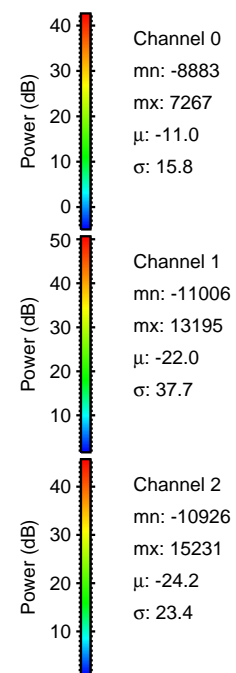
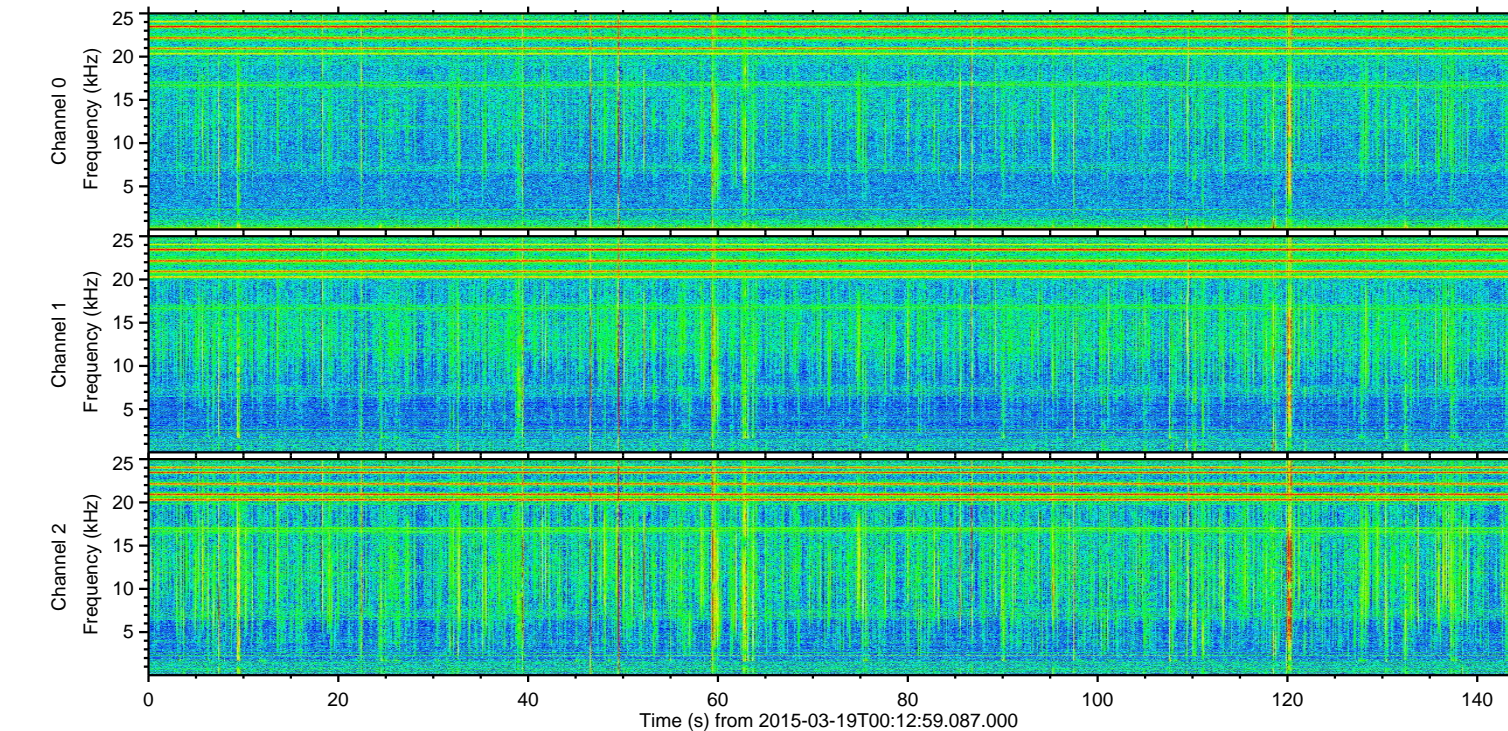
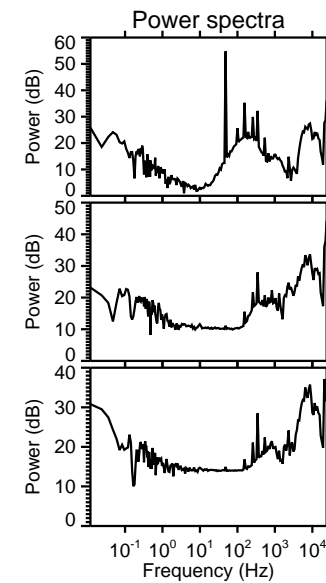
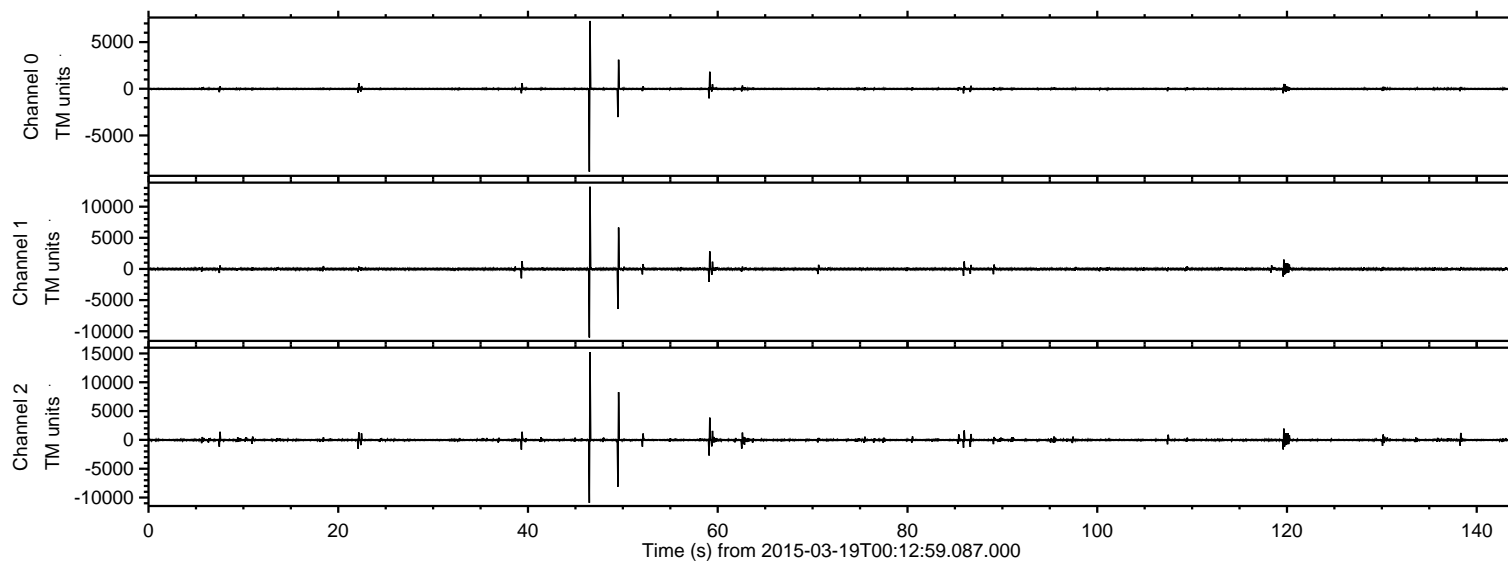
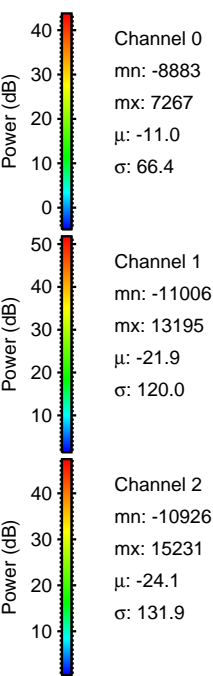
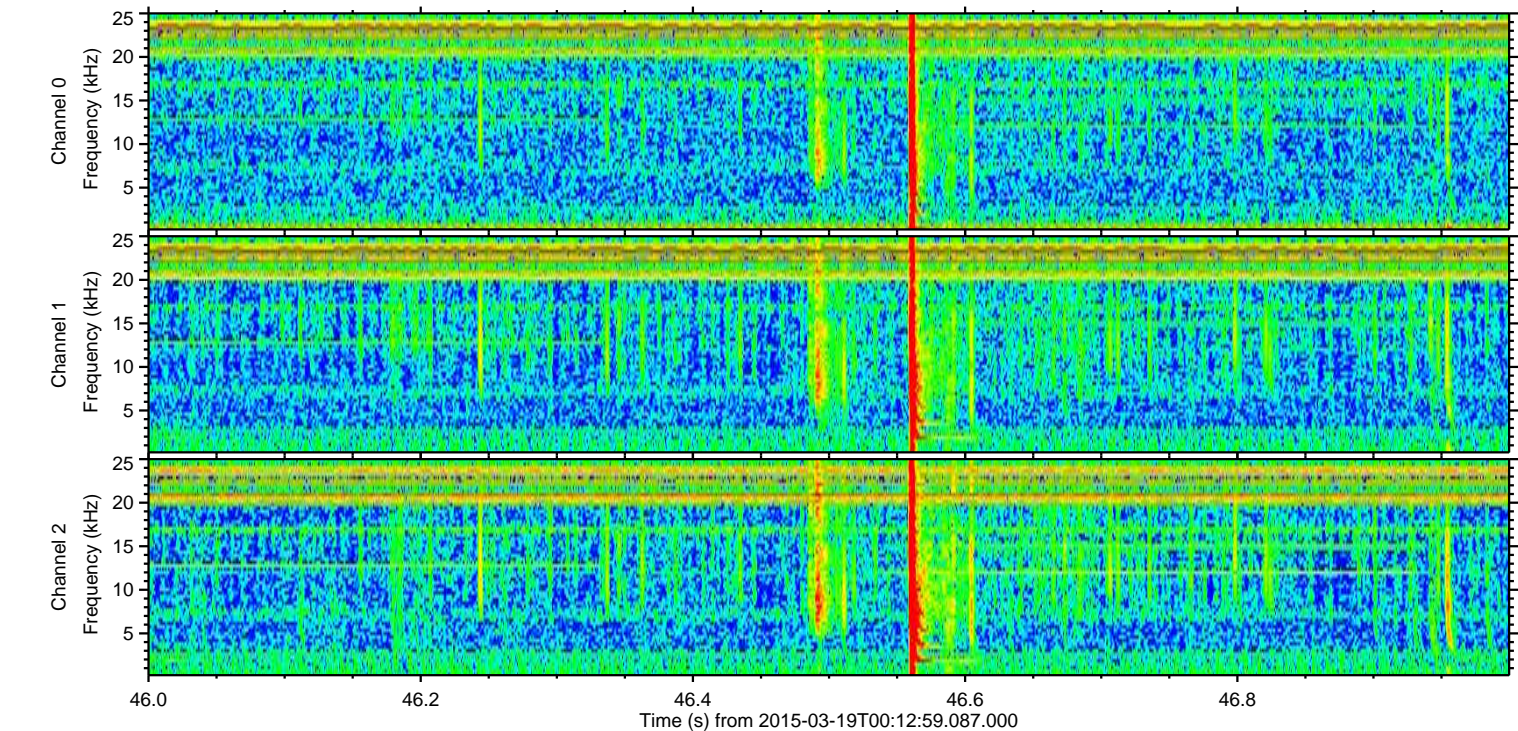
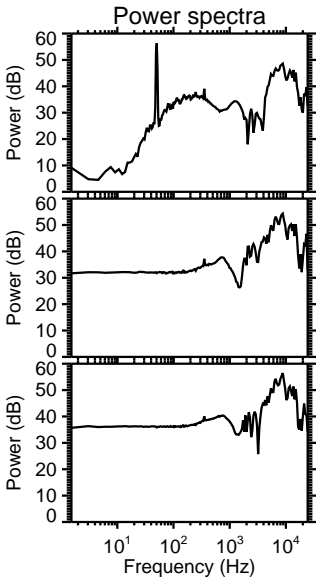
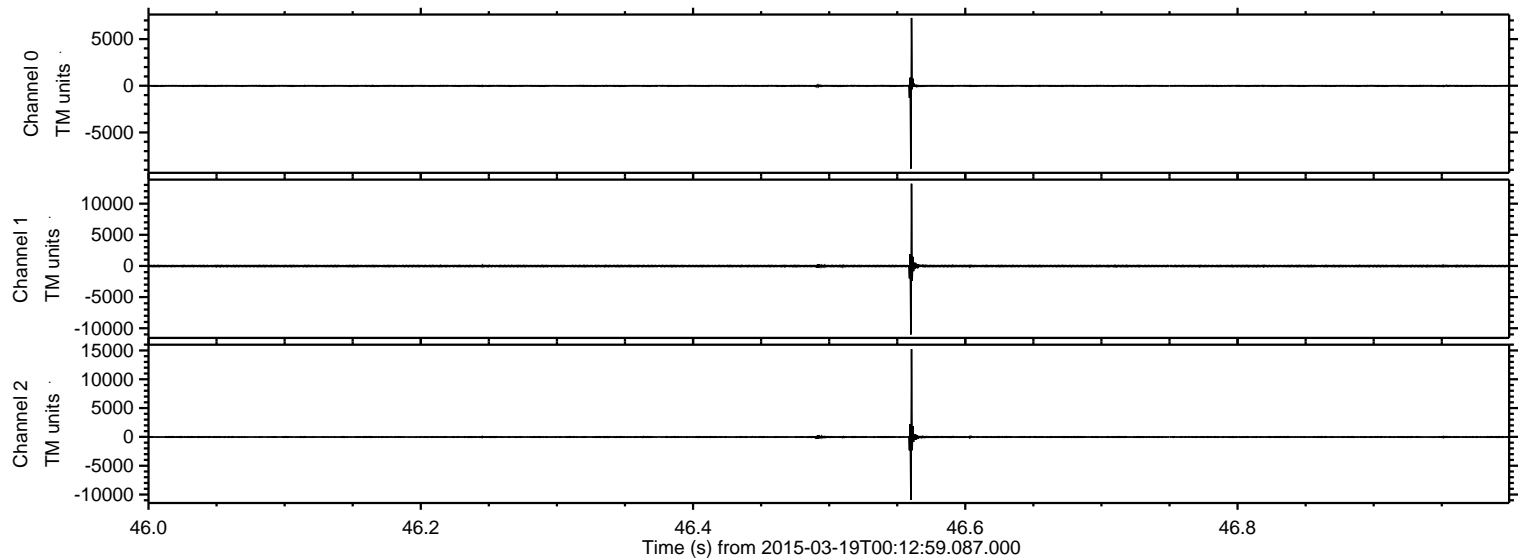


ELMAVAN 3D WAVEFORMS (Measured data sampled at 50 kHz) 49798 packets of 144 samples from 2015-03-19T00:12:59.087.000.

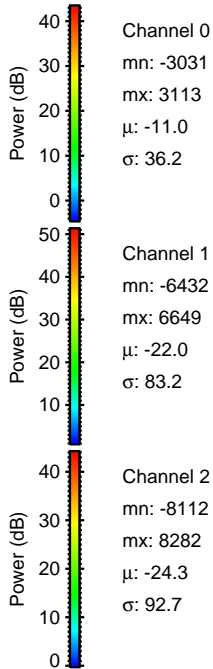
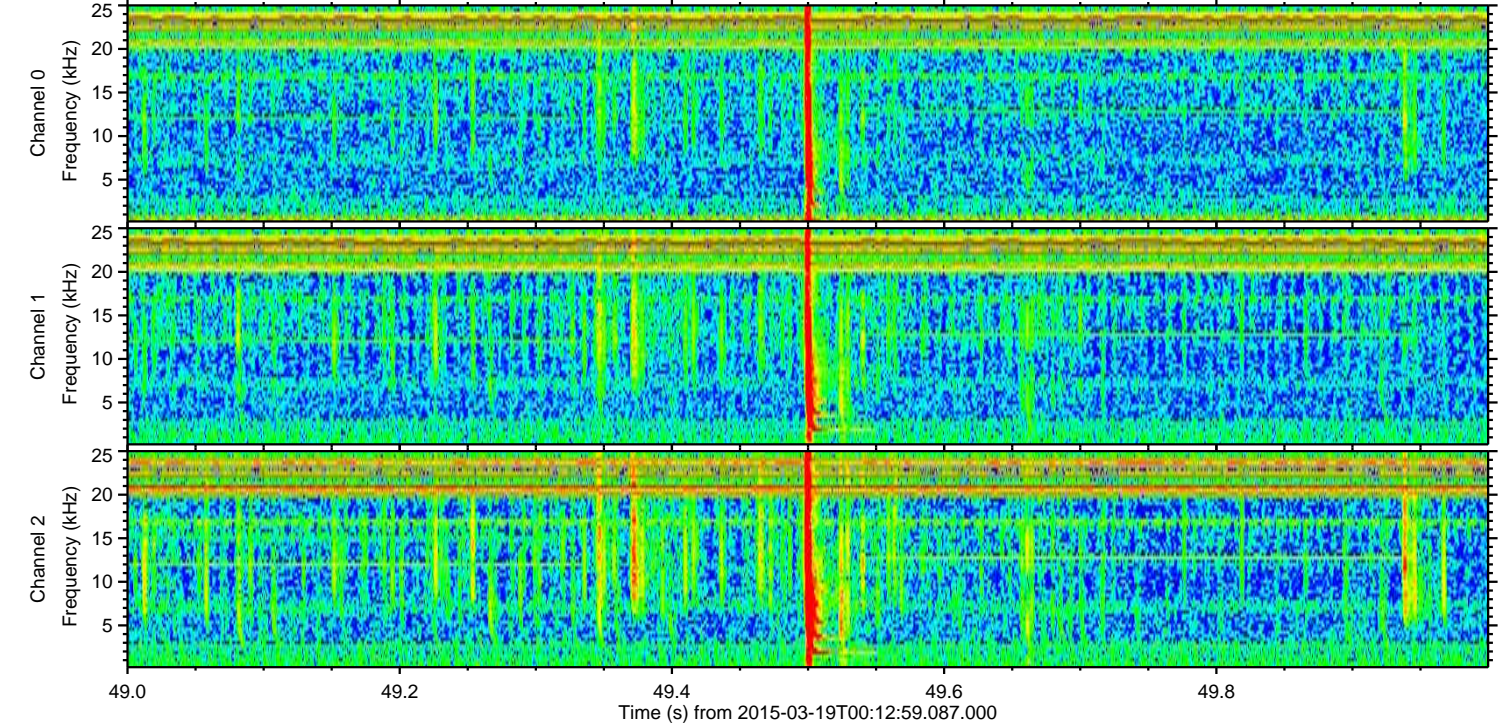
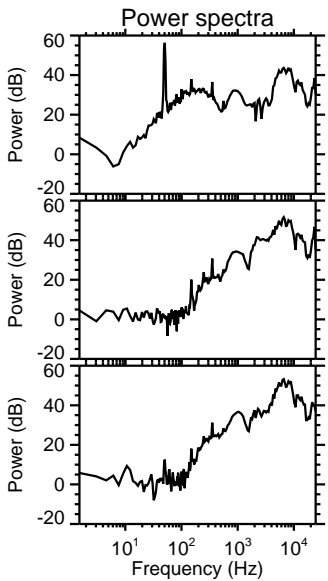
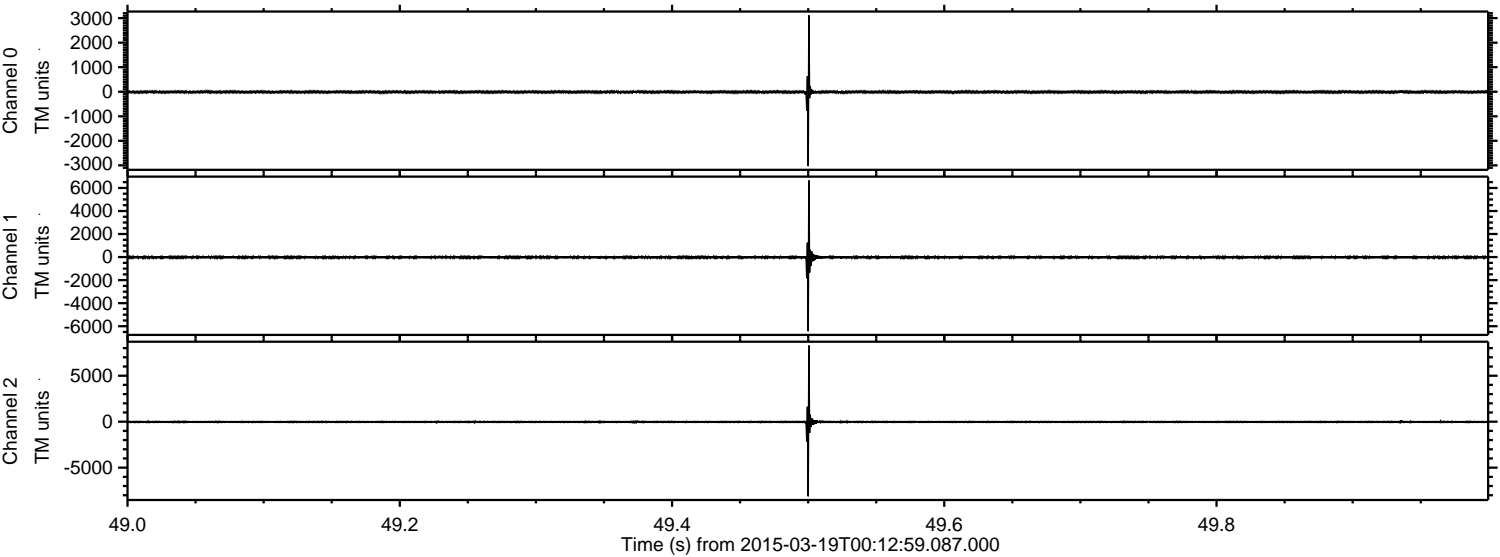
Processed Thu Mar 19 01:19:58 2015 by ELM ver.2012-10-06 from 001__elm20150319_001258__dat00.bin



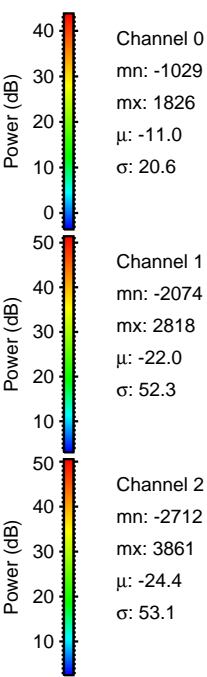
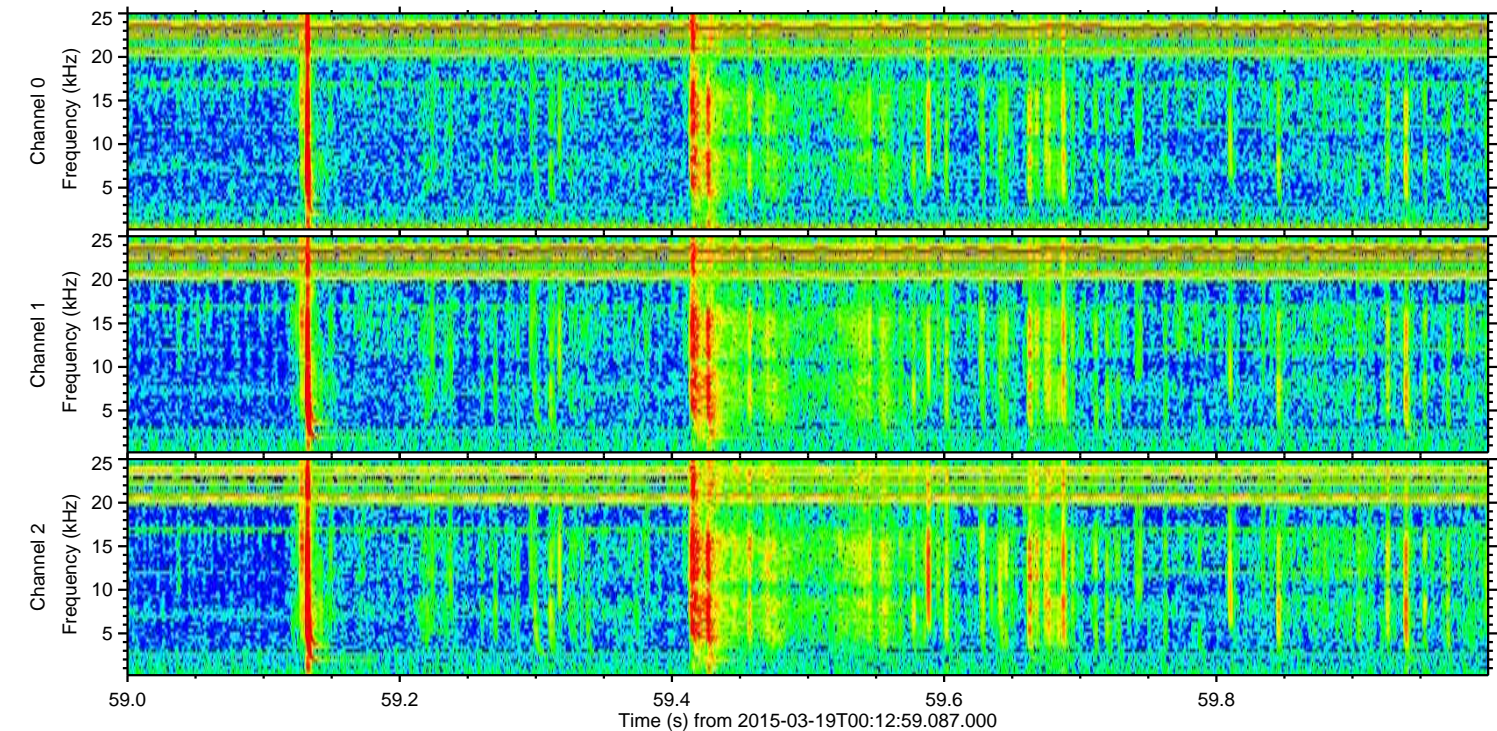
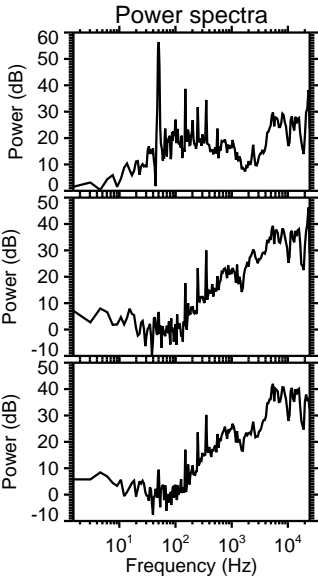
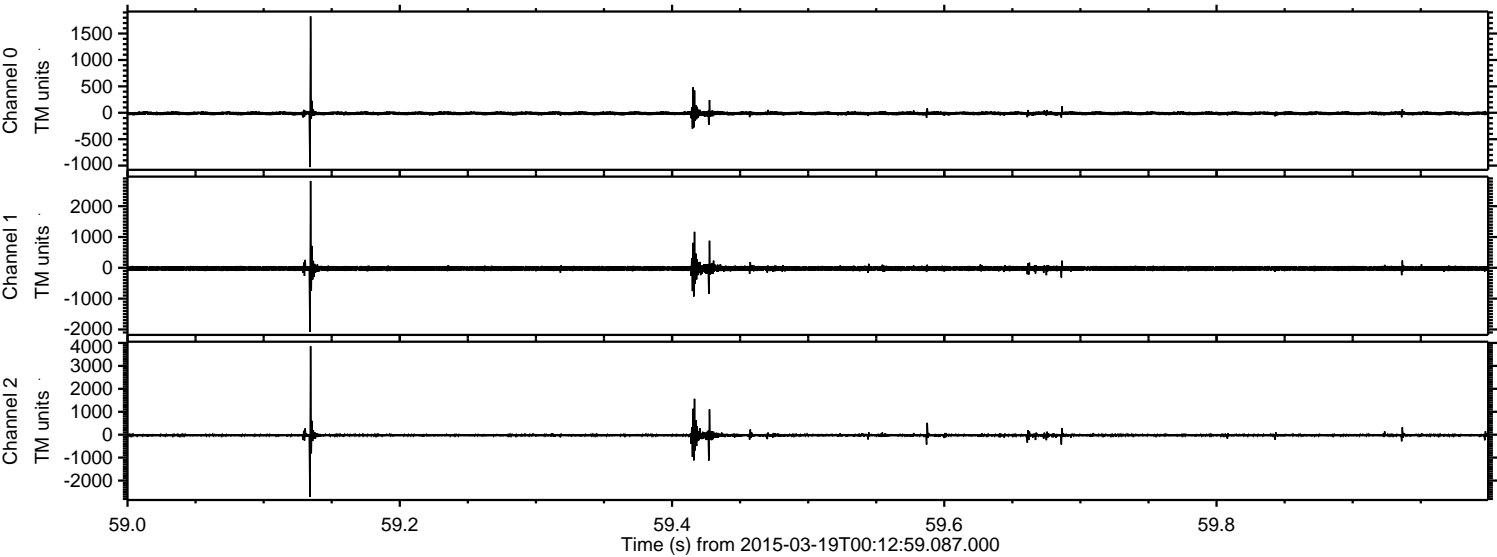
Processed Thu Mar 19 01:20:09 2015 by ELM ver.2012-10-06 from 001__elm20150319_001258__dat00.bin



Processed Thu Mar 19 01:20:10 2015 by ELM ver.2012-10-06 from 001__elm20150319_001258__dat00.bin

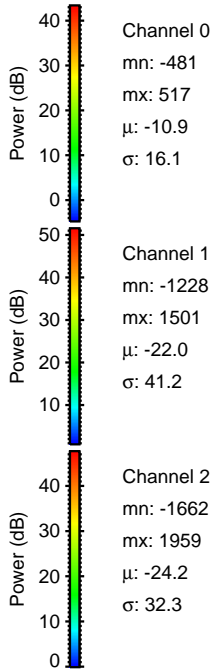
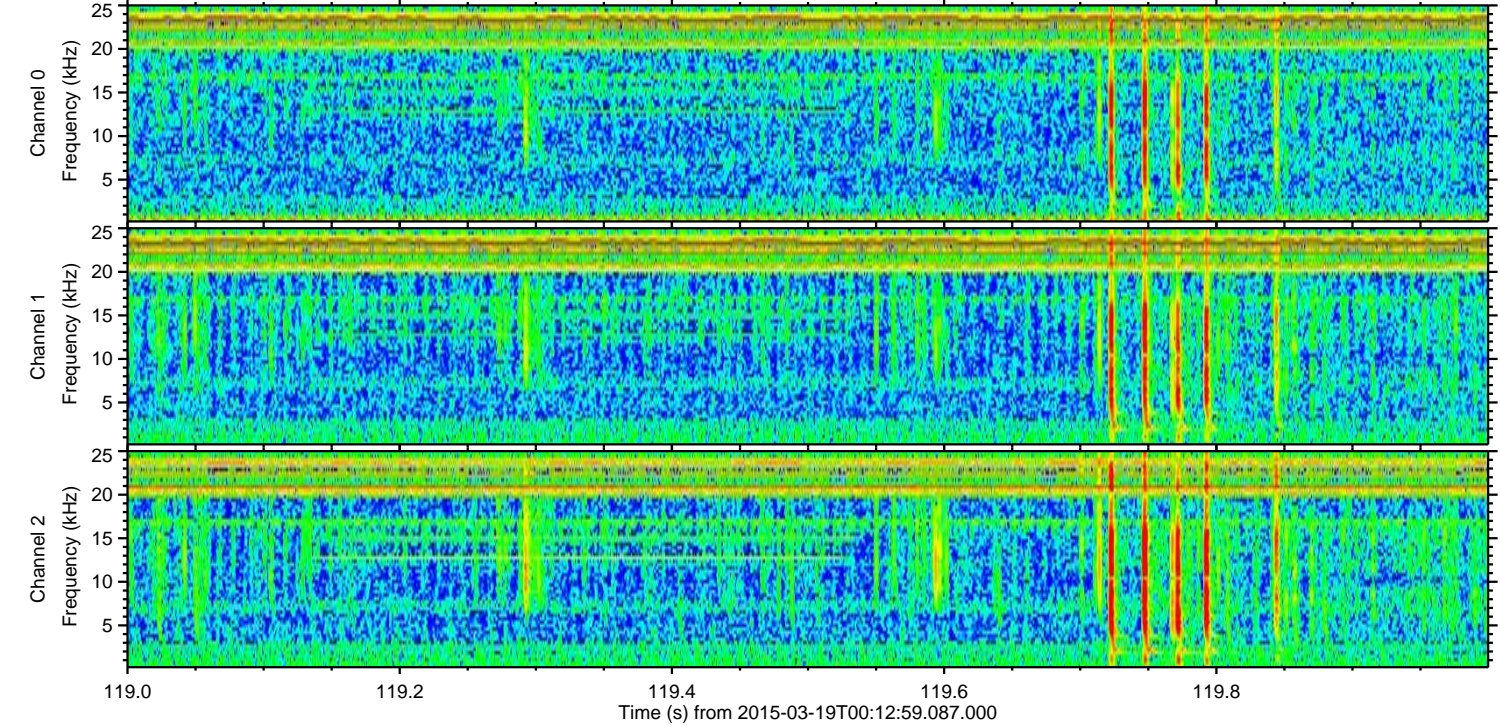
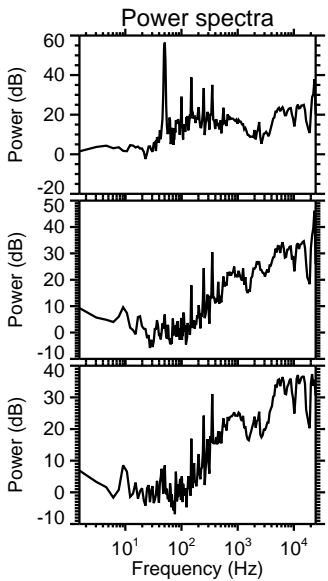
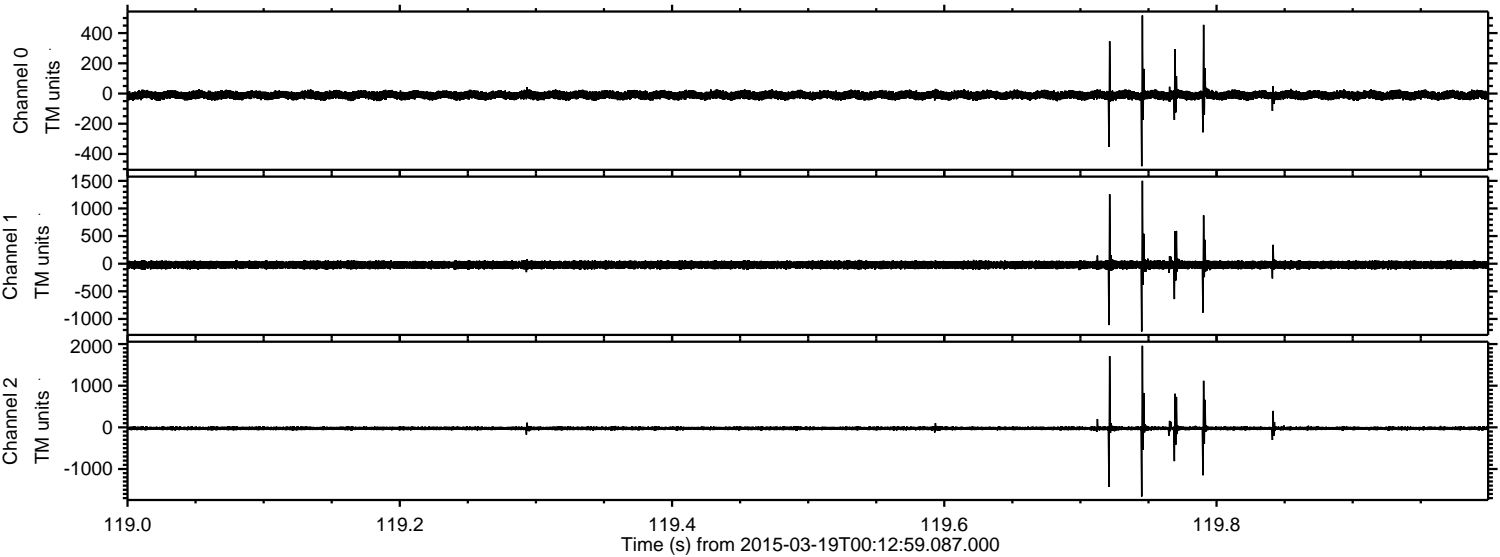


Processed Thu Mar 19 01:20:11 2015 by ELM ver.2012-10-06 from 001__elm20150319_001258__dat00.bin



ELMAVAN 3D WAVEFORMS (Measured data sampled at 50 kHz) 49798 packets of 144 samples from 2015-03-19T00:12:59.087.000. Part 120/144

Processed Thu Mar 19 01:20:12 2015 by ELM ver.2012-10-06 from 001__elm20150319_001258__dat00.bin



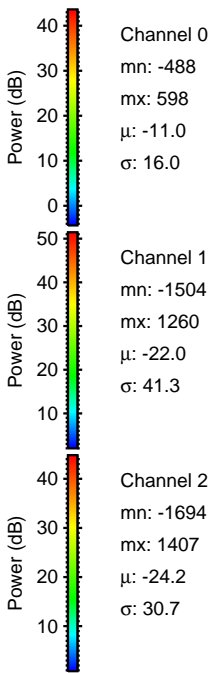
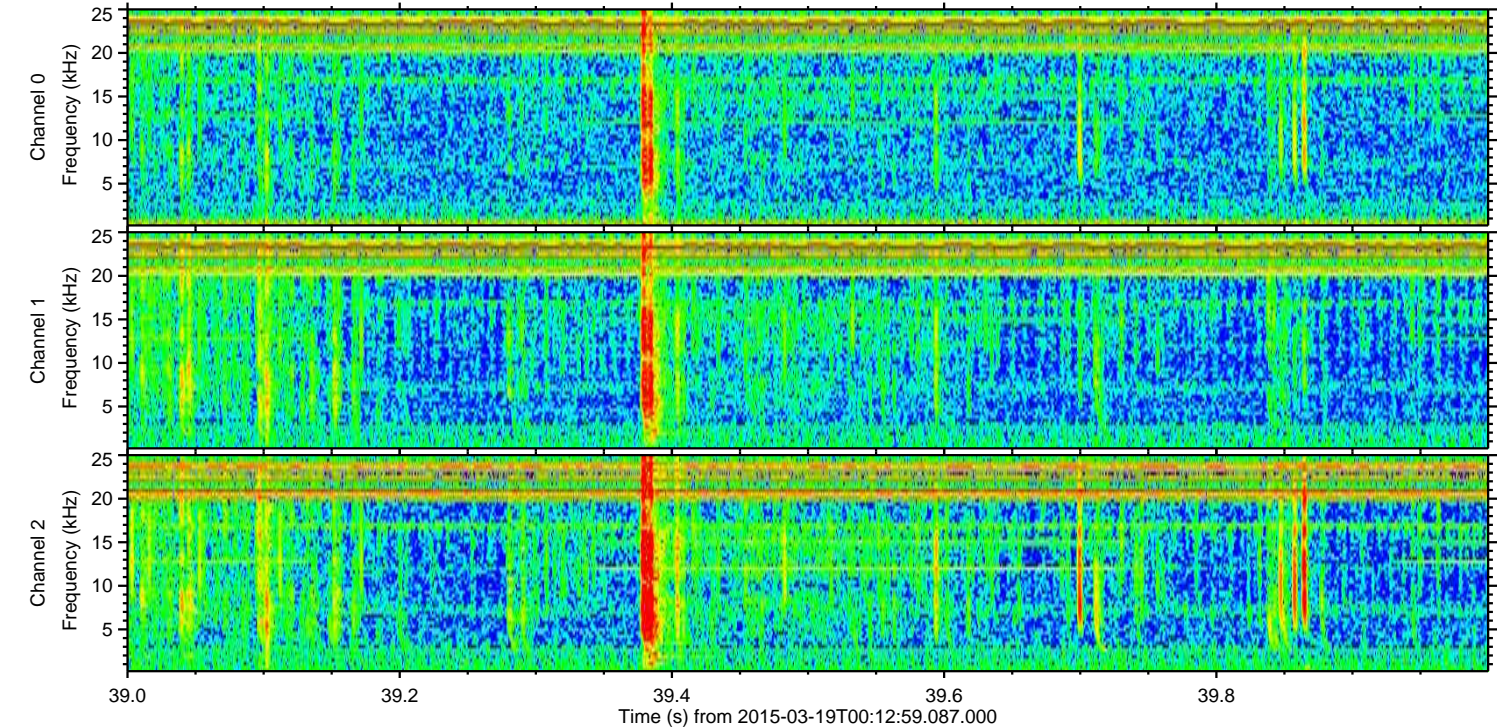
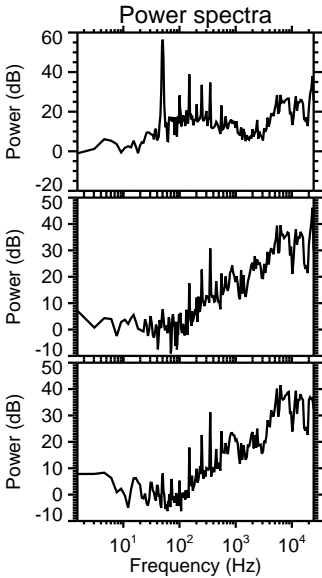
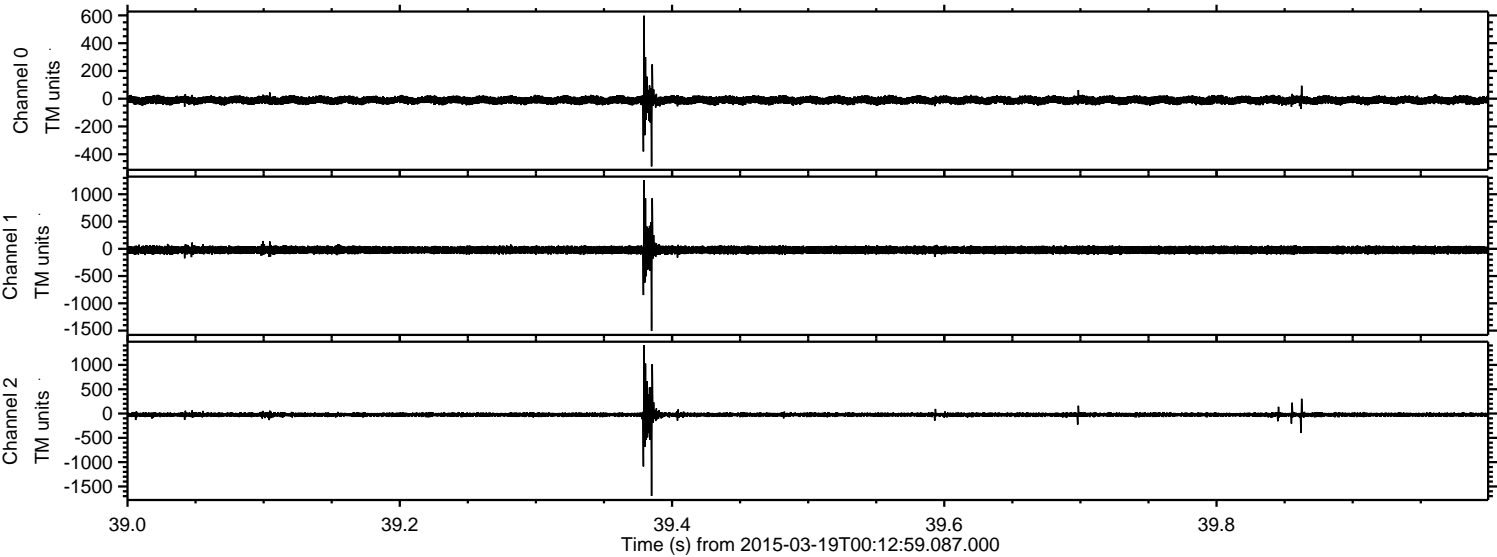
Channel 0
mn: -481
mx: 517
 μ : -10.9
 σ : 16.1

Channel 1
mn: -1228
mx: 1501
 μ : -22.0
 σ : 41.2

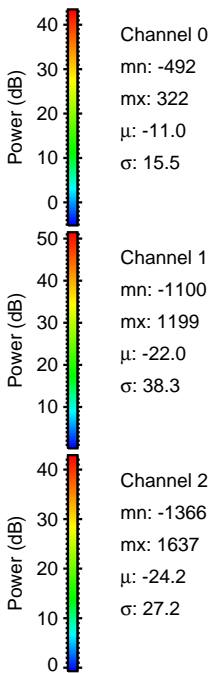
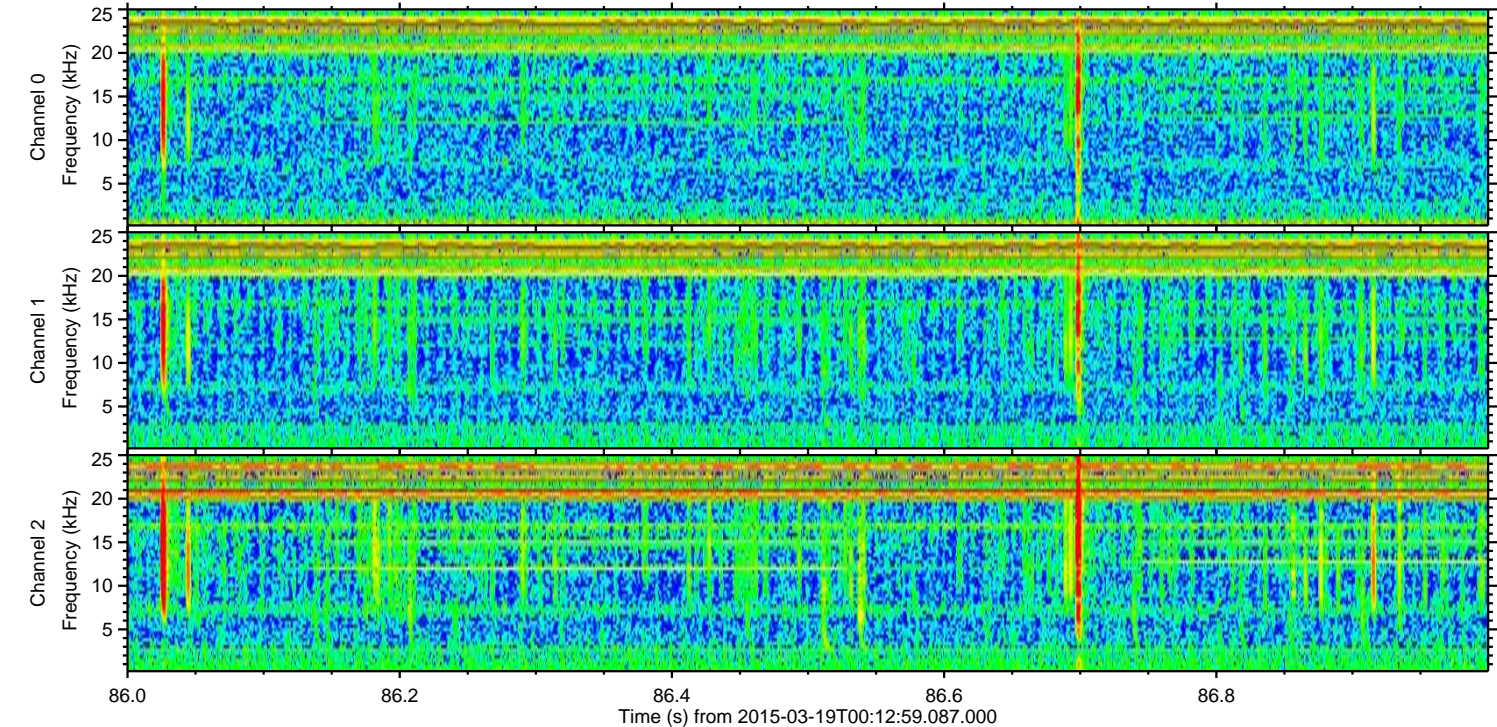
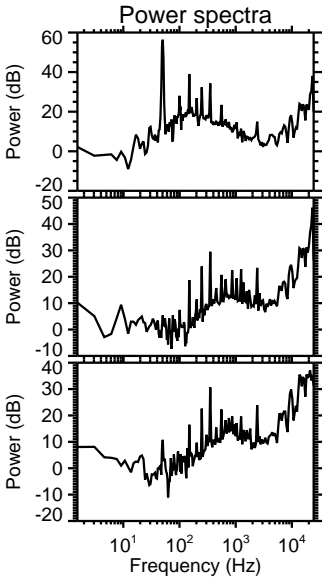
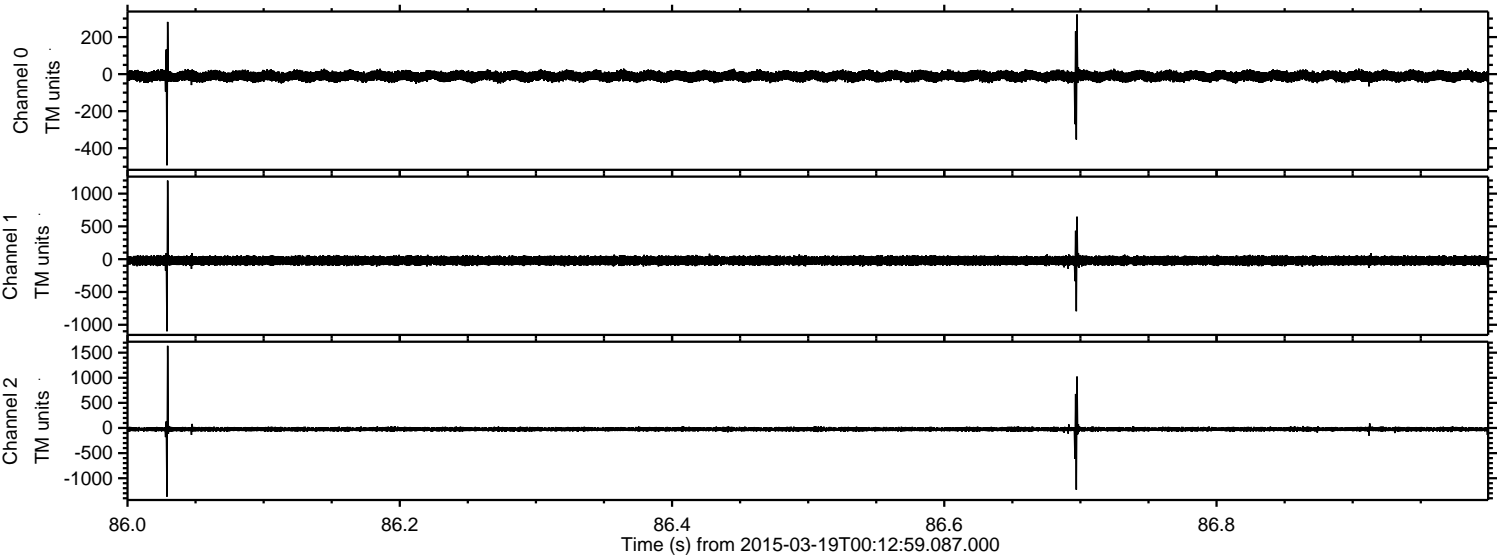
Channel 2
mn: -1662
mx: 1959
 μ : -24.2
 σ : 32.3

ELMAVAN 3D WAVEFORMS (Measured data sampled at 50 kHz) 49798 packets of 144 samples from 2015-03-19T00:12:59.087.000. Part 40/144

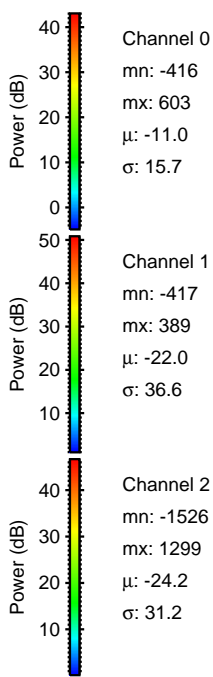
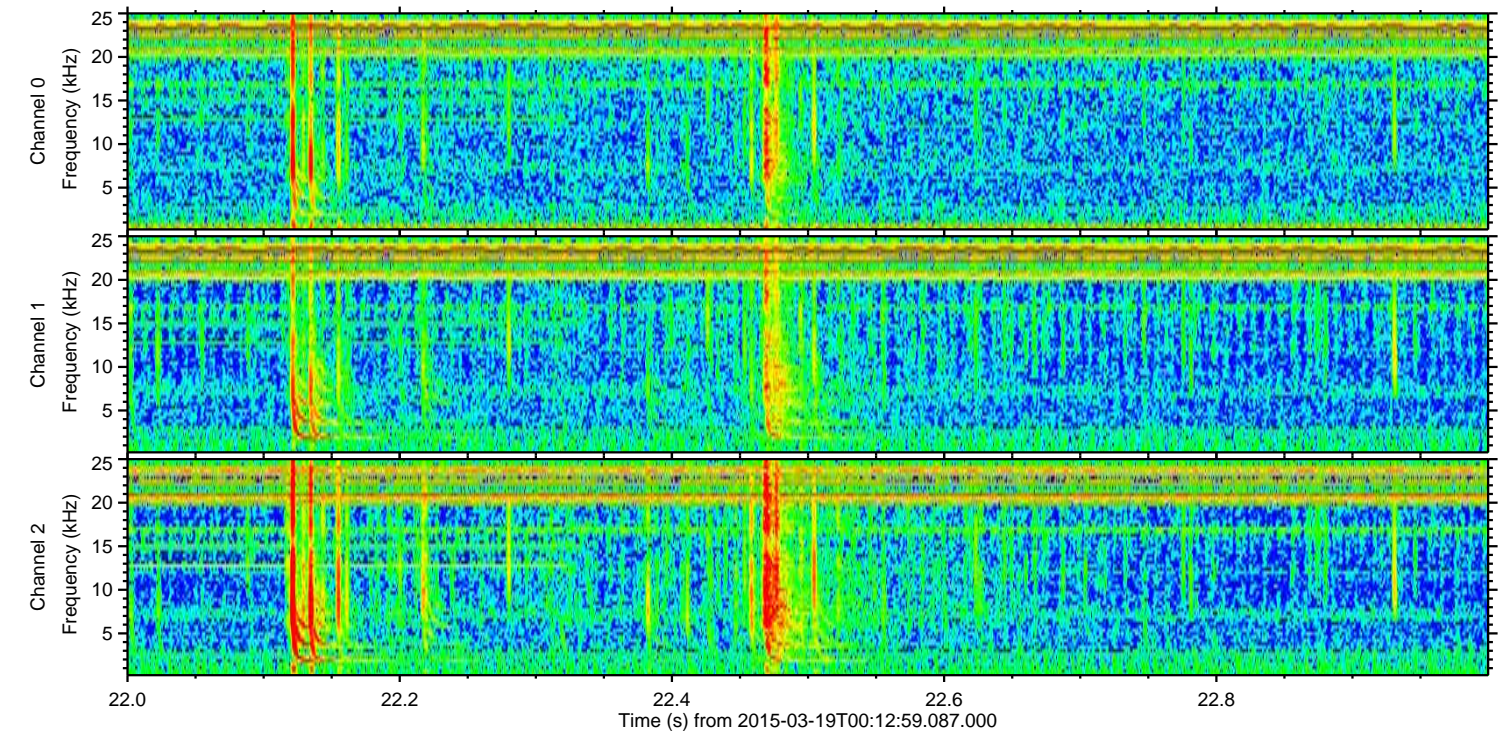
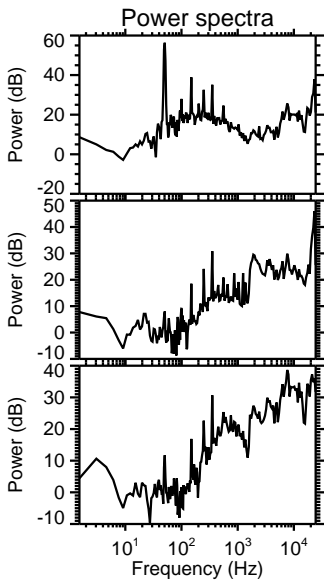
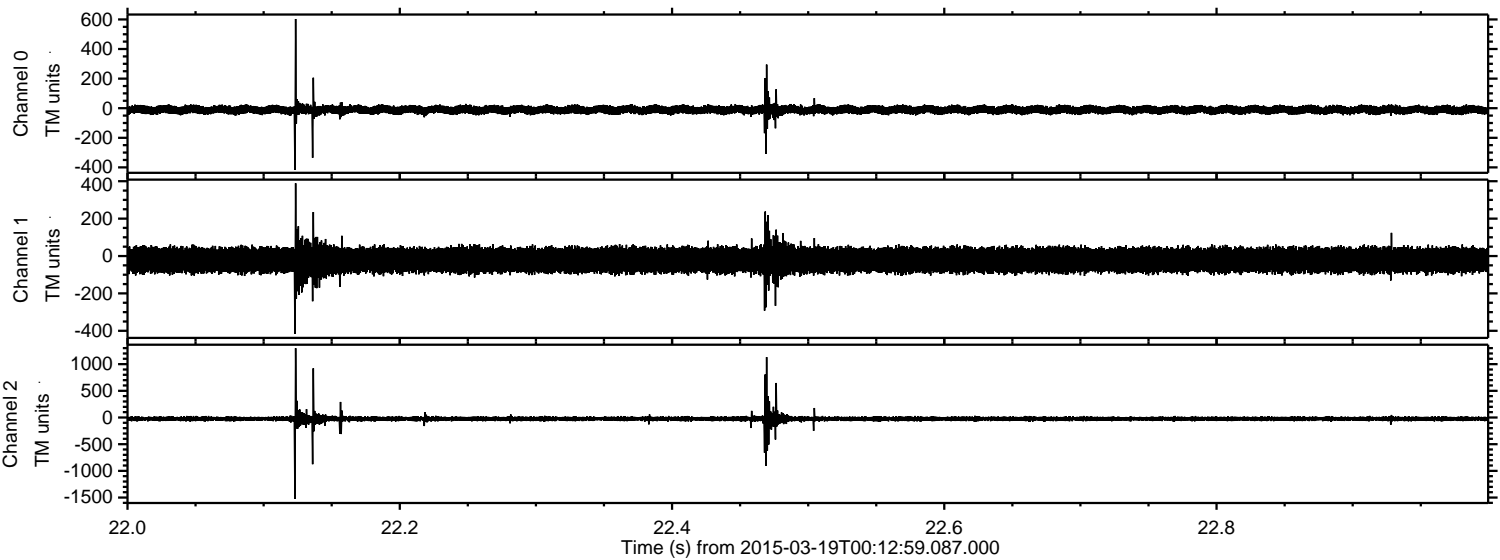
Processed Thu Mar 19 01:20:13 2015 by ELM ver.2012-10-06 from 001__elm20150319_001258__dat00.bin



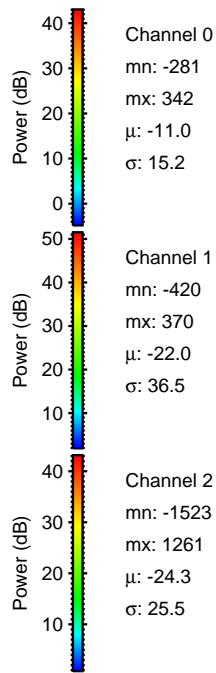
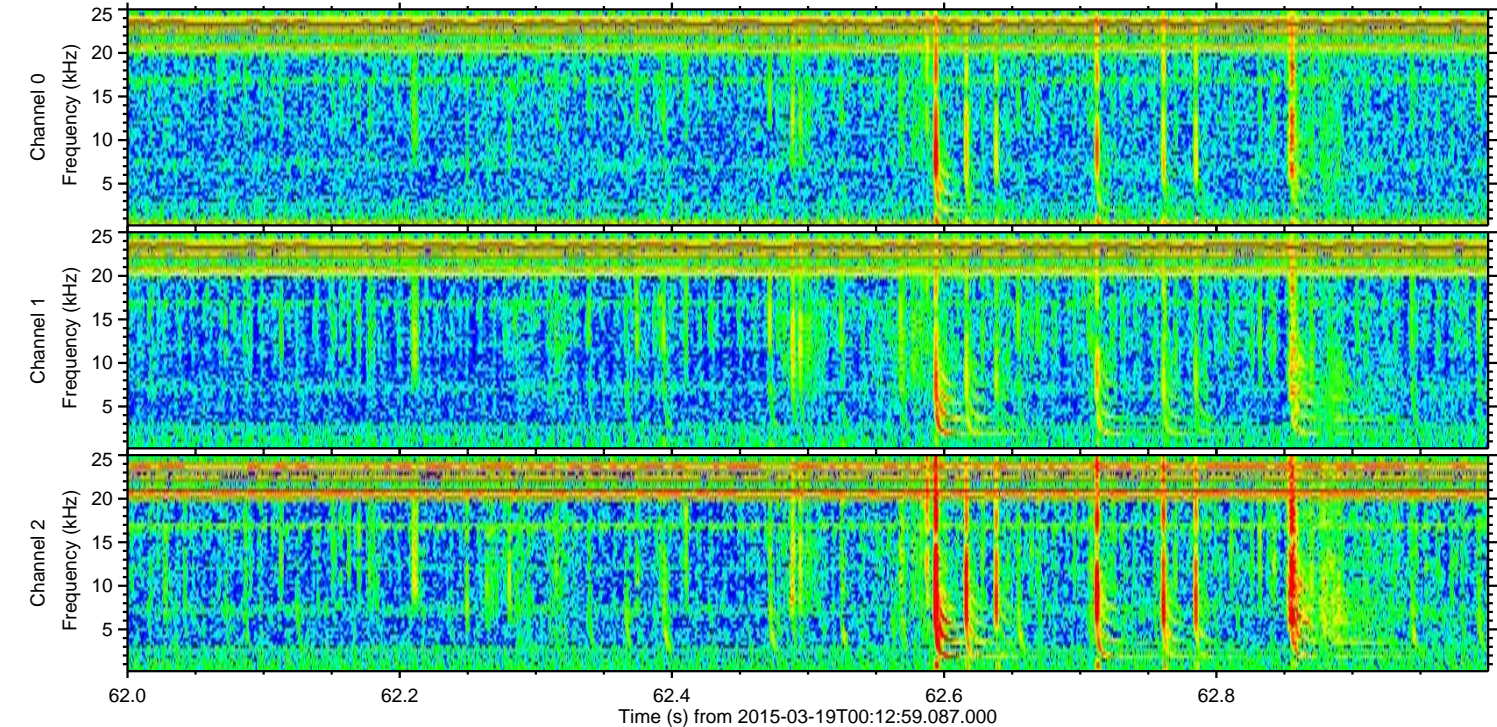
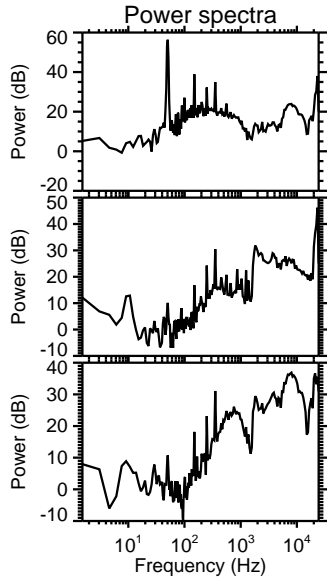
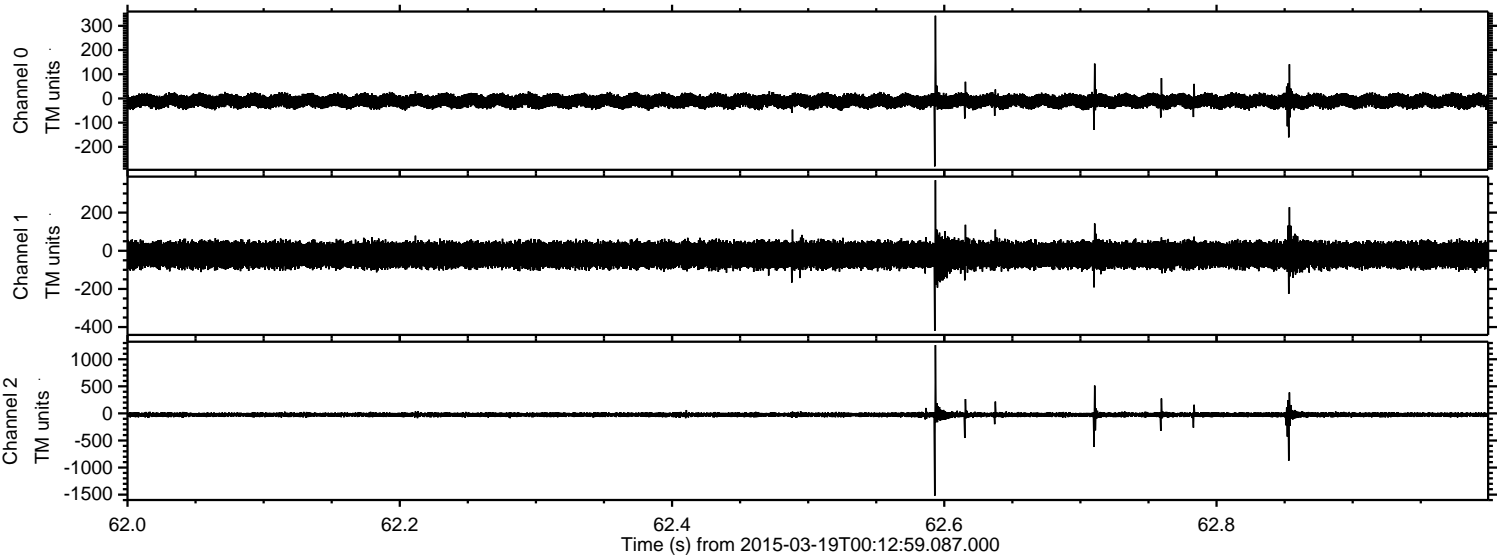
Processed Thu Mar 19 01:20:14 2015 by ELM ver.2012-10-06 from 001__elm20150319_001258__dat00.bin



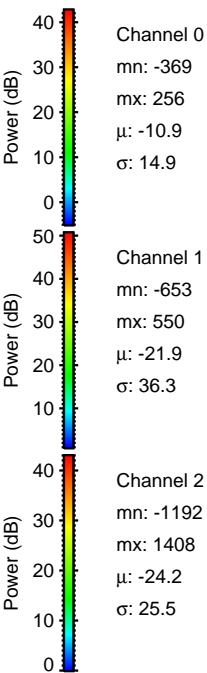
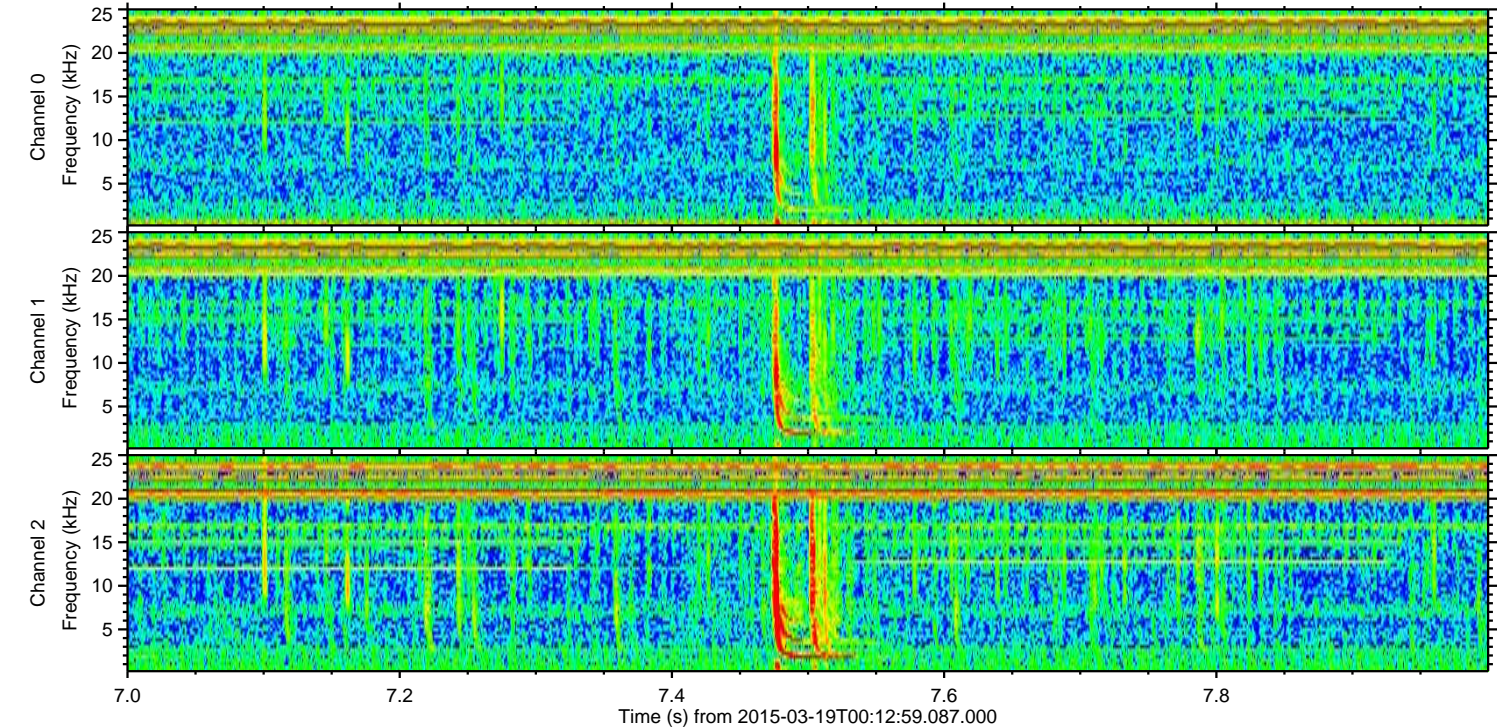
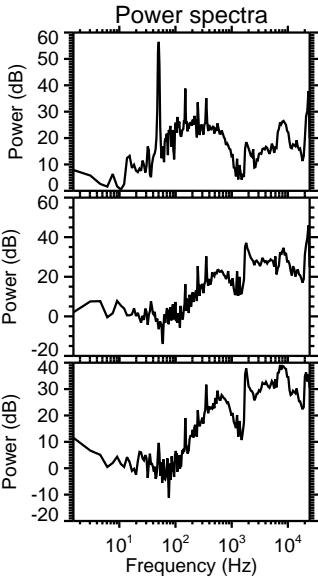
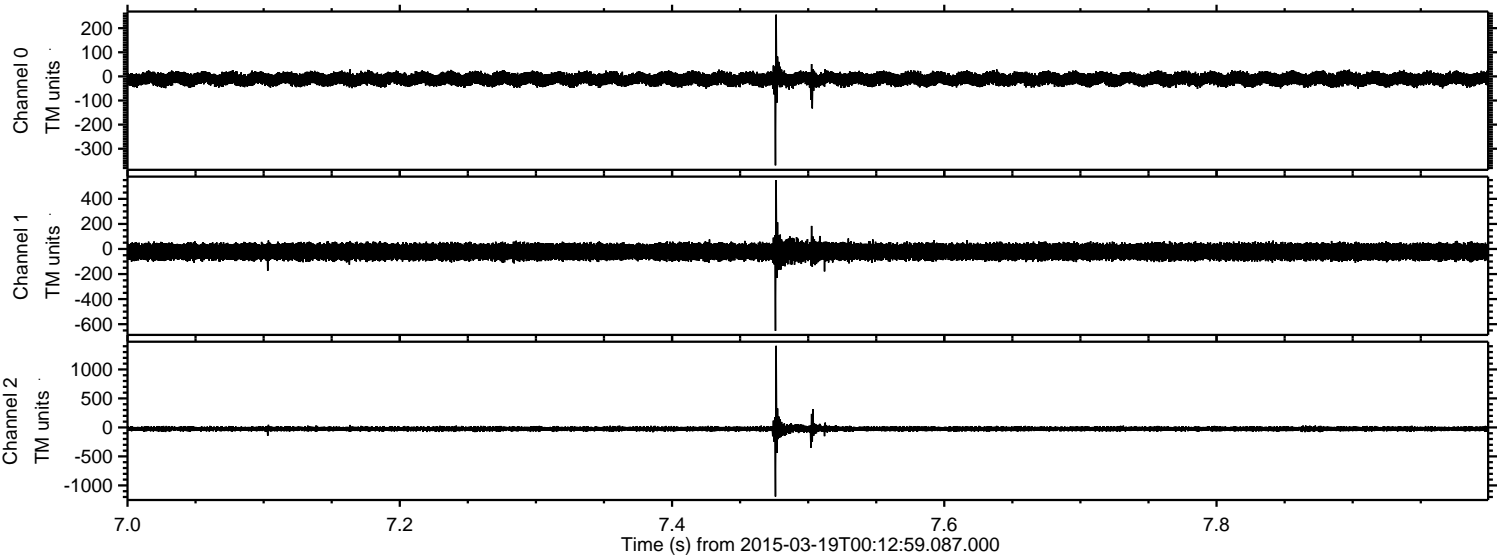
Processed Thu Mar 19 01:20:15 2015 by ELM ver.2012-10-06 from 001__elm20150319_001258__dat00.bin



Processed Thu Mar 19 01:20:16 2015 by ELM ver.2012-10-06 from 001__elm20150319_001258__dat00.bin



Processed Thu Mar 19 01:20:17 2015 by ELM ver.2012-10-06 from 001__elm20150319_001258__dat00.bin



Processed Thu Mar 19 01:20:18 2015 by ELM ver.2012-10-06 from 001__elm20150319_001258__dat00.bin

