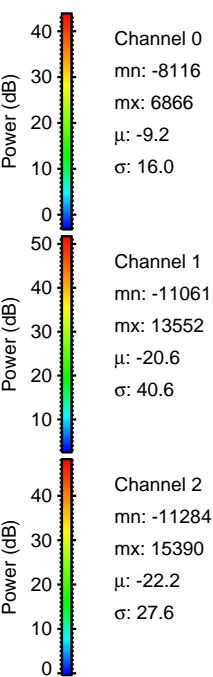
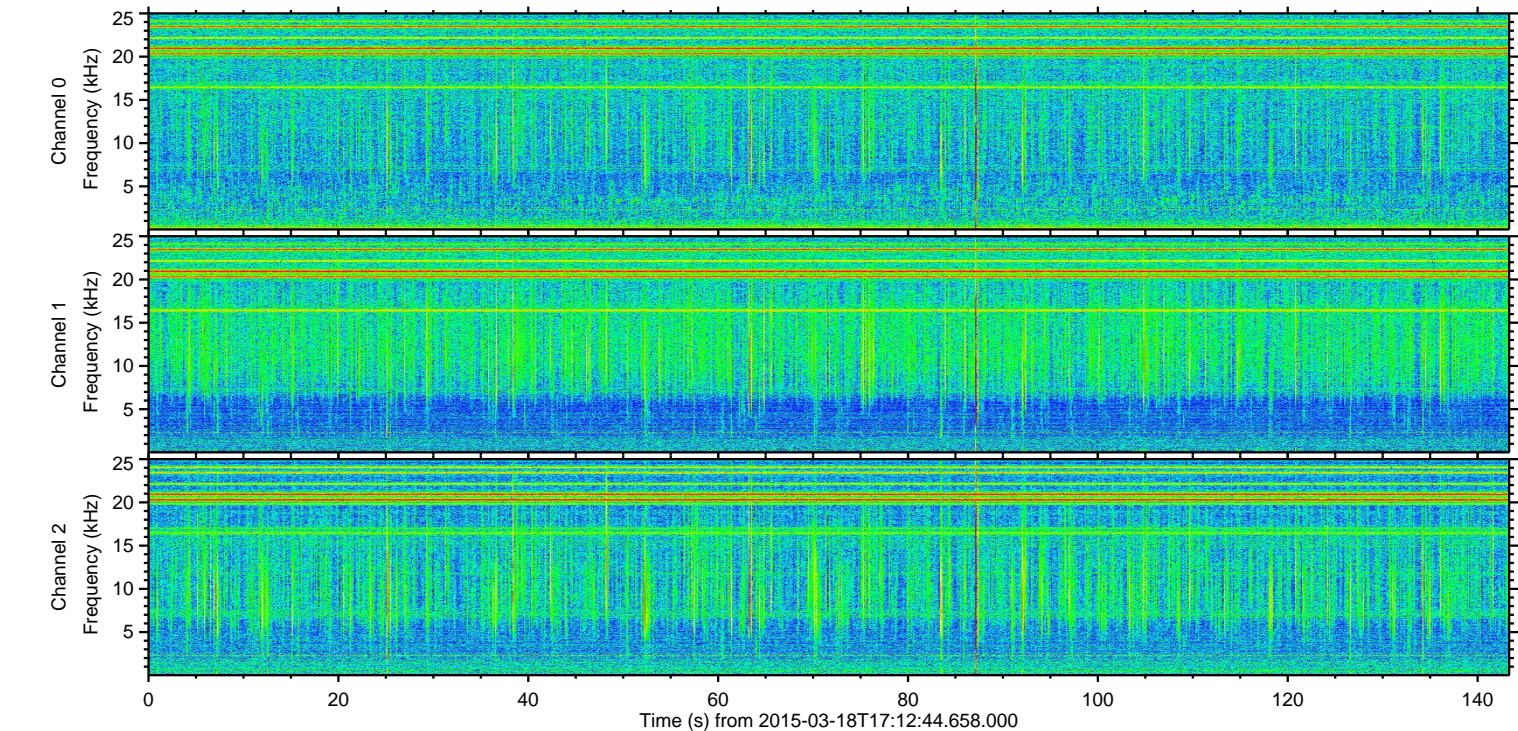
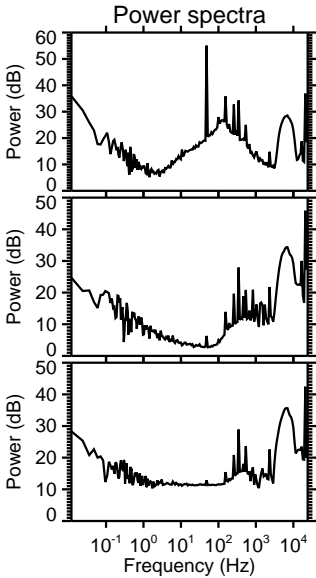
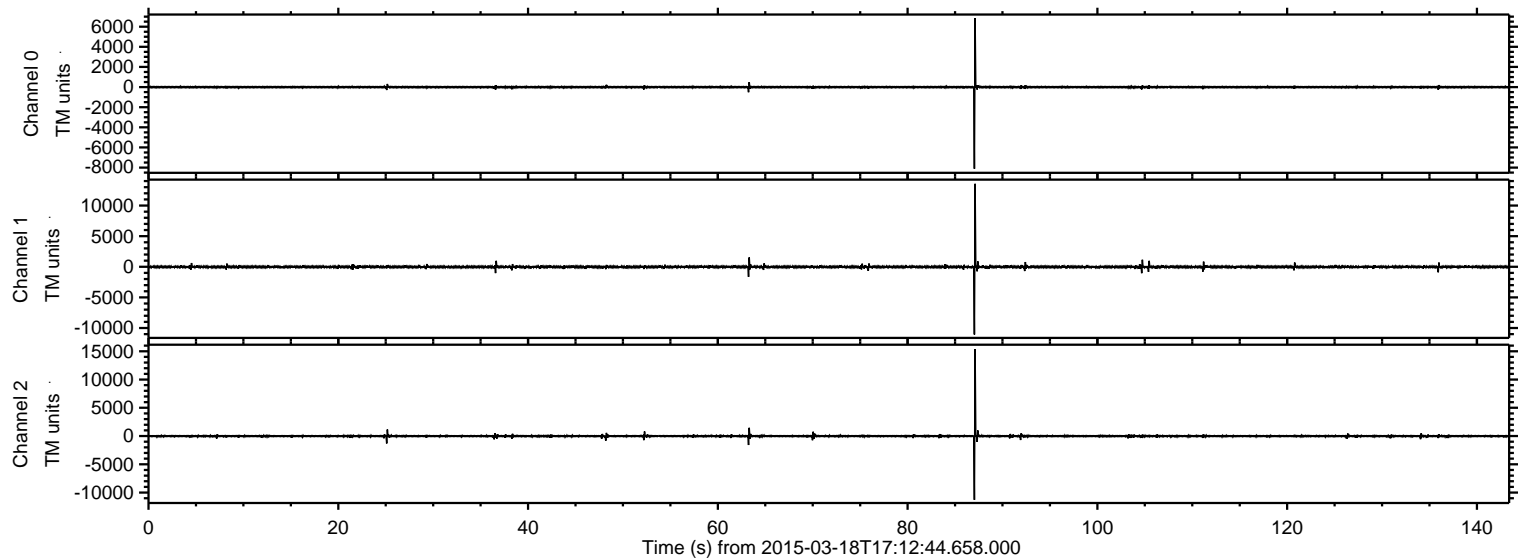


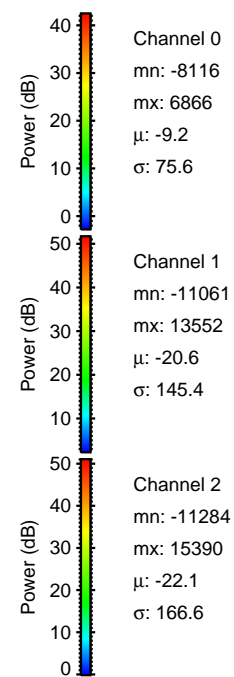
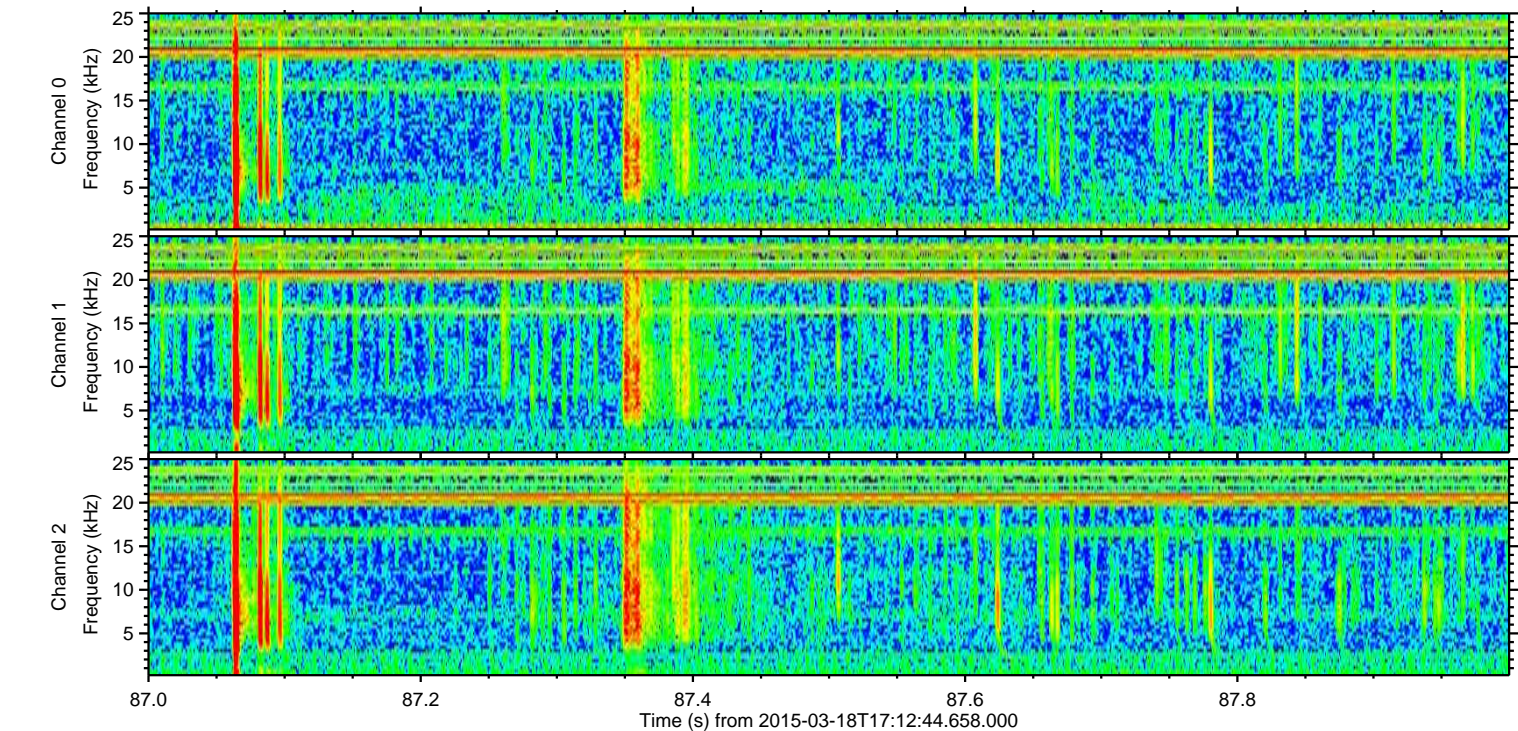
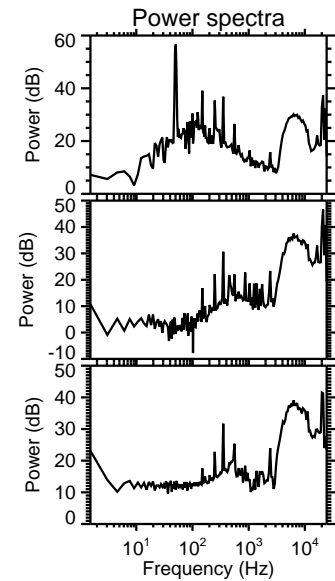
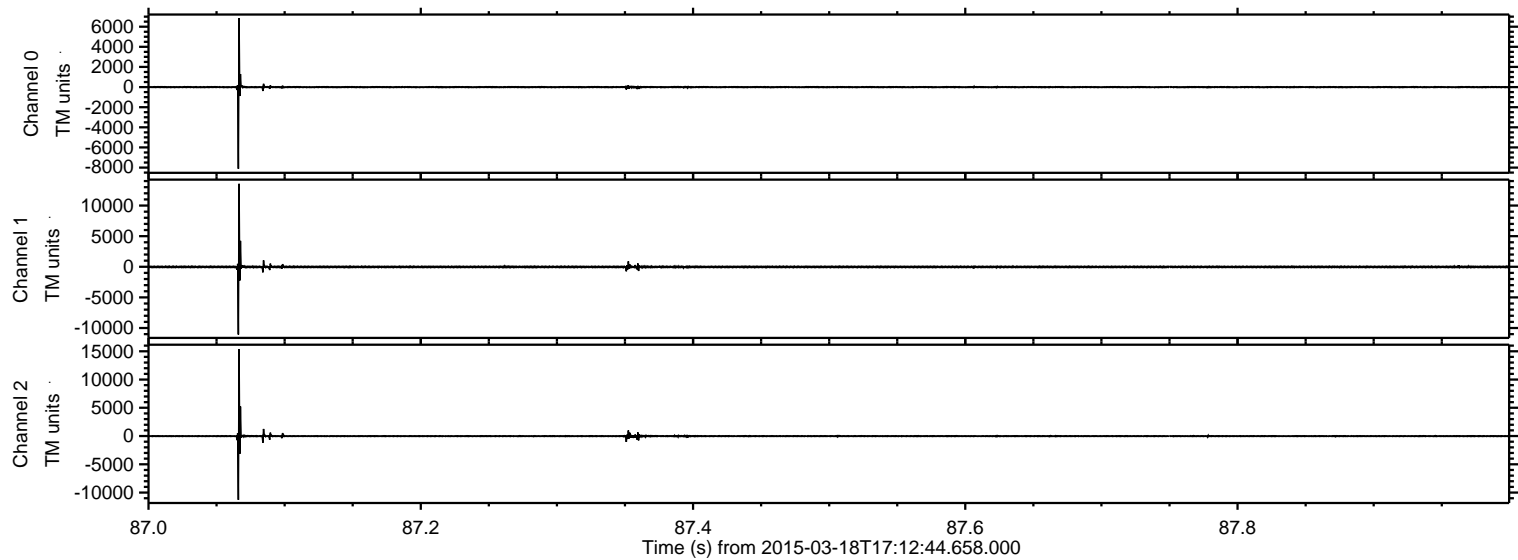
ELMAVAN 3D WAVEFORMS (Measured data sampled at 50 kHz) 49790 packets of 144 samples from 2015-03-18T17:12:44.658.000.

Processed Wed Mar 18 18:19:17 2015 by ELM ver.2012-10-06 from 001\_\_elm20150318\_171243\_\_dat00.bin



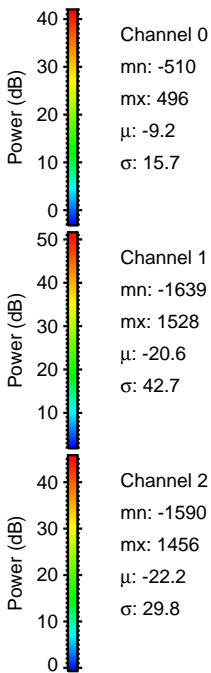
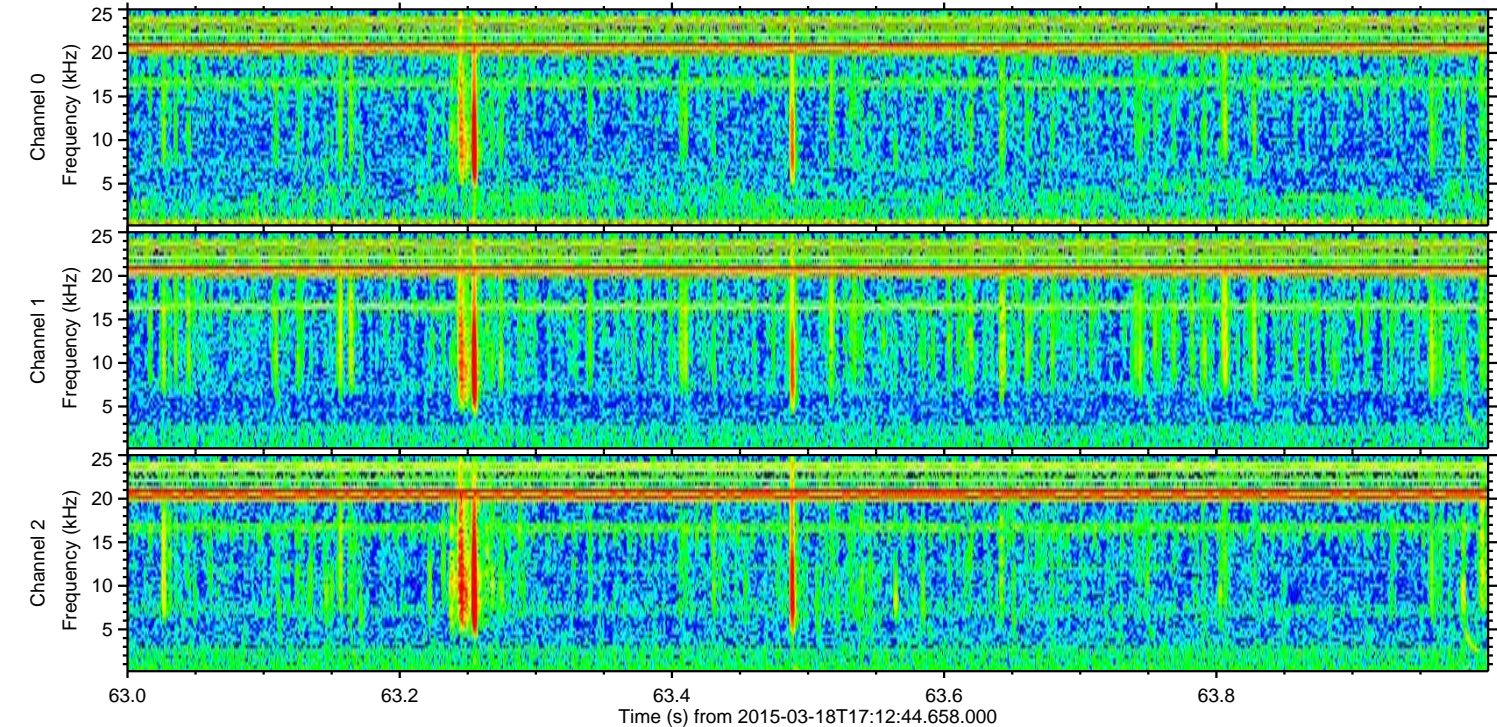
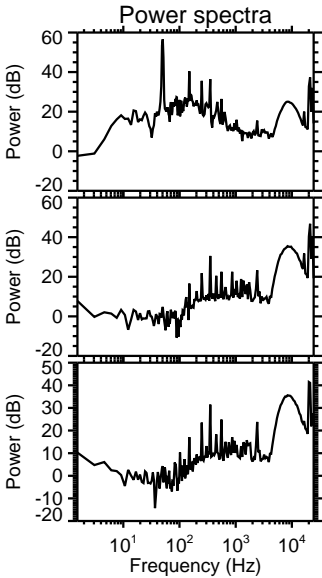
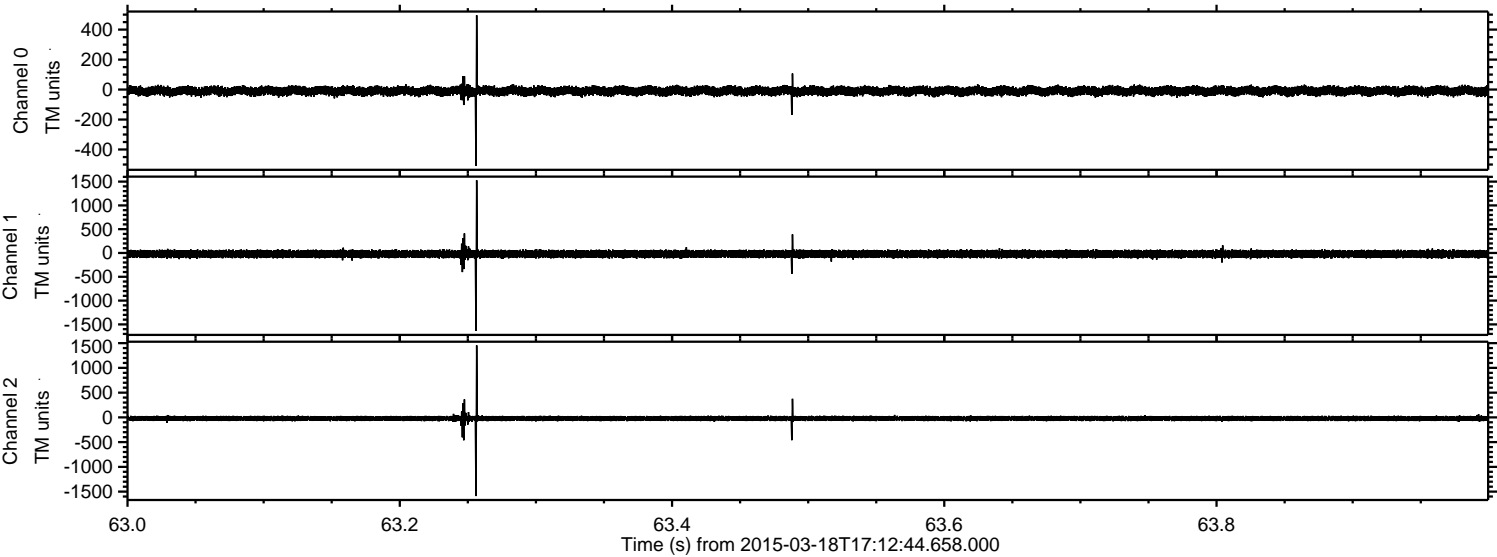


Processed Wed Mar 18 18:19:29 2015 by ELM ver.2012-10-06 from 001\_\_elm20150318\_171243\_\_dat00.bin



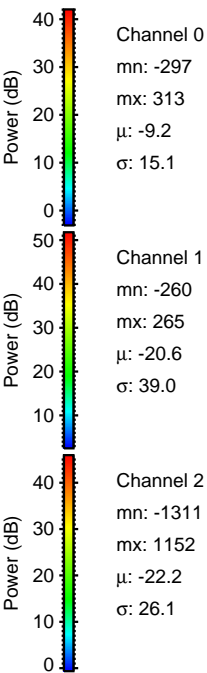
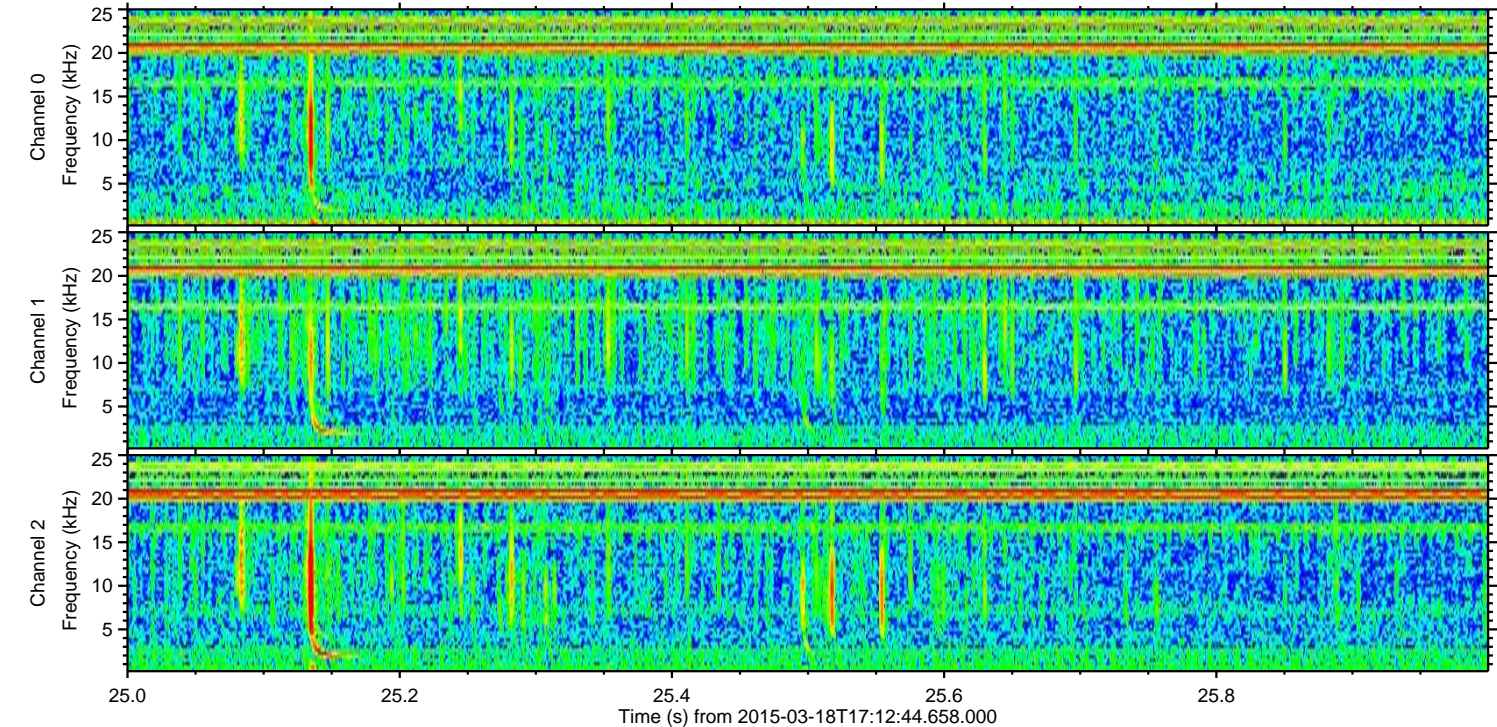
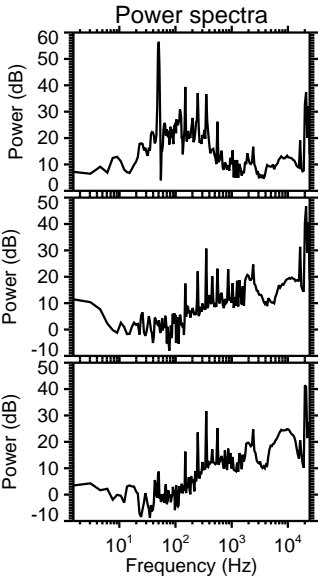
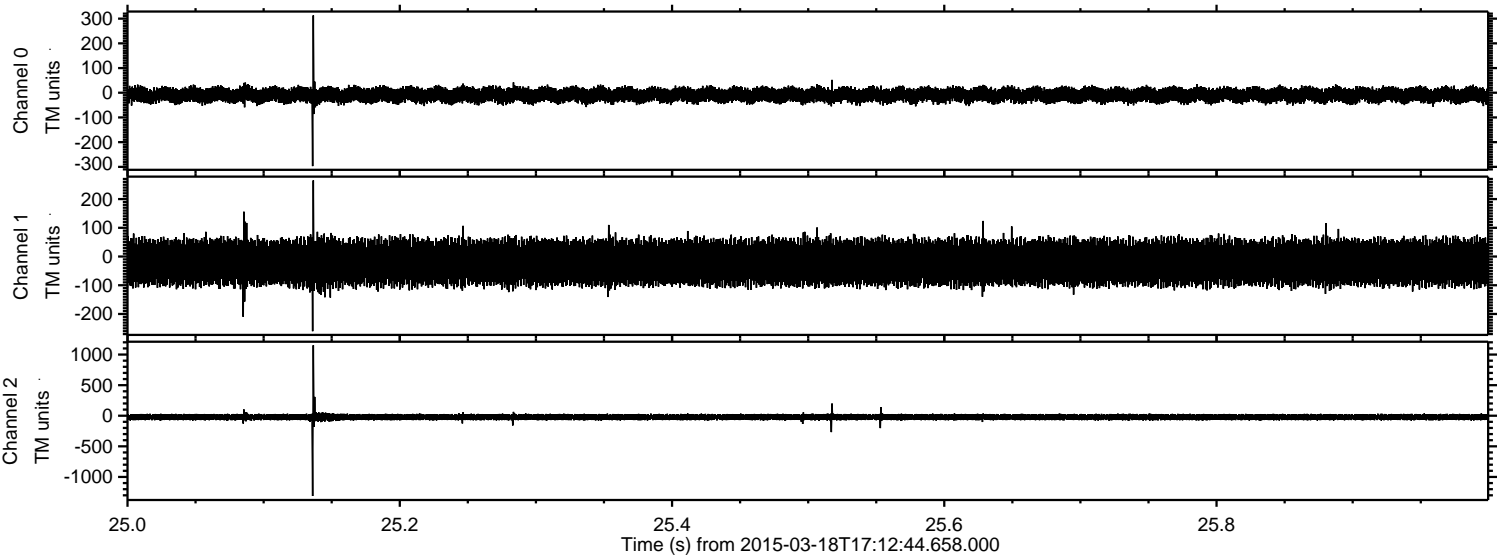


Processed Wed Mar 18 18:19:29 2015 by ELM ver.2012-10-06 from 001\_\_elm20150318\_171243\_\_dat00.bin





Processed Wed Mar 18 18:19:30 2015 by ELM ver.2012-10-06 from 001\_\_elm20150318\_171243\_\_dat00.bin



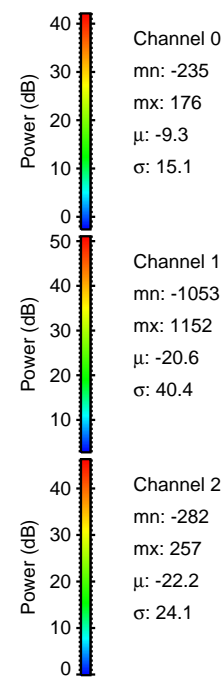
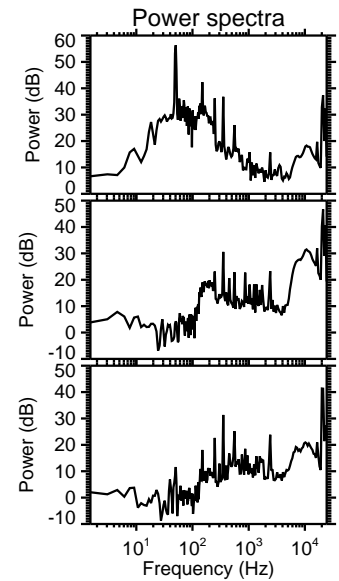
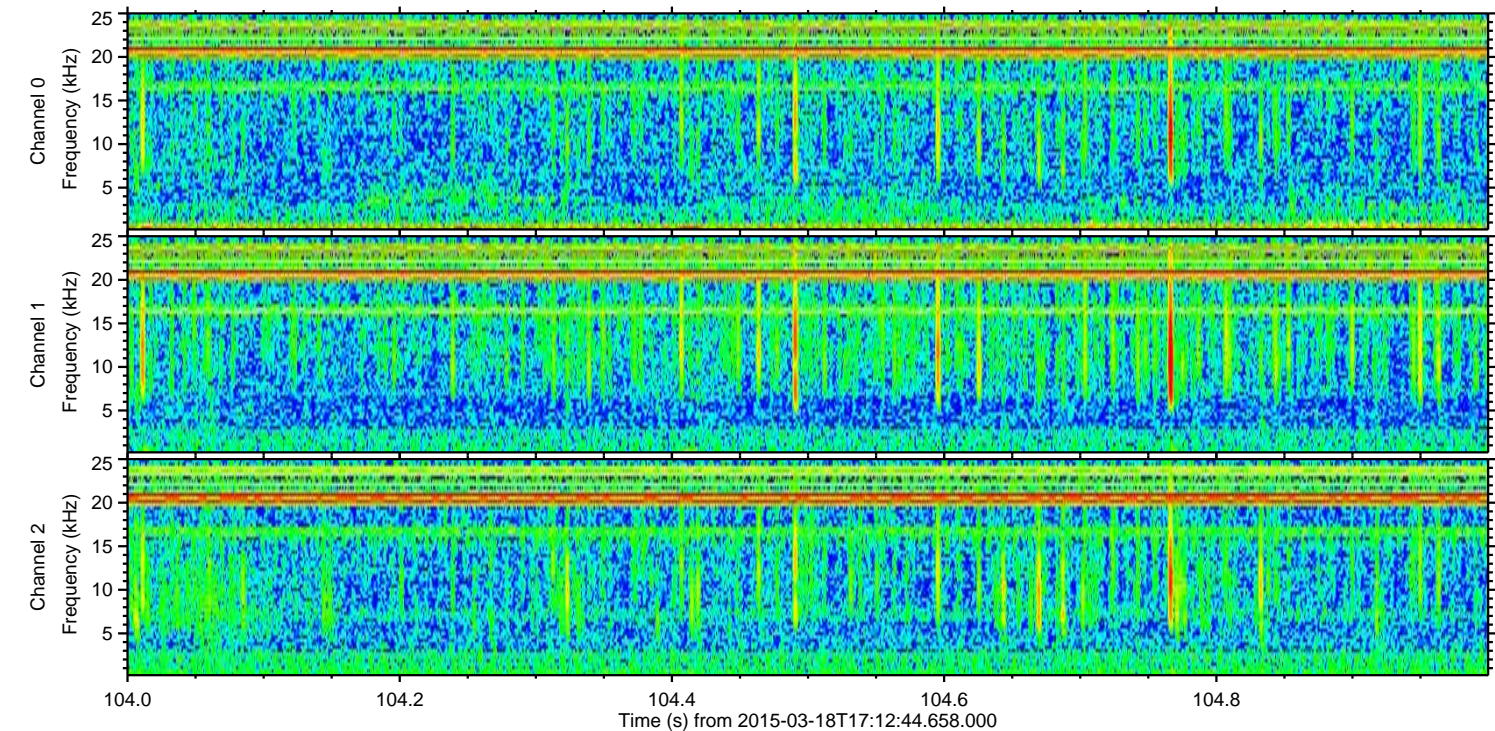
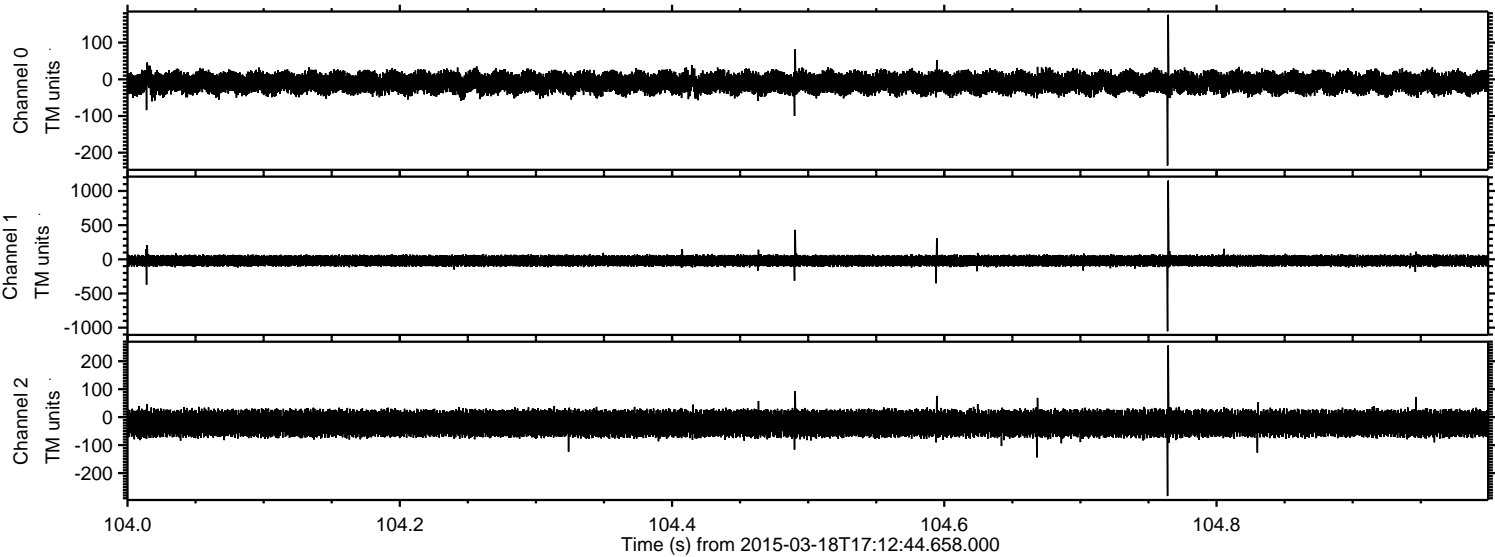
Channel 0  
mn: -297  
mx: 313  
 $\mu$ : -9.2  
 $\sigma$ : 15.1

Channel 1  
mn: -260  
mx: 265  
 $\mu$ : -20.6  
 $\sigma$ : 39.0

Channel 2  
mn: -1311  
mx: 1152  
 $\mu$ : -22.2  
 $\sigma$ : 26.1



Processed Wed Mar 18 18:19:31 2015 by ELM ver.2012-10-06 from 001\_\_elm20150318\_171243\_\_dat00.bin



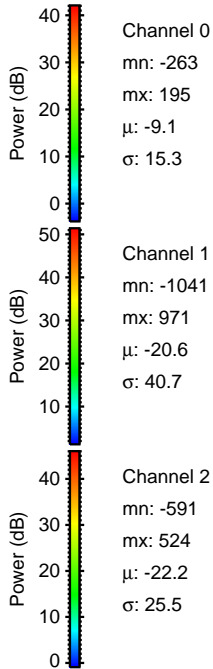
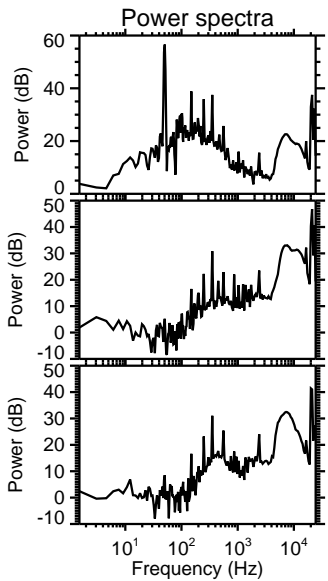
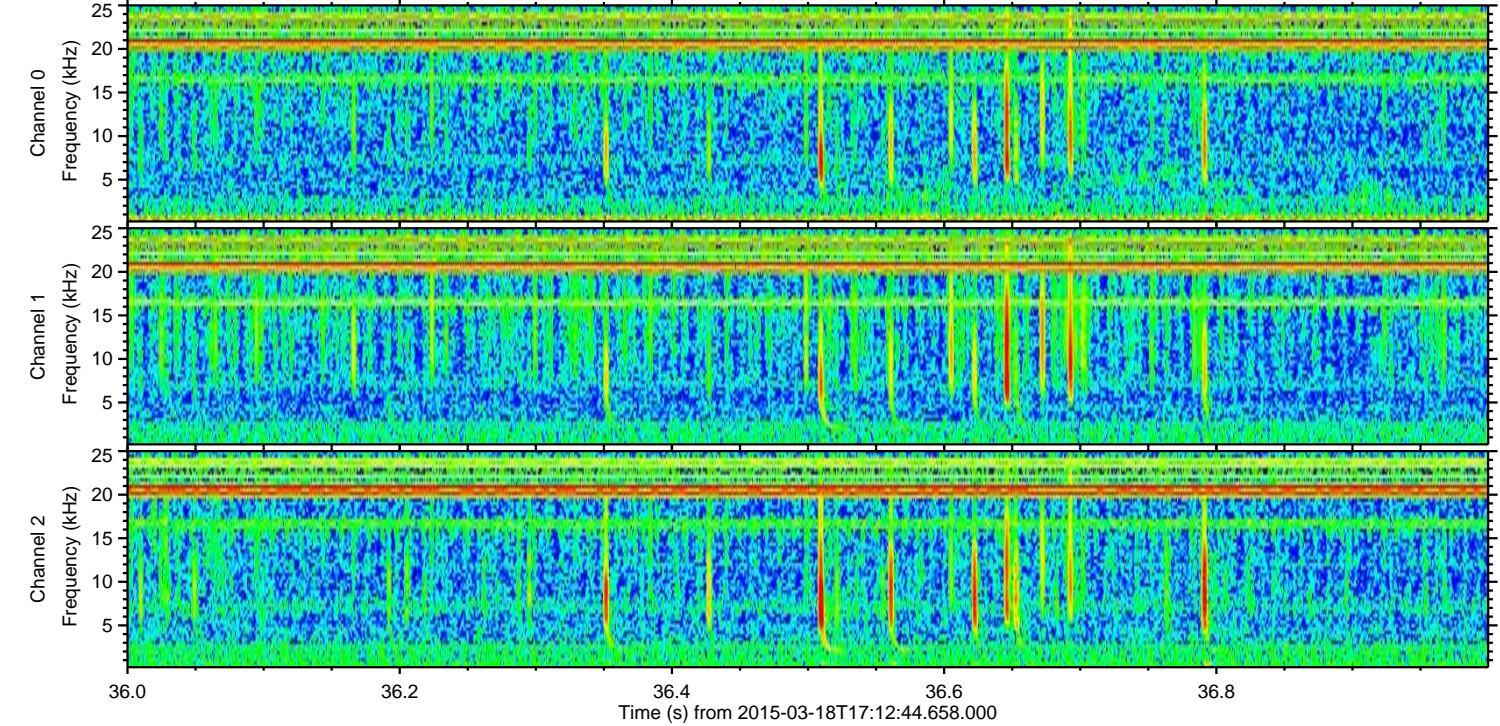
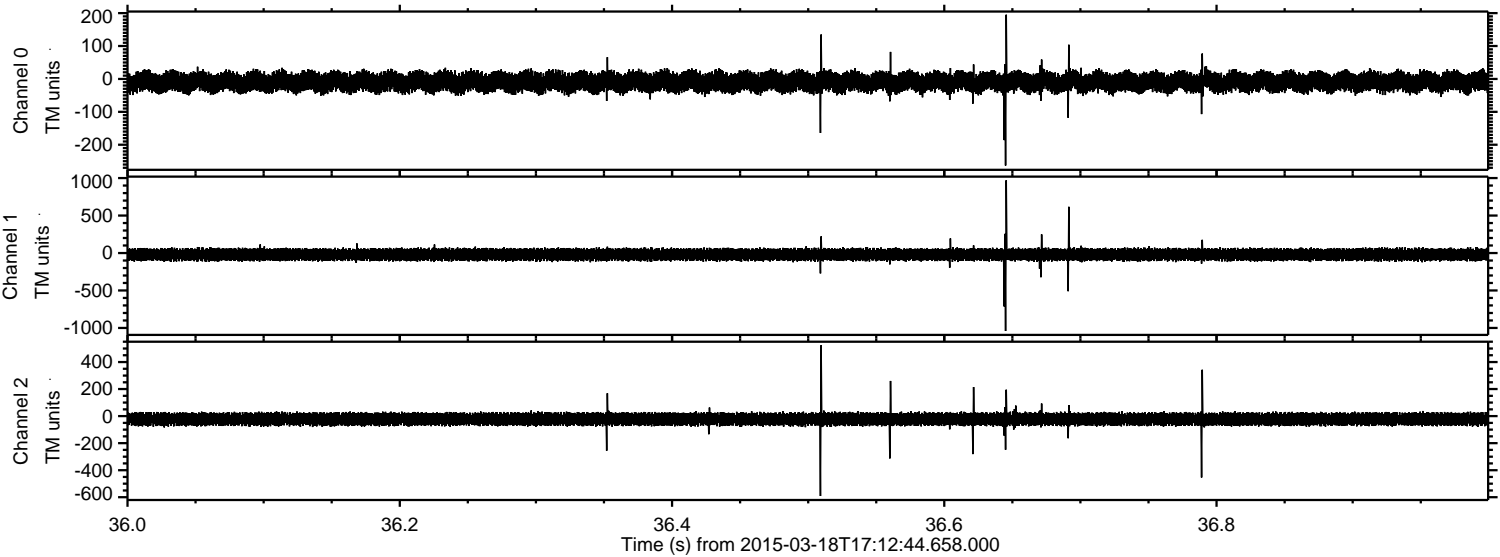
Channel 0  
mn: -235  
mx: 176  
 $\mu$ : -9.3  
 $\sigma$ : 15.1

Channel 1  
mn: -1053  
mx: 1152  
 $\mu$ : -20.6  
 $\sigma$ : 40.4

Channel 2  
mn: -282  
mx: 257  
 $\mu$ : -22.2  
 $\sigma$ : 24.1



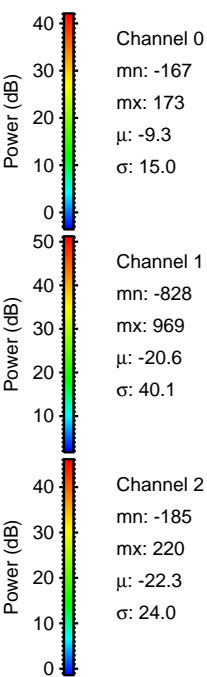
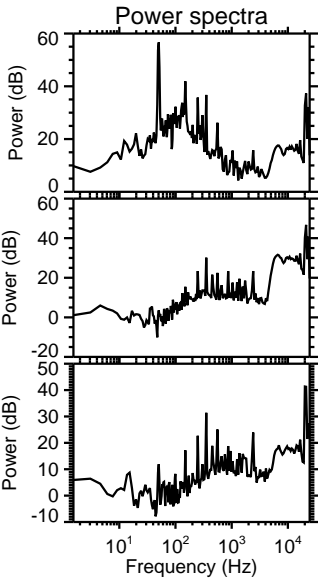
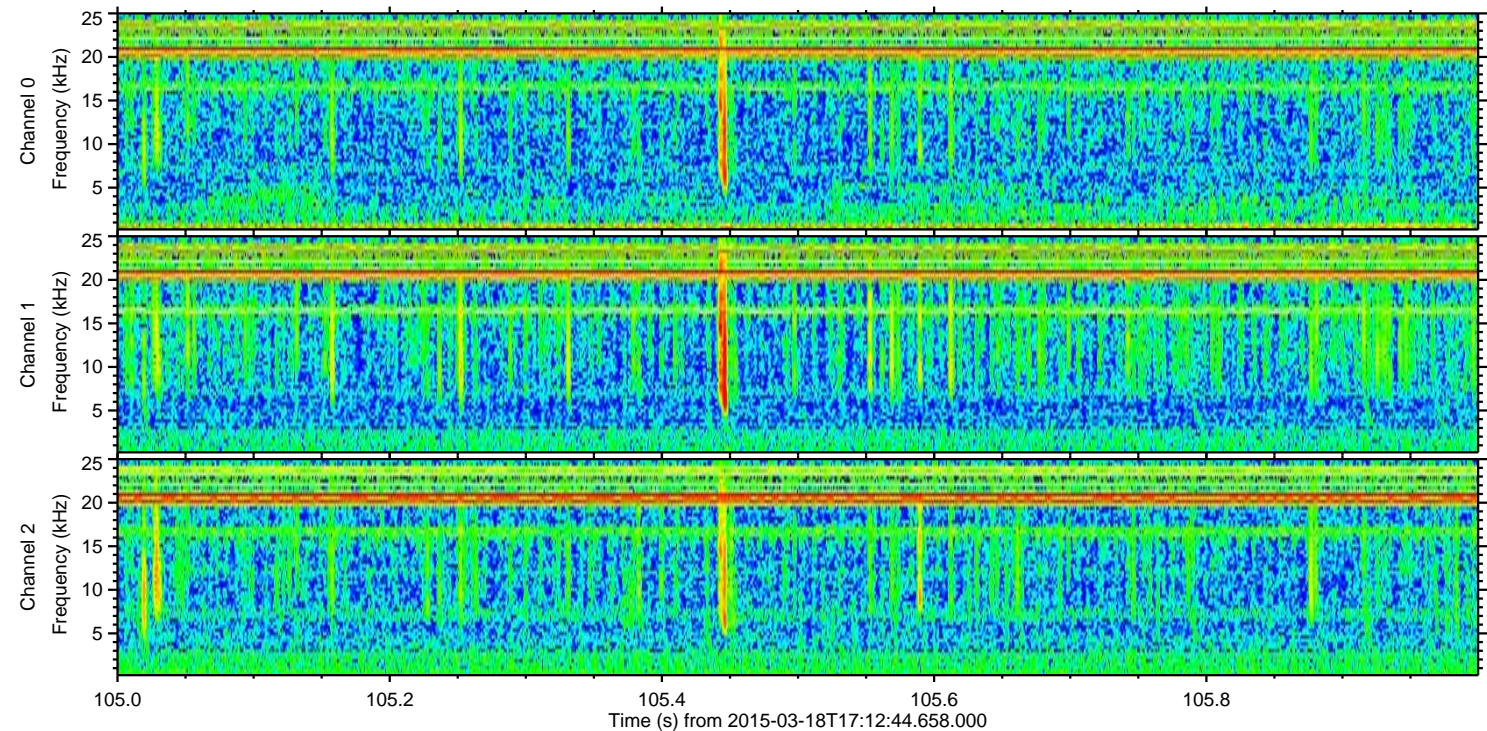
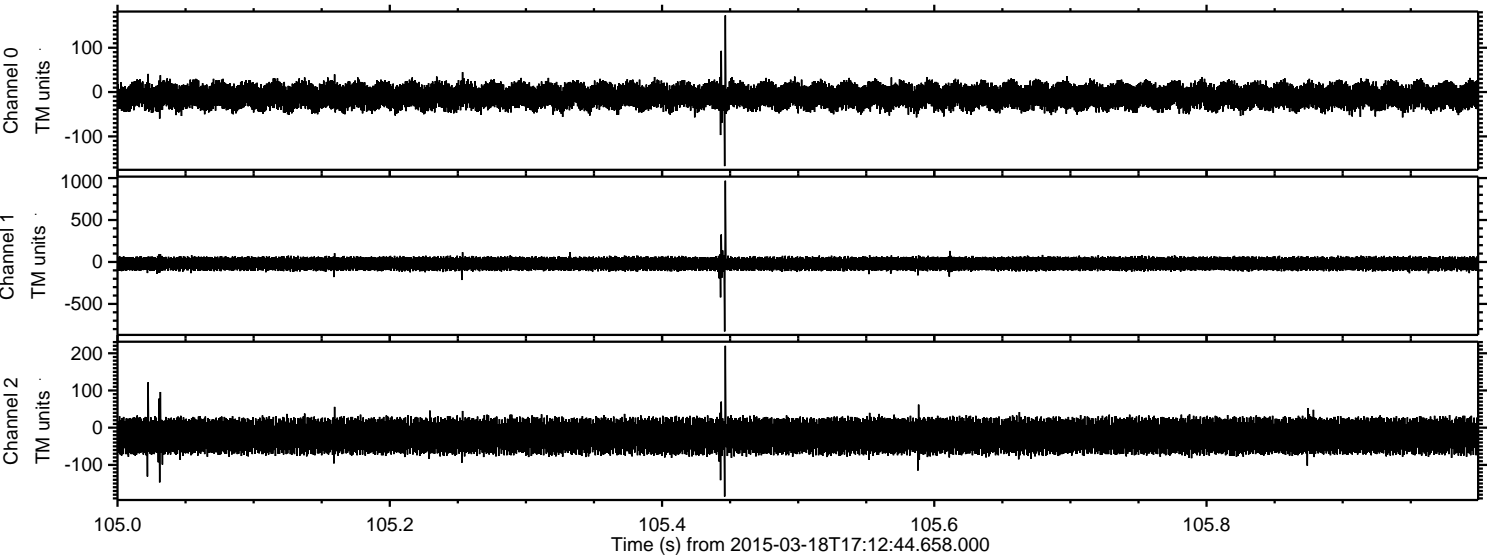
Processed Wed Mar 18 18:19:32 2015 by ELM ver.2012-10-06 from 001\_\_elm20150318\_171243\_\_dat00.bin





ELMAVAN 3D WAVEFORMS (Measured data sampled at 50 kHz) 49790 packets of 144 samples from 2015-03-18T17:12:44.658.000. Part 106/144

Processed Wed Mar 18 18:19:33 2015 by ELM ver.2012-10-06 from 001\_\_elm20150318\_171243\_\_dat00.bin



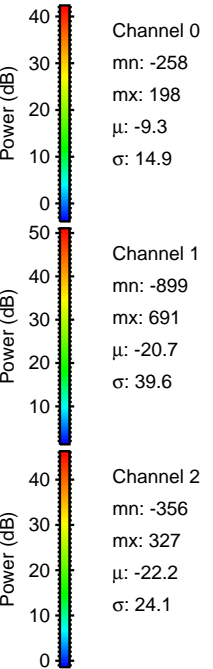
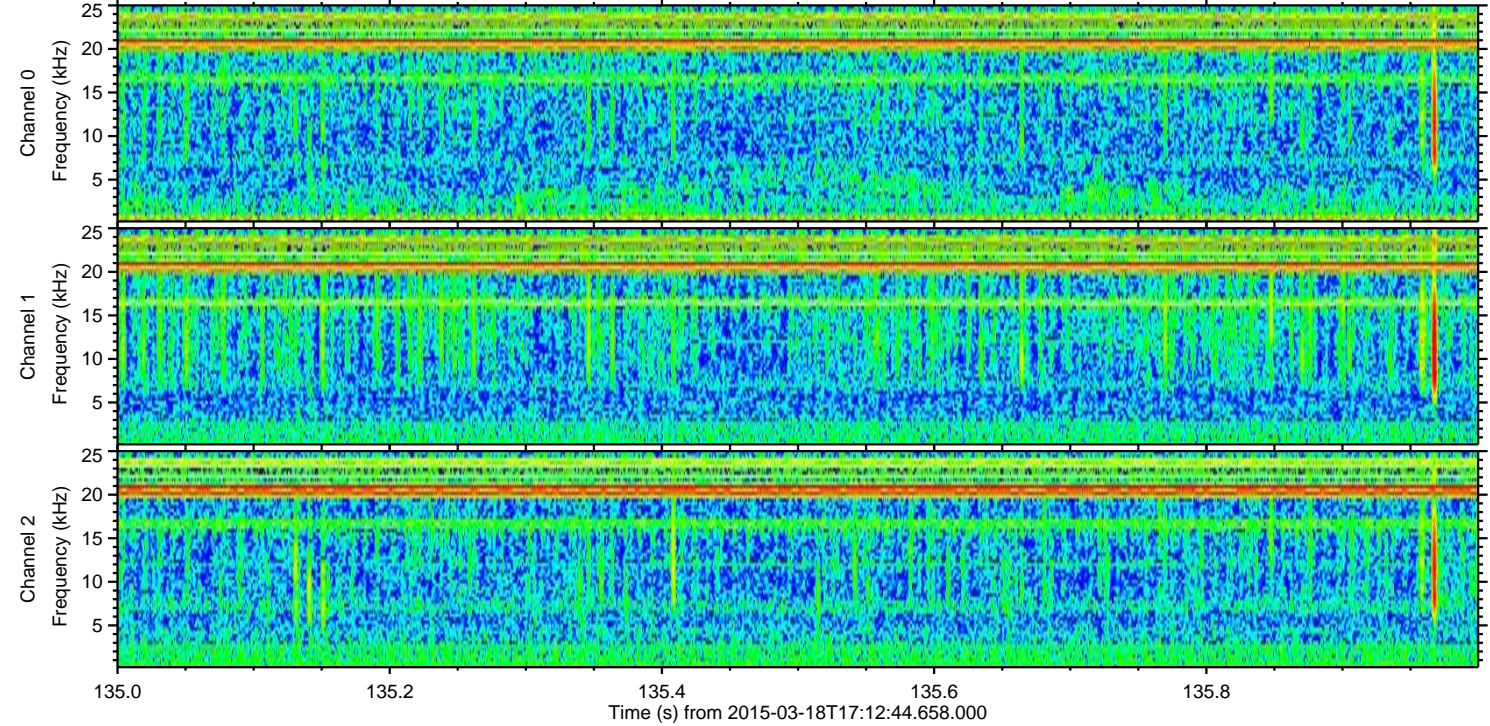
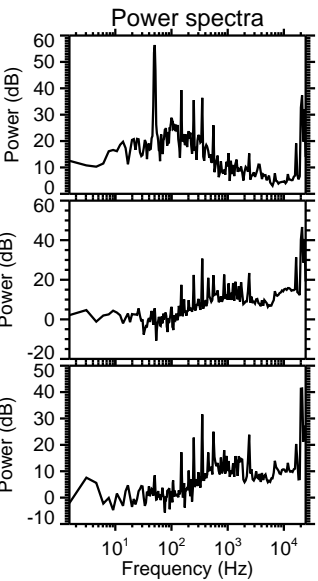
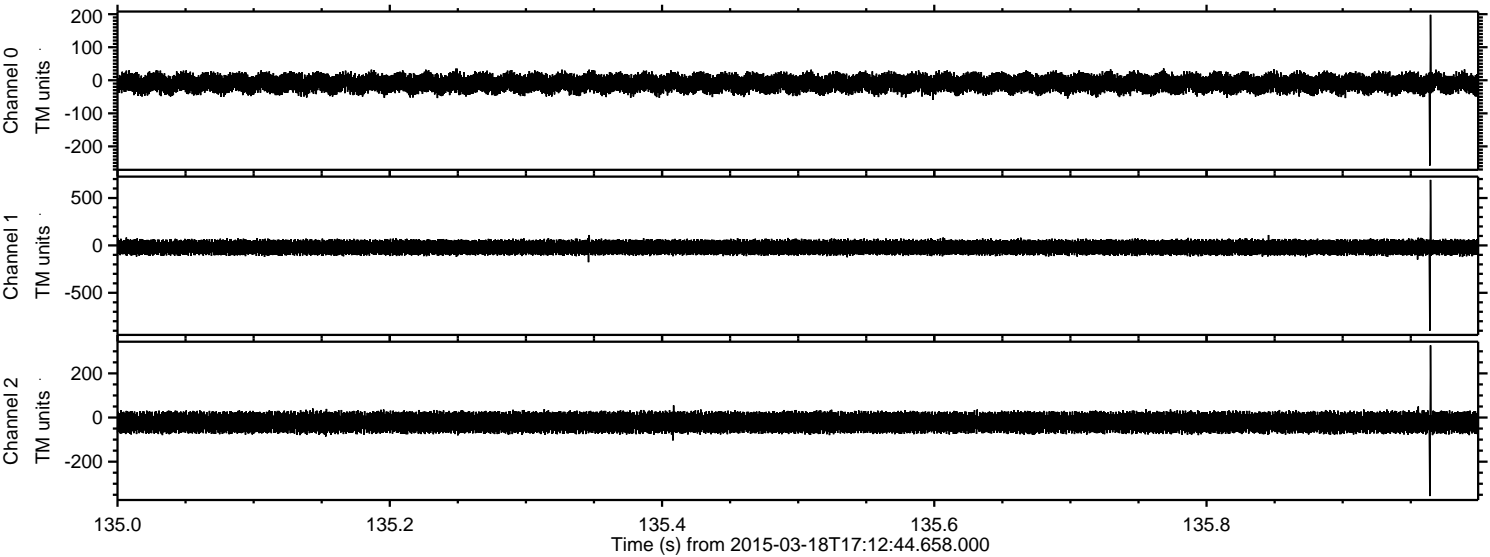
Channel 0  
mn: -167  
mx: 173  
 $\mu$ : -9.3  
 $\sigma$ : 15.0

Channel 1  
mn: -828  
mx: 969  
 $\mu$ : -20.6  
 $\sigma$ : 40.1

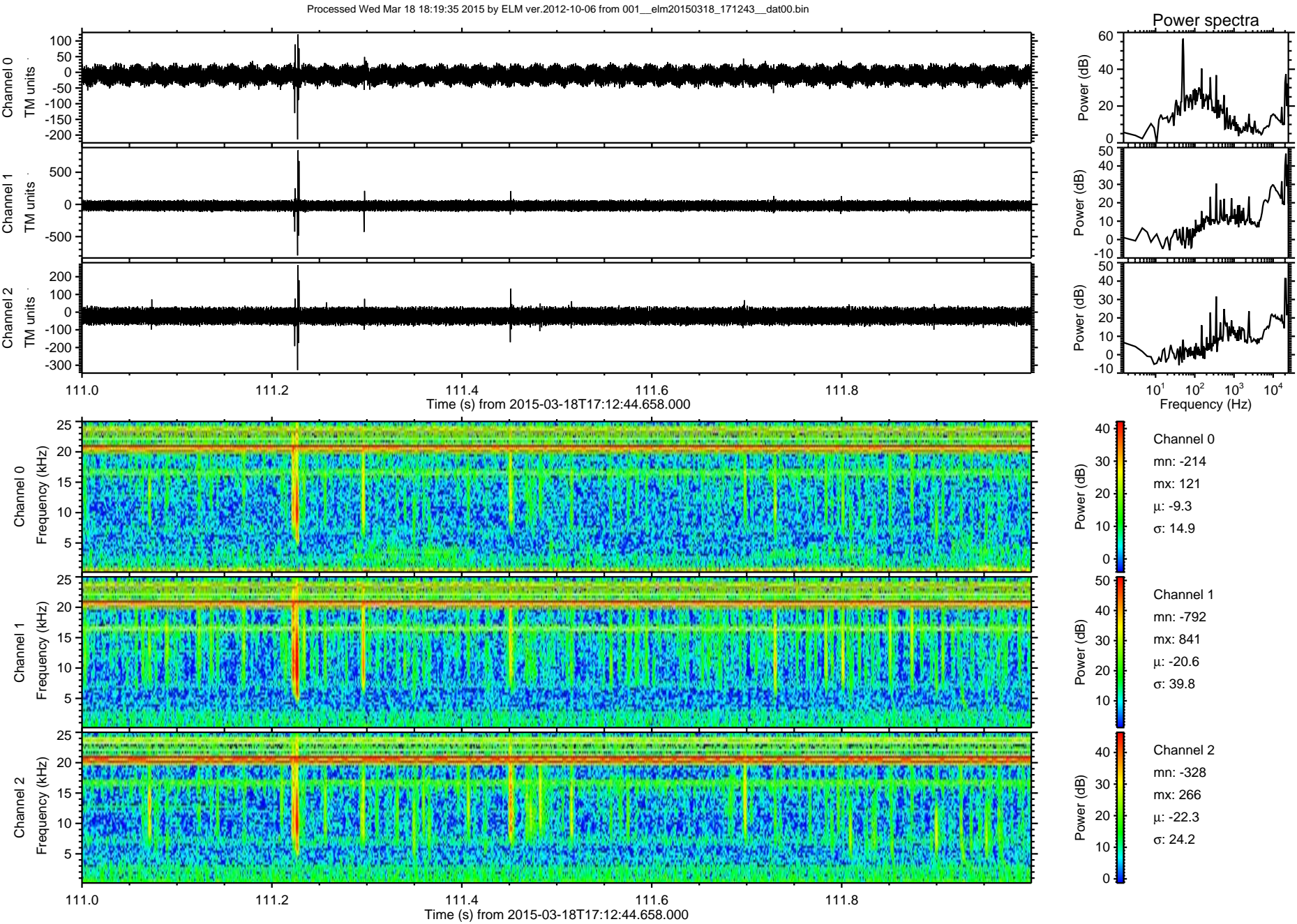
Channel 2  
mn: -185  
mx: 220  
 $\mu$ : -22.3  
 $\sigma$ : 24.0



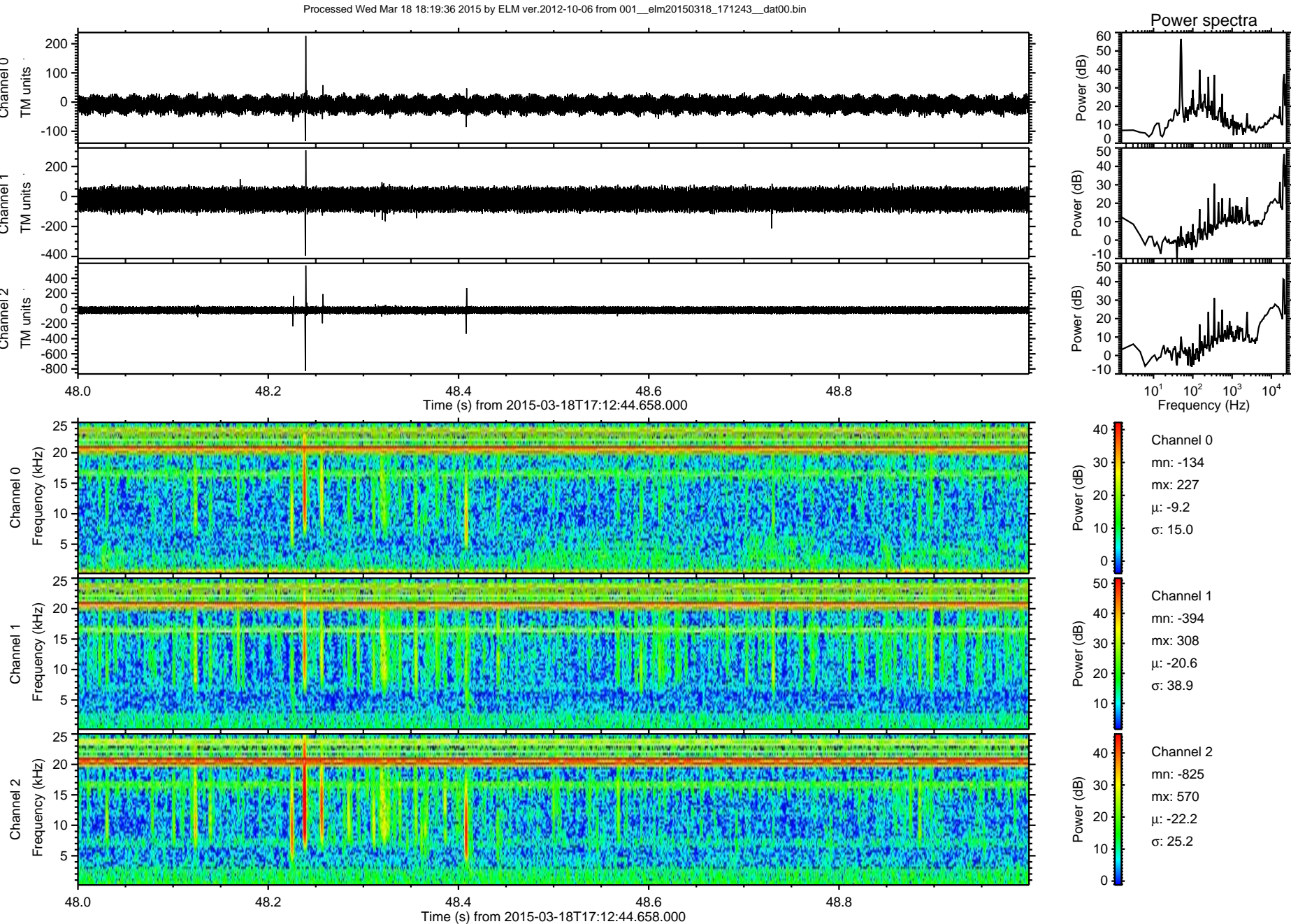
Processed Wed Mar 18 18:19:34 2015 by ELM ver.2012-10-06 from 001\_\_elm20150318\_171243\_\_dat00.bin





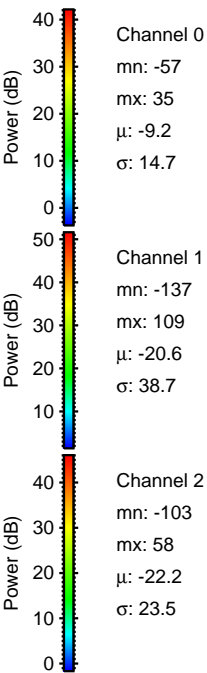
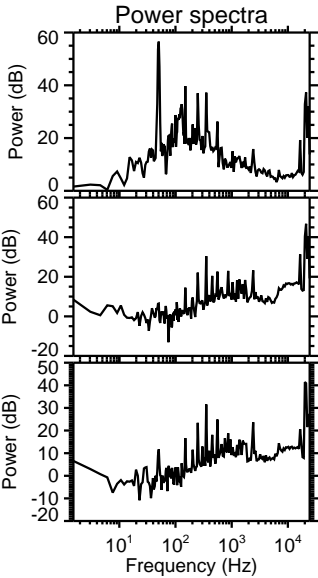
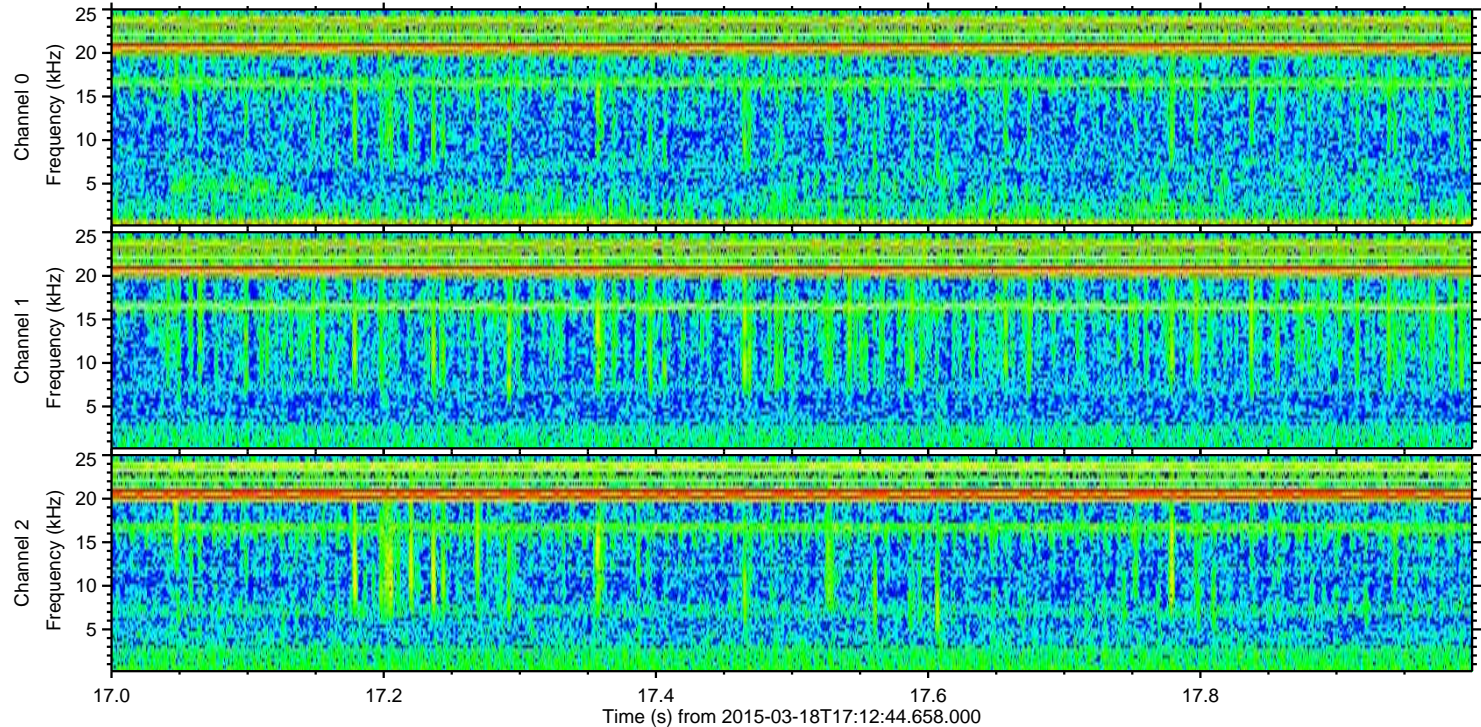
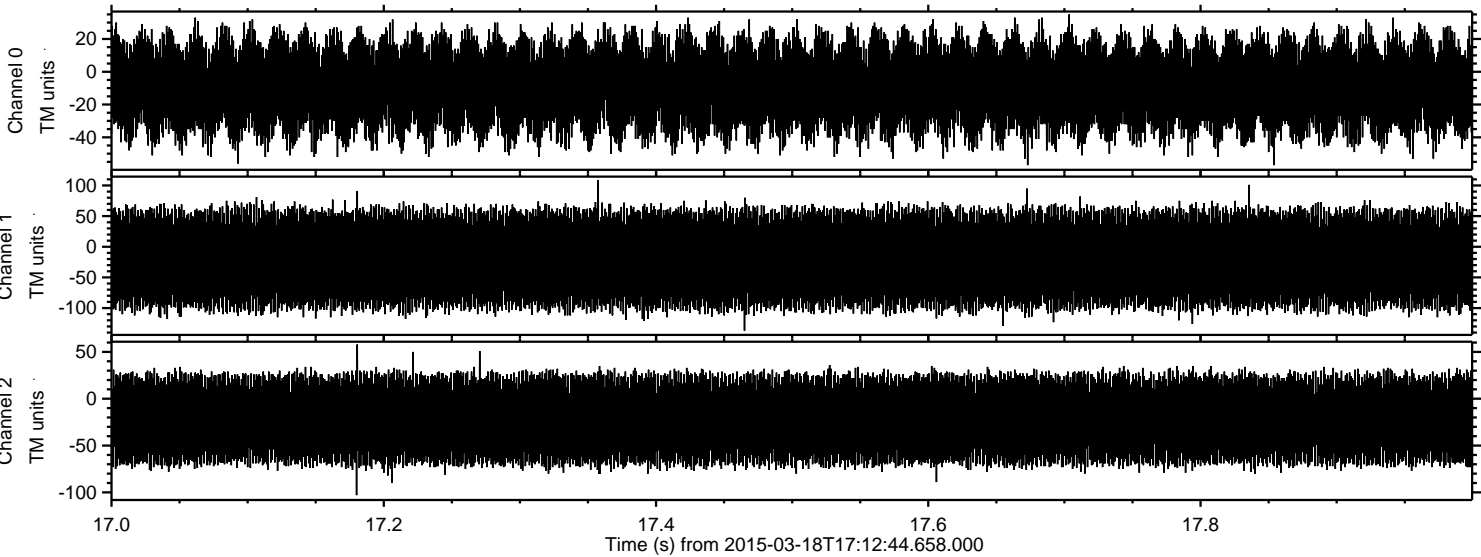








Processed Wed Mar 18 18:19:37 2015 by ELM ver.2012-10-06 from 001\_\_elm20150318\_171243\_\_dat00.bin



Channel 0  
mn: -57  
mx: 35  
 $\mu$ : -9.2  
 $\sigma$ : 14.7

Channel 1  
mn: -137  
mx: 109  
 $\mu$ : -20.6  
 $\sigma$ : 38.7

Channel 2  
mn: -103  
mx: 58  
 $\mu$ : -22.2  
 $\sigma$ : 23.5