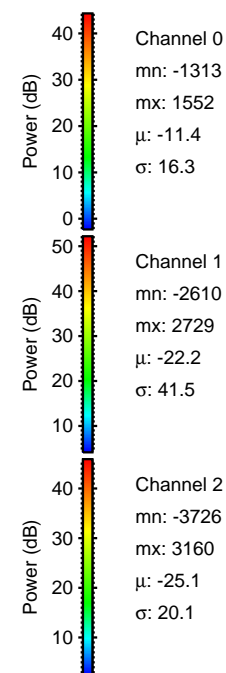
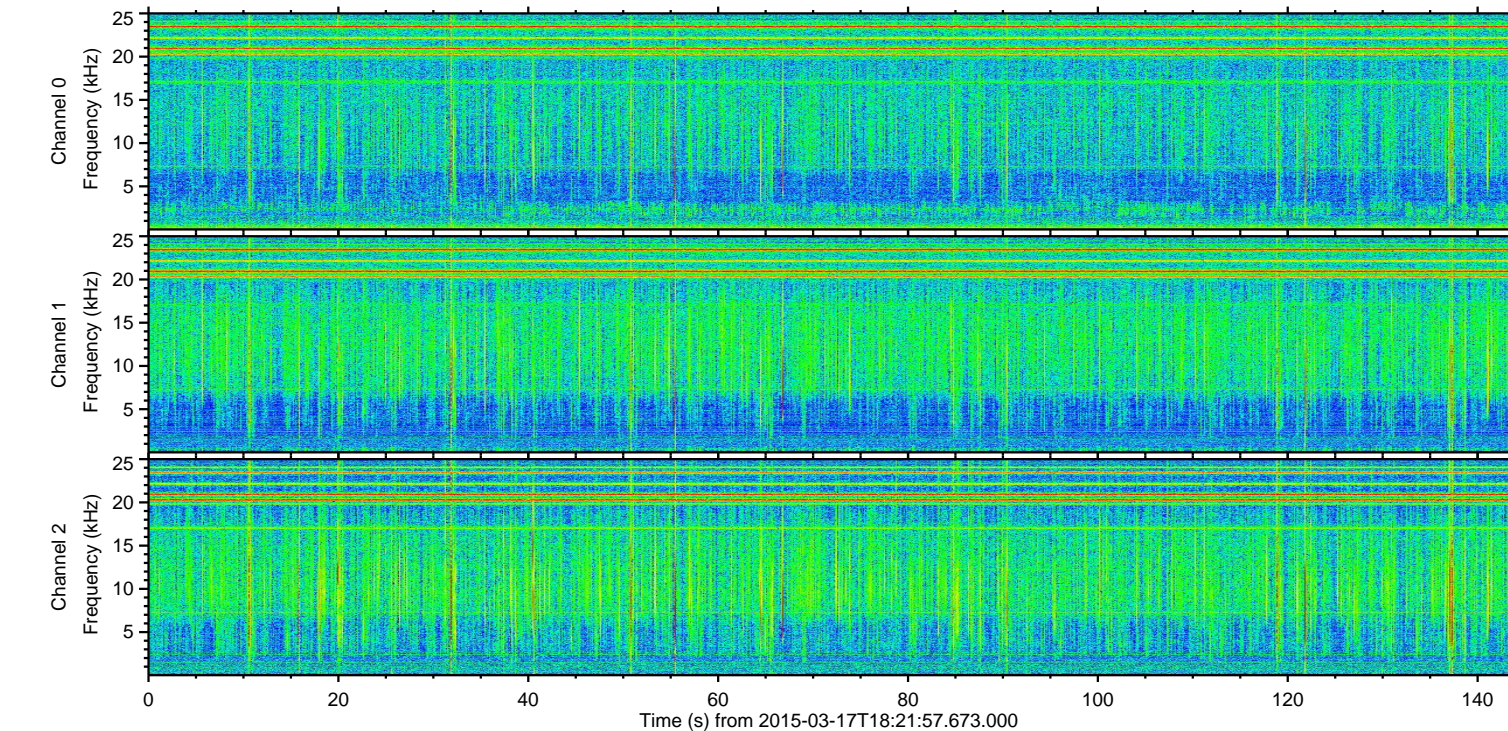
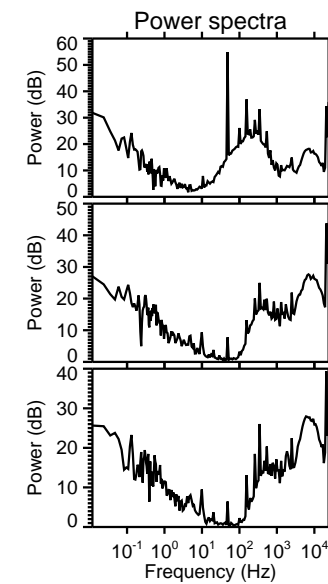
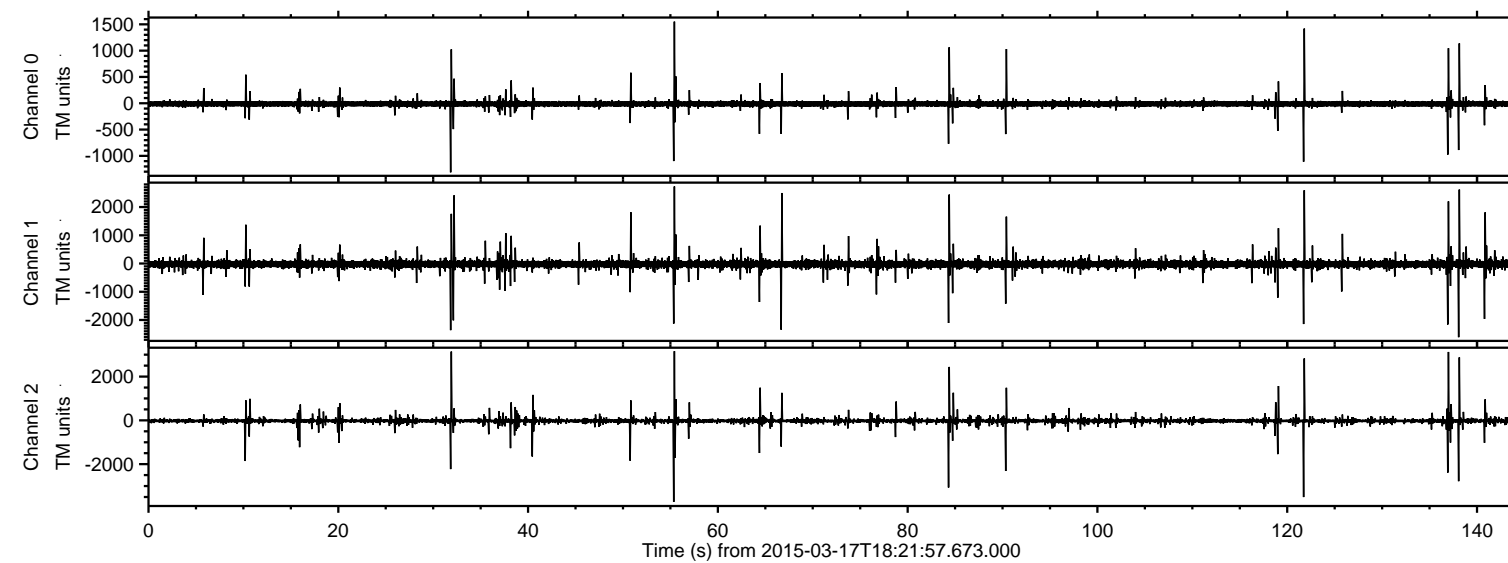
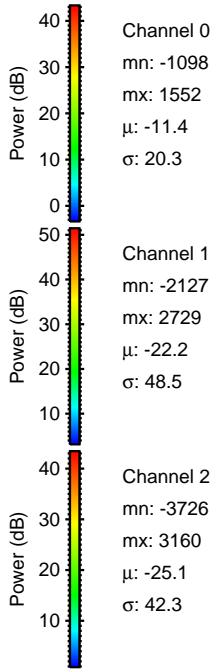
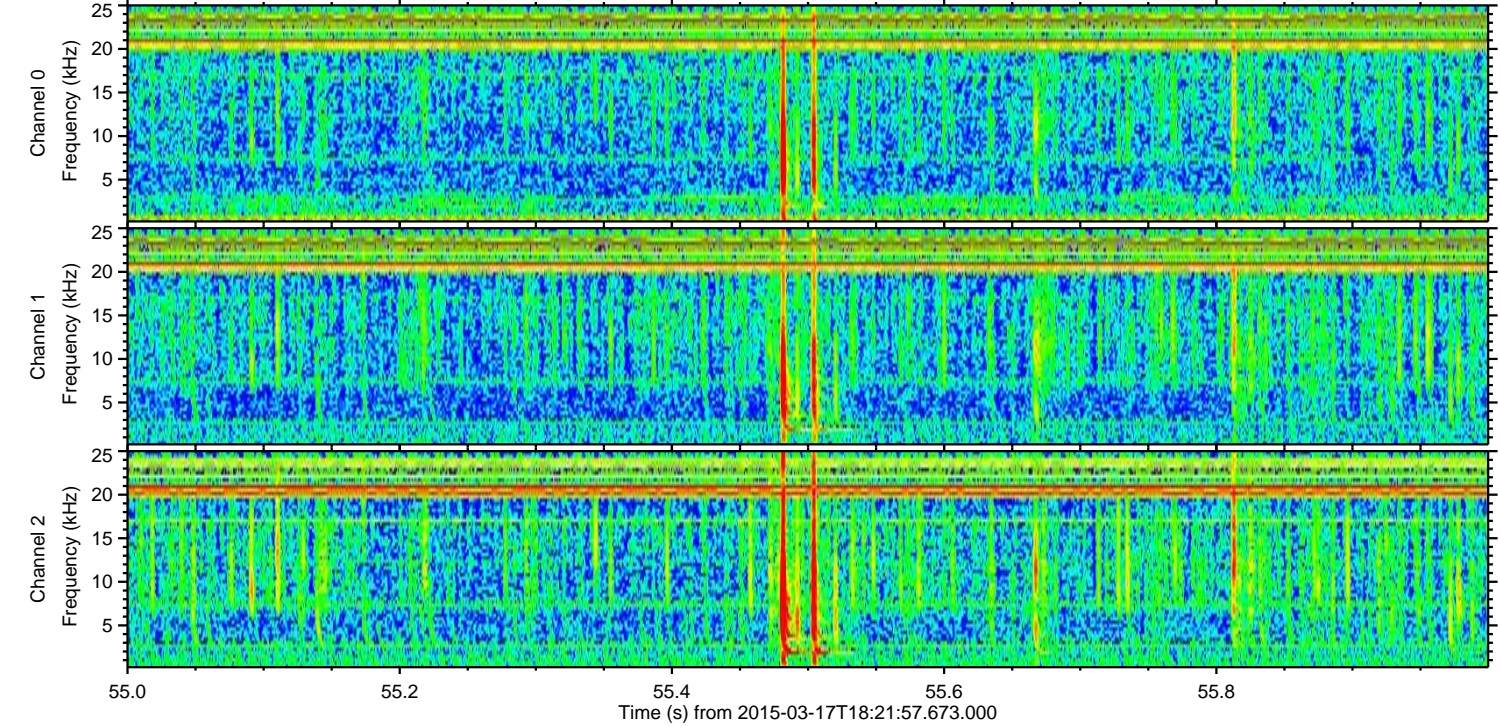
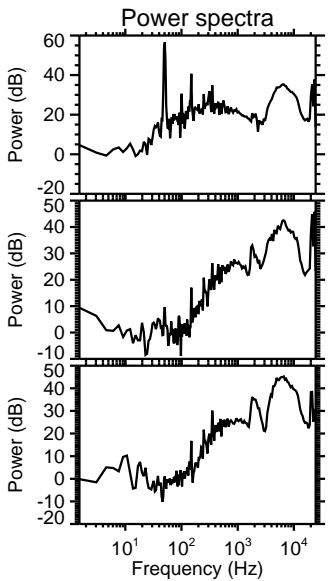
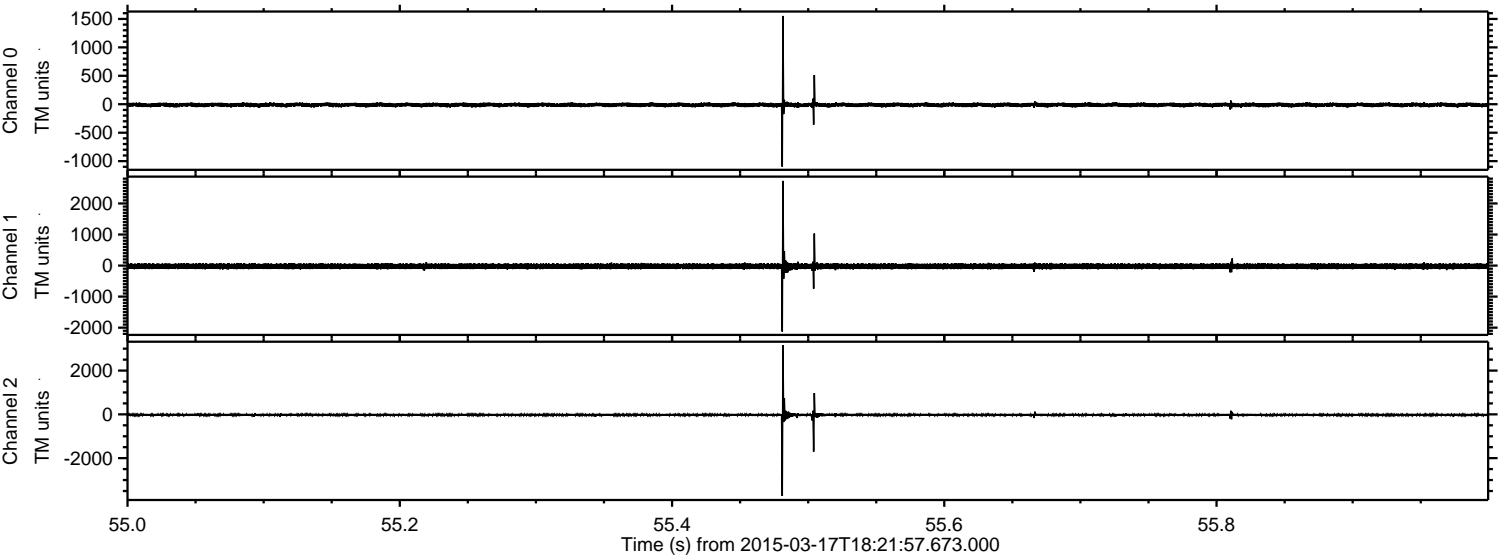


ELMAVAN 3D WAVEFORMS (Measured data sampled at 50 kHz) 49787 packets of 144 samples from 2015-03-17T18:21:57.673.000.

Processed Tue Mar 17 19:31:35 2015 by ELM ver.2012-10-06 from 001__elm20150317_182156__dat00.bin

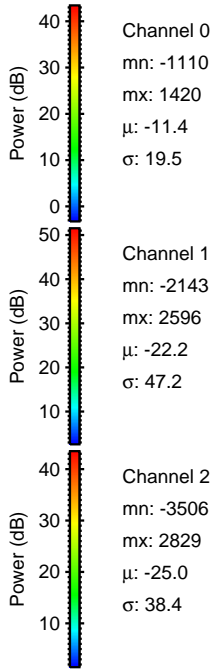
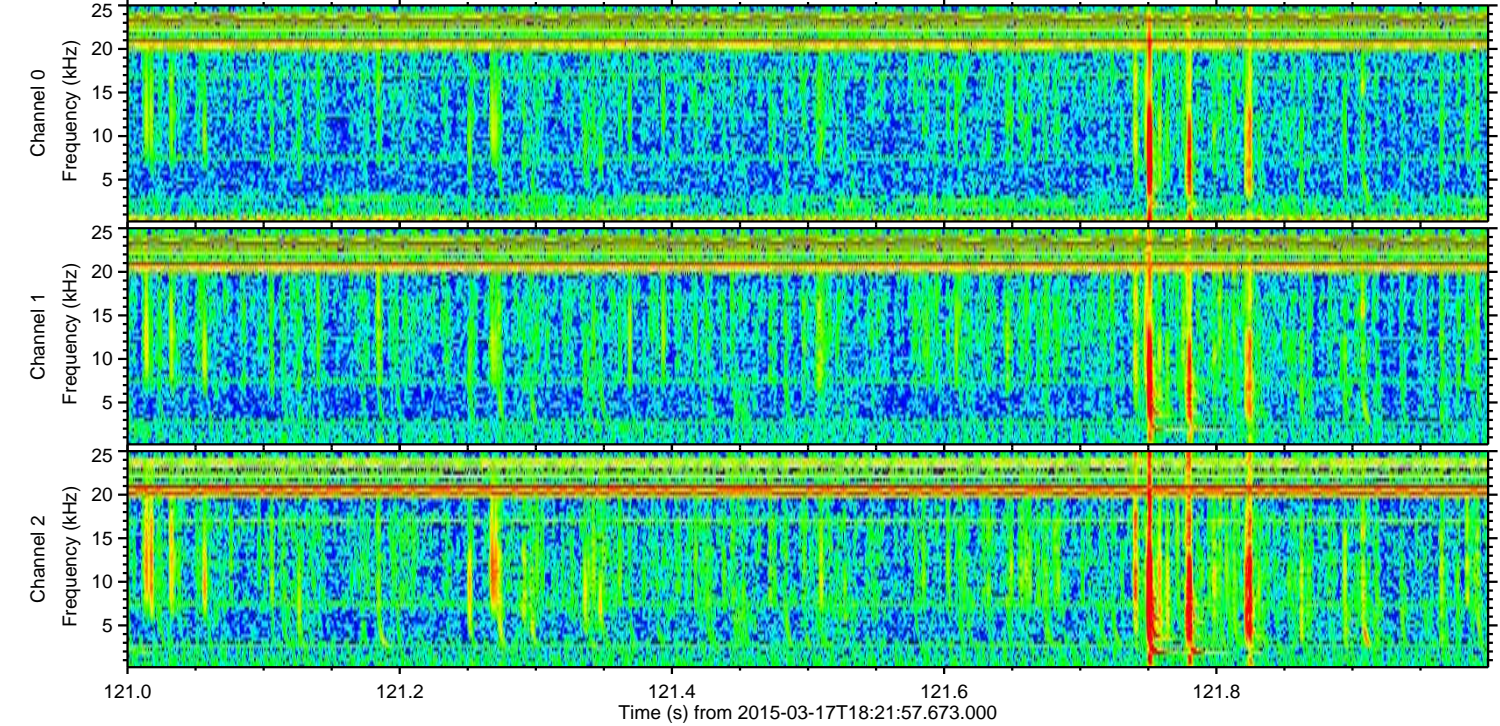
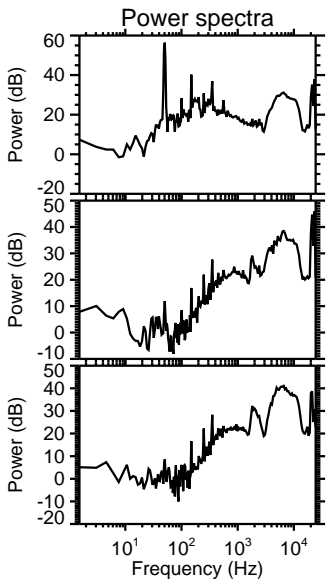
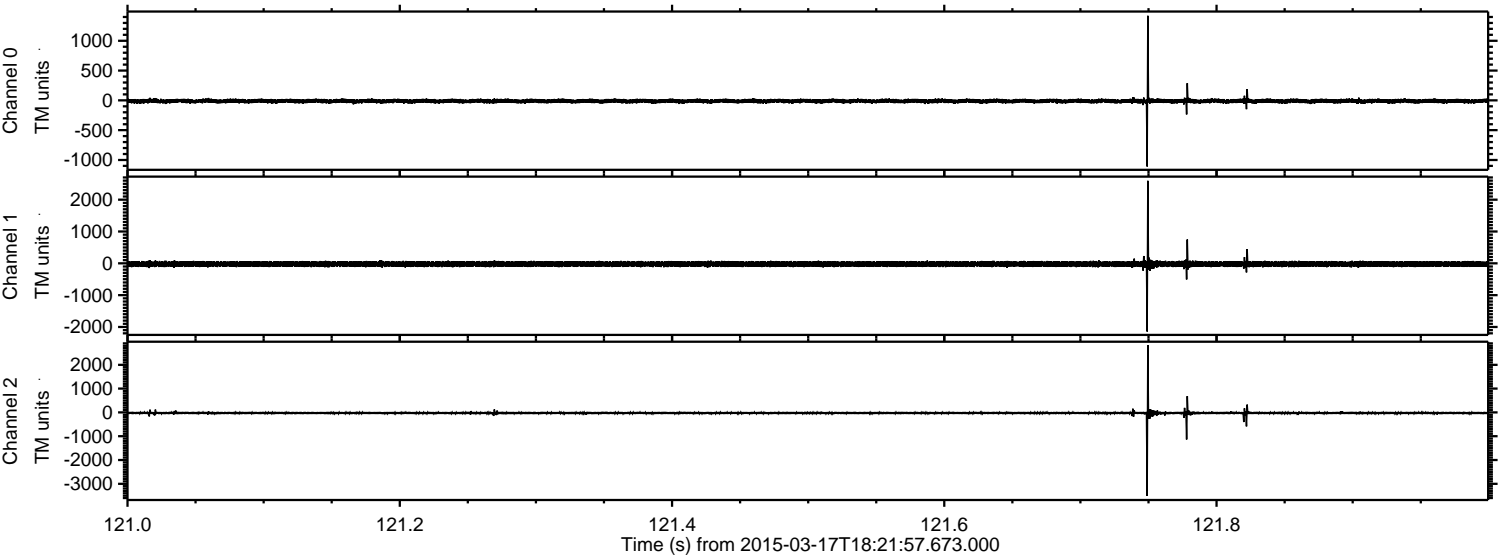


Processed Tue Mar 17 19:31:46 2015 by ELM ver.2012-10-06 from 001__elm20150317_182156__dat00.bin



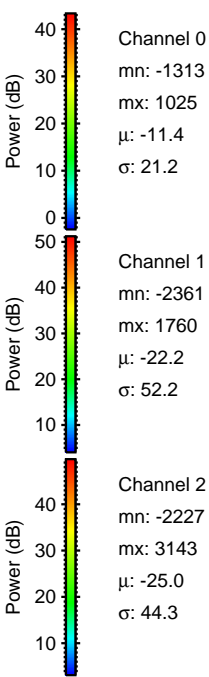
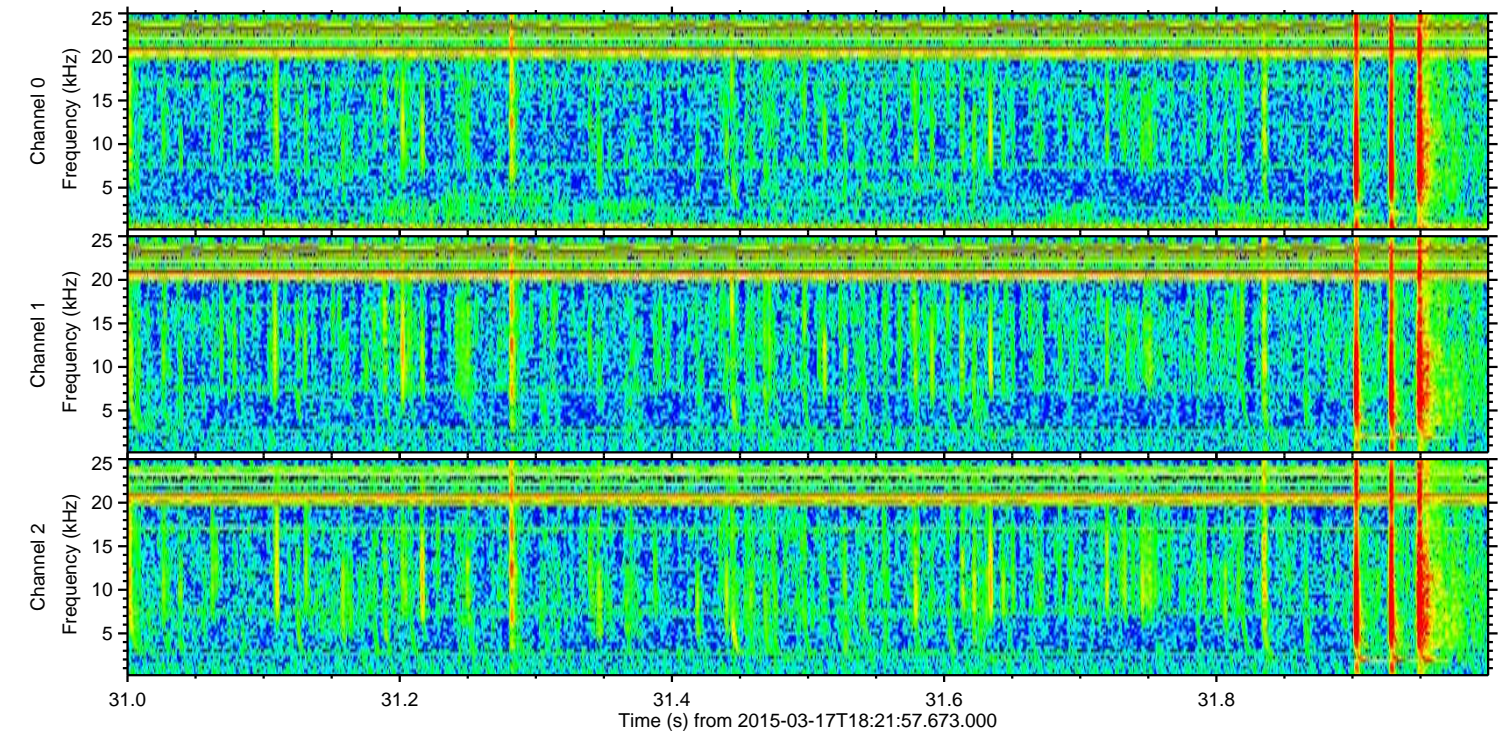
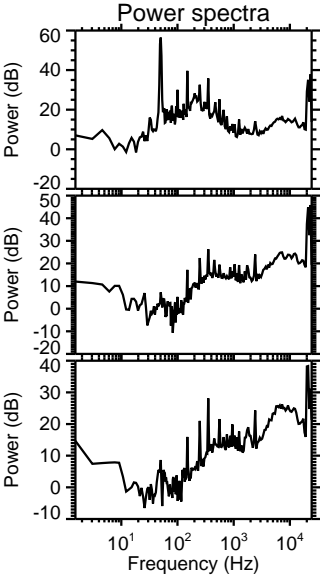
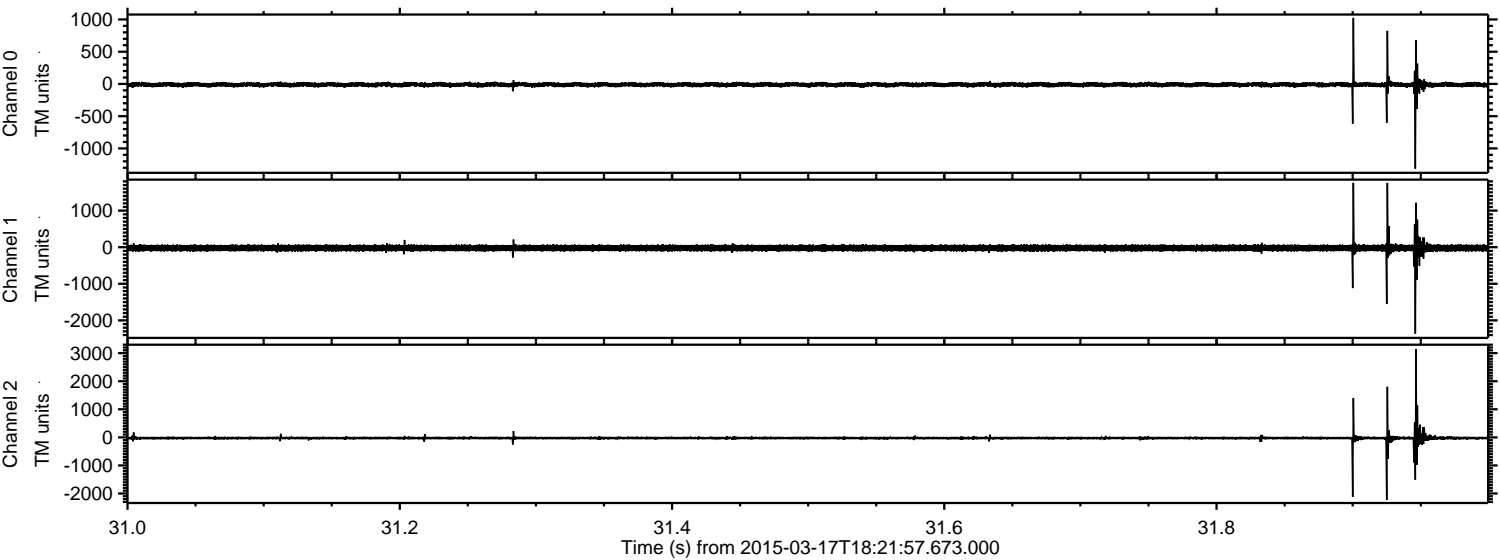
ELMAVAN 3D WAVEFORMS (Measured data sampled at 50 kHz) 49787 packets of 144 samples from 2015-03-17T18:21:57.673.000. Part 122/144

Processed Tue Mar 17 19:31:47 2015 by ELM ver.2012-10-06 from 001__elm20150317_182156__dat00.bin



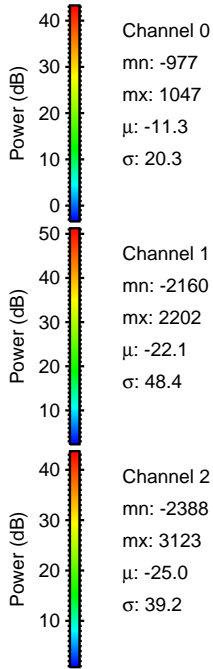
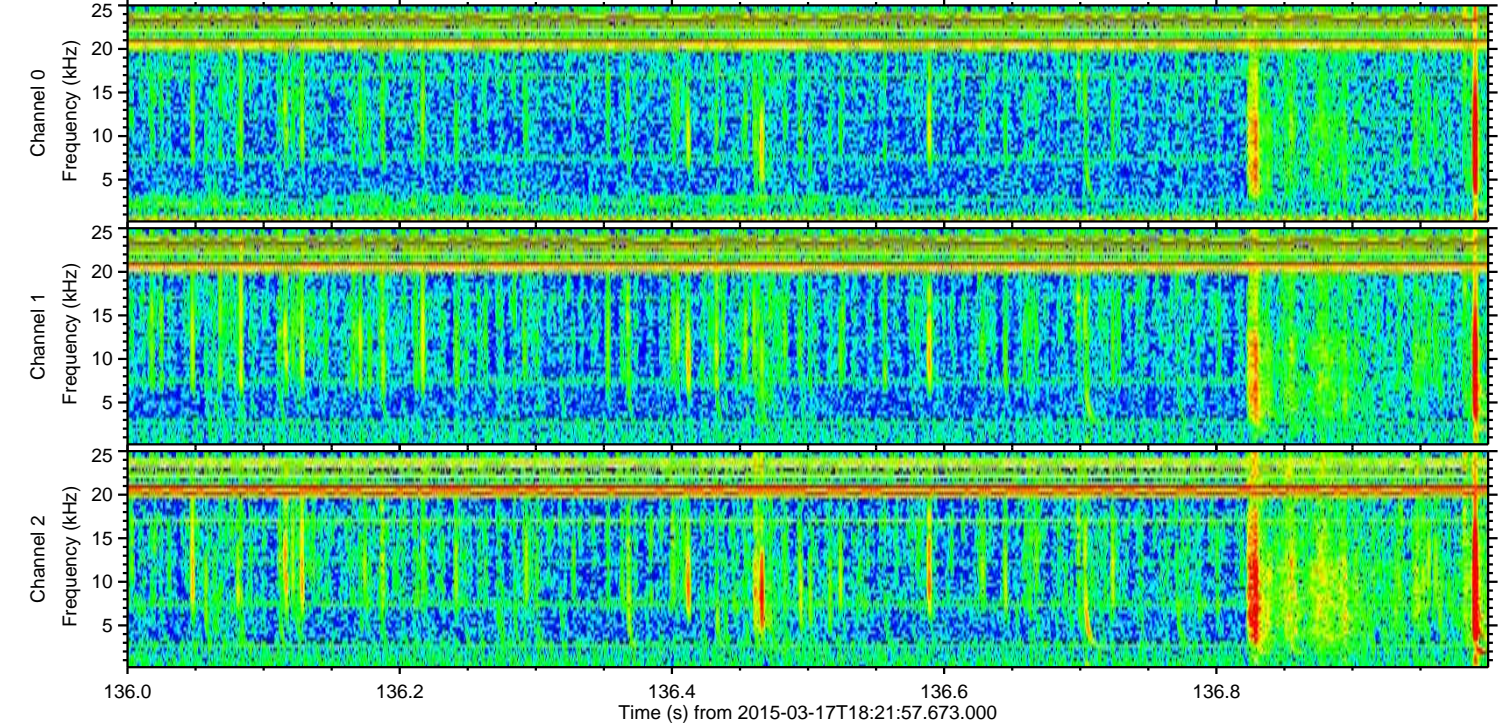
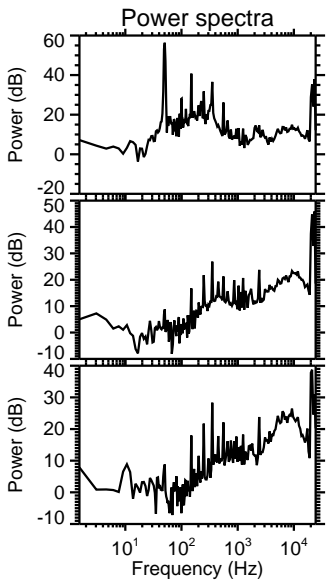
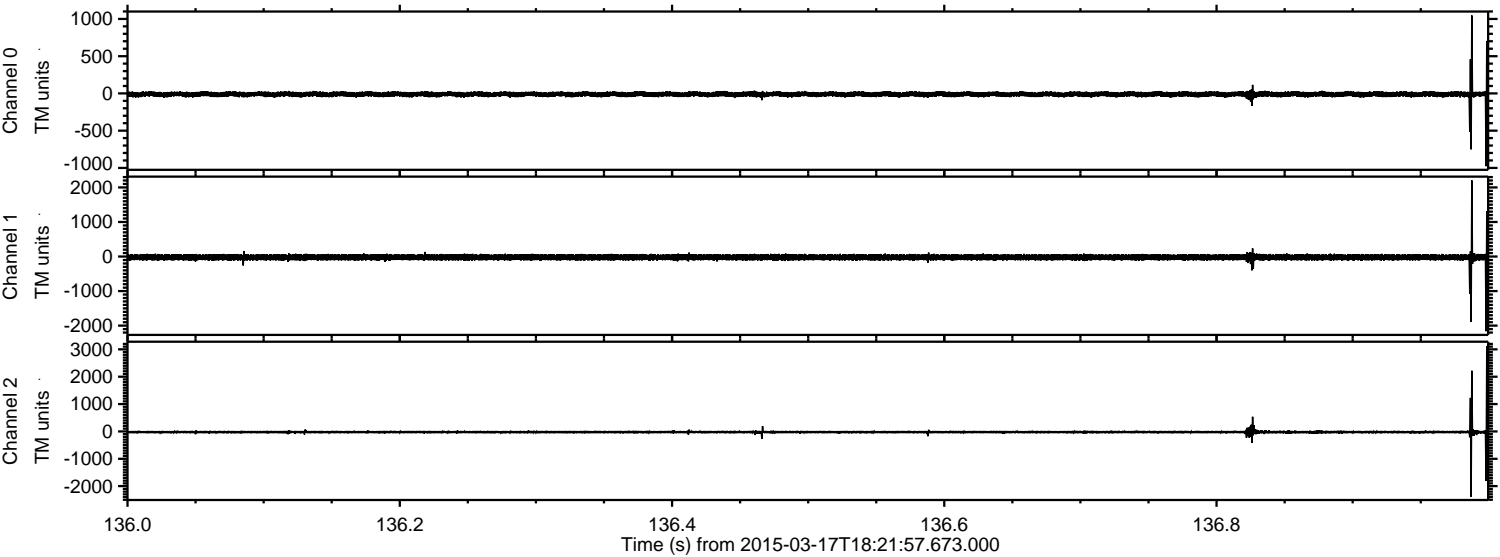
ELMAVAN 3D WAVEFORMS (Measured data sampled at 50 kHz) 49787 packets of 144 samples from 2015-03-17T18:21:57.673.000. Part 32/144

Processed Tue Mar 17 19:31:48 2015 by ELM ver.2012-10-06 from 001__elm20150317_182156__dat00.bin

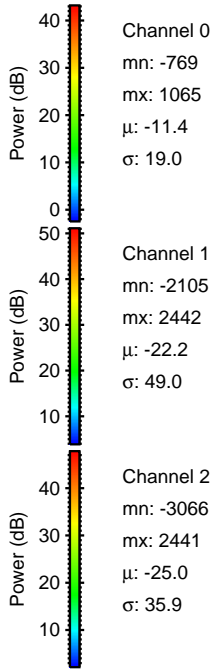
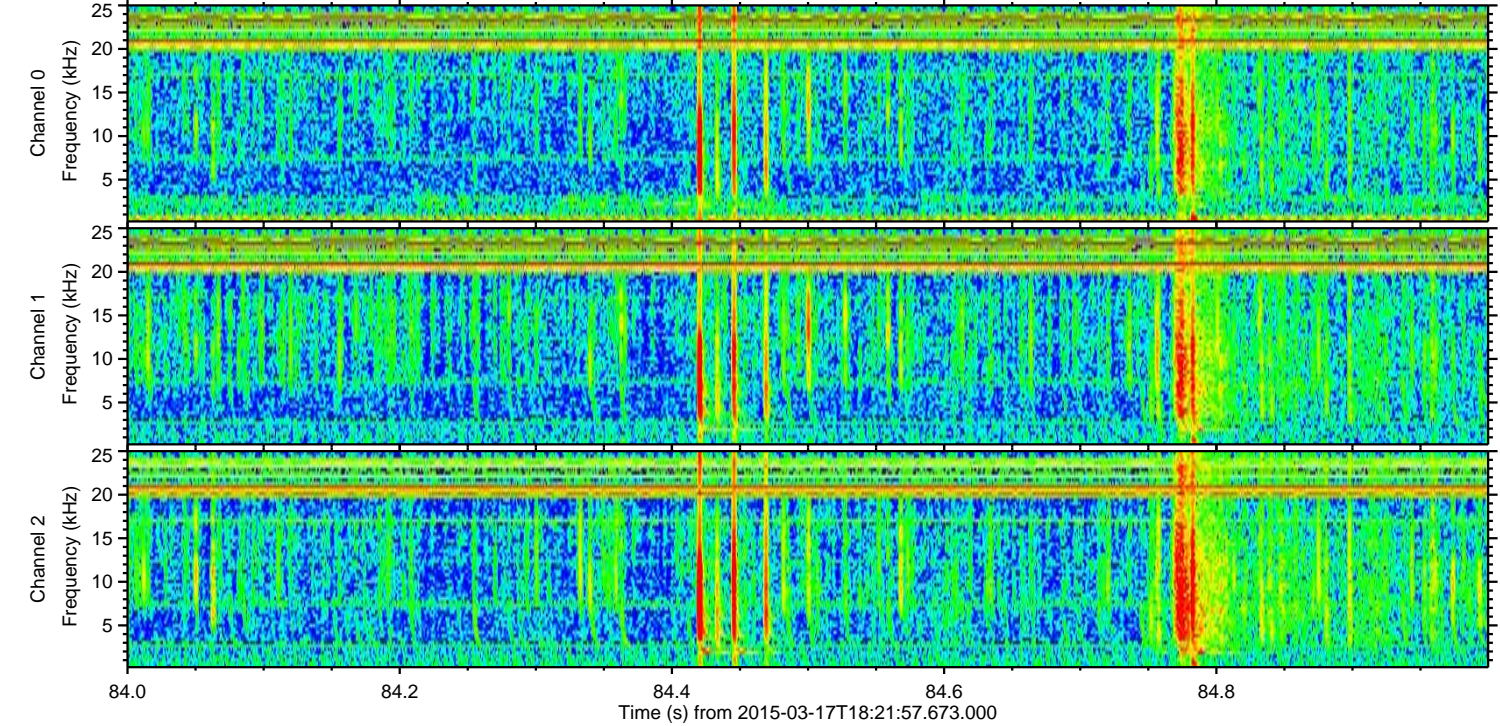
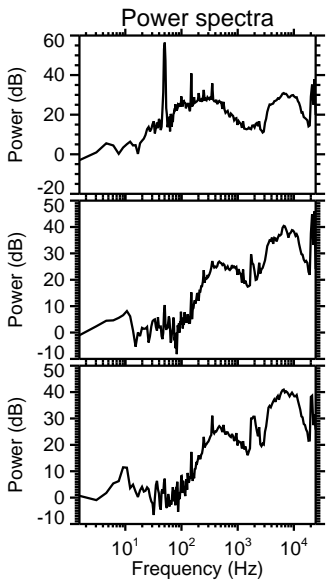
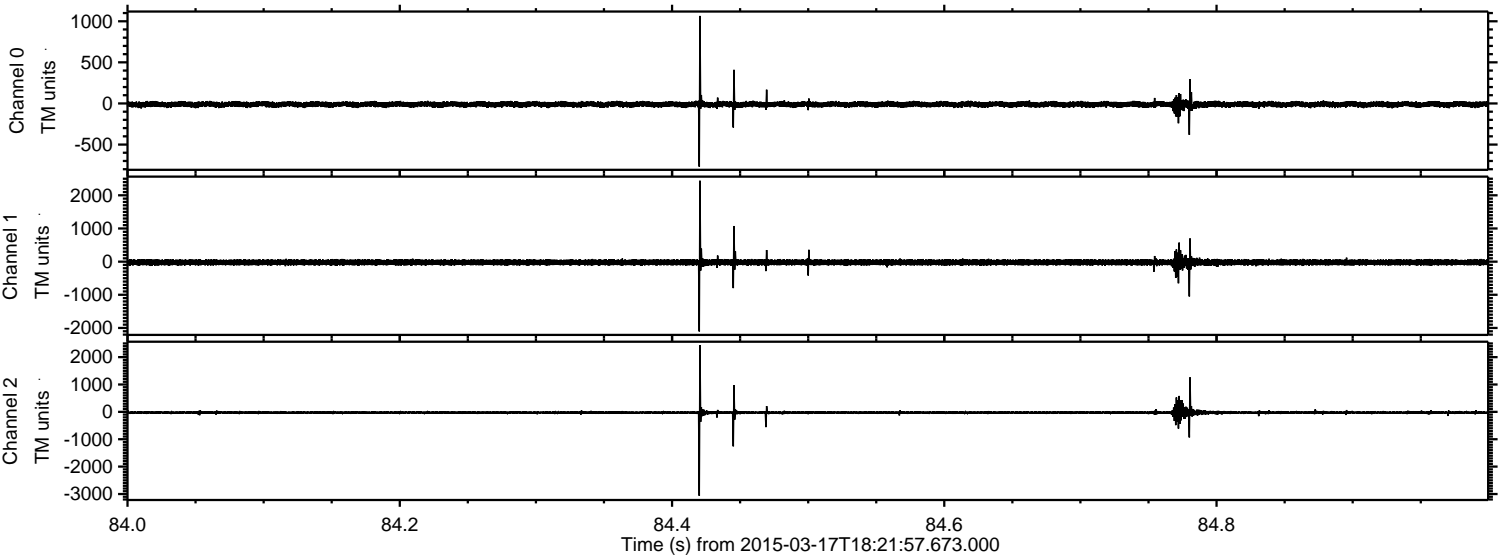


ELMAVAN 3D WAVEFORMS (Measured data sampled at 50 kHz) 49787 packets of 144 samples from 2015-03-17T18:21:57.673.000. Part 137/144

Processed Tue Mar 17 19:31:49 2015 by ELM ver.2012-10-06 from 001__elm20150317_182156__dat00.bin



Processed Tue Mar 17 19:31:50 2015 by ELM ver.2012-10-06 from 001__elm20150317_182156__dat00.bin



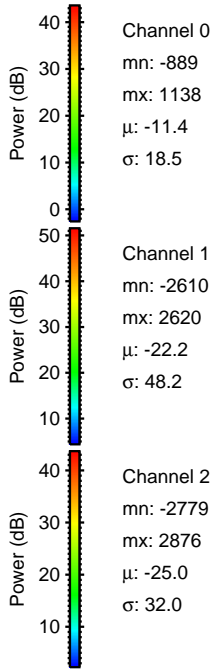
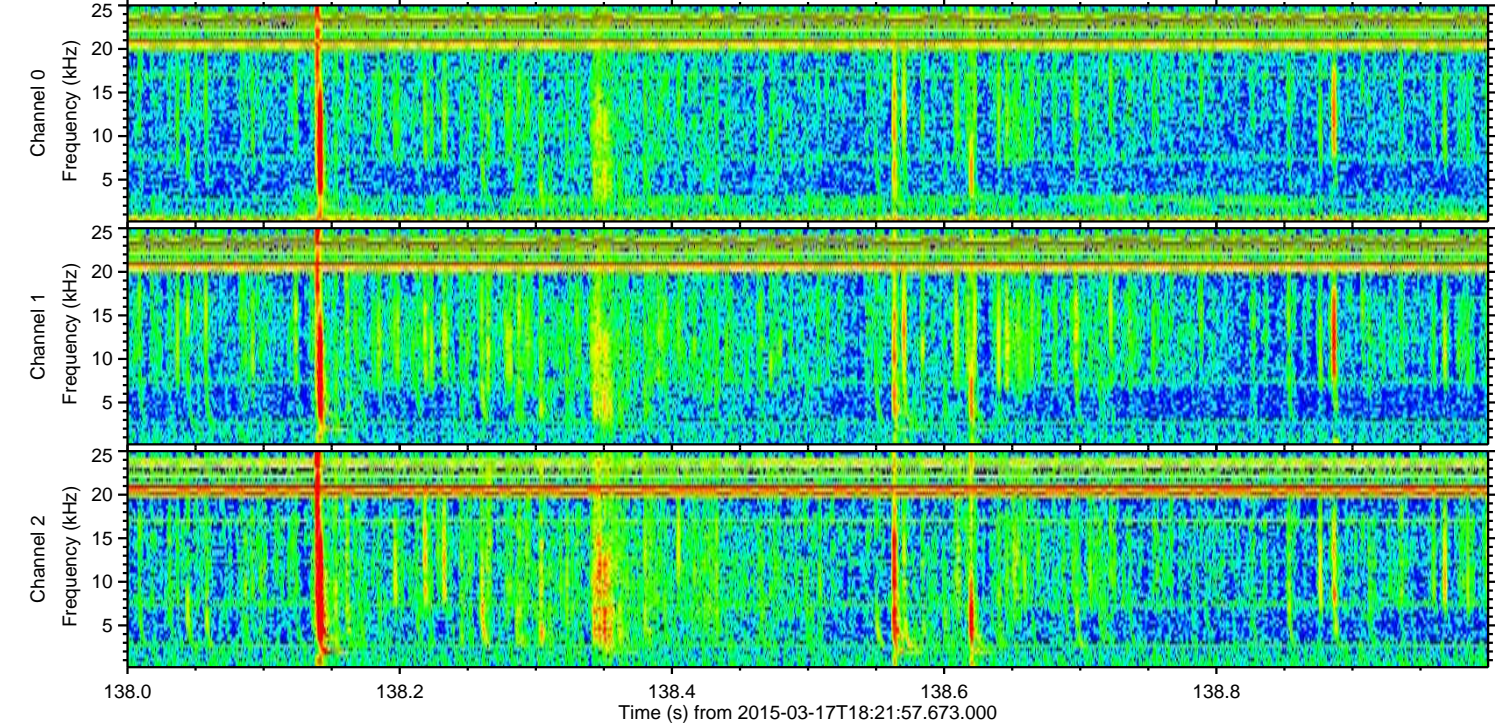
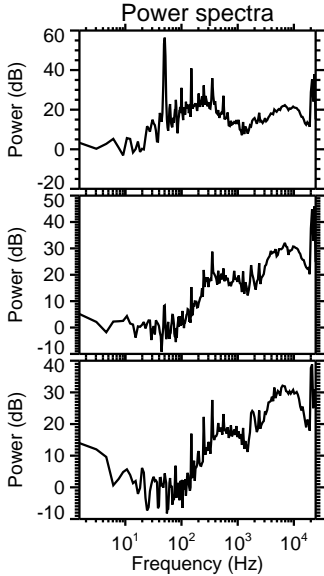
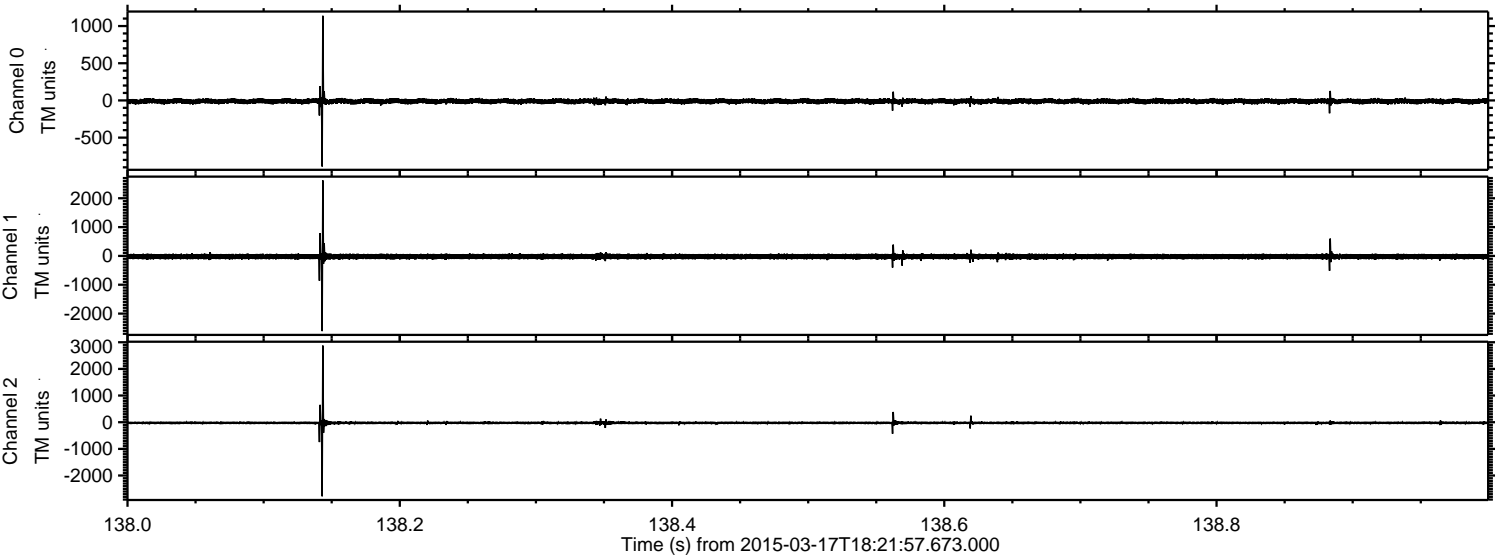
Channel 0
mn: -769
mx: 1065
 μ : -11.4
 σ : 19.0

Channel 1
mn: -2105
mx: 2442
 μ : -22.2
 σ : 49.0

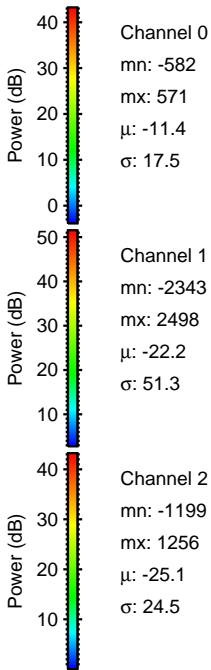
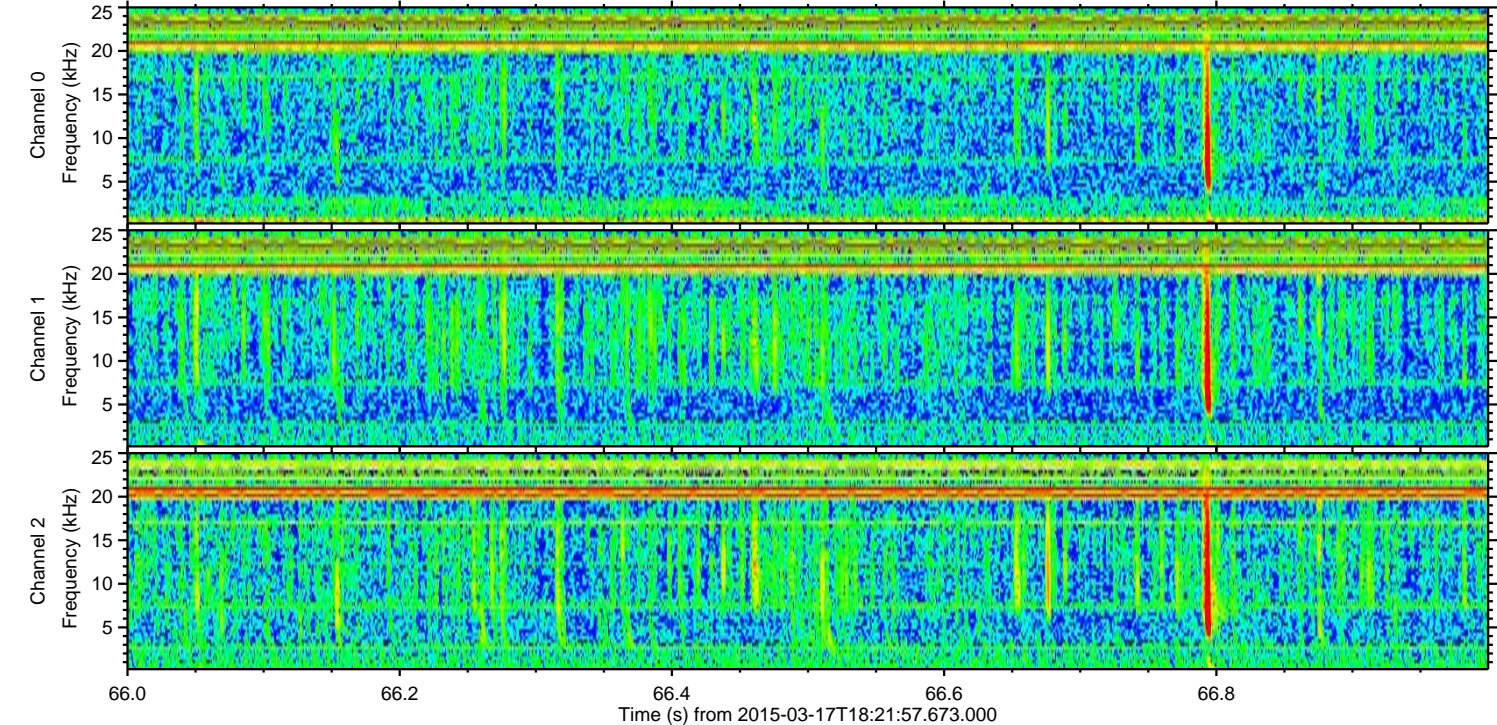
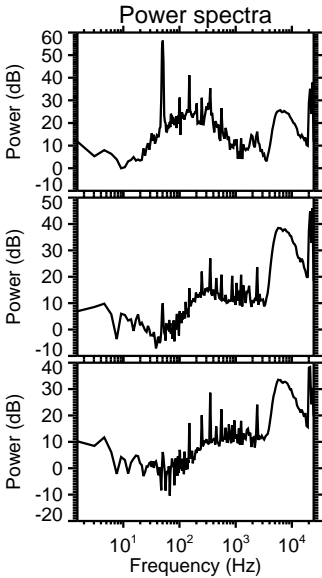
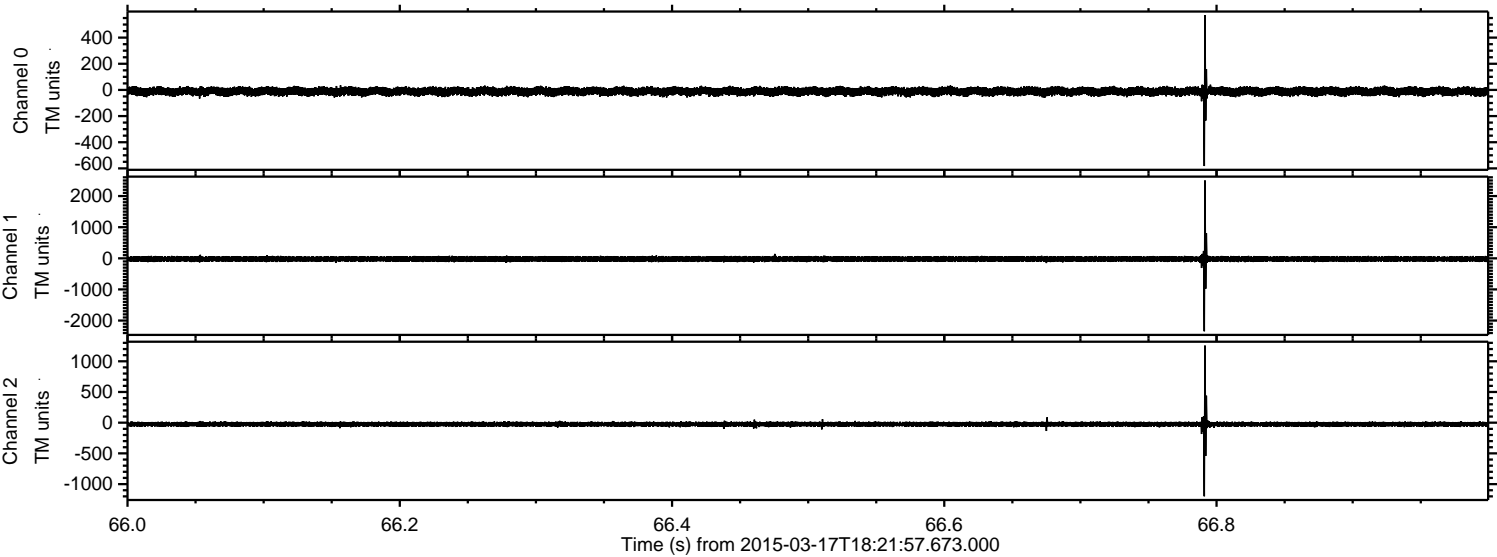
Channel 2
mn: -3066
mx: 2441
 μ : -25.0
 σ : 35.9

ELMAVAN 3D WAVEFORMS (Measured data sampled at 50 kHz) 49787 packets of 144 samples from 2015-03-17T18:21:57.673.000. Part 139/144

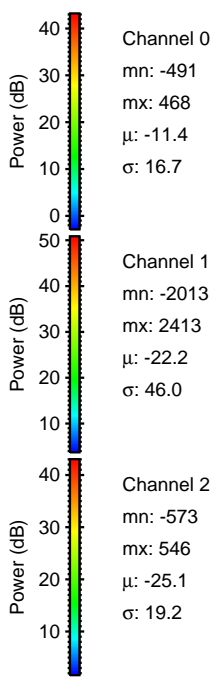
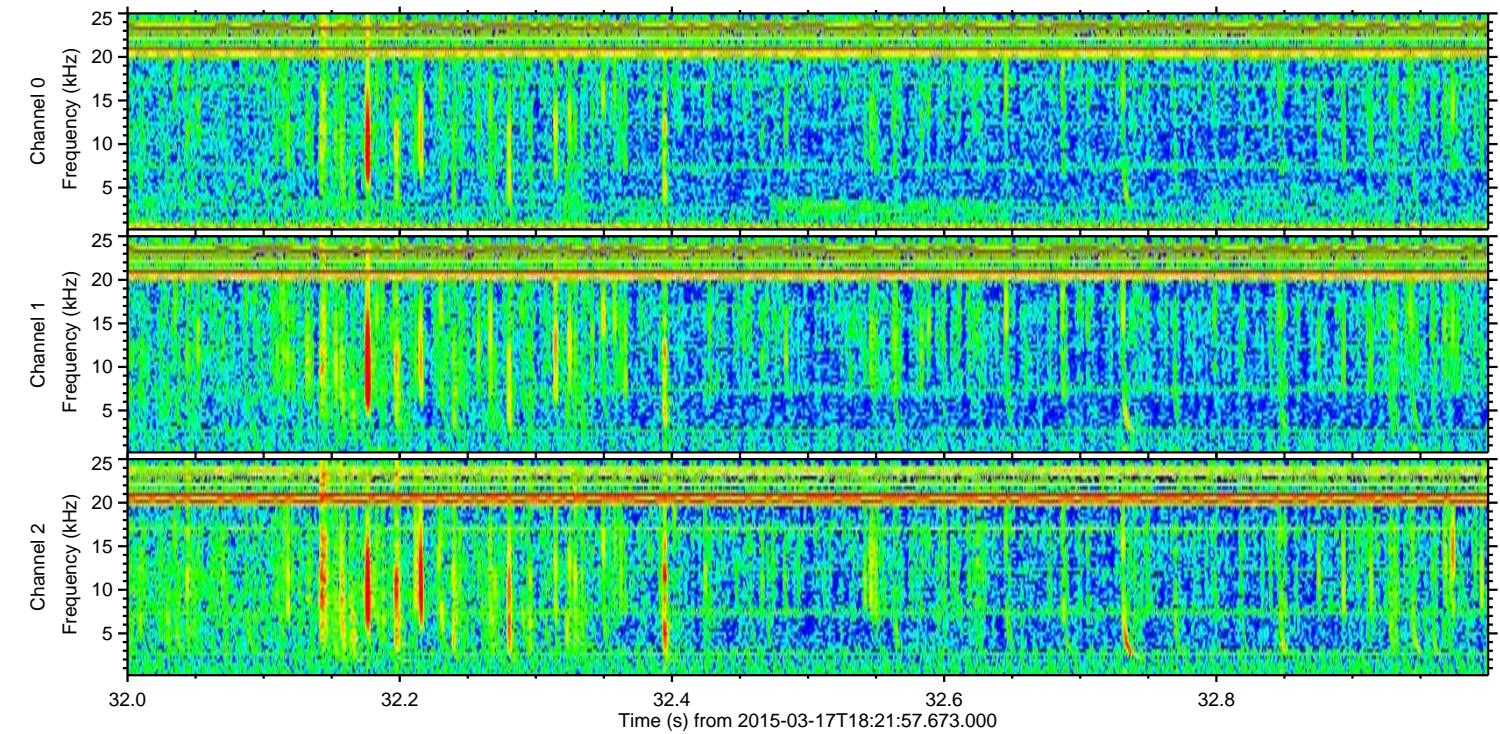
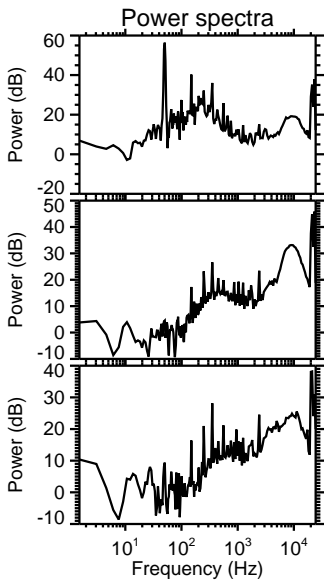
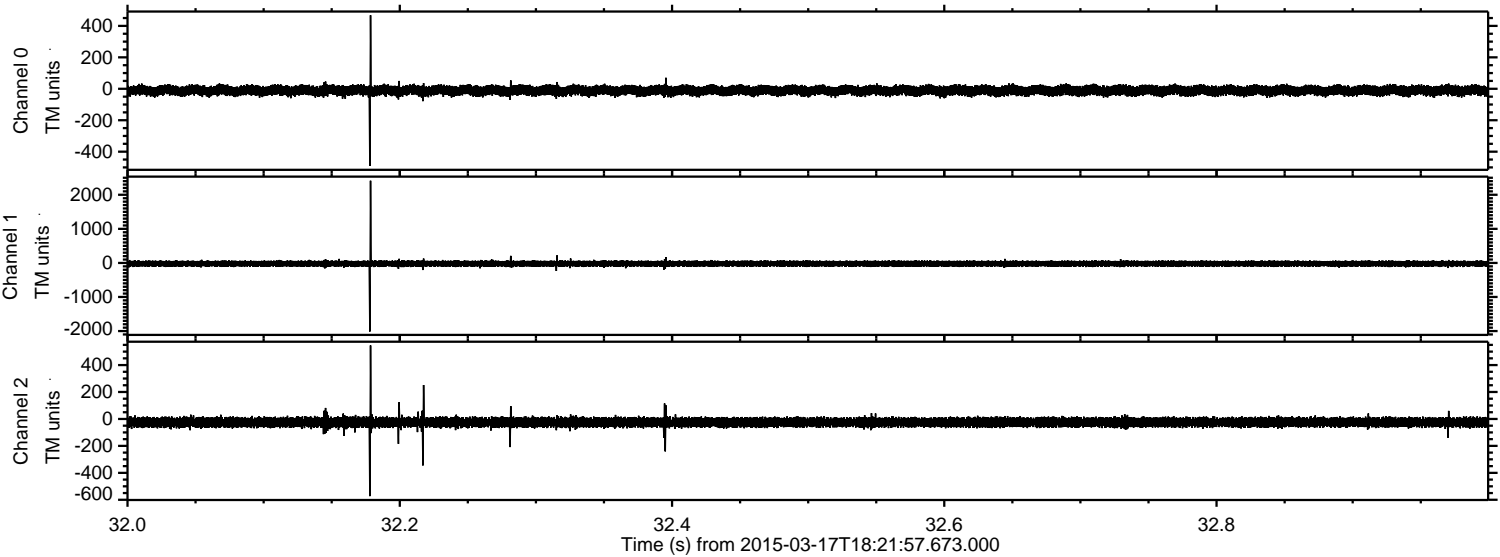
Processed Tue Mar 17 19:31:51 2015 by ELM ver.2012-10-06 from 001__elm20150317_182156__dat00.bin



Processed Tue Mar 17 19:31:52 2015 by ELM ver.2012-10-06 from 001__elm20150317_182156__dat00.bin



Processed Tue Mar 17 19:31:53 2015 by ELM ver.2012-10-06 from 001__elm20150317_182156__dat00.bin



Processed Tue Mar 17 19:31:54 2015 by ELM ver.2012-10-06 from 001__elm20150317_182156__dat00.bin

