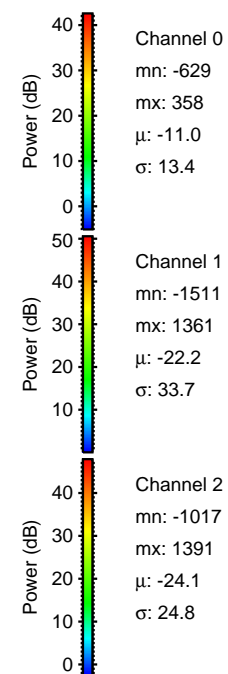
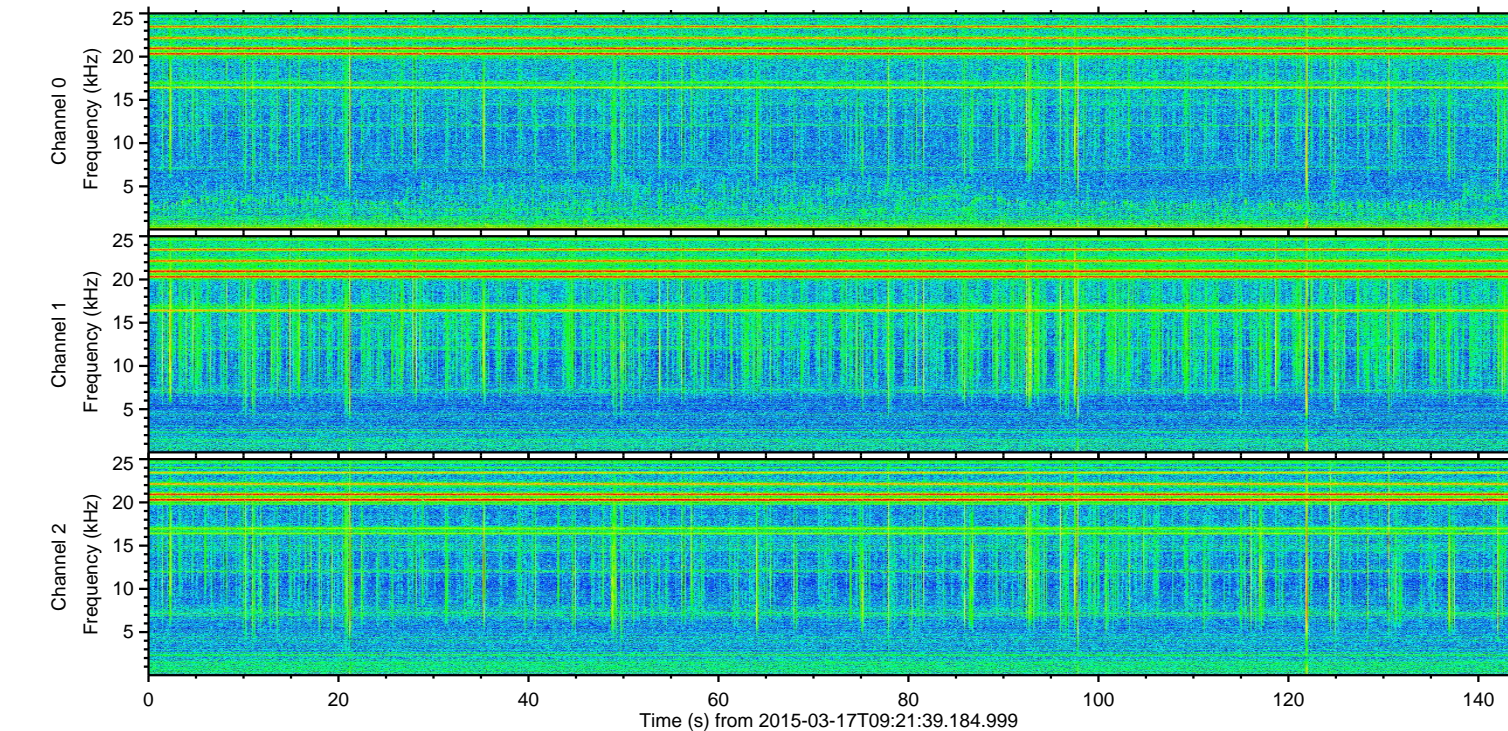
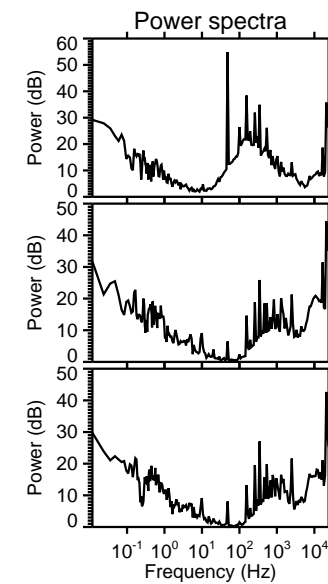
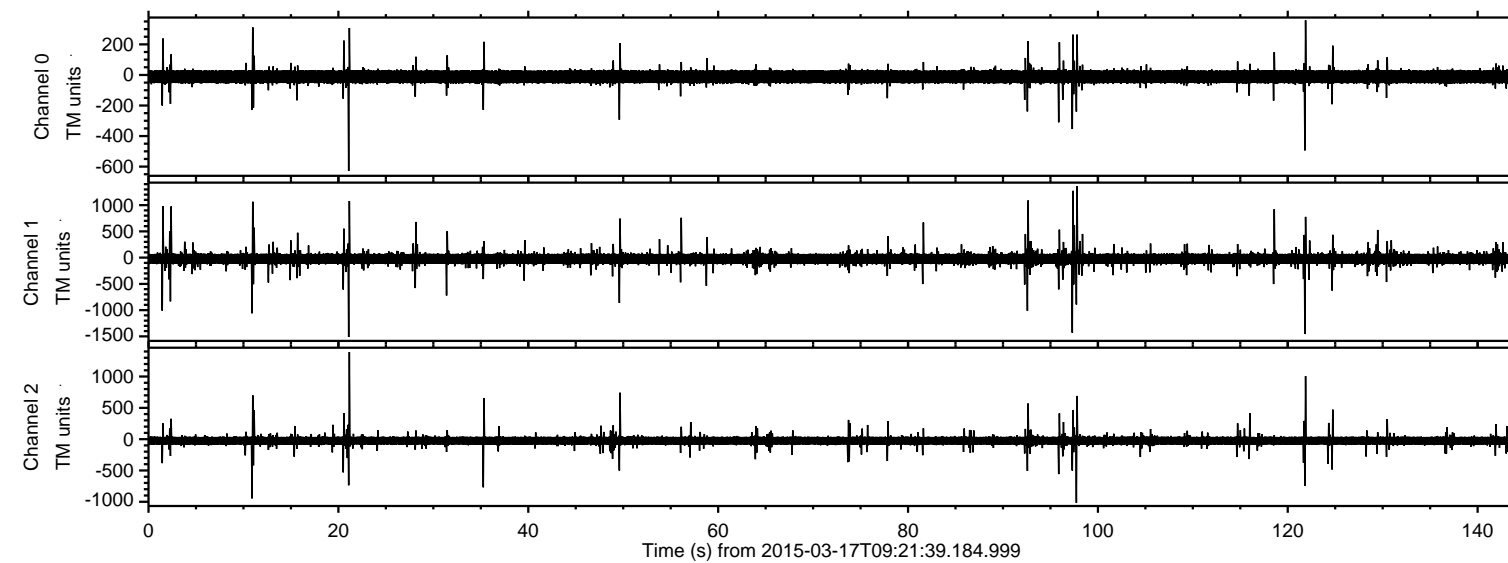


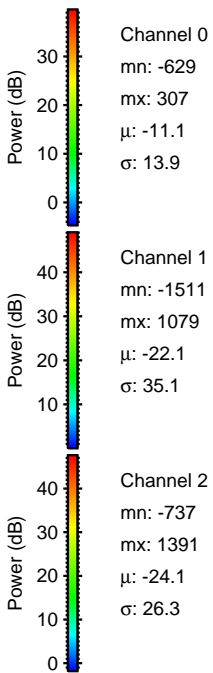
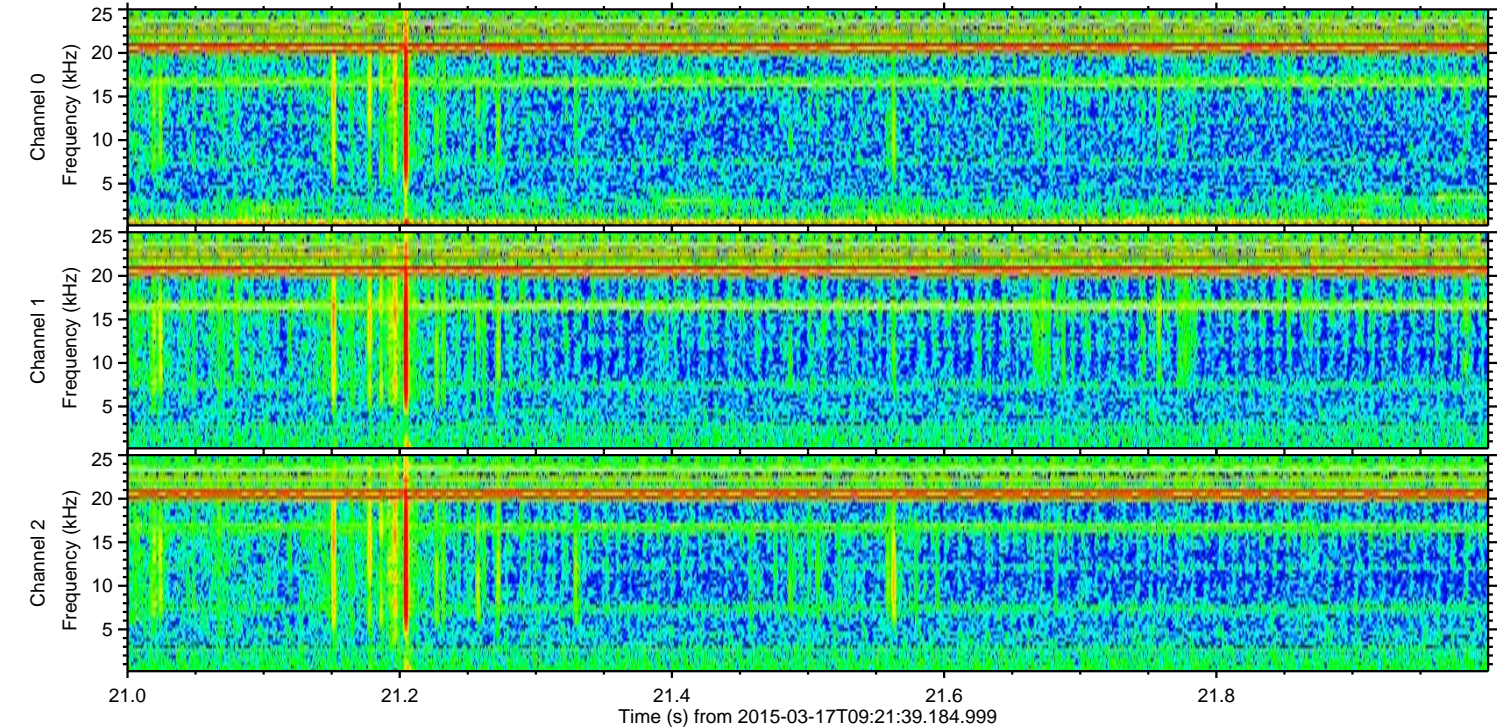
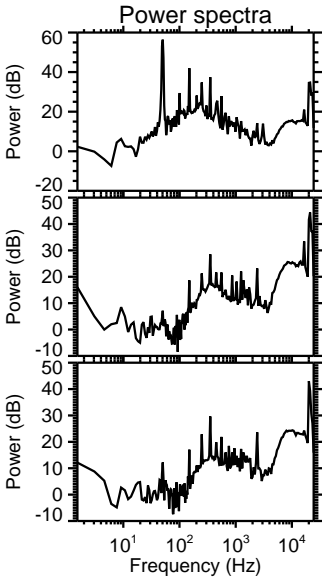
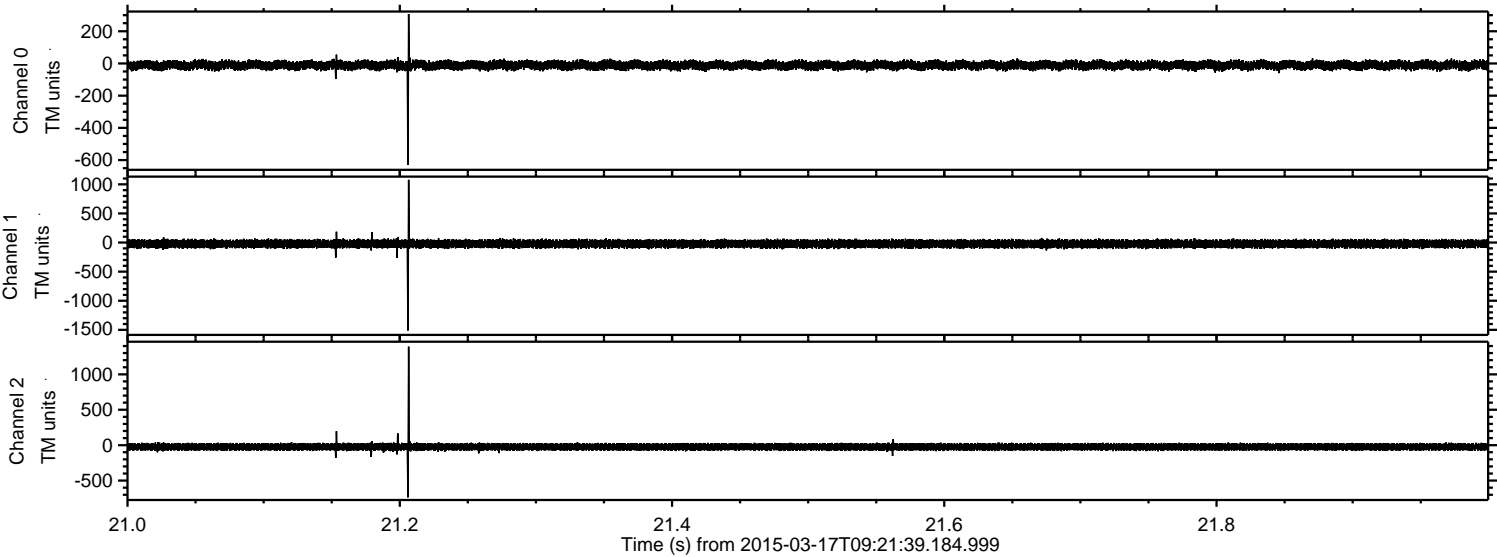
# ELMAVAN 3D WAVEFORMS (Measured data sampled at 50 kHz) 49763 packets of 144 samples from 2015-03-17T09:21:39.184.999.

Processed Tue Mar 17 10:30:48 2015 by ELM ver.2012-10-06 from 001\_\_elm20150317\_092138\_\_dat00.bin





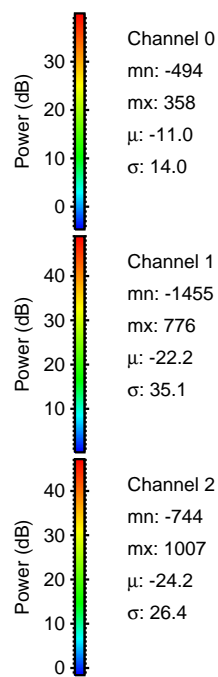
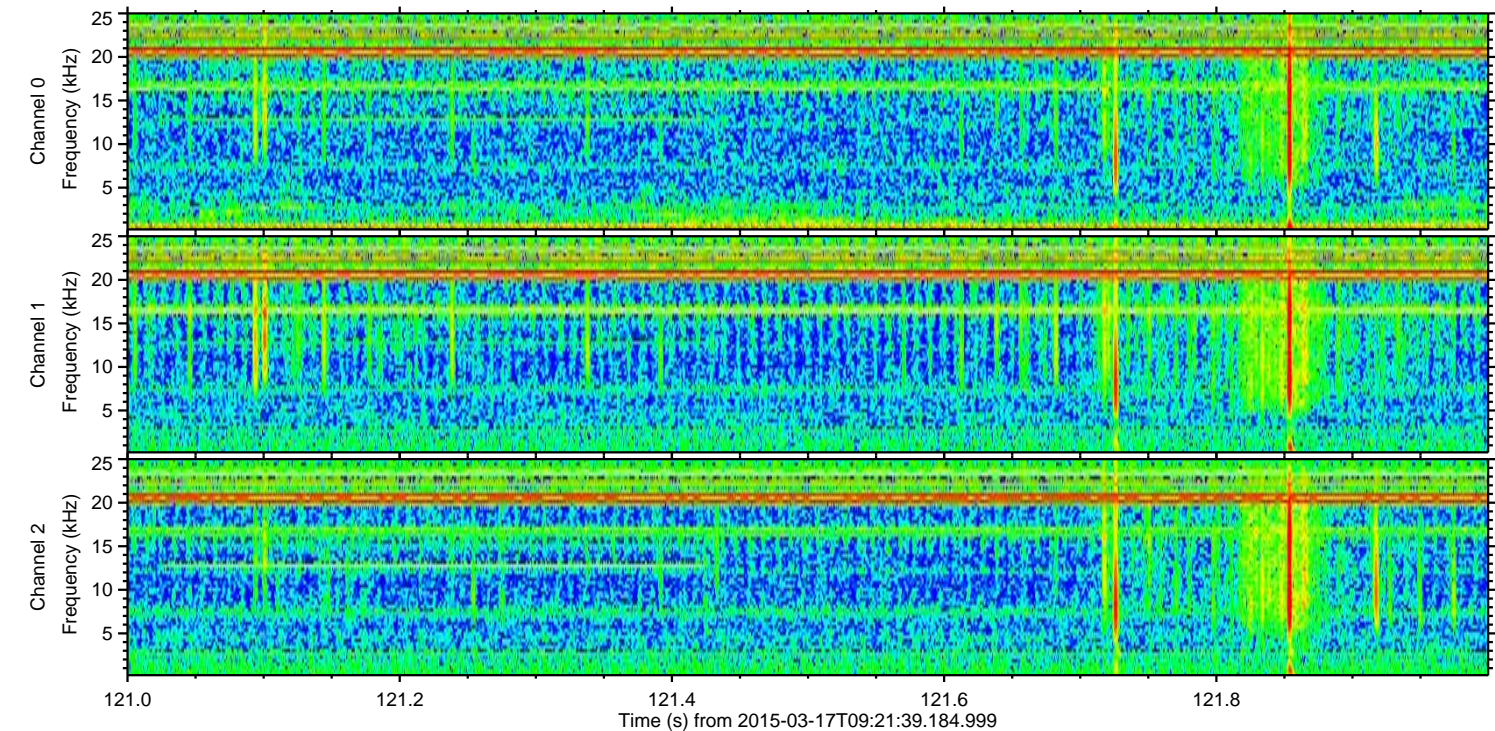
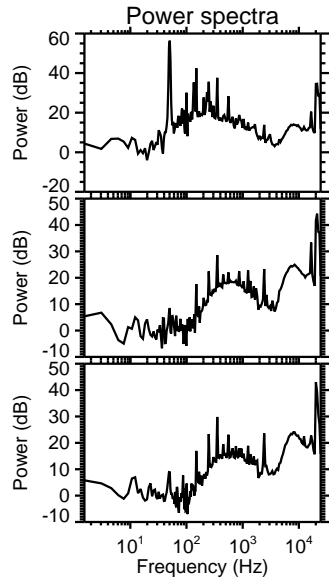
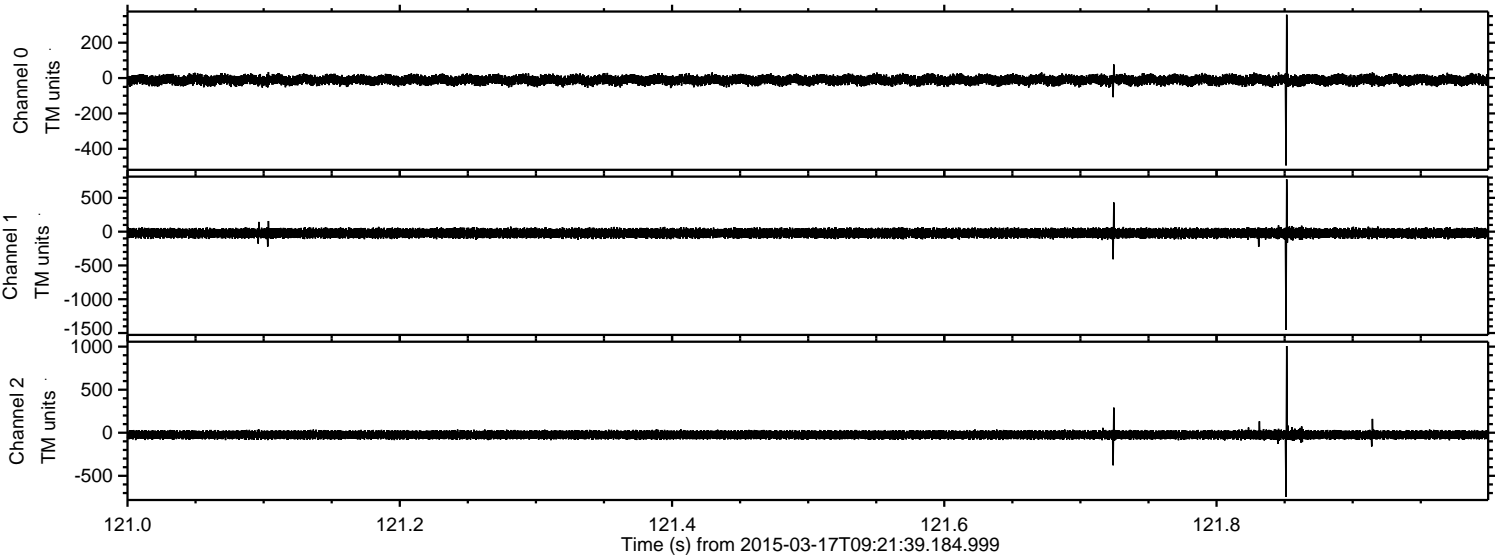
Processed Tue Mar 17 10:30:59 2015 by ELM ver.2012-10-06 from 001\_\_elm20150317\_092138\_\_dat00.bin





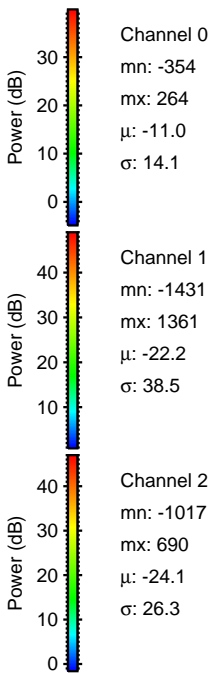
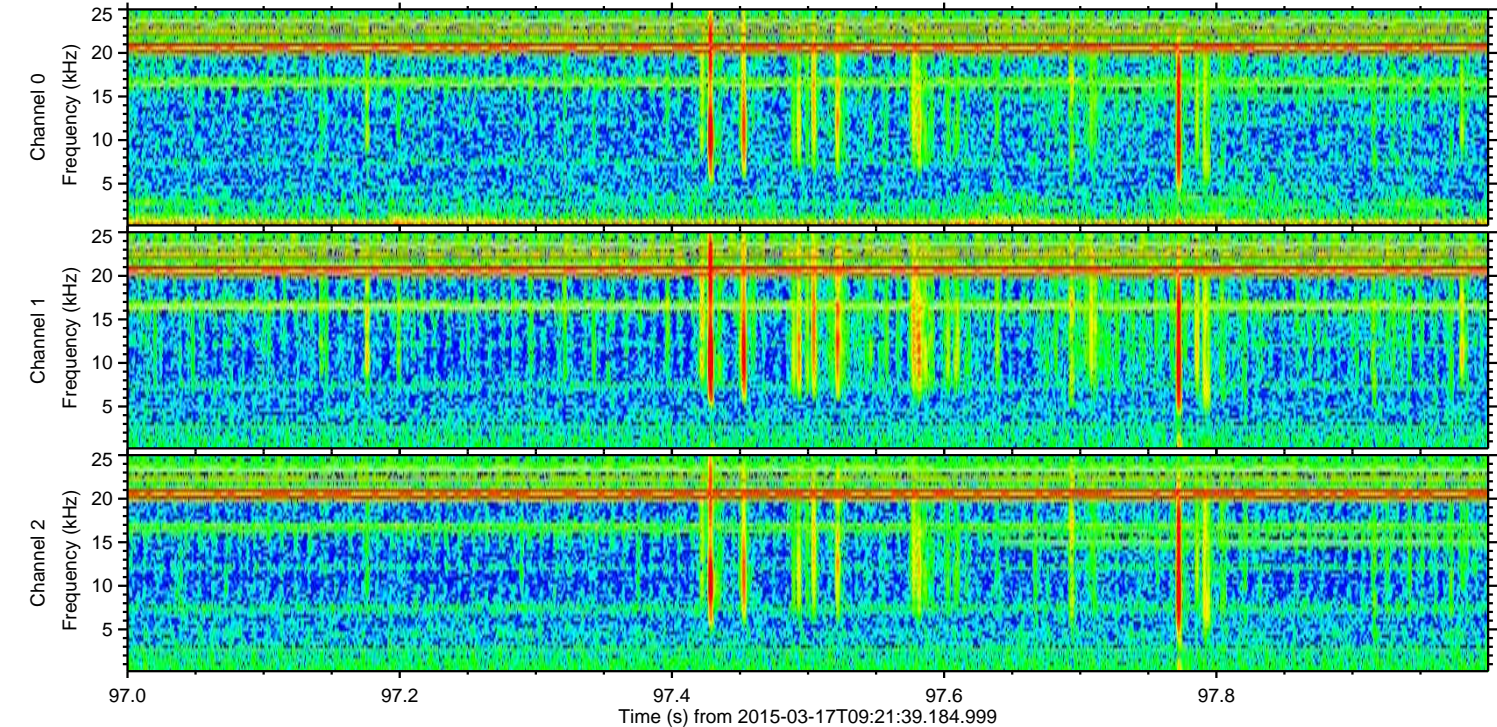
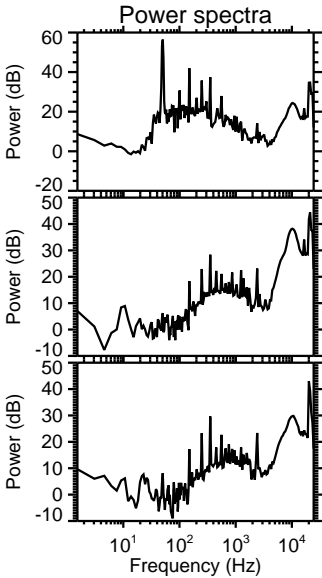
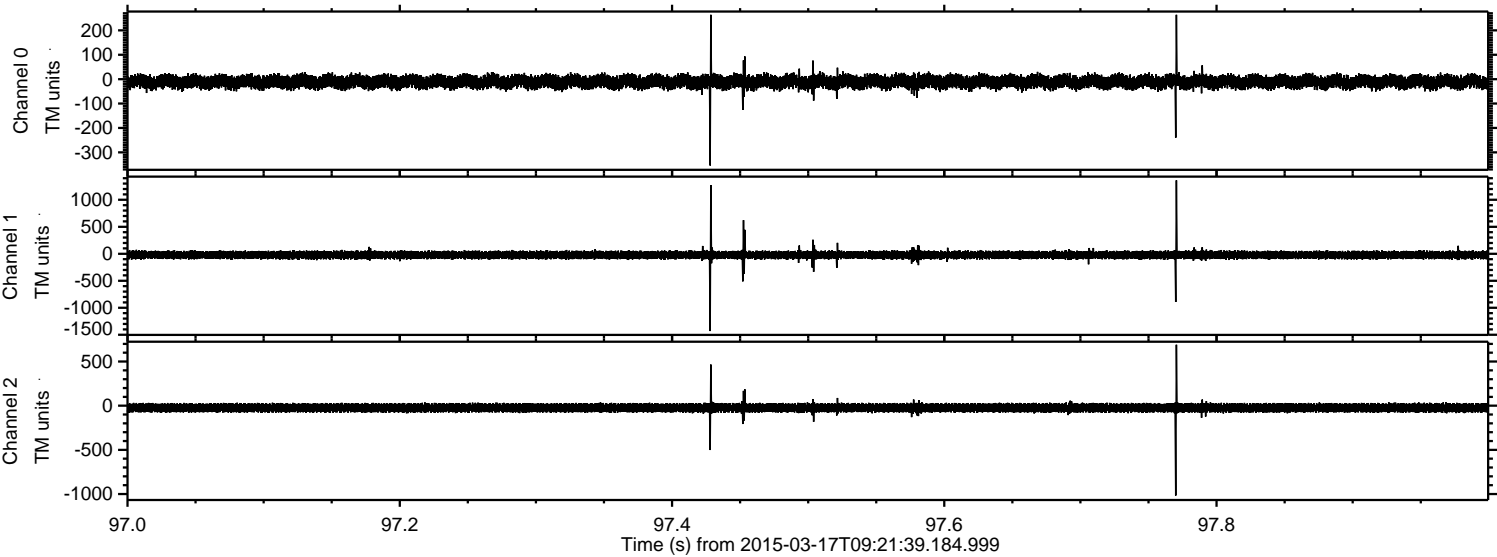
ELMAVAN 3D WAVEFORMS (Measured data sampled at 50 kHz) 49763 packets of 144 samples from 2015-03-17T09:21:39.184.999. Part 122/144

Processed Tue Mar 17 10:31:00 2015 by ELM ver.2012-10-06 from 001\_\_elm20150317\_092138\_\_dat00.bin



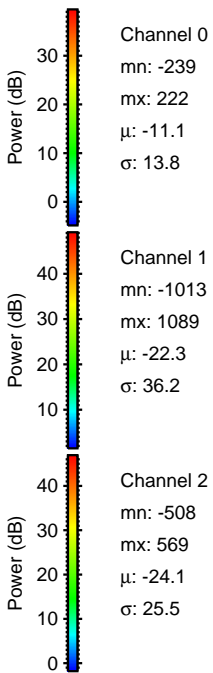
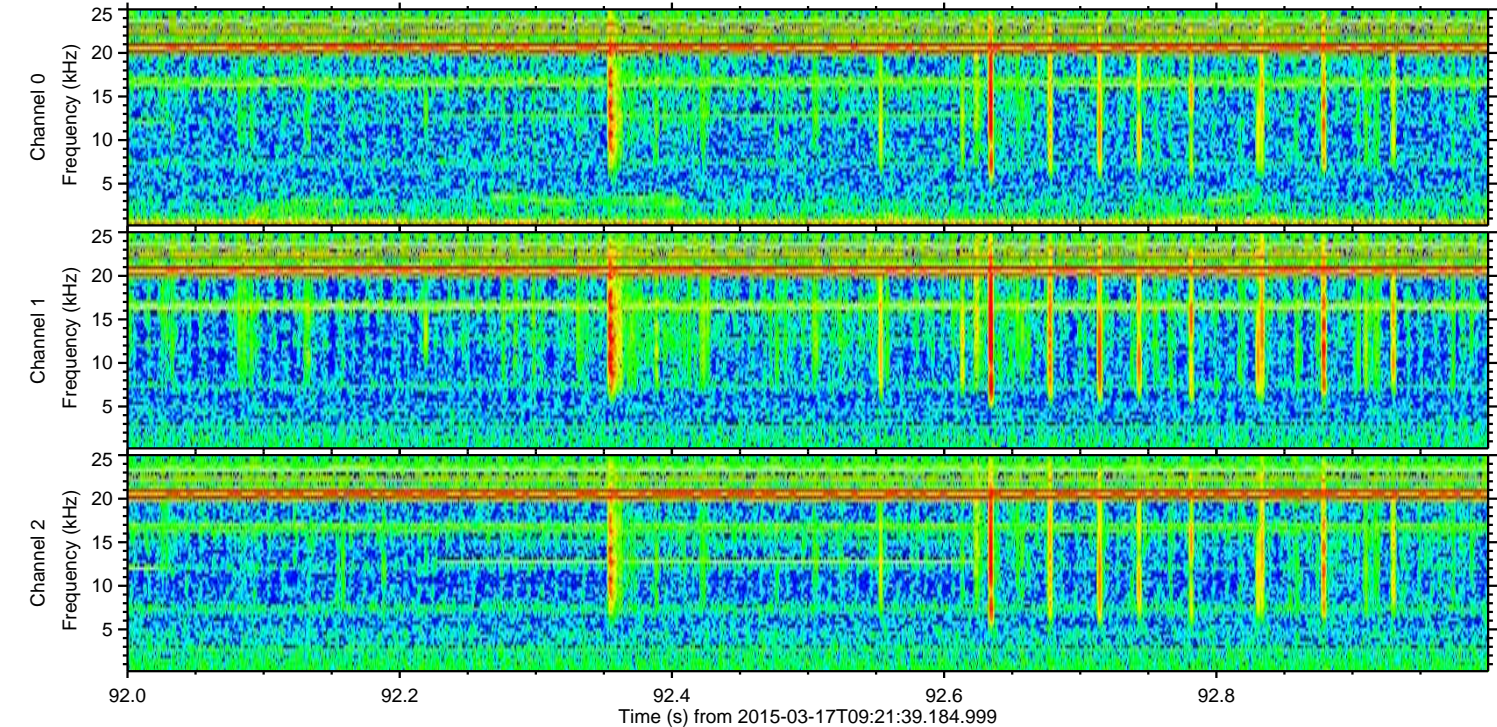
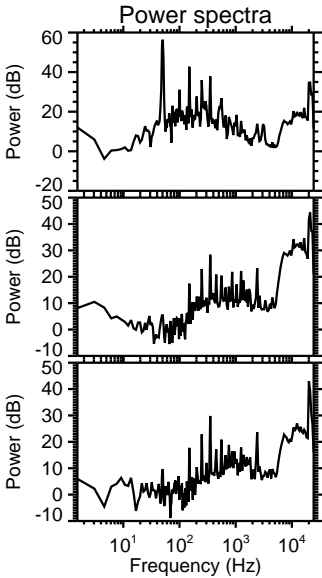
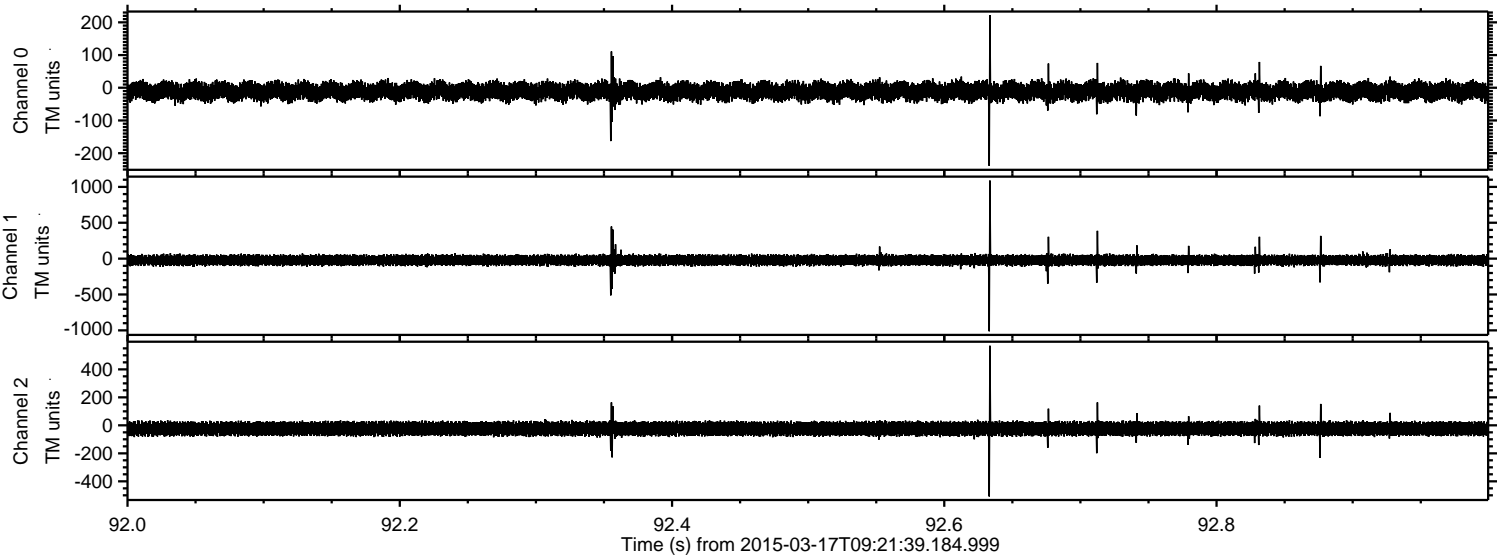


Processed Tue Mar 17 10:31:01 2015 by ELM ver.2012-10-06 from 001\_\_elm20150317\_092138\_\_dat00.bin



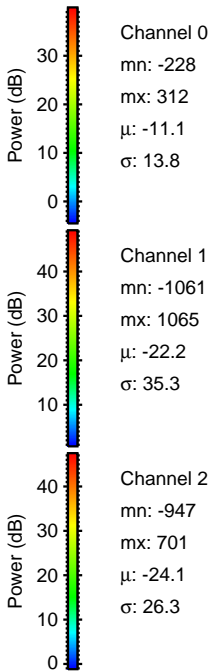
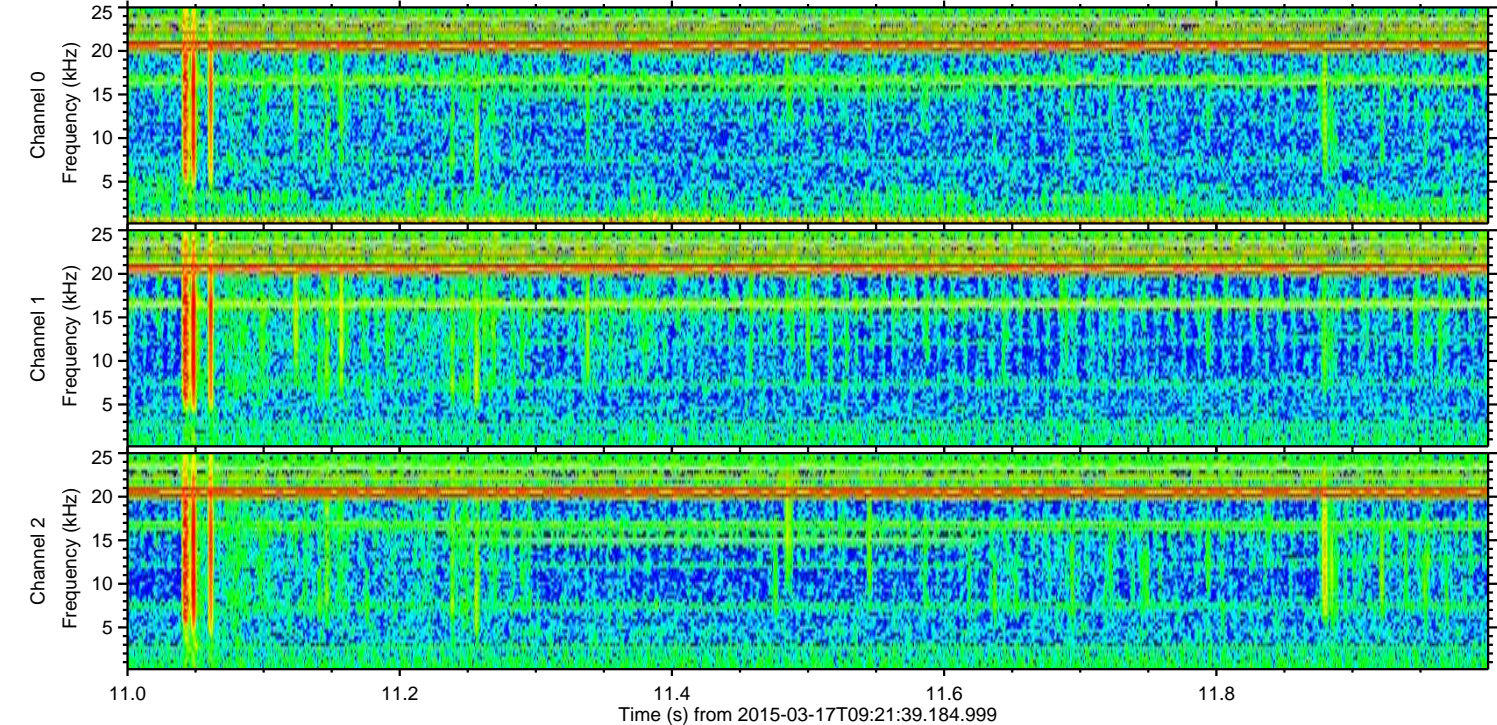
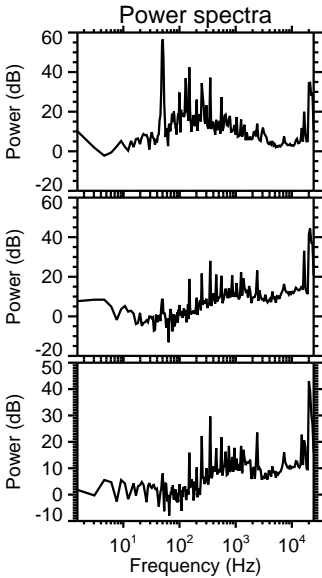
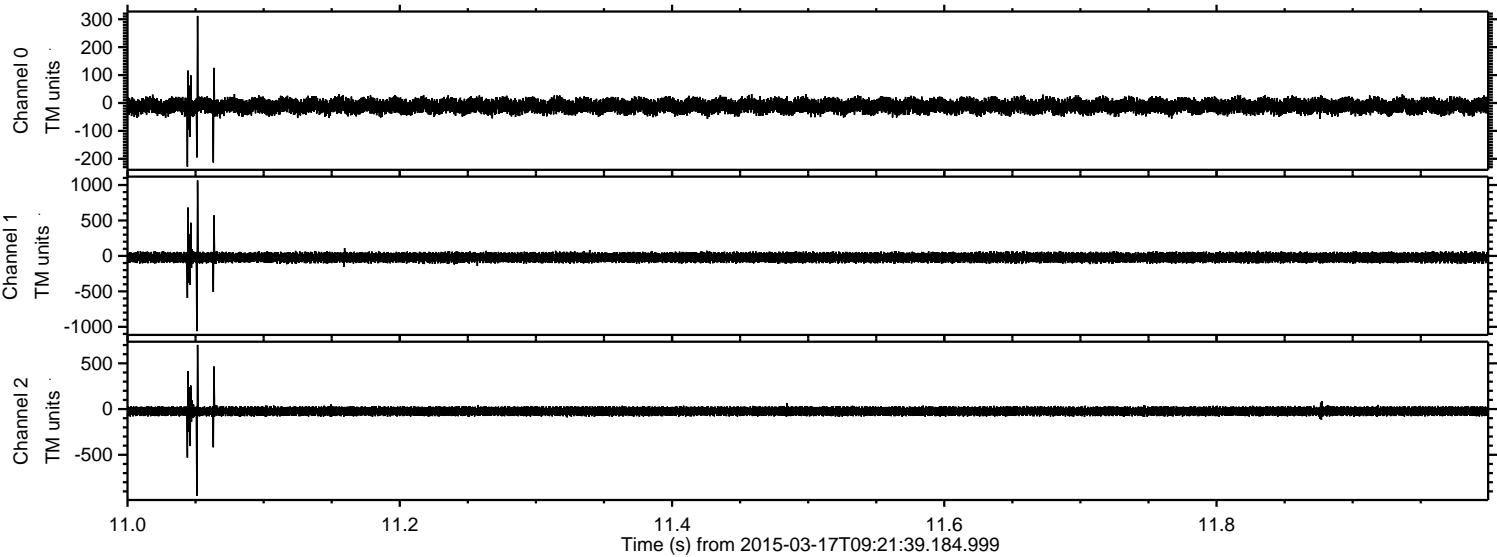


Processed Tue Mar 17 10:31:02 2015 by ELM ver.2012-10-06 from 001\_\_elm20150317\_092138\_\_dat00.bin



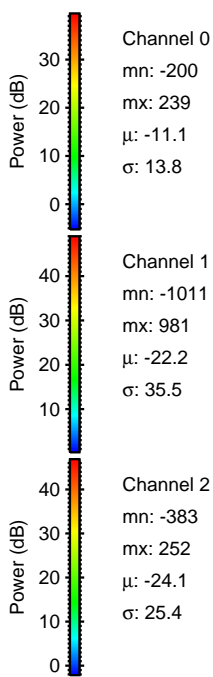
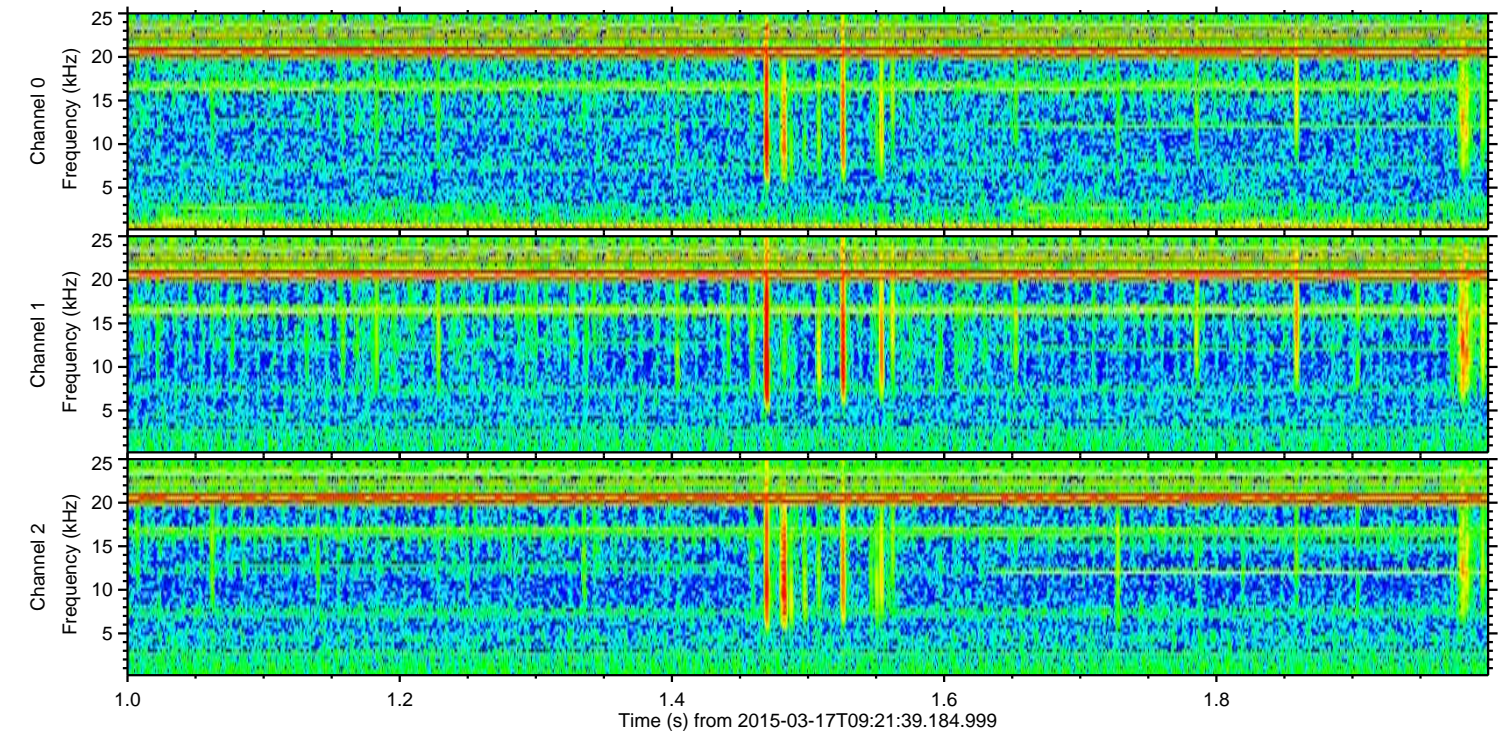
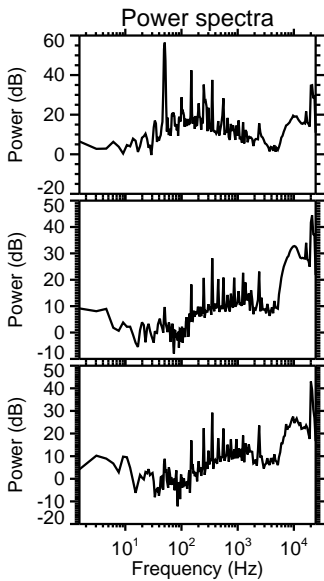
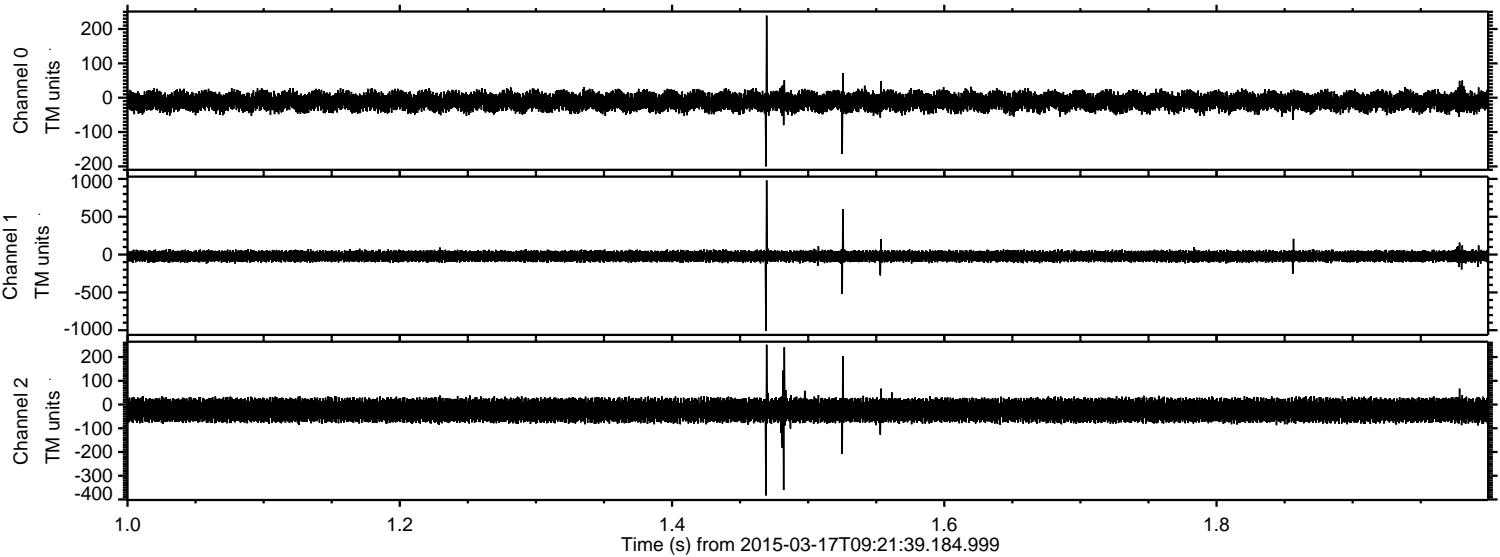


Processed Tue Mar 17 10:31:03 2015 by ELM ver.2012-10-06 from 001\_\_elm20150317\_092138\_\_dat00.bin



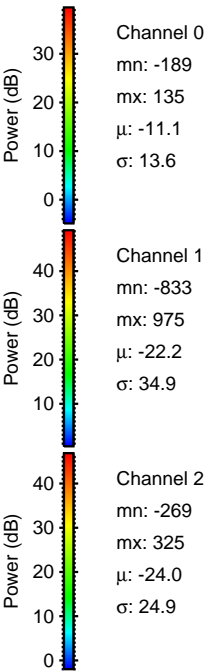
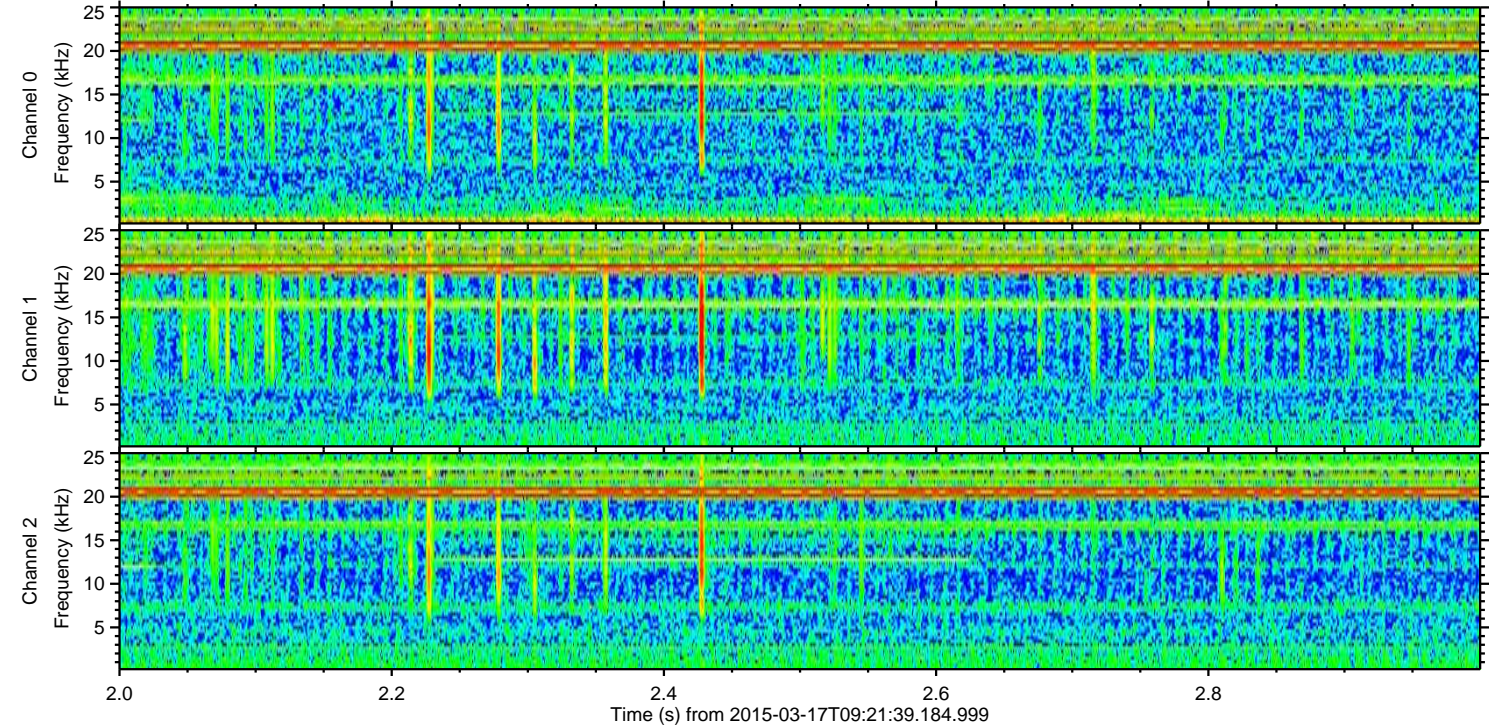
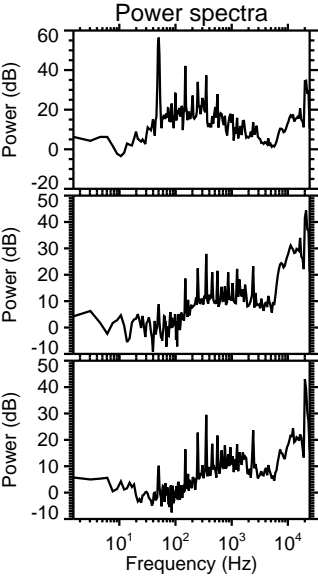
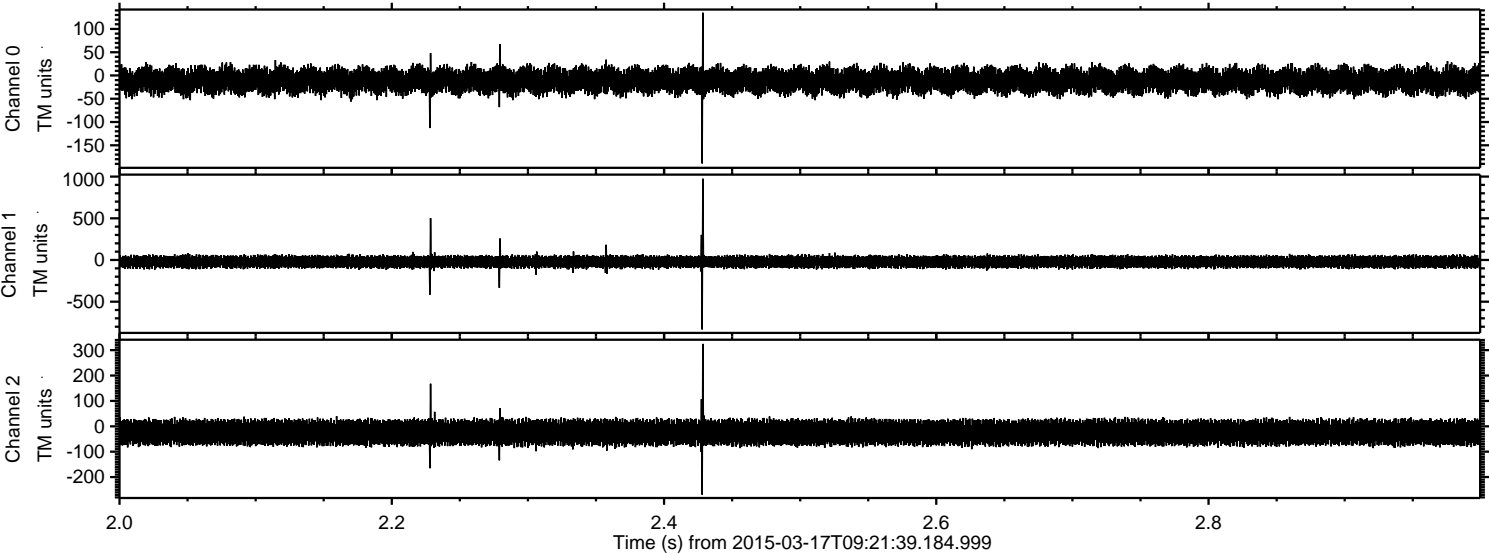


Processed Tue Mar 17 10:31:04 2015 by ELM ver.2012-10-06 from 001\_\_elm20150317\_092138\_\_dat00.bin





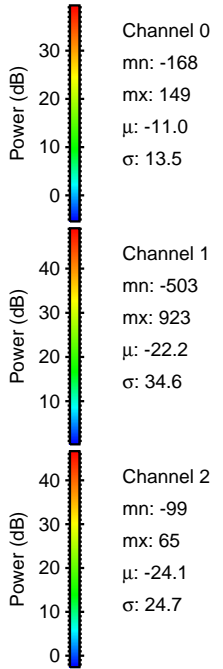
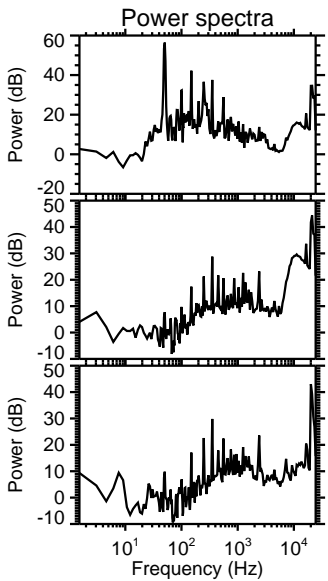
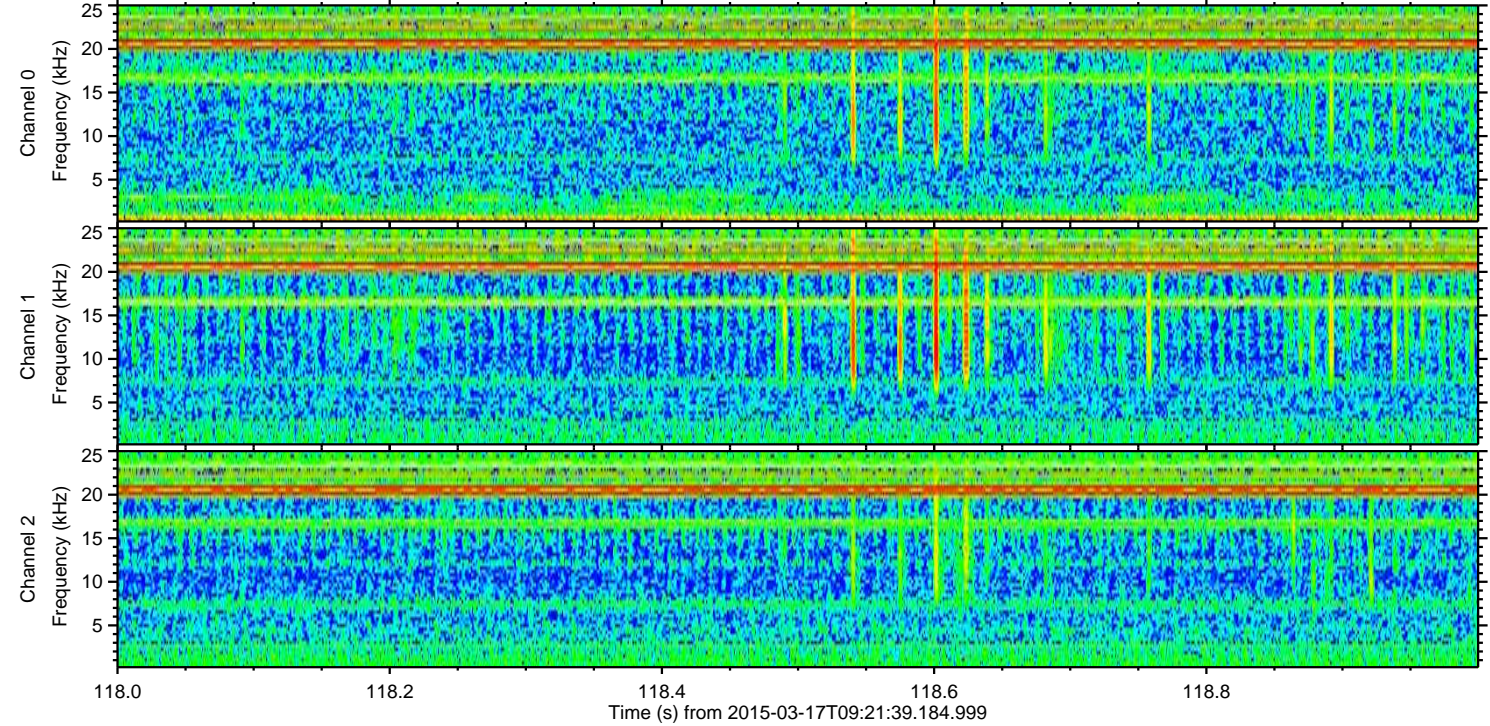
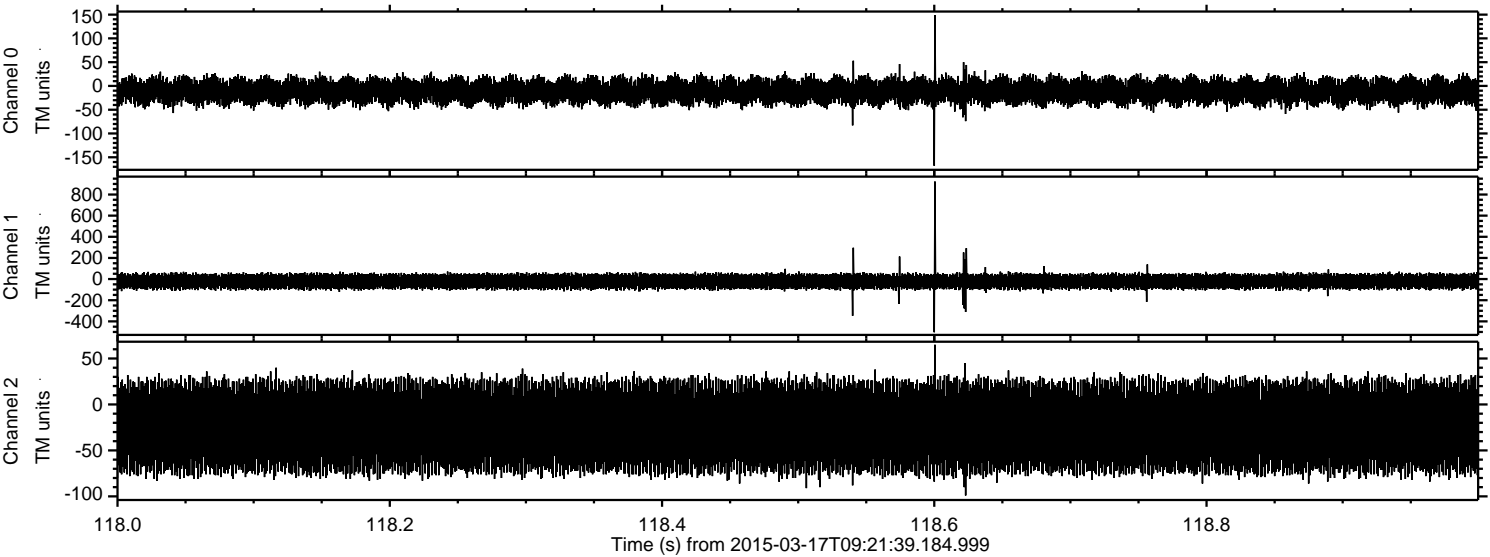
Processed Tue Mar 17 10:31:05 2015 by ELM ver.2012-10-06 from 001\_\_elm20150317\_092138\_\_dat00.bin





ELMAVAN 3D WAVEFORMS (Measured data sampled at 50 kHz) 49763 packets of 144 samples from 2015-03-17T09:21:39.184.999. Part 119/144

Processed Tue Mar 17 10:31:06 2015 by ELM ver.2012-10-06 from 001\_\_elm20150317\_092138\_\_dat00.bin



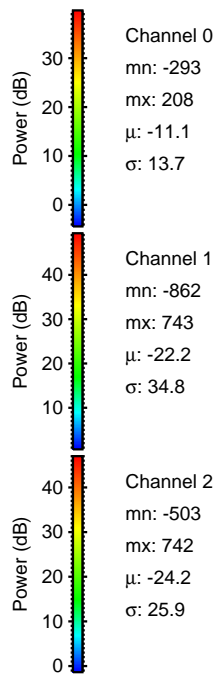
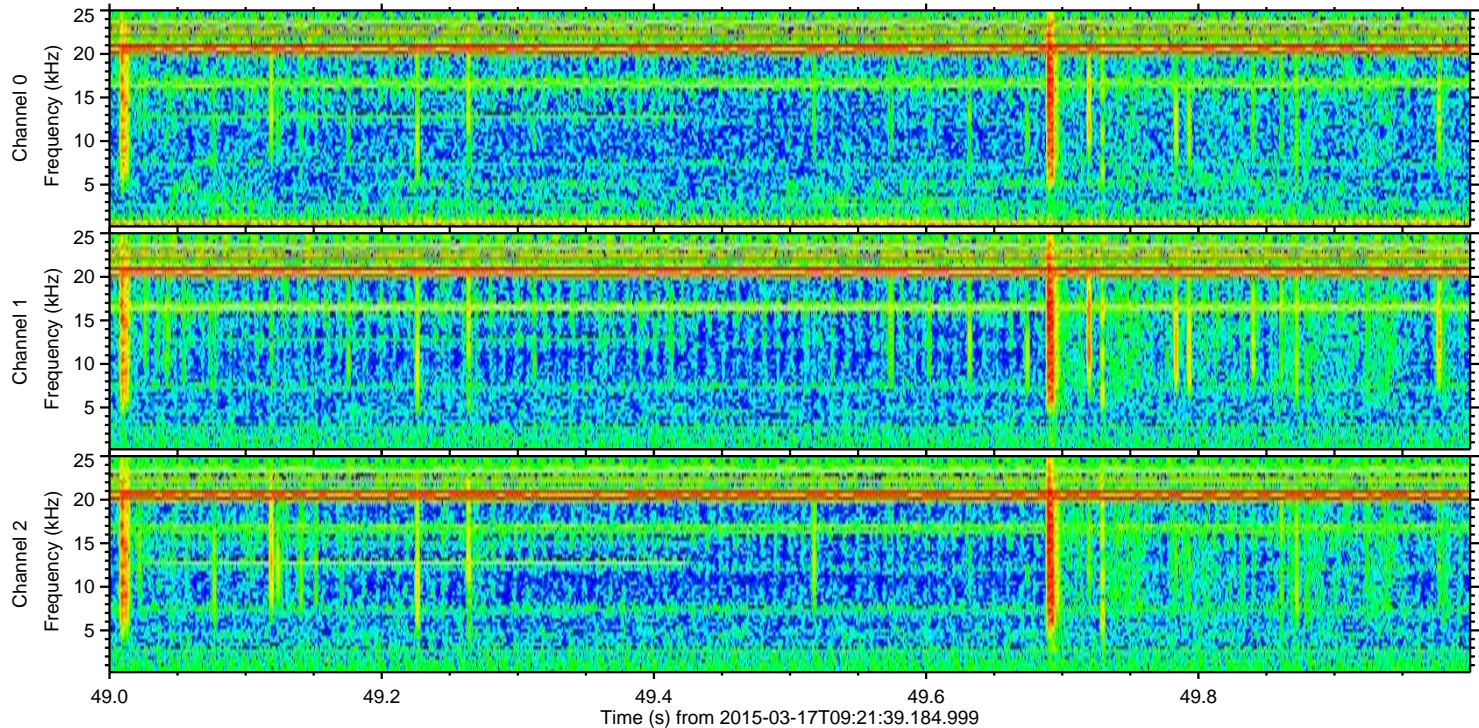
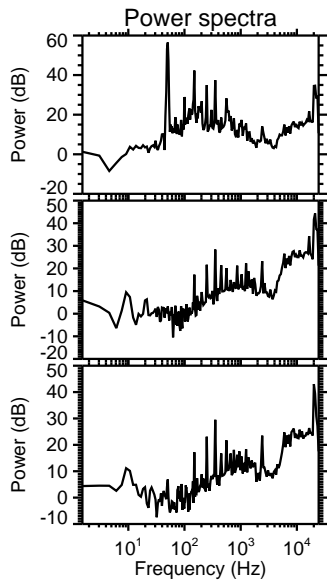
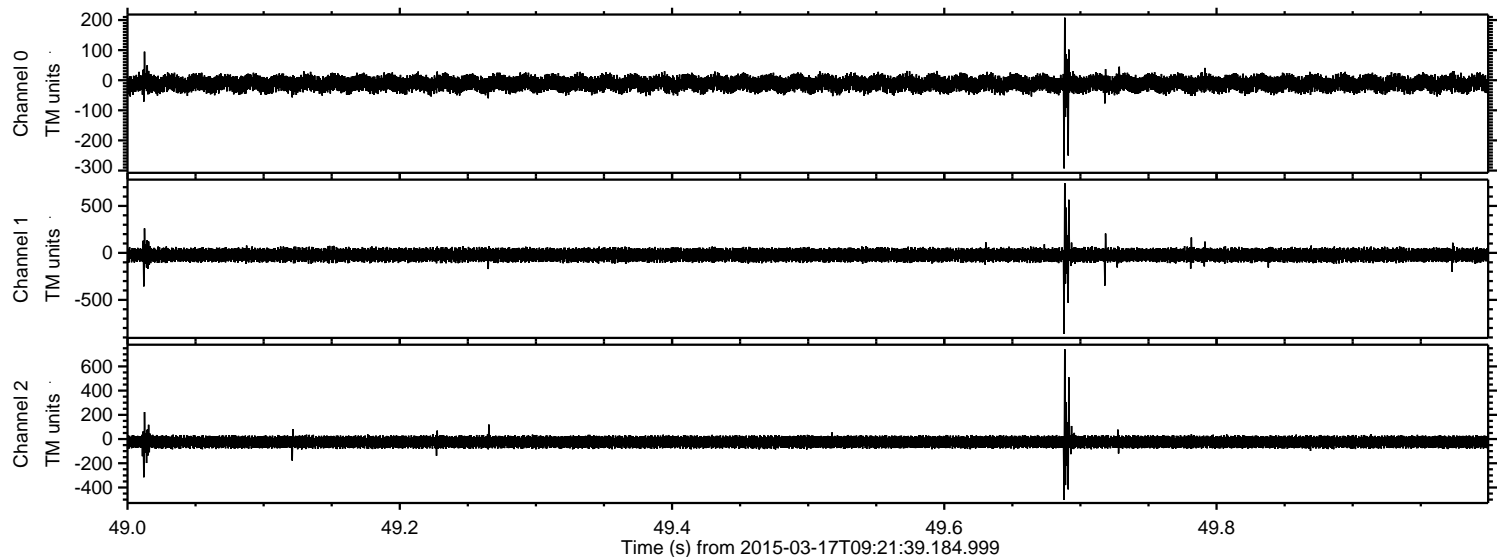
Channel 0  
mn: -168  
mx: 149  
 $\mu$ : -11.0  
 $\sigma$ : 13.5

Channel 1  
mn: -503  
mx: 923  
 $\mu$ : -22.2  
 $\sigma$ : 34.6

Channel 2  
mn: -99  
mx: 65  
 $\mu$ : -24.1  
 $\sigma$ : 24.7



Processed Tue Mar 17 10:31:07 2015 by ELM ver.2012-10-06 from 001\_\_elm20150317\_092138\_\_dat00.bin





Processed Tue Mar 17 10:31:08 2015 by ELM ver.2012-10-06 from 001\_\_elm20150317\_092138\_\_dat00.bin

