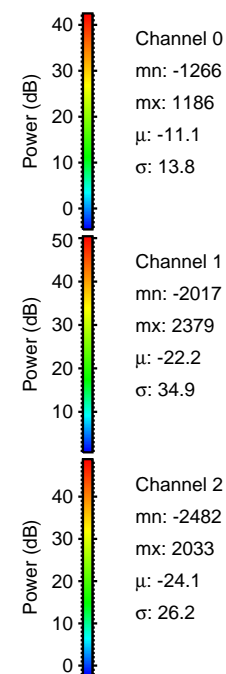
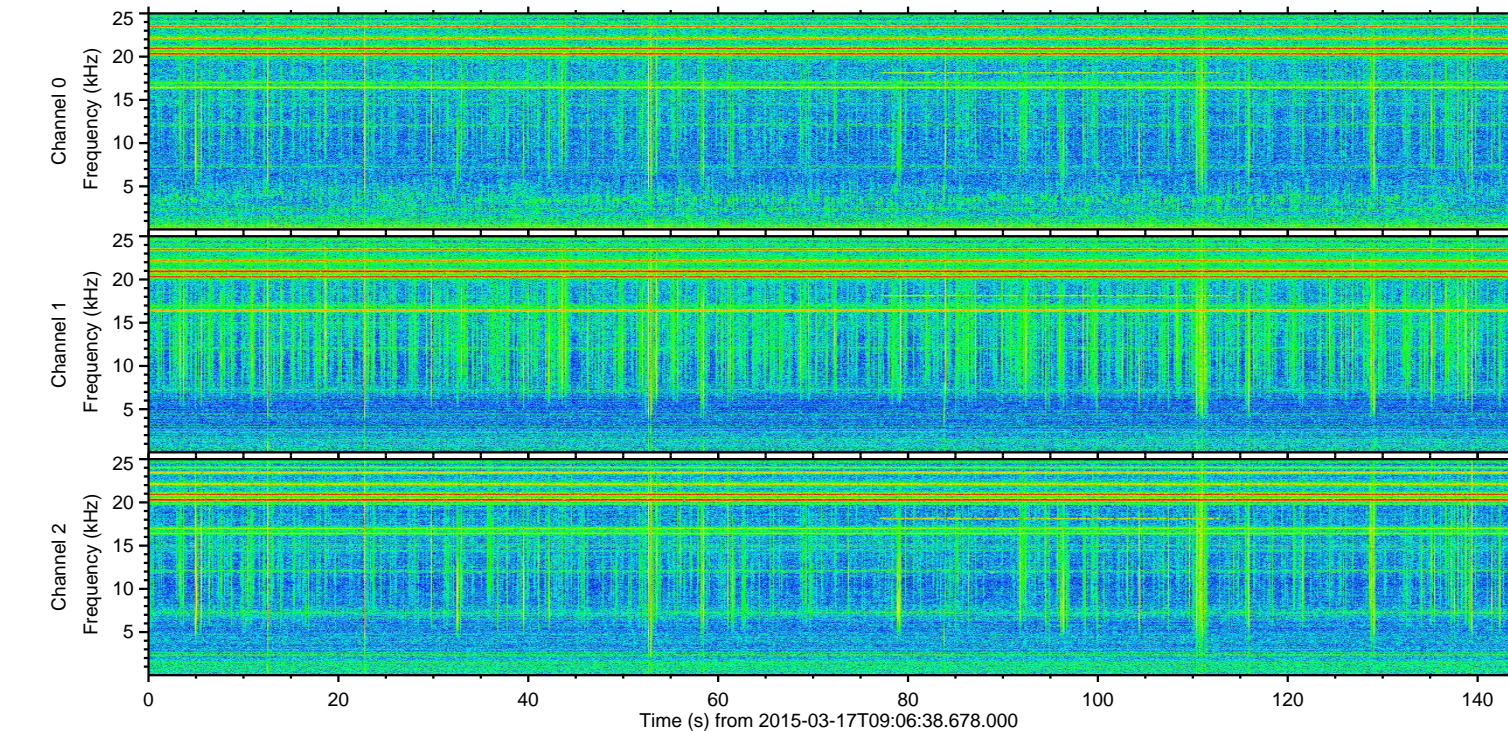
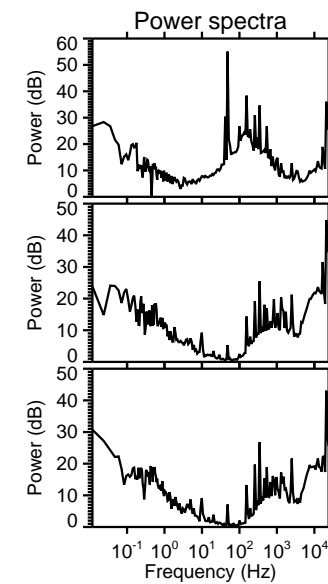
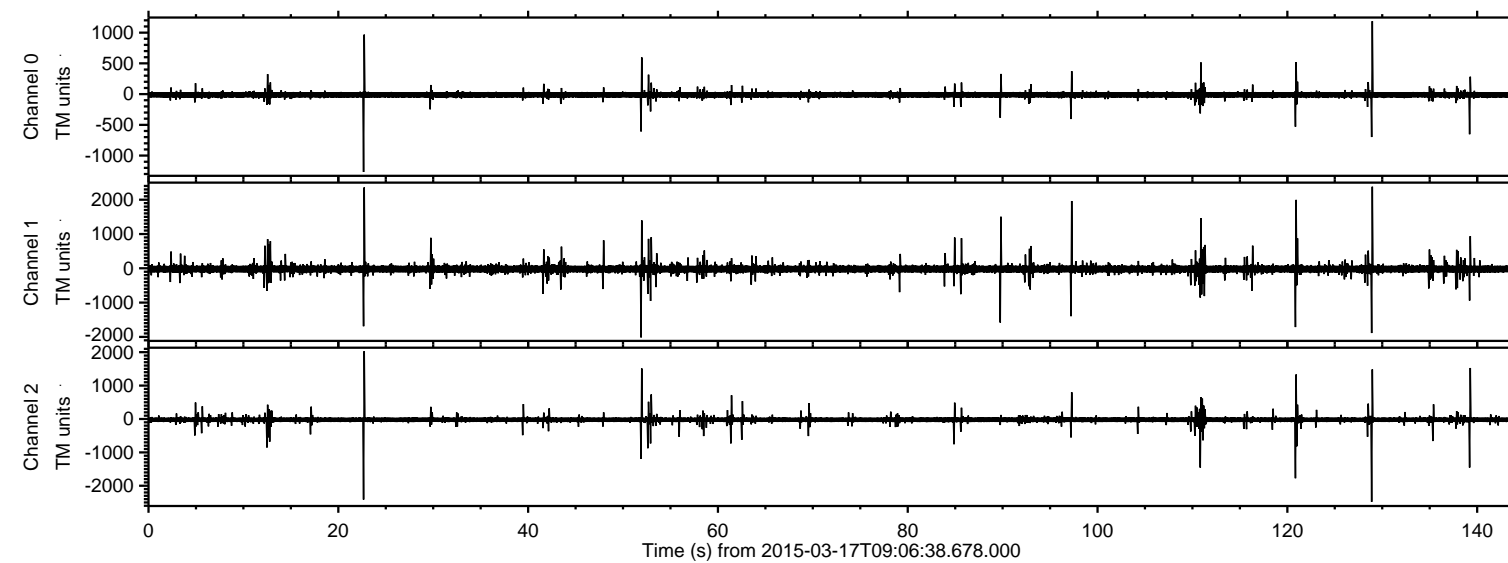


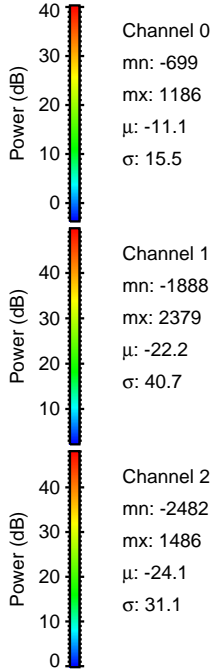
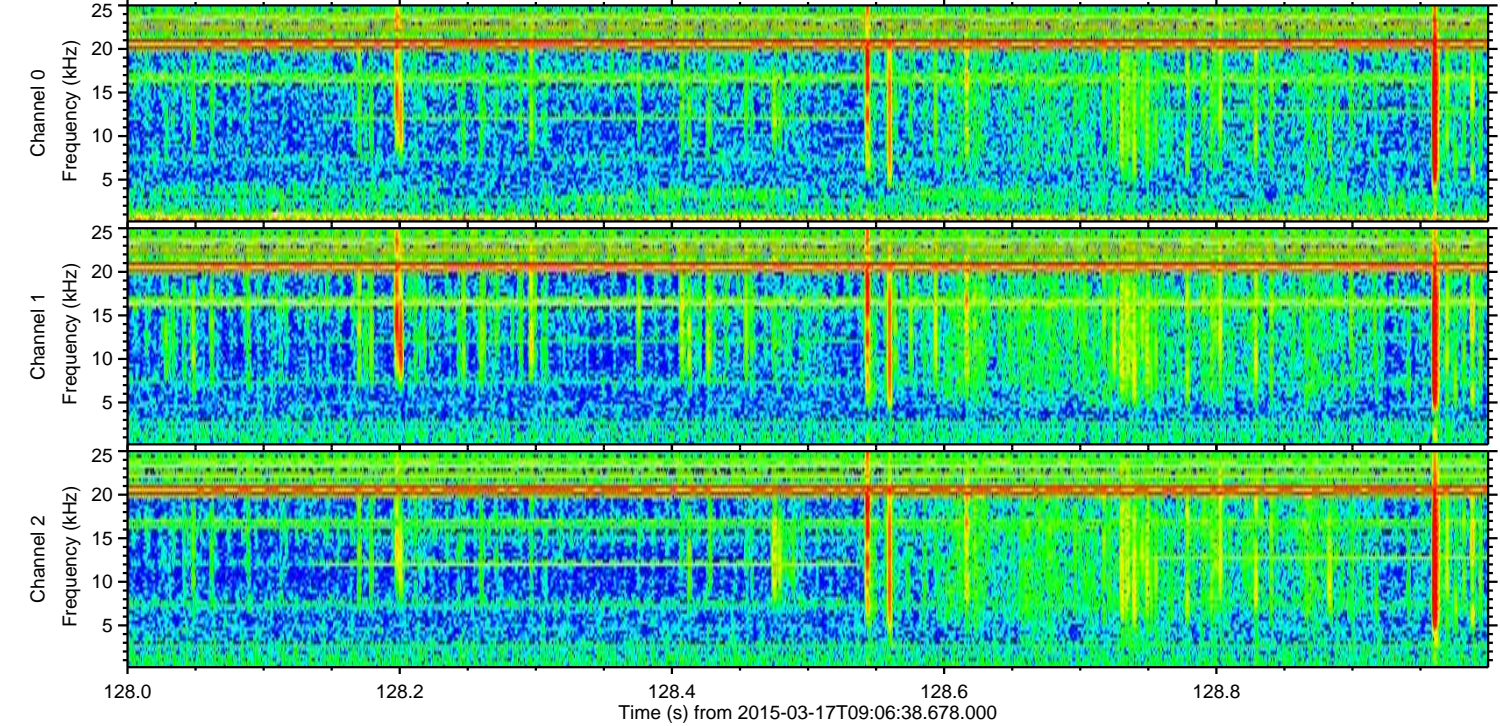
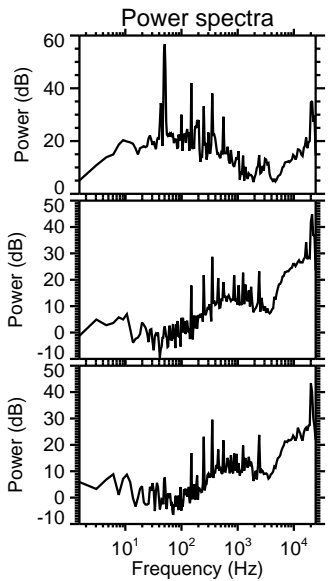
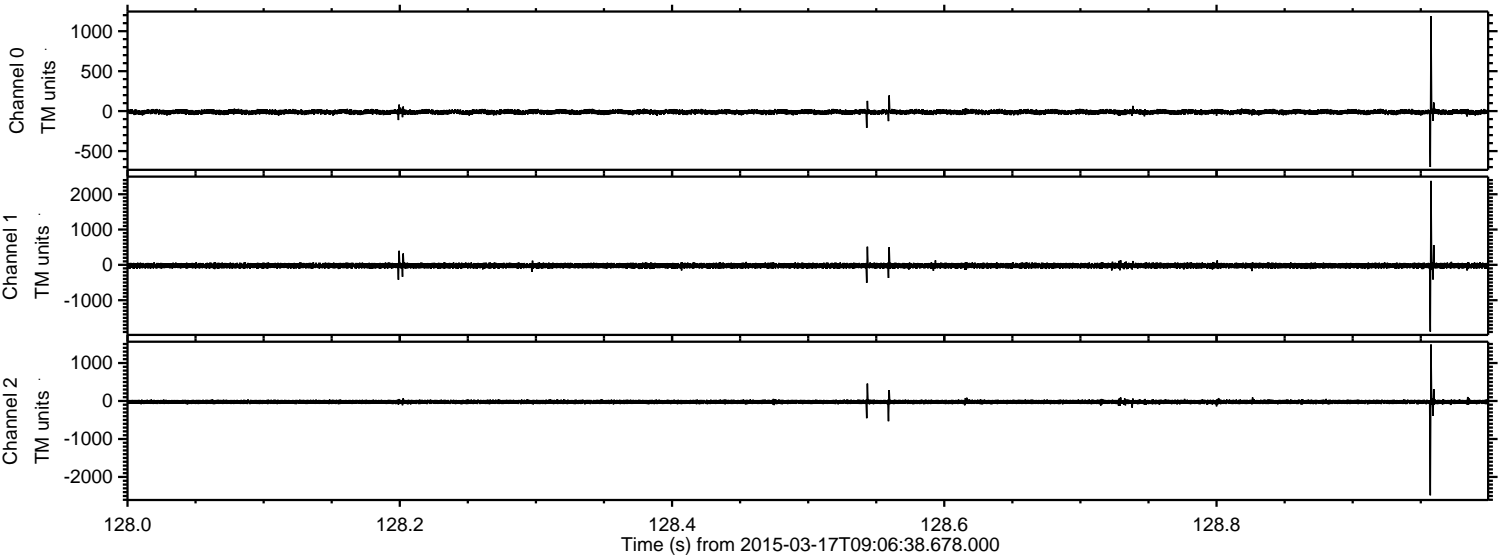
ELMAVAN 3D WAVEFORMS (Measured data sampled at 50 kHz) 49782 packets of 144 samples from 2015-03-17T09:06:38.678.000.

Processed Tue Mar 17 10:15:16 2015 by ELM ver.2012-10-06 from 001__elm20150317_090637__dat00.bin



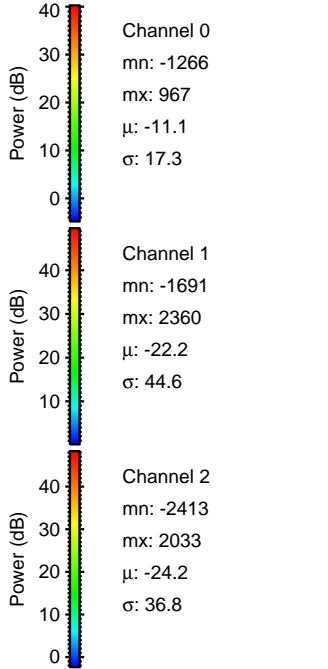
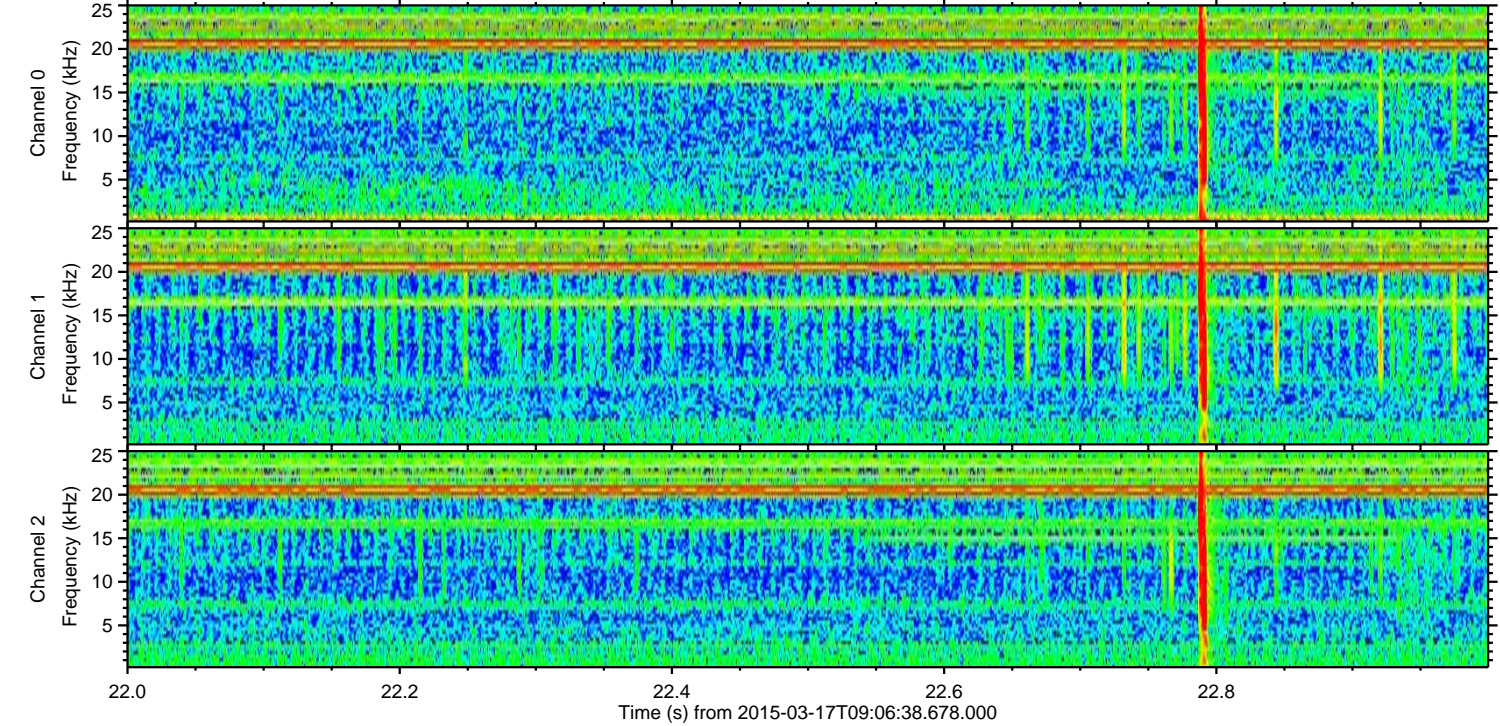
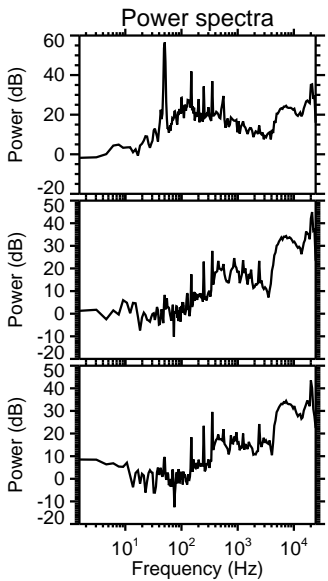
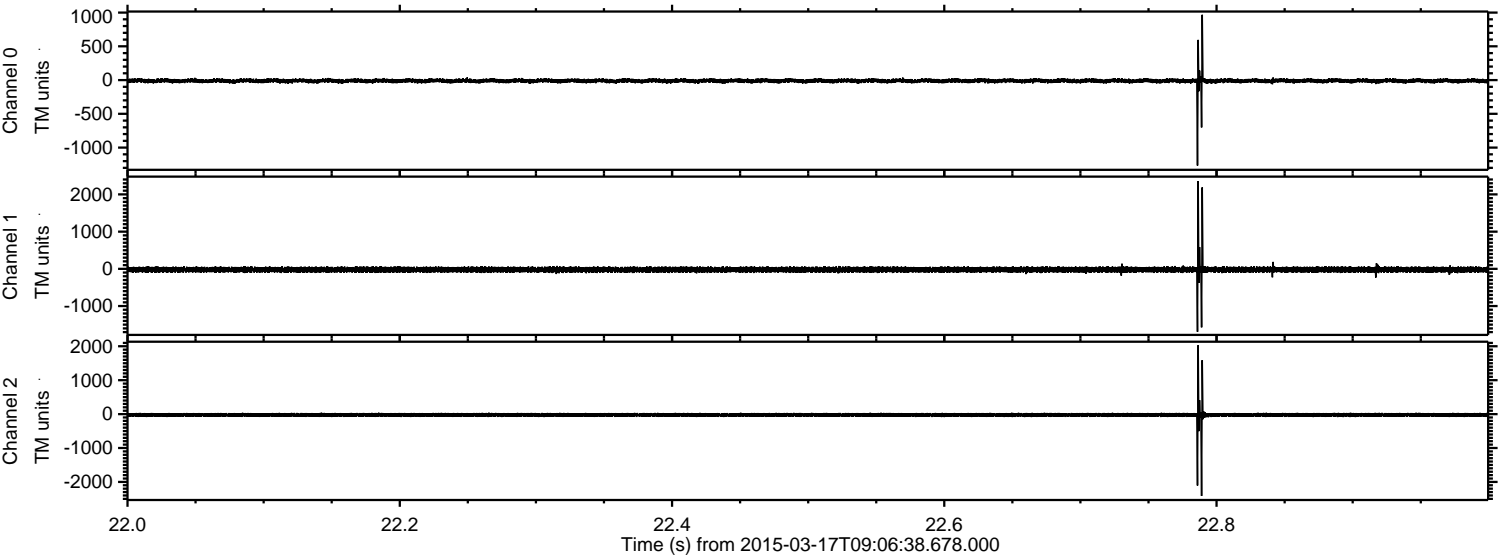
ELMAVAN 3D WAVEFORMS (Measured data sampled at 50 kHz) 49782 packets of 144 samples from 2015-03-17T09:06:38.678.000. Part 129/144

Processed Tue Mar 17 10:15:27 2015 by ELM ver.2012-10-06 from 001__elm20150317_090637__dat00.bin

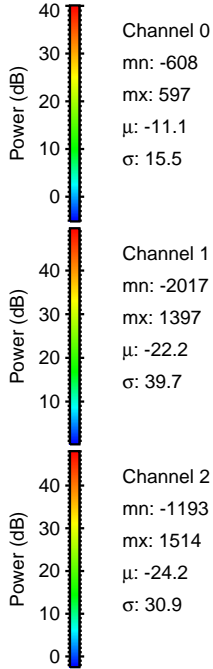
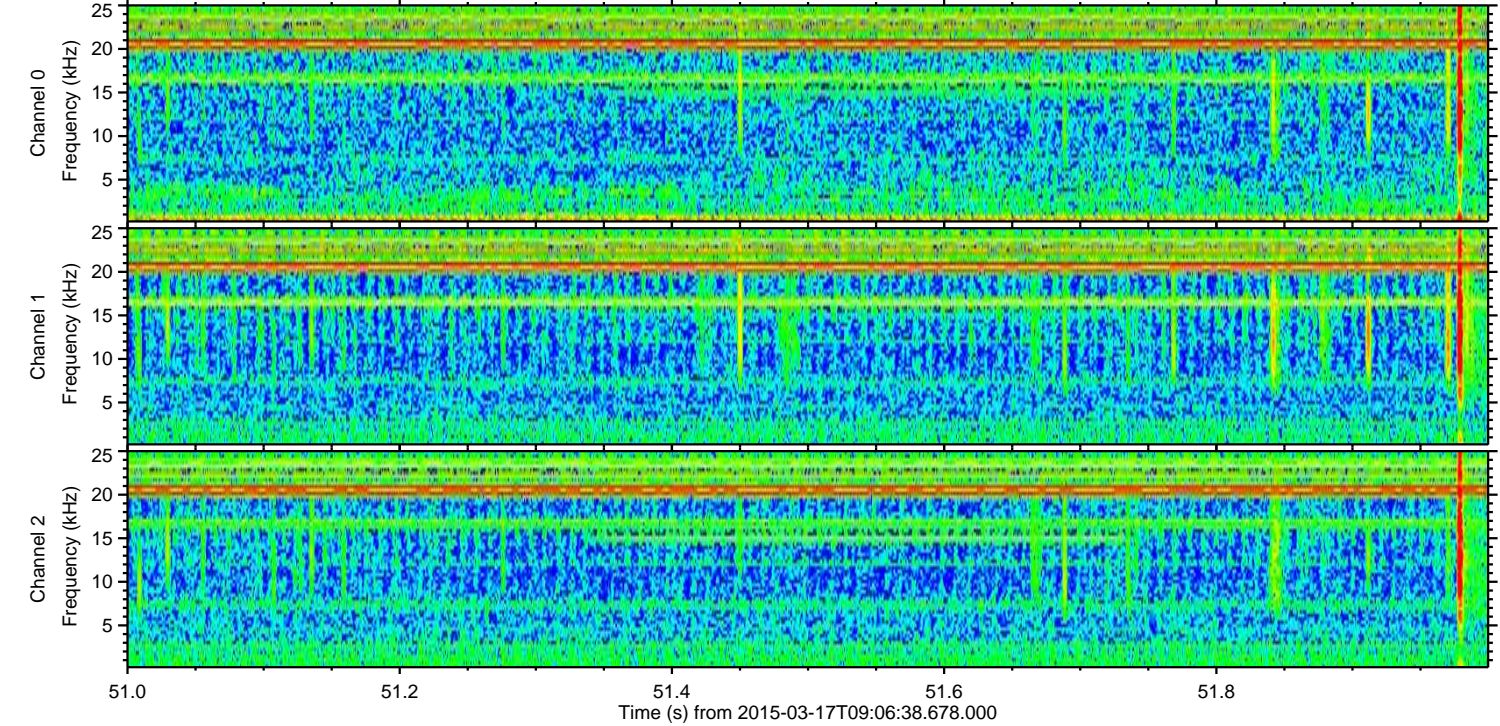
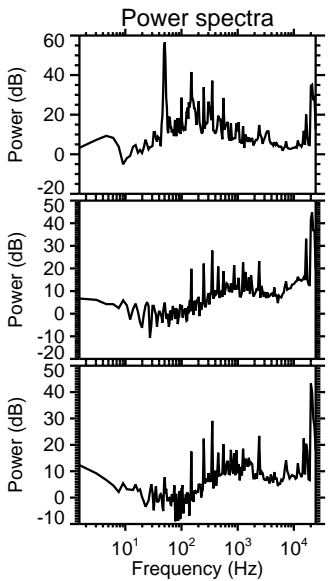
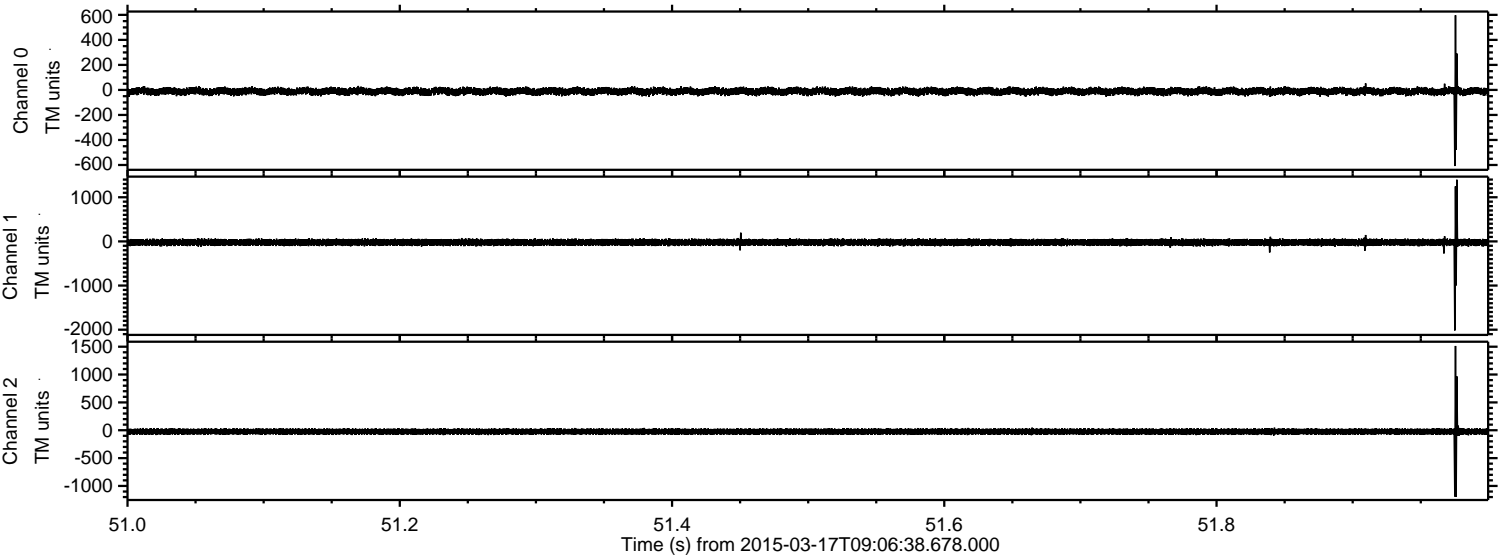


ELMAVAN 3D WAVEFORMS (Measured data sampled at 50 kHz) 49782 packets of 144 samples from 2015-03-17T09:06:38.678.000. Part 23/144

Processed Tue Mar 17 10:15:28 2015 by ELM ver.2012-10-06 from 001__elm20150317_090637__dat00.bin

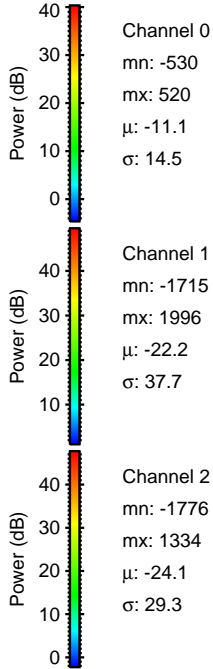
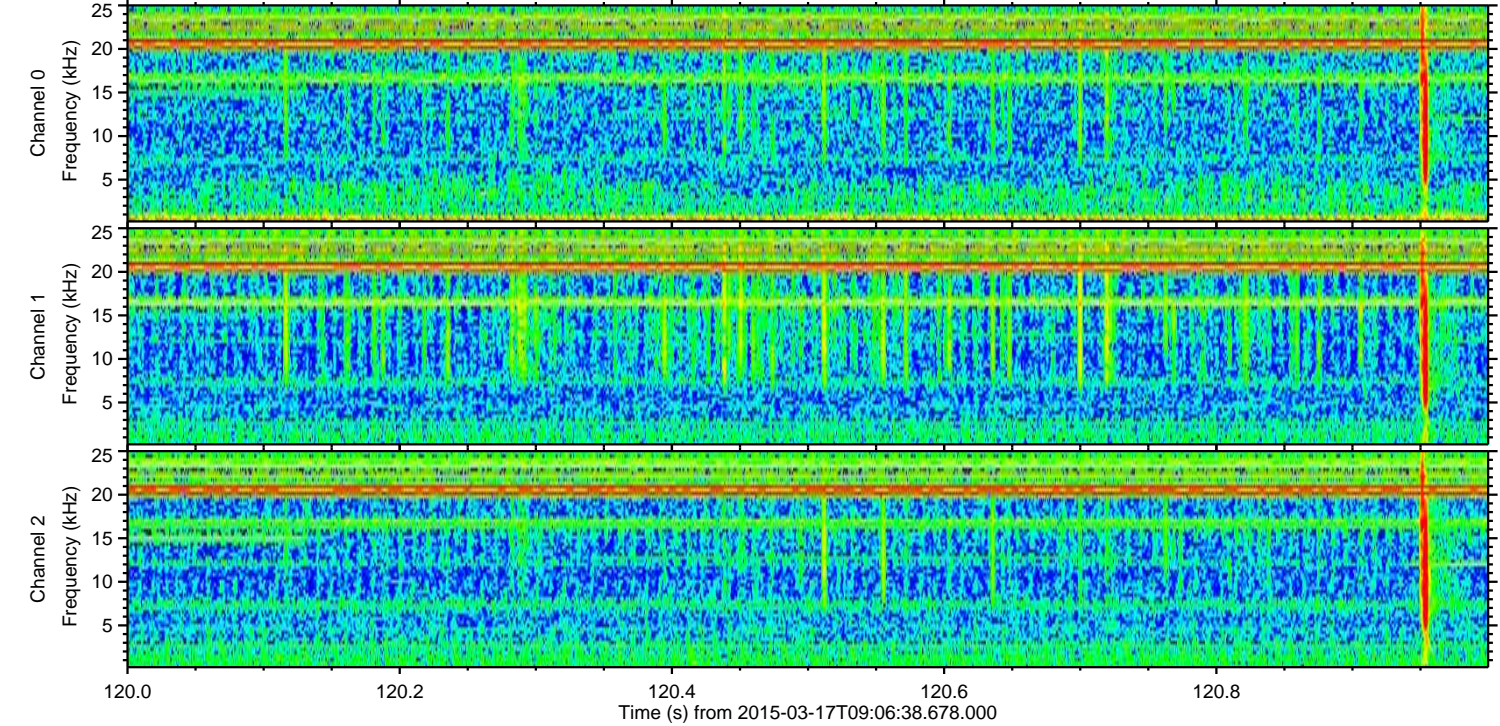
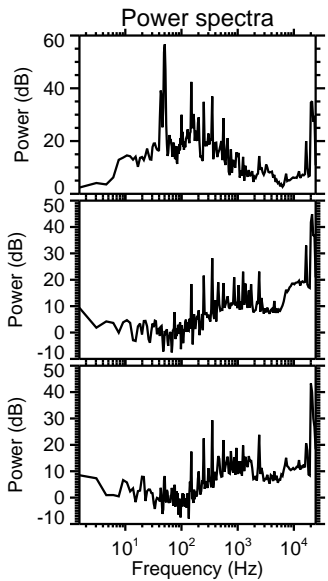
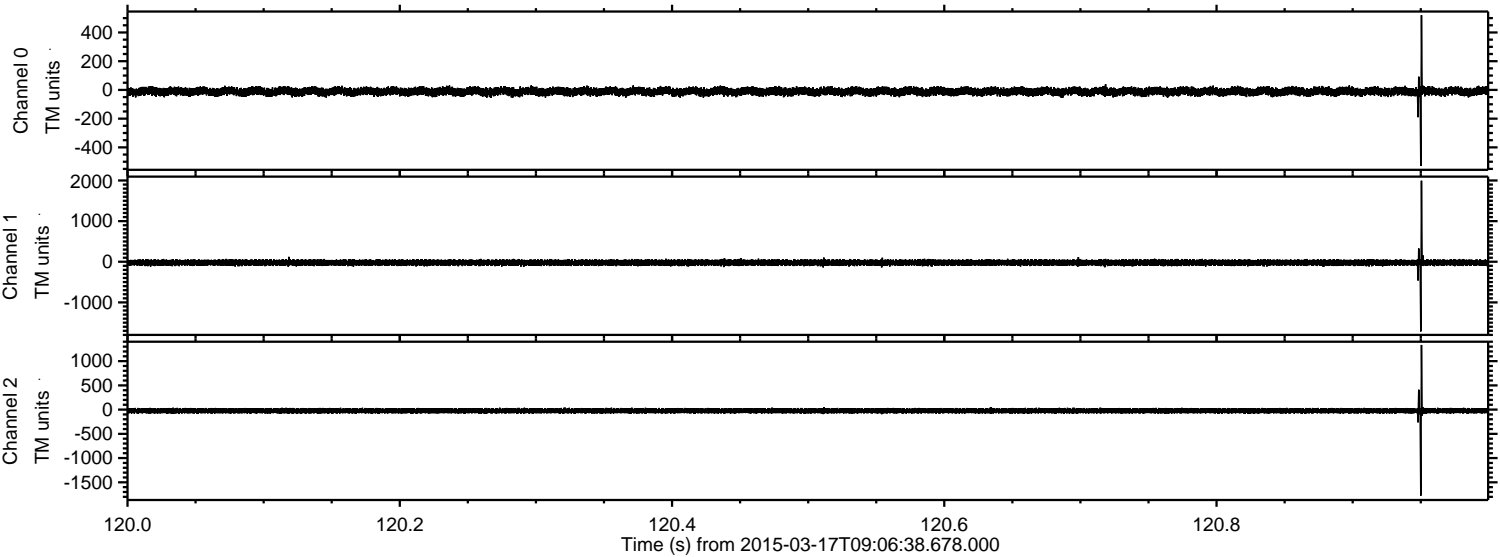


Processed Tue Mar 17 10:15:29 2015 by ELM ver.2012-10-06 from 001__elm20150317_090637__dat00.bin

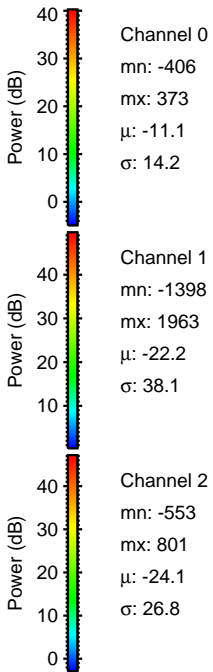
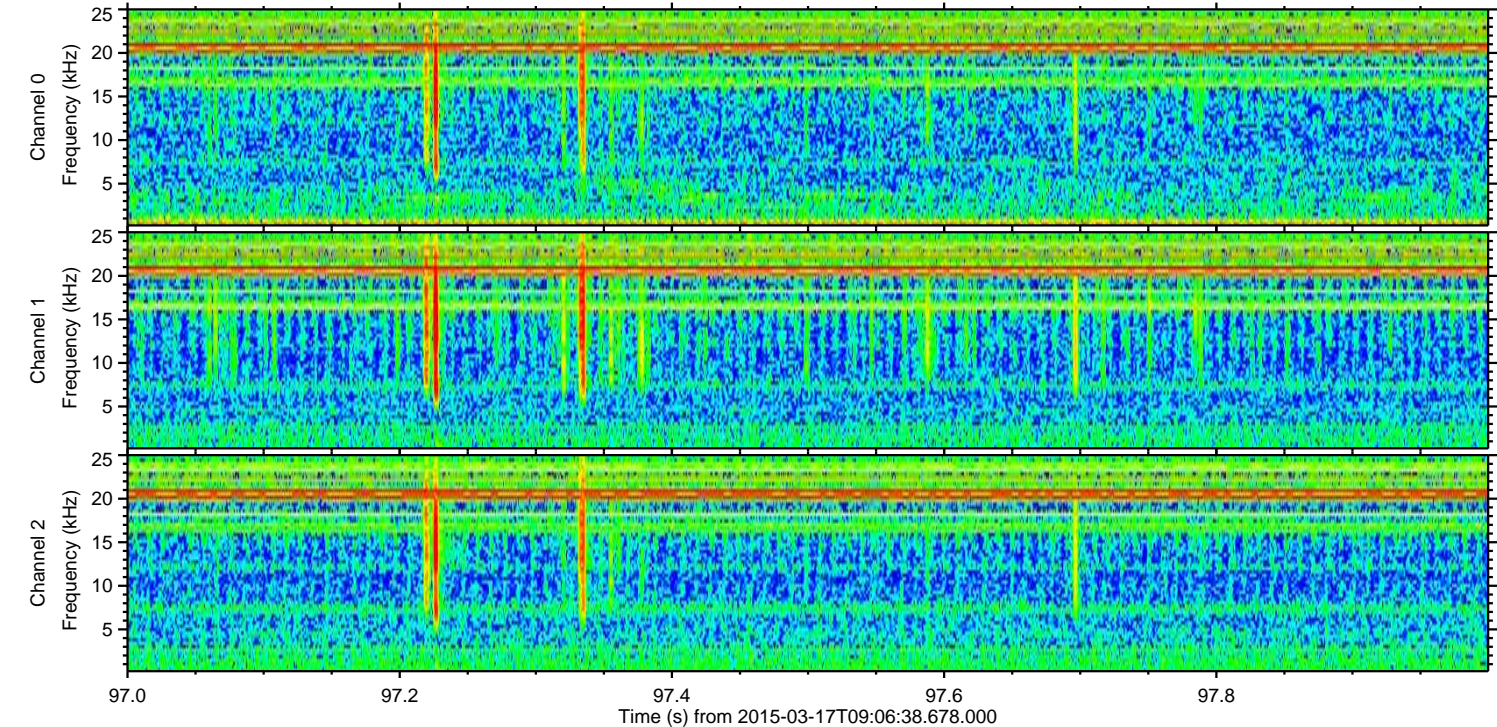
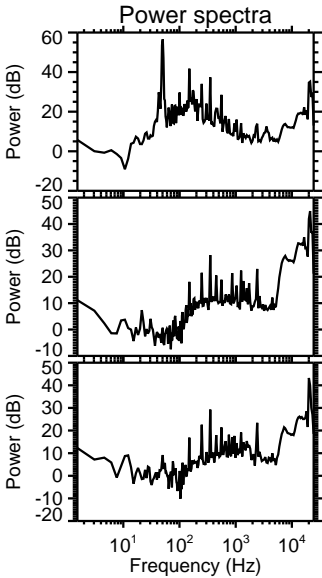
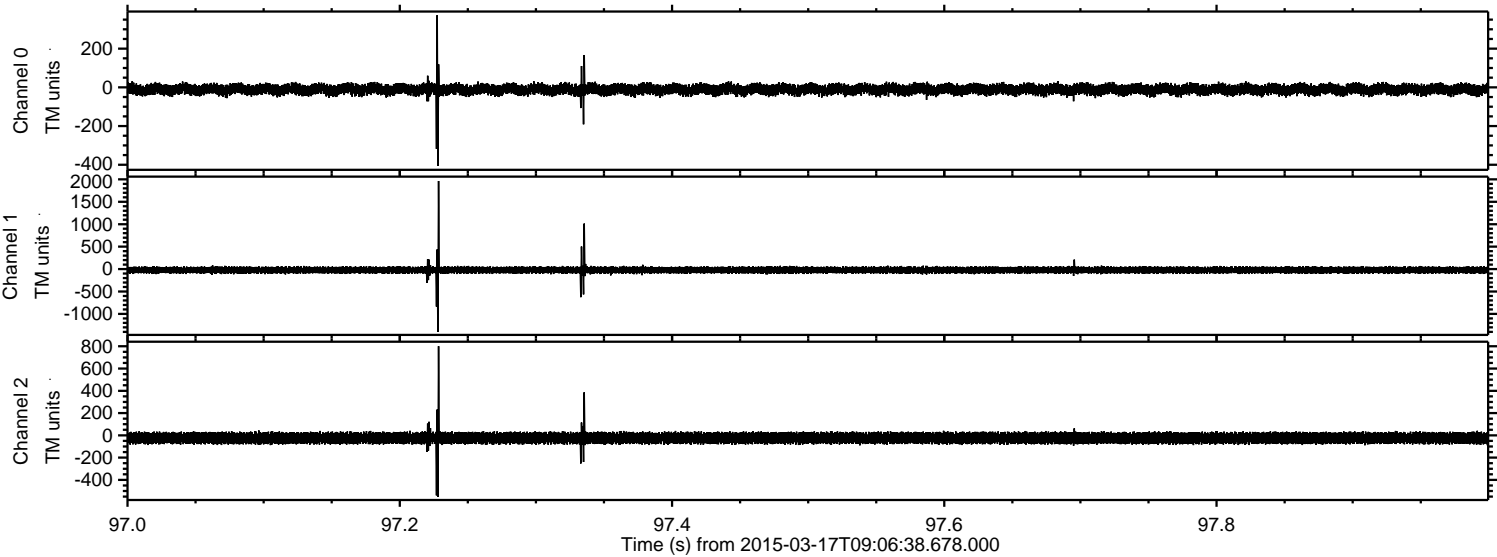


ELMAVAN 3D WAVEFORMS (Measured data sampled at 50 kHz) 49782 packets of 144 samples from 2015-03-17T09:06:38.678.000. Part 121/144

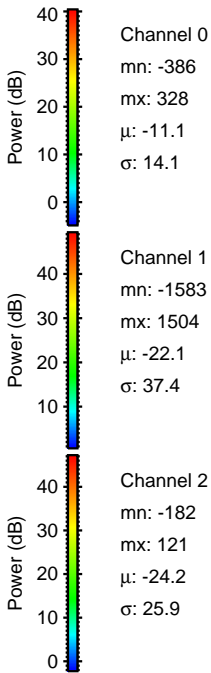
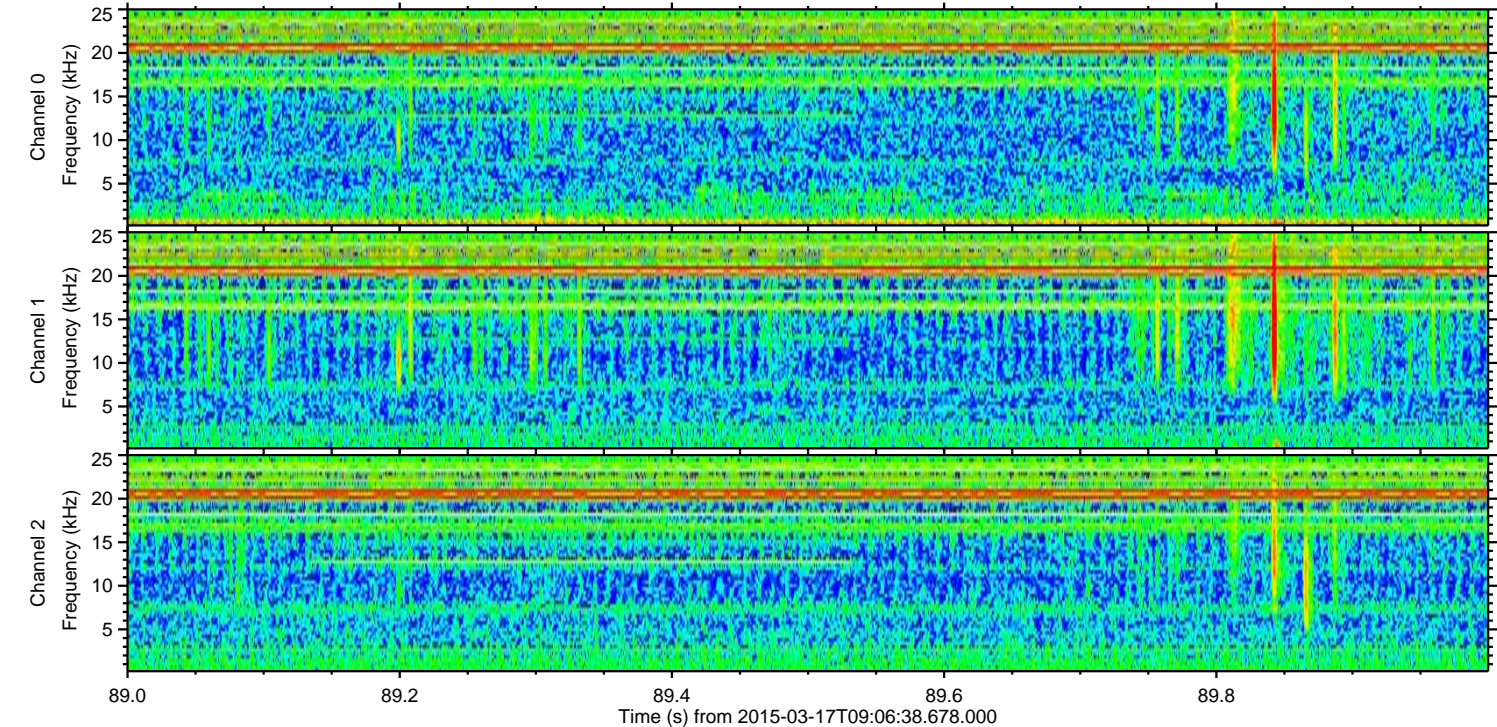
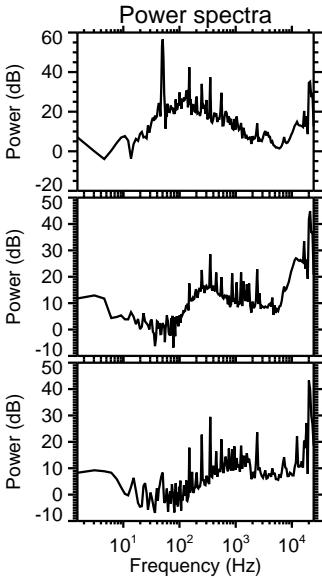
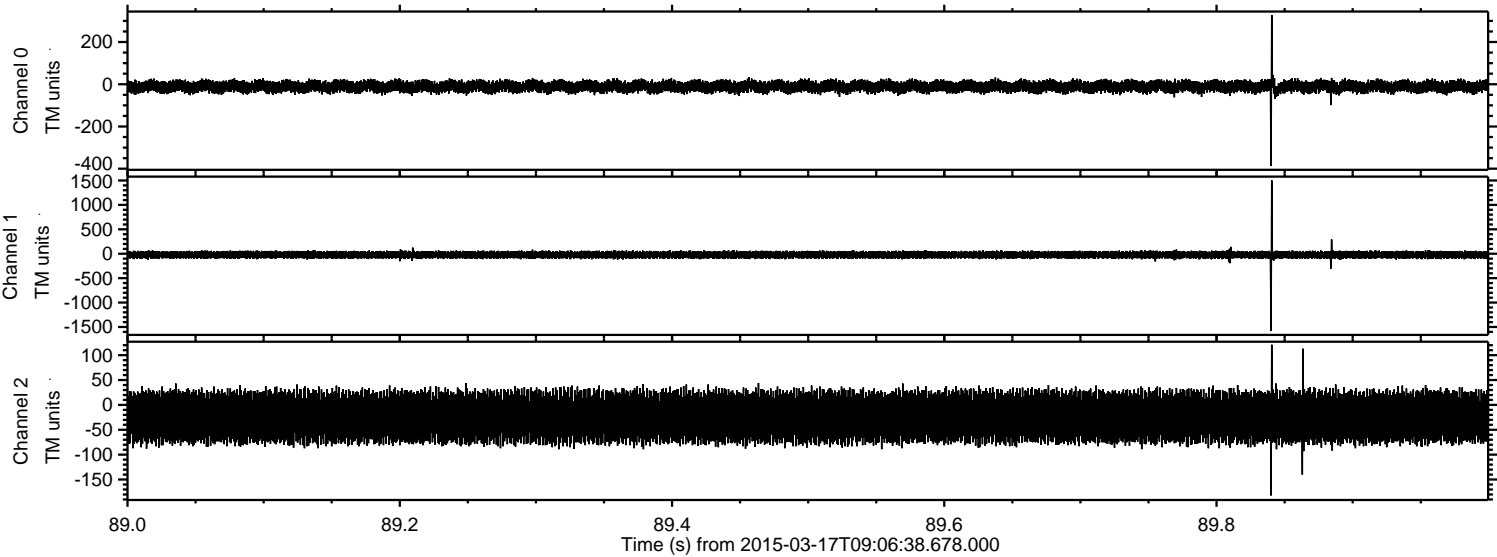
Processed Tue Mar 17 10:15:30 2015 by ELM ver.2012-10-06 from 001__elm20150317_090637__dat00.bin



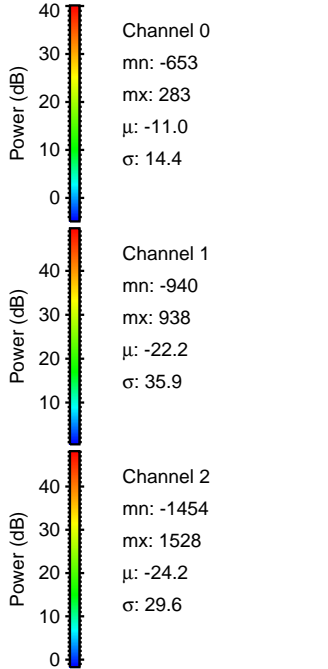
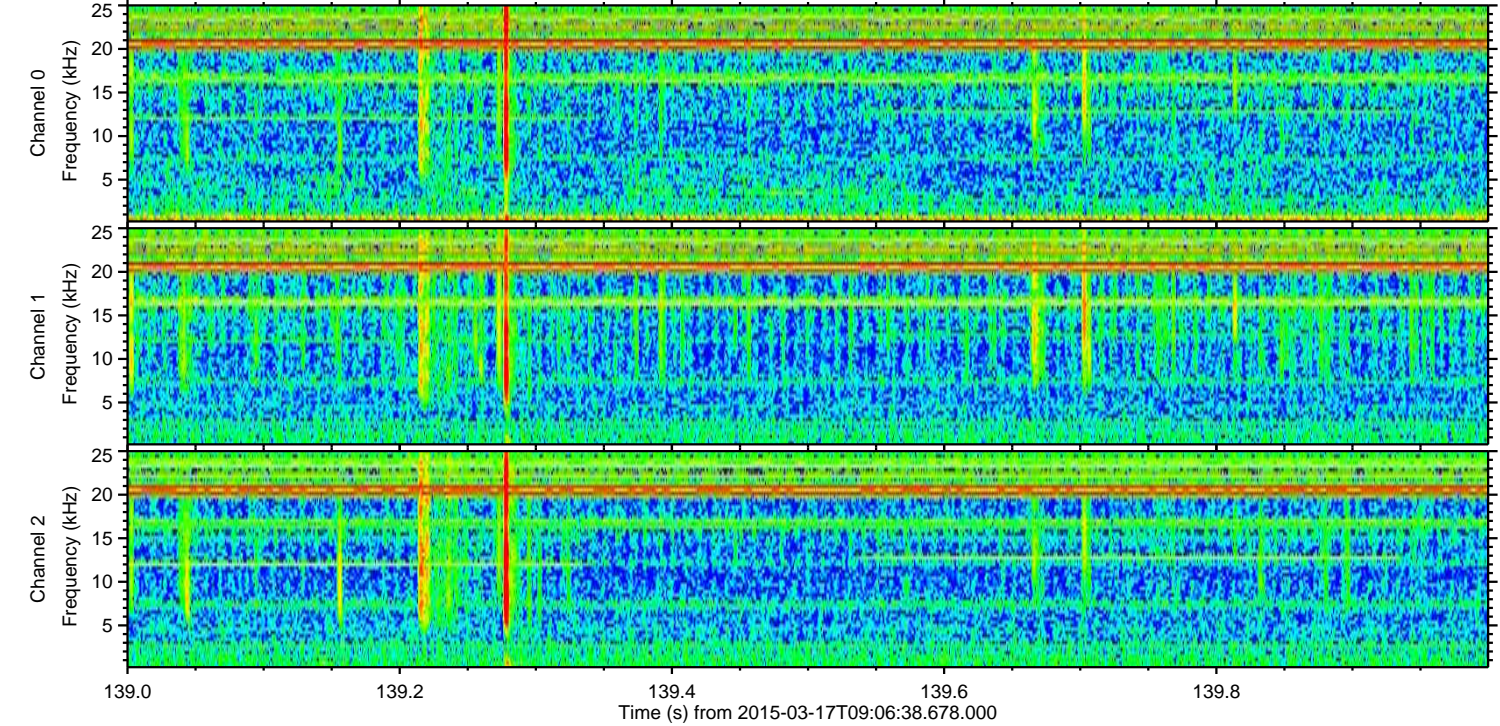
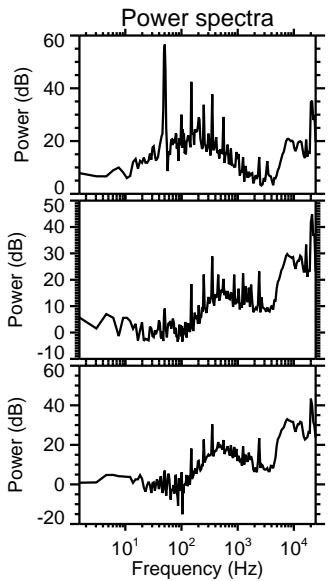
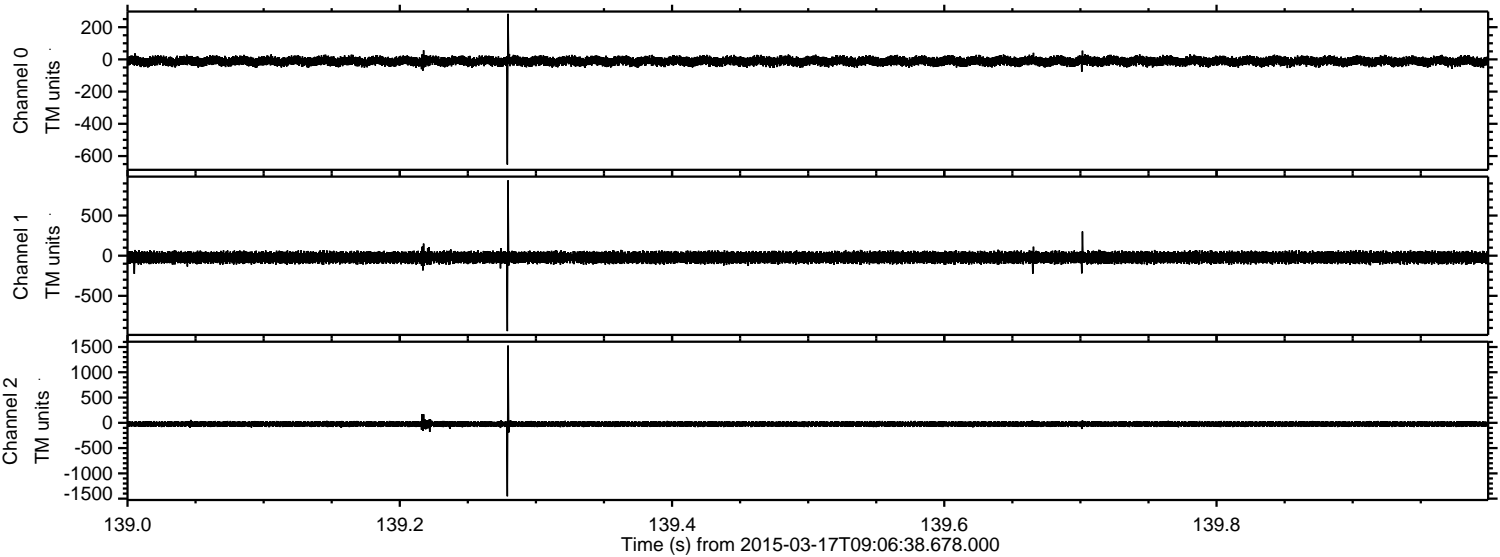
Processed Tue Mar 17 10:15:31 2015 by ELM ver.2012-10-06 from 001__elm20150317_090637__dat00.bin



Processed Tue Mar 17 10:15:32 2015 by ELM ver.2012-10-06 from 001__elm20150317_090637__dat00.bin

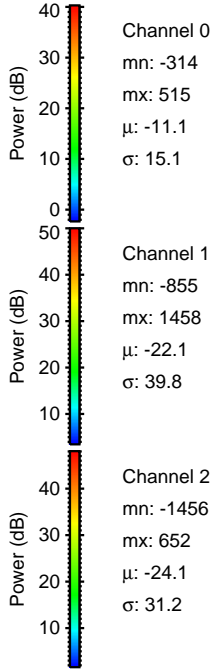
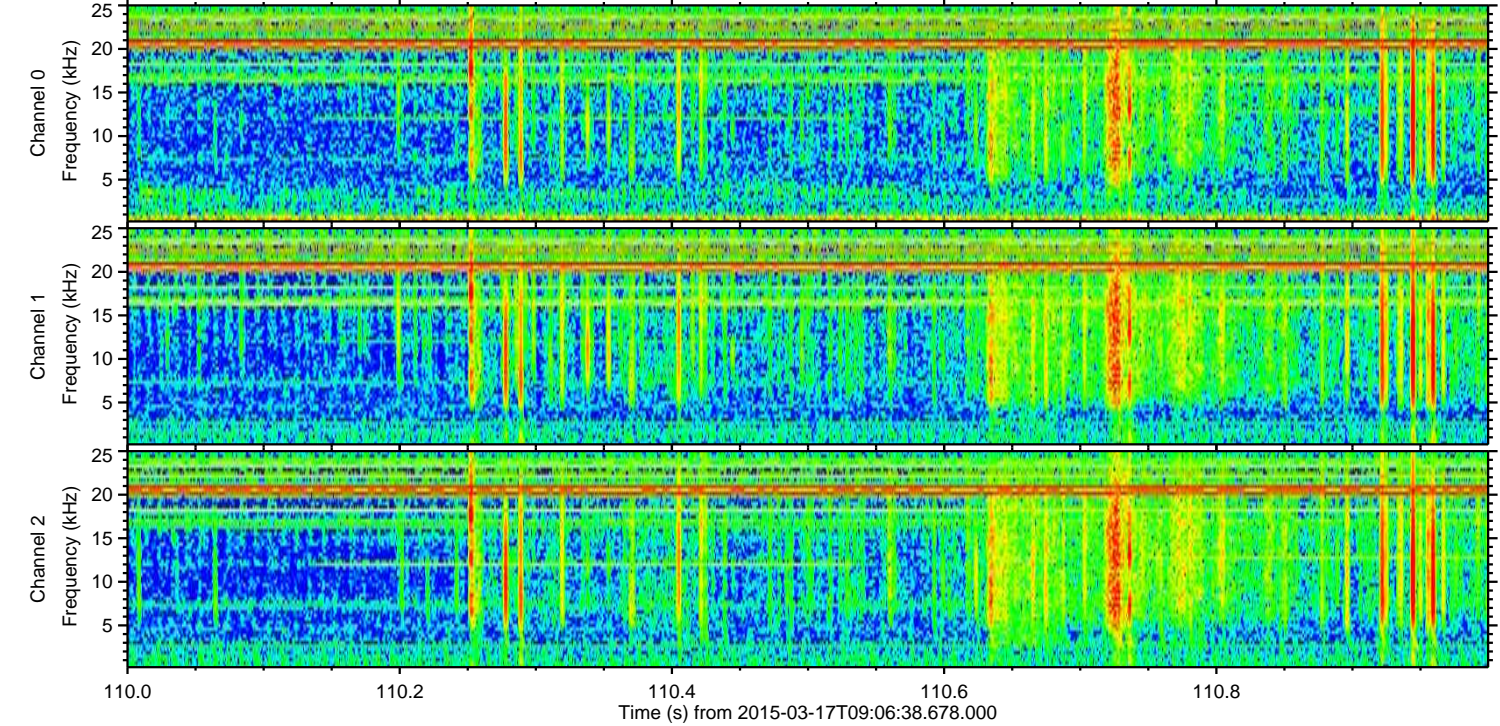
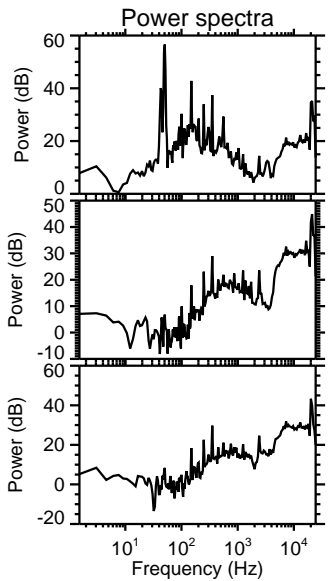
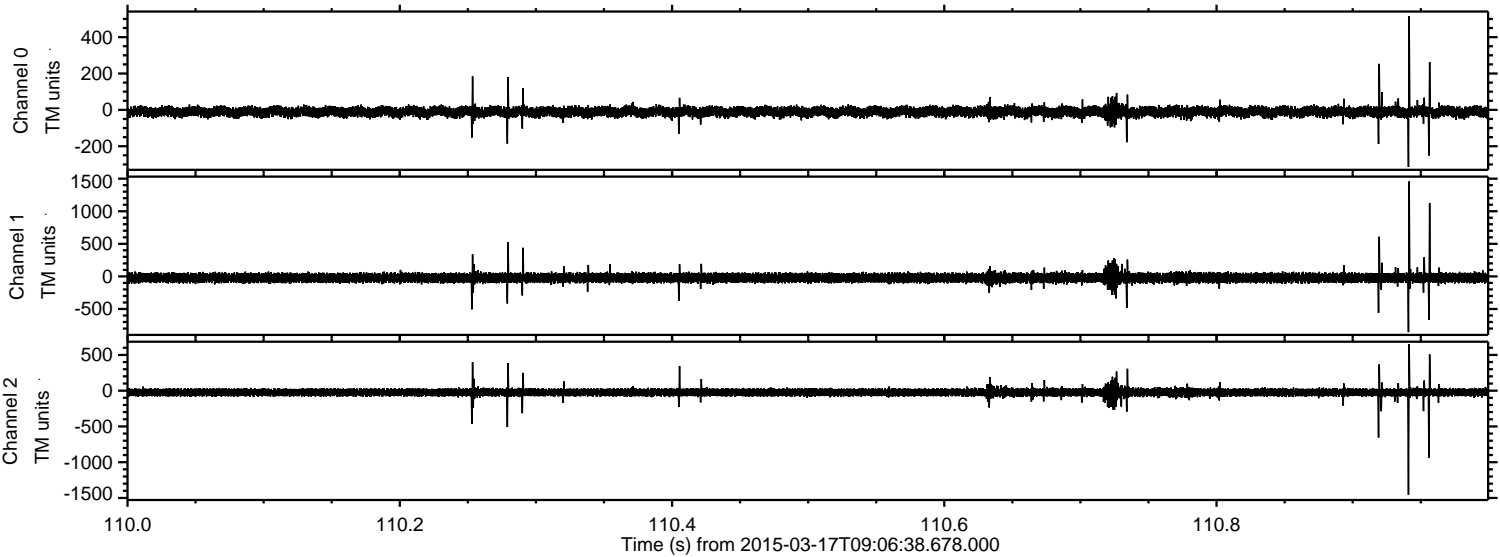


Processed Tue Mar 17 10:15:33 2015 by ELM ver.2012-10-06 from 001__elm20150317_090637__dat00.bin



ELMAVAN 3D WAVEFORMS (Measured data sampled at 50 kHz) 49782 packets of 144 samples from 2015-03-17T09:06:38.678.000. Part 111/144

Processed Tue Mar 17 10:15:34 2015 by ELM ver.2012-10-06 from 001__elm20150317_090637__dat00.bin

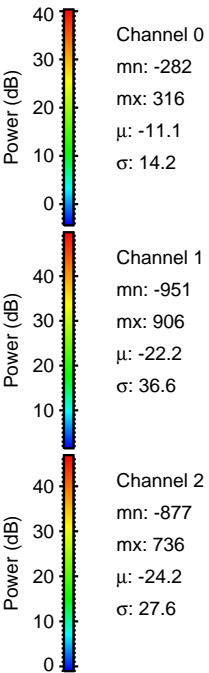
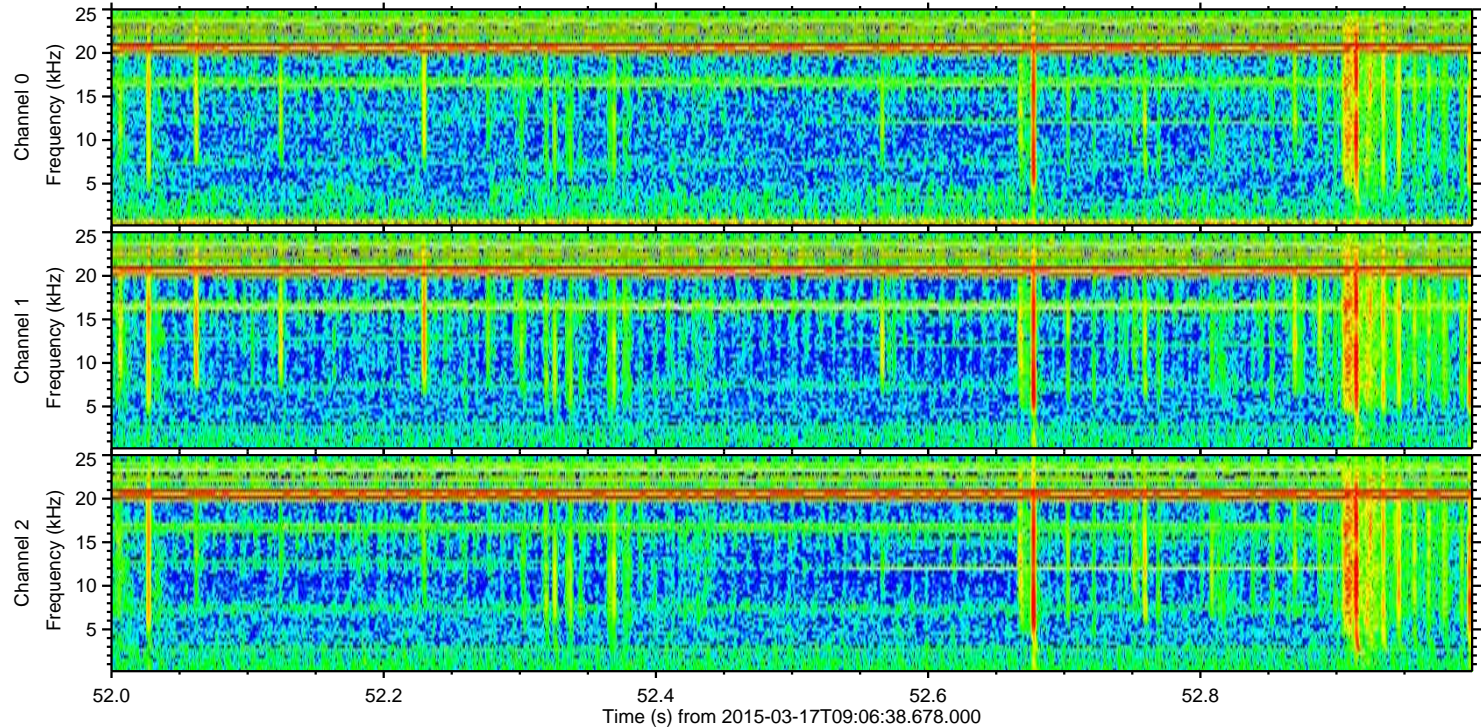
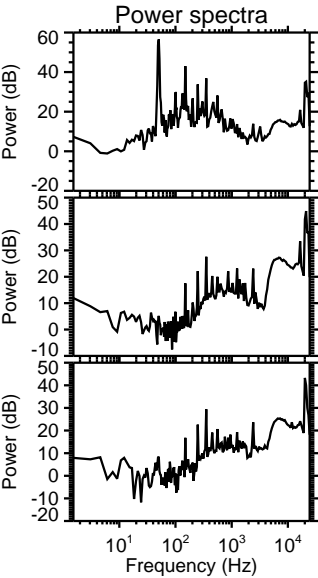
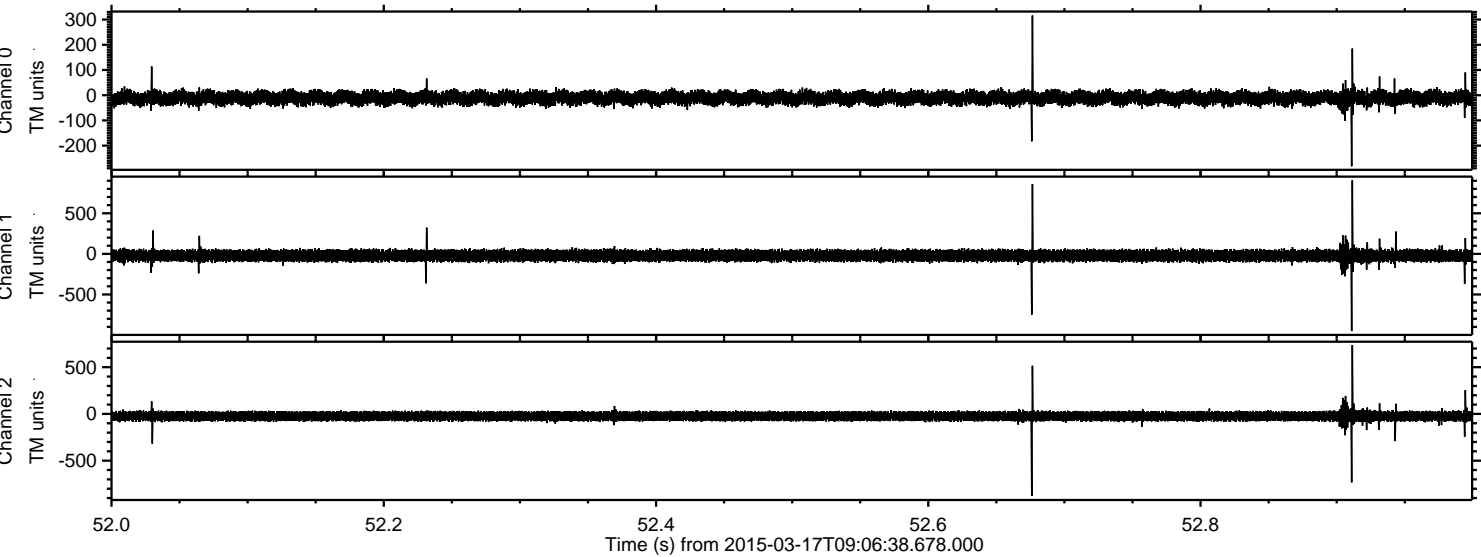


Channel 0
mn: -314
mx: 515
 μ : -11.1
 σ : 15.1

Channel 1
mn: -855
mx: 1458
 μ : -22.1
 σ : 39.8

Channel 2
mn: -1456
mx: 652
 μ : -24.1
 σ : 31.2

Processed Tue Mar 17 10:15:35 2015 by ELM ver.2012-10-06 from 001__elm20150317_090637__dat00.bin



Processed Tue Mar 17 10:15:36 2015 by ELM ver.2012-10-06 from 001__elm20150317_090637__dat00.bin

