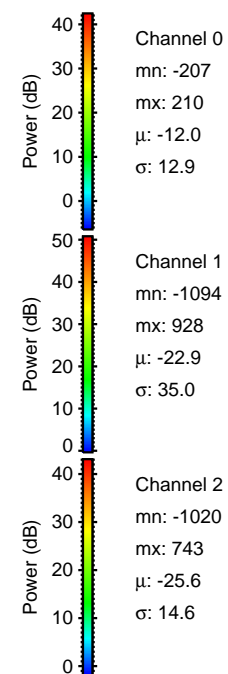
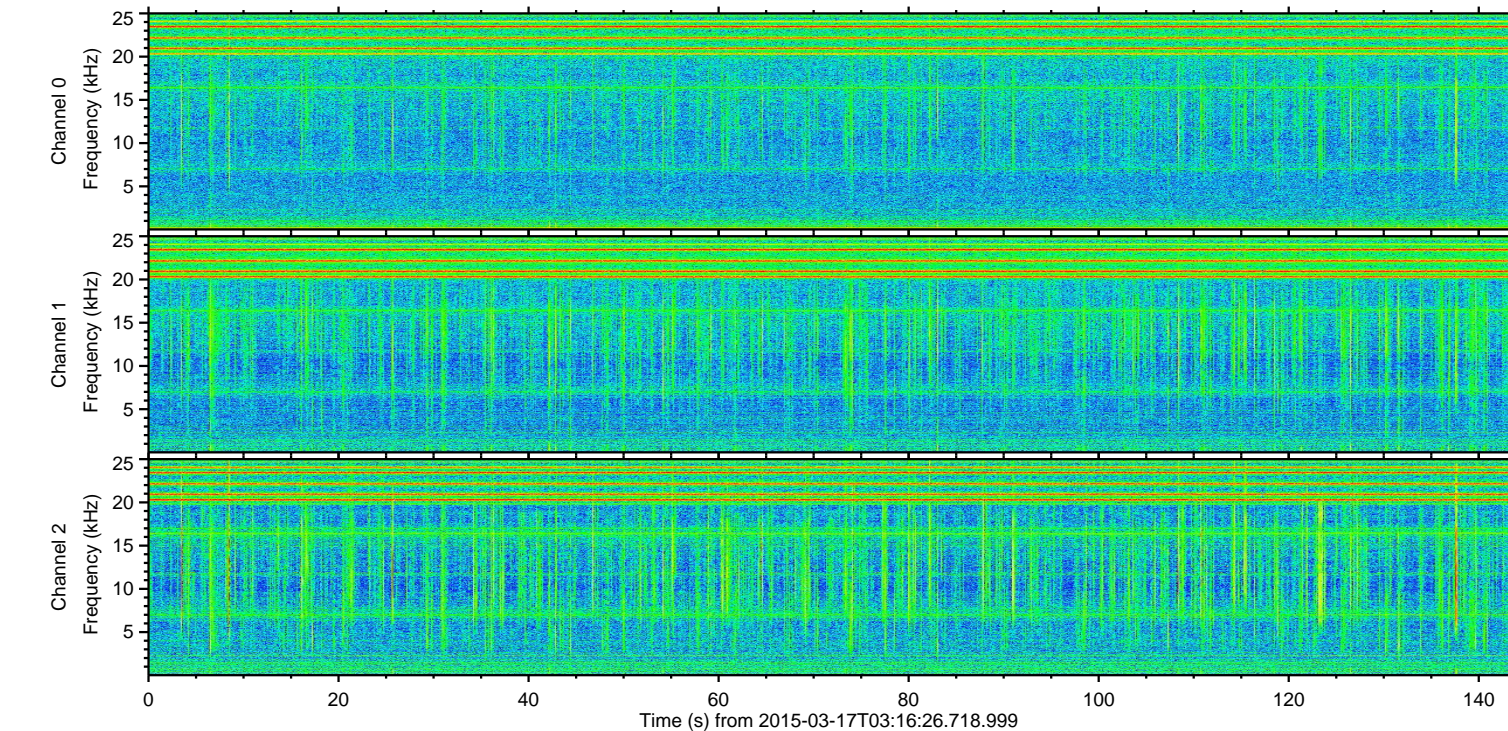
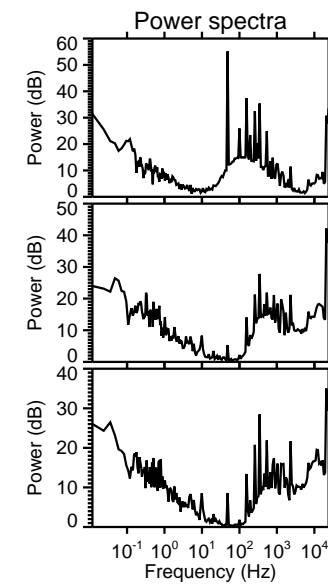
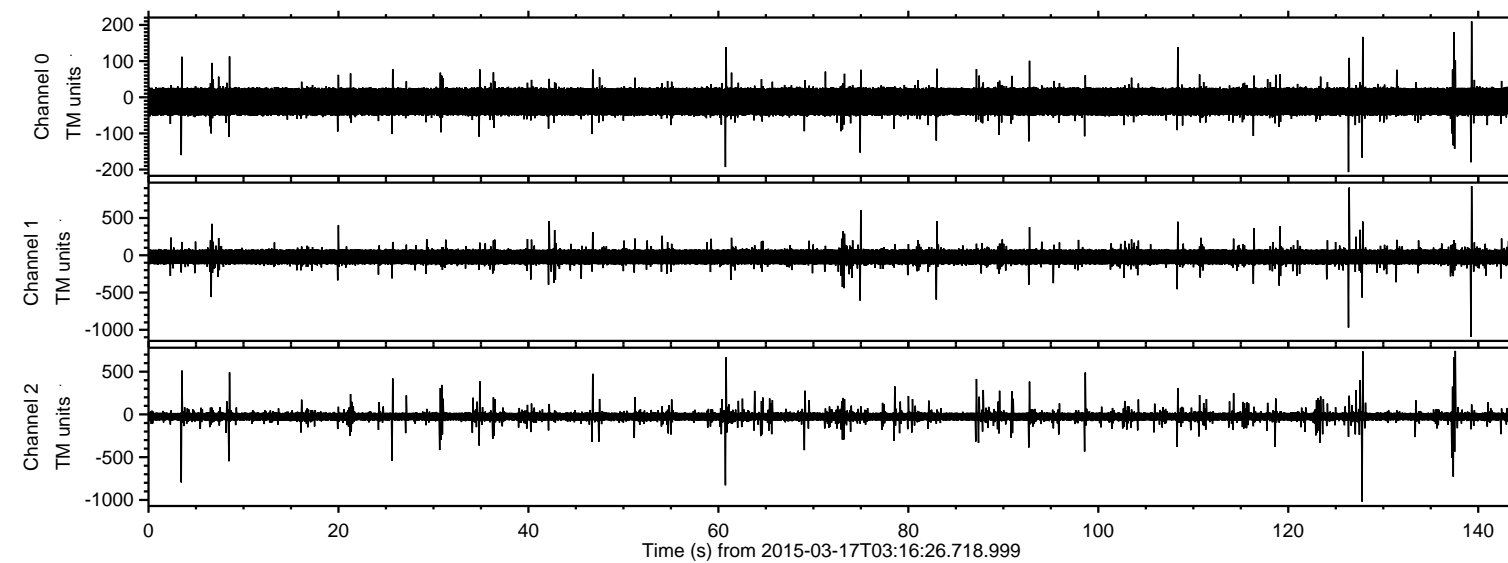


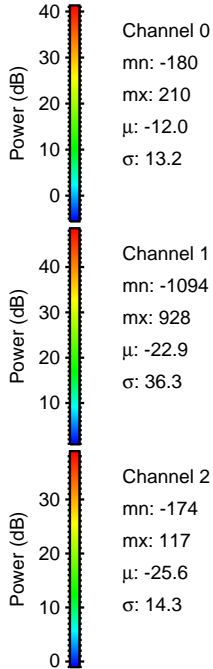
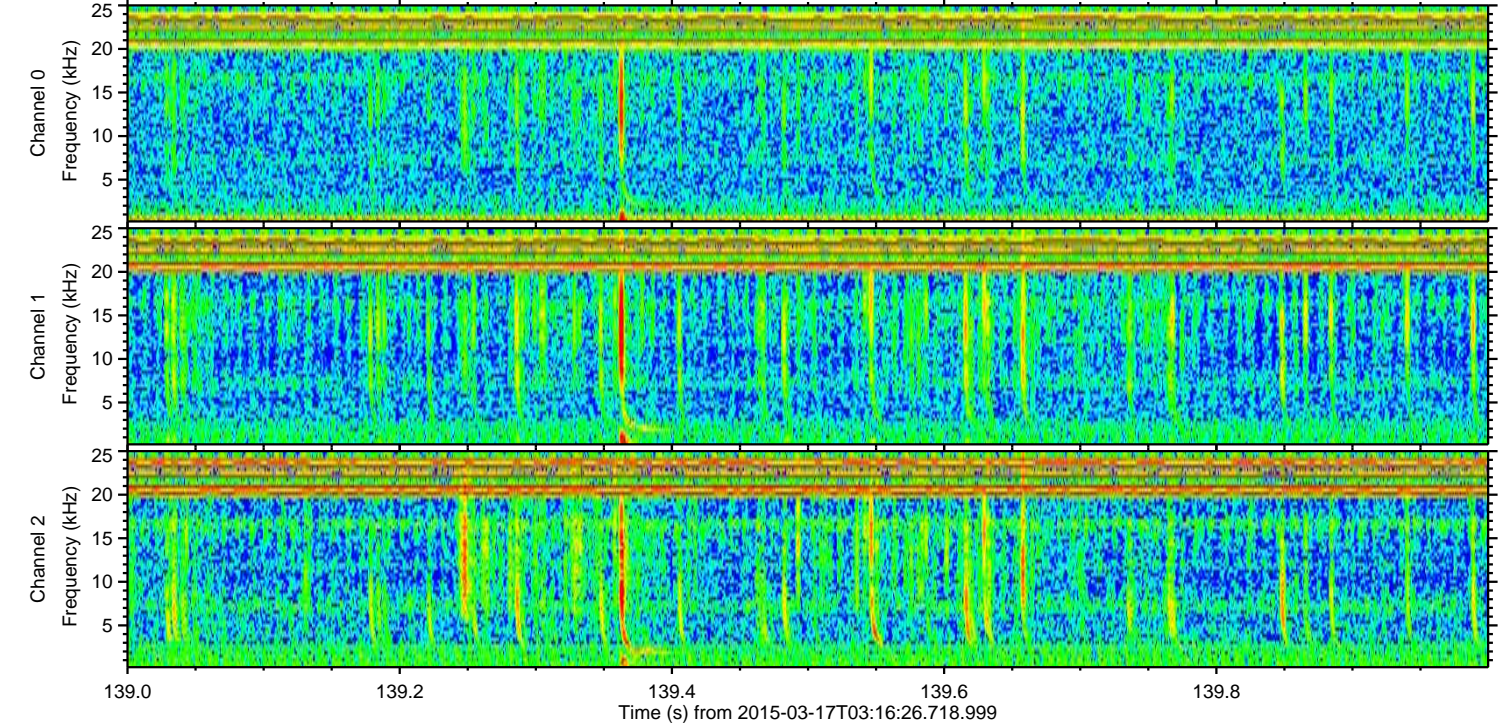
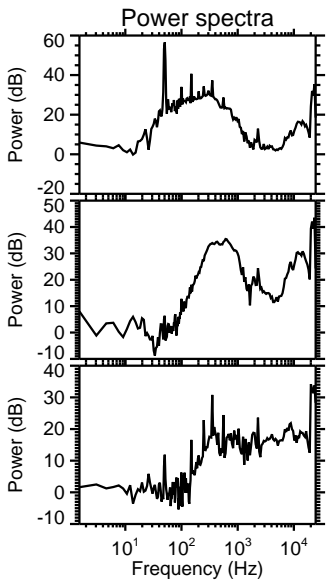
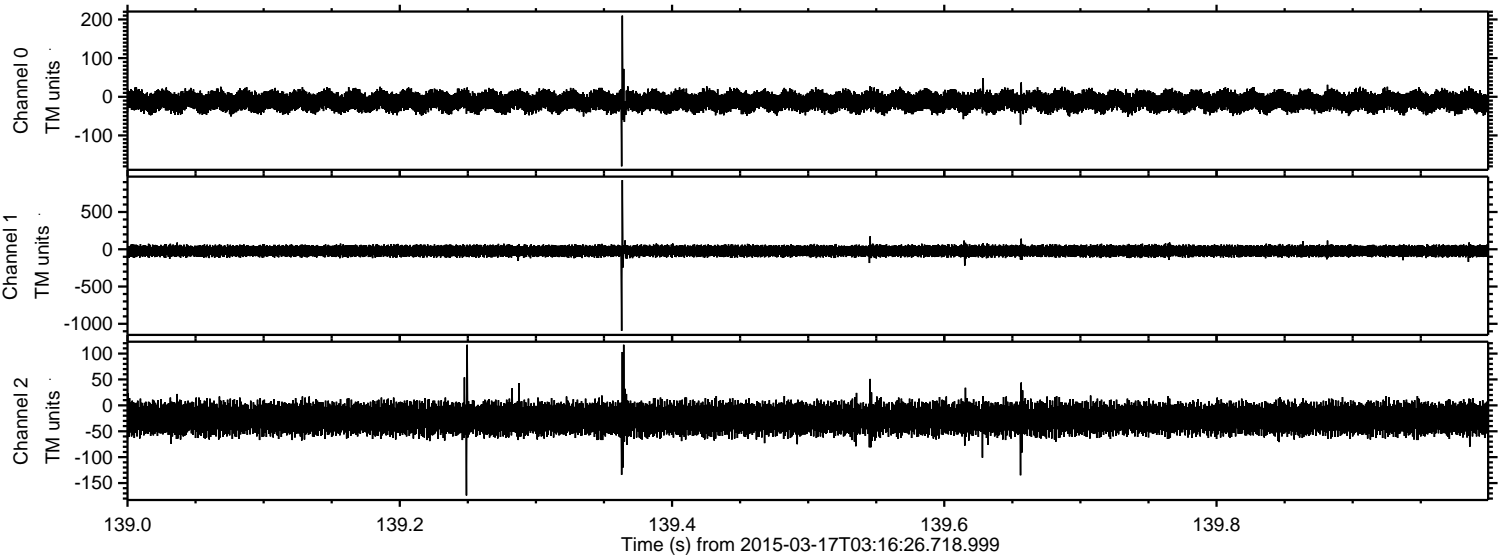
ELMAVAN 3D WAVEFORMS (Measured data sampled at 50 kHz) 49740 packets of 144 samples from 2015-03-17T03:16:26.718.999.

Processed Tue Mar 17 04:45:09 2015 by ELM ver.2012-10-06 from 001__elm20150317_031625__dat00.bin



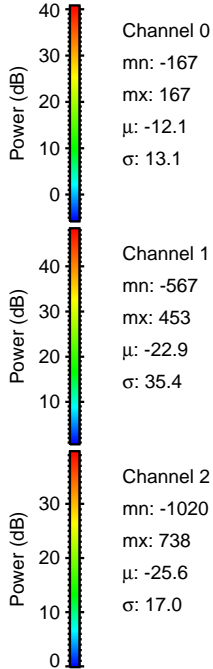
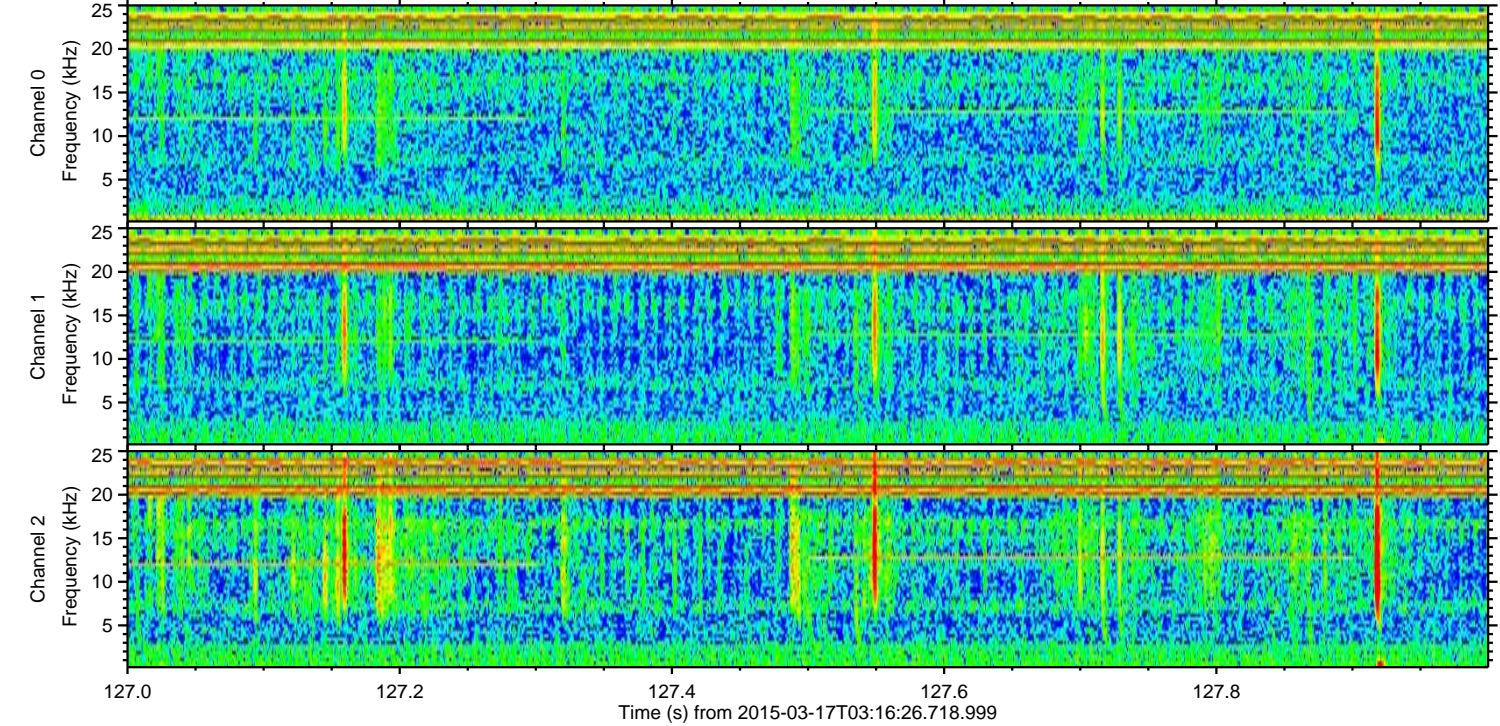
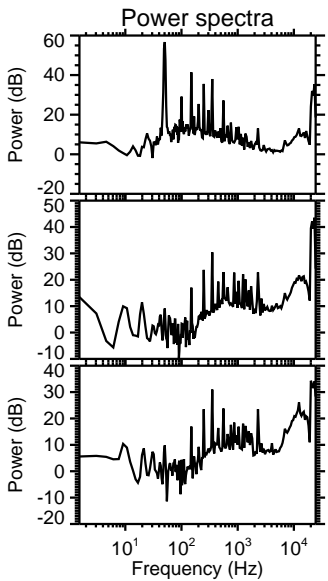
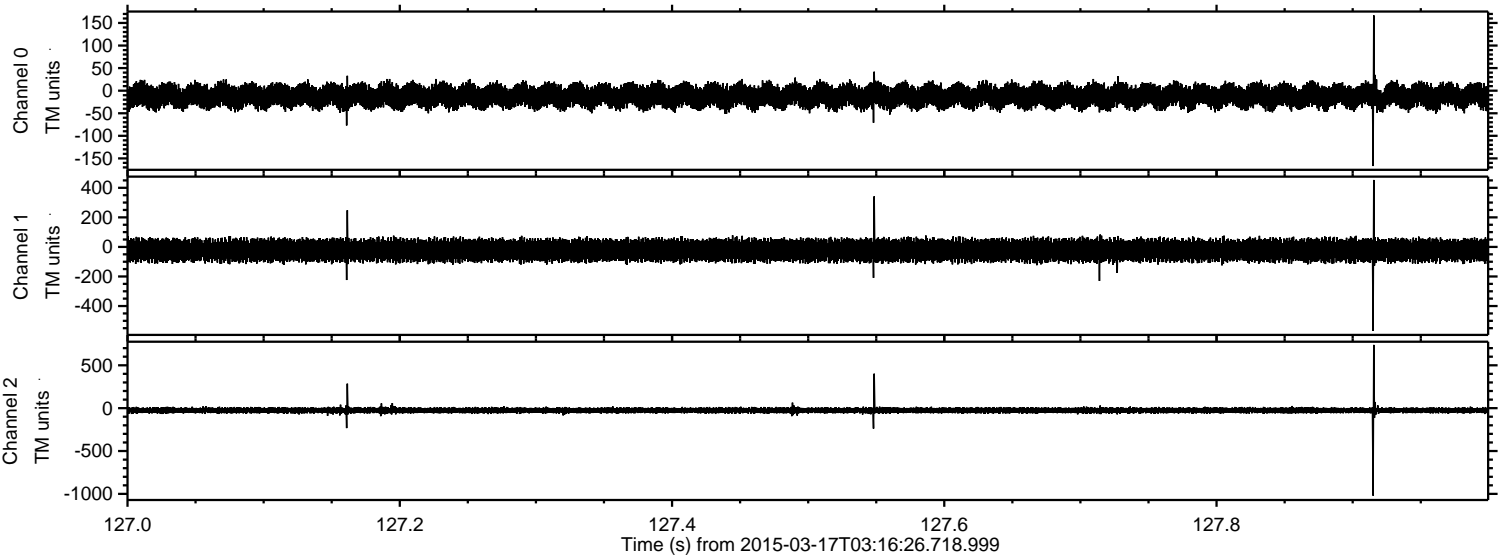
ELMAVAN 3D WAVEFORMS (Measured data sampled at 50 kHz) 49740 packets of 144 samples from 2015-03-17T03:16:26.718.999. Part 140/144

Processed Tue Mar 17 04:45:21 2015 by ELM ver.2012-10-06 from 001__elm20150317_031625__dat00.bin



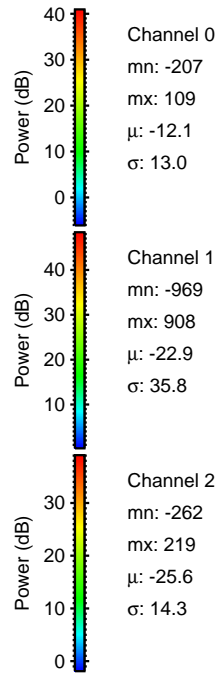
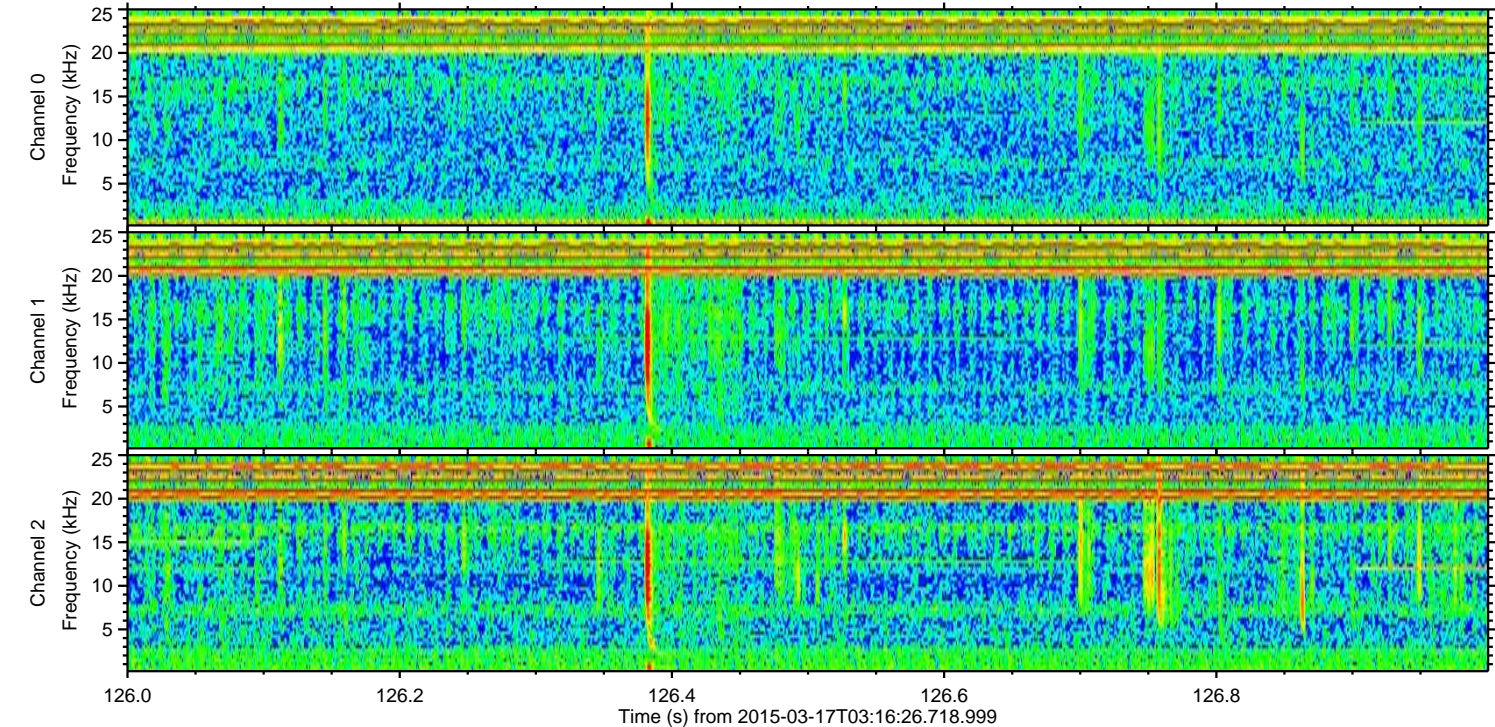
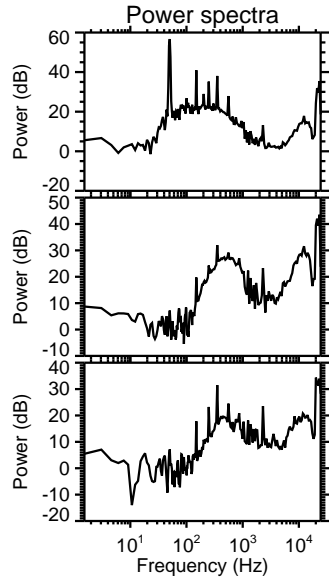
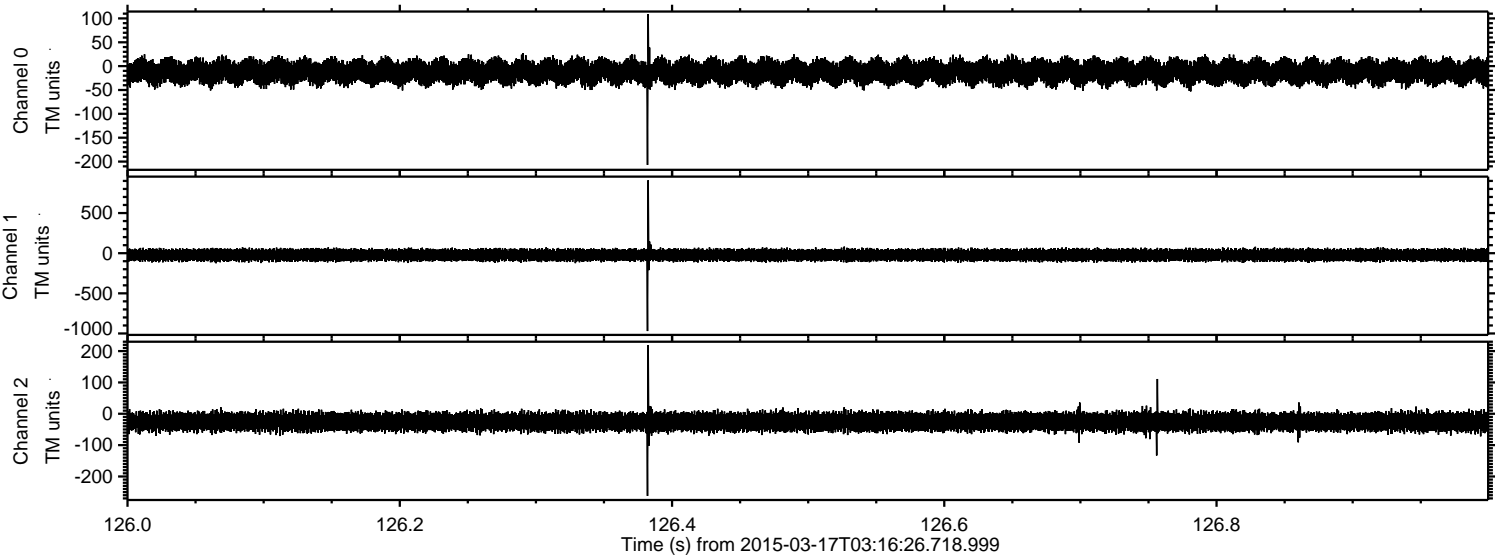
ELMAVAN 3D WAVEFORMS (Measured data sampled at 50 kHz) 49740 packets of 144 samples from 2015-03-17T03:16:26.718.999. Part 128/144

Processed Tue Mar 17 04:45:22 2015 by ELM ver.2012-10-06 from 001__elm20150317_031625__dat00.bin

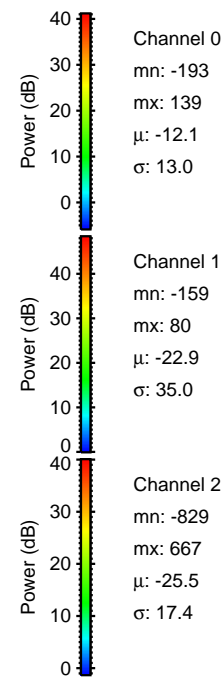
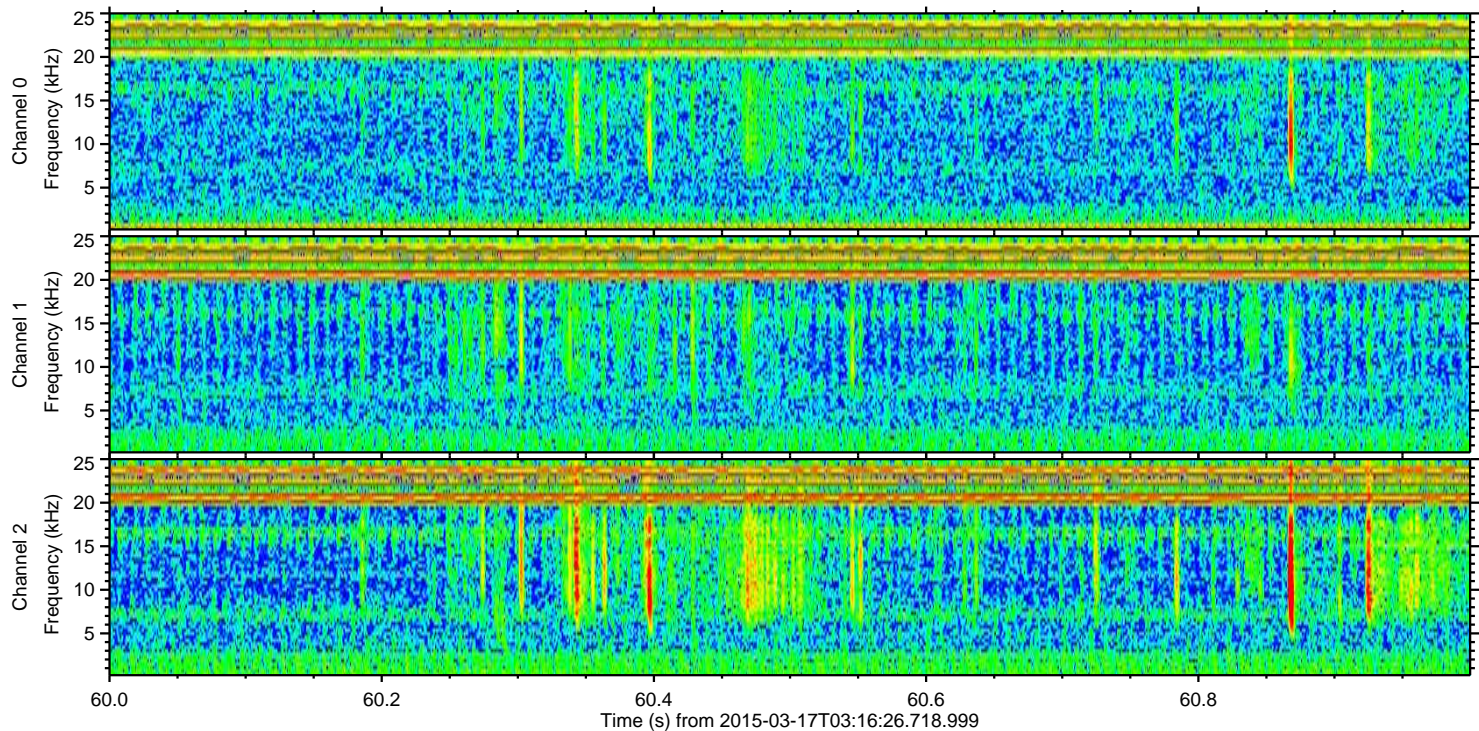
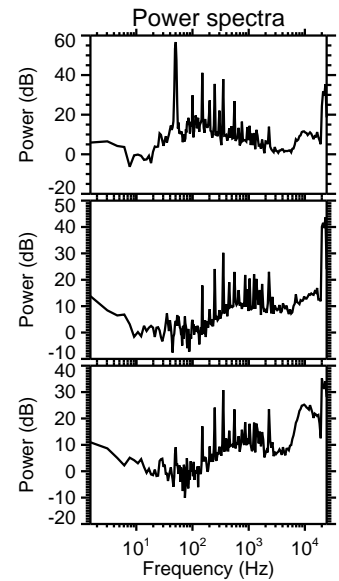
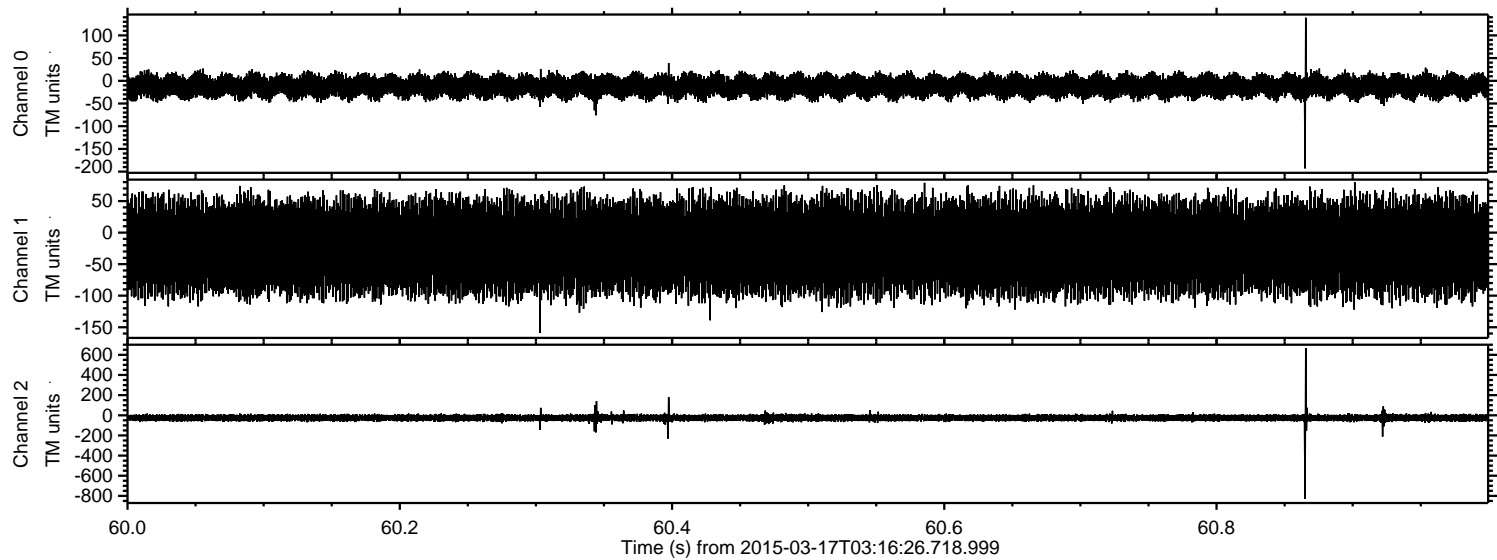


ELMAVAN 3D WAVEFORMS (Measured data sampled at 50 kHz) 49740 packets of 144 samples from 2015-03-17T03:16:26.718.999. Part 127/144

Processed Tue Mar 17 04:45:23 2015 by ELM ver.2012-10-06 from 001__elm20150317_031625__dat00.bin

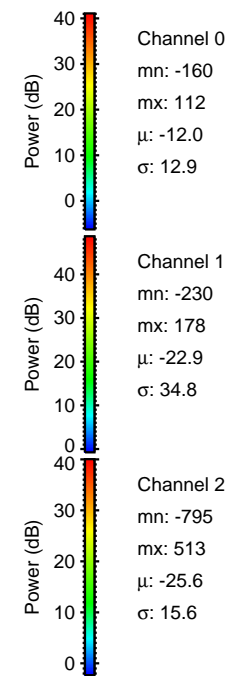
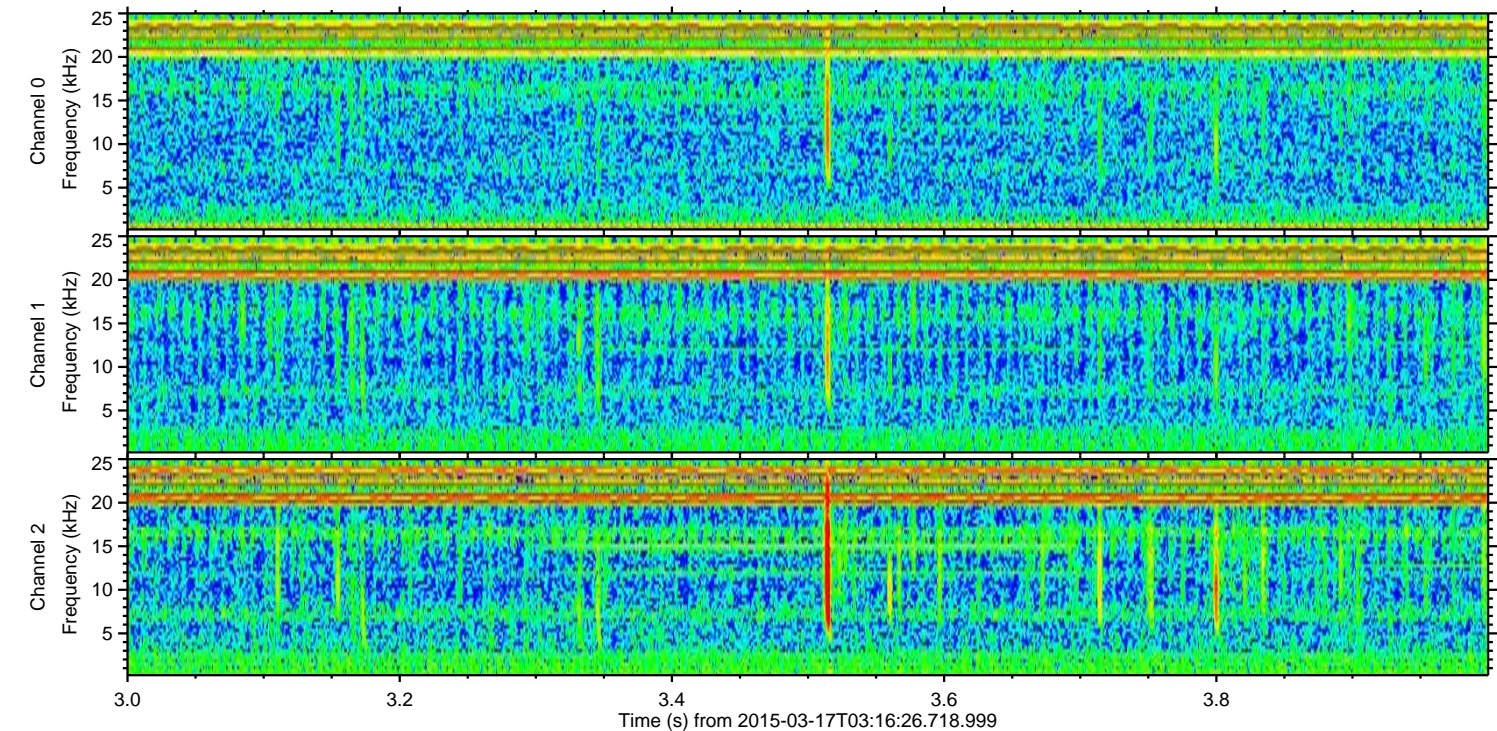
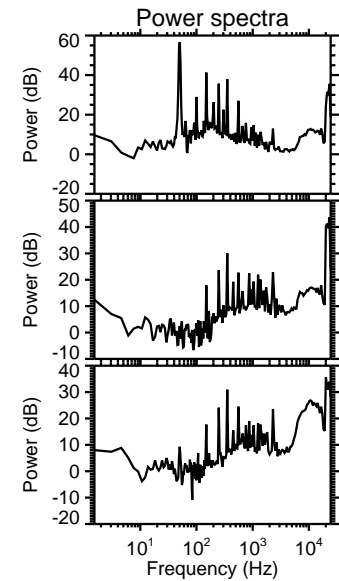
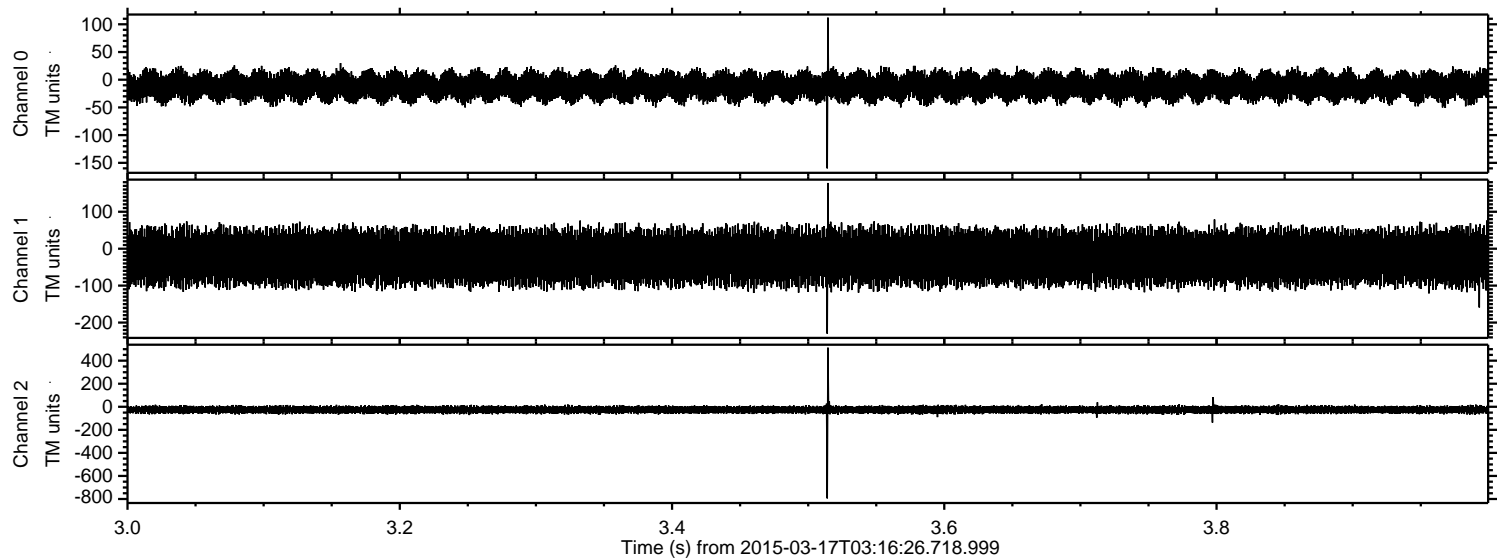


Processed Tue Mar 17 04:45:24 2015 by ELM ver.2012-10-06 from 001__elm20150317_031625__dat00.bin

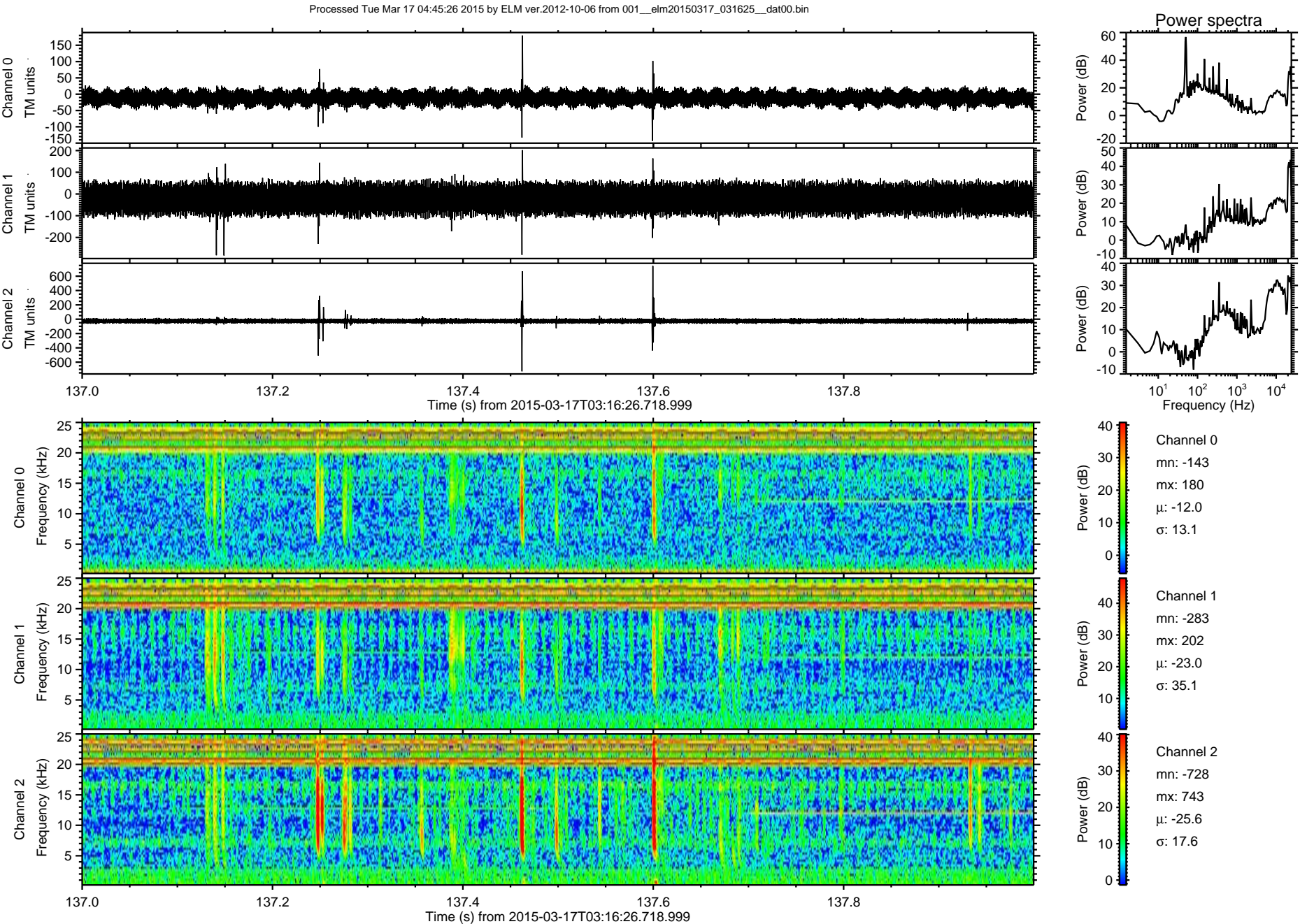


ELMAVAN 3D WAVEFORMS (Measured data sampled at 50 kHz) 49740 packets of 144 samples from 2015-03-17T03:16:26.718.999. Part 4/144

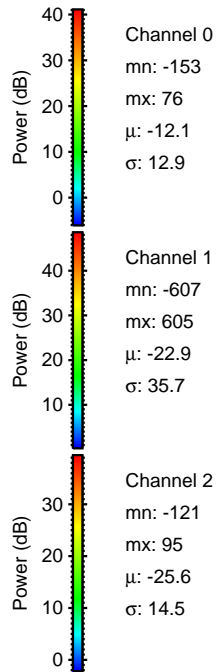
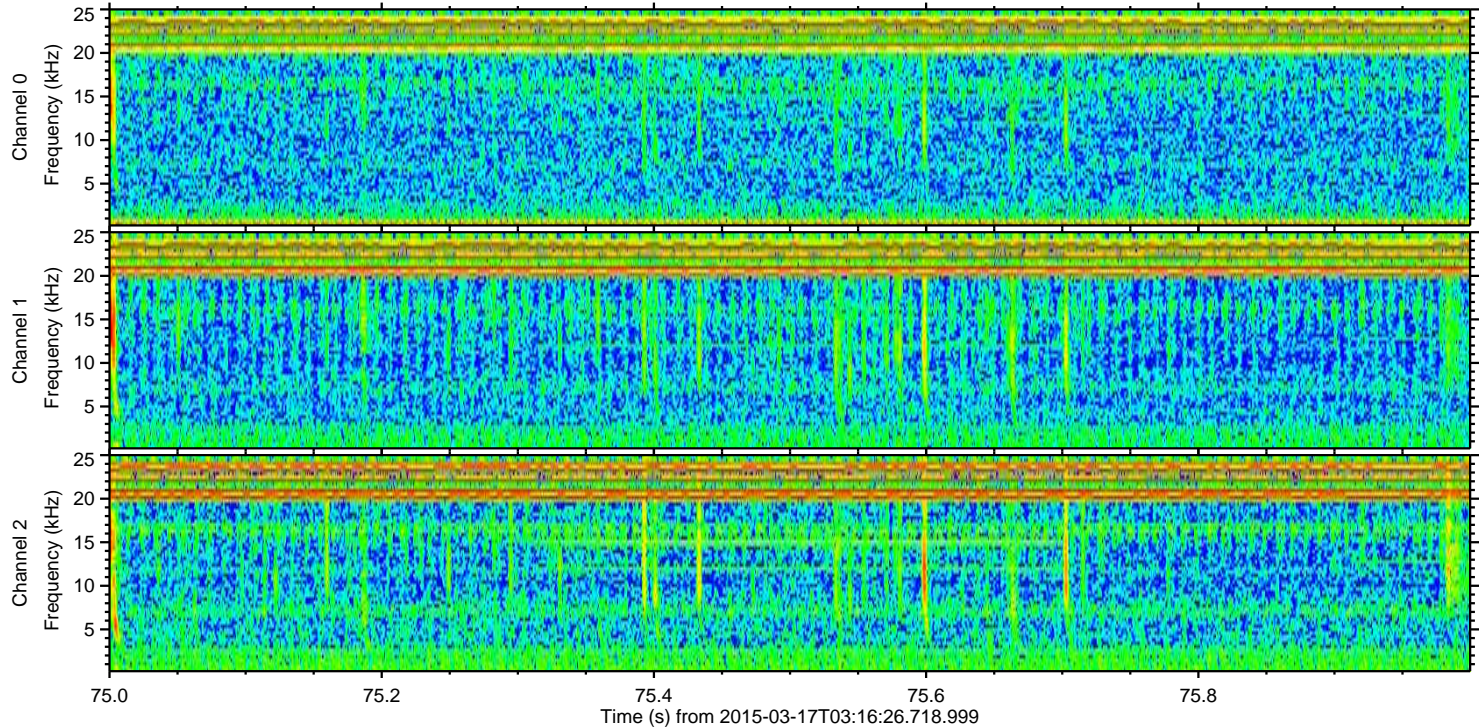
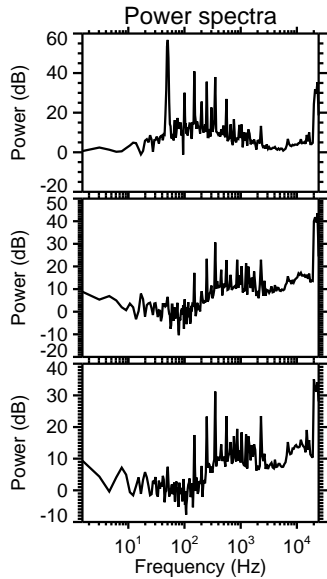
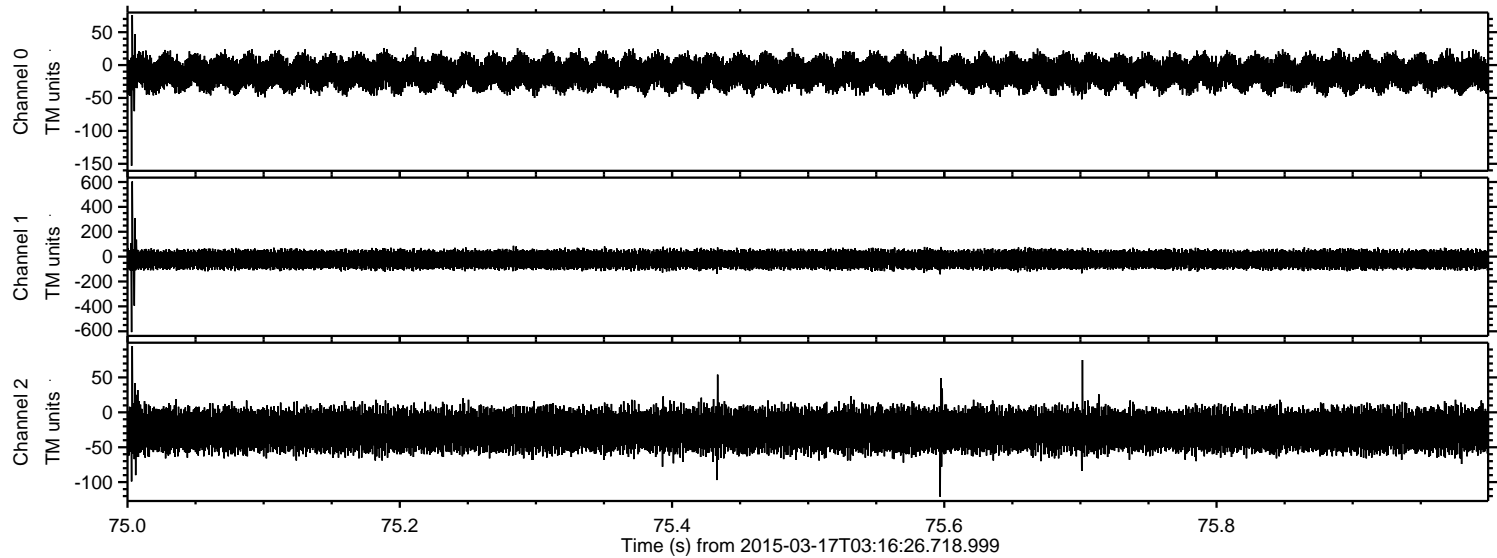
Processed Tue Mar 17 04:45:25 2015 by ELM ver.2012-10-06 from 001__elm20150317_031625__dat00.bin



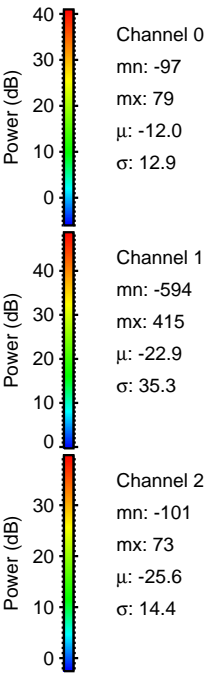
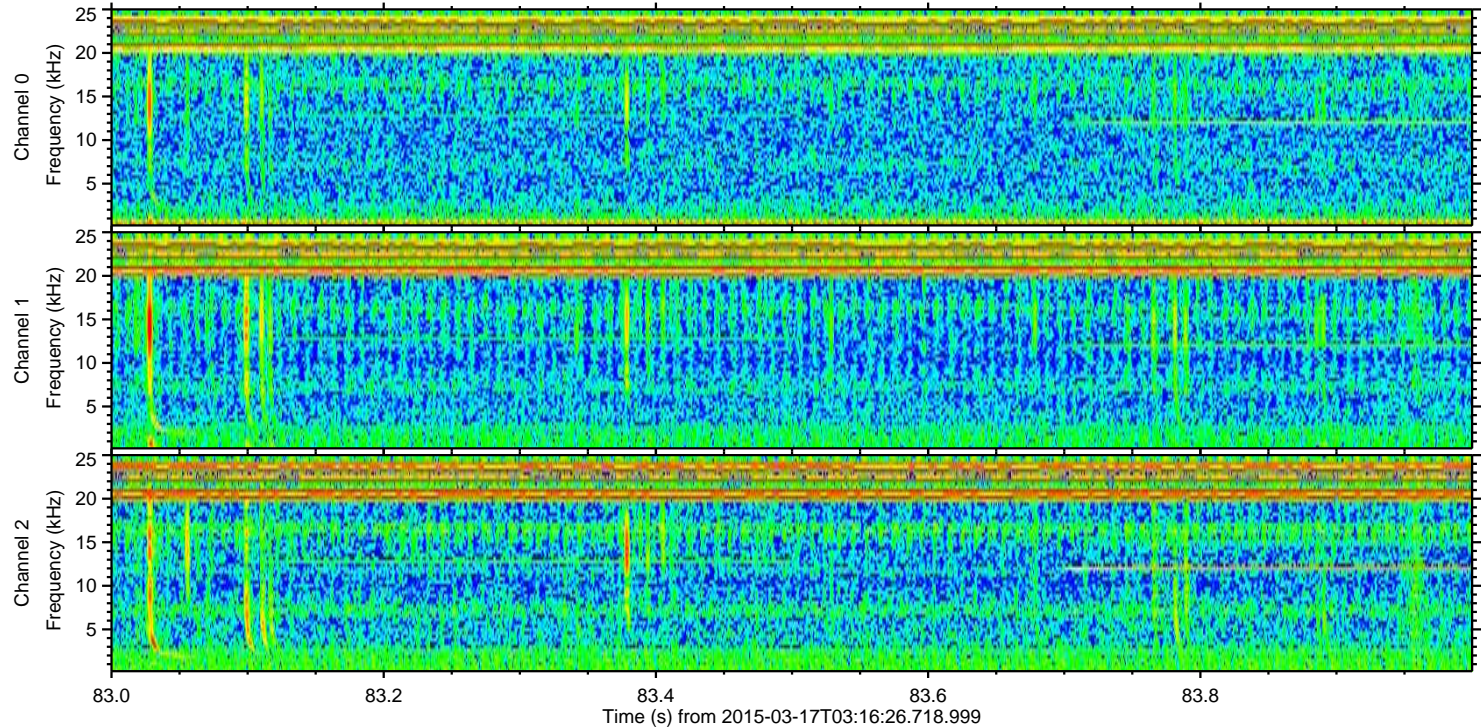
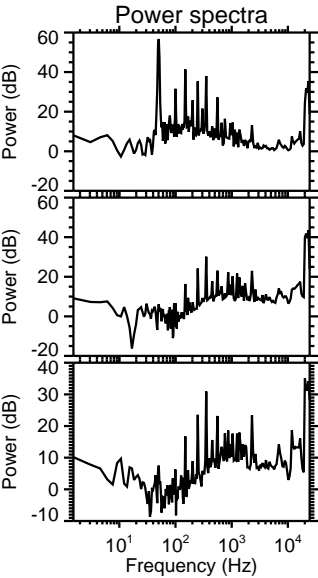
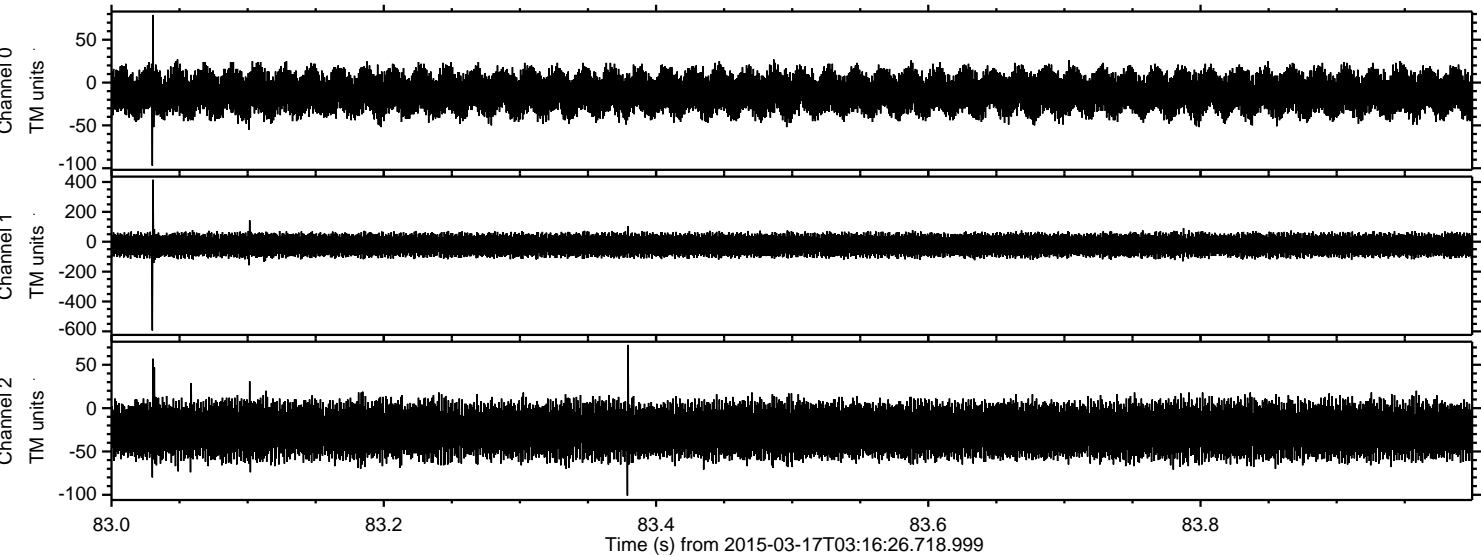
ELMAVAN 3D WAVEFORMS (Measured data sampled at 50 kHz) 49740 packets of 144 samples from 2015-03-17T03:16:26.718.999. Part 138/144



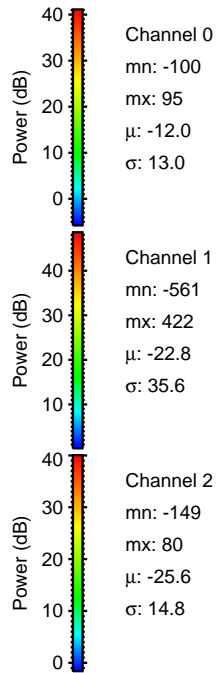
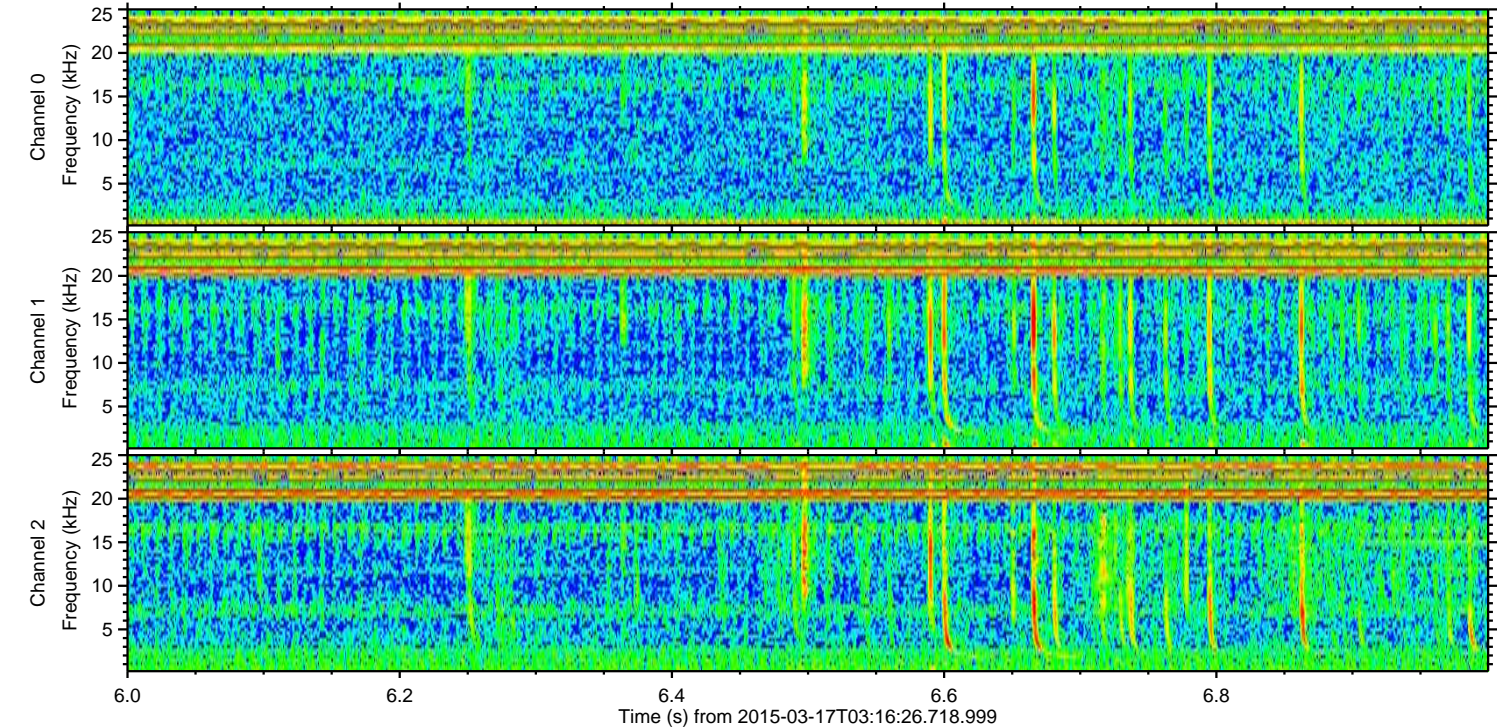
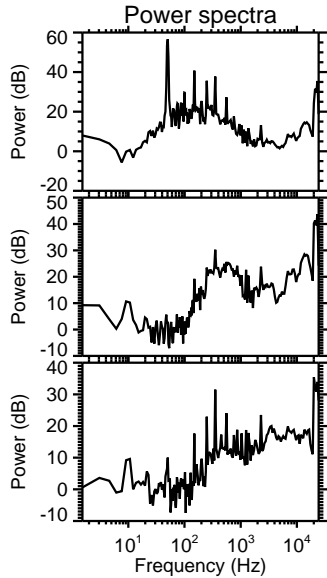
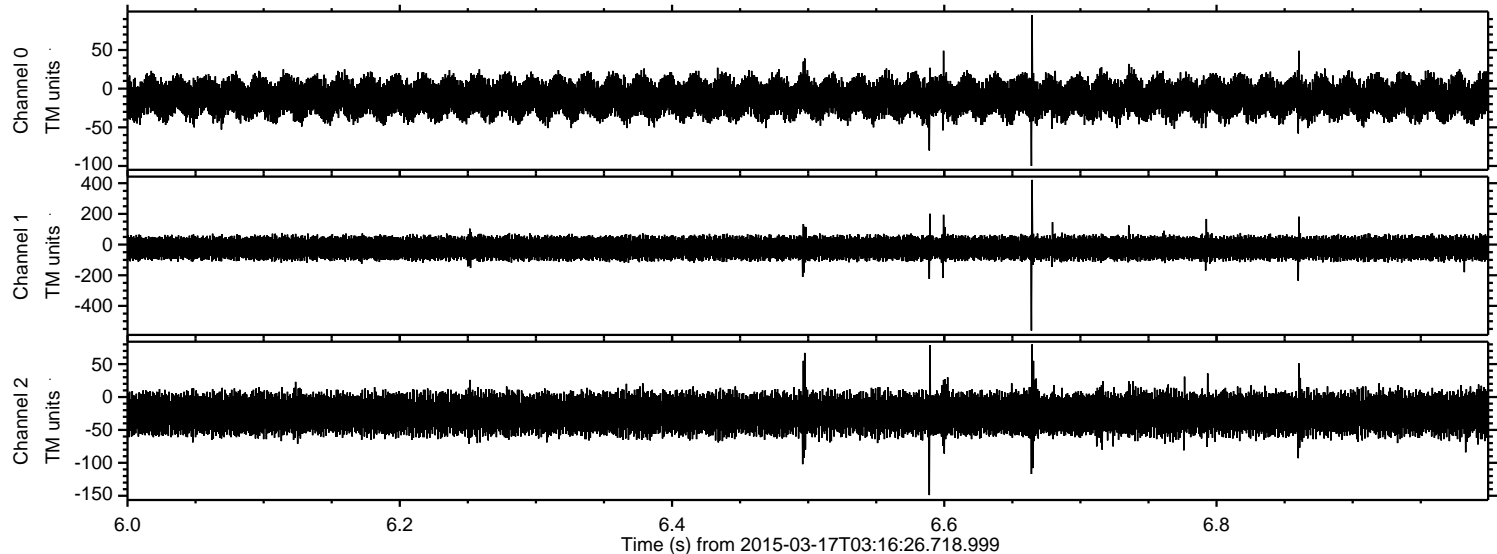
Processed Tue Mar 17 04:45:27 2015 by ELM ver.2012-10-06 from 001__elm20150317_031625__dat00.bin



Processed Tue Mar 17 04:45:28 2015 by ELM ver.2012-10-06 from 001__elm20150317_031625__dat00.bin



Processed Tue Mar 17 04:45:28 2015 by ELM ver.2012-10-06 from 001__elm20150317_031625__dat00.bin



Processed Tue Mar 17 04:45:29 2015 by ELM ver.2012-10-06 from 001__elm20150317_031625__dat00.bin

