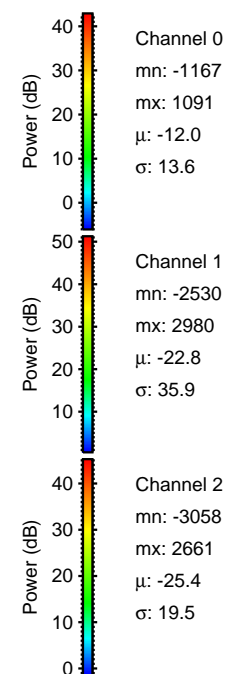
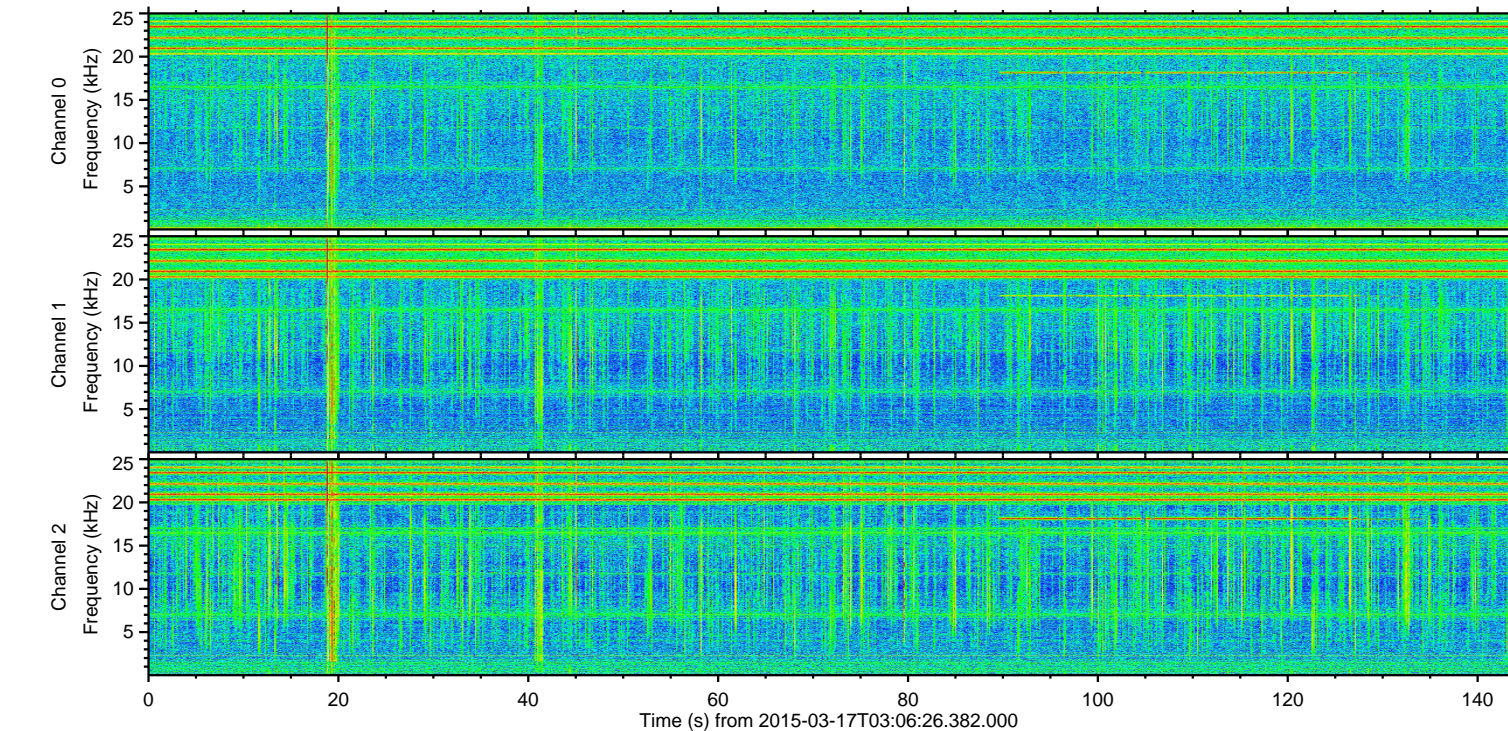
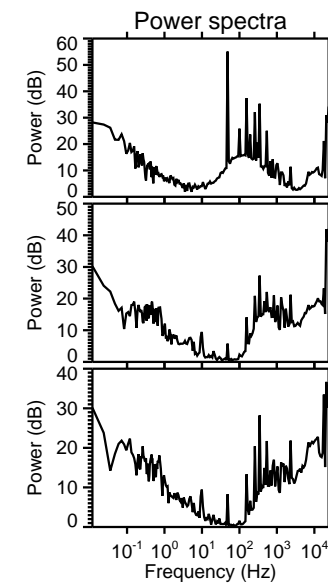
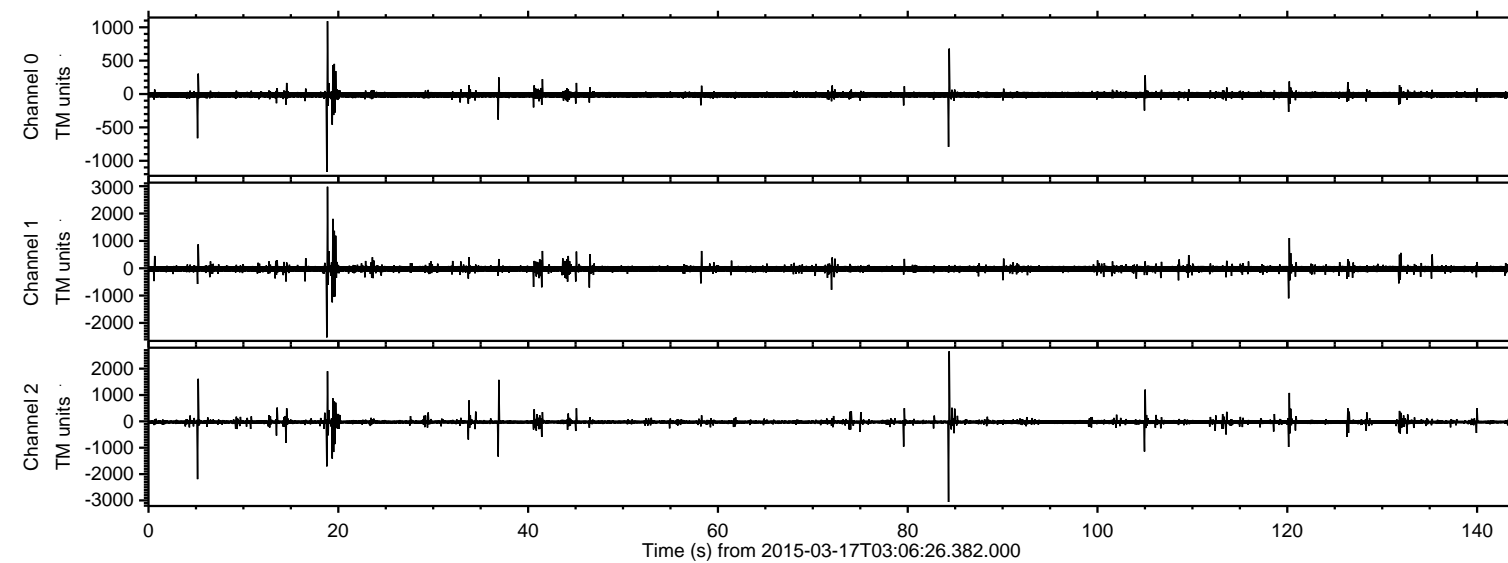
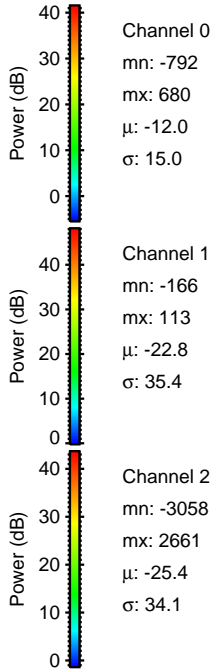
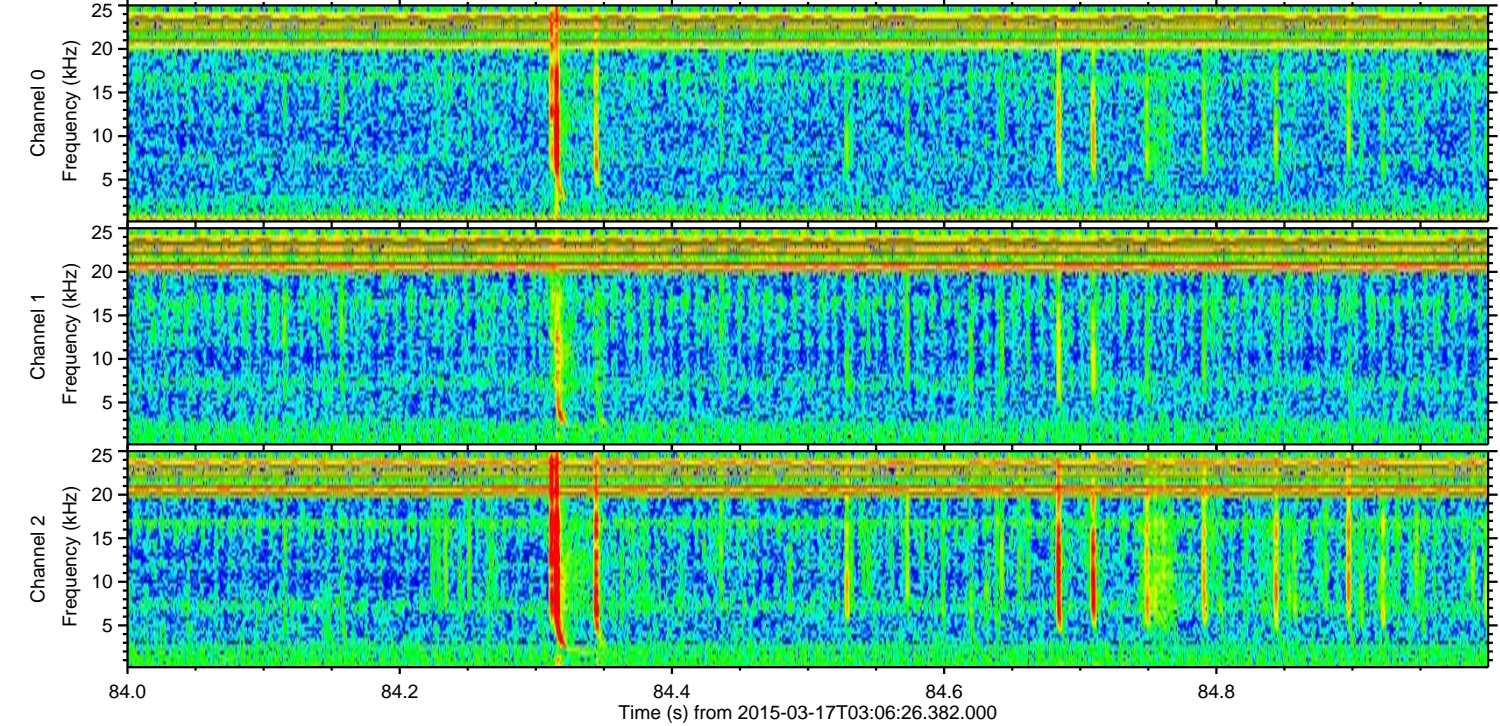
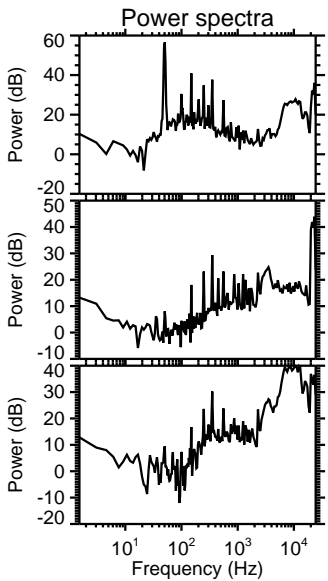
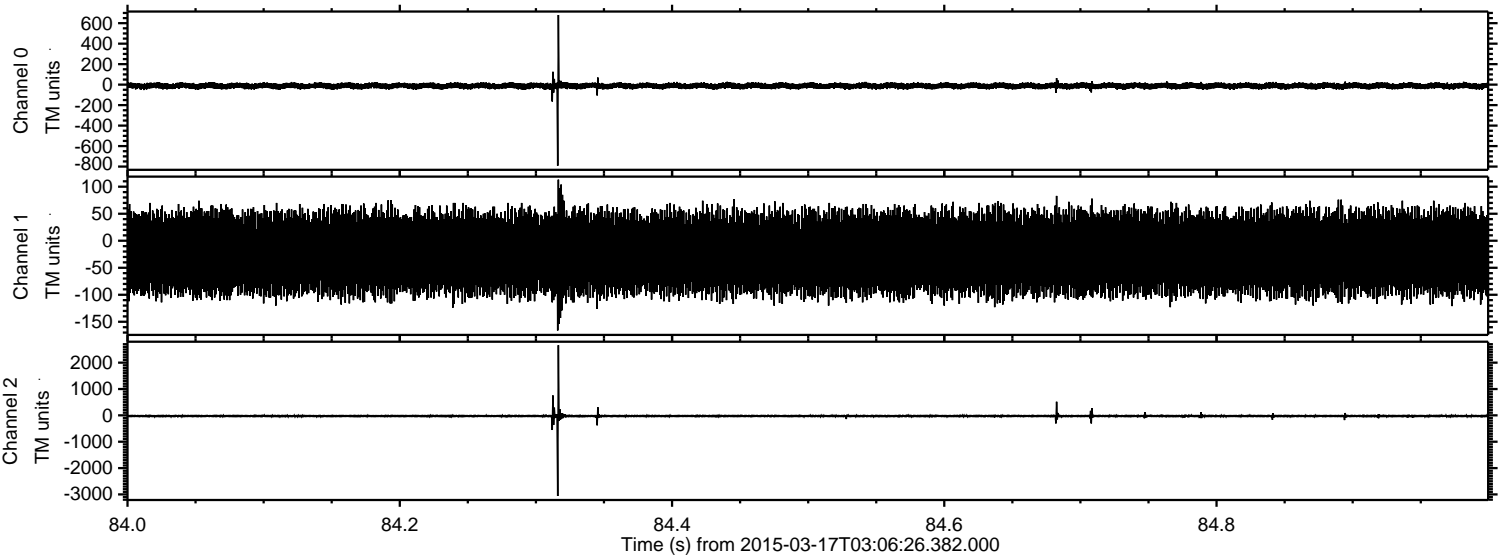


ELMAVAN 3D WAVEFORMS (Measured data sampled at 50 kHz) 49783 packets of 144 samples from 2015-03-17T03:06:26.382.000.

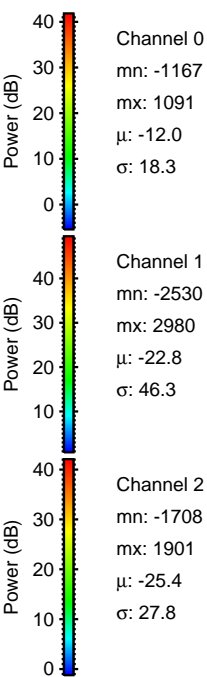
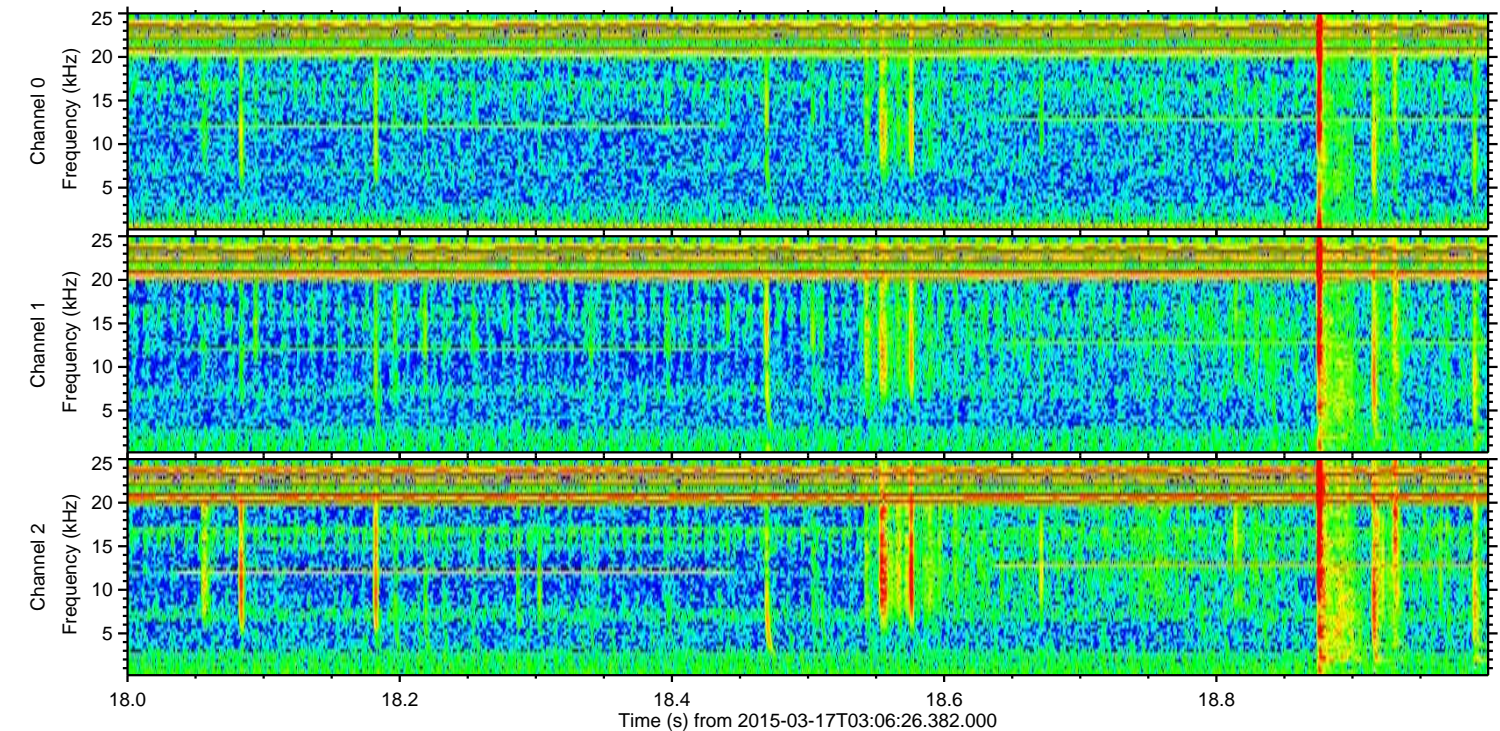
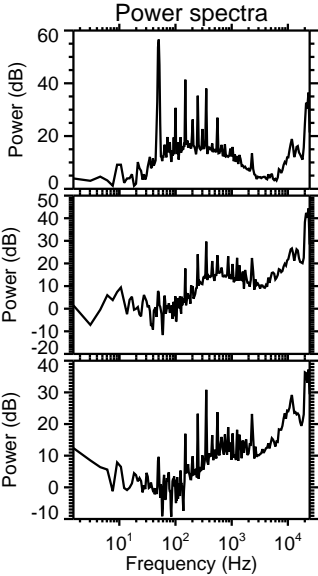
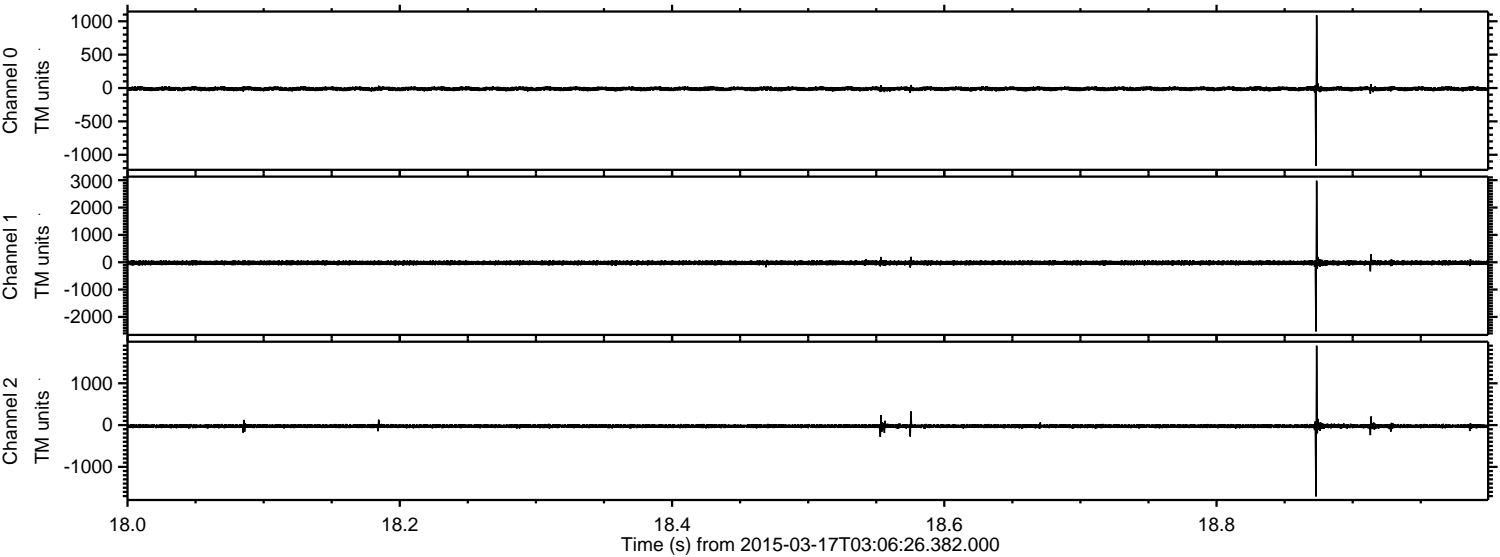
Processed Tue Mar 17 04:15:02 2015 by ELM ver.2012-10-06 from 001__elm20150317_030625__dat00.bin



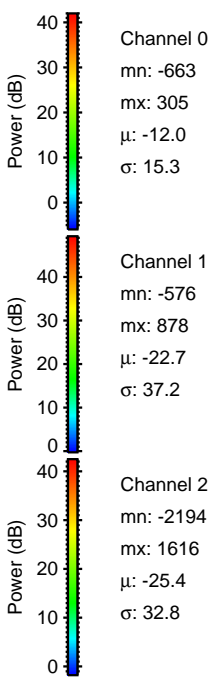
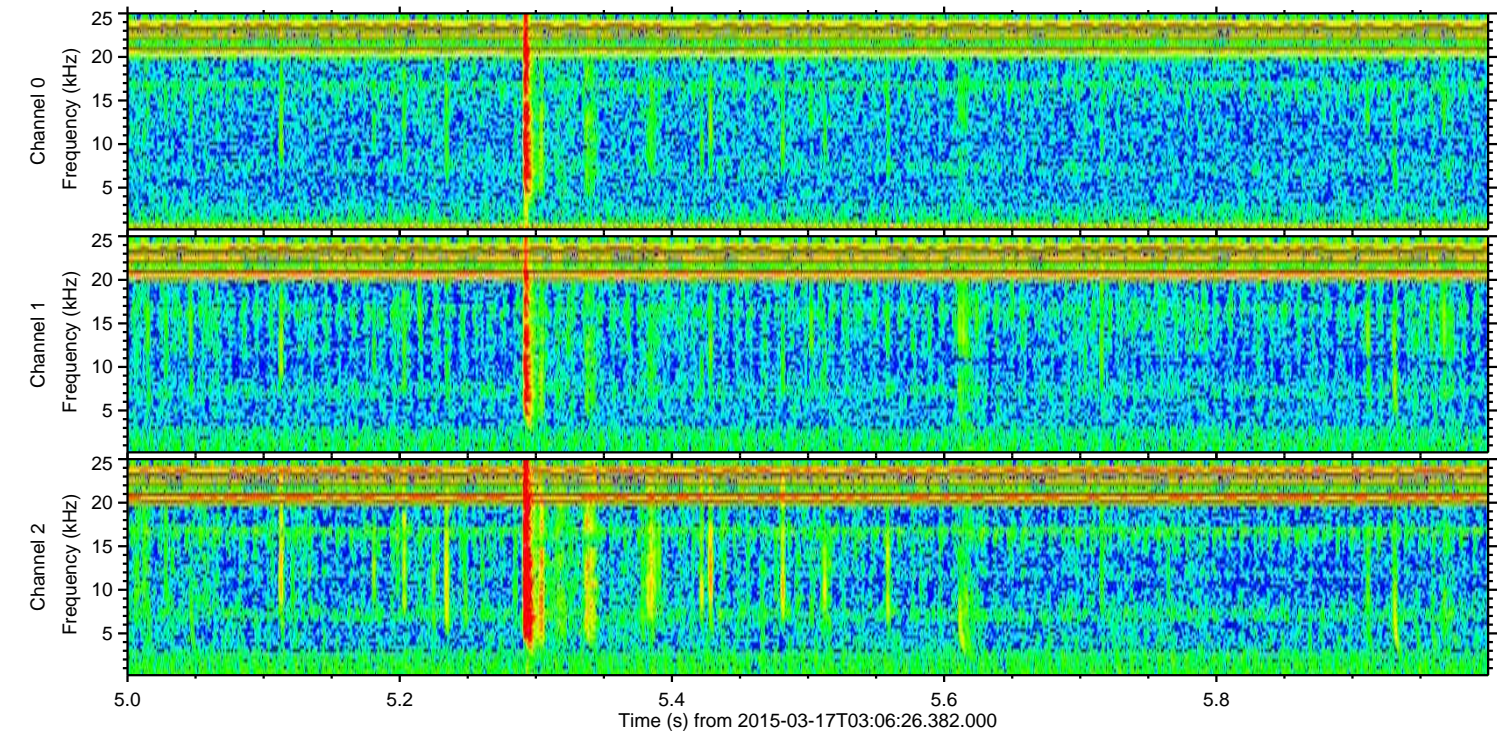
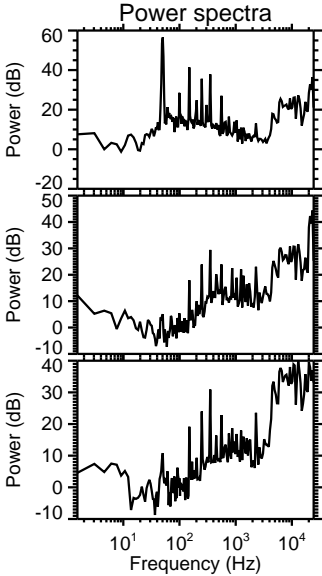
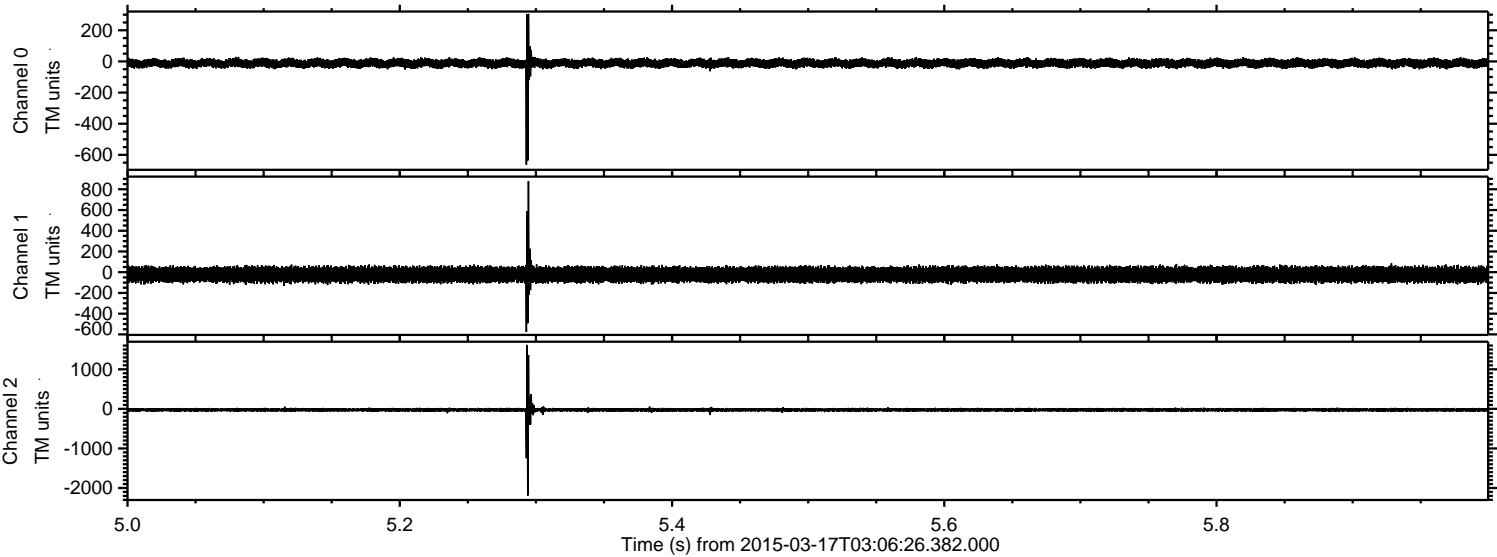
Processed Tue Mar 17 04:15:14 2015 by ELM ver.2012-10-06 from 001__elm20150317_030625__dat00.bin



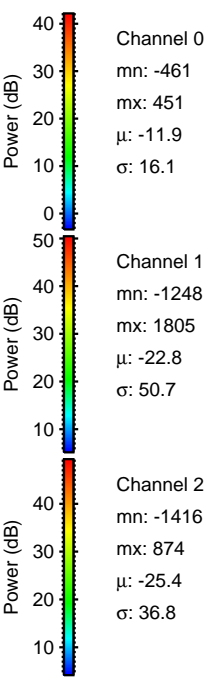
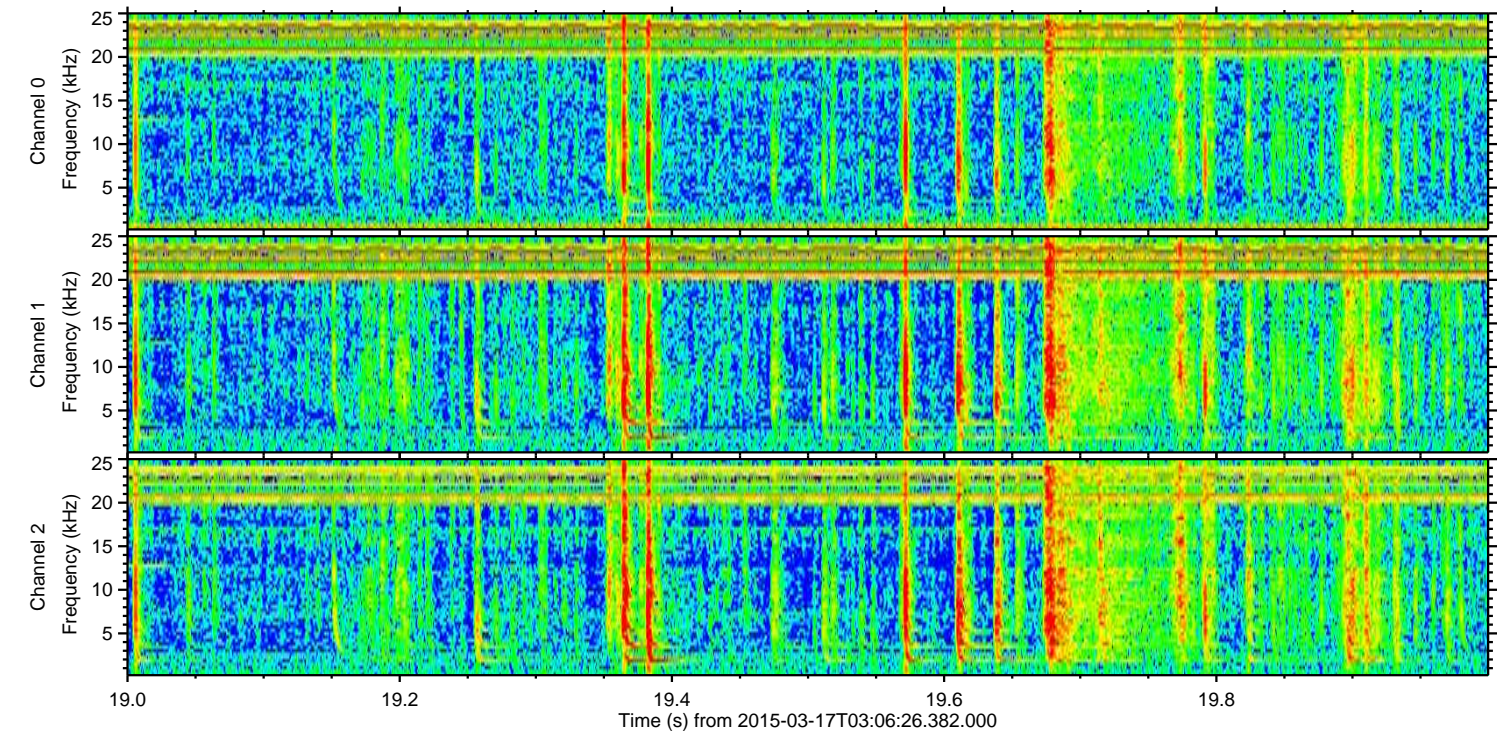
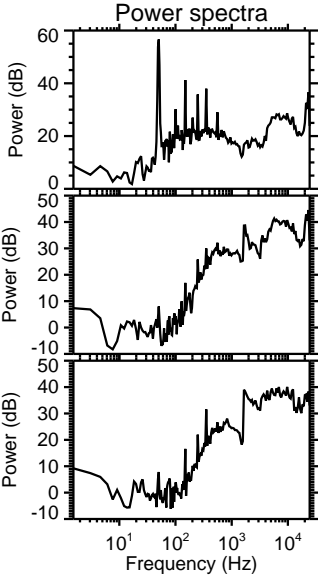
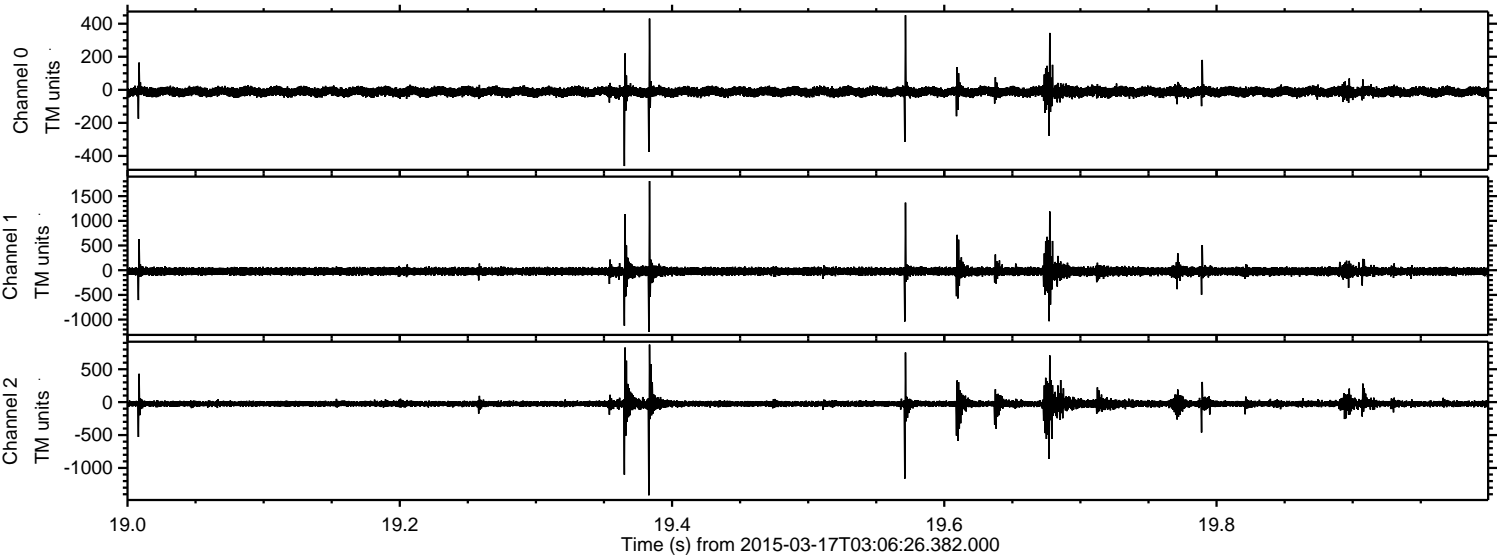
Processed Tue Mar 17 04:15:15 2015 by ELM ver.2012-10-06 from 001__elm20150317_030625__dat00.bin



Processed Tue Mar 17 04:15:15 2015 by ELM ver.2012-10-06 from 001__elm20150317_030625__dat00.bin



Processed Tue Mar 17 04:15:16 2015 by ELM ver.2012-10-06 from 001__elm20150317_030625__dat00.bin

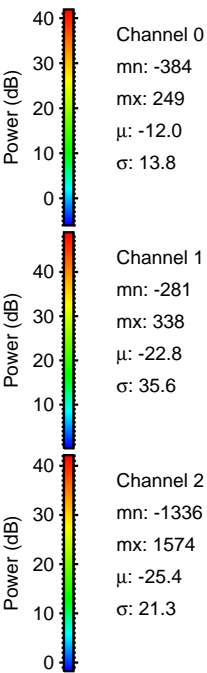
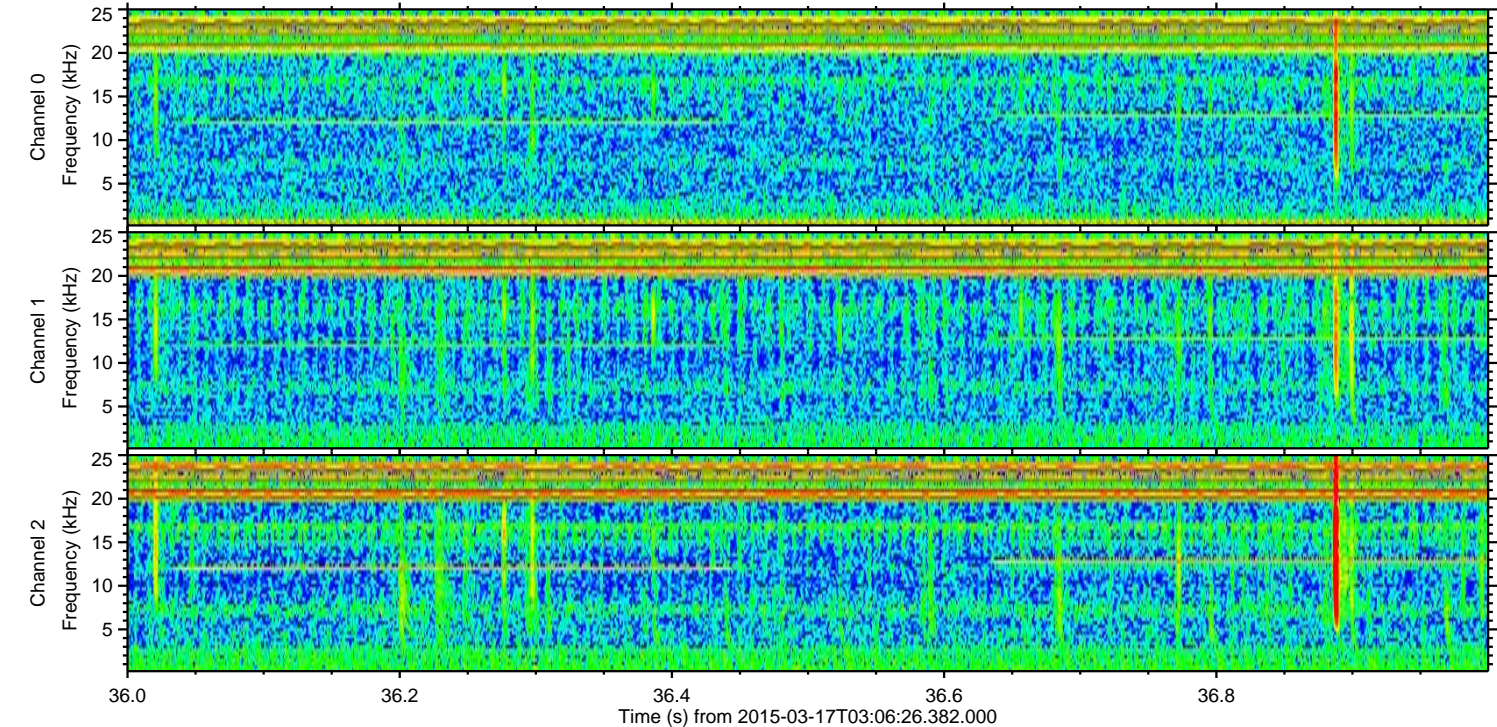
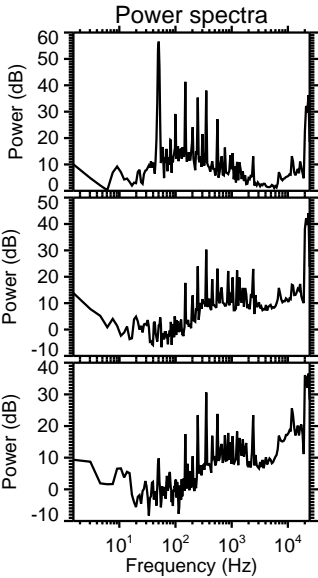
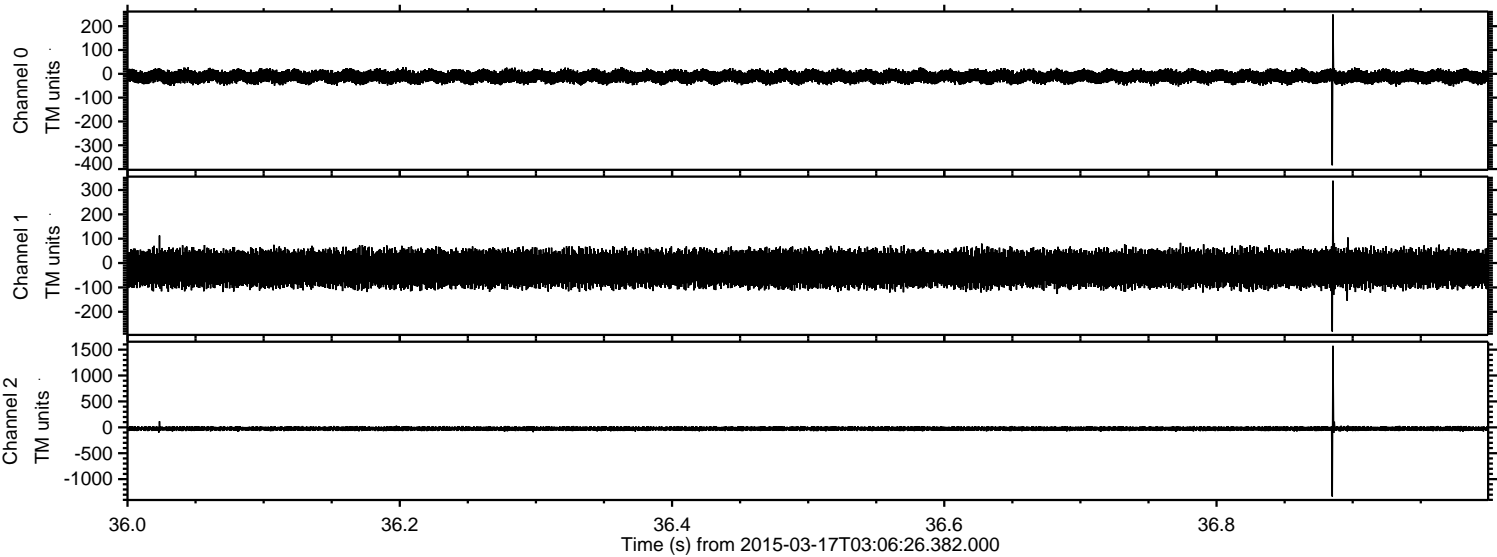


Channel 0
mn: -461
mx: 451
 μ : -11.9
 σ : 16.1

Channel 1
mn: -1248
mx: 1805
 μ : -22.8
 σ : 50.7

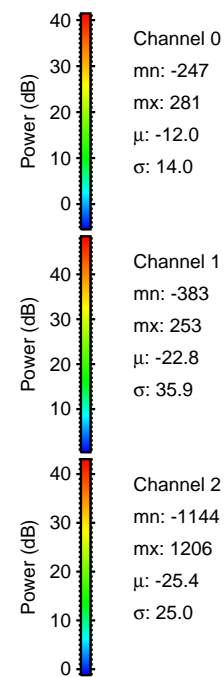
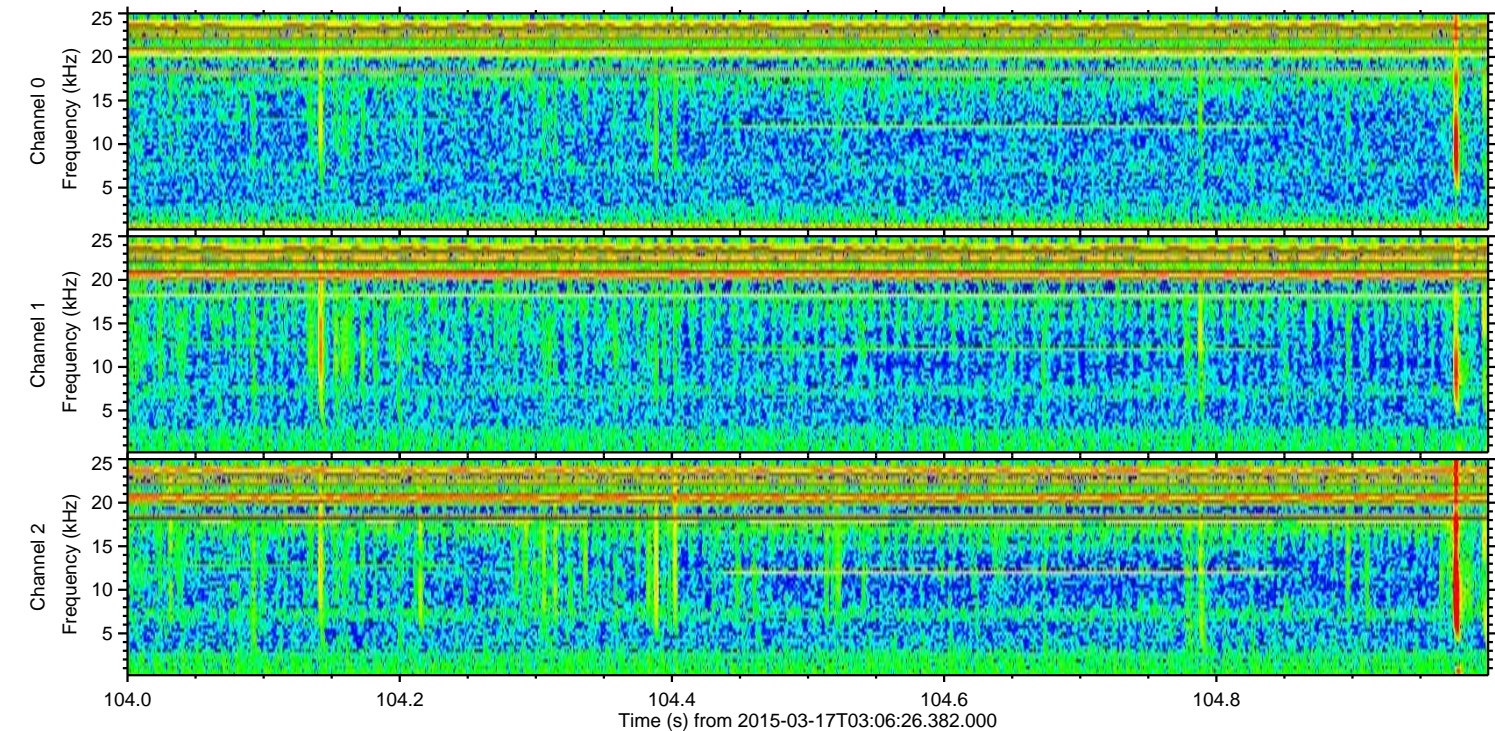
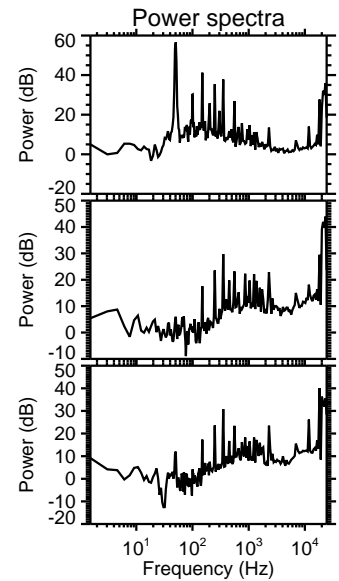
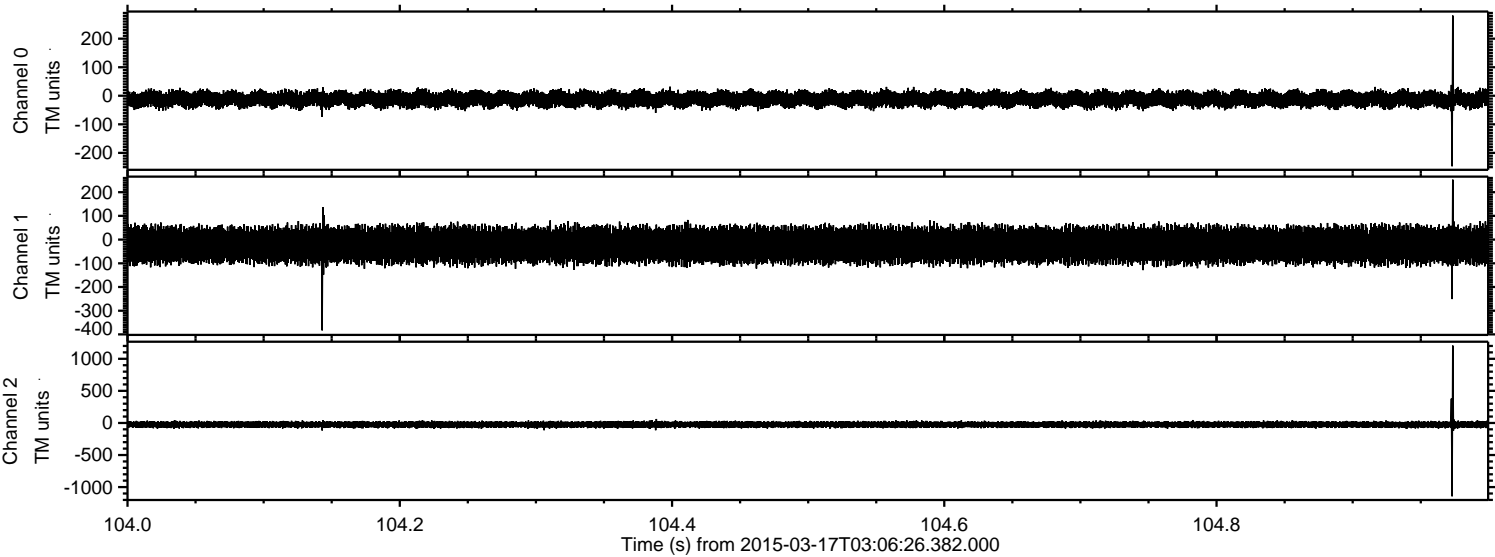
Channel 2
mn: -1416
mx: 874
 μ : -25.4
 σ : 36.8

Processed Tue Mar 17 04:15:17 2015 by ELM ver.2012-10-06 from 001__elm20150317_030625__dat00.bin



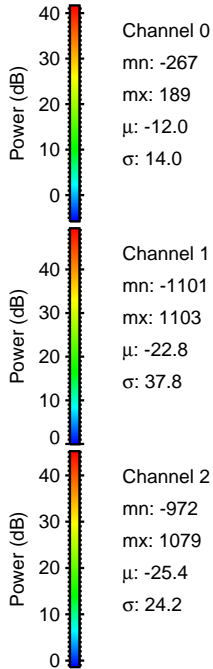
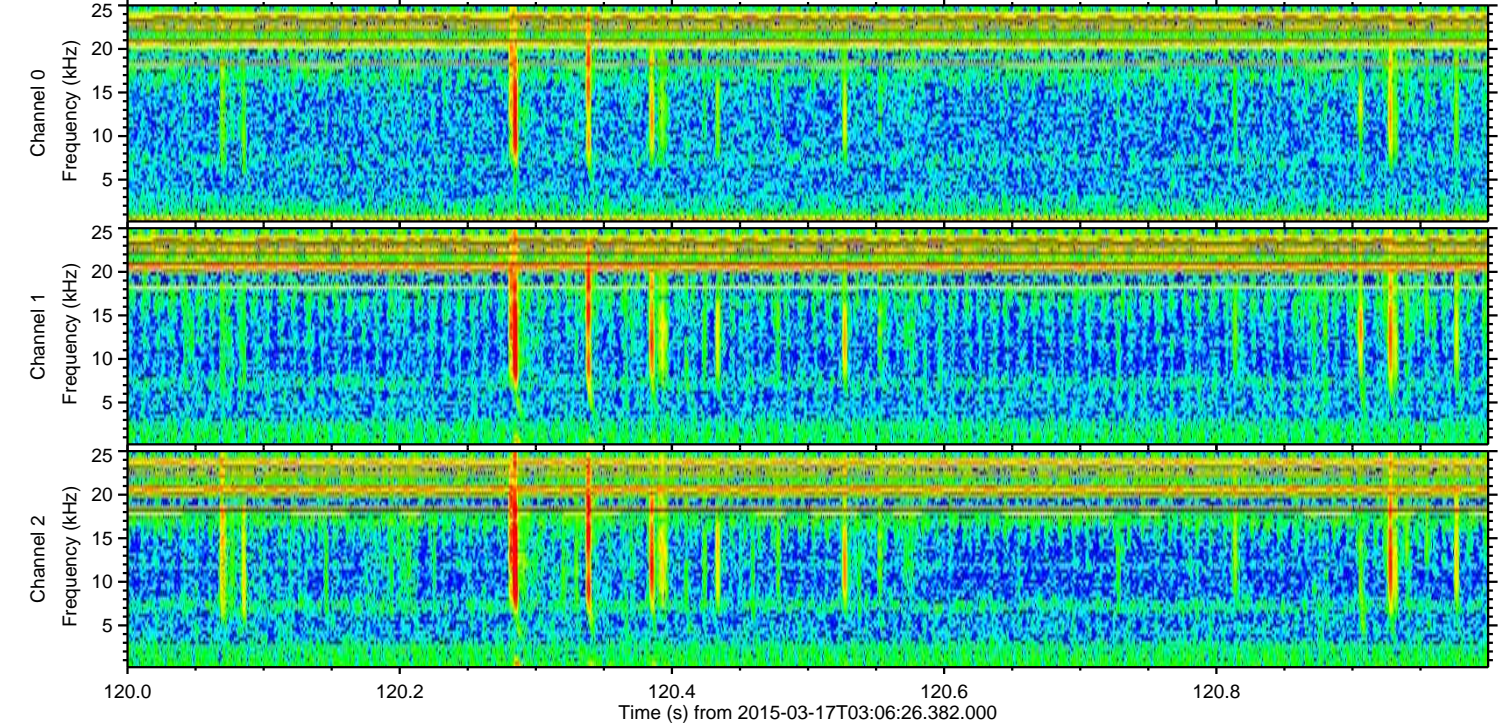
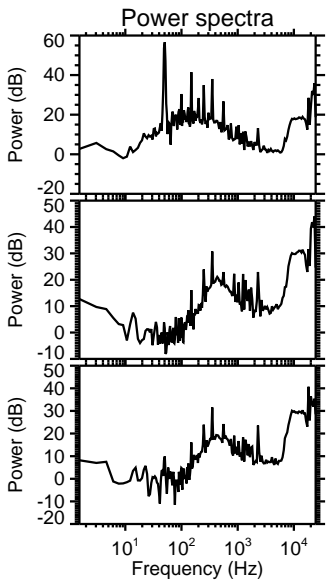
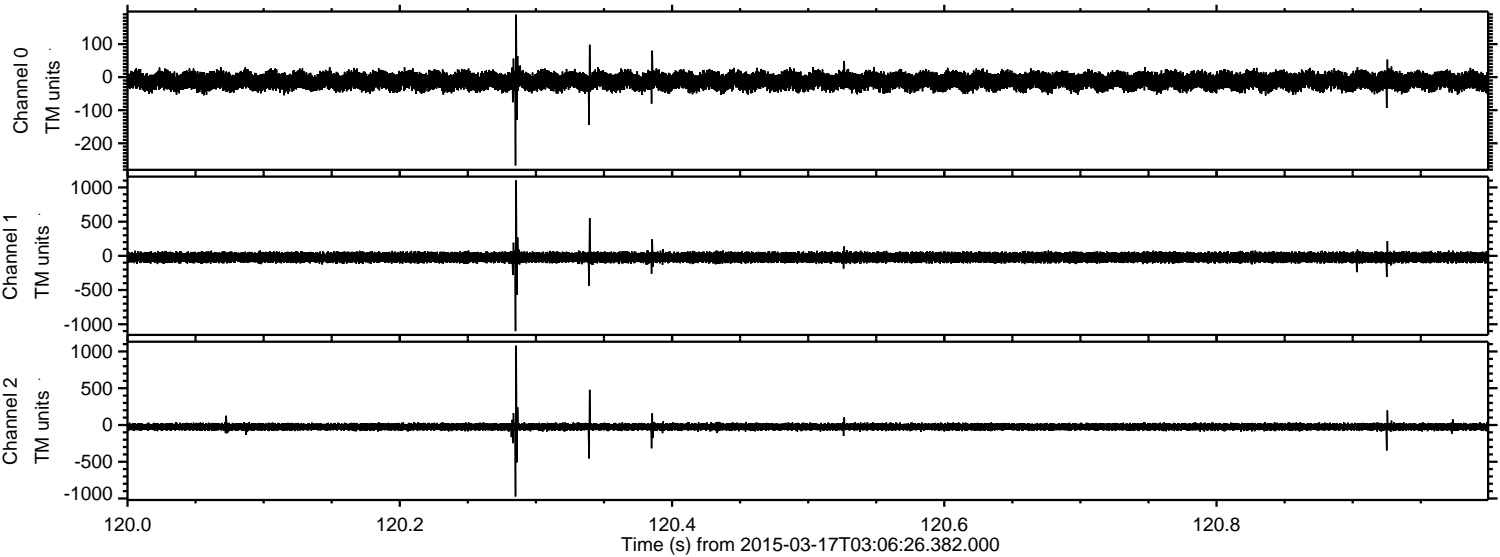
ELMAVAN 3D WAVEFORMS (Measured data sampled at 50 kHz) 49783 packets of 144 samples from 2015-03-17T03:06:26.382.000. Part 105/144

Processed Tue Mar 17 04:15:18 2015 by ELM ver.2012-10-06 from 001__elm20150317_030625__dat00.bin

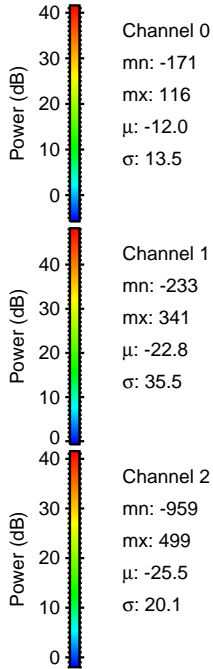
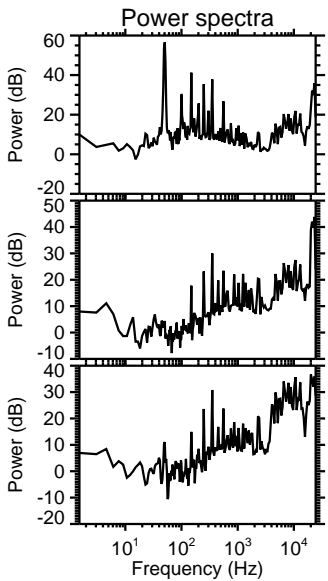
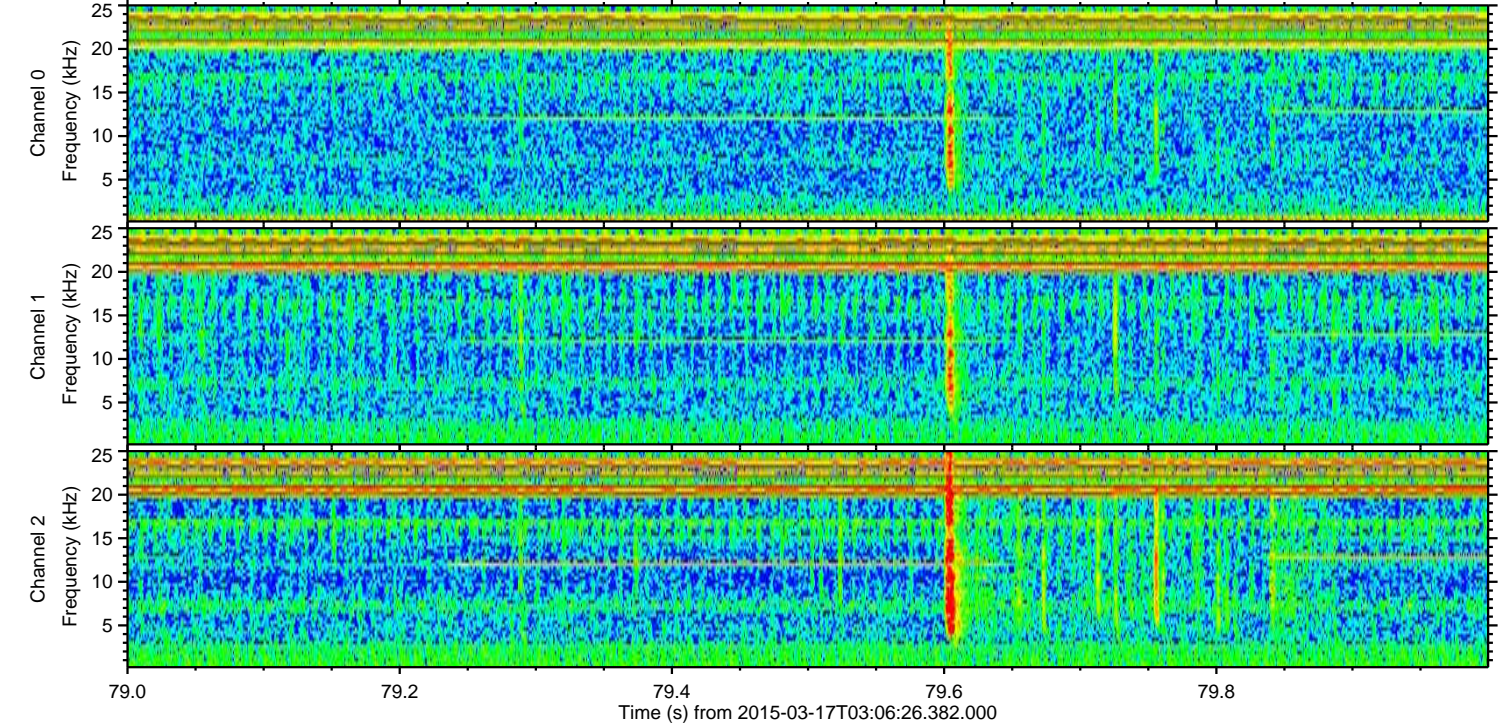
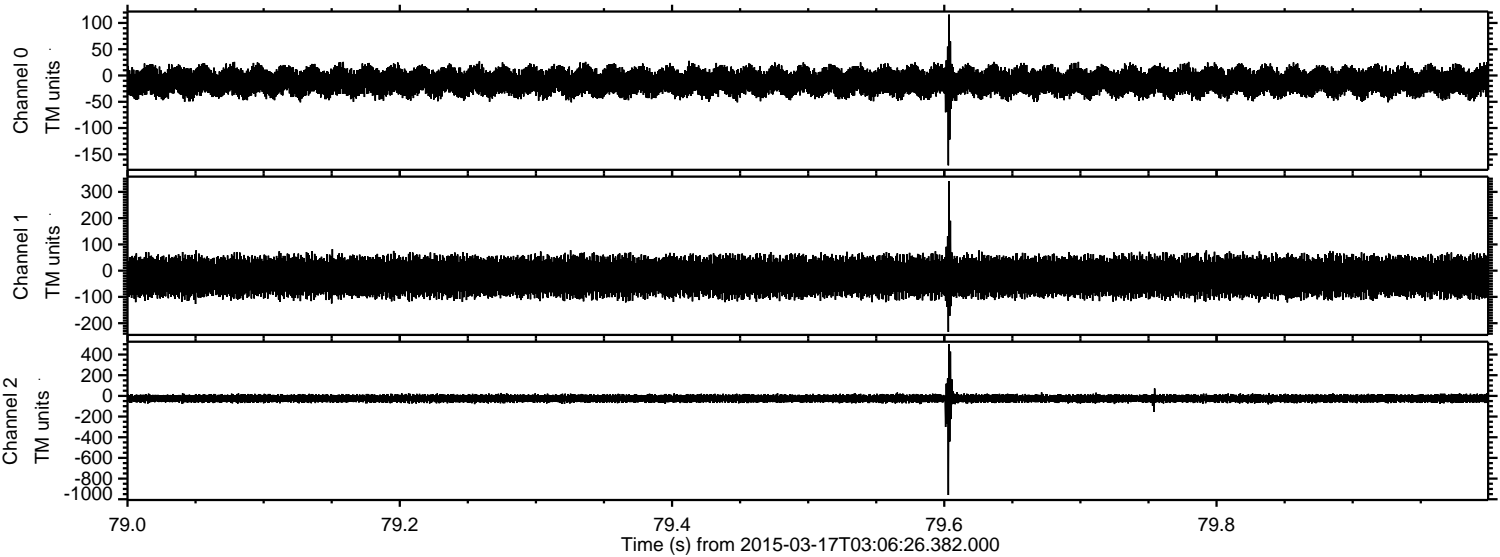


ELMAVAN 3D WAVEFORMS (Measured data sampled at 50 kHz) 49783 packets of 144 samples from 2015-03-17T03:06:26.382.000. Part 121/144

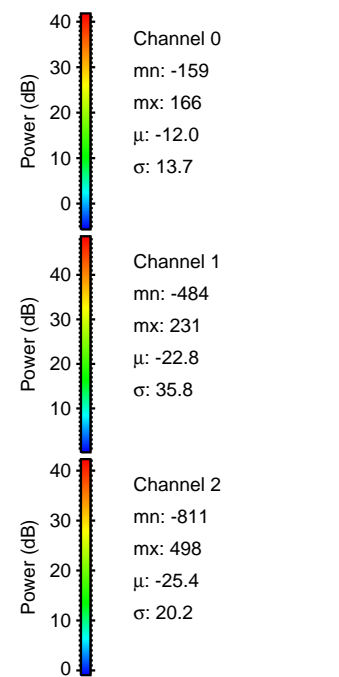
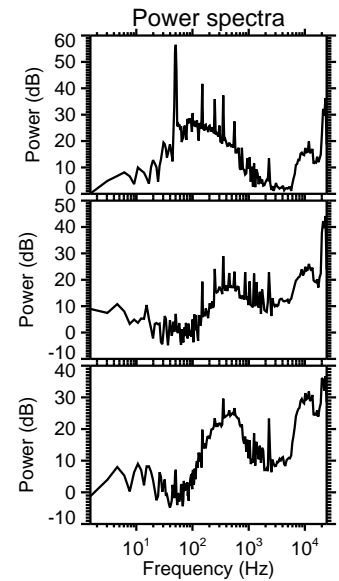
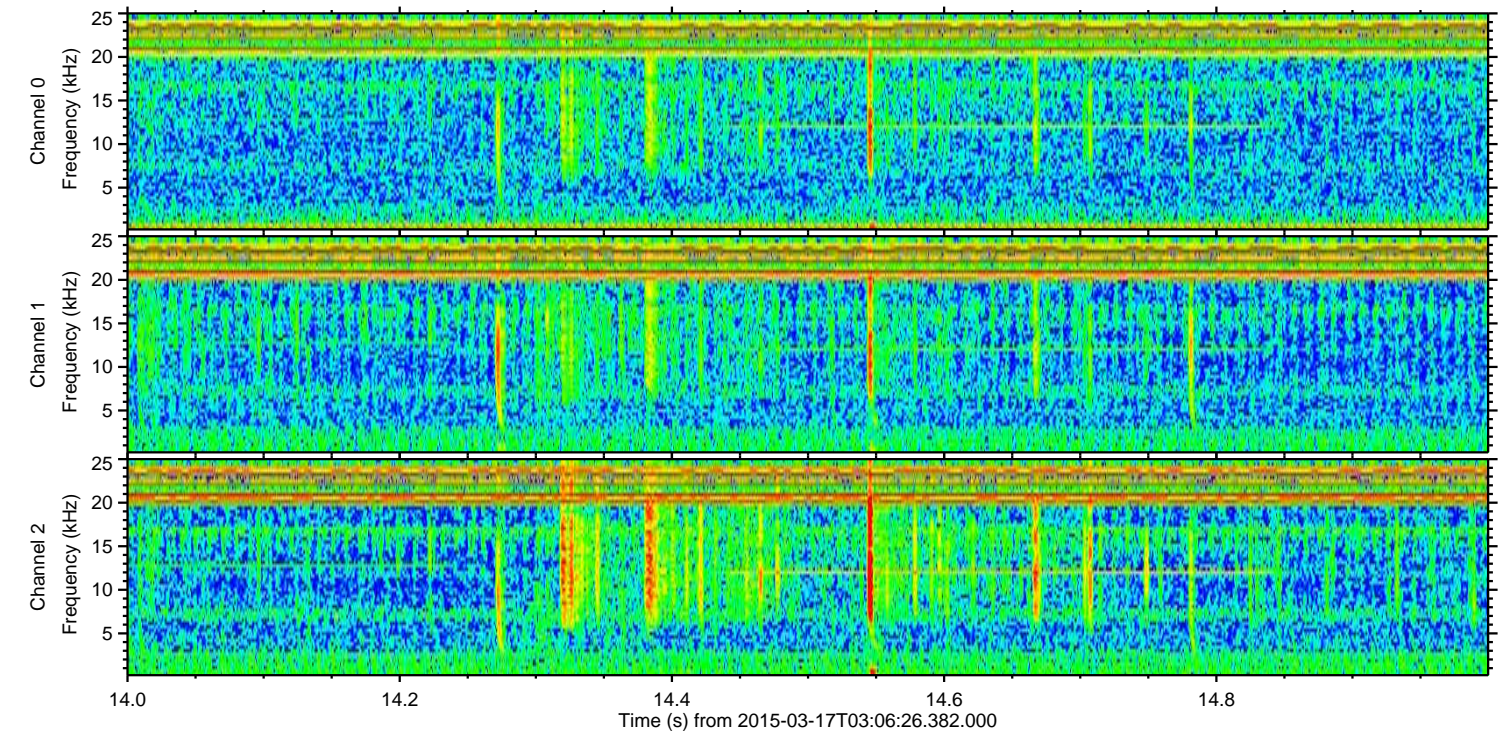
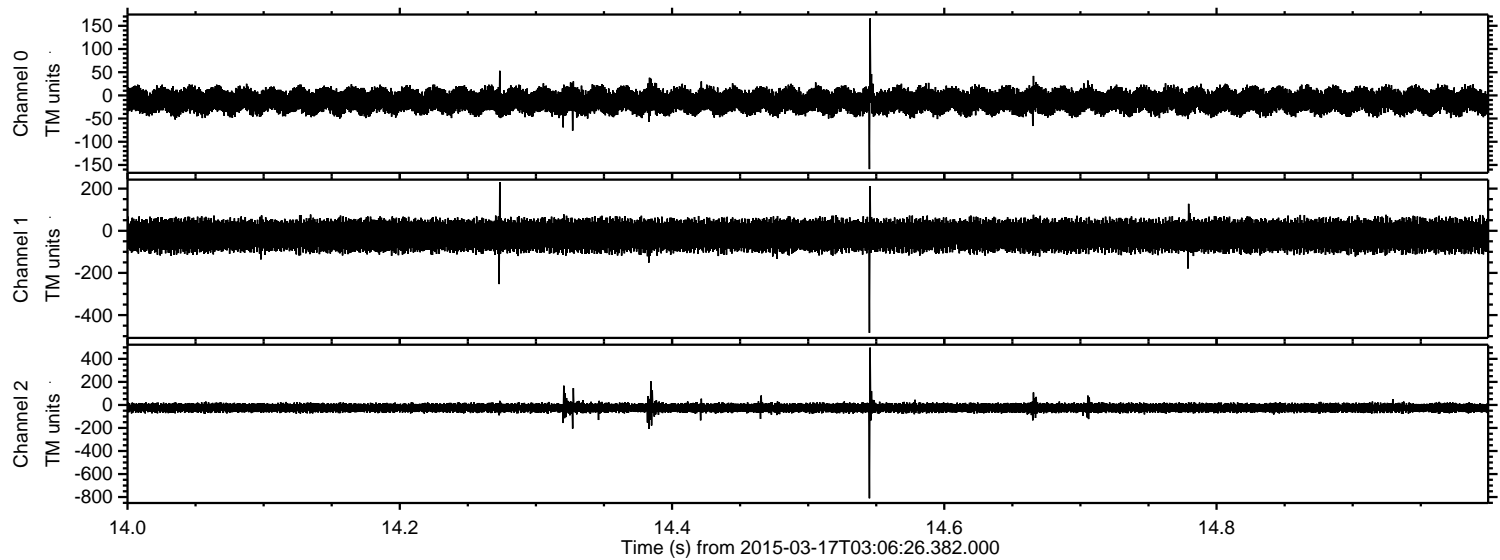
Processed Tue Mar 17 04:15:19 2015 by ELM ver.2012-10-06 from 001__elm20150317_030625__dat00.bin



Processed Tue Mar 17 04:15:20 2015 by ELM ver.2012-10-06 from 001__elm20150317_030625__dat00.bin



Processed Tue Mar 17 04:15:21 2015 by ELM ver.2012-10-06 from 001__elm20150317_030625__dat00.bin



Power spectra

Channel 0

mn: -159
mx: 166
 μ : -12.0
 σ : 13.7

Channel 1

mn: -484
mx: 231
 μ : -22.8
 σ : 35.8

Channel 2

mn: -811
mx: 498
 μ : -25.4
 σ : 20.2

Processed Tue Mar 17 04:15:22 2015 by ELM ver.2012-10-06 from 001__elm20150317_030625__dat00.bin

