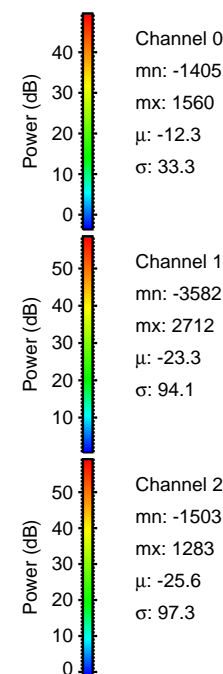
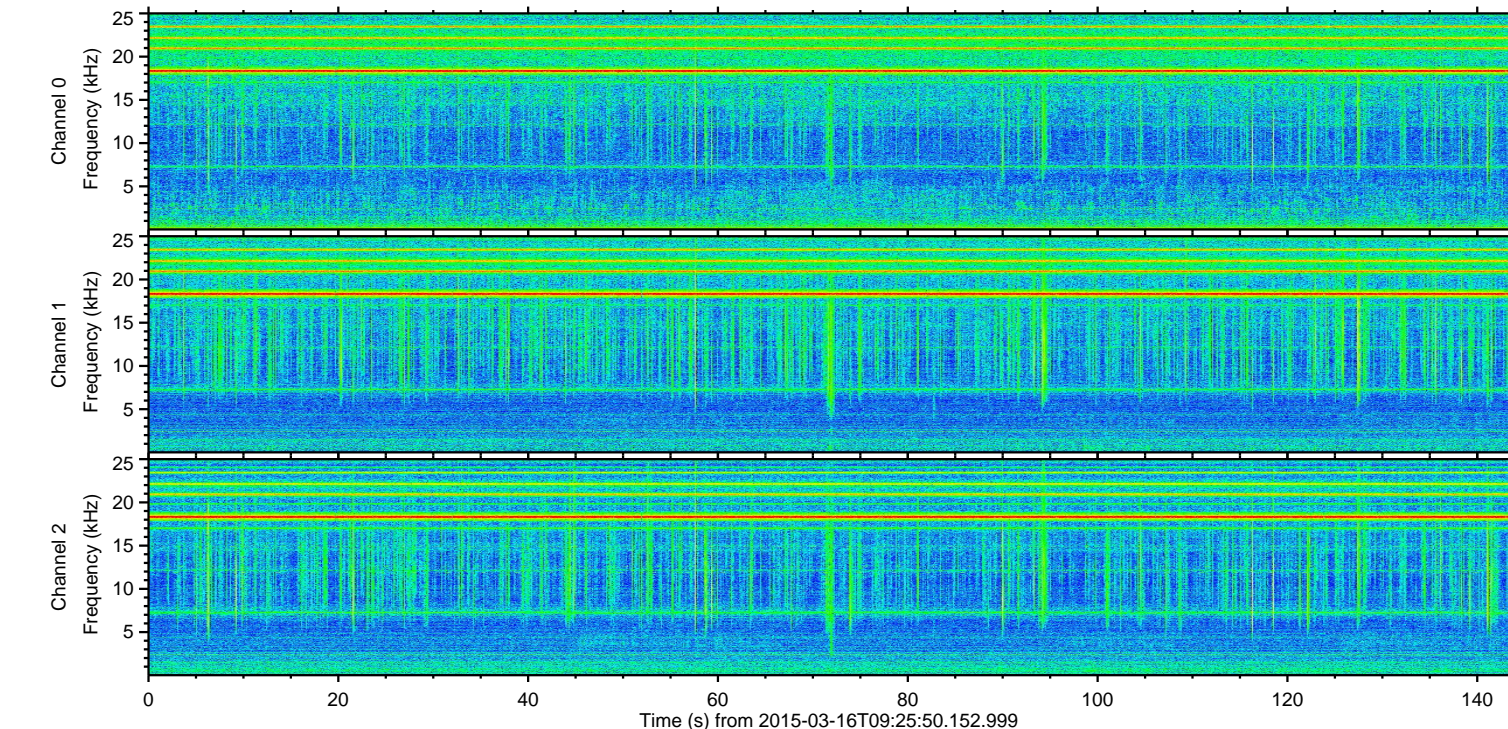
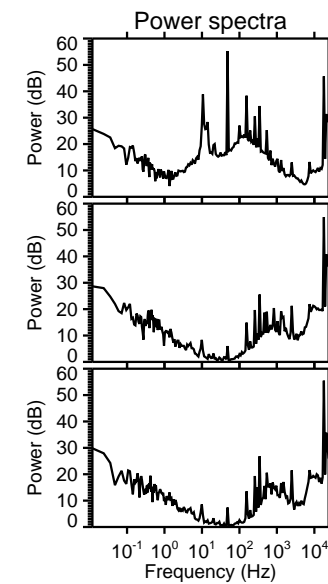
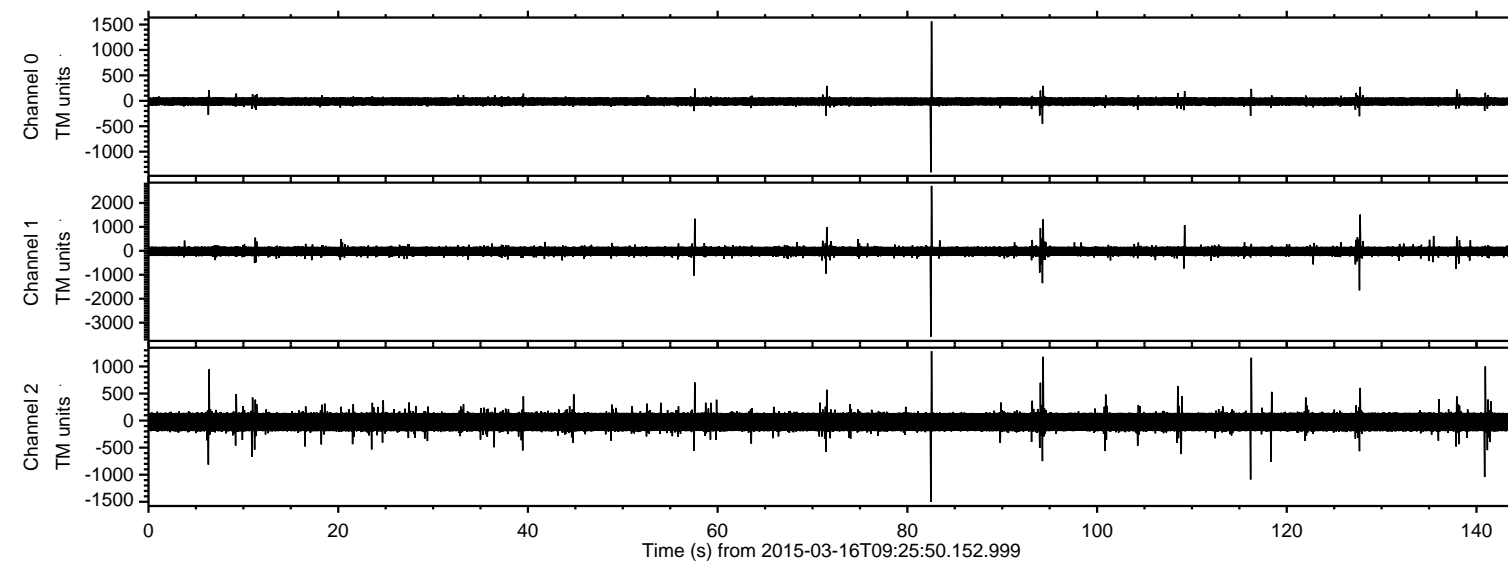
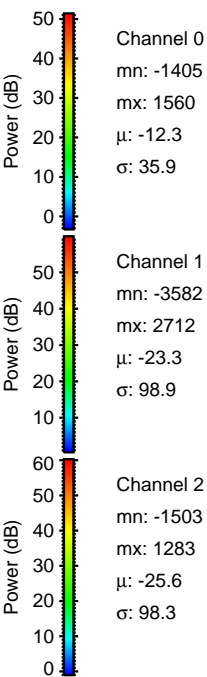
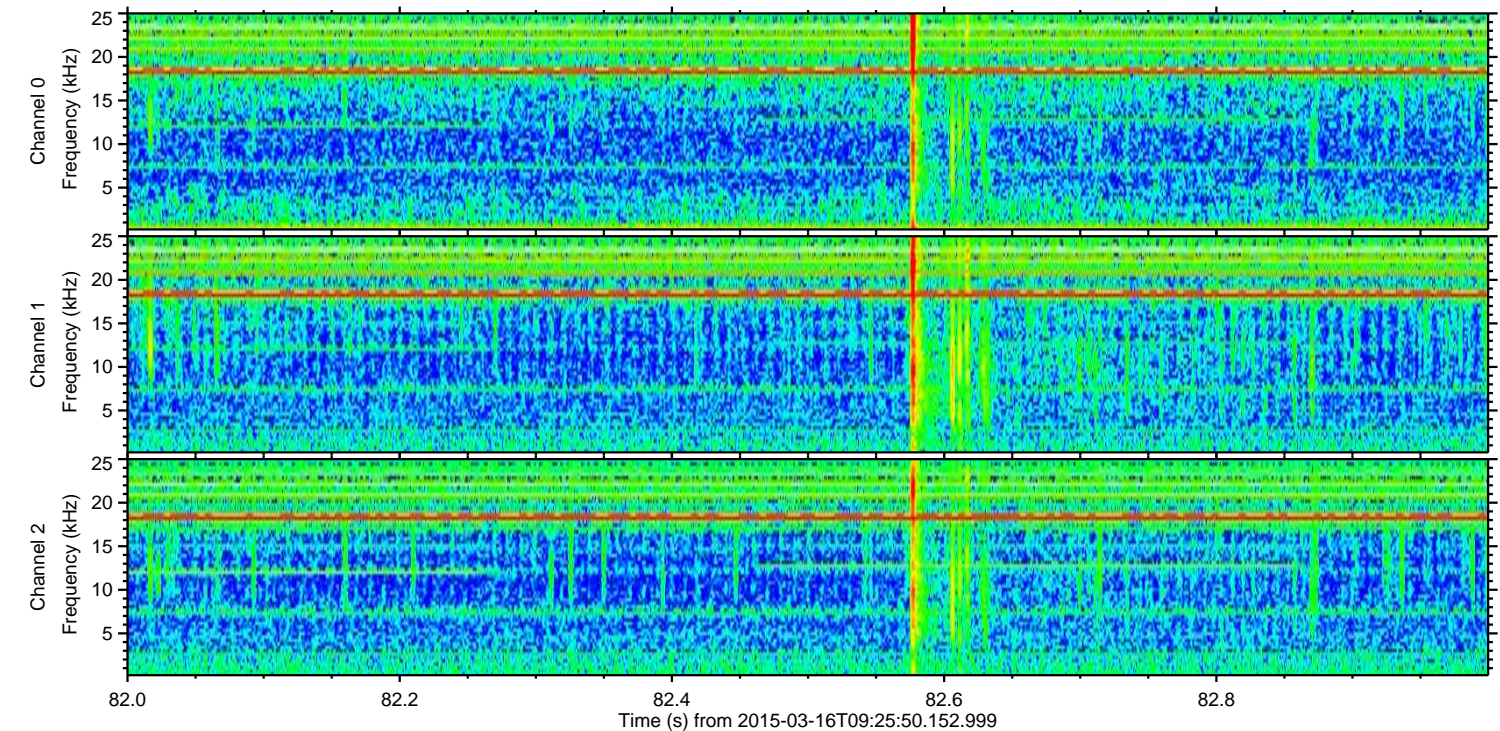
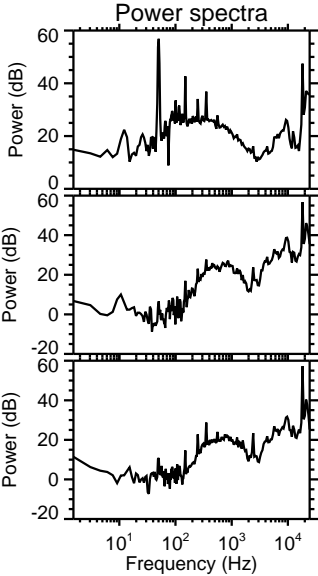
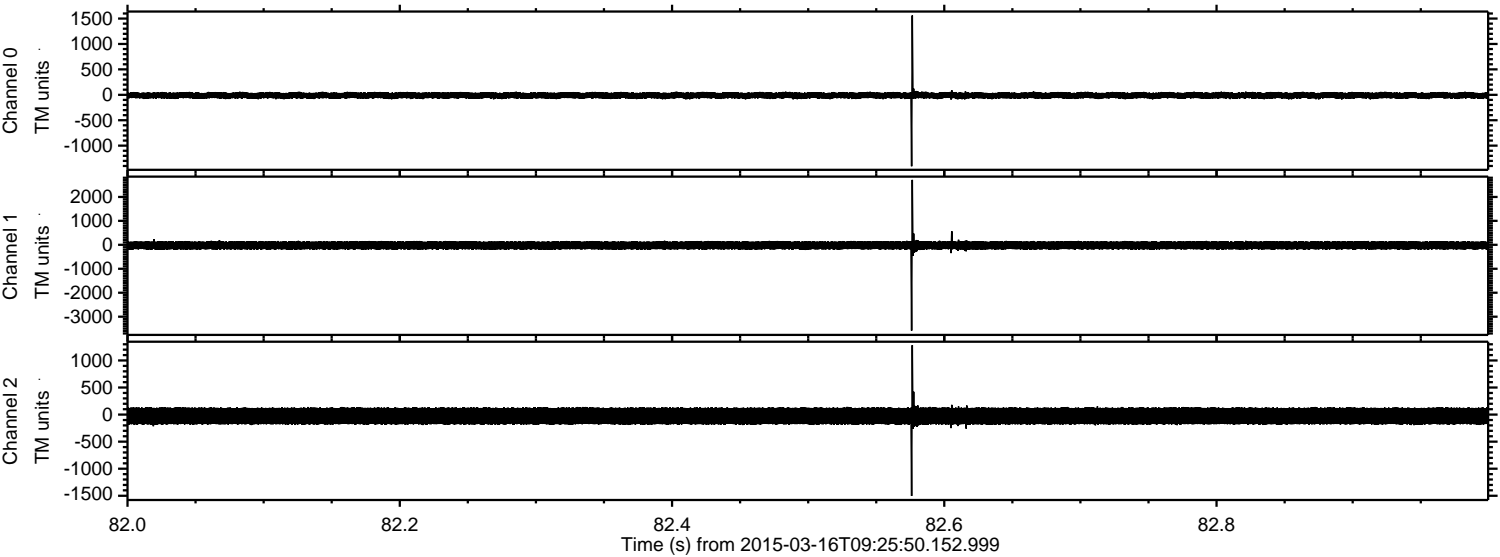


ELMAVAN 3D WAVEFORMS (Measured data sampled at 50 kHz) 49806 packets of 144 samples from 2015-03-16T09:25:50.152.999.

Processed Mon Mar 16 15:11:08 2015 by ELM ver.2012-10-06 from 001__elm20150316_092549__dat00.bin



Processed Mon Mar 16 15:11:20 2015 by ELM ver.2012-10-06 from 001__elm20150316_092549__dat00.bin

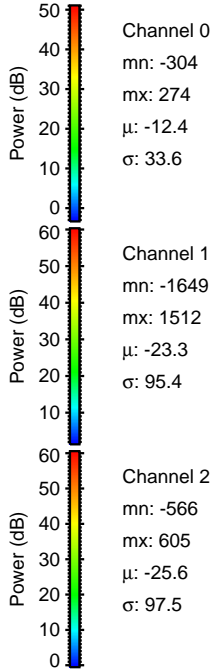
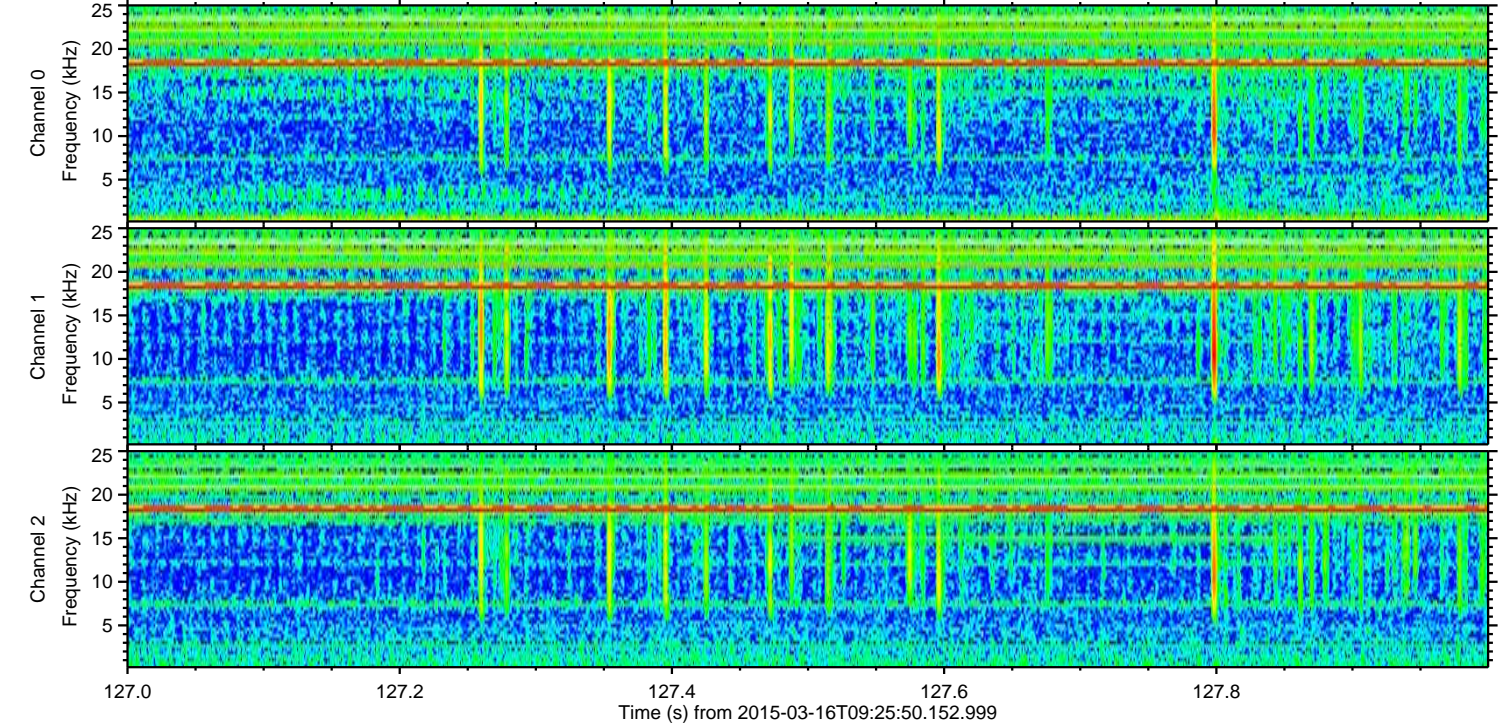
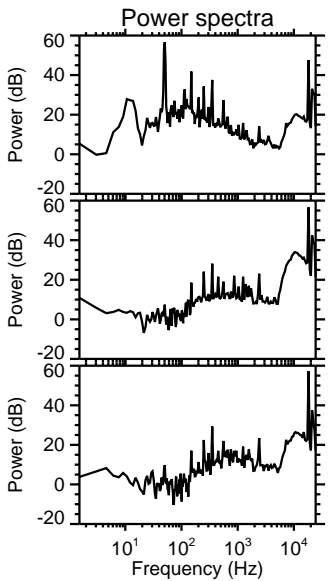
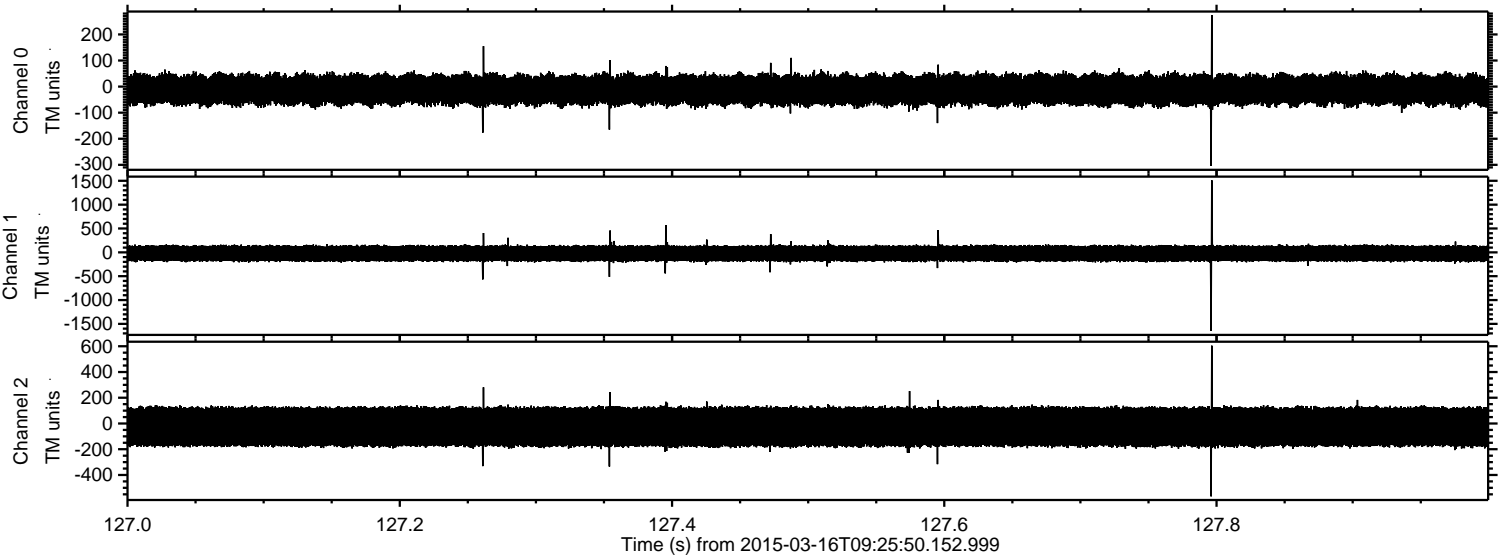


Channel 0
mn: -1405
mx: 1560
 μ : -12.3
 σ : 35.9

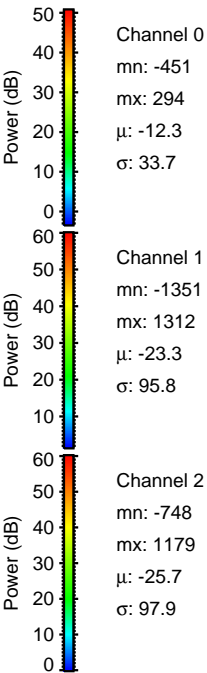
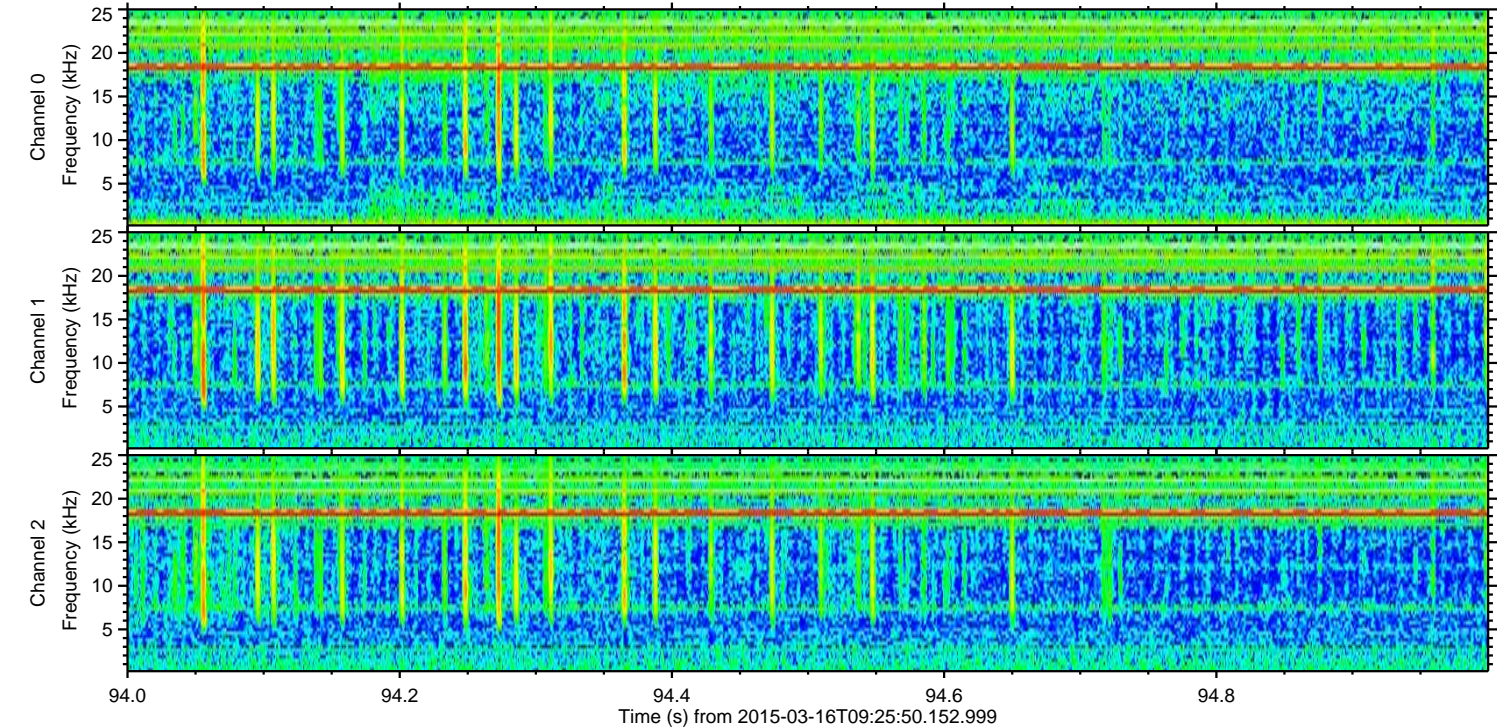
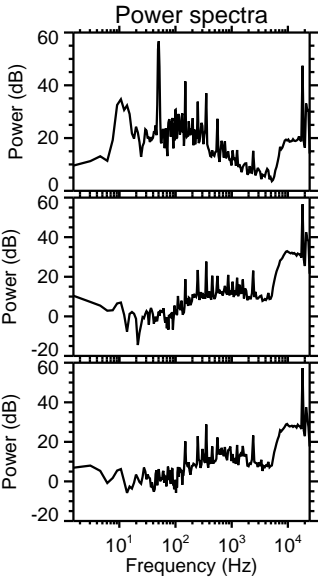
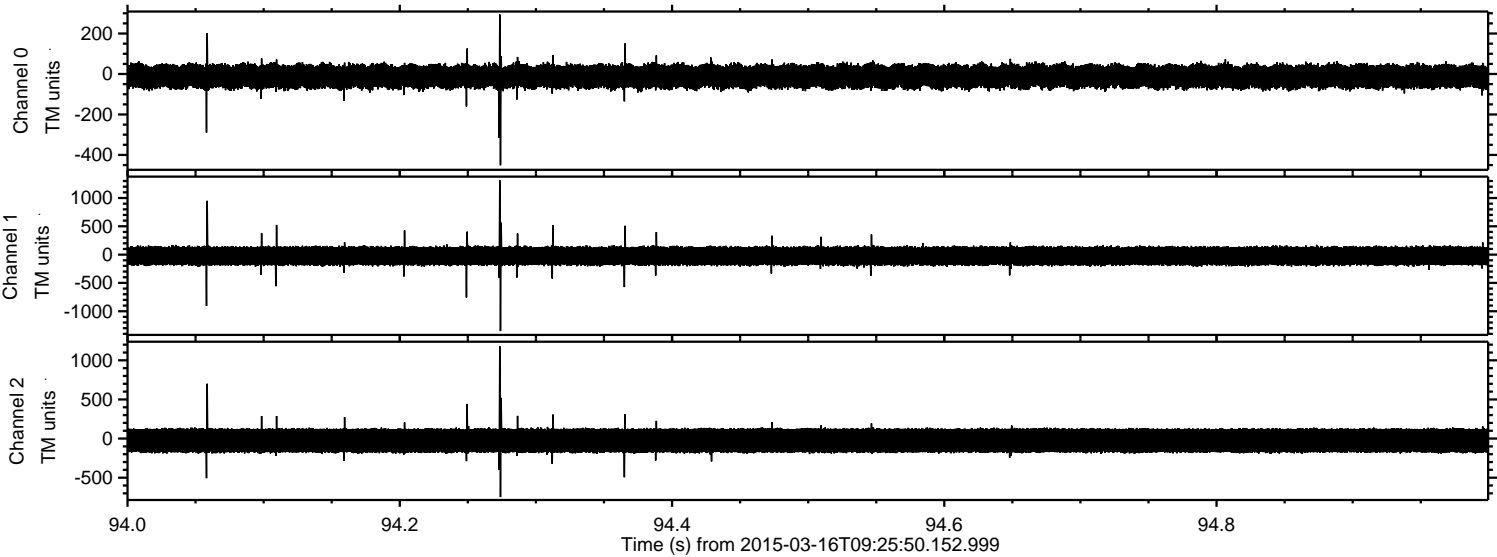
Channel 1
mn: -3582
mx: 2712
 μ : -23.3
 σ : 98.9

Channel 2
mn: -1503
mx: 1283
 μ : -25.6
 σ : 98.3

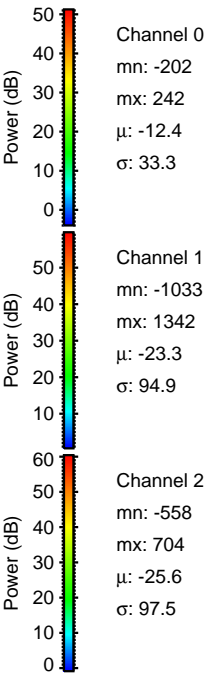
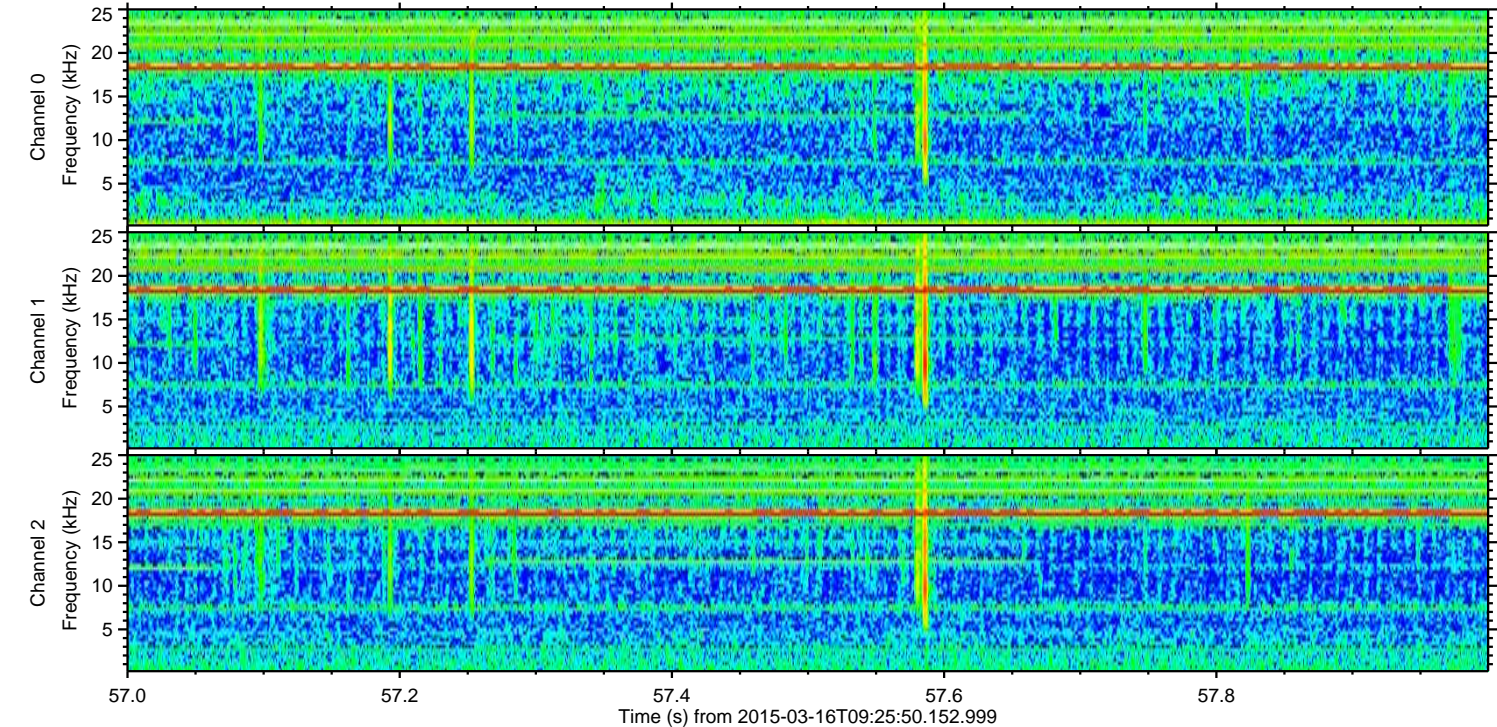
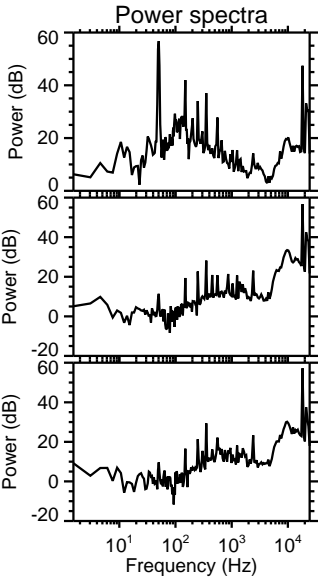
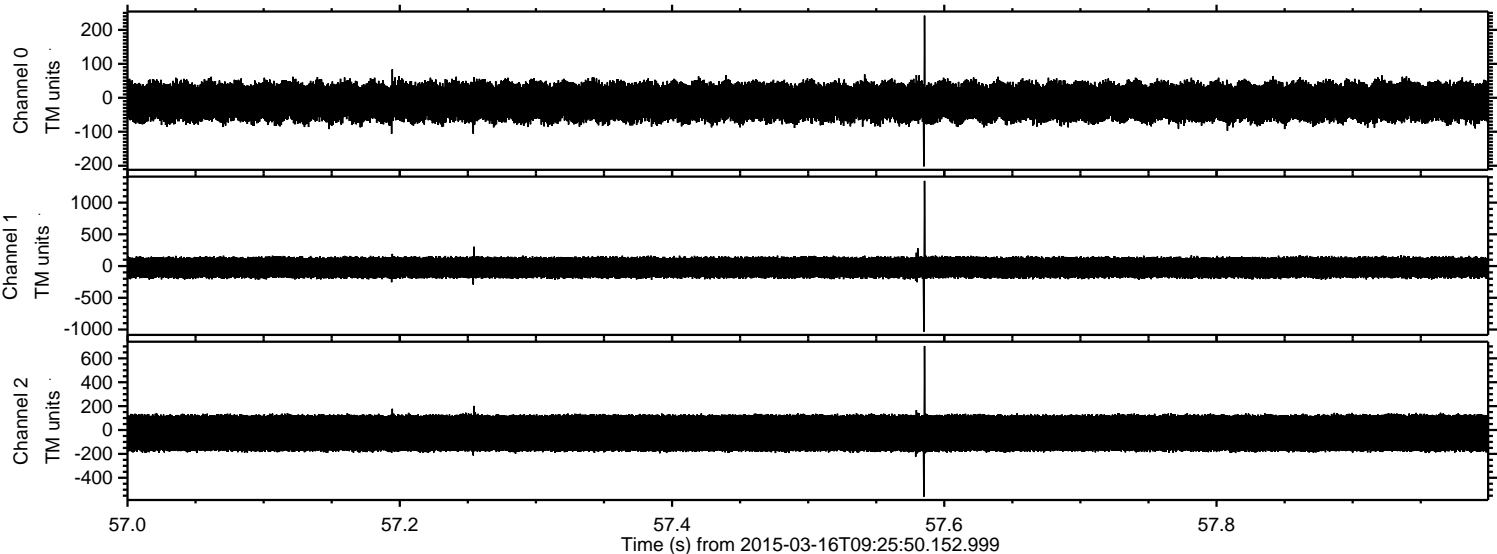
Processed Mon Mar 16 15:11:21 2015 by ELM ver.2012-10-06 from 001__elm20150316_092549__dat00.bin



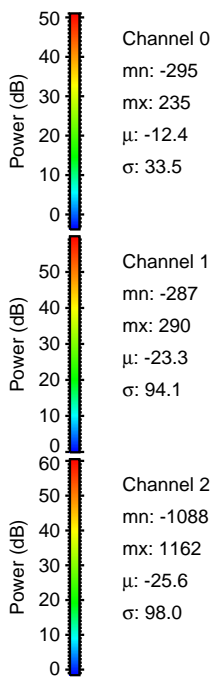
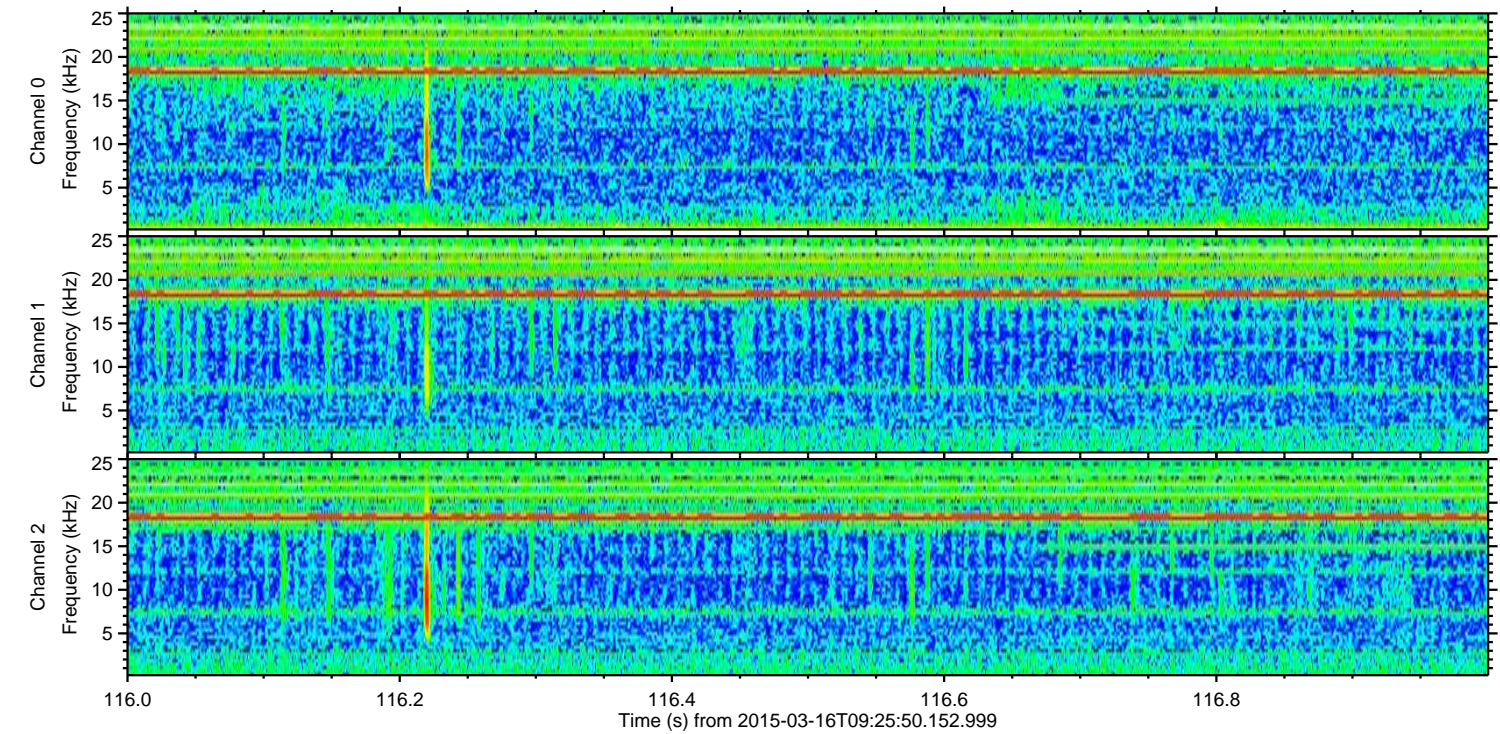
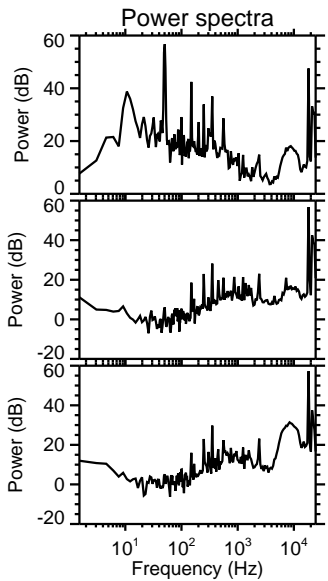
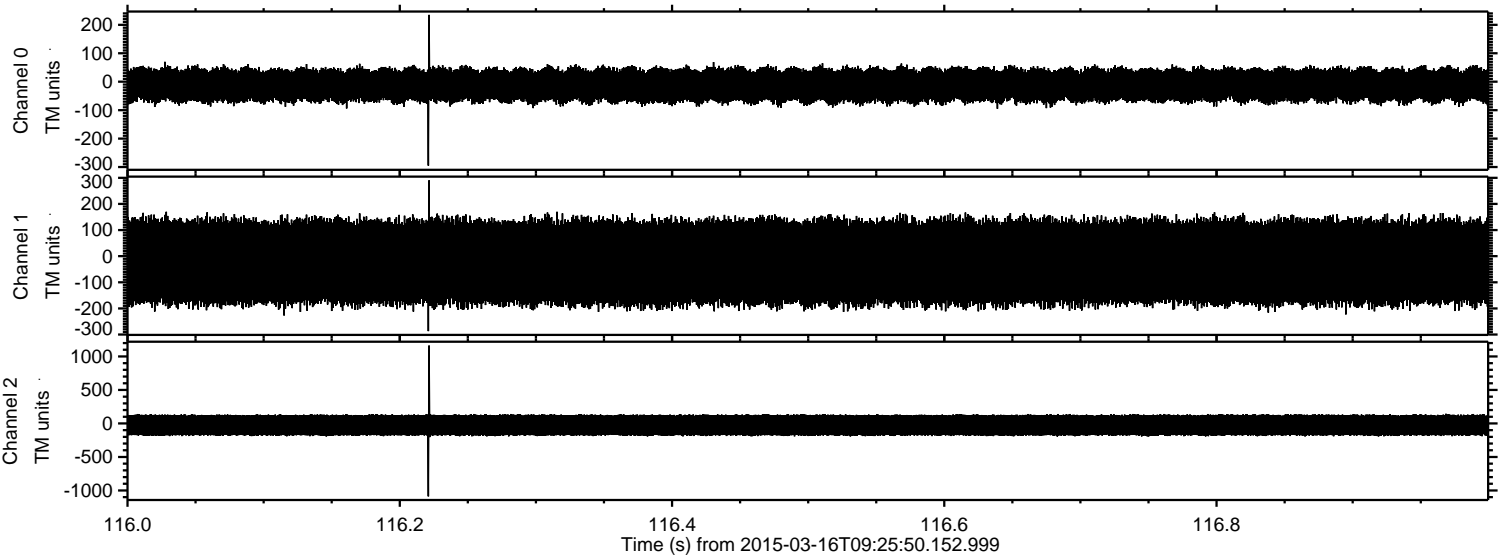
Processed Mon Mar 16 15:11:22 2015 by ELM ver.2012-10-06 from 001__elm20150316_092549__dat00.bin



Processed Mon Mar 16 15:11:23 2015 by ELM ver.2012-10-06 from 001__elm20150316_092549__dat00.bin

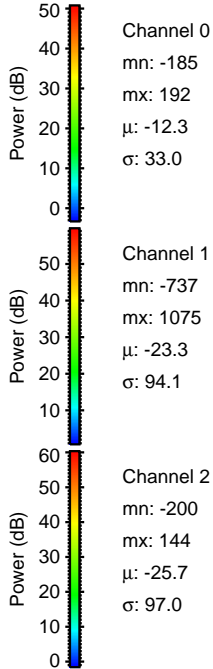
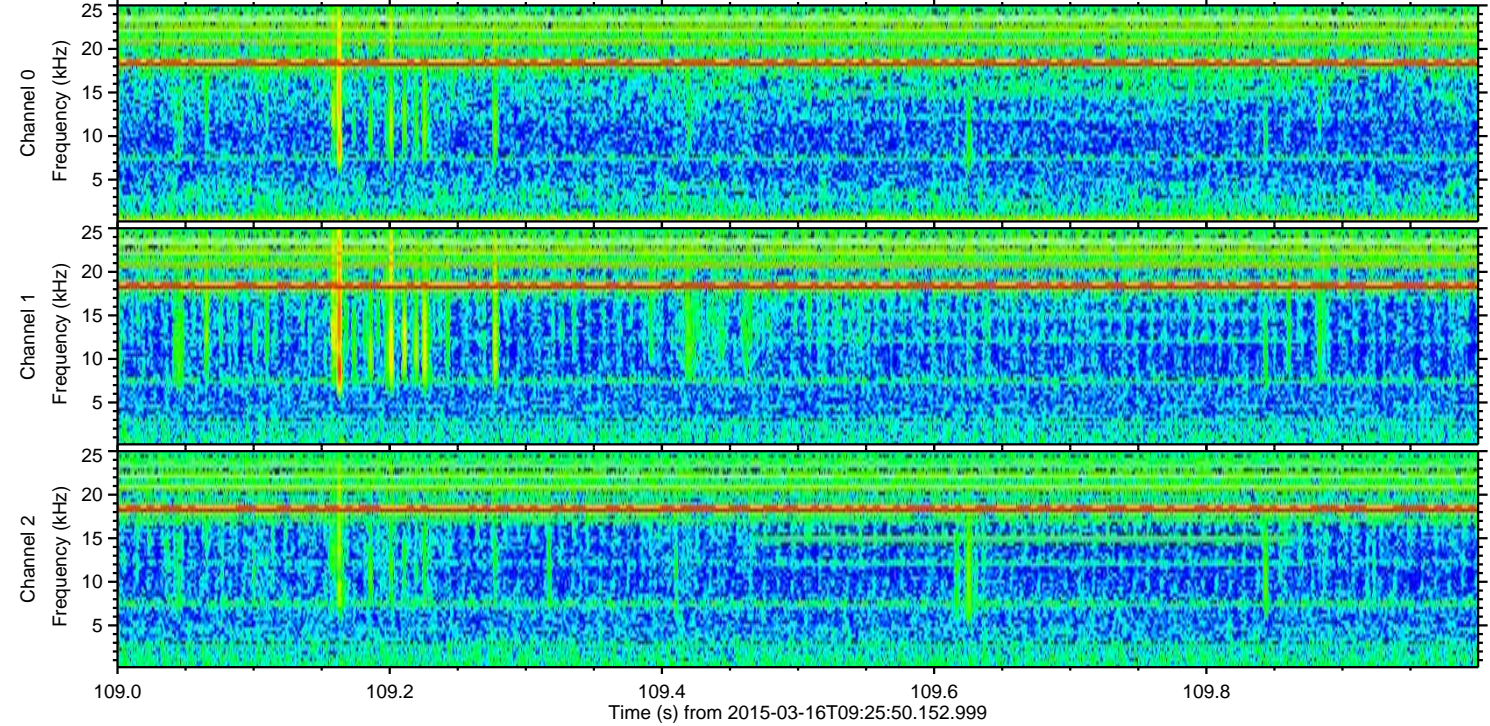
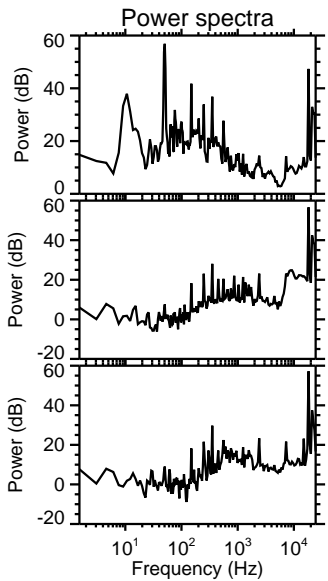
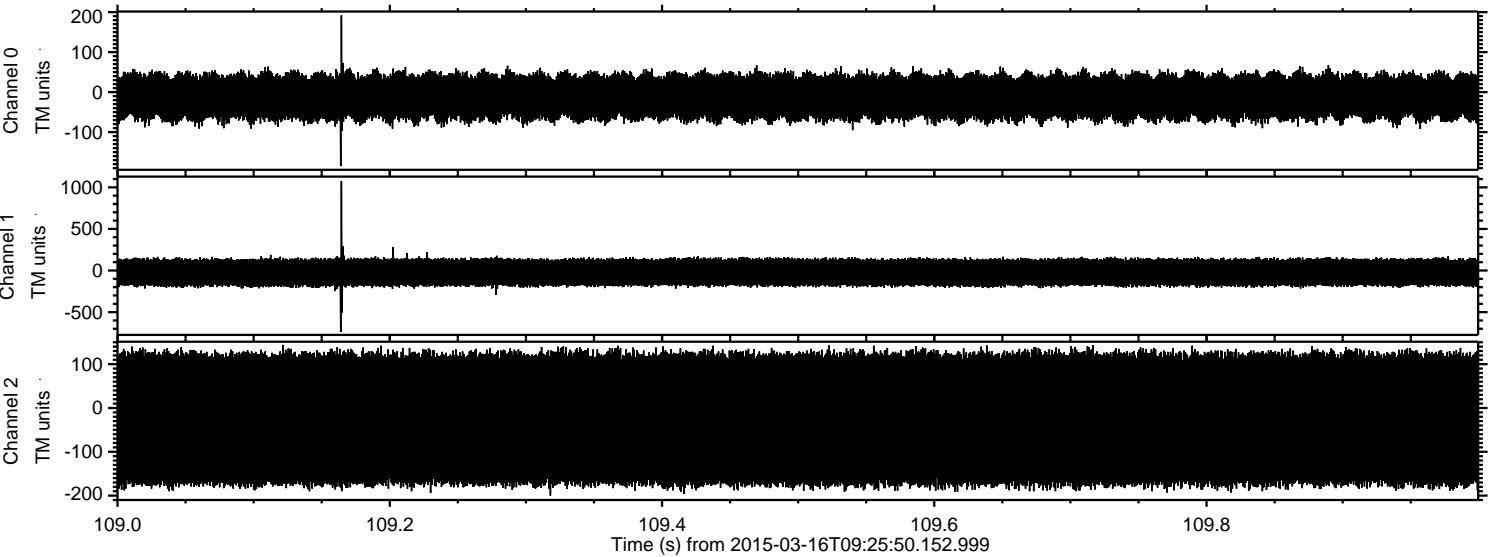


Processed Mon Mar 16 15:11:24 2015 by ELM ver.2012-10-06 from 001__elm20150316_092549__dat00.bin



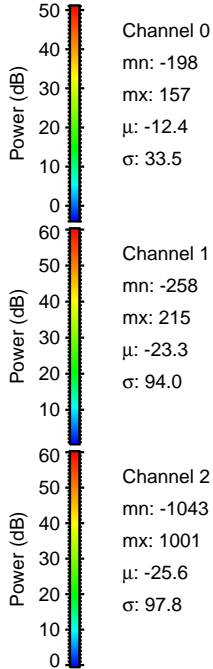
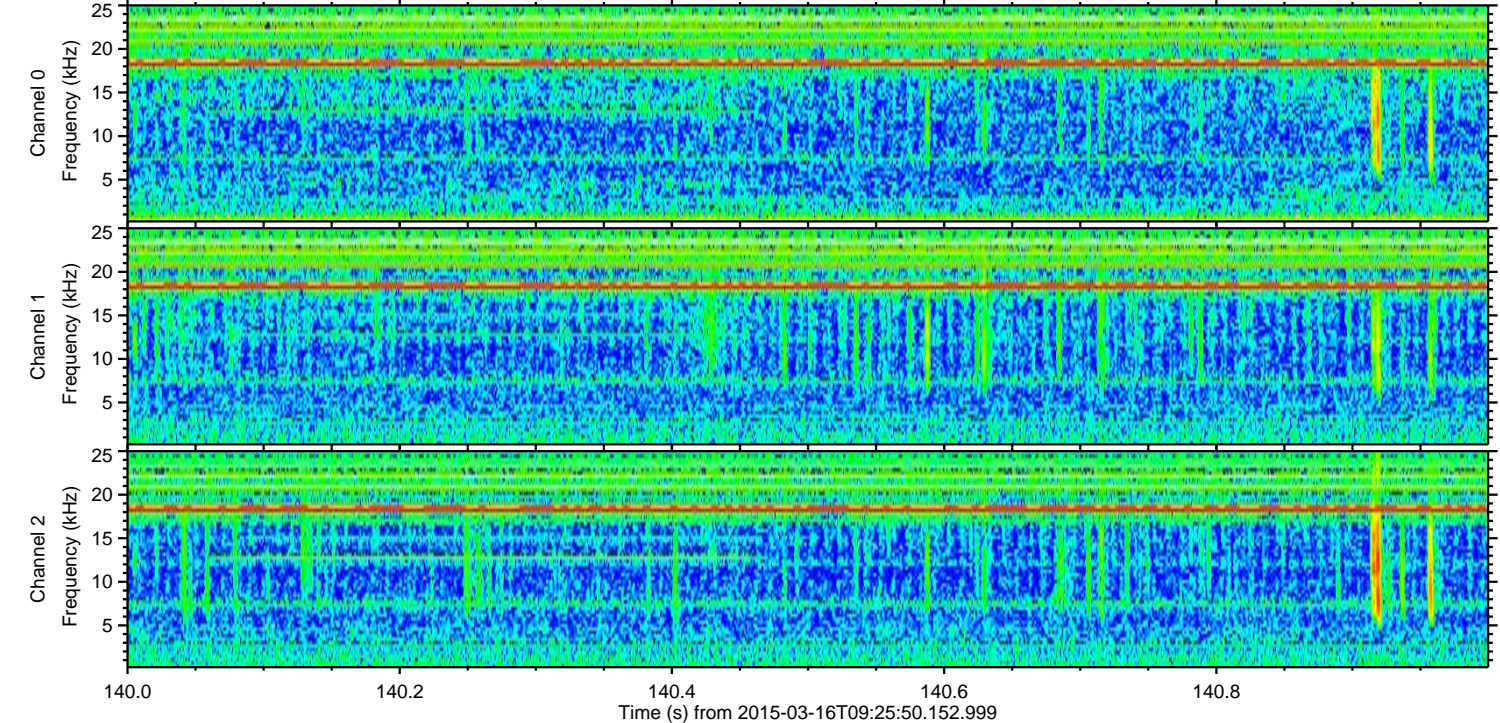
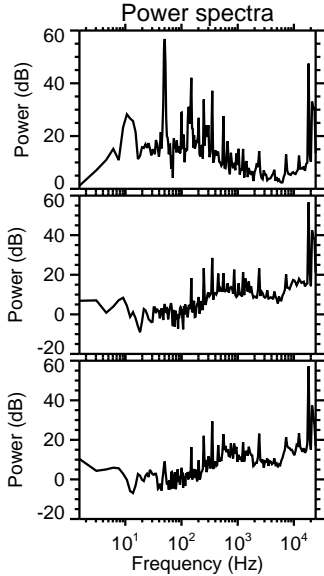
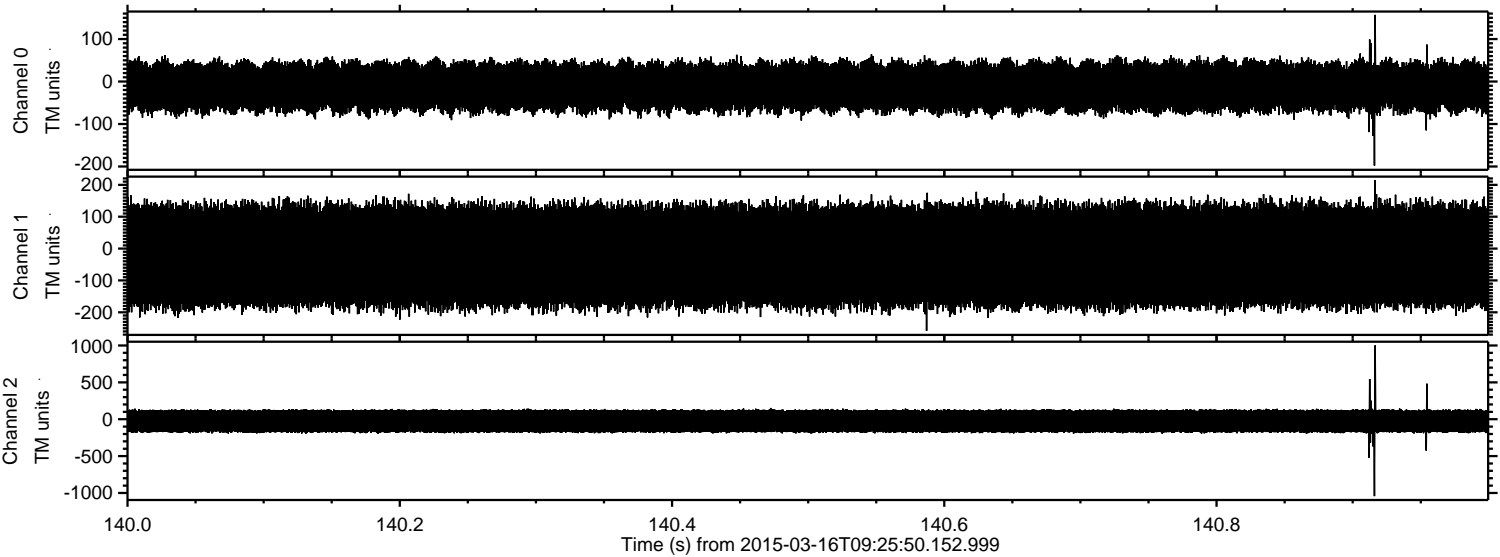
ELMAVAN 3D WAVEFORMS (Measured data sampled at 50 kHz) 49806 packets of 144 samples from 2015-03-16T09:25:50.152.999. Part 110/144

Processed Mon Mar 16 15:11:24 2015 by ELM ver.2012-10-06 from 001__elm20150316_092549__dat00.bin

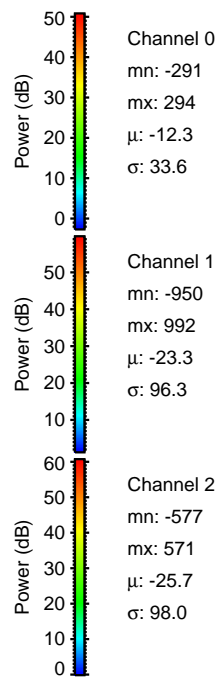
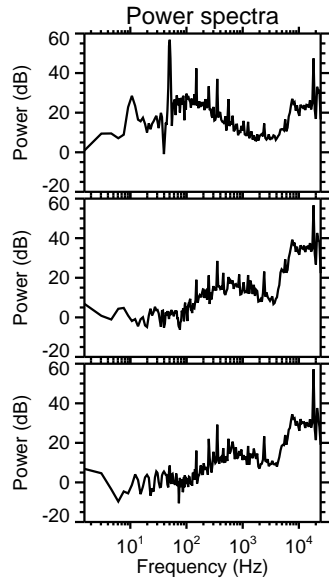
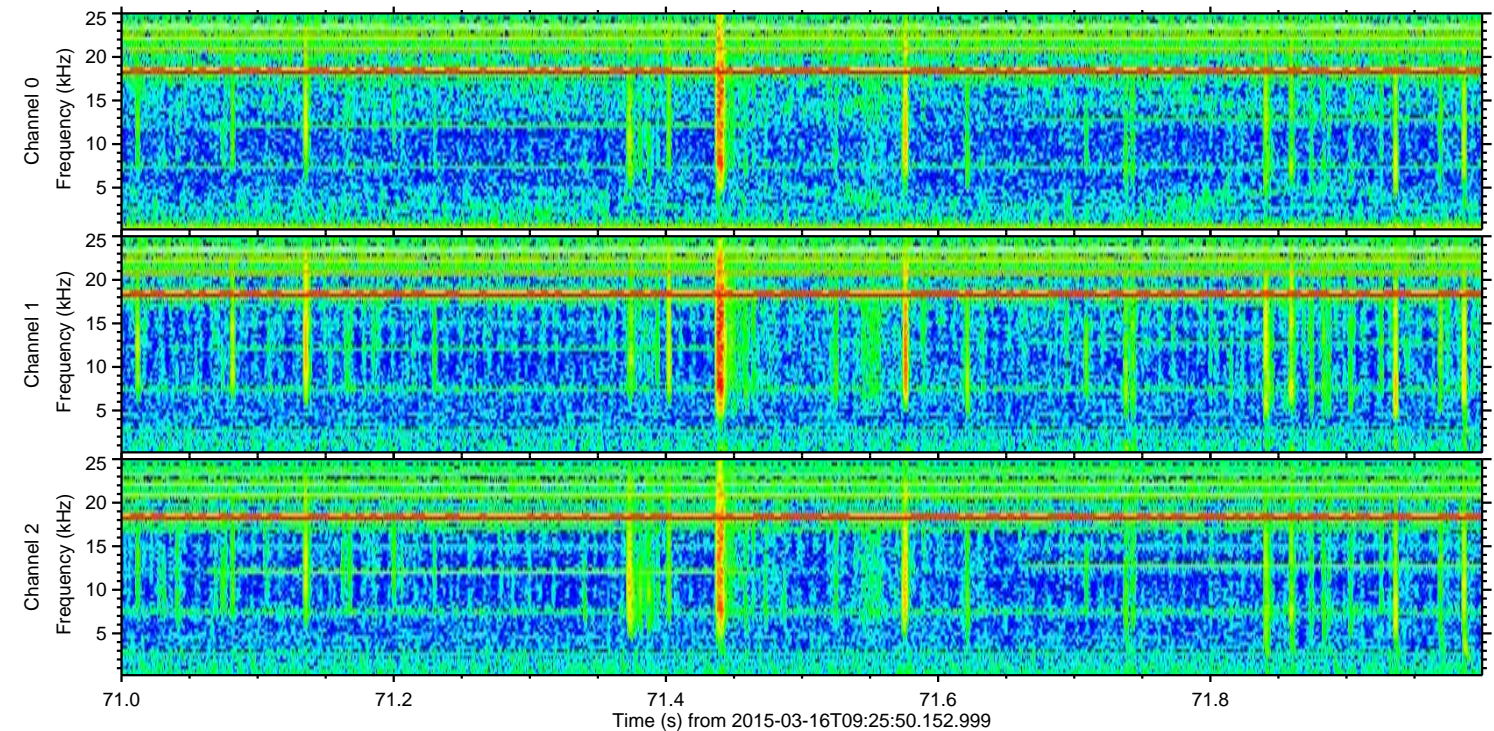
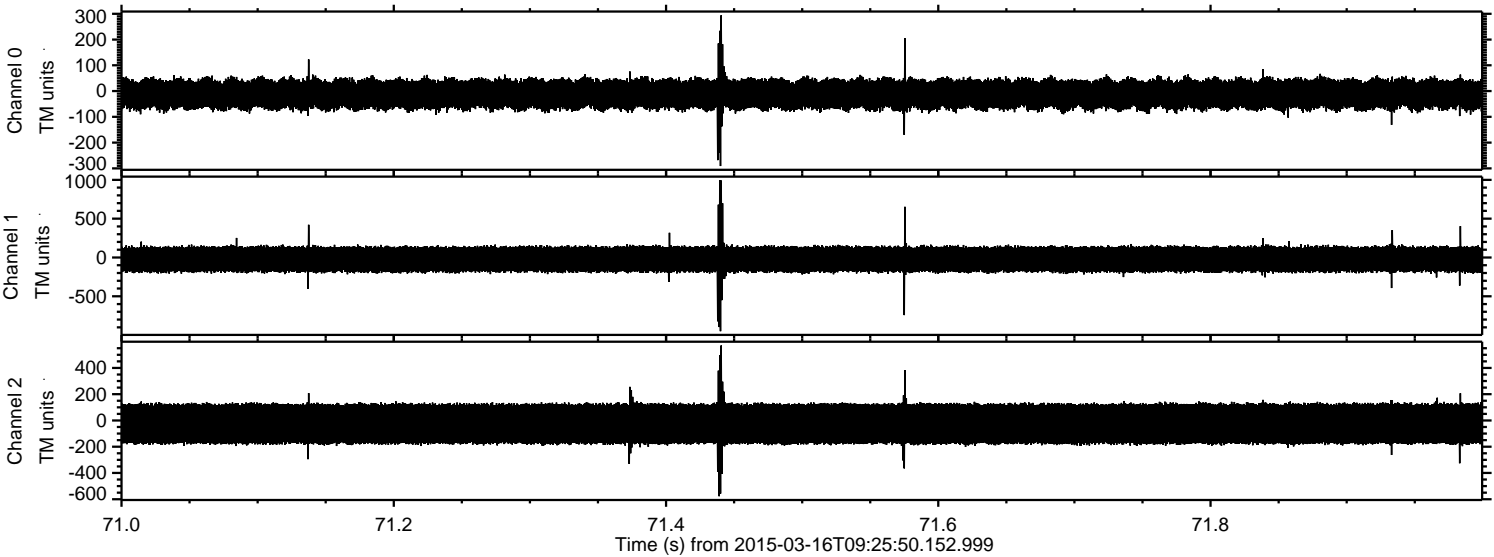


ELMAVAN 3D WAVEFORMS (Measured data sampled at 50 kHz) 49806 packets of 144 samples from 2015-03-16T09:25:50.152.999. Part 141/144

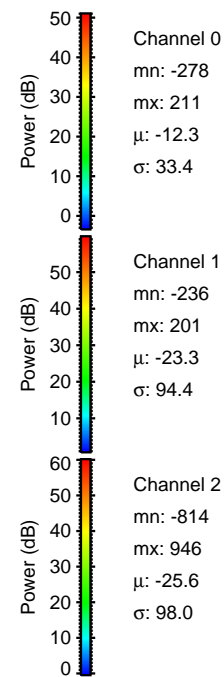
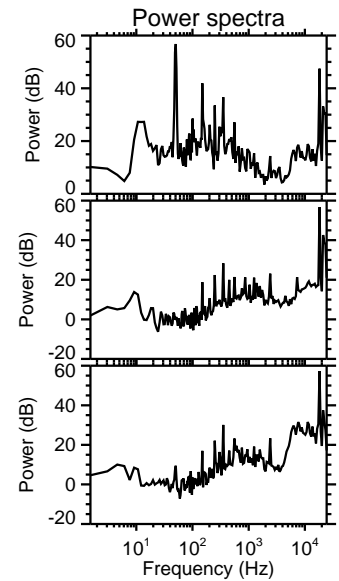
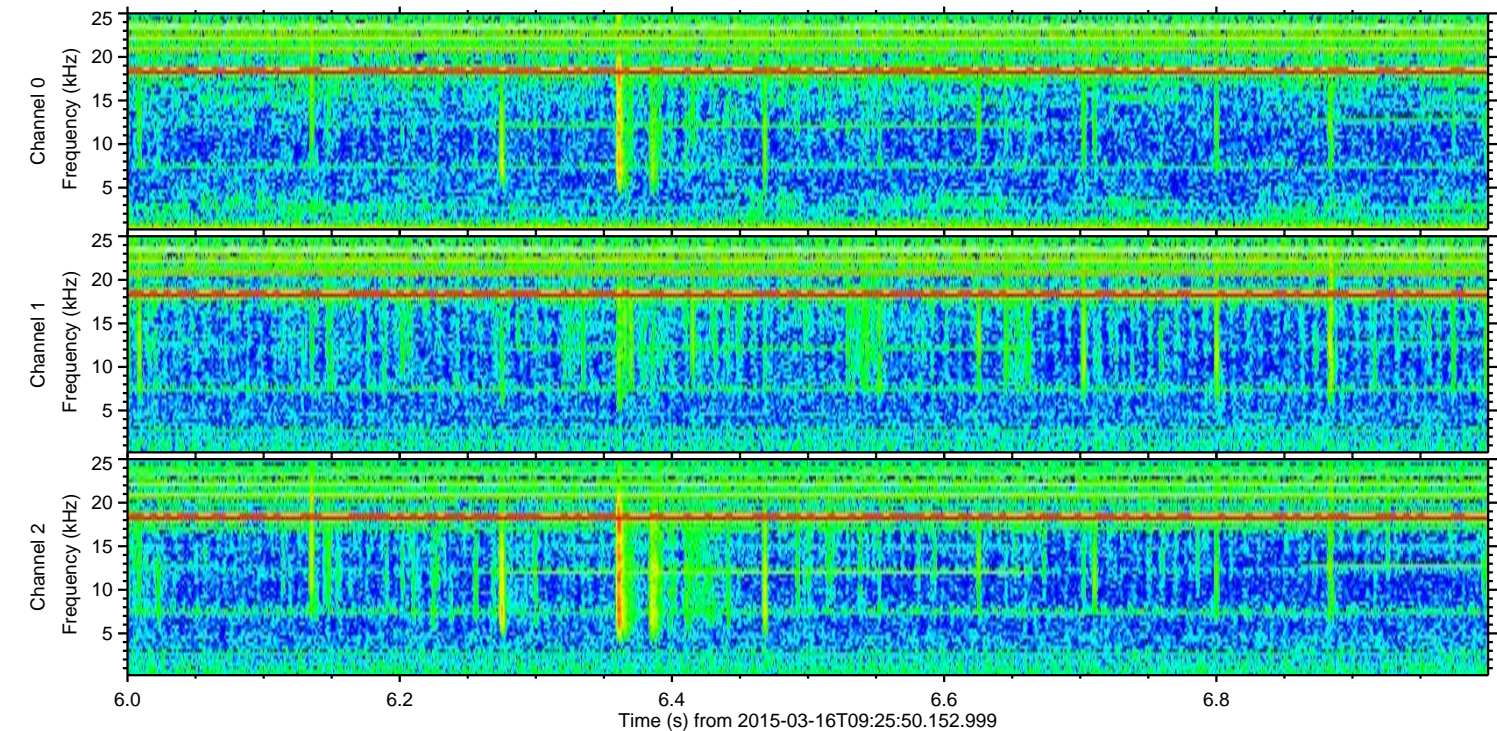
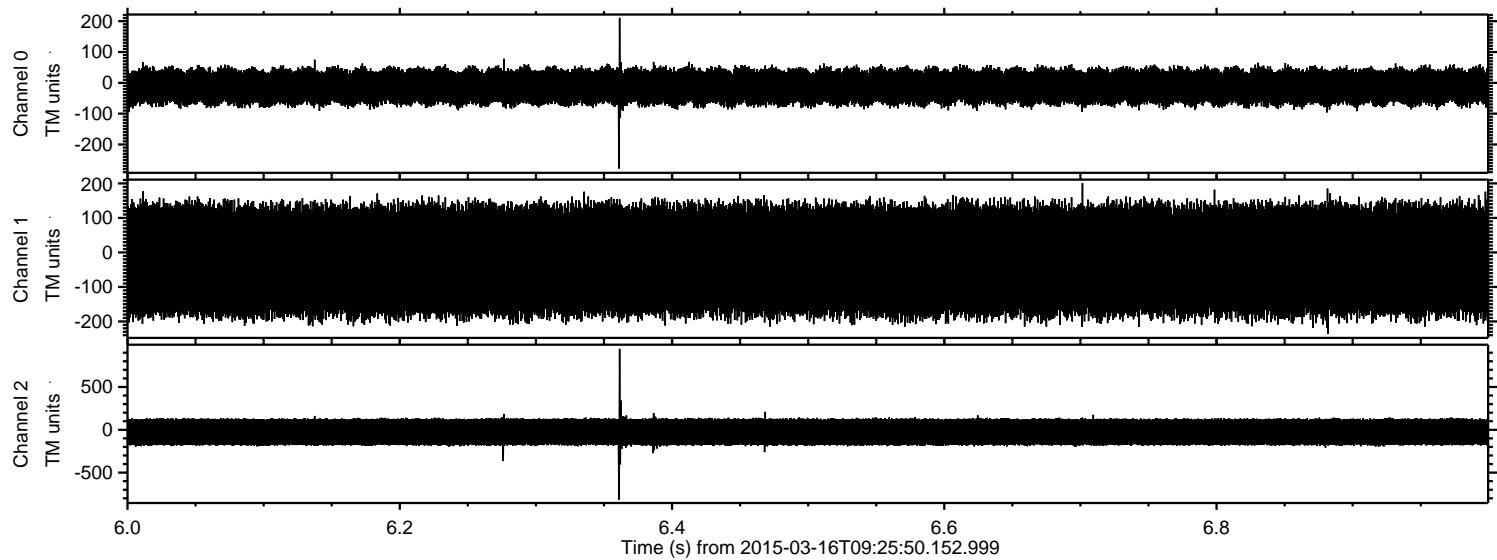
Processed Mon Mar 16 15:11:25 2015 by ELM ver.2012-10-06 from 001__elm20150316_092549__dat00.bin



Processed Mon Mar 16 15:11:26 2015 by ELM ver.2012-10-06 from 001__elm20150316_092549__dat00.bin



Processed Mon Mar 16 15:11:27 2015 by ELM ver.2012-10-06 from 001__elm20150316_092549__dat00.bin



Channel 0
mn: -278
mx: 211
 μ : -12.3
 σ : 33.4

Channel 1
mn: -236
mx: 201
 μ : -23.3
 σ : 94.4

Channel 2
mn: -814
mx: 946
 μ : -25.6
 σ : 98.0

Processed Mon Mar 16 15:11:28 2015 by ELM ver.2012-10-06 from 001__elm20150316_092549__dat00.bin

