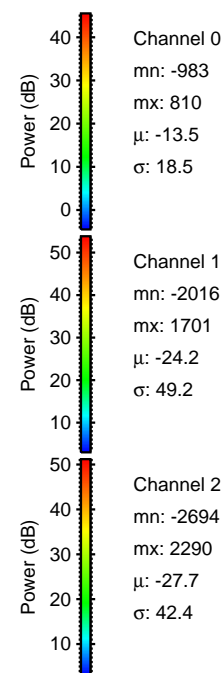
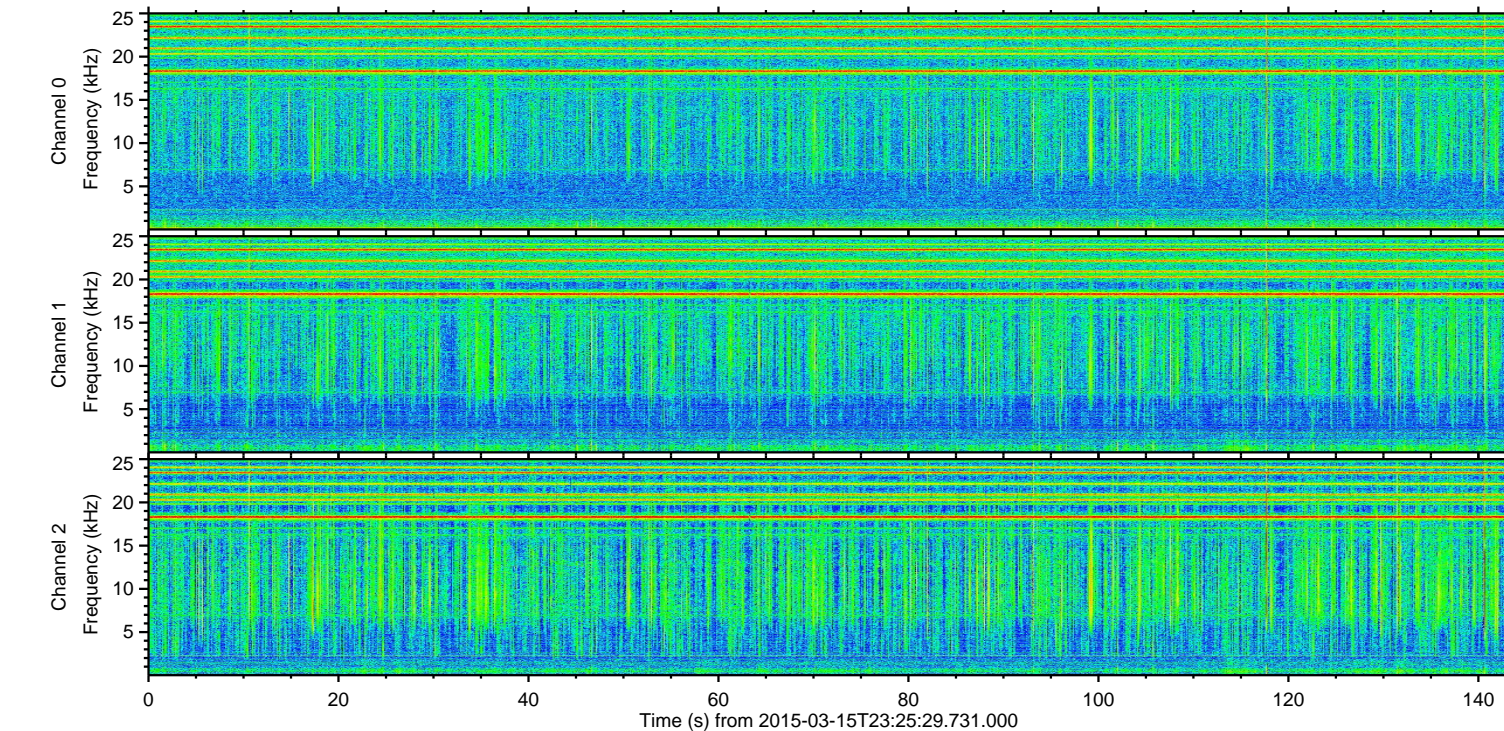
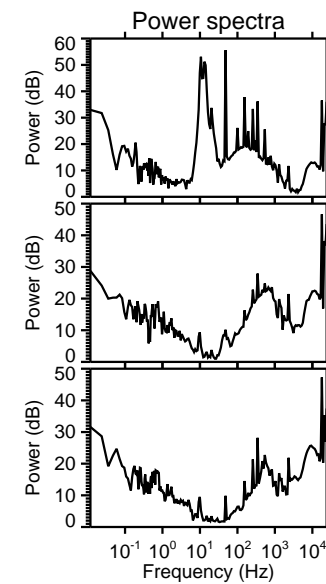
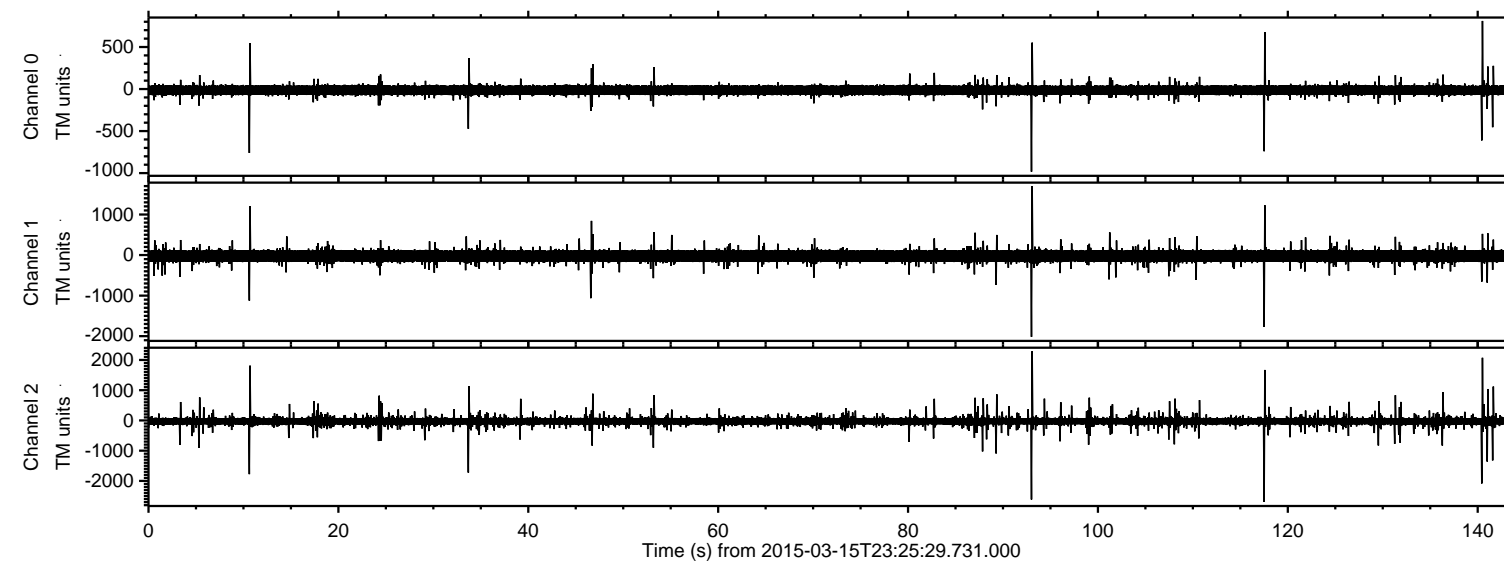


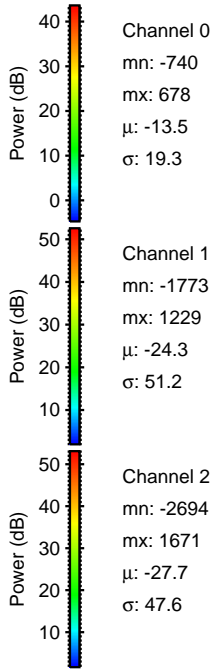
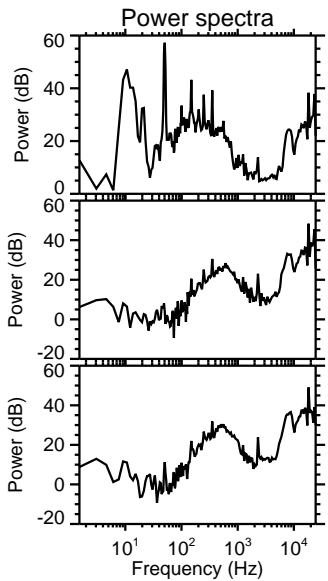
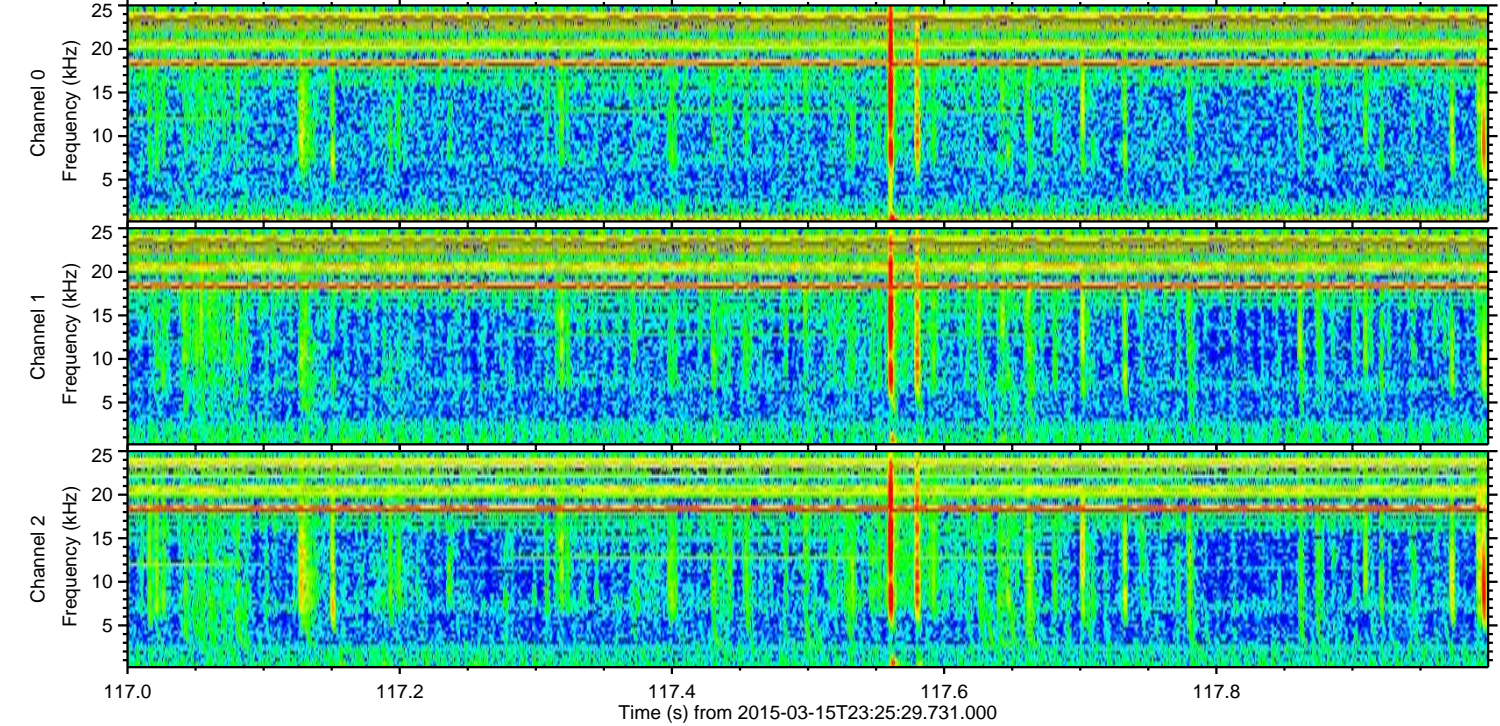
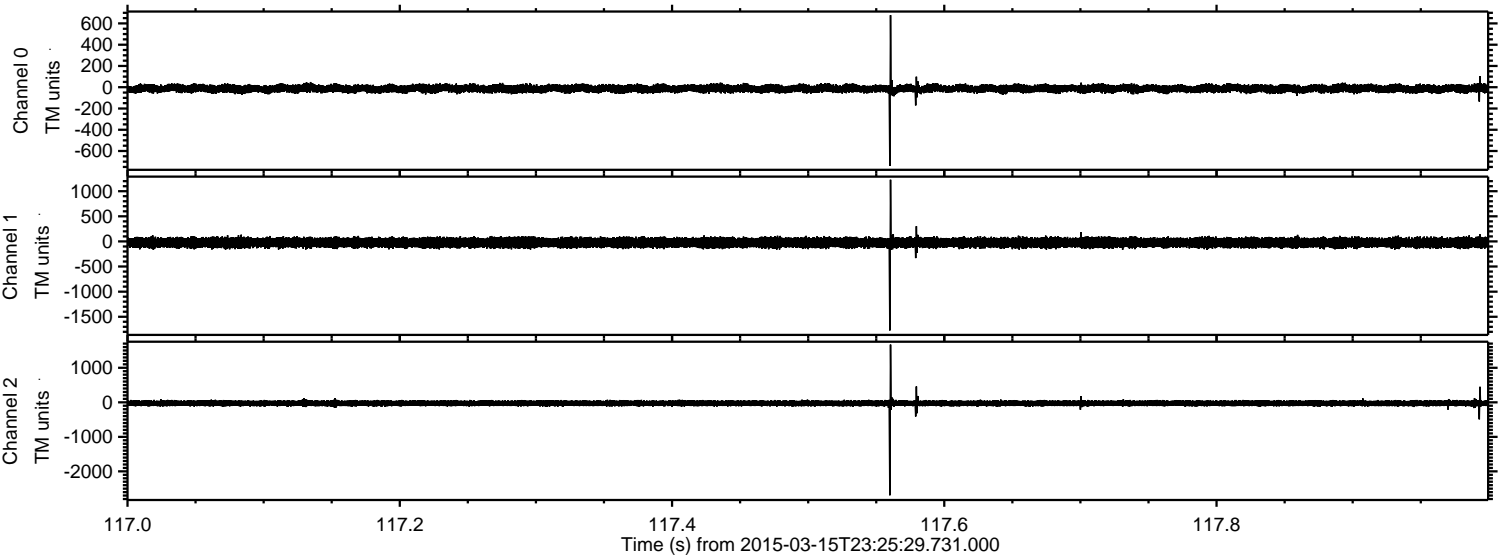
ELMAVAN 3D WAVEFORMS (Measured data sampled at 50 kHz) 49762 packets of 144 samples from 2015-03-15T23:25:29.731.000.

Processed Mon Mar 16 00:48:32 2015 by ELM ver.2012-10-06 from 001__elm20150315_232528__dat00.bin

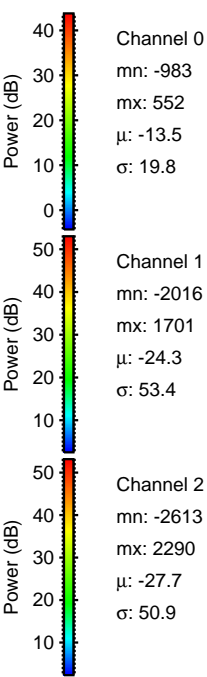
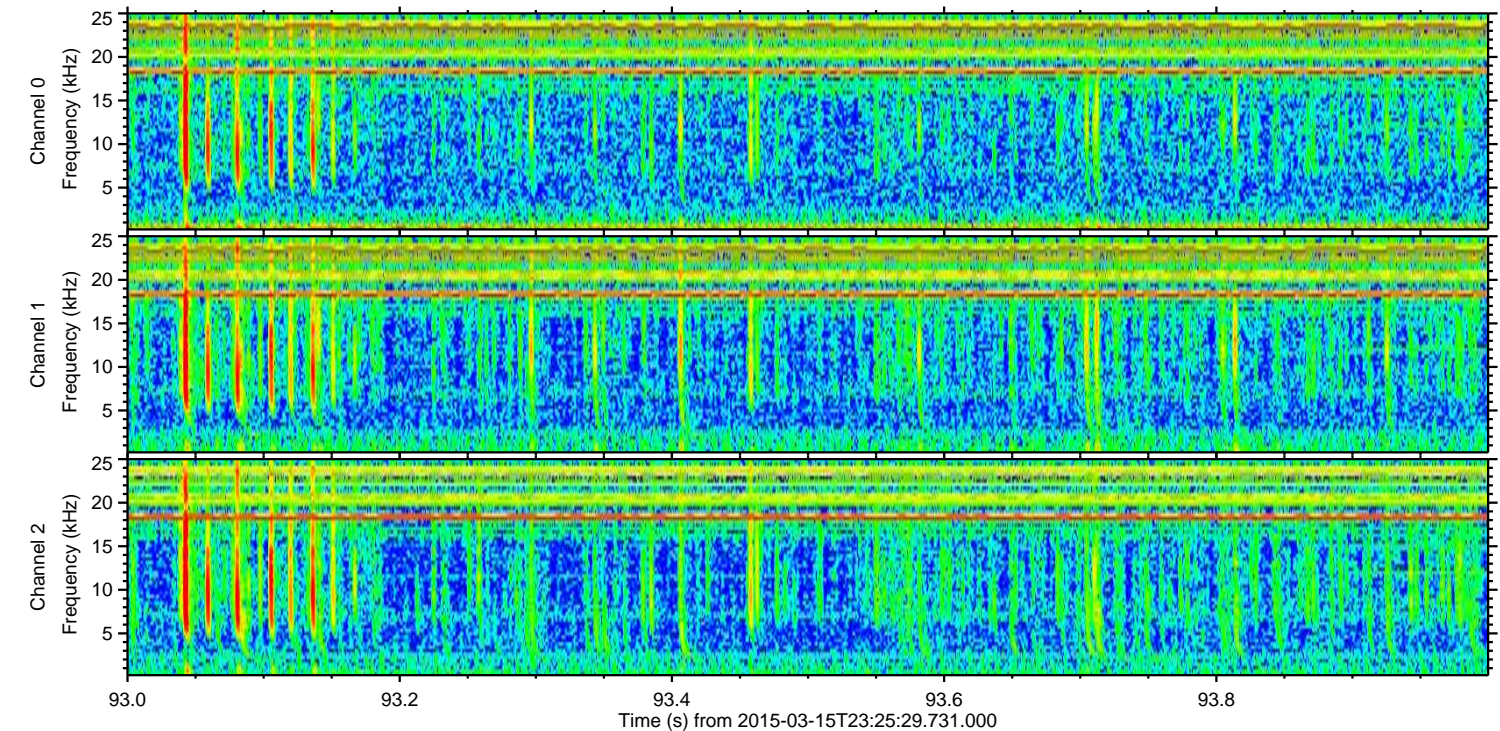
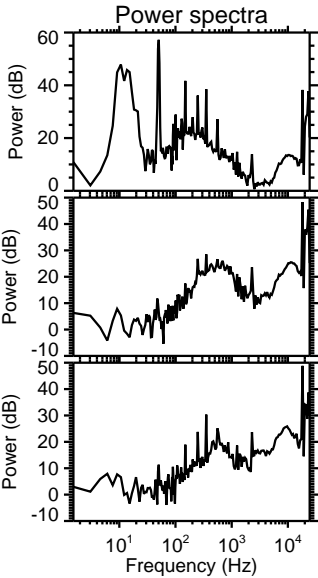
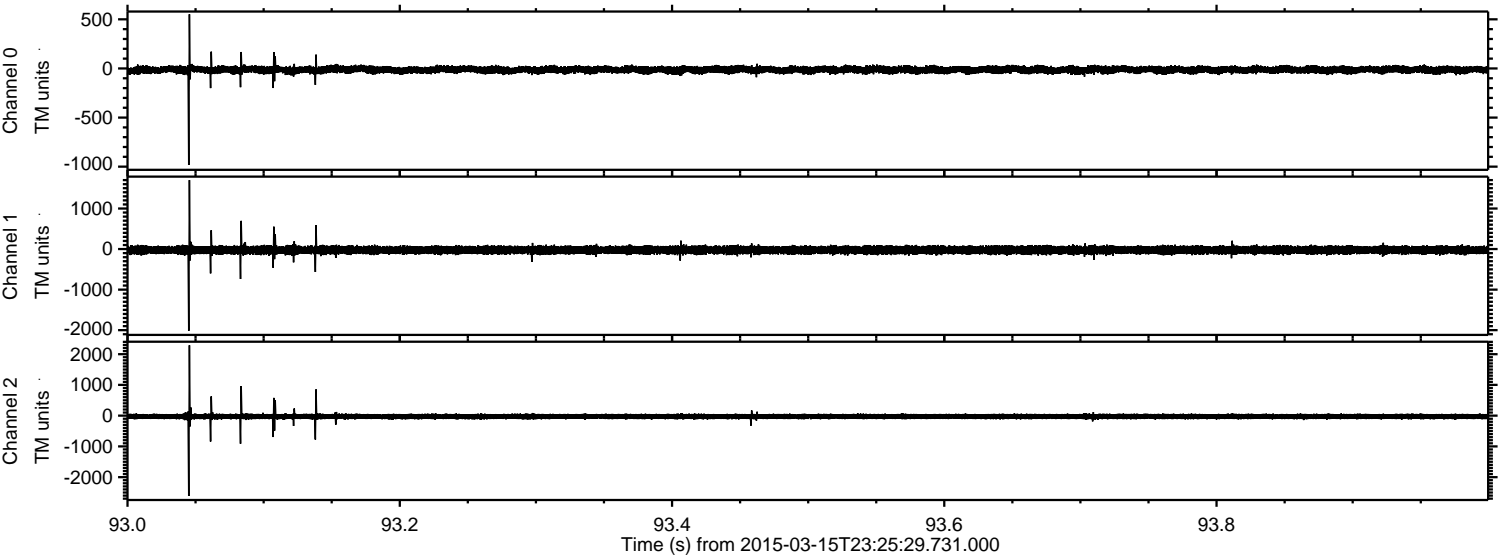


ELMAVAN 3D WAVEFORMS (Measured data sampled at 50 kHz) 49762 packets of 144 samples from 2015-03-15T23:25:29.731.000. Part 118/144

Processed Mon Mar 16 00:48:43 2015 by ELM ver.2012-10-06 from 001__elm20150315_232528__dat00.bin

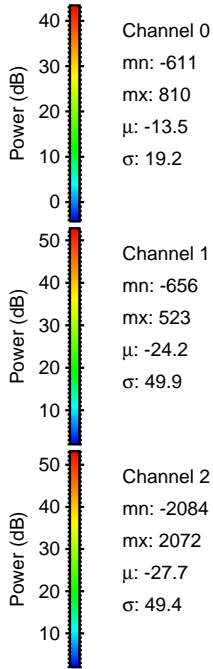
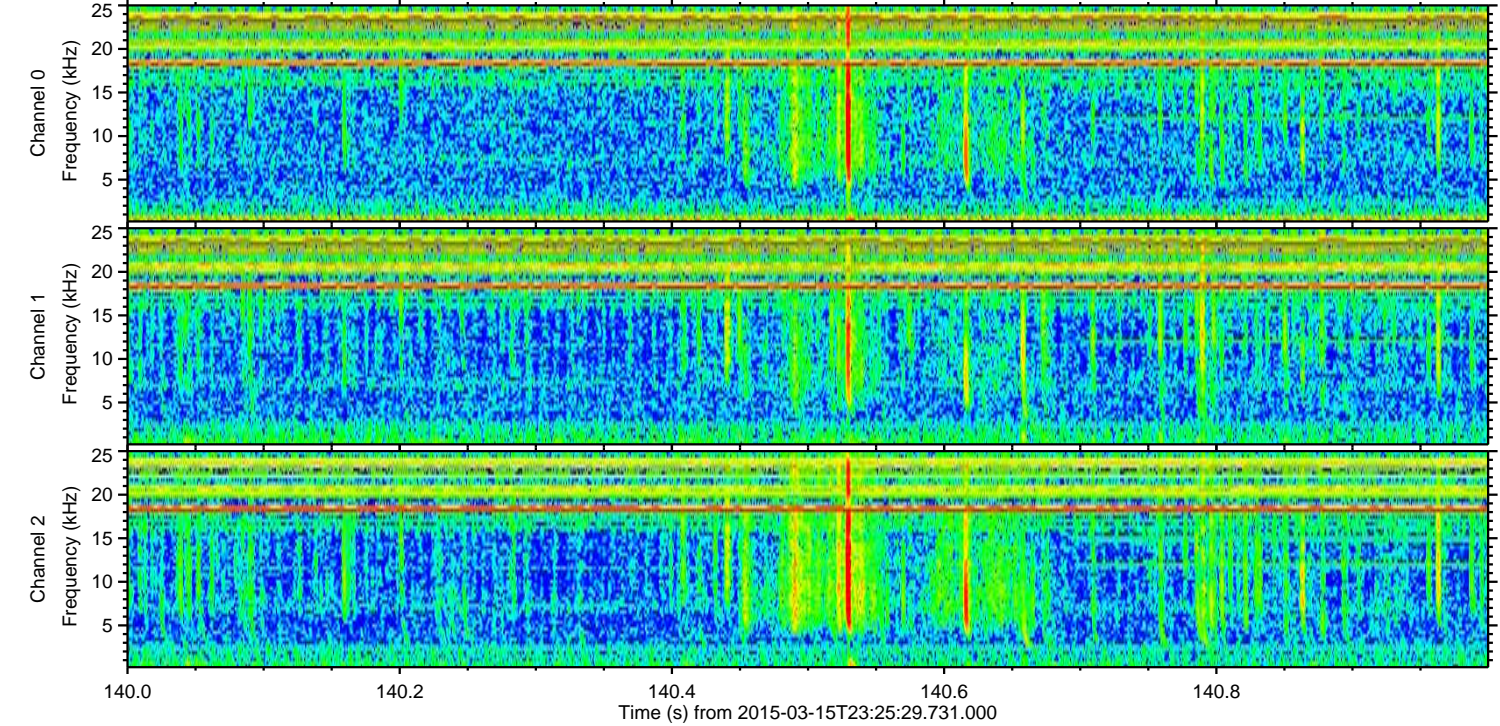
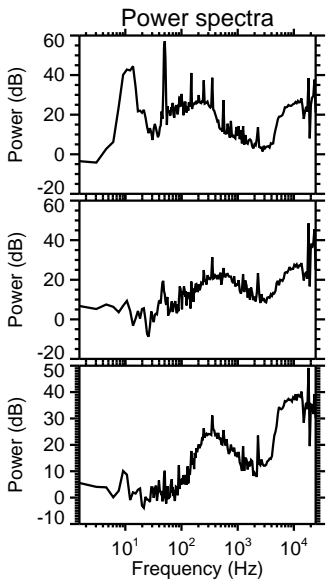
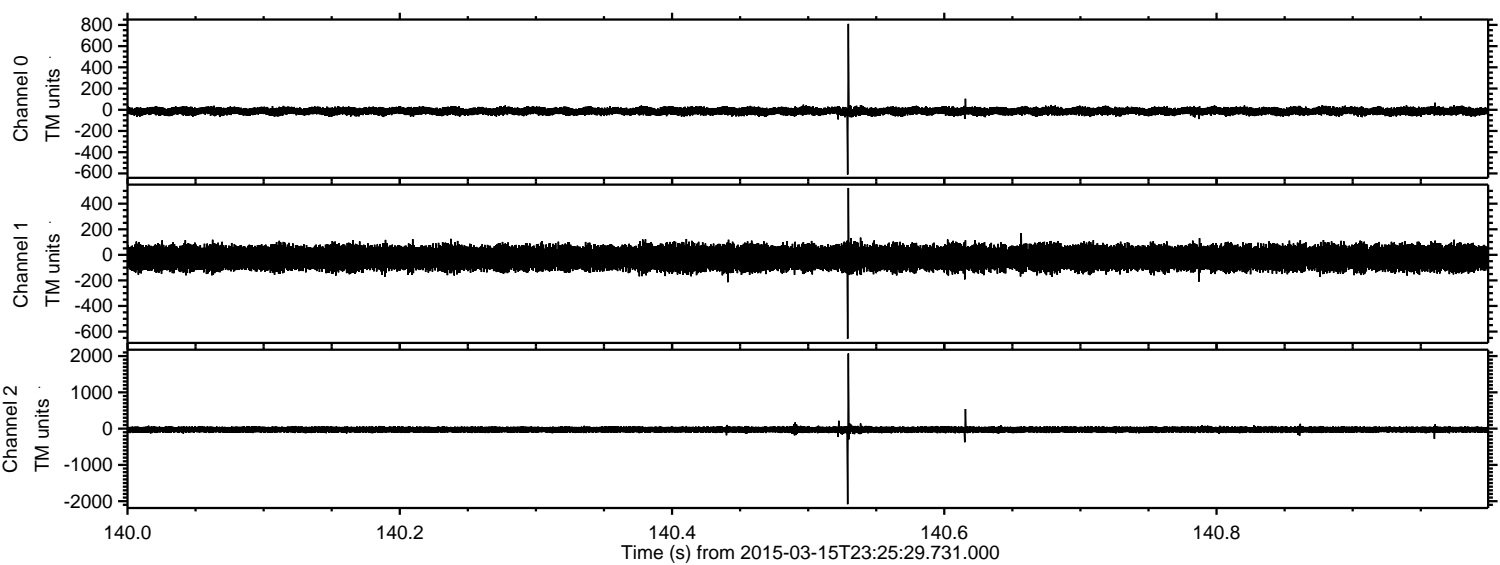


Processed Mon Mar 16 00:48:44 2015 by ELM ver.2012-10-06 from 001__elm20150315_232528__dat00.bin

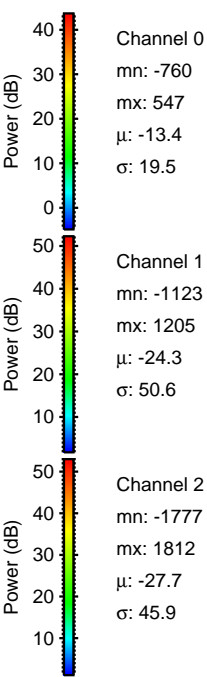
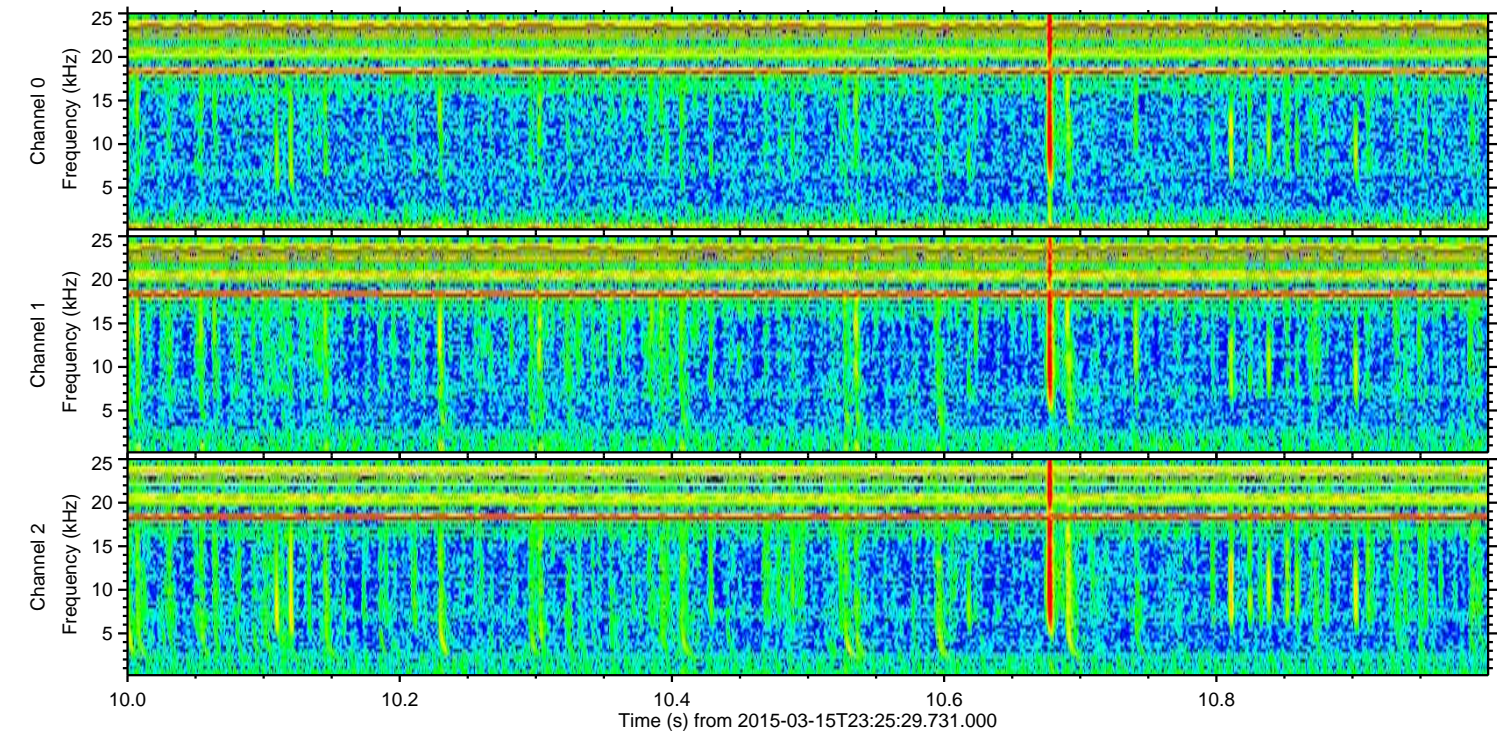
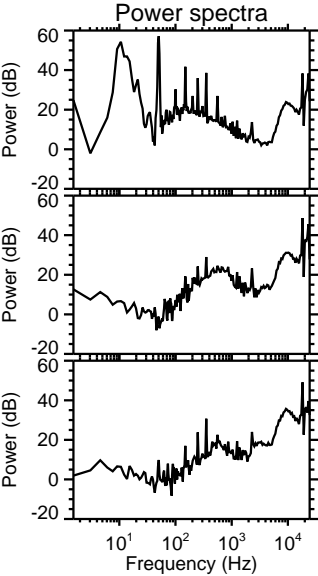
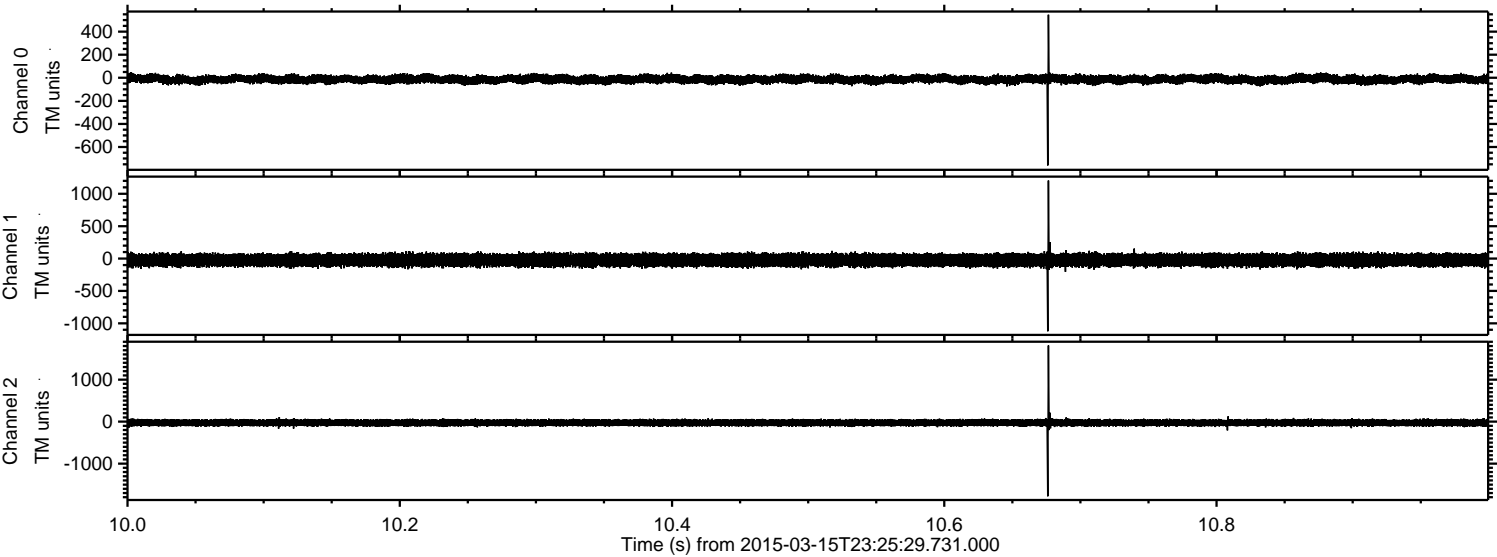


ELMAVAN 3D WAVEFORMS (Measured data sampled at 50 kHz) 49762 packets of 144 samples from 2015-03-15T23:25:29.731.000. Part 141/144

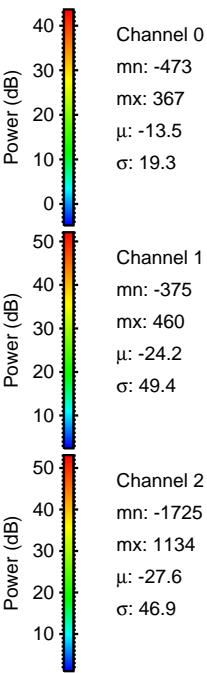
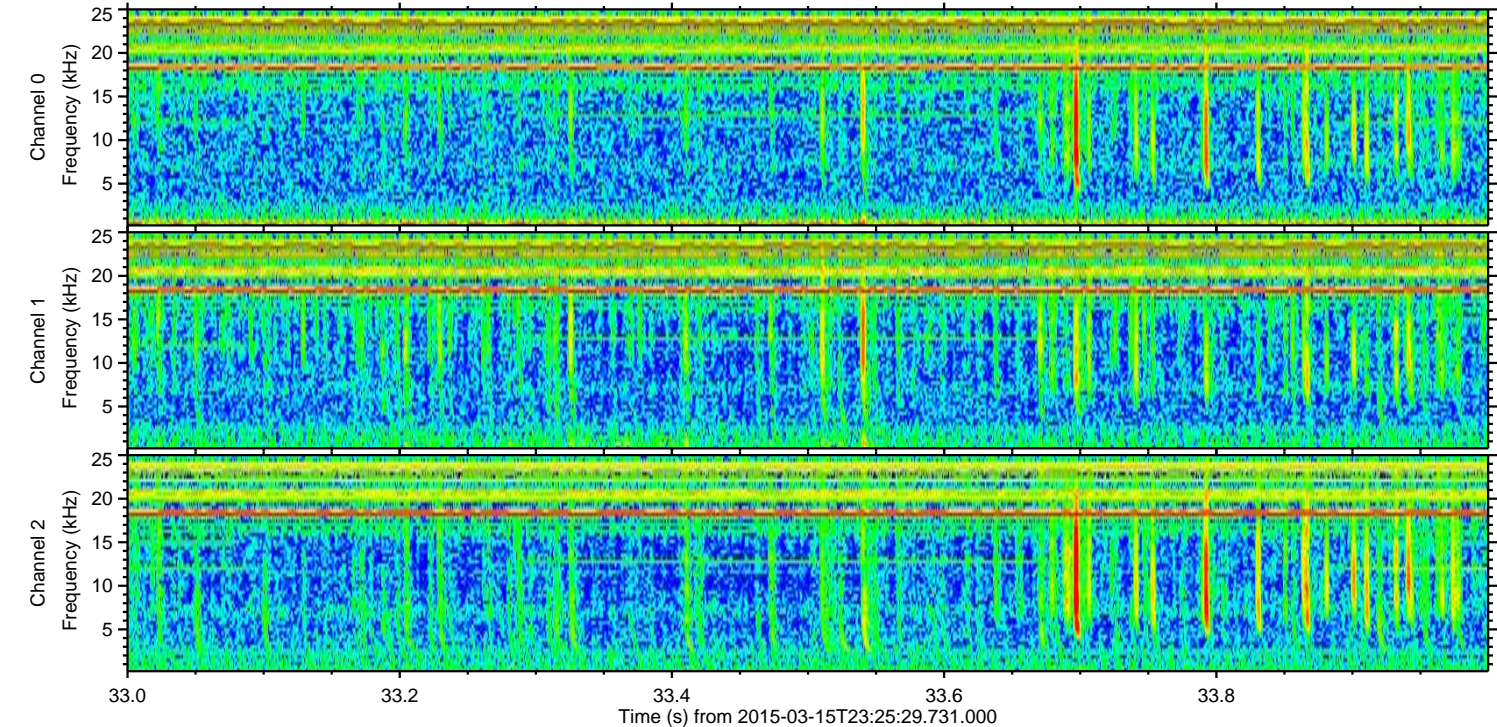
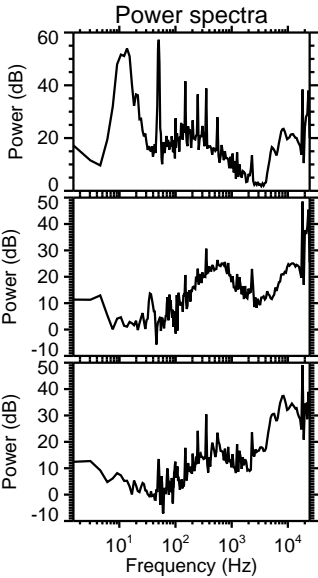
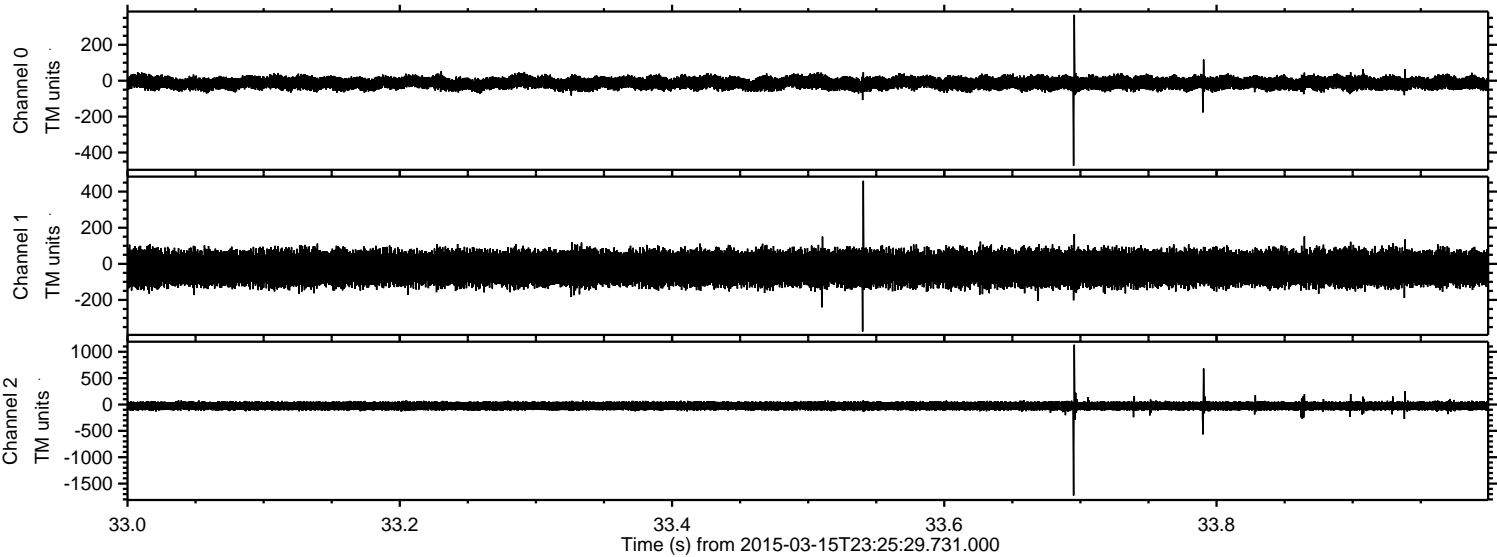
Processed Mon Mar 16 00:48:45 2015 by ELM ver.2012-10-06 from 001__elm20150315_232528__dat00.bin



Processed Mon Mar 16 00:48:46 2015 by ELM ver.2012-10-06 from 001__elm20150315_232528__dat00.bin

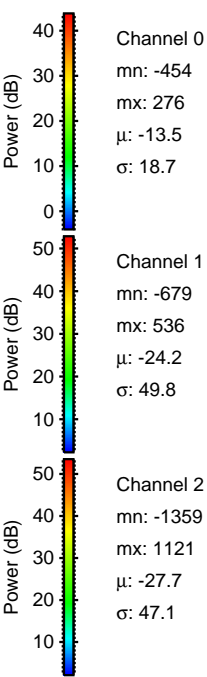
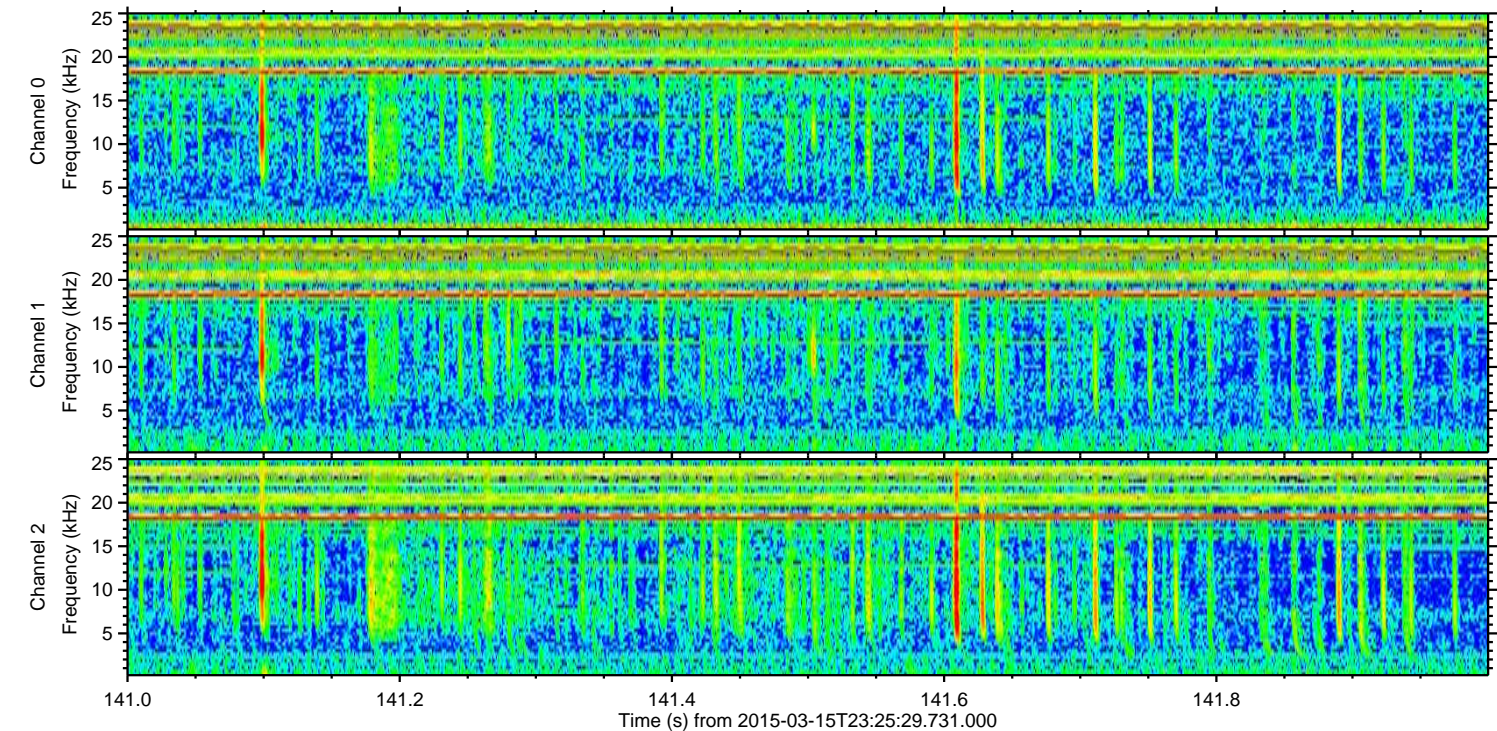
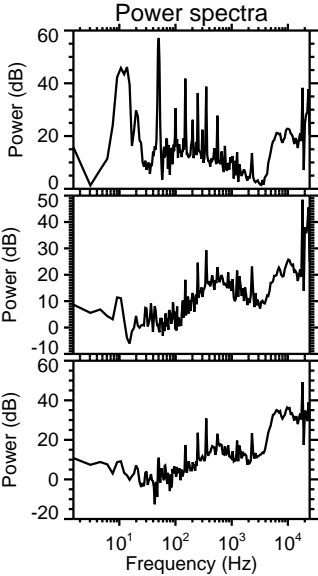
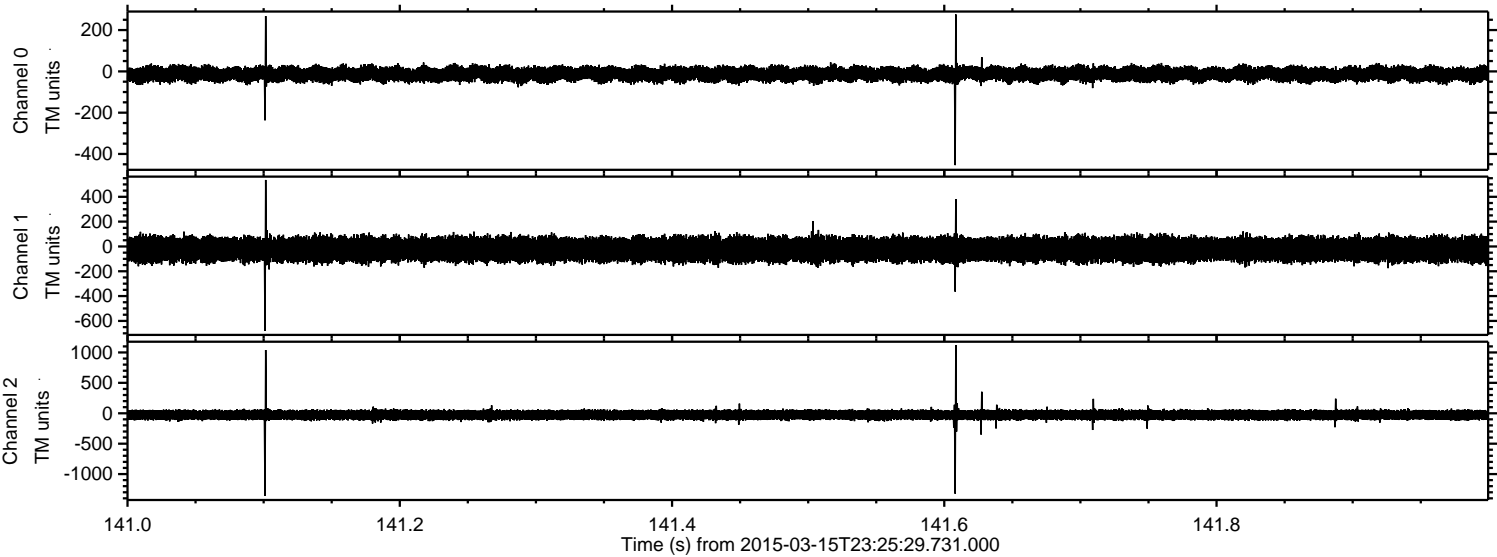


Processed Mon Mar 16 00:48:47 2015 by ELM ver.2012-10-06 from 001__elm20150315_232528__dat00.bin

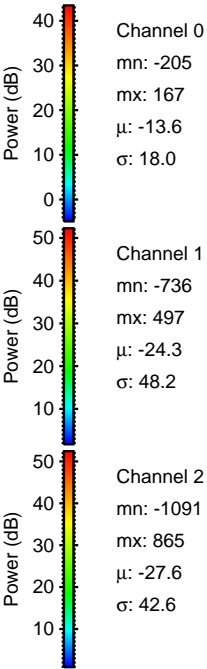
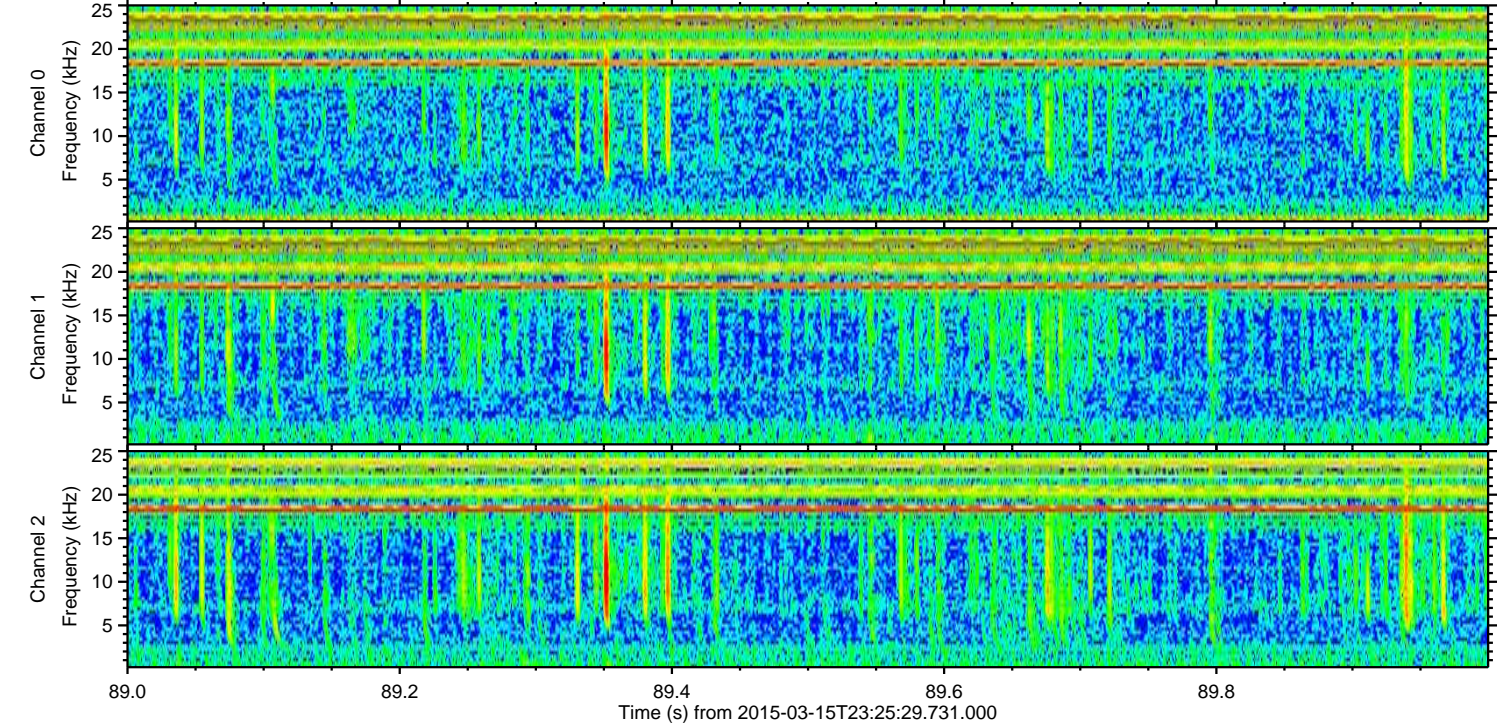
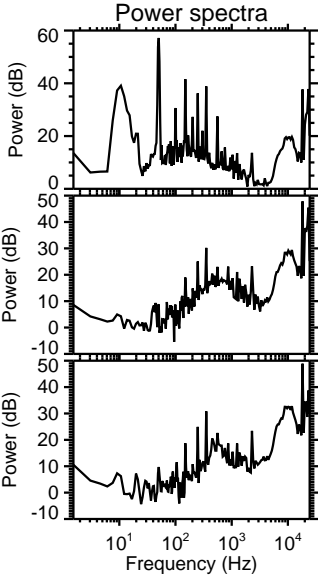
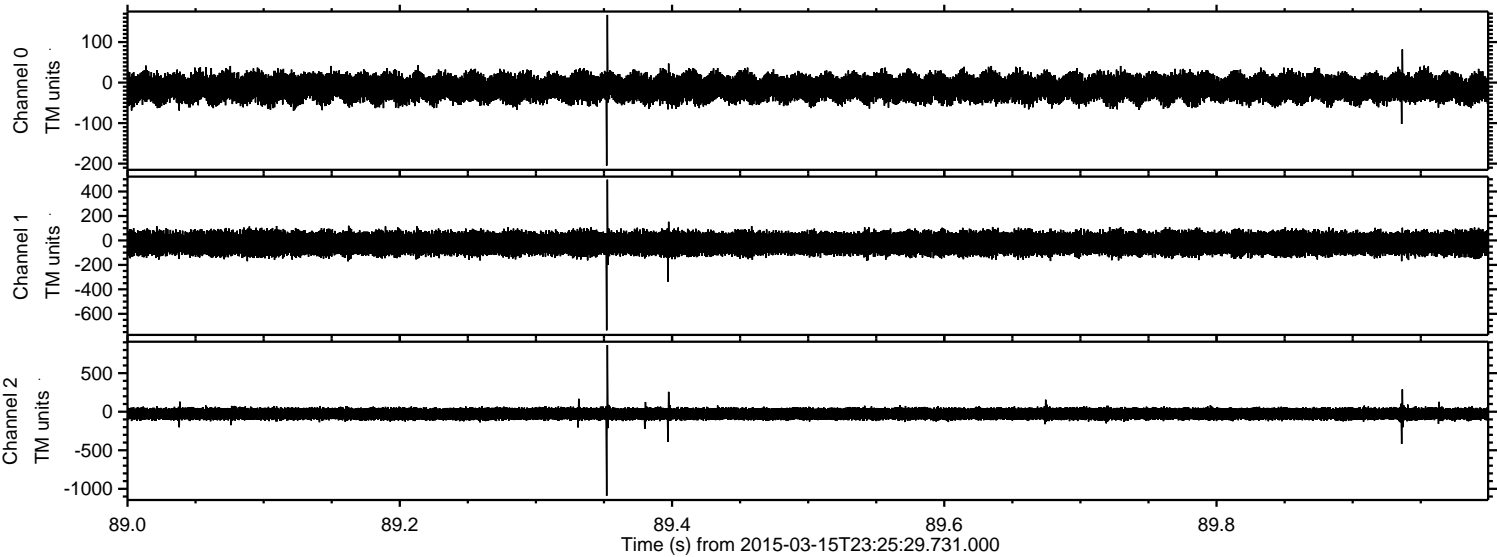


ELMAVAN 3D WAVEFORMS (Measured data sampled at 50 kHz) 49762 packets of 144 samples from 2015-03-15T23:25:29.731.000. Part 142/144

Processed Mon Mar 16 00:48:48 2015 by ELM ver.2012-10-06 from 001__elm20150315_232528__dat00.bin

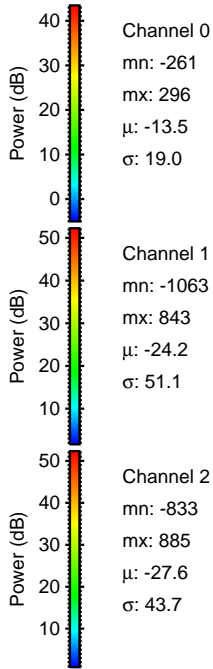
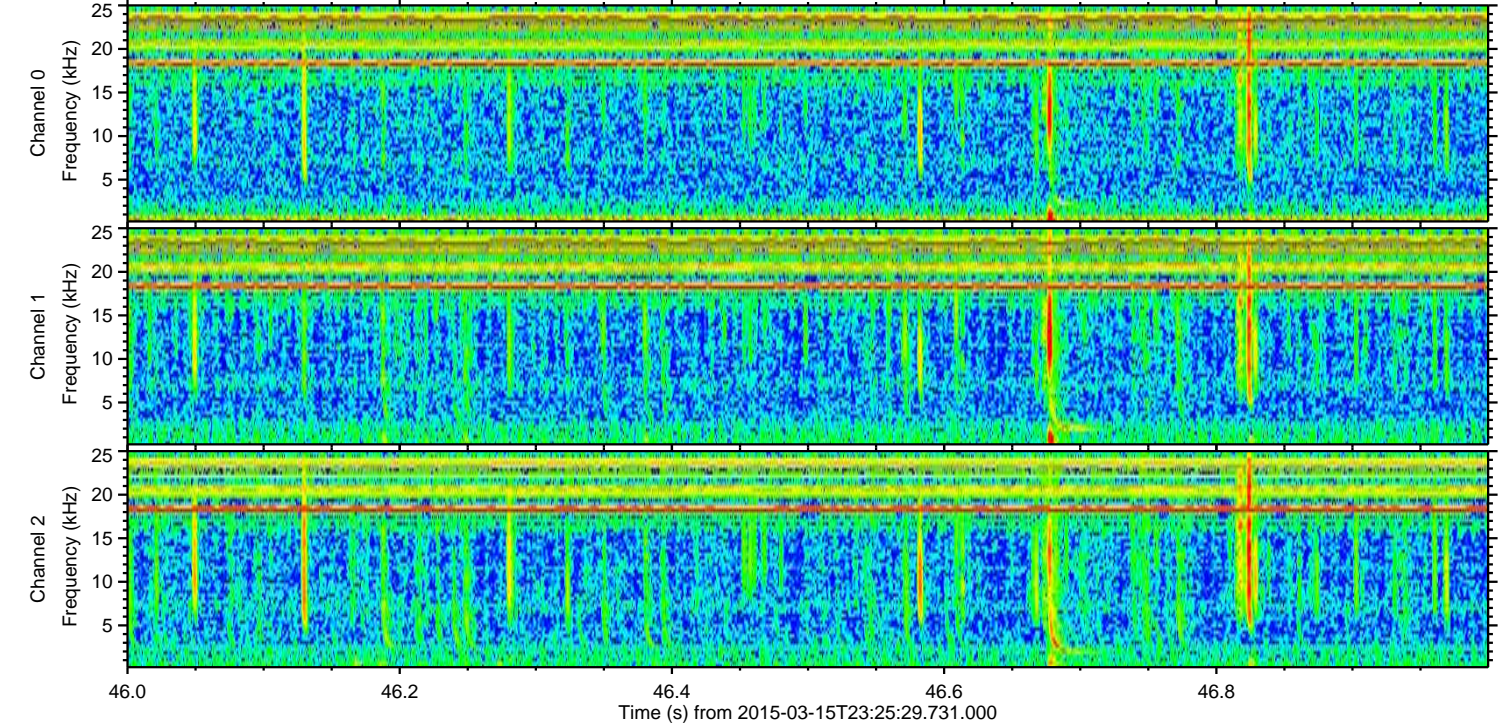
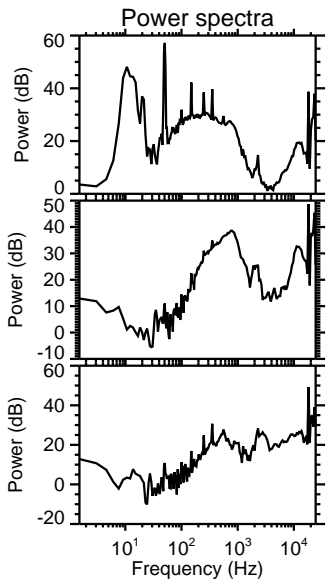
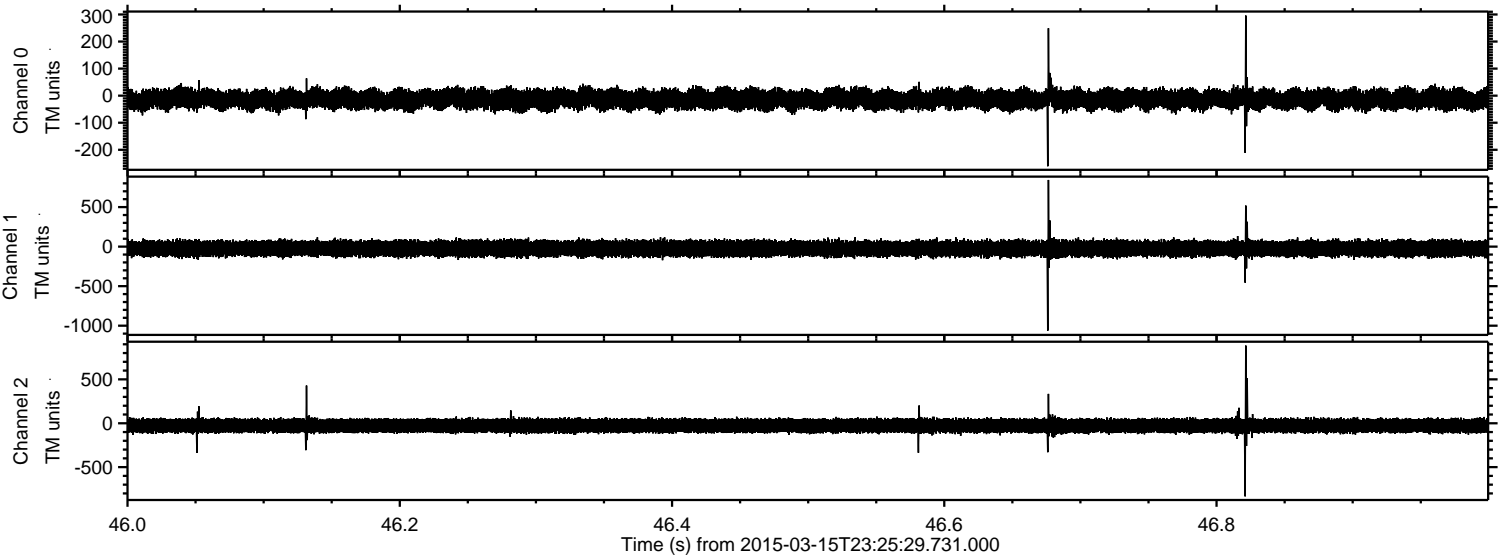


Processed Mon Mar 16 00:48:49 2015 by ELM ver.2012-10-06 from 001__elm20150315_232528__dat00.bin



ELMAVAN 3D WAVEFORMS (Measured data sampled at 50 kHz) 49762 packets of 144 samples from 2015-03-15T23:25:29.731.000. Part 47/144

Processed Mon Mar 16 00:48:50 2015 by ELM ver.2012-10-06 from 001__elm20150315_232528__dat00.bin

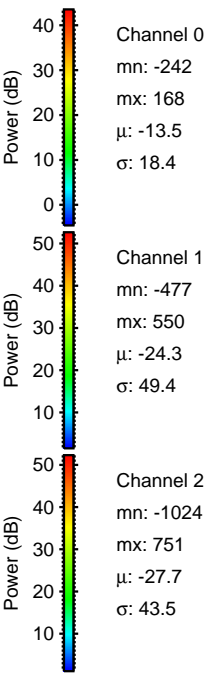
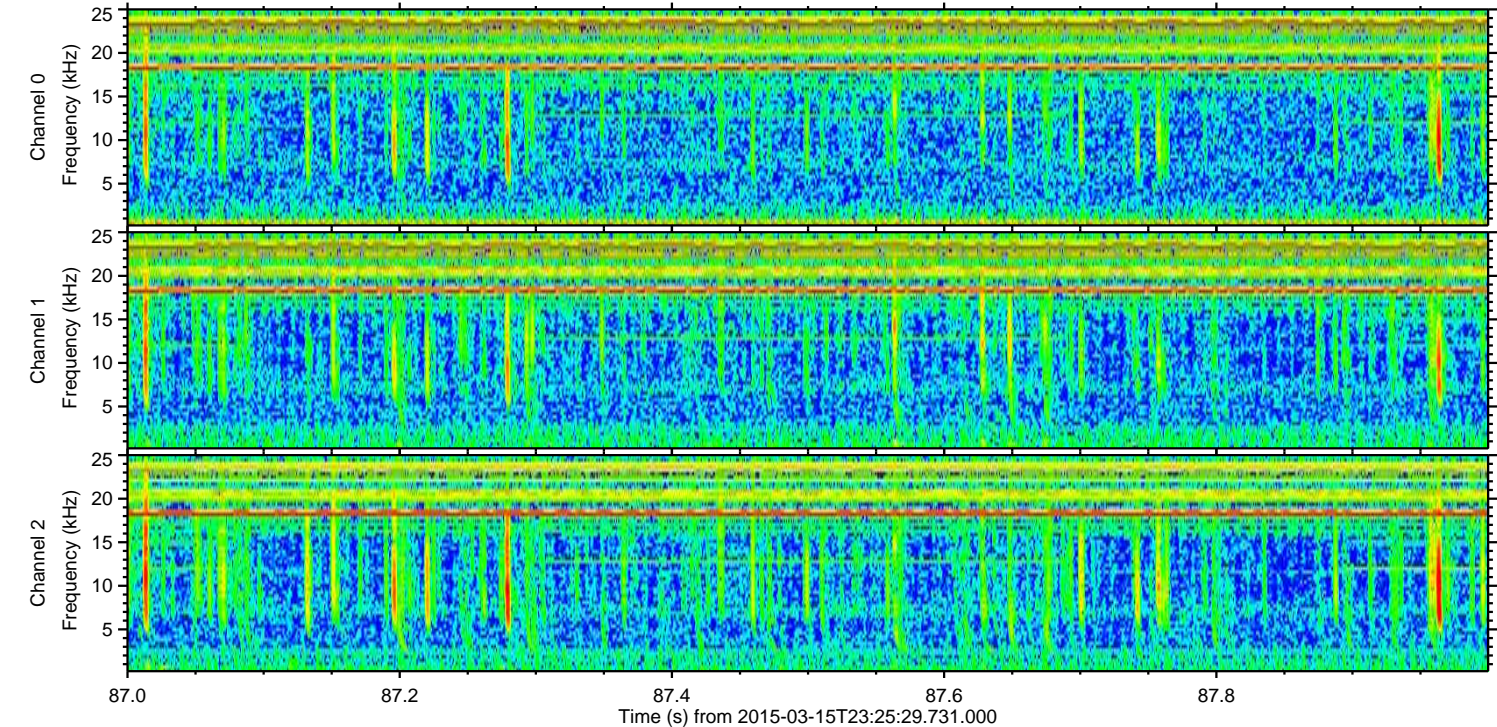
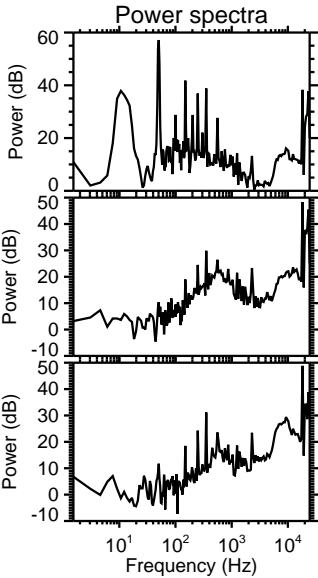
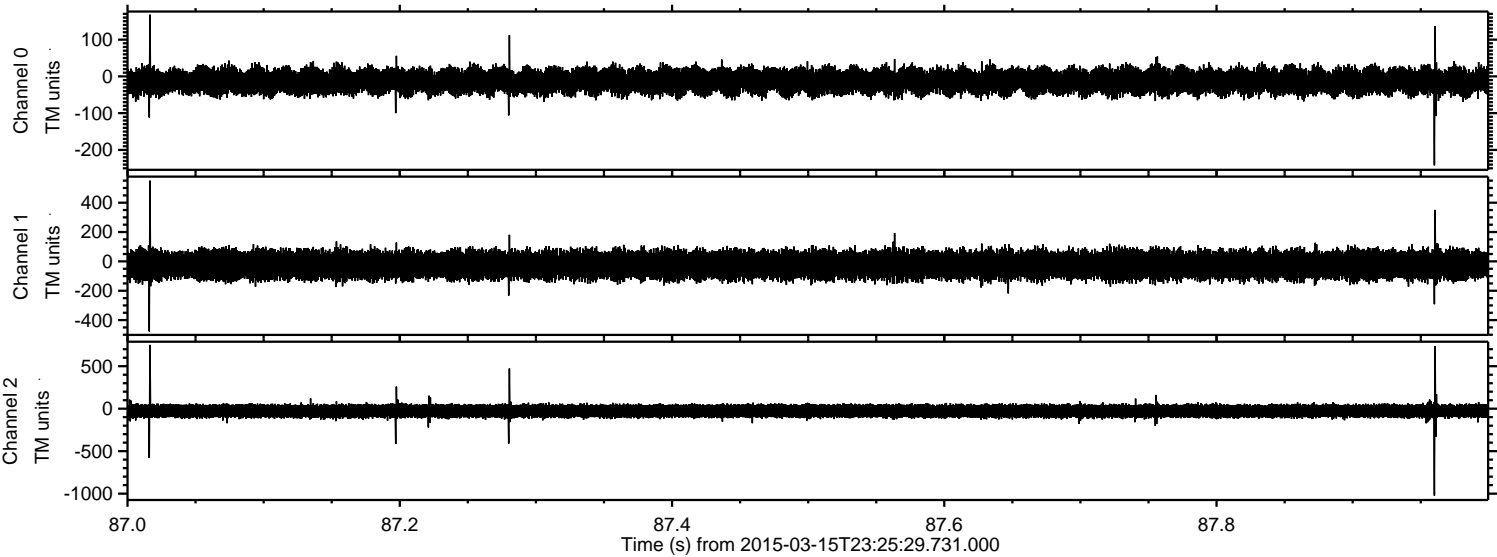


Channel 0
mn: -261
mx: 296
 μ : -13.5
 σ : 19.0

Channel 1
mn: -1063
mx: 843
 μ : -24.2
 σ : 51.1

Channel 2
mn: -833
mx: 885
 μ : -27.6
 σ : 43.7

Processed Mon Mar 16 00:48:51 2015 by ELM ver.2012-10-06 from 001__elm20150315_232528__dat00.bin



Processed Mon Mar 16 00:48:52 2015 by ELM ver.2012-10-06 from 001__elm20150315_232528__dat00.bin

