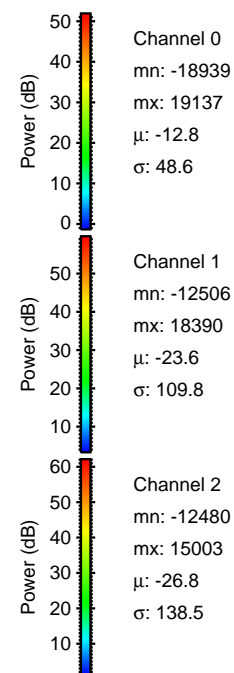
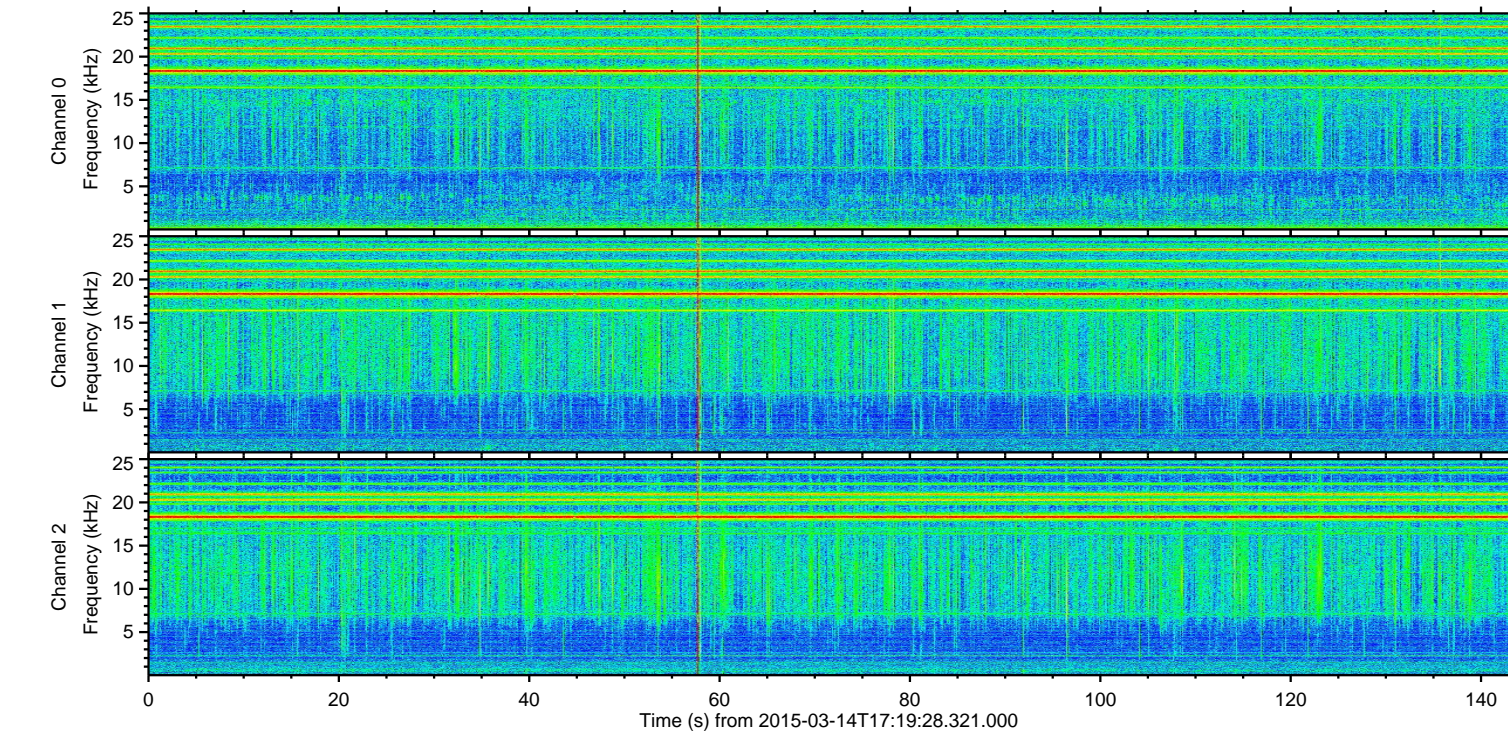
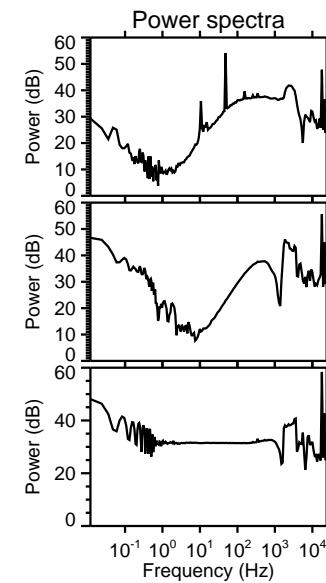
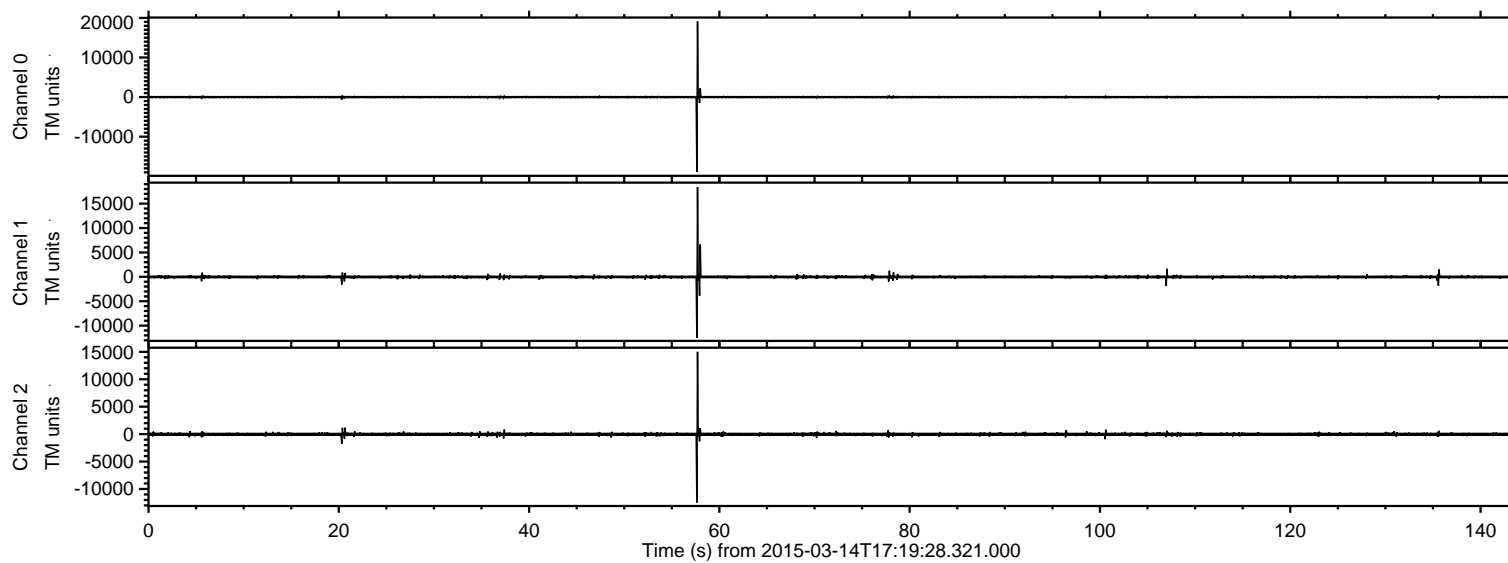
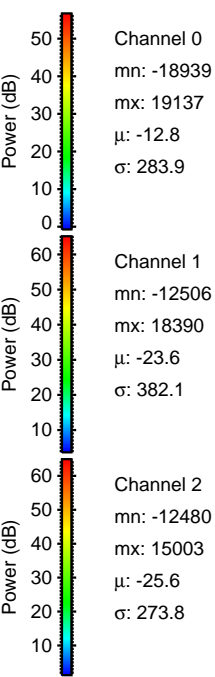
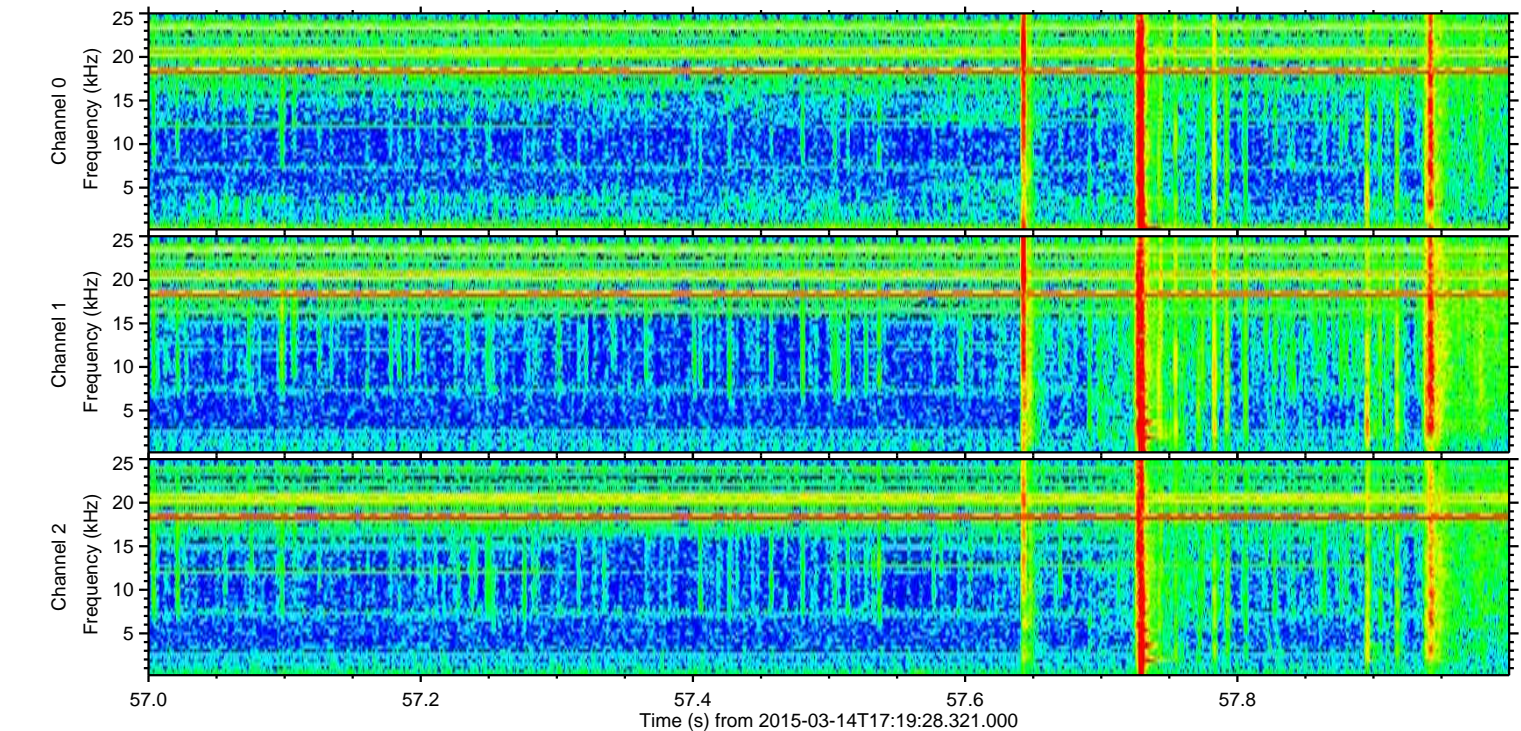
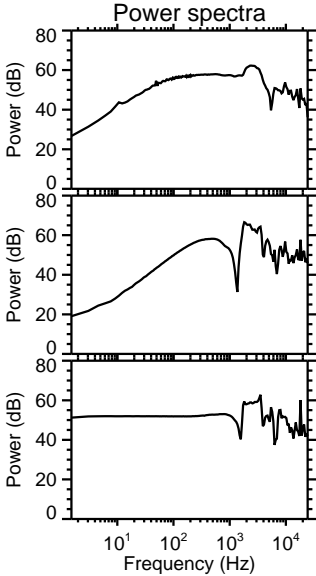
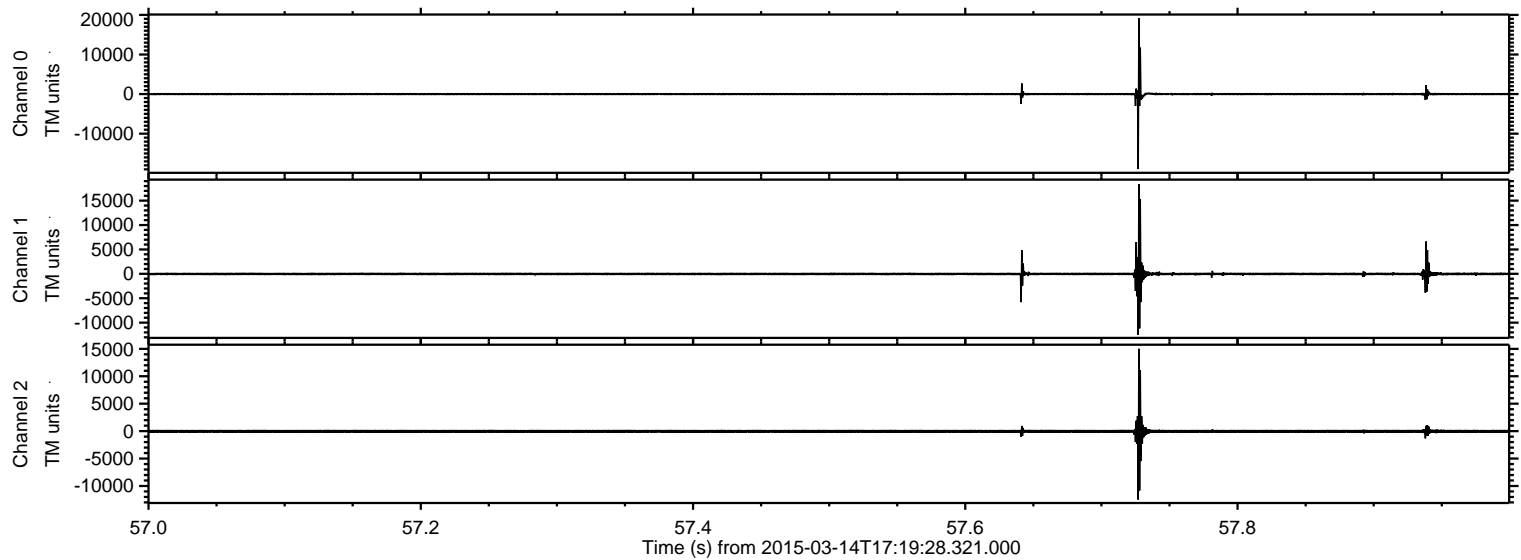


ELMAVAN 3D WAVEFORMS (Measured data sampled at 50 kHz) 49655 packets of 144 samples from 2015-03-14T17:19:28.321.000.

Processed Sat Mar 14 18:30:52 2015 by ELM ver.2012-10-06 from 001__elm20150314_171927__dat00.bin

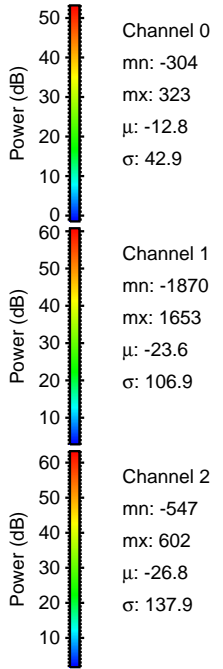
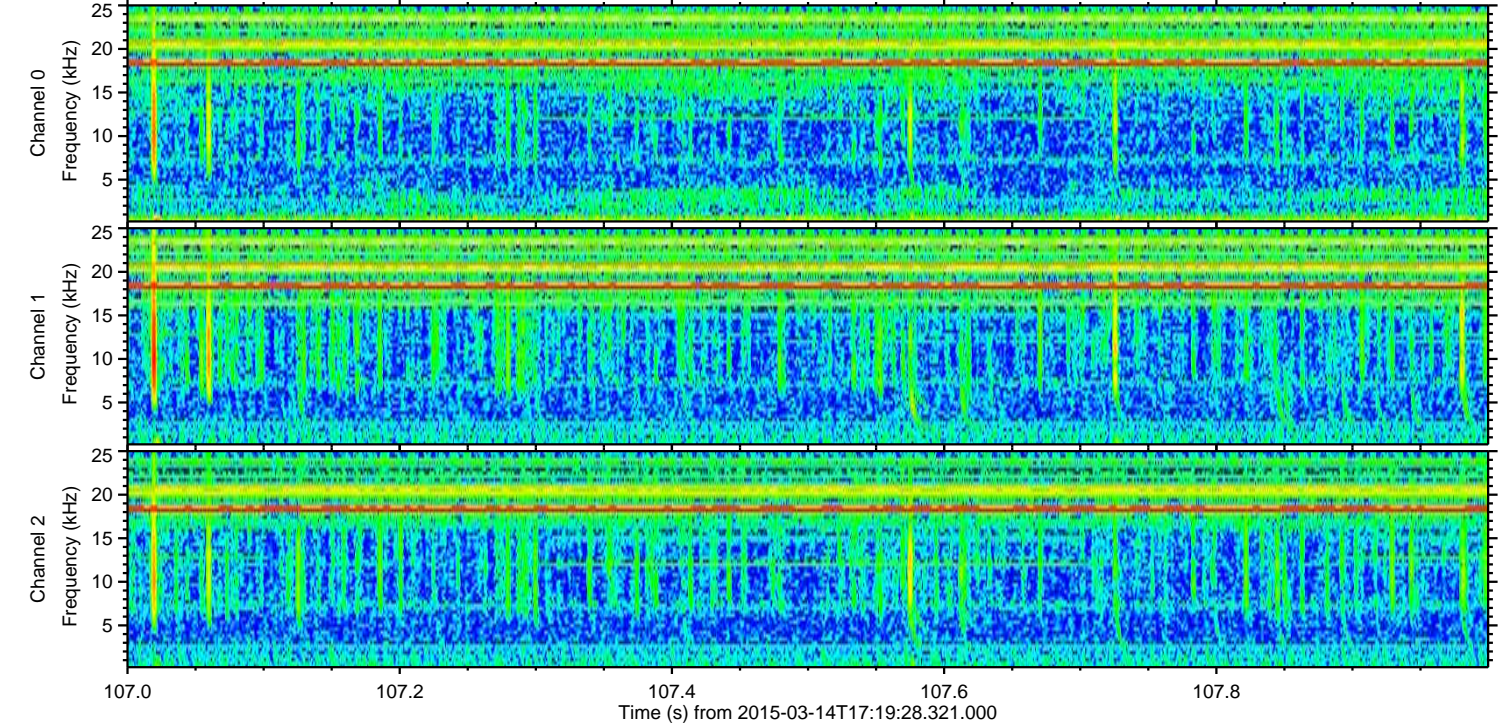
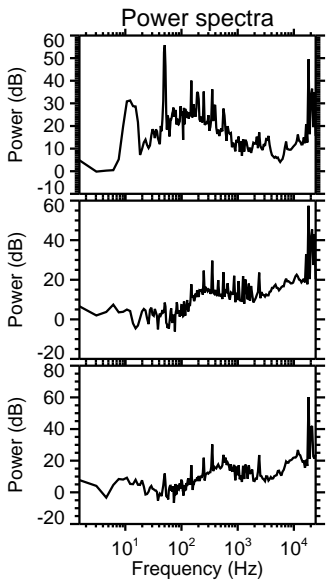
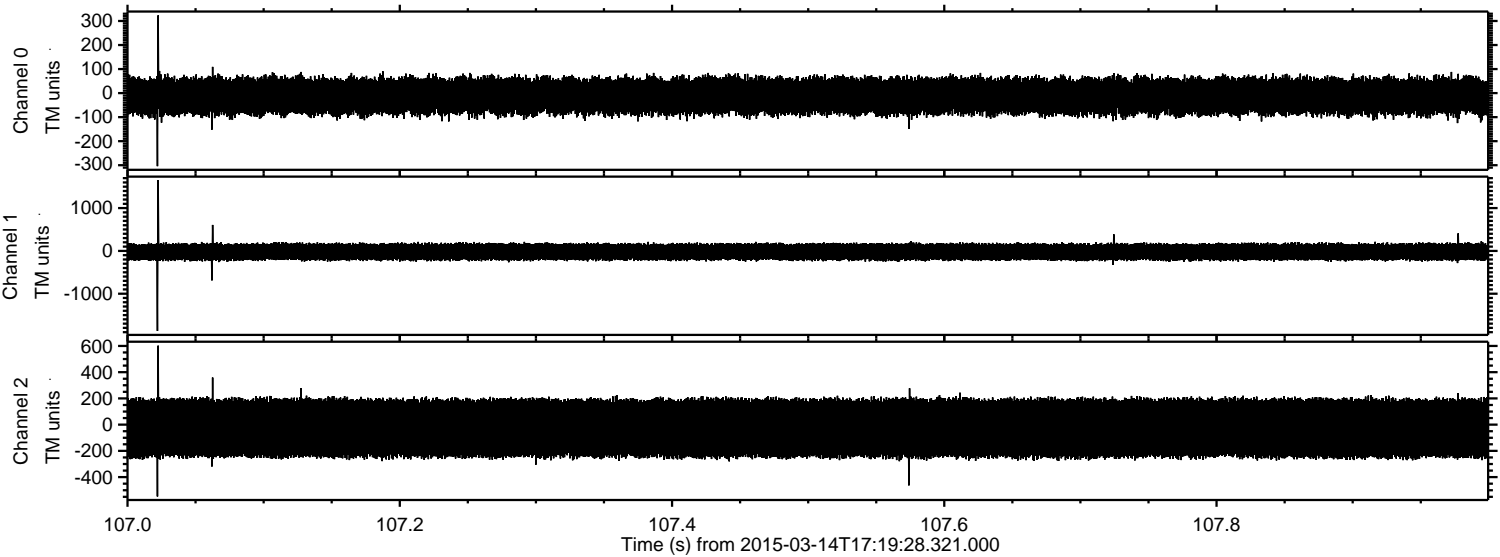


Processed Sat Mar 14 18:31:08 2015 by ELM ver.2012-10-06 from 001__elm20150314_171927__dat00.bin



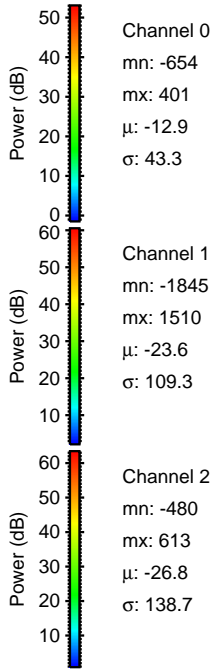
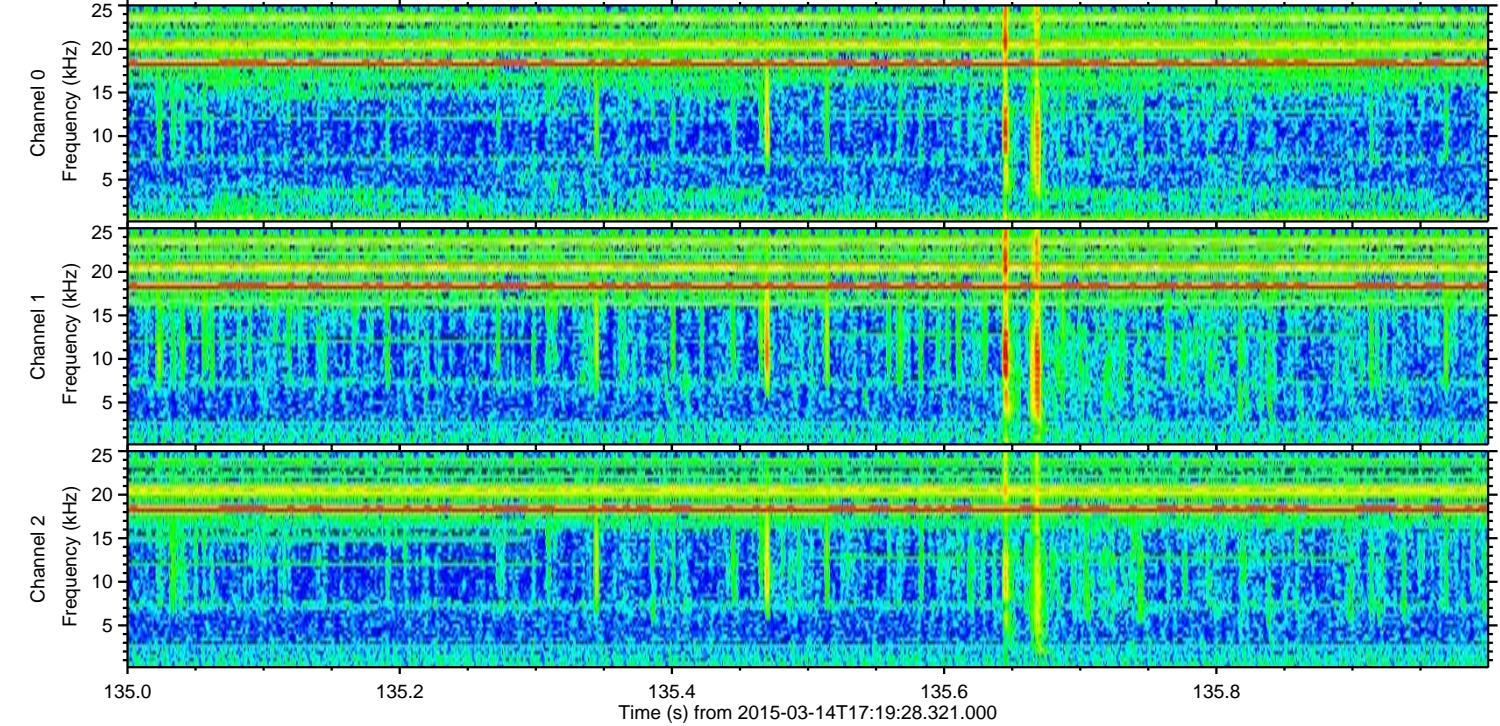
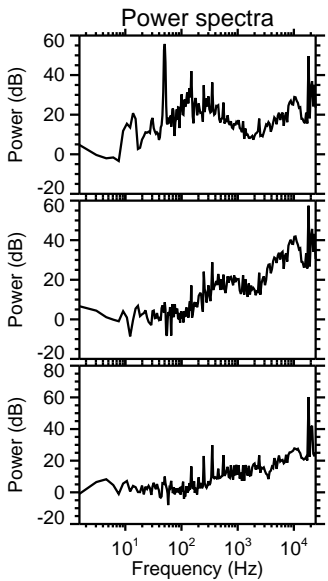
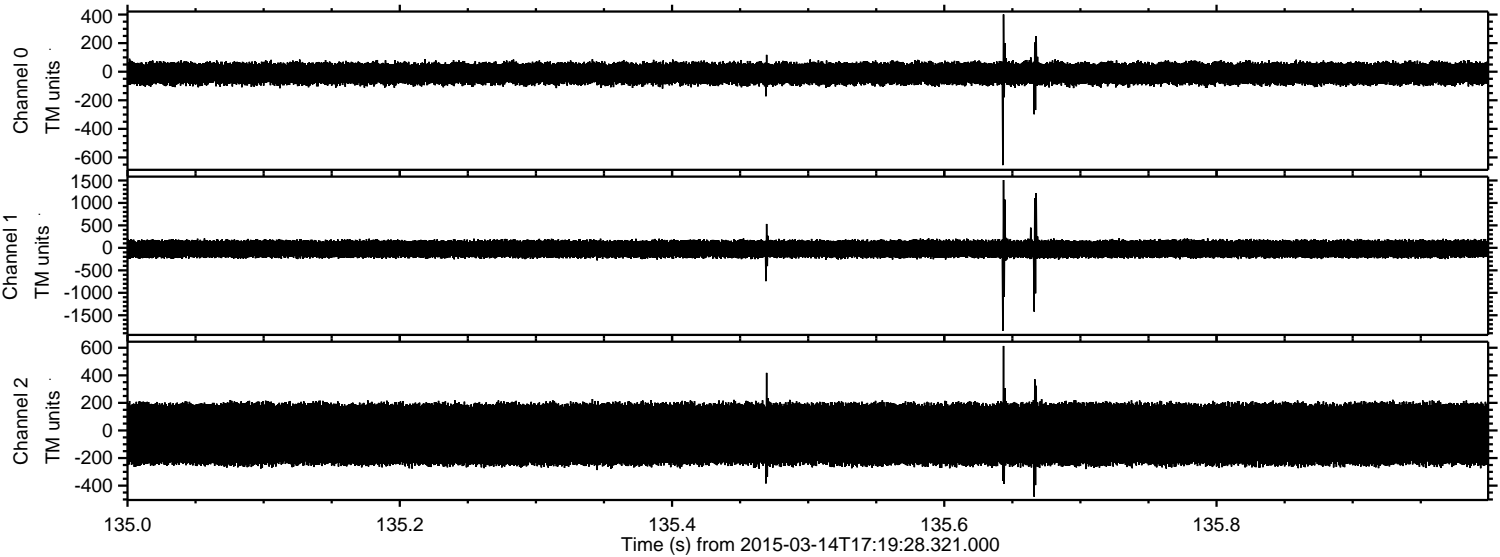
ELMAVAN 3D WAVEFORMS (Measured data sampled at 50 kHz) 49655 packets of 144 samples from 2015-03-14T17:19:28.321.000. Part 108/144

Processed Sat Mar 14 18:31:09 2015 by ELM ver.2012-10-06 from 001__elm20150314_171927__dat00.bin



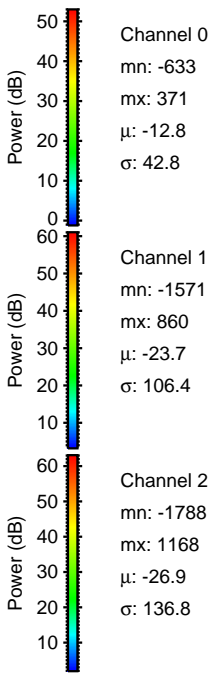
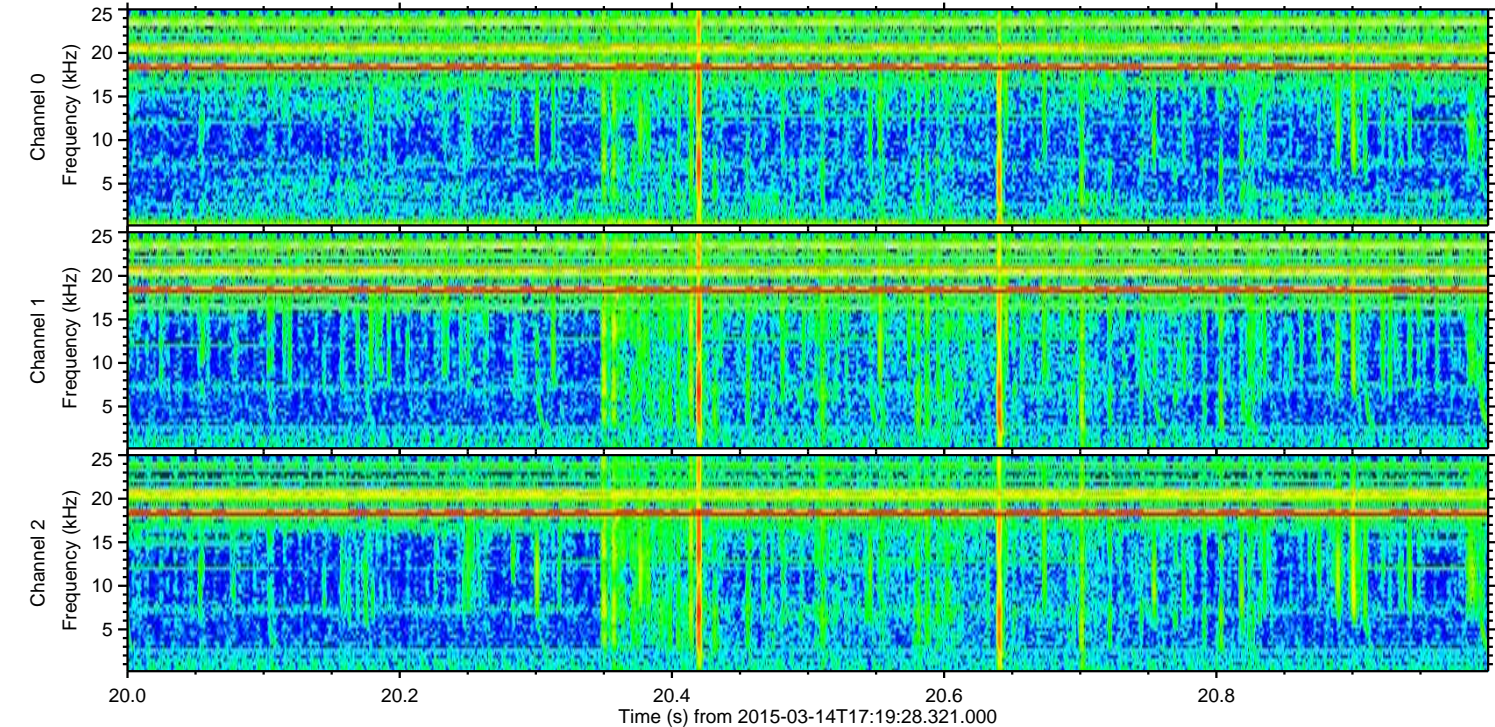
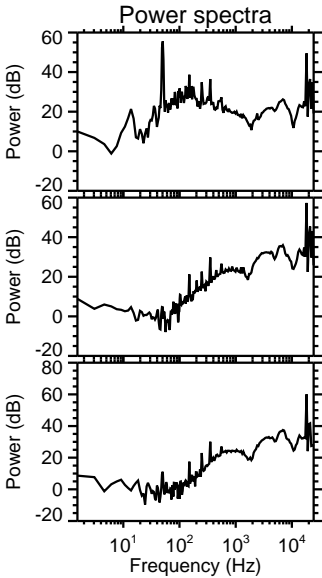
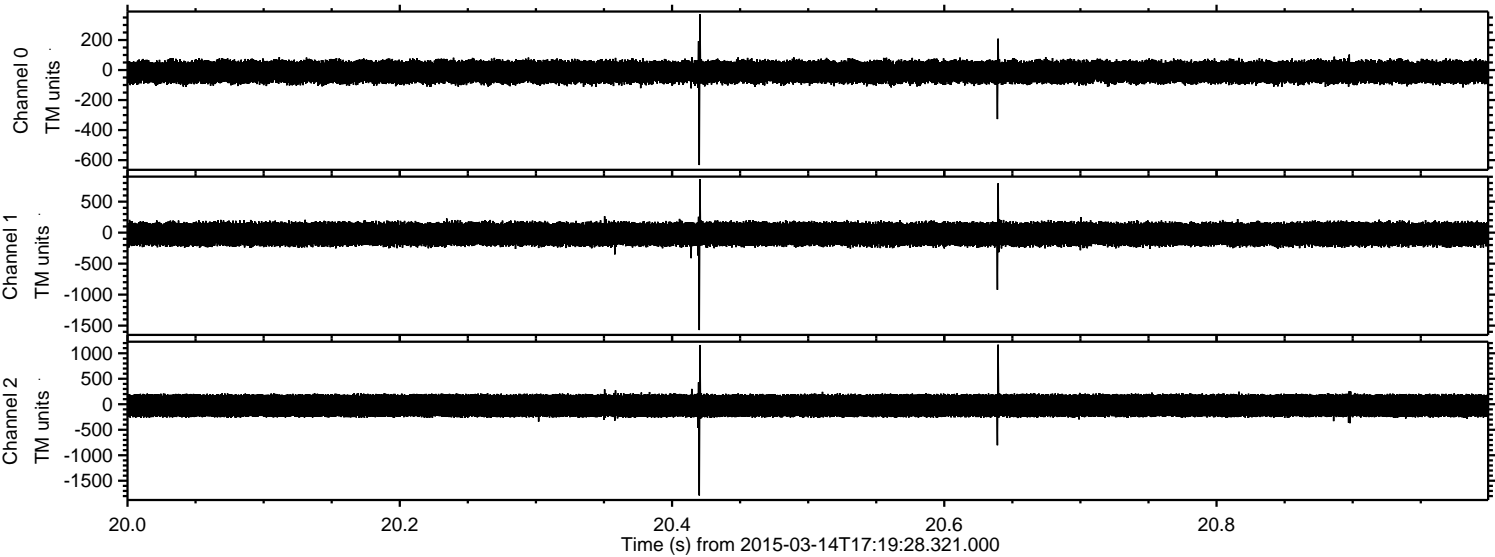
ELMAVAN 3D WAVEFORMS (Measured data sampled at 50 kHz) 49655 packets of 144 samples from 2015-03-14T17:19:28.321.000. Part 136/144

Processed Sat Mar 14 18:31:10 2015 by ELM ver.2012-10-06 from 001__elm20150314_171927__dat00.bin

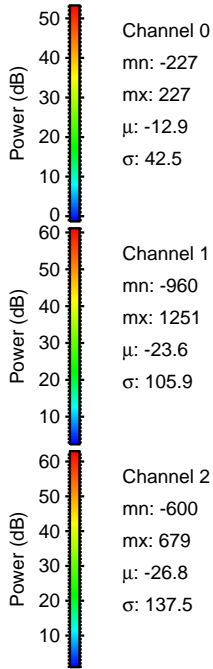
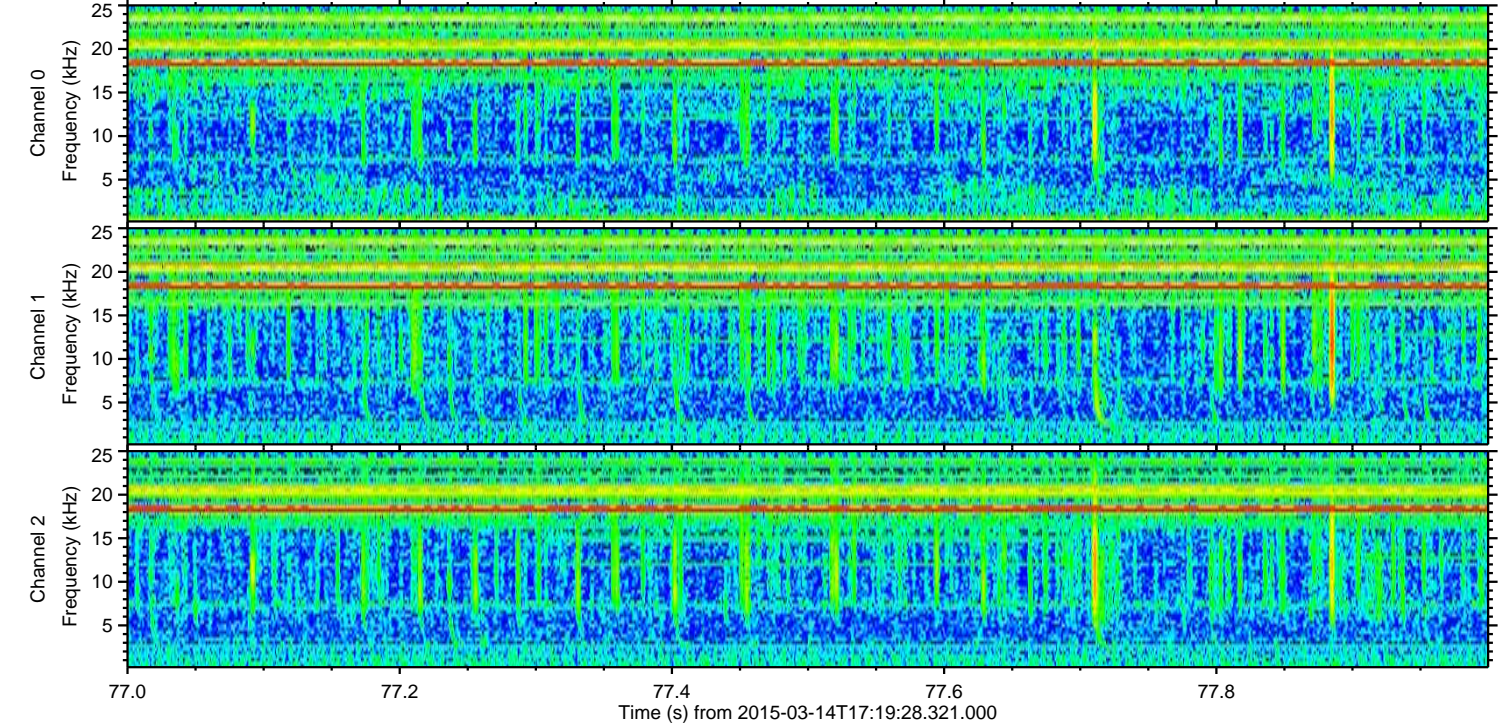
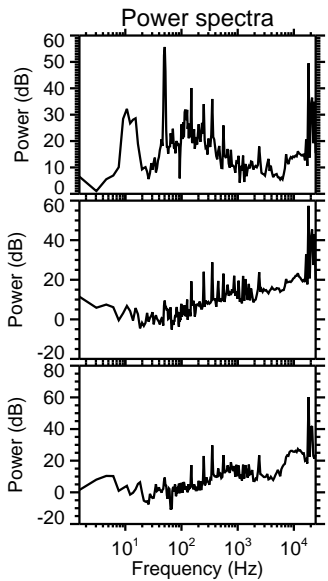
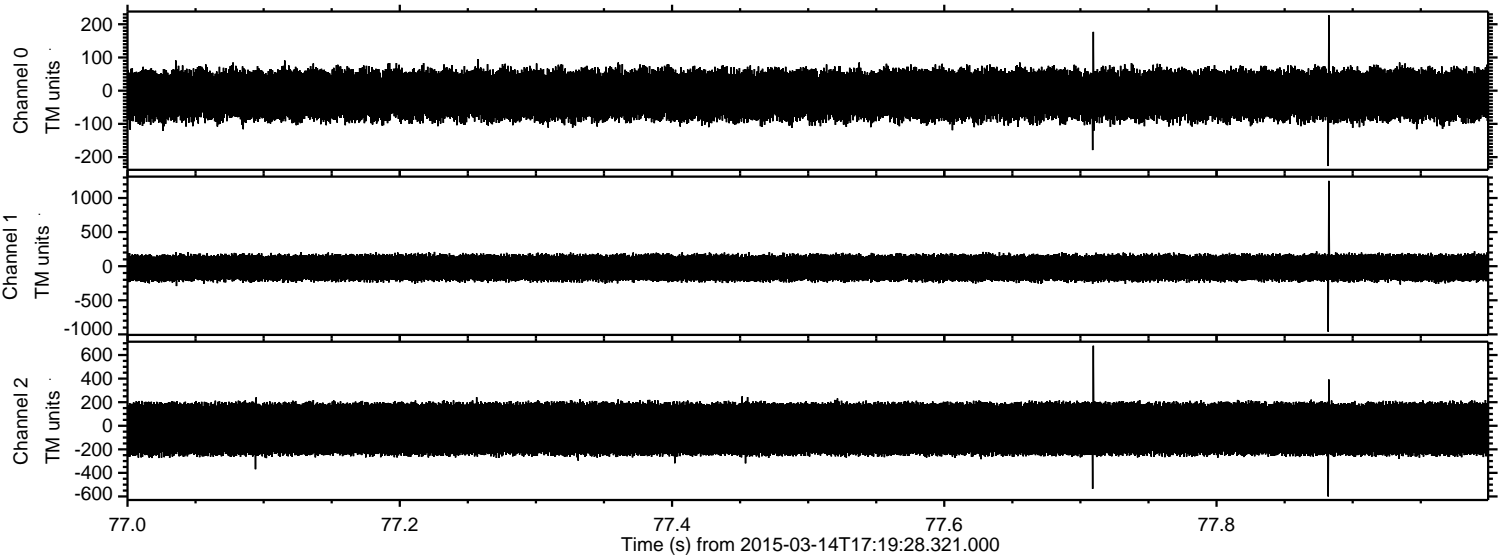


ELMAVAN 3D WAVEFORMS (Measured data sampled at 50 kHz) 49655 packets of 144 samples from 2015-03-14T17:19:28.321.000. Part 21/144

Processed Sat Mar 14 18:31:11 2015 by ELM ver.2012-10-06 from 001__elm20150314_171927__dat00.bin

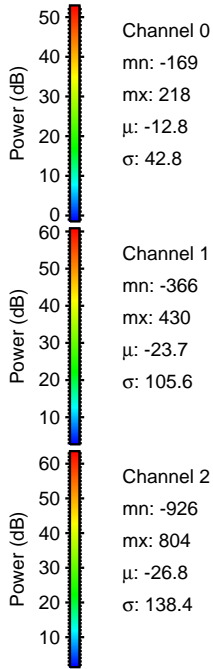
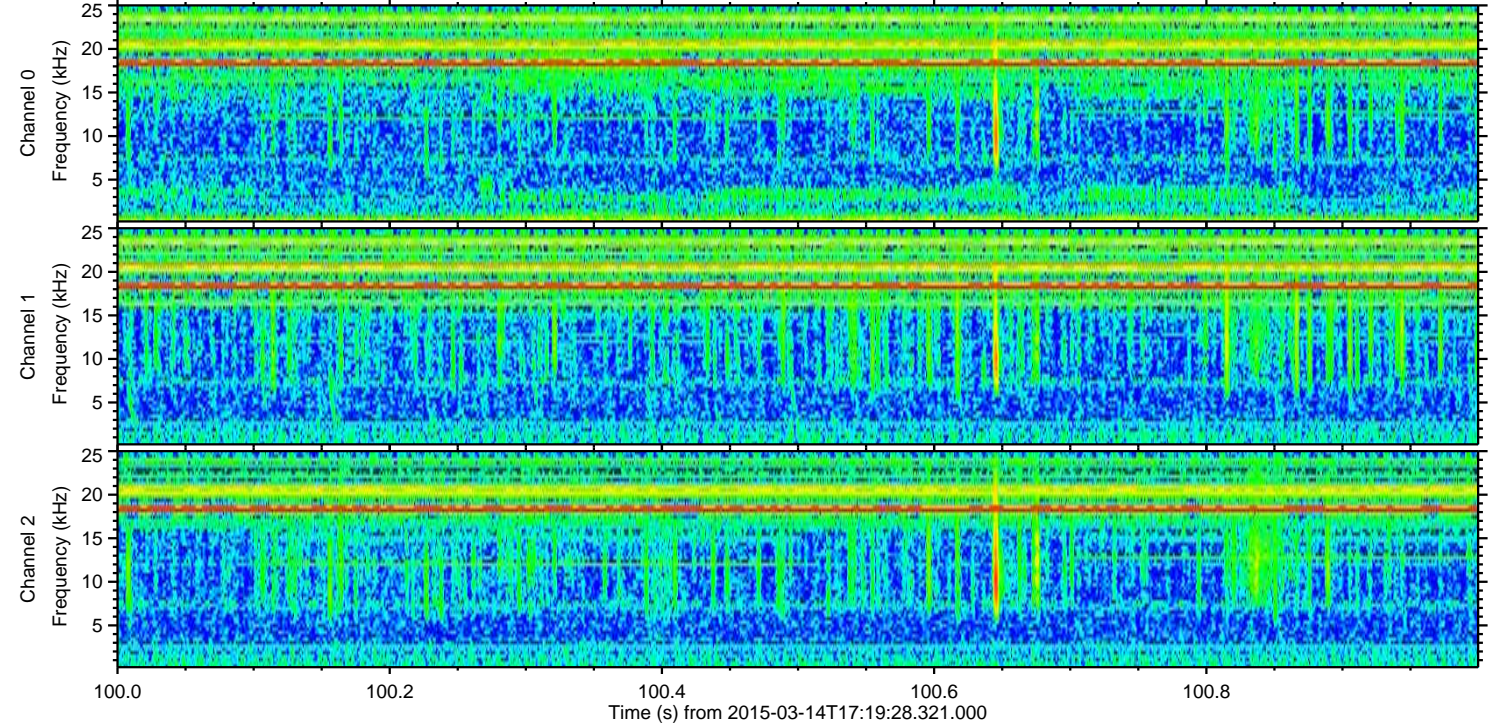
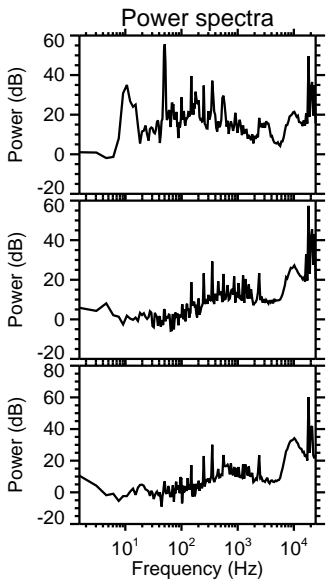
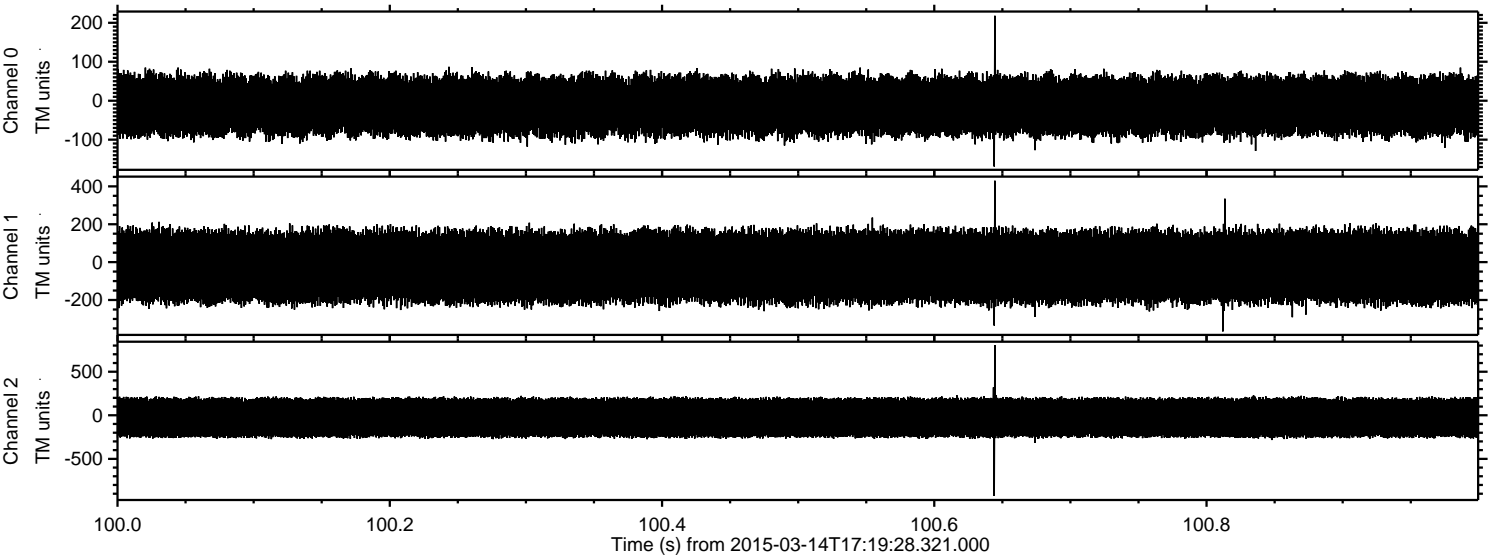


Processed Sat Mar 14 18:31:12 2015 by ELM ver.2012-10-06 from 001__elm20150314_171927__dat00.bin

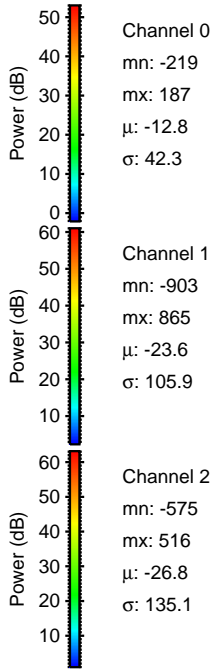
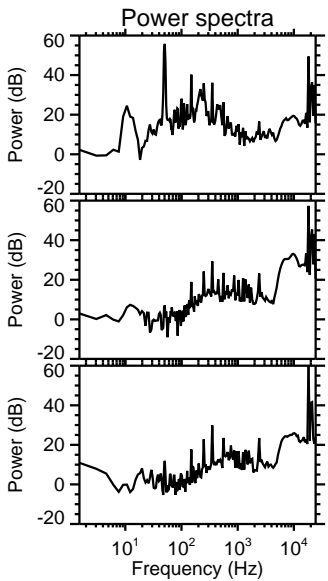
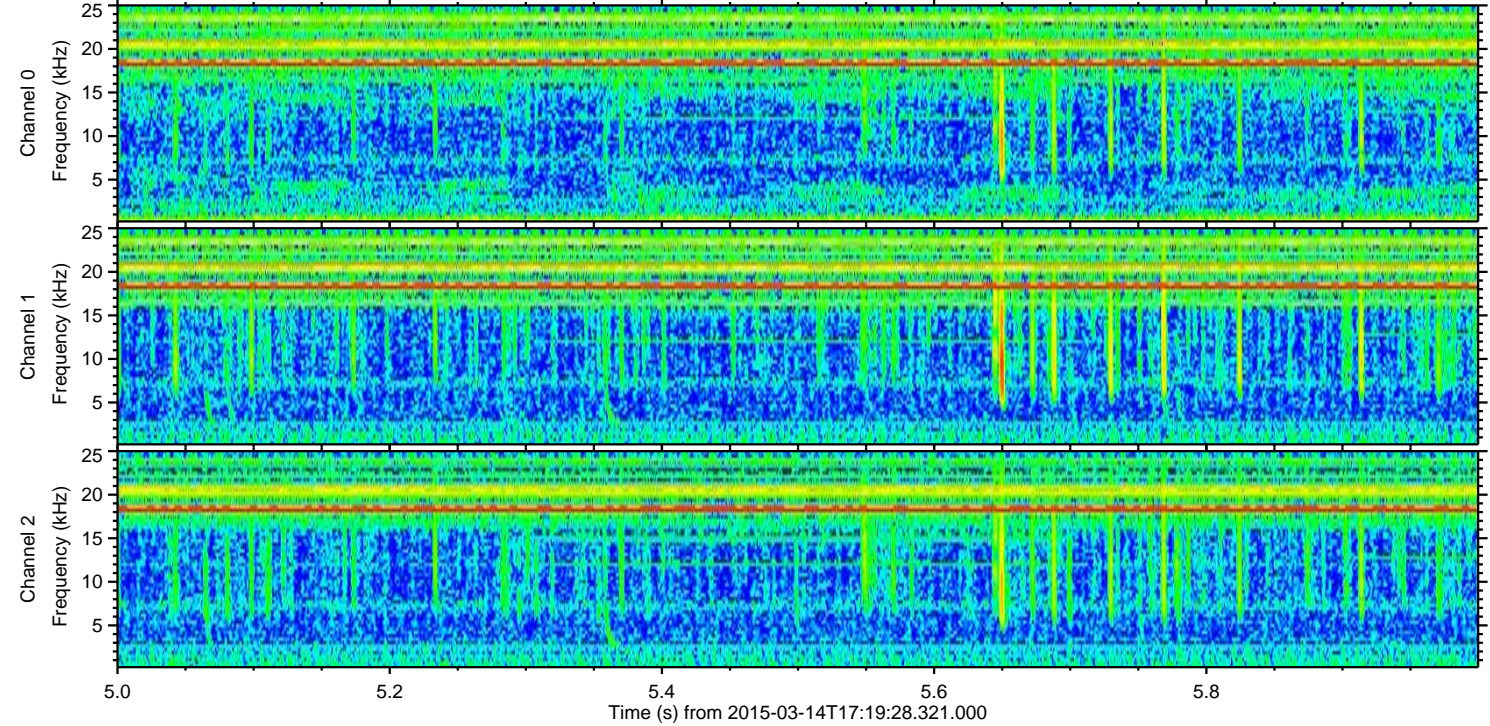
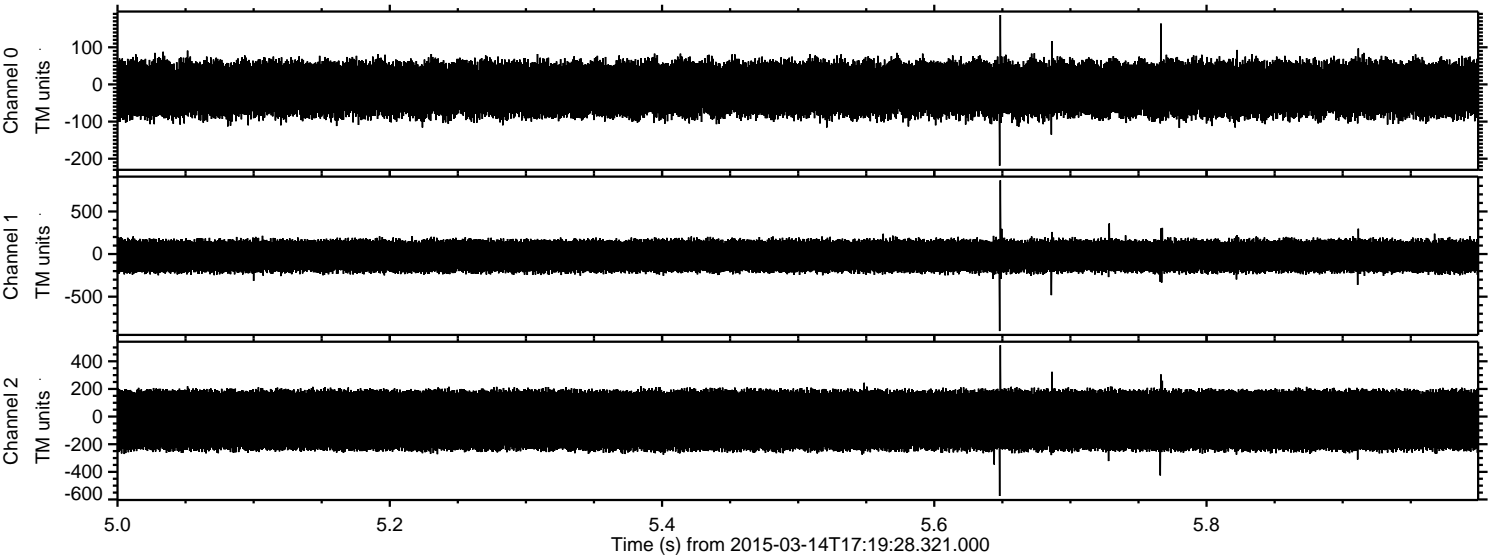


ELMAVAN 3D WAVEFORMS (Measured data sampled at 50 kHz) 49655 packets of 144 samples from 2015-03-14T17:19:28.321.000. Part 101/144

Processed Sat Mar 14 18:31:13 2015 by ELM ver.2012-10-06 from 001__elm20150314_171927__dat00.bin



Processed Sat Mar 14 18:31:14 2015 by ELM ver.2012-10-06 from 001__elm20150314_171927__dat00.bin

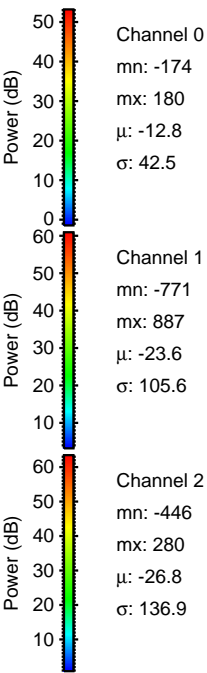
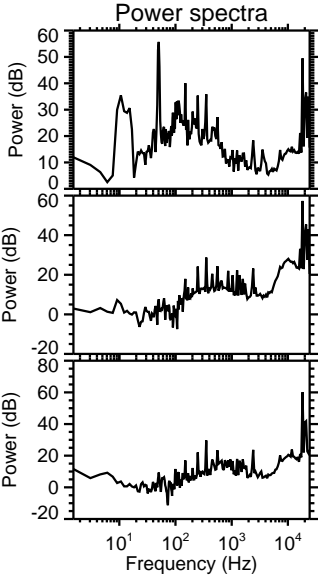
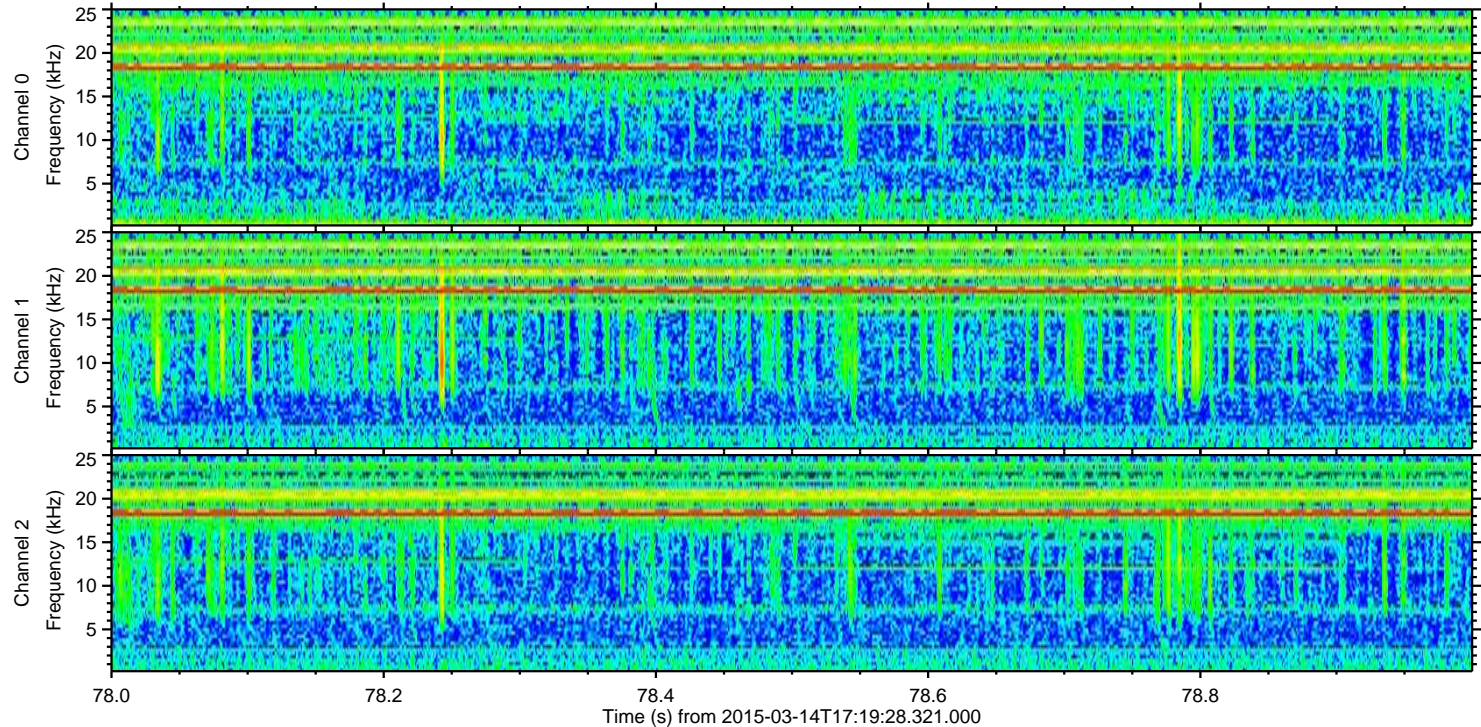
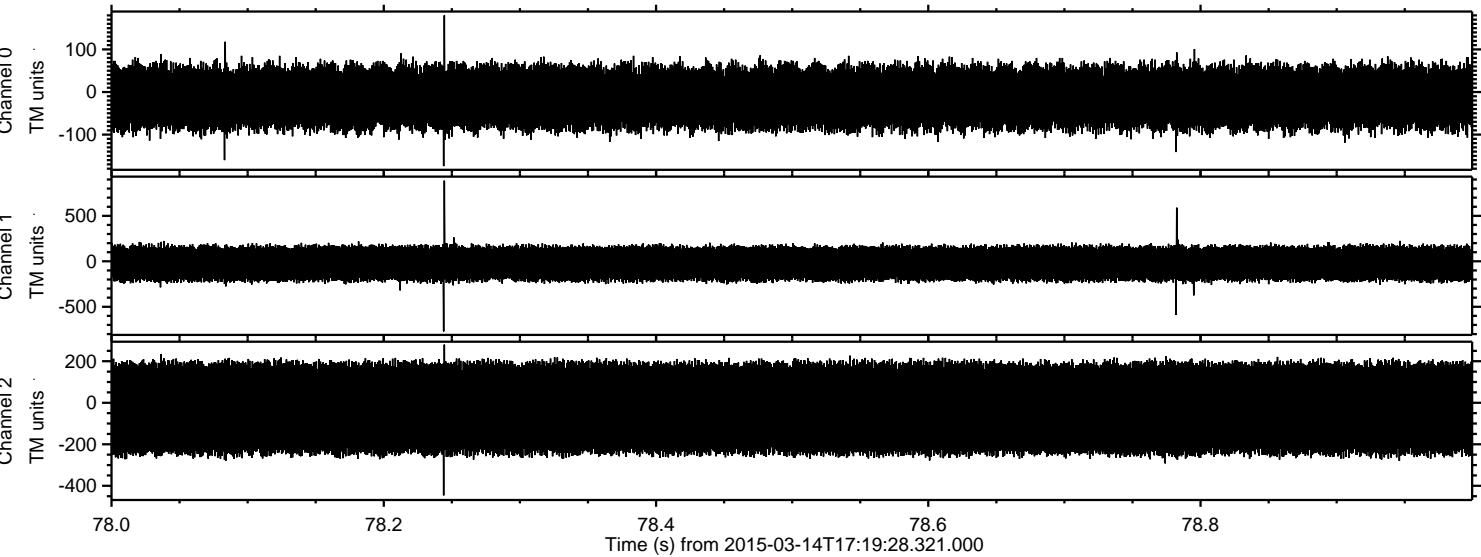


Channel 0
mn: -219
mx: 187
 μ : -12.8
 σ : 42.3

Channel 1
mn: -903
mx: 865
 μ : -23.6
 σ : 105.9

Channel 2
mn: -575
mx: 516
 μ : -26.8
 σ : 135.1

Processed Sat Mar 14 18:31:15 2015 by ELM ver.2012-10-06 from 001__elm20150314_171927__dat00.bin

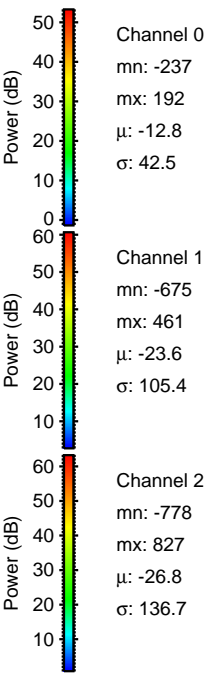
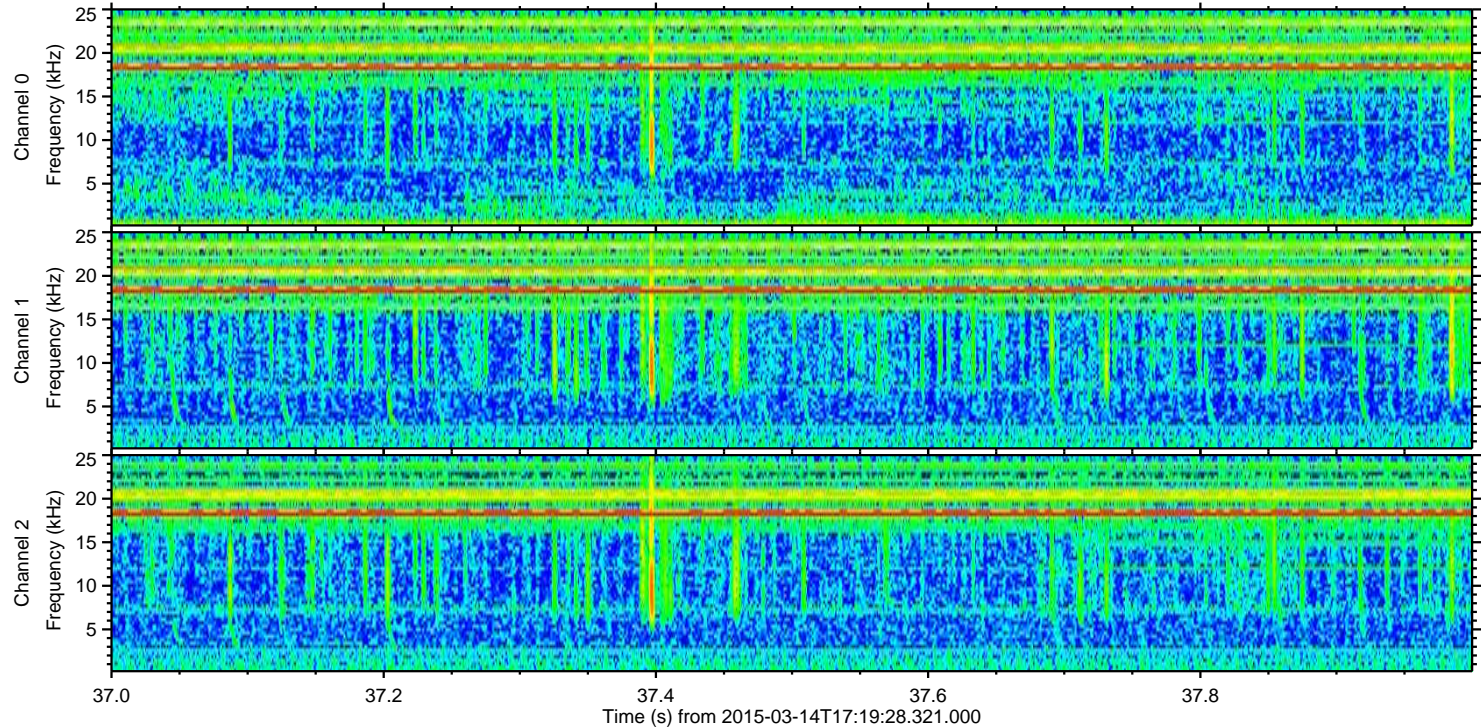
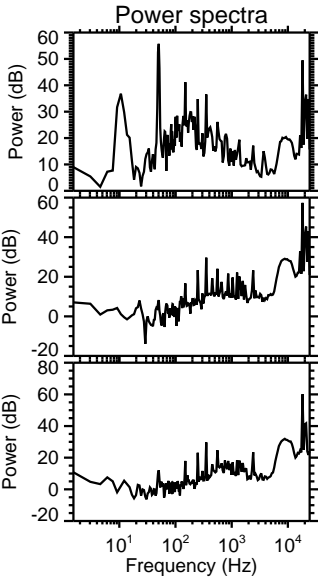
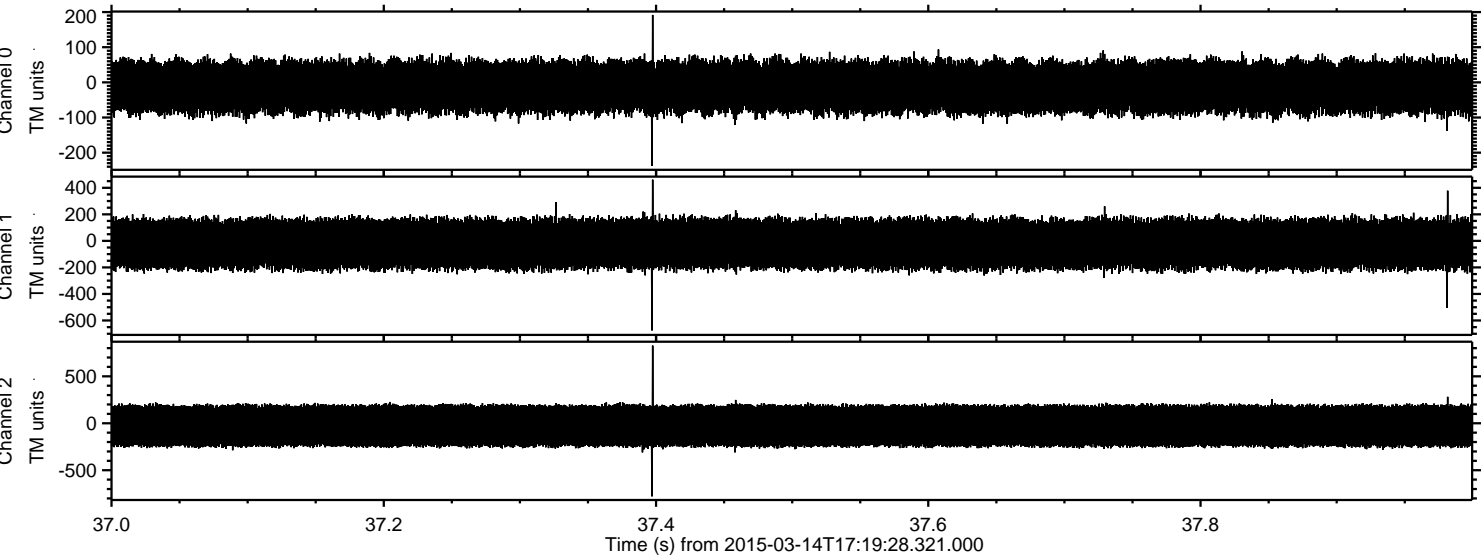


Channel 0
mn: -174
mx: 180
 μ : -12.8
 σ : 42.5

Channel 1
mn: -771
mx: 887
 μ : -23.6
 σ : 105.6

Channel 2
mn: -446
mx: 280
 μ : -26.8
 σ : 136.9

Processed Sat Mar 14 18:31:16 2015 by ELM ver.2012-10-06 from 001__elm20150314_171927__dat00.bin



Processed Sat Mar 14 18:31:17 2015 by ELM ver.2012-10-06 from 001__elm20150314_171927__dat00.bin

