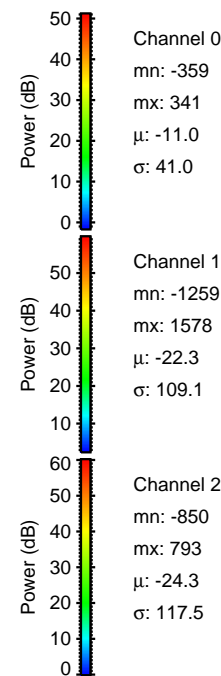
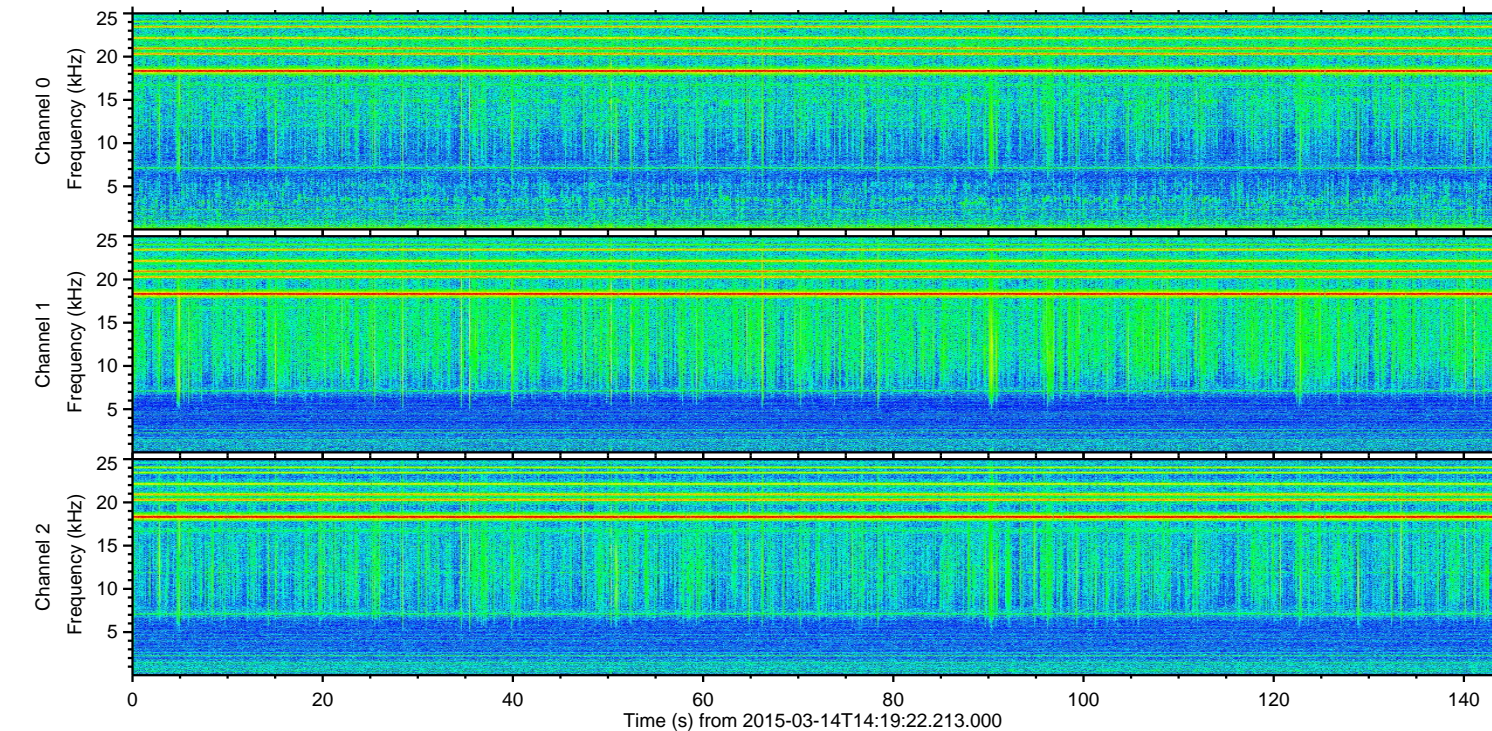
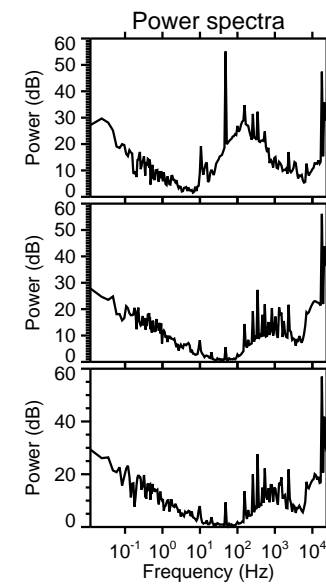
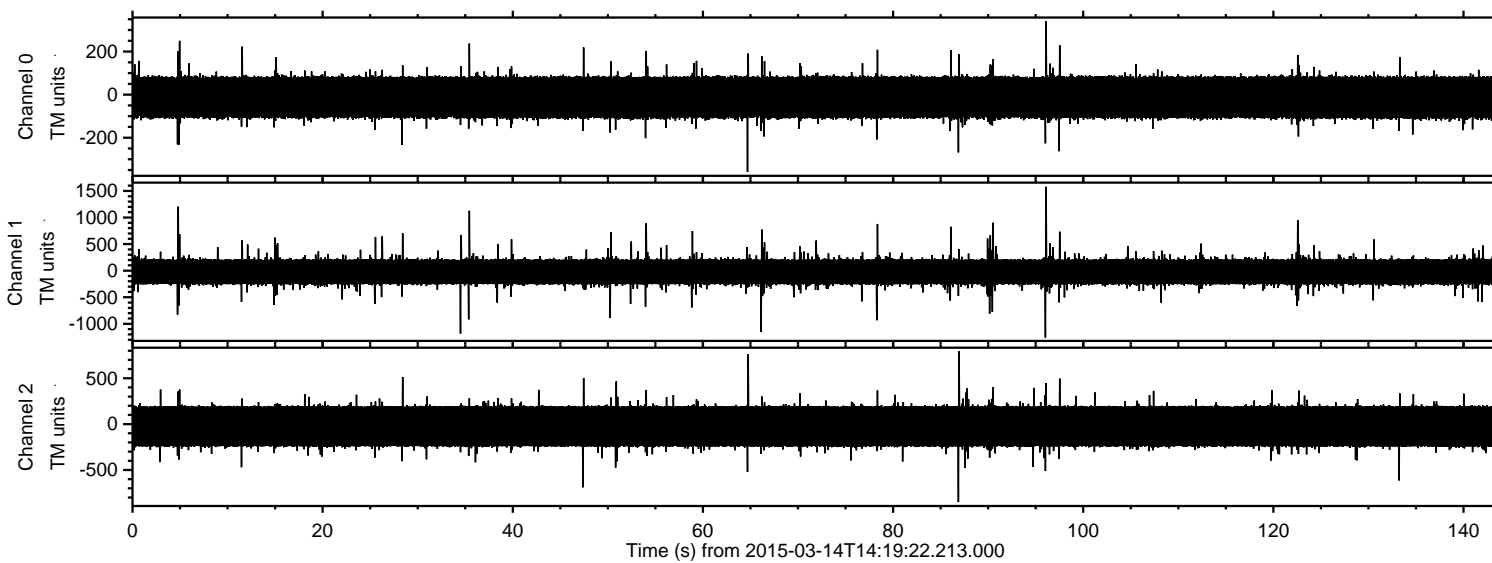


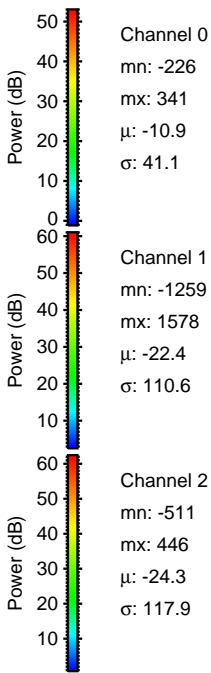
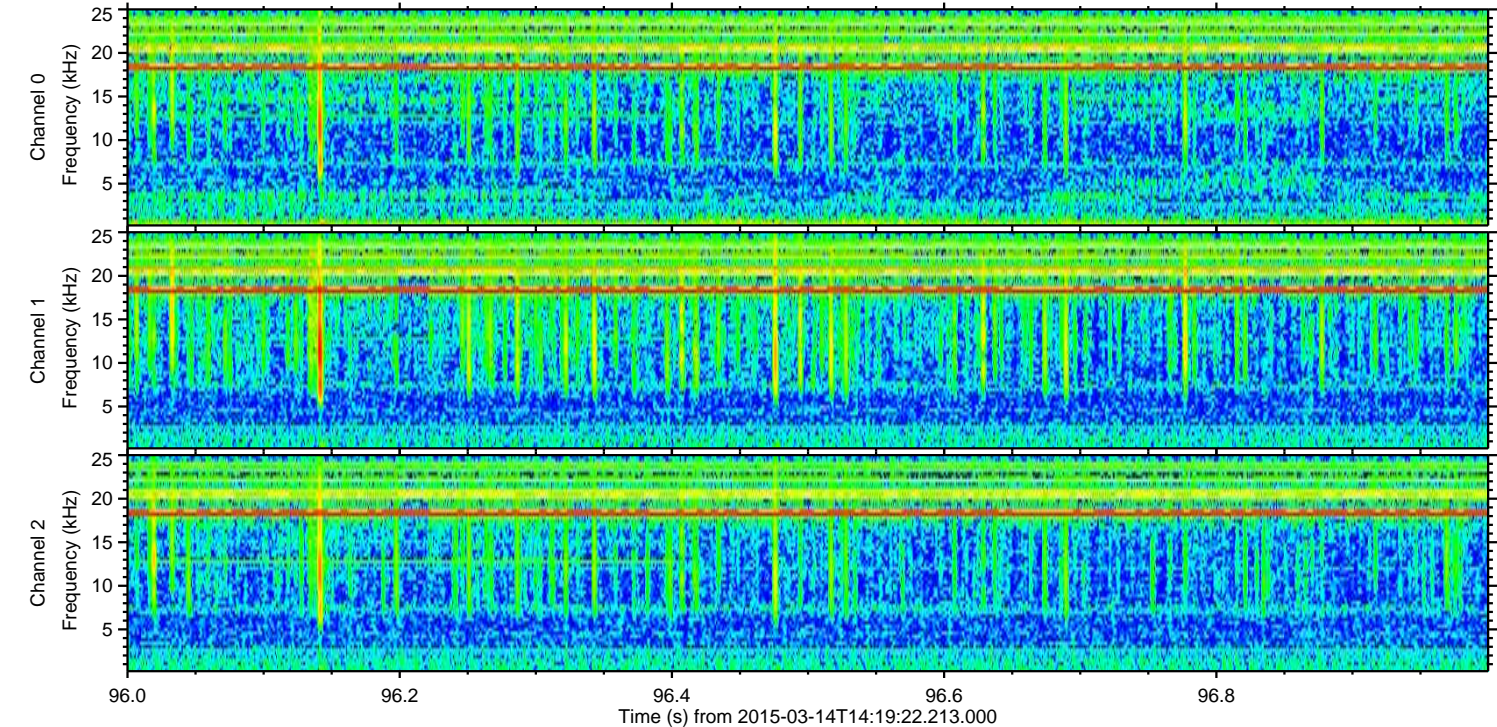
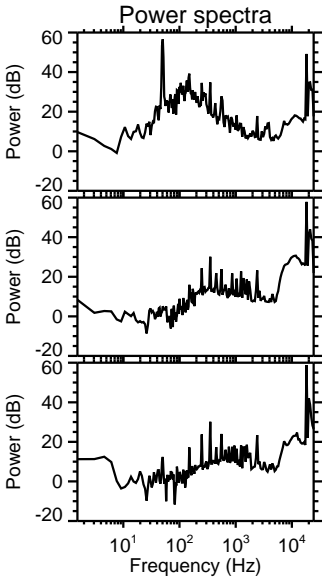
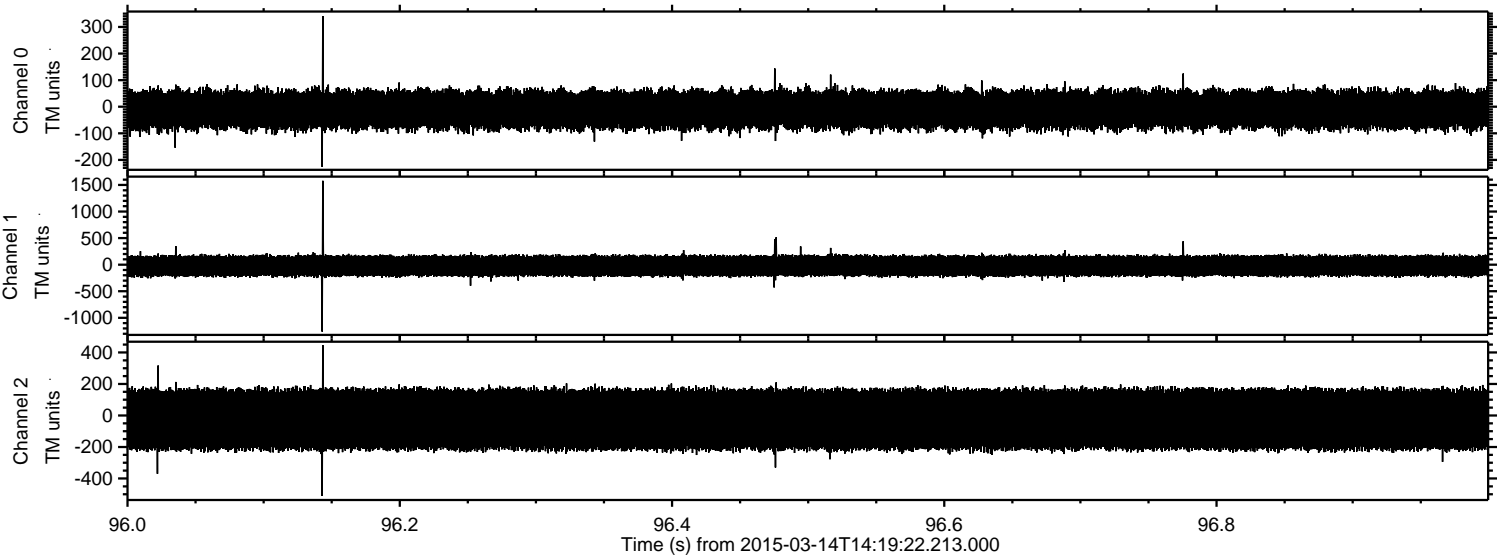
# ELMAVAN 3D WAVEFORMS (Measured data sampled at 50 kHz) 49693 packets of 144 samples from 2015-03-14T14:19:22.213.000.

Processed Sat Mar 14 15:30:20 2015 by ELM ver.2012-10-06 from 001\_\_elm20150314\_141921\_\_dat00.bin



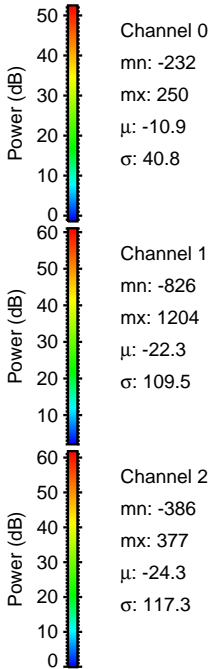
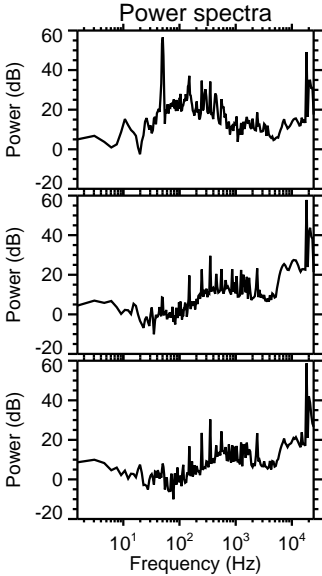
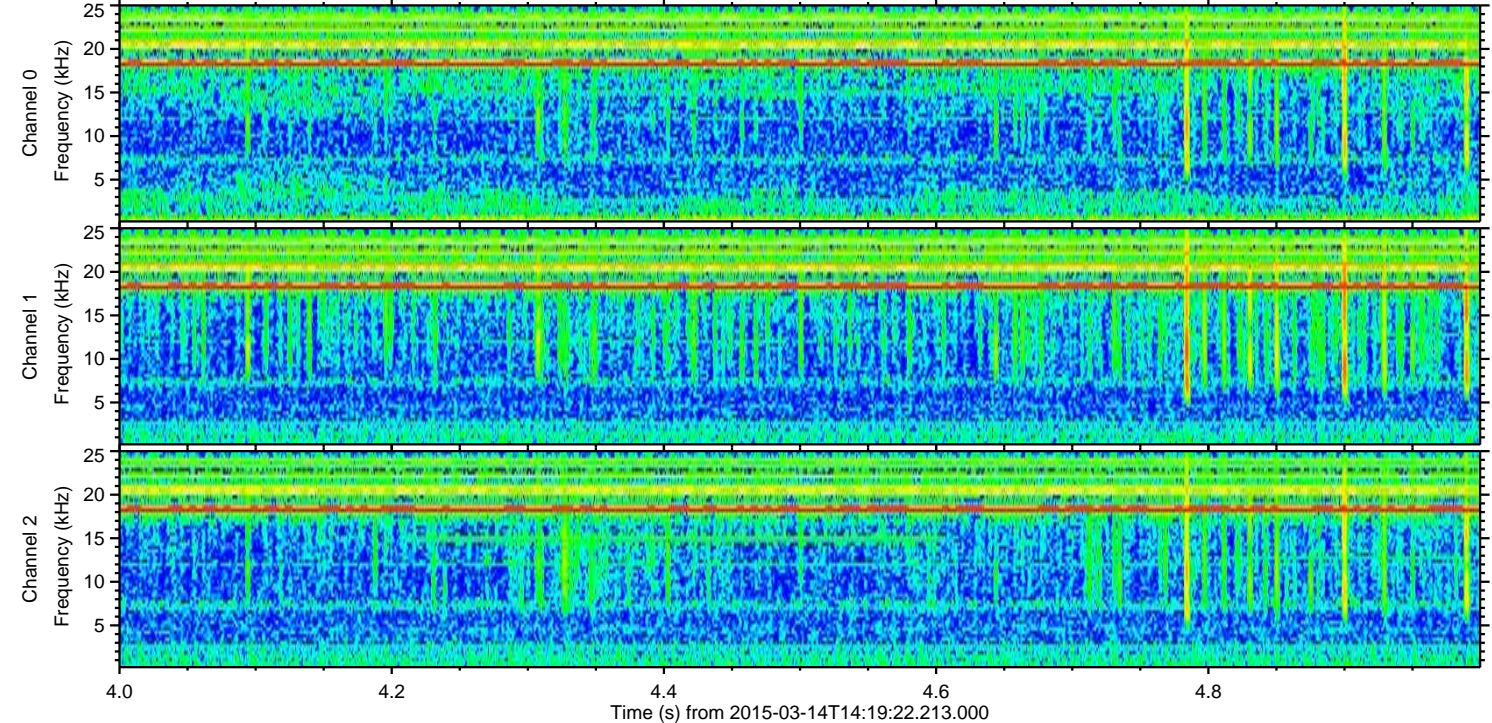
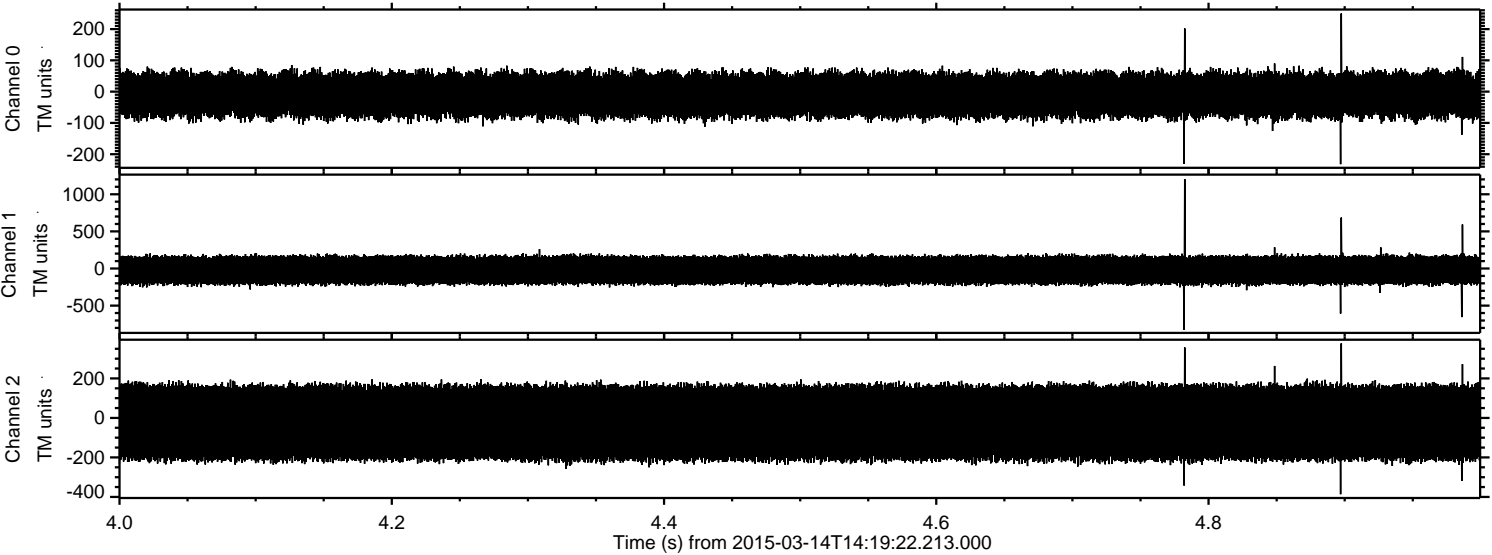


Processed Sat Mar 14 15:30:34 2015 by ELM ver.2012-10-06 from 001\_\_elm20150314\_141921\_\_dat00.bin





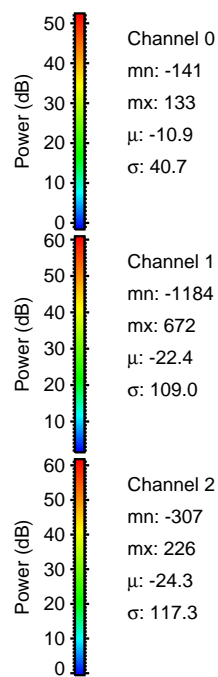
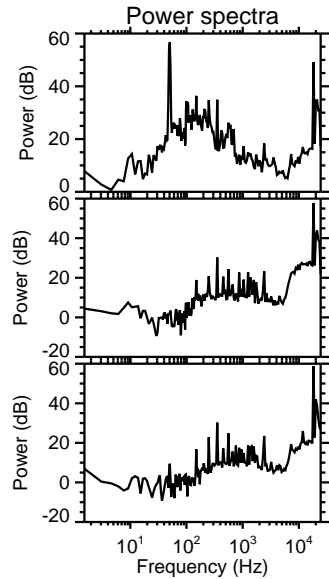
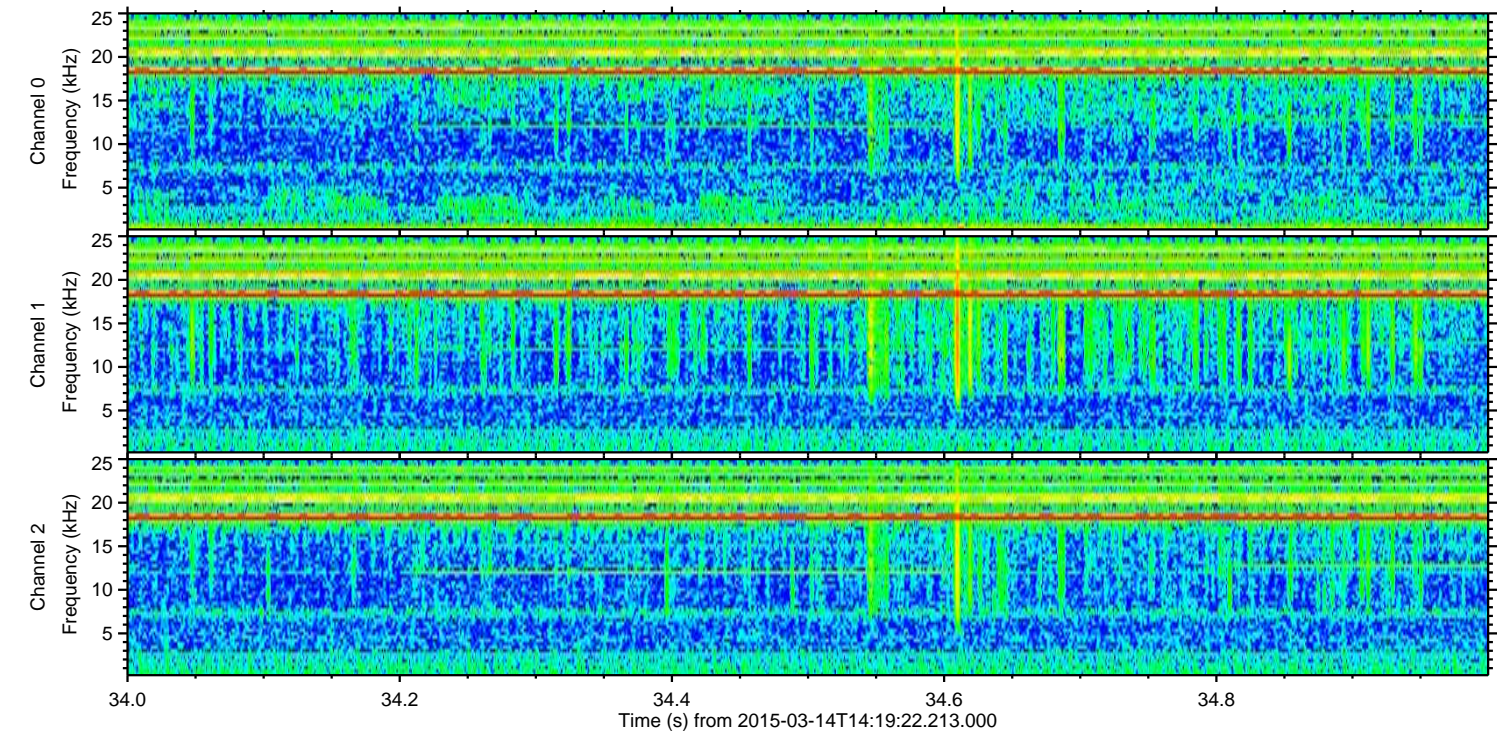
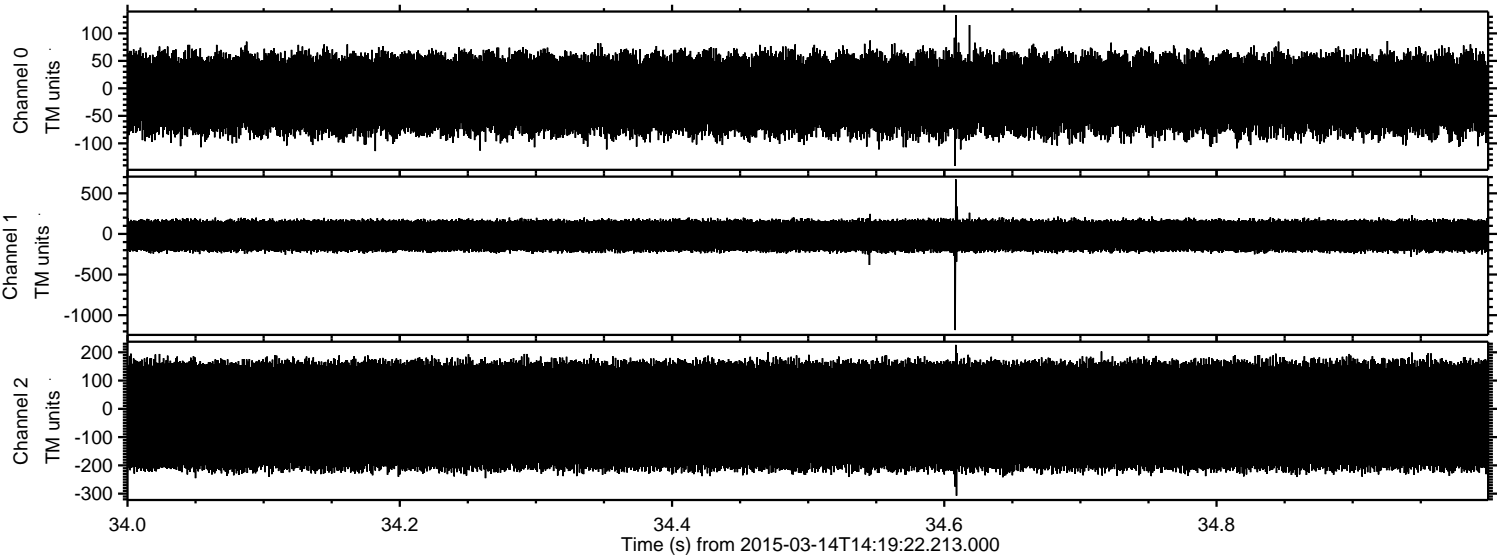
Processed Sat Mar 14 15:30:35 2015 by ELM ver.2012-10-06 from 001\_\_elm20150314\_141921\_\_dat00.bin





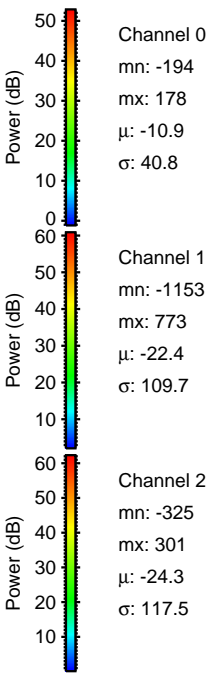
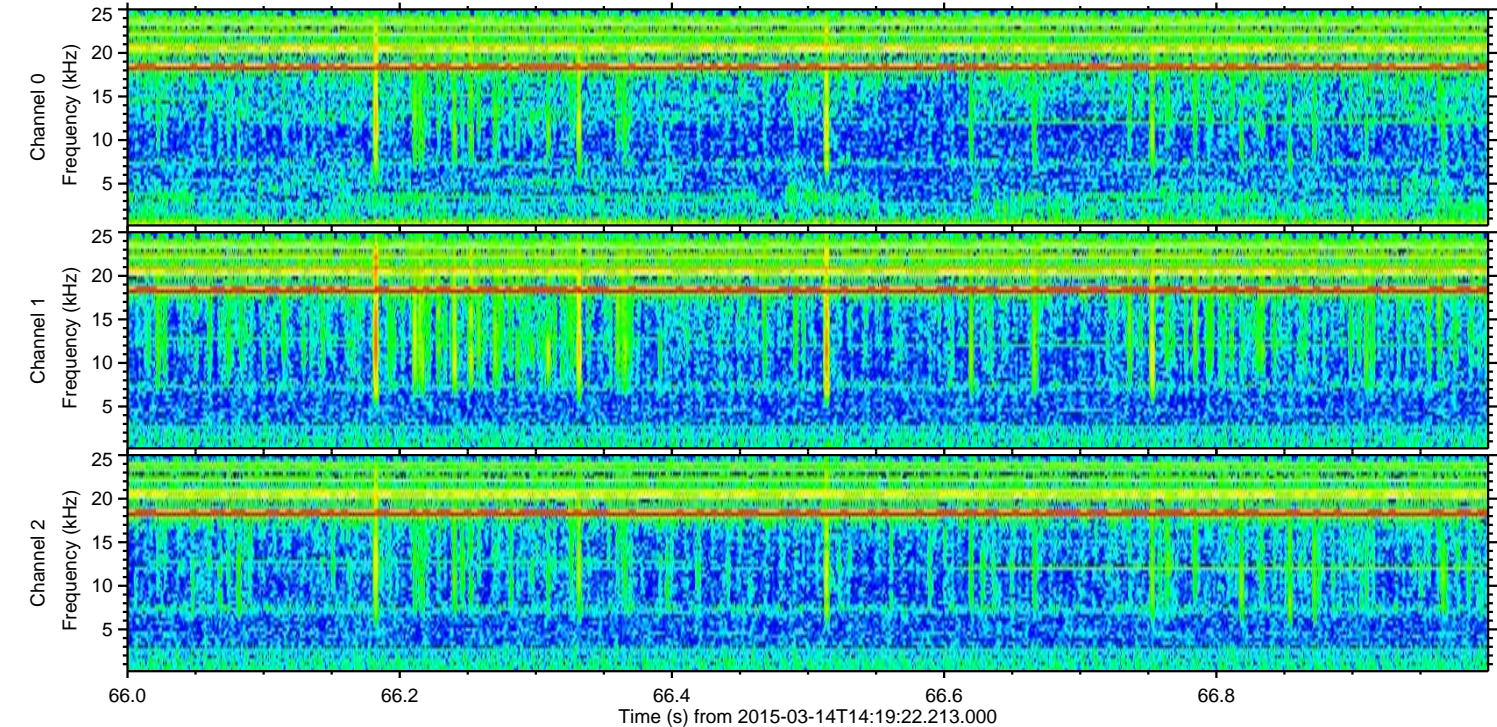
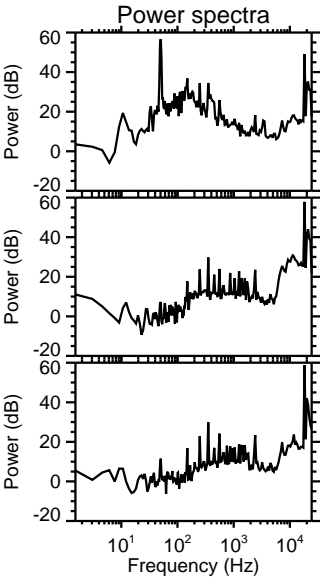
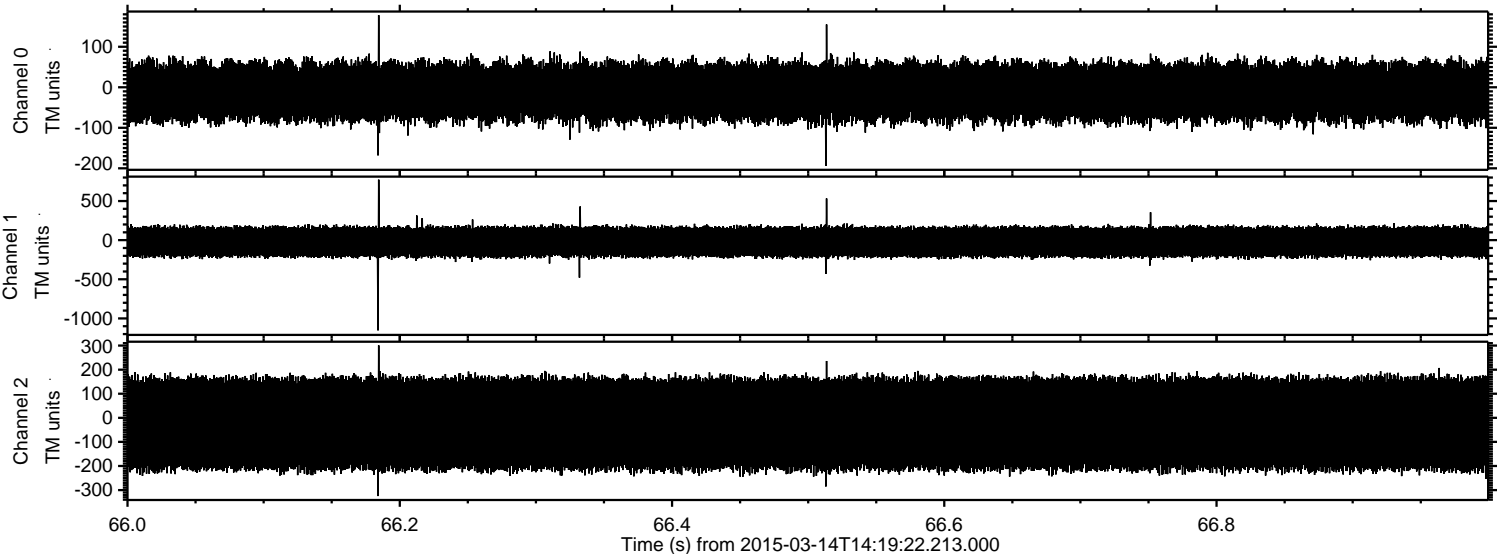
ELMAVAN 3D WAVEFORMS (Measured data sampled at 50 kHz) 49693 packets of 144 samples from 2015-03-14T14:19:22.213.000. Part 35/144

Processed Sat Mar 14 15:30:36 2015 by ELM ver.2012-10-06 from 001\_\_elm20150314\_141921\_\_dat00.bin





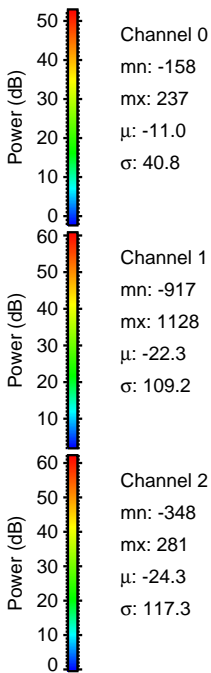
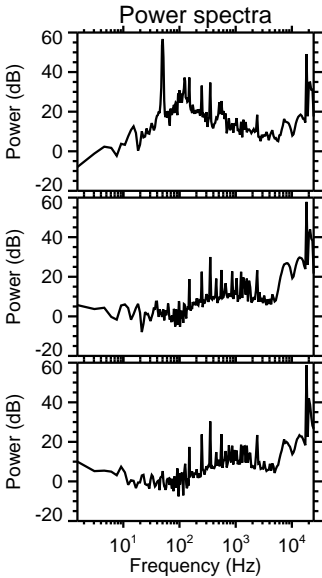
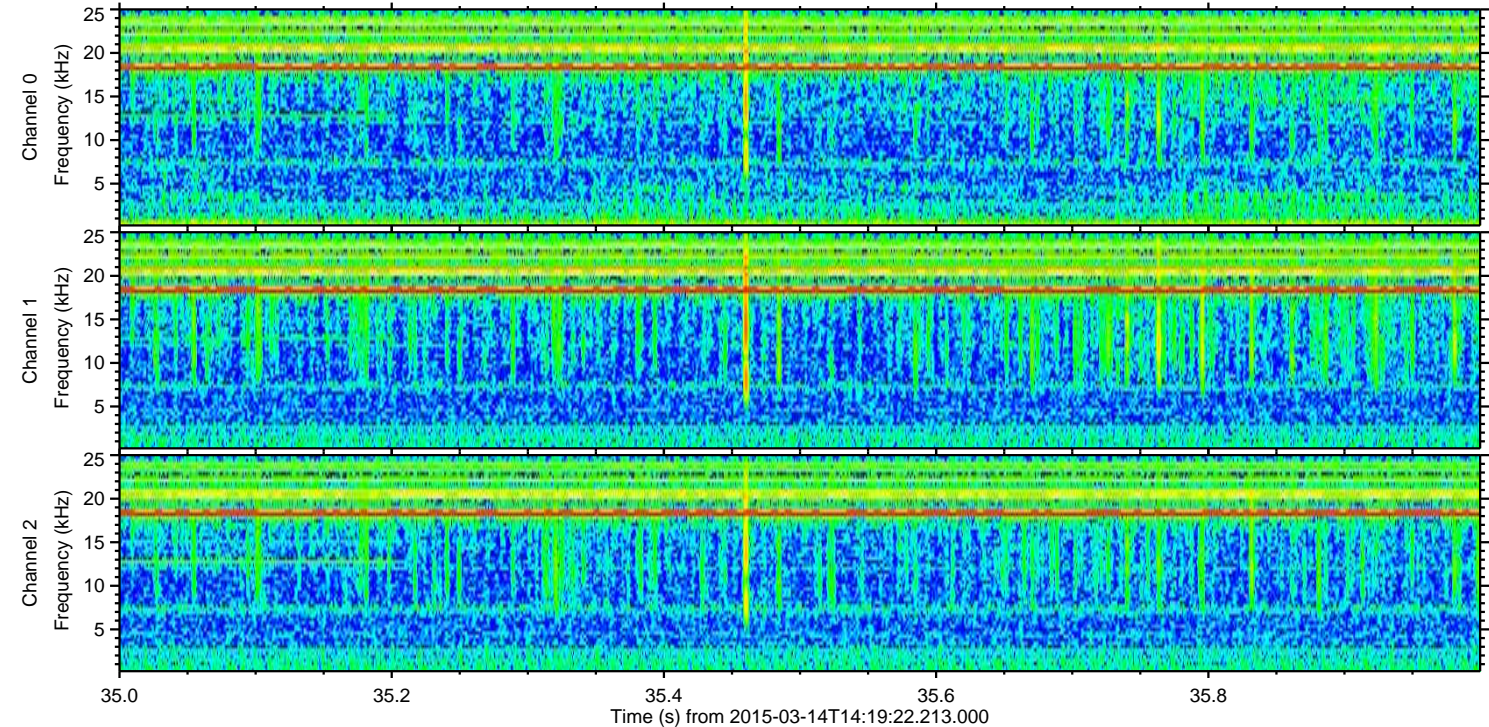
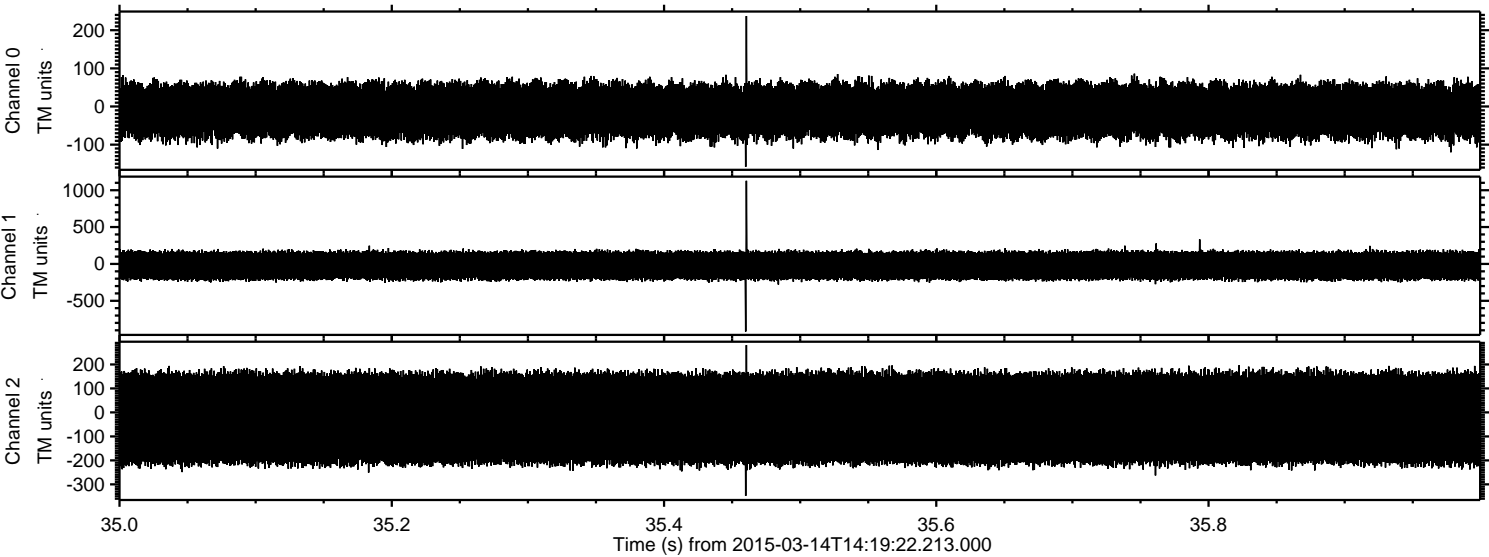
Processed Sat Mar 14 15:30:37 2015 by ELM ver.2012-10-06 from 001\_\_elm20150314\_141921\_\_dat00.bin





ELMAVAN 3D WAVEFORMS (Measured data sampled at 50 kHz) 49693 packets of 144 samples from 2015-03-14T14:19:22.213.000. Part 36/144

Processed Sat Mar 14 15:30:38 2015 by ELM ver.2012-10-06 from 001\_\_elm20150314\_141921\_\_dat00.bin



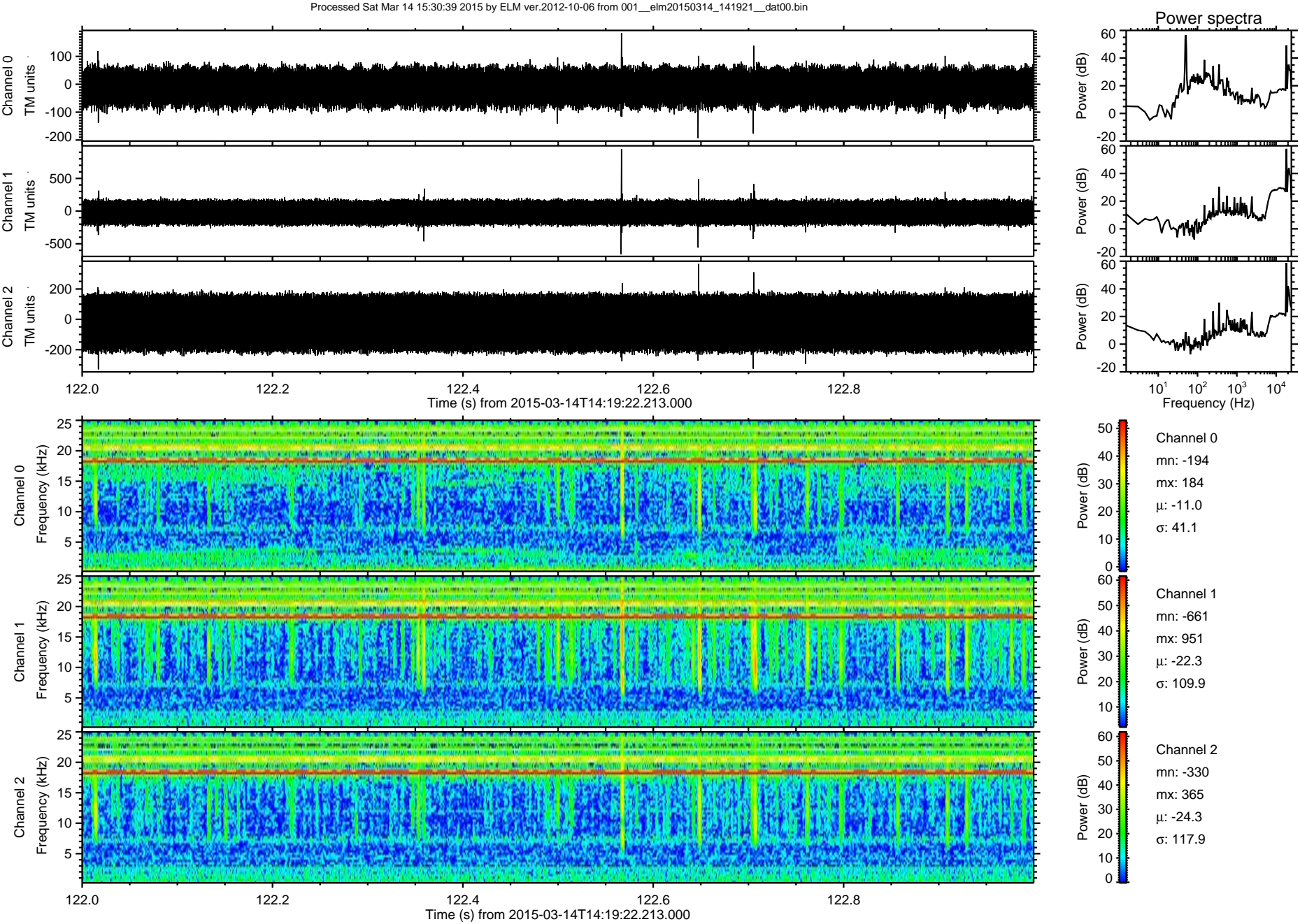
Channel 0  
mn: -158  
mx: 237  
 $\mu$ : -11.0  
 $\sigma$ : 40.8

Channel 1  
mn: -917  
mx: 1128  
 $\mu$ : -22.3  
 $\sigma$ : 109.2

Channel 2  
mn: -348  
mx: 281  
 $\mu$ : -24.3  
 $\sigma$ : 117.3



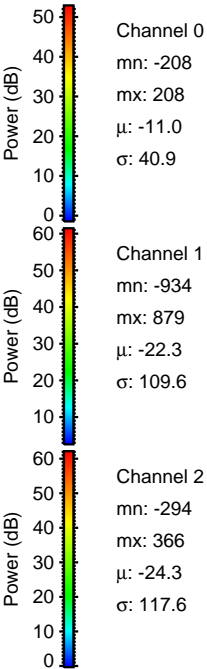
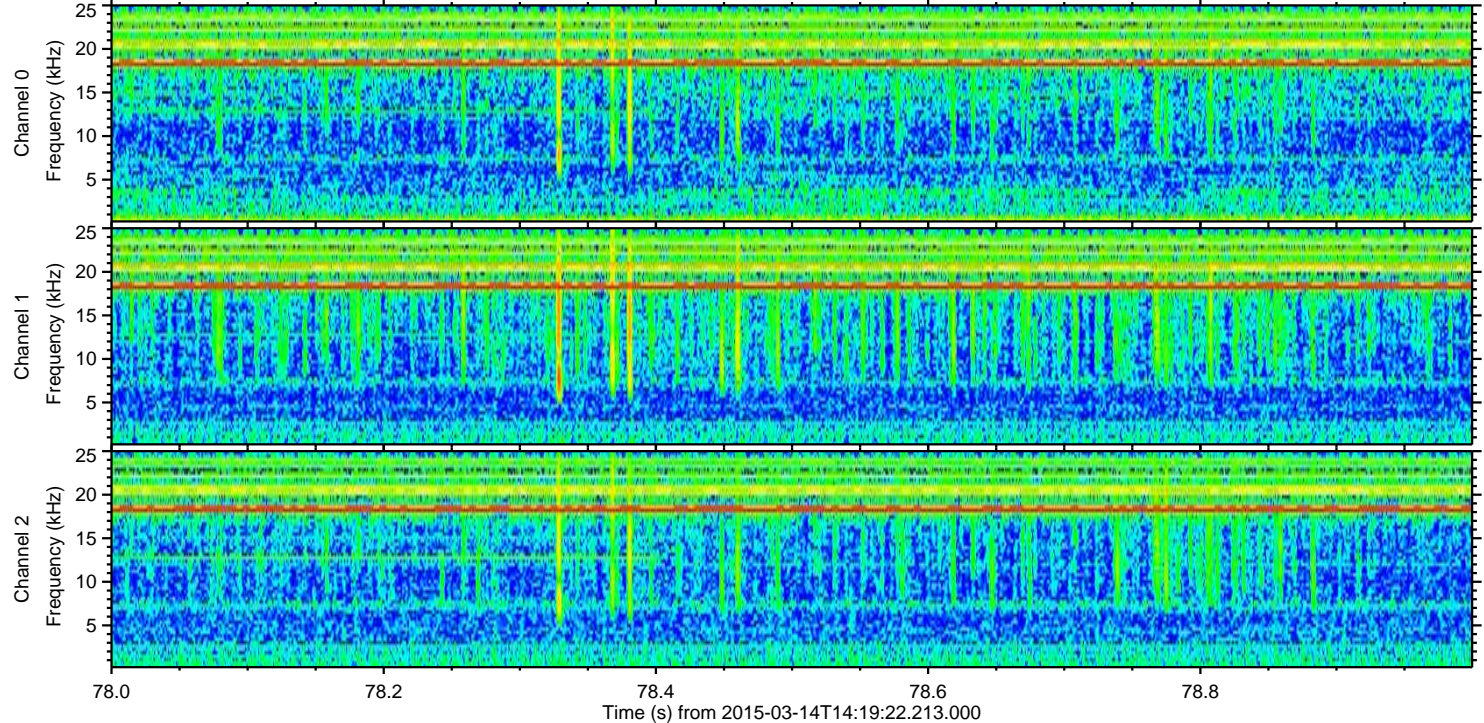
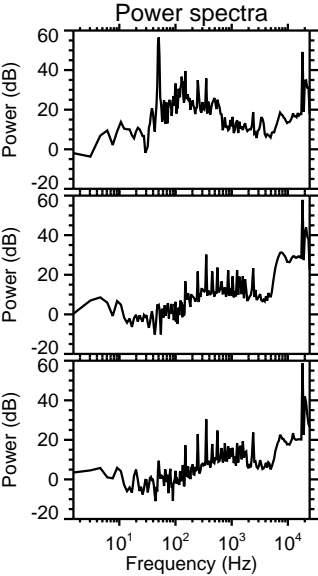
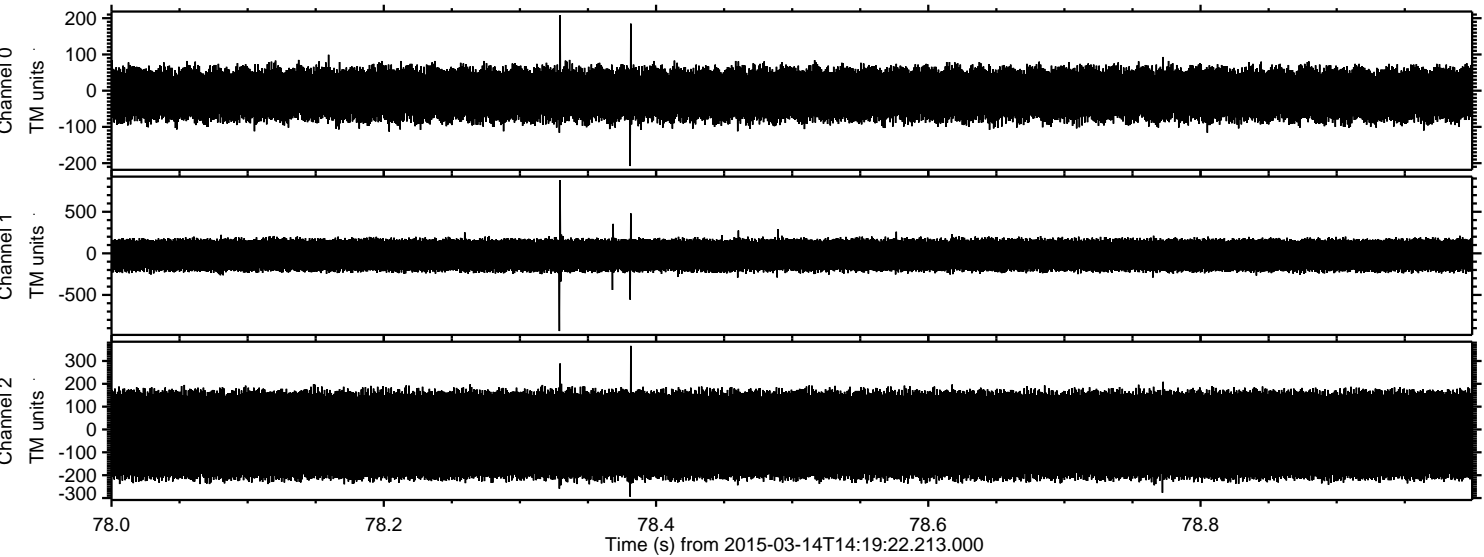
ELMAVAN 3D WAVEFORMS (Measured data sampled at 50 kHz) 49693 packets of 144 samples from 2015-03-14T14:19:22.213.000. Part 123/144





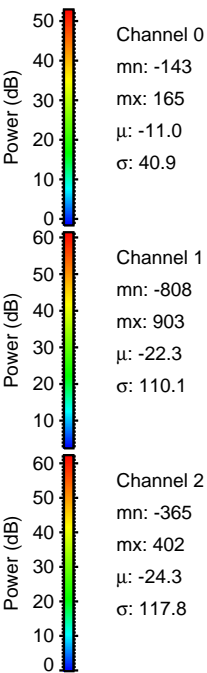
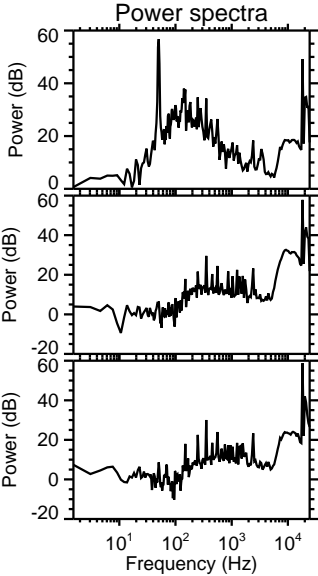
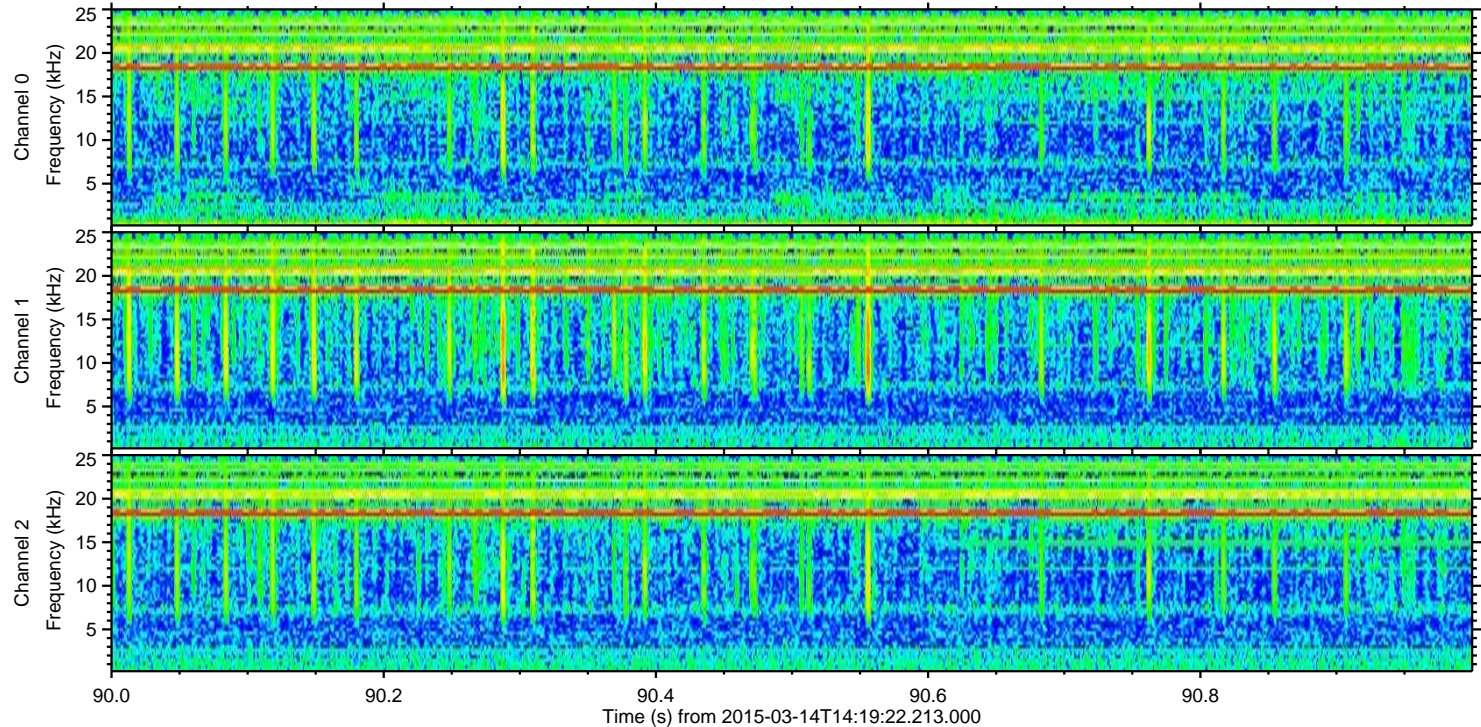
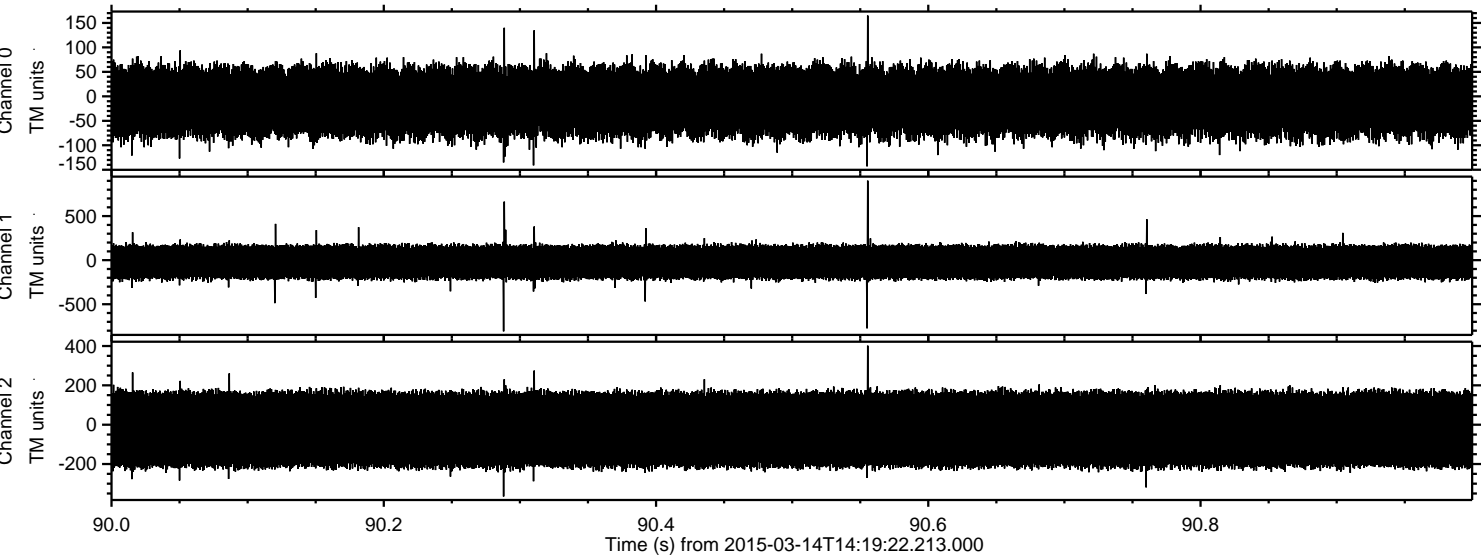
ELMAVAN 3D WAVEFORMS (Measured data sampled at 50 kHz) 49693 packets of 144 samples from 2015-03-14T14:19:22.213.000. Part 79/144

Processed Sat Mar 14 15:30:40 2015 by ELM ver.2012-10-06 from 001\_\_elm20150314\_141921\_\_dat00.bin



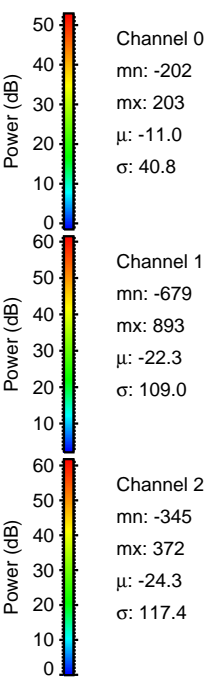
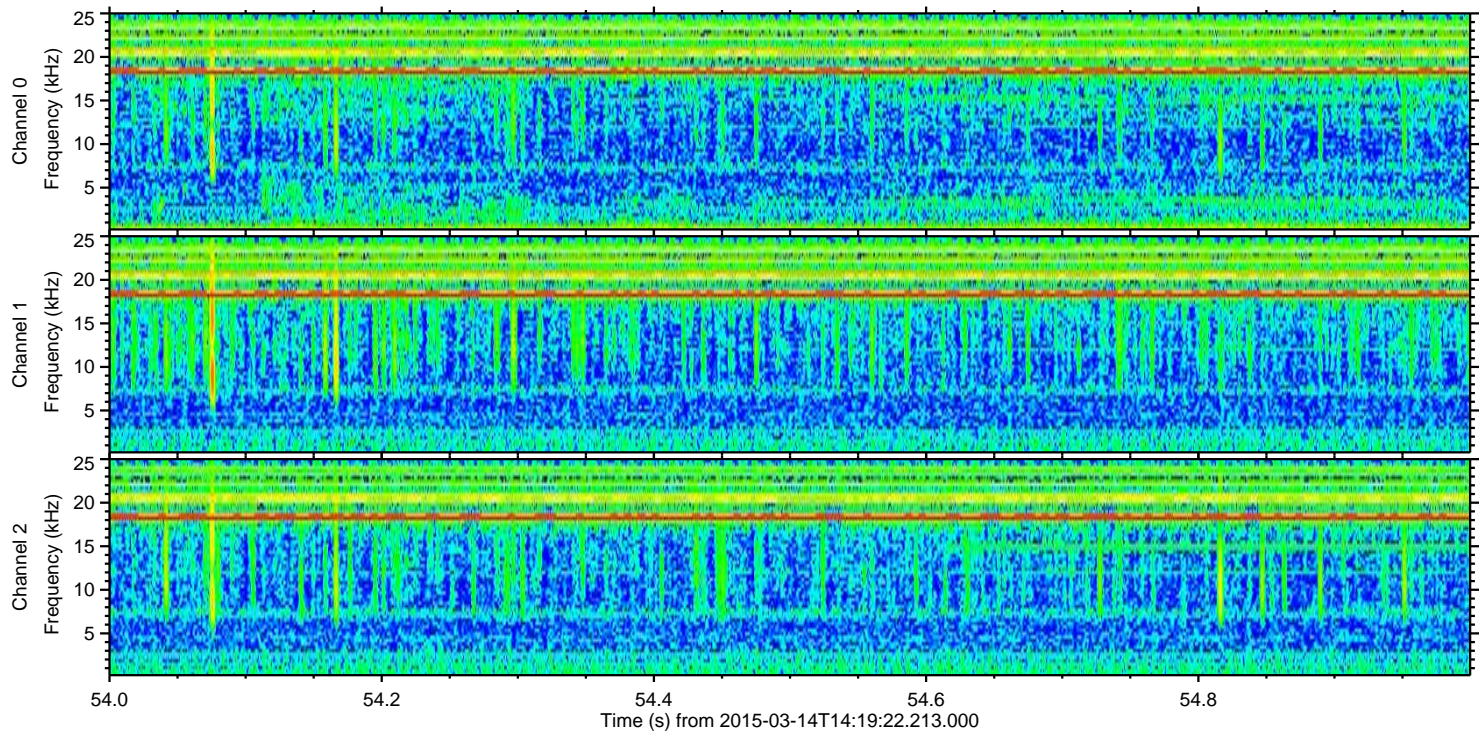
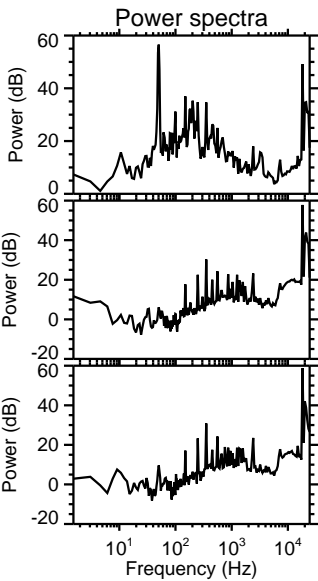
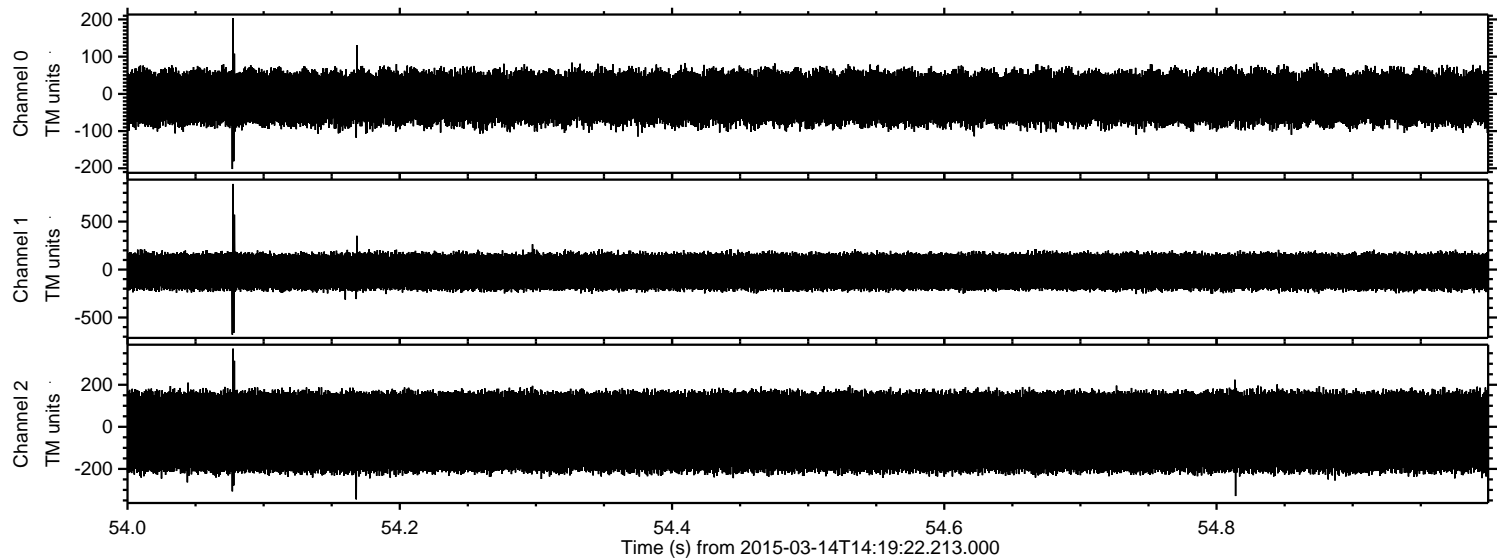


Processed Sat Mar 14 15:30:41 2015 by ELM ver.2012-10-06 from 001\_\_elm20150314\_141921\_\_dat00.bin



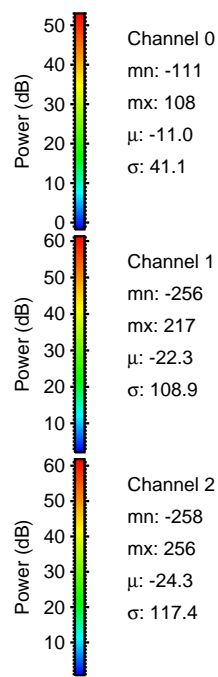
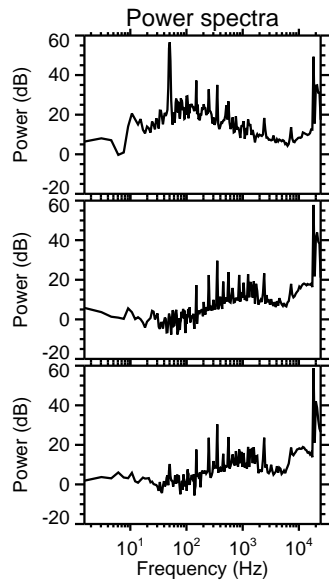
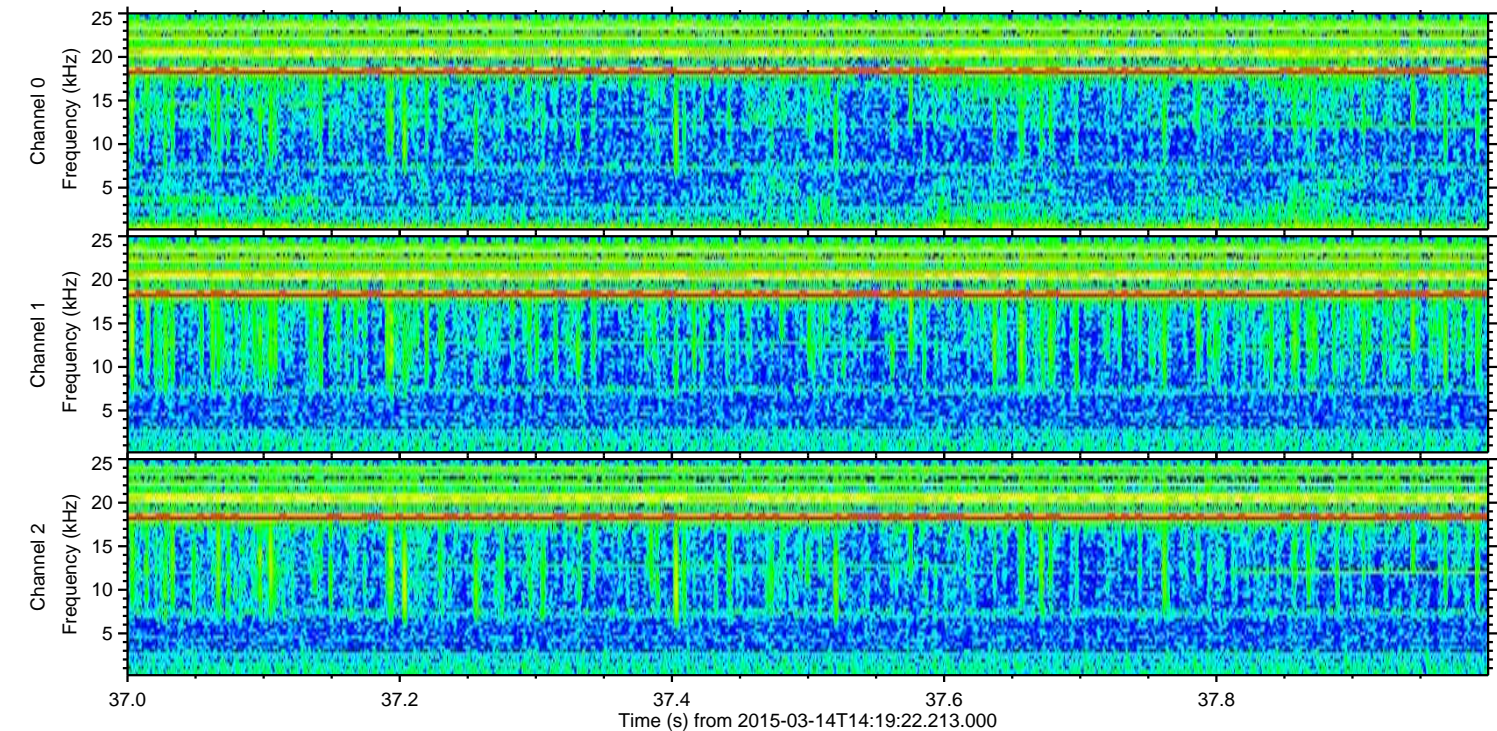
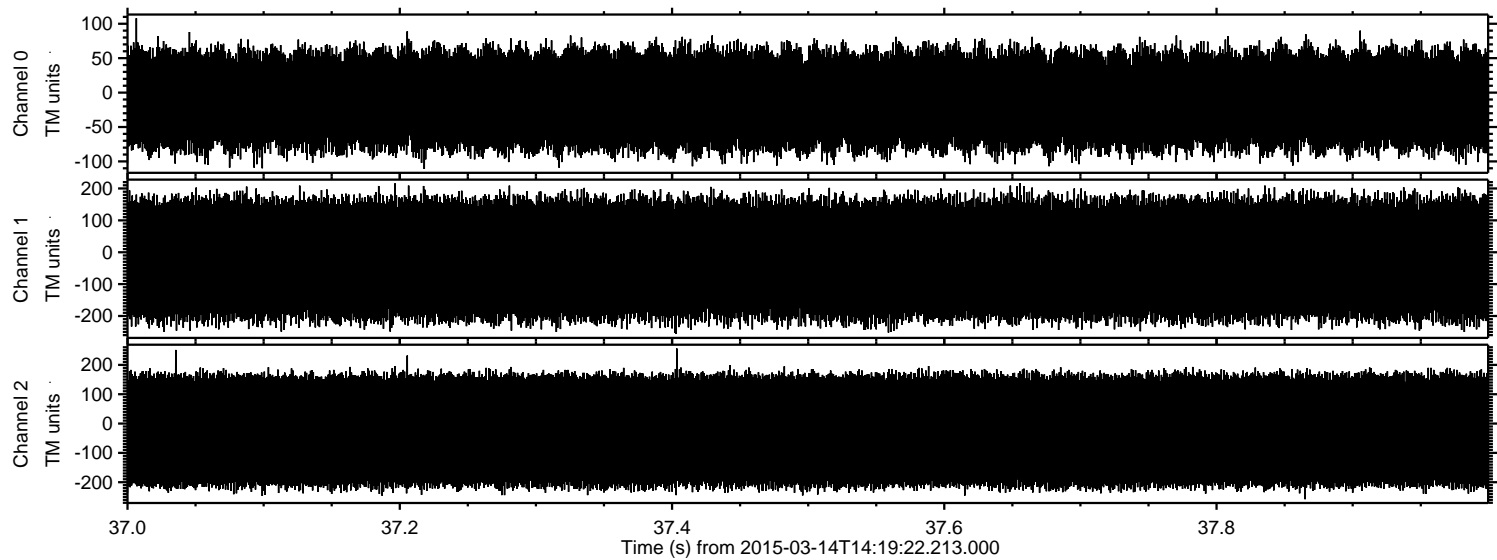


Processed Sat Mar 14 15:30:42 2015 by ELM ver.2012-10-06 from 001\_\_elm20150314\_141921\_\_dat00.bin





Processed Sat Mar 14 15:30:43 2015 by ELM ver.2012-10-06 from 001\_\_elm20150314\_141921\_\_dat00.bin



Channel 0  
mn: -111  
mx: 108  
 $\mu$ : -11.0  
 $\sigma$ : 41.1

Channel 1  
mn: -256  
mx: 217  
 $\mu$ : -22.3  
 $\sigma$ : 108.9

Channel 2  
mn: -258  
mx: 256  
 $\mu$ : -24.3  
 $\sigma$ : 117.4