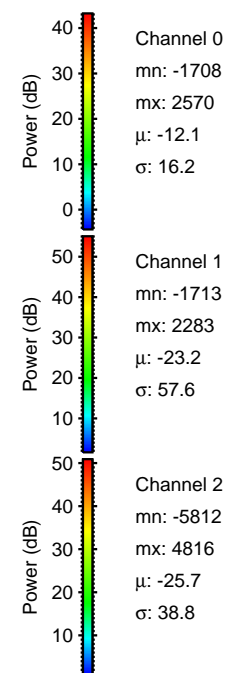
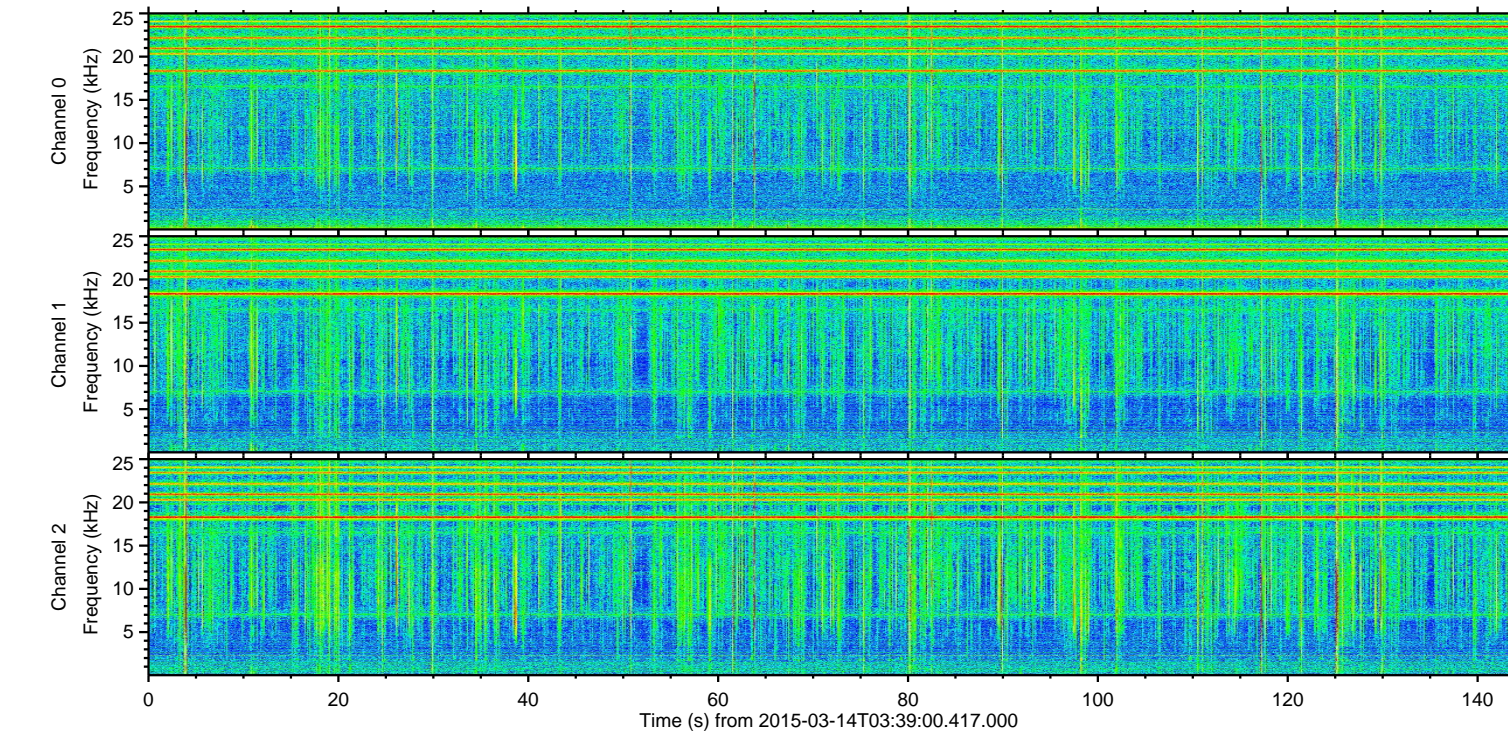
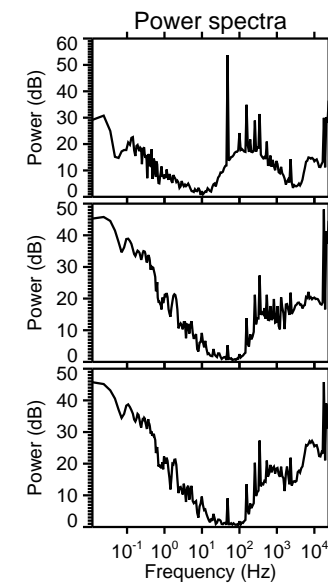
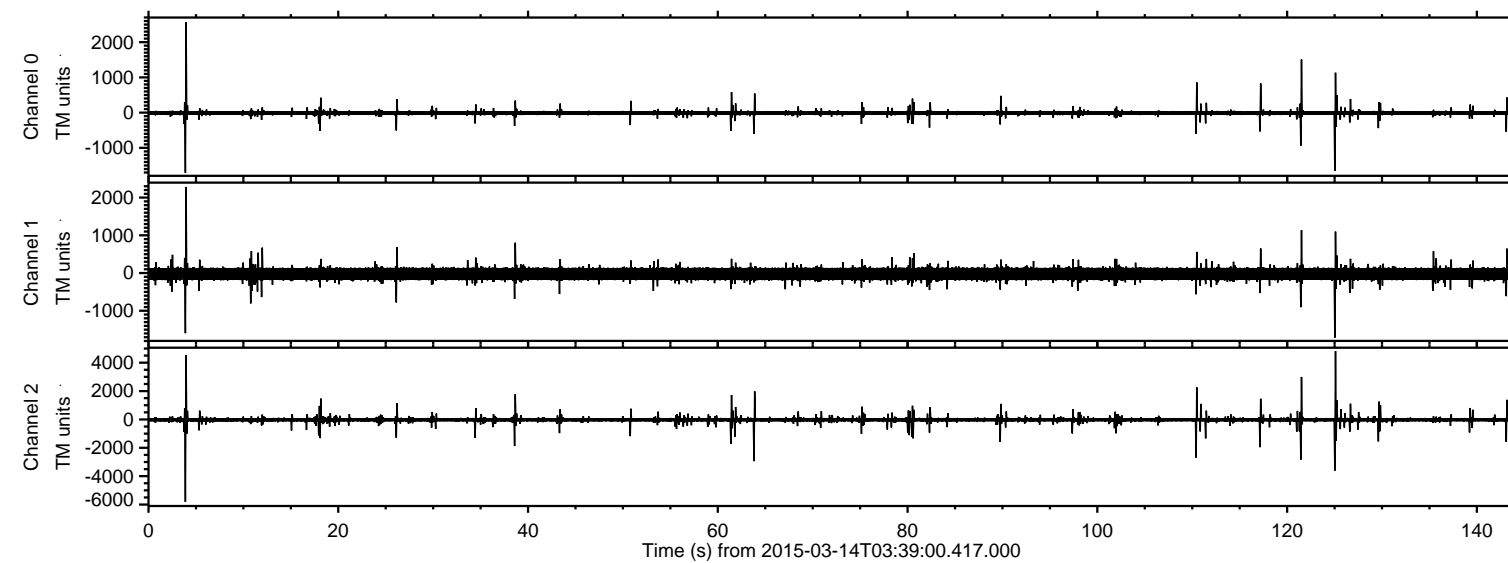
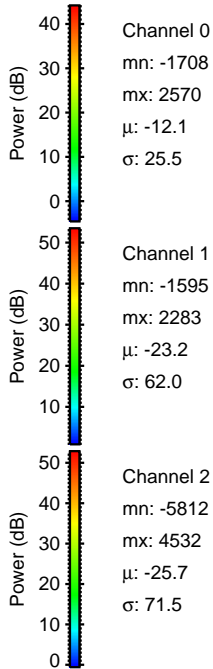
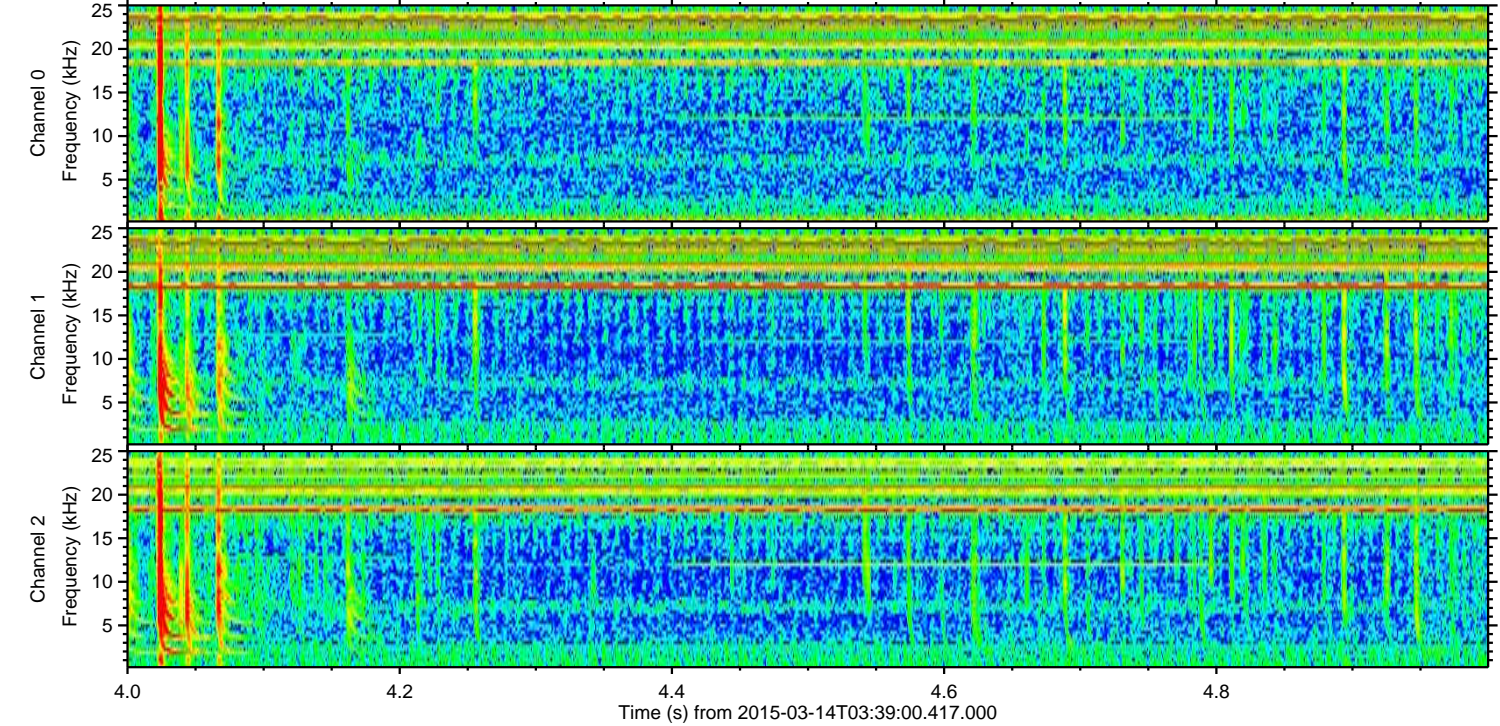
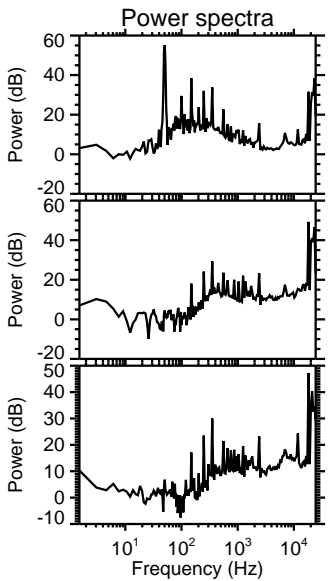
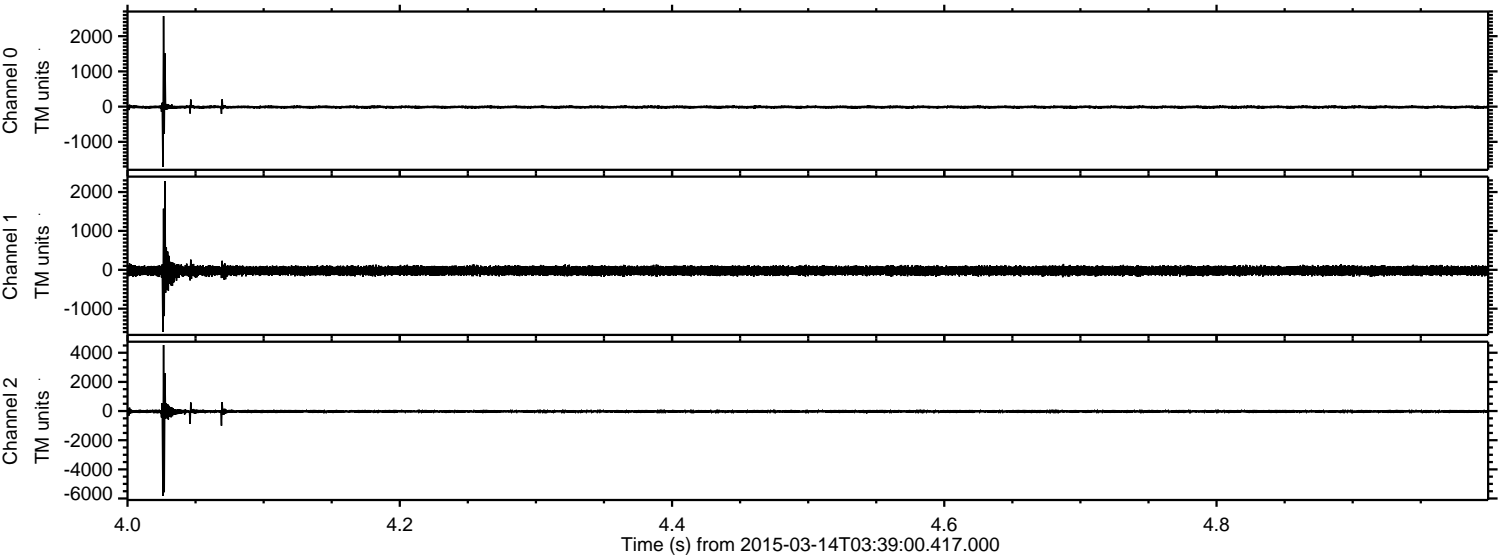


ELMAVAN 3D WAVEFORMS (Measured data sampled at 50 kHz) 49791 packets of 144 samples from 2015-03-14T03:39:00.417.000.

Processed Sat Mar 14 05:18:45 2015 by ELM ver.2012-10-06 from 001__elm20150314_033859__dat00.bin

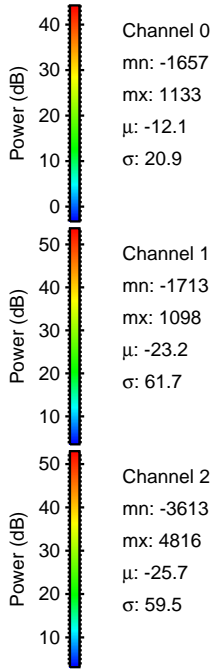
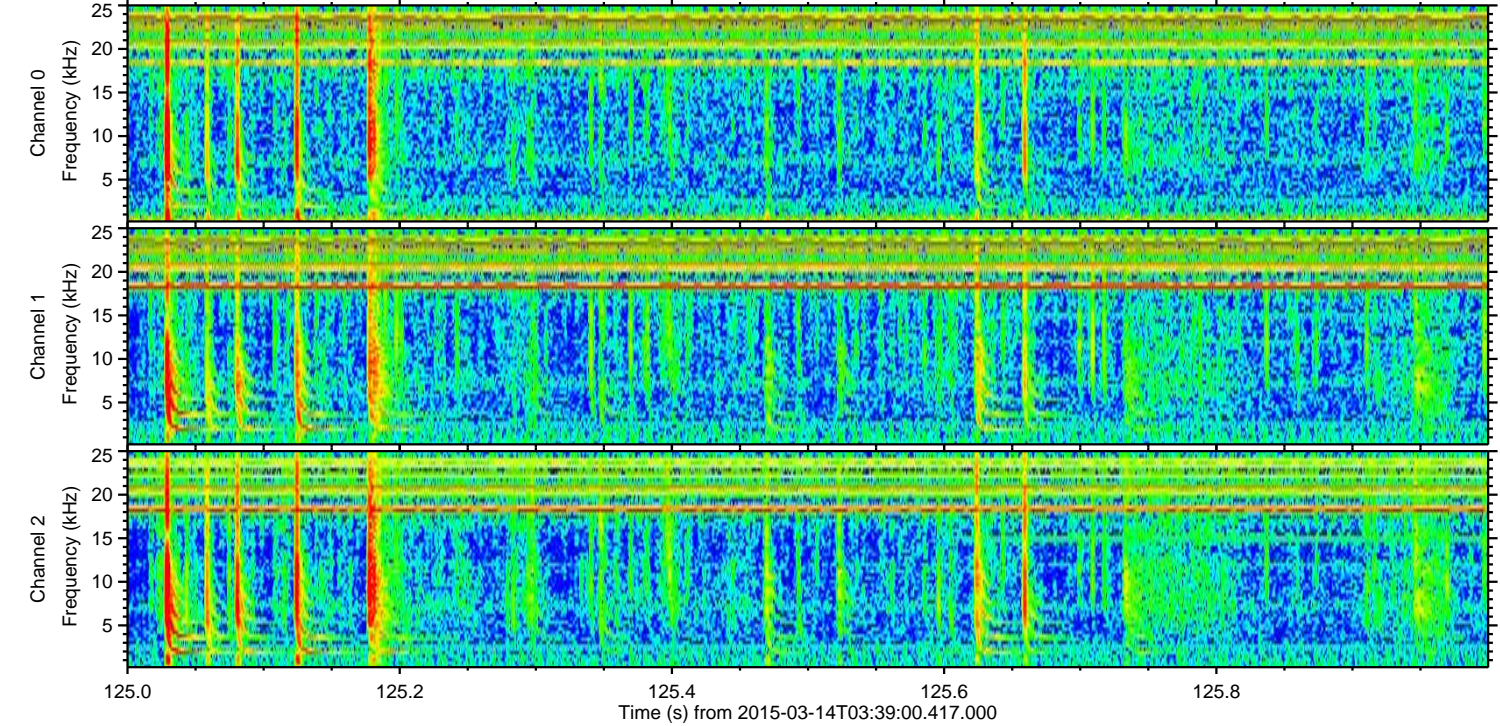
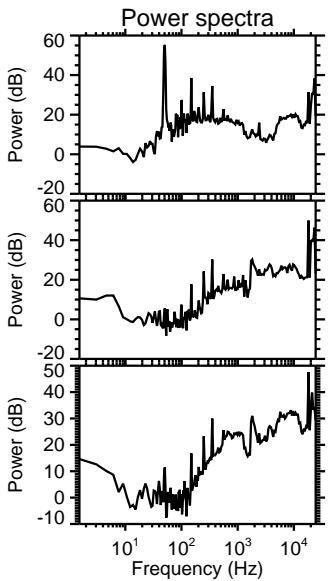
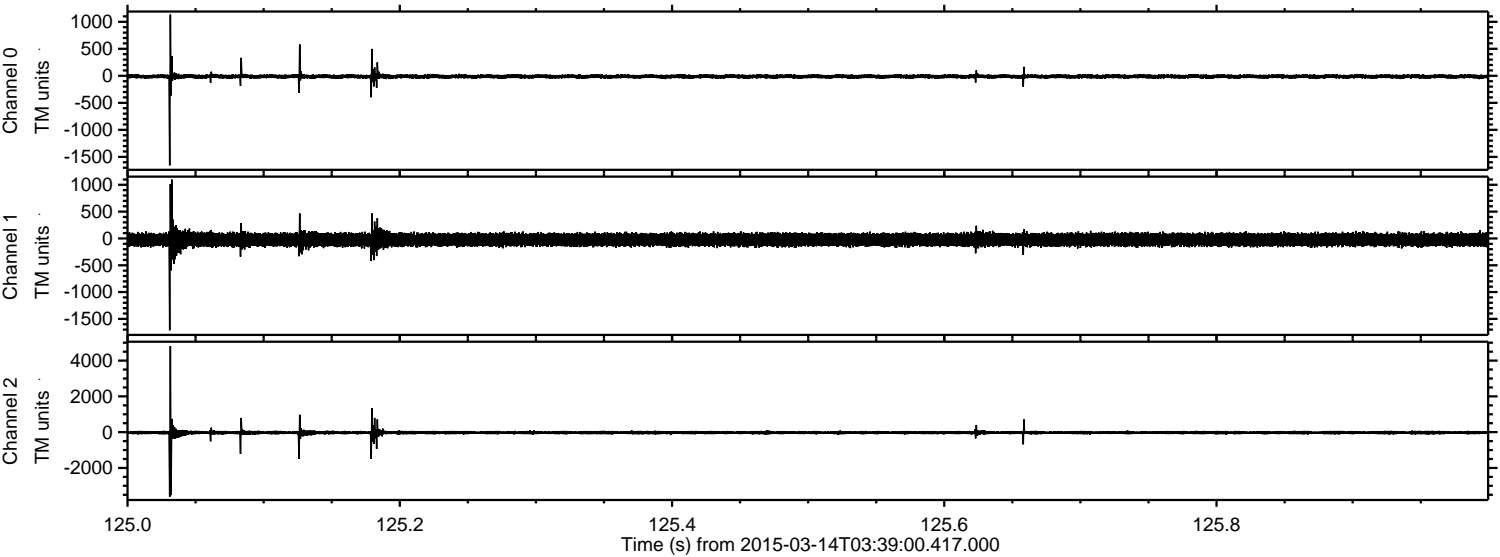


Processed Sat Mar 14 05:18:56 2015 by ELM ver.2012-10-06 from 001__elm20150314_033859__dat00.bin



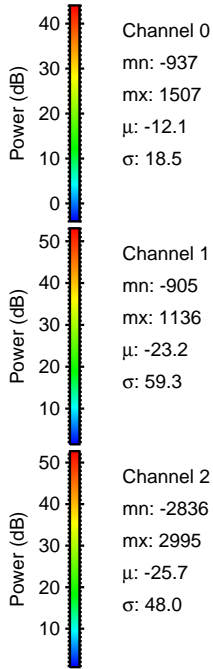
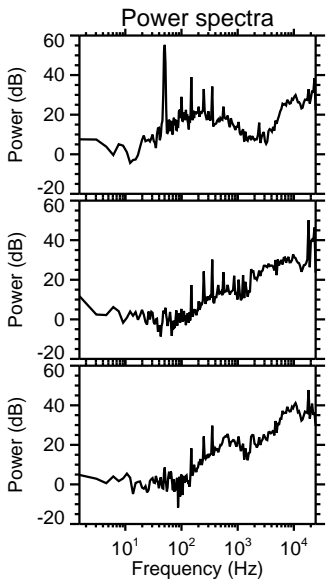
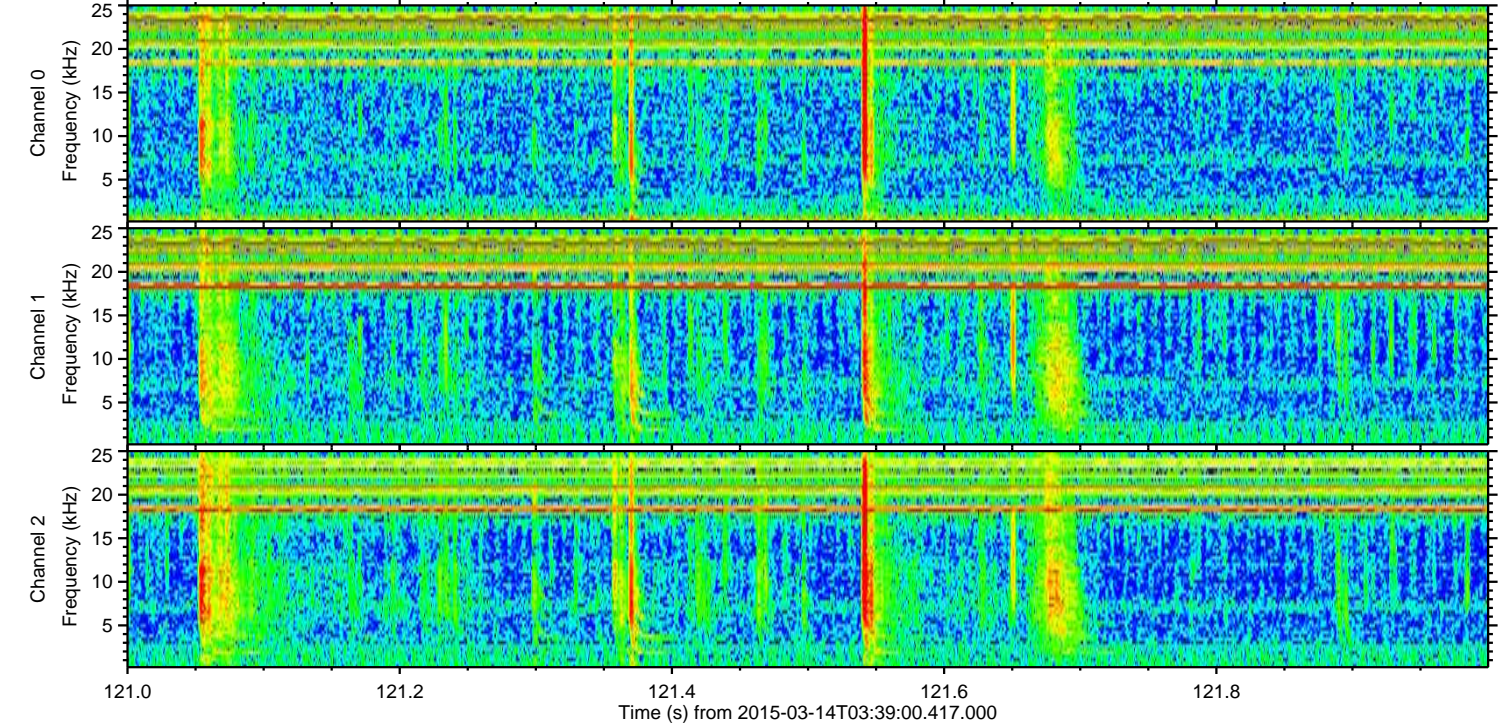
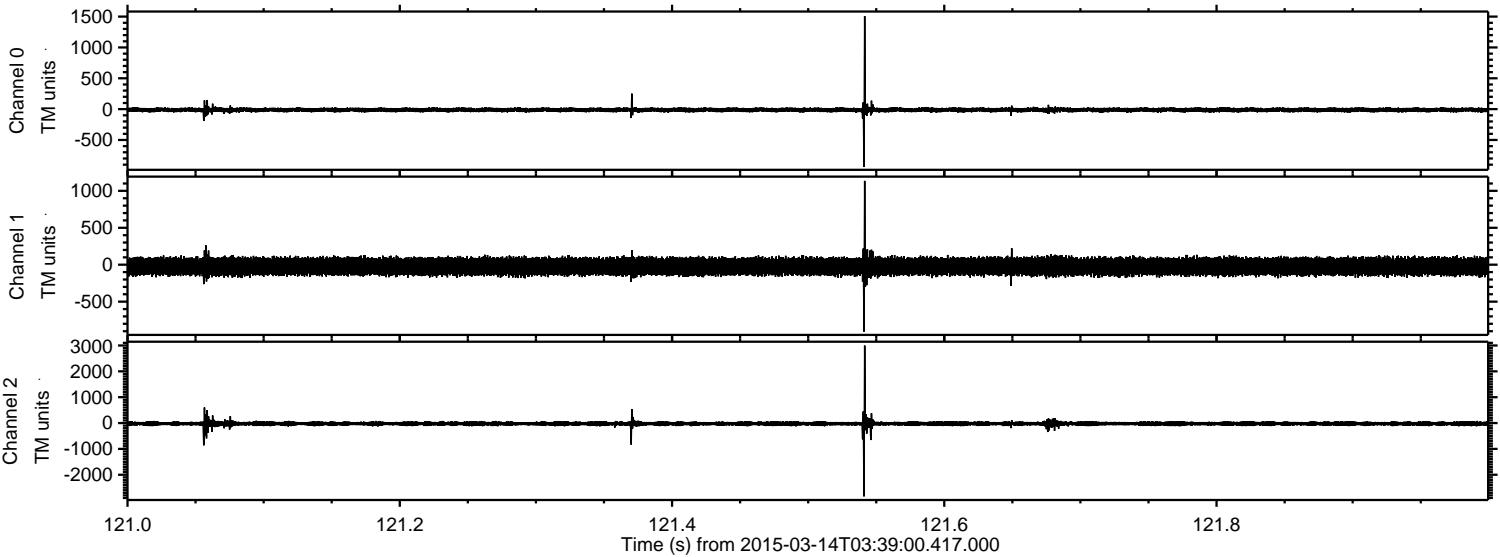
ELMAVAN 3D WAVEFORMS (Measured data sampled at 50 kHz) 49791 packets of 144 samples from 2015-03-14T03:39:00.417.000. Part 126/144

Processed Sat Mar 14 05:18:57 2015 by ELM ver.2012-10-06 from 001__elm20150314_033859__dat00.bin



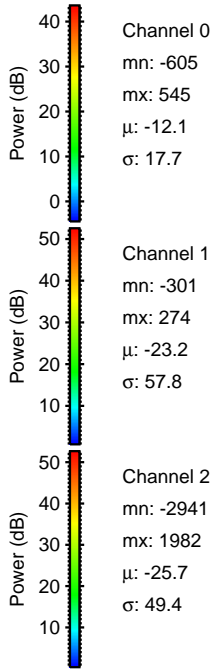
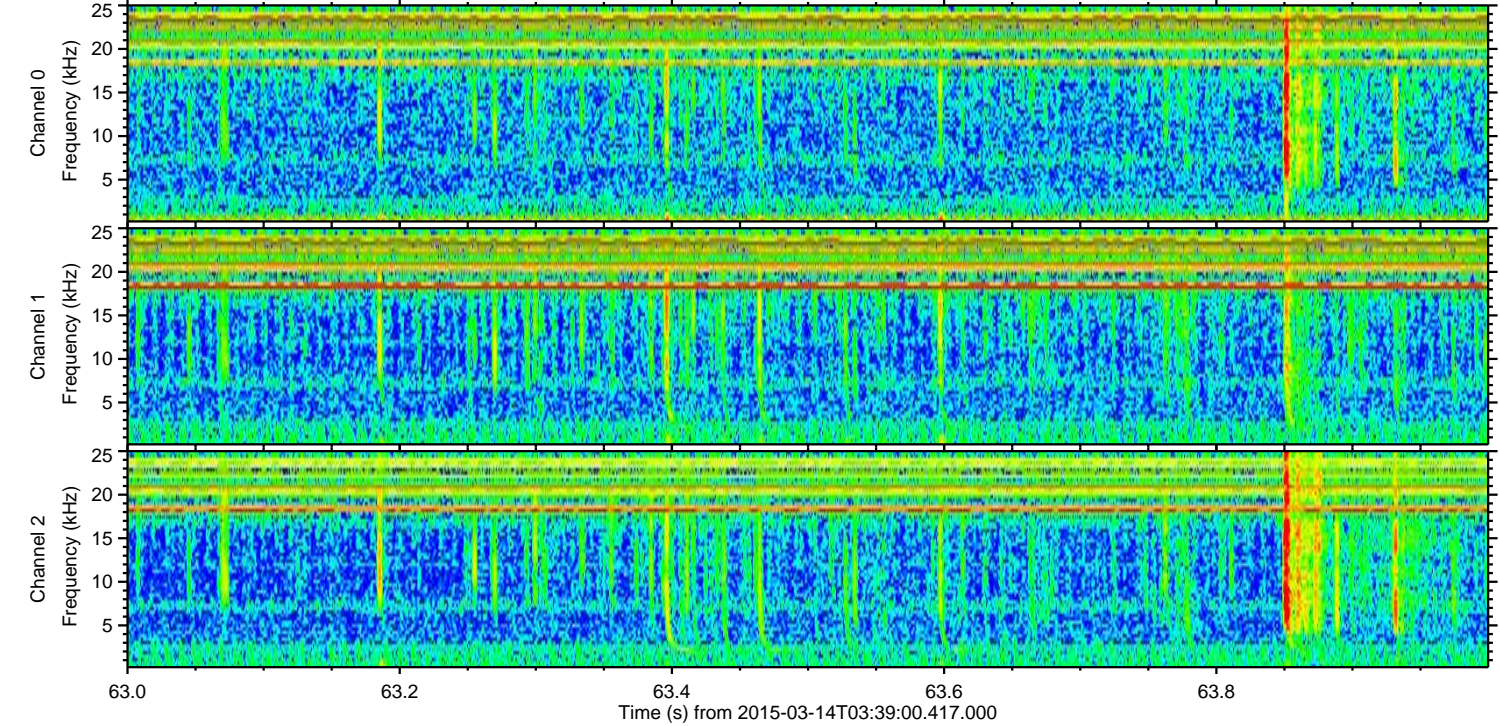
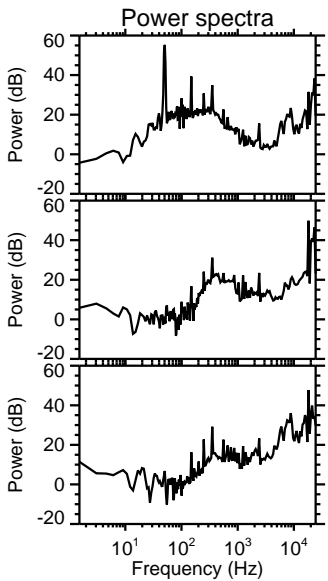
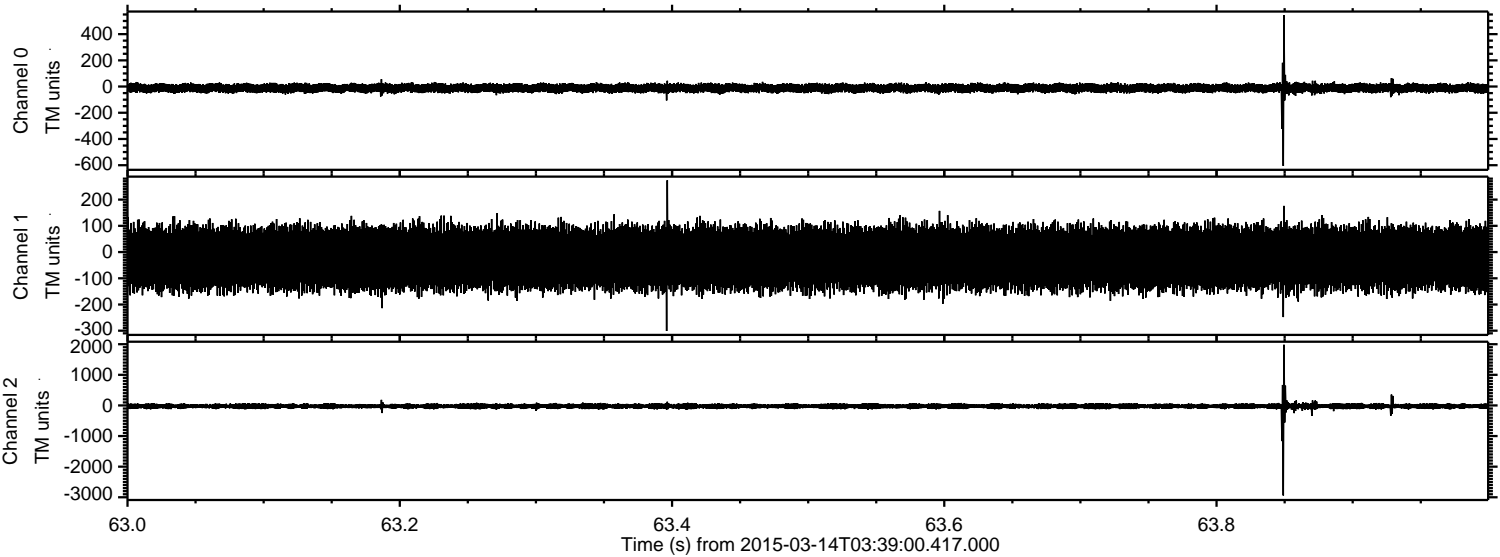
ELMAVAN 3D WAVEFORMS (Measured data sampled at 50 kHz) 49791 packets of 144 samples from 2015-03-14T03:39:00.417.000. Part 122/144

Processed Sat Mar 14 05:18:58 2015 by ELM ver.2012-10-06 from 001__elm20150314_033859__dat00.bin



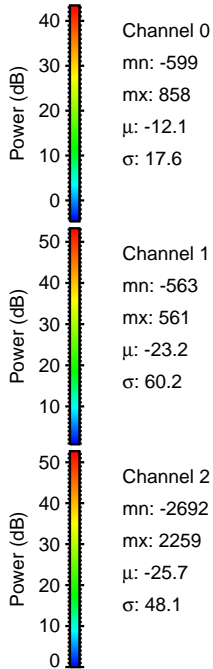
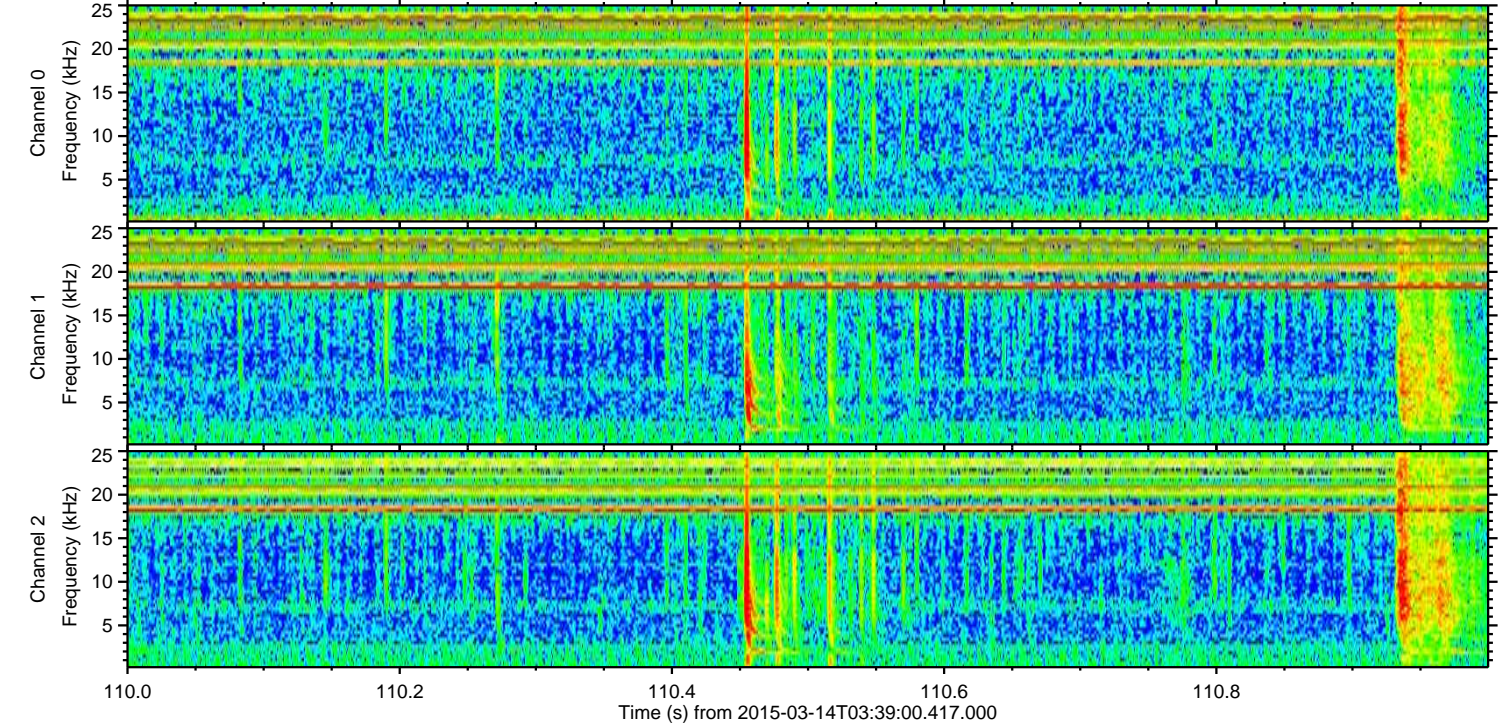
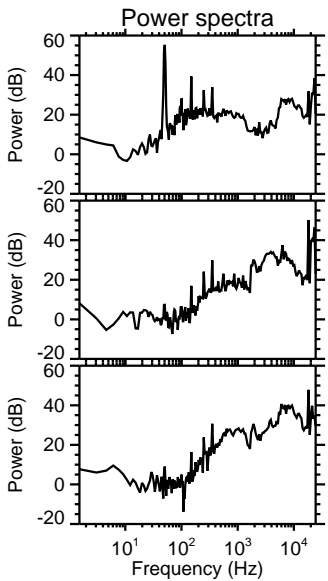
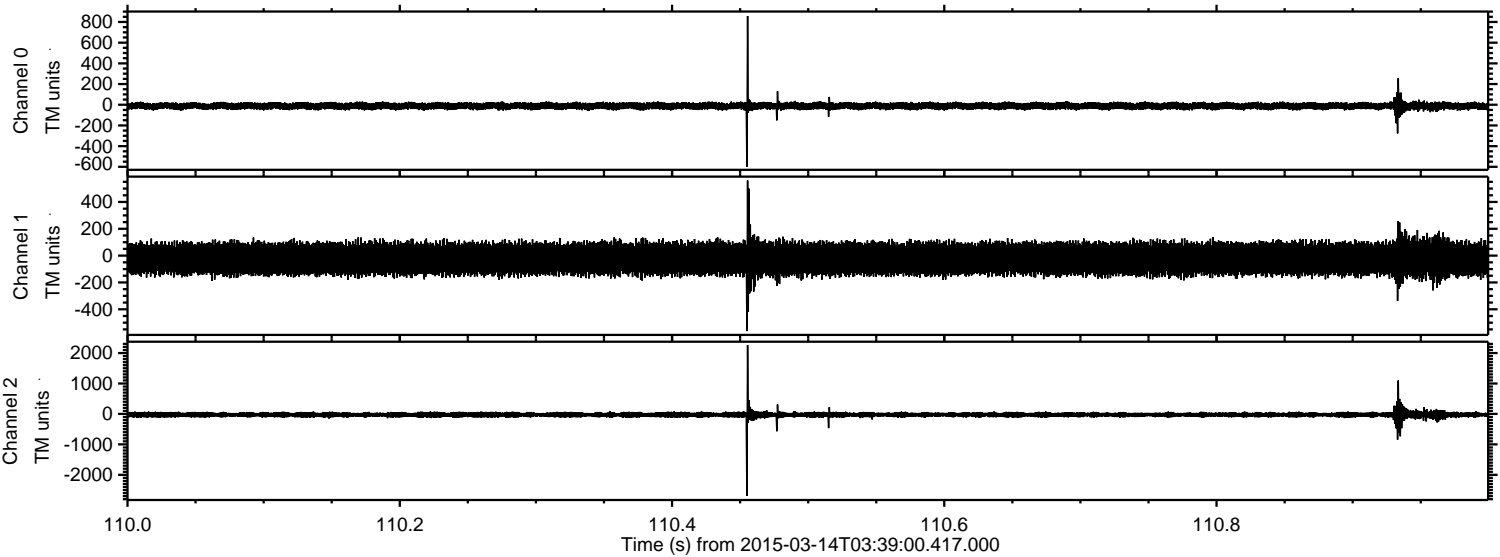
ELMAVAN 3D WAVEFORMS (Measured data sampled at 50 kHz) 49791 packets of 144 samples from 2015-03-14T03:39:00.417.000. Part 64/144

Processed Sat Mar 14 05:18:59 2015 by ELM ver.2012-10-06 from 001__elm20150314_033859__dat00.bin



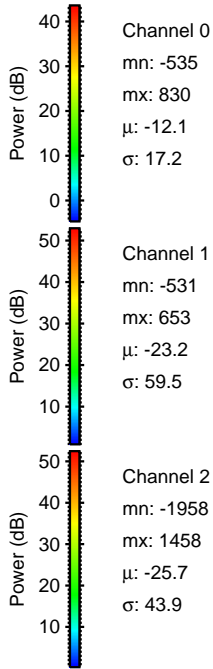
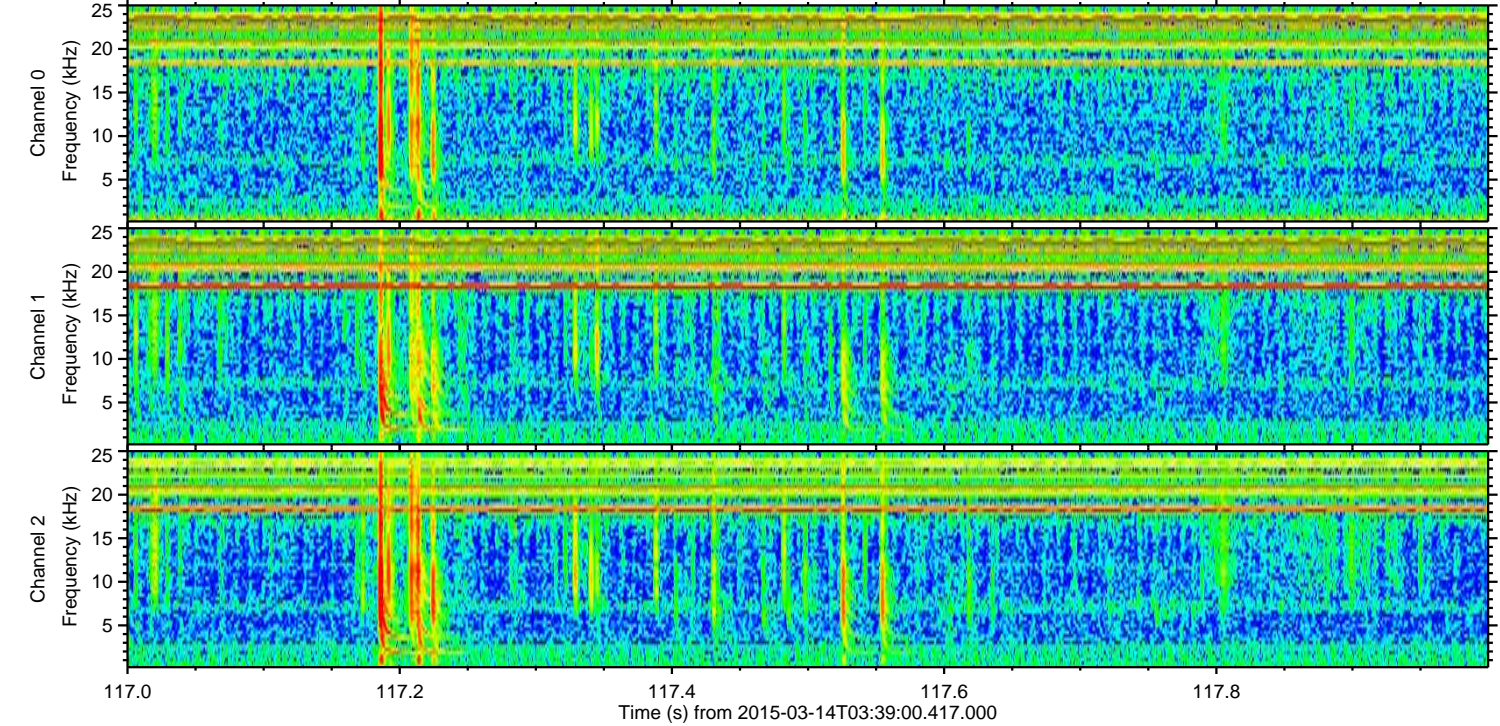
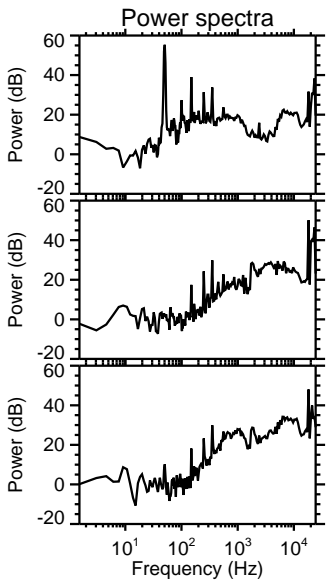
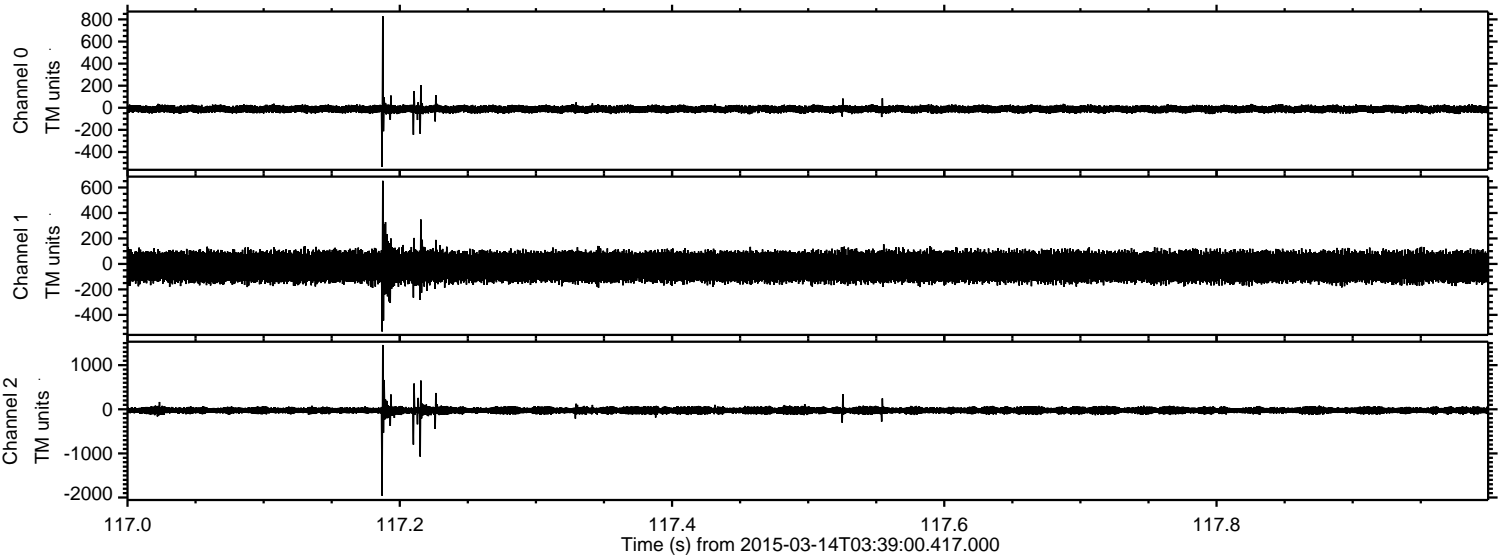
ELMAVAN 3D WAVEFORMS (Measured data sampled at 50 kHz) 49791 packets of 144 samples from 2015-03-14T03:39:00.417.000. Part 111/144

Processed Sat Mar 14 05:19:00 2015 by ELM ver.2012-10-06 from 001__elm20150314_033859__dat00.bin

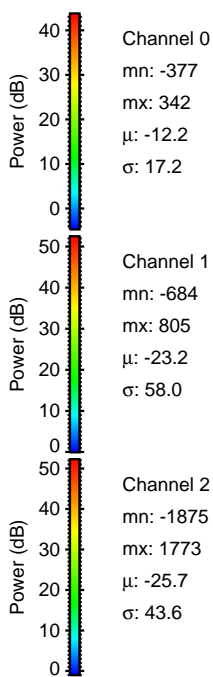
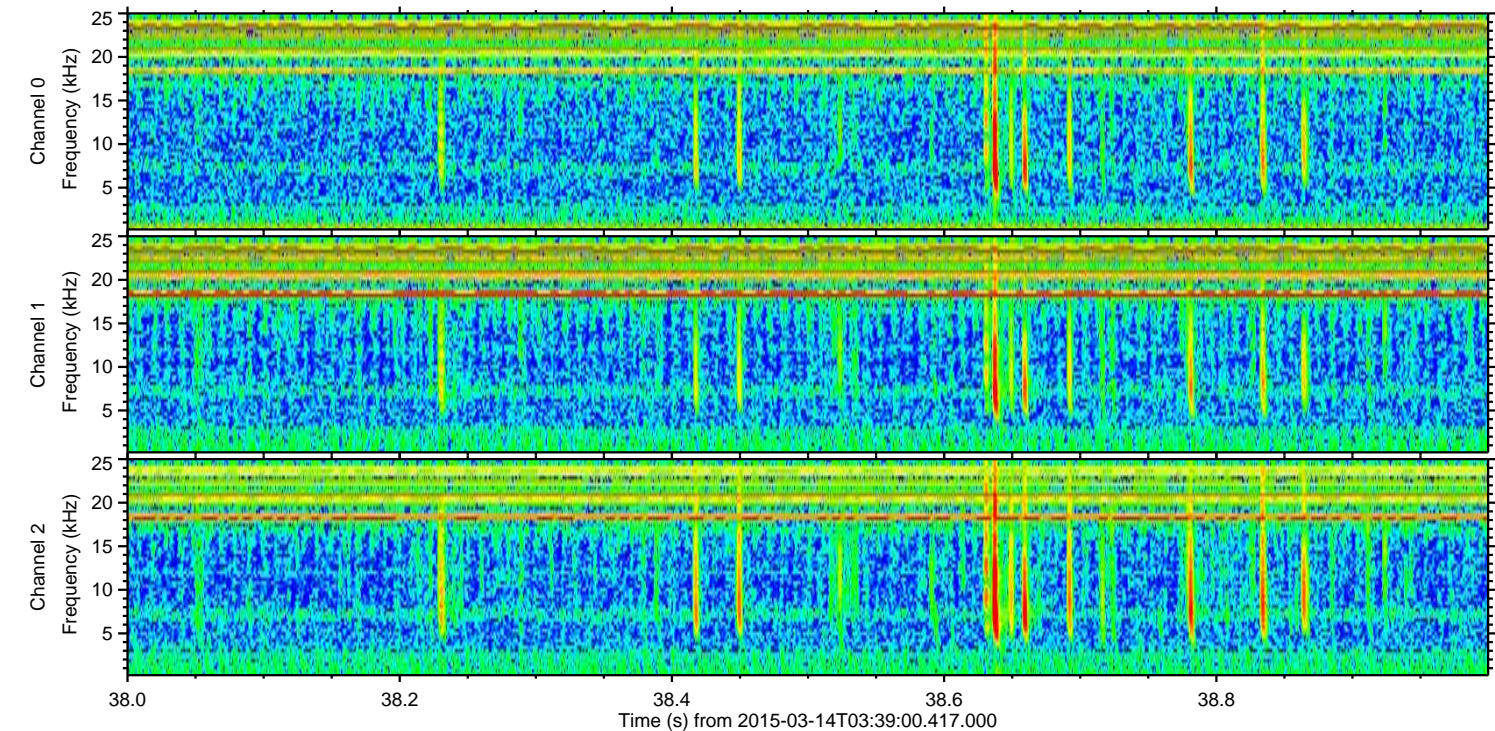
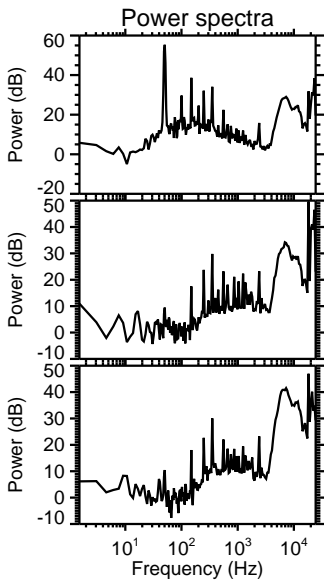
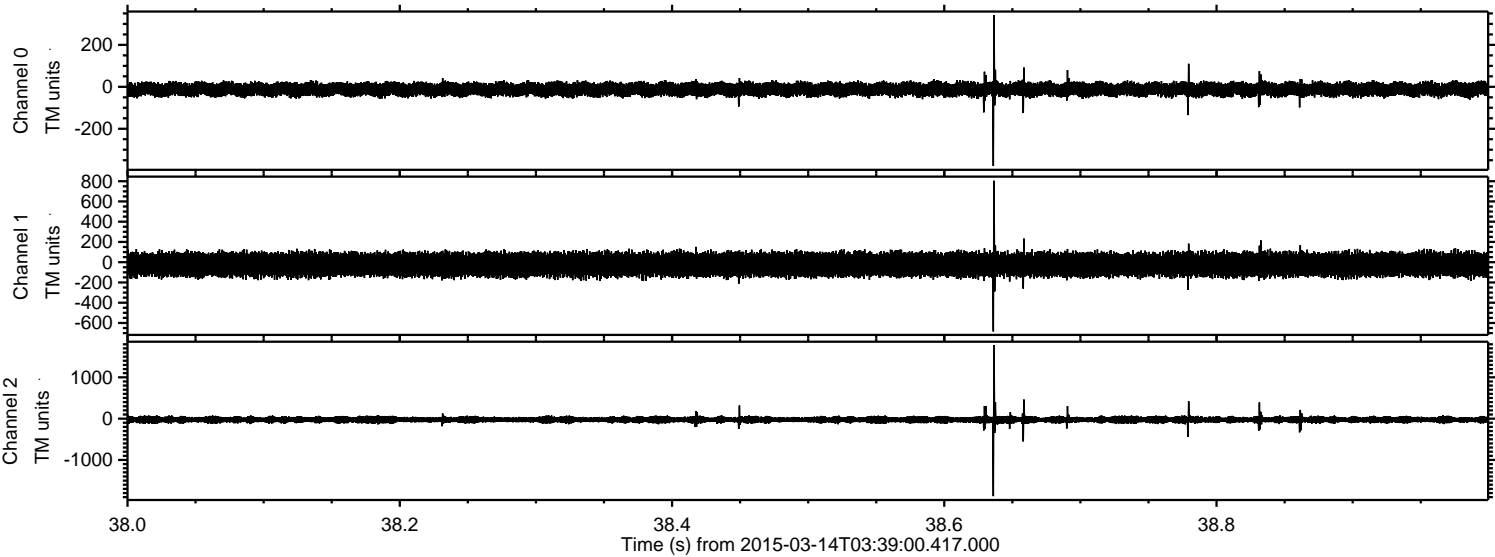


ELMAVAN 3D WAVEFORMS (Measured data sampled at 50 kHz) 49791 packets of 144 samples from 2015-03-14T03:39:00.417.000. Part 118/144

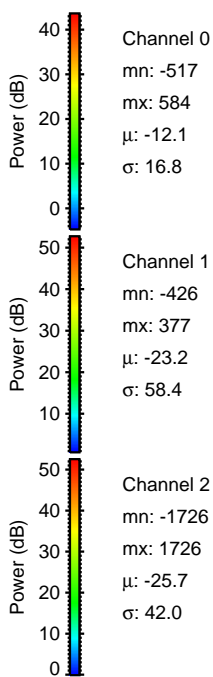
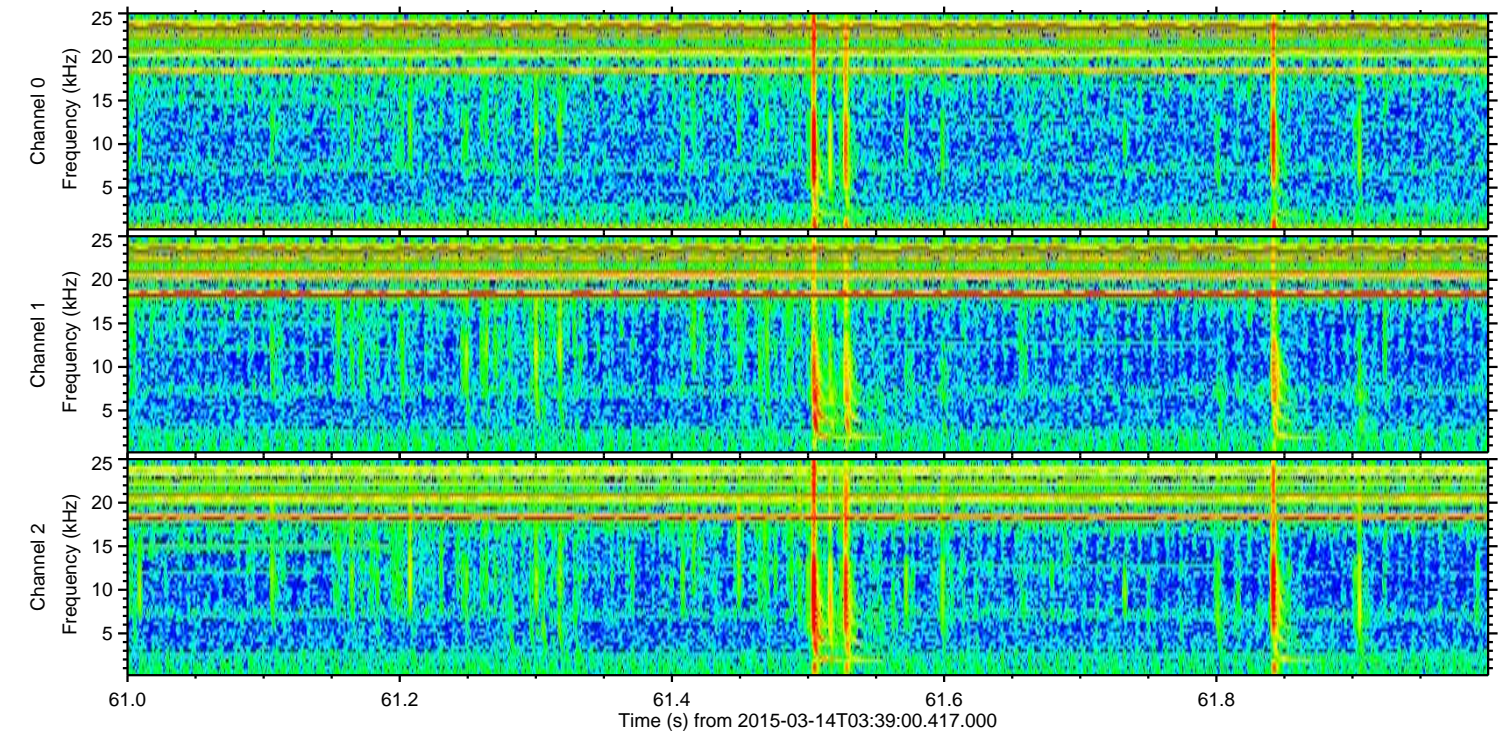
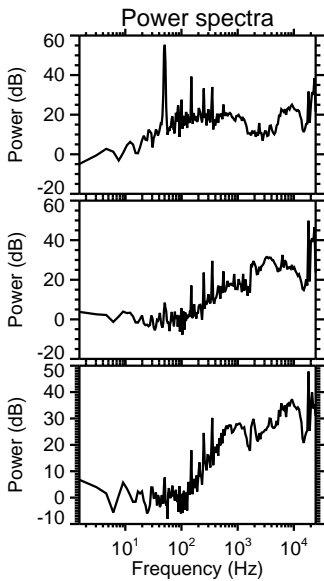
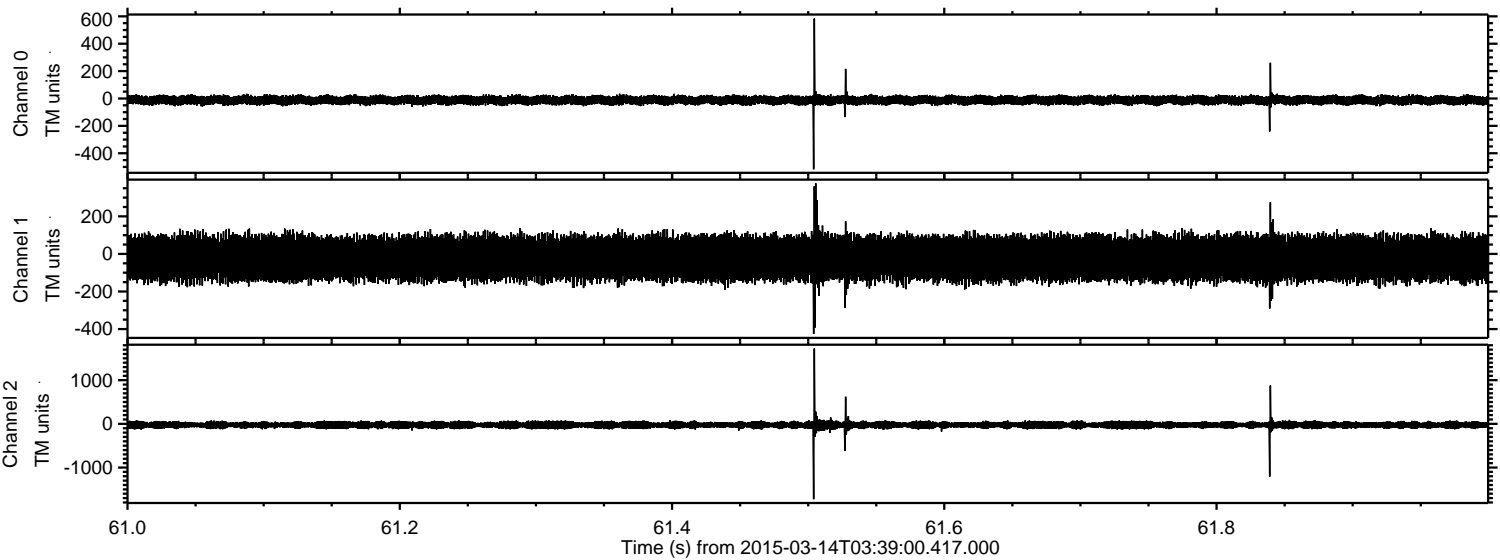
Processed Sat Mar 14 05:19:01 2015 by ELM ver.2012-10-06 from 001__elm20150314_033859__dat00.bin



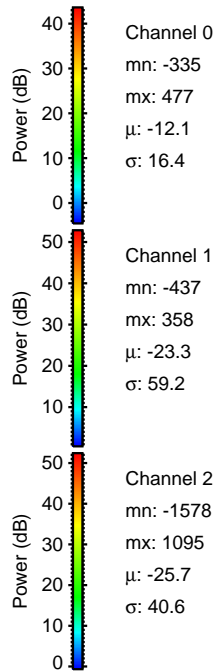
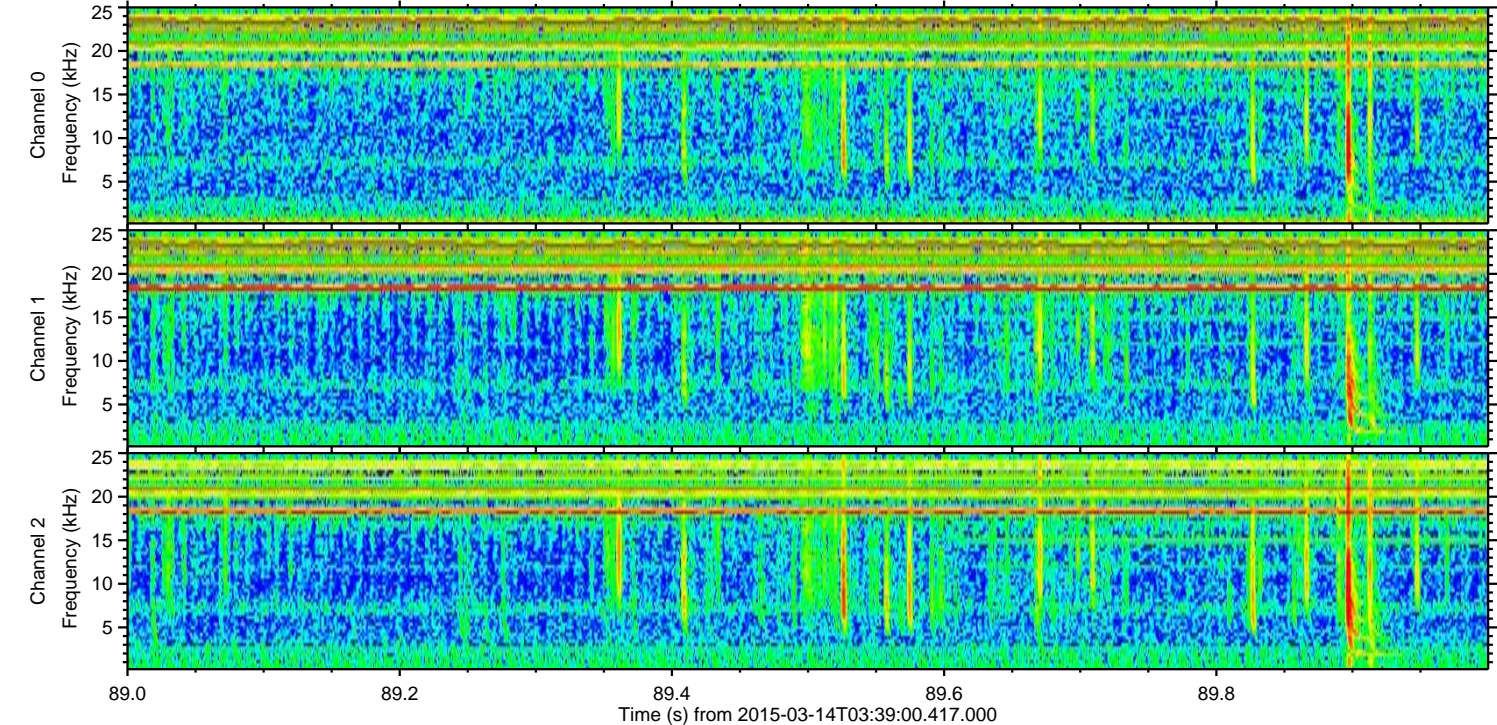
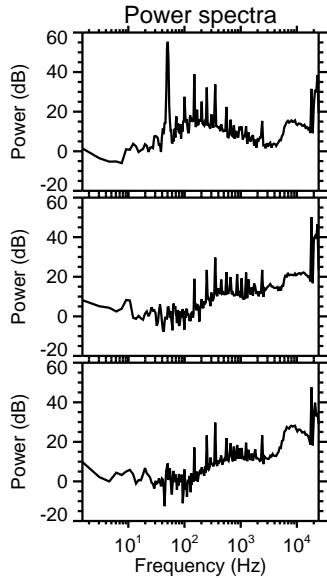
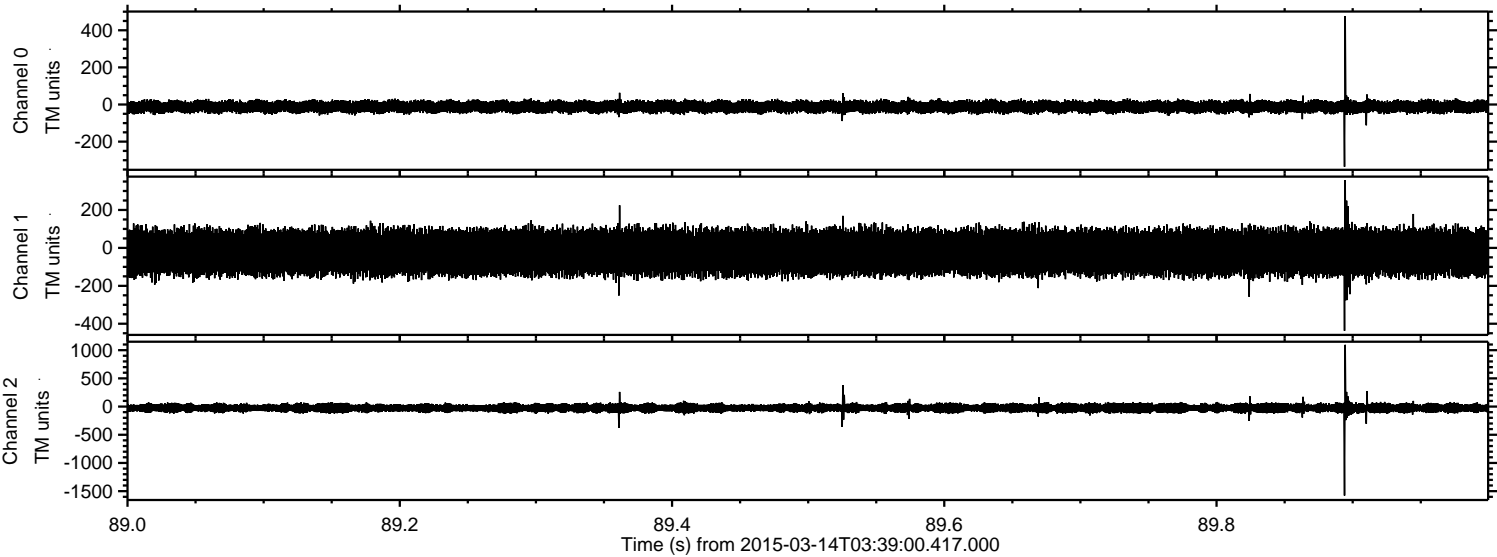
Processed Sat Mar 14 05:19:02 2015 by ELM ver.2012-10-06 from 001__elm20150314_033859__dat00.bin



Processed Sat Mar 14 05:19:03 2015 by ELM ver.2012-10-06 from 001__elm20150314_033859__dat00.bin



Processed Sat Mar 14 05:19:04 2015 by ELM ver.2012-10-06 from 001__elm20150314_033859__dat00.bin



Power spectra

Channel 0

mn: -335
mx: 477
 μ : -12.1
 σ : 16.4

Channel 1

mn: -437
mx: 358
 μ : -23.3
 σ : 59.2

Channel 2

mn: -1578
mx: 1095
 μ : -25.7
 σ : 40.6

Processed Sat Mar 14 05:19:05 2015 by ELM ver.2012-10-06 from 001__elm20150314_033859__dat00.bin

