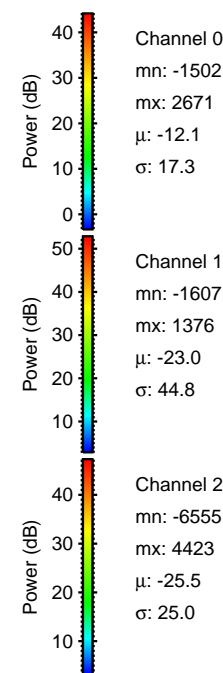
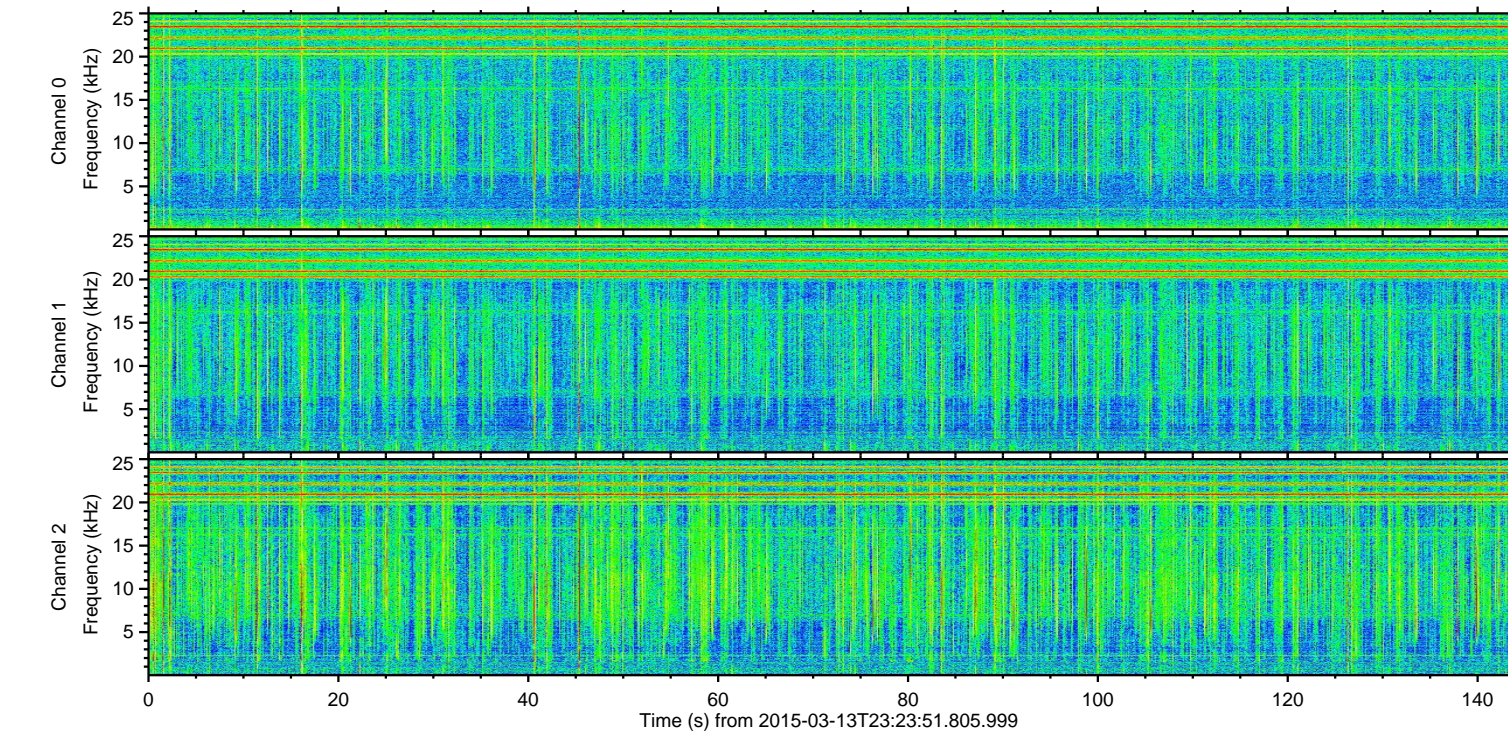
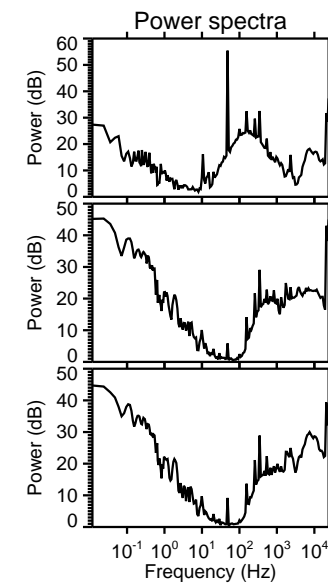
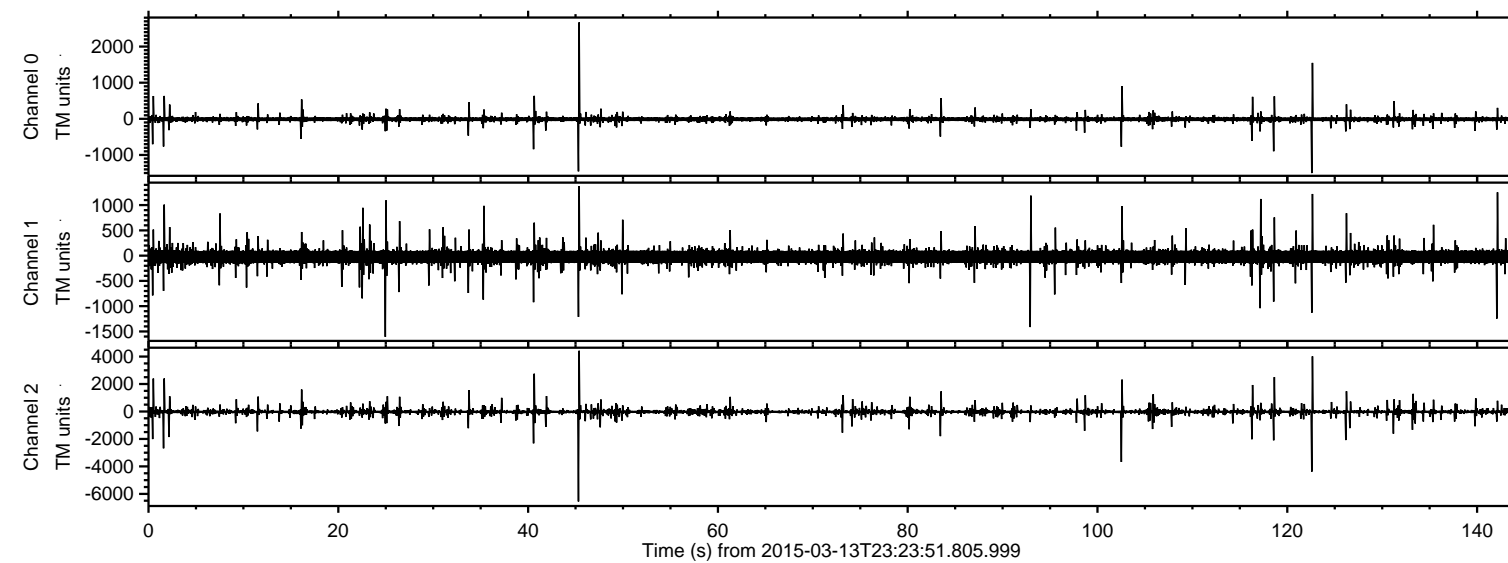


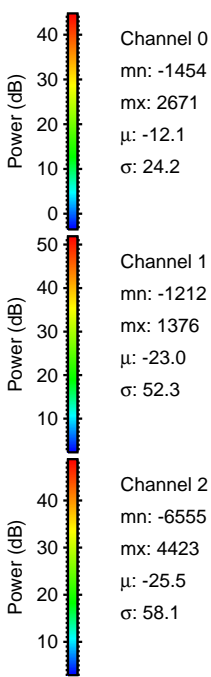
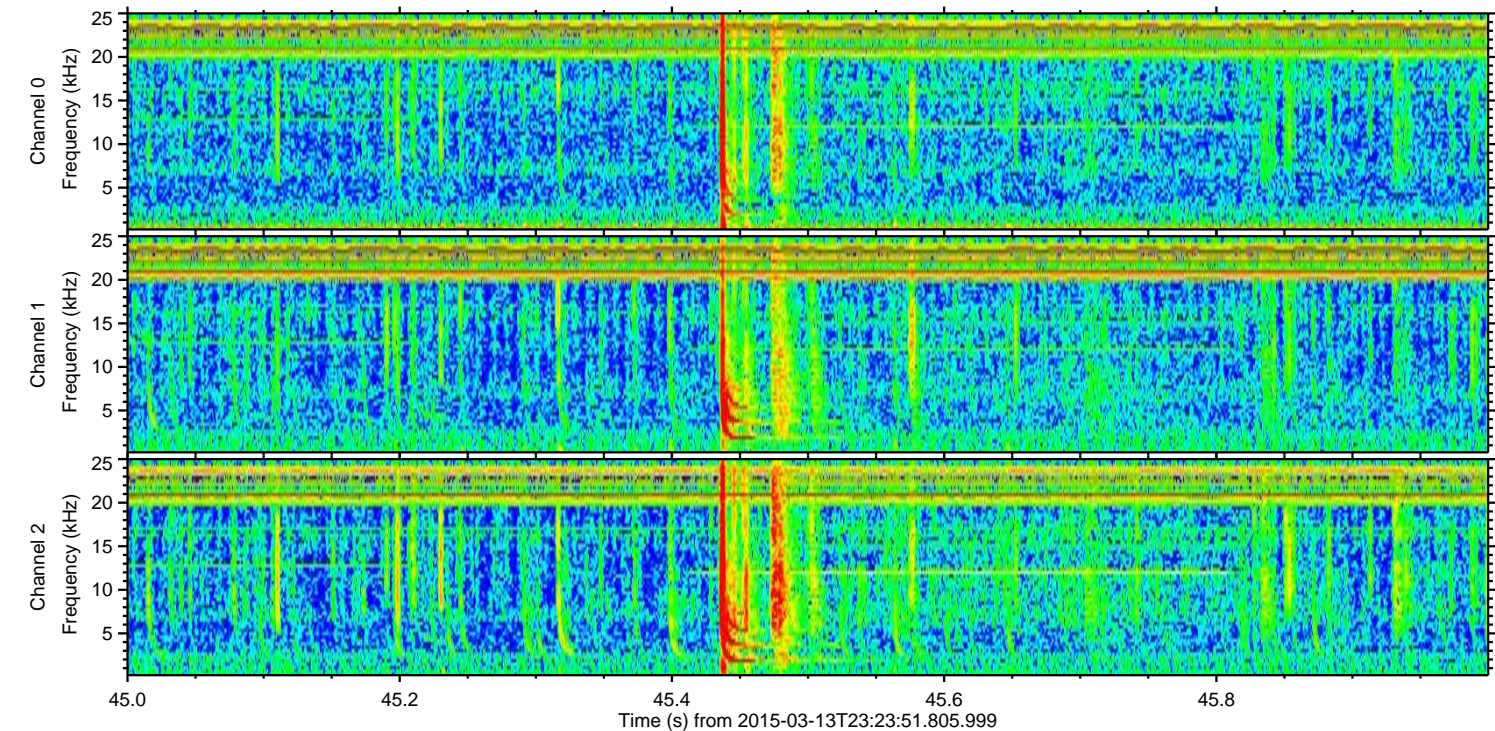
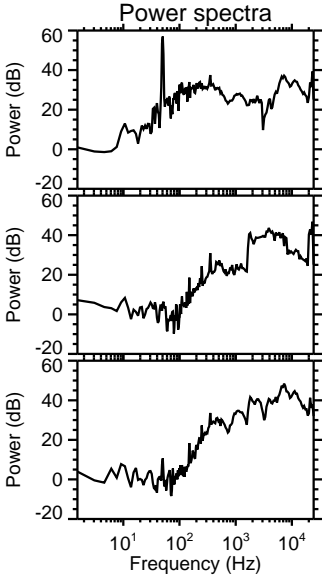
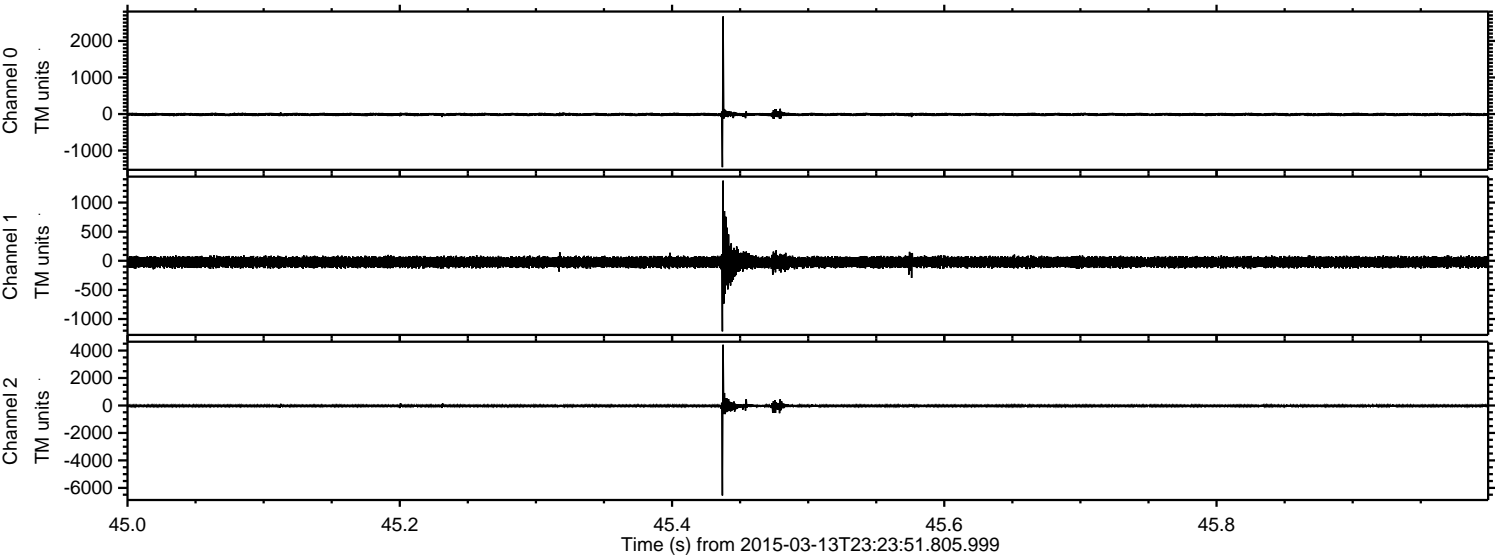
# ELMAVAN 3D WAVEFORMS (Measured data sampled at 50 kHz) 49784 packets of 144 samples from 2015-03-13T23:23:51.805.999.

Processed Sat Mar 14 00:31:19 2015 by ELM ver.2012-10-06 from 001\_\_elm20150313\_232350\_\_dat00.bin





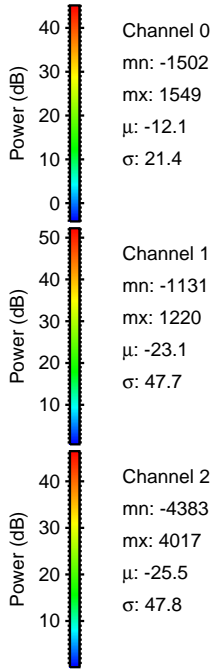
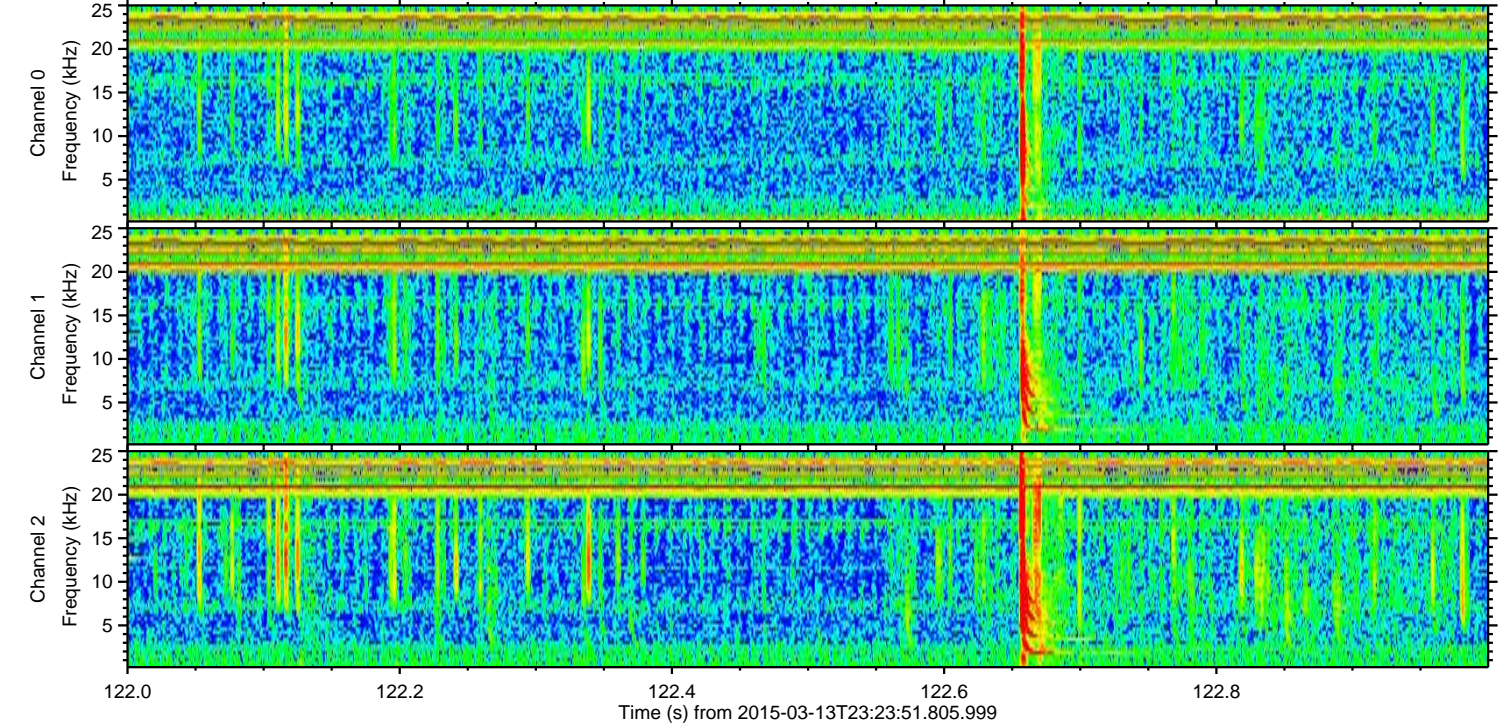
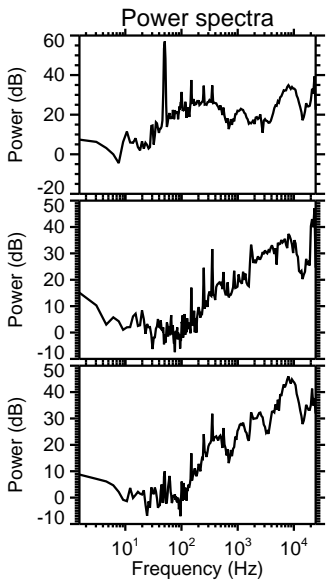
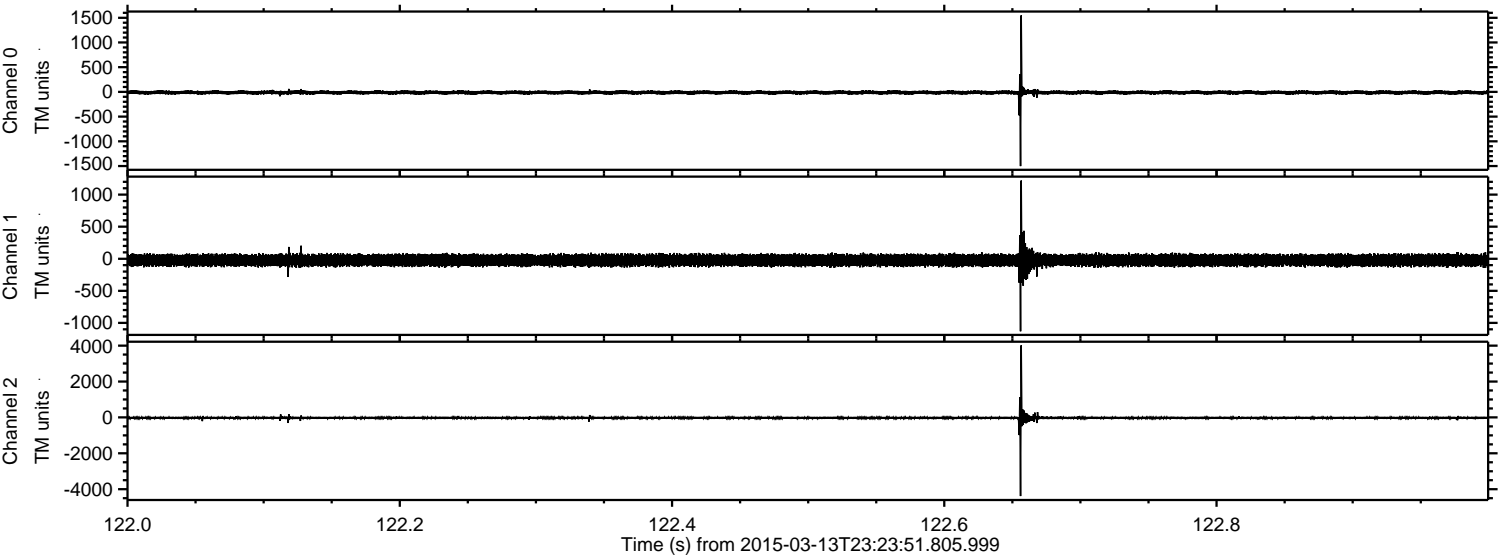
Processed Sat Mar 14 00:31:31 2015 by ELM ver.2012-10-06 from 001\_\_elm20150313\_232350\_\_dat00.bin





ELMAVAN 3D WAVEFORMS (Measured data sampled at 50 kHz) 49784 packets of 144 samples from 2015-03-13T23:23:51.805.999. Part 123/144

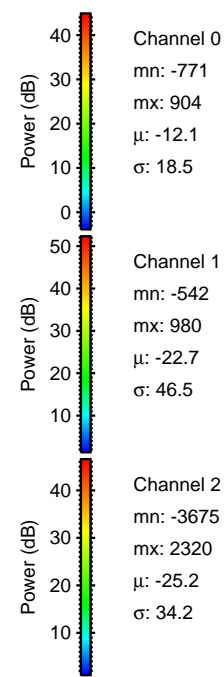
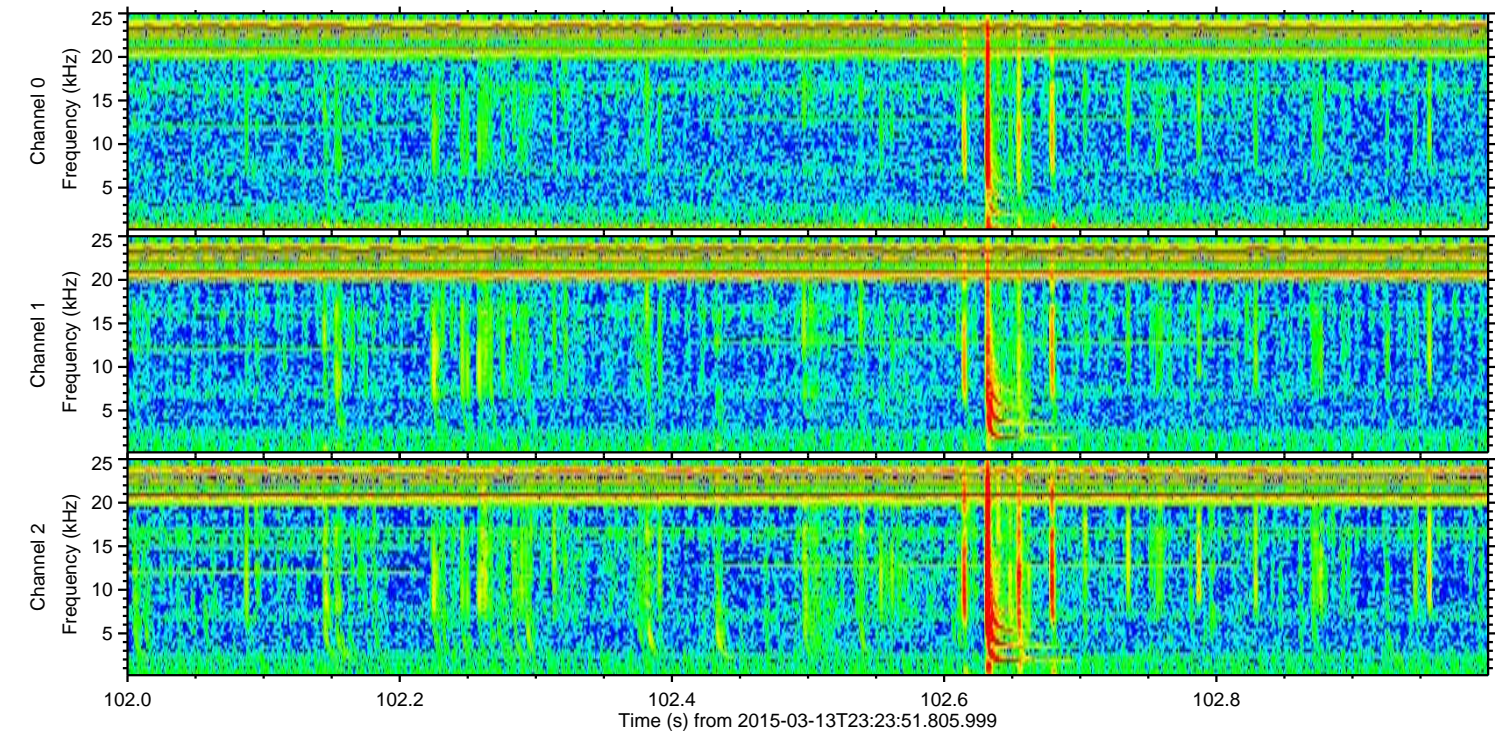
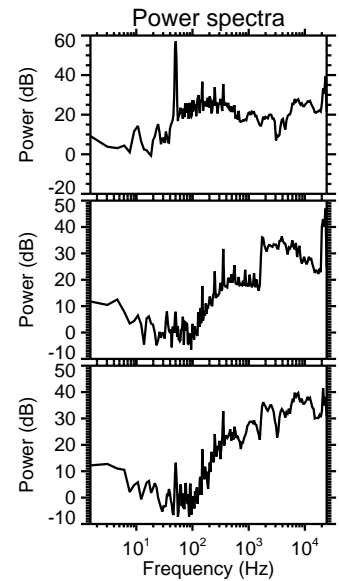
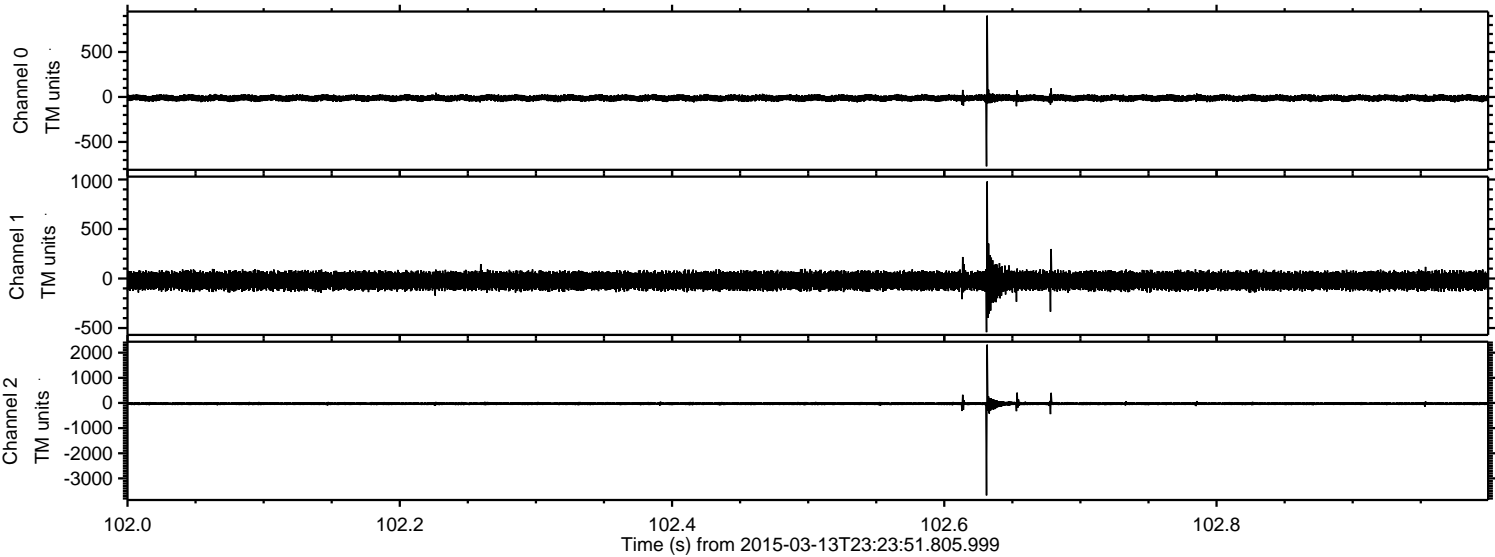
Processed Sat Mar 14 00:31:32 2015 by ELM ver.2012-10-06 from 001\_\_elm20150313\_232350\_\_dat00.bin





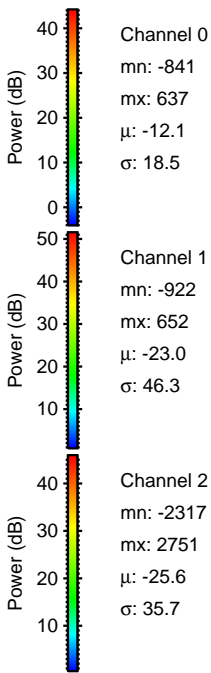
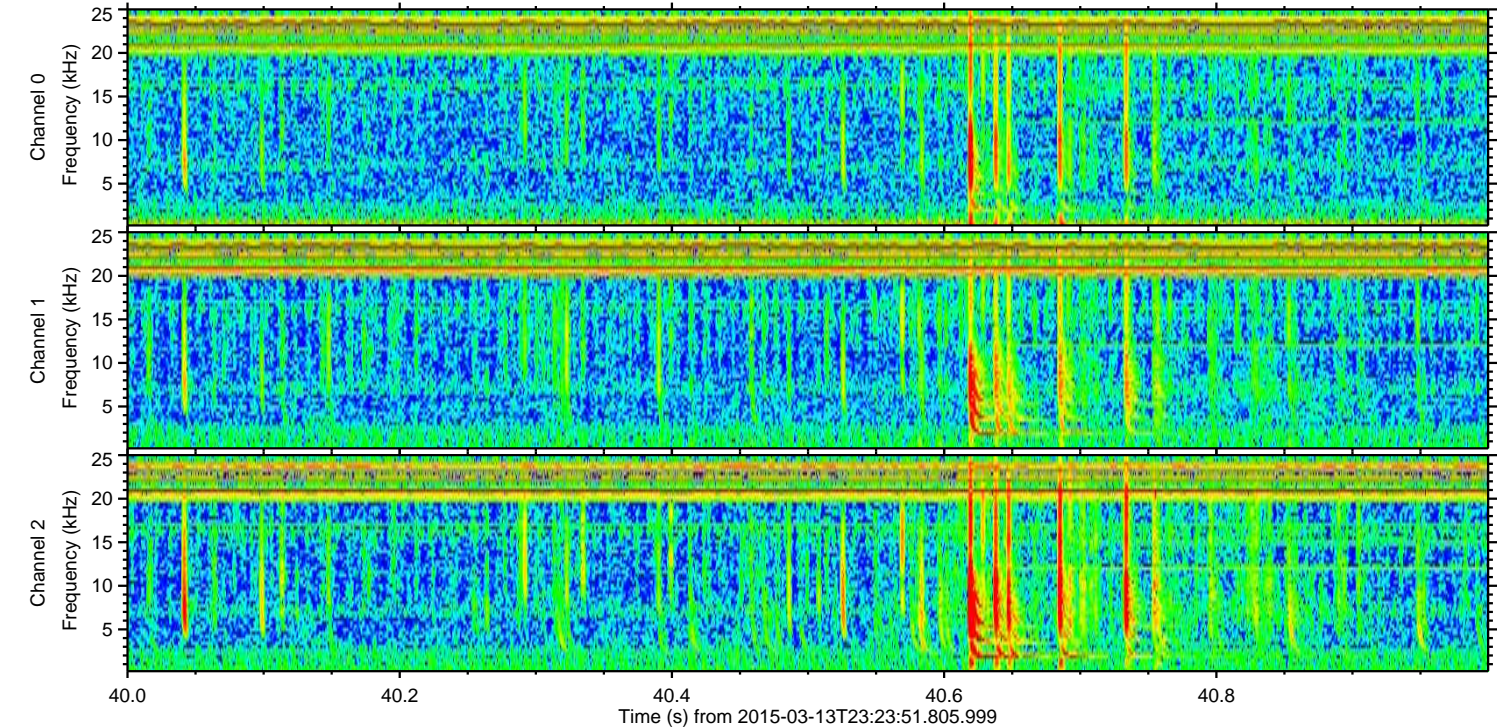
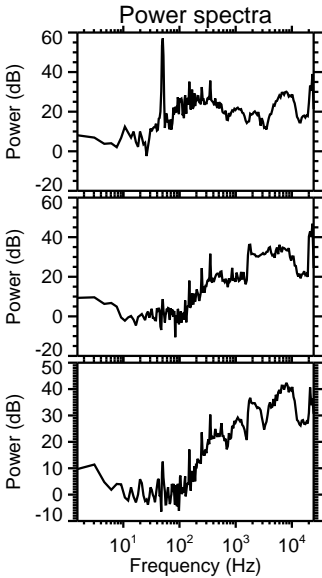
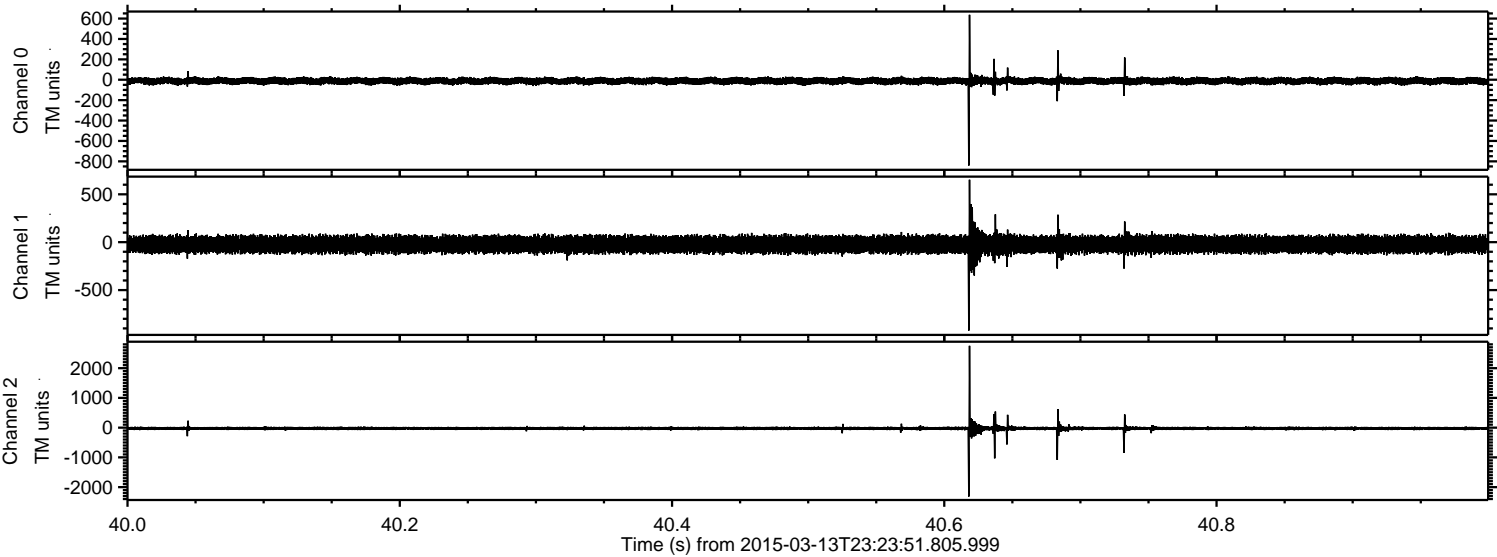
ELMAVAN 3D WAVEFORMS (Measured data sampled at 50 kHz) 49784 packets of 144 samples from 2015-03-13T23:23:51.805.999. Part 103/144

Processed Sat Mar 14 00:31:33 2015 by ELM ver.2012-10-06 from 001\_\_elm20150313\_232350\_\_dat00.bin





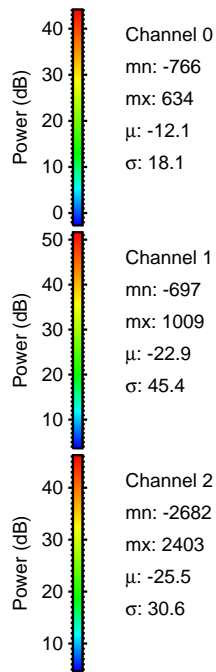
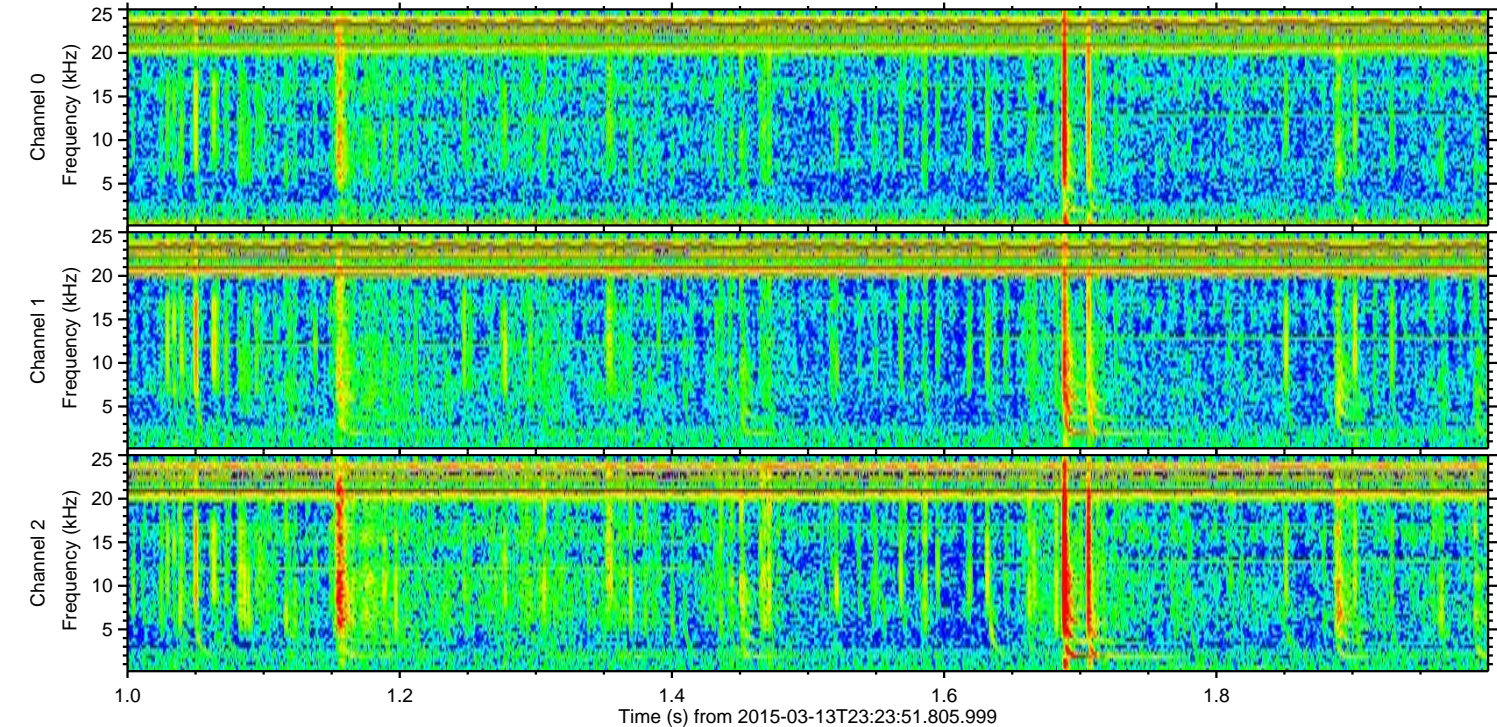
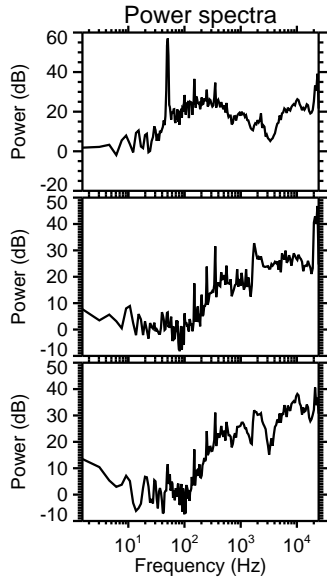
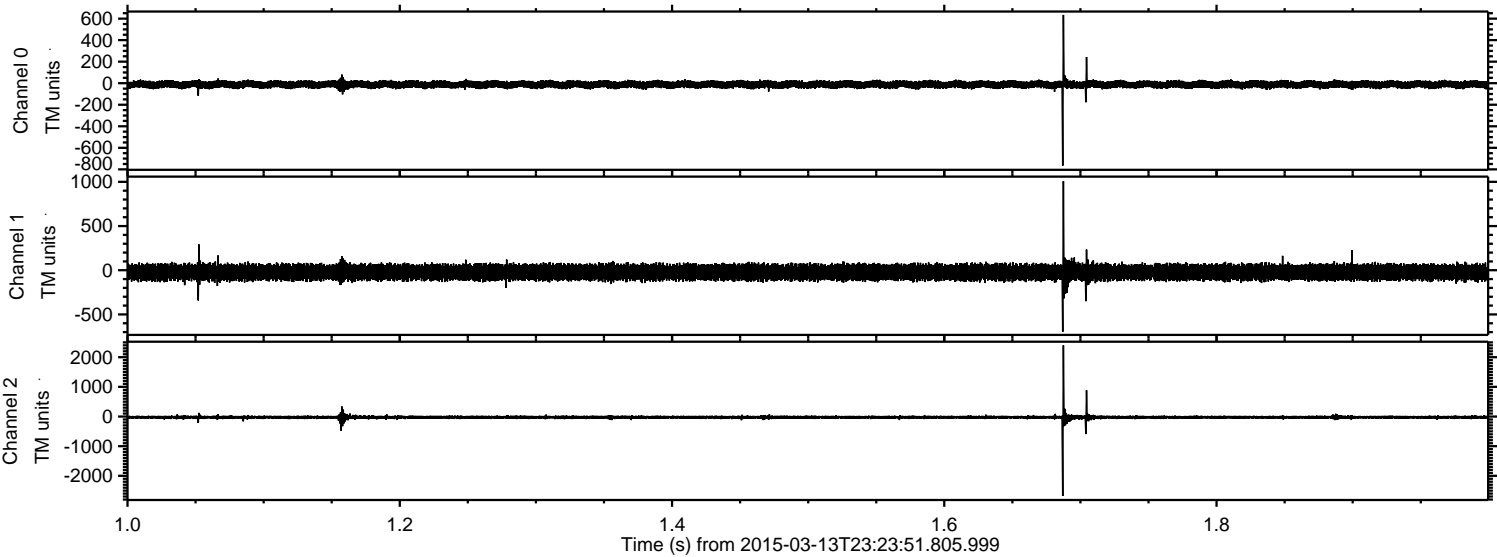
Processed Sat Mar 14 00:31:33 2015 by ELM ver.2012-10-06 from 001\_\_elm20150313\_232350\_\_dat00.bin





ELMAVAN 3D WAVEFORMS (Measured data sampled at 50 kHz) 49784 packets of 144 samples from 2015-03-13T23:23:51.805.999. Part 2/144

Processed Sat Mar 14 00:31:34 2015 by ELM ver.2012-10-06 from 001\_\_elm20150313\_232350\_\_dat00.bin



Channel 0  
mn: -766  
mx: 634  
 $\mu$ : -12.1  
 $\sigma$ : 18.1

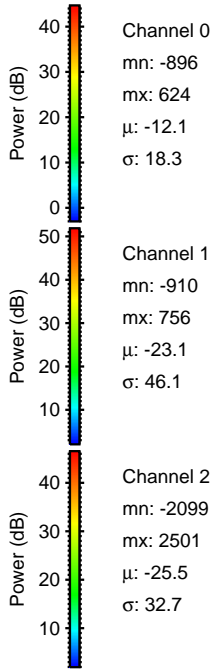
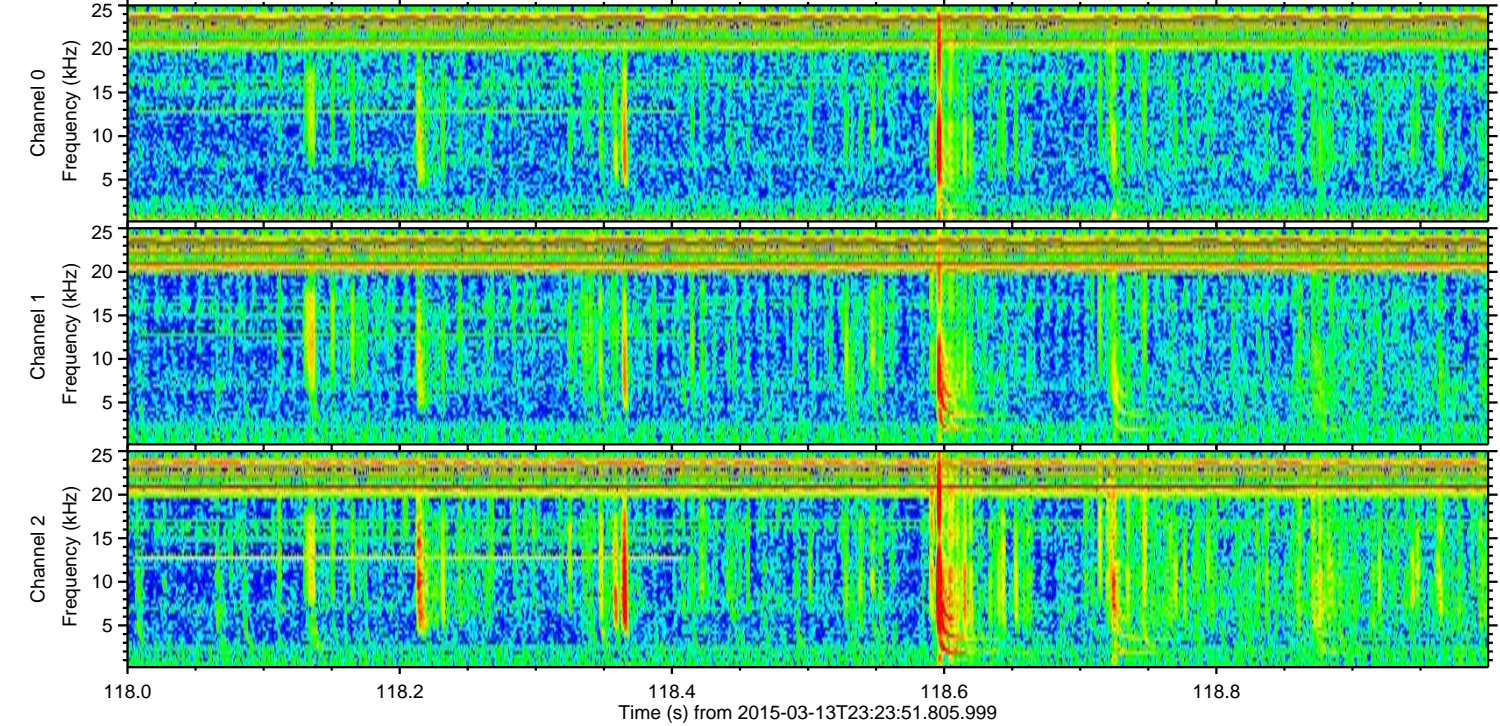
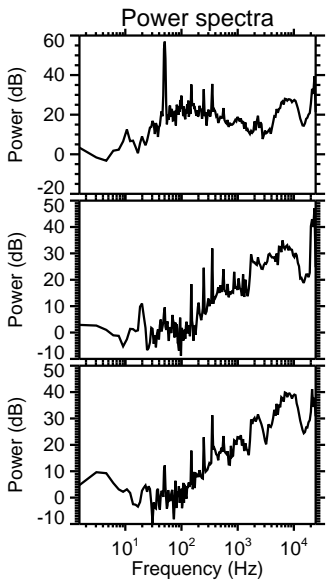
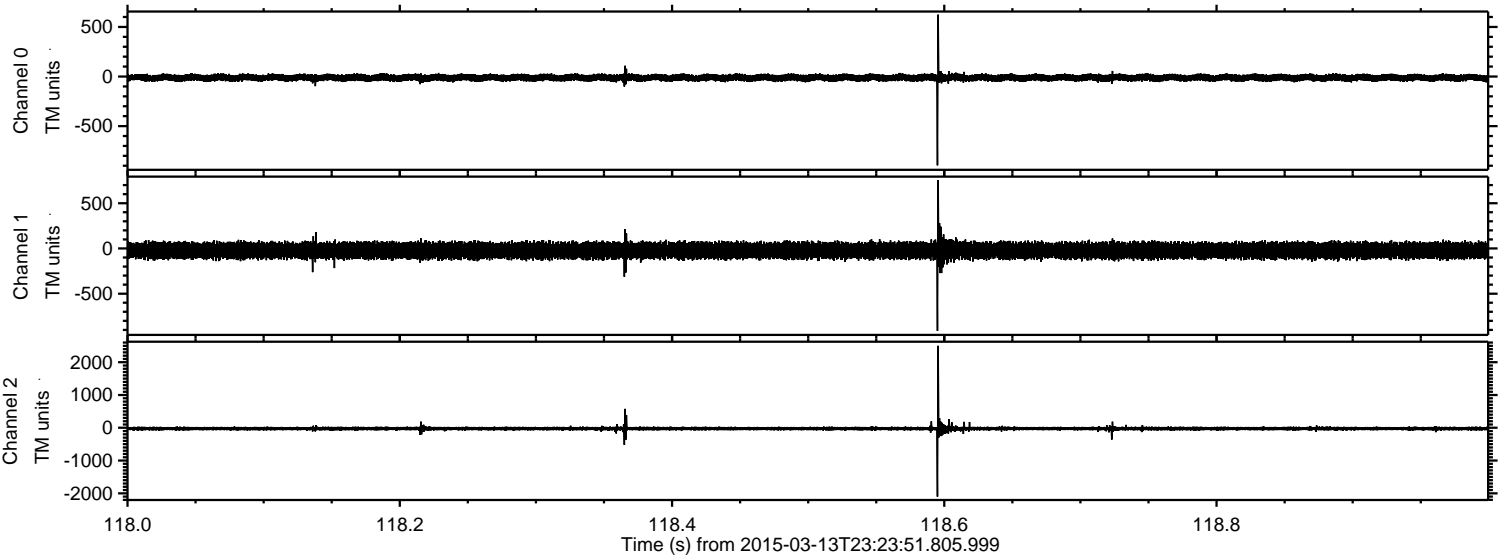
Channel 1  
mn: -697  
mx: 1009  
 $\mu$ : -22.9  
 $\sigma$ : 45.4

Channel 2  
mn: -2682  
mx: 2403  
 $\mu$ : -25.5  
 $\sigma$ : 30.6



ELMAVAN 3D WAVEFORMS (Measured data sampled at 50 kHz) 49784 packets of 144 samples from 2015-03-13T23:23:51.805.999. Part 119/144

Processed Sat Mar 14 00:31:35 2015 by ELM ver.2012-10-06 from 001\_\_elm20150313\_232350\_\_dat00.bin



Channel 0  
mn: -896  
mx: 624  
 $\mu$ : -12.1  
 $\sigma$ : 18.3

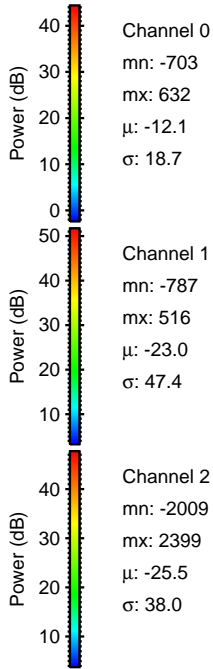
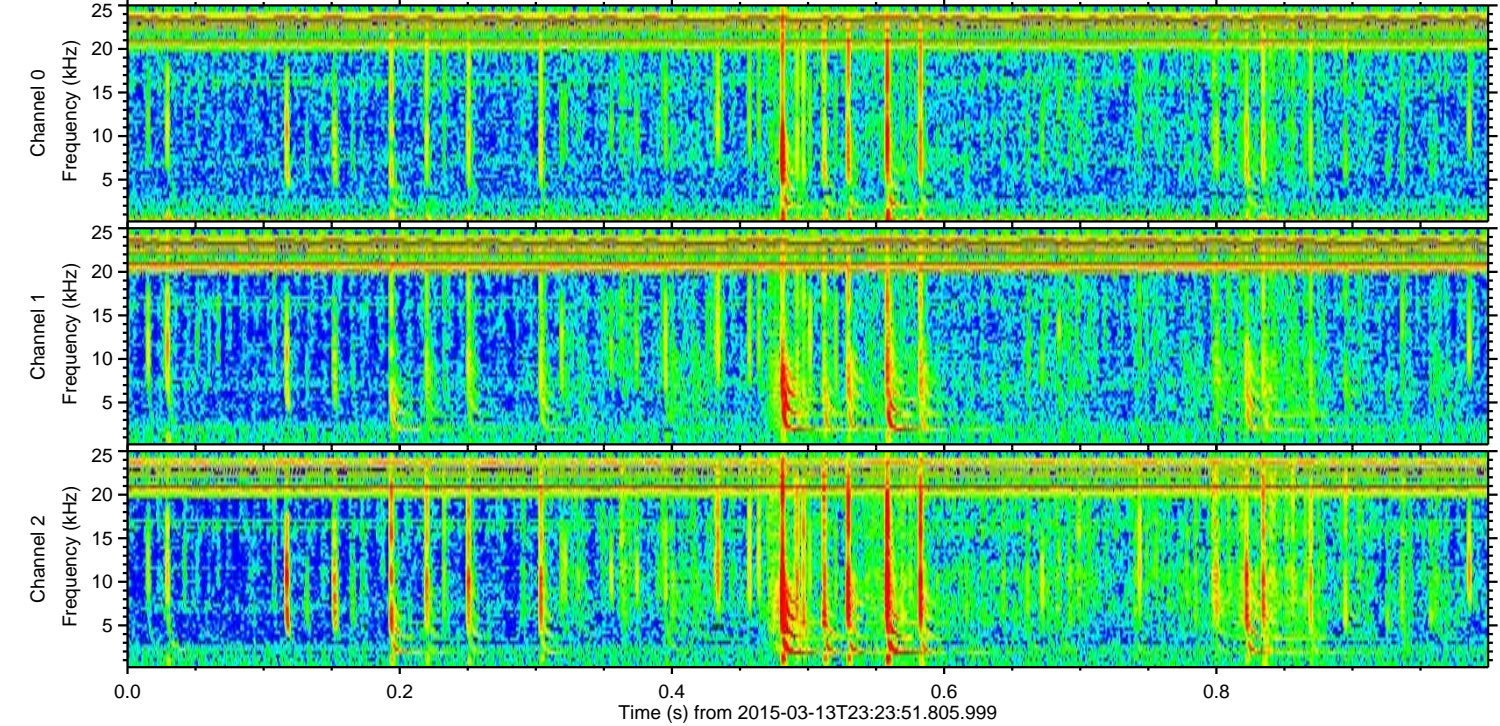
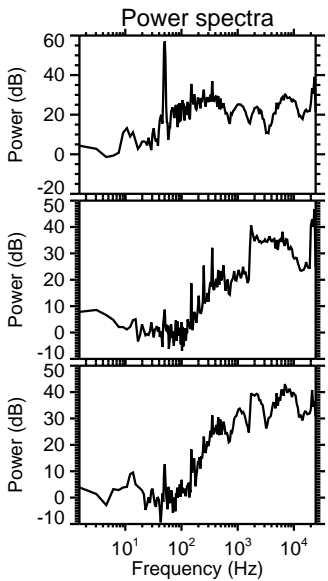
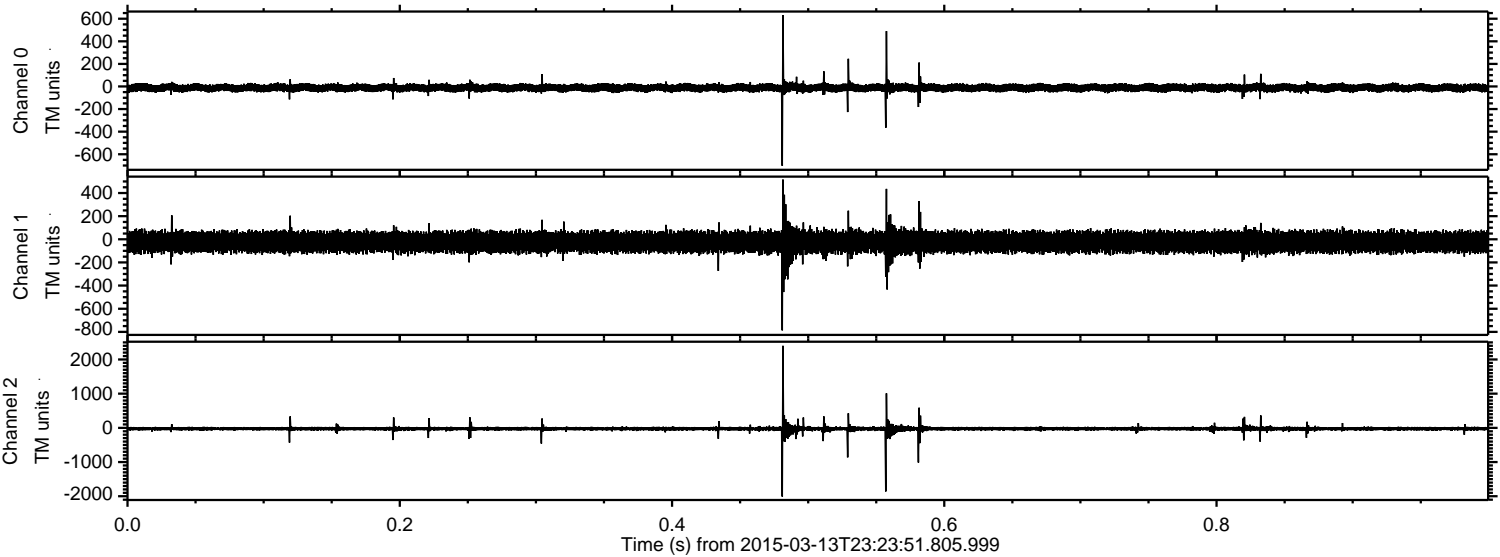
Channel 1  
mn: -910  
mx: 756  
 $\mu$ : -23.1  
 $\sigma$ : 46.1

Channel 2  
mn: -2099  
mx: 2501  
 $\mu$ : -25.5  
 $\sigma$ : 32.7



ELMAVAN 3D WAVEFORMS (Measured data sampled at 50 kHz) 49784 packets of 144 samples from 2015-03-13T23:23:51.805.999. Part 1/144

Processed Sat Mar 14 00:31:36 2015 by ELM ver.2012-10-06 from 001\_\_elm20150313\_232350\_\_dat00.bin



Channel 0  
mn: -703  
mx: 632  
 $\mu$ : -12.1  
 $\sigma$ : 18.7

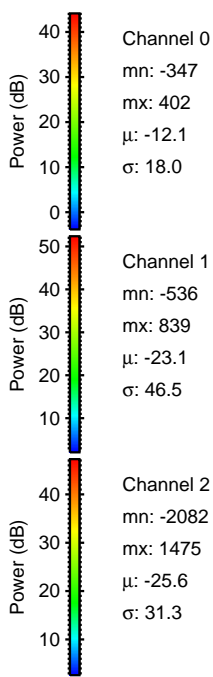
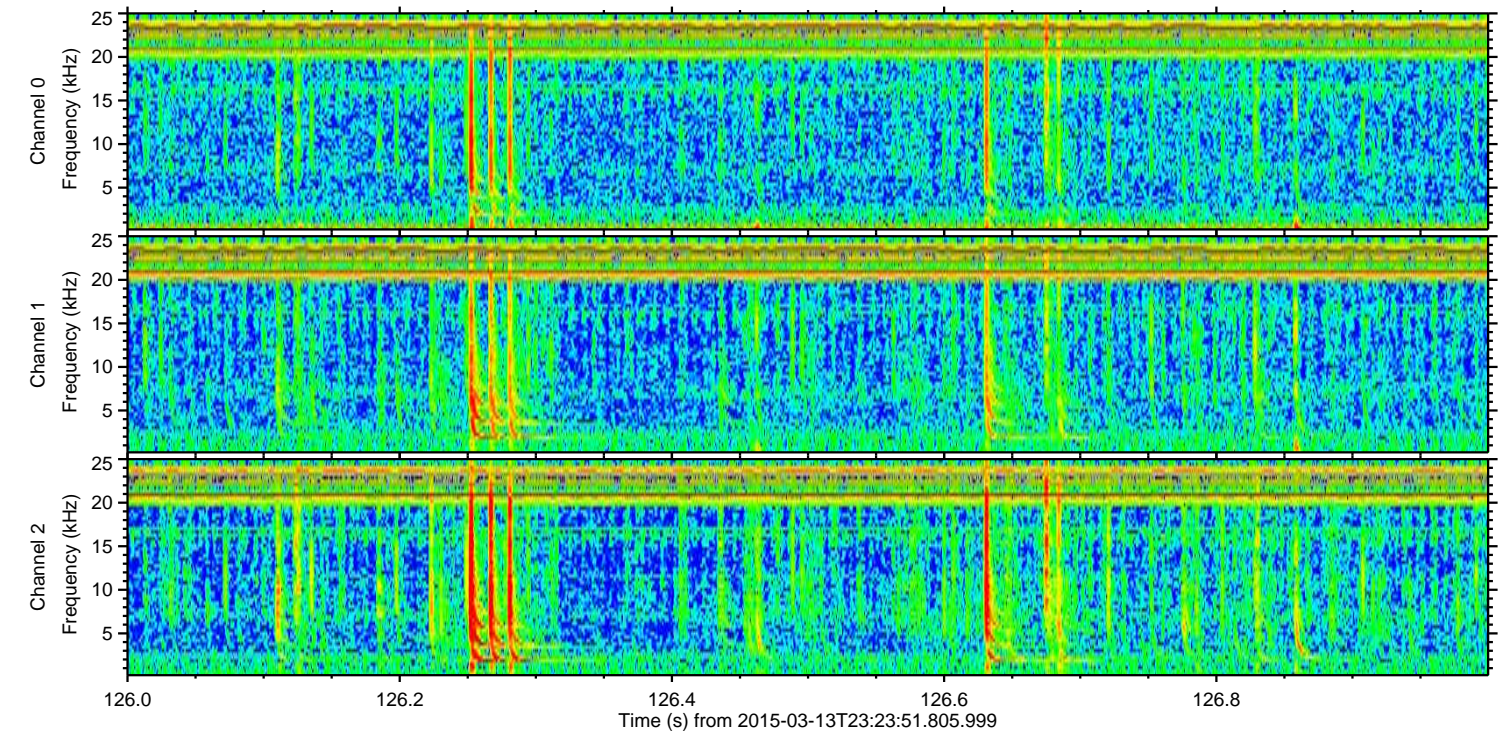
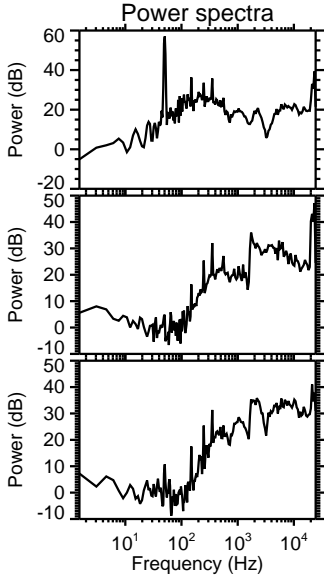
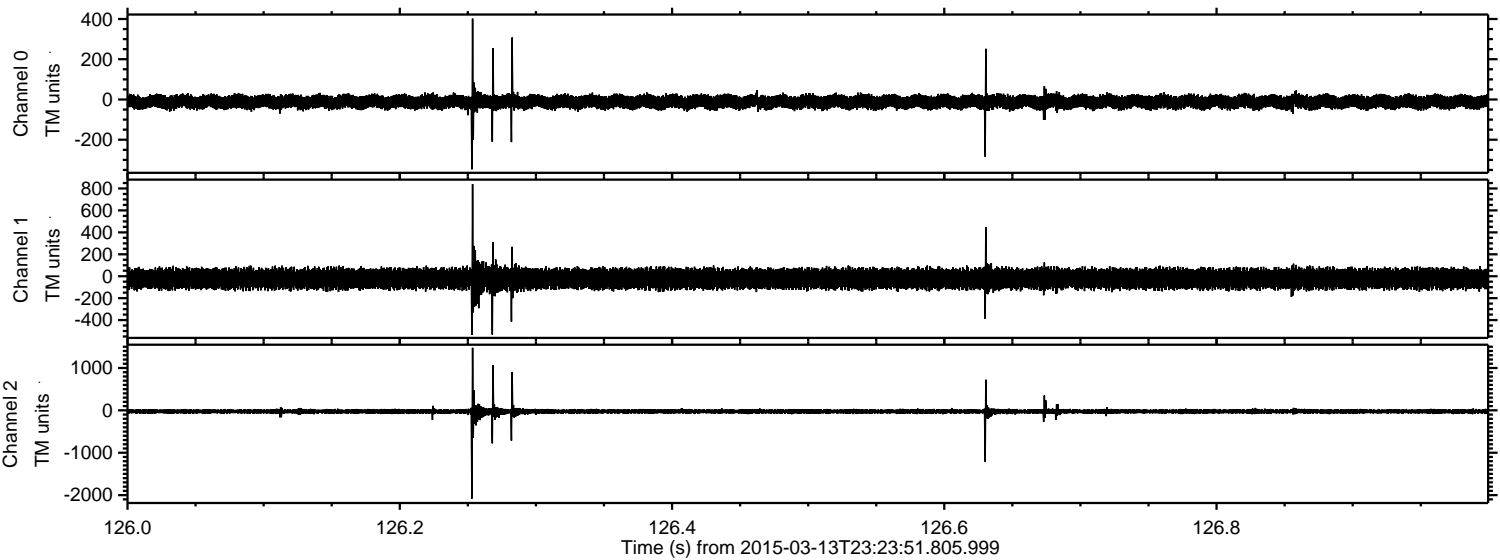
Channel 1  
mn: -787  
mx: 516  
 $\mu$ : -23.0  
 $\sigma$ : 47.4

Channel 2  
mn: -2009  
mx: 2399  
 $\mu$ : -25.5  
 $\sigma$ : 38.0



ELMAVAN 3D WAVEFORMS (Measured data sampled at 50 kHz) 49784 packets of 144 samples from 2015-03-13T23:23:51.805.999. Part 127/144

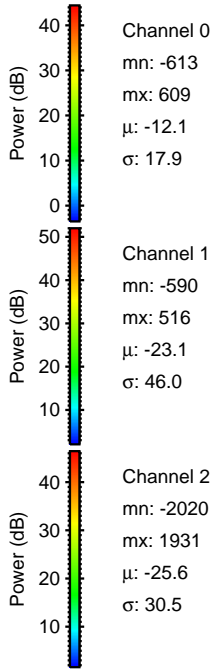
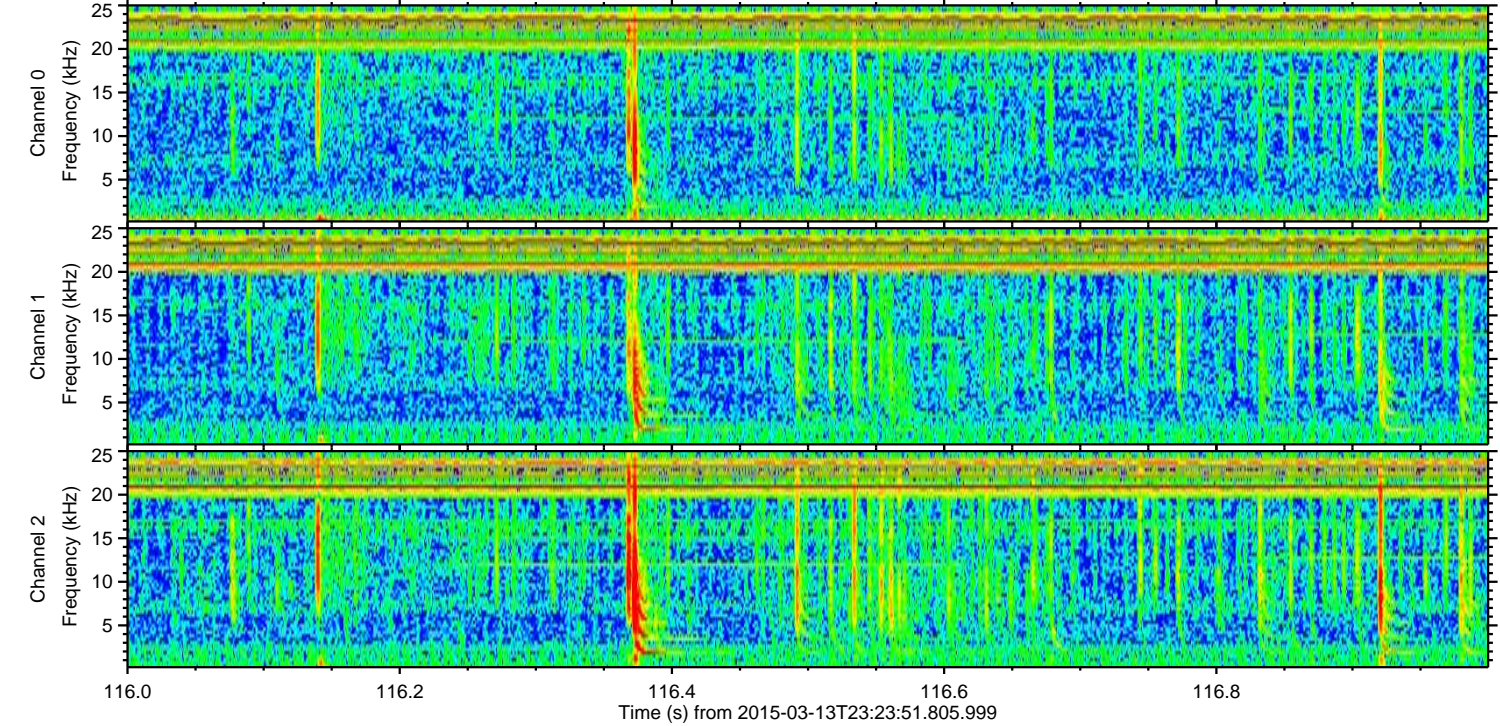
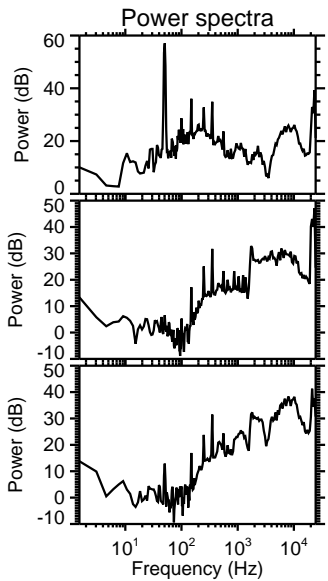
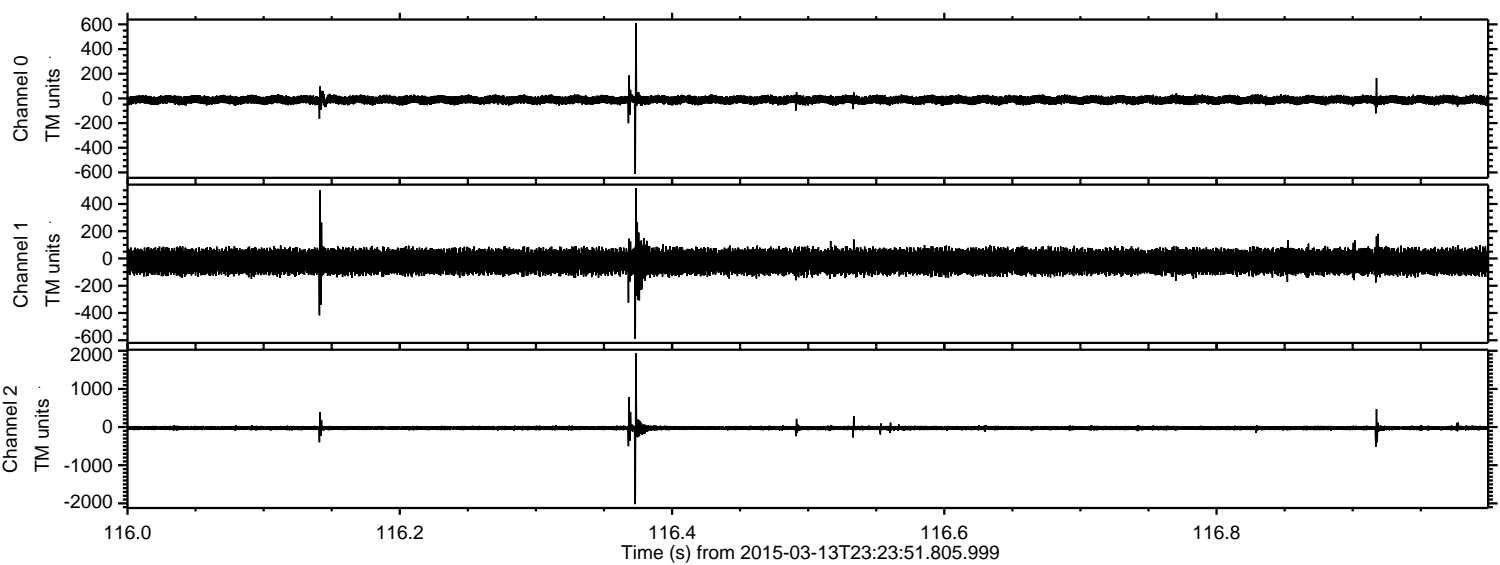
Processed Sat Mar 14 00:31:37 2015 by ELM ver.2012-10-06 from 001\_\_elm20150313\_232350\_\_dat00.bin





ELMAVAN 3D WAVEFORMS (Measured data sampled at 50 kHz) 49784 packets of 144 samples from 2015-03-13T23:23:51.805.999. Part 117/144

Processed Sat Mar 14 00:31:38 2015 by ELM ver.2012-10-06 from 001\_\_elm20150313\_232350\_\_dat00.bin



Channel 0  
mn: -613  
mx: 609  
 $\mu$ : -12.1  
 $\sigma$ : 17.9

Channel 1  
mn: -590  
mx: 516  
 $\mu$ : -23.1  
 $\sigma$ : 46.0

Channel 2  
mn: -2020  
mx: 1931  
 $\mu$ : -25.6  
 $\sigma$ : 30.5



