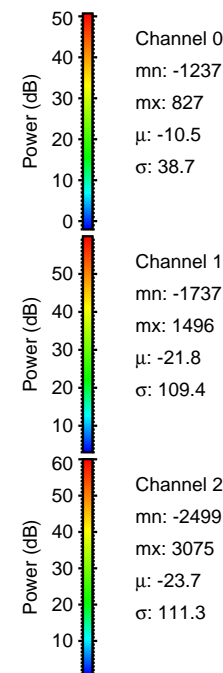
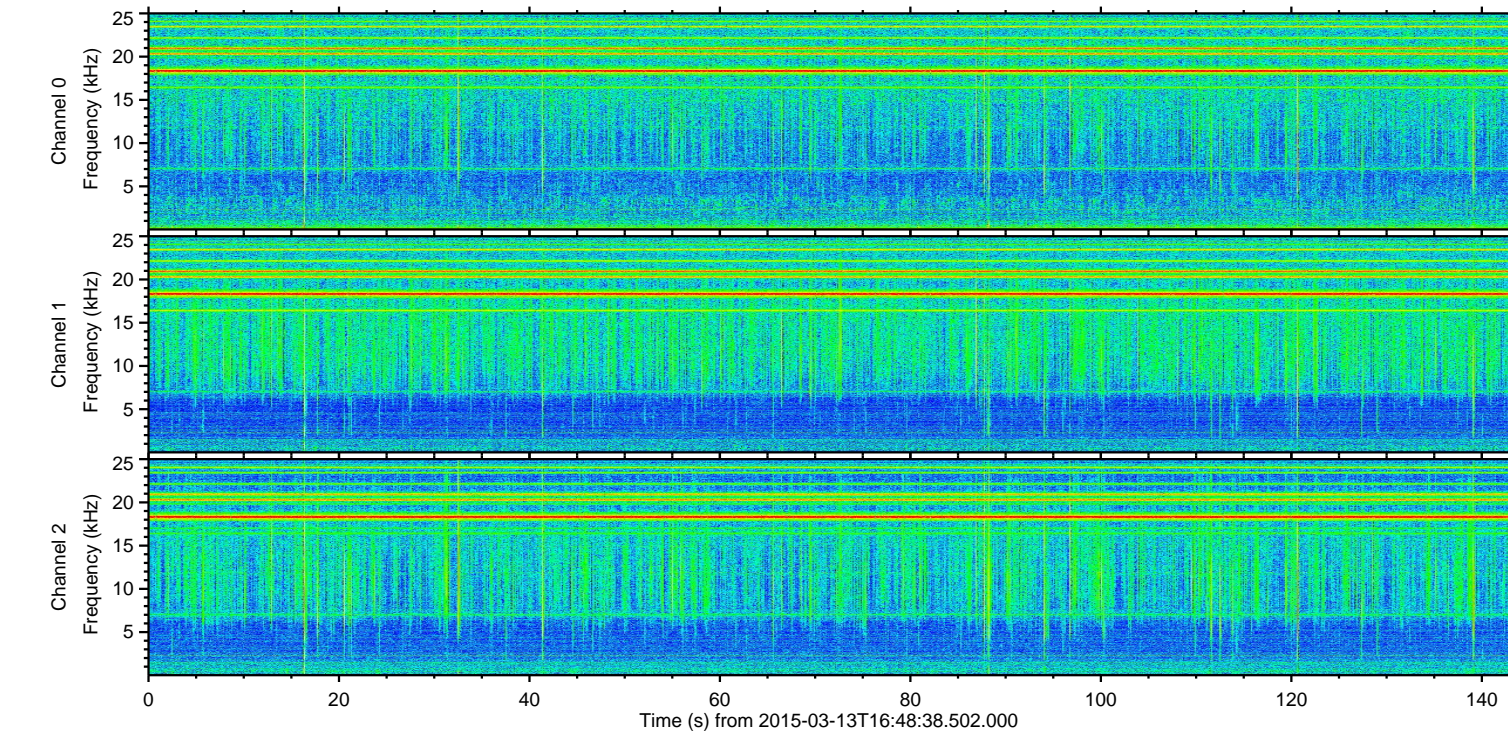
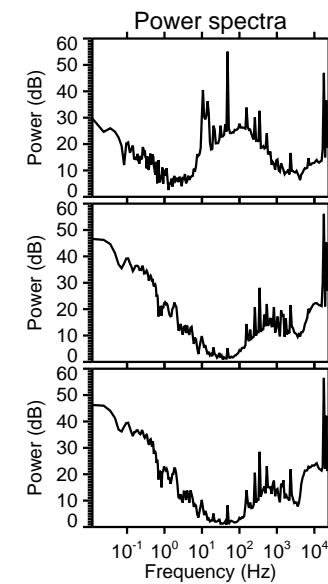
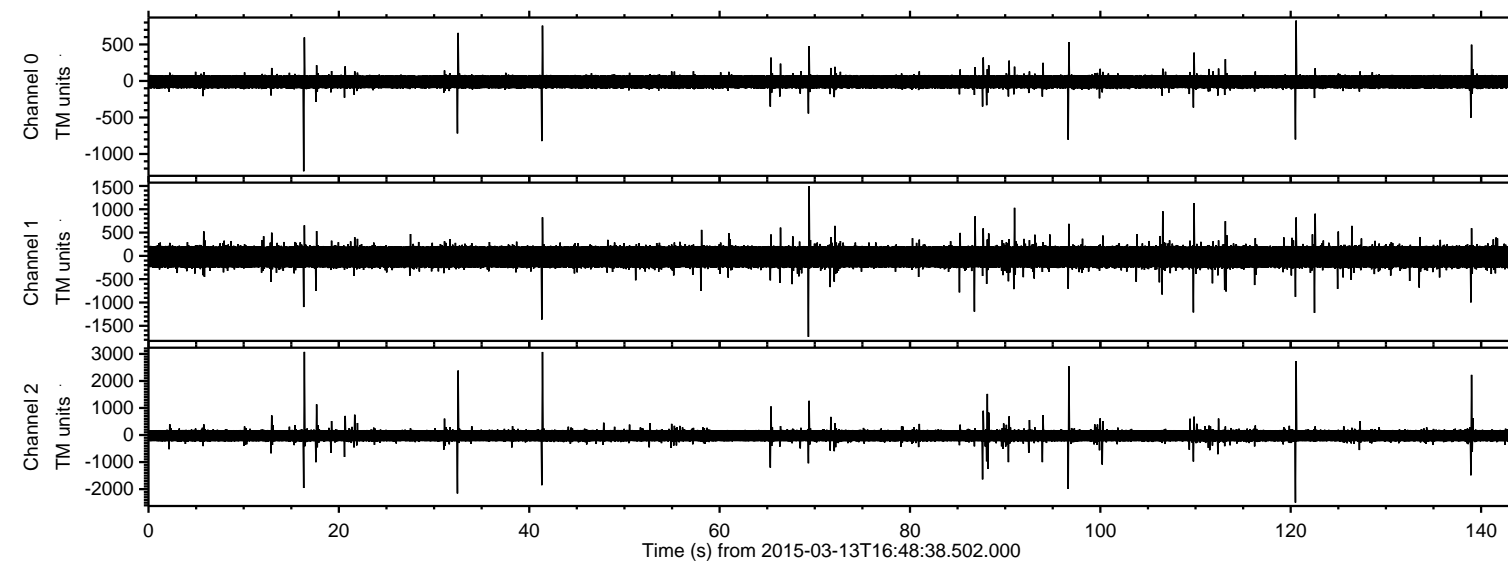


# ELMAVAN 3D WAVEFORMS (Measured data sampled at 50 kHz) 49635 packets of 144 samples from 2015-03-13T16:48:38.502.000.

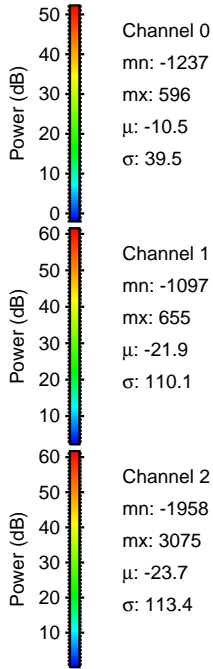
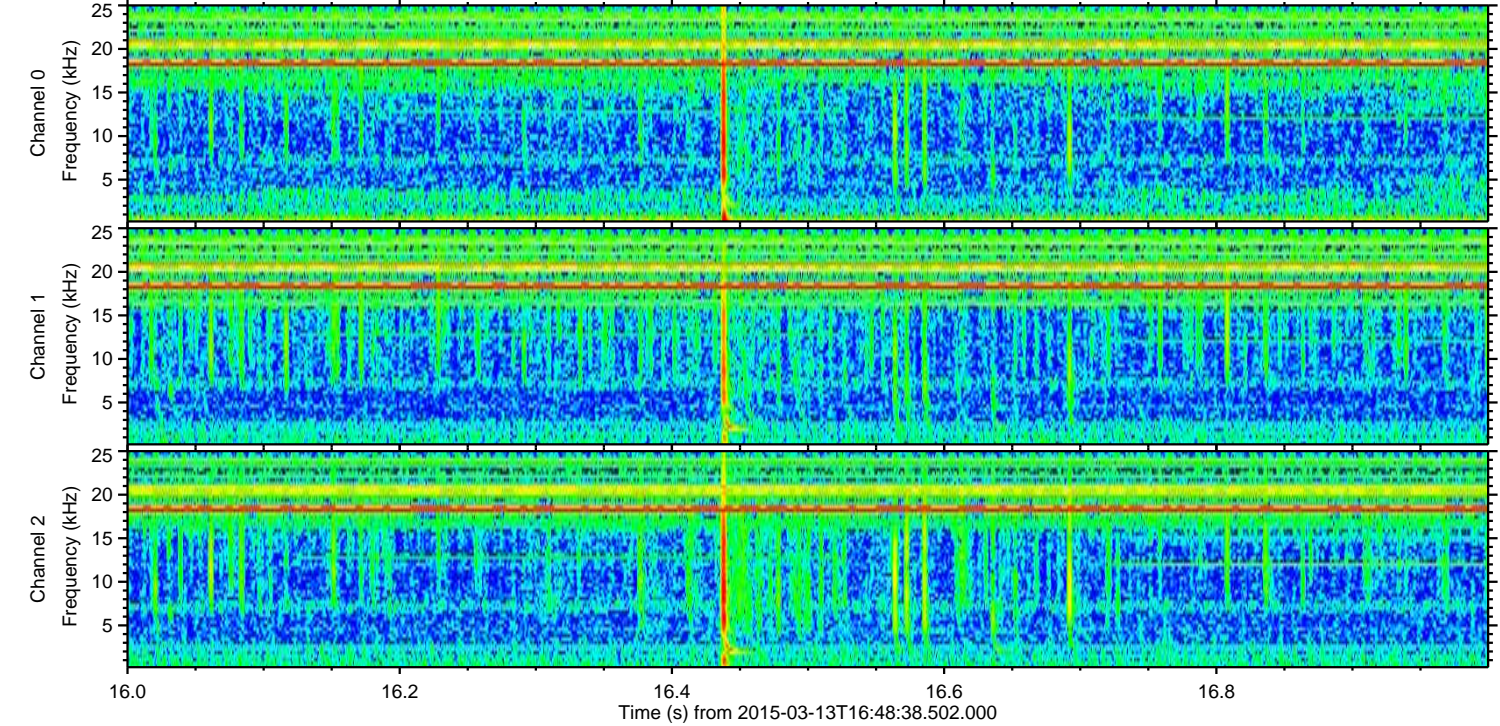
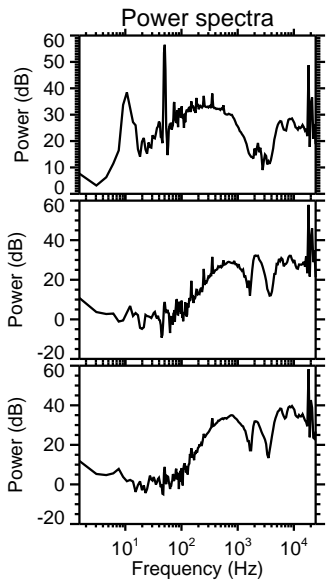
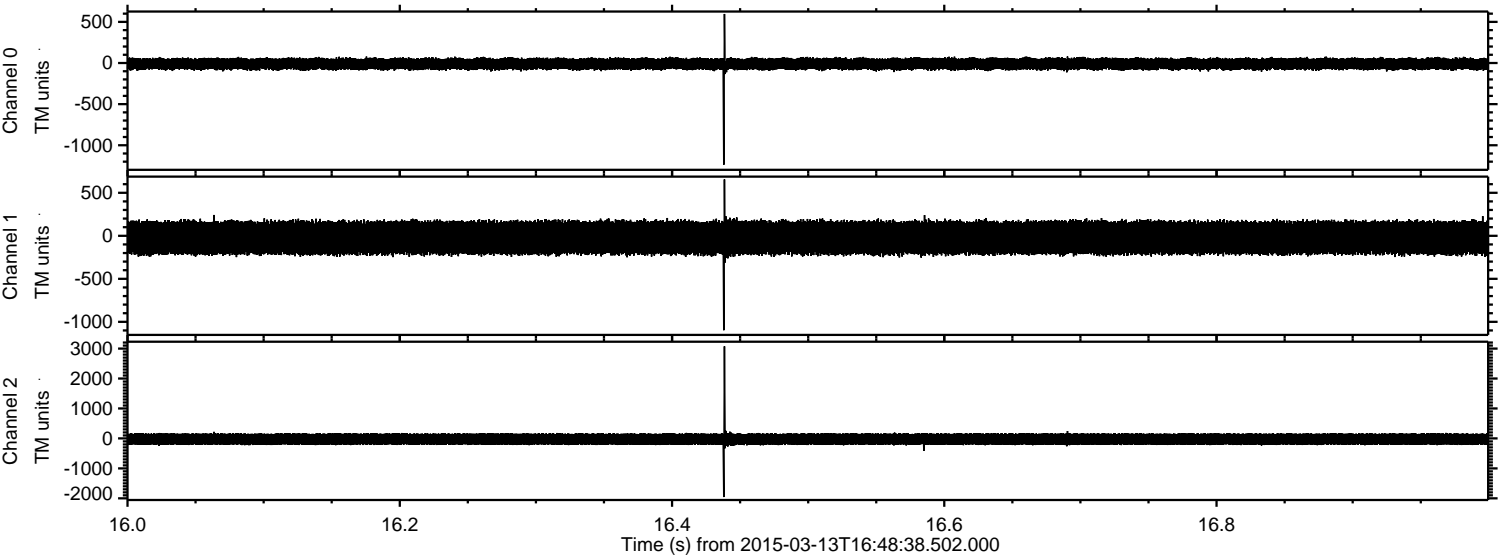
Processed Fri Mar 13 17:58:00 2015 by ELM ver.2012-10-06 from 001\_\_elm20150313\_164837\_\_dat00.bin





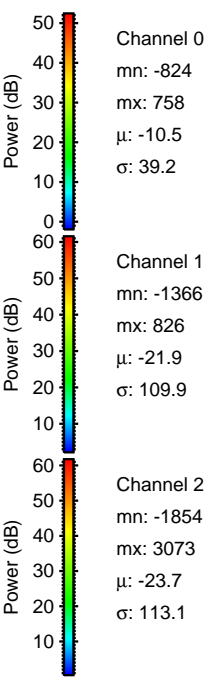
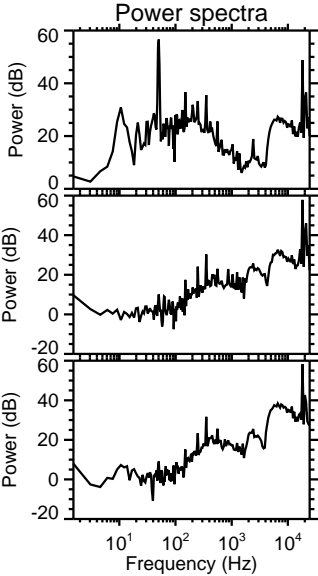
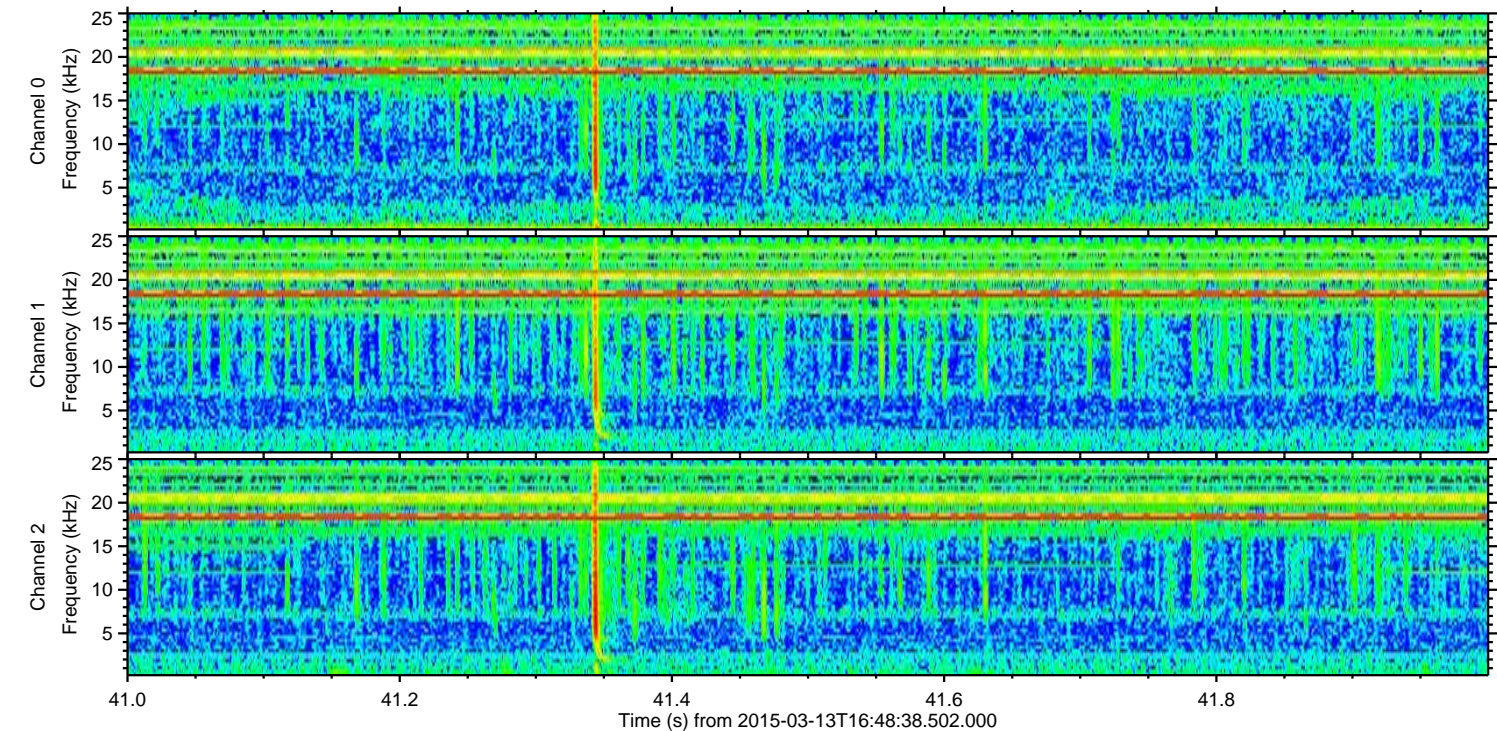
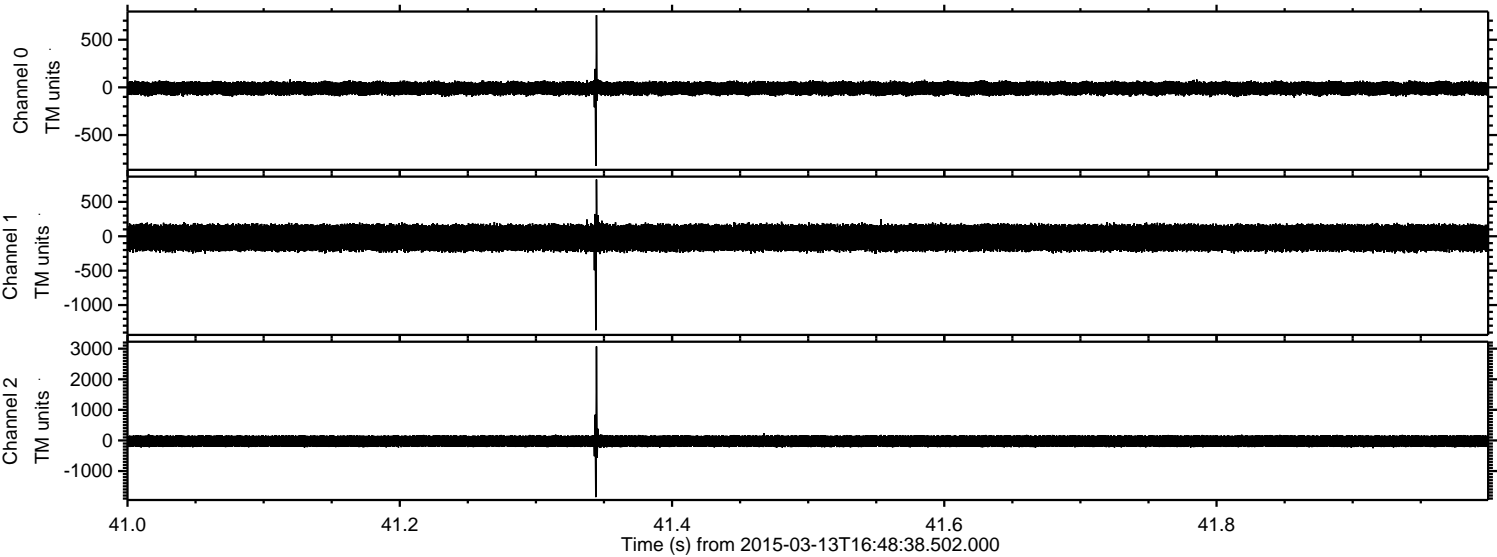
ELMAVAN 3D WAVEFORMS (Measured data sampled at 50 kHz) 49635 packets of 144 samples from 2015-03-13T16:48:38.502.000. Part 17/143

Processed Fri Mar 13 17:58:15 2015 by ELM ver.2012-10-06 from 001\_\_elm20150313\_164837\_\_dat00.bin





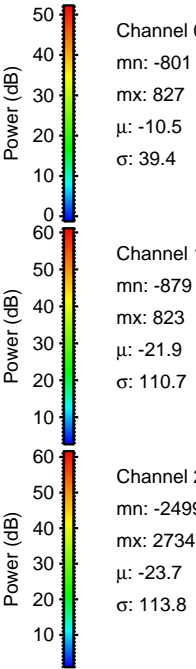
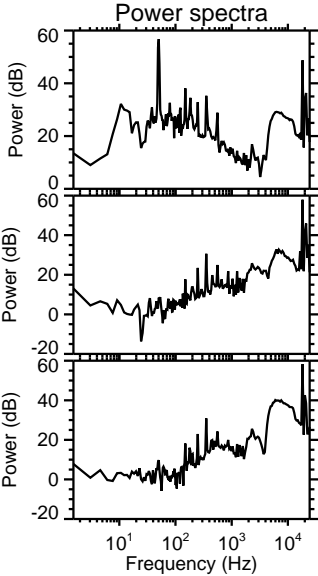
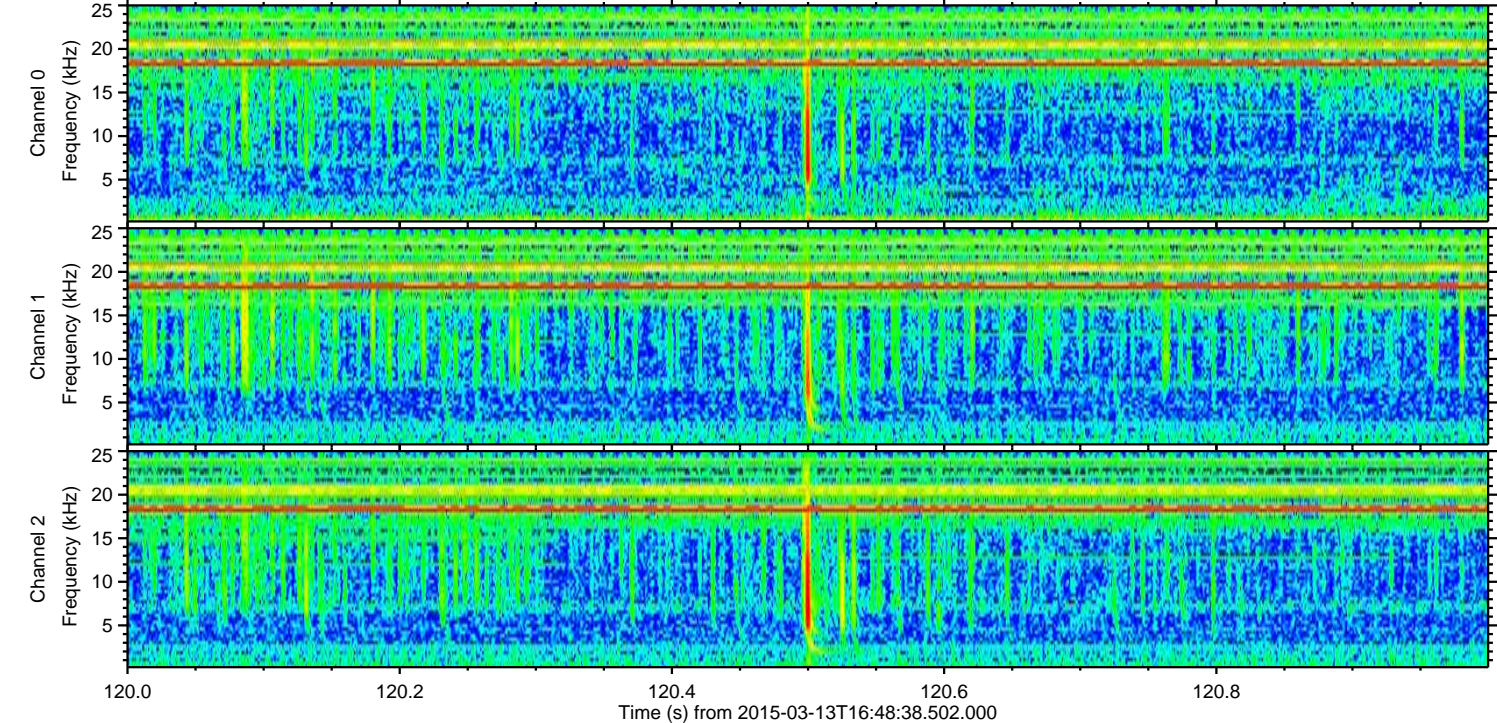
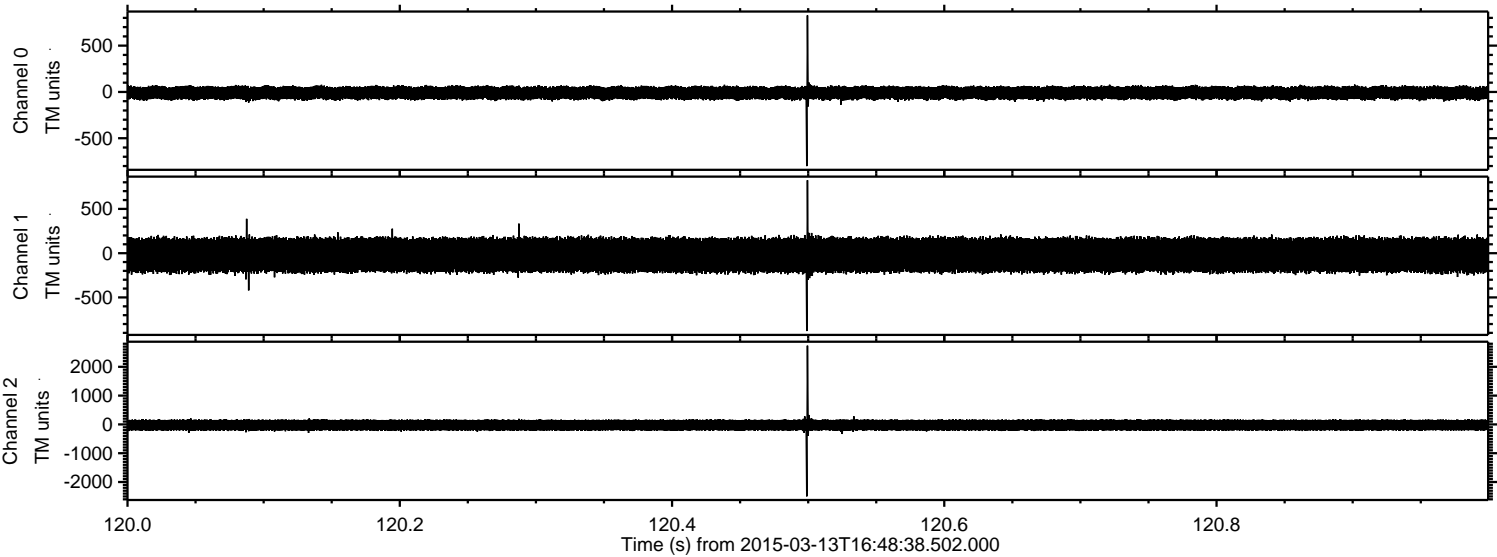
Processed Fri Mar 13 17:58:16 2015 by ELM ver.2012-10-06 from 001\_\_elm20150313\_164837\_\_dat00.bin





ELMAVAN 3D WAVEFORMS (Measured data sampled at 50 kHz) 49635 packets of 144 samples from 2015-03-13T16:48:38.502.000. Part 121/143

Processed Fri Mar 13 17:58:17 2015 by ELM ver.2012-10-06 from 001\_\_elm20150313\_164837\_\_dat00.bin



Channel 0  
mn: -801  
mx: 827  
 $\mu$ : -10.5  
 $\sigma$ : 39.4

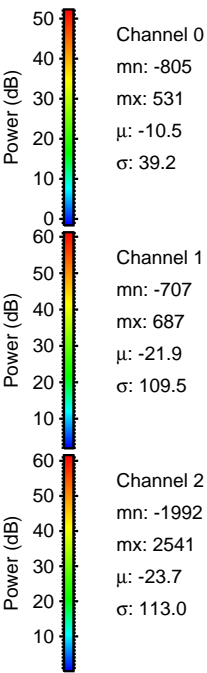
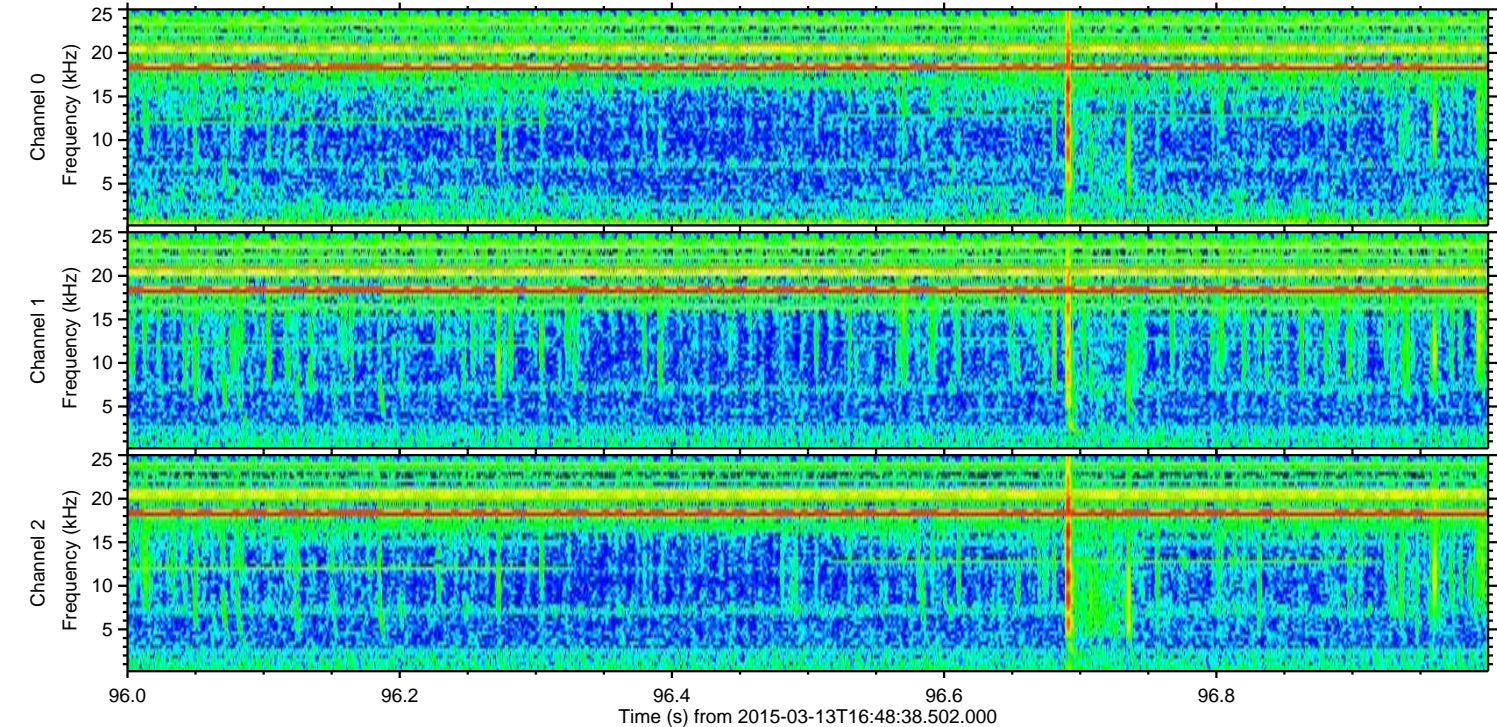
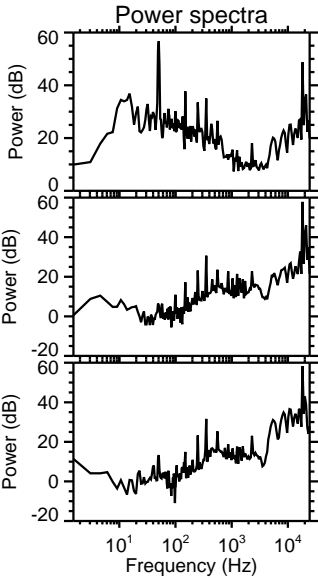
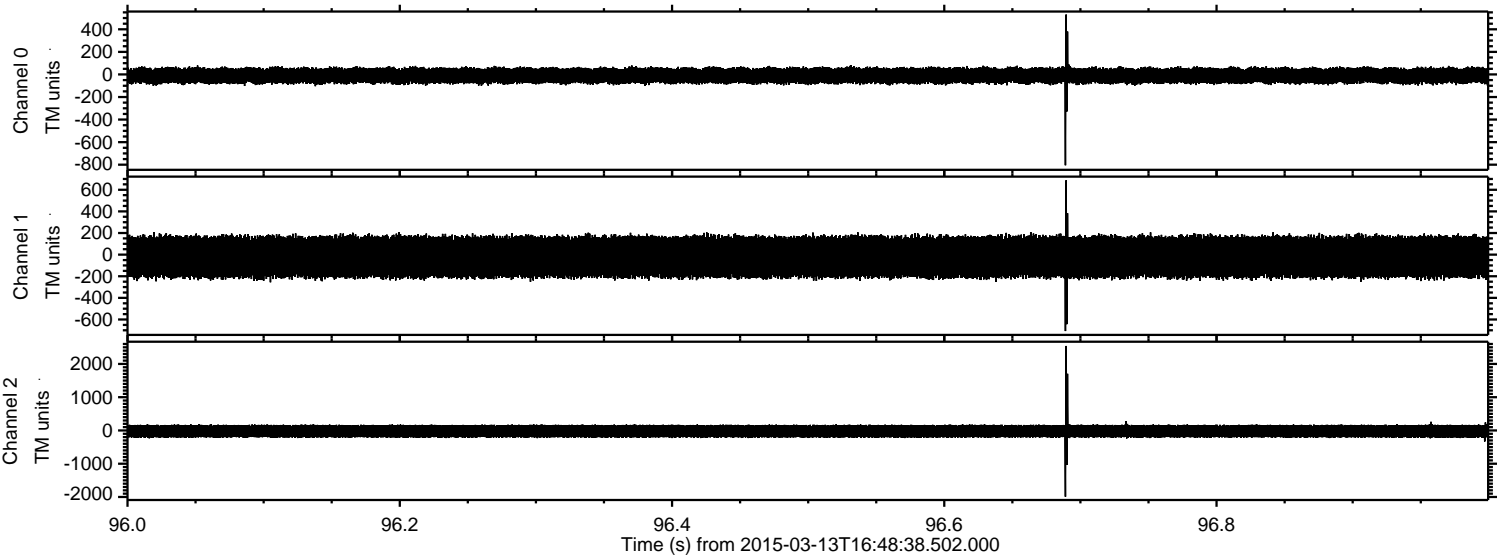
Channel 1  
mn: -879  
mx: 823  
 $\mu$ : -21.9  
 $\sigma$ : 110.7

Channel 2  
mn: -2499  
mx: 2734  
 $\mu$ : -23.7  
 $\sigma$ : 113.8



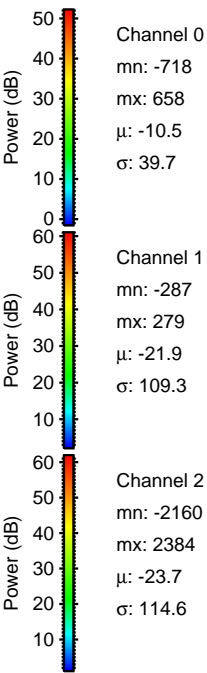
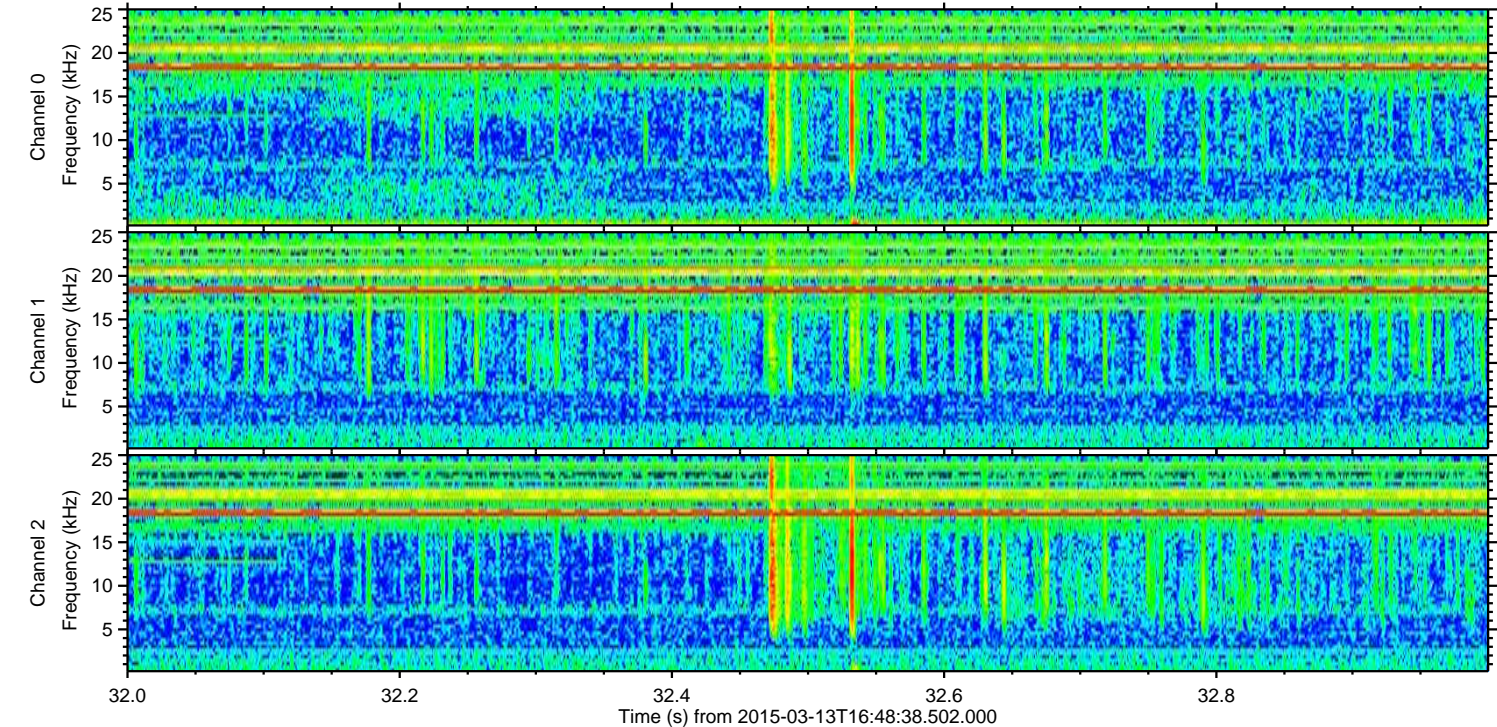
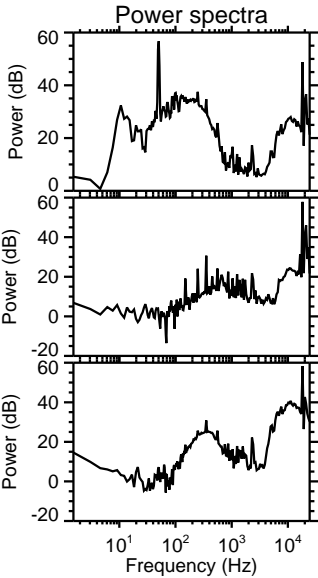
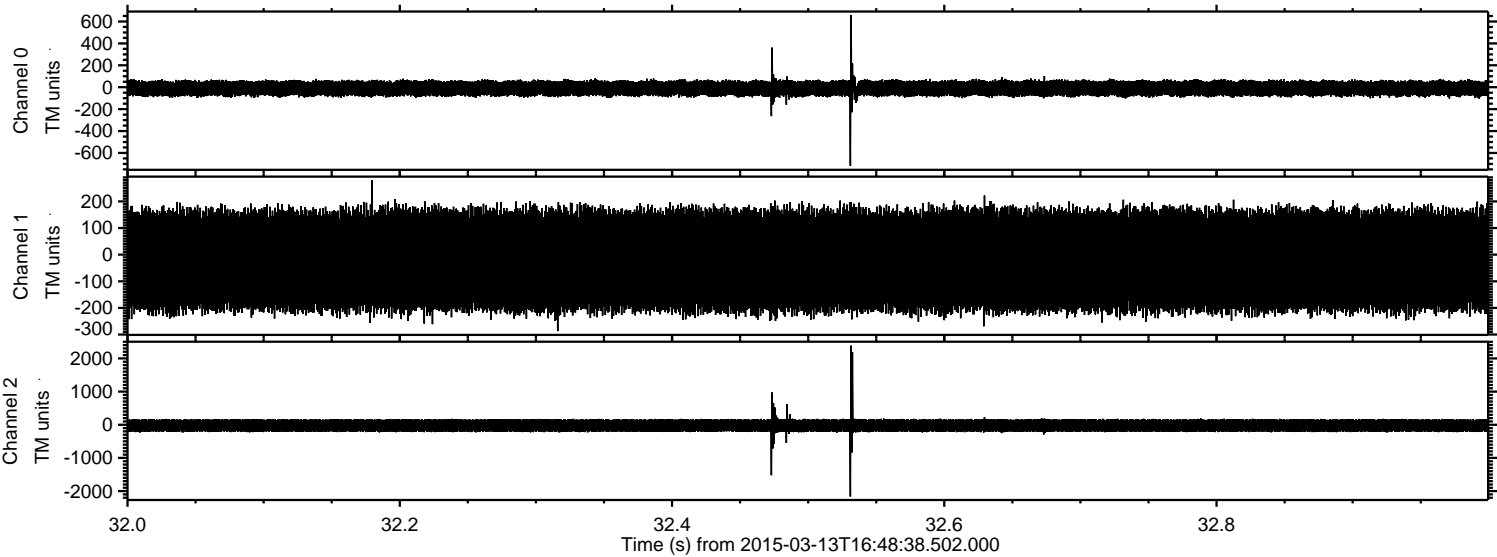
ELMAVAN 3D WAVEFORMS (Measured data sampled at 50 kHz) 49635 packets of 144 samples from 2015-03-13T16:48:38.502.000. Part 97/143

Processed Fri Mar 13 17:58:18 2015 by ELM ver.2012-10-06 from 001\_\_elm20150313\_164837\_\_dat00.bin



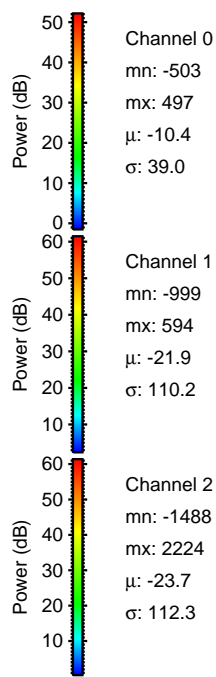
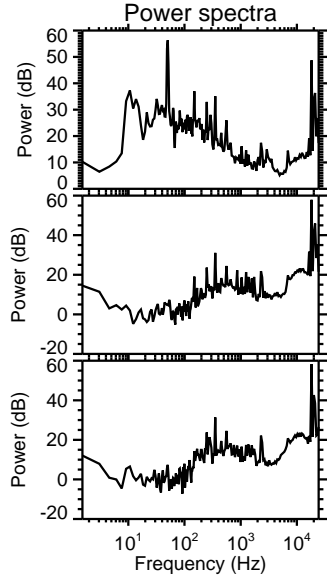
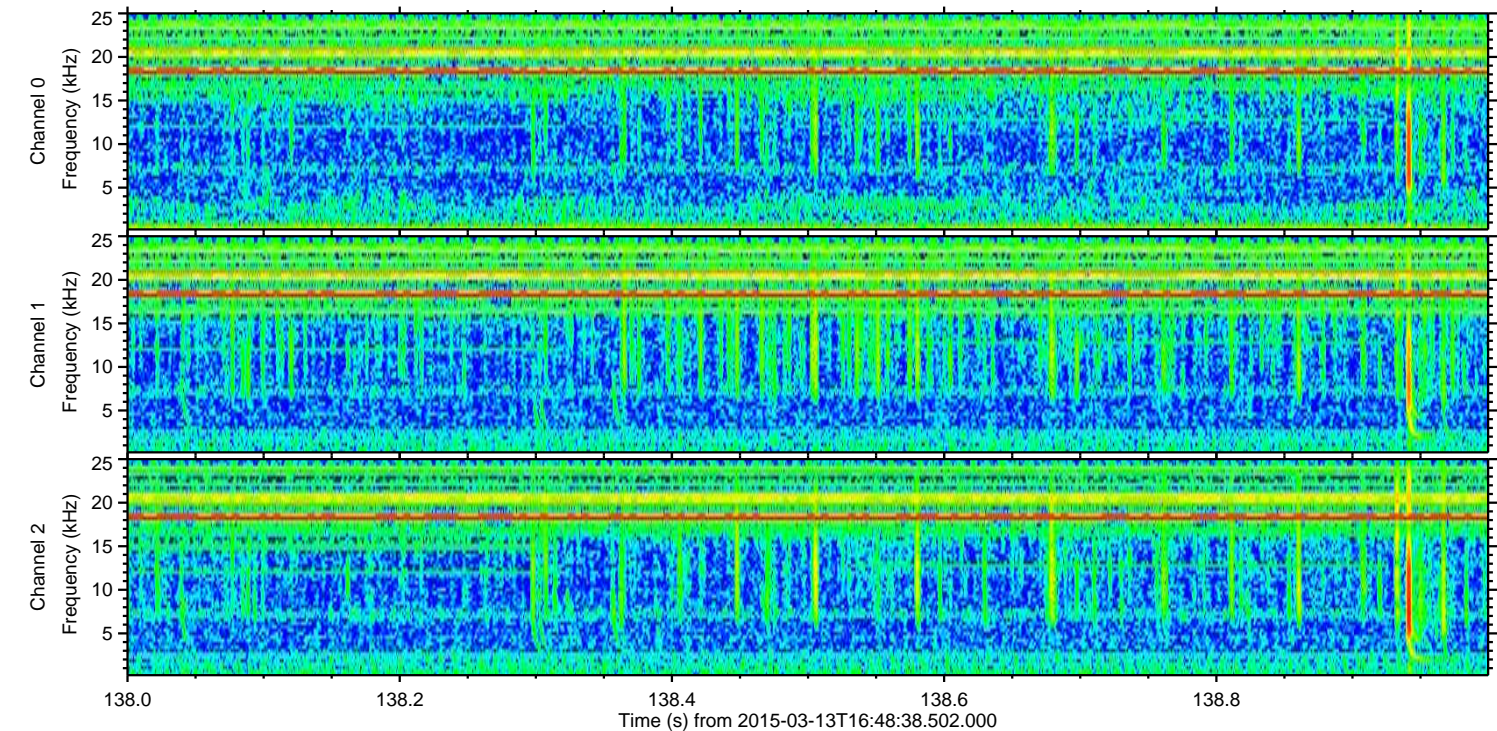
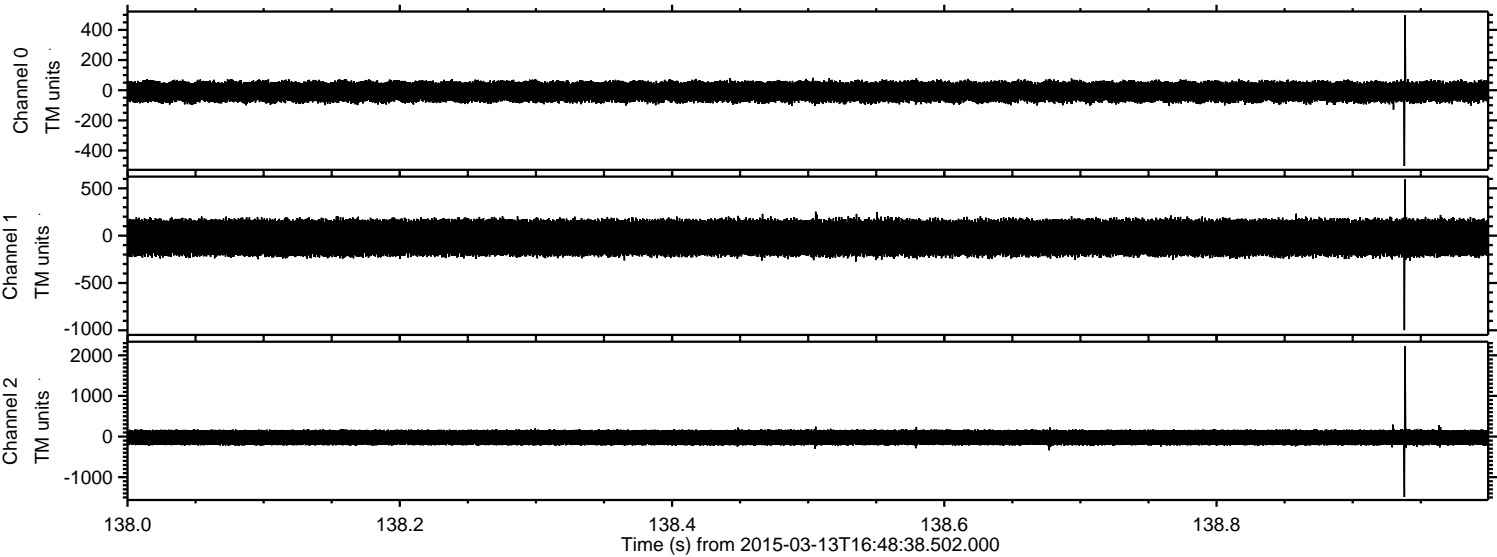


Processed Fri Mar 13 17:58:19 2015 by ELM ver.2012-10-06 from 001\_\_elm20150313\_164837\_\_dat00.bin



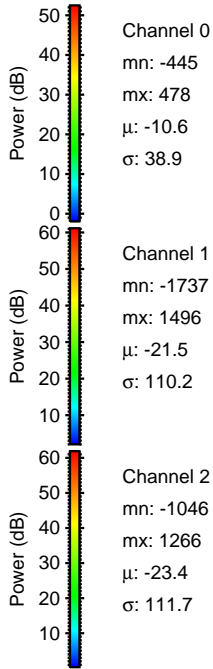
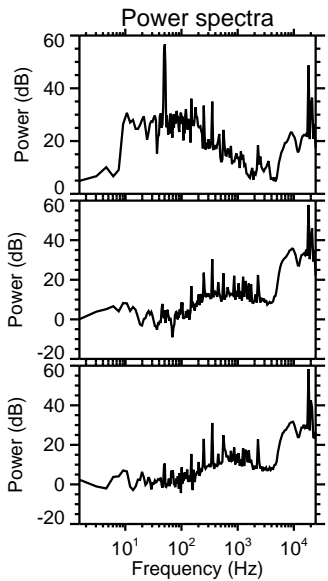
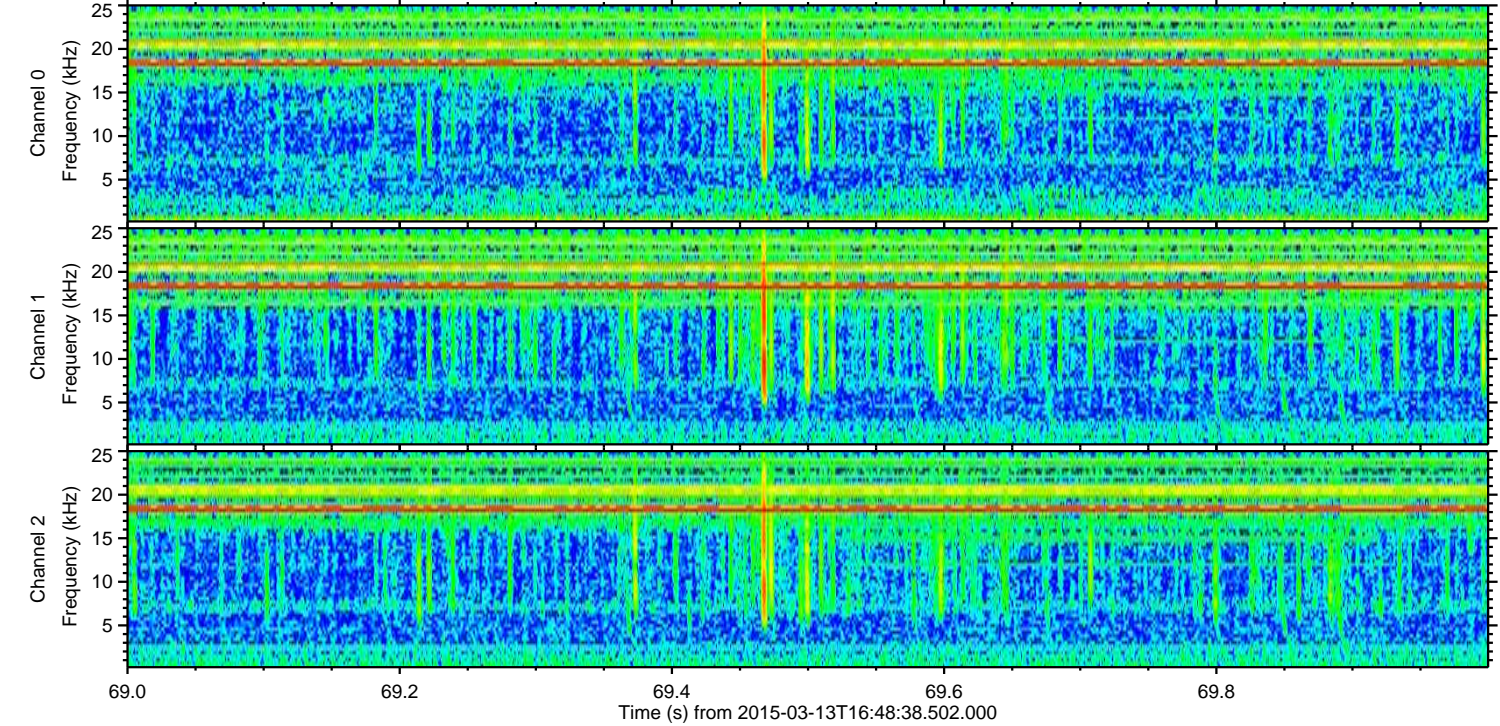
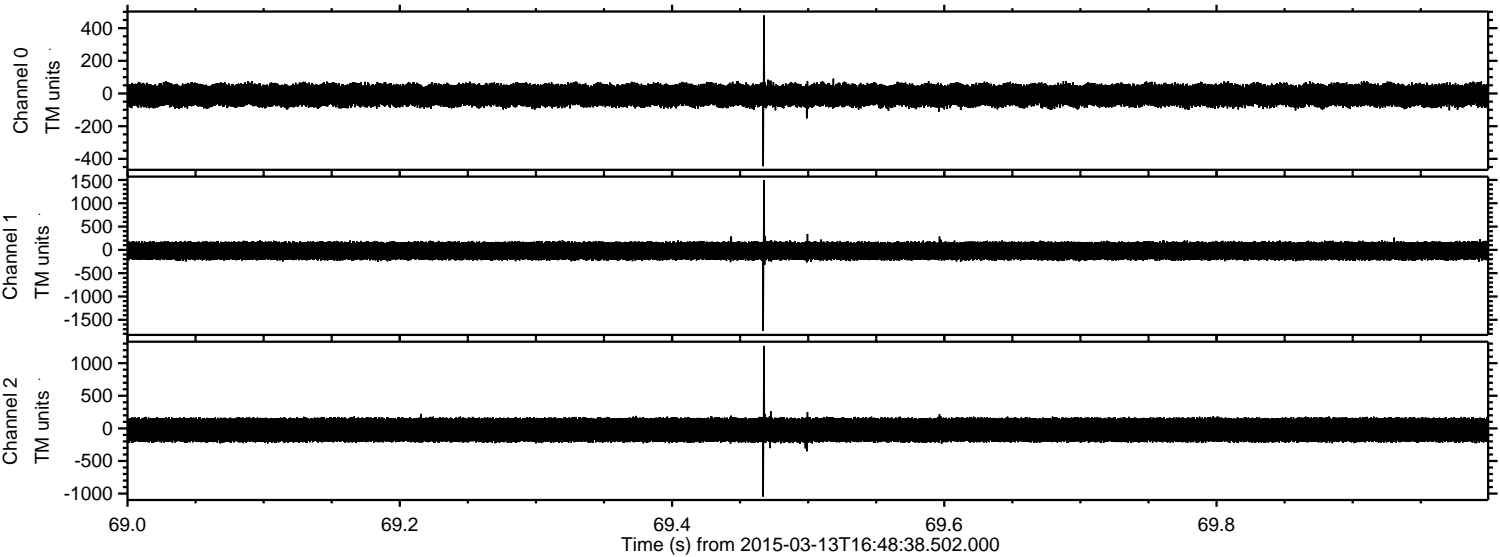


Processed Fri Mar 13 17:58:20 2015 by ELM ver.2012-10-06 from 001\_\_elm20150313\_164837\_\_dat00.bin





Processed Fri Mar 13 17:58:21 2015 by ELM ver.2012-10-06 from 001\_\_elm20150313\_164837\_\_dat00.bin



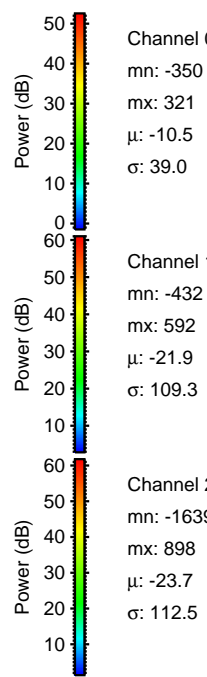
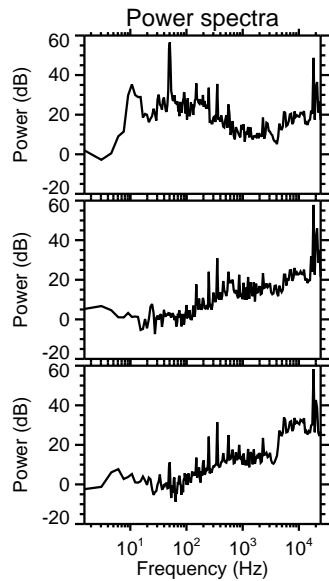
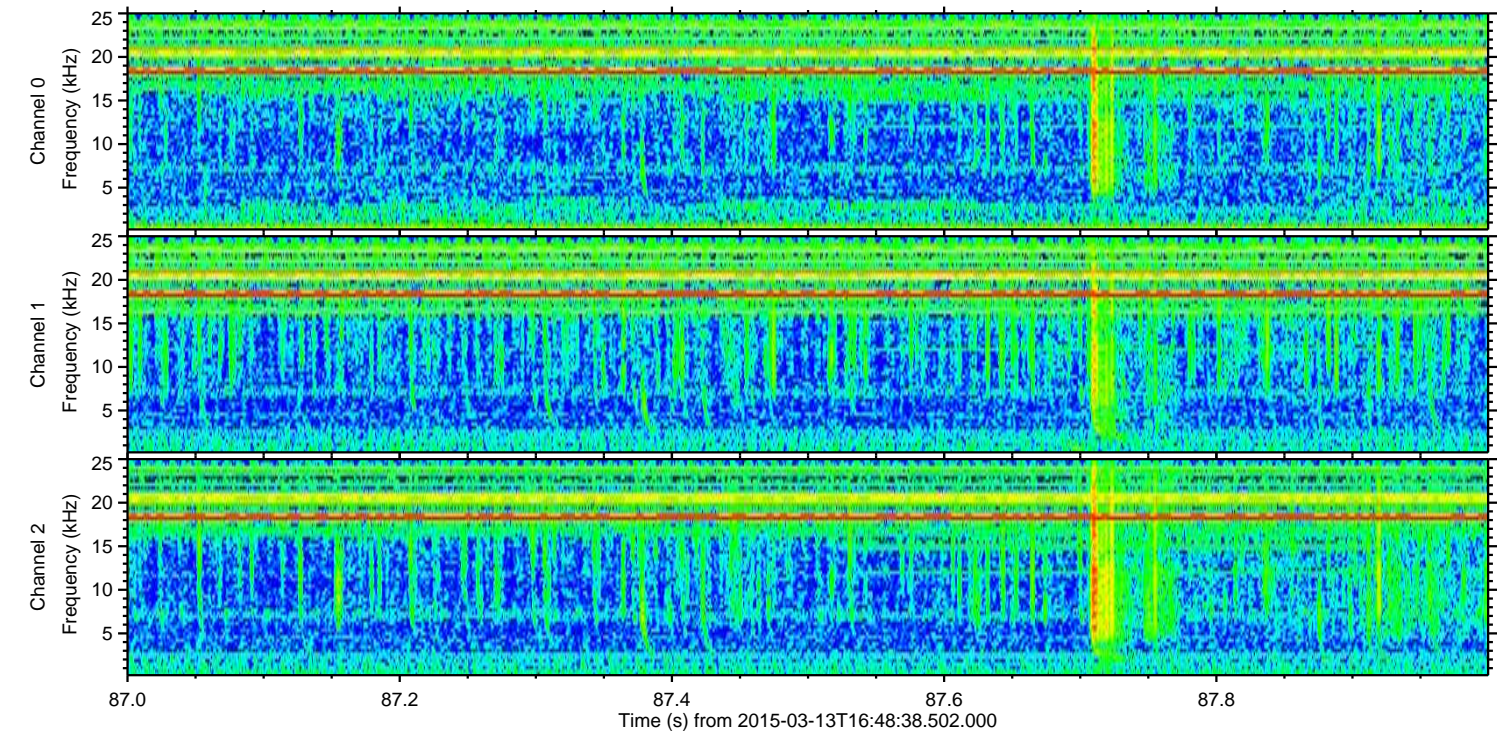
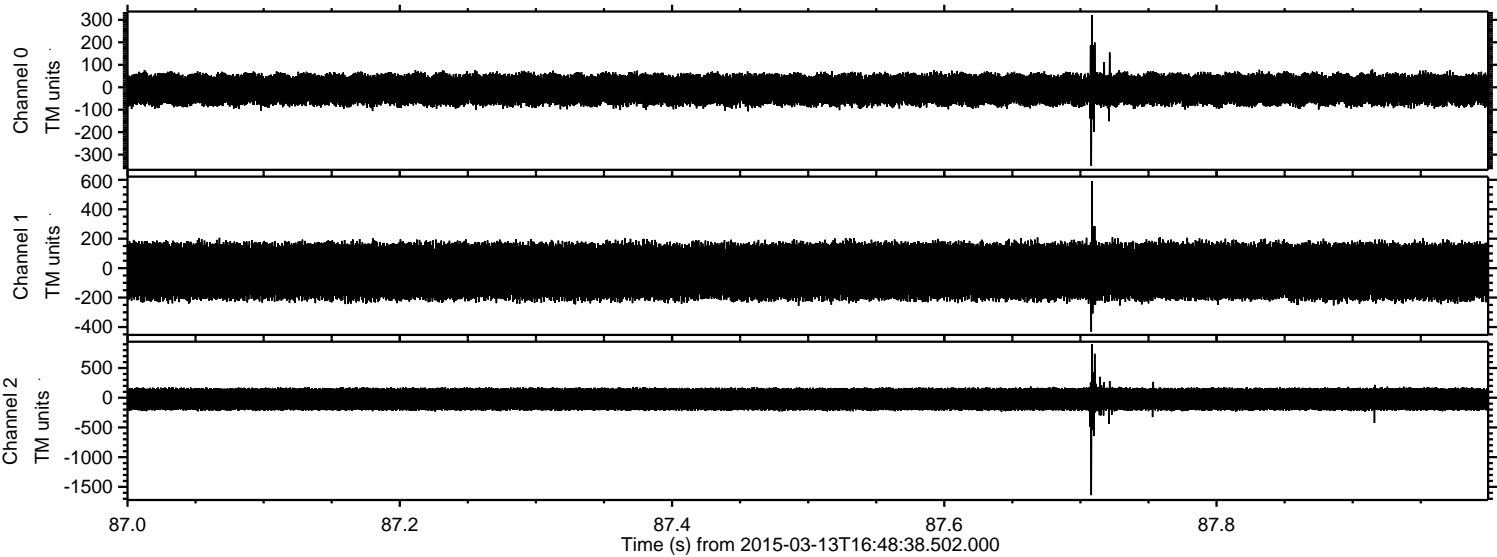
Channel 0  
mn: -445  
mx: 478  
 $\mu$ : -10.6  
 $\sigma$ : 38.9

Channel 1  
mn: -1737  
mx: 1496  
 $\mu$ : -21.5  
 $\sigma$ : 110.2

Channel 2  
mn: -1046  
mx: 1266  
 $\mu$ : -23.4  
 $\sigma$ : 111.7



Processed Fri Mar 13 17:58:22 2015 by ELM ver.2012-10-06 from 001\_\_elm20150313\_164837\_\_dat00.bin



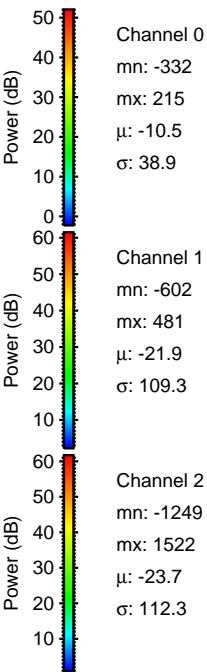
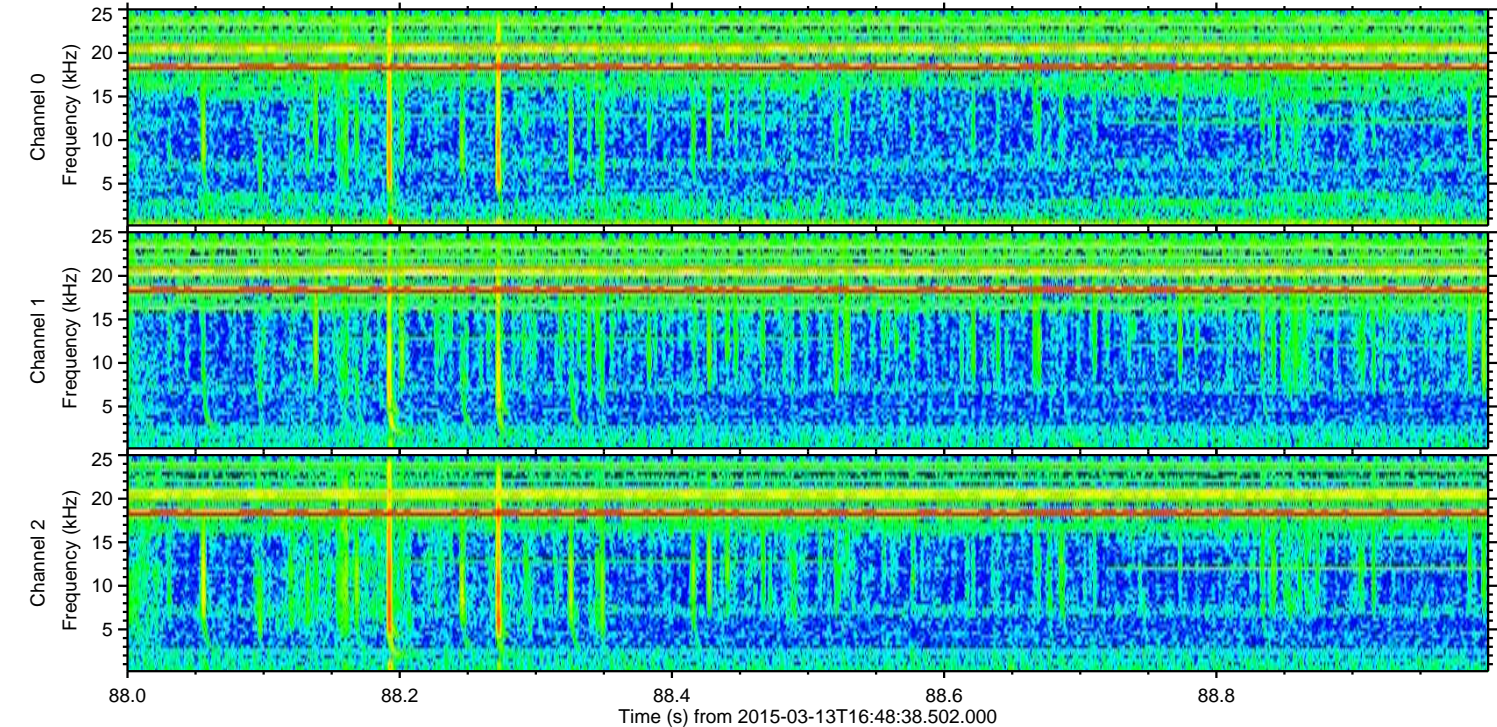
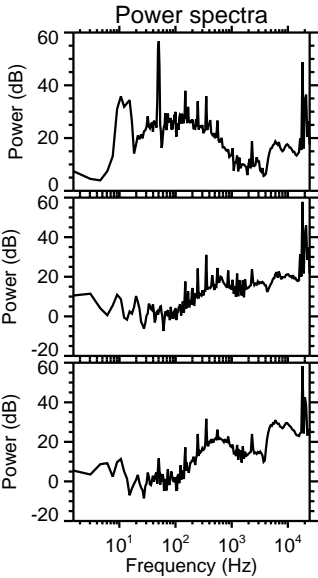
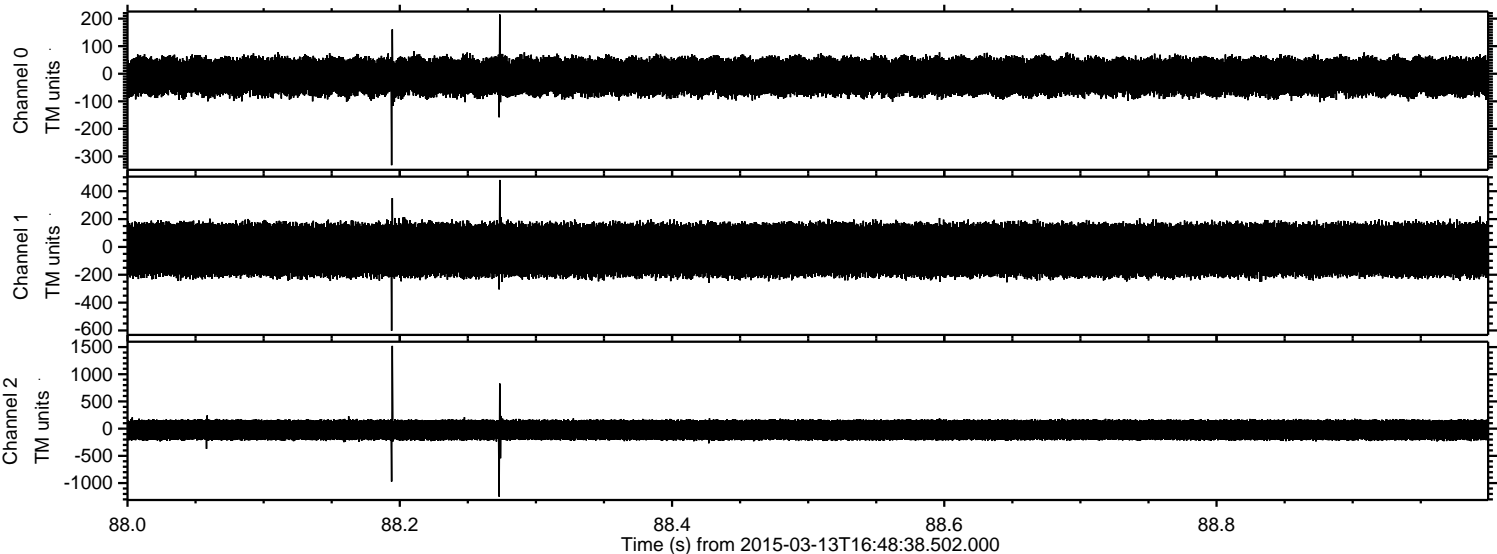
Channel 0  
mn: -350  
mx: 321  
 $\mu$ : -10.5  
 $\sigma$ : 39.0

Channel 1  
mn: -432  
mx: 592  
 $\mu$ : -21.9  
 $\sigma$ : 109.3

Channel 2  
mn: -1639  
mx: 898  
 $\mu$ : -23.7  
 $\sigma$ : 112.5



Processed Fri Mar 13 17:58:23 2015 by ELM ver.2012-10-06 from 001\_\_elm20150313\_164837\_\_dat00.bin





Processed Fri Mar 13 17:58:24 2015 by ELM ver.2012-10-06 from 001\_\_elm20150313\_164837\_\_dat00.bin

