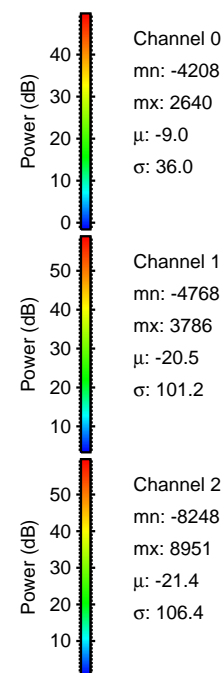
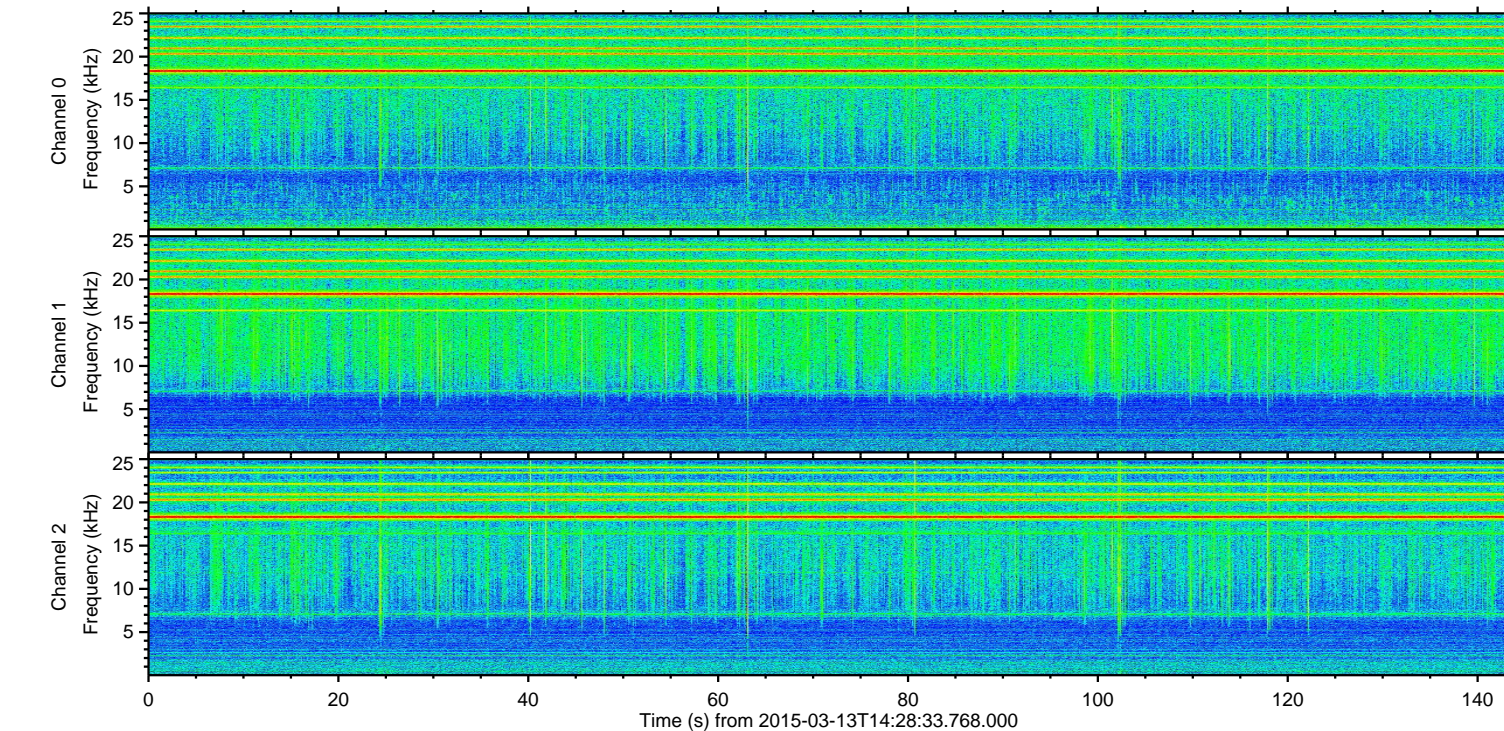
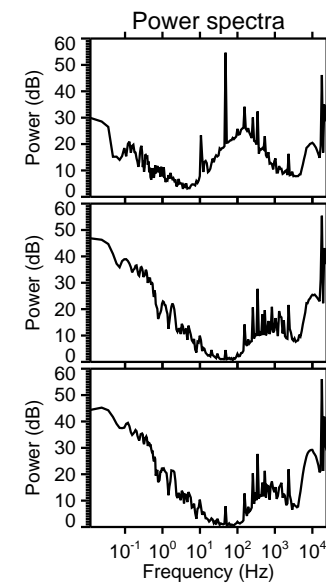
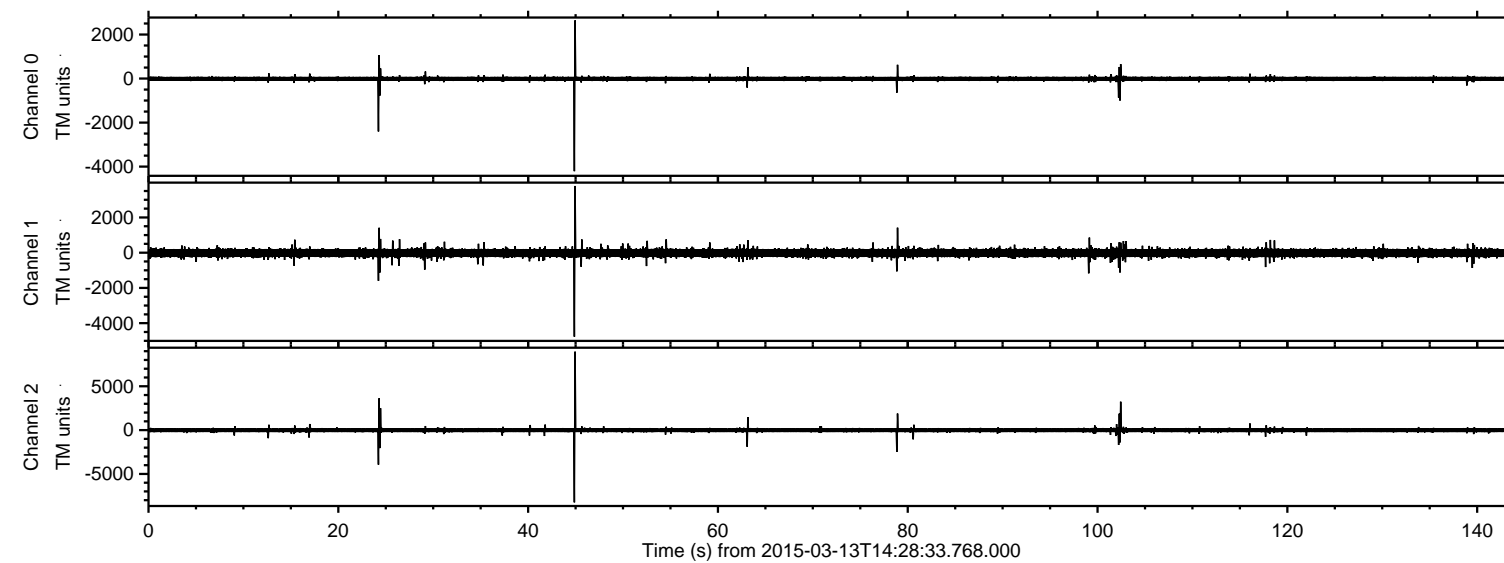
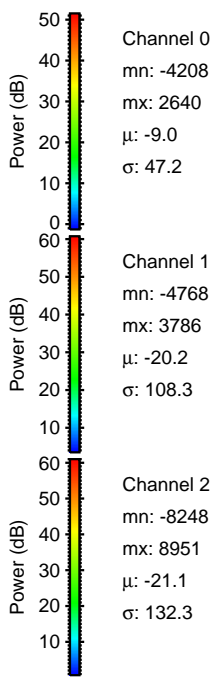
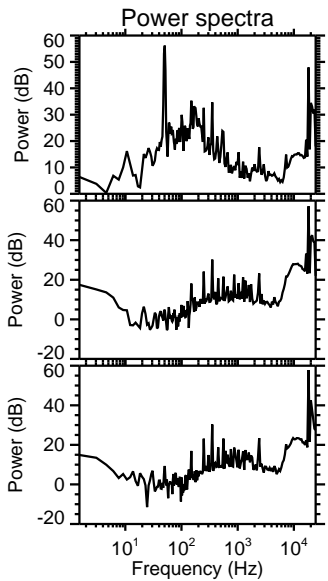
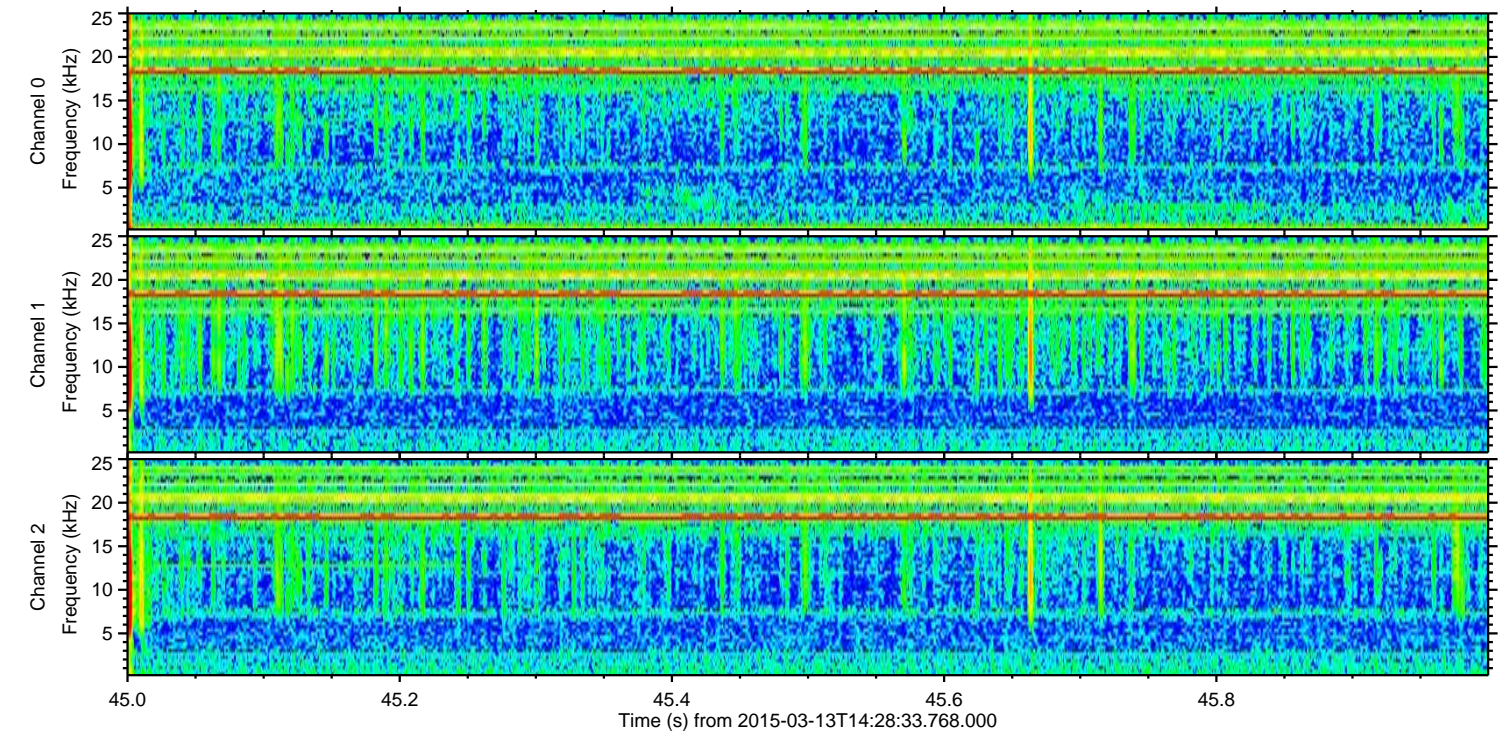
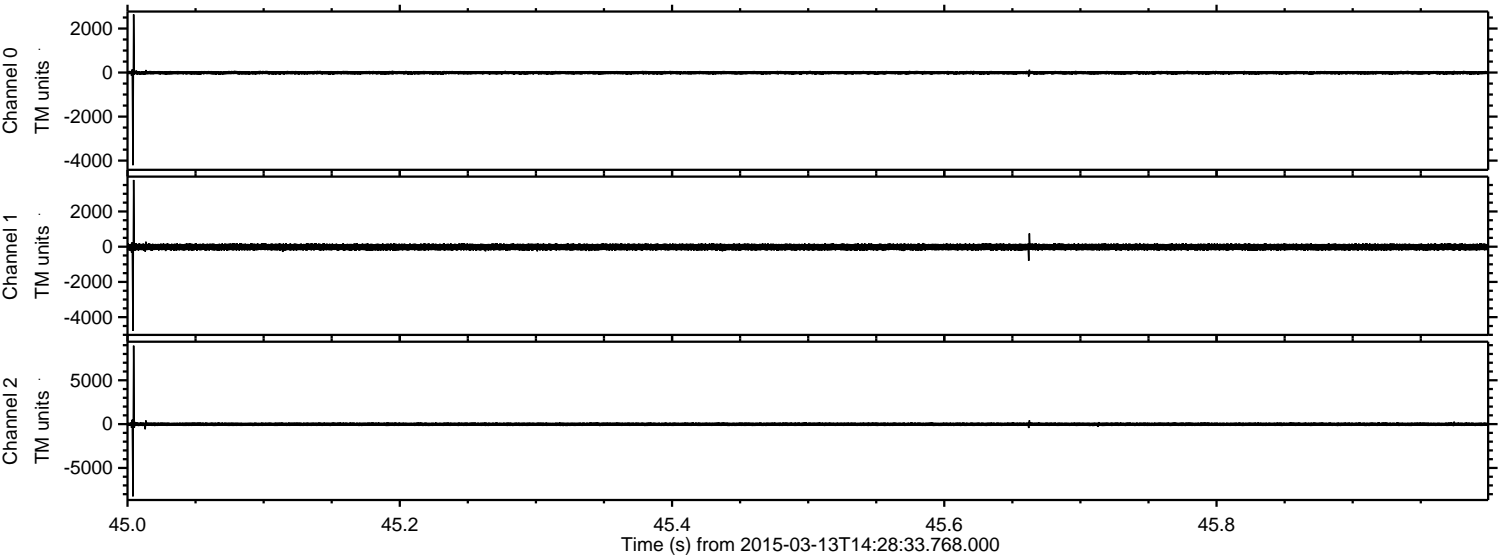


# ELMAVAN 3D WAVEFORMS (Measured data sampled at 50 kHz) 49781 packets of 144 samples from 2015-03-13T14:28:33.768.000.

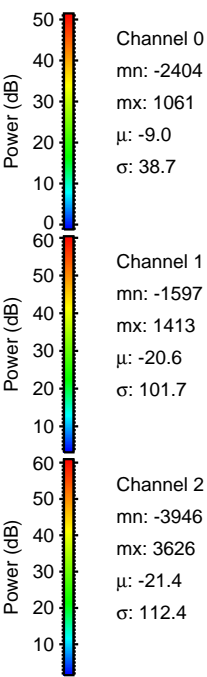
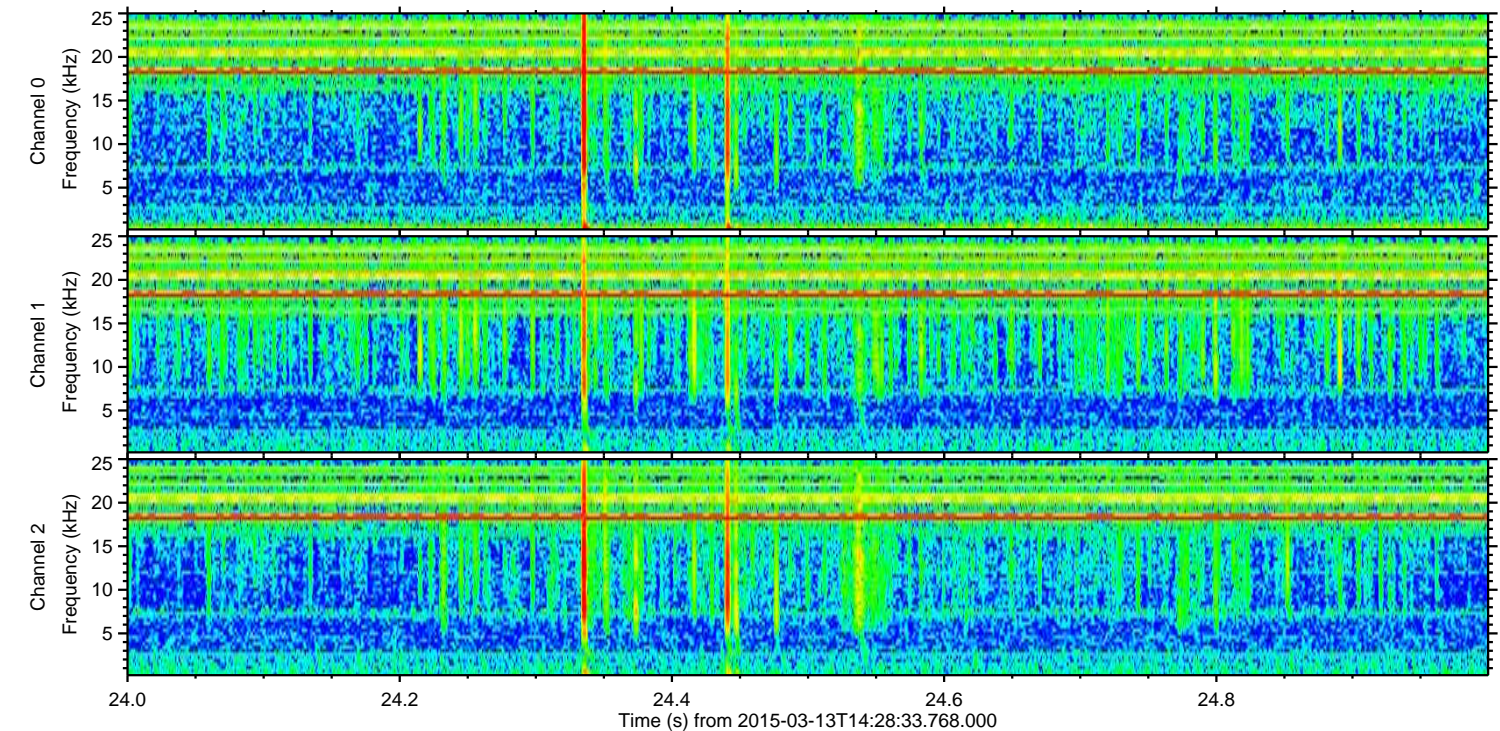
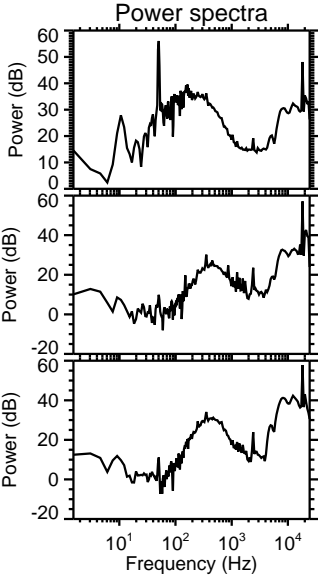
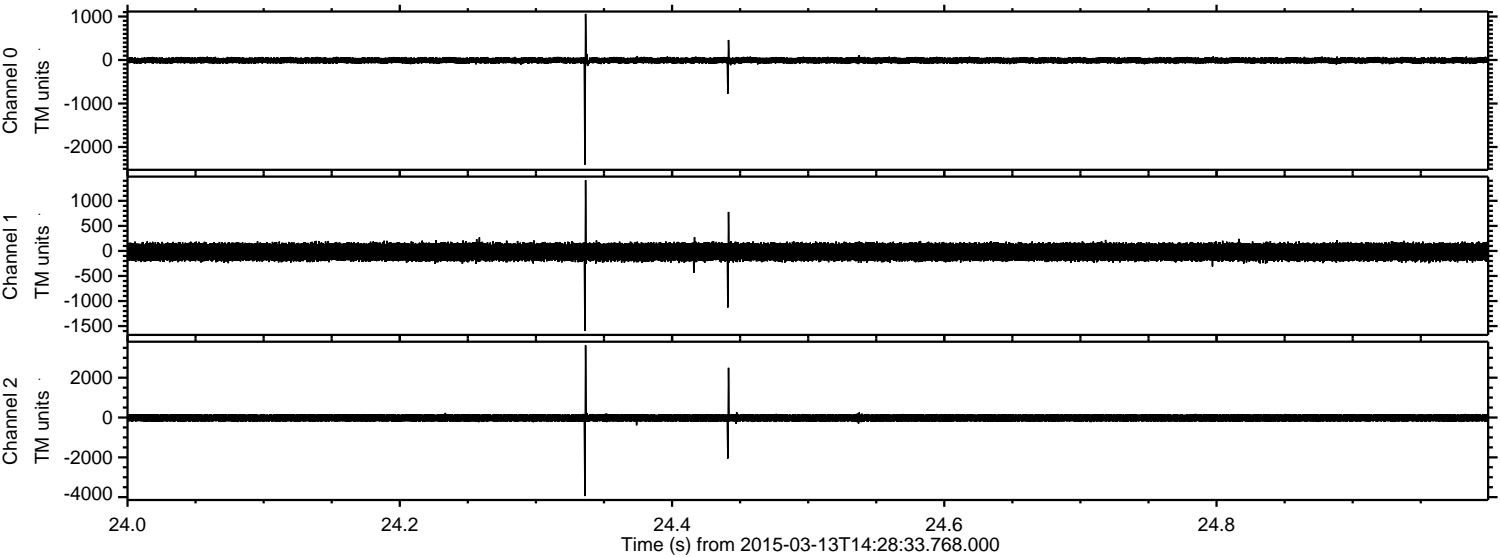
Processed Fri Mar 13 15:35:45 2015 by ELM ver.2012-10-06 from 001\_\_elm20150313\_142832\_\_dat00.bin



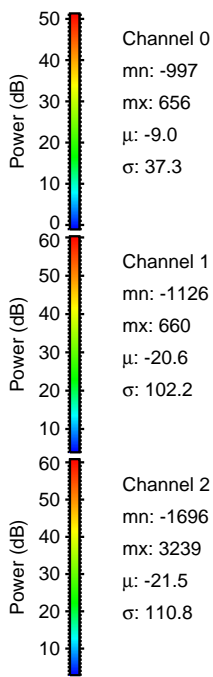
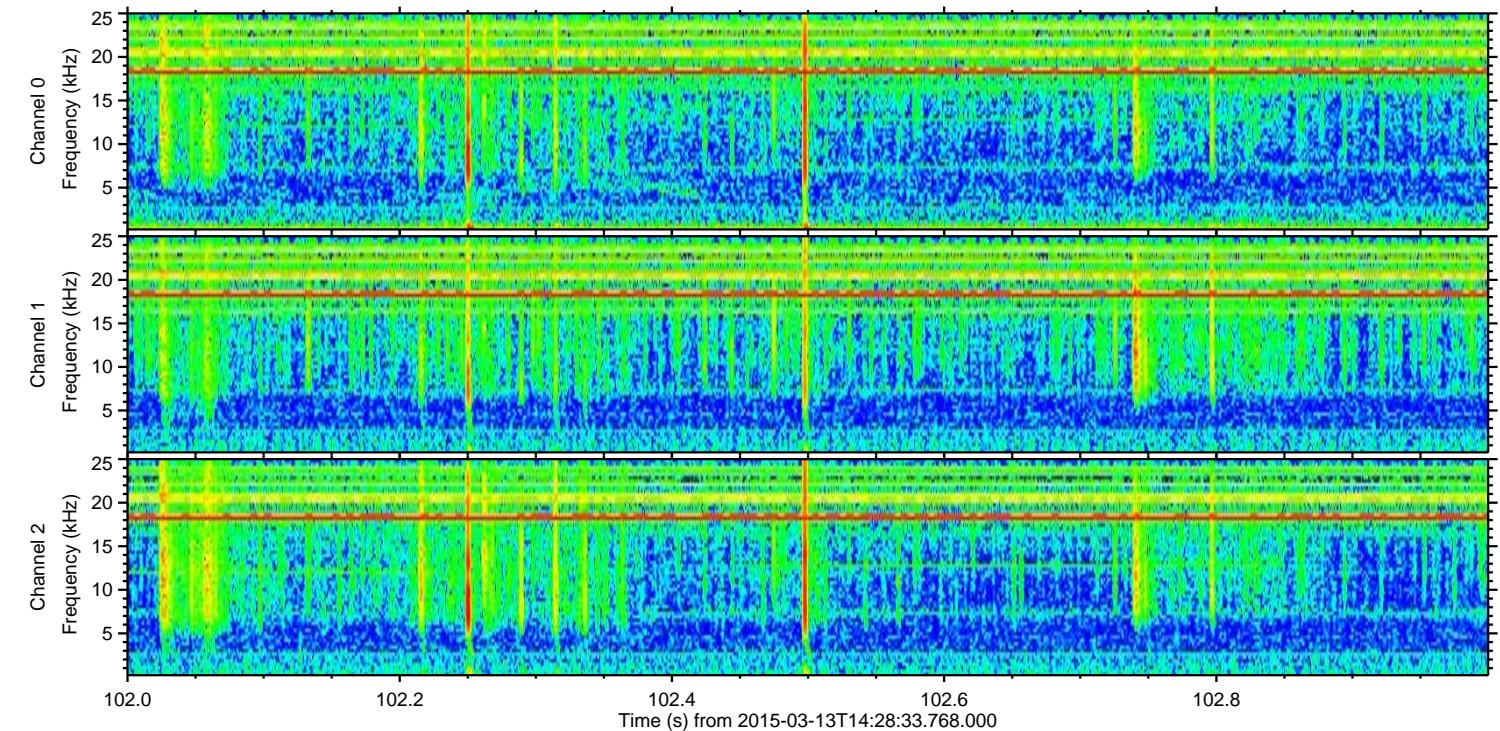
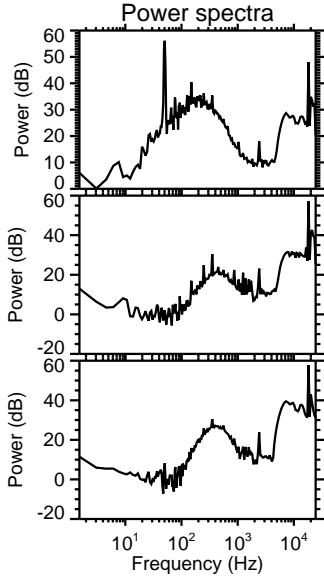
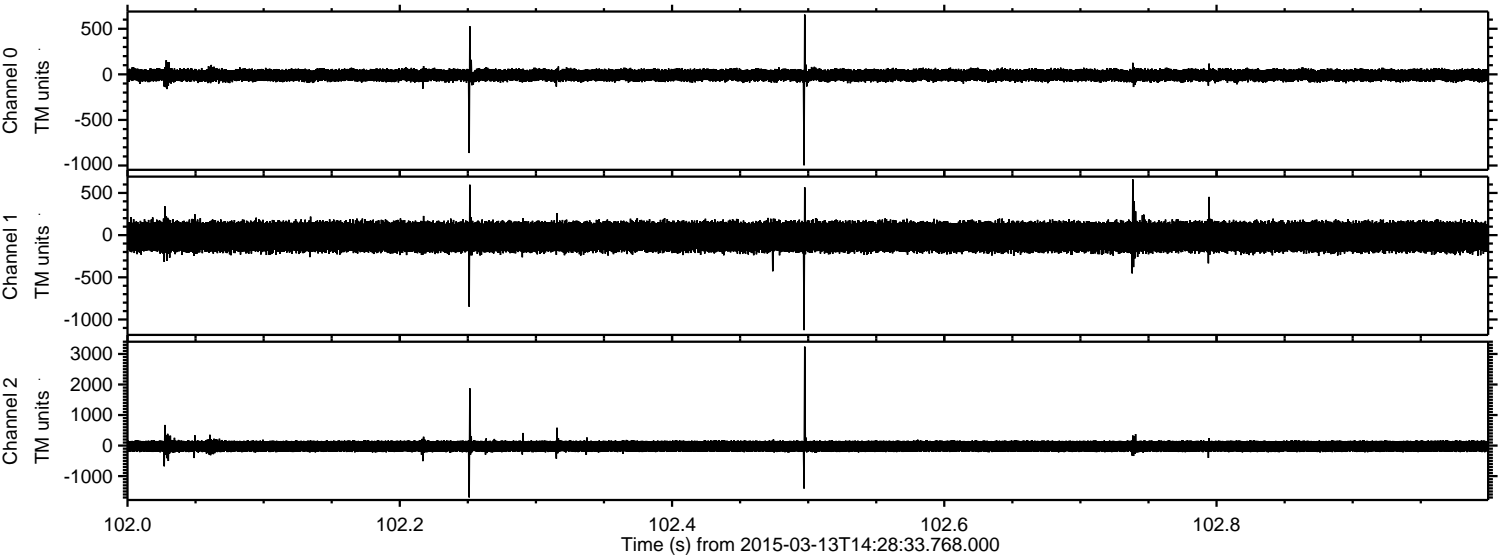
Processed Fri Mar 13 15:35:57 2015 by ELM ver.2012-10-06 from 001\_\_elm20150313\_142832\_\_dat00.bin



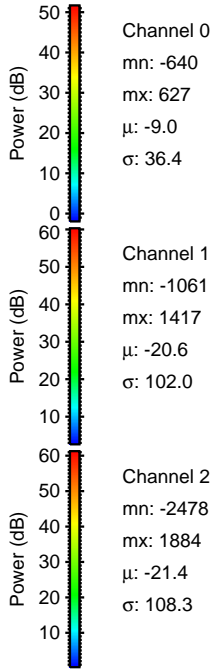
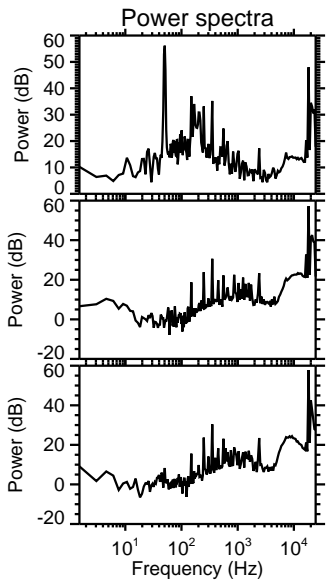
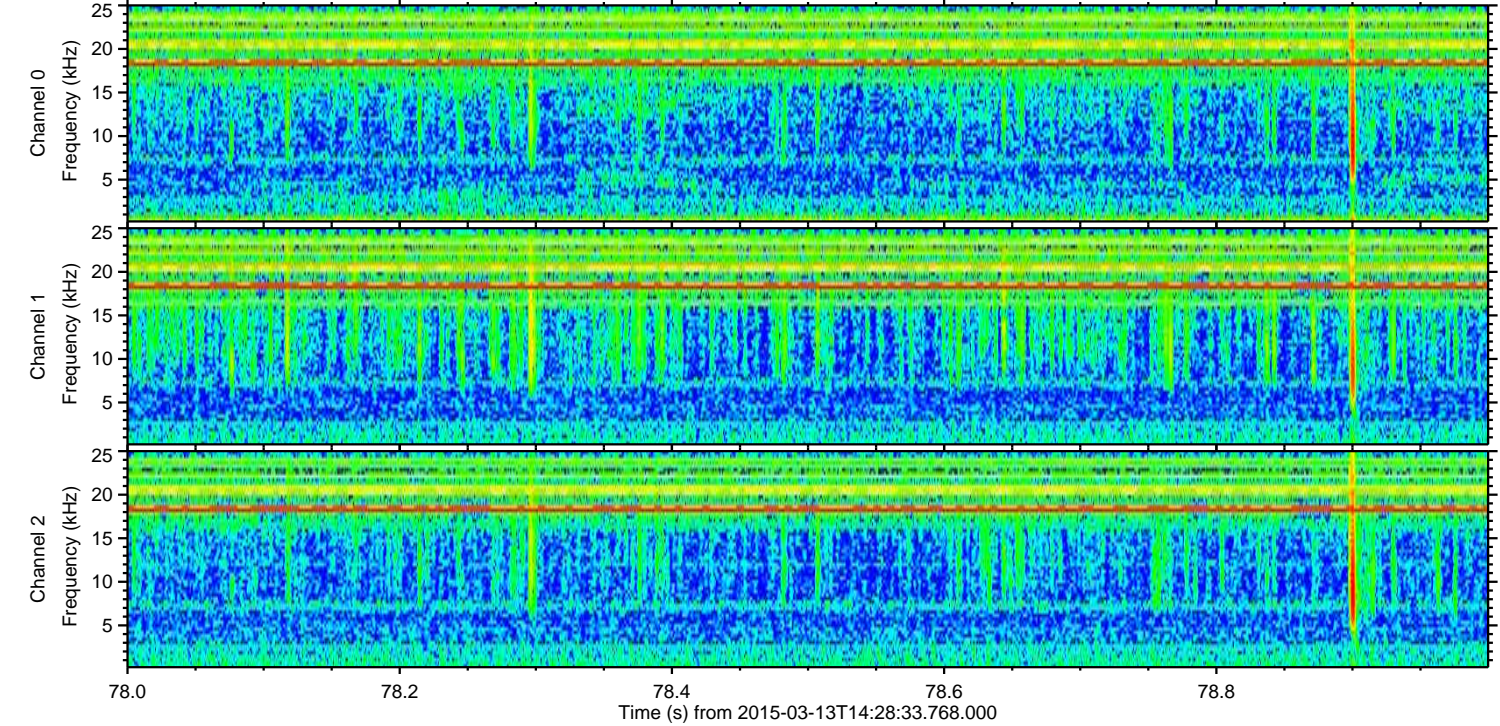
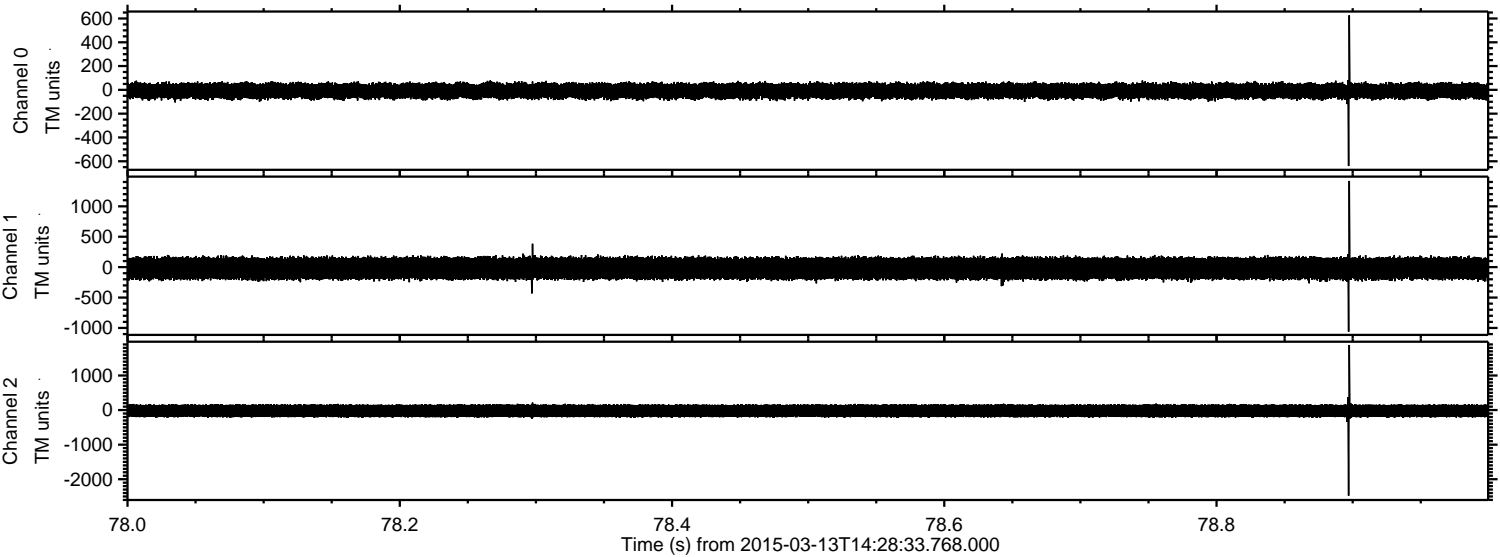
Processed Fri Mar 13 15:35:58 2015 by ELM ver.2012-10-06 from 001\_\_elm20150313\_142832\_\_dat00.bin



Processed Fri Mar 13 15:35:59 2015 by ELM ver.2012-10-06 from 001\_\_elm20150313\_142832\_\_dat00.bin

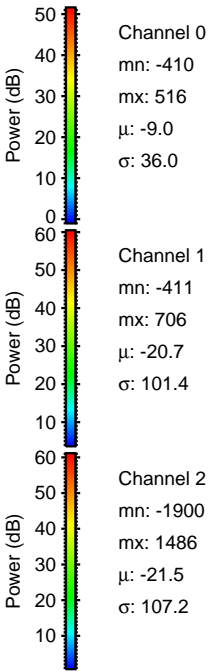
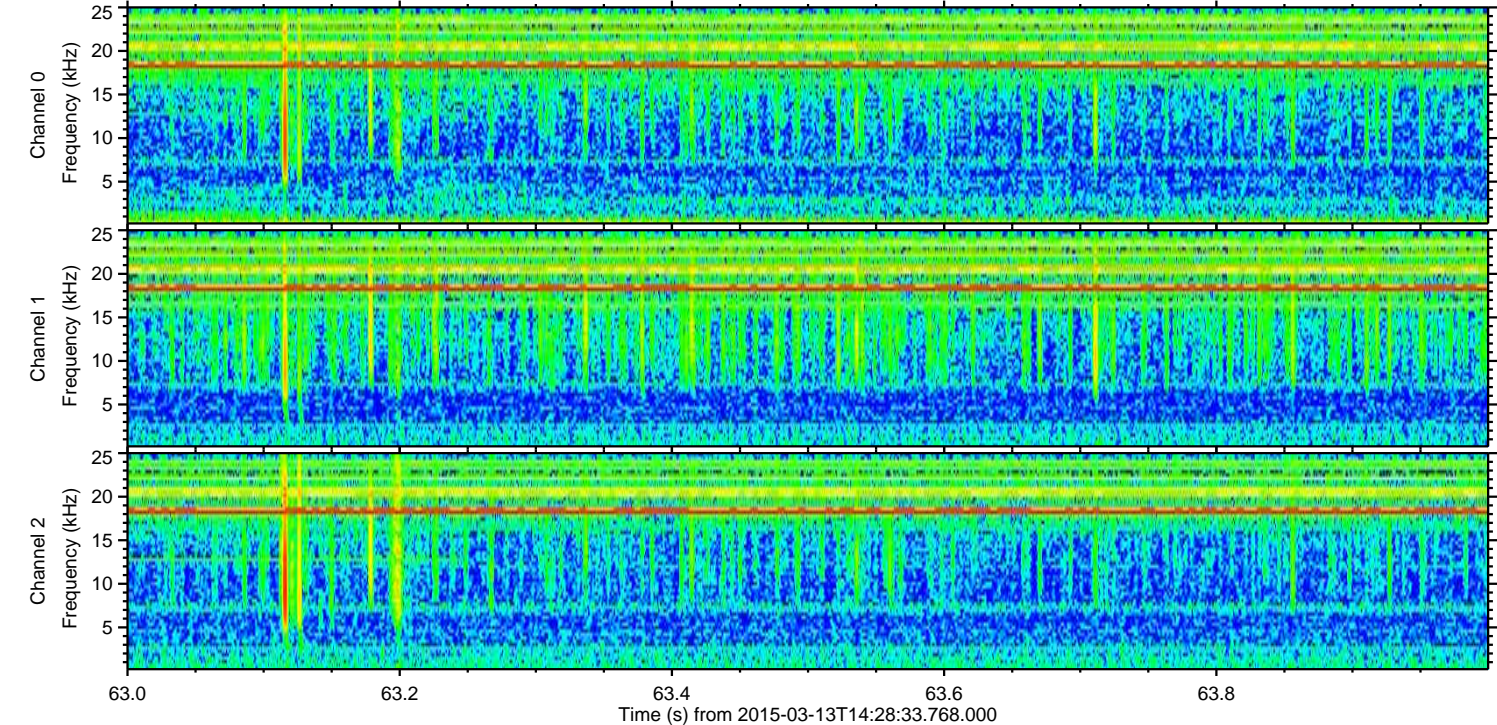
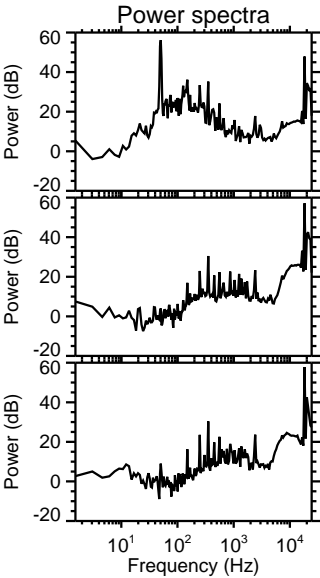
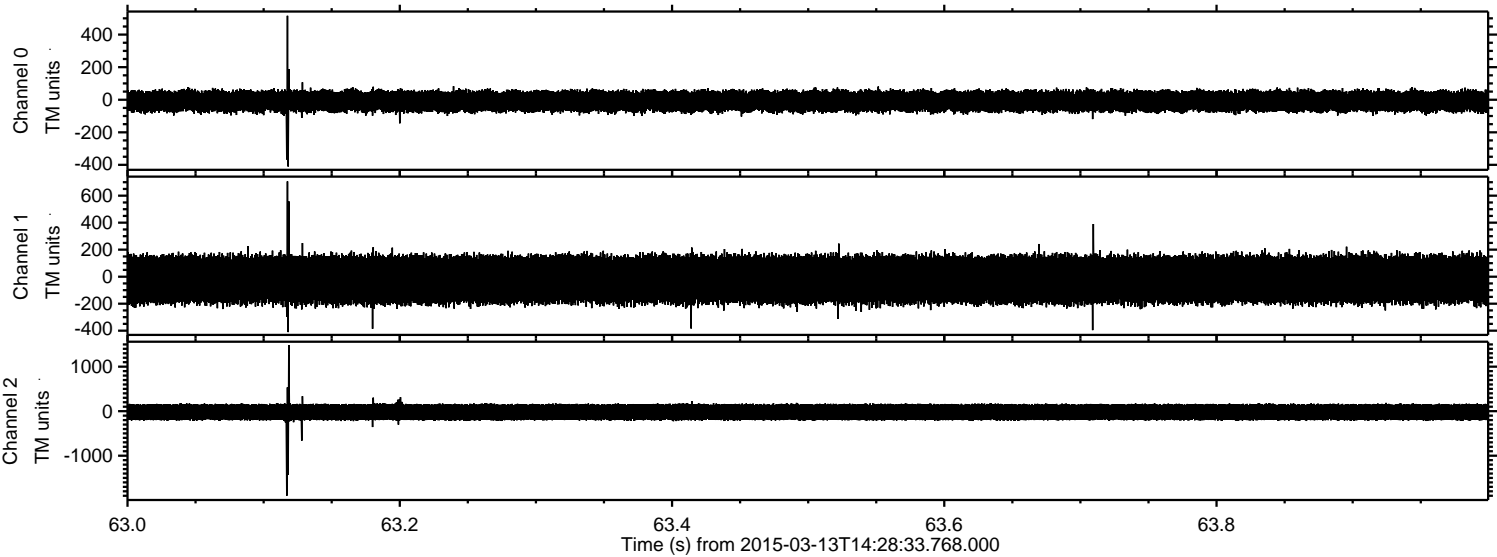


Processed Fri Mar 13 15:36:00 2015 by ELM ver.2012-10-06 from 001\_\_elm20150313\_142832\_\_dat00.bin



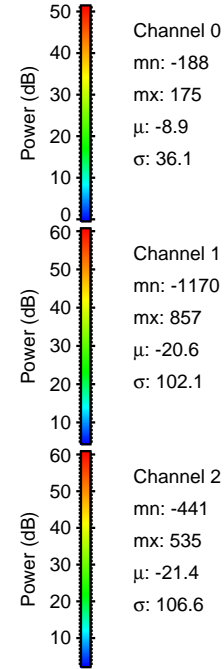
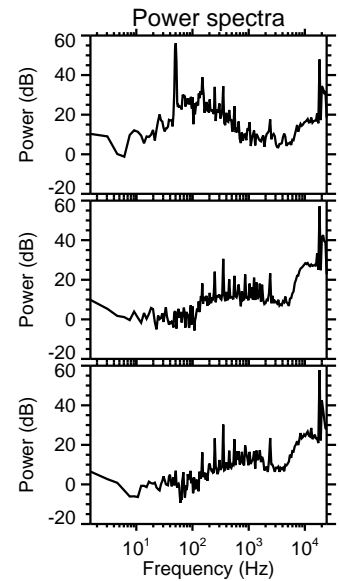
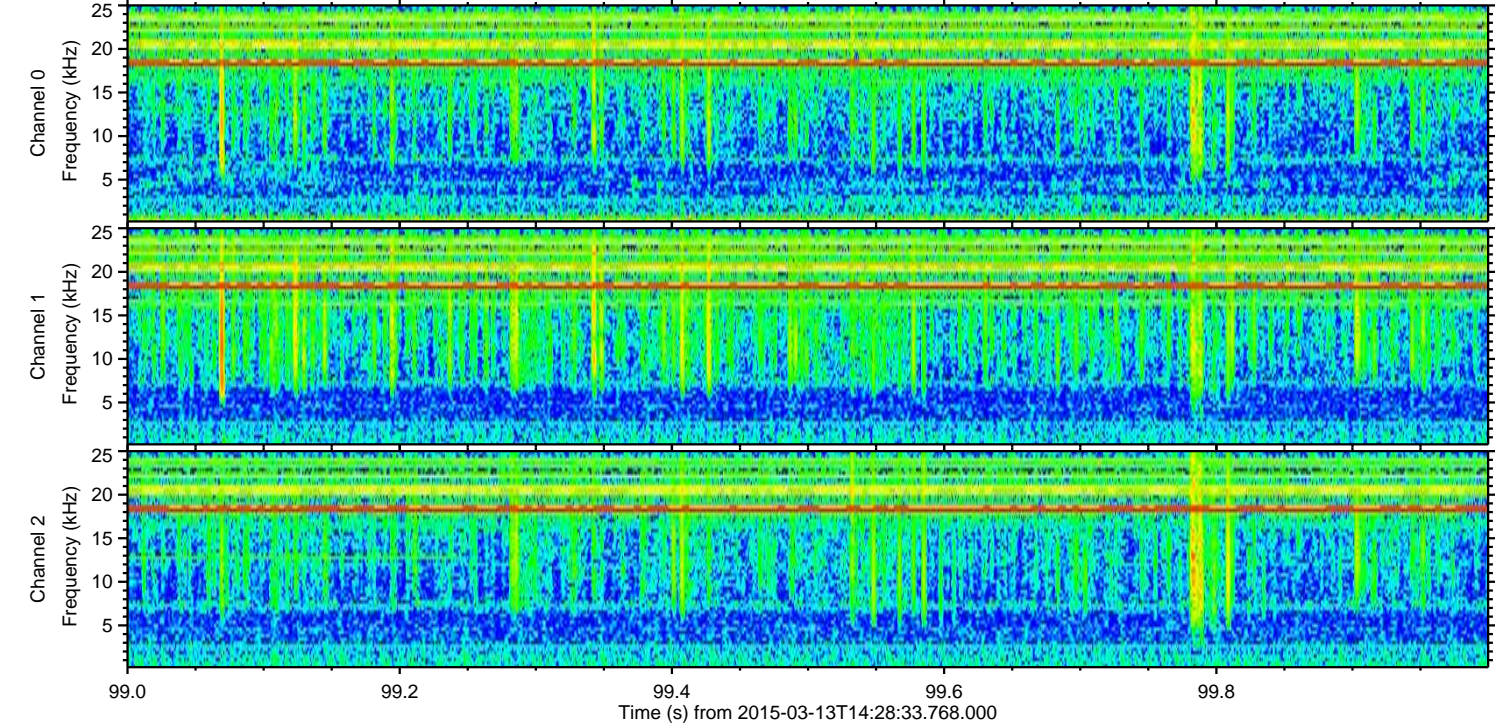
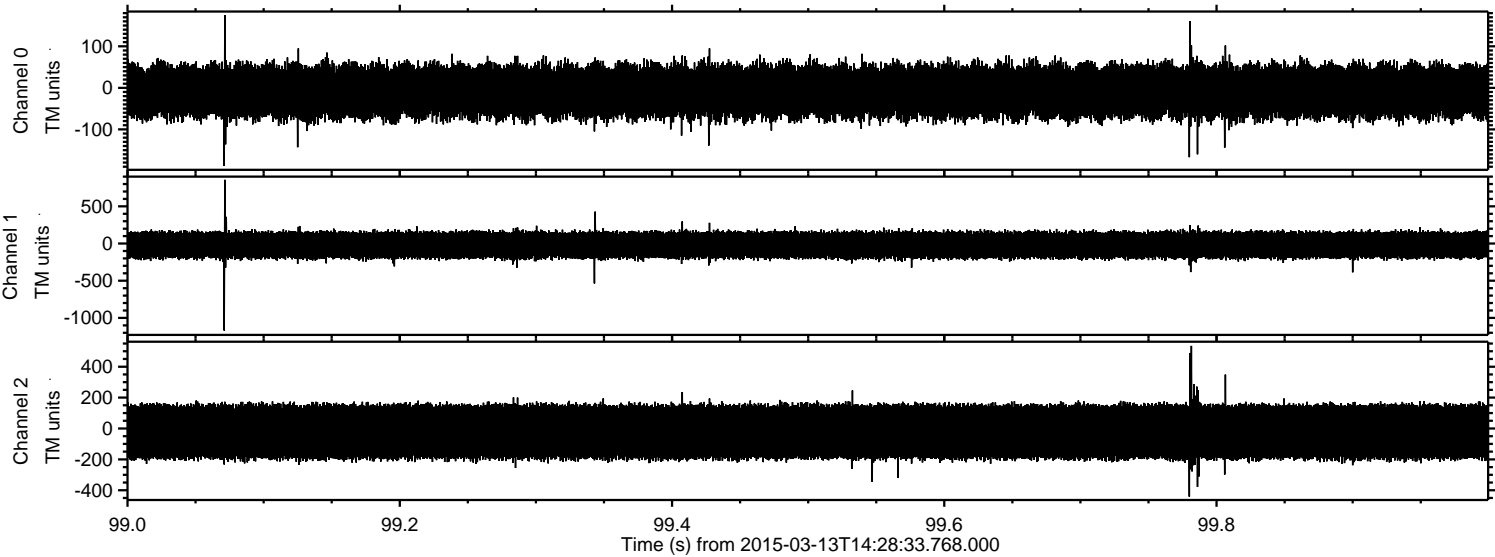
ELMAVAN 3D WAVEFORMS (Measured data sampled at 50 kHz) 49781 packets of 144 samples from 2015-03-13T14:28:33.768.000. Part 64/144

Processed Fri Mar 13 15:36:01 2015 by ELM ver.2012-10-06 from 001\_\_elm20150313\_142832\_\_dat00.bin

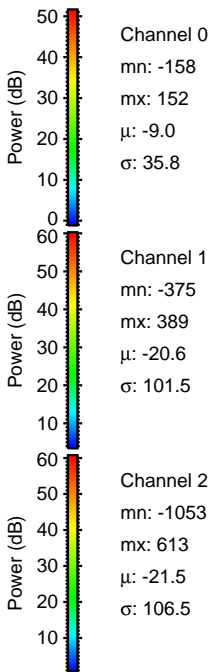
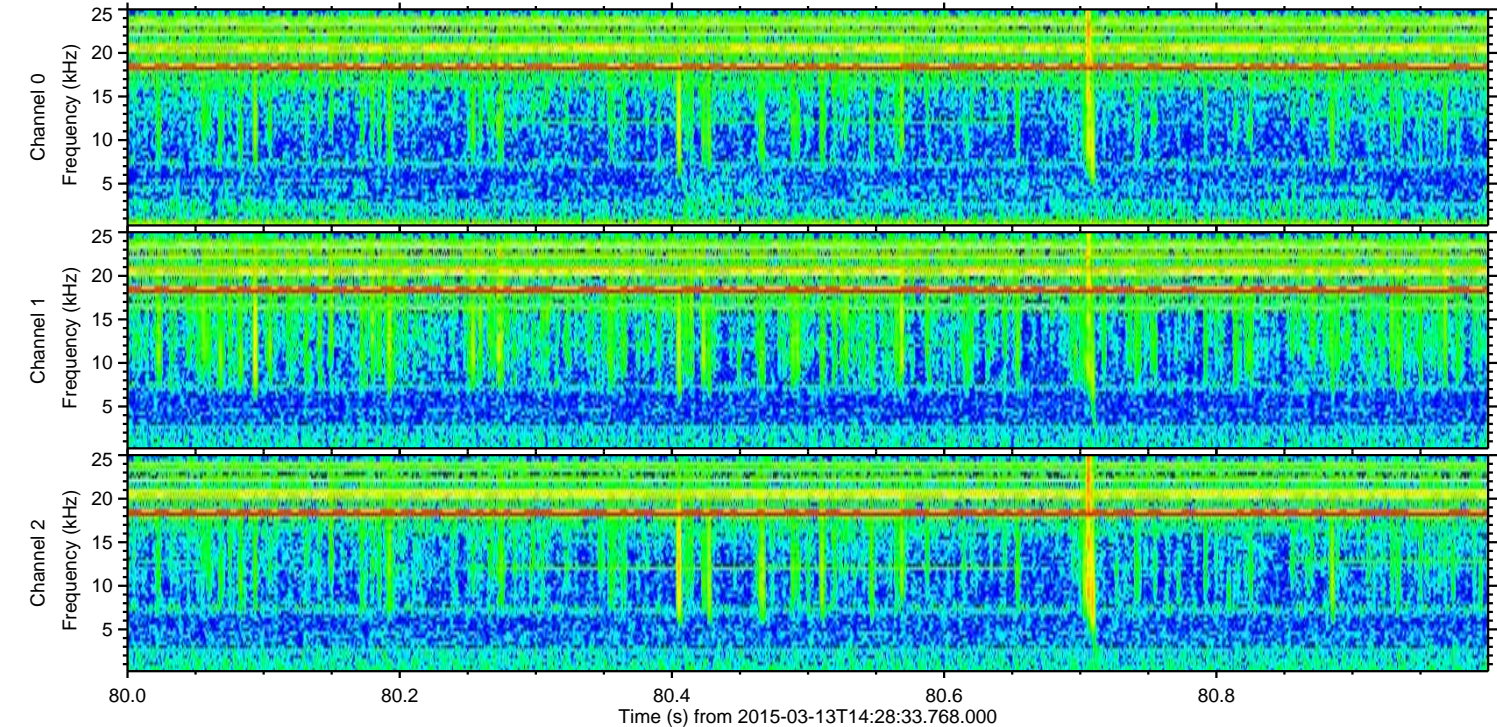
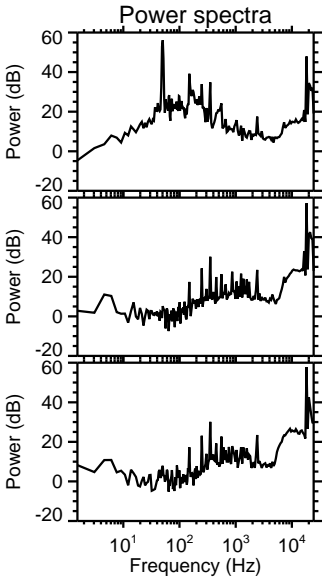
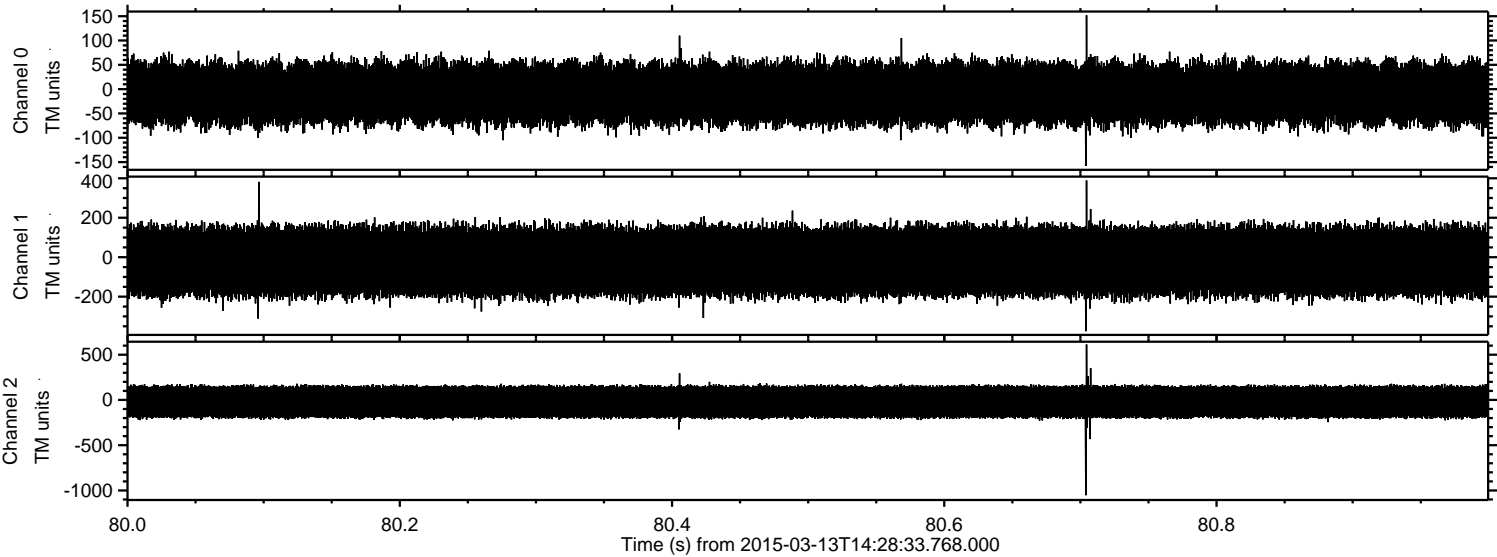


ELMAVAN 3D WAVEFORMS (Measured data sampled at 50 kHz) 49781 packets of 144 samples from 2015-03-13T14:28:33.768.000. Part 100/144

Processed Fri Mar 13 15:36:01 2015 by ELM ver.2012-10-06 from 001\_\_elm20150313\_142832\_\_dat00.bin

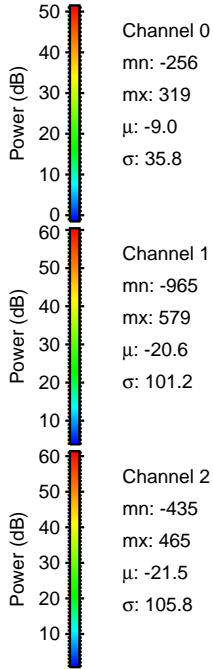
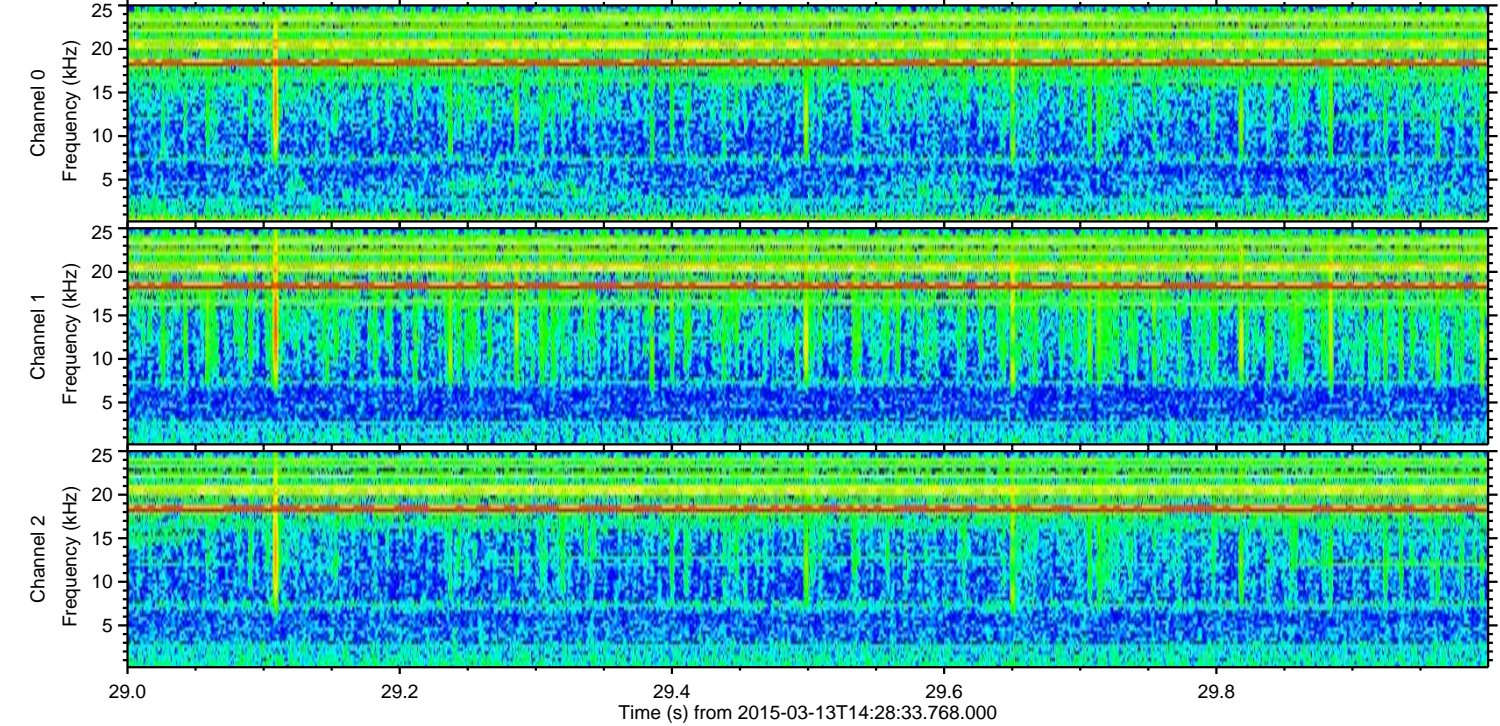
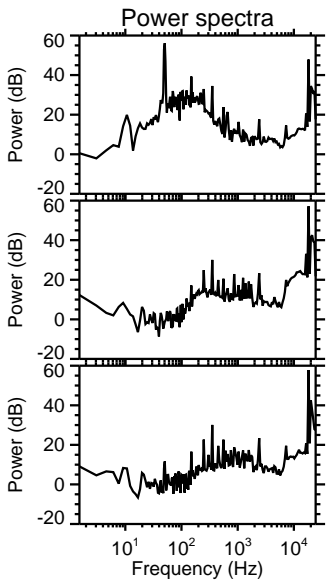
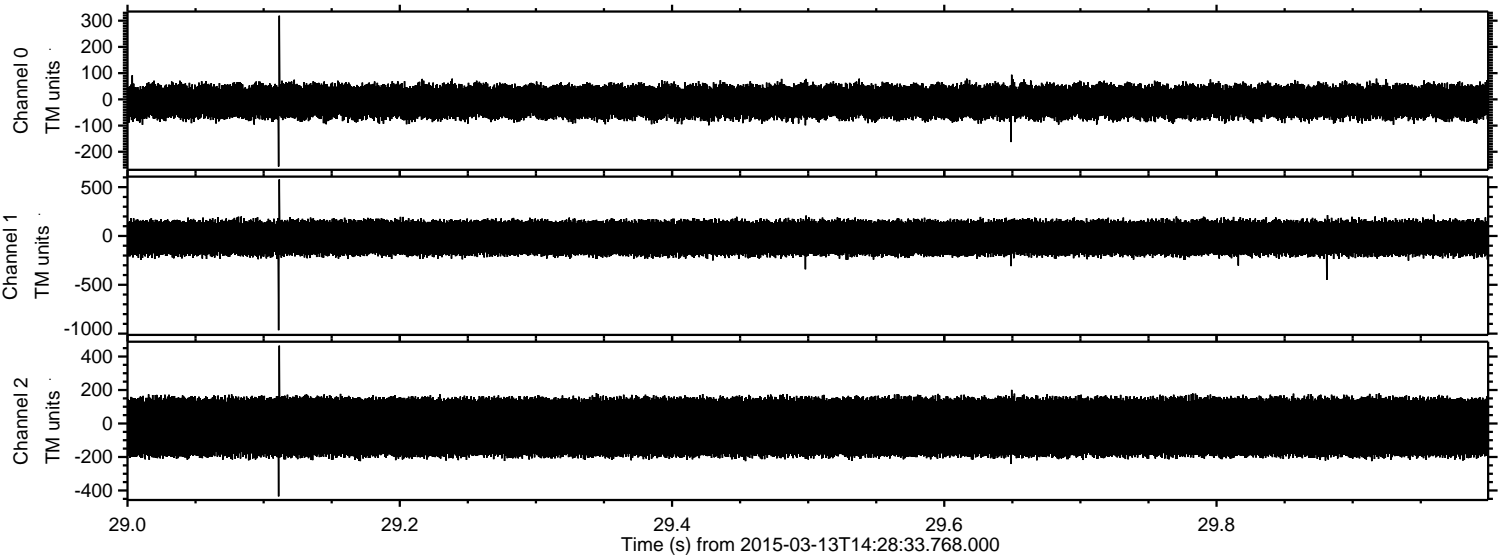


Processed Fri Mar 13 15:36:02 2015 by ELM ver.2012-10-06 from 001\_\_elm20150313\_142832\_\_dat00.bin

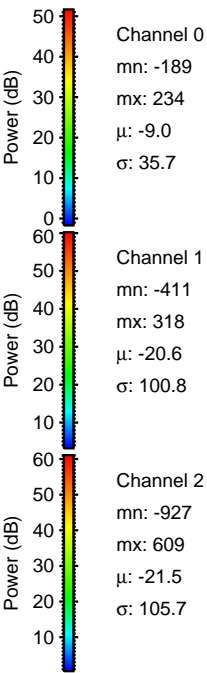
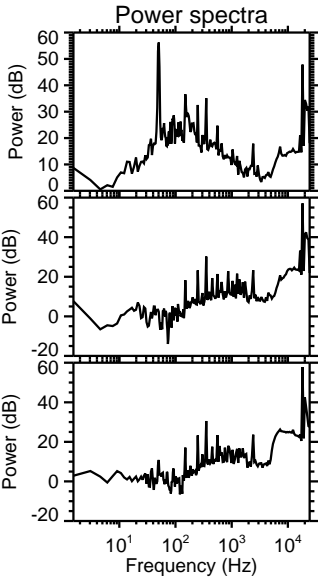
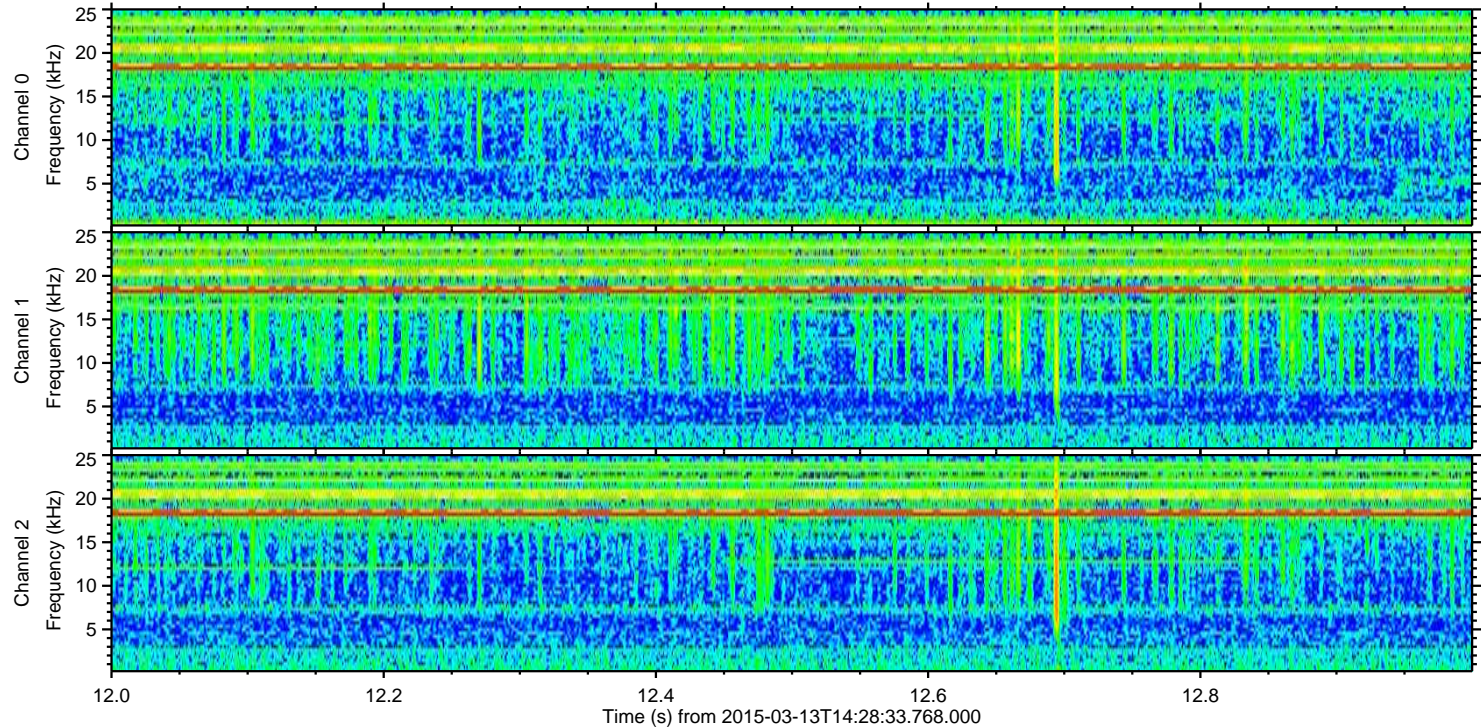
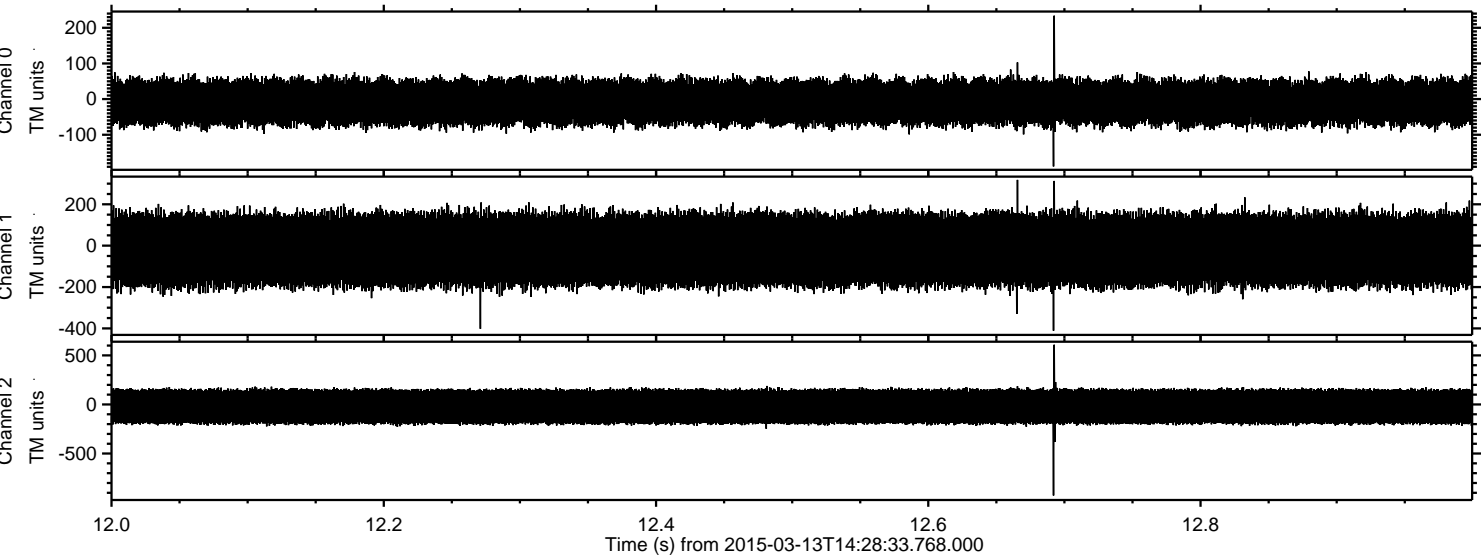


ELMAVAN 3D WAVEFORMS (Measured data sampled at 50 kHz) 49781 packets of 144 samples from 2015-03-13T14:28:33.768.000. Part 30/144

Processed Fri Mar 13 15:36:03 2015 by ELM ver.2012-10-06 from 001\_\_elm20150313\_142832\_\_dat00.bin



Processed Fri Mar 13 15:36:04 2015 by ELM ver.2012-10-06 from 001\_\_elm20150313\_142832\_\_dat00.bin



Channel 0  
mn: -189  
mx: 234  
 $\mu$ : -9.0  
 $\sigma$ : 35.7

Channel 1  
mn: -411  
mx: 318  
 $\mu$ : -20.6  
 $\sigma$ : 100.8

Channel 2  
mn: -927  
mx: 609  
 $\mu$ : -21.5  
 $\sigma$ : 105.7

Processed Fri Mar 13 15:36:05 2015 by ELM ver.2012-10-06 from 001\_\_elm20150313\_142832\_\_dat00.bin

