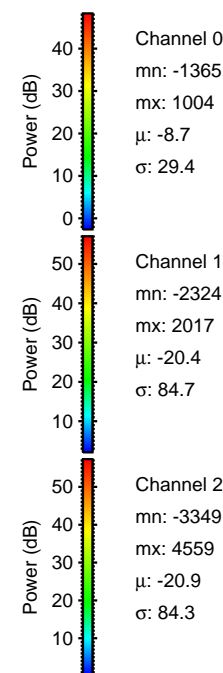
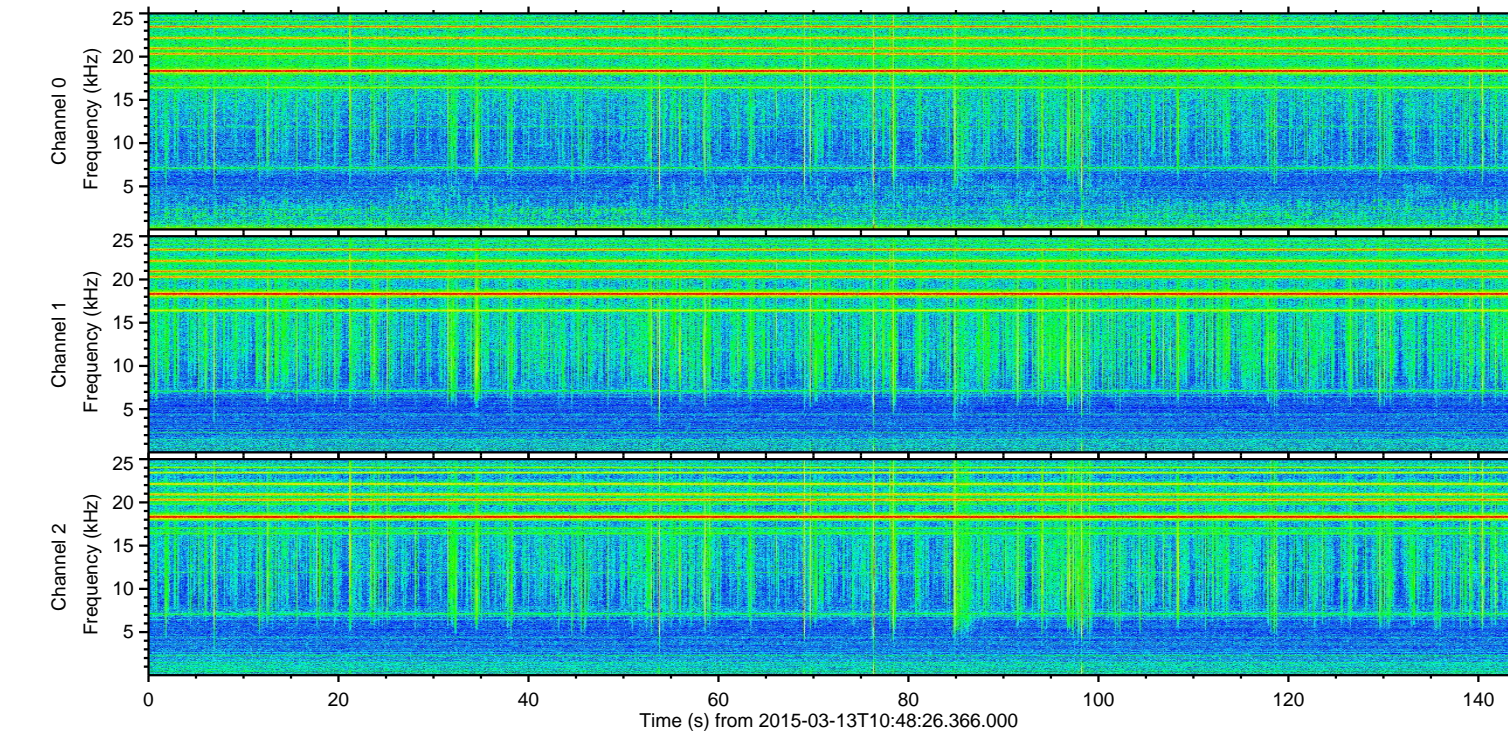
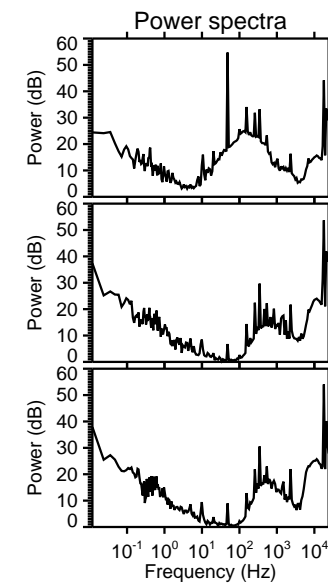
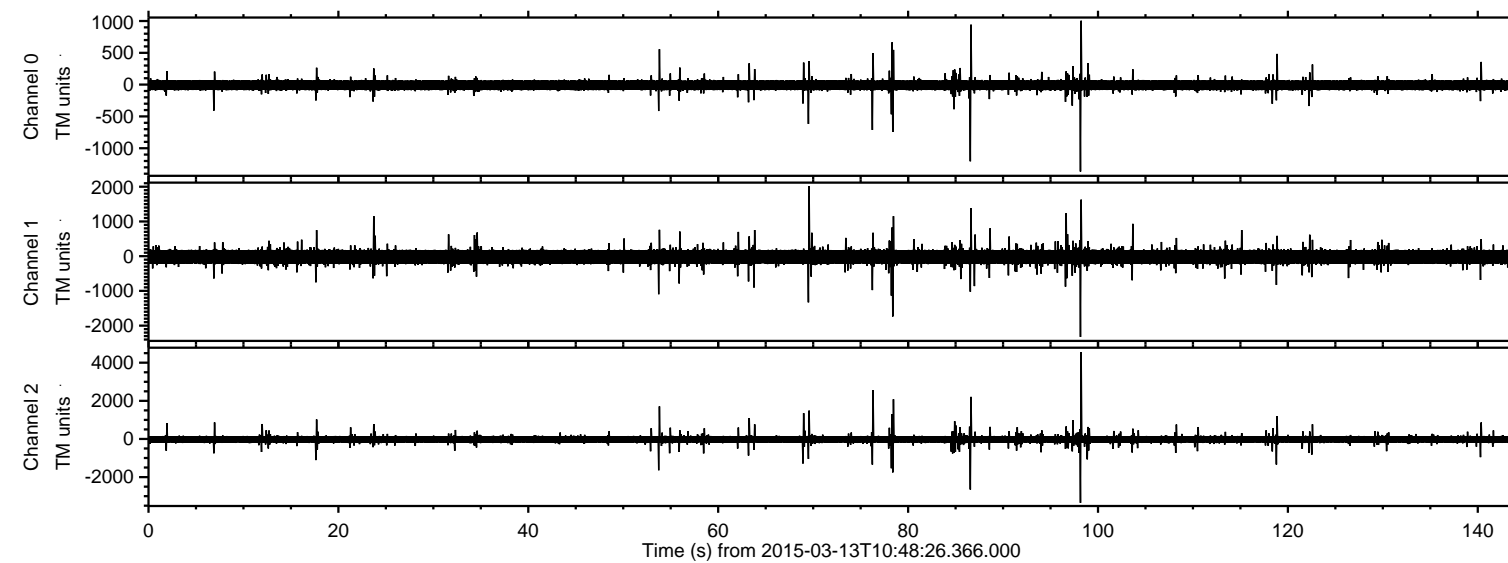


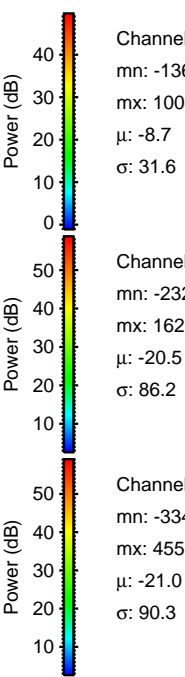
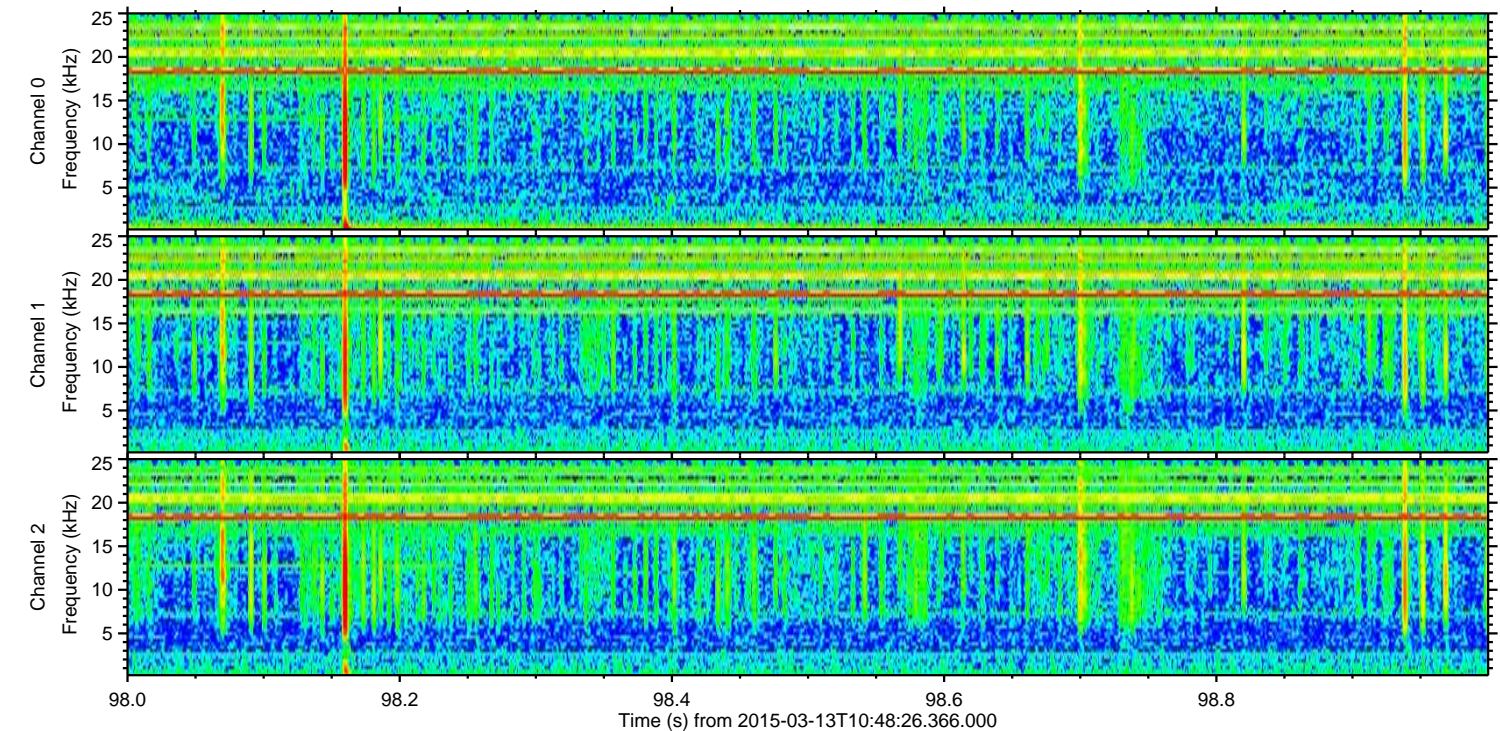
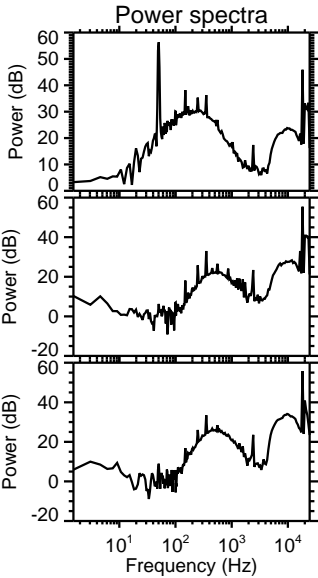
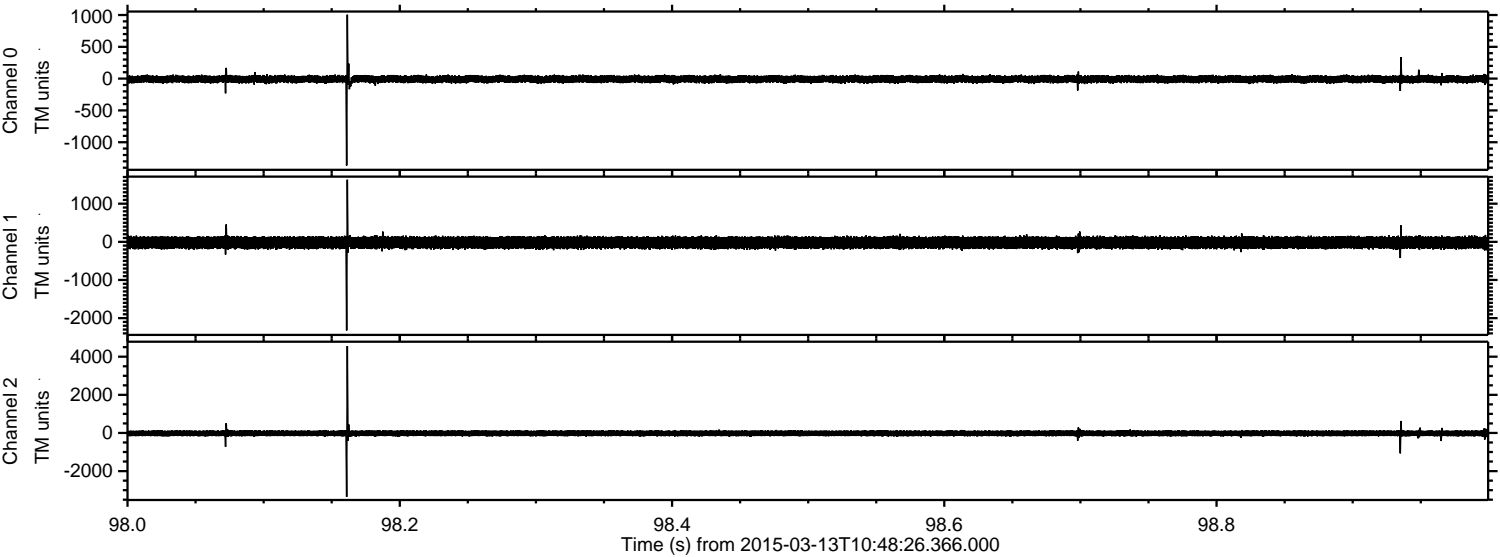
# ELMAVAN 3D WAVEFORMS (Measured data sampled at 50 kHz) 49758 packets of 144 samples from 2015-03-13T10:48:26.366.000.

Processed Fri Mar 13 11:55:38 2015 by ELM ver.2012-10-06 from 001\_\_elm20150313\_104825\_\_dat00.bin





Processed Fri Mar 13 11:55:49 2015 by ELM ver.2012-10-06 from 001\_\_elm20150313\_104825\_\_dat00.bin



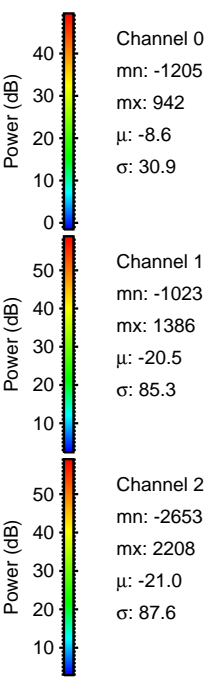
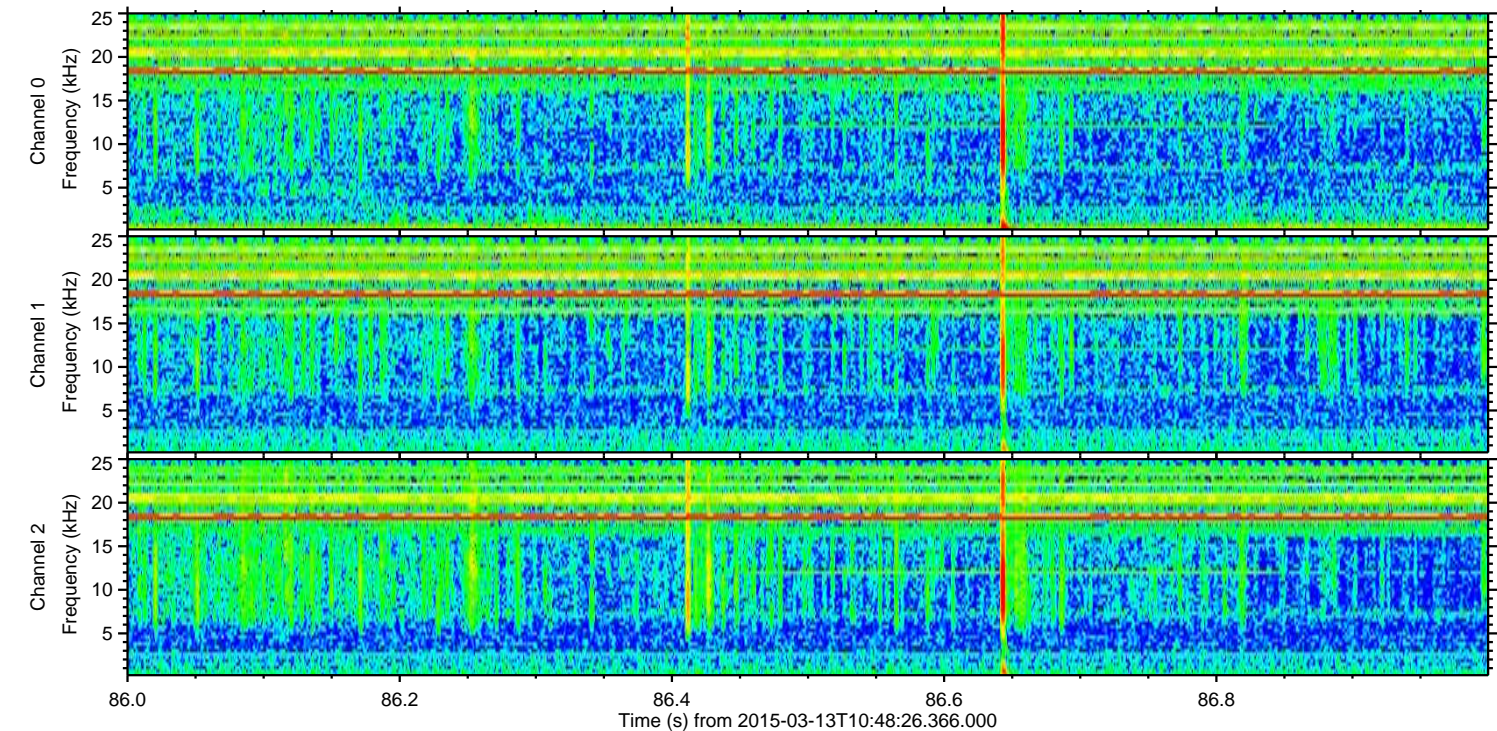
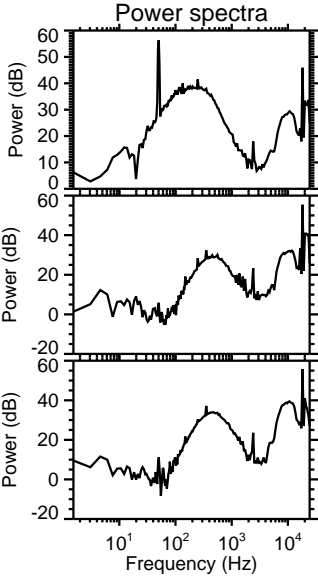
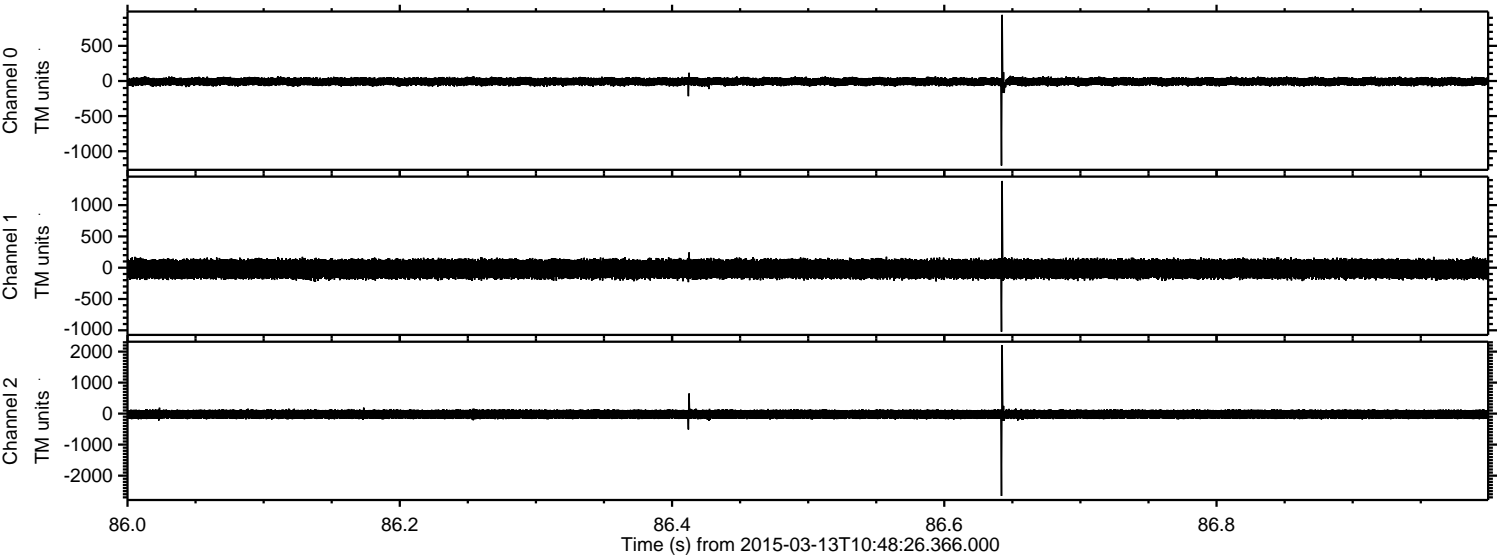
Channel 0  
mn: -1365  
mx: 1004  
 $\mu$ : -8.7  
 $\sigma$ : 31.6

Channel 1  
mn: -2324  
mx: 1629  
 $\mu$ : -20.5  
 $\sigma$ : 86.2

Channel 2  
mn: -3349  
mx: 4559  
 $\mu$ : -21.0  
 $\sigma$ : 90.3

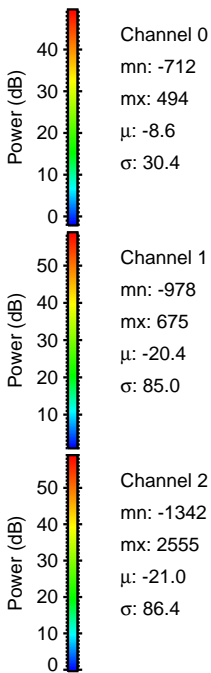
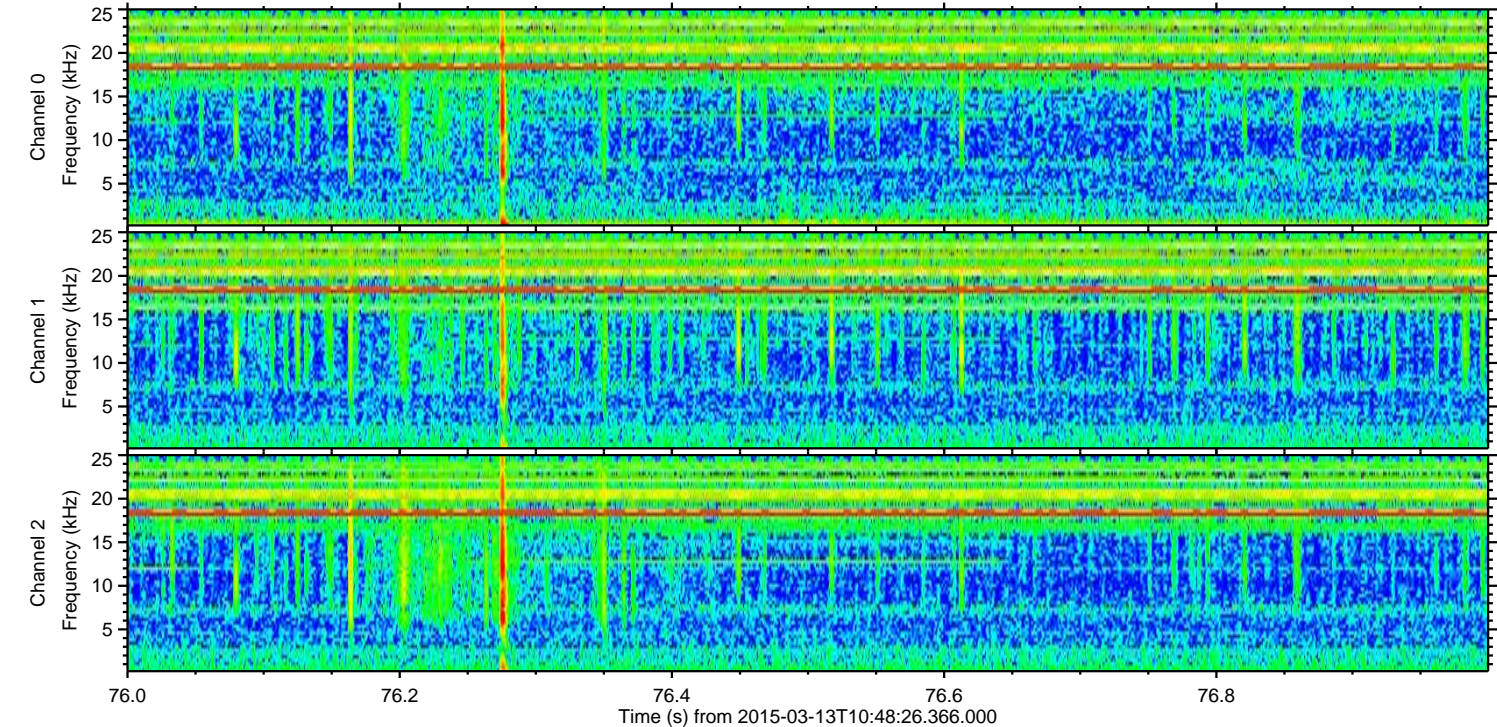
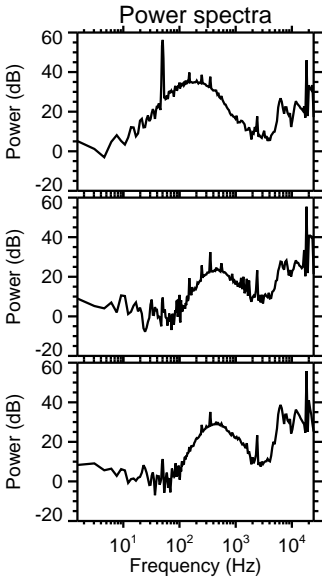
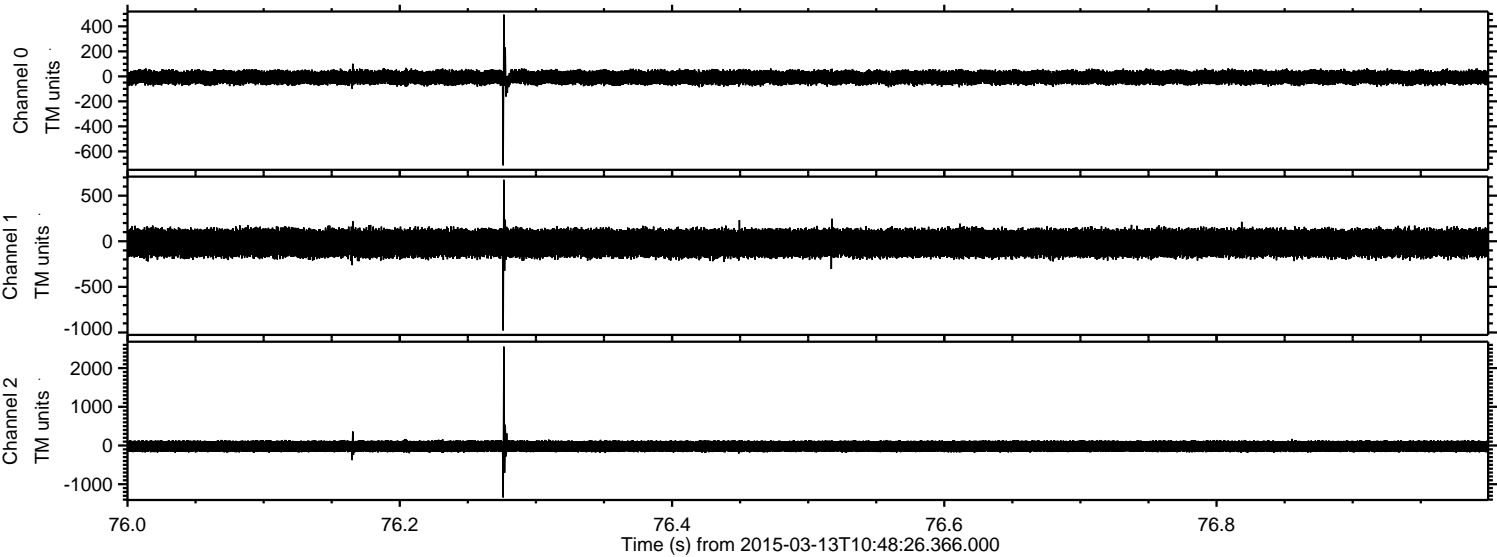


Processed Fri Mar 13 11:55:50 2015 by ELM ver.2012-10-06 from 001\_\_elm20150313\_104825\_\_dat00.bin



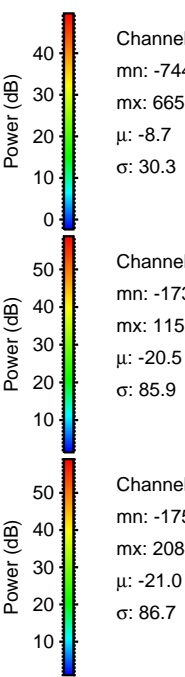
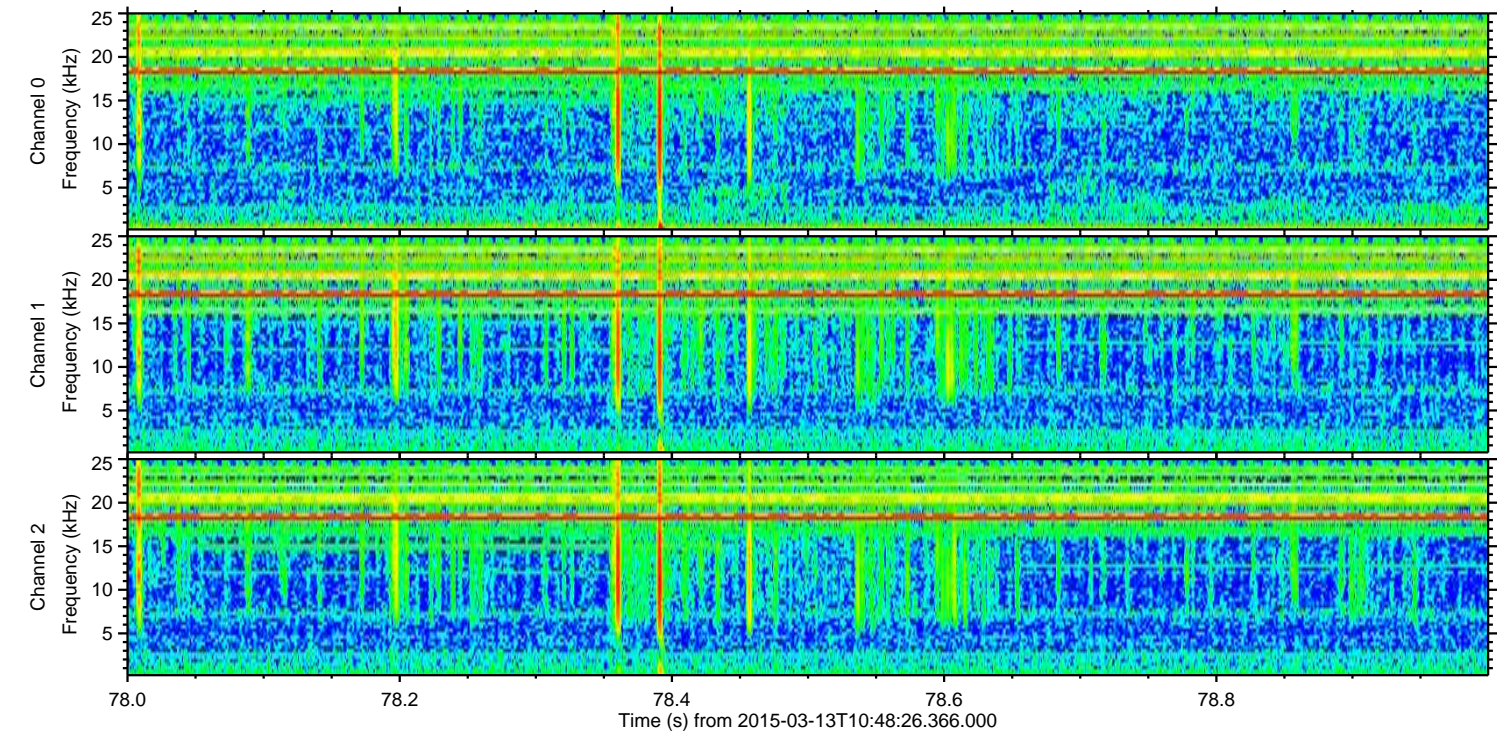
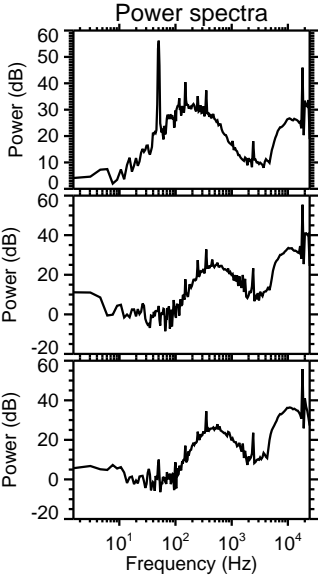
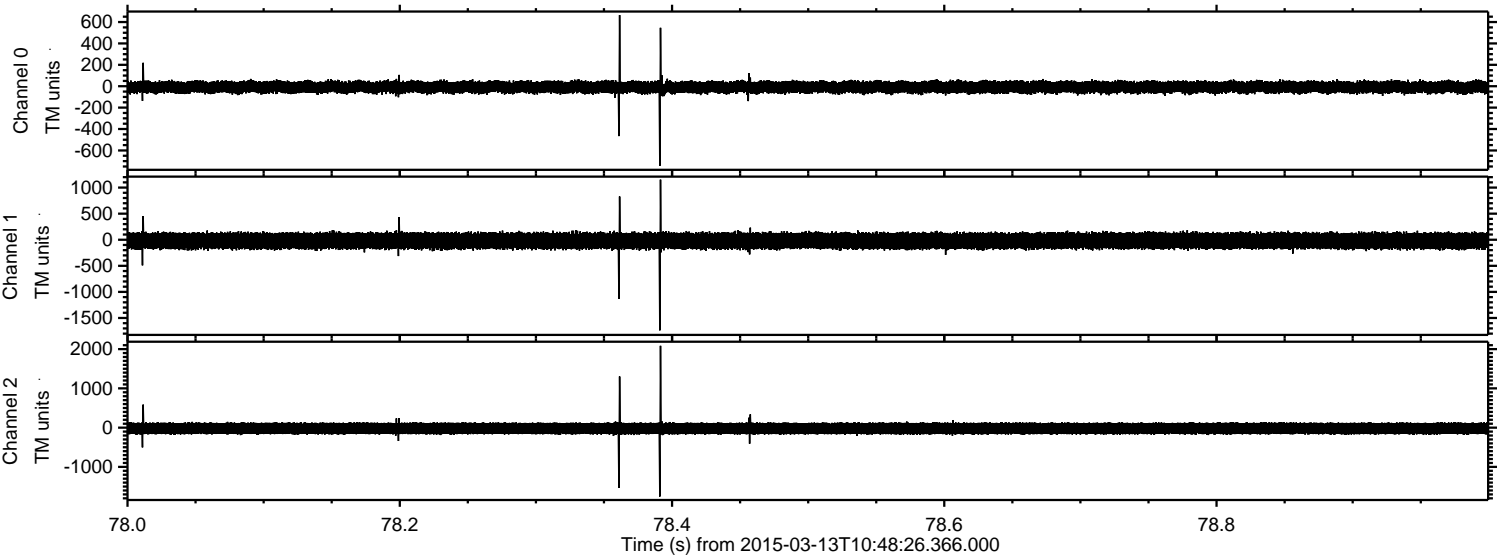


Processed Fri Mar 13 11:55:51 2015 by ELM ver.2012-10-06 from 001\_\_elm20150313\_104825\_\_dat00.bin





Processed Fri Mar 13 11:55:52 2015 by ELM ver.2012-10-06 from 001\_\_elm20150313\_104825\_\_dat00.bin



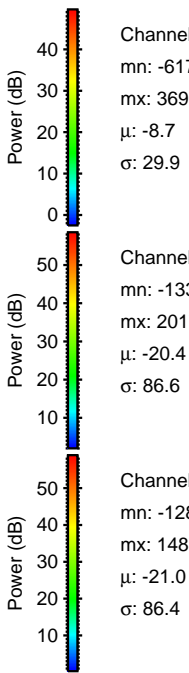
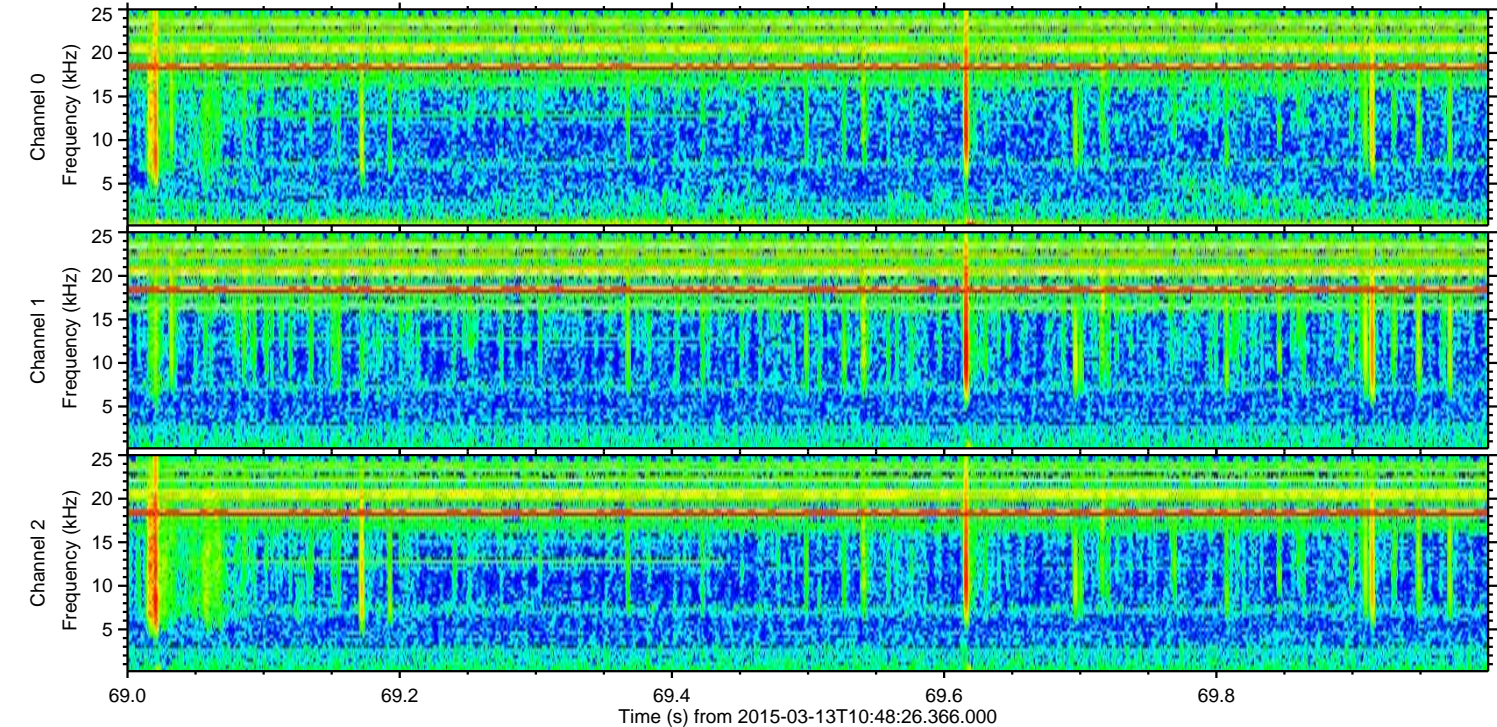
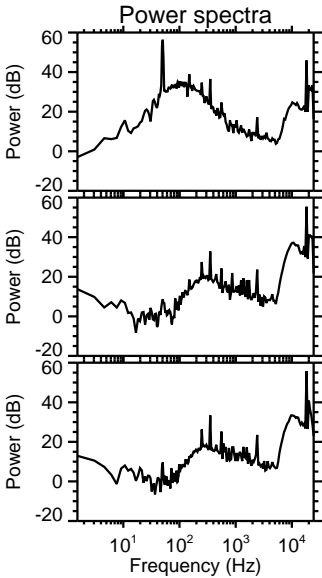
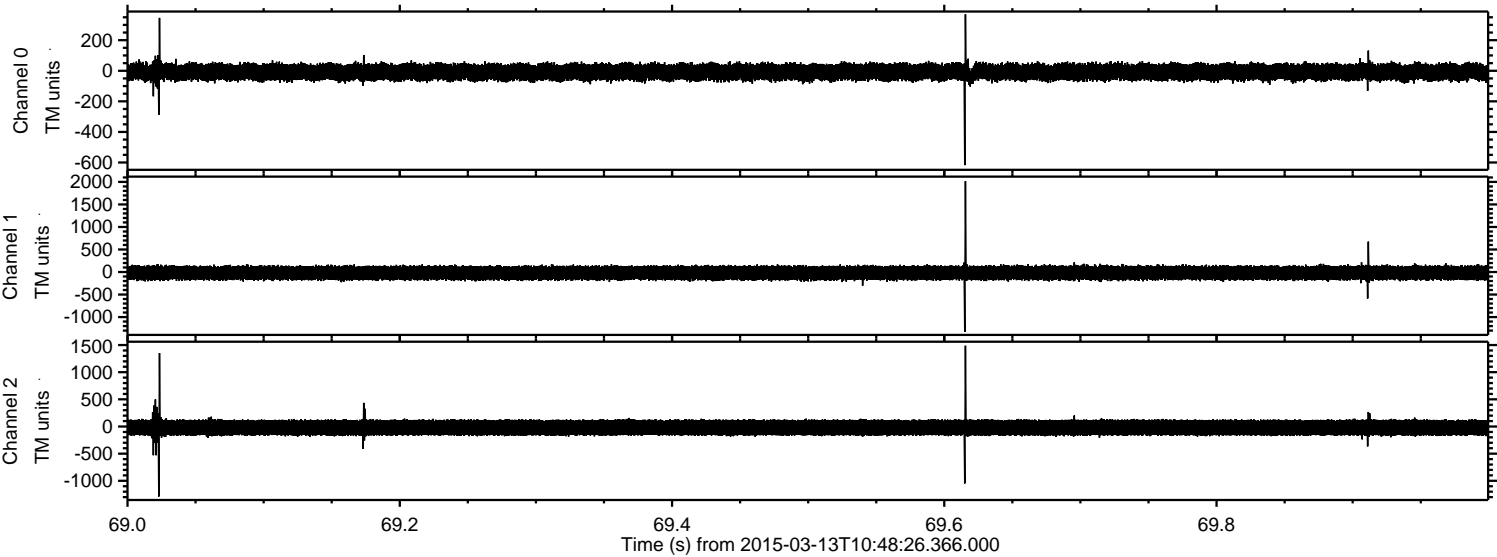
Channel 0  
mn: -744  
mx: 665  
 $\mu$ : -8.7  
 $\sigma$ : 30.3

Channel 1  
mn: -1738  
mx: 1152  
 $\mu$ : -20.5  
 $\sigma$ : 85.9

Channel 2  
mn: -1755  
mx: 2084  
 $\mu$ : -21.0  
 $\sigma$ : 86.7

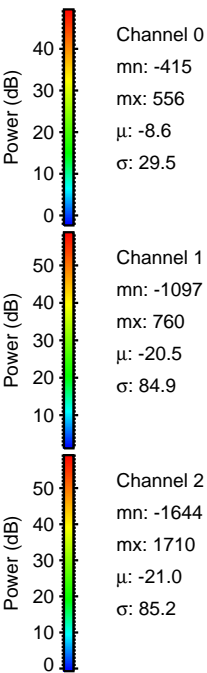
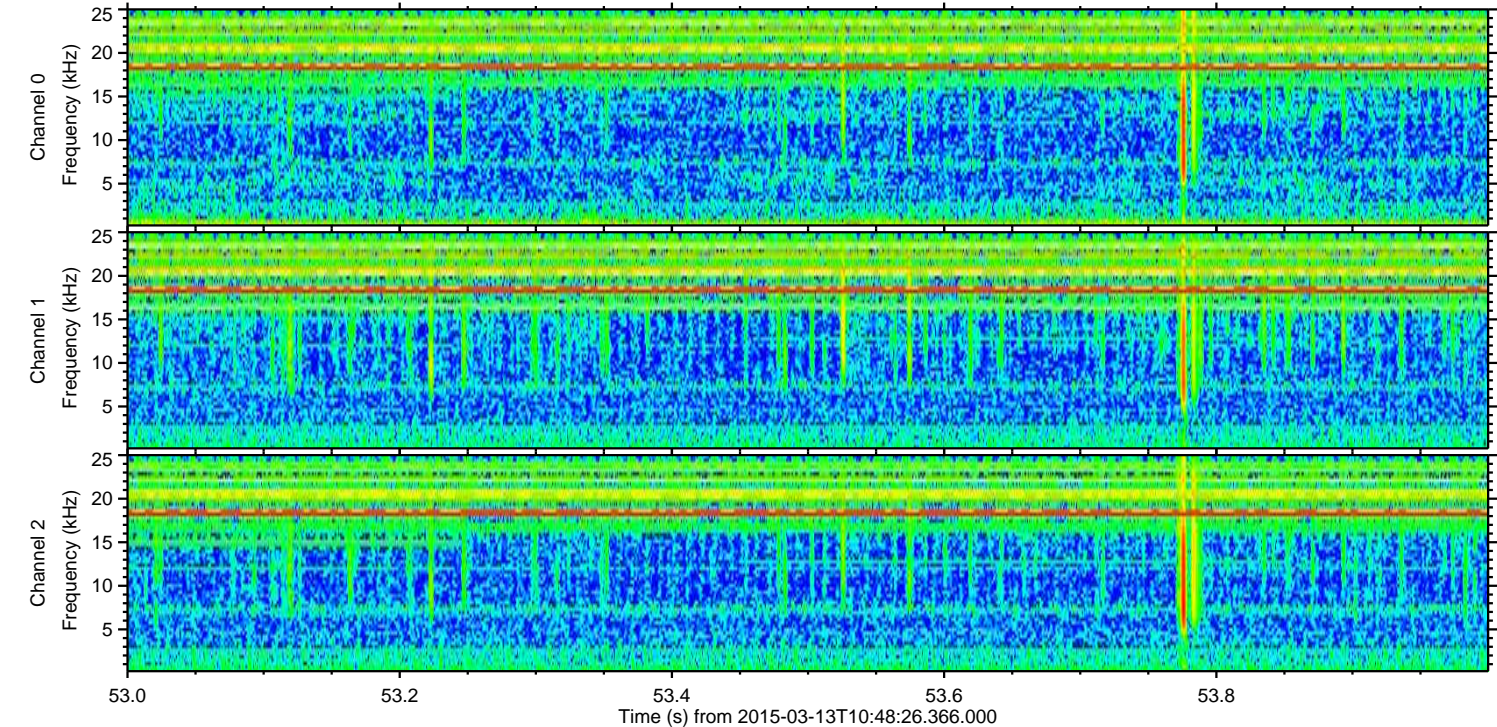
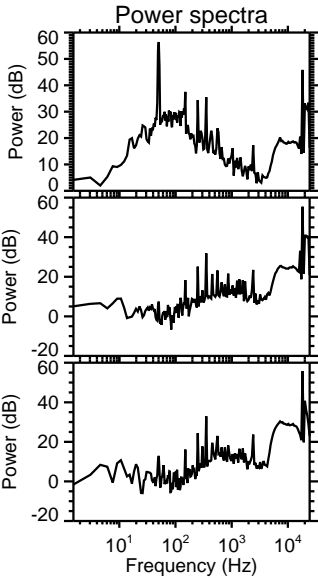
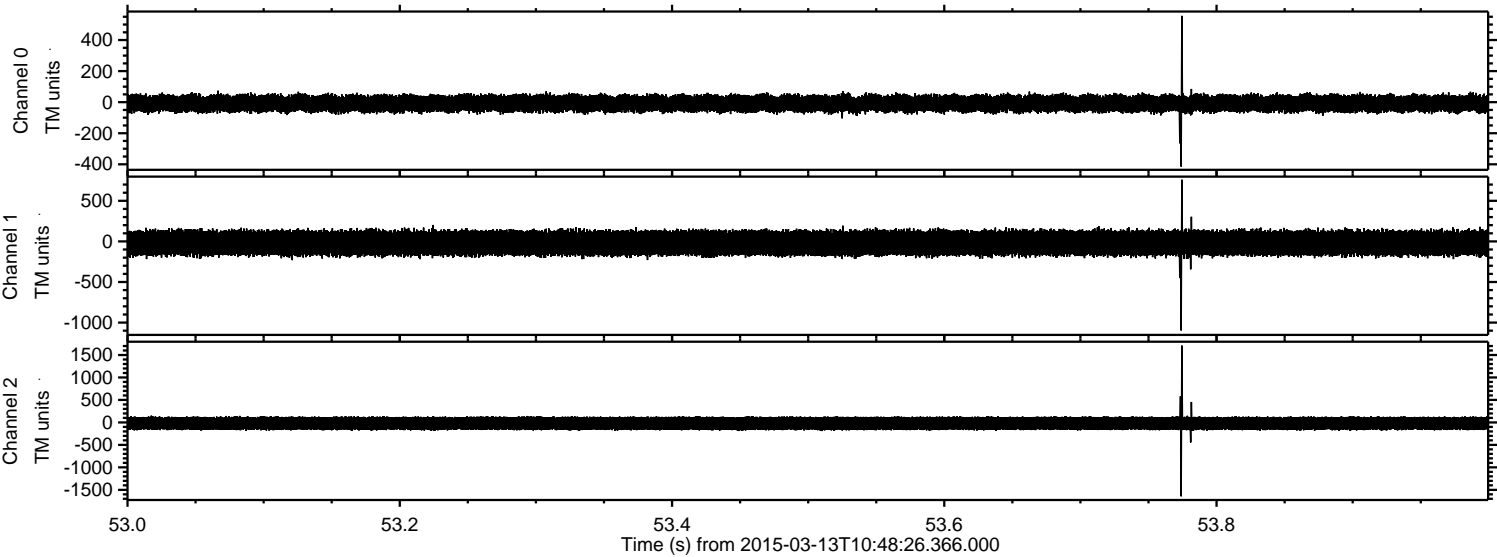


Processed Fri Mar 13 11:55:53 2015 by ELM ver.2012-10-06 from 001\_\_elm20150313\_104825\_\_dat00.bin



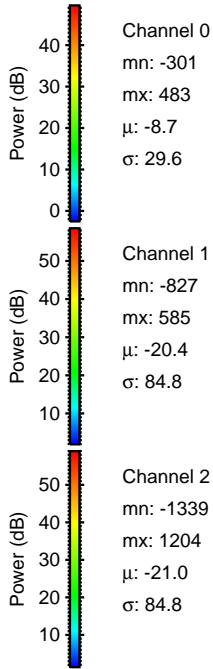
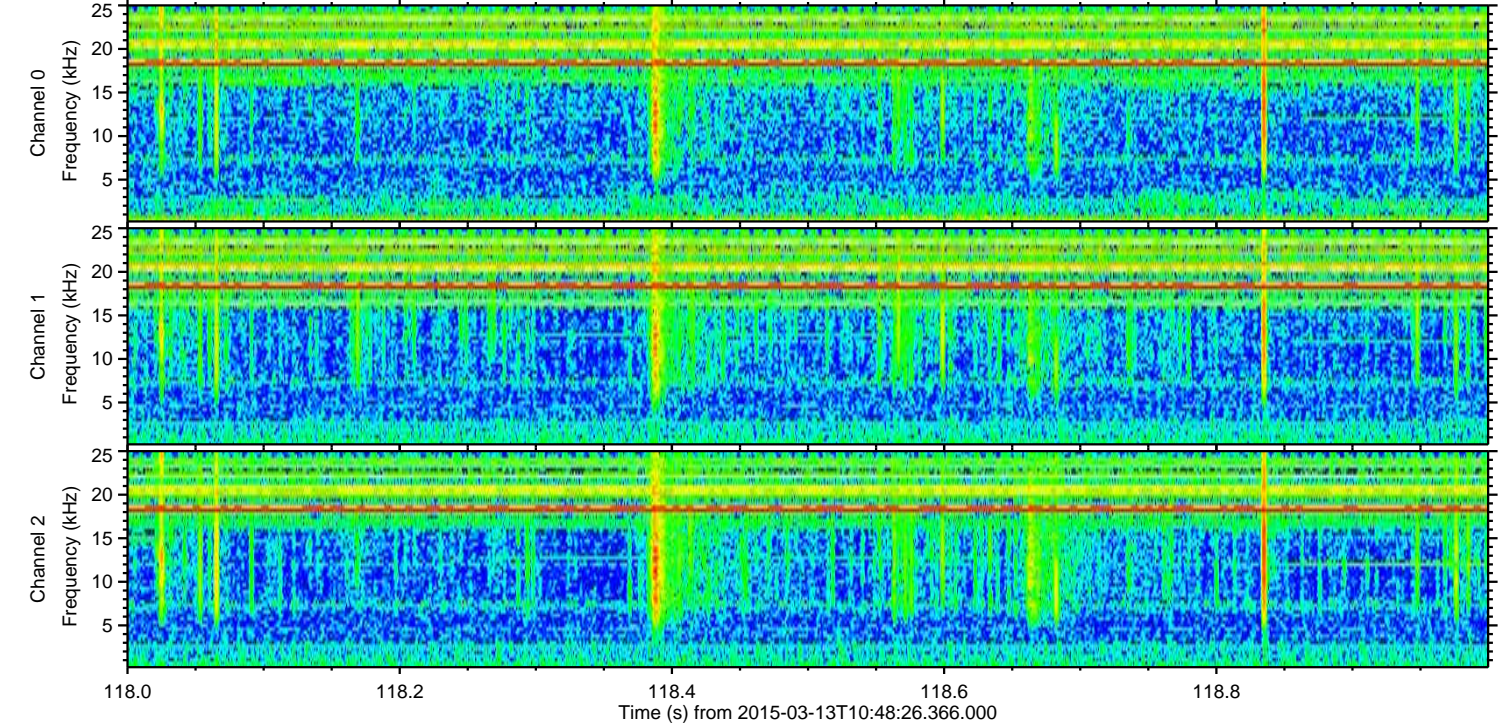
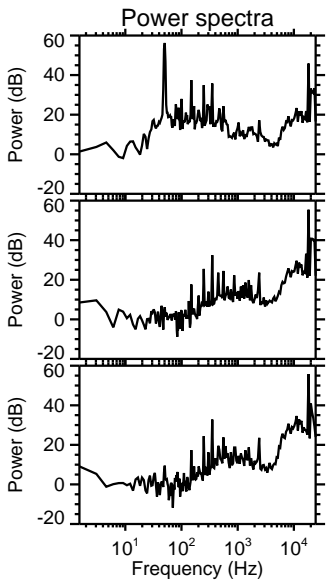
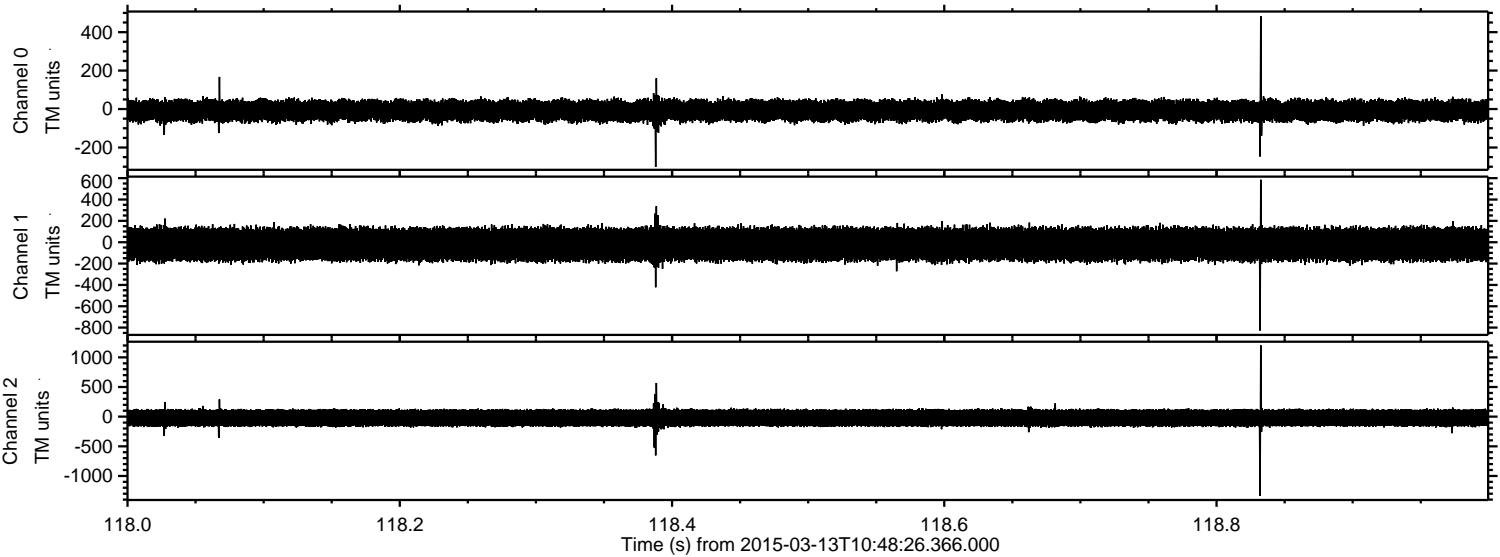


Processed Fri Mar 13 11:55:54 2015 by ELM ver.2012-10-06 from 001\_\_elm20150313\_104825\_\_dat00.bin





Processed Fri Mar 13 11:55:55 2015 by ELM ver.2012-10-06 from 001\_\_elm20150313\_104825\_\_dat00.bin



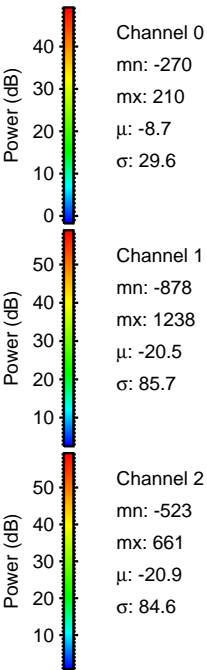
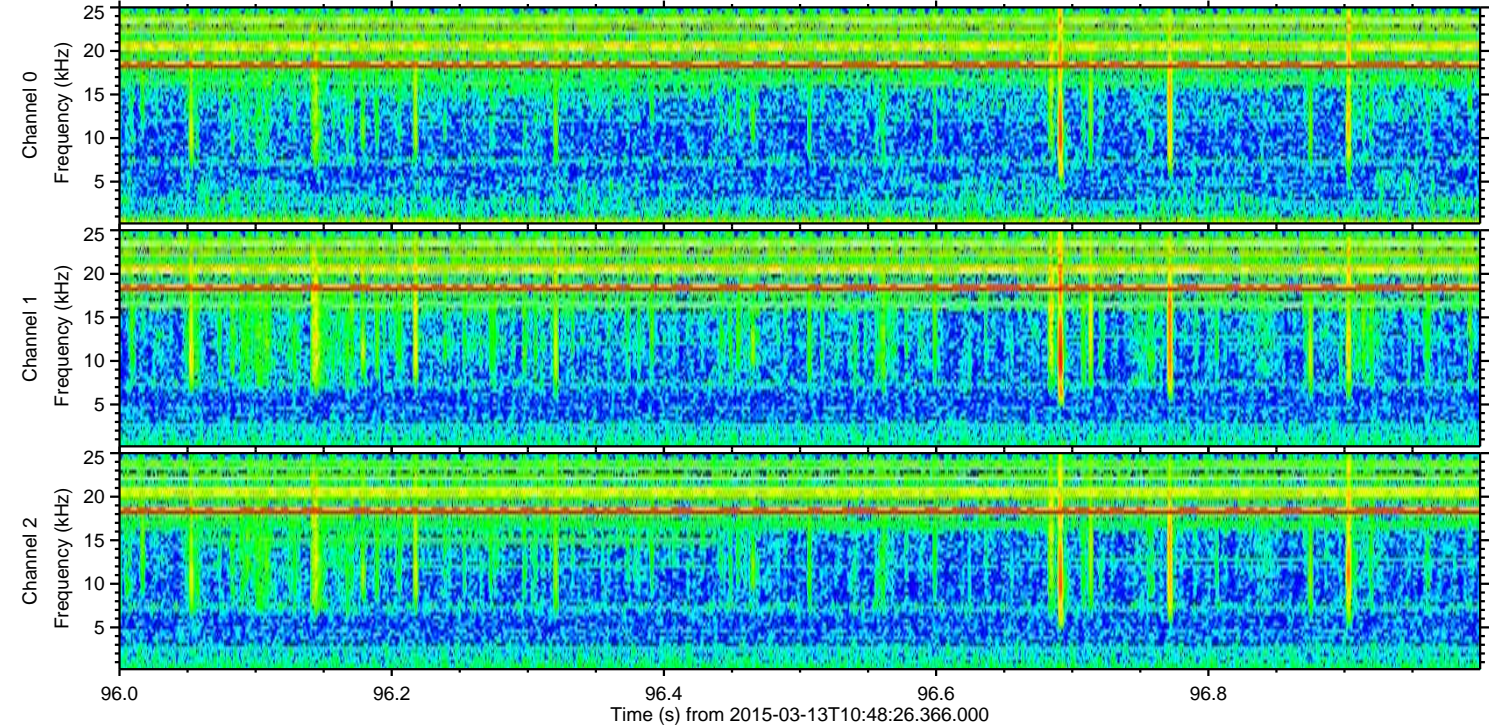
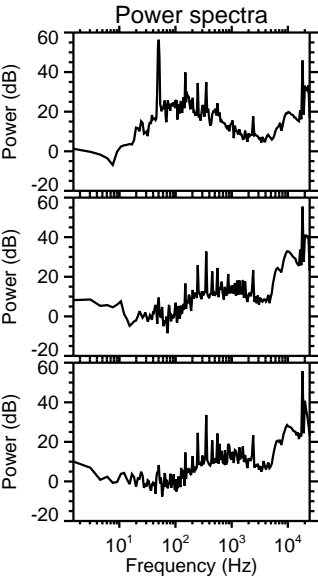
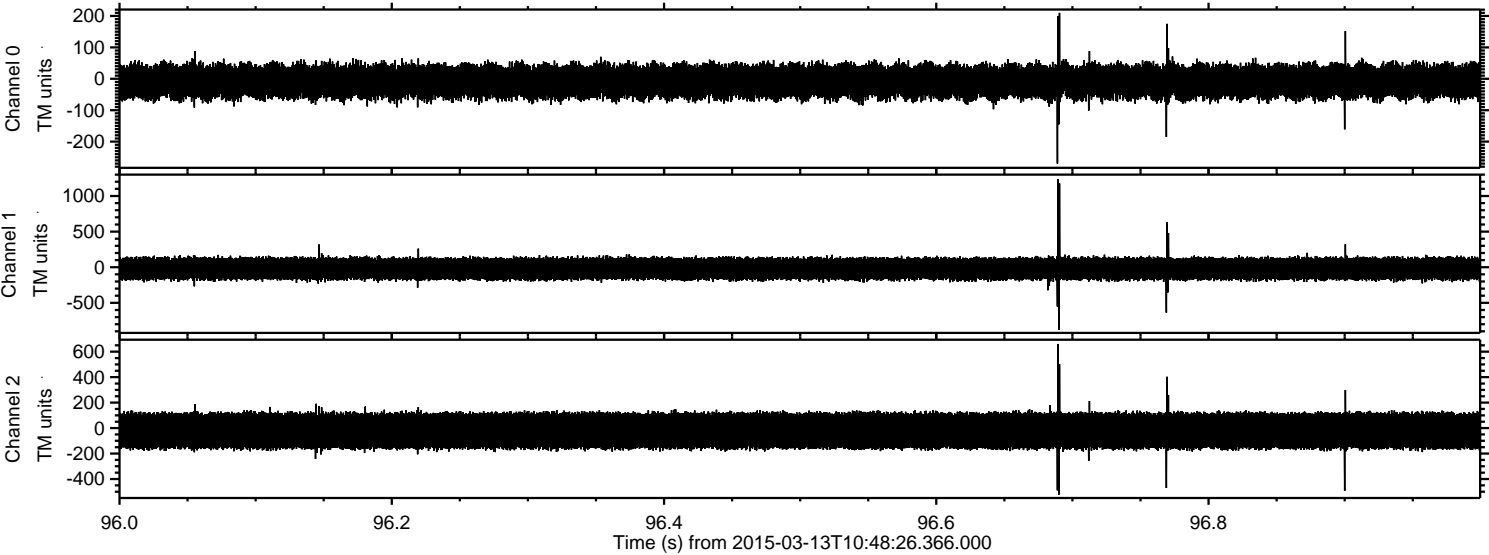
Channel 0  
mn: -301  
mx: 483  
 $\mu$ : -8.7  
 $\sigma$ : 29.6

Channel 1  
mn: -827  
mx: 585  
 $\mu$ : -20.4  
 $\sigma$ : 84.8

Channel 2  
mn: -1339  
mx: 1204  
 $\mu$ : -21.0  
 $\sigma$ : 84.8

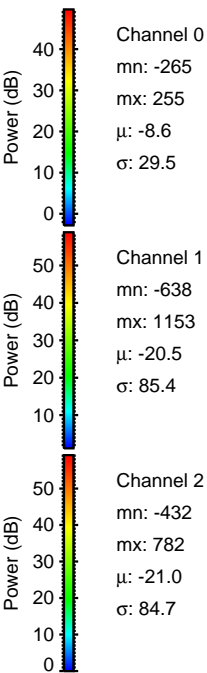
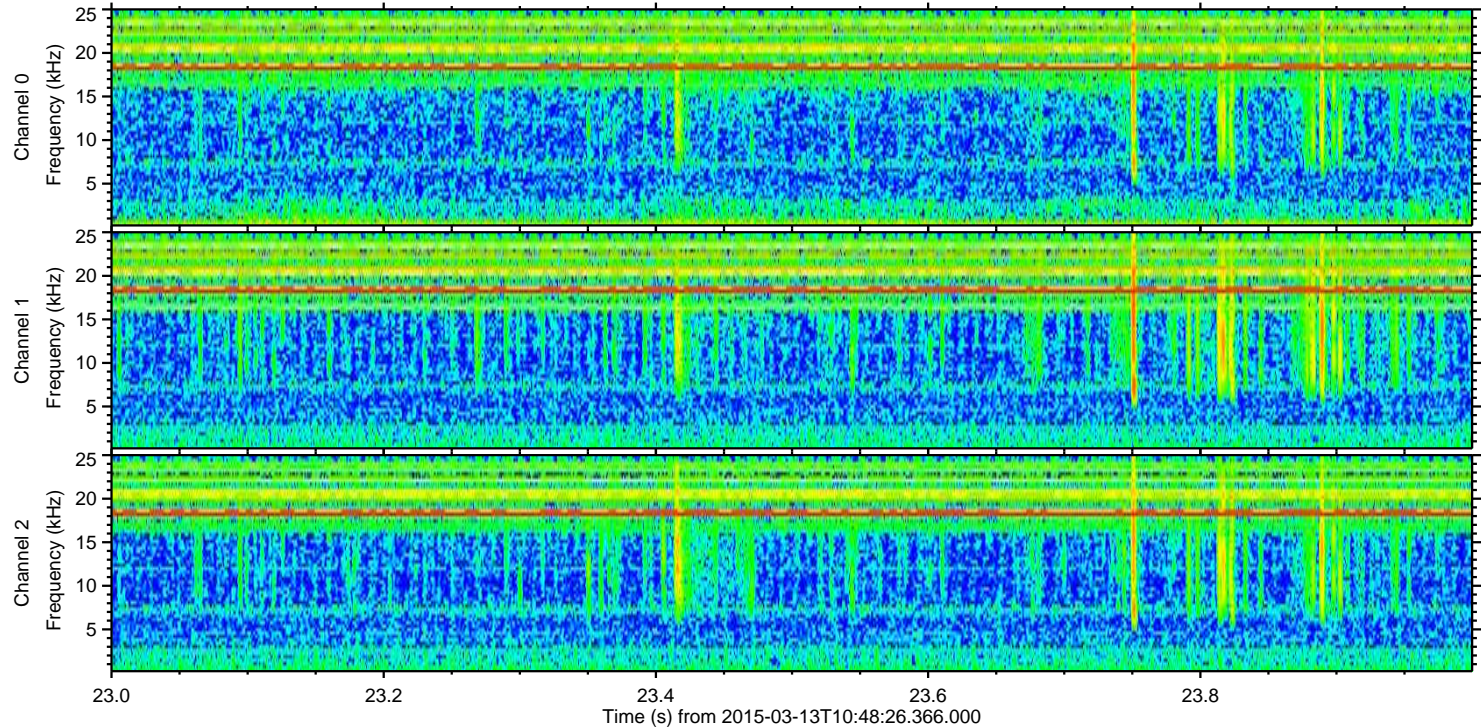
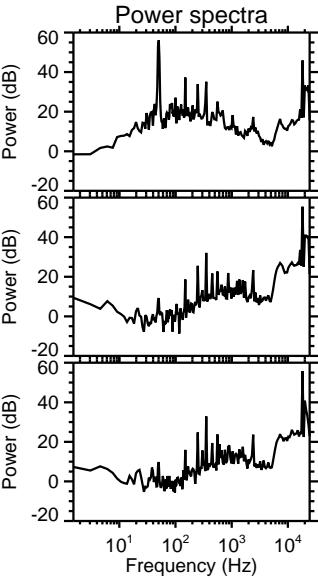
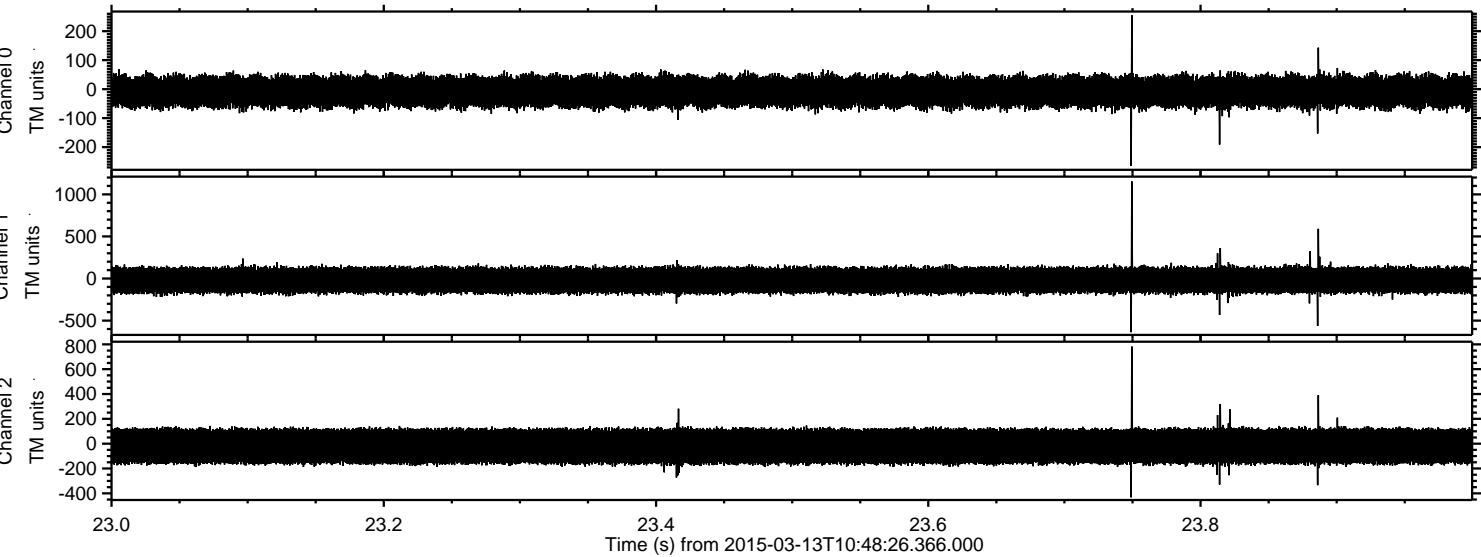


Processed Fri Mar 13 11:55:56 2015 by ELM ver.2012-10-06 from 001\_\_elm20150313\_104825\_\_dat00.bin





Processed Fri Mar 13 11:55:57 2015 by ELM ver.2012-10-06 from 001\_\_elm20150313\_104825\_\_dat00.bin





Processed Fri Mar 13 11:55:58 2015 by ELM ver.2012-10-06 from 001\_\_elm20150313\_104825\_\_dat00.bin

