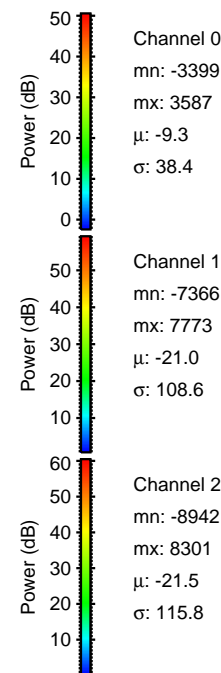
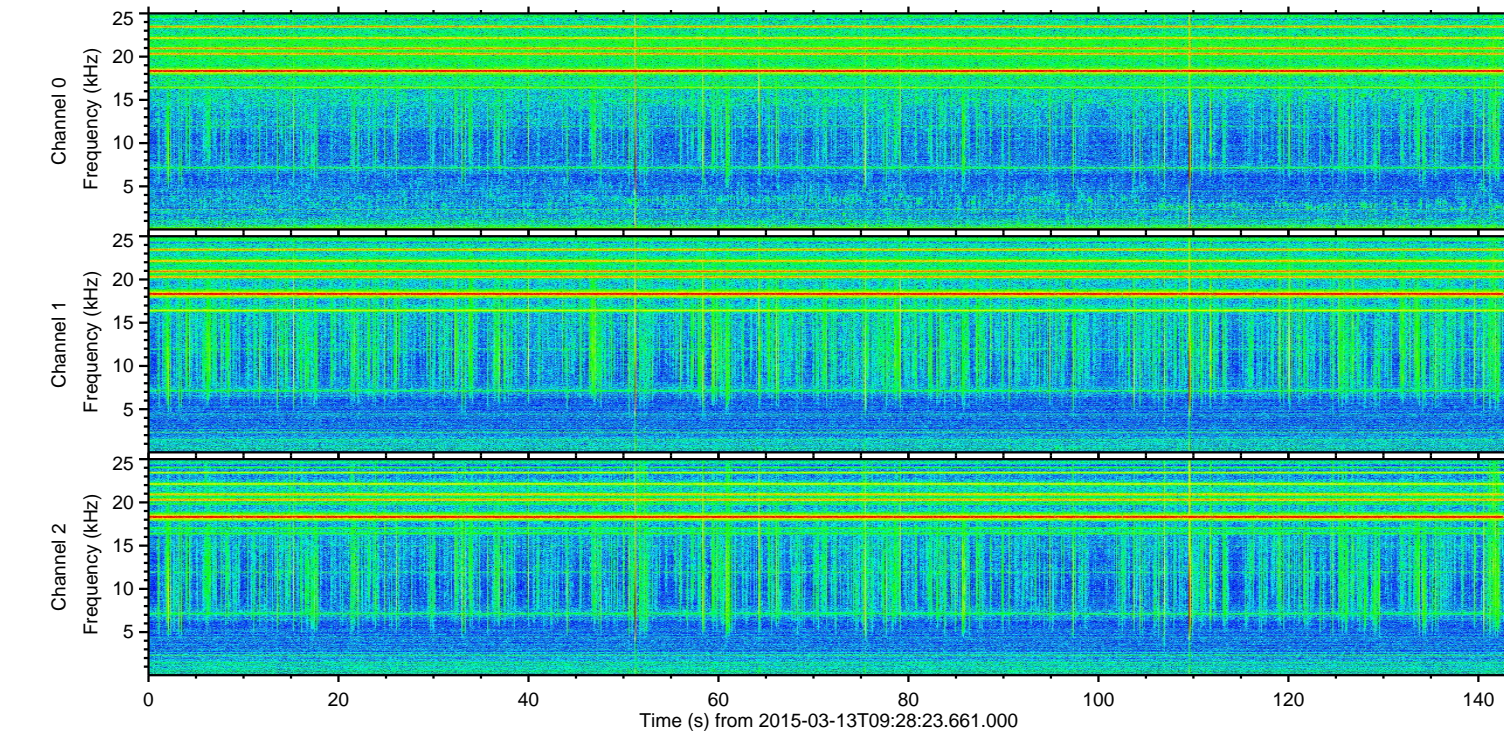
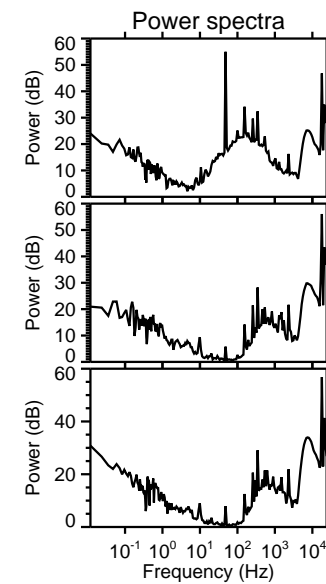
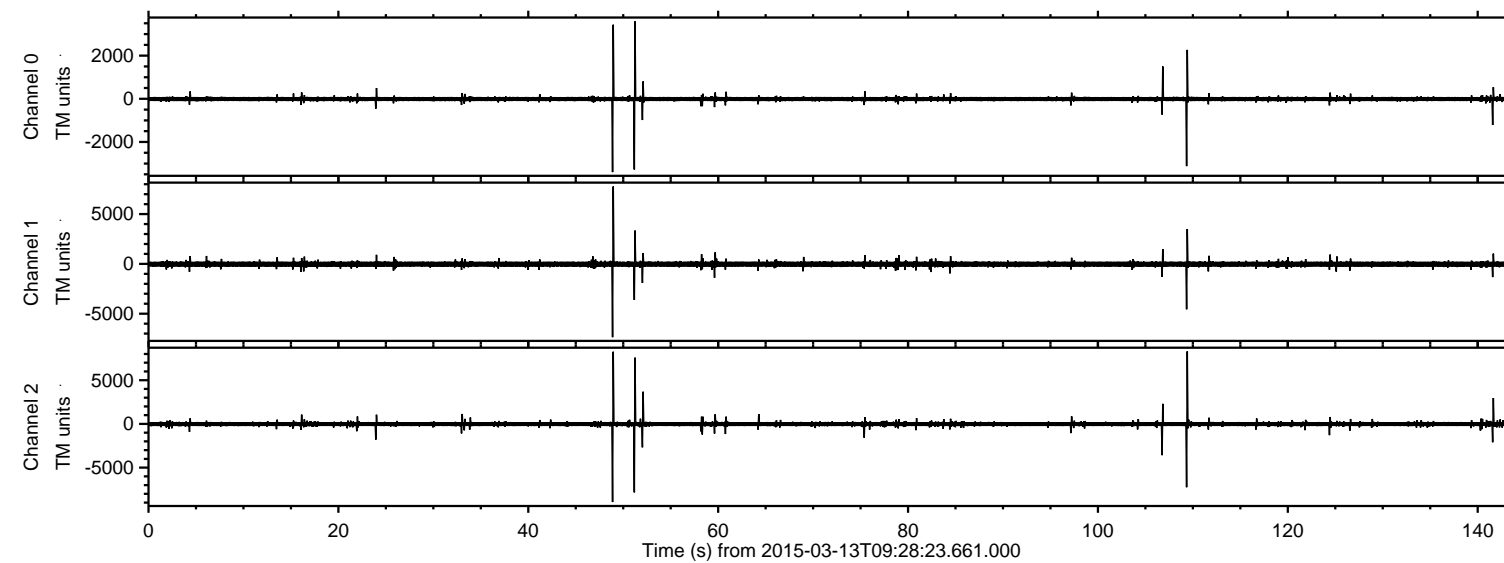
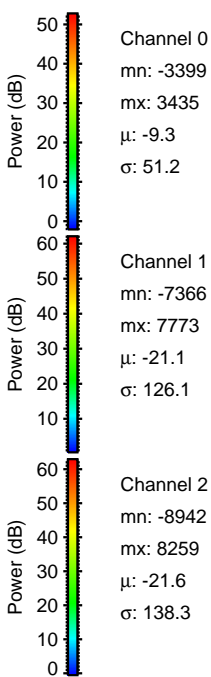
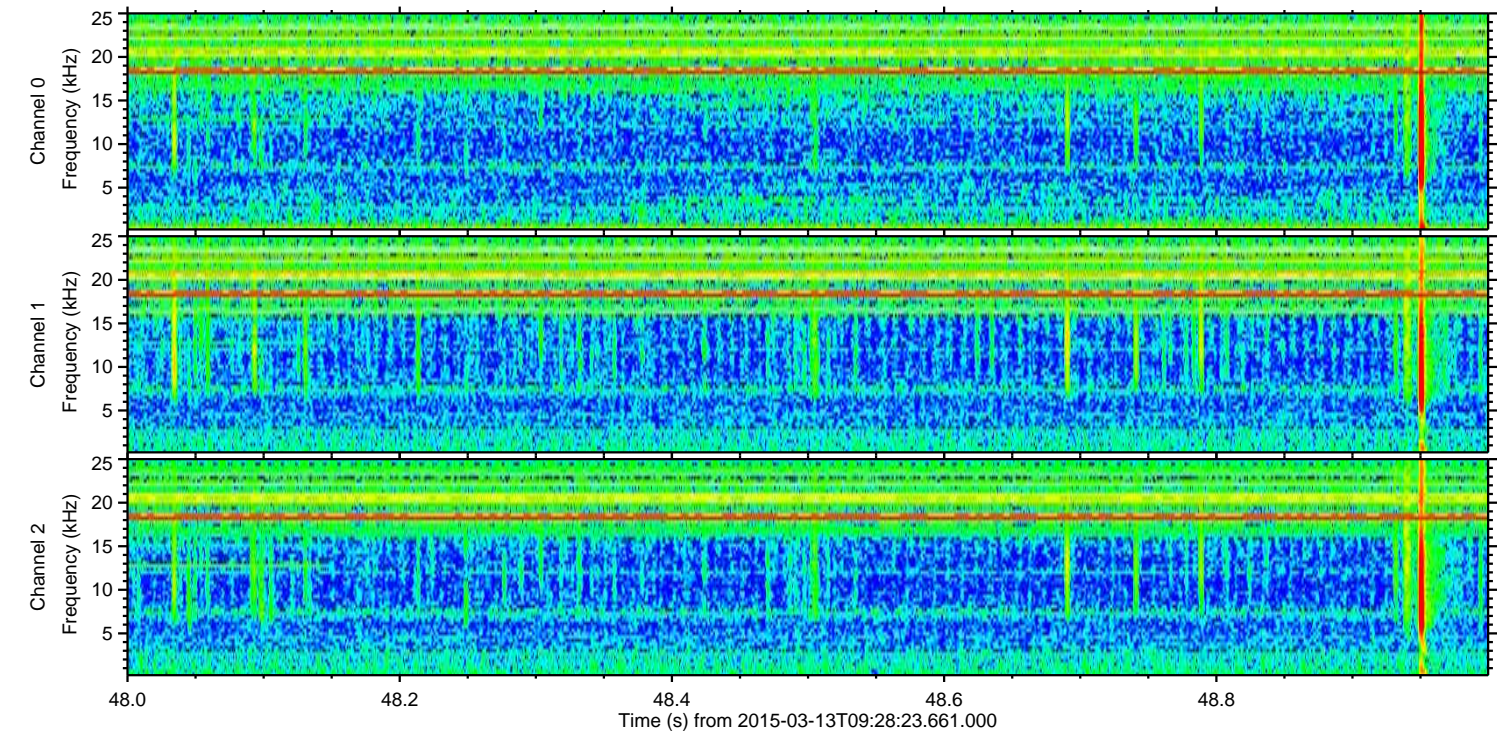
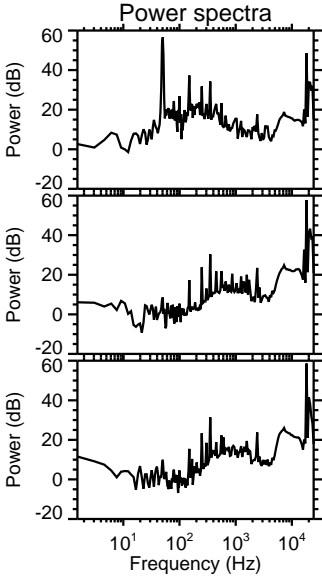
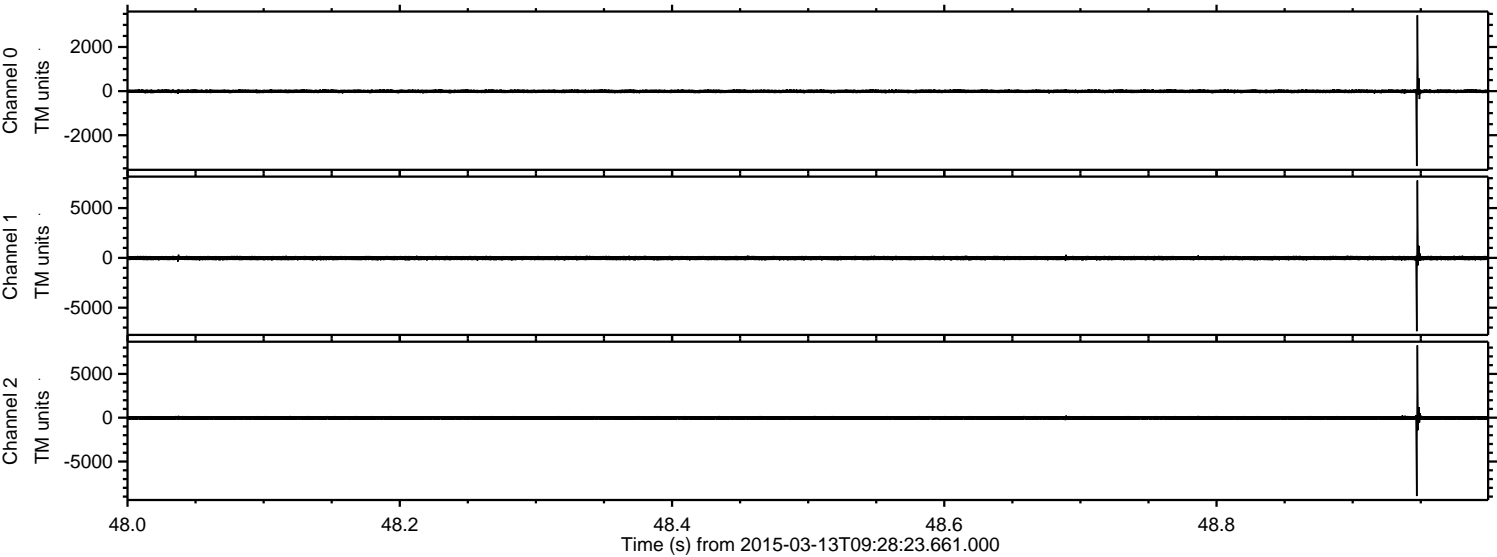


ELMAVAN 3D WAVEFORMS (Measured data sampled at 50 kHz) 49760 packets of 144 samples from 2015-03-13T09:28:23.661.000.

Processed Fri Mar 13 10:36:26 2015 by ELM ver.2012-10-06 from 001__elm20150313_092822__dat00.bin

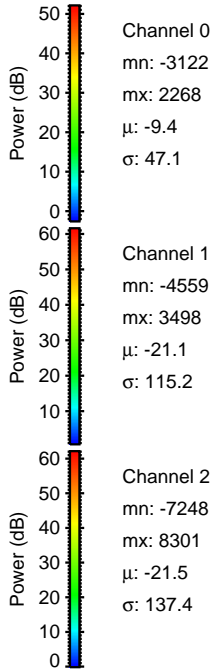
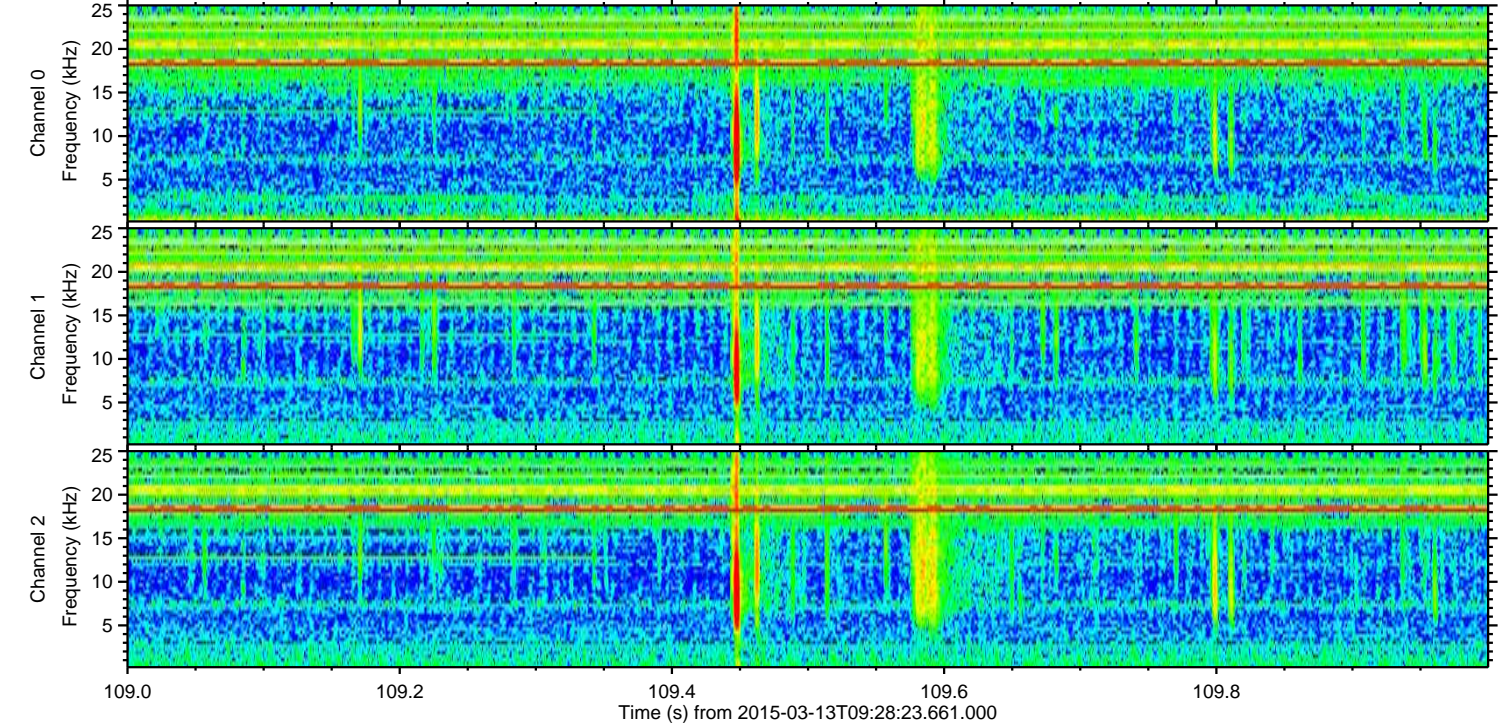
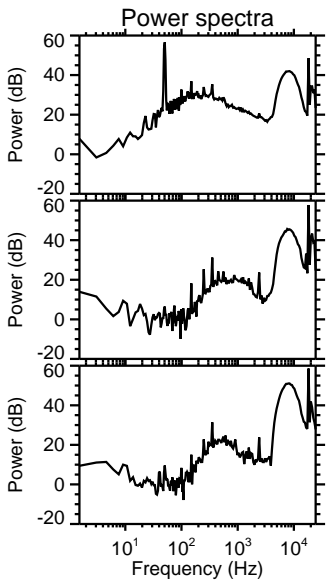
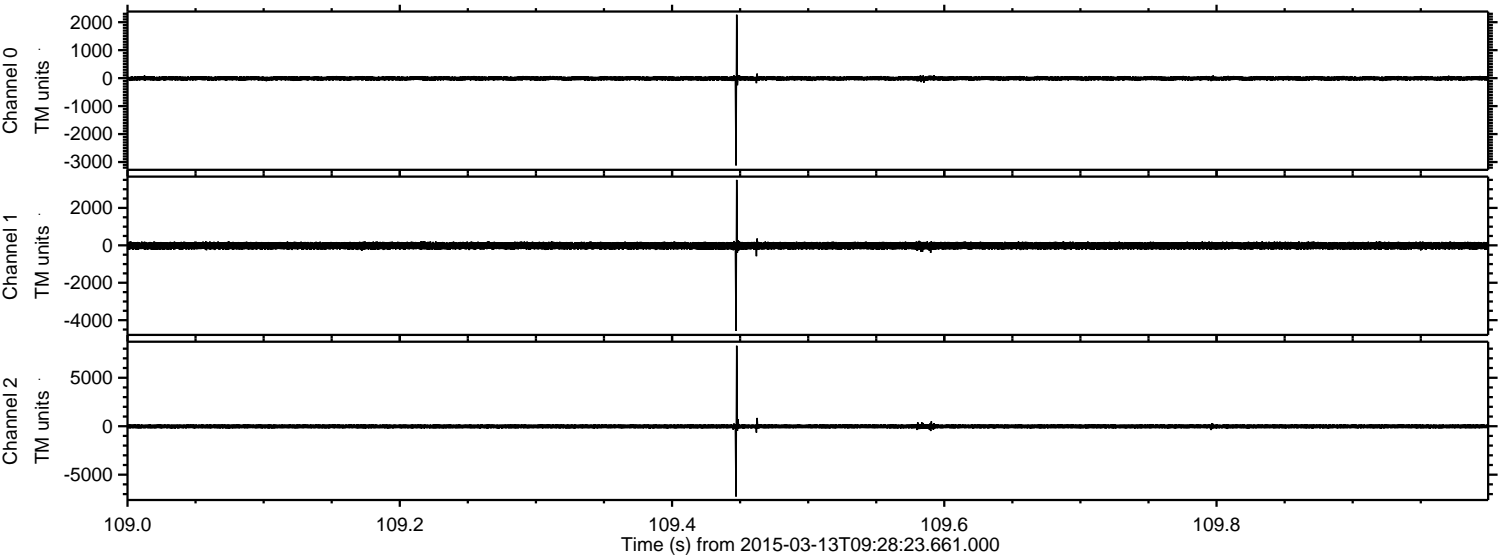


Processed Fri Mar 13 10:36:38 2015 by ELM ver.2012-10-06 from 001__elm20150313_092822__dat00.bin

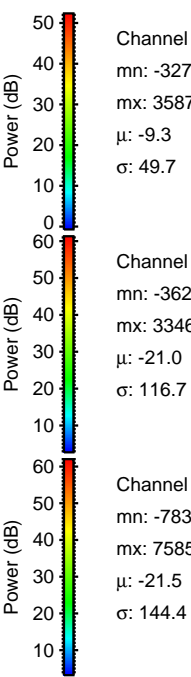
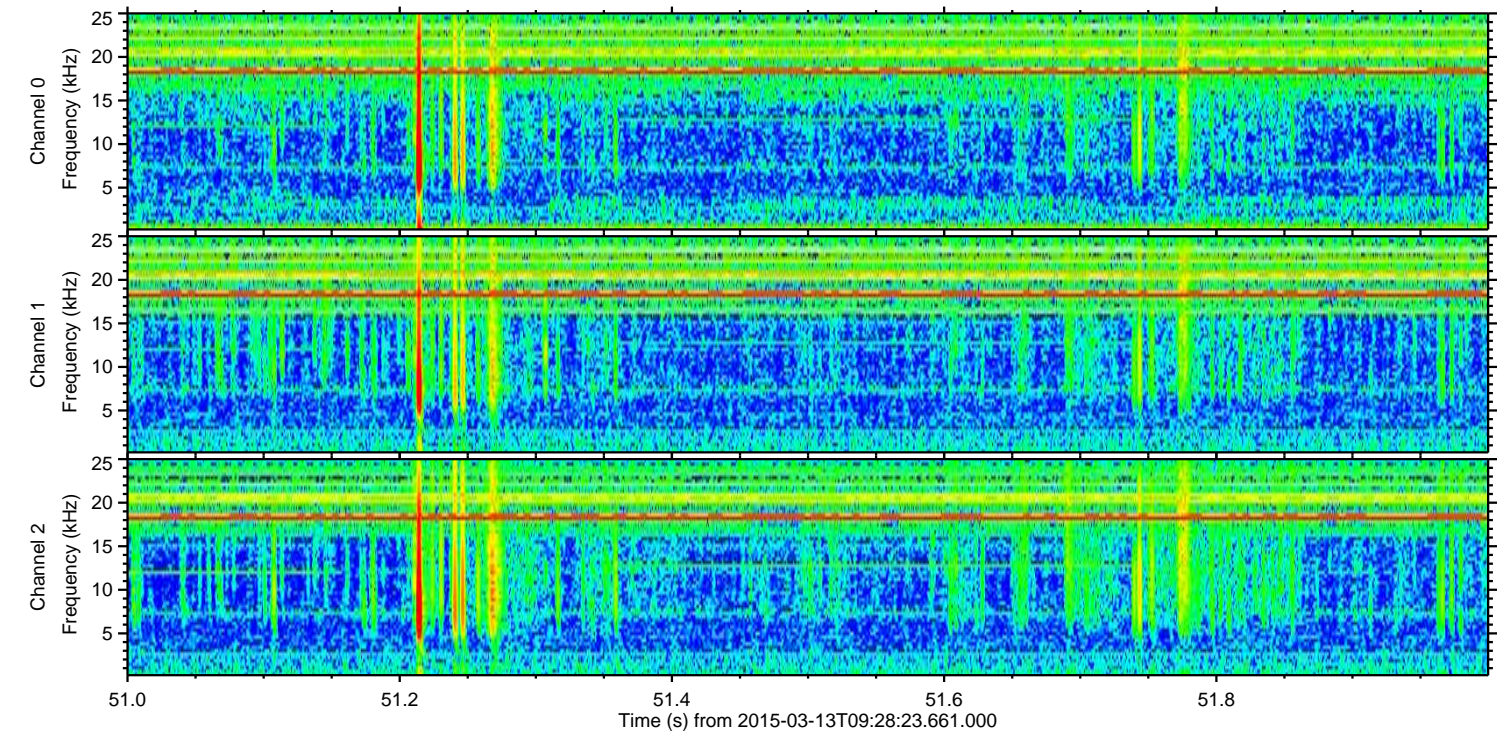
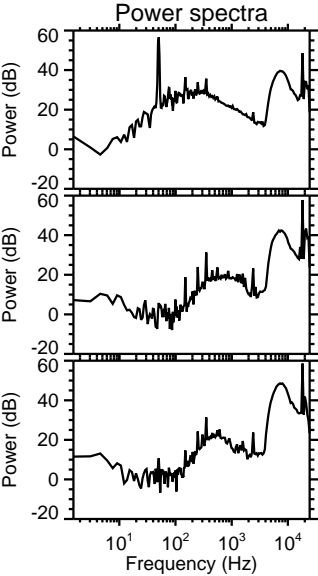
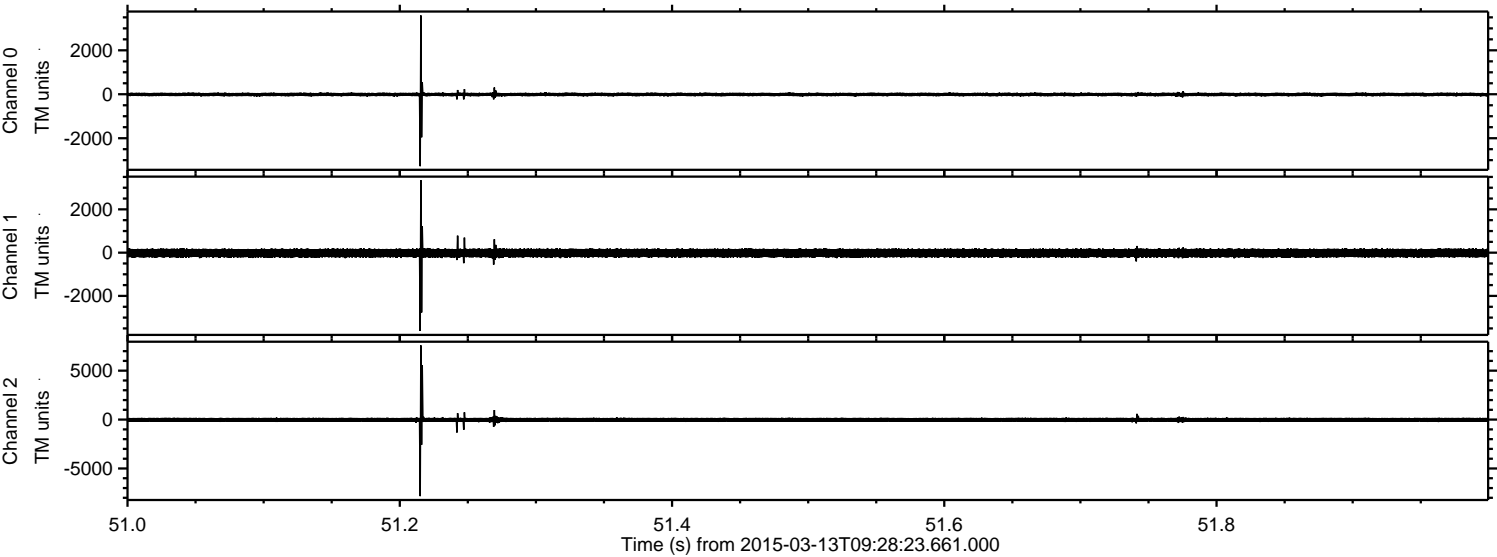


ELMAVAN 3D WAVEFORMS (Measured data sampled at 50 kHz) 49760 packets of 144 samples from 2015-03-13T09:28:23.661.000. Part 110/144

Processed Fri Mar 13 10:36:39 2015 by ELM ver.2012-10-06 from 001__elm20150313_092822__dat00.bin



Processed Fri Mar 13 10:36:40 2015 by ELM ver.2012-10-06 from 001__elm20150313_092822__dat00.bin

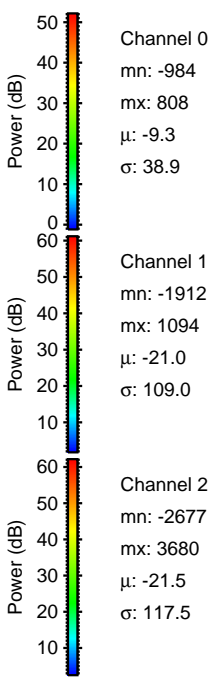
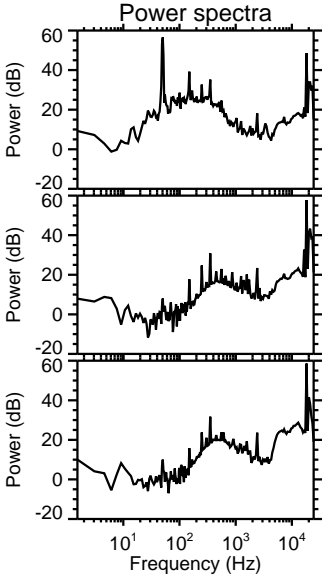
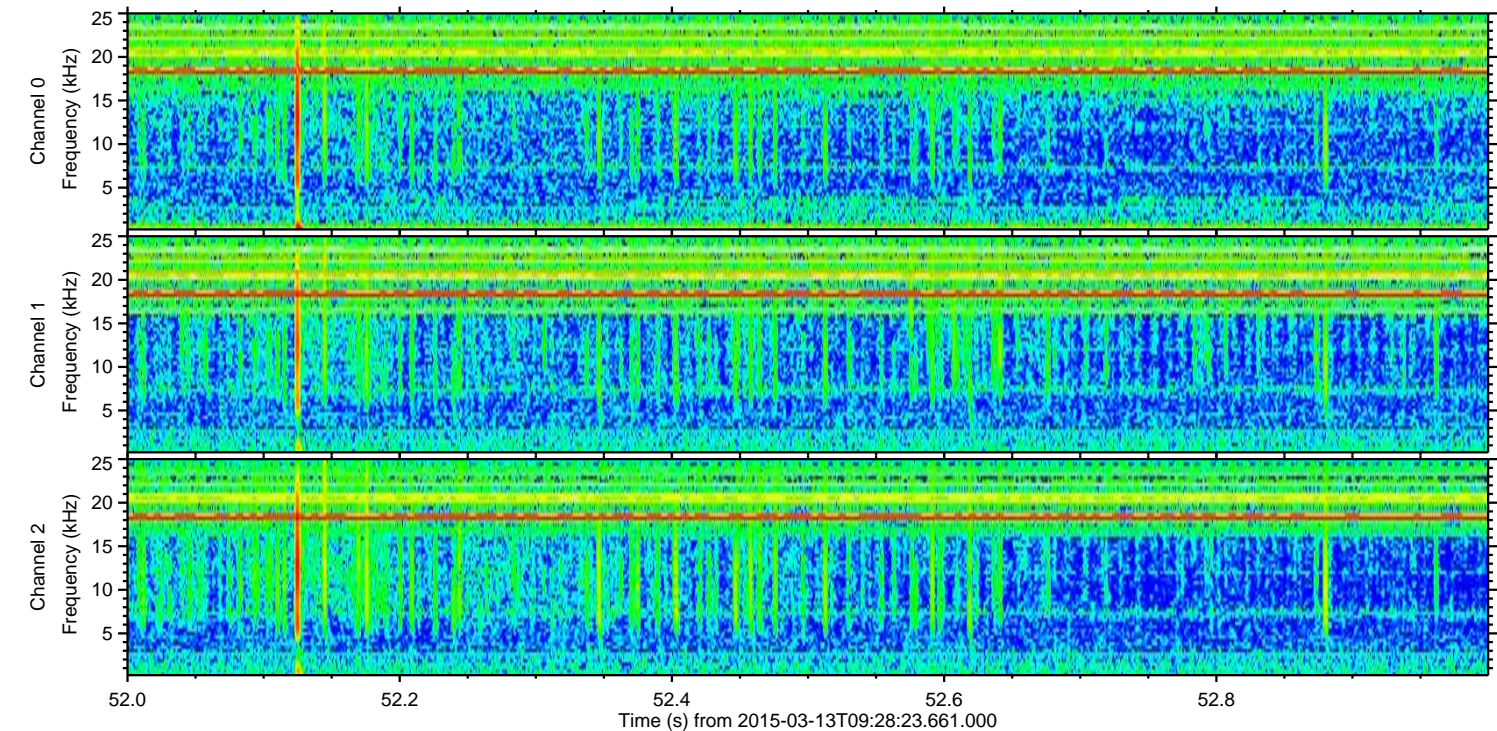
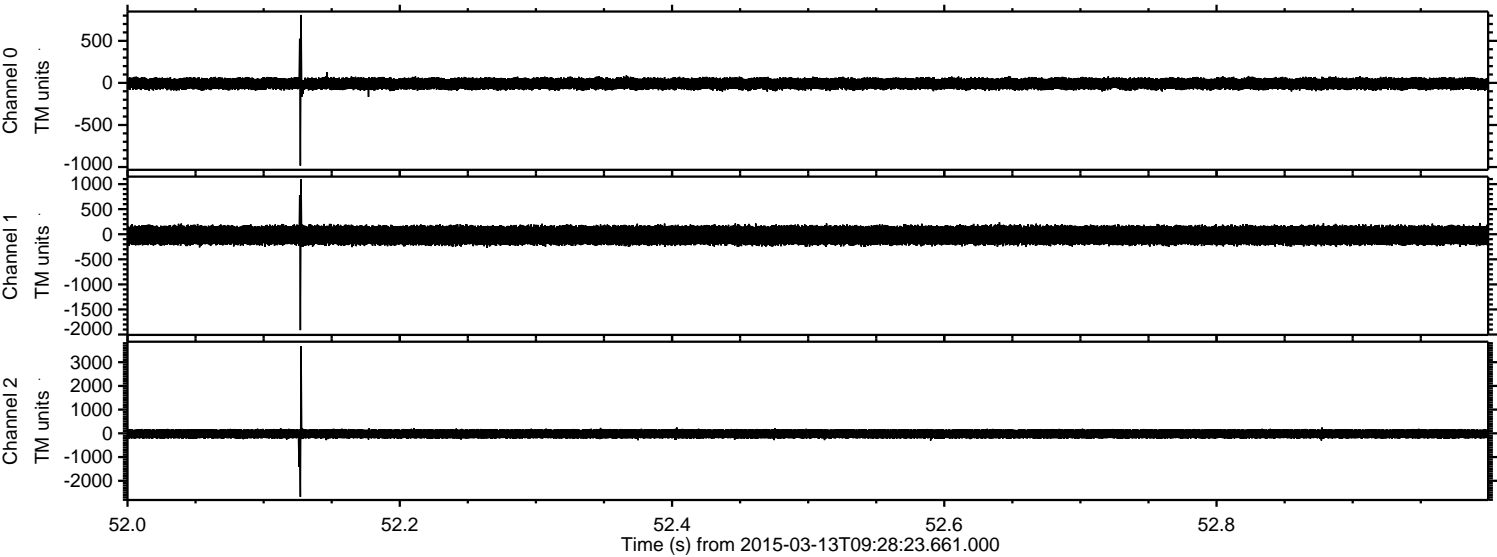


Channel 0
mn: -3276
mx: 3587
 μ : -9.3
 σ : 49.7

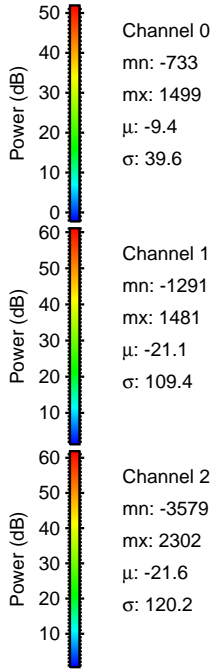
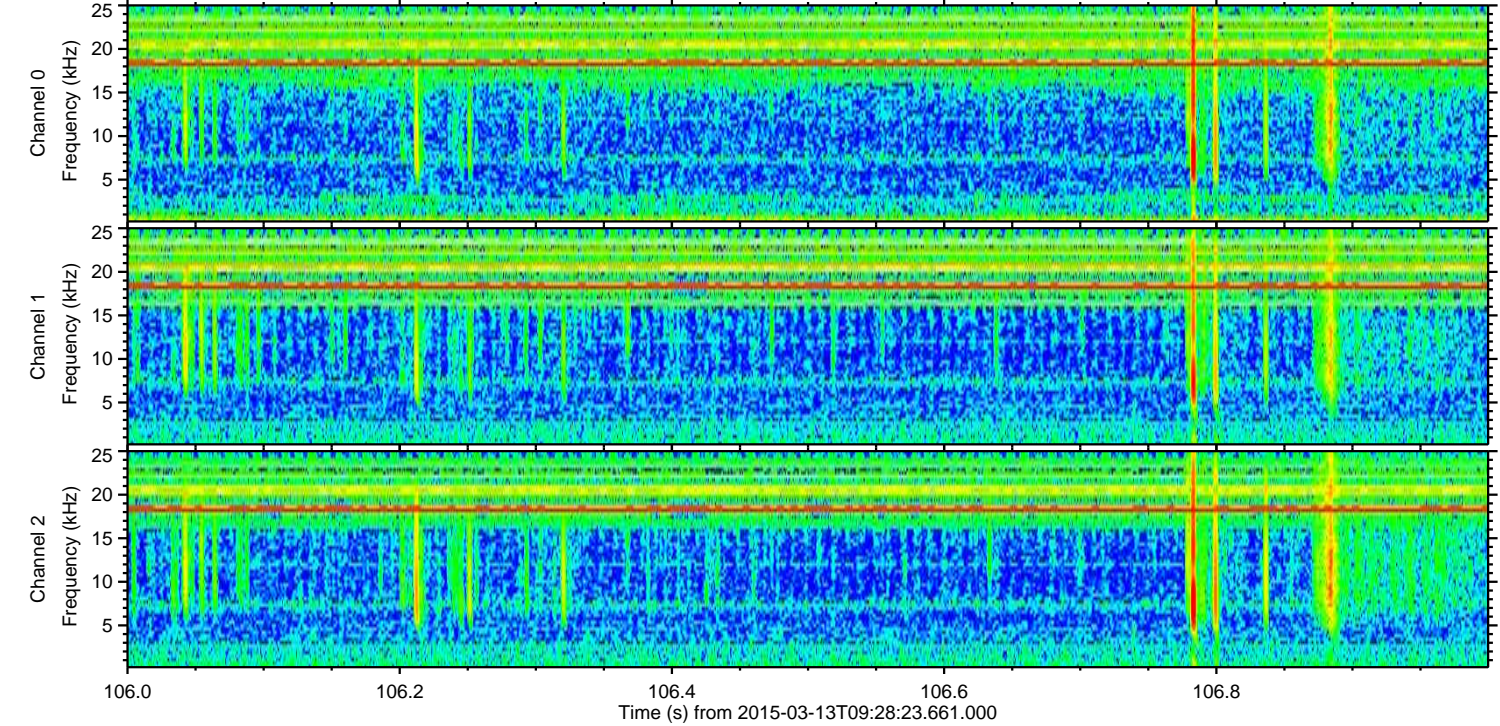
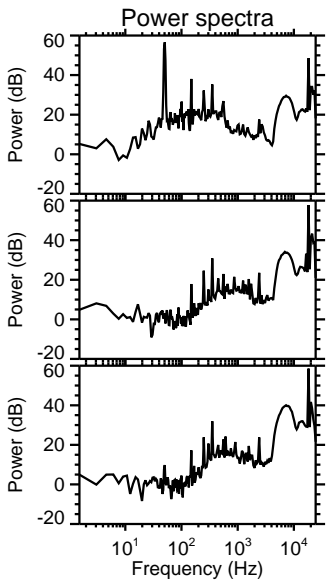
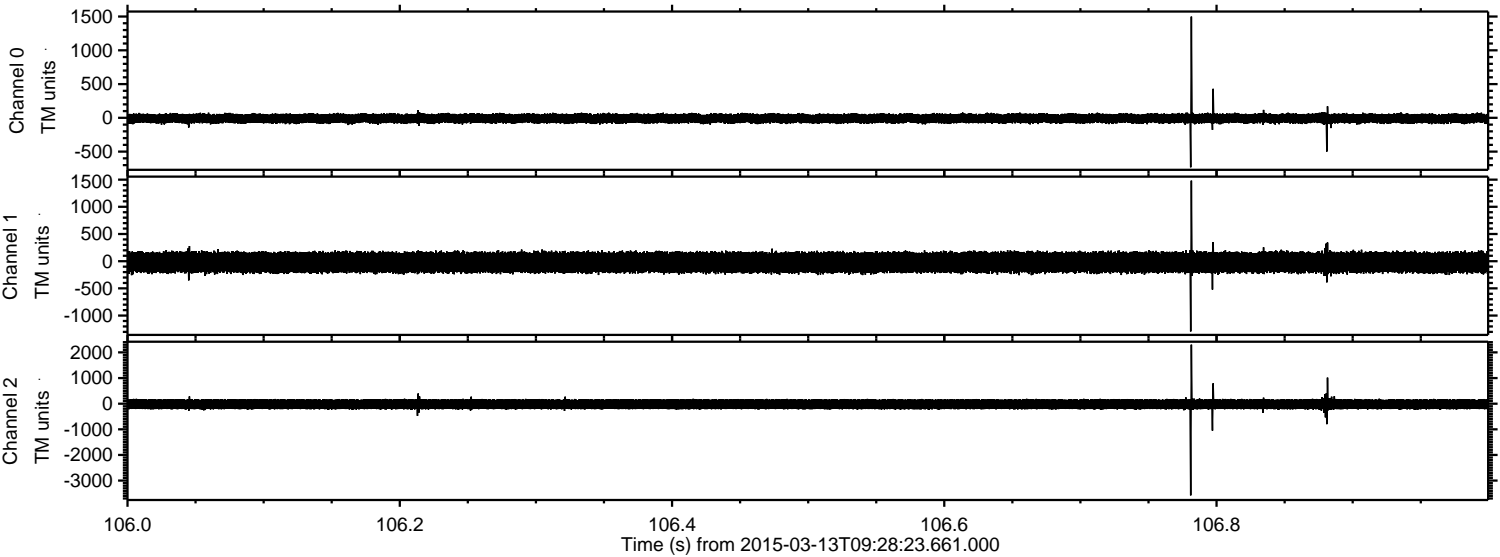
Channel 1
mn: -3620
mx: 3346
 μ : -21.0
 σ : 116.7

Channel 2
mn: -7831
mx: 7585
 μ : -21.5
 σ : 144.4

Processed Fri Mar 13 10:36:41 2015 by ELM ver.2012-10-06 from 001__elm20150313_092822__dat00.bin



Processed Fri Mar 13 10:36:42 2015 by ELM ver.2012-10-06 from 001__elm20150313_092822__dat00.bin



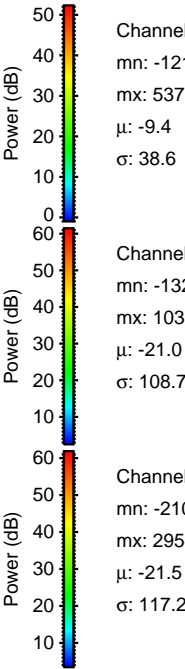
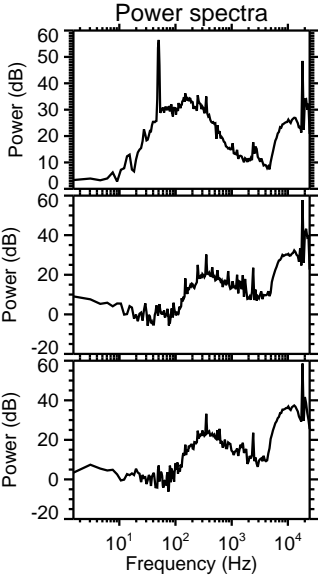
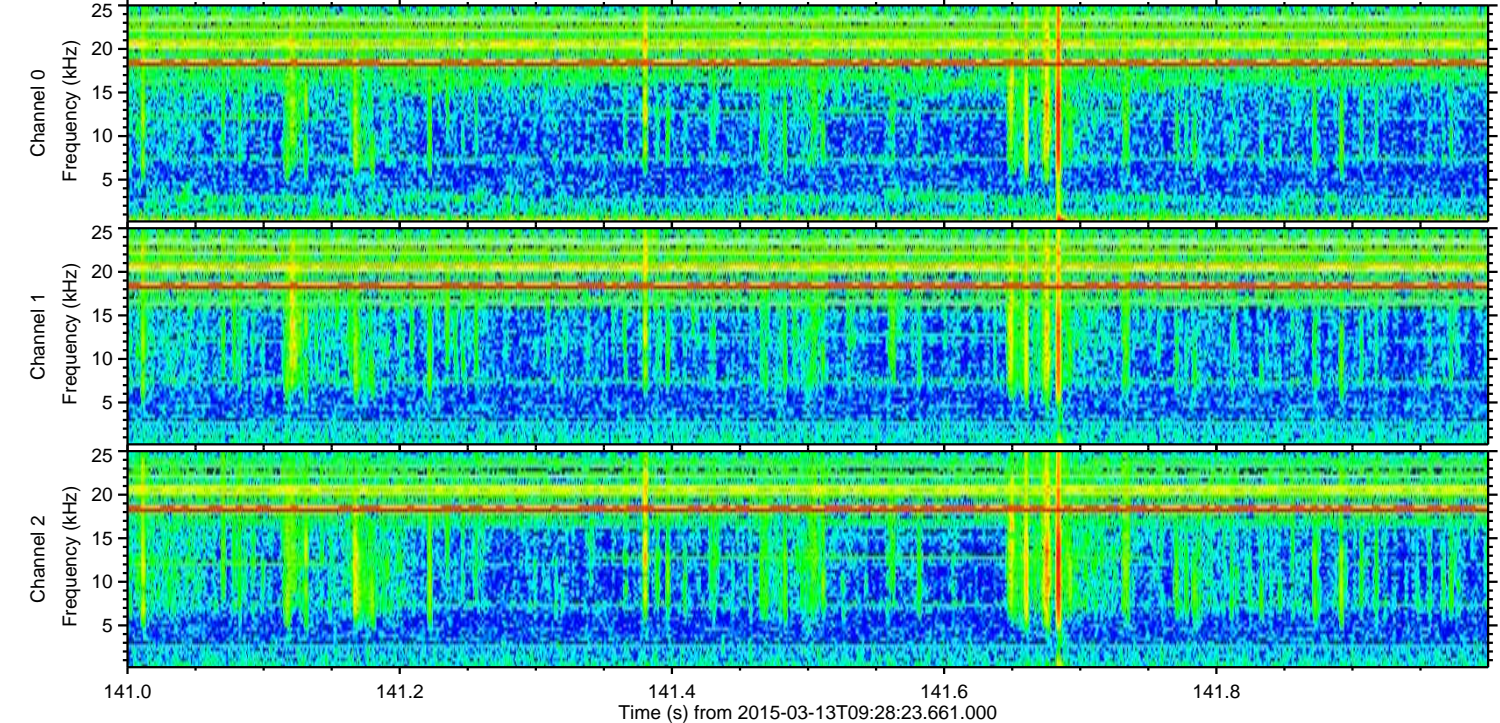
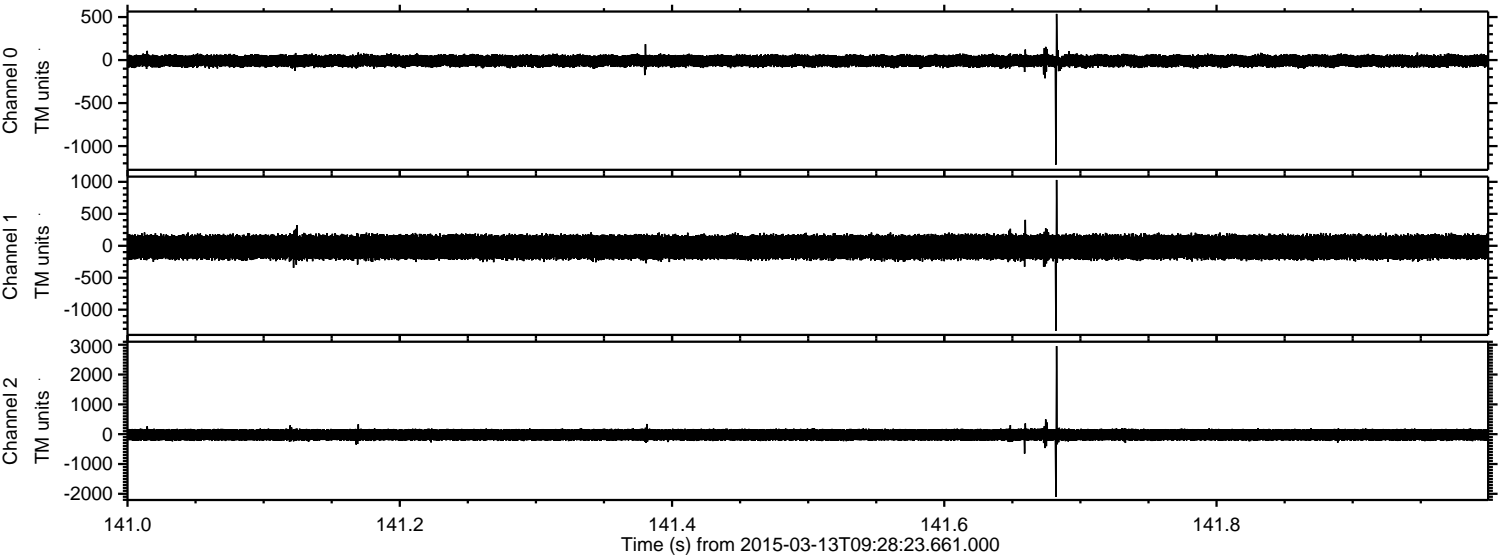
Channel 0
mn: -733
mx: 1499
 μ : -9.4
 σ : 39.6

Channel 1
mn: -1291
mx: 1481
 μ : -21.1
 σ : 109.4

Channel 2
mn: -3579
mx: 2302
 μ : -21.6
 σ : 120.2

ELMAVAN 3D WAVEFORMS (Measured data sampled at 50 kHz) 49760 packets of 144 samples from 2015-03-13T09:28:23.661.000. Part 142/144

Processed Fri Mar 13 10:36:42 2015 by ELM ver.2012-10-06 from 001__elm20150313_092822__dat00.bin

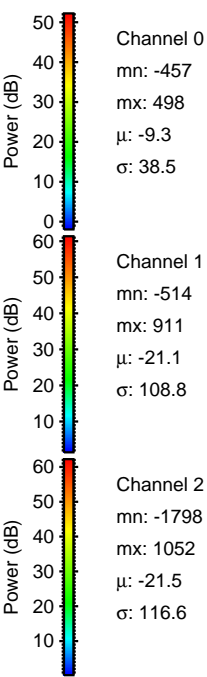
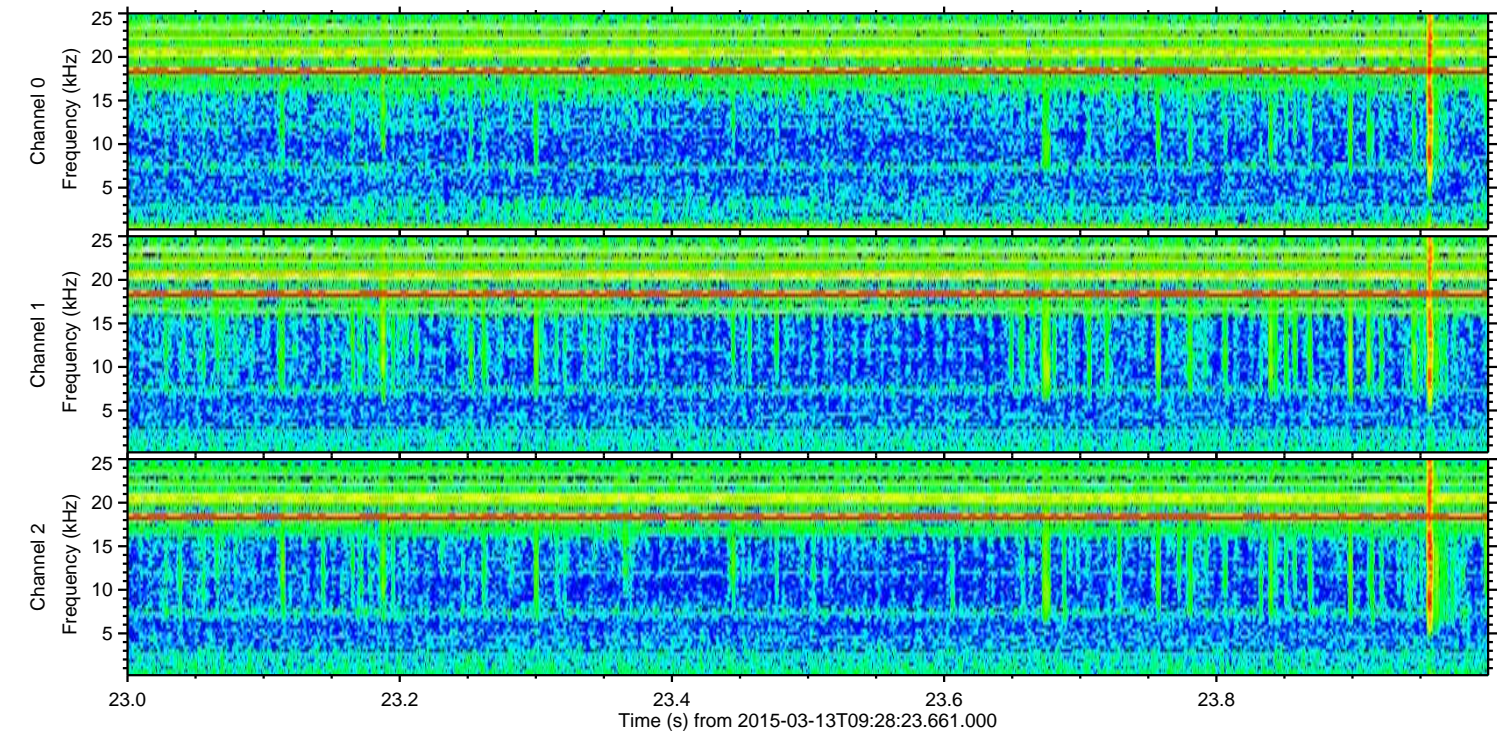
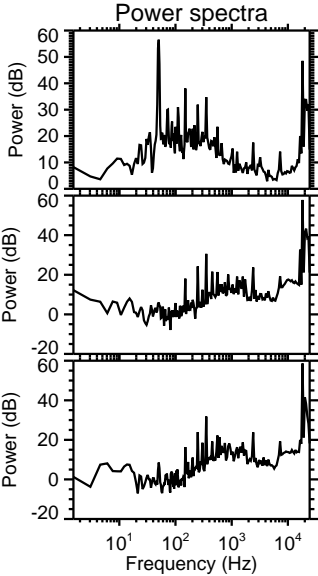
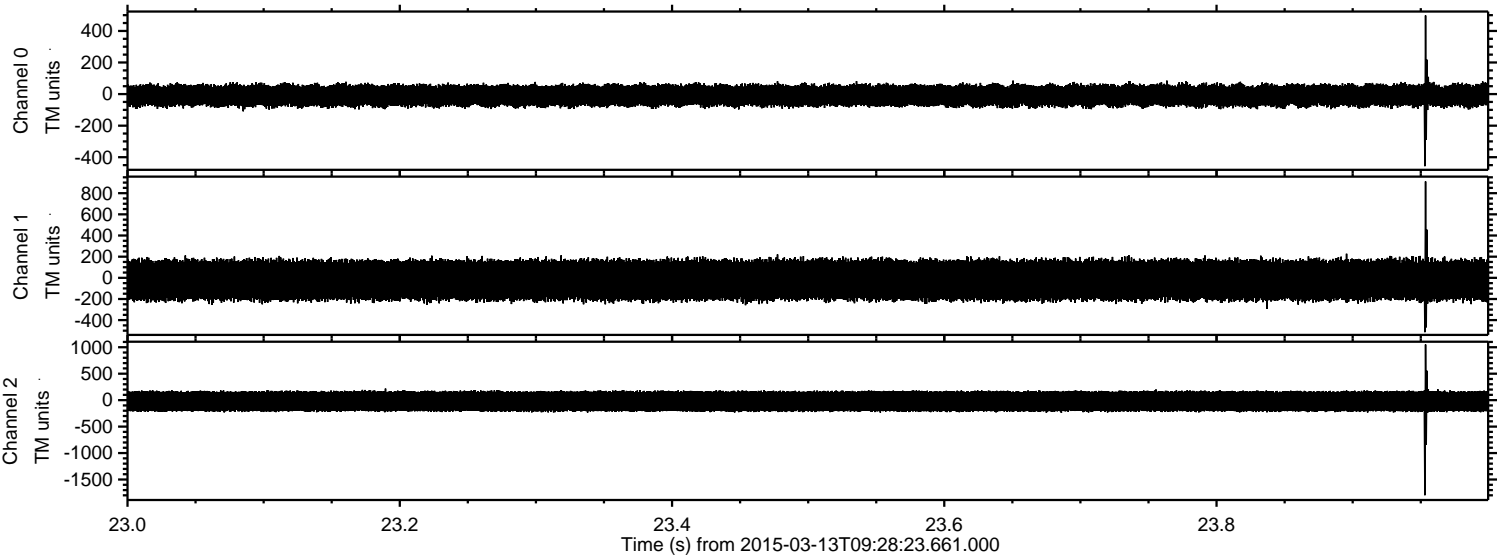


Channel 0
mn: -1215
mx: 537
 μ : -9.4
 σ : 38.6

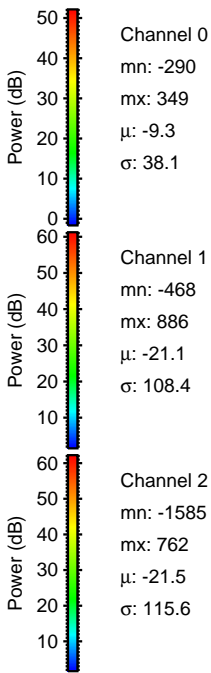
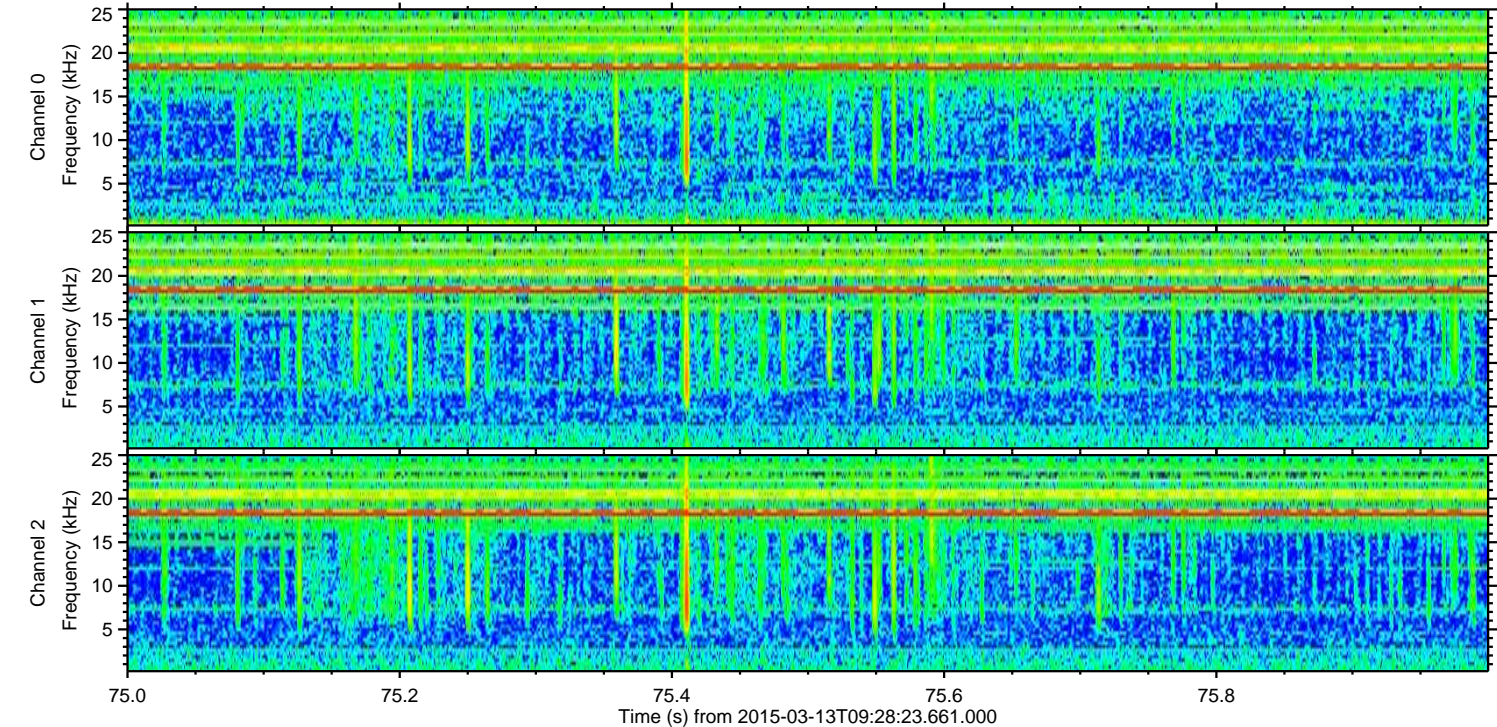
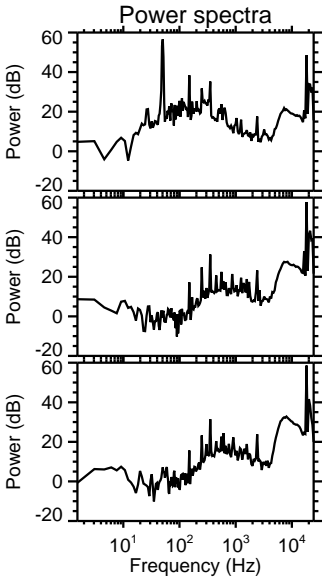
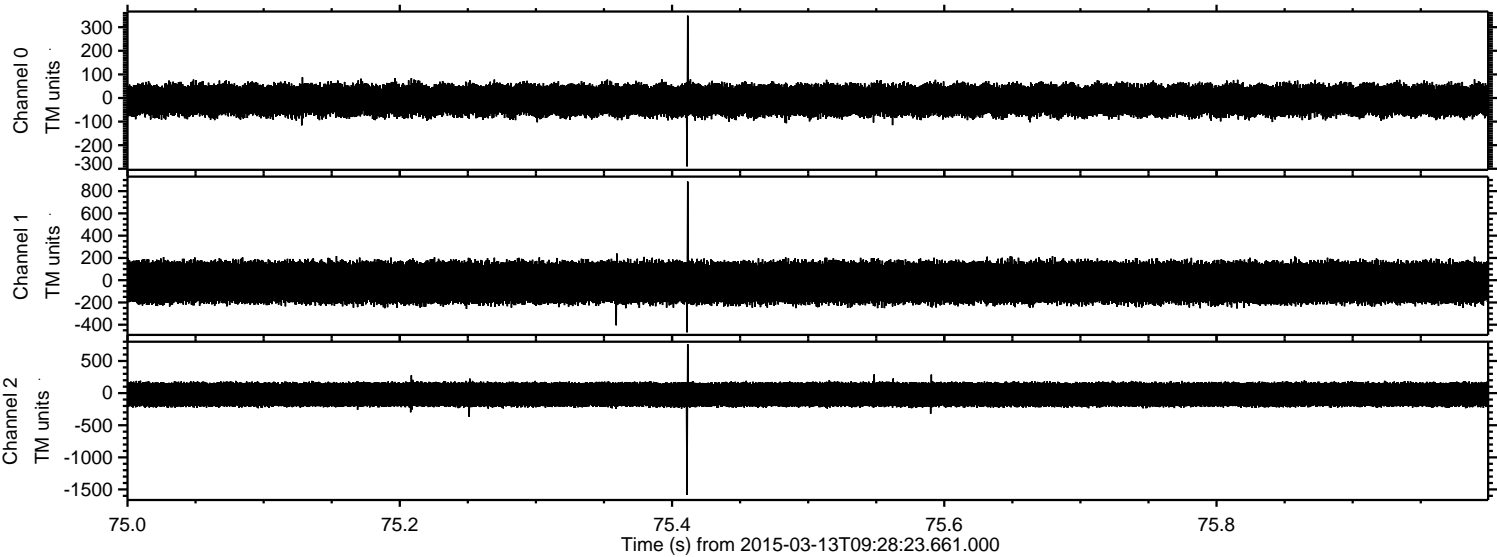
Channel 1
mn: -1328
mx: 1030
 μ : -21.0
 σ : 108.7

Channel 2
mn: -2103
mx: 2954
 μ : -21.5
 σ : 117.2

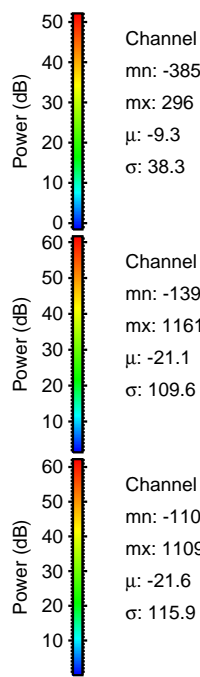
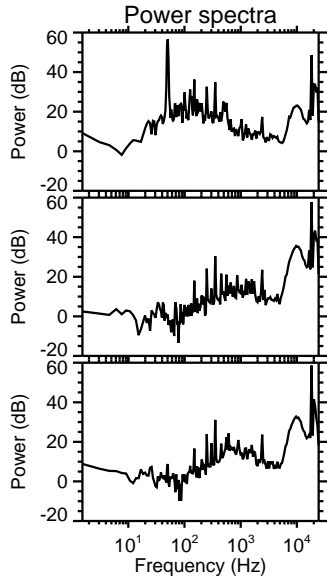
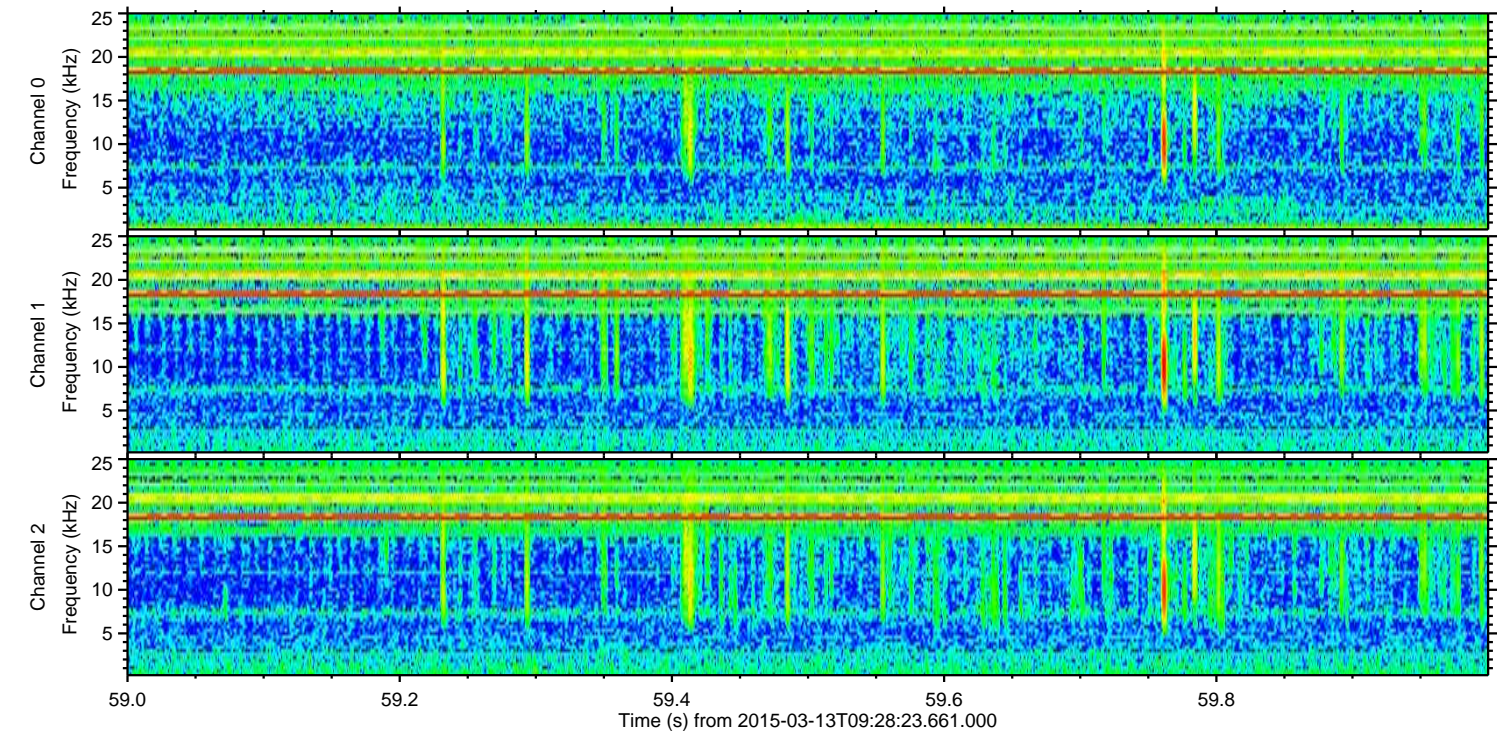
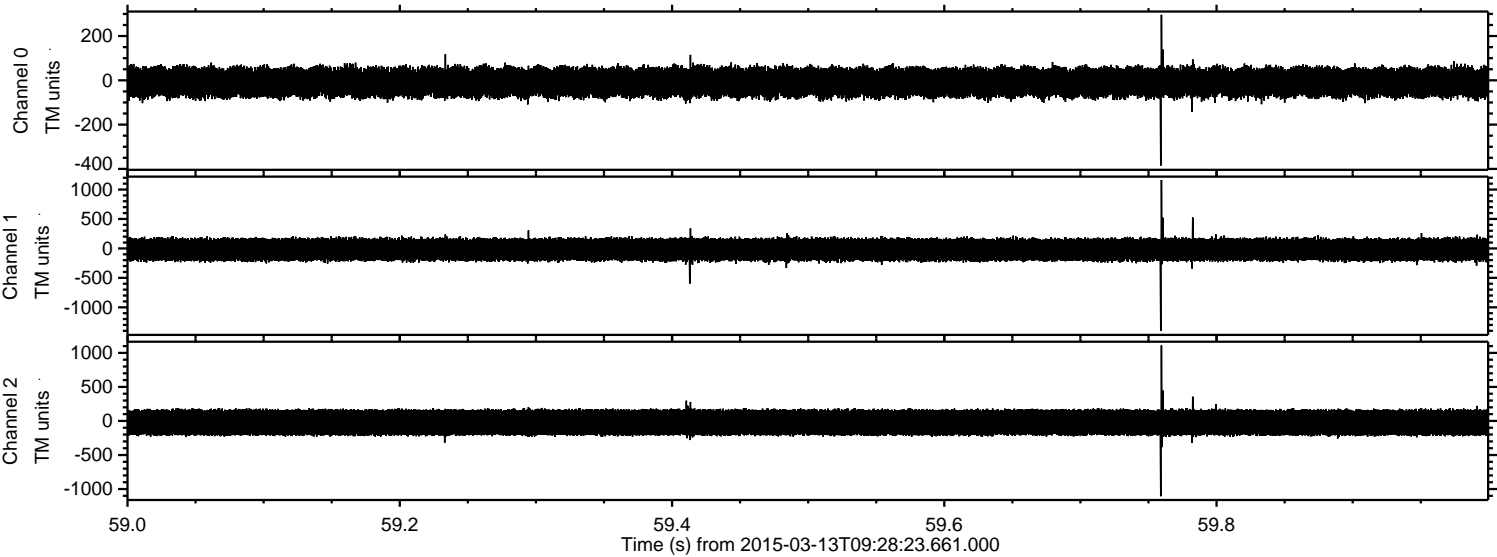
Processed Fri Mar 13 10:36:43 2015 by ELM ver.2012-10-06 from 001__elm20150313_092822__dat00.bin



Processed Fri Mar 13 10:36:44 2015 by ELM ver.2012-10-06 from 001__elm20150313_092822__dat00.bin



Processed Fri Mar 13 10:36:45 2015 by ELM ver.2012-10-06 from 001__elm20150313_092822__dat00.bin



Channel 0
mn: -385
mx: 296
 μ : -9.3
 σ : 38.3

Channel 1
mn: -1399
mx: 1161
 μ : -21.1
 σ : 109.6

Channel 2
mn: -1106
mx: 1109
 μ : -21.6
 σ : 115.9

Processed Fri Mar 13 10:36:46 2015 by ELM ver.2012-10-06 from 001__elm20150313_092822__dat00.bin

