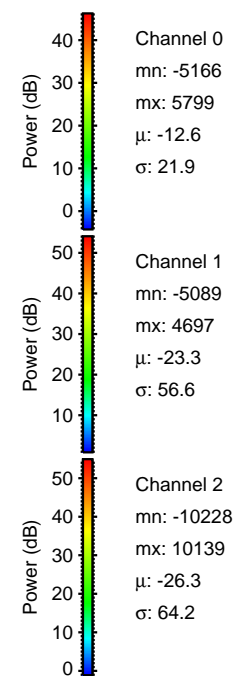
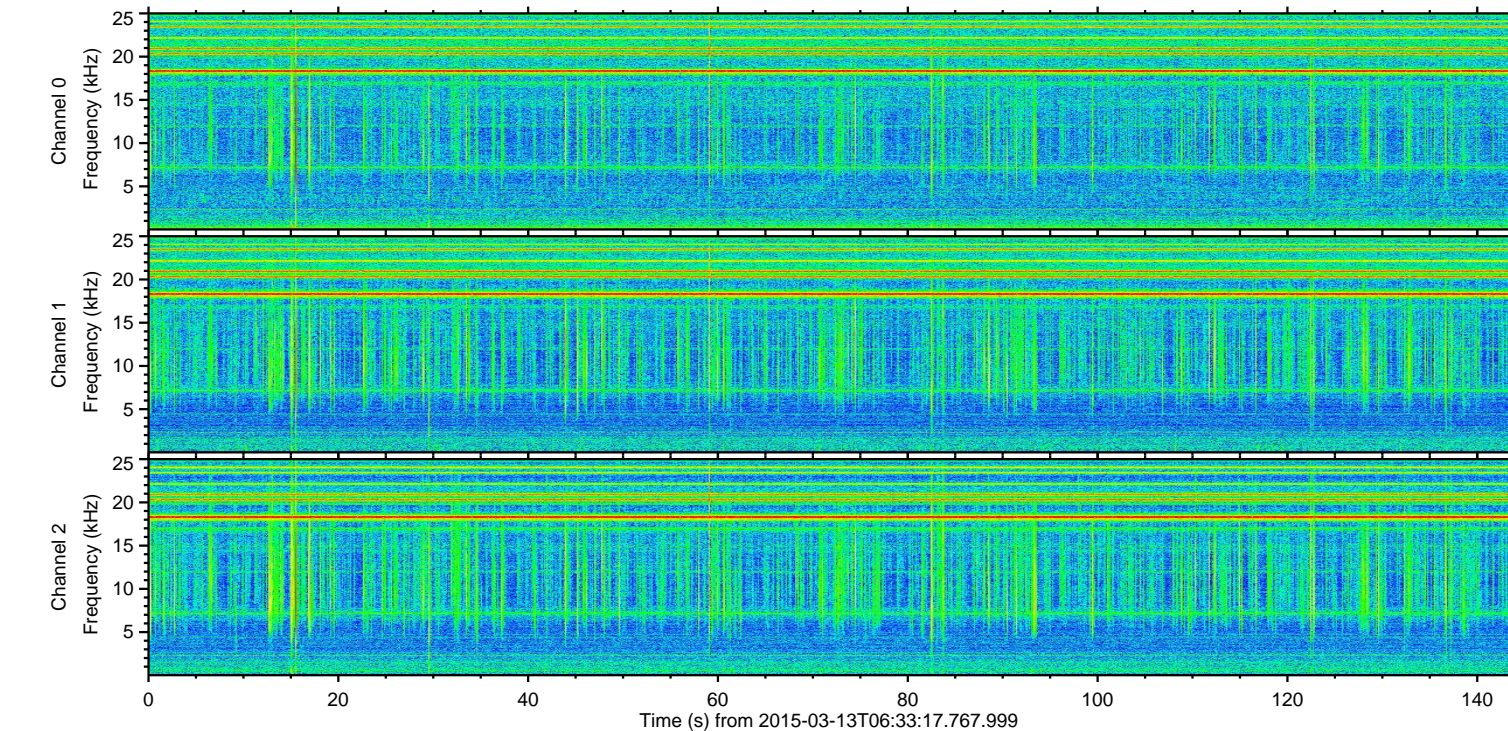
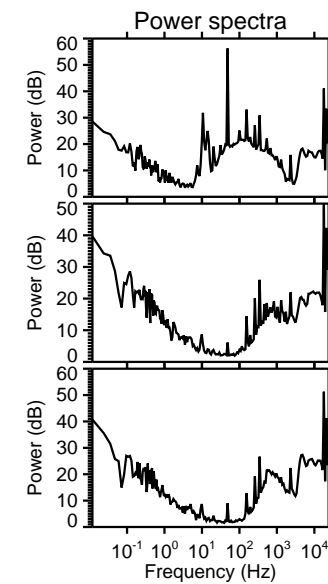
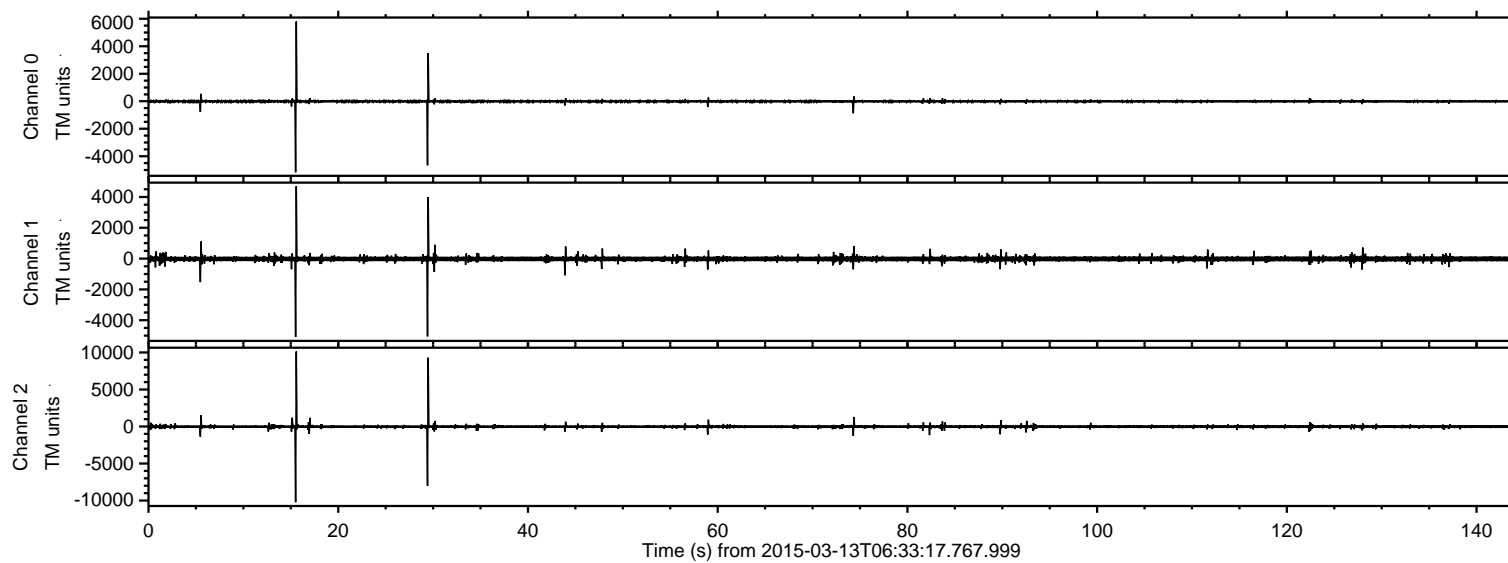


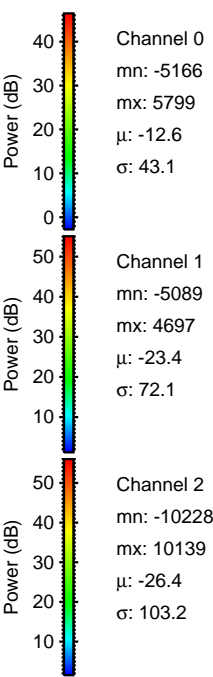
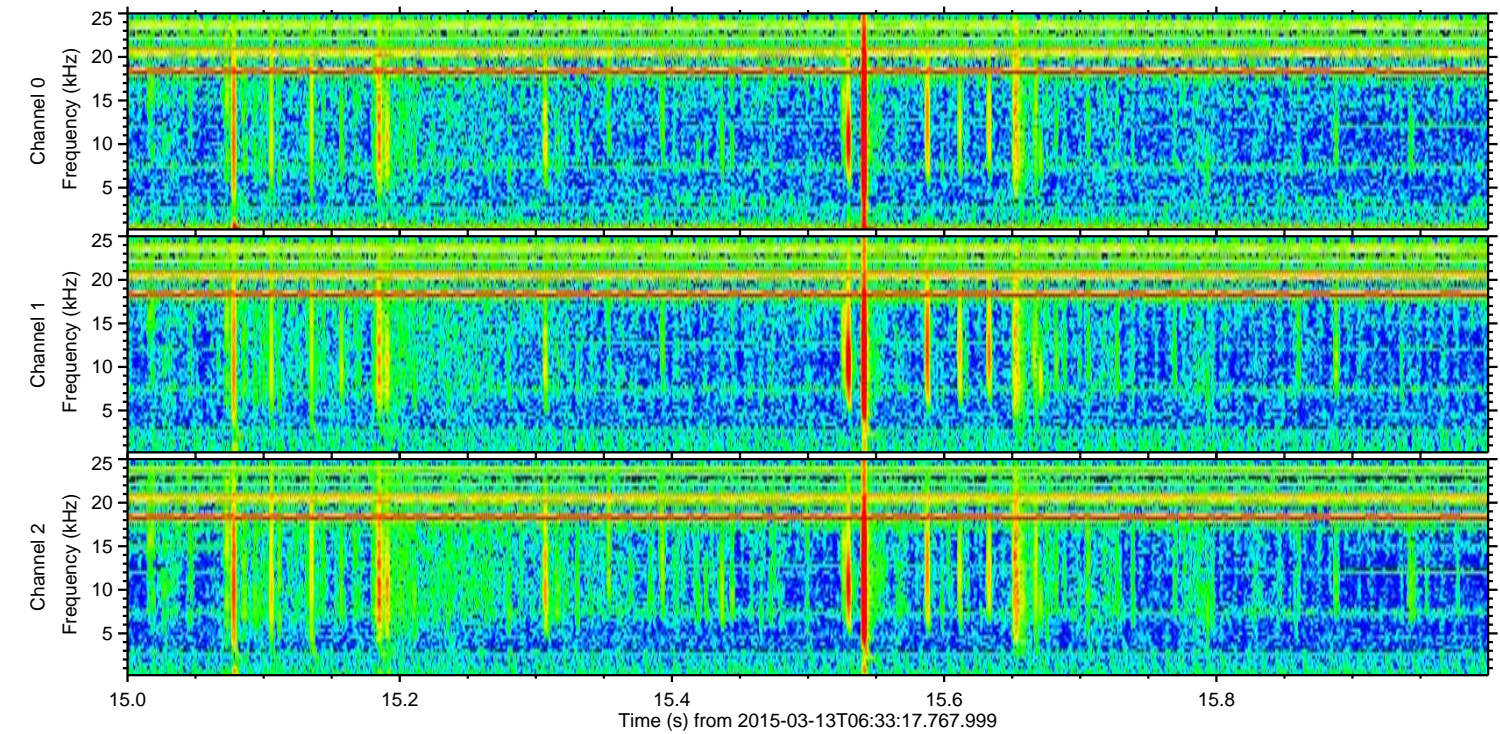
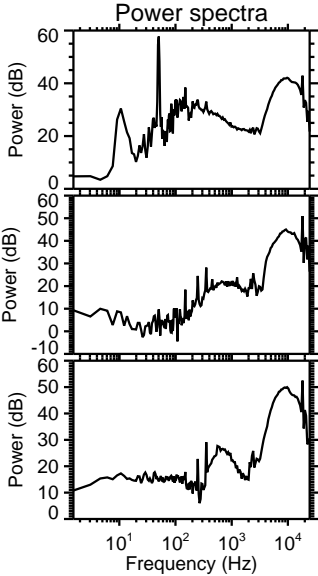
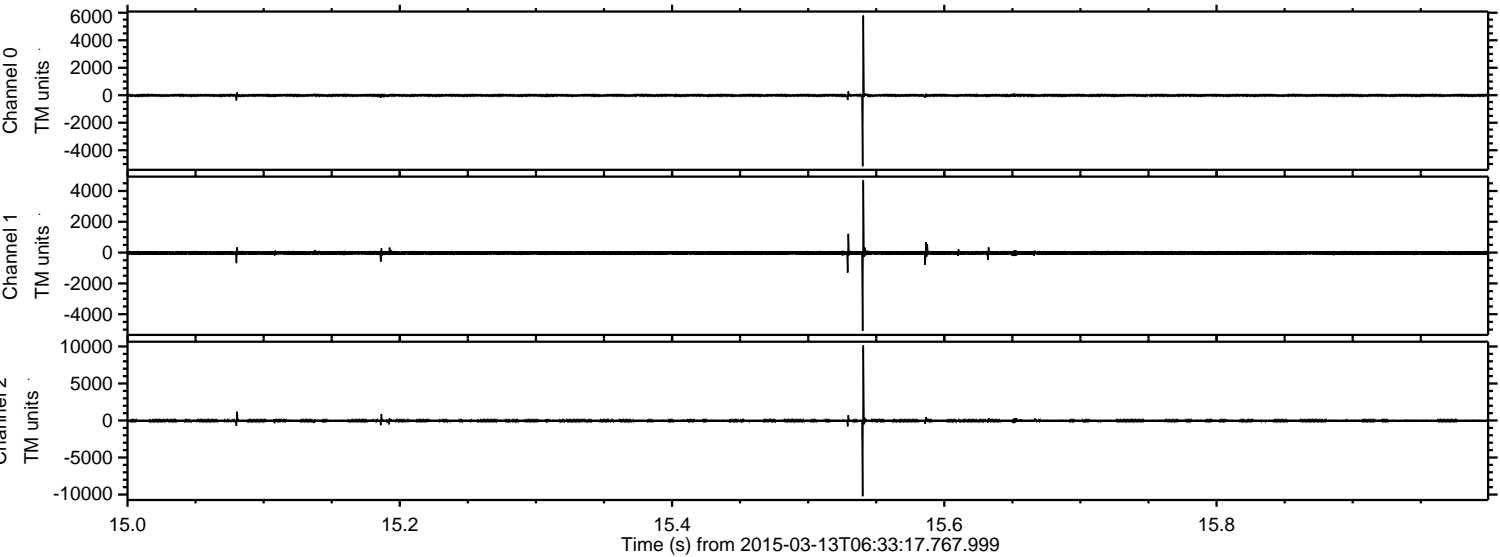
ELMAVAN 3D WAVEFORMS (Measured data sampled at 50 kHz) 49803 packets of 144 samples from 2015-03-13T06:33:17.767.999.

Processed Fri Mar 13 08:42:24 2015 by ELM ver.2012-10-06 from 001__elm20150313_063316__dat00.bin

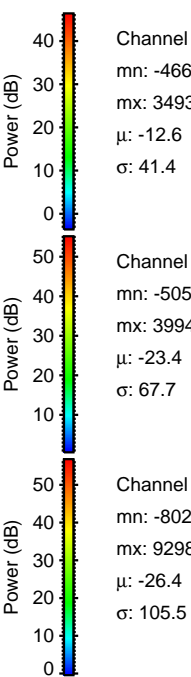
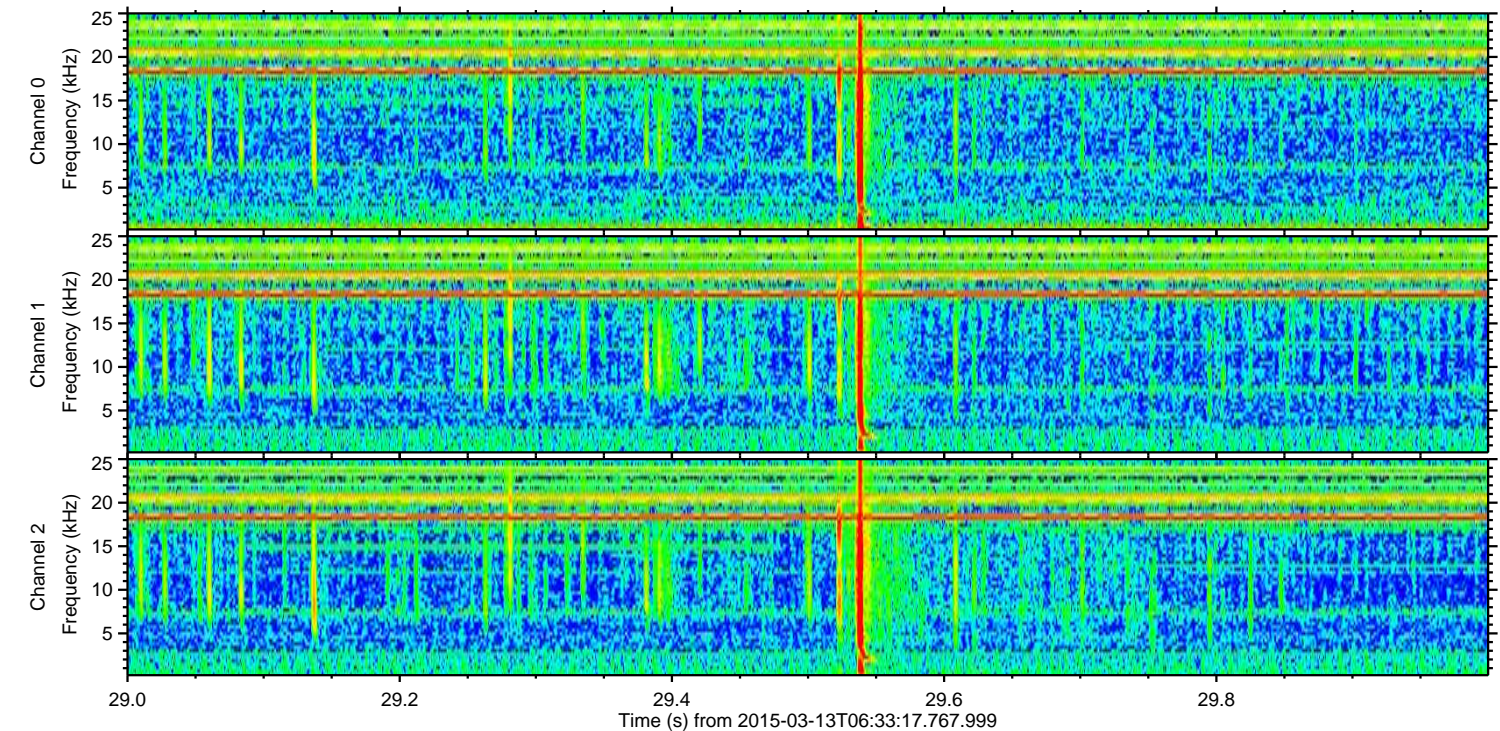
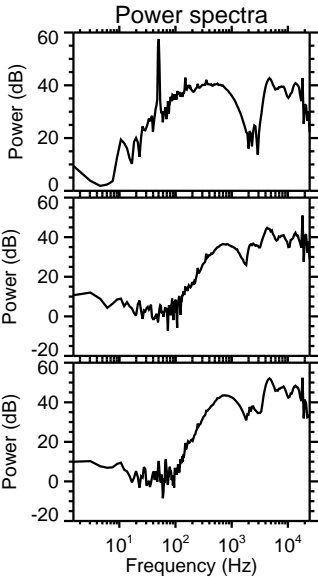
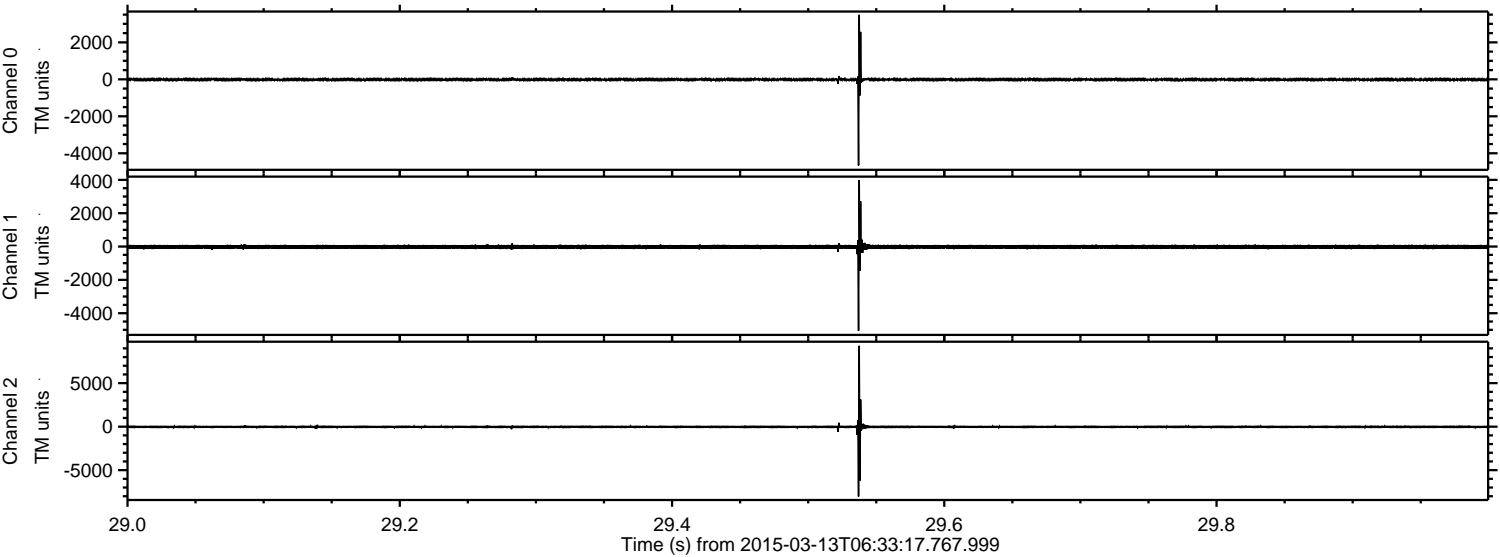


ELMAVAN 3D WAVEFORMS (Measured data sampled at 50 kHz) 49803 packets of 144 samples from 2015-03-13T06:33:17.767.999. Part 16/144

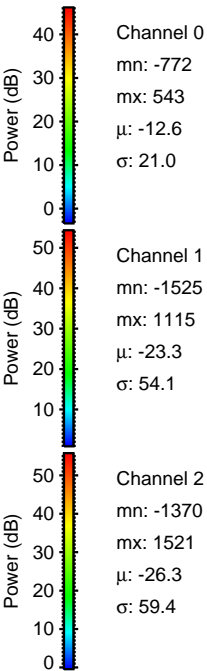
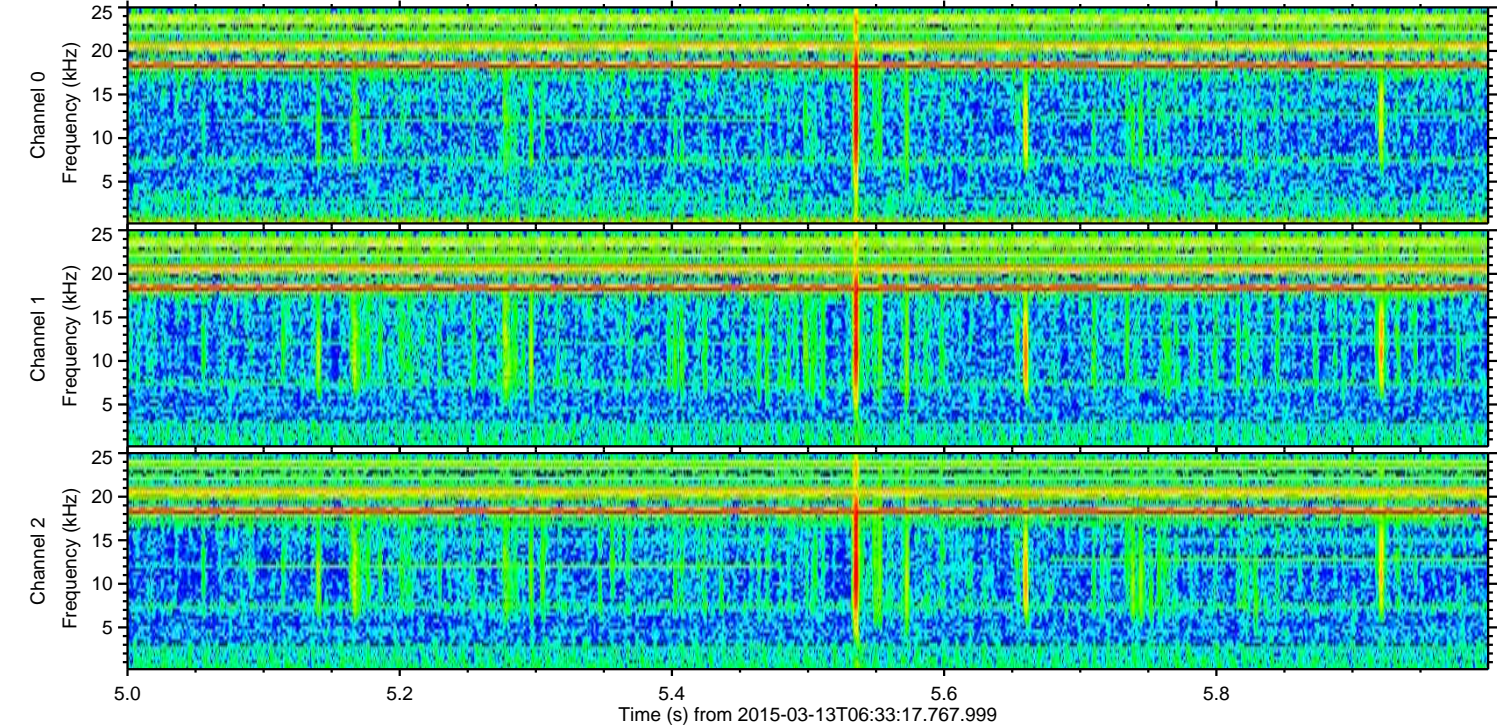
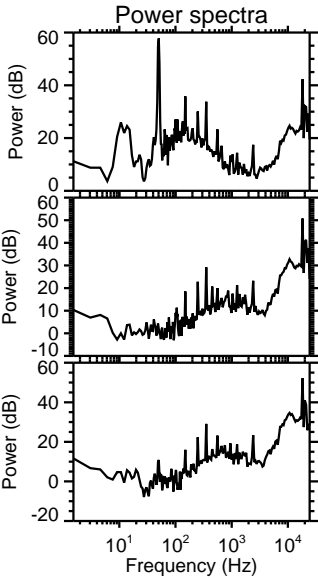
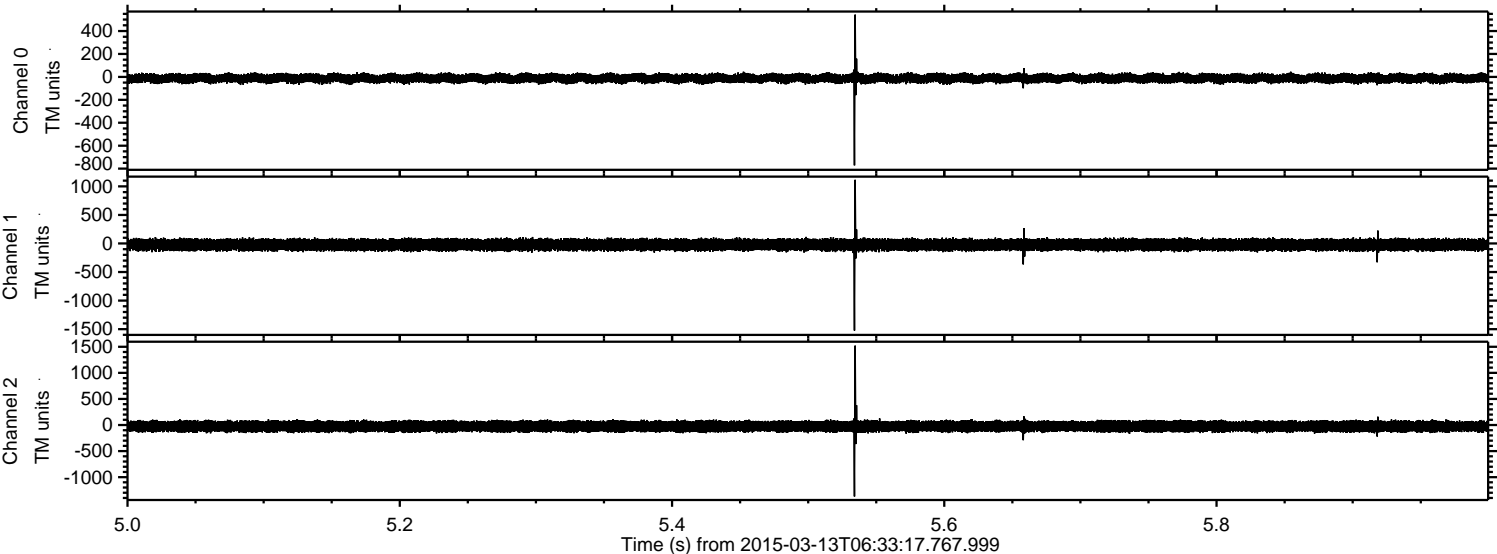
Processed Fri Mar 13 08:42:36 2015 by ELM ver.2012-10-06 from 001__elm20150313_063316__dat00.bin



Processed Fri Mar 13 08:42:37 2015 by ELM ver.2012-10-06 from 001__elm20150313_063316__dat00.bin



Processed Fri Mar 13 08:42:37 2015 by ELM ver.2012-10-06 from 001__elm20150313_063316__dat00.bin

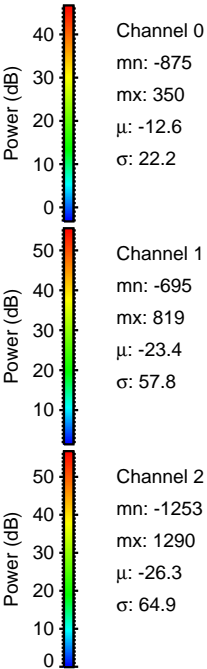
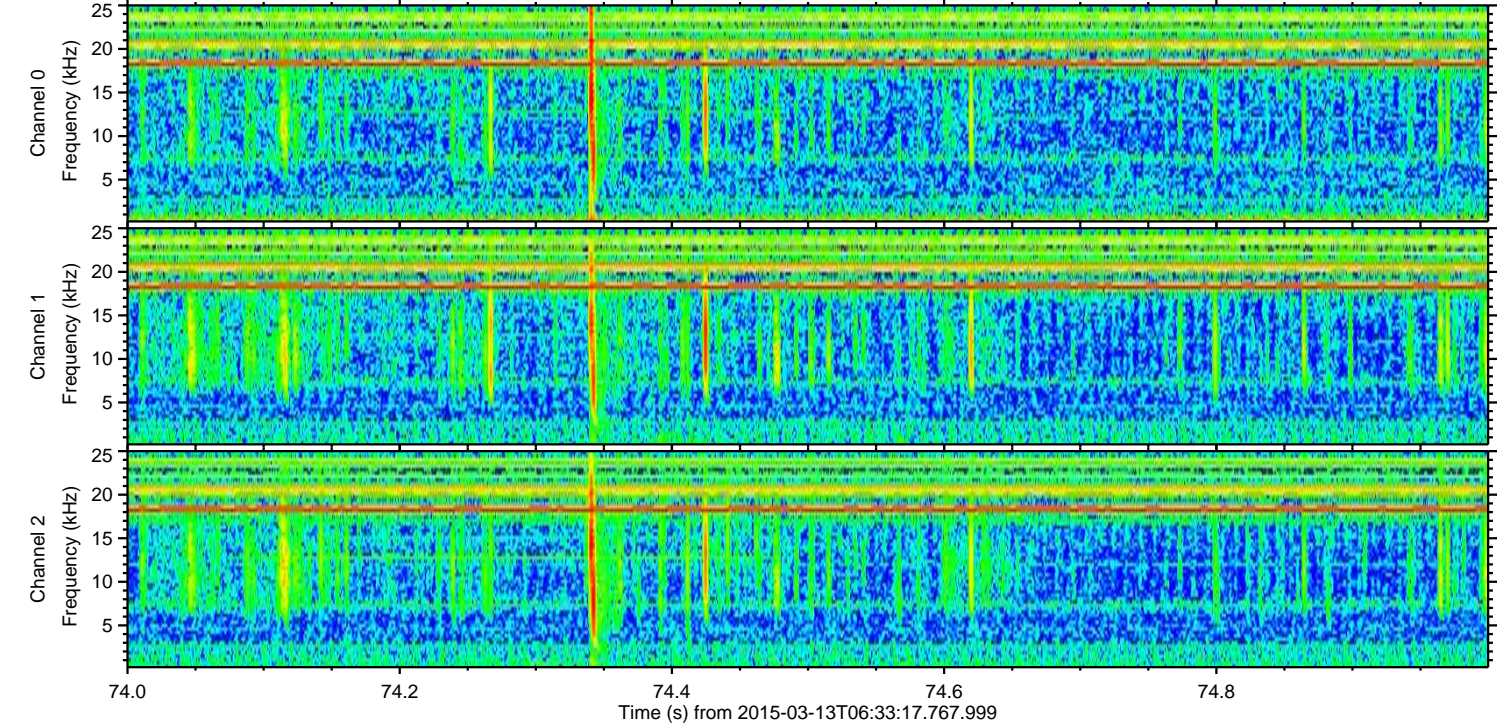
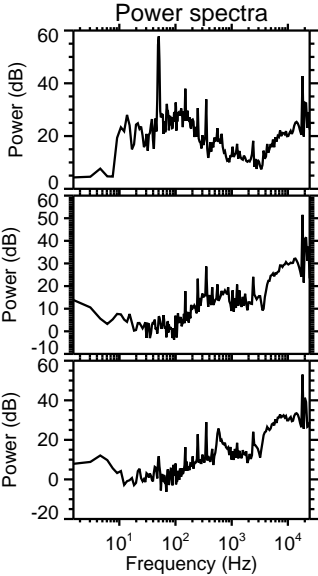
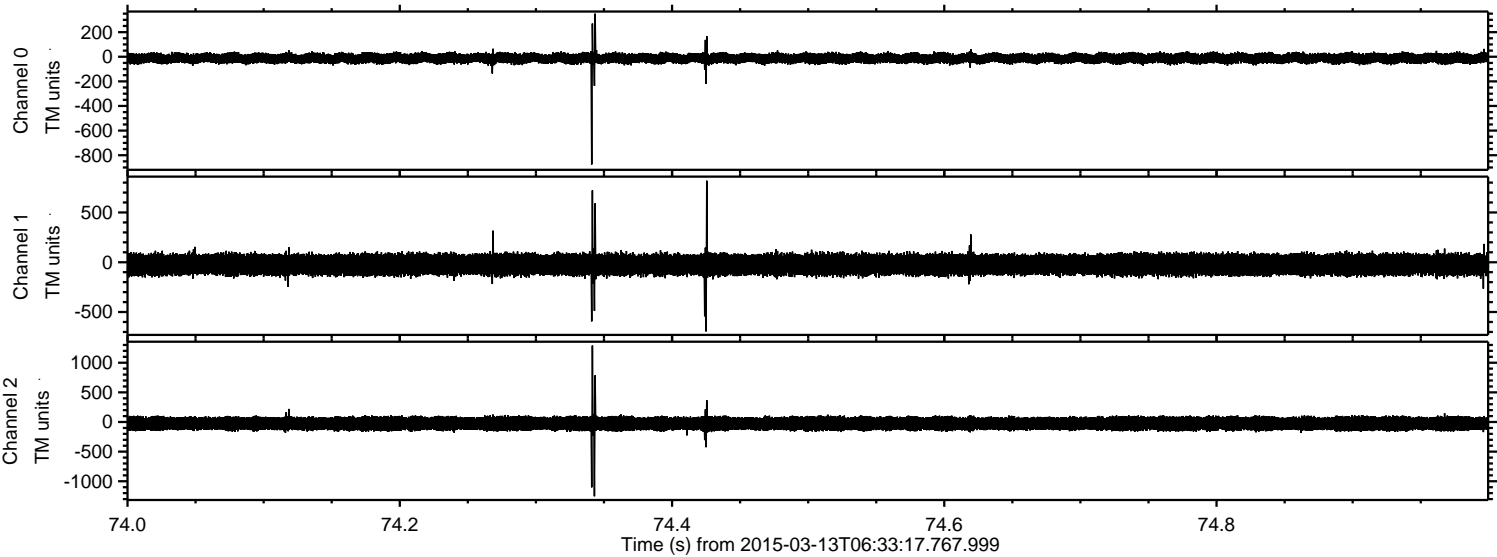


Channel 0
mn: -772
mx: 543
 μ : -12.6
 σ : 21.0

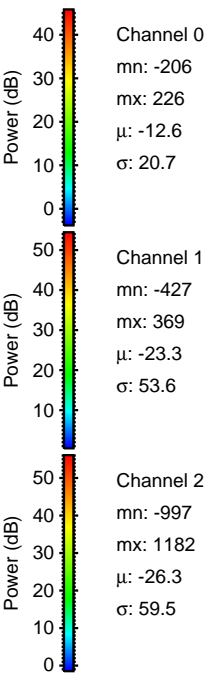
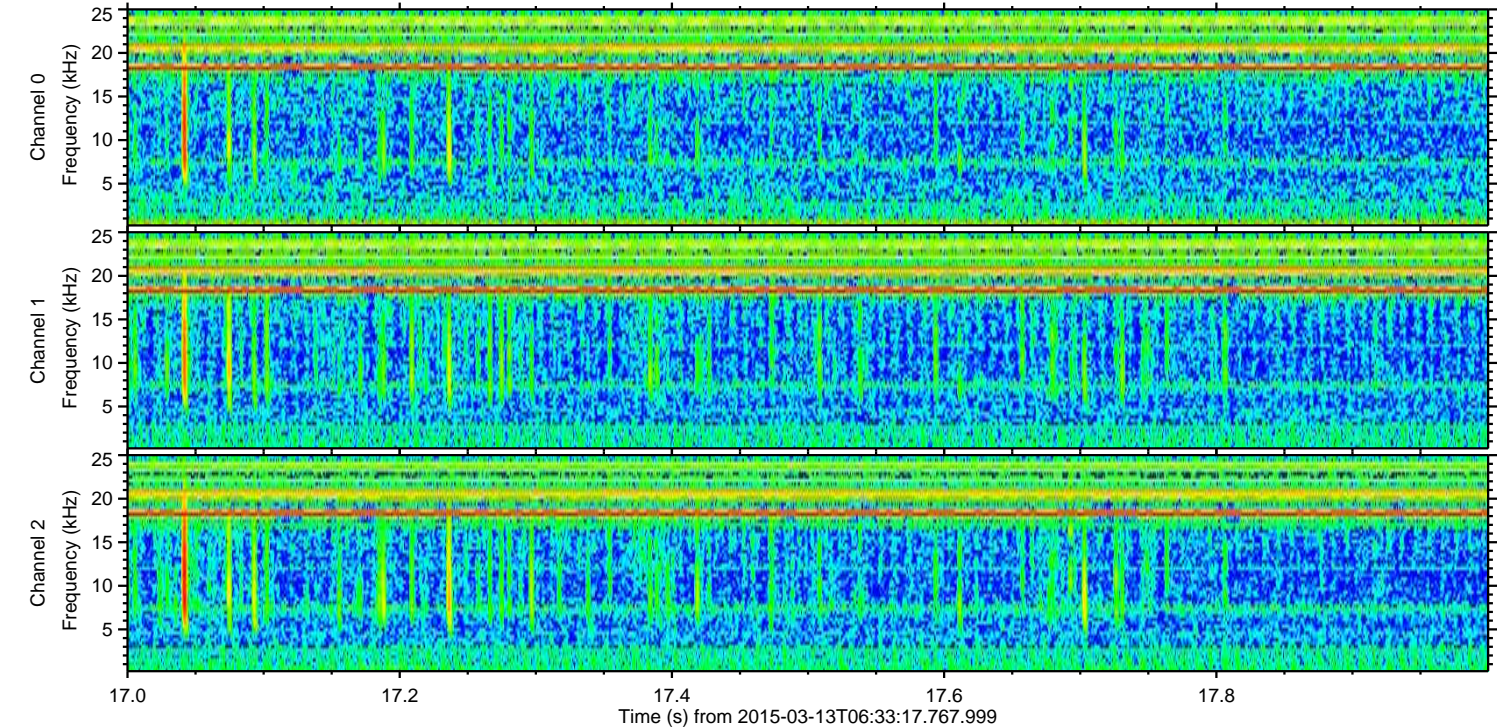
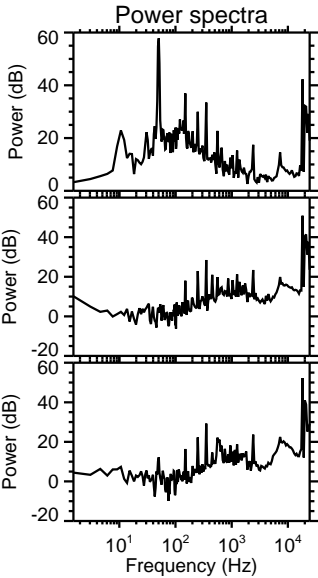
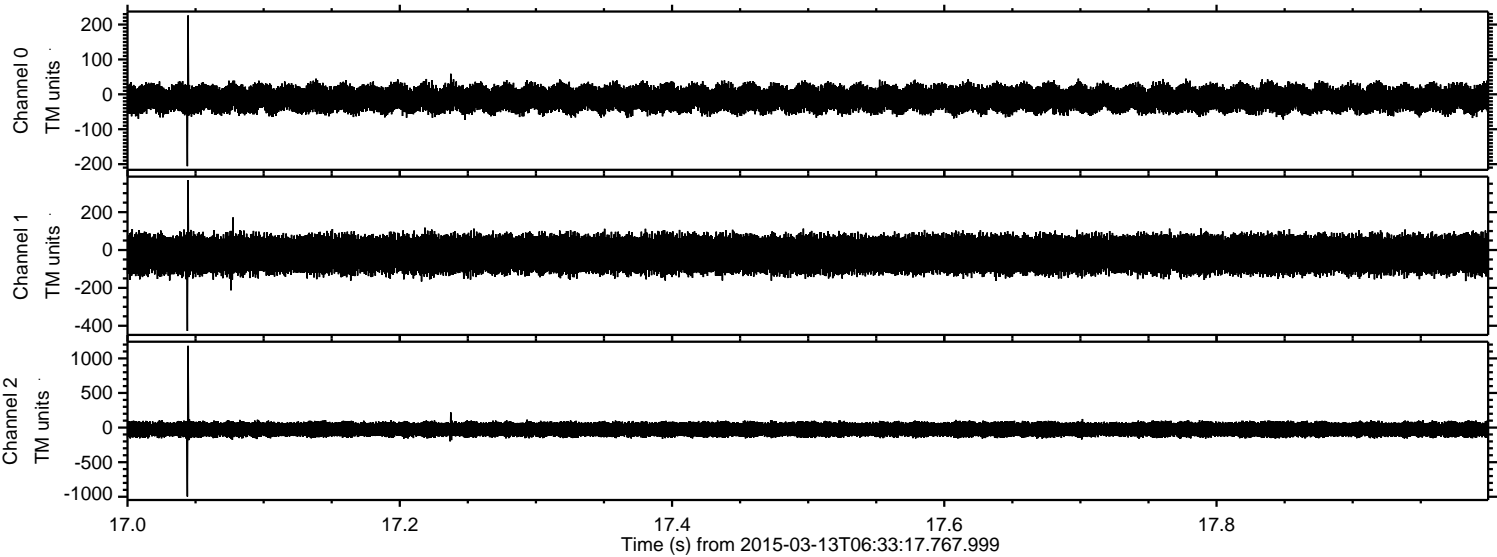
Channel 1
mn: -1525
mx: 1115
 μ : -23.3
 σ : 54.1

Channel 2
mn: -1370
mx: 1521
 μ : -26.3
 σ : 59.4

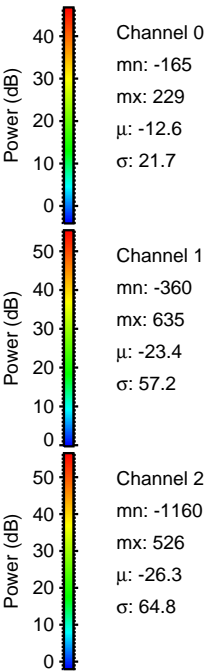
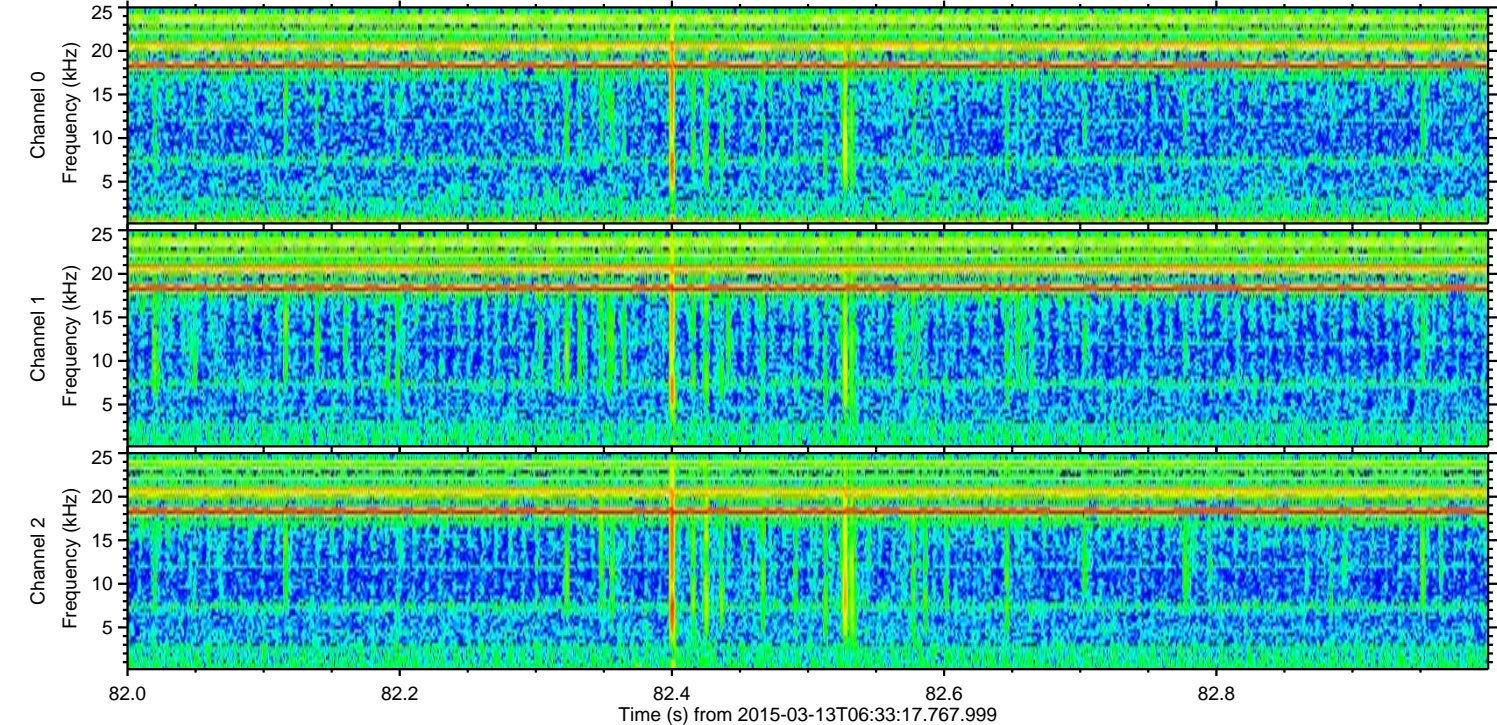
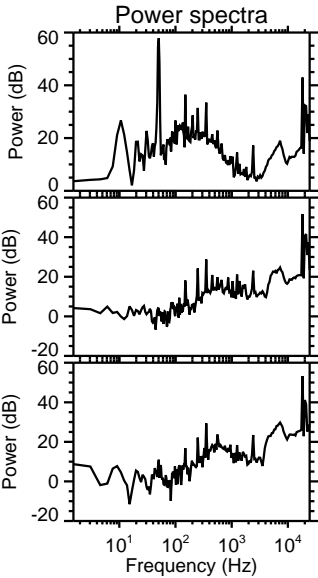
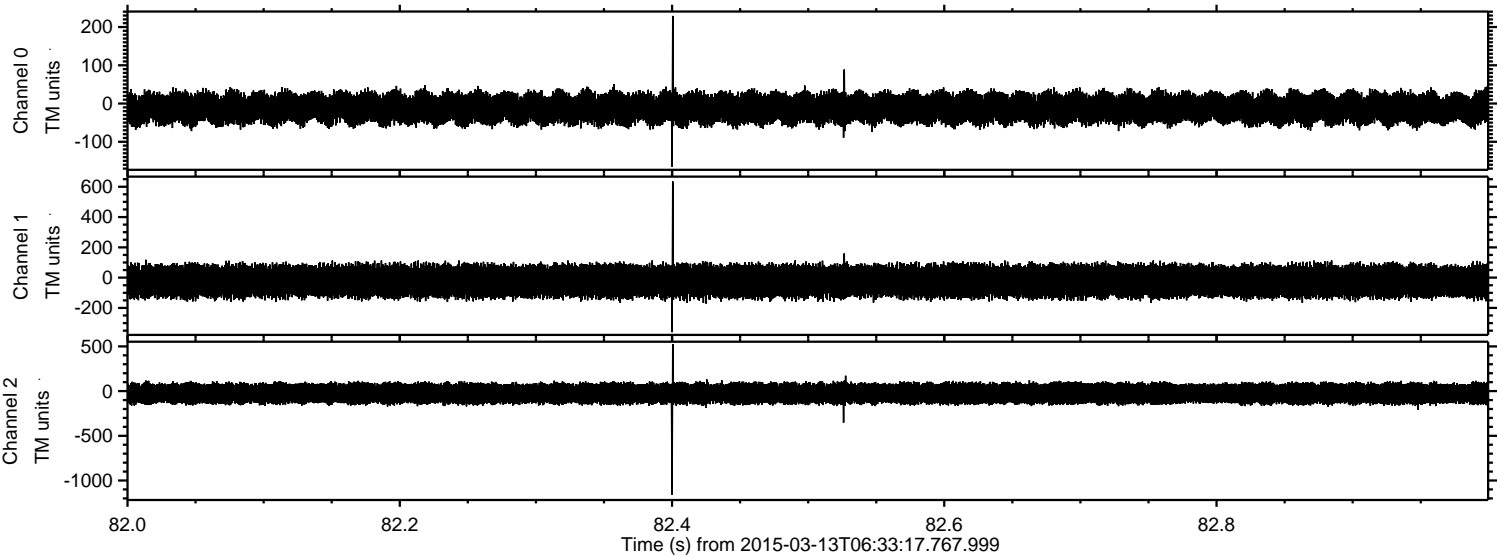
Processed Fri Mar 13 08:42:38 2015 by ELM ver.2012-10-06 from 001__elm20150313_063316__dat00.bin



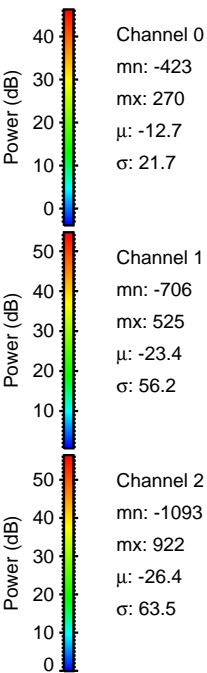
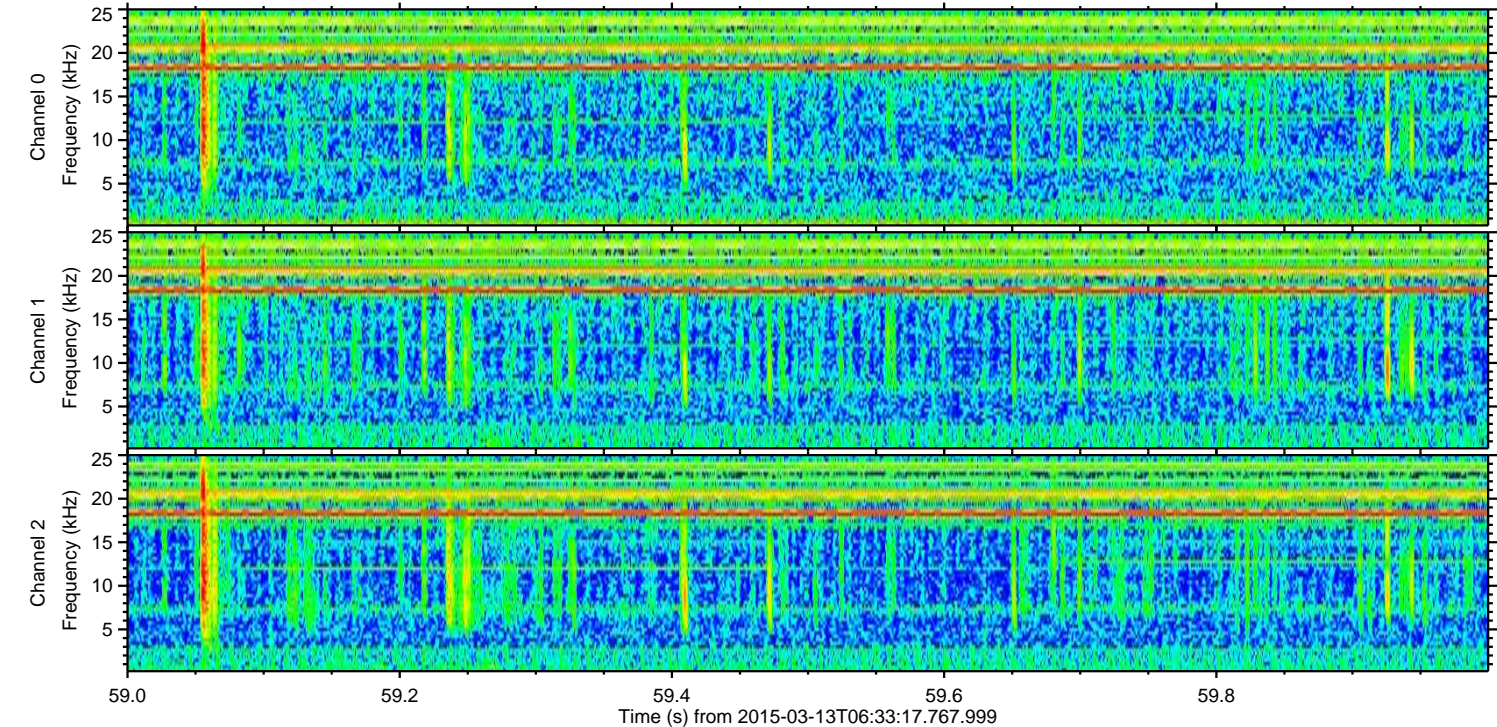
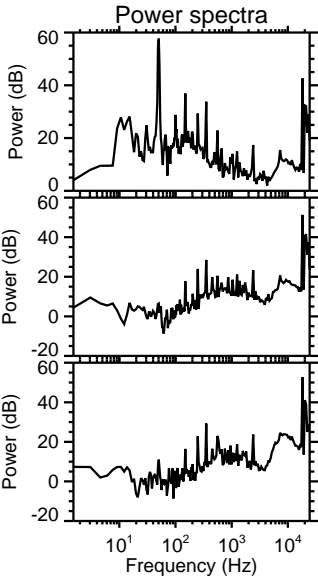
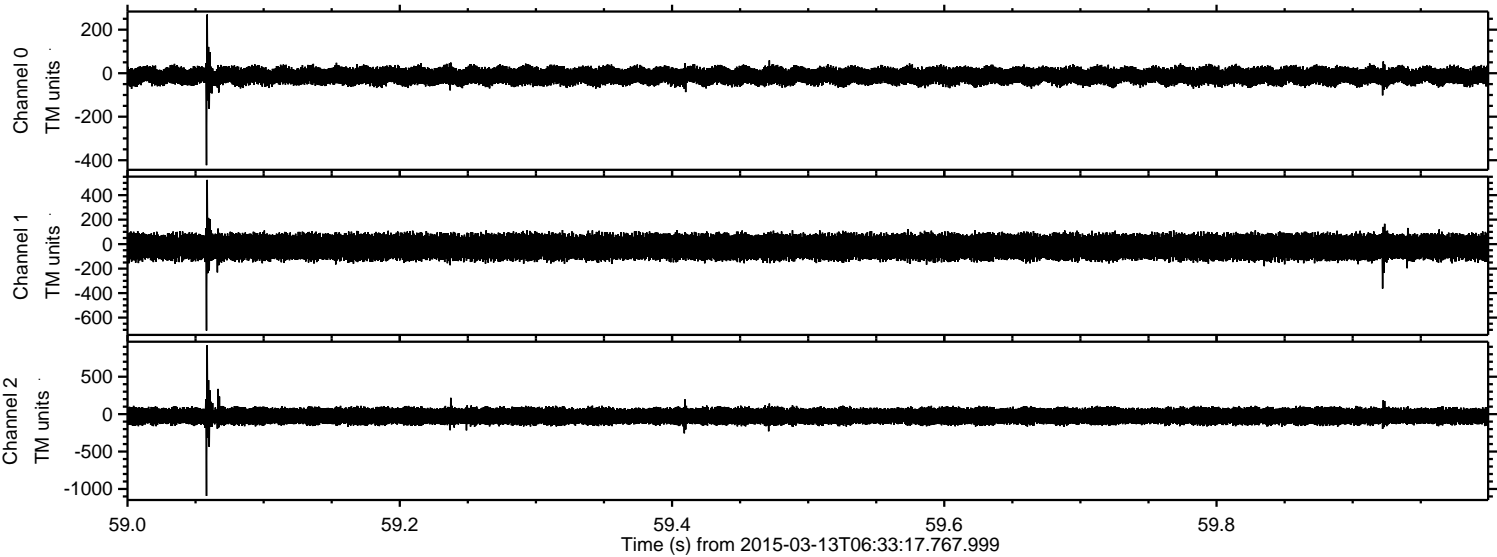
Processed Fri Mar 13 08:42:39 2015 by ELM ver.2012-10-06 from 001__elm20150313_063316__dat00.bin



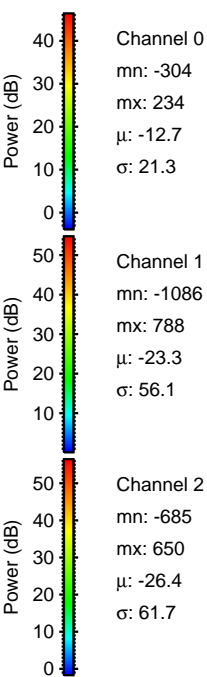
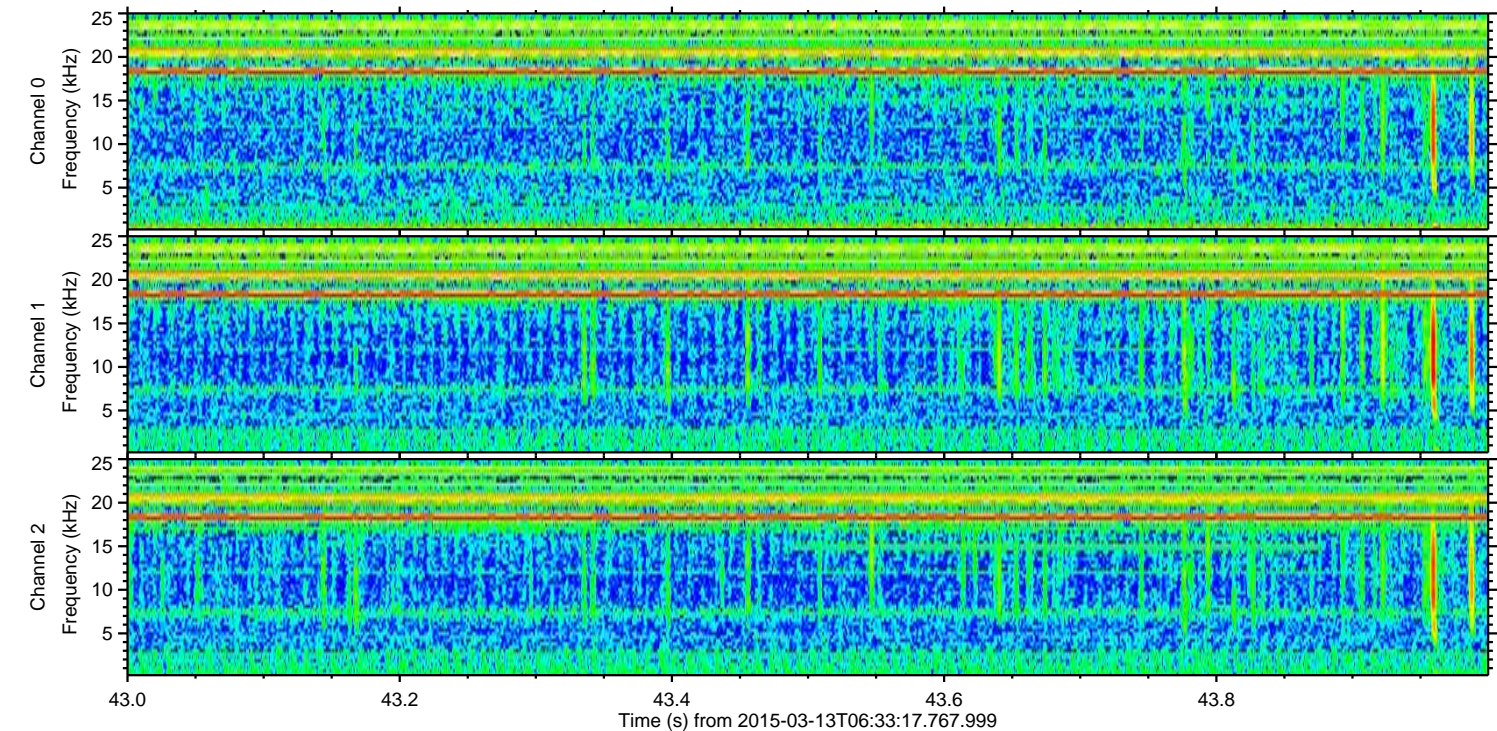
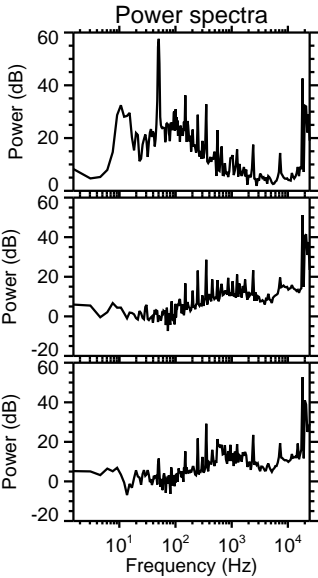
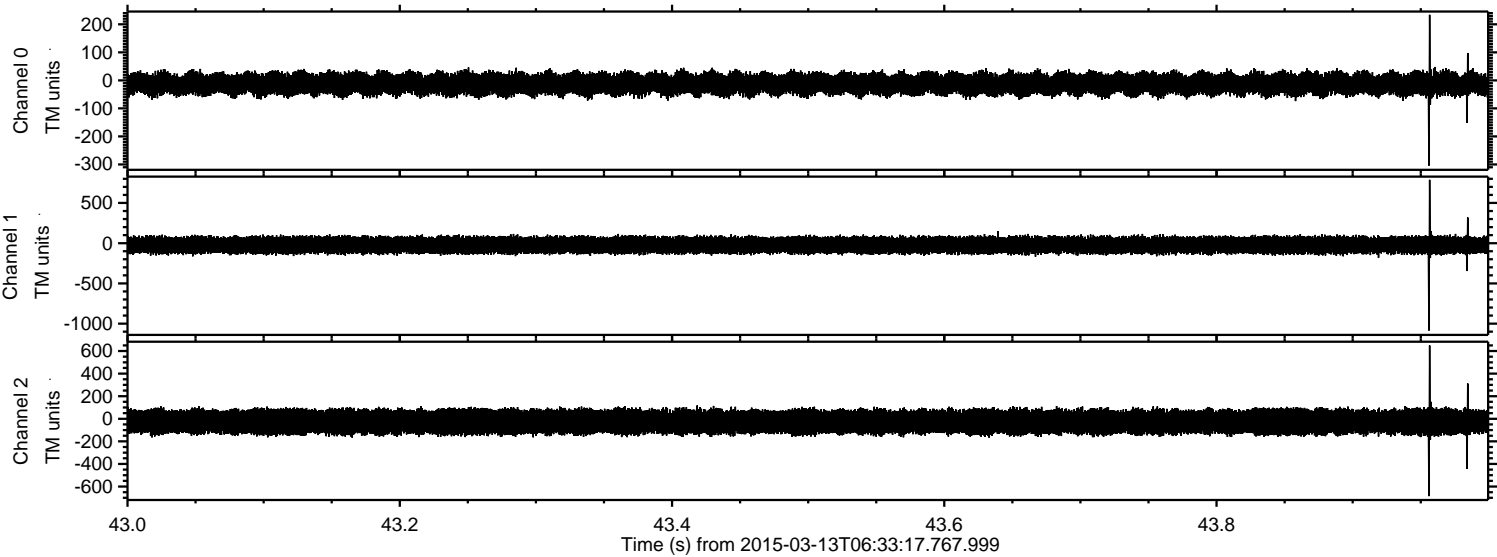
Processed Fri Mar 13 08:42:40 2015 by ELM ver.2012-10-06 from 001__elm20150313_063316__dat00.bin



Processed Fri Mar 13 08:42:41 2015 by ELM ver.2012-10-06 from 001__elm20150313_063316__dat00.bin



Processed Fri Mar 13 08:42:42 2015 by ELM ver.2012-10-06 from 001__elm20150313_063316__dat00.bin

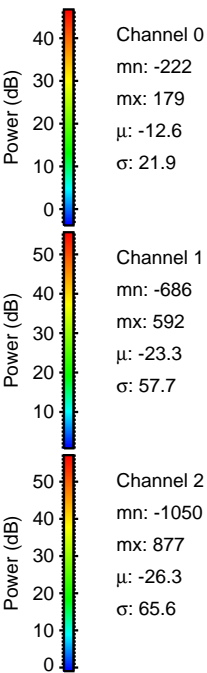
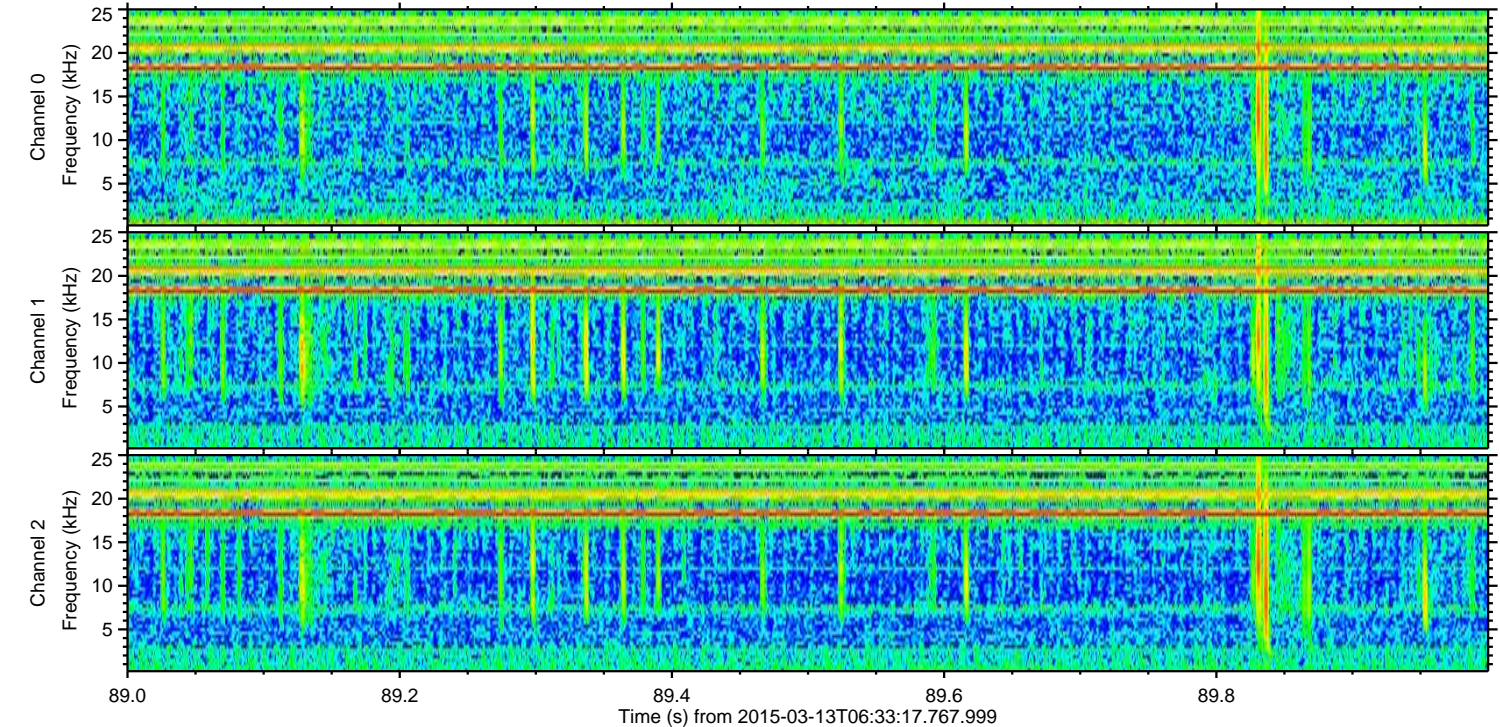
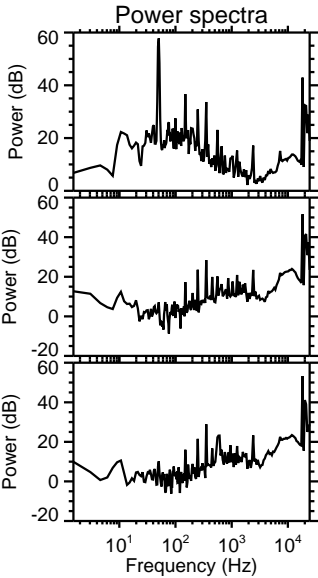
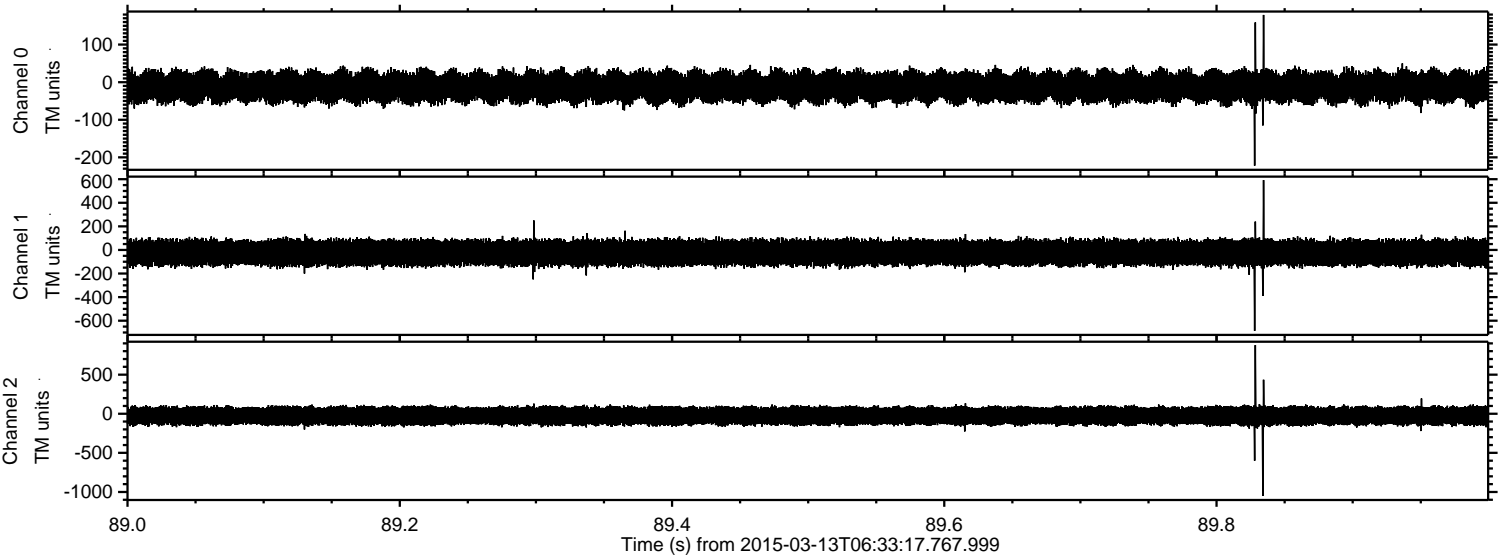


Channel 0
mn: -304
mx: 234
 μ : -12.7
 σ : 21.3

Channel 1
mn: -1086
mx: 788
 μ : -23.3
 σ : 56.1

Channel 2
mn: -685
mx: 650
 μ : -26.4
 σ : 61.7

Processed Fri Mar 13 08:42:43 2015 by ELM ver.2012-10-06 from 001__elm20150313_063316__dat00.bin



Processed Fri Mar 13 08:42:44 2015 by ELM ver.2012-10-06 from 001__elm20150313_063316__dat00.bin

