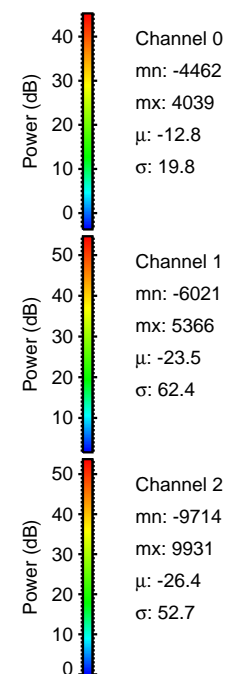
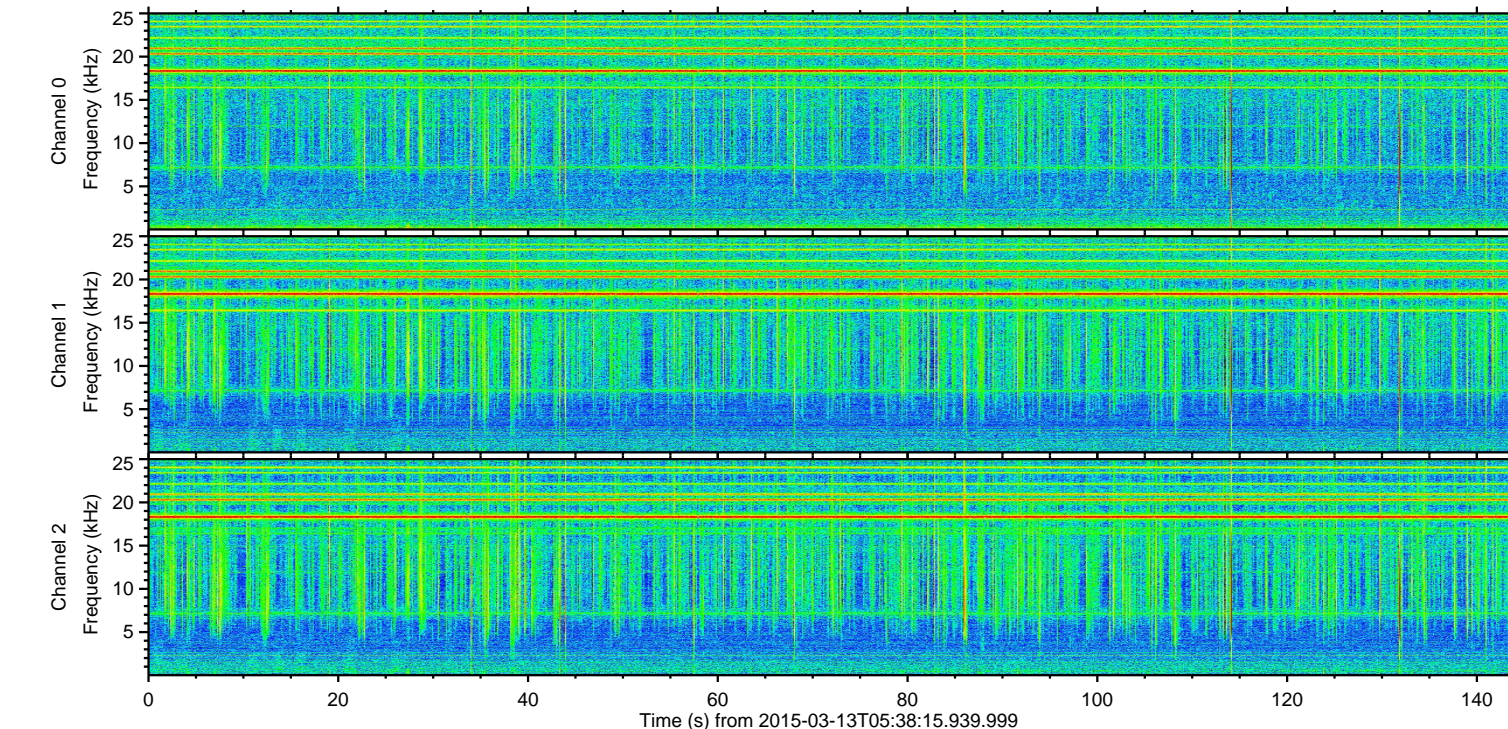
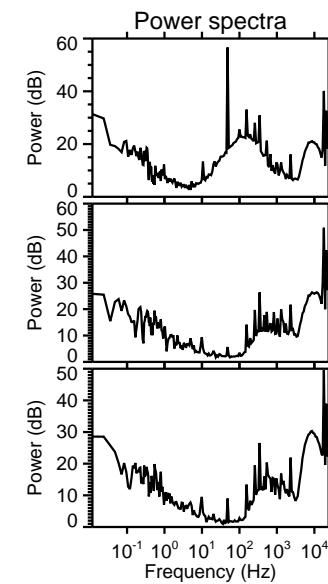
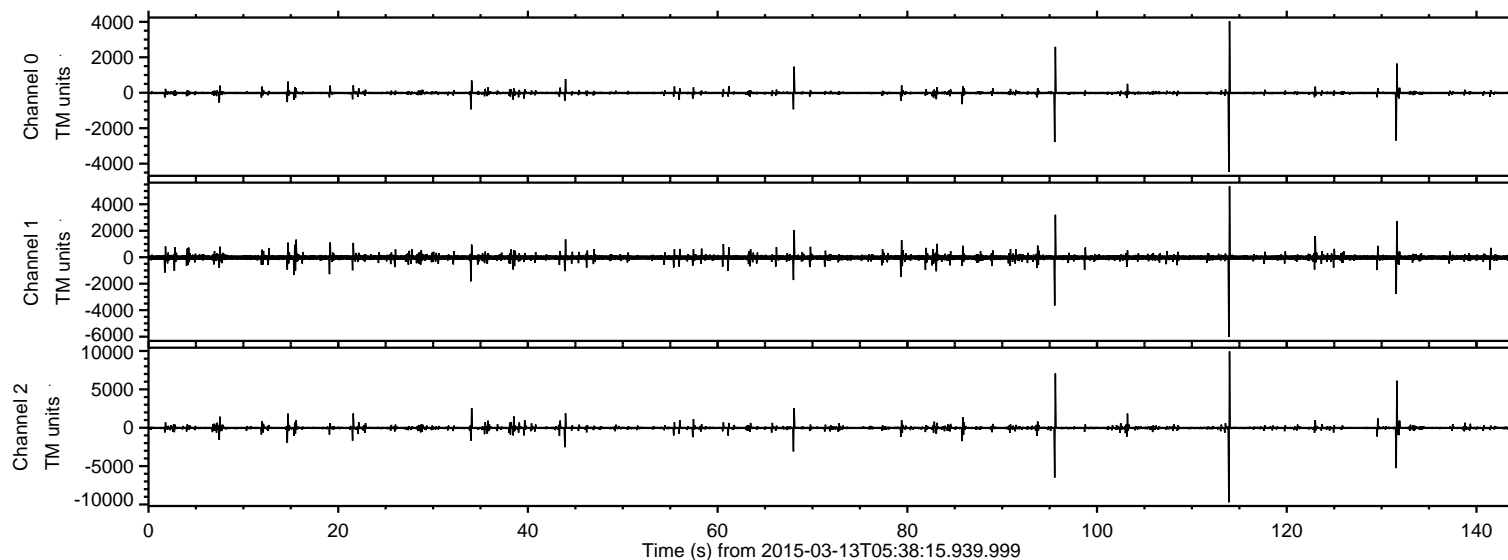


# ELMAVAN 3D WAVEFORMS (Measured data sampled at 50 kHz) 49807 packets of 144 samples from 2015-03-13T05:38:15.939.999.

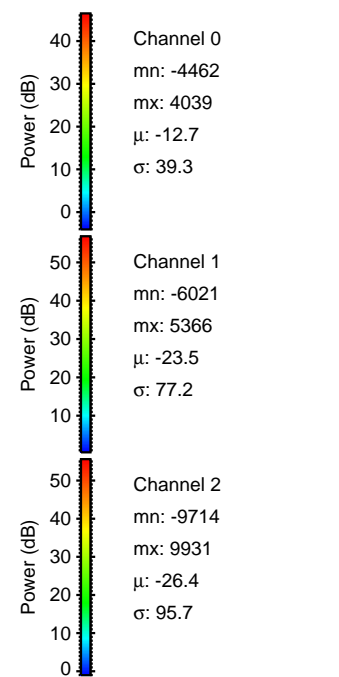
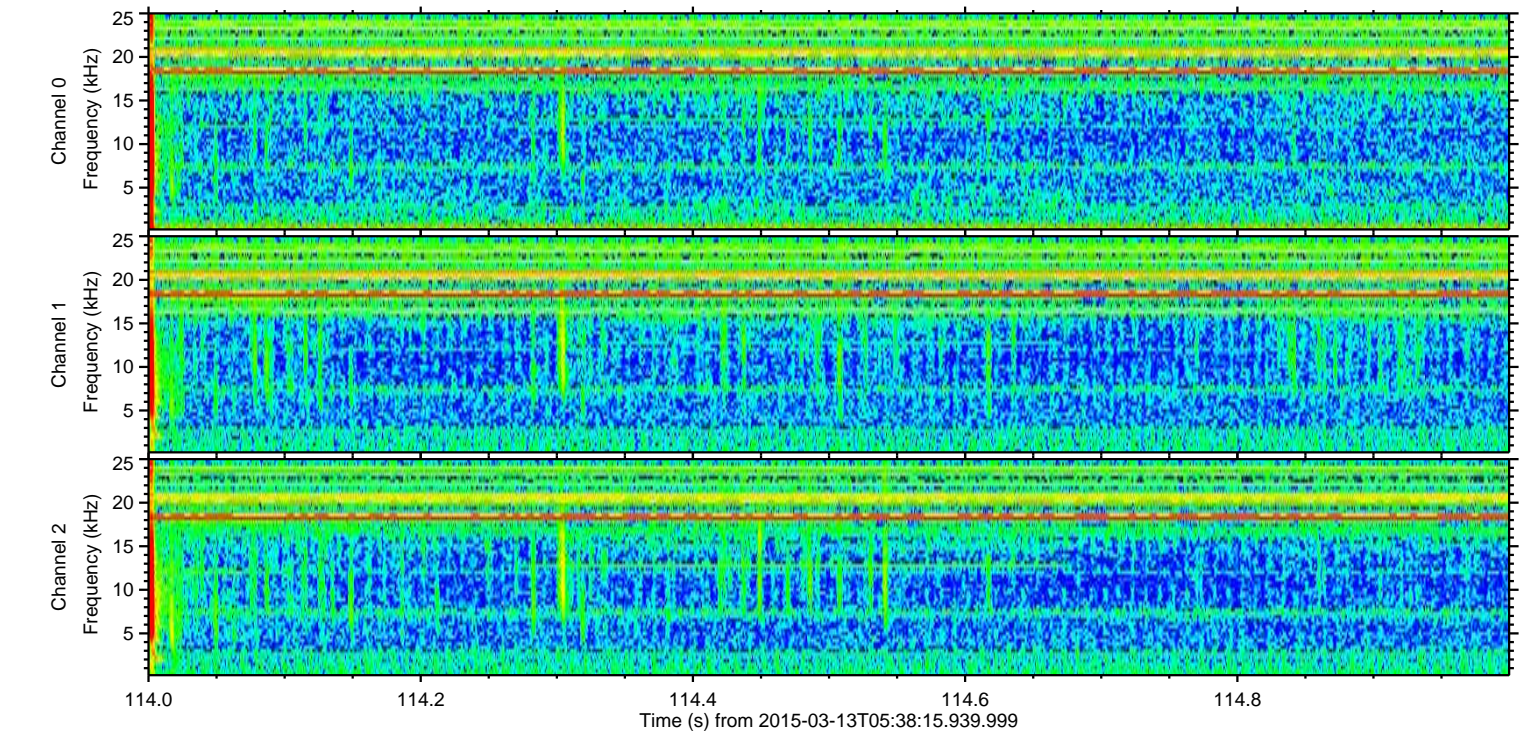
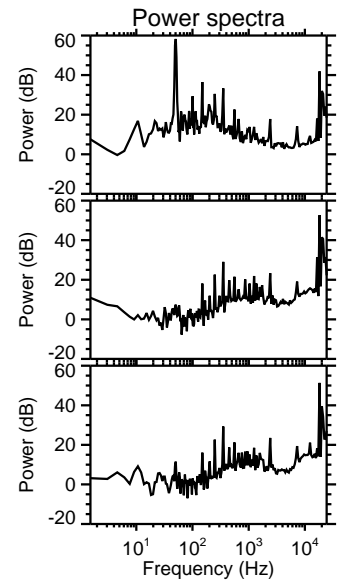
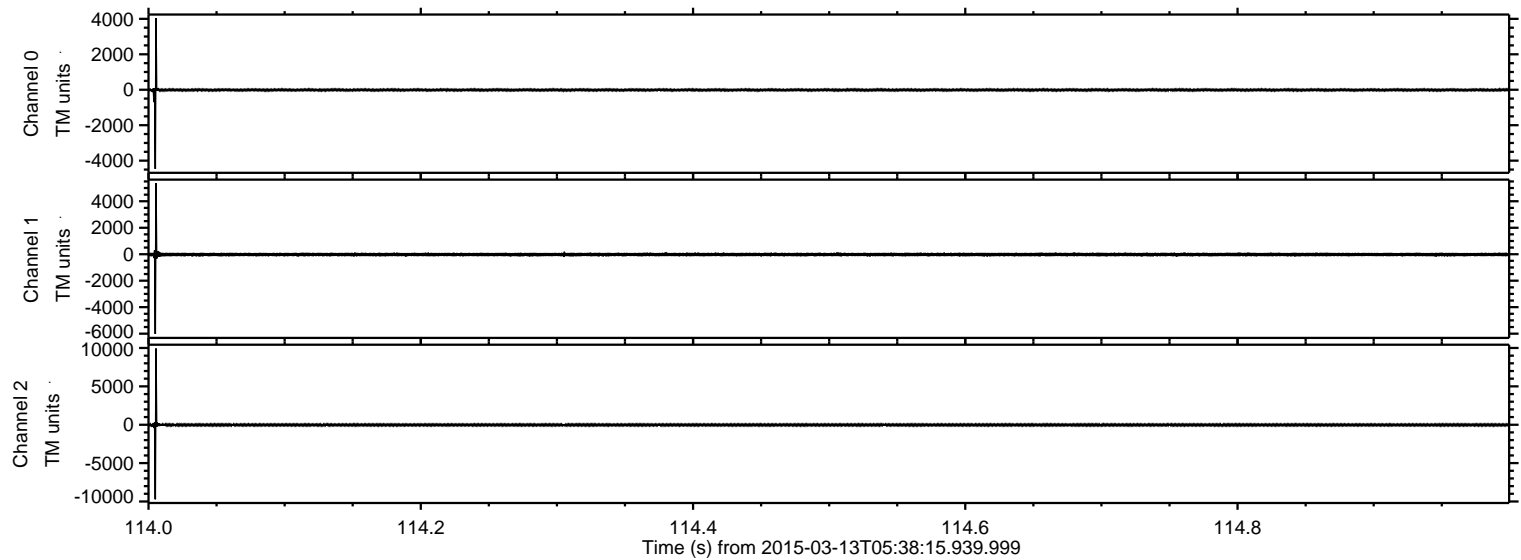
Processed Fri Mar 13 08:22:26 2015 by ELM ver.2012-10-06 from 001\_\_elm20150313\_053814\_\_dat00.bin





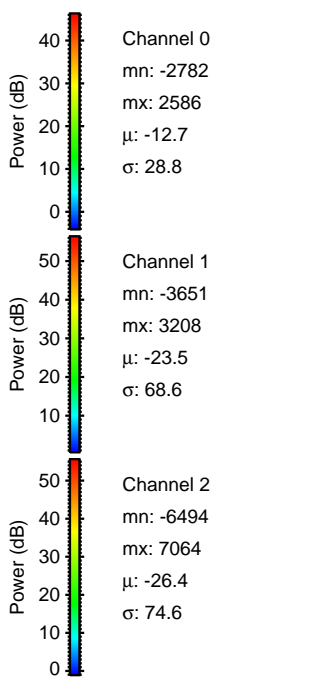
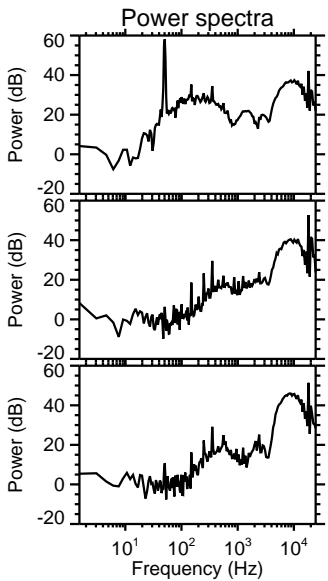
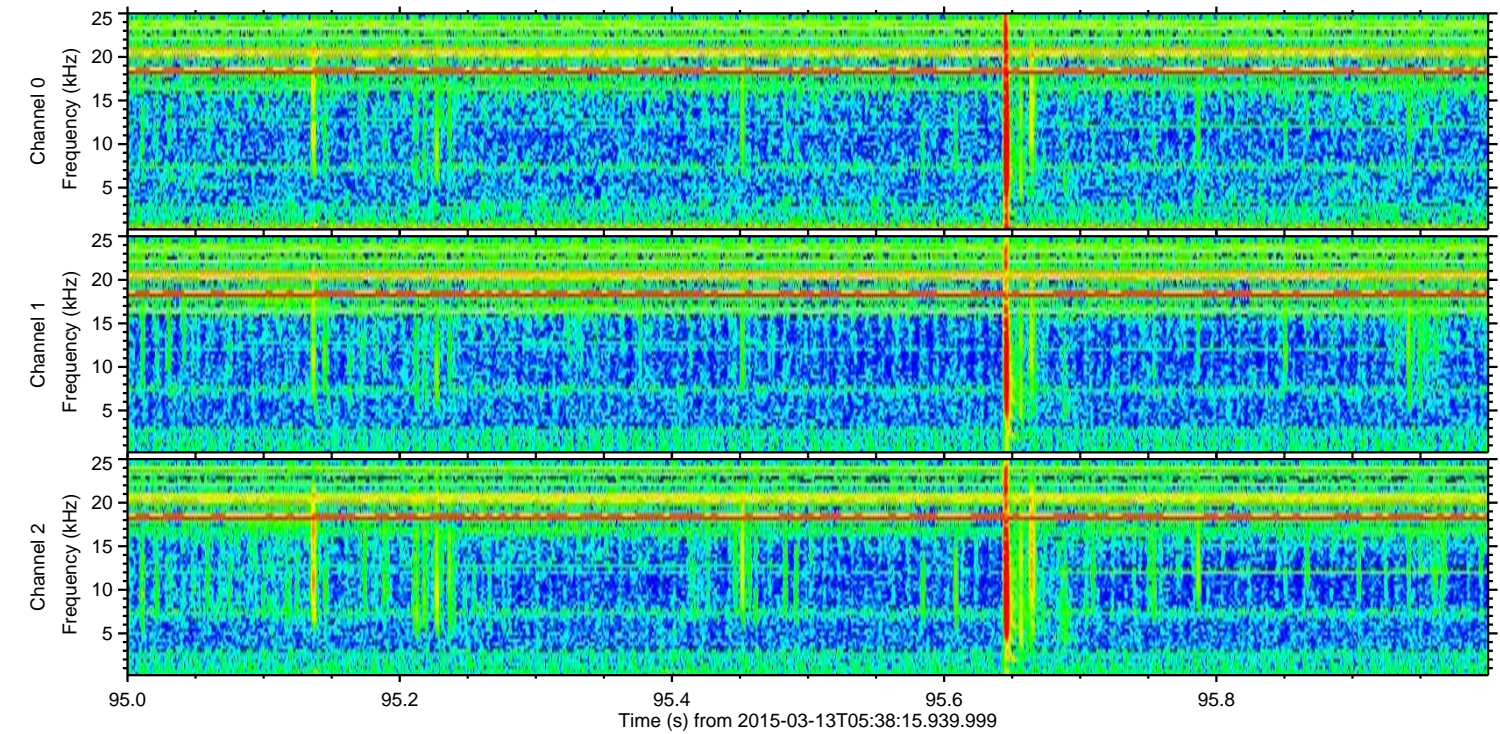
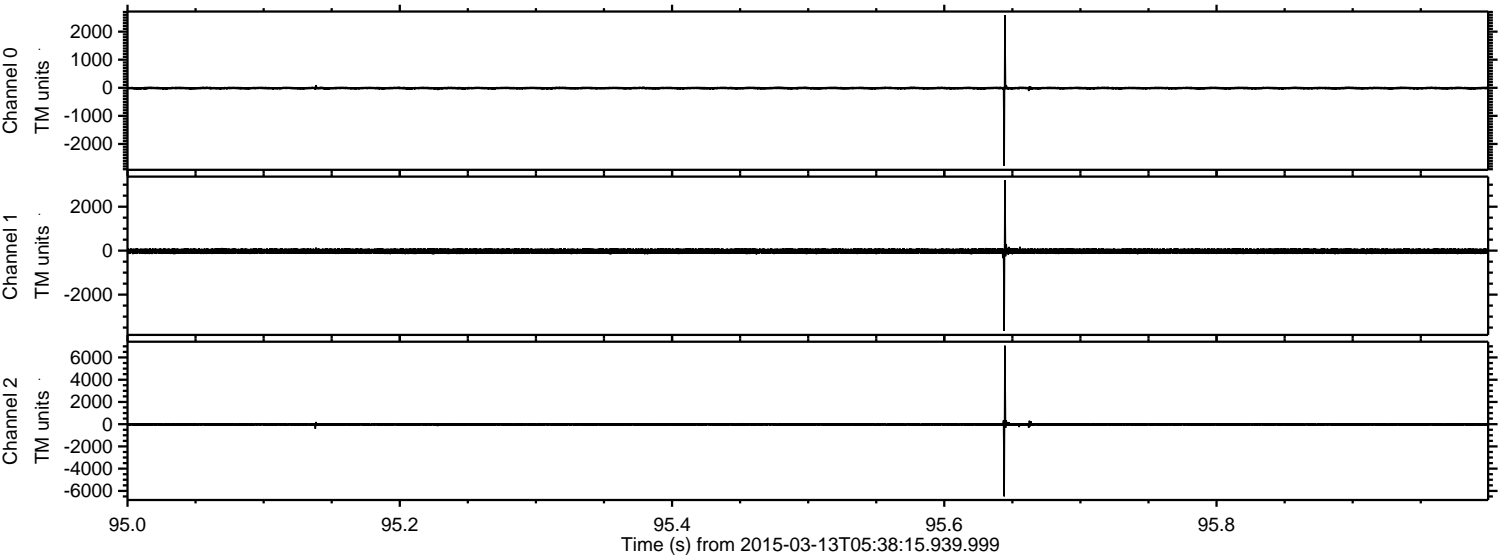
ELMAVAN 3D WAVEFORMS (Measured data sampled at 50 kHz) 49807 packets of 144 samples from 2015-03-13T05:38:15.939.999. Part 115/144

Processed Fri Mar 13 08:22:37 2015 by ELM ver.2012-10-06 from 001\_\_elm20150313\_053814\_\_dat00.bin





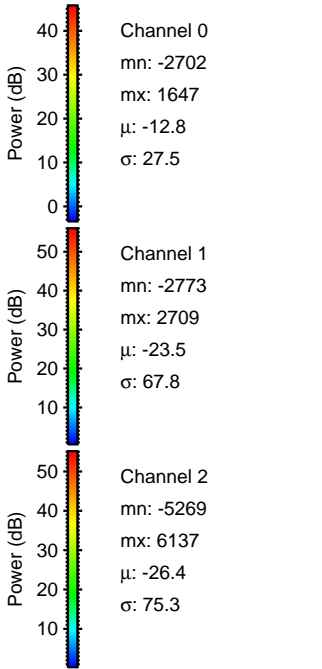
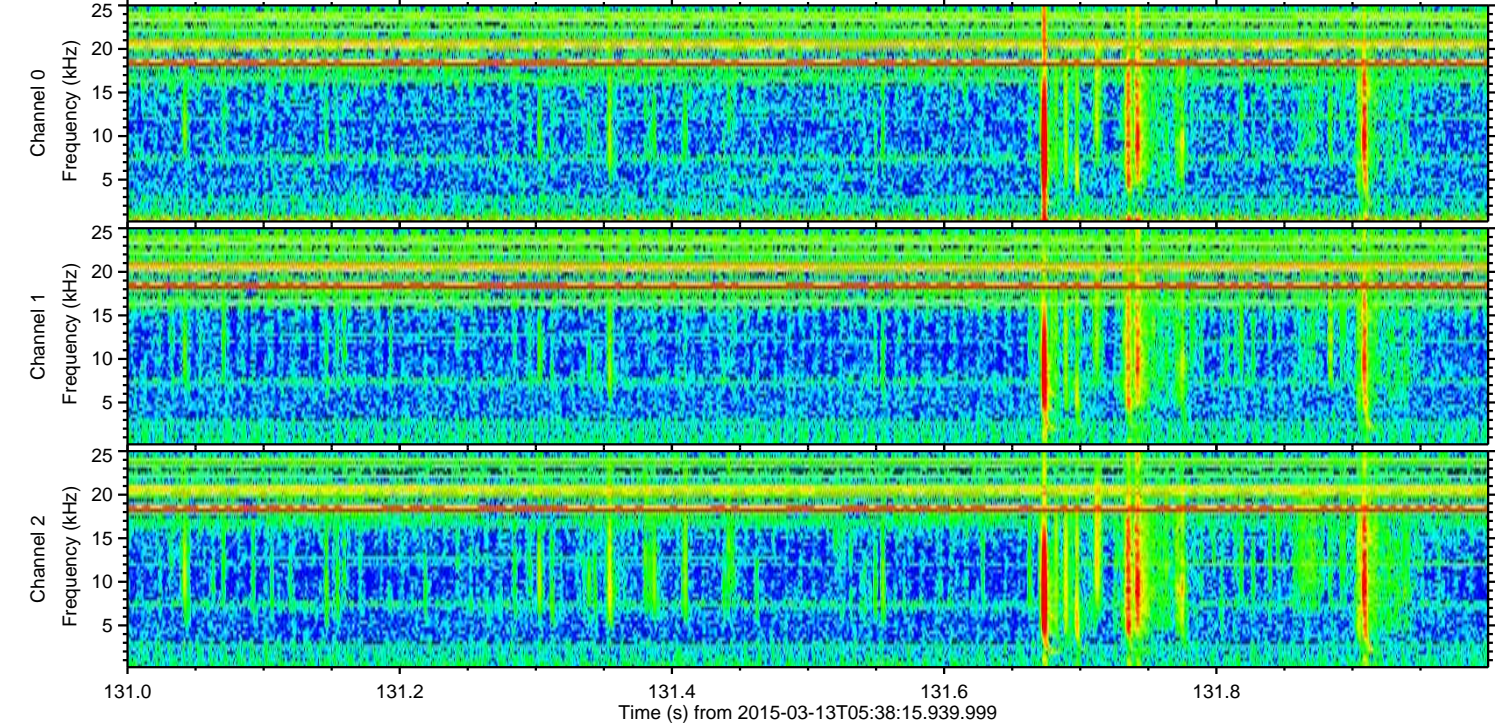
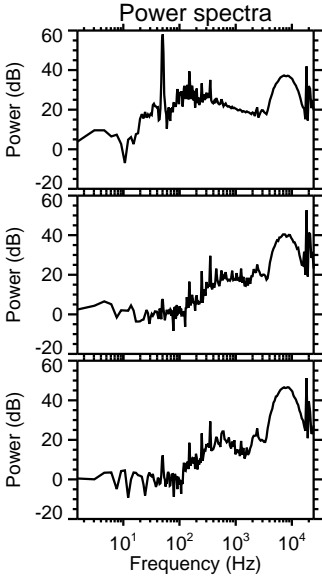
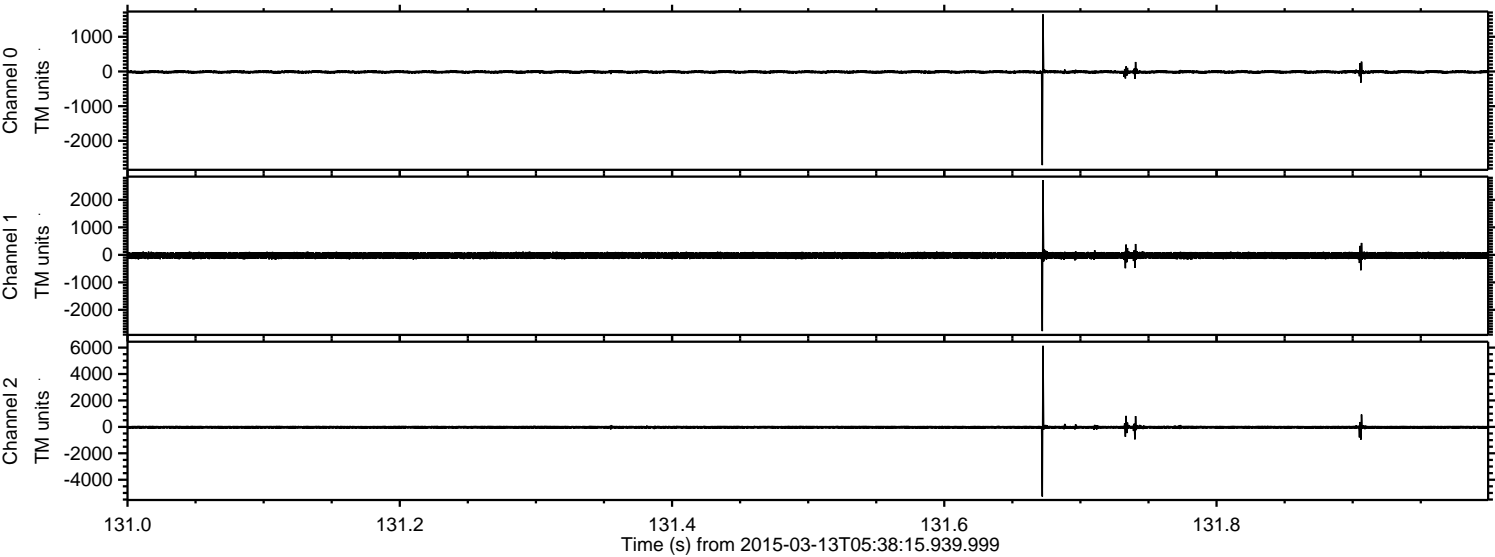
Processed Fri Mar 13 08:22:38 2015 by ELM ver.2012-10-06 from 001\_\_elm20150313\_053814\_\_dat00.bin





ELMAVAN 3D WAVEFORMS (Measured data sampled at 50 kHz) 49807 packets of 144 samples from 2015-03-13T05:38:15.939.999. Part 132/144

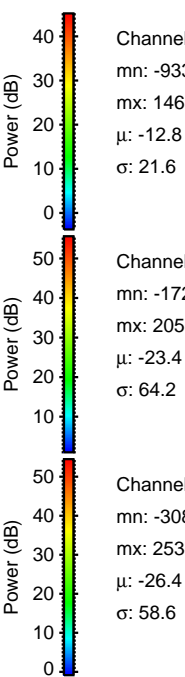
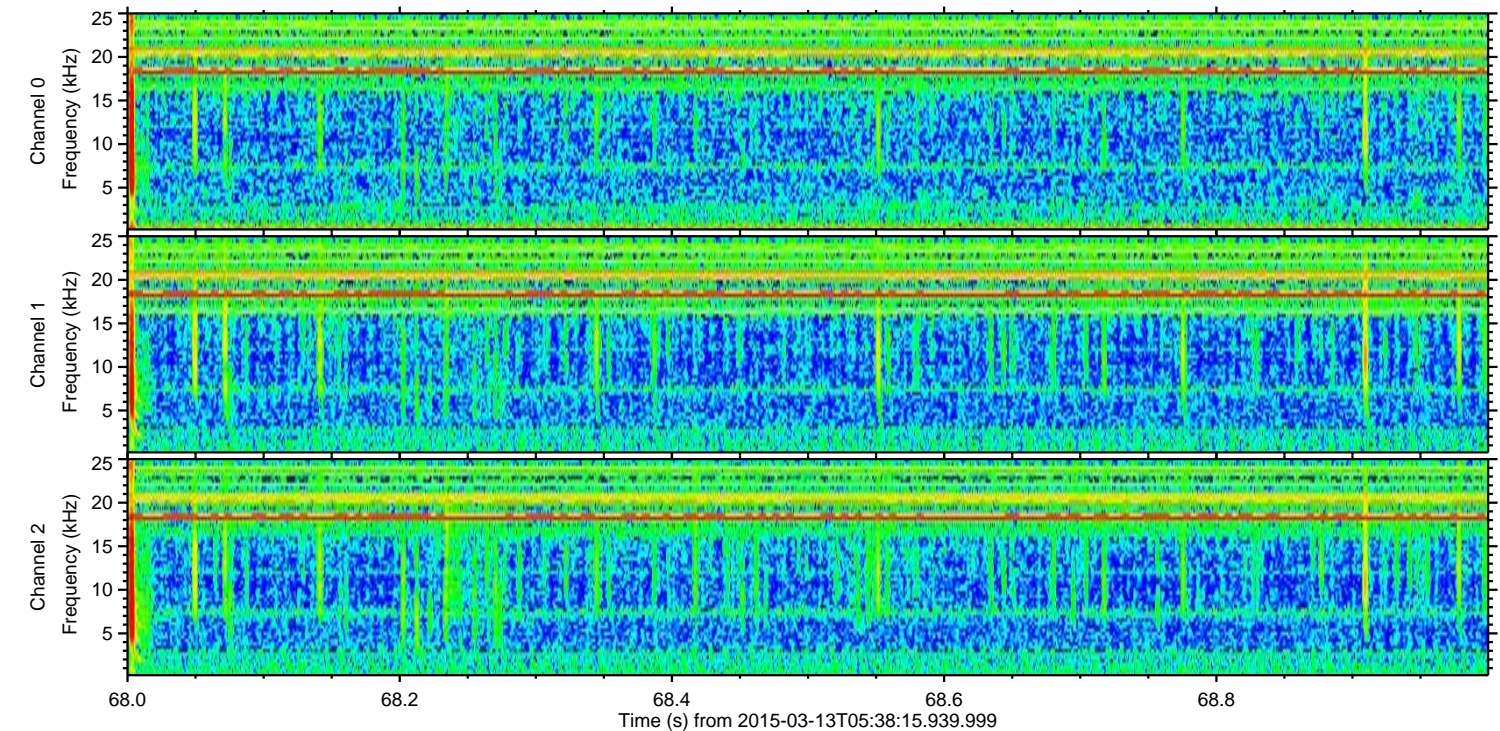
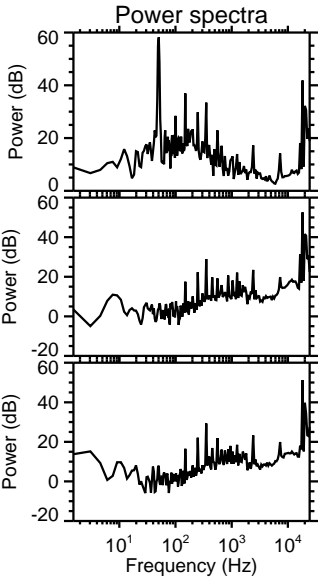
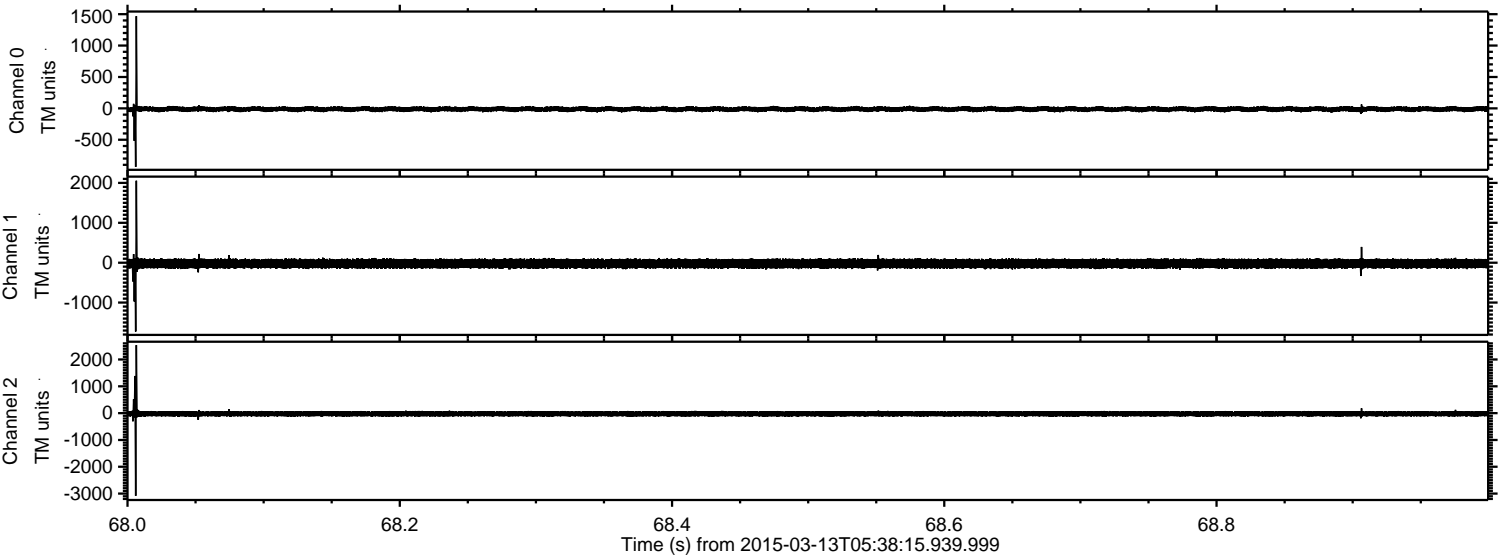
Processed Fri Mar 13 08:22:39 2015 by ELM ver.2012-10-06 from 001\_\_elm20150313\_053814\_\_dat00.bin





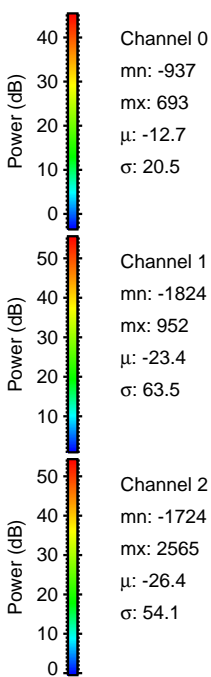
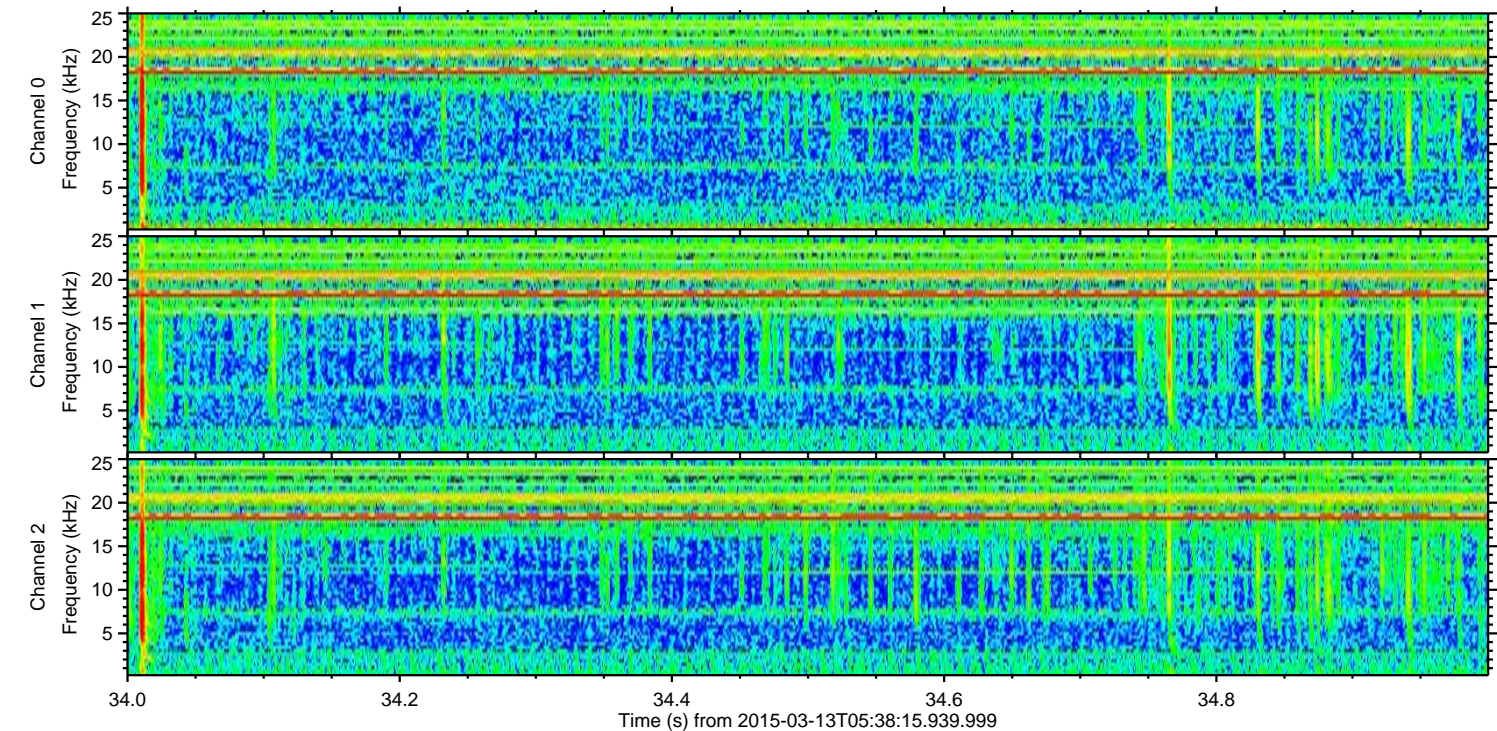
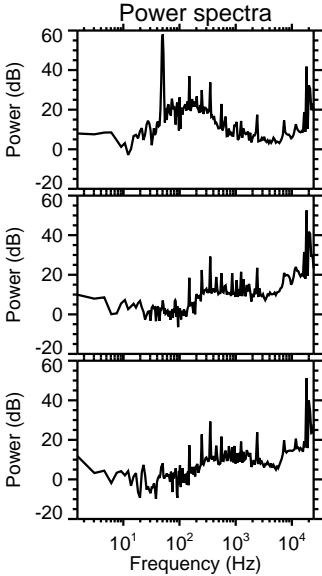
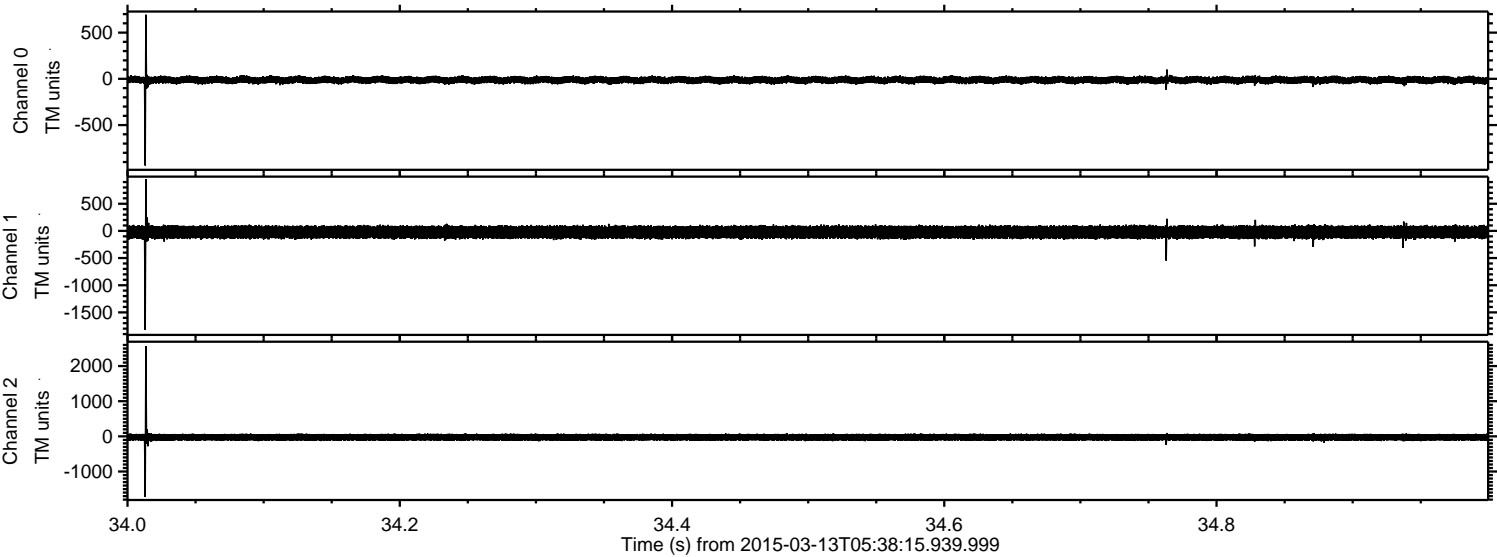
ELMAVAN 3D WAVEFORMS (Measured data sampled at 50 kHz) 49807 packets of 144 samples from 2015-03-13T05:38:15.939.999. Part 69/144

Processed Fri Mar 13 08:22:40 2015 by ELM ver.2012-10-06 from 001\_\_elm20150313\_053814\_\_dat00.bin





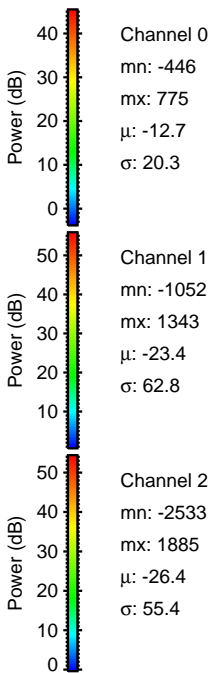
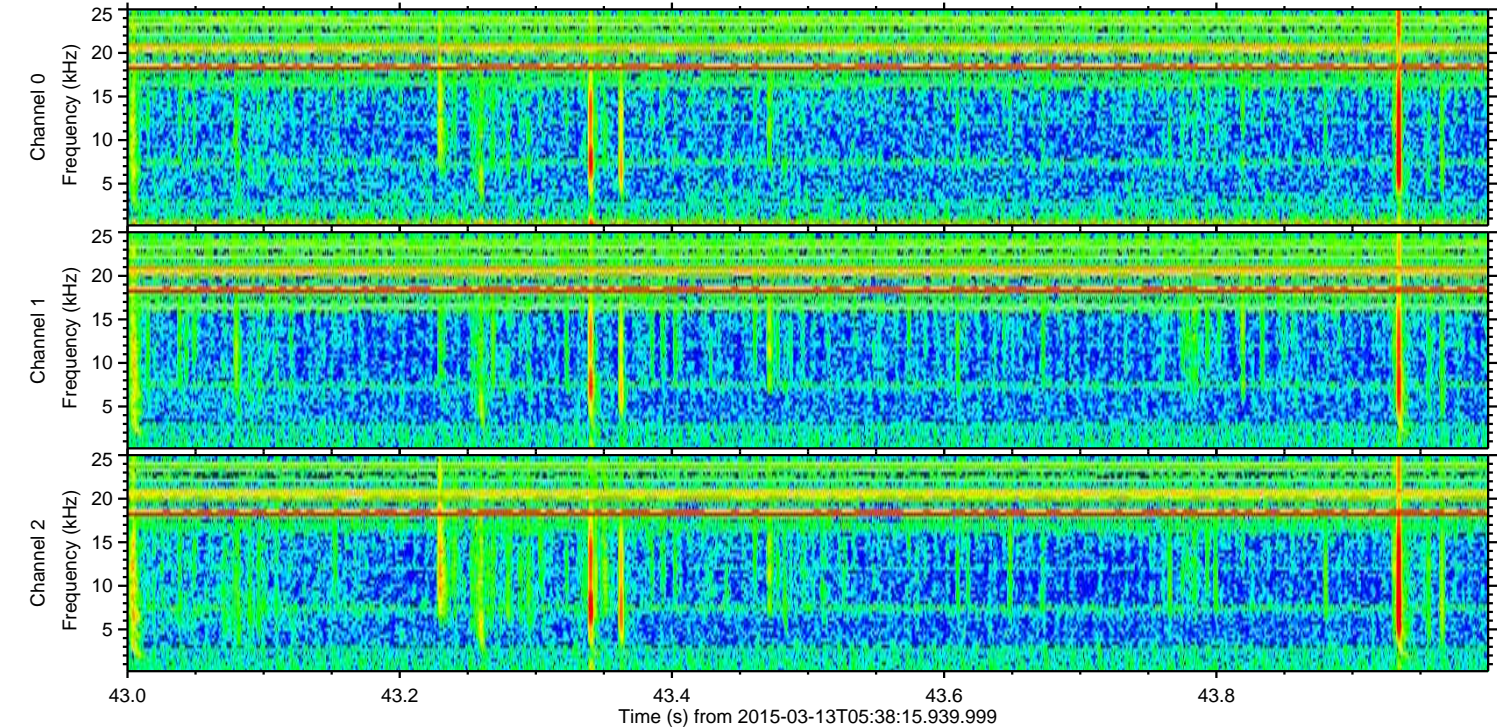
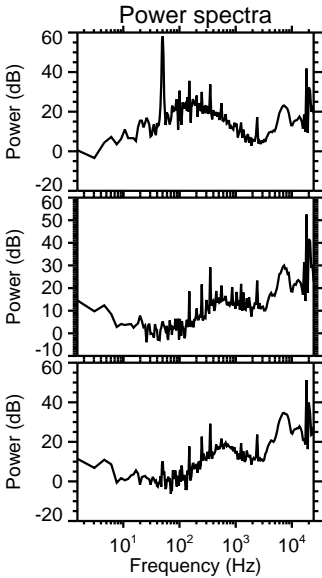
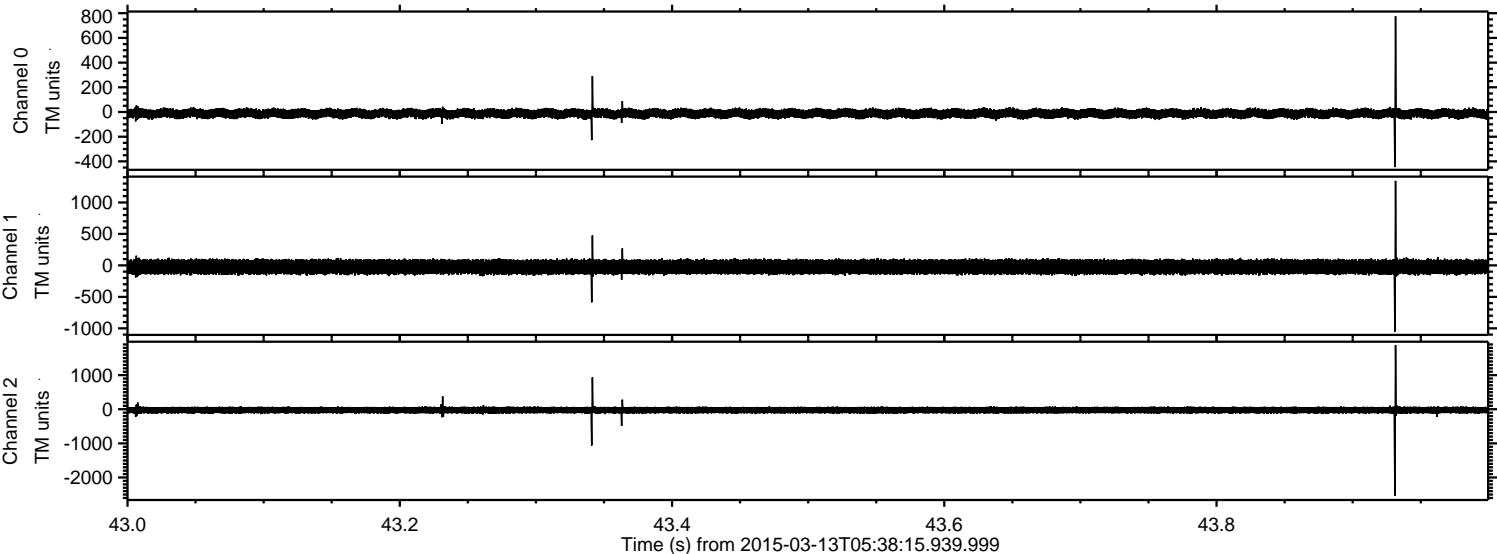
Processed Fri Mar 13 08:22:41 2015 by ELM ver.2012-10-06 from 001\_\_elm20150313\_053814\_\_dat00.bin





ELMAVAN 3D WAVEFORMS (Measured data sampled at 50 kHz) 49807 packets of 144 samples from 2015-03-13T05:38:15.939.999. Part 44/144

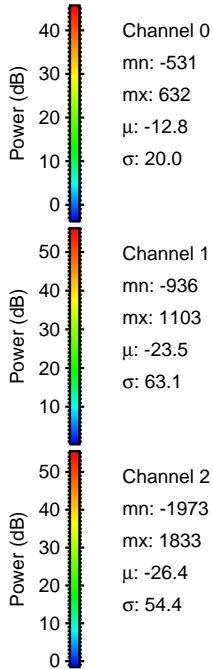
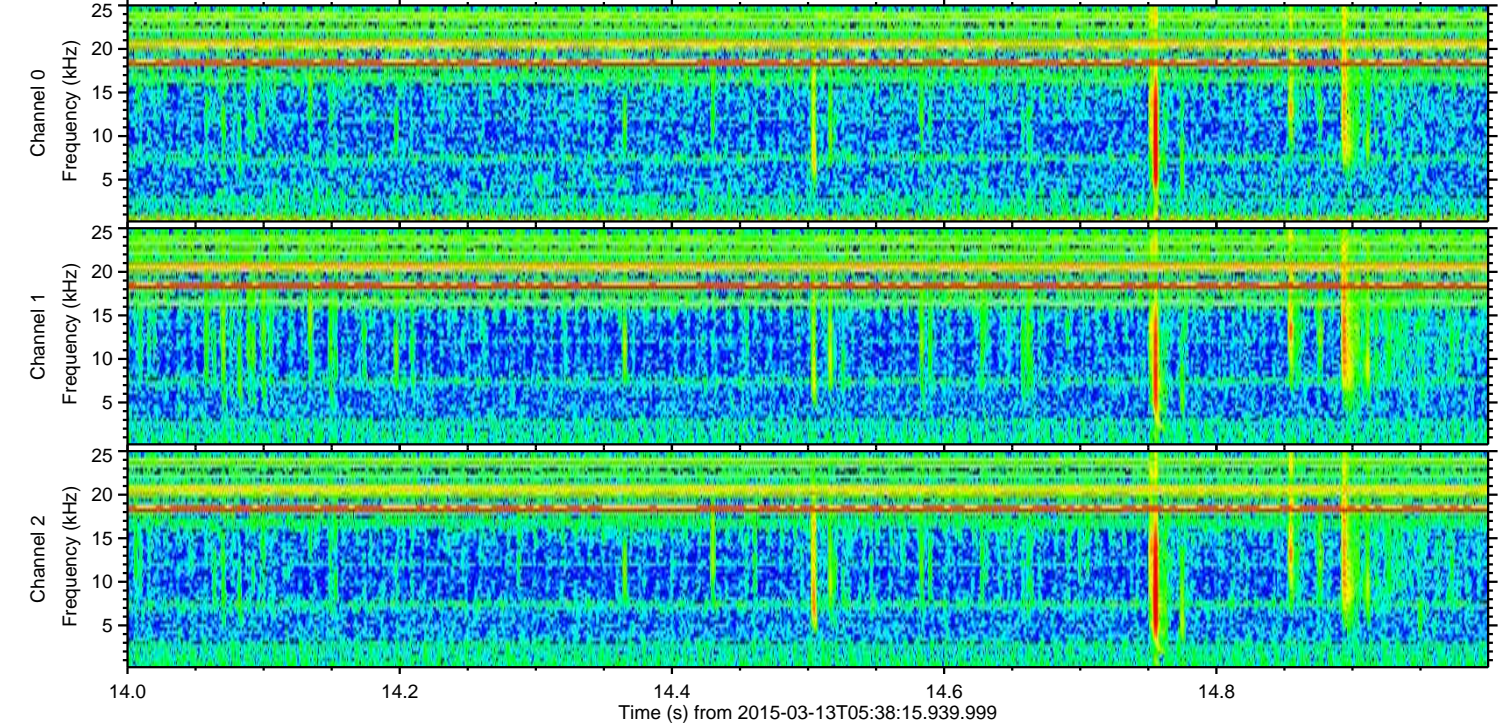
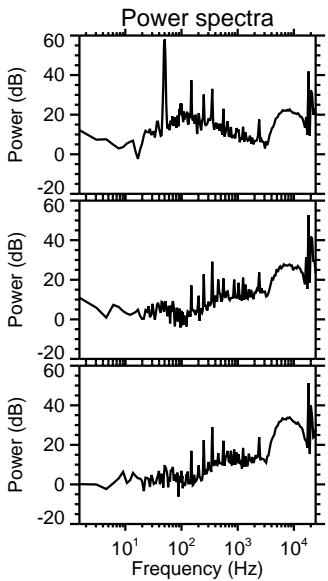
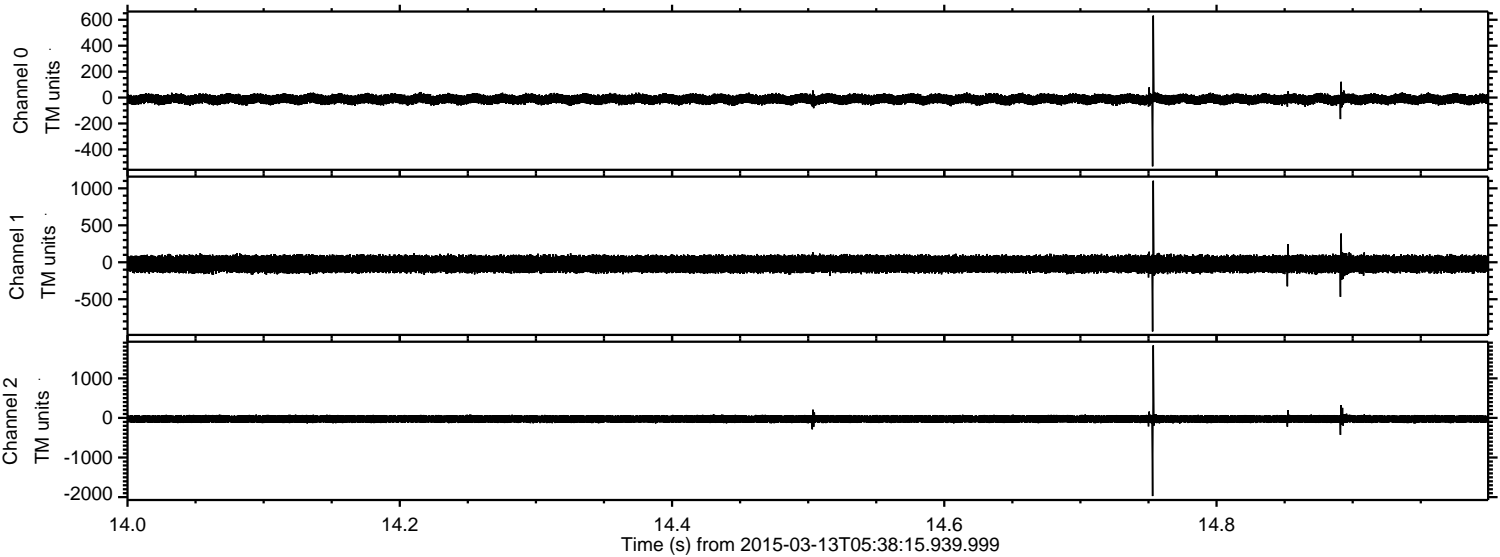
Processed Fri Mar 13 08:22:42 2015 by ELM ver.2012-10-06 from 001\_\_elm20150313\_053814\_\_dat00.bin





ELMAVAN 3D WAVEFORMS (Measured data sampled at 50 kHz) 49807 packets of 144 samples from 2015-03-13T05:38:15.939.999. Part 15/144

Processed Fri Mar 13 08:22:43 2015 by ELM ver.2012-10-06 from 001\_\_elm20150313\_053814\_\_dat00.bin



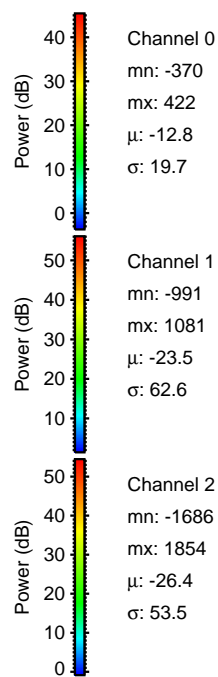
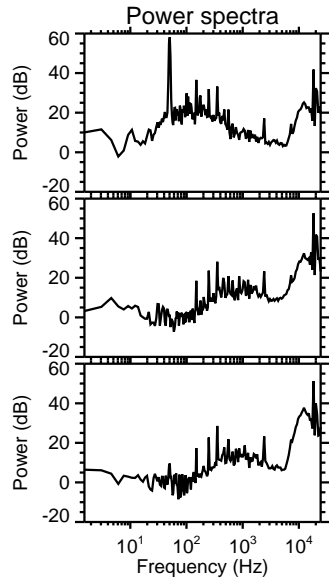
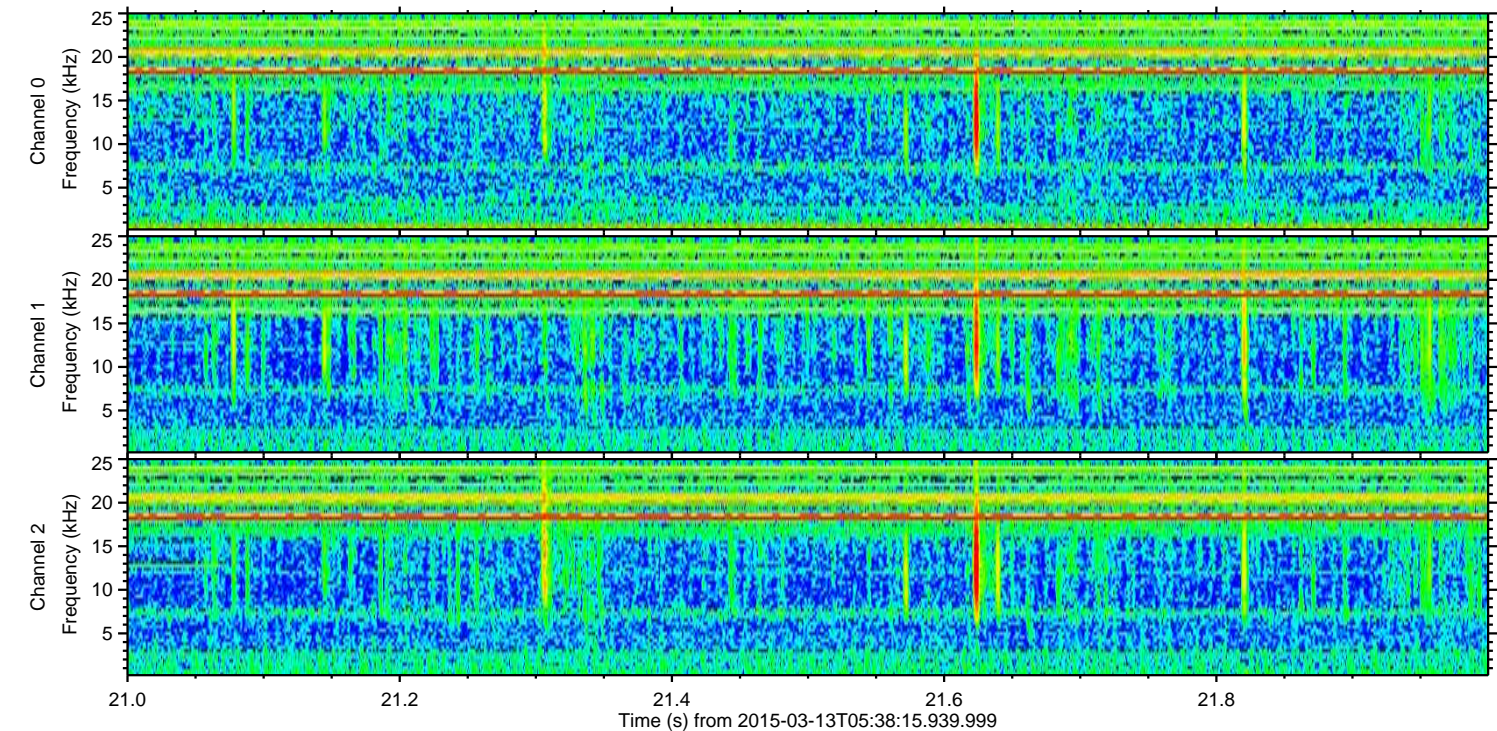
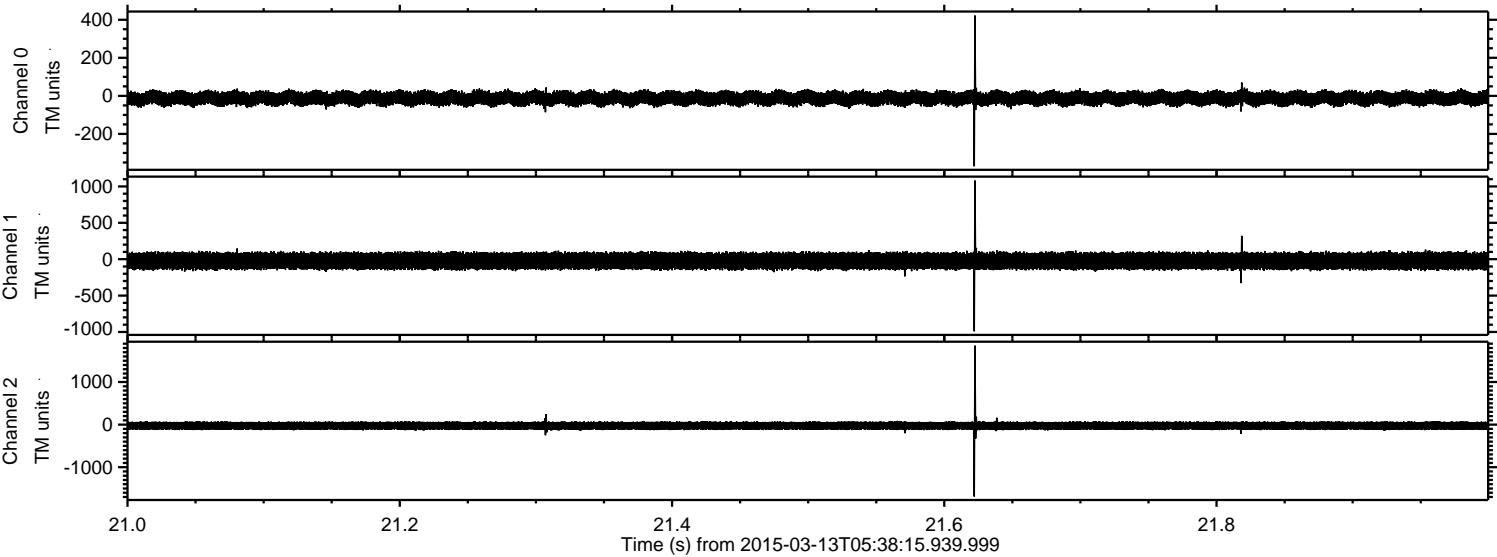
Channel 0  
mn: -531  
mx: 632  
 $\mu$ : -12.8  
 $\sigma$ : 20.0

Channel 1  
mn: -936  
mx: 1103  
 $\mu$ : -23.5  
 $\sigma$ : 63.1

Channel 2  
mn: -1973  
mx: 1833  
 $\mu$ : -26.4  
 $\sigma$ : 54.4



Processed Fri Mar 13 08:22:44 2015 by ELM ver.2012-10-06 from 001\_\_elm20150313\_053814\_\_dat00.bin



Power spectra

Channel 0  
mn: -370  
mx: 422  
 $\mu$ : -12.8  
 $\sigma$ : 19.7

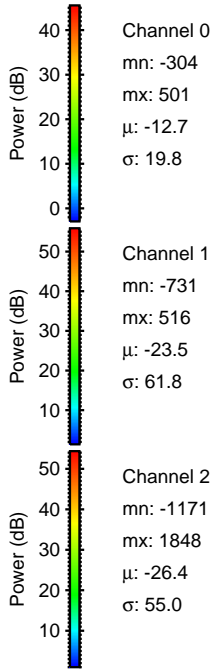
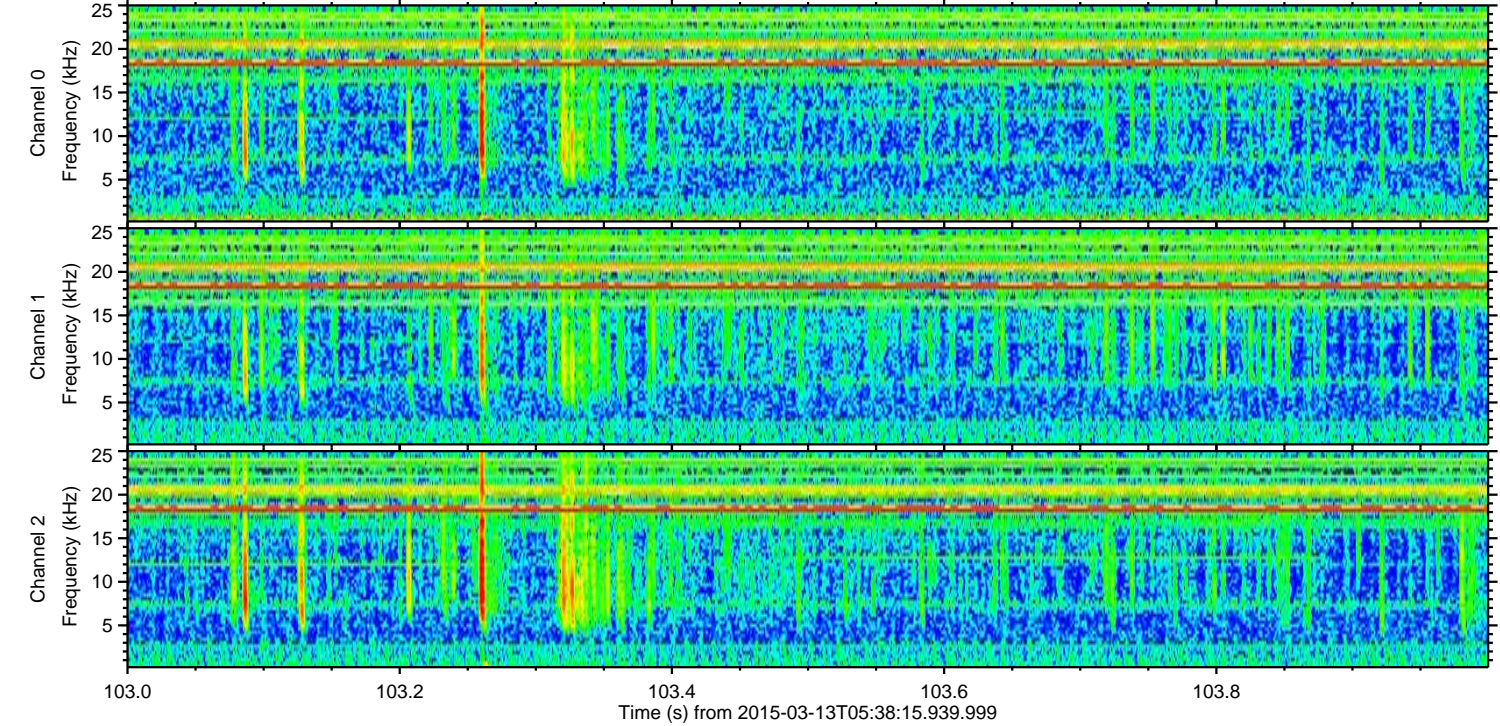
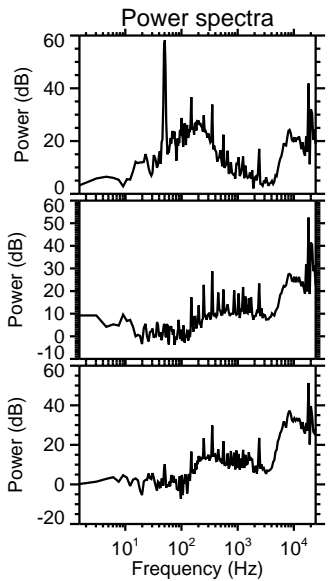
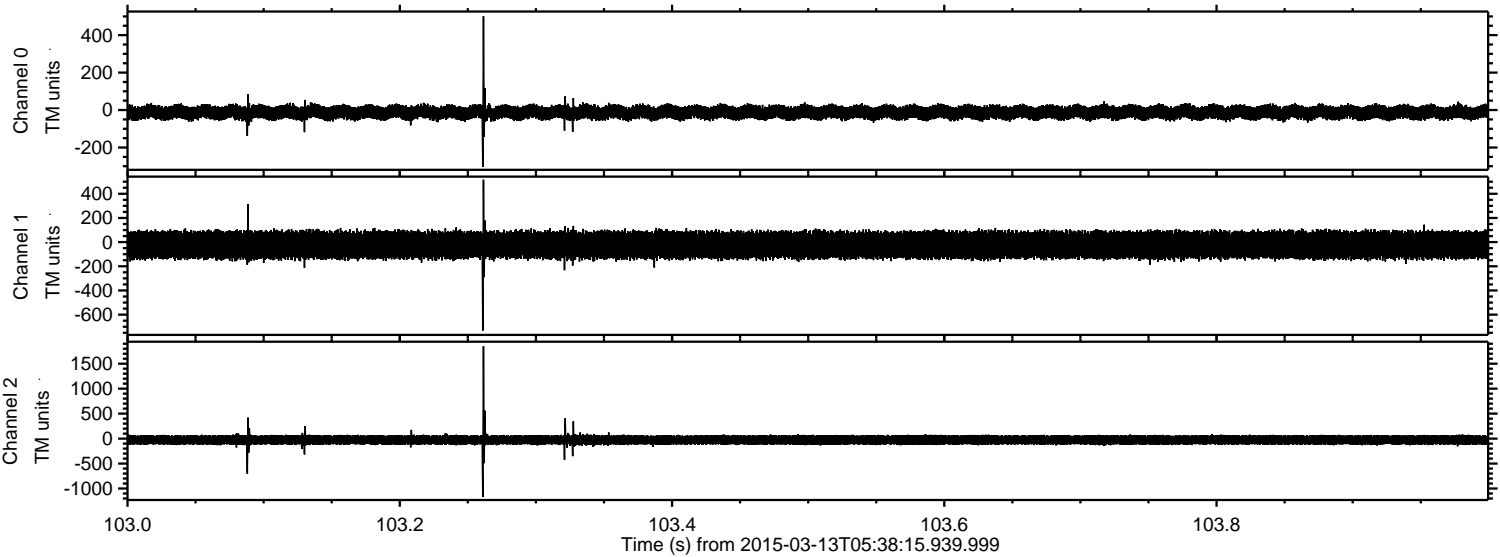
Channel 1  
mn: -991  
mx: 1081  
 $\mu$ : -23.5  
 $\sigma$ : 62.6

Channel 2  
mn: -1686  
mx: 1854  
 $\mu$ : -26.4  
 $\sigma$ : 53.5



ELMAVAN 3D WAVEFORMS (Measured data sampled at 50 kHz) 49807 packets of 144 samples from 2015-03-13T05:38:15.939.999. Part 104/144

Processed Fri Mar 13 08:22:45 2015 by ELM ver.2012-10-06 from 001\_\_elm20150313\_053814\_\_dat00.bin





ELMAVAN 3D WAVEFORMS (Measured data sampled at 50 kHz) 49807 packets of 144 samples from 2015-03-13T05:38:15.939.999. Part 111/144

