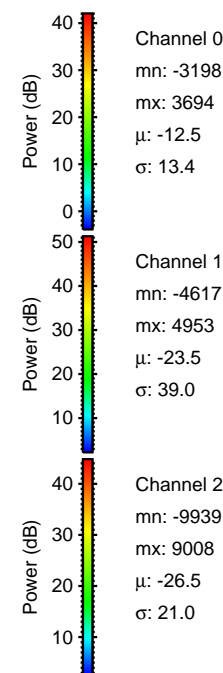
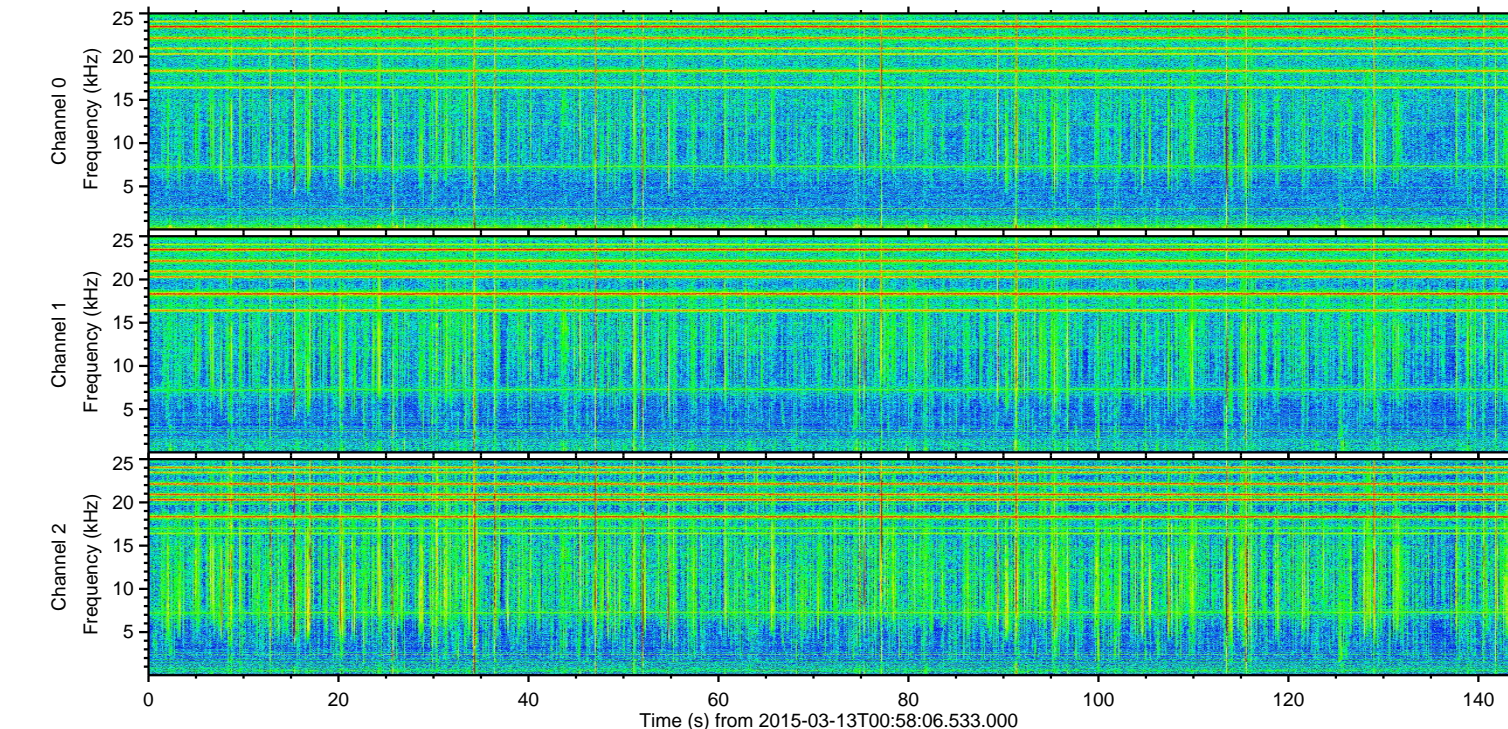
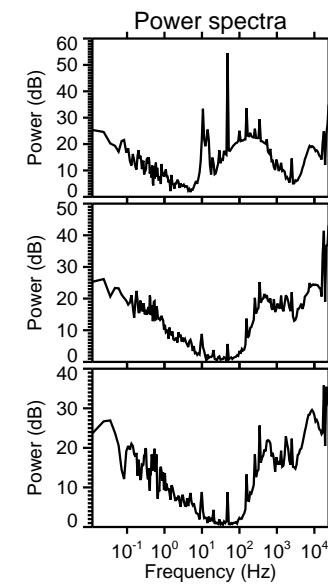
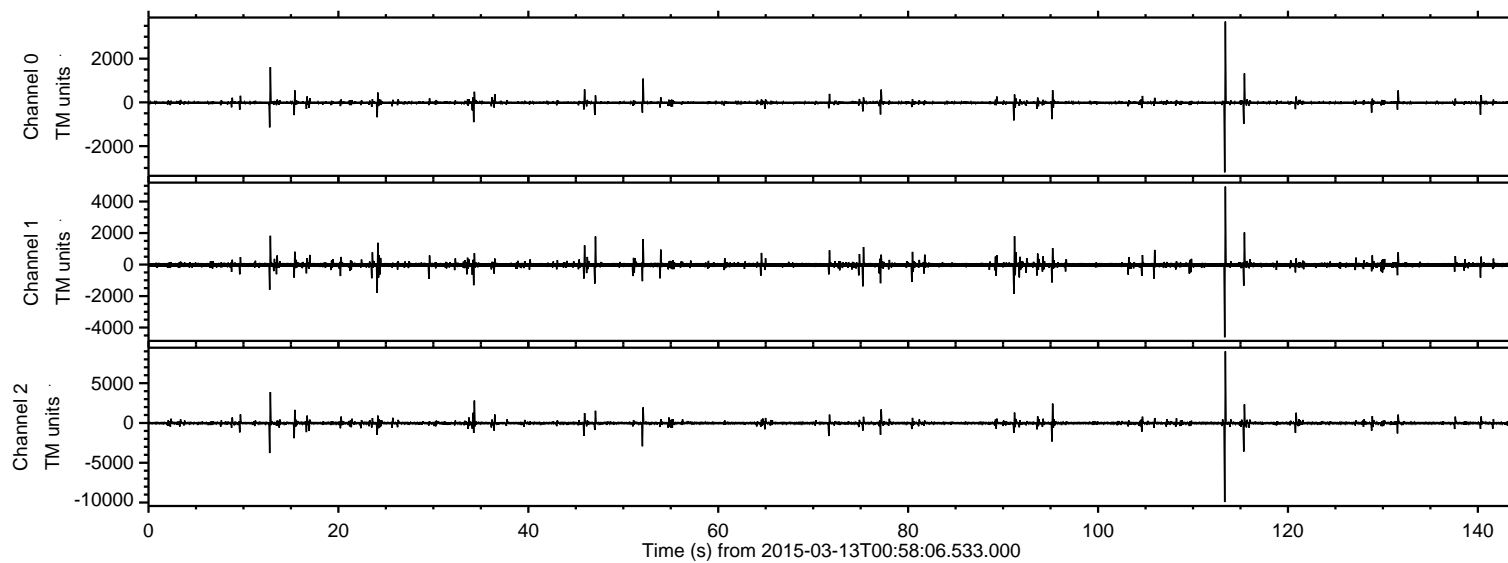


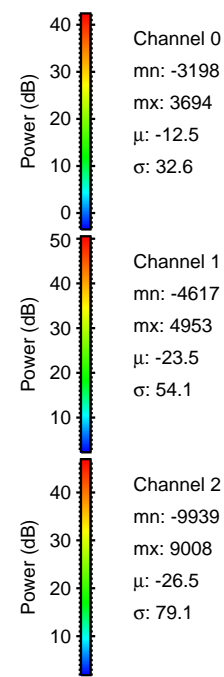
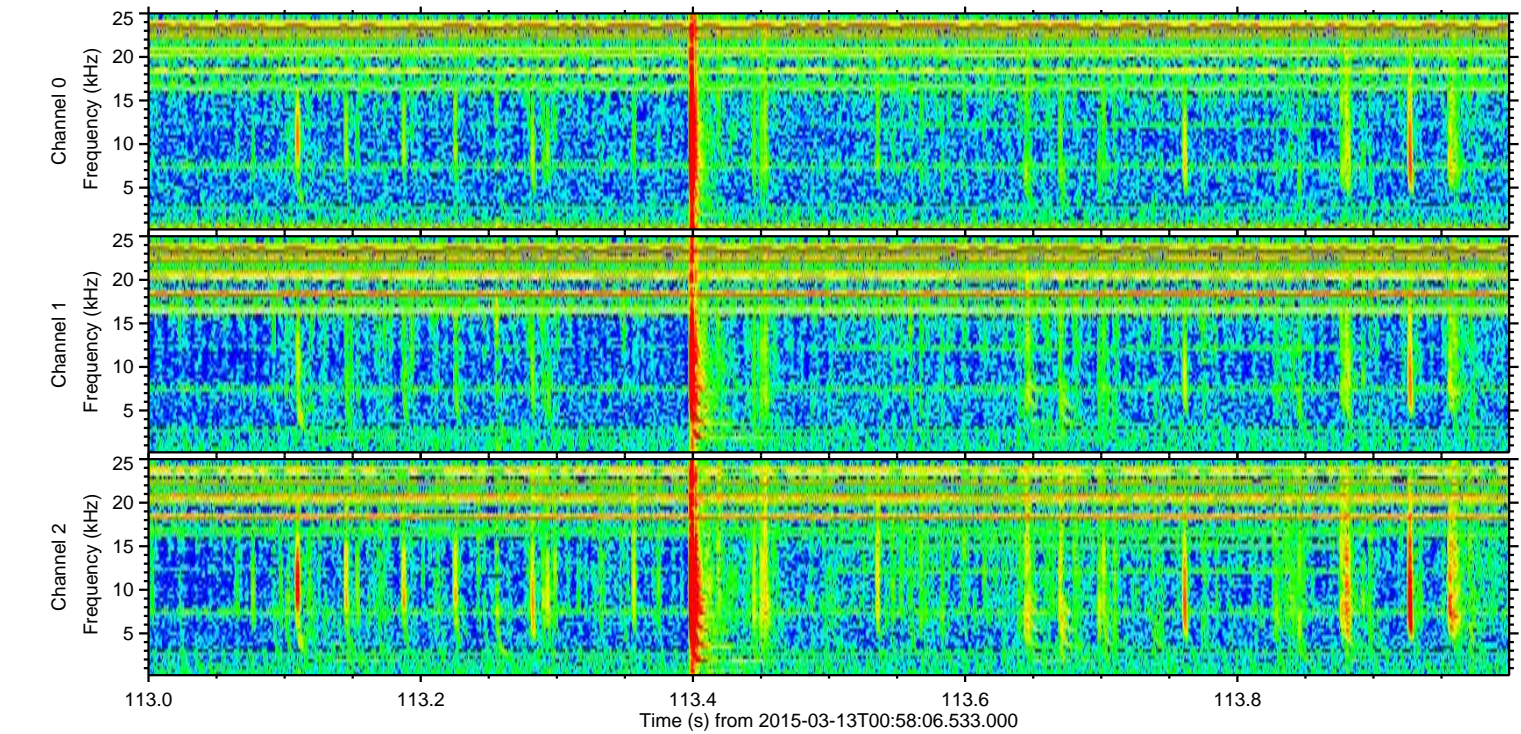
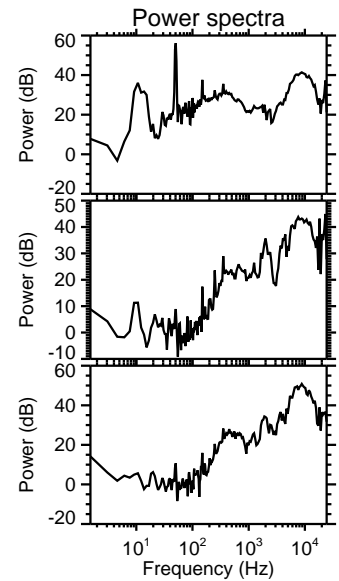
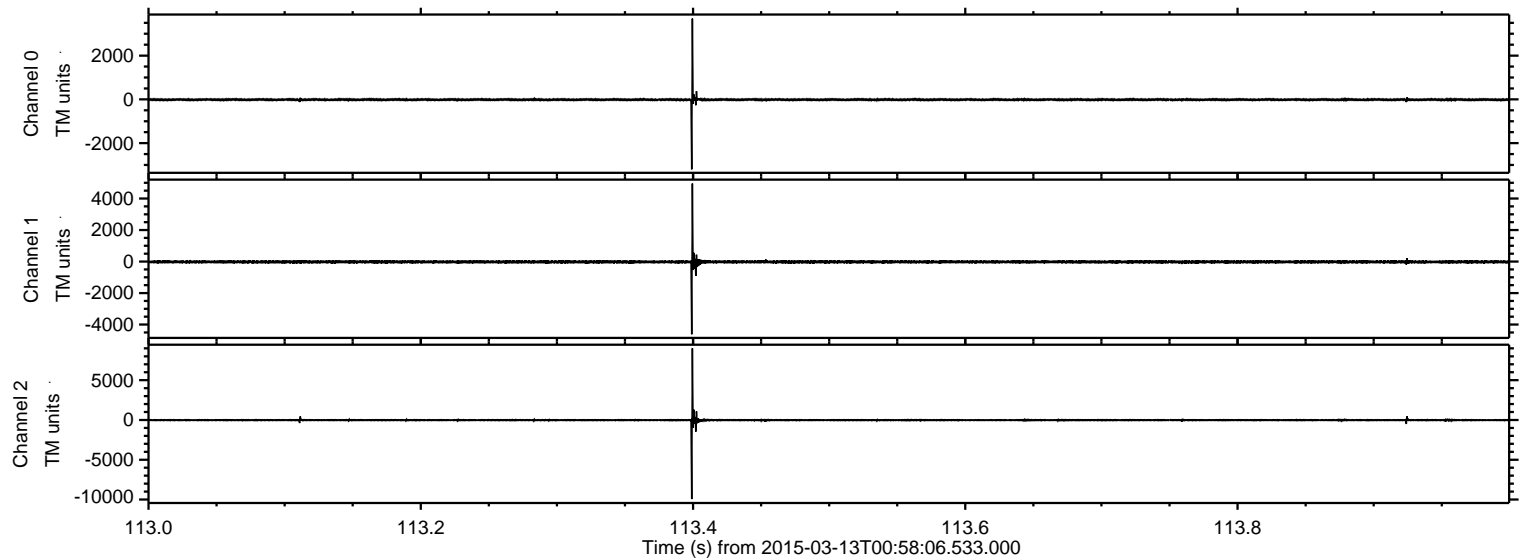
ELMAVAN 3D WAVEFORMS (Measured data sampled at 50 kHz) 49755 packets of 144 samples from 2015-03-13T00:58:06.533.000.

Processed Fri Mar 13 02:05:18 2015 by ELM ver.2012-10-06 from 001__elm20150313_005805__dat00.bin

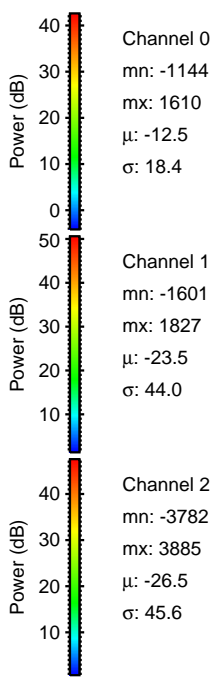
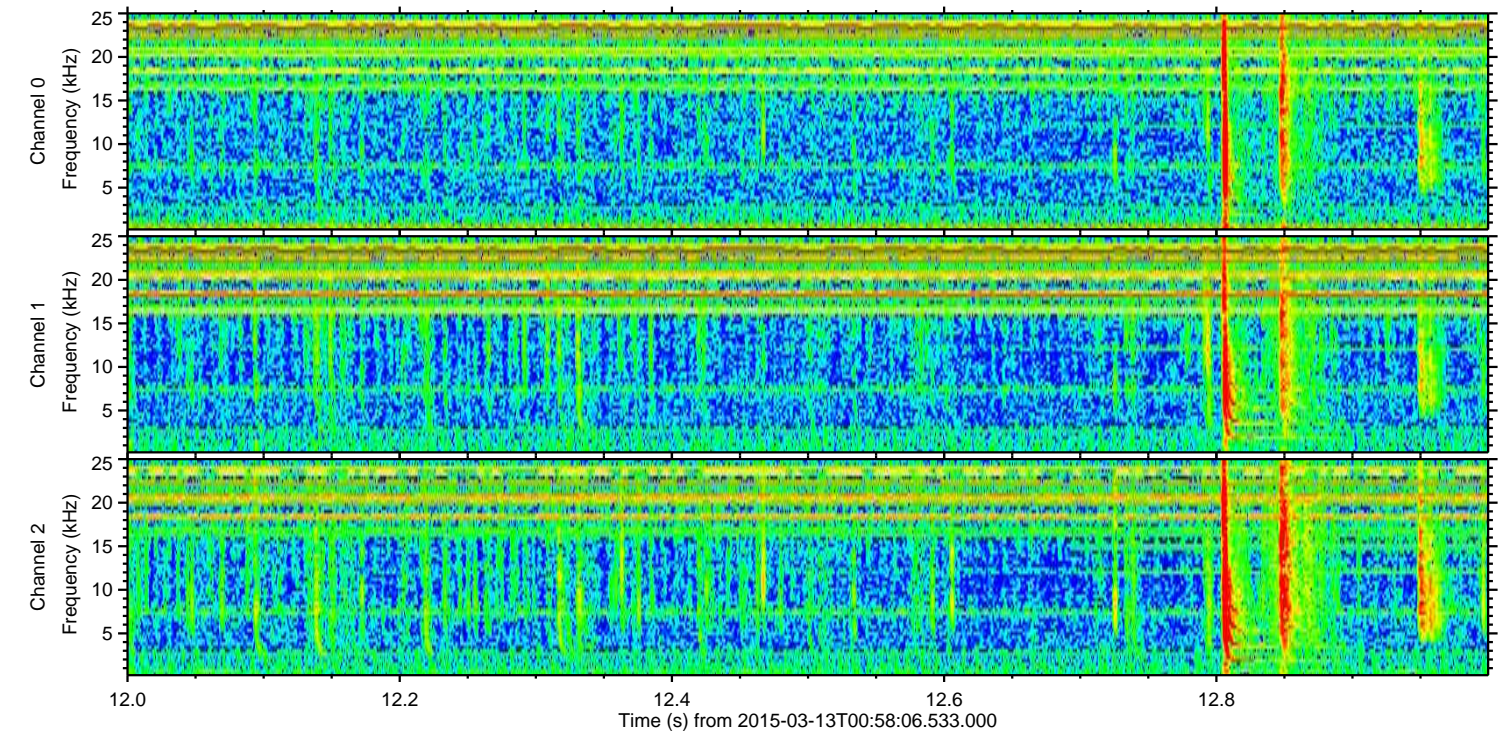
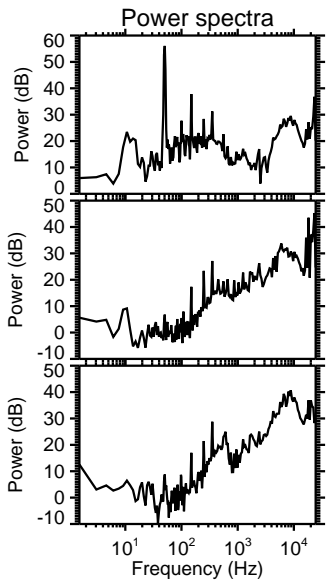
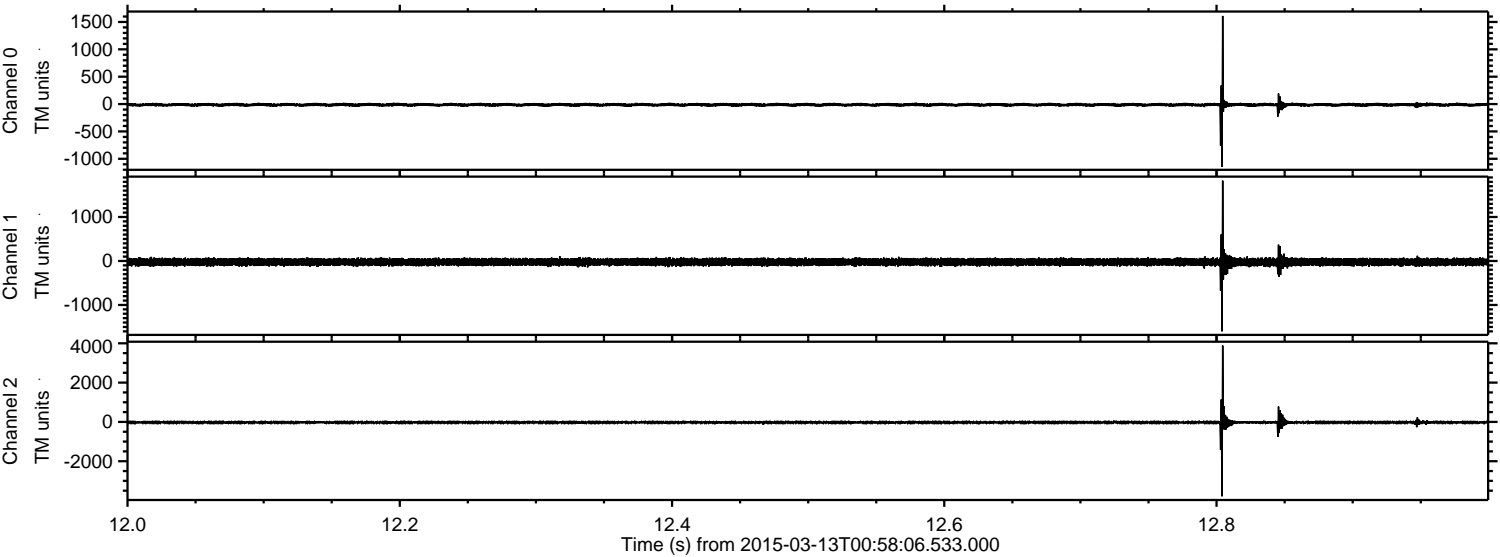


ELMAVAN 3D WAVEFORMS (Measured data sampled at 50 kHz) 49755 packets of 144 samples from 2015-03-13T00:58:06.533.000. Part 114/144

Processed Fri Mar 13 02:05:30 2015 by ELM ver.2012-10-06 from 001__elm20150313_005805__dat00.bin

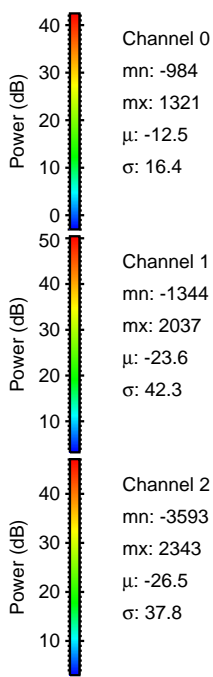
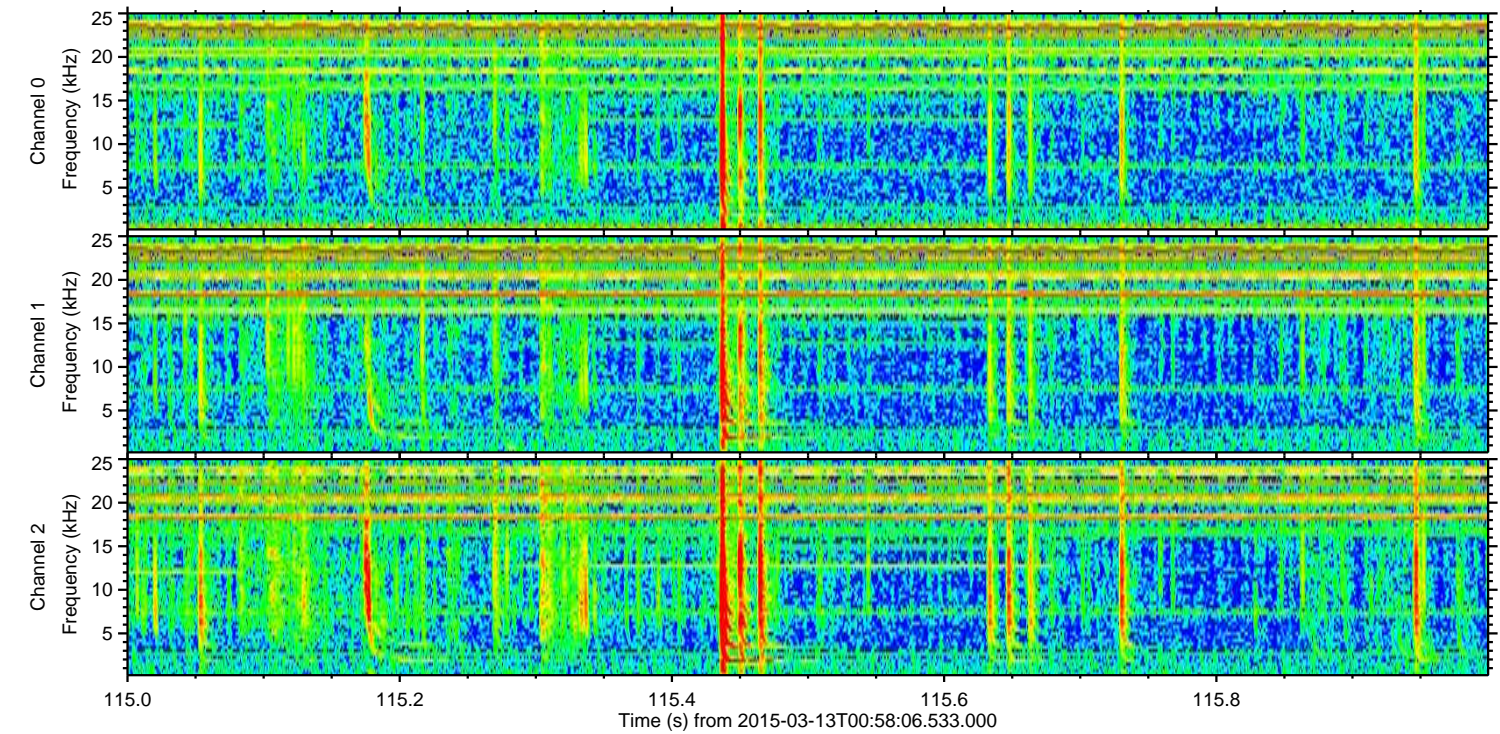
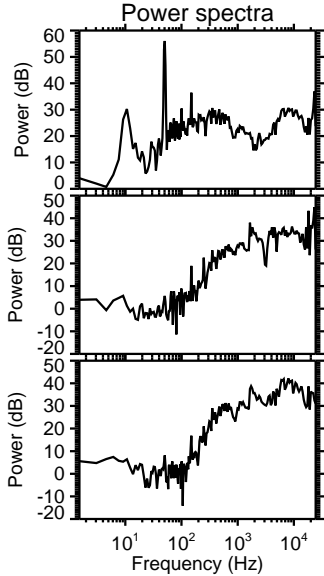
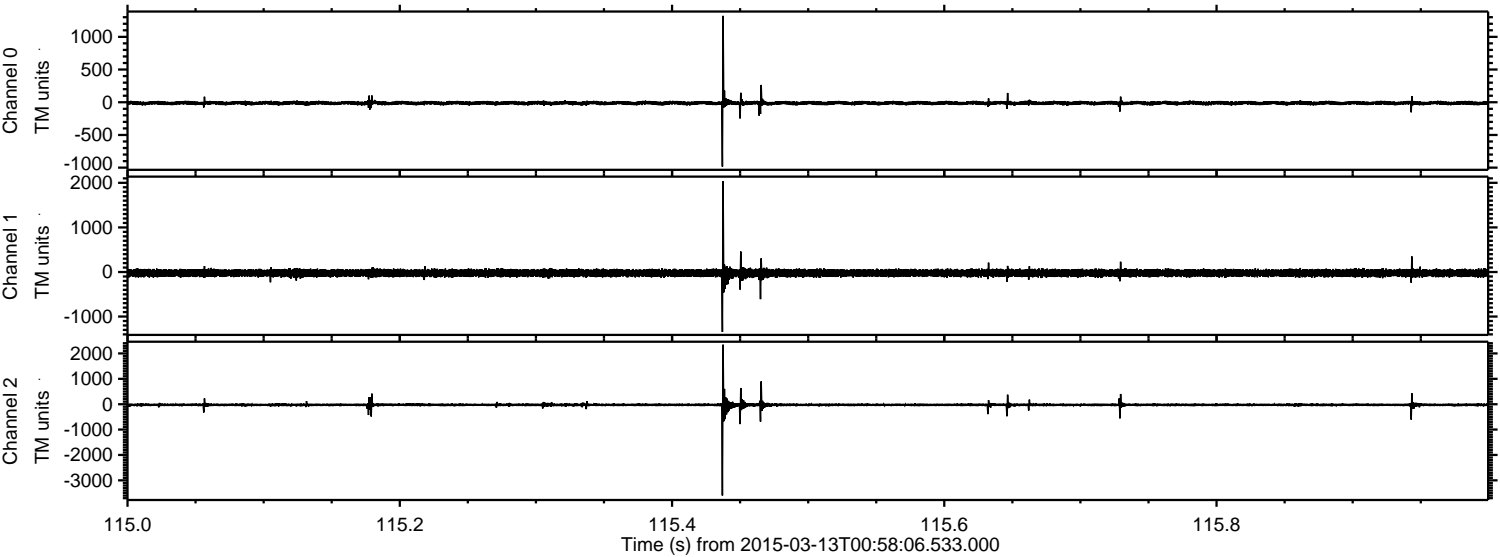


Processed Fri Mar 13 02:05:31 2015 by ELM ver.2012-10-06 from 001__elm20150313_005805__dat00.bin

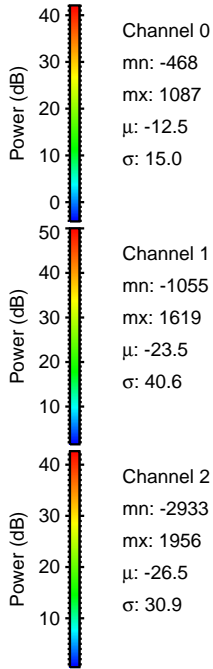
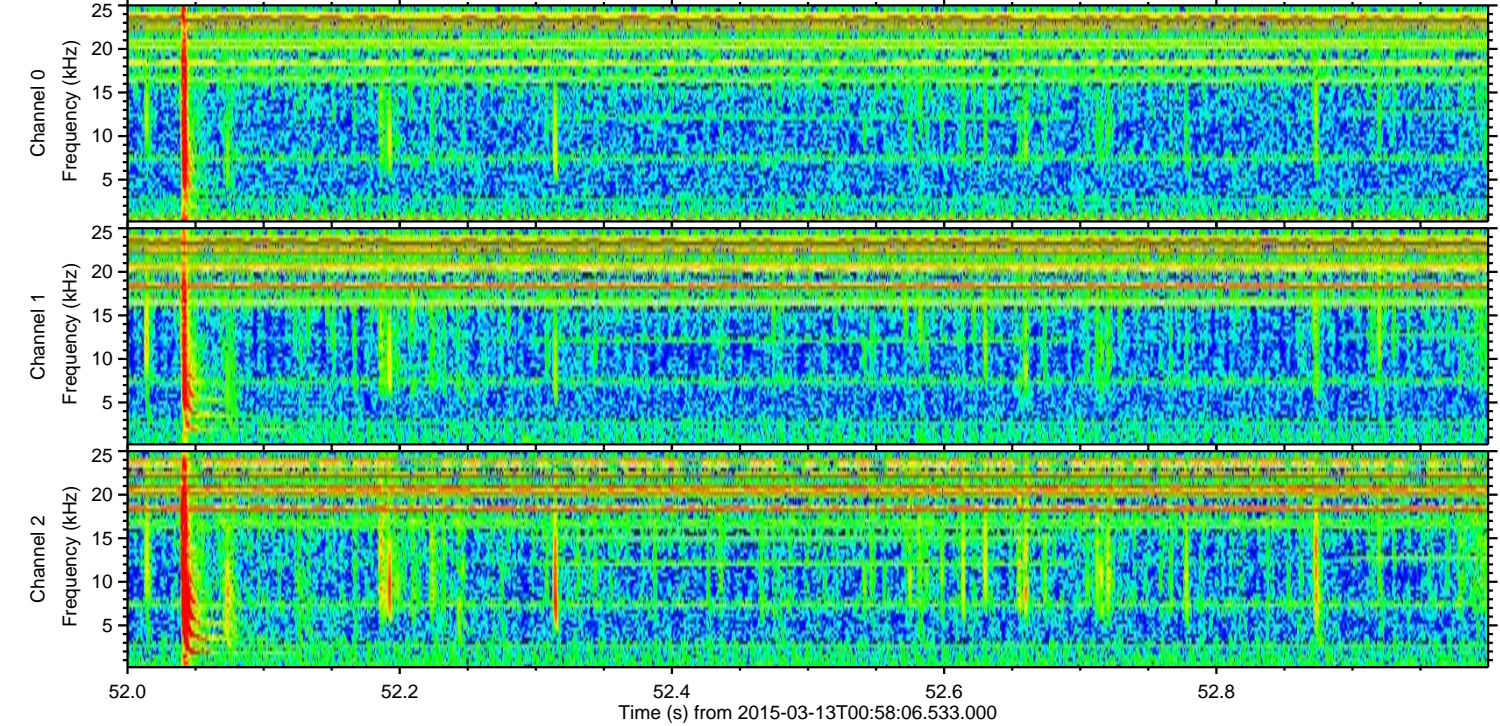
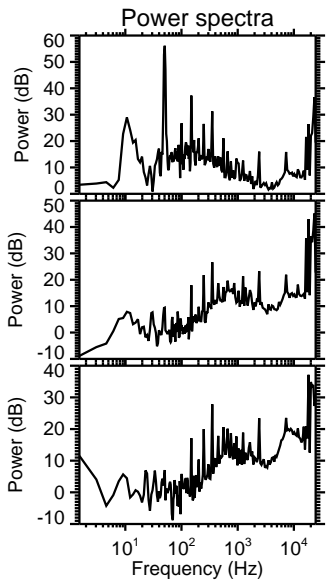
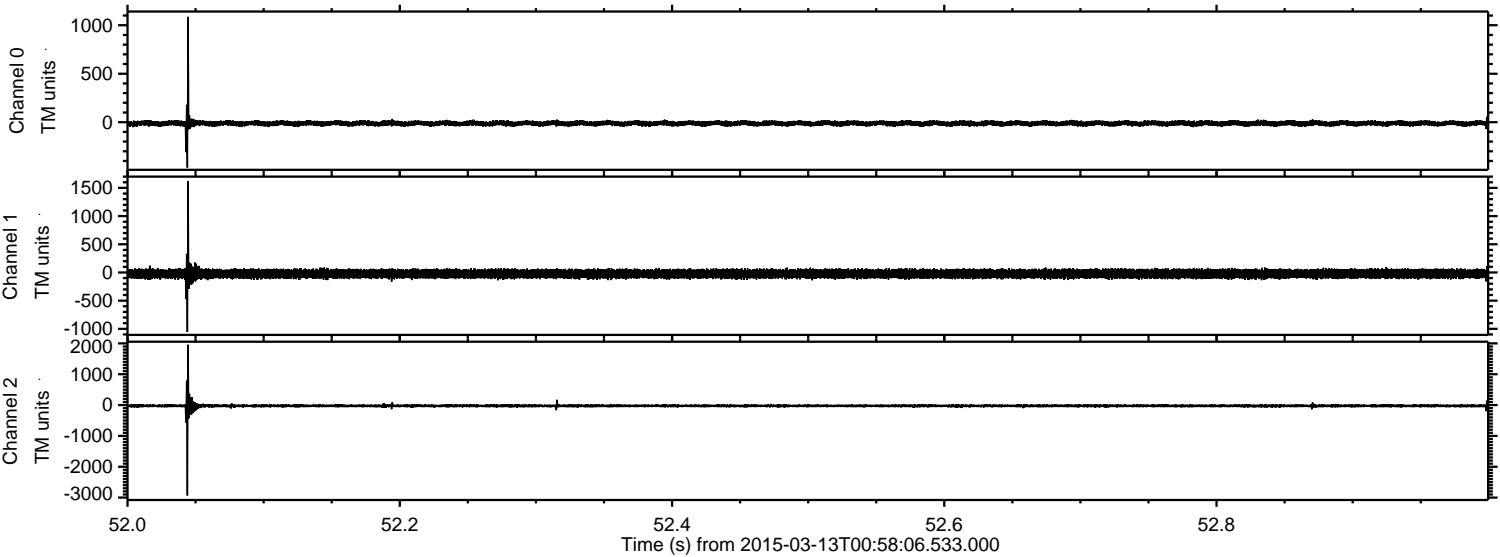


ELMAVAN 3D WAVEFORMS (Measured data sampled at 50 kHz) 49755 packets of 144 samples from 2015-03-13T00:58:06.533.000. Part 116/144

Processed Fri Mar 13 02:05:32 2015 by ELM ver.2012-10-06 from 001__elm20150313_005805__dat00.bin

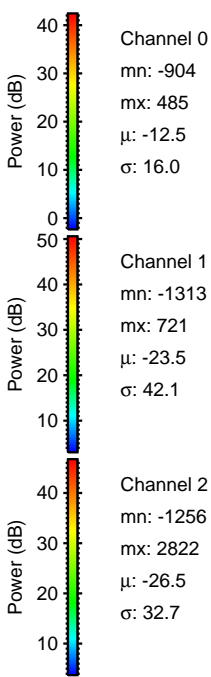
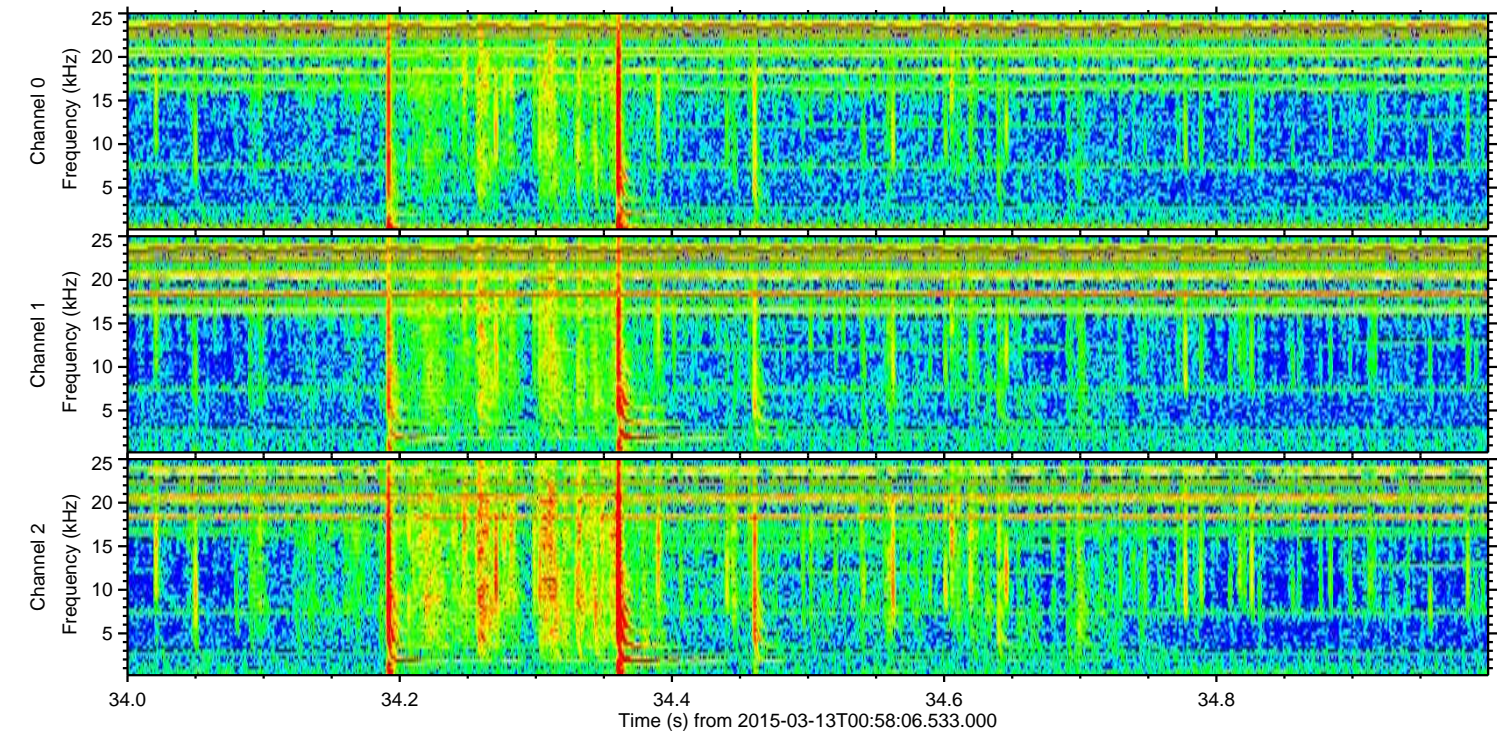
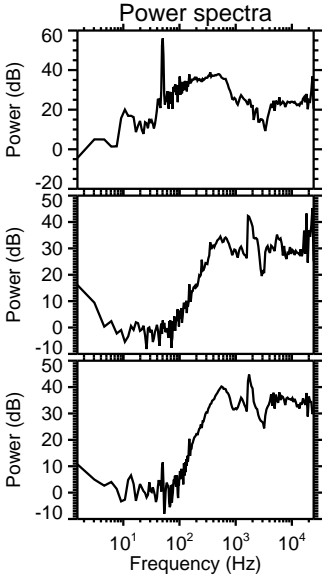
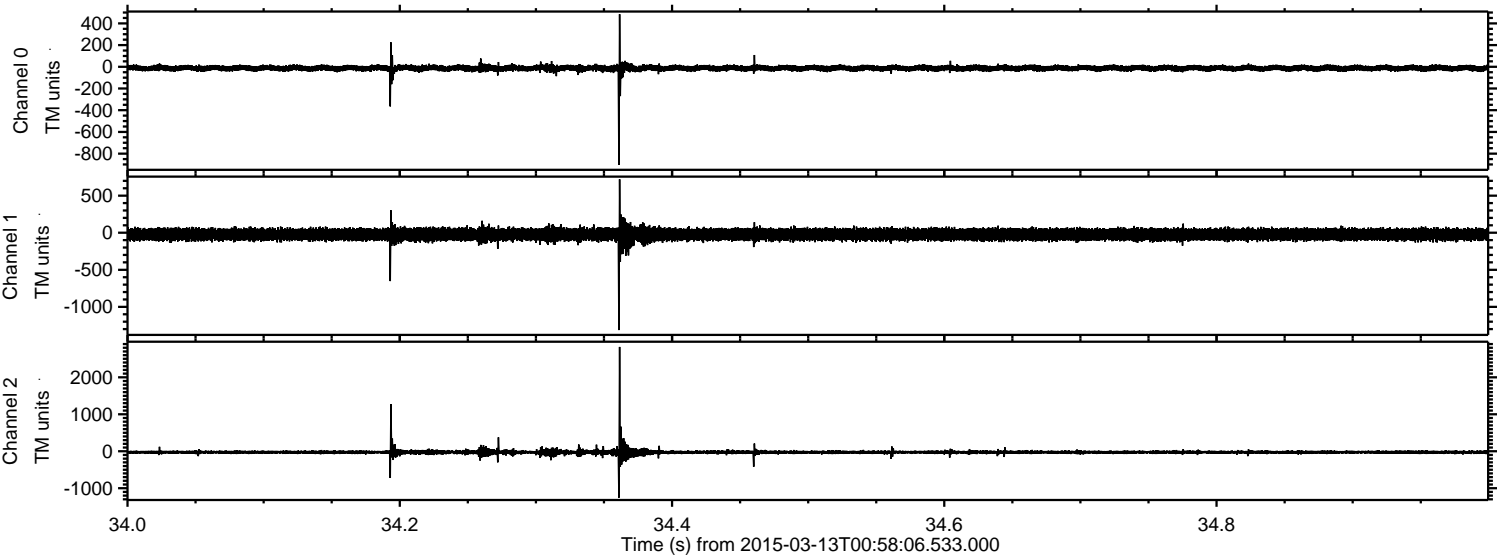


Processed Fri Mar 13 02:05:33 2015 by ELM ver.2012-10-06 from 001__elm20150313_005805__dat00.bin

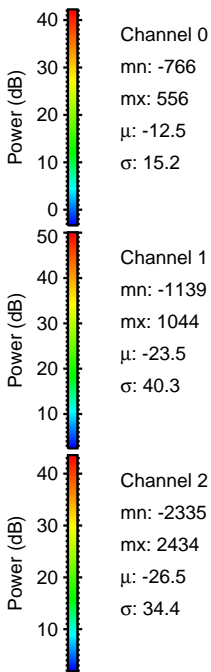
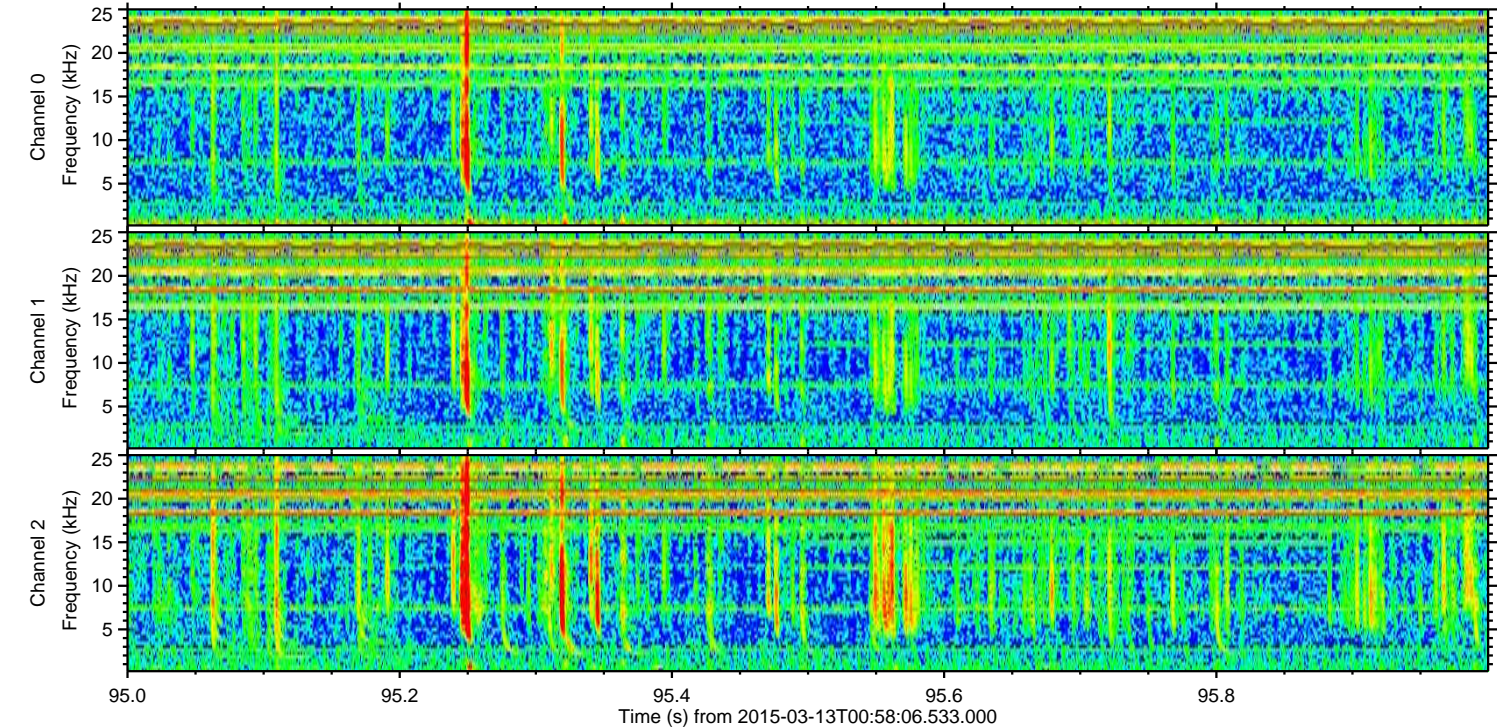
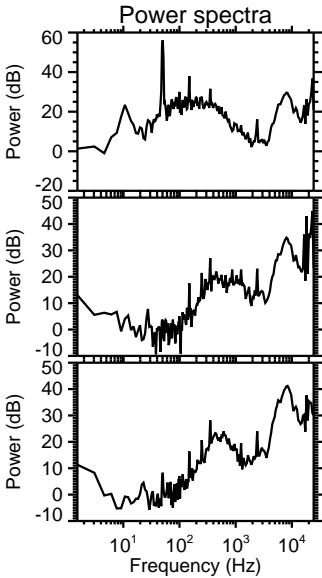
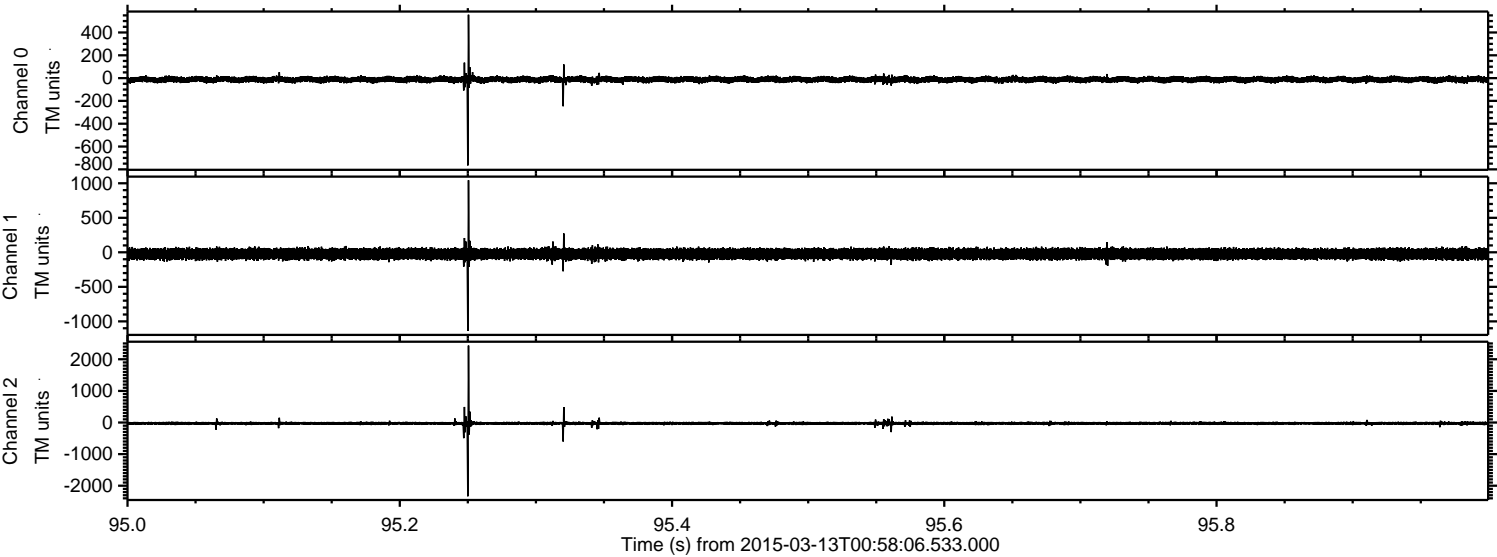


ELMAVAN 3D WAVEFORMS (Measured data sampled at 50 kHz) 49755 packets of 144 samples from 2015-03-13T00:58:06.533.000. Part 35/144

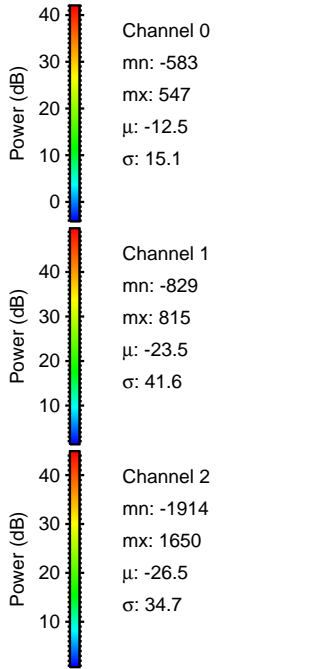
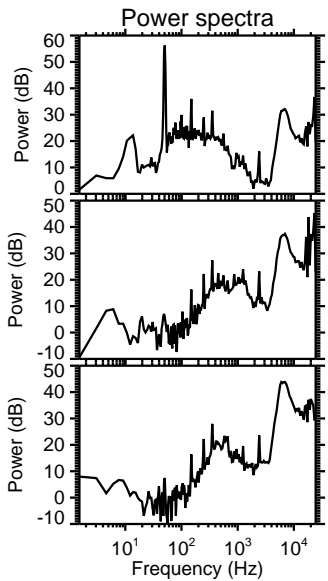
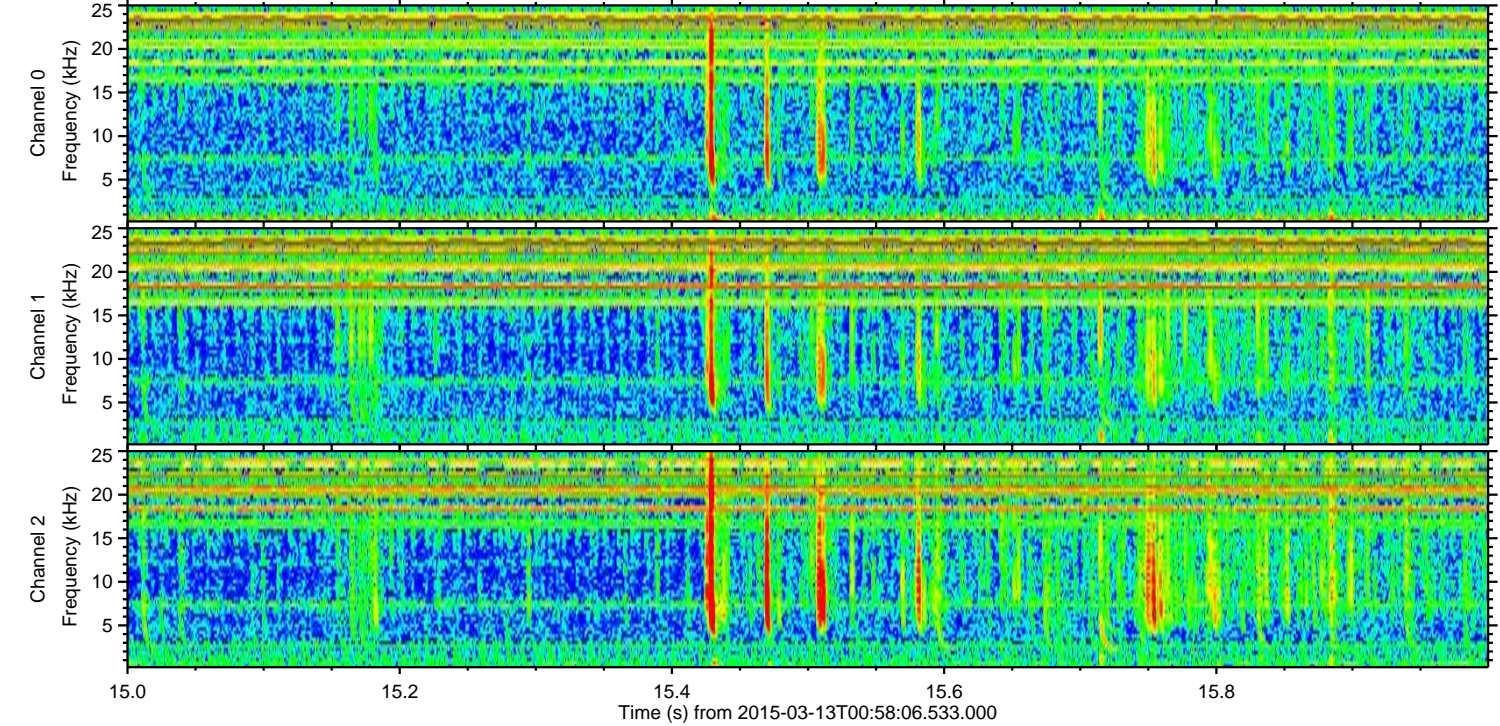
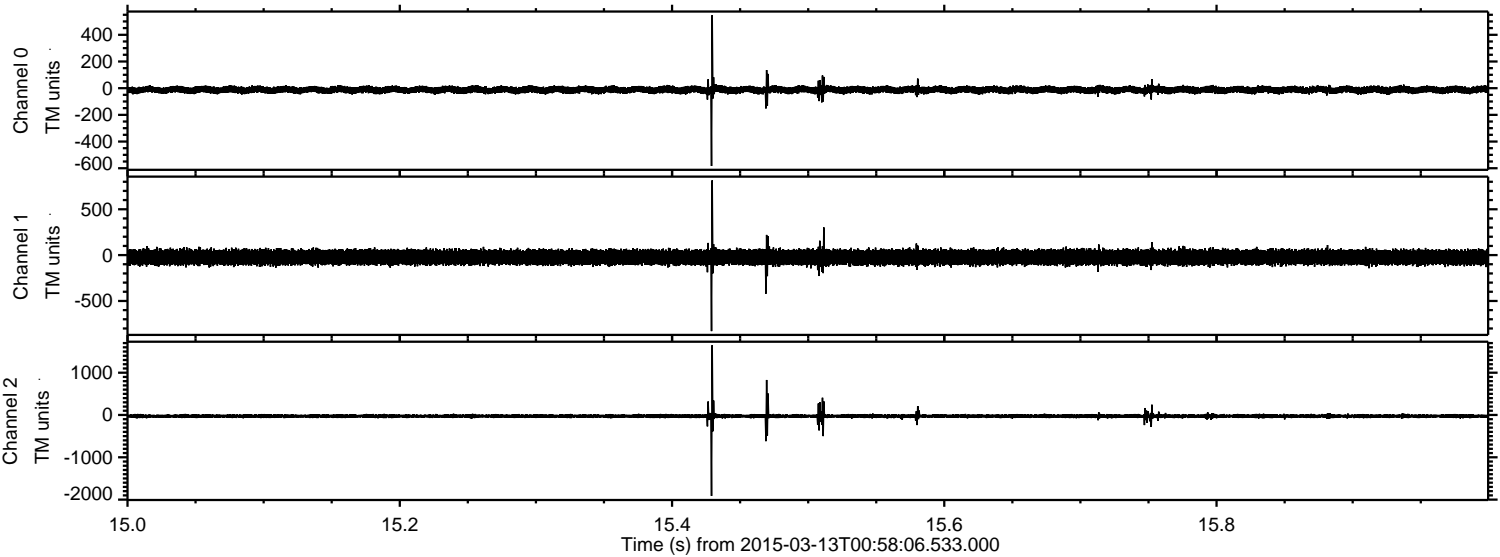
Processed Fri Mar 13 02:05:34 2015 by ELM ver.2012-10-06 from 001__elm20150313_005805__dat00.bin



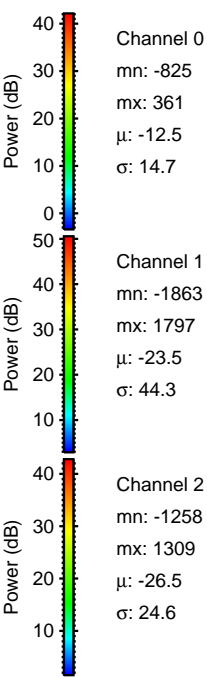
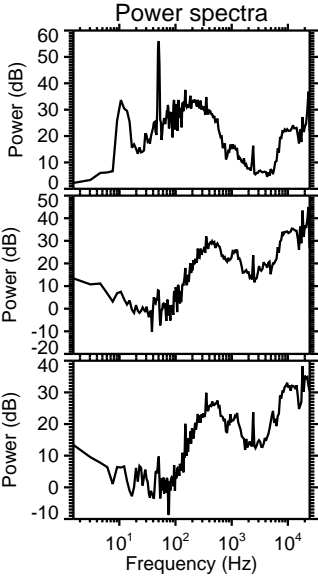
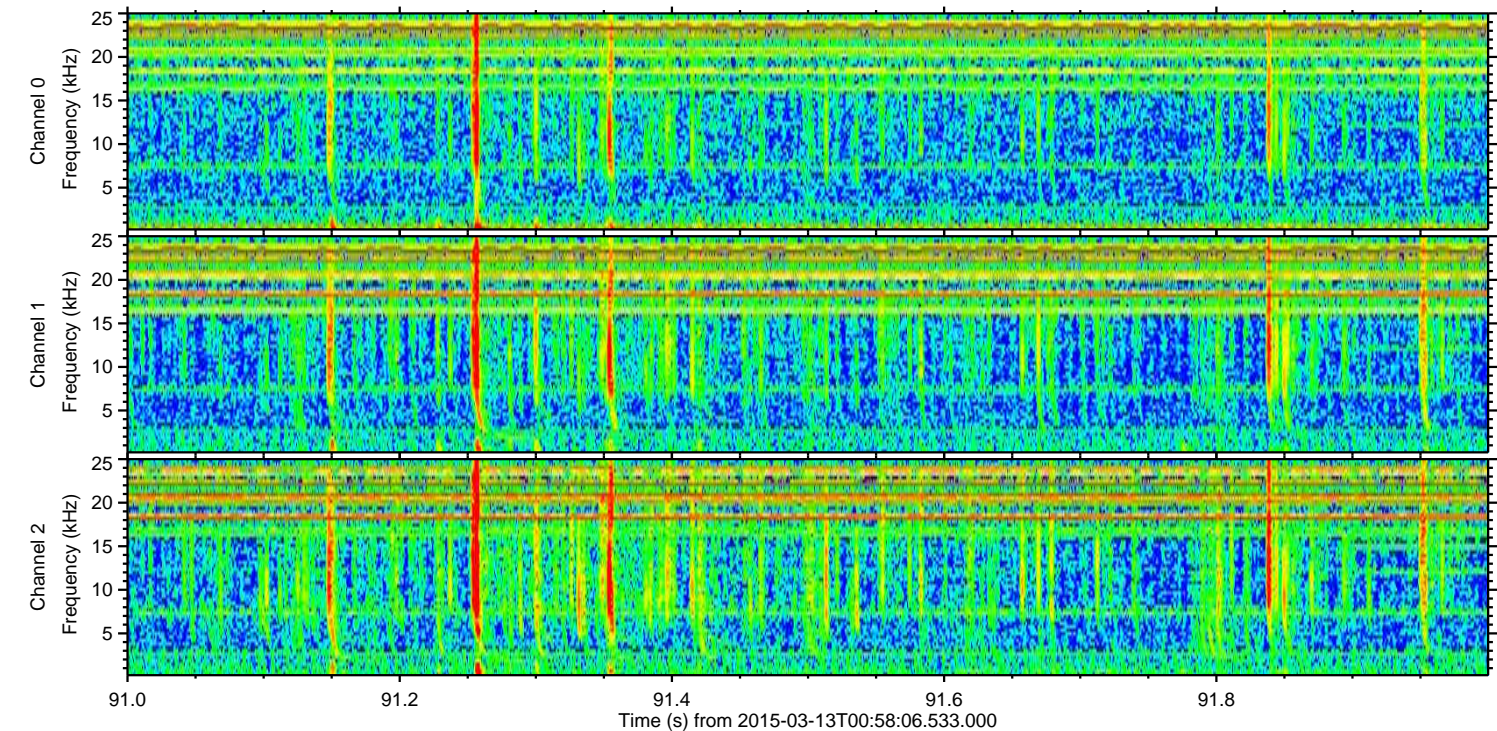
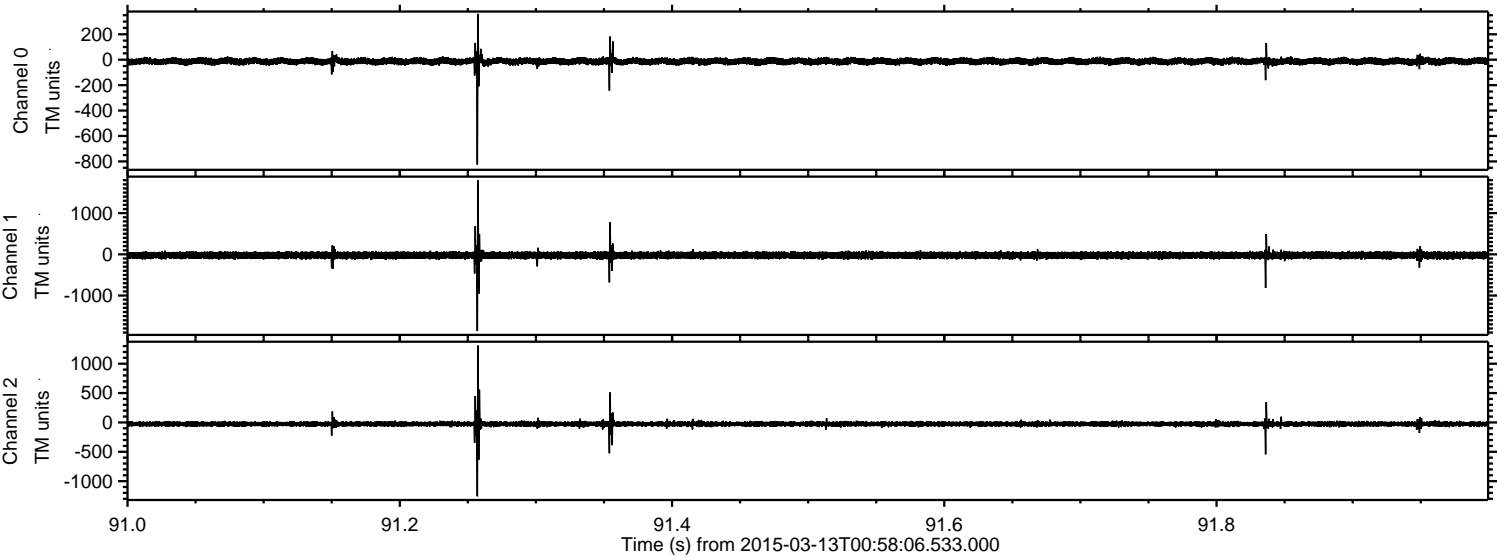
Processed Fri Mar 13 02:05:35 2015 by ELM ver.2012-10-06 from 001__elm20150313_005805__dat00.bin



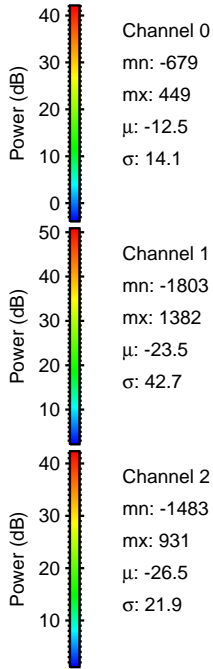
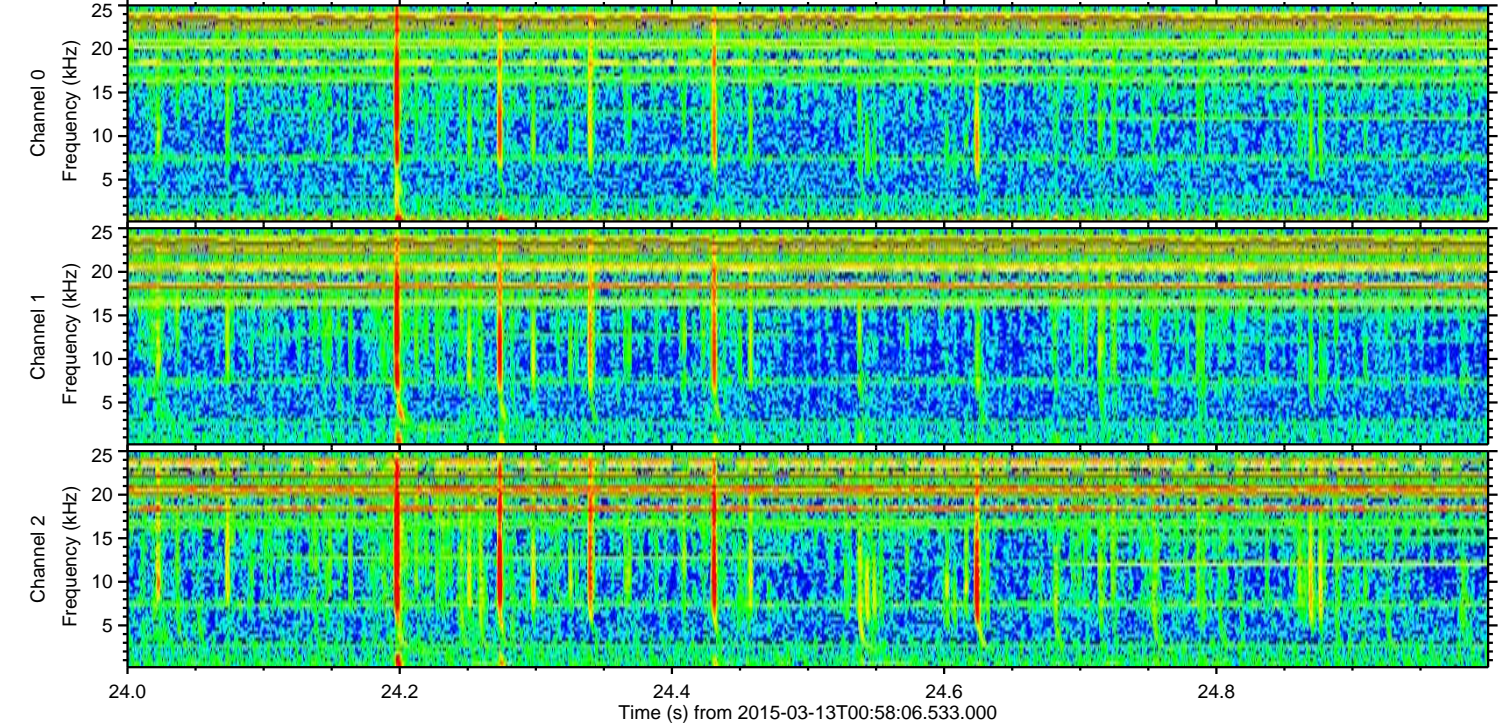
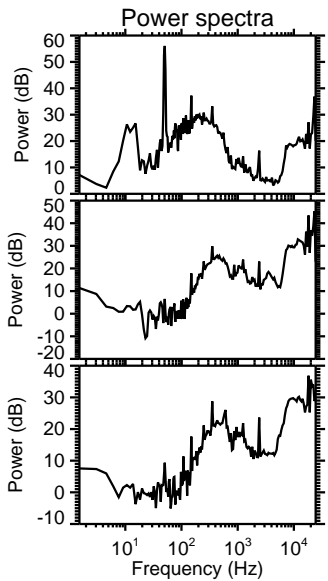
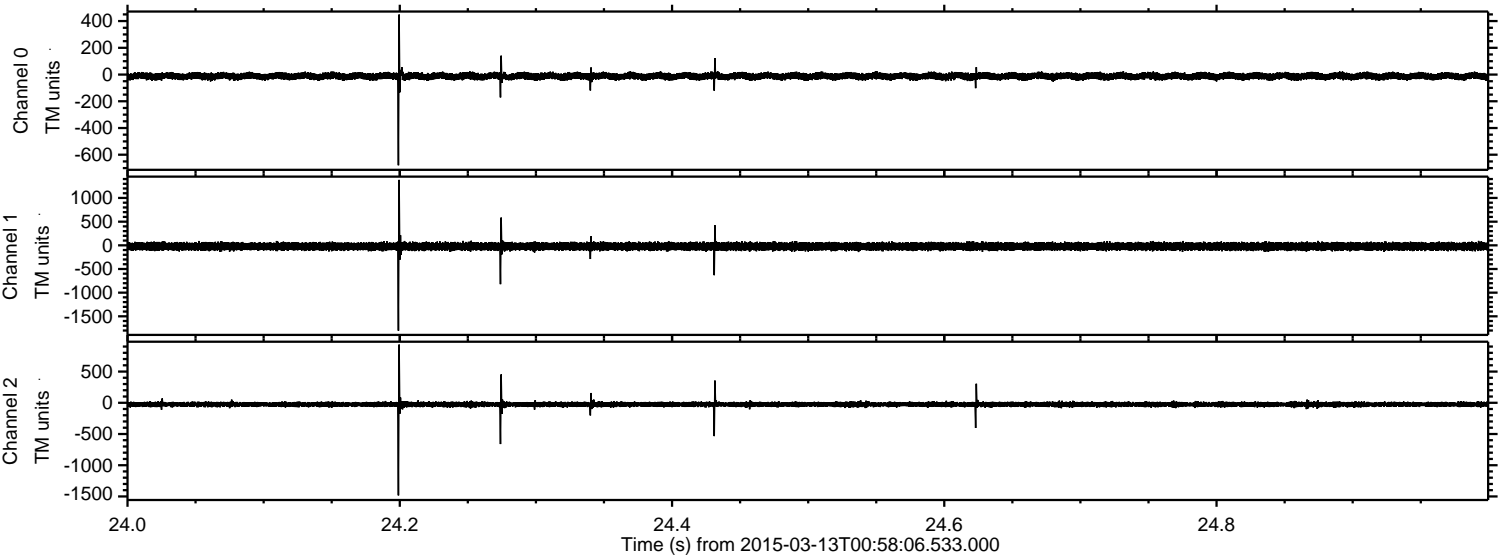
Processed Fri Mar 13 02:05:35 2015 by ELM ver.2012-10-06 from 001__elm20150313_005805__dat00.bin



Processed Fri Mar 13 02:05:36 2015 by ELM ver.2012-10-06 from 001__elm20150313_005805__dat00.bin



Processed Fri Mar 13 02:05:37 2015 by ELM ver.2012-10-06 from 001__elm20150313_005805__dat00.bin



Channel 0
mn: -679
mx: 449
 μ : -12.5
 σ : 14.1

Channel 1
mn: -1803
mx: 1382
 μ : -23.5
 σ : 42.7

Channel 2
mn: -1483
mx: 931
 μ : -26.5
 σ : 21.9

