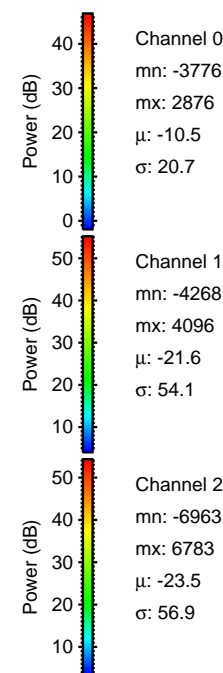
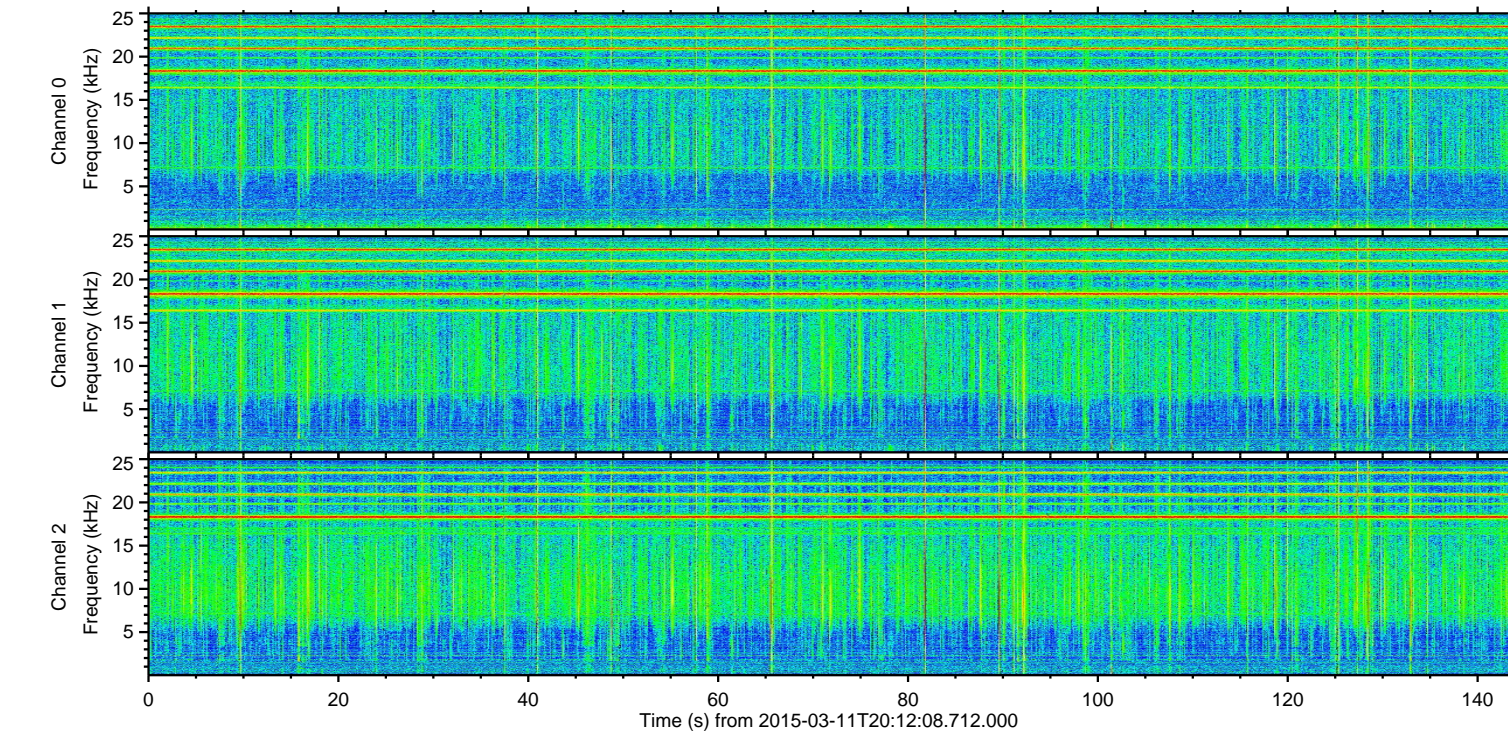
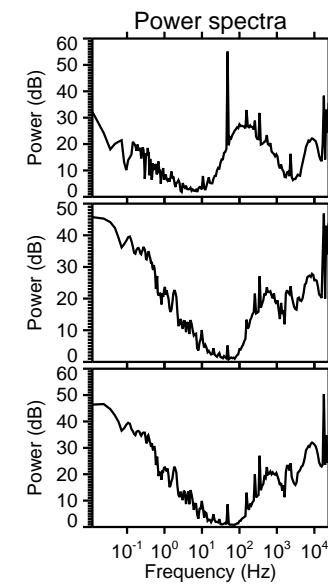
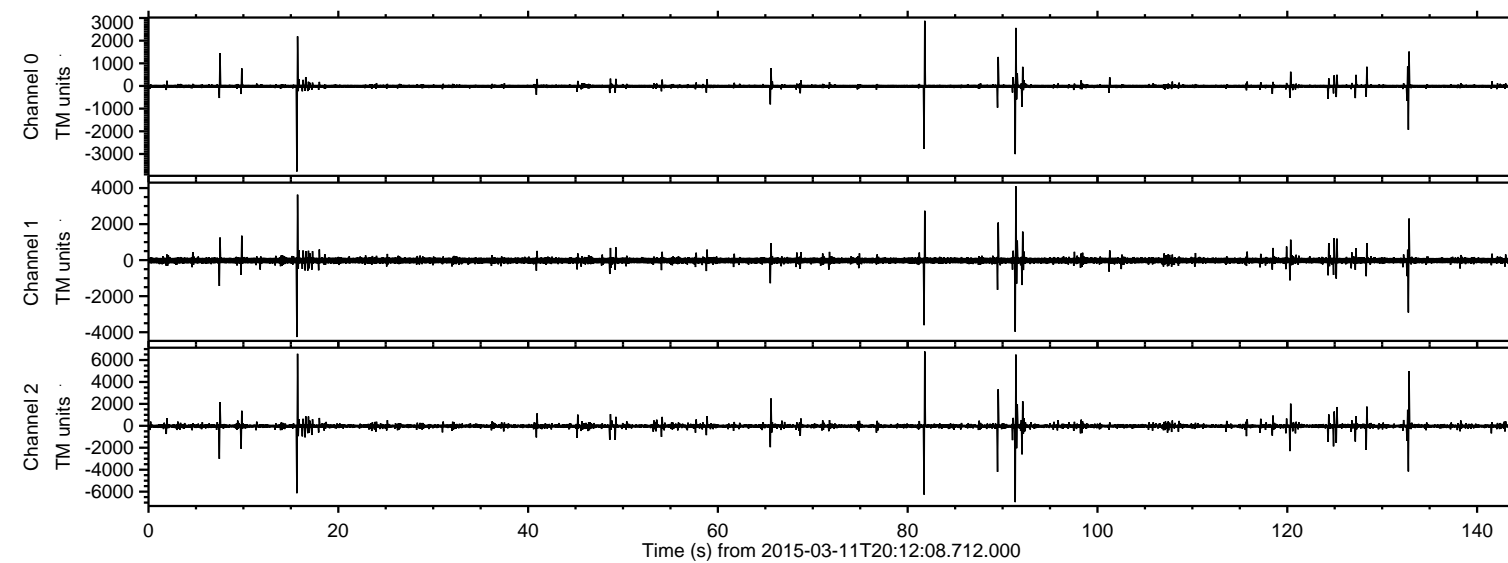


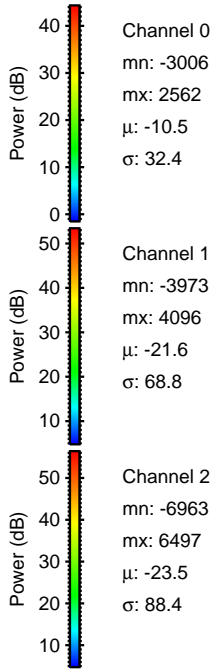
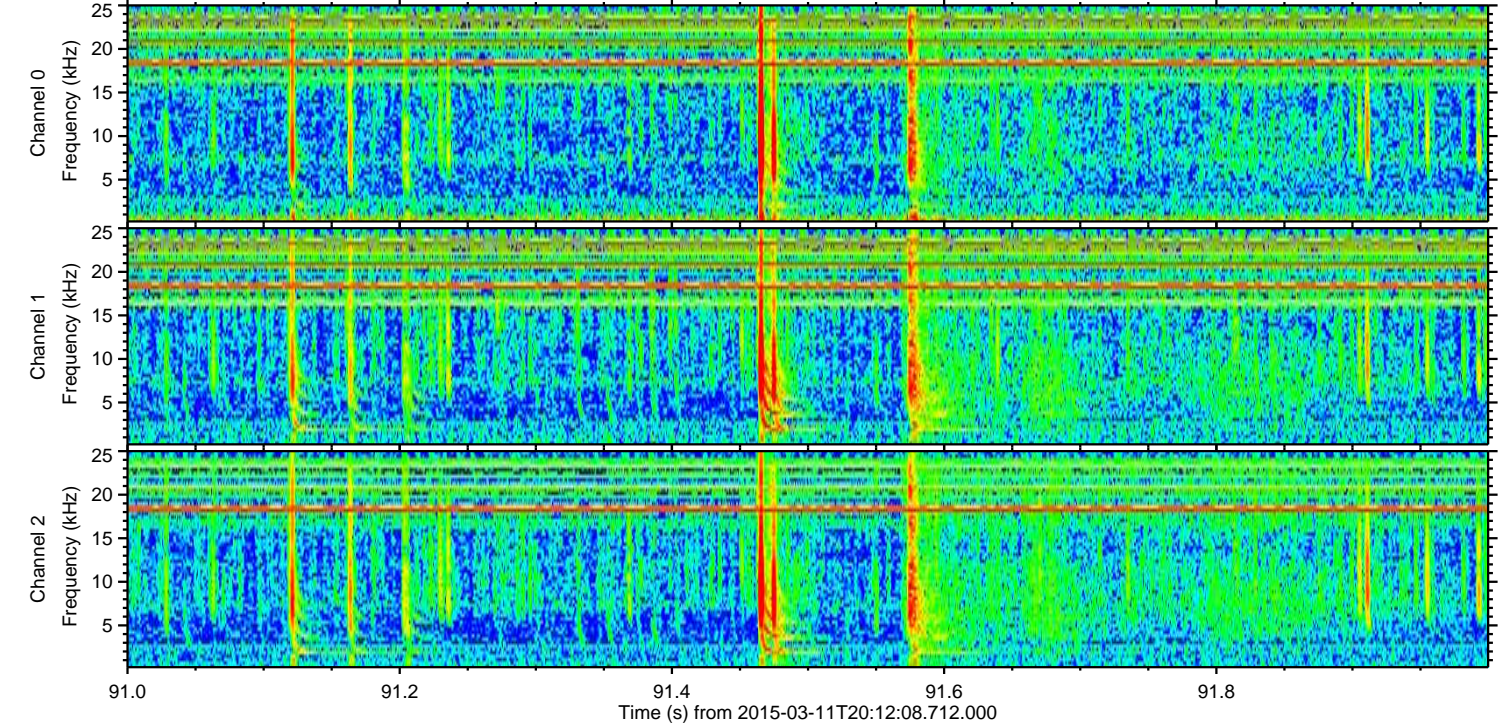
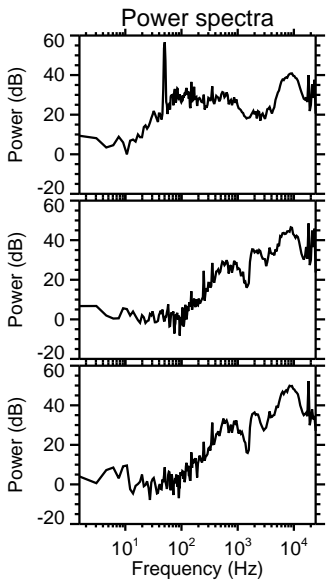
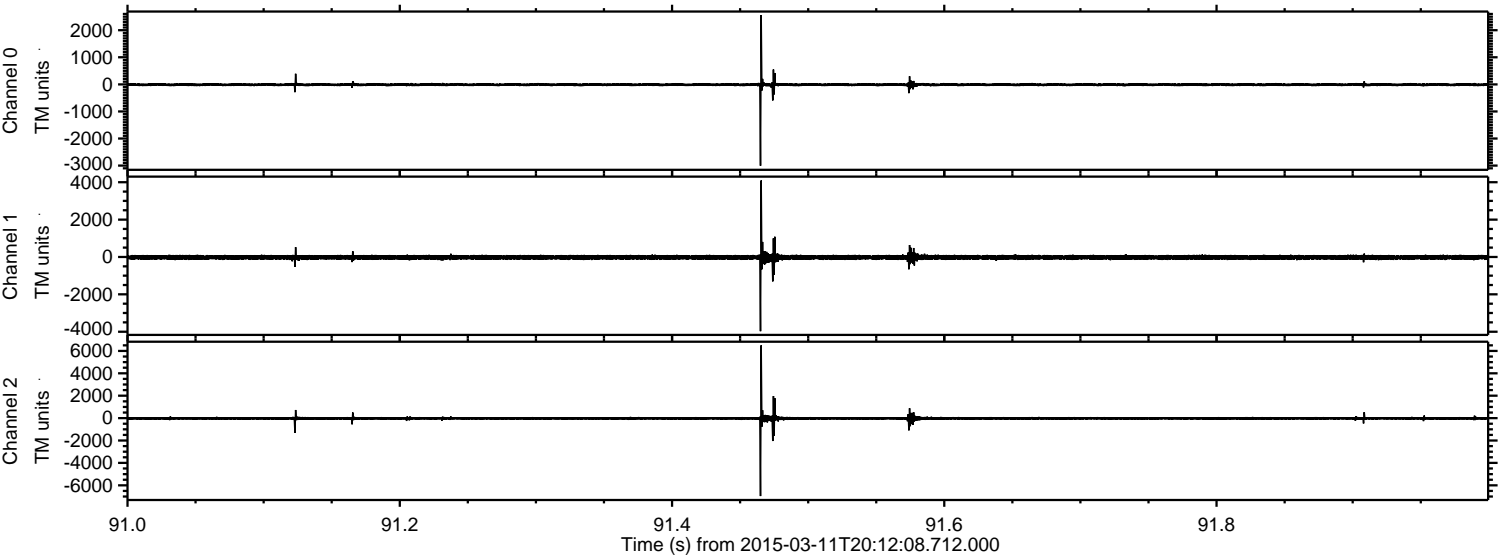
# ELMAVAN 3D WAVEFORMS (Measured data sampled at 50 kHz) 49785 packets of 144 samples from 2015-03-11T20:12:08.712.000.

Processed Wed Mar 11 21:19:16 2015 by ELM ver.2012-10-06 from 001\_\_elm20150311\_201207\_\_dat00.bin





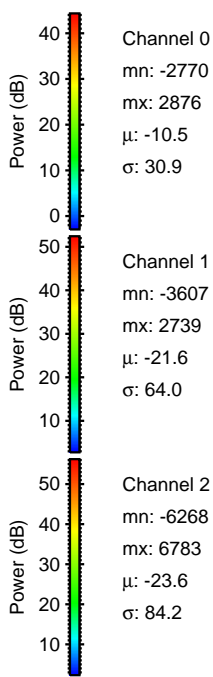
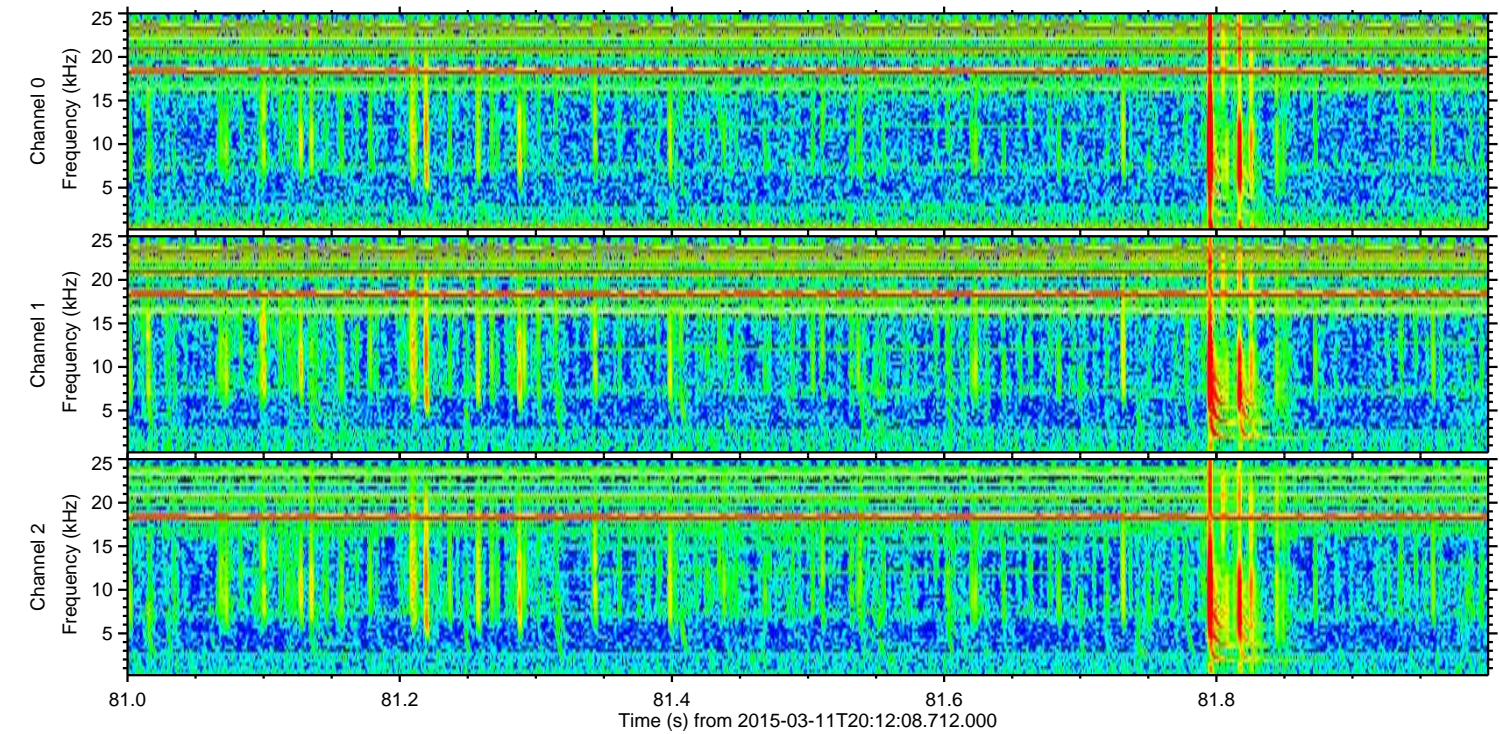
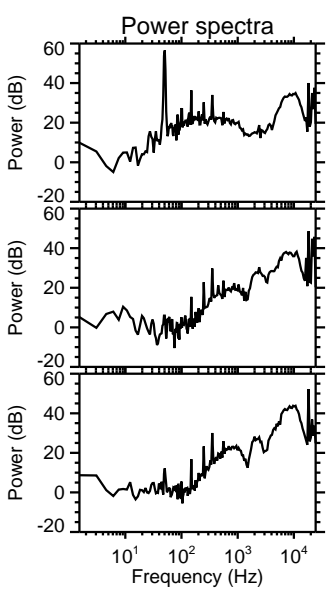
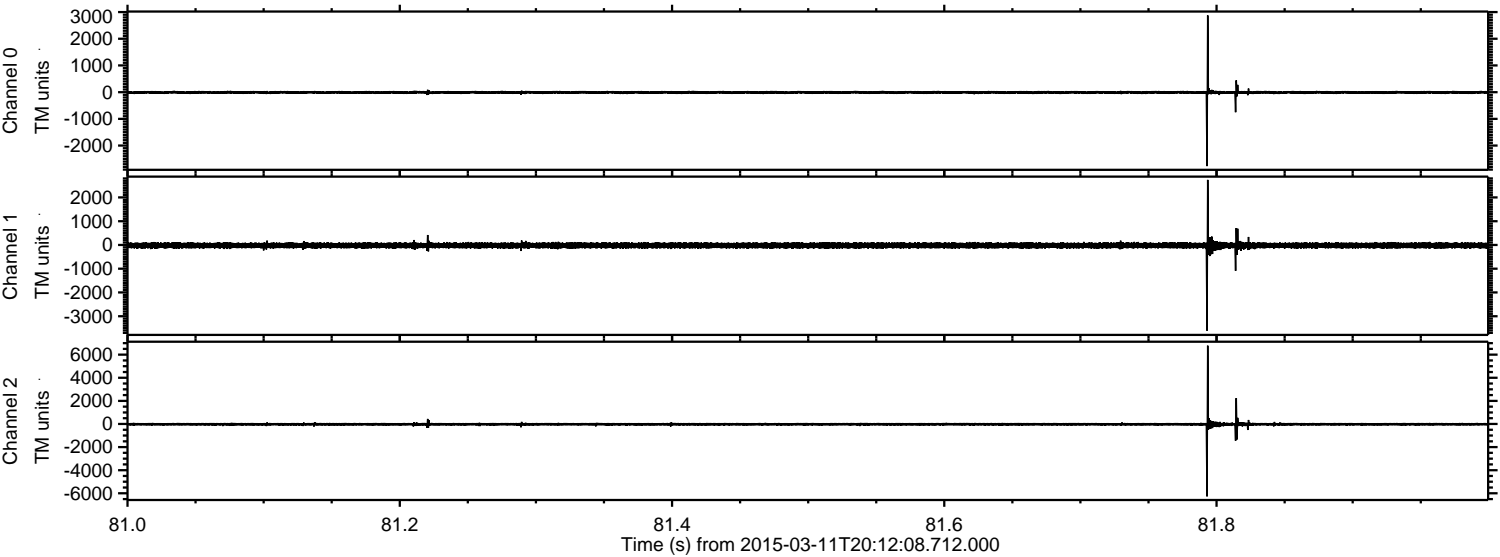
Processed Wed Mar 11 21:19:28 2015 by ELM ver.2012-10-06 from 001\_\_elm20150311\_201207\_\_dat00.bin





ELMAVAN 3D WAVEFORMS (Measured data sampled at 50 kHz) 49785 packets of 144 samples from 2015-03-11T20:12:08.712.000. Part 82/144

Processed Wed Mar 11 21:19:29 2015 by ELM ver.2012-10-06 from 001\_\_elm20150311\_201207\_\_dat00.bin



Channel 0  
mn: -2770  
mx: 2876  
 $\mu$ : -10.5  
 $\sigma$ : 30.9

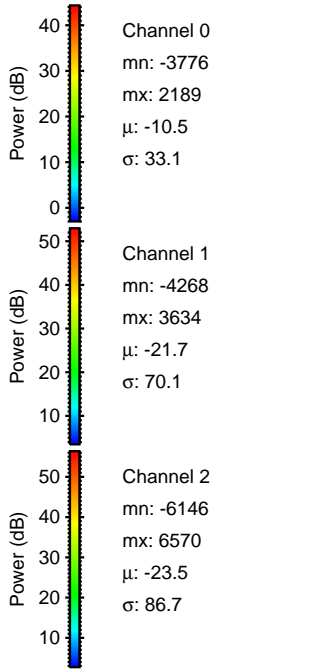
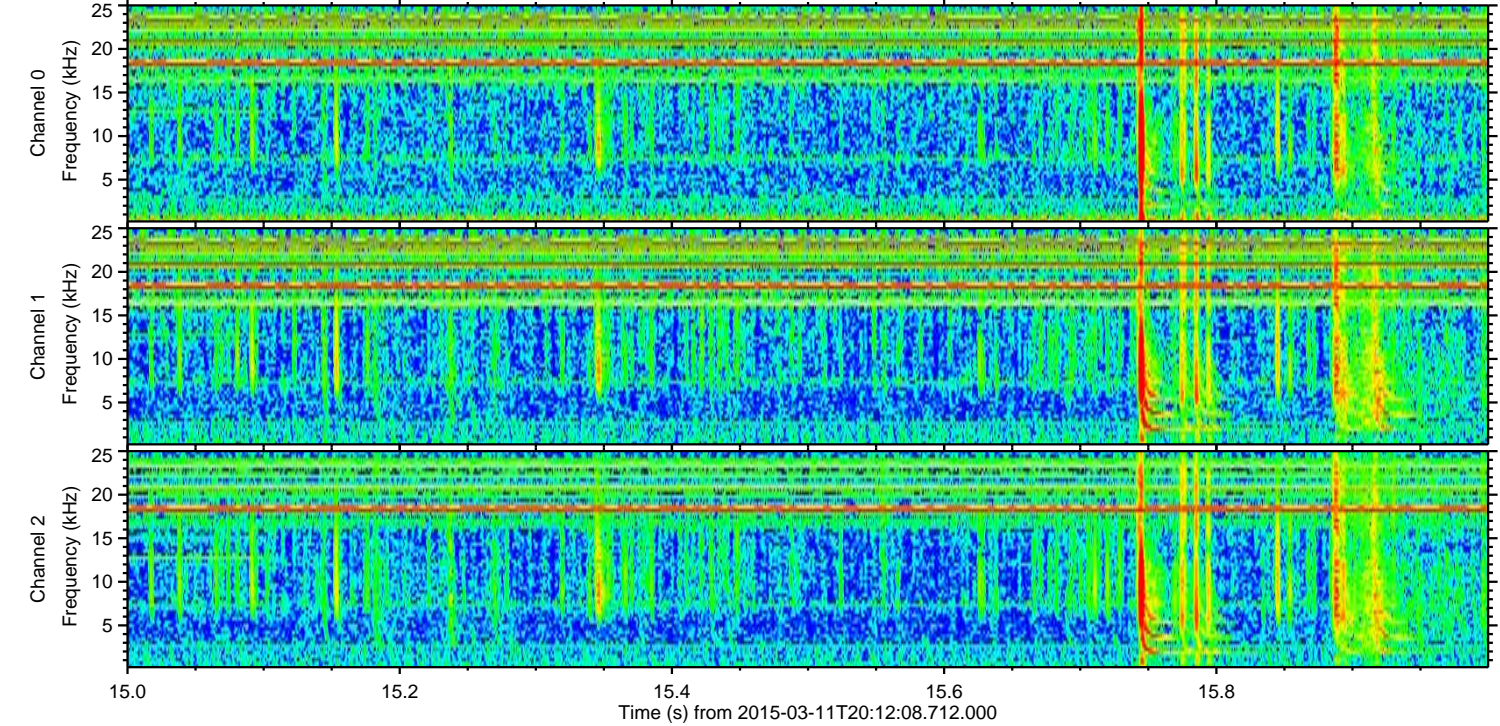
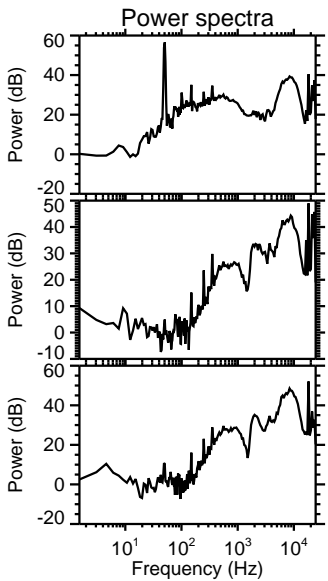
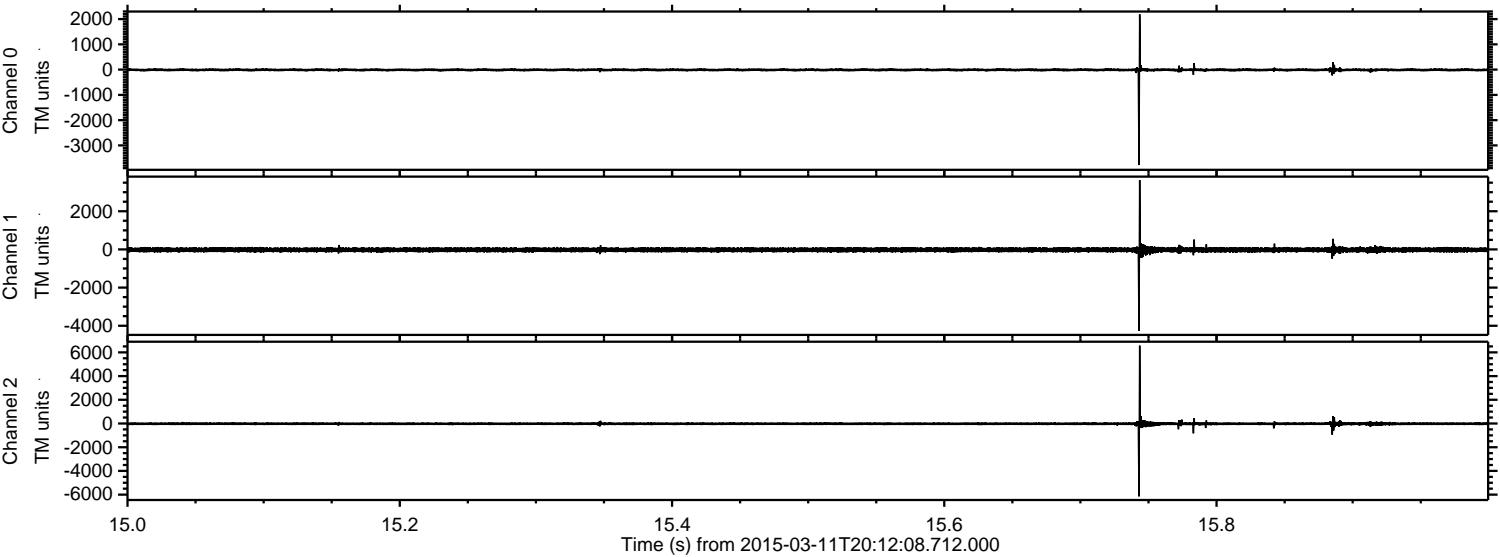
Channel 1  
mn: -3607  
mx: 2739  
 $\mu$ : -21.6  
 $\sigma$ : 64.0

Channel 2  
mn: -6268  
mx: 6783  
 $\mu$ : -23.6  
 $\sigma$ : 84.2



ELMAVAN 3D WAVEFORMS (Measured data sampled at 50 kHz) 49785 packets of 144 samples from 2015-03-11T20:12:08.712.000. Part 16/144

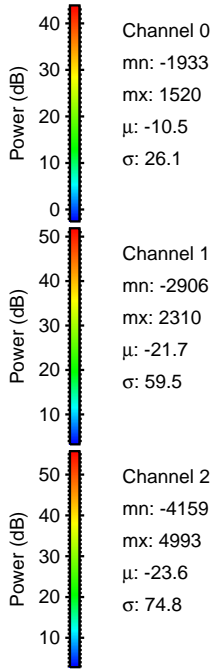
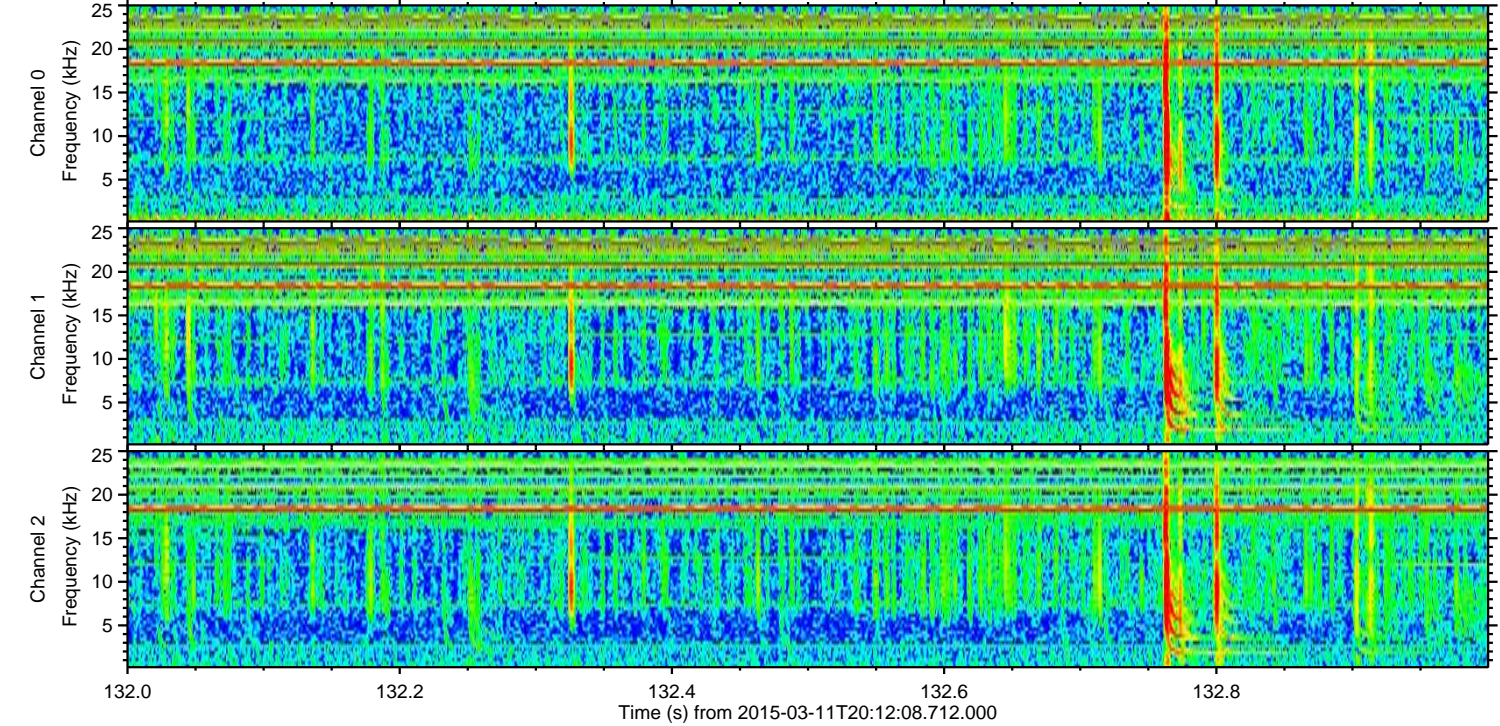
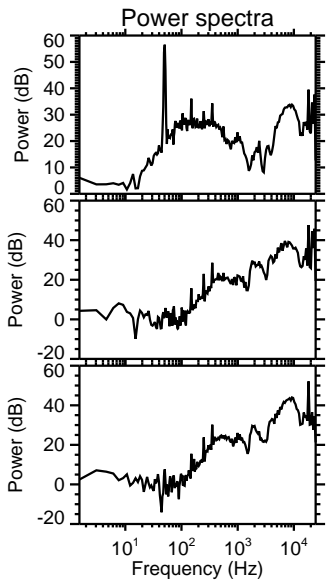
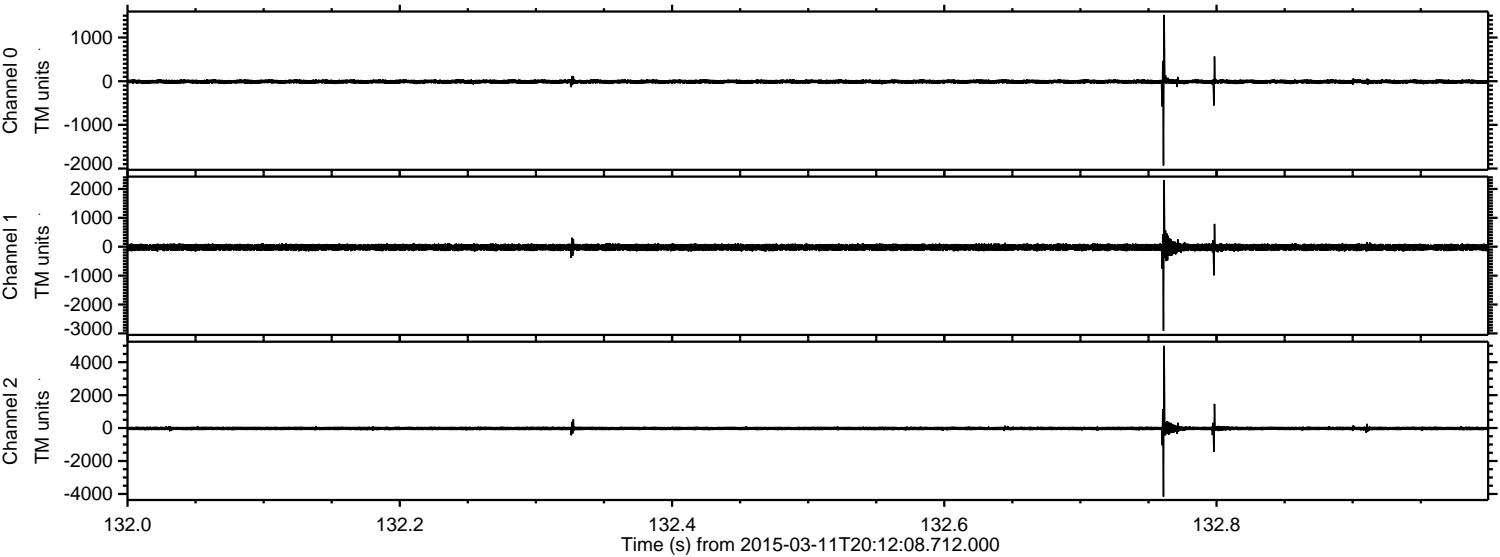
Processed Wed Mar 11 21:19:29 2015 by ELM ver.2012-10-06 from 001\_\_elm20150311\_201207\_\_dat00.bin





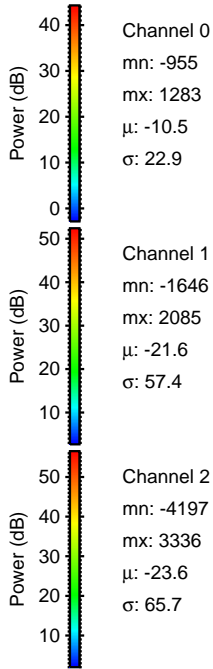
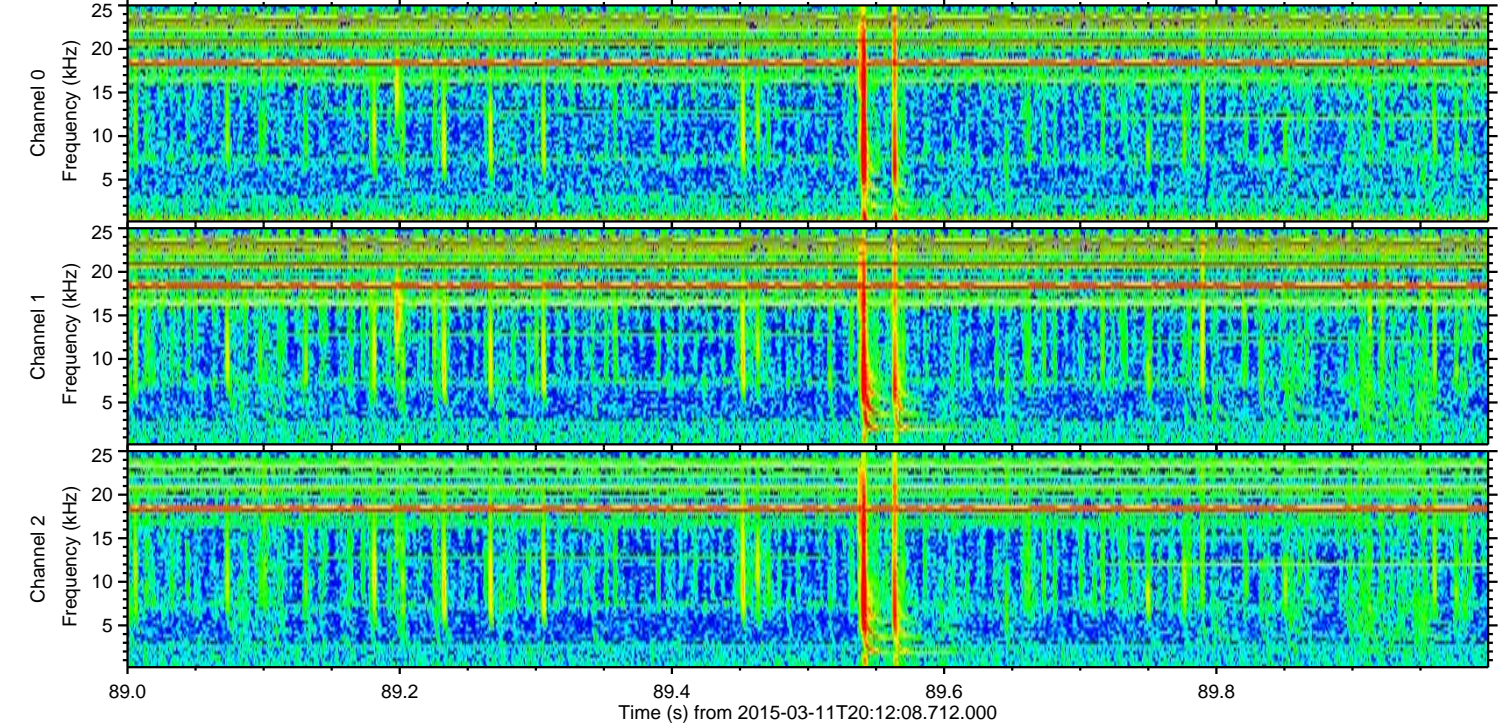
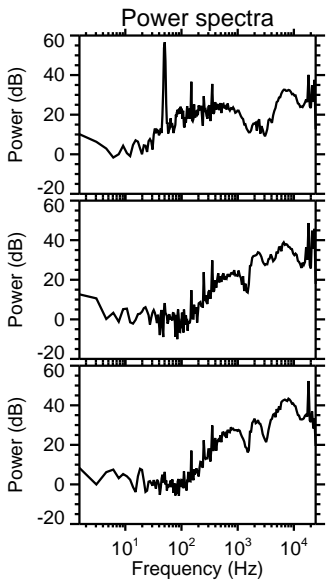
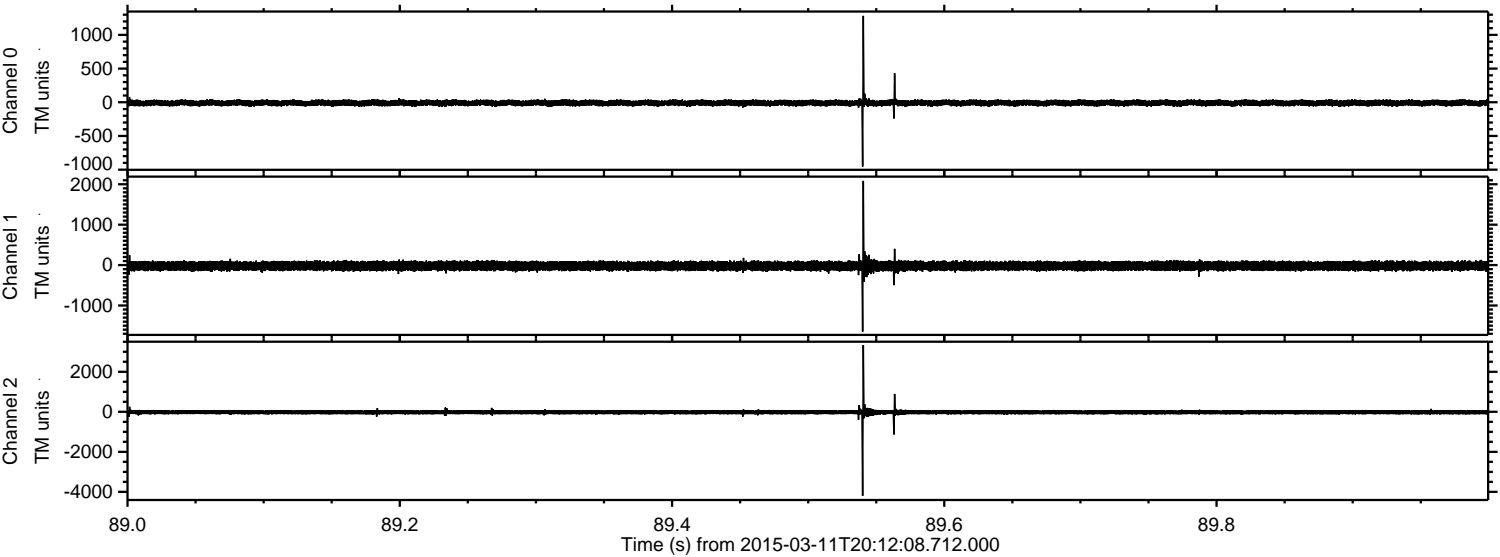
ELMAVAN 3D WAVEFORMS (Measured data sampled at 50 kHz) 49785 packets of 144 samples from 2015-03-11T20:12:08.712.000. Part 133/144

Processed Wed Mar 11 21:19:30 2015 by ELM ver.2012-10-06 from 001\_\_elm20150311\_201207\_\_dat00.bin



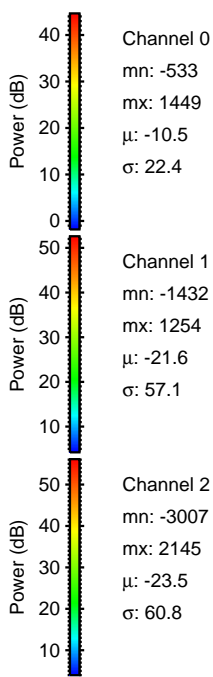
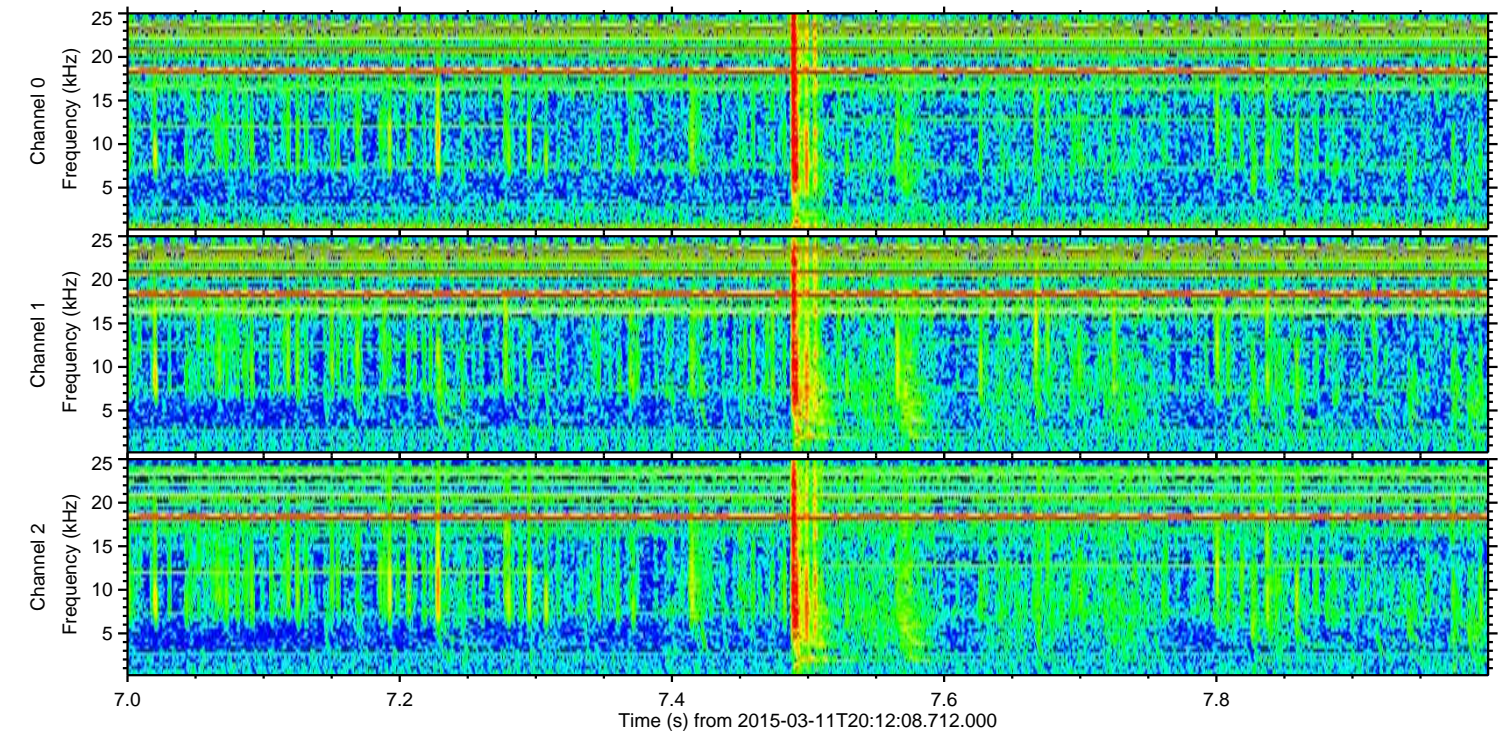
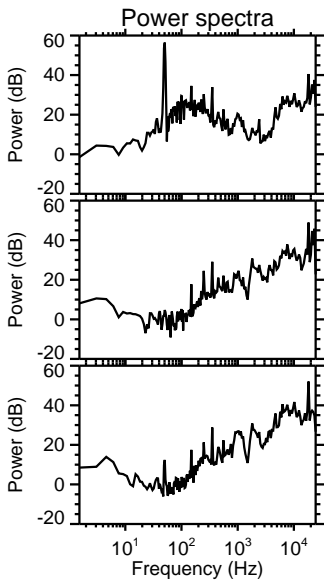
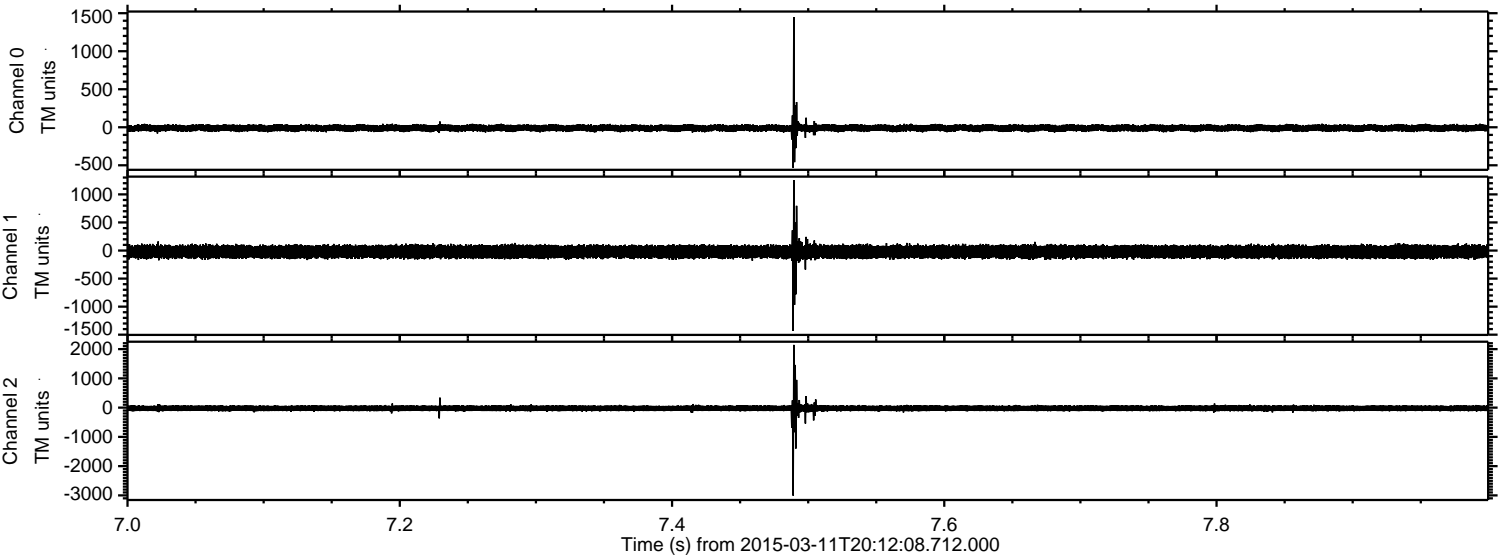


Processed Wed Mar 11 21:19:31 2015 by ELM ver.2012-10-06 from 001\_\_elm20150311\_201207\_\_dat00.bin





Processed Wed Mar 11 21:19:32 2015 by ELM ver.2012-10-06 from 001\_\_elm20150311\_201207\_\_dat00.bin



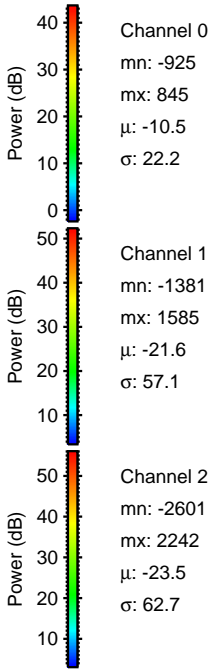
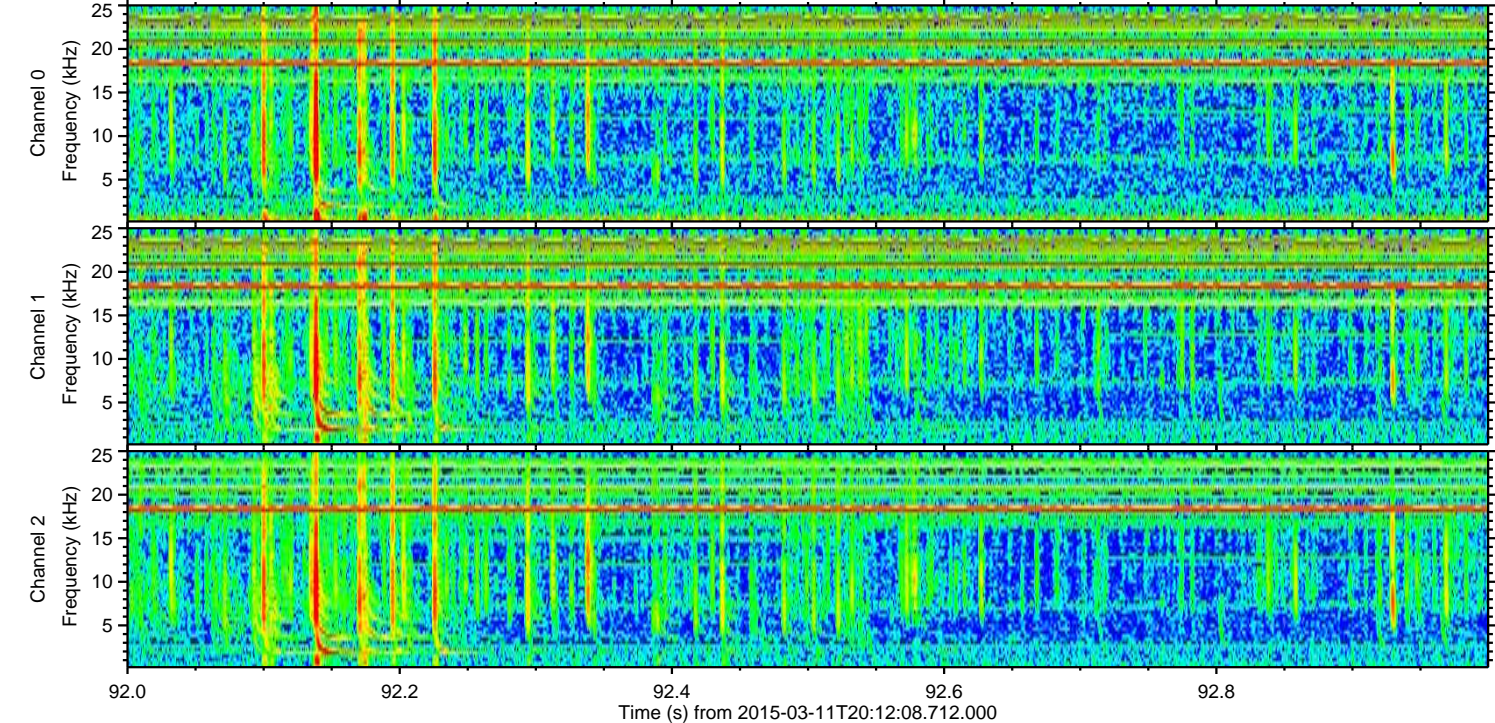
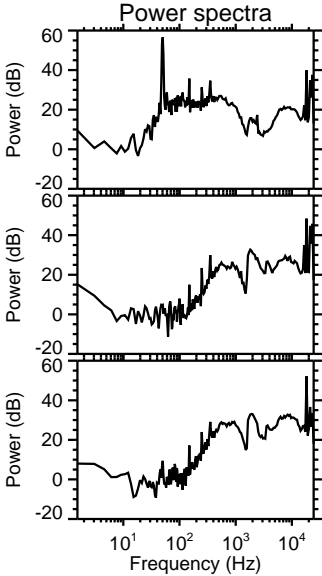
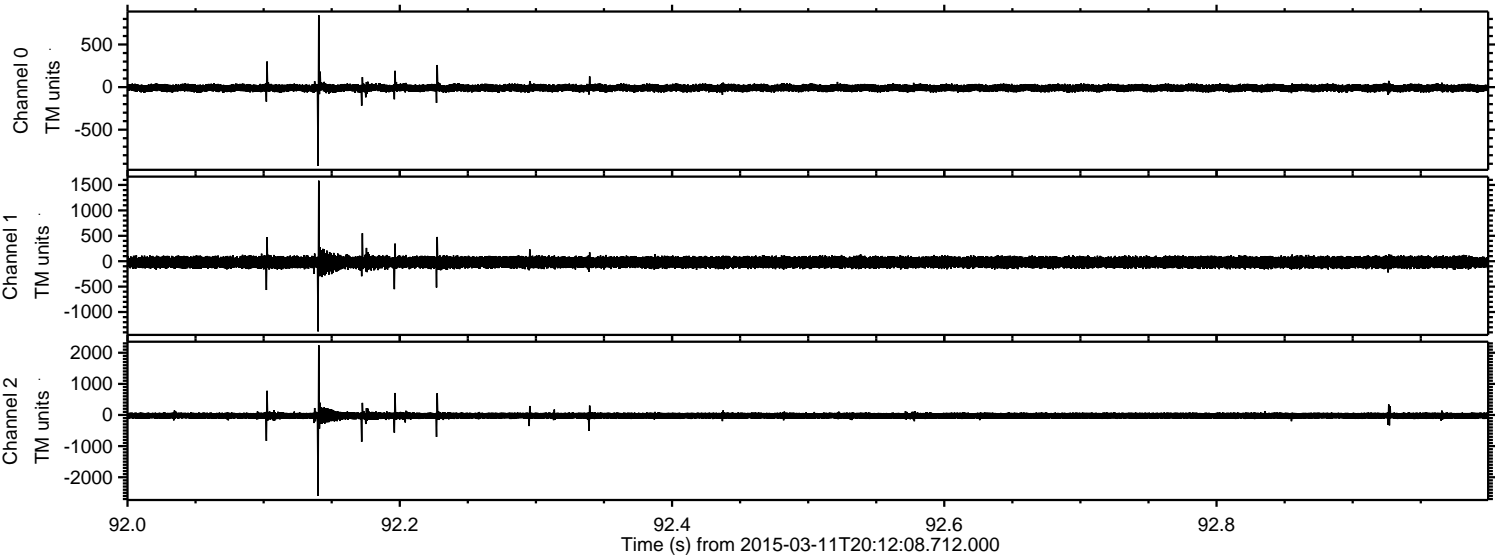
Channel 0  
mn: -533  
mx: 1449  
 $\mu$ : -10.5  
 $\sigma$ : 22.4

Channel 1  
mn: -1432  
mx: 1254  
 $\mu$ : -21.6  
 $\sigma$ : 57.1

Channel 2  
mn: -3007  
mx: 2145  
 $\mu$ : -23.5  
 $\sigma$ : 60.8

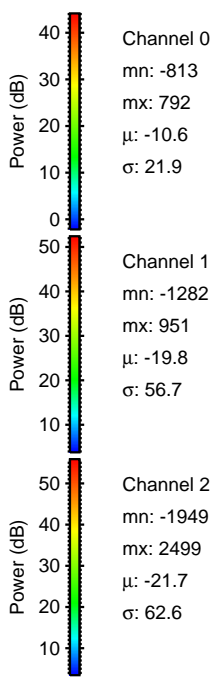
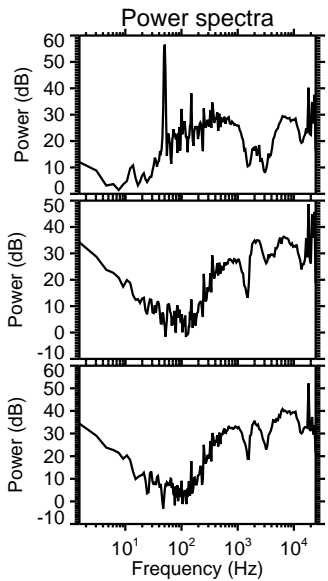
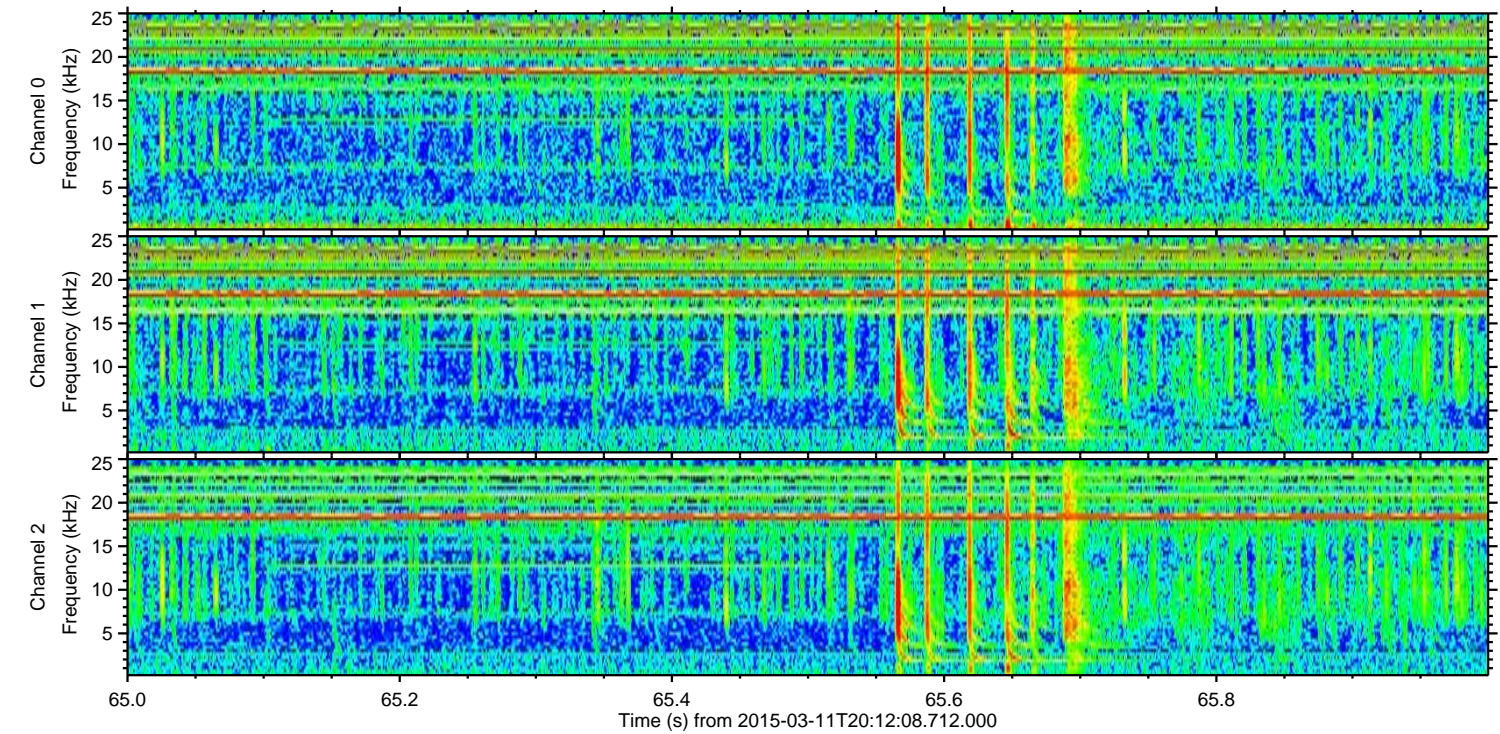
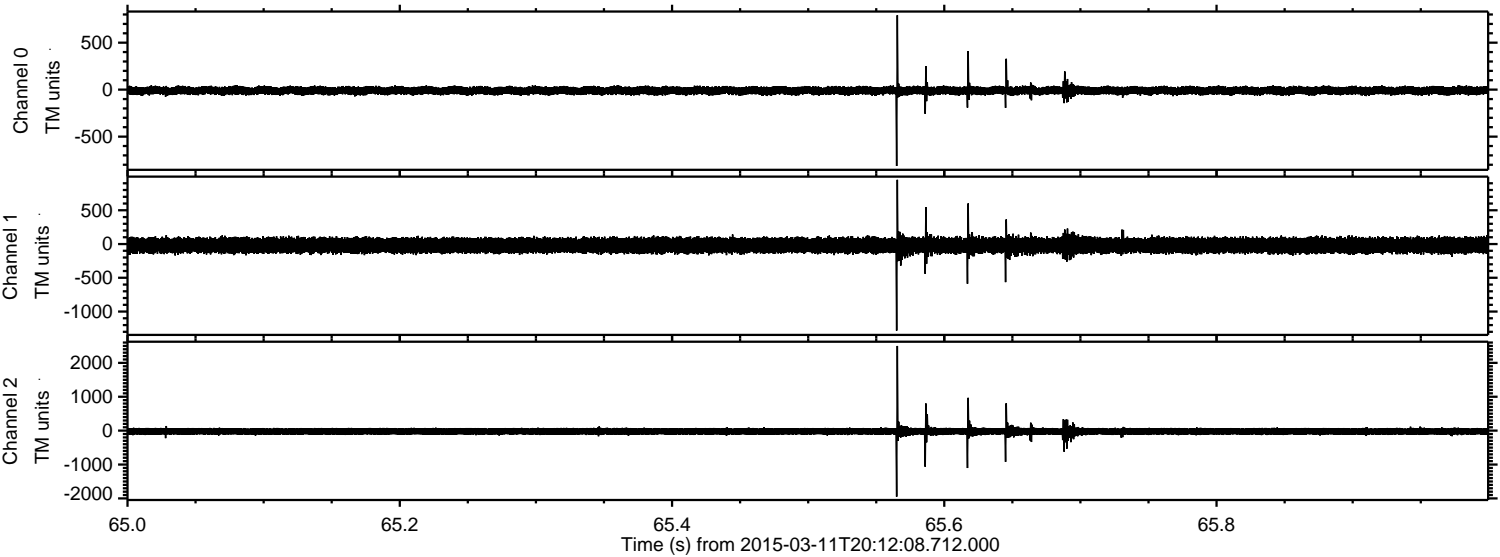


Processed Wed Mar 11 21:19:33 2015 by ELM ver.2012-10-06 from 001\_\_elm20150311\_201207\_\_dat00.bin





Processed Wed Mar 11 21:19:34 2015 by ELM ver.2012-10-06 from 001\_\_elm20150311\_201207\_\_dat00.bin



Channel 0  
mn: -813  
mx: 792  
 $\mu$ : -10.6  
 $\sigma$ : 21.9

Channel 1  
mn: -1282  
mx: 951  
 $\mu$ : -19.8  
 $\sigma$ : 56.7

Channel 2  
mn: -1949  
mx: 2499  
 $\mu$ : -21.7  
 $\sigma$ : 62.6



ELMAVAN 3D WAVEFORMS (Measured data sampled at 50 kHz) 49785 packets of 144 samples from 2015-03-11T20:12:08.712.000. Part 121/144

Processed Wed Mar 11 21:19:35 2015 by ELM ver.2012-10-06 from 001\_\_elm20150311\_201207\_\_dat00.bin

