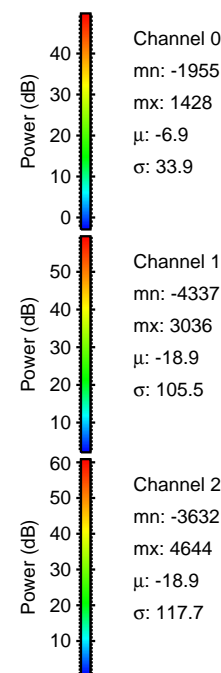
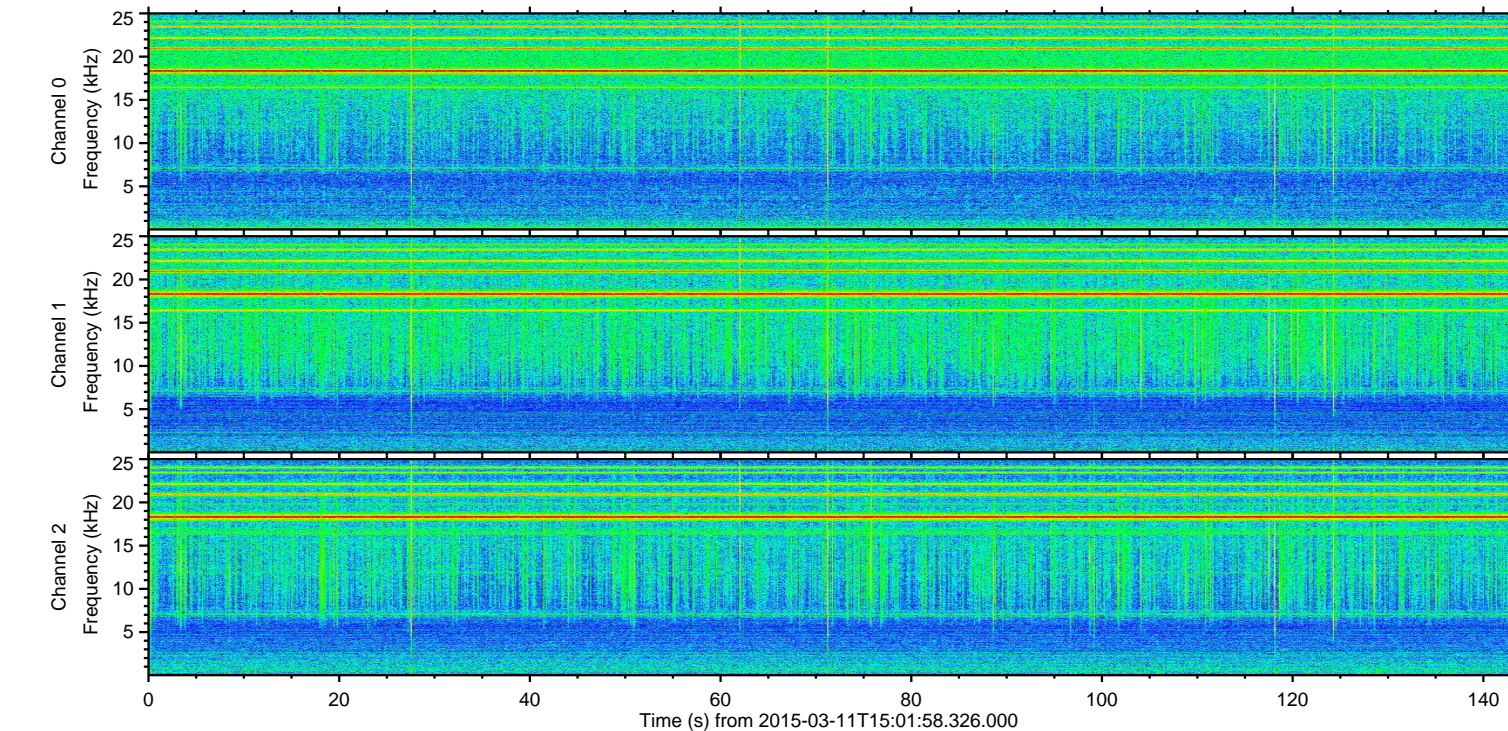
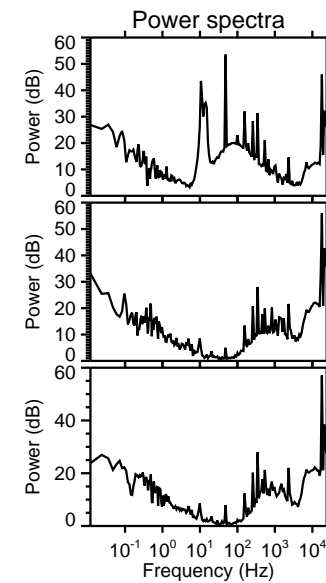
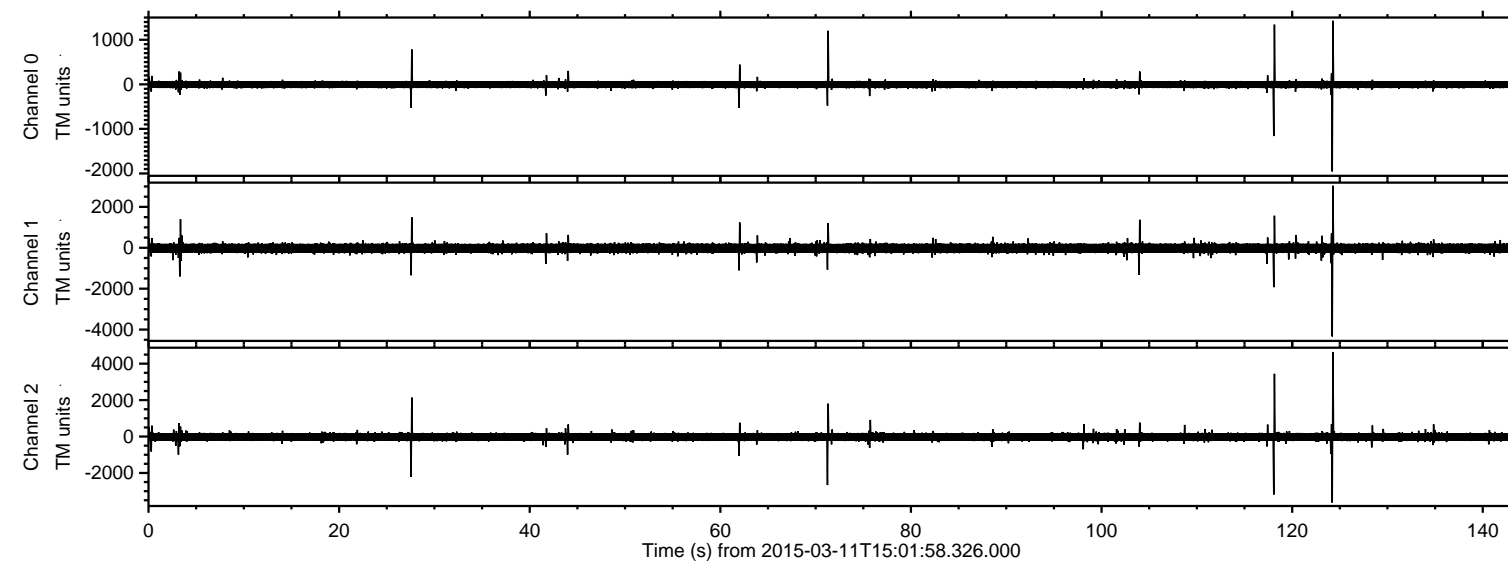


# ELMAVAN 3D WAVEFORMS (Measured data sampled at 50 kHz) 49572 packets of 144 samples from 2015-03-11T15:01:58.326.000.

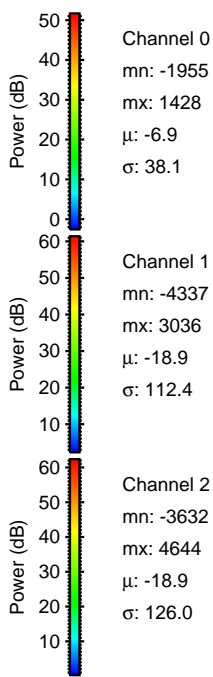
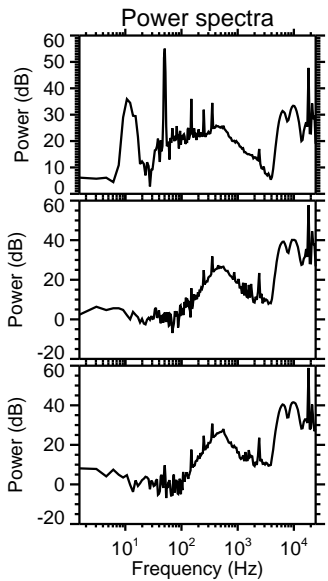
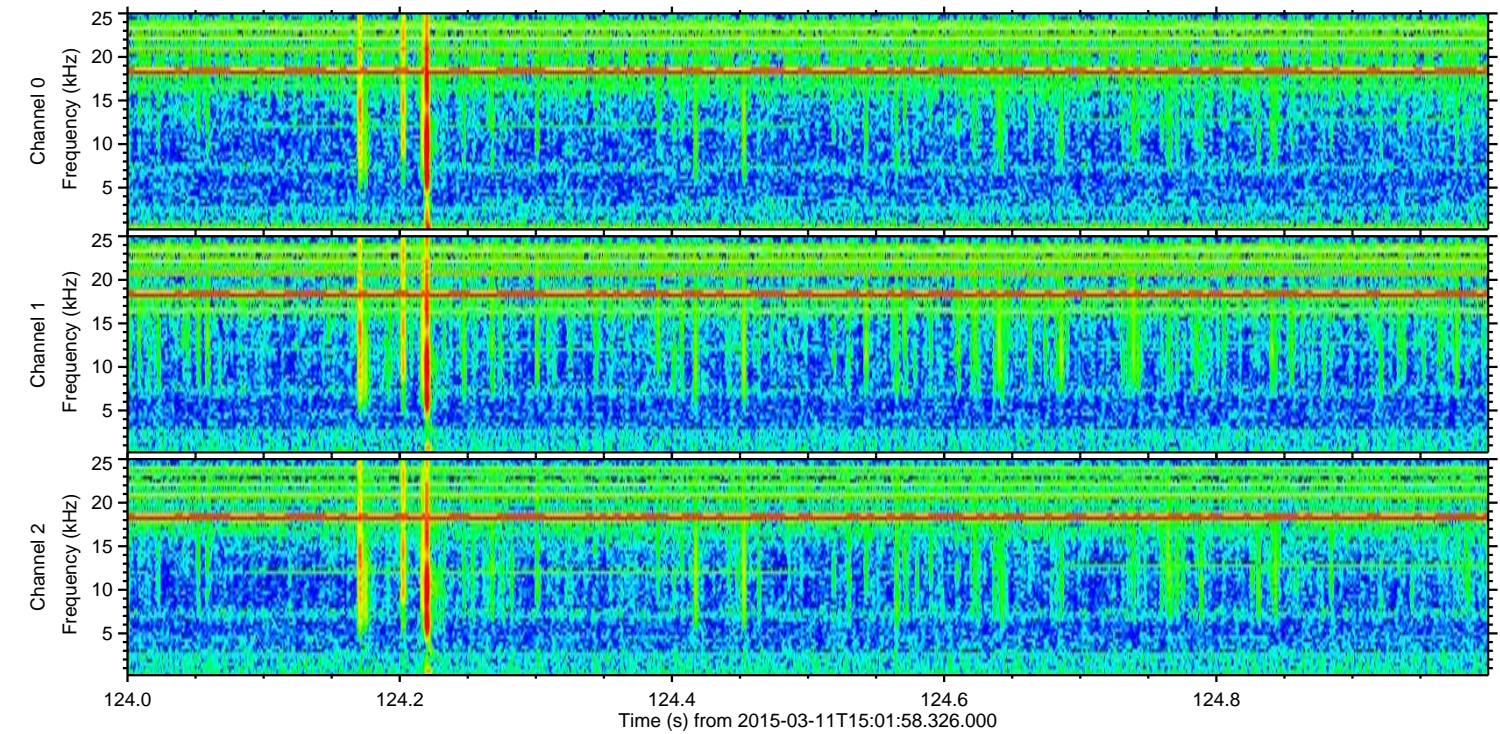
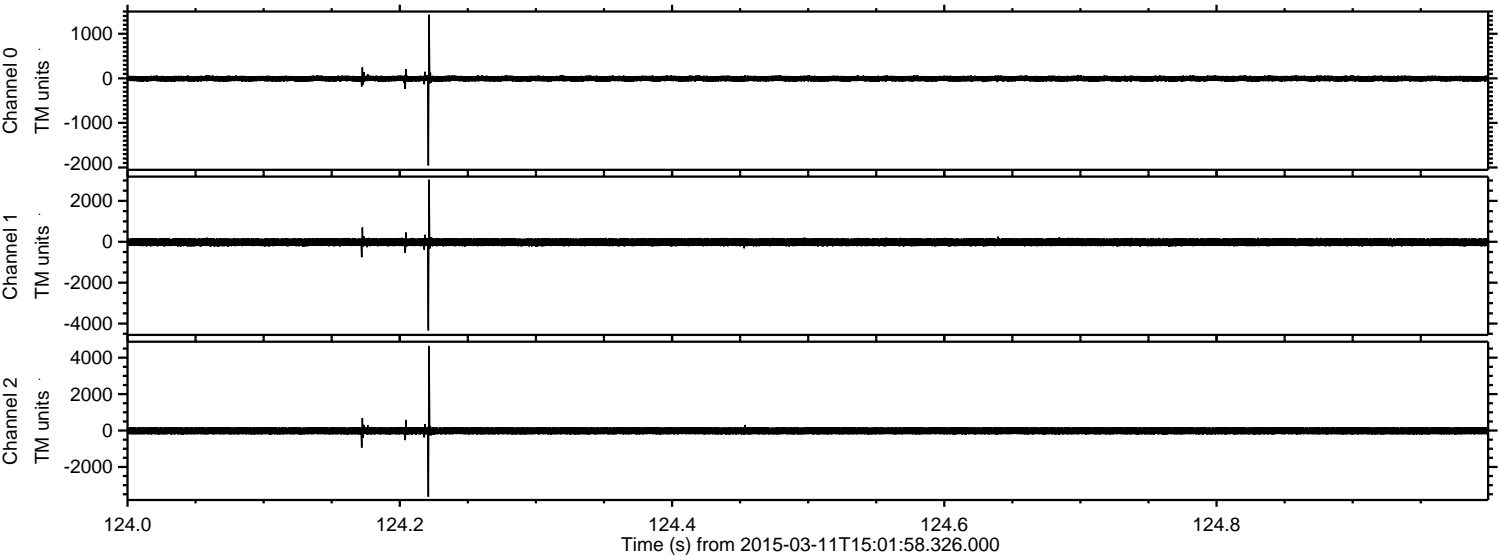
Processed Wed Mar 11 16:09:14 2015 by ELM ver.2012-10-06 from 001\_\_elm20150311\_150157\_\_dat00.bin





ELMAVAN 3D WAVEFORMS (Measured data sampled at 50 kHz) 49572 packets of 144 samples from 2015-03-11T15:01:58.326.000. Part 125/143

Processed Wed Mar 11 16:09:25 2015 by ELM ver.2012-10-06 from 001\_\_elm20150311\_150157\_\_dat00.bin



Channel 0  
mn: -1955  
mx: 1428  
 $\mu$ : -6.9  
 $\sigma$ : 38.1

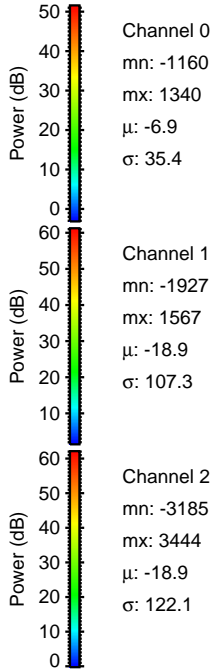
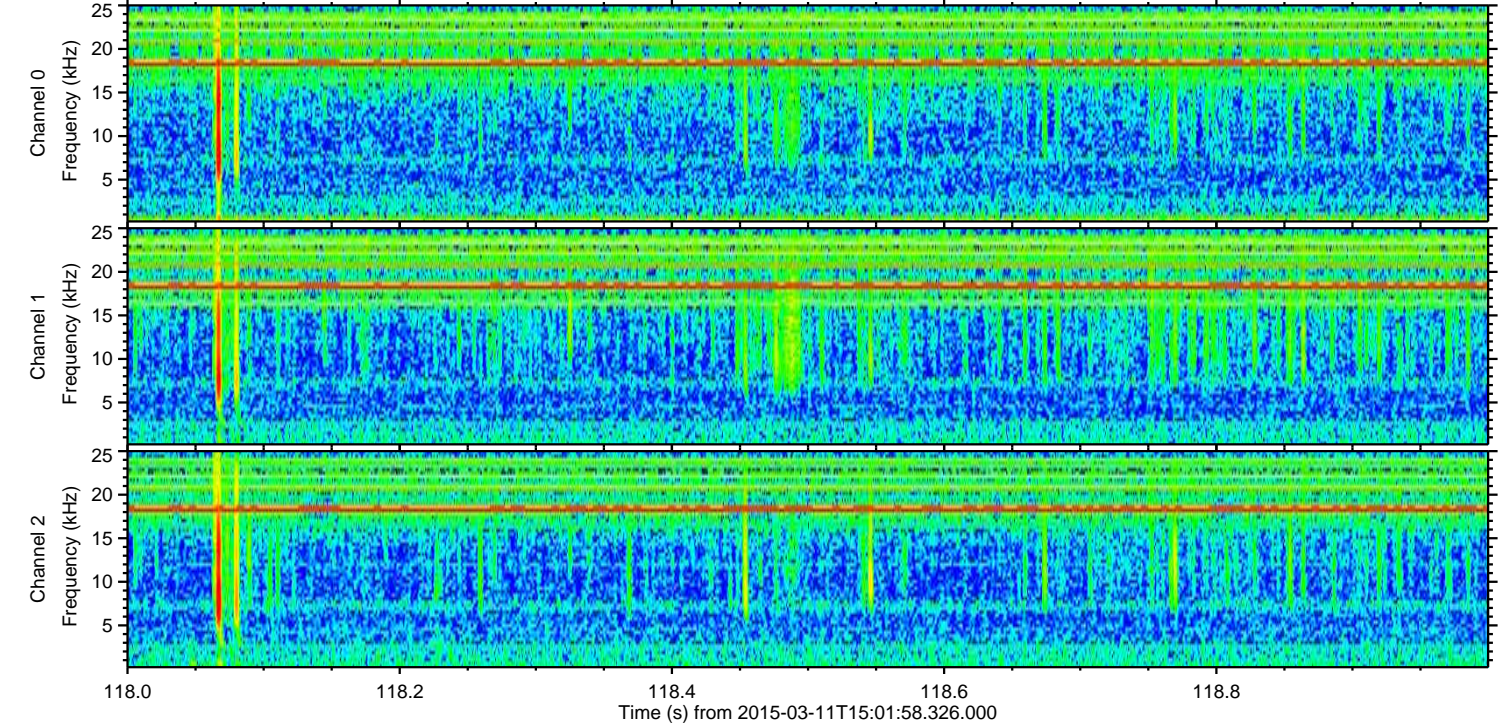
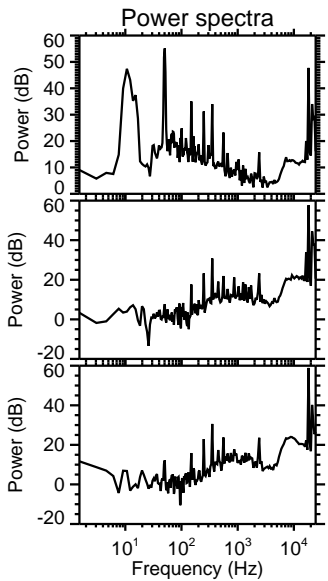
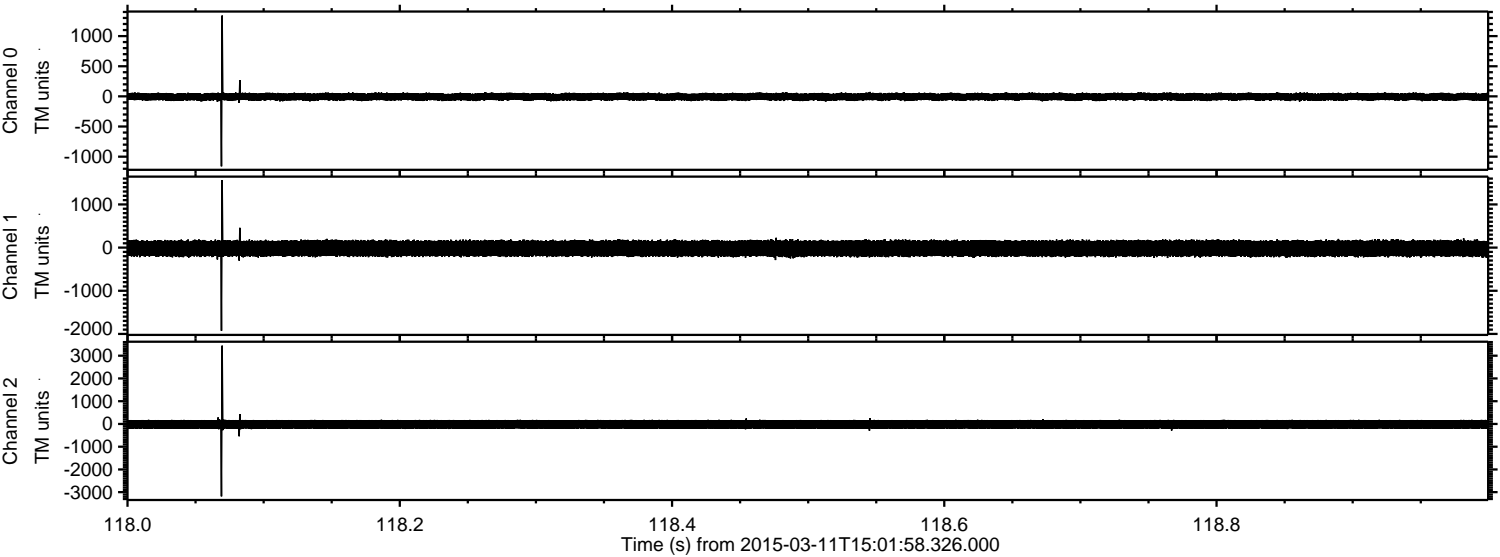
Channel 1  
mn: -4337  
mx: 3036  
 $\mu$ : -18.9  
 $\sigma$ : 112.4

Channel 2  
mn: -3632  
mx: 4644  
 $\mu$ : -18.9  
 $\sigma$ : 126.0



ELMAVAN 3D WAVEFORMS (Measured data sampled at 50 kHz) 49572 packets of 144 samples from 2015-03-11T15:01:58.326.000. Part 119/143

Processed Wed Mar 11 16:09:26 2015 by ELM ver.2012-10-06 from 001\_\_elm20150311\_150157\_\_dat00.bin



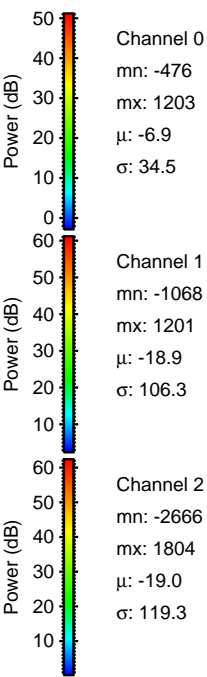
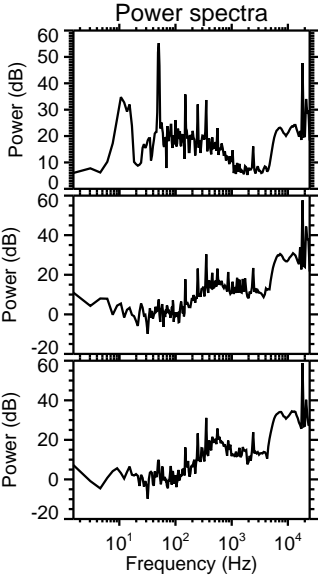
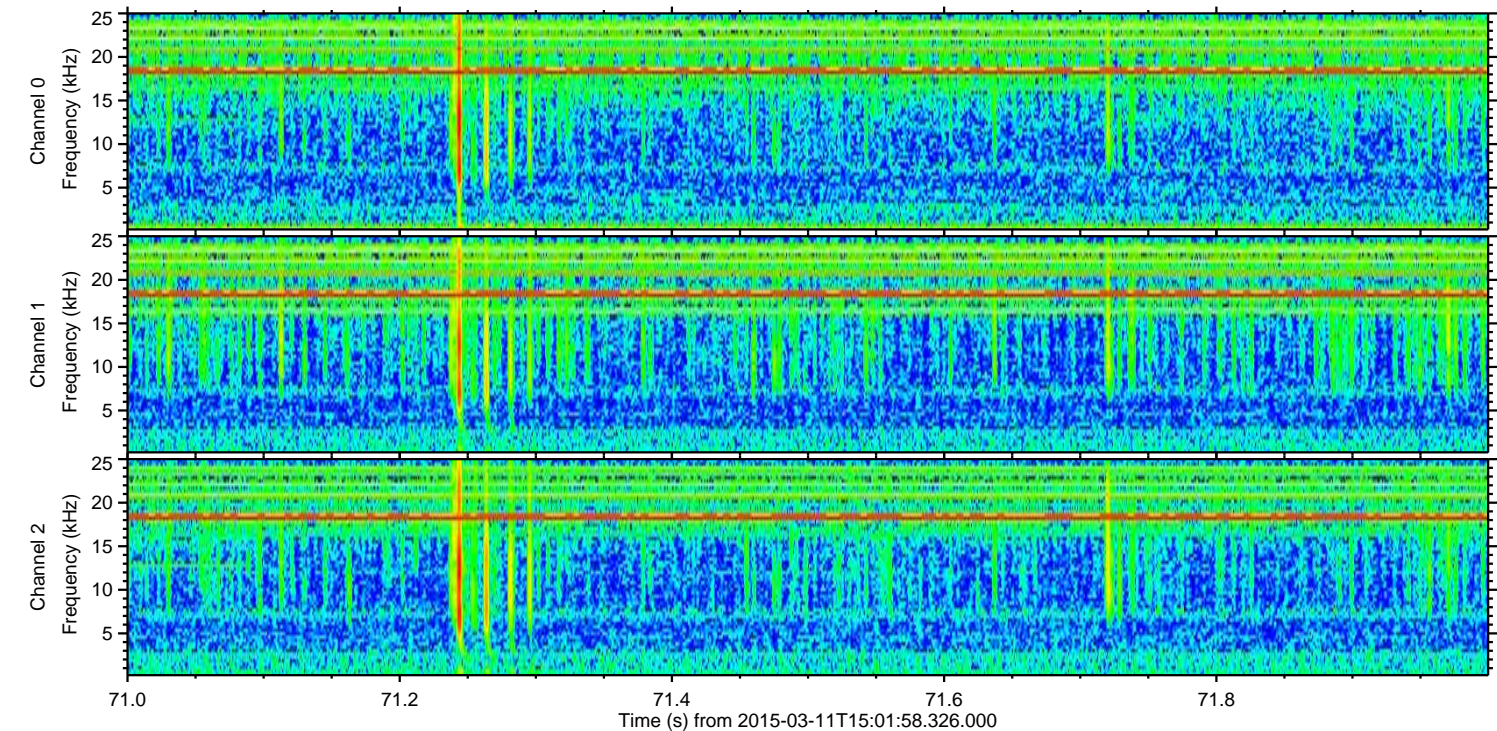
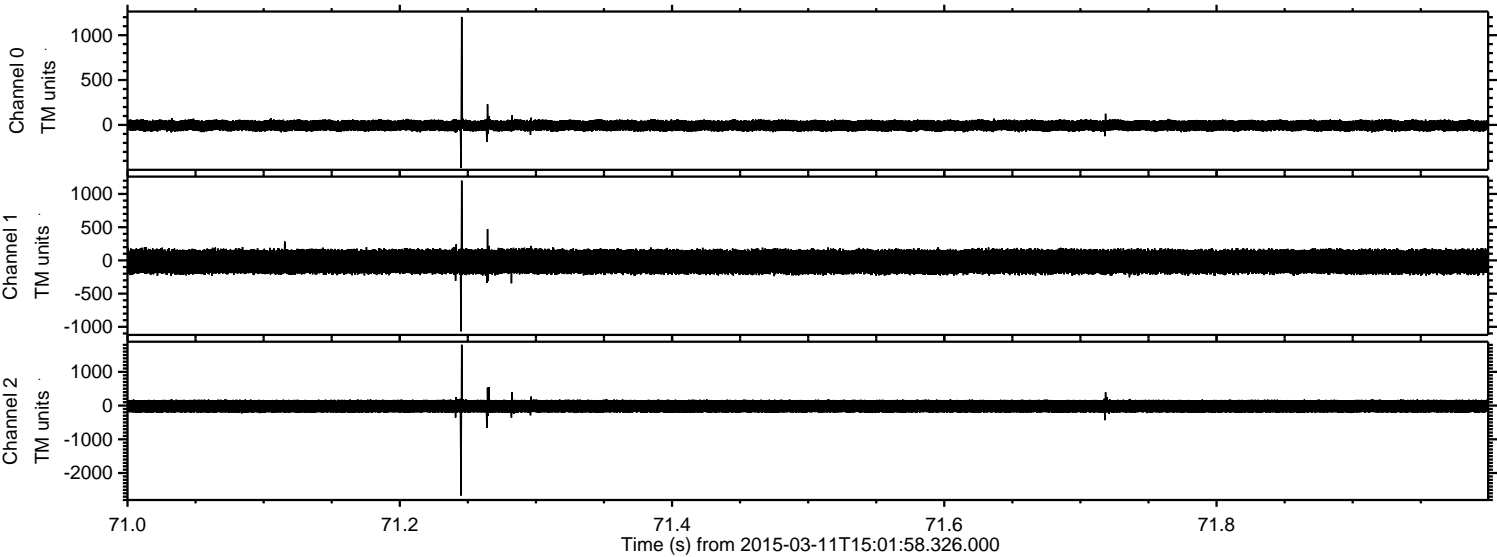
Channel 0  
mn: -1160  
mx: 1340  
 $\mu$ : -6.9  
 $\sigma$ : 35.4

Channel 1  
mn: -1927  
mx: 1567  
 $\mu$ : -18.9  
 $\sigma$ : 107.3

Channel 2  
mn: -3185  
mx: 3444  
 $\mu$ : -18.9  
 $\sigma$ : 122.1

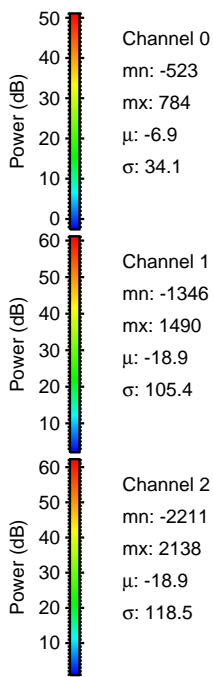
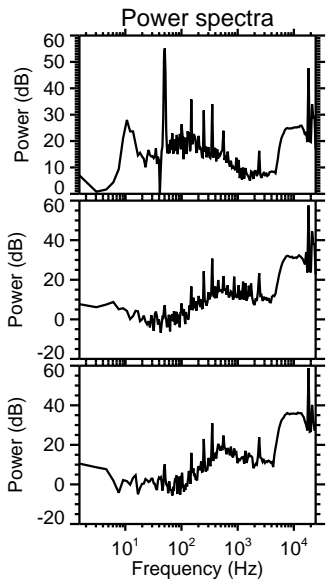
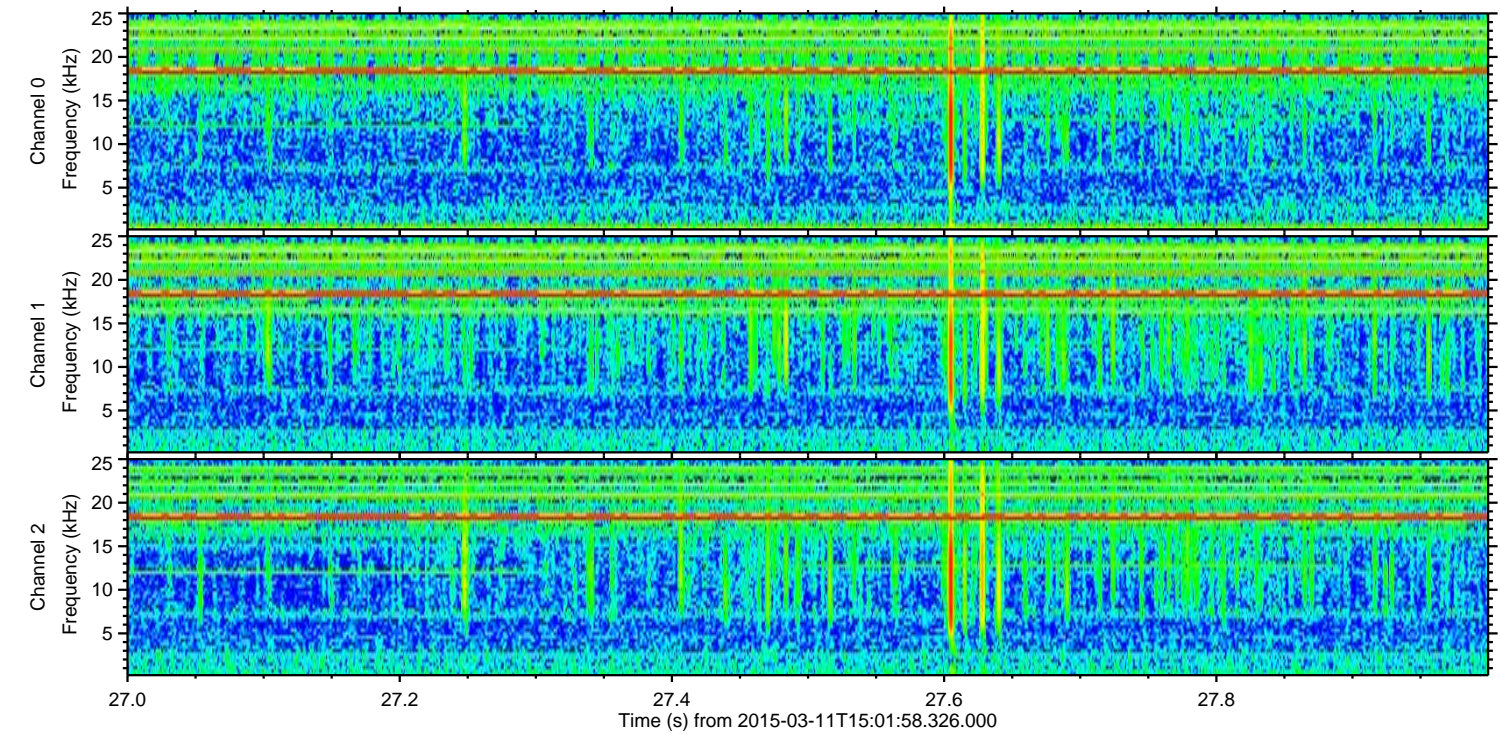
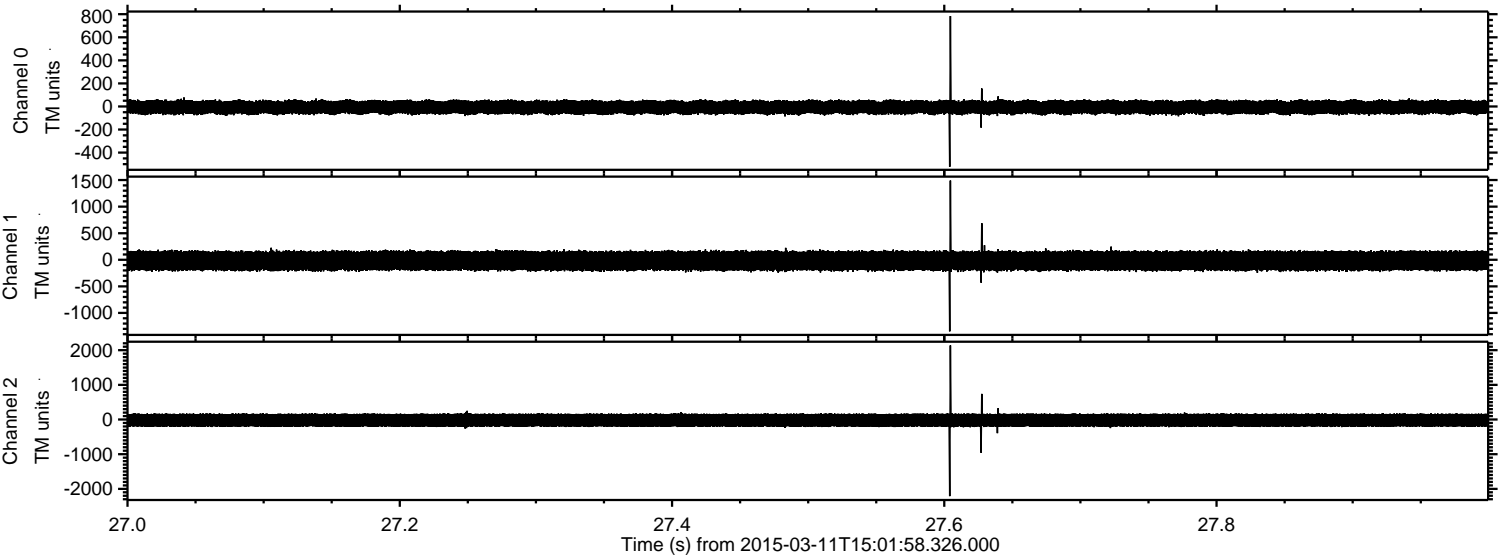


Processed Wed Mar 11 16:09:27 2015 by ELM ver.2012-10-06 from 001\_\_elm20150311\_150157\_\_dat00.bin



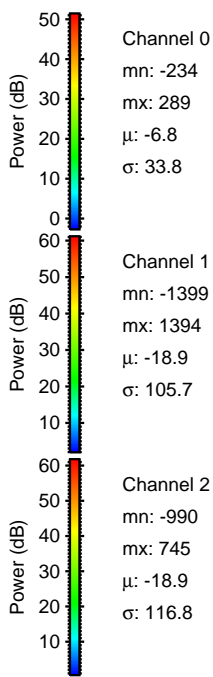
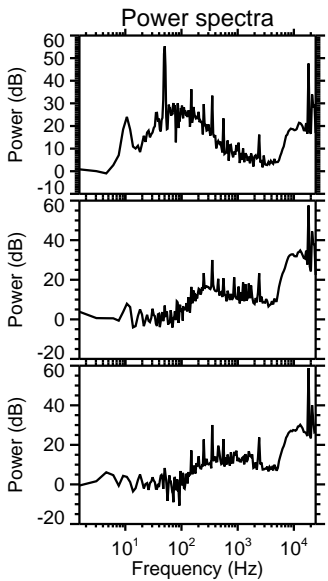
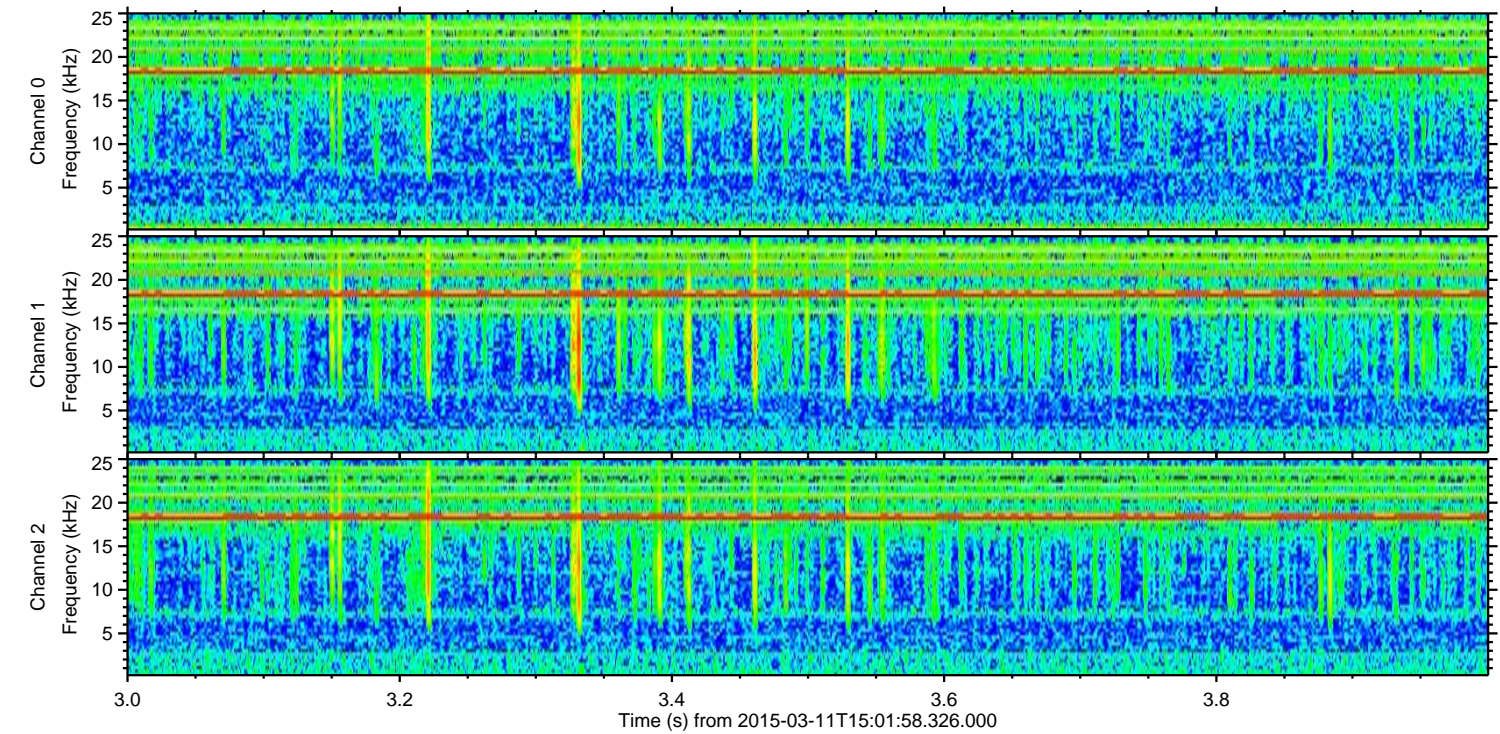
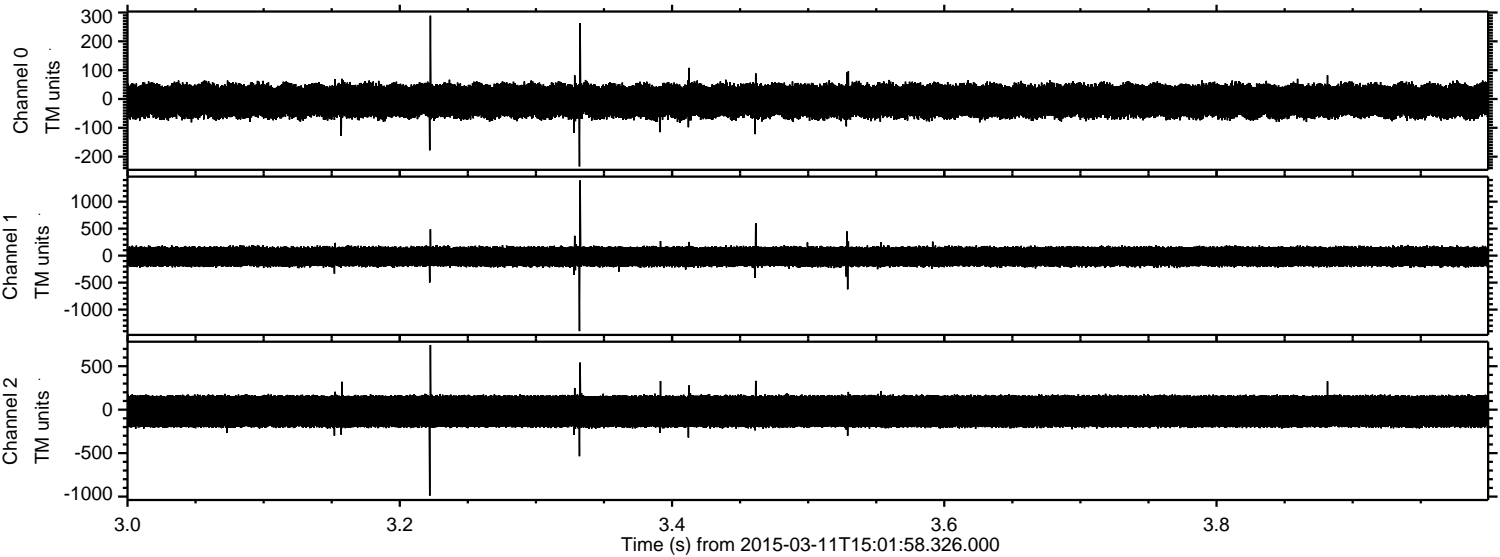


Processed Wed Mar 11 16:09:28 2015 by ELM ver.2012-10-06 from 001\_\_elm20150311\_150157\_\_dat00.bin





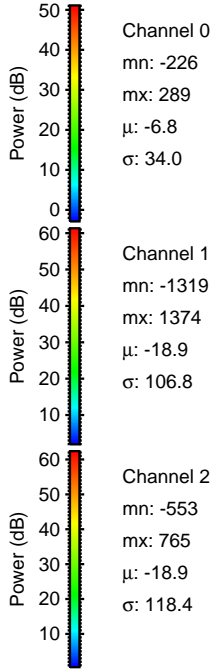
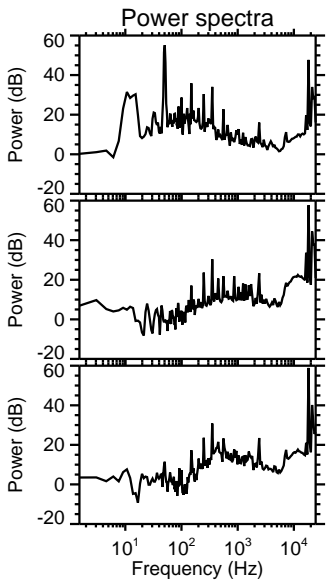
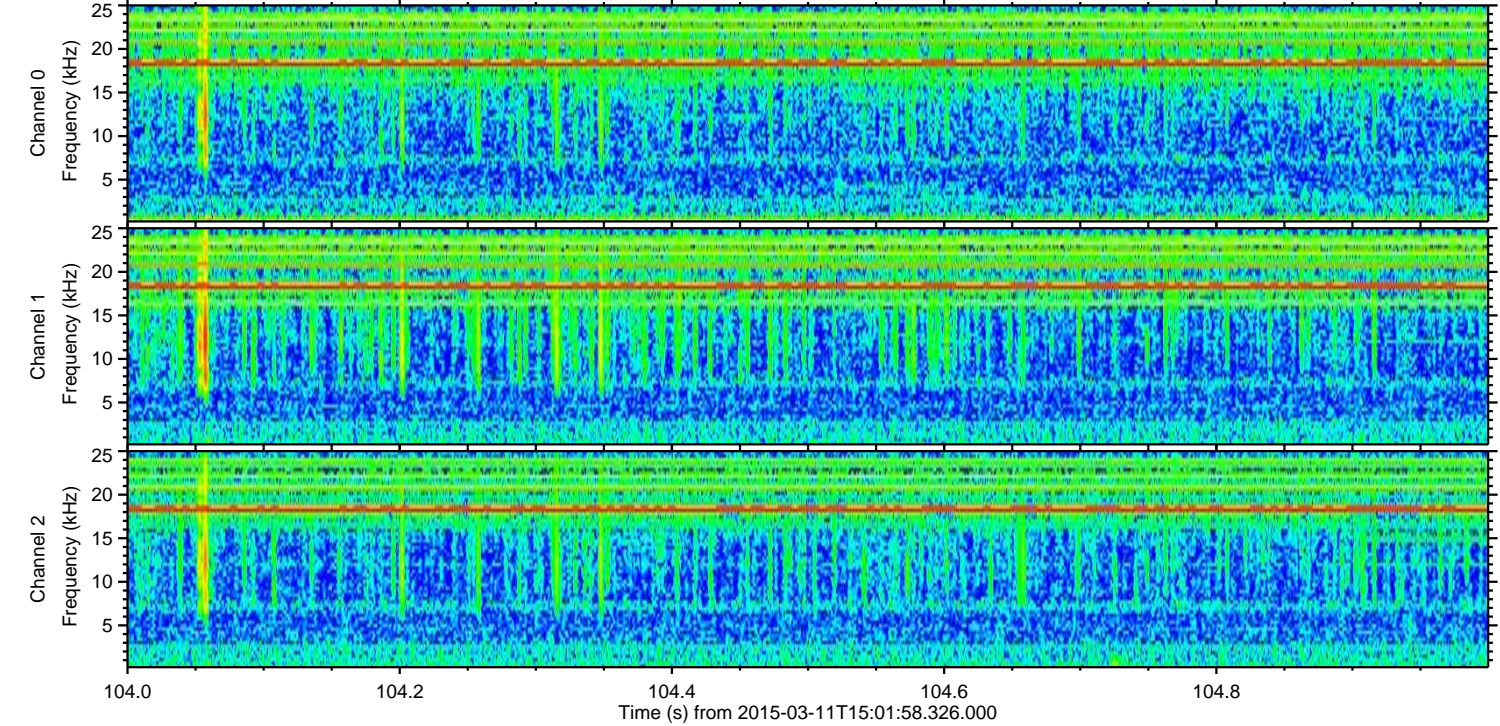
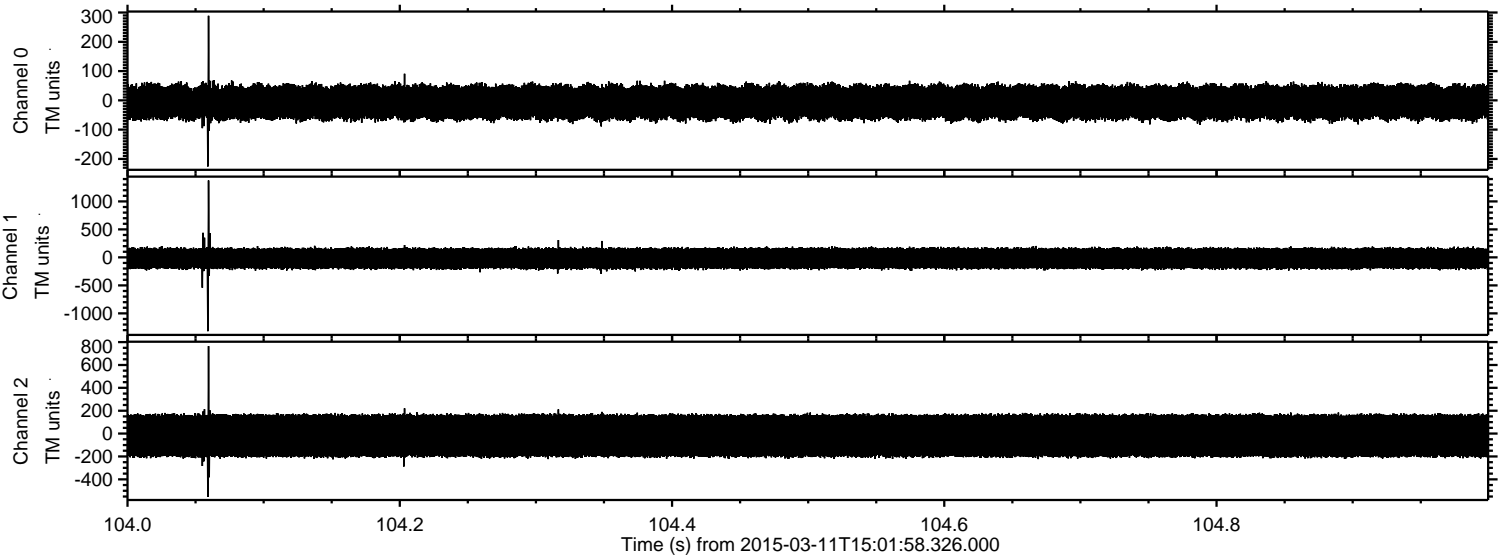
Processed Wed Mar 11 16:09:29 2015 by ELM ver.2012-10-06 from 001\_\_elm20150311\_150157\_\_dat00.bin





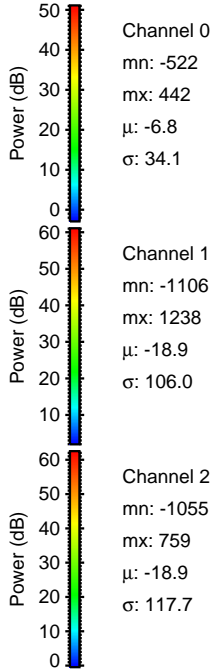
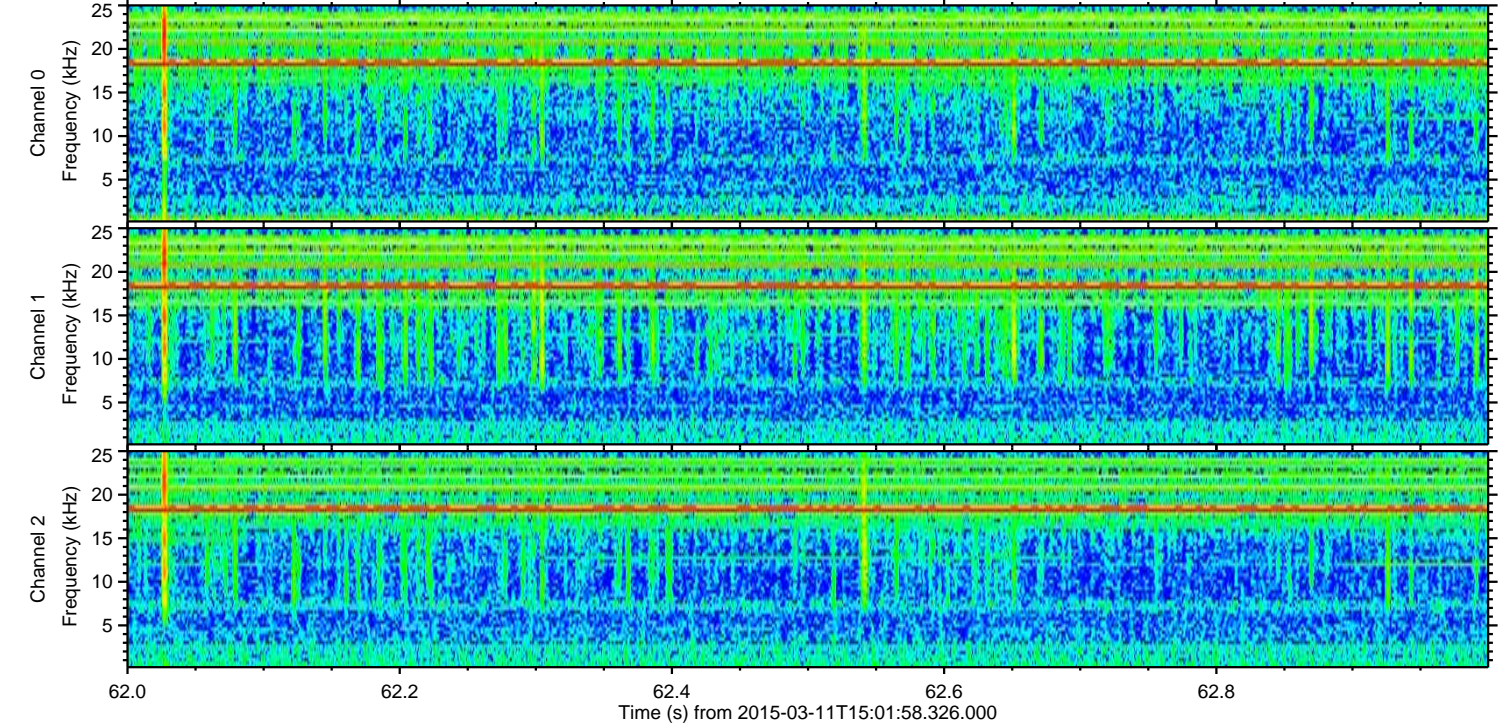
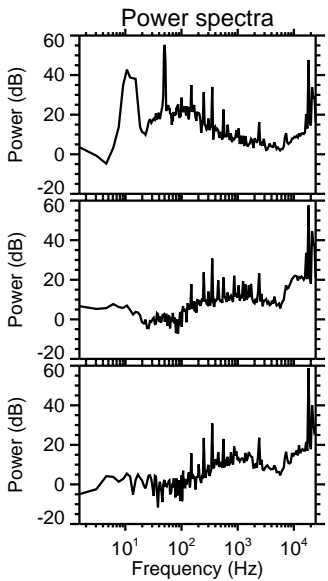
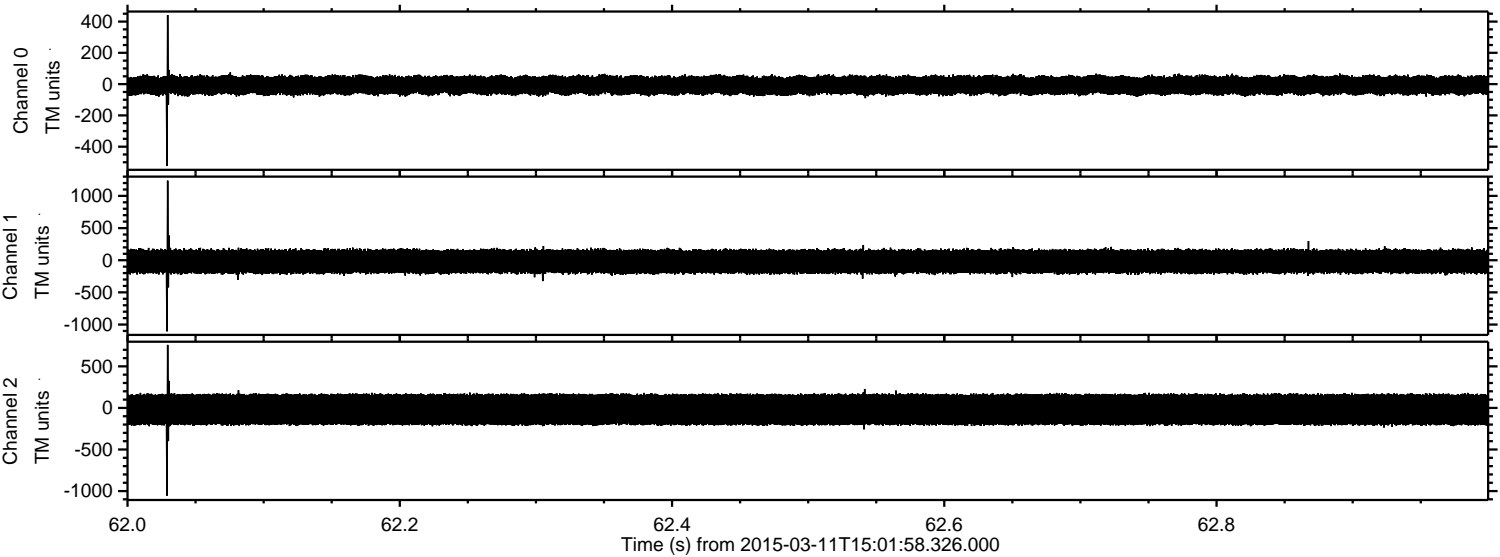
ELMAVAN 3D WAVEFORMS (Measured data sampled at 50 kHz) 49572 packets of 144 samples from 2015-03-11T15:01:58.326.000. Part 105/143

Processed Wed Mar 11 16:09:30 2015 by ELM ver.2012-10-06 from 001\_\_elm20150311\_150157\_\_dat00.bin





Processed Wed Mar 11 16:09:31 2015 by ELM ver.2012-10-06 from 001\_\_elm20150311\_150157\_\_dat00.bin



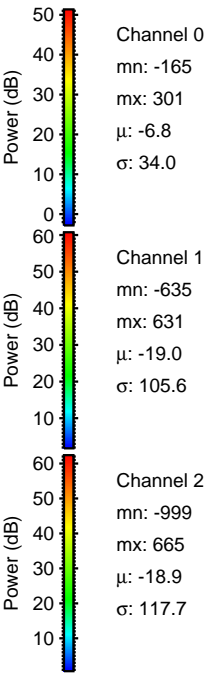
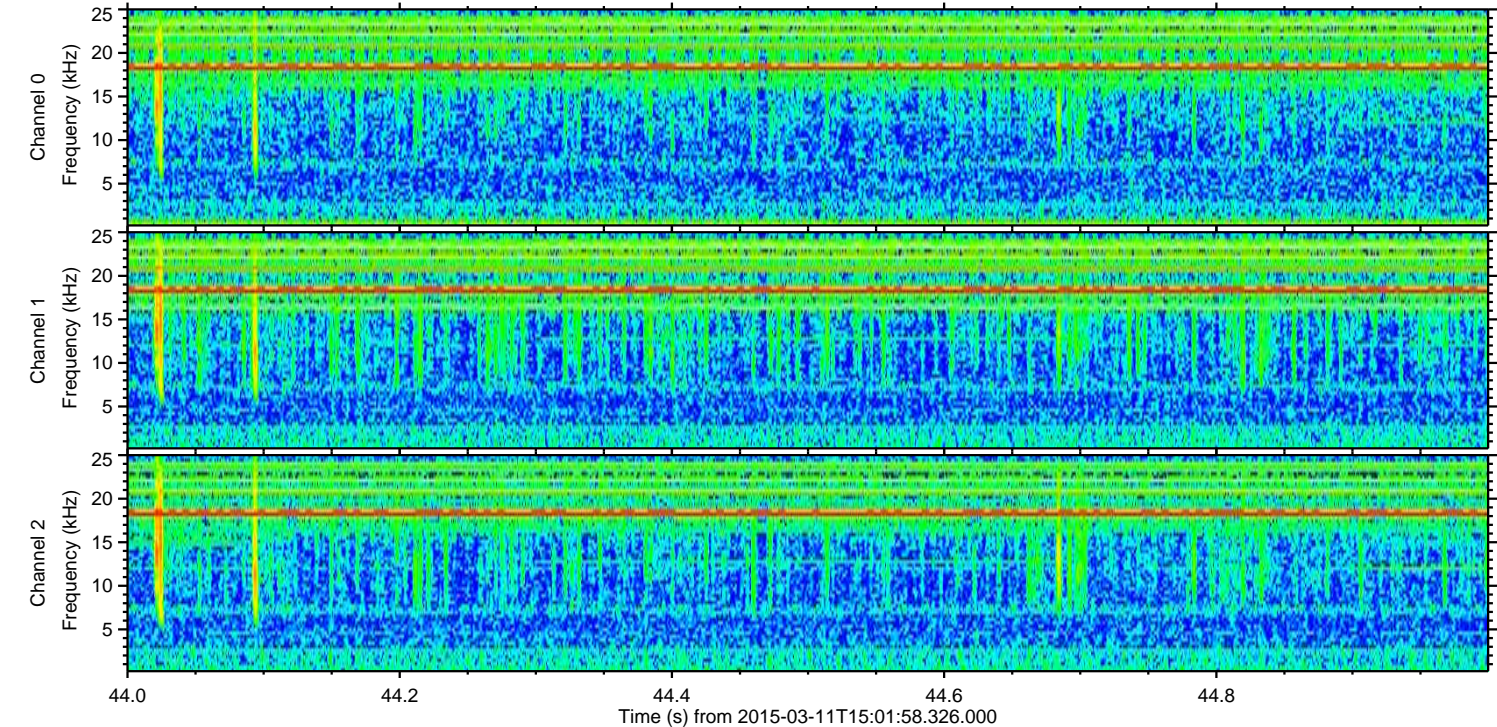
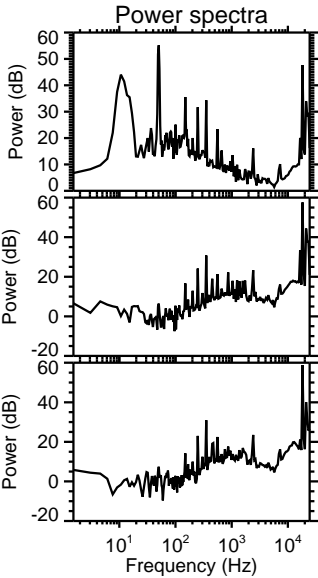
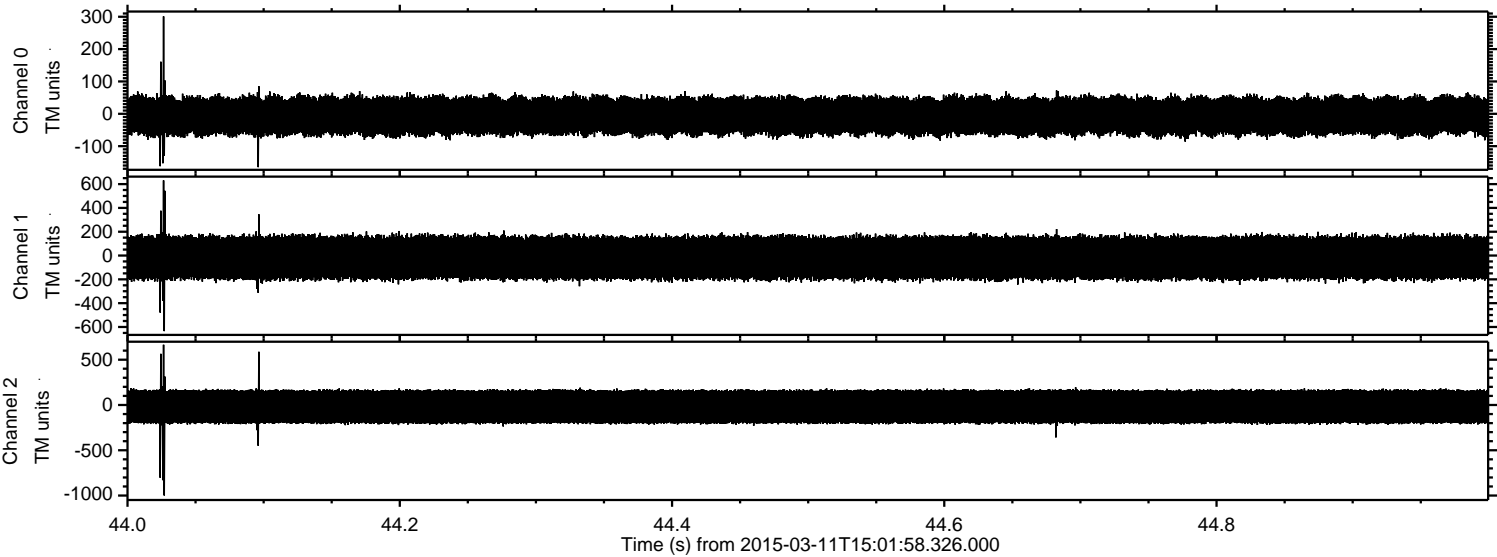
Channel 0  
mn: -522  
mx: 442  
 $\mu$ : -6.8  
 $\sigma$ : 34.1

Channel 1  
mn: -1106  
mx: 1238  
 $\mu$ : -18.9  
 $\sigma$ : 106.0

Channel 2  
mn: -1055  
mx: 759  
 $\mu$ : -18.9  
 $\sigma$ : 117.7

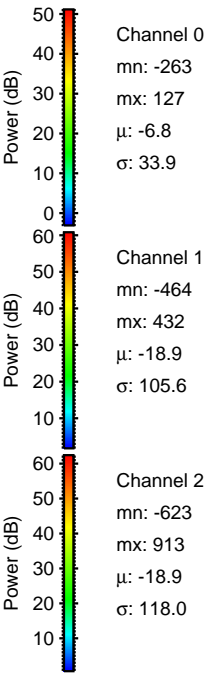
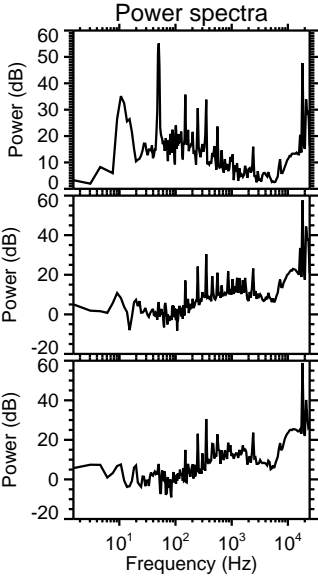
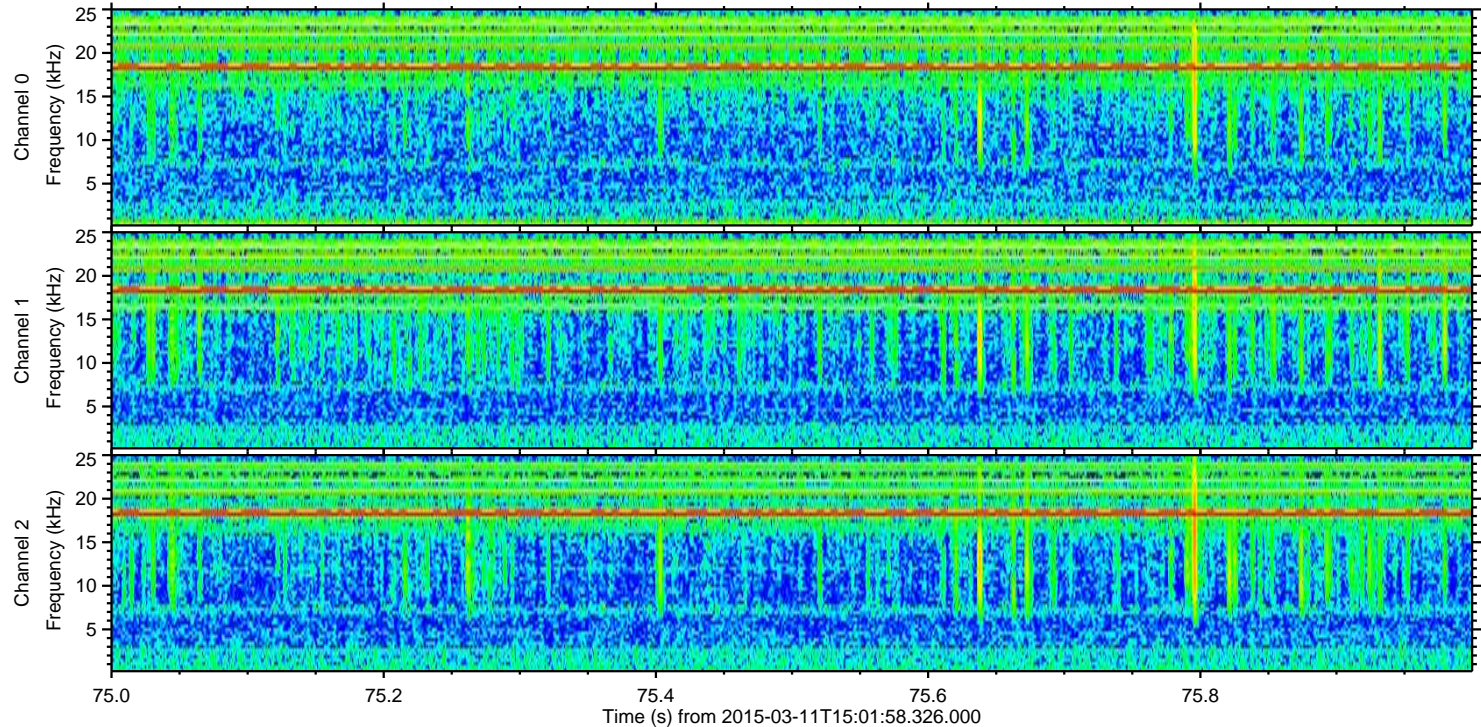
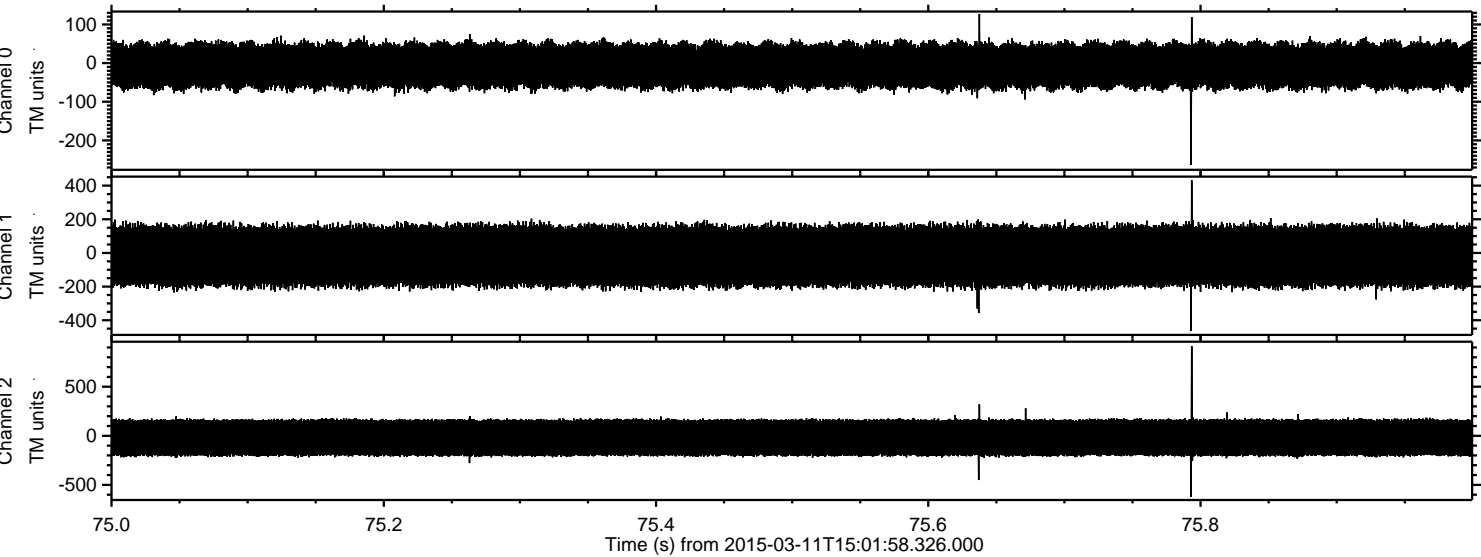


Processed Wed Mar 11 16:09:32 2015 by ELM ver.2012-10-06 from 001\_\_elm20150311\_150157\_\_dat00.bin





Processed Wed Mar 11 16:09:33 2015 by ELM ver.2012-10-06 from 001\_\_elm20150311\_150157\_\_dat00.bin





Processed Wed Mar 11 16:09:34 2015 by ELM ver.2012-10-06 from 001\_\_elm20150311\_150157\_\_dat00.bin

