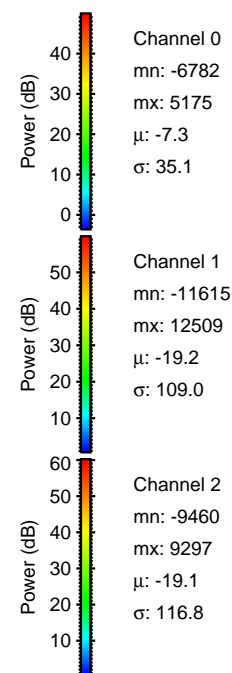
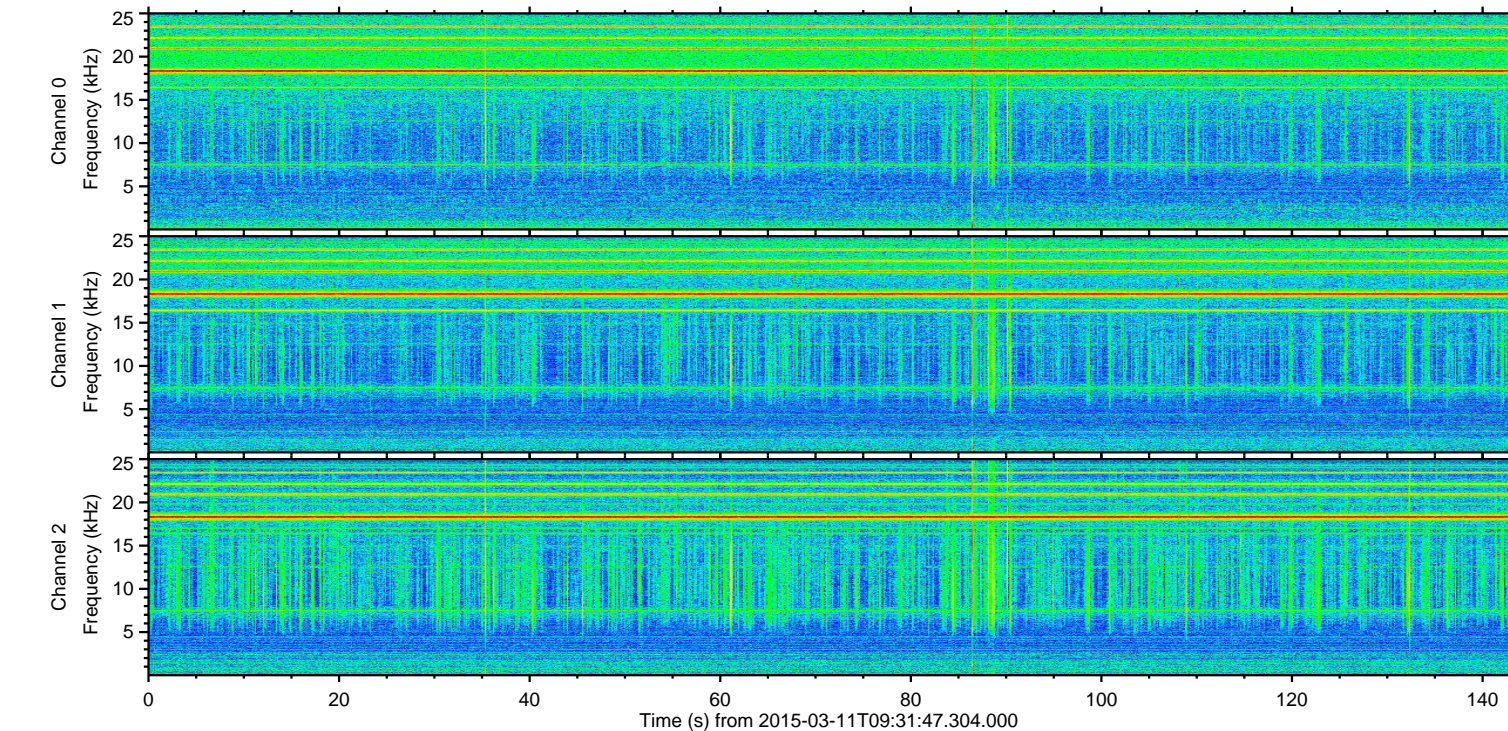
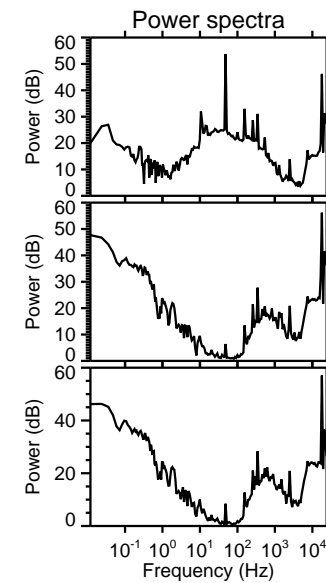
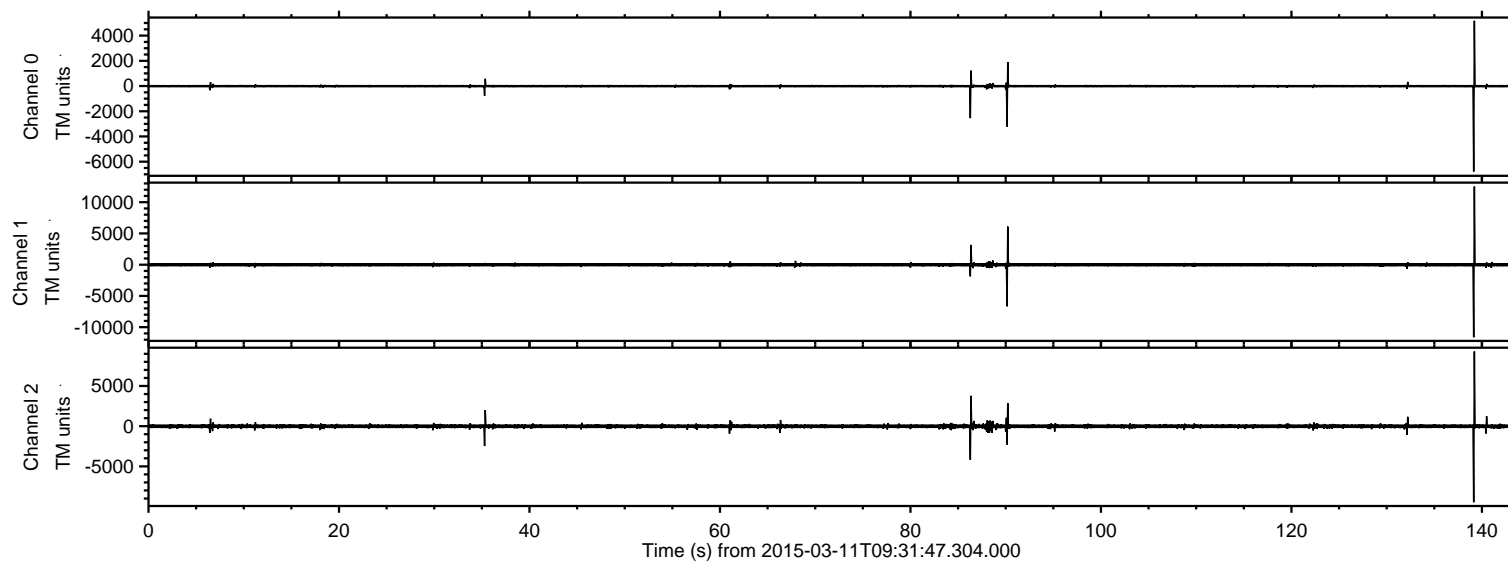


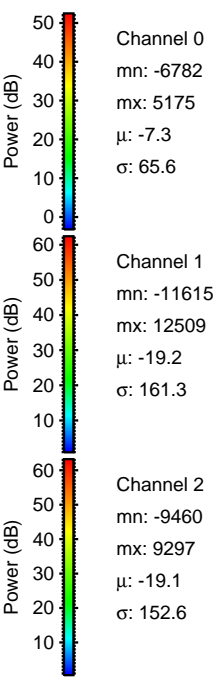
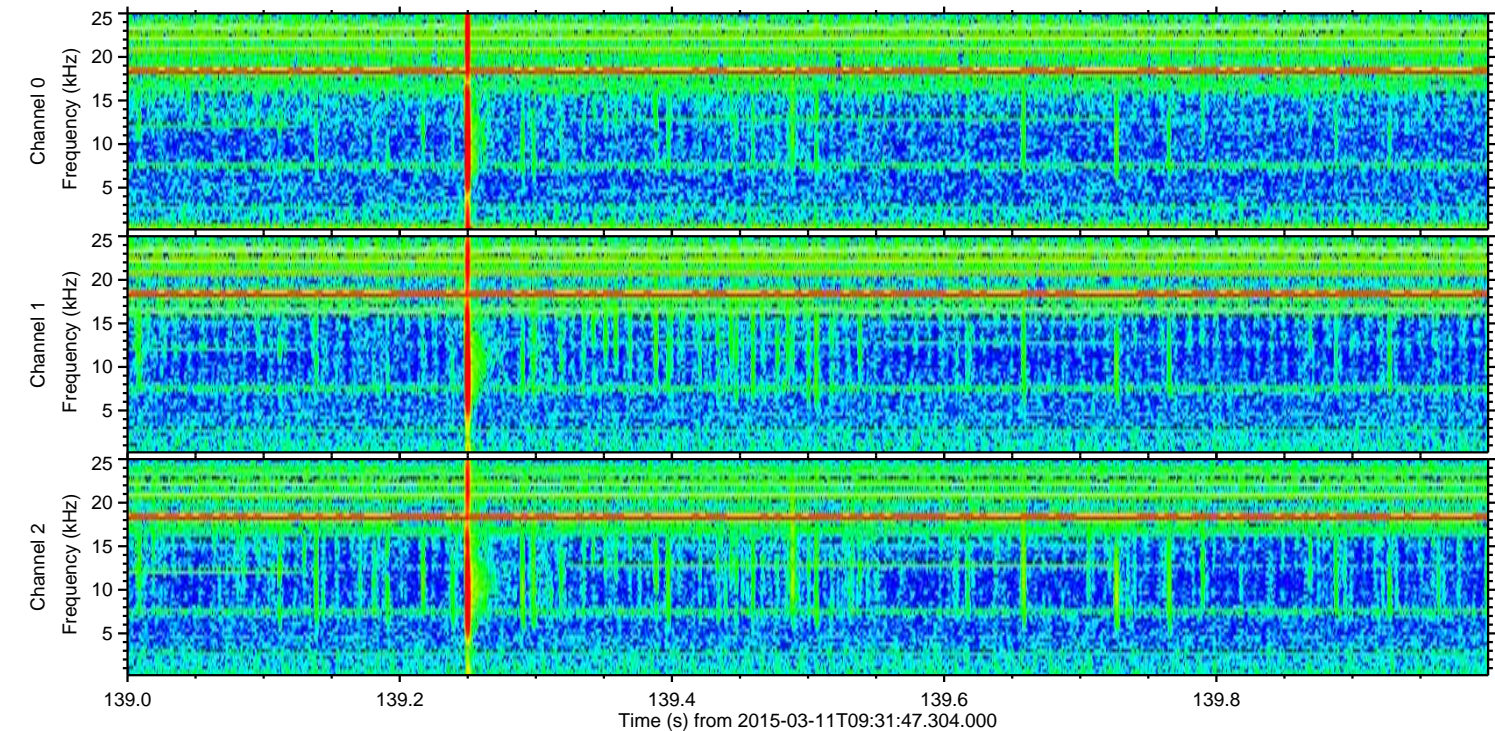
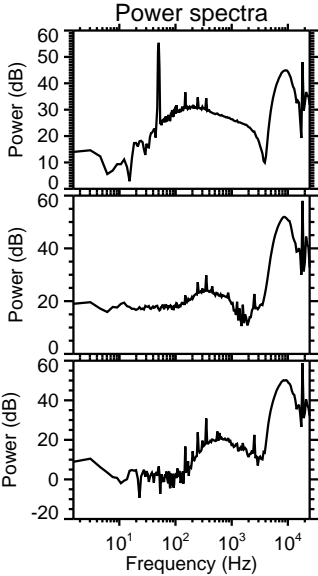
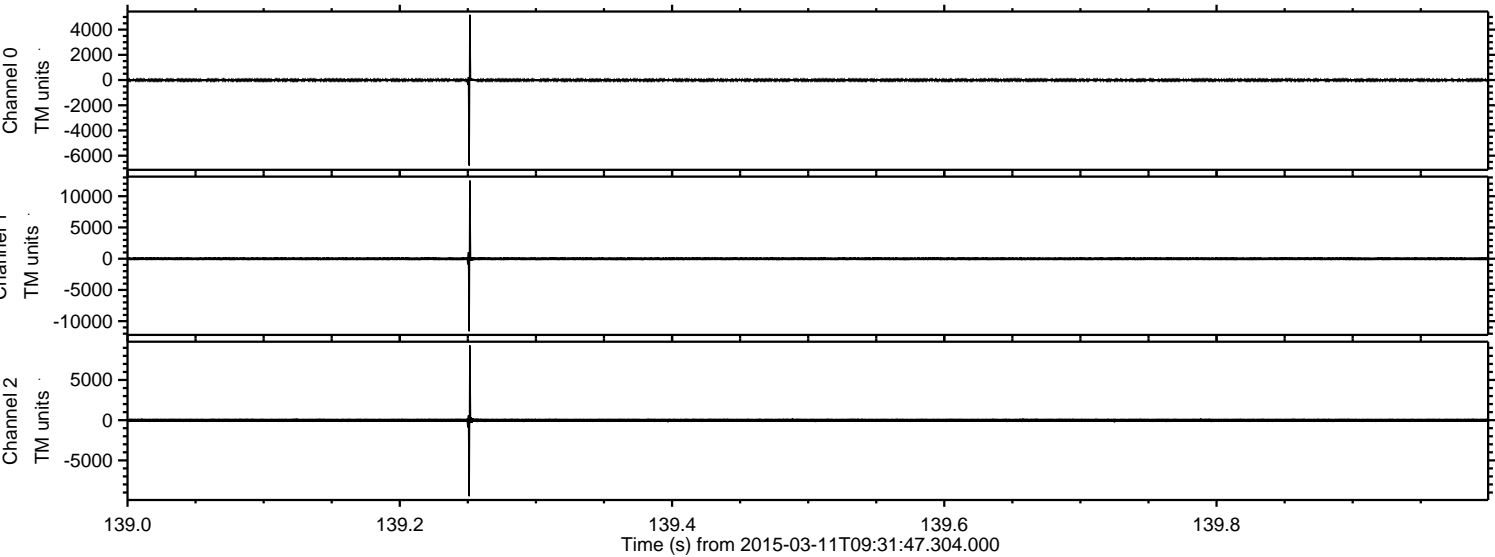
ELMAVAN 3D WAVEFORMS (Measured data sampled at 50 kHz) 49602 packets of 144 samples from 2015-03-11T09:31:47.304.000.

Processed Wed Mar 11 10:38:32 2015 by ELM ver.2012-10-06 from 001__elm20150311_093146__dat00.bin

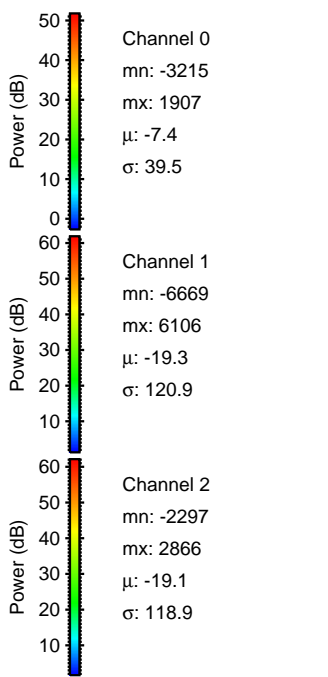
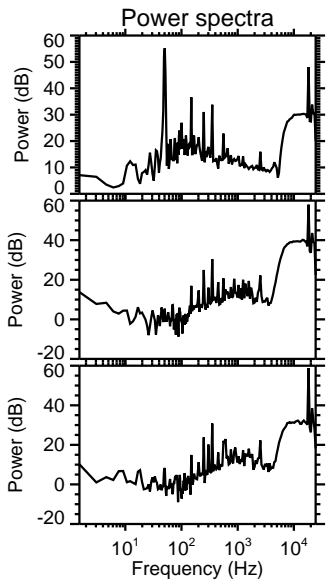
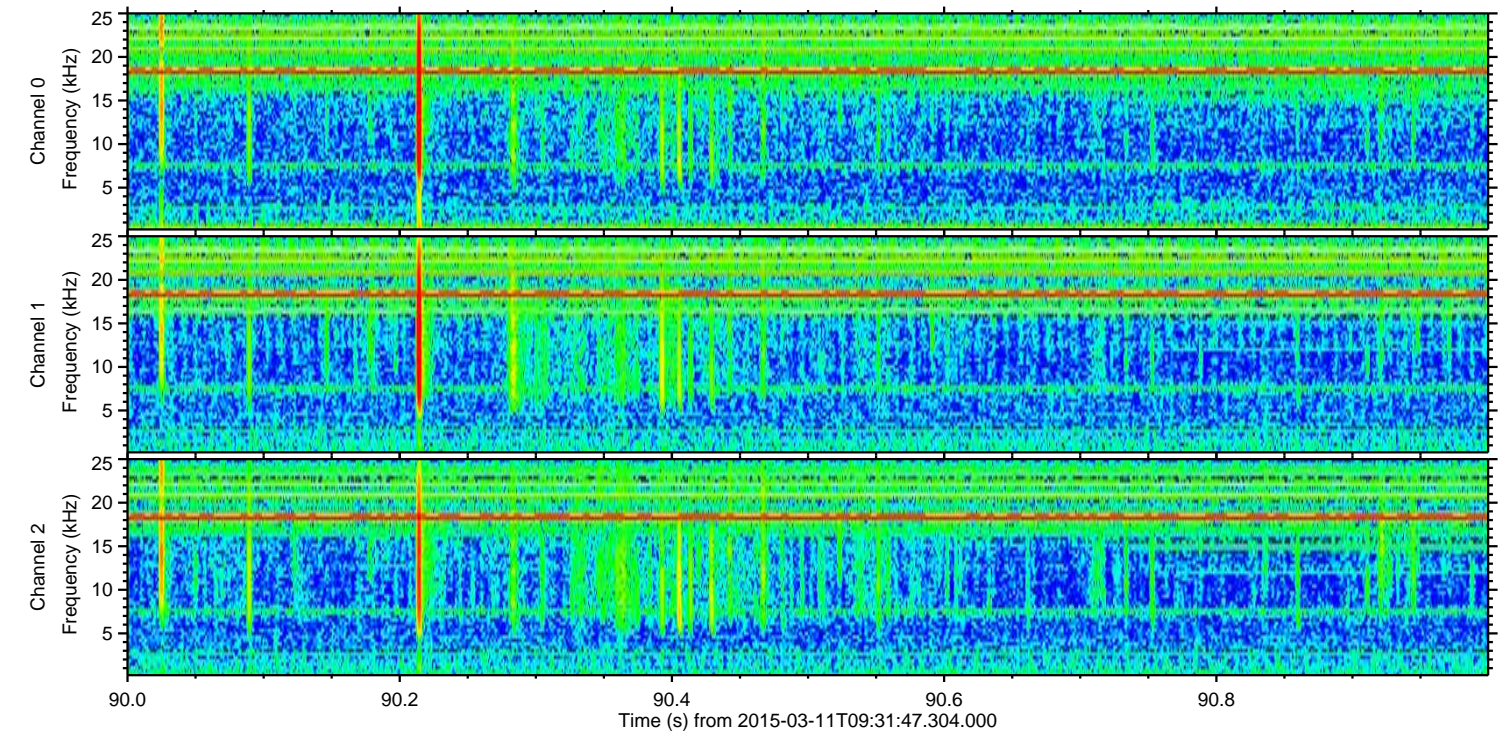
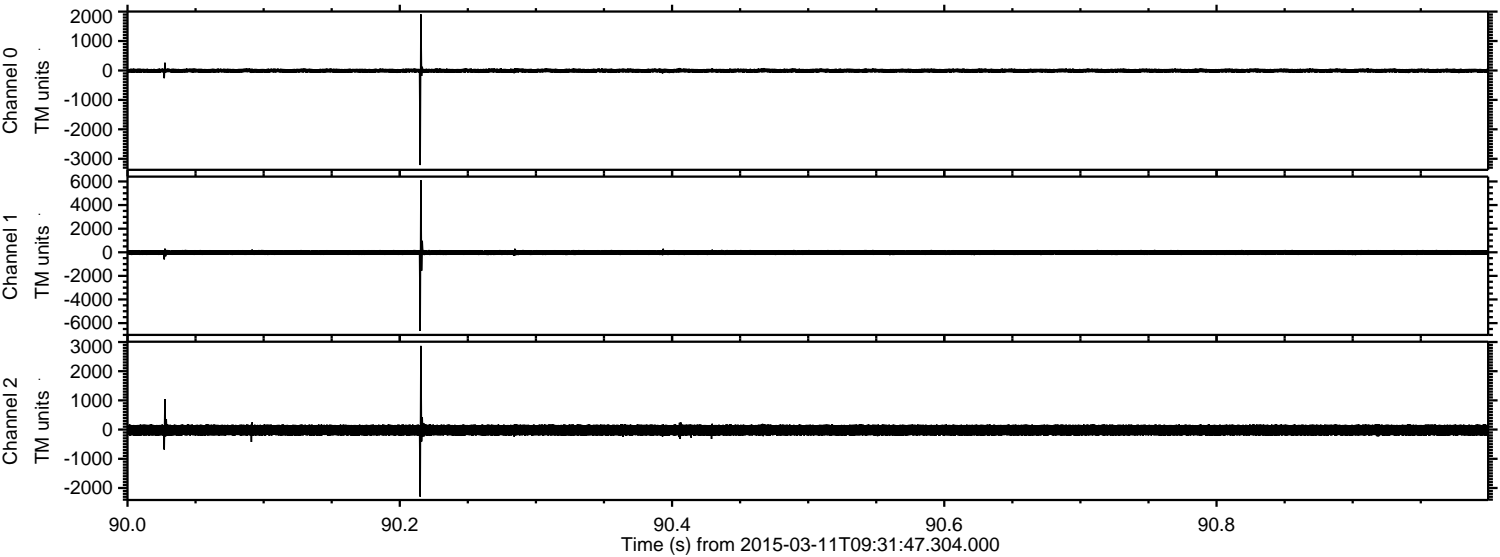


ELMAVAN 3D WAVEFORMS (Measured data sampled at 50 kHz) 49602 packets of 144 samples from 2015-03-11T09:31:47.304.000. Part 140/143

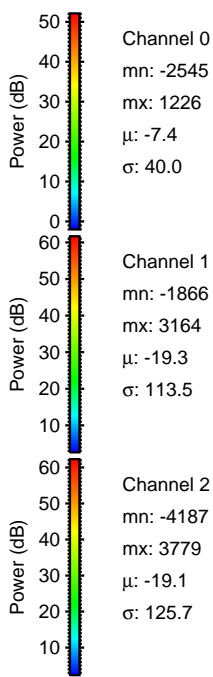
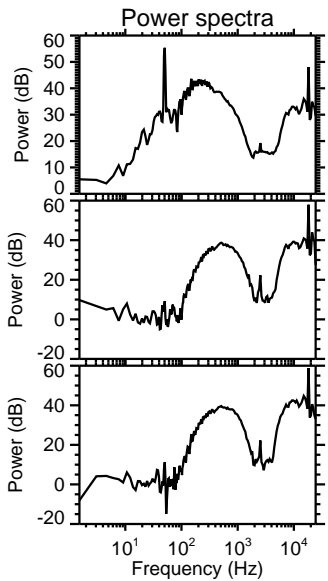
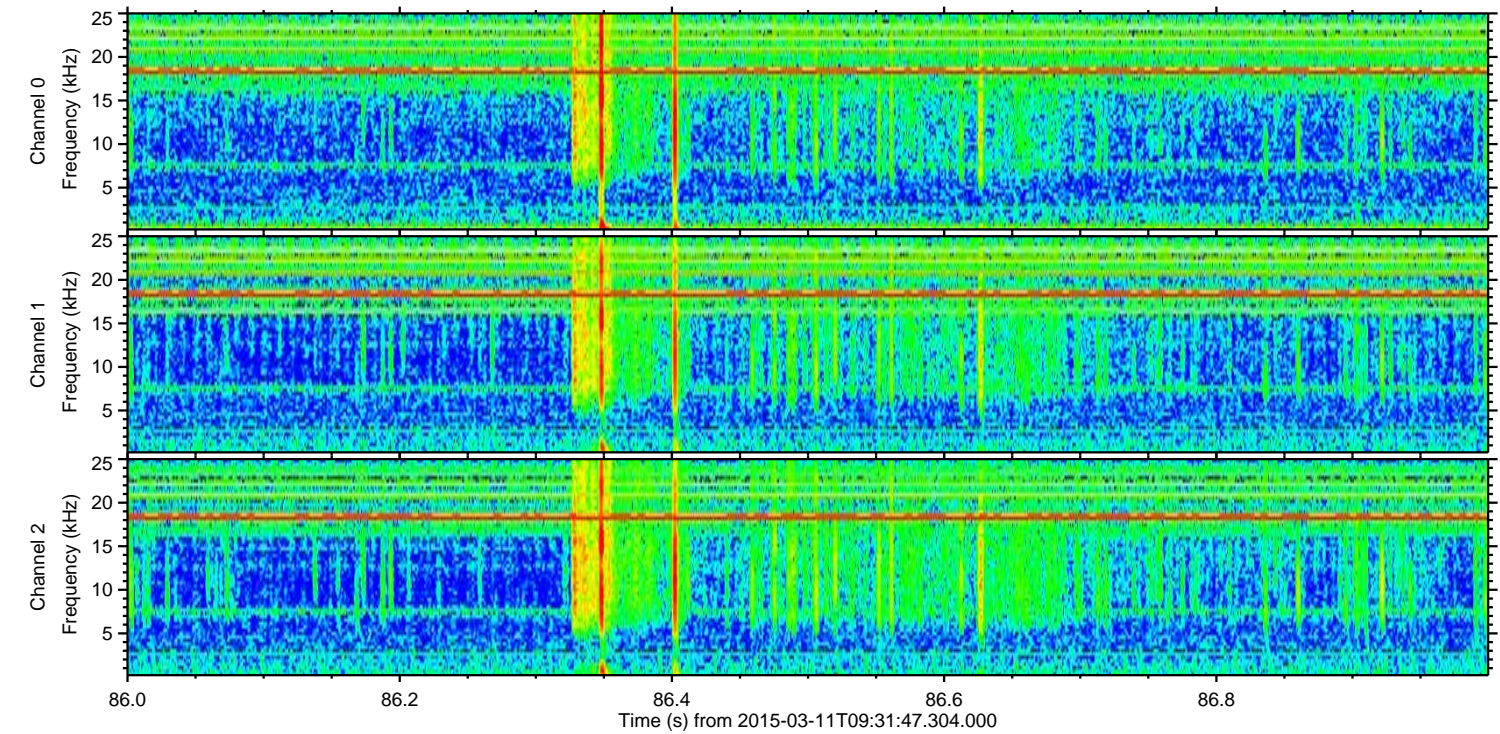
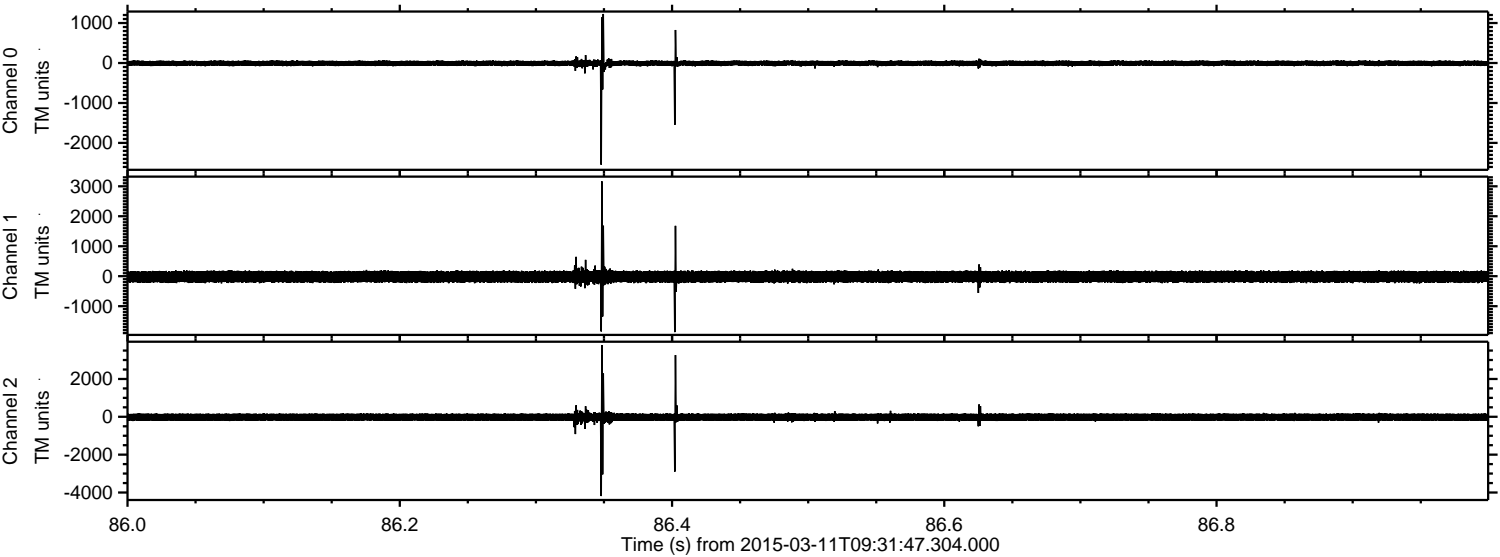
Processed Wed Mar 11 10:38:47 2015 by ELM ver.2012-10-06 from 001__elm20150311_093146__dat00.bin



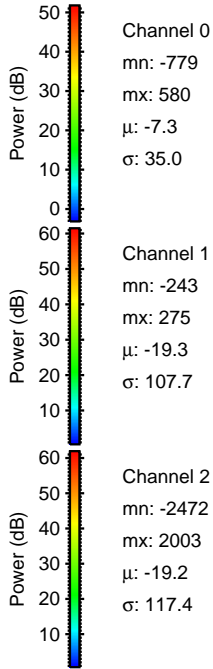
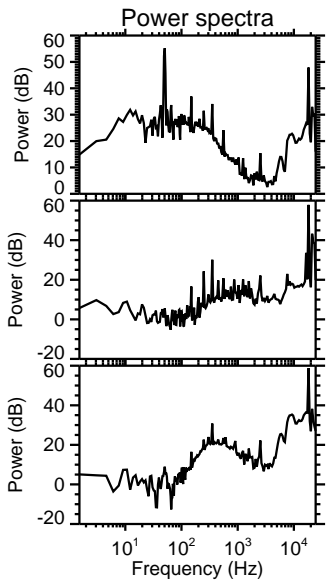
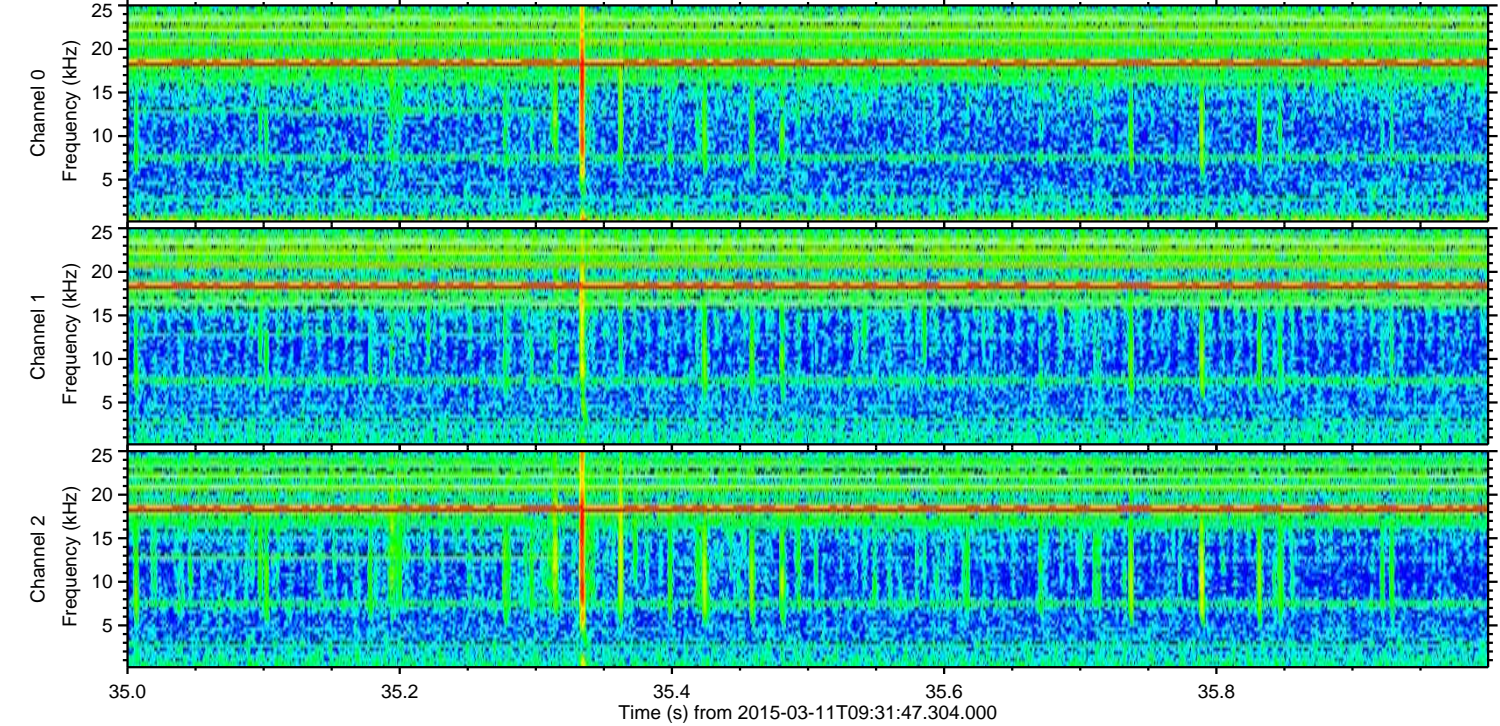
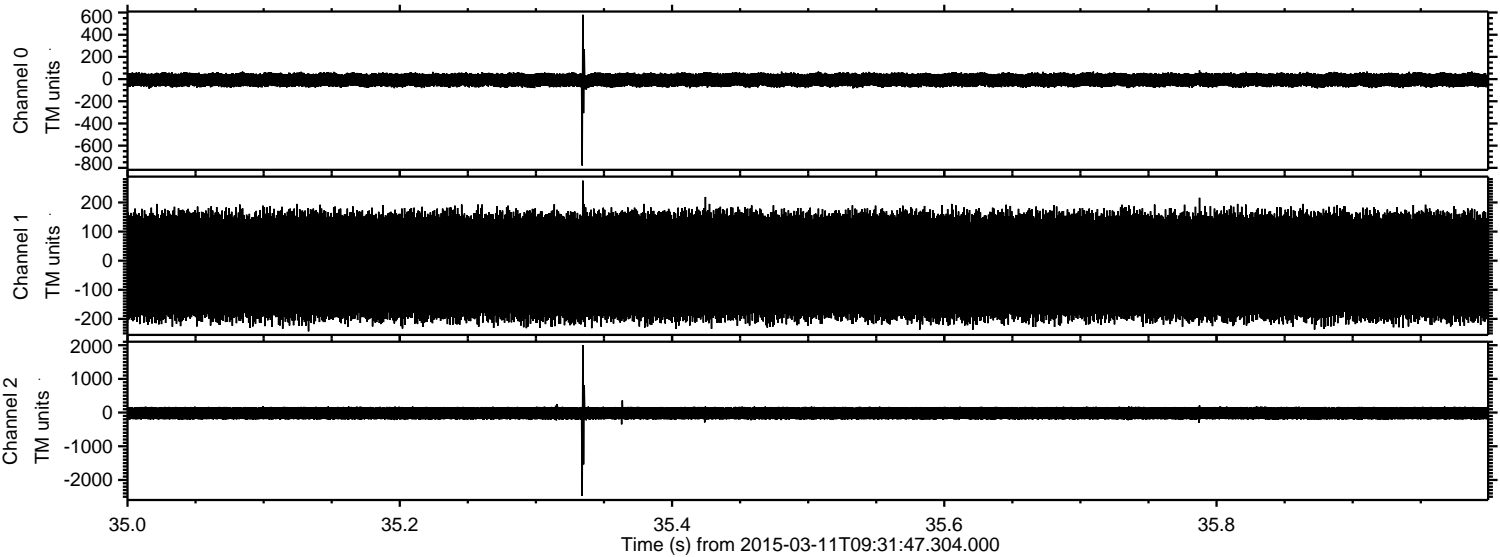
Processed Wed Mar 11 10:38:48 2015 by ELM ver.2012-10-06 from 001__elm20150311_093146__dat00.bin



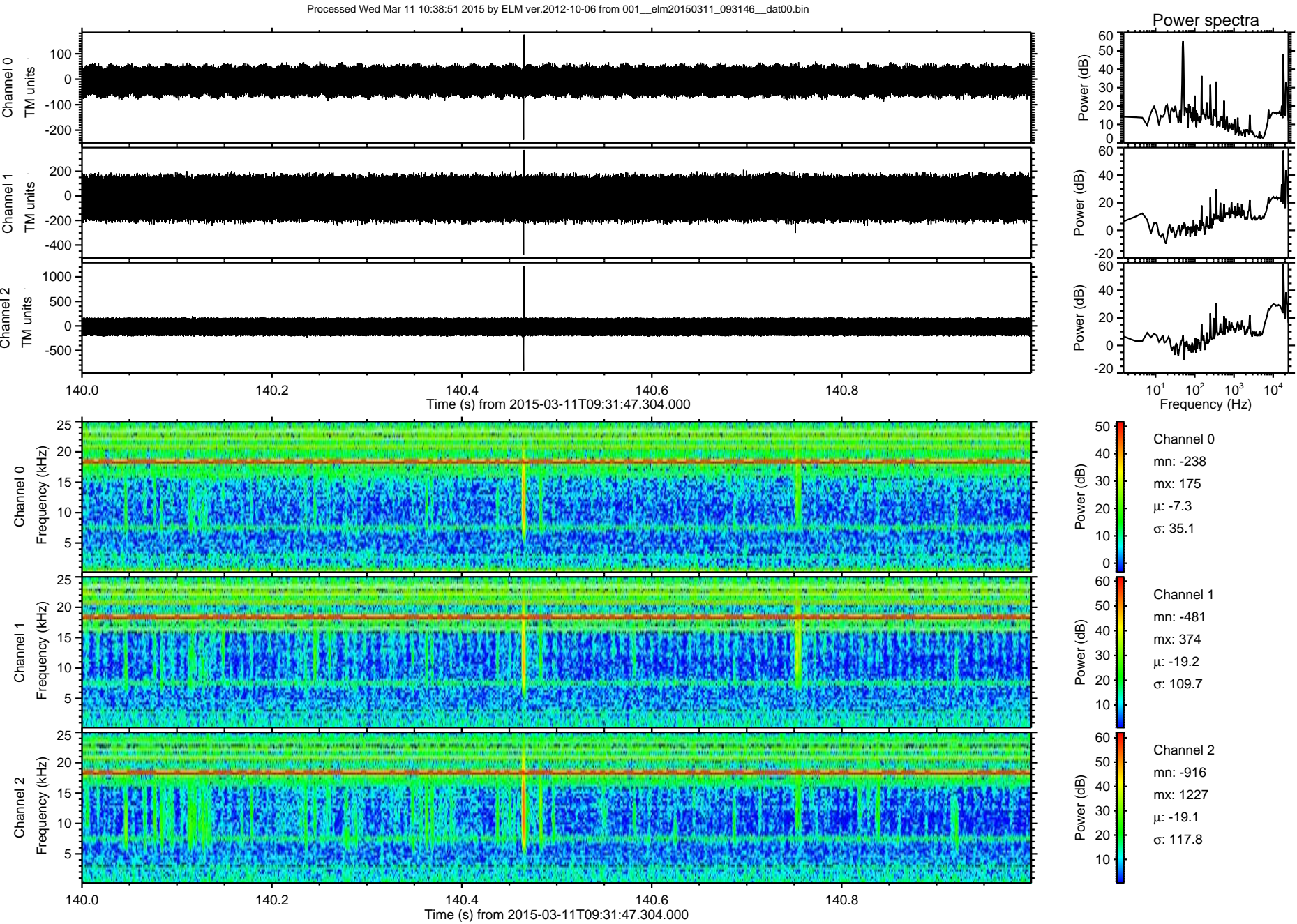
Processed Wed Mar 11 10:38:49 2015 by ELM ver.2012-10-06 from 001__elm20150311_093146__dat00.bin



Processed Wed Mar 11 10:38:50 2015 by ELM ver.2012-10-06 from 001__elm20150311_093146__dat00.bin

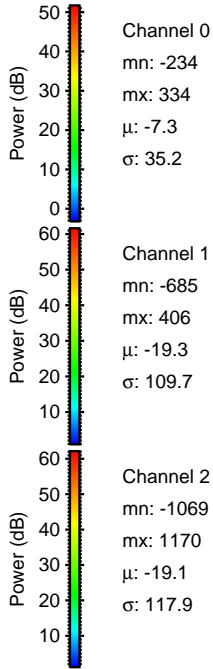
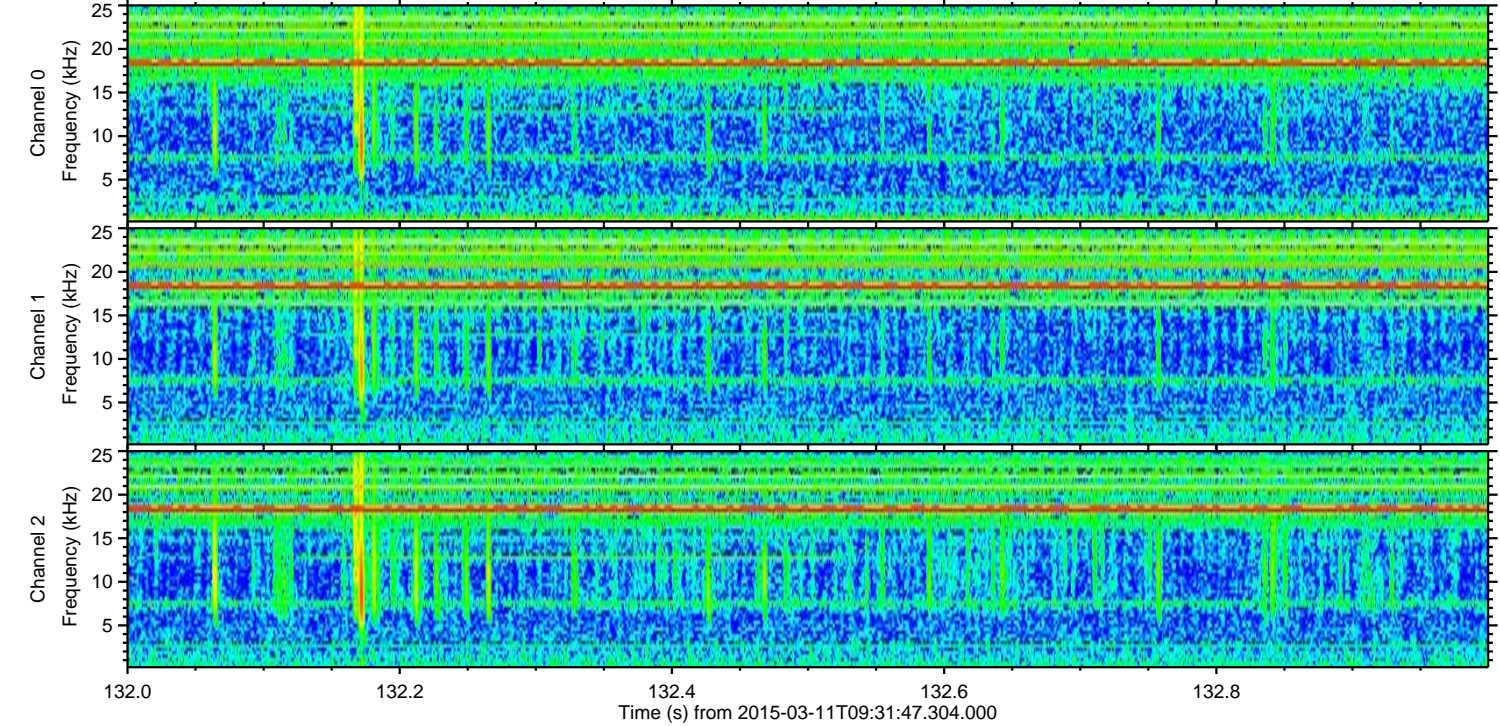
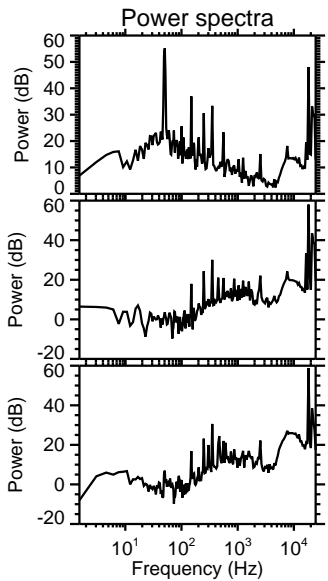
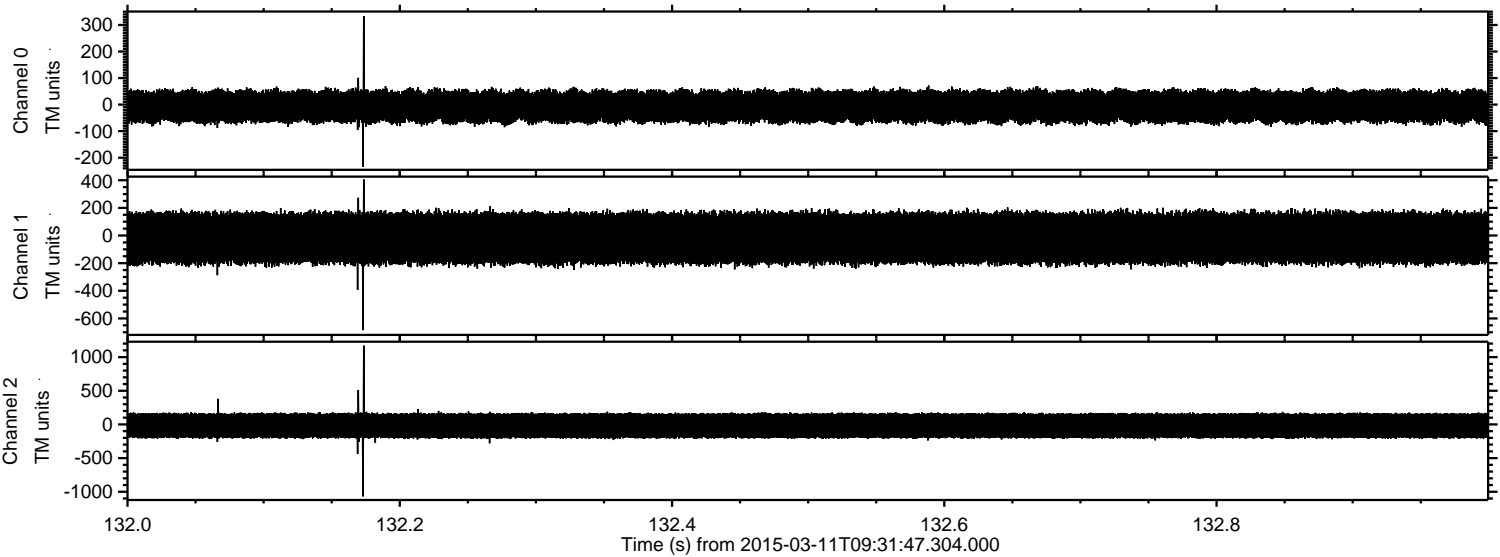


ELMAVAN 3D WAVEFORMS (Measured data sampled at 50 kHz) 49602 packets of 144 samples from 2015-03-11T09:31:47.304.000. Part 141/143

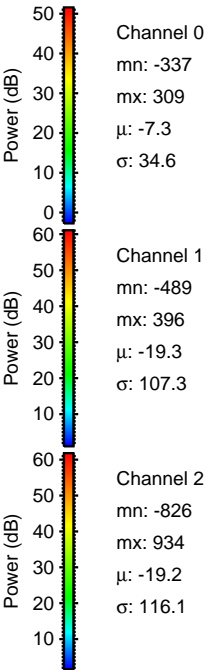
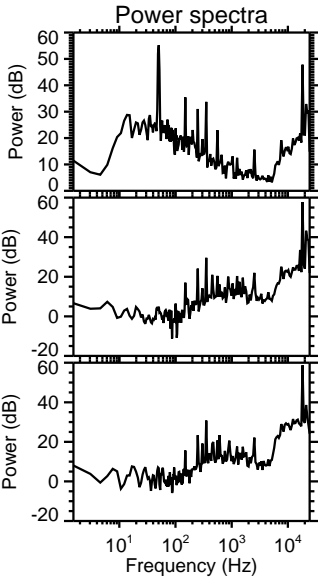
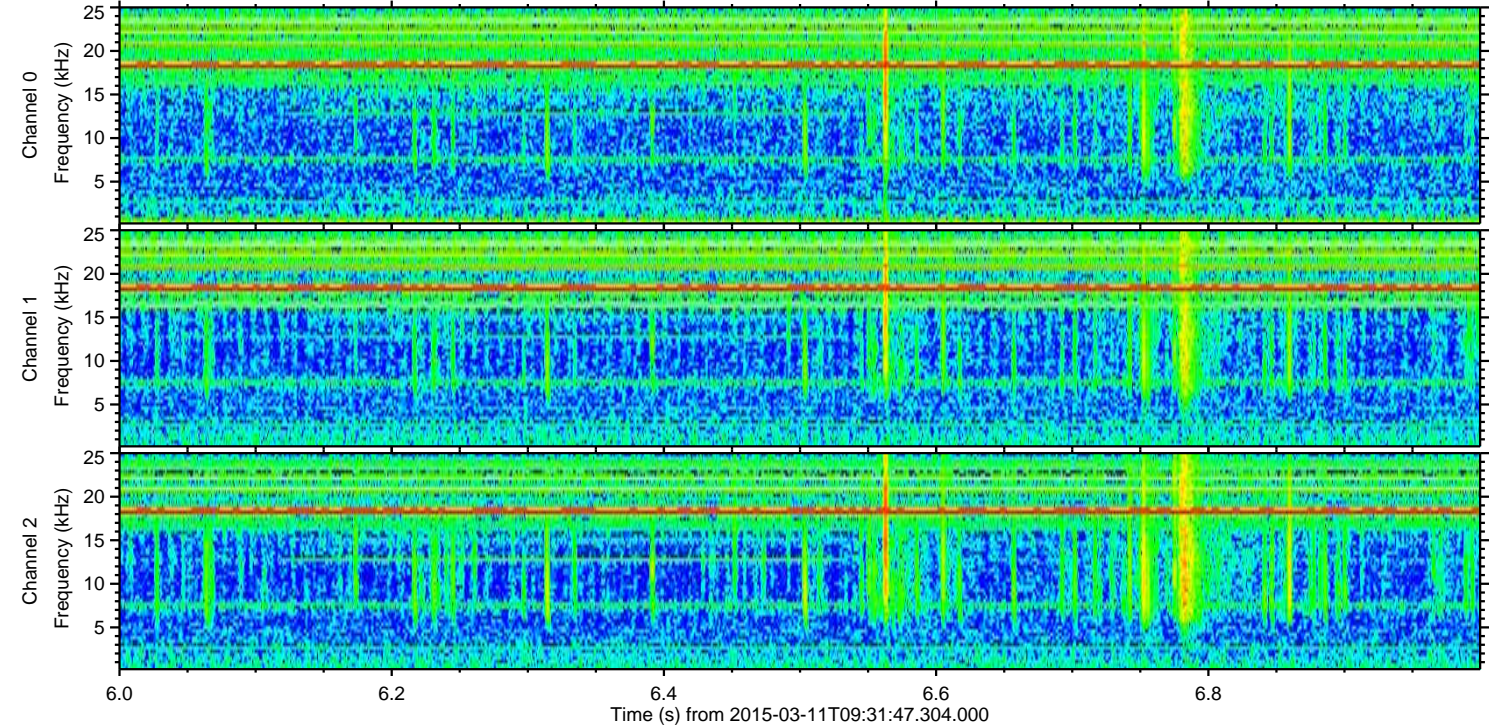
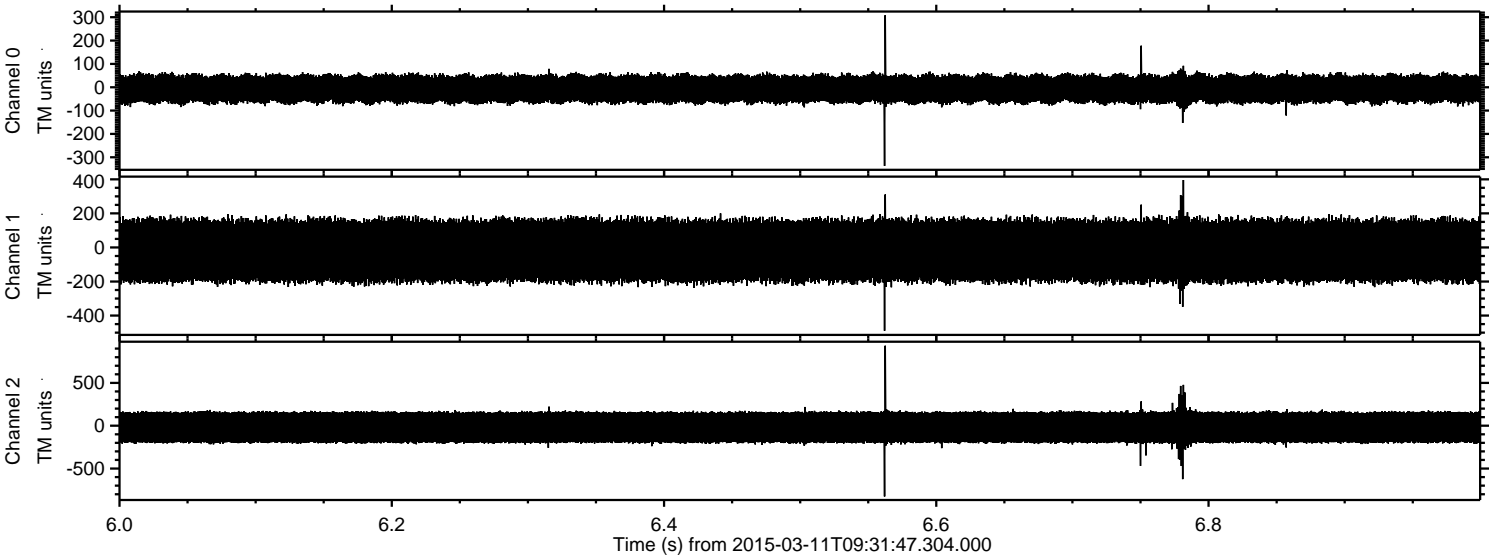


ELMAVAN 3D WAVEFORMS (Measured data sampled at 50 kHz) 49602 packets of 144 samples from 2015-03-11T09:31:47.304.000. Part 133/143

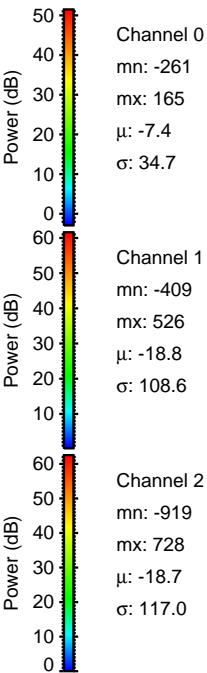
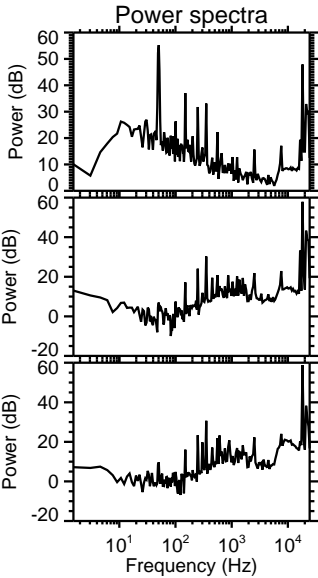
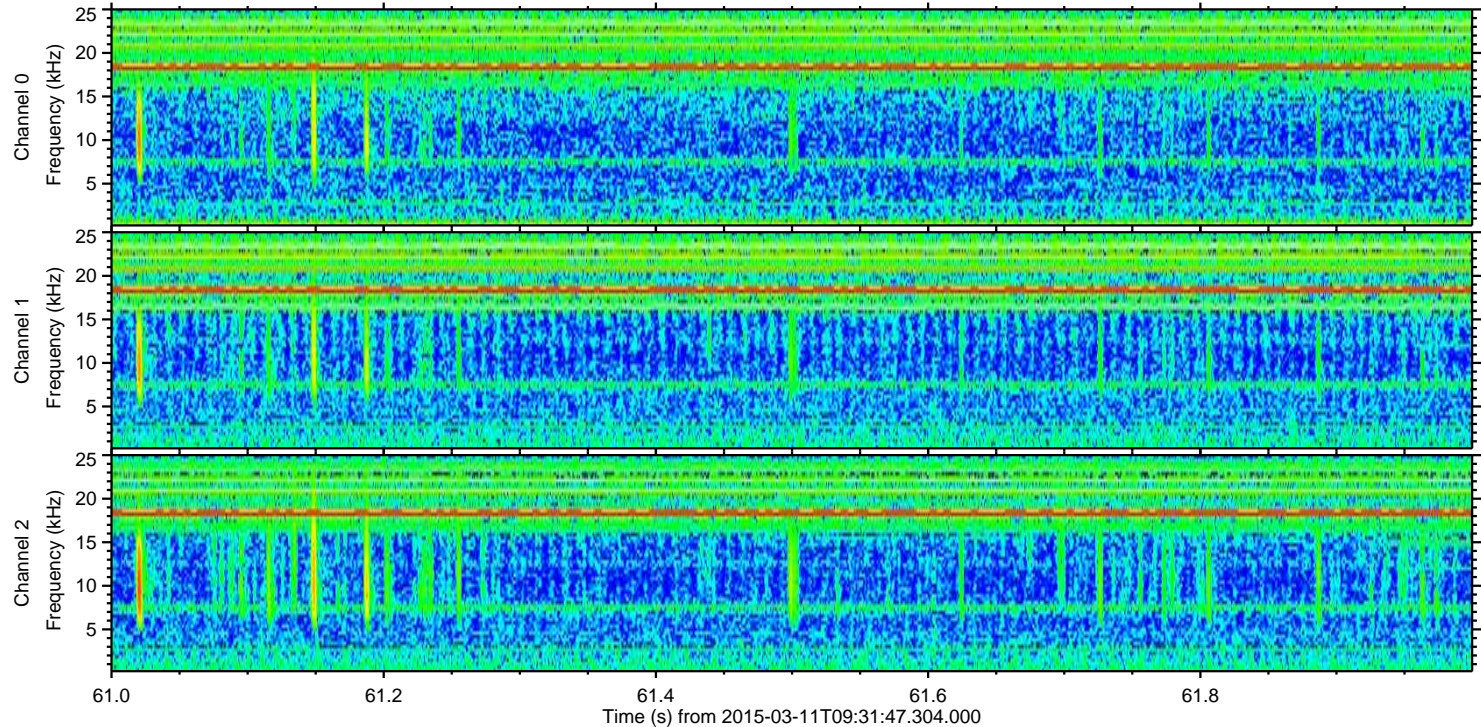
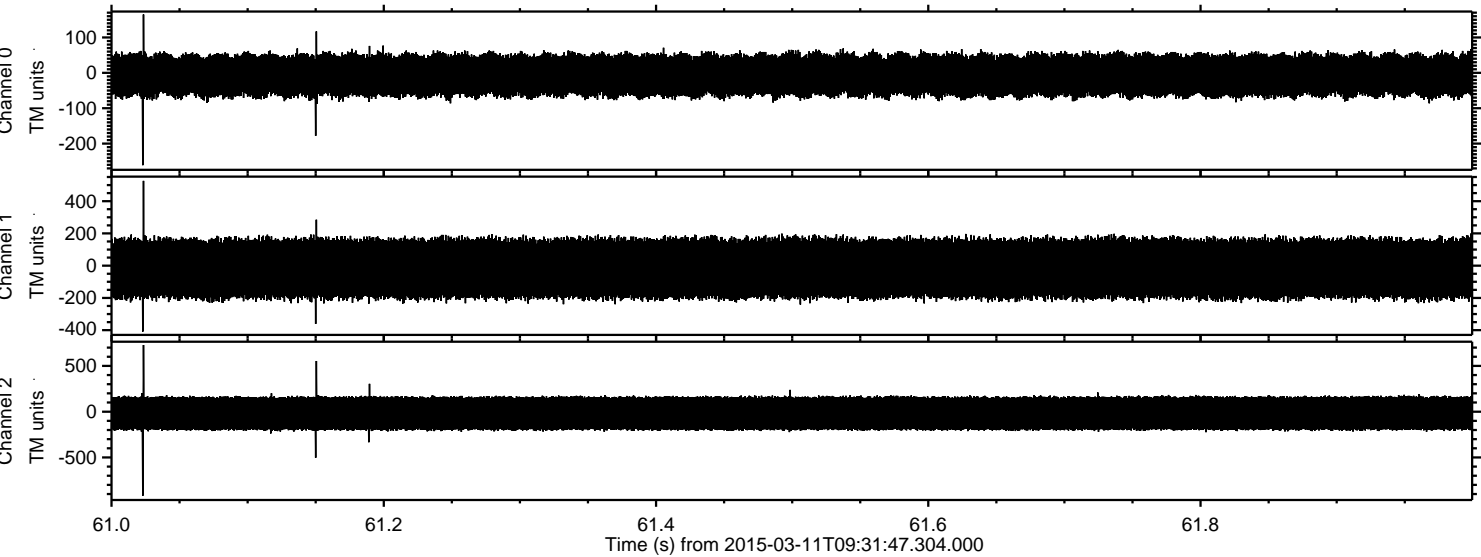
Processed Wed Mar 11 10:38:52 2015 by ELM ver.2012-10-06 from 001__elm20150311_093146__dat00.bin



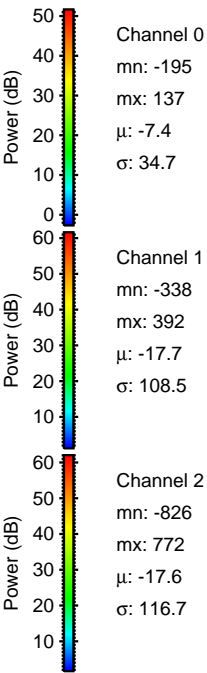
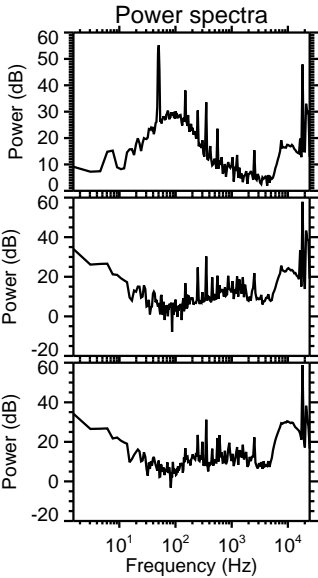
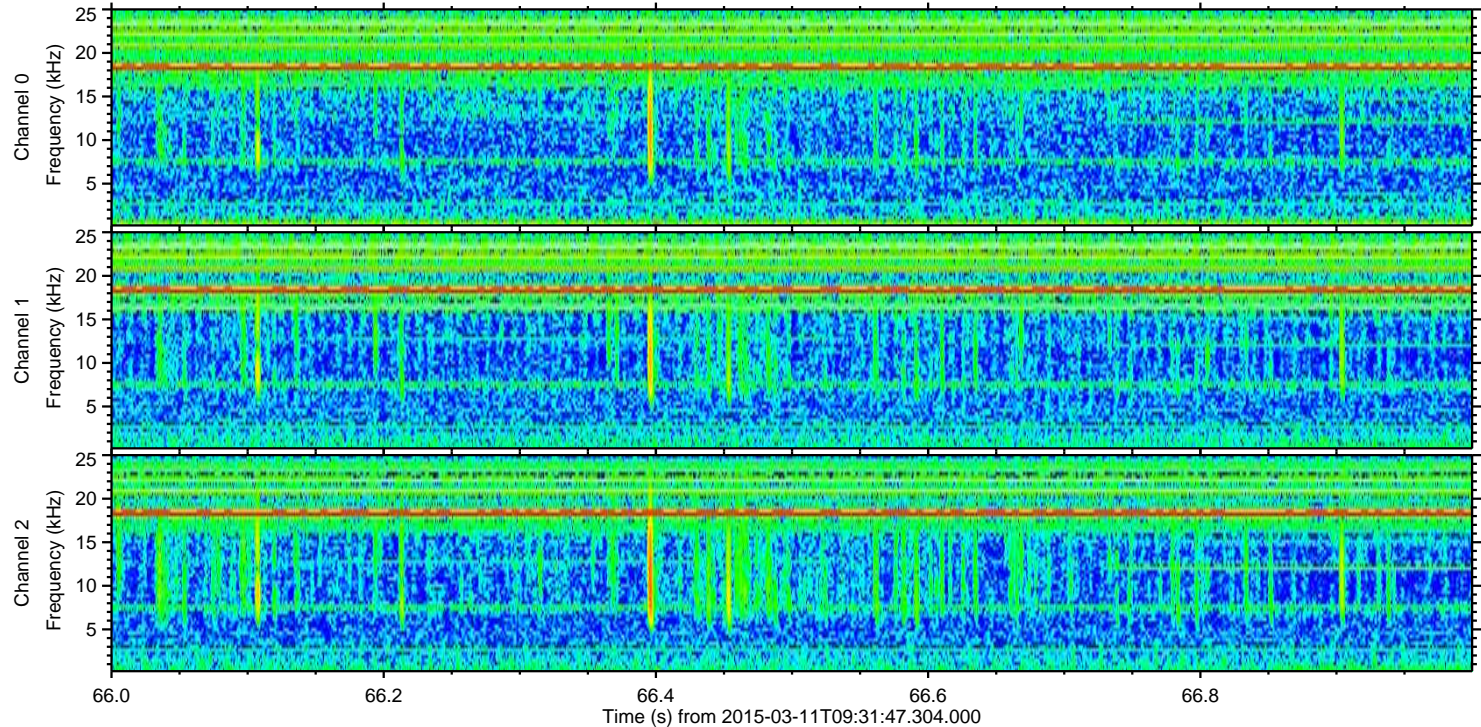
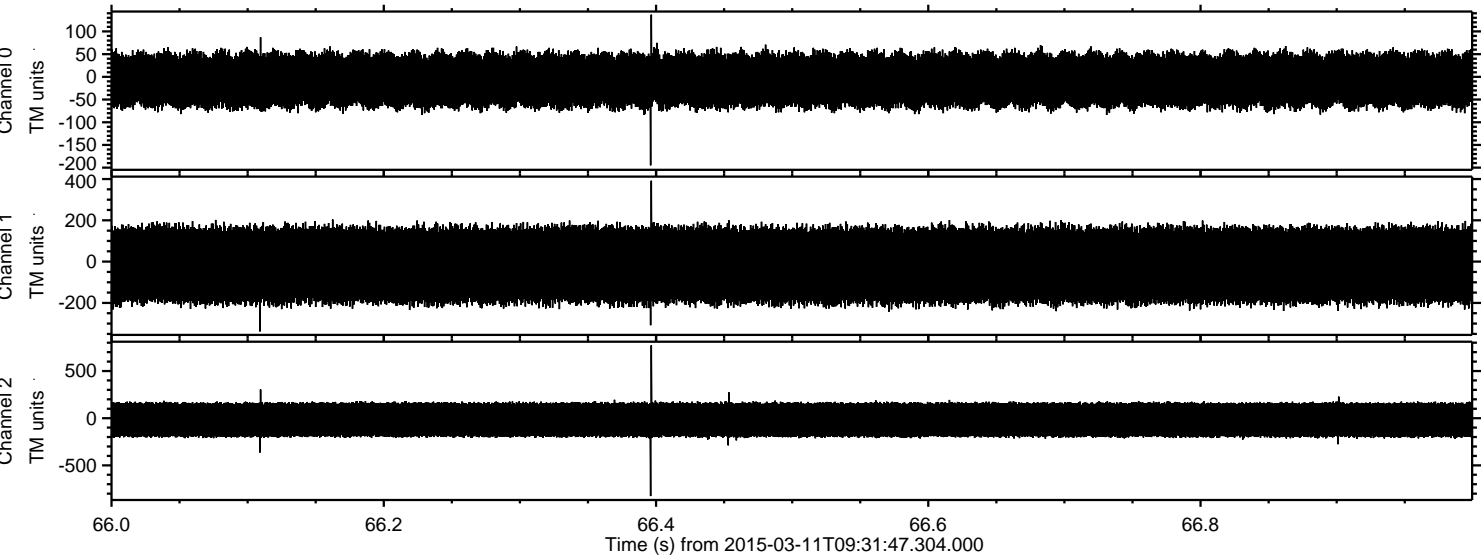
Processed Wed Mar 11 10:38:53 2015 by ELM ver.2012-10-06 from 001__elm20150311_093146__dat00.bin



Processed Wed Mar 11 10:38:54 2015 by ELM ver.2012-10-06 from 001__elm20150311_093146__dat00.bin



Processed Wed Mar 11 10:38:55 2015 by ELM ver.2012-10-06 from 001__elm20150311_093146__dat00.bin



Channel 0
mn: -195
mx: 137
 μ : -7.4
 σ : 34.7

Channel 1
mn: -338
mx: 392
 μ : -17.7
 σ : 108.5

Channel 2
mn: -826
mx: 772
 μ : -17.6
 σ : 116.7

Processed Wed Mar 11 10:38:56 2015 by ELM ver.2012-10-06 from 001__elm20150311_093146__dat00.bin

