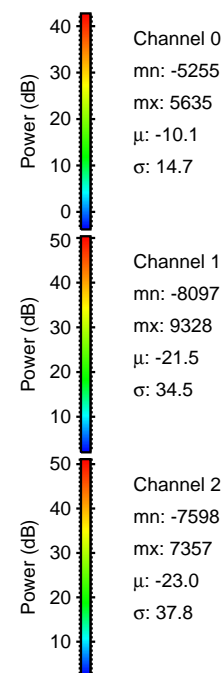
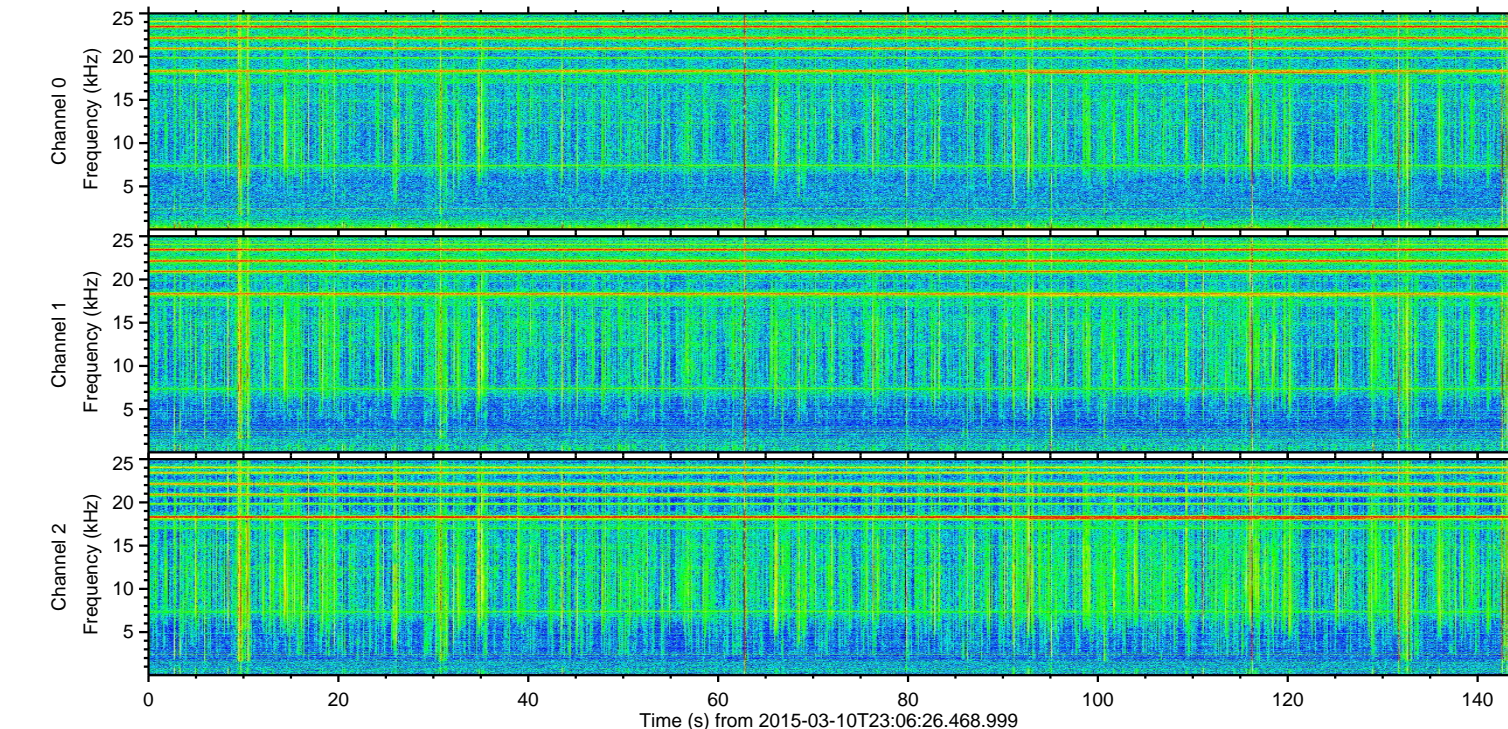
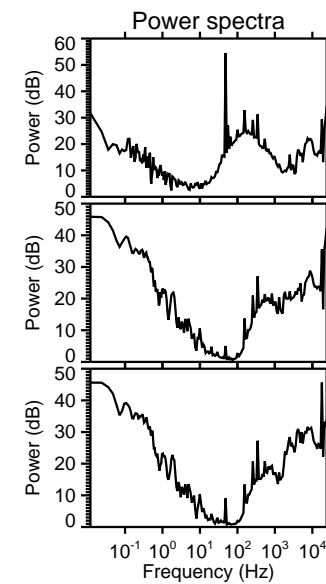
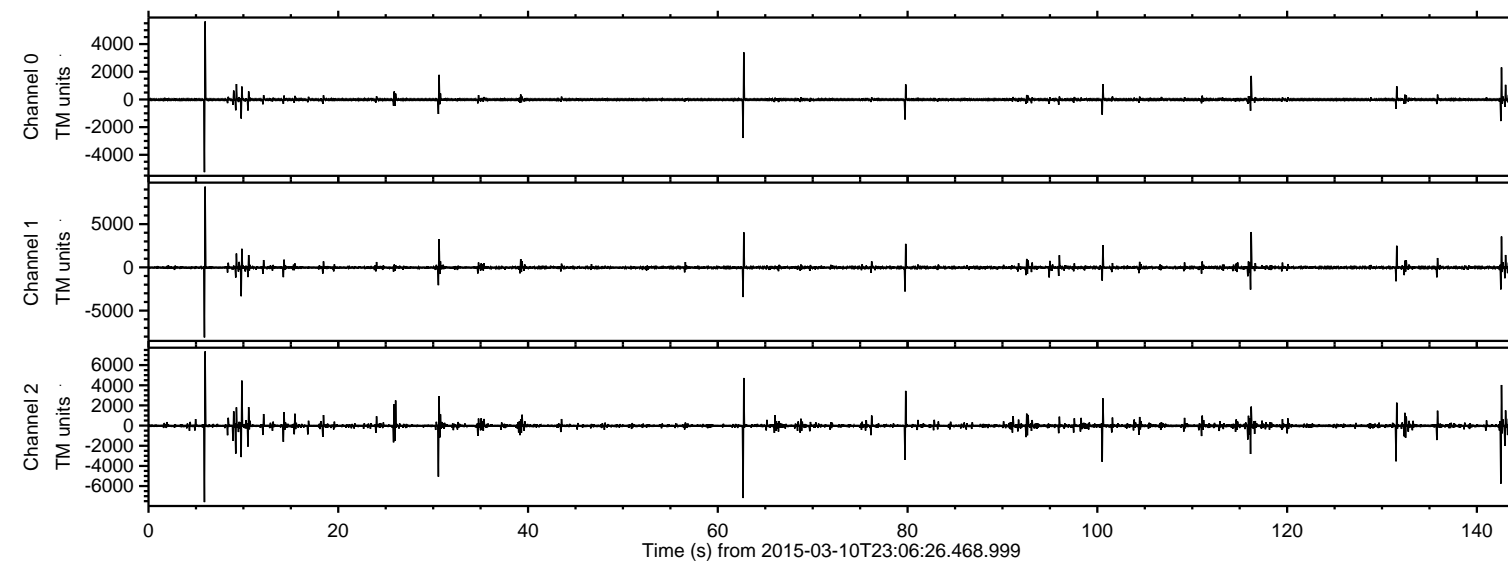
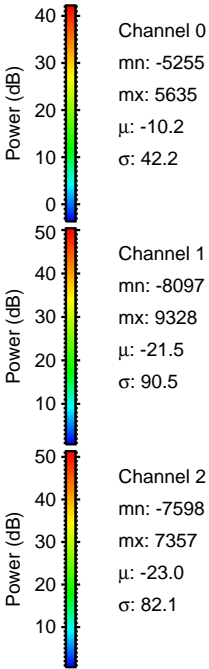
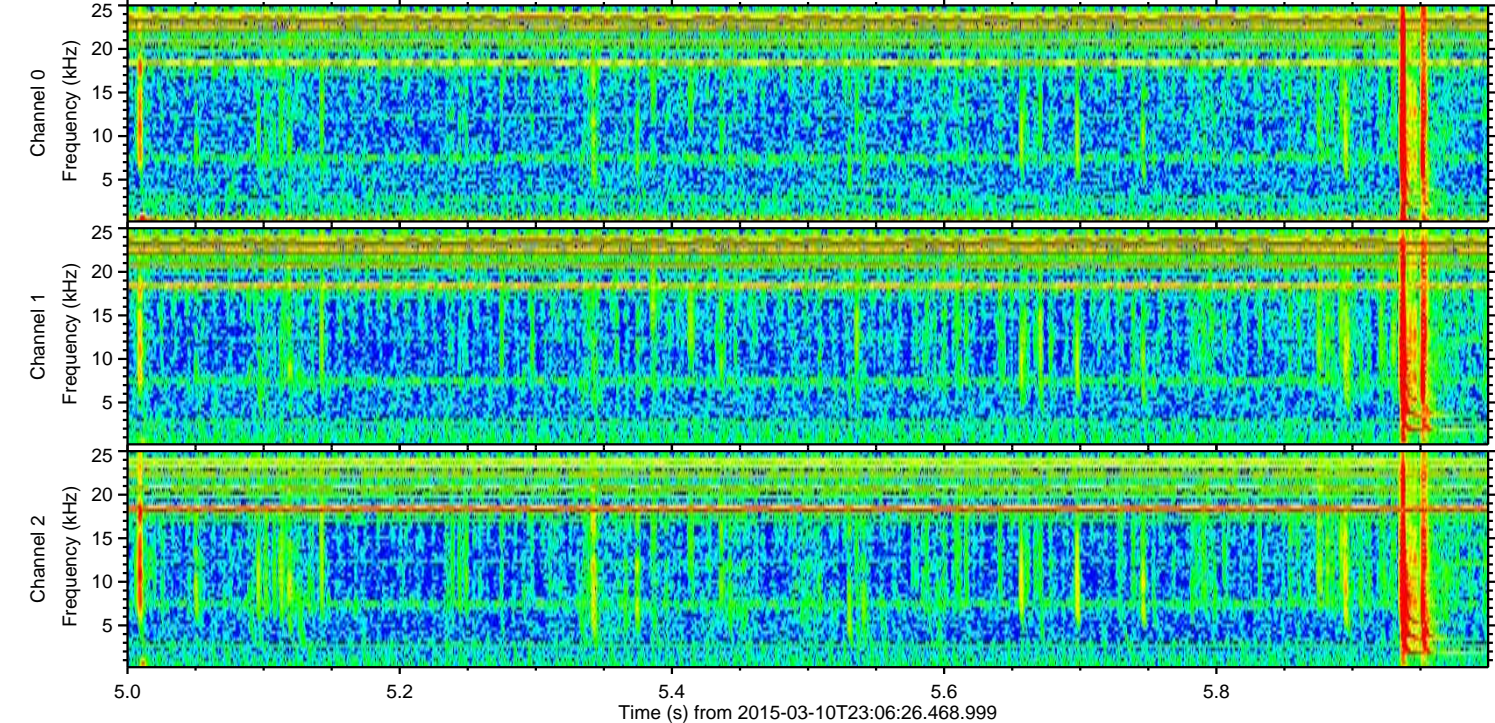
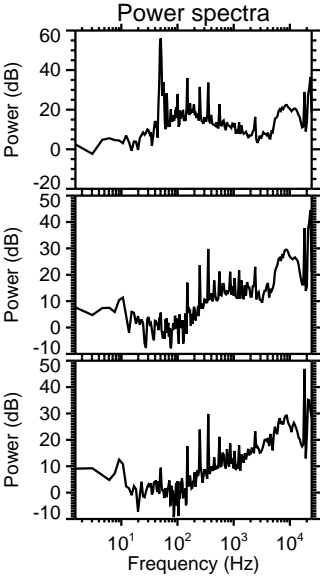
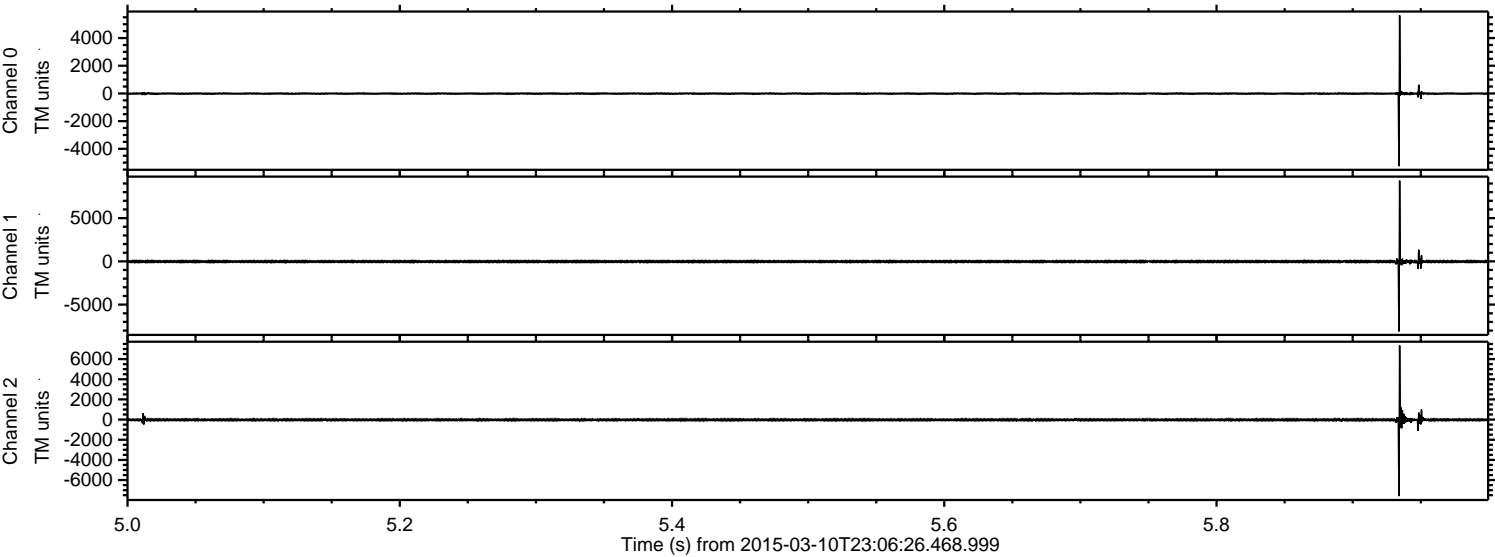


ELMAVAN 3D WAVEFORMS (Measured data sampled at 50 kHz) 49791 packets of 144 samples from 2015-03-10T23:06:26.468.999.

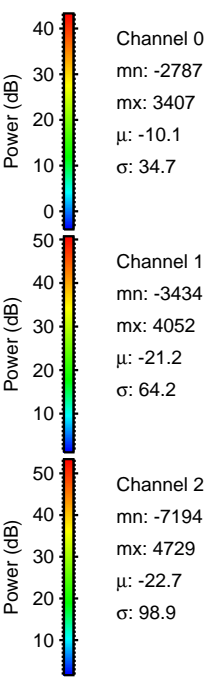
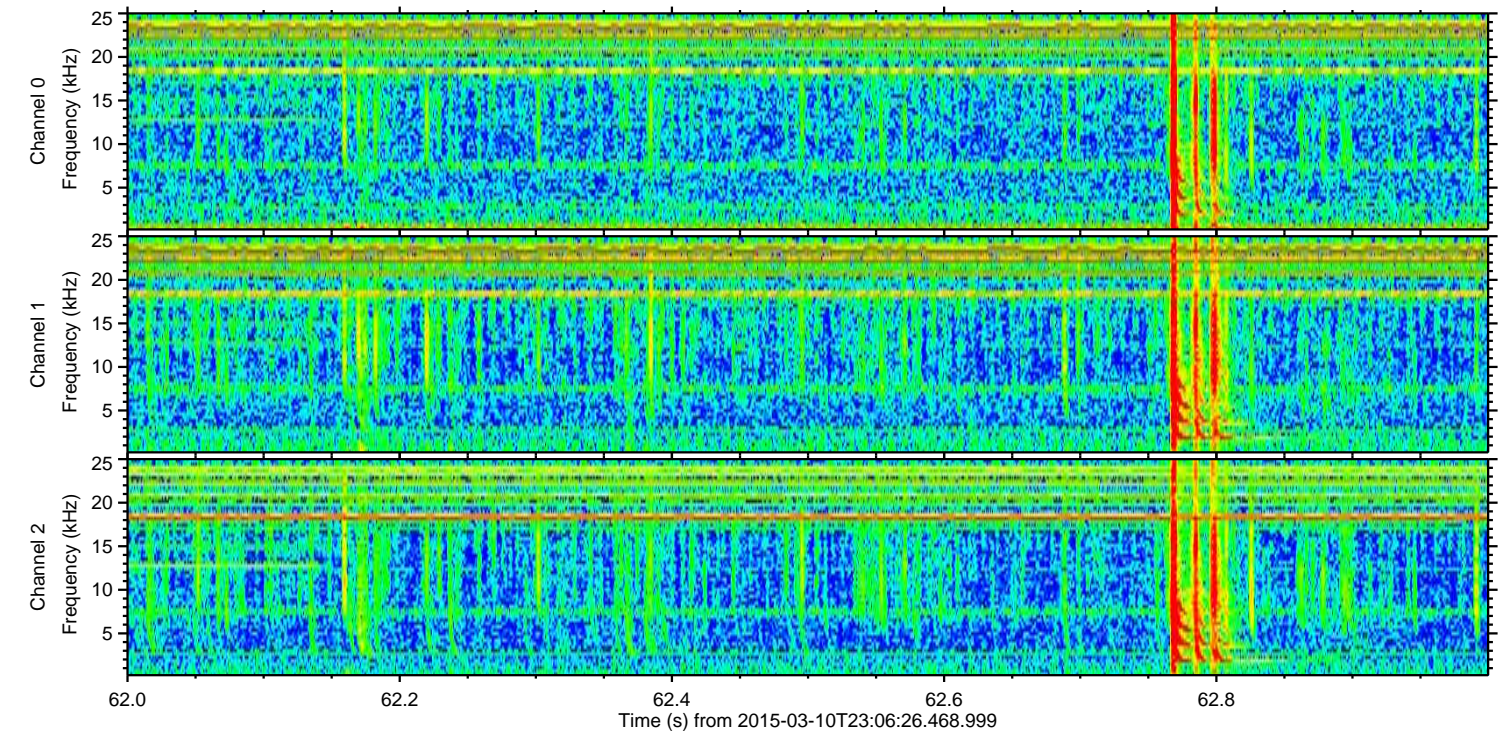
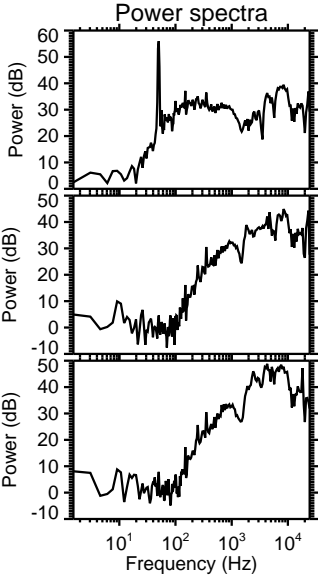
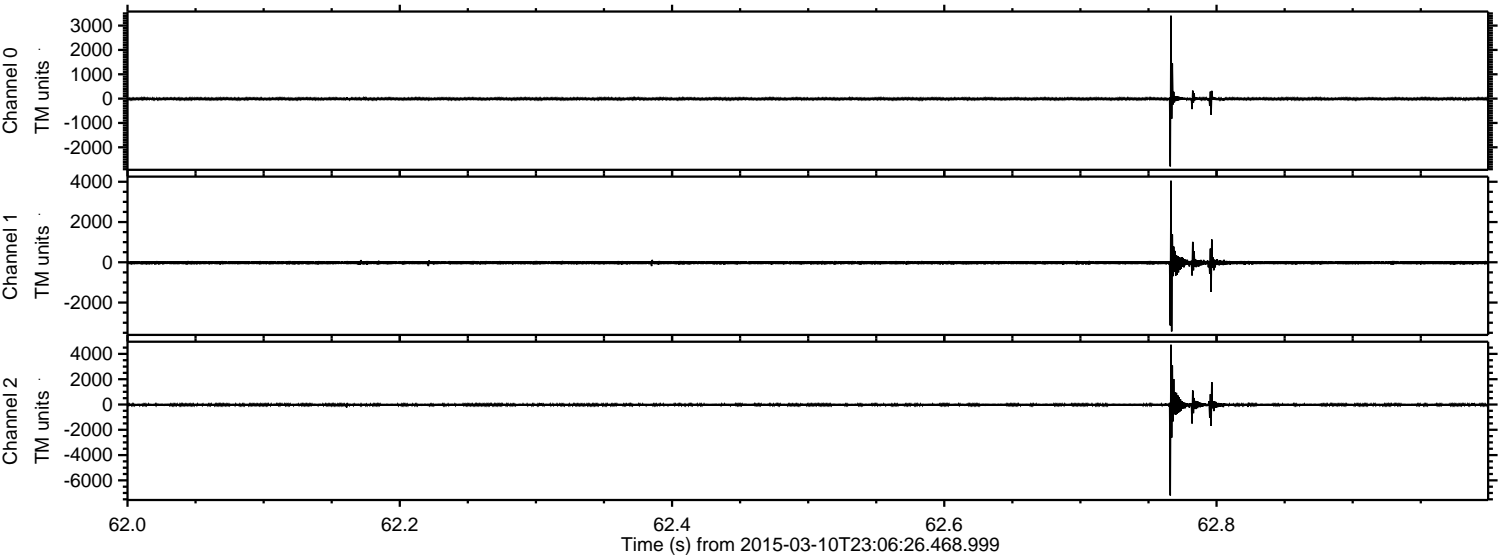
Processed Wed Mar 11 00:13:29 2015 by ELM ver.2012-10-06 from 001__elm20150310_230625__dat00.bin



Processed Wed Mar 11 00:13:40 2015 by ELM ver.2012-10-06 from 001__elm20150310_230625__dat00.bin

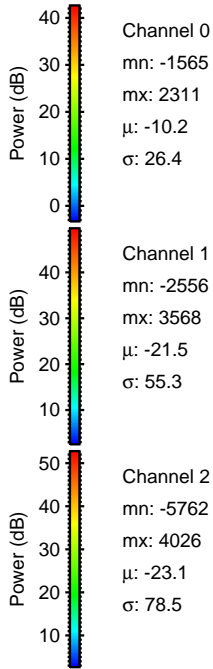
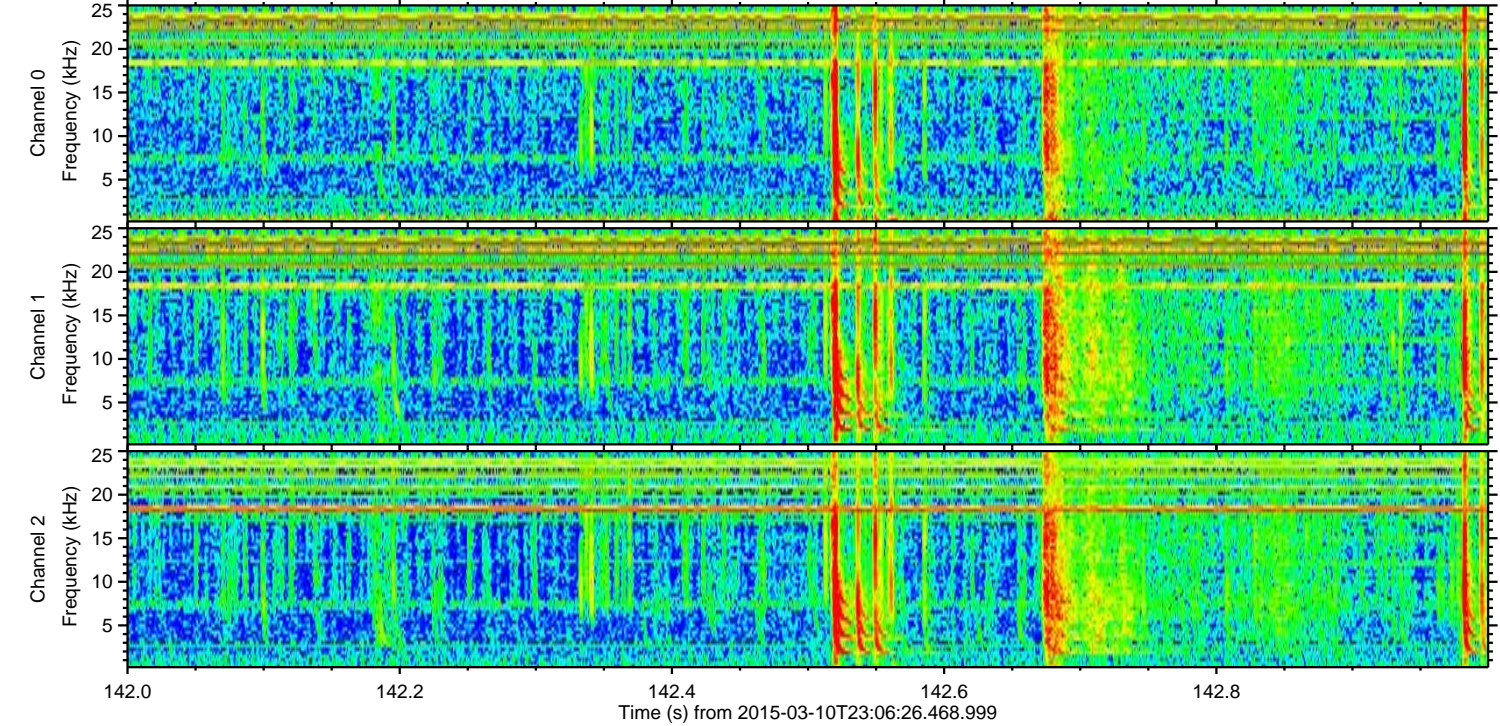
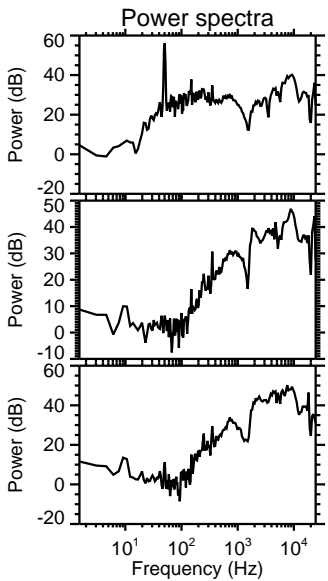
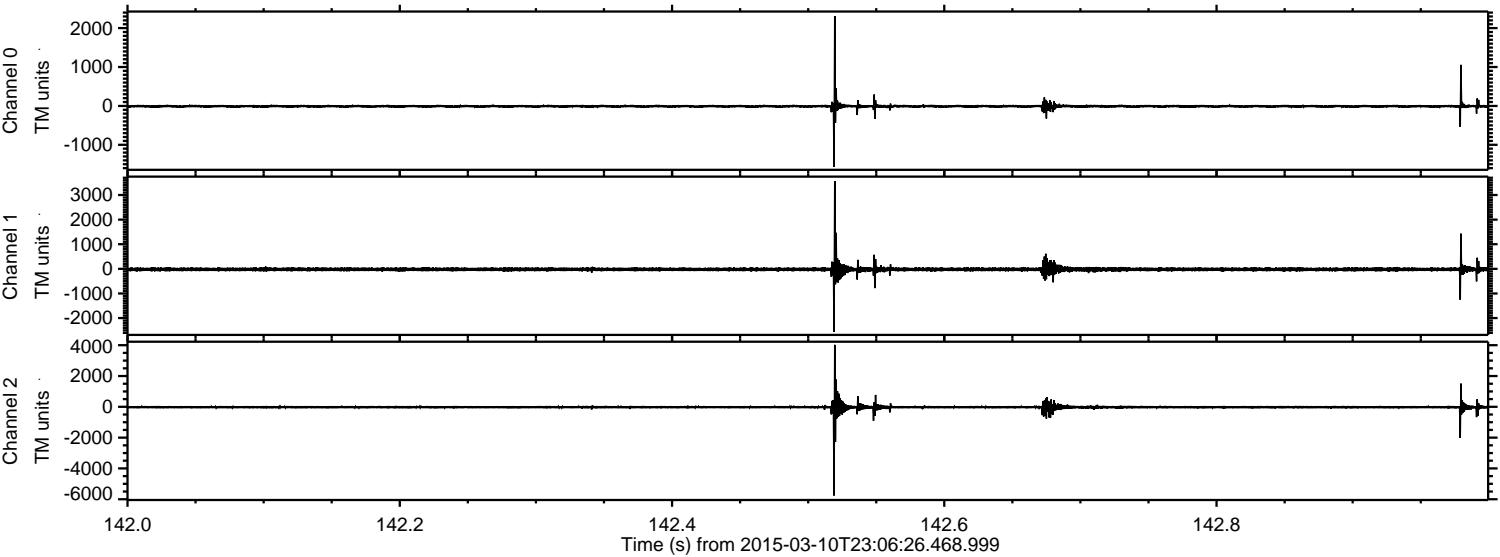


Processed Wed Mar 11 00:13:41 2015 by ELM ver.2012-10-06 from 001__elm20150310_230625__dat00.bin

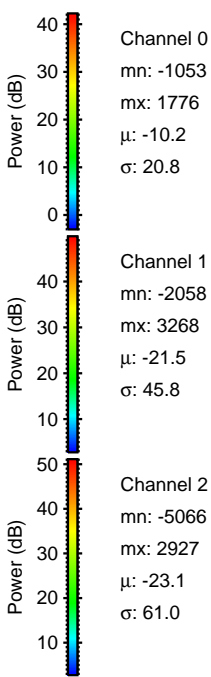
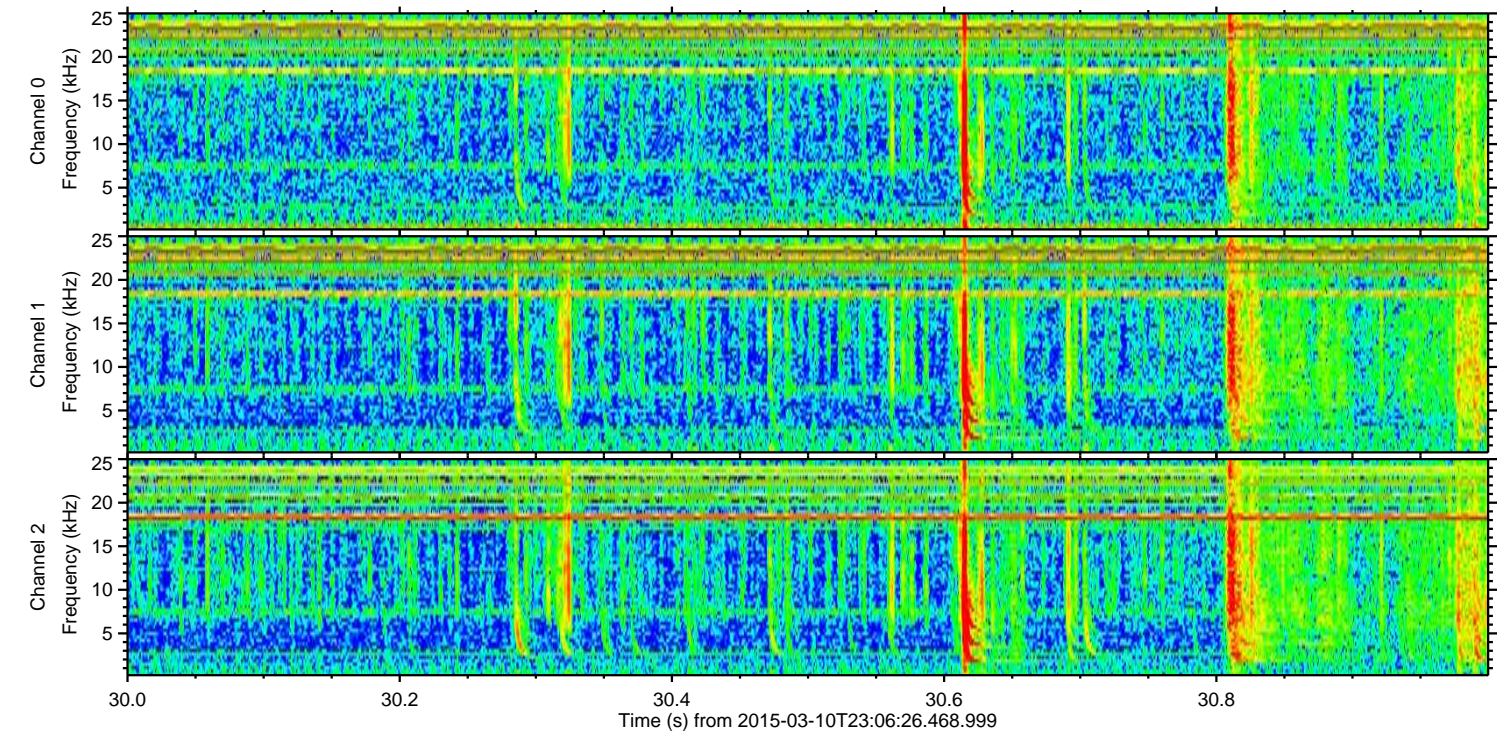
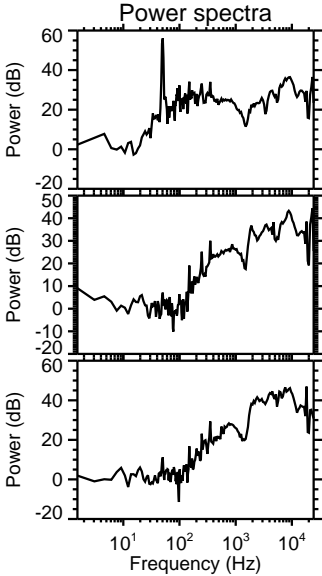
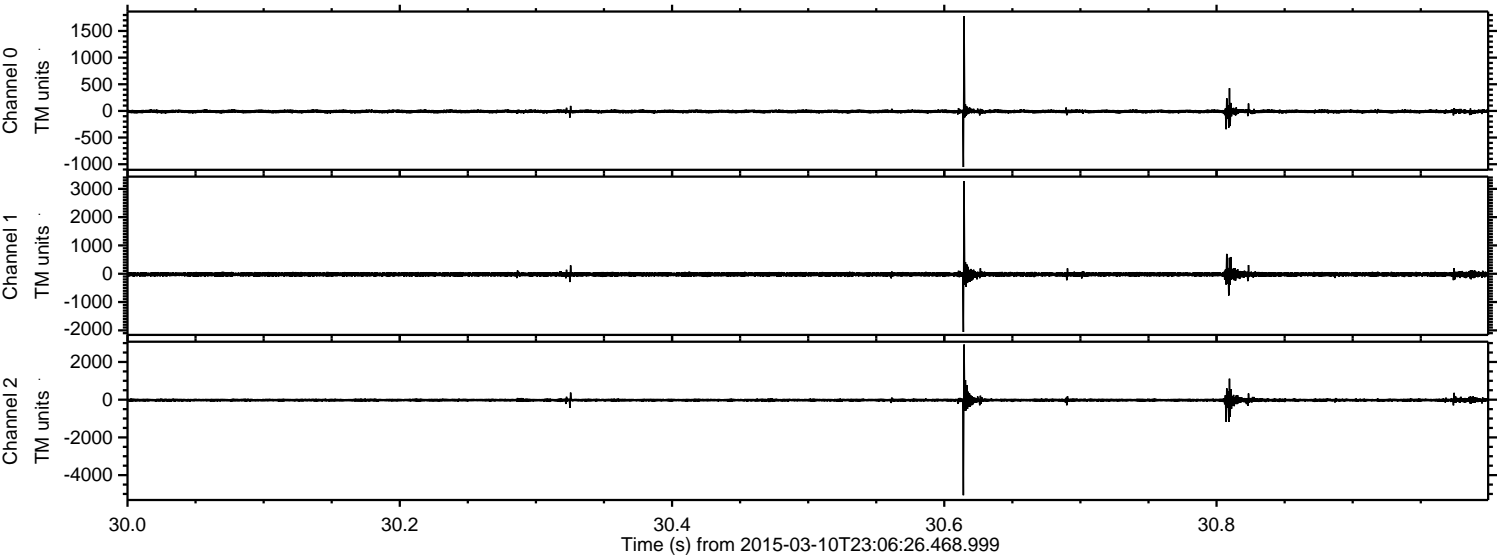


ELMAVAN 3D WAVEFORMS (Measured data sampled at 50 kHz) 49791 packets of 144 samples from 2015-03-10T23:06:26.468.999. Part 143/144

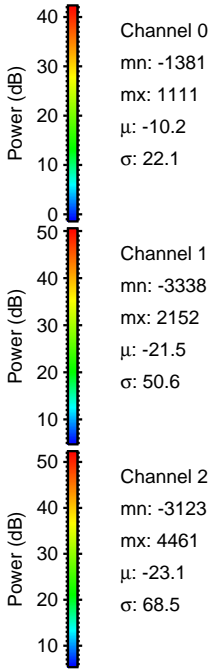
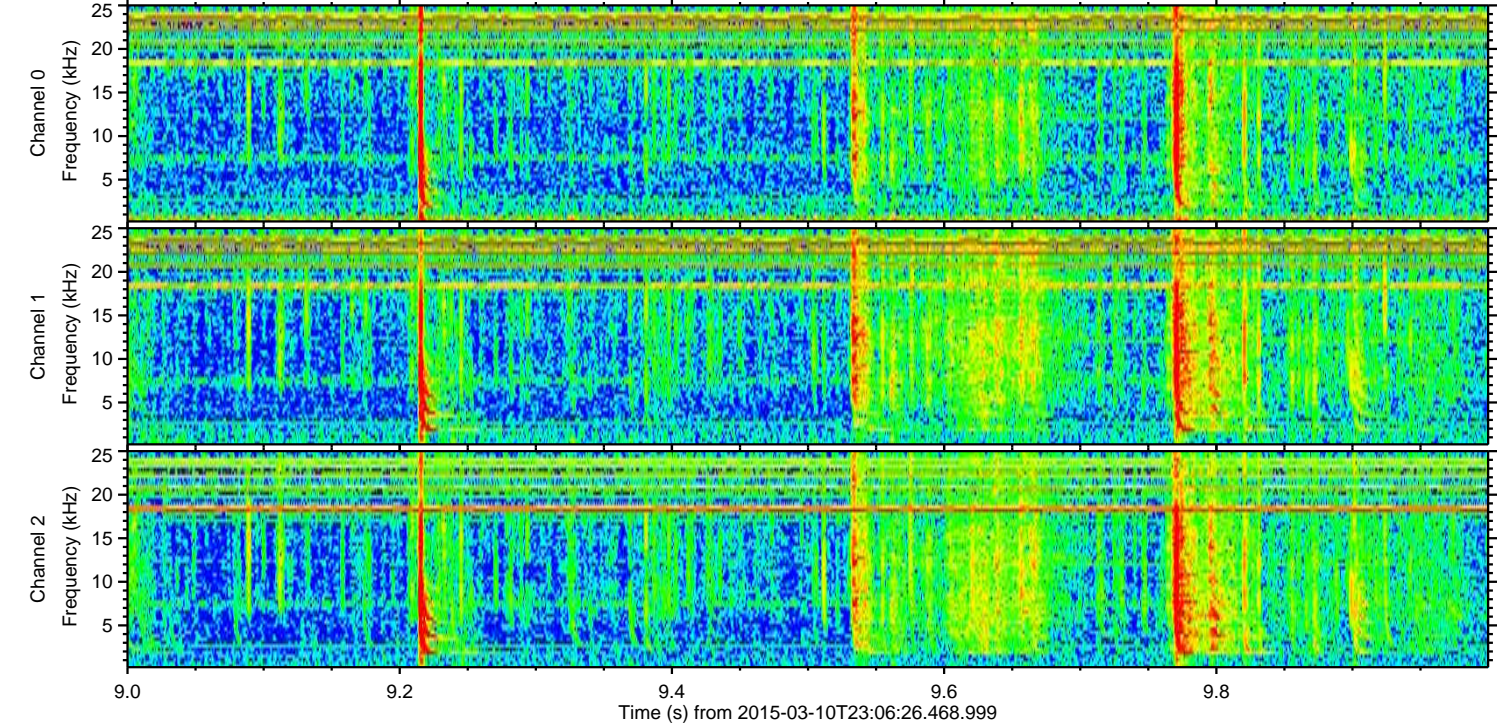
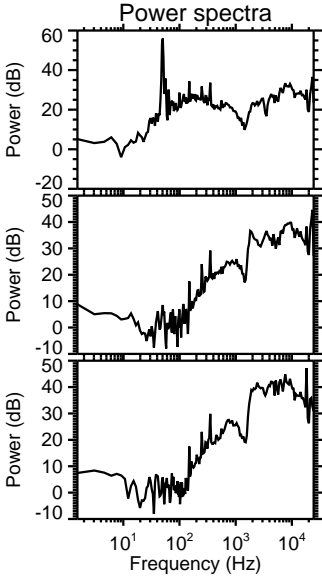
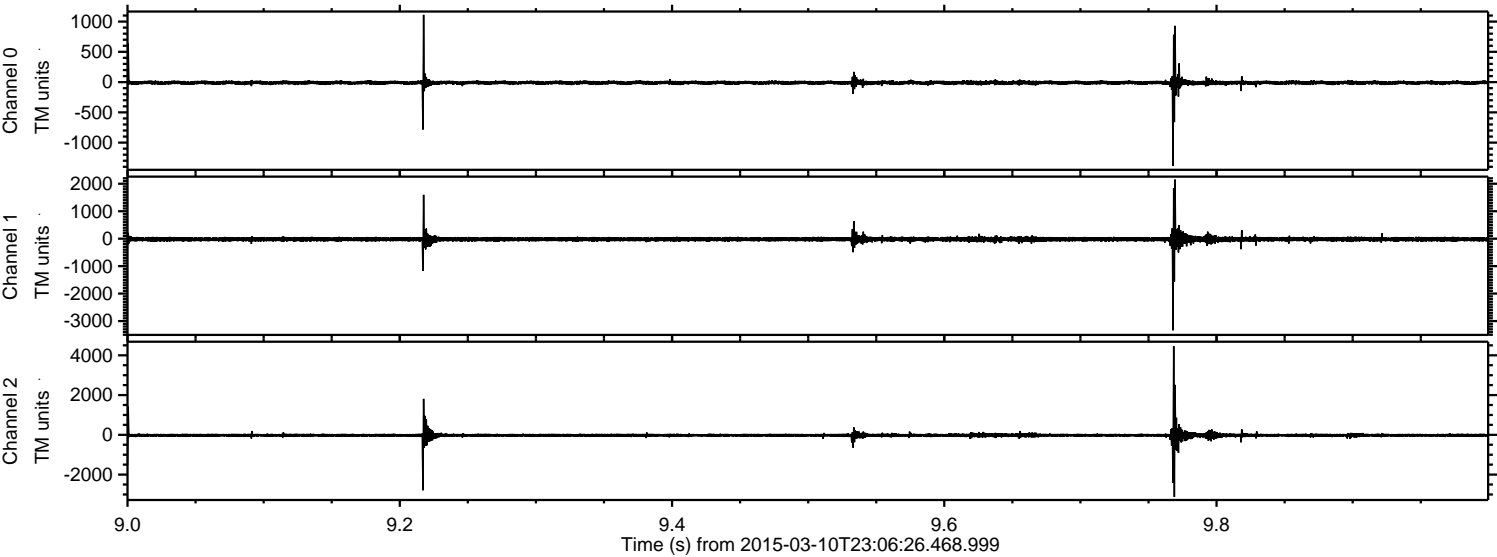
Processed Wed Mar 11 00:13:42 2015 by ELM ver.2012-10-06 from 001__elm20150310_230625__dat00.bin



Processed Wed Mar 11 00:13:43 2015 by ELM ver.2012-10-06 from 001__elm20150310_230625__dat00.bin

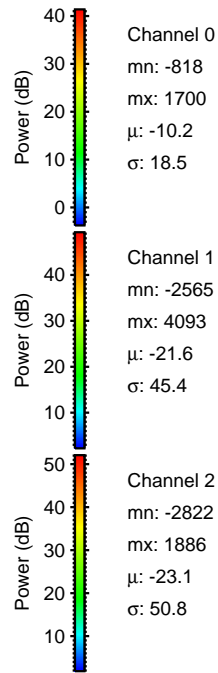
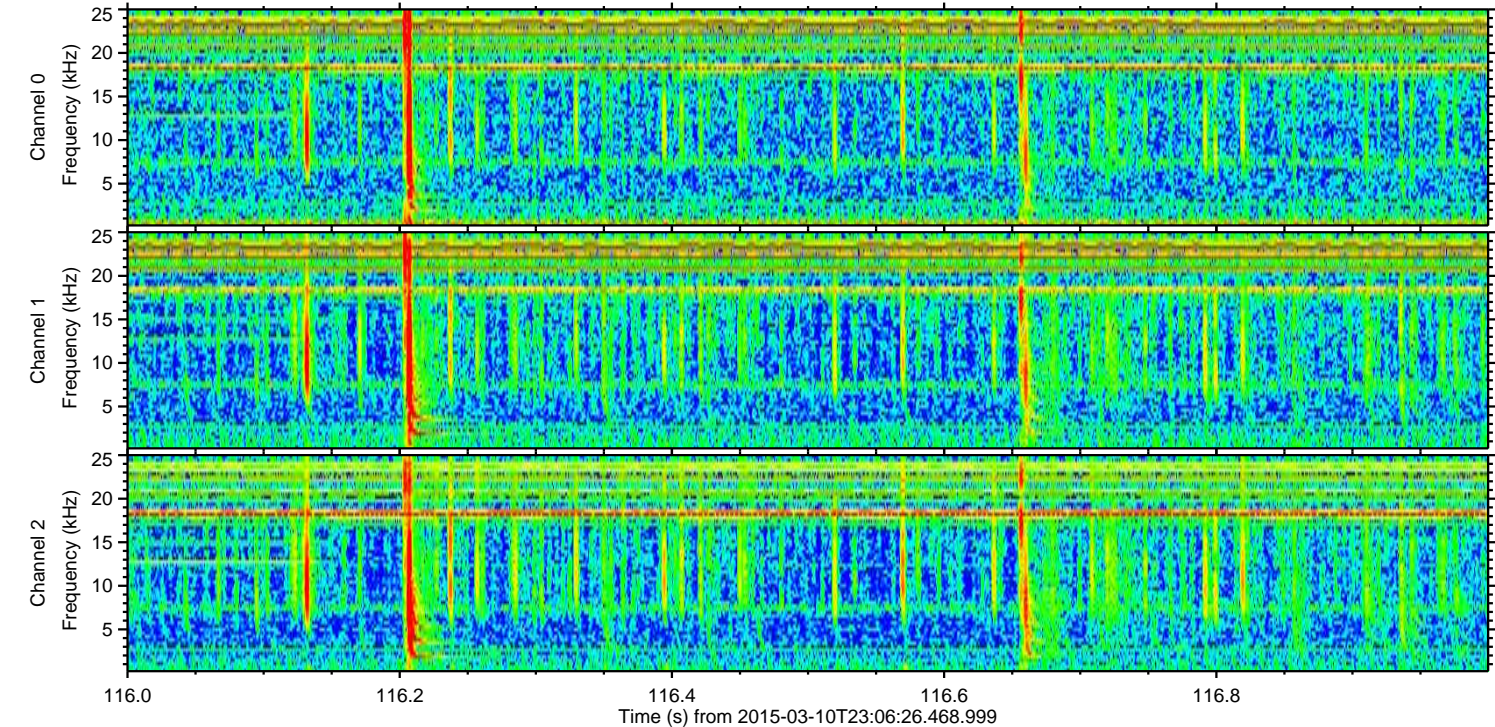
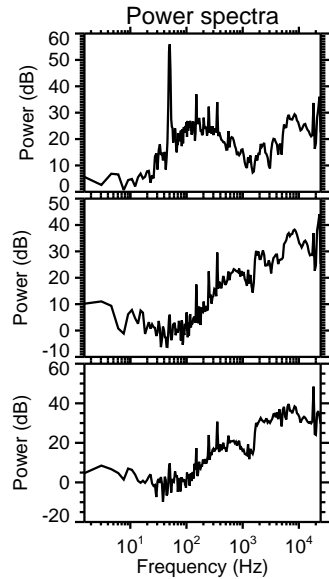
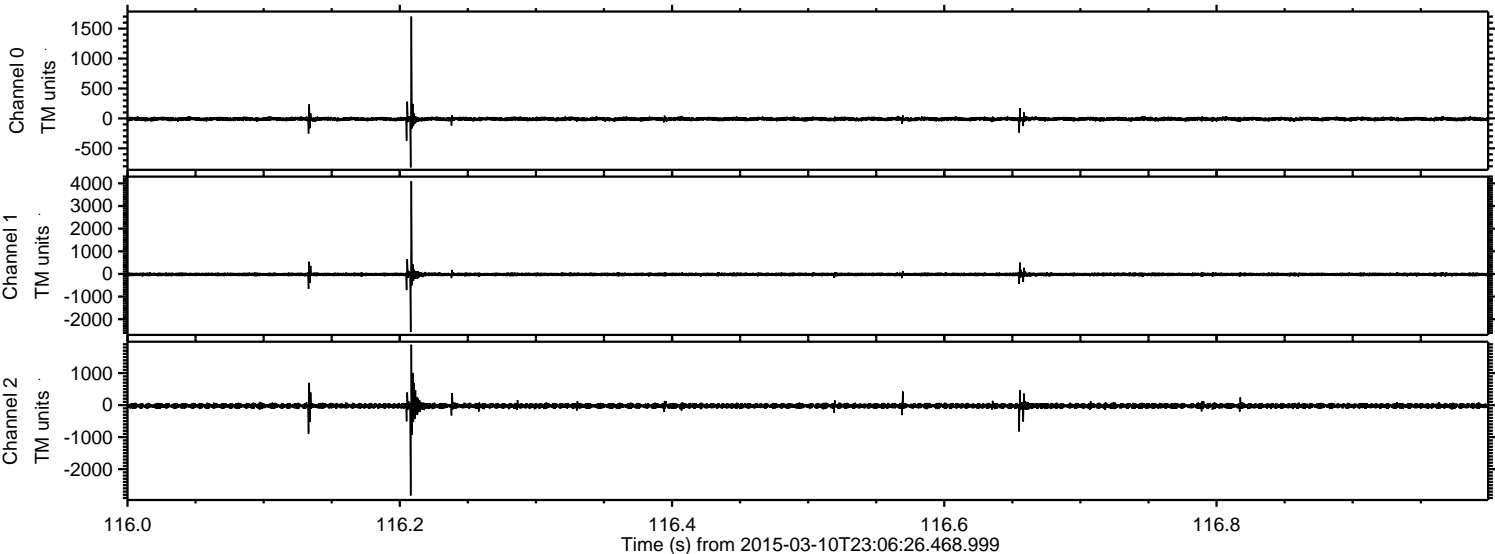


Processed Wed Mar 11 00:13:44 2015 by ELM ver.2012-10-06 from 001__elm20150310_230625__dat00.bin



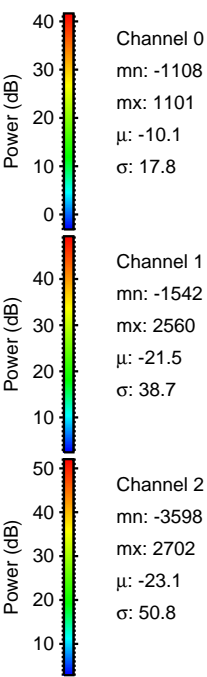
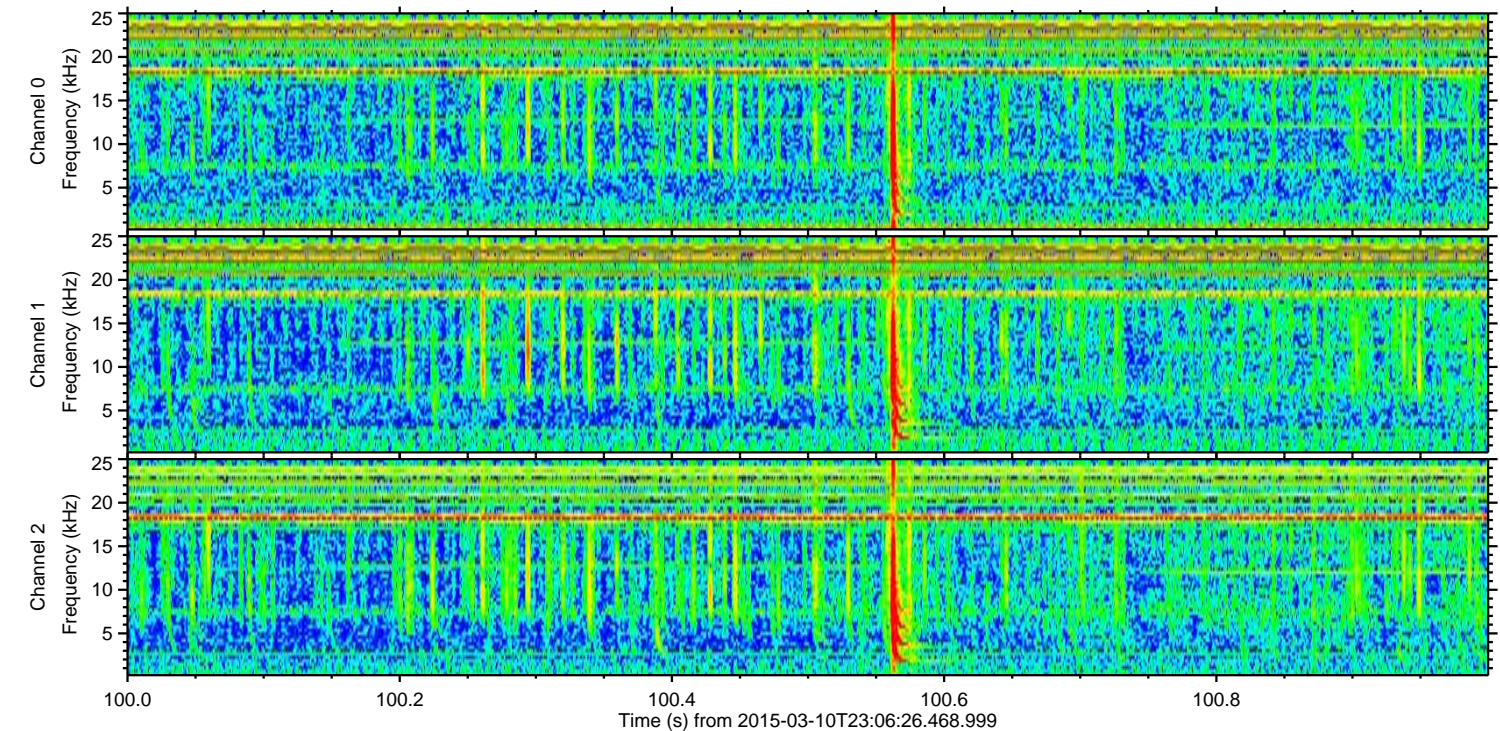
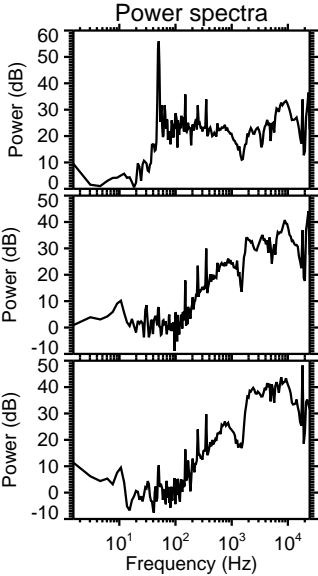
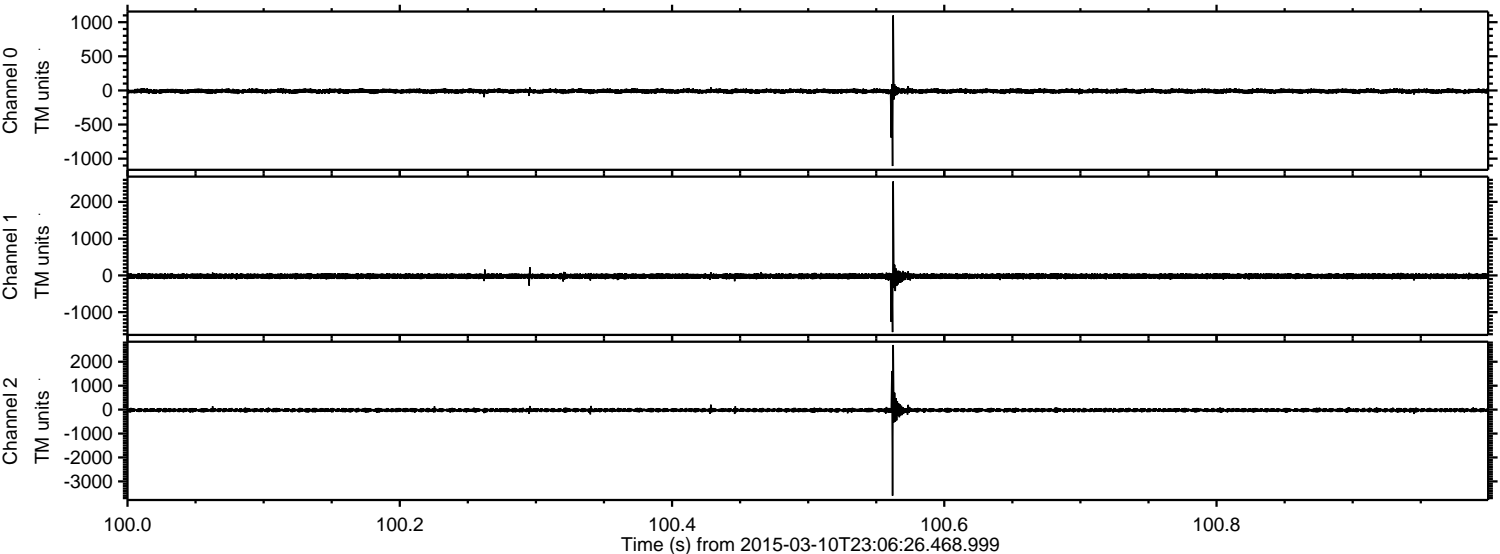
ELMAVAN 3D WAVEFORMS (Measured data sampled at 50 kHz) 49791 packets of 144 samples from 2015-03-10T23:06:26.468.999. Part 117/144

Processed Wed Mar 11 00:13:45 2015 by ELM ver.2012-10-06 from 001__elm20150310_230625__dat00.bin



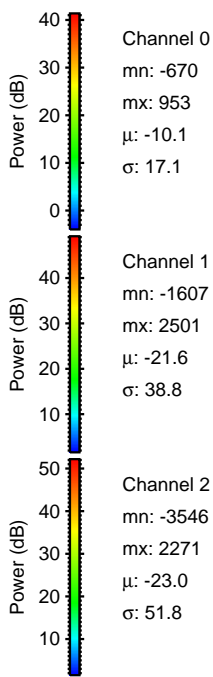
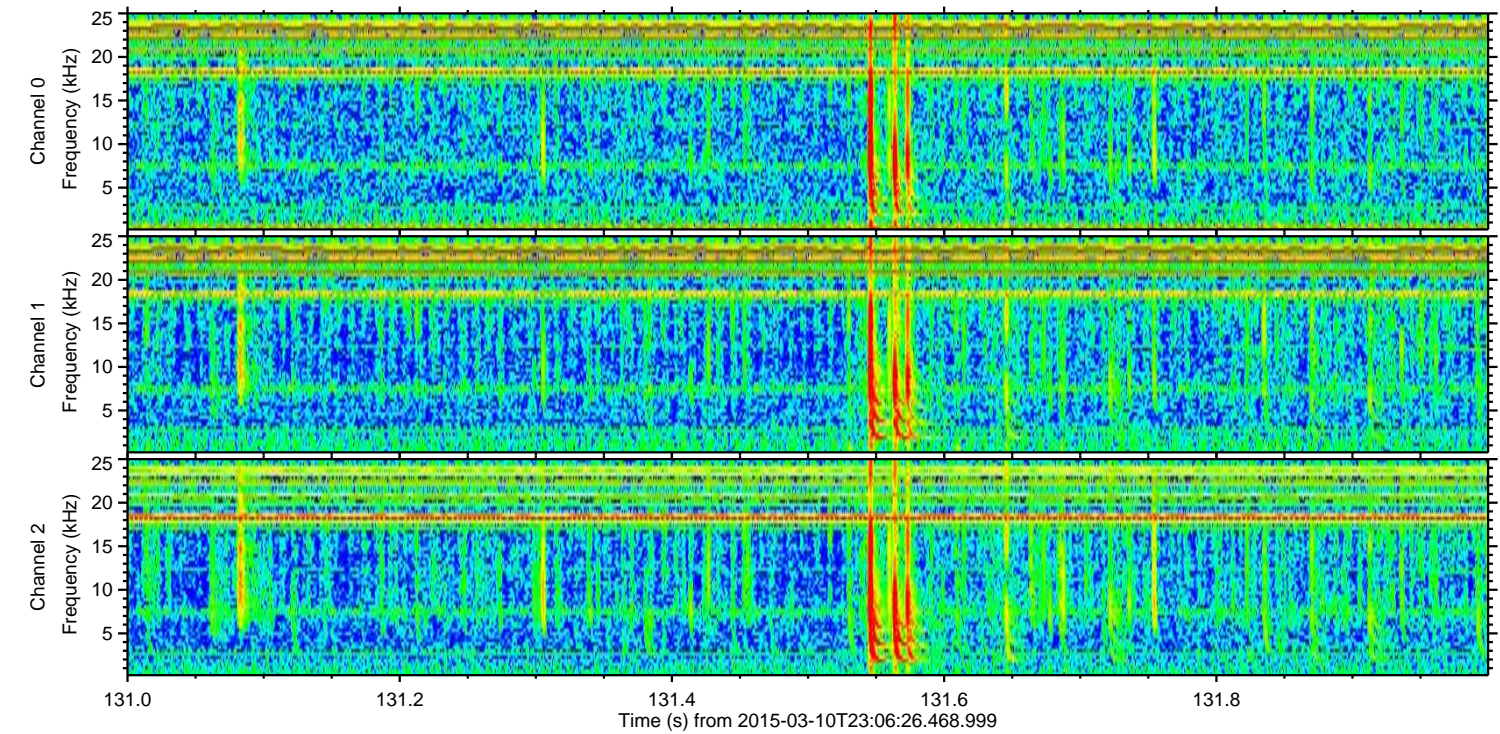
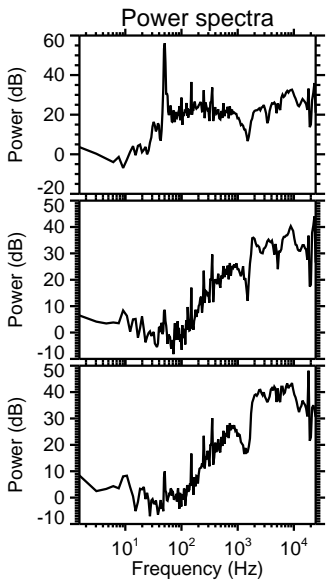
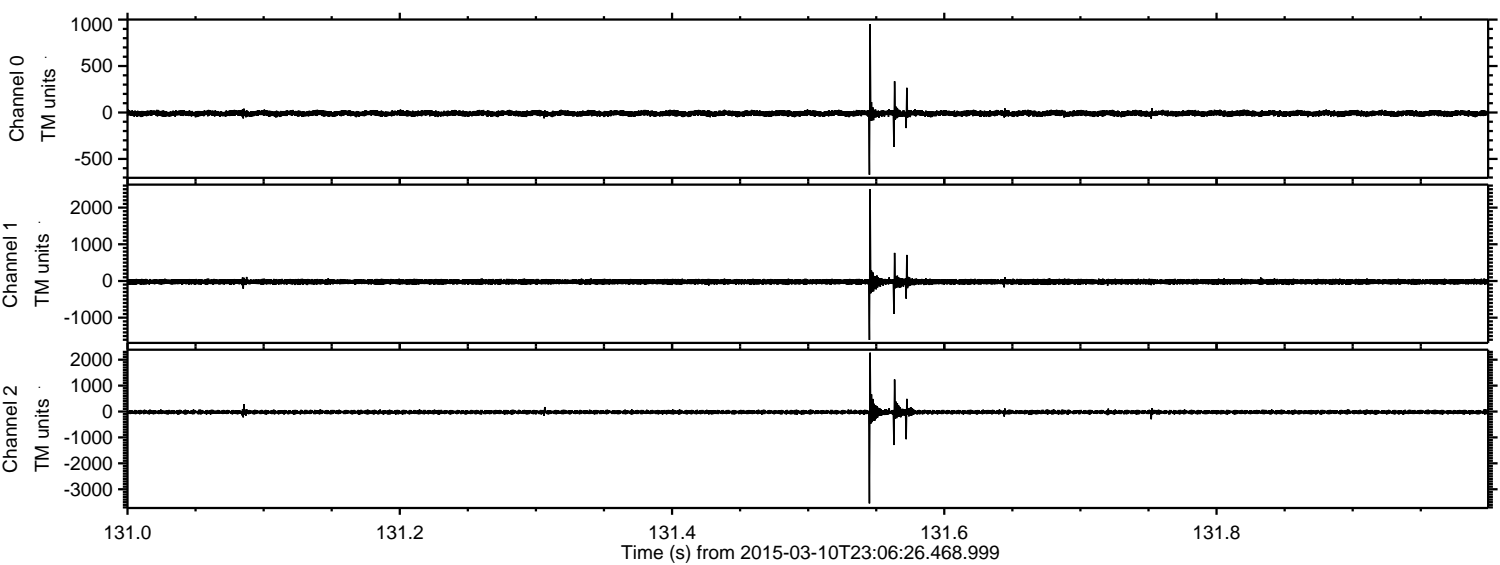
ELMAVAN 3D WAVEFORMS (Measured data sampled at 50 kHz) 49791 packets of 144 samples from 2015-03-10T23:06:26.468.999. Part 101/144

Processed Wed Mar 11 00:13:46 2015 by ELM ver.2012-10-06 from 001__elm20150310_230625__dat00.bin



ELMAVAN 3D WAVEFORMS (Measured data sampled at 50 kHz) 49791 packets of 144 samples from 2015-03-10T23:06:26.468.999. Part 132/144

Processed Wed Mar 11 00:13:47 2015 by ELM ver.2012-10-06 from 001__elm20150310_230625__dat00.bin

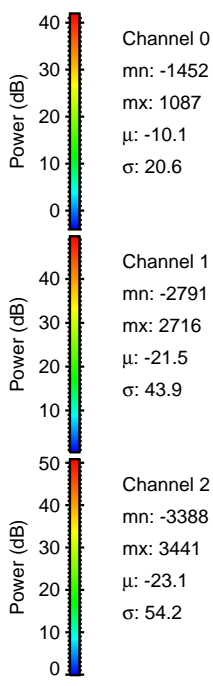
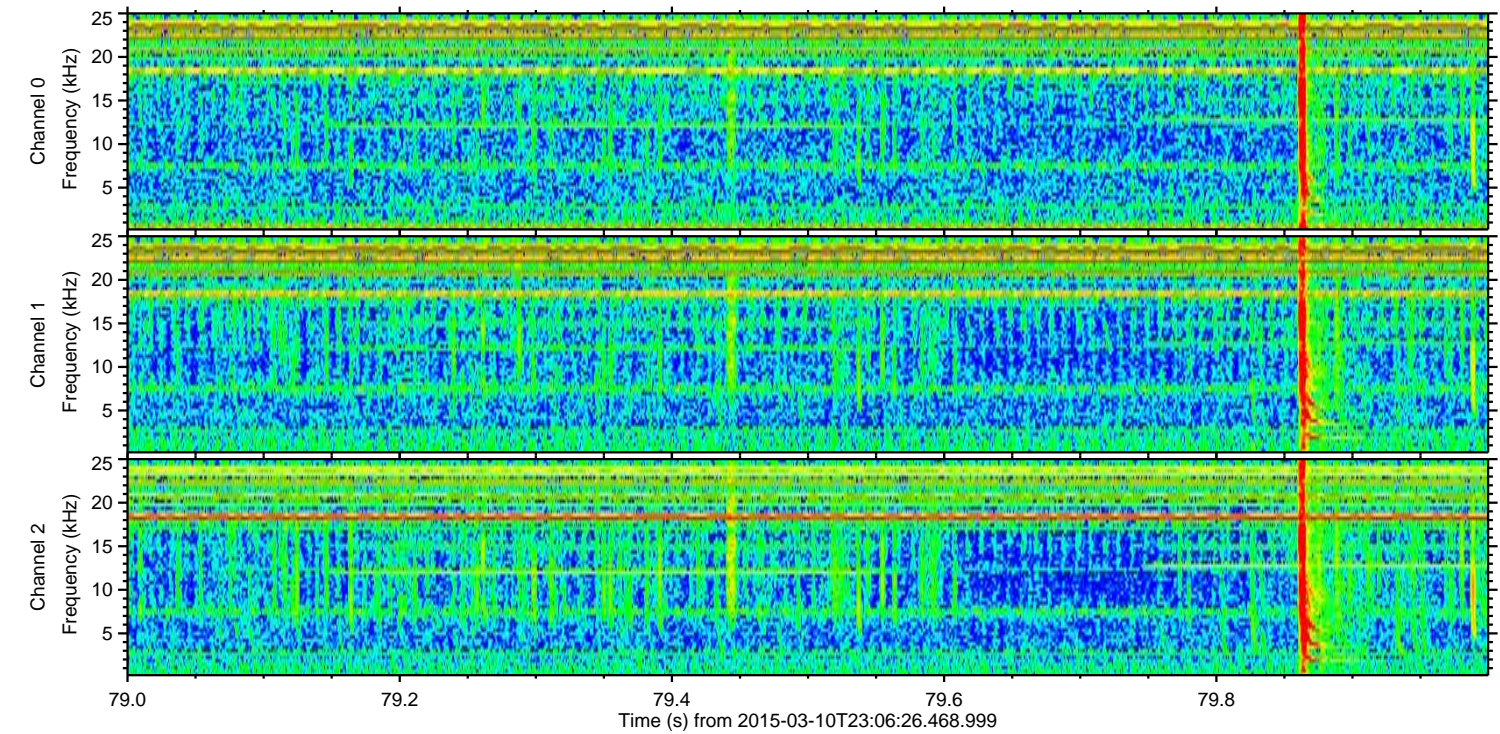
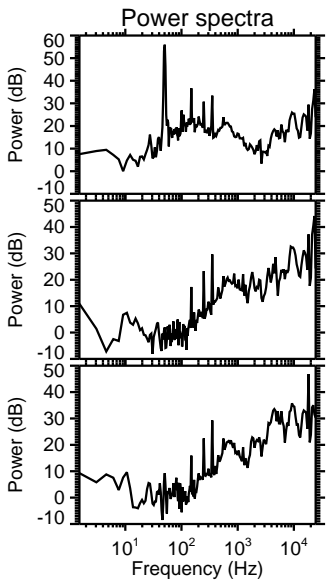
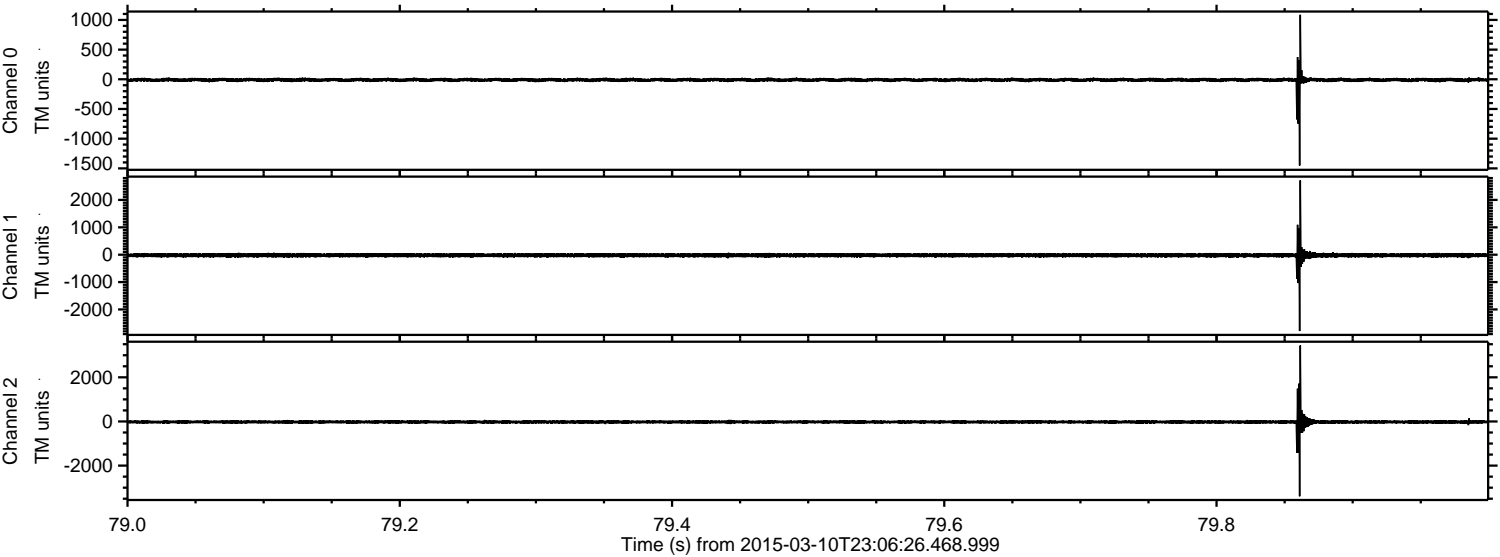


Channel 0
mn: -670
mx: 953
 μ : -10.1
 σ : 17.1

Channel 1
mn: -1607
mx: 2501
 μ : -21.6
 σ : 38.8

Channel 2
mn: -3546
mx: 2271
 μ : -23.0
 σ : 51.8

Processed Wed Mar 11 00:13:48 2015 by ELM ver.2012-10-06 from 001__elm20150310_230625__dat00.bin



Channel 0
mn: -1452
mx: 1087
 μ : -10.1
 σ : 20.6

Channel 1
mn: -2791
mx: 2716
 μ : -21.5
 σ : 43.9

Channel 2
mn: -3388
mx: 3441
 μ : -23.1
 σ : 54.2

Processed Wed Mar 11 00:13:49 2015 by ELM ver.2012-10-06 from 001__elm20150310_230625__dat00.bin

