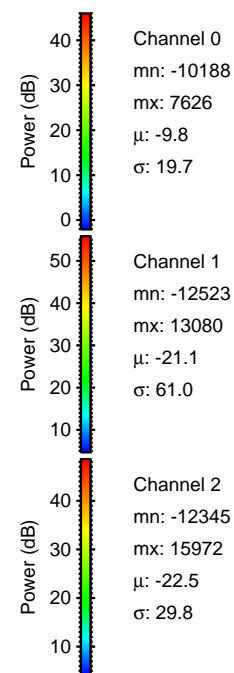
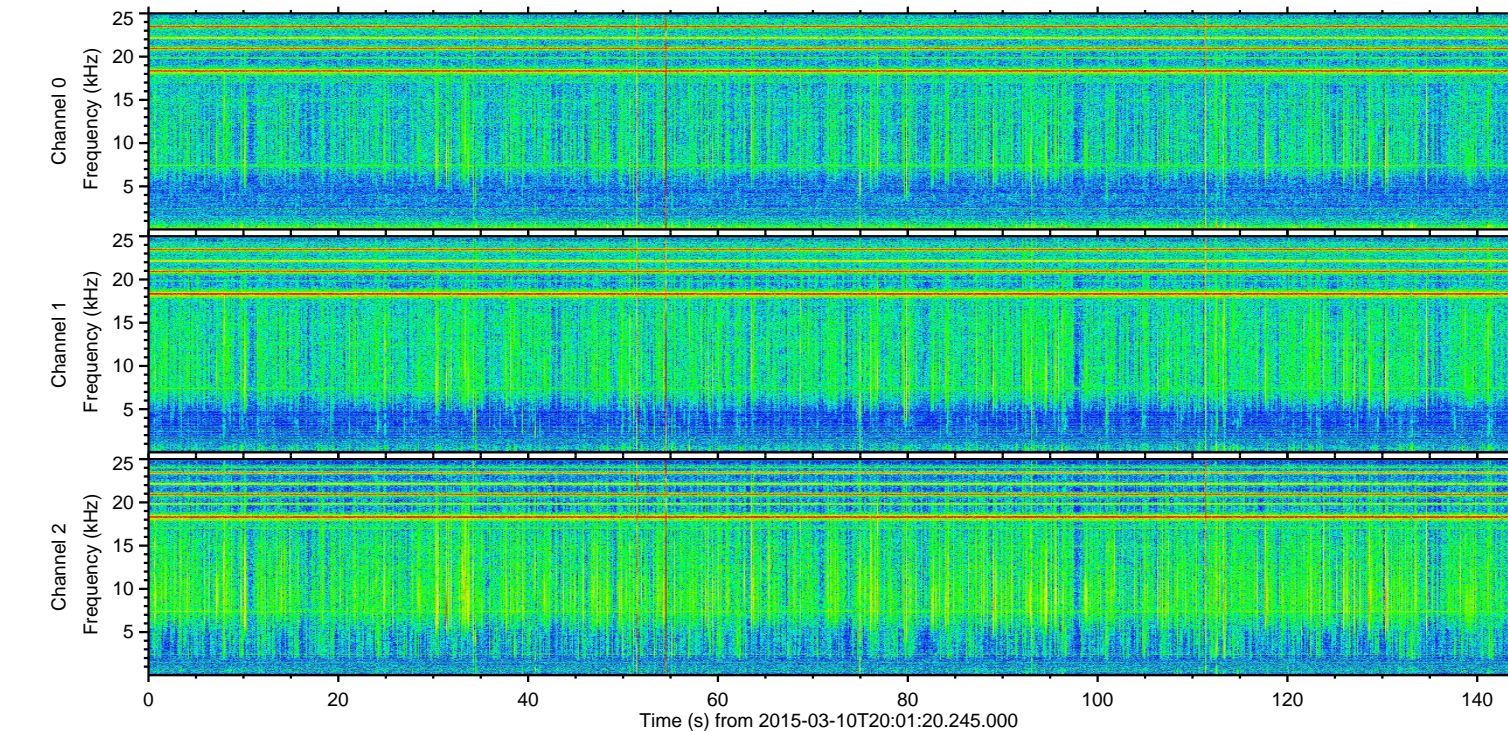
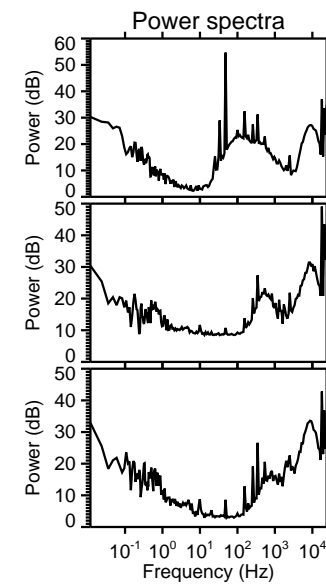
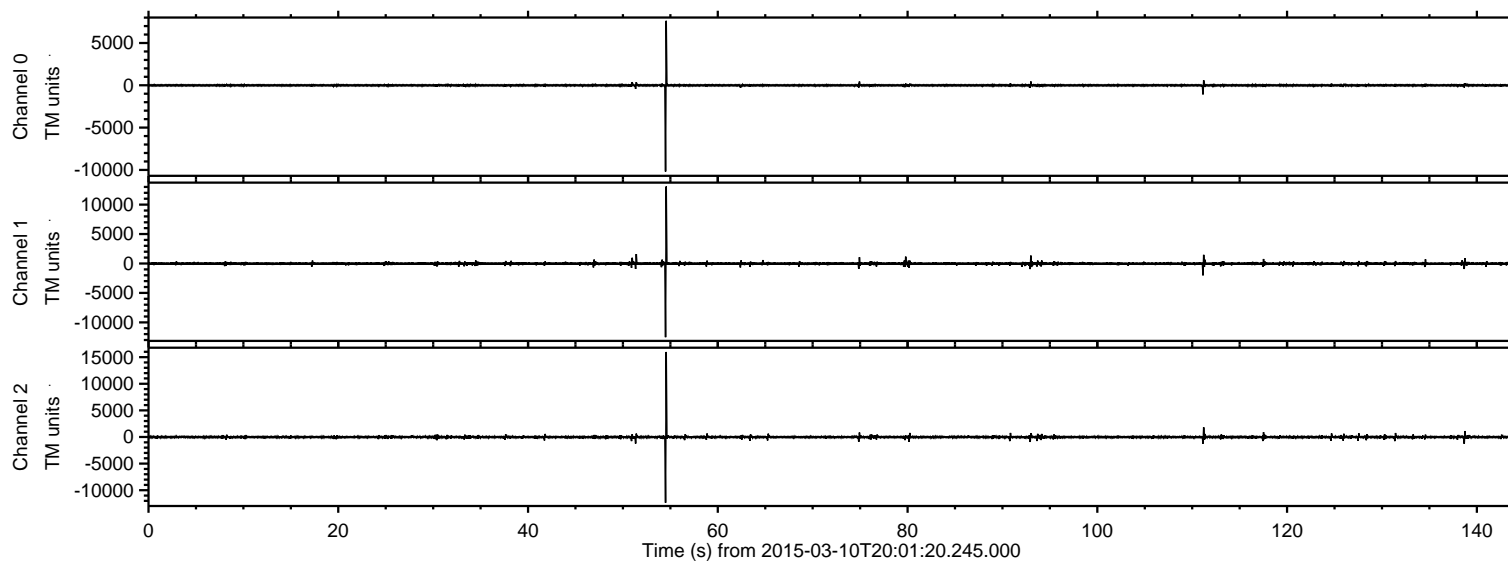
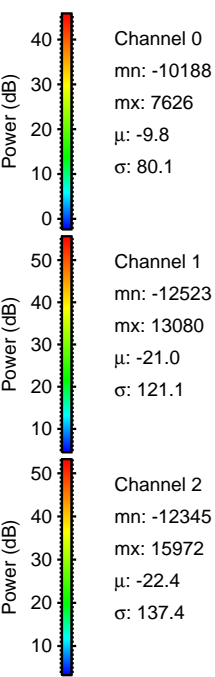
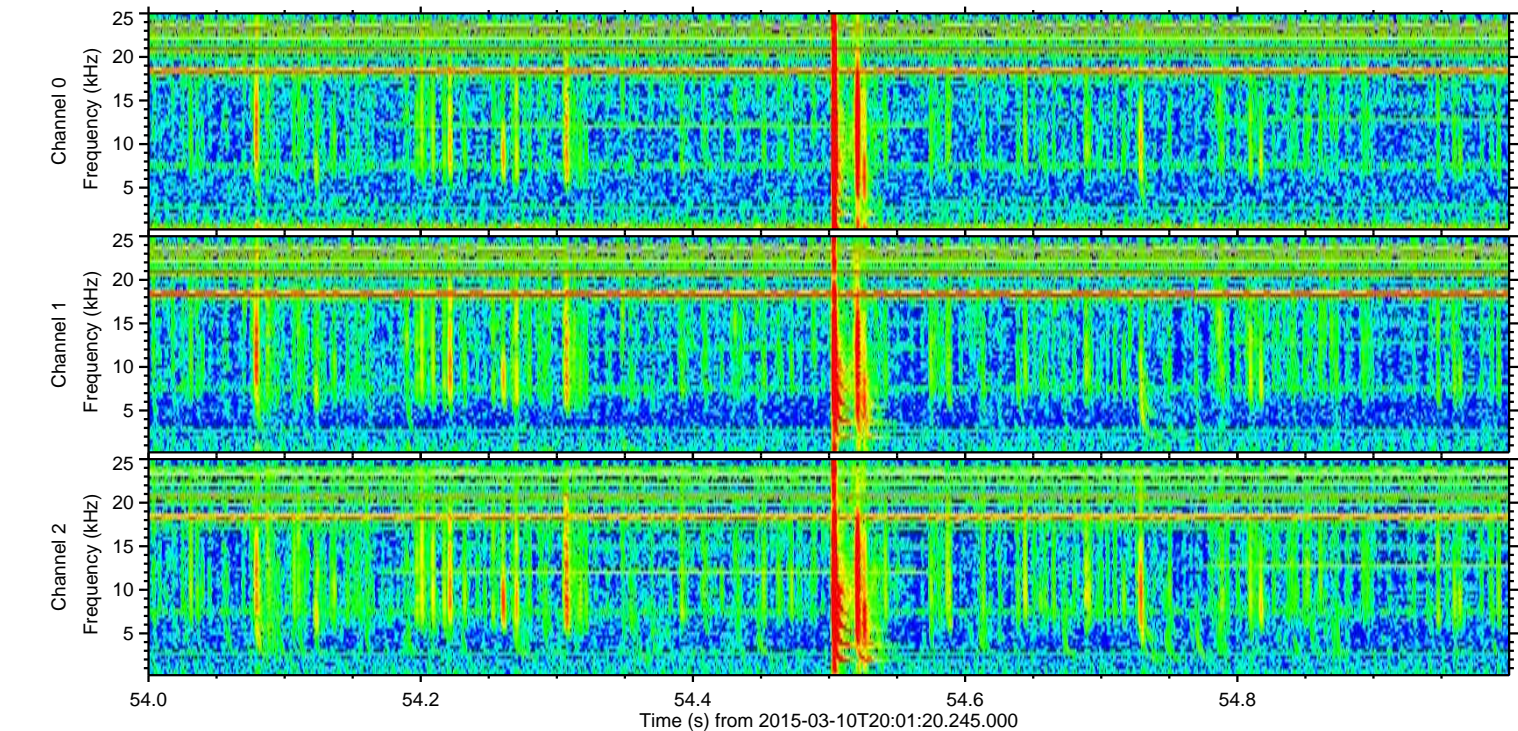
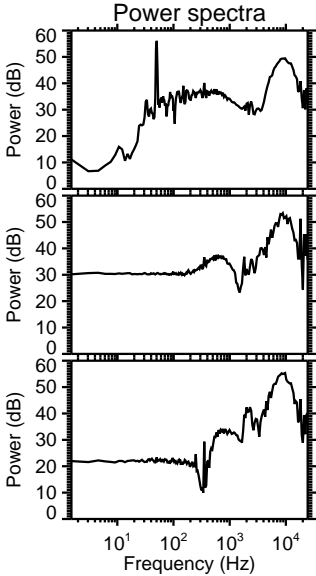
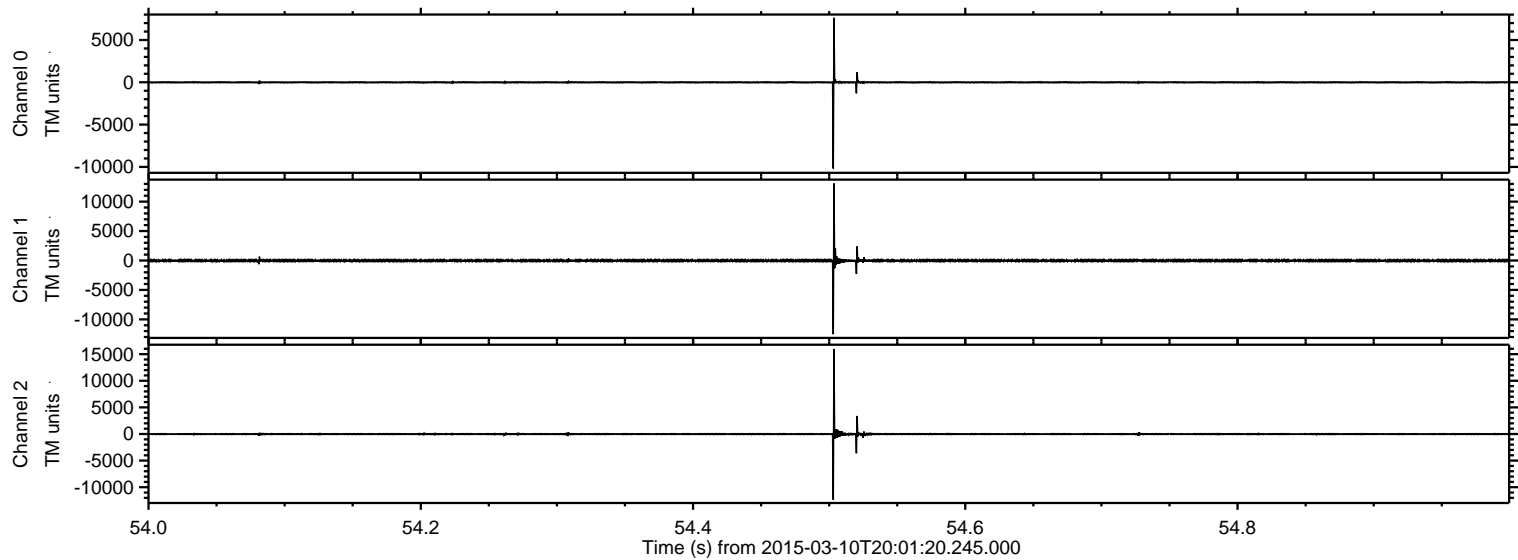


ELMAVAN 3D WAVEFORMS (Measured data sampled at 50 kHz) 49793 packets of 144 samples from 2015-03-10T20:01:20.245.000.

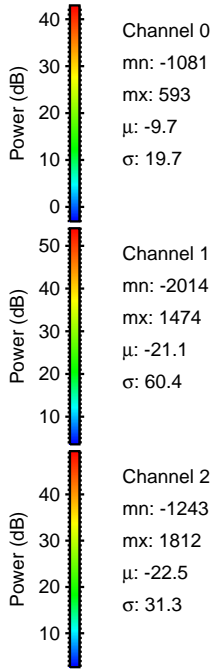
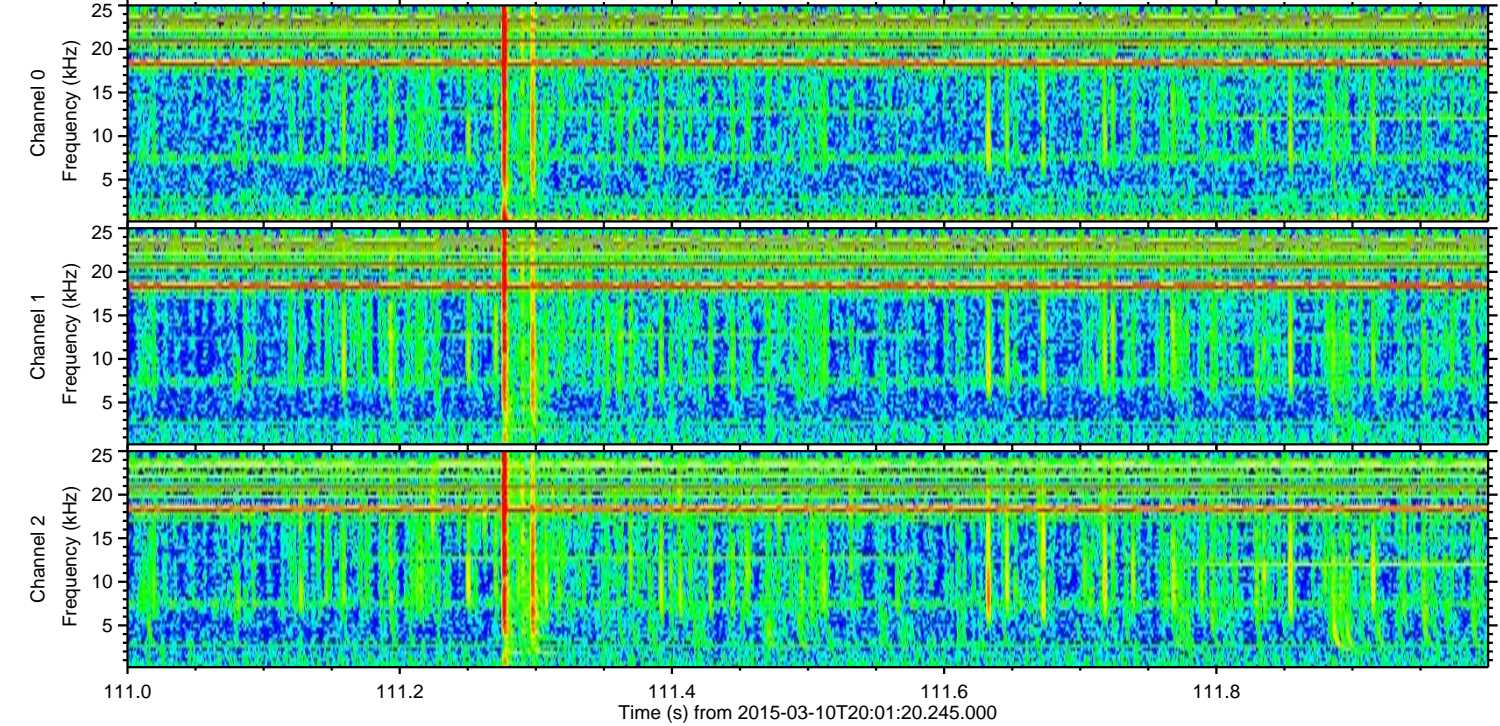
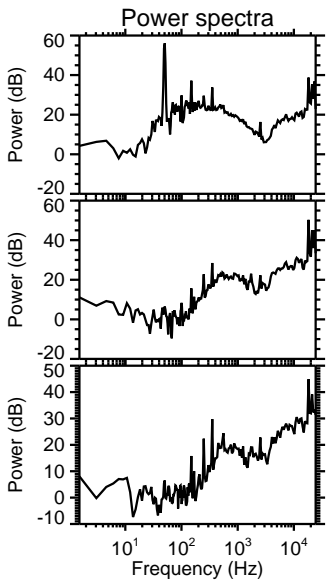
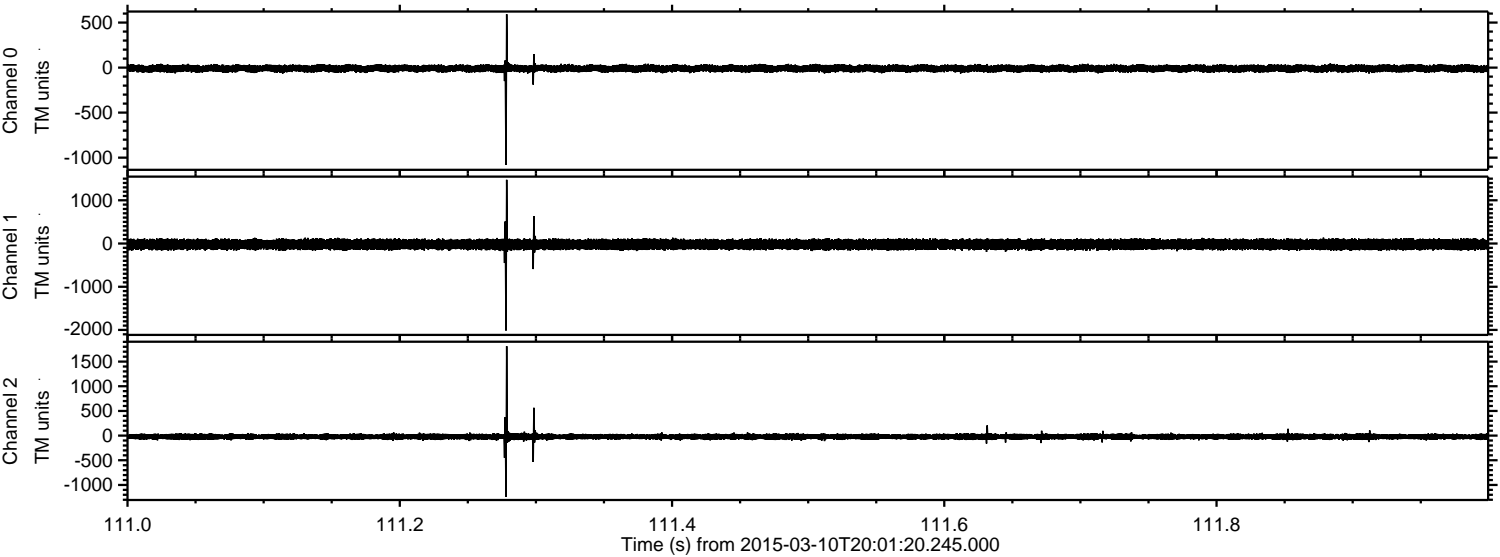
Processed Tue Mar 10 21:08:10 2015 by ELM ver.2012-10-06 from 001__elm20150310_200119__dat00.bin



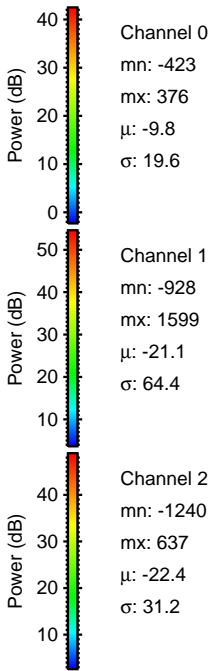
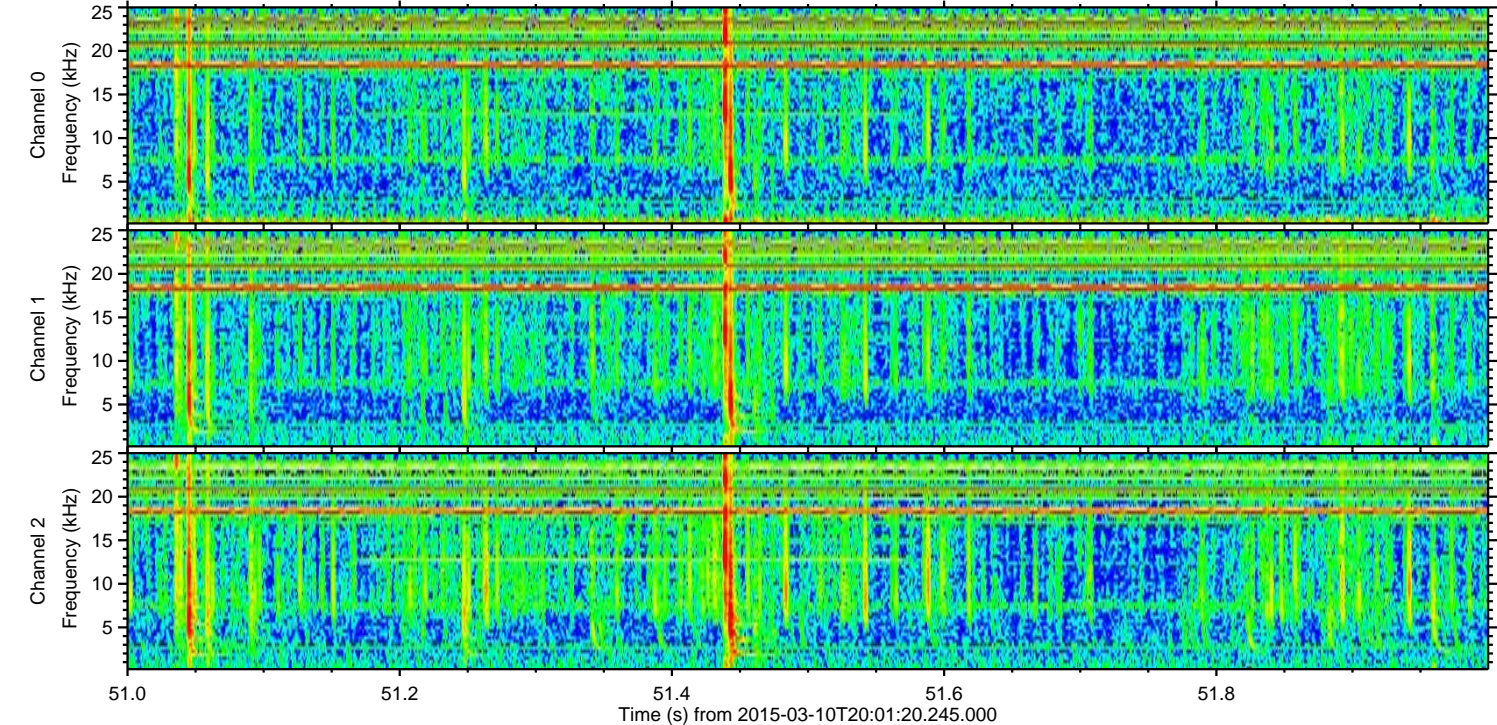
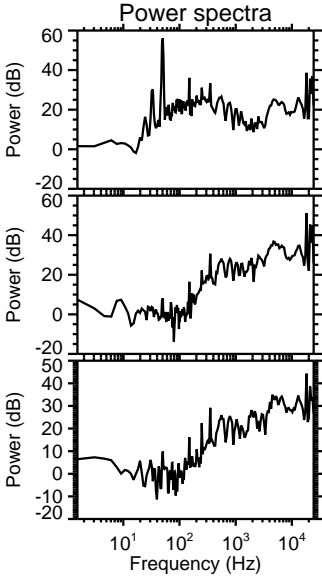
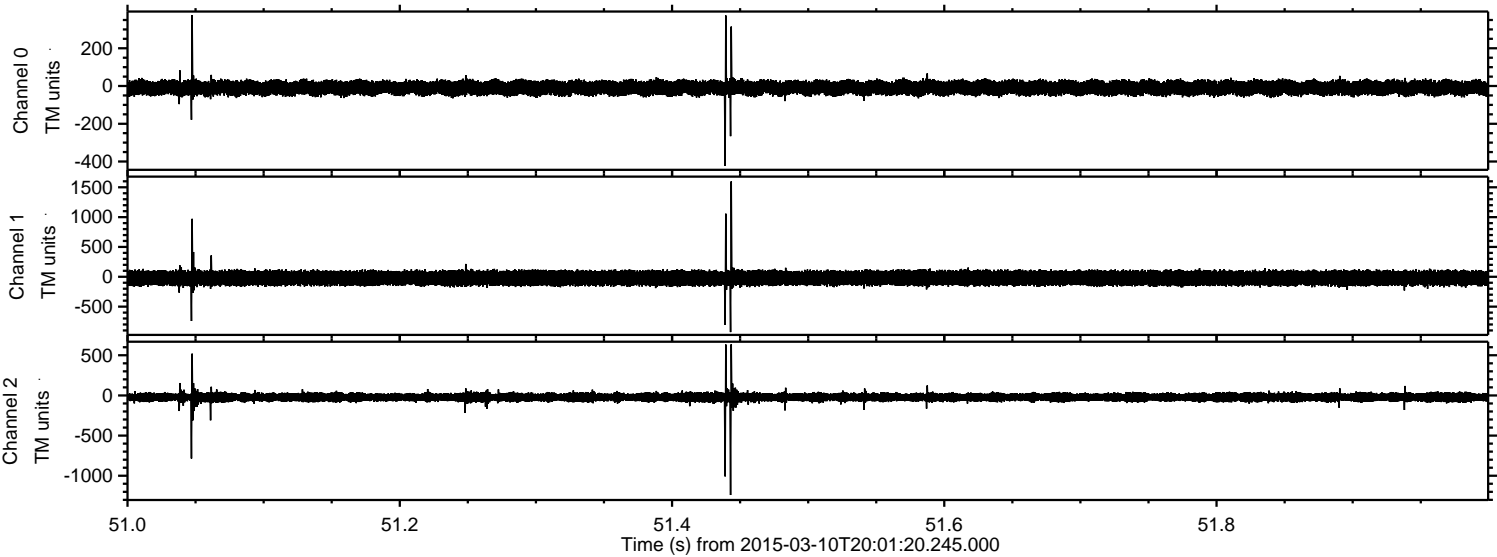
Processed Tue Mar 10 21:08:22 2015 by ELM ver.2012-10-06 from 001__elm20150310_200119__dat00.bin



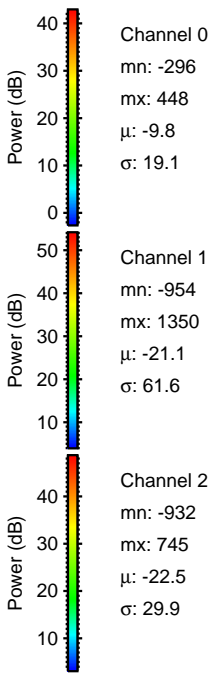
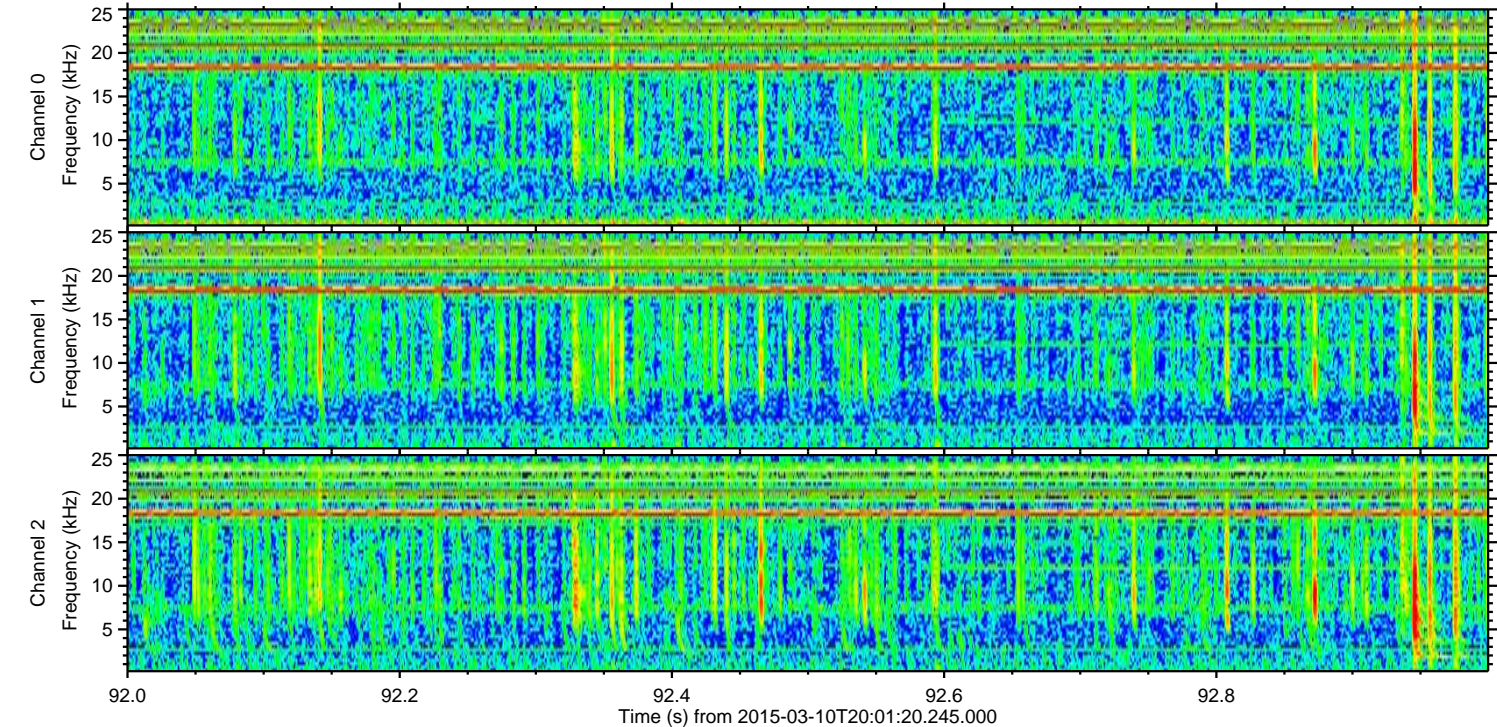
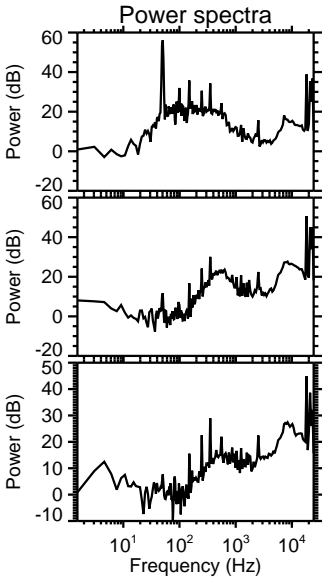
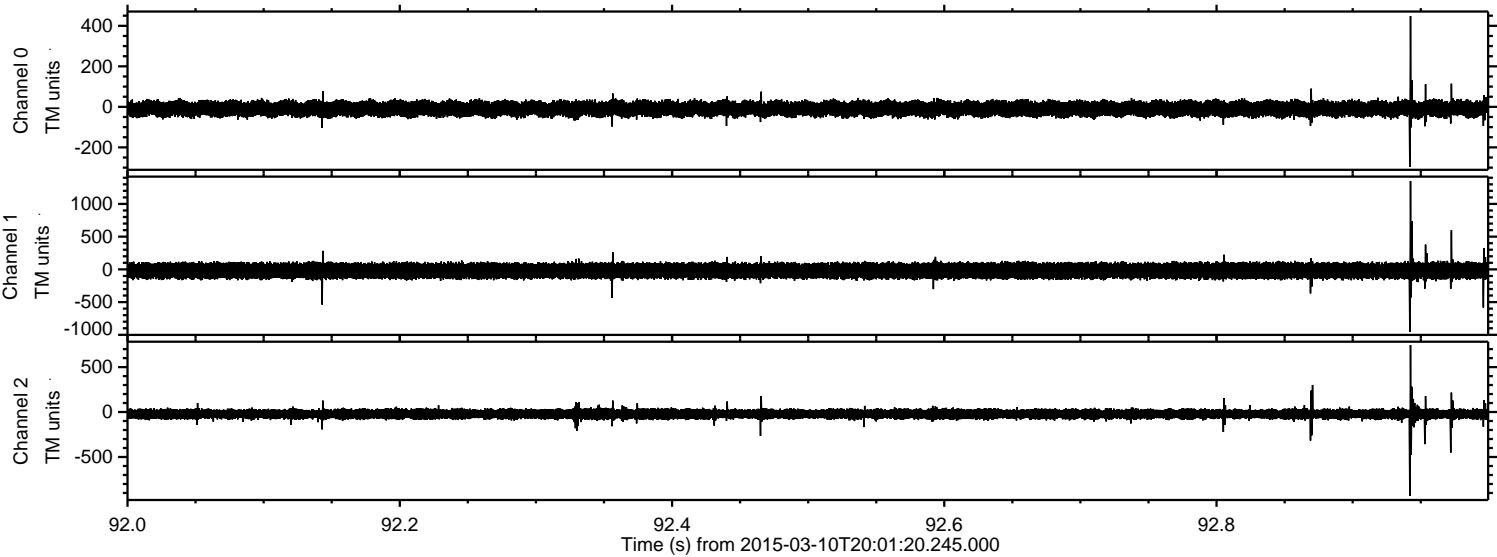
Processed Tue Mar 10 21:08:23 2015 by ELM ver.2012-10-06 from 001__elm20150310_200119__dat00.bin



Processed Tue Mar 10 21:08:24 2015 by ELM ver.2012-10-06 from 001__elm20150310_200119__dat00.bin

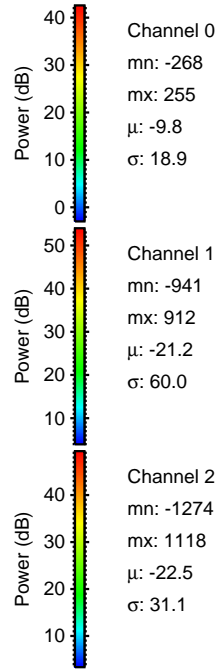
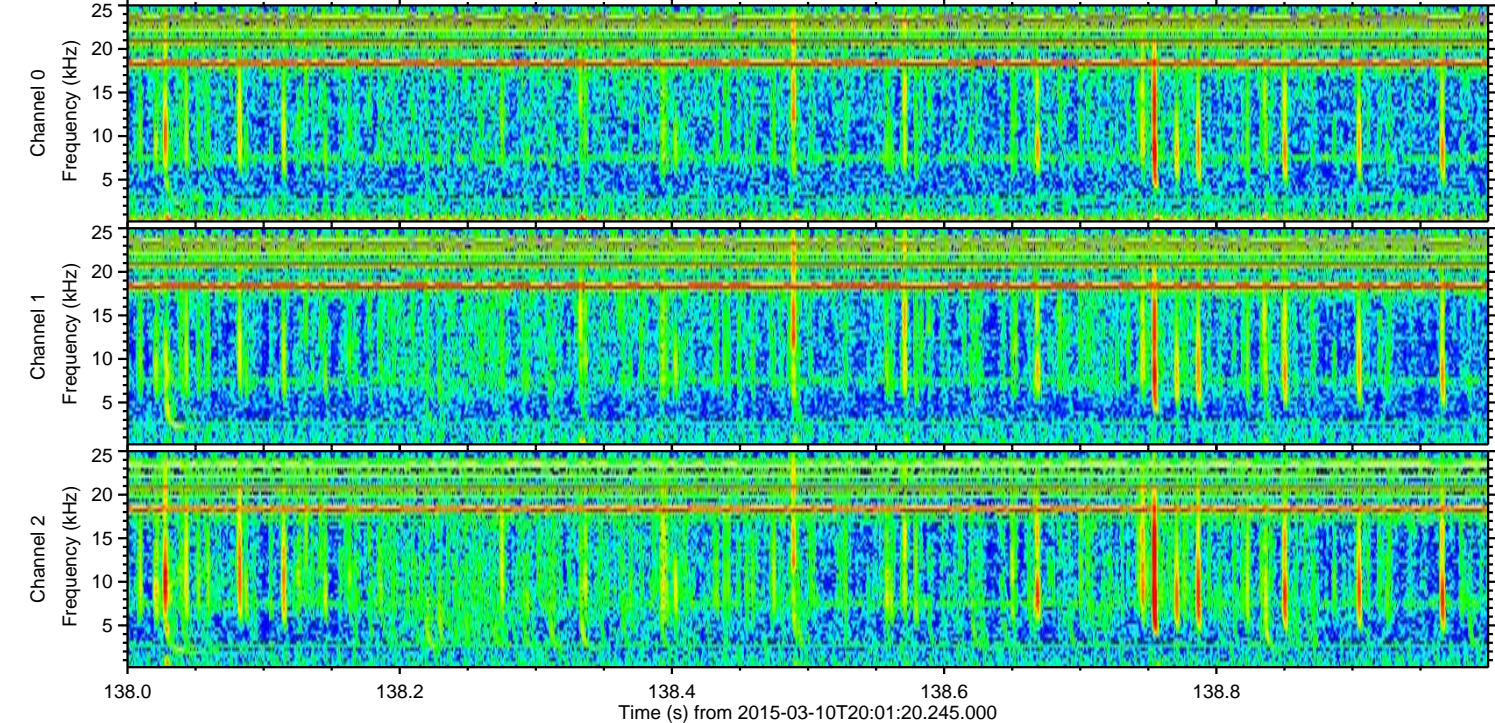
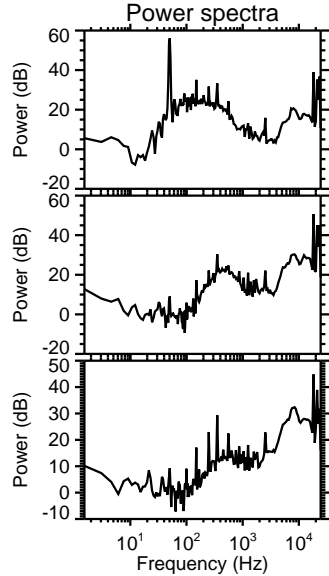
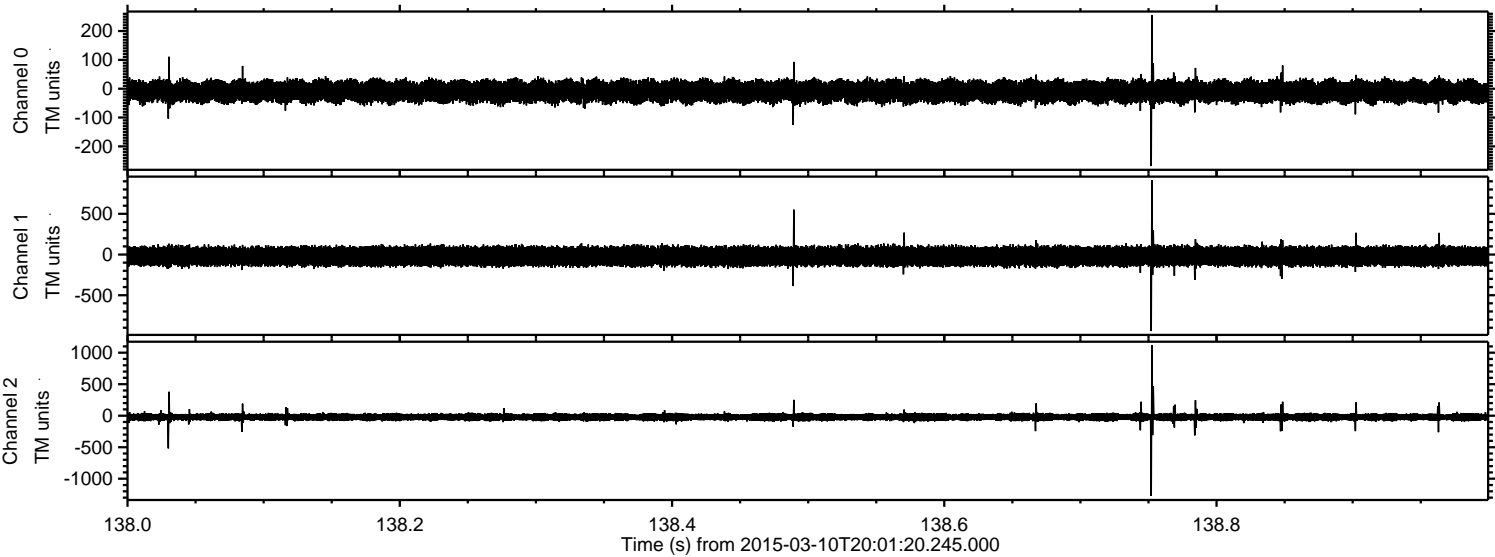


Processed Tue Mar 10 21:08:25 2015 by ELM ver.2012-10-06 from 001__elm20150310_200119__dat00.bin

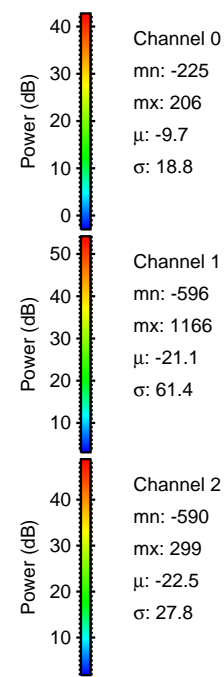
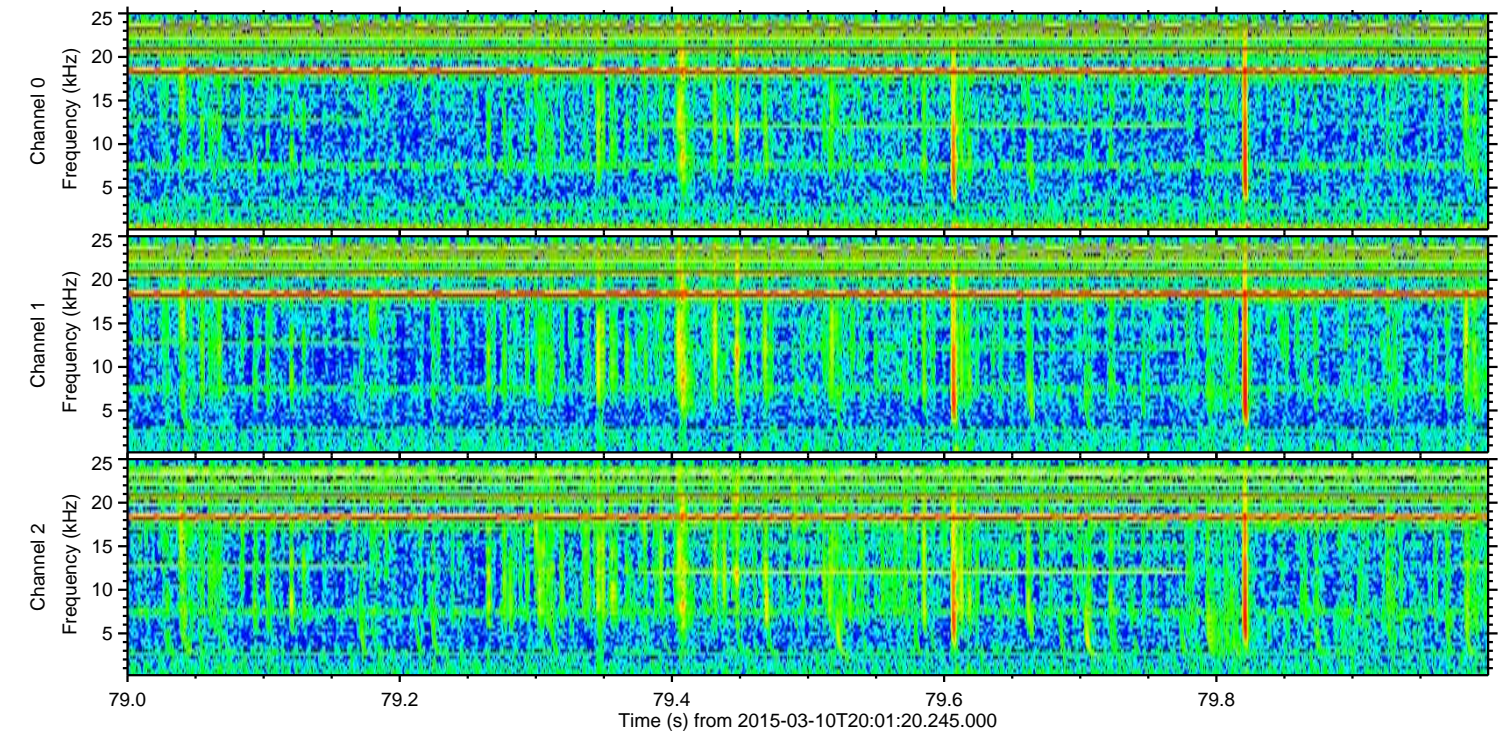
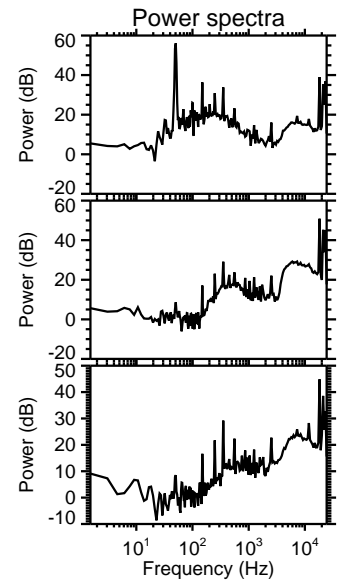
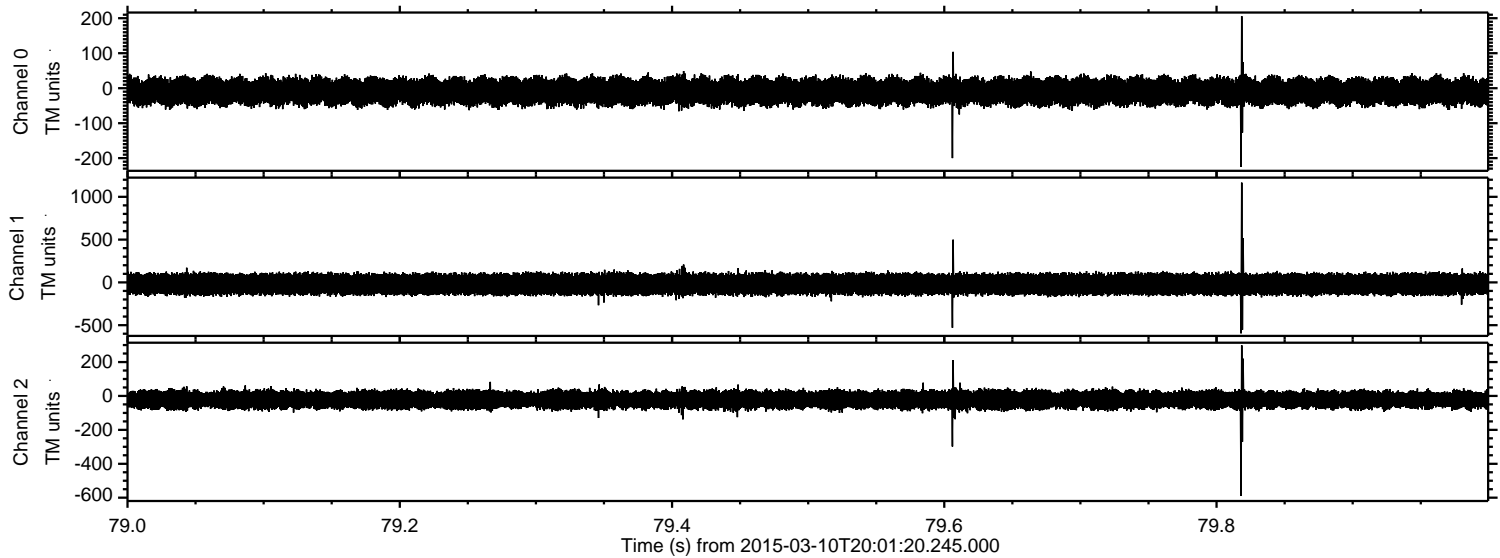


ELMAVAN 3D WAVEFORMS (Measured data sampled at 50 kHz) 49793 packets of 144 samples from 2015-03-10T20:01:20.245.000. Part 139/144

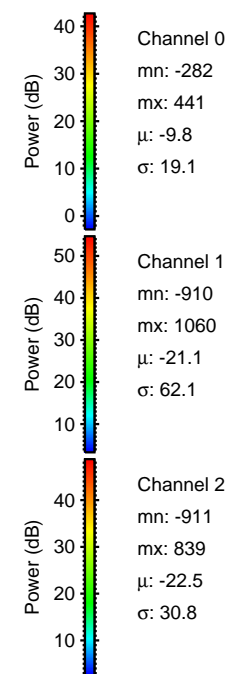
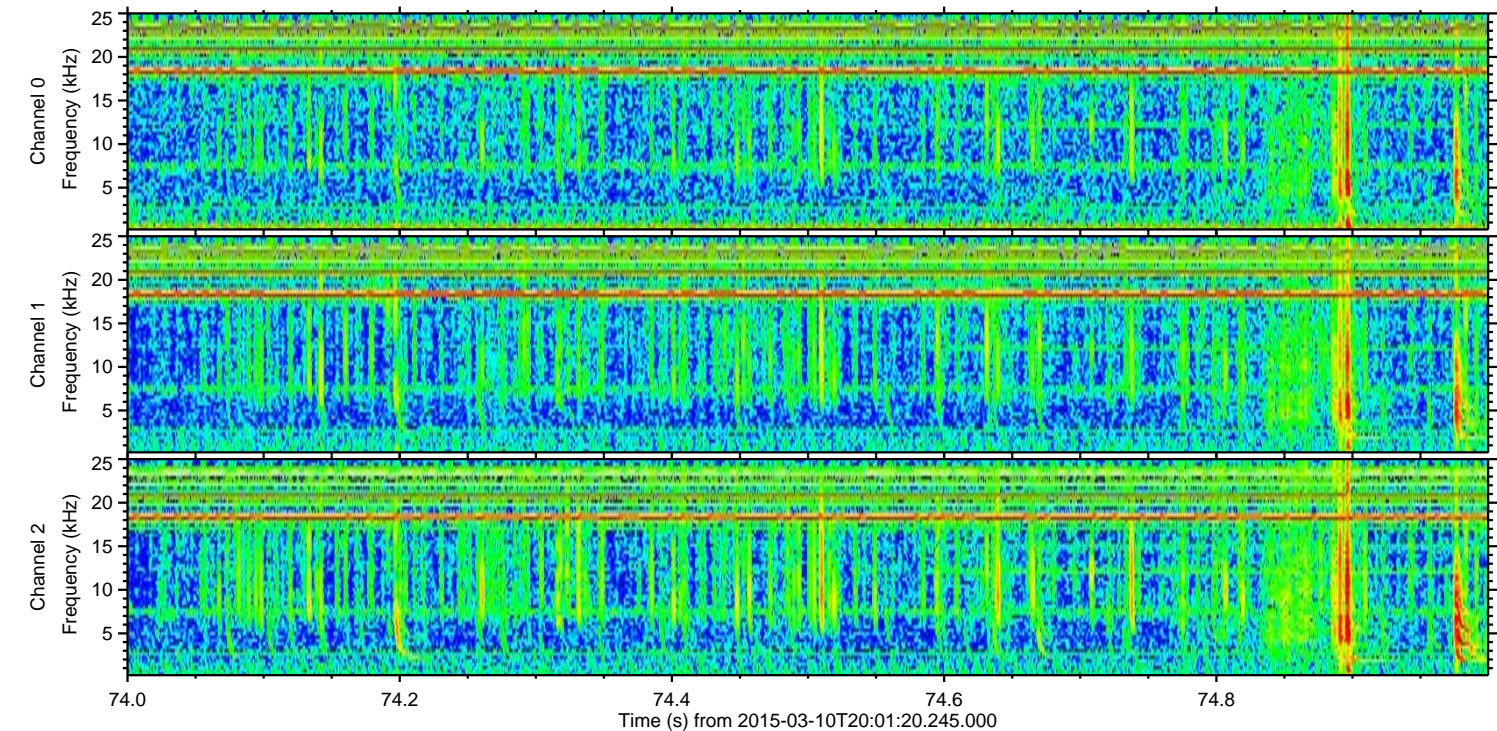
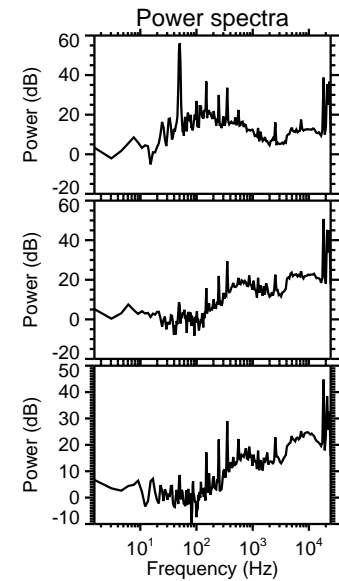
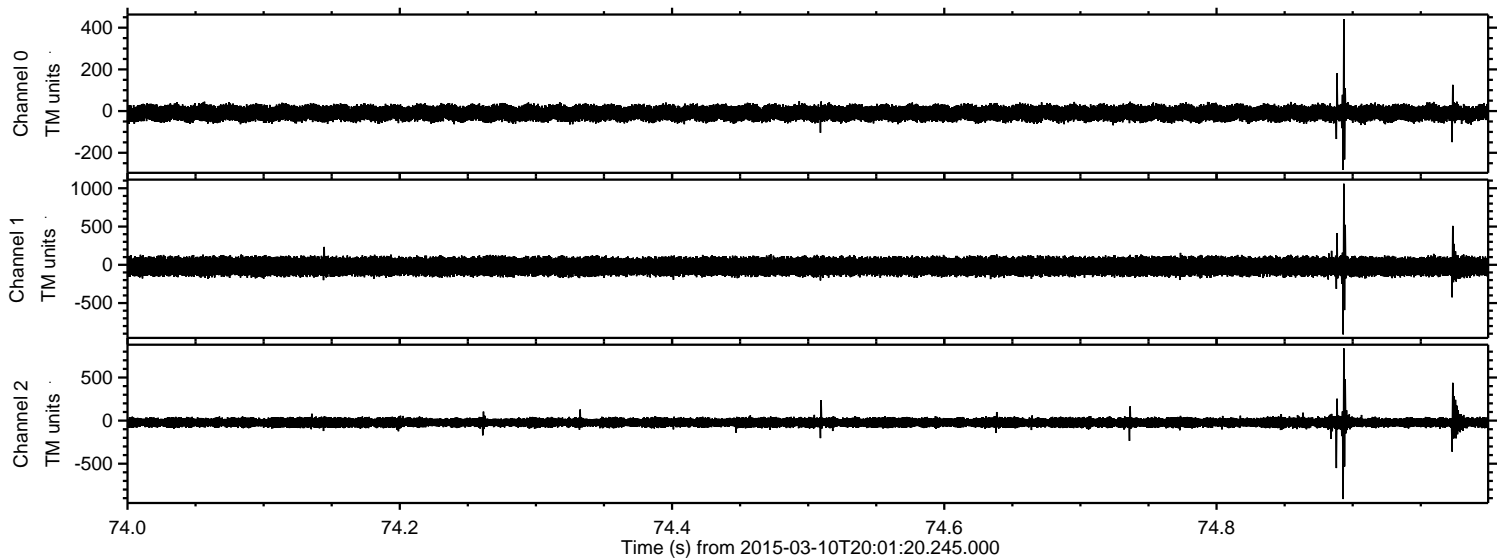
Processed Tue Mar 10 21:08:26 2015 by ELM ver.2012-10-06 from 001__elm20150310_200119__dat00.bin



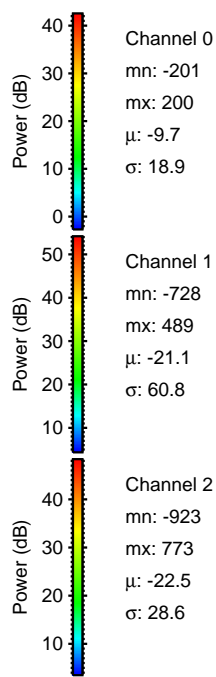
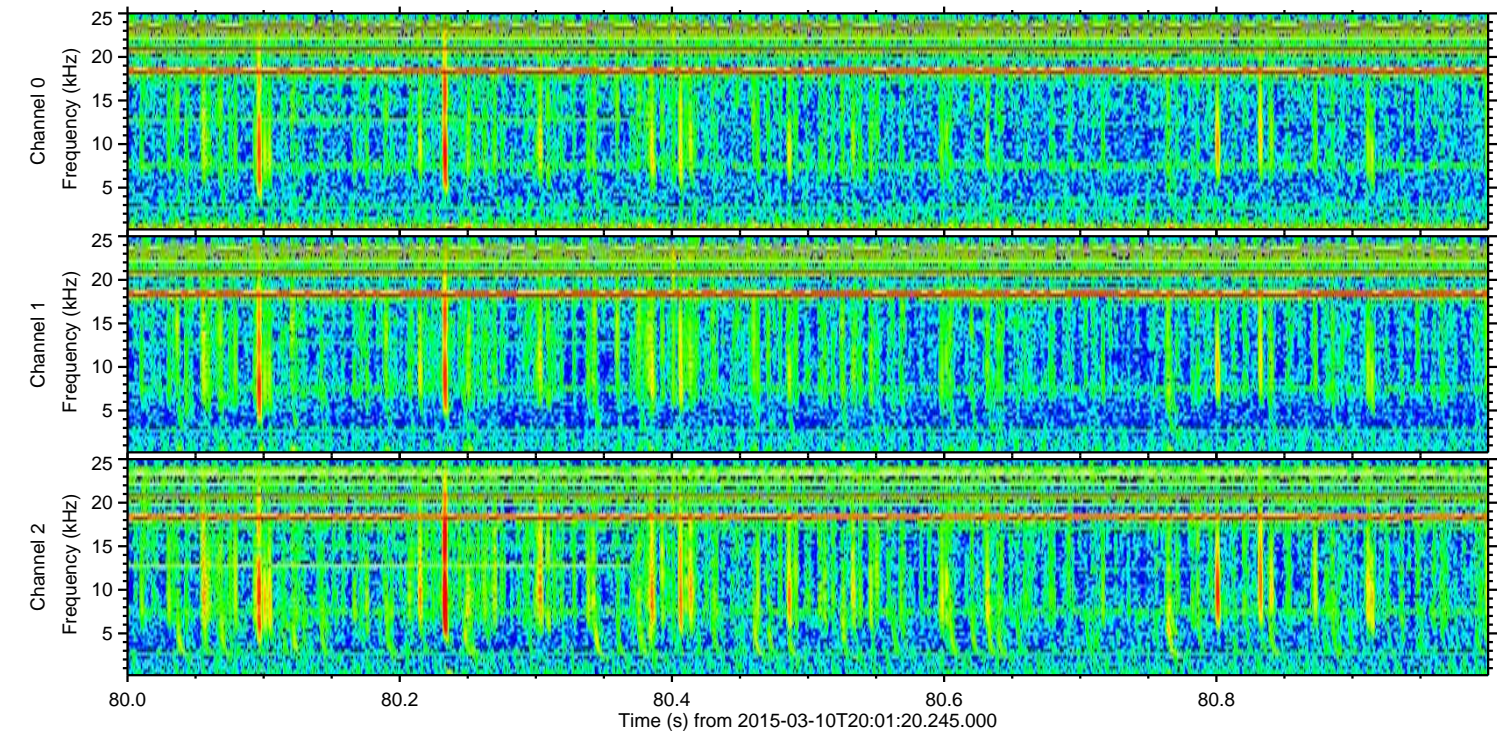
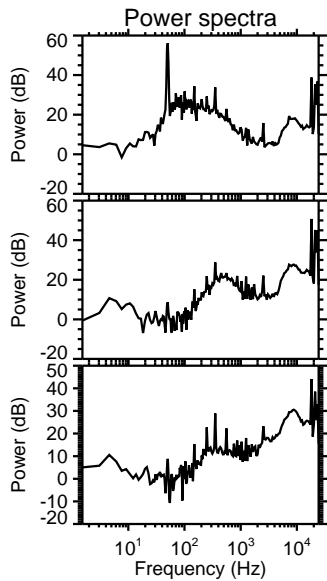
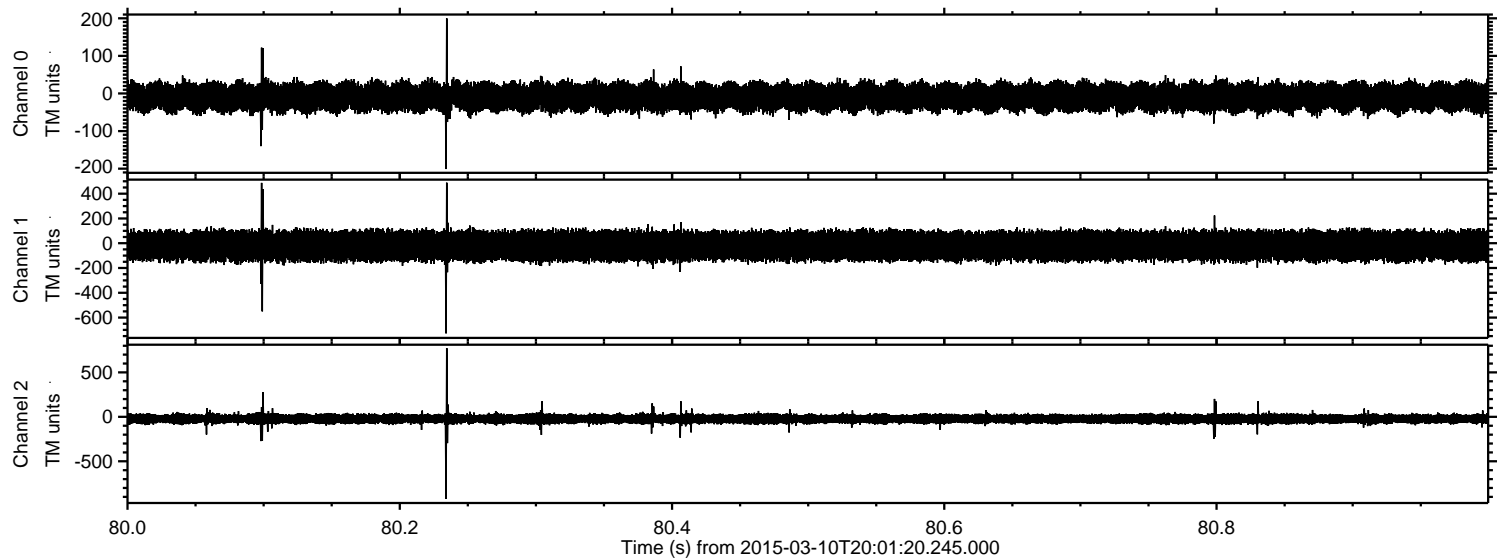
Processed Tue Mar 10 21:08:27 2015 by ELM ver.2012-10-06 from 001__elm20150310_200119__dat00.bin



Processed Tue Mar 10 21:08:28 2015 by ELM ver.2012-10-06 from 001__elm20150310_200119__dat00.bin

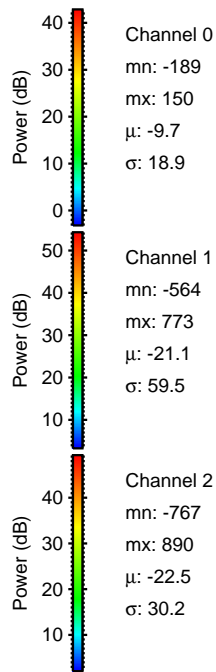
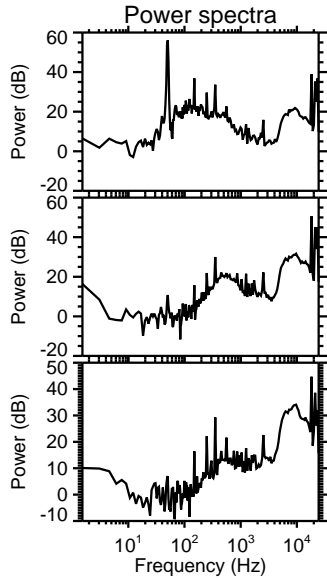
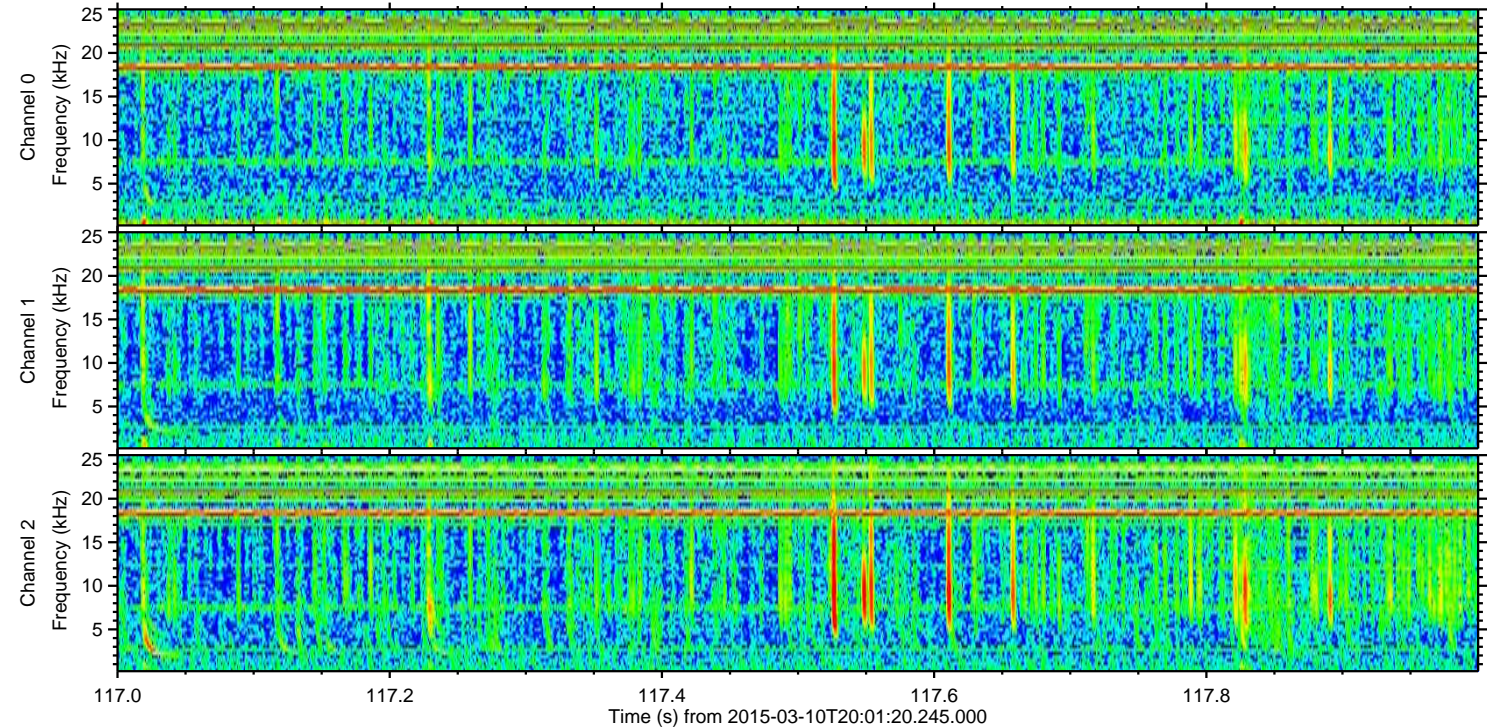
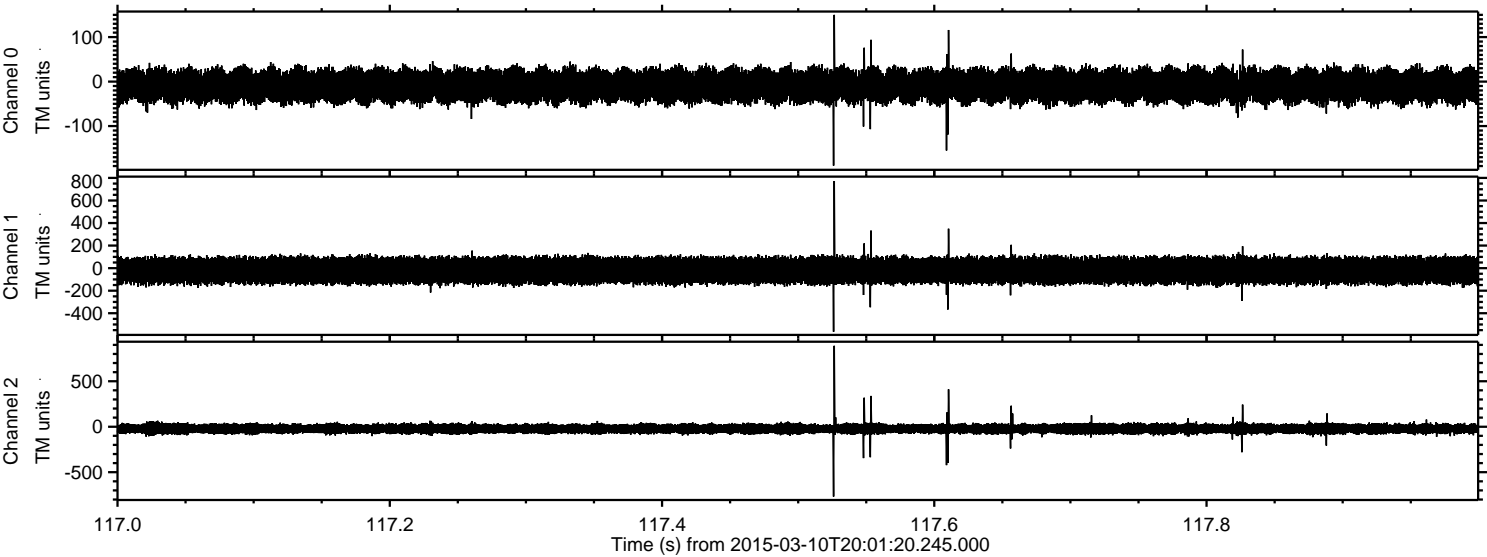


Processed Tue Mar 10 21:08:29 2015 by ELM ver.2012-10-06 from 001__elm20150310_200119__dat00.bin



ELMAVAN 3D WAVEFORMS (Measured data sampled at 50 kHz) 49793 packets of 144 samples from 2015-03-10T20:01:20.245.000. Part 118/144

Processed Tue Mar 10 21:08:29 2015 by ELM ver.2012-10-06 from 001__elm20150310_200119__dat00.bin



Channel 0
mn: -189
mx: 150
 μ : -9.7
 σ : 18.9

Channel 1
mn: -564
mx: 773
 μ : -21.1
 σ : 59.5

Channel 2
mn: -767
mx: 890
 μ : -22.5
 σ : 30.2

Processed Tue Mar 10 21:08:30 2015 by ELM ver.2012-10-06 from 001__elm20150310_200119__dat00.bin

