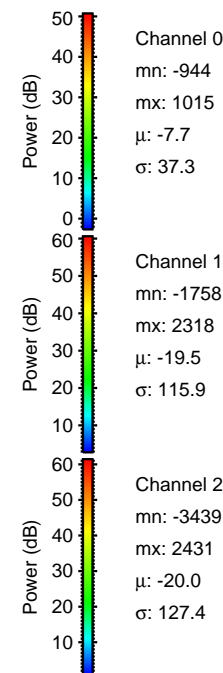
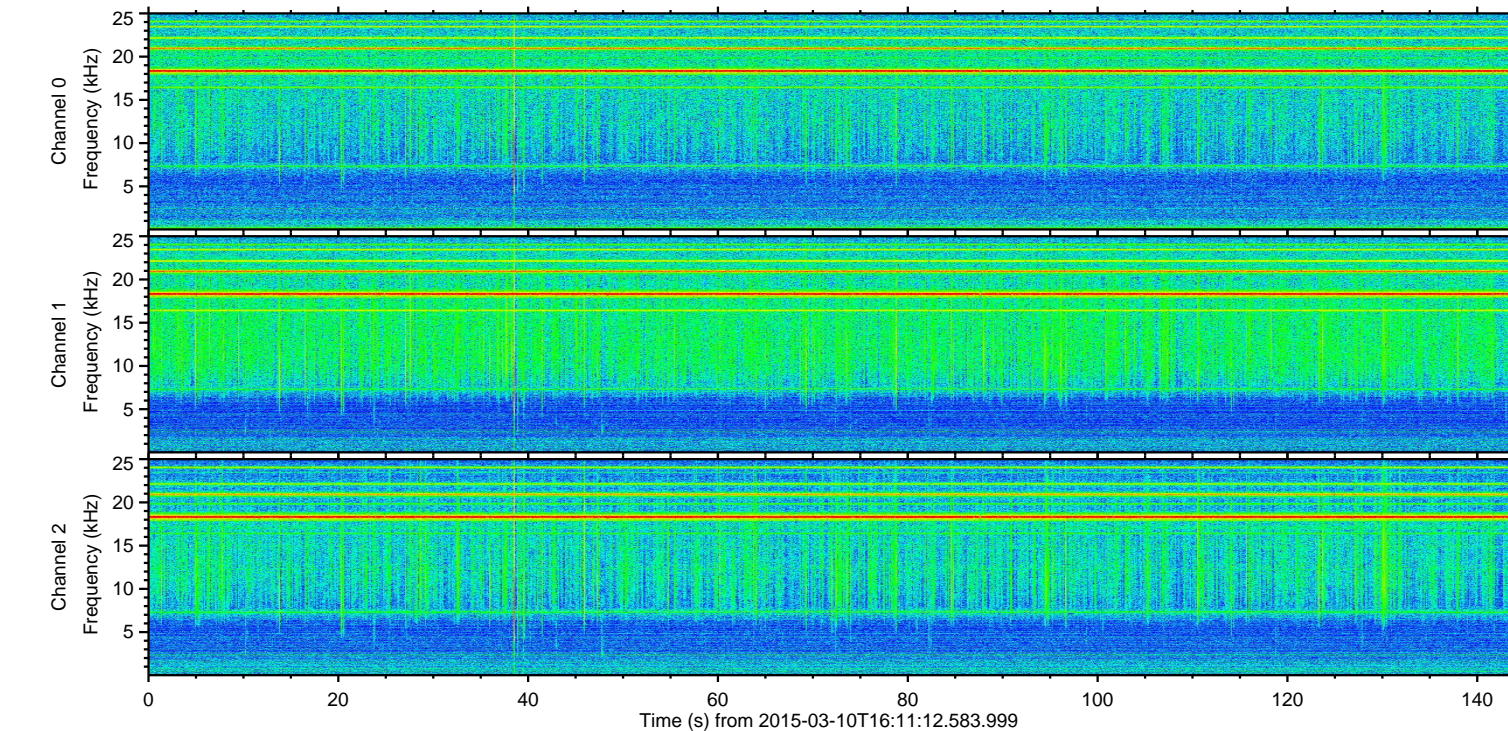
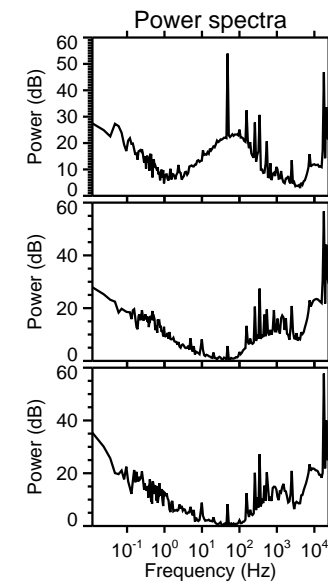
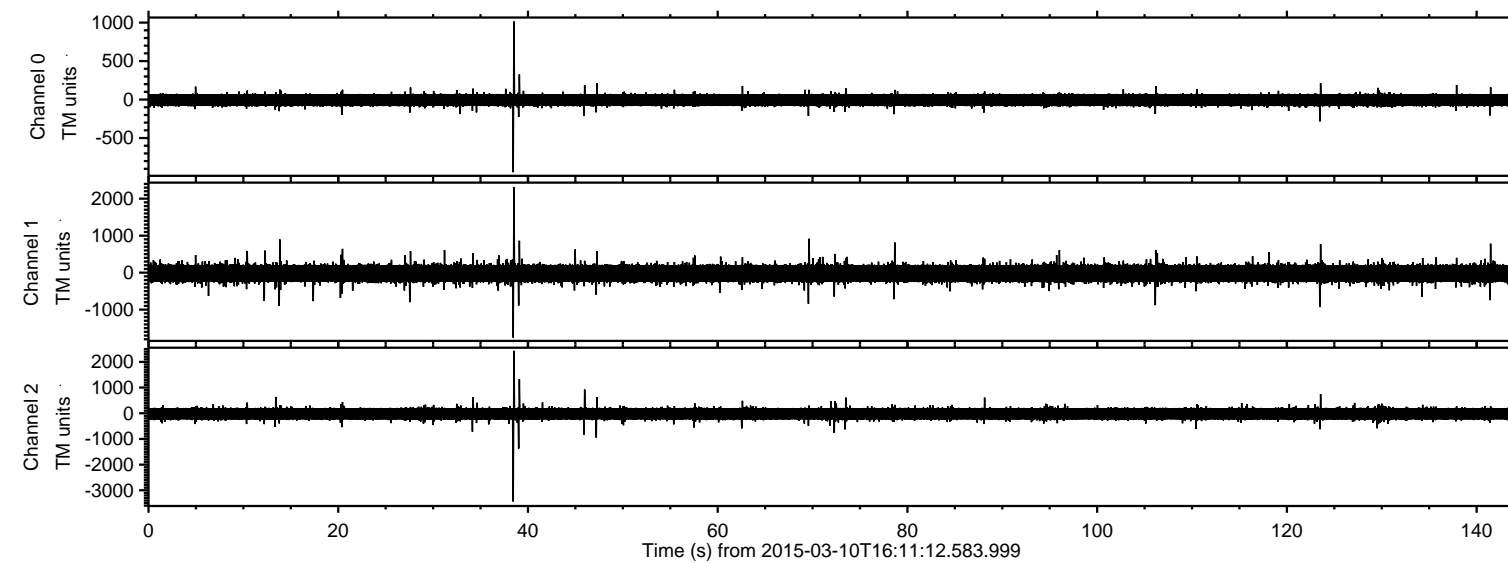


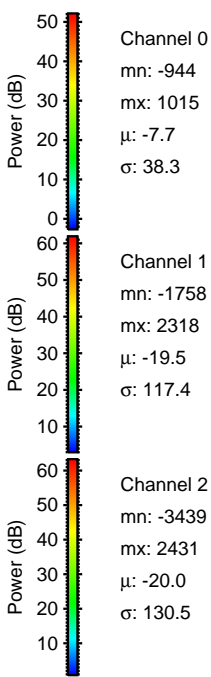
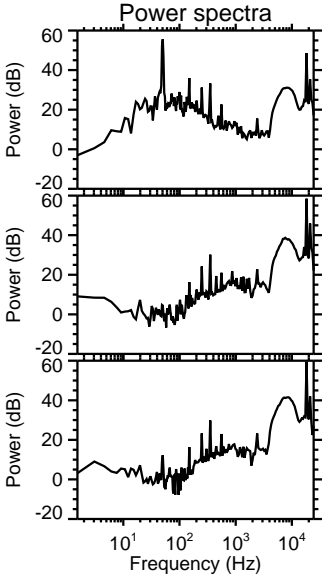
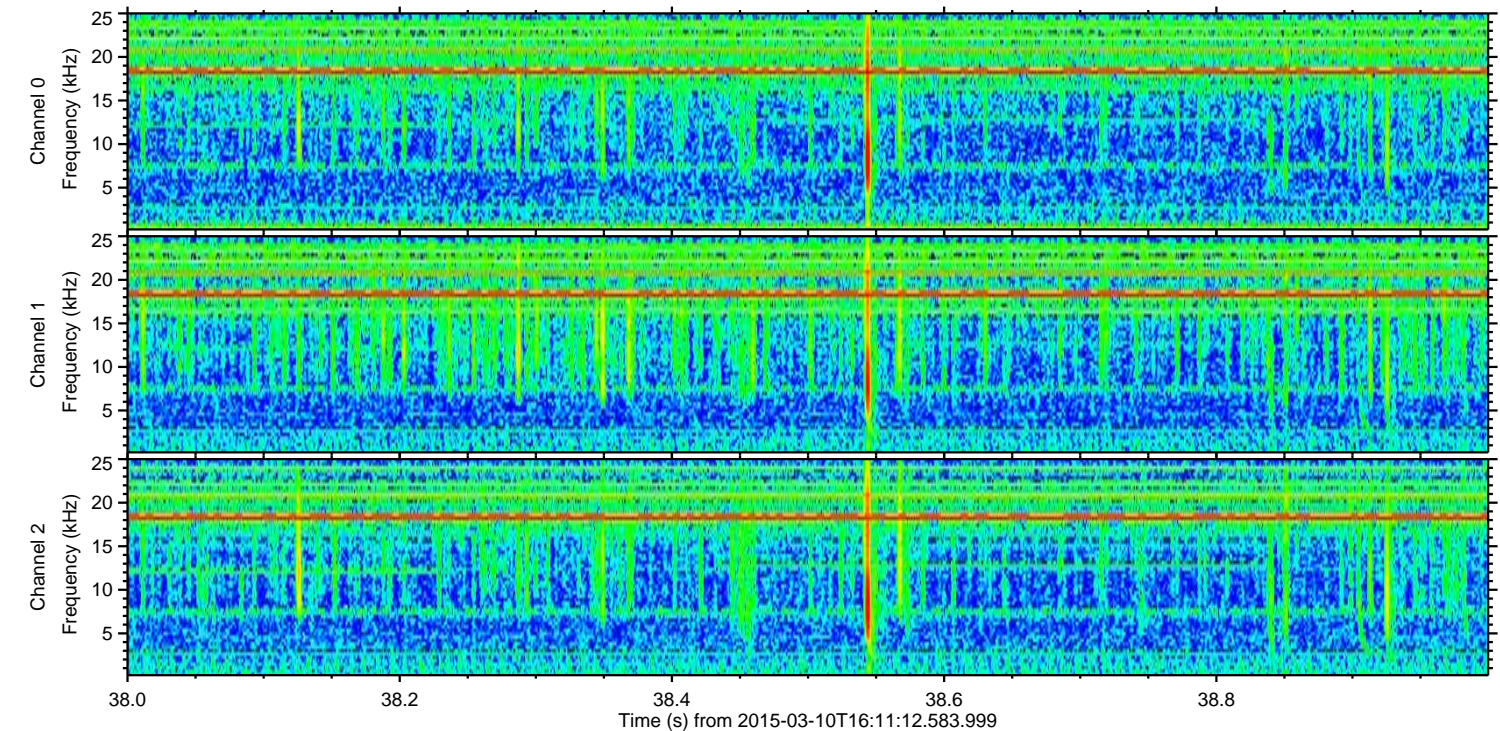
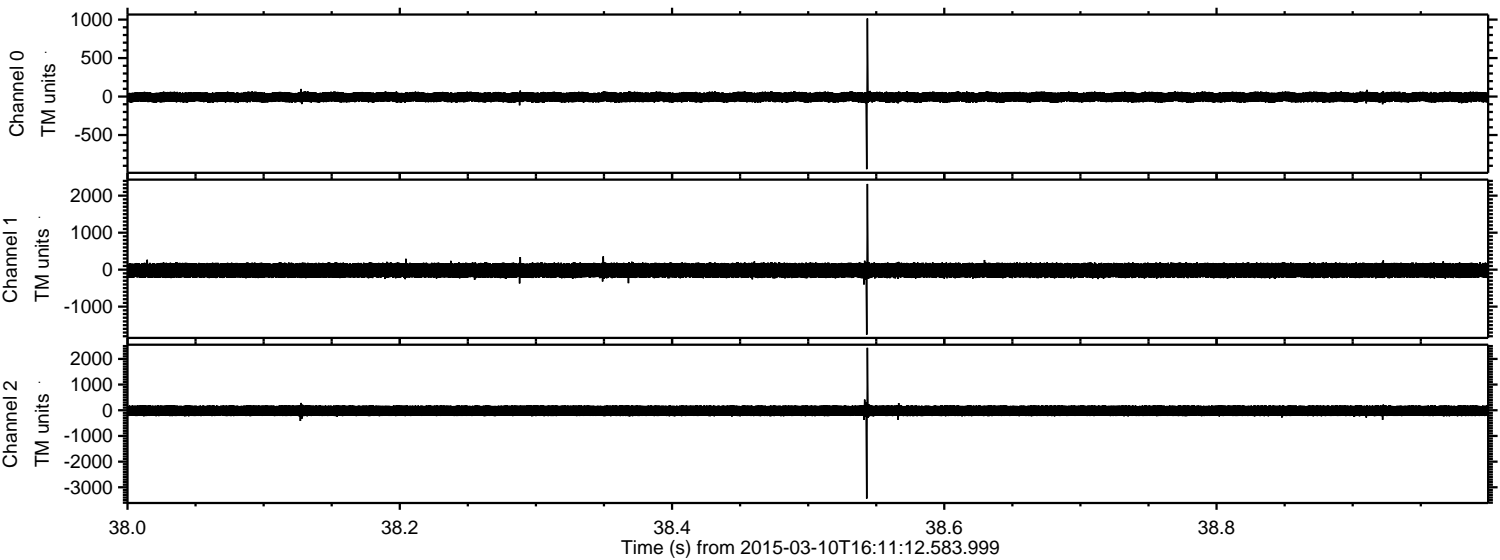
# ELMAVAN 3D WAVEFORMS (Measured data sampled at 50 kHz) 49801 packets of 144 samples from 2015-03-10T16:11:12.583.999.

Processed Tue Mar 10 17:18:51 2015 by ELM ver.2012-10-06 from 001\_\_elm20150310\_161111\_\_dat00.bin



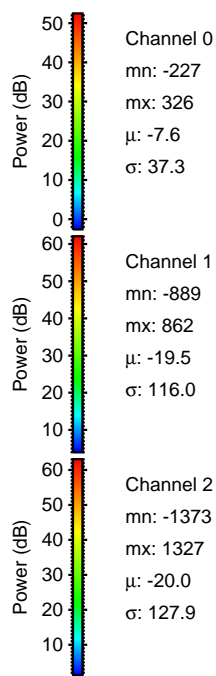
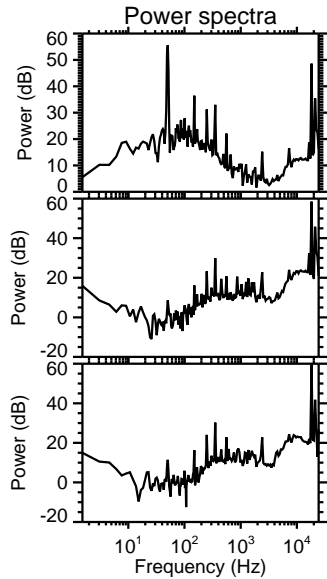
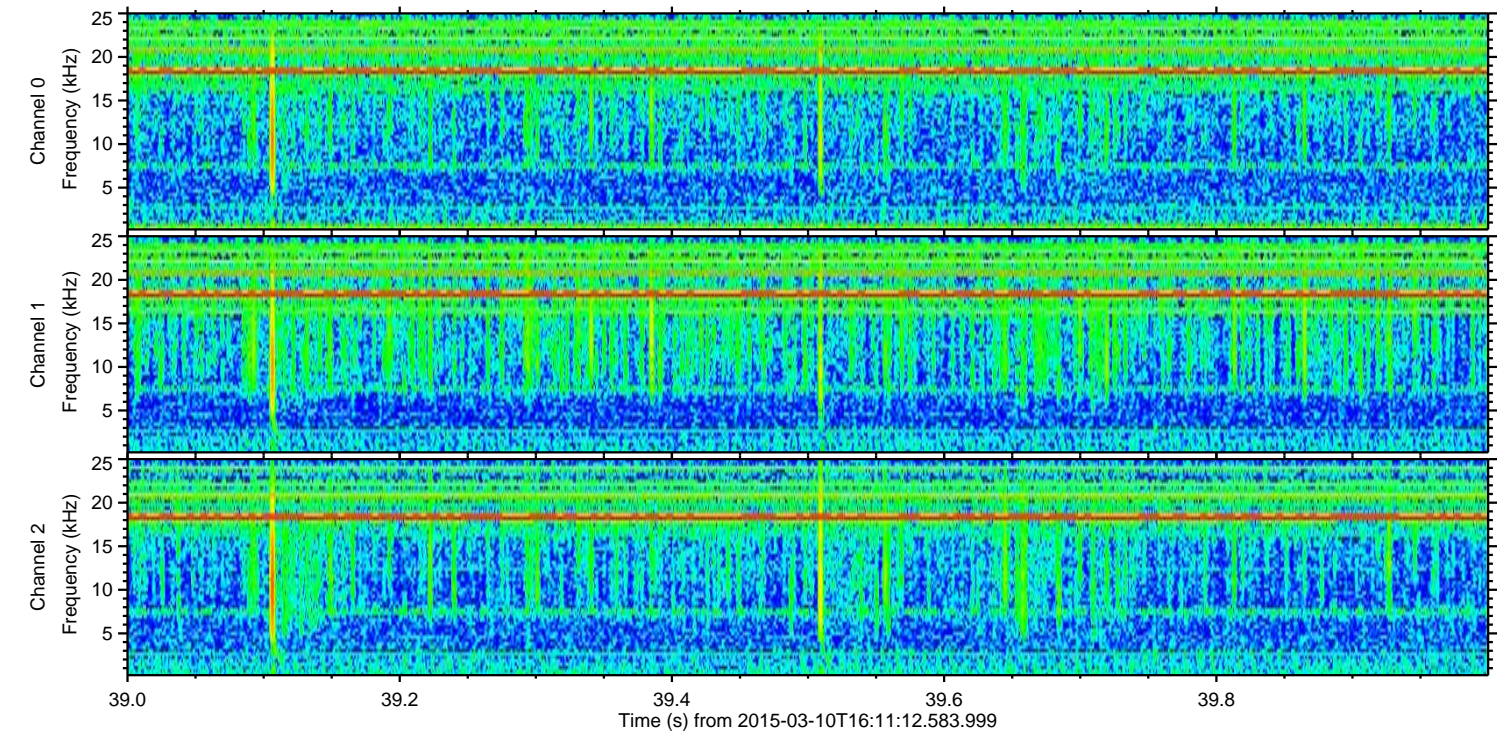
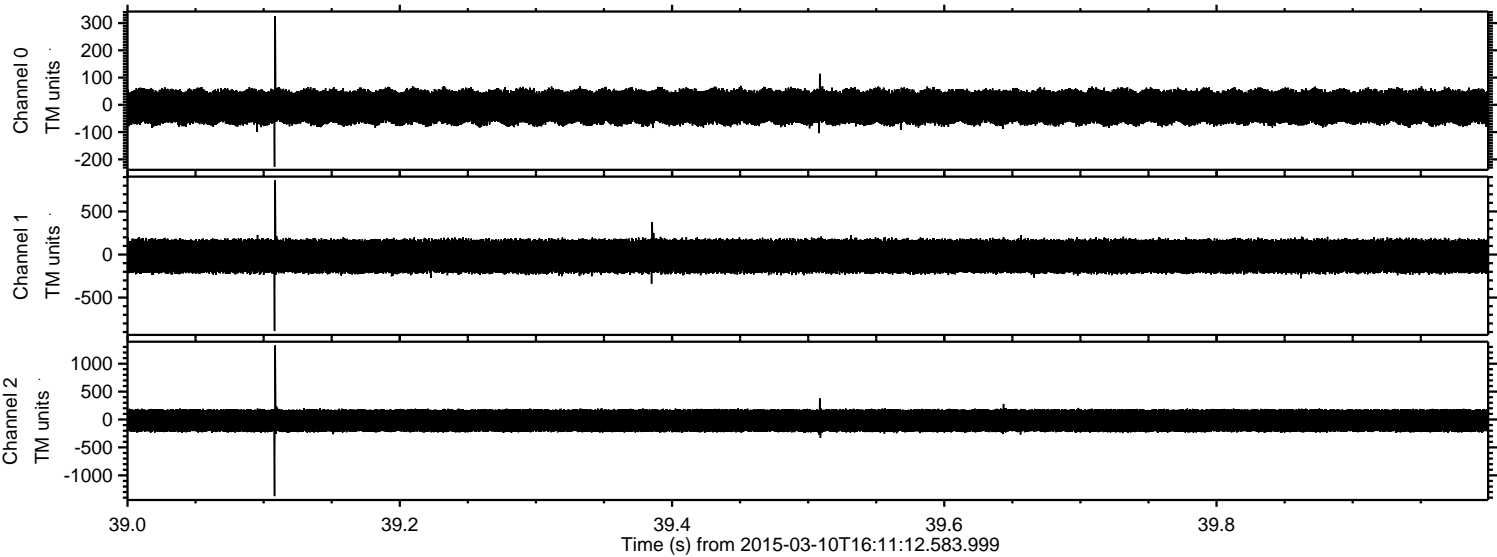


Processed Tue Mar 10 17:19:02 2015 by ELM ver.2012-10-06 from 001\_\_elm20150310\_161111\_\_dat00.bin





Processed Tue Mar 10 17:19:03 2015 by ELM ver.2012-10-06 from 001\_\_elm20150310\_161111\_\_dat00.bin



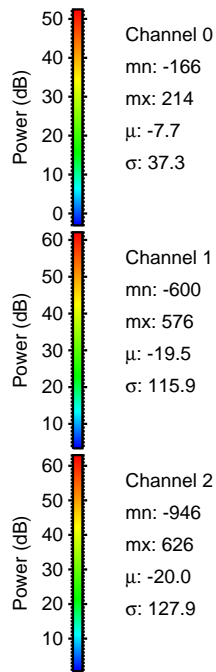
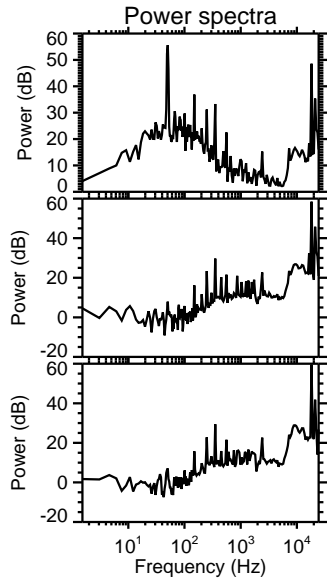
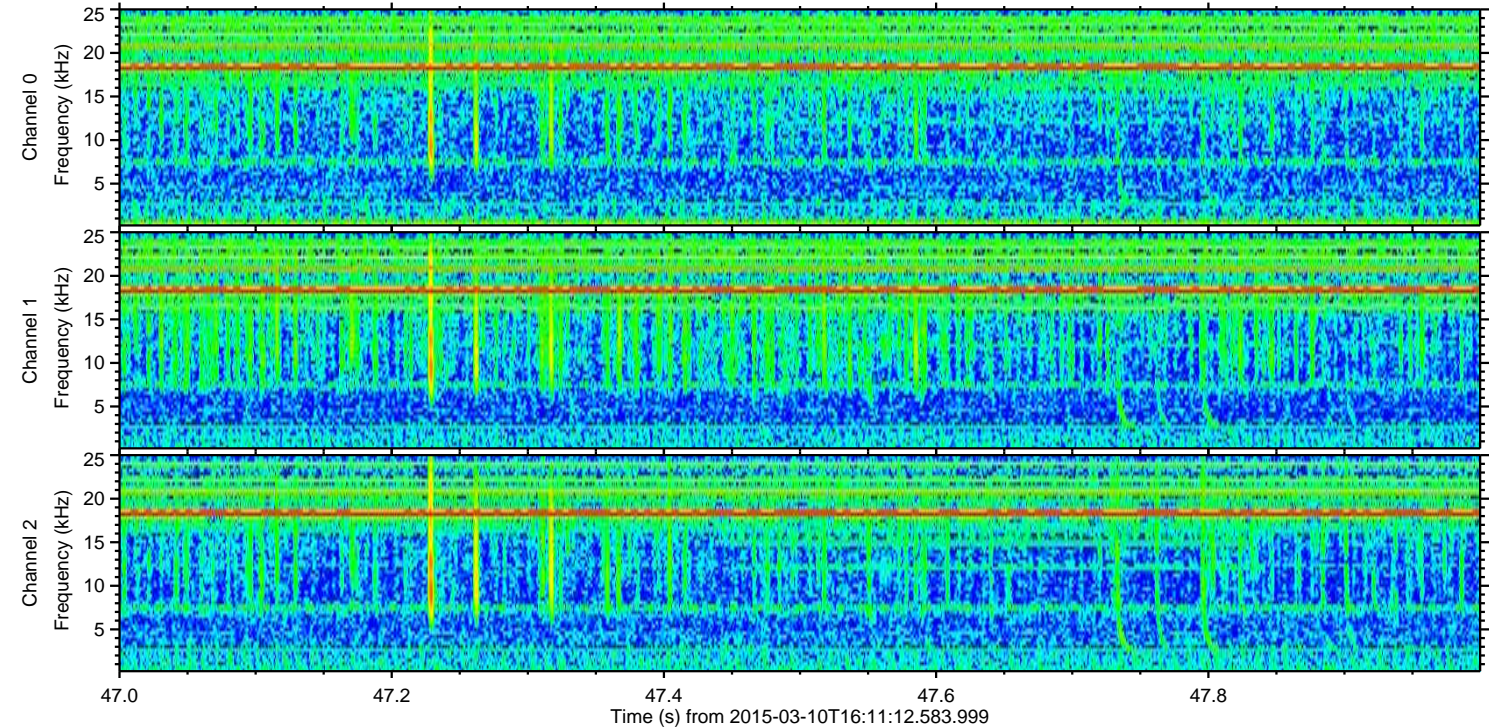
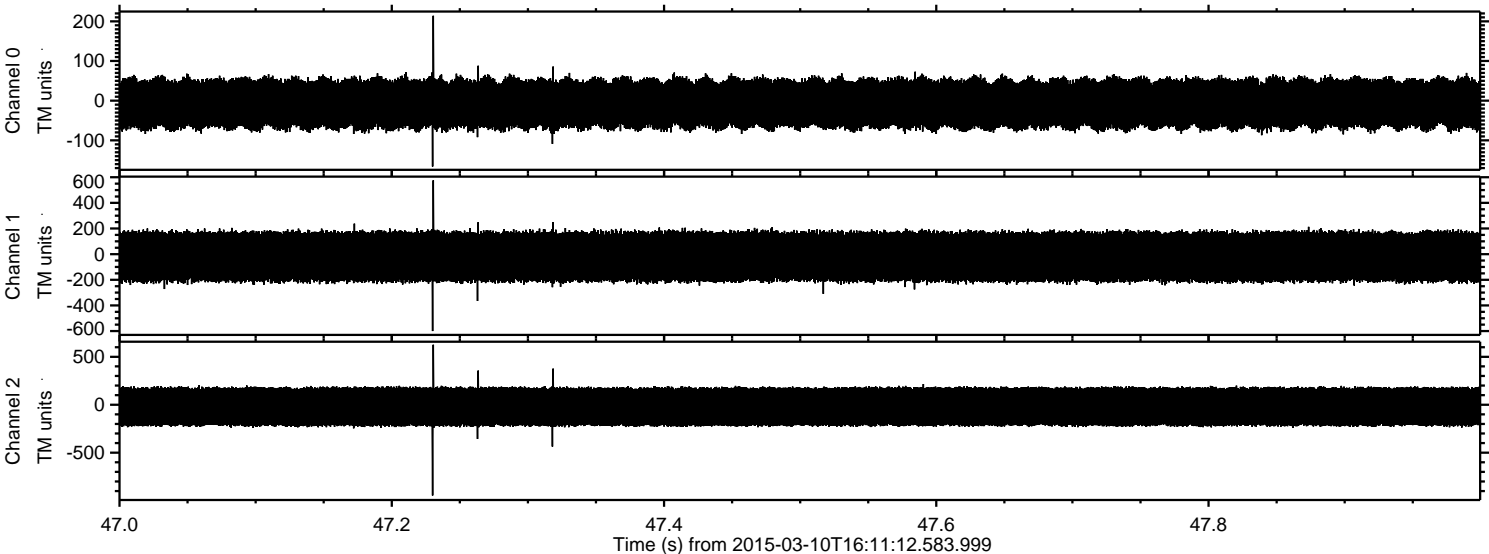
Channel 0  
mn: -227  
mx: 326  
 $\mu$ : -7.6  
 $\sigma$ : 37.3

Channel 1  
mn: -889  
mx: 862  
 $\mu$ : -19.5  
 $\sigma$ : 116.0

Channel 2  
mn: -1373  
mx: 1327  
 $\mu$ : -20.0  
 $\sigma$ : 127.9



Processed Tue Mar 10 17:19:04 2015 by ELM ver.2012-10-06 from 001\_\_elm20150310\_161111\_\_dat00.bin



Power spectra

Channel 0  
mn: -166  
mx: 214  
 $\mu$ : -7.7  
 $\sigma$ : 37.3

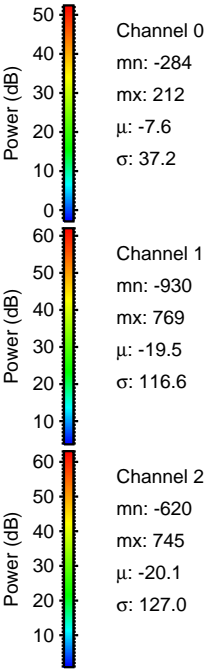
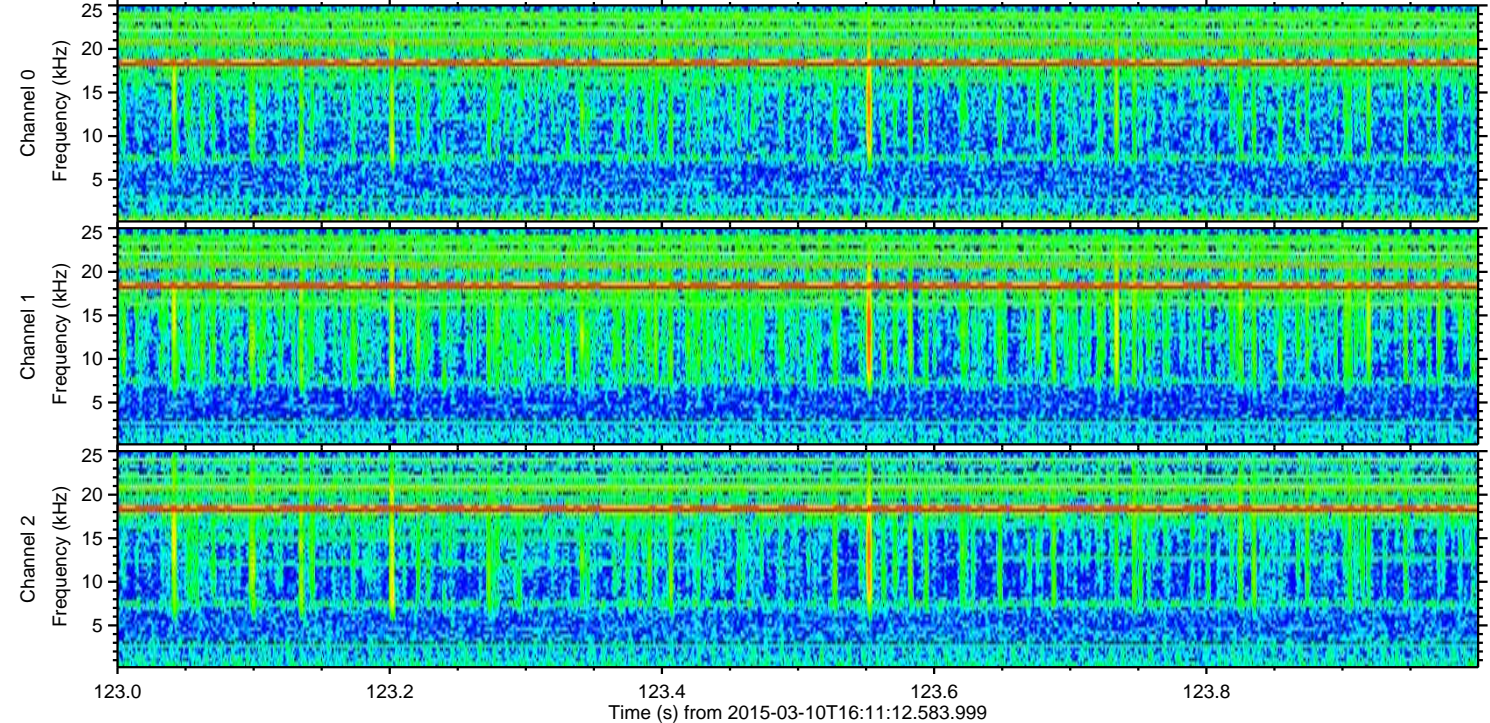
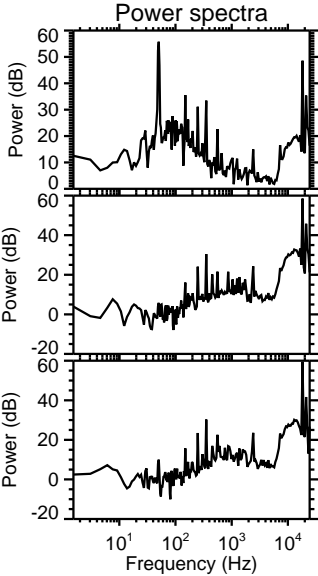
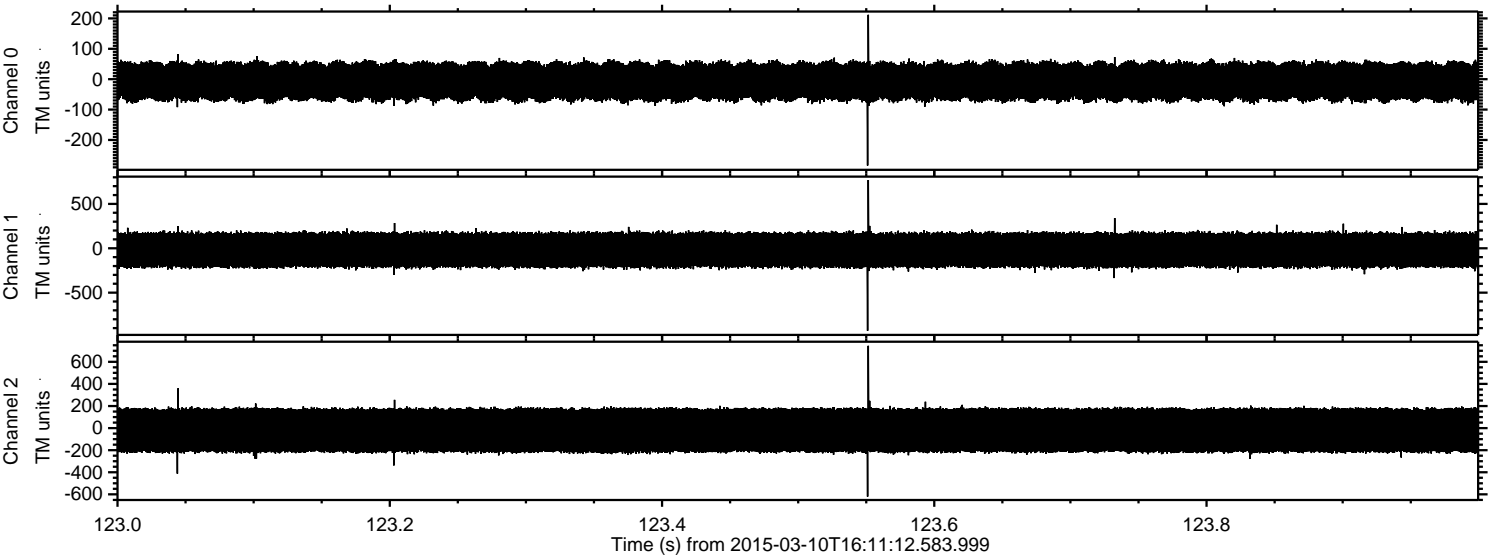
Channel 1  
mn: -600  
mx: 576  
 $\mu$ : -19.5  
 $\sigma$ : 115.9

Channel 2  
mn: -946  
mx: 626  
 $\mu$ : -20.0  
 $\sigma$ : 127.9



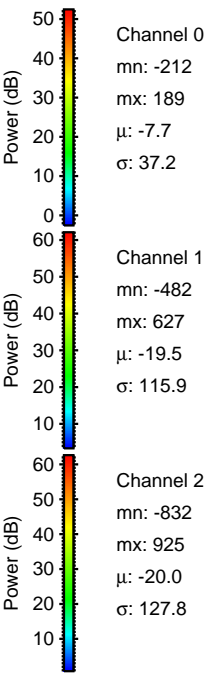
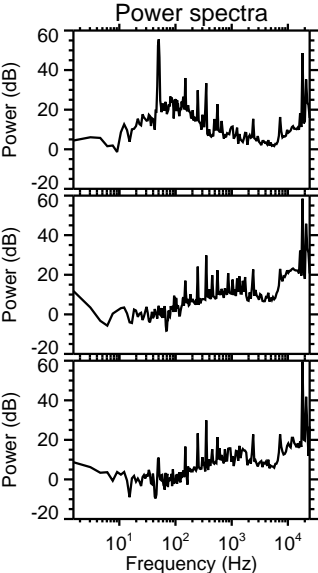
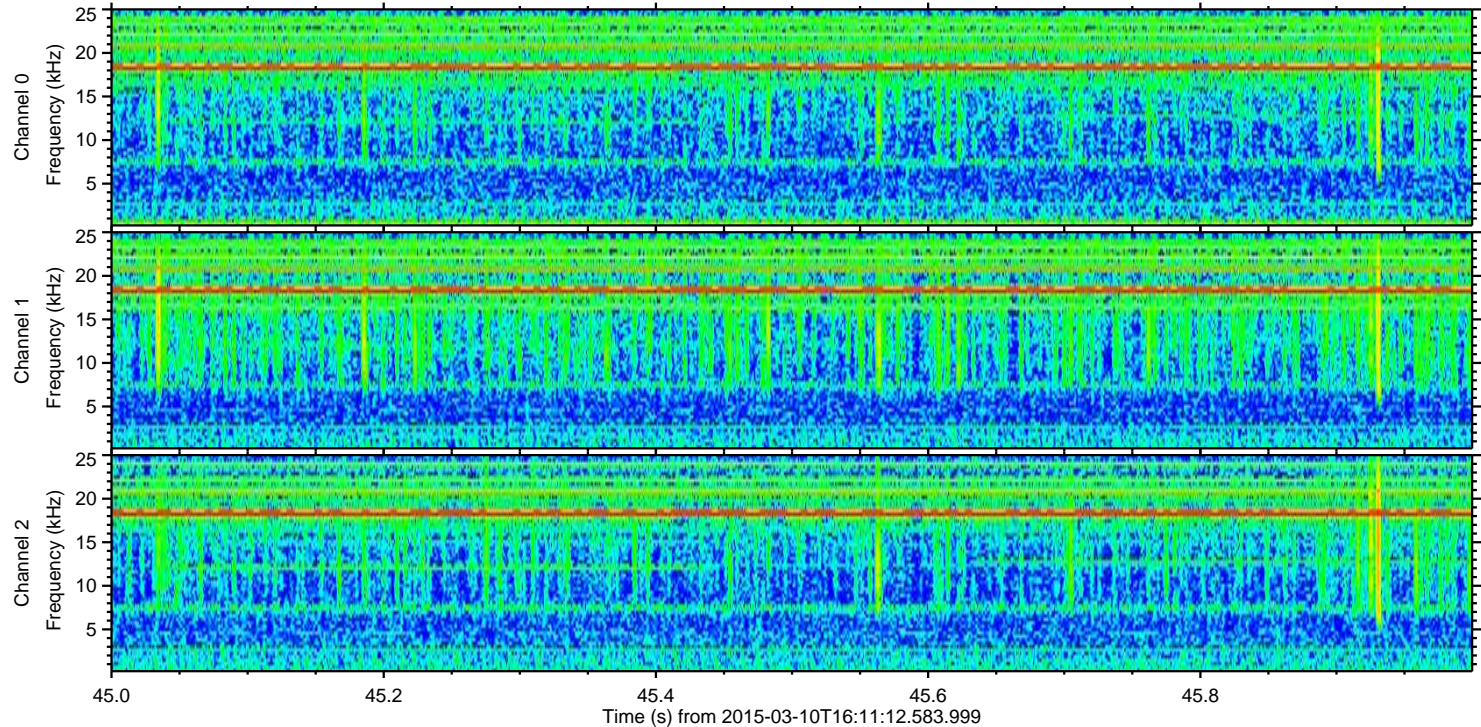
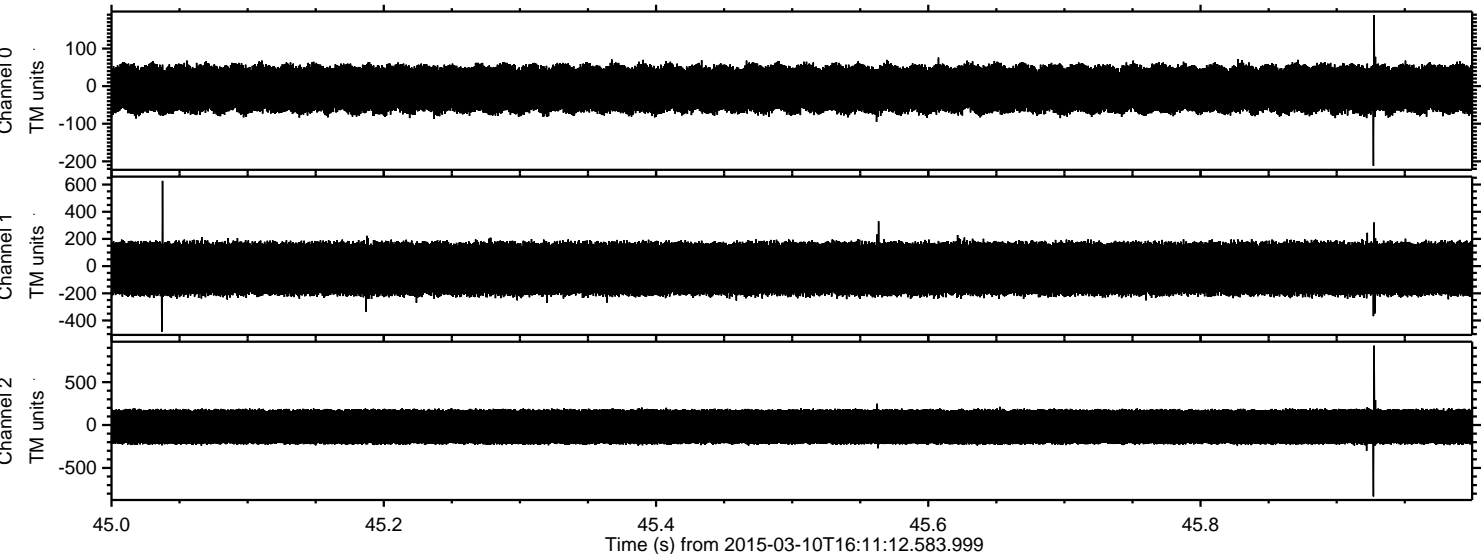
ELMAVAN 3D WAVEFORMS (Measured data sampled at 50 kHz) 49801 packets of 144 samples from 2015-03-10T16:11:12.583.999. Part 124/144

Processed Tue Mar 10 17:19:05 2015 by ELM ver.2012-10-06 from 001\_\_elm20150310\_161111\_\_dat00.bin





Processed Tue Mar 10 17:19:06 2015 by ELM ver.2012-10-06 from 001\_\_elm20150310\_161111\_\_dat00.bin



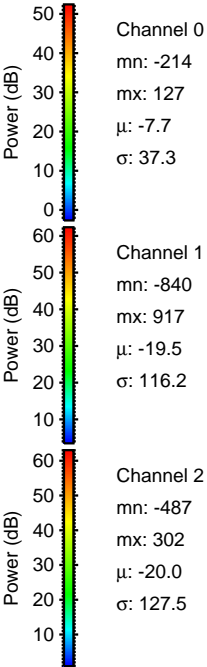
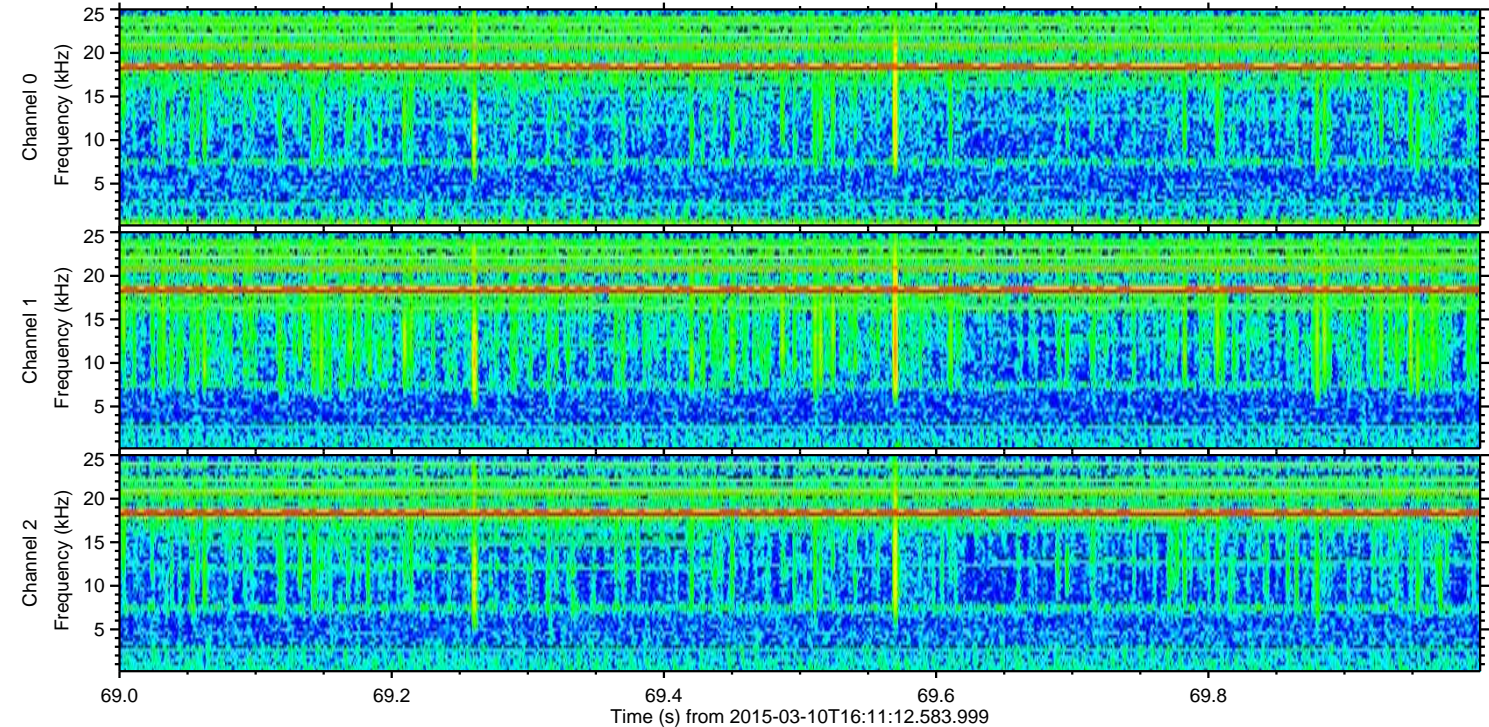
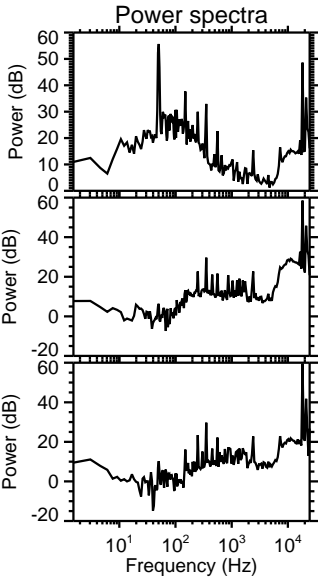
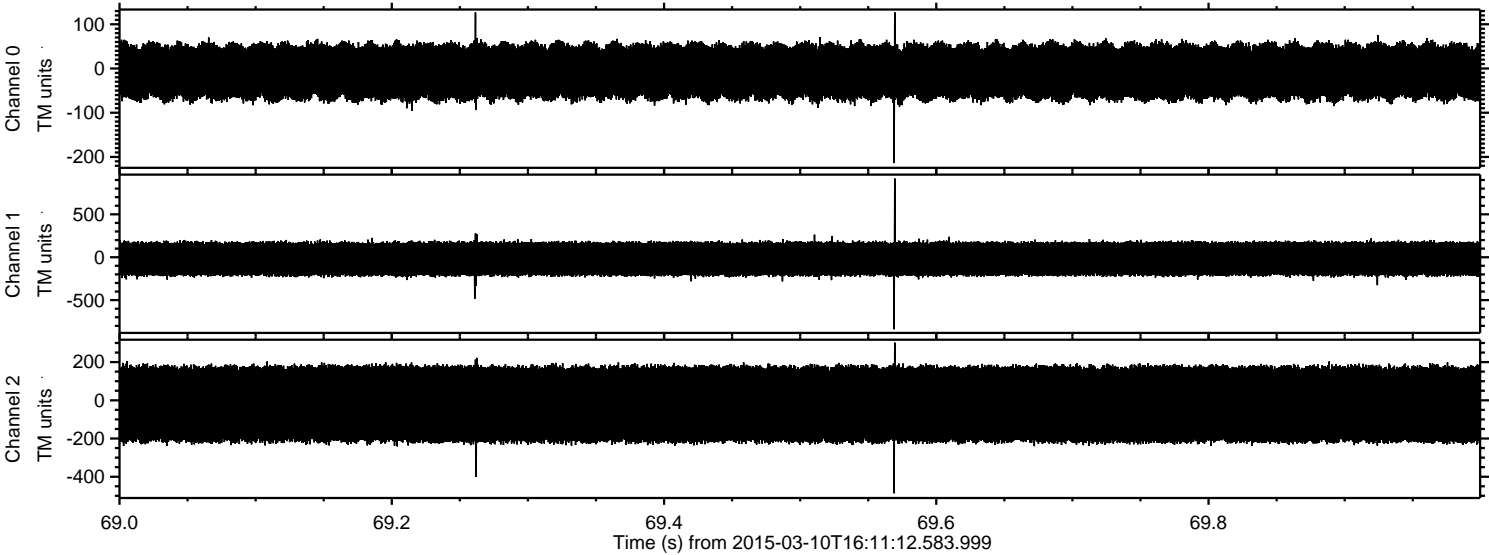
Channel 0  
mn: -212  
mx: 189  
 $\mu$ : -7.7  
 $\sigma$ : 37.2

Channel 1  
mn: -482  
mx: 627  
 $\mu$ : -19.5  
 $\sigma$ : 115.9

Channel 2  
mn: -832  
mx: 925  
 $\mu$ : -20.0  
 $\sigma$ : 127.8

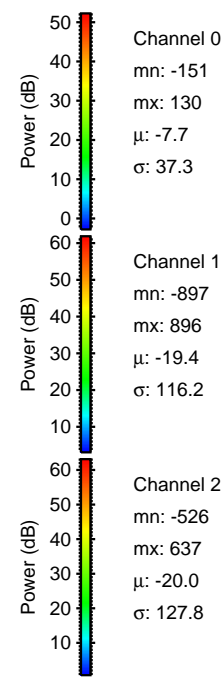
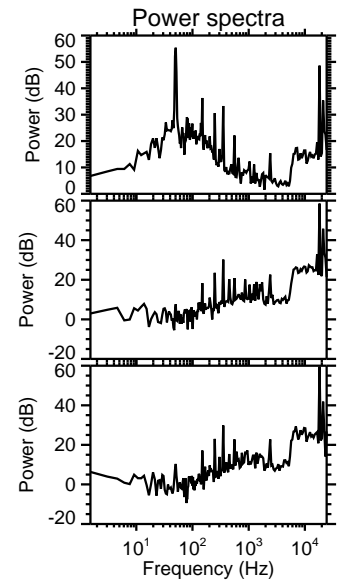
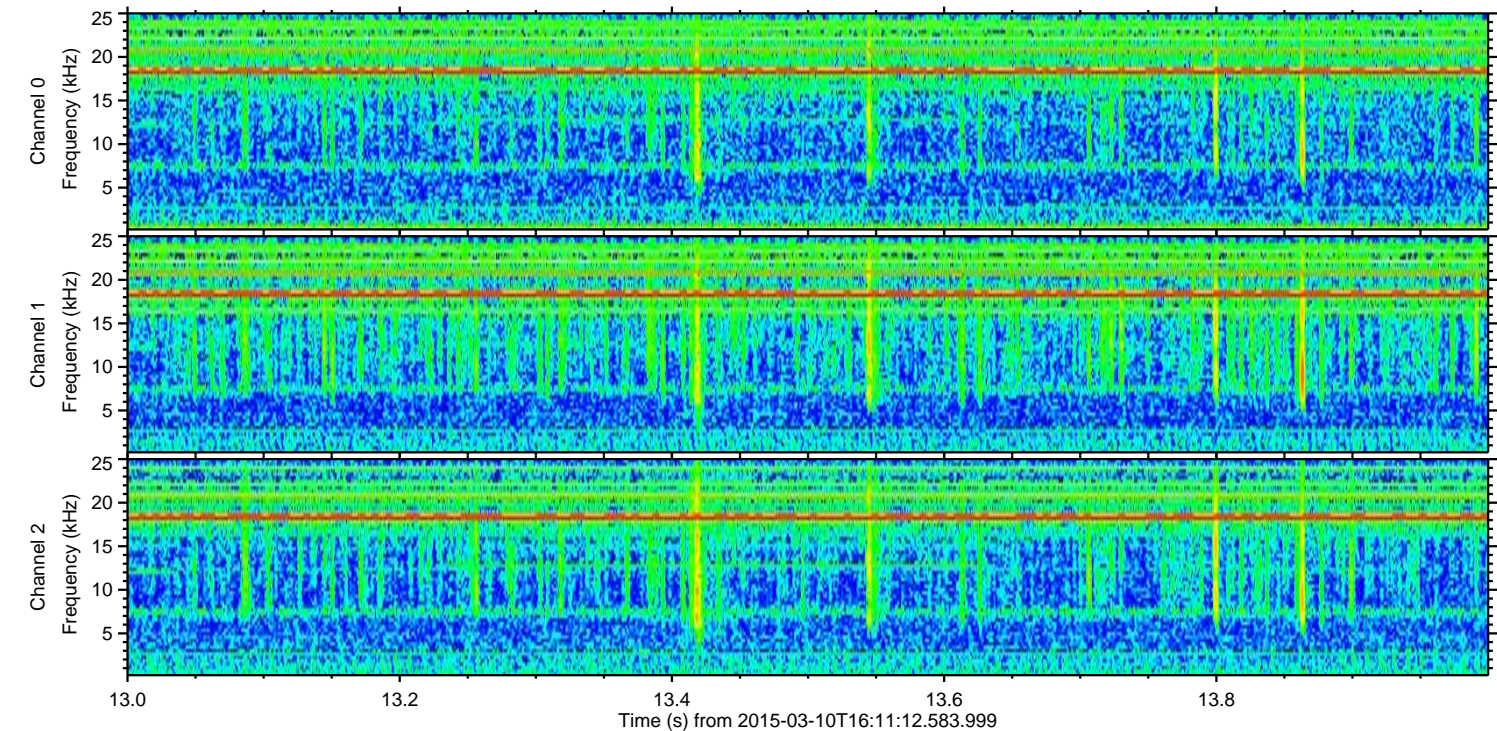
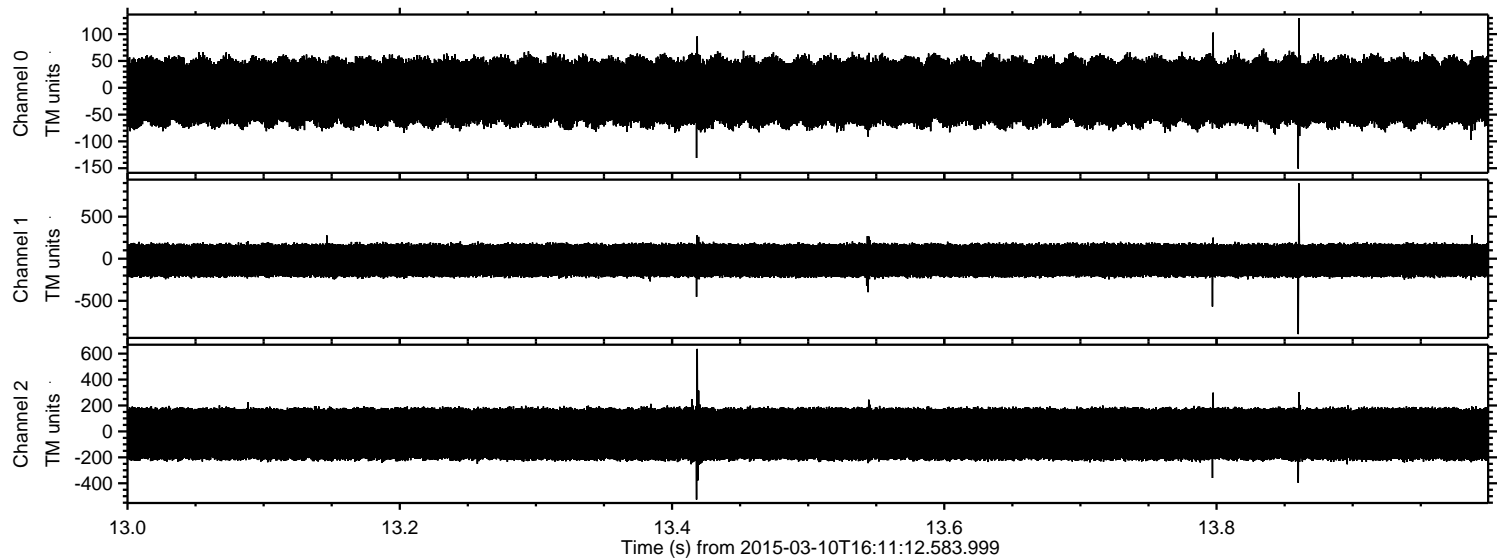


Processed Tue Mar 10 17:19:07 2015 by ELM ver.2012-10-06 from 001\_\_elm20150310\_161111\_\_dat00.bin





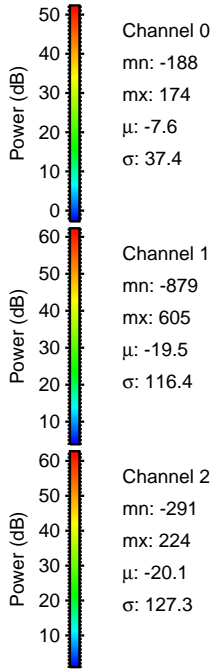
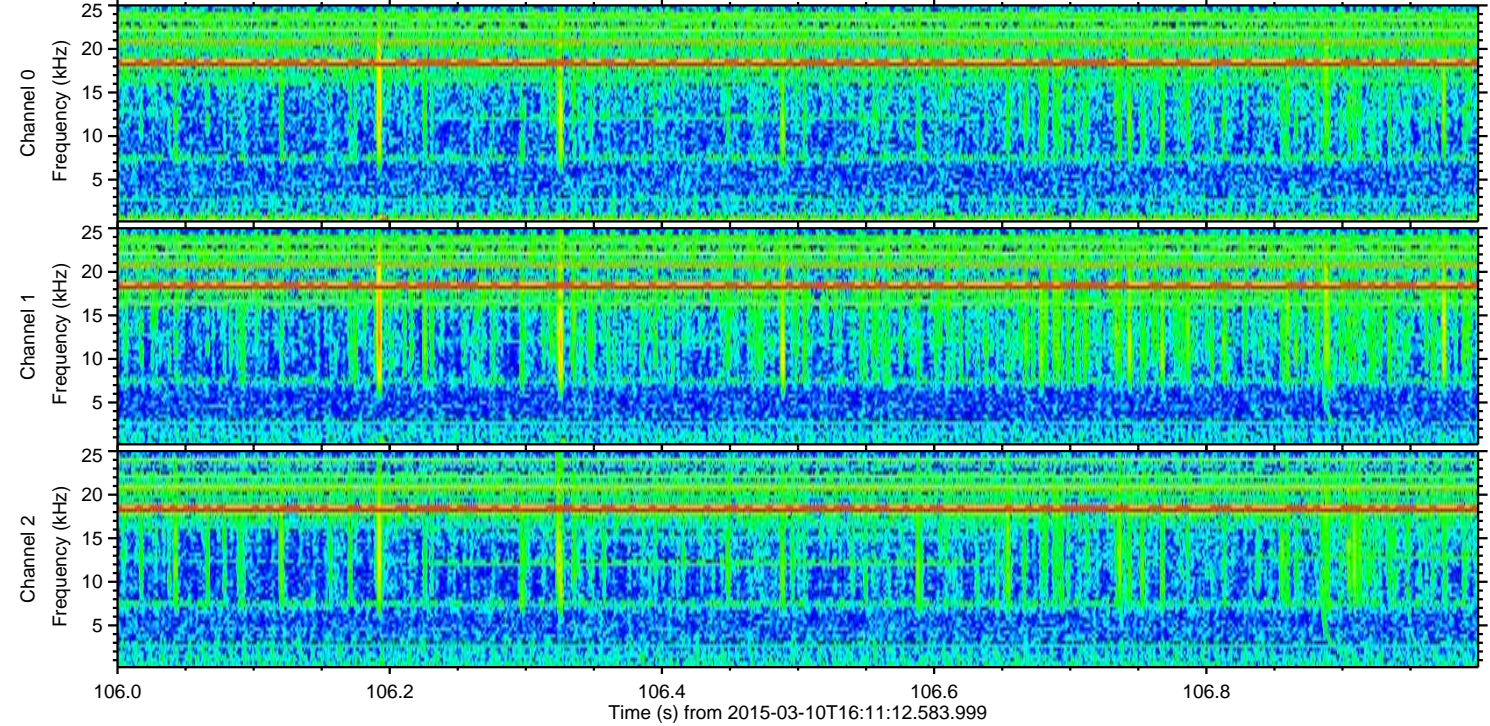
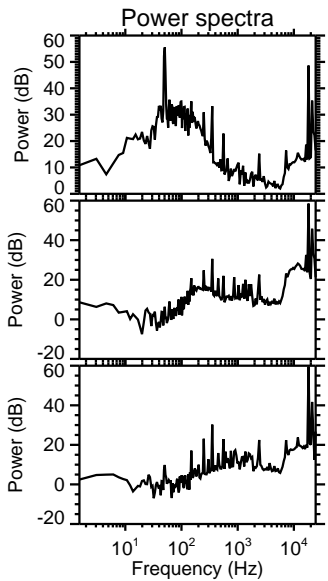
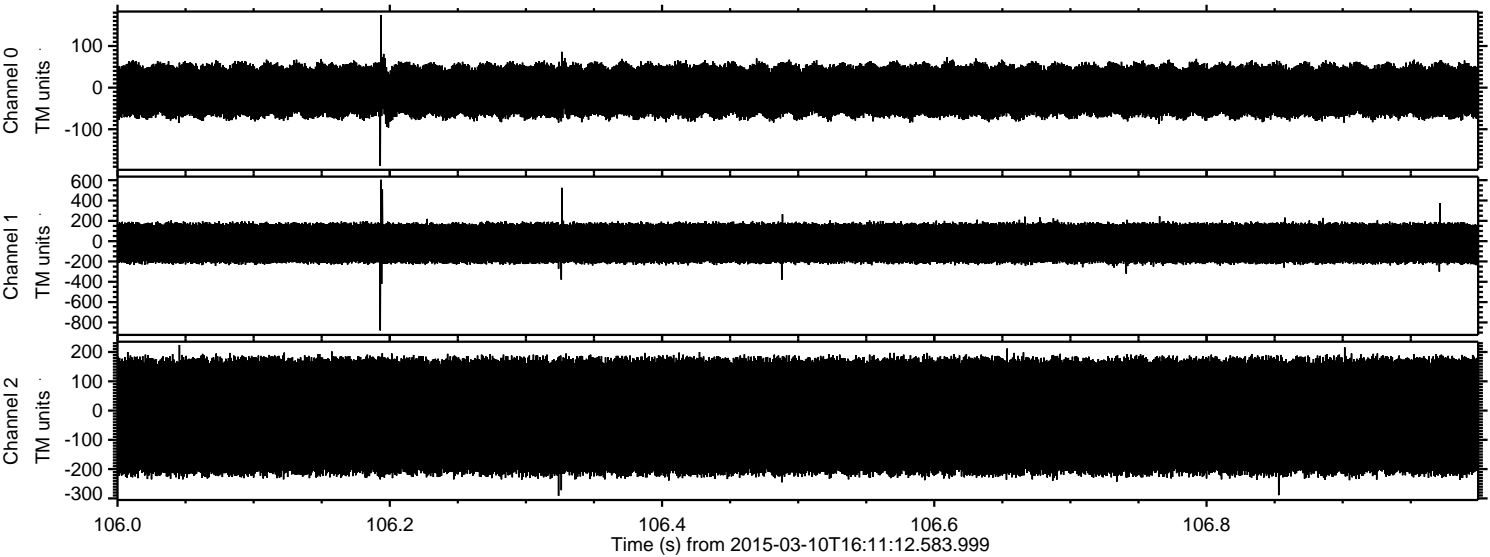
Processed Tue Mar 10 17:19:08 2015 by ELM ver.2012-10-06 from 001\_\_elm20150310\_161111\_\_dat00.bin





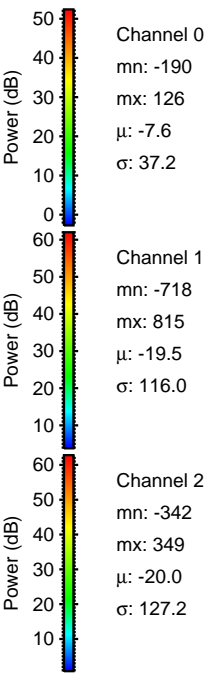
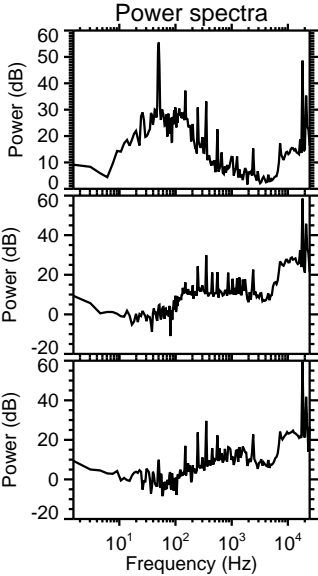
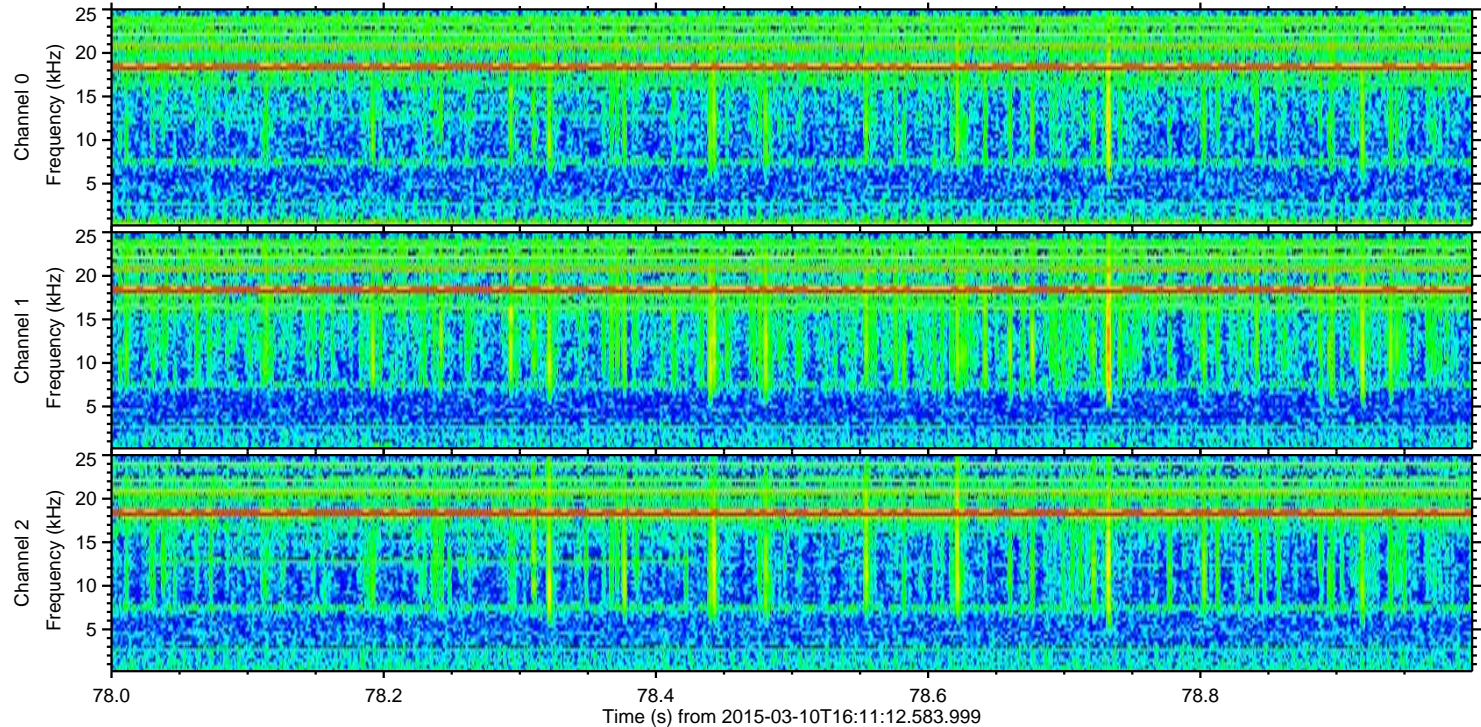
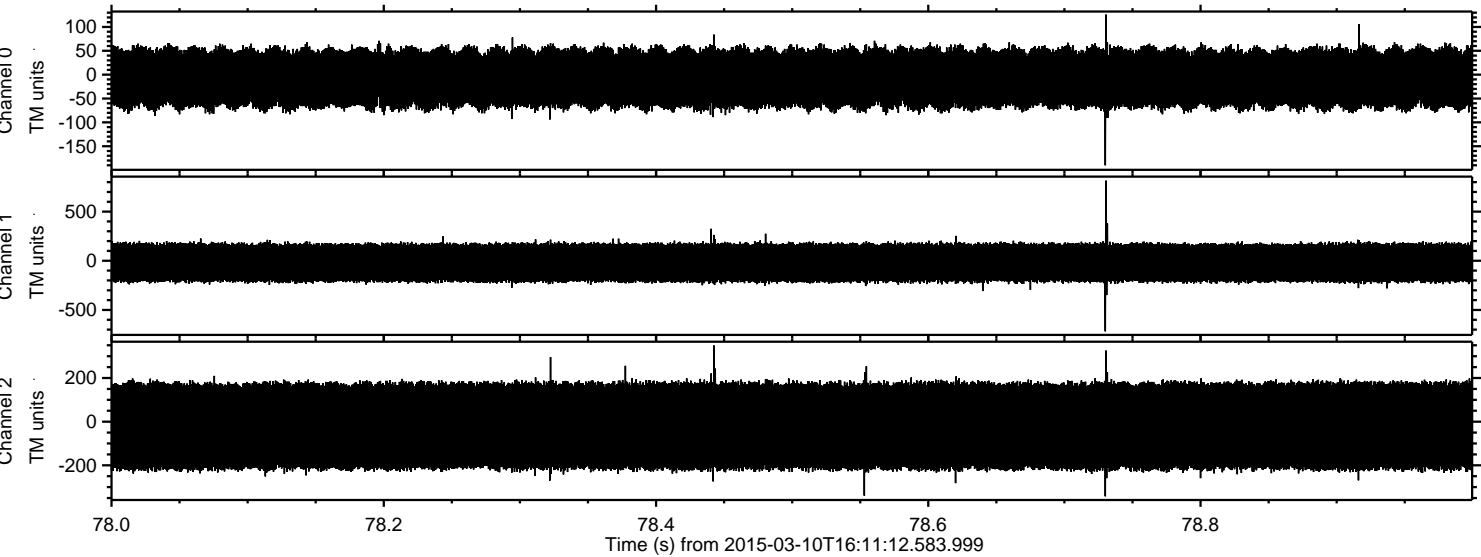
ELMAVAN 3D WAVEFORMS (Measured data sampled at 50 kHz) 49801 packets of 144 samples from 2015-03-10T16:11:12.583.999. Part 107/144

Processed Tue Mar 10 17:19:09 2015 by ELM ver.2012-10-06 from 001\_\_elm20150310\_161111\_\_dat00.bin





Processed Tue Mar 10 17:19:10 2015 by ELM ver.2012-10-06 from 001\_\_elm20150310\_161111\_\_dat00.bin



Channel 0  
mn: -190  
mx: 126  
 $\mu$ : -7.6  
 $\sigma$ : 37.2

Channel 1  
mn: -718  
mx: 815  
 $\mu$ : -19.5  
 $\sigma$ : 116.0

Channel 2  
mn: -342  
mx: 349  
 $\mu$ : -20.0  
 $\sigma$ : 127.2



ELMAVAN 3D WAVEFORMS (Measured data sampled at 50 kHz) 49801 packets of 144 samples from 2015-03-10T16:11:12.583.999. Part 137/144

Processed Tue Mar 10 17:19:11 2015 by ELM ver.2012-10-06 from 001\_\_elm20150310\_161111\_\_dat00.bin

