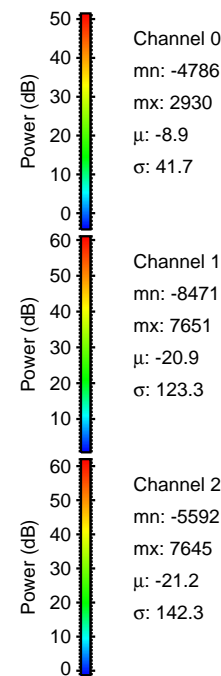
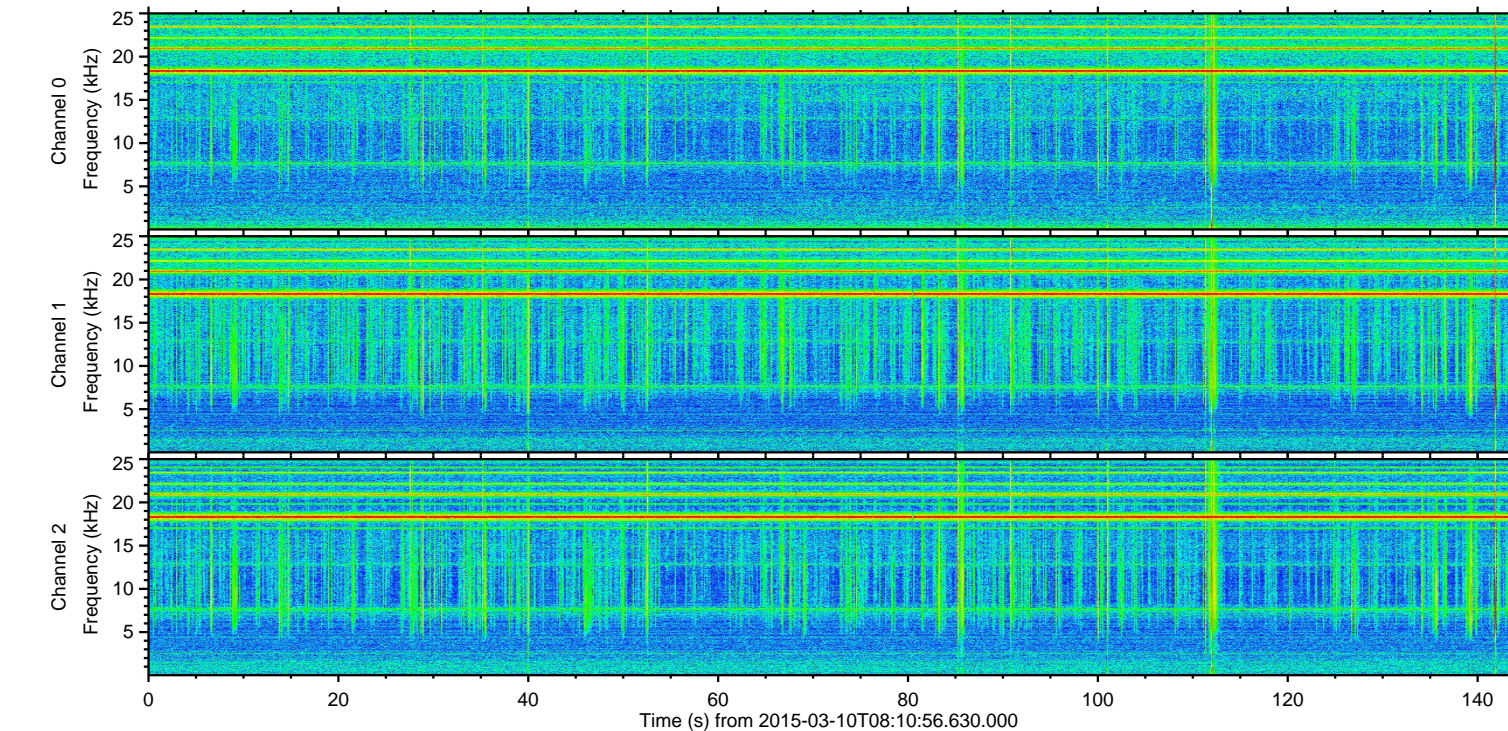
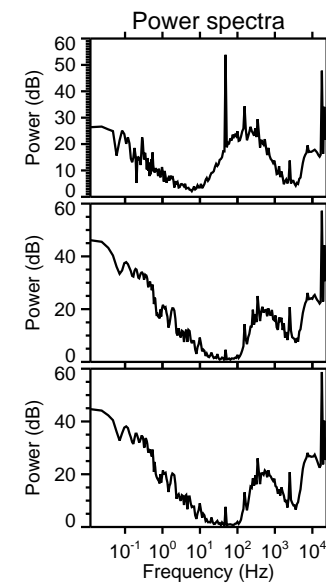
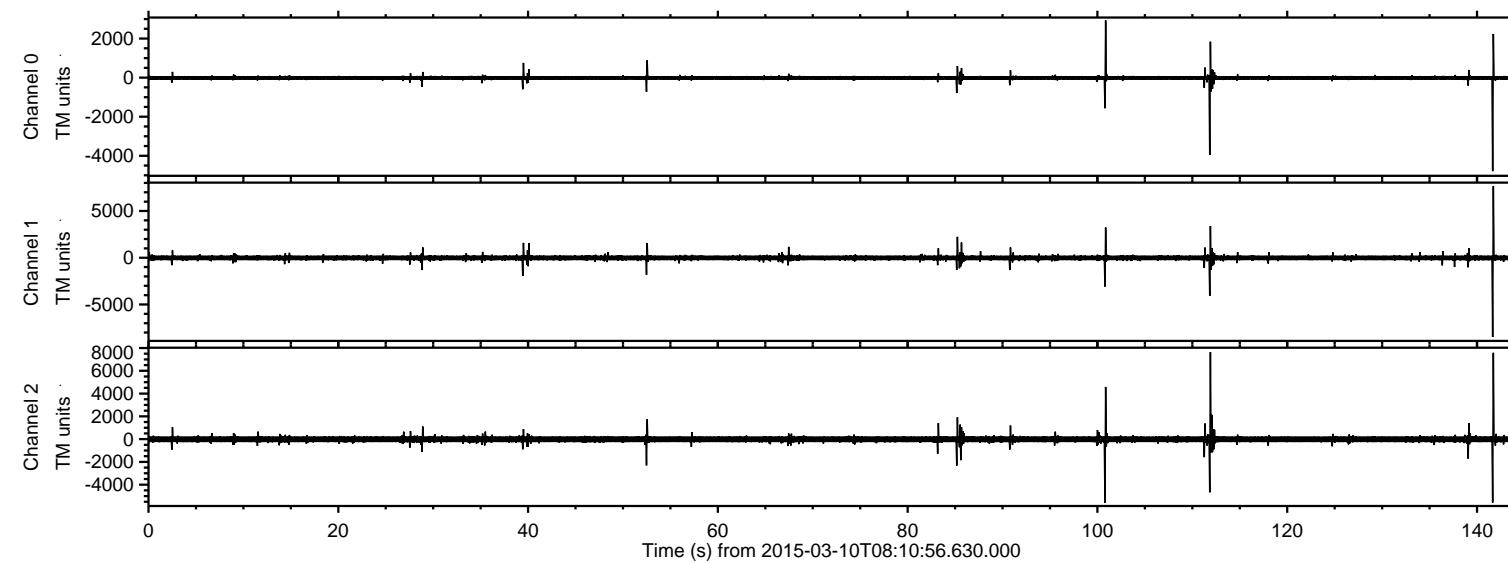


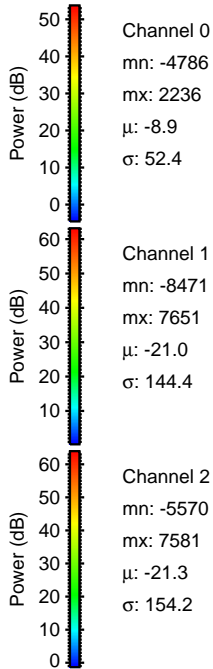
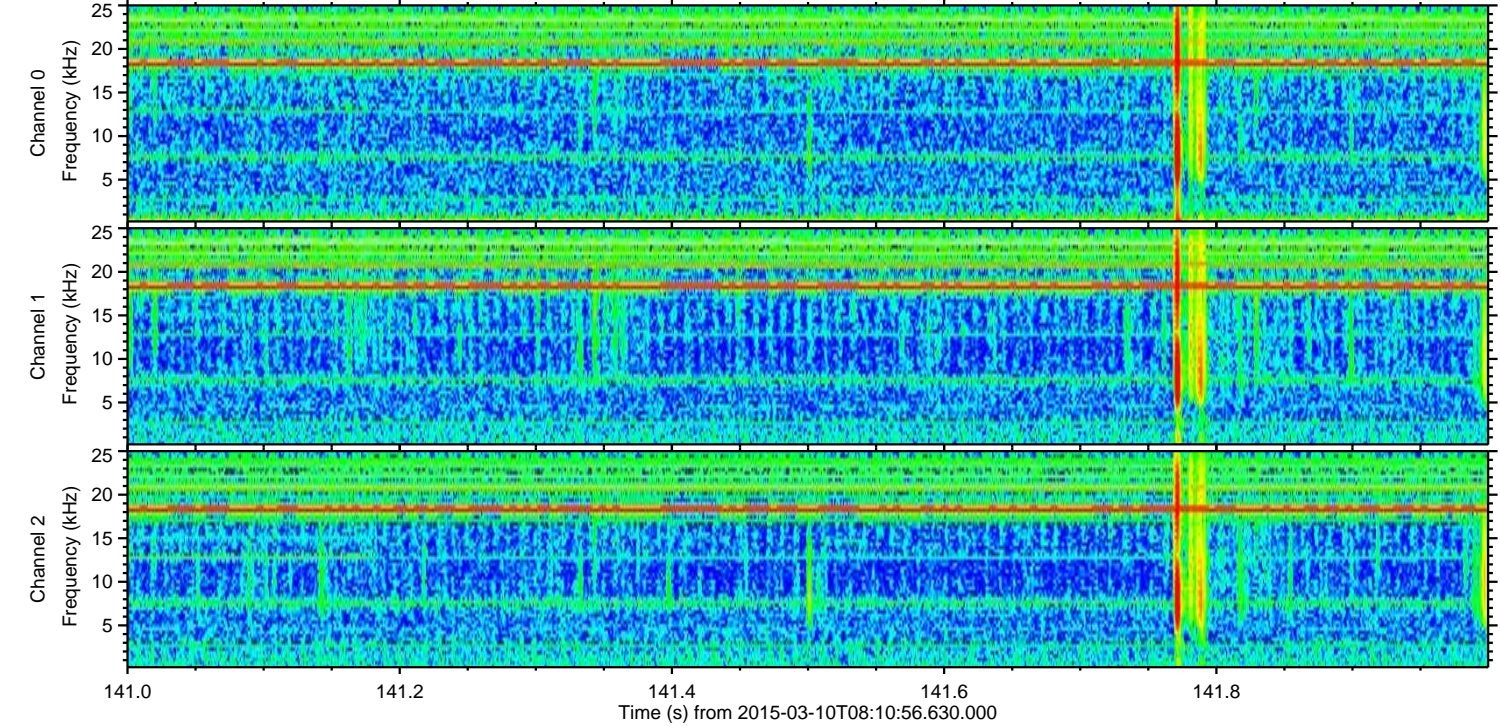
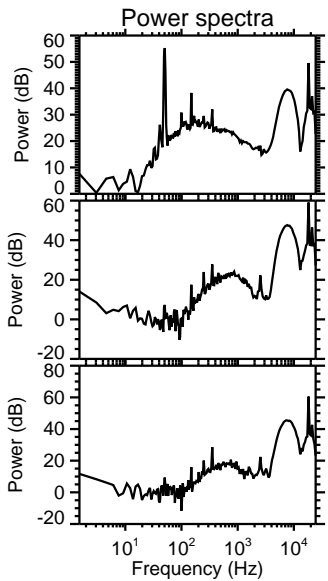
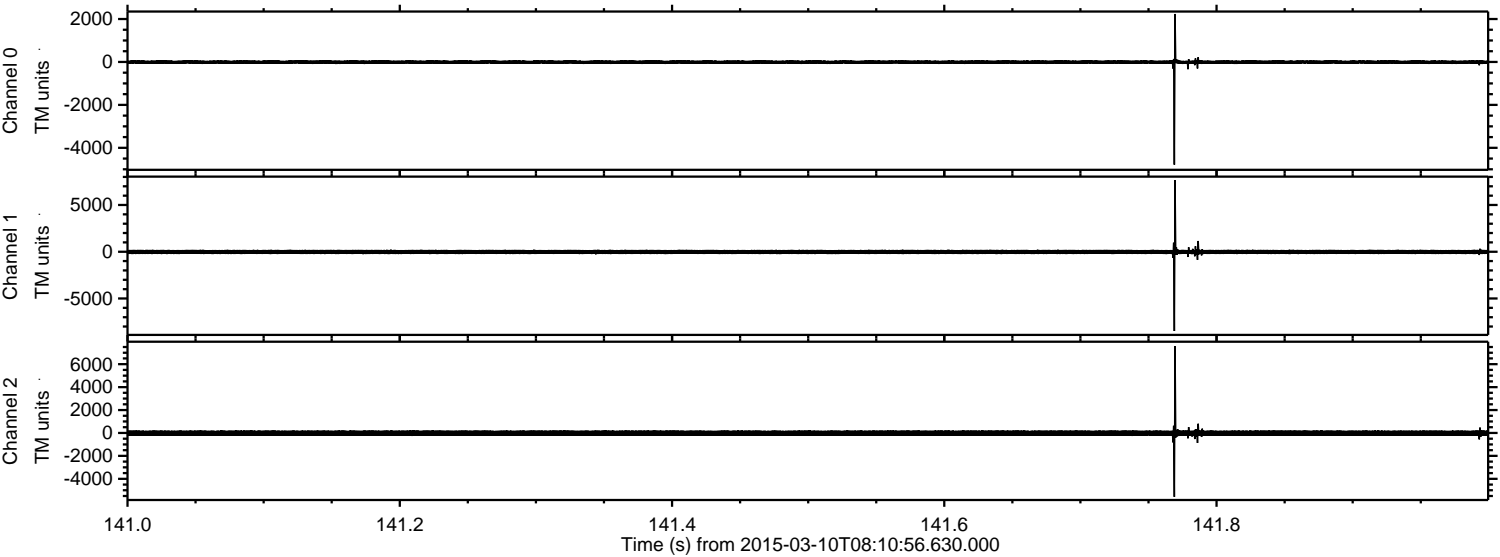
ELMAVAN 3D WAVEFORMS (Measured data sampled at 50 kHz) 49787 packets of 144 samples from 2015-03-10T08:10:56.630.000.

Processed Tue Mar 10 09:18:07 2015 by ELM ver.2012-10-06 from 001__elm20150310_081055__dat00.bin

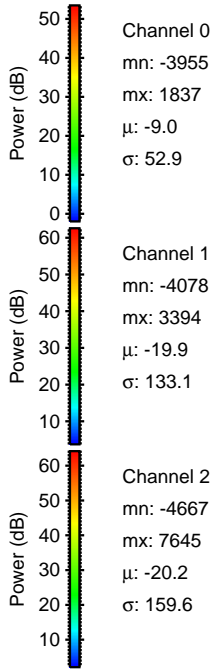
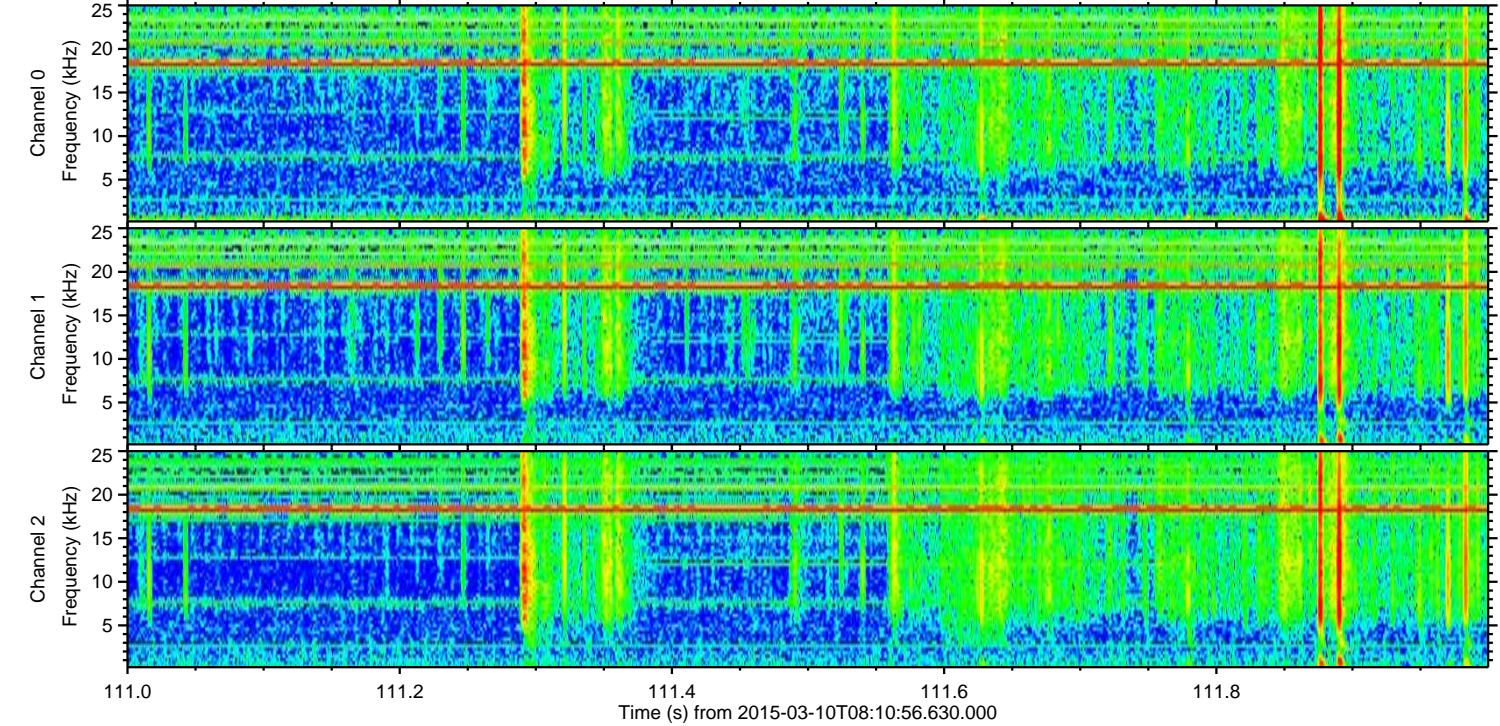
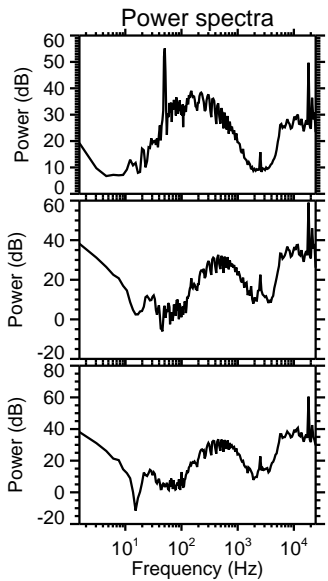
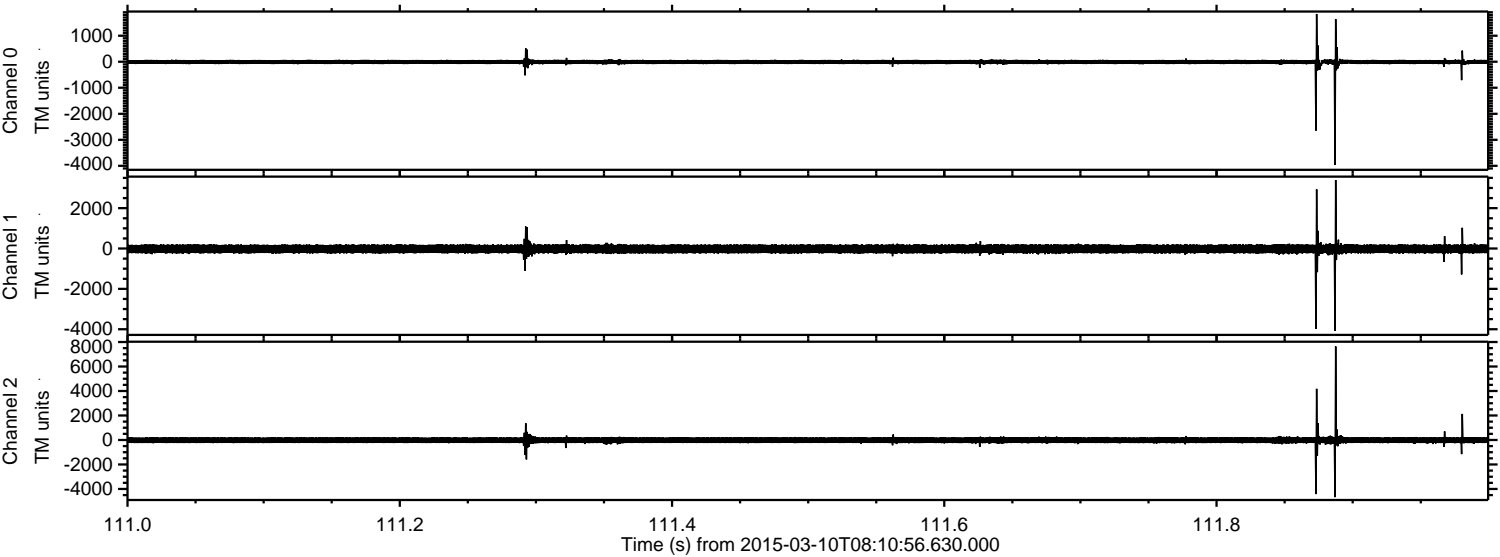


ELMAVAN 3D WAVEFORMS (Measured data sampled at 50 kHz) 49787 packets of 144 samples from 2015-03-10T08:10:56.630.000. Part 142/144

Processed Tue Mar 10 09:18:18 2015 by ELM ver.2012-10-06 from 001__elm20150310_081055__dat00.bin



Processed Tue Mar 10 09:18:19 2015 by ELM ver.2012-10-06 from 001__elm20150310_081055__dat00.bin



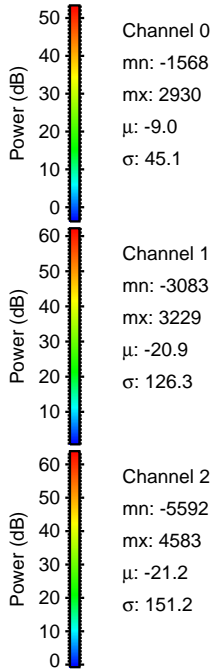
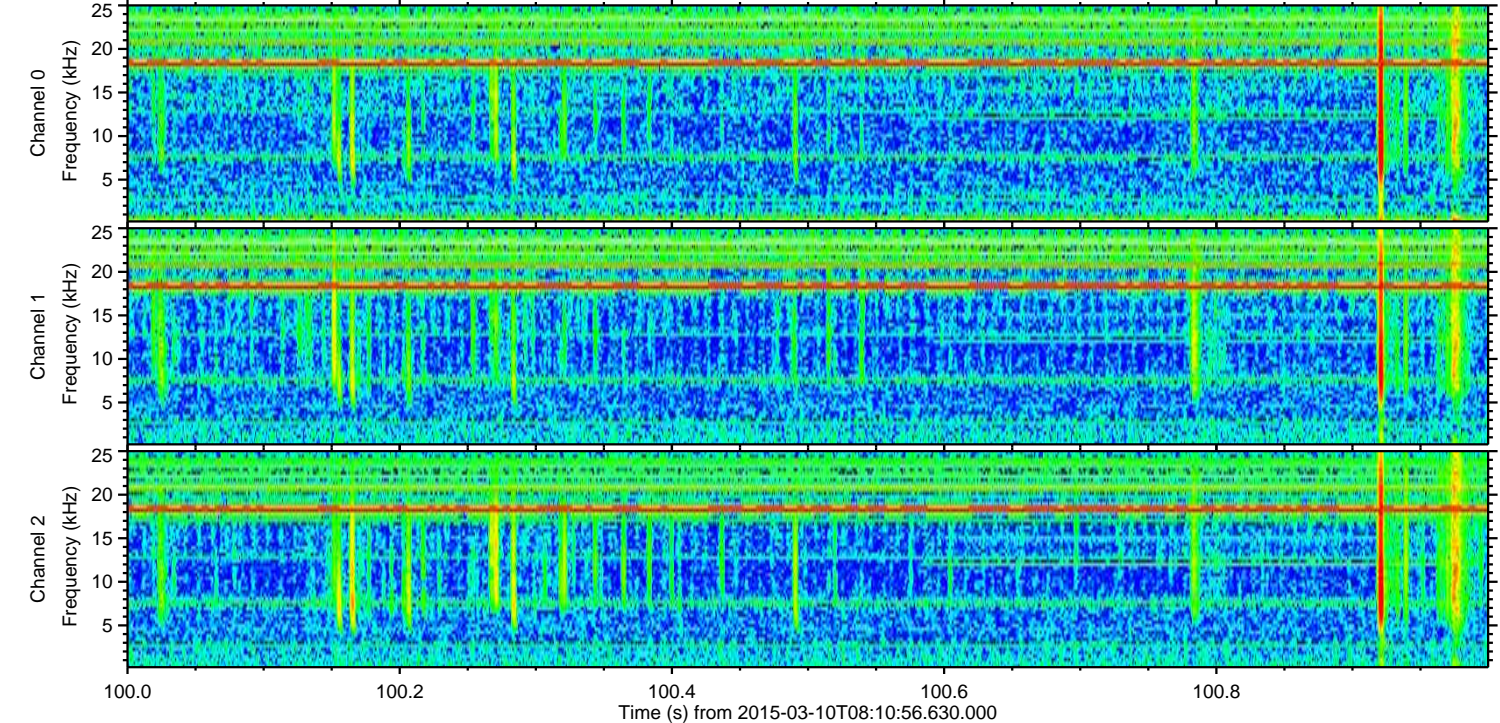
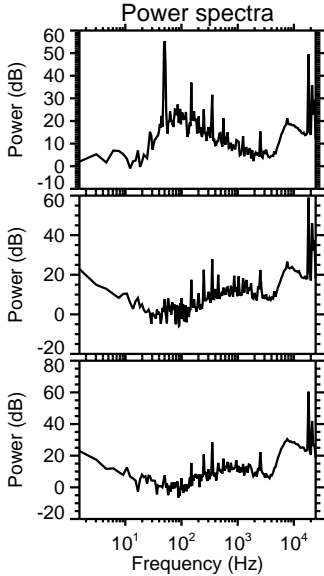
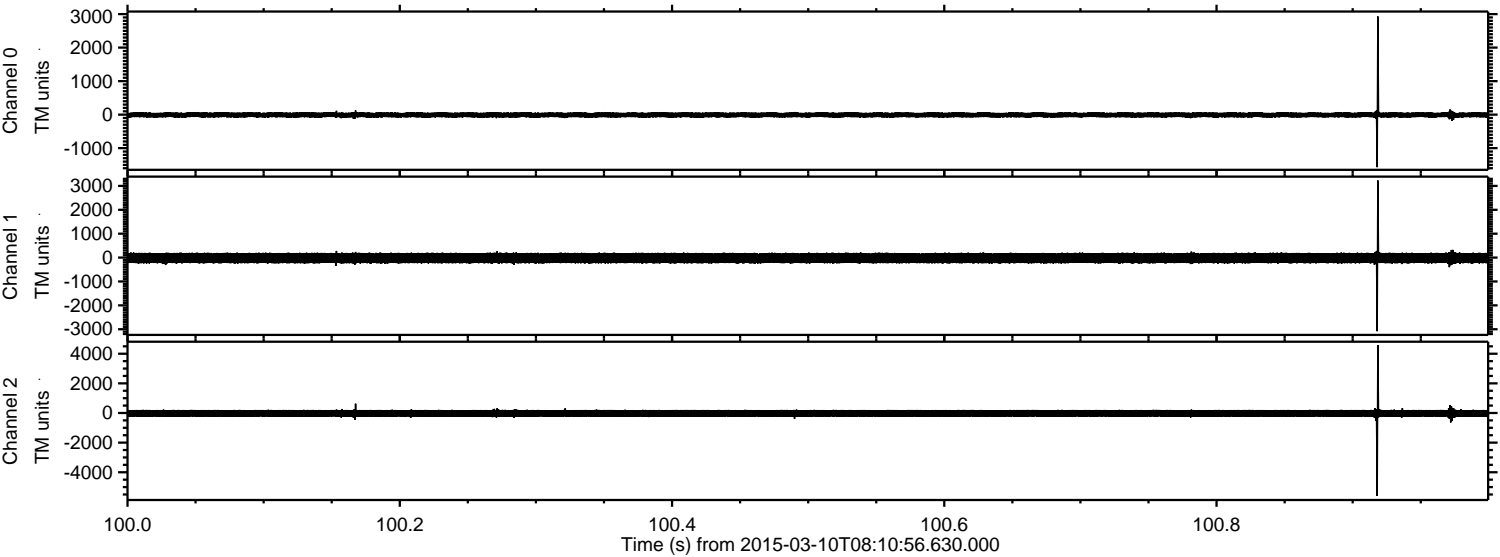
Channel 0
mn: -3955
mx: 1837
 μ : -9.0
 σ : 52.9

Channel 1
mn: -4078
mx: 3394
 μ : -19.9
 σ : 133.1

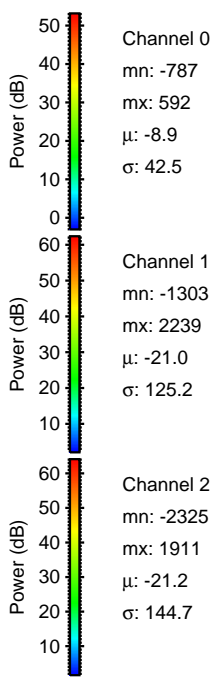
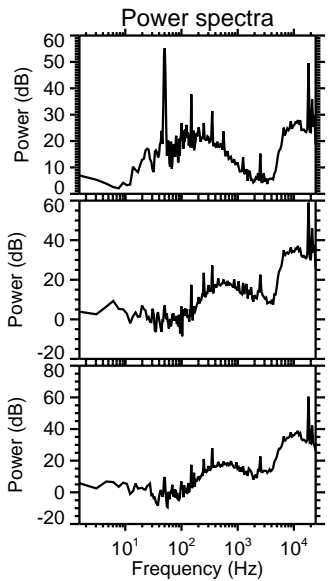
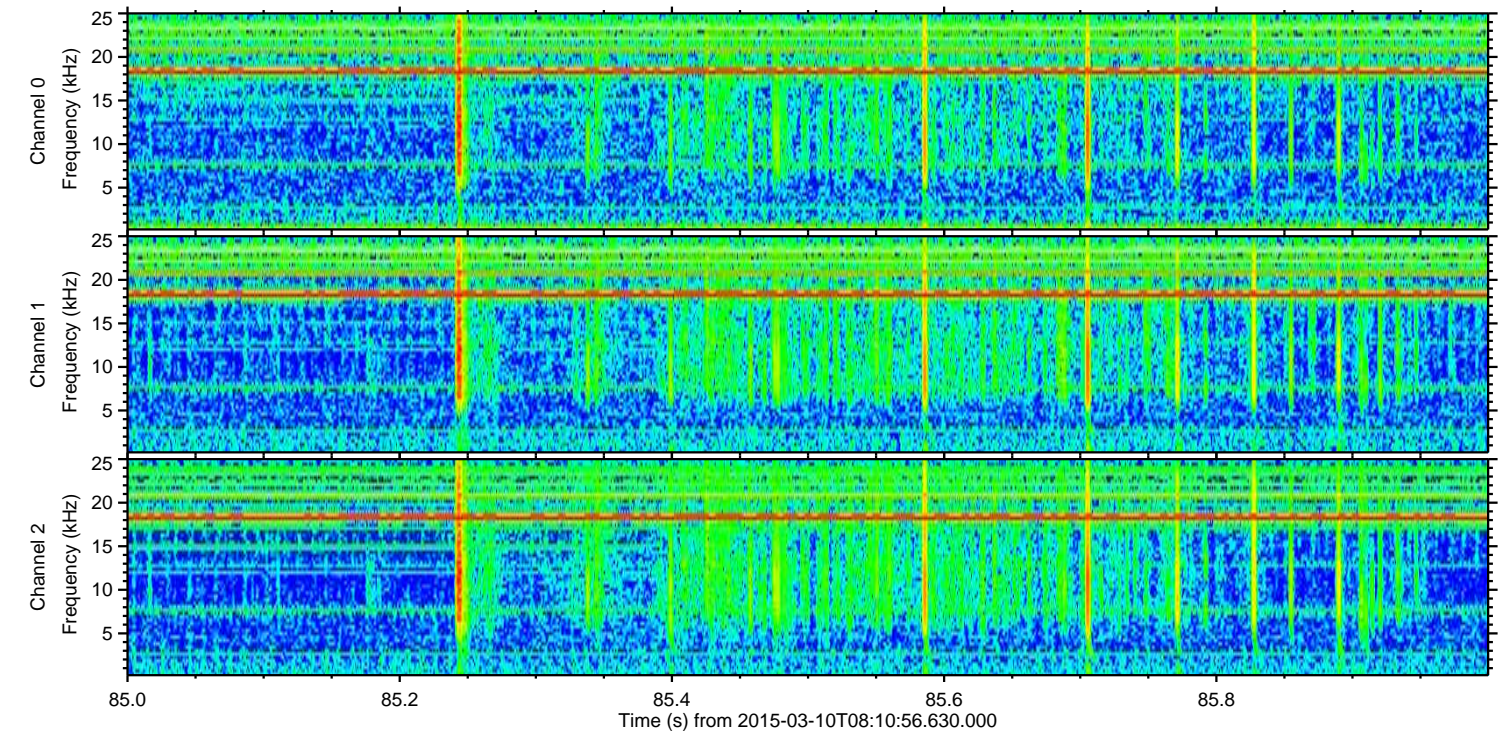
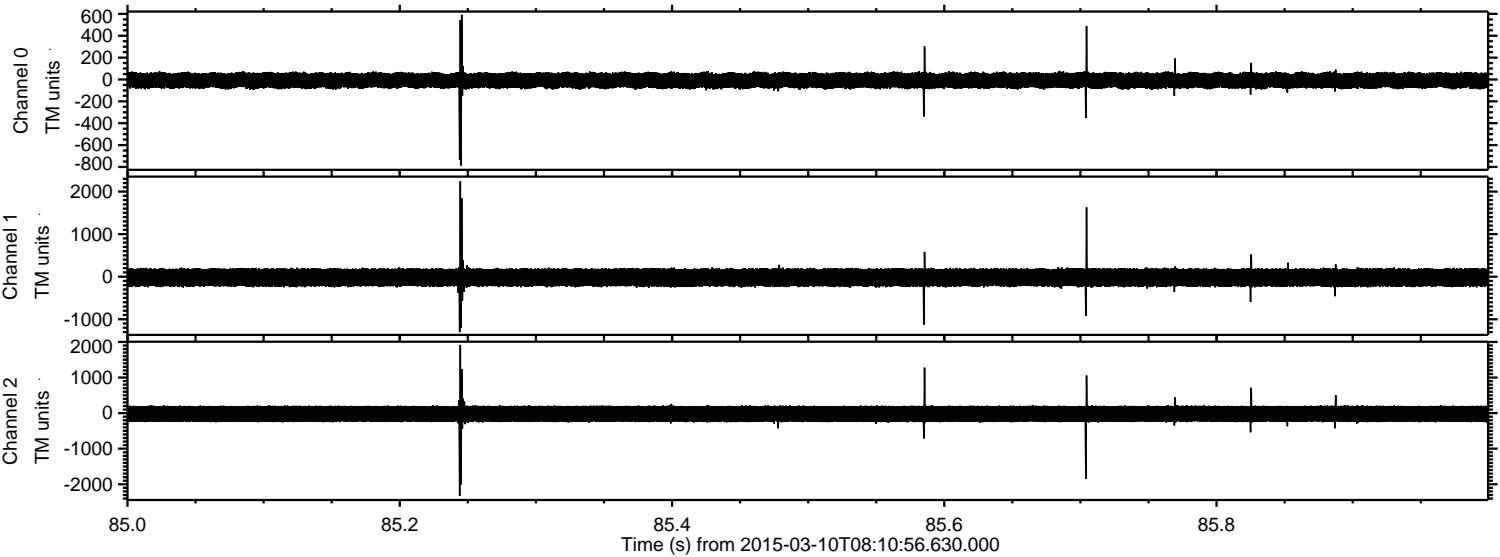
Channel 2
mn: -4667
mx: 7645
 μ : -20.2
 σ : 159.6

ELMAVAN 3D WAVEFORMS (Measured data sampled at 50 kHz) 49787 packets of 144 samples from 2015-03-10T08:10:56.630.000. Part 101/144

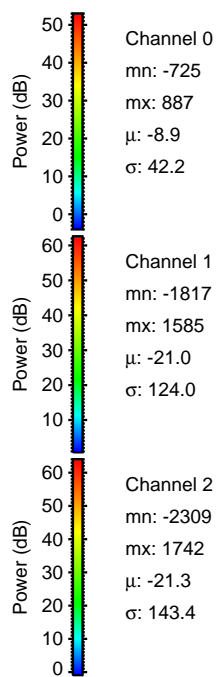
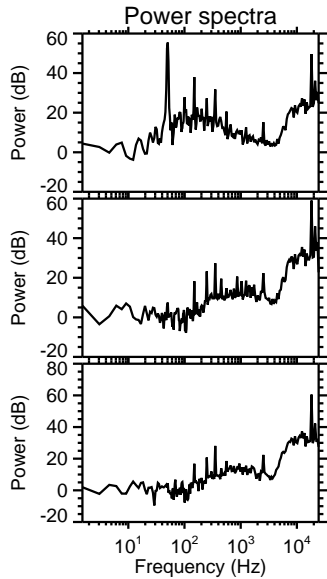
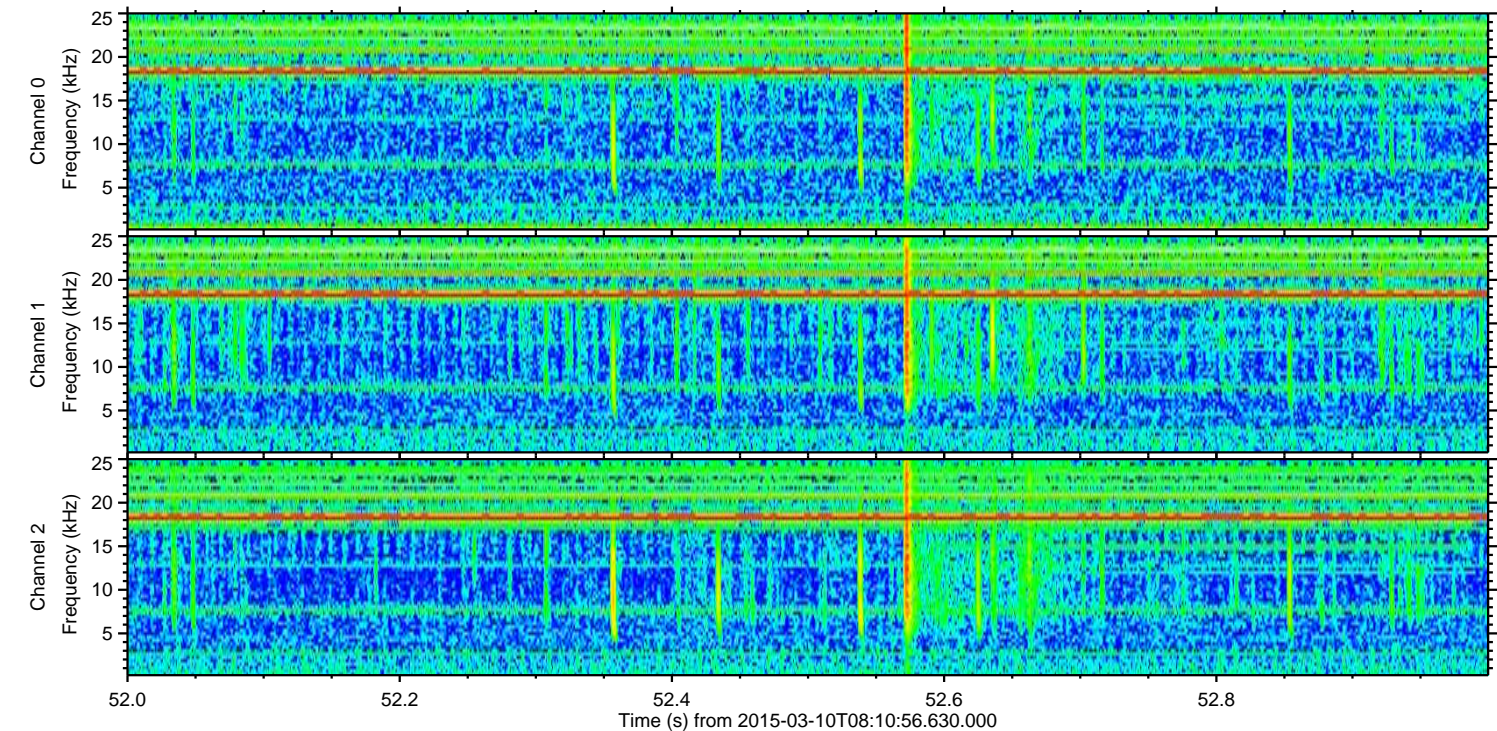
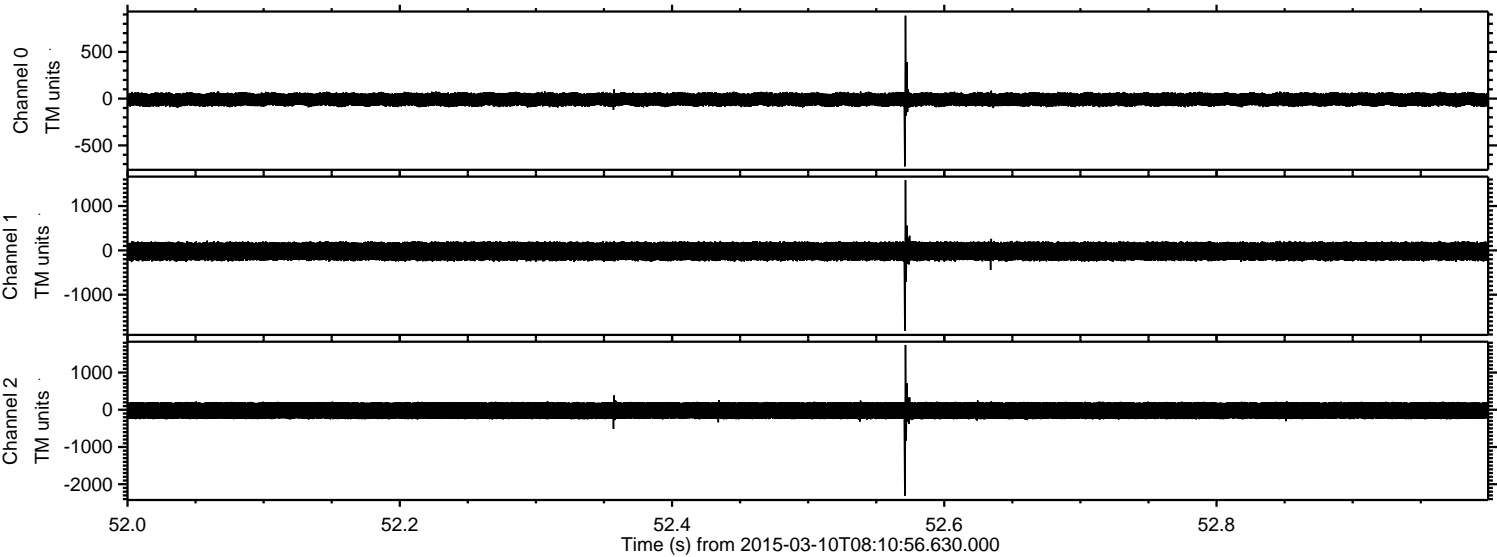
Processed Tue Mar 10 09:18:20 2015 by ELM ver.2012-10-06 from 001__elm20150310_081055__dat00.bin



Processed Tue Mar 10 09:18:21 2015 by ELM ver.2012-10-06 from 001__elm20150310_081055__dat00.bin

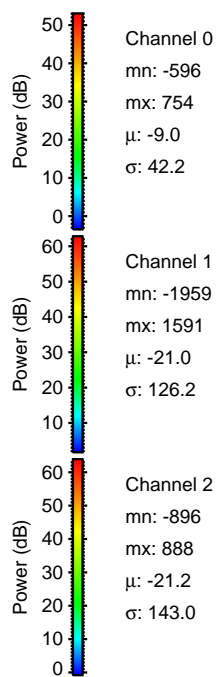
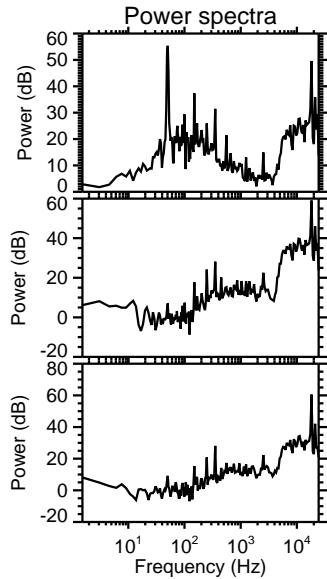
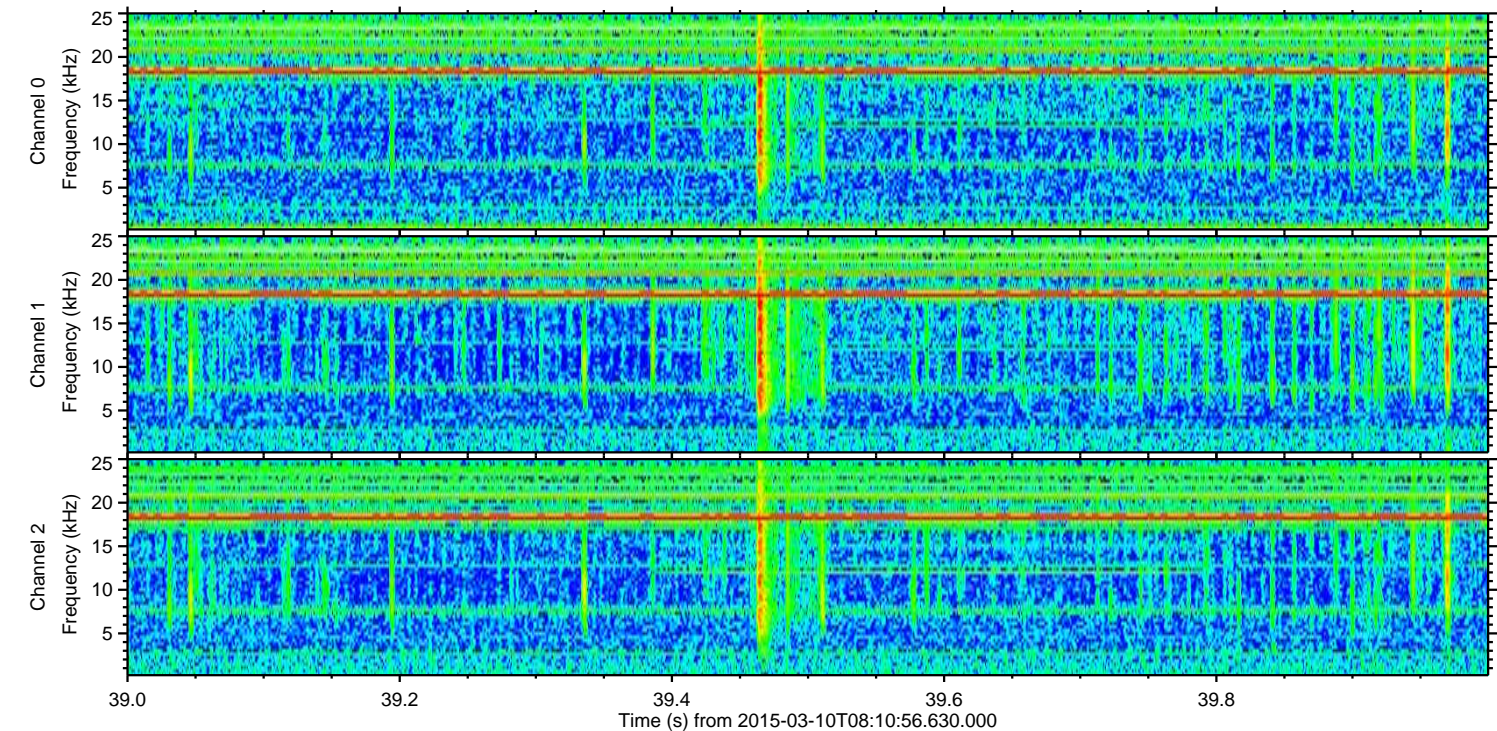
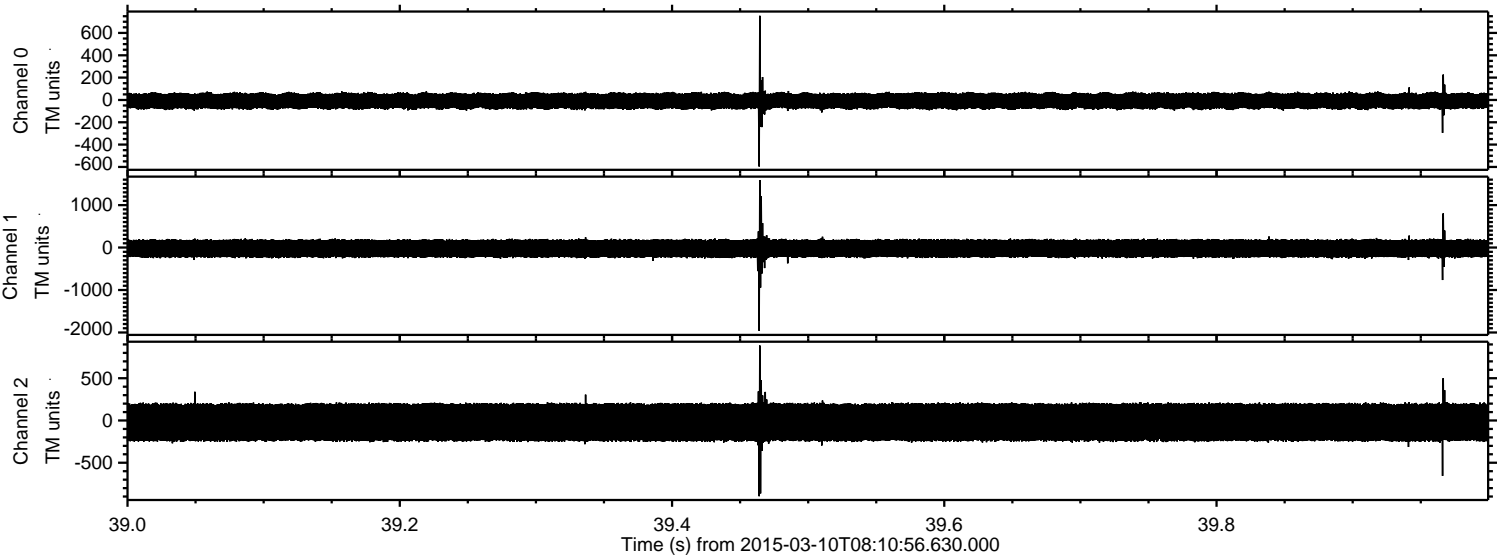


Processed Tue Mar 10 09:18:22 2015 by ELM ver.2012-10-06 from 001__elm20150310_081055__dat00.bin

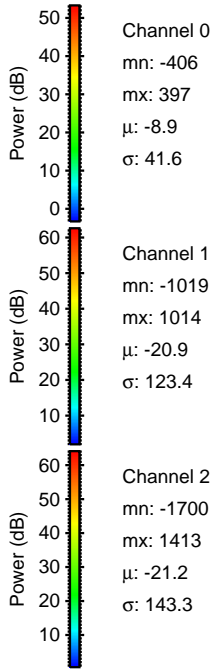
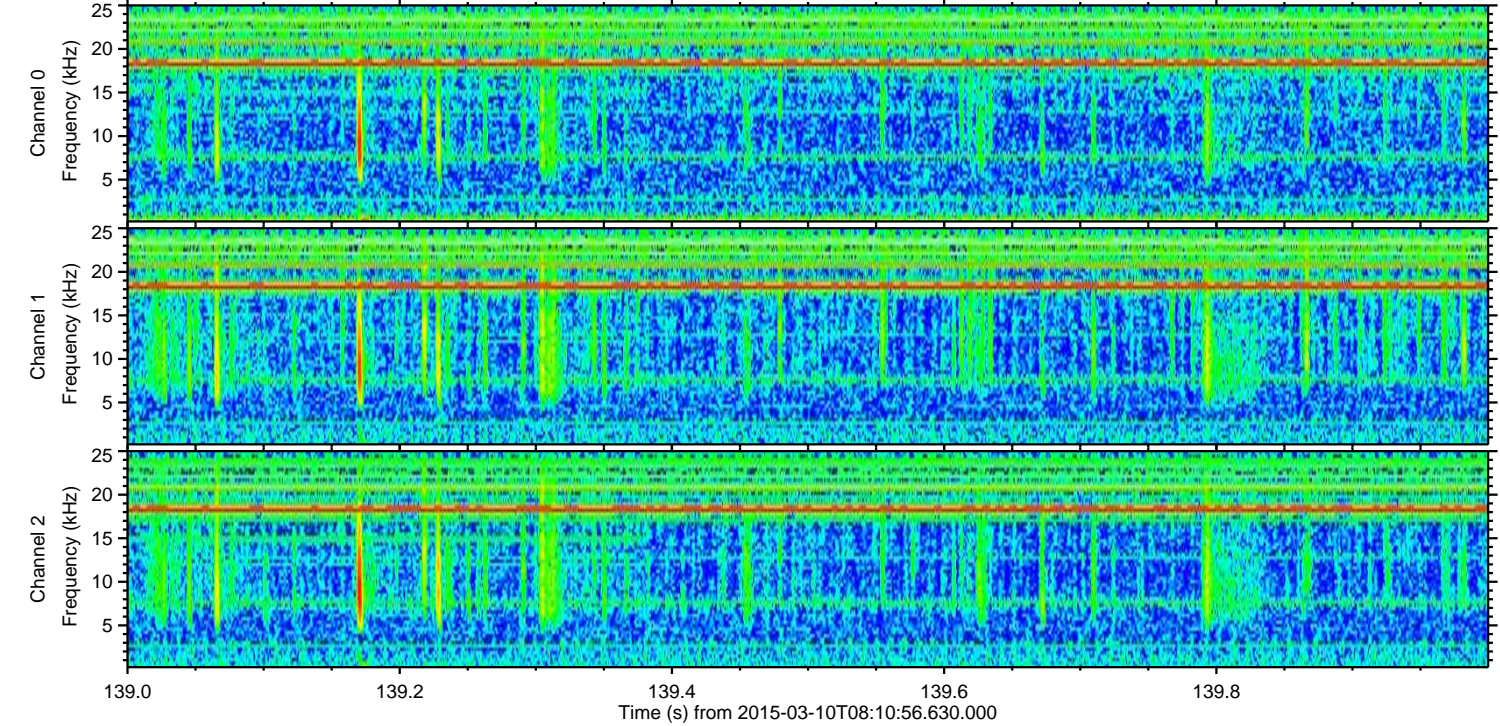
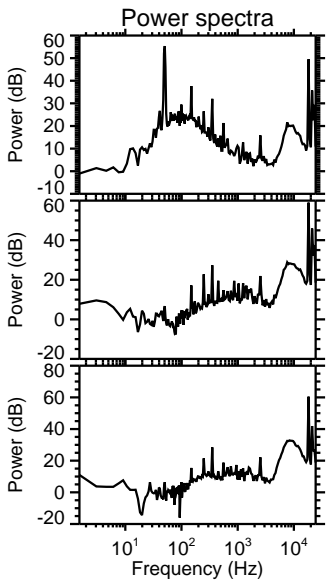
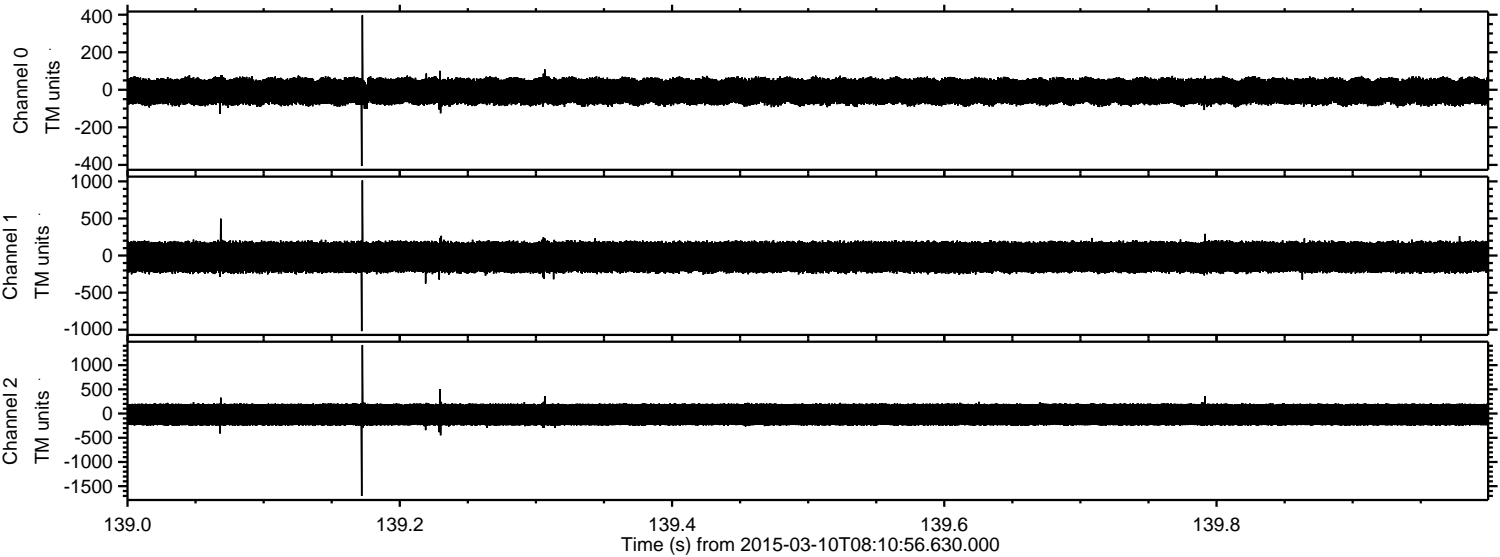


ELMAVAN 3D WAVEFORMS (Measured data sampled at 50 kHz) 49787 packets of 144 samples from 2015-03-10T08:10:56.630.000. Part 40/144

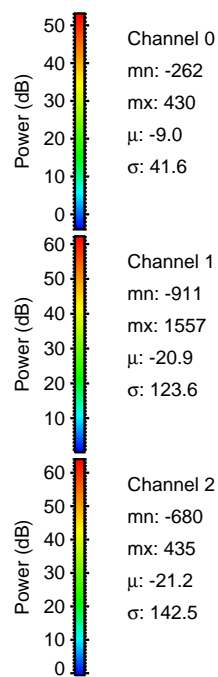
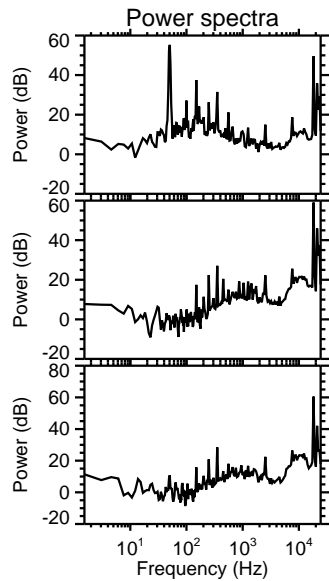
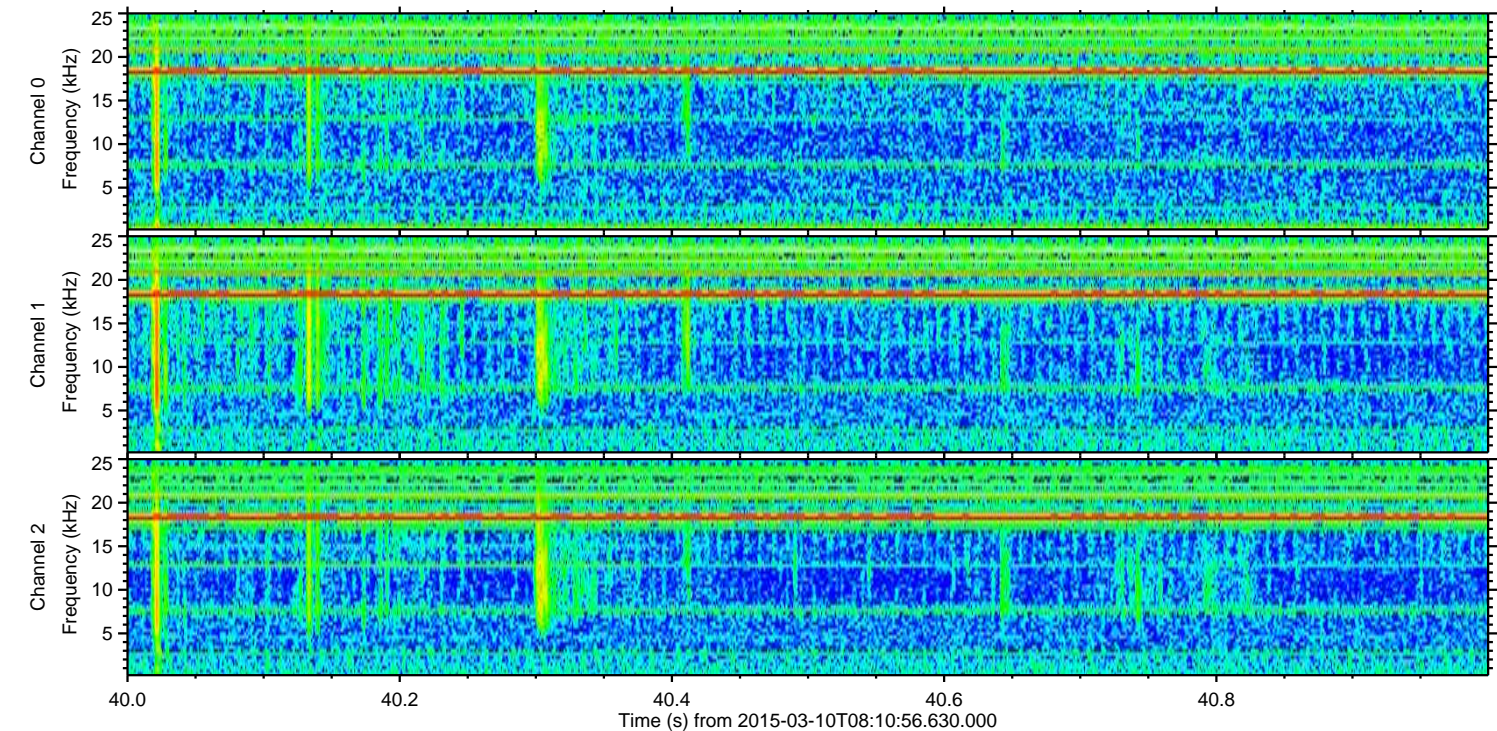
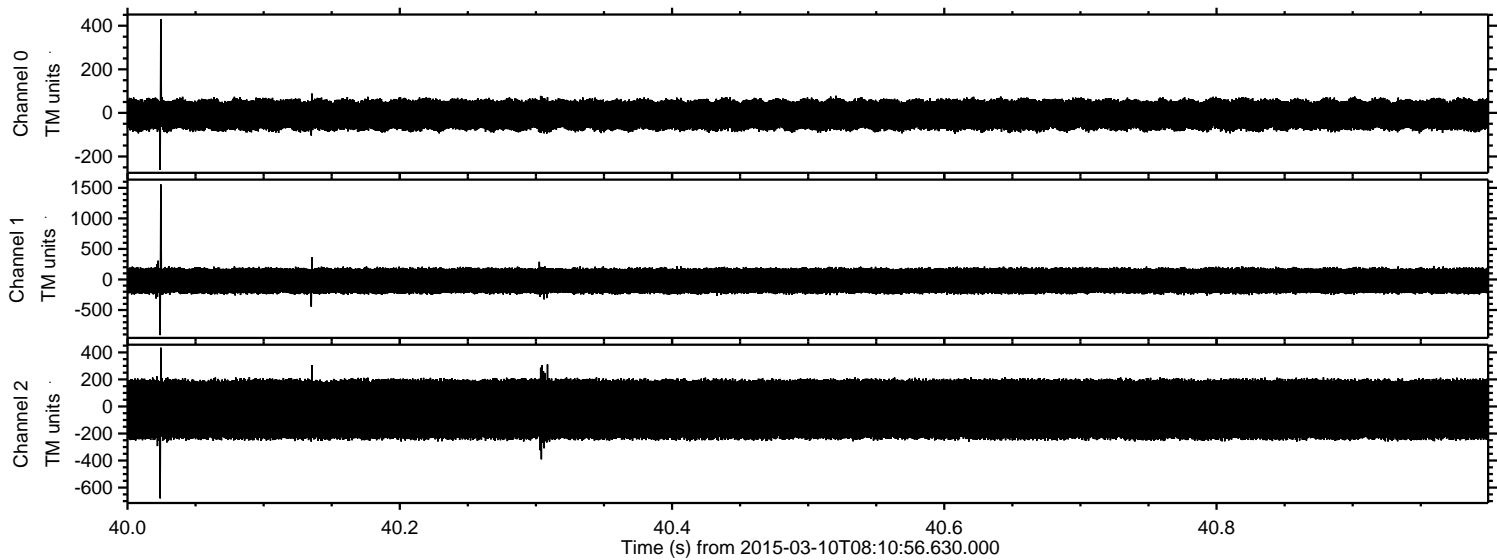
Processed Tue Mar 10 09:18:23 2015 by ELM ver.2012-10-06 from 001__elm20150310_081055__dat00.bin



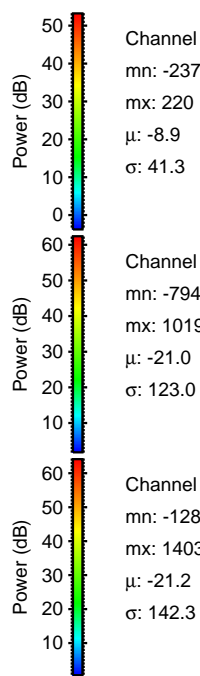
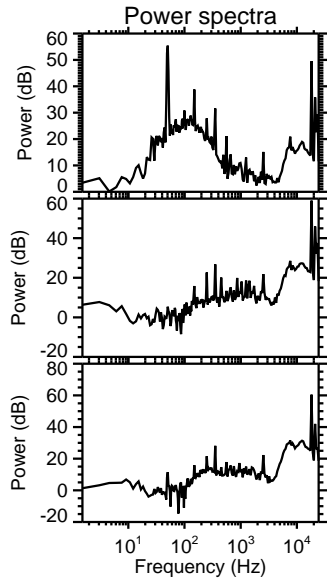
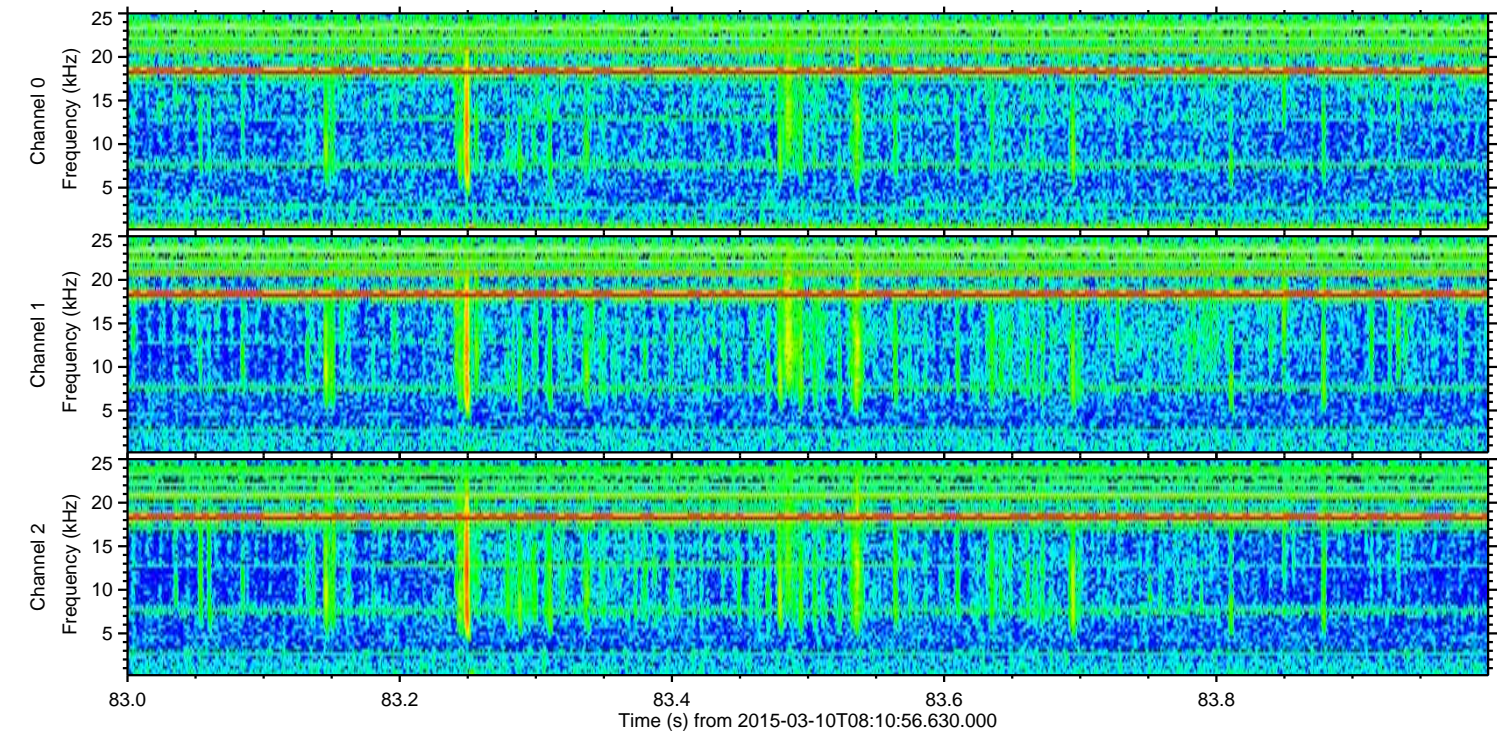
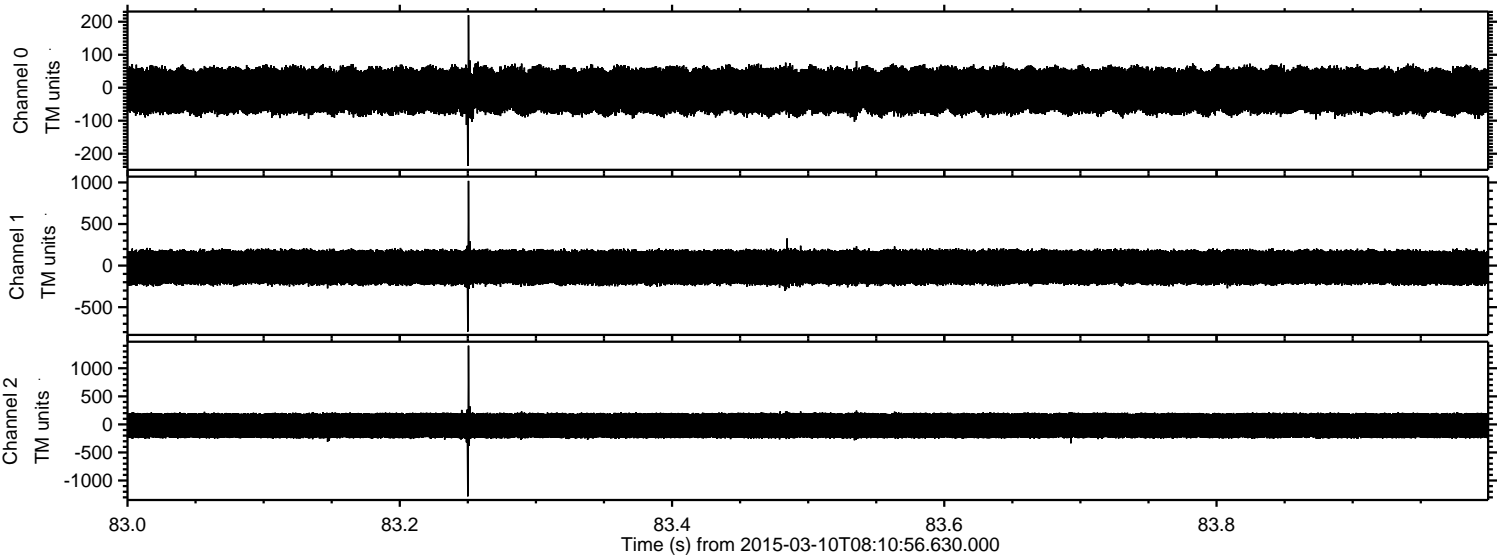
Processed Tue Mar 10 09:18:24 2015 by ELM ver.2012-10-06 from 001__elm20150310_081055__dat00.bin



Processed Tue Mar 10 09:18:24 2015 by ELM ver.2012-10-06 from 001__elm20150310_081055__dat00.bin



Processed Tue Mar 10 09:18:25 2015 by ELM ver.2012-10-06 from 001__elm20150310_081055__dat00.bin



Processed Tue Mar 10 09:18:26 2015 by ELM ver.2012-10-06 from 001__elm20150310_081055__dat00.bin

