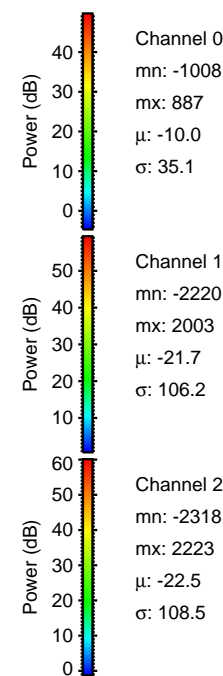
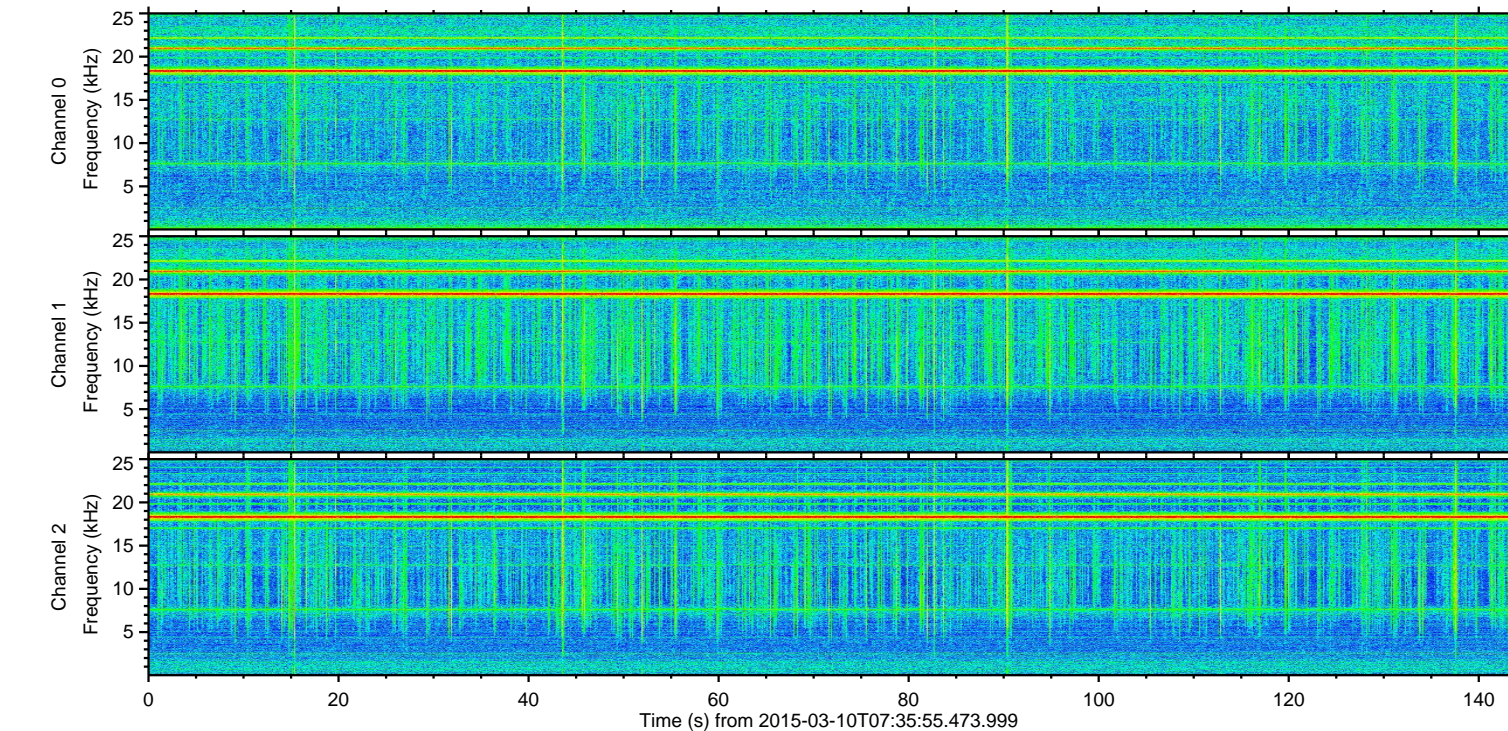
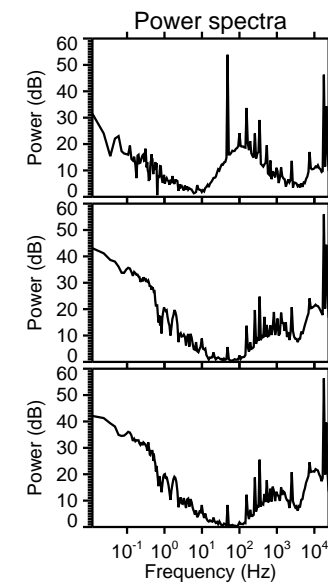
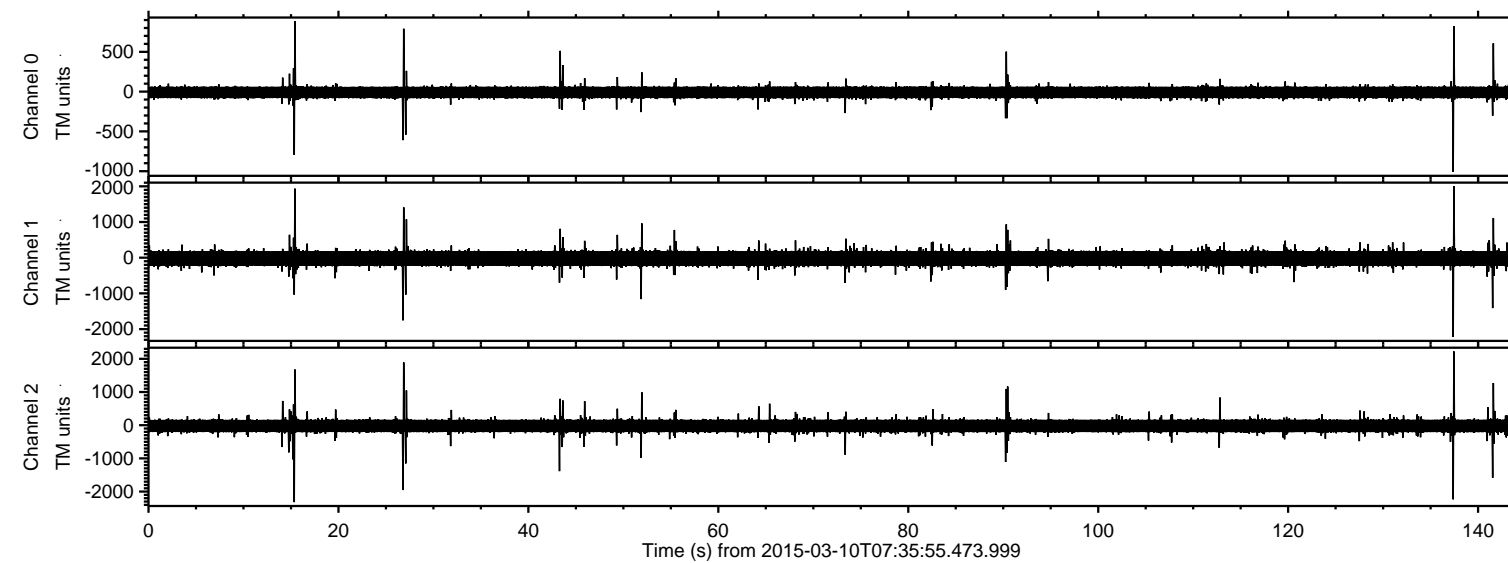
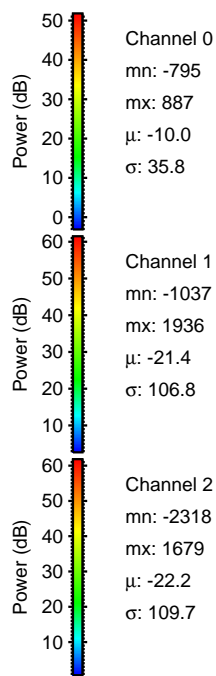
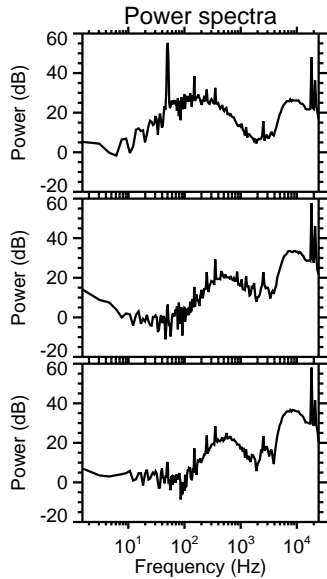
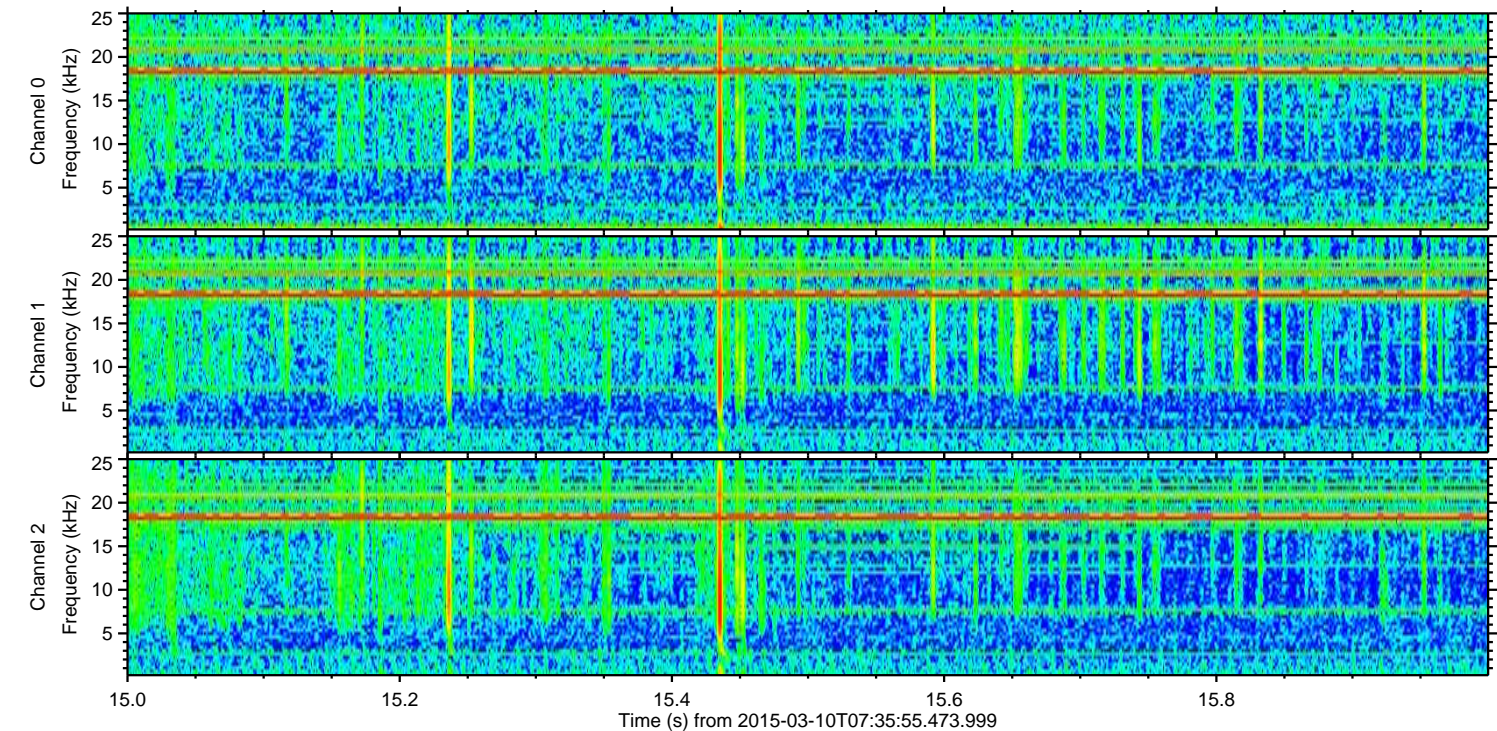
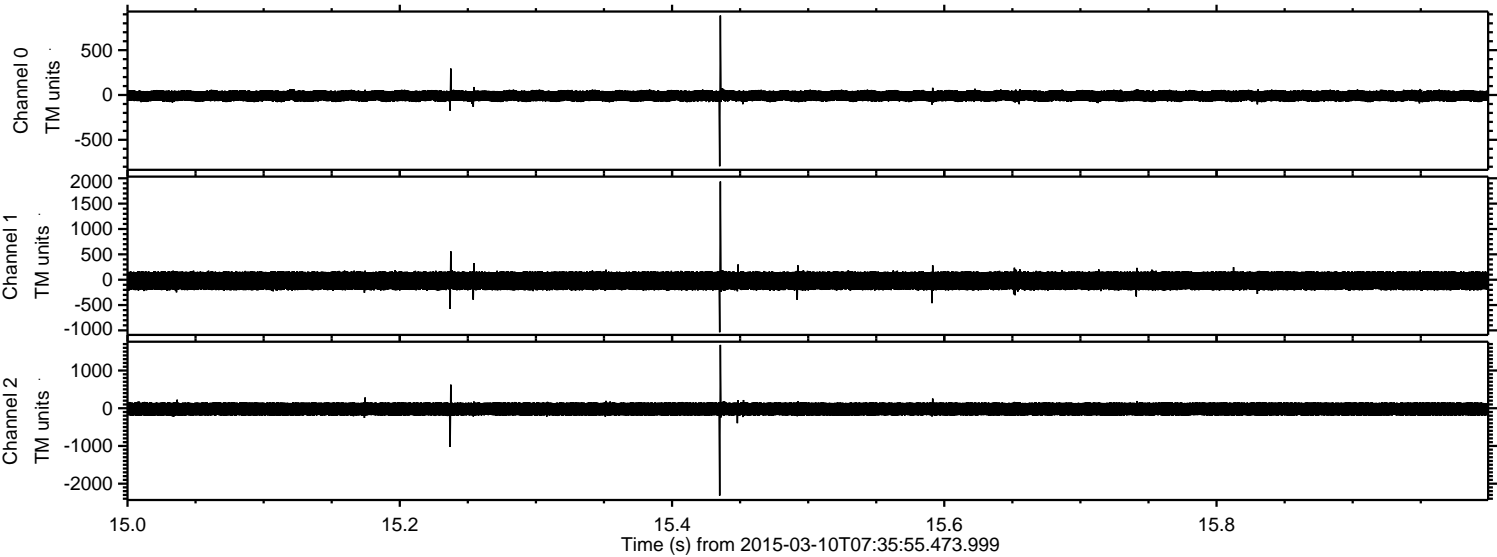


ELMAVAN 3D WAVEFORMS (Measured data sampled at 50 kHz) 49747 packets of 144 samples from 2015-03-10T07:35:55.473.999.

Processed Tue Mar 10 08:43:06 2015 by ELM ver.2012-10-06 from 001__elm20150310_073554__dat00.bin

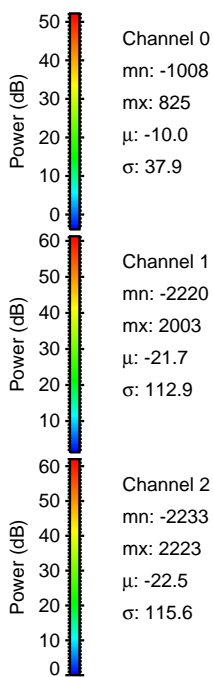
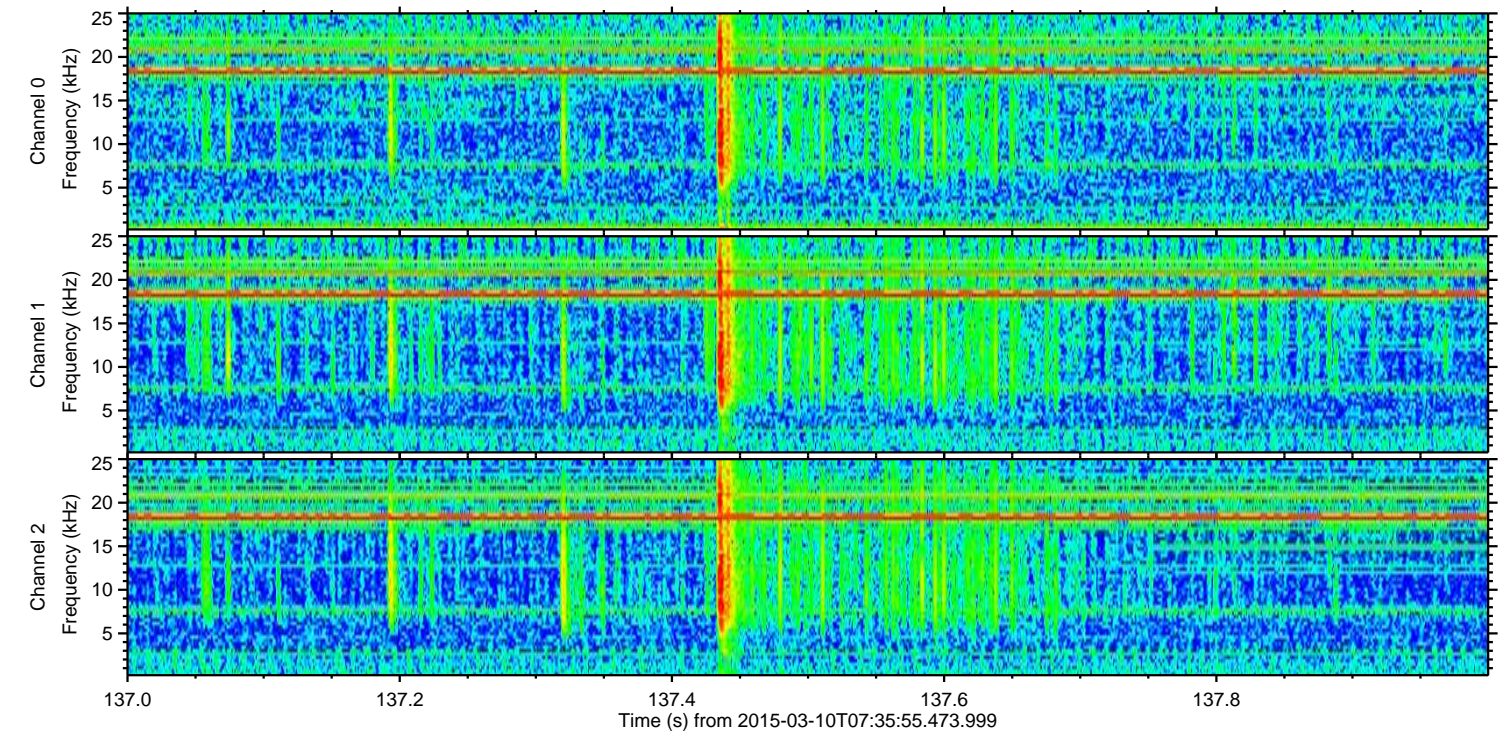
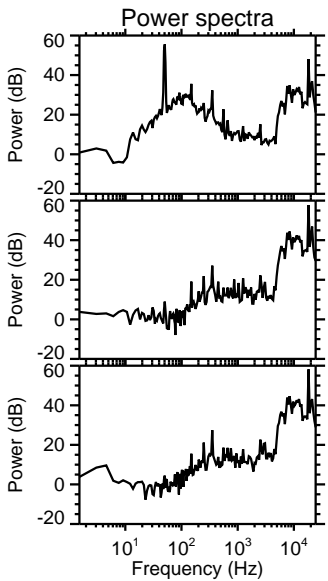
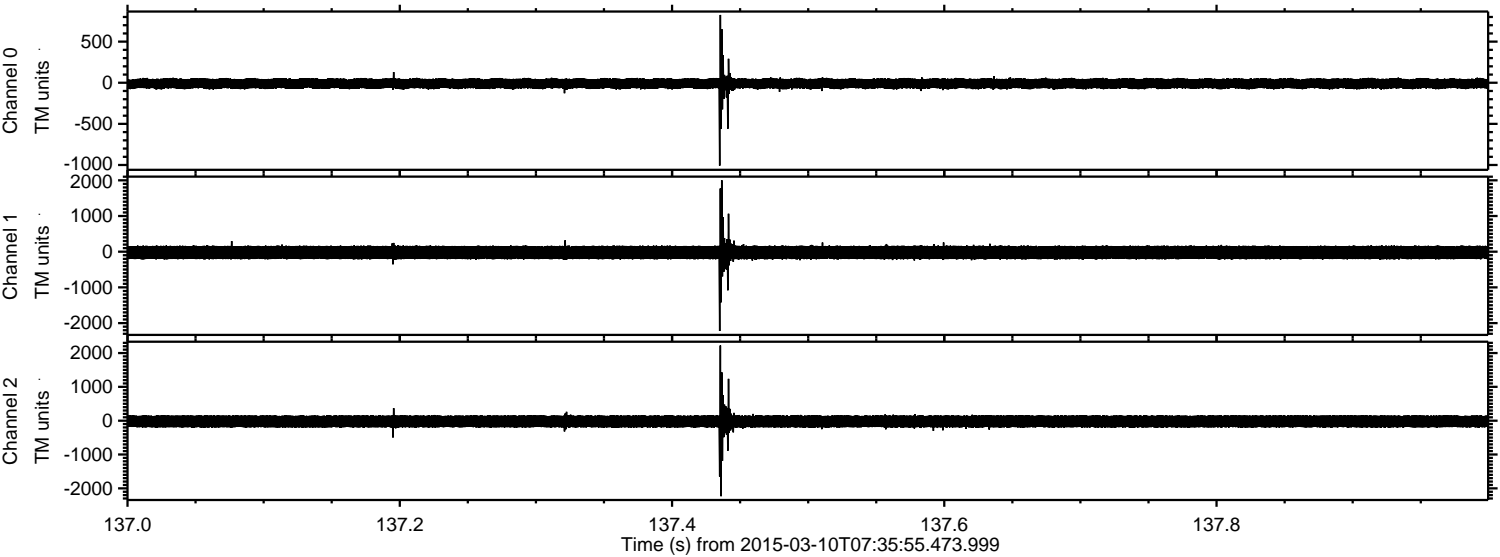


Processed Tue Mar 10 08:43:18 2015 by ELM ver.2012-10-06 from 001__elm20150310_073554__dat00.bin



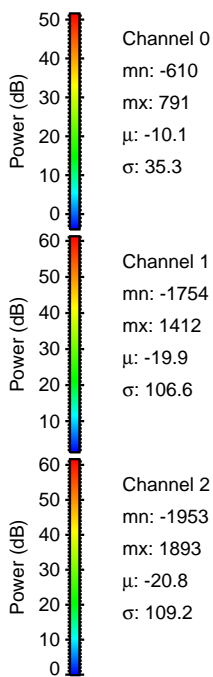
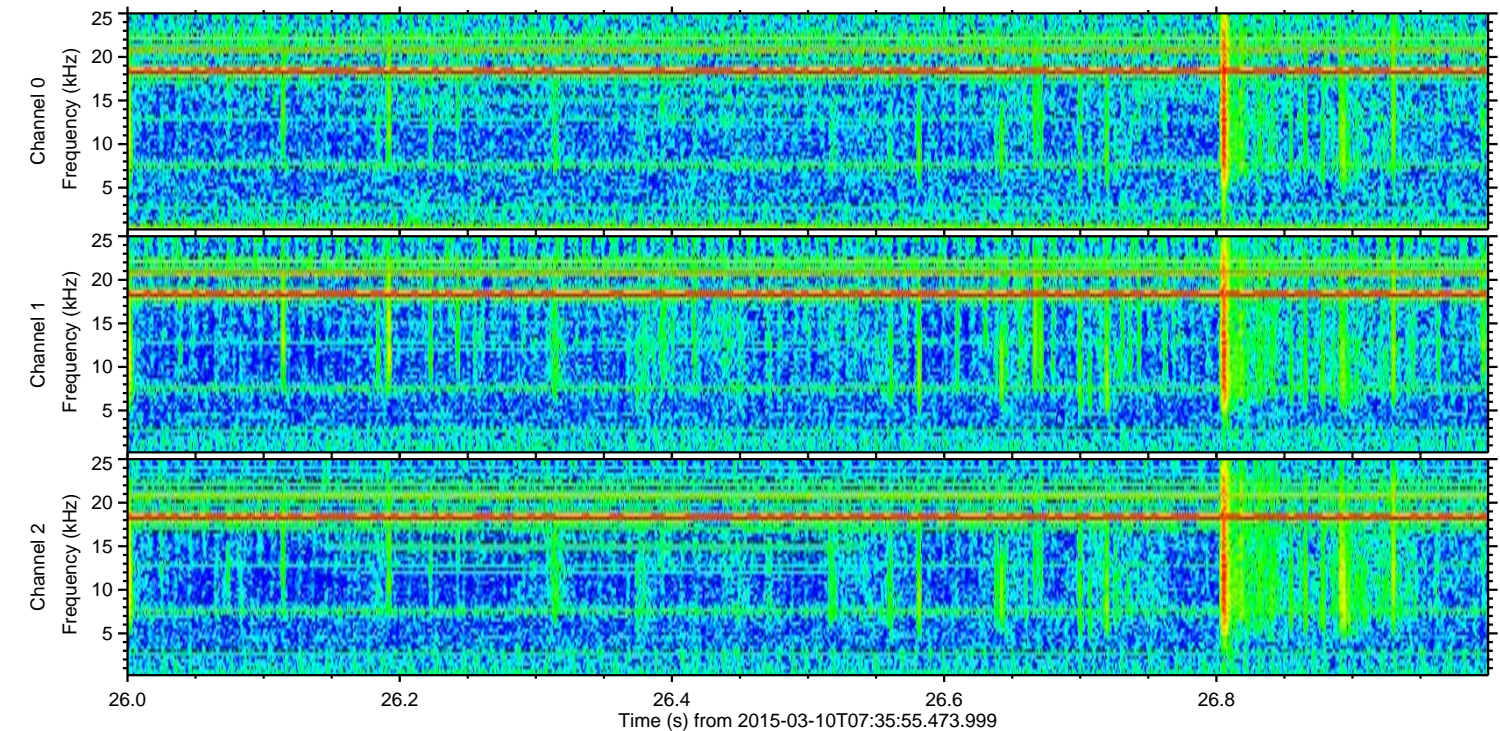
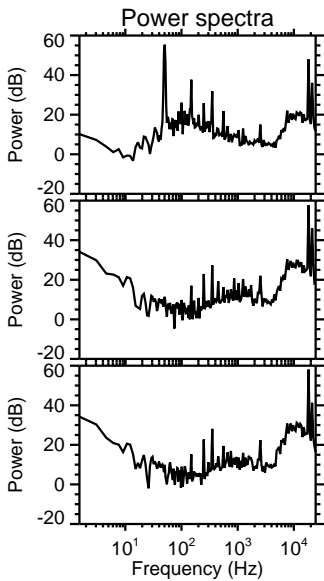
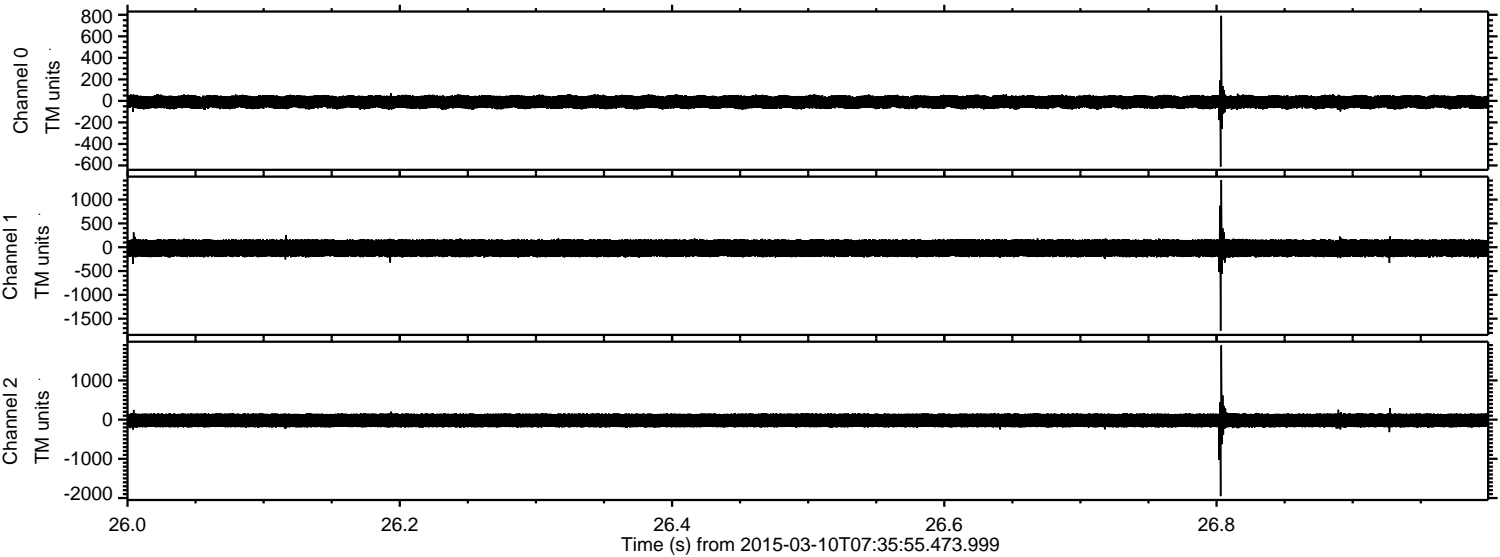
ELMAVAN 3D WAVEFORMS (Measured data sampled at 50 kHz) 49747 packets of 144 samples from 2015-03-10T07:35:55.473.999. Part 138/144

Processed Tue Mar 10 08:43:19 2015 by ELM ver.2012-10-06 from 001__elm20150310_073554__dat00.bin



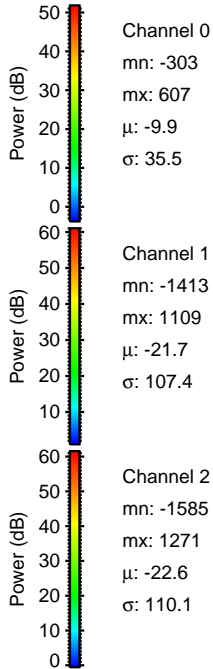
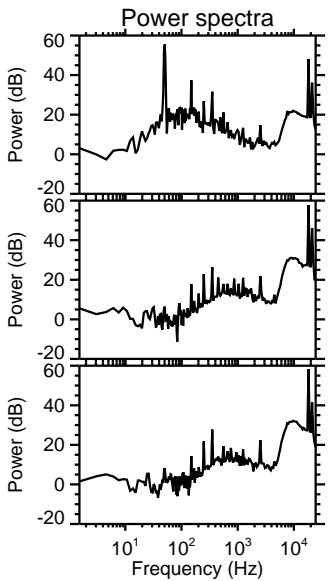
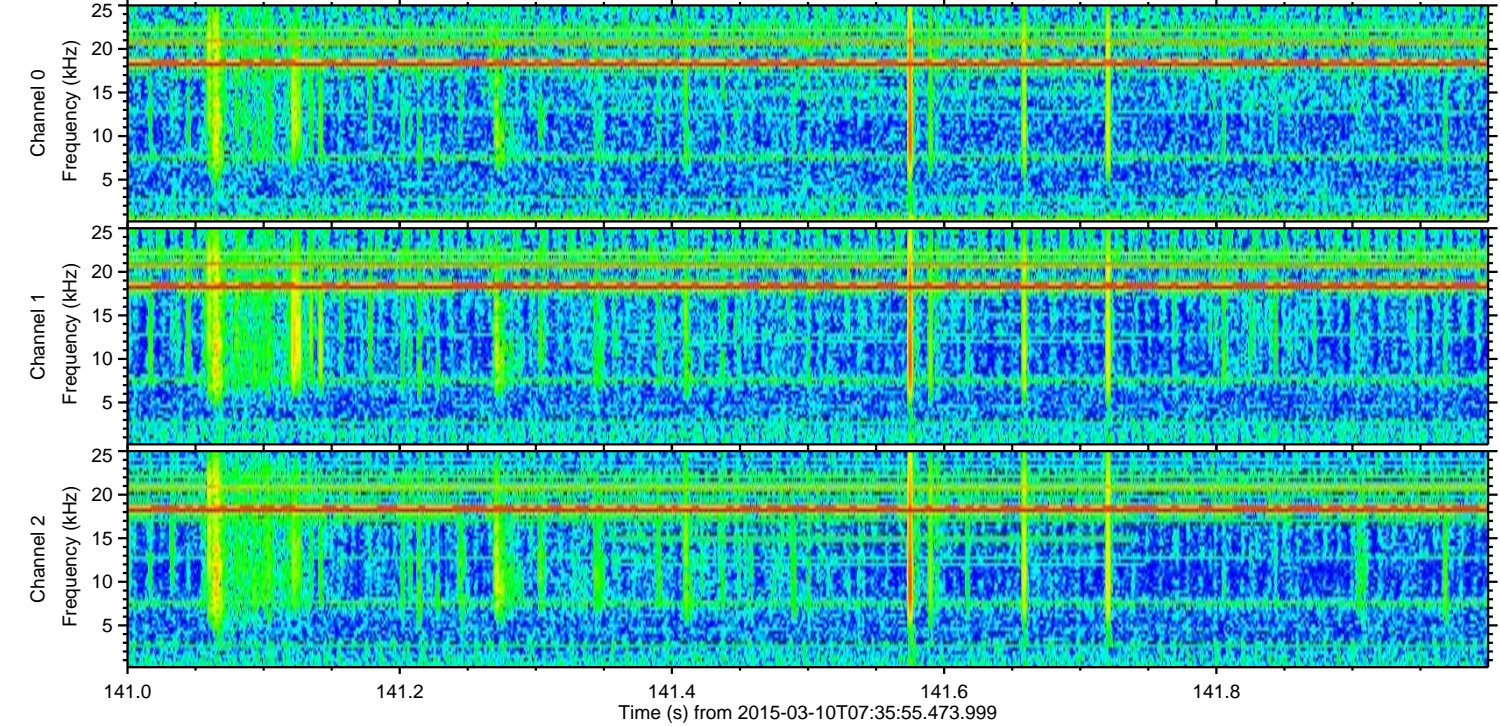
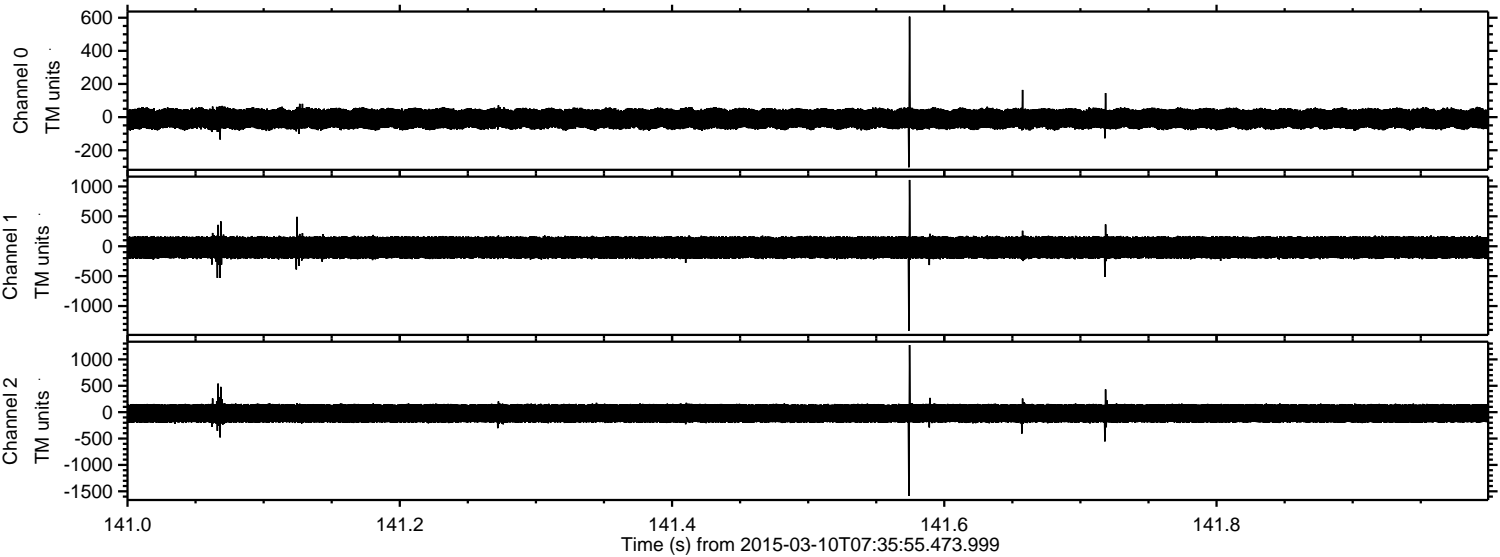
ELMAVAN 3D WAVEFORMS (Measured data sampled at 50 kHz) 49747 packets of 144 samples from 2015-03-10T07:35:55.473.999. Part 27/144

Processed Tue Mar 10 08:43:20 2015 by ELM ver.2012-10-06 from 001__elm20150310_073554__dat00.bin



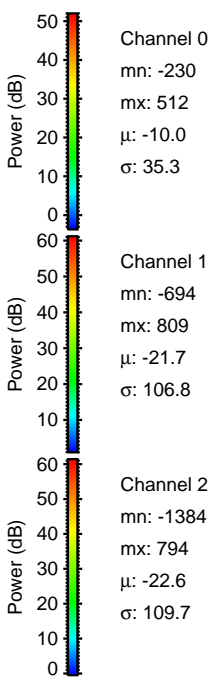
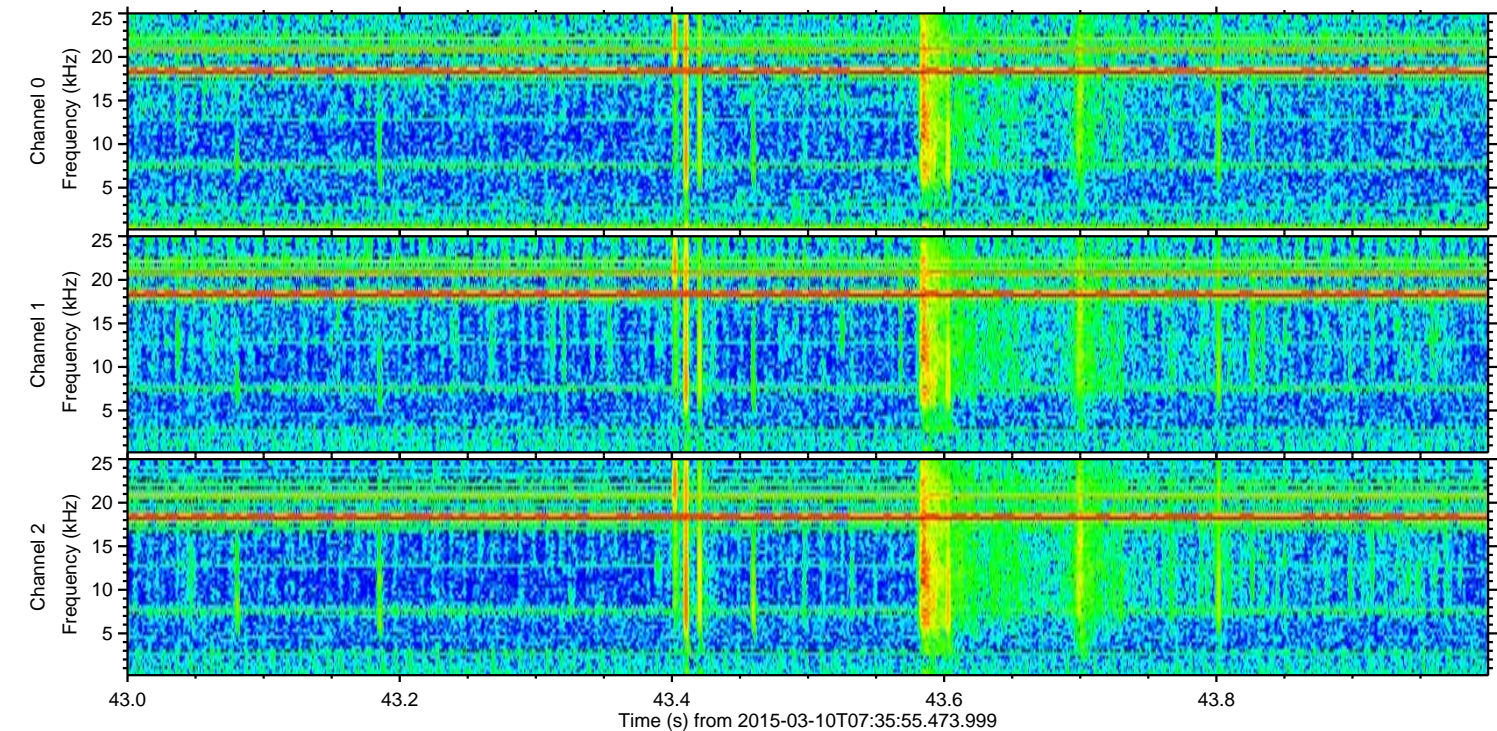
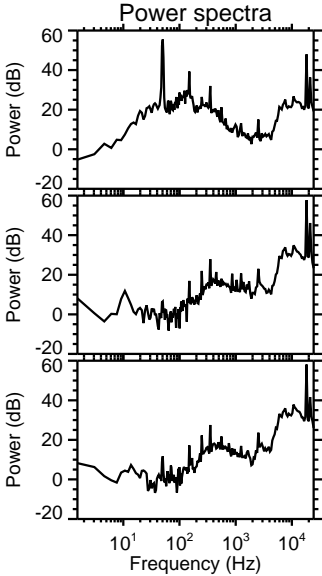
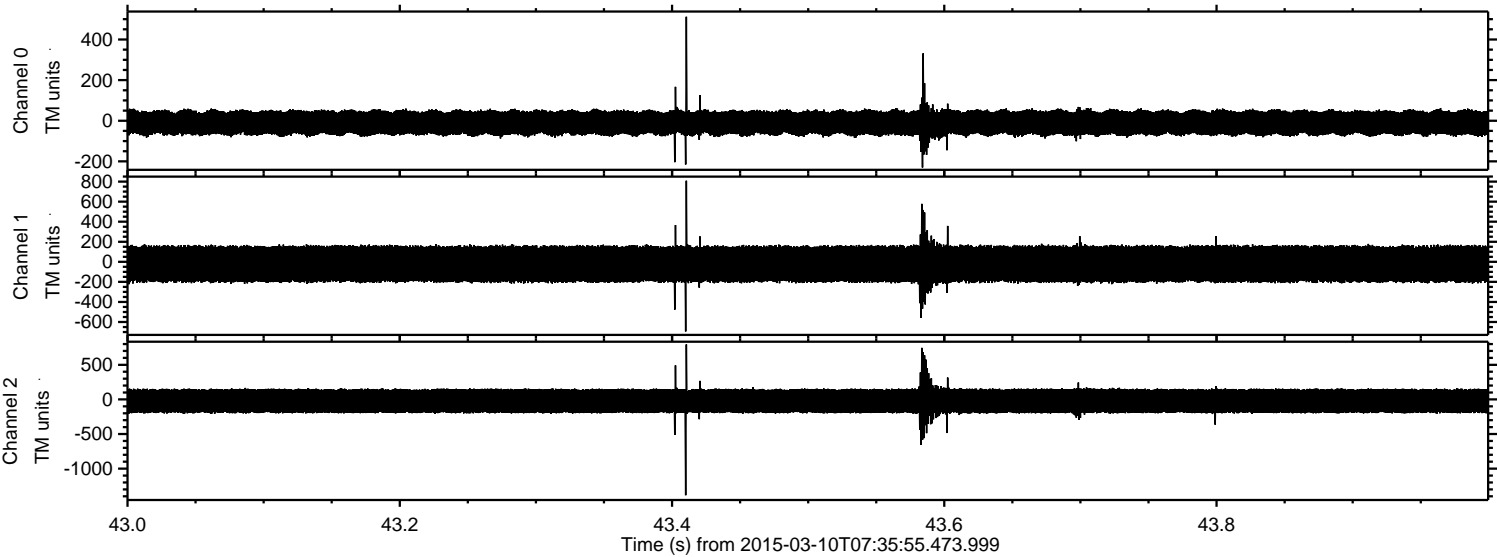
ELMAVAN 3D WAVEFORMS (Measured data sampled at 50 kHz) 49747 packets of 144 samples from 2015-03-10T07:35:55.473.999. Part 142/144

Processed Tue Mar 10 08:43:20 2015 by ELM ver.2012-10-06 from 001__elm20150310_073554__dat00.bin

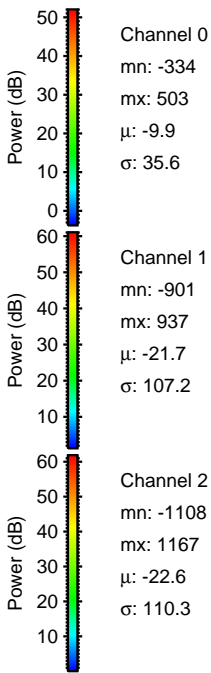
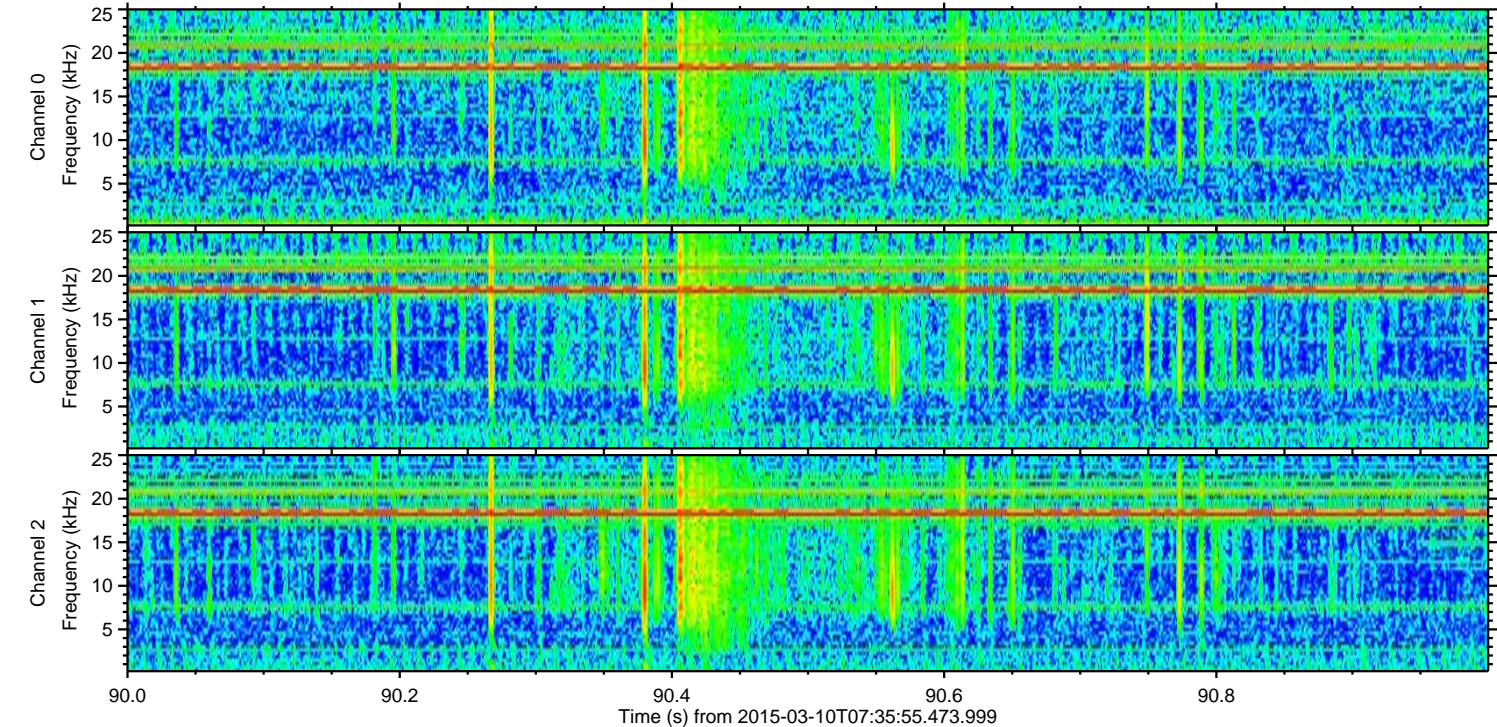
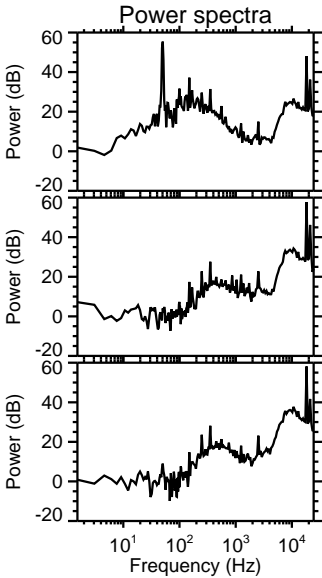
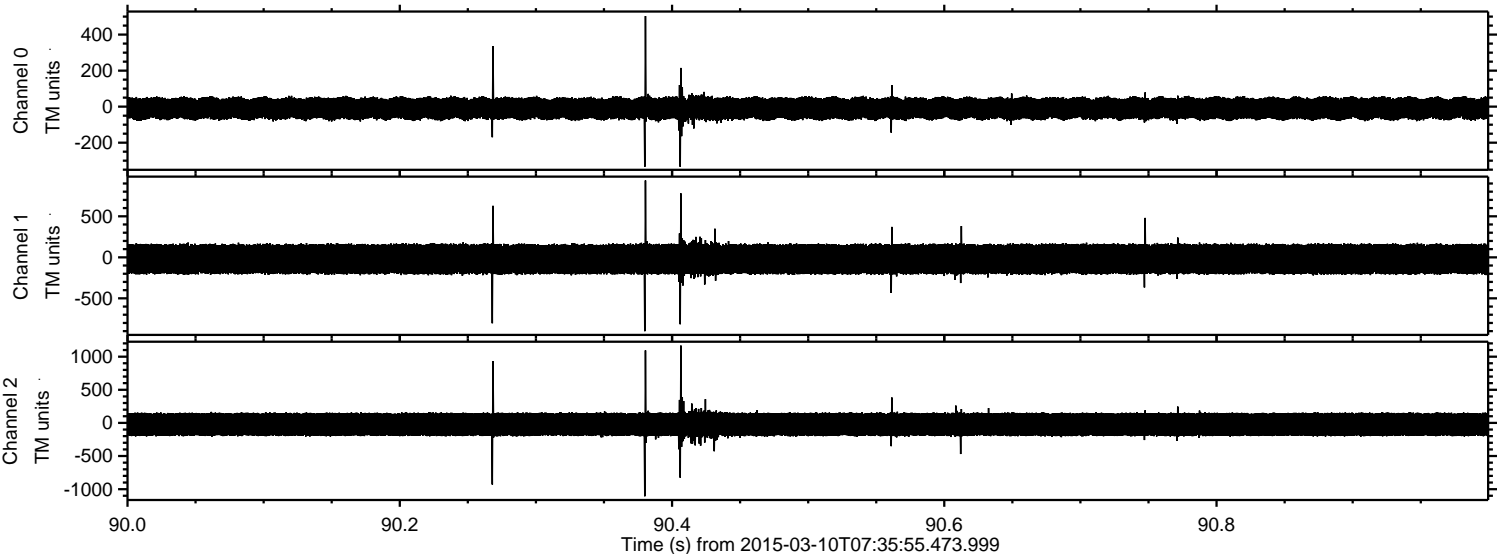


ELMAVAN 3D WAVEFORMS (Measured data sampled at 50 kHz) 49747 packets of 144 samples from 2015-03-10T07:35:55.473.999. Part 44/144

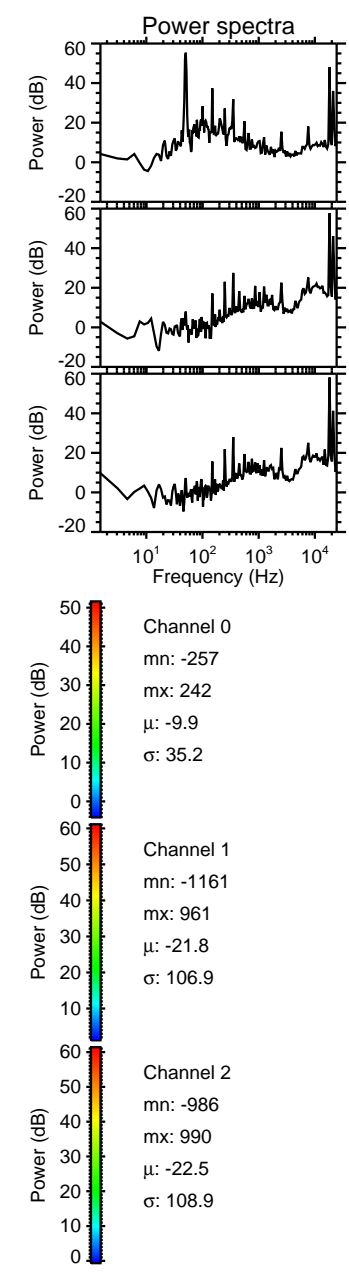
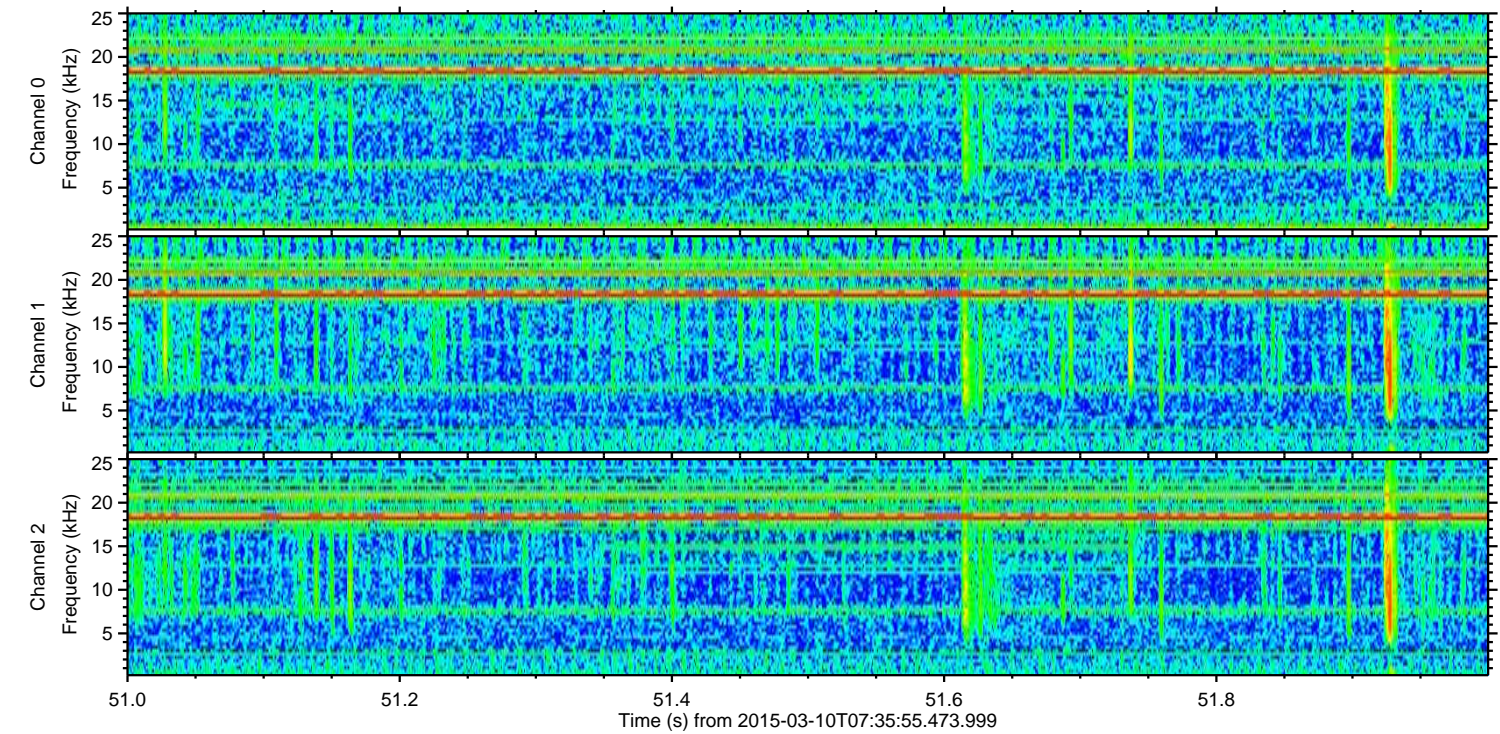
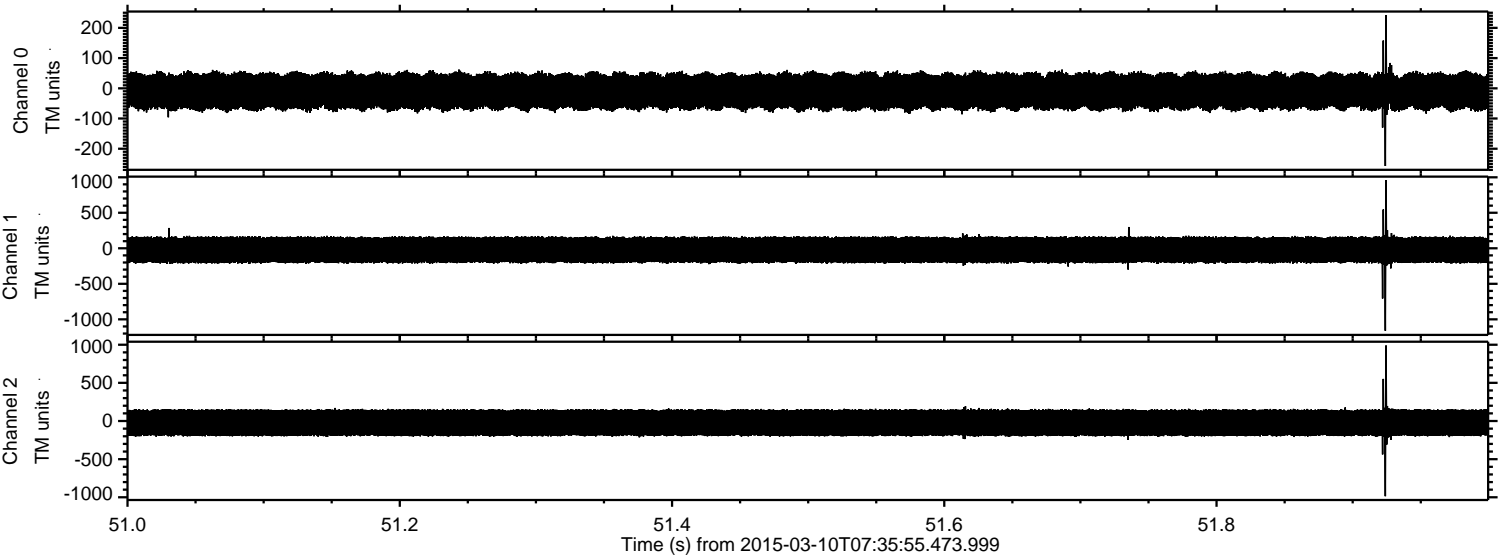
Processed Tue Mar 10 08:43:21 2015 by ELM ver.2012-10-06 from 001__elm20150310_073554__dat00.bin



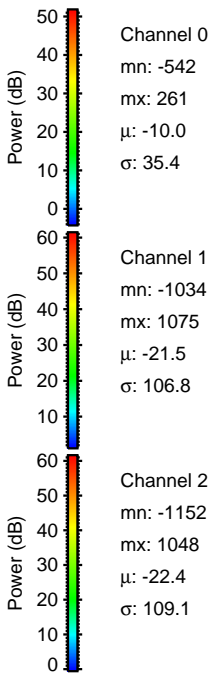
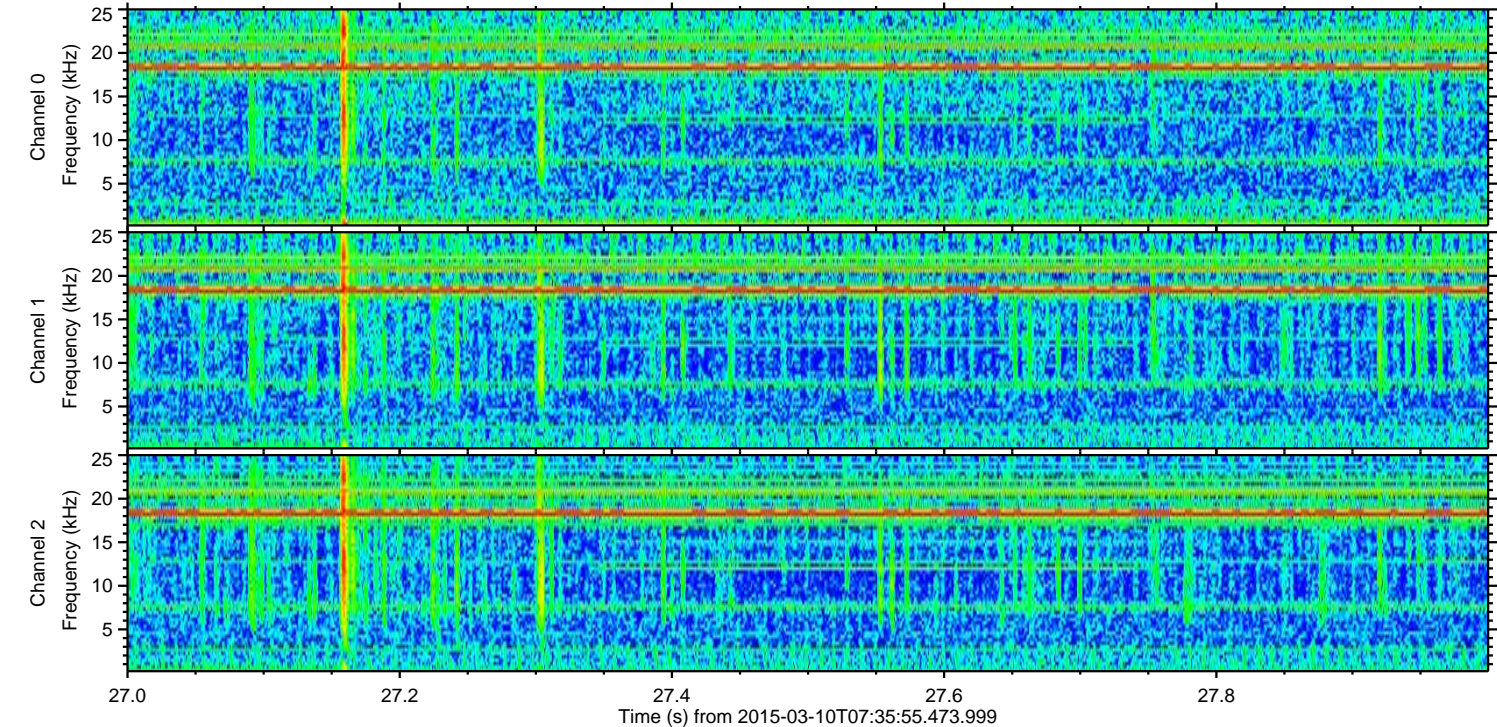
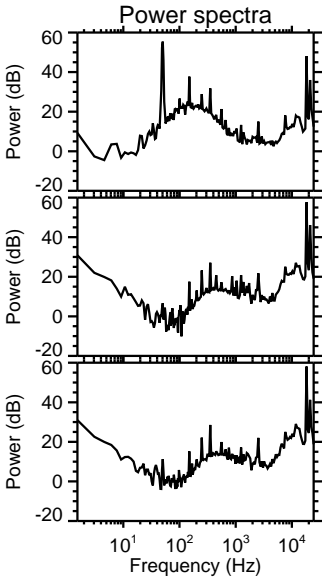
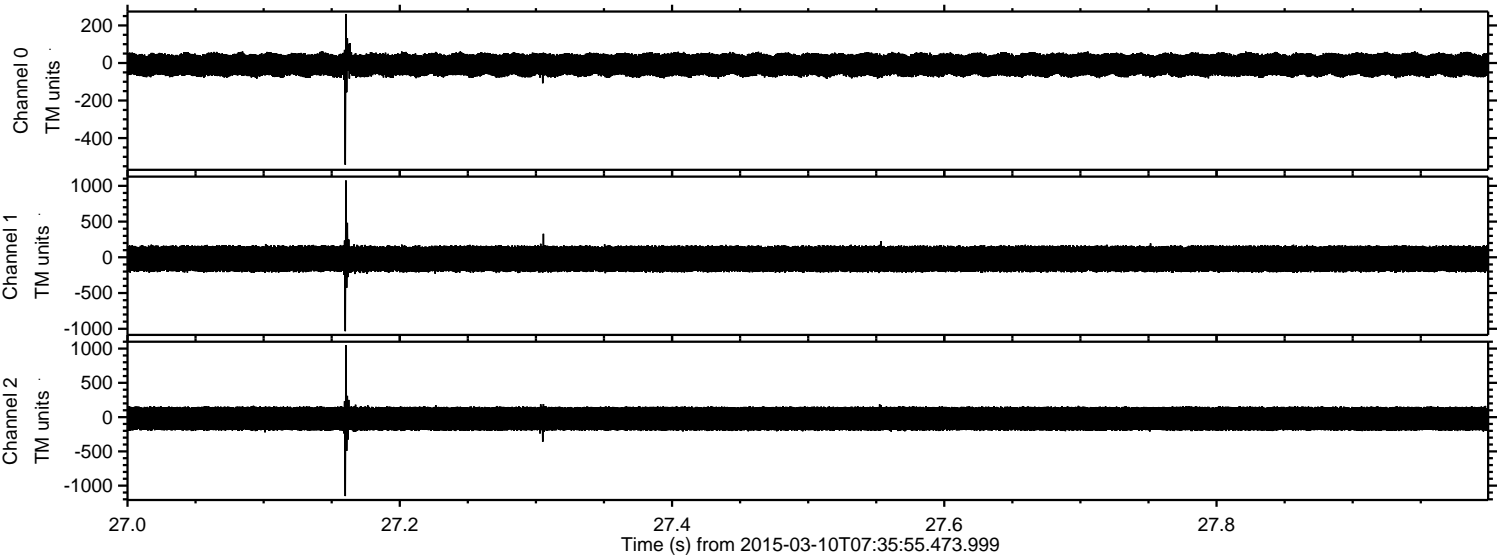
Processed Tue Mar 10 08:43:22 2015 by ELM ver.2012-10-06 from 001__elm20150310_073554__dat00.bin



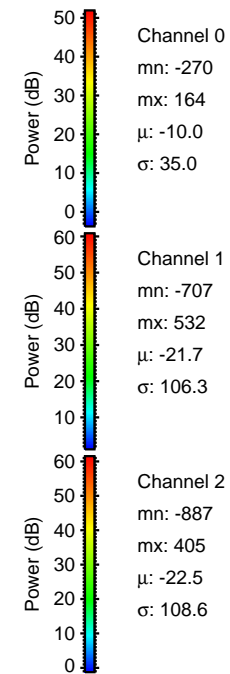
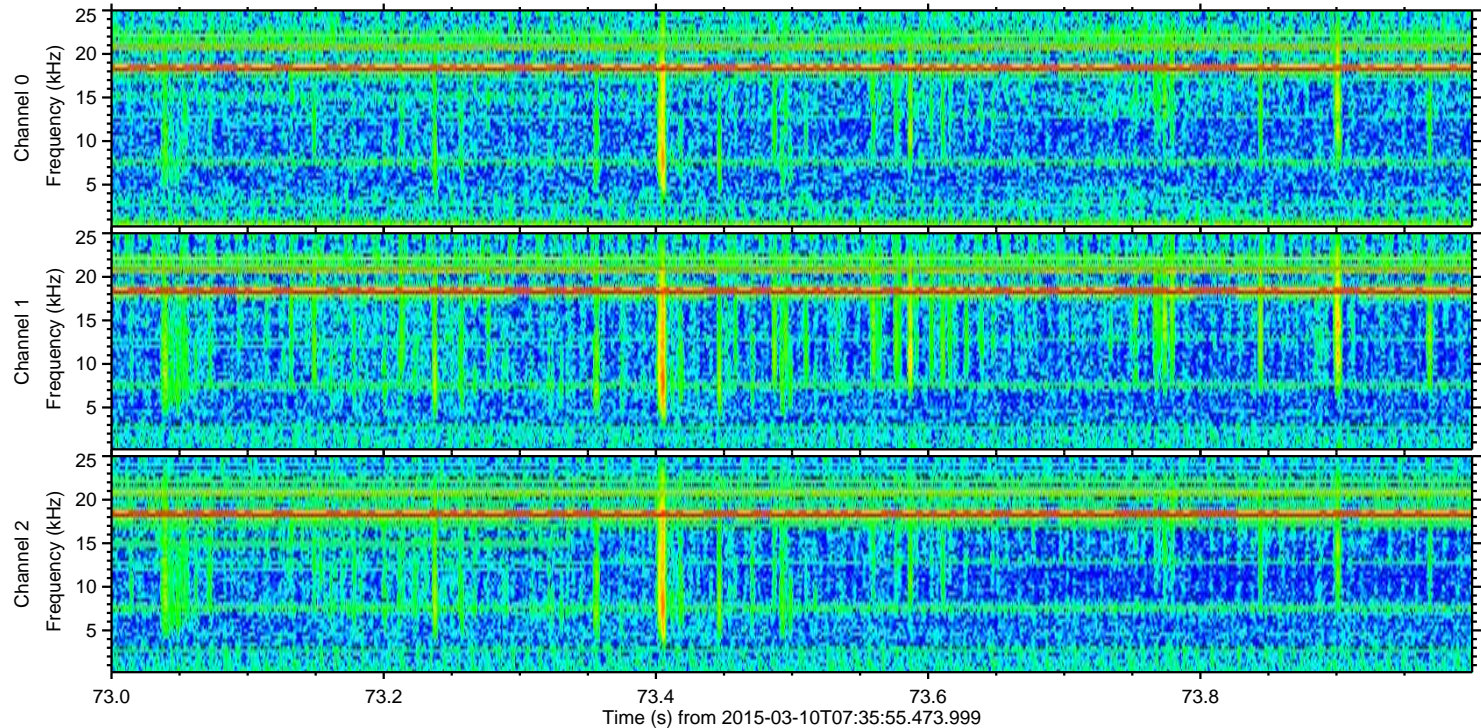
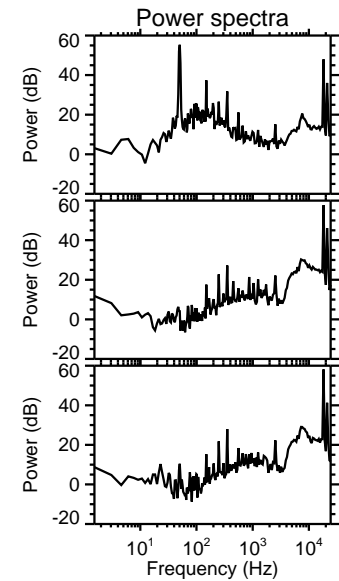
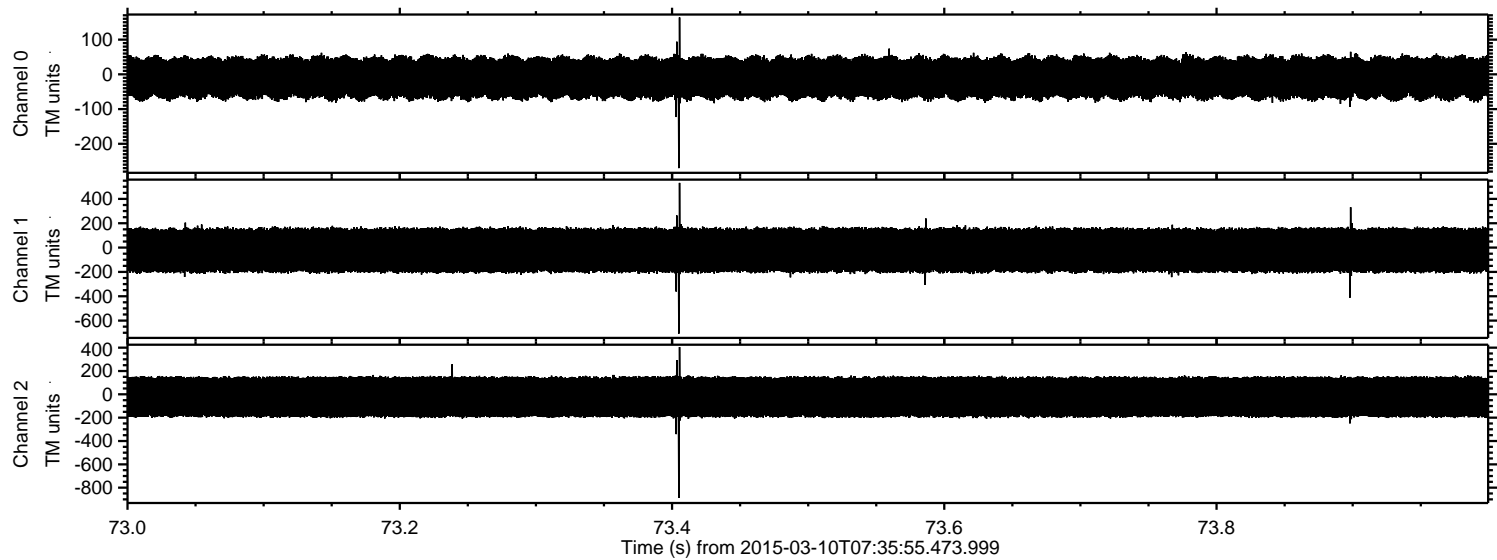
Processed Tue Mar 10 08:43:23 2015 by ELM ver.2012-10-06 from 001__elm20150310_073554__dat00.bin



Processed Tue Mar 10 08:43:24 2015 by ELM ver.2012-10-06 from 001__elm20150310_073554__dat00.bin



Processed Tue Mar 10 08:43:25 2015 by ELM ver.2012-10-06 from 001__elm20150310_073554__dat00.bin



Processed Tue Mar 10 08:43:26 2015 by ELM ver.2012-10-06 from 001__elm20150310_073554__dat00.bin

