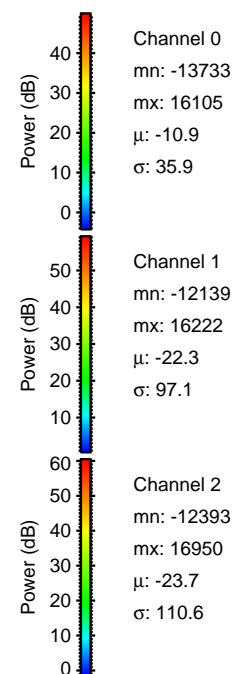
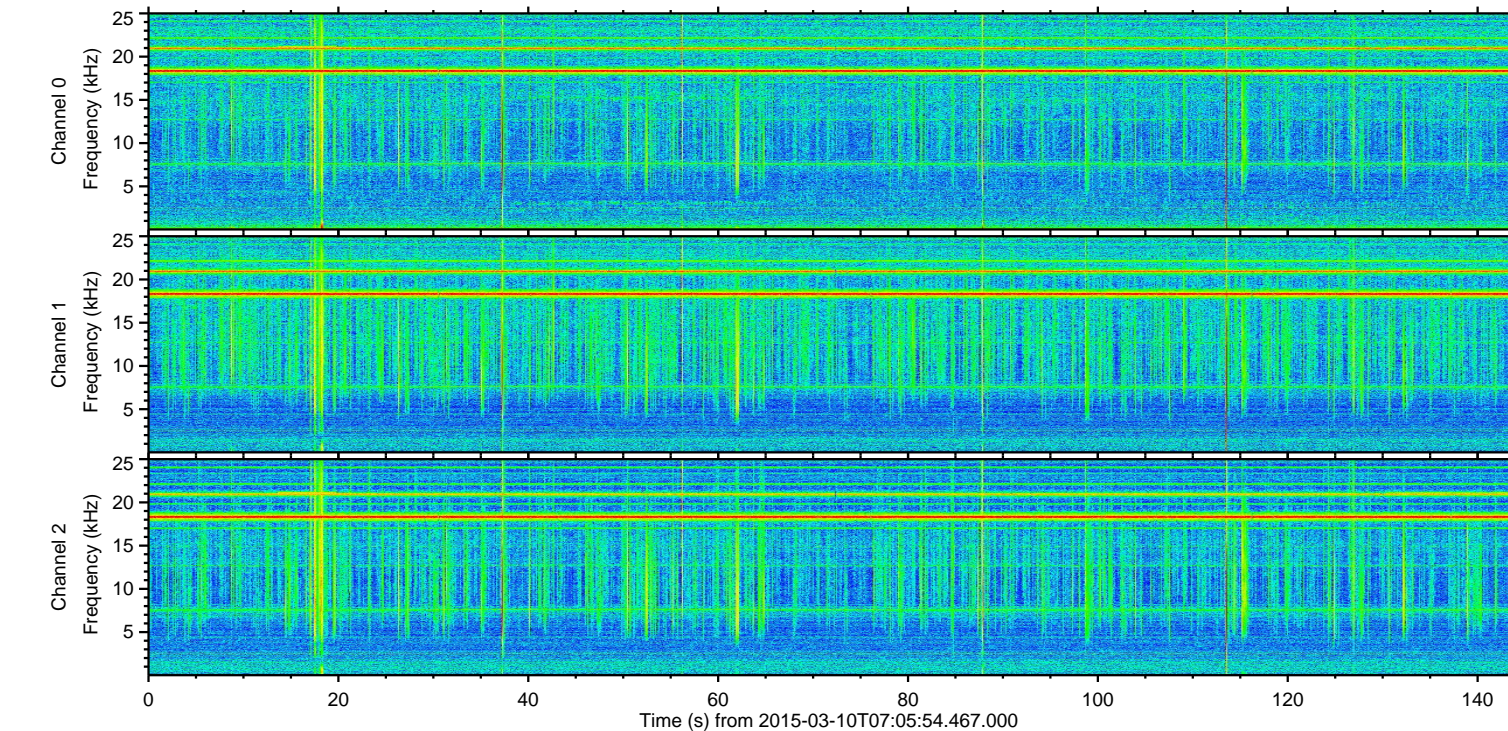
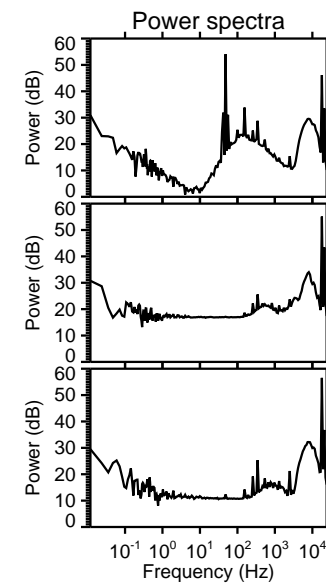
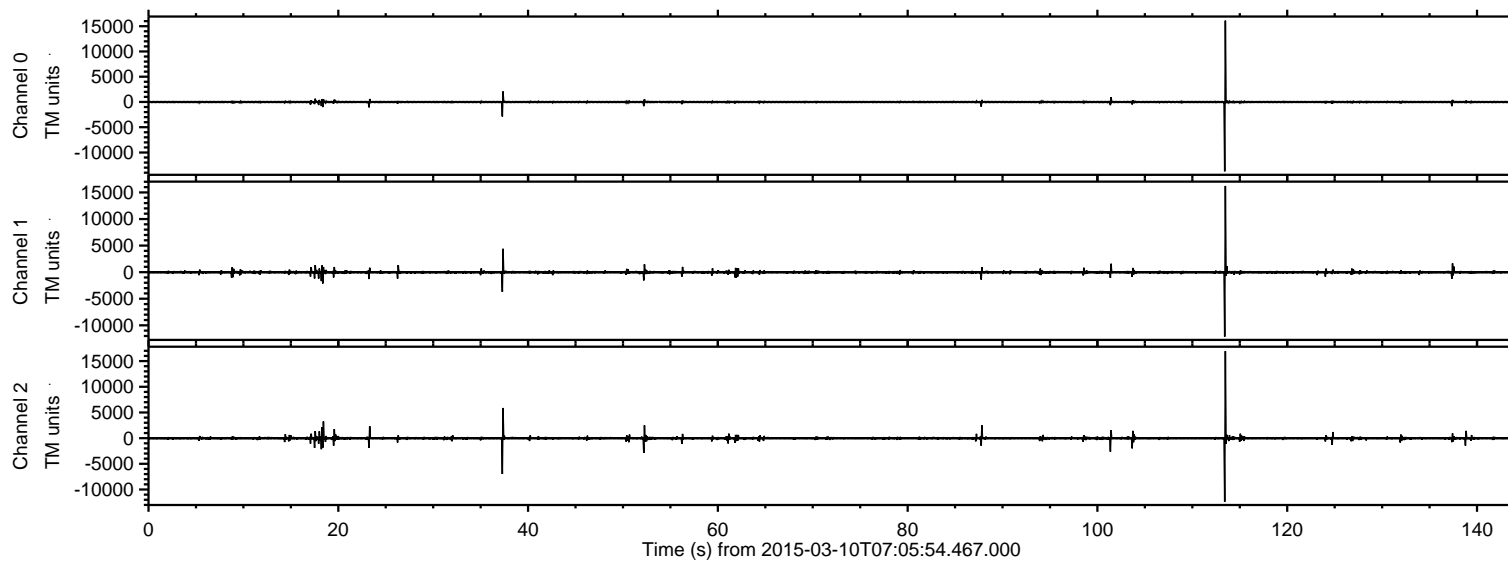


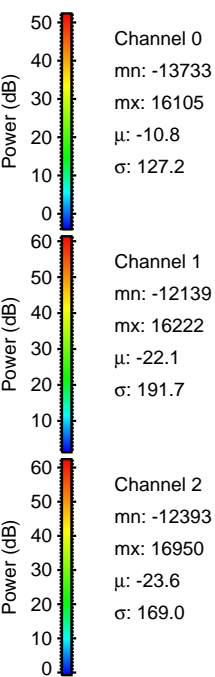
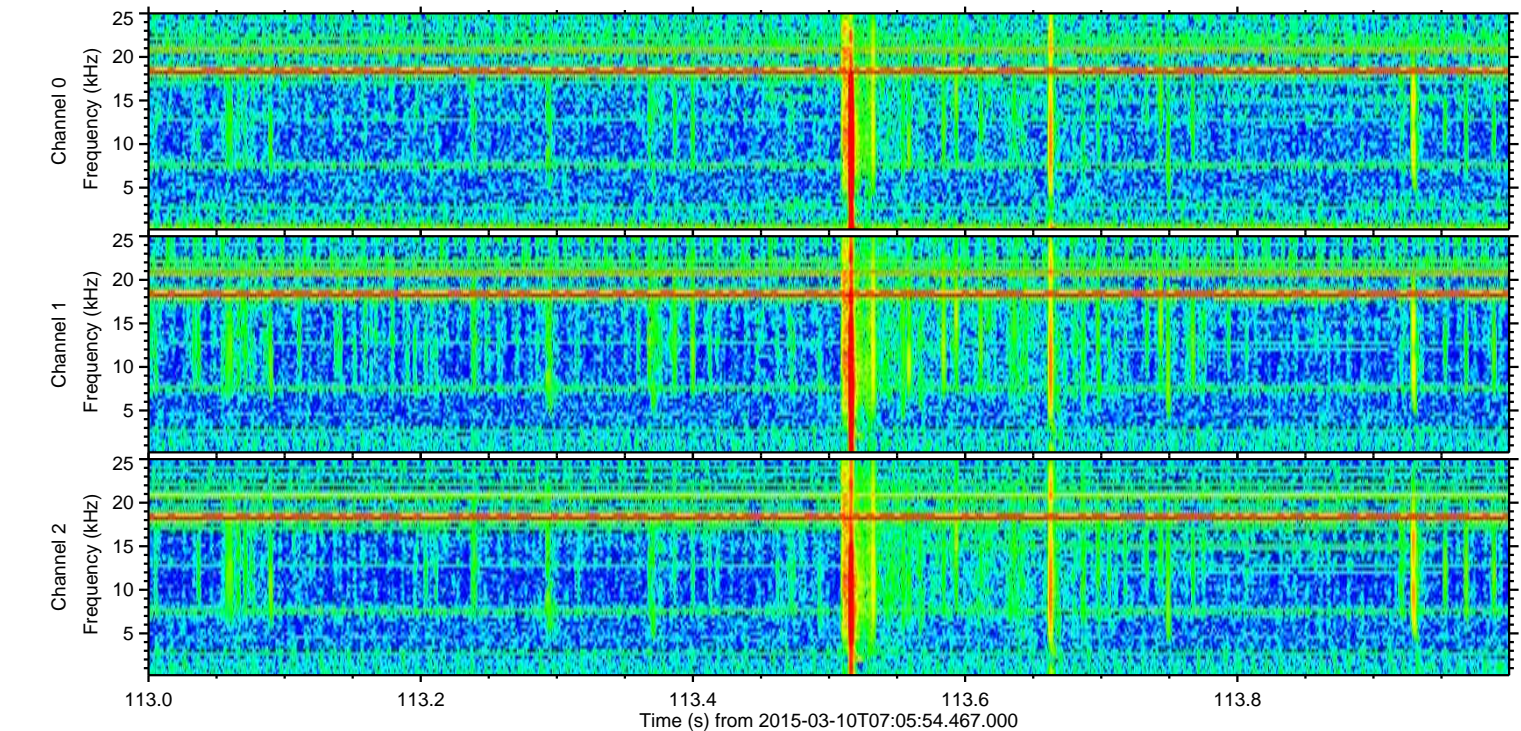
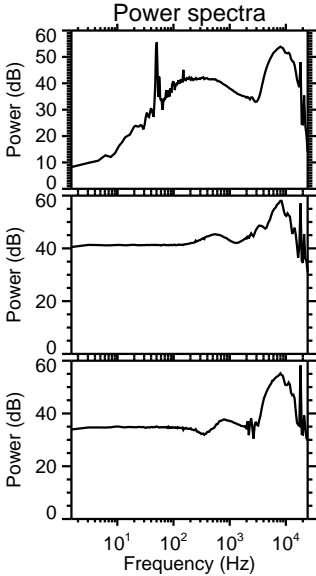
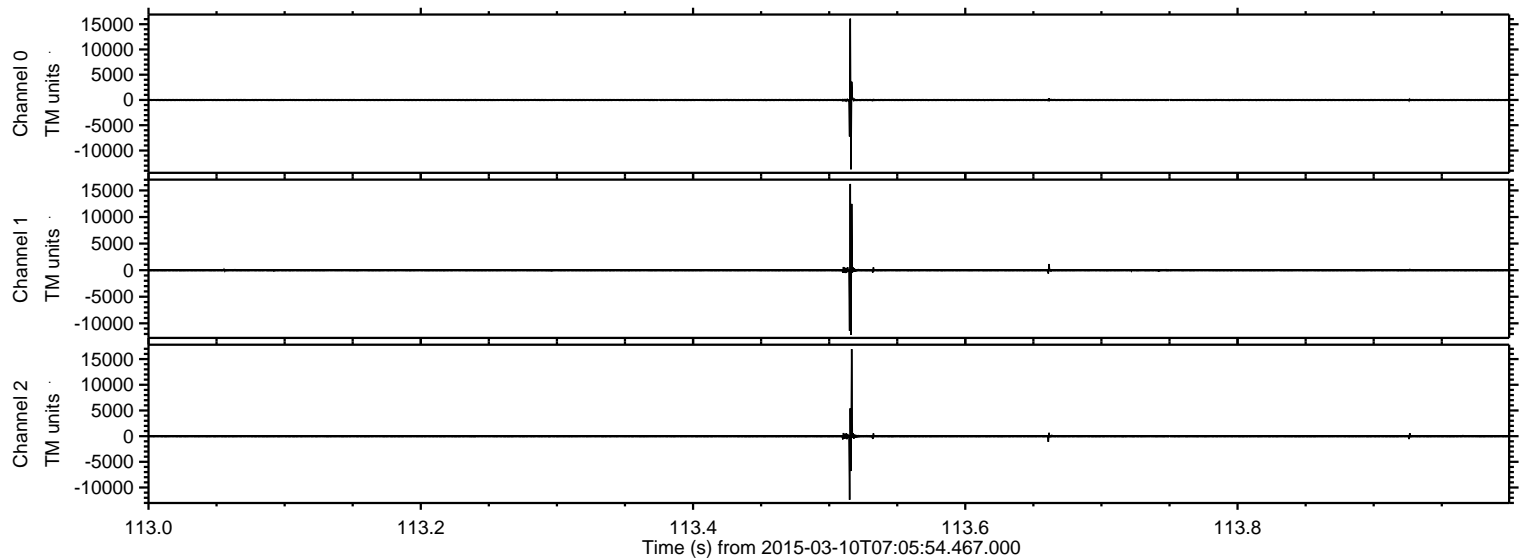
ELMAVAN 3D WAVEFORMS (Measured data sampled at 50 kHz) 49787 packets of 144 samples from 2015-03-10T07:05:54.467.000.

Processed Tue Mar 10 08:13:33 2015 by ELM ver.2012-10-06 from 001__elm20150310_070553__dat00.bin

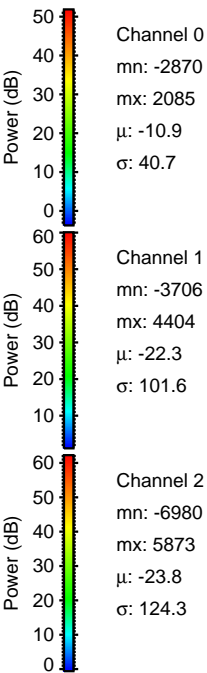
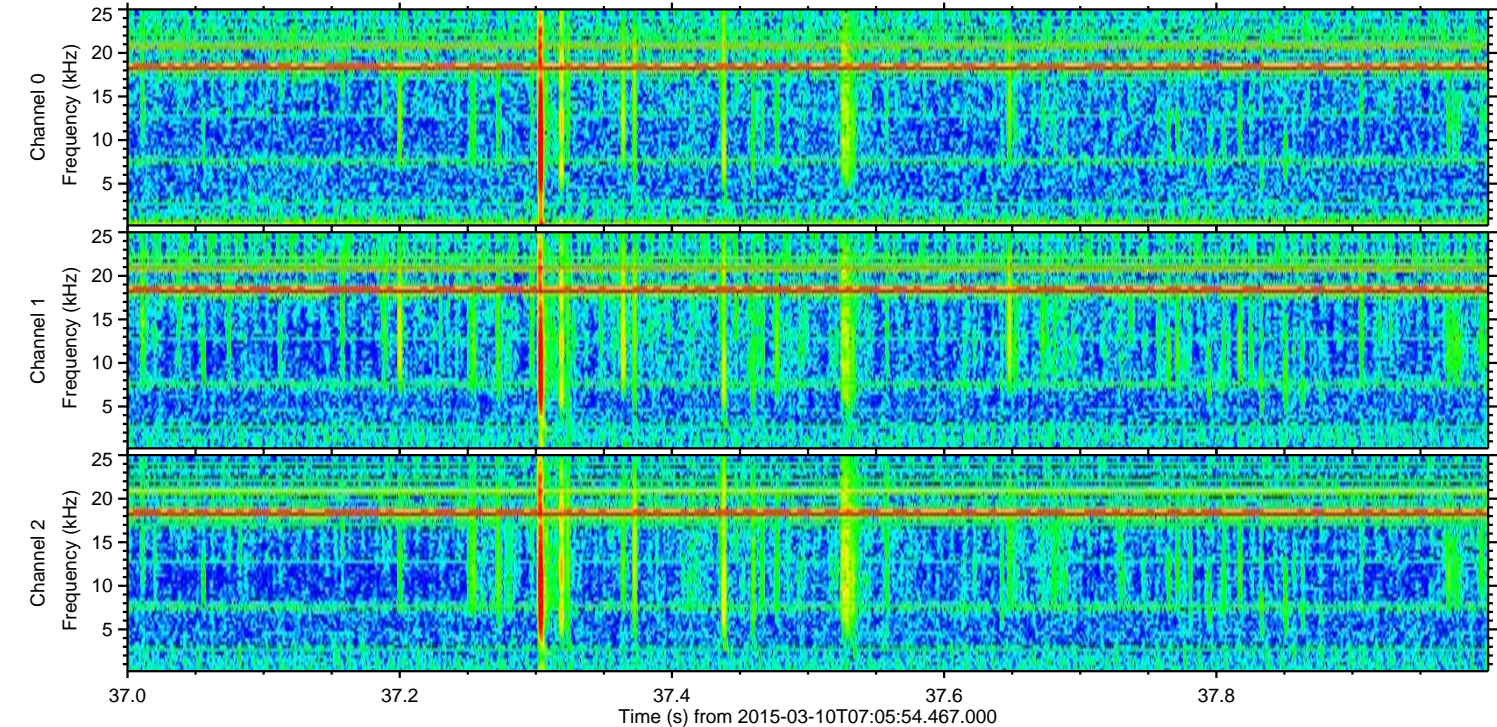
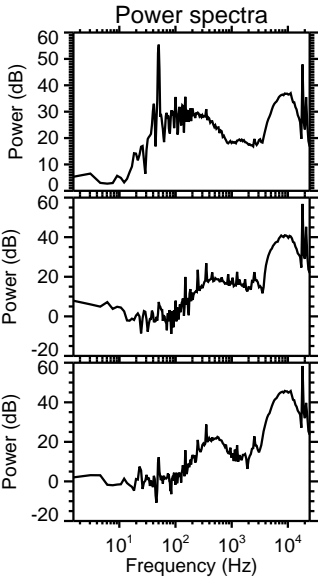
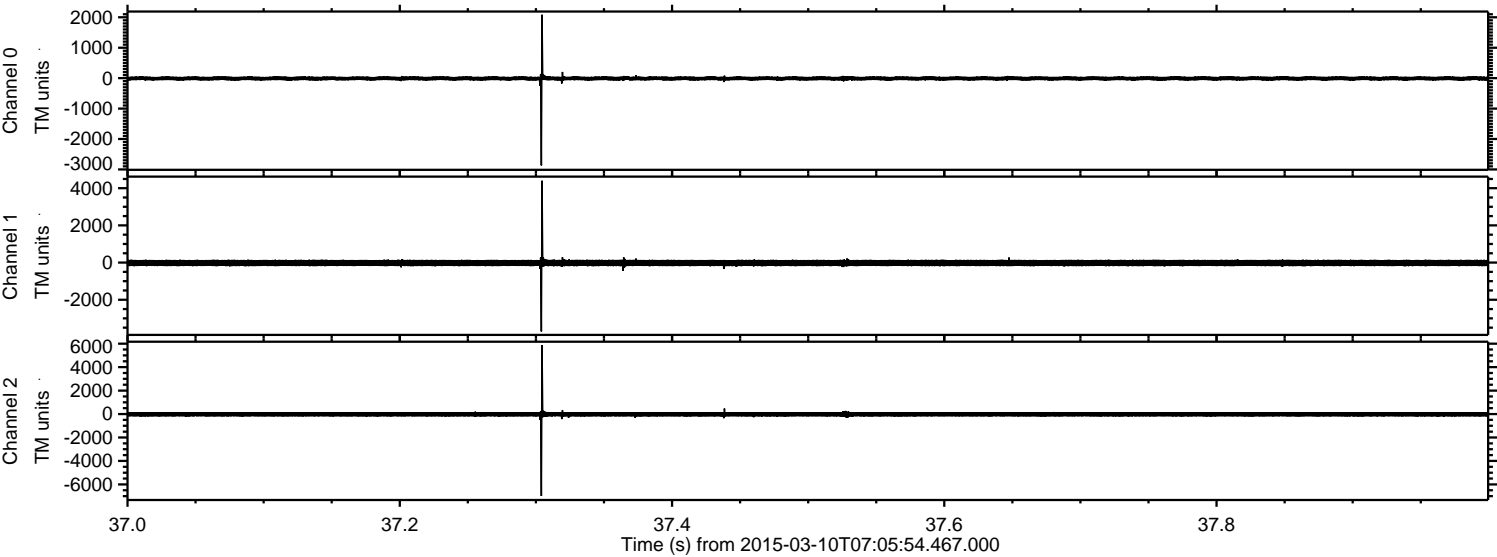


ELMAVAN 3D WAVEFORMS (Measured data sampled at 50 kHz) 49787 packets of 144 samples from 2015-03-10T07:05:54.467.000. Part 114/144

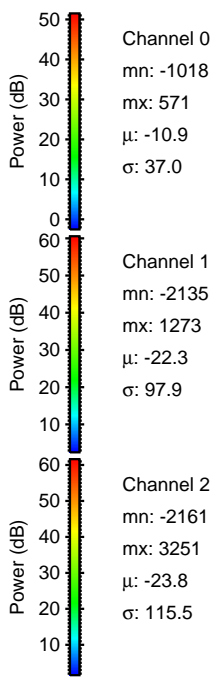
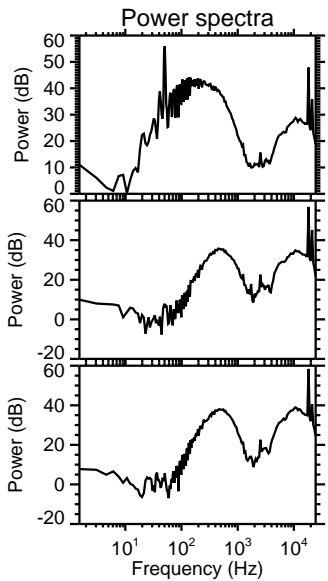
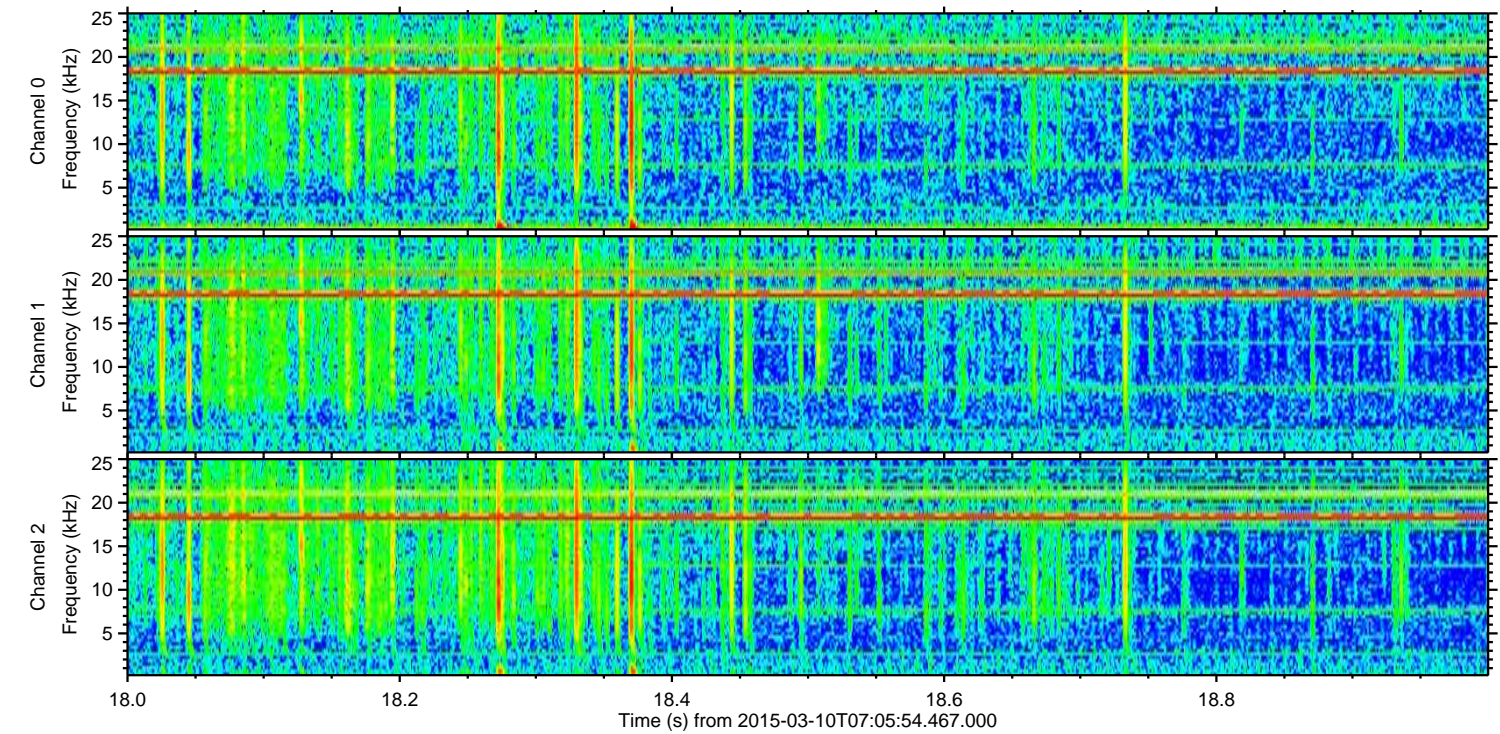
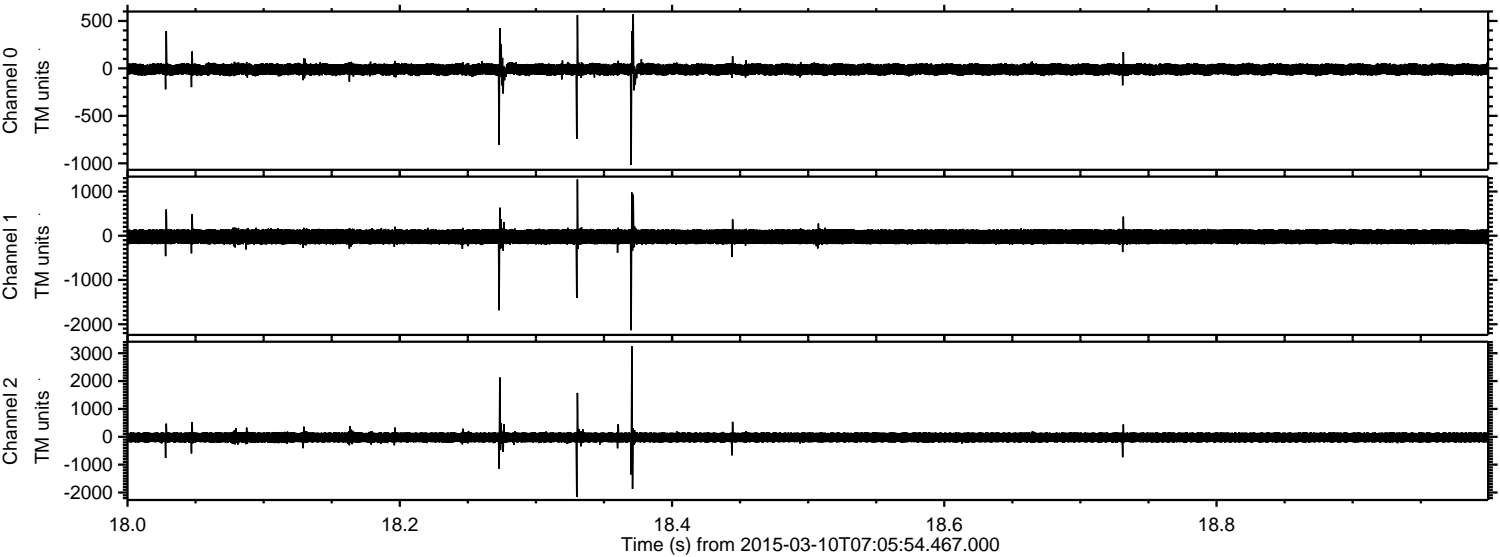
Processed Tue Mar 10 08:13:45 2015 by ELM ver.2012-10-06 from 001__elm20150310_070553__dat00.bin



Processed Tue Mar 10 08:13:46 2015 by ELM ver.2012-10-06 from 001__elm20150310_070553__dat00.bin



Processed Tue Mar 10 08:13:47 2015 by ELM ver.2012-10-06 from 001__elm20150310_070553__dat00.bin

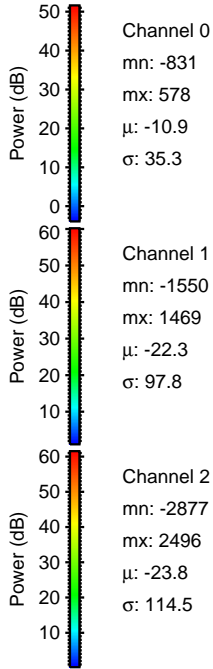
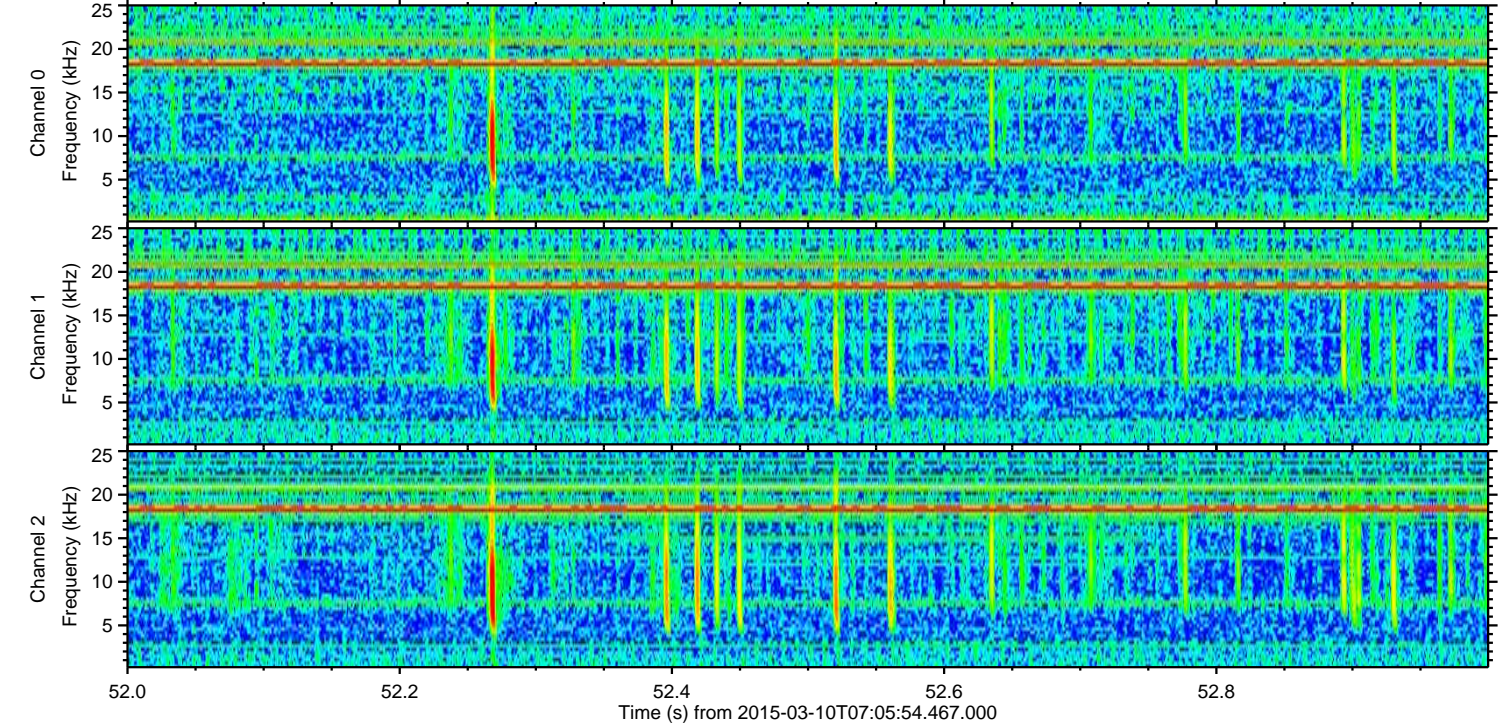
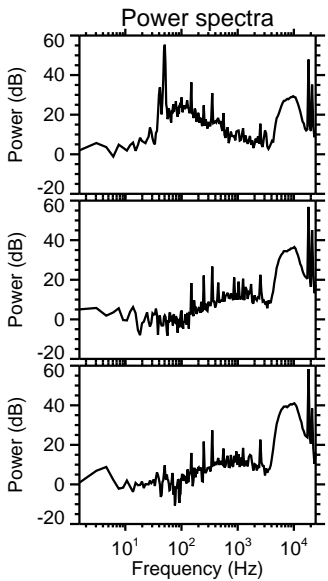
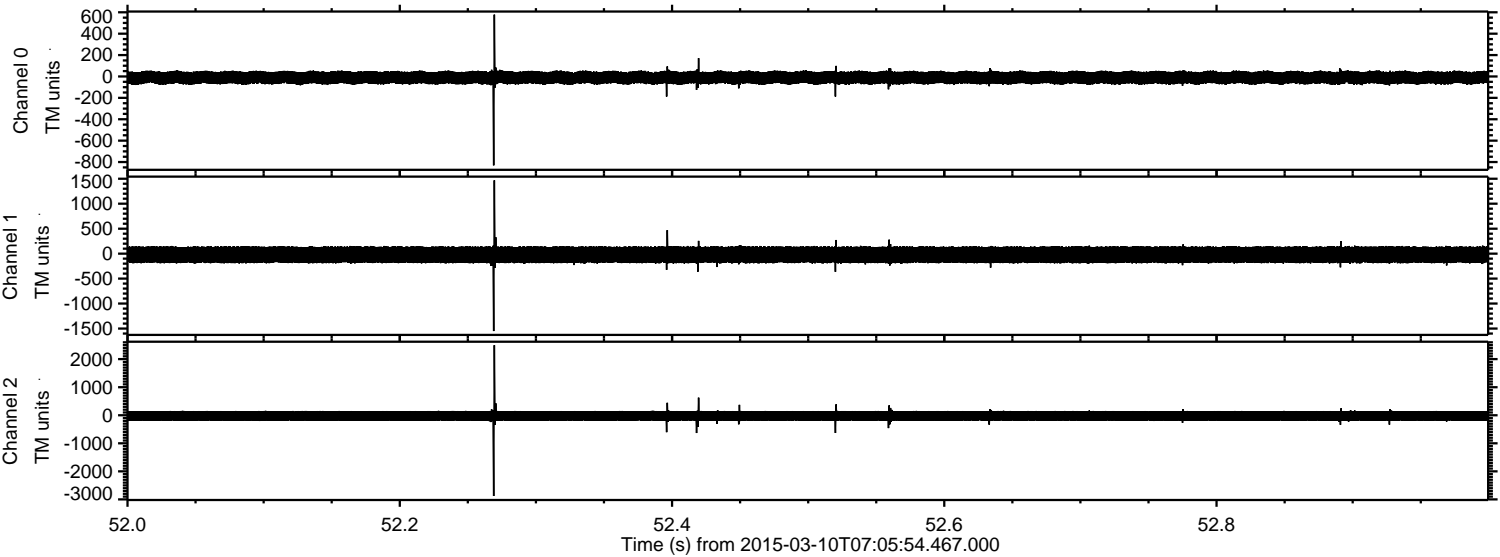


Channel 0
mn: -1018
mx: 571
 μ : -10.9
 σ : 37.0

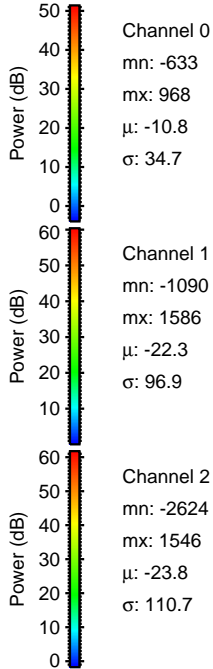
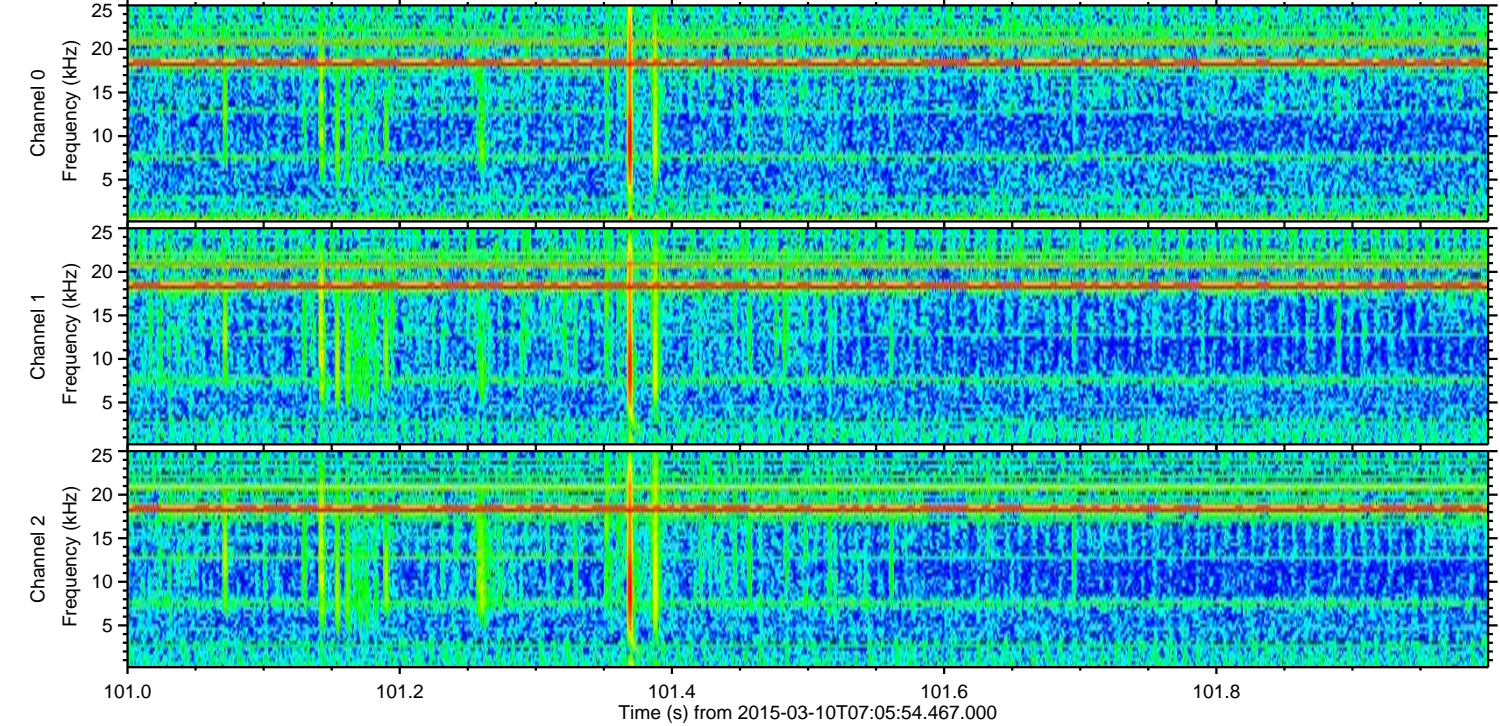
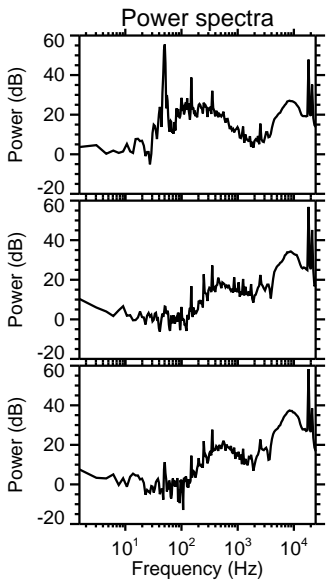
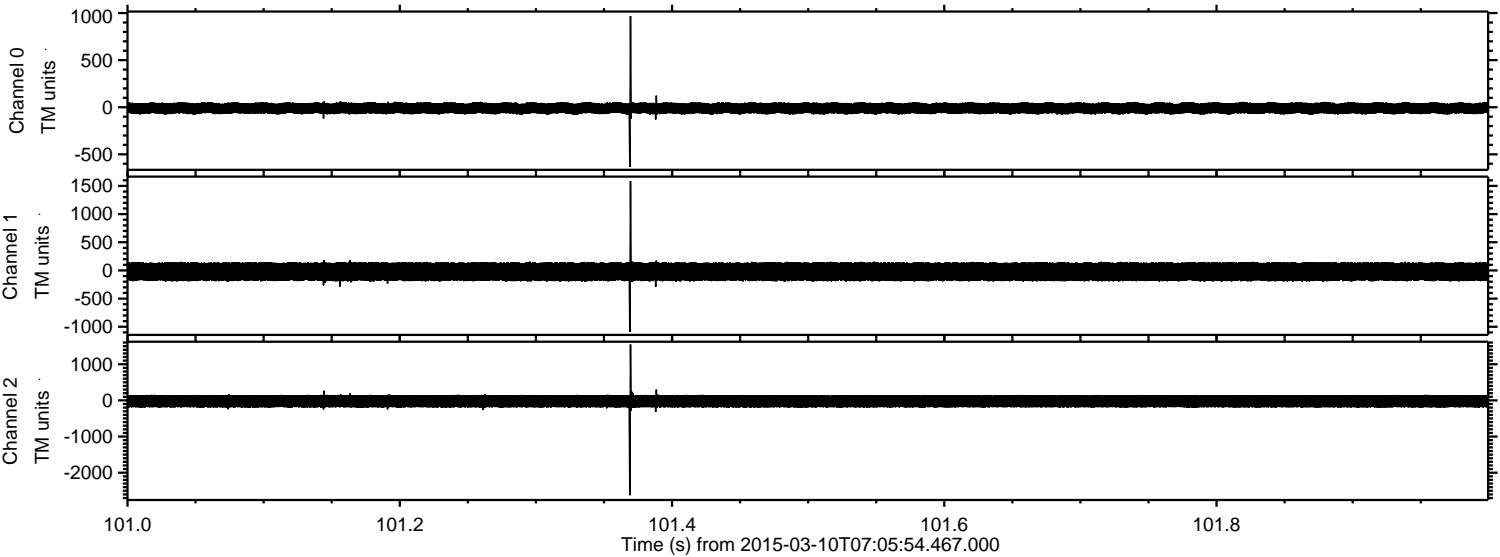
Channel 1
mn: -2135
mx: 1273
 μ : -22.3
 σ : 97.9

Channel 2
mn: -2161
mx: 3251
 μ : -23.8
 σ : 115.5

Processed Tue Mar 10 08:13:48 2015 by ELM ver.2012-10-06 from 001__elm20150310_070553__dat00.bin



Processed Tue Mar 10 08:13:49 2015 by ELM ver.2012-10-06 from 001__elm20150310_070553__dat00.bin

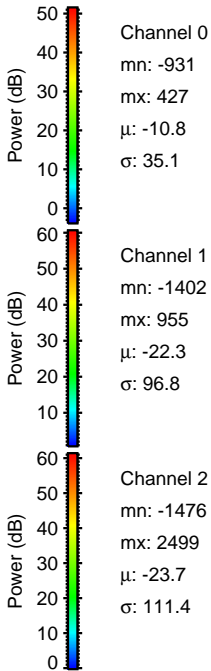
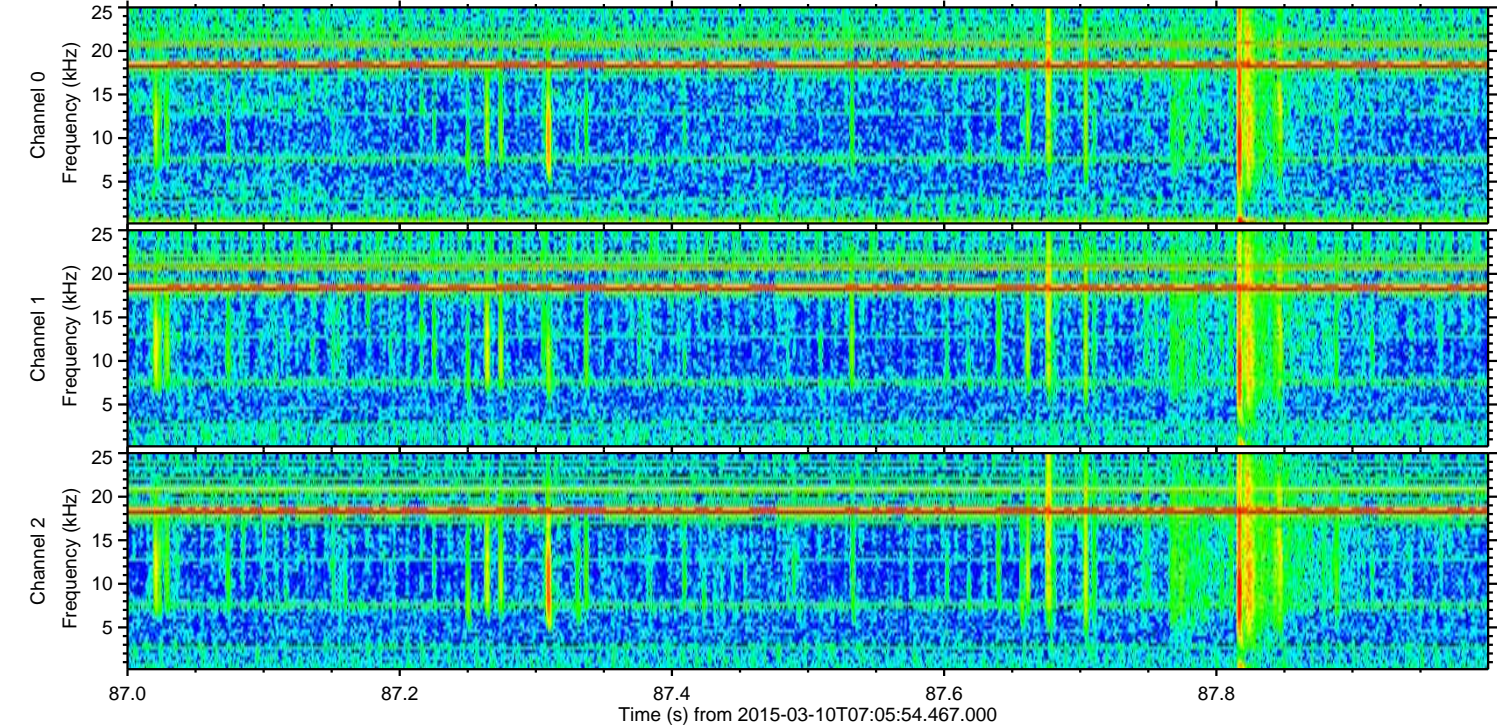
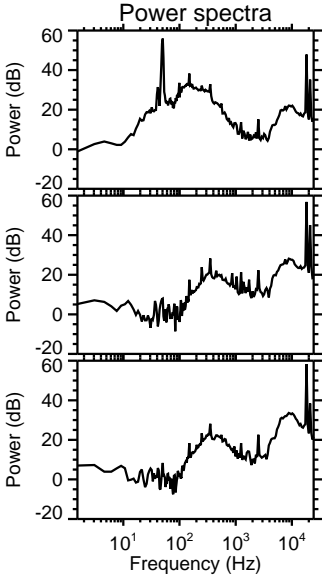
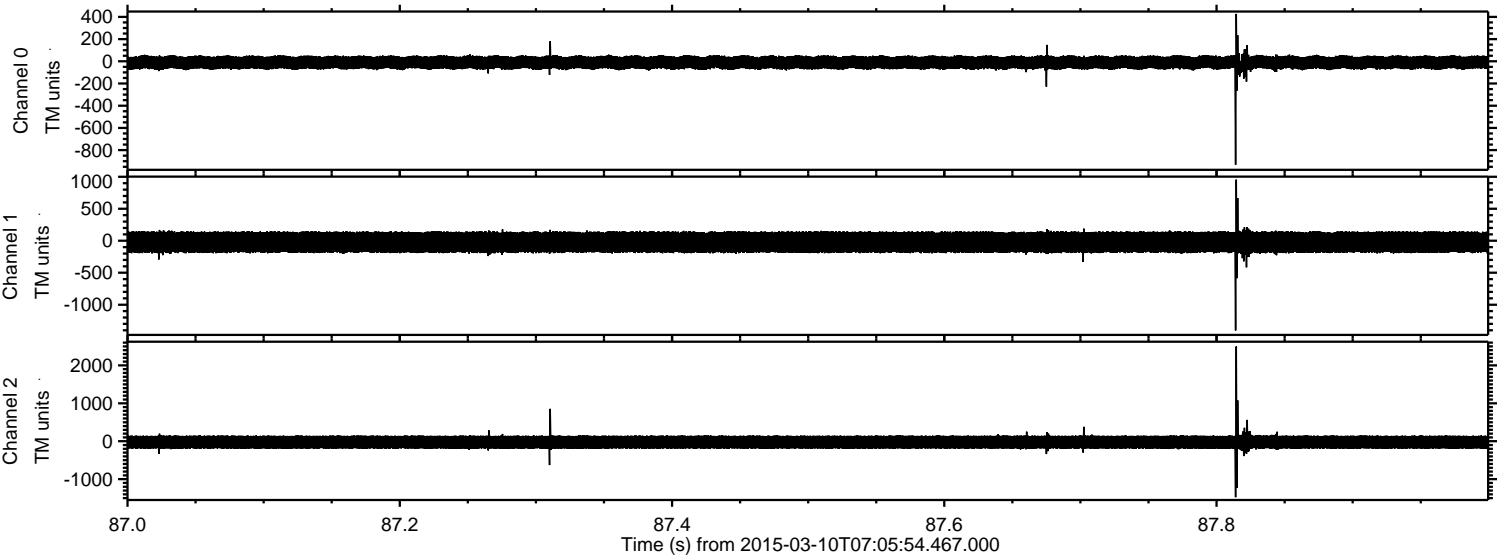


Channel 0
mn: -633
mx: 968
 μ : -10.8
 σ : 34.7

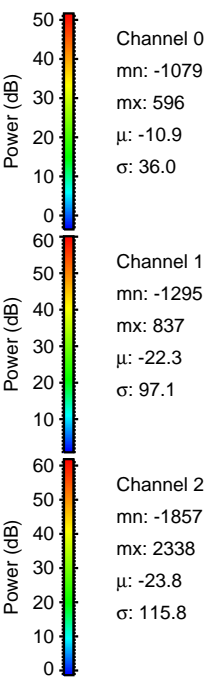
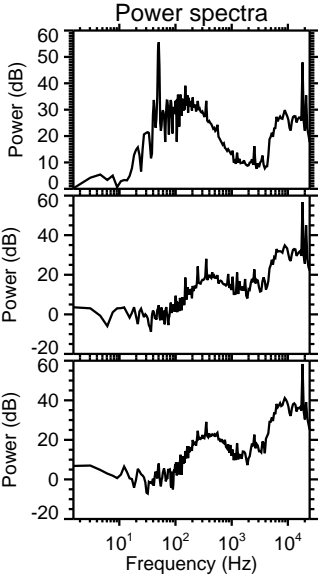
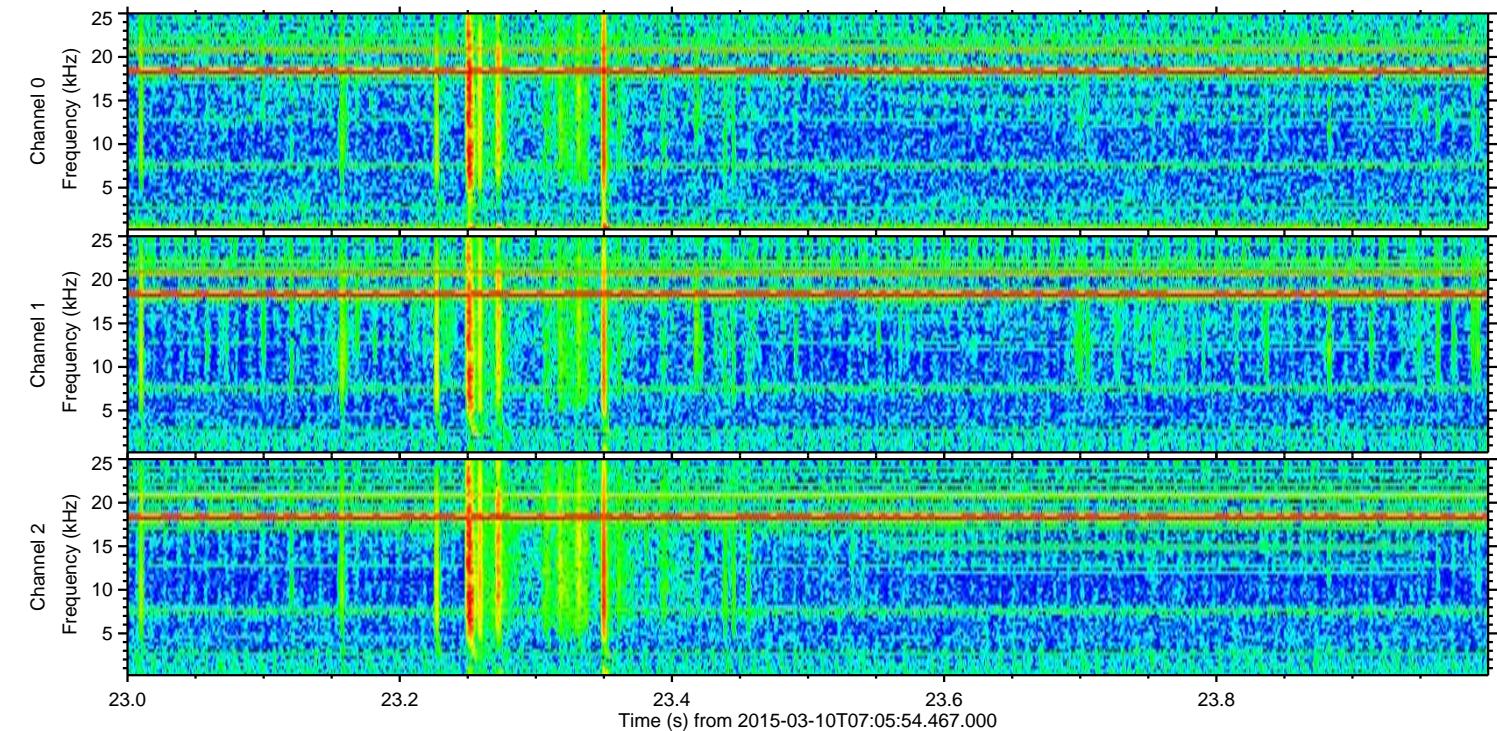
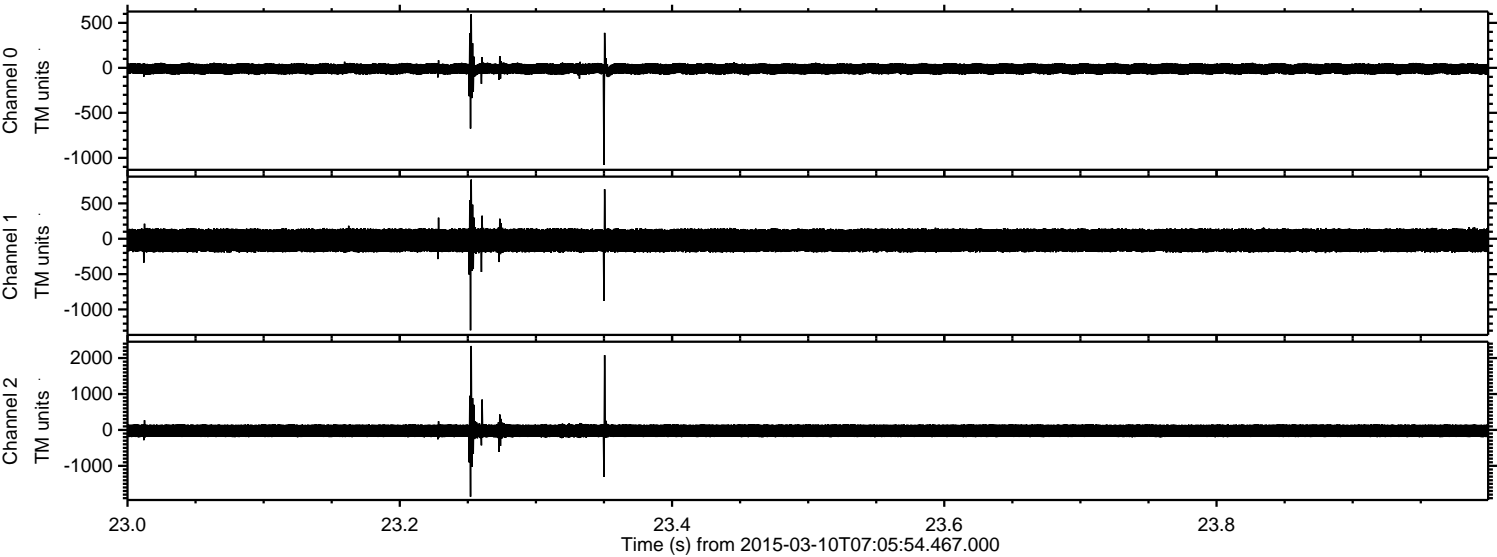
Channel 1
mn: -1090
mx: 1586
 μ : -22.3
 σ : 96.9

Channel 2
mn: -2624
mx: 1546
 μ : -23.8
 σ : 110.7

Processed Tue Mar 10 08:13:49 2015 by ELM ver.2012-10-06 from 001__elm20150310_070553__dat00.bin

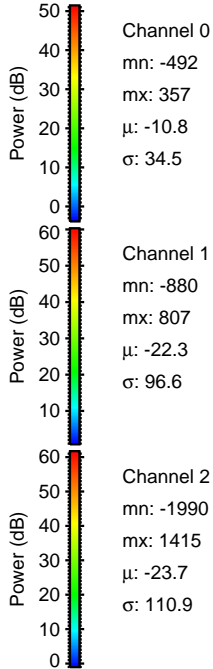
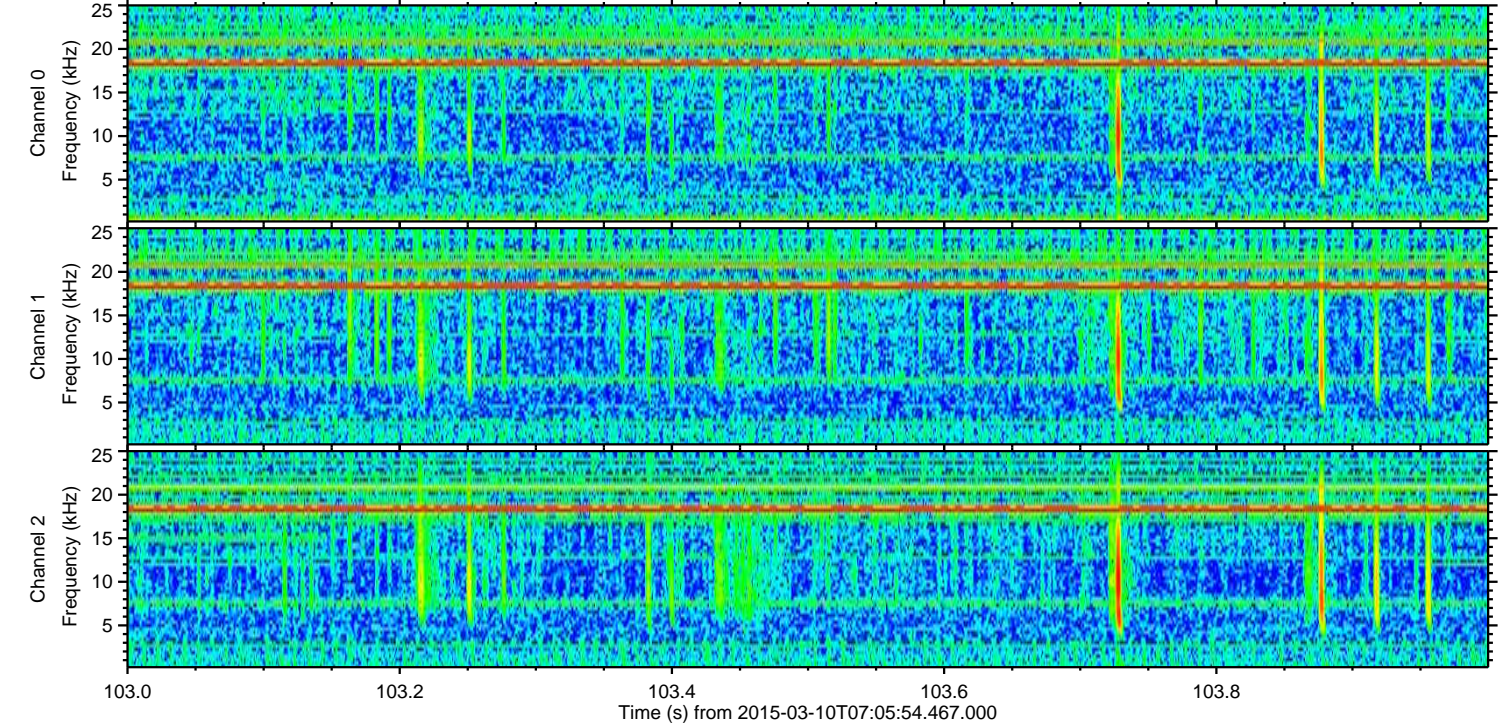
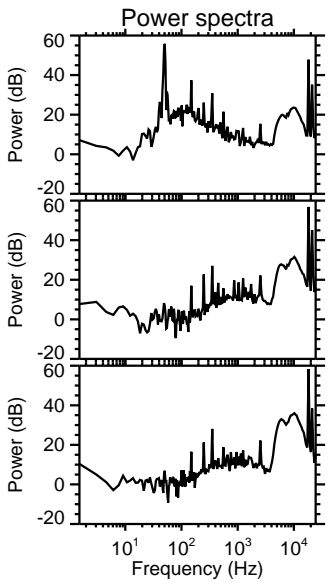
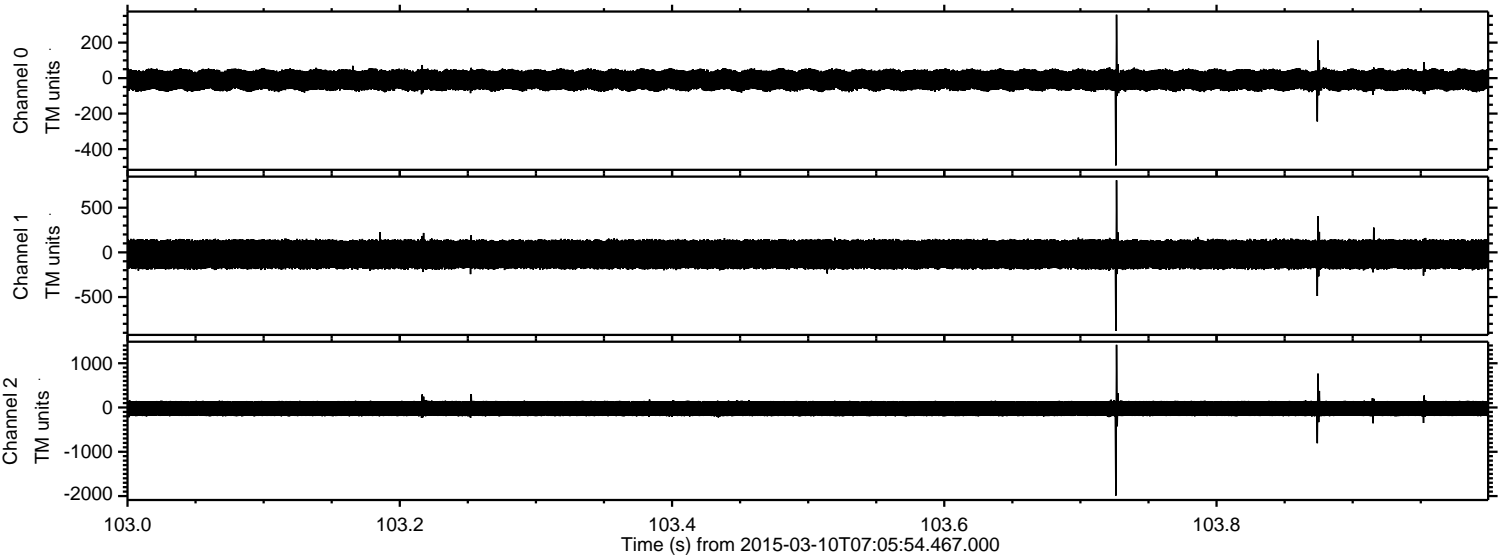


Processed Tue Mar 10 08:13:50 2015 by ELM ver.2012-10-06 from 001__elm20150310_070553__dat00.bin



ELMAVAN 3D WAVEFORMS (Measured data sampled at 50 kHz) 49787 packets of 144 samples from 2015-03-10T07:05:54.467.000. Part 104/144

Processed Tue Mar 10 08:13:51 2015 by ELM ver.2012-10-06 from 001__elm20150310_070553__dat00.bin



Processed Tue Mar 10 08:13:52 2015 by ELM ver.2012-10-06 from 001__elm20150310_070553__dat00.bin

