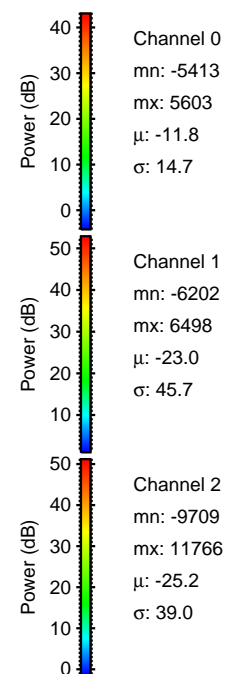
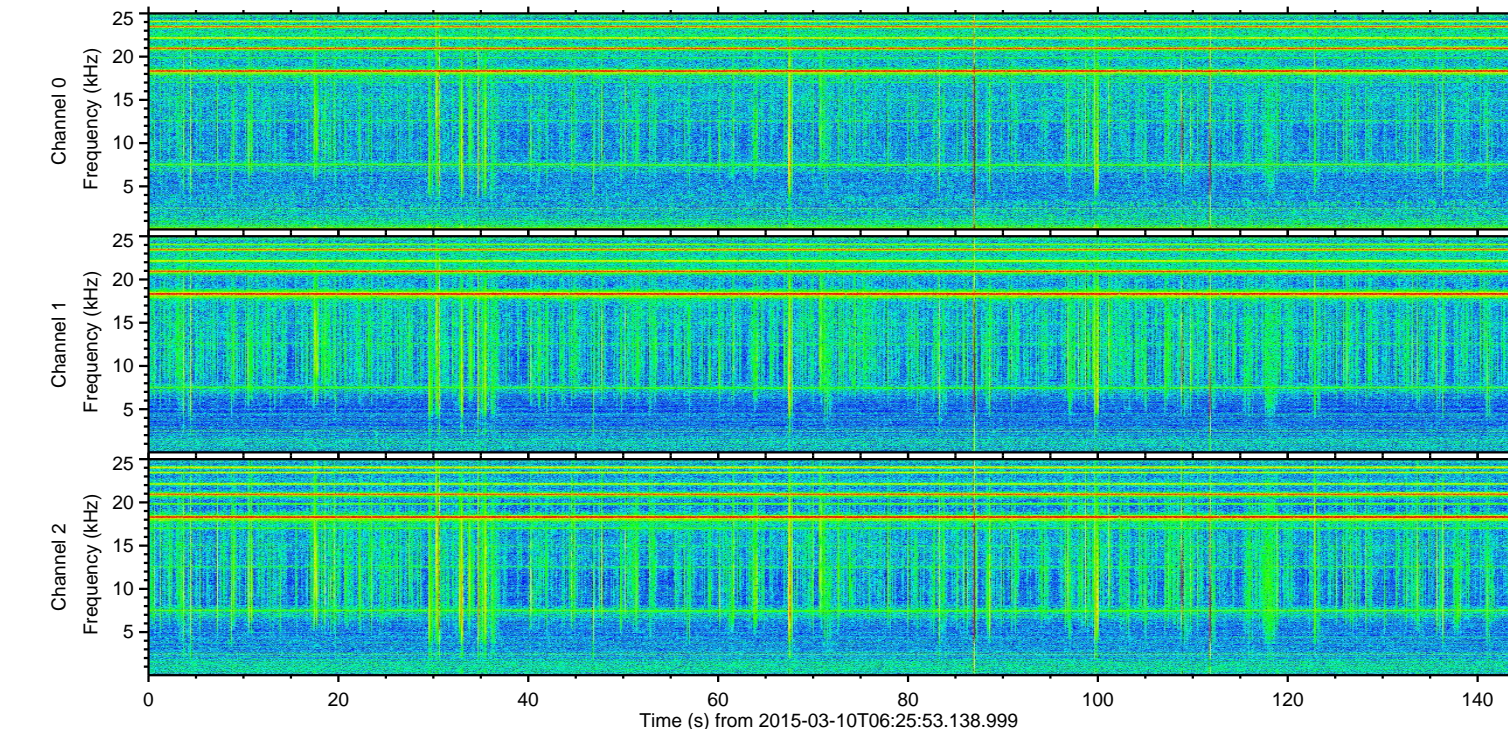
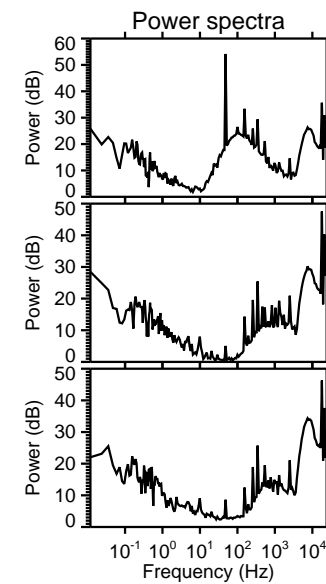
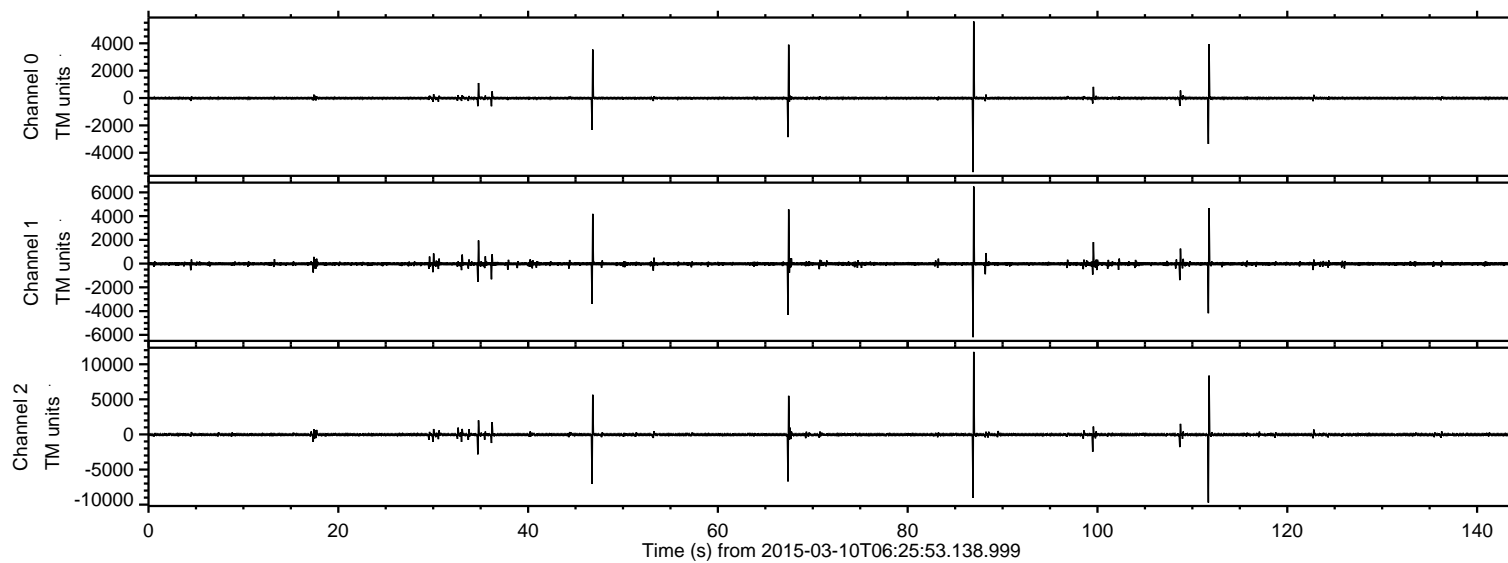


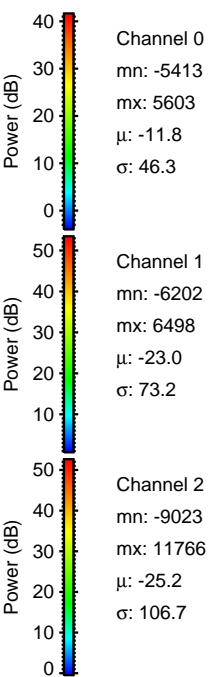
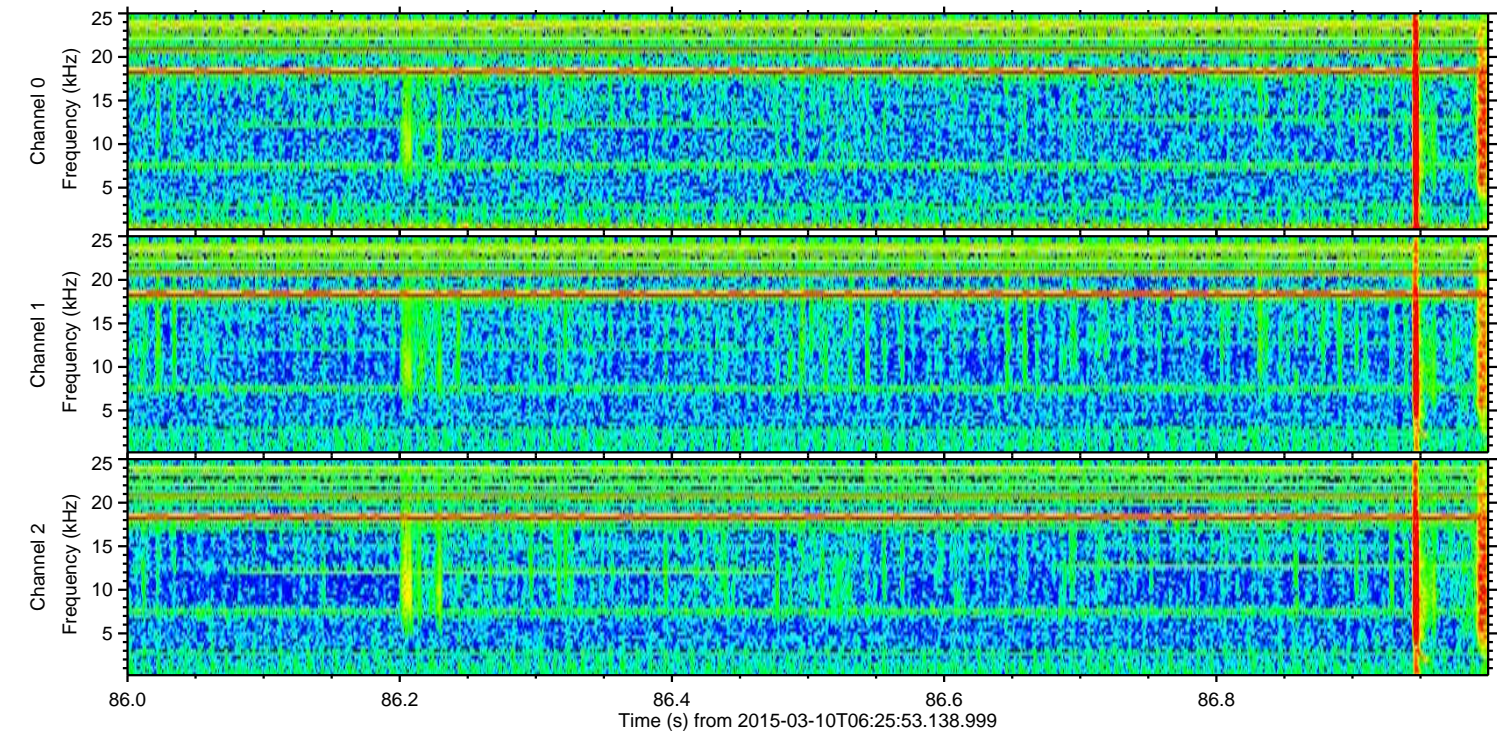
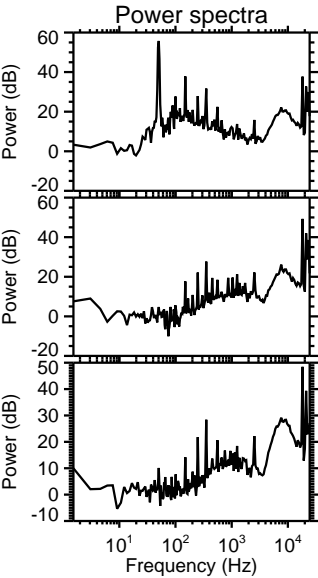
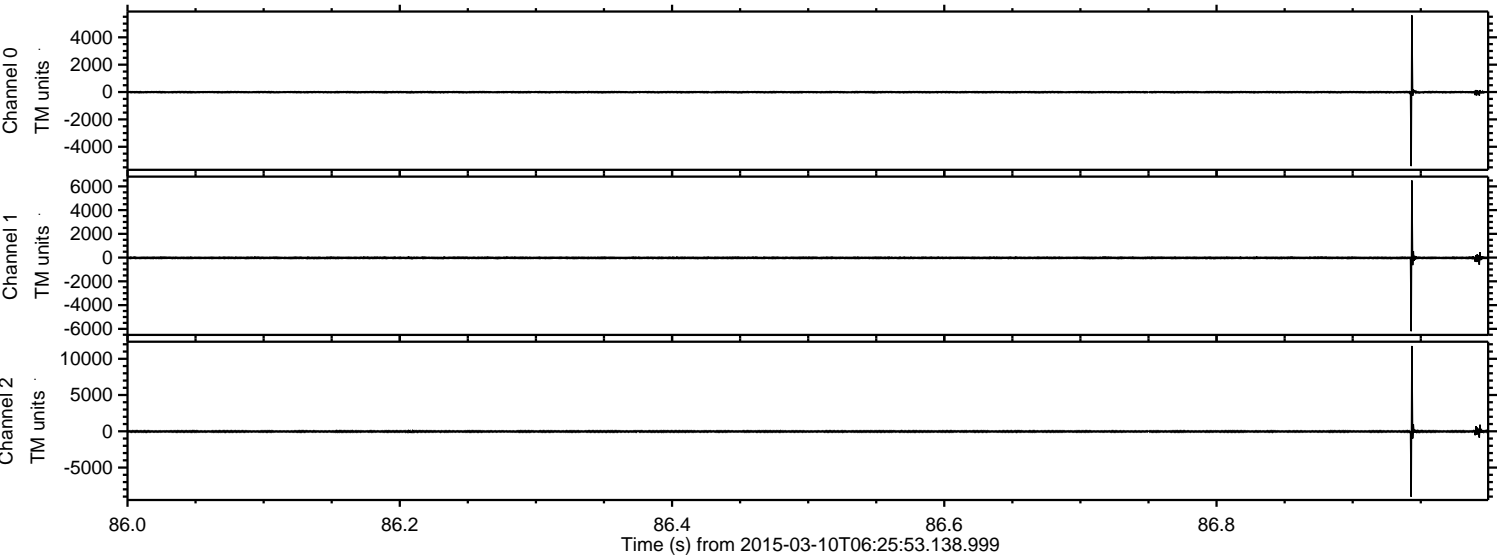
ELMAVAN 3D WAVEFORMS (Measured data sampled at 50 kHz) 49785 packets of 144 samples from 2015-03-10T06:25:53.138.999.

Processed Tue Mar 10 07:33:13 2015 by ELM ver.2012-10-06 from 001__elm20150310_062552__dat00.bin



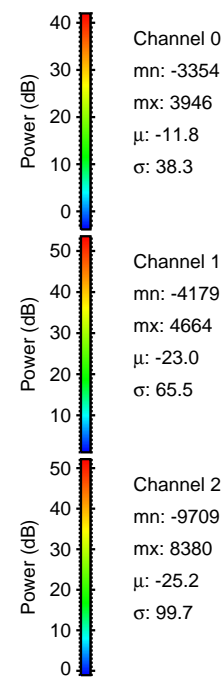
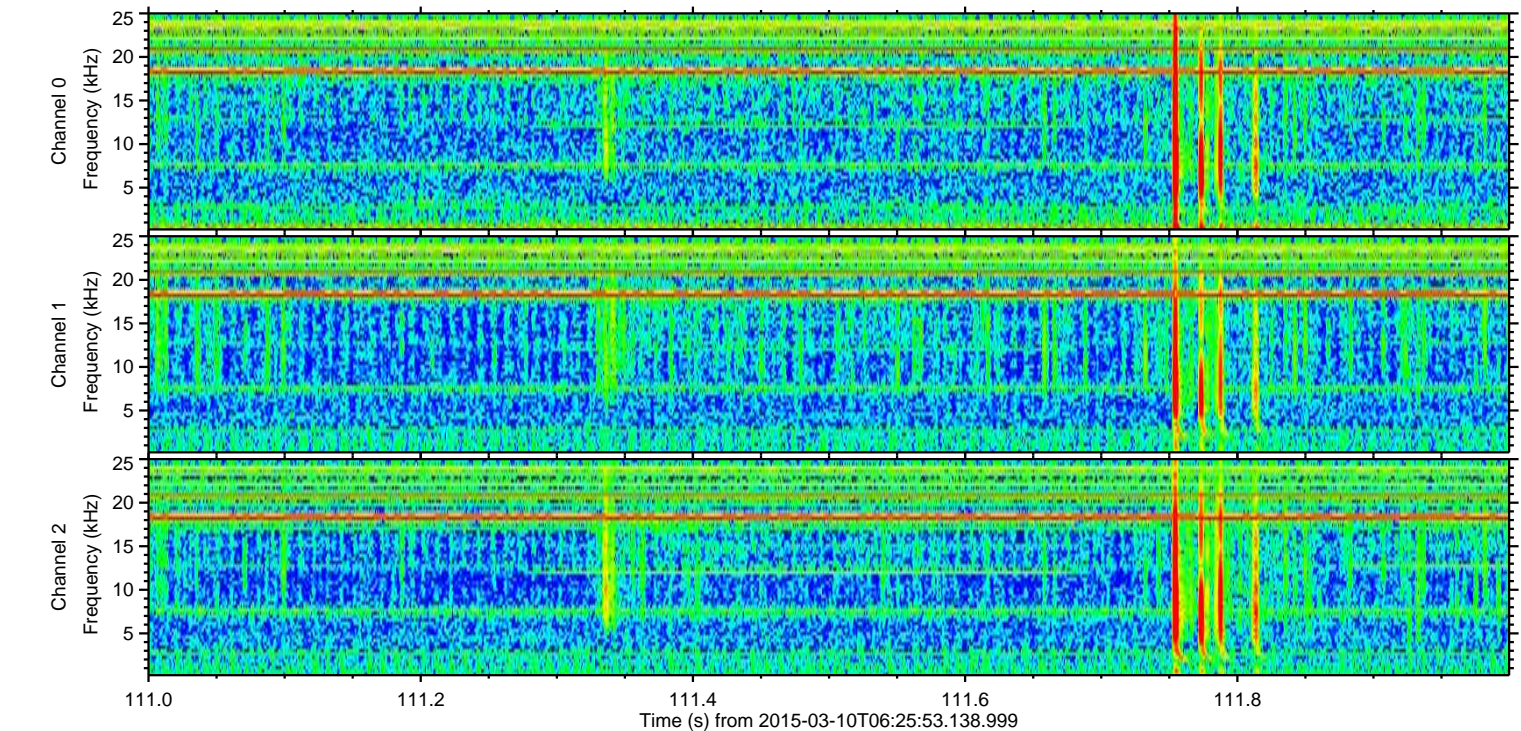
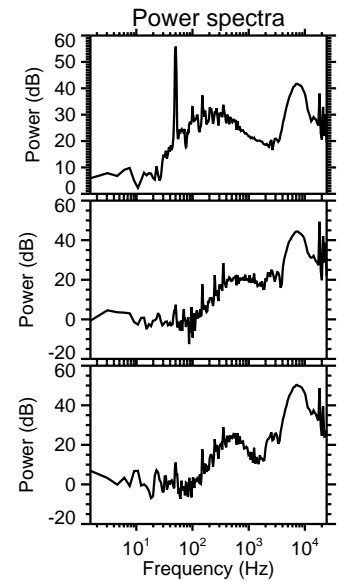
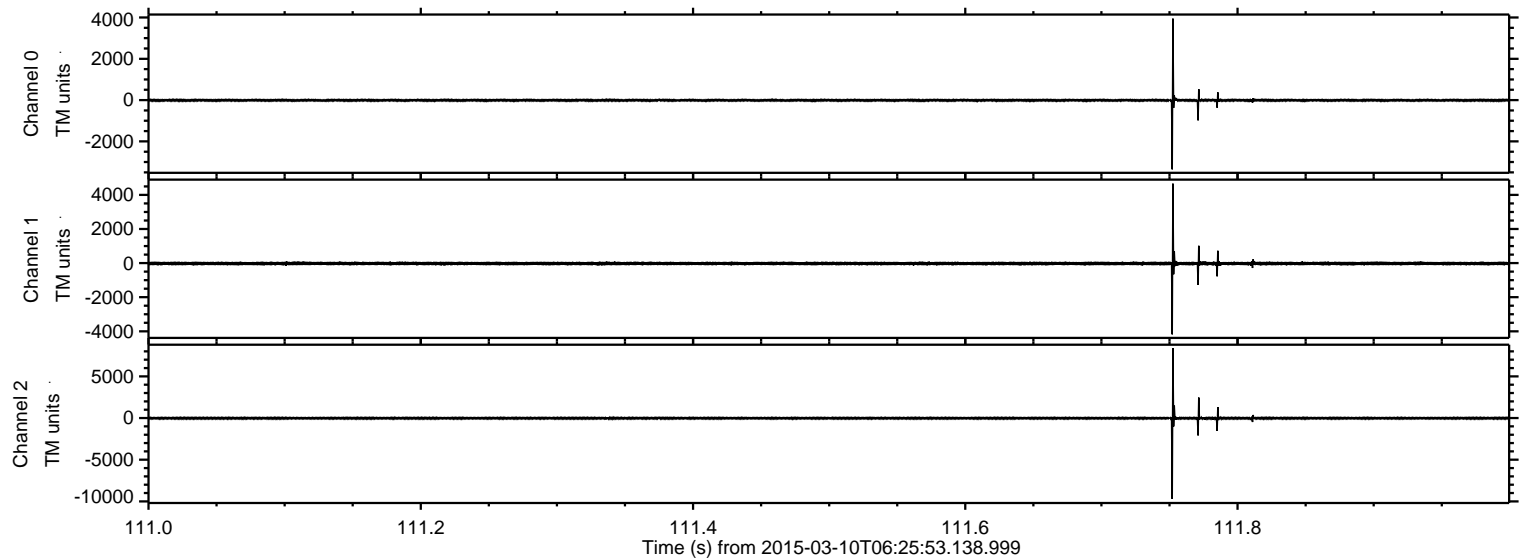
ELMAVAN 3D WAVEFORMS (Measured data sampled at 50 kHz) 49785 packets of 144 samples from 2015-03-10T06:25:53.138.999. Part 87/144

Processed Tue Mar 10 07:33:24 2015 by ELM ver.2012-10-06 from 001__elm20150310_062552__dat00.bin



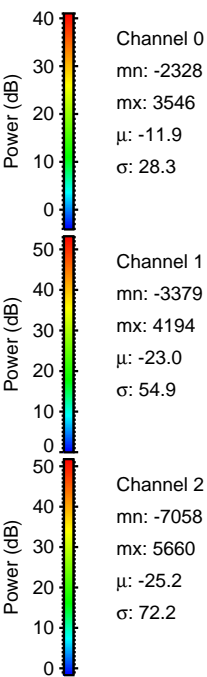
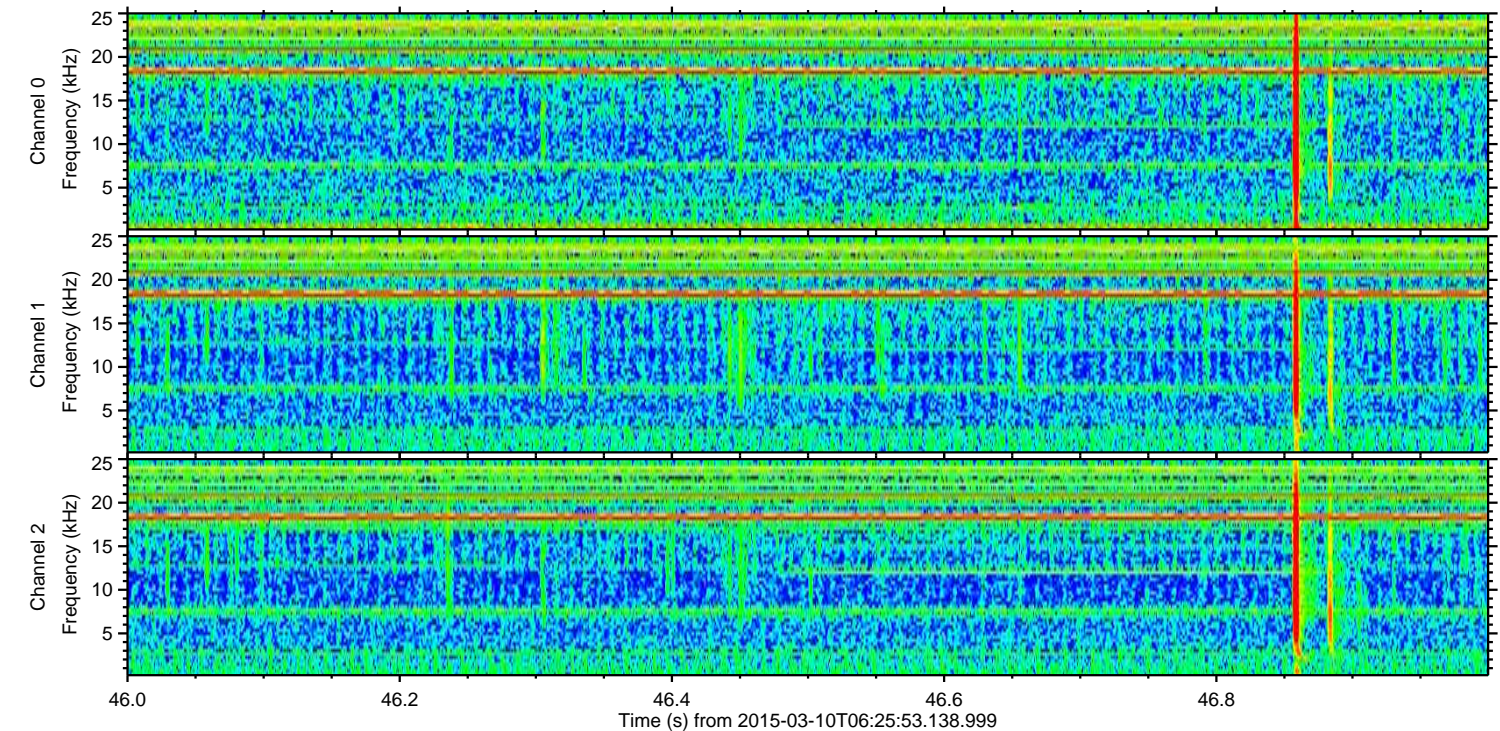
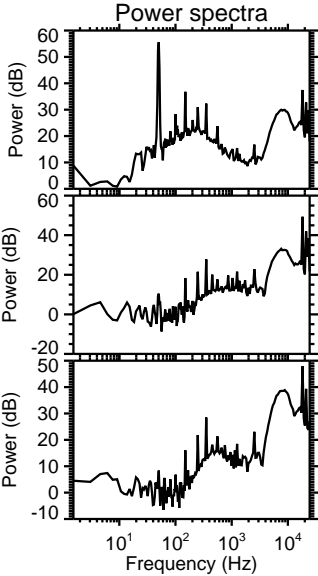
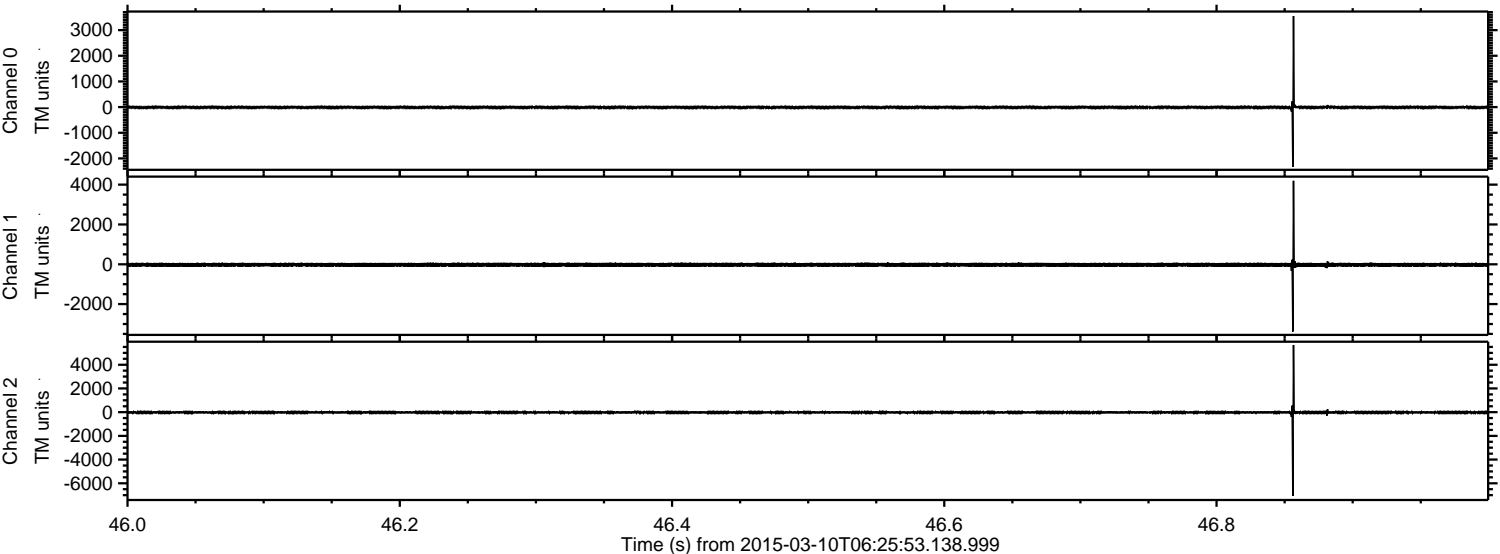
ELMAVAN 3D WAVEFORMS (Measured data sampled at 50 kHz) 49785 packets of 144 samples from 2015-03-10T06:25:53.138.999. Part 112/144

Processed Tue Mar 10 07:33:25 2015 by ELM ver.2012-10-06 from 001__elm20150310_062552__dat00.bin

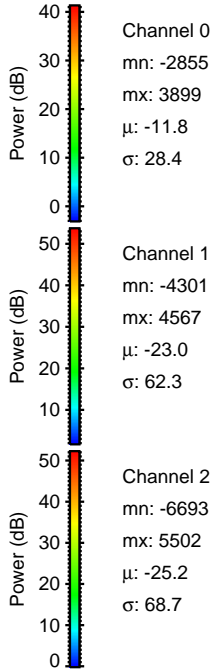
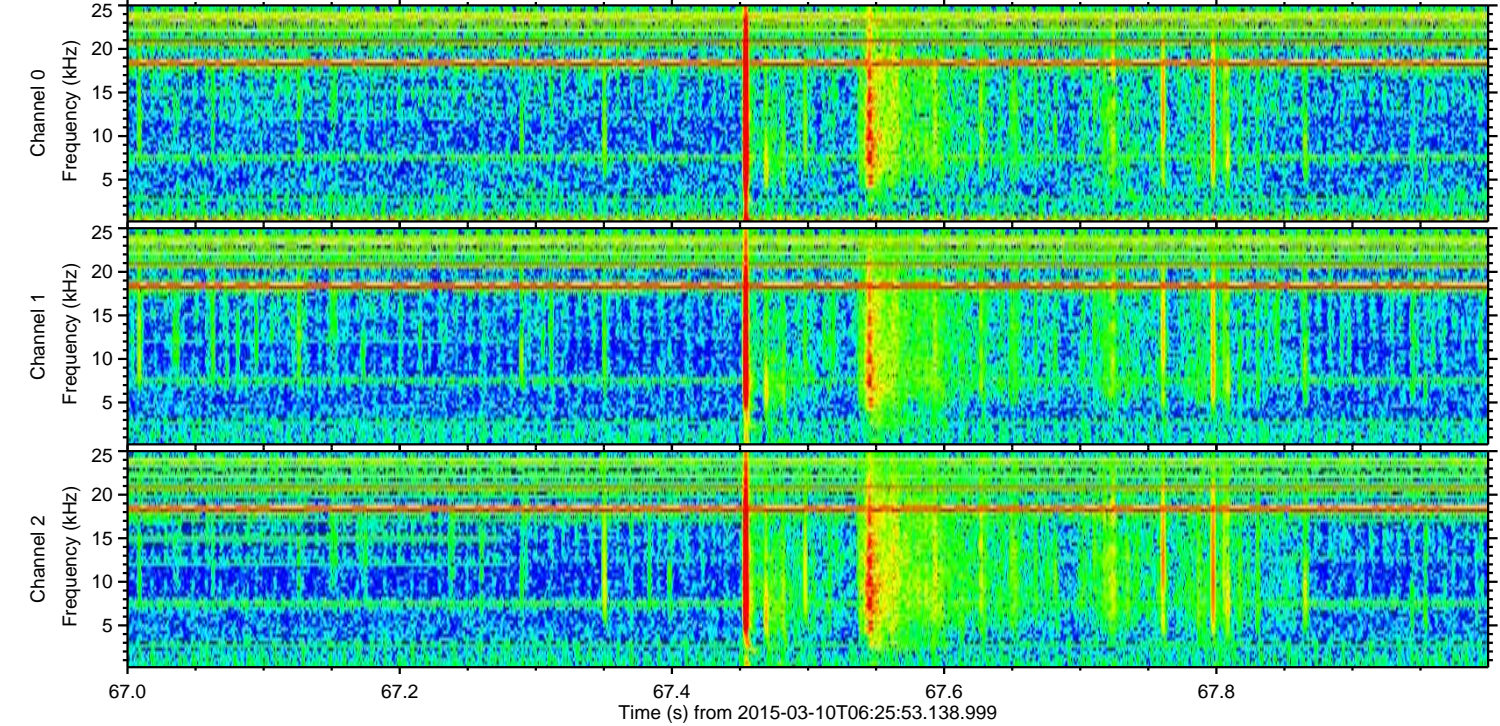
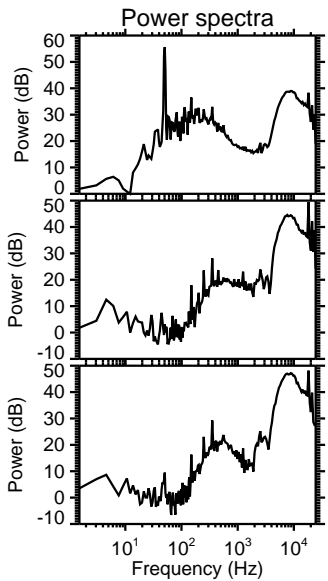
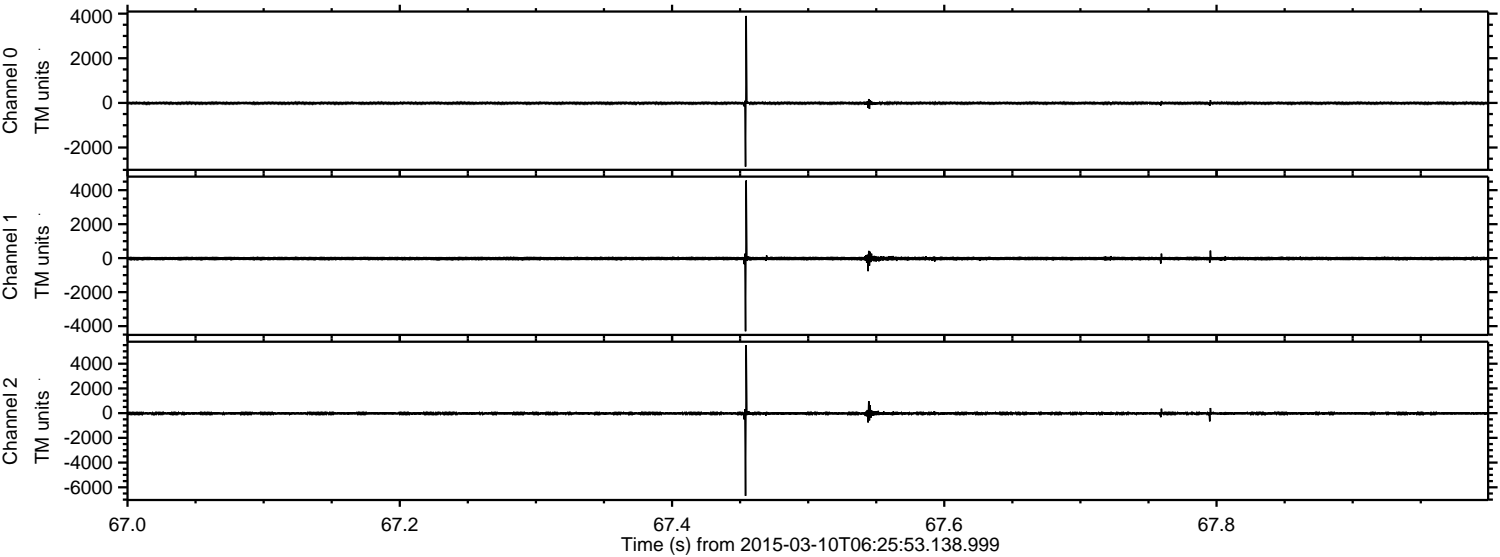


ELMAVAN 3D WAVEFORMS (Measured data sampled at 50 kHz) 49785 packets of 144 samples from 2015-03-10T06:25:53.138.999. Part 47/144

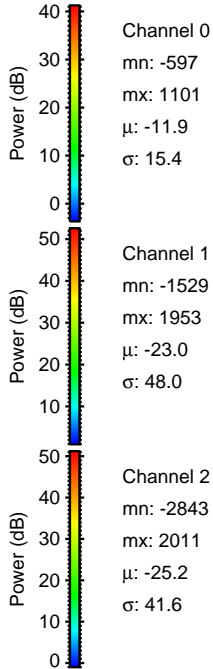
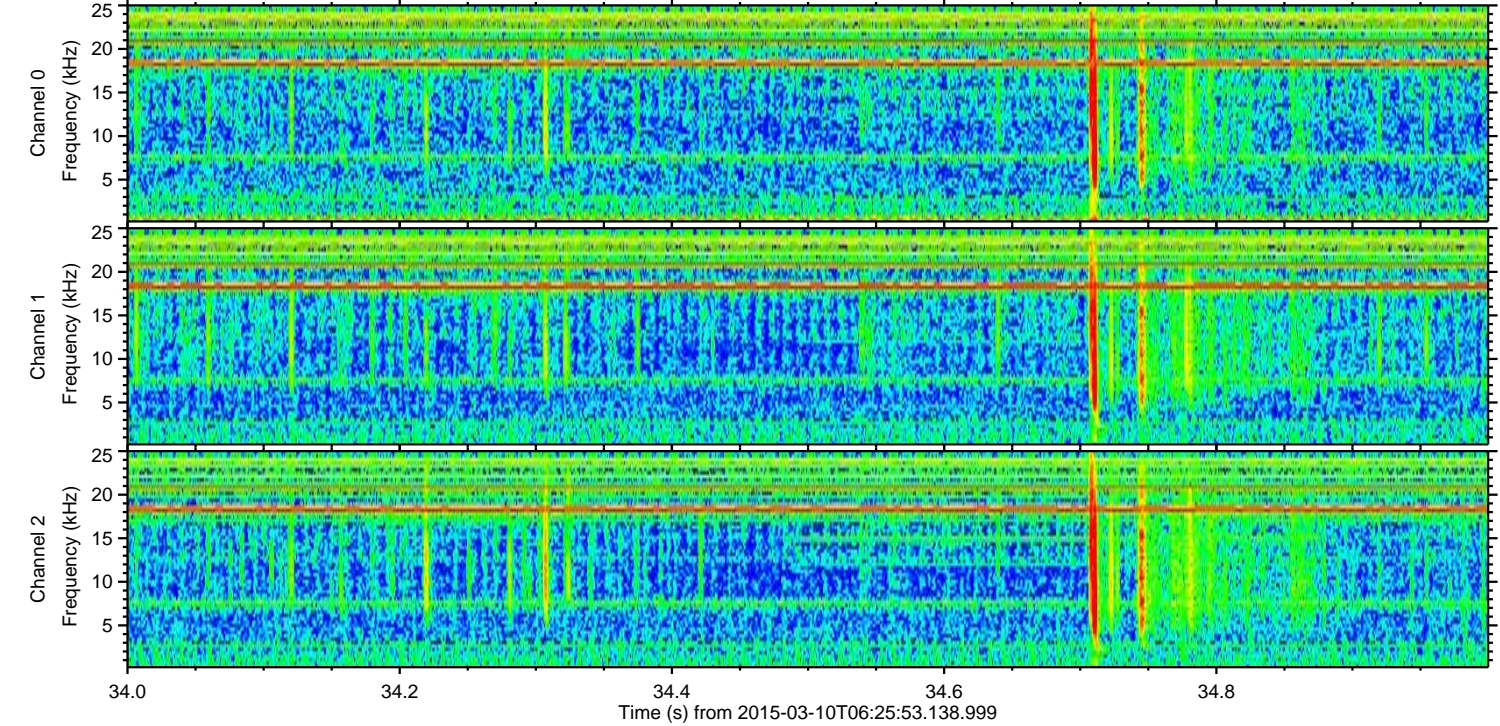
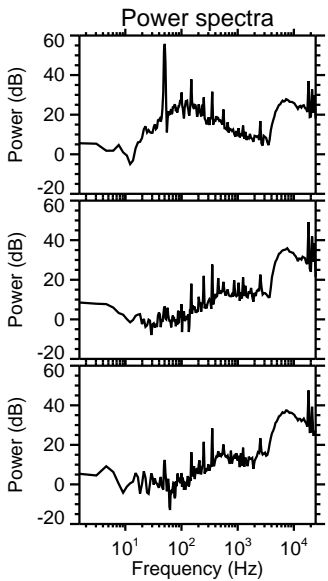
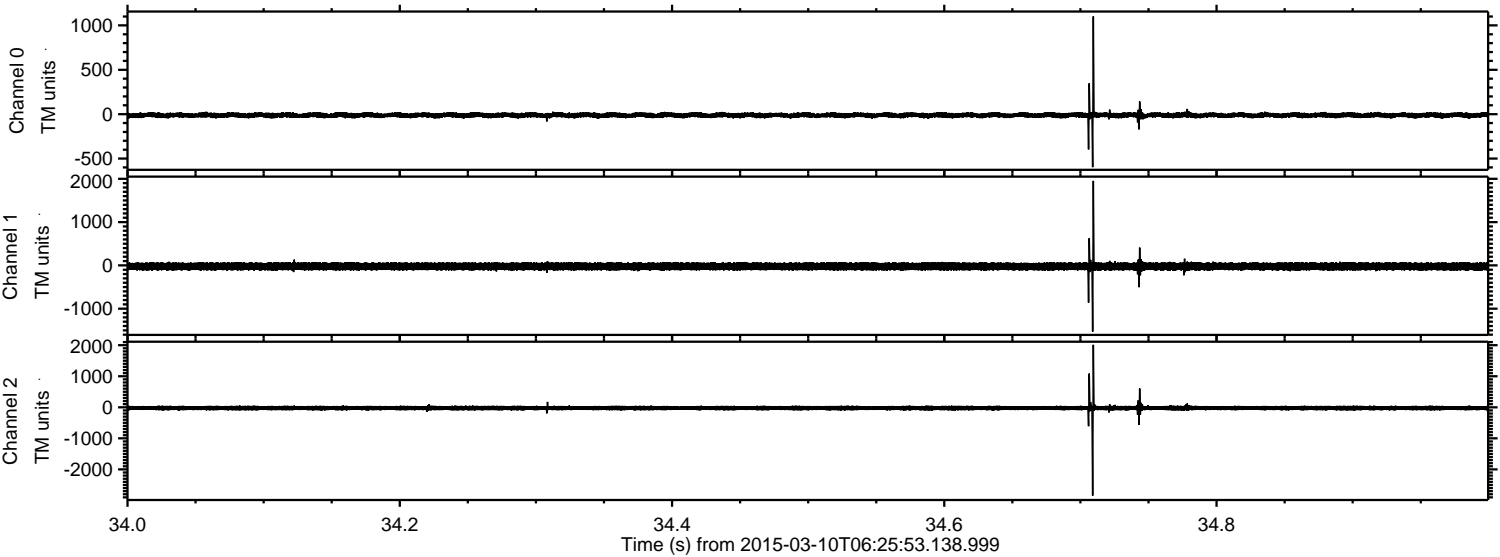
Processed Tue Mar 10 07:33:26 2015 by ELM ver.2012-10-06 from 001__elm20150310_062552__dat00.bin



Processed Tue Mar 10 07:33:27 2015 by ELM ver.2012-10-06 from 001__elm20150310_062552__dat00.bin

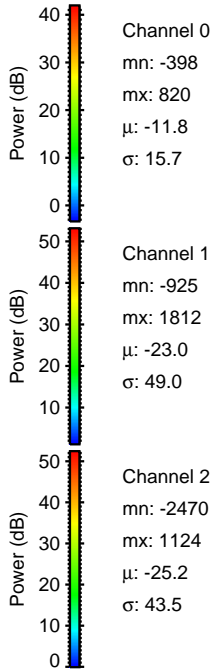
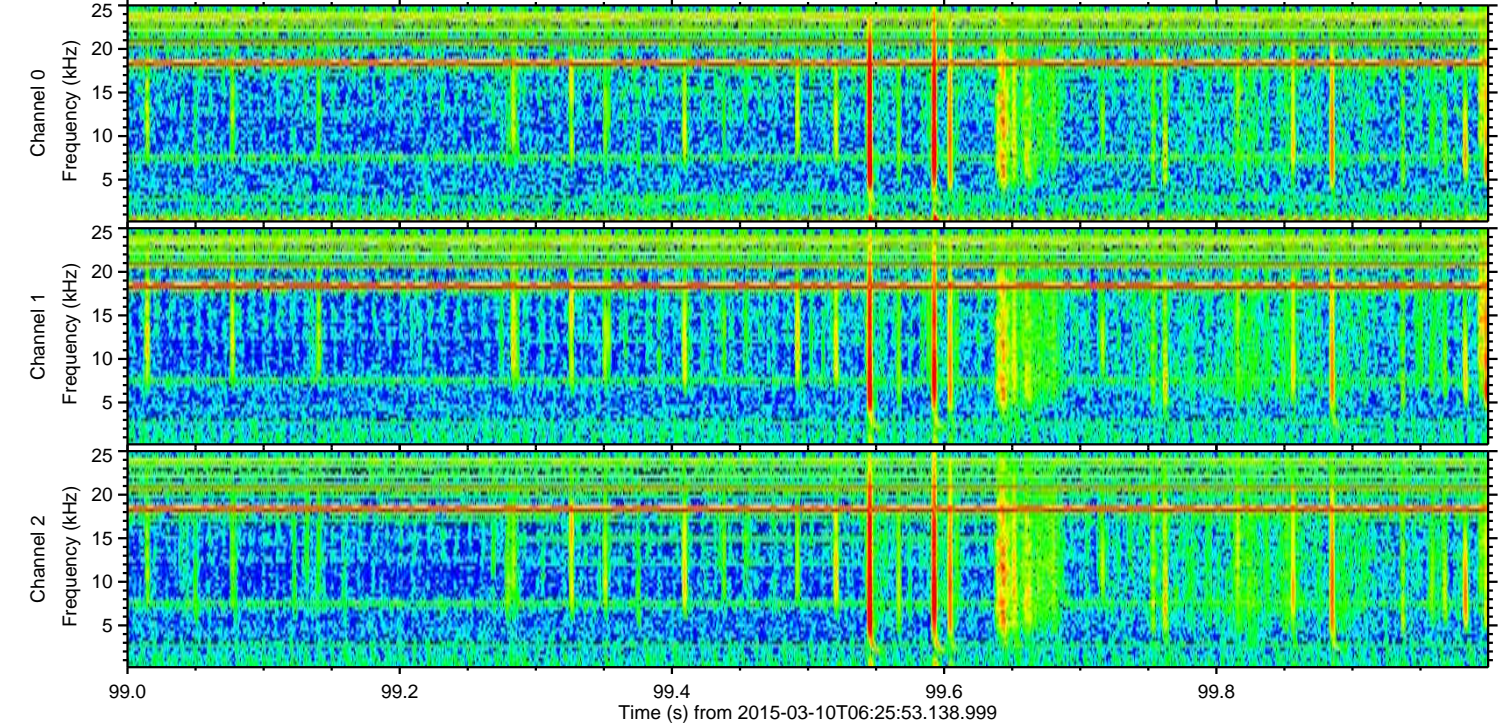
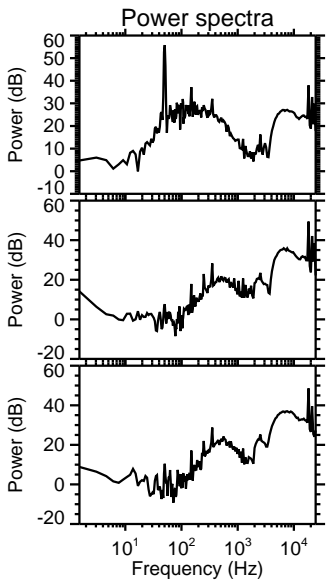
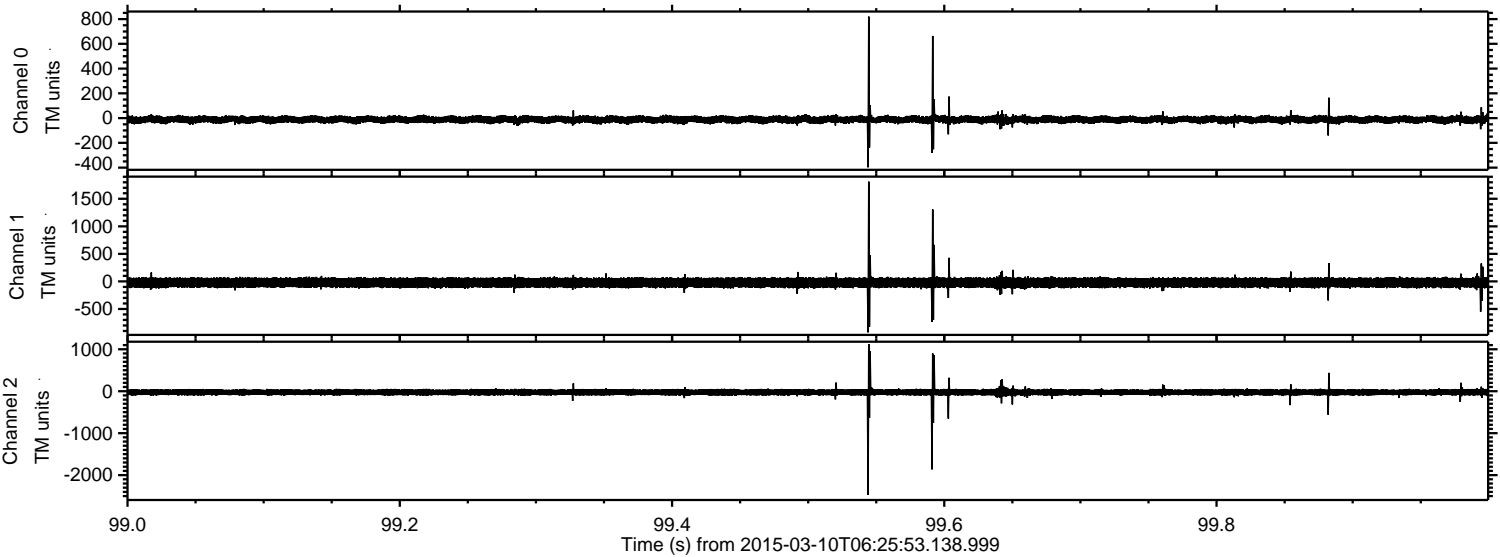


Processed Tue Mar 10 07:33:28 2015 by ELM ver.2012-10-06 from 001__elm20150310_062552__dat00.bin

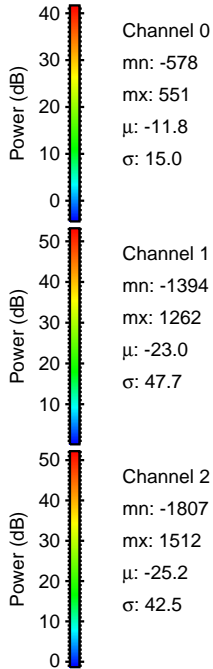
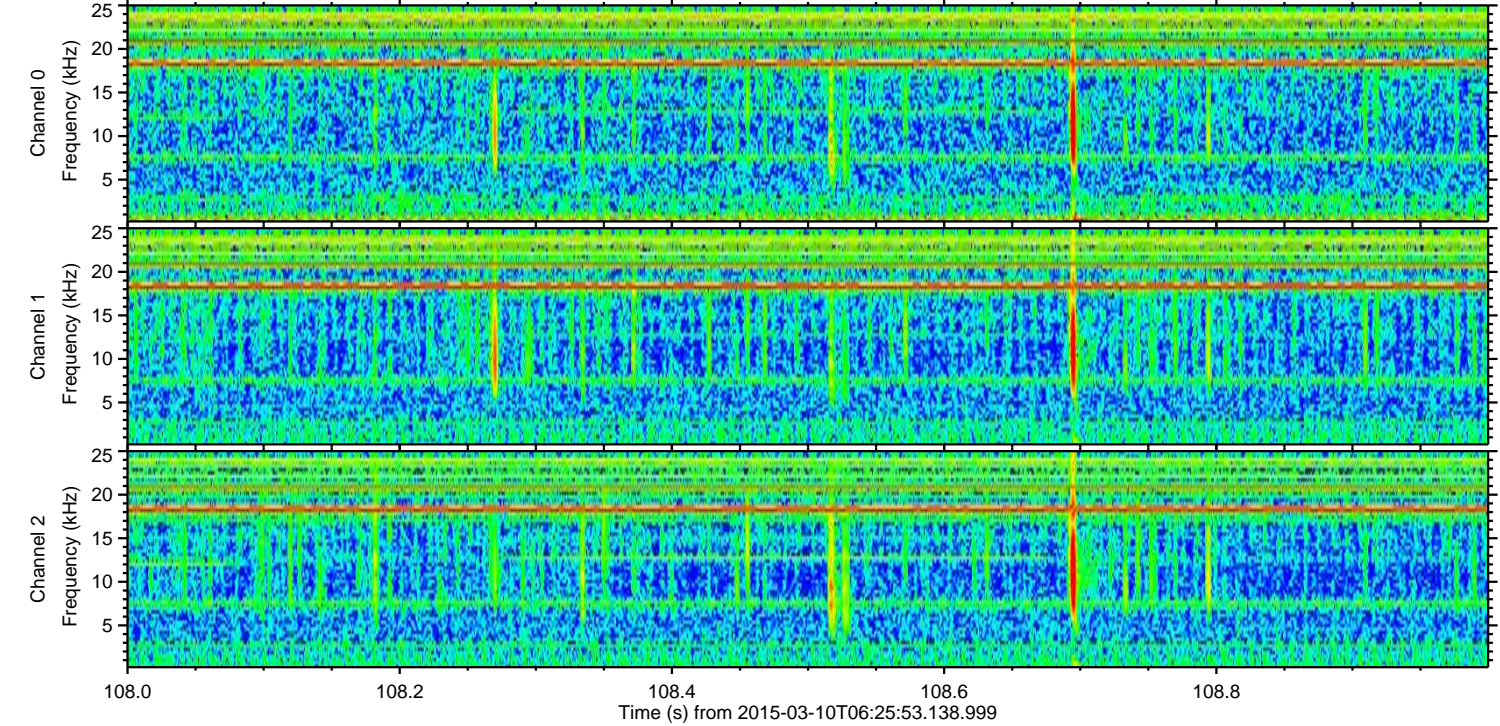
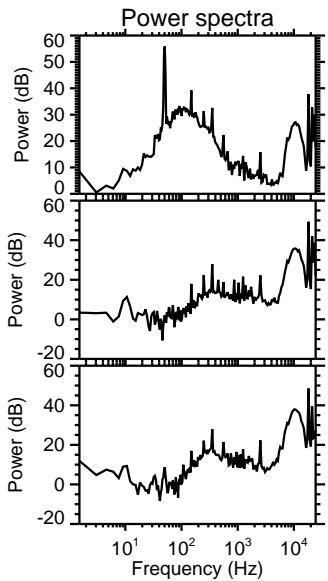
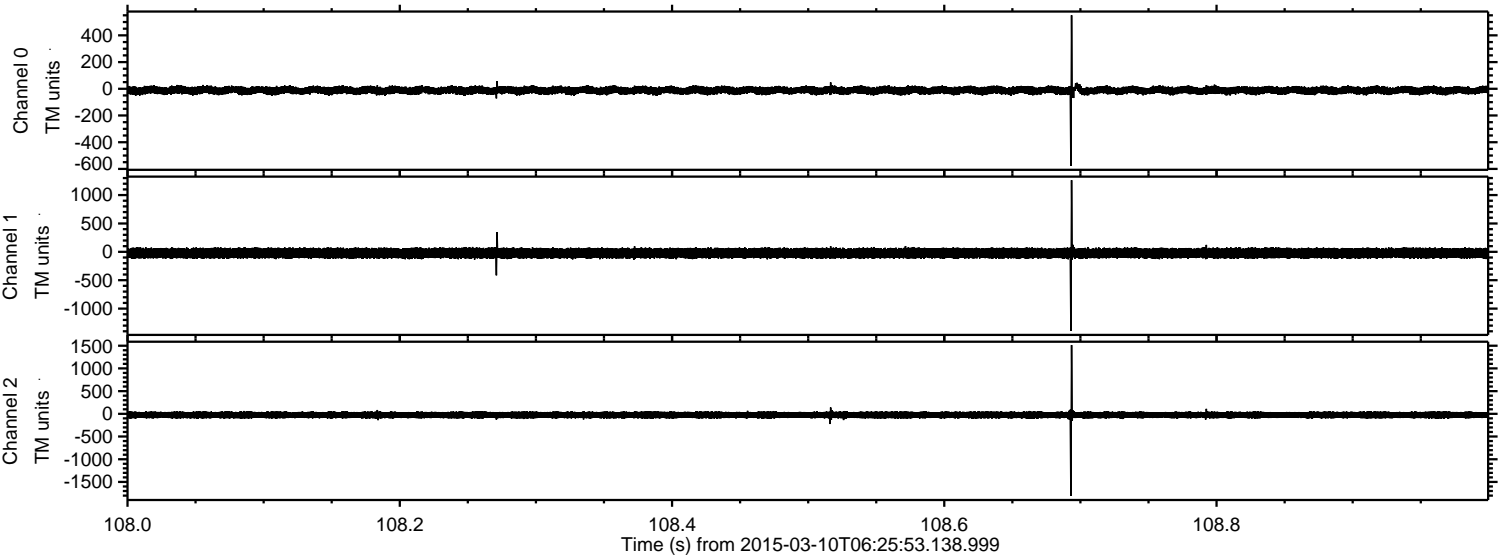


ELMAVAN 3D WAVEFORMS (Measured data sampled at 50 kHz) 49785 packets of 144 samples from 2015-03-10T06:25:53.138.999. Part 100/144

Processed Tue Mar 10 07:33:29 2015 by ELM ver.2012-10-06 from 001__elm20150310_062552__dat00.bin



Processed Tue Mar 10 07:33:30 2015 by ELM ver.2012-10-06 from 001__elm20150310_062552__dat00.bin



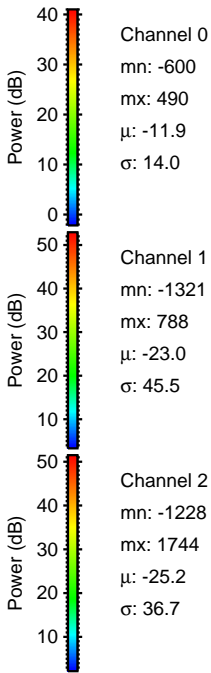
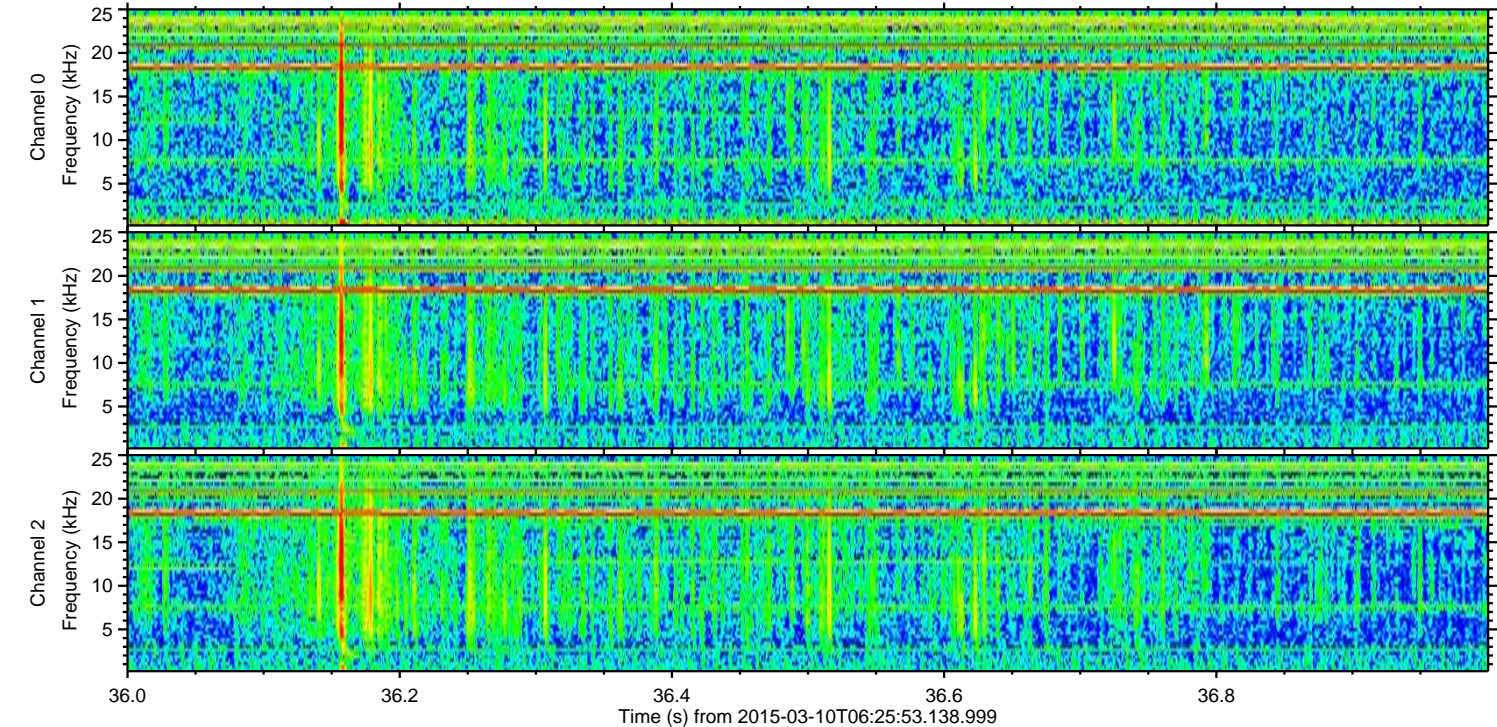
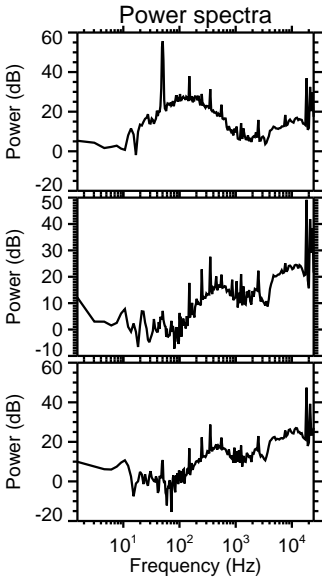
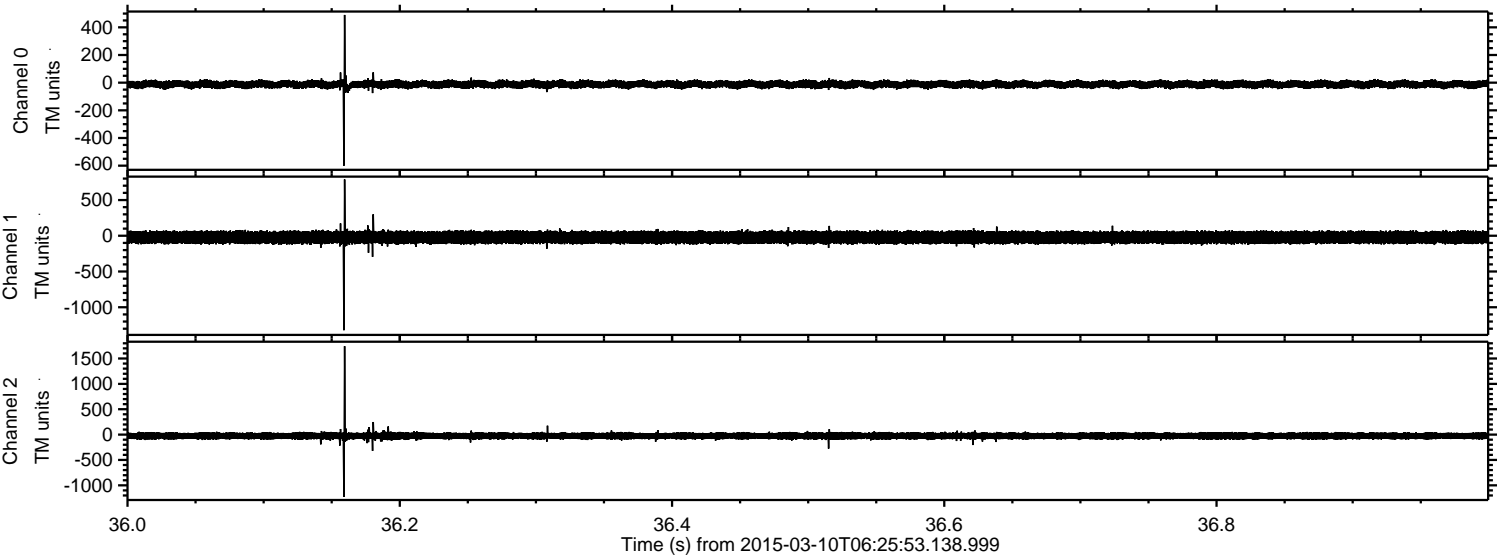
Channel 0
mn: -578
mx: 551
 μ : -11.8
 σ : 15.0

Channel 1
mn: -1394
mx: 1262
 μ : -23.0
 σ : 47.7

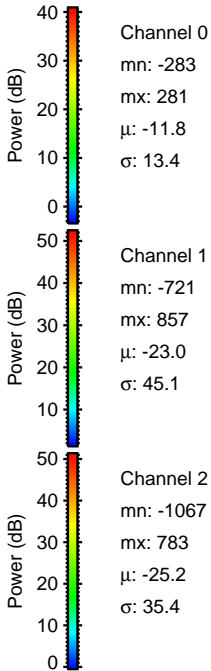
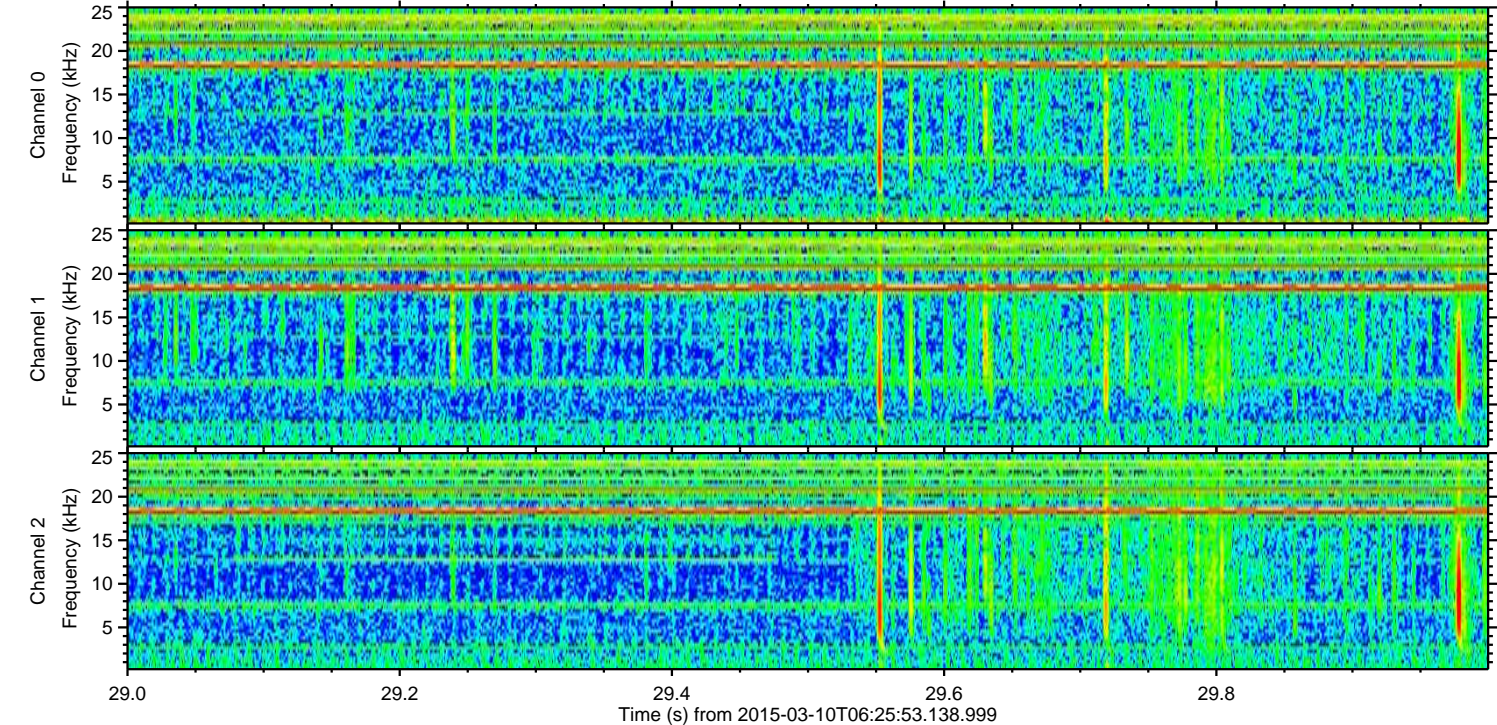
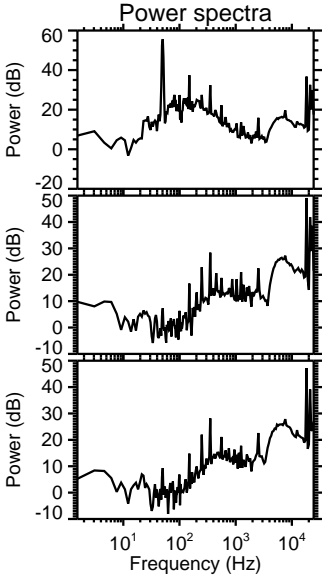
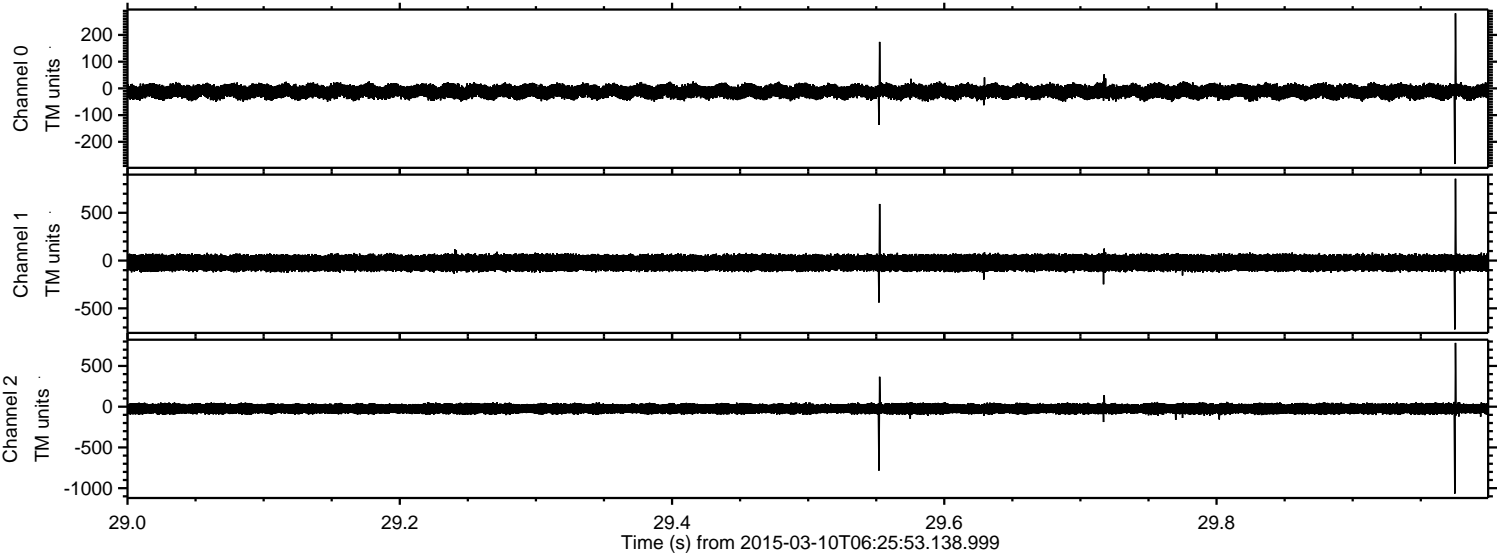
Channel 2
mn: -1807
mx: 1512
 μ : -25.2
 σ : 42.5

ELMAVAN 3D WAVEFORMS (Measured data sampled at 50 kHz) 49785 packets of 144 samples from 2015-03-10T06:25:53.138.999. Part 37/144

Processed Tue Mar 10 07:33:31 2015 by ELM ver.2012-10-06 from 001__elm20150310_062552__dat00.bin



Processed Tue Mar 10 07:33:32 2015 by ELM ver.2012-10-06 from 001__elm20150310_062552__dat00.bin



Channel 0
mn: -283
mx: 281
 μ : -11.8
 σ : 13.4

Channel 1
mn: -721
mx: 857
 μ : -23.0
 σ : 45.1

Channel 2
mn: -1067
mx: 783
 μ : -25.2
 σ : 35.4

Processed Tue Mar 10 07:33:33 2015 by ELM ver.2012-10-06 from 001__elm20150310_062552__dat00.bin

