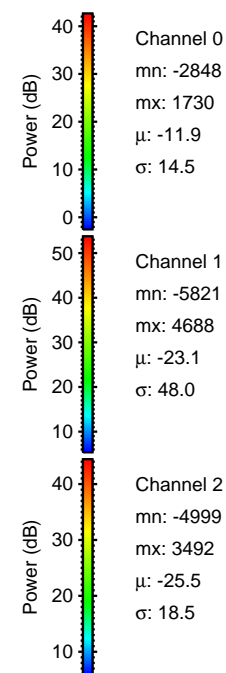
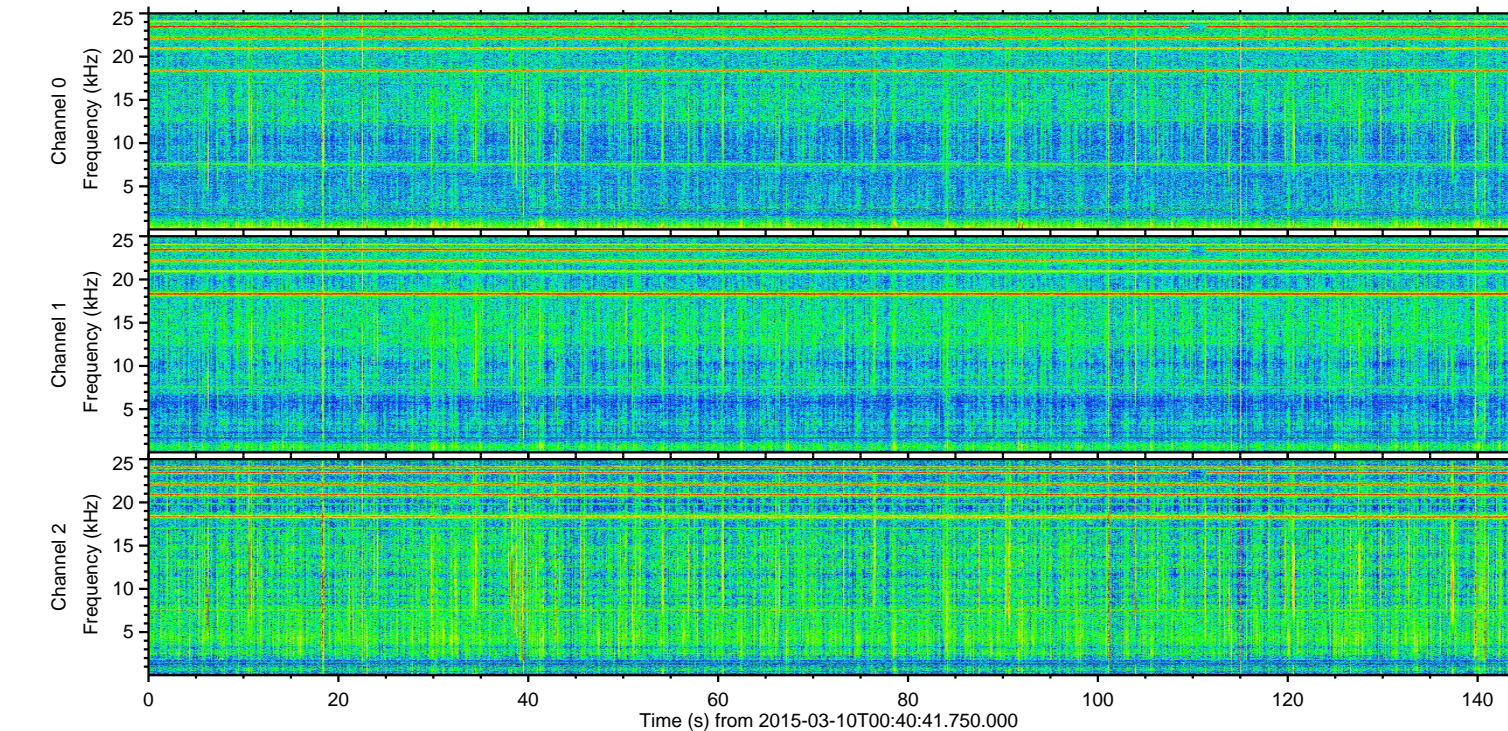
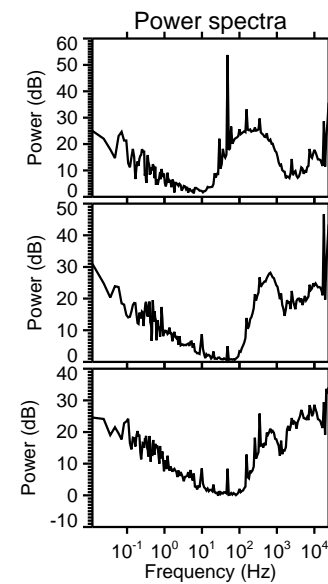
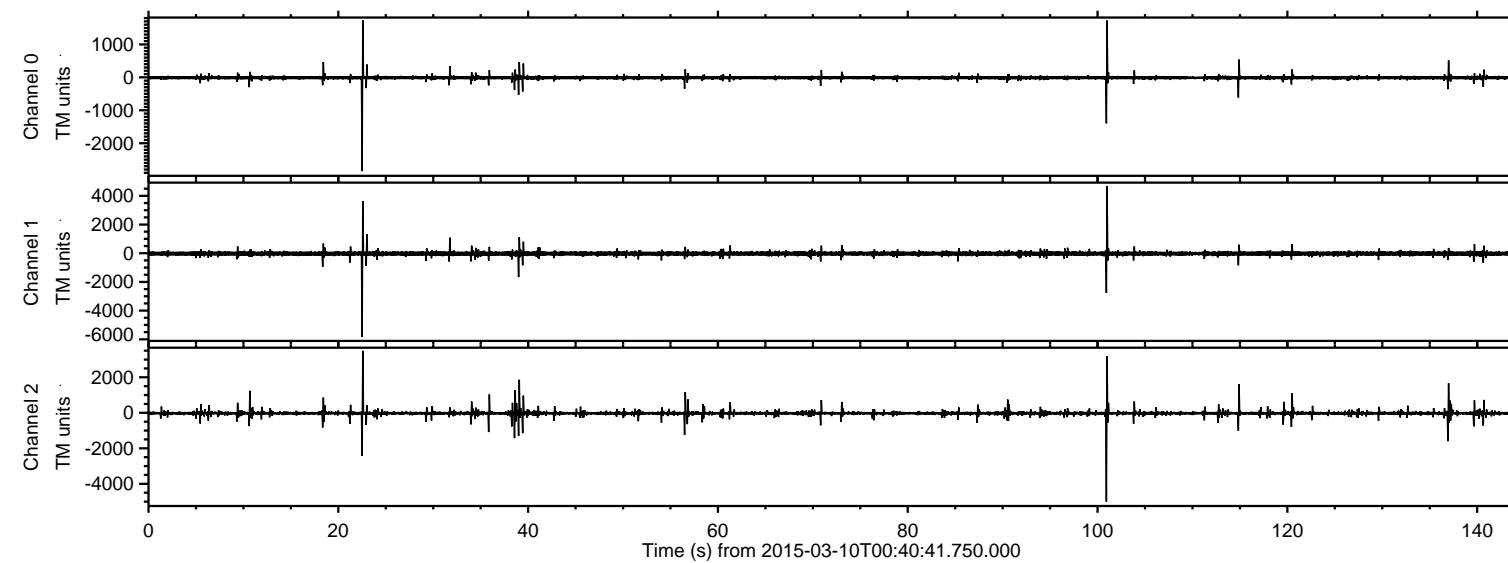
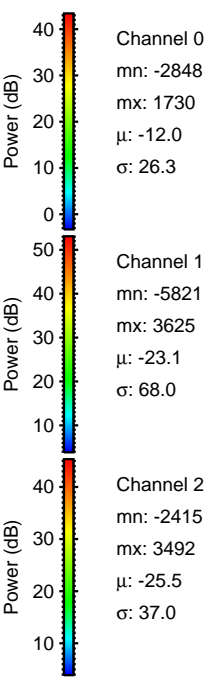
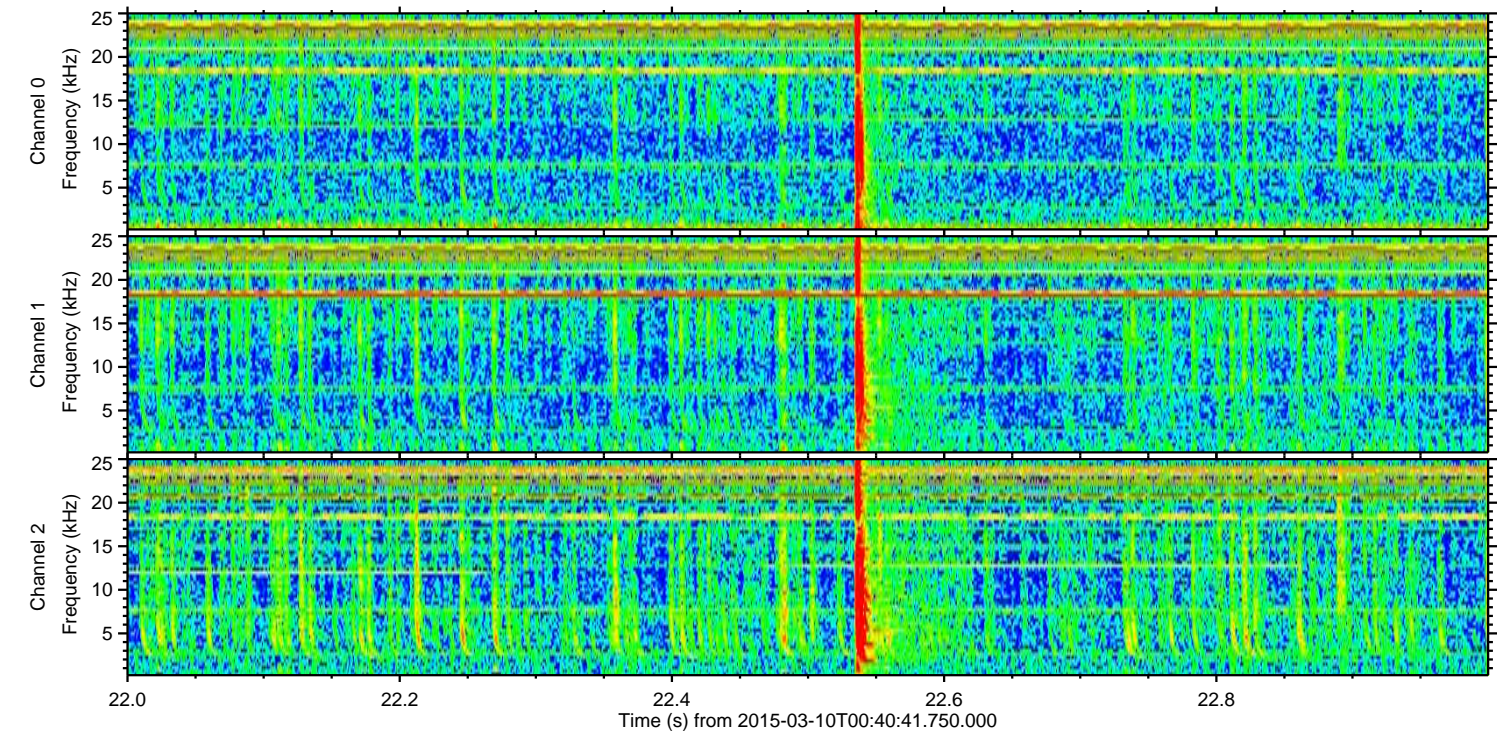
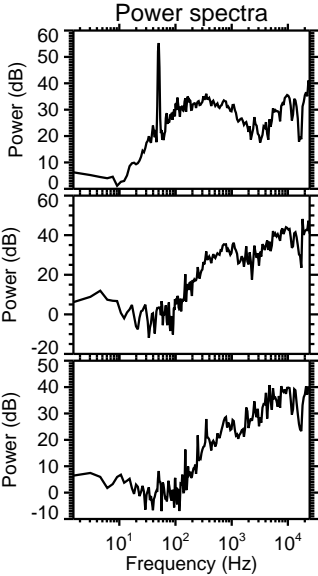
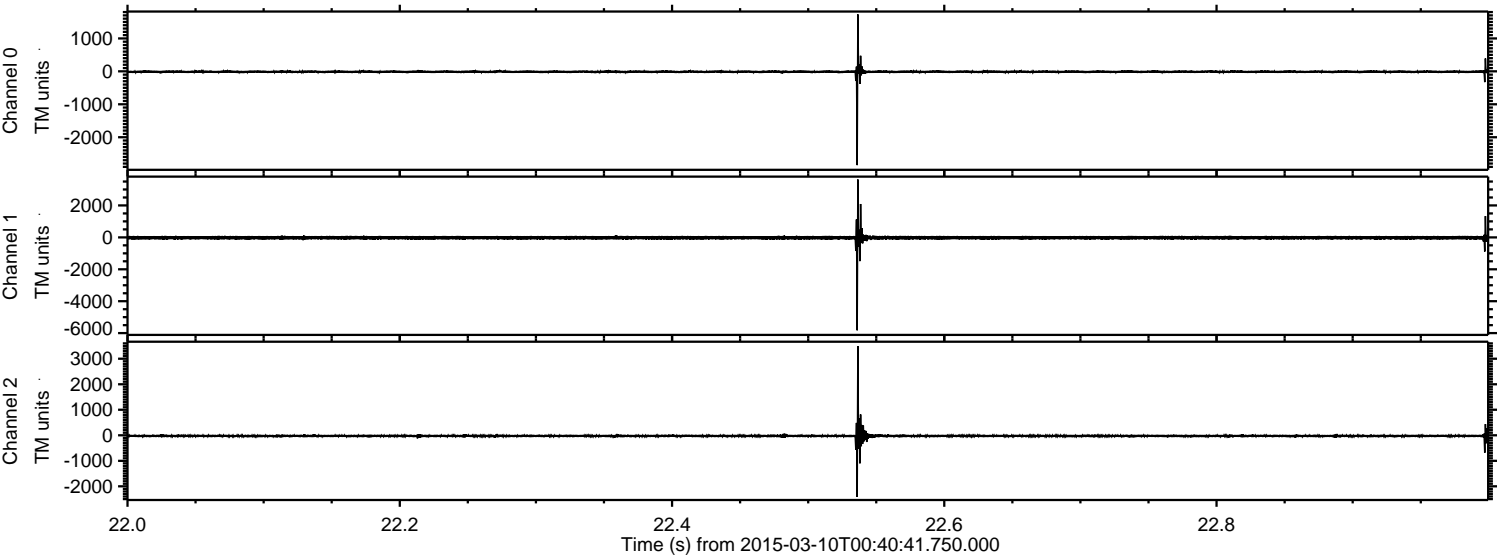


ELMAVAN 3D WAVEFORMS (Measured data sampled at 50 kHz) 49780 packets of 144 samples from 2015-03-10T00:40:41.750.000.

Processed Tue Mar 10 01:47:36 2015 by ELM ver.2012-10-06 from 001__elm20150310_004040__dat00.bin

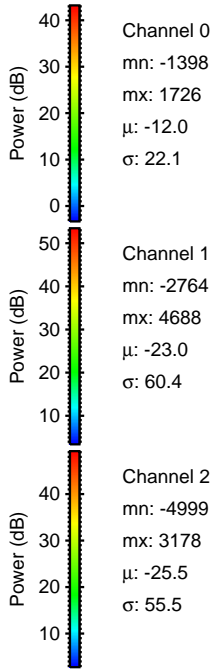
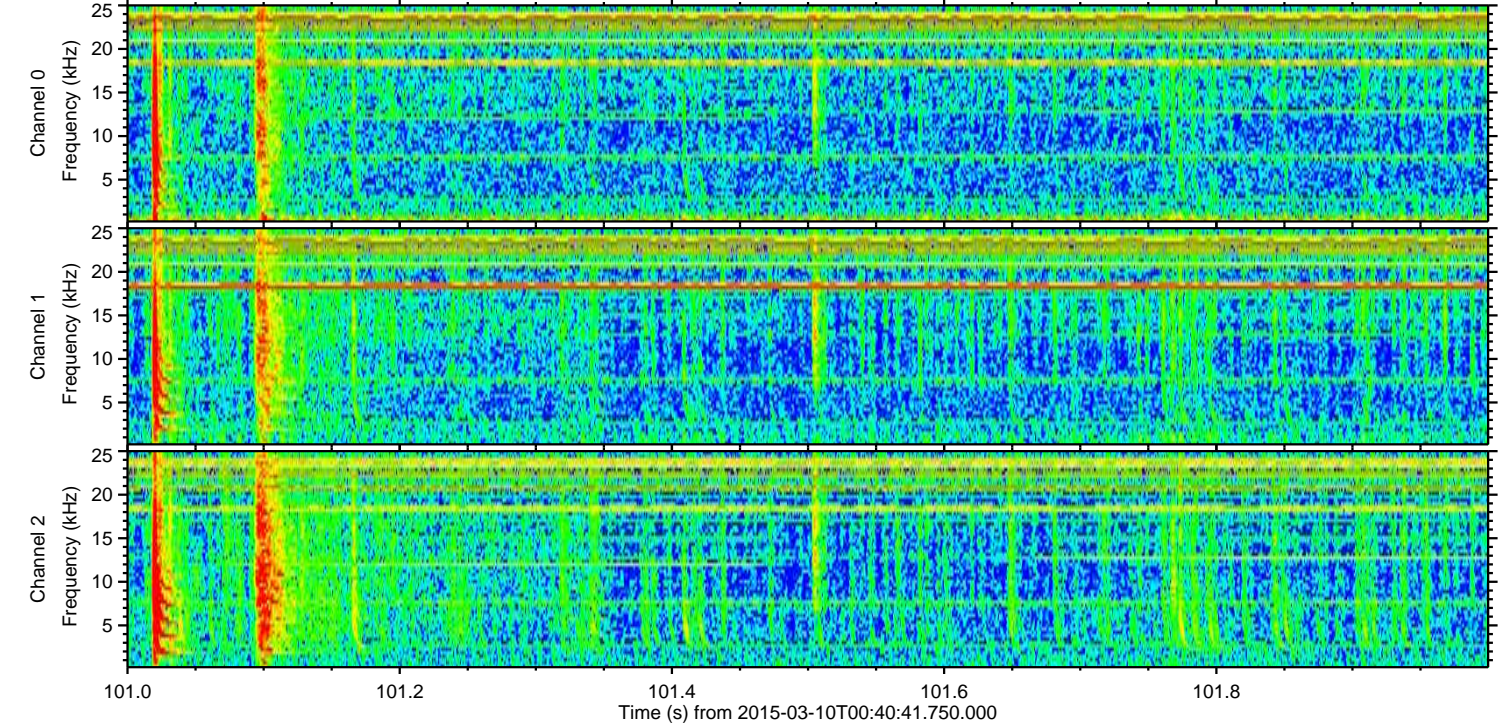
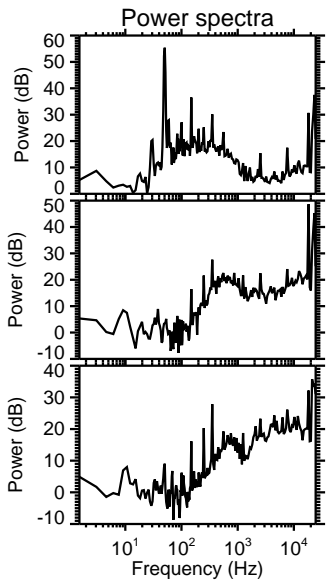
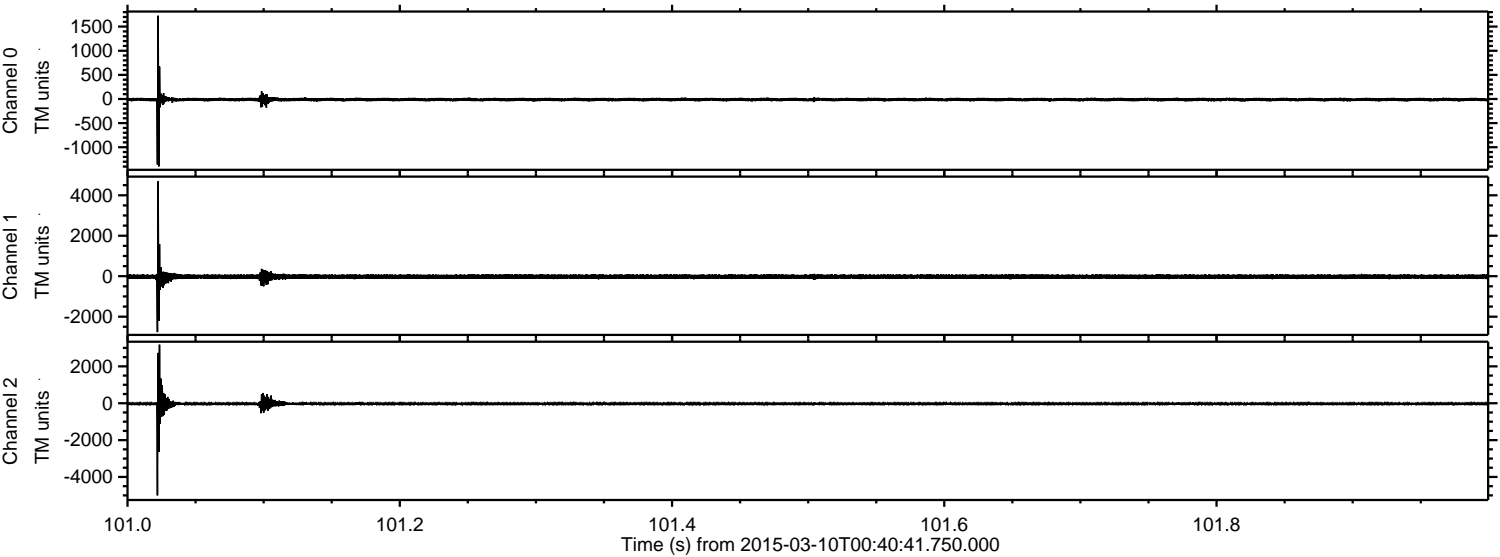


Processed Tue Mar 10 01:47:47 2015 by ELM ver.2012-10-06 from 001__elm20150310_004040__dat00.bin



ELMAVAN 3D WAVEFORMS (Measured data sampled at 50 kHz) 49780 packets of 144 samples from 2015-03-10T00:40:41.750.000. Part 102/144

Processed Tue Mar 10 01:47:48 2015 by ELM ver.2012-10-06 from 001__elm20150310_004040__dat00.bin



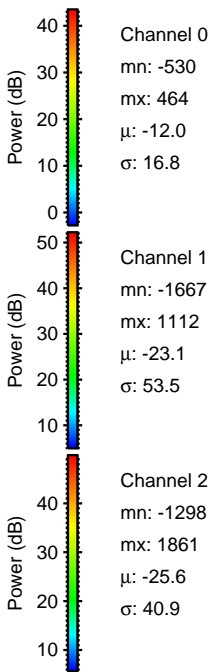
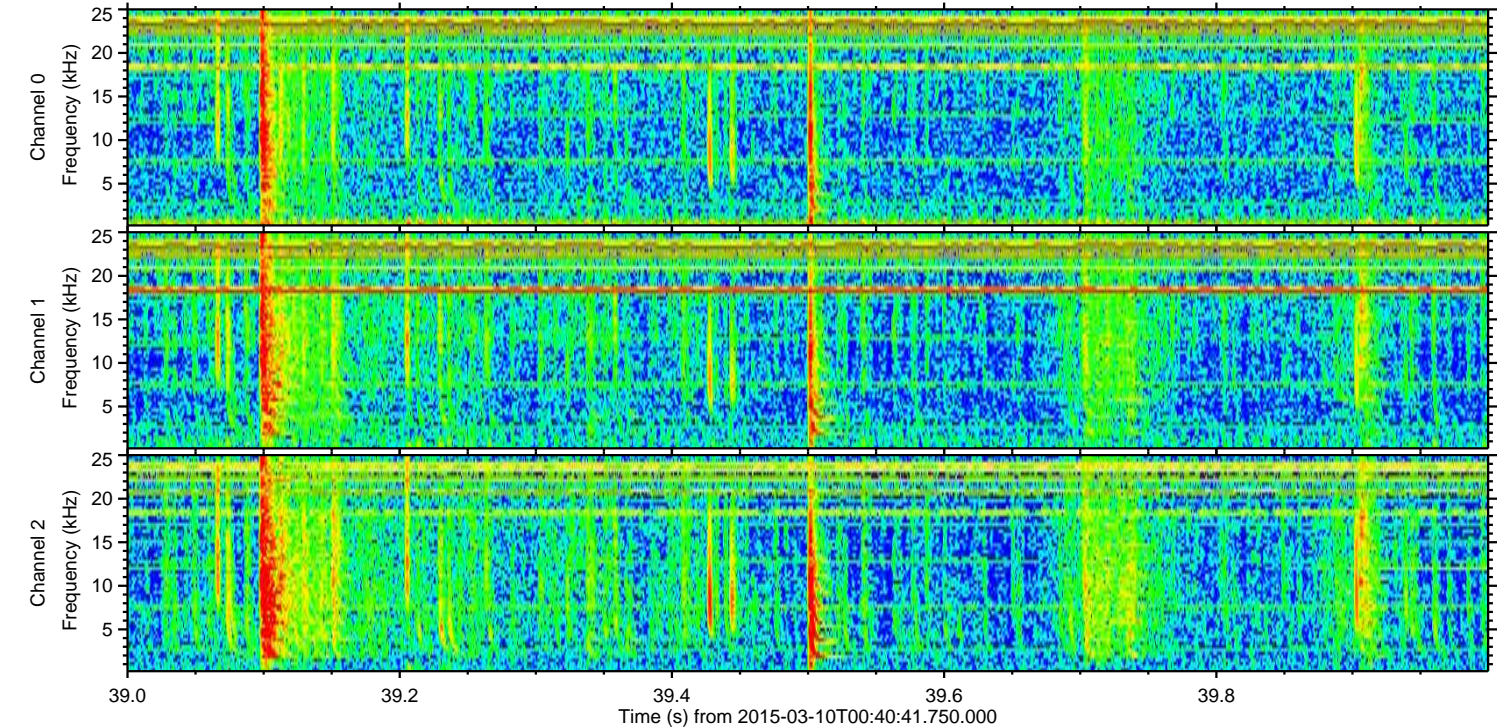
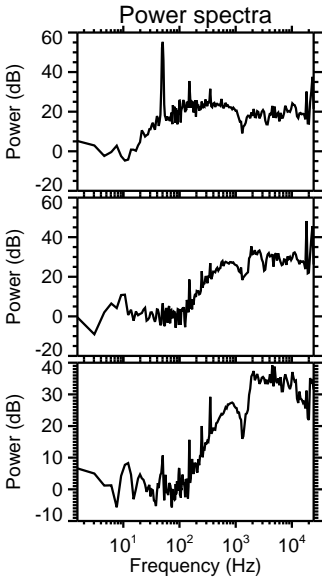
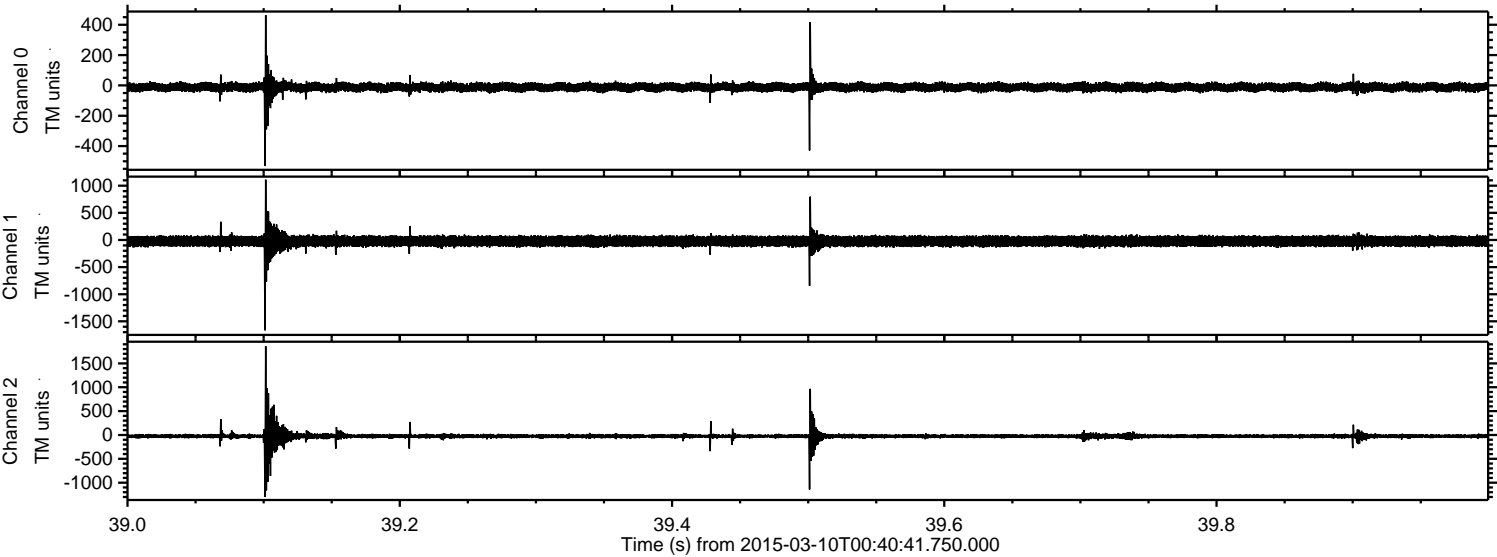
Channel 0
mn: -1398
mx: 1726
 μ : -12.0
 σ : 22.1

Channel 1
mn: -2764
mx: 4688
 μ : -23.0
 σ : 60.4

Channel 2
mn: -4999
mx: 3178
 μ : -25.5
 σ : 55.5

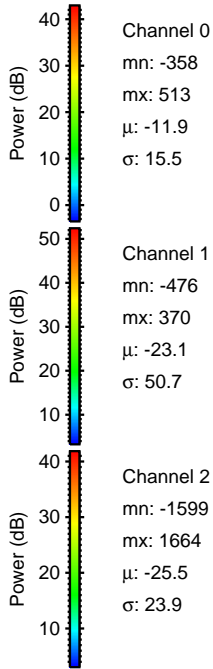
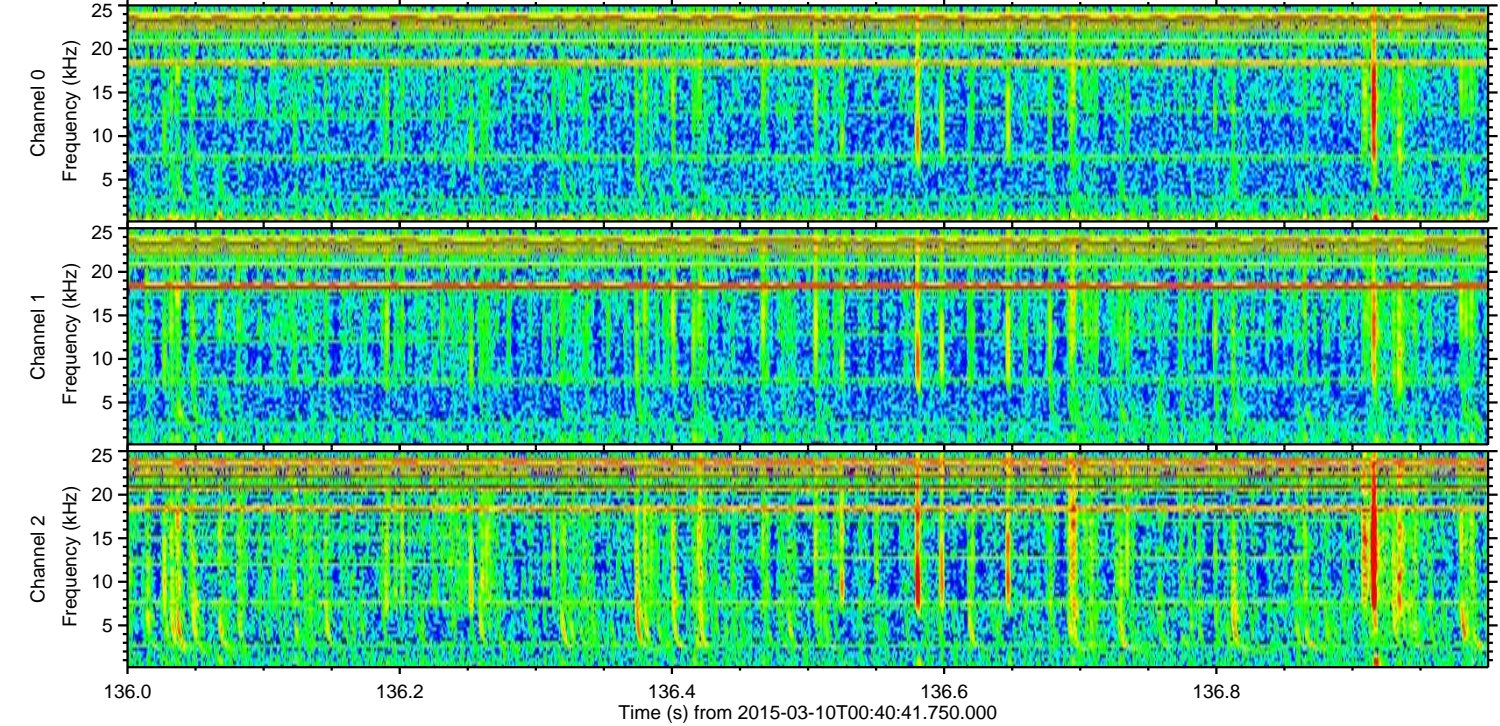
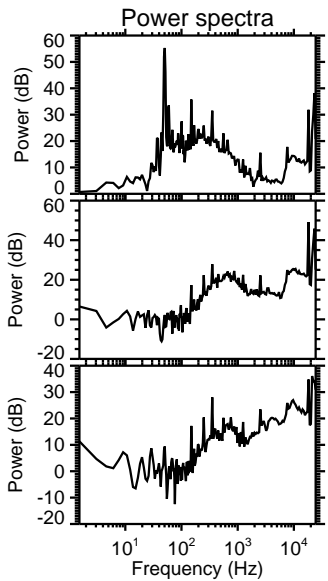
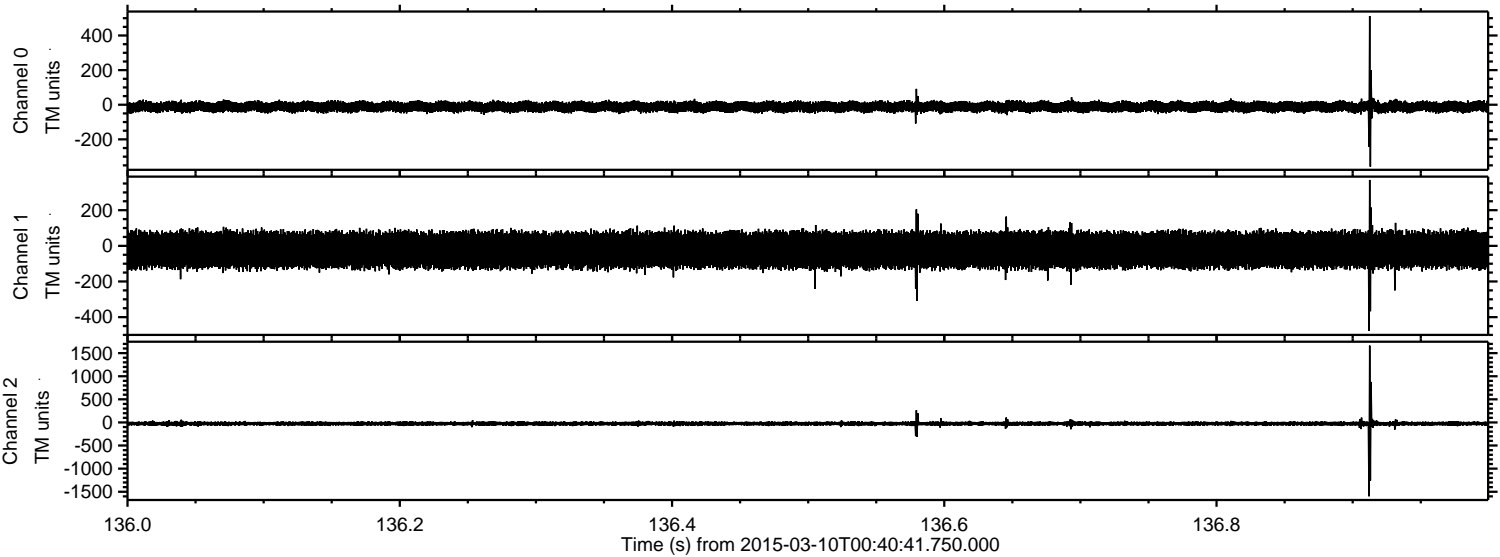
ELMAVAN 3D WAVEFORMS (Measured data sampled at 50 kHz) 49780 packets of 144 samples from 2015-03-10T00:40:41.750.000. Part 40/144

Processed Tue Mar 10 01:47:49 2015 by ELM ver.2012-10-06 from 001__elm20150310_004040__dat00.bin



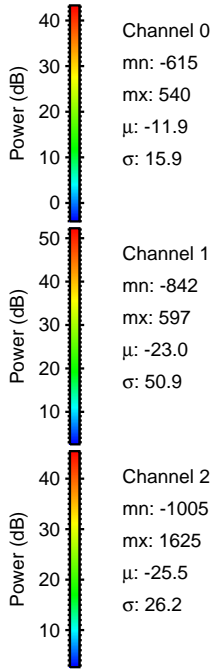
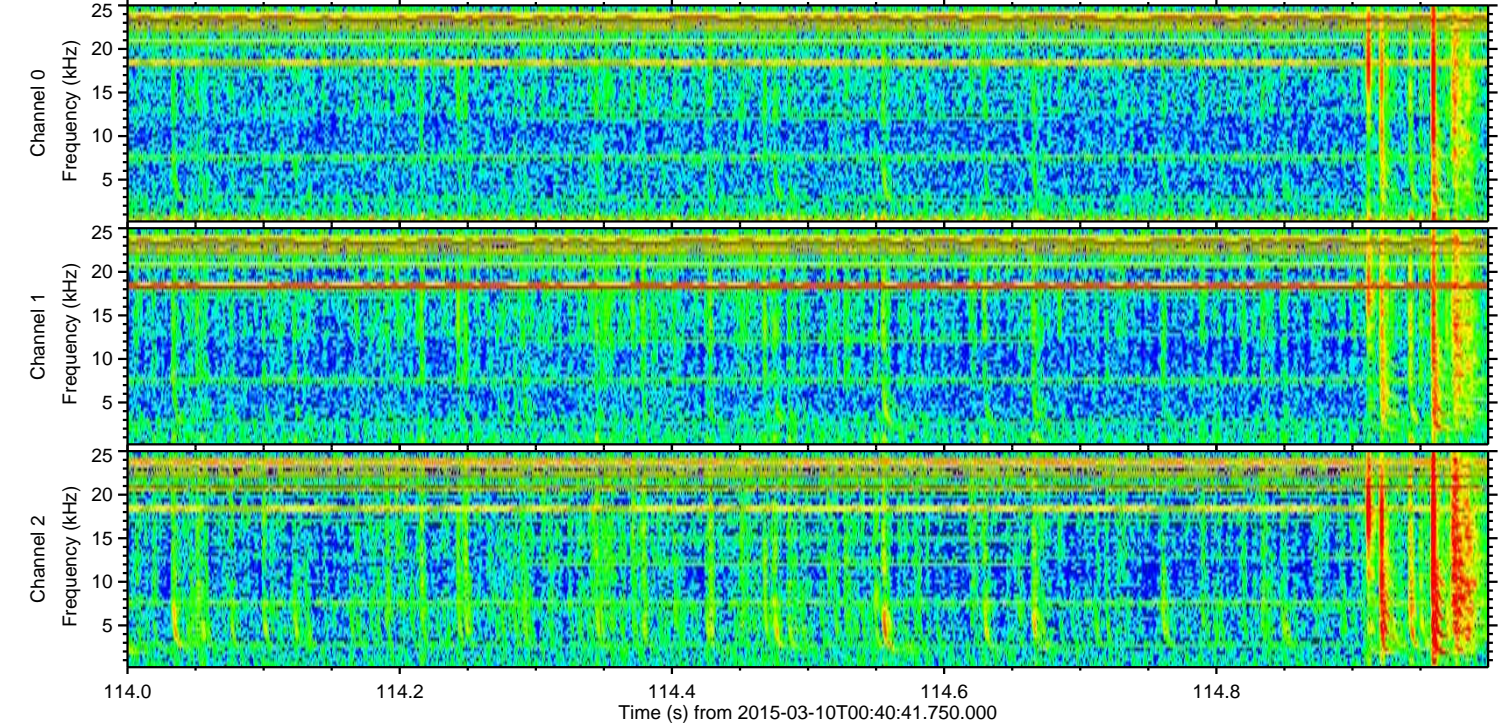
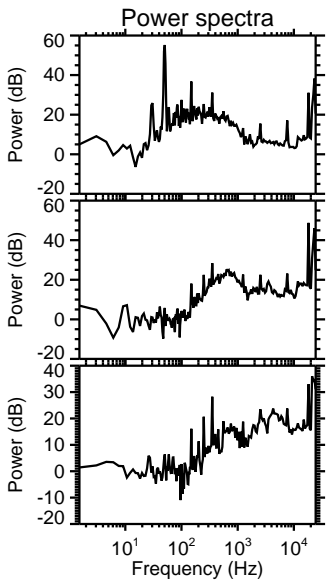
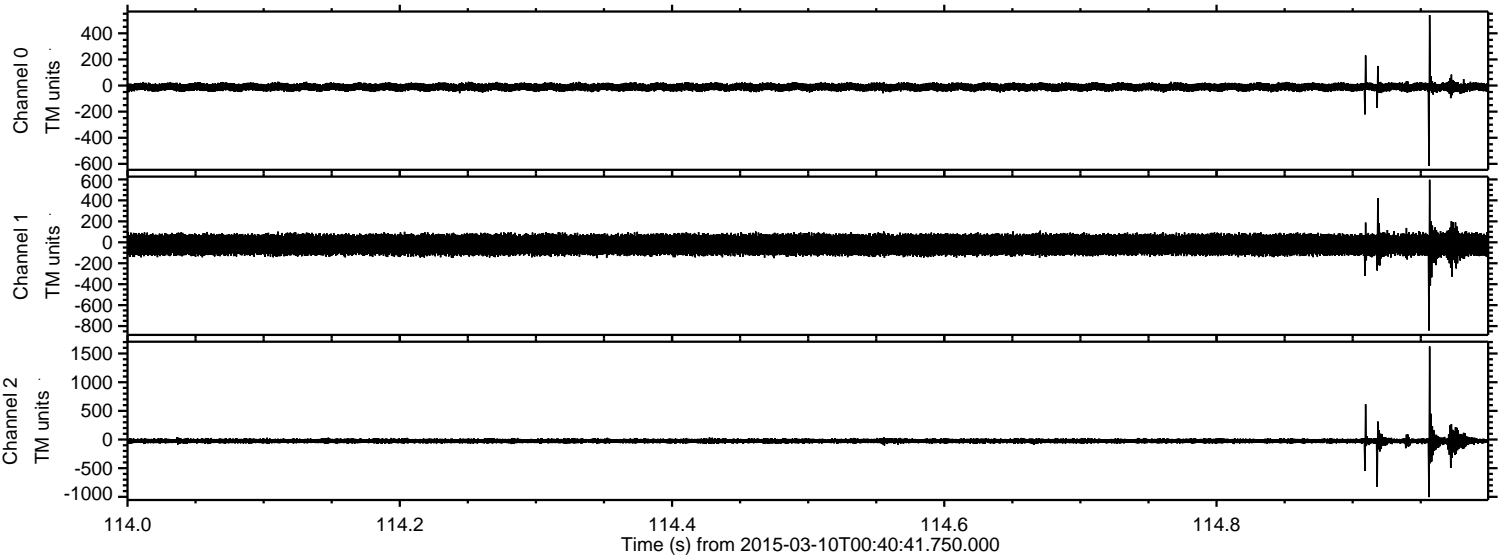
ELMAVAN 3D WAVEFORMS (Measured data sampled at 50 kHz) 49780 packets of 144 samples from 2015-03-10T00:40:41.750.000. Part 137/144

Processed Tue Mar 10 01:47:50 2015 by ELM ver.2012-10-06 from 001__elm20150310_004040__dat00.bin

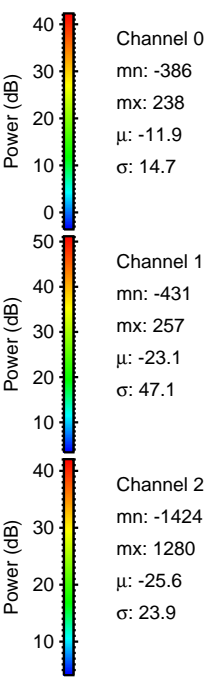
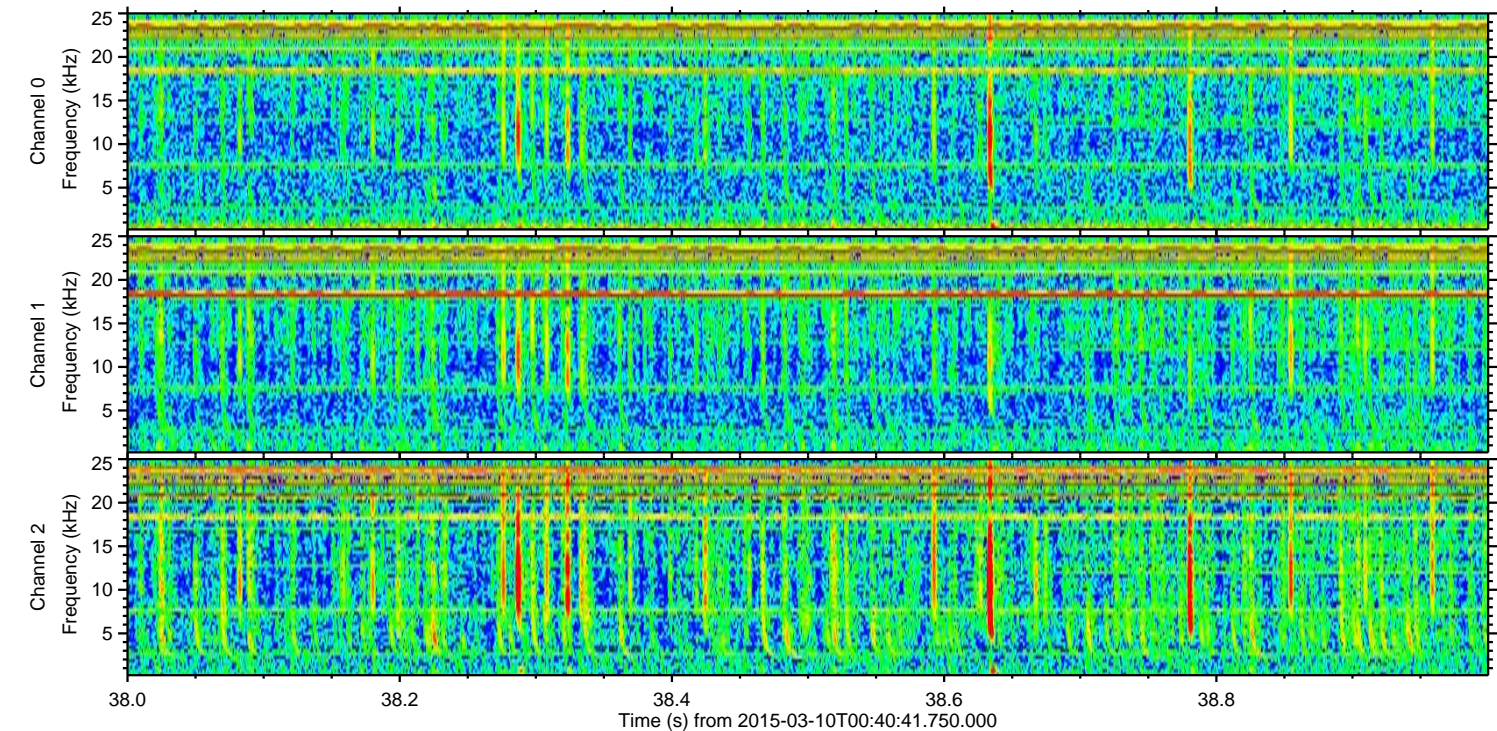
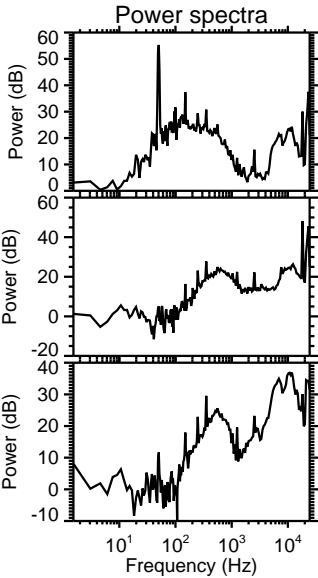
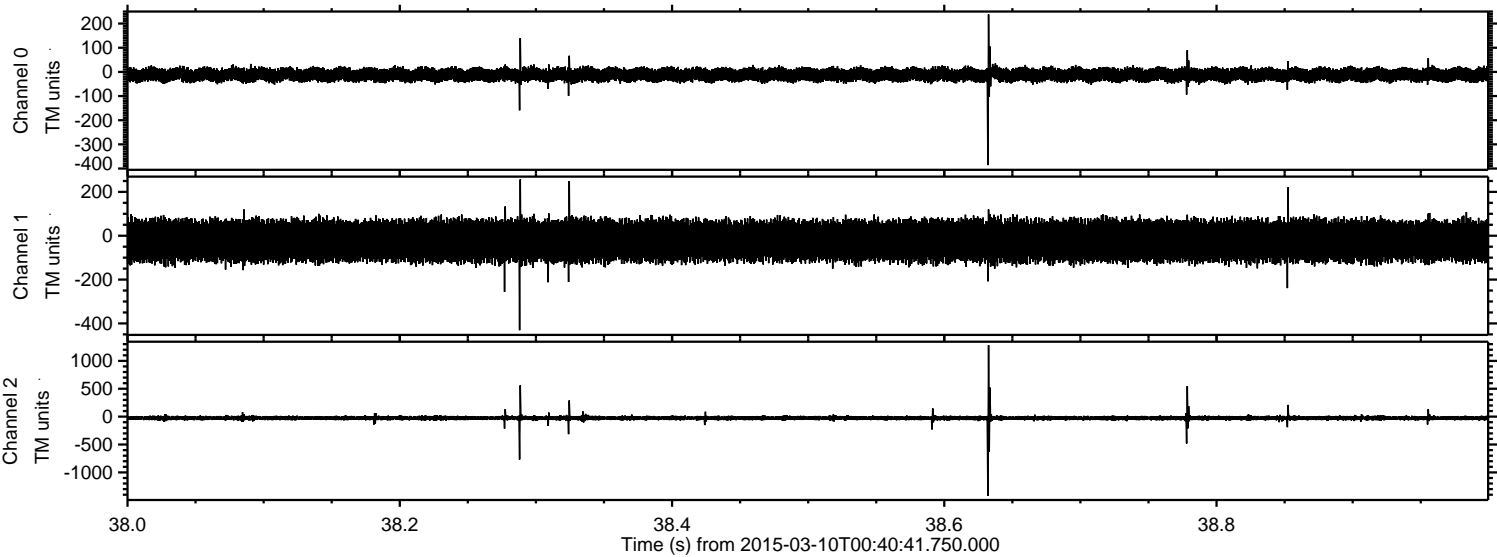


ELMAVAN 3D WAVEFORMS (Measured data sampled at 50 kHz) 49780 packets of 144 samples from 2015-03-10T00:40:41.750.000. Part 115/144

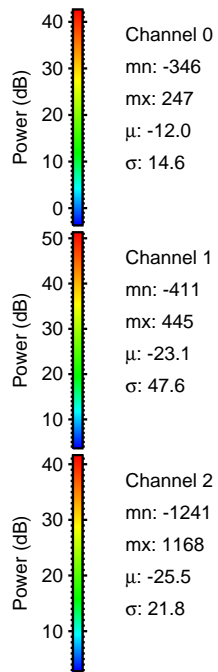
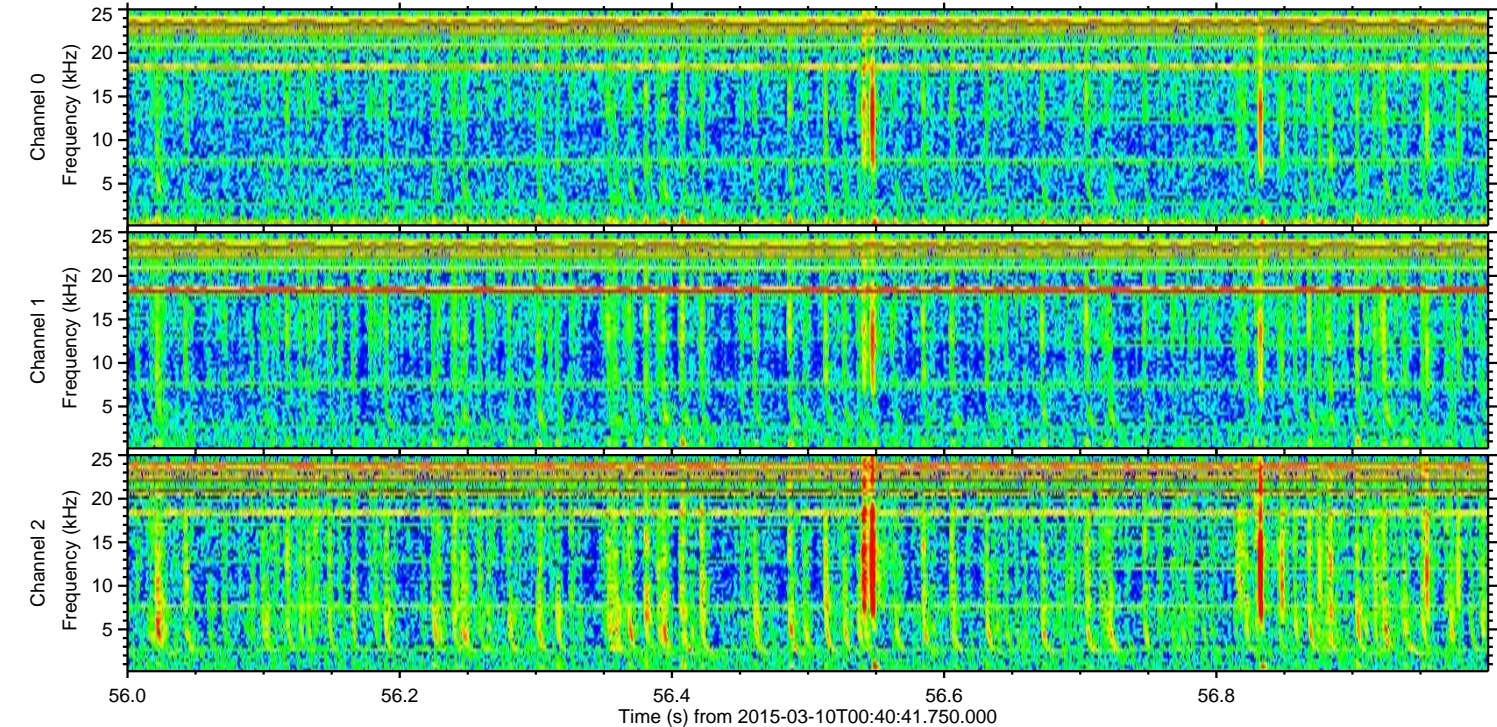
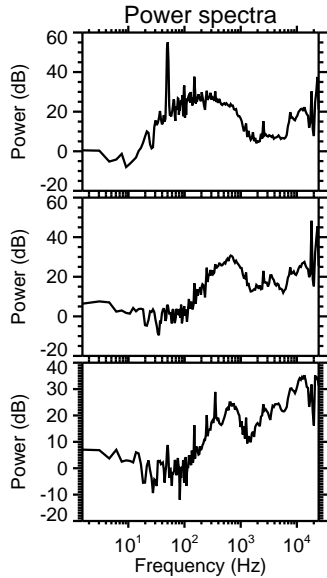
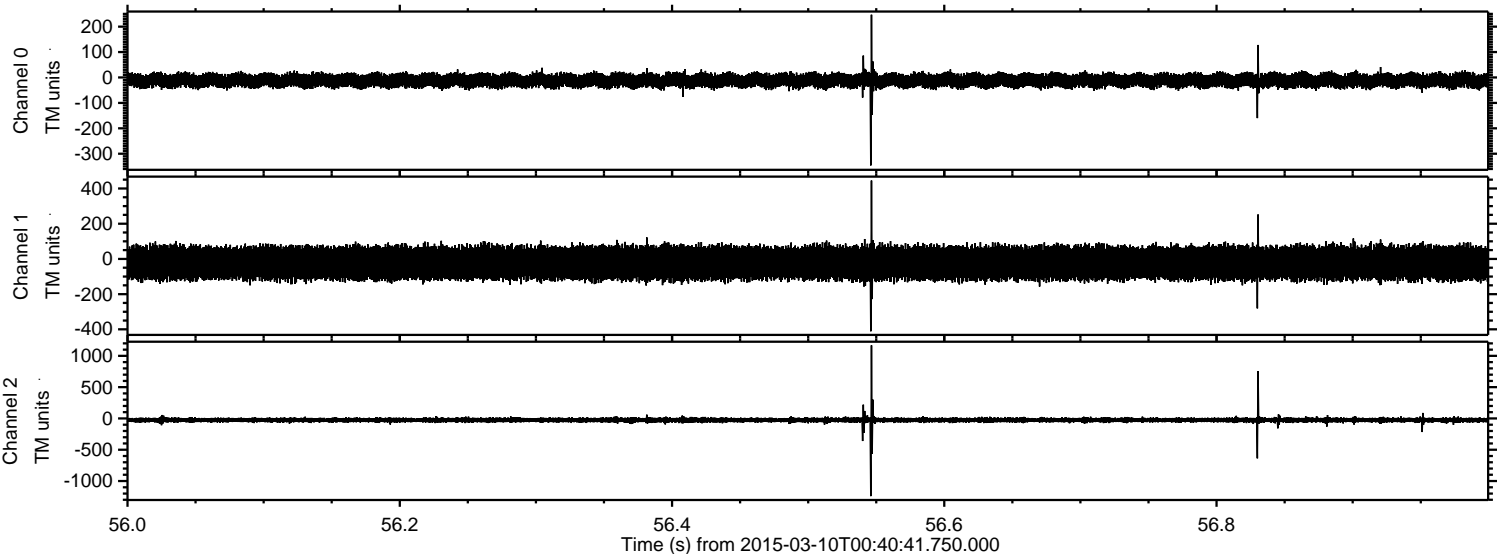
Processed Tue Mar 10 01:47:51 2015 by ELM ver.2012-10-06 from 001__elm20150310_004040__dat00.bin



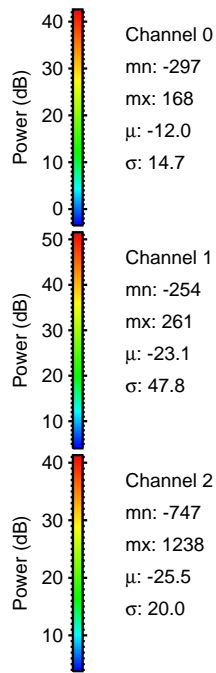
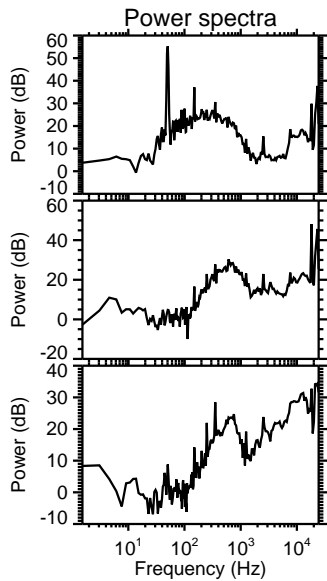
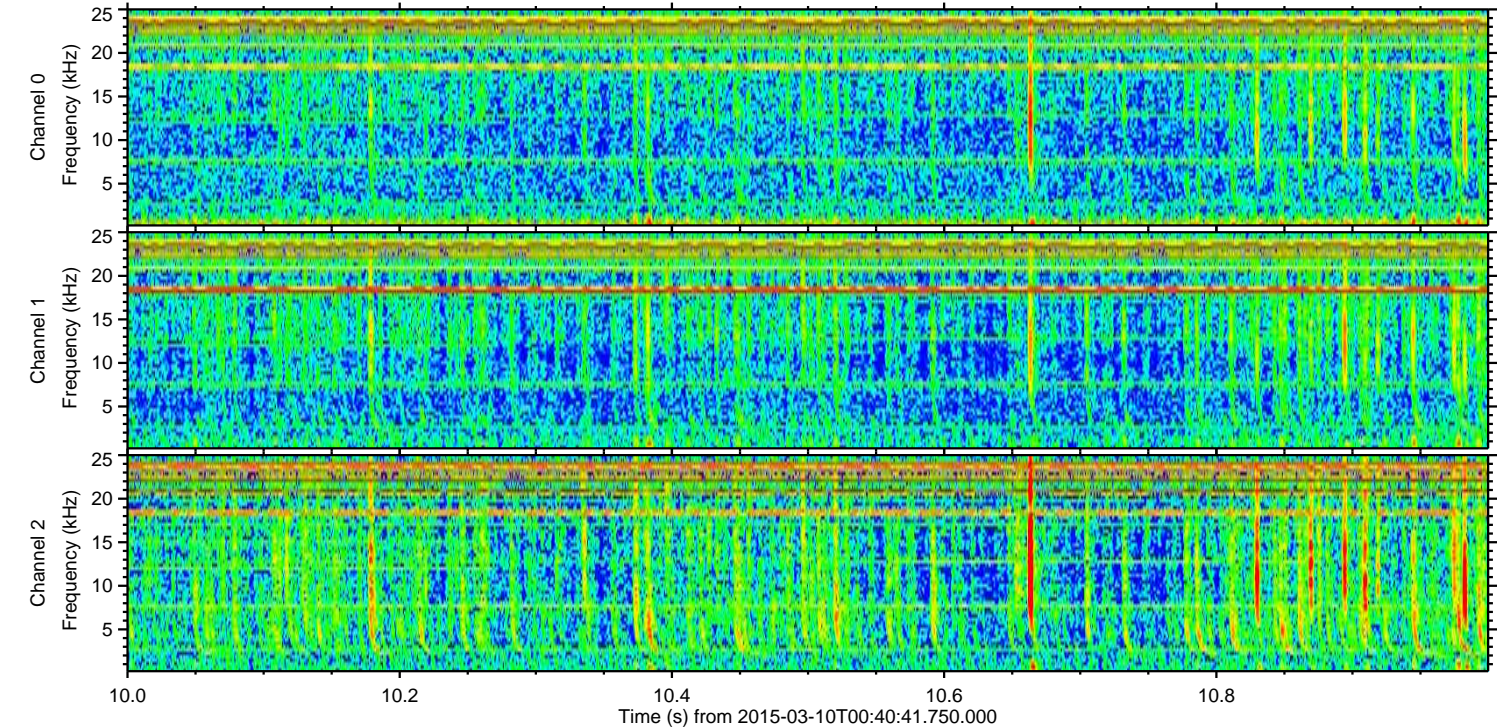
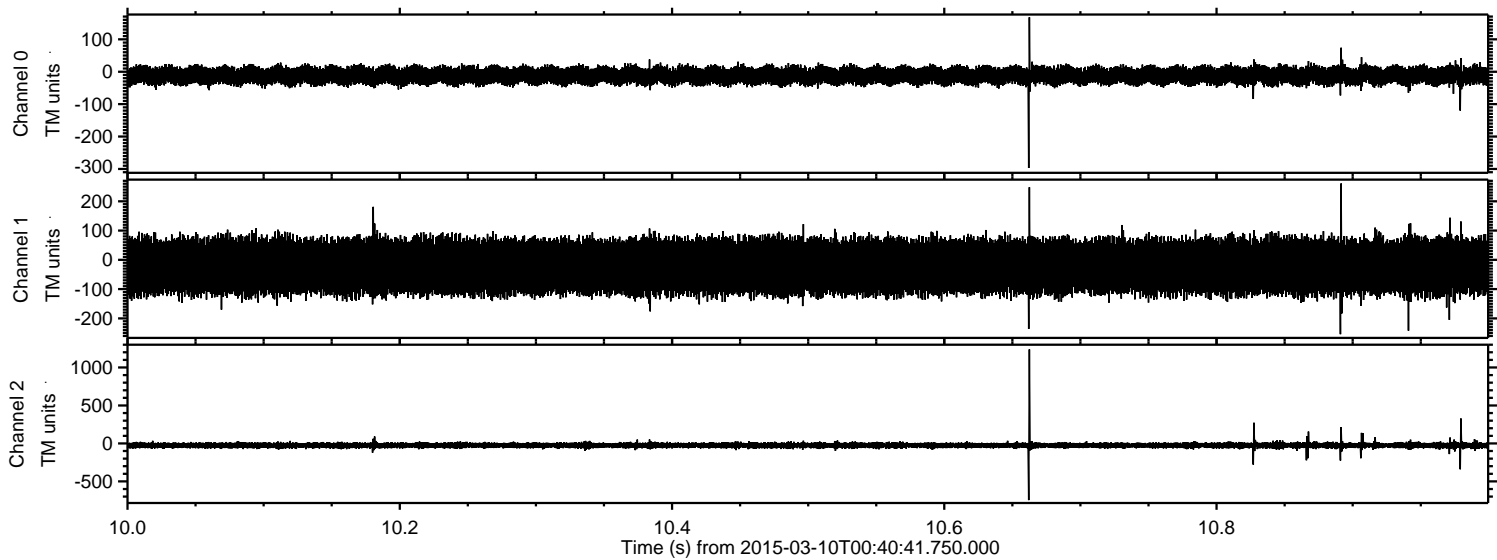
Processed Tue Mar 10 01:47:52 2015 by ELM ver.2012-10-06 from 001__elm20150310_004040__dat00.bin



Processed Tue Mar 10 01:47:53 2015 by ELM ver.2012-10-06 from 001__elm20150310_004040__dat00.bin



Processed Tue Mar 10 01:47:54 2015 by ELM ver.2012-10-06 from 001__elm20150310_004040__dat00.bin



Processed Tue Mar 10 01:47:55 2015 by ELM ver.2012-10-06 from 001__elm20150310_004040__dat00.bin

