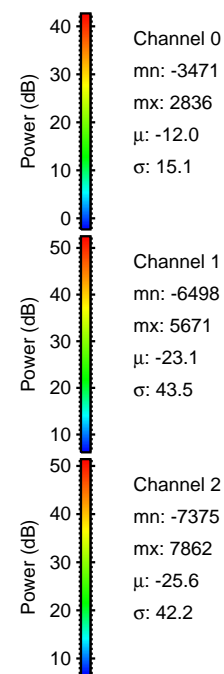
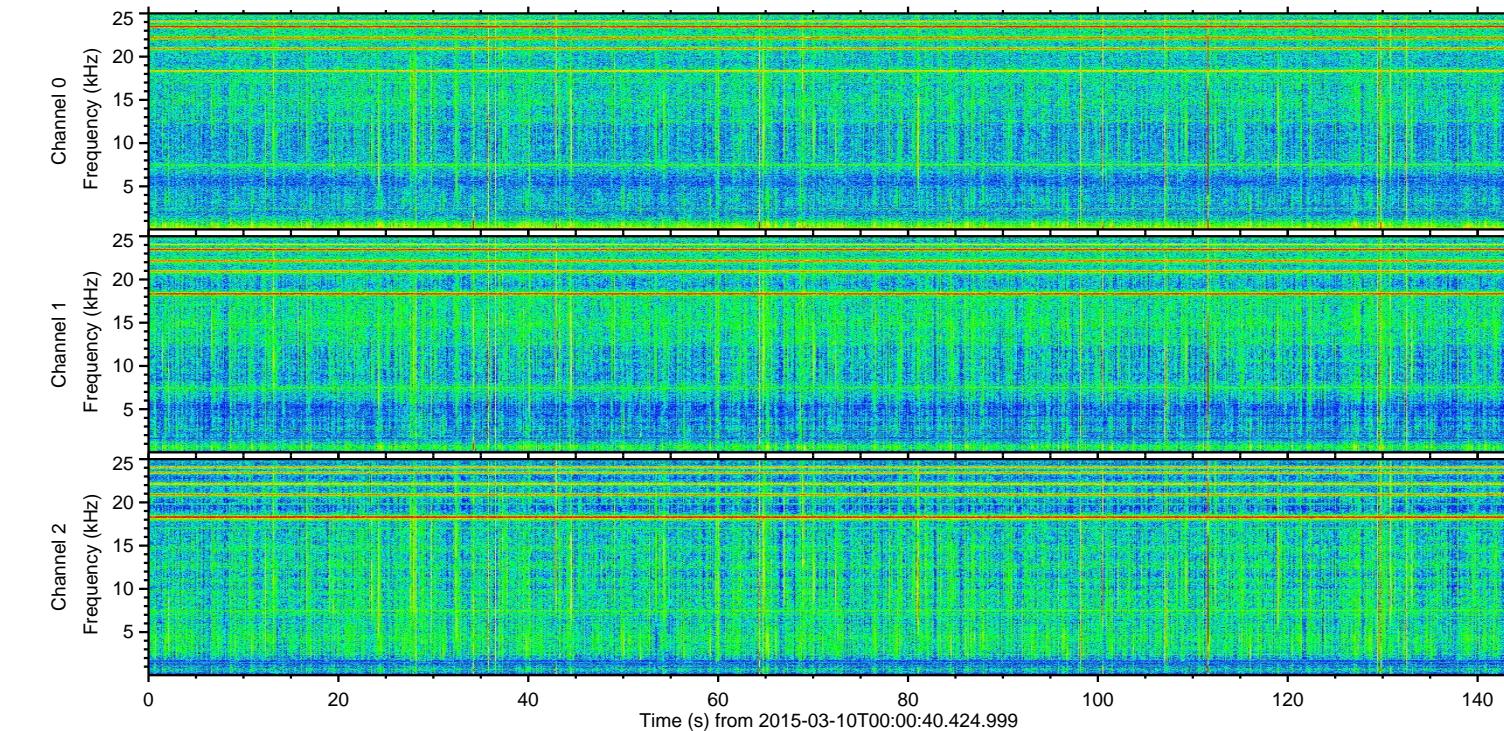
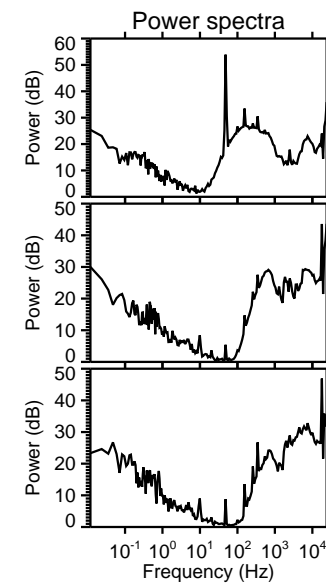
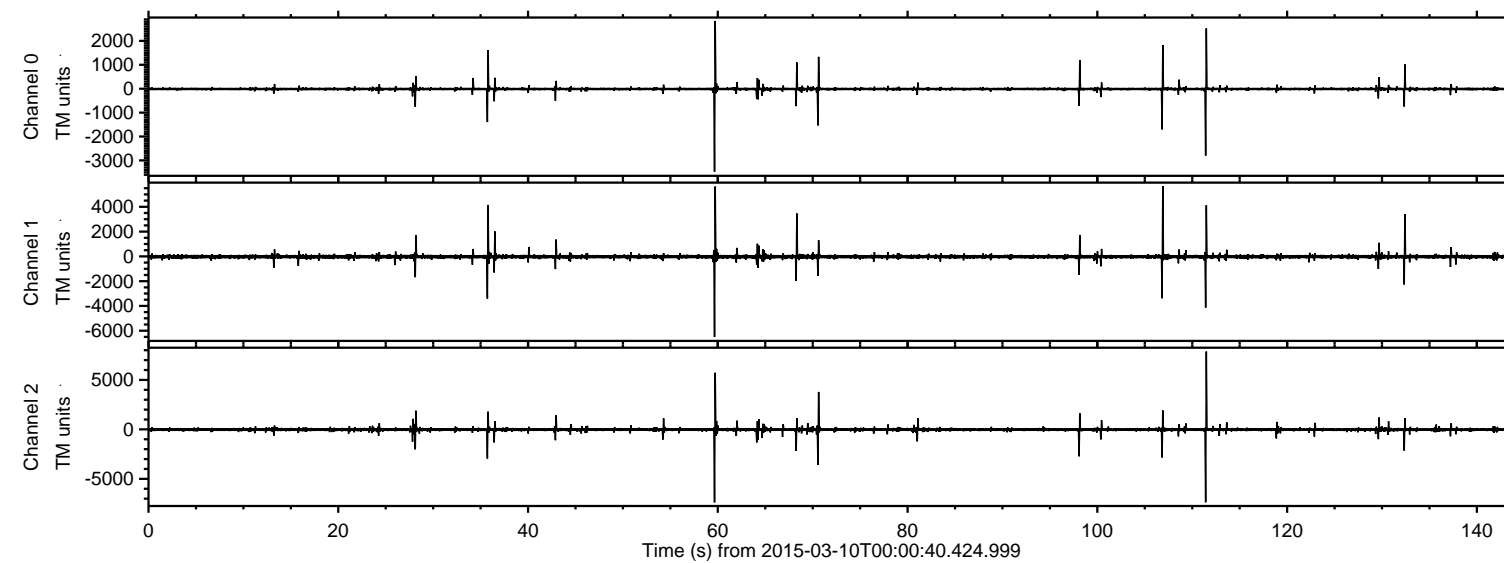


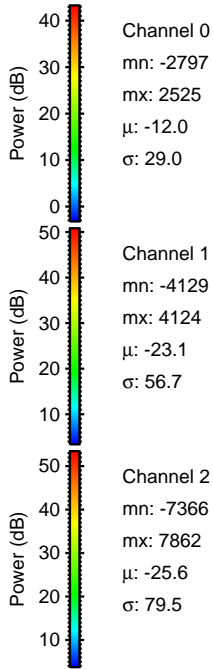
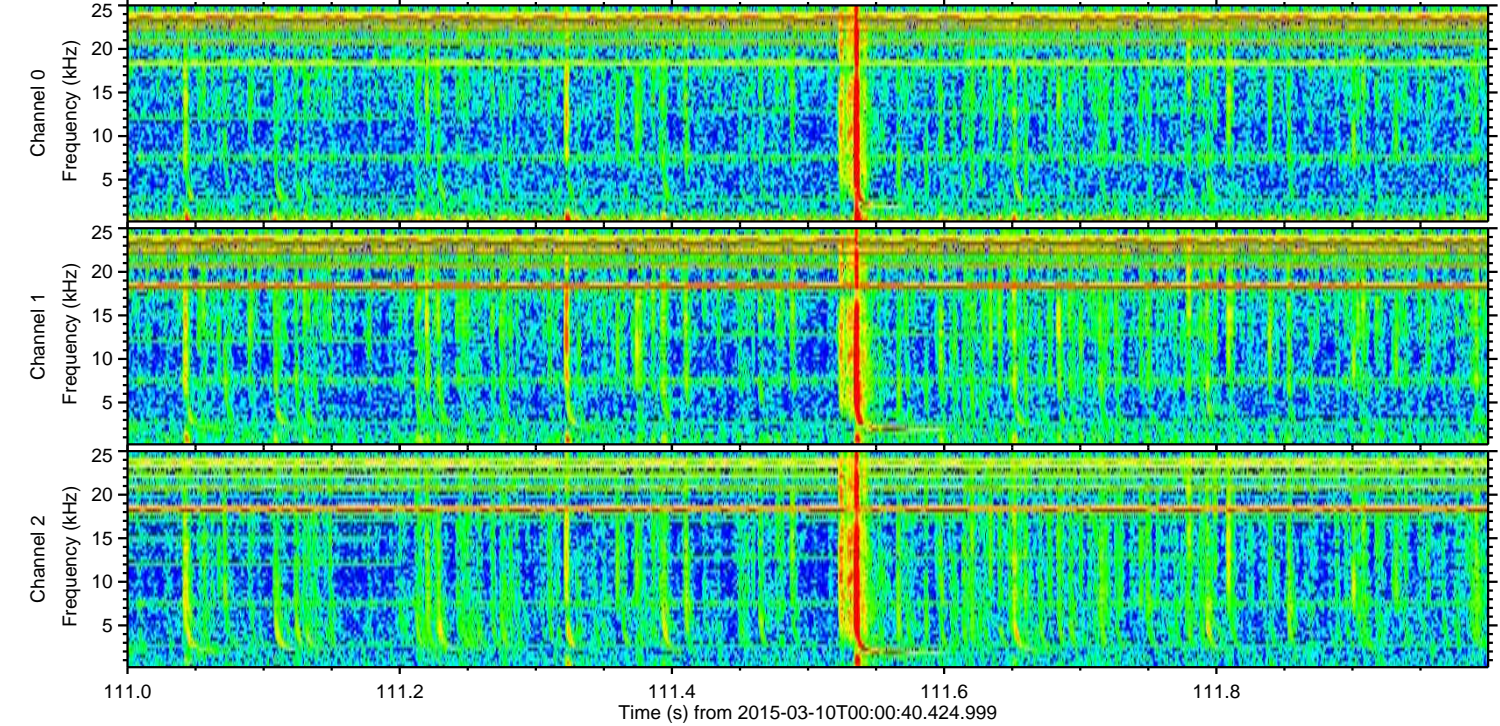
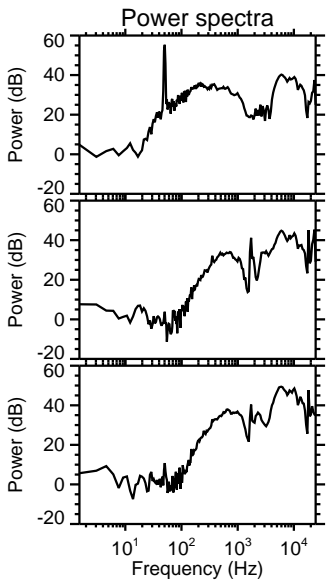
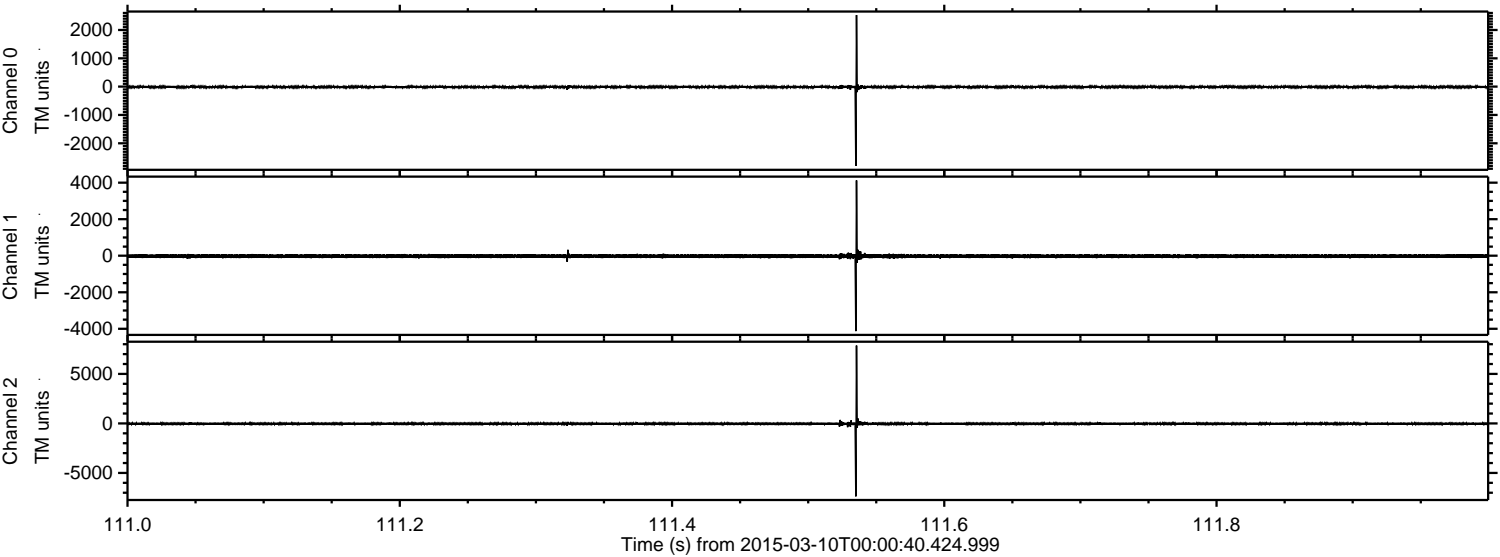
ELMAVAN 3D WAVEFORMS (Measured data sampled at 50 kHz) 49791 packets of 144 samples from 2015-03-10T00:00:40.424.999.

Processed Tue Mar 10 01:07:36 2015 by ELM ver.2012-10-06 from 001__elm20150310_000039__dat00.bin

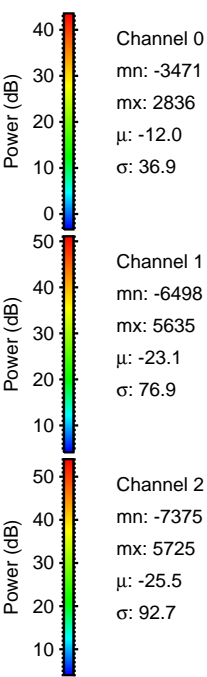
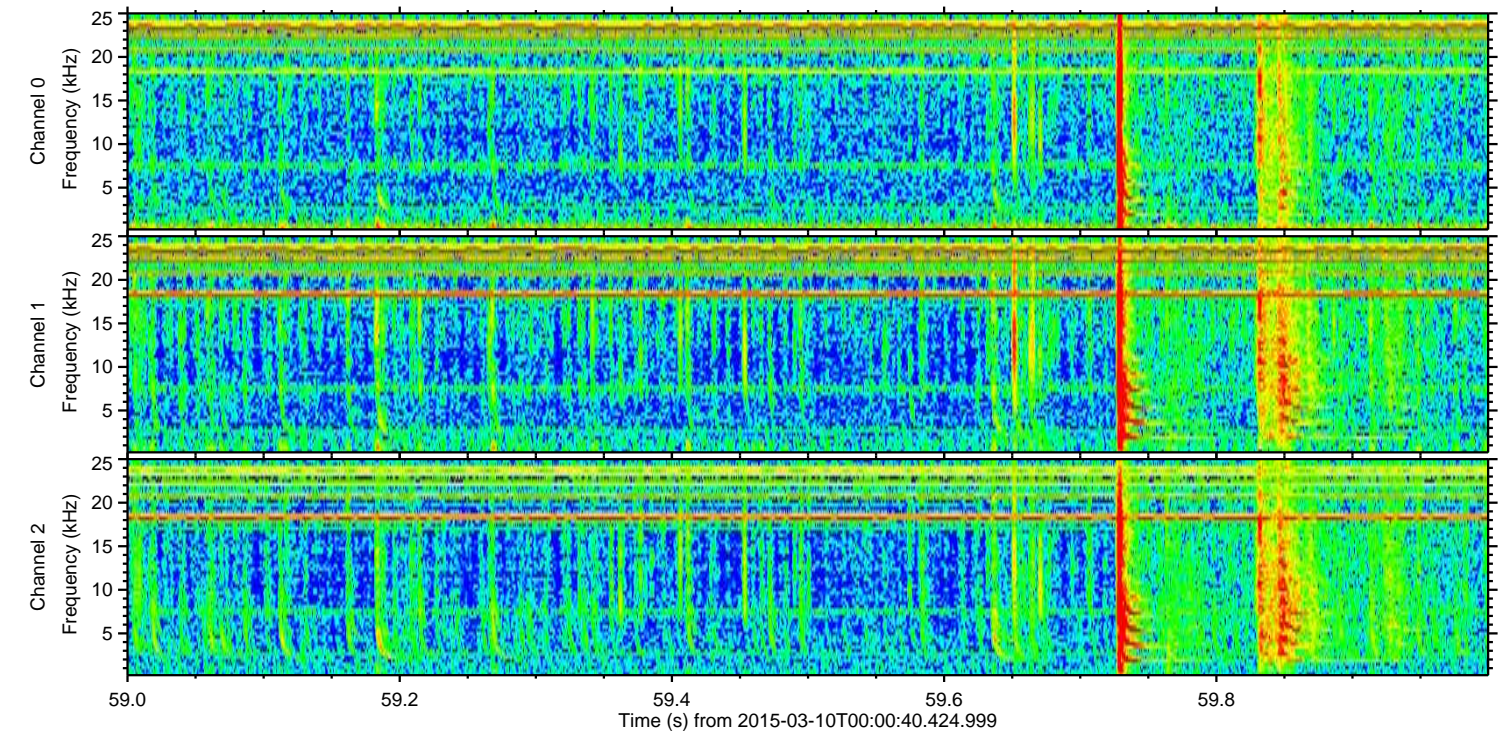
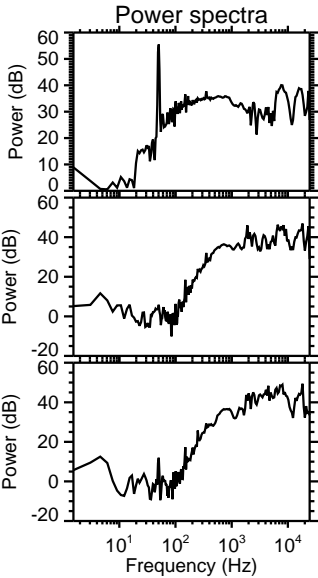
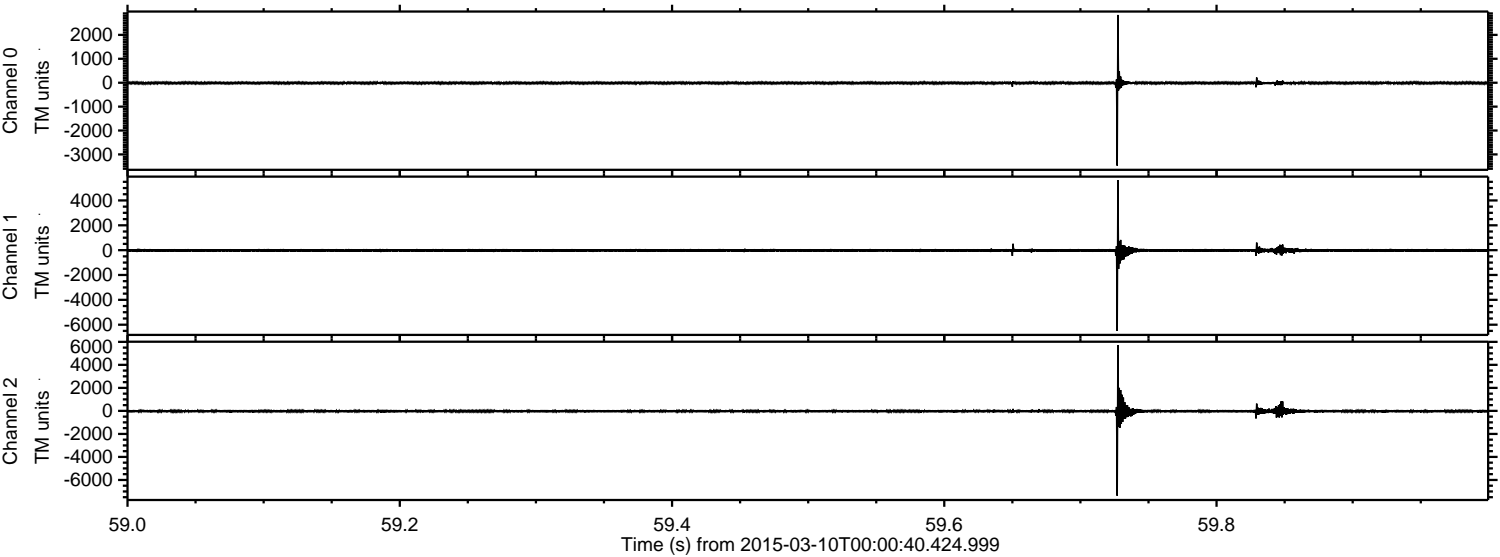


ELMAVAN 3D WAVEFORMS (Measured data sampled at 50 kHz) 49791 packets of 144 samples from 2015-03-10T00:00:40.424.999. Part 112/144

Processed Tue Mar 10 01:07:47 2015 by ELM ver.2012-10-06 from 001__elm20150310_000039__dat00.bin

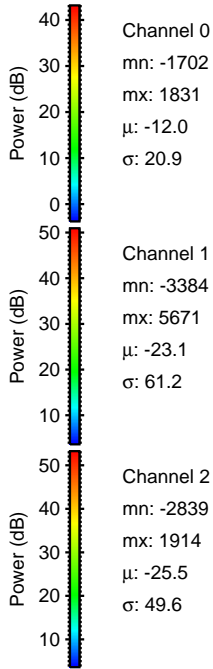
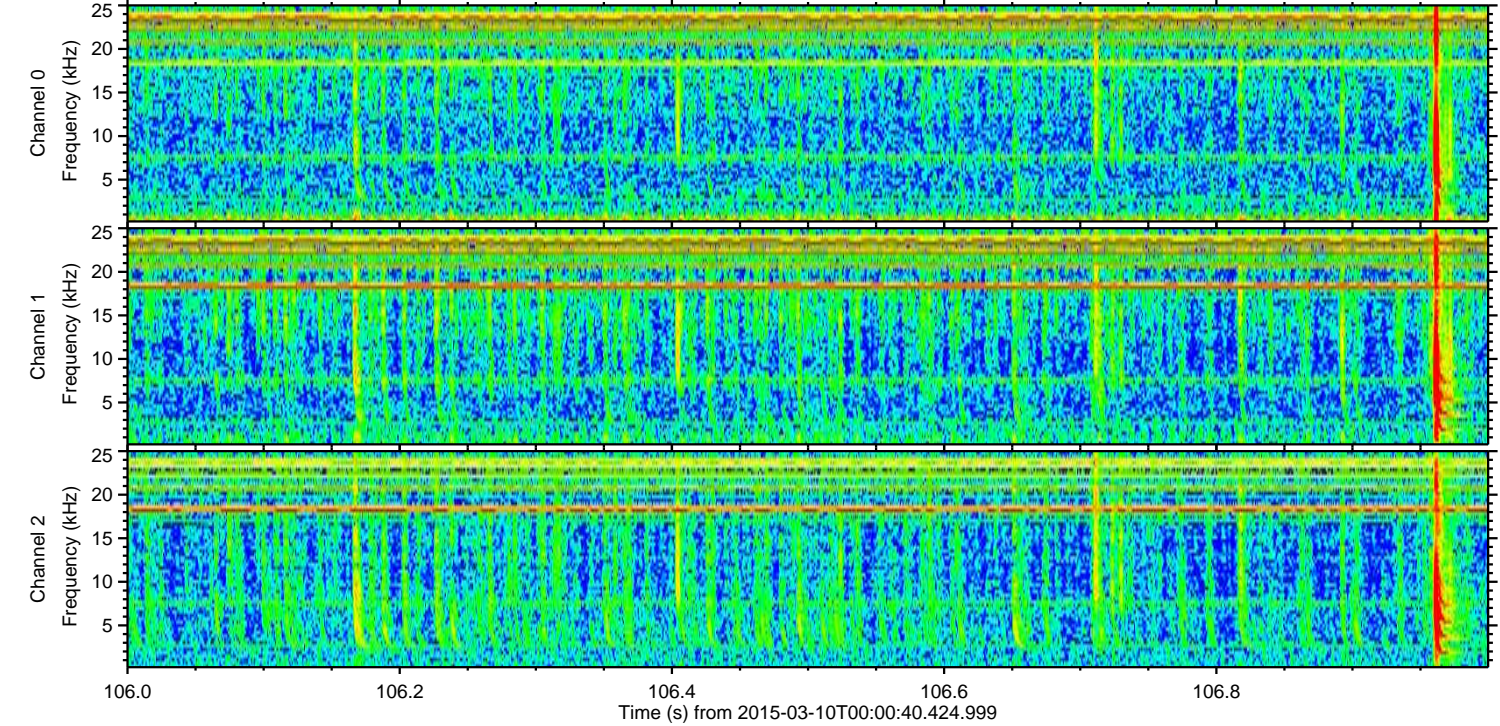
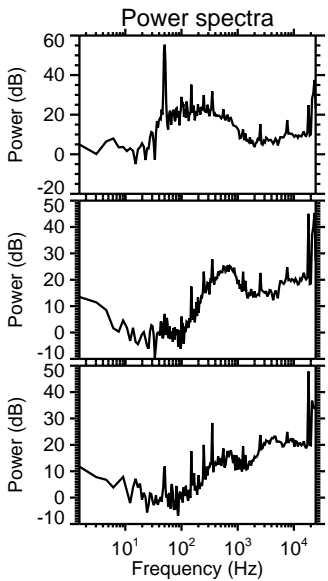
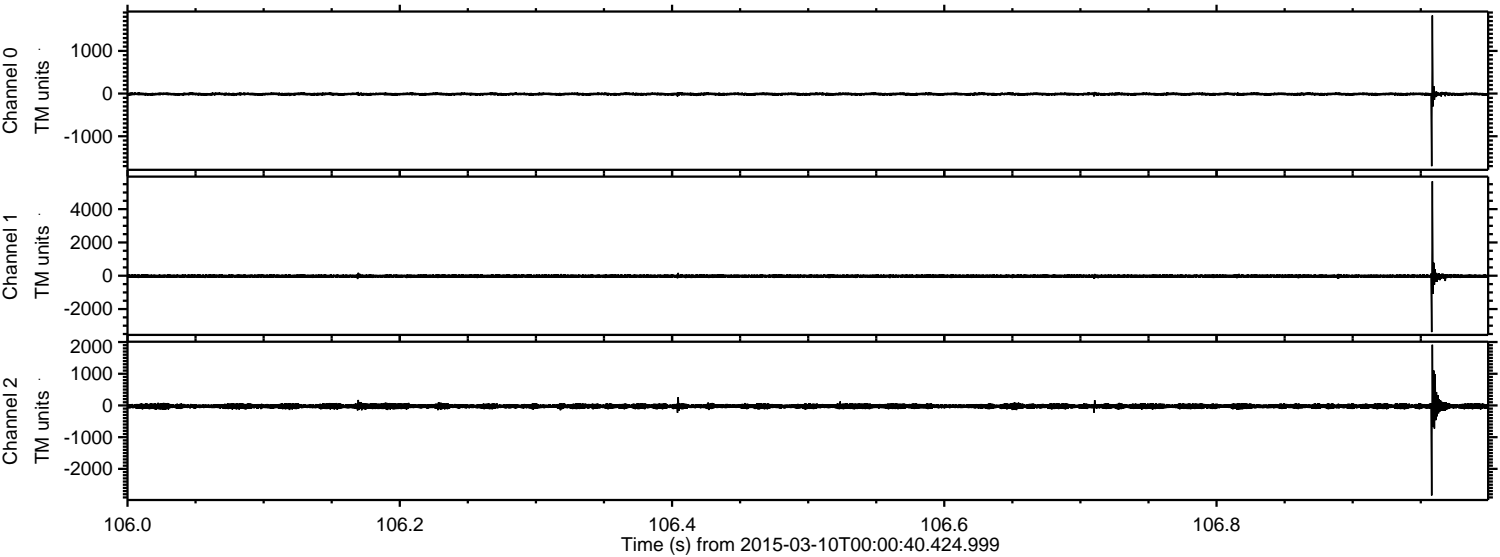


Processed Tue Mar 10 01:07:48 2015 by ELM ver.2012-10-06 from 001__elm20150310_000039__dat00.bin

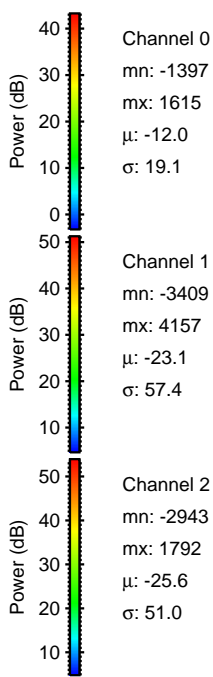
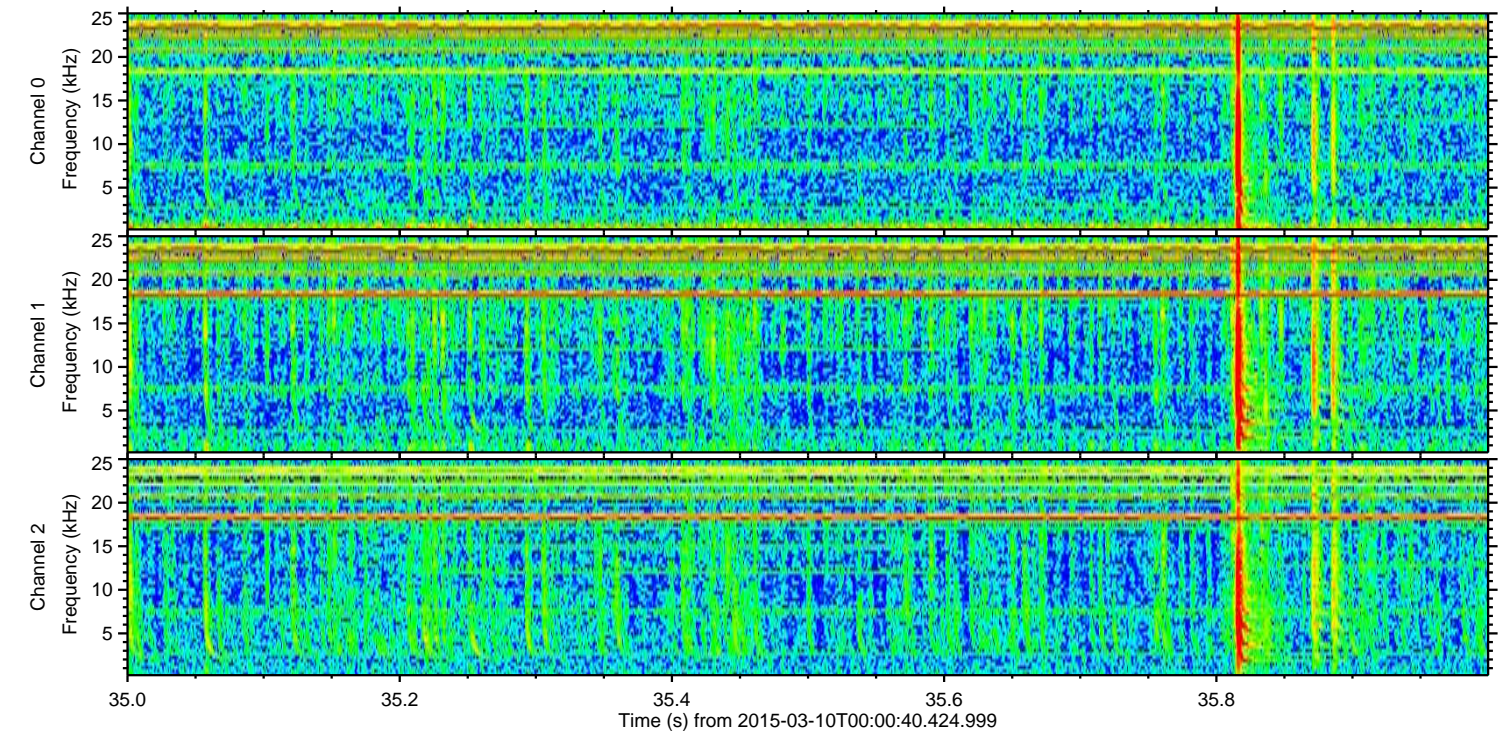
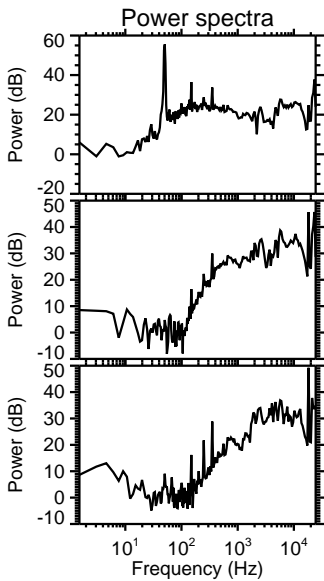
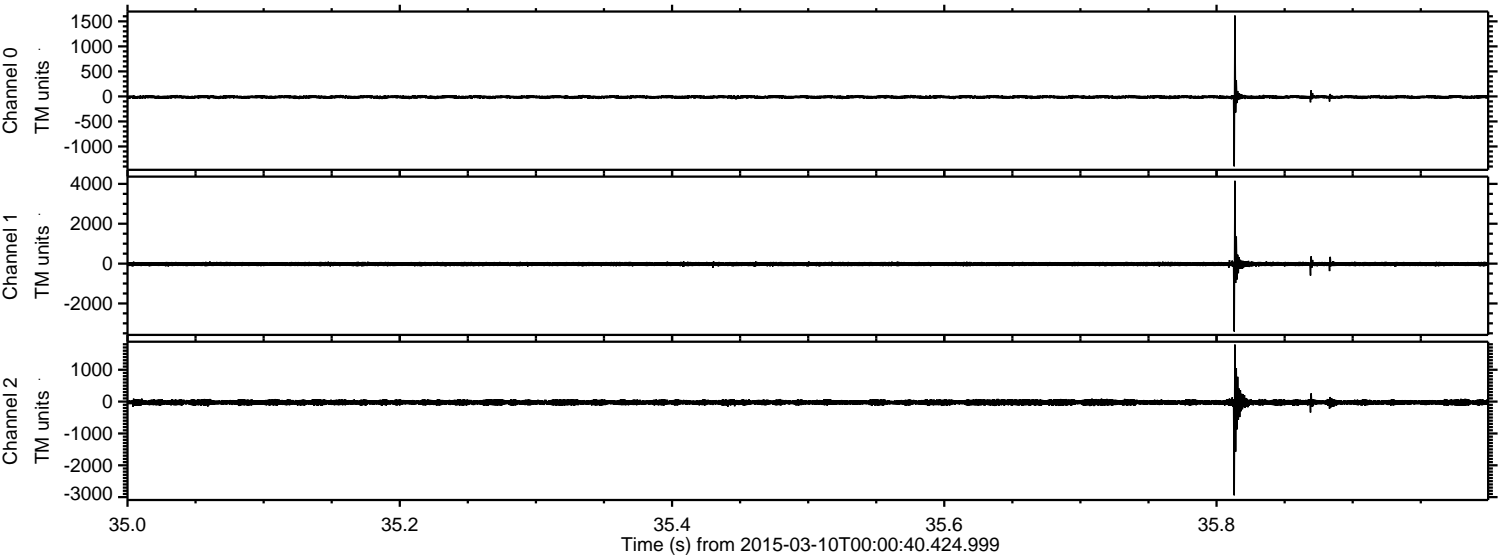


ELMAVAN 3D WAVEFORMS (Measured data sampled at 50 kHz) 49791 packets of 144 samples from 2015-03-10T00:00:40.424.999. Part 107/144

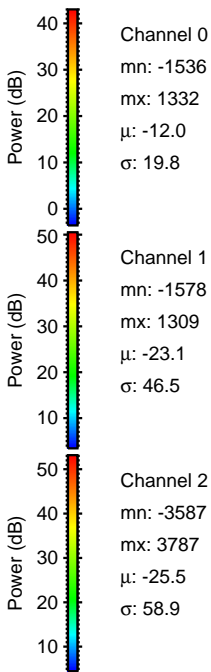
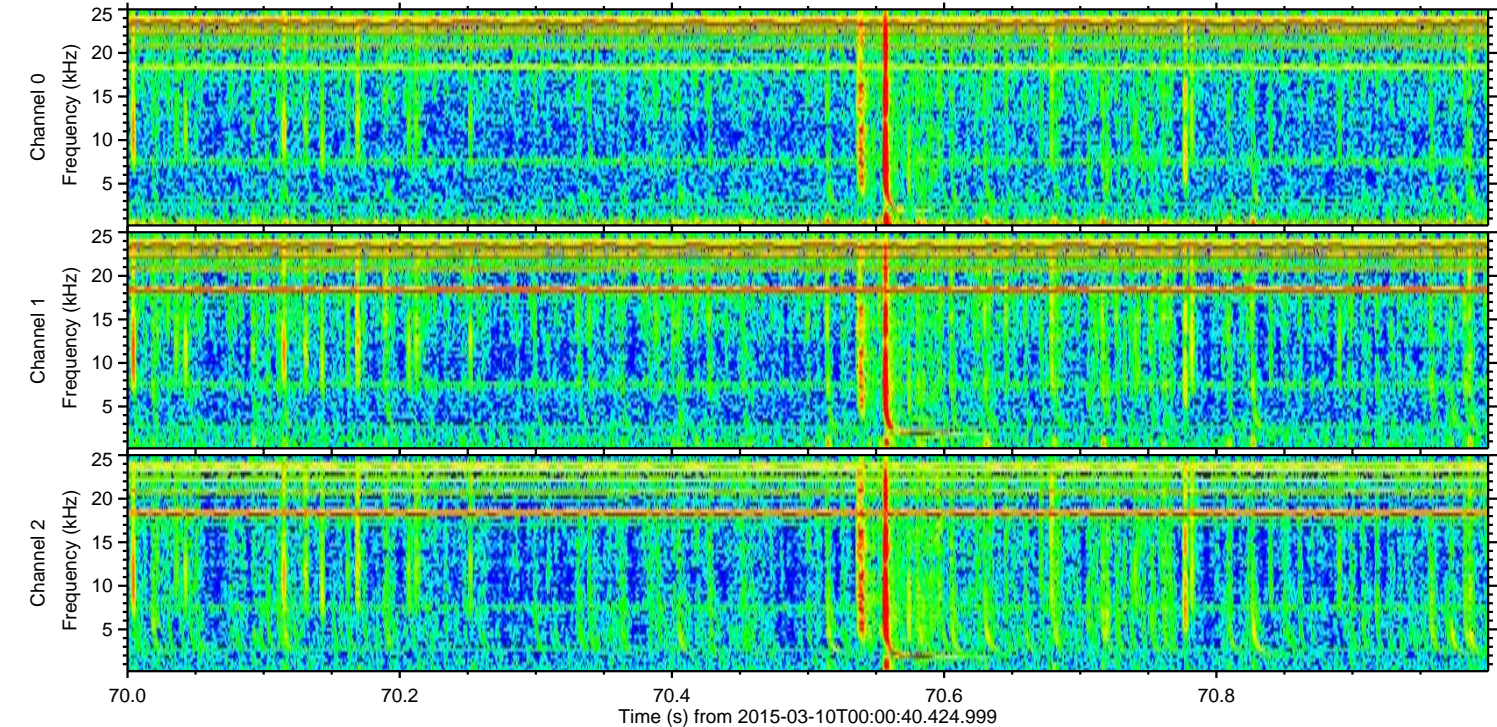
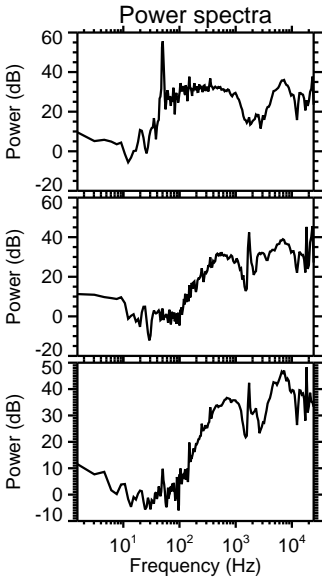
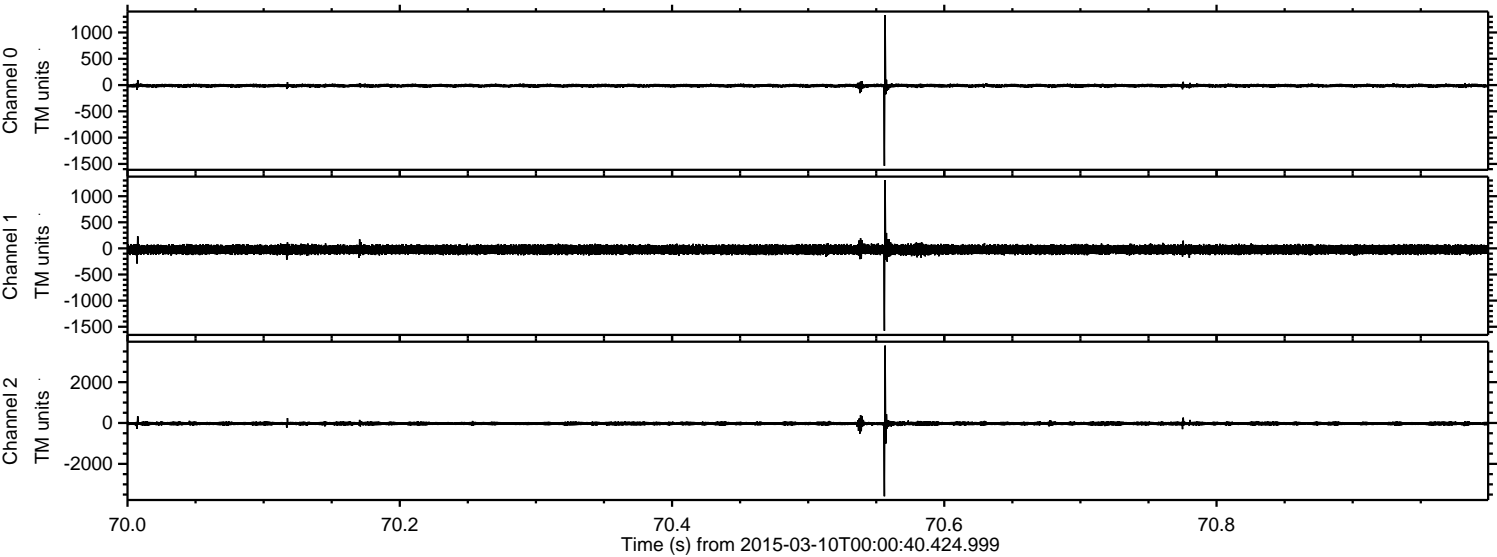
Processed Tue Mar 10 01:07:49 2015 by ELM ver.2012-10-06 from 001__elm20150310_000039__dat00.bin



Processed Tue Mar 10 01:07:50 2015 by ELM ver.2012-10-06 from 001__elm20150310_000039__dat00.bin



Processed Tue Mar 10 01:07:51 2015 by ELM ver.2012-10-06 from 001__elm20150310_000039__dat00.bin

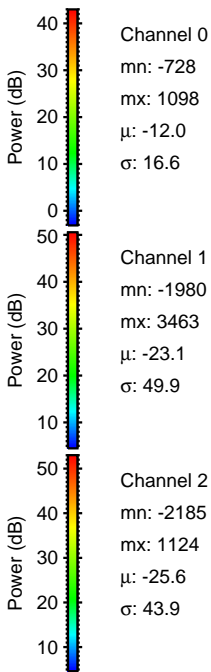
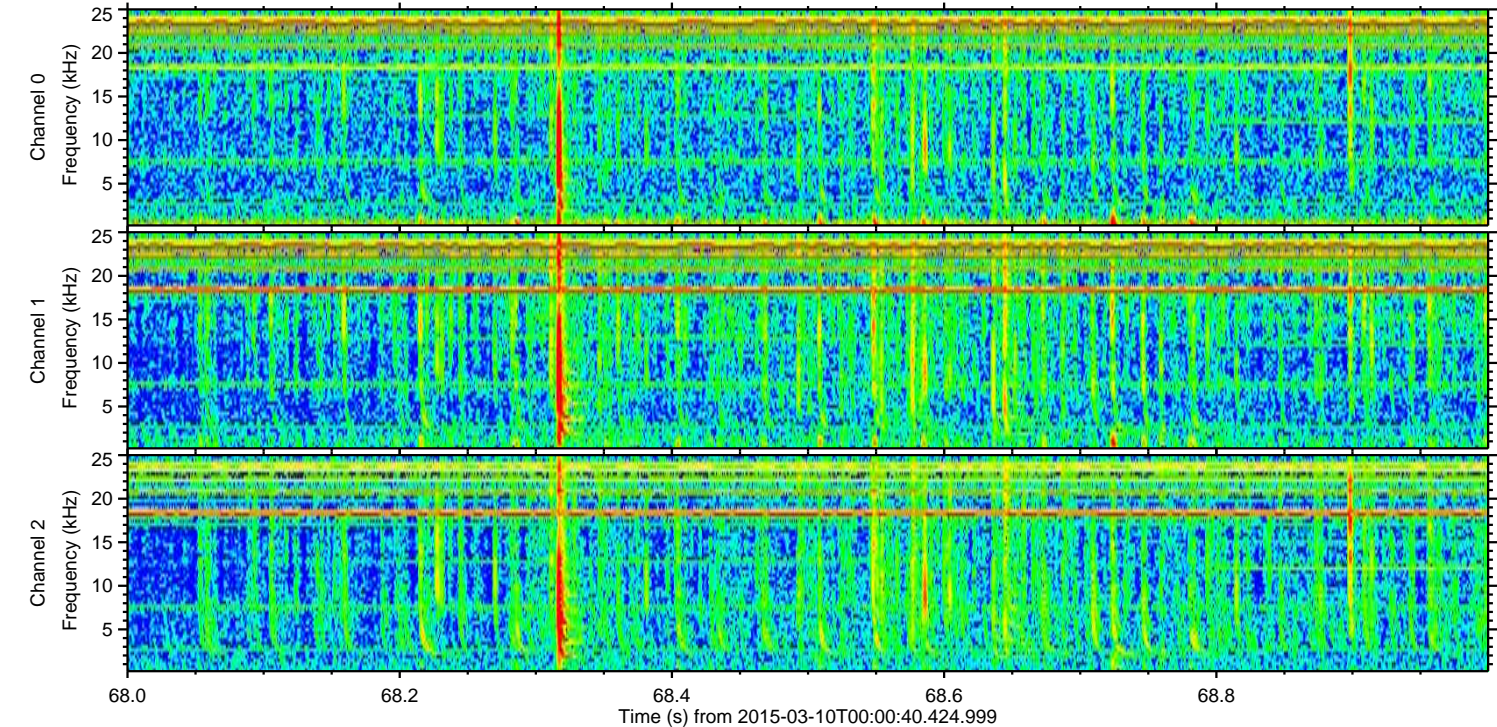
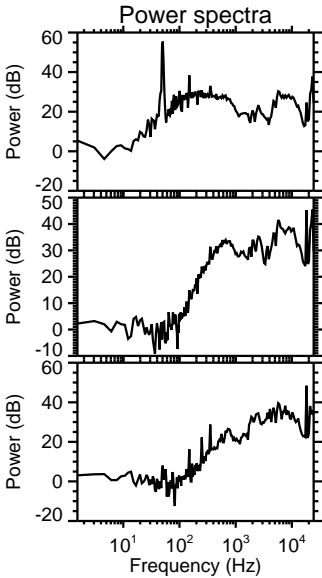
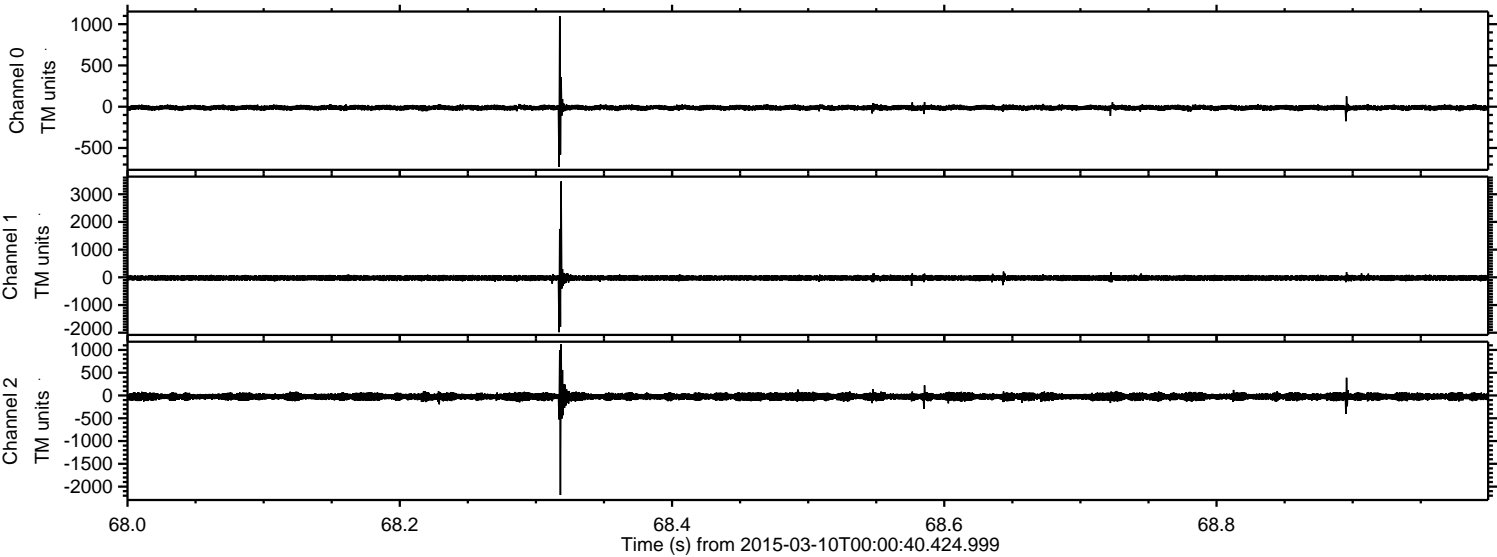


Channel 0
mn: -1536
mx: 1332
 μ : -12.0
 σ : 19.8

Channel 1
mn: -1578
mx: 1309
 μ : -23.1
 σ : 46.5

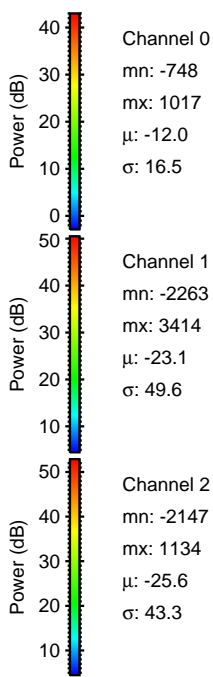
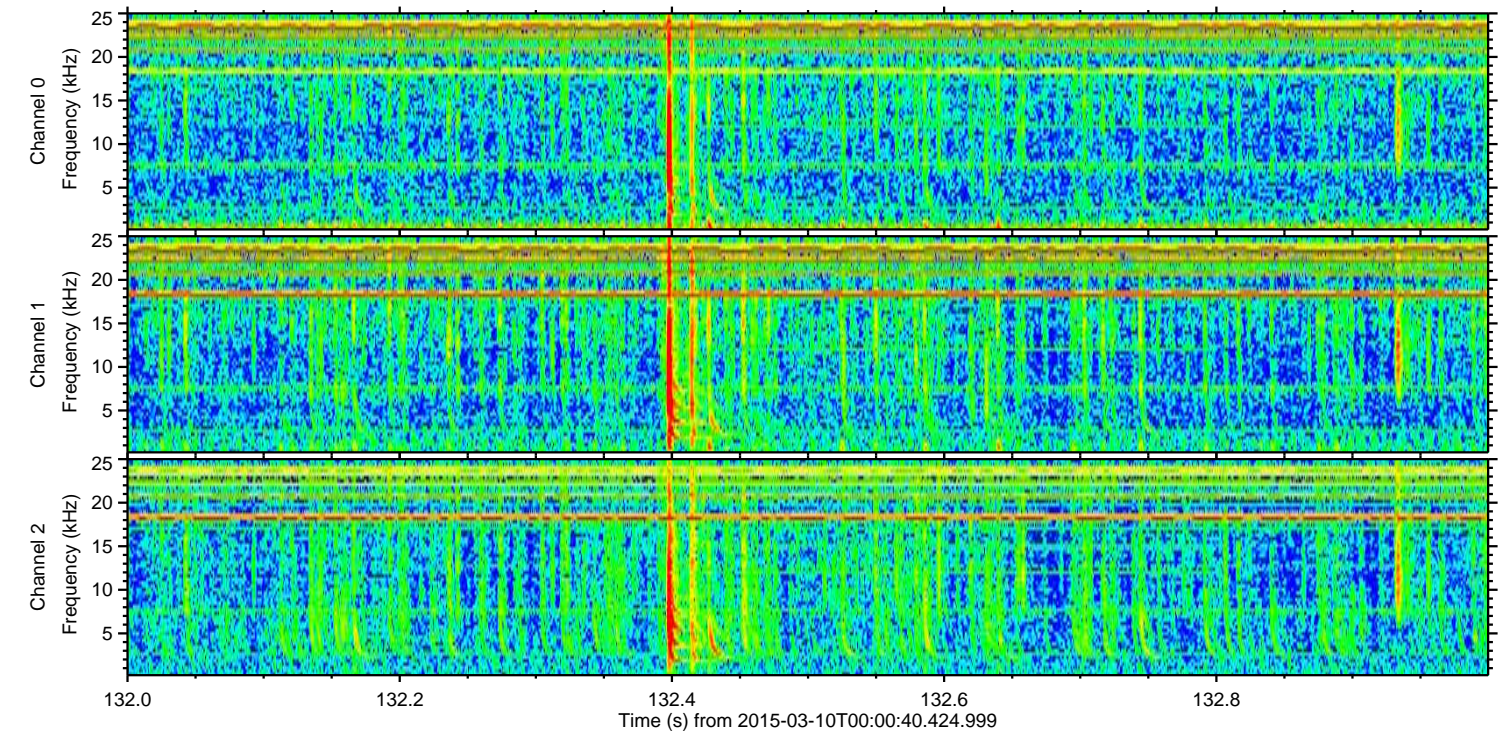
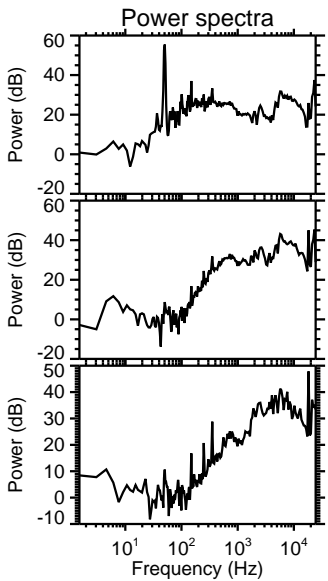
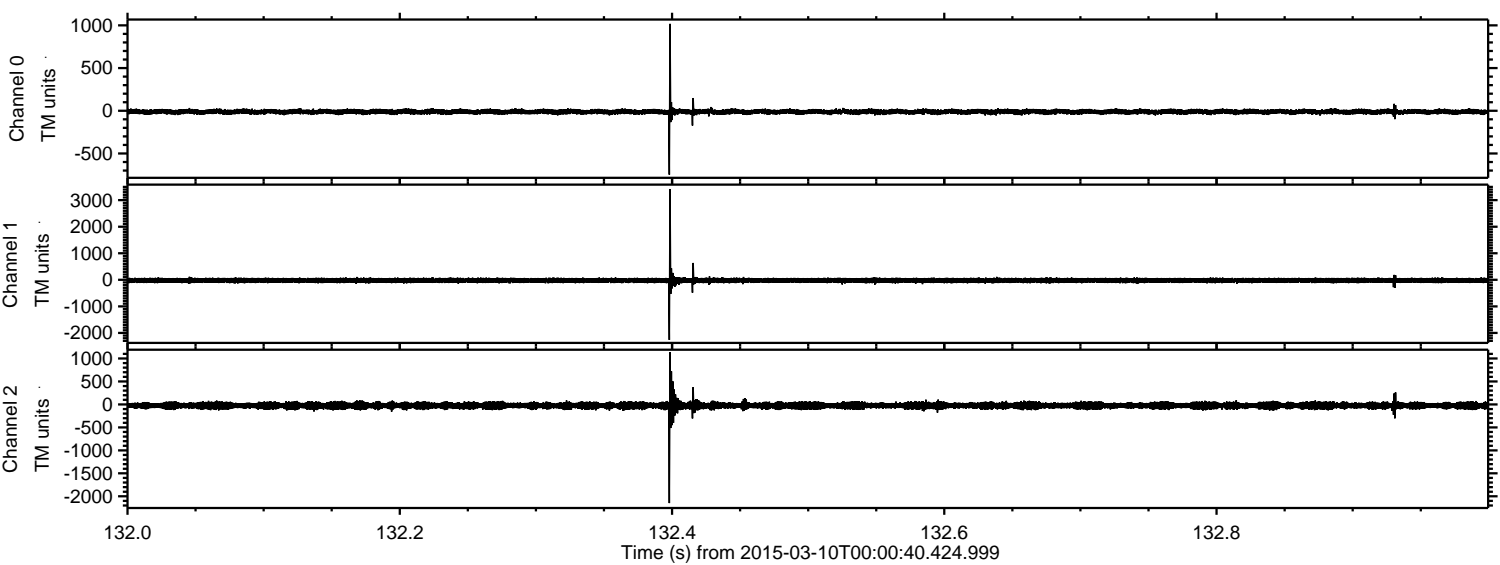
Channel 2
mn: -3587
mx: 3787
 μ : -25.5
 σ : 58.9

Processed Tue Mar 10 01:07:52 2015 by ELM ver.2012-10-06 from 001__elm20150310_000039__dat00.bin

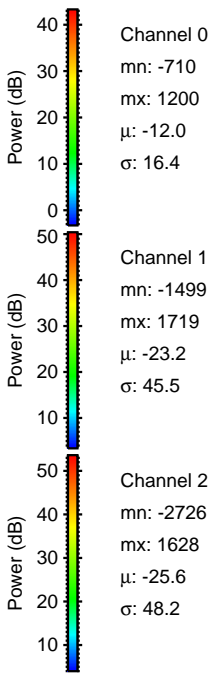
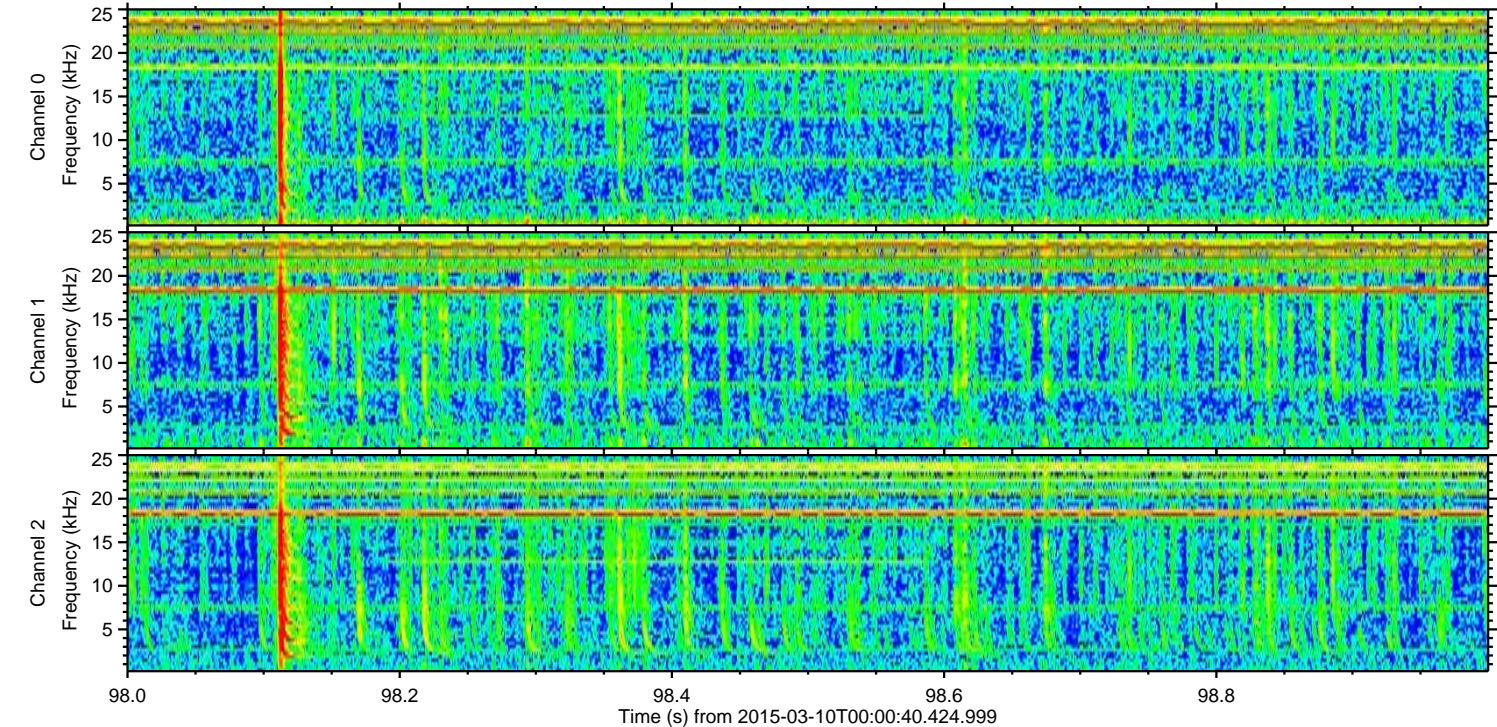
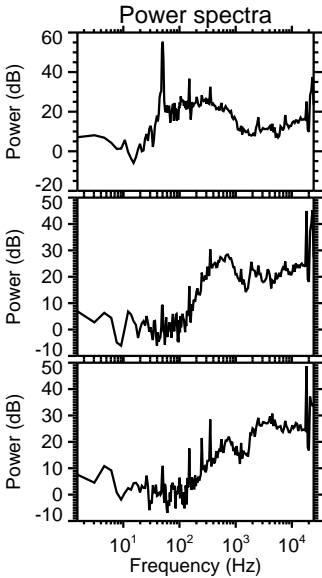
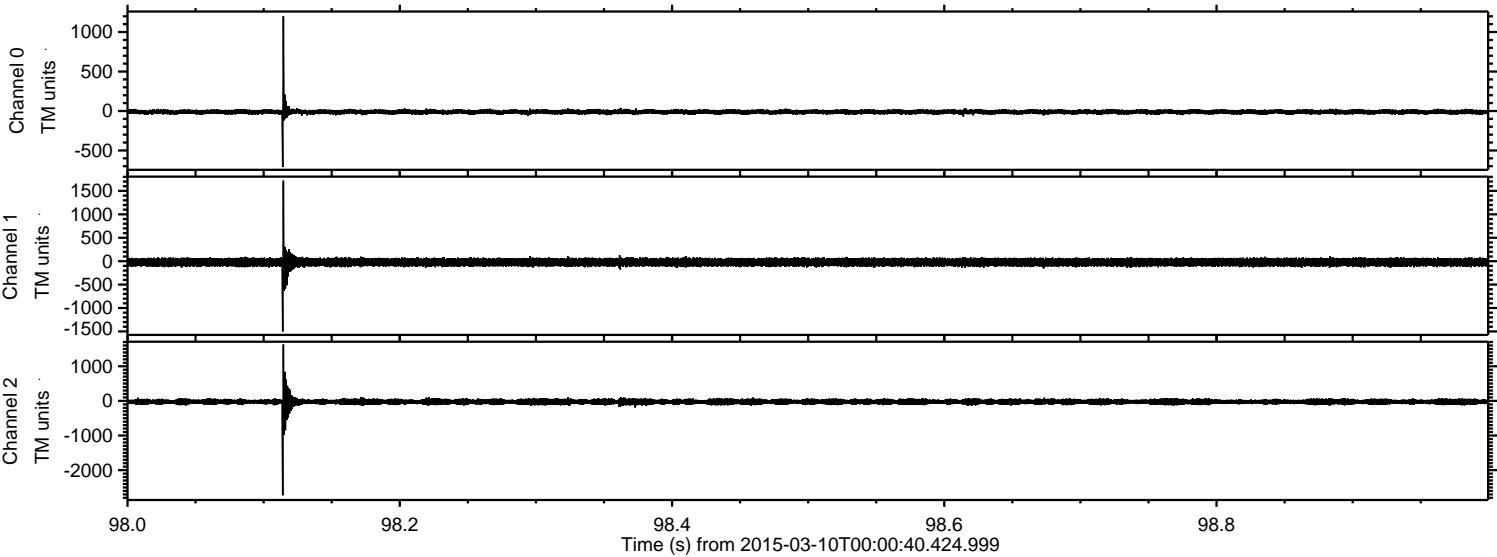


ELMAVAN 3D WAVEFORMS (Measured data sampled at 50 kHz) 49791 packets of 144 samples from 2015-03-10T00:00:40.424.999. Part 133/144

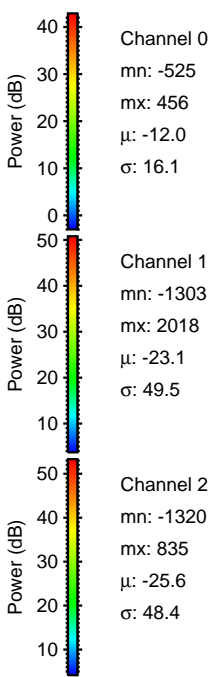
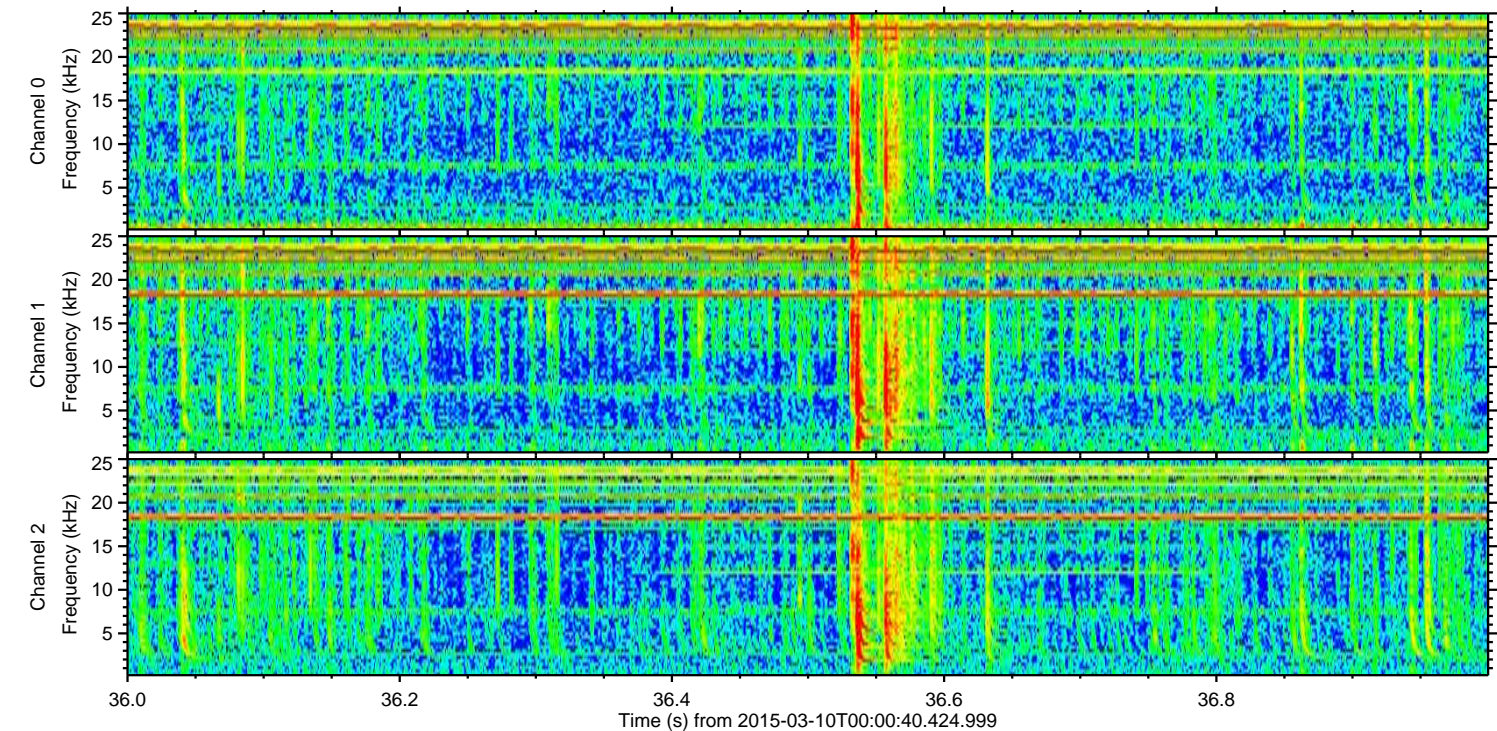
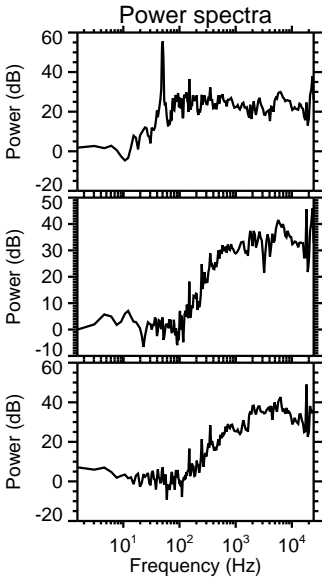
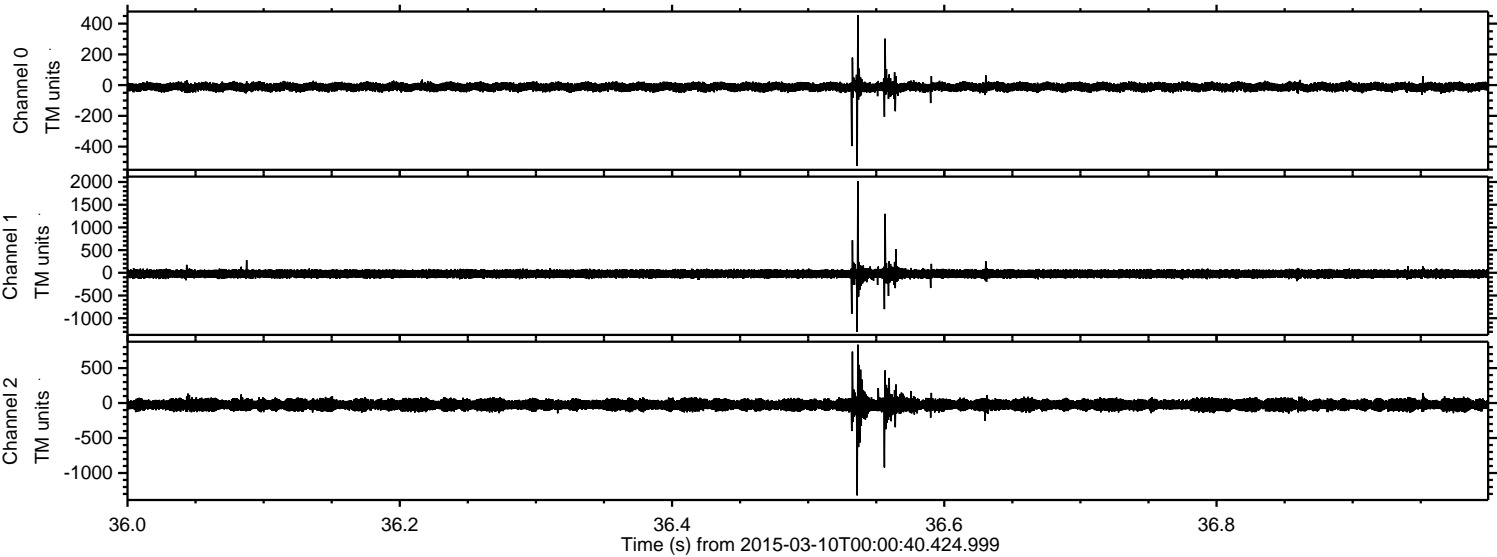
Processed Tue Mar 10 01:07:53 2015 by ELM ver.2012-10-06 from 001__elm20150310_000039__dat00.bin



Processed Tue Mar 10 01:07:54 2015 by ELM ver.2012-10-06 from 001__elm20150310_000039__dat00.bin



Processed Tue Mar 10 01:07:55 2015 by ELM ver.2012-10-06 from 001__elm20150310_000039__dat00.bin



Processed Tue Mar 10 01:07:56 2015 by ELM ver.2012-10-06 from 001__elm20150310_000039__dat00.bin

