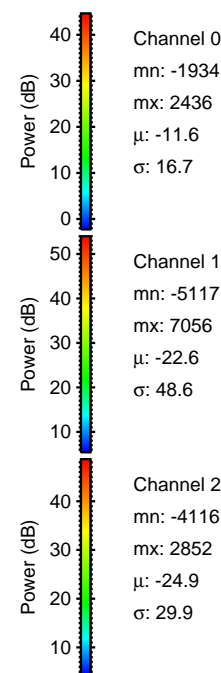
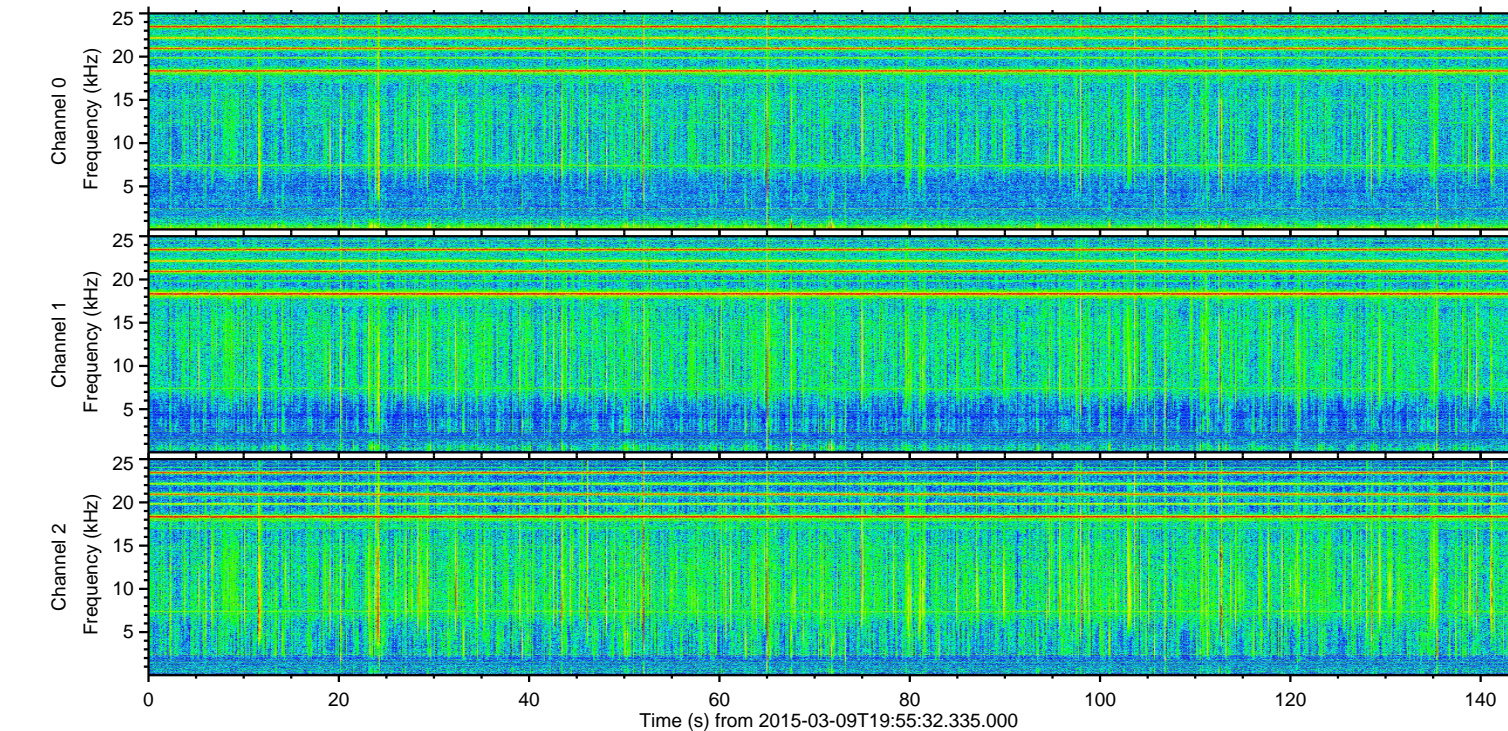
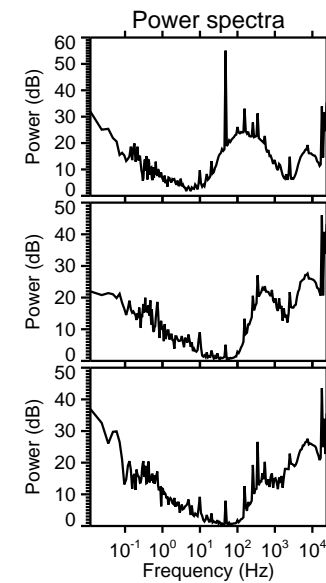
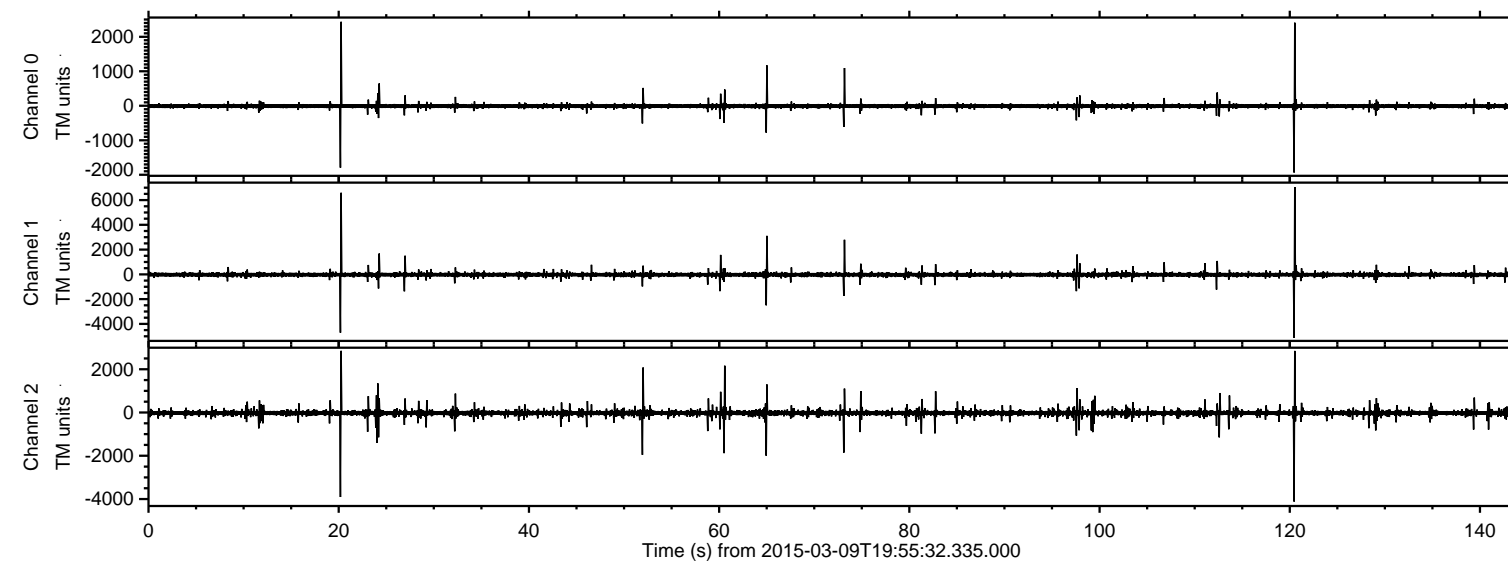


# ELMAVAN 3D WAVEFORMS (Measured data sampled at 50 kHz) 49676 packets of 144 samples from 2015-03-09T19:55:32.335.000.

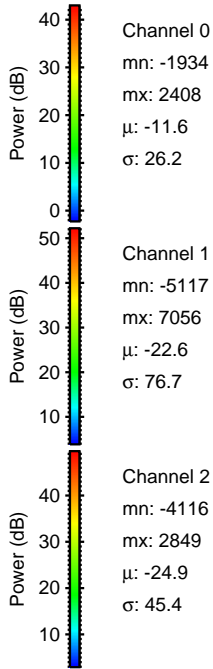
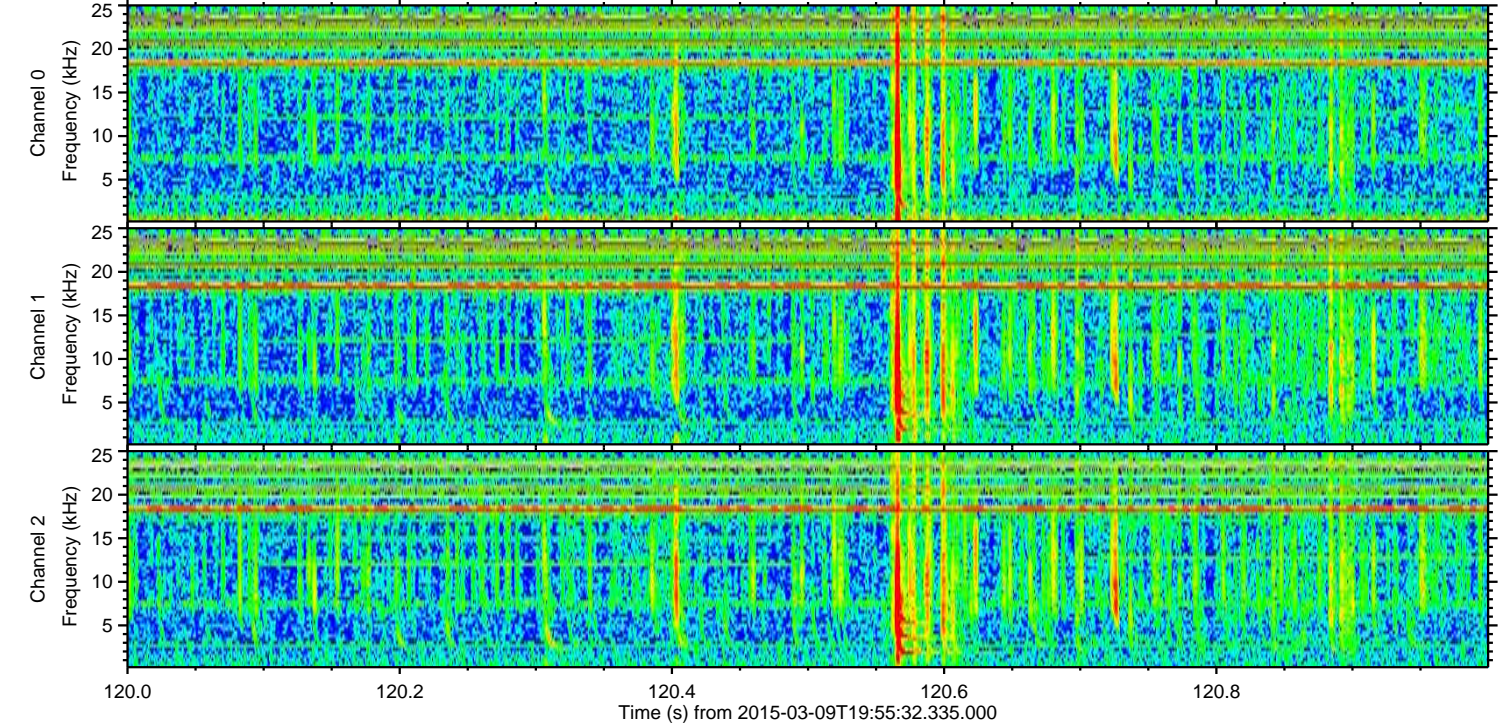
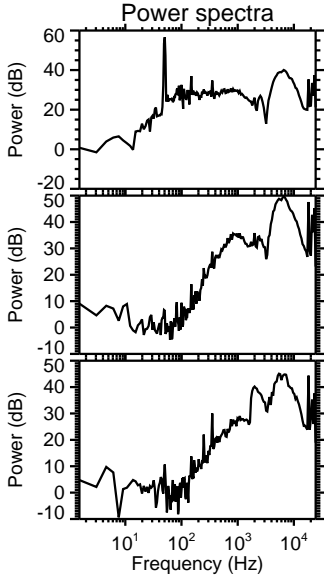
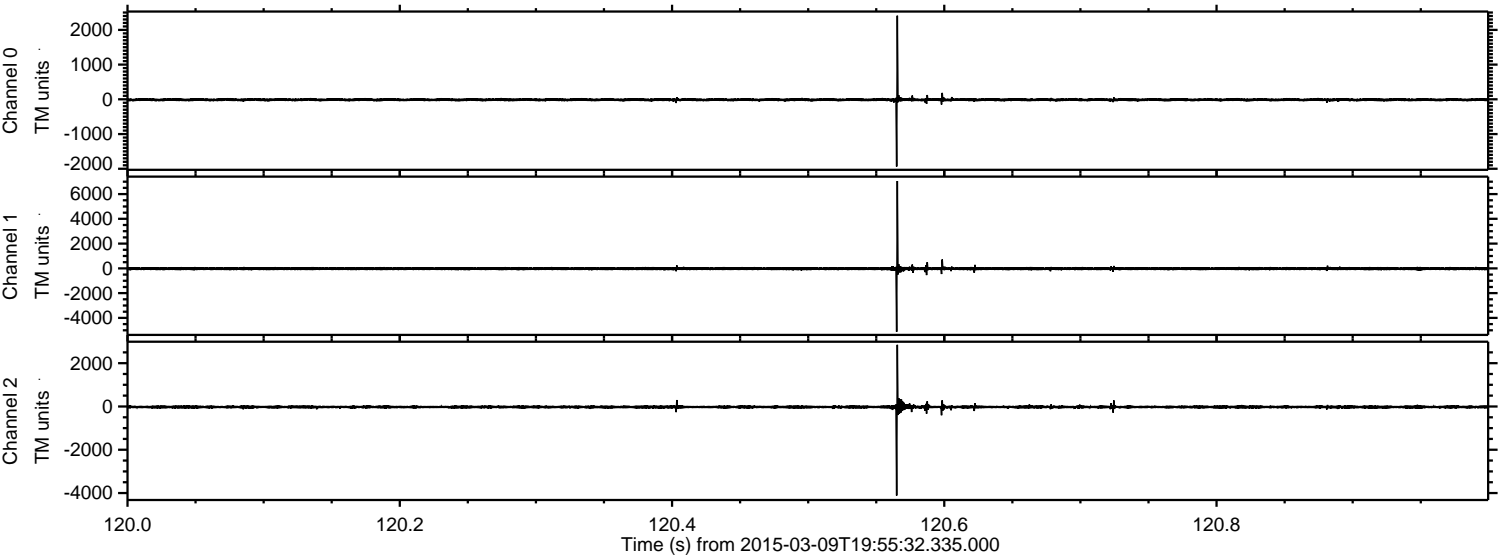
Processed Mon Mar 9 21:02:30 2015 by ELM ver.2012-10-06 from 001\_\_elm20150309\_195531\_\_dat00.bin





ELMAVAN 3D WAVEFORMS (Measured data sampled at 50 kHz) 49676 packets of 144 samples from 2015-03-09T19:55:32.335.000. Part 121/144

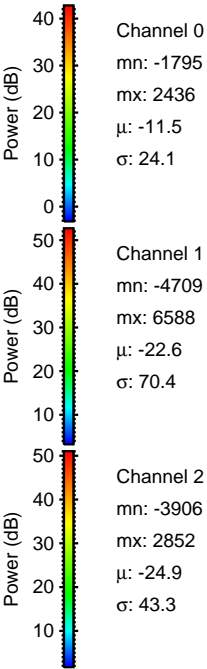
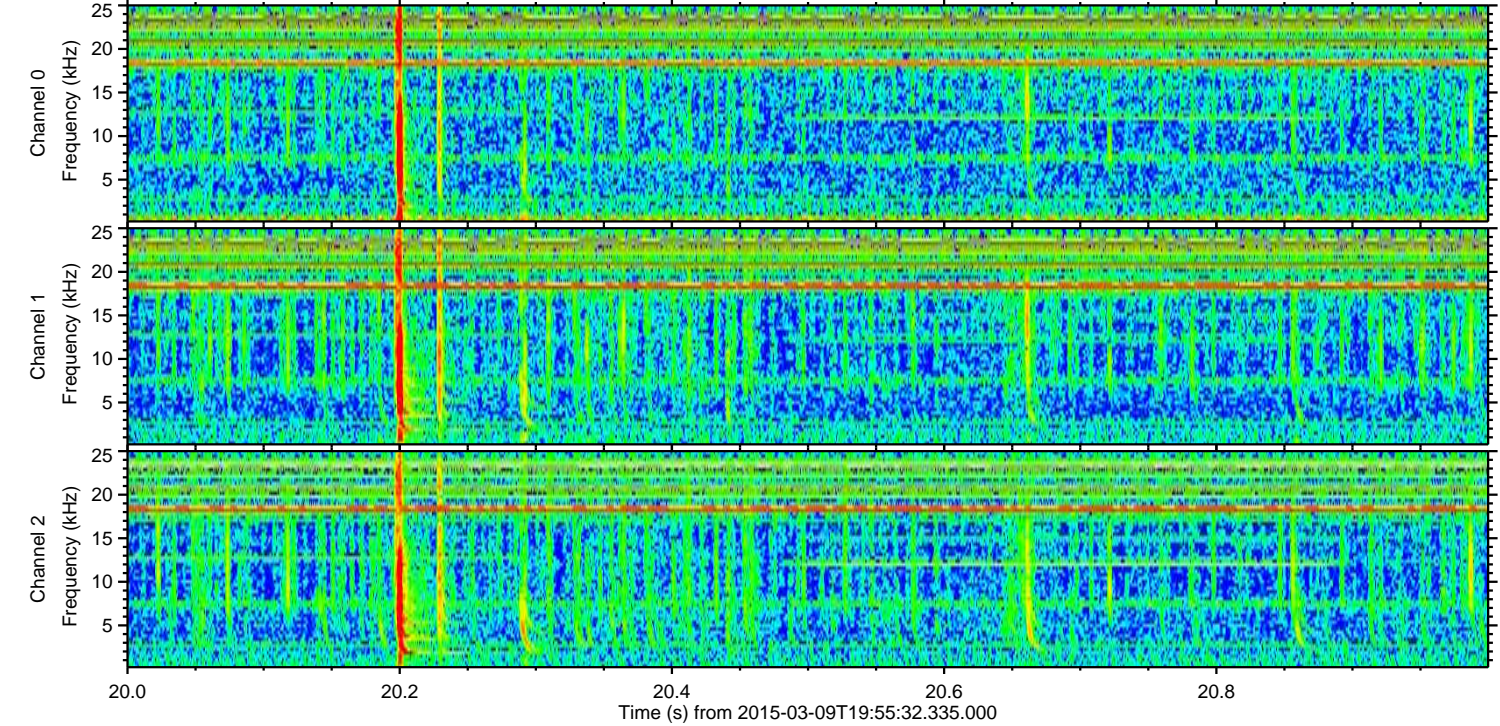
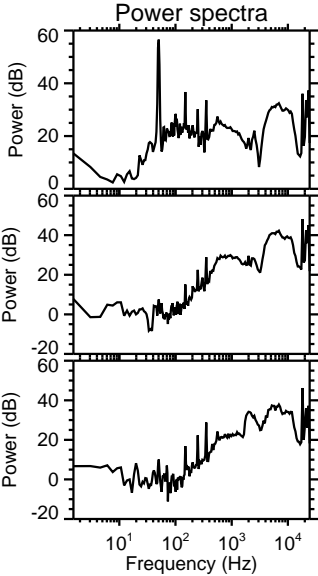
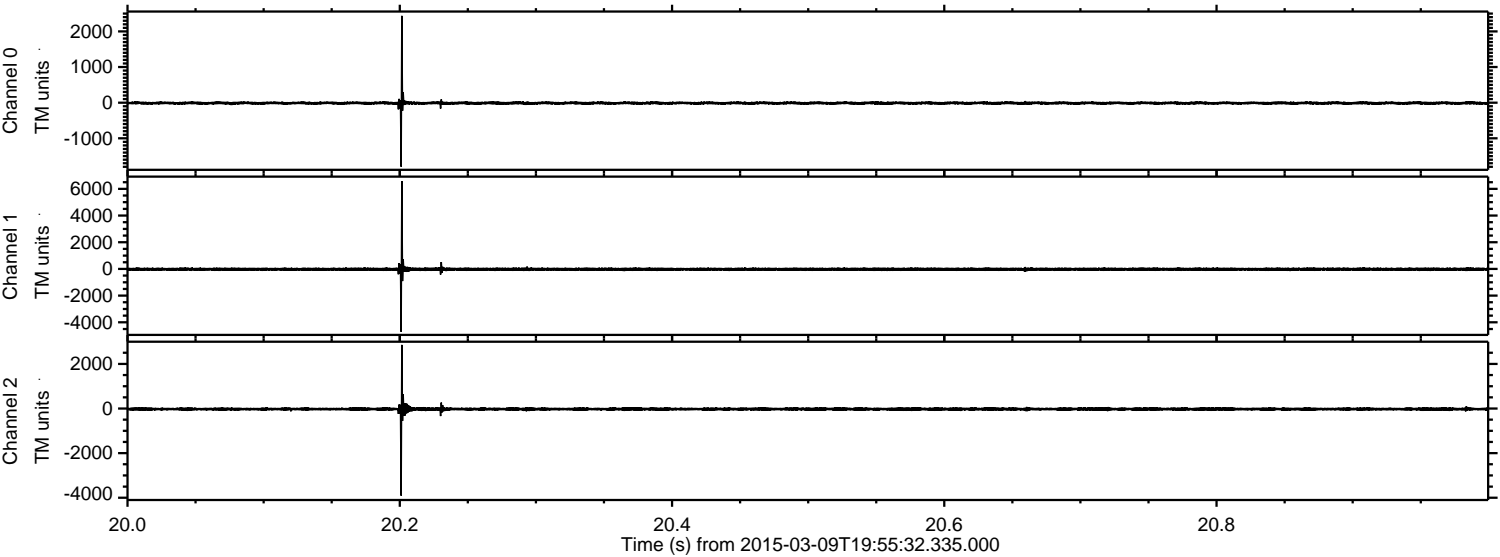
Processed Mon Mar 9 21:02:41 2015 by ELM ver.2012-10-06 from 001\_\_elm20150309\_195531\_\_dat00.bin





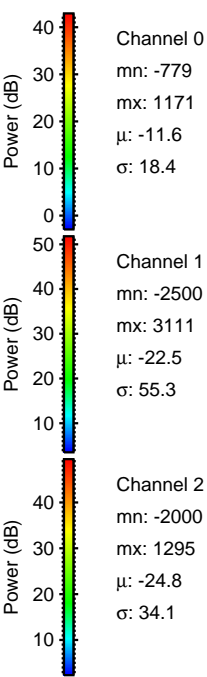
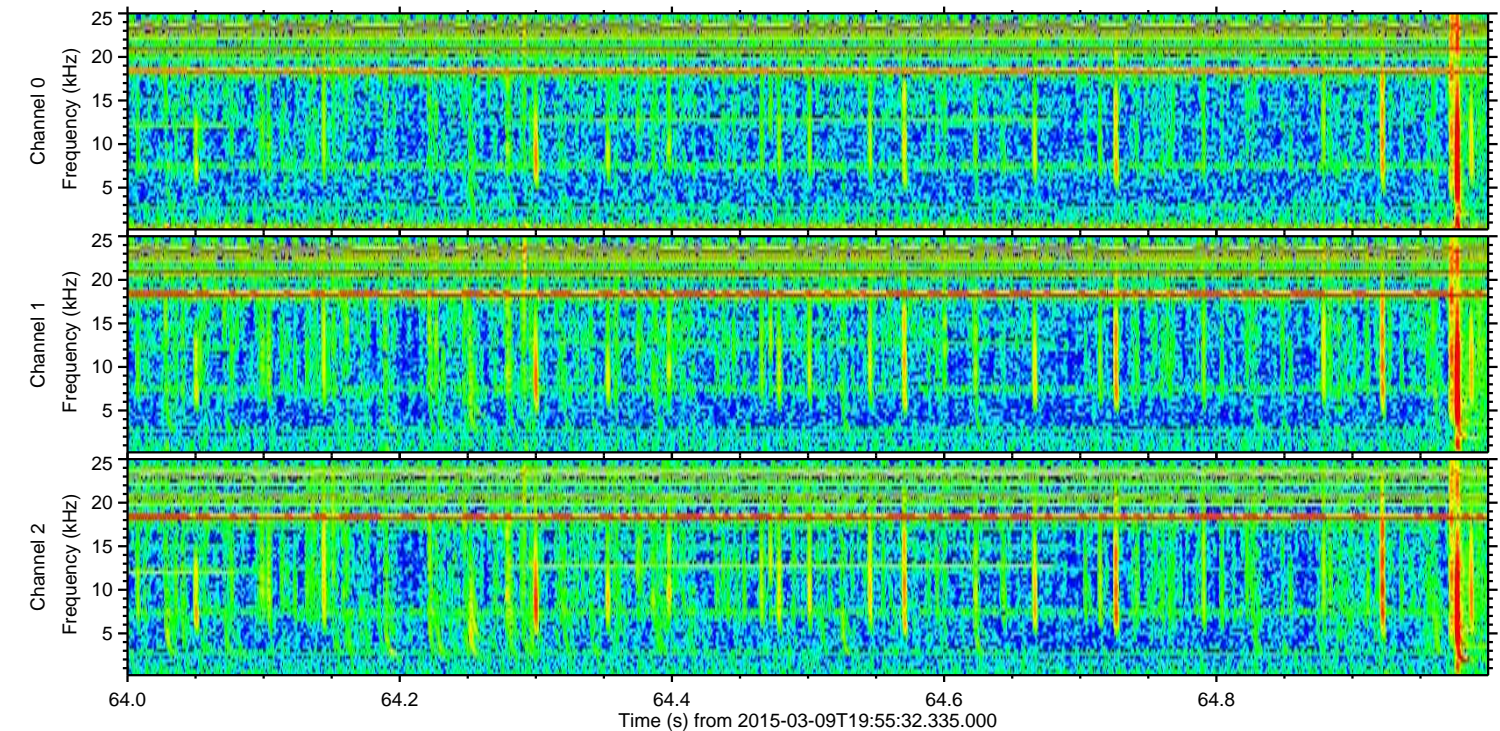
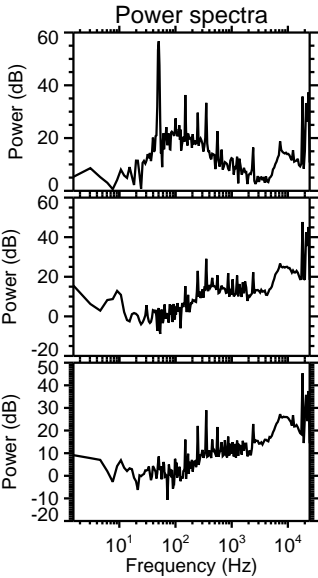
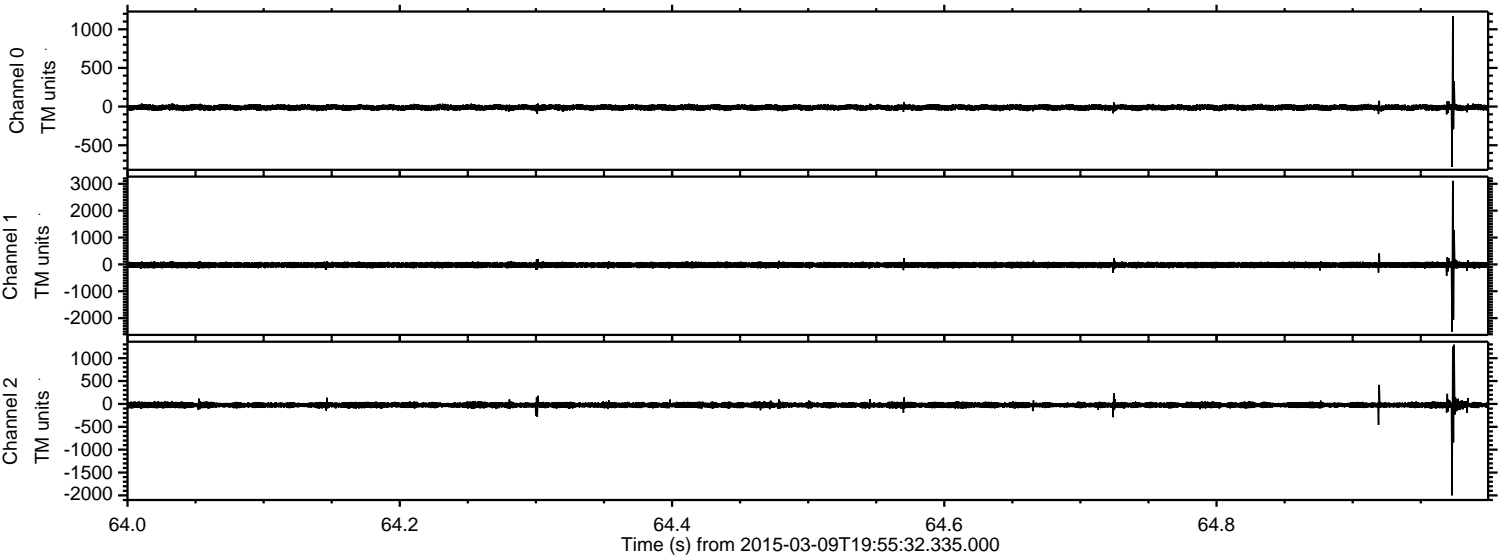
ELMAVAN 3D WAVEFORMS (Measured data sampled at 50 kHz) 49676 packets of 144 samples from 2015-03-09T19:55:32.335.000. Part 21/144

Processed Mon Mar 9 21:02:42 2015 by ELM ver.2012-10-06 from 001\_\_elm20150309\_195531\_\_dat00.bin





Processed Mon Mar 9 21:02:43 2015 by ELM ver.2012-10-06 from 001\_\_elm20150309\_195531\_\_dat00.bin



Channel 0  
mn: -779  
mx: 1171  
 $\mu$ : -11.6  
 $\sigma$ : 18.4

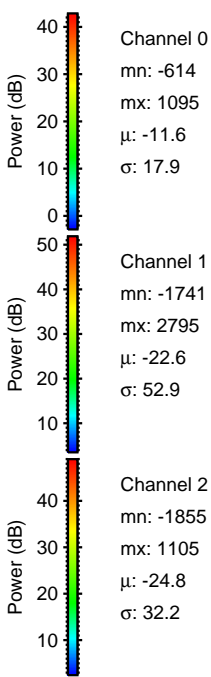
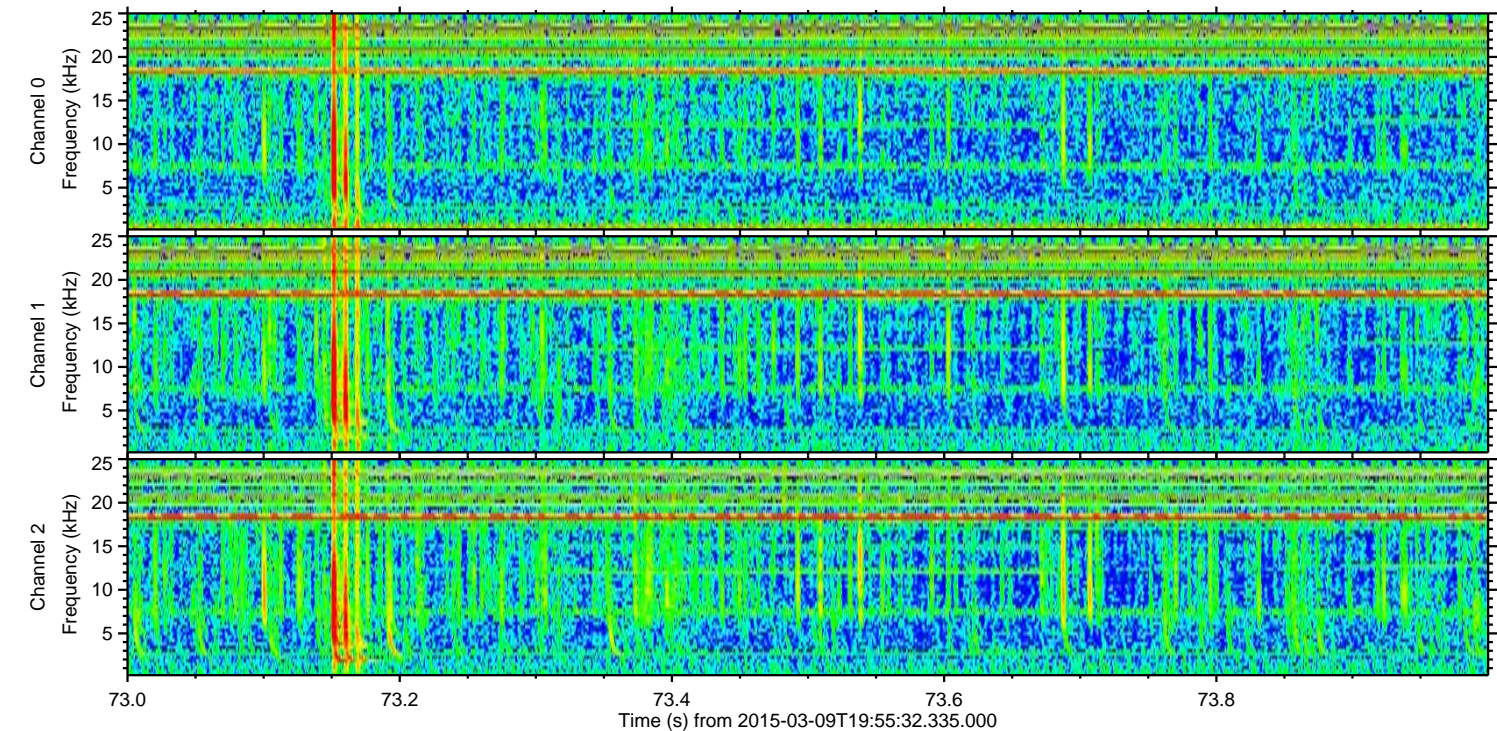
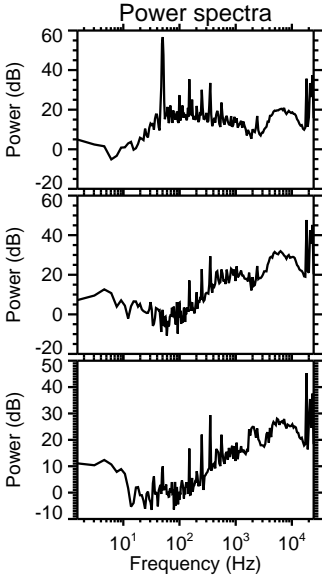
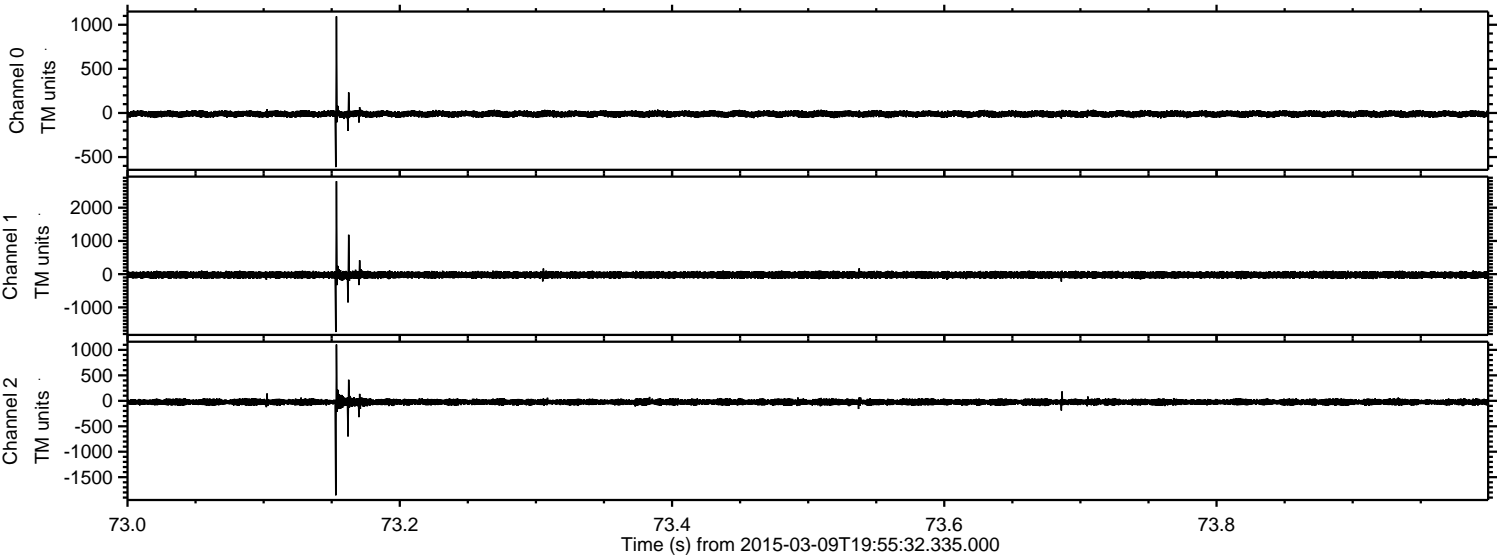
Channel 1  
mn: -2500  
mx: 3111  
 $\mu$ : -22.5  
 $\sigma$ : 55.3

Channel 2  
mn: -2000  
mx: 1295  
 $\mu$ : -24.8  
 $\sigma$ : 34.1



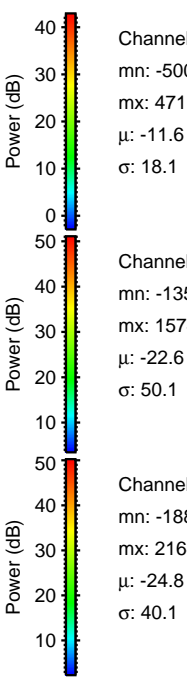
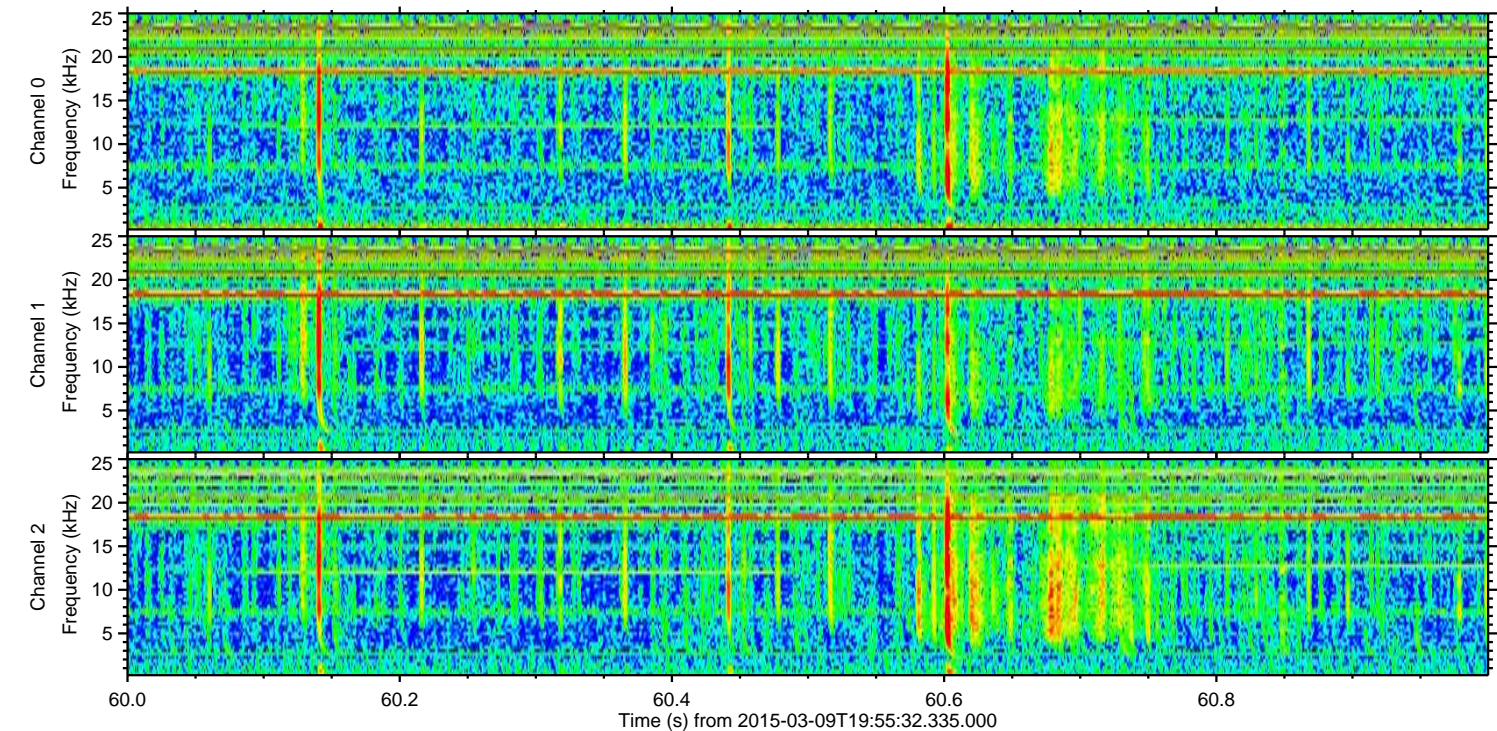
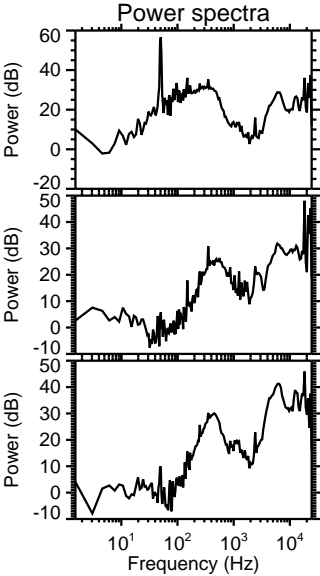
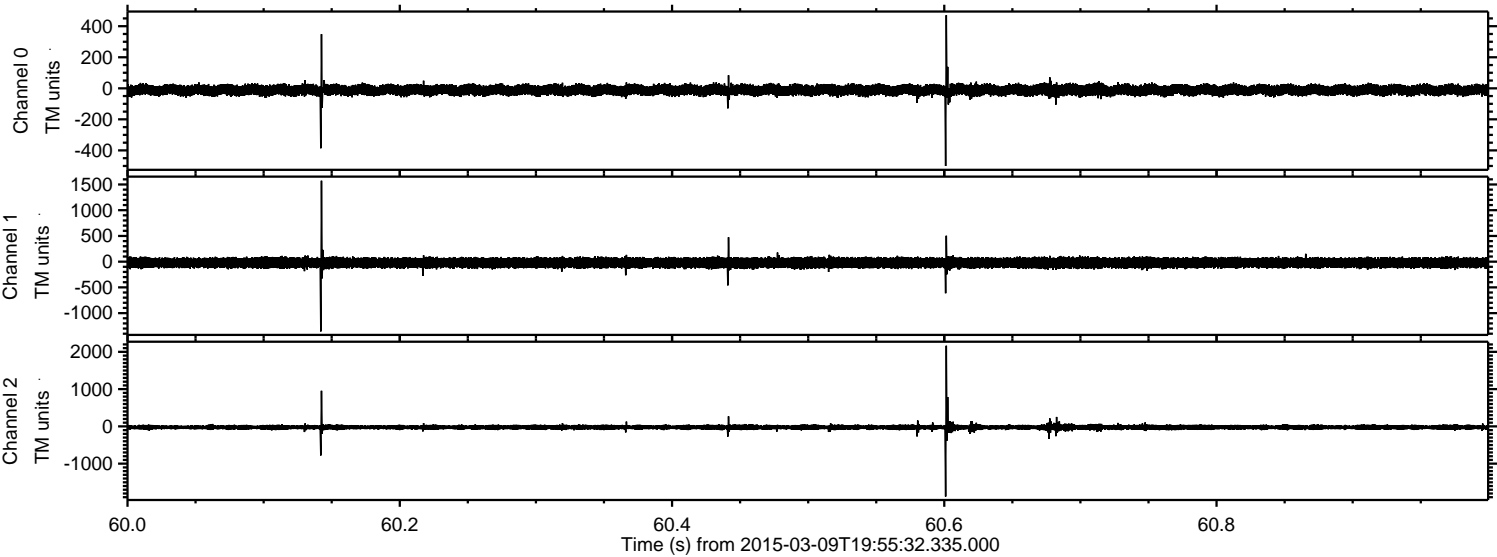
ELMAVAN 3D WAVEFORMS (Measured data sampled at 50 kHz) 49676 packets of 144 samples from 2015-03-09T19:55:32.335.000. Part 74/144

Processed Mon Mar 9 21:02:44 2015 by ELM ver.2012-10-06 from 001\_\_elm20150309\_195531\_\_dat00.bin





Processed Mon Mar 9 21:02:45 2015 by ELM ver.2012-10-06 from 001\_\_elm20150309\_195531\_\_dat00.bin



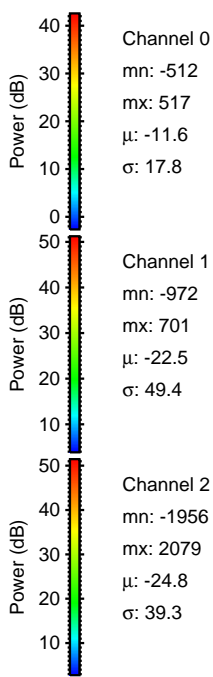
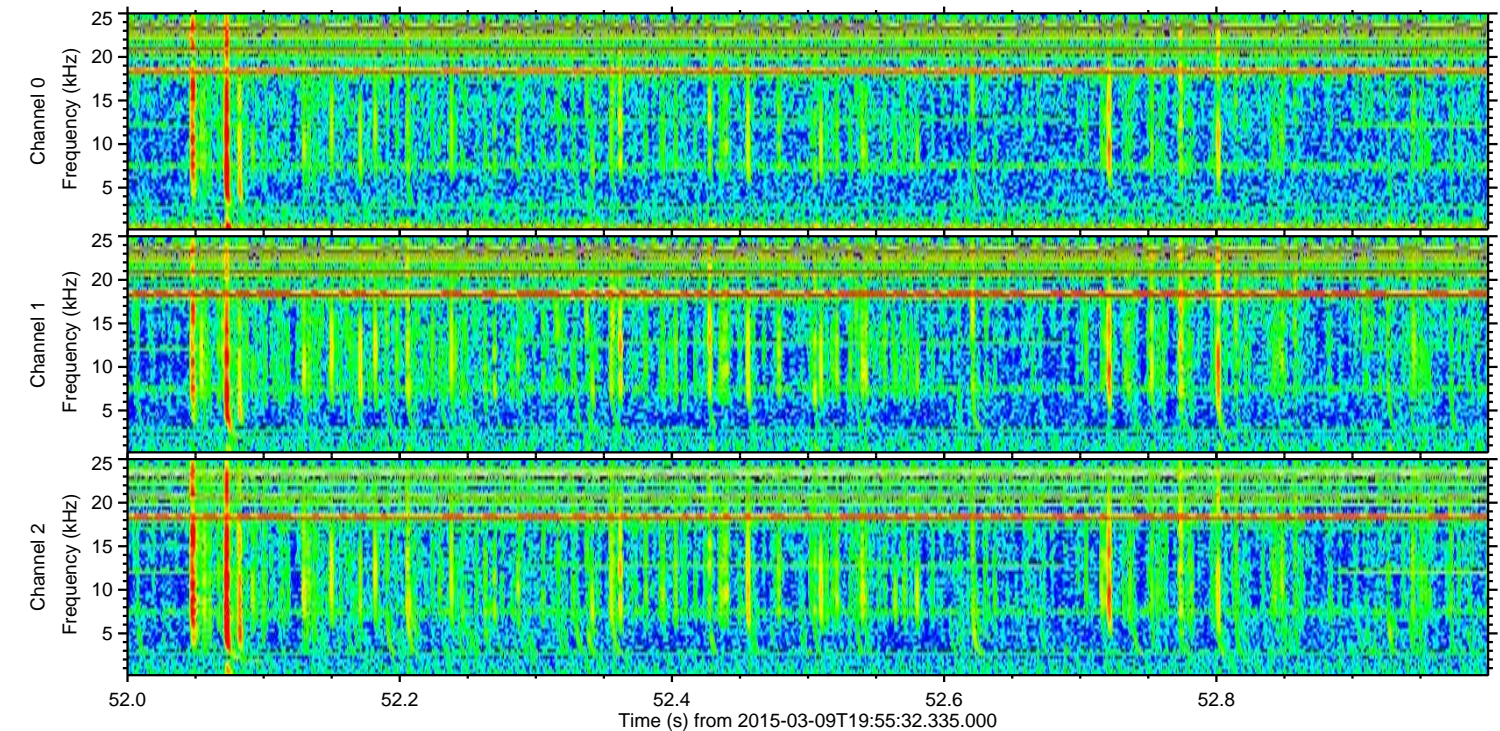
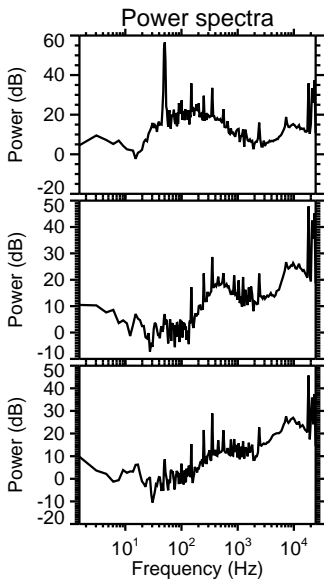
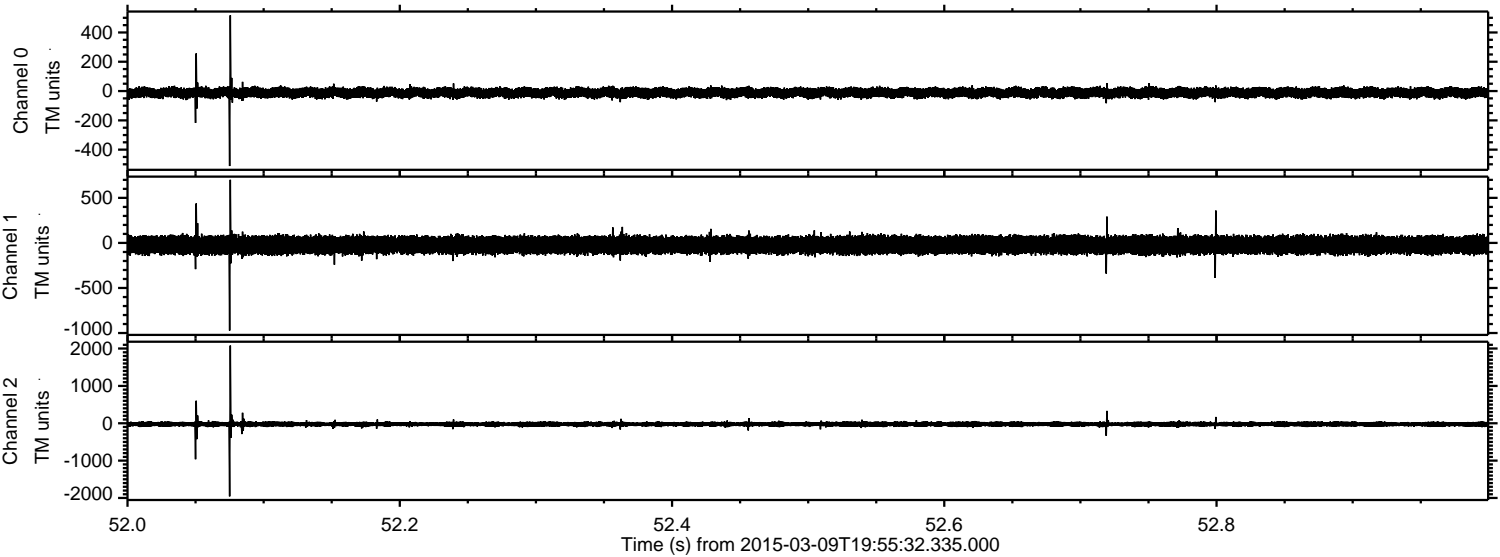
Channel 0  
mn: -500  
mx: 471  
 $\mu$ : -11.6  
 $\sigma$ : 18.1

Channel 1  
mn: -1356  
mx: 1574  
 $\mu$ : -22.6  
 $\sigma$ : 50.1

Channel 2  
mn: -1881  
mx: 2164  
 $\mu$ : -24.8  
 $\sigma$ : 40.1



Processed Mon Mar 9 21:02:46 2015 by ELM ver.2012-10-06 from 001\_\_elm20150309\_195531\_\_dat00.bin



Channel 0  
mn: -512  
mx: 517  
 $\mu$ : -11.6  
 $\sigma$ : 17.8

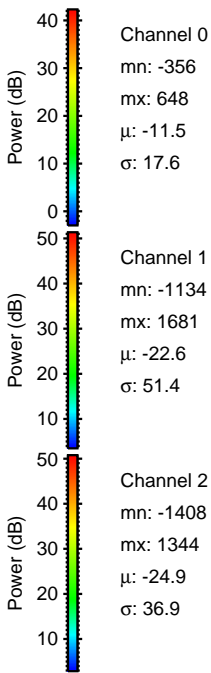
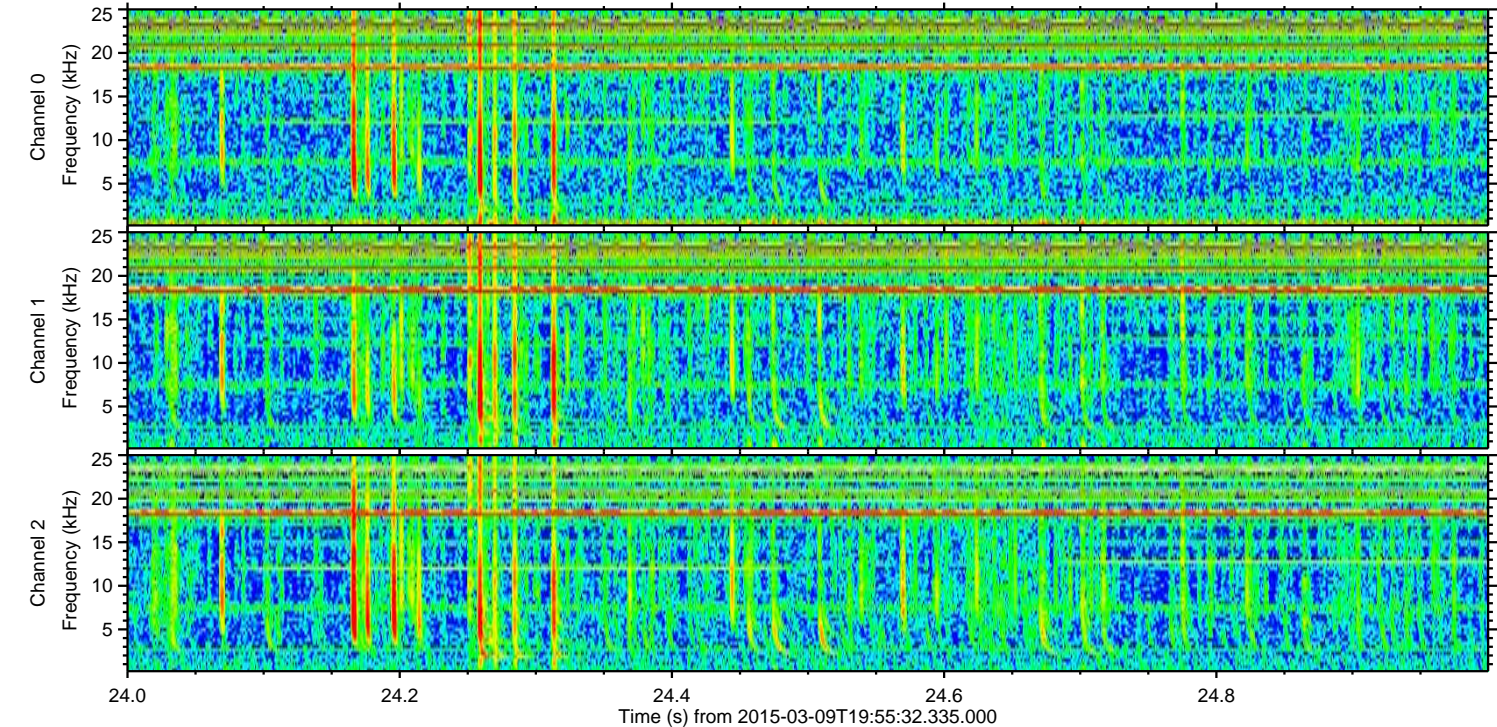
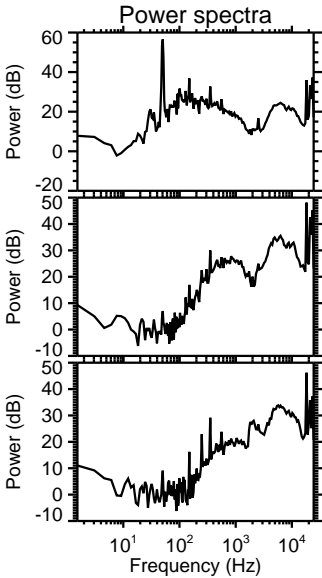
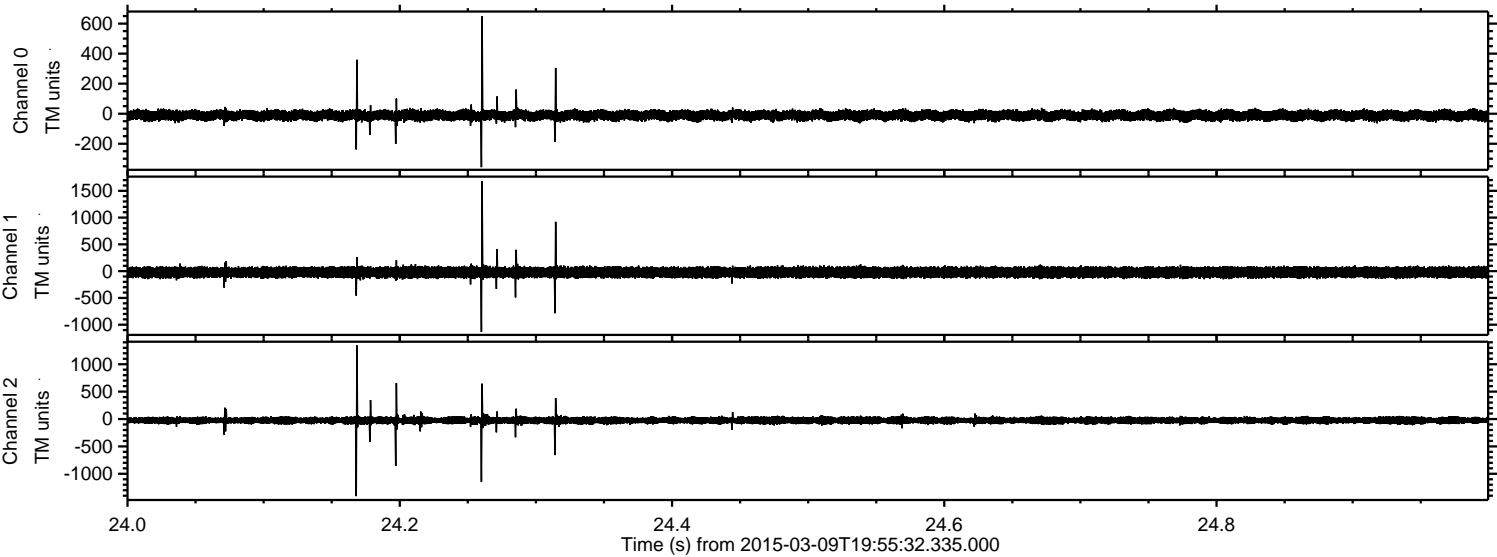
Channel 1  
mn: -972  
mx: 701  
 $\mu$ : -22.5  
 $\sigma$ : 49.4

Channel 2  
mn: -1956  
mx: 2079  
 $\mu$ : -24.8  
 $\sigma$ : 39.3



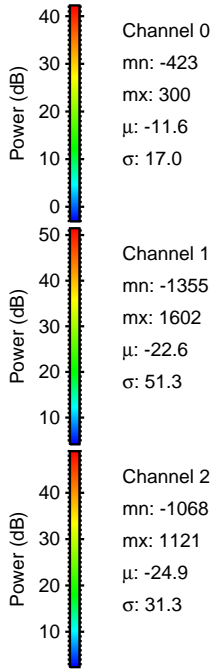
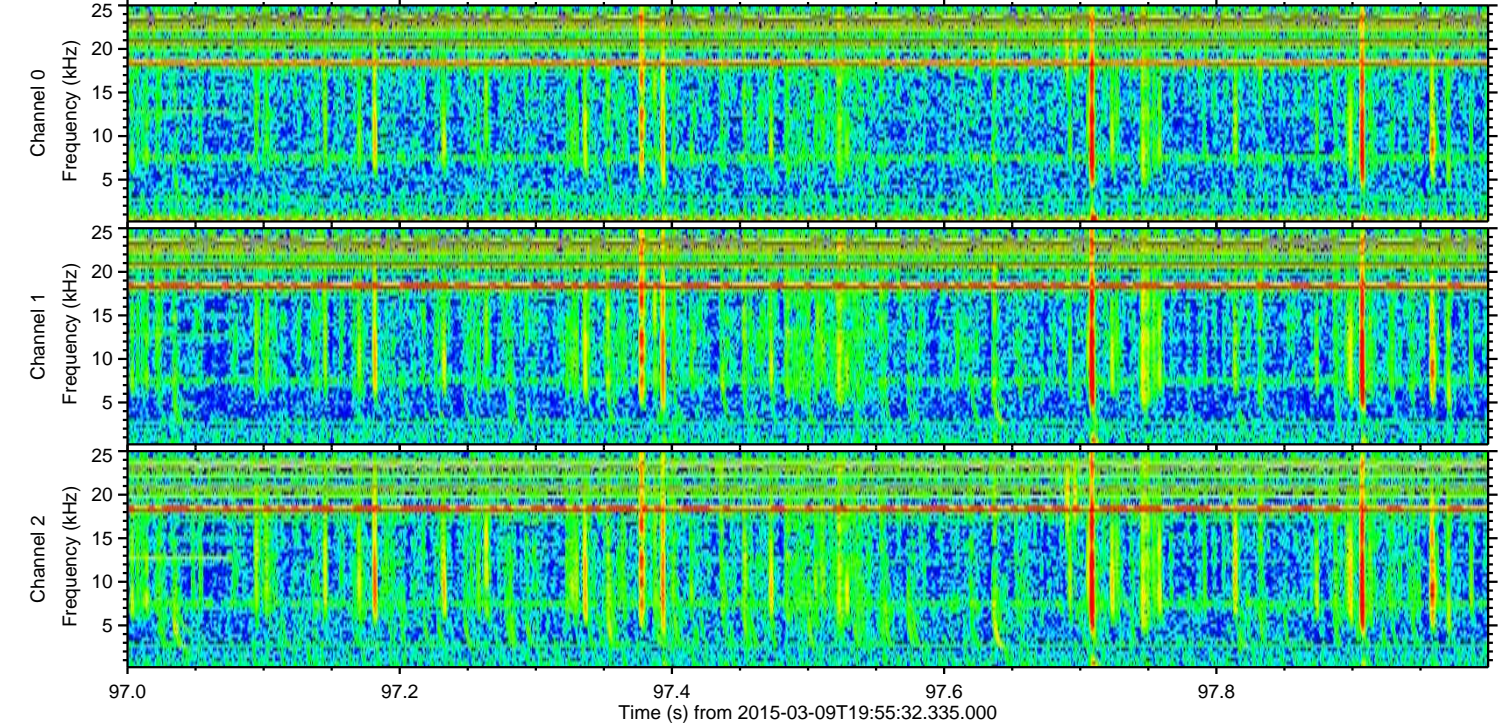
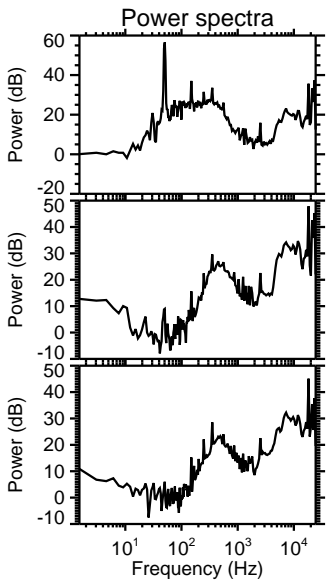
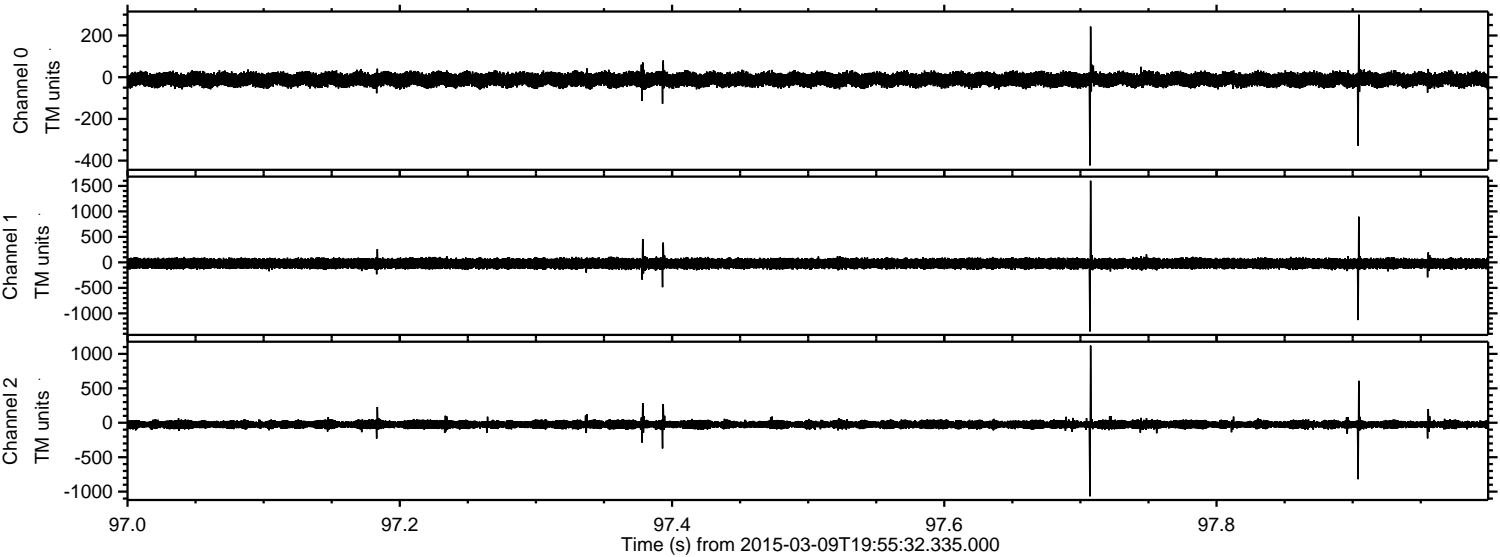
ELMAVAN 3D WAVEFORMS (Measured data sampled at 50 kHz) 49676 packets of 144 samples from 2015-03-09T19:55:32.335.000. Part 25/144

Processed Mon Mar 9 21:02:47 2015 by ELM ver.2012-10-06 from 001\_\_elm20150309\_195531\_\_dat00.bin





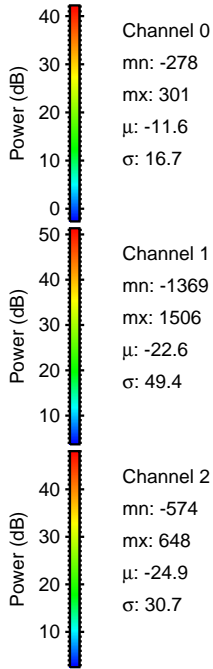
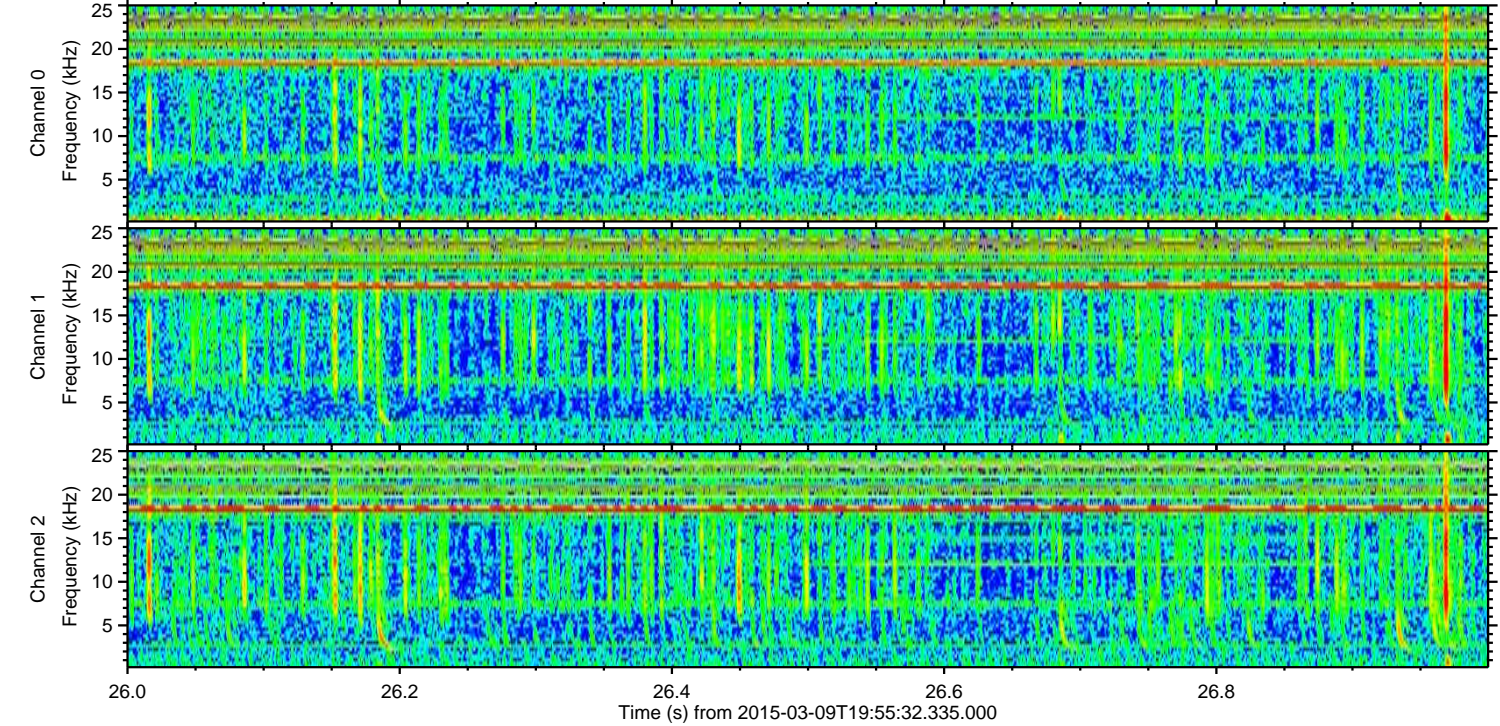
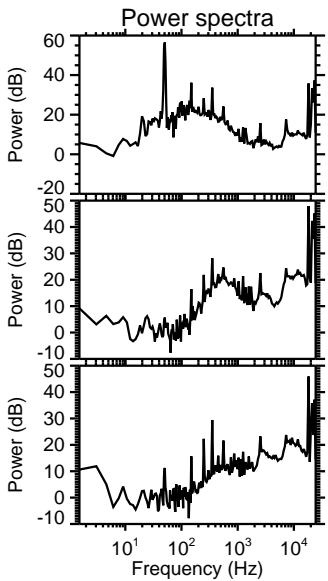
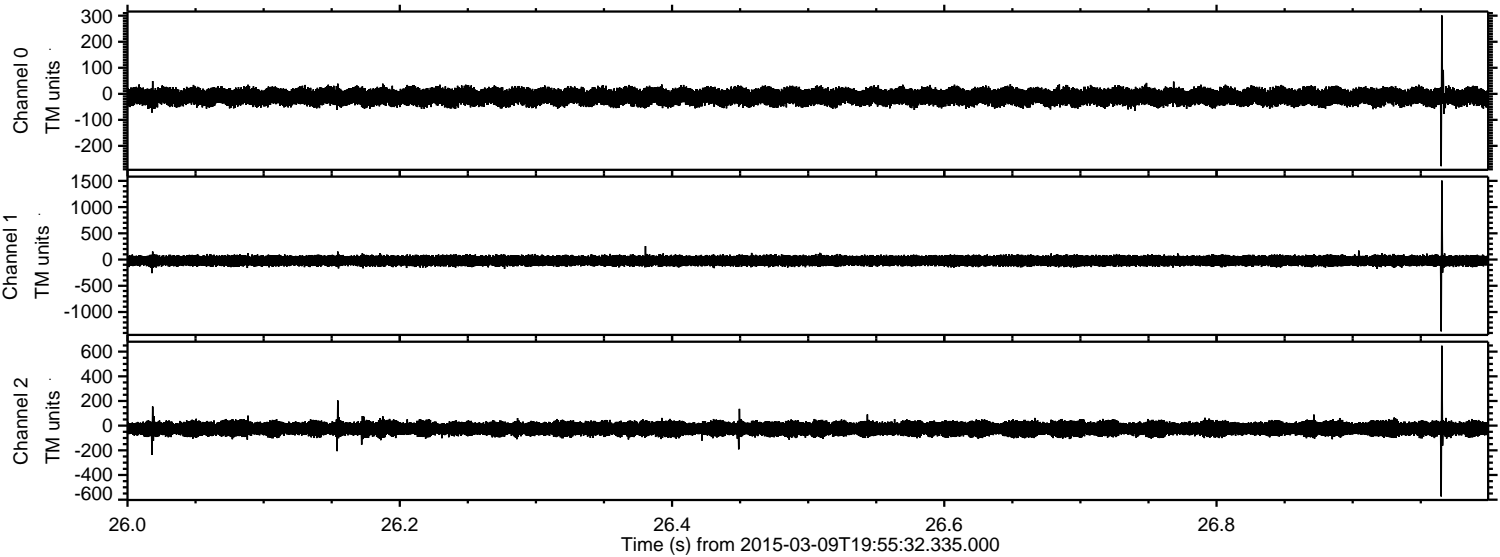
Processed Mon Mar 9 21:02:48 2015 by ELM ver.2012-10-06 from 001\_\_elm20150309\_195531\_\_dat00.bin





ELMAVAN 3D WAVEFORMS (Measured data sampled at 50 kHz) 49676 packets of 144 samples from 2015-03-09T19:55:32.335.000. Part 27/144

Processed Mon Mar 9 21:02:49 2015 by ELM ver.2012-10-06 from 001\_\_elm20150309\_195531\_\_dat00.bin



Channel 0  
mn: -278  
mx: 301  
 $\mu$ : -11.6  
 $\sigma$ : 16.7

Channel 1  
mn: -1369  
mx: 1506  
 $\mu$ : -22.6  
 $\sigma$ : 49.4

Channel 2  
mn: -574  
mx: 648  
 $\mu$ : -24.9  
 $\sigma$ : 30.7



ELMAVAN 3D WAVEFORMS (Measured data sampled at 50 kHz) 49676 packets of 144 samples from 2015-03-09T19:55:32.335.000. Part 137/144

