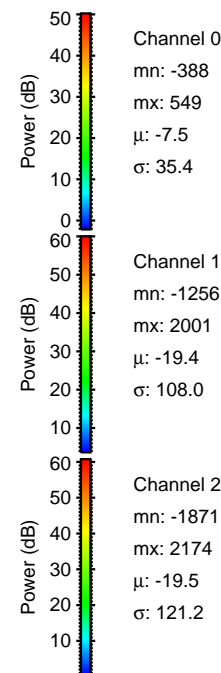
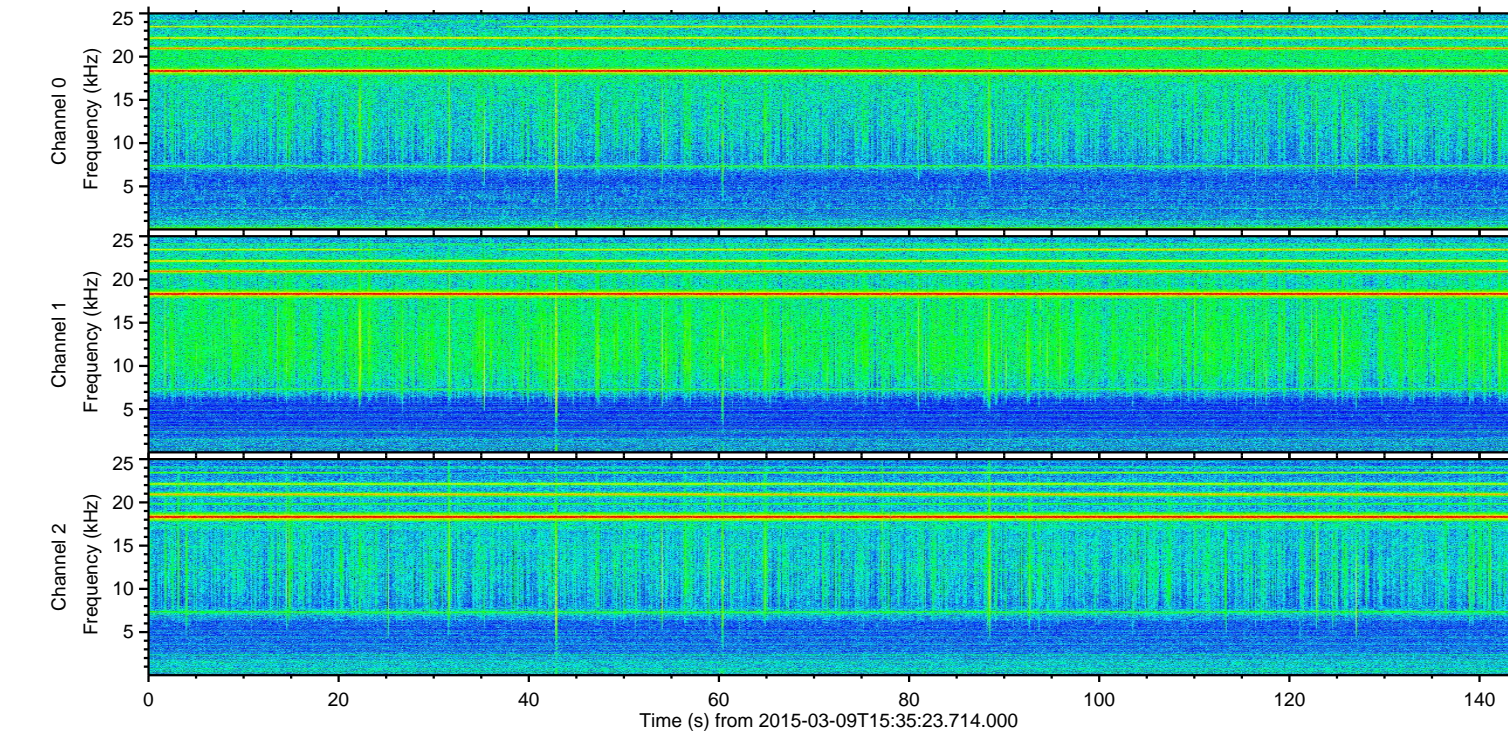
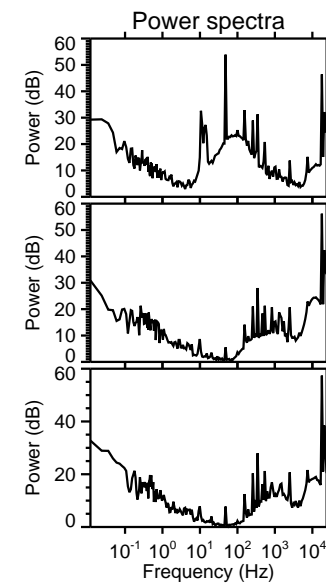
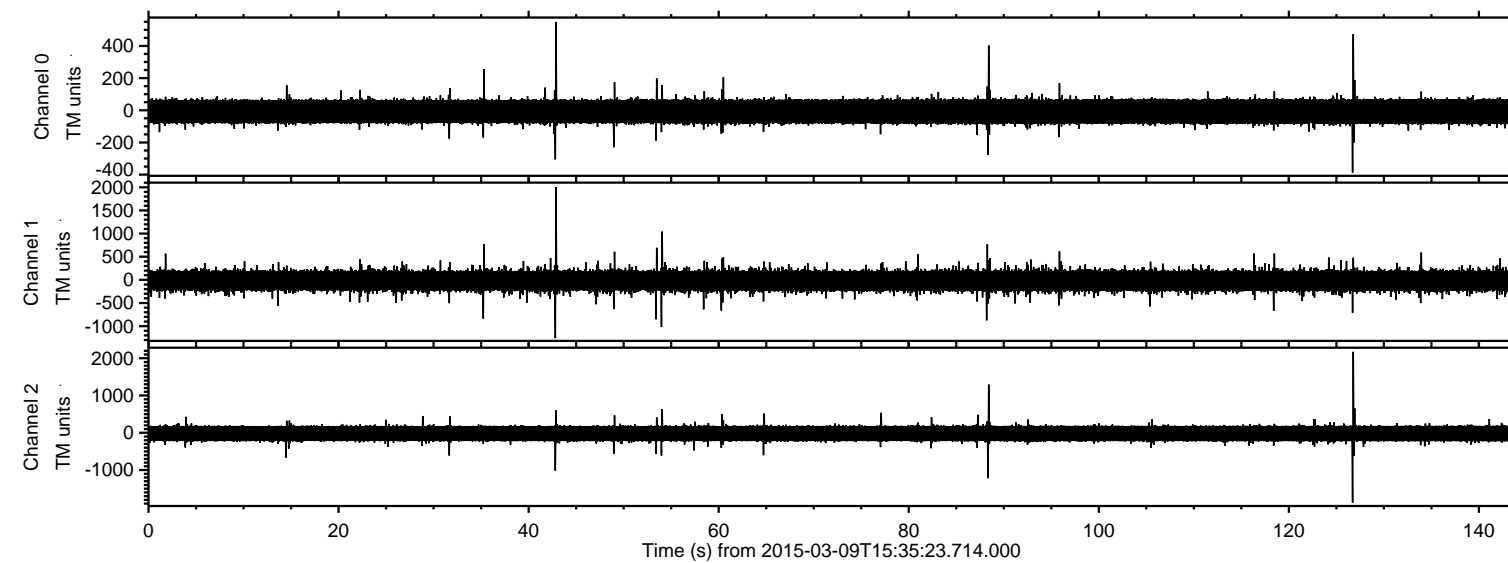


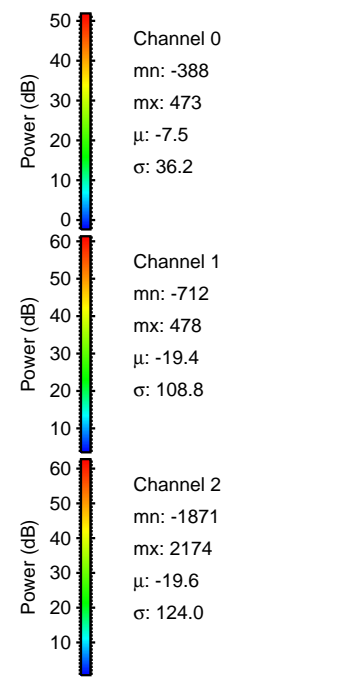
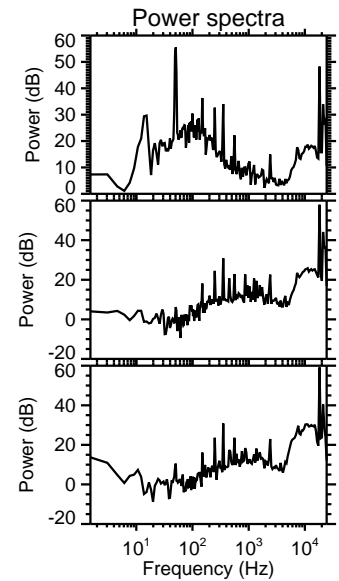
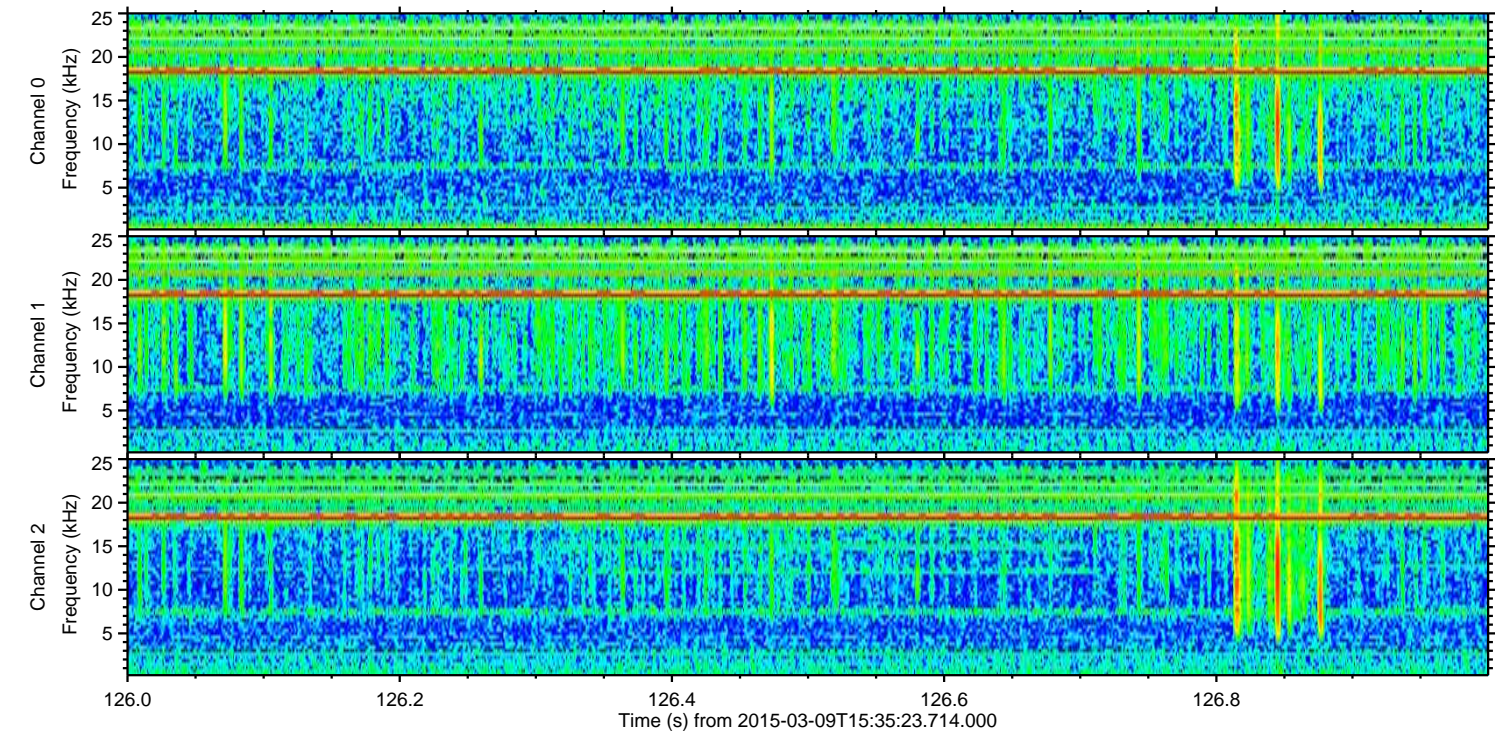
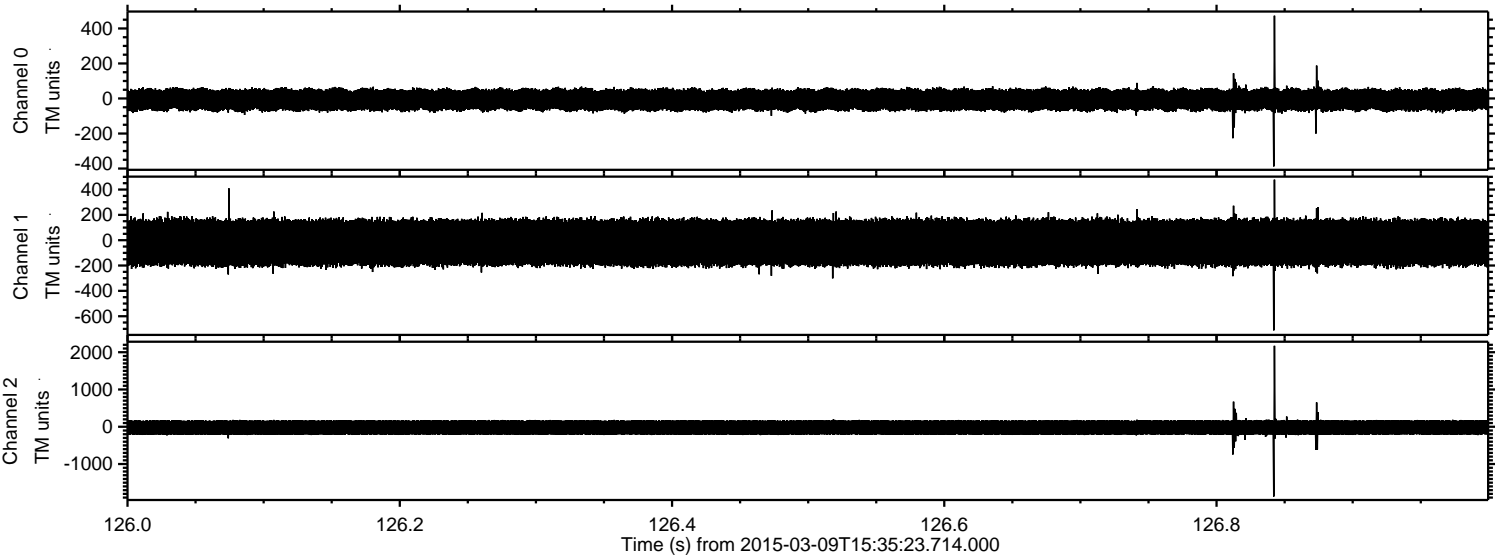
ELMAVAN 3D WAVEFORMS (Measured data sampled at 50 kHz) 49715 packets of 144 samples from 2015-03-09T15:35:23.714.000.

Processed Mon Mar 9 16:43:16 2015 by ELM ver.2012-10-06 from 001__elm20150309_153522__dat00.bin

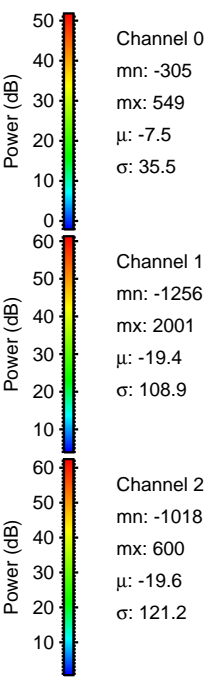
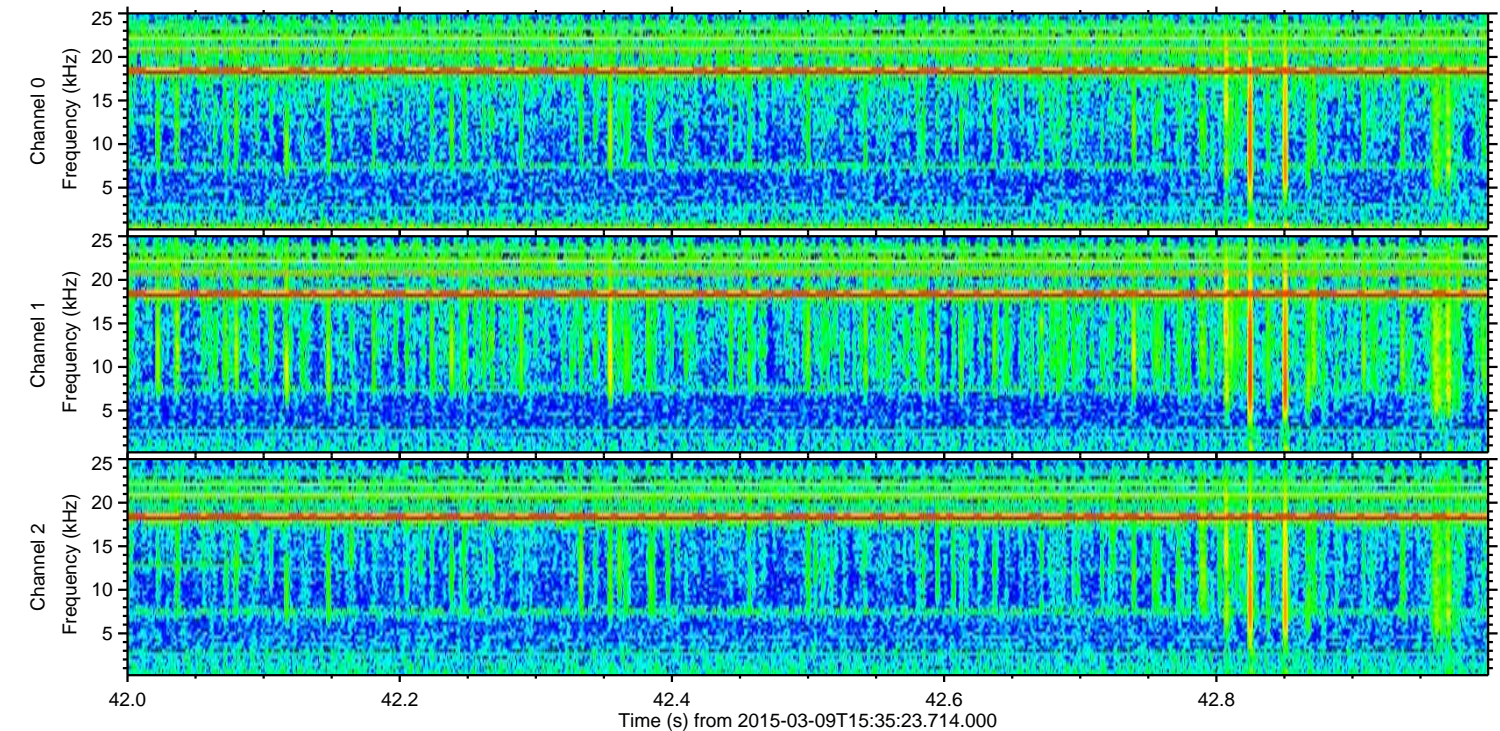
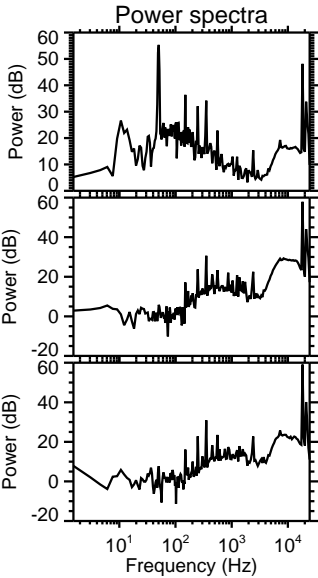
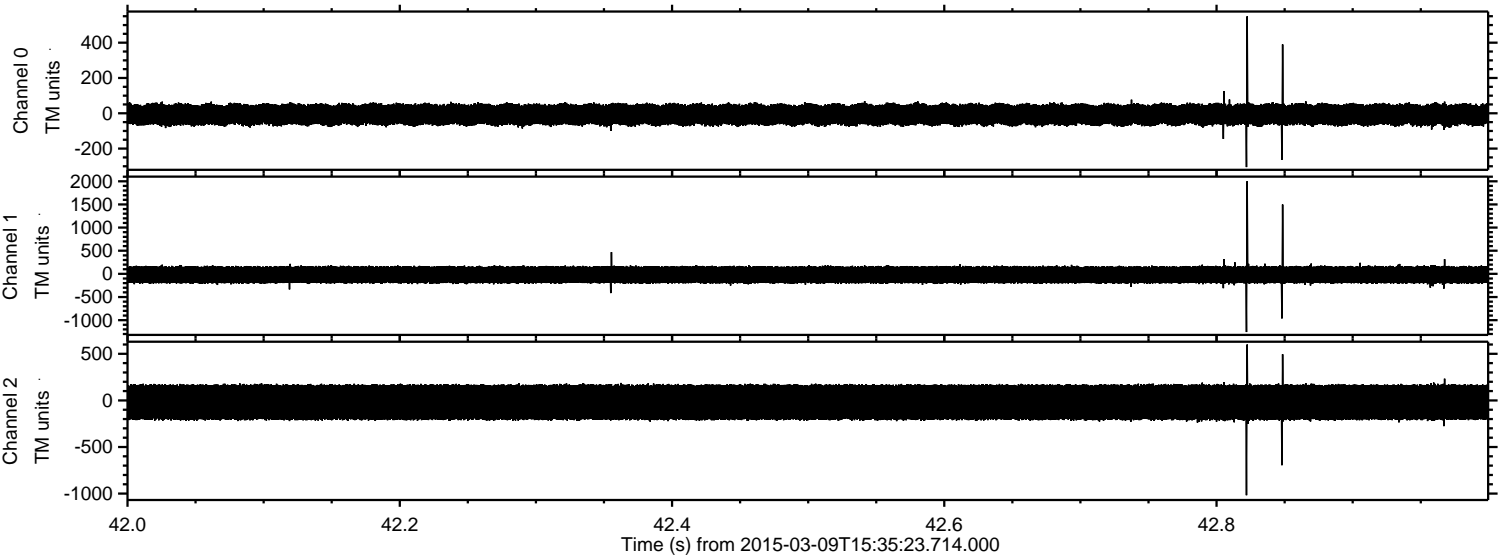


ELMAVAN 3D WAVEFORMS (Measured data sampled at 50 kHz) 49715 packets of 144 samples from 2015-03-09T15:35:23.714.000. Part 127/144

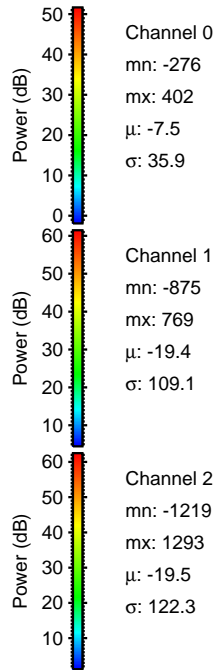
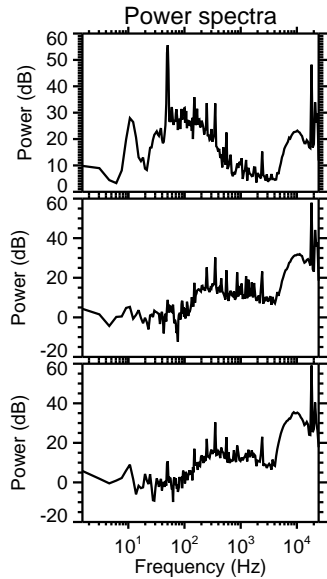
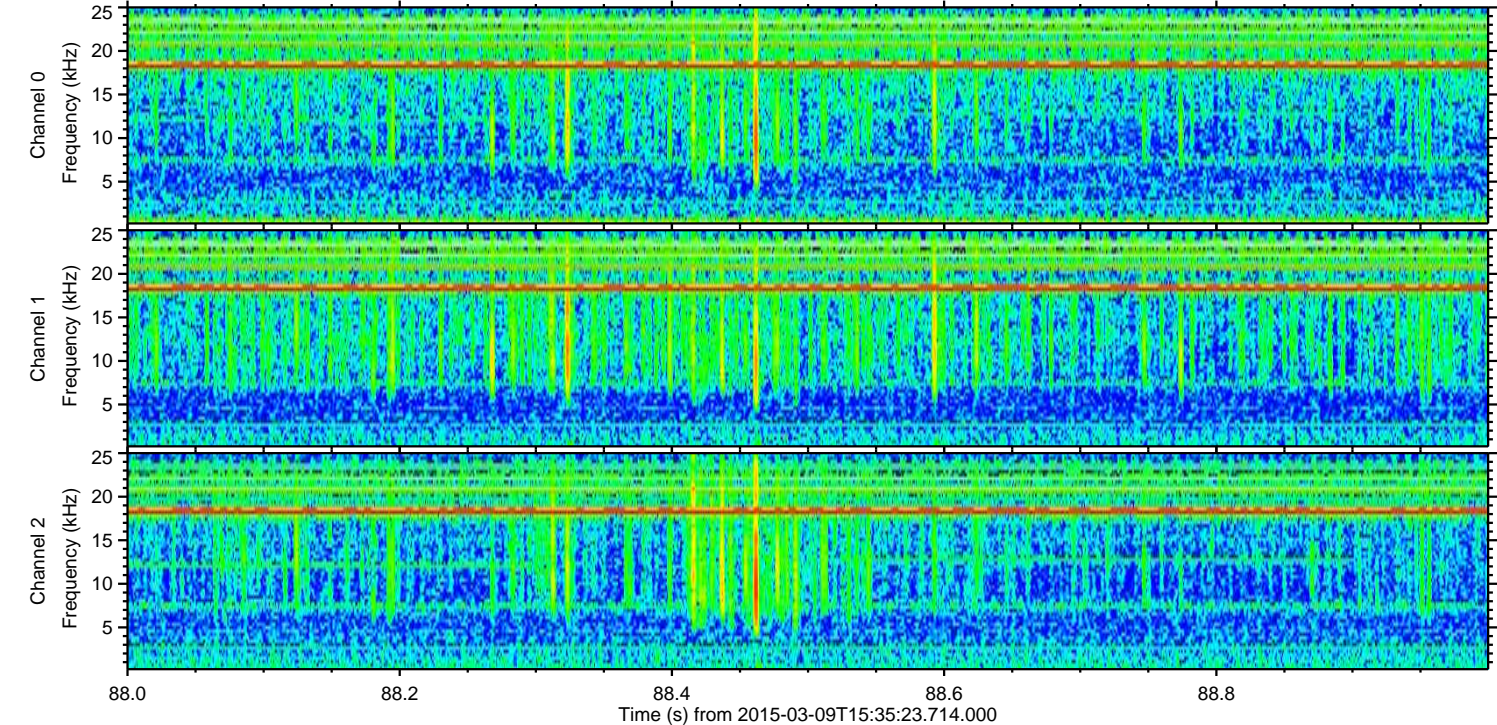
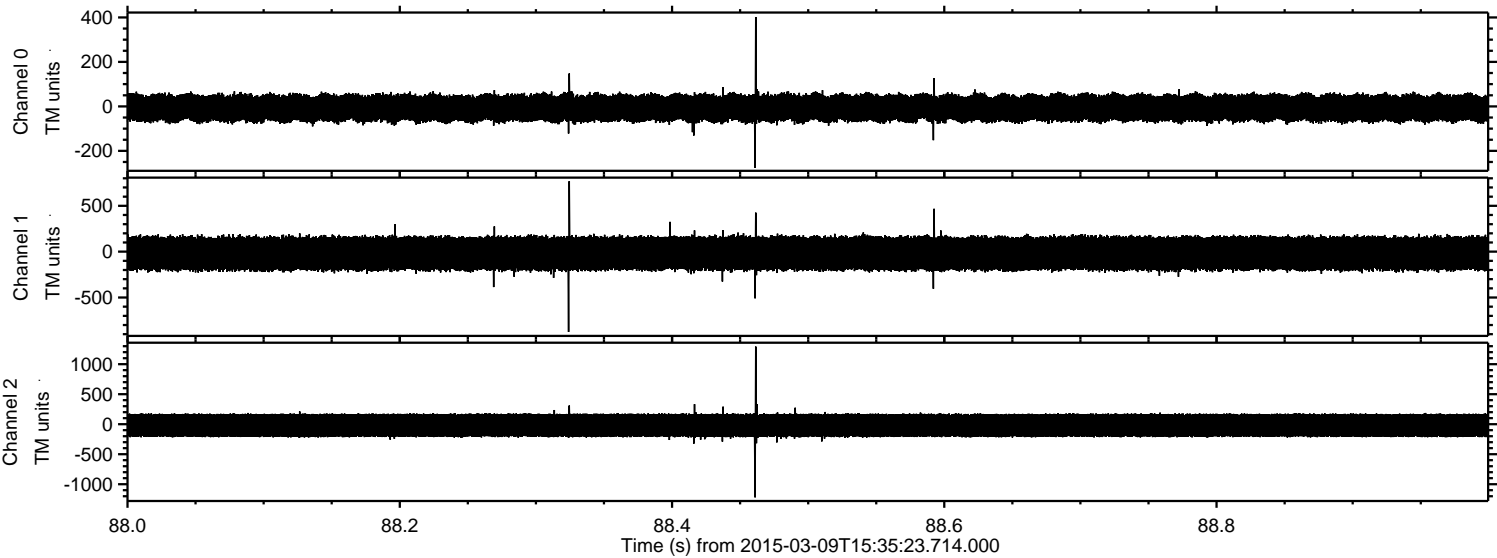
Processed Mon Mar 9 16:43:28 2015 by ELM ver.2012-10-06 from 001__elm20150309_153522__dat00.bin



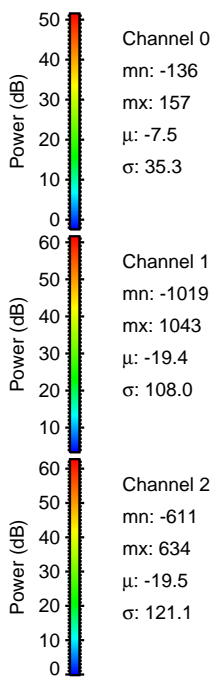
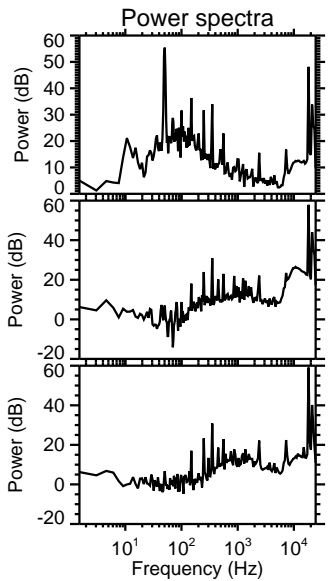
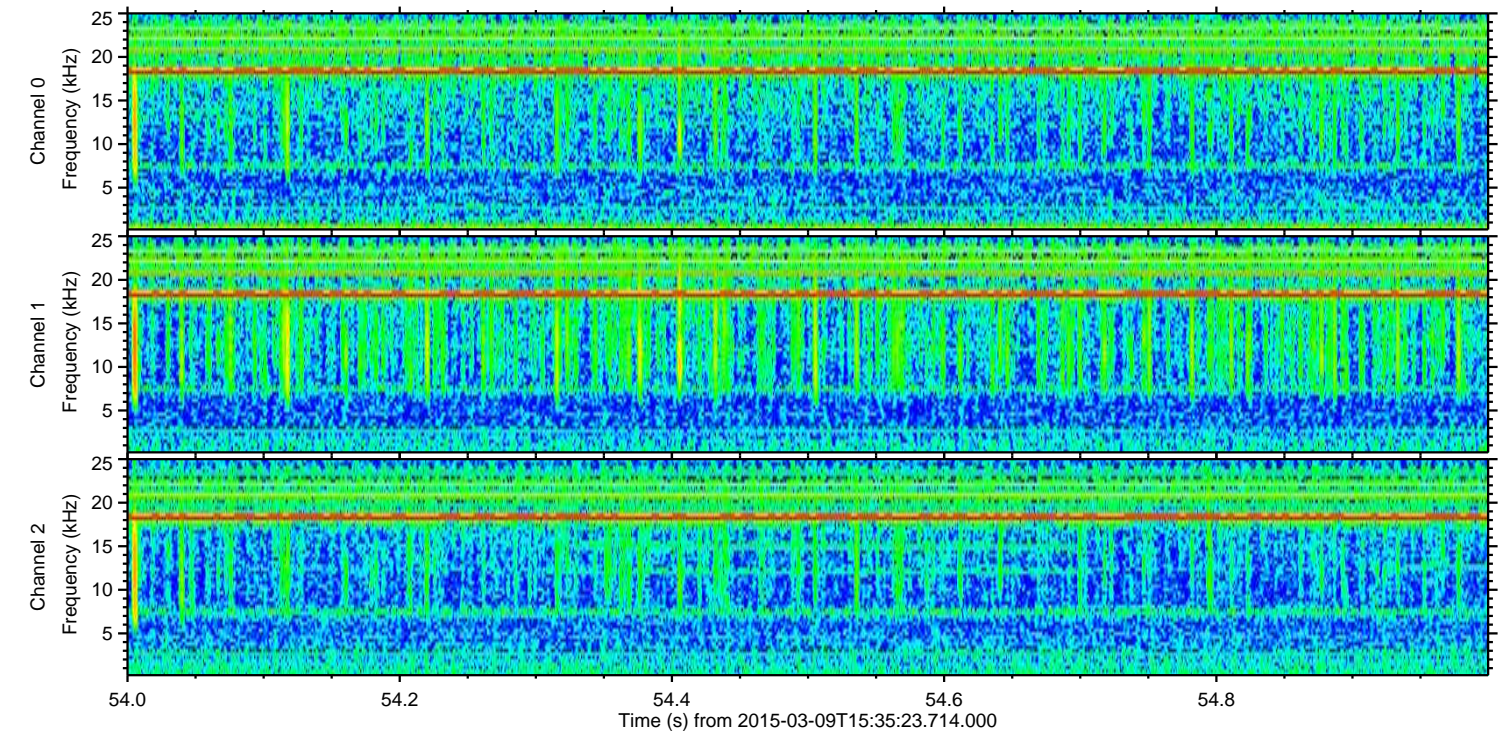
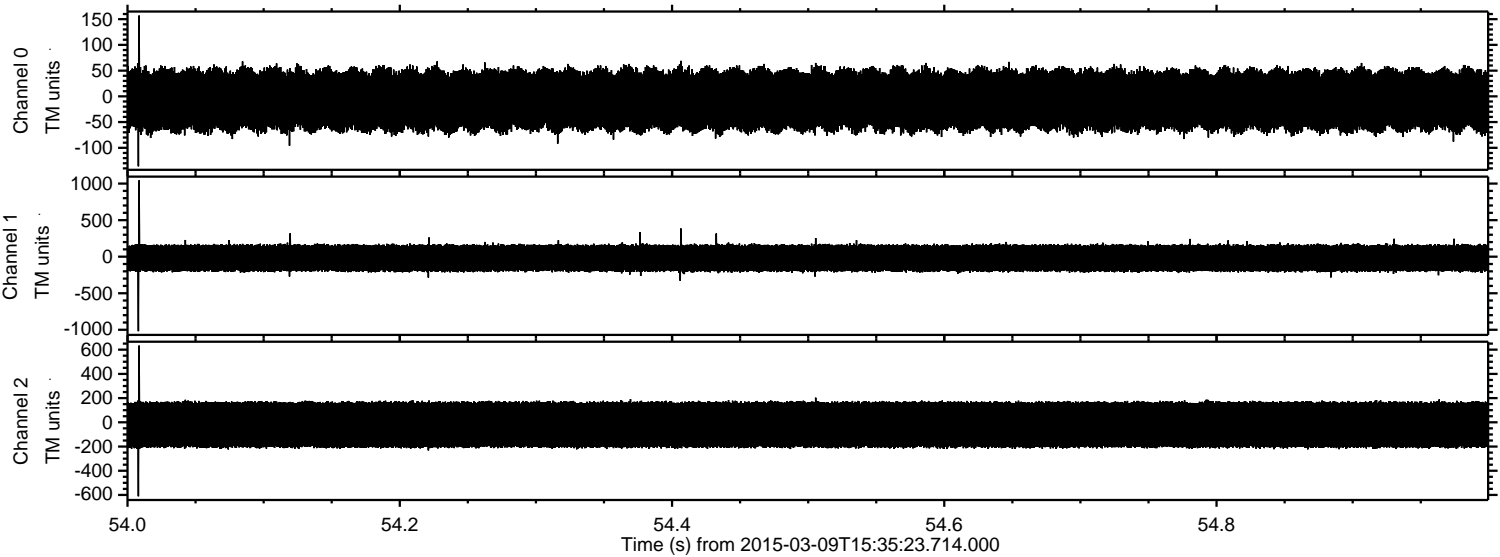
Processed Mon Mar 9 16:43:29 2015 by ELM ver.2012-10-06 from 001__elm20150309_153522__dat00.bin



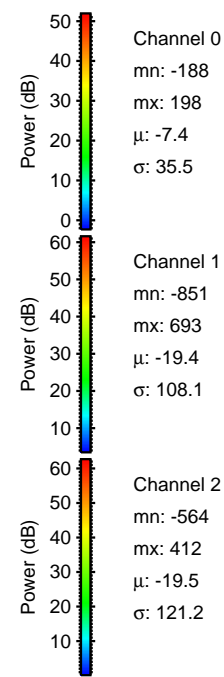
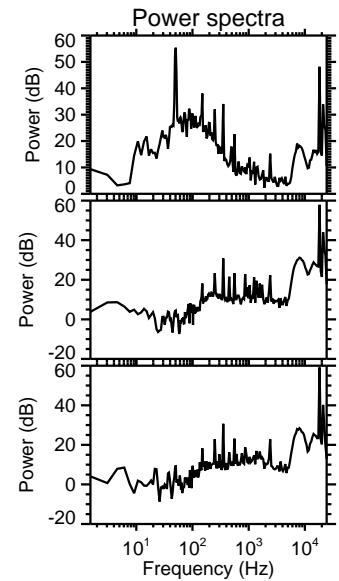
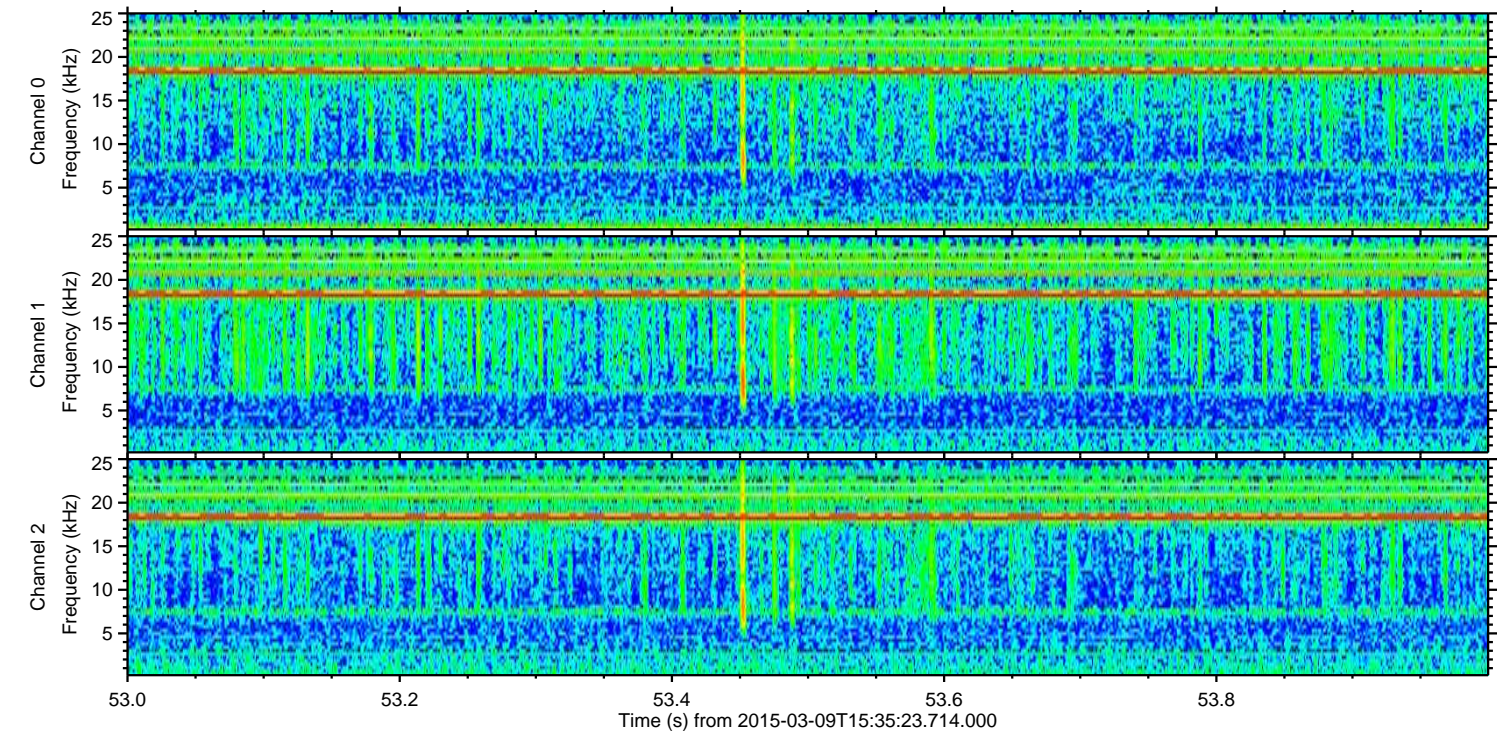
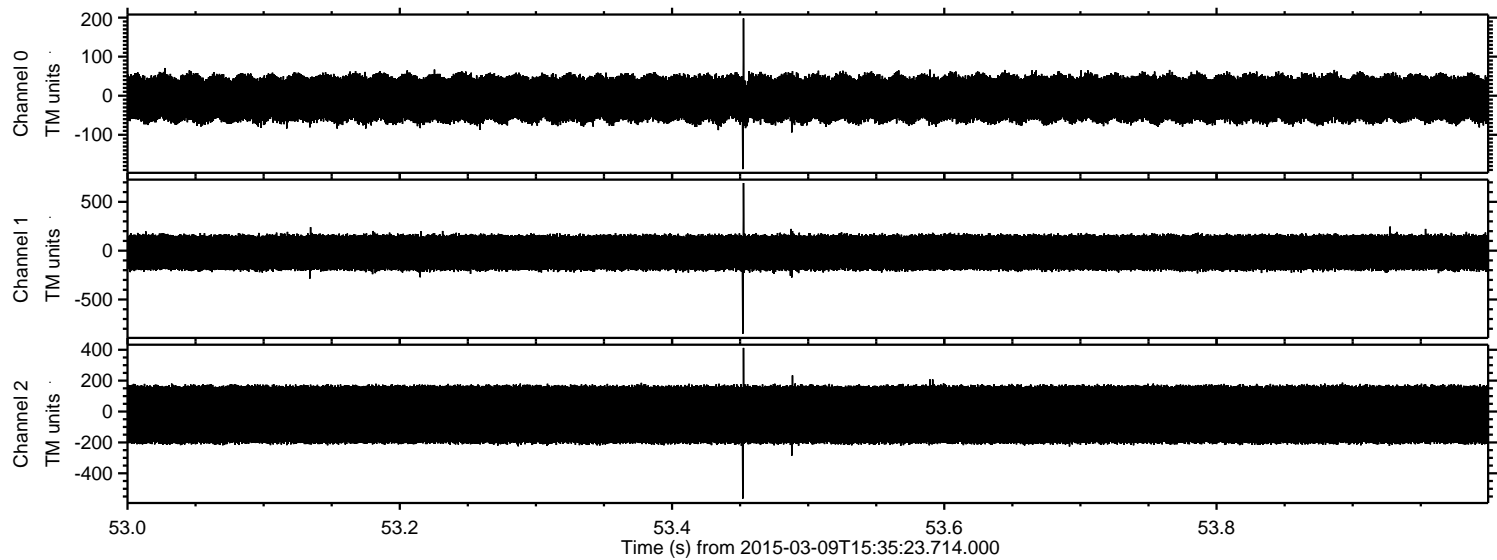
Processed Mon Mar 9 16:43:30 2015 by ELM ver.2012-10-06 from 001__elm20150309_153522__dat00.bin



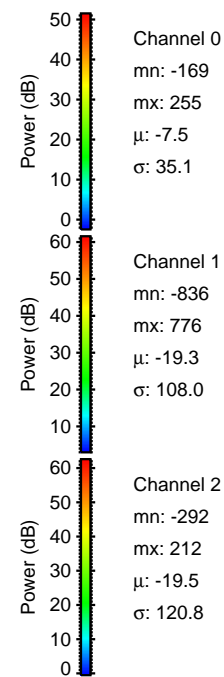
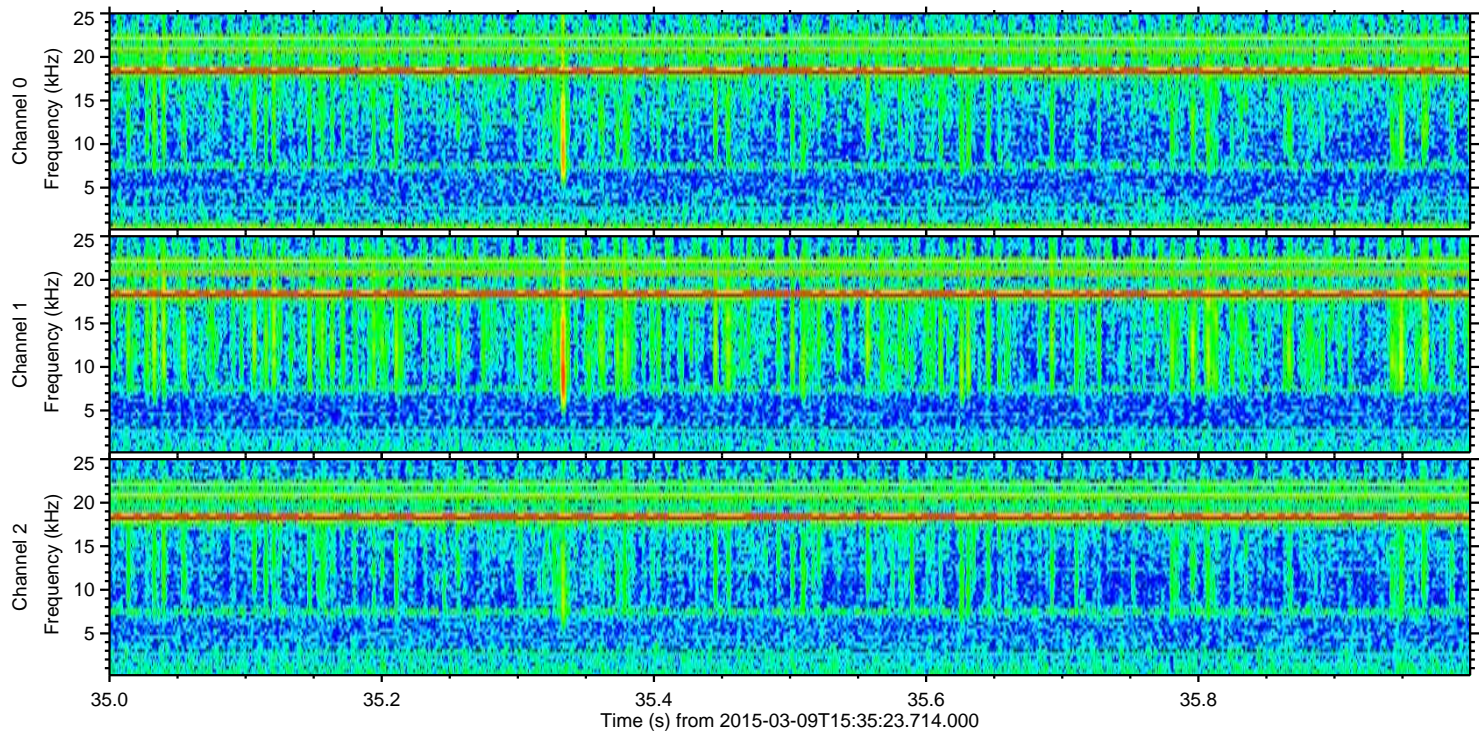
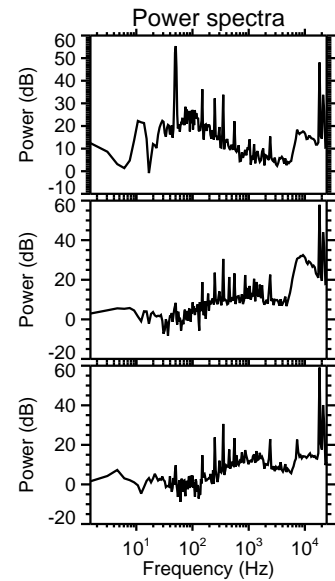
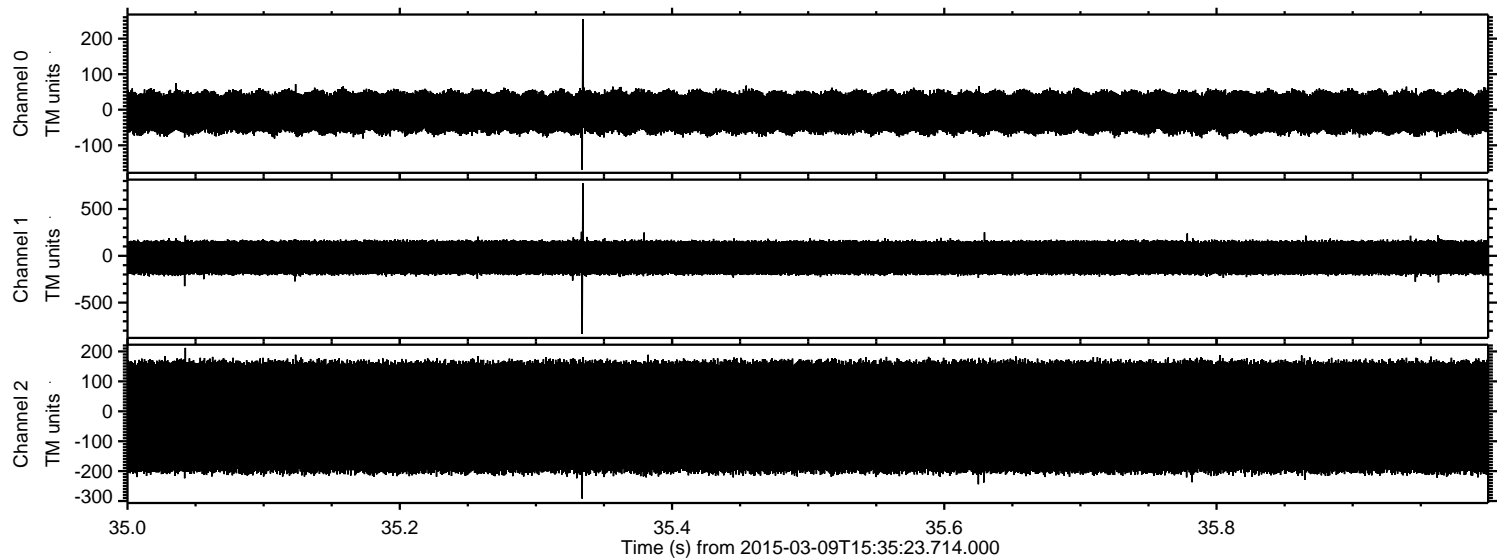
Processed Mon Mar 9 16:43:31 2015 by ELM ver.2012-10-06 from 001__elm20150309_153522__dat00.bin



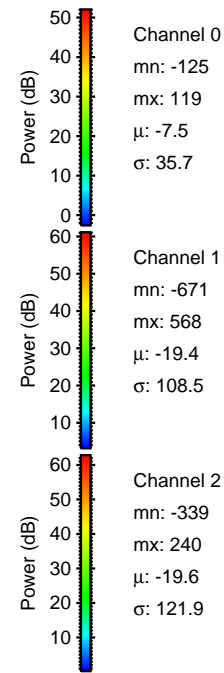
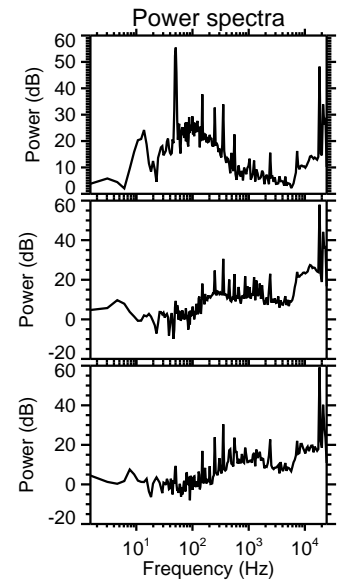
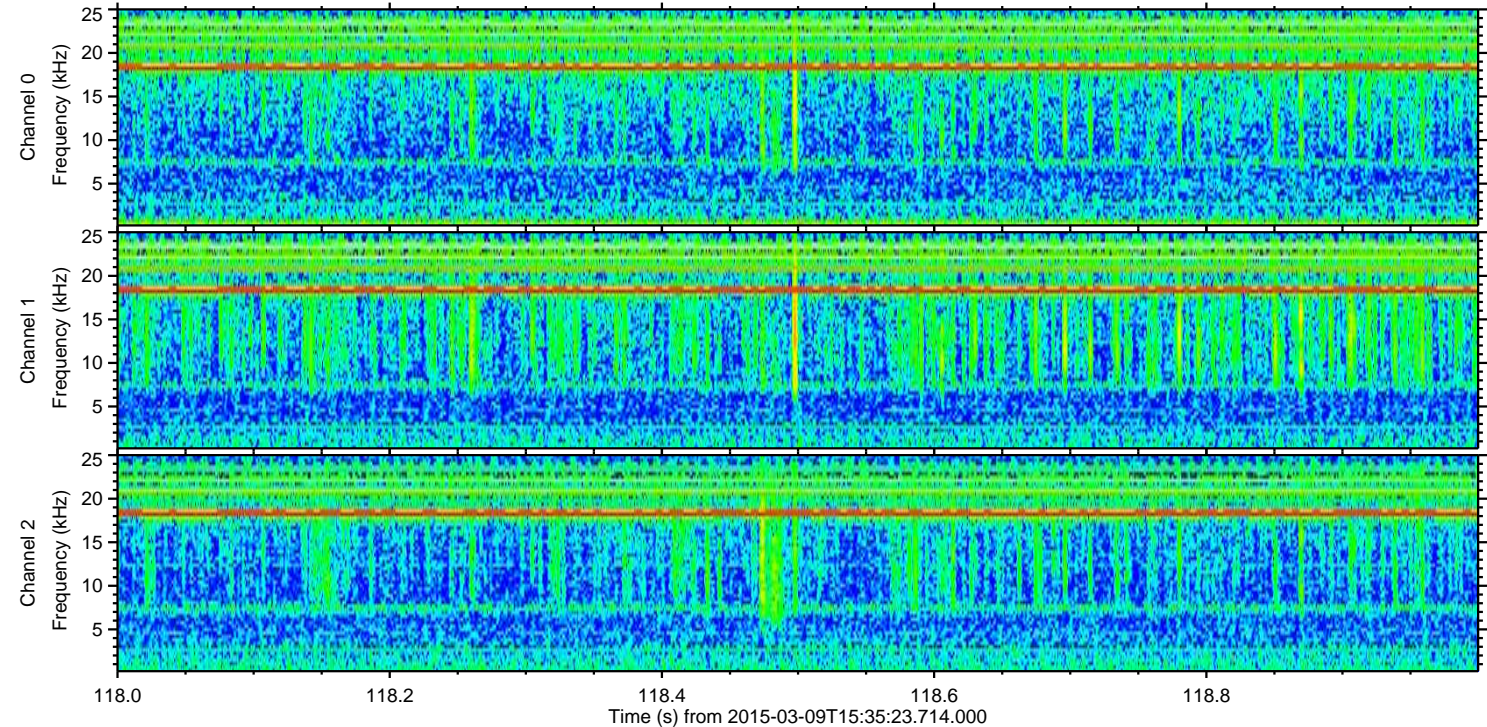
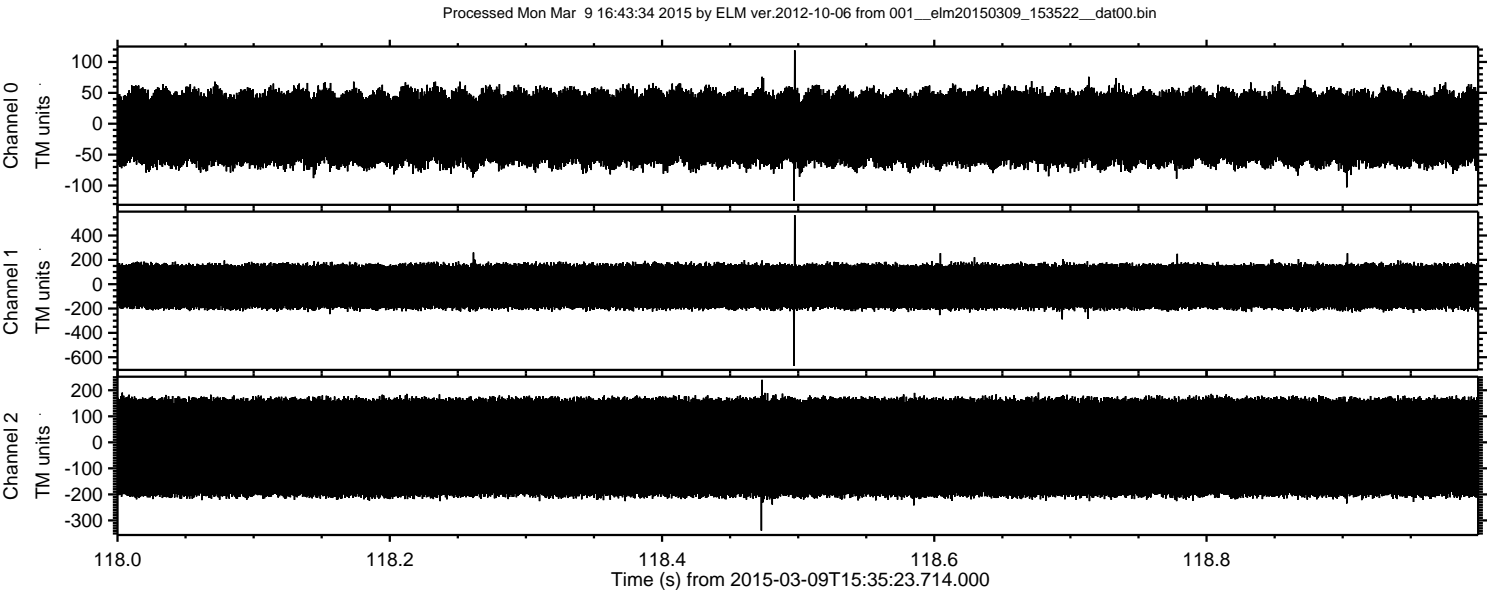
Processed Mon Mar 9 16:43:32 2015 by ELM ver.2012-10-06 from 001__elm20150309_153522__dat00.bin



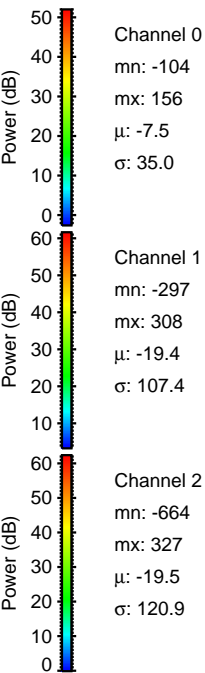
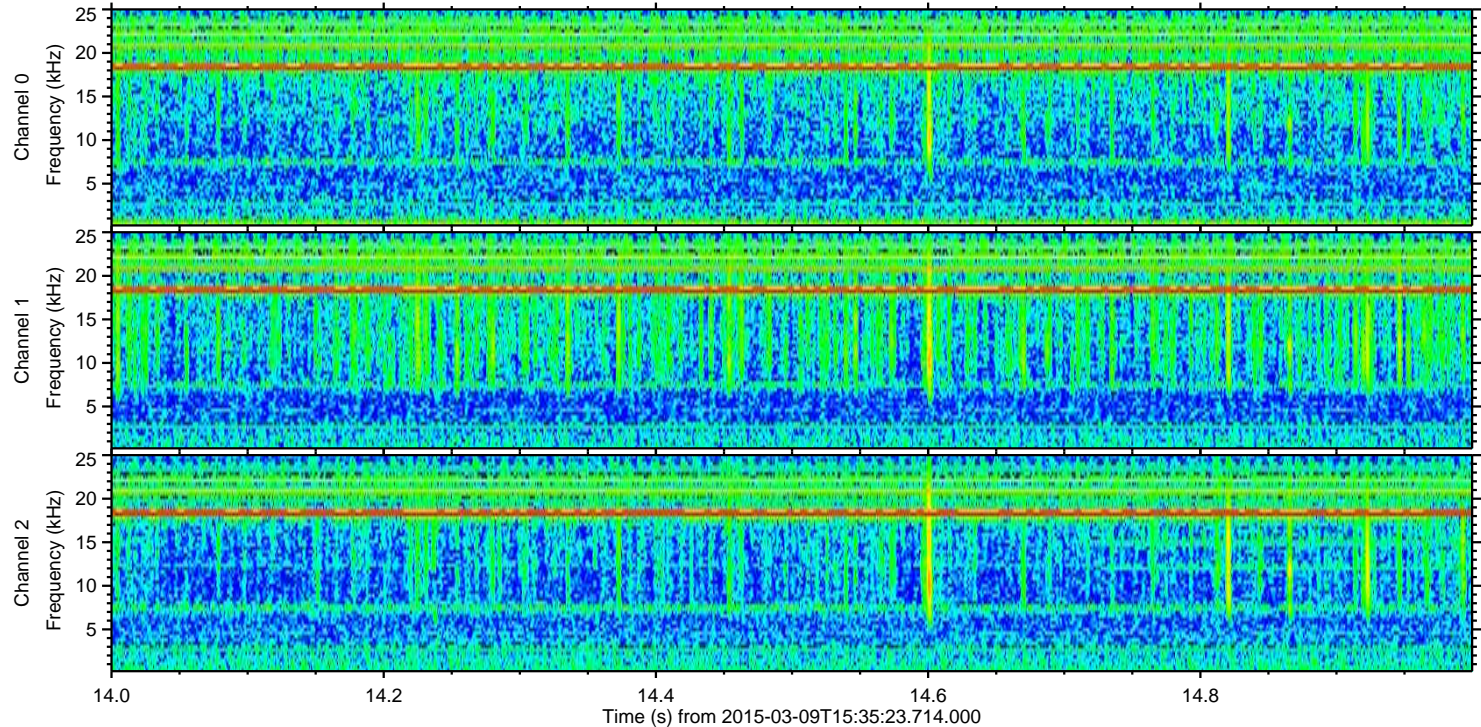
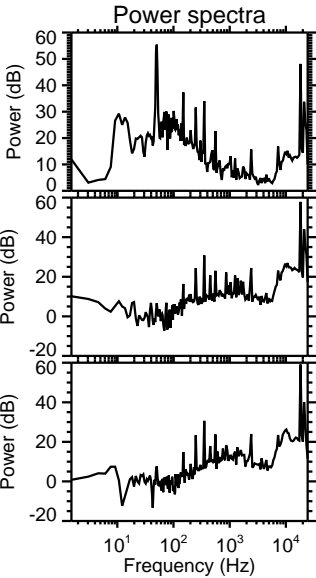
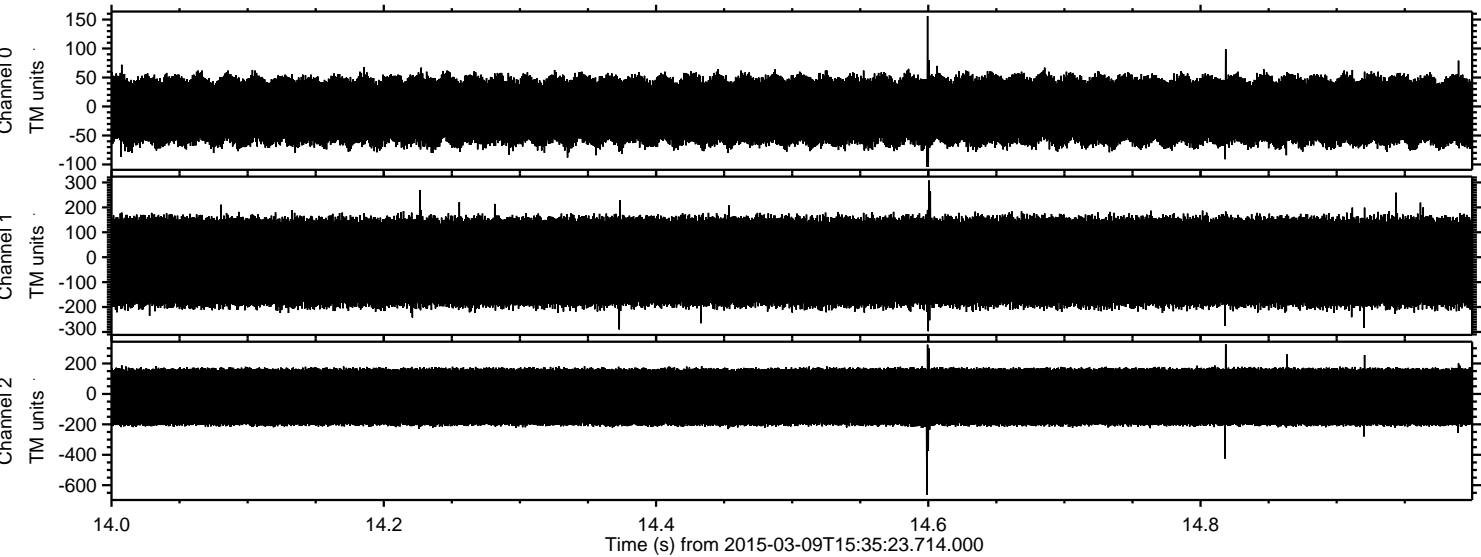
Processed Mon Mar 9 16:43:33 2015 by ELM ver.2012-10-06 from 001__elm20150309_153522__dat00.bin



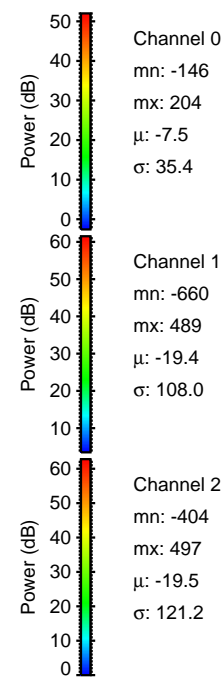
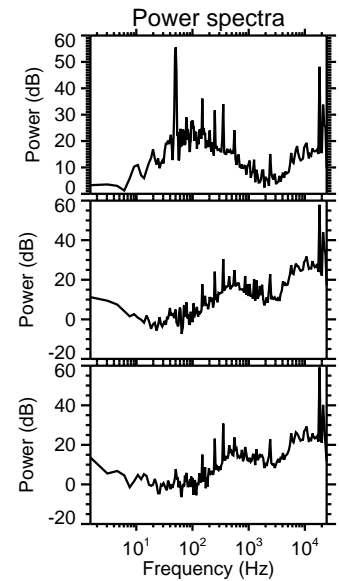
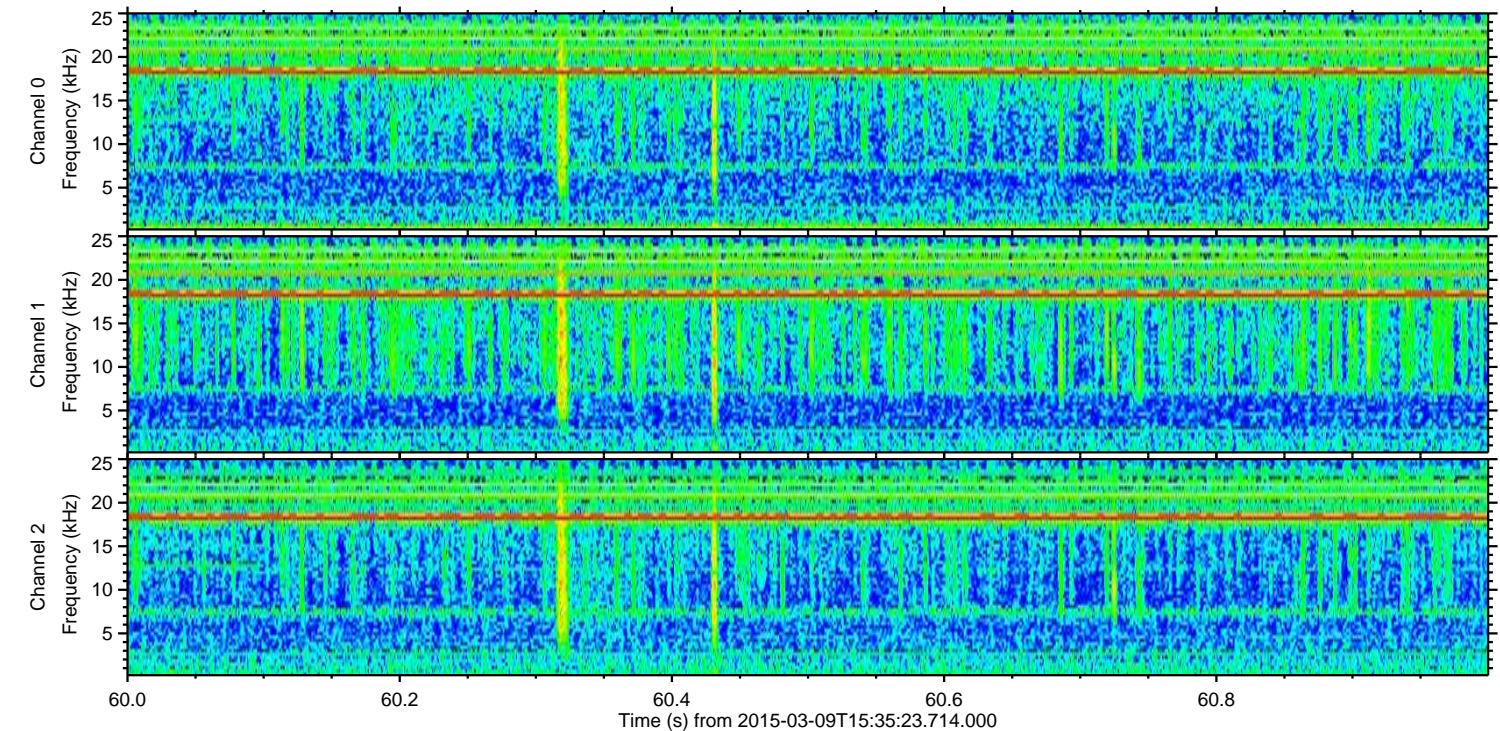
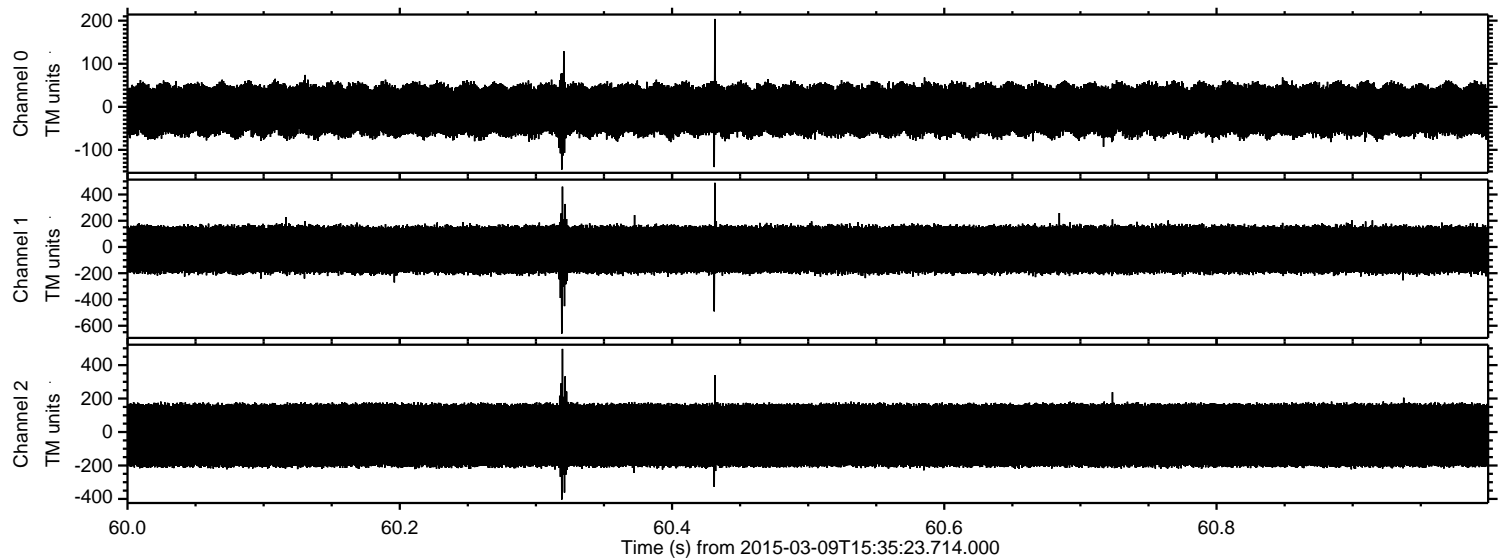
ELMAVAN 3D WAVEFORMS (Measured data sampled at 50 kHz) 49715 packets of 144 samples from 2015-03-09T15:35:23.714.000. Part 119/144



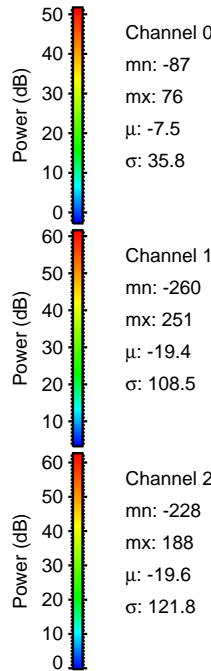
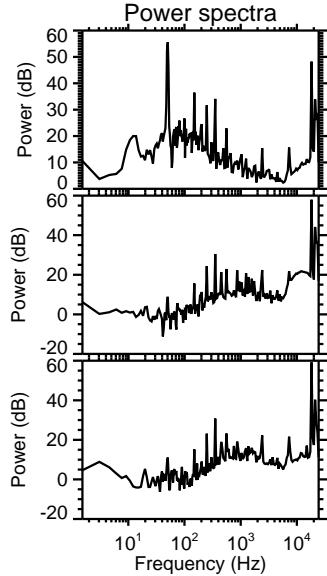
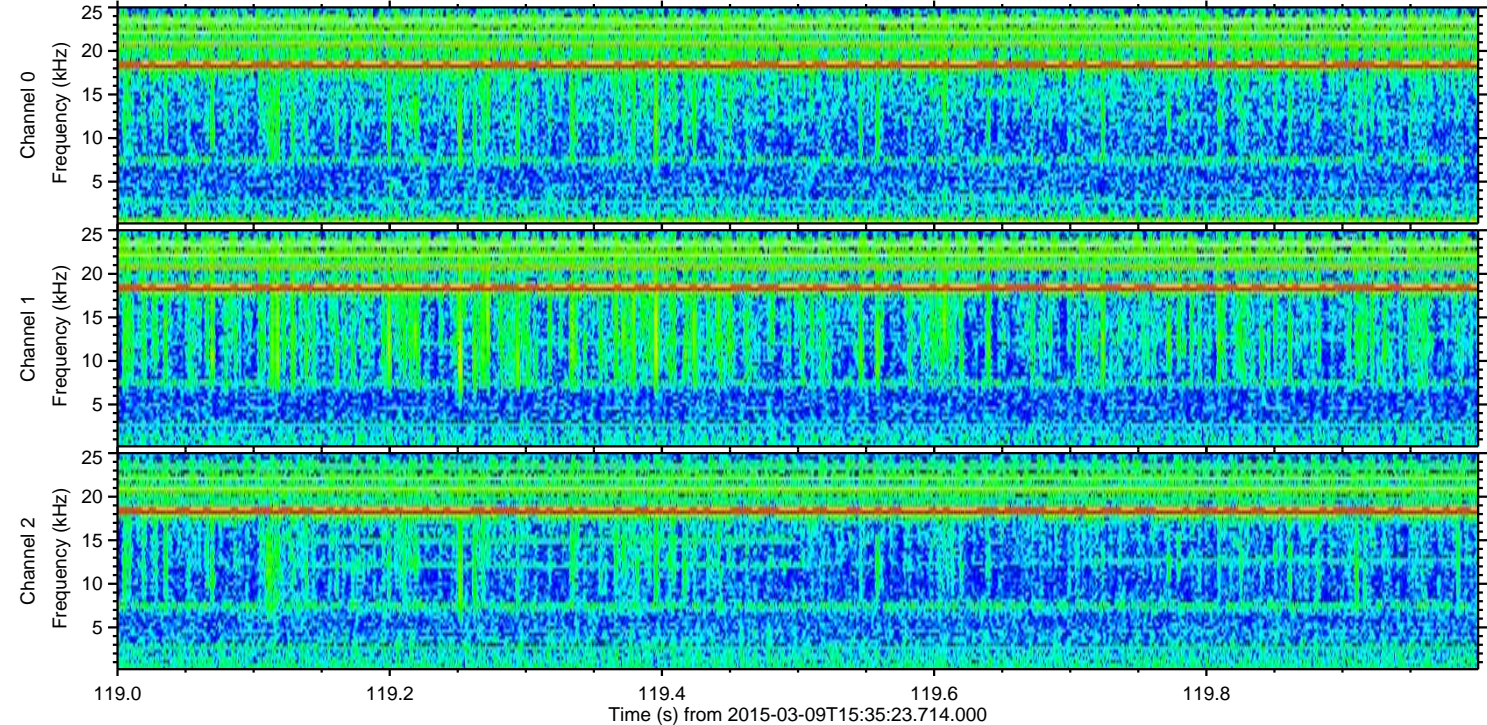
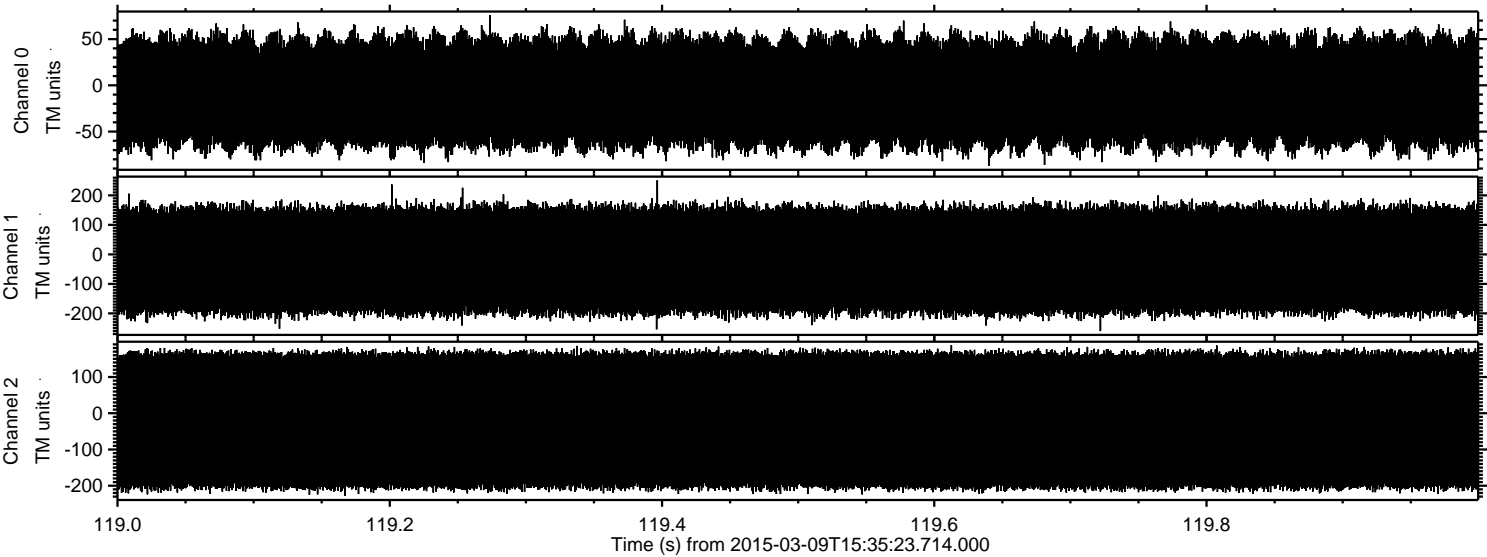
Processed Mon Mar 9 16:43:34 2015 by ELM ver.2012-10-06 from 001__elm20150309_153522__dat00.bin



Processed Mon Mar 9 16:43:35 2015 by ELM ver.2012-10-06 from 001__elm20150309_153522__dat00.bin



Processed Mon Mar 9 16:43:36 2015 by ELM ver.2012-10-06 from 001__elm20150309_153522__dat00.bin



Channel 0
mn: -87
mx: 76
 μ : -7.5
 σ : 35.8

Channel 1
mn: -260
mx: 251
 μ : -19.4
 σ : 108.5

Channel 2
mn: -228
mx: 188
 μ : -19.6
 σ : 121.8