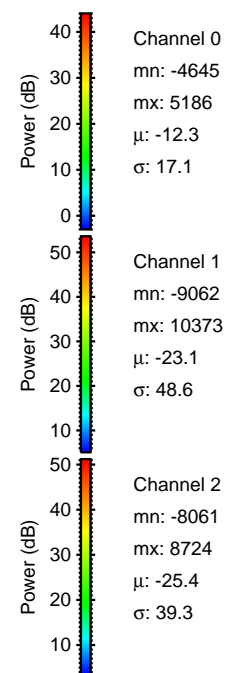
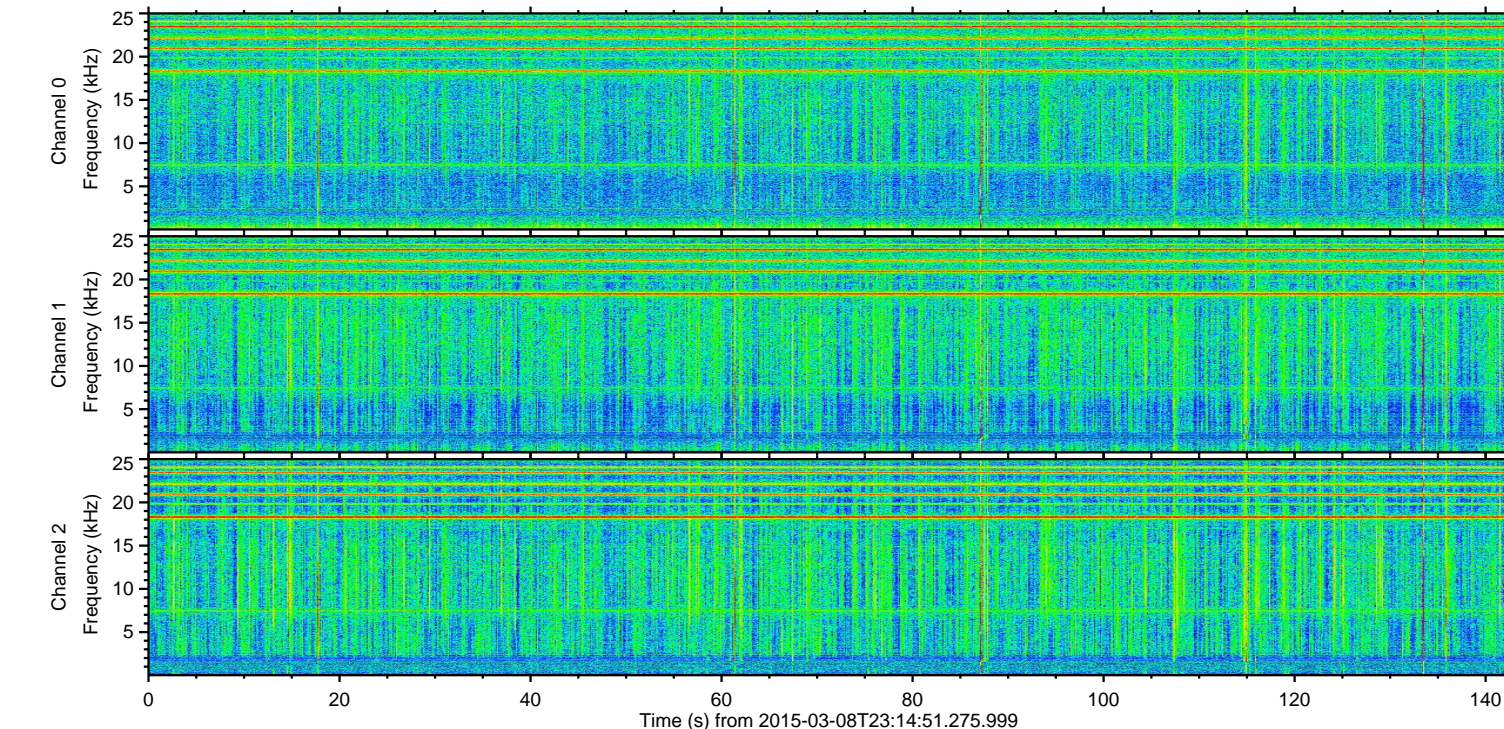
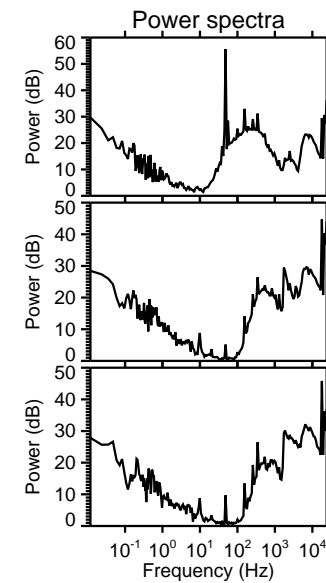
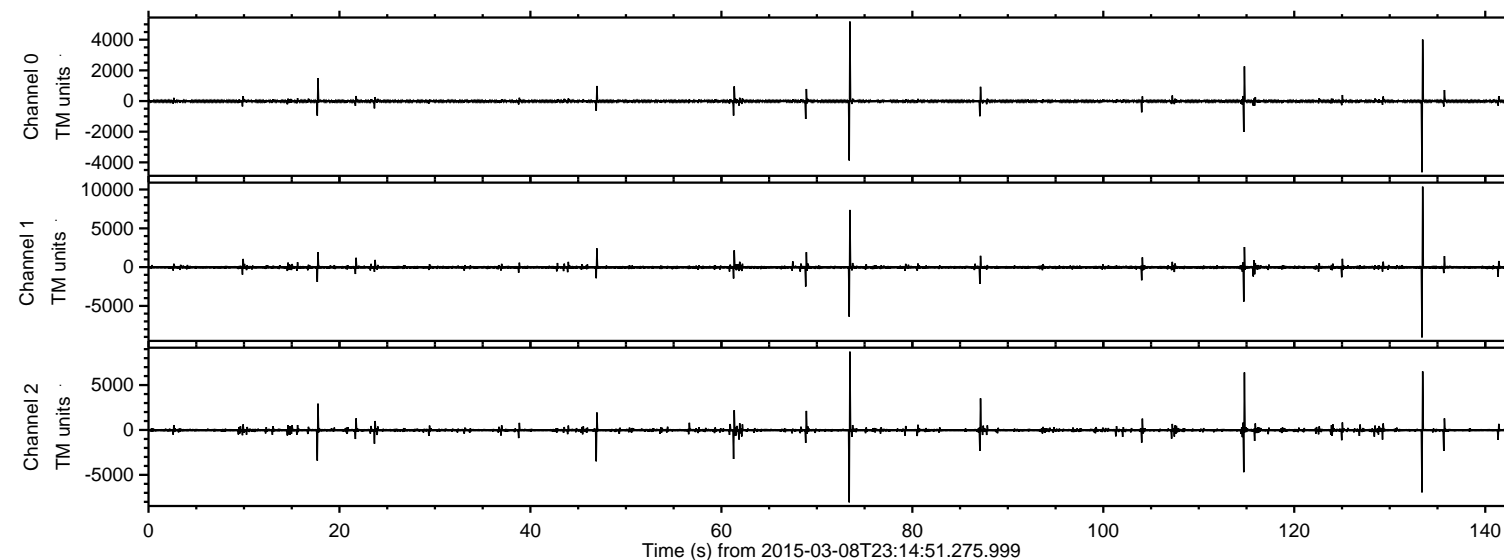


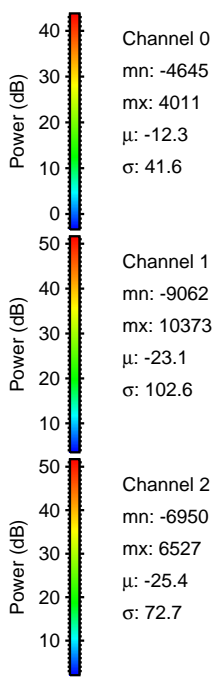
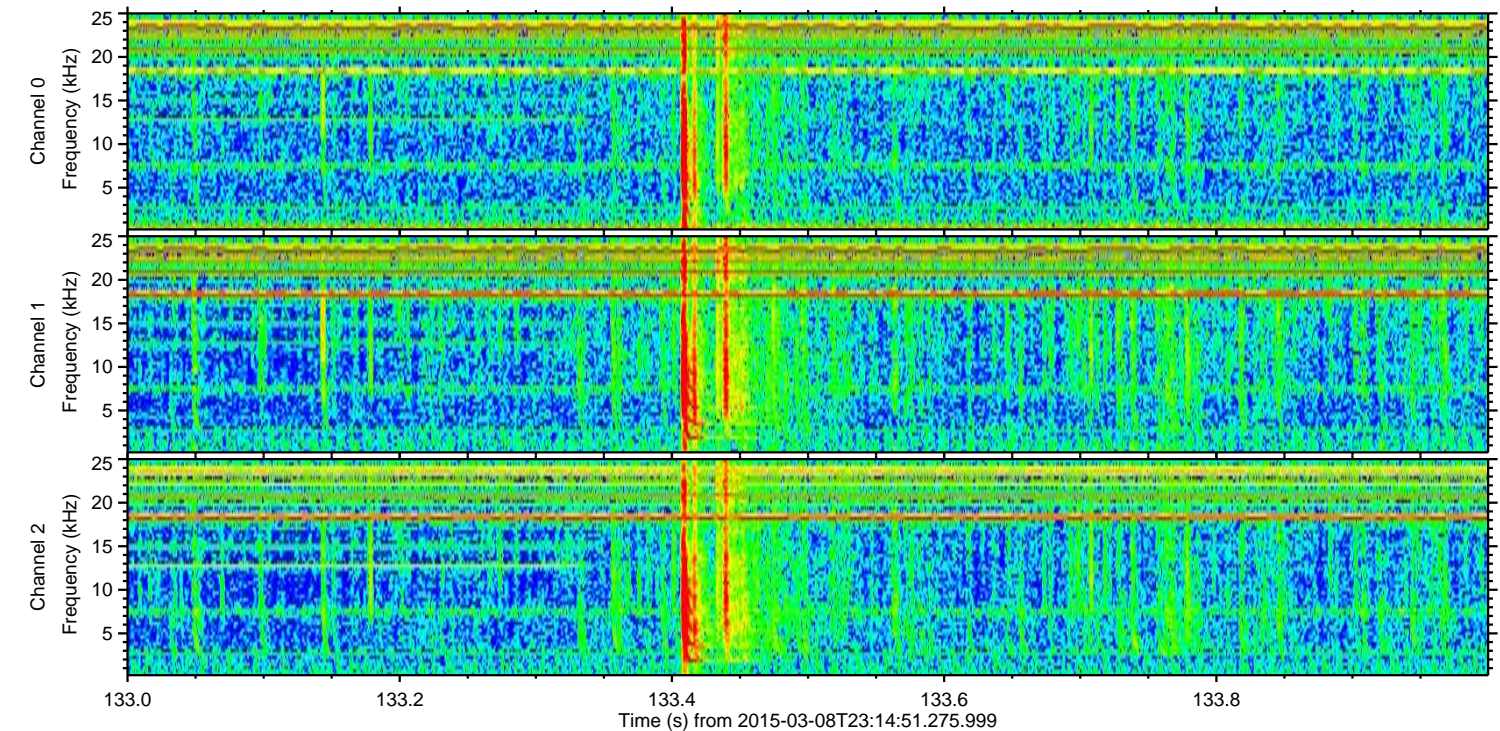
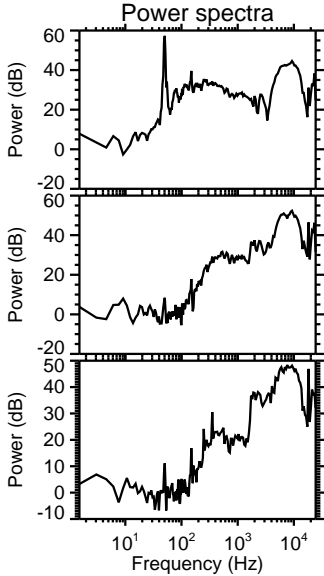
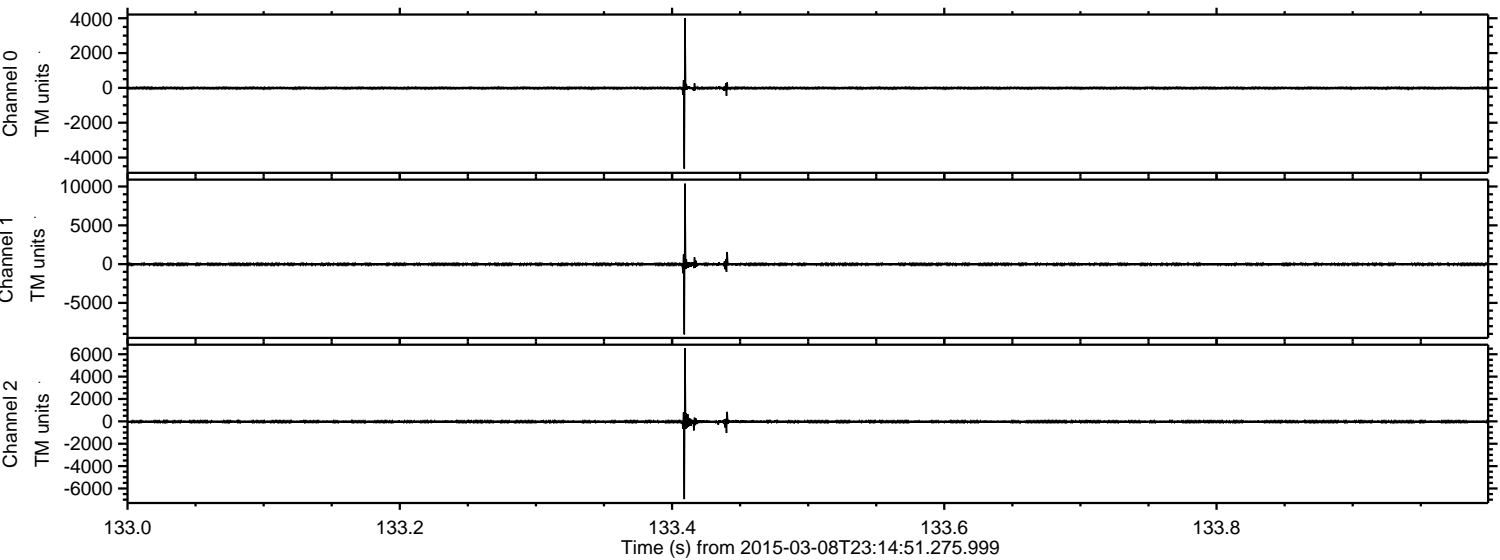
ELMAVAN 3D WAVEFORMS (Measured data sampled at 50 kHz) 49481 packets of 144 samples from 2015-03-08T23:14:51.275.999.

Processed Mon Mar 9 00:22:22 2015 by ELM ver.2012-10-06 from 001__elm20150308_231450__dat00.bin



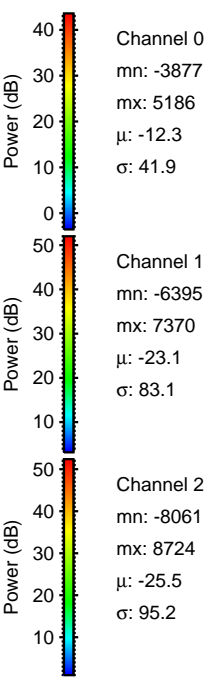
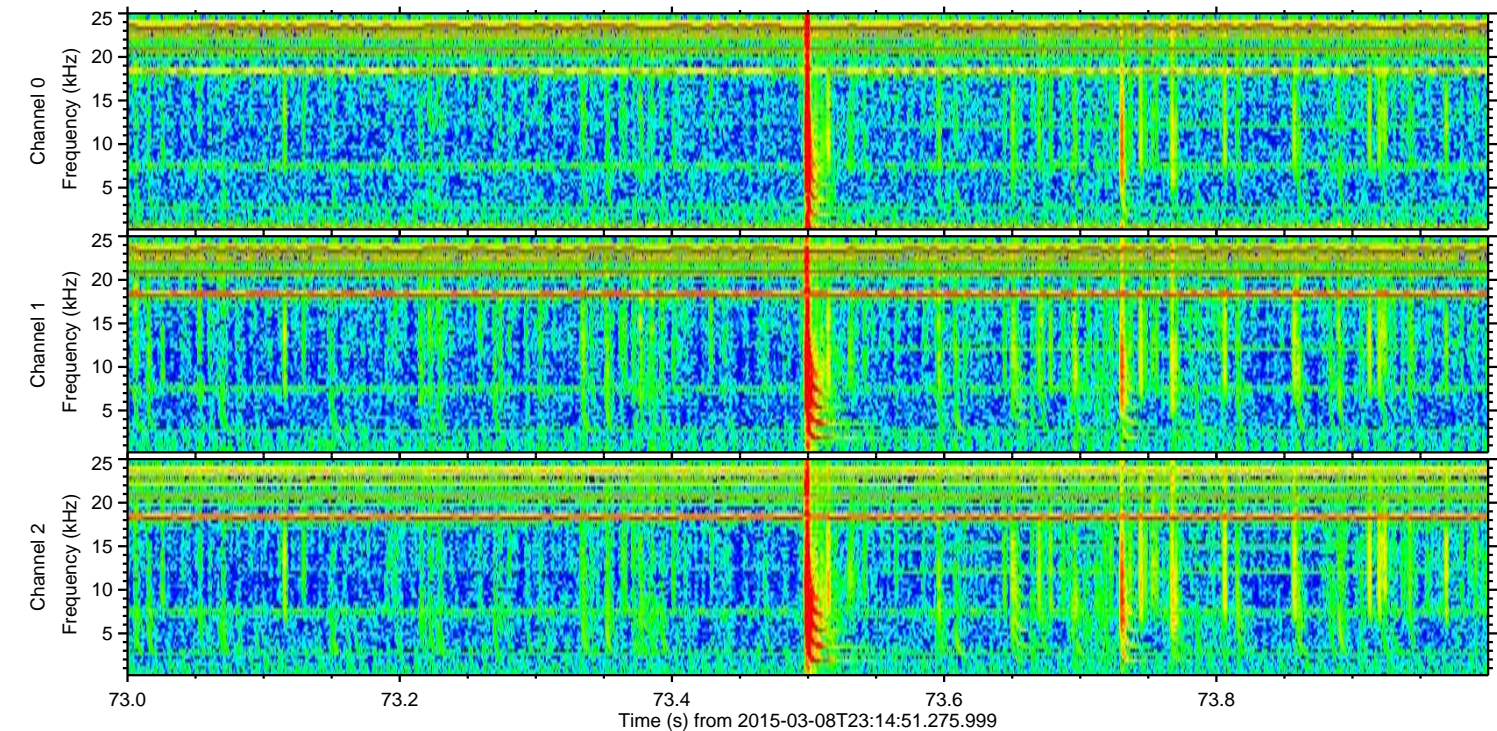
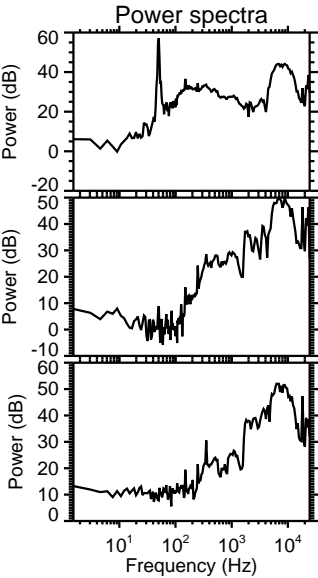
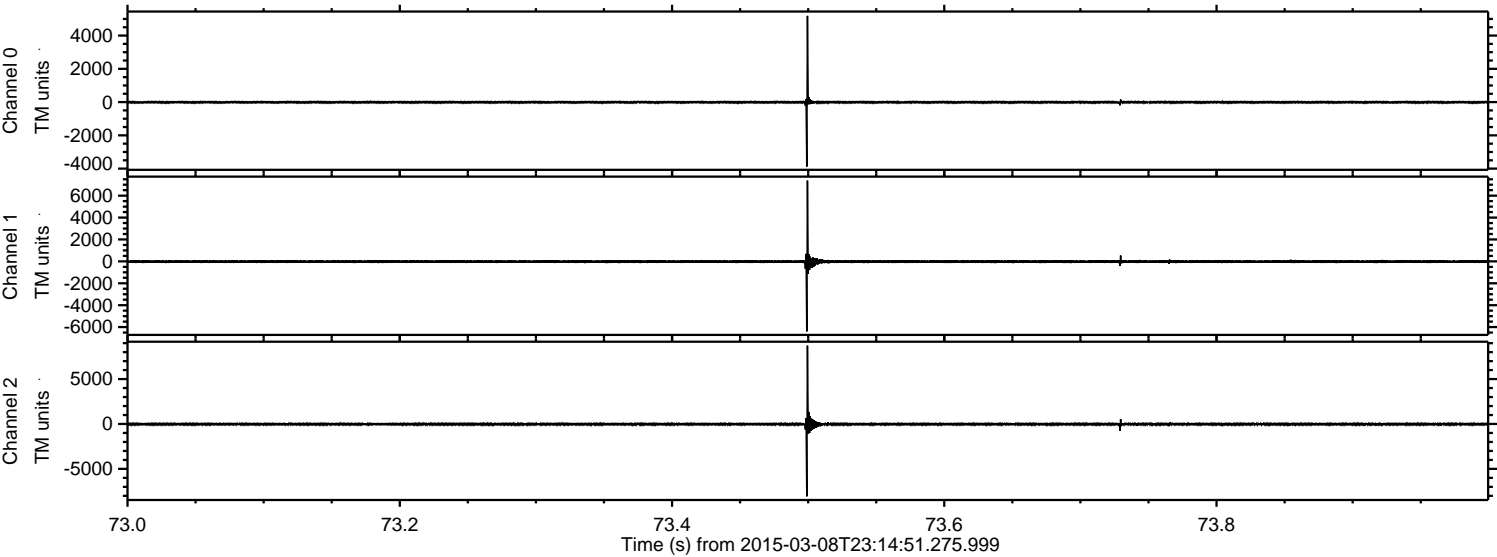
ELMAVAN 3D WAVEFORMS (Measured data sampled at 50 kHz) 49481 packets of 144 samples from 2015-03-08T23:14:51.275.999. Part 134/143

Processed Mon Mar 9 00:22:37 2015 by ELM ver.2012-10-06 from 001__elm20150308_231450__dat00.bin



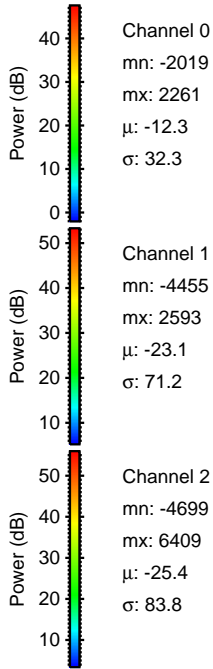
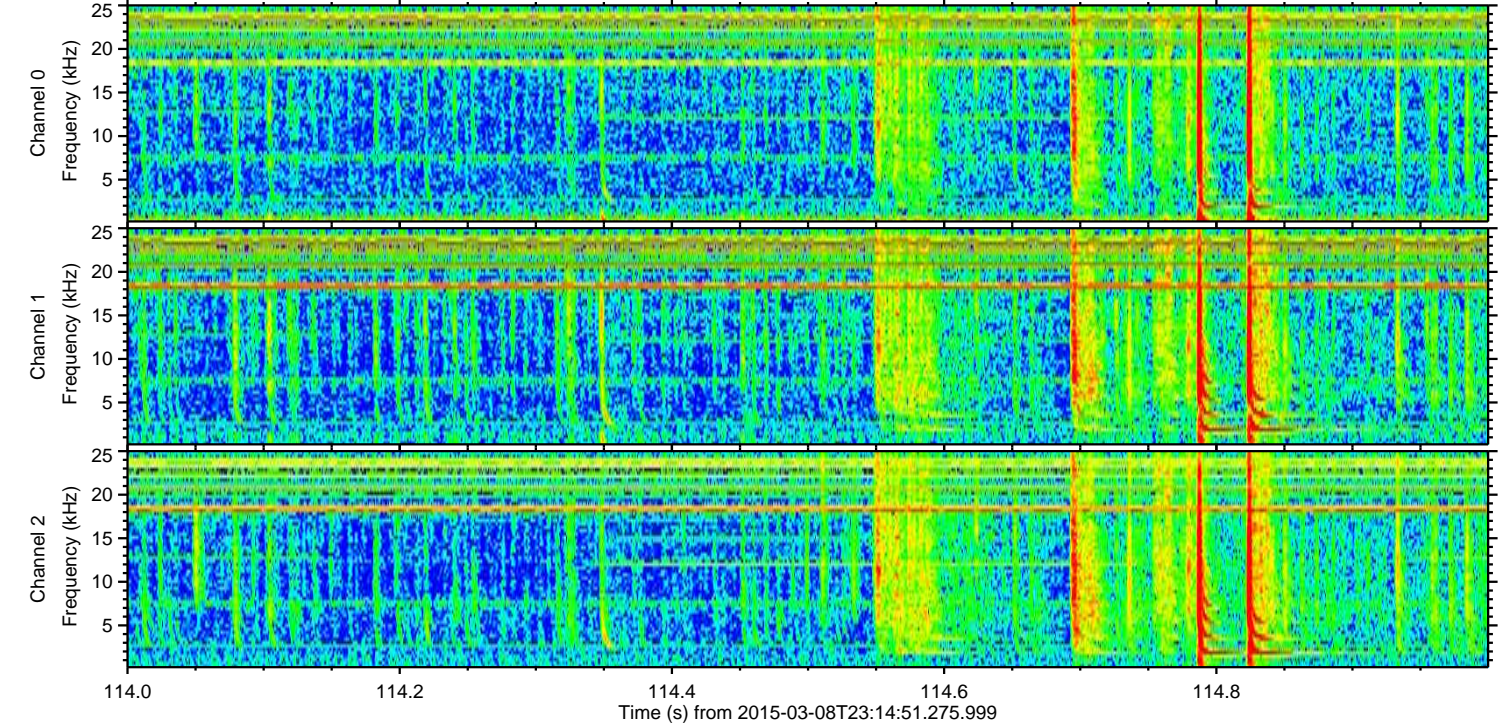
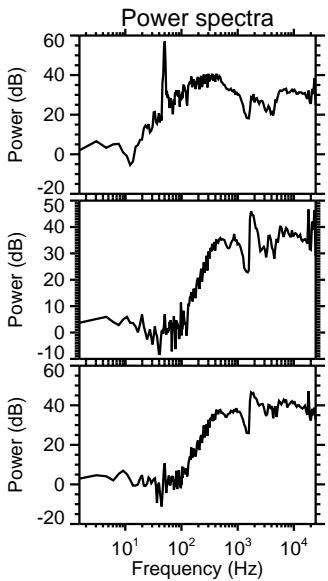
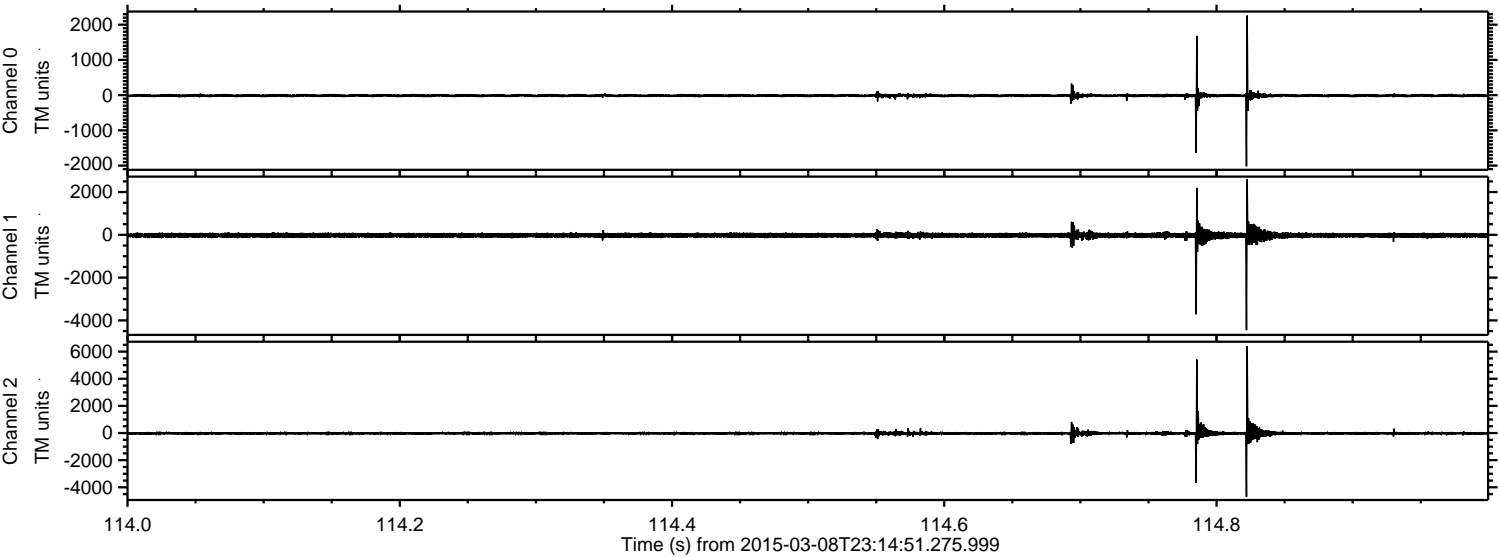
ELMAVAN 3D WAVEFORMS (Measured data sampled at 50 kHz) 49481 packets of 144 samples from 2015-03-08T23:14:51.275.999. Part 74/143

Processed Mon Mar 9 00:22:38 2015 by ELM ver.2012-10-06 from 001__elm20150308_231450__dat00.bin



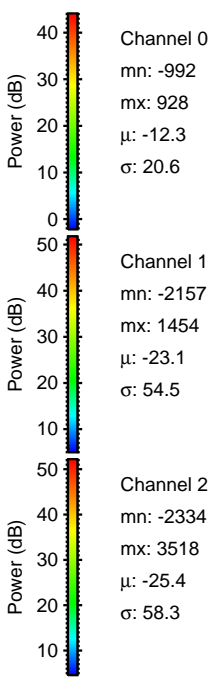
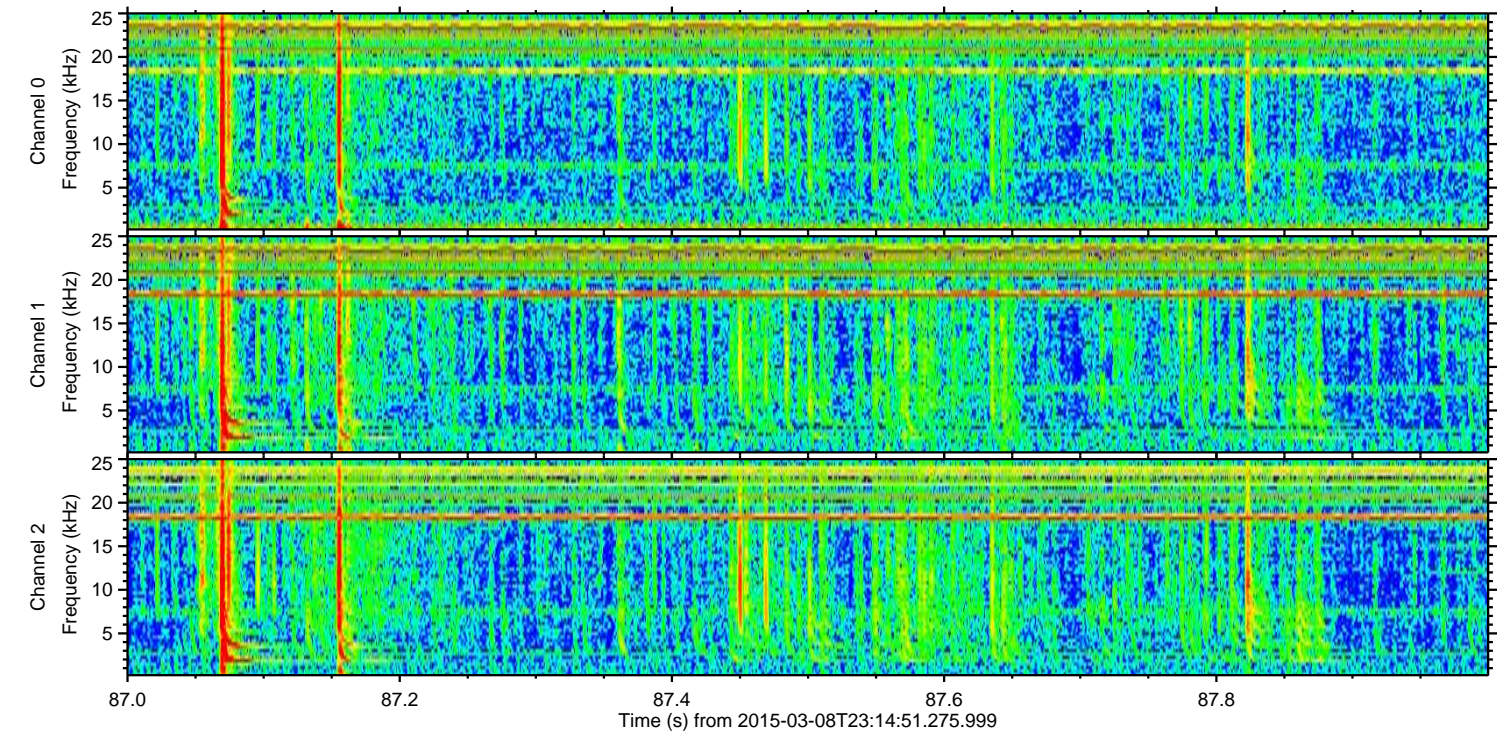
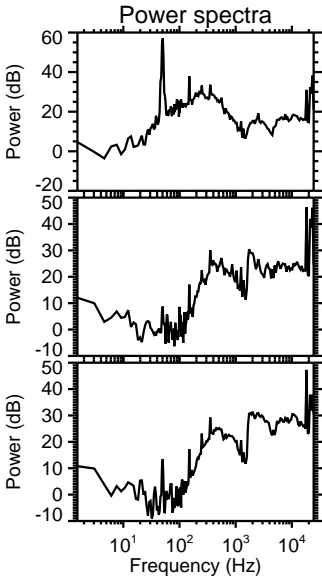
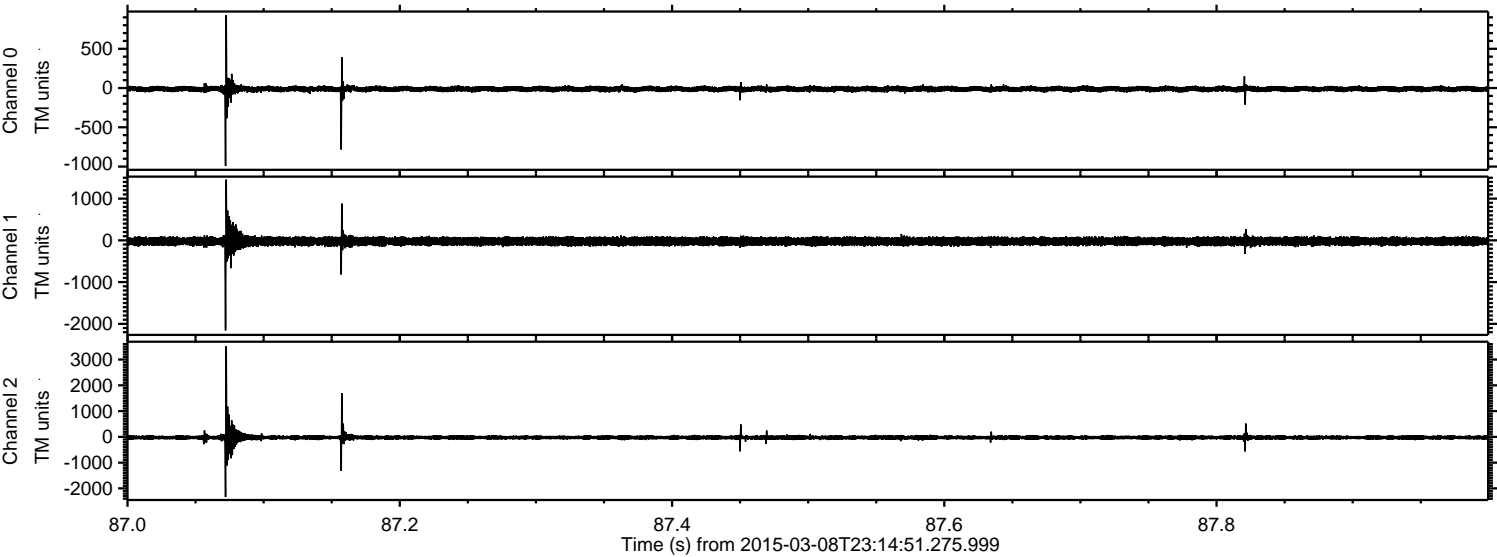
ELMAVAN 3D WAVEFORMS (Measured data sampled at 50 kHz) 49481 packets of 144 samples from 2015-03-08T23:14:51.275.999. Part 115/143

Processed Mon Mar 9 00:22:39 2015 by ELM ver.2012-10-06 from 001__elm20150308_231450__dat00.bin



ELMAVAN 3D WAVEFORMS (Measured data sampled at 50 kHz) 49481 packets of 144 samples from 2015-03-08T23:14:51.275.999. Part 88/143

Processed Mon Mar 9 00:22:40 2015 by ELM ver.2012-10-06 from 001__elm20150308_231450__dat00.bin



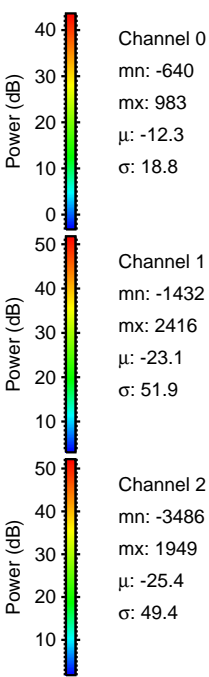
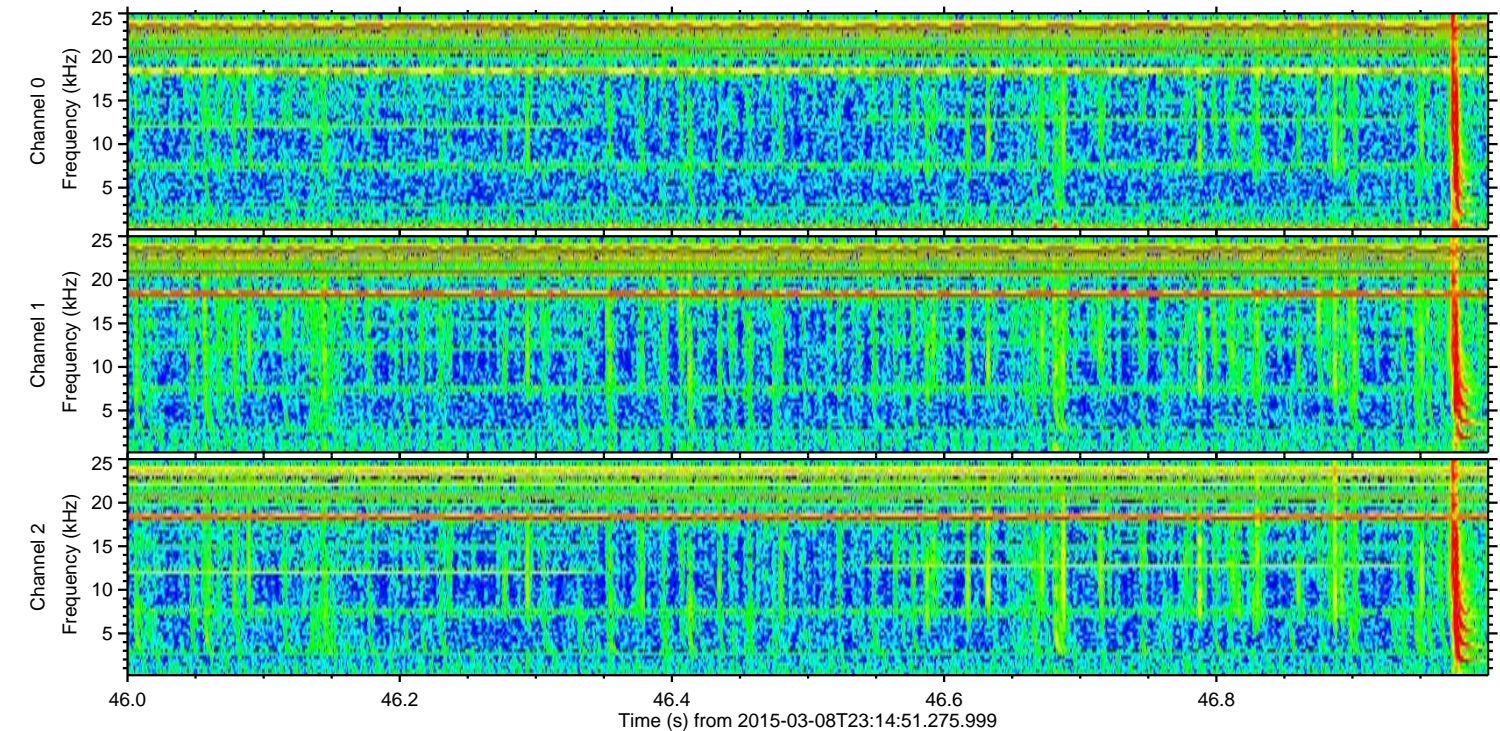
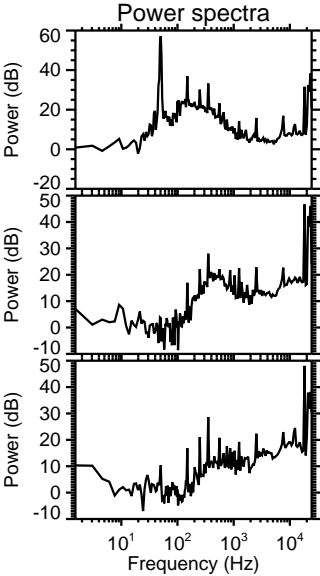
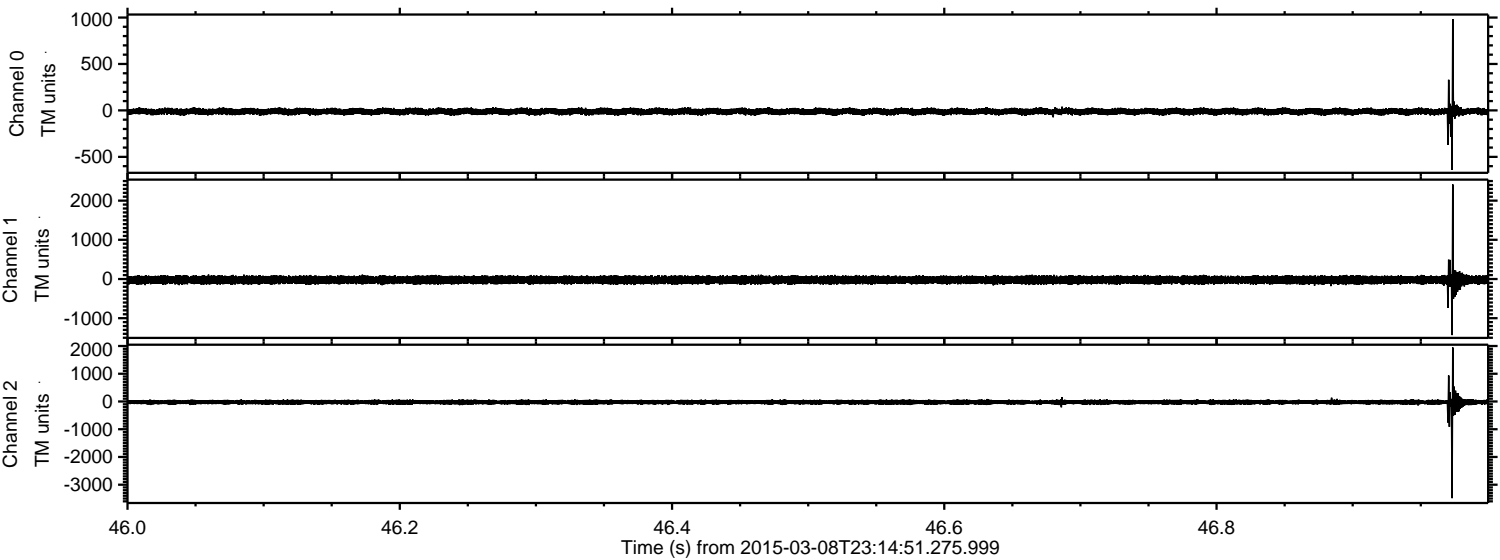
Channel 0
mn: -992
mx: 928
 μ : -12.3
 σ : 20.6

Channel 1
mn: -2157
mx: 1454
 μ : -23.1
 σ : 54.5

Channel 2
mn: -2334
mx: 3518
 μ : -25.4
 σ : 58.3

ELMAVAN 3D WAVEFORMS (Measured data sampled at 50 kHz) 49481 packets of 144 samples from 2015-03-08T23:14:51.275.999. Part 47/143

Processed Mon Mar 9 00:22:41 2015 by ELM ver.2012-10-06 from 001__elm20150308_231450__dat00.bin

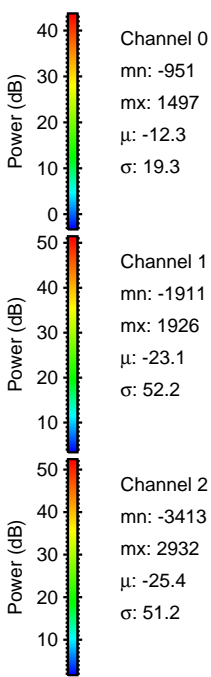
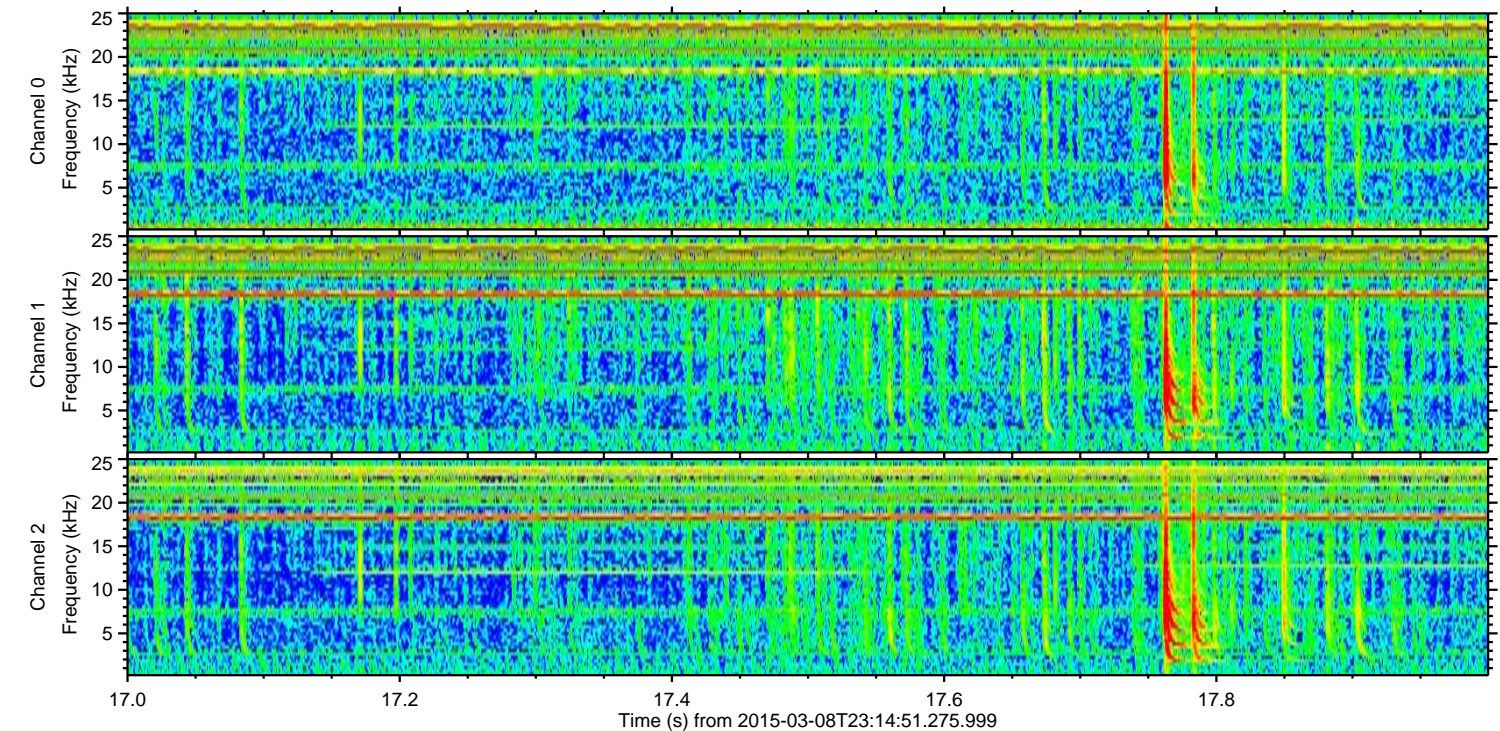
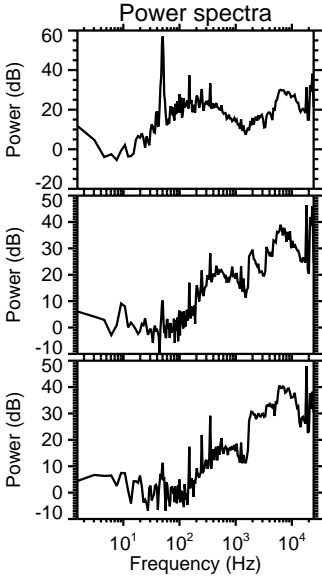
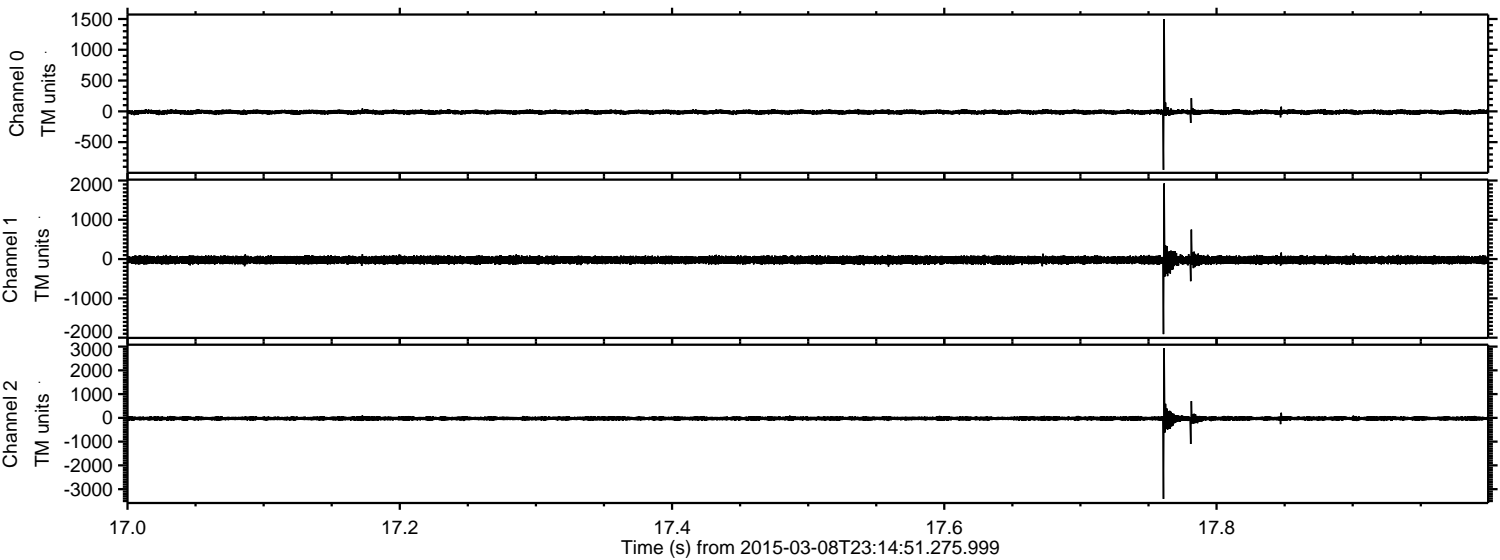


Channel 0
mn: -640
mx: 983
 μ : -12.3
 σ : 18.8

Channel 1
mn: -1432
mx: 2416
 μ : -23.1
 σ : 51.9

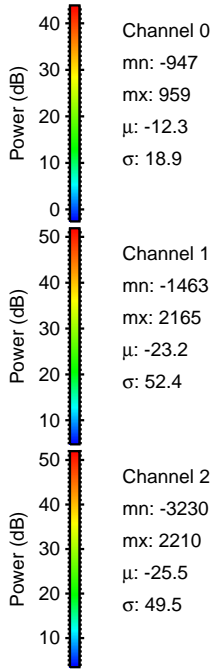
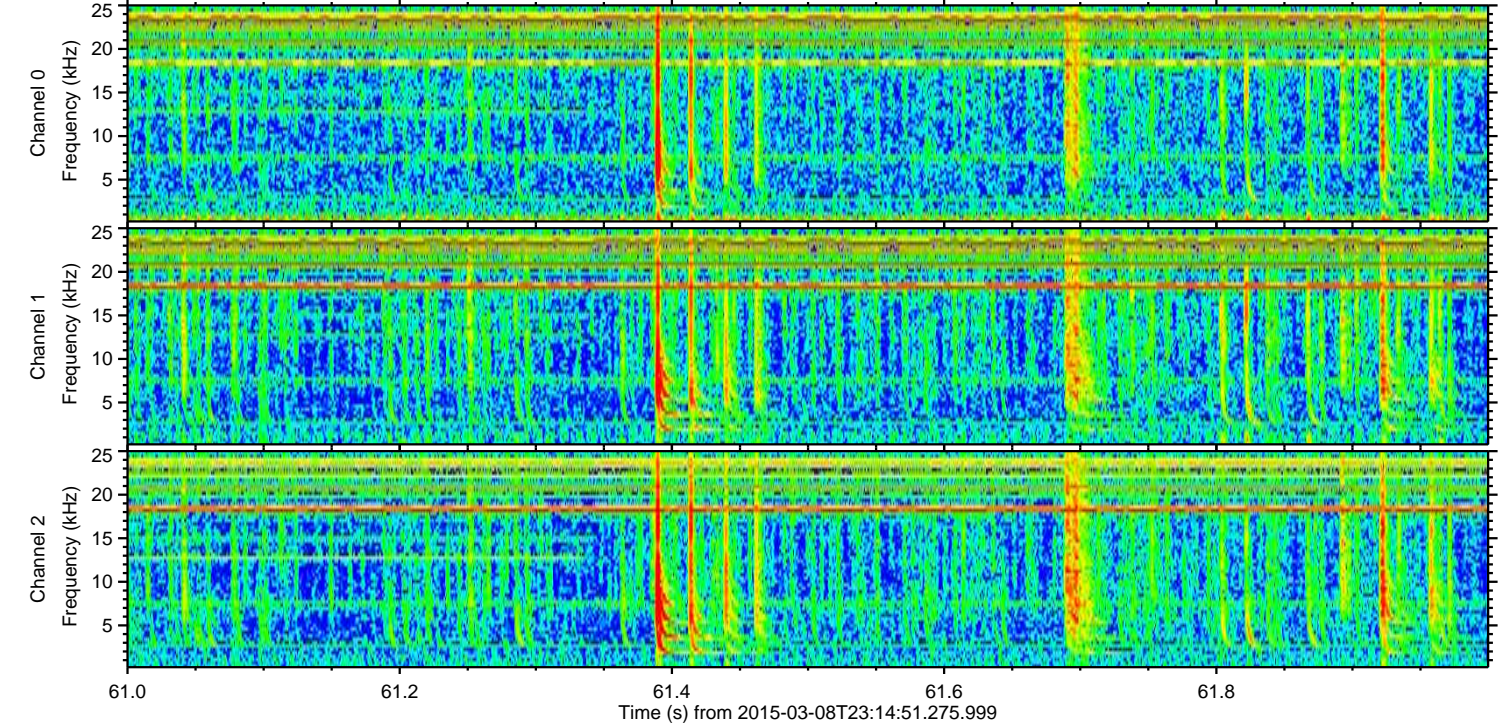
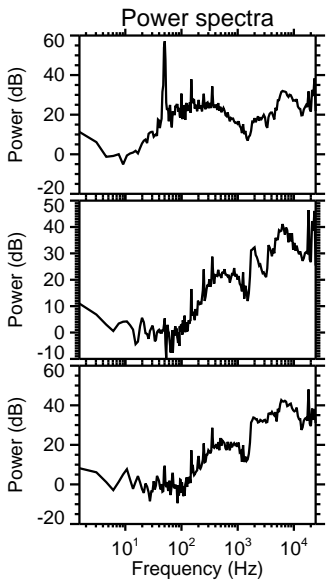
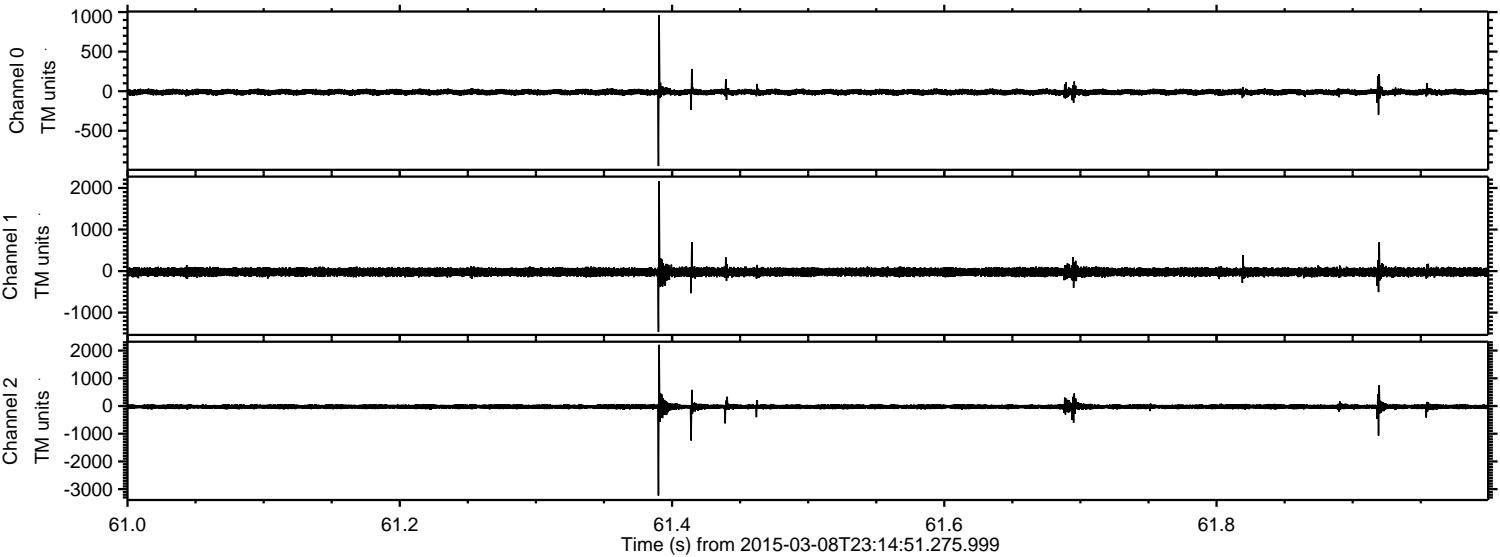
Channel 2
mn: -3486
mx: 1949
 μ : -25.4
 σ : 49.4

Processed Mon Mar 9 00:22:42 2015 by ELM ver.2012-10-06 from 001__elm20150308_231450__dat00.bin

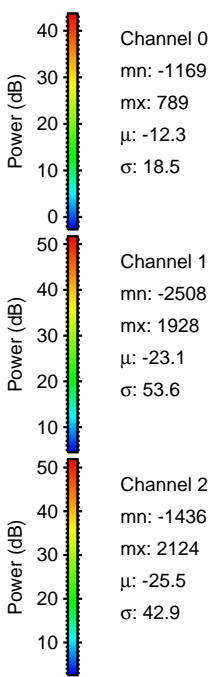
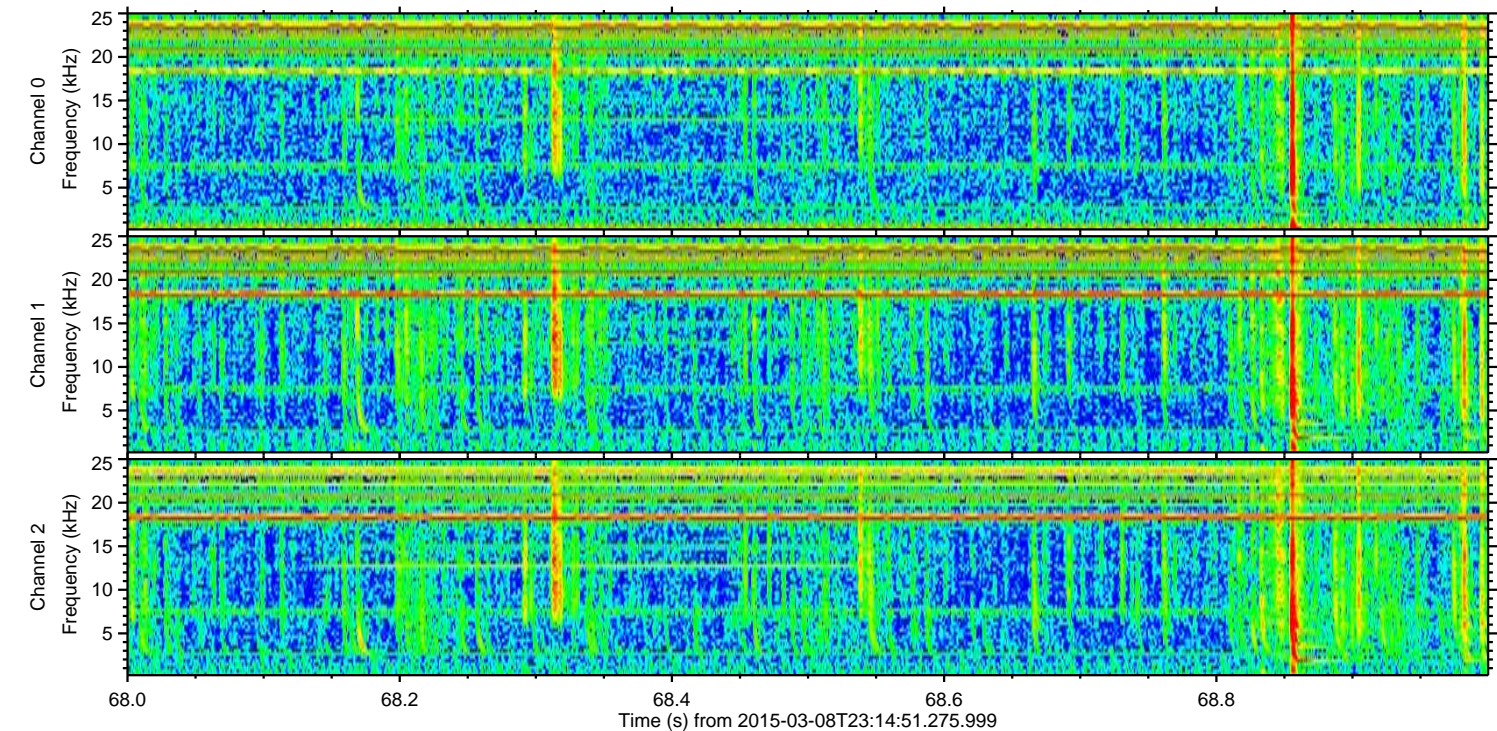
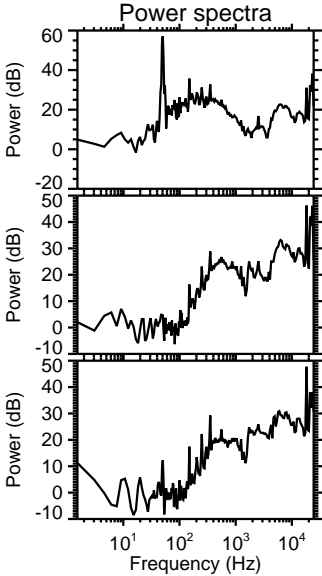
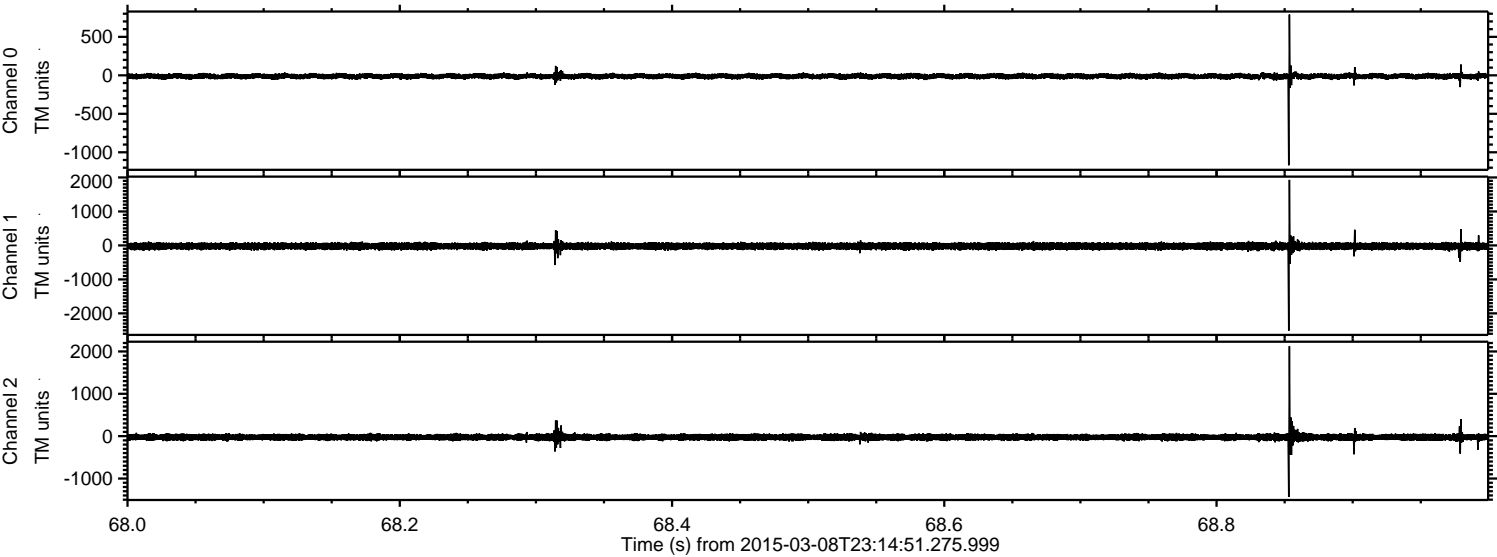


ELMAVAN 3D WAVEFORMS (Measured data sampled at 50 kHz) 49481 packets of 144 samples from 2015-03-08T23:14:51.275.999. Part 62/143

Processed Mon Mar 9 00:22:43 2015 by ELM ver.2012-10-06 from 001__elm20150308_231450__dat00.bin



Processed Mon Mar 9 00:22:44 2015 by ELM ver.2012-10-06 from 001__elm20150308_231450__dat00.bin



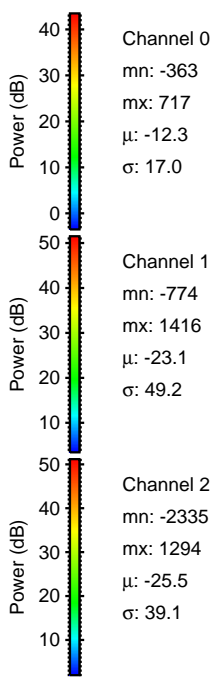
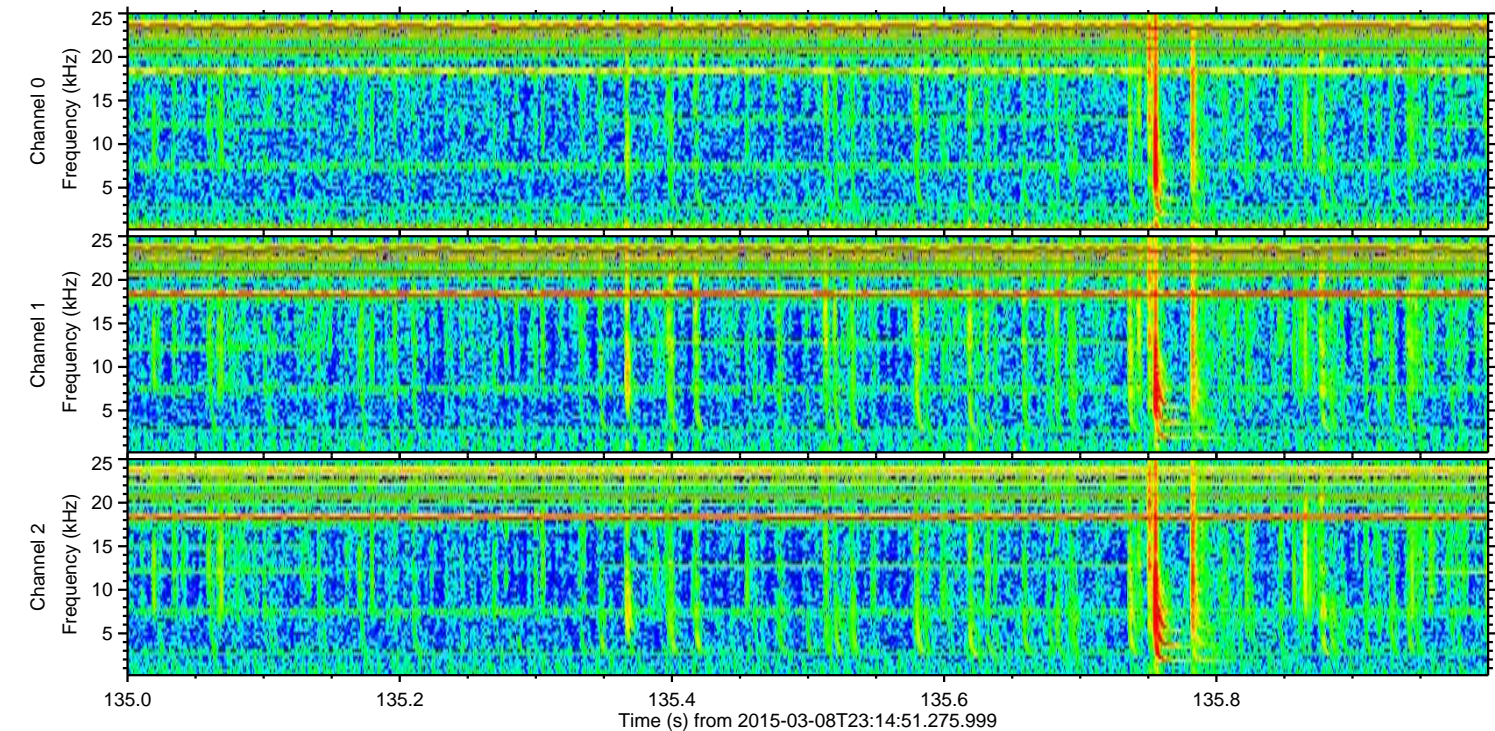
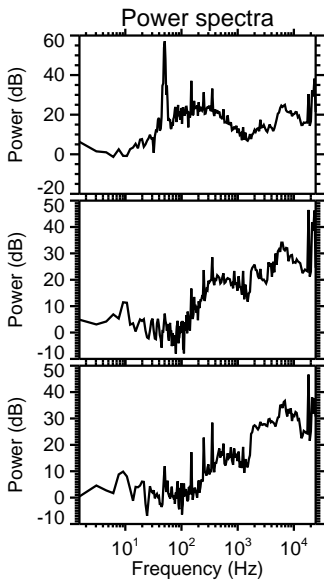
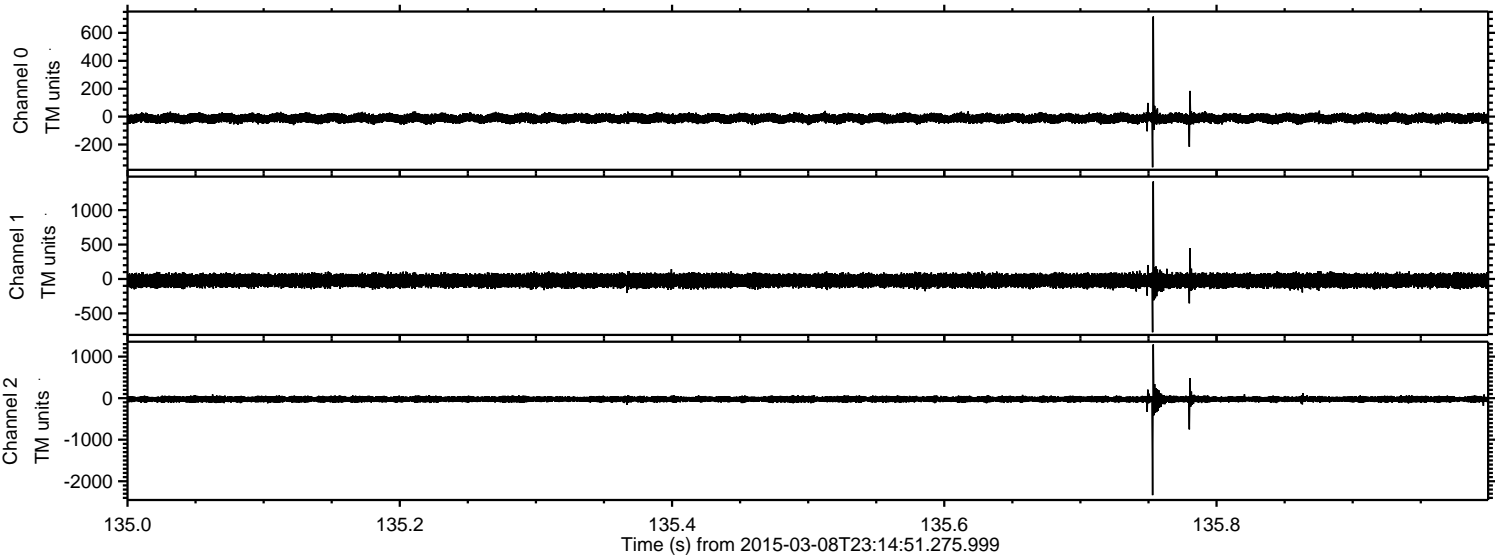
Channel 0
mn: -1169
mx: 789
 μ : -12.3
 σ : 18.5

Channel 1
mn: -2508
mx: 1928
 μ : -23.1
 σ : 53.6

Channel 2
mn: -1436
mx: 2124
 μ : -25.5
 σ : 42.9

ELMAVAN 3D WAVEFORMS (Measured data sampled at 50 kHz) 49481 packets of 144 samples from 2015-03-08T23:14:51.275.999. Part 136/143

Processed Mon Mar 9 00:22:45 2015 by ELM ver.2012-10-06 from 001__elm20150308_231450__dat00.bin



Channel 0
mn: -363
mx: 717
 μ : -12.3
 σ : 17.0

Channel 1
mn: -774
mx: 1416
 μ : -23.1
 σ : 49.2

Channel 2
mn: -2335
mx: 1294
 μ : -25.5
 σ : 39.1

Processed Mon Mar 9 00:22:46 2015 by ELM ver.2012-10-06 from 001__elm20150308_231450__dat00.bin

