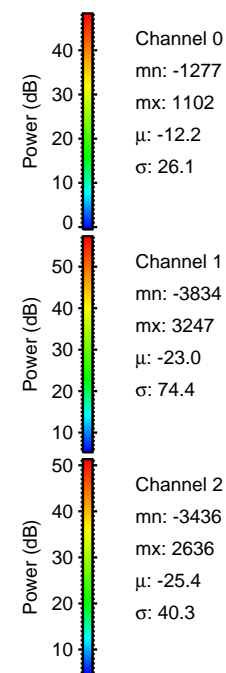
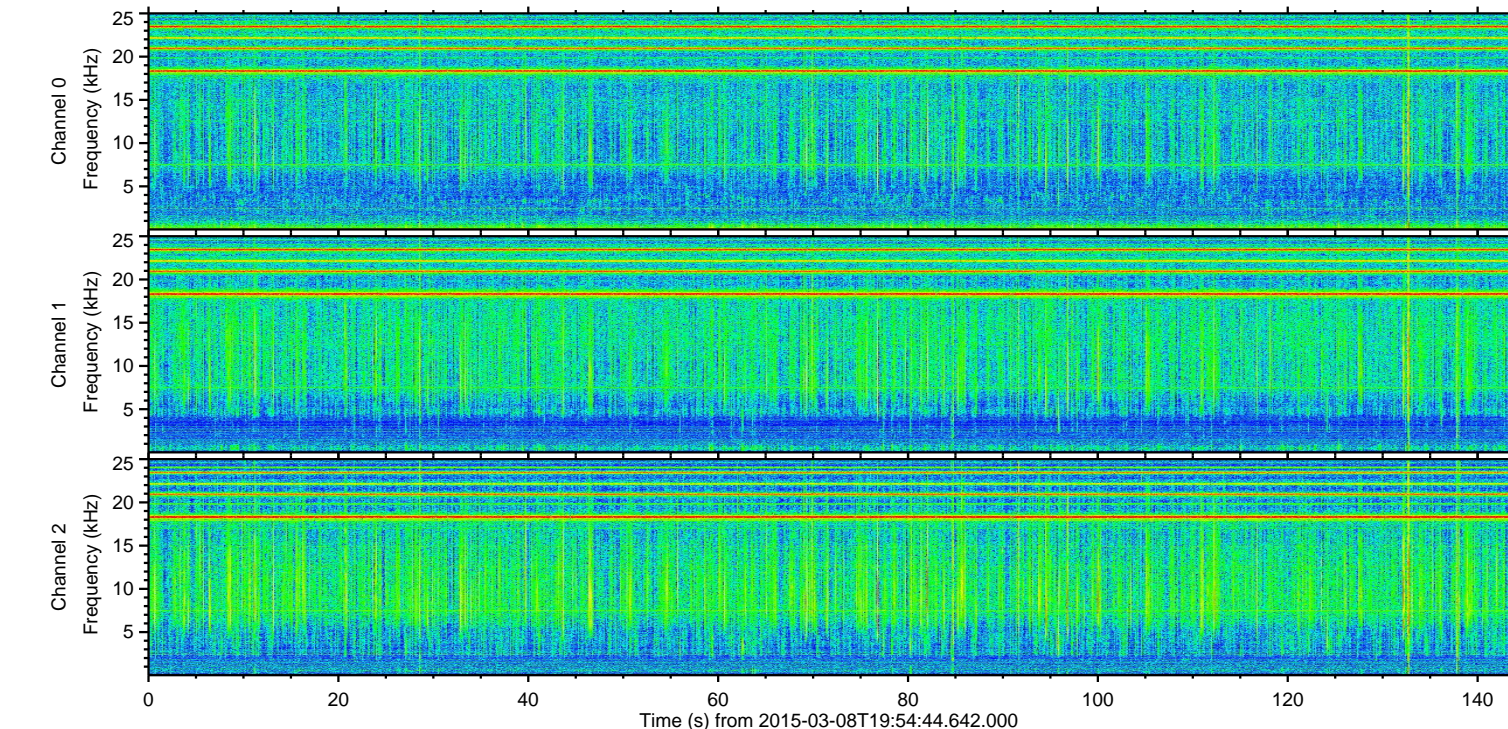
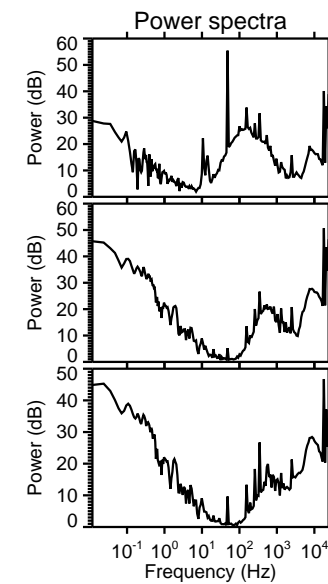
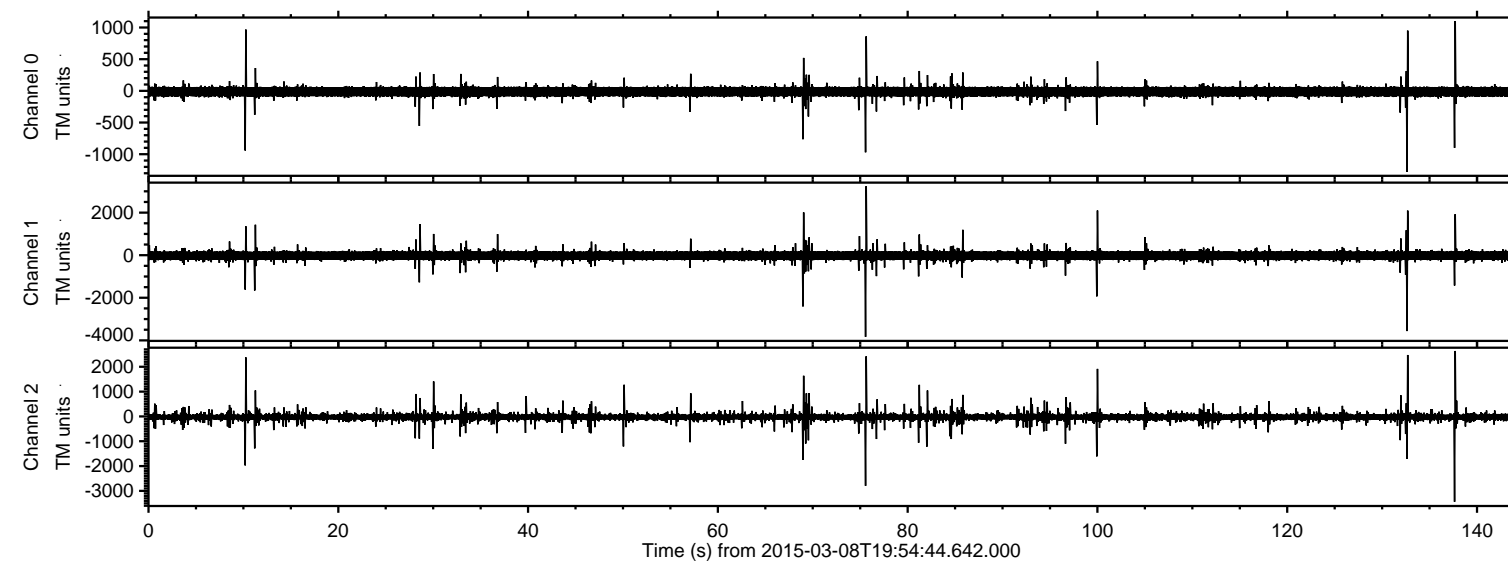
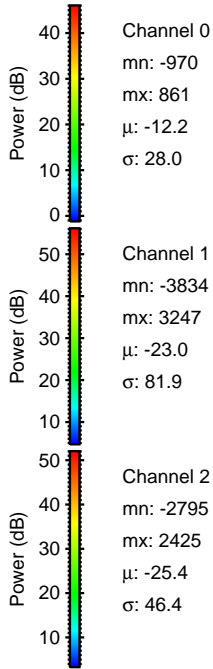
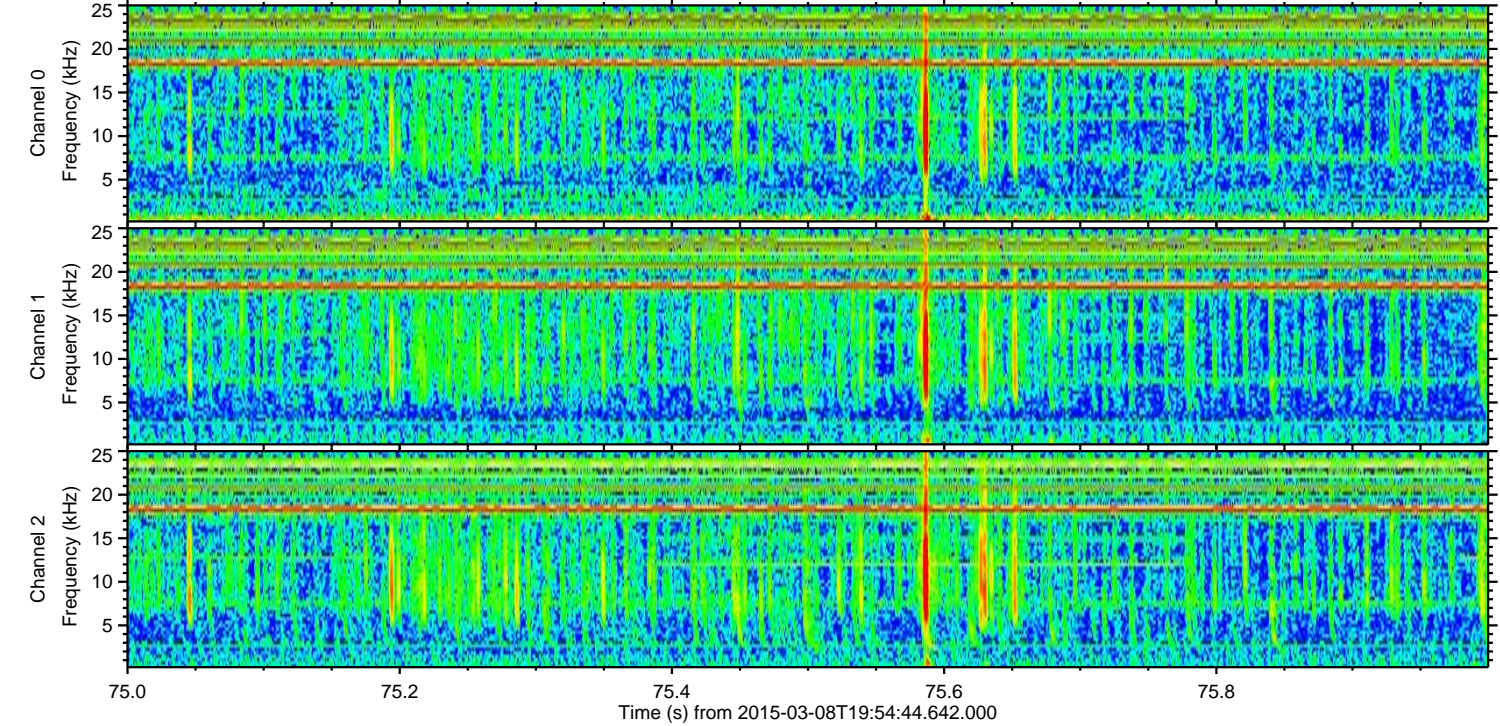
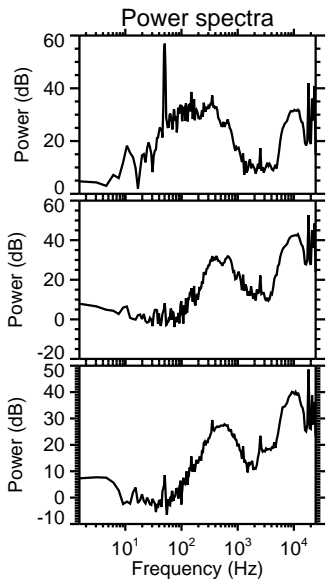
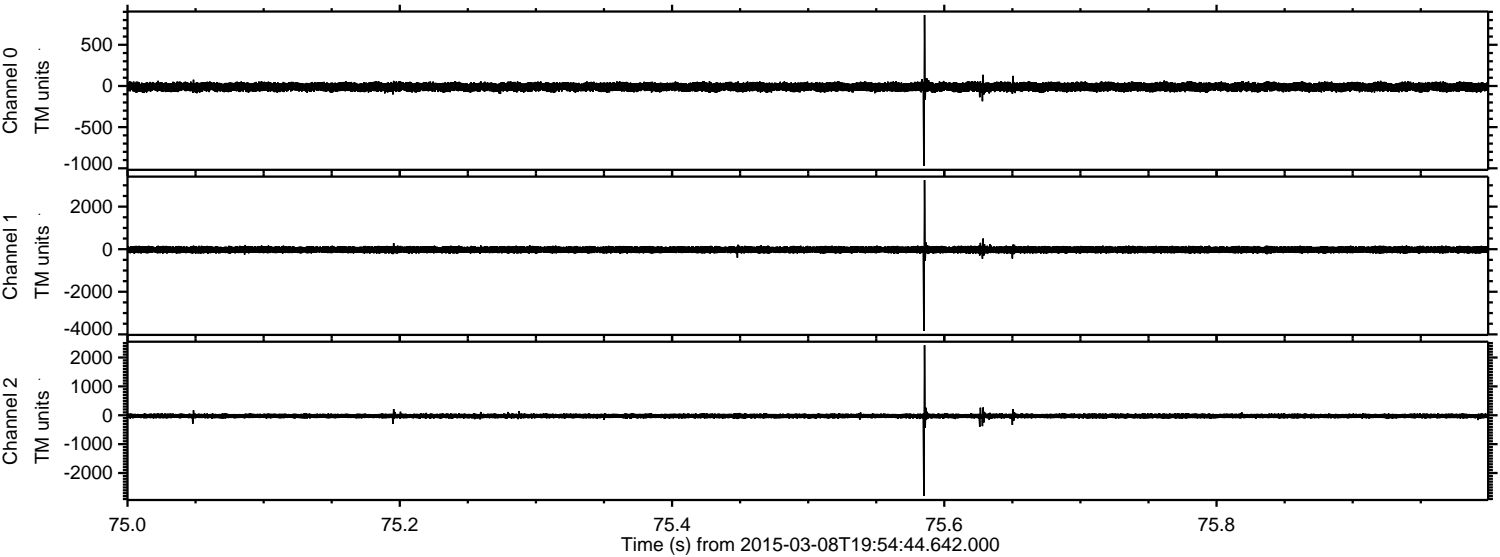


ELMAVAN 3D WAVEFORMS (Measured data sampled at 50 kHz) 49787 packets of 144 samples from 2015-03-08T19:54:44.642.000.

Processed Sun Mar 8 21:02:07 2015 by ELM ver.2012-10-06 from 001__elm20150308_195443__dat00.bin

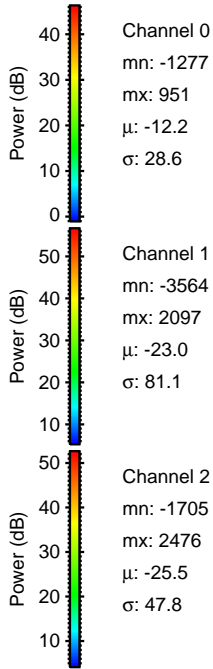
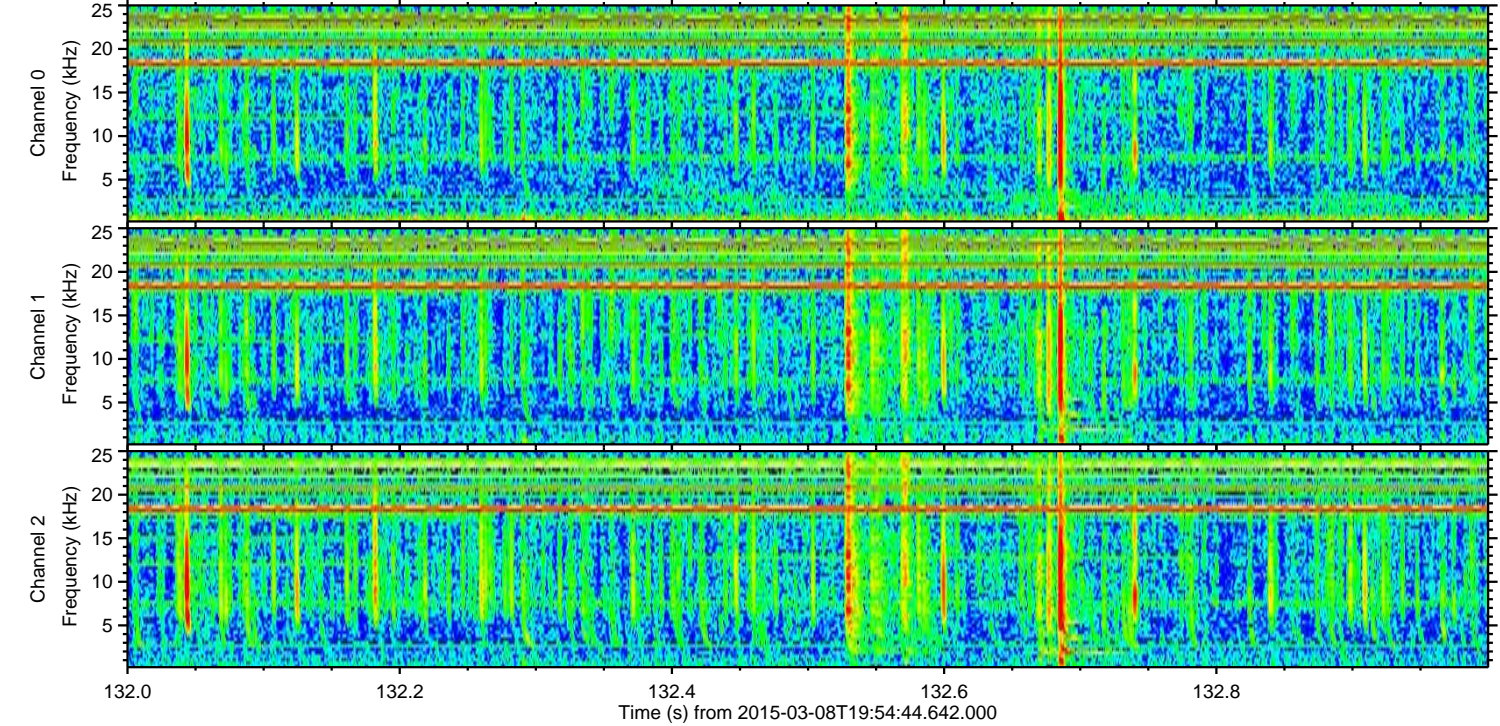
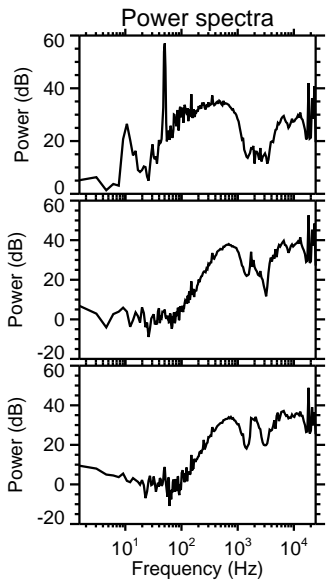
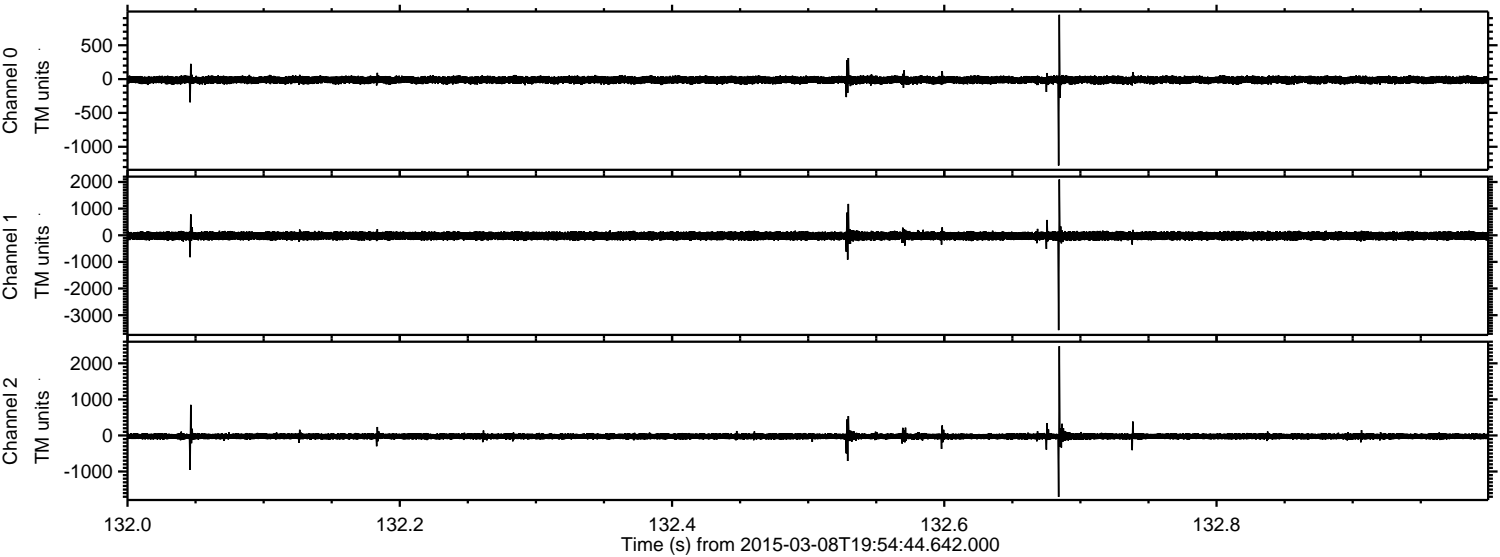


Processed Sun Mar 8 21:02:19 2015 by ELM ver.2012-10-06 from 001__elm20150308_195443__dat00.bin



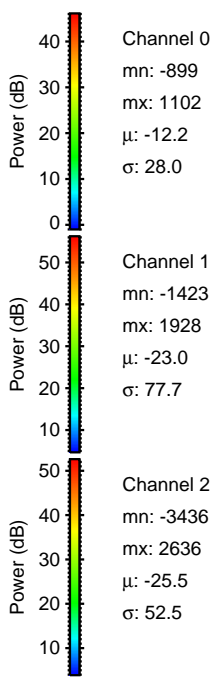
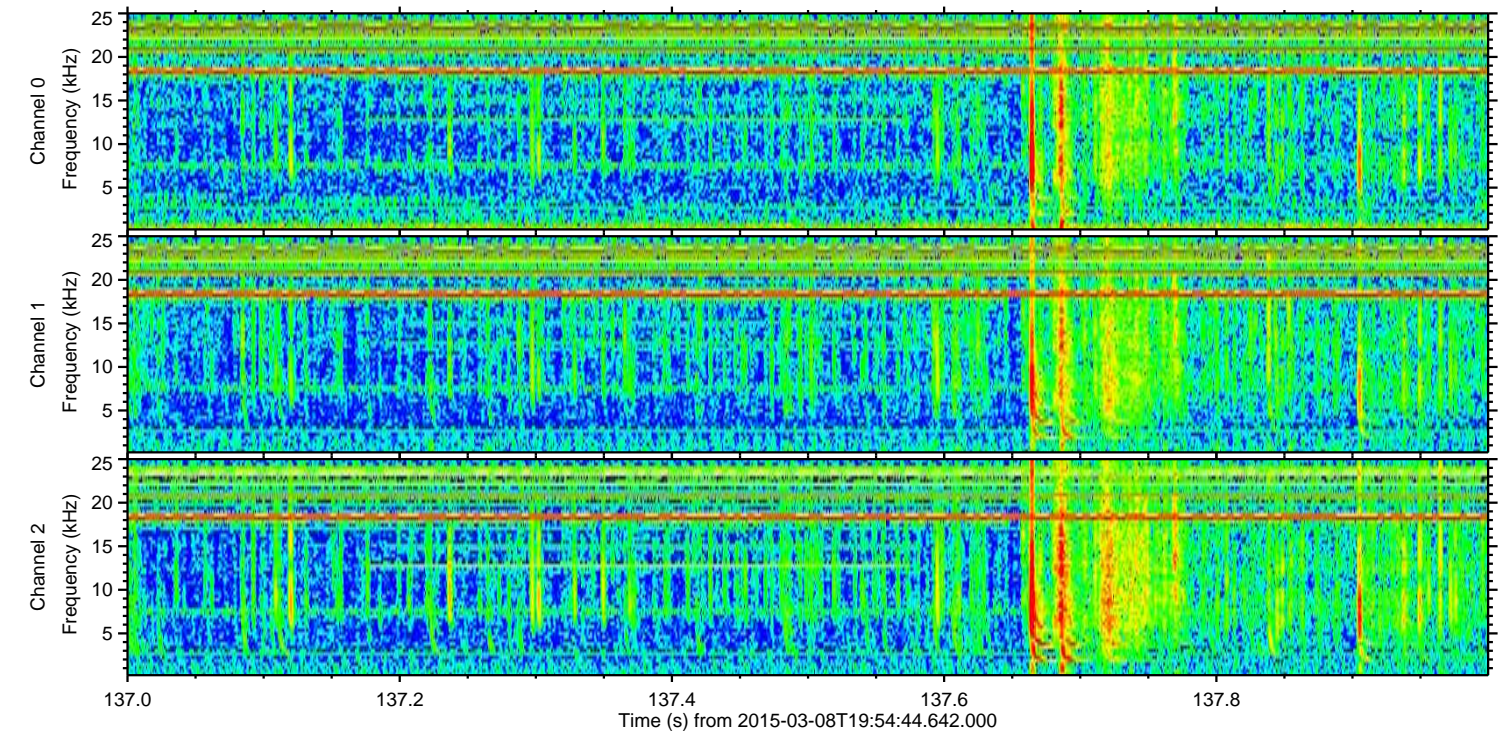
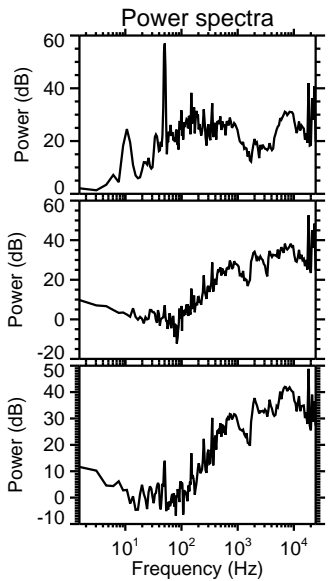
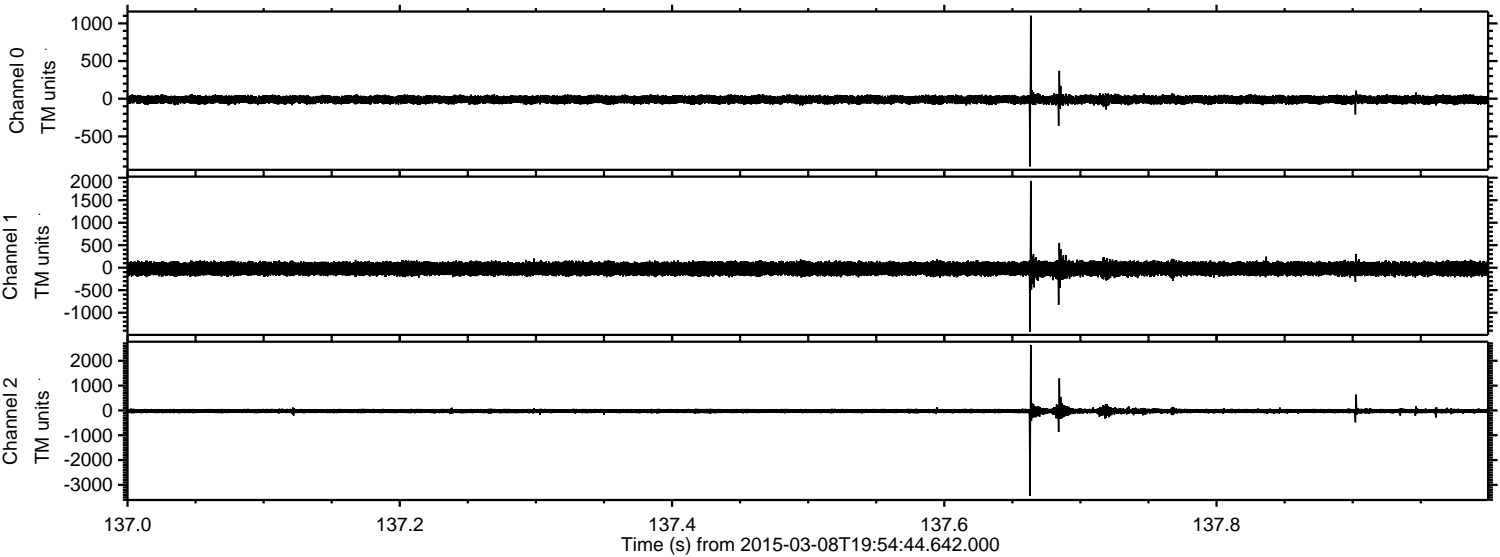
ELMAVAN 3D WAVEFORMS (Measured data sampled at 50 kHz) 49787 packets of 144 samples from 2015-03-08T19:54:44.642.000. Part 133/144

Processed Sun Mar 8 21:02:19 2015 by ELM ver.2012-10-06 from 001__elm20150308_195443__dat00.bin



ELMAVAN 3D WAVEFORMS (Measured data sampled at 50 kHz) 49787 packets of 144 samples from 2015-03-08T19:54:44.642.000. Part 138/144

Processed Sun Mar 8 21:02:20 2015 by ELM ver.2012-10-06 from 001__elm20150308_195443__dat00.bin

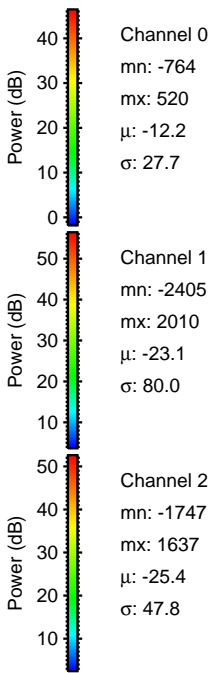
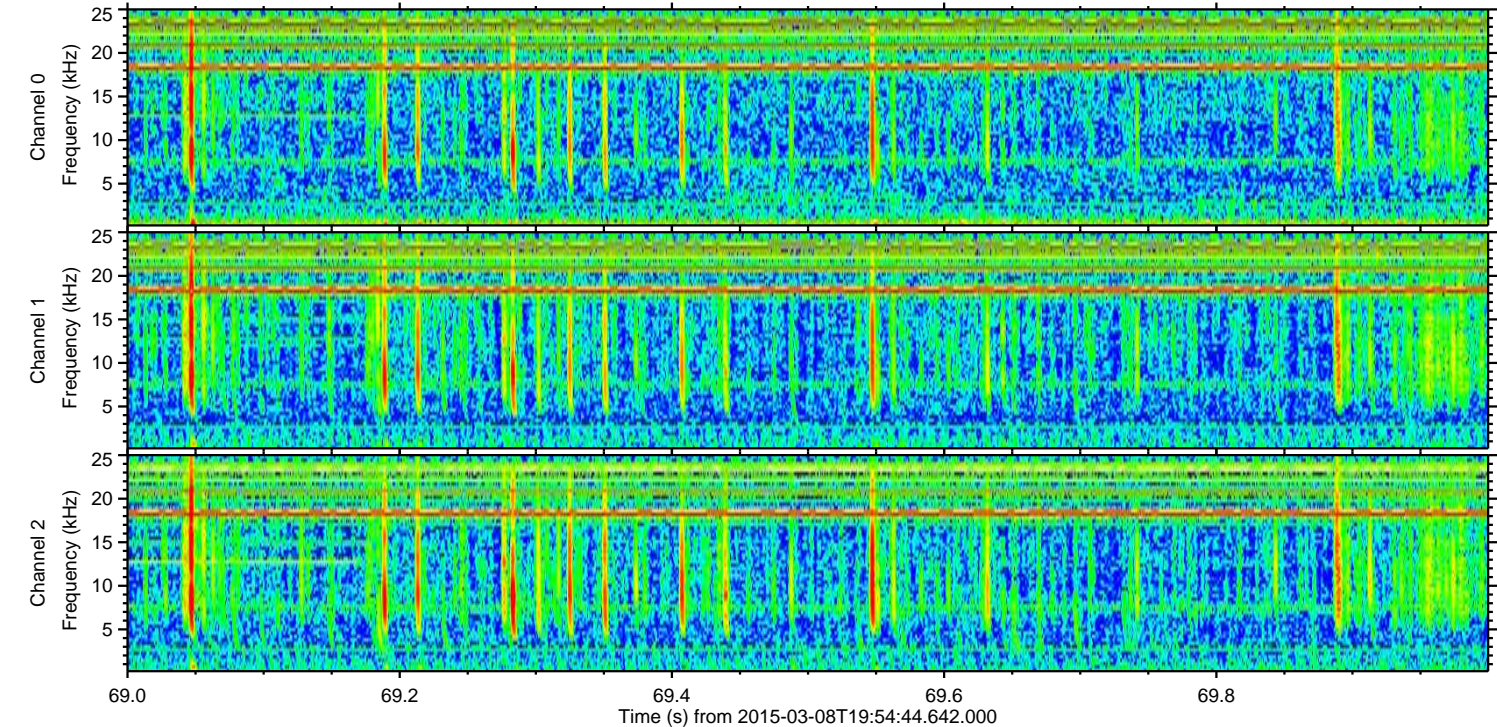
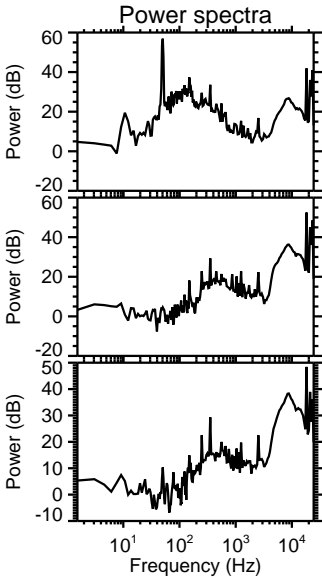
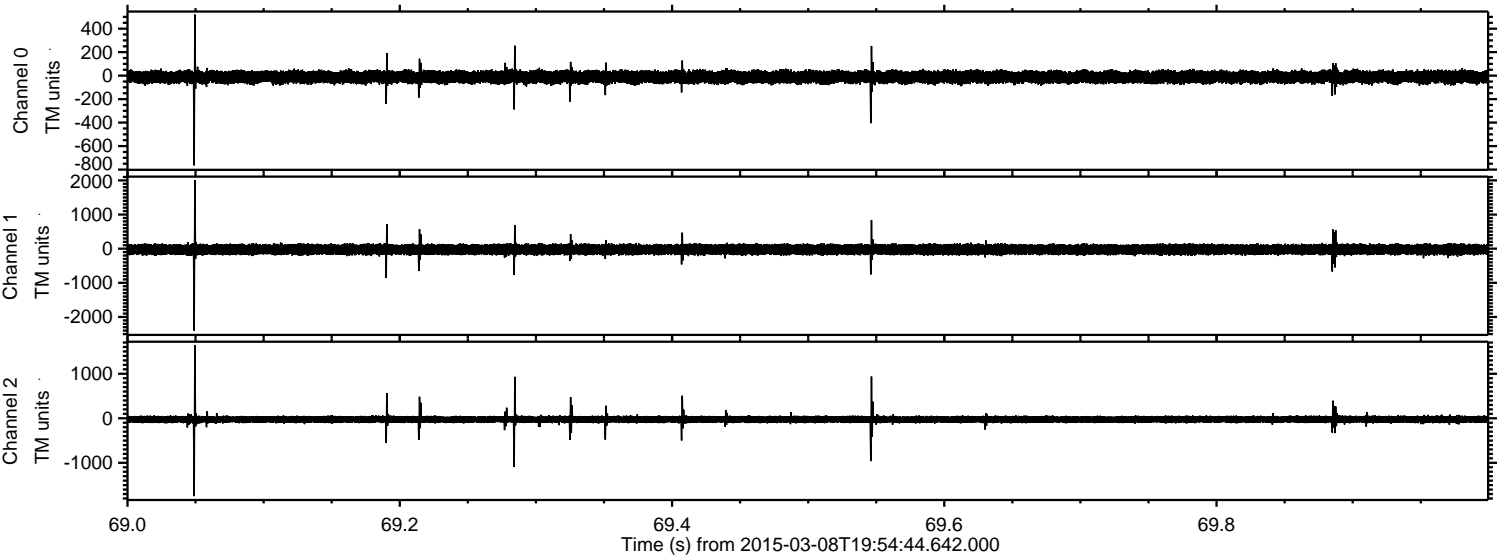


Channel 0
mn: -899
mx: 1102
 μ : -12.2
 σ : 28.0

Channel 1
mn: -1423
mx: 1928
 μ : -23.0
 σ : 77.7

Channel 2
mn: -3436
mx: 2636
 μ : -25.5
 σ : 52.5

Processed Sun Mar 8 21:02:21 2015 by ELM ver.2012-10-06 from 001__elm20150308_195443__dat00.bin



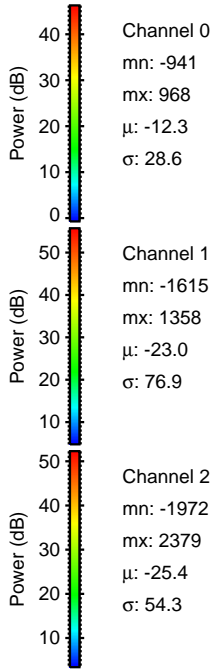
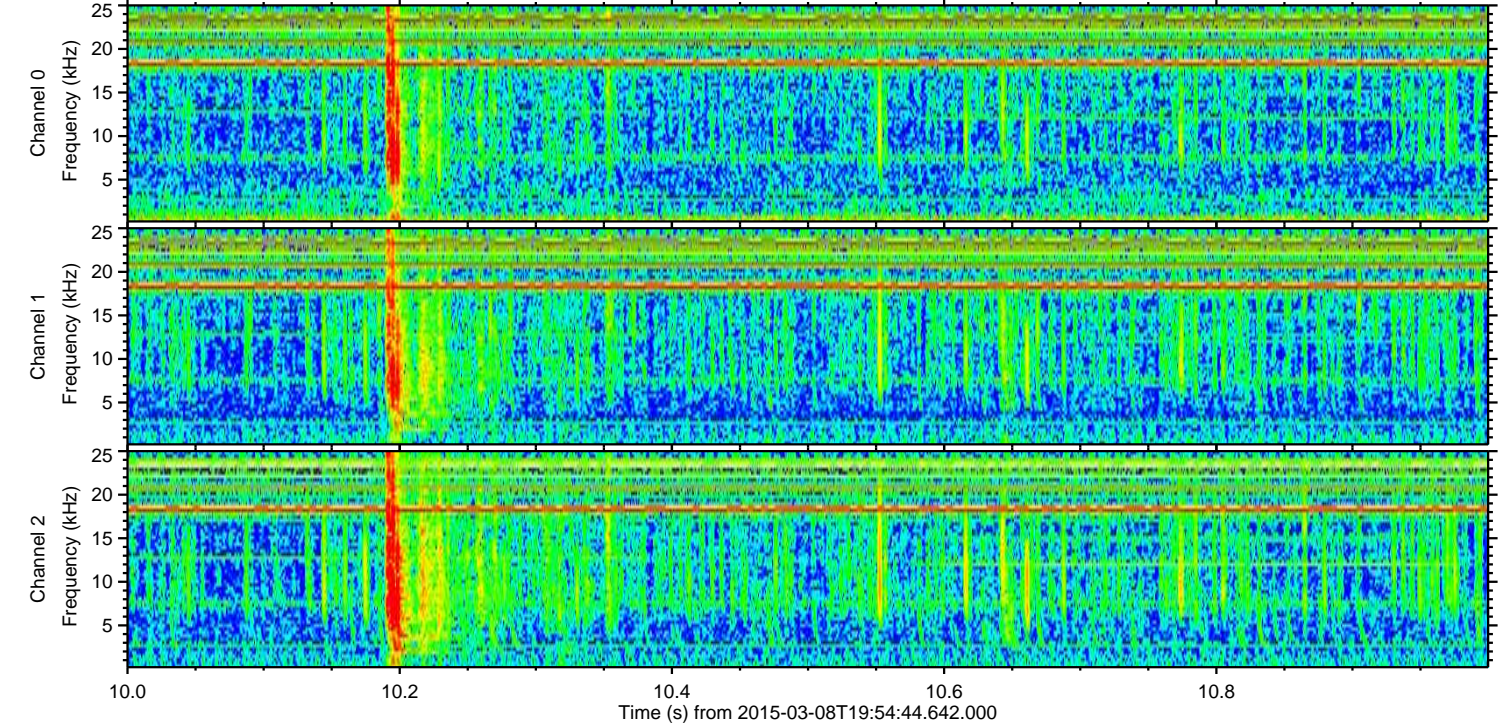
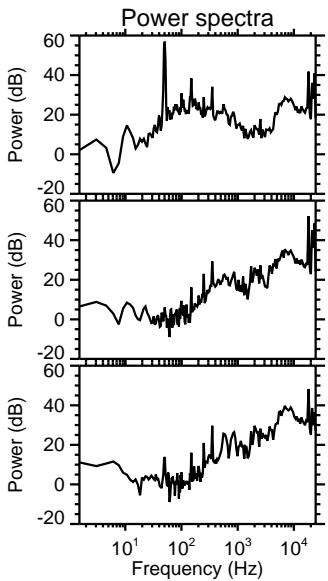
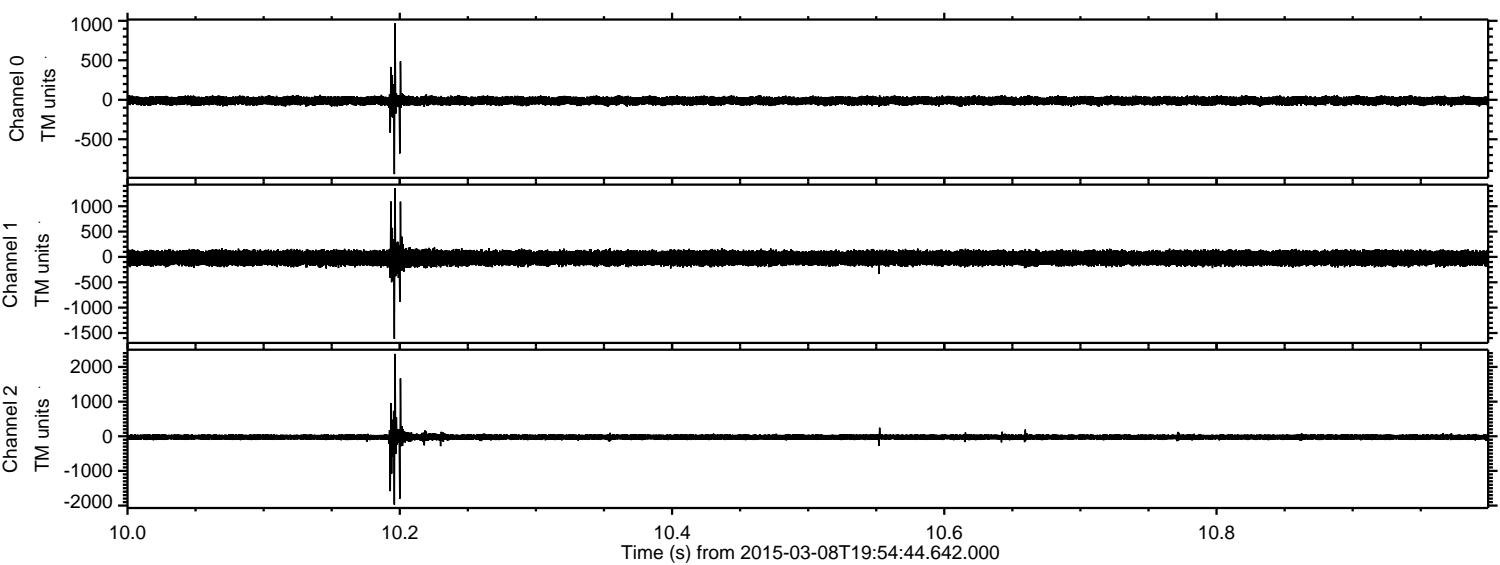
Channel 0
mn: -764
mx: 520
 μ : -12.2
 σ : 27.7

Channel 1
mn: -2405
mx: 2010
 μ : -23.1
 σ : 80.0

Channel 2
mn: -1747
mx: 1637
 μ : -25.4
 σ : 47.8

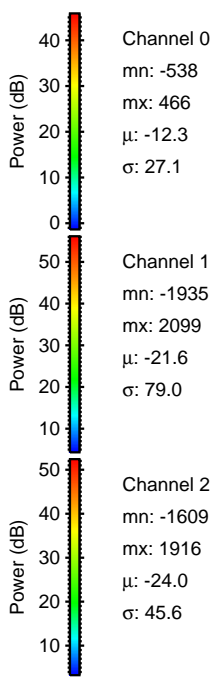
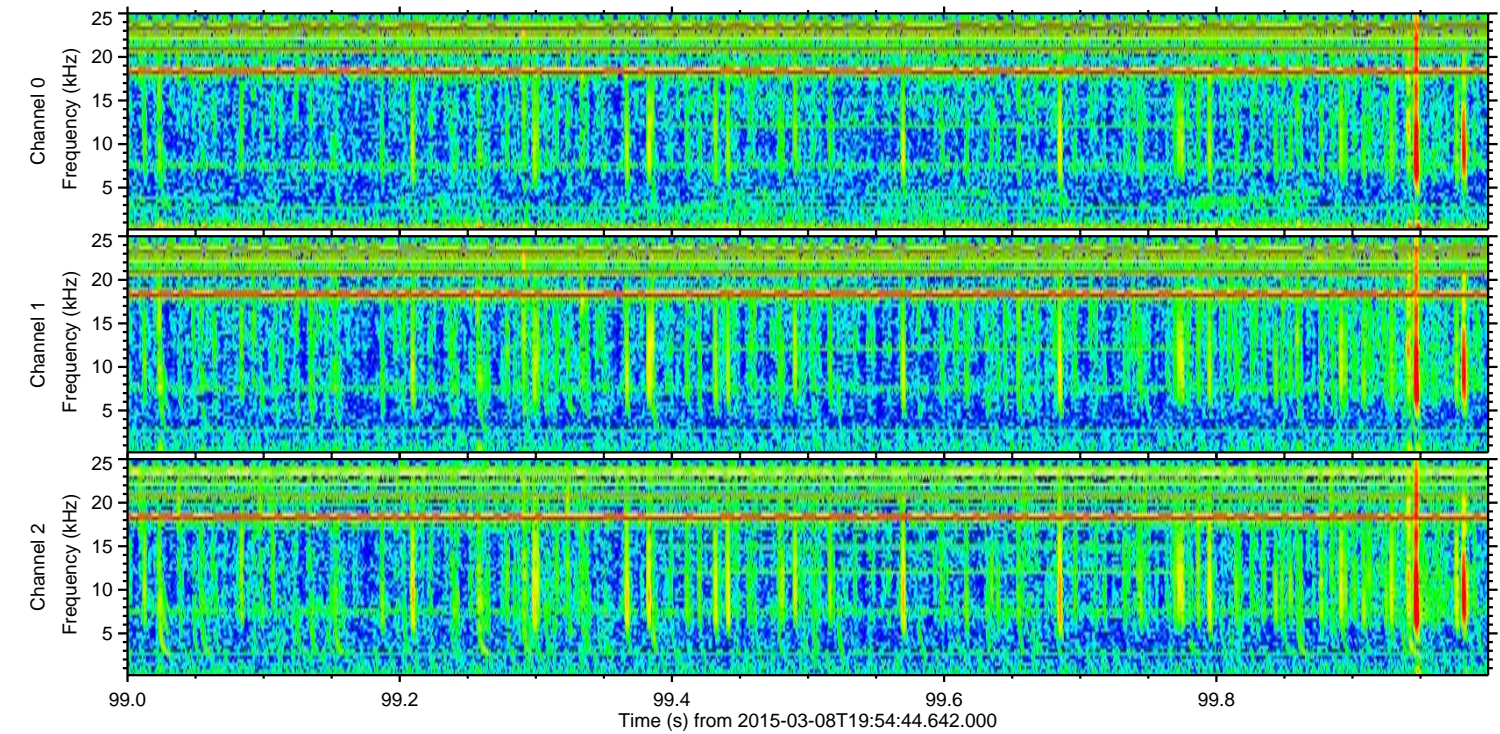
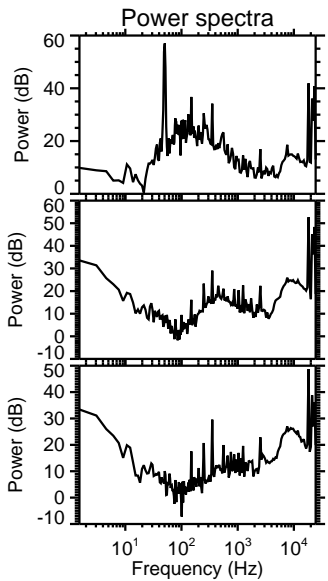
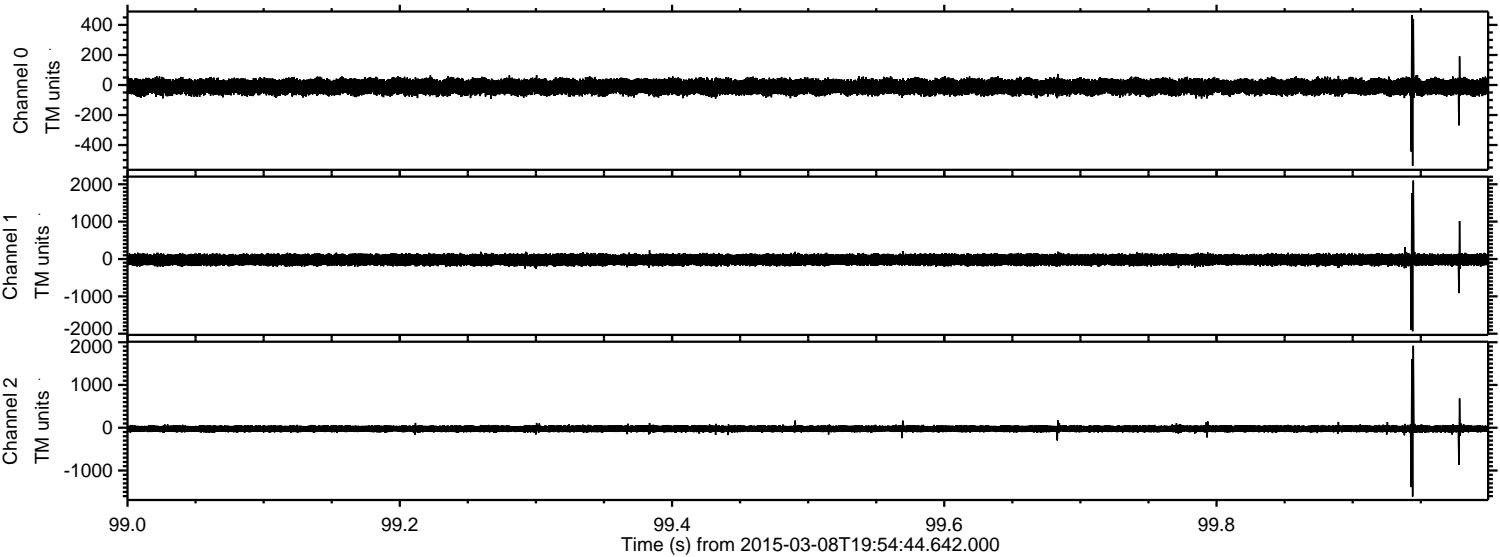
ELMAVAN 3D WAVEFORMS (Measured data sampled at 50 kHz) 49787 packets of 144 samples from 2015-03-08T19:54:44.642.000. Part 11/144

Processed Sun Mar 8 21:02:22 2015 by ELM ver.2012-10-06 from 001__elm20150308_195443__dat00.bin



ELMAVAN 3D WAVEFORMS (Measured data sampled at 50 kHz) 49787 packets of 144 samples from 2015-03-08T19:54:44.642.000. Part 100/144

Processed Sun Mar 8 21:02:23 2015 by ELM ver.2012-10-06 from 001__elm20150308_195443__dat00.bin

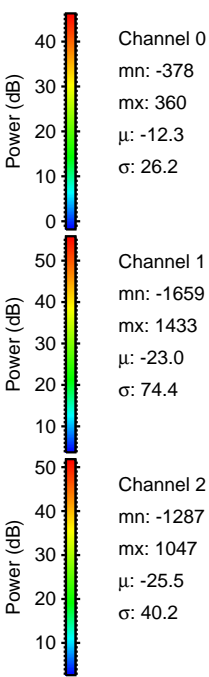
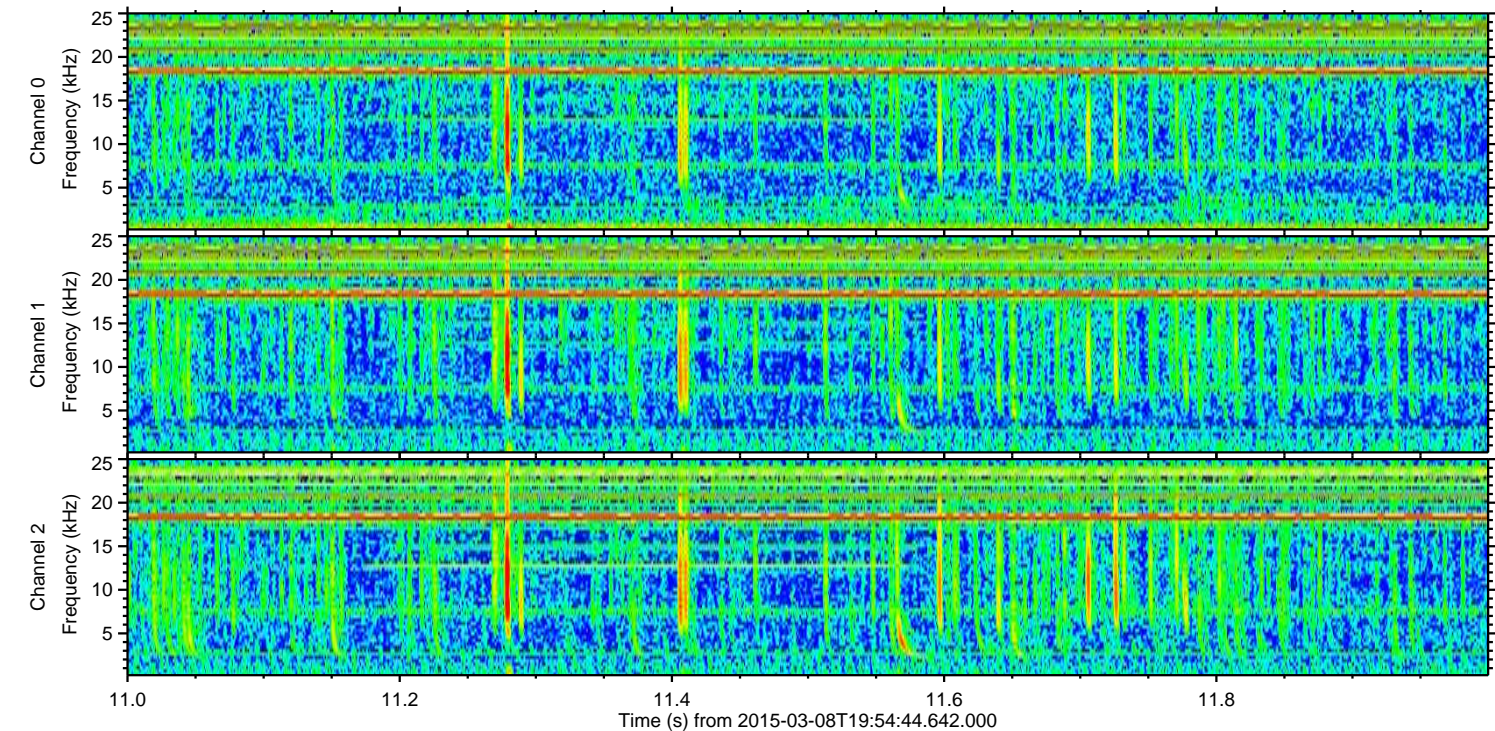
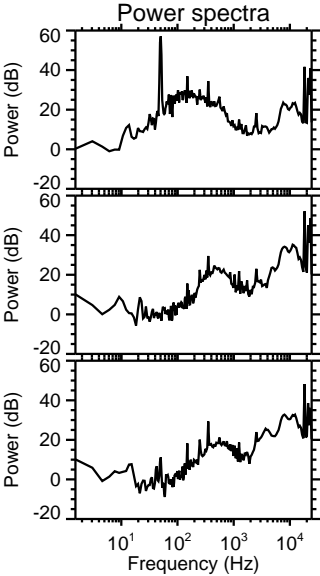
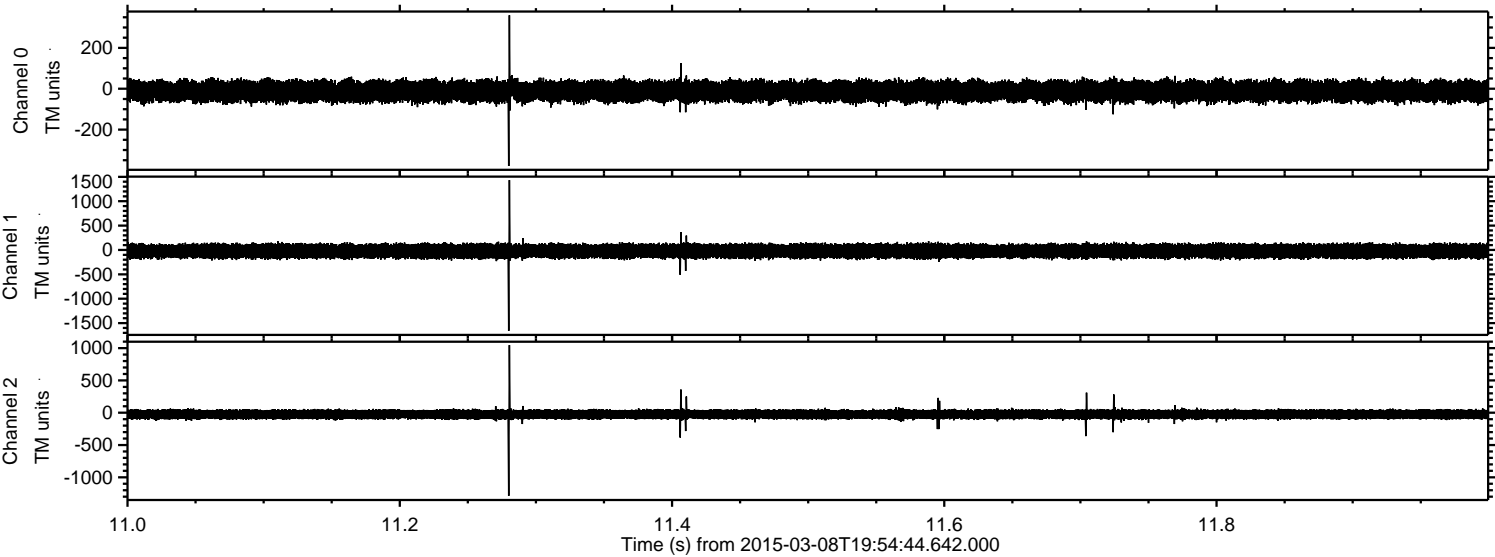


Channel 0
mn: -538
mx: 466
 μ : -12.3
 σ : 27.1

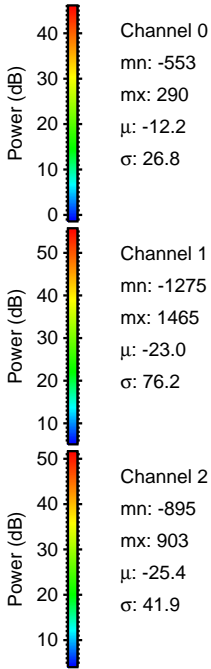
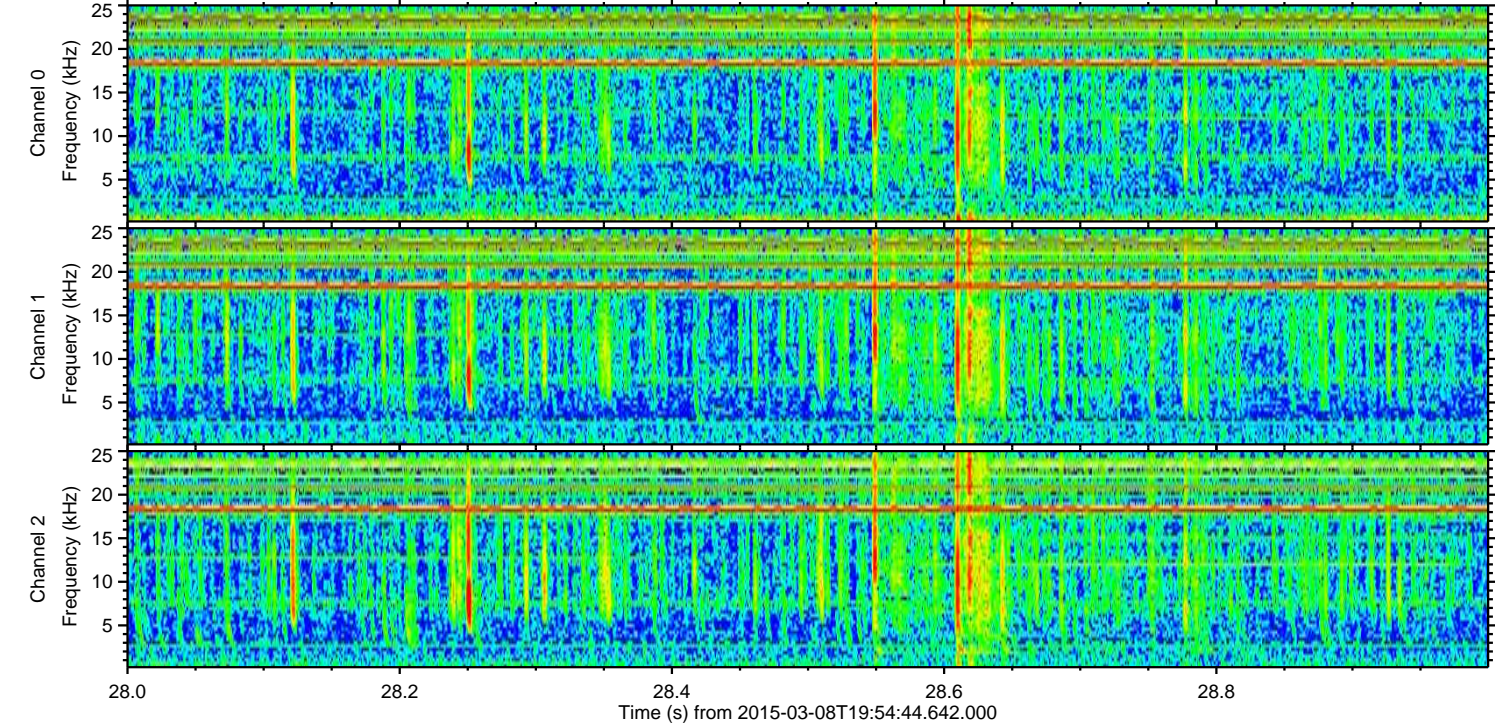
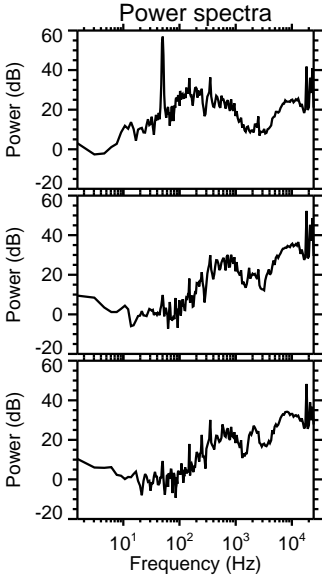
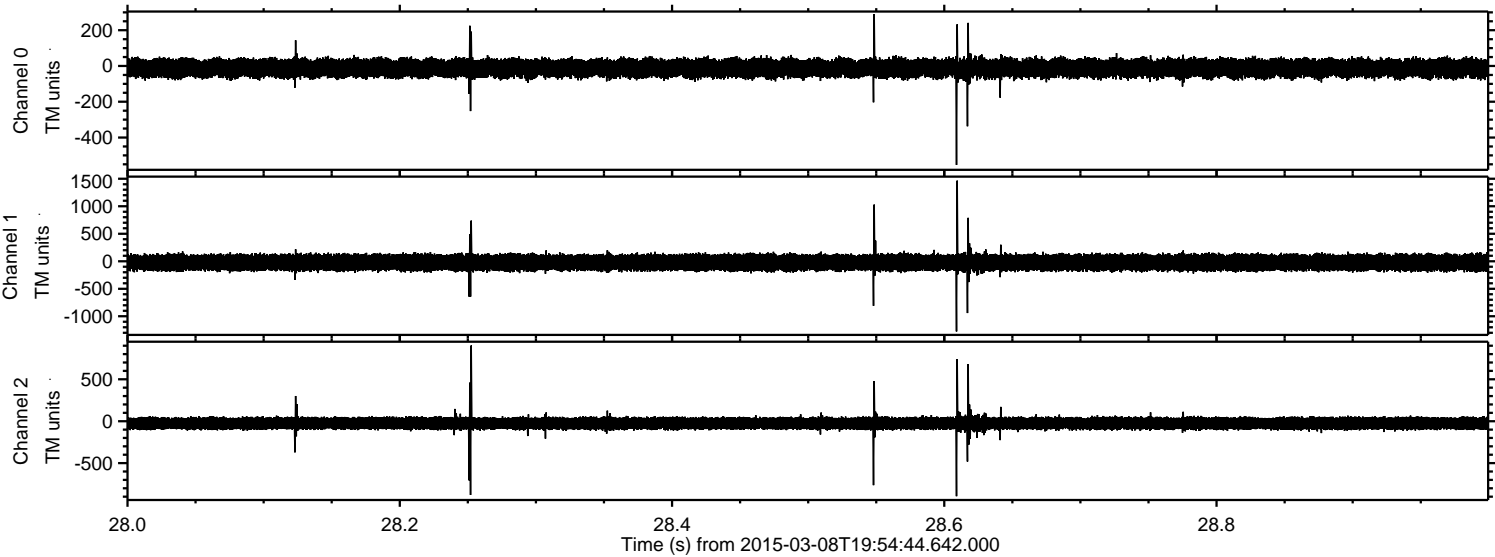
Channel 1
mn: -1935
mx: 2099
 μ : -21.6
 σ : 79.0

Channel 2
mn: -1609
mx: 1916
 μ : -24.0
 σ : 45.6

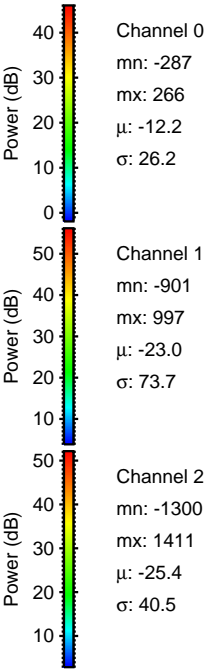
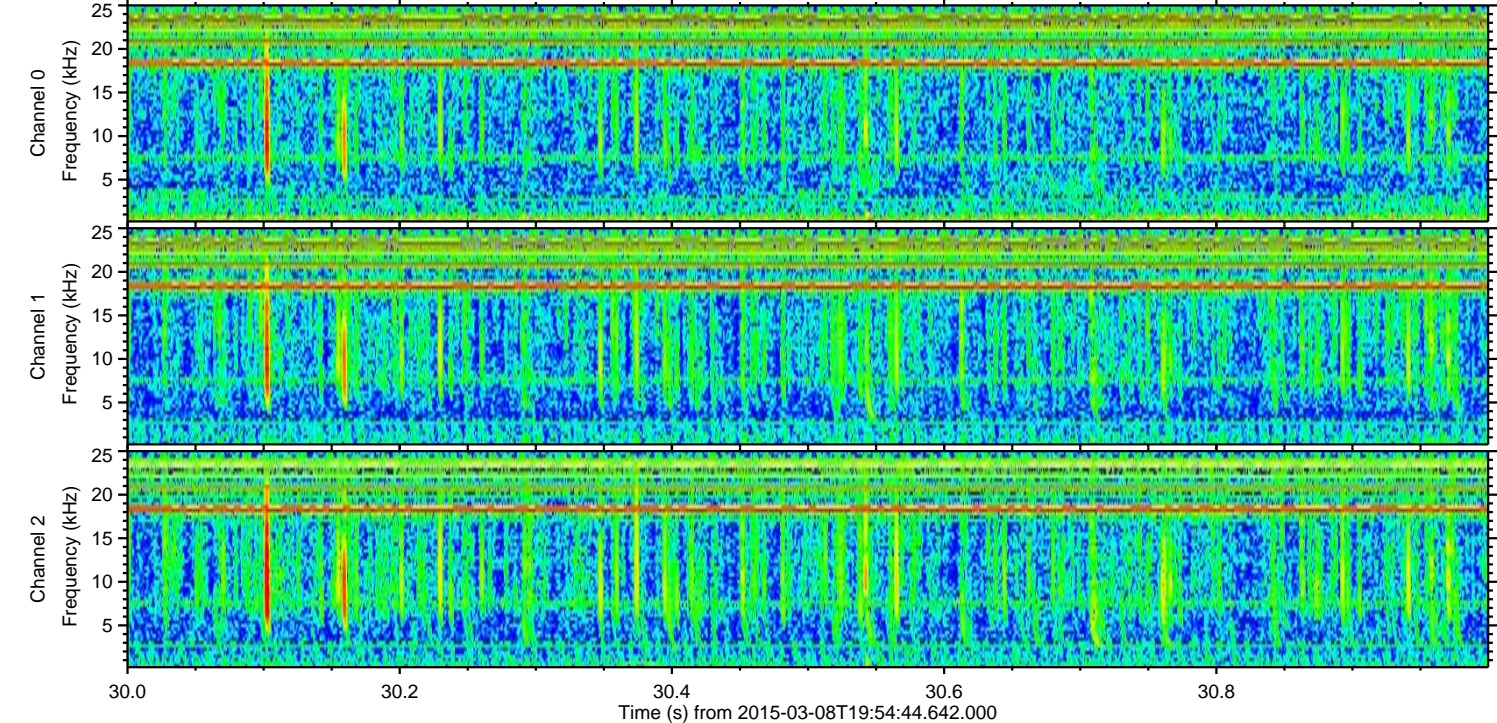
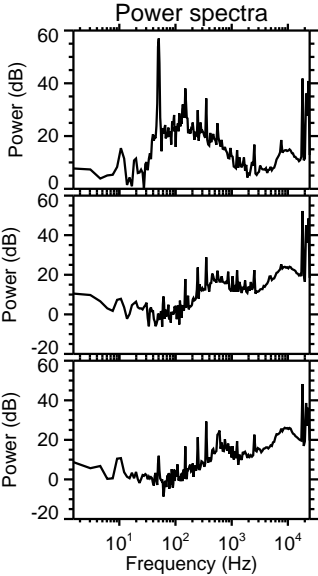
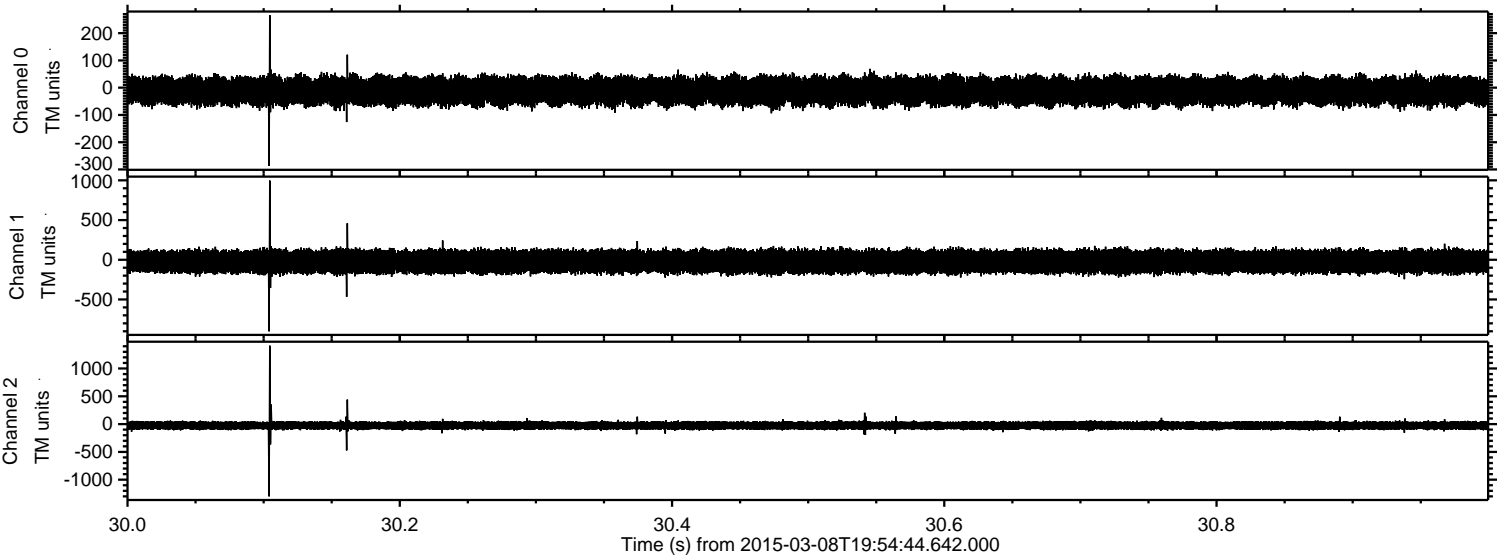
Processed Sun Mar 8 21:02:24 2015 by ELM ver.2012-10-06 from 001__elm20150308_195443__dat00.bin



Processed Sun Mar 8 21:02:25 2015 by ELM ver.2012-10-06 from 001__elm20150308_195443__dat00.bin



Processed Sun Mar 8 21:02:26 2015 by ELM ver.2012-10-06 from 001__elm20150308_195443__dat00.bin



Processed Sun Mar 8 21:02:27 2015 by ELM ver.2012-10-06 from 001__elm20150308_195443__dat00.bin

