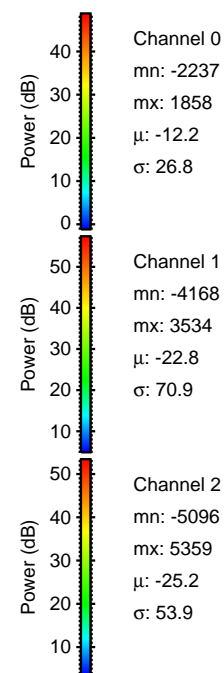
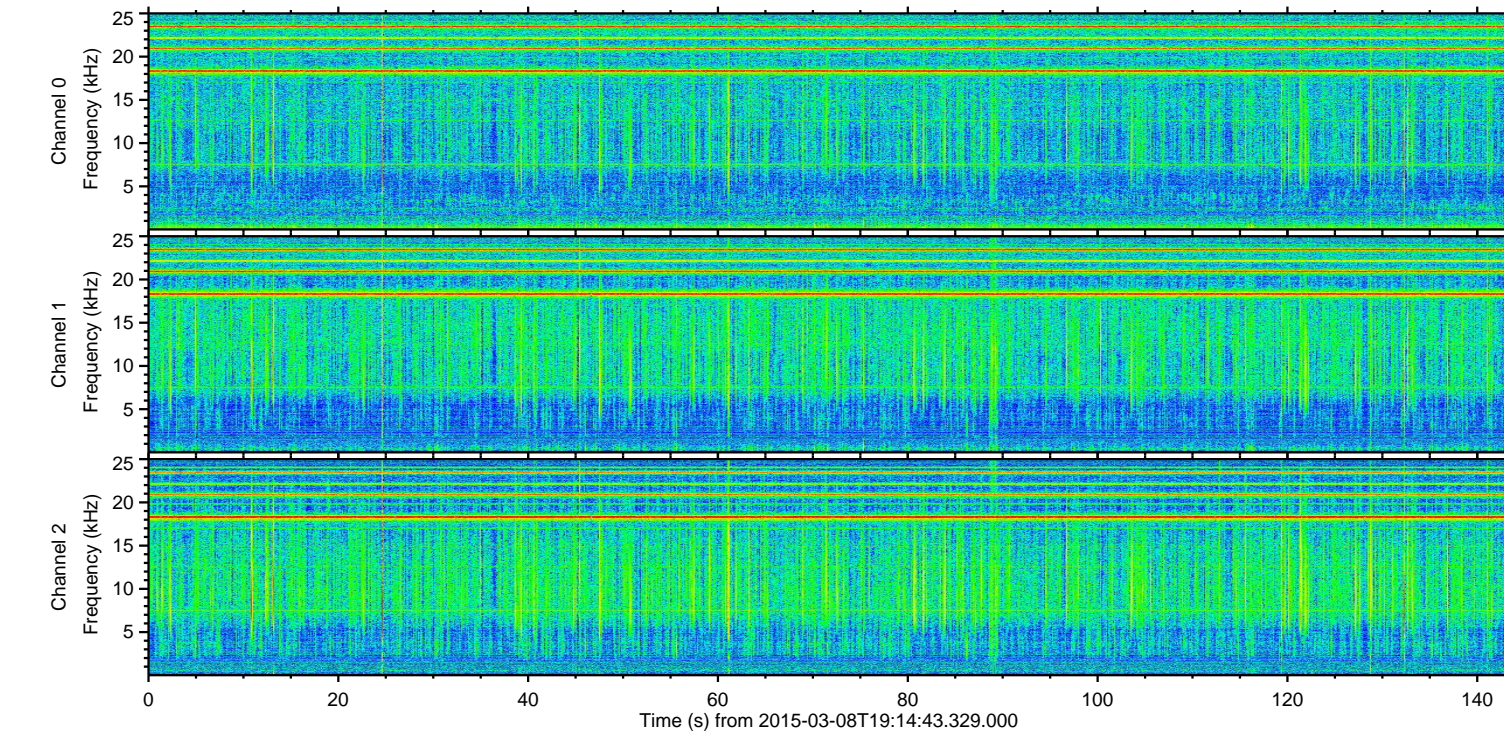
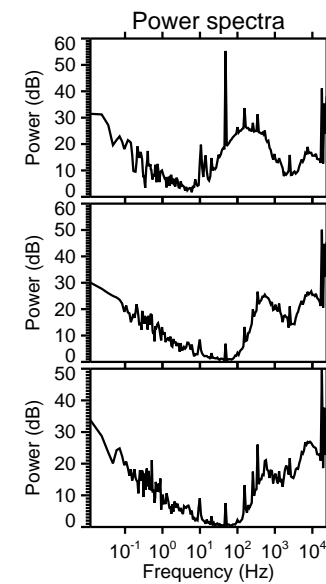
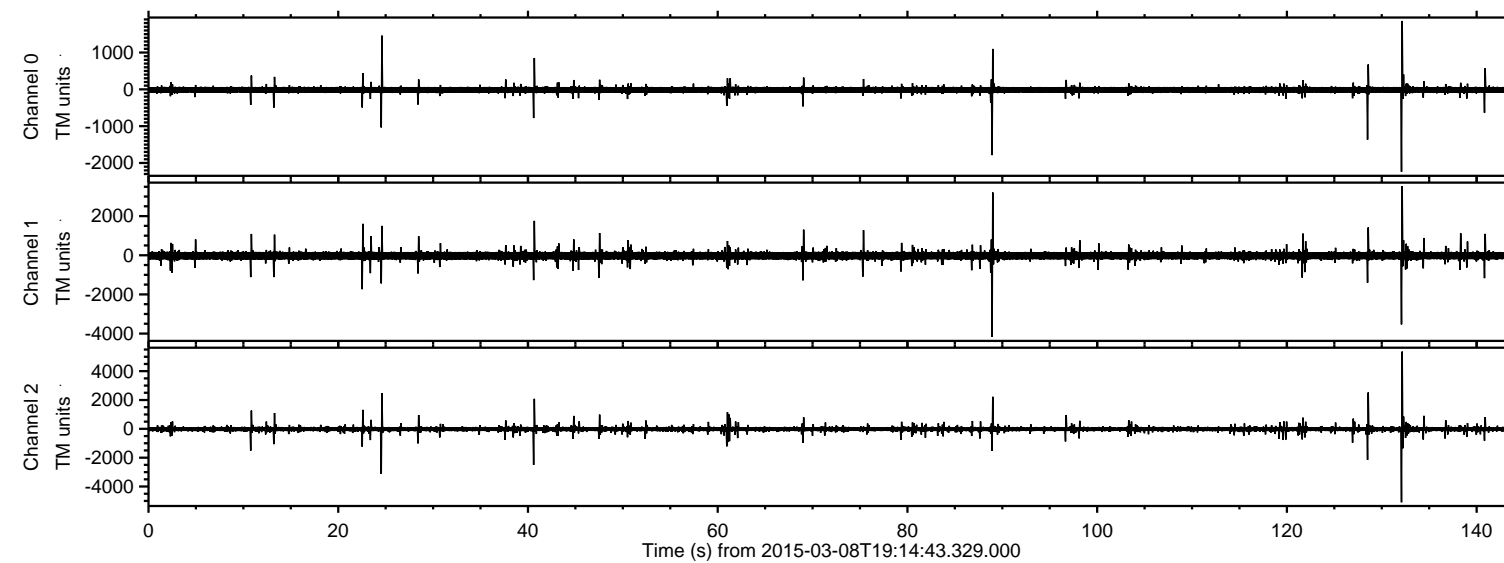


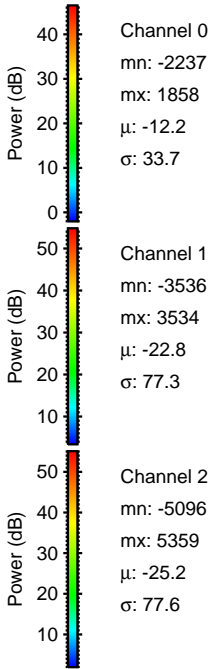
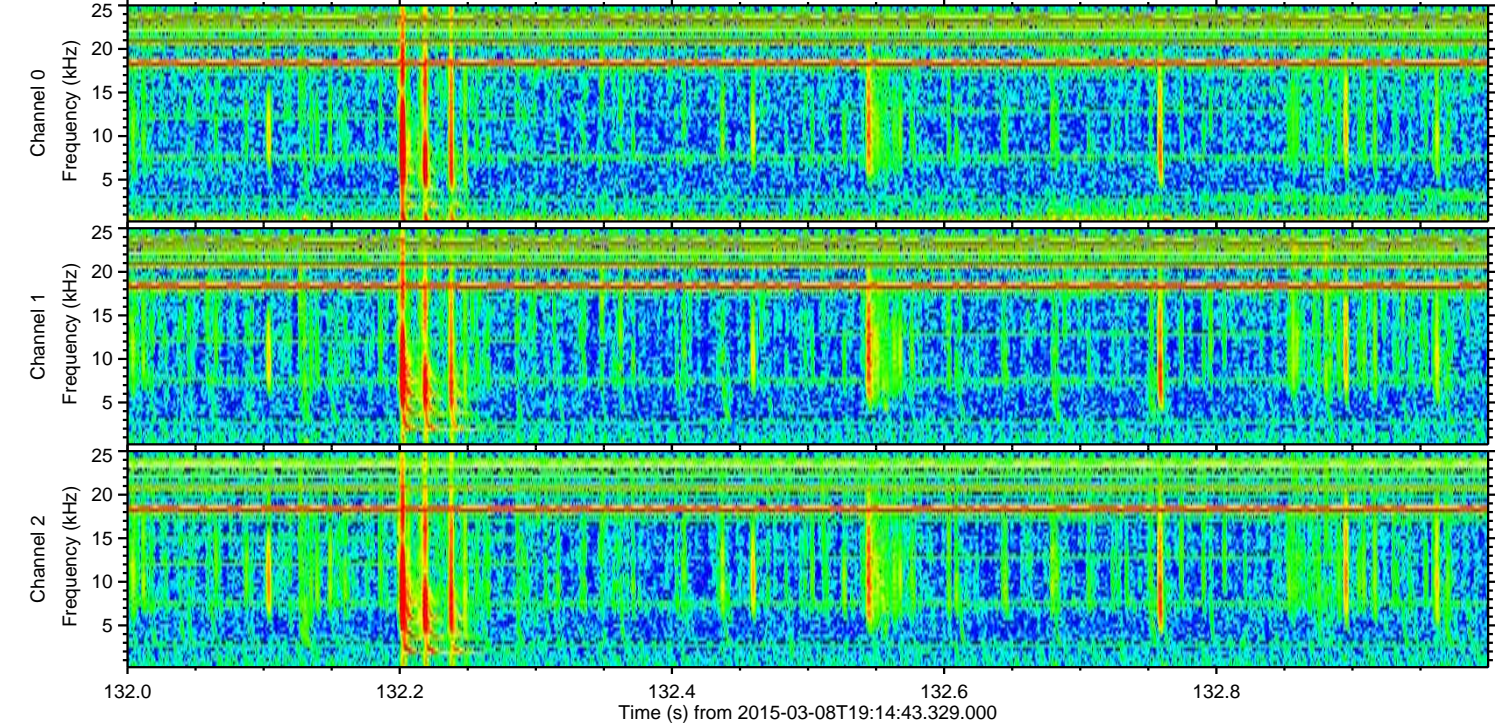
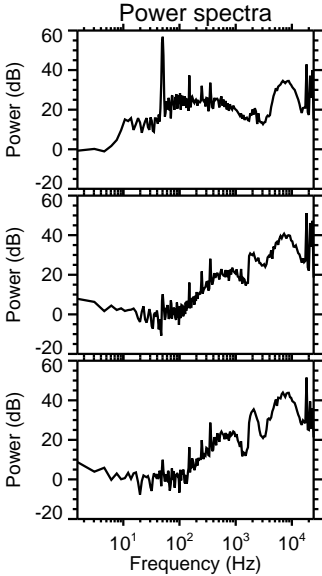
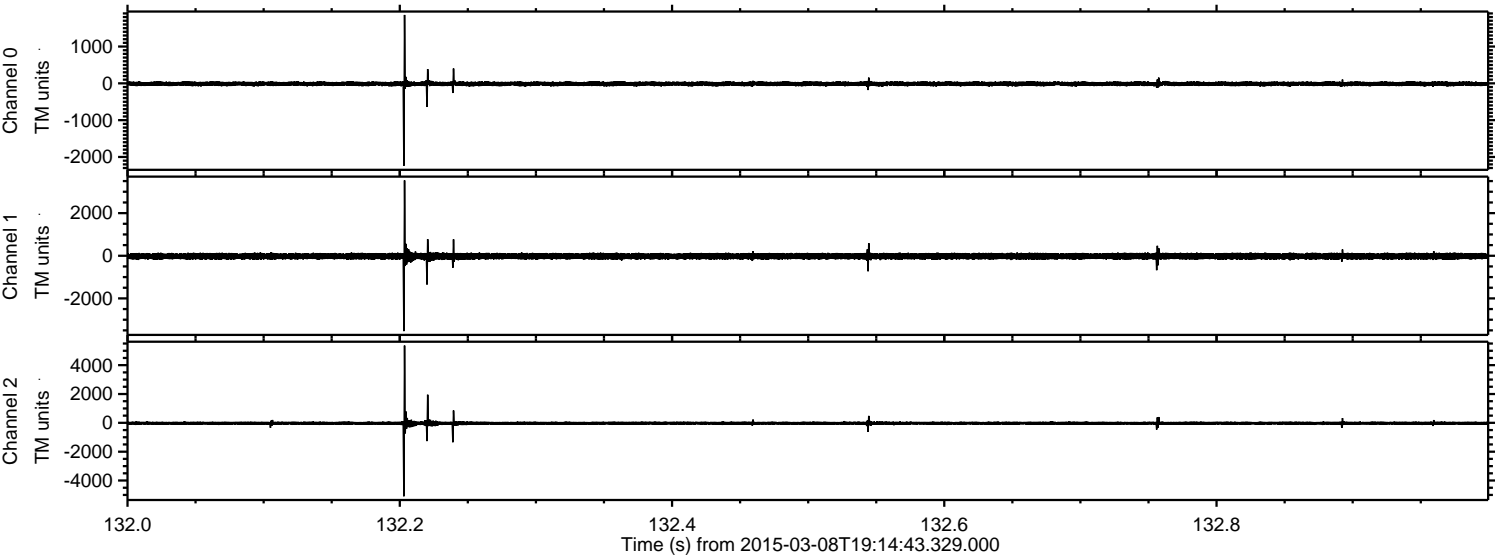
ELMAVAN 3D WAVEFORMS (Measured data sampled at 50 kHz) 49802 packets of 144 samples from 2015-03-08T19:14:43.329.000.

Processed Sun Mar 8 20:22:31 2015 by ELM ver.2012-10-06 from 001__elm20150308_191442__dat00.bin

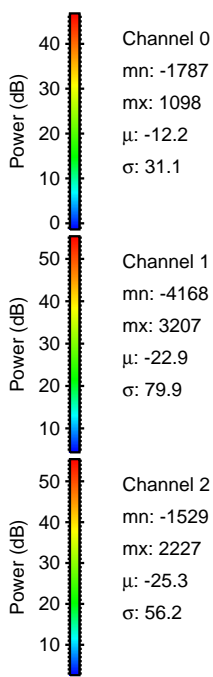
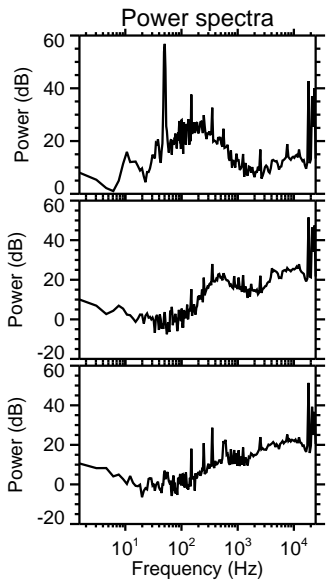
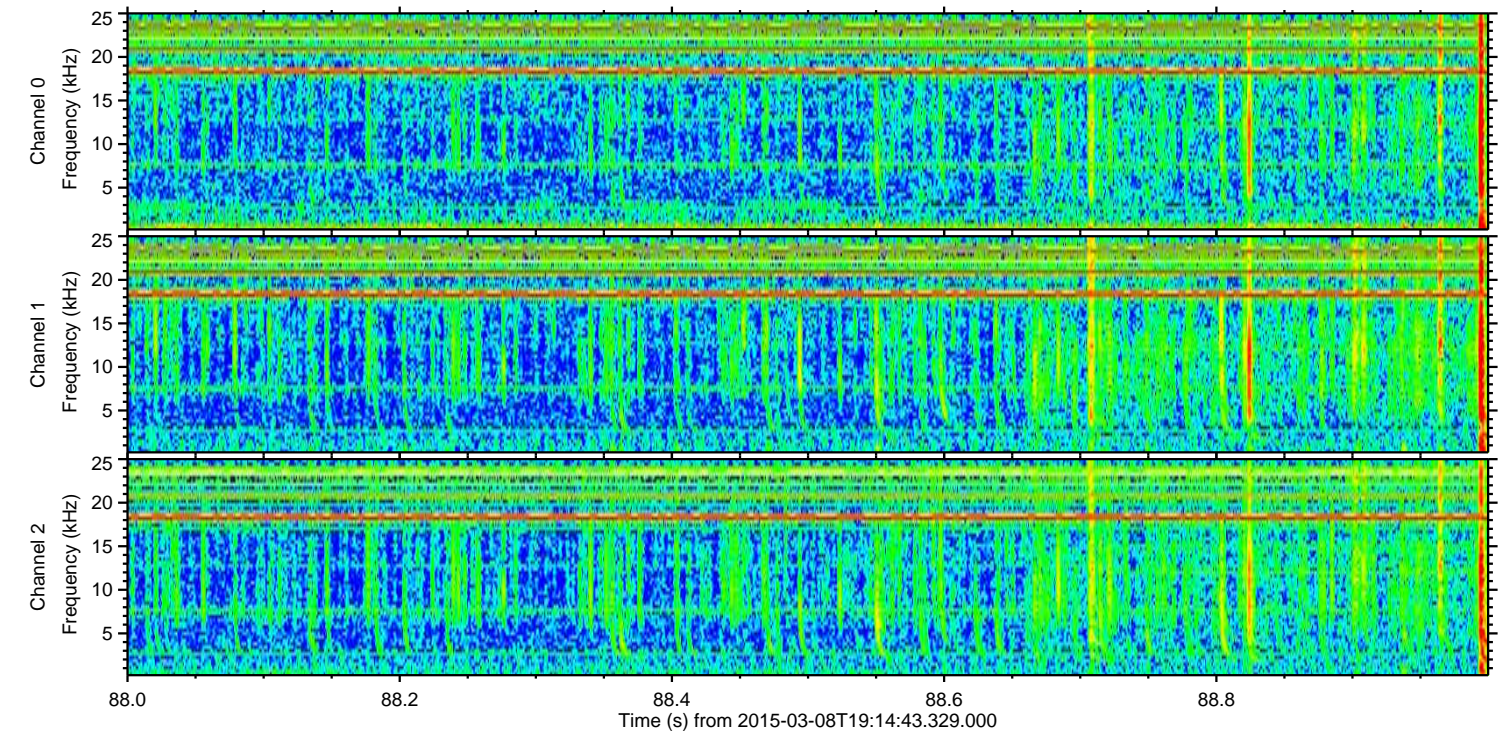
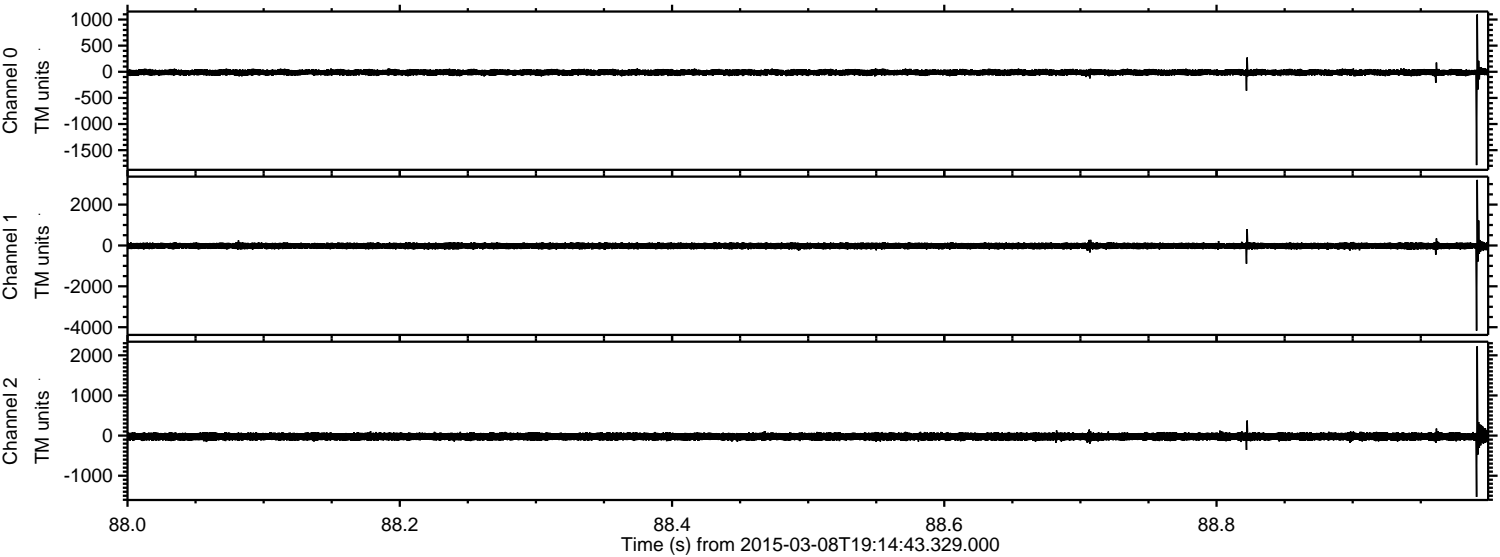


ELMAVAN 3D WAVEFORMS (Measured data sampled at 50 kHz) 49802 packets of 144 samples from 2015-03-08T19:14:43.329.000. Part 133/144

Processed Sun Mar 8 20:22:42 2015 by ELM ver.2012-10-06 from 001__elm20150308_191442__dat00.bin



Processed Sun Mar 8 20:22:43 2015 by ELM ver.2012-10-06 from 001__elm20150308_191442__dat00.bin



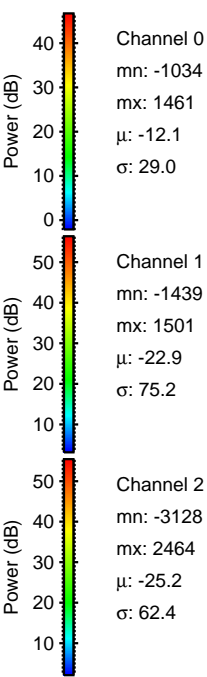
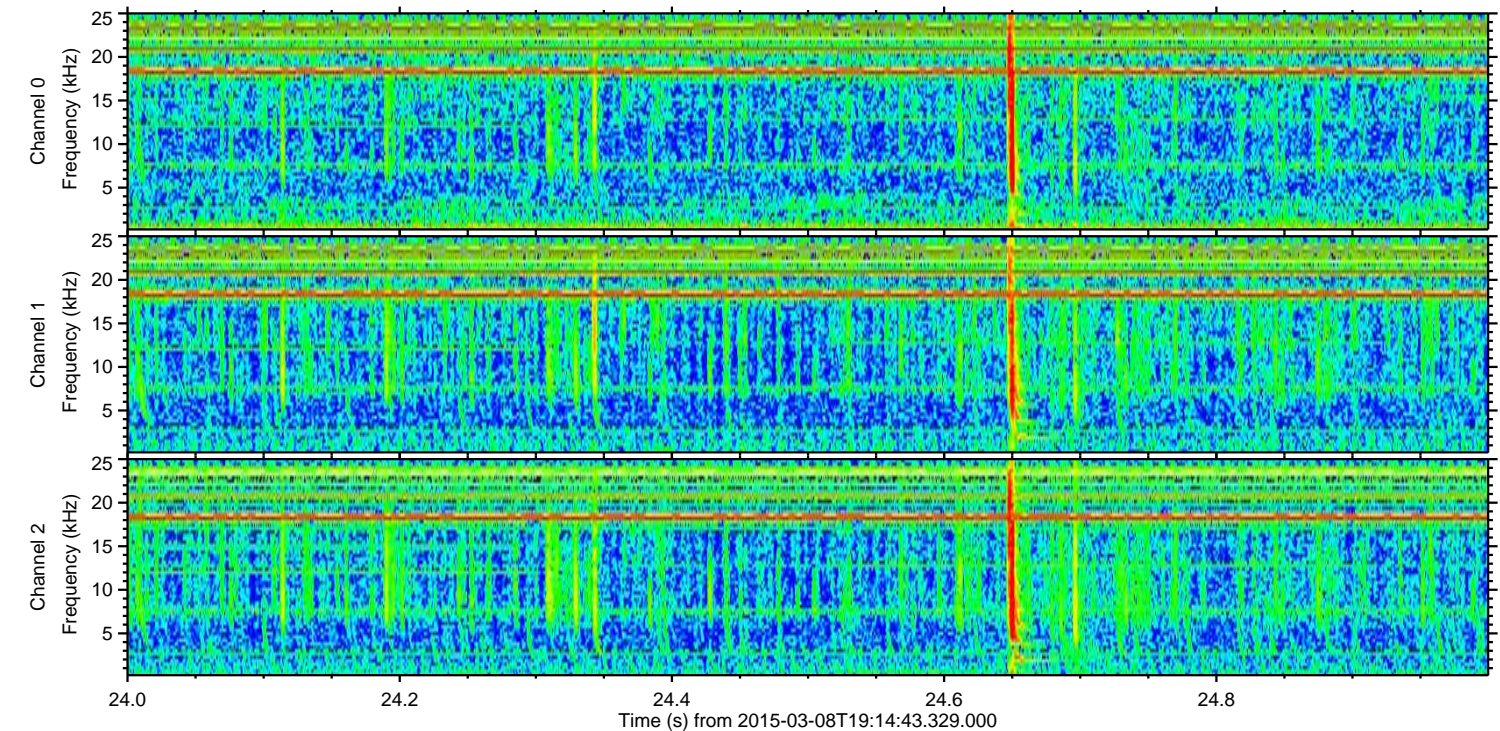
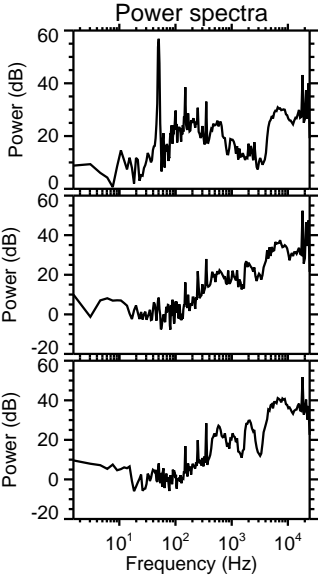
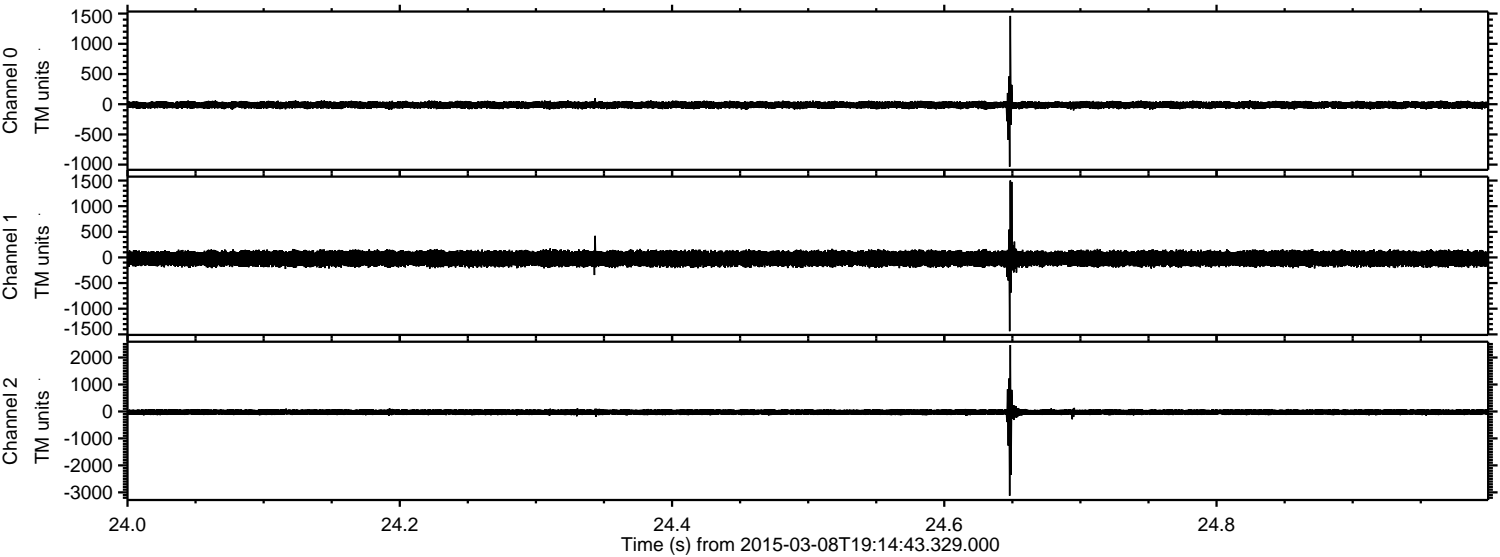
Channel 0
mn: -1787
mx: 1098
 μ : -12.2
 σ : 31.1

Channel 1
mn: -4168
mx: 3207
 μ : -22.9
 σ : 79.9

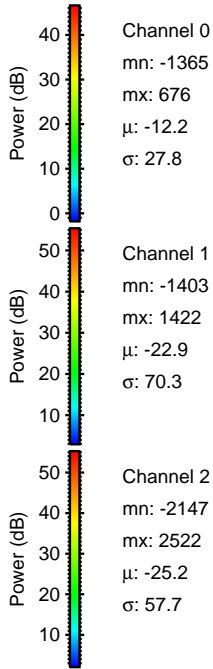
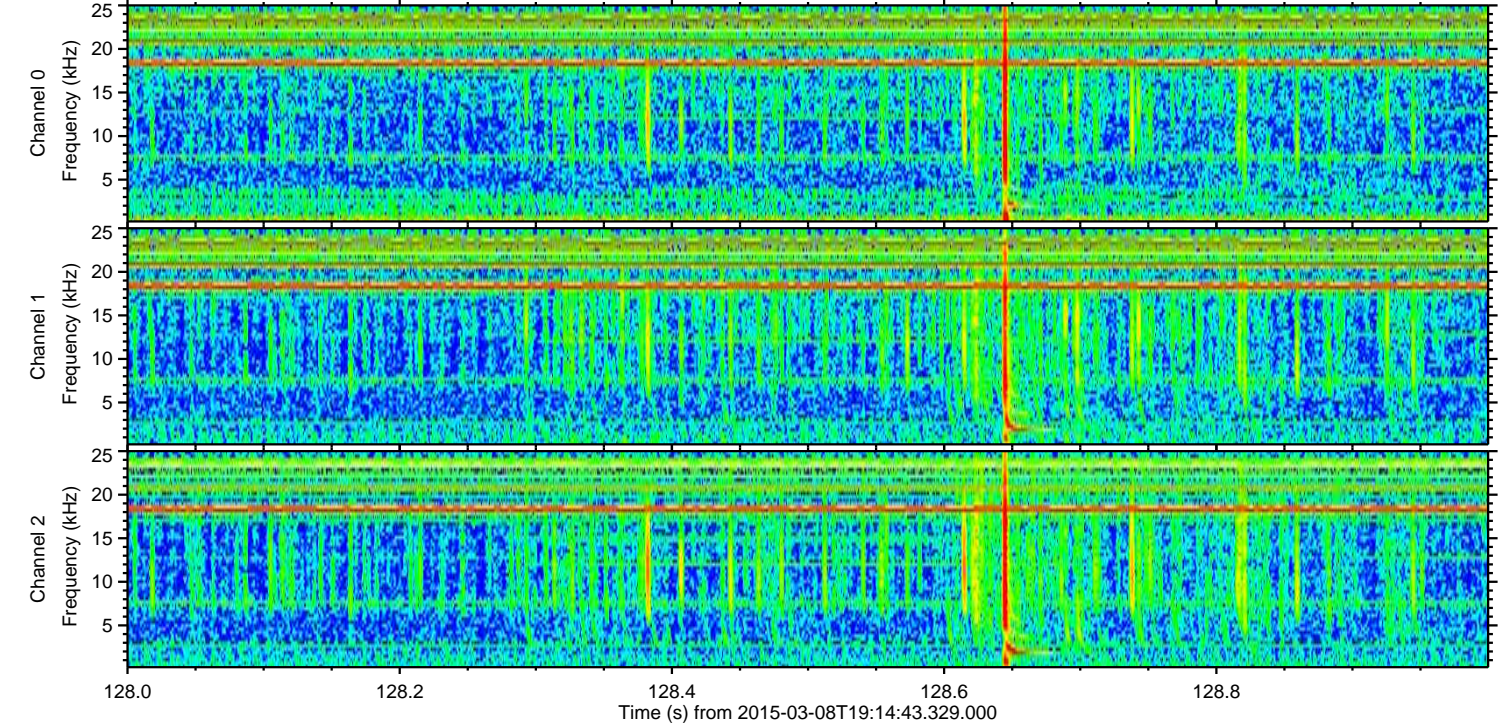
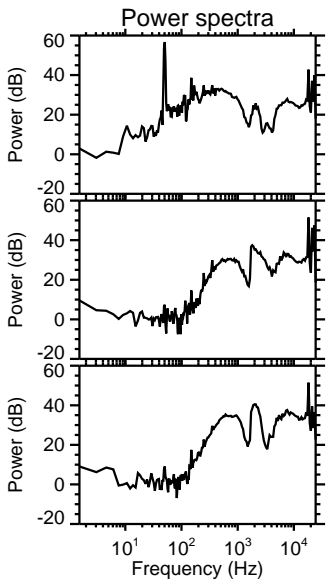
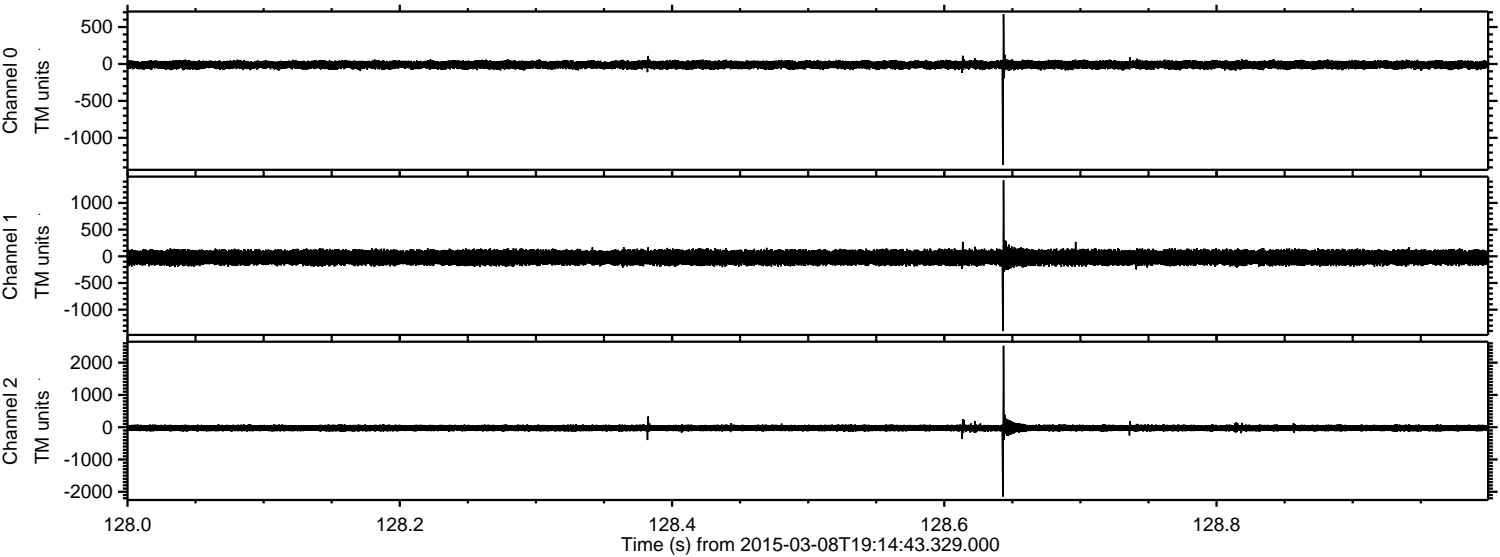
Channel 2
mn: -1529
mx: 2227
 μ : -25.3
 σ : 56.2

ELMAVAN 3D WAVEFORMS (Measured data sampled at 50 kHz) 49802 packets of 144 samples from 2015-03-08T19:14:43.329.000. Part 25/144

Processed Sun Mar 8 20:22:44 2015 by ELM ver.2012-10-06 from 001__elm20150308_191442__dat00.bin

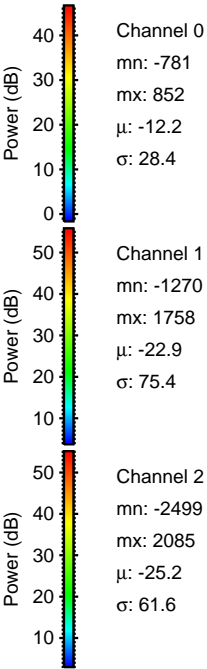
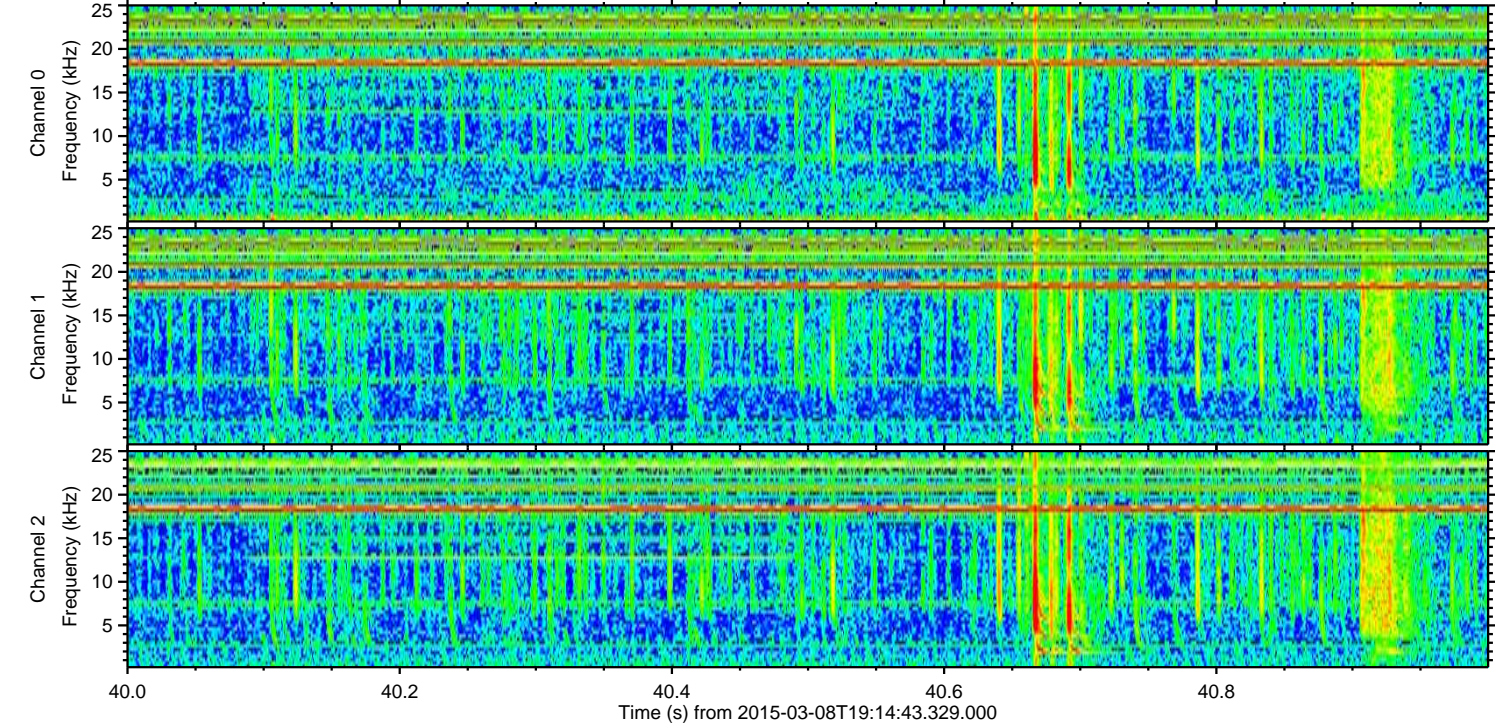
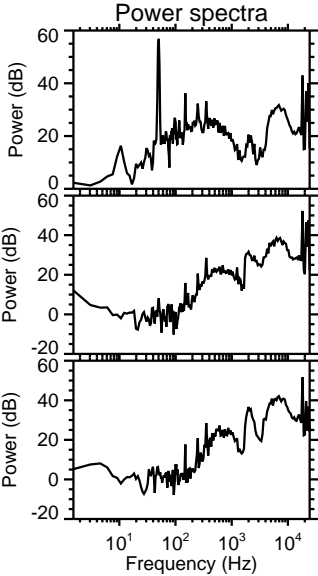
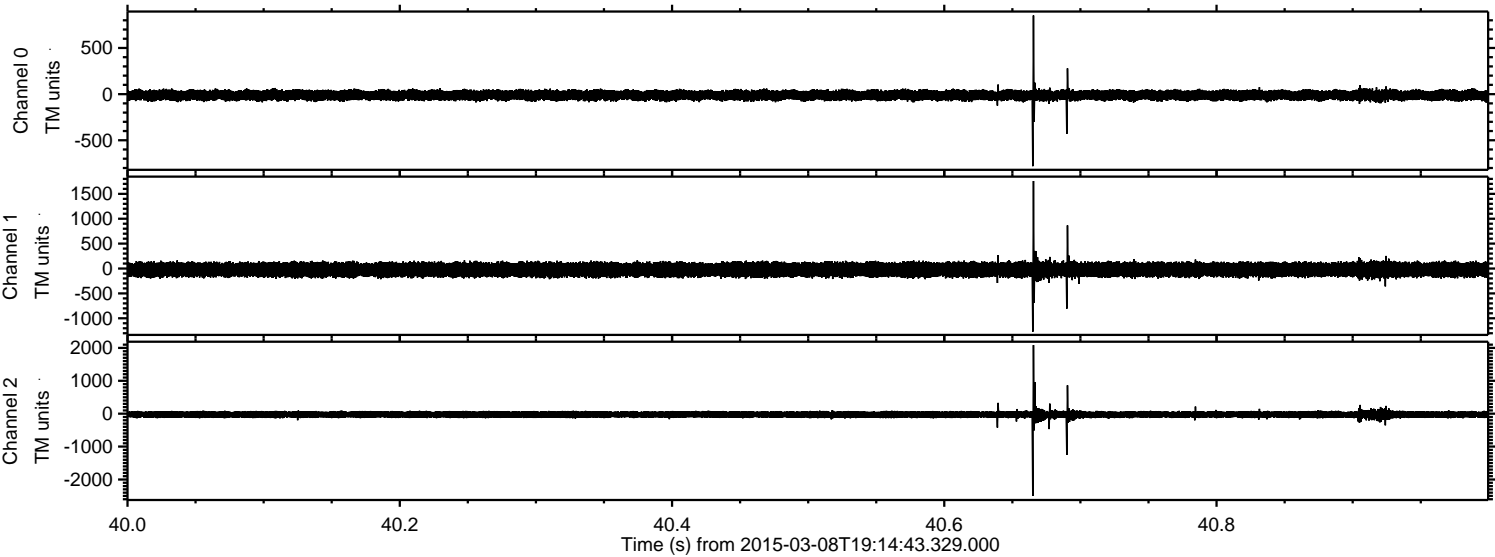


Processed Sun Mar 8 20:22:45 2015 by ELM ver.2012-10-06 from 001__elm20150308_191442__dat00.bin

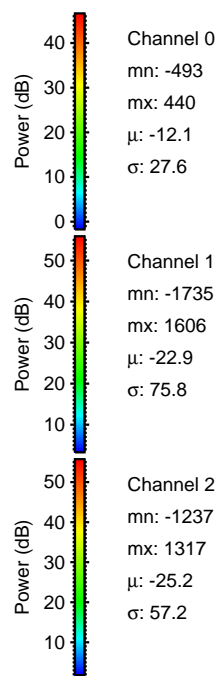
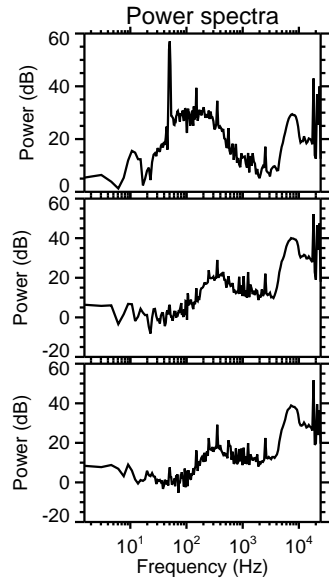
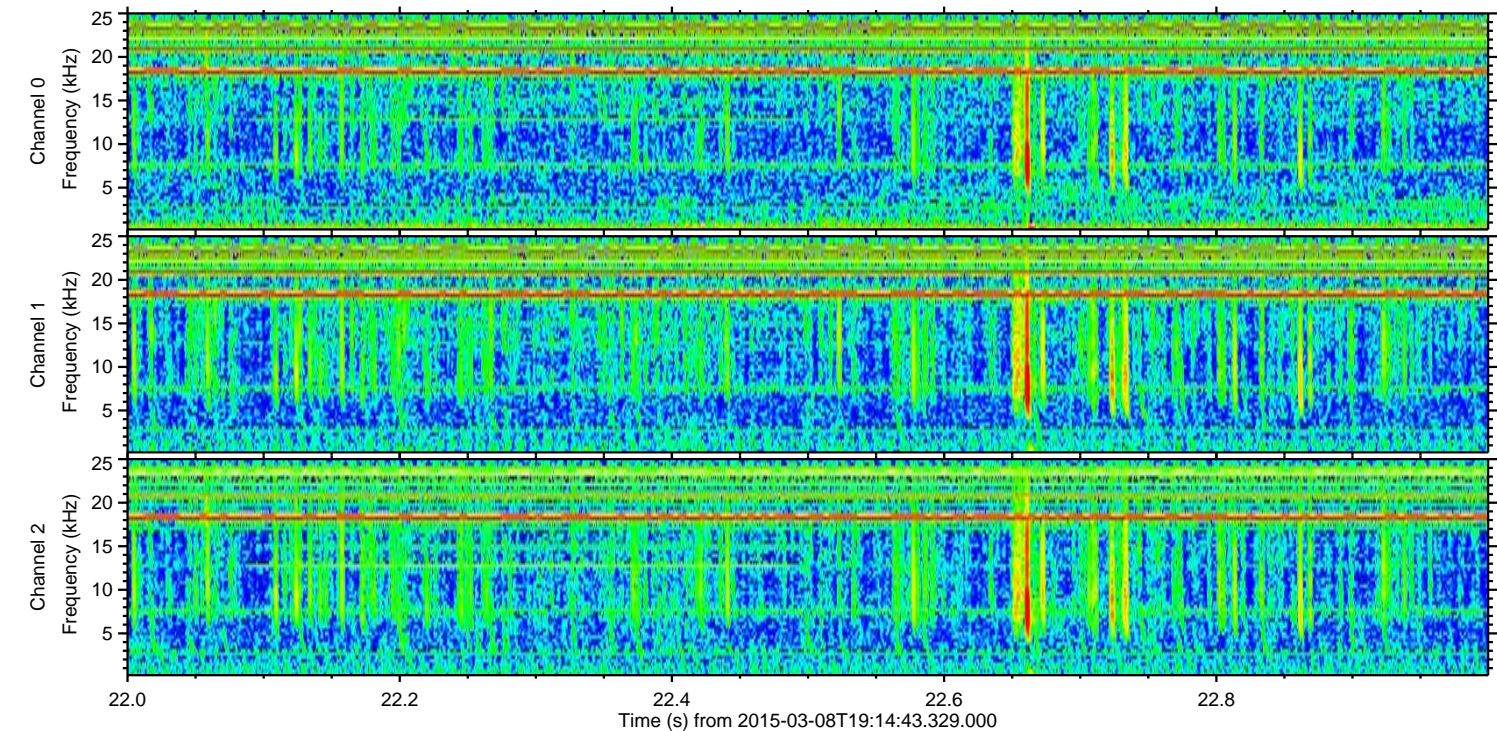
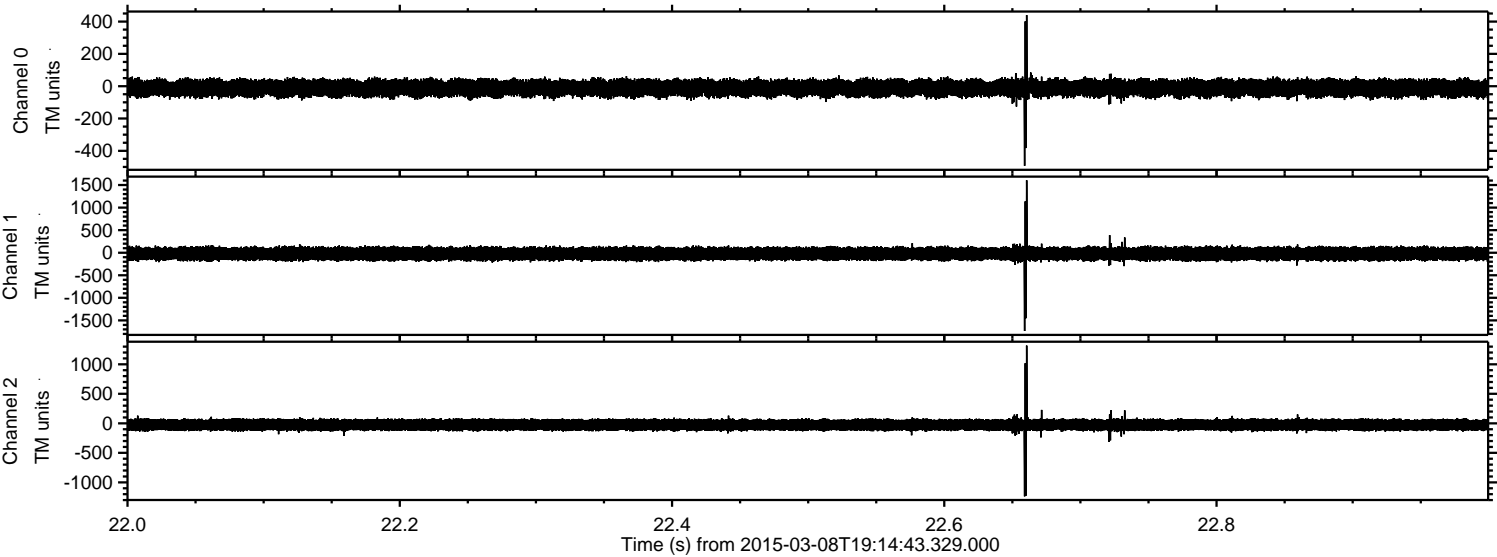


ELMAVAN 3D WAVEFORMS (Measured data sampled at 50 kHz) 49802 packets of 144 samples from 2015-03-08T19:14:43.329.000. Part 41/144

Processed Sun Mar 8 20:22:46 2015 by ELM ver.2012-10-06 from 001__elm20150308_191442__dat00.bin



Processed Sun Mar 8 20:22:47 2015 by ELM ver.2012-10-06 from 001__elm20150308_191442__dat00.bin

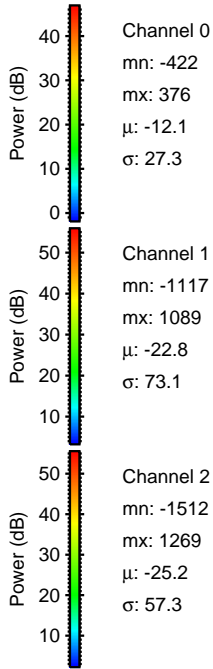
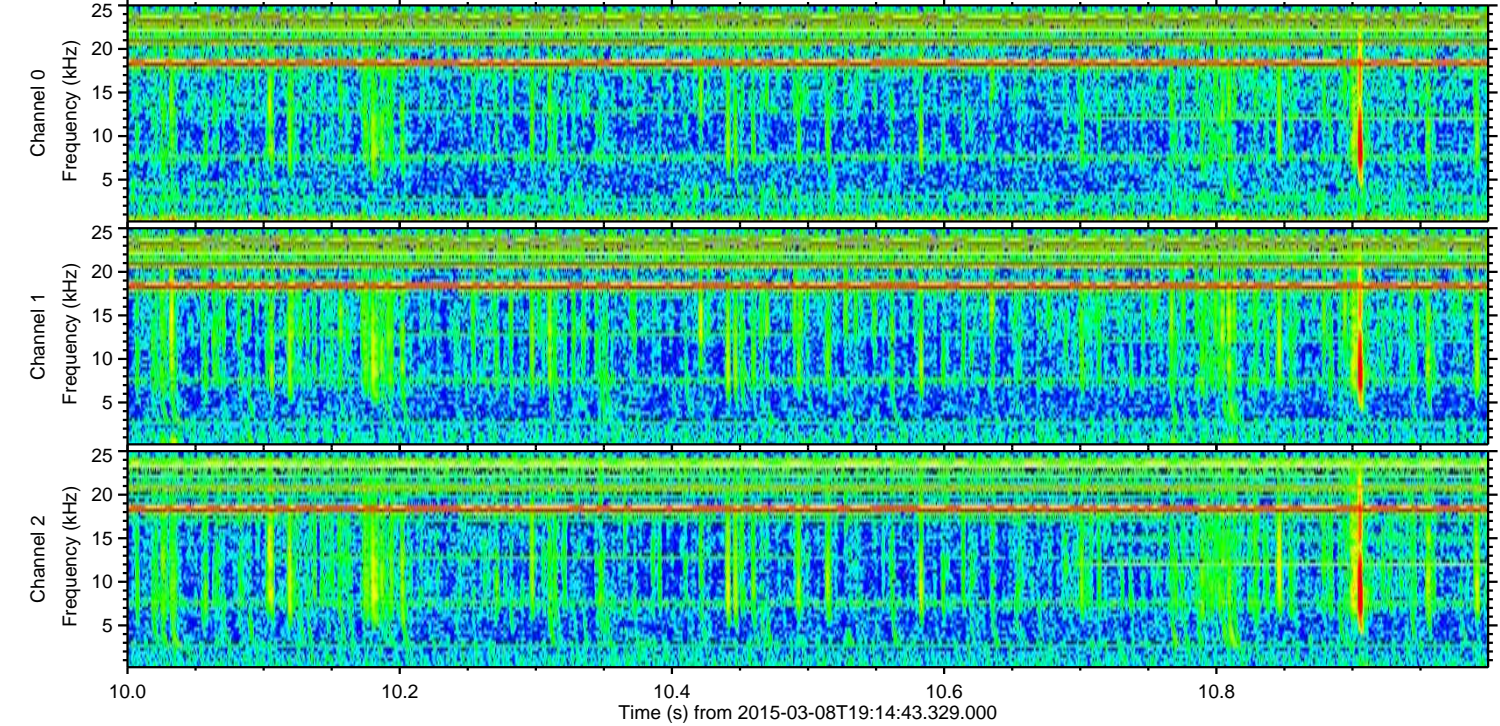
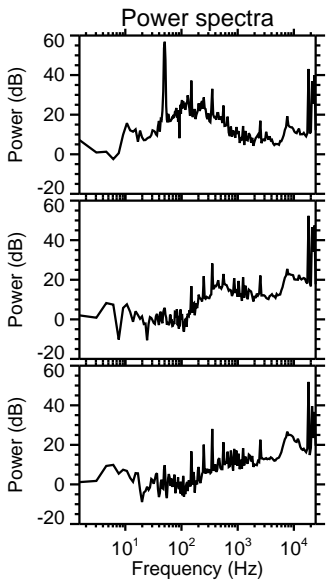
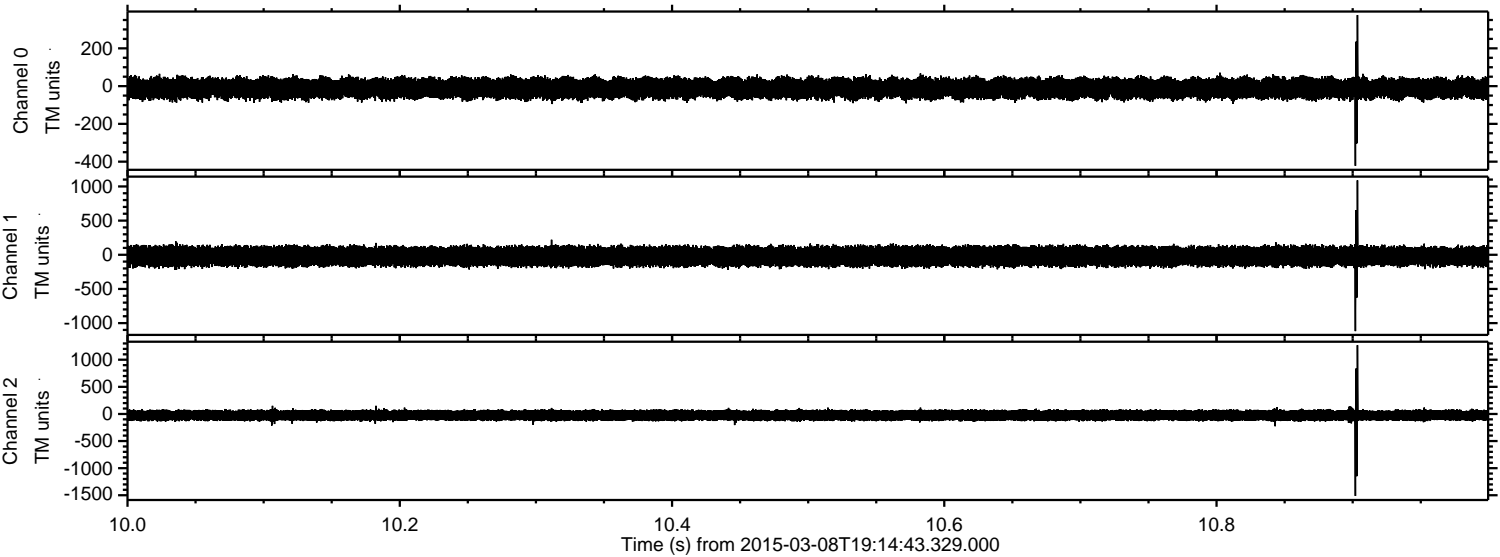


Channel 0
mn: -493
mx: 440
 μ : -12.1
 σ : 27.6

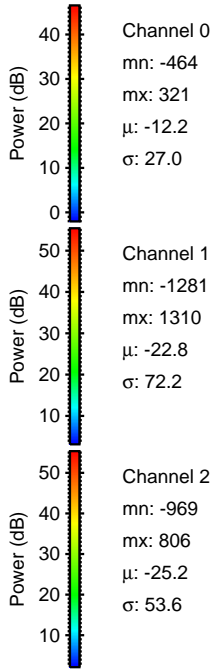
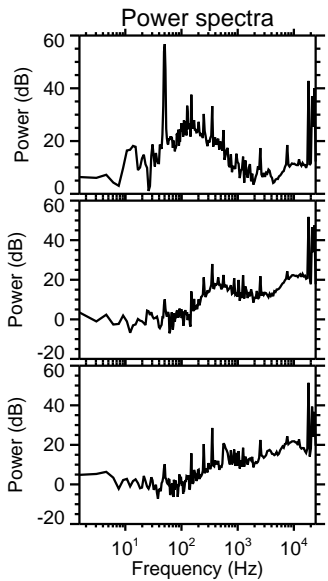
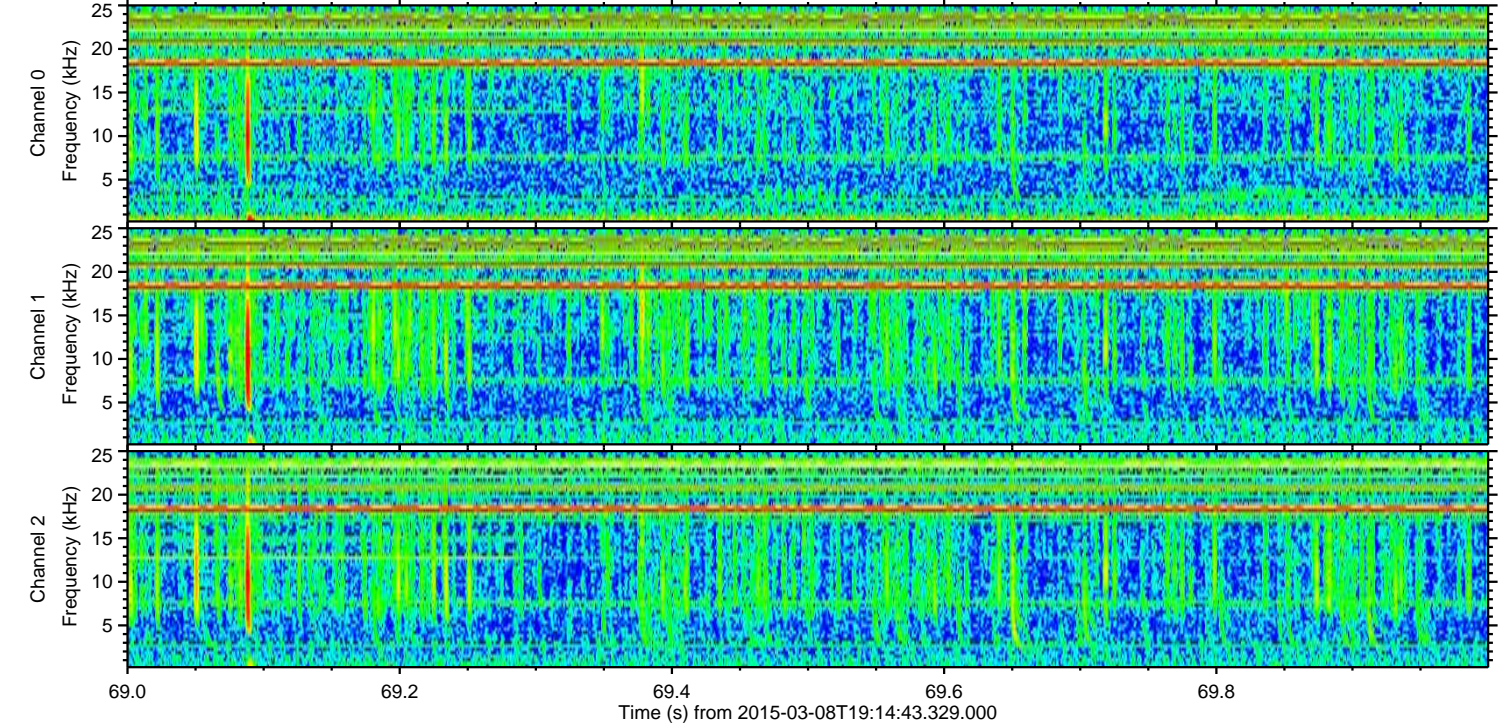
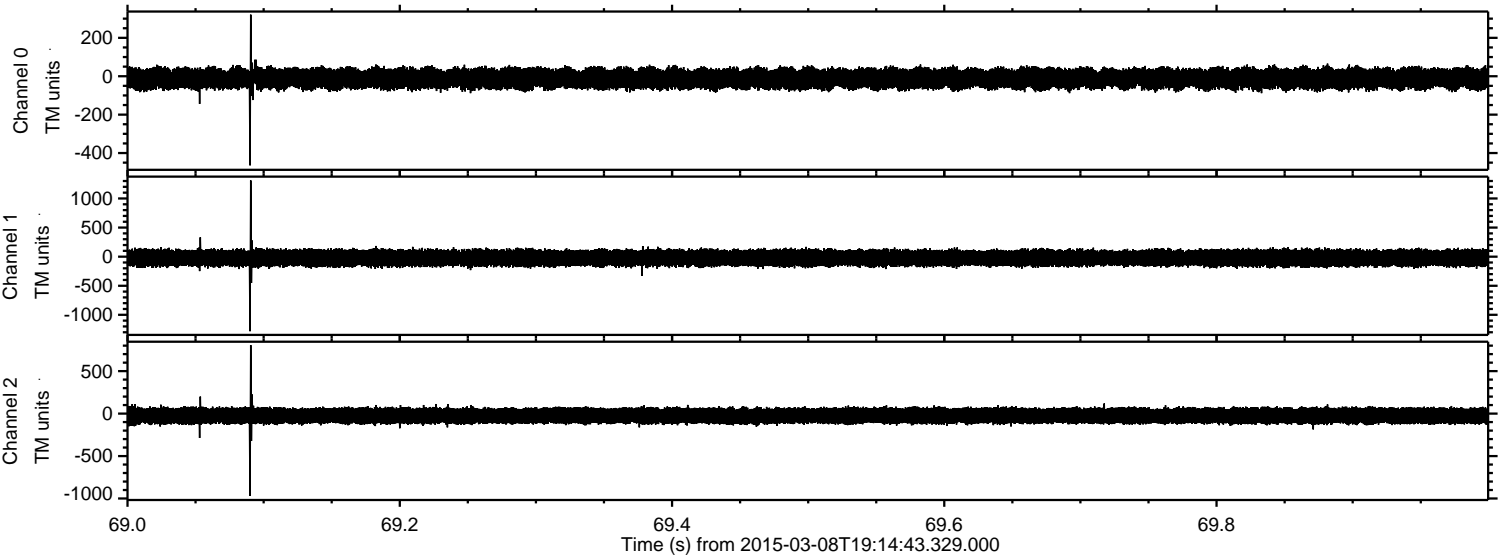
Channel 1
mn: -1735
mx: 1606
 μ : -22.9
 σ : 75.8

Channel 2
mn: -1237
mx: 1317
 μ : -25.2
 σ : 57.2

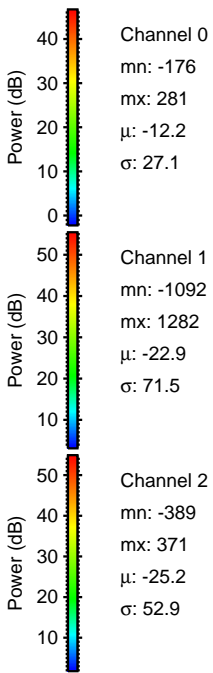
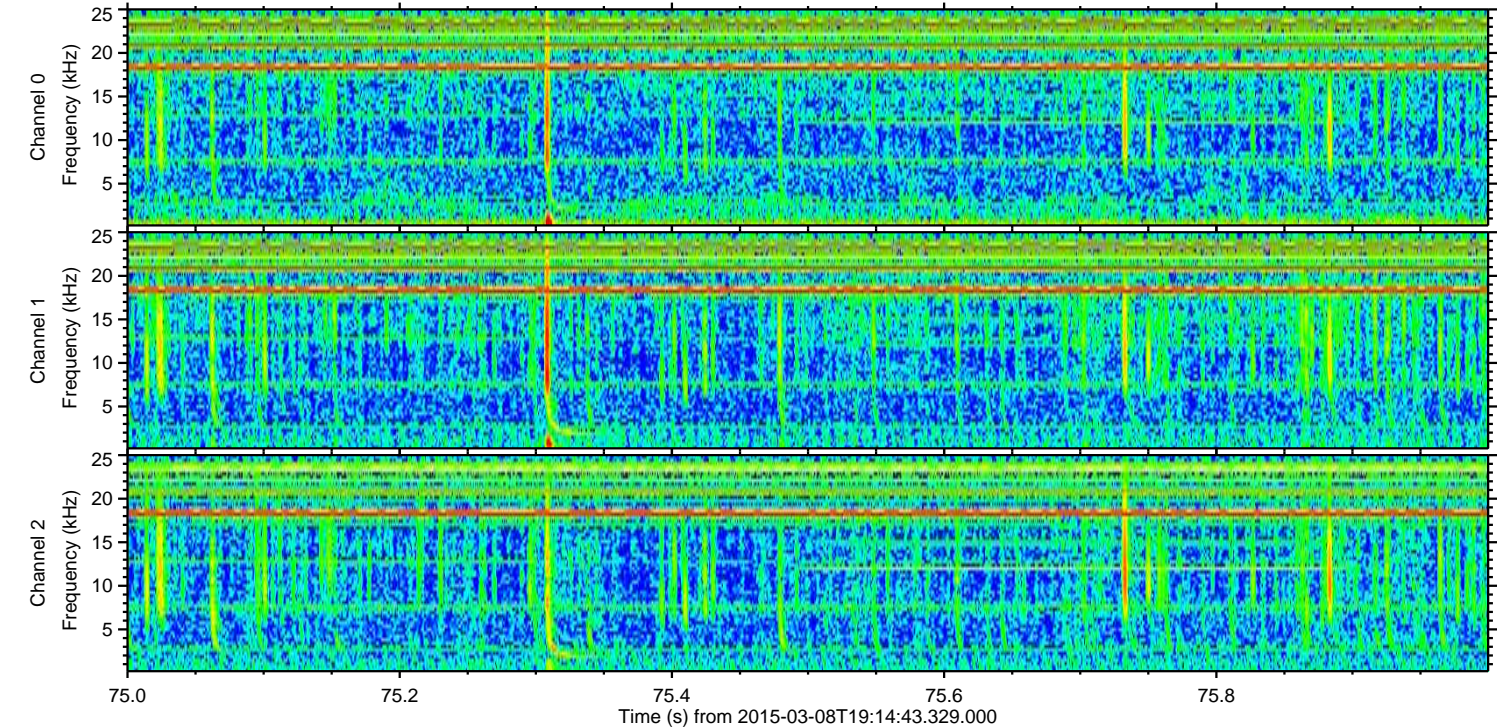
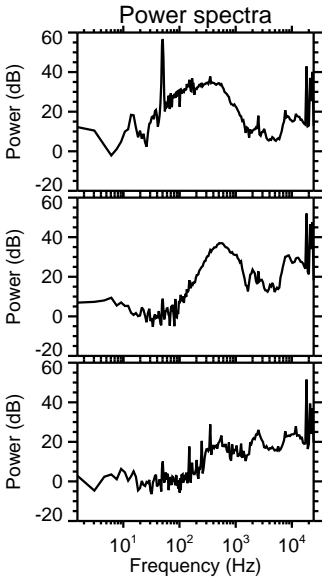
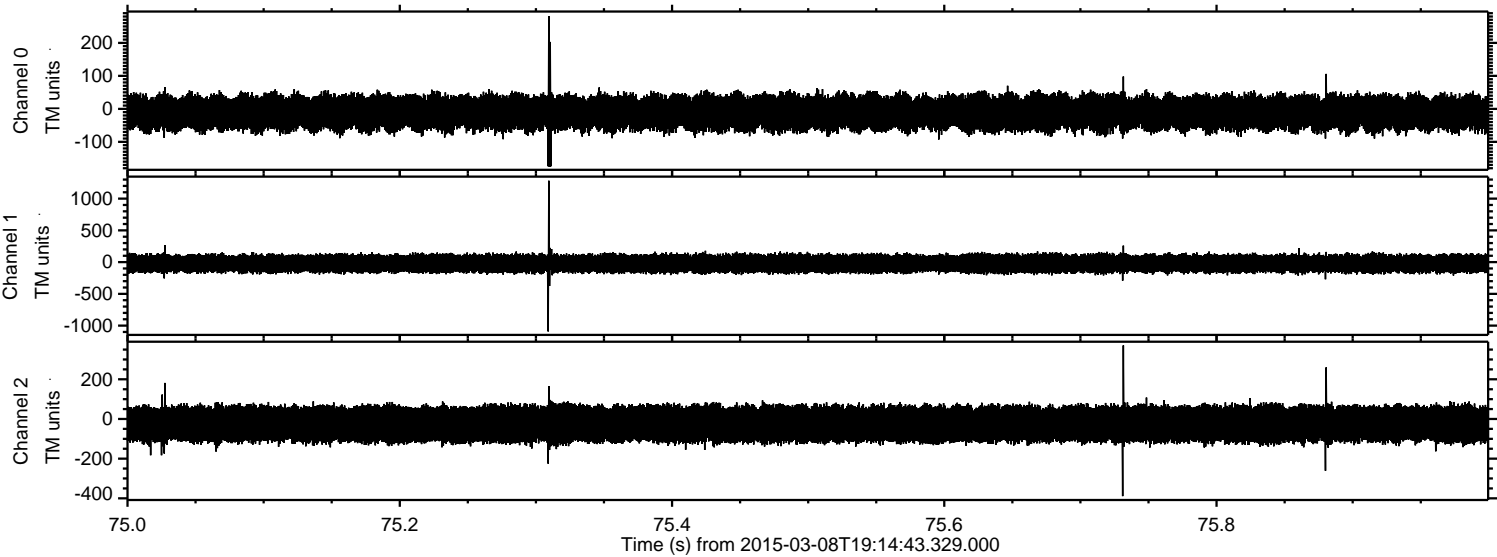
Processed Sun Mar 8 20:22:48 2015 by ELM ver.2012-10-06 from 001__elm20150308_191442__dat00.bin



Processed Sun Mar 8 20:22:49 2015 by ELM ver.2012-10-06 from 001__elm20150308_191442__dat00.bin



Processed Sun Mar 8 20:22:49 2015 by ELM ver.2012-10-06 from 001__elm20150308_191442__dat00.bin



Channel 0
mn: -176
mx: 281
 μ : -12.2
 σ : 27.1

Channel 1
mn: -1092
mx: 1282
 μ : -22.9
 σ : 71.5

Channel 2
mn: -389
mx: 371
 μ : -25.2
 σ : 52.9

