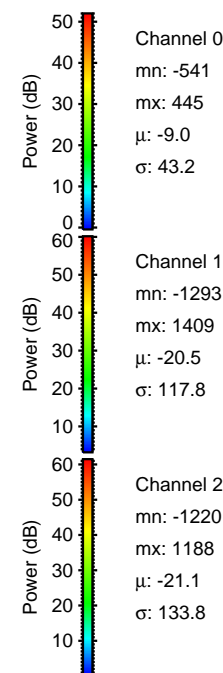
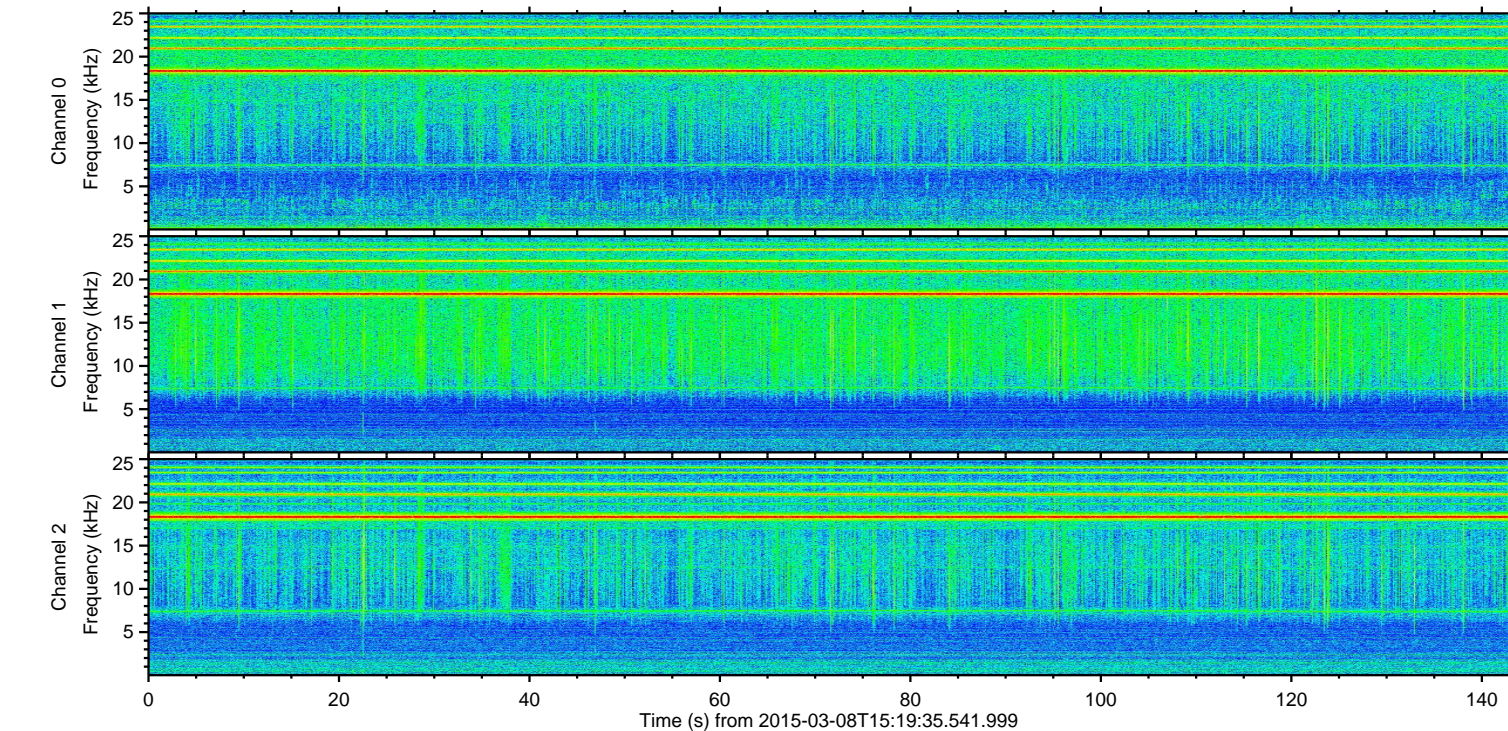
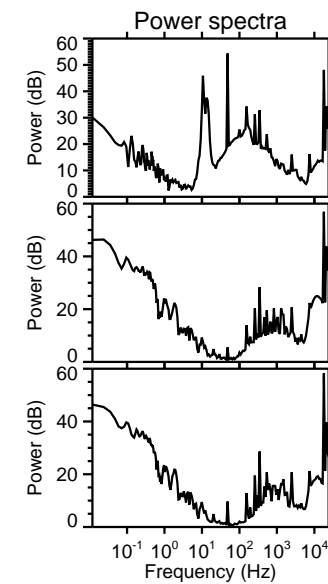
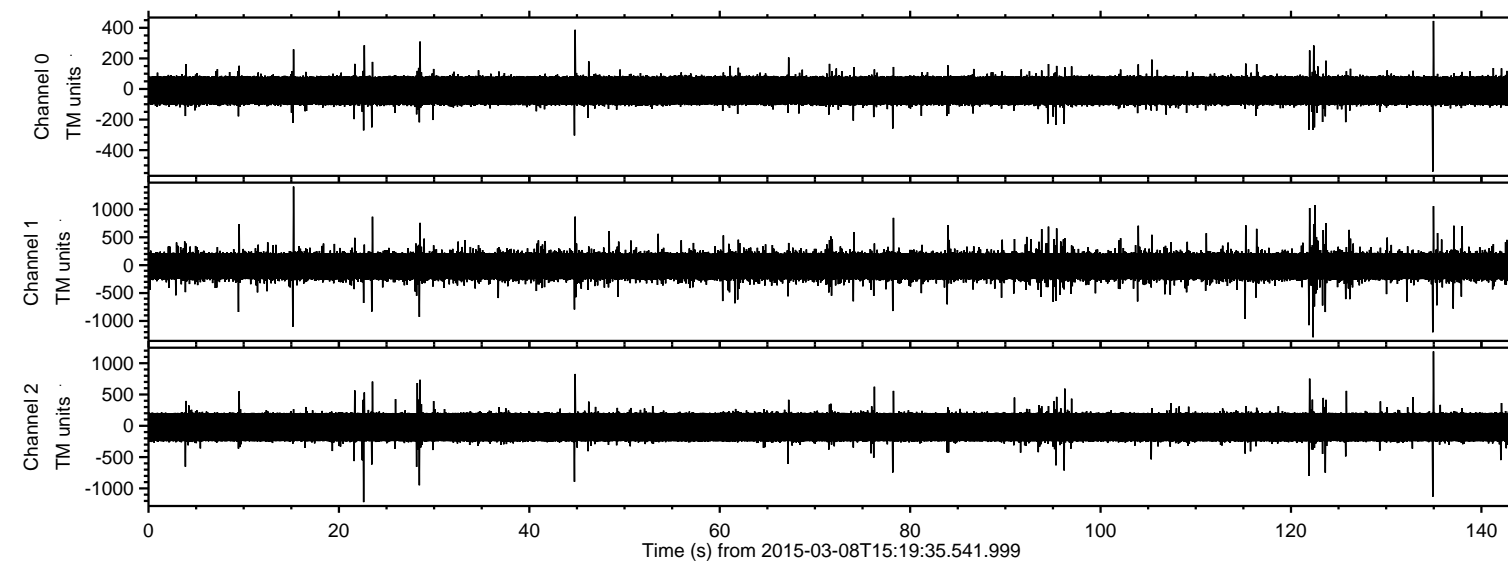


ELMAVAN 3D WAVEFORMS (Measured data sampled at 50 kHz) 49624 packets of 144 samples from 2015-03-08T15:19:35.541.999.

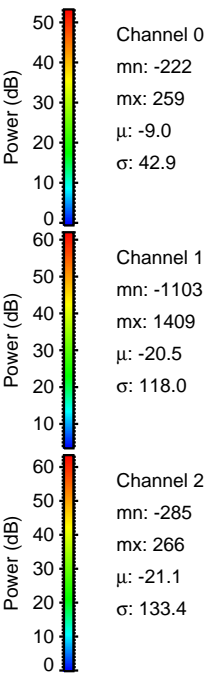
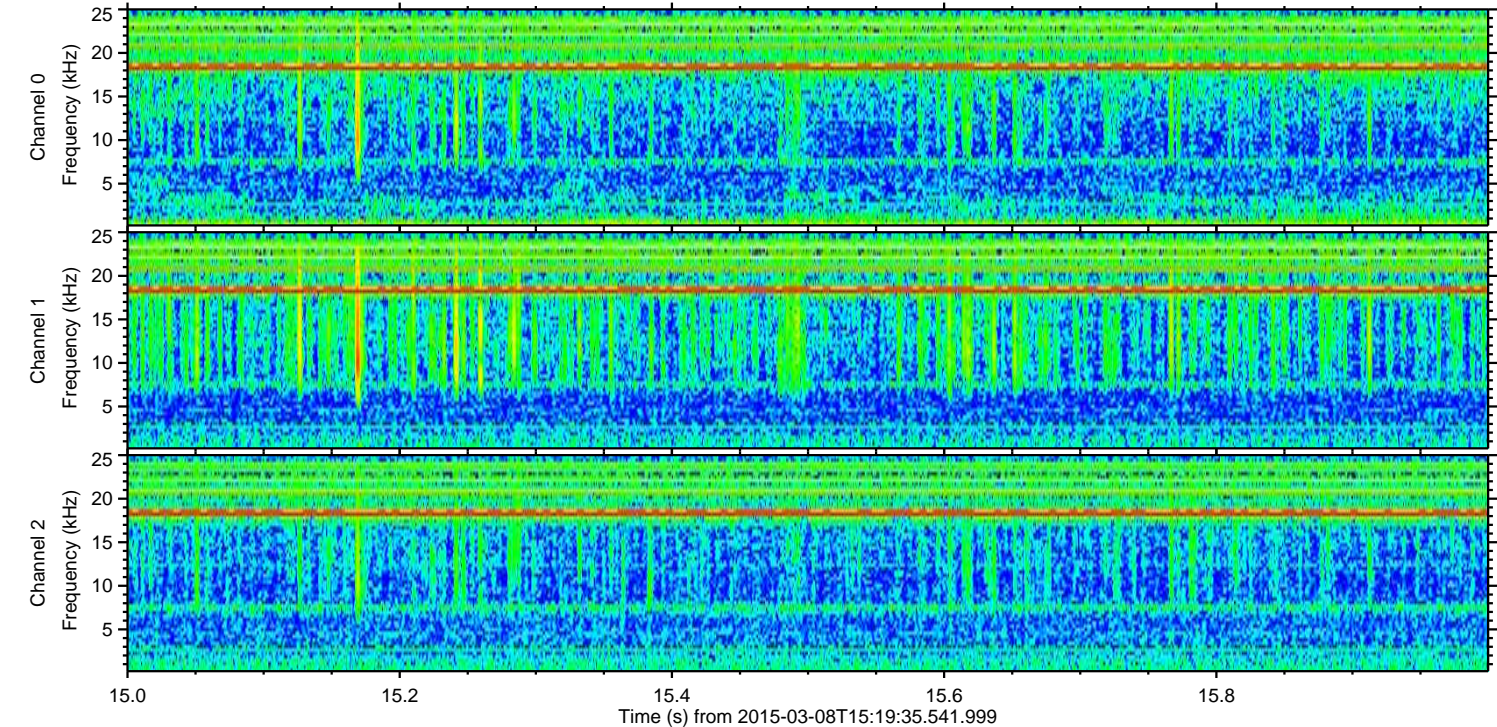
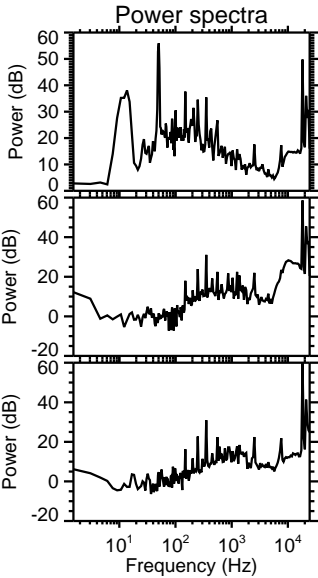
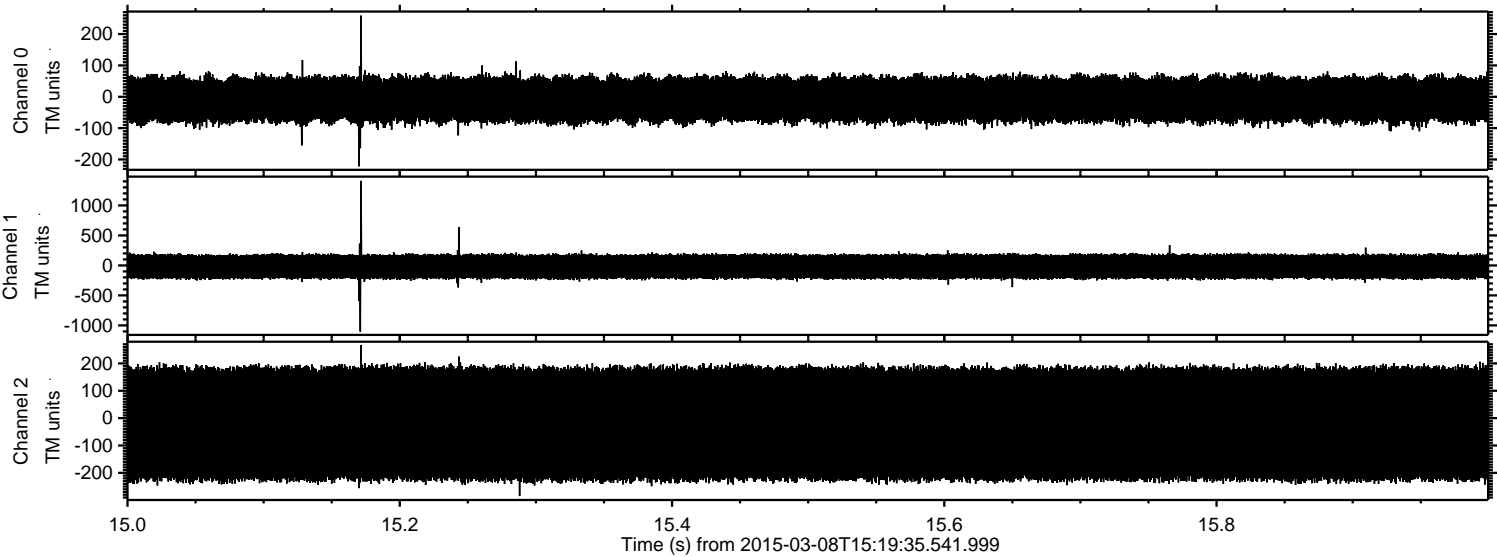
Processed Sun Mar 8 16:40:51 2015 by ELM ver.2012-10-06 from 001\_\_elm20150308\_151934\_\_dat00.bin





ELMAVAN 3D WAVEFORMS (Measured data sampled at 50 kHz) 49624 packets of 144 samples from 2015-03-08T15:19:35.541.999. Part 16/143

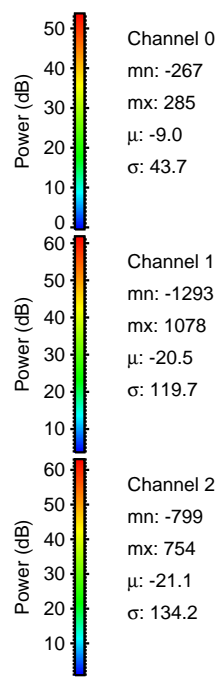
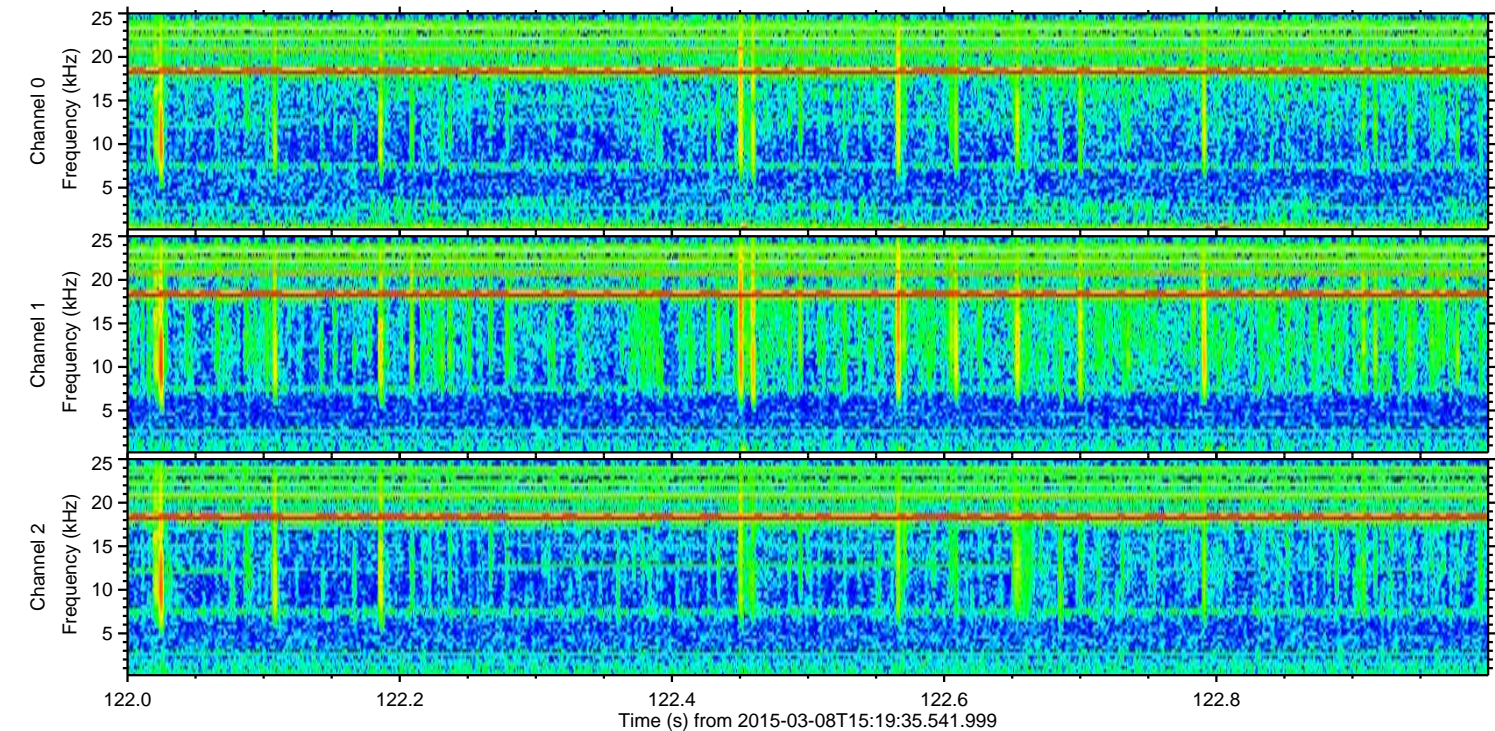
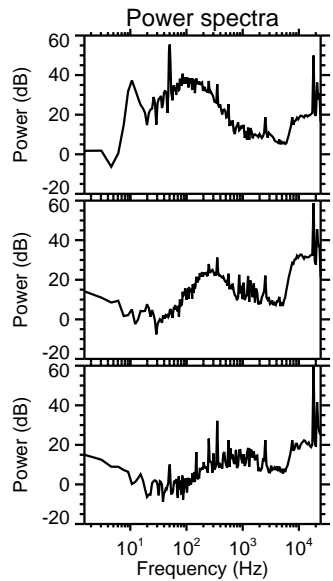
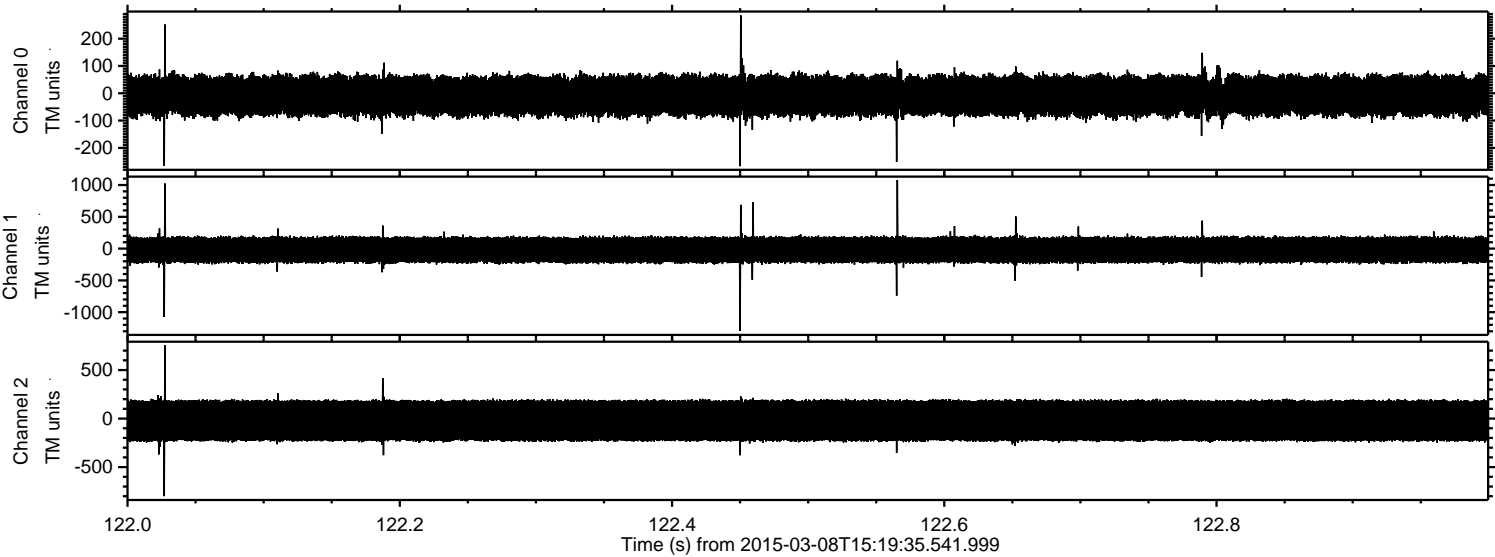
Processed Sun Mar 8 16:41:06 2015 by ELM ver.2012-10-06 from 001\_\_elm20150308\_151934\_\_dat00.bin





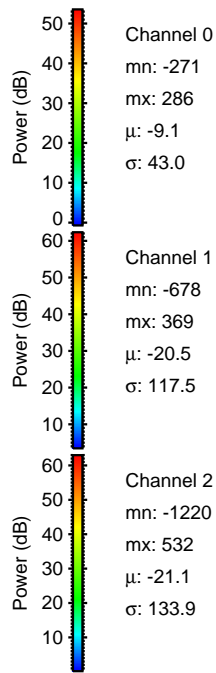
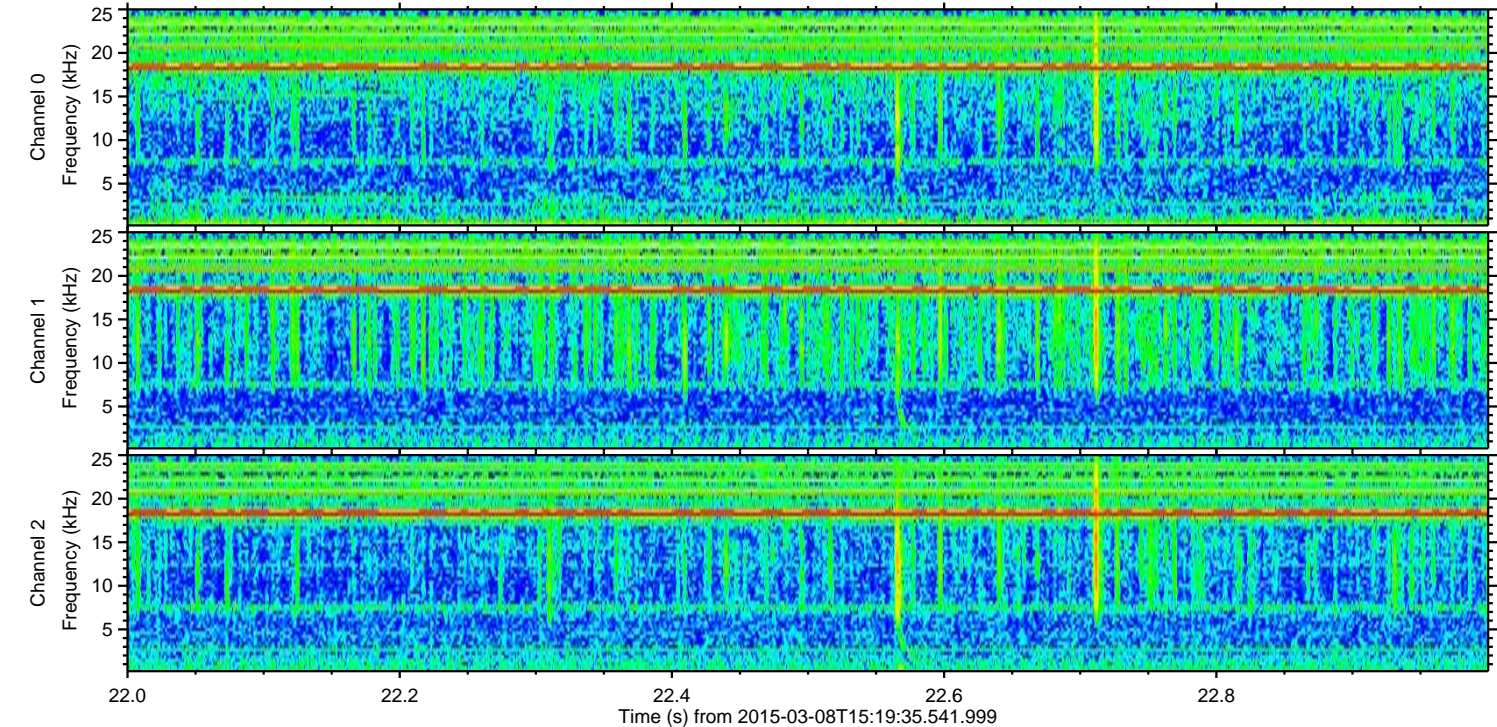
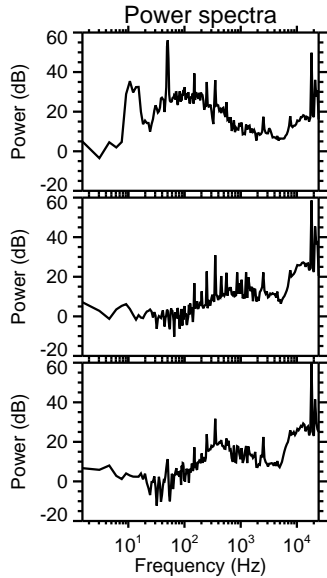
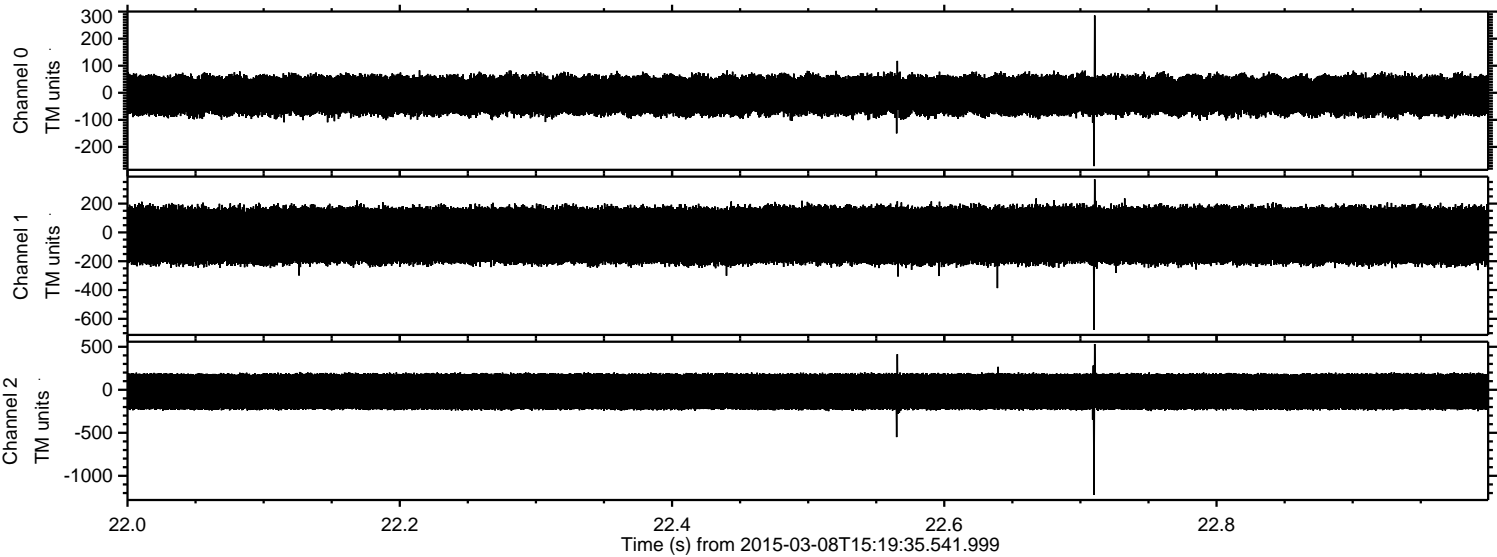
ELMAVAN 3D WAVEFORMS (Measured data sampled at 50 kHz) 49624 packets of 144 samples from 2015-03-08T15:19:35.541.999. Part 123/143

Processed Sun Mar 8 16:41:07 2015 by ELM ver.2012-10-06 from 001\_\_elm20150308\_151934\_\_dat00.bin





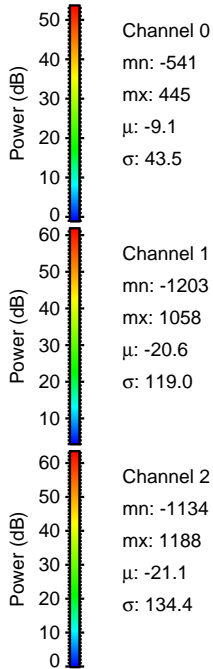
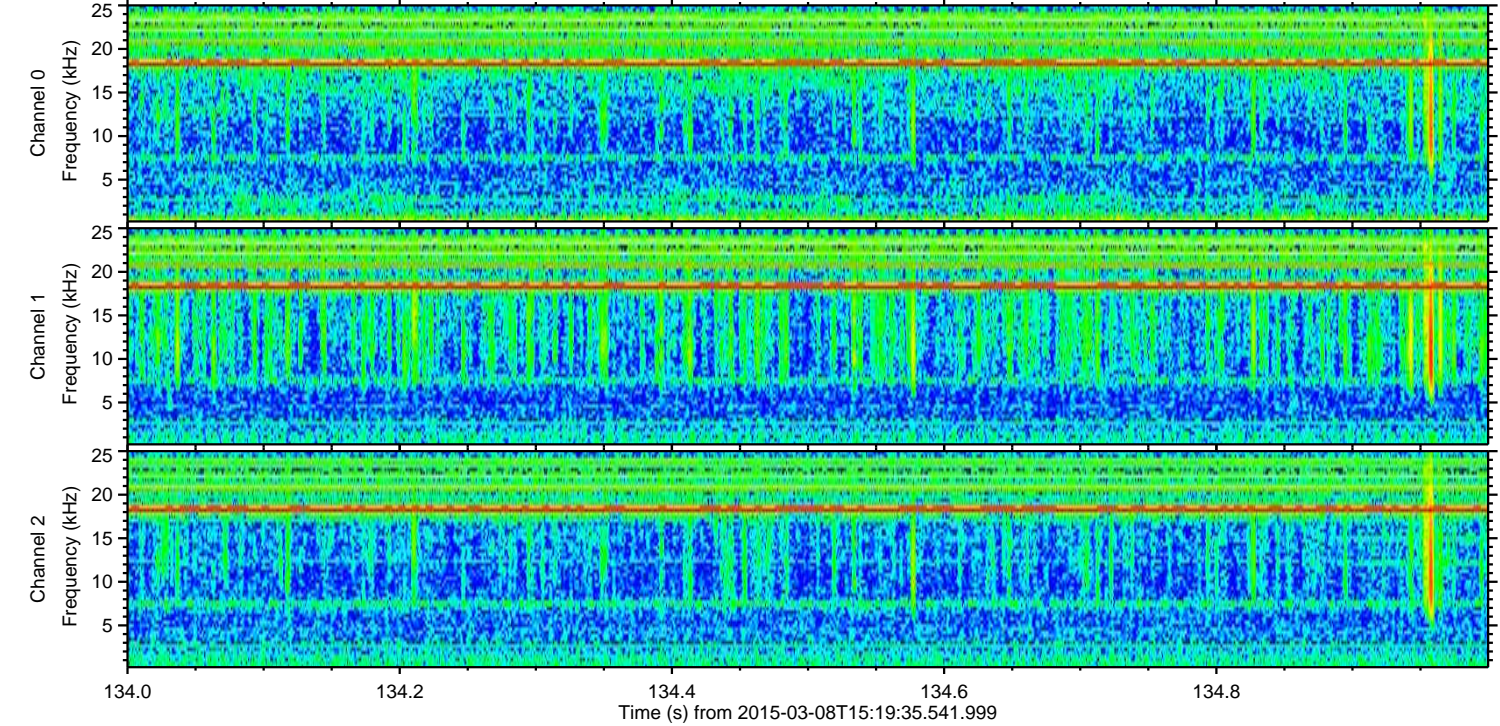
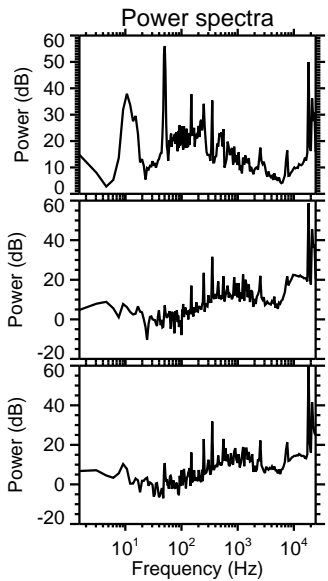
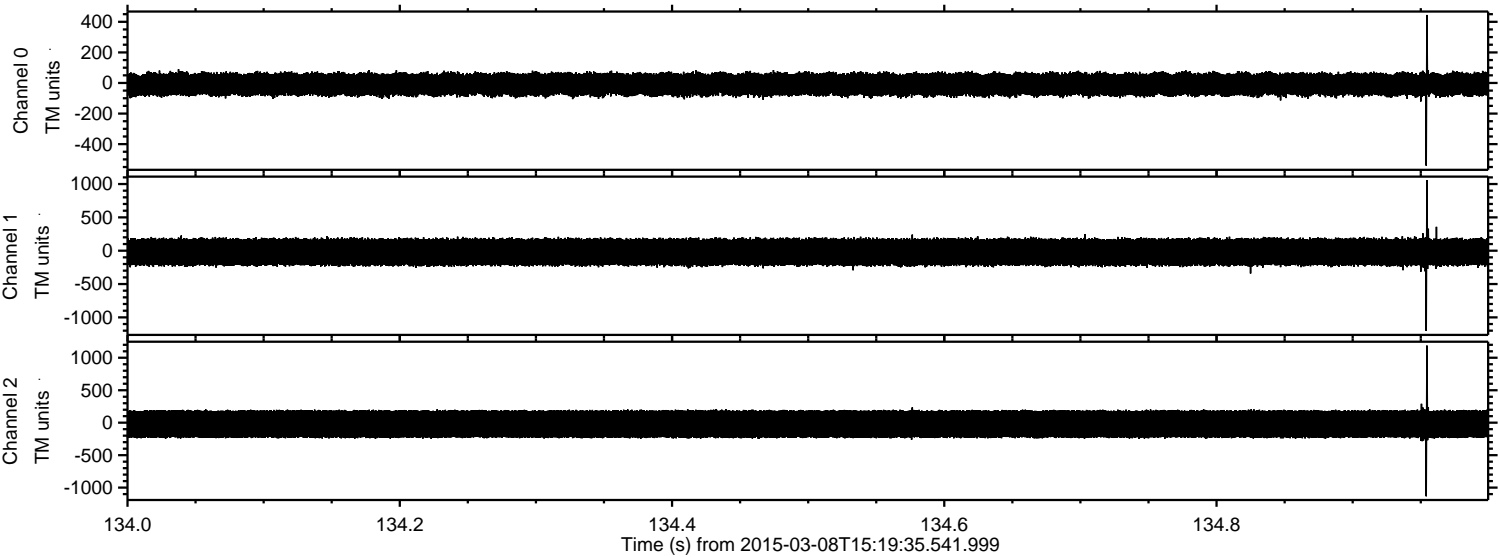
Processed Sun Mar 8 16:41:09 2015 by ELM ver.2012-10-06 from 001\_\_elm20150308\_151934\_\_dat00.bin





ELMAVAN 3D WAVEFORMS (Measured data sampled at 50 kHz) 49624 packets of 144 samples from 2015-03-08T15:19:35.541.999. Part 135/143

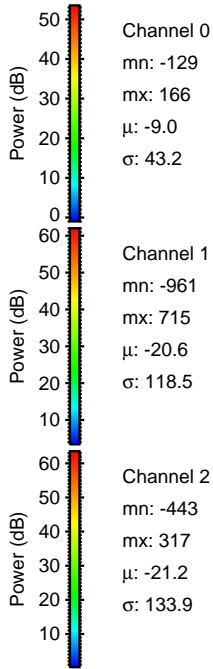
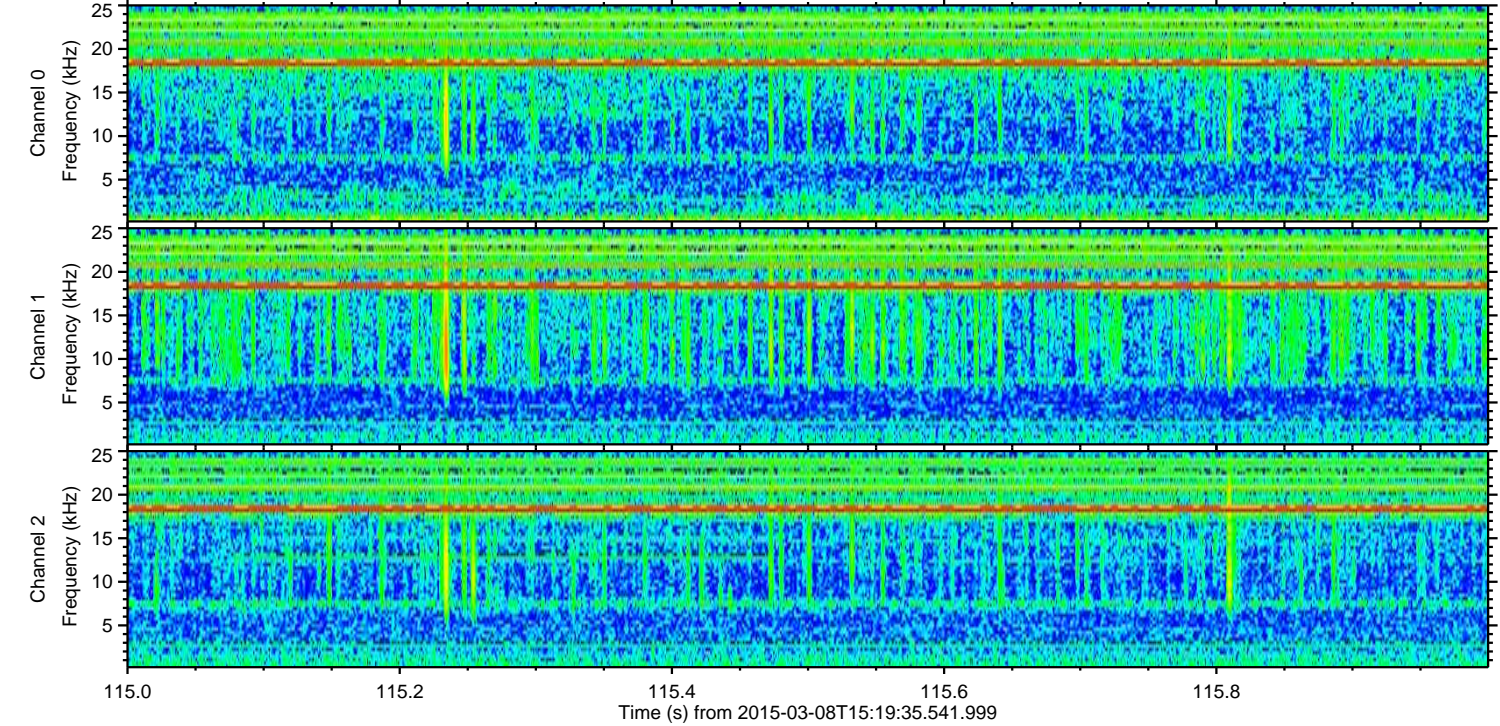
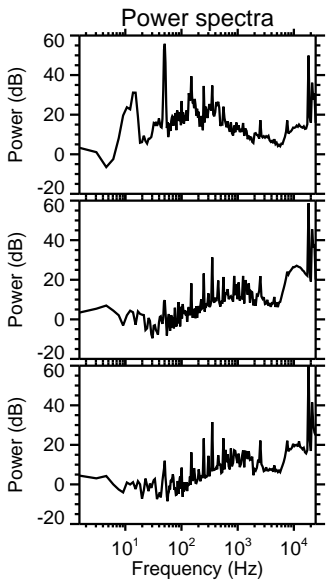
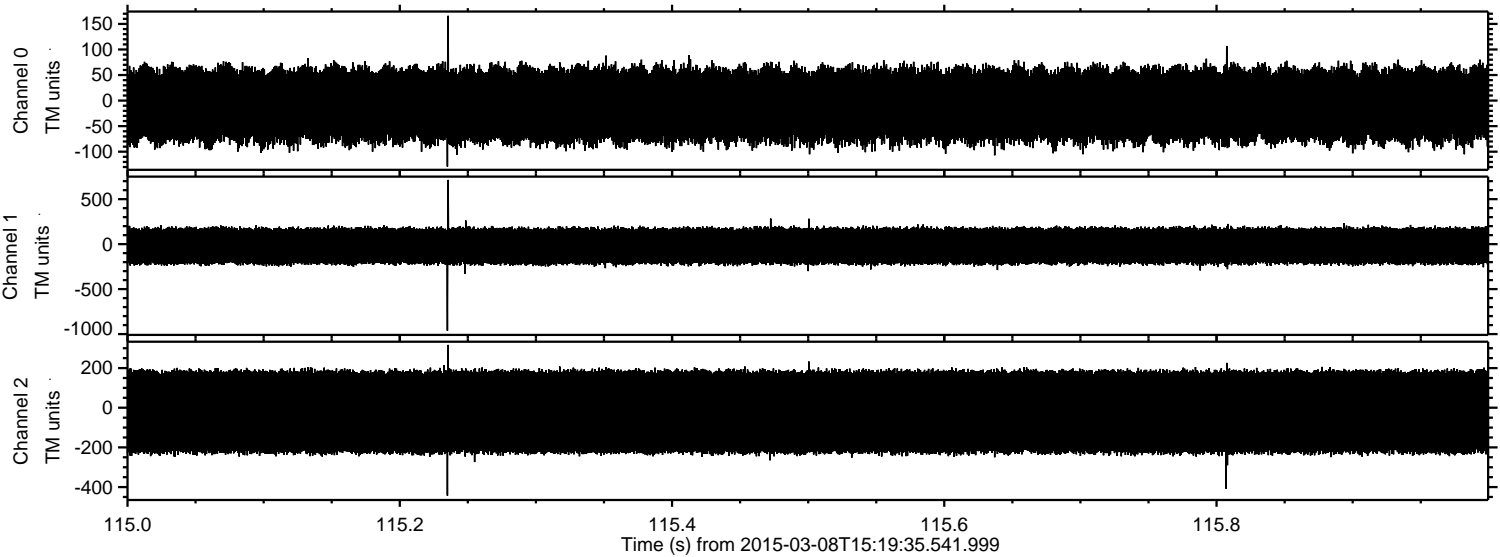
Processed Sun Mar 8 16:41:10 2015 by ELM ver.2012-10-06 from 001\_\_elm20150308\_151934\_\_dat00.bin





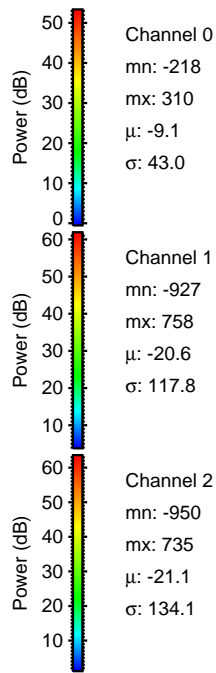
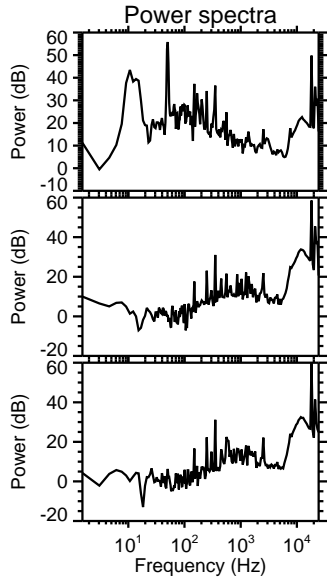
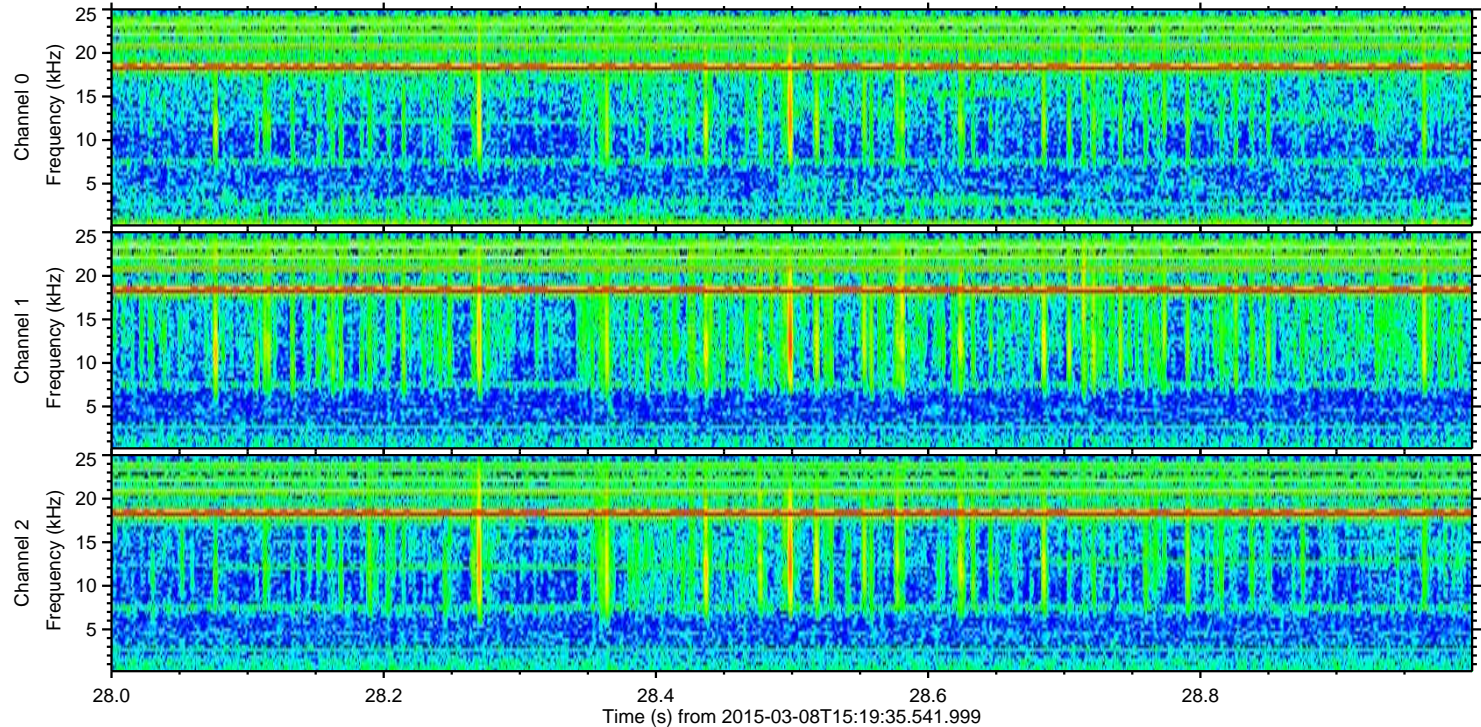
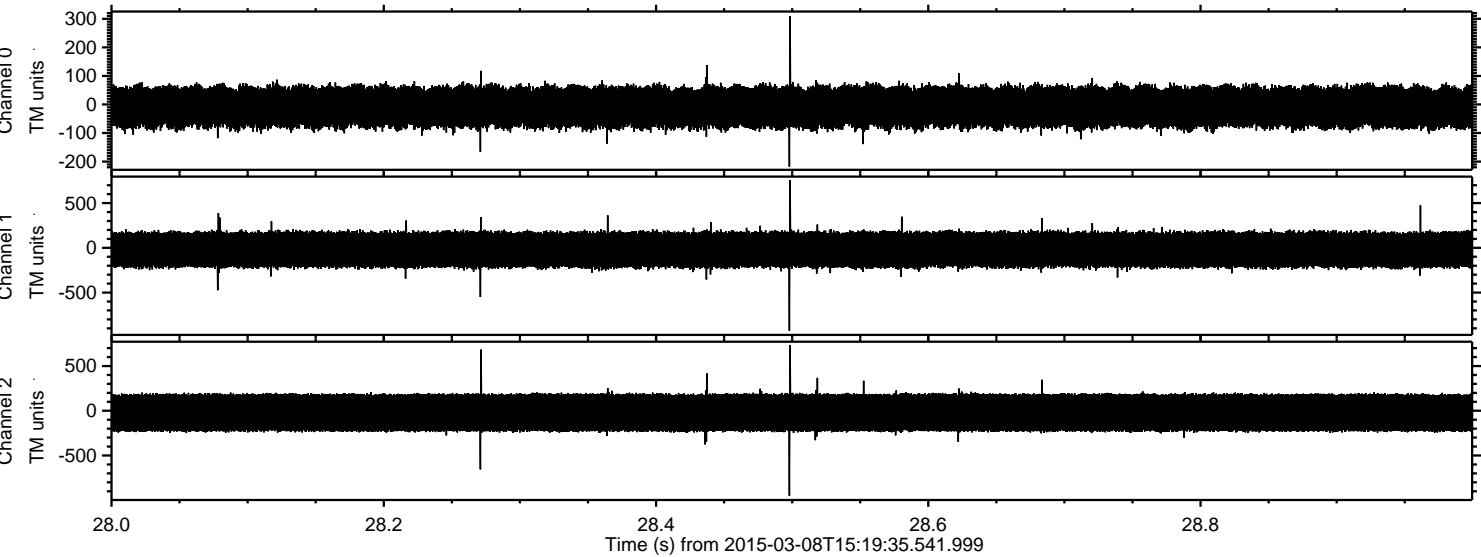
ELMAVAN 3D WAVEFORMS (Measured data sampled at 50 kHz) 49624 packets of 144 samples from 2015-03-08T15:19:35.541.999. Part 116/143

Processed Sun Mar 8 16:41:11 2015 by ELM ver.2012-10-06 from 001\_\_elm20150308\_151934\_\_dat00.bin





Processed Sun Mar 8 16:41:12 2015 by ELM ver.2012-10-06 from 001\_\_elm20150308\_151934\_\_dat00.bin



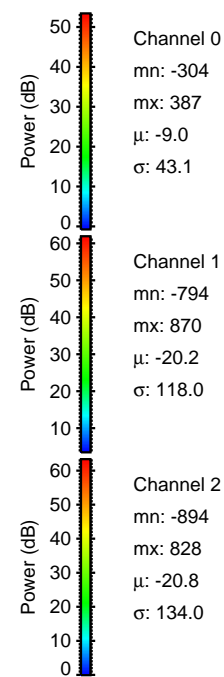
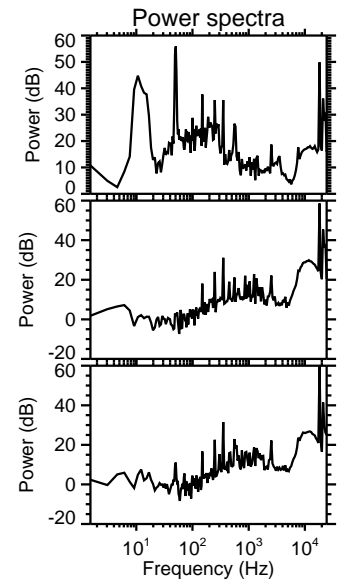
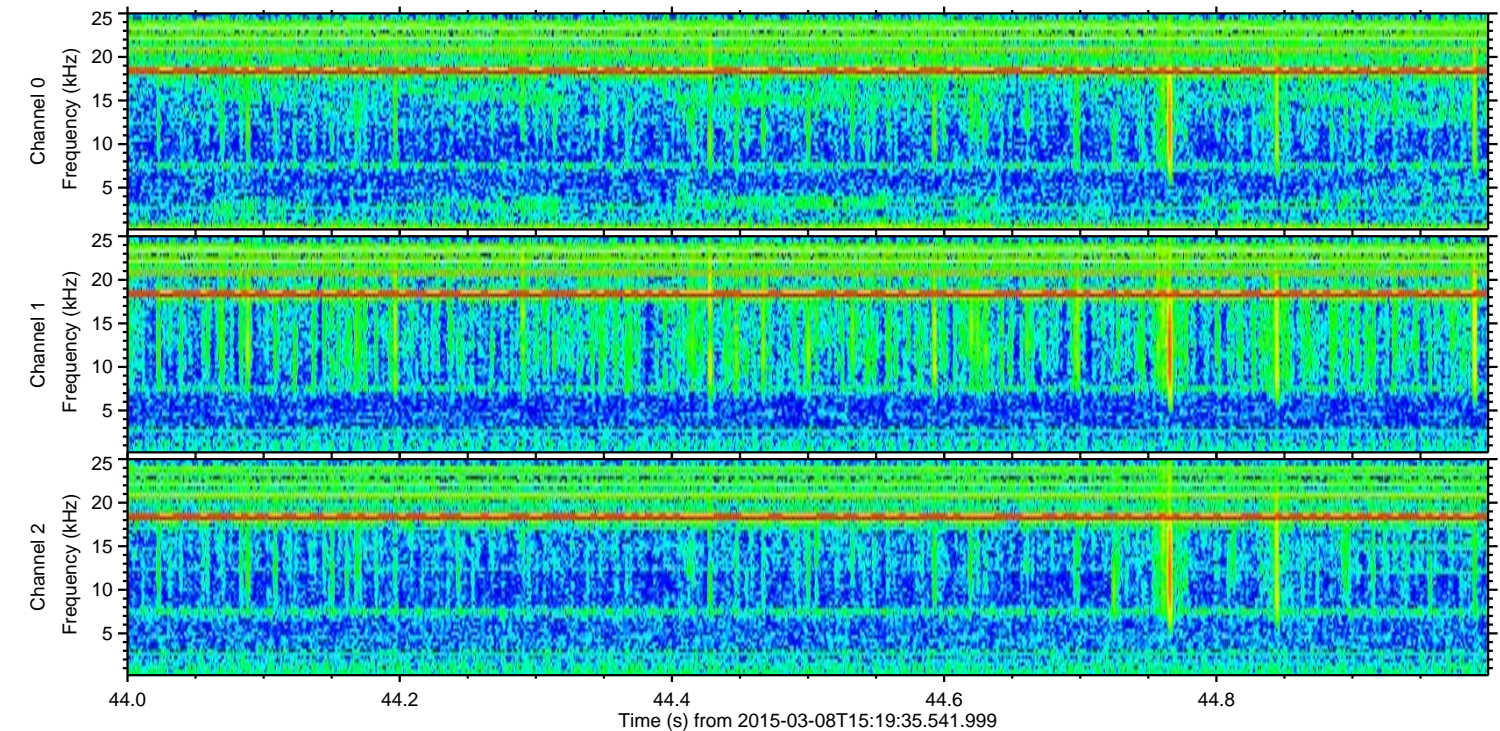
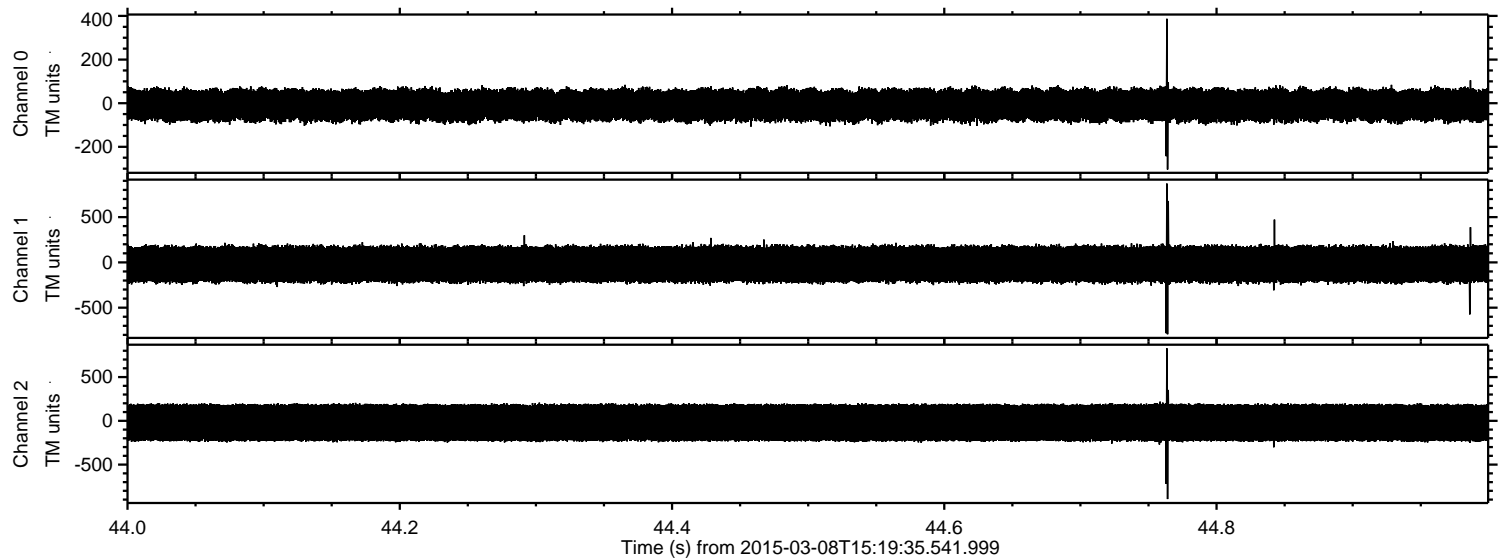
Channel 0  
mn: -218  
mx: 310  
 $\mu$ : -9.1  
 $\sigma$ : 43.0

Channel 1  
mn: -927  
mx: 758  
 $\mu$ : -20.6  
 $\sigma$ : 117.8

Channel 2  
mn: -950  
mx: 735  
 $\mu$ : -21.1  
 $\sigma$ : 134.1

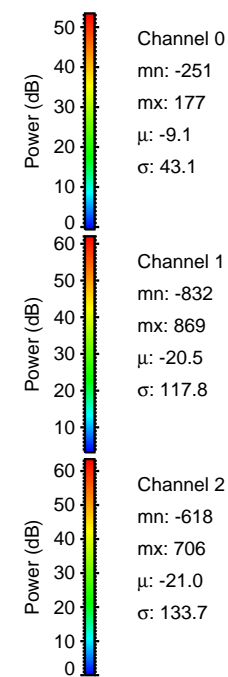
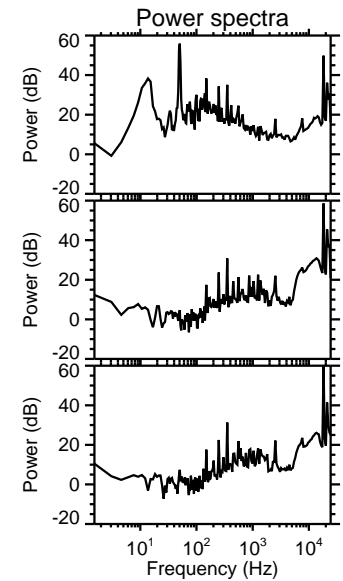
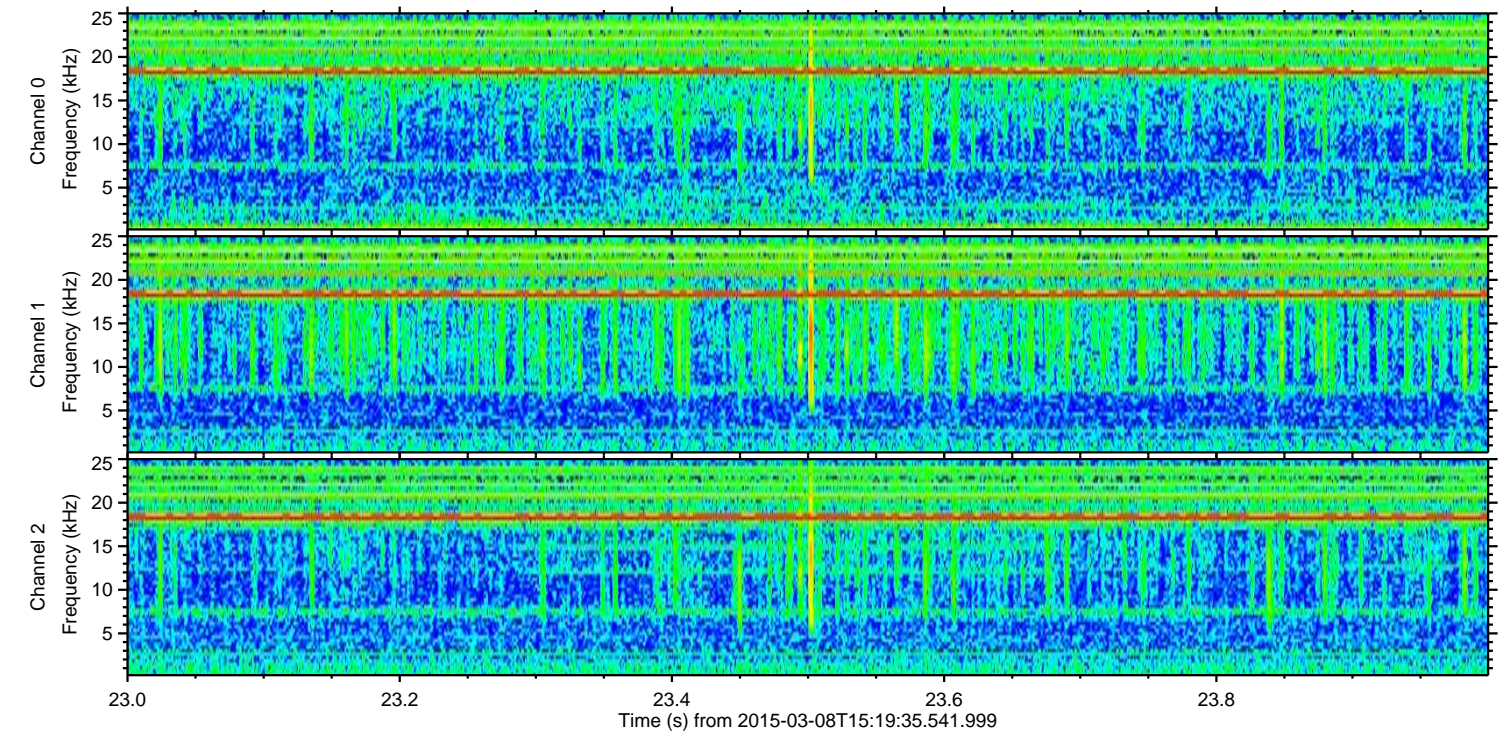
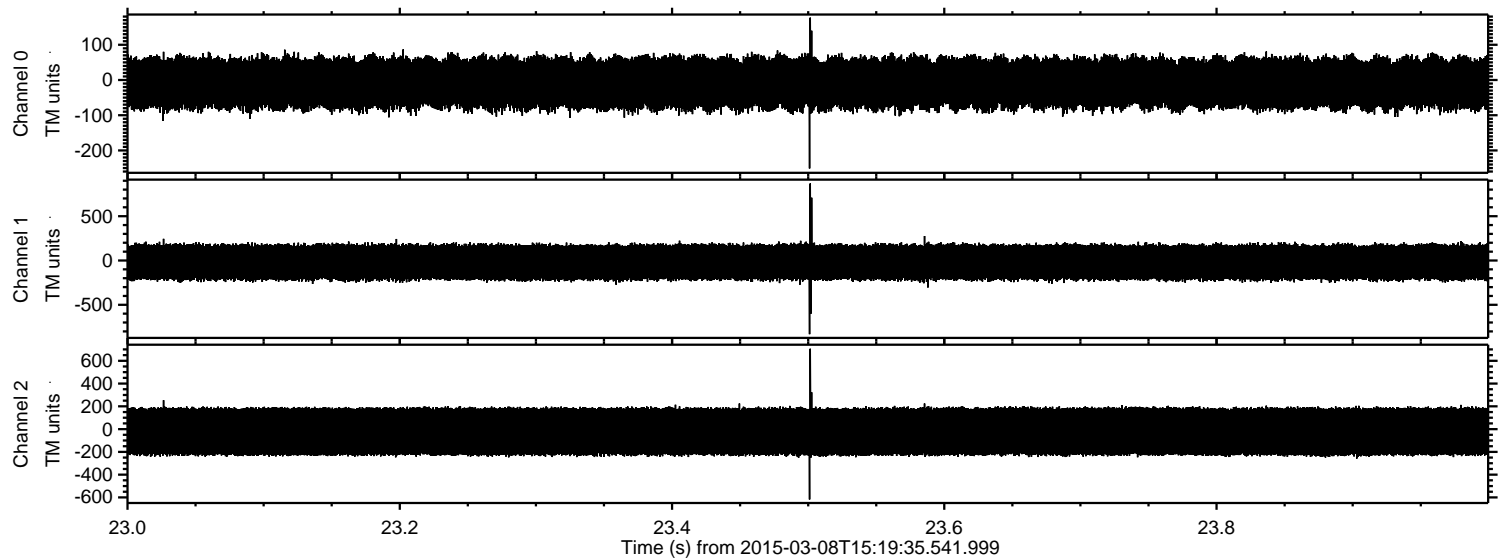


Processed Sun Mar 8 16:41:13 2015 by ELM ver.2012-10-06 from 001\_\_elm20150308\_151934\_\_dat00.bin





Processed Sun Mar 8 16:41:15 2015 by ELM ver.2012-10-06 from 001\_\_elm20150308\_151934\_\_dat00.bin



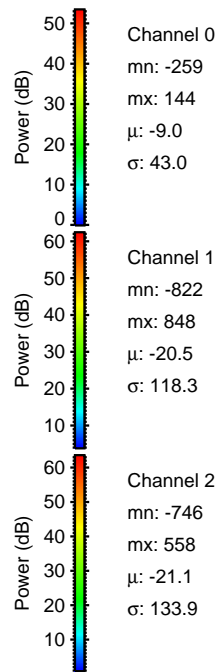
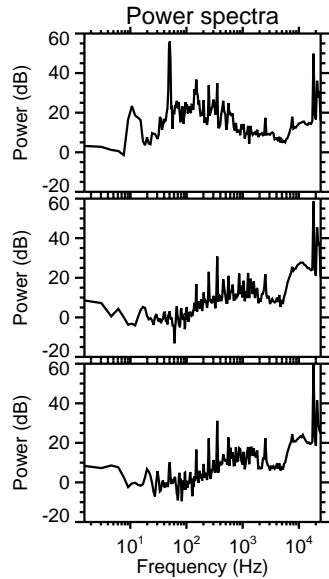
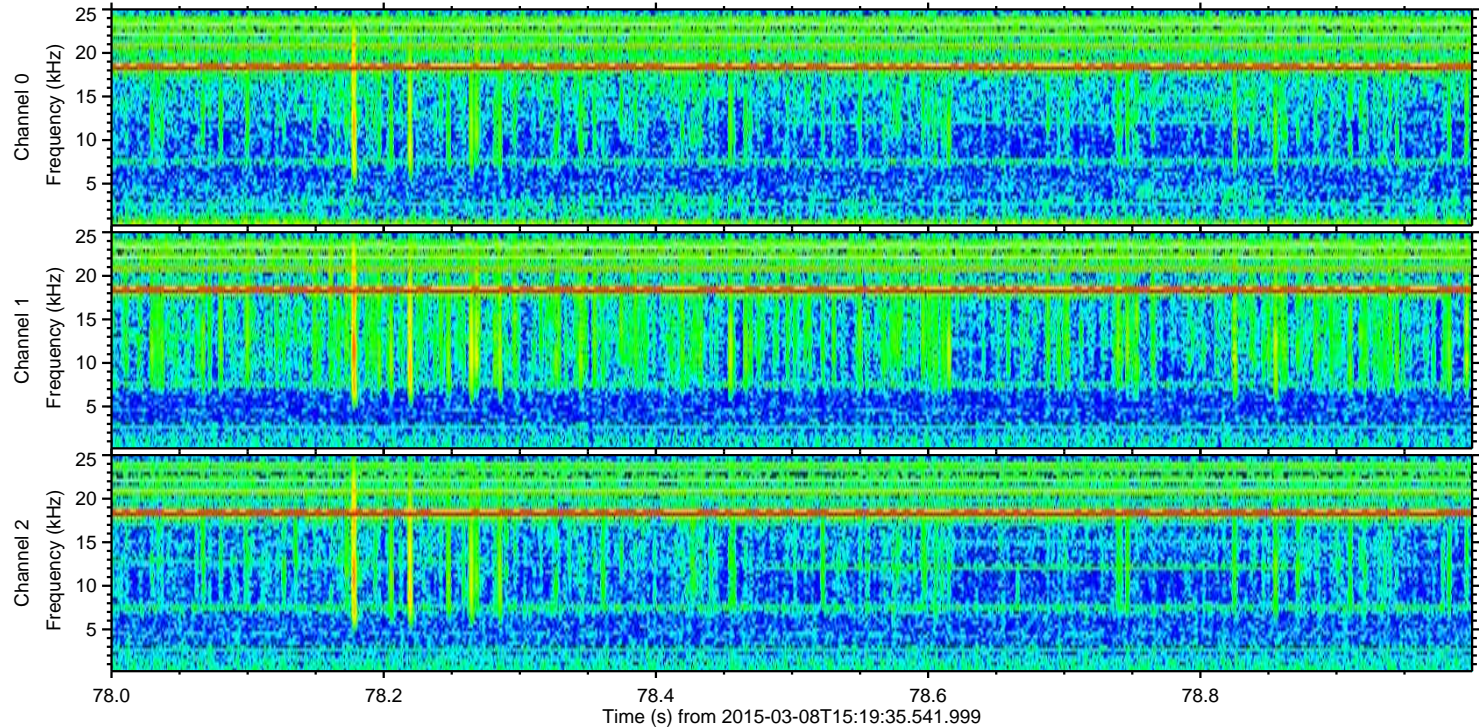
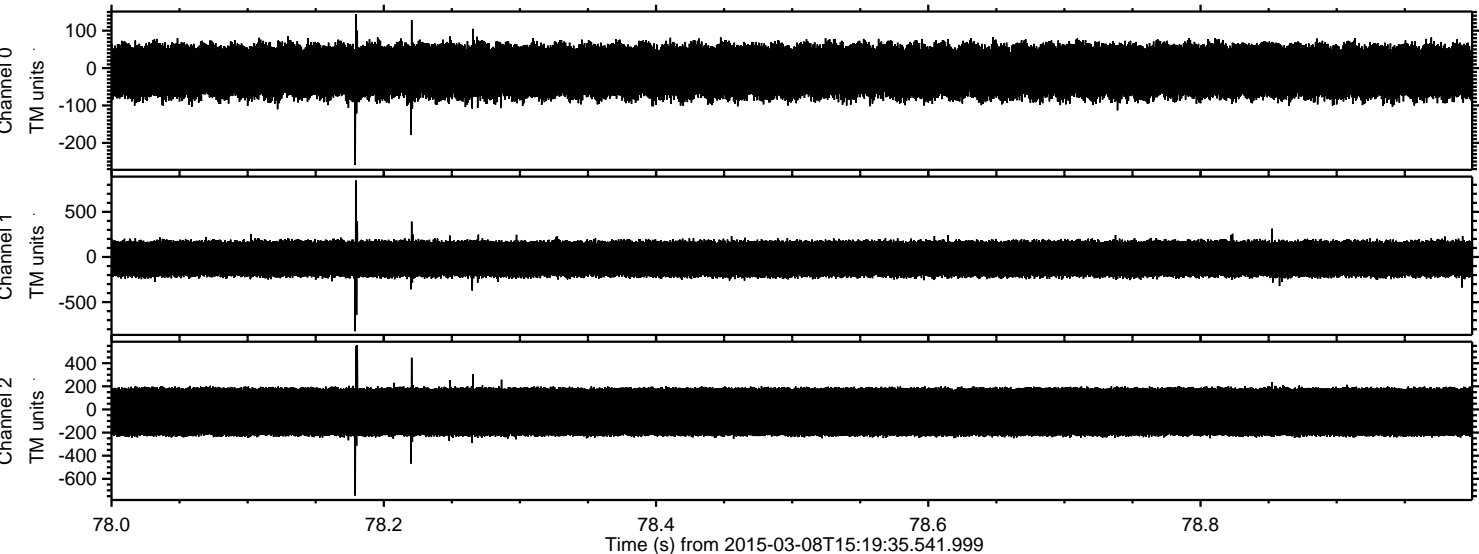
Channel 0  
mn: -251  
mx: 177  
 $\mu$ : -9.1  
 $\sigma$ : 43.1

Channel 1  
mn: -832  
mx: 869  
 $\mu$ : -20.5  
 $\sigma$ : 117.8

Channel 2  
mn: -618  
mx: 706  
 $\mu$ : -21.0  
 $\sigma$ : 133.7



Processed Sun Mar 8 16:41:16 2015 by ELM ver.2012-10-06 from 001\_\_elm20150308\_151934\_\_dat00.bin





Processed Sun Mar 8 16:41:17 2015 by ELM ver.2012-10-06 from 001\_\_elm20150308\_151934\_\_dat00.bin

