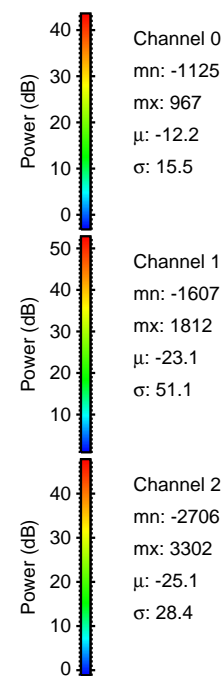
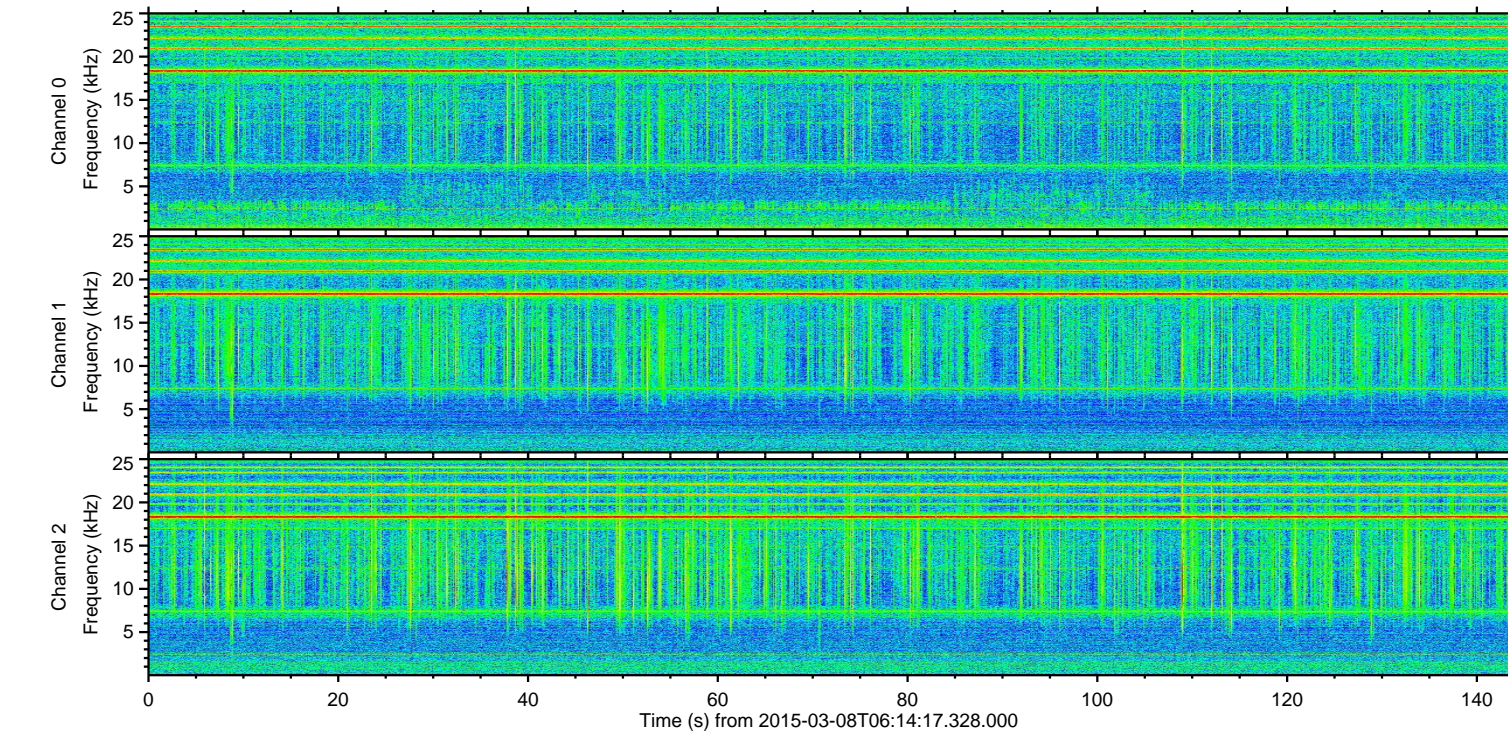
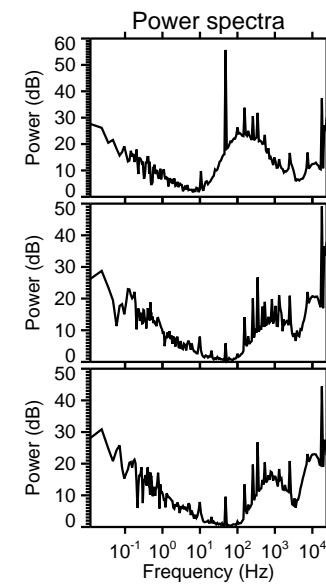
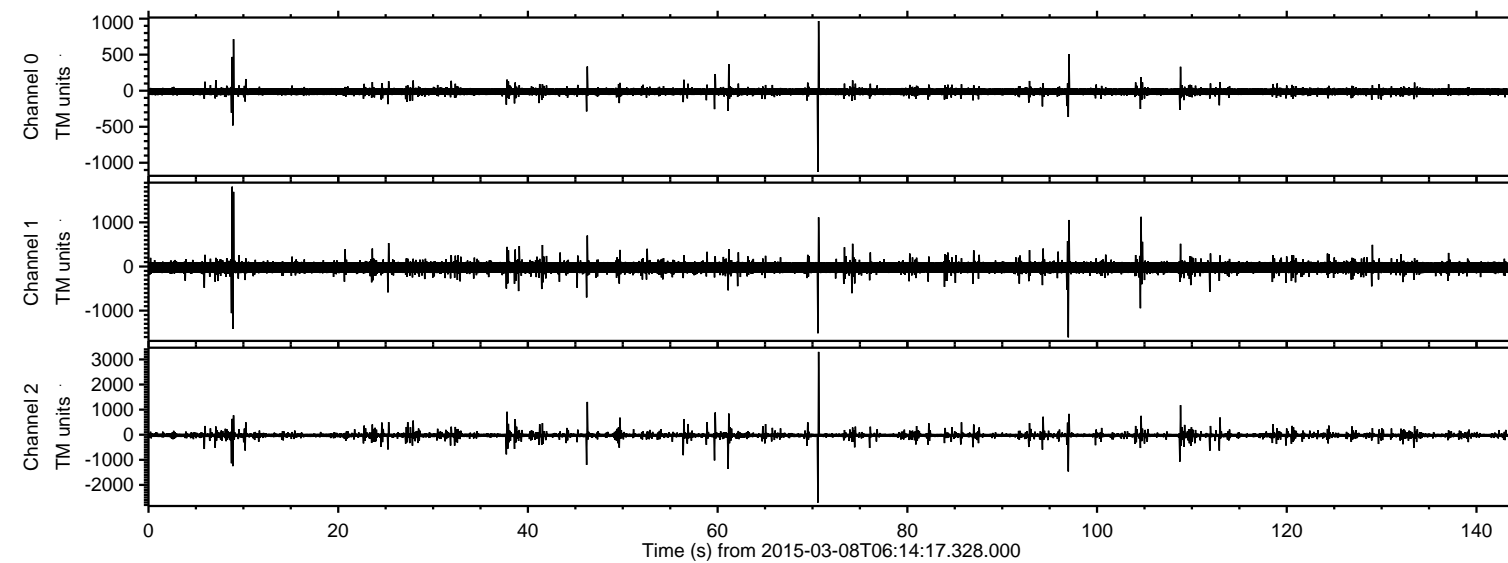


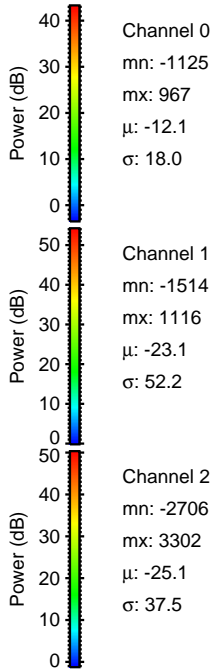
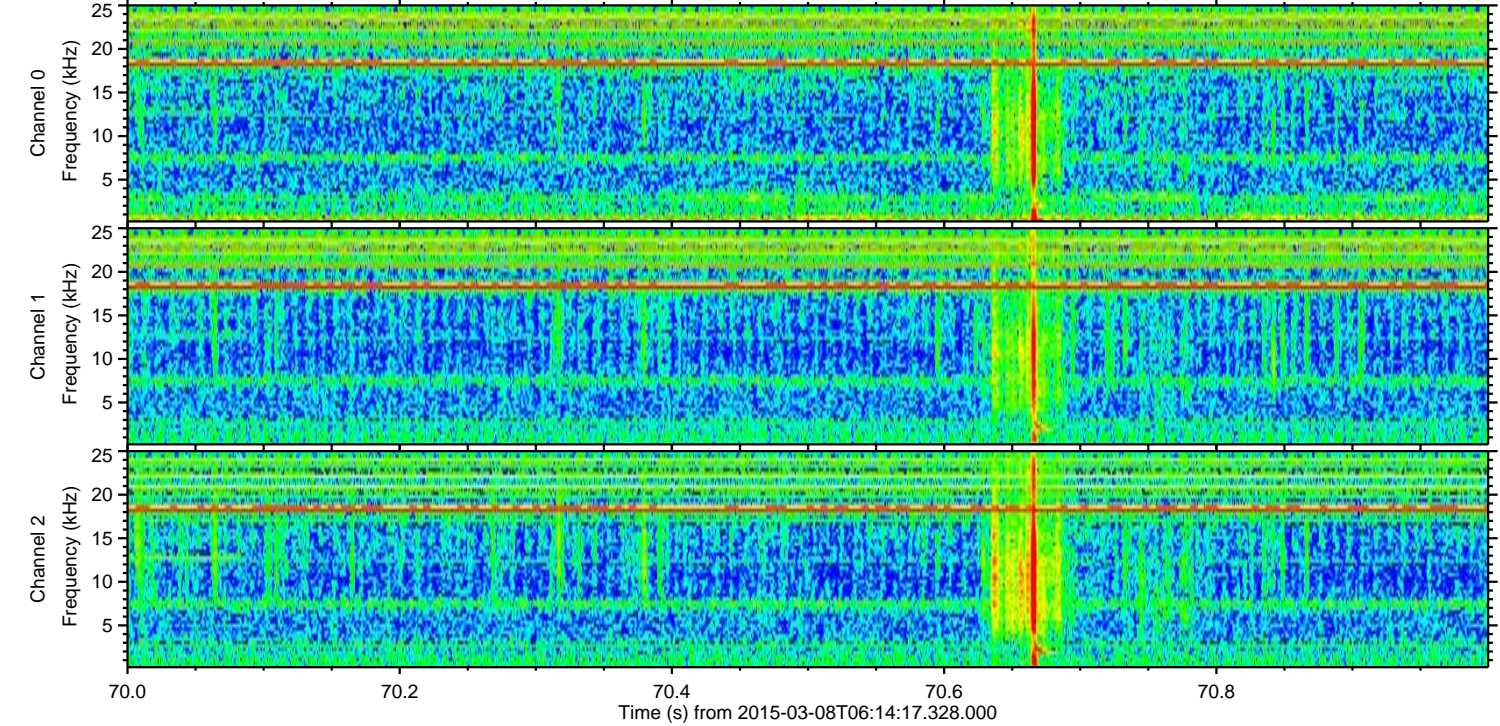
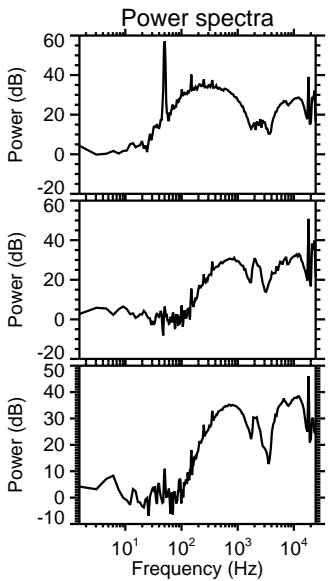
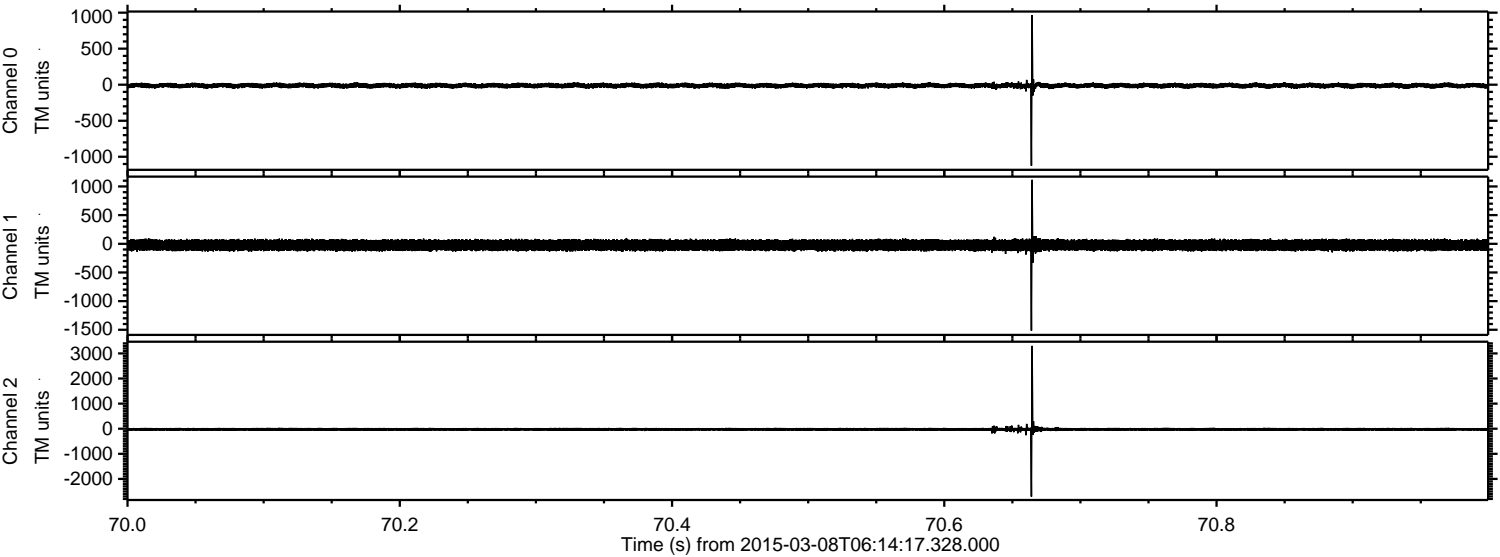
# ELMAVAN 3D WAVEFORMS (Measured data sampled at 50 kHz) 49807 packets of 144 samples from 2015-03-08T06:14:17.328.000.

Processed Sun Mar 8 14:35:33 2015 by ELM ver.2012-10-06 from 001\_\_elm20150308\_061416\_\_dat00.bin





Processed Sun Mar 8 14:35:45 2015 by ELM ver.2012-10-06 from 001\_\_elm20150308\_061416\_\_dat00.bin



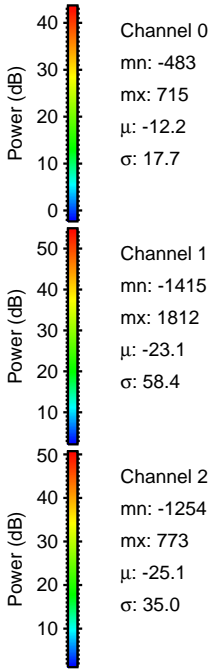
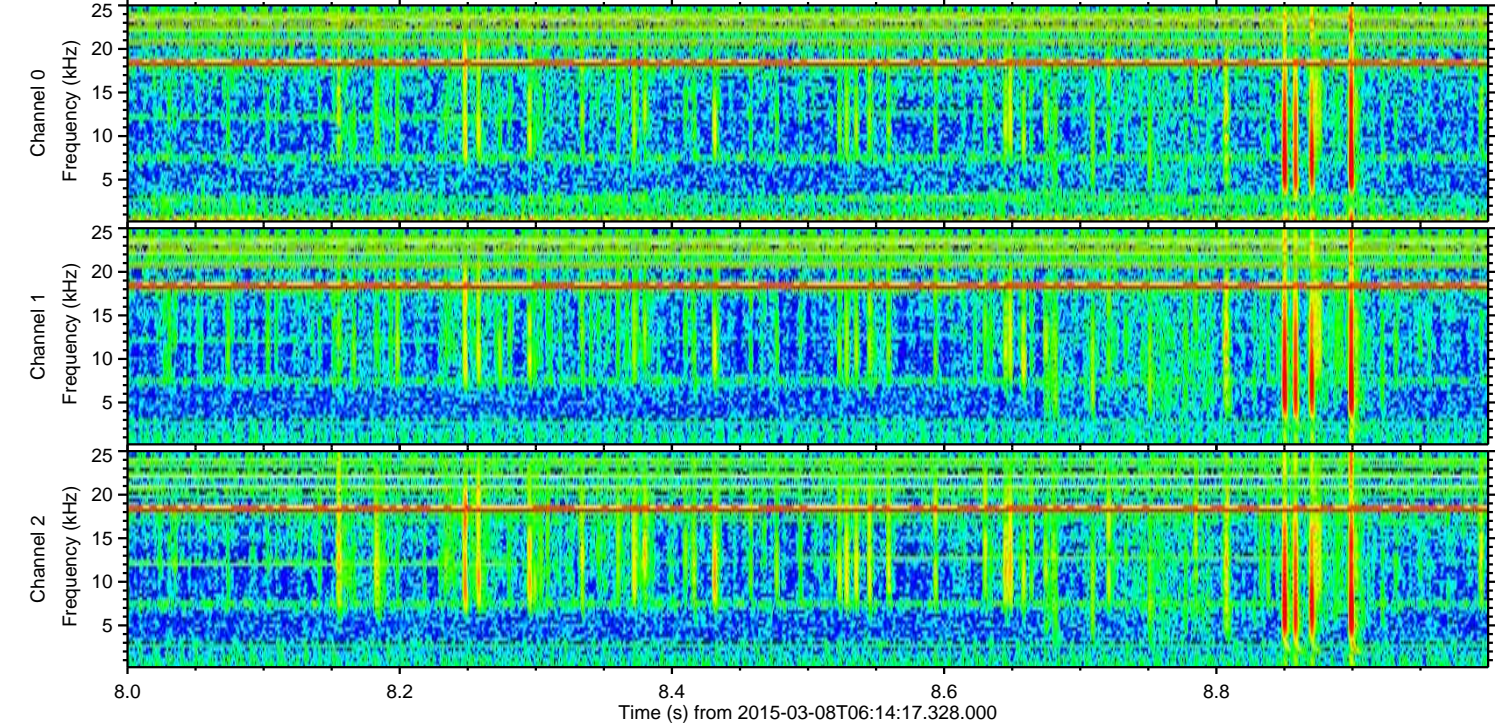
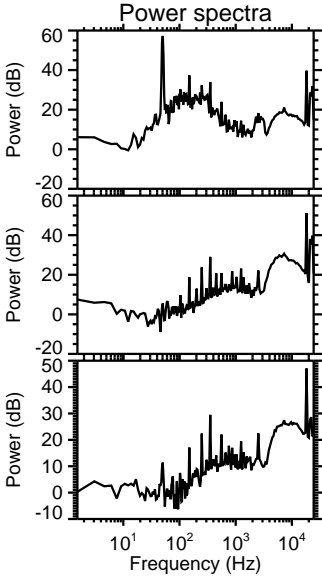
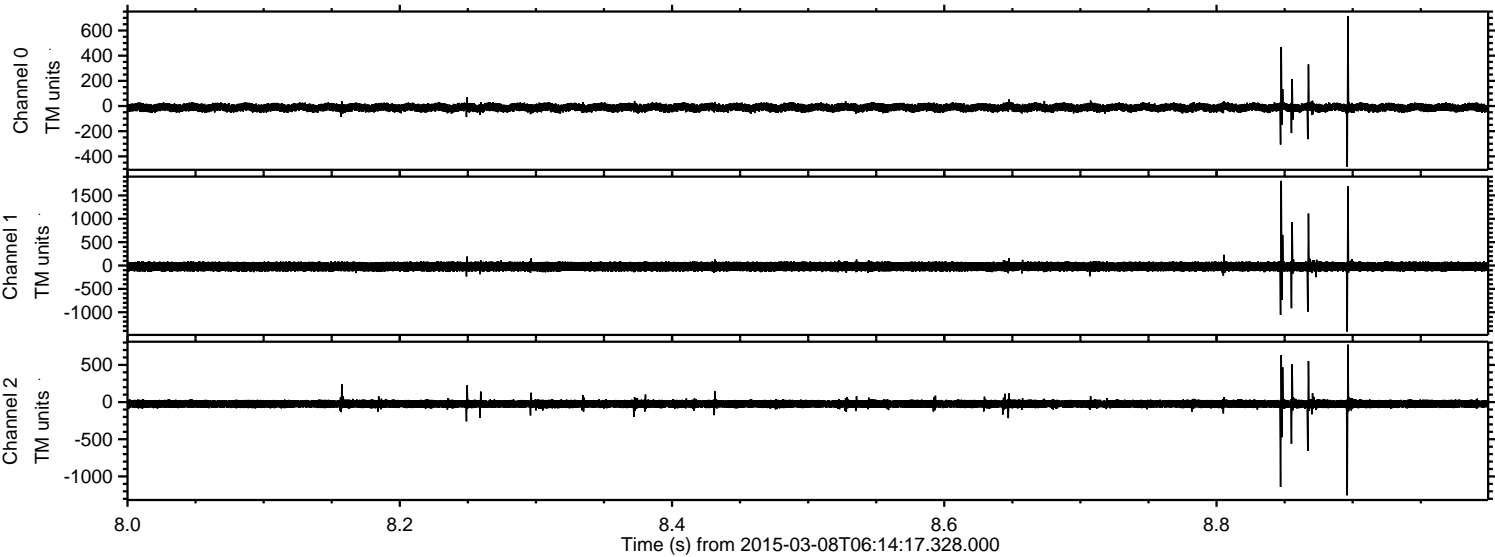
Channel 0  
mn: -1125  
mx: 967  
 $\mu$ : -12.1  
 $\sigma$ : 18.0

Channel 1  
mn: -1514  
mx: 1116  
 $\mu$ : -23.1  
 $\sigma$ : 52.2

Channel 2  
mn: -2706  
mx: 3302  
 $\mu$ : -25.1  
 $\sigma$ : 37.5

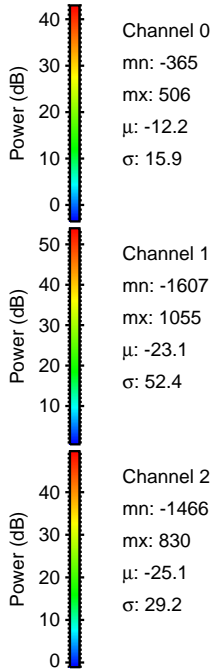
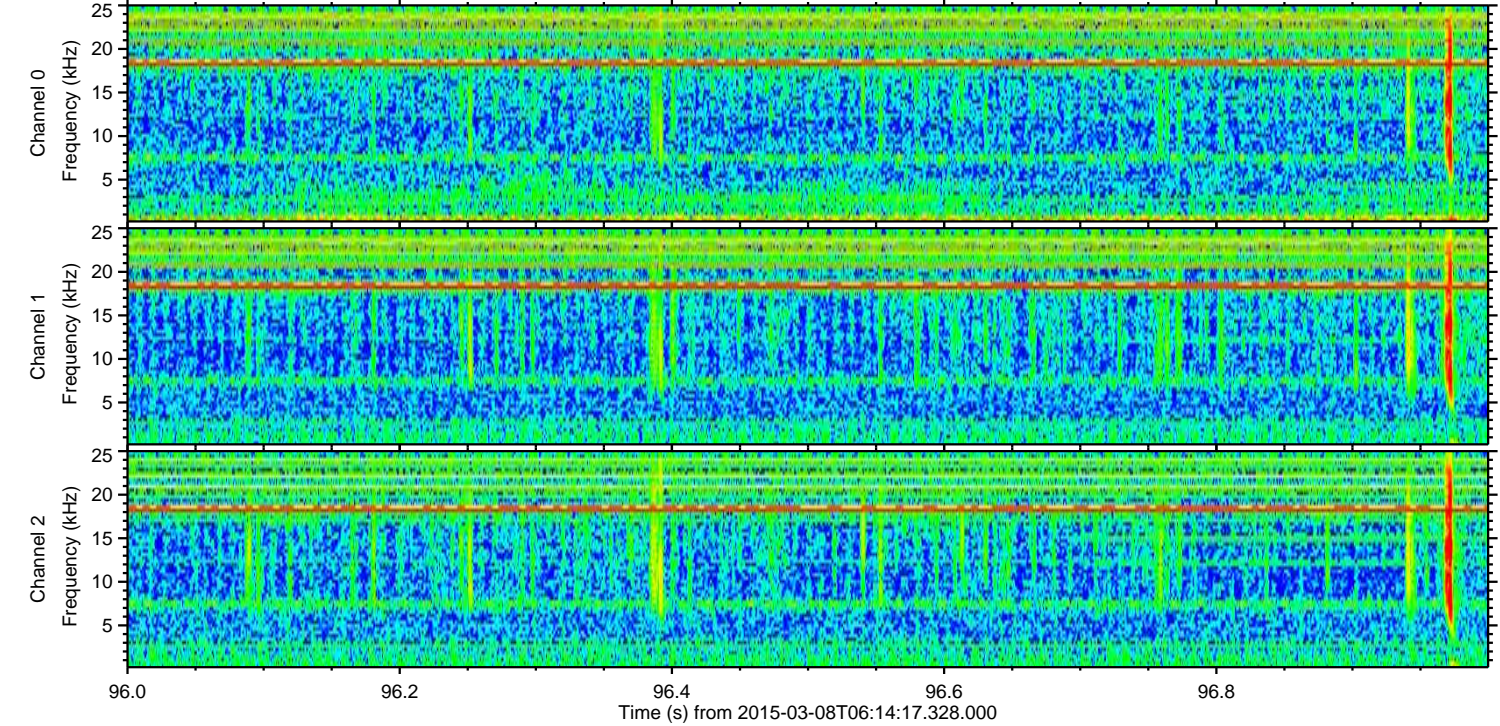
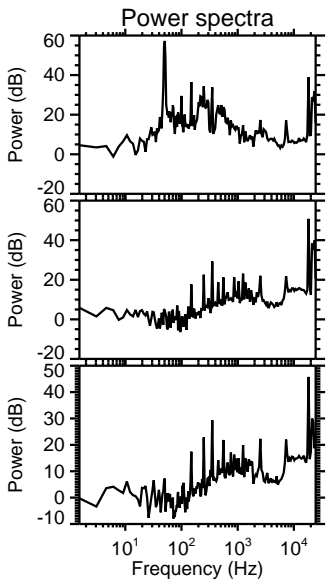
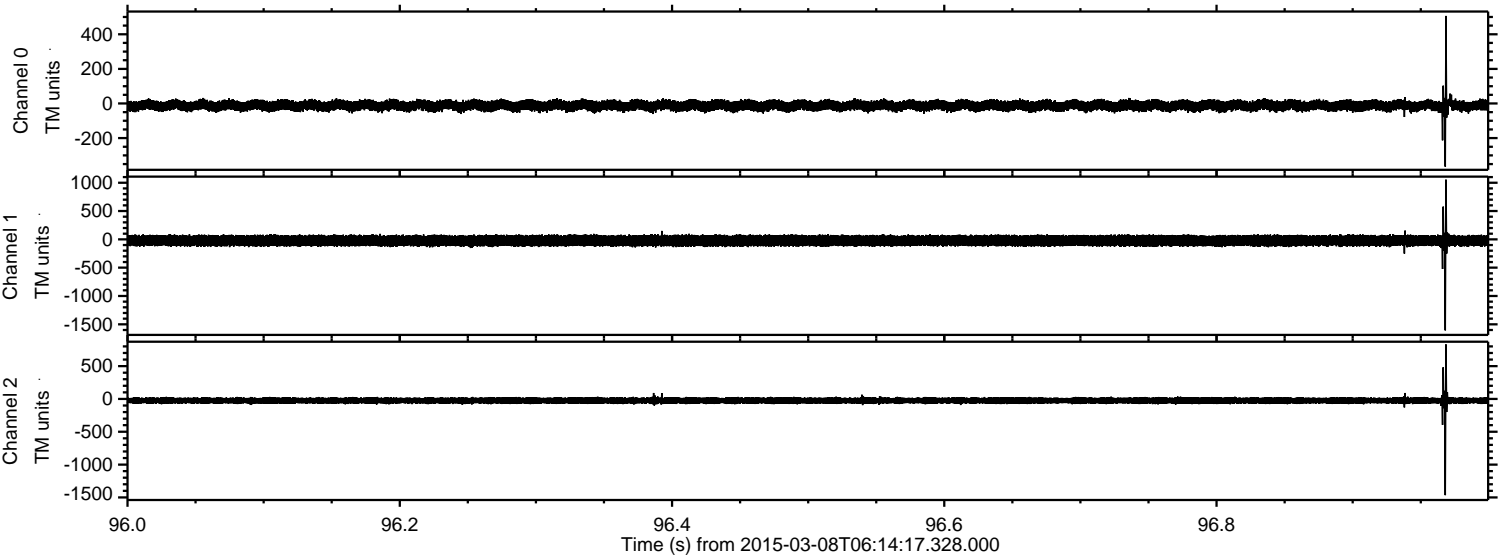


Processed Sun Mar 8 14:35:46 2015 by ELM ver.2012-10-06 from 001\_\_elm20150308\_061416\_\_dat00.bin



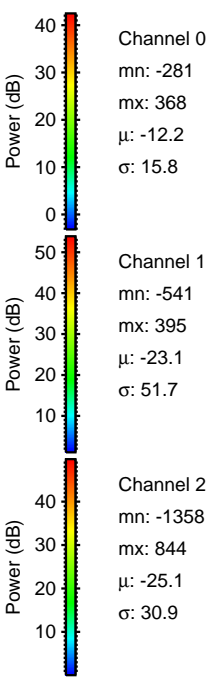
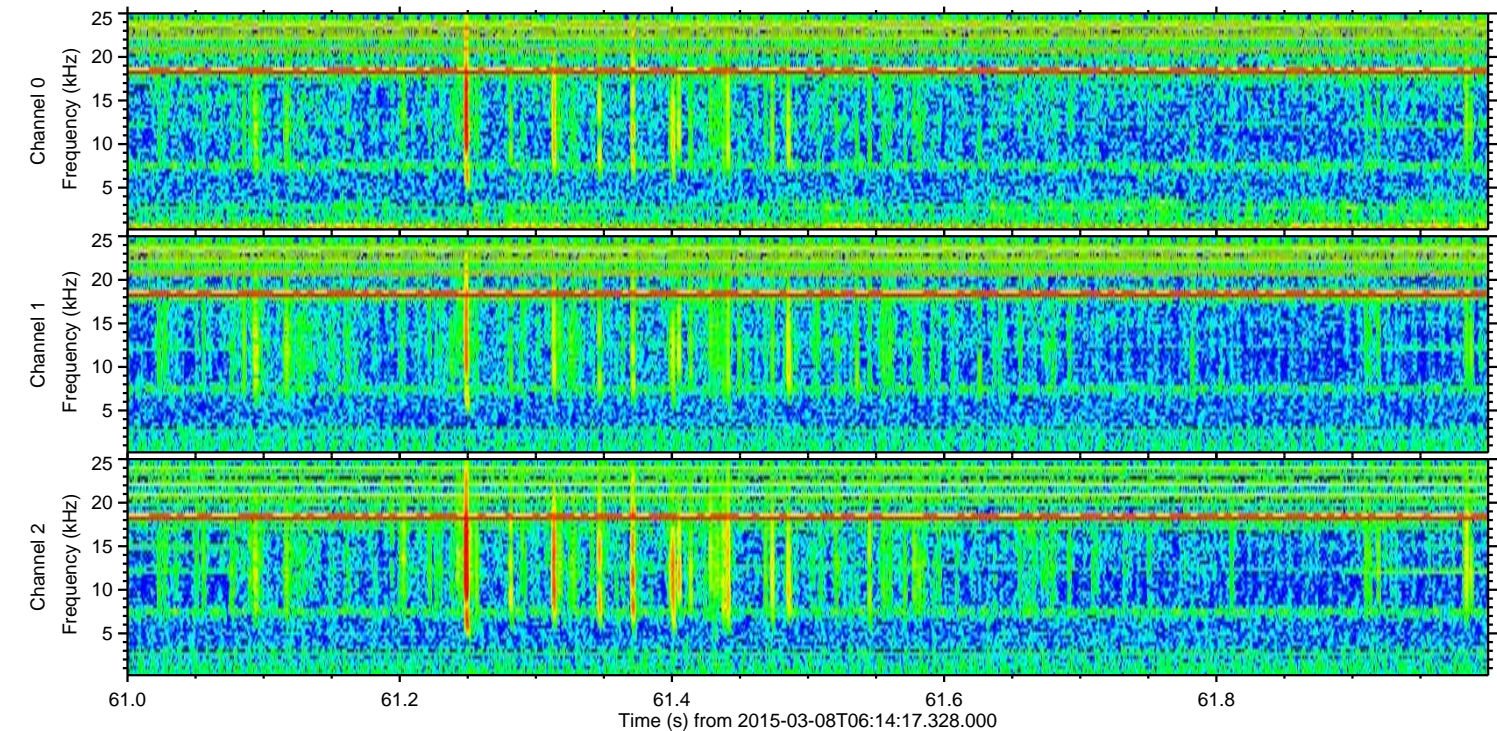
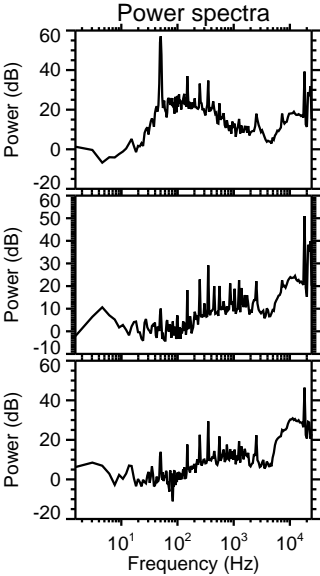
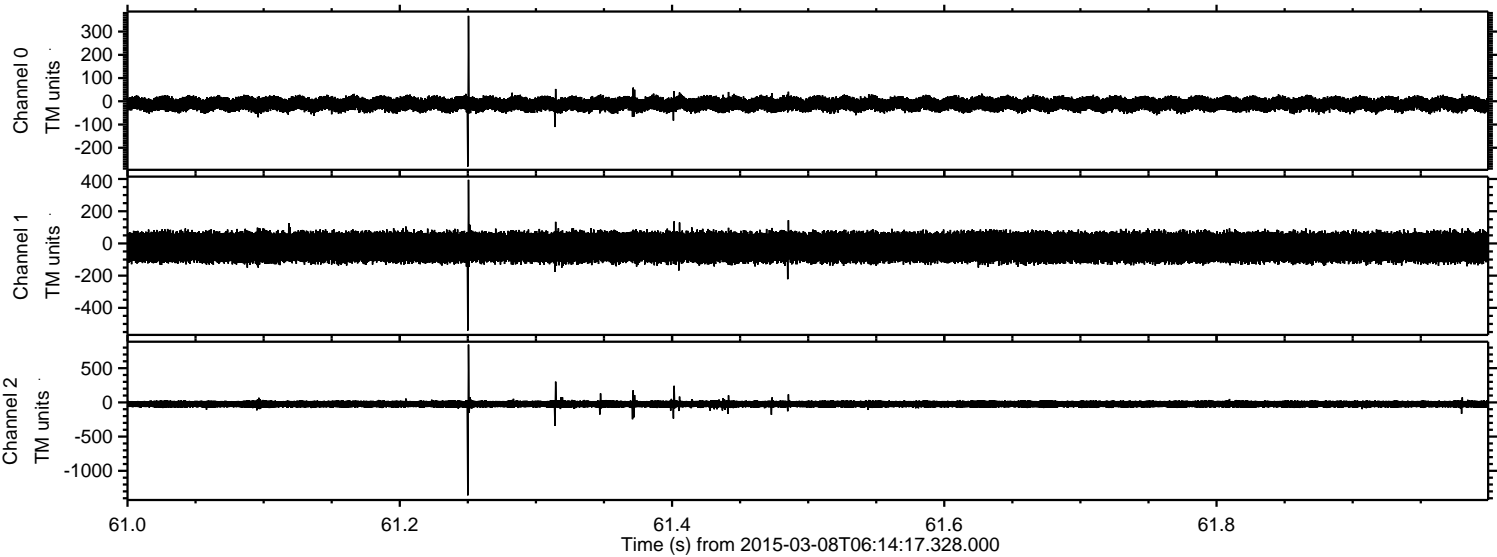


Processed Sun Mar 8 14:35:47 2015 by ELM ver.2012-10-06 from 001\_\_elm20150308\_061416\_\_dat00.bin





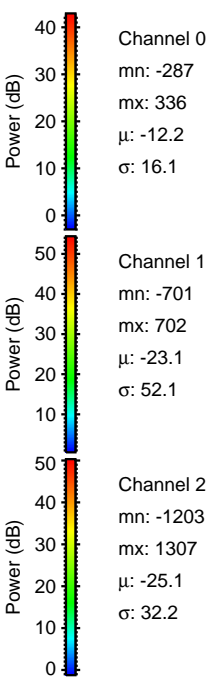
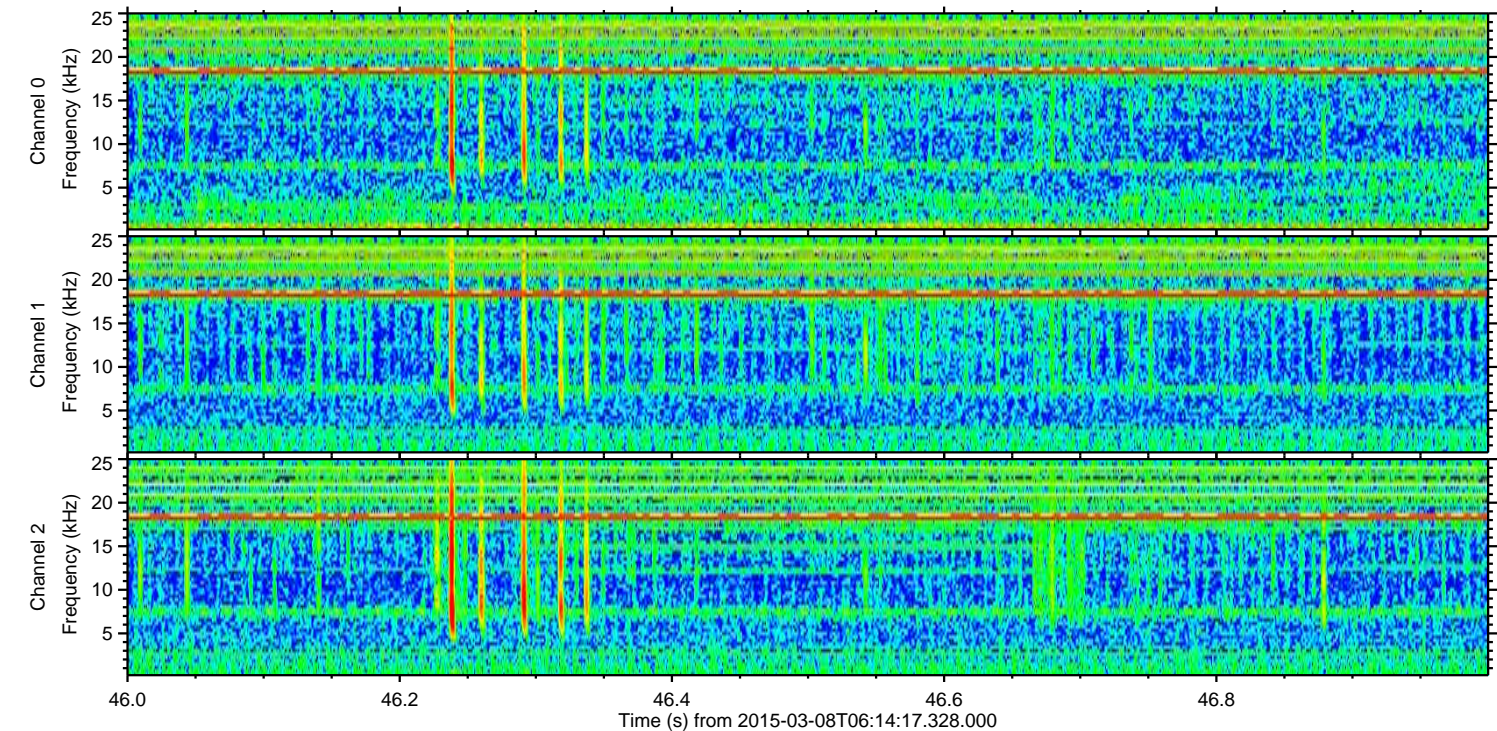
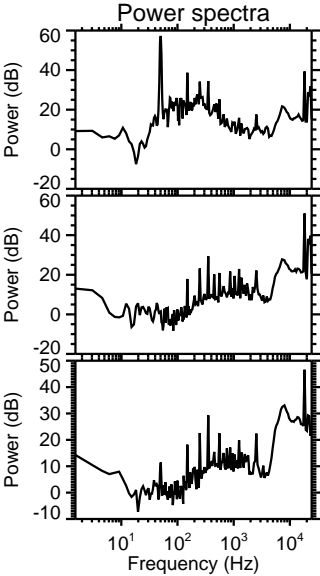
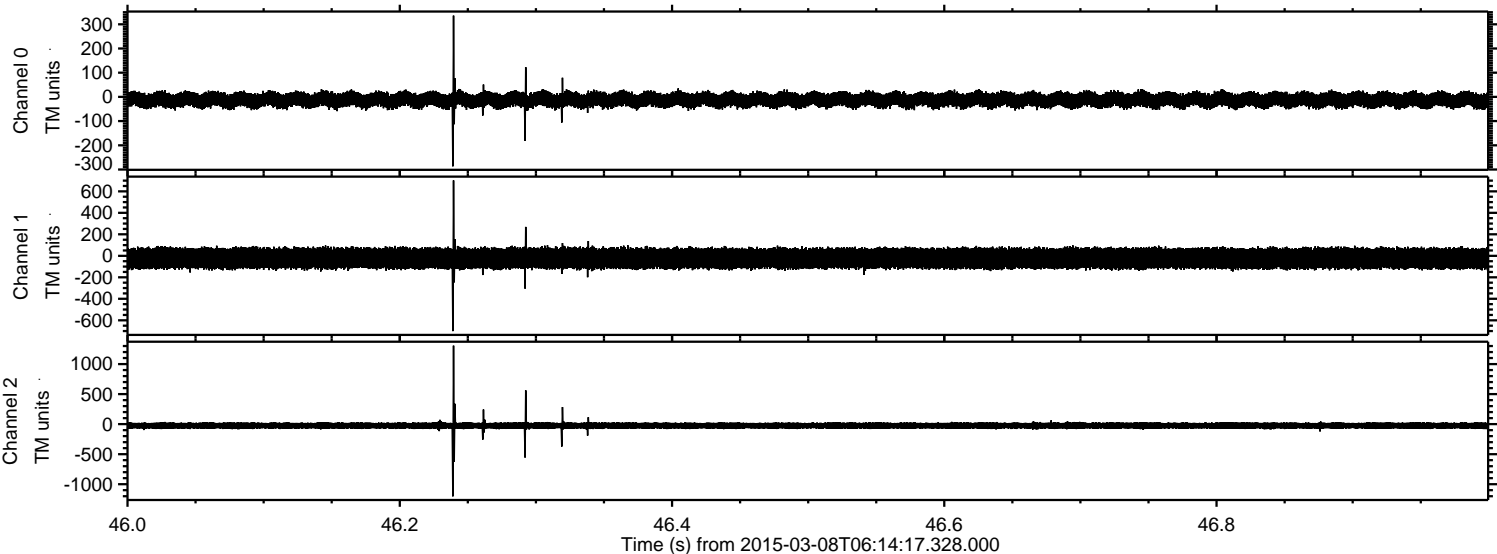
Processed Sun Mar 8 14:35:48 2015 by ELM ver.2012-10-06 from 001\_\_elm20150308\_061416\_\_dat00.bin





ELMAVAN 3D WAVEFORMS (Measured data sampled at 50 kHz) 49807 packets of 144 samples from 2015-03-08T06:14:17.328.000. Part 47/144

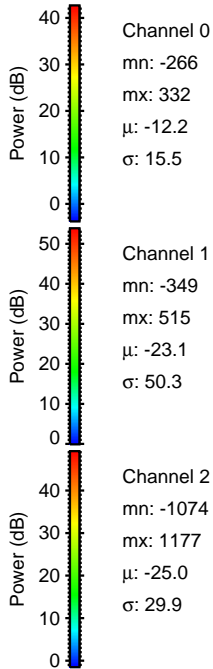
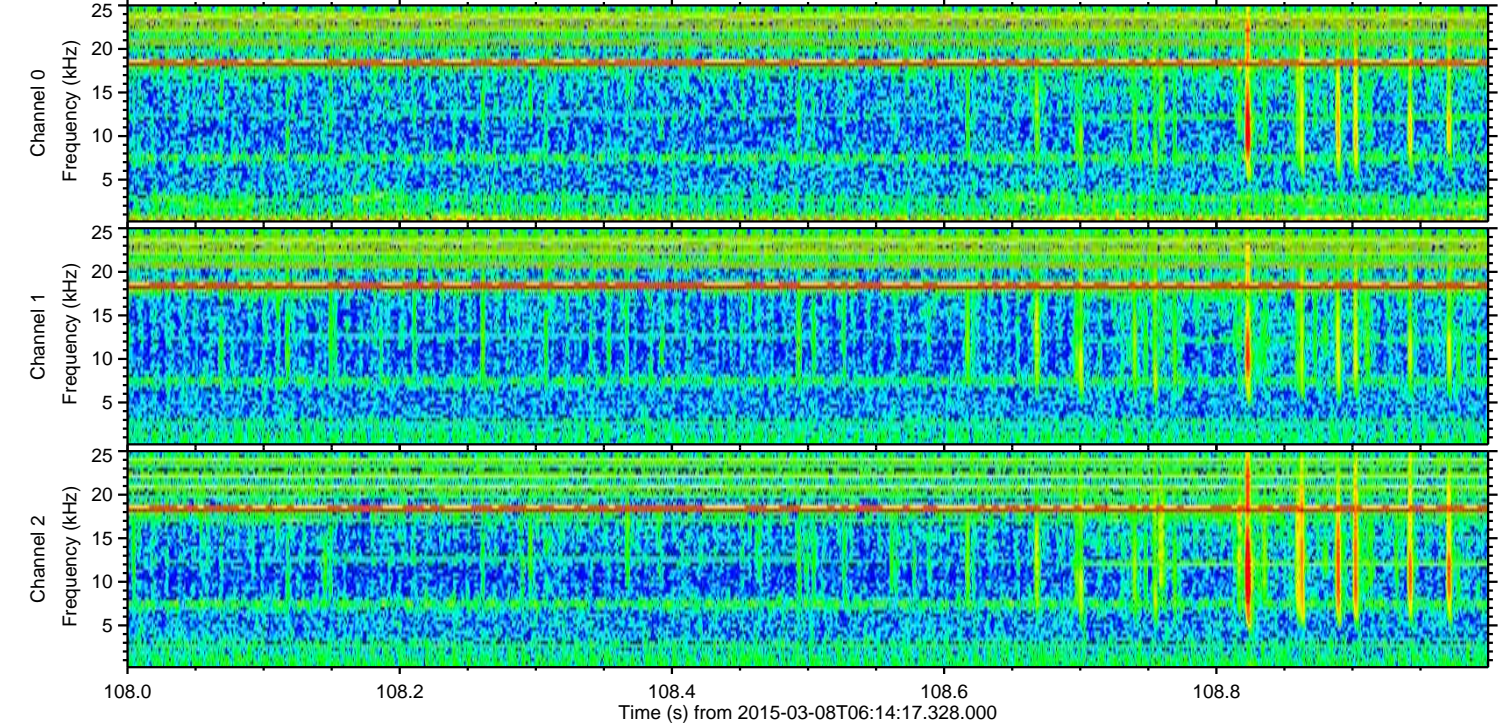
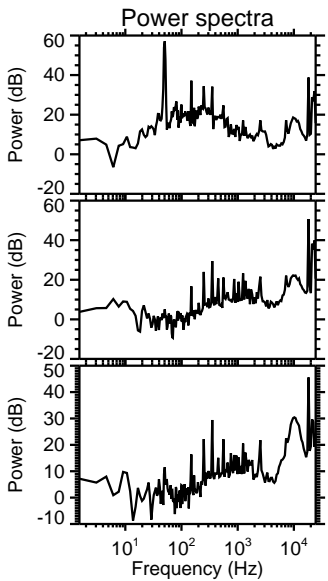
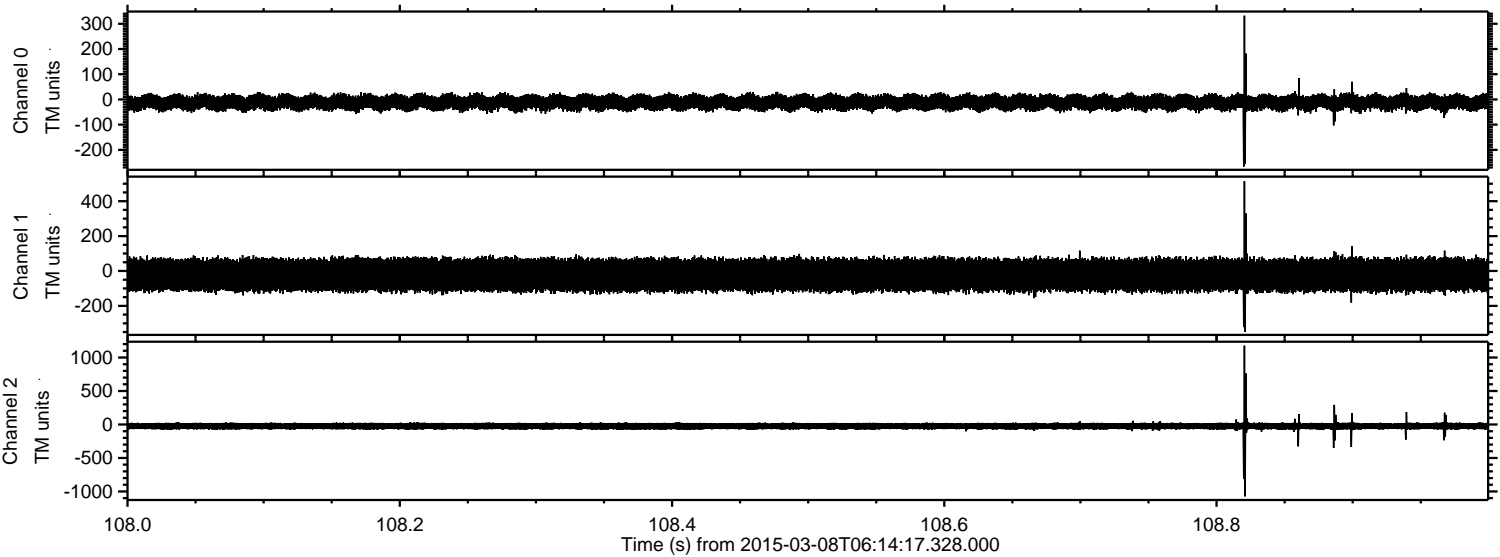
Processed Sun Mar 8 14:35:49 2015 by ELM ver.2012-10-06 from 001\_\_elm20150308\_061416\_\_dat00.bin





ELMAVAN 3D WAVEFORMS (Measured data sampled at 50 kHz) 49807 packets of 144 samples from 2015-03-08T06:14:17.328.000. Part 109/144

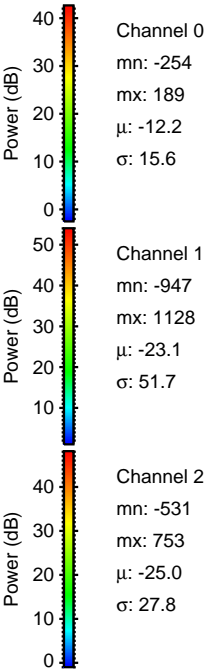
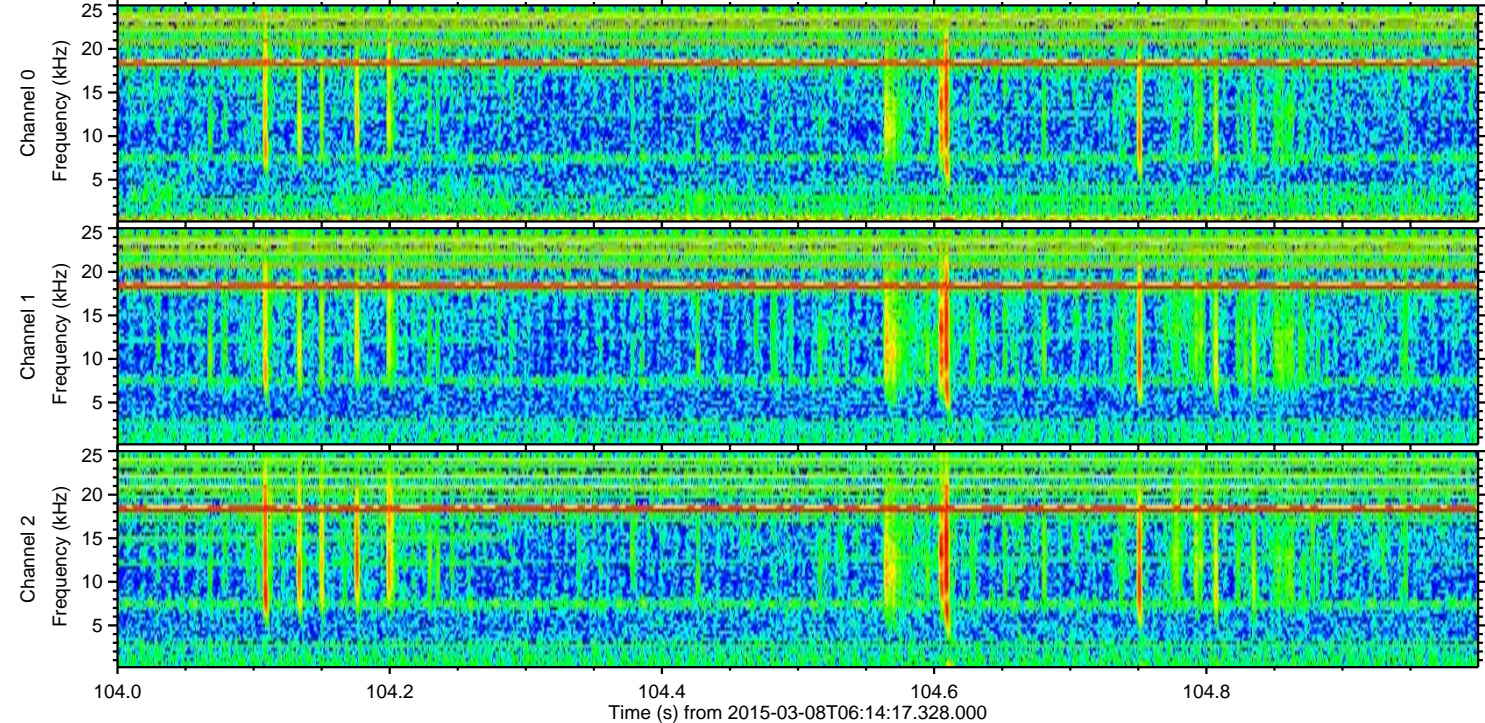
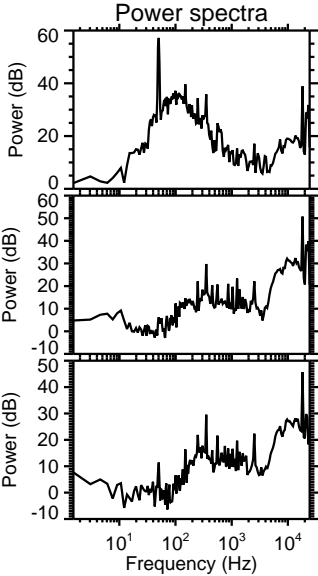
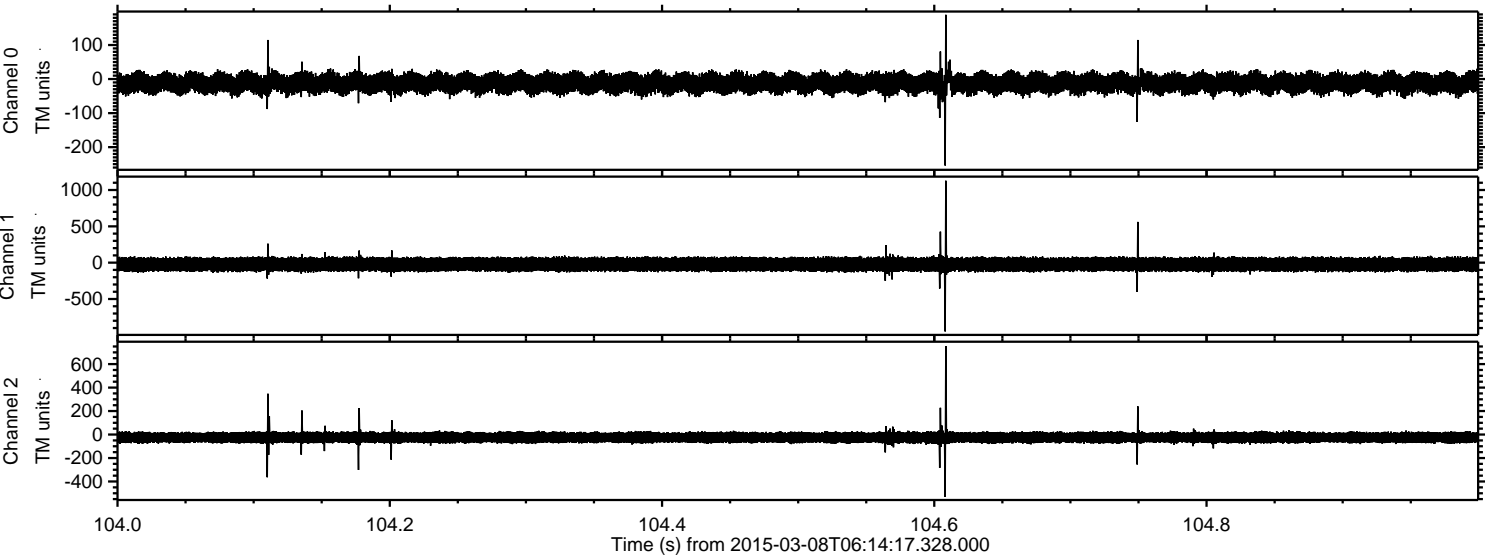
Processed Sun Mar 8 14:35:49 2015 by ELM ver.2012-10-06 from 001\_\_elm20150308\_061416\_\_dat00.bin





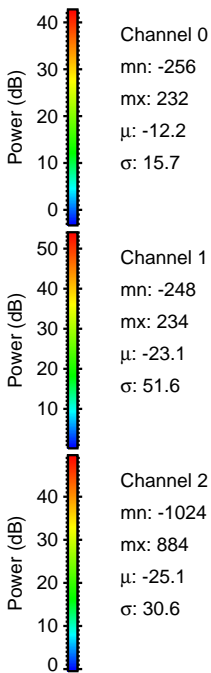
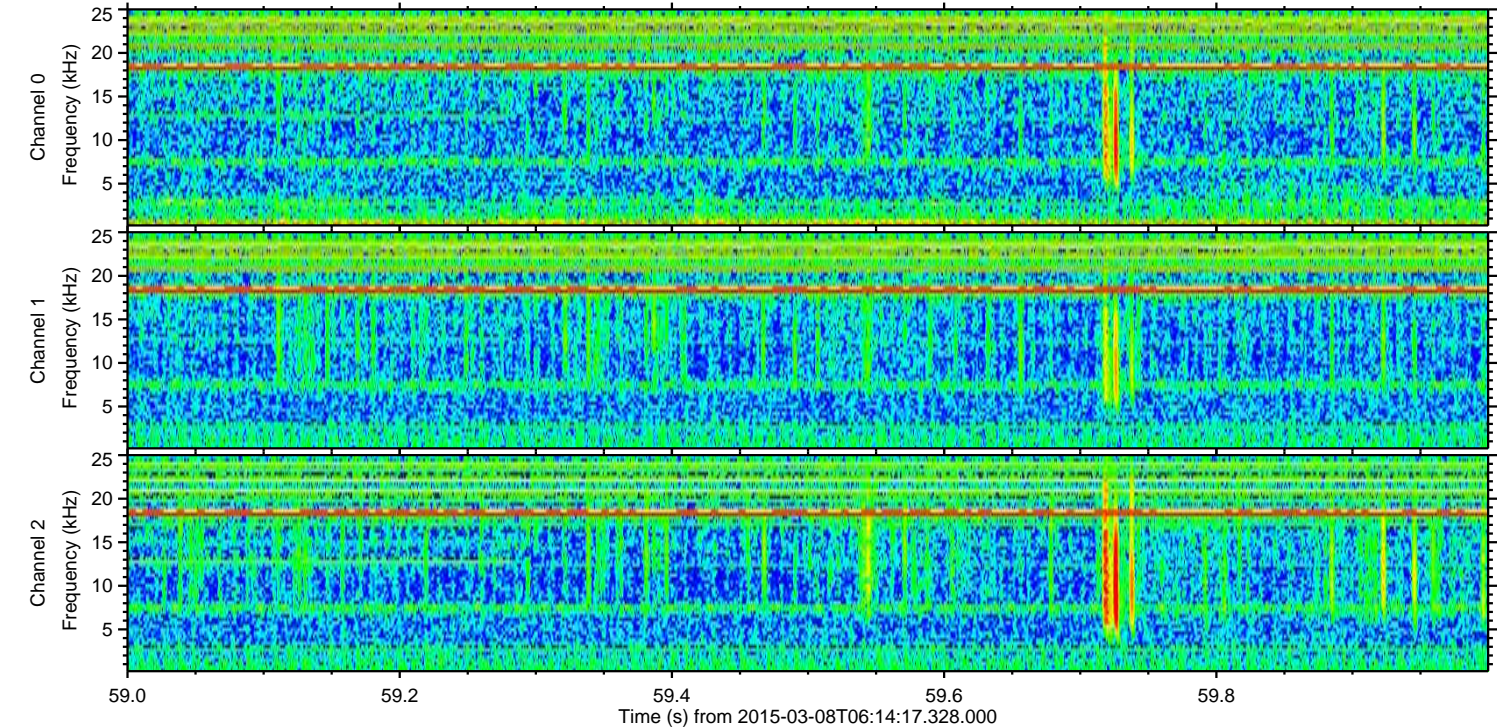
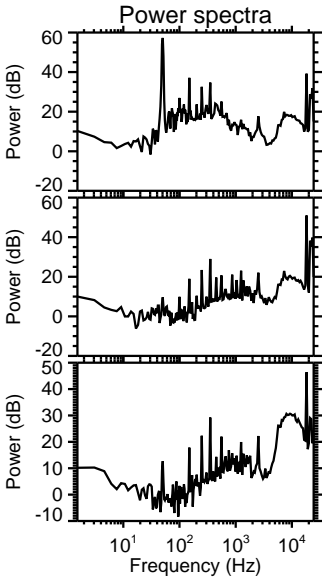
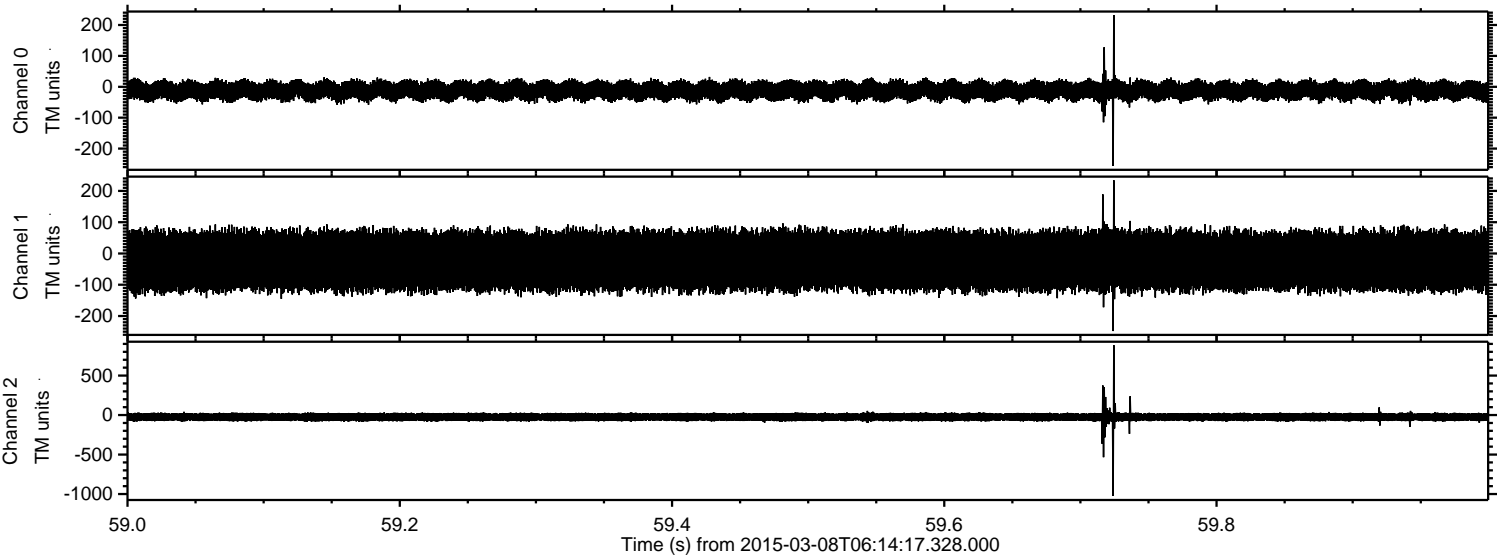
ELMAVAN 3D WAVEFORMS (Measured data sampled at 50 kHz) 49807 packets of 144 samples from 2015-03-08T06:14:17.328.000. Part 105/144

Processed Sun Mar 8 14:35:50 2015 by ELM ver.2012-10-06 from 001\_\_elm20150308\_061416\_\_dat00.bin



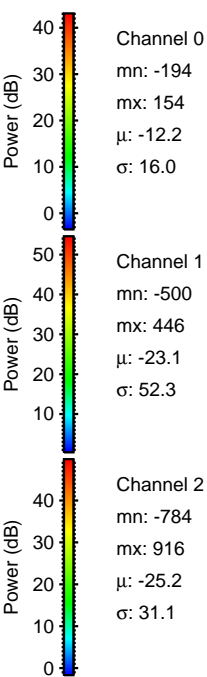
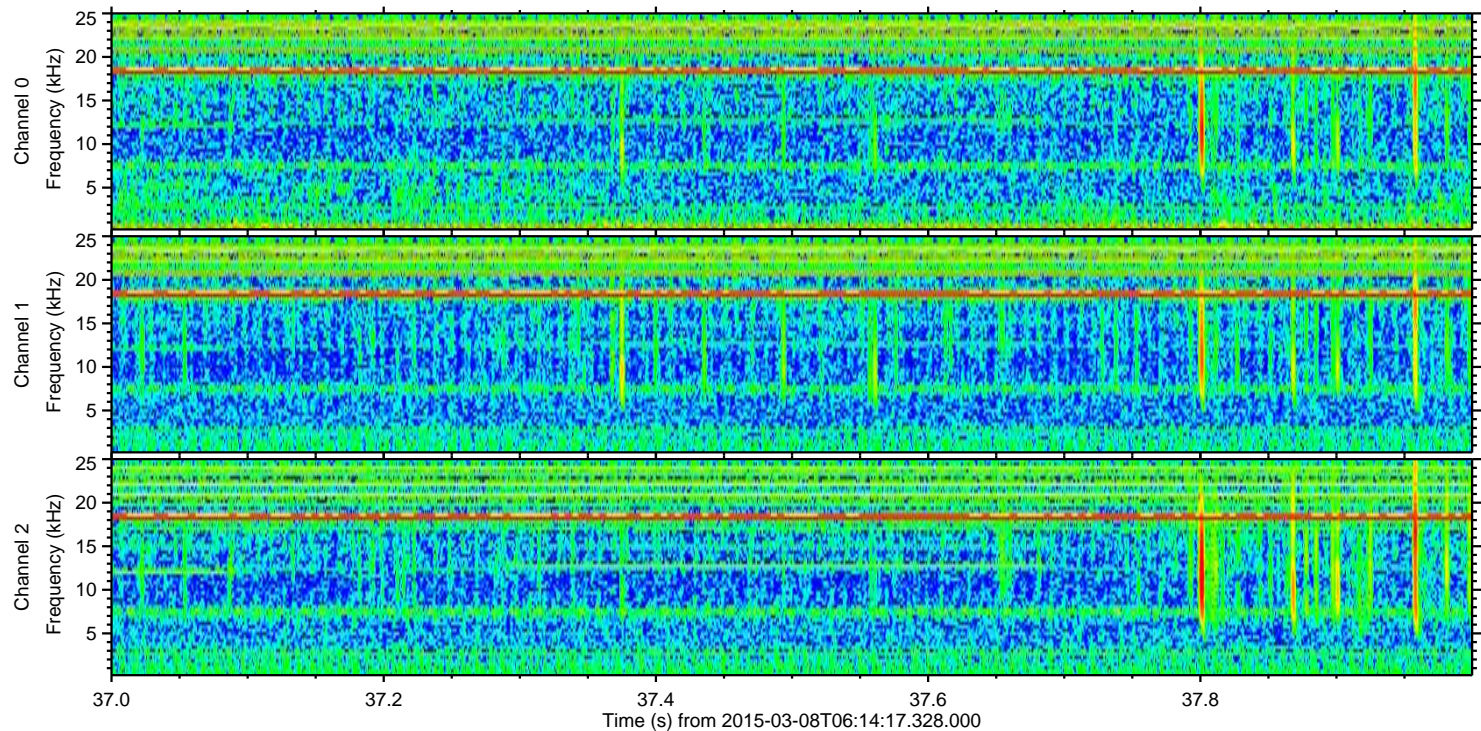
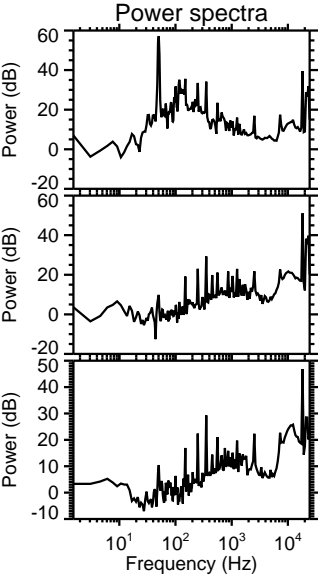
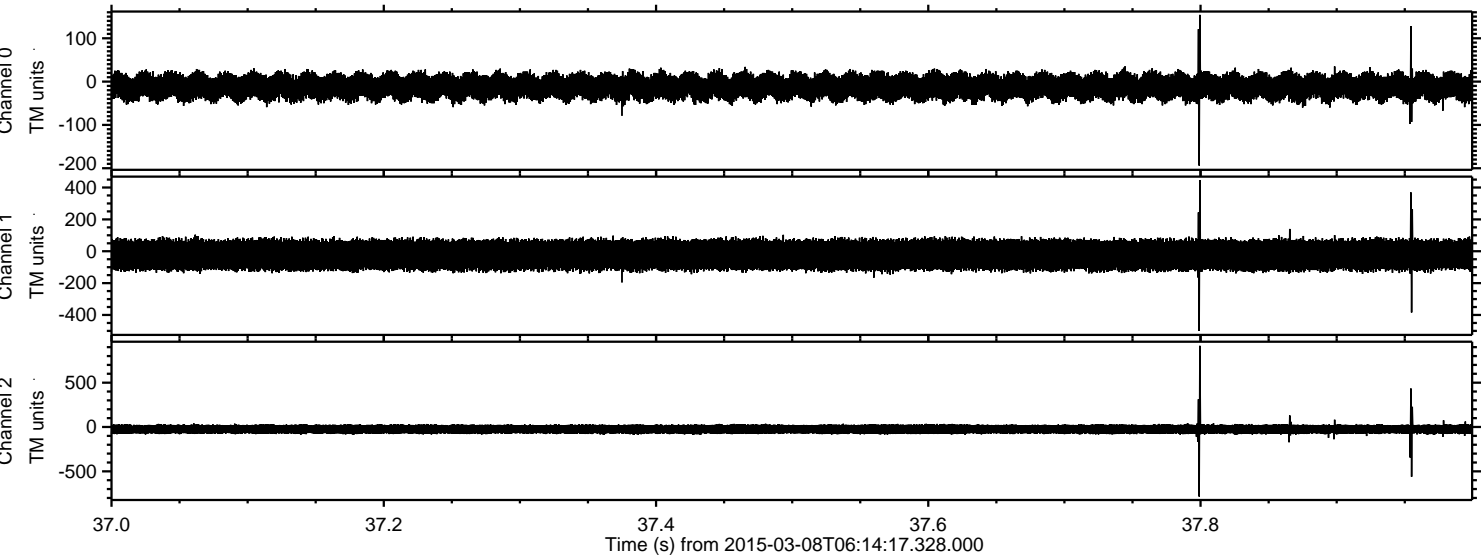


Processed Sun Mar 8 14:35:51 2015 by ELM ver.2012-10-06 from 001\_\_elm20150308\_061416\_\_dat00.bin



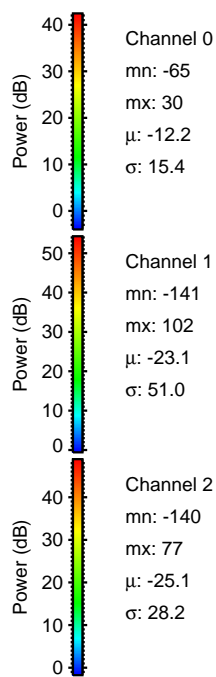
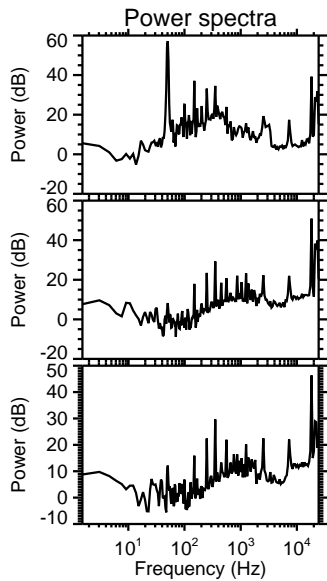
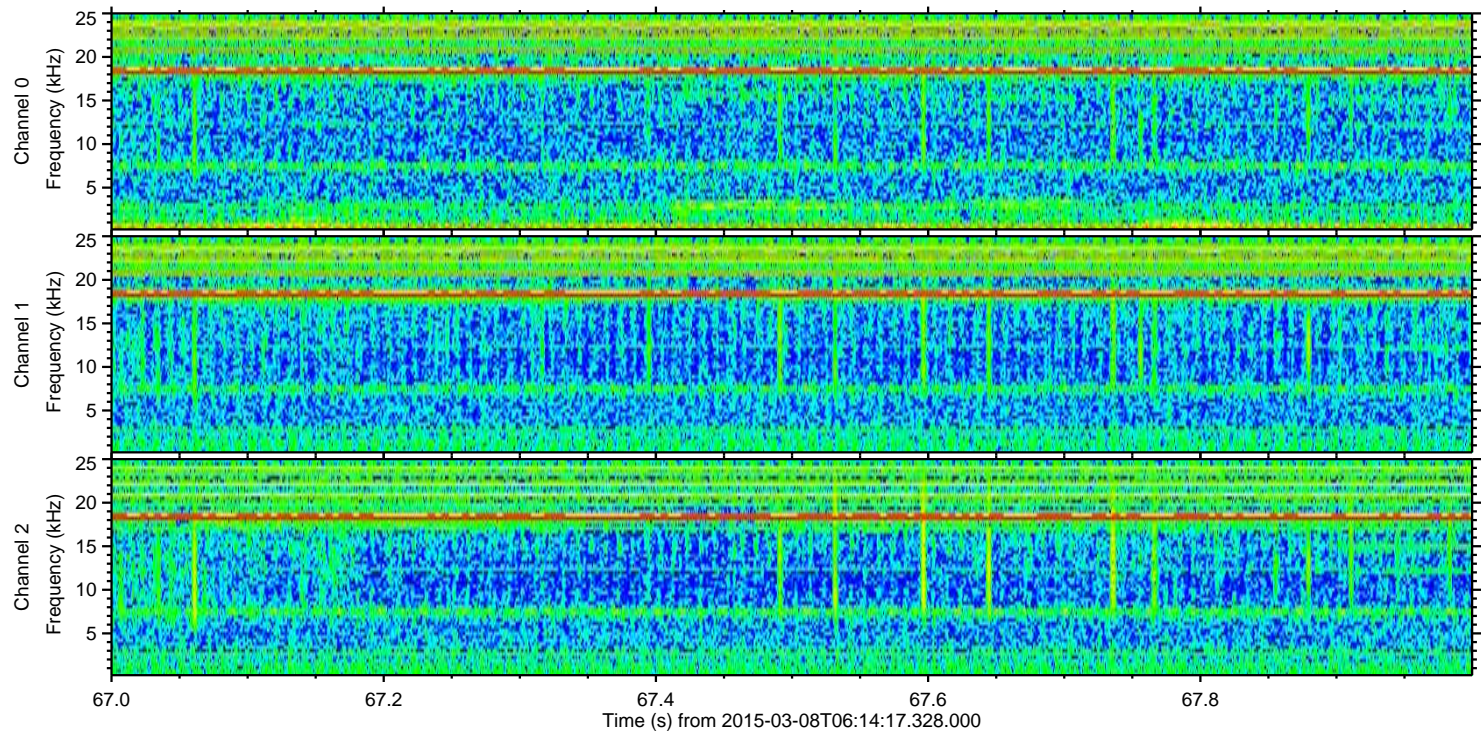
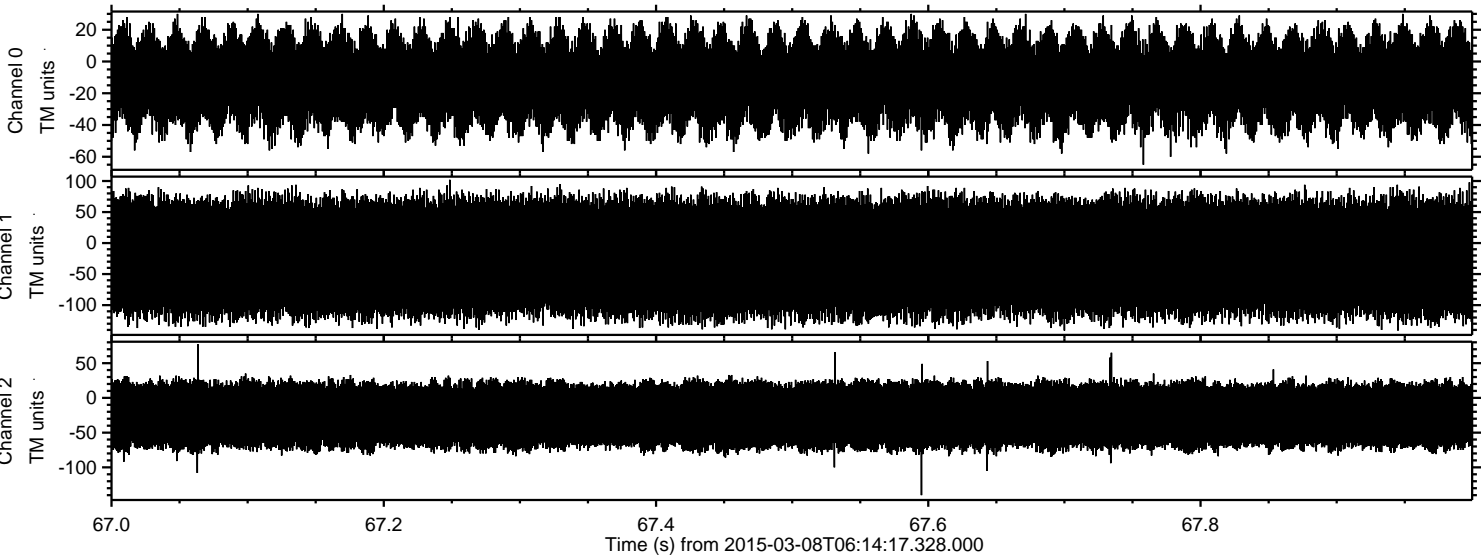


Processed Sun Mar 8 14:35:52 2015 by ELM ver.2012-10-06 from 001\_\_elm20150308\_061416\_\_dat00.bin





Processed Sun Mar 8 14:35:53 2015 by ELM ver.2012-10-06 from 001\_\_elm20150308\_061416\_\_dat00.bin



Channel 0  
mn: -65  
mx: 30  
 $\mu$ : -12.2  
 $\sigma$ : 15.4

Channel 1  
mn: -141  
mx: 102  
 $\mu$ : -23.1  
 $\sigma$ : 51.0

Channel 2  
mn: -140  
mx: 77  
 $\mu$ : -25.1  
 $\sigma$ : 28.2