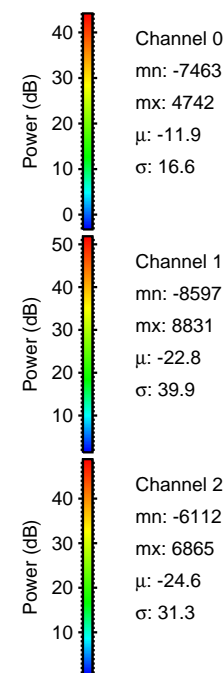
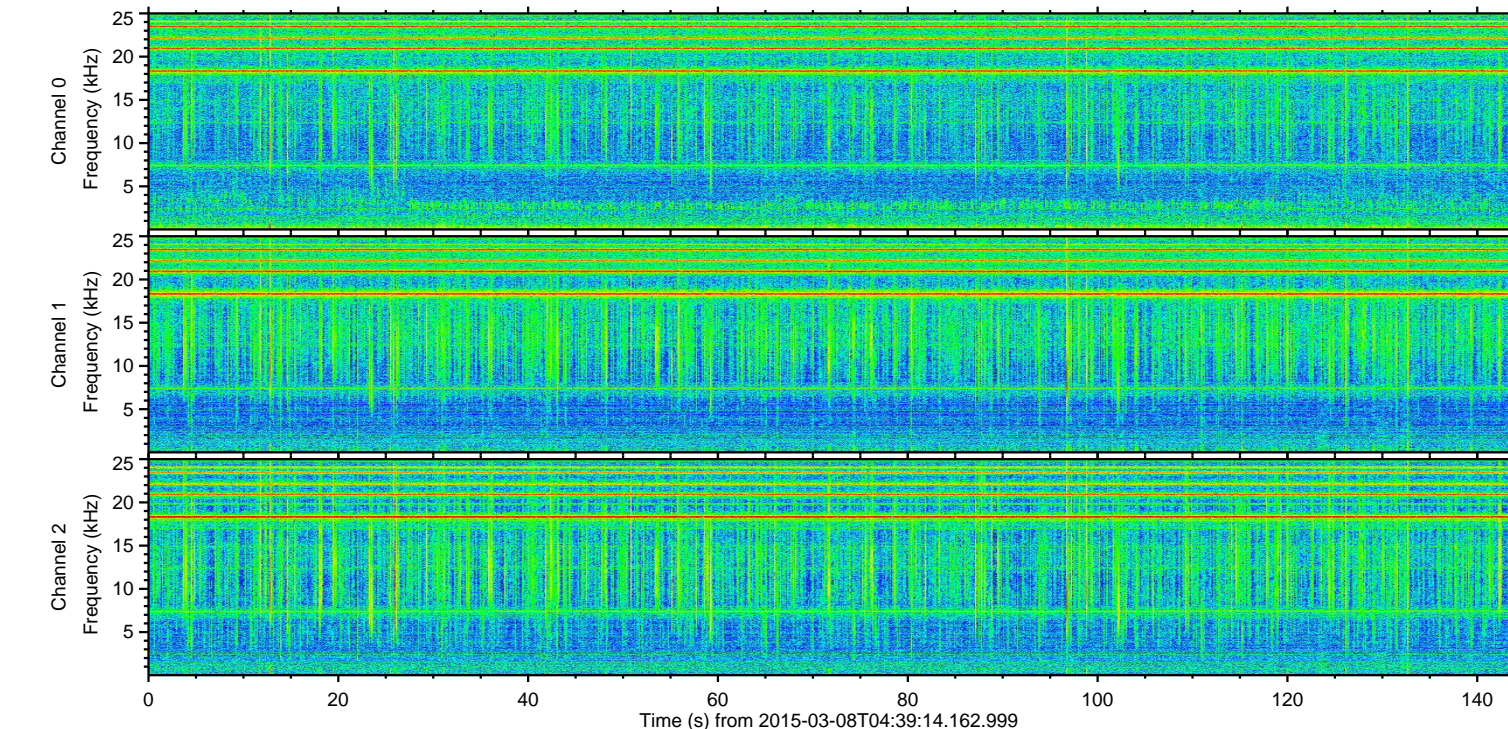
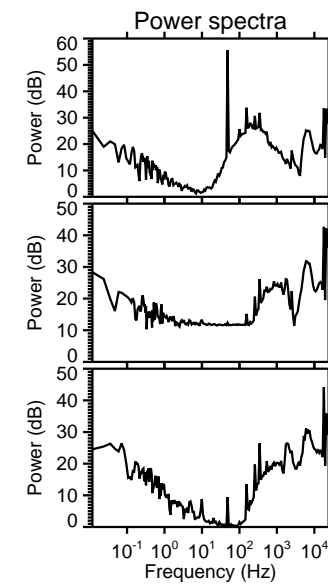
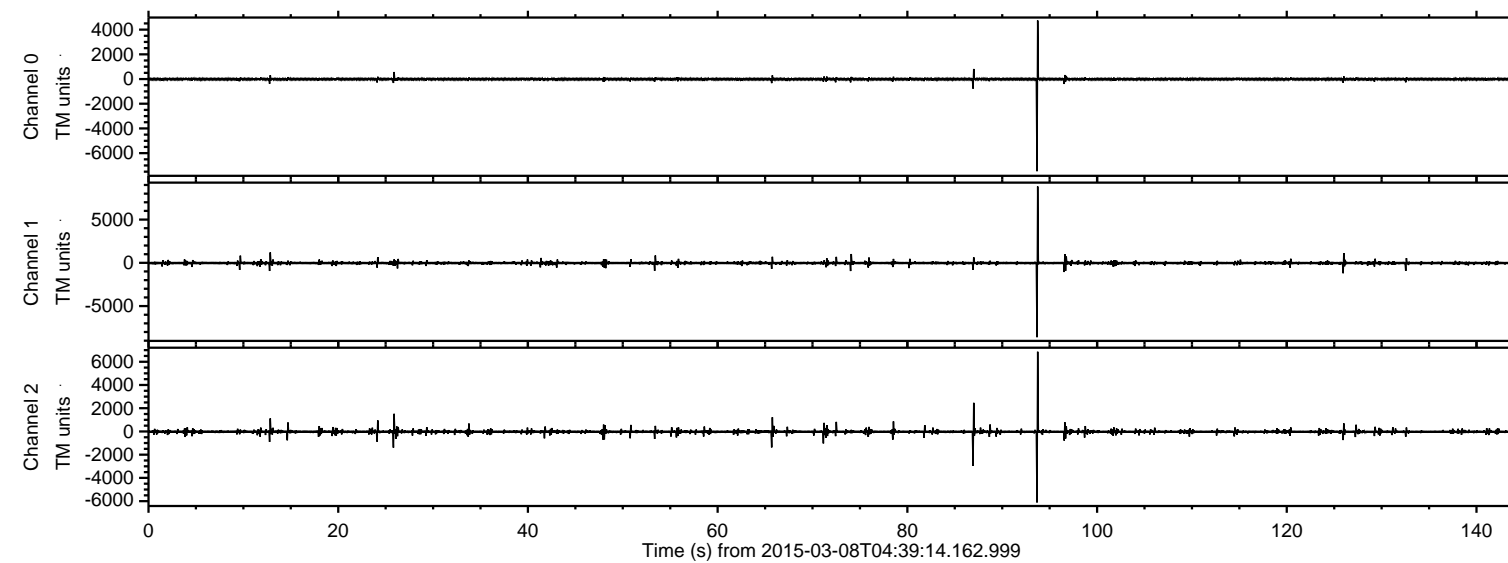


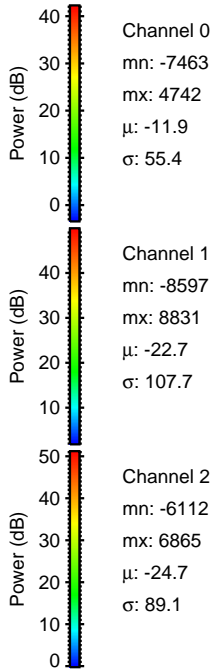
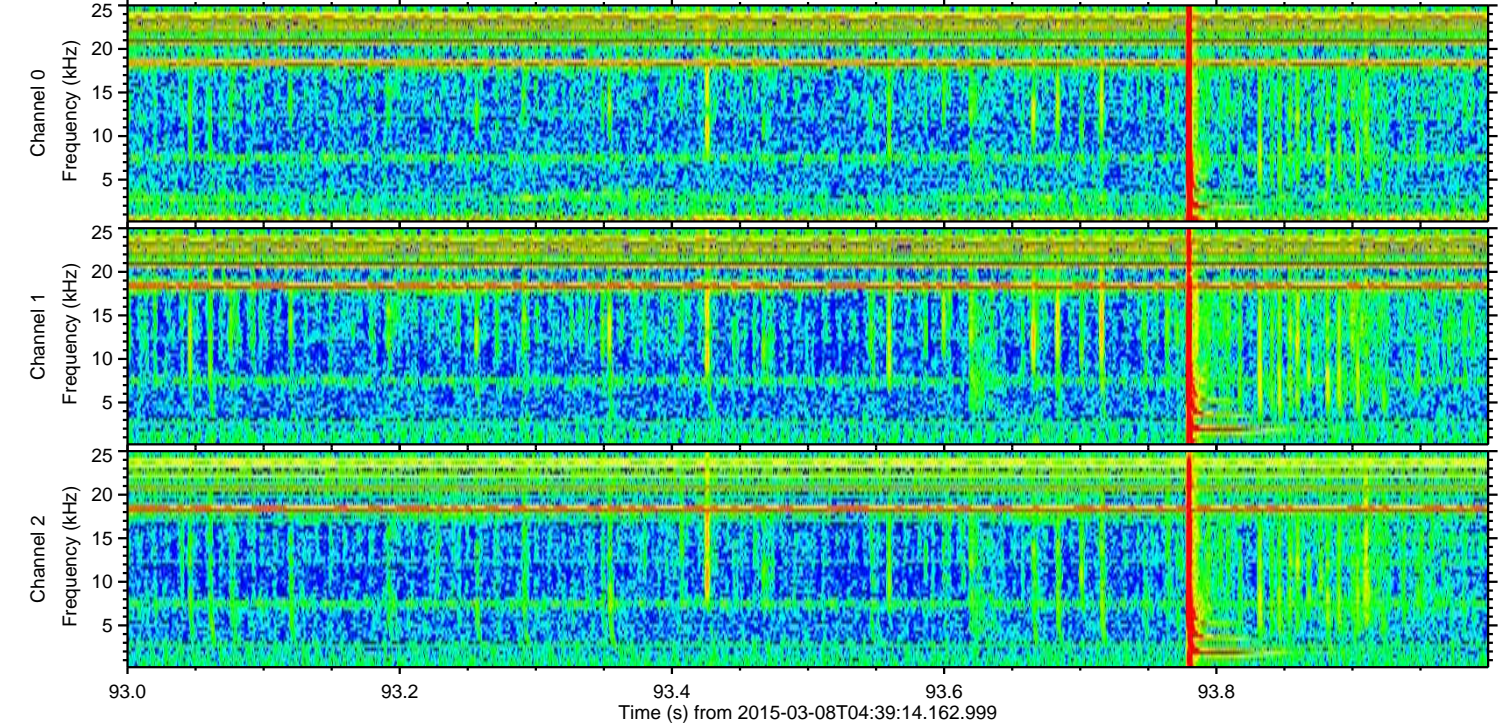
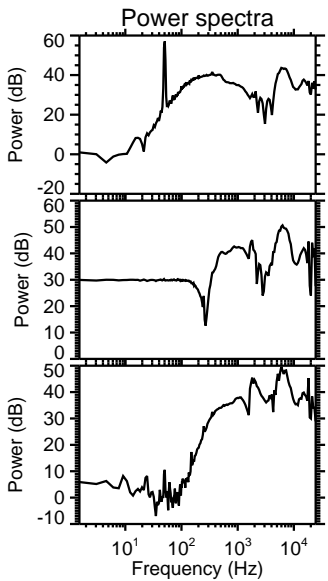
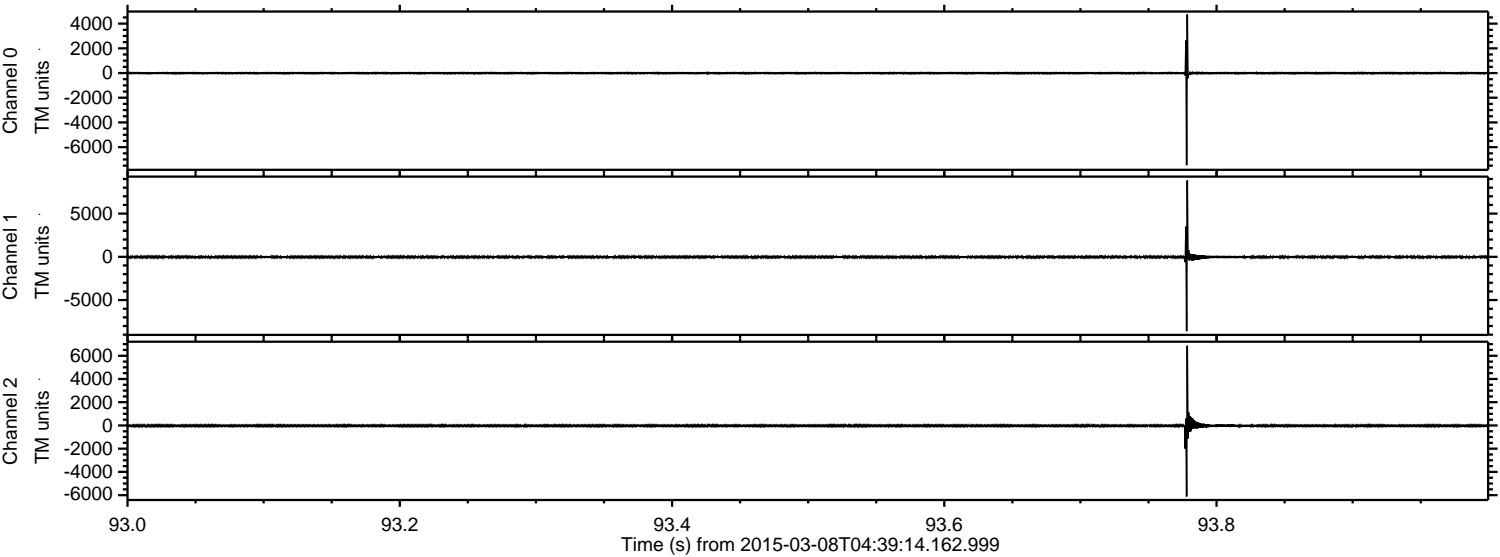
# ELMAVAN 3D WAVEFORMS (Measured data sampled at 50 kHz) 49806 packets of 144 samples from 2015-03-08T04:39:14.162.999.

Processed Sun Mar 8 14:13:48 2015 by ELM ver.2012-10-06 from 001\_\_elm20150308\_043913\_\_dat00.bin





Processed Sun Mar 8 14:14:00 2015 by ELM ver.2012-10-06 from 001\_\_elm20150308\_043913\_\_dat00.bin



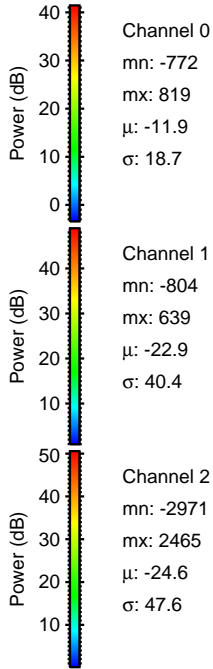
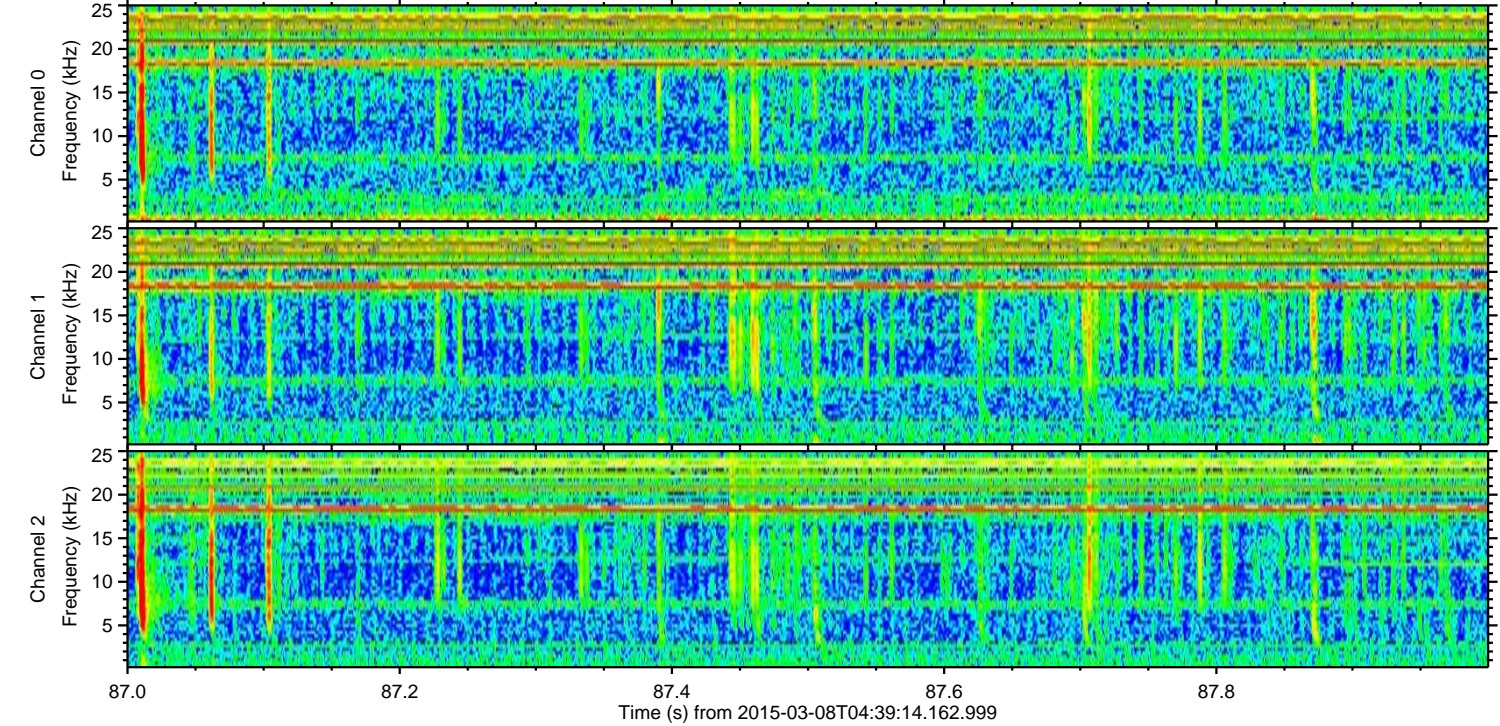
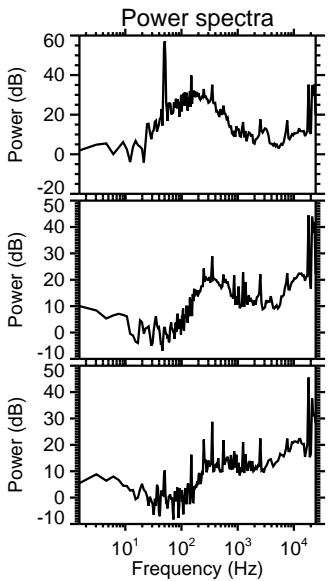
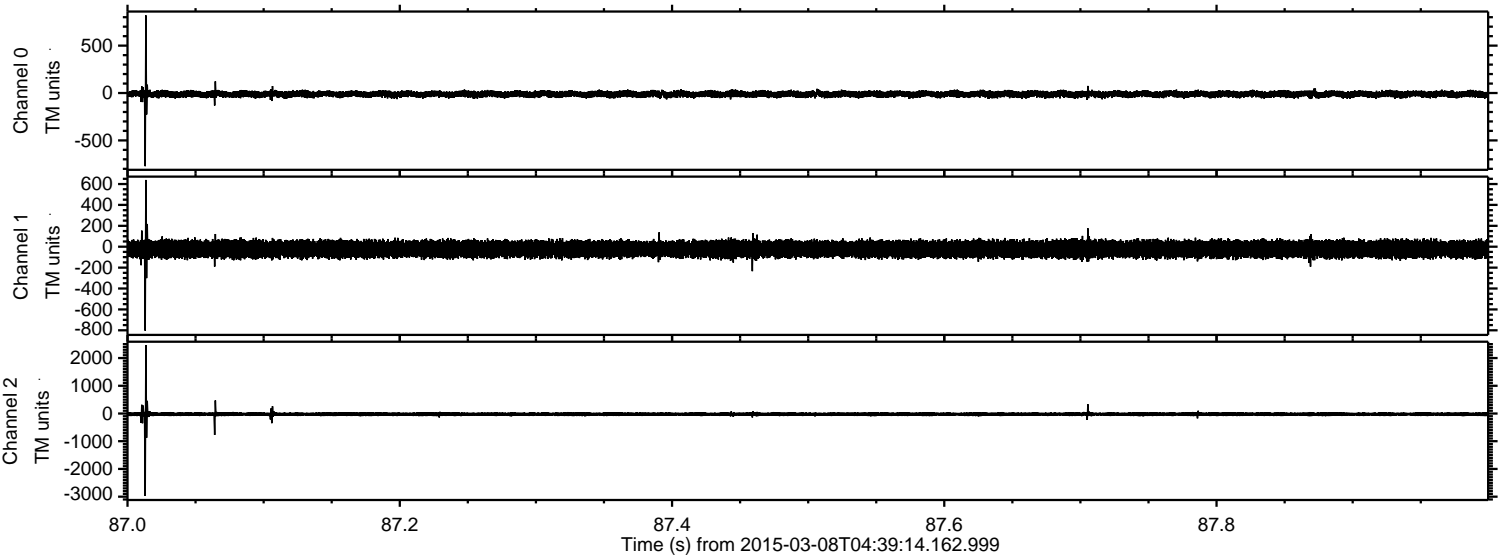
Channel 0  
mn: -7463  
mx: 4742  
 $\mu$ : -11.9  
 $\sigma$ : 55.4

Channel 1  
mn: -8597  
mx: 8831  
 $\mu$ : -22.7  
 $\sigma$ : 107.7

Channel 2  
mn: -6112  
mx: 6865  
 $\mu$ : -24.7  
 $\sigma$ : 89.1



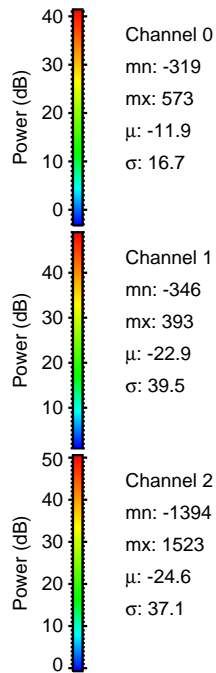
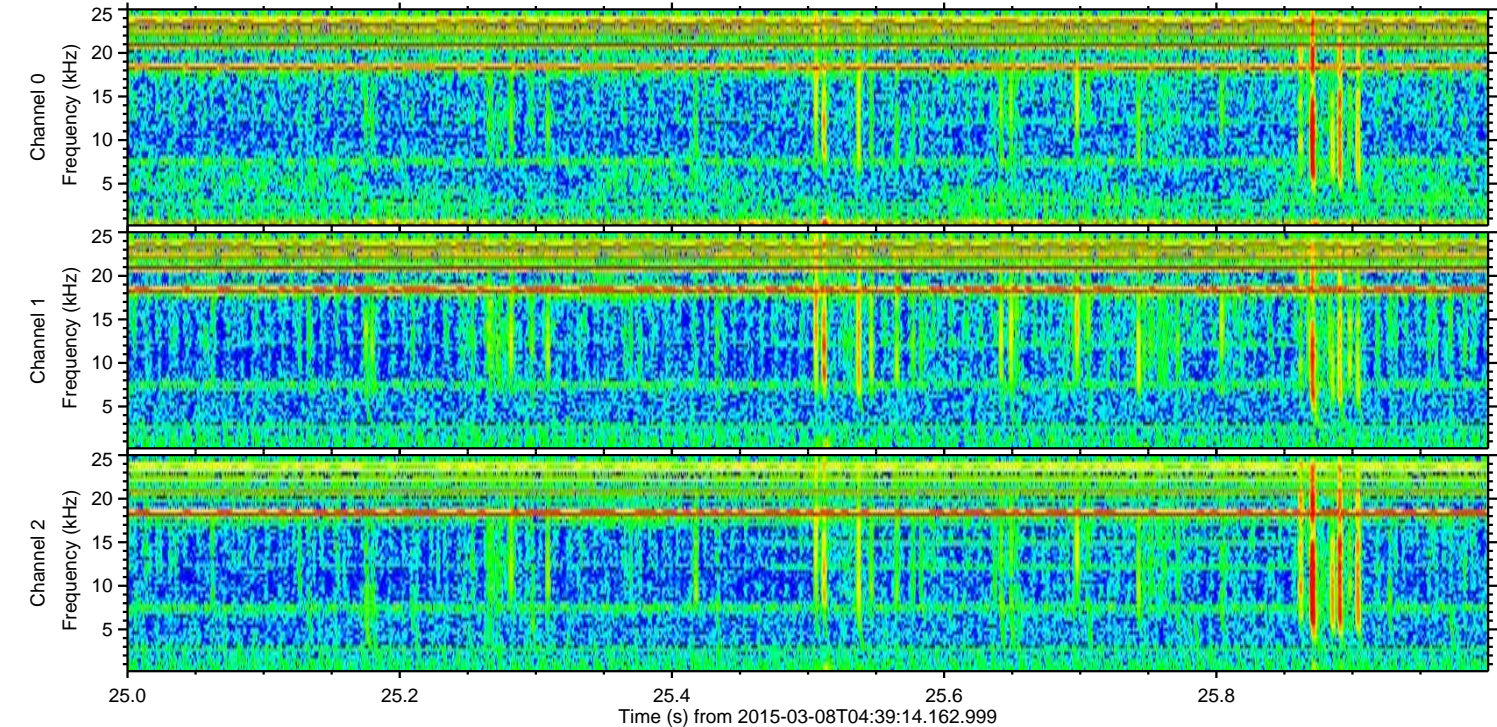
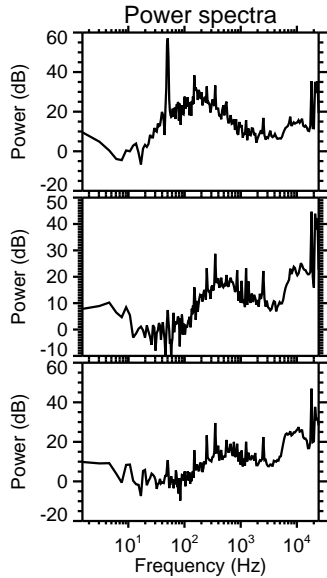
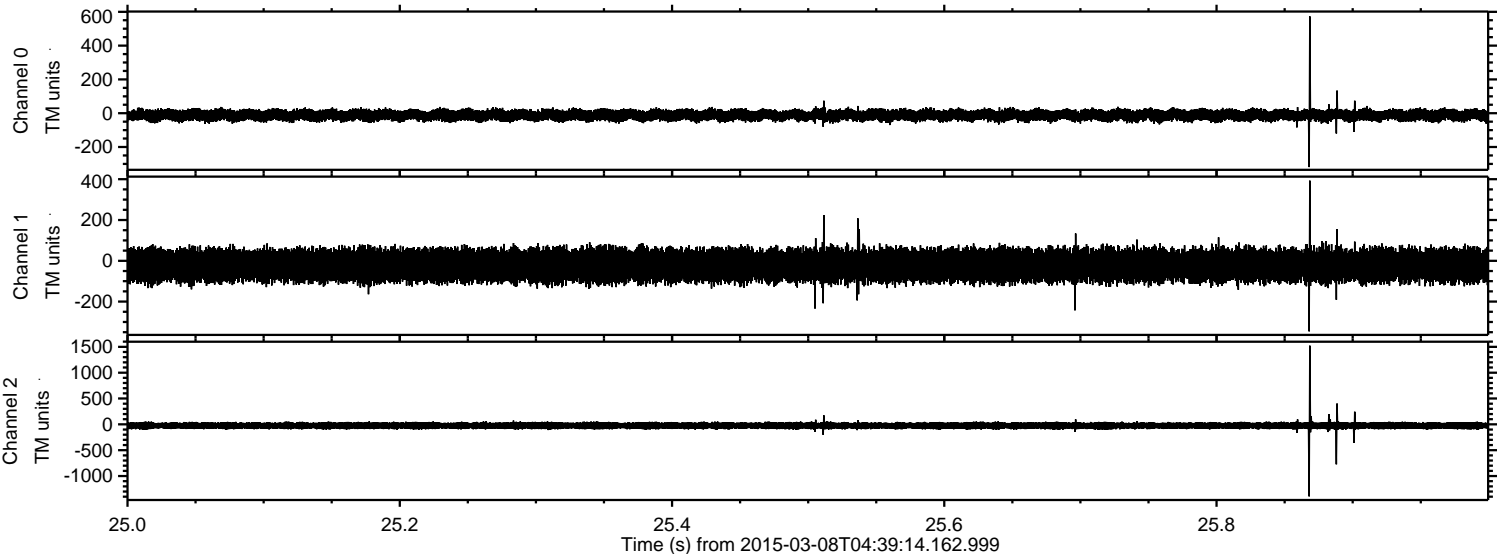
Processed Sun Mar 8 14:14:01 2015 by ELM ver.2012-10-06 from 001\_\_elm20150308\_043913\_\_dat00.bin





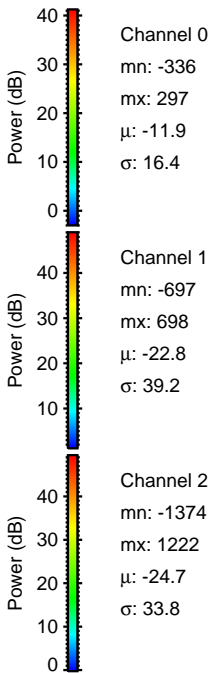
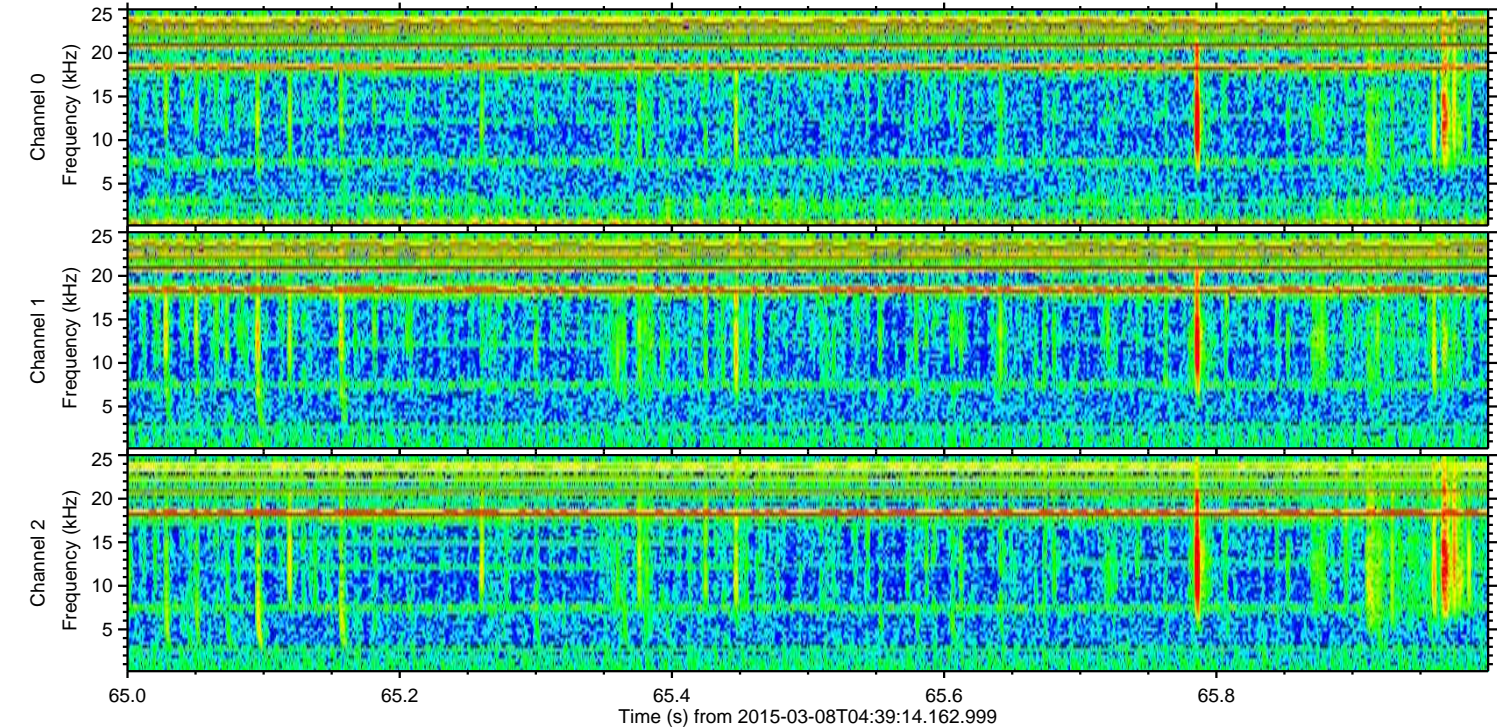
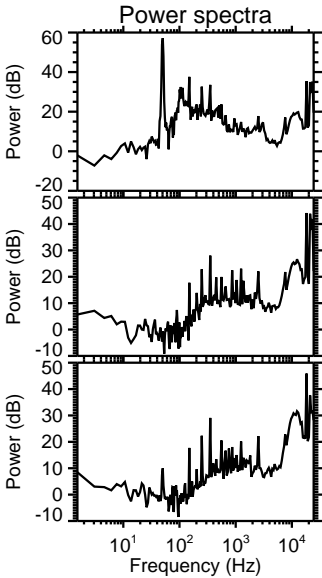
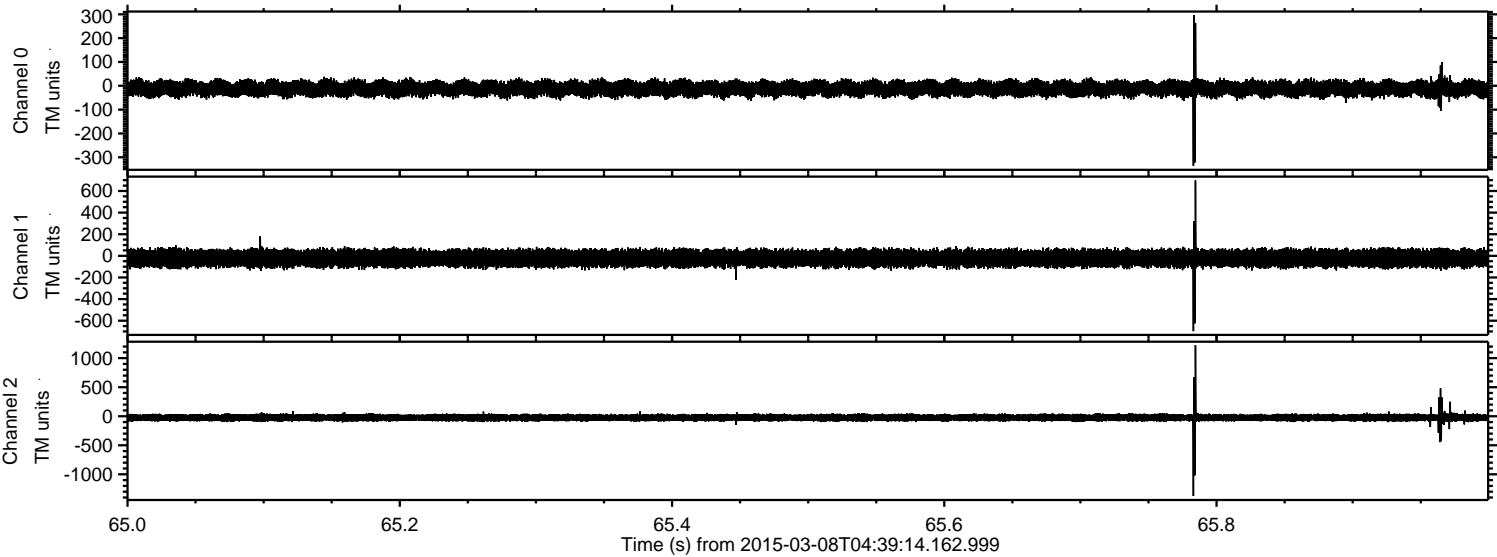
ELMAVAN 3D WAVEFORMS (Measured data sampled at 50 kHz) 49806 packets of 144 samples from 2015-03-08T04:39:14.162.999. Part 26/144

Processed Sun Mar 8 14:14:02 2015 by ELM ver.2012-10-06 from 001\_\_elm20150308\_043913\_\_dat00.bin





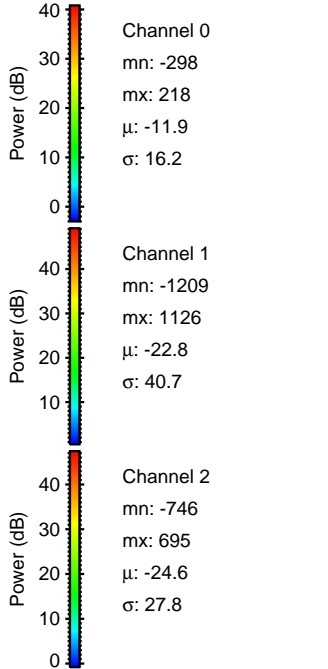
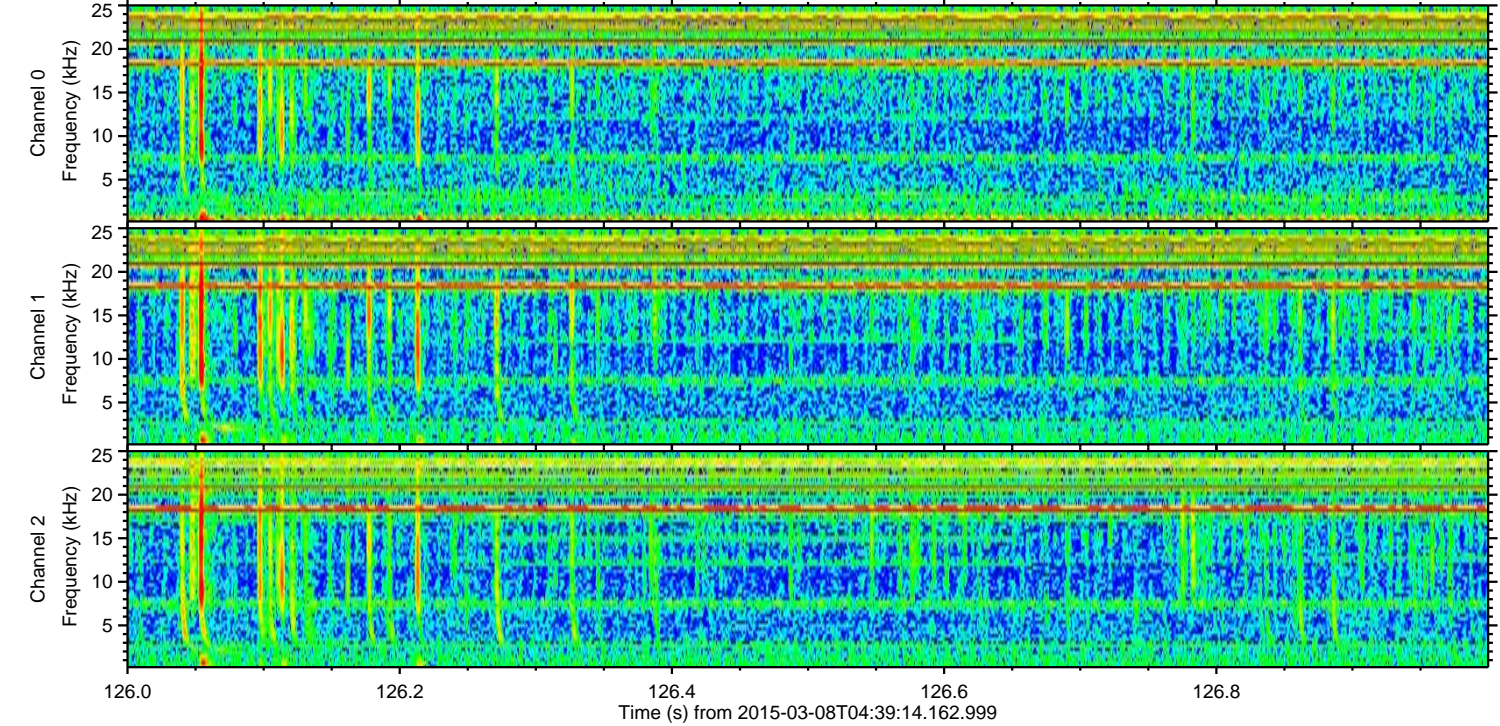
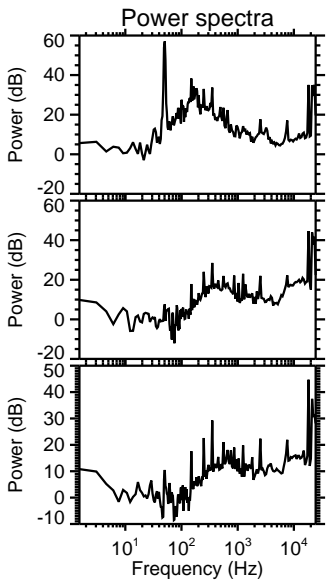
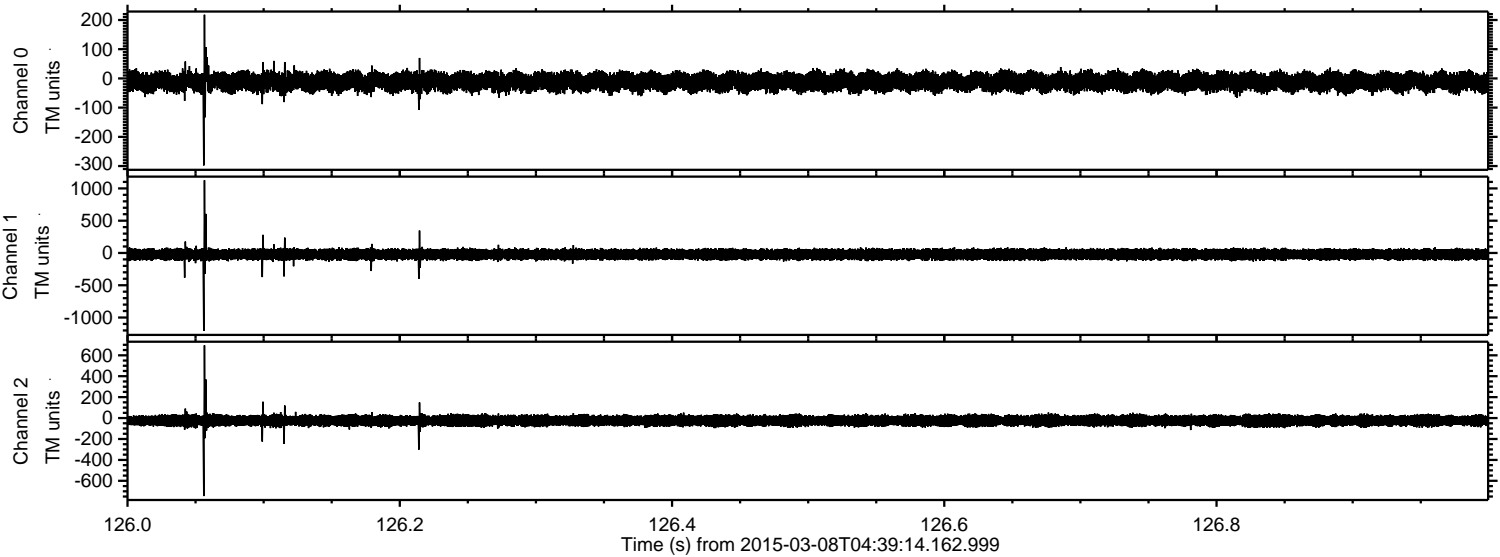
Processed Sun Mar 8 14:14:03 2015 by ELM ver.2012-10-06 from 001\_\_elm20150308\_043913\_\_dat00.bin





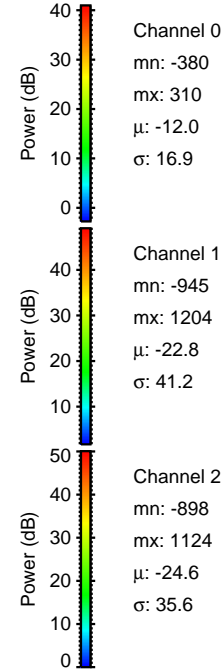
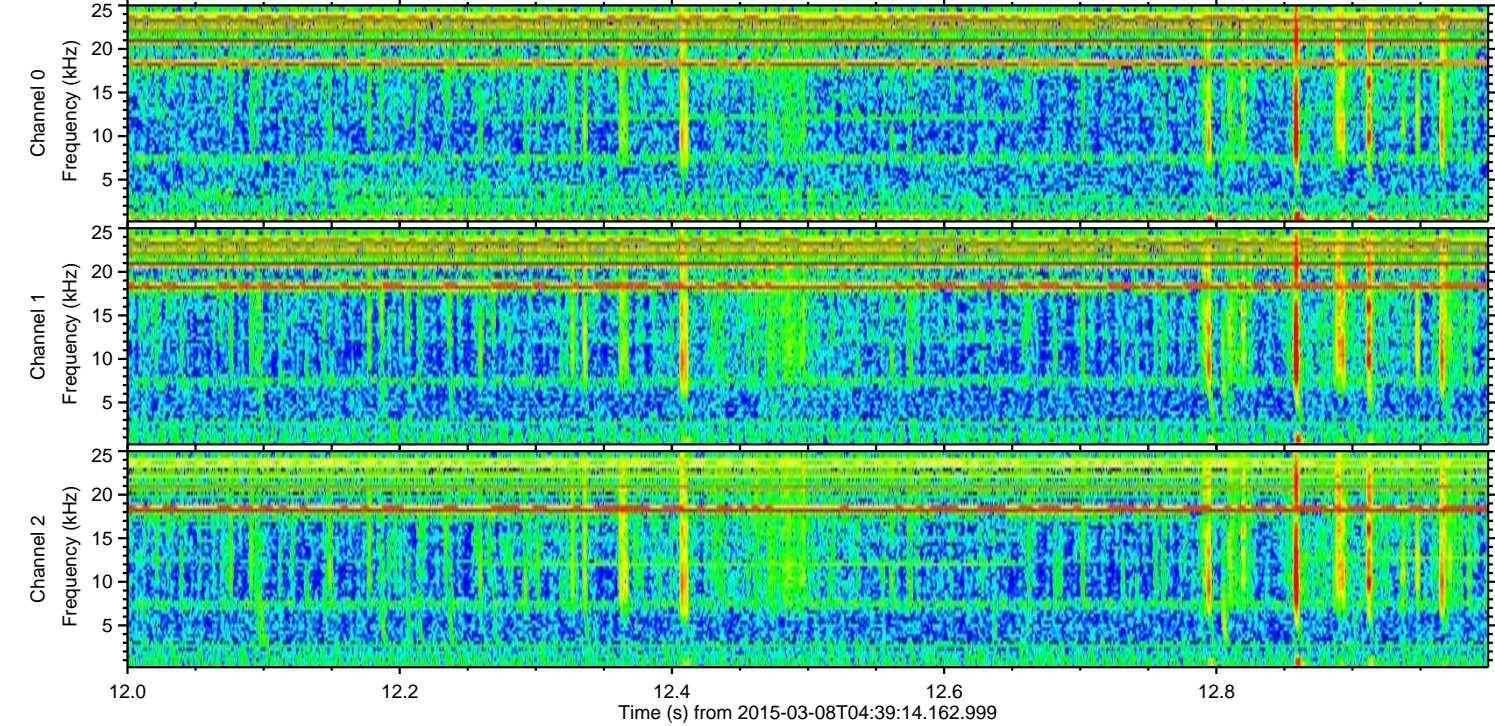
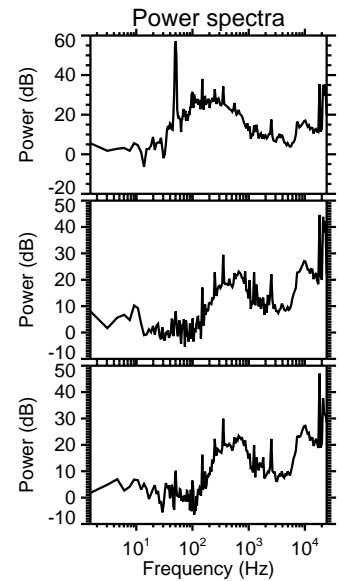
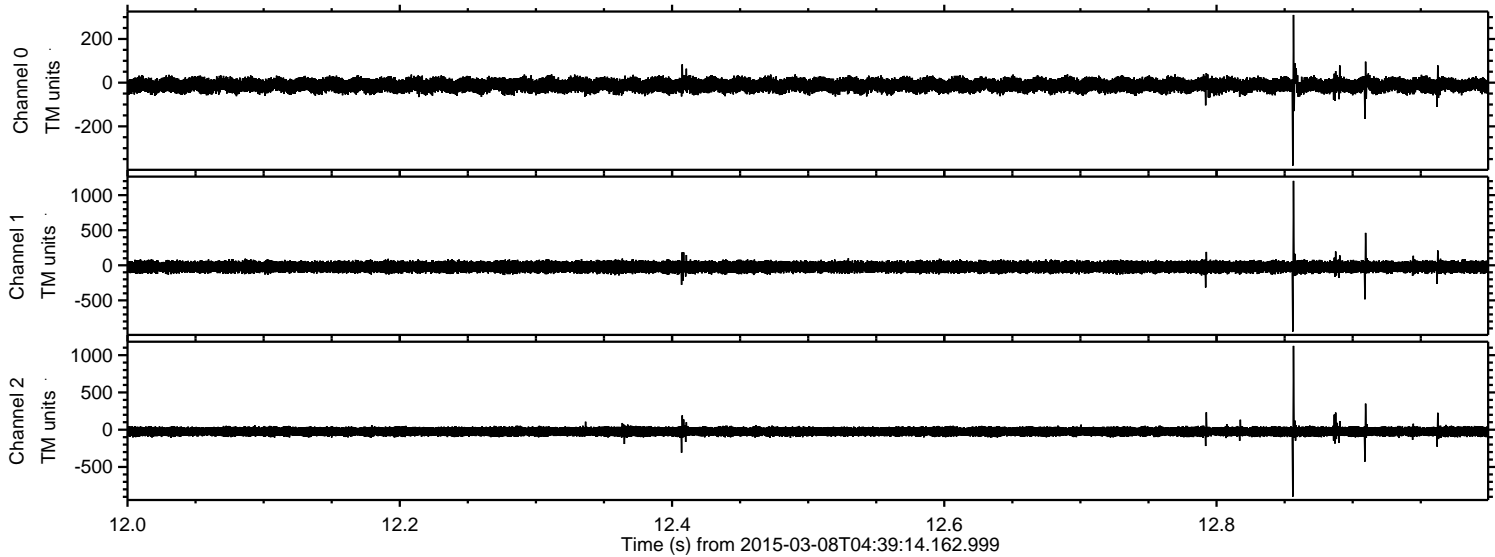
ELMAVAN 3D WAVEFORMS (Measured data sampled at 50 kHz) 49806 packets of 144 samples from 2015-03-08T04:39:14.162.999. Part 127/144

Processed Sun Mar 8 14:14:04 2015 by ELM ver.2012-10-06 from 001\_\_elm20150308\_043913\_\_dat00.bin



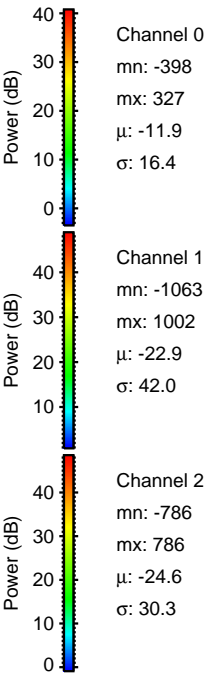
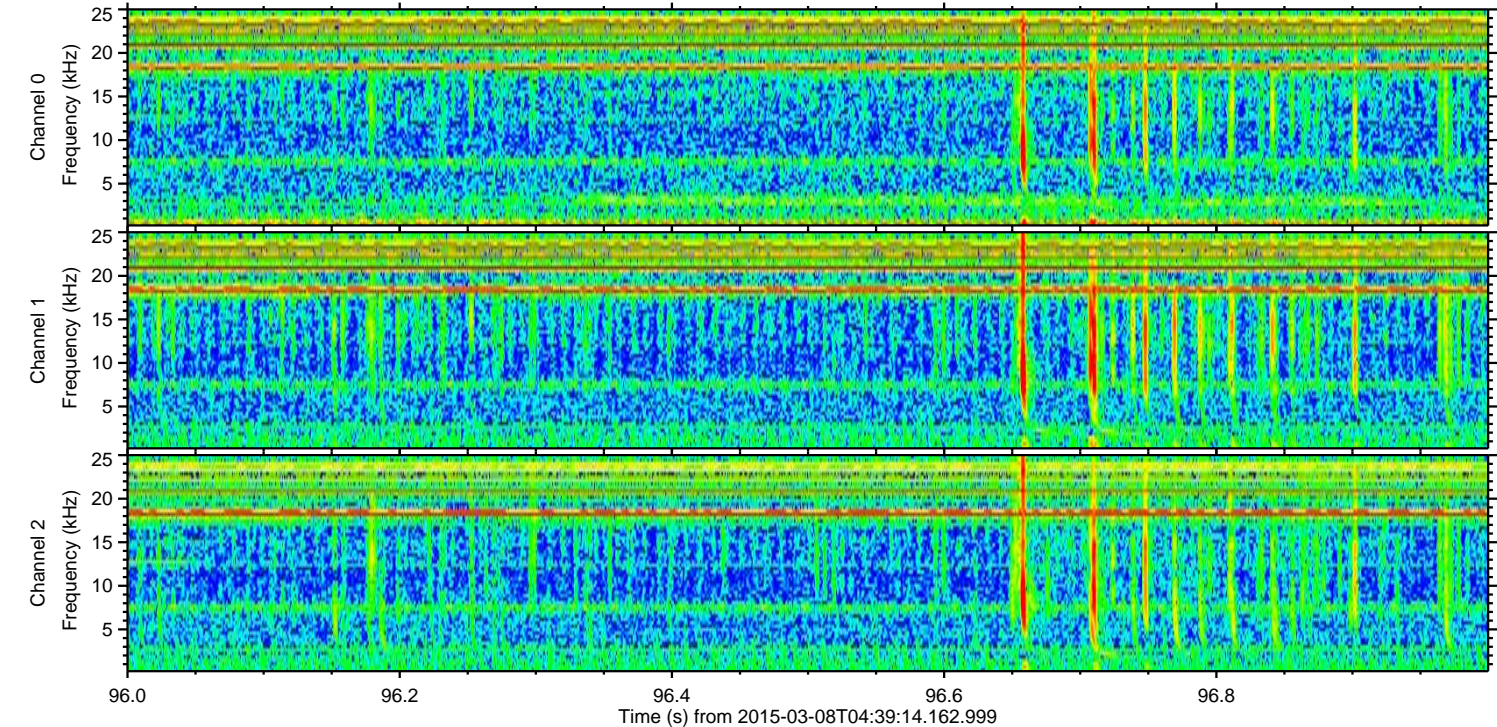
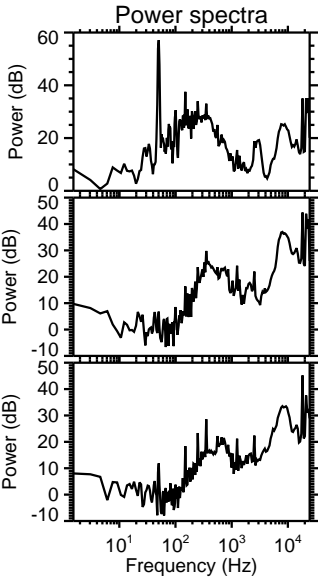
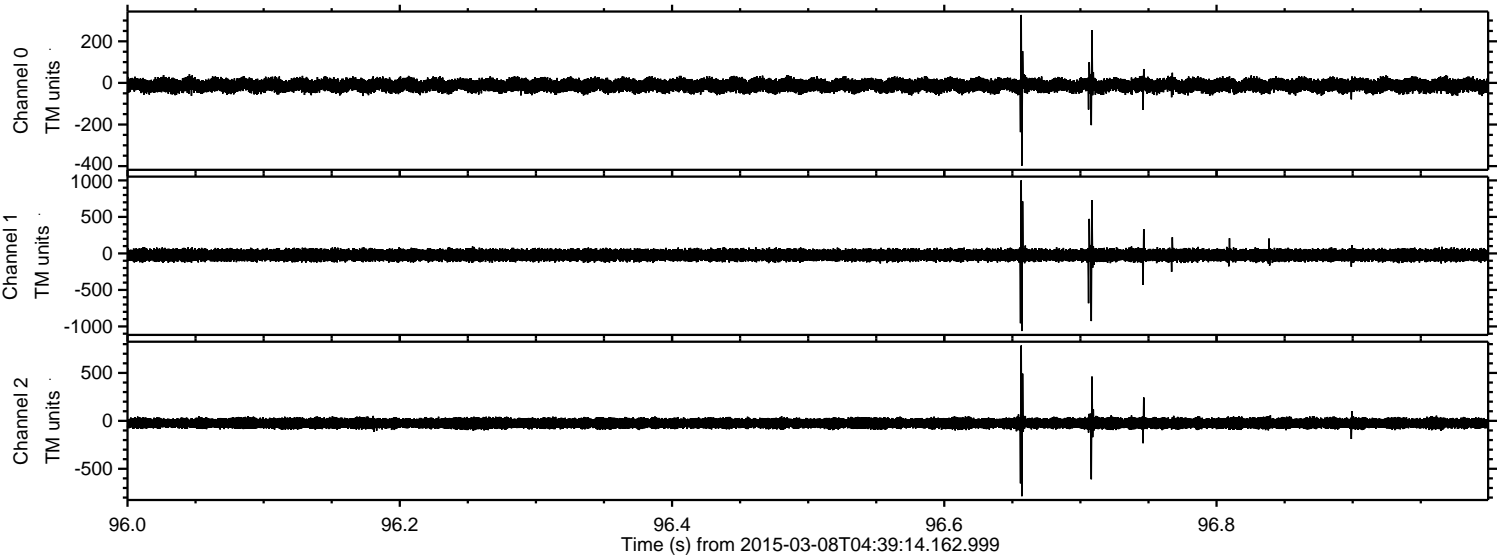


Processed Sun Mar 8 14:14:05 2015 by ELM ver.2012-10-06 from 001\_\_elm20150308\_043913\_\_dat00.bin



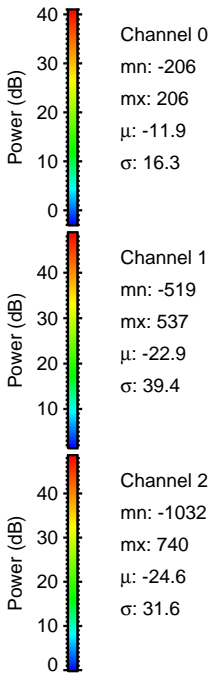
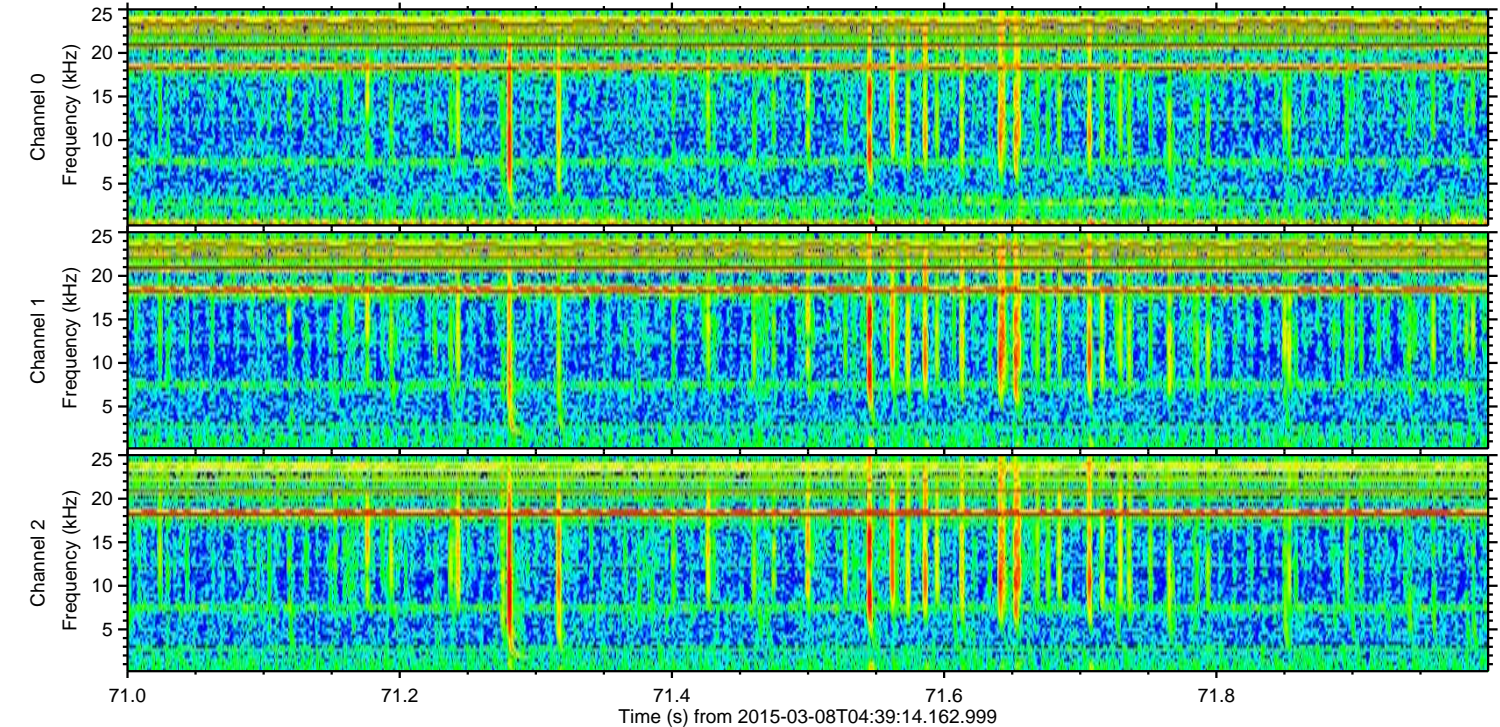
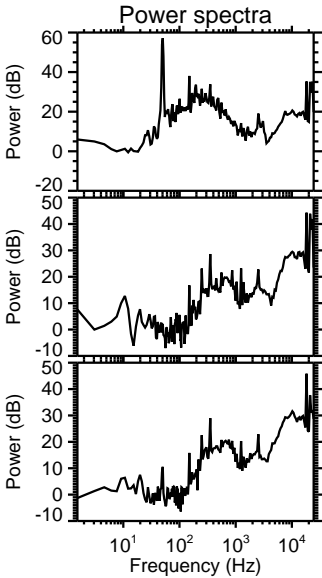
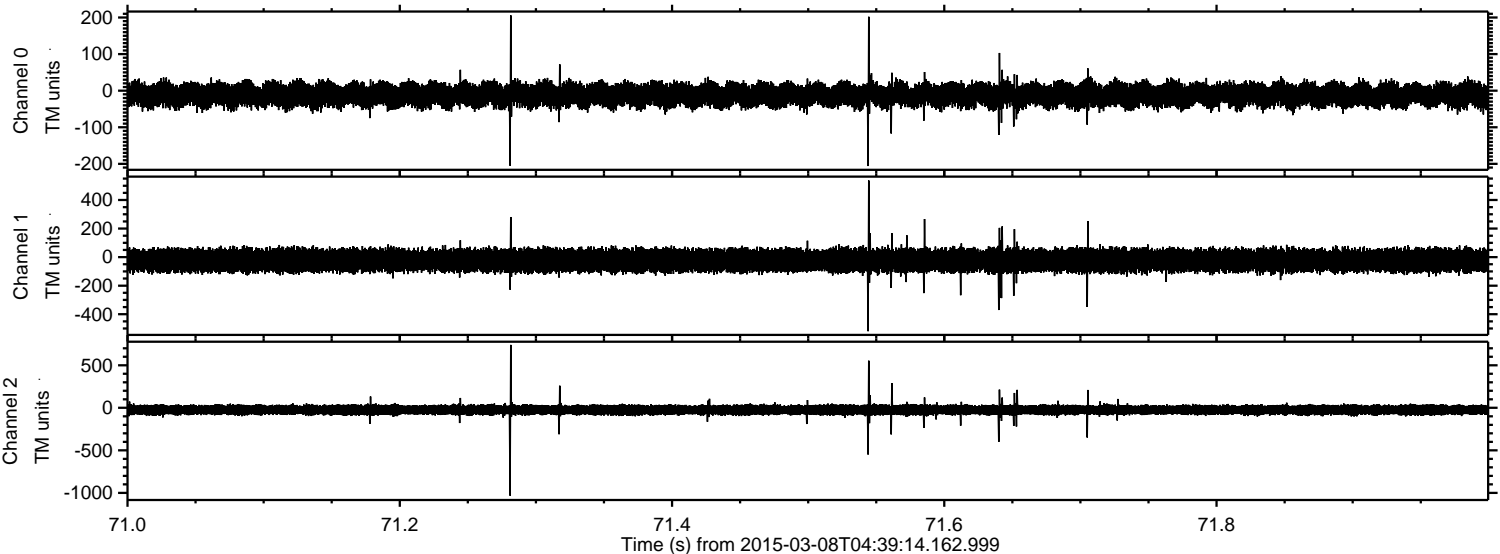


Processed Sun Mar 8 14:14:06 2015 by ELM ver.2012-10-06 from 001\_\_elm20150308\_043913\_\_dat00.bin



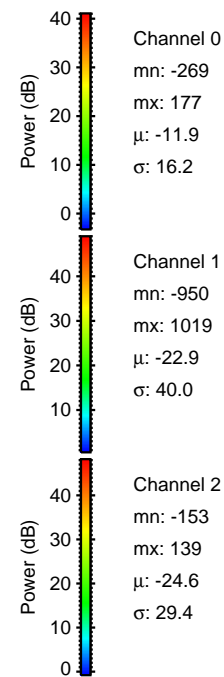
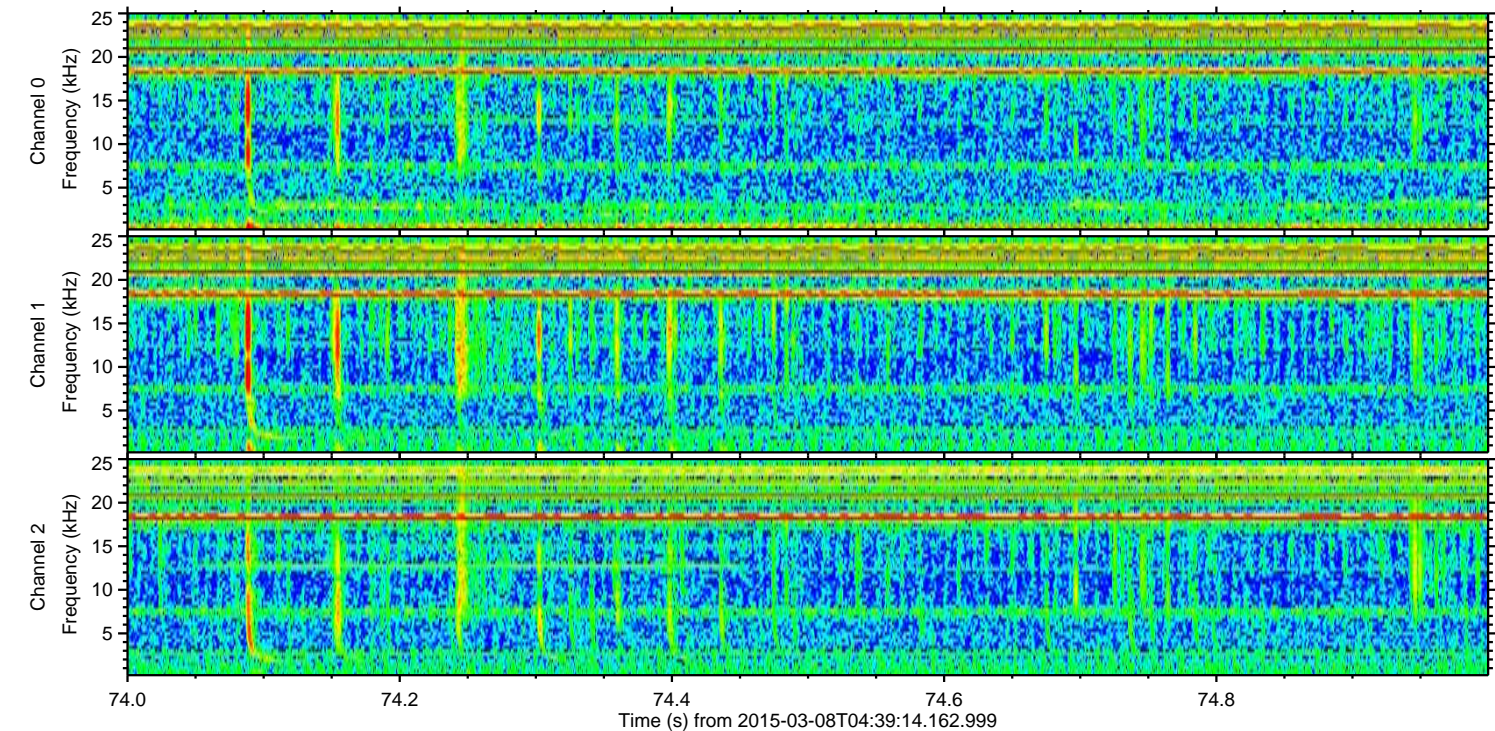
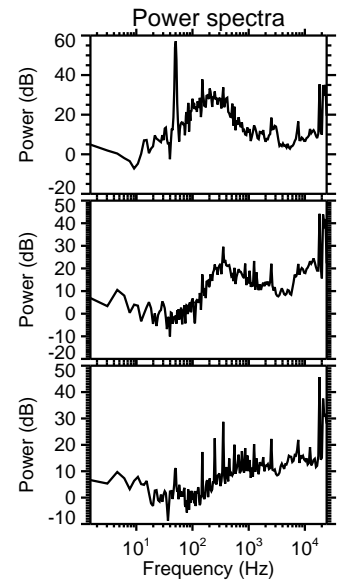
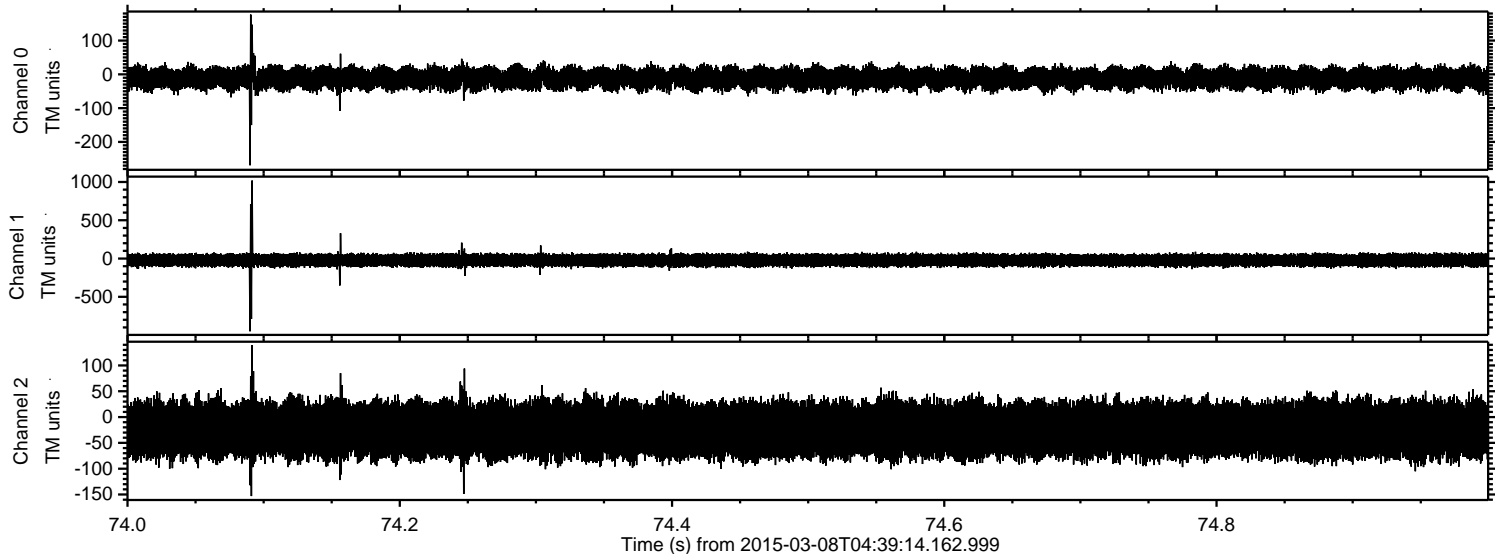


Processed Sun Mar 8 14:14:07 2015 by ELM ver.2012-10-06 from 001\_\_elm20150308\_043913\_\_dat00.bin





Processed Sun Mar 8 14:14:07 2015 by ELM ver.2012-10-06 from 001\_\_elm20150308\_043913\_\_dat00.bin





Processed Sun Mar 8 14:14:08 2015 by ELM ver.2012-10-06 from 001\_\_elm20150308\_043913\_\_dat00.bin

