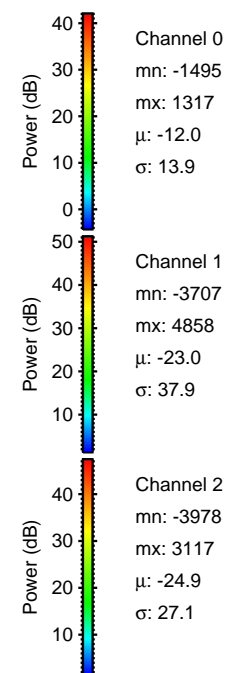
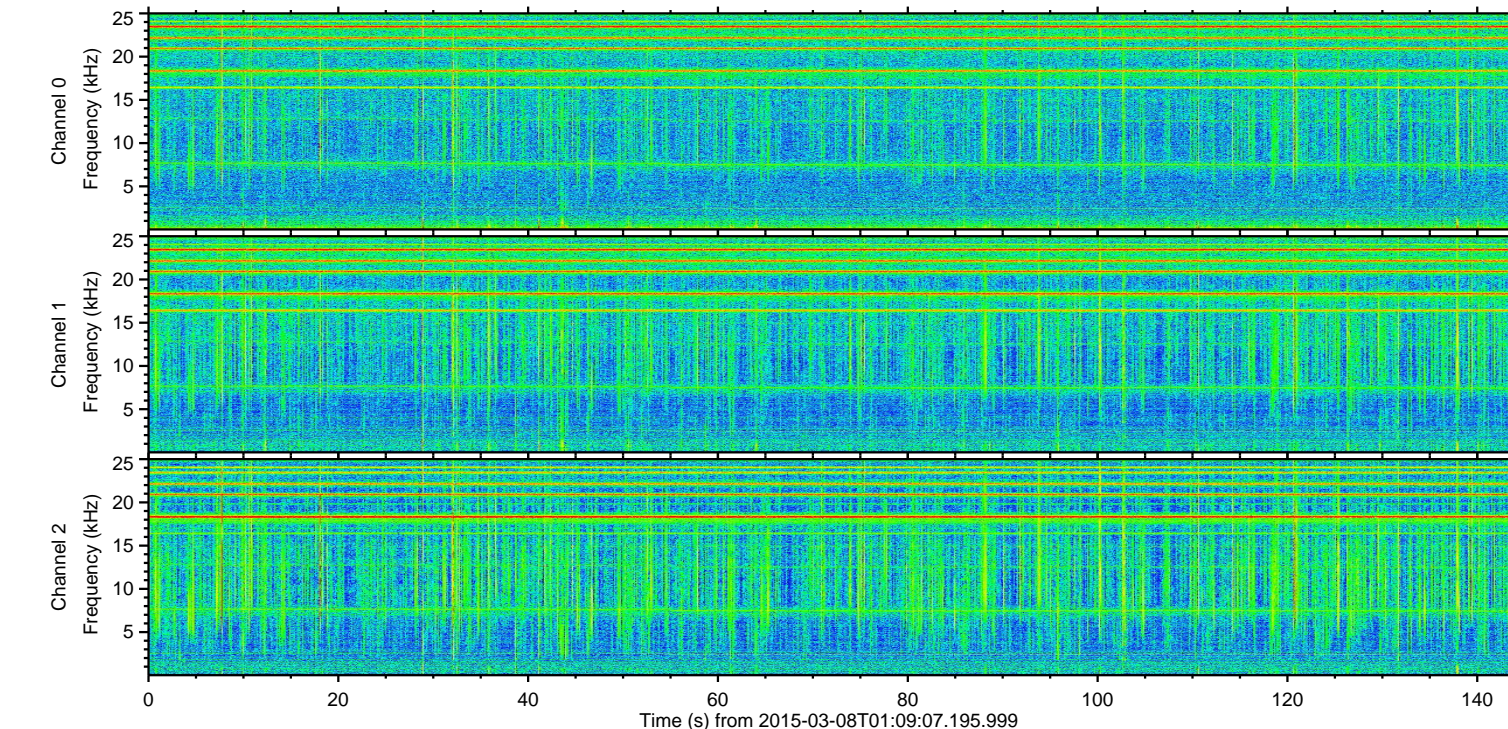
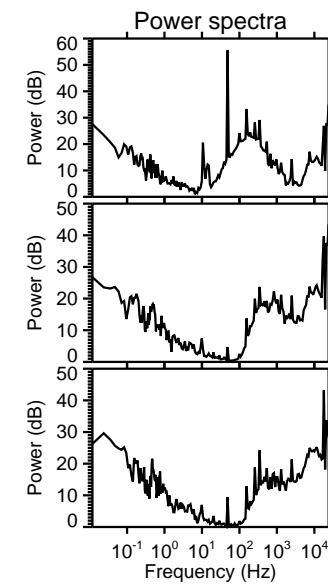
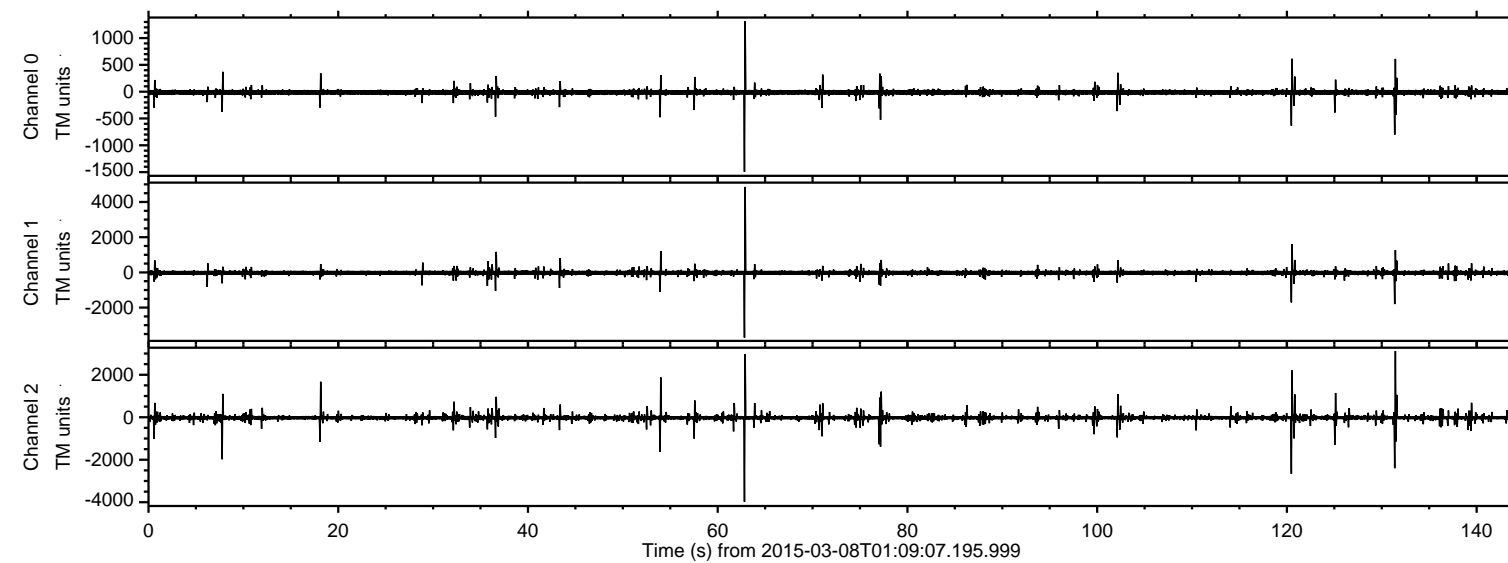
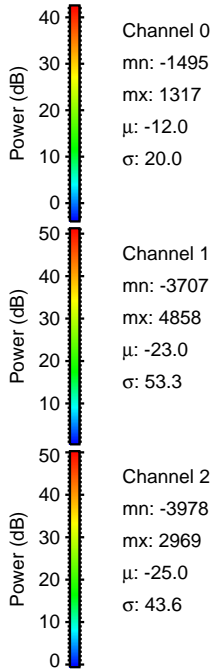
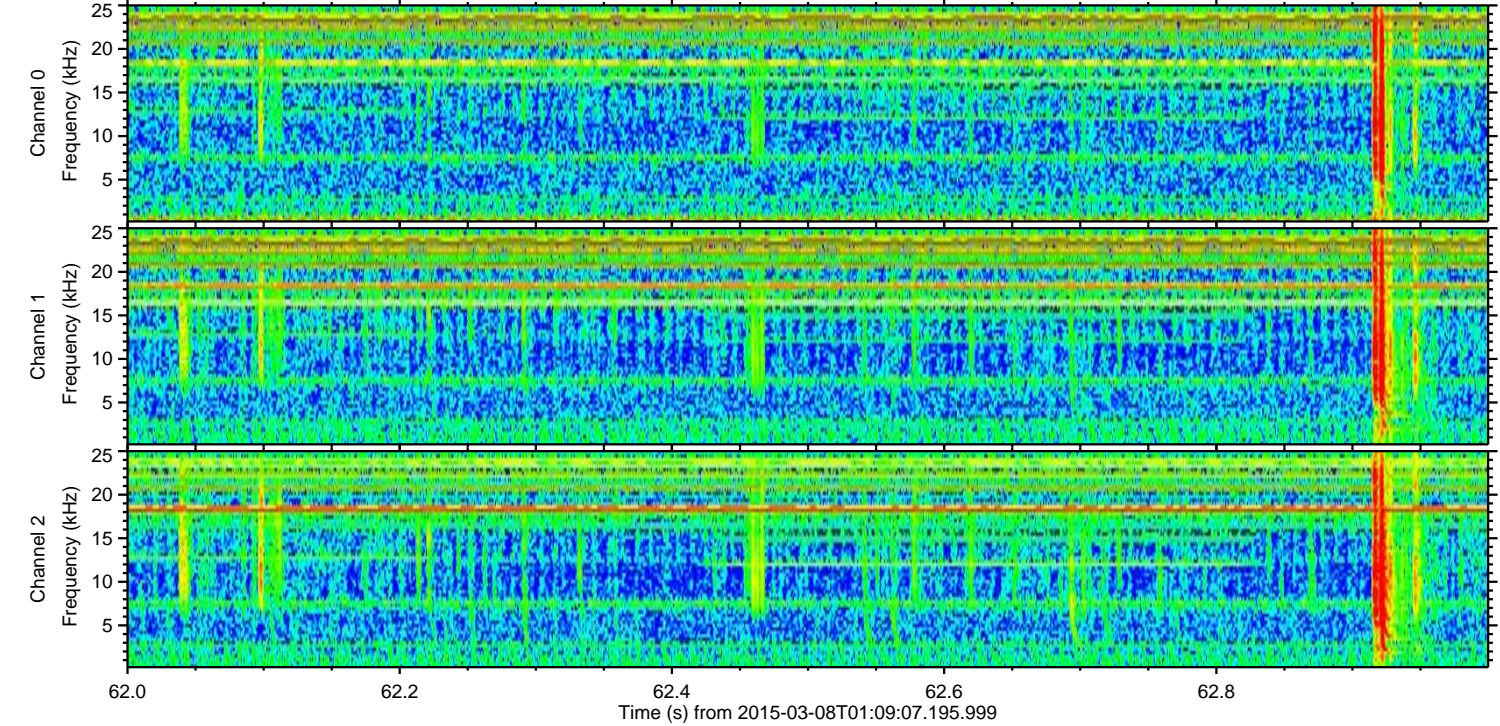
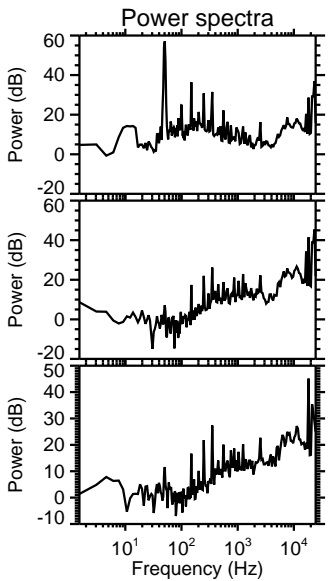
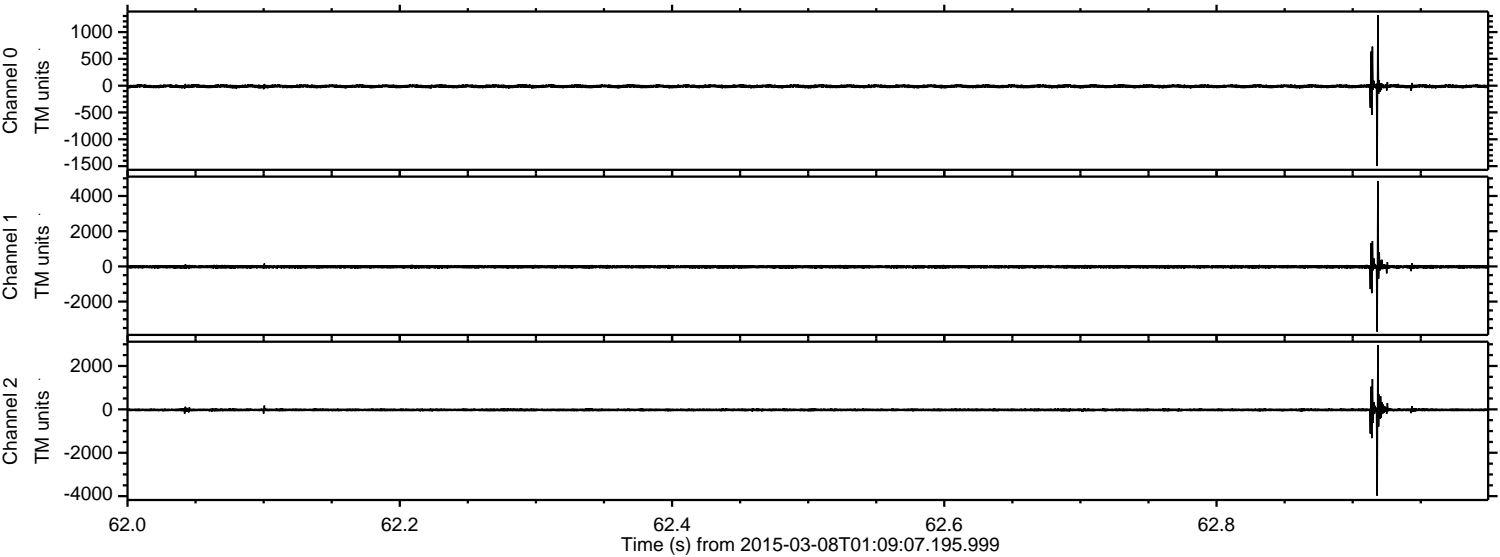


ELMAVAN 3D WAVEFORMS (Measured data sampled at 50 kHz) 49802 packets of 144 samples from 2015-03-08T01:09:07.195.999.

Processed Sun Mar 8 13:26:38 2015 by ELM ver.2012-10-06 from 001__elm20150308_010906__dat00.bin

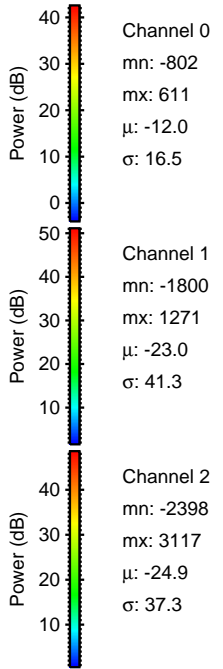
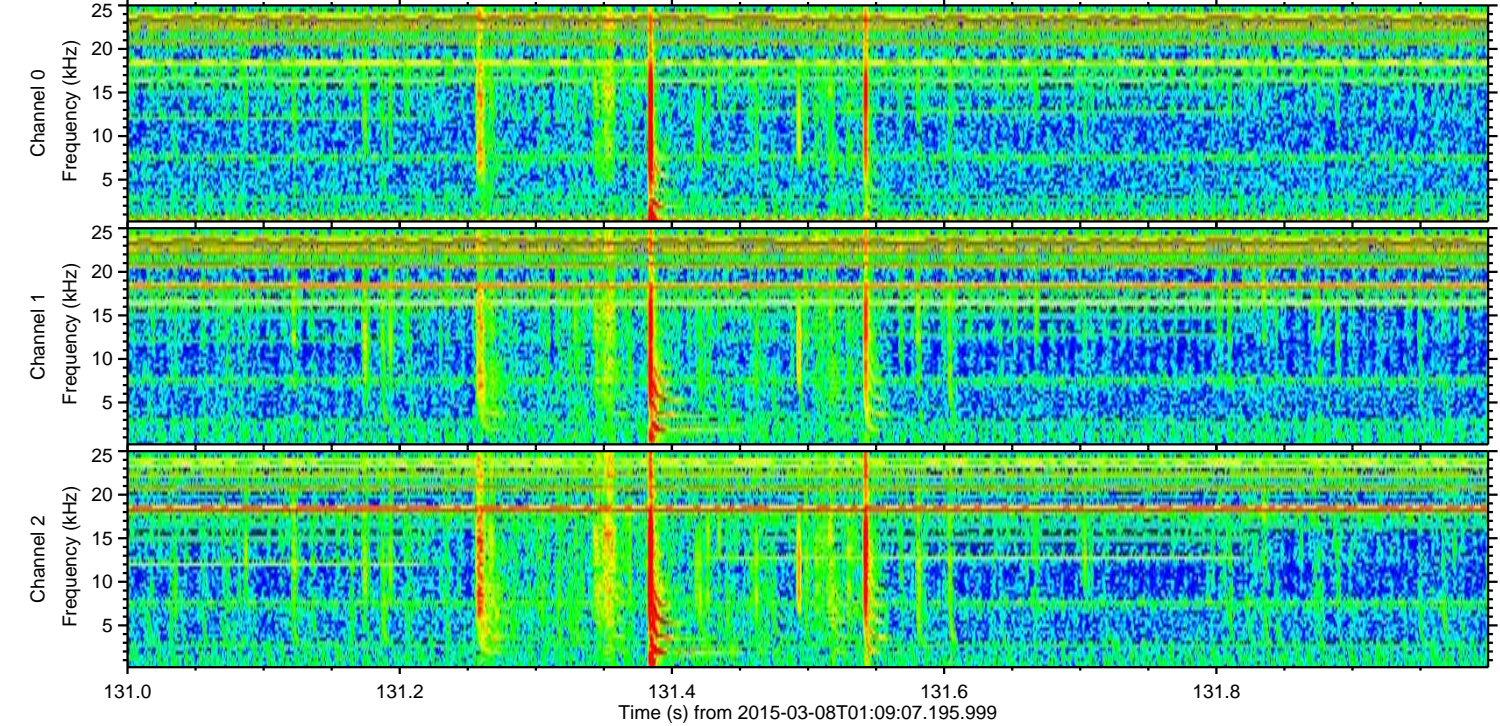
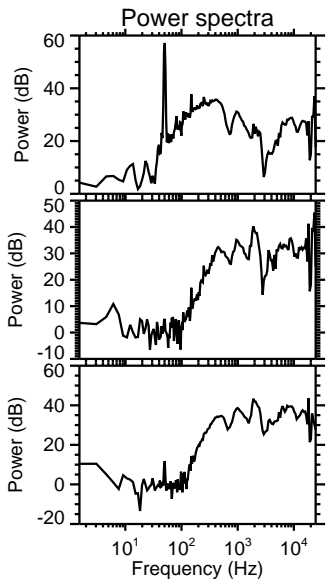
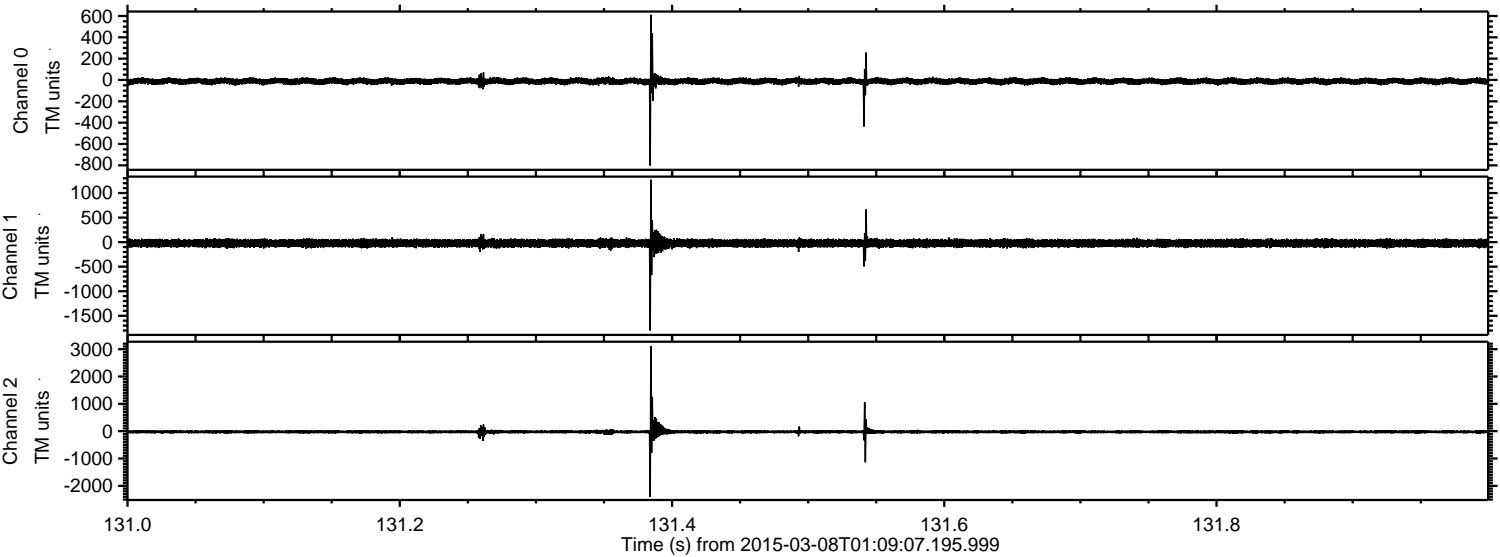


Processed Sun Mar 8 13:26:50 2015 by ELM ver.2012-10-06 from 001__elm20150308_010906__dat00.bin



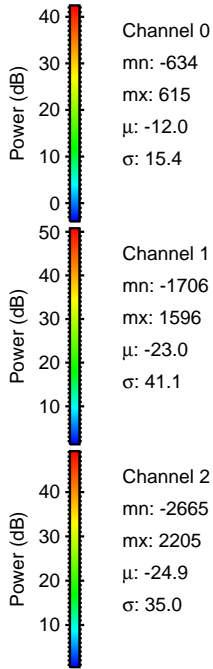
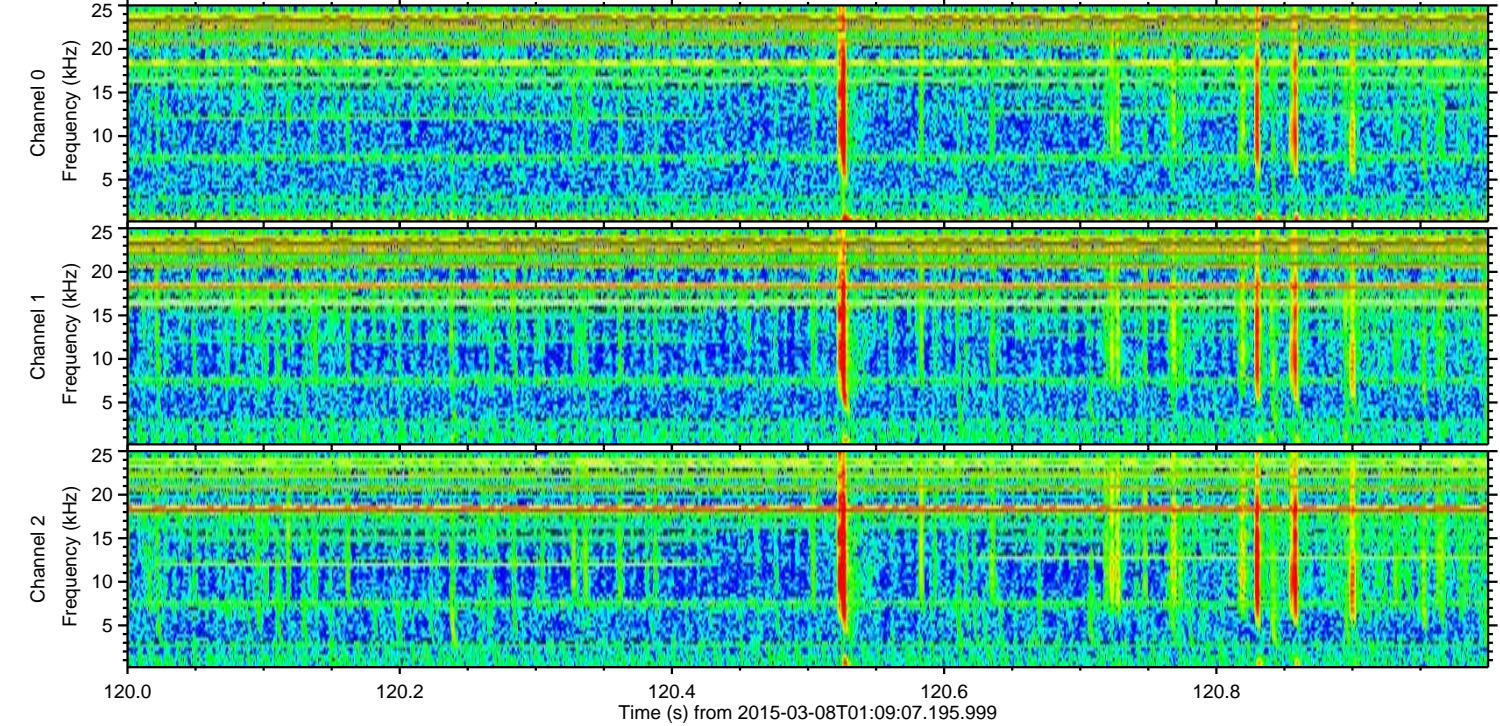
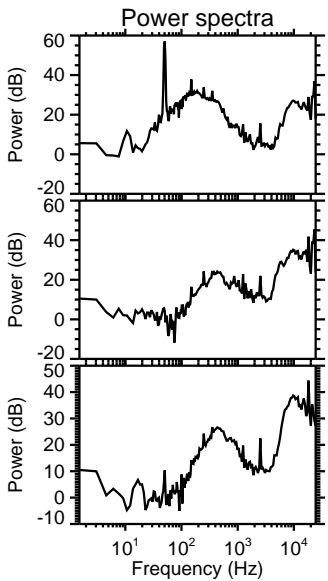
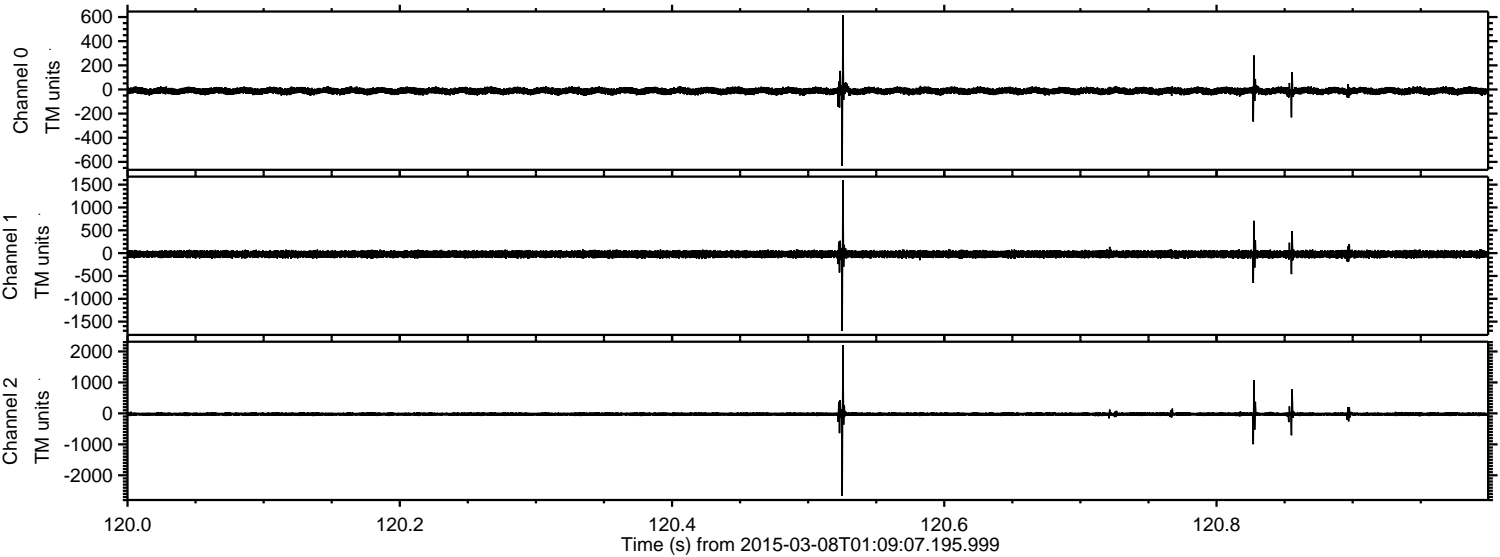
ELMAVAN 3D WAVEFORMS (Measured data sampled at 50 kHz) 49802 packets of 144 samples from 2015-03-08T01:09:07.195.999. Part 132/144

Processed Sun Mar 8 13:26:51 2015 by ELM ver.2012-10-06 from 001__elm20150308_010906__dat00.bin

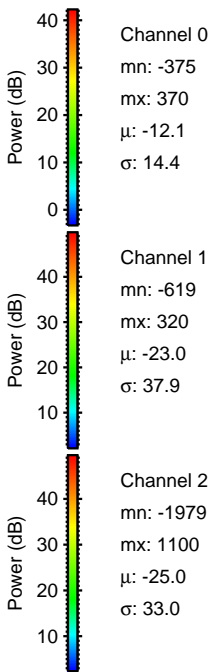
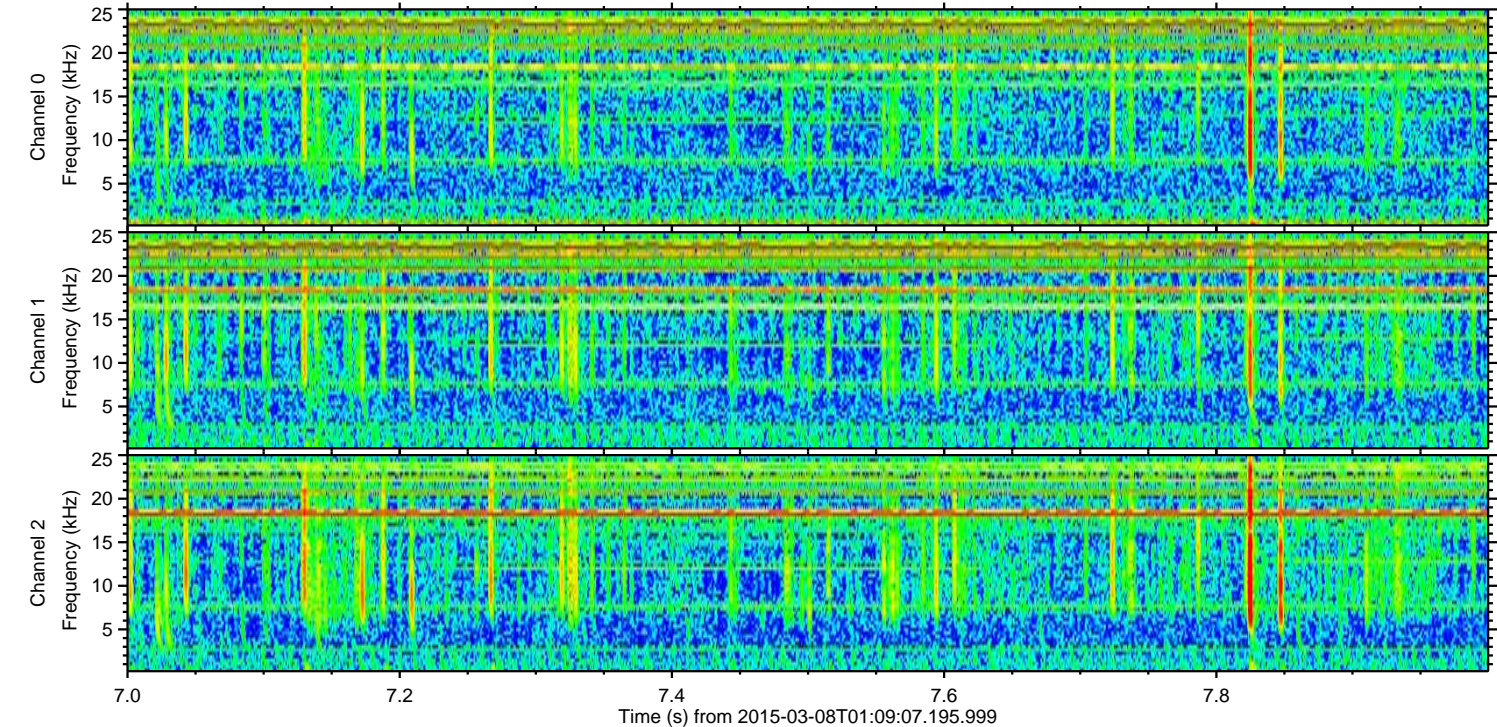
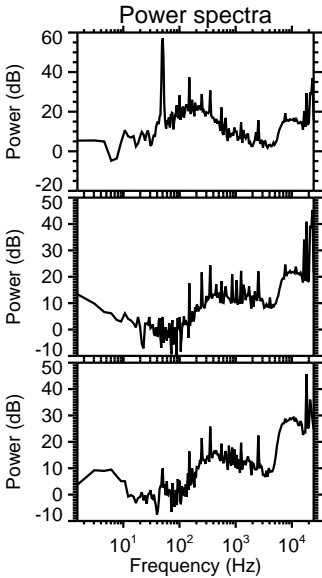
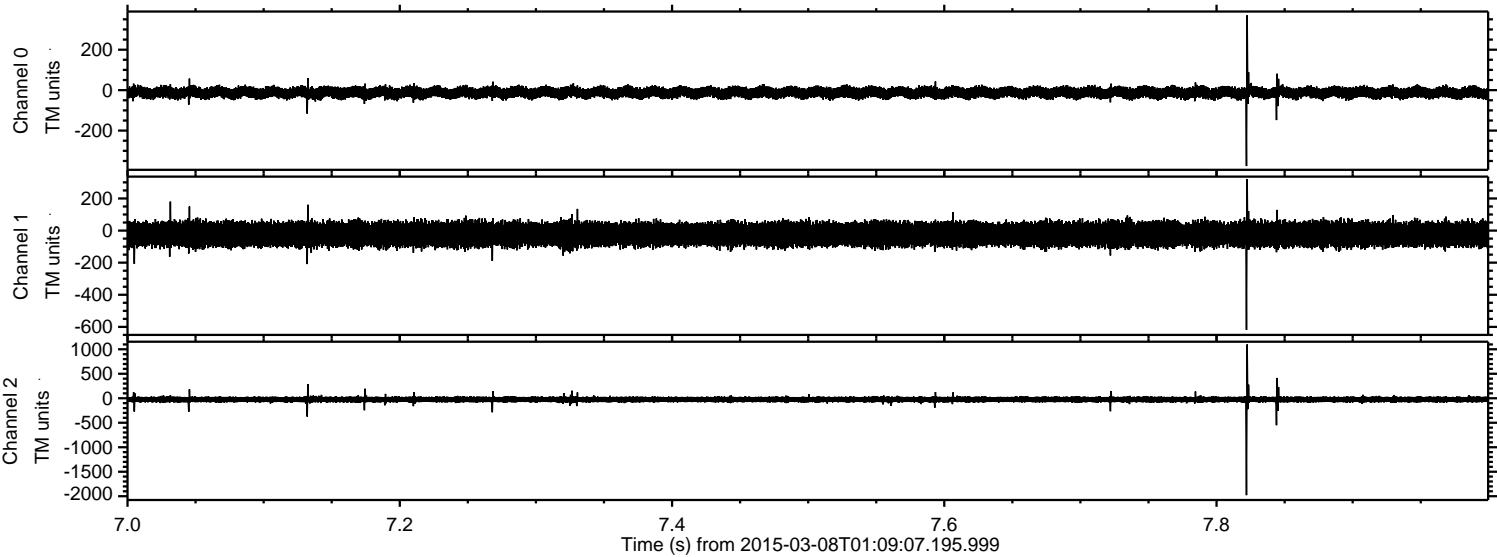


ELMAVAN 3D WAVEFORMS (Measured data sampled at 50 kHz) 49802 packets of 144 samples from 2015-03-08T01:09:07.195.999. Part 121/144

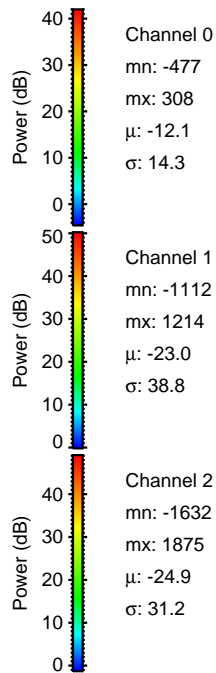
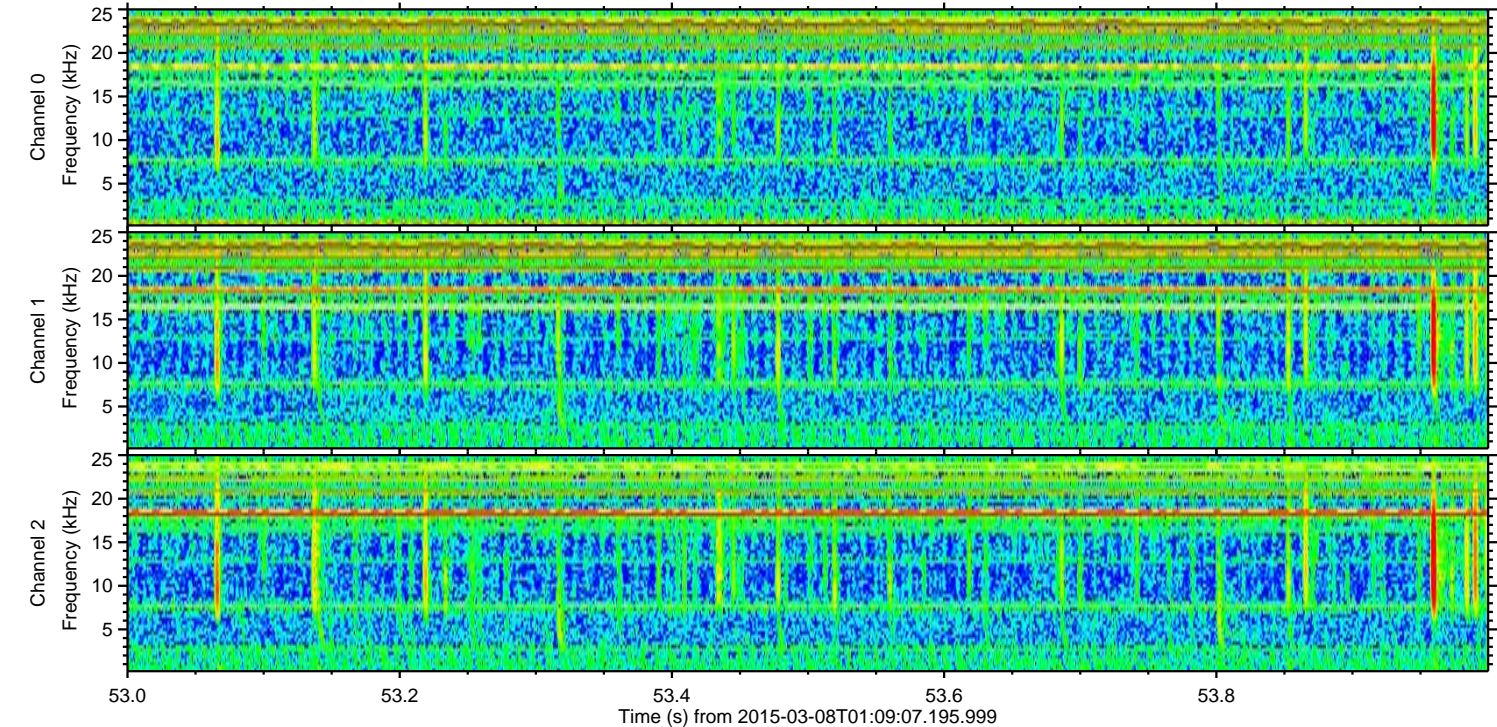
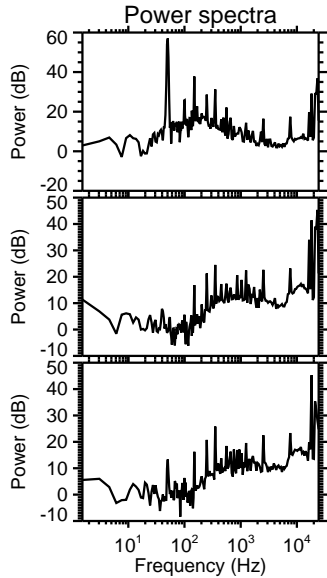
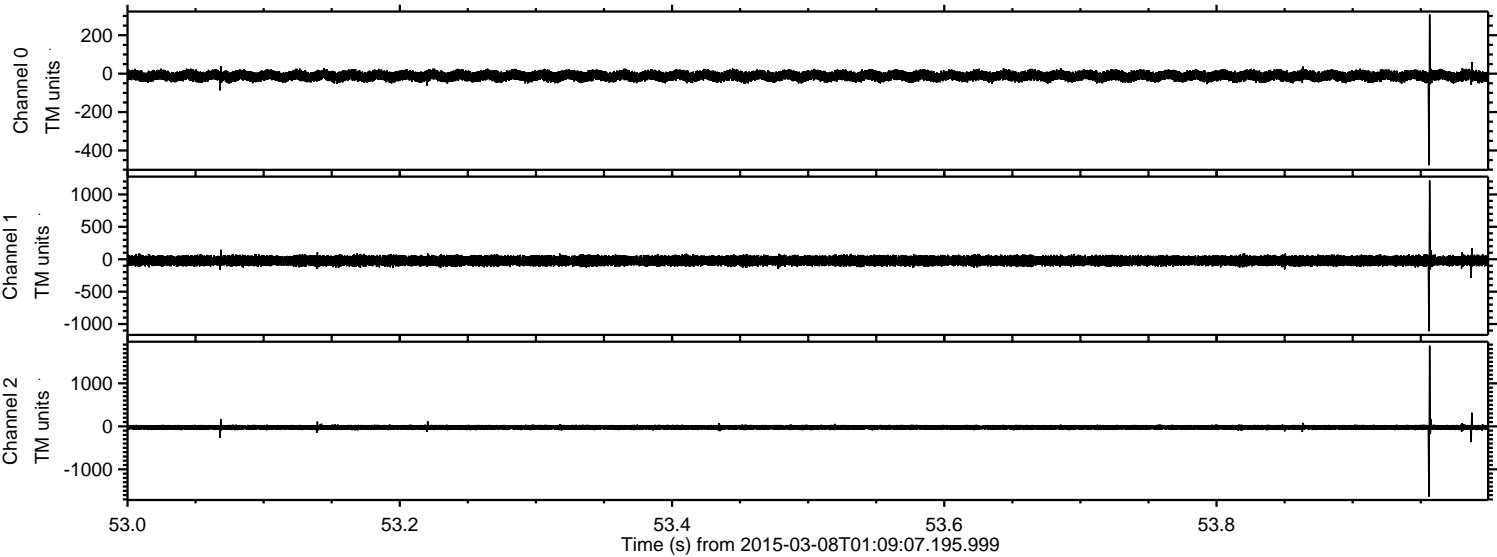
Processed Sun Mar 8 13:26:52 2015 by ELM ver.2012-10-06 from 001__elm20150308_010906__dat00.bin



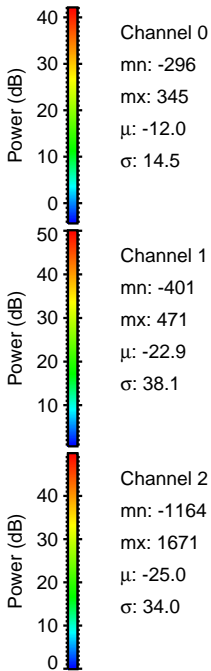
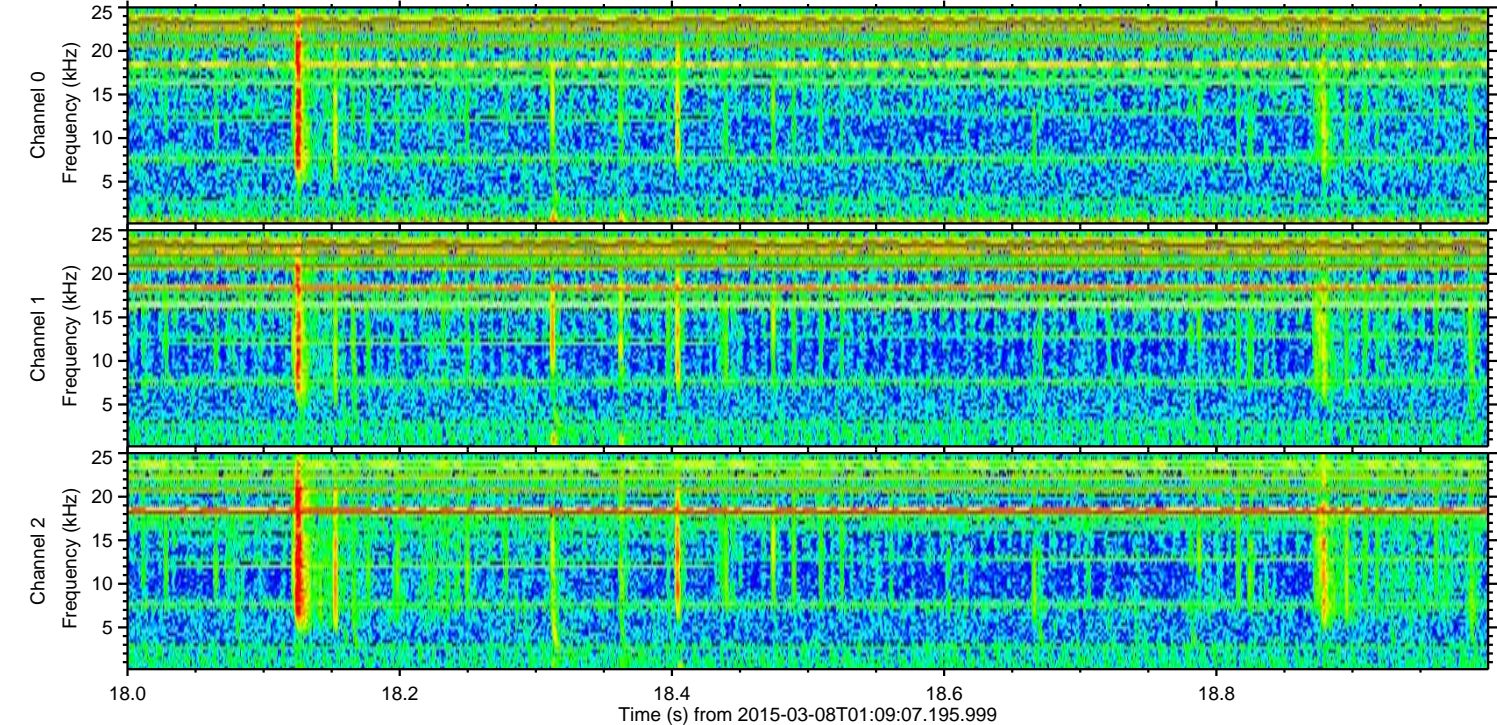
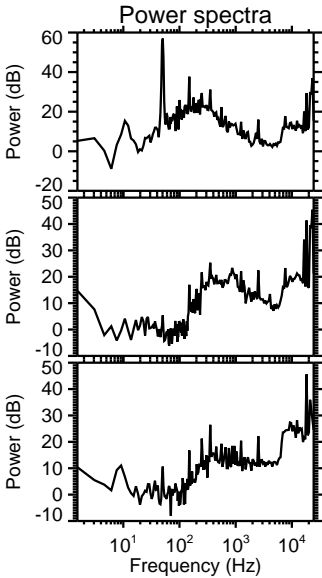
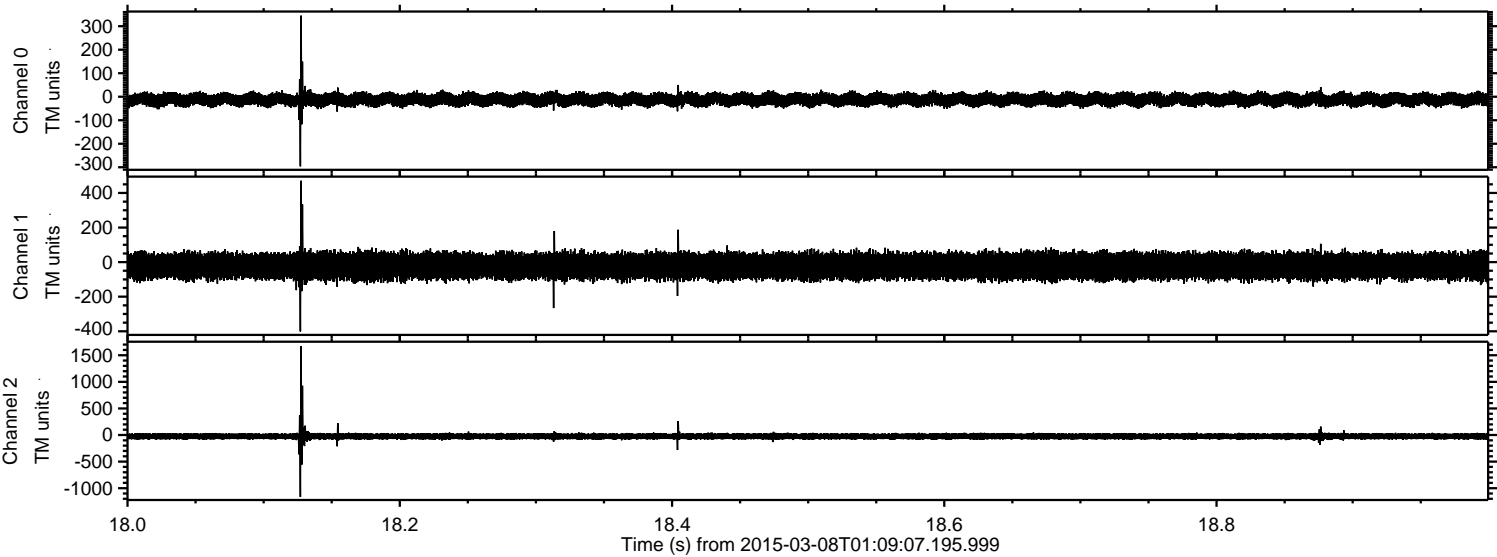
Processed Sun Mar 8 13:26:52 2015 by ELM ver.2012-10-06 from 001__elm20150308_010906__dat00.bin



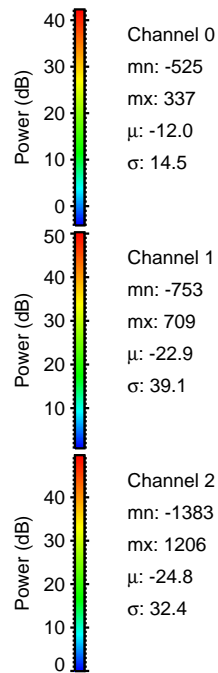
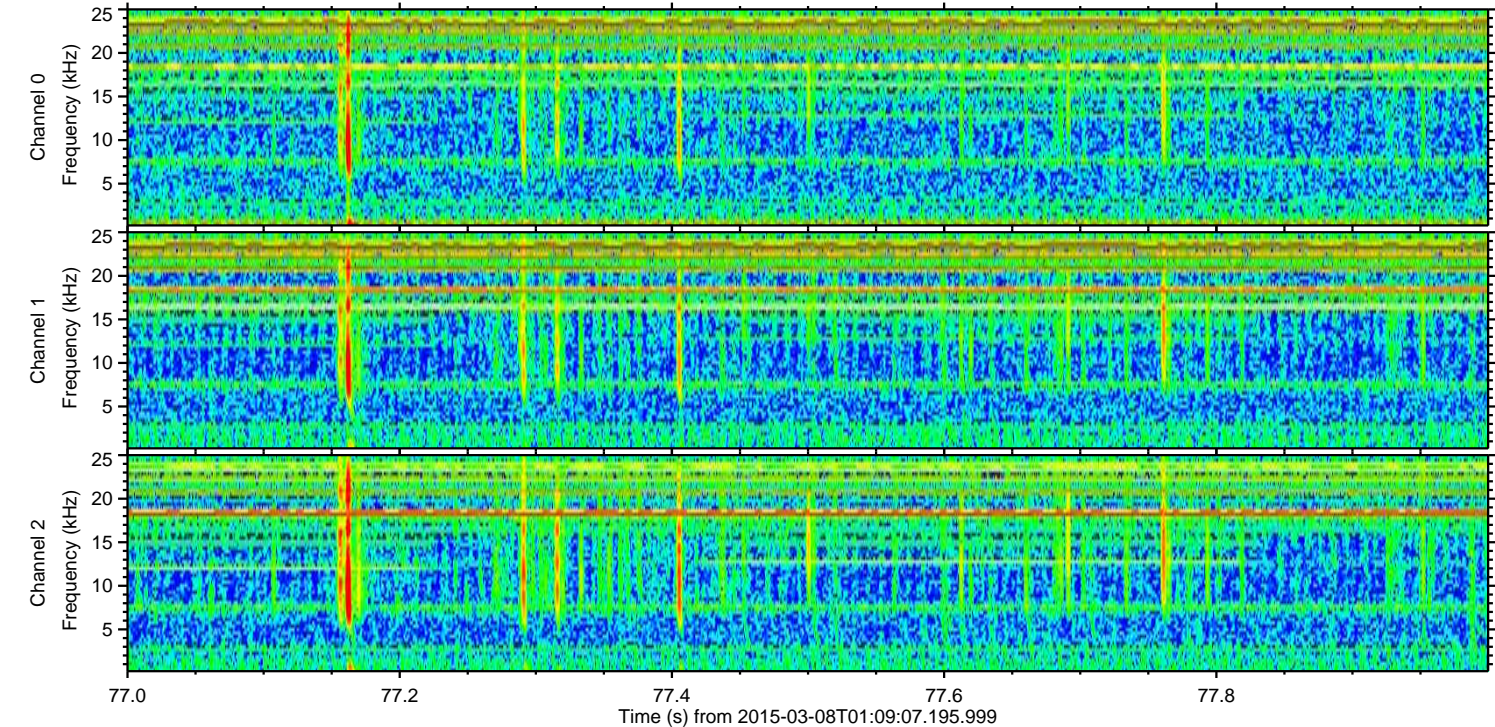
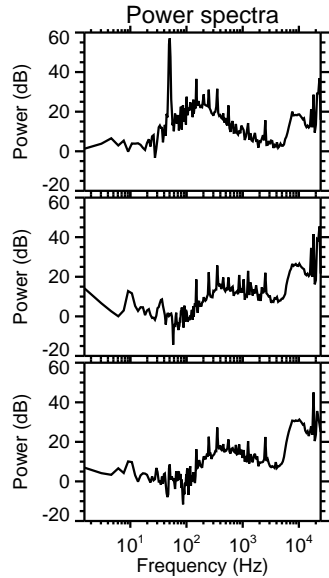
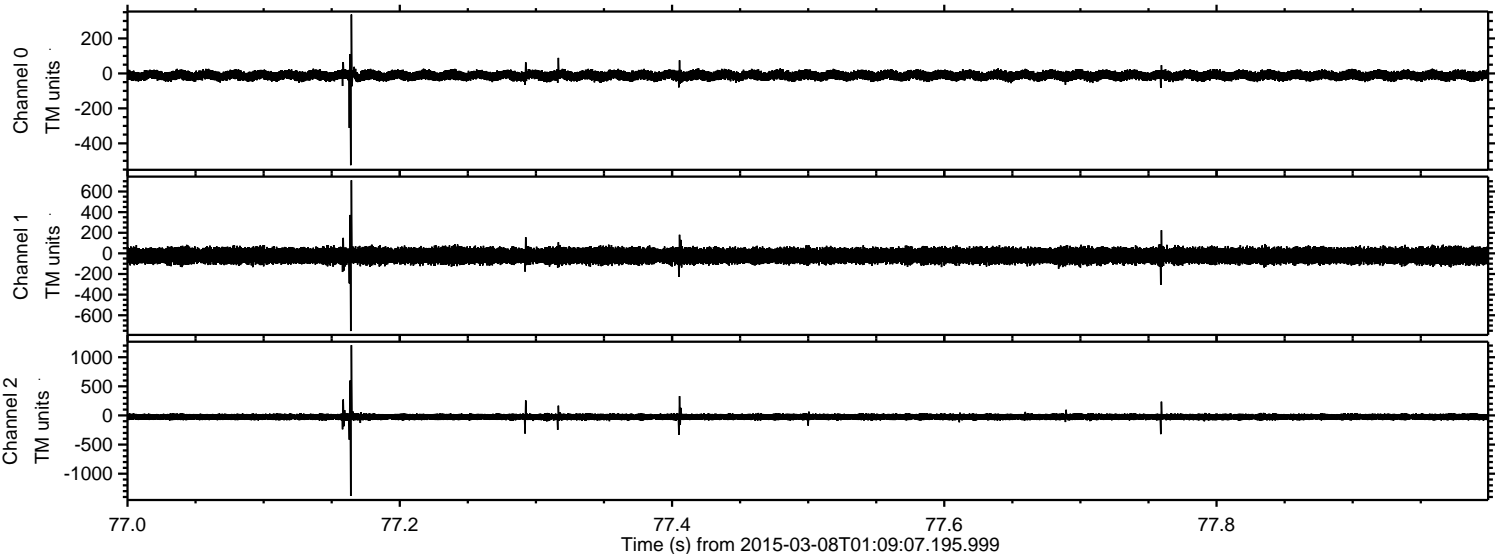
Processed Sun Mar 8 13:26:53 2015 by ELM ver.2012-10-06 from 001__elm20150308_010906__dat00.bin



Processed Sun Mar 8 13:26:54 2015 by ELM ver.2012-10-06 from 001__elm20150308_010906__dat00.bin

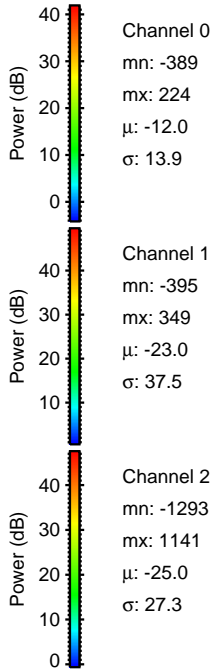
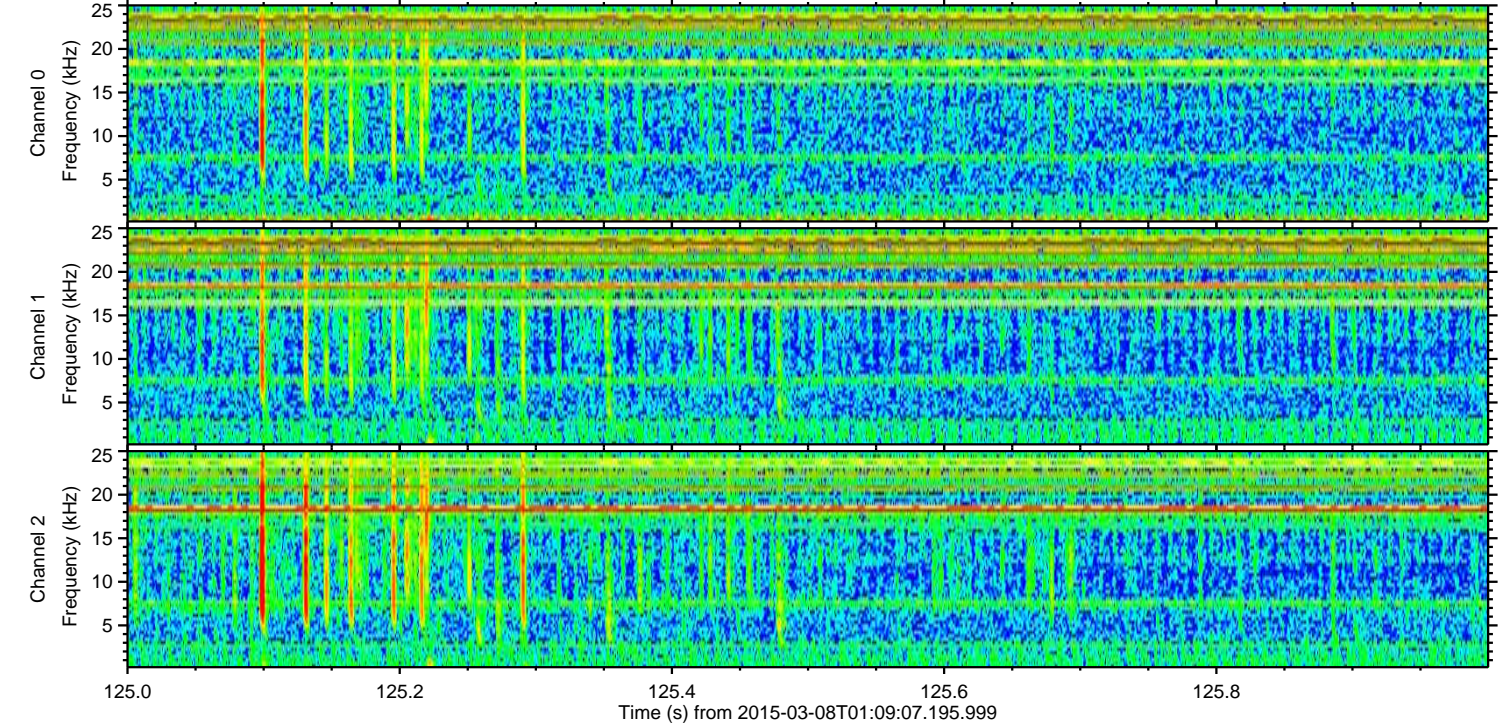
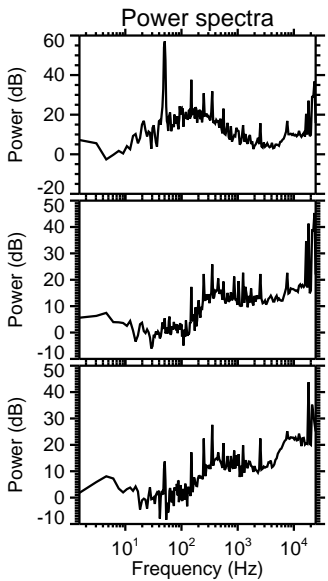
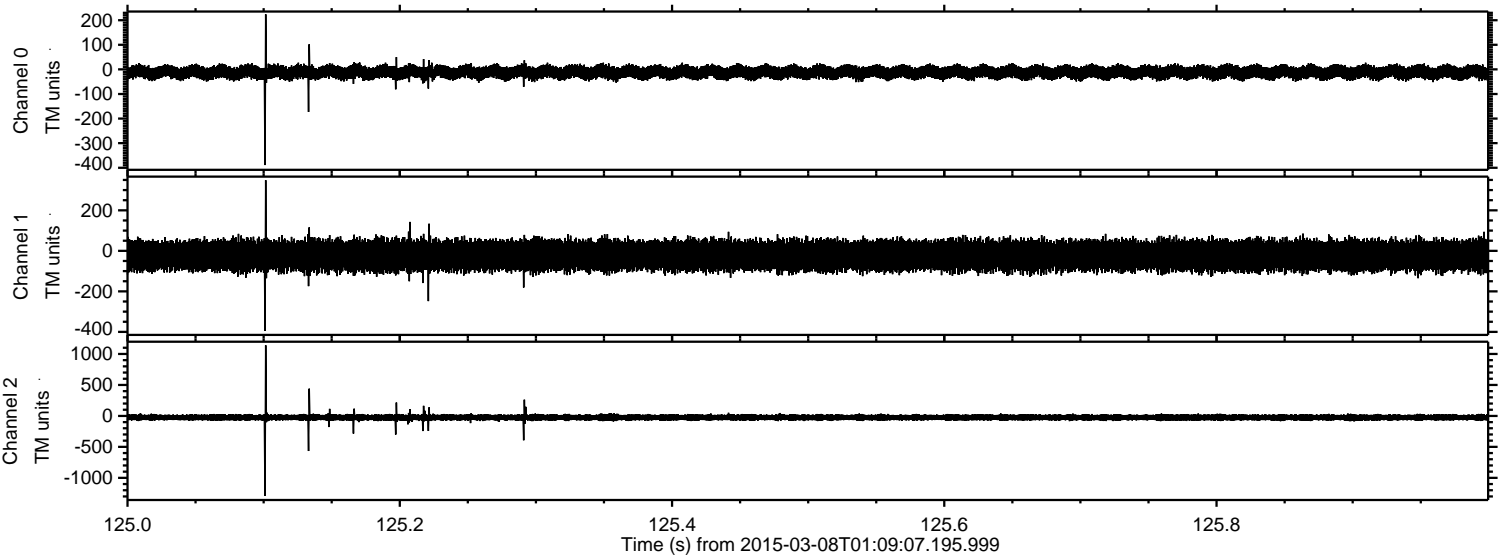


Processed Sun Mar 8 13:26:55 2015 by ELM ver.2012-10-06 from 001__elm20150308_010906__dat00.bin



ELMAVAN 3D WAVEFORMS (Measured data sampled at 50 kHz) 49802 packets of 144 samples from 2015-03-08T01:09:07.195.999. Part 126/144

Processed Sun Mar 8 13:26:56 2015 by ELM ver.2012-10-06 from 001__elm20150308_010906__dat00.bin

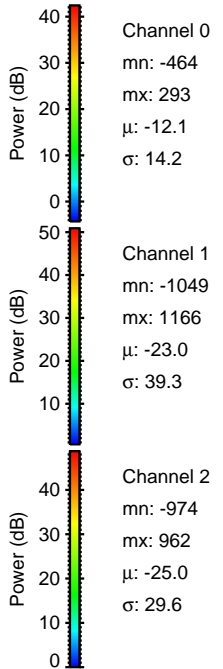
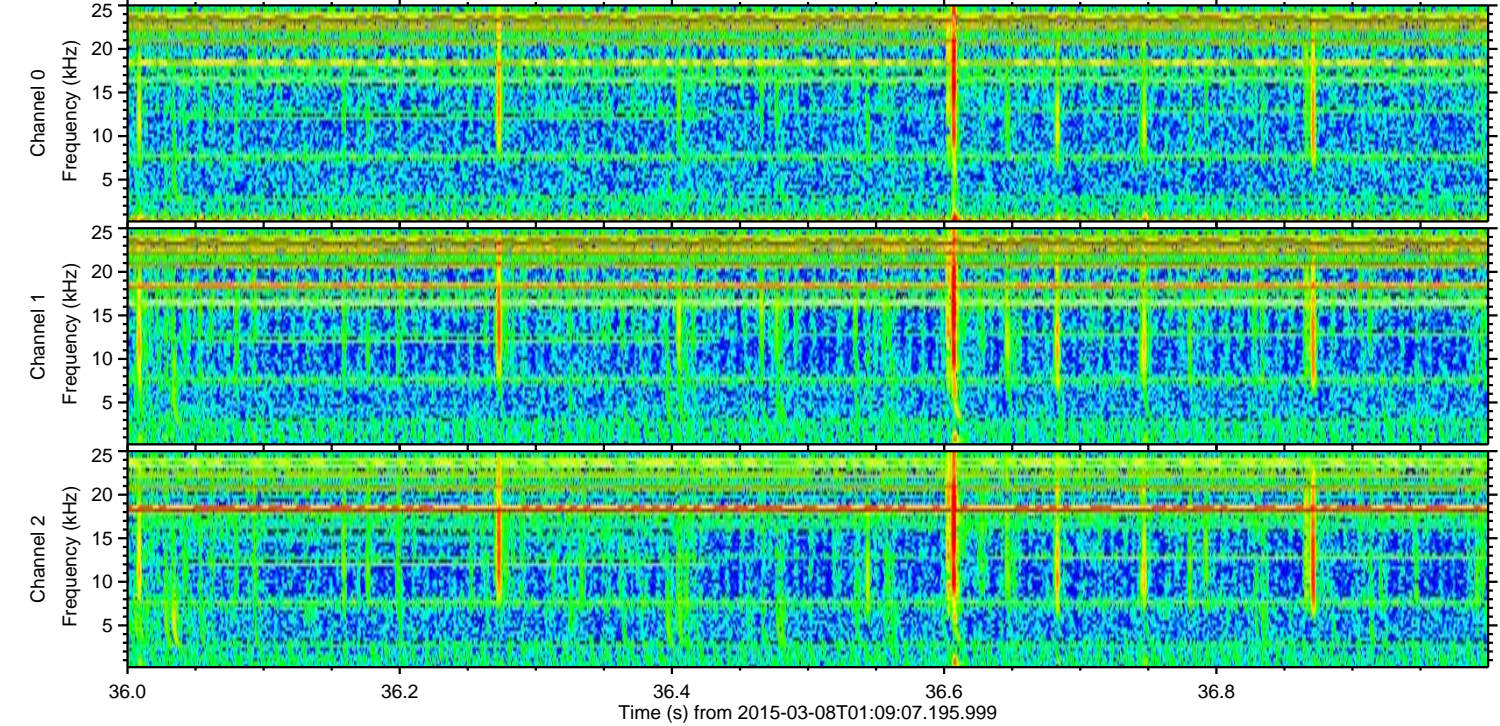
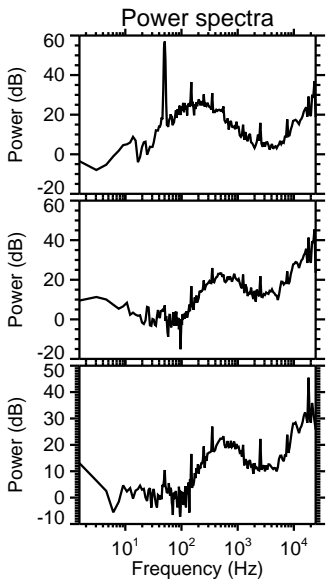
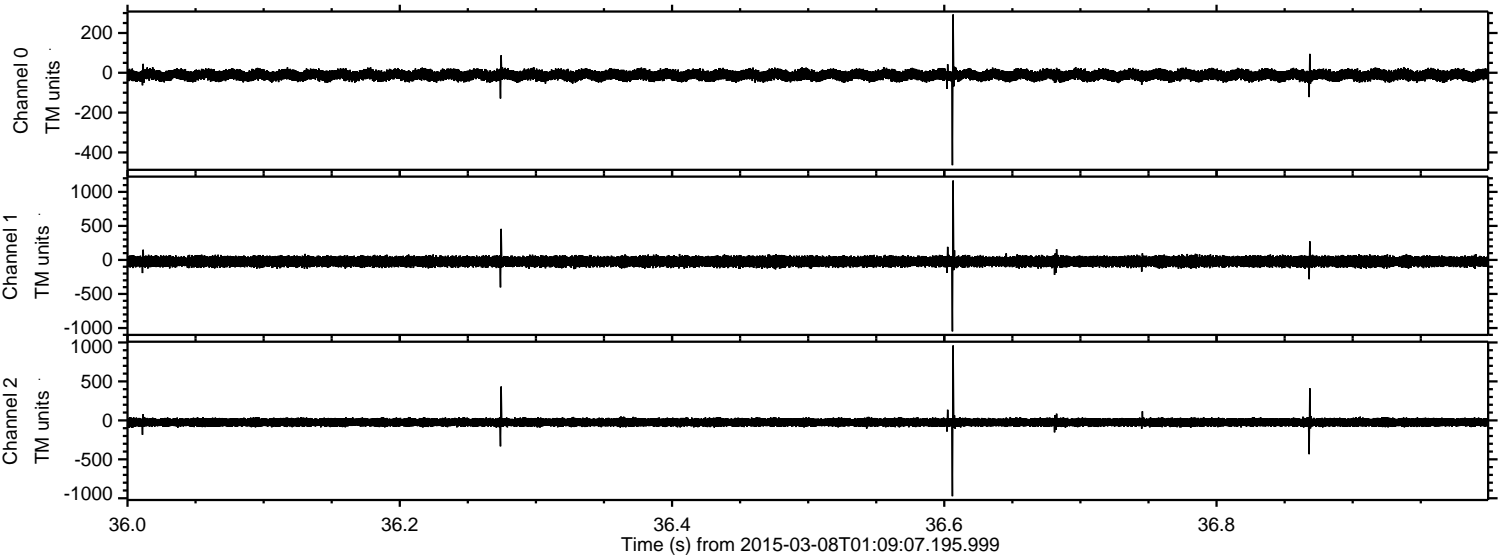


Channel 0
mn: -389
mx: 224
 μ : -12.0
 σ : 13.9

Channel 1
mn: -395
mx: 349
 μ : -23.0
 σ : 37.5

Channel 2
mn: -1293
mx: 1141
 μ : -25.0
 σ : 27.3

Processed Sun Mar 8 13:26:57 2015 by ELM ver.2012-10-06 from 001__elm20150308_010906__dat00.bin



Processed Sun Mar 8 13:26:58 2015 by ELM ver.2012-10-06 from 001__elm20150308_010906__dat00.bin

