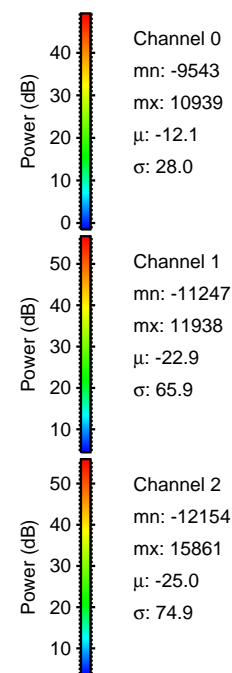
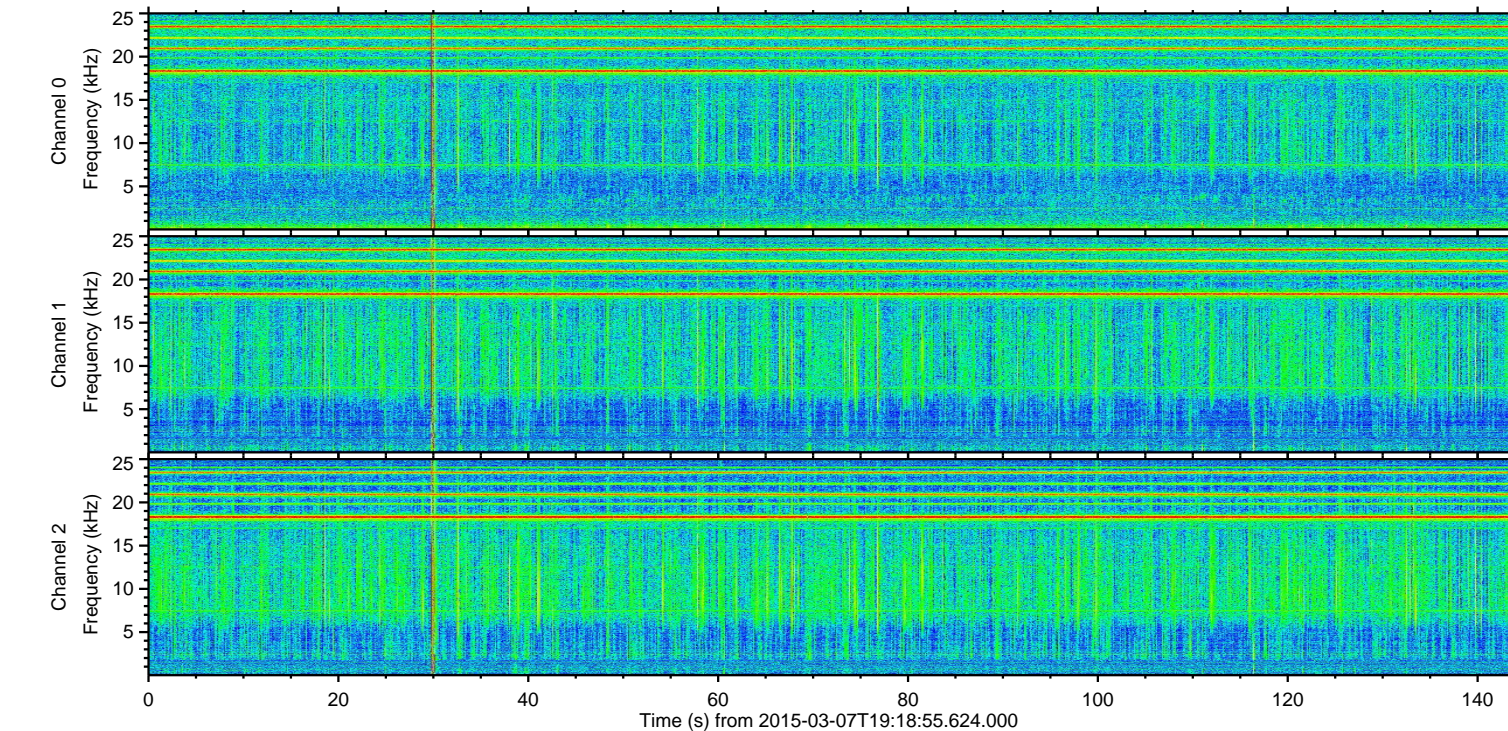
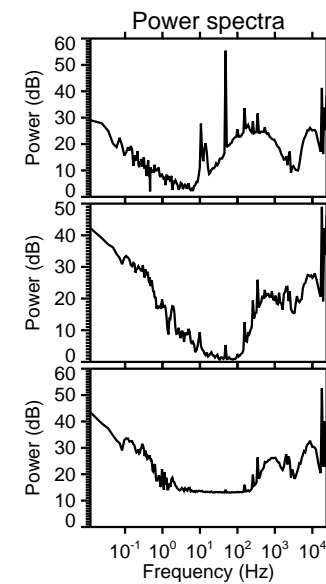
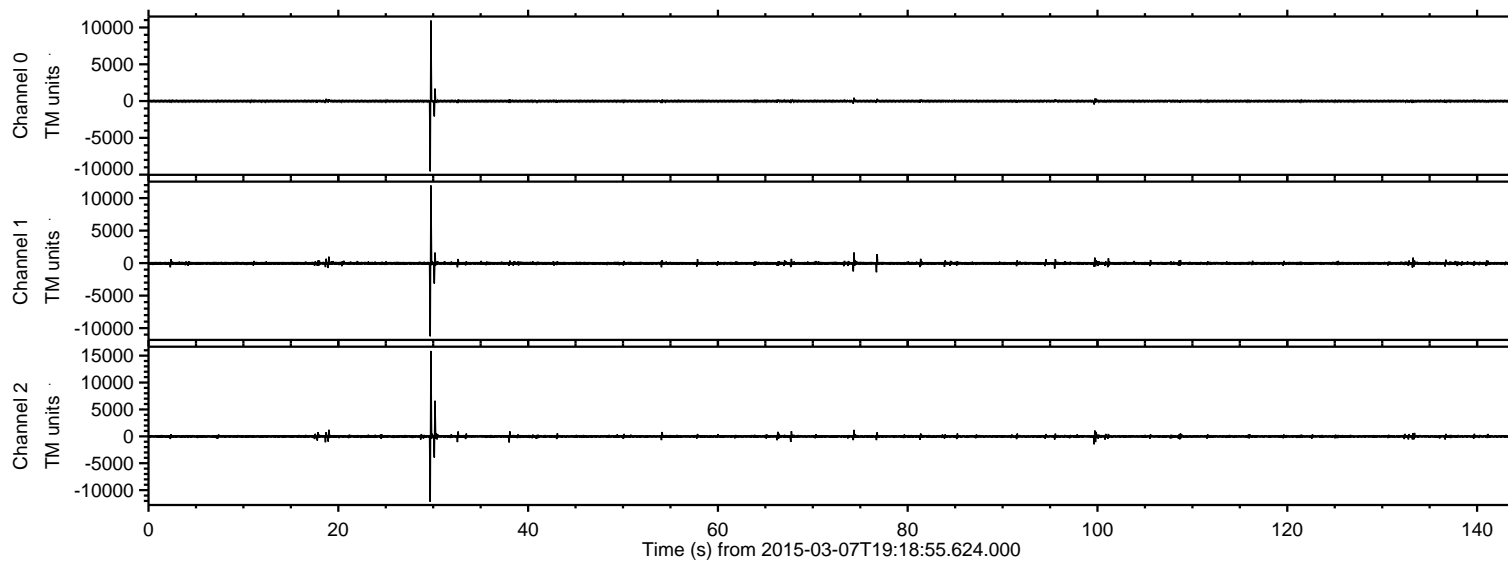


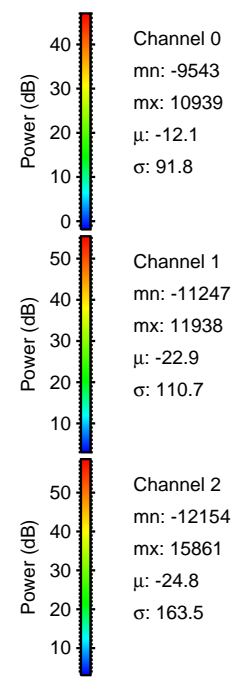
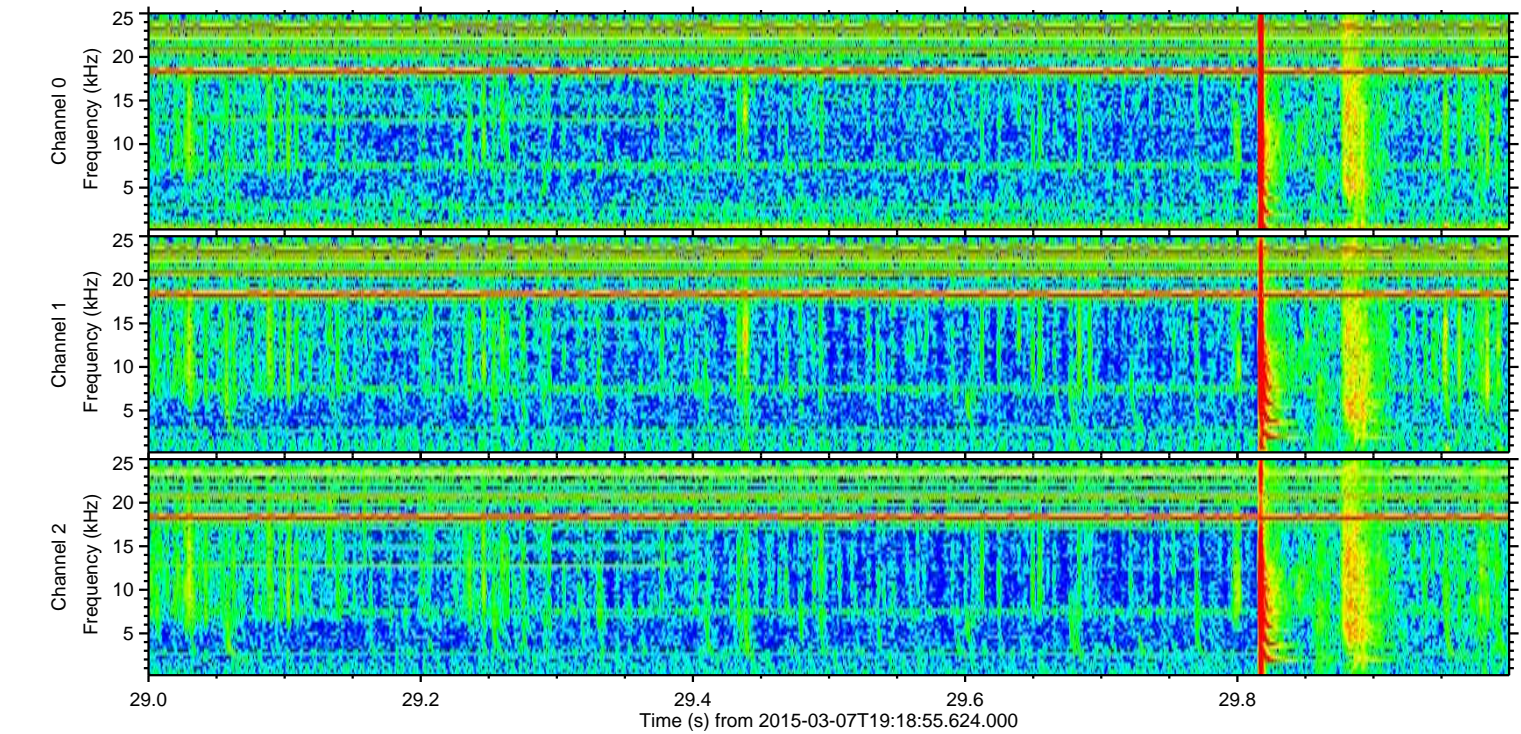
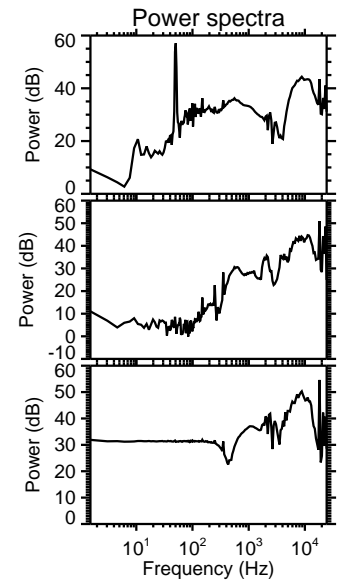
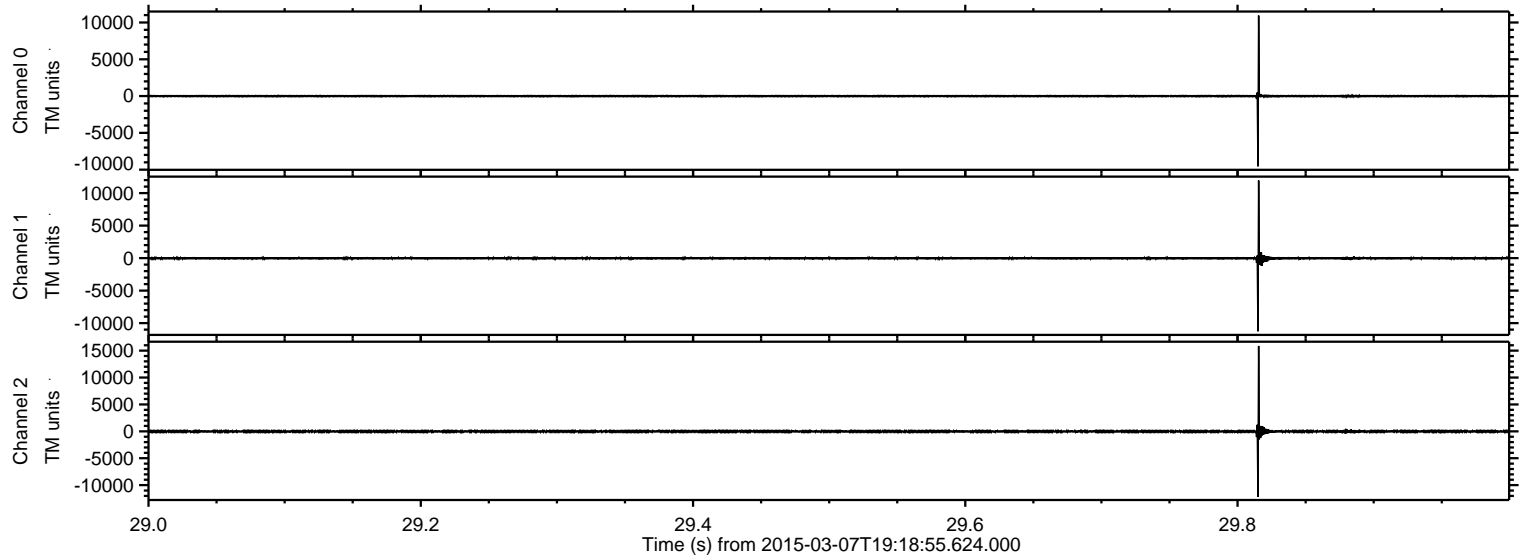
ELMAVAN 3D WAVEFORMS (Measured data sampled at 50 kHz) 49784 packets of 144 samples from 2015-03-07T19:18:55.624.000.

Processed Sun Mar 8 12:00:06 2015 by ELM ver.2012-10-06 from 001__elm20150307_191854__dat00.bin

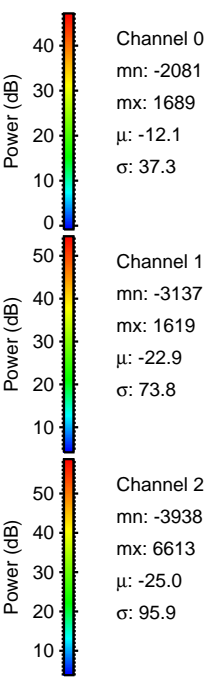
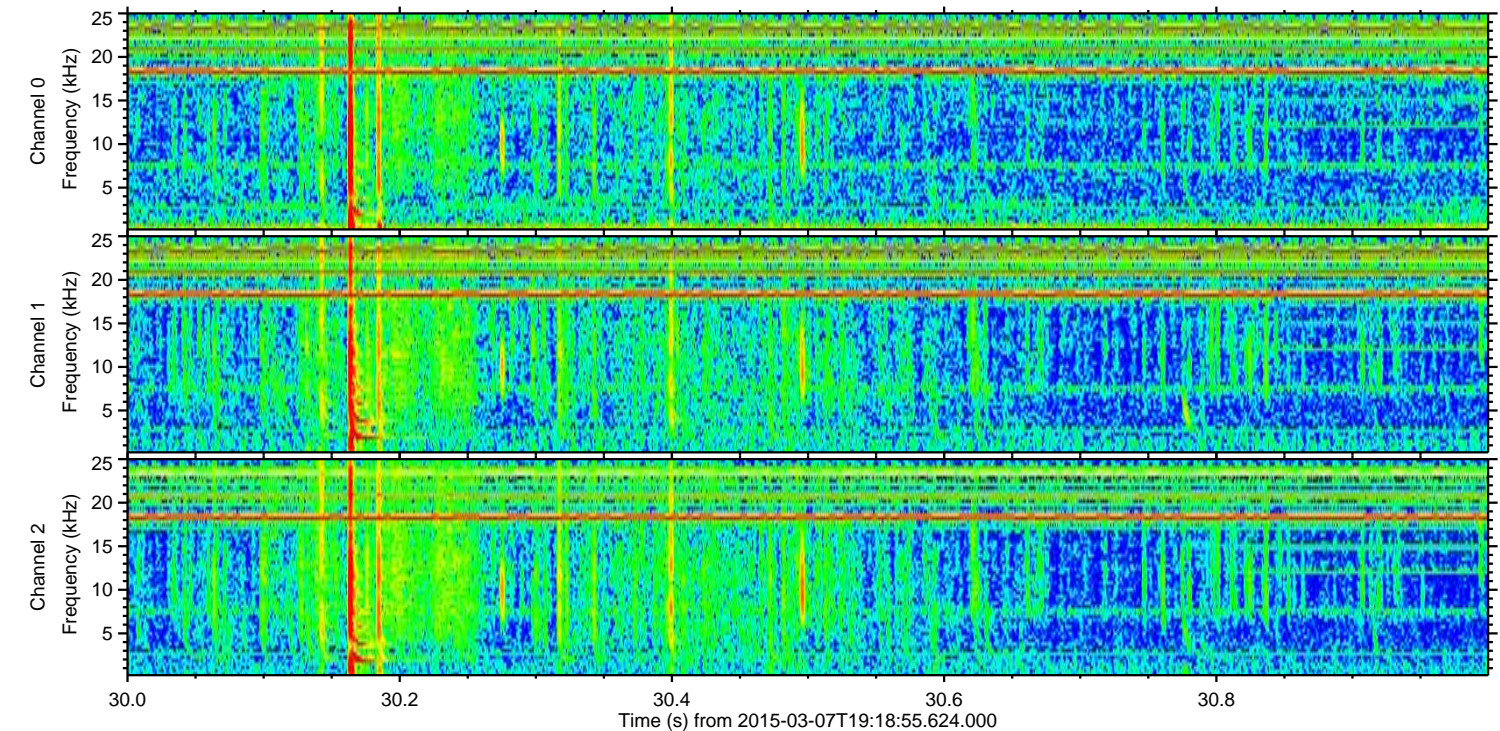
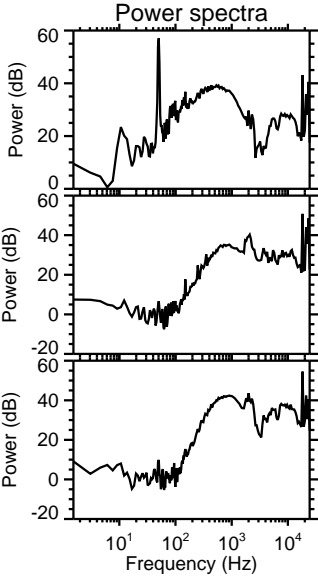
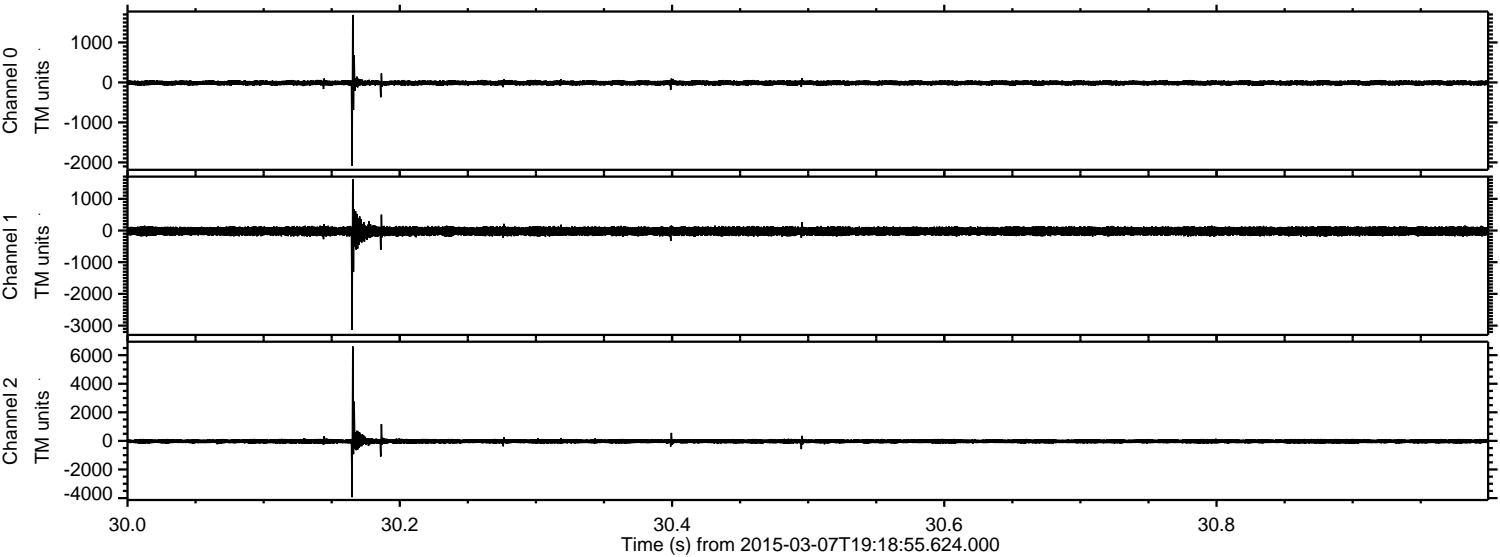


ELMAVAN 3D WAVEFORMS (Measured data sampled at 50 kHz) 49784 packets of 144 samples from 2015-03-07T19:18:55.624.000. Part 30/144

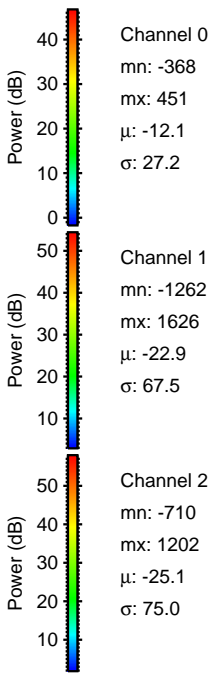
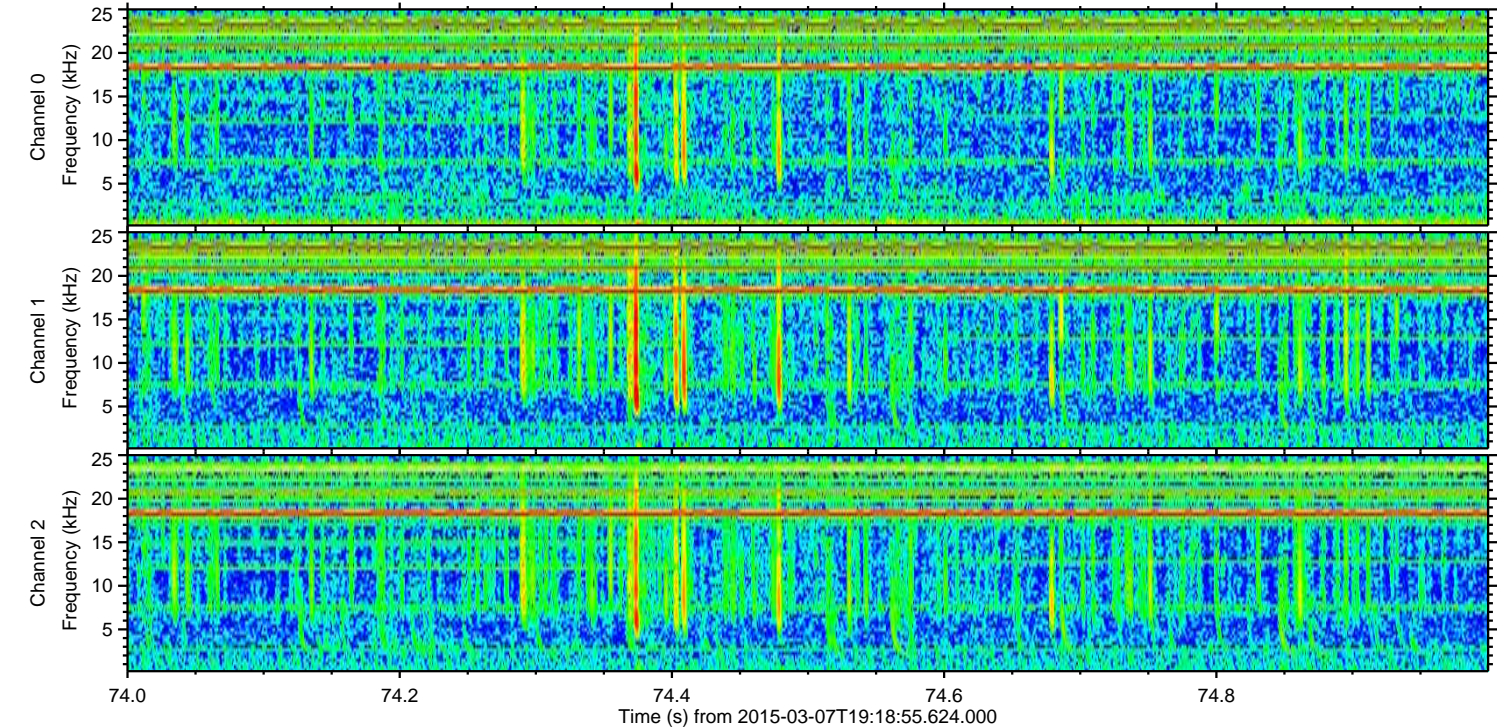
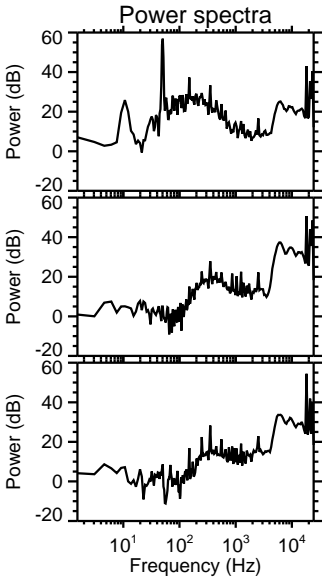
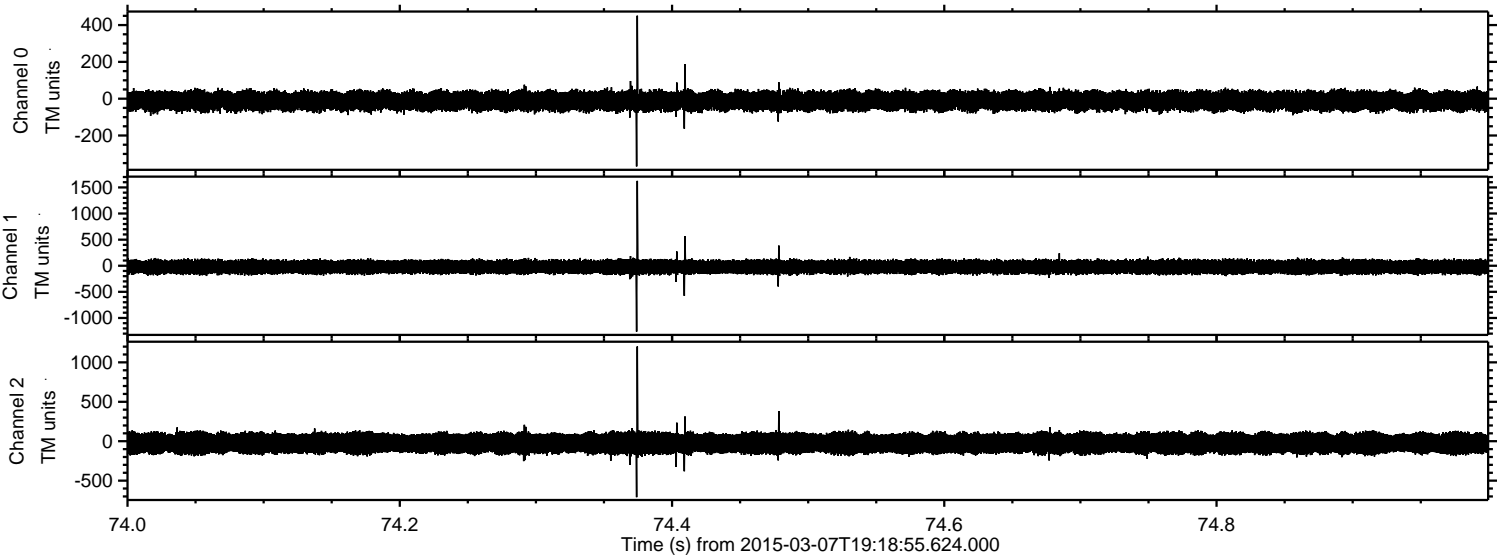
Processed Sun Mar 8 12:00:17 2015 by ELM ver.2012-10-06 from 001__elm20150307_191854__dat00.bin



Processed Sun Mar 8 12:00:18 2015 by ELM ver.2012-10-06 from 001__elm20150307_191854__dat00.bin

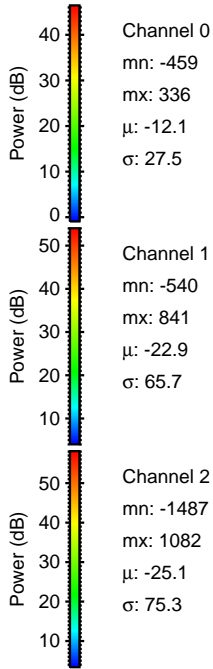
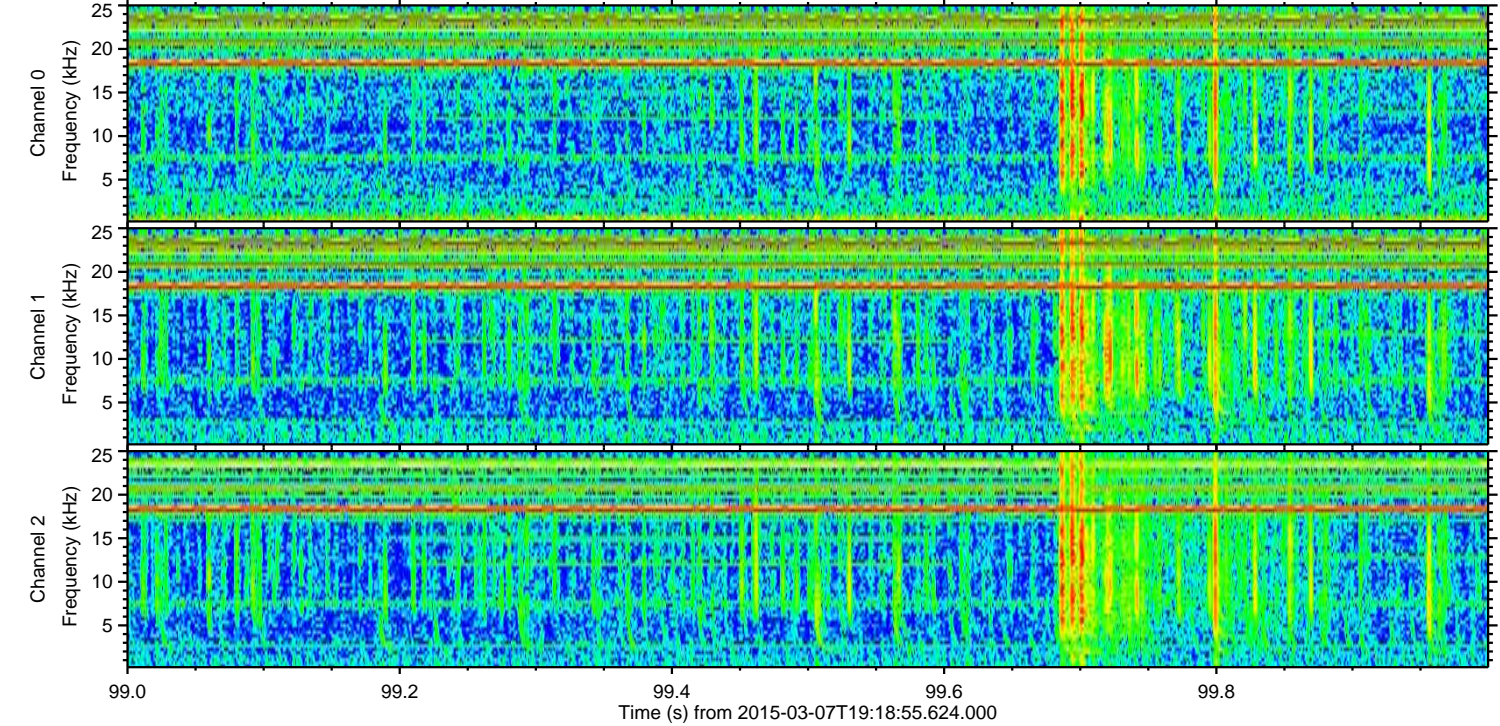
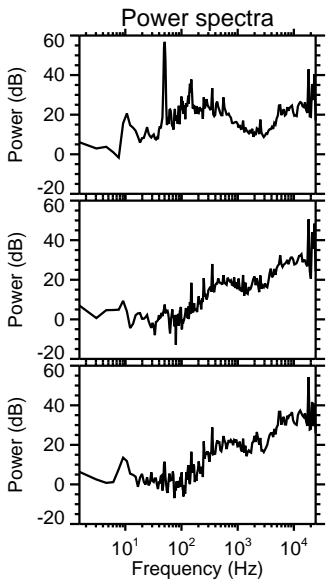
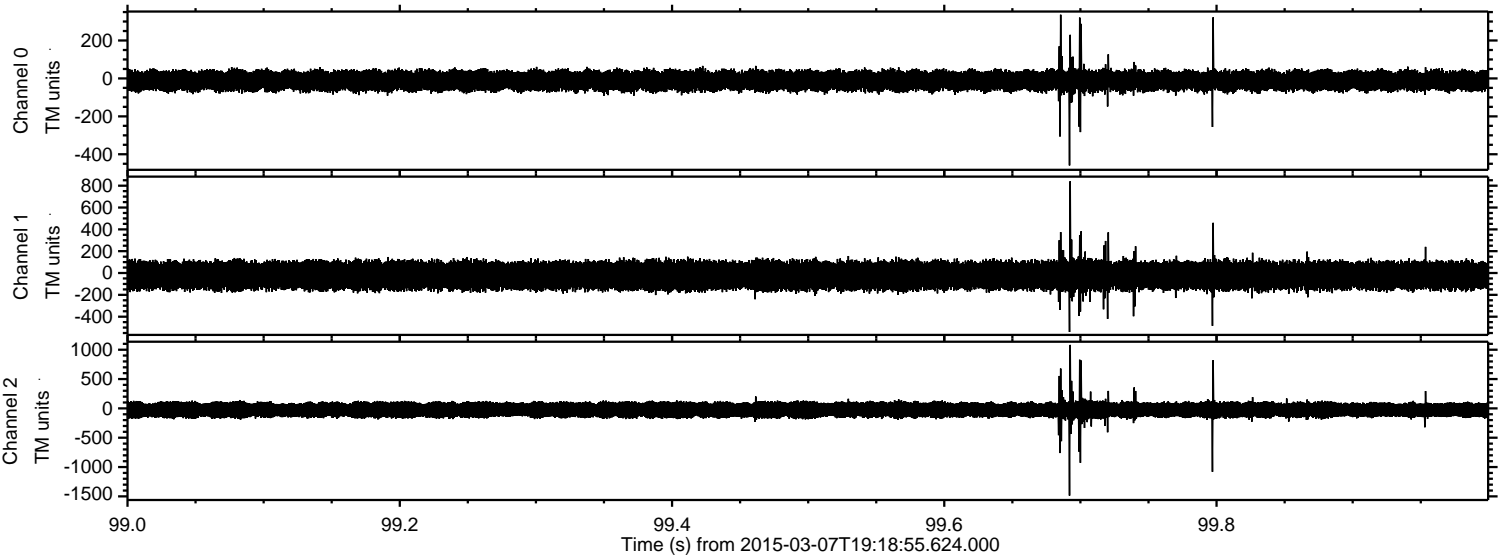


Processed Sun Mar 8 12:00:19 2015 by ELM ver.2012-10-06 from 001__elm20150307_191854__dat00.bin



ELMAVAN 3D WAVEFORMS (Measured data sampled at 50 kHz) 49784 packets of 144 samples from 2015-03-07T19:18:55.624.000. Part 100/144

Processed Sun Mar 8 12:00:20 2015 by ELM ver.2012-10-06 from 001__elm20150307_191854__dat00.bin

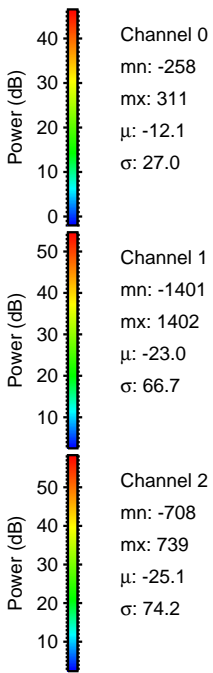
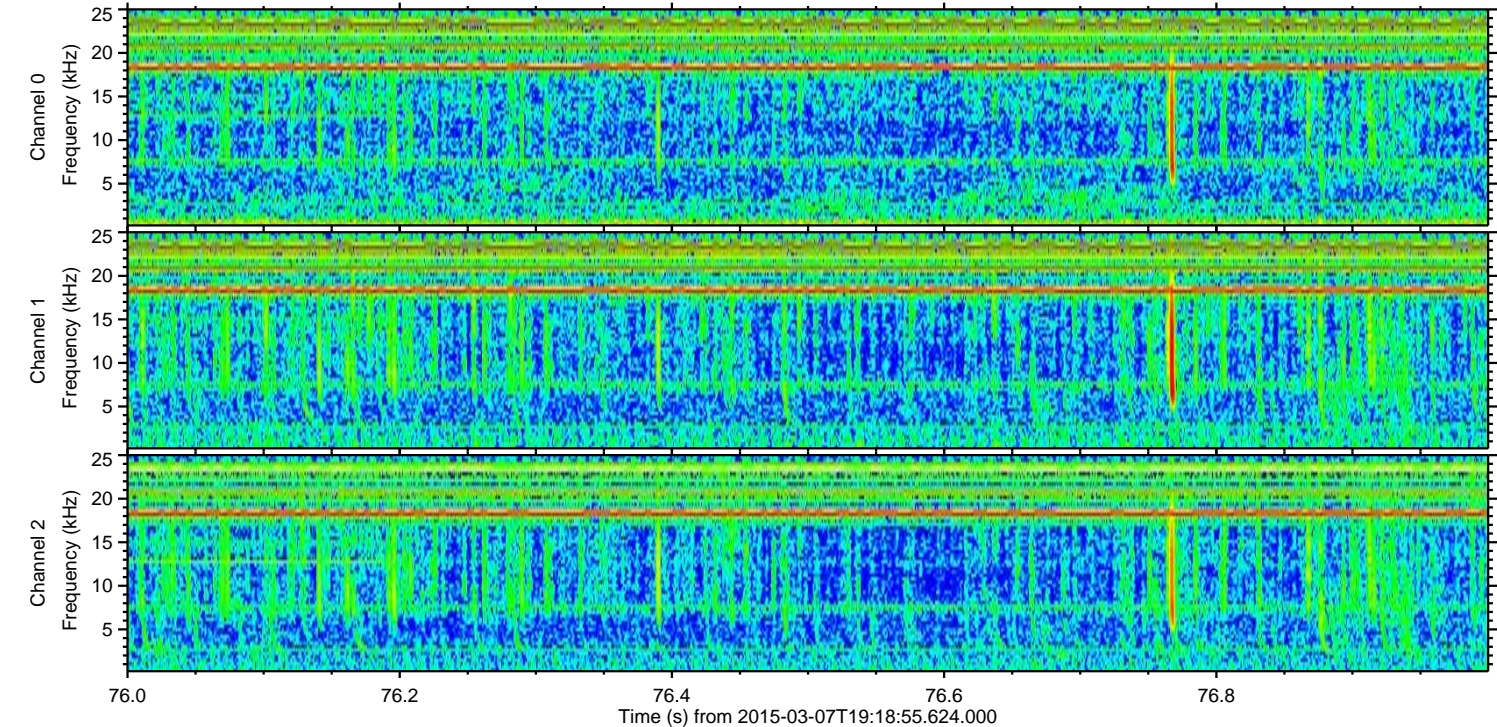
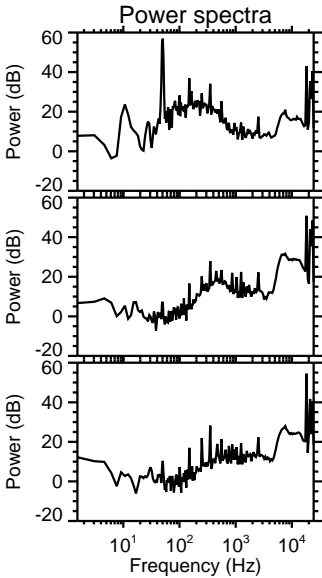
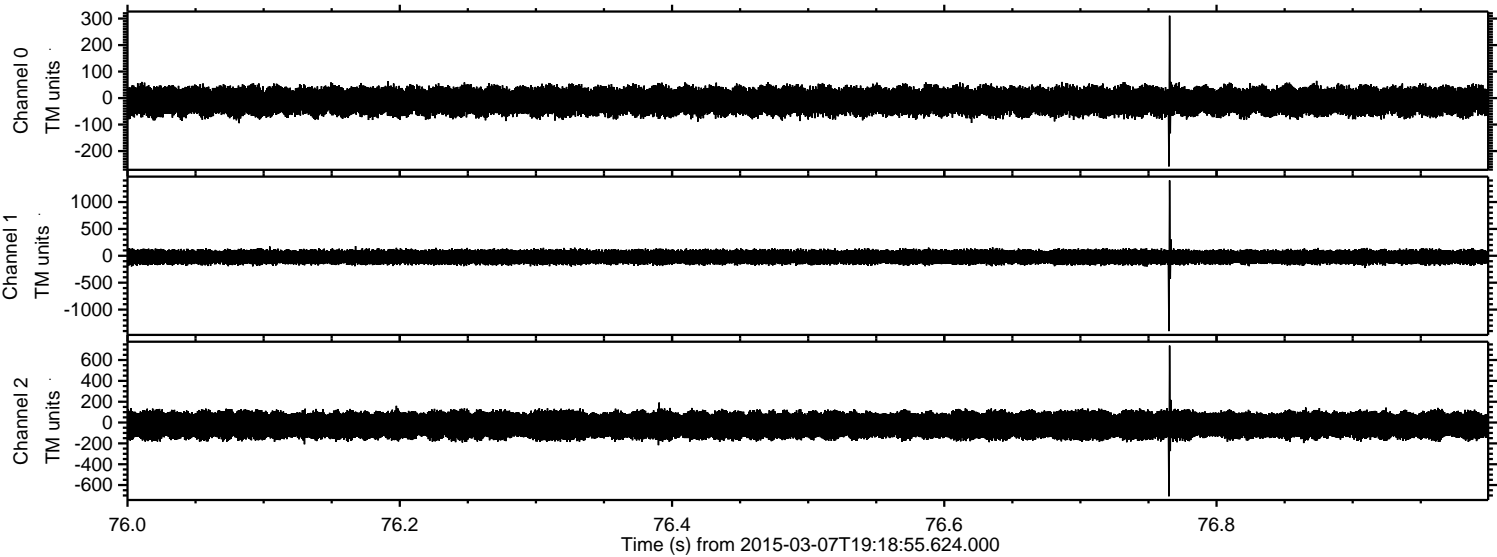


Channel 0
mn: -459
mx: 336
 μ : -12.1
 σ : 27.5

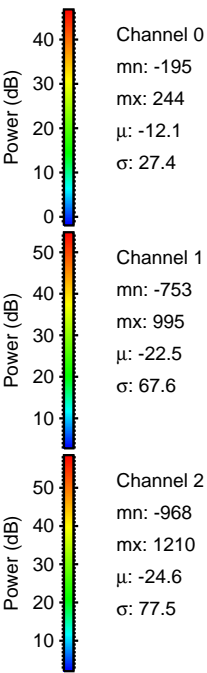
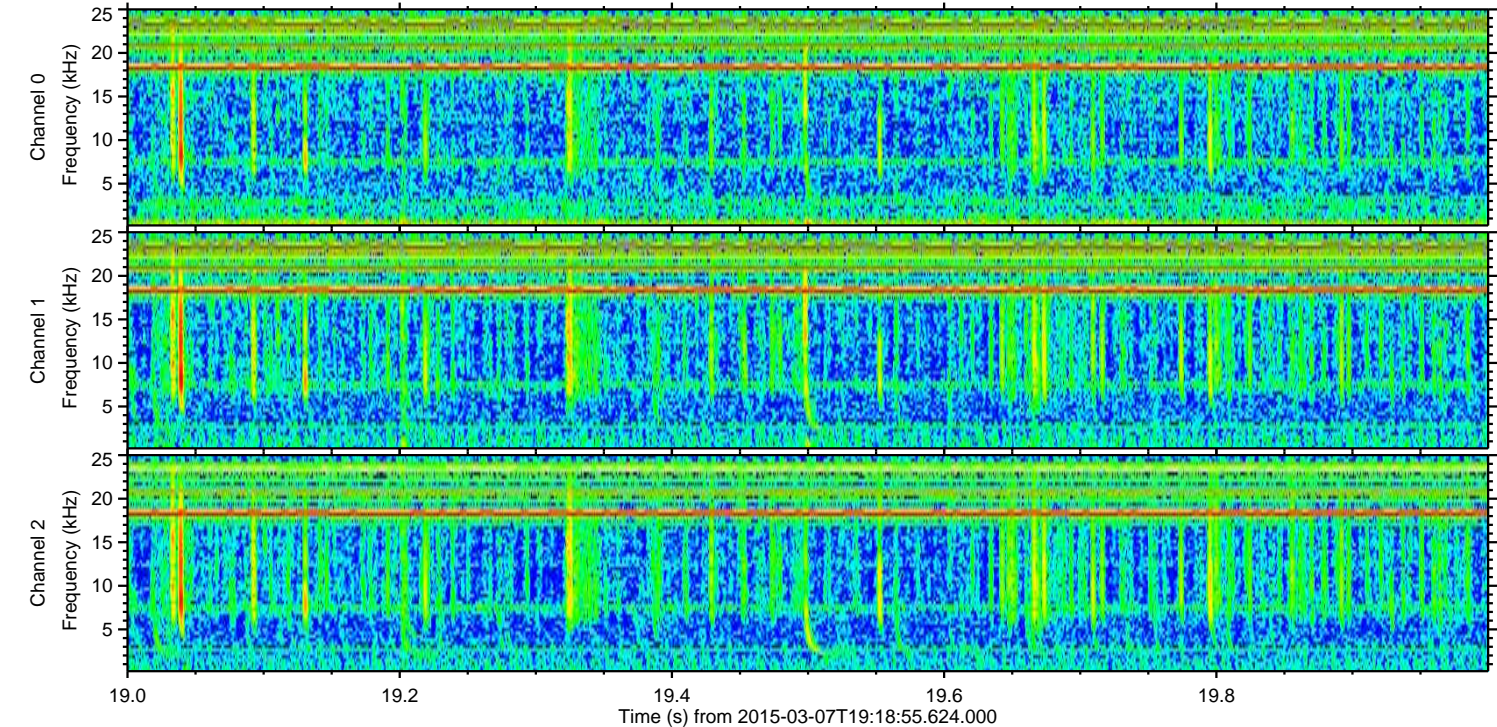
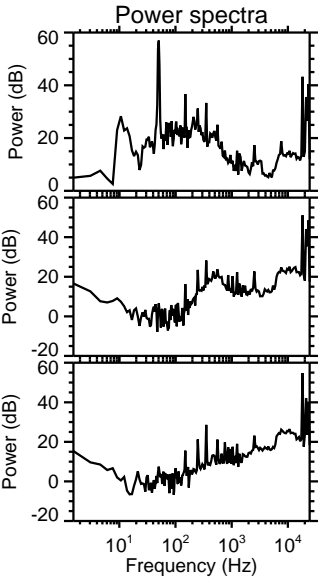
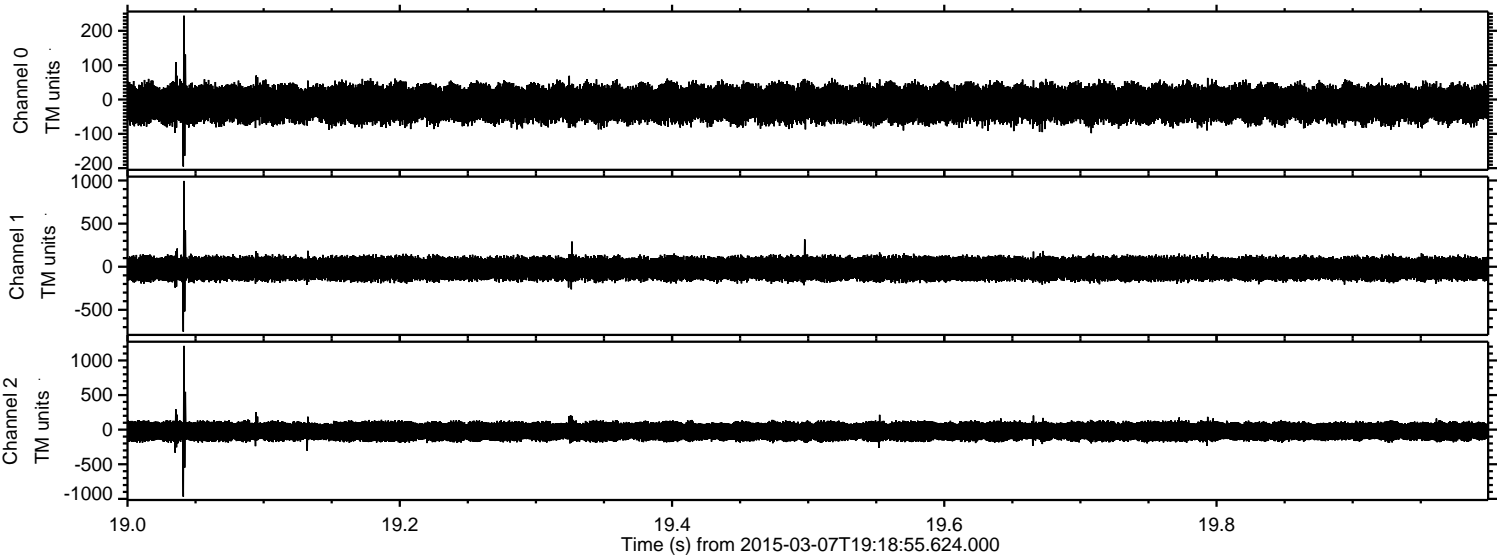
Channel 1
mn: -540
mx: 841
 μ : -22.9
 σ : 65.7

Channel 2
mn: -1487
mx: 1082
 μ : -25.1
 σ : 75.3

Processed Sun Mar 8 12:00:21 2015 by ELM ver.2012-10-06 from 001__elm20150307_191854__dat00.bin



Processed Sun Mar 8 12:00:22 2015 by ELM ver.2012-10-06 from 001__elm20150307_191854__dat00.bin

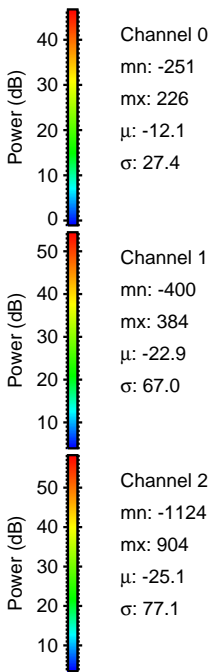
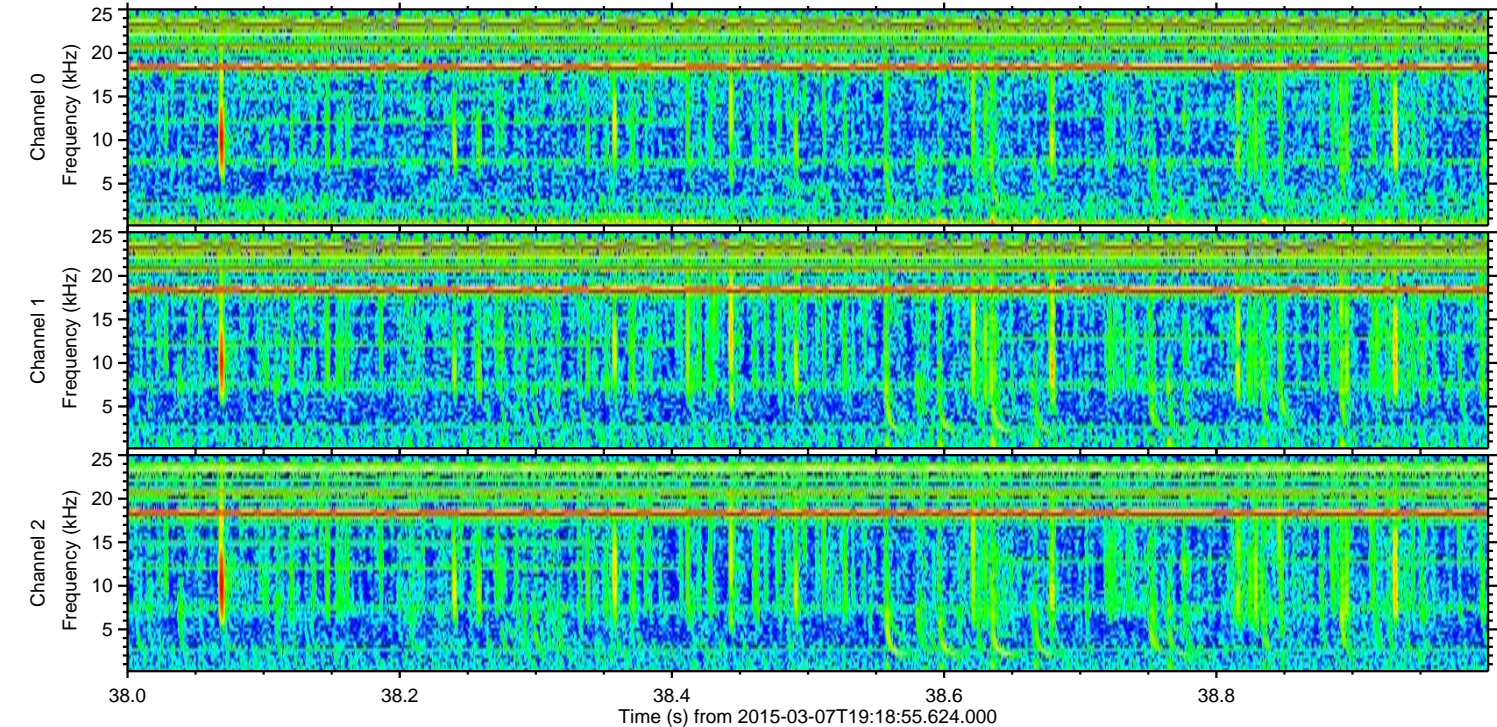
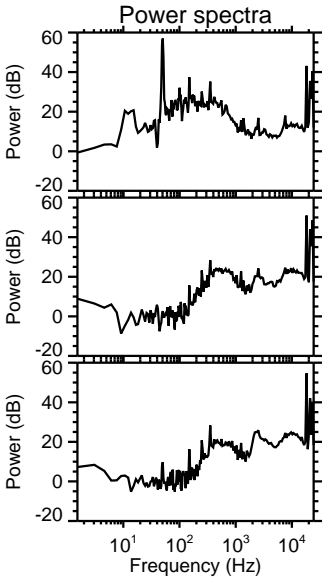
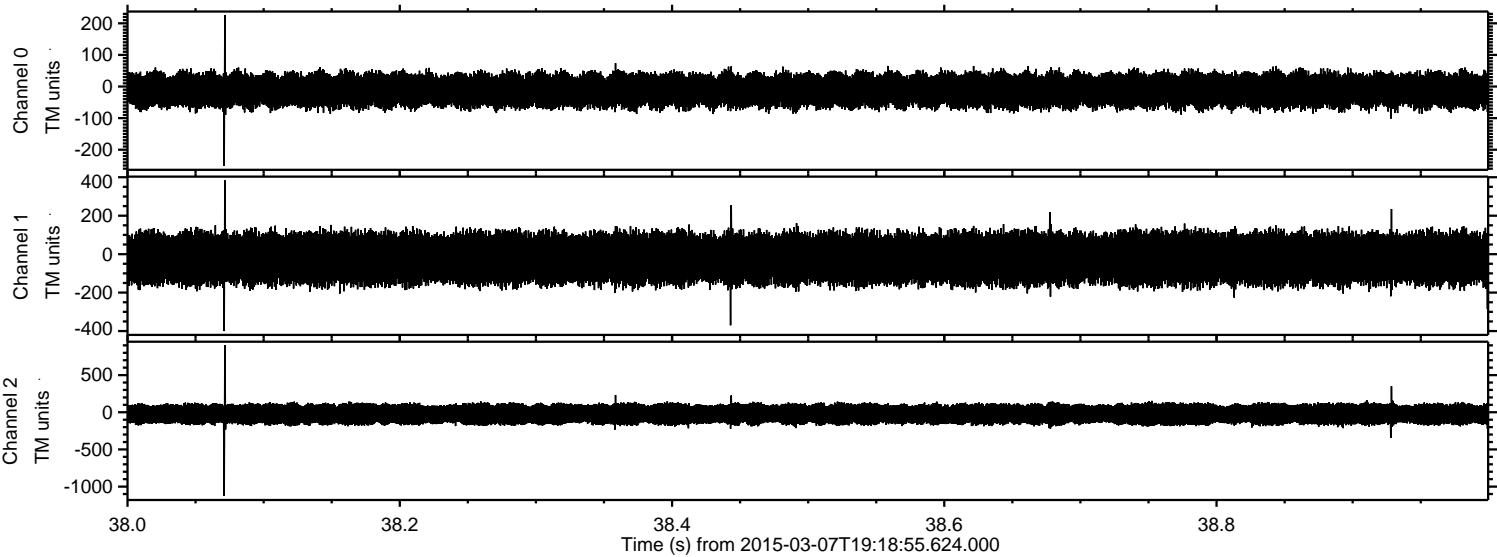


Channel 0
mn: -195
mx: 244
 μ : -12.1
 σ : 27.4

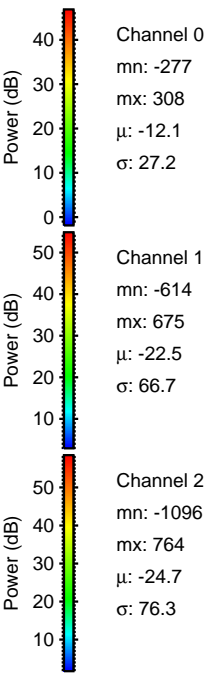
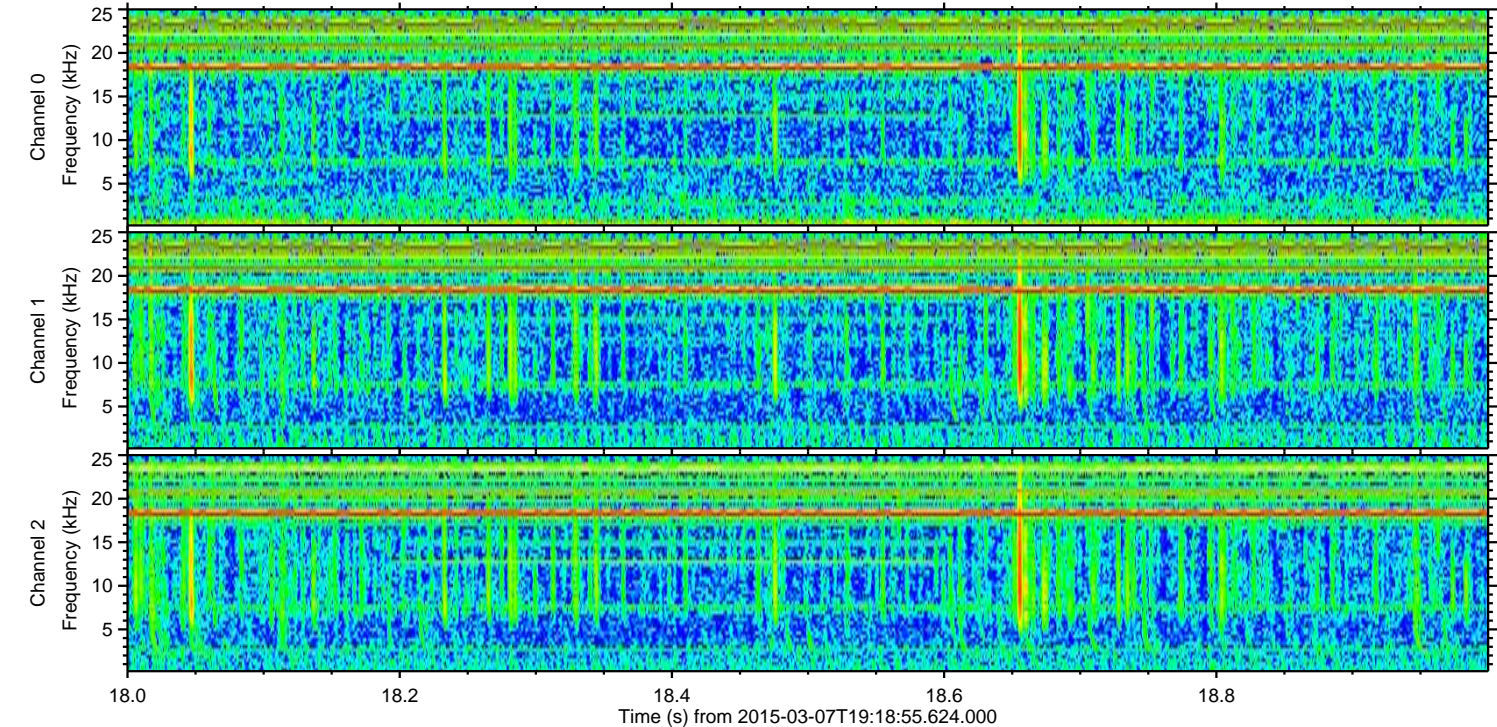
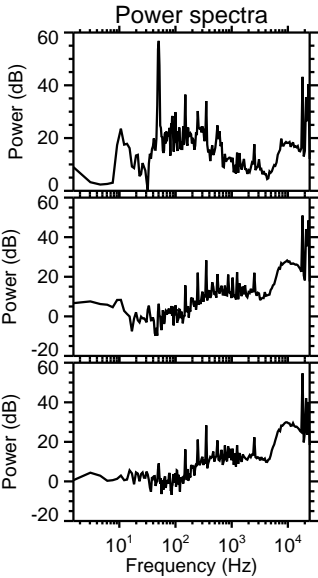
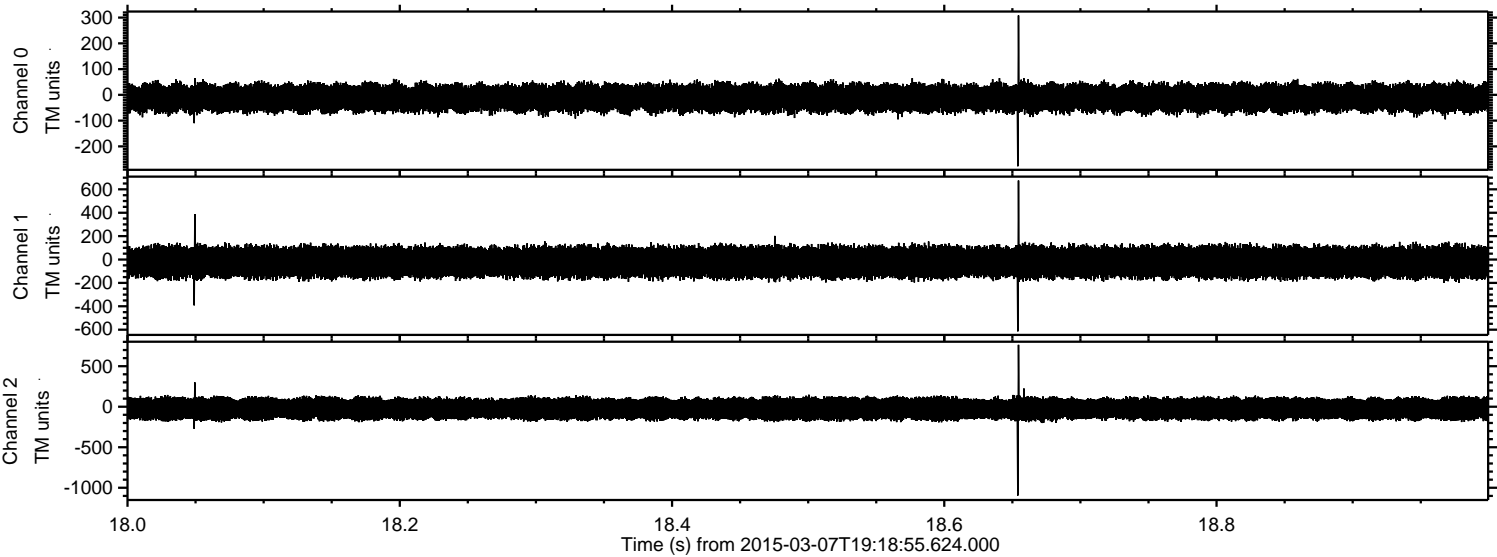
Channel 1
mn: -753
mx: 995
 μ : -22.5
 σ : 67.6

Channel 2
mn: -968
mx: 1210
 μ : -24.6
 σ : 77.5

Processed Sun Mar 8 12:00:23 2015 by ELM ver.2012-10-06 from 001__elm20150307_191854__dat00.bin



Processed Sun Mar 8 12:00:24 2015 by ELM ver.2012-10-06 from 001__elm20150307_191854__dat00.bin



Channel 0
mn: -277
mx: 308
 μ : -12.1
 σ : 27.2

Channel 1
mn: -614
mx: 675
 μ : -22.5
 σ : 66.7

Channel 2
mn: -1096
mx: 764
 μ : -24.7
 σ : 76.3

Processed Sun Mar 8 12:00:25 2015 by ELM ver.2012-10-06 from 001__elm20150307_191854__dat00.bin

