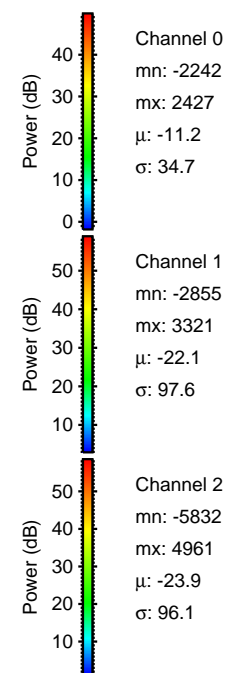
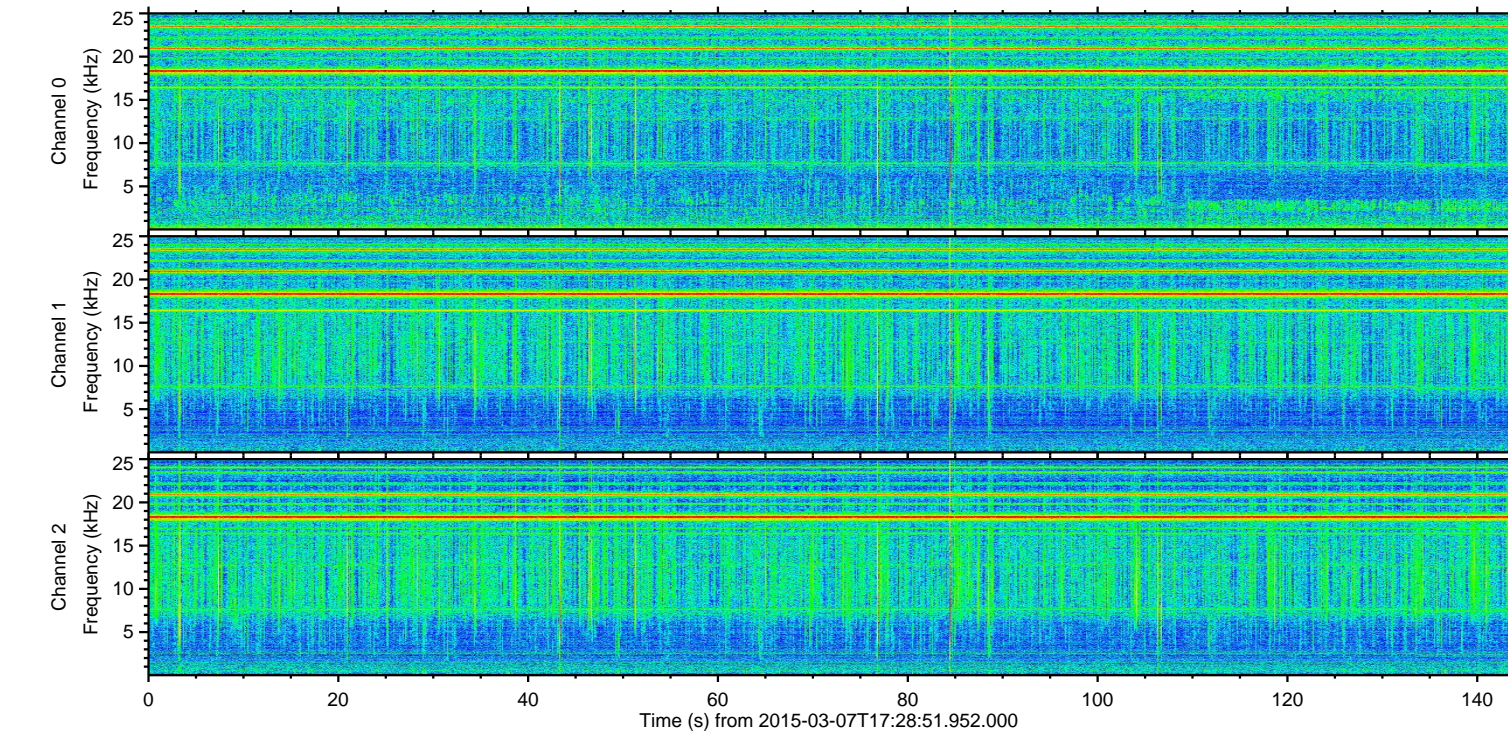
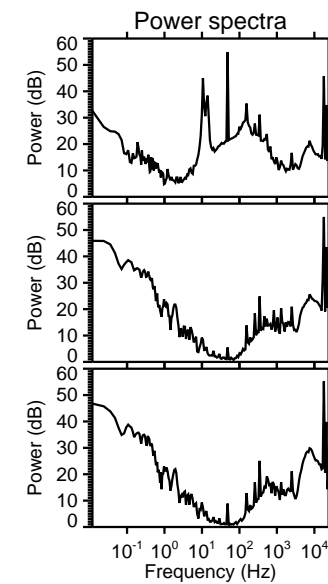
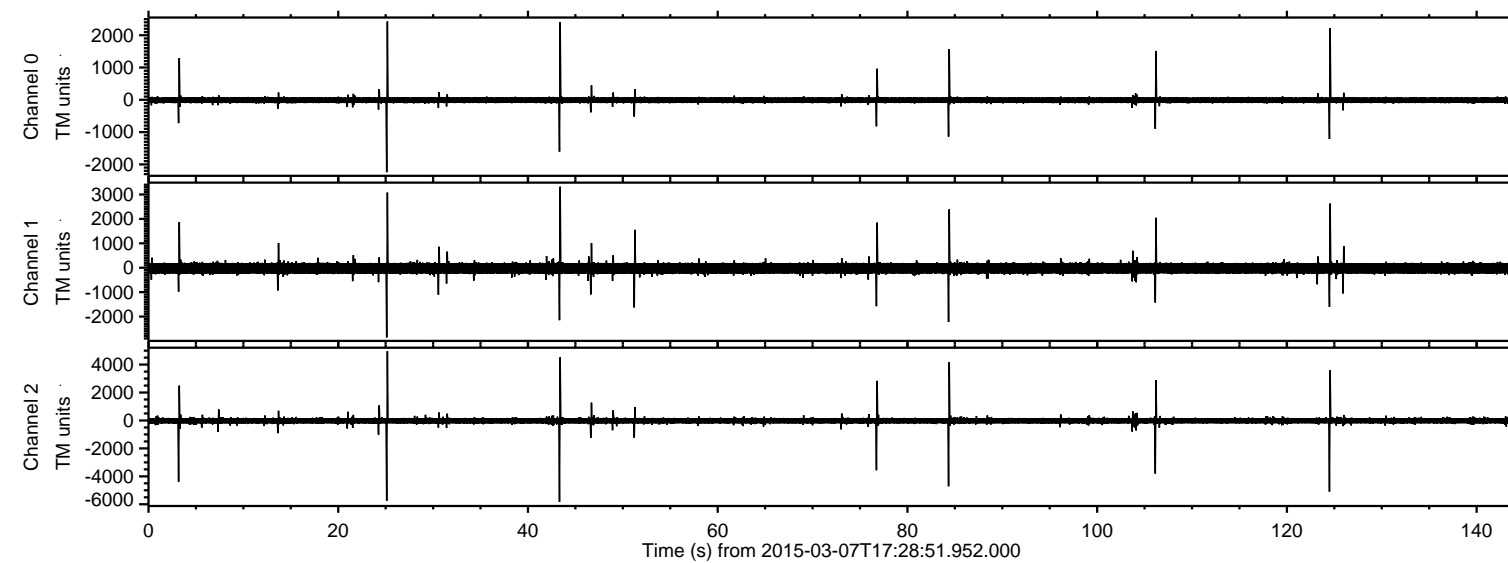


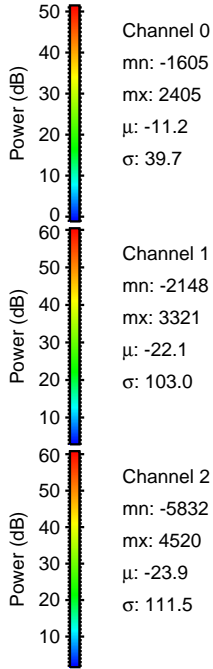
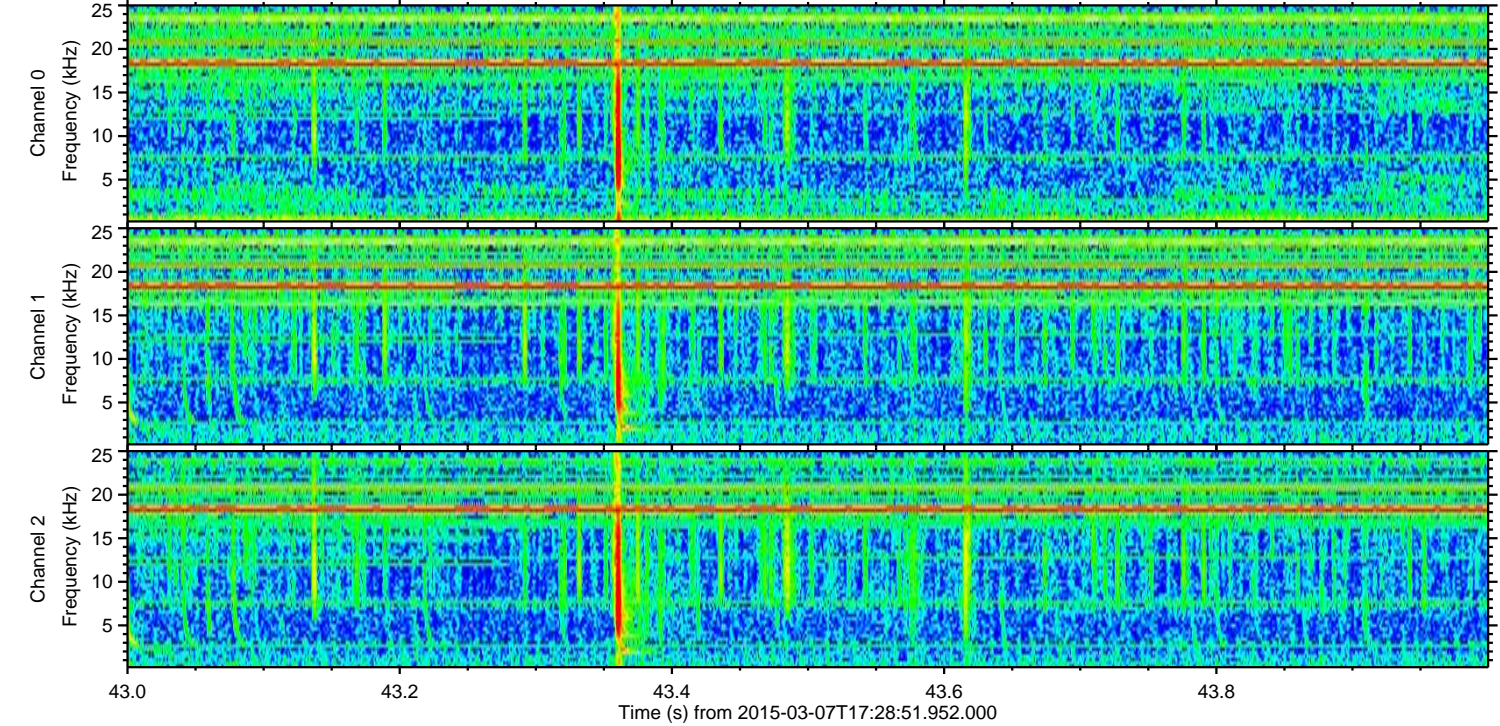
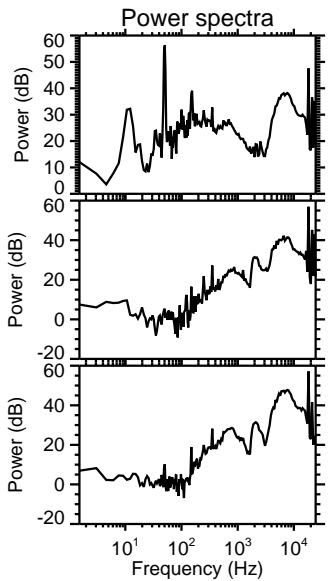
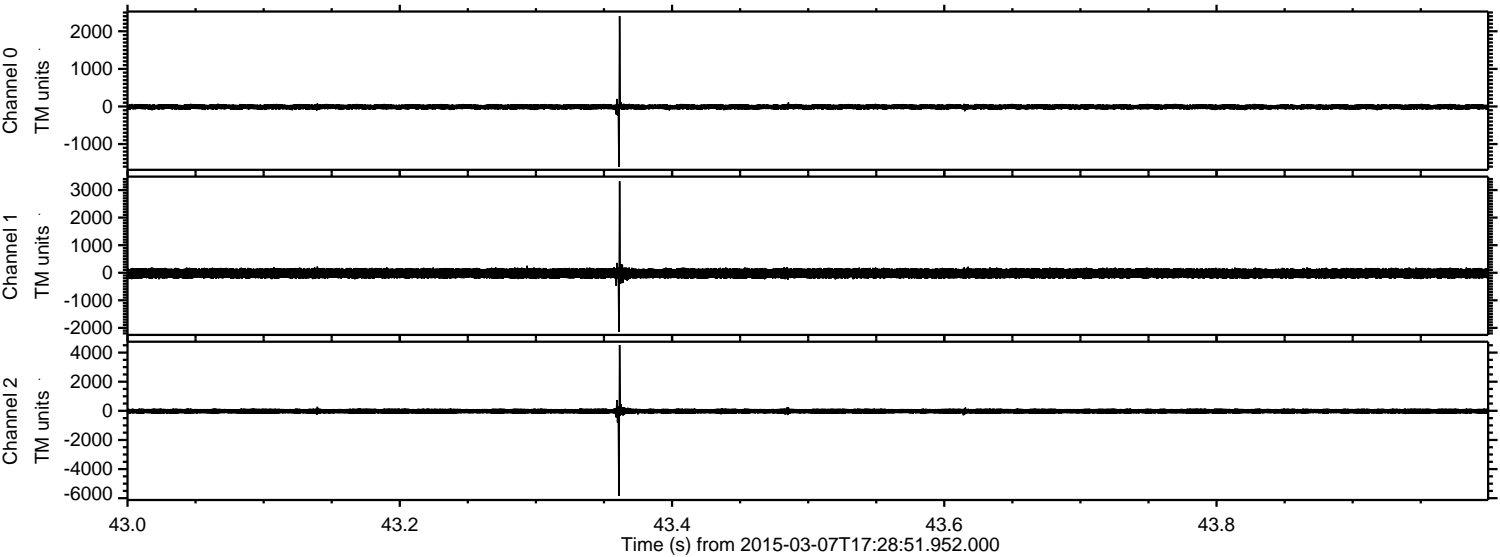
# ELMAVAN 3D WAVEFORMS (Measured data sampled at 50 kHz) 49801 packets of 144 samples from 2015-03-07T17:28:51.952.000.

Processed Sun Mar 8 11:28:47 2015 by ELM ver.2012-10-06 from 001\_\_elm20150307\_172850\_\_dat00.bin



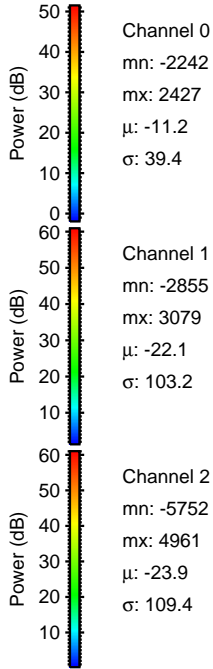
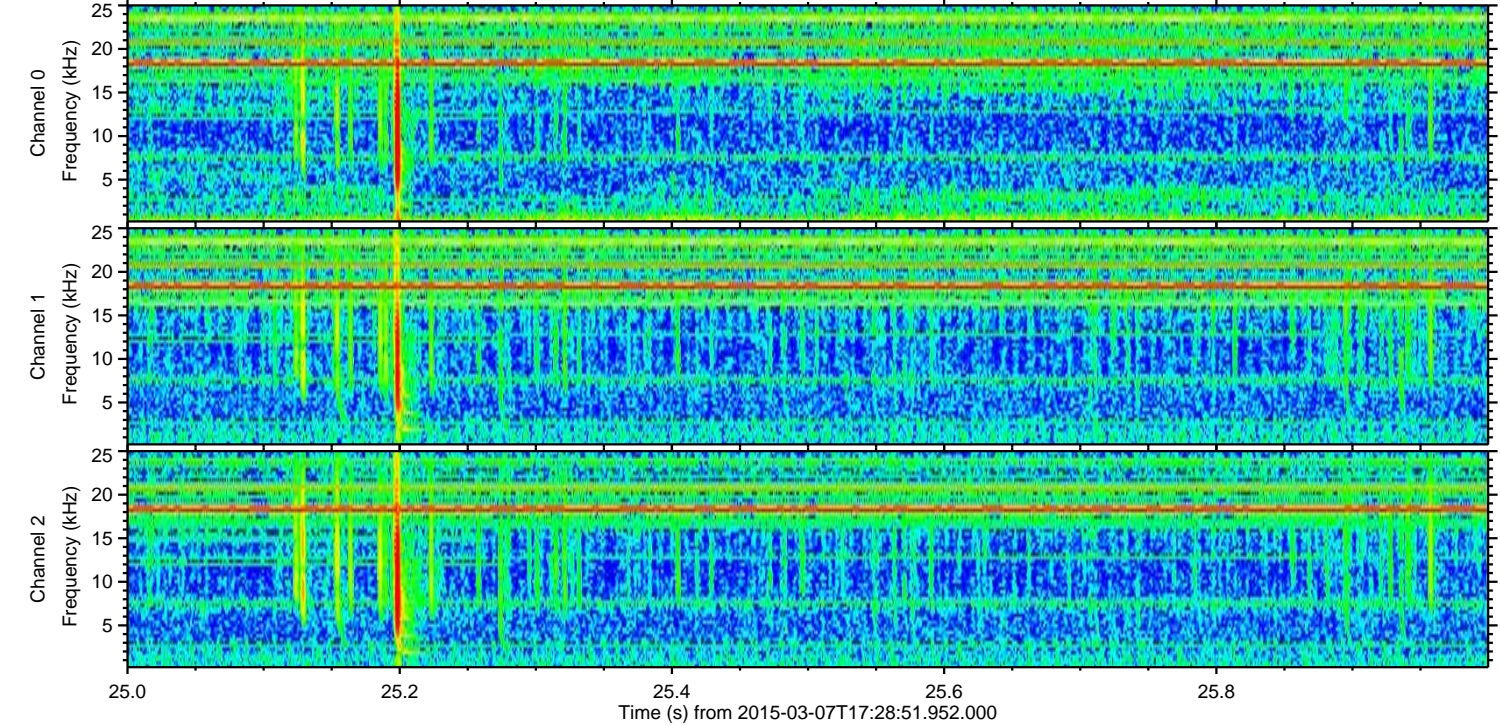
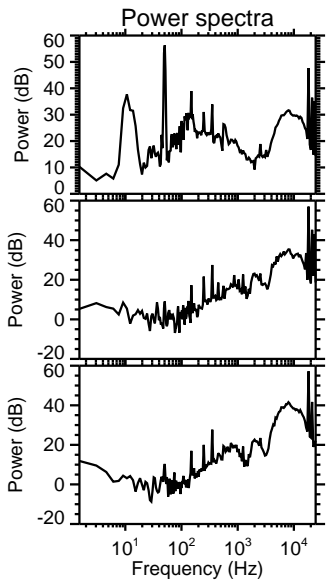
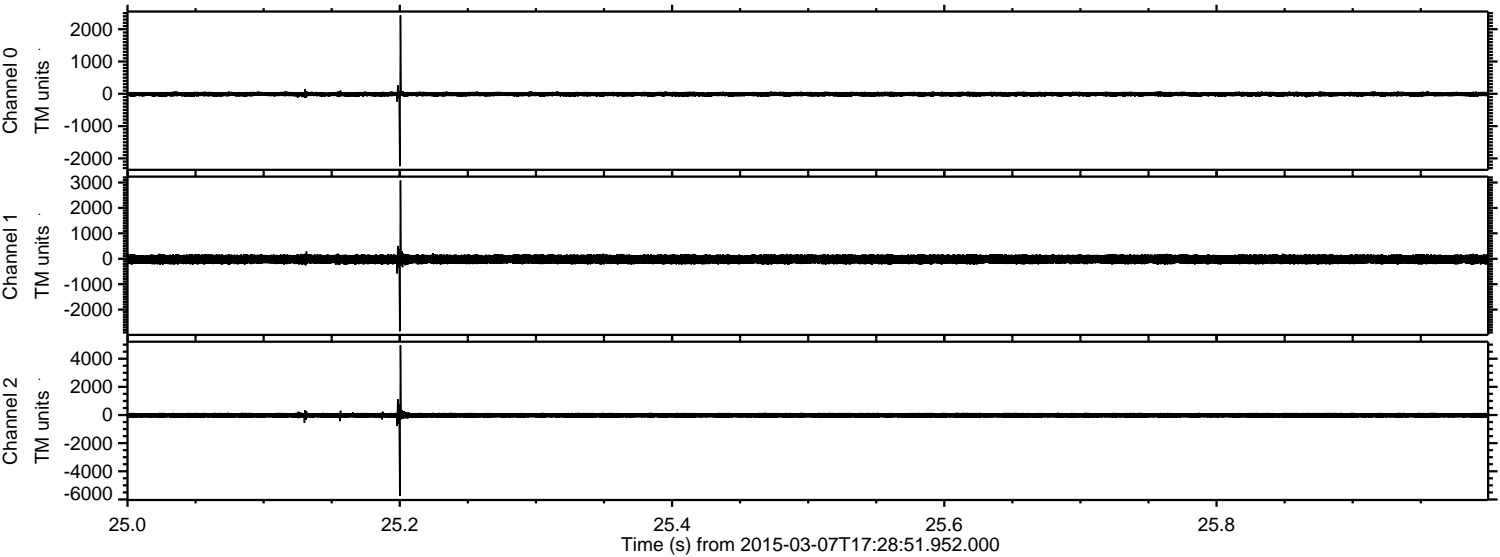


Processed Sun Mar 8 11:28:58 2015 by ELM ver.2012-10-06 from 001\_\_elm20150307\_172850\_\_dat00.bin





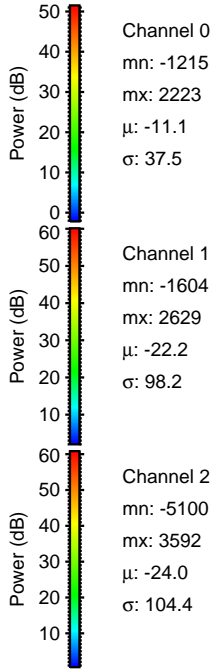
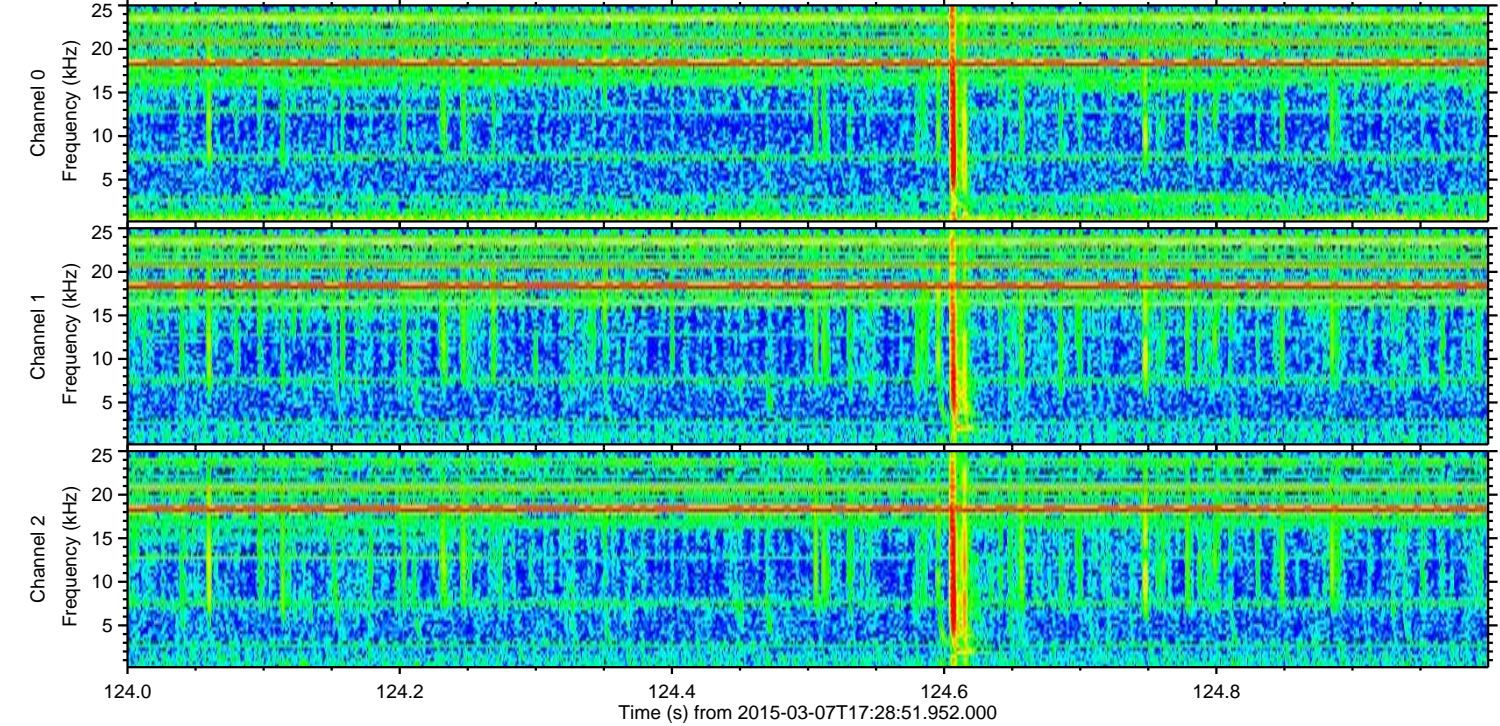
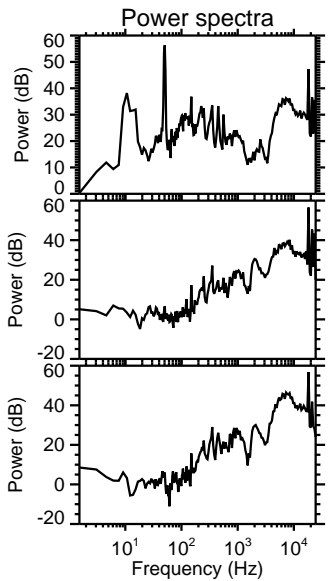
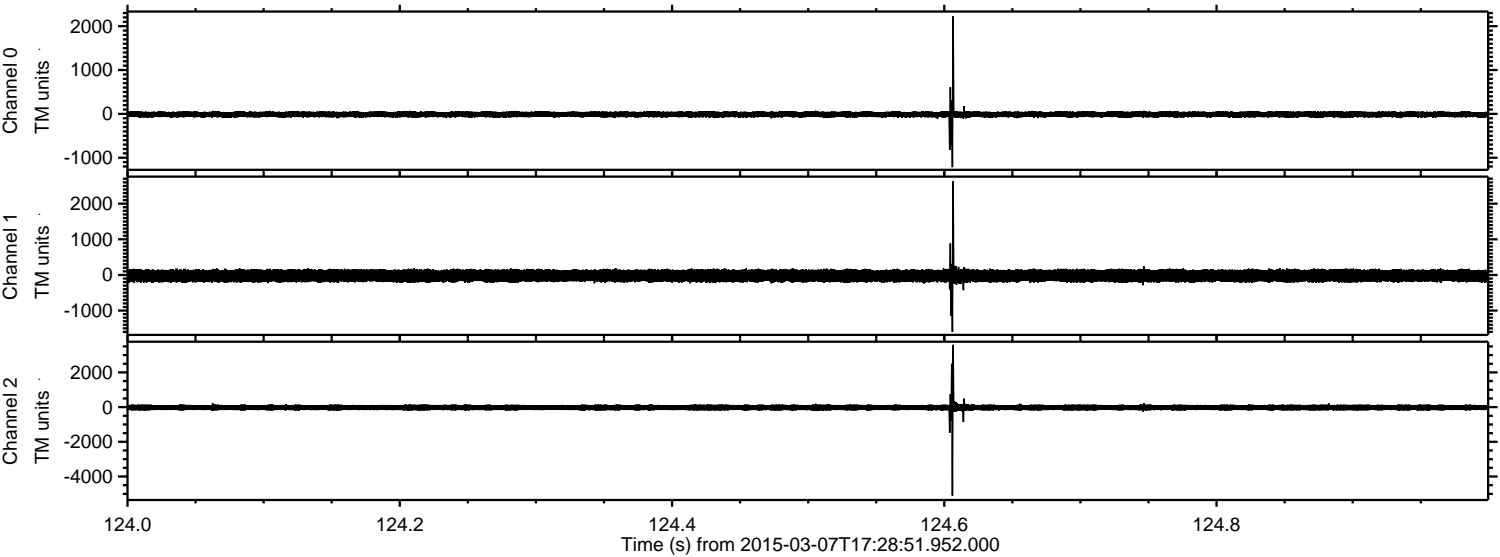
Processed Sun Mar 8 11:28:59 2015 by ELM ver.2012-10-06 from 001\_\_elm20150307\_172850\_\_dat00.bin





ELMAVAN 3D WAVEFORMS (Measured data sampled at 50 kHz) 49801 packets of 144 samples from 2015-03-07T17:28:51.952.000. Part 125/144

Processed Sun Mar 8 11:29:00 2015 by ELM ver.2012-10-06 from 001\_\_elm20150307\_172850\_\_dat00.bin



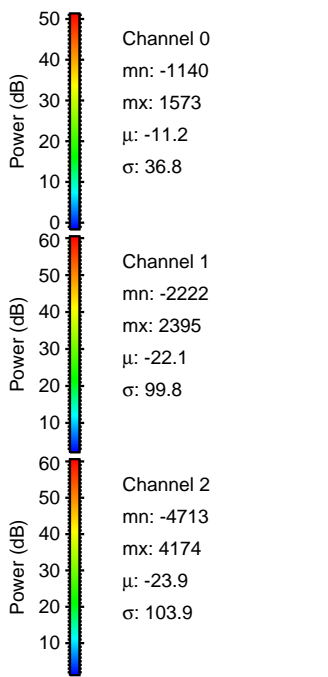
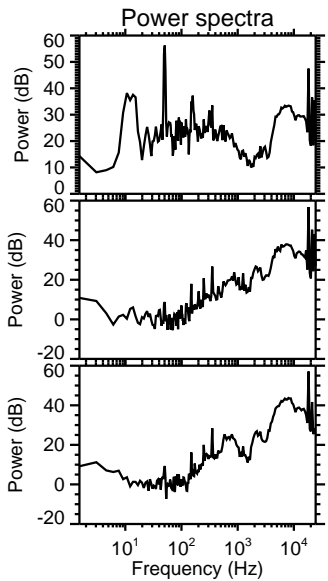
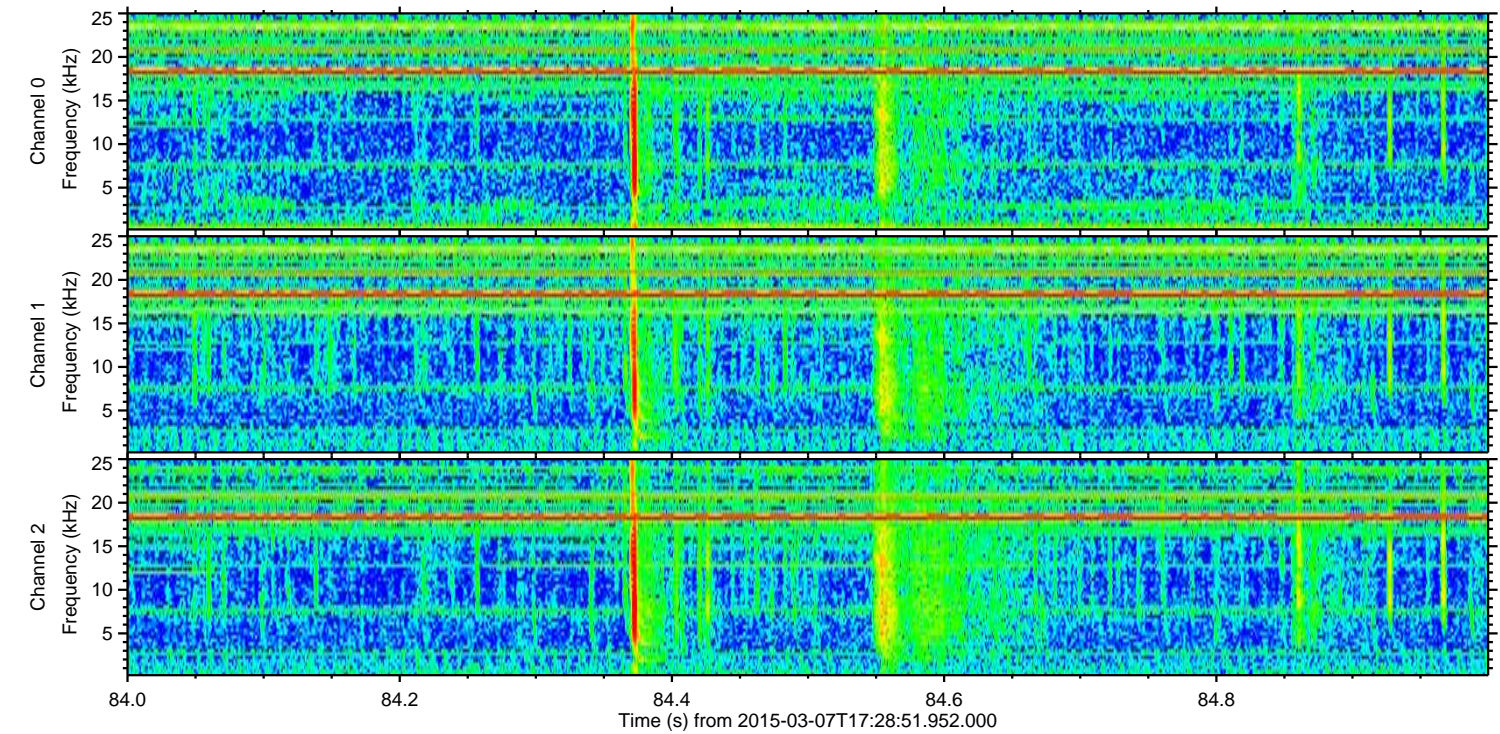
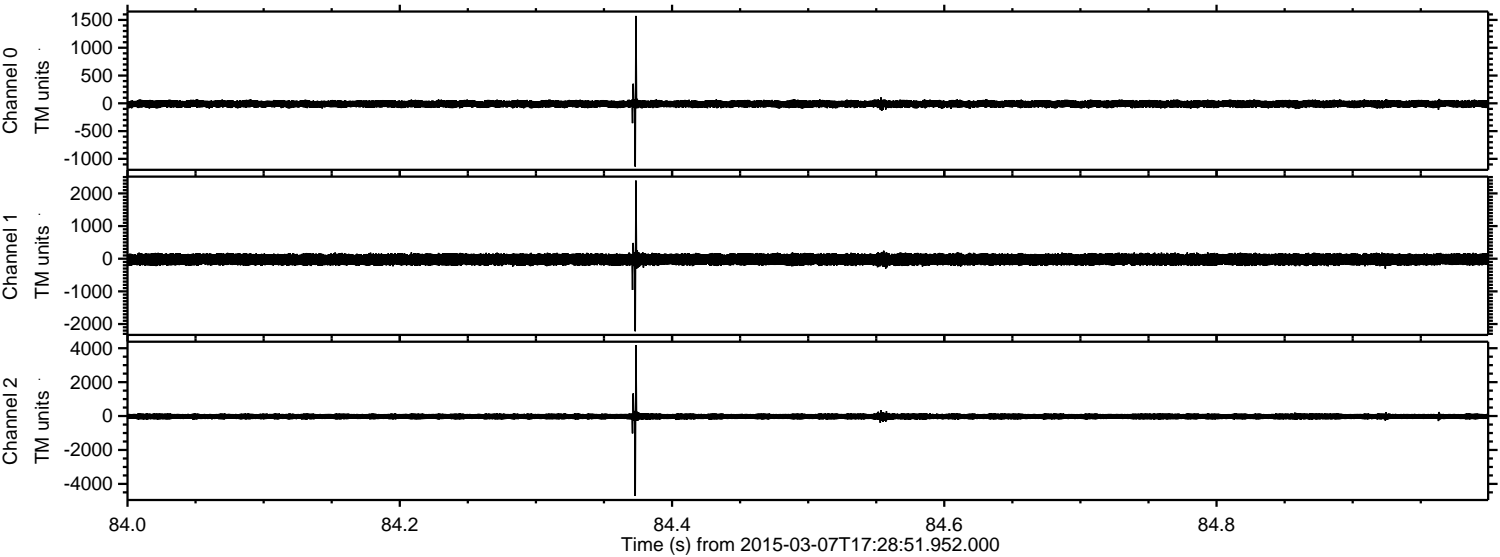
Channel 0  
mn: -1215  
mx: 2223  
 $\mu$ : -11.1  
 $\sigma$ : 37.5

Channel 1  
mn: -1604  
mx: 2629  
 $\mu$ : -22.2  
 $\sigma$ : 98.2

Channel 2  
mn: -5100  
mx: 3592  
 $\mu$ : -24.0  
 $\sigma$ : 104.4

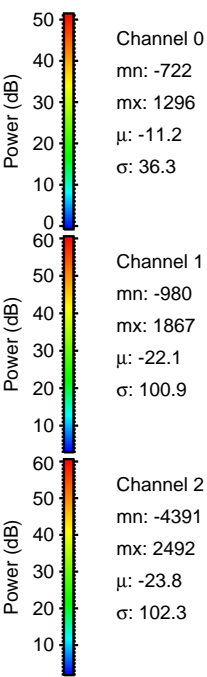
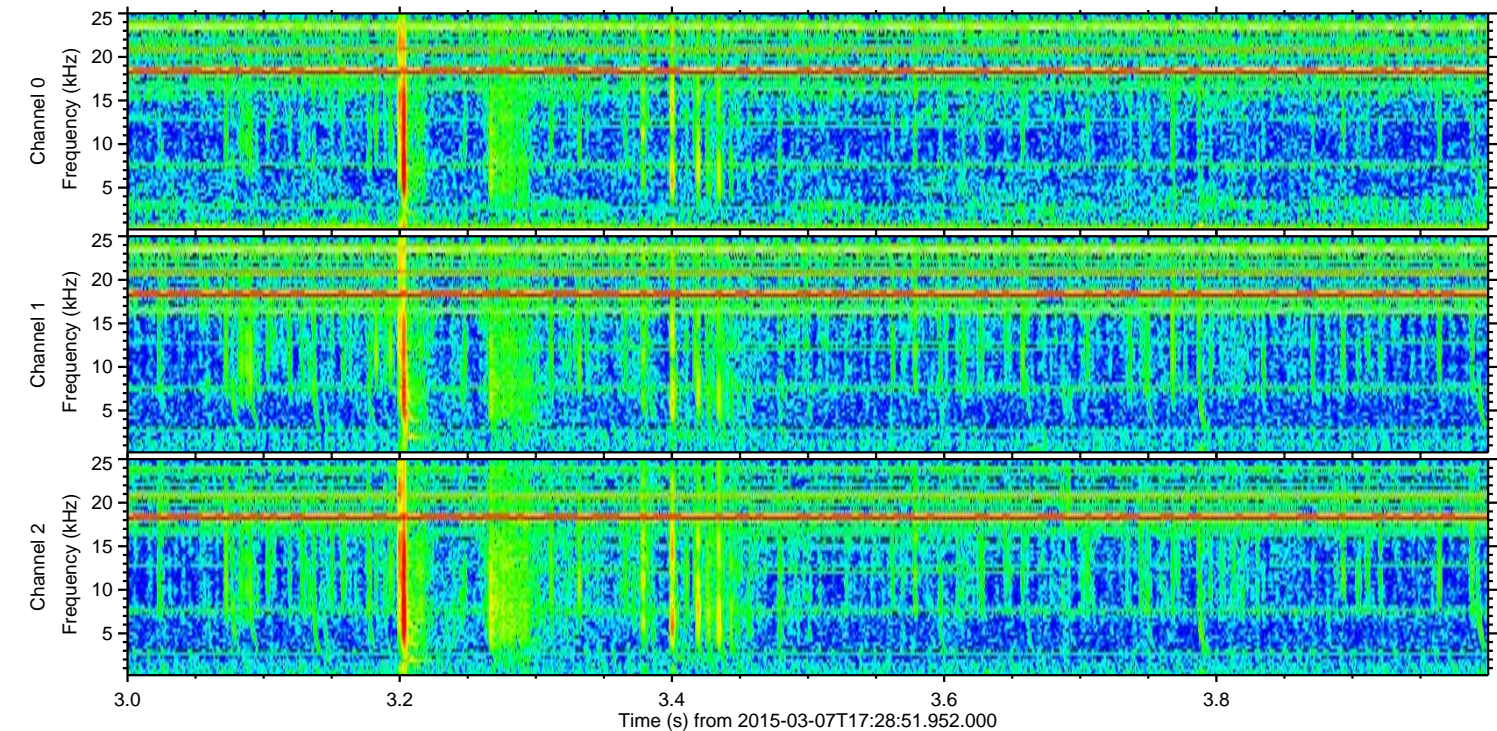
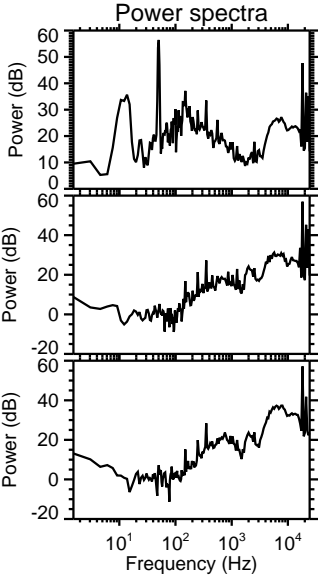
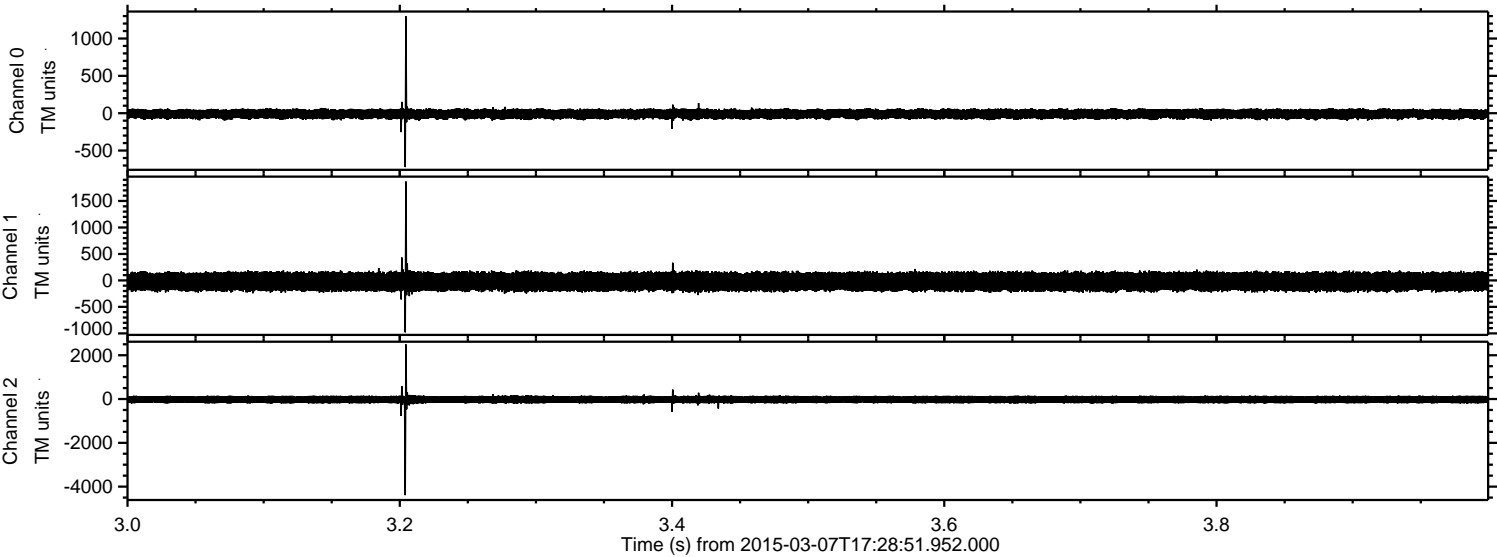


Processed Sun Mar 8 11:29:01 2015 by ELM ver.2012-10-06 from 001\_\_elm20150307\_172850\_\_dat00.bin





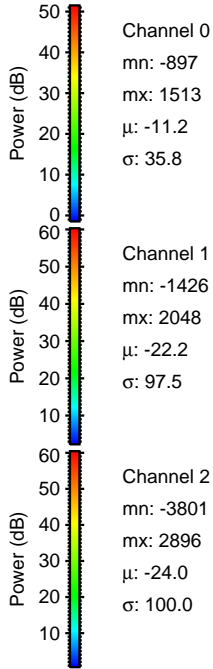
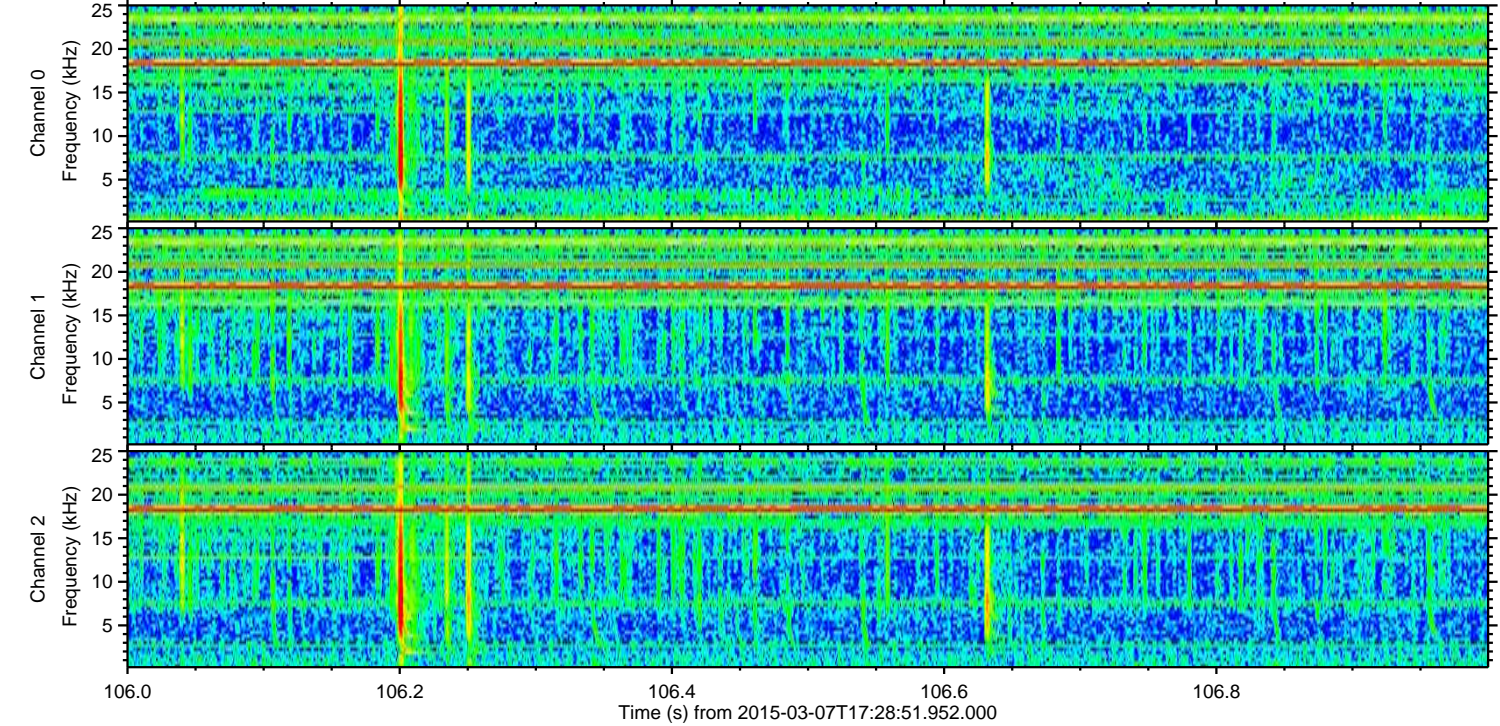
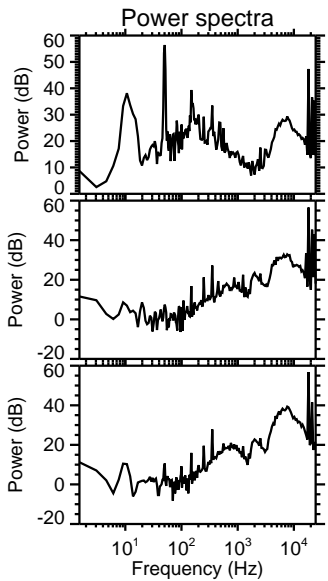
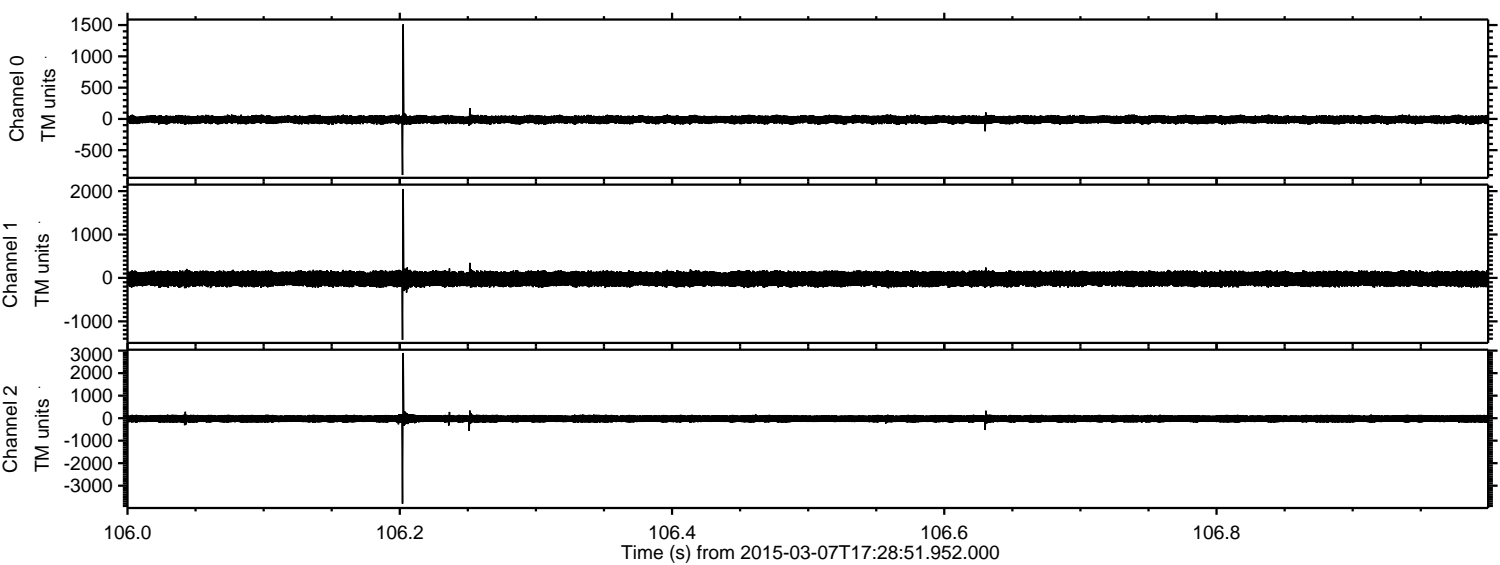
Processed Sun Mar 8 11:29:02 2015 by ELM ver.2012-10-06 from 001\_\_elm20150307\_172850\_\_dat00.bin





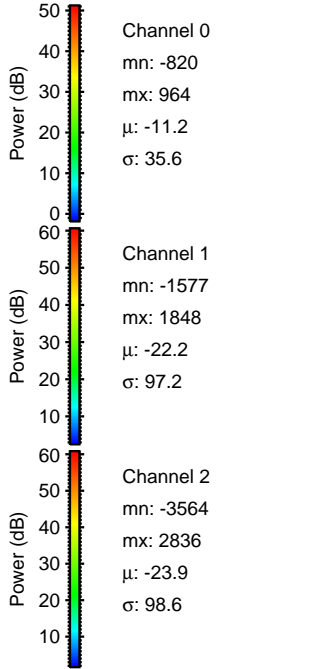
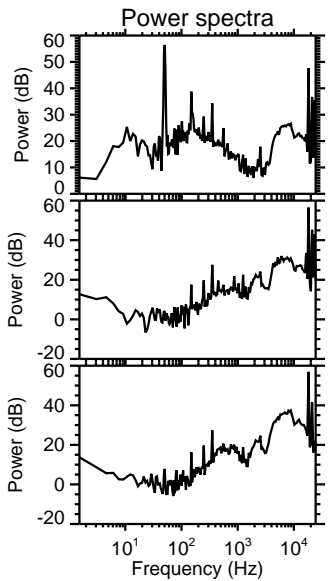
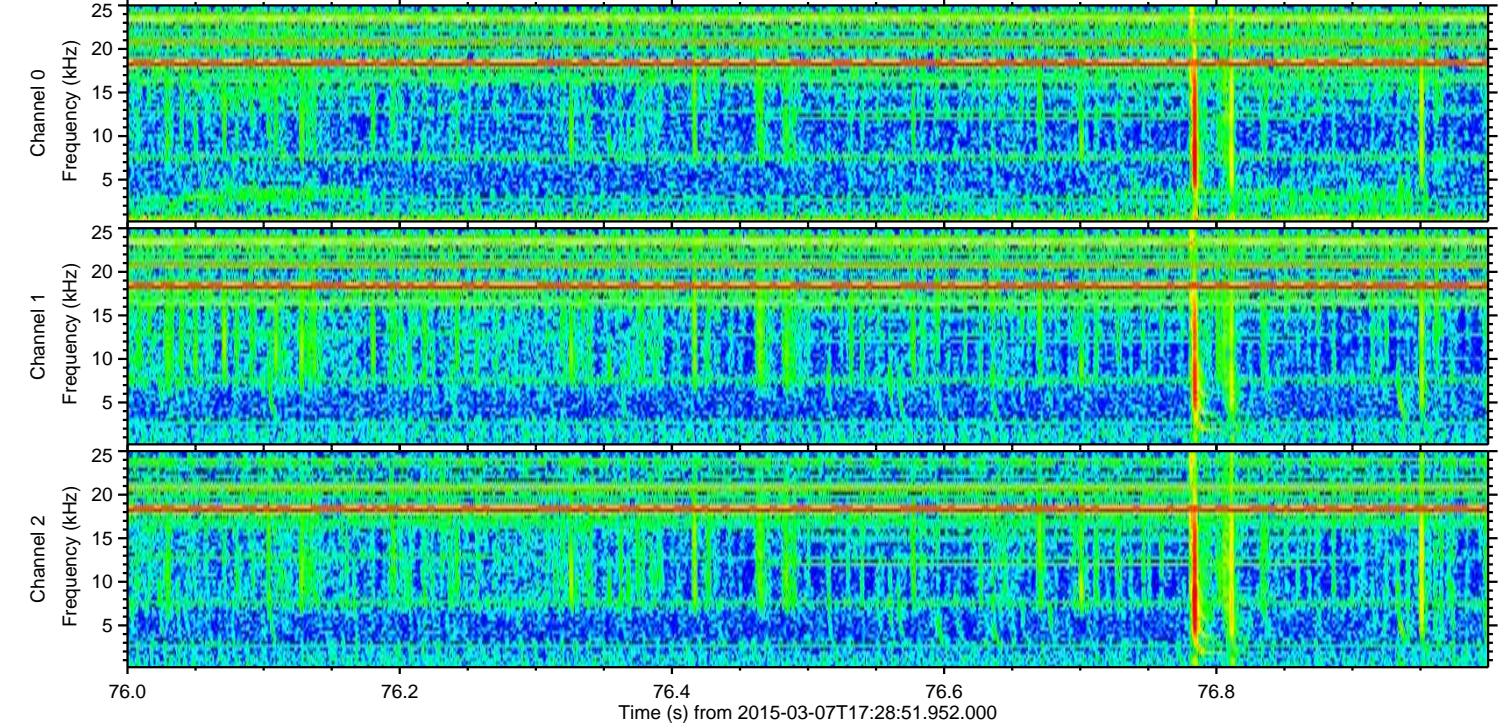
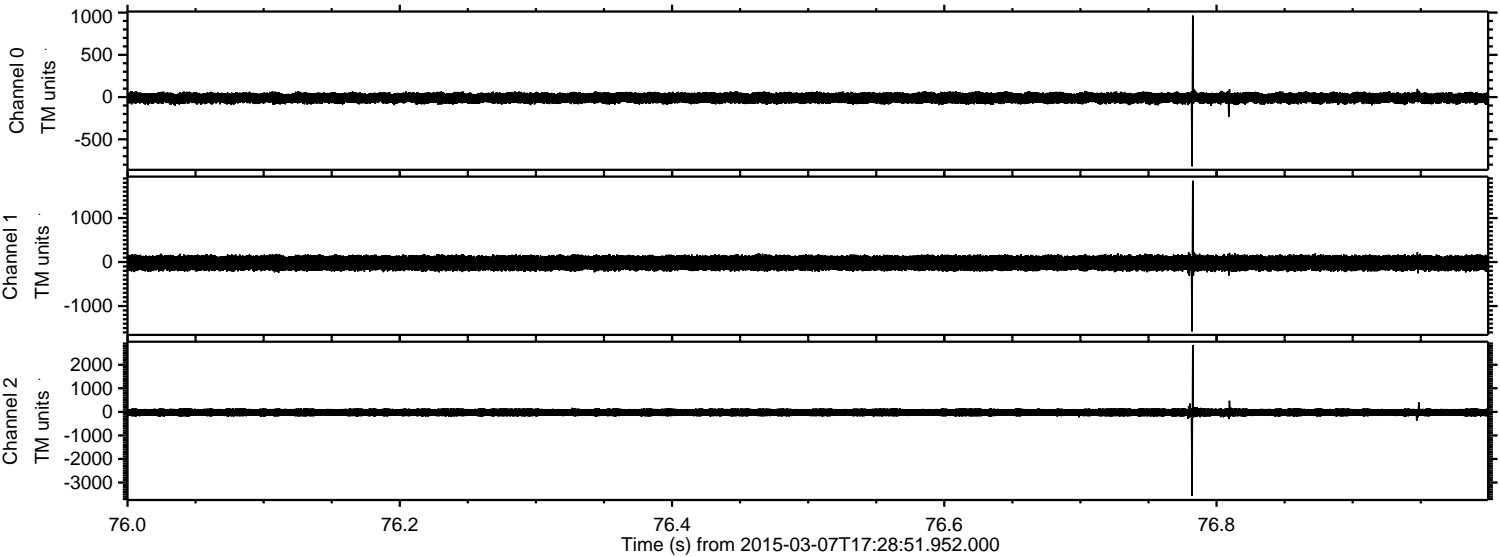
ELMAVAN 3D WAVEFORMS (Measured data sampled at 50 kHz) 49801 packets of 144 samples from 2015-03-07T17:28:51.952.000. Part 107/144

Processed Sun Mar 8 11:29:03 2015 by ELM ver.2012-10-06 from 001\_\_elm20150307\_172850\_\_dat00.bin



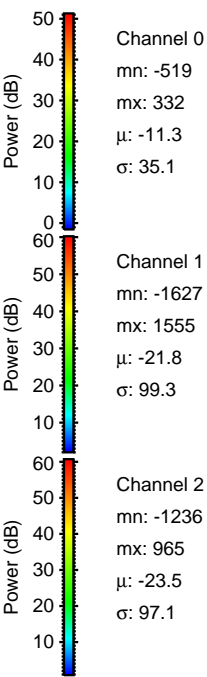
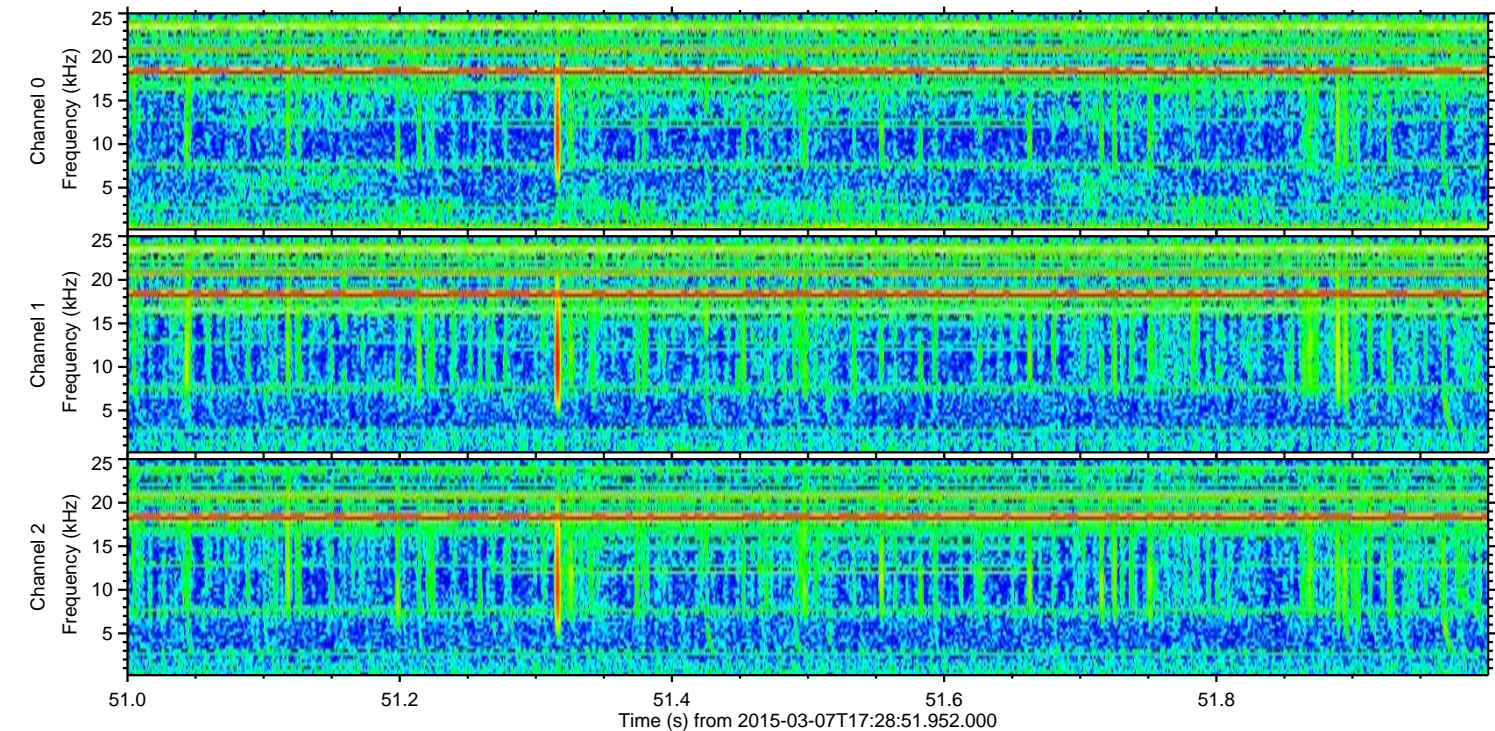
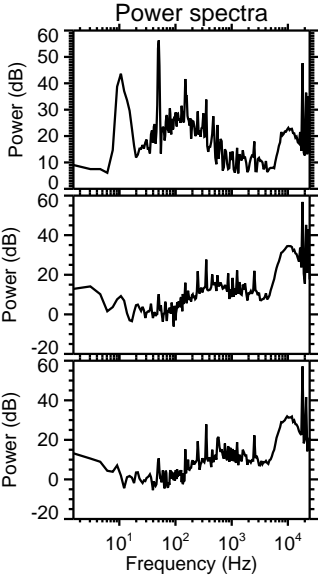
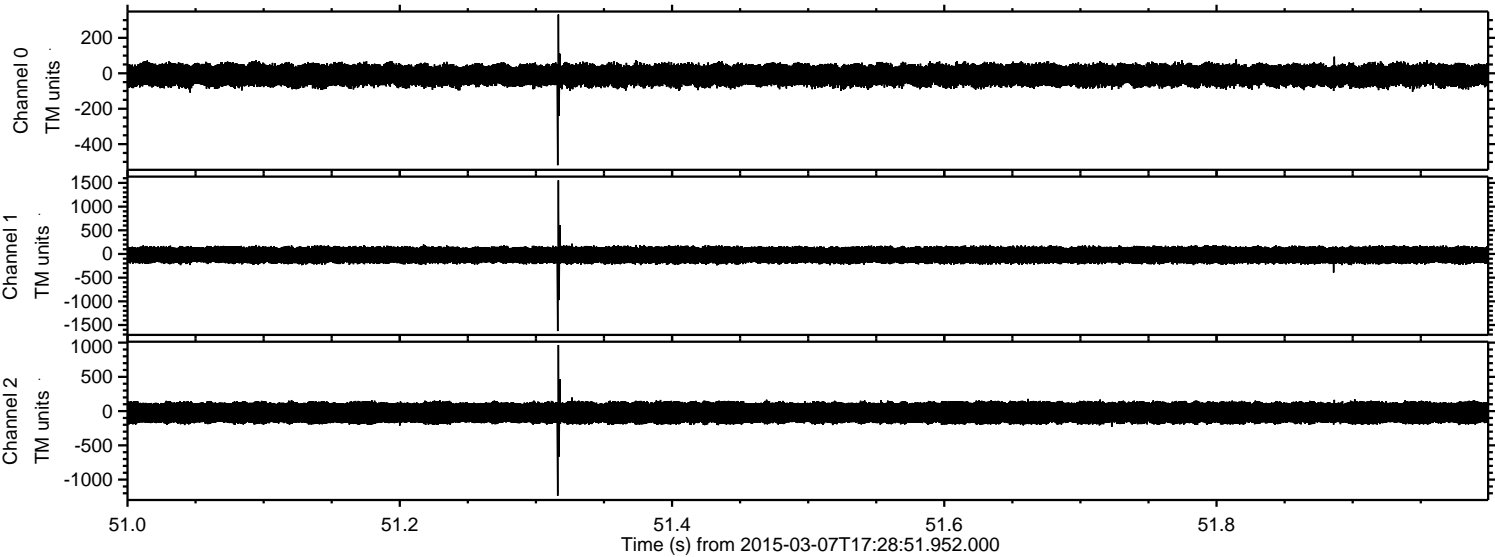


Processed Sun Mar 8 11:29:04 2015 by ELM ver.2012-10-06 from 001\_\_elm20150307\_172850\_\_dat00.bin



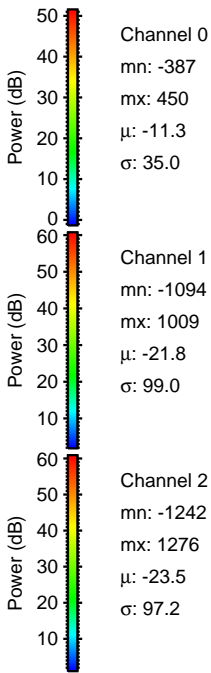
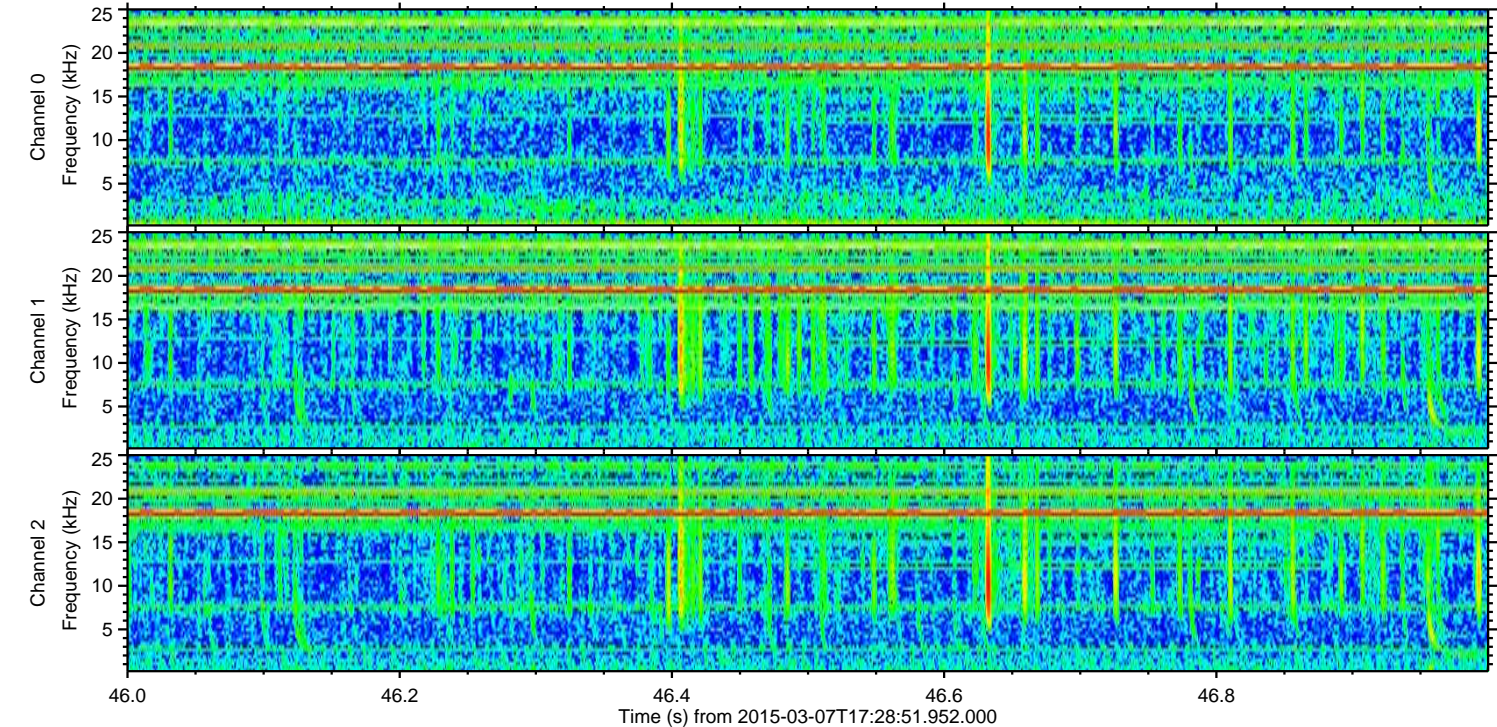
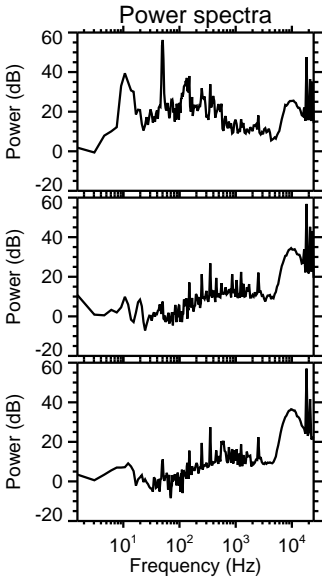
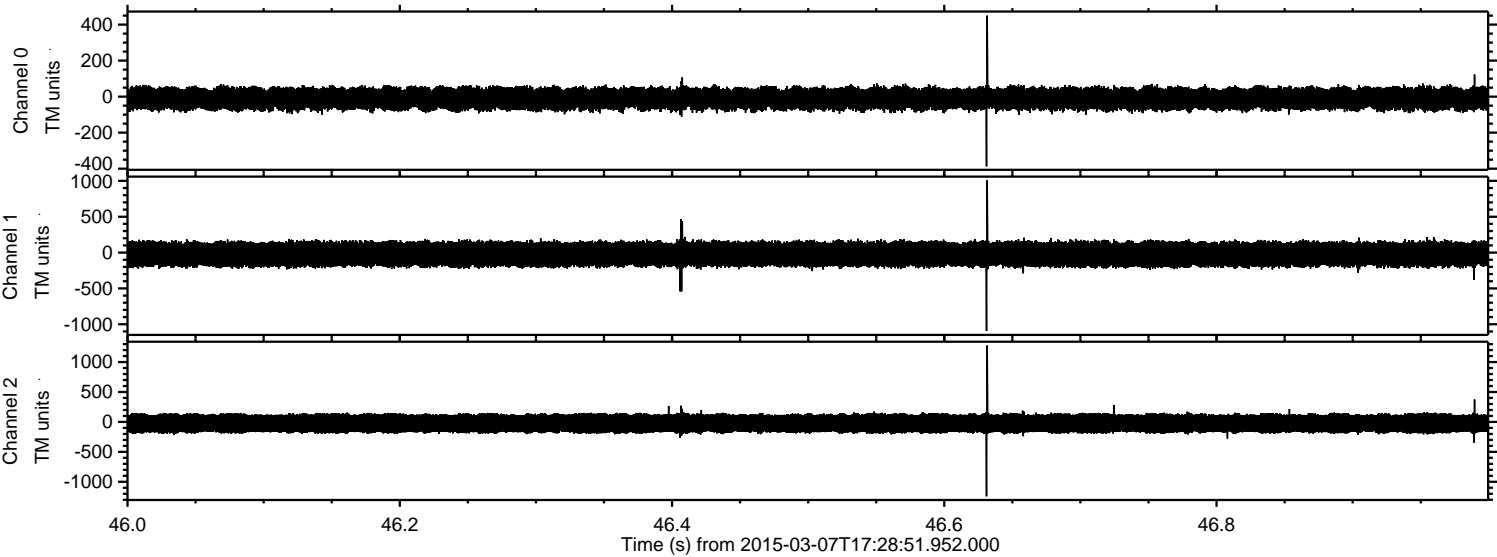


Processed Sun Mar 8 11:29:05 2015 by ELM ver.2012-10-06 from 001\_\_elm20150307\_172850\_\_dat00.bin





Processed Sun Mar 8 11:29:06 2015 by ELM ver.2012-10-06 from 001\_\_elm20150307\_172850\_\_dat00.bin





Processed Sun Mar 8 11:29:07 2015 by ELM ver.2012-10-06 from 001\_\_elm20150307\_172850\_\_dat00.bin

