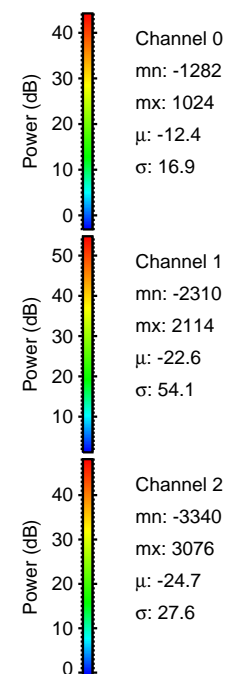
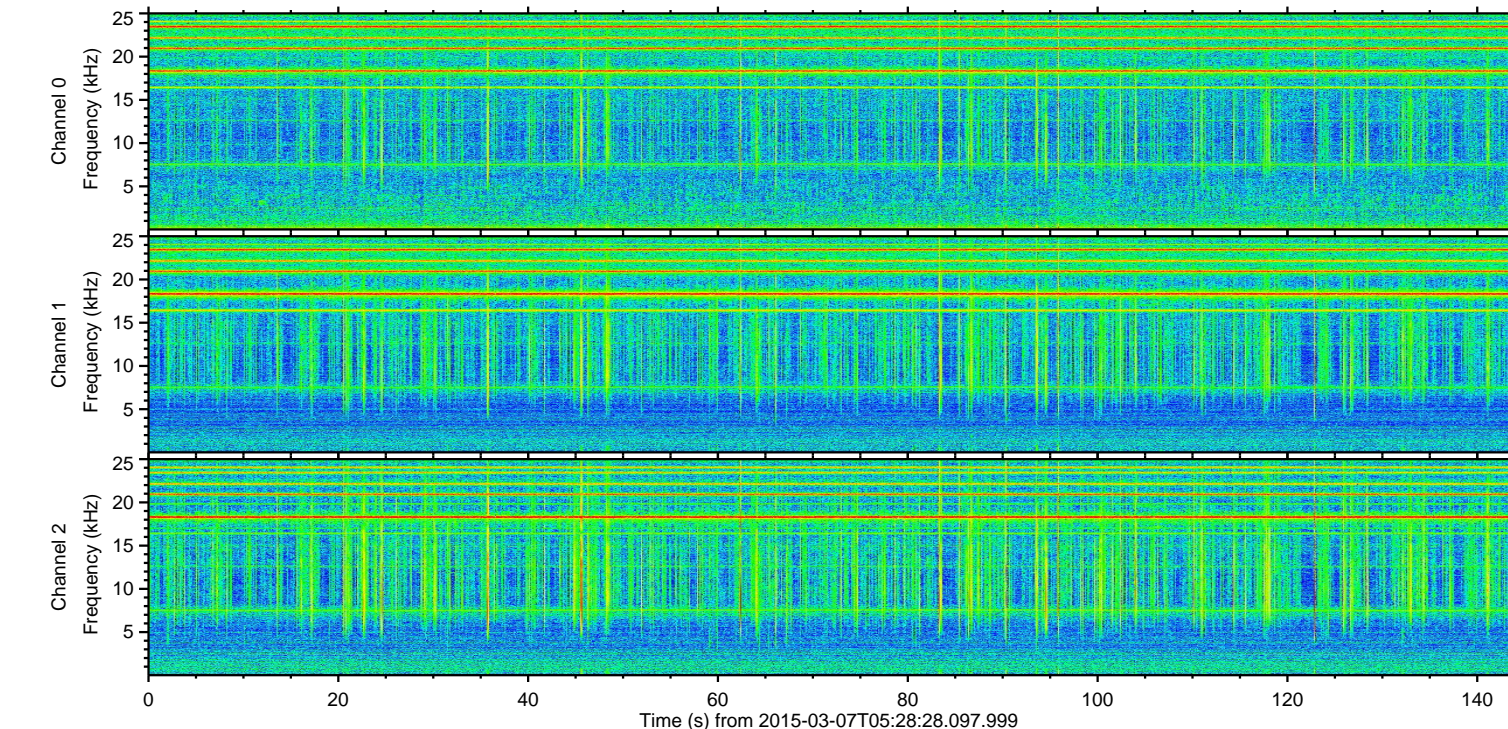
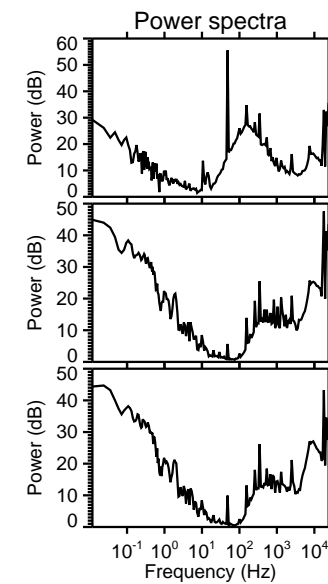
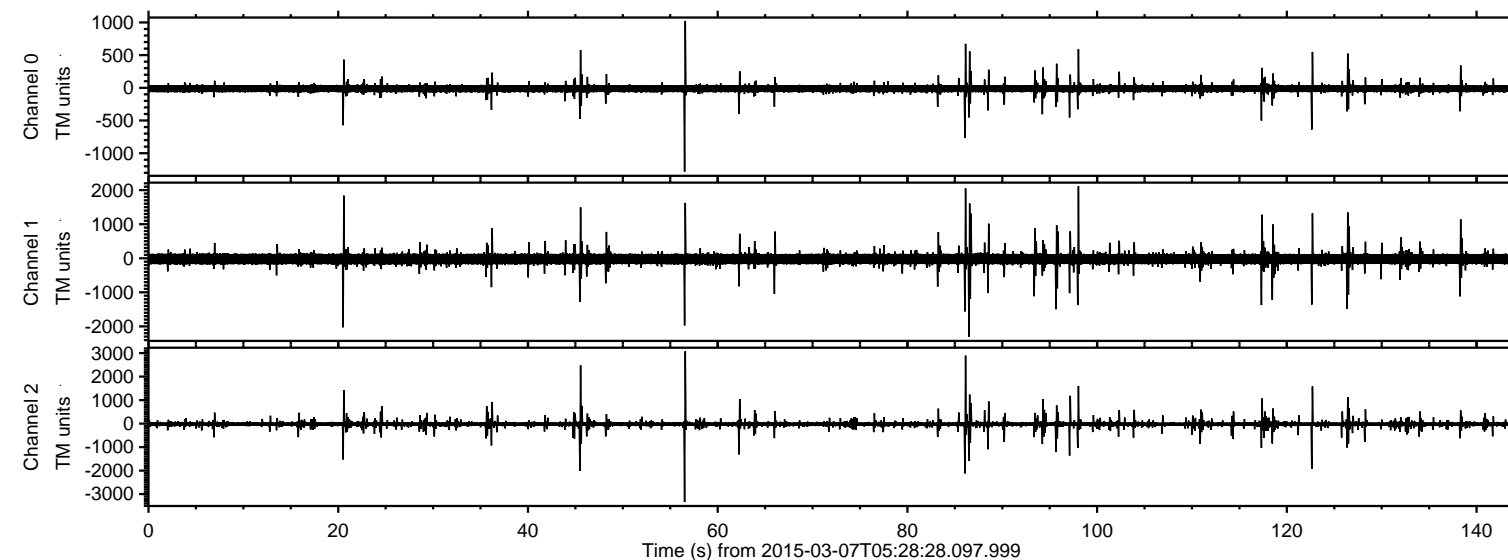
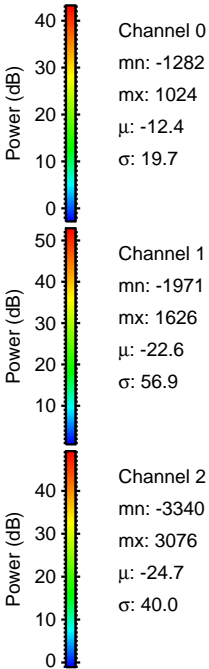
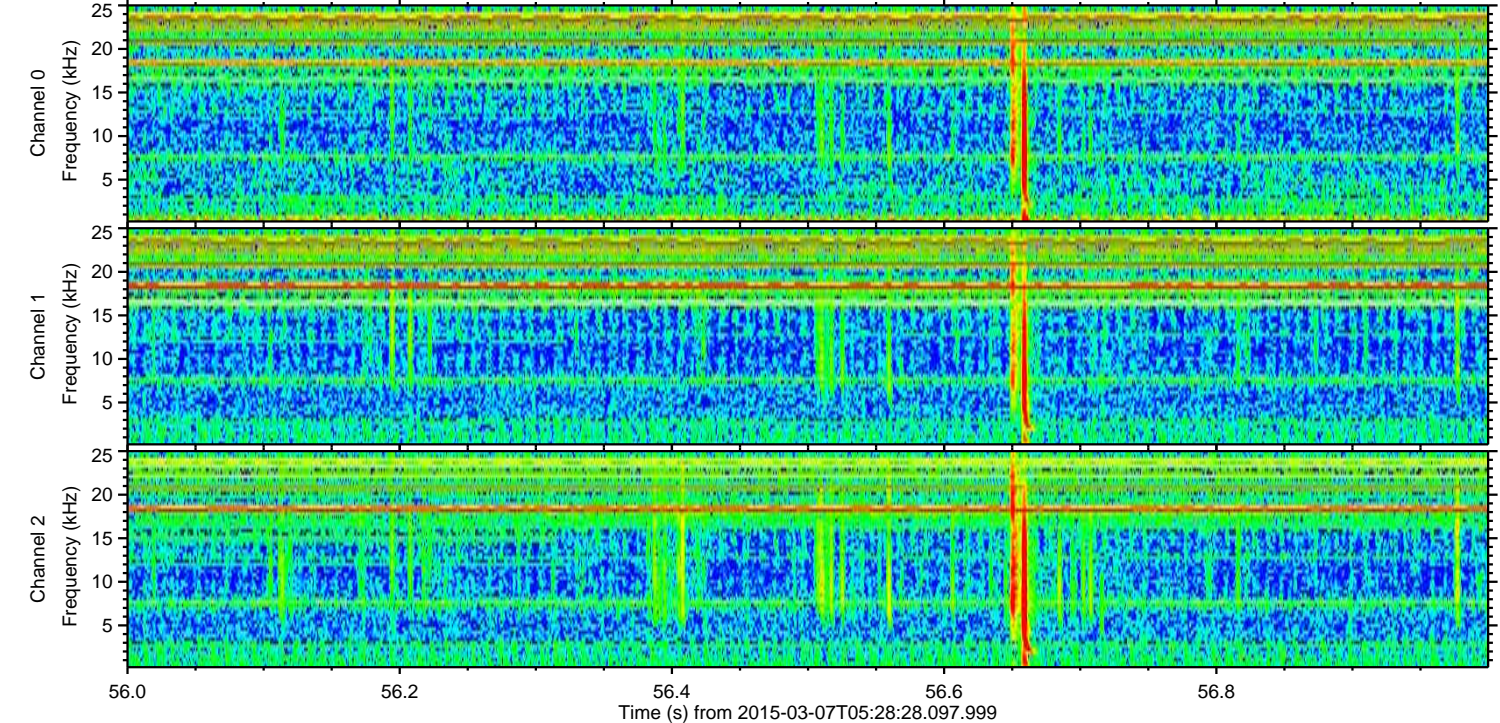
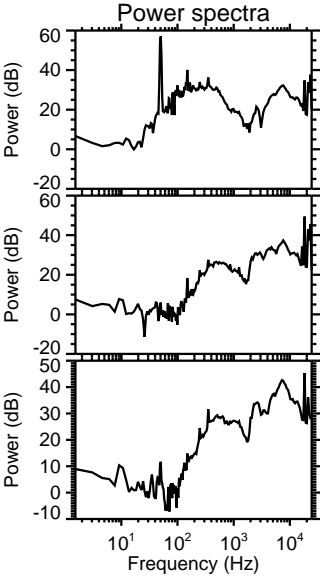
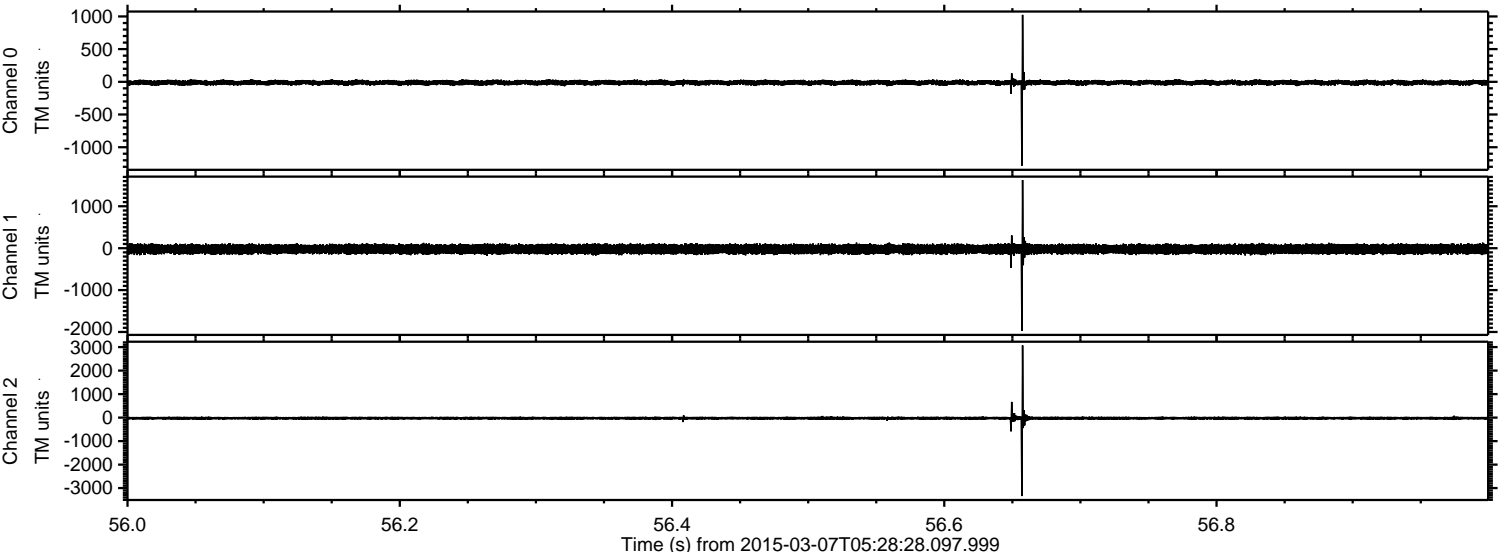


ELMAVAN 3D WAVEFORMS (Measured data sampled at 50 kHz) 49803 packets of 144 samples from 2015-03-07T05:28:28.097.999.

Processed Sun Mar 8 07:18:30 2015 by ELM ver.2012-10-06 from 001__elm20150307_052827__dat00.bin



Processed Sun Mar 8 07:18:41 2015 by ELM ver.2012-10-06 from 001__elm20150307_052827__dat00.bin

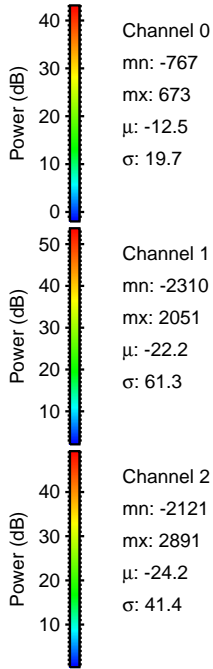
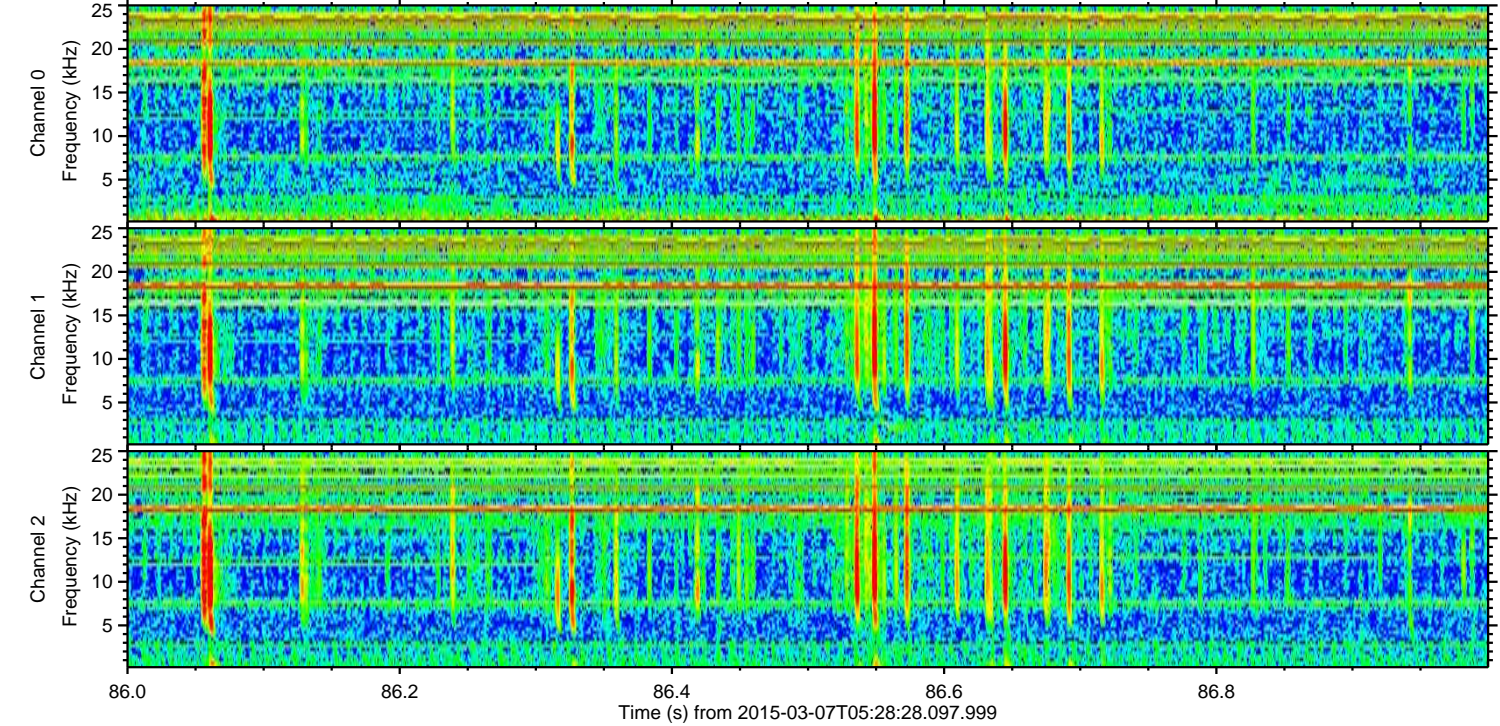
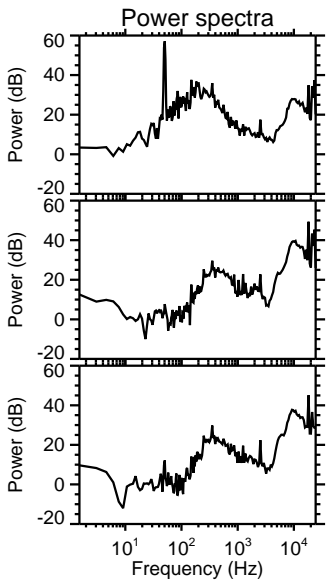
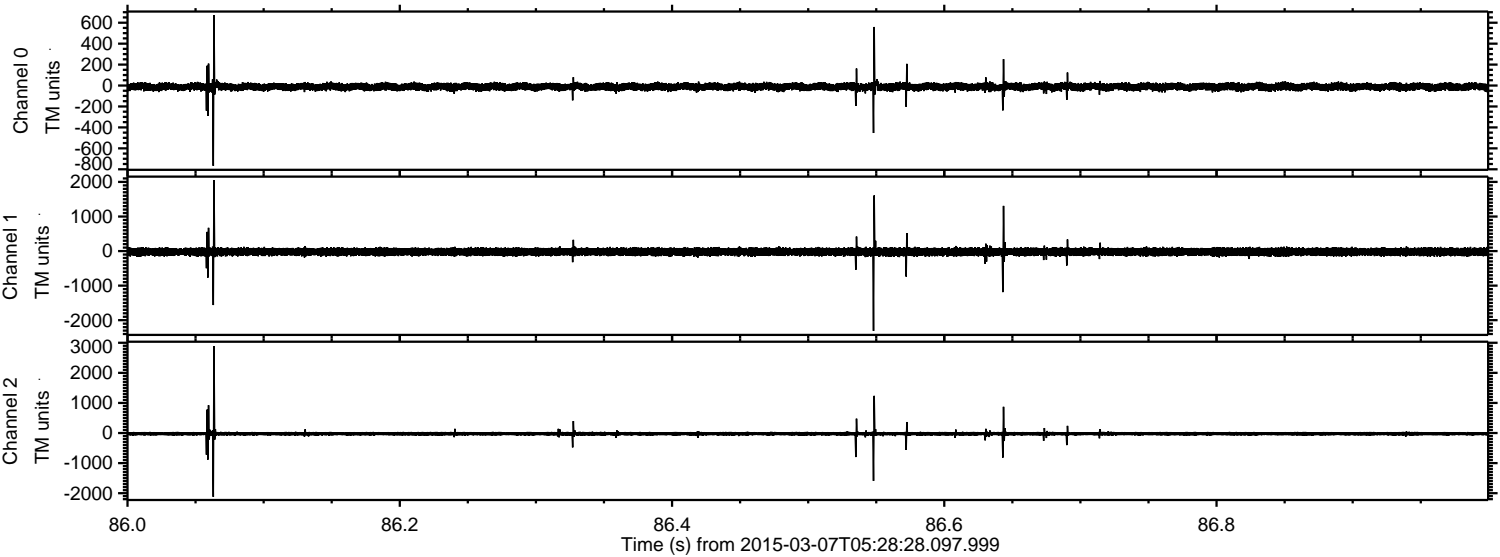


Channel 0
mn: -1282
mx: 1024
 μ : -12.4
 σ : 19.7

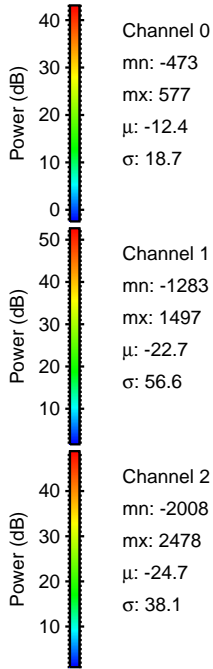
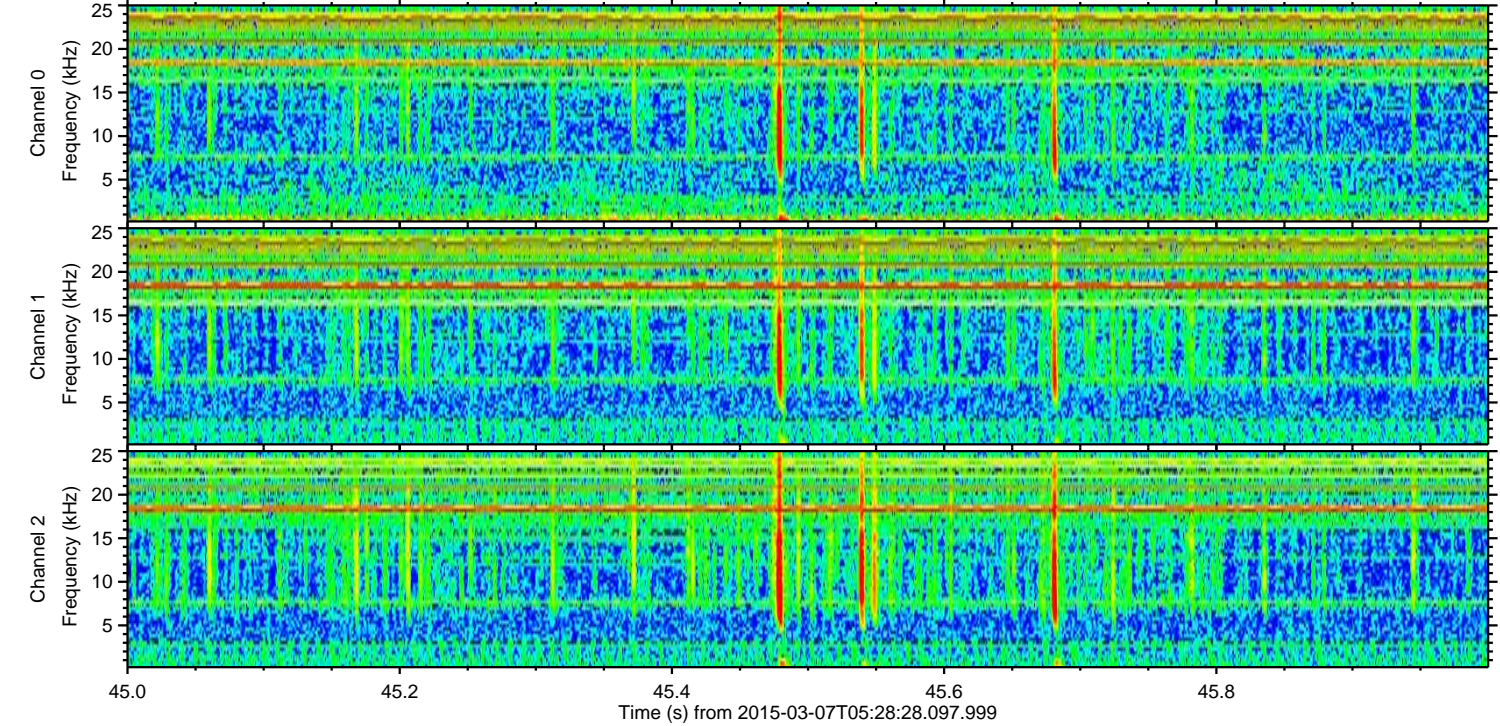
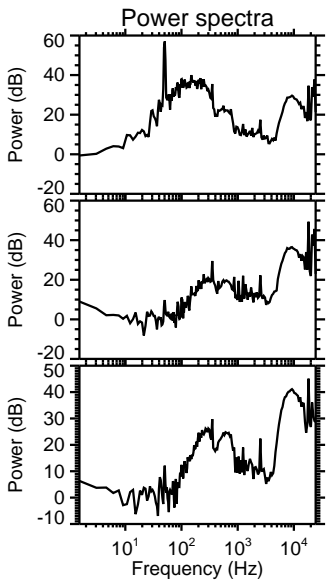
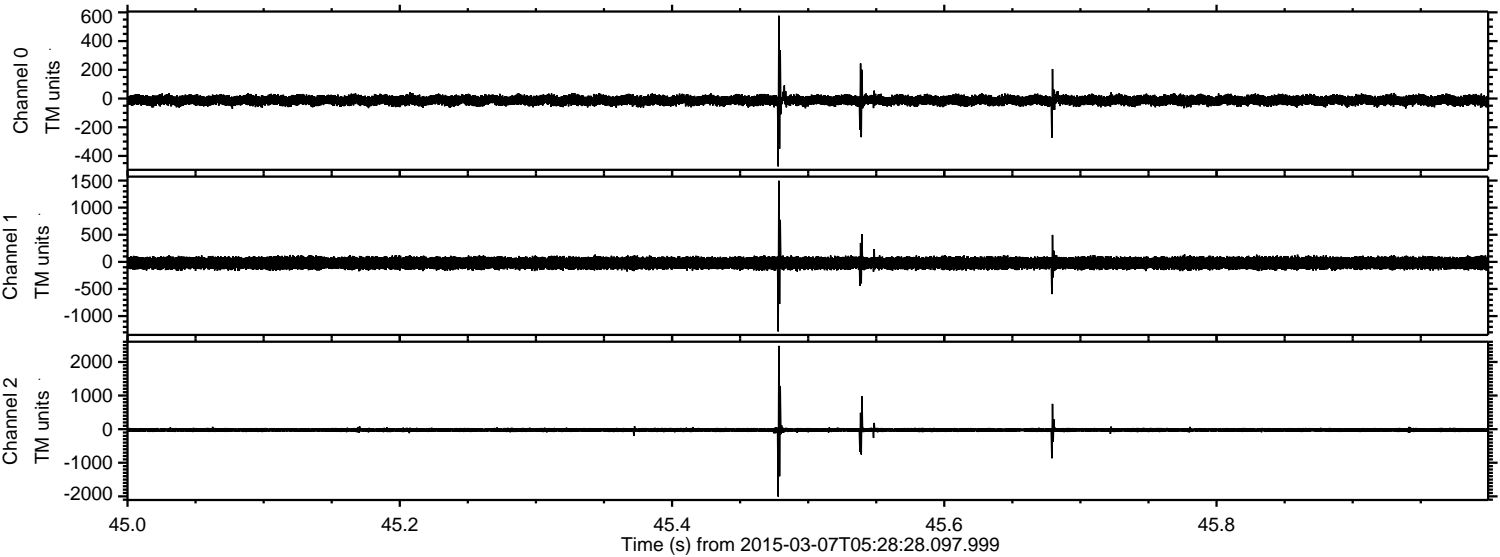
Channel 1
mn: -1971
mx: 1626
 μ : -22.6
 σ : 56.9

Channel 2
mn: -3340
mx: 3076
 μ : -24.7
 σ : 40.0

Processed Sun Mar 8 07:18:42 2015 by ELM ver.2012-10-06 from 001__elm20150307_052827__dat00.bin



Processed Sun Mar 8 07:18:43 2015 by ELM ver.2012-10-06 from 001__elm20150307_052827__dat00.bin



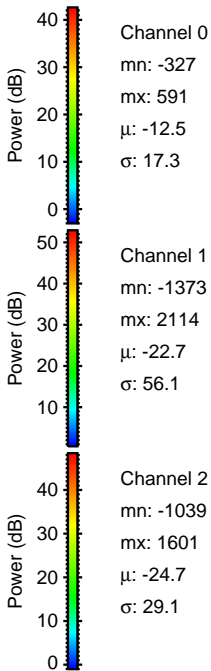
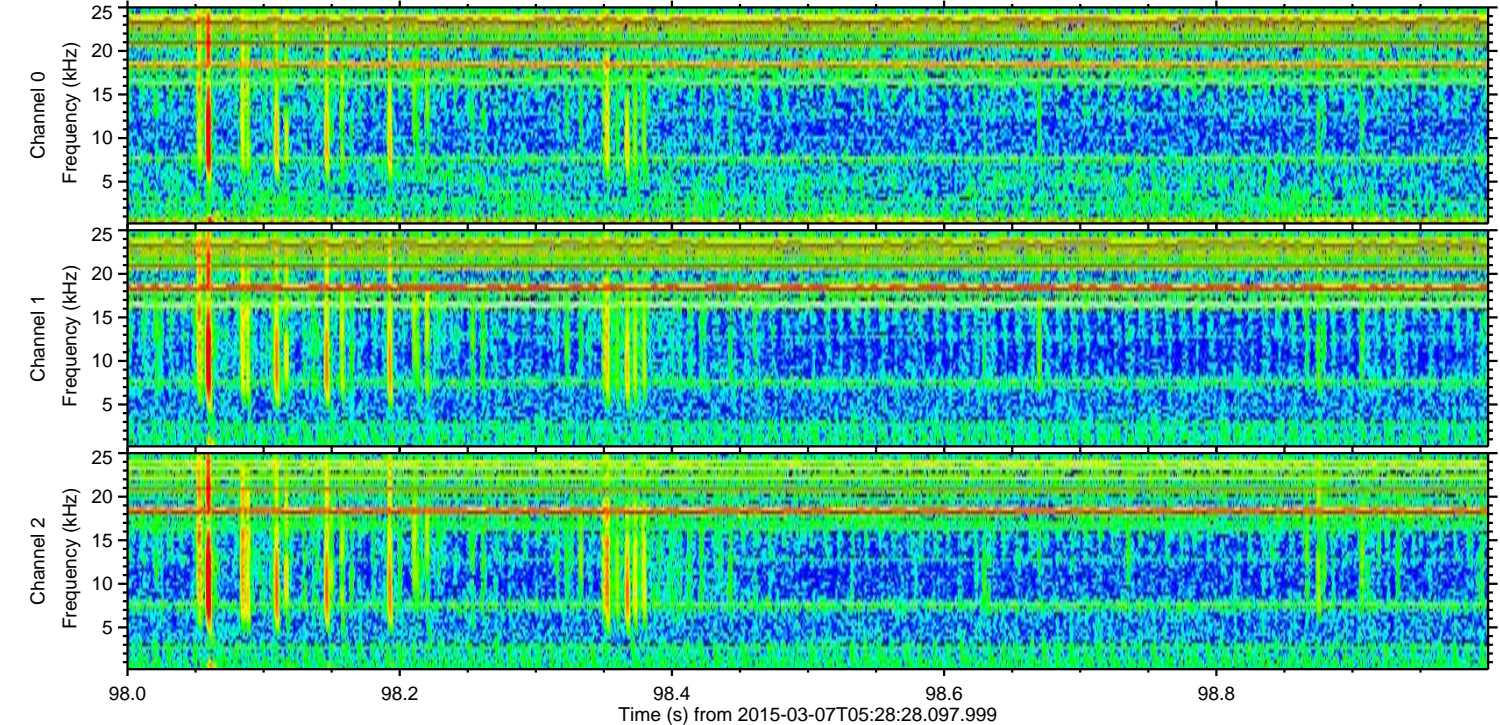
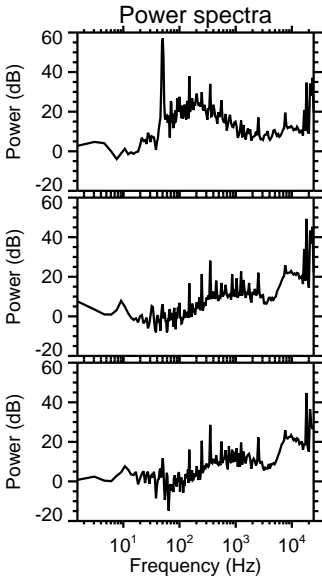
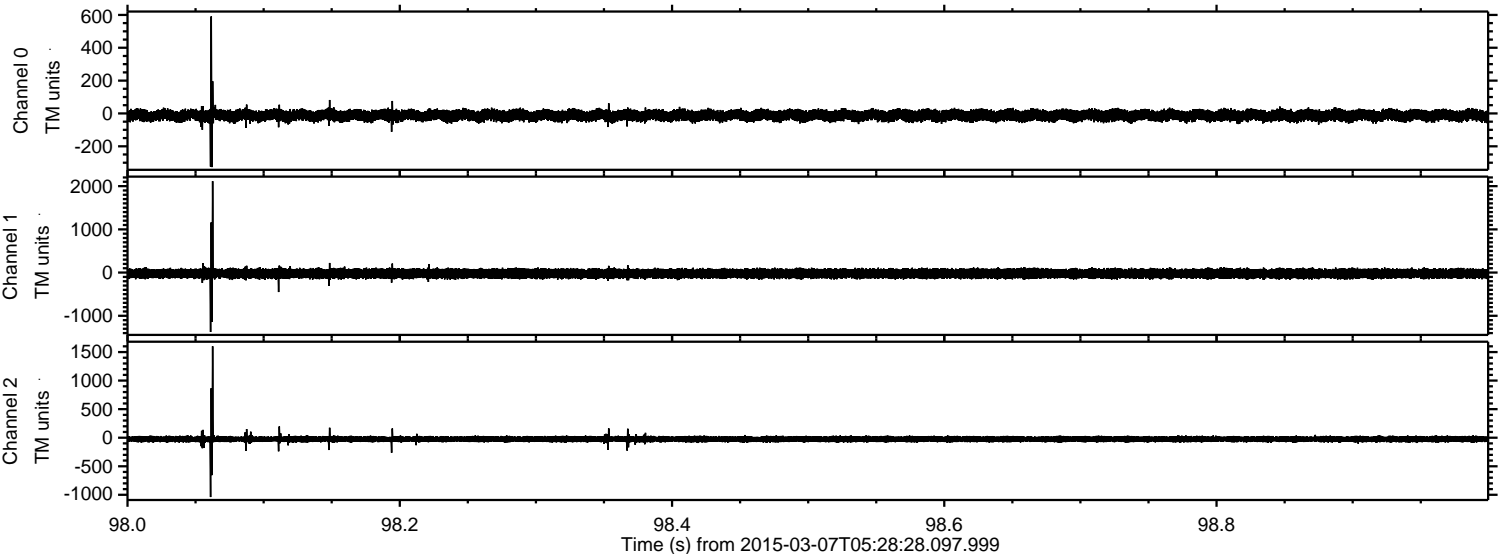
Channel 0
mn: -473
mx: 577
 μ : -12.4
 σ : 18.7

Channel 1
mn: -1283
mx: 1497
 μ : -22.7
 σ : 56.6

Channel 2
mn: -2008
mx: 2478
 μ : -24.7
 σ : 38.1

ELMAVAN 3D WAVEFORMS (Measured data sampled at 50 kHz) 49803 packets of 144 samples from 2015-03-07T05:28:28.097.999. Part 99/144

Processed Sun Mar 8 07:18:44 2015 by ELM ver.2012-10-06 from 001__elm20150307_052827__dat00.bin

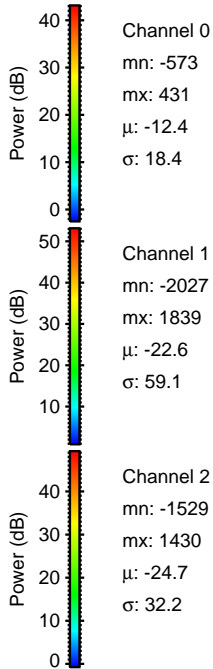
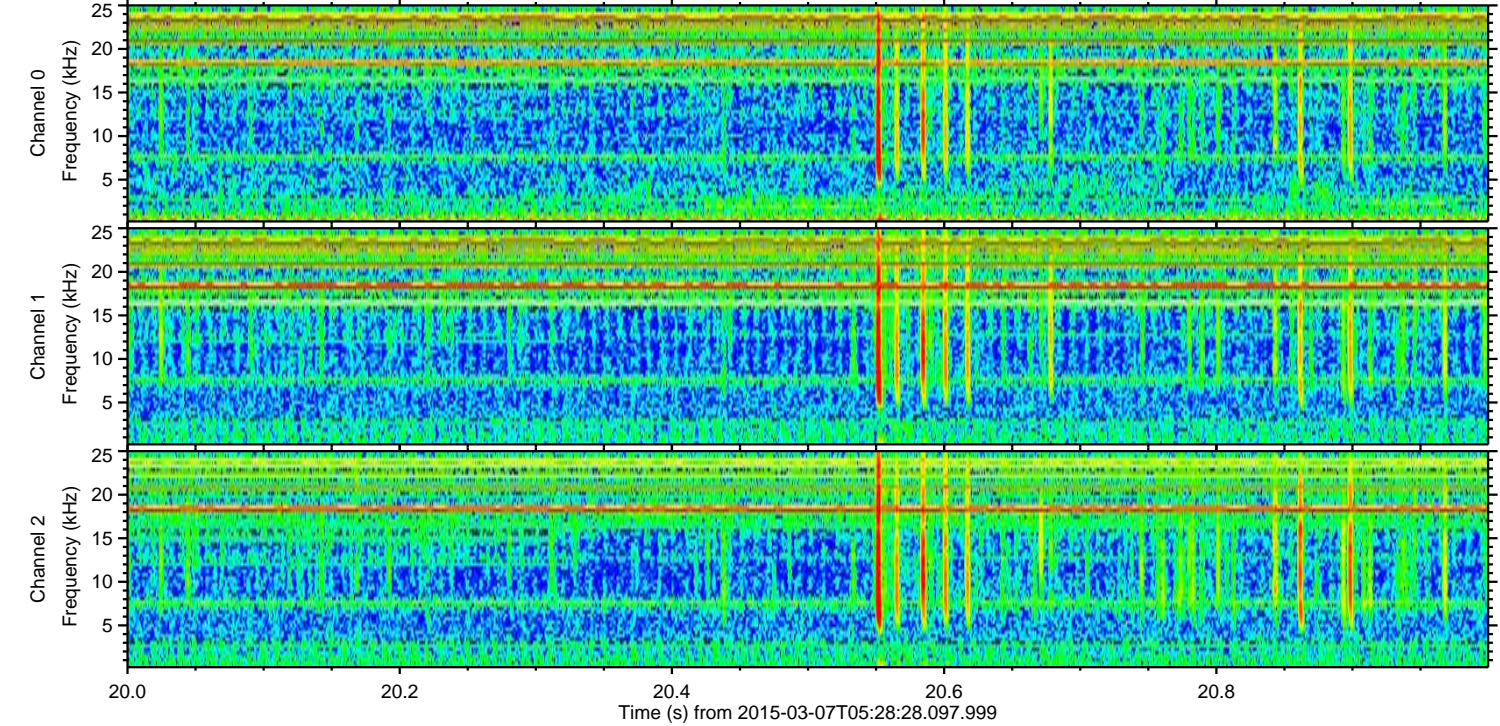
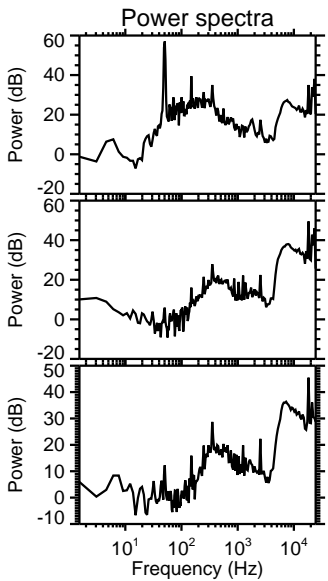
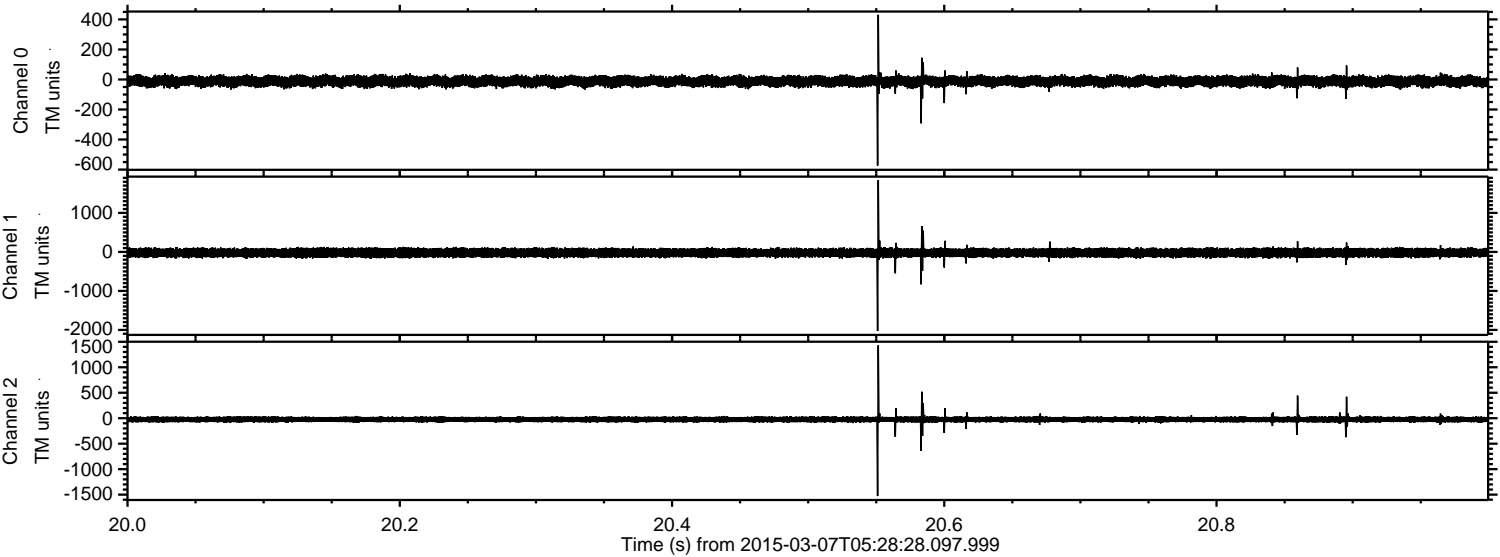


Channel 0
mn: -327
mx: 591
 μ : -12.5
 σ : 17.3

Channel 1
mn: -1373
mx: 2114
 μ : -22.7
 σ : 56.1

Channel 2
mn: -1039
mx: 1601
 μ : -24.7
 σ : 29.1

Processed Sun Mar 8 07:18:45 2015 by ELM ver.2012-10-06 from 001__elm20150307_052827__dat00.bin



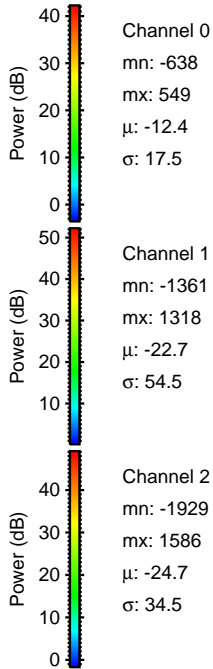
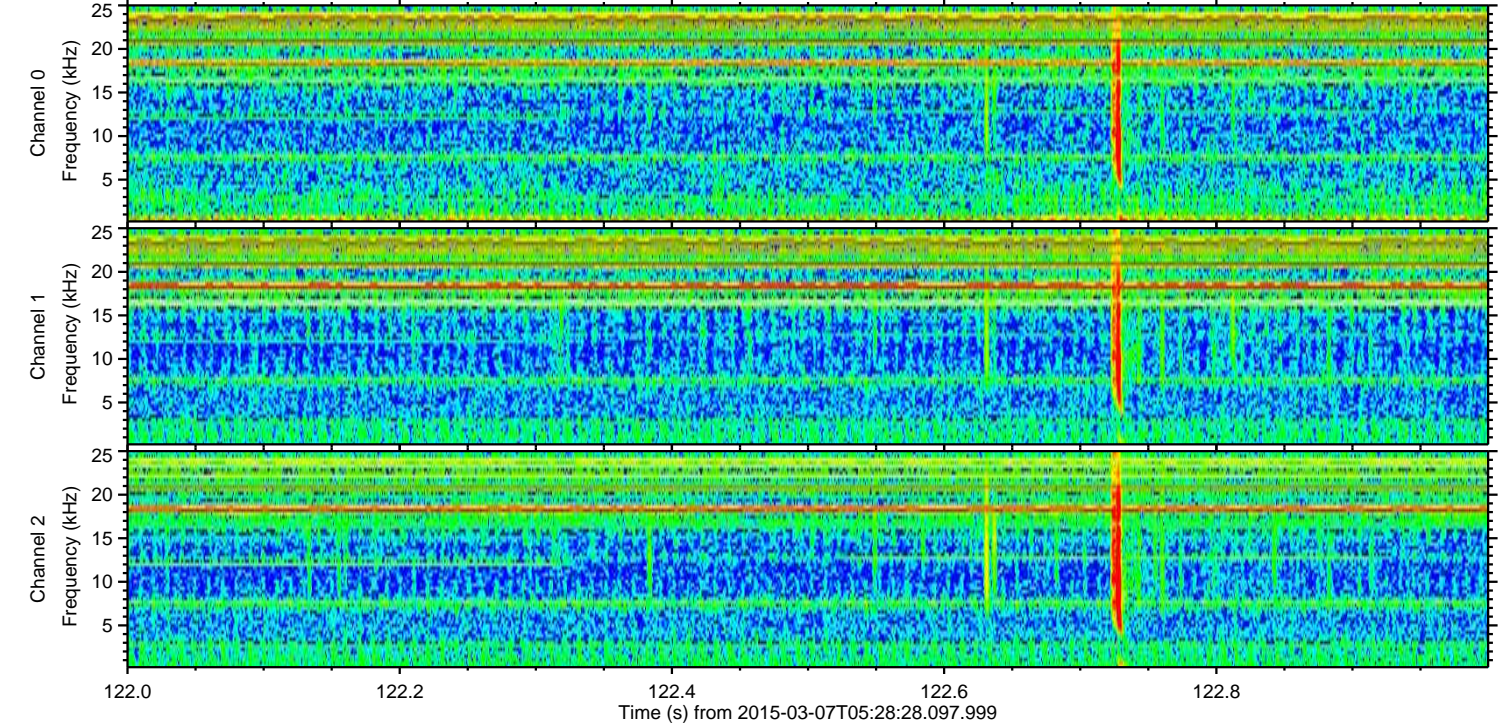
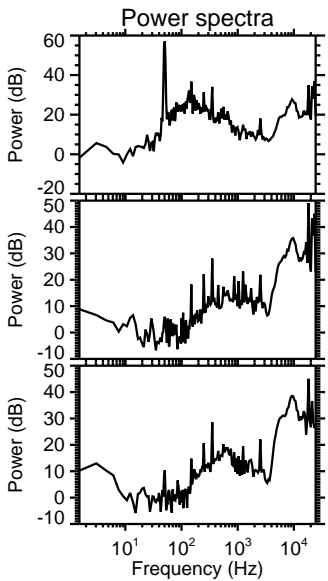
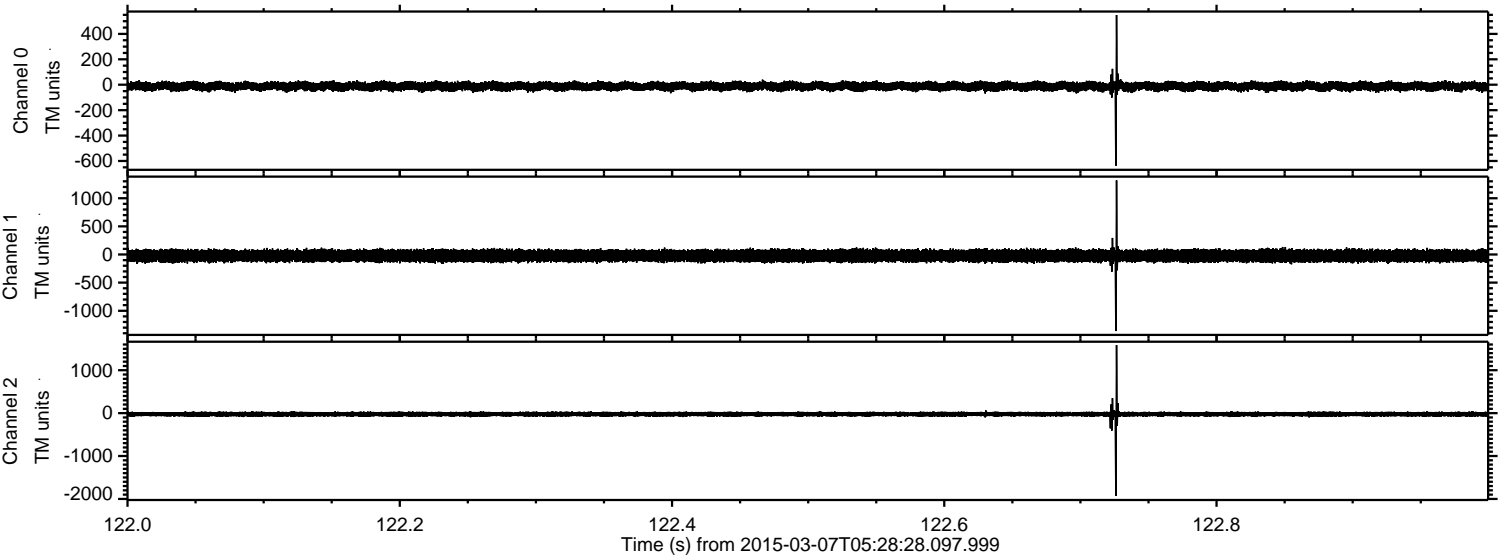
Channel 0
mn: -573
mx: 431
 μ : -12.4
 σ : 18.4

Channel 1
mn: -2027
mx: 1839
 μ : -22.6
 σ : 59.1

Channel 2
mn: -1529
mx: 1430
 μ : -24.7
 σ : 32.2

ELMAVAN 3D WAVEFORMS (Measured data sampled at 50 kHz) 49803 packets of 144 samples from 2015-03-07T05:28:28.097.999. Part 123/144

Processed Sun Mar 8 07:18:46 2015 by ELM ver.2012-10-06 from 001__elm20150307_052827__dat00.bin

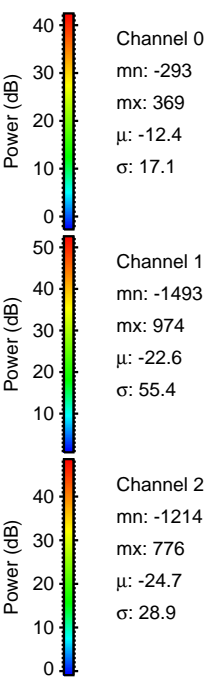
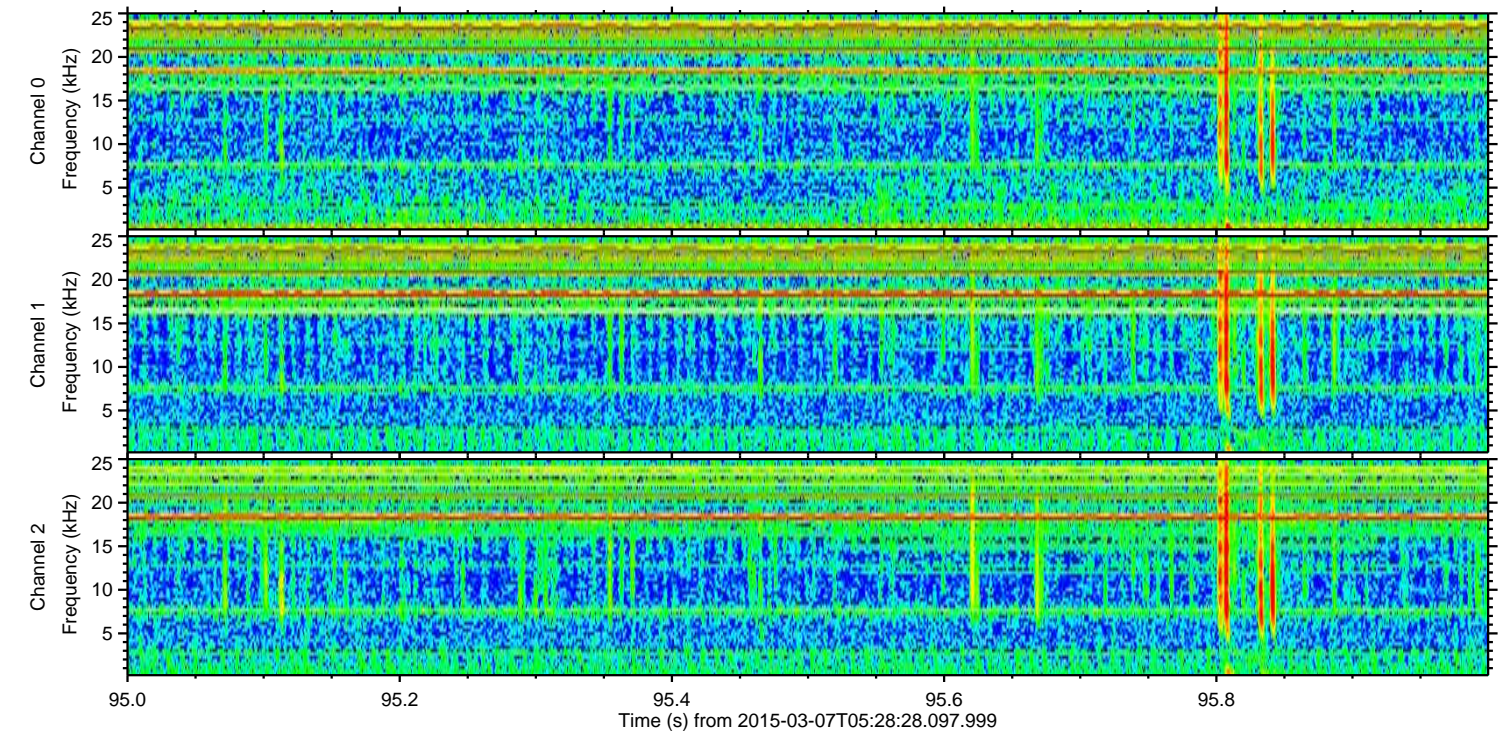
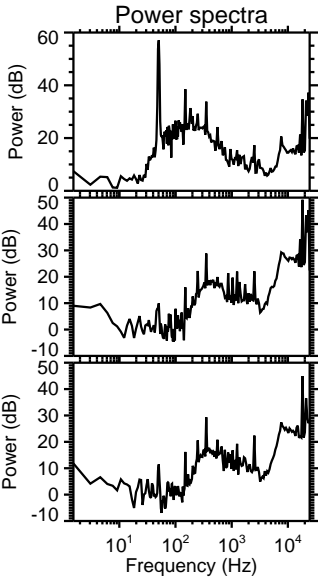
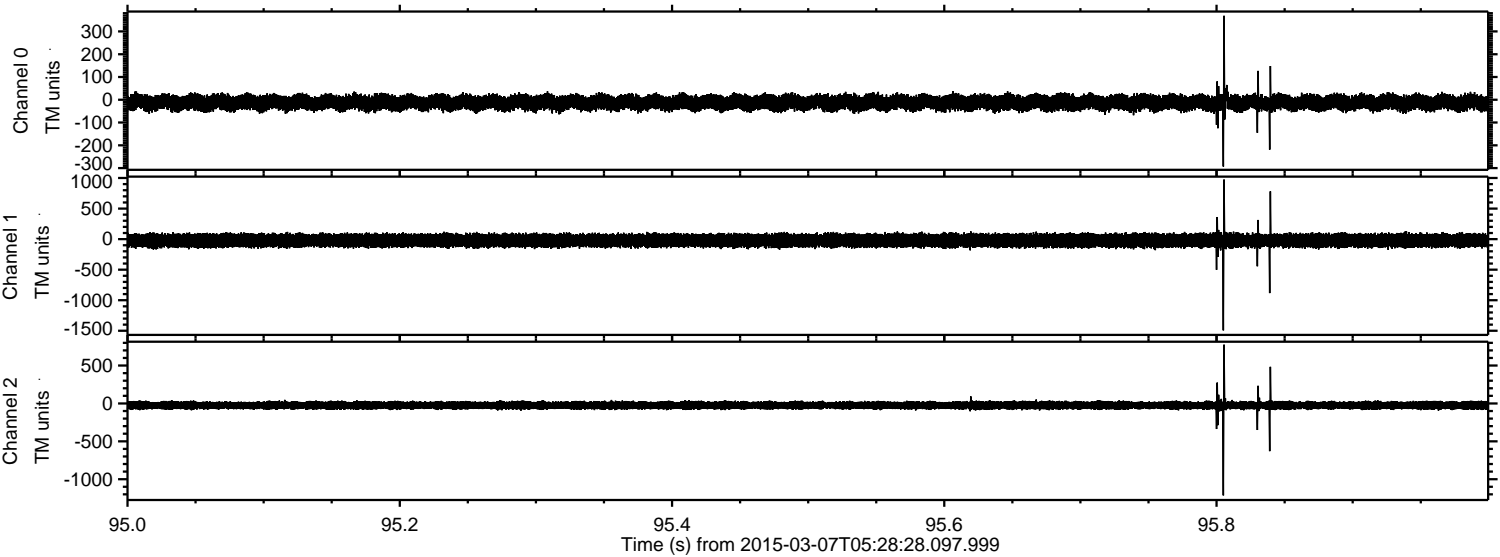


Channel 0
mn: -638
mx: 549
 μ : -12.4
 σ : 17.5

Channel 1
mn: -1361
mx: 1318
 μ : -22.7
 σ : 54.5

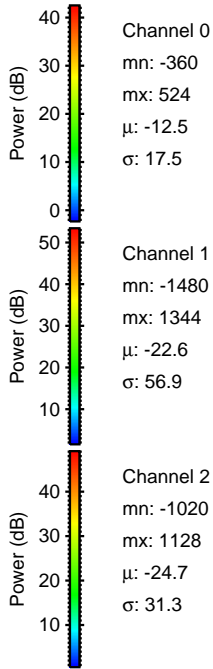
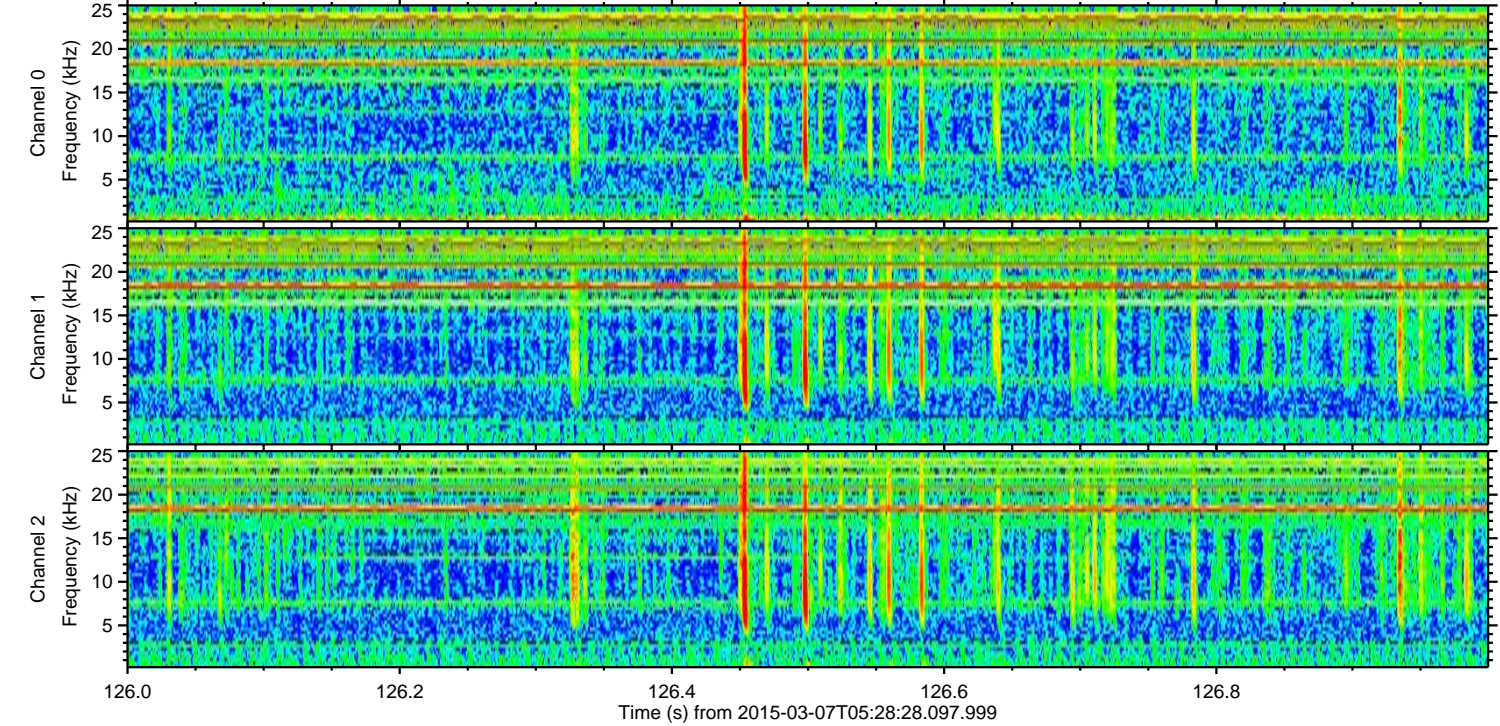
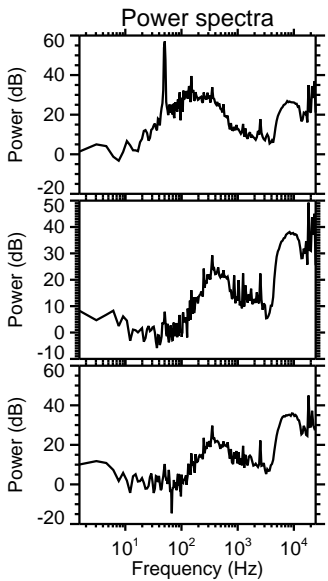
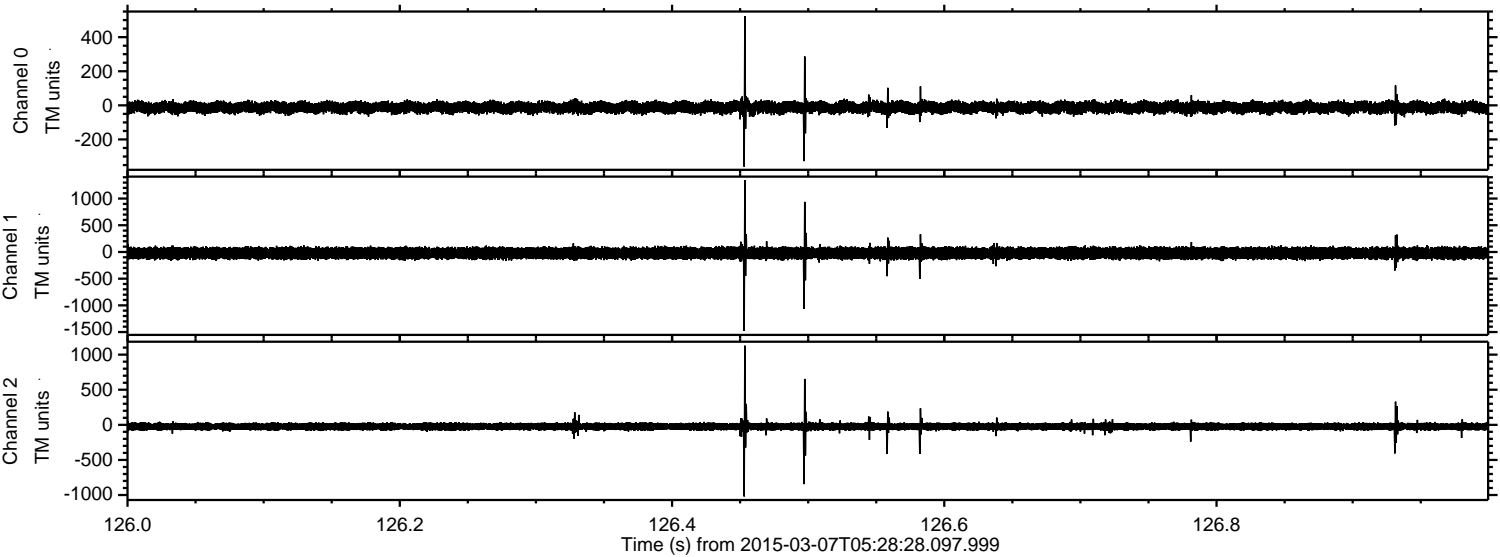
Channel 2
mn: -1929
mx: 1586
 μ : -24.7
 σ : 34.5

Processed Sun Mar 8 07:18:47 2015 by ELM ver.2012-10-06 from 001__elm20150307_052827__dat00.bin



ELMAVAN 3D WAVEFORMS (Measured data sampled at 50 kHz) 49803 packets of 144 samples from 2015-03-07T05:28:28.097.999. Part 127/144

Processed Sun Mar 8 07:18:48 2015 by ELM ver.2012-10-06 from 001__elm20150307_052827__dat00.bin



ELMAVAN 3D WAVEFORMS (Measured data sampled at 50 kHz) 49803 packets of 144 samples from 2015-03-07T05:28:28.097.999. Part 118/144

Processed Sun Mar 8 07:18:49 2015 by ELM ver.2012-10-06 from 001__elm20150307_052827__dat00.bin

