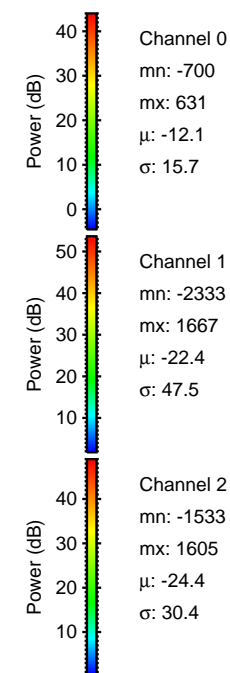
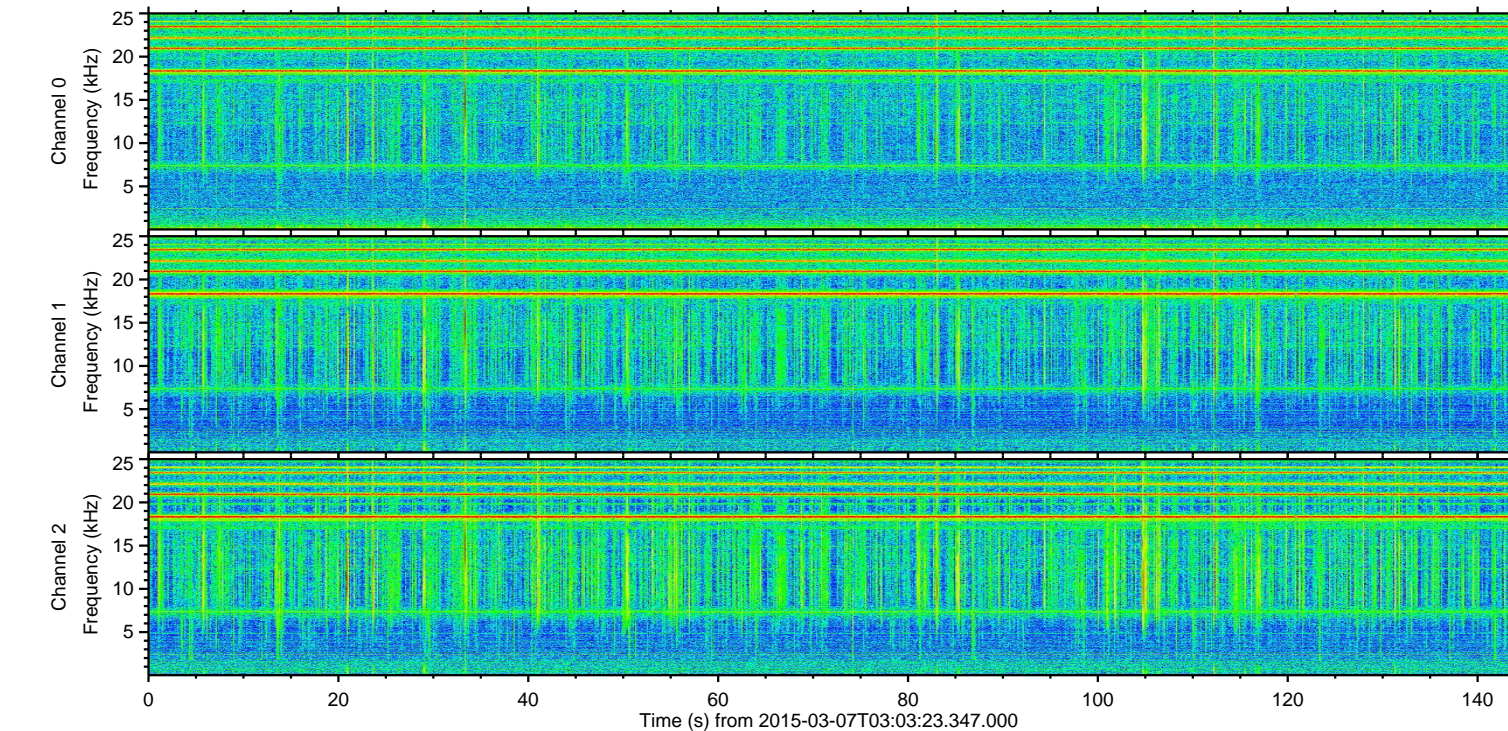
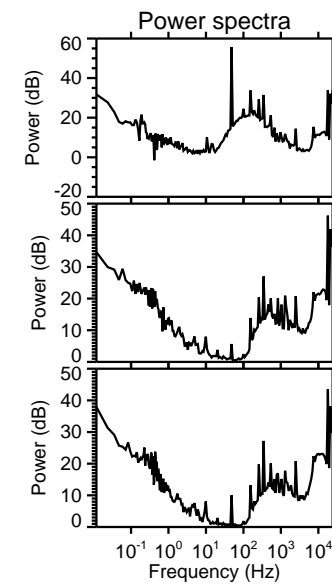
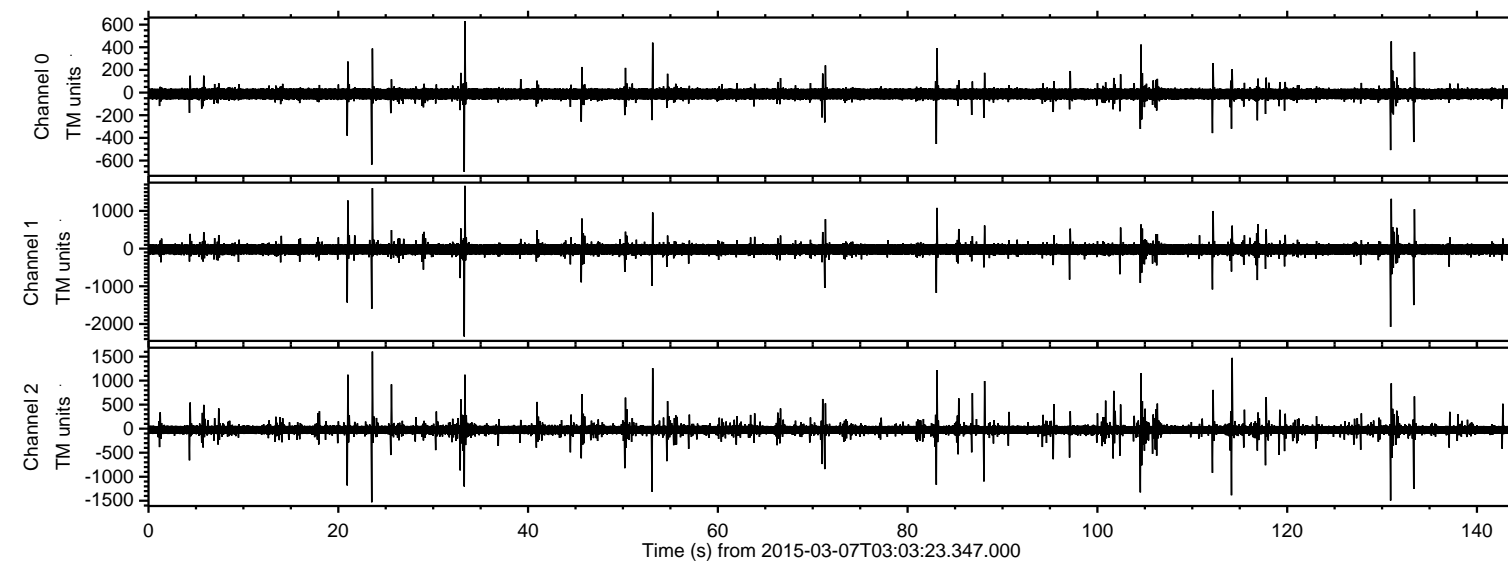
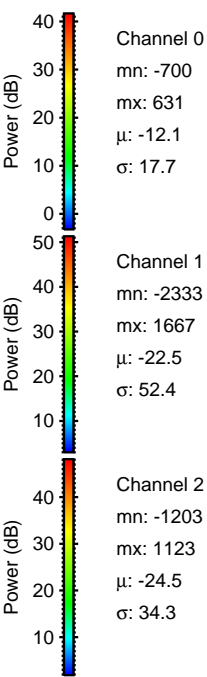
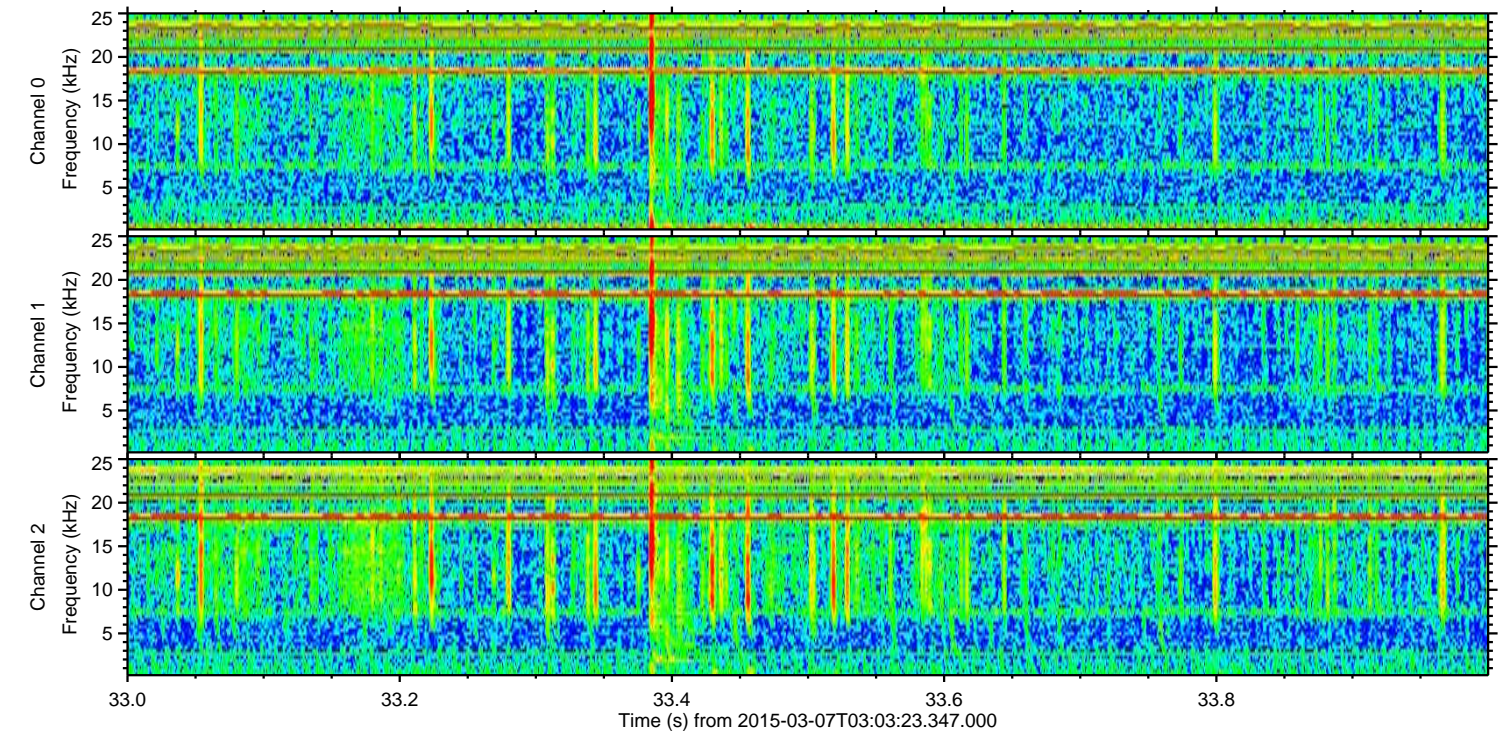
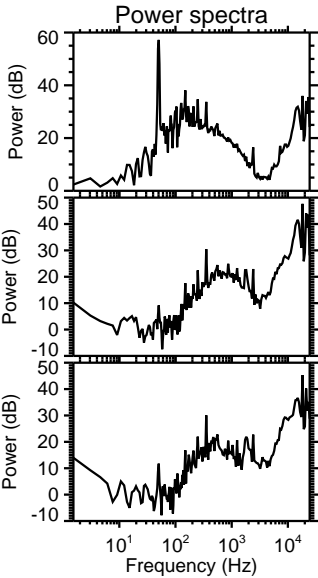
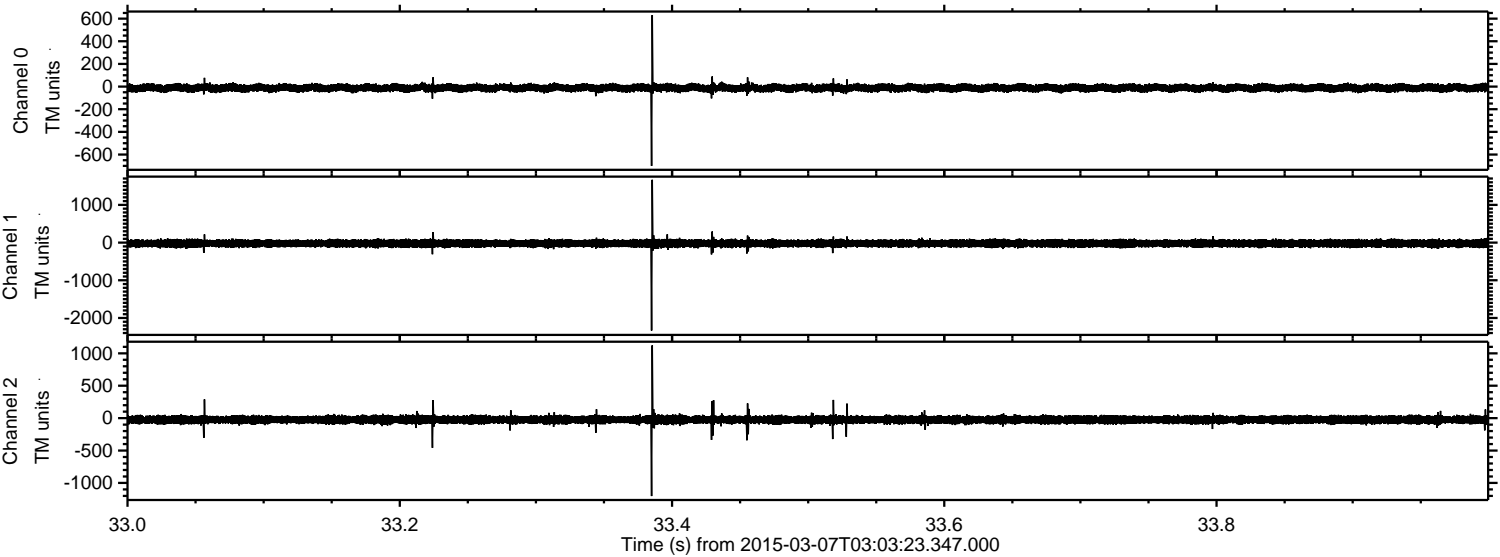


ELMAVAN 3D WAVEFORMS (Measured data sampled at 50 kHz) 49789 packets of 144 samples from 2015-03-07T03:03:23.347.000.

Processed Sun Mar 8 06:26:13 2015 by ELM ver.2012-10-06 from 001__elm20150307_030322__dat00.bin

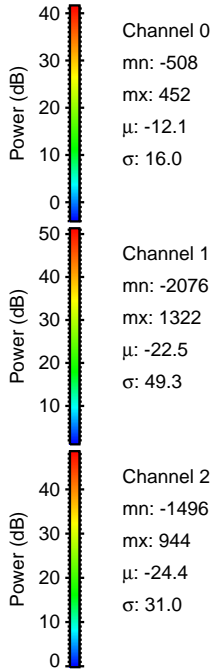
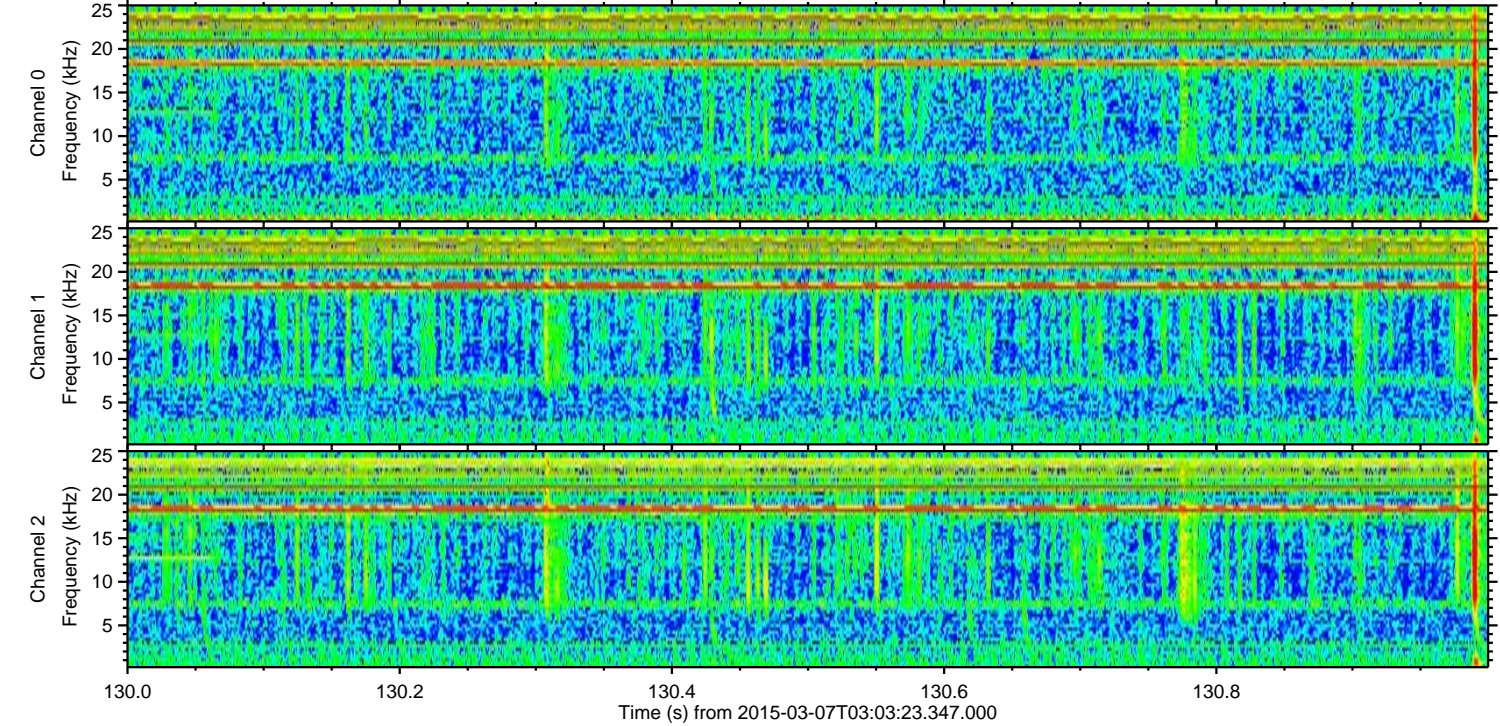
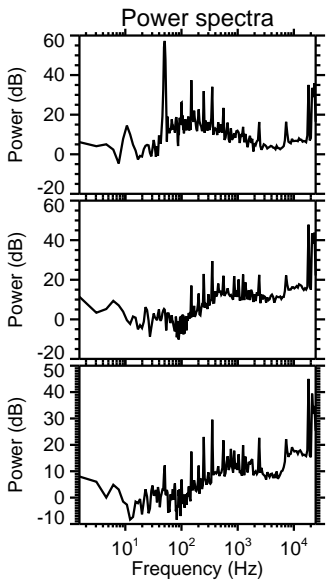
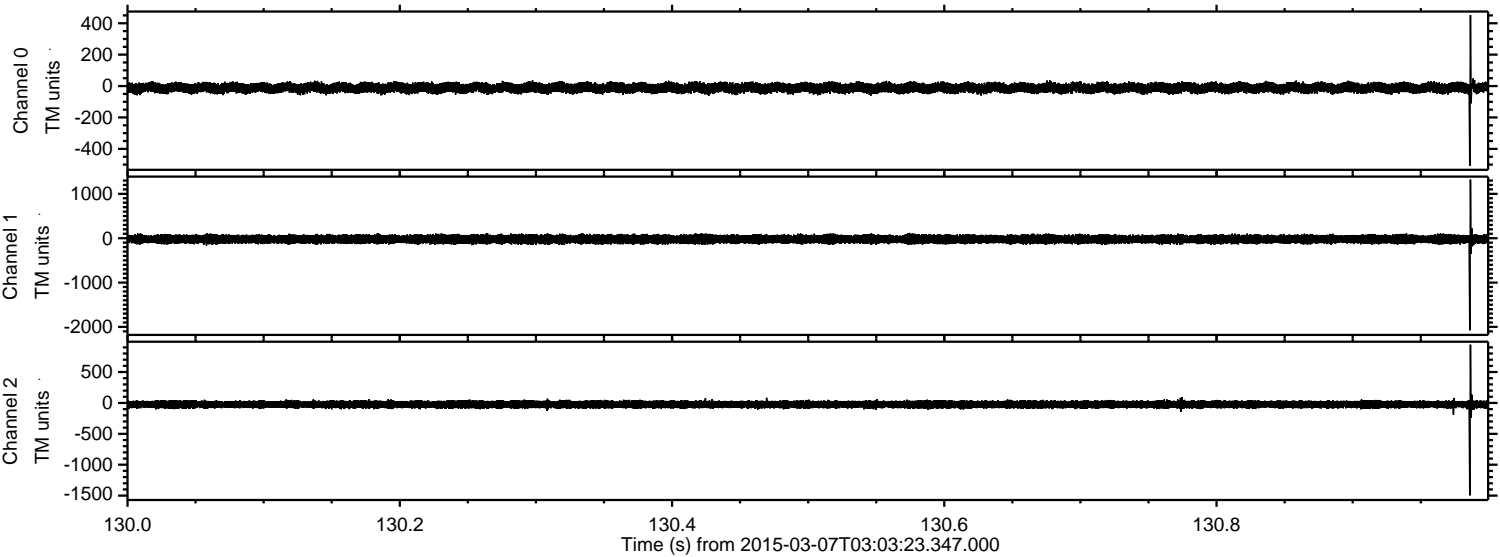


Processed Sun Mar 8 06:26:25 2015 by ELM ver.2012-10-06 from 001__elm20150307_030322__dat00.bin



ELMAVAN 3D WAVEFORMS (Measured data sampled at 50 kHz) 49789 packets of 144 samples from 2015-03-07T03:03:23.347.000. Part 131/144

Processed Sun Mar 8 06:26:26 2015 by ELM ver.2012-10-06 from 001__elm20150307_030322__dat00.bin



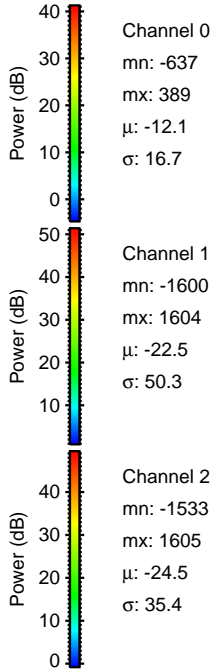
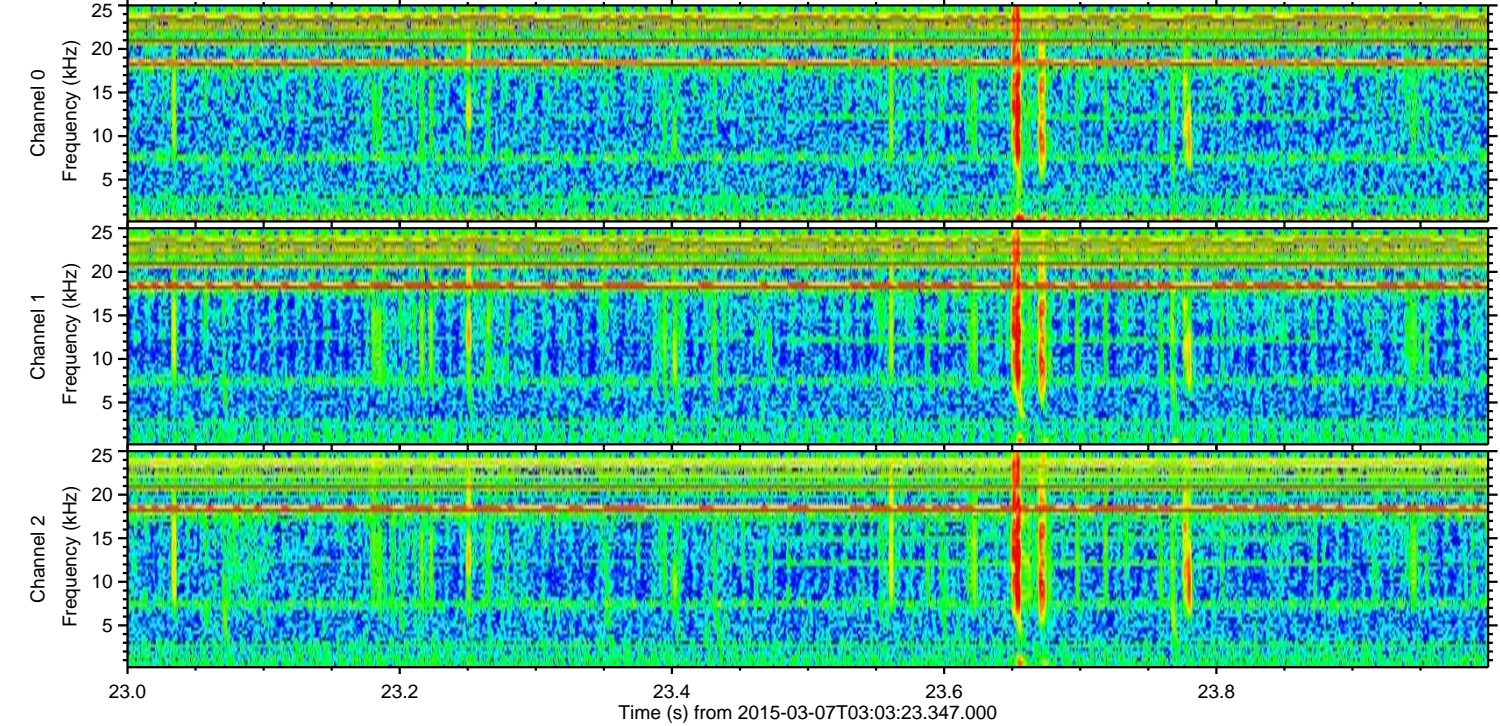
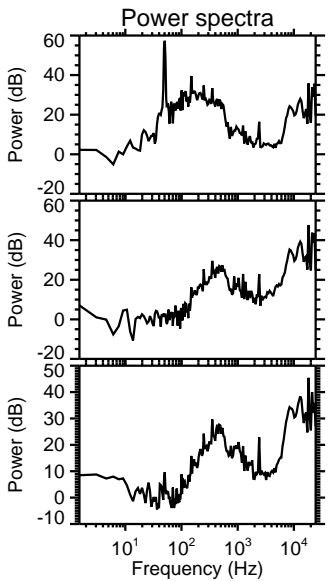
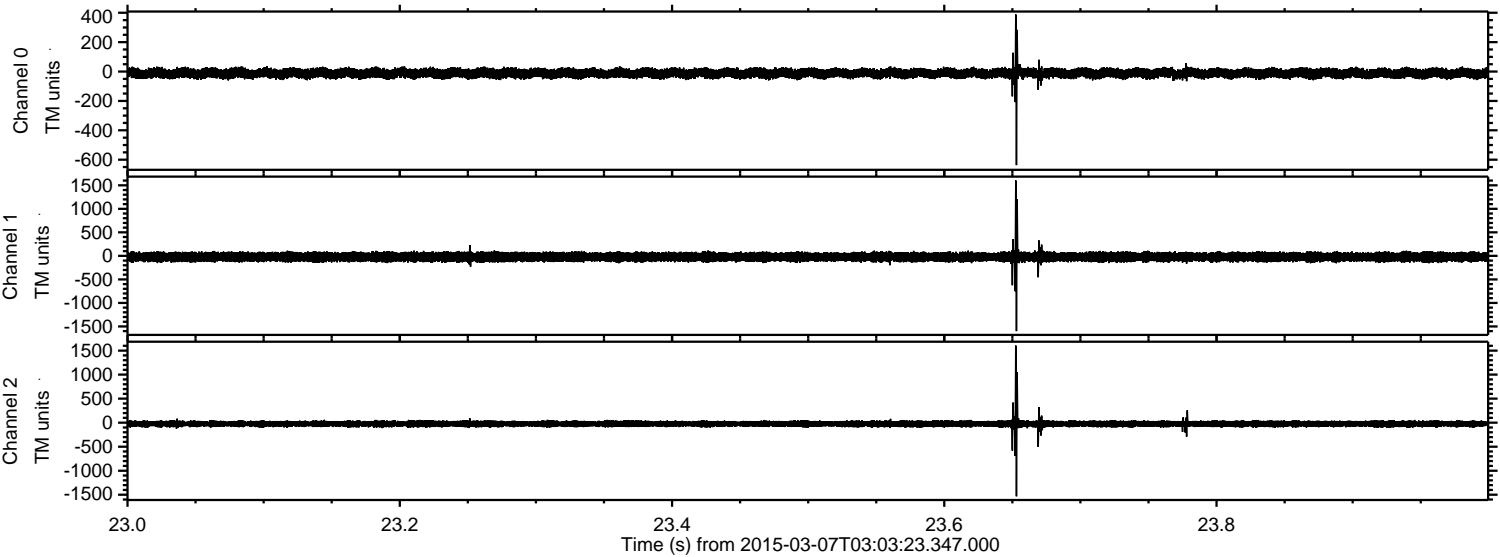
Channel 0
mn: -508
mx: 452
 μ : -12.1
 σ : 16.0

Channel 1
mn: -2076
mx: 1322
 μ : -22.5
 σ : 49.3

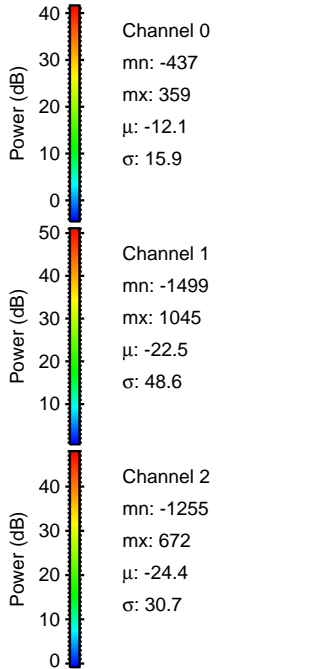
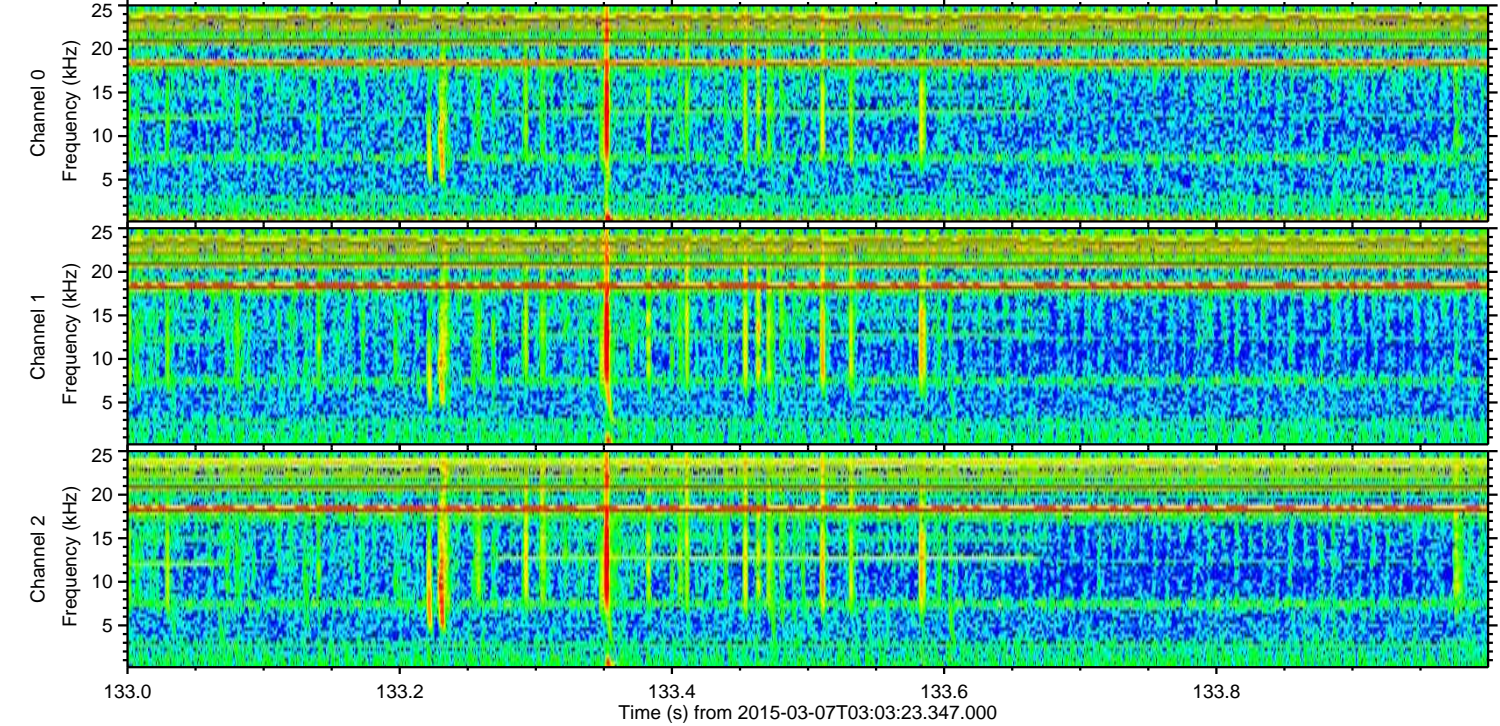
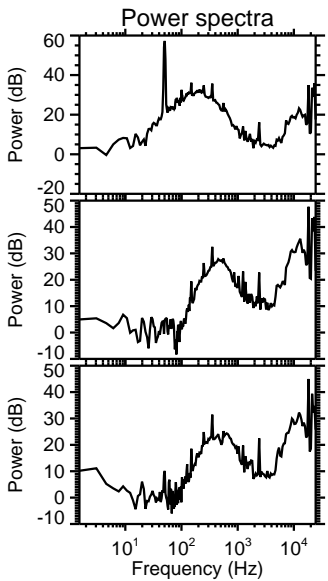
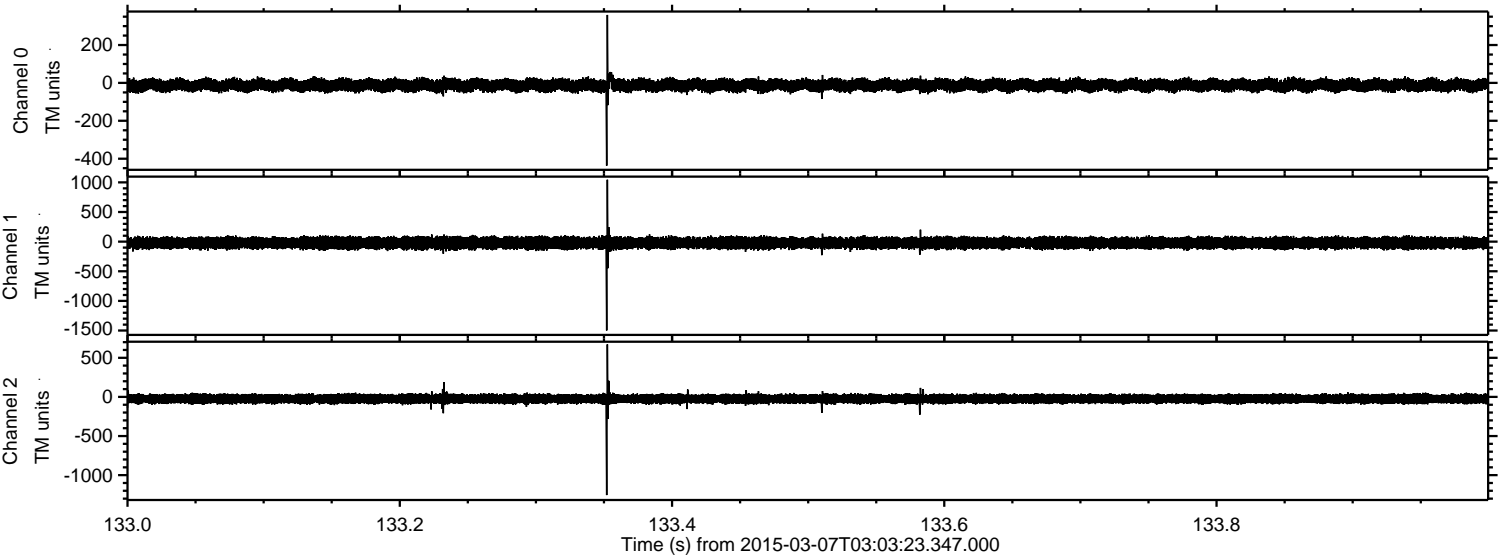
Channel 2
mn: -1496
mx: 944
 μ : -24.4
 σ : 31.0

ELMAVAN 3D WAVEFORMS (Measured data sampled at 50 kHz) 49789 packets of 144 samples from 2015-03-07T03:03:23.347.000. Part 24/144

Processed Sun Mar 8 06:26:27 2015 by ELM ver.2012-10-06 from 001__elm20150307_030322__dat00.bin

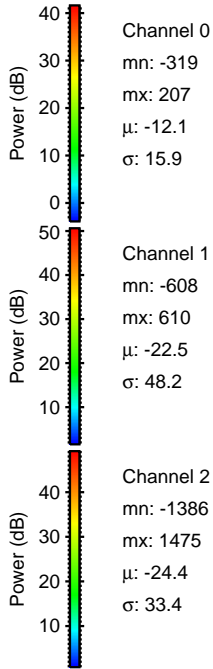
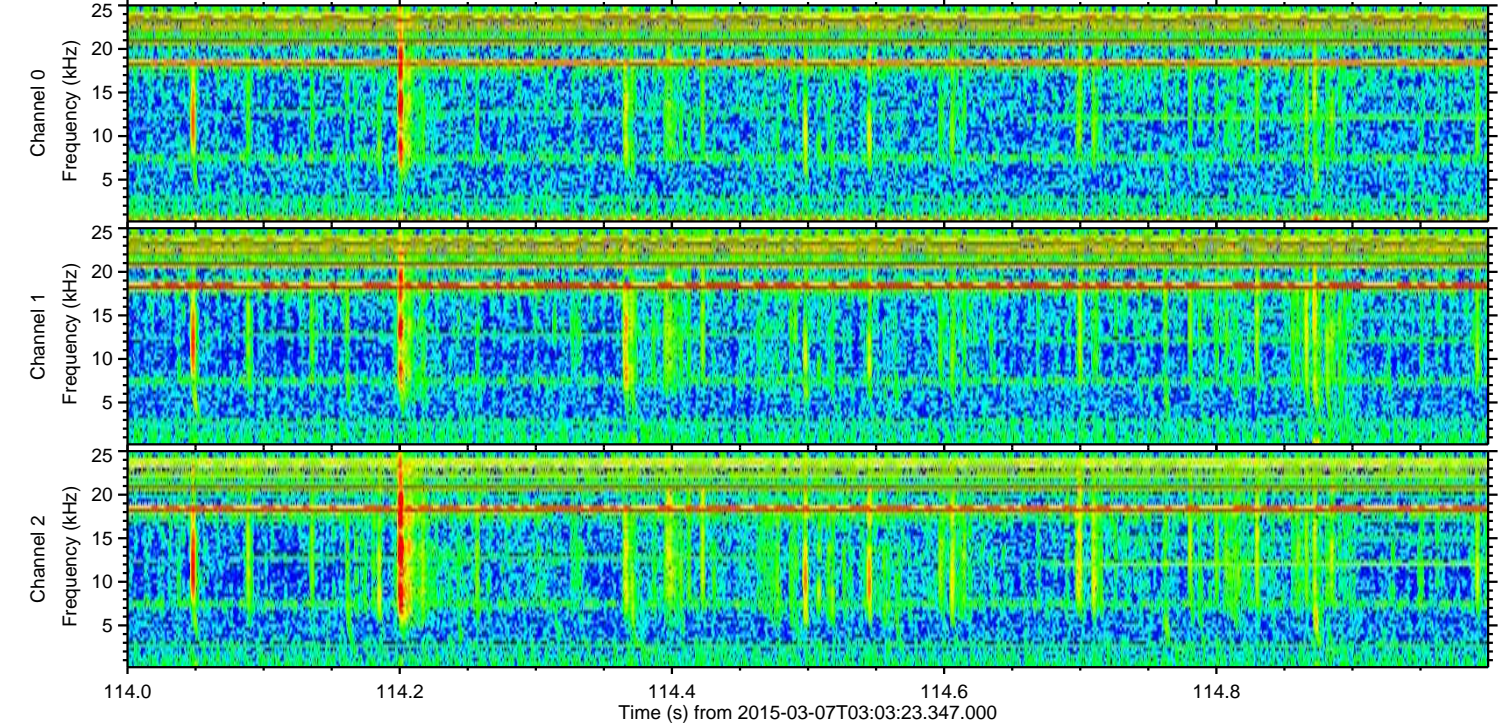
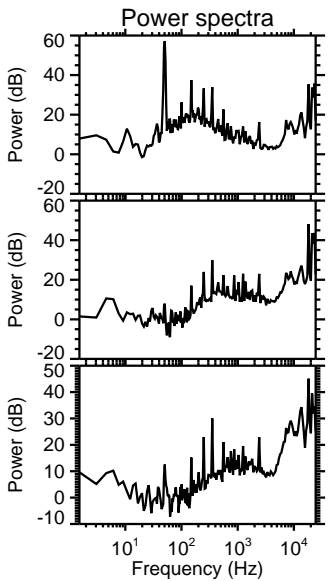
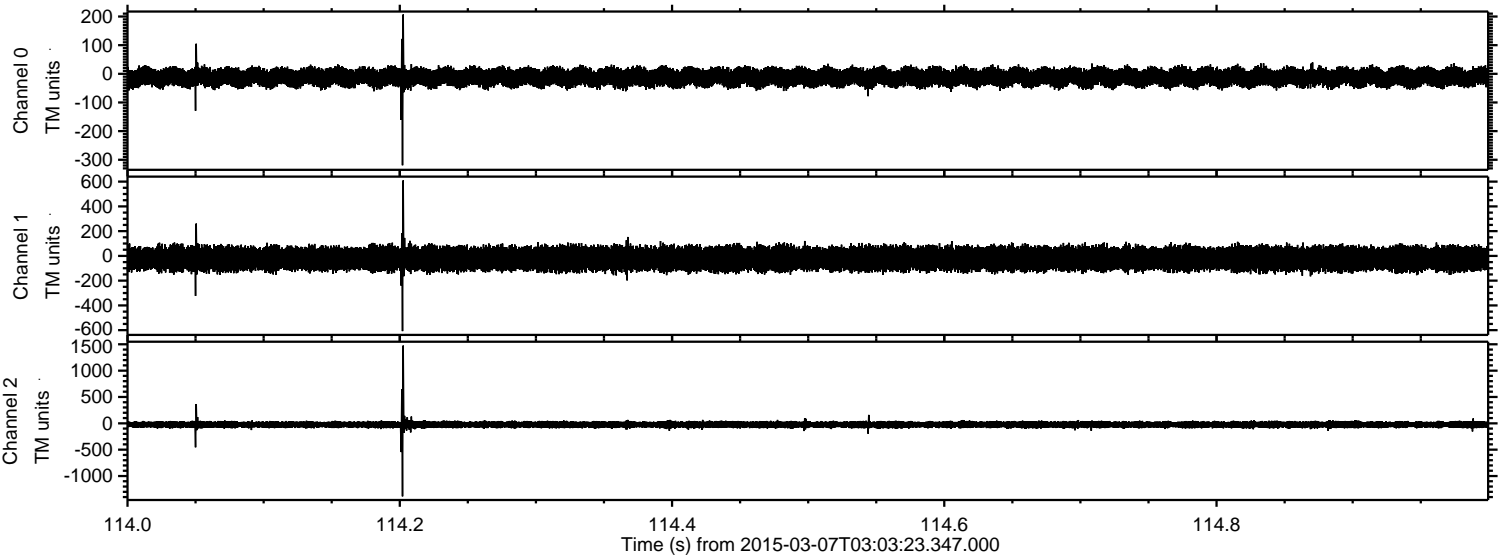


Processed Sun Mar 8 06:26:28 2015 by ELM ver.2012-10-06 from 001__elm20150307_030322__dat00.bin

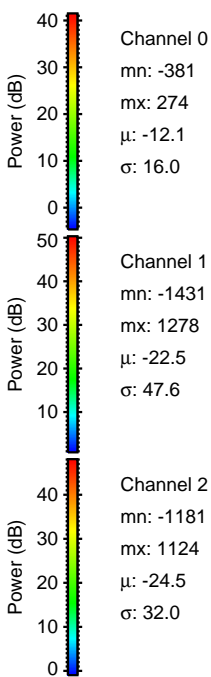
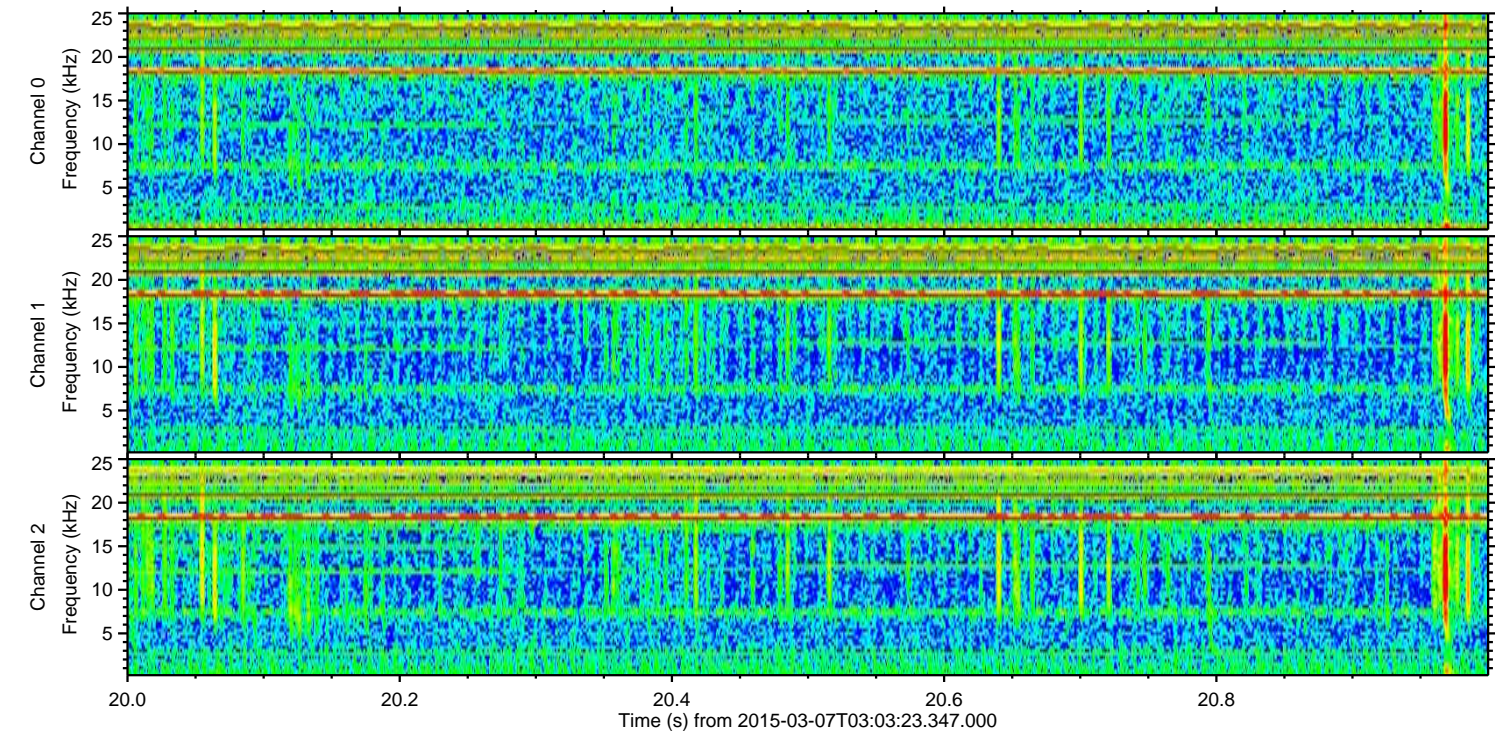
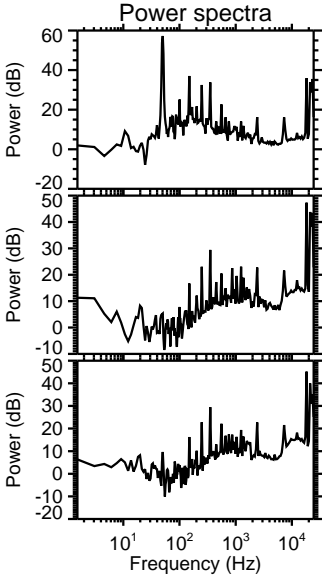
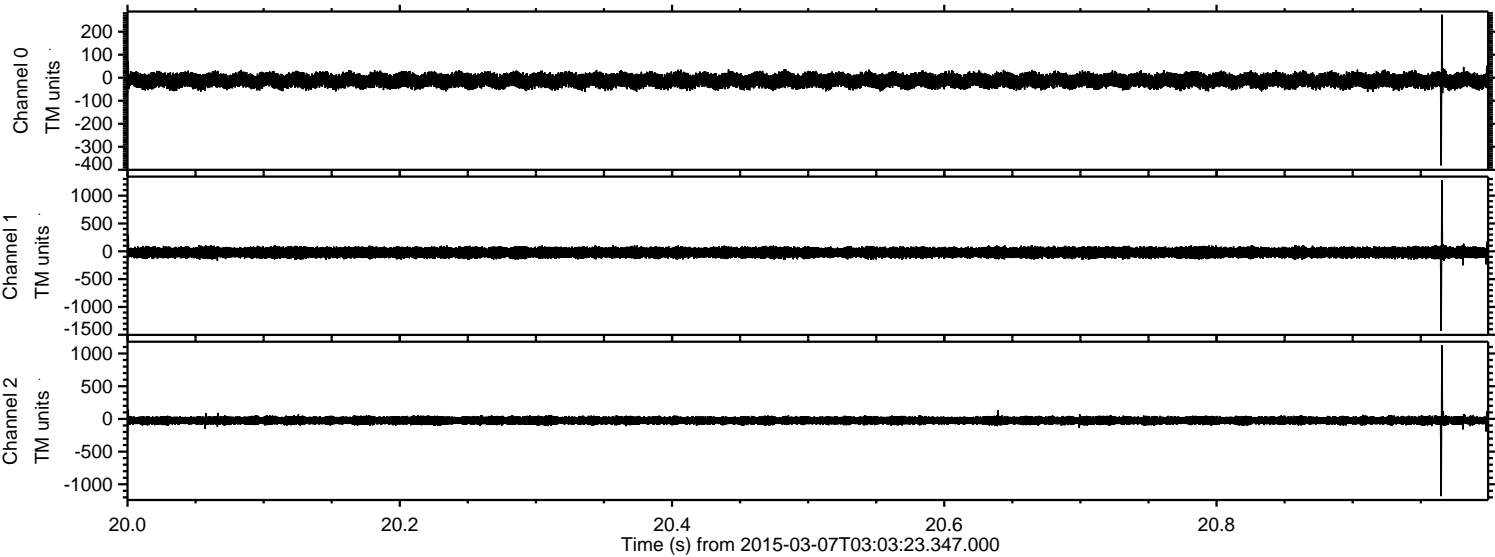


ELMAVAN 3D WAVEFORMS (Measured data sampled at 50 kHz) 49789 packets of 144 samples from 2015-03-07T03:03:23.347.000. Part 115/144

Processed Sun Mar 8 06:26:29 2015 by ELM ver.2012-10-06 from 001__elm20150307_030322__dat00.bin



Processed Sun Mar 8 06:26:30 2015 by ELM ver.2012-10-06 from 001__elm20150307_030322__dat00.bin

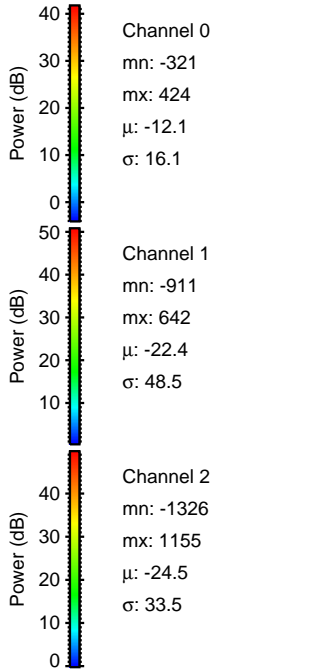
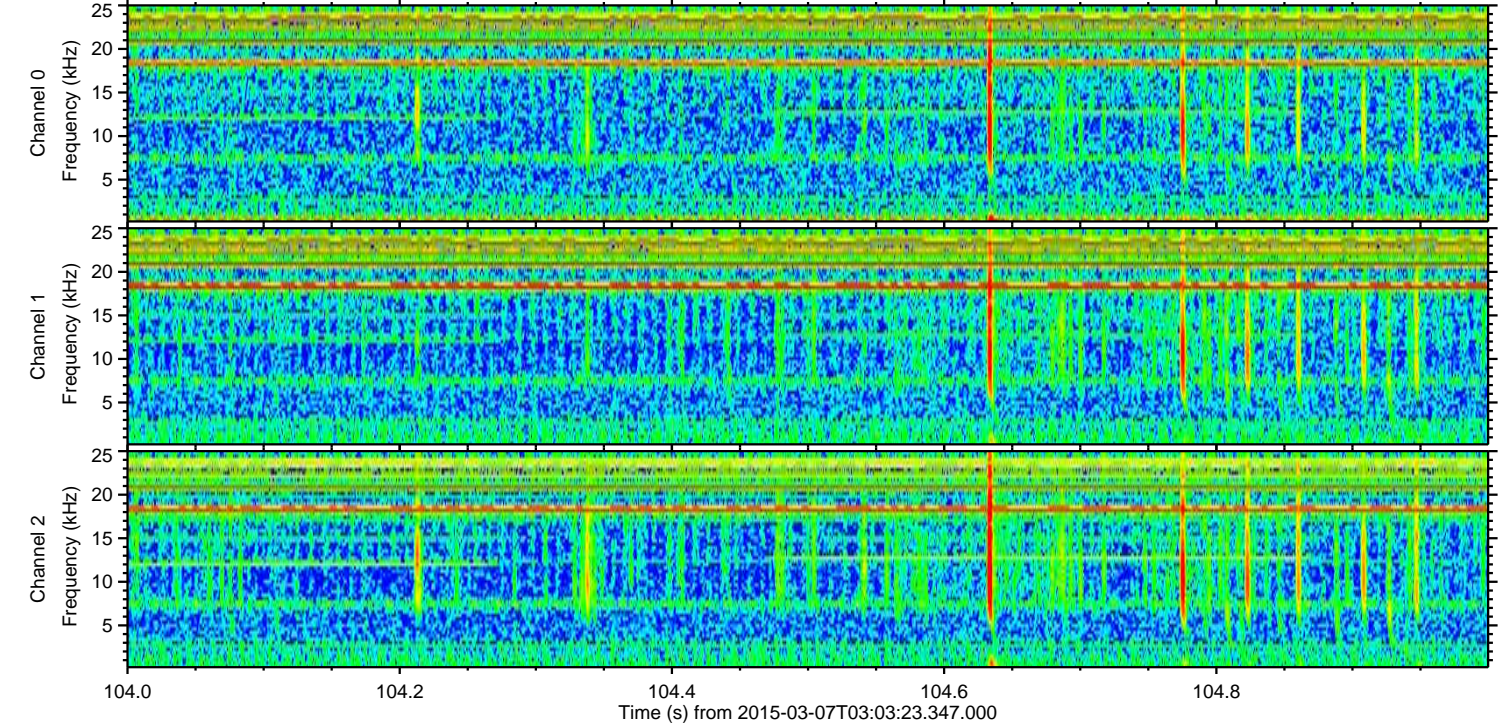
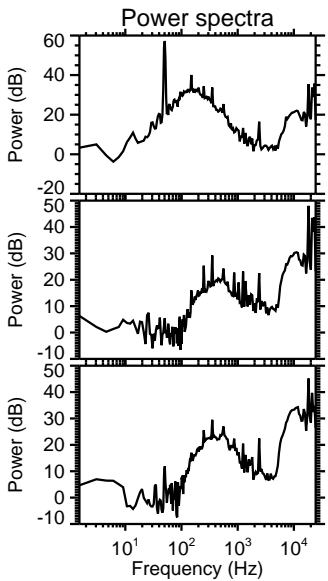
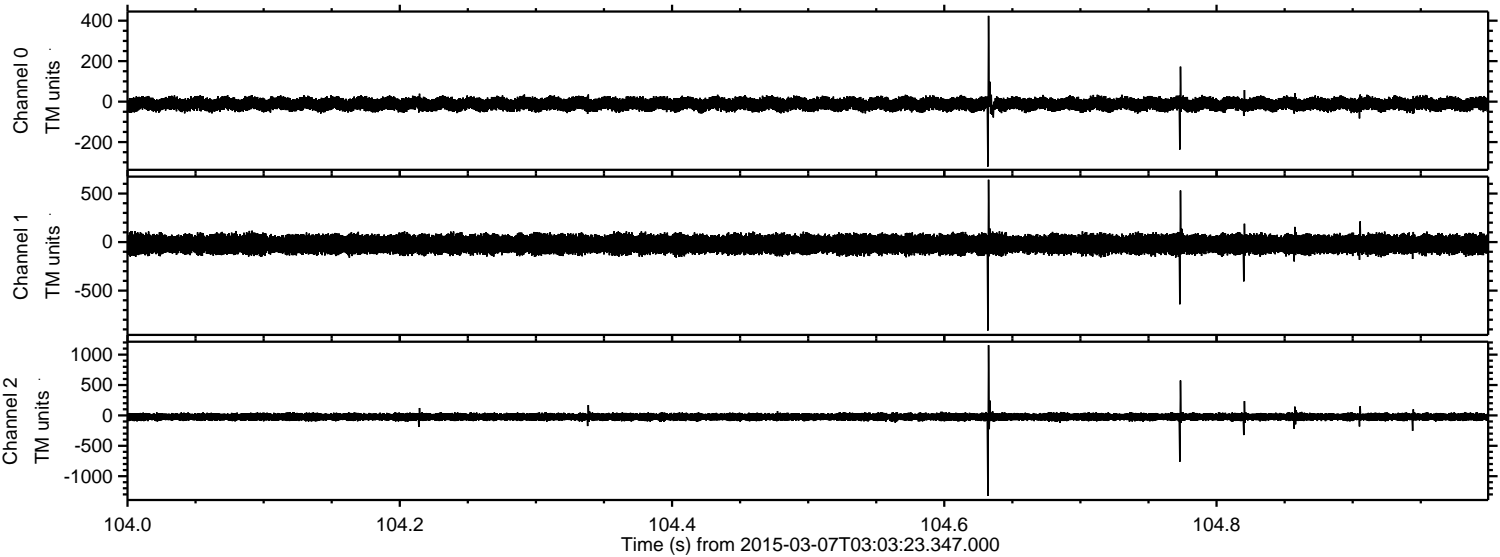


Channel 0
mn: -381
mx: 274
 μ : -12.1
 σ : 16.0

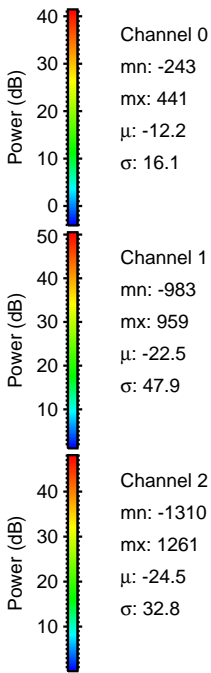
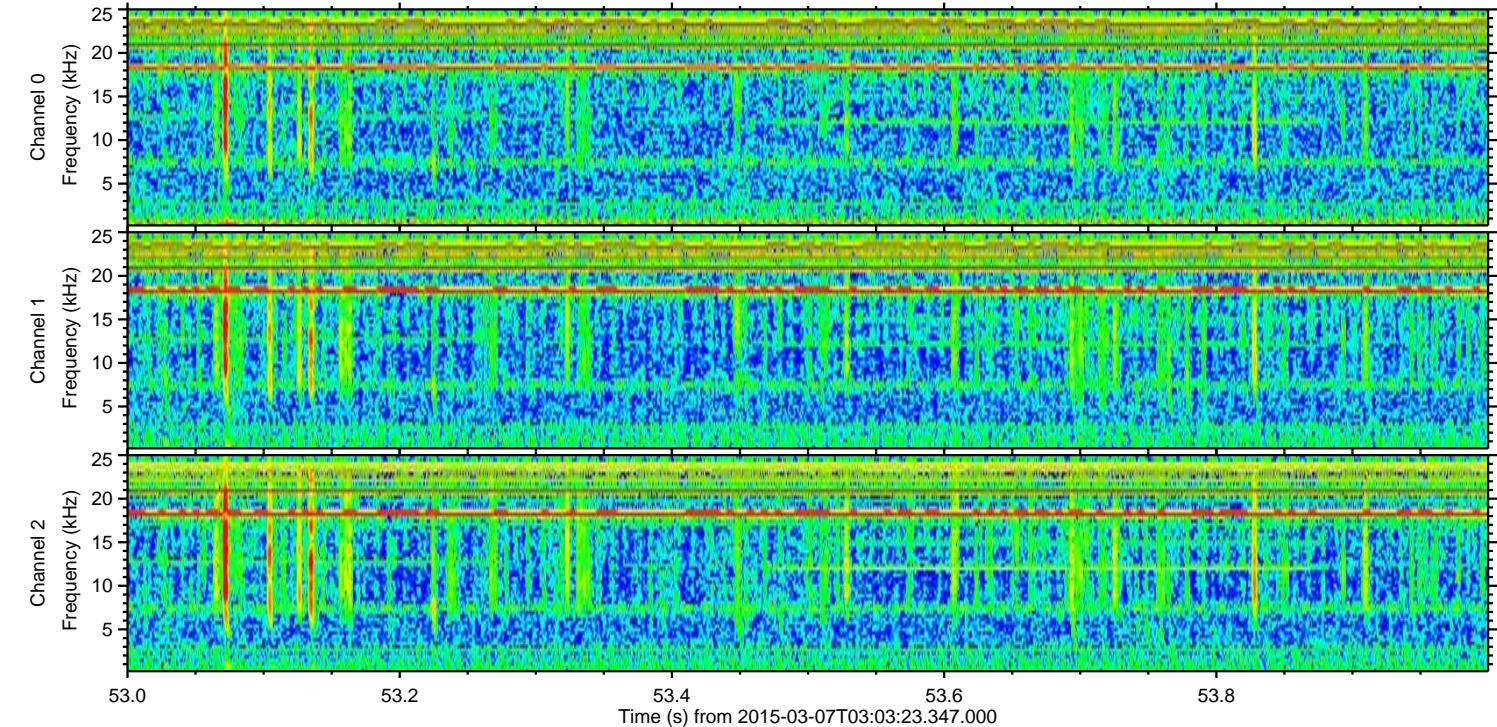
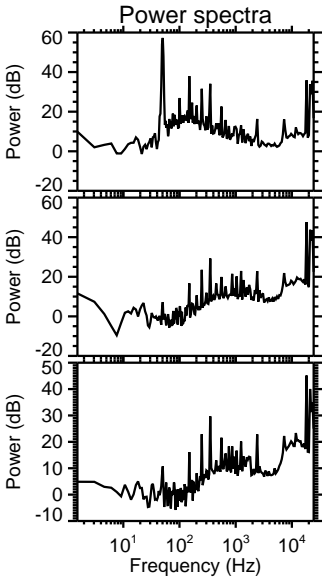
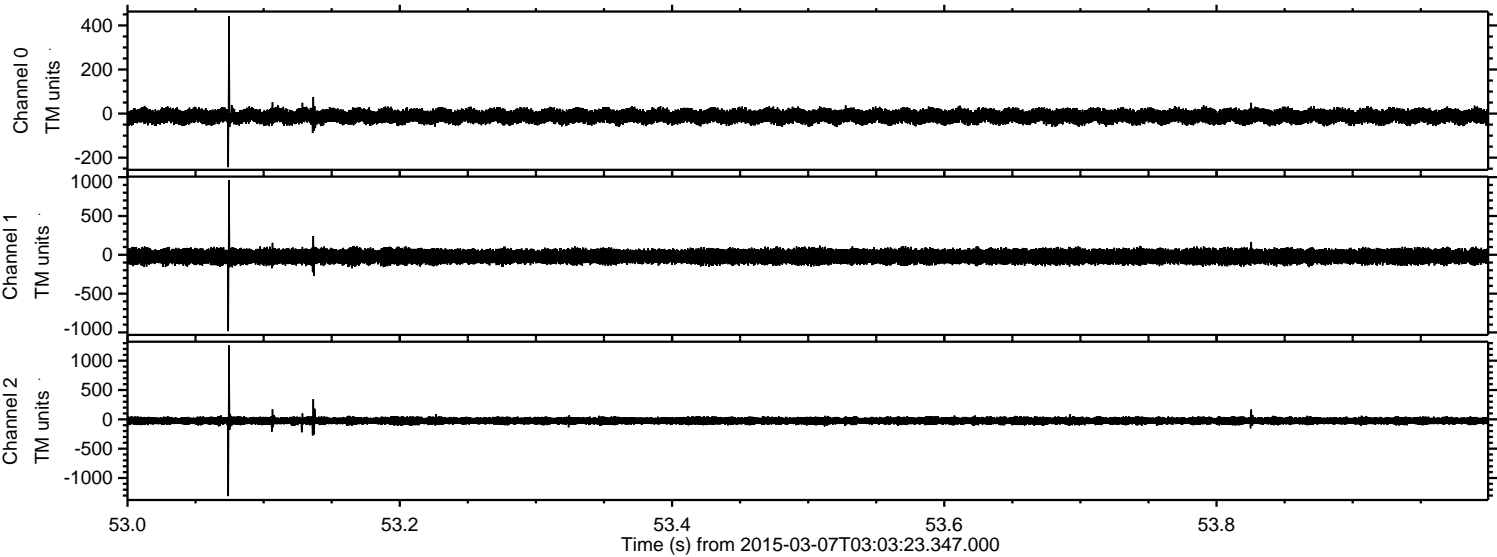
Channel 1
mn: -1431
mx: 1278
 μ : -22.5
 σ : 47.6

Channel 2
mn: -1181
mx: 1124
 μ : -24.5
 σ : 32.0

Processed Sun Mar 8 06:26:30 2015 by ELM ver.2012-10-06 from 001__elm20150307_030322__dat00.bin



Processed Sun Mar 8 06:26:31 2015 by ELM ver.2012-10-06 from 001__elm20150307_030322__dat00.bin



Processed Sun Mar 8 06:26:32 2015 by ELM ver.2012-10-06 from 001__elm20150307_030322__dat00.bin

