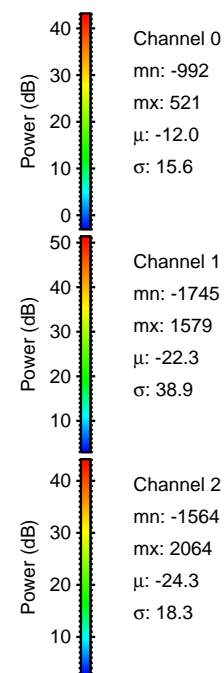
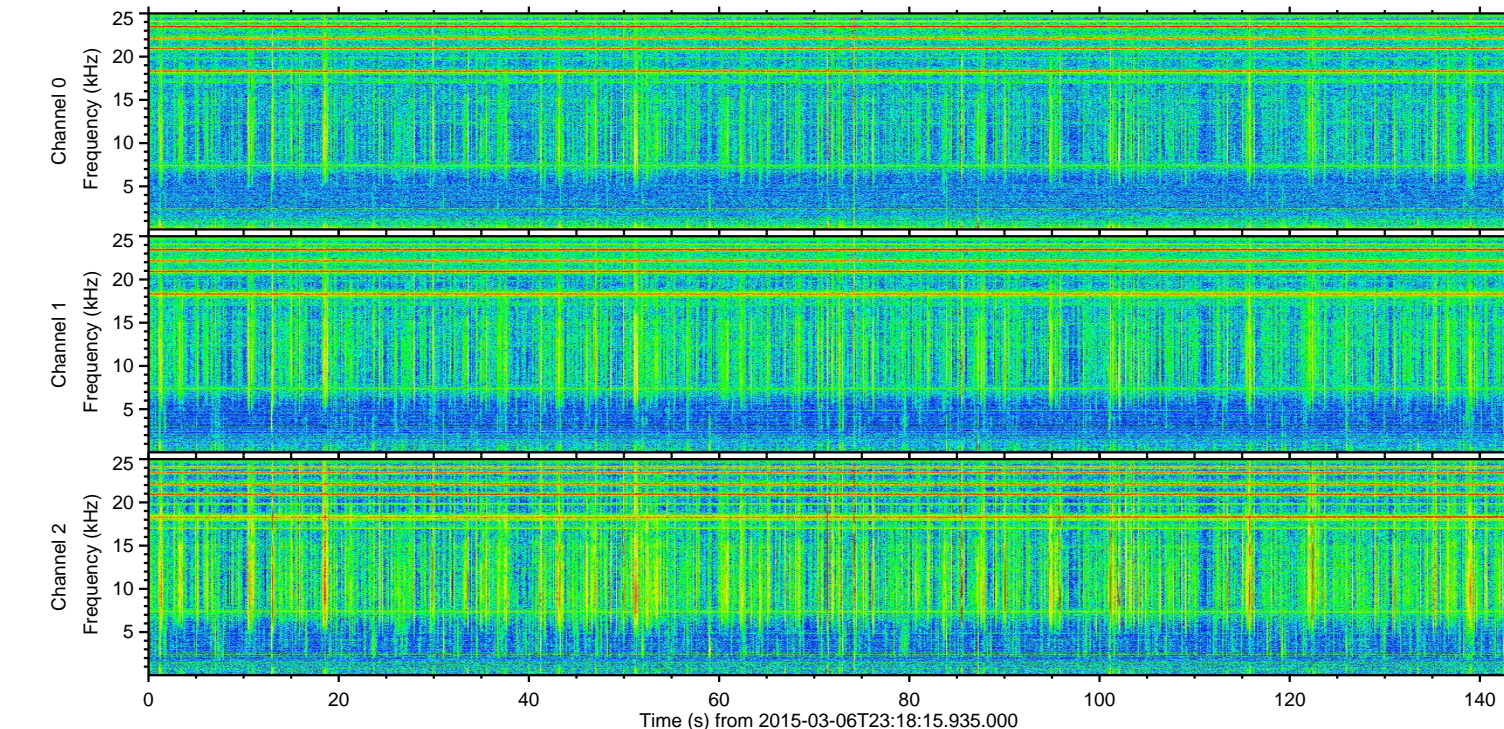
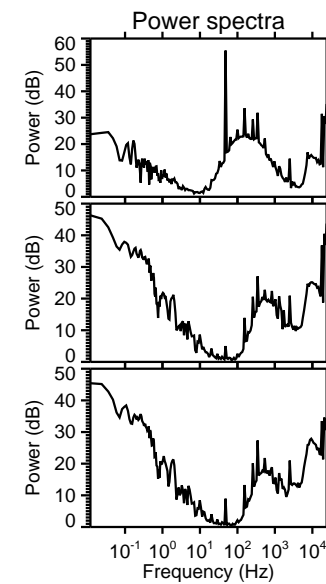
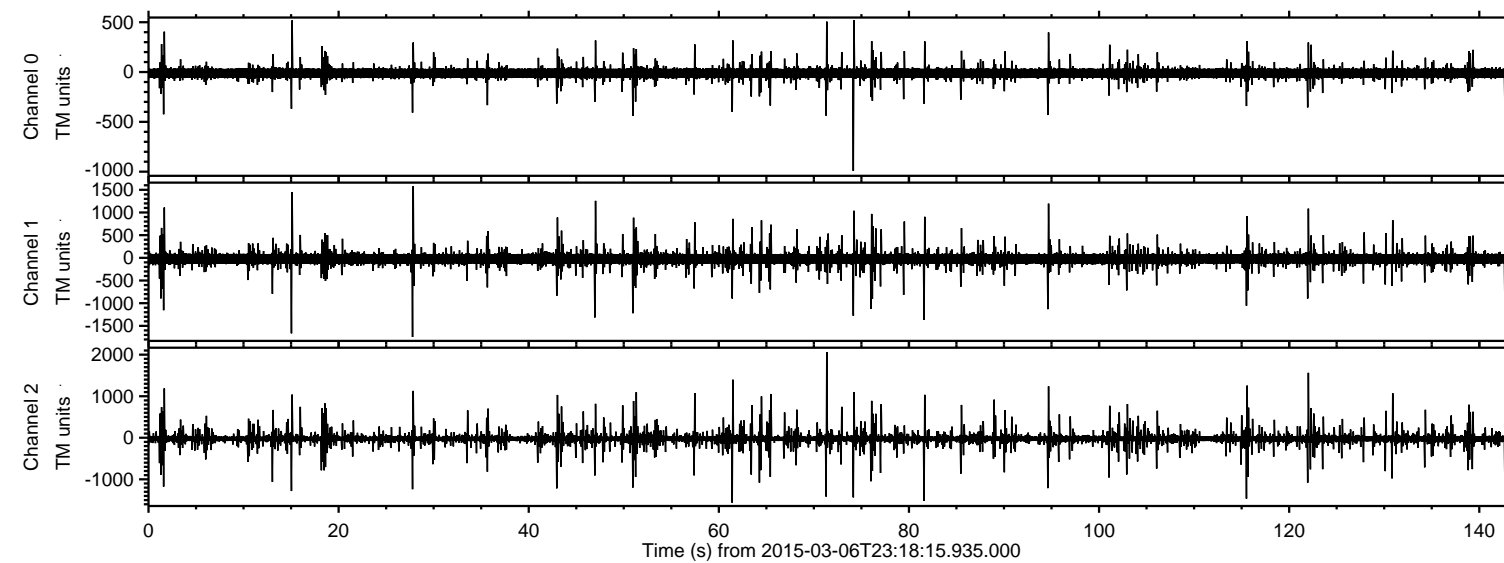


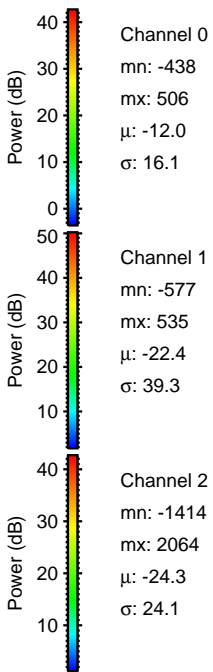
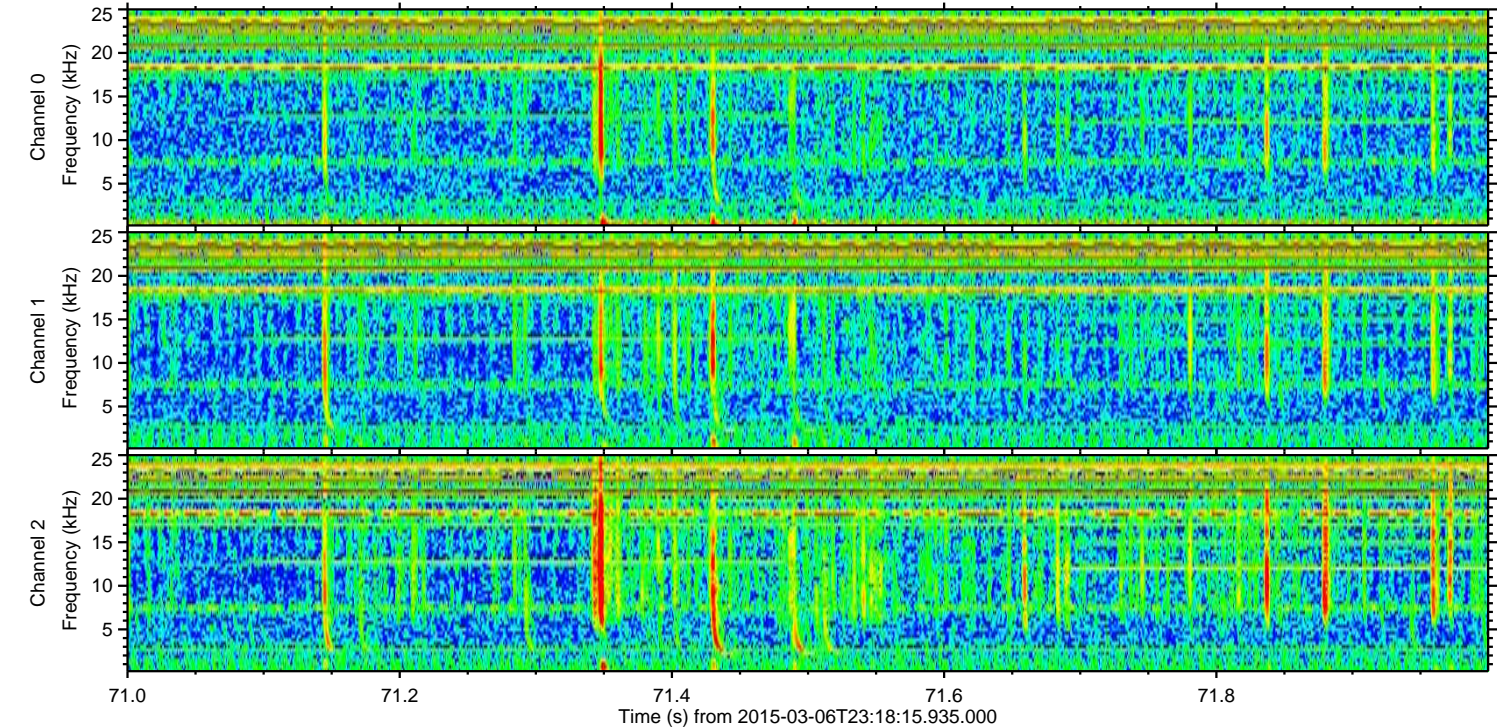
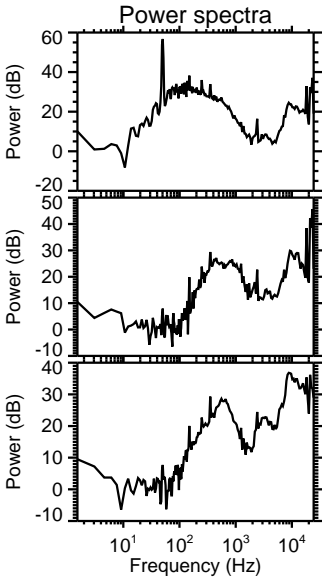
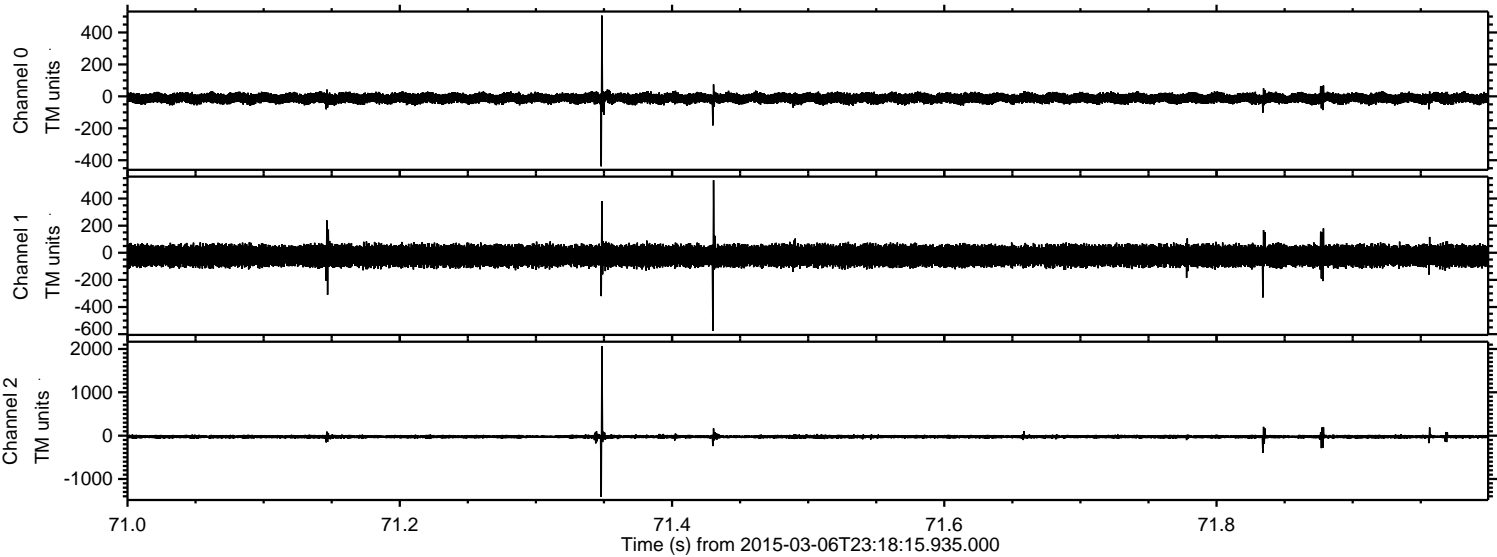
# ELMAVAN 3D WAVEFORMS (Measured data sampled at 50 kHz) 49703 packets of 144 samples from 2015-03-06T23:18:15.935.000.

Processed Sun Mar 8 04:11:59 2015 by ELM ver.2012-10-06 from 001\_\_elm20150306\_231814\_\_dat00.bin



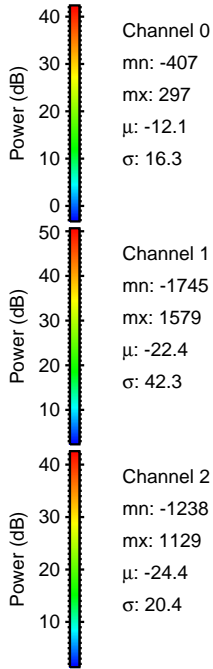
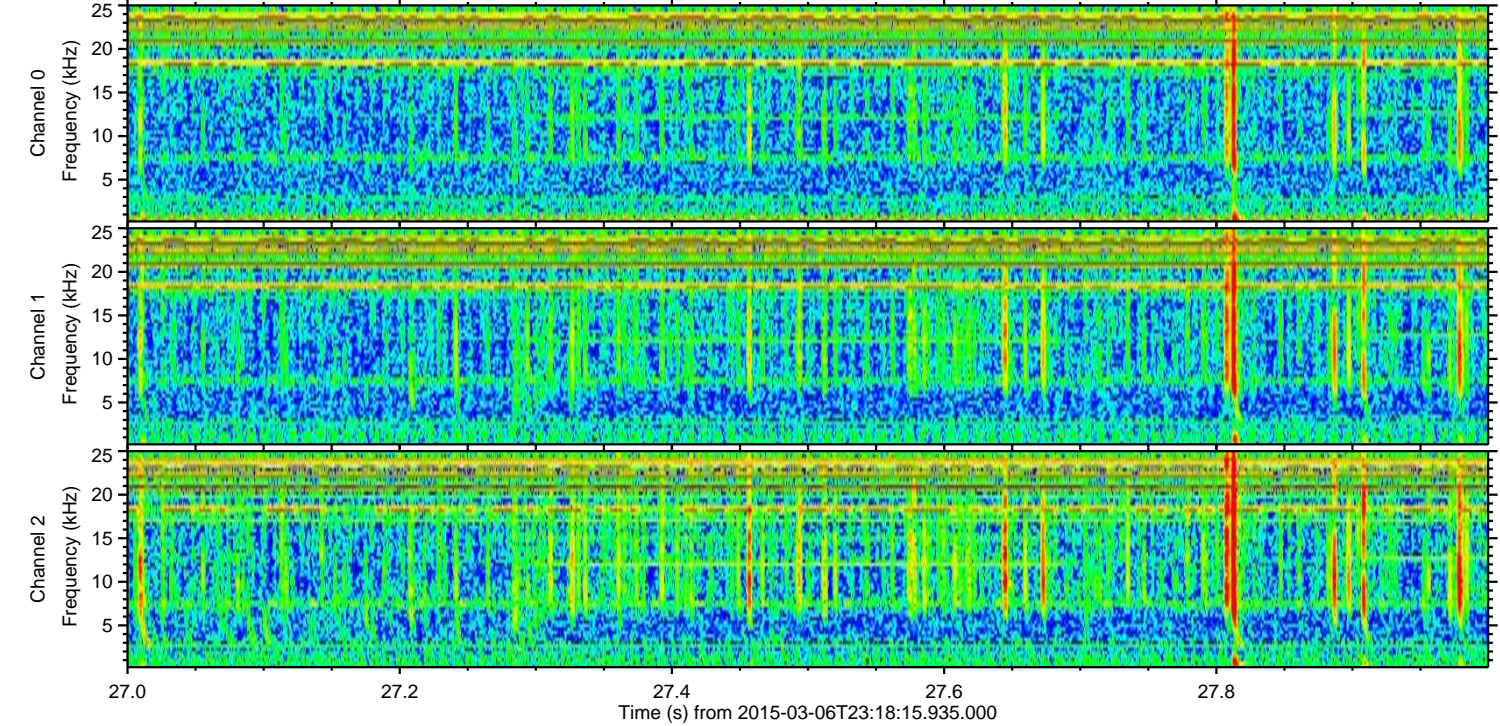
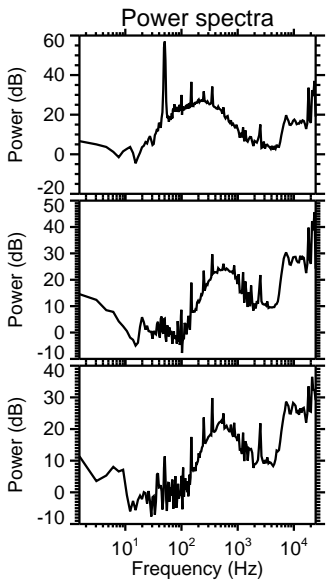
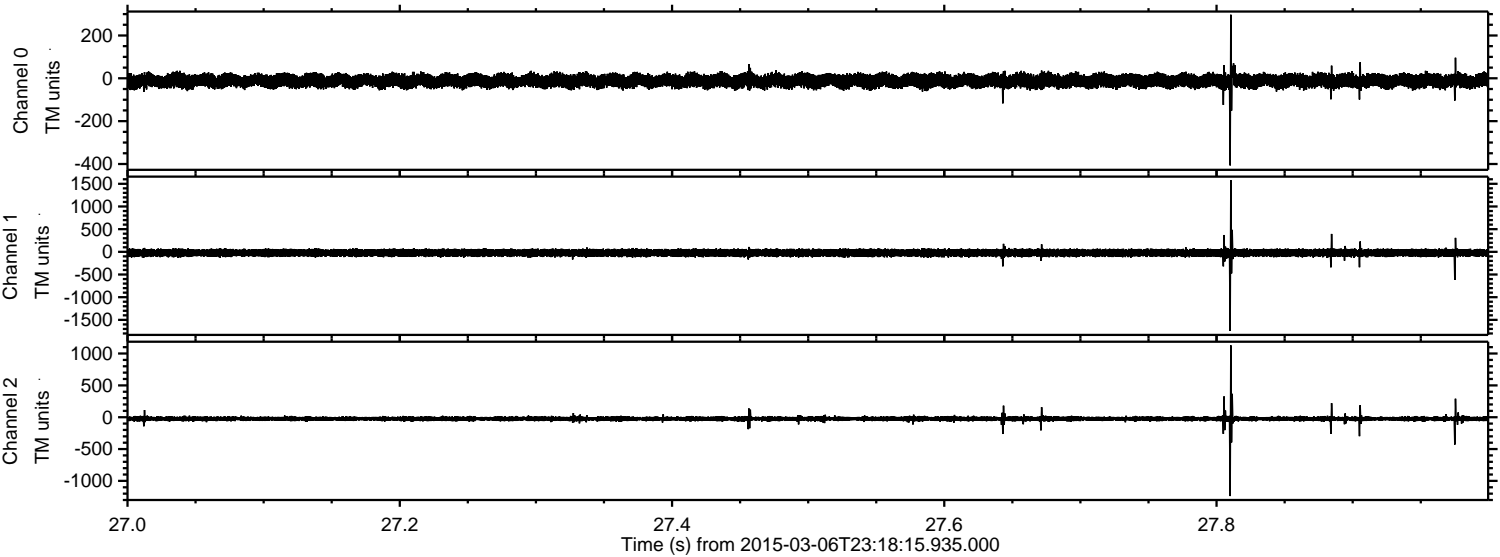


Processed Sun Mar 8 04:12:13 2015 by ELM ver.2012-10-06 from 001\_\_elm20150306\_231814\_\_dat00.bin





Processed Sun Mar 8 04:12:14 2015 by ELM ver.2012-10-06 from 001\_\_elm20150306\_231814\_\_dat00.bin



Channel 0  
mn: -407  
mx: 297  
μ: -12.1  
σ: 16.3

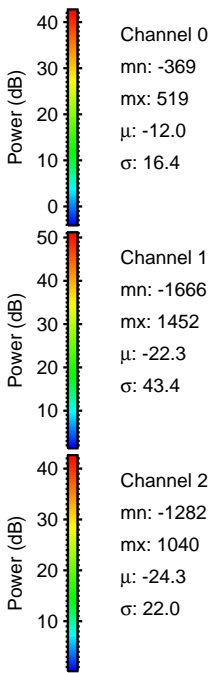
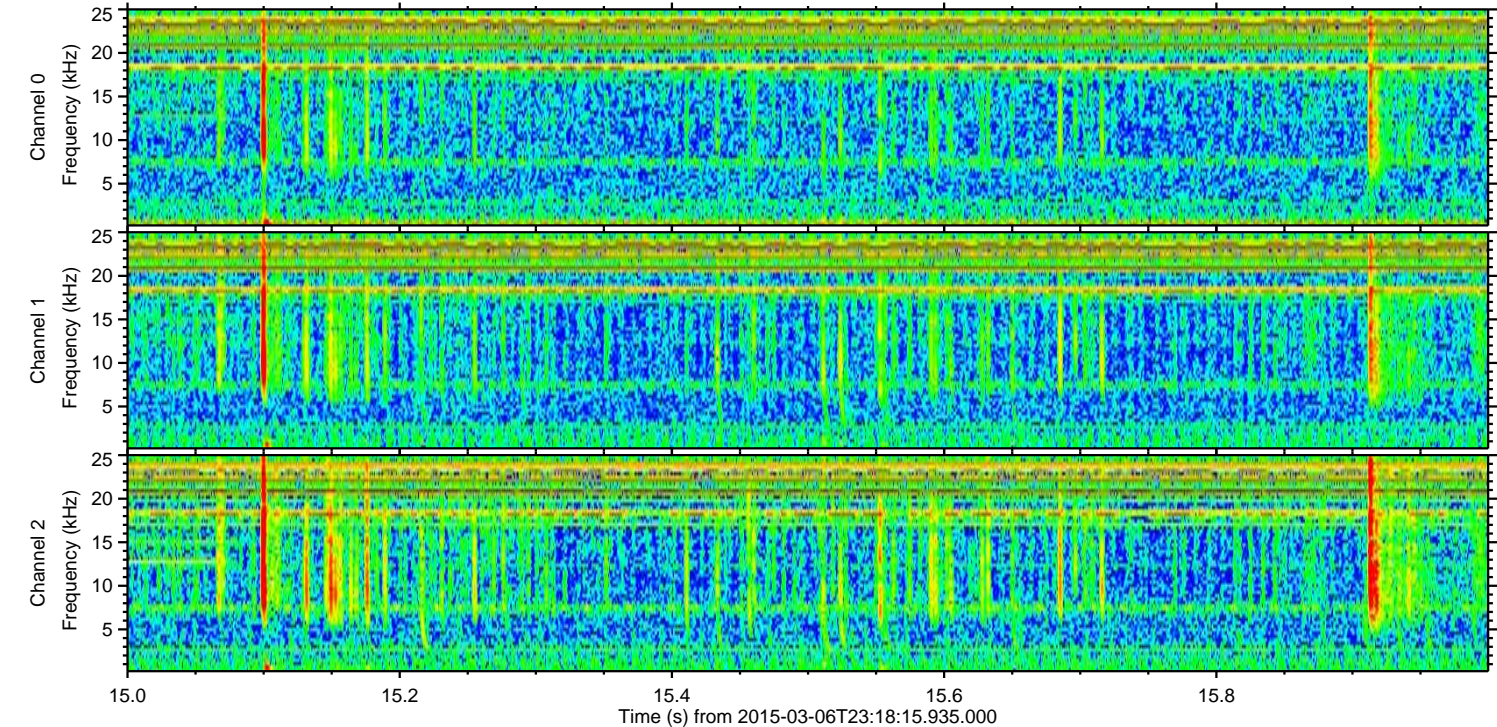
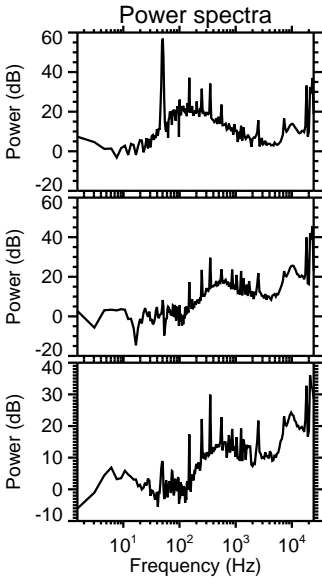
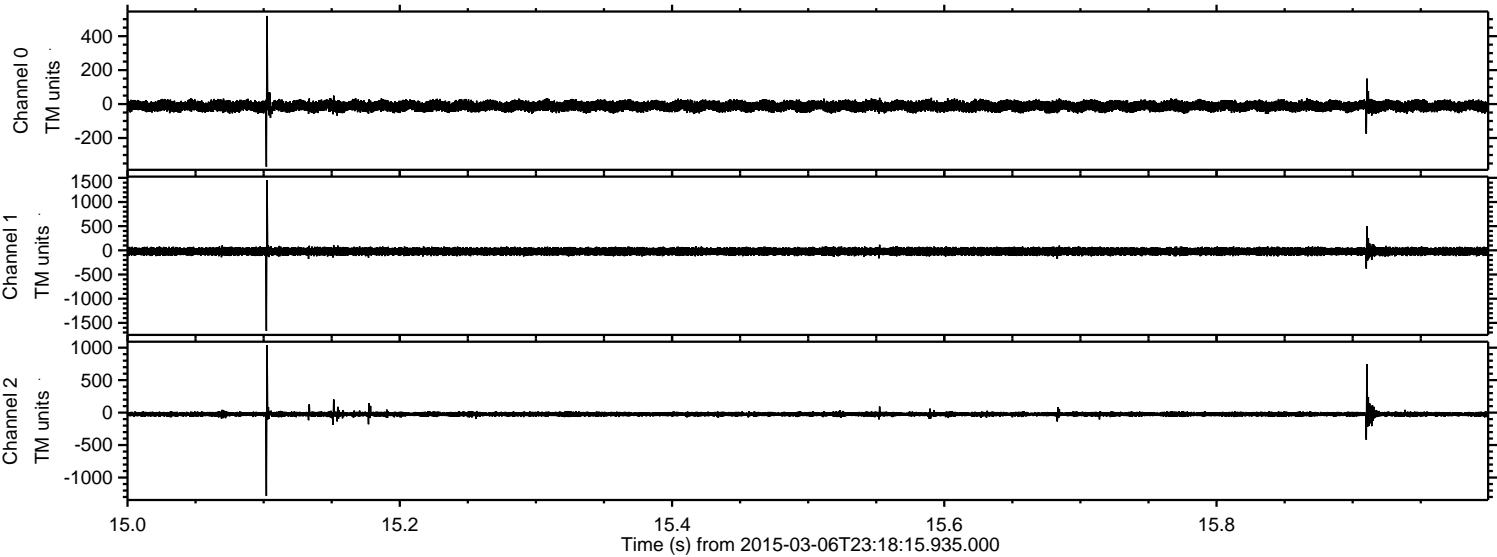
Channel 1  
mn: -1745  
mx: 1579  
μ: -22.4  
σ: 42.3

Channel 2  
mn: -1238  
mx: 1129  
μ: -24.4  
σ: 20.4



ELMAVAN 3D WAVEFORMS (Measured data sampled at 50 kHz) 49703 packets of 144 samples from 2015-03-06T23:18:15.935.000. Part 16/144

Processed Sun Mar 8 04:12:15 2015 by ELM ver.2012-10-06 from 001\_\_elm20150306\_231814\_\_dat00.bin



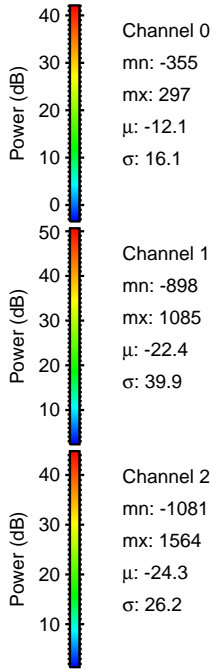
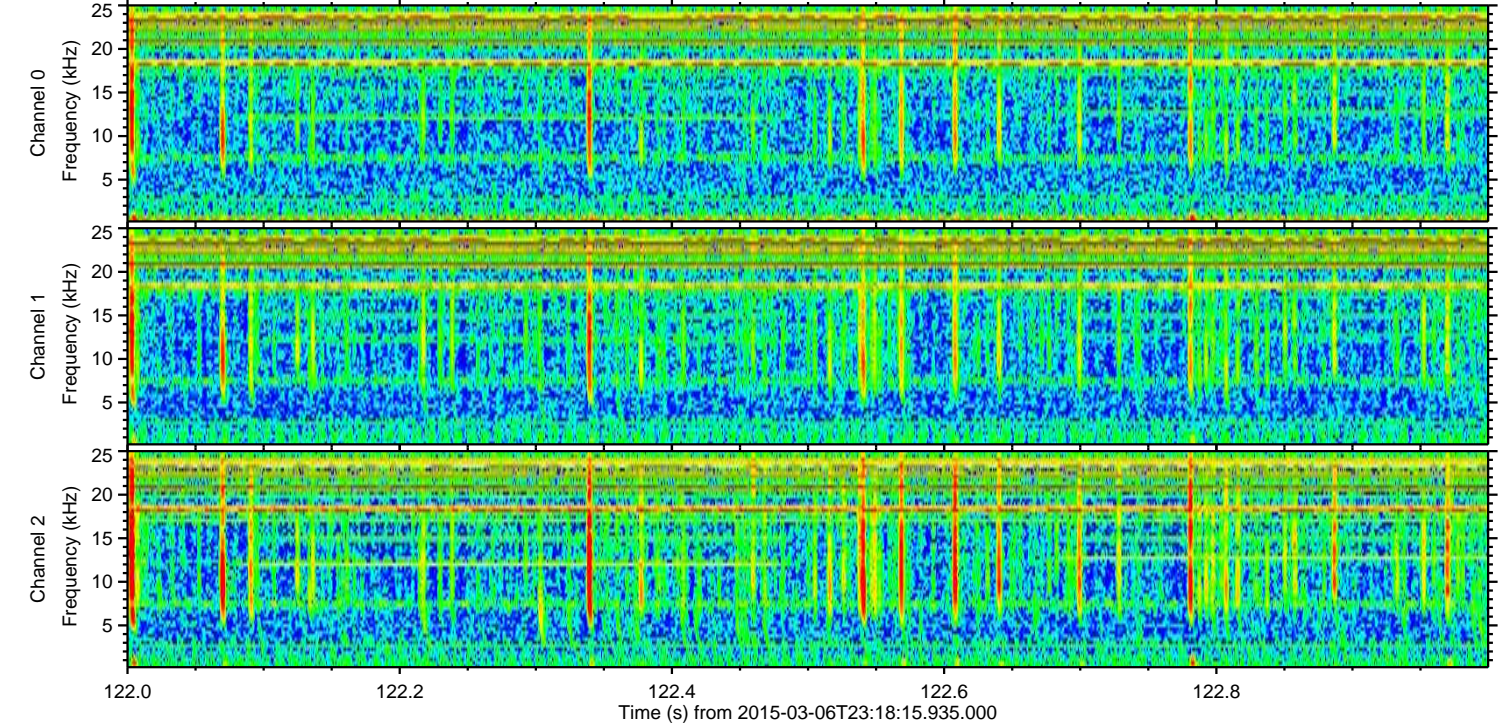
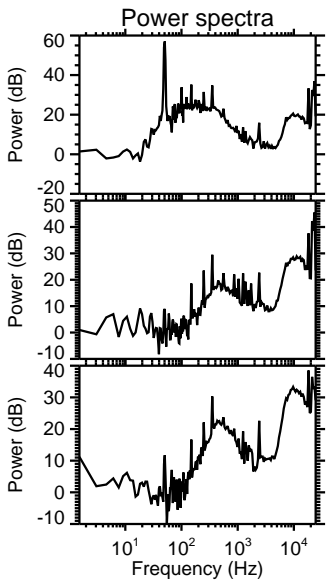
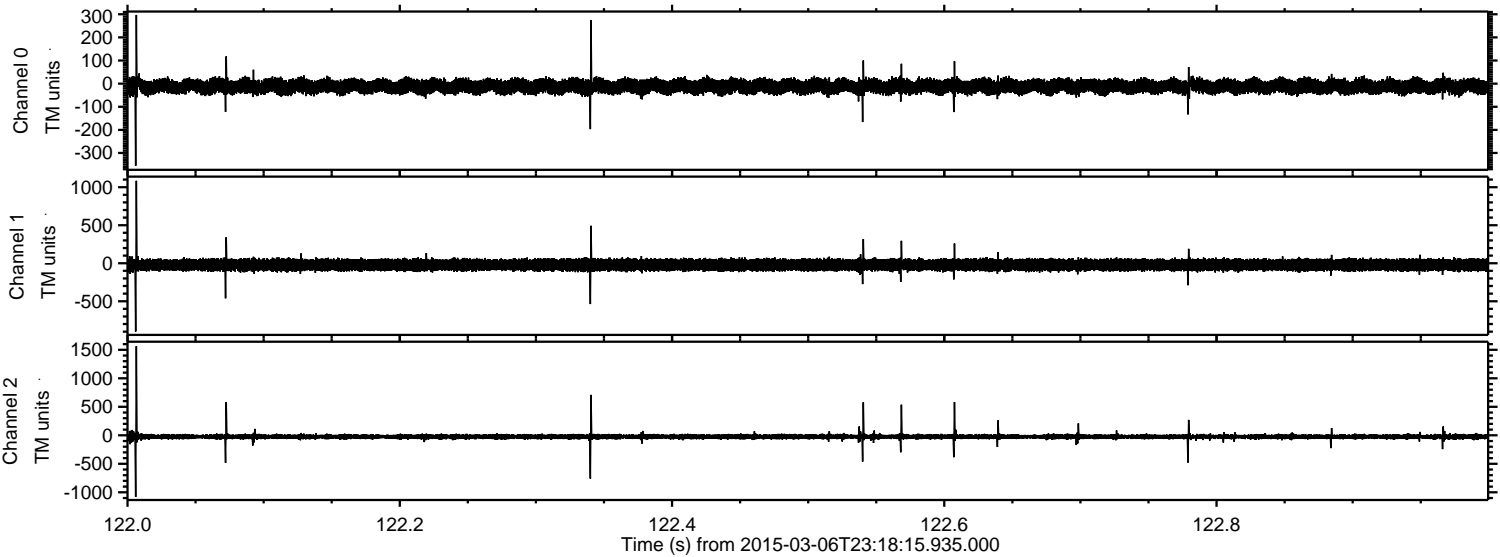
Channel 0  
mn: -369  
mx: 519  
 $\mu$ : -12.0  
 $\sigma$ : 16.4

Channel 1  
mn: -1666  
mx: 1452  
 $\mu$ : -22.3  
 $\sigma$ : 43.4

Channel 2  
mn: -1282  
mx: 1040  
 $\mu$ : -24.3  
 $\sigma$ : 22.0

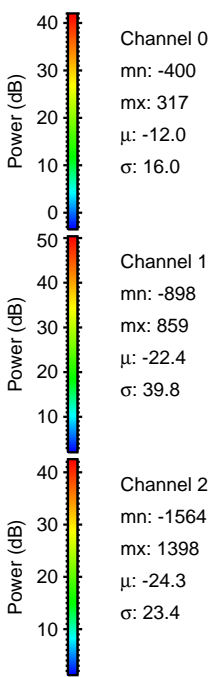
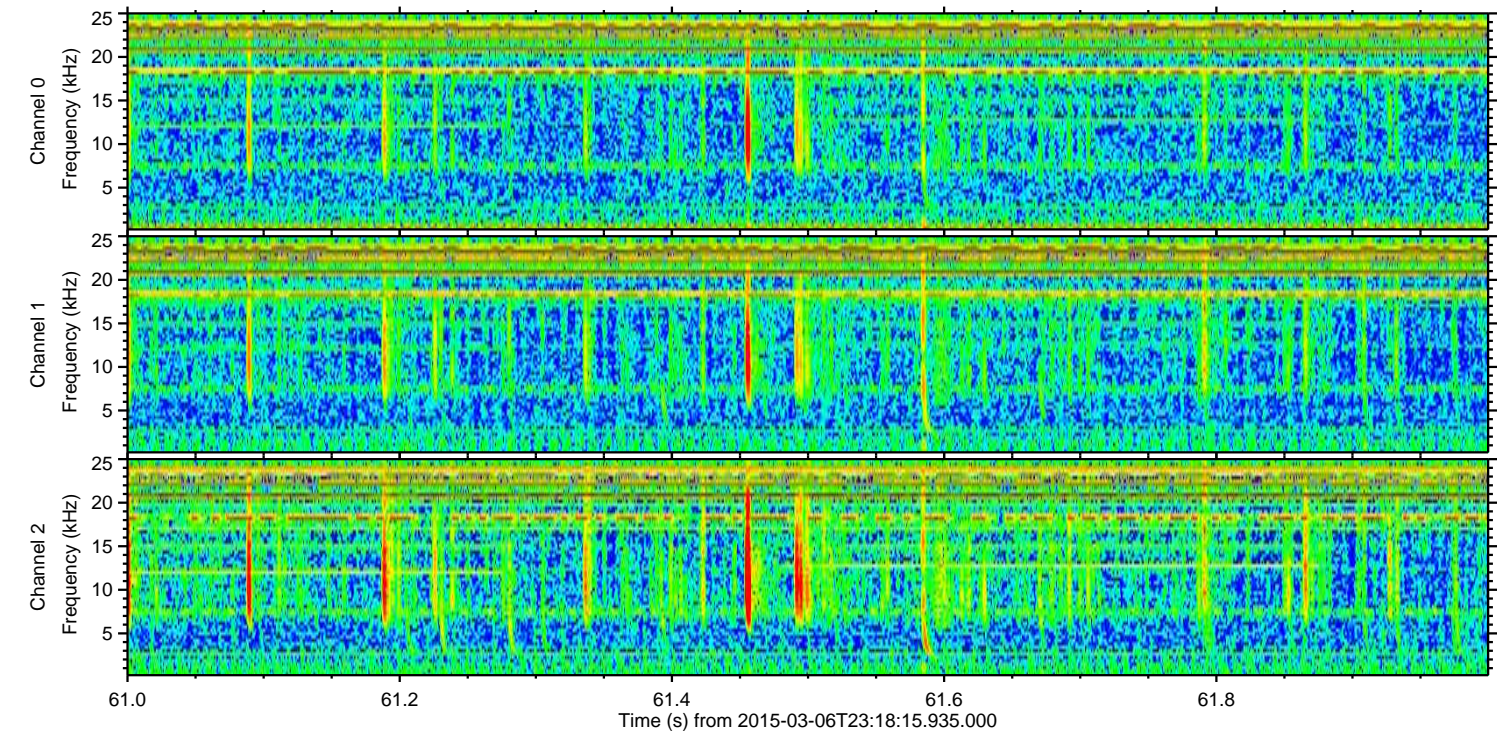
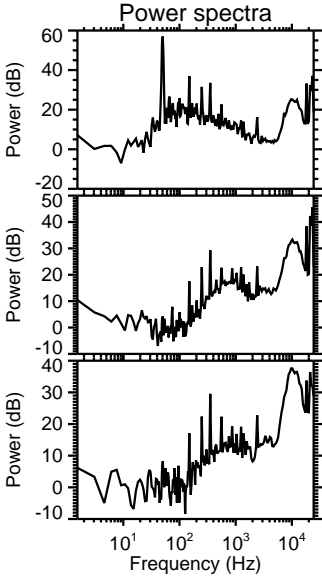
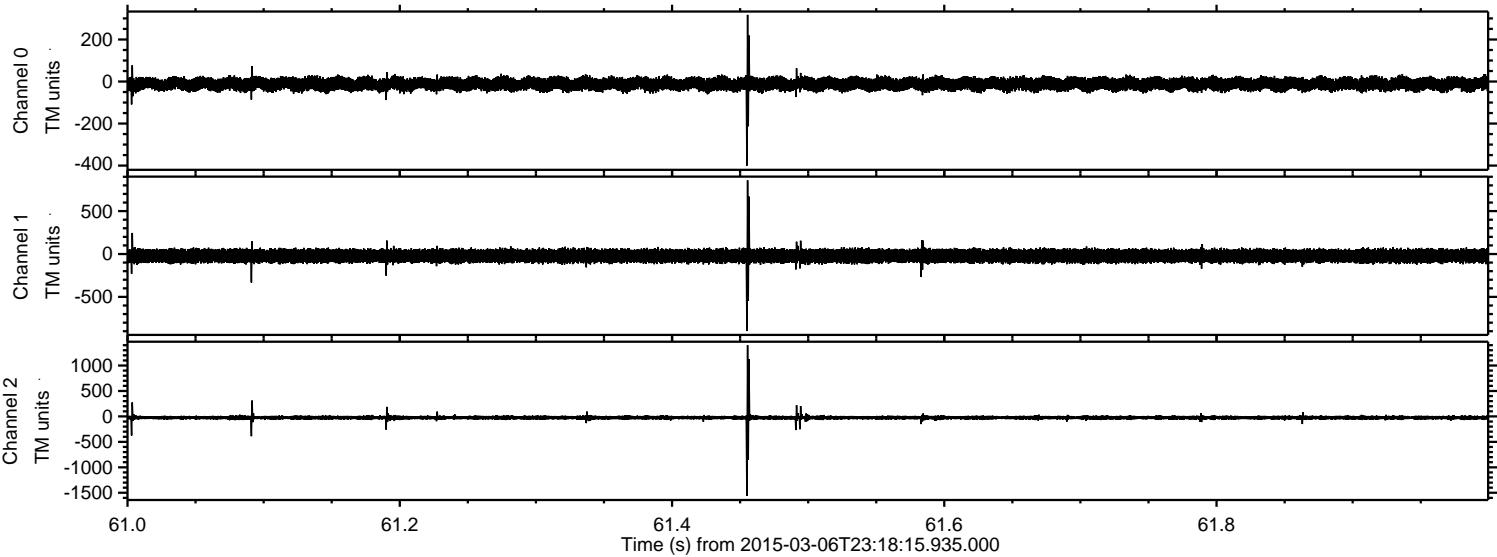


Processed Sun Mar 8 04:12:16 2015 by ELM ver.2012-10-06 from 001\_\_elm20150306\_231814\_\_dat00.bin



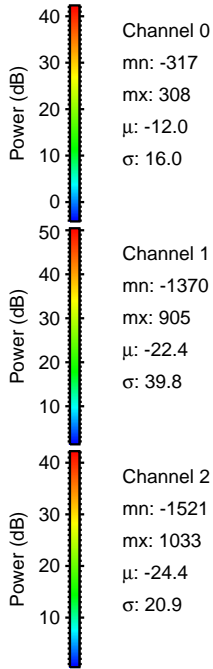
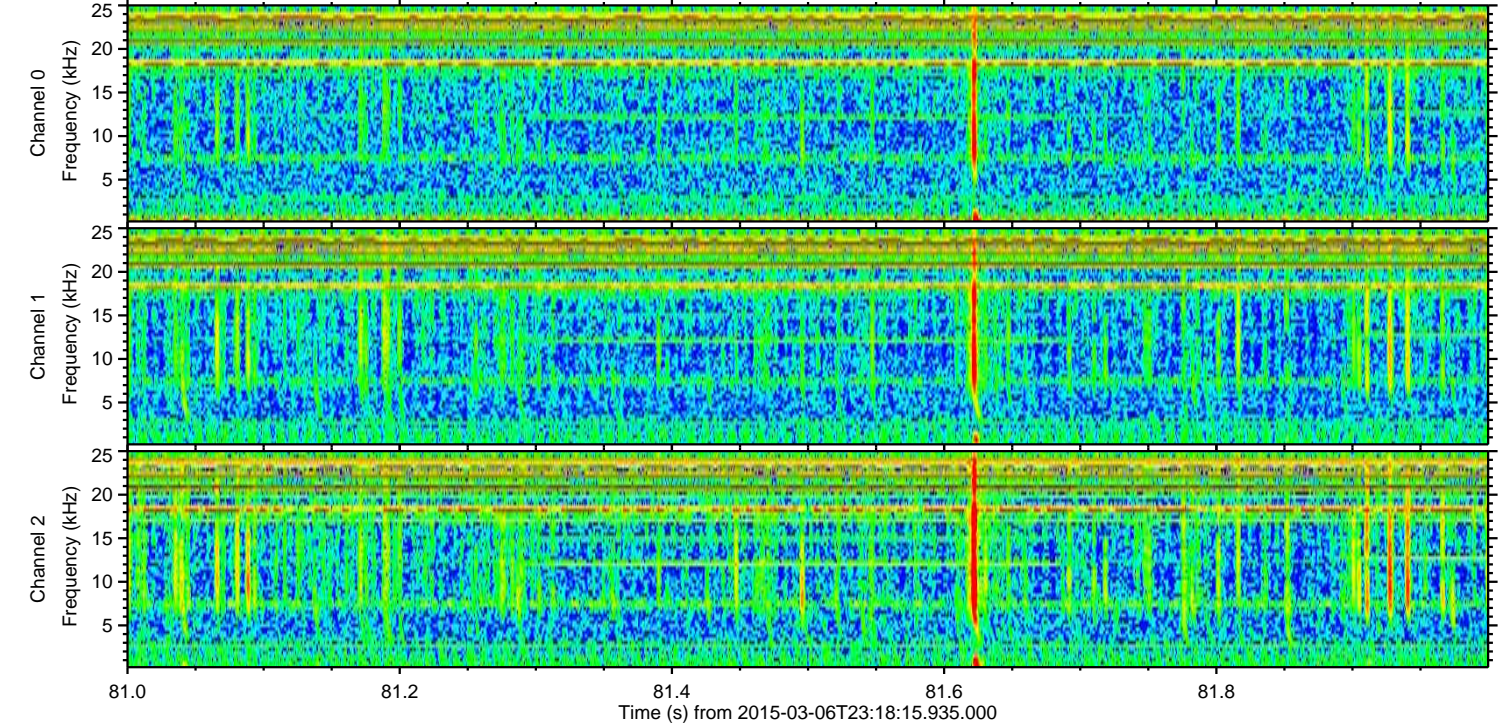
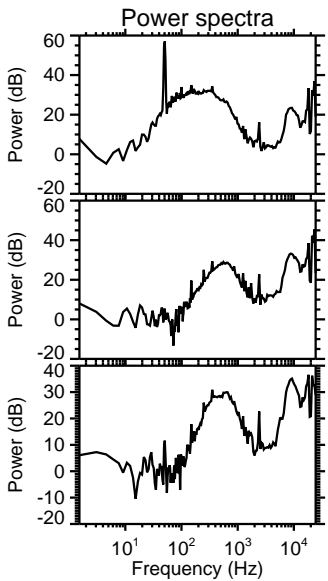
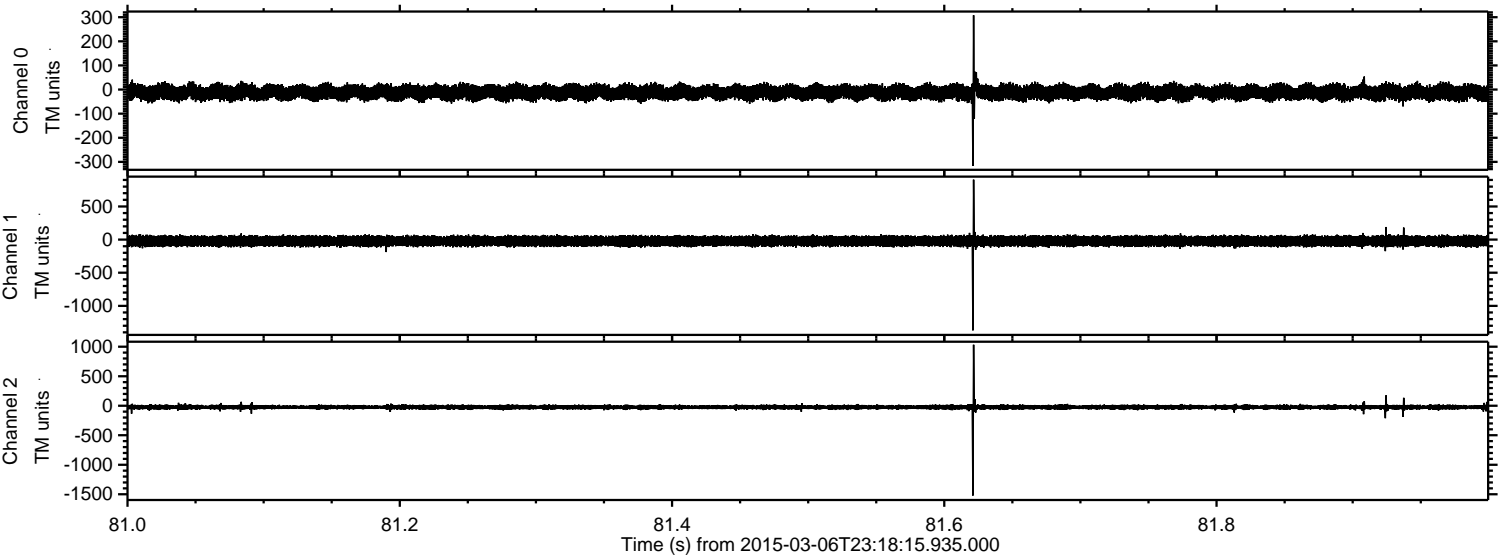


Processed Sun Mar 8 04:12:17 2015 by ELM ver.2012-10-06 from 001\_\_elm20150306\_231814\_\_dat00.bin





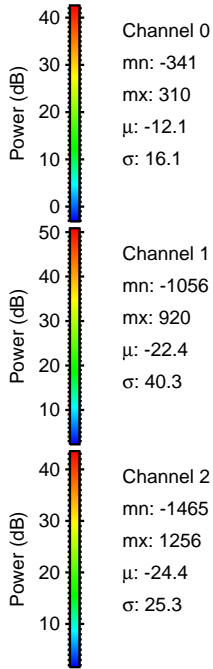
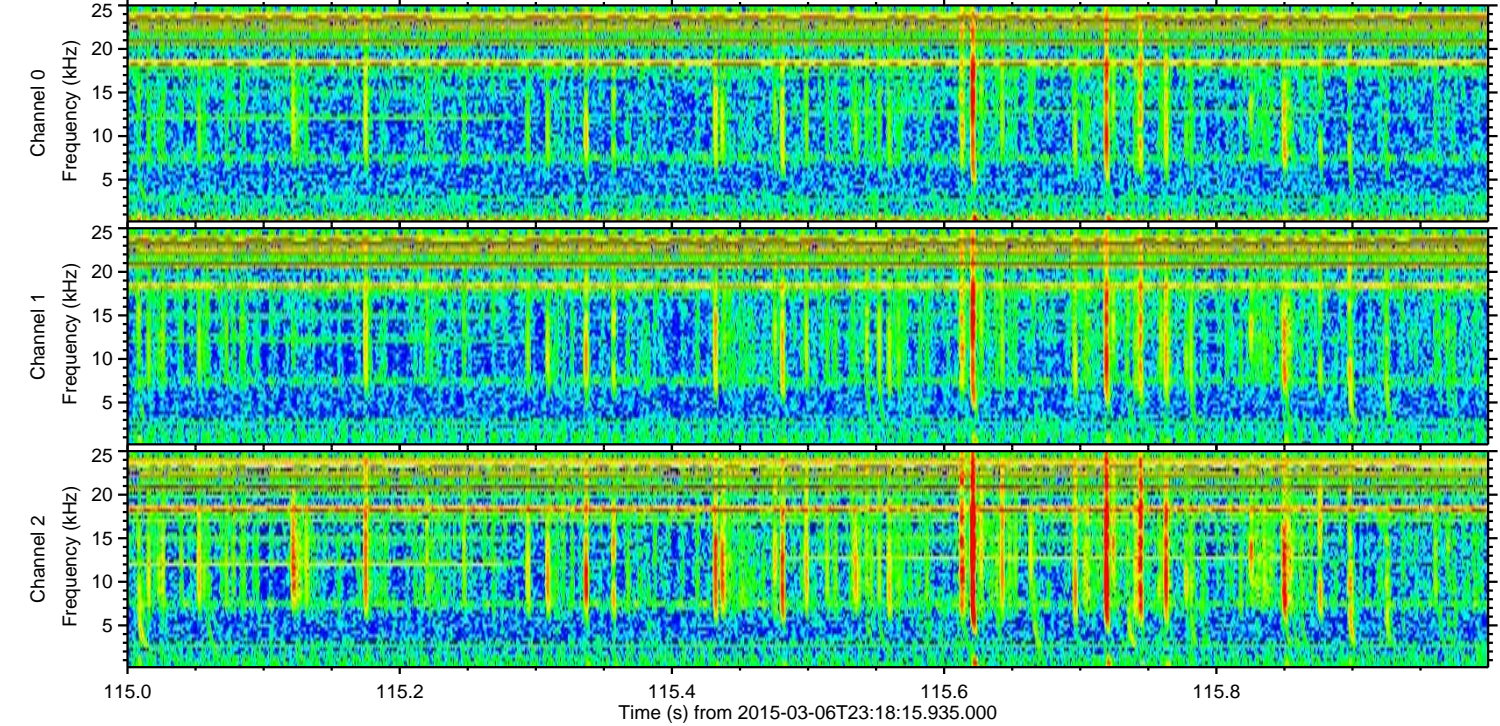
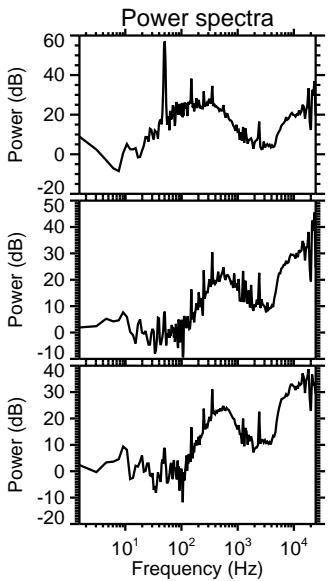
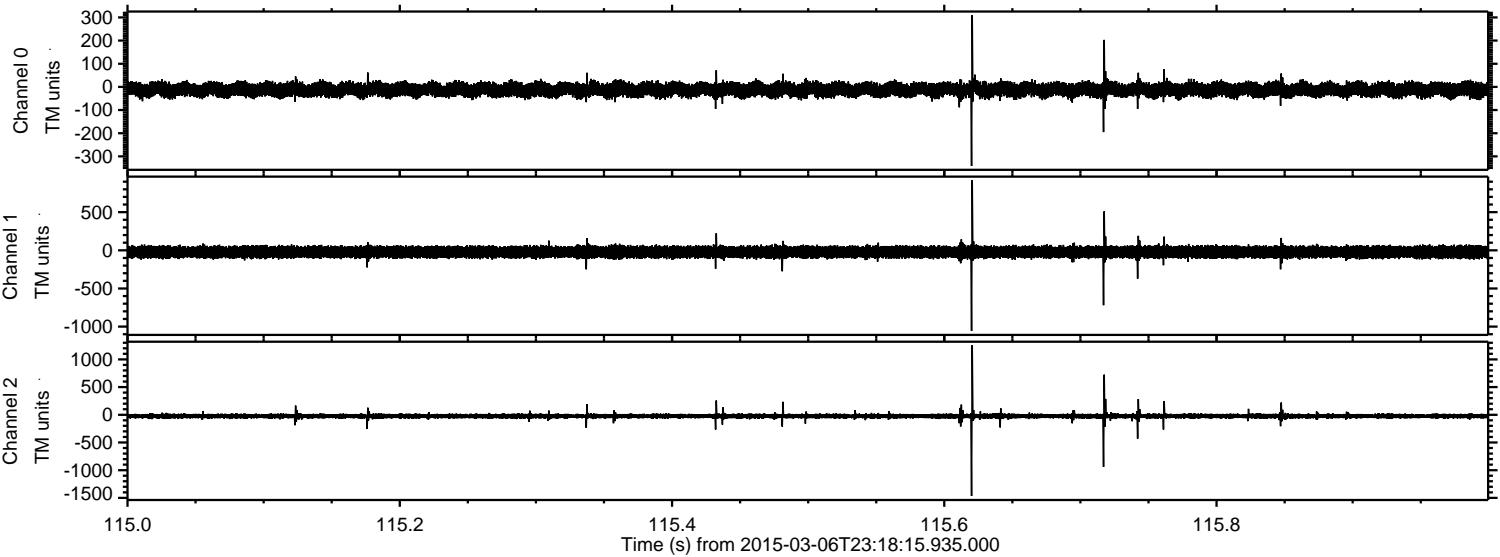
Processed Sun Mar 8 04:12:19 2015 by ELM ver.2012-10-06 from 001\_\_elm20150306\_231814\_\_dat00.bin





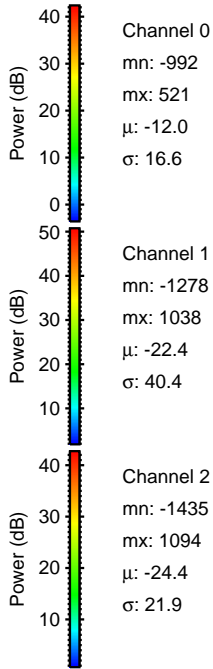
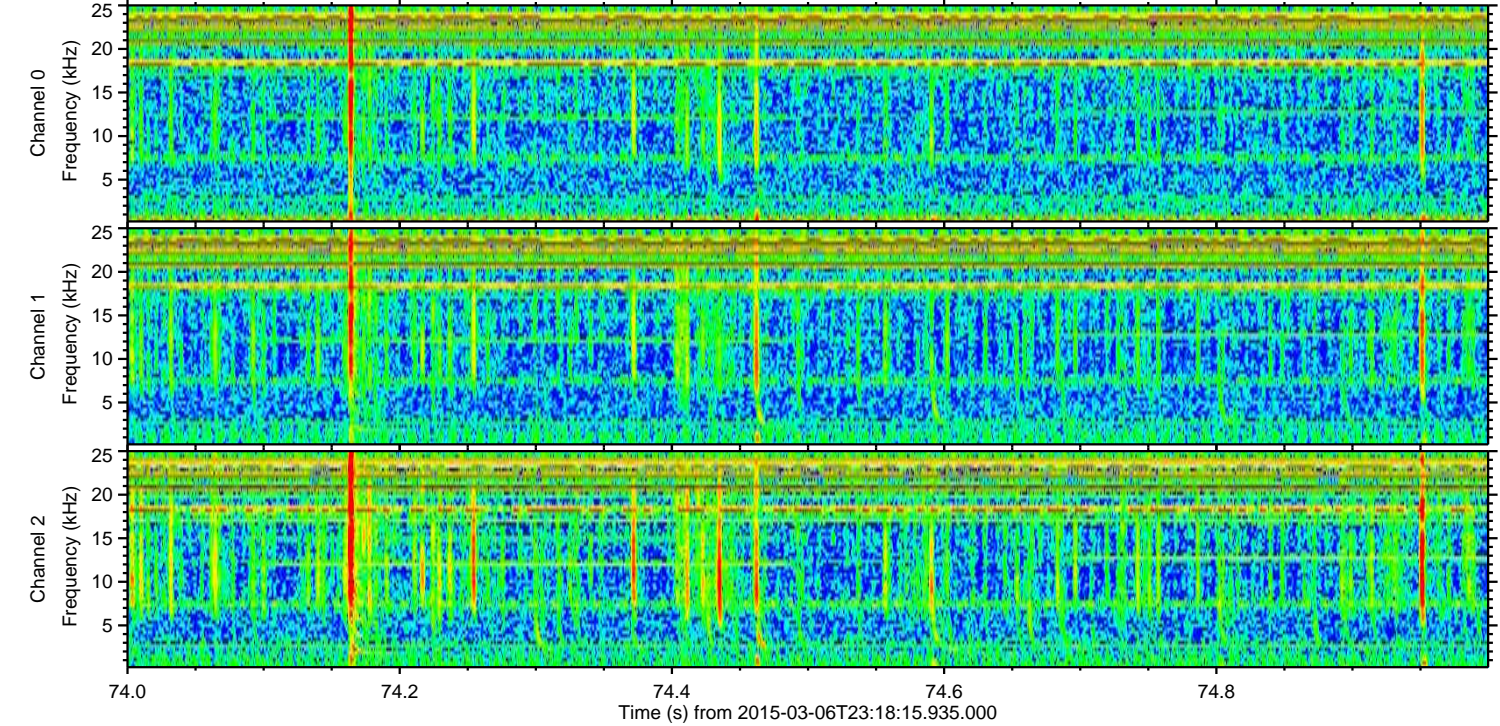
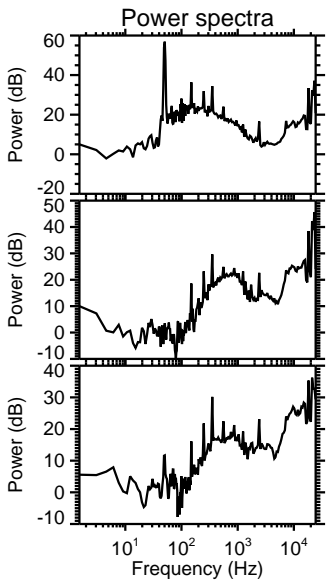
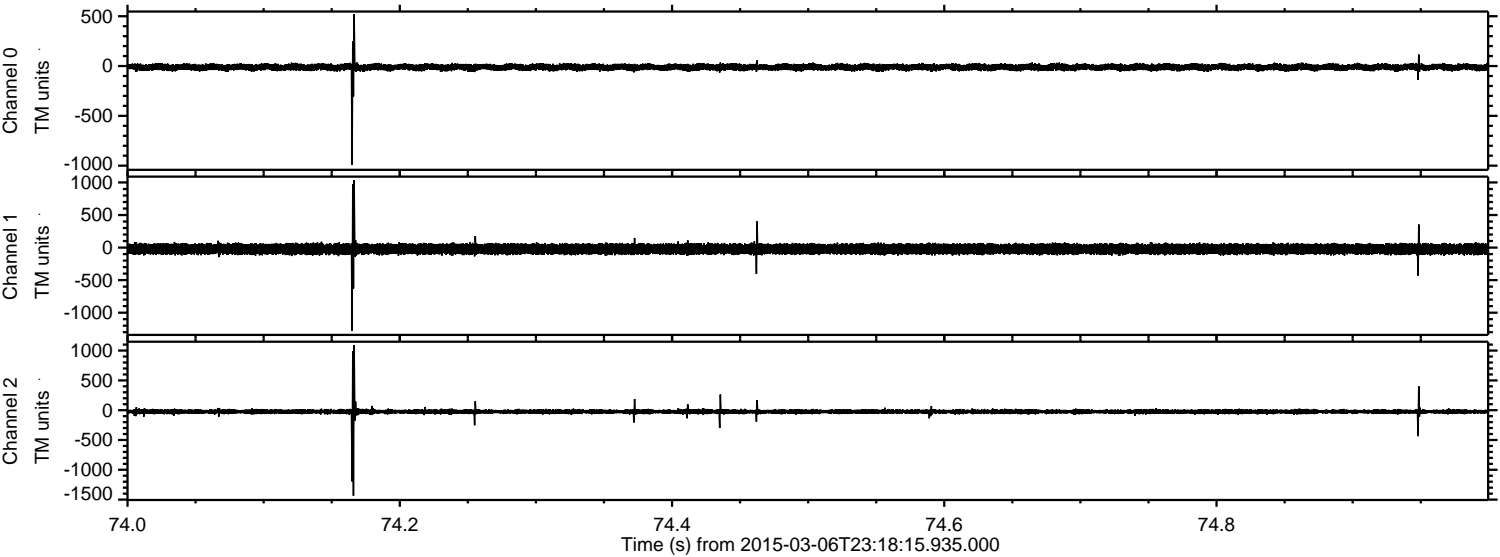
ELMAVAN 3D WAVEFORMS (Measured data sampled at 50 kHz) 49703 packets of 144 samples from 2015-03-06T23:18:15.935.000. Part 116/144

Processed Sun Mar 8 04:12:20 2015 by ELM ver.2012-10-06 from 001\_\_elm20150306\_231814\_\_dat00.bin



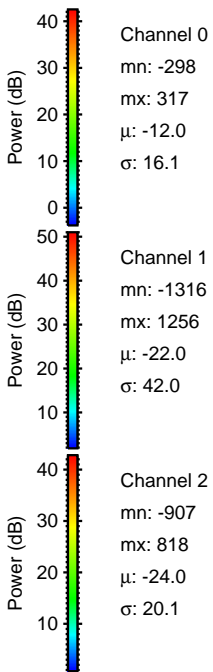
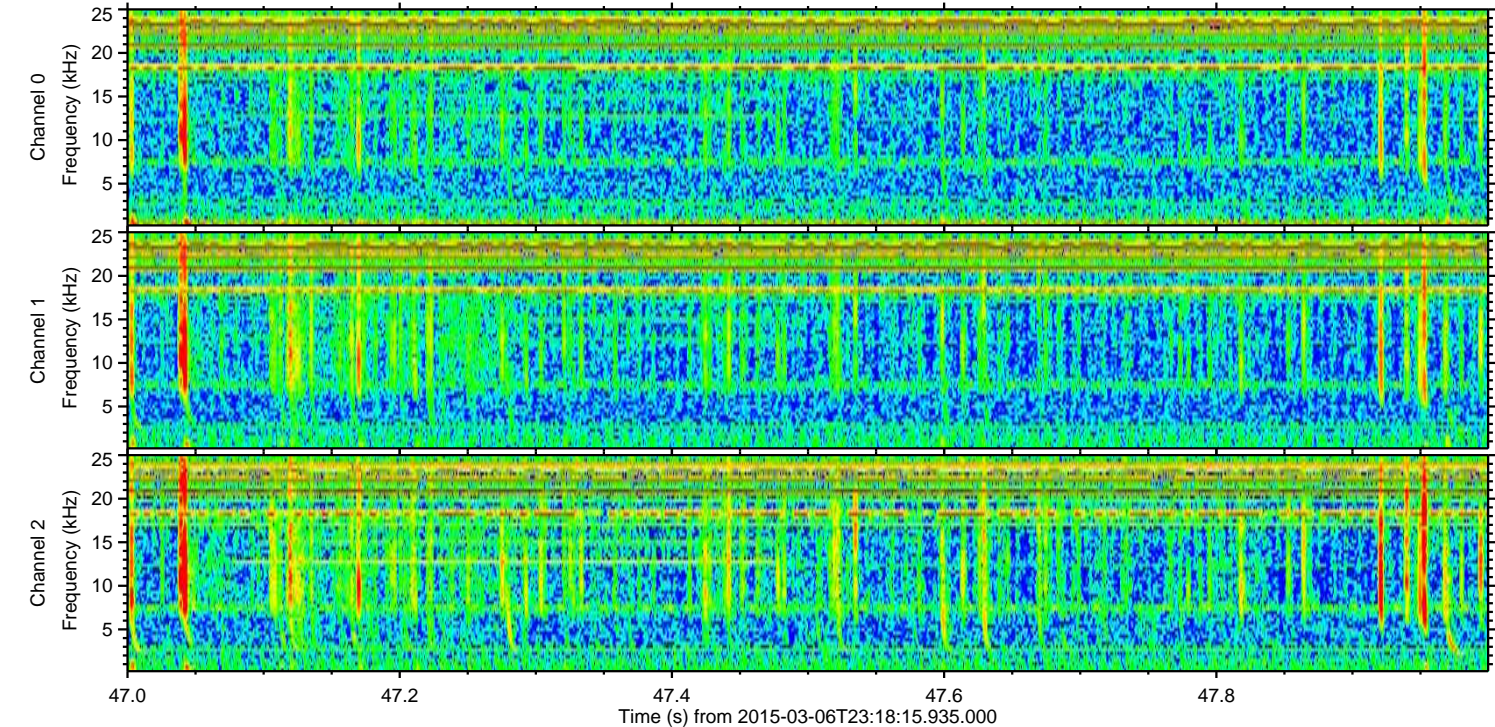
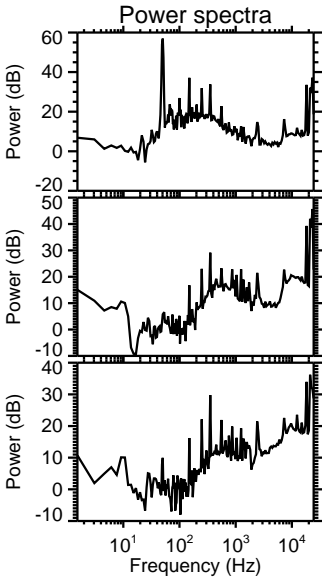
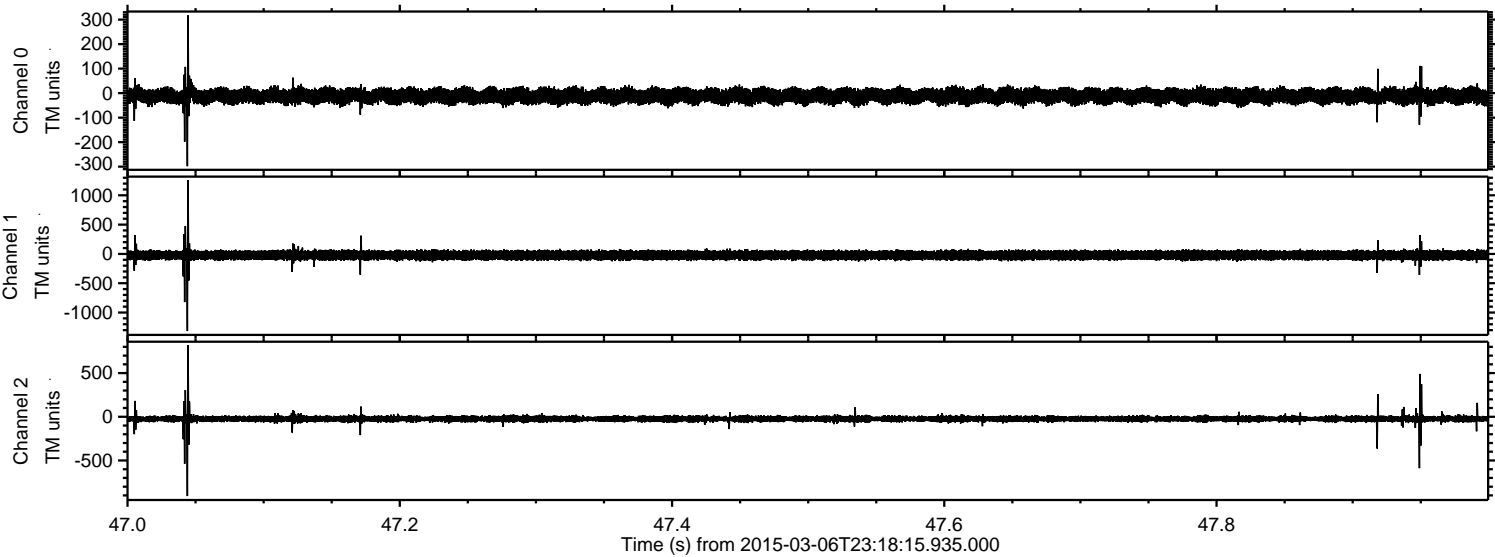


Processed Sun Mar 8 04:12:21 2015 by ELM ver.2012-10-06 from 001\_\_elm20150306\_231814\_\_dat00.bin





Processed Sun Mar 8 04:12:22 2015 by ELM ver.2012-10-06 from 001\_\_elm20150306\_231814\_\_dat00.bin



Channel 0  
mn: -298  
mx: 317  
 $\mu$ : -12.0  
 $\sigma$ : 16.1

Channel 1  
mn: -1316  
mx: 1256  
 $\mu$ : -22.0  
 $\sigma$ : 42.0

Channel 2  
mn: -907  
mx: 818  
 $\mu$ : -24.0  
 $\sigma$ : 20.1



