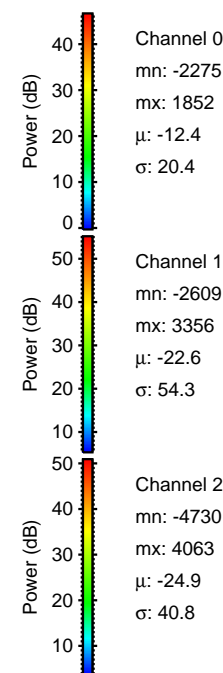
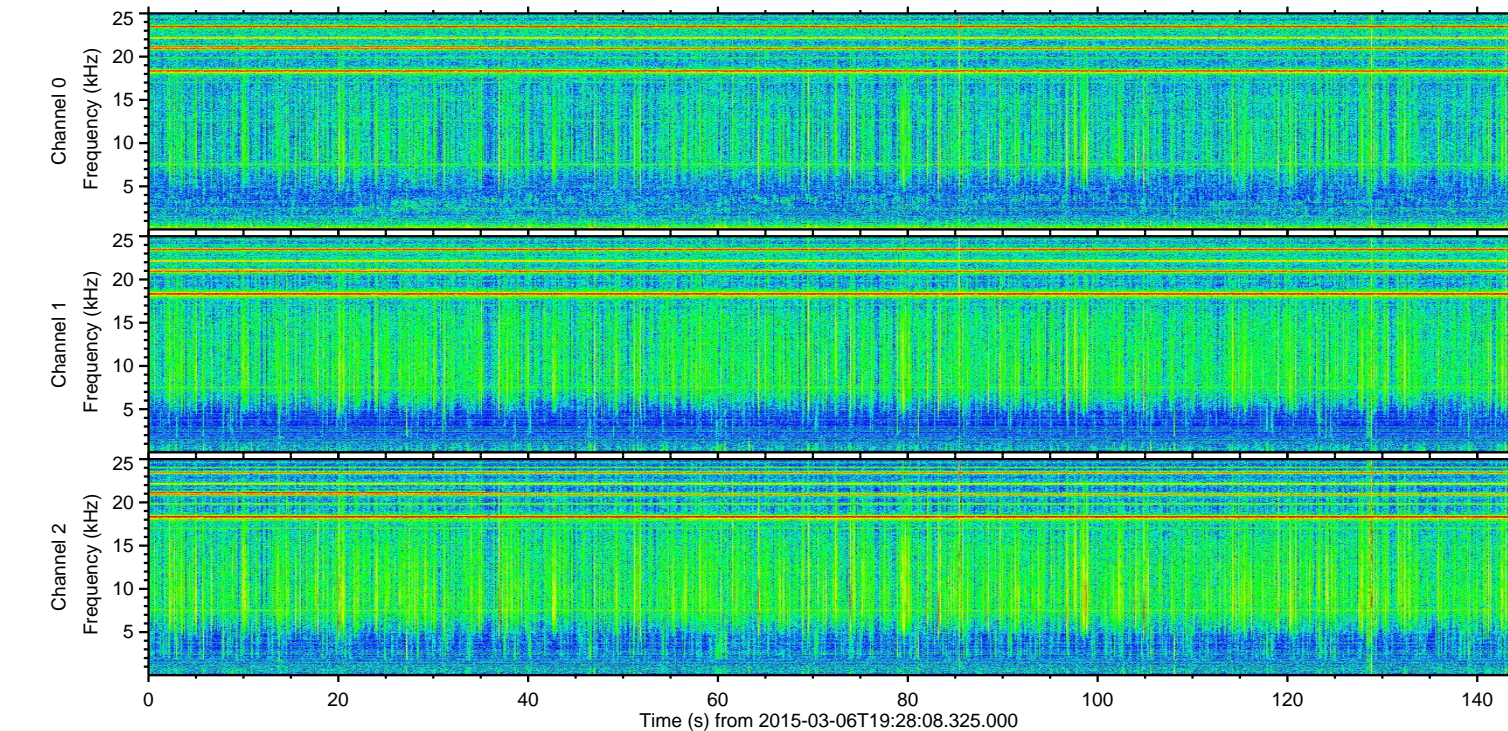
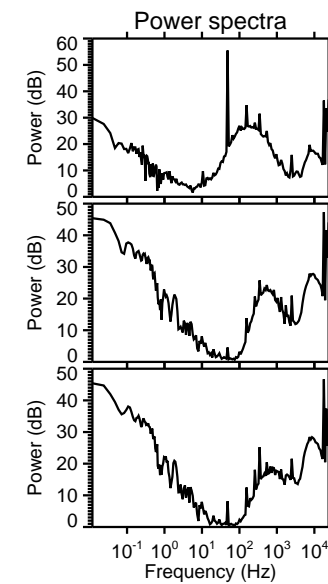
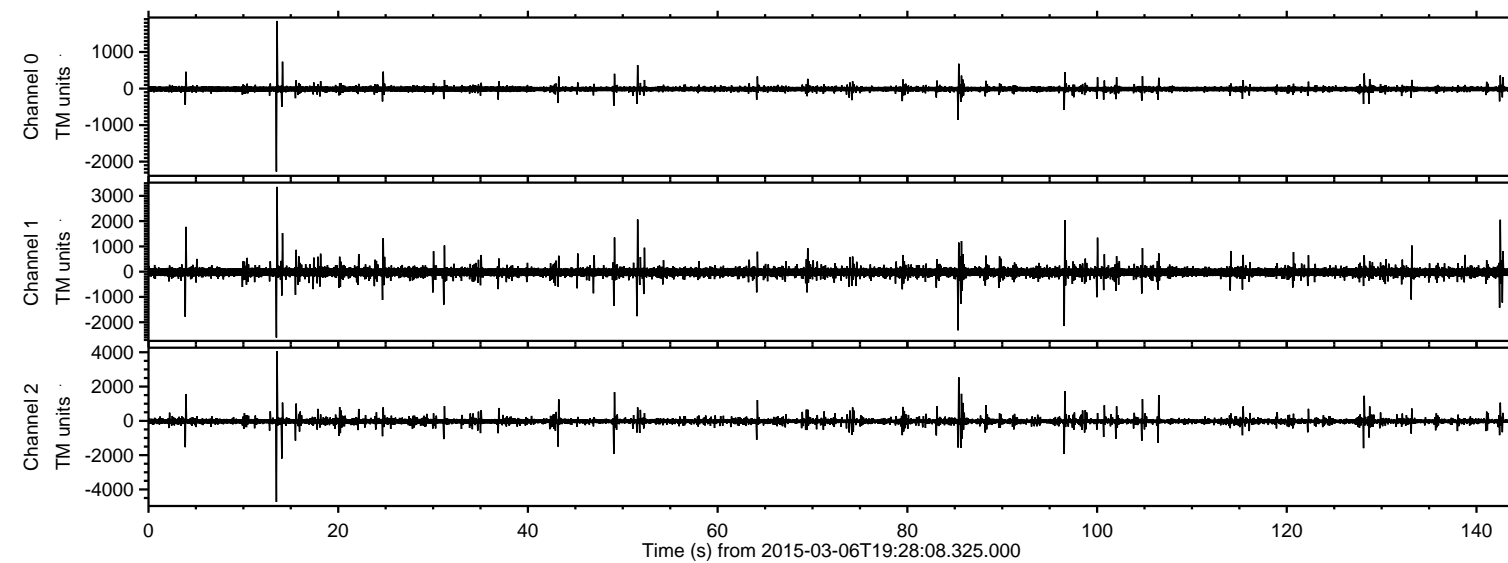


# ELMAVAN 3D WAVEFORMS (Measured data sampled at 50 kHz) 49806 packets of 144 samples from 2015-03-06T19:28:08.325.000.

Processed Sun Mar 8 03:05:12 2015 by ELM ver.2012-10-06 from 001\_\_elm20150306\_192807\_\_dat00.bin



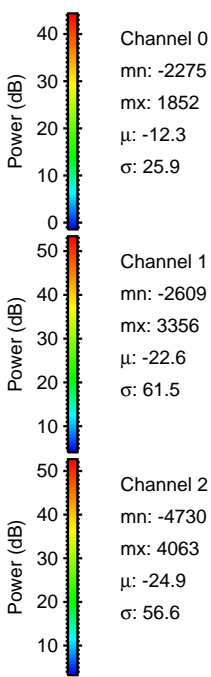
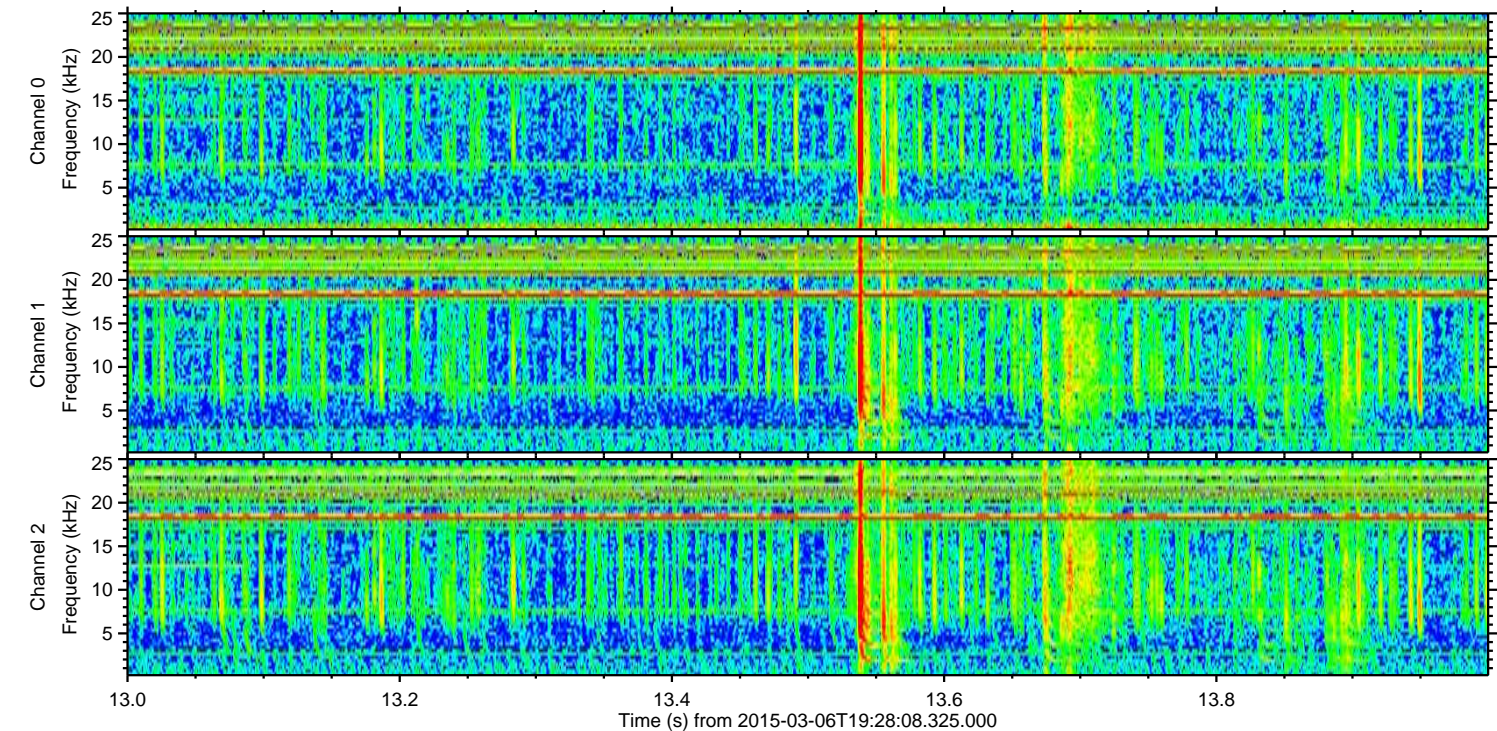
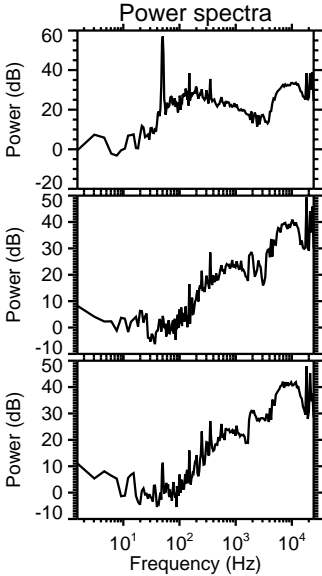
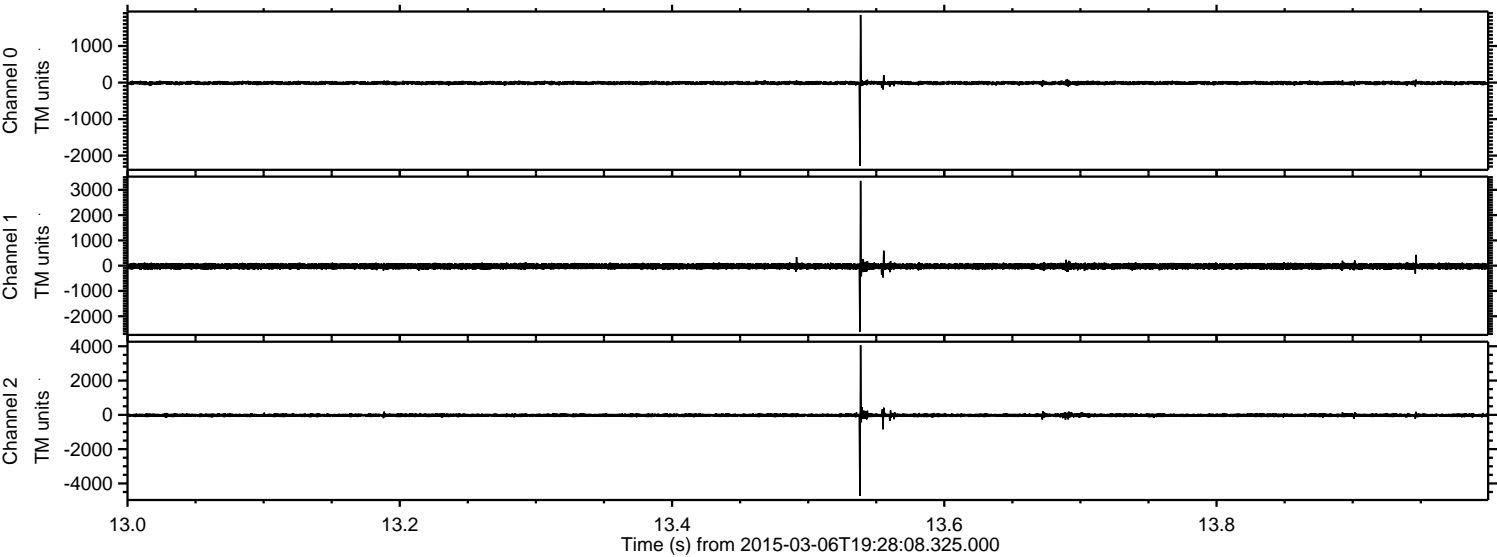
Channel 0  
mn: -2275  
mx: 1852  
 $\mu$ : -12.4  
 $\sigma$ : 20.4

Channel 1  
mn: -2609  
mx: 3356  
 $\mu$ : -22.6  
 $\sigma$ : 54.3

Channel 2  
mn: -4730  
mx: 4063  
 $\mu$ : -24.9  
 $\sigma$ : 40.8

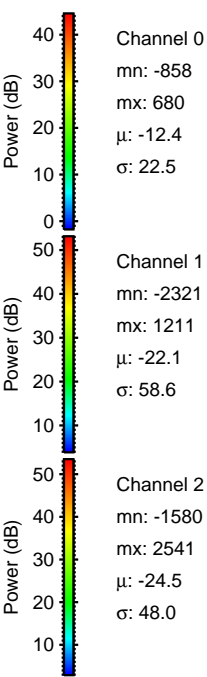
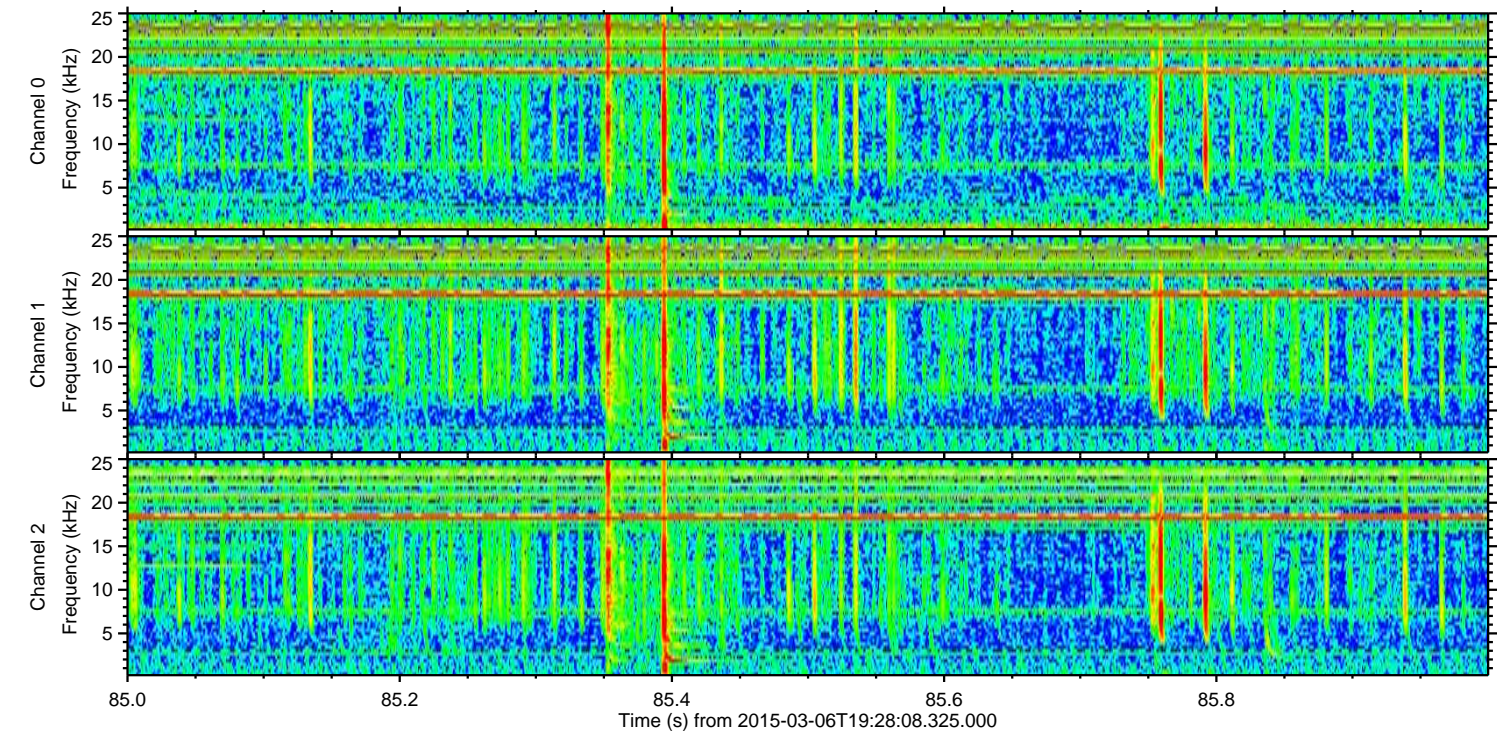
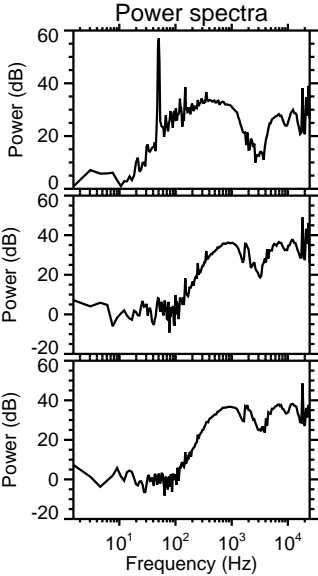
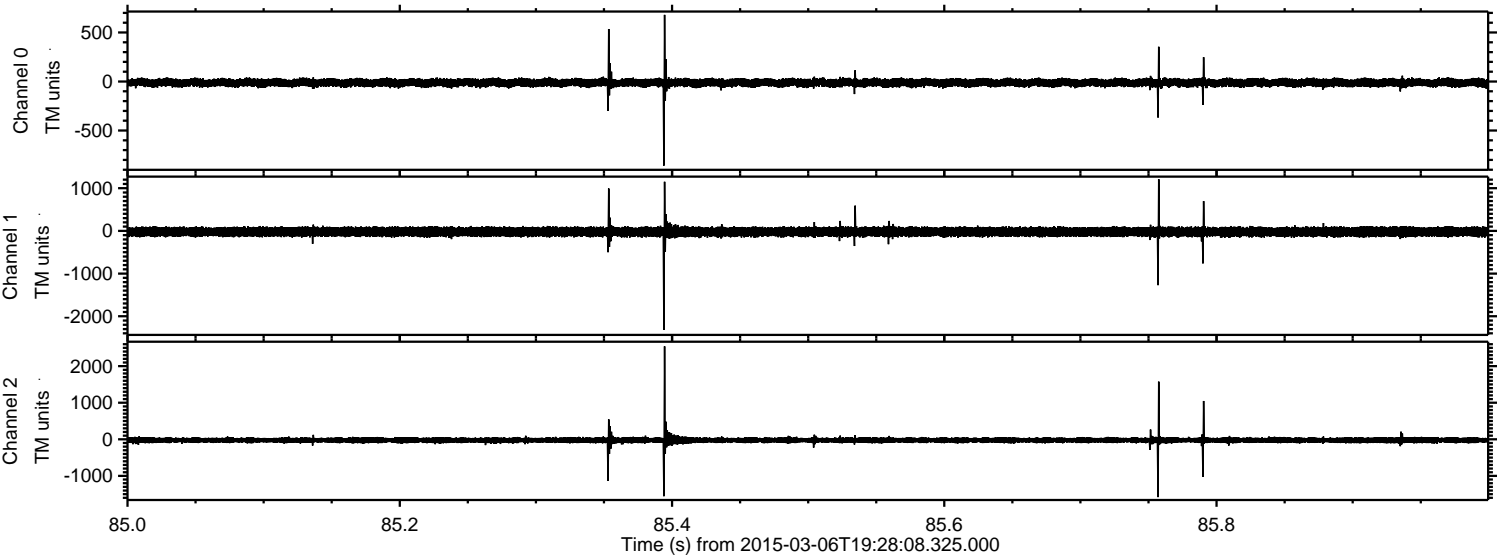


Processed Sun Mar 8 03:05:24 2015 by ELM ver.2012-10-06 from 001\_\_elm20150306\_192807\_\_dat00.bin



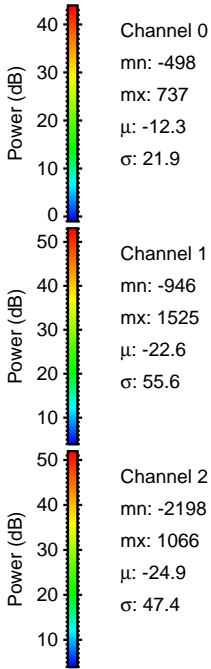
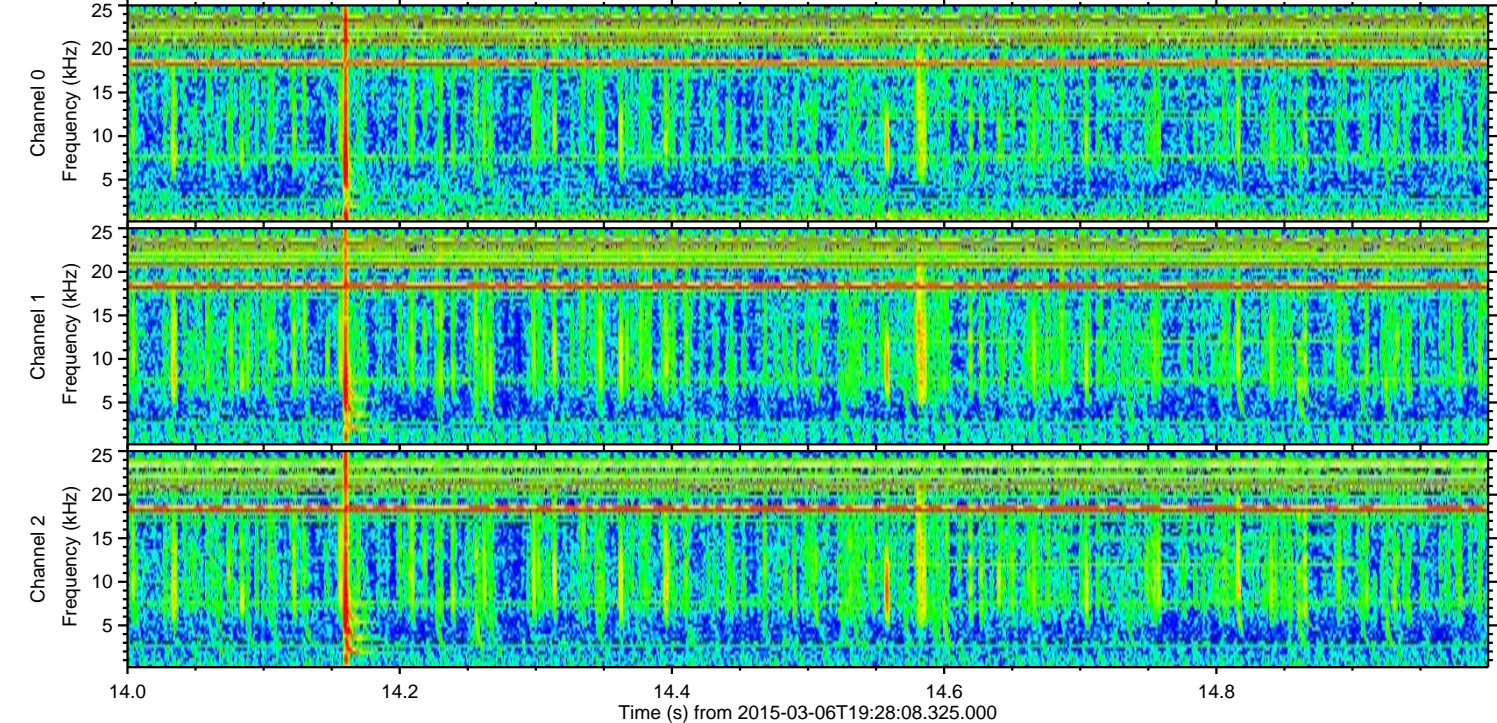
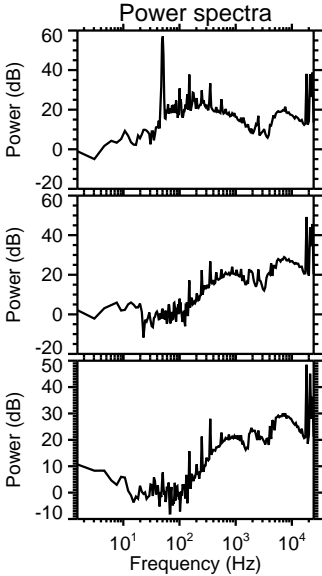
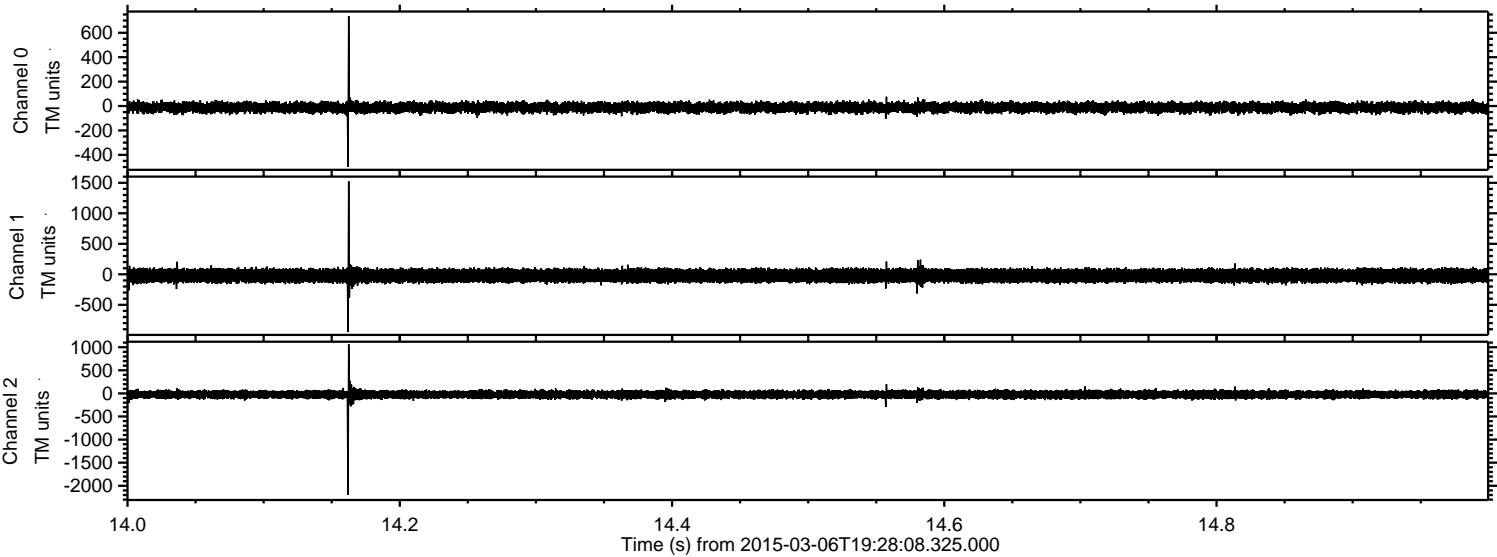


Processed Sun Mar 8 03:05:25 2015 by ELM ver.2012-10-06 from 001\_\_elm20150306\_192807\_\_dat00.bin



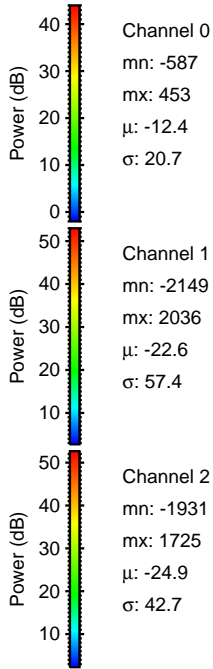
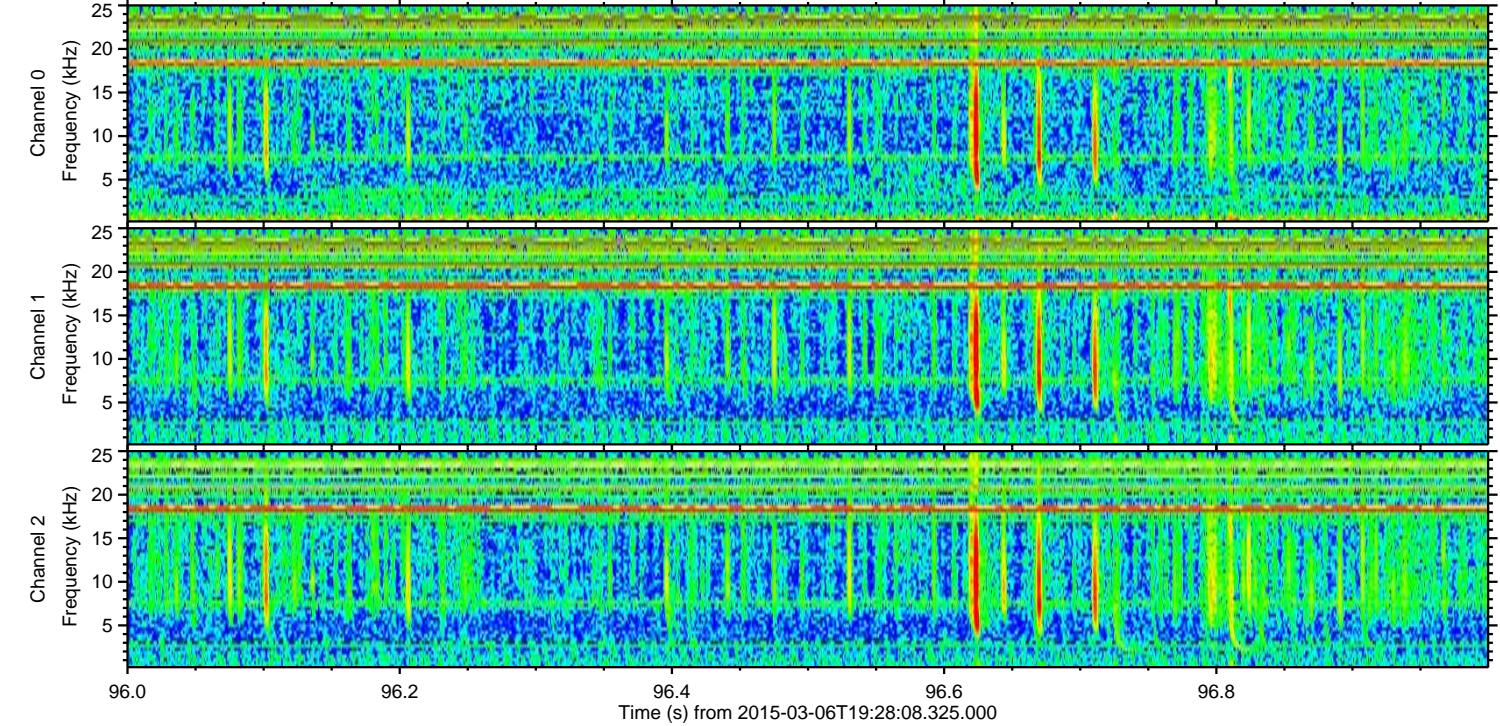
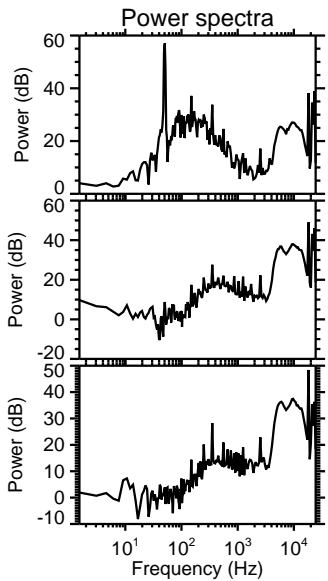
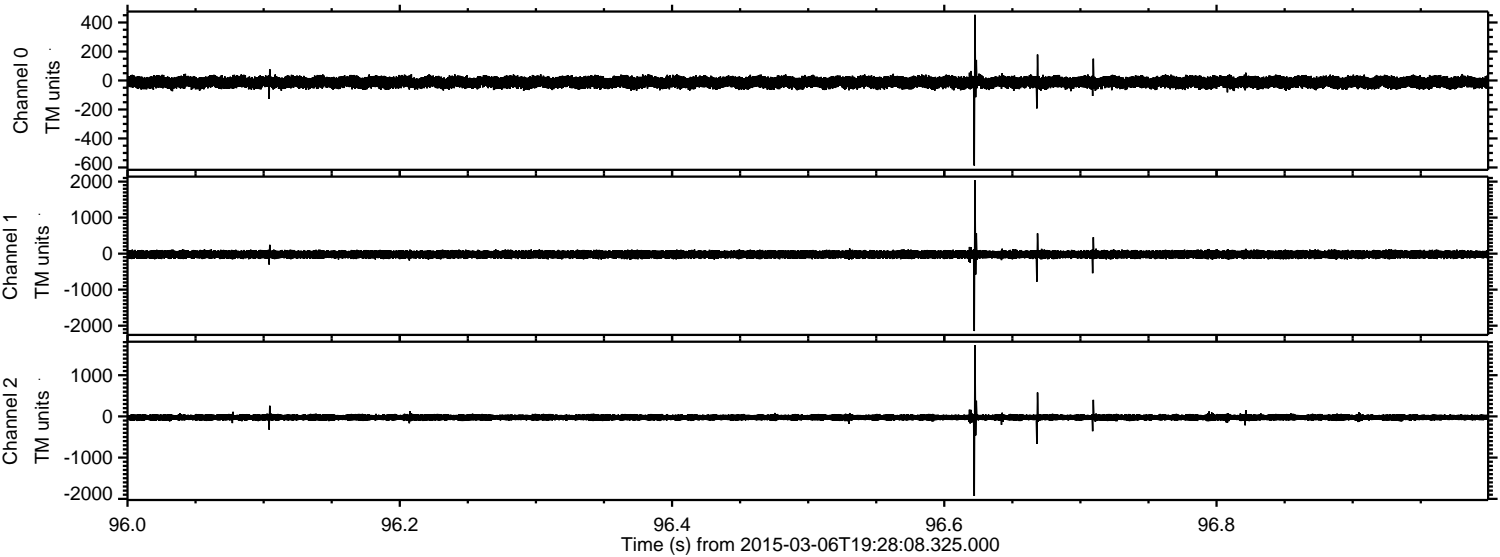


Processed Sun Mar 8 03:05:26 2015 by ELM ver.2012-10-06 from 001\_\_elm20150306\_192807\_\_dat00.bin



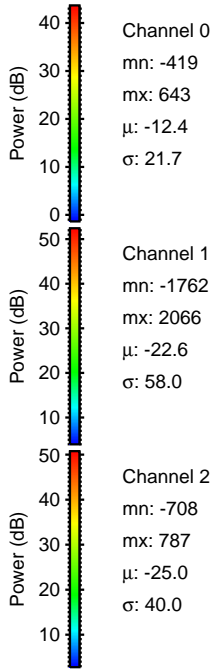
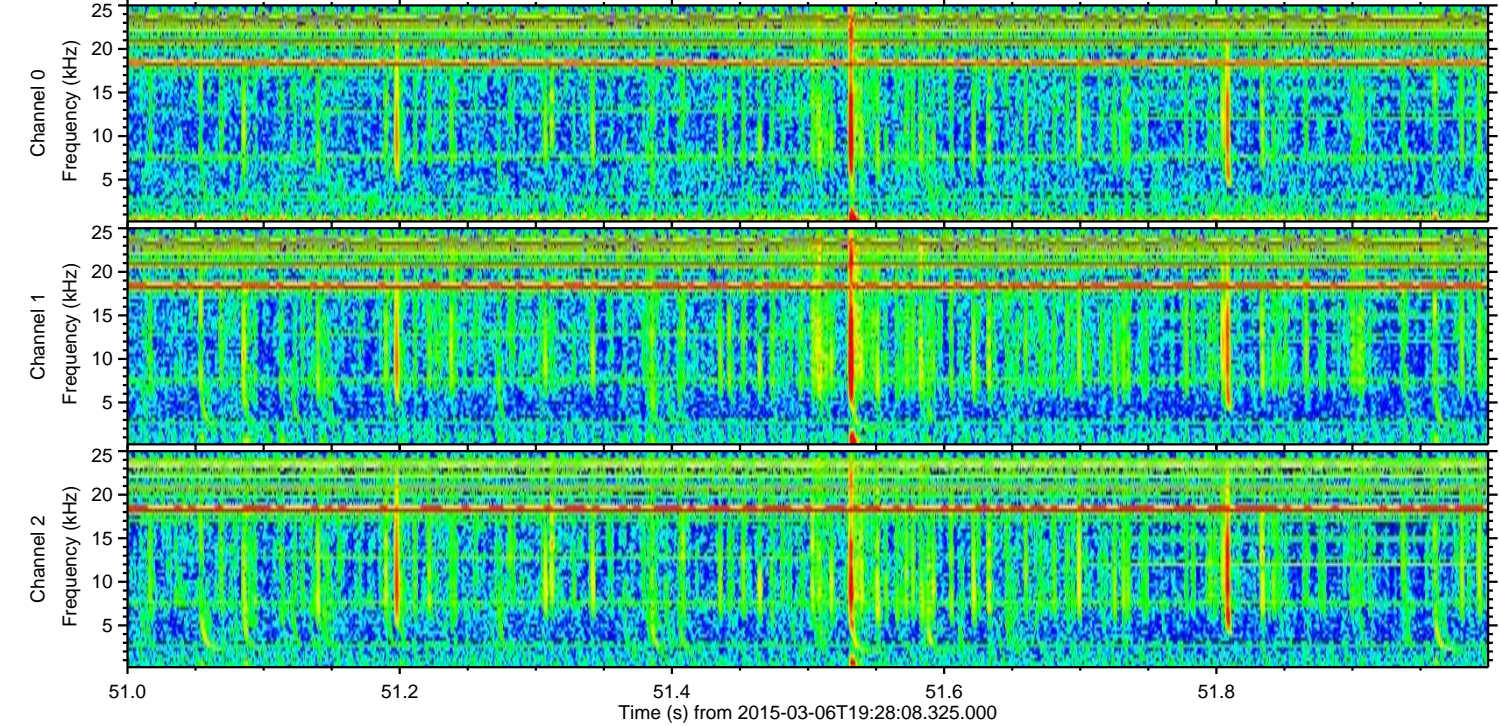
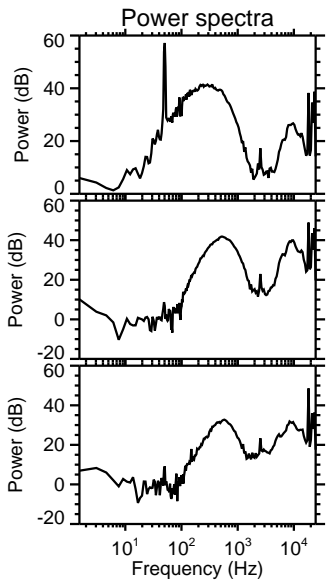
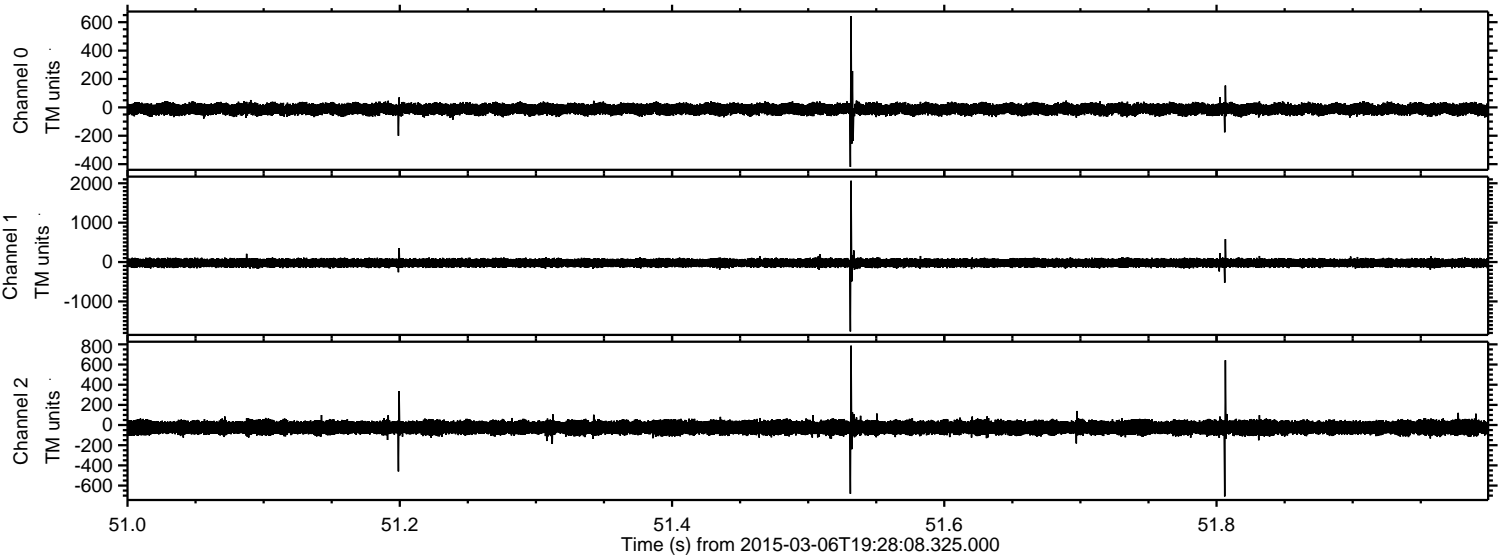


Processed Sun Mar 8 03:05:26 2015 by ELM ver.2012-10-06 from 001\_\_elm20150306\_192807\_\_dat00.bin





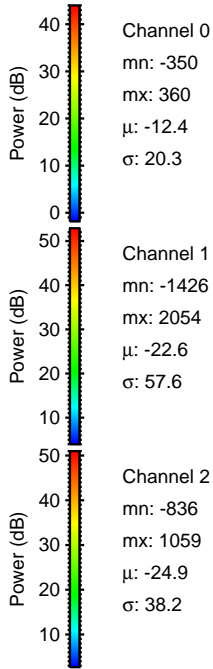
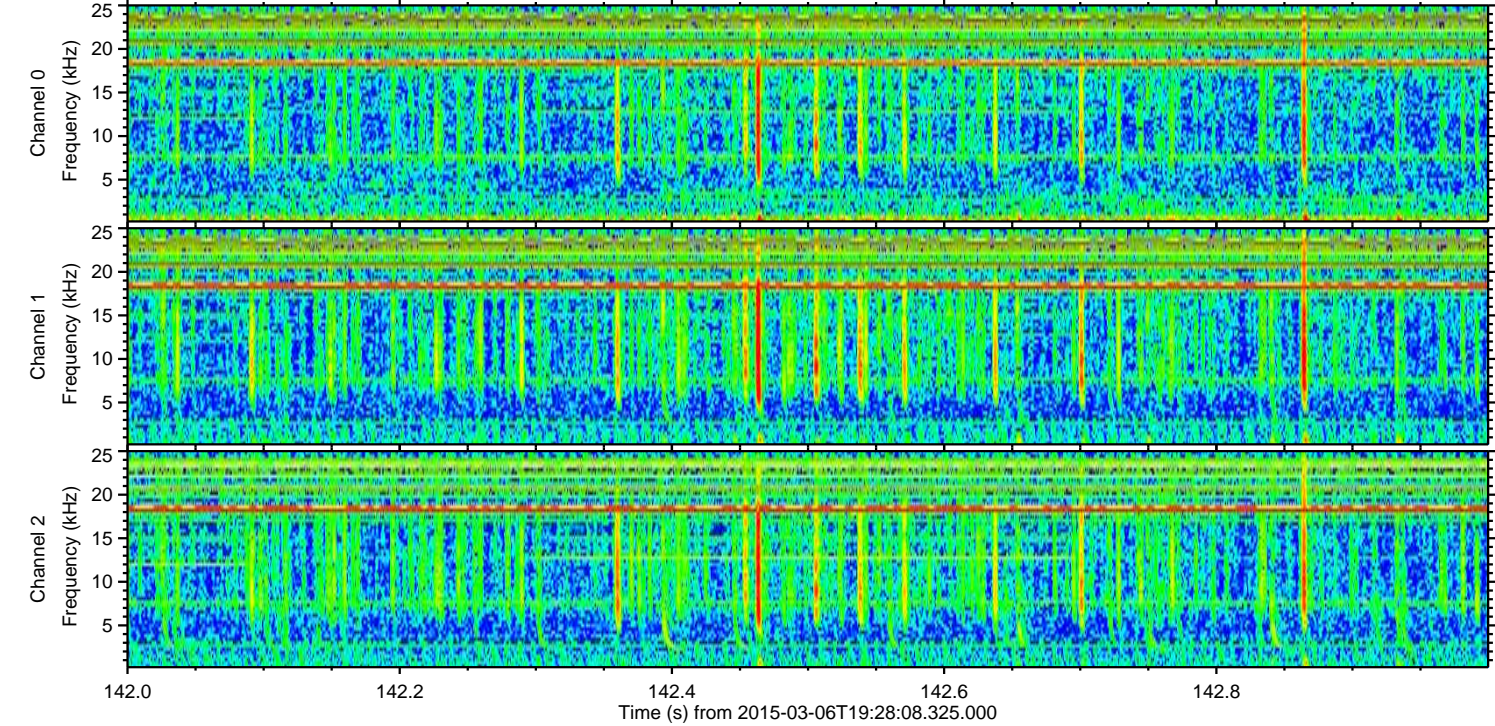
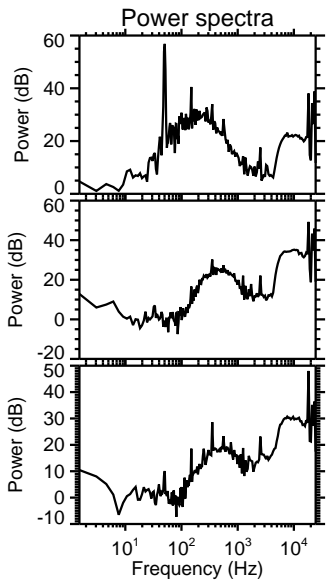
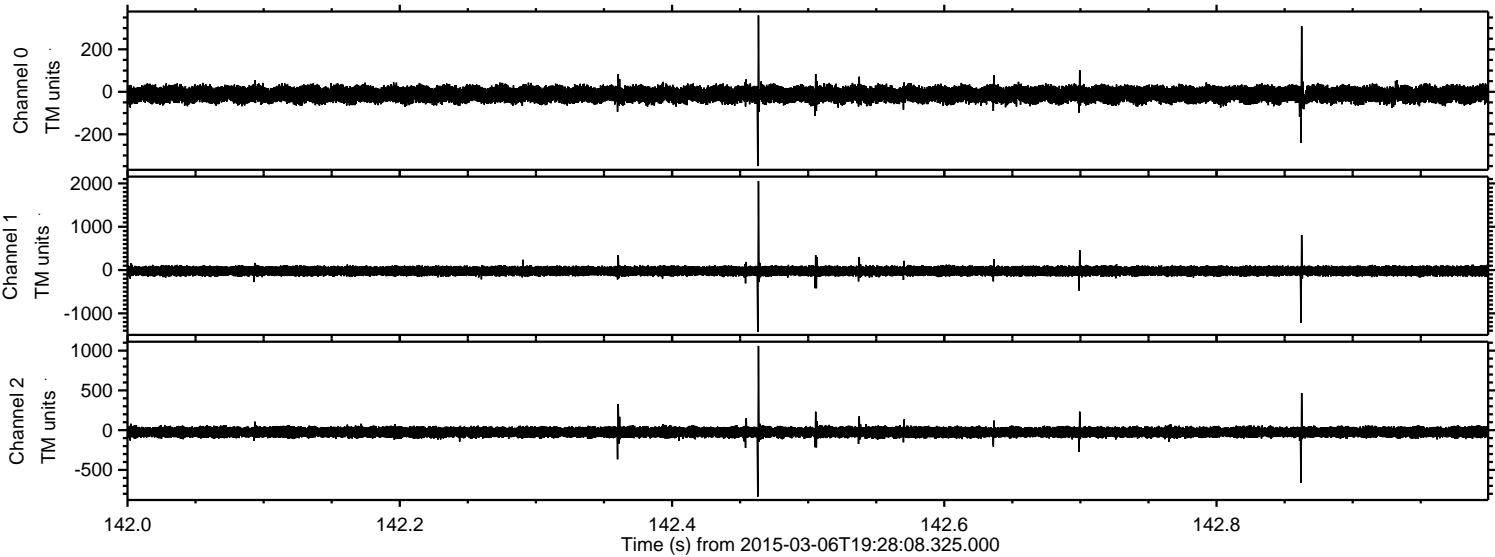
Processed Sun Mar 8 03:05:27 2015 by ELM ver.2012-10-06 from 001\_\_elm20150306\_192807\_\_dat00.bin





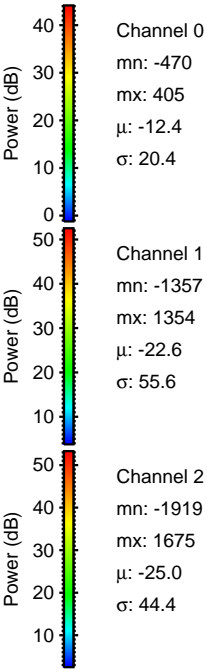
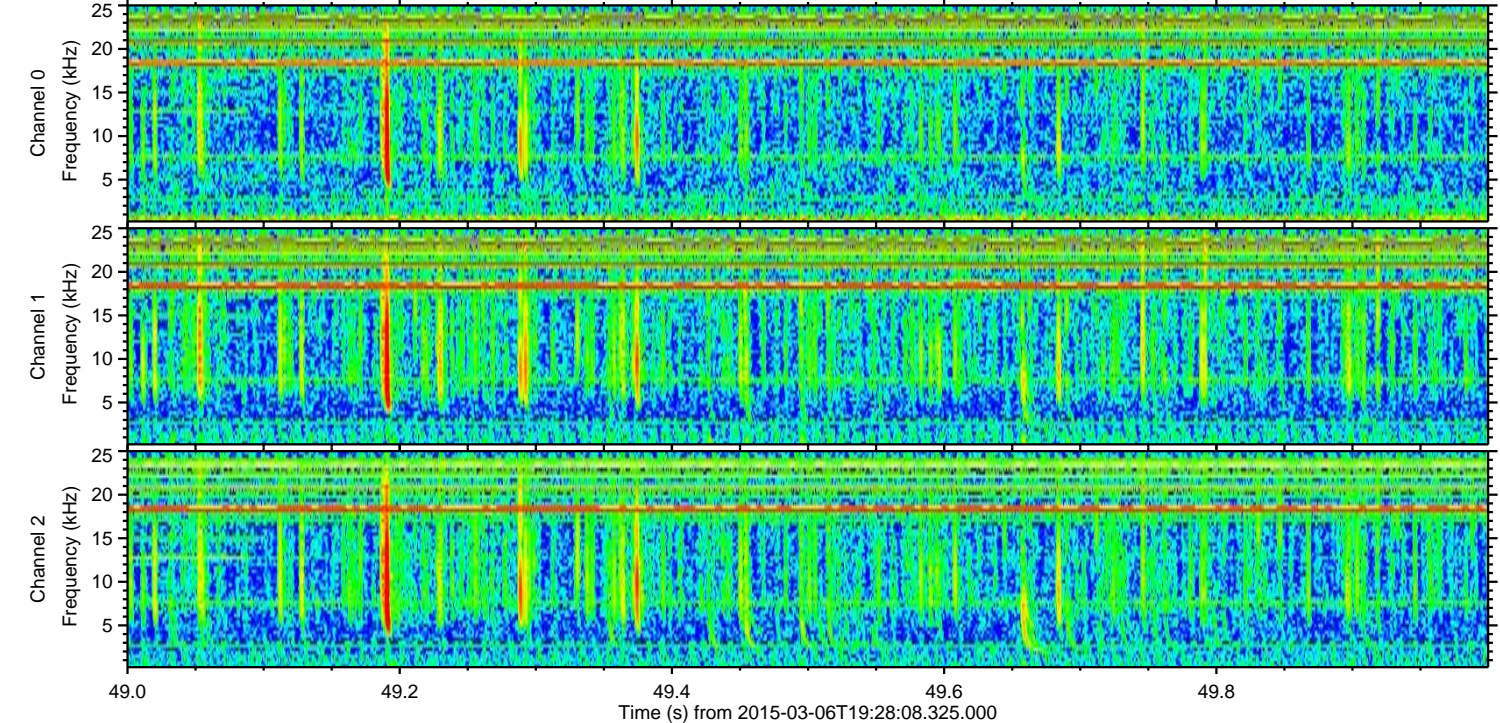
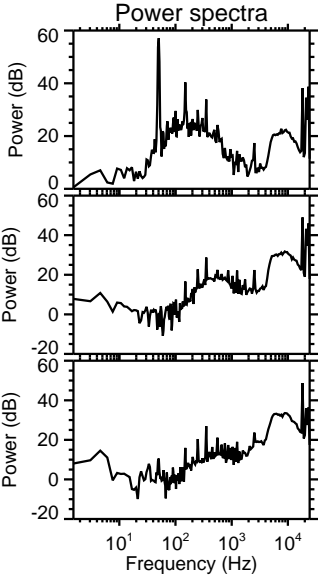
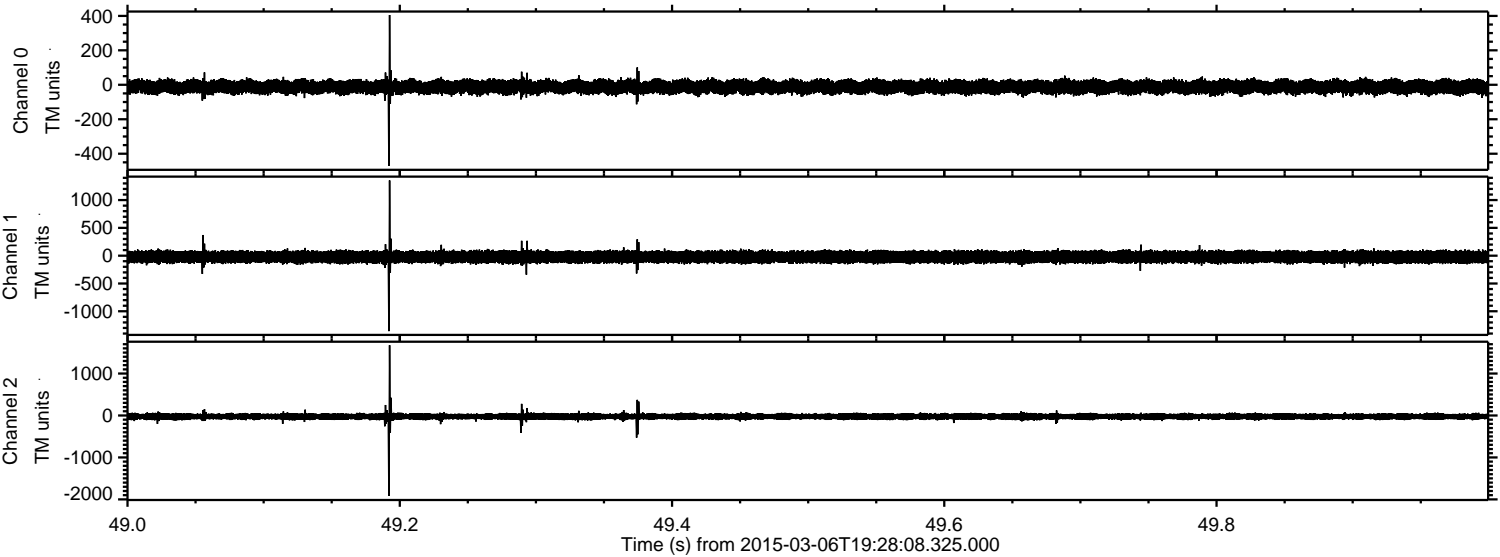
ELMAVAN 3D WAVEFORMS (Measured data sampled at 50 kHz) 49806 packets of 144 samples from 2015-03-06T19:28:08.325.000. Part 143/144

Processed Sun Mar 8 03:05:28 2015 by ELM ver.2012-10-06 from 001\_\_elm20150306\_192807\_\_dat00.bin



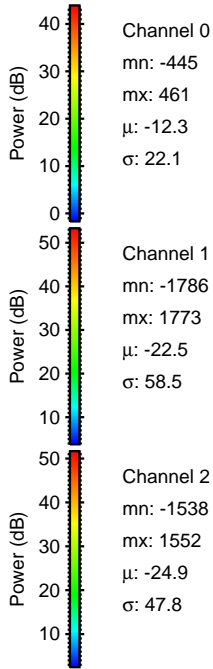
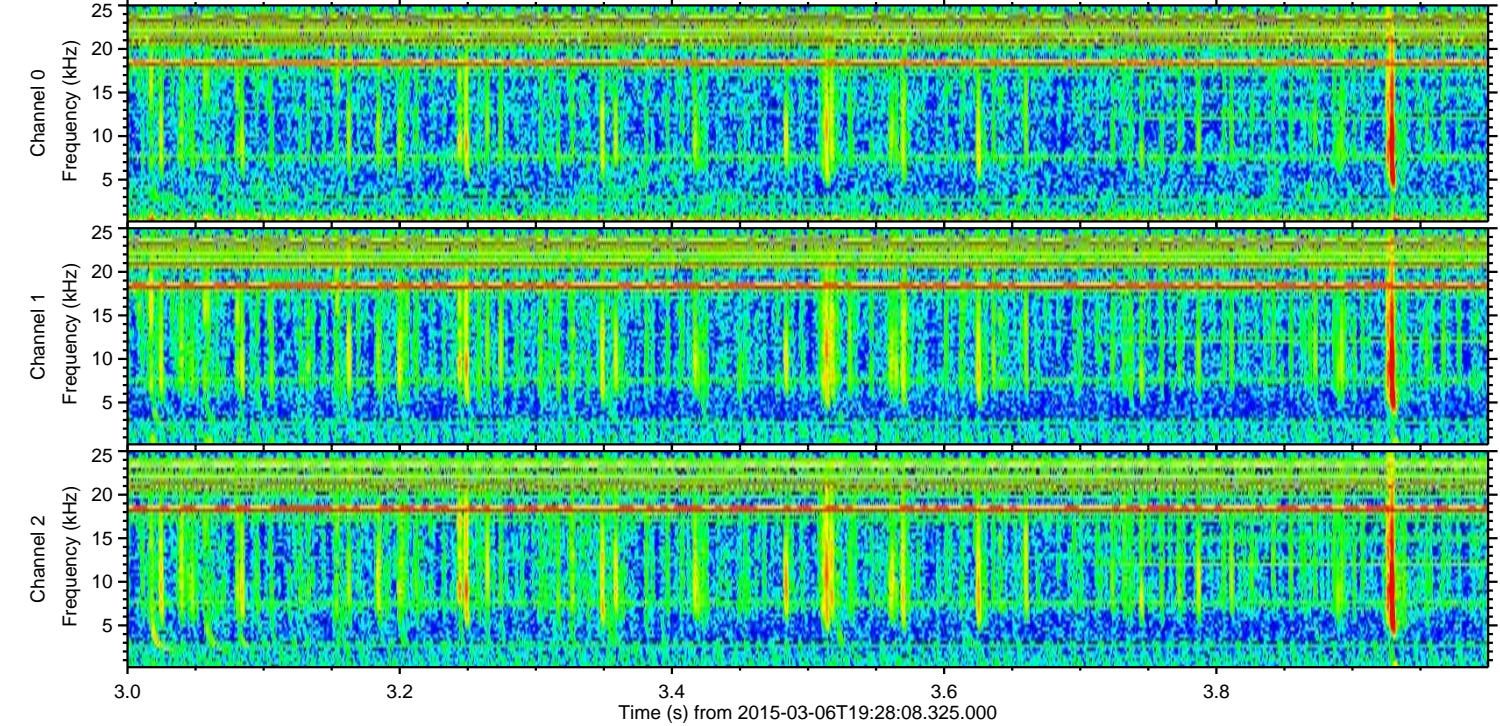
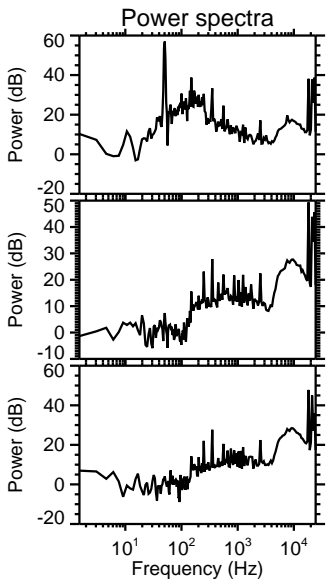
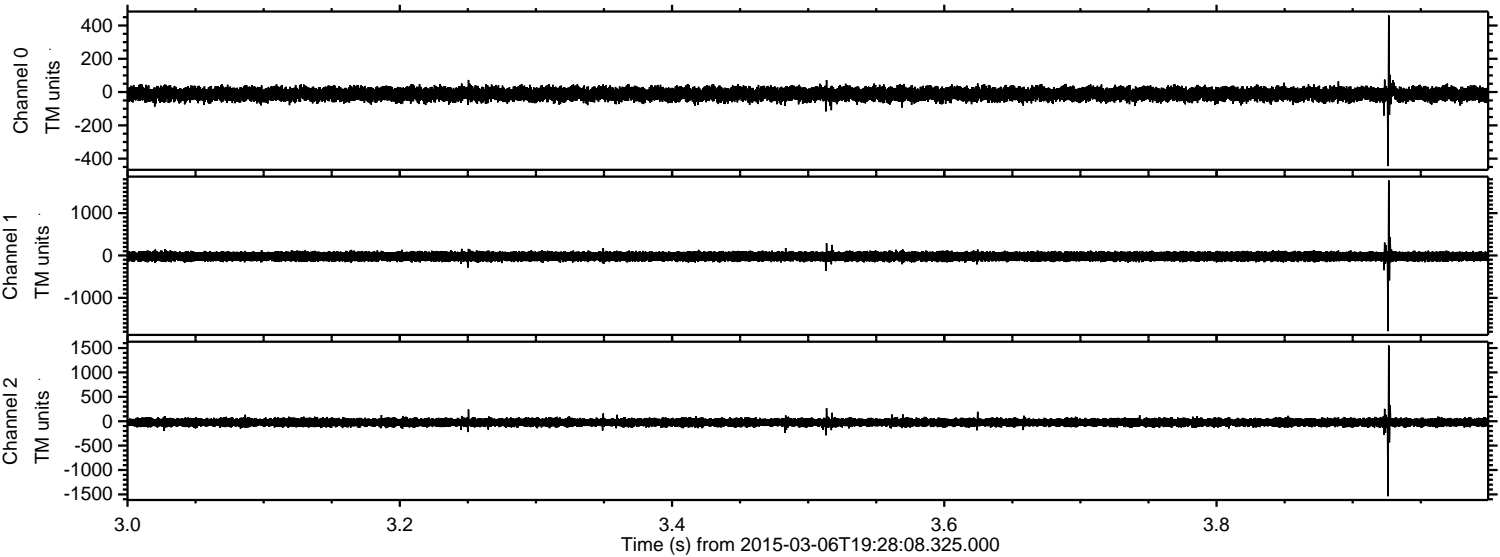


Processed Sun Mar 8 03:05:29 2015 by ELM ver.2012-10-06 from 001\_\_elm20150306\_192807\_\_dat00.bin





Processed Sun Mar 8 03:05:30 2015 by ELM ver.2012-10-06 from 001\_\_elm20150306\_192807\_\_dat00.bin



Channel 0  
mn: -445  
mx: 461  
 $\mu$ : -12.3  
 $\sigma$ : 22.1

Channel 1  
mn: -1786  
mx: 1773  
 $\mu$ : -22.5  
 $\sigma$ : 58.5

Channel 2  
mn: -1538  
mx: 1552  
 $\mu$ : -24.9  
 $\sigma$ : 47.8



Processed Sun Mar 8 03:05:31 2015 by ELM ver.2012-10-06 from 001\_\_elm20150306\_192807\_\_dat00.bin

