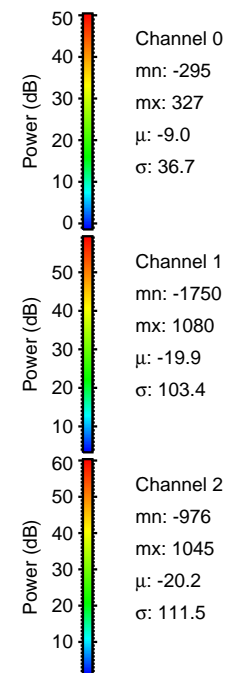
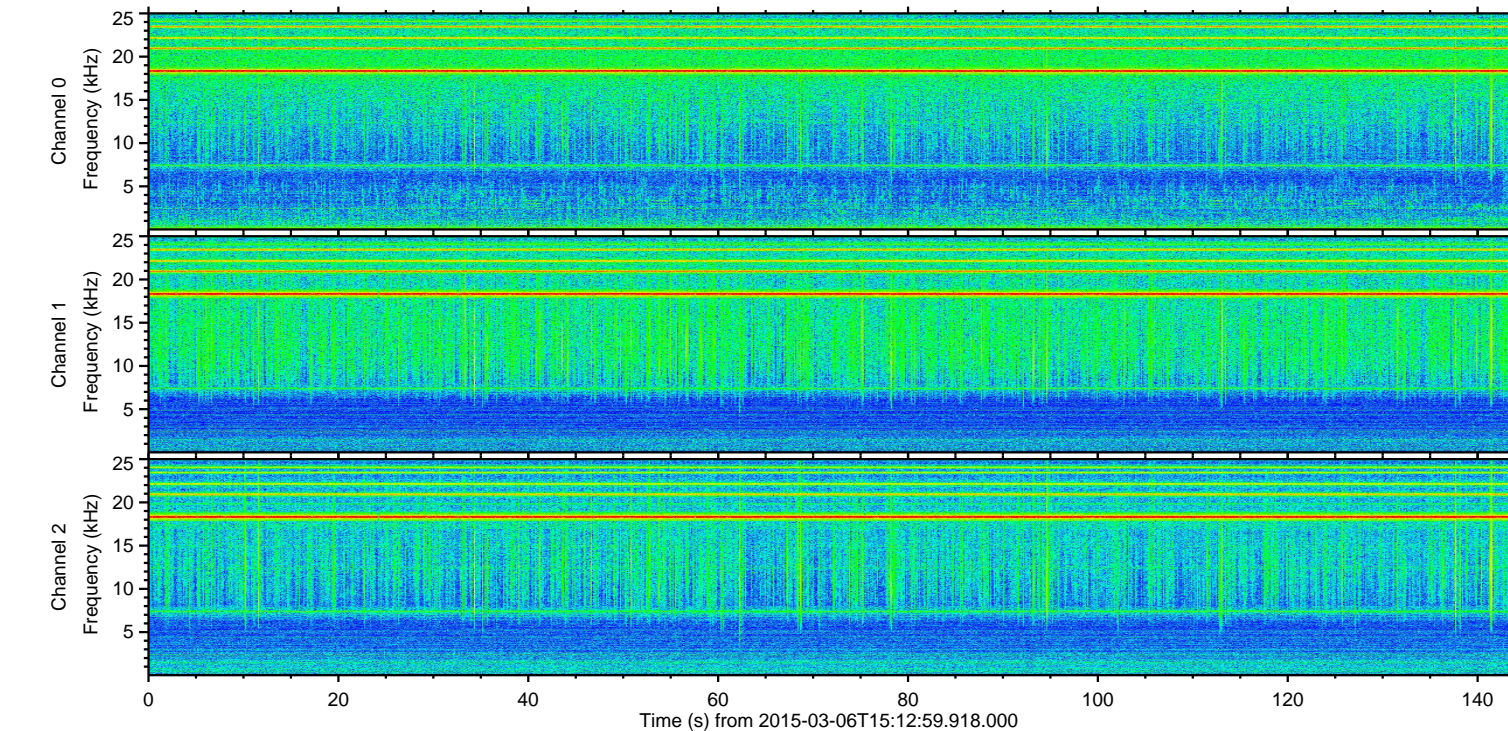
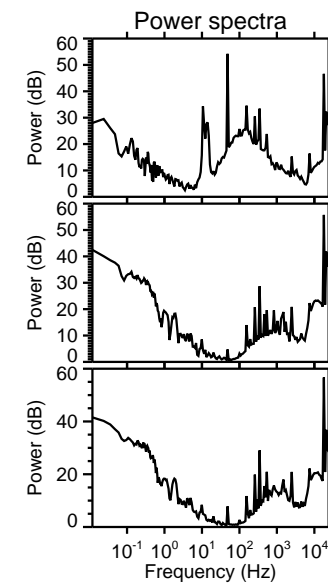
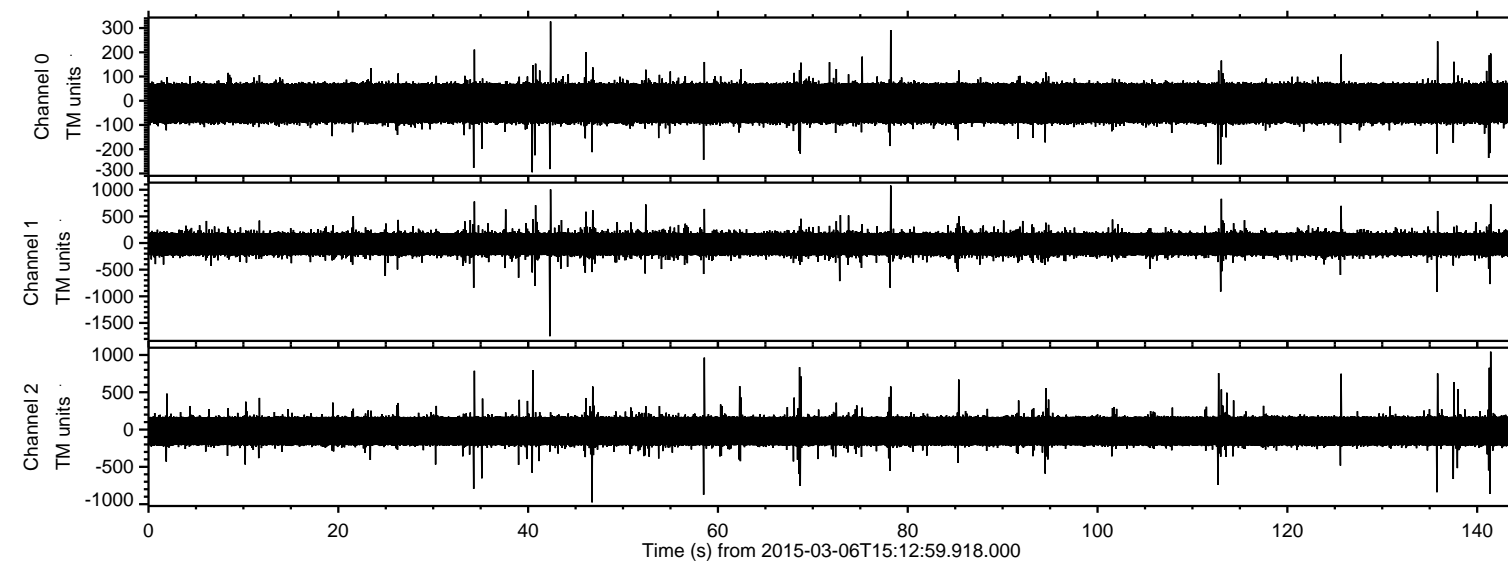
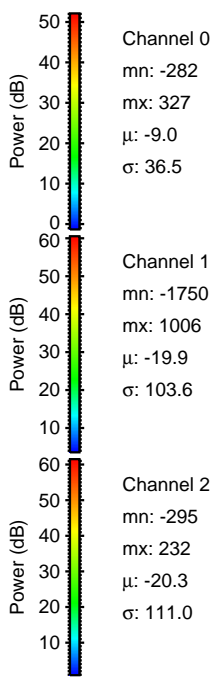
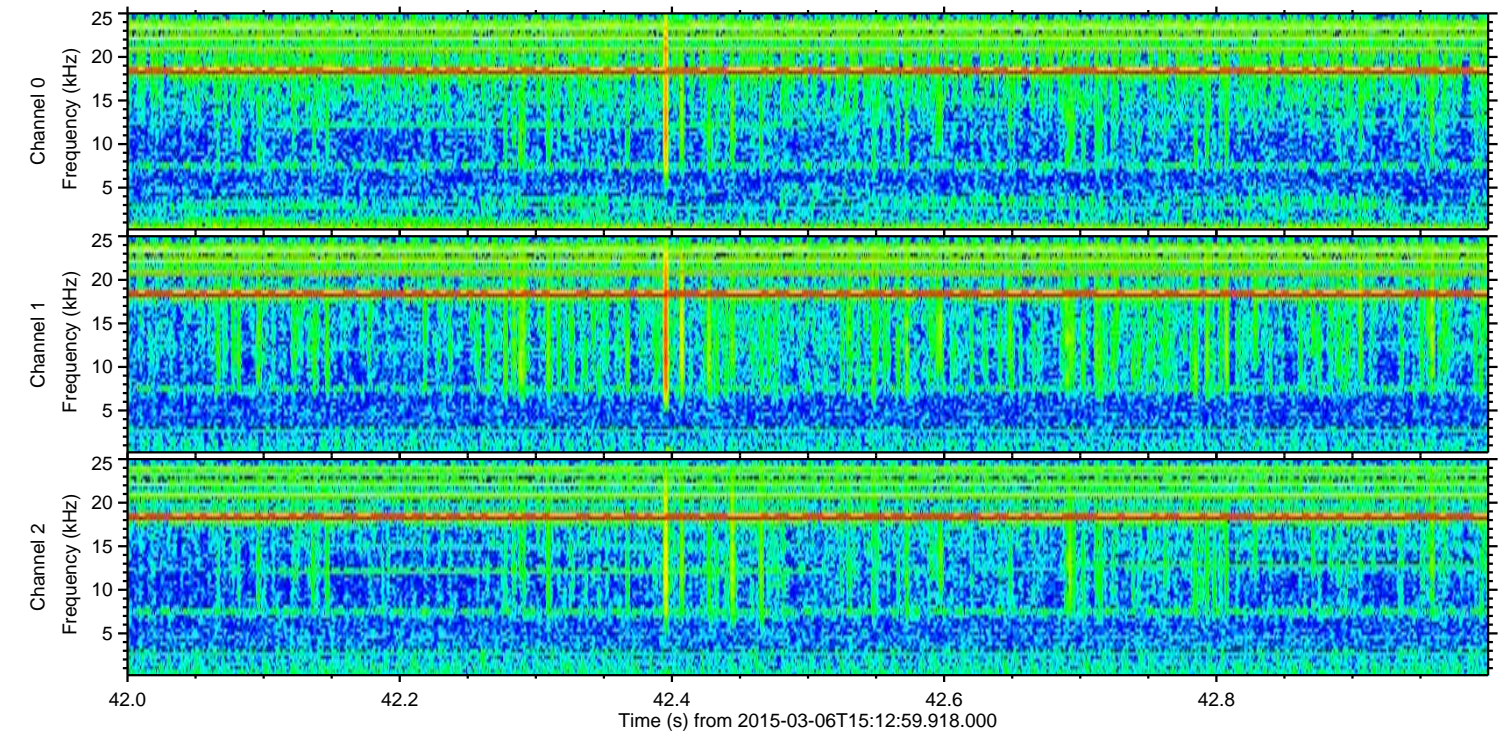
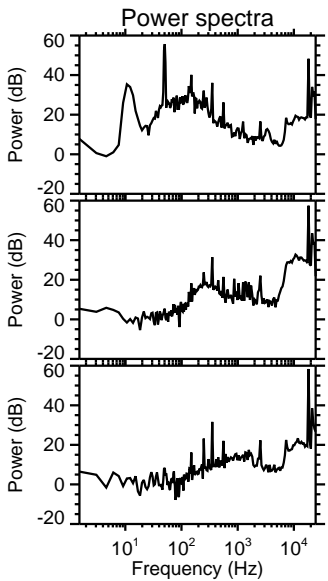
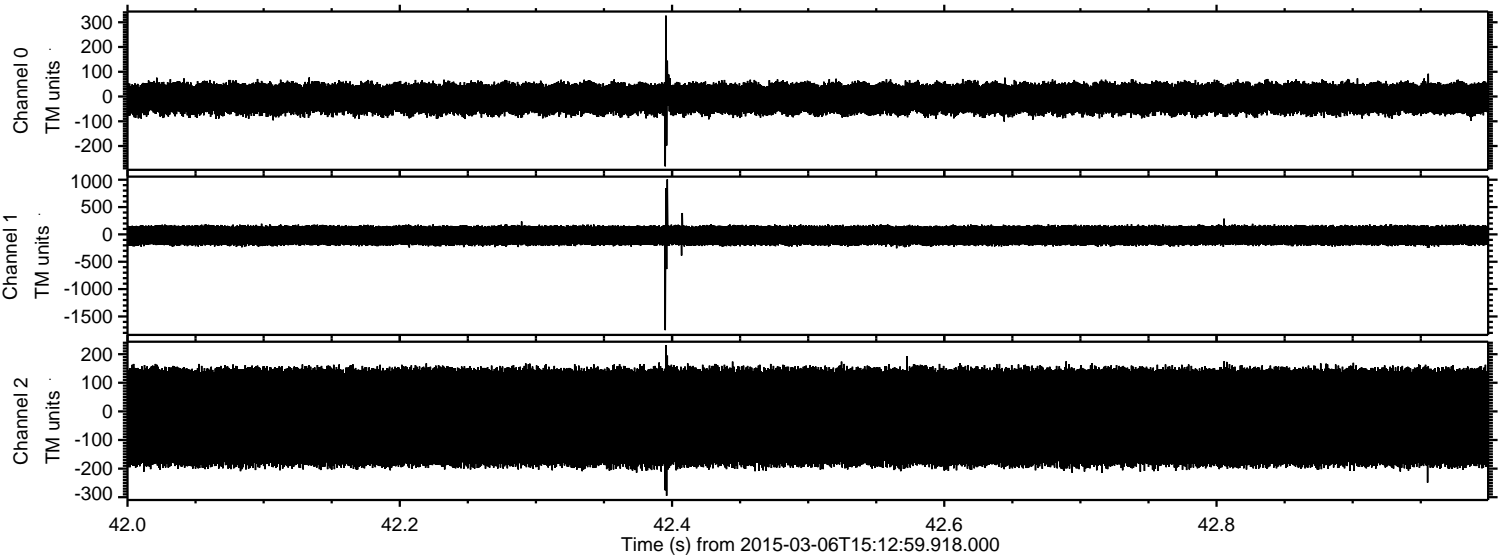


ELMAVAN 3D WAVEFORMS (Measured data sampled at 50 kHz) 49781 packets of 144 samples from 2015-03-06T15:12:59.918.000.

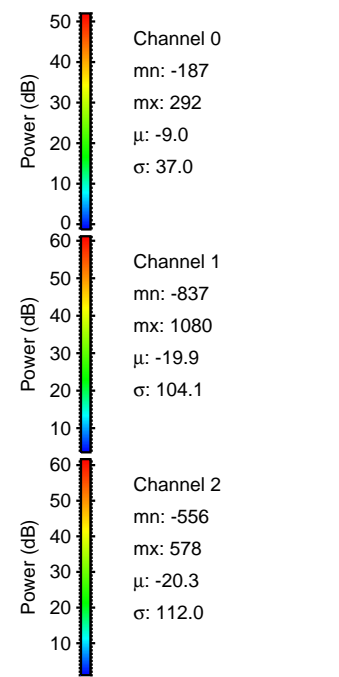
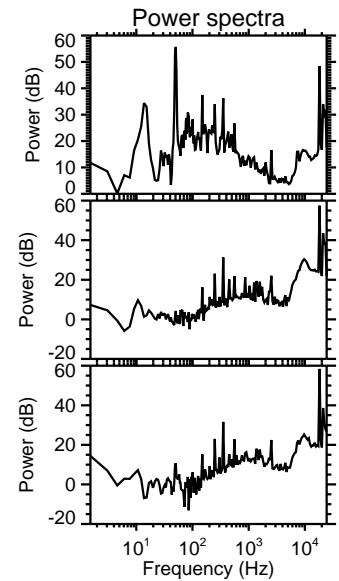
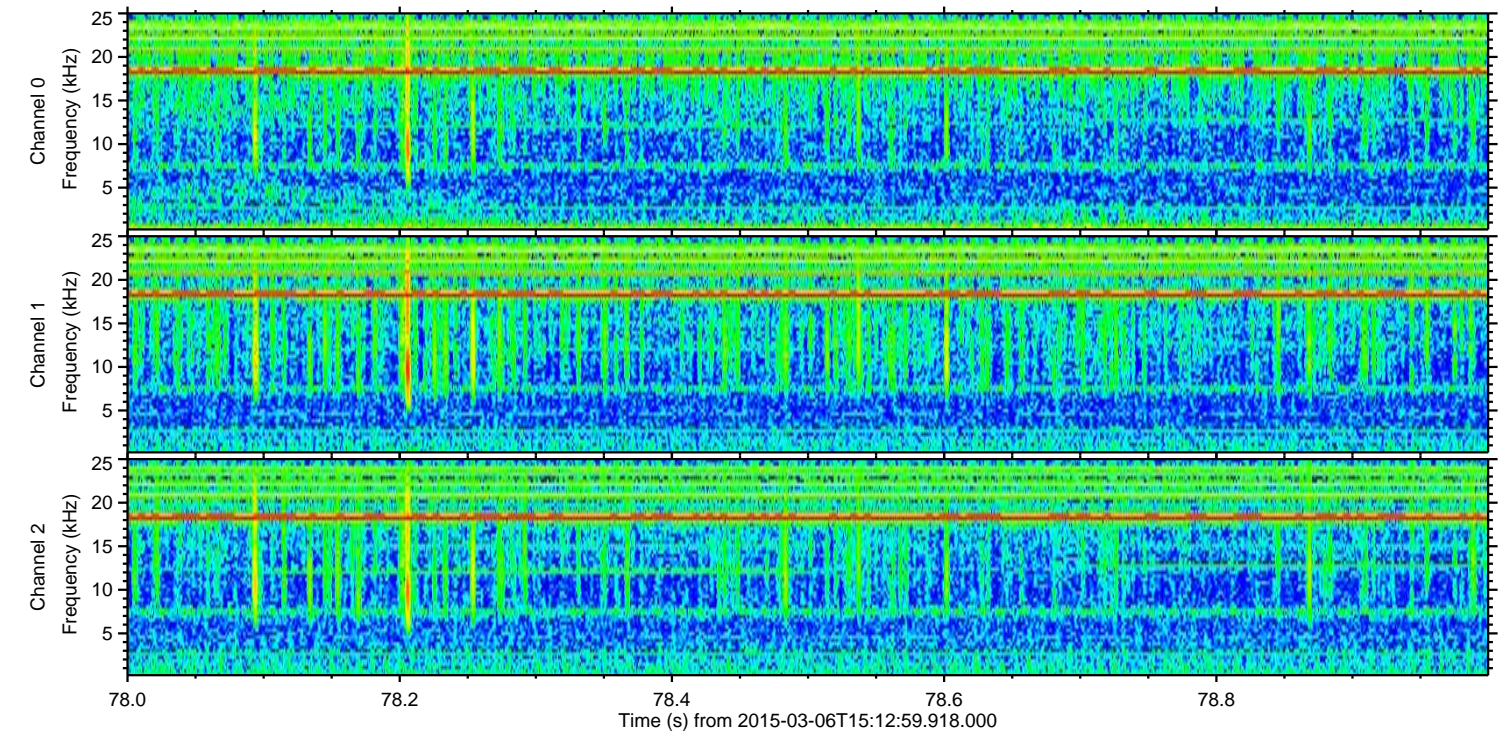
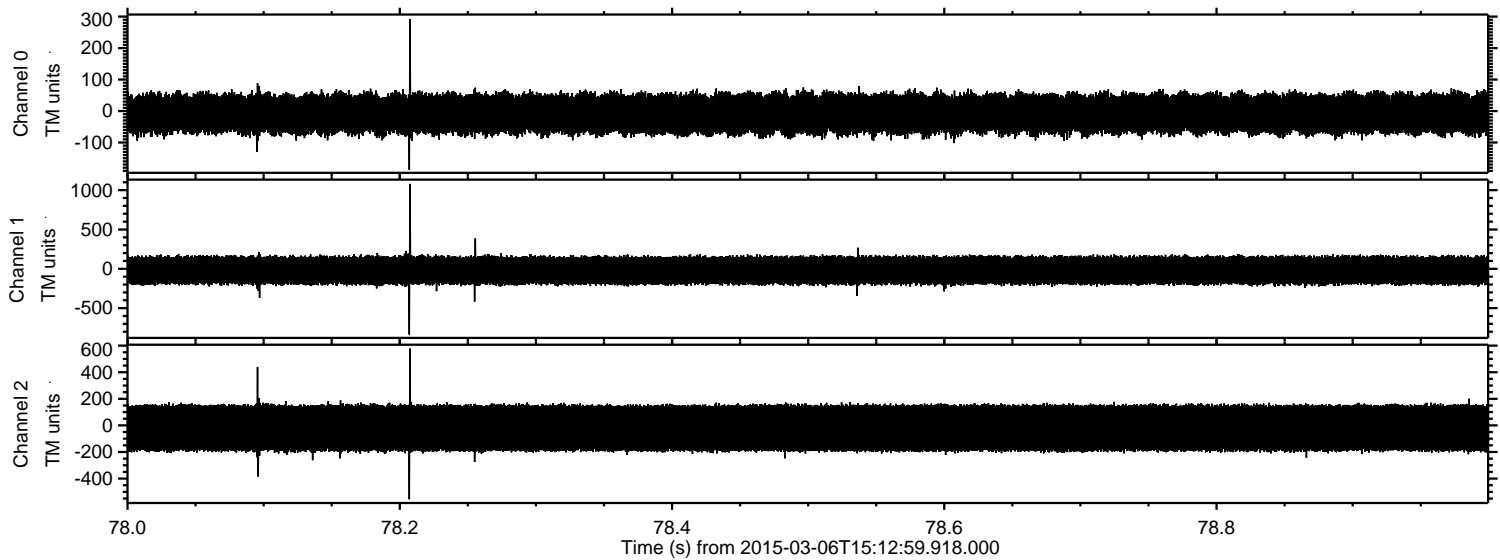
Processed Sun Mar 8 02:08:57 2015 by ELM ver.2012-10-06 from 001__elm20150306_151258__dat00.bin



Processed Sun Mar 8 02:09:11 2015 by ELM ver.2012-10-06 from 001__elm20150306_151258__dat00.bin



Processed Sun Mar 8 02:09:13 2015 by ELM ver.2012-10-06 from 001__elm20150306_151258__dat00.bin

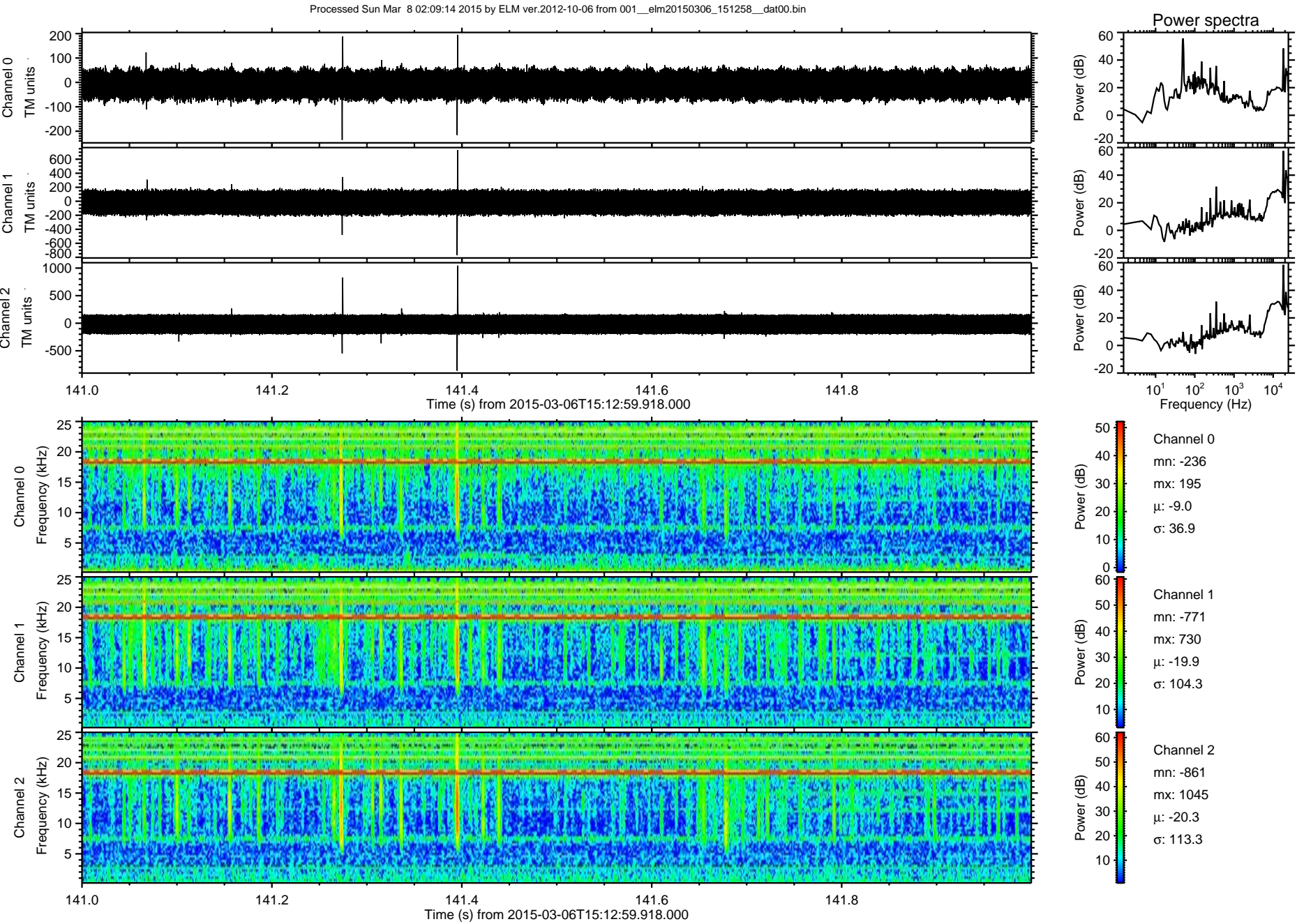


Channel 0
mn: -187
mx: 292
 μ : -9.0
 σ : 37.0

Channel 1
mn: -837
mx: 1080
 μ : -19.9
 σ : 104.1

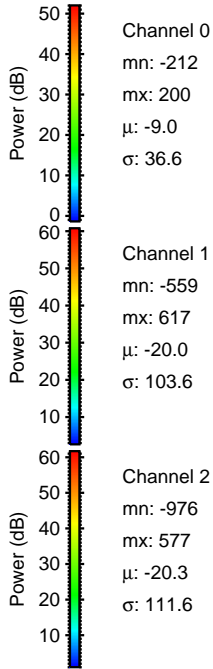
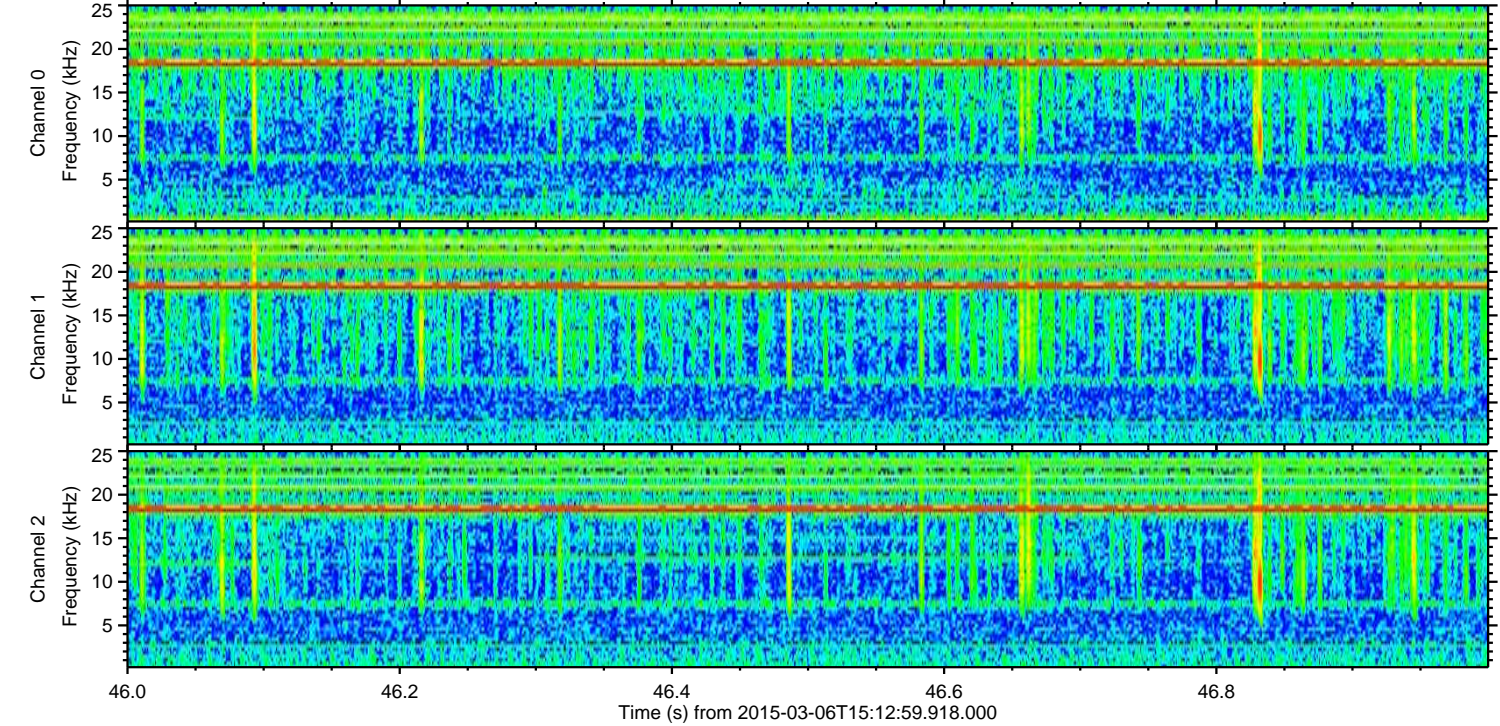
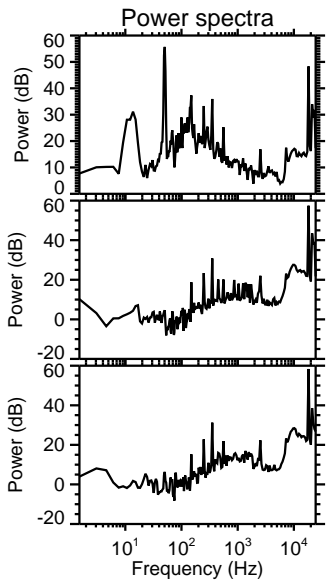
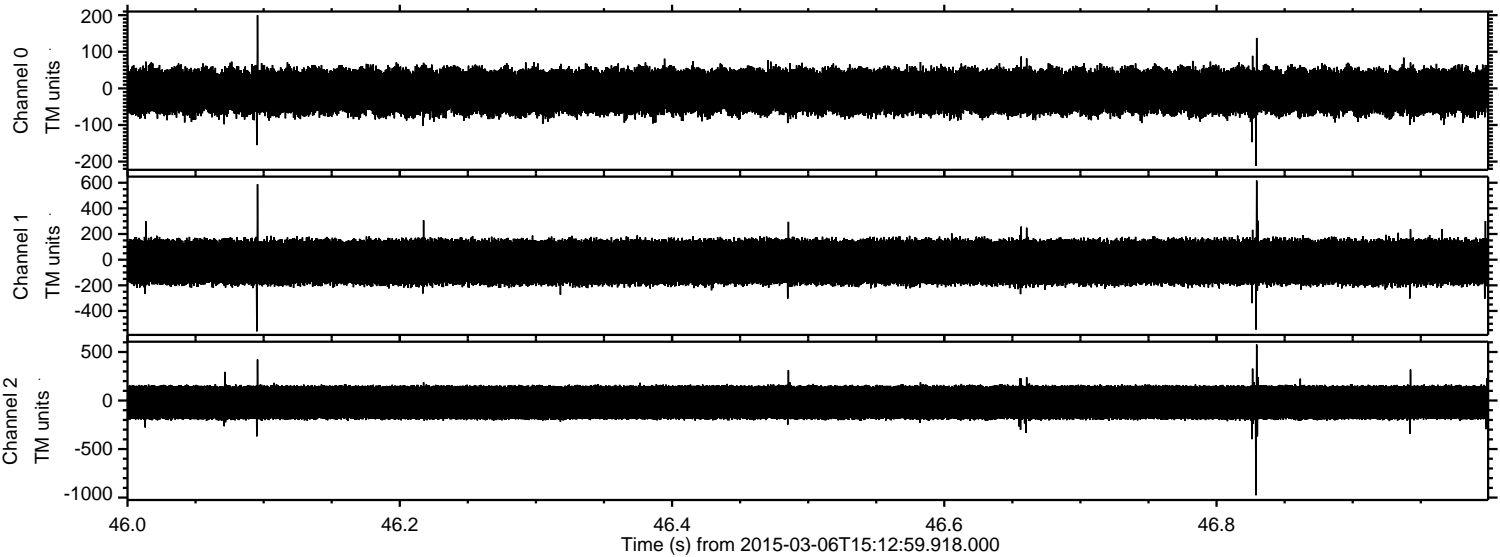
Channel 2
mn: -556
mx: 578
 μ : -20.3
 σ : 112.0

ELMAVAN 3D WAVEFORMS (Measured data sampled at 50 kHz) 49781 packets of 144 samples from 2015-03-06T15:12:59.918.000. Part 142/144

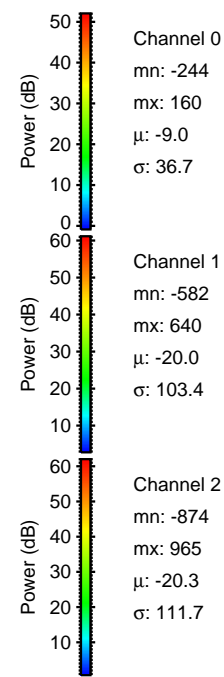
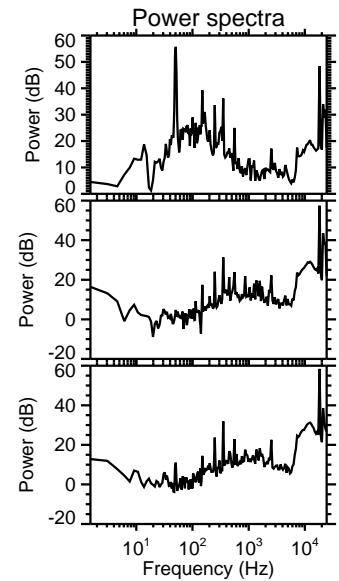
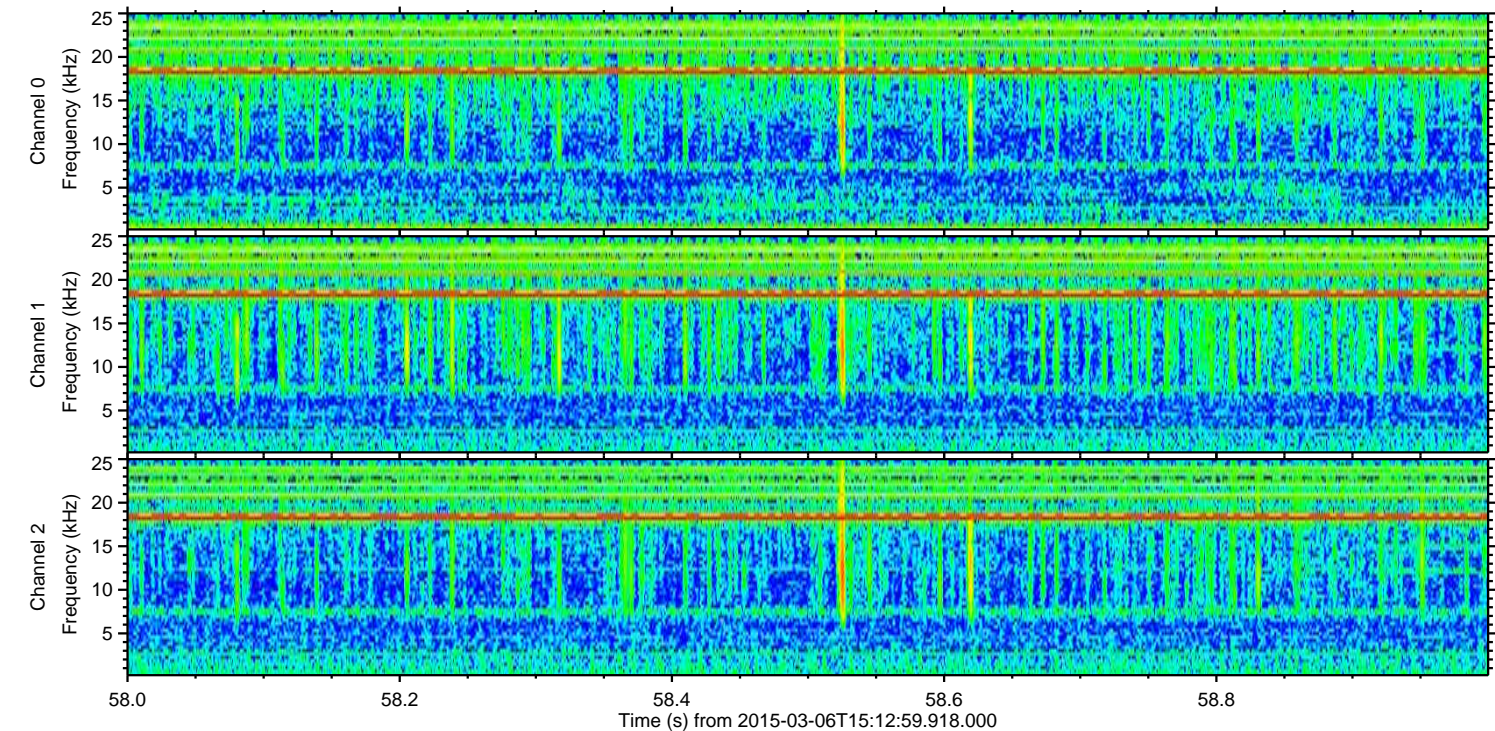
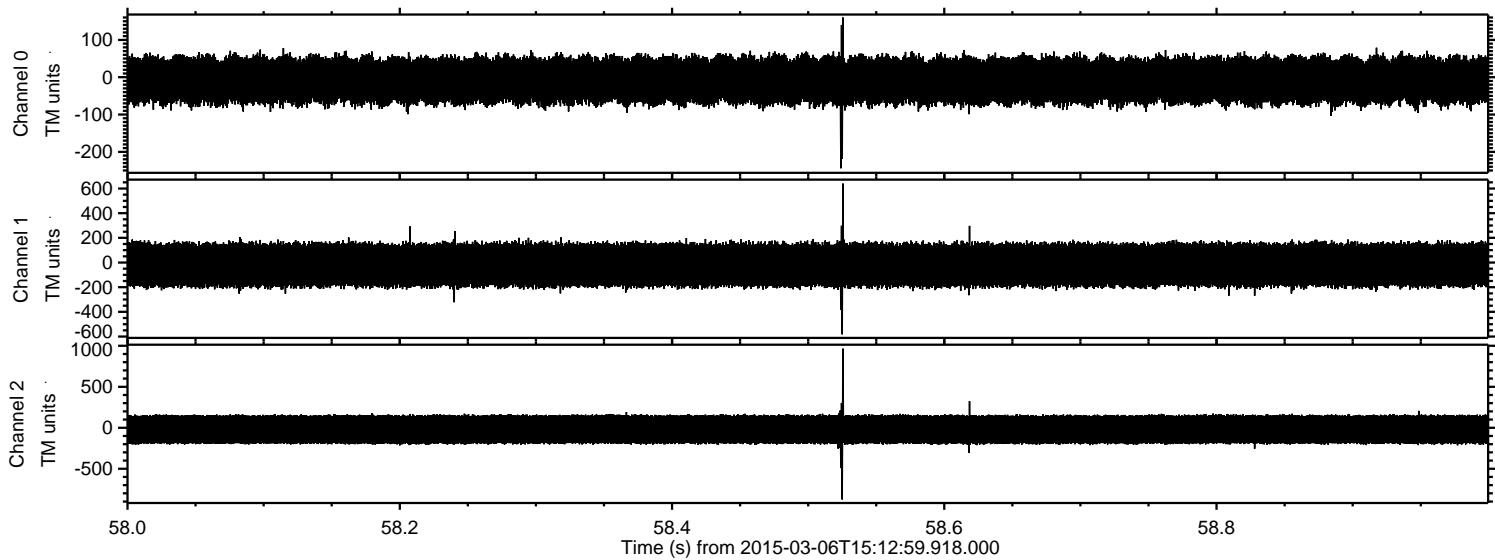


ELMAVAN 3D WAVEFORMS (Measured data sampled at 50 kHz) 49781 packets of 144 samples from 2015-03-06T15:12:59.918.000. Part 47/144

Processed Sun Mar 8 02:09:15 2015 by ELM ver.2012-10-06 from 001__elm20150306_151258__dat00.bin

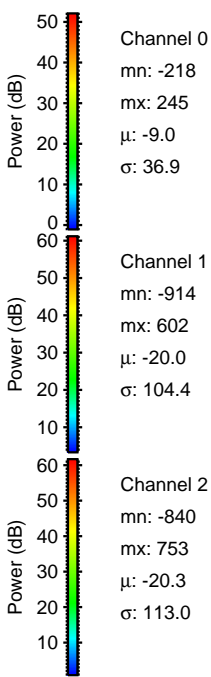
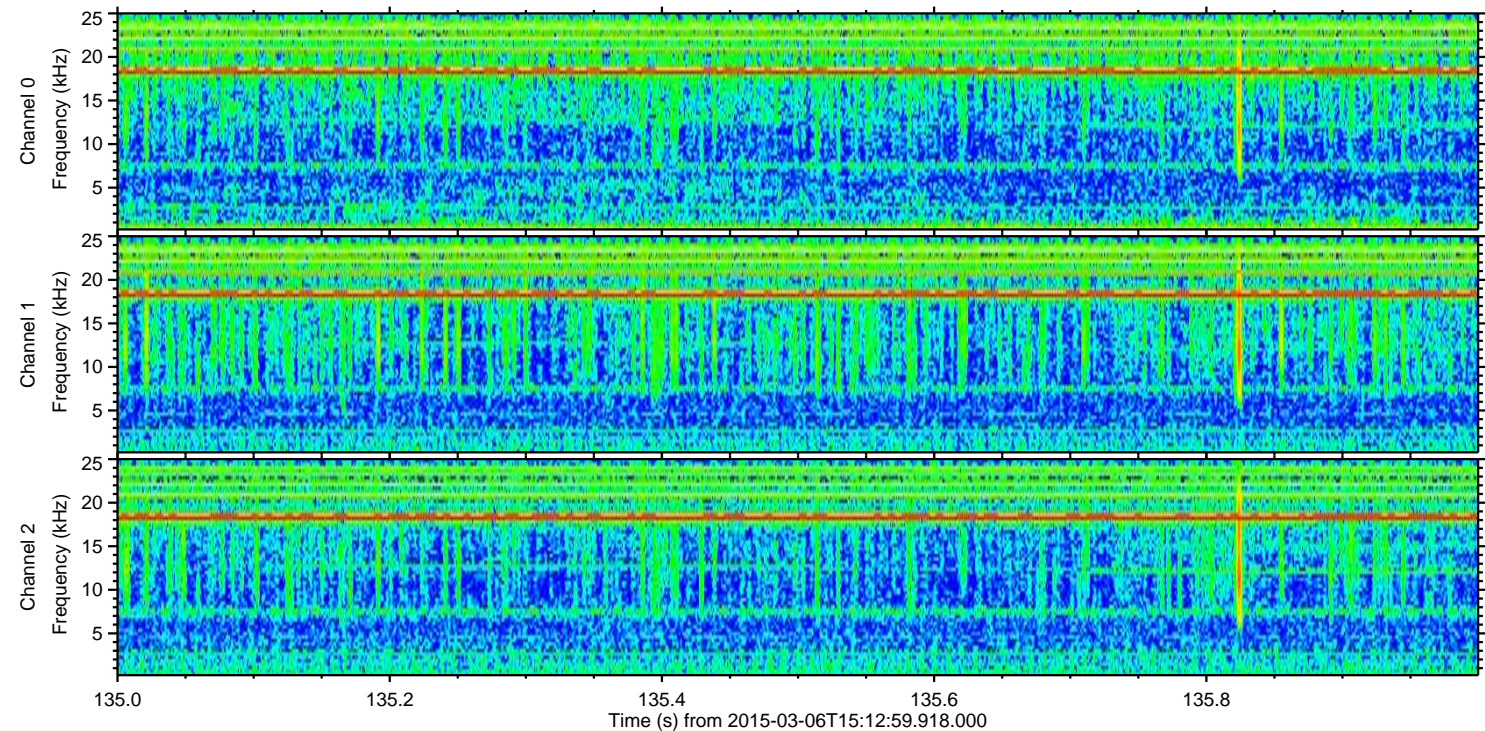
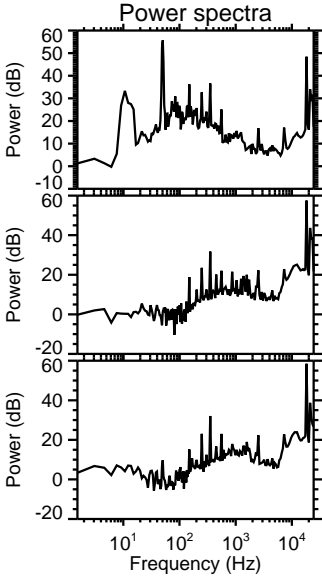
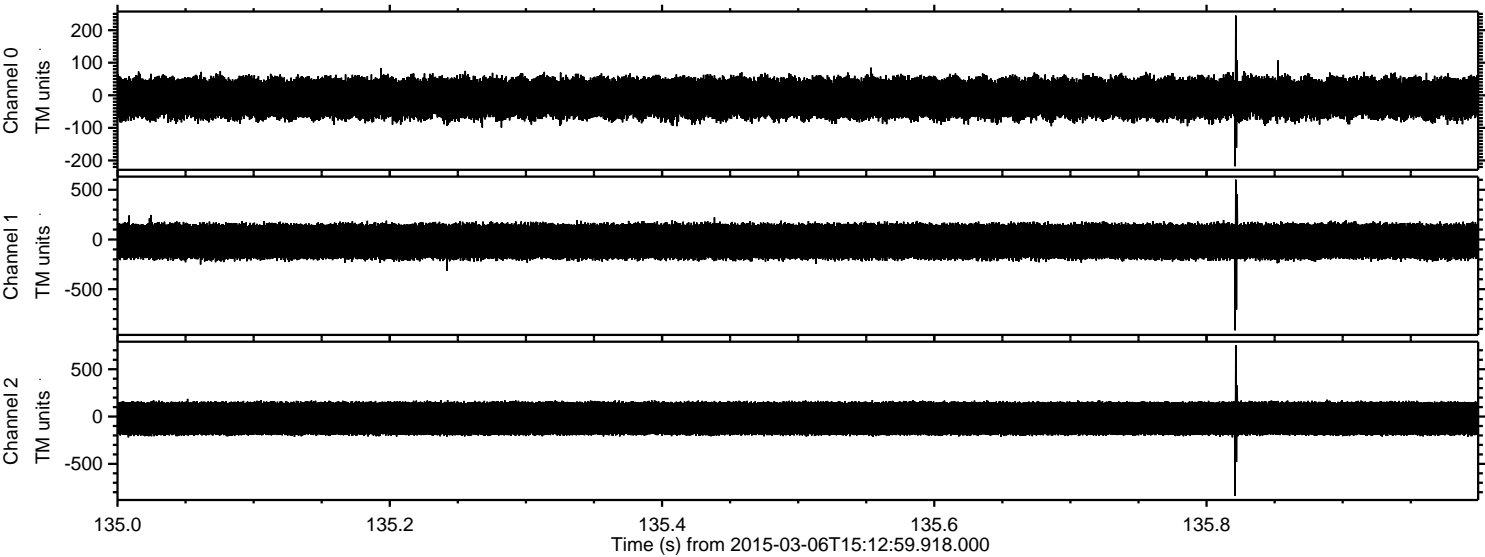


Processed Sun Mar 8 02:09:16 2015 by ELM ver.2012-10-06 from 001__elm20150306_151258__dat00.bin



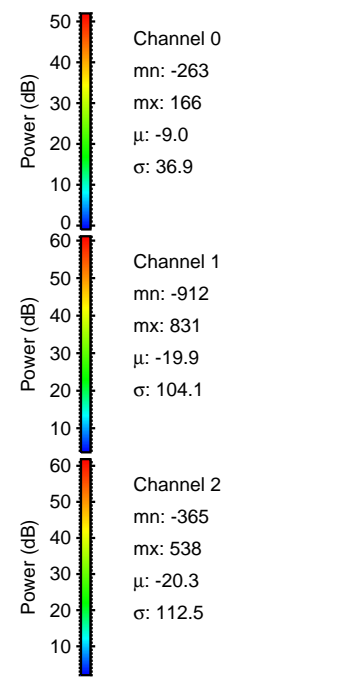
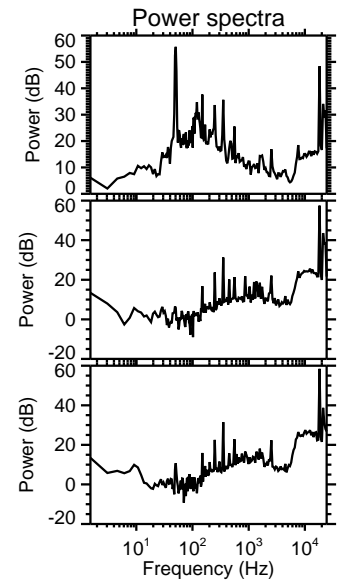
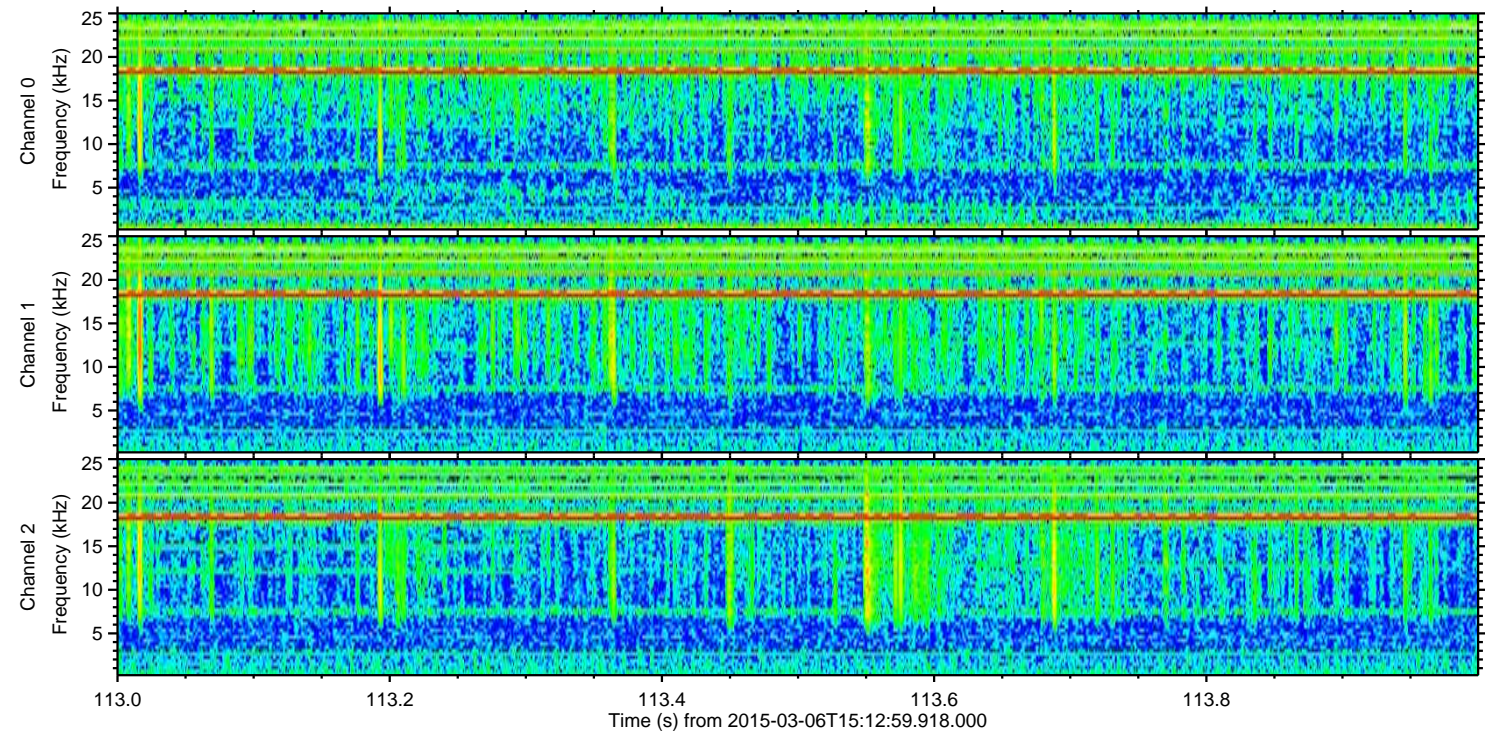
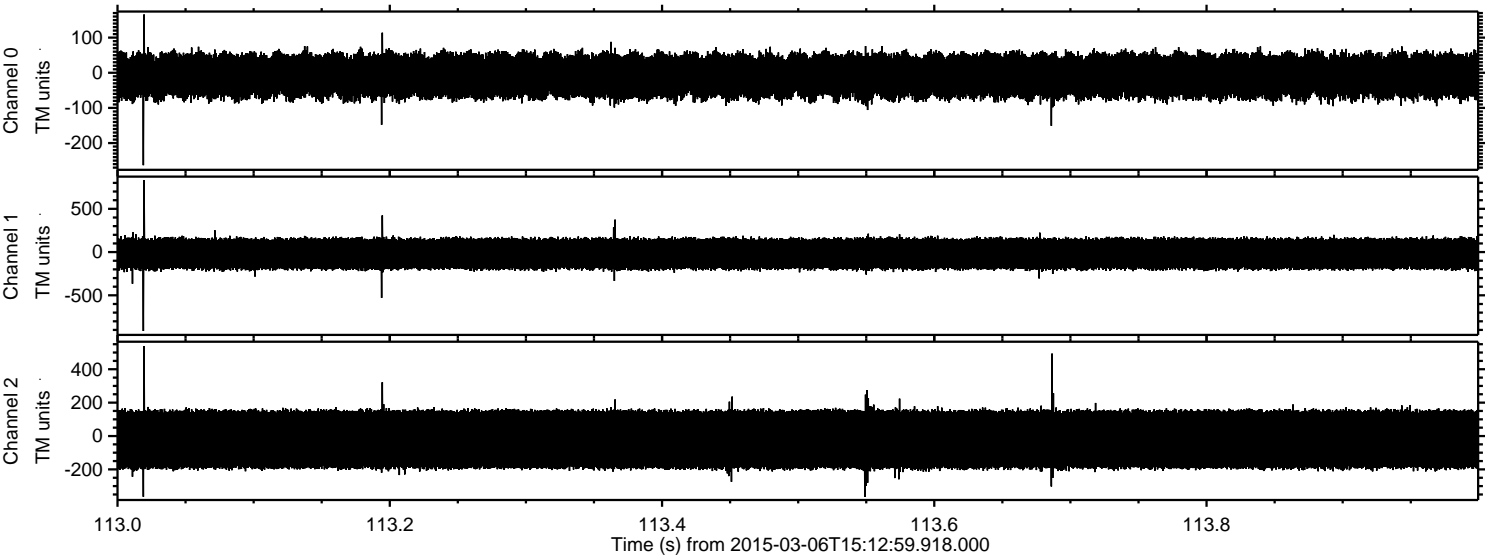
ELMAVAN 3D WAVEFORMS (Measured data sampled at 50 kHz) 49781 packets of 144 samples from 2015-03-06T15:12:59.918.000. Part 136/144

Processed Sun Mar 8 02:09:17 2015 by ELM ver.2012-10-06 from 001__elm20150306_151258__dat00.bin

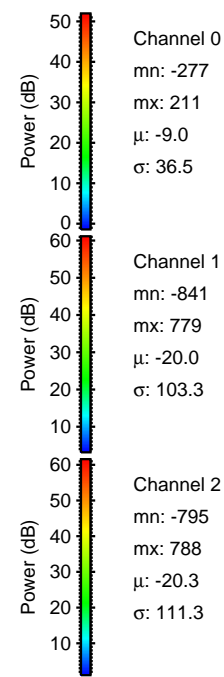
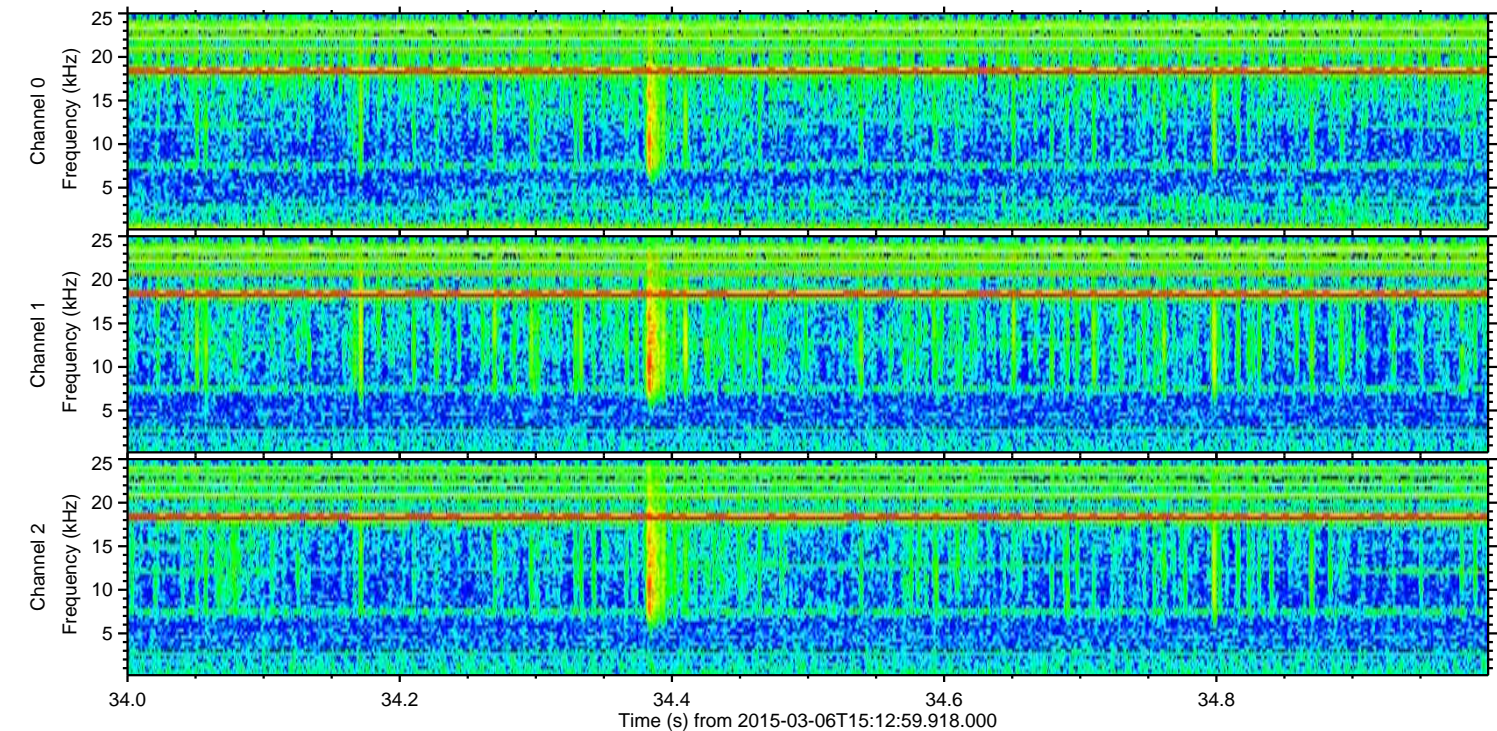
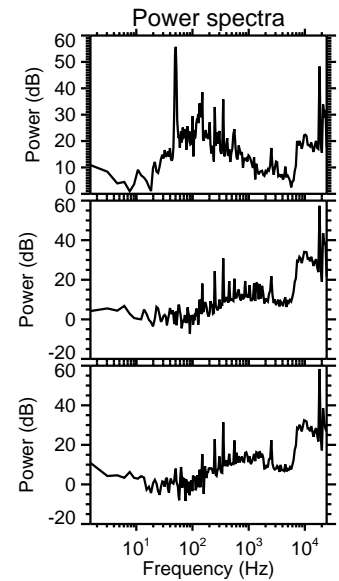
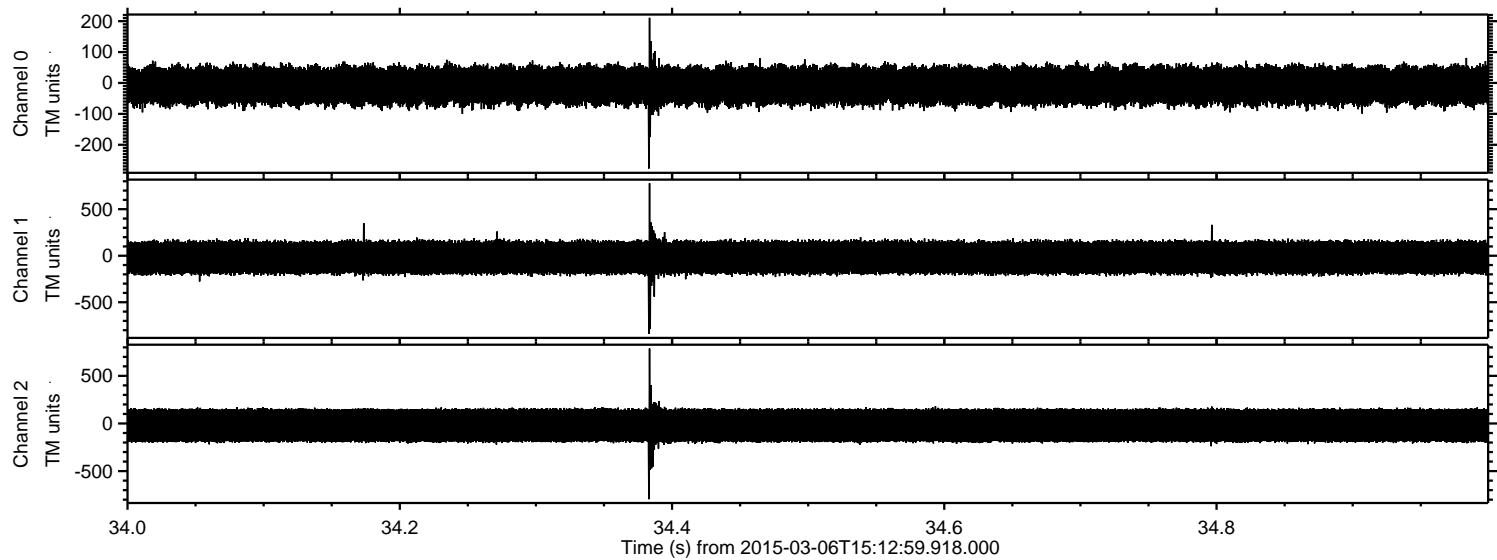


ELMAVAN 3D WAVEFORMS (Measured data sampled at 50 kHz) 49781 packets of 144 samples from 2015-03-06T15:12:59.918.000. Part 114/144

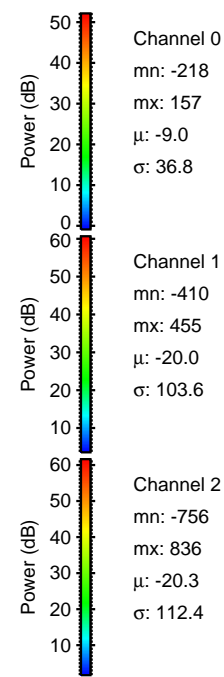
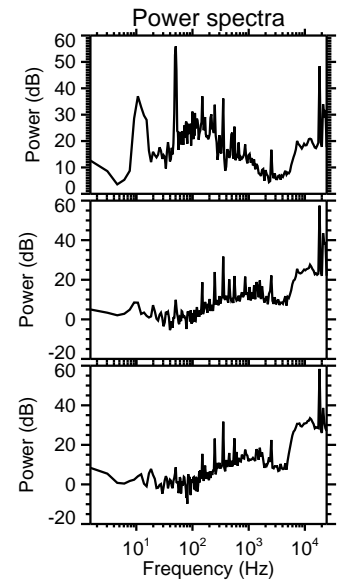
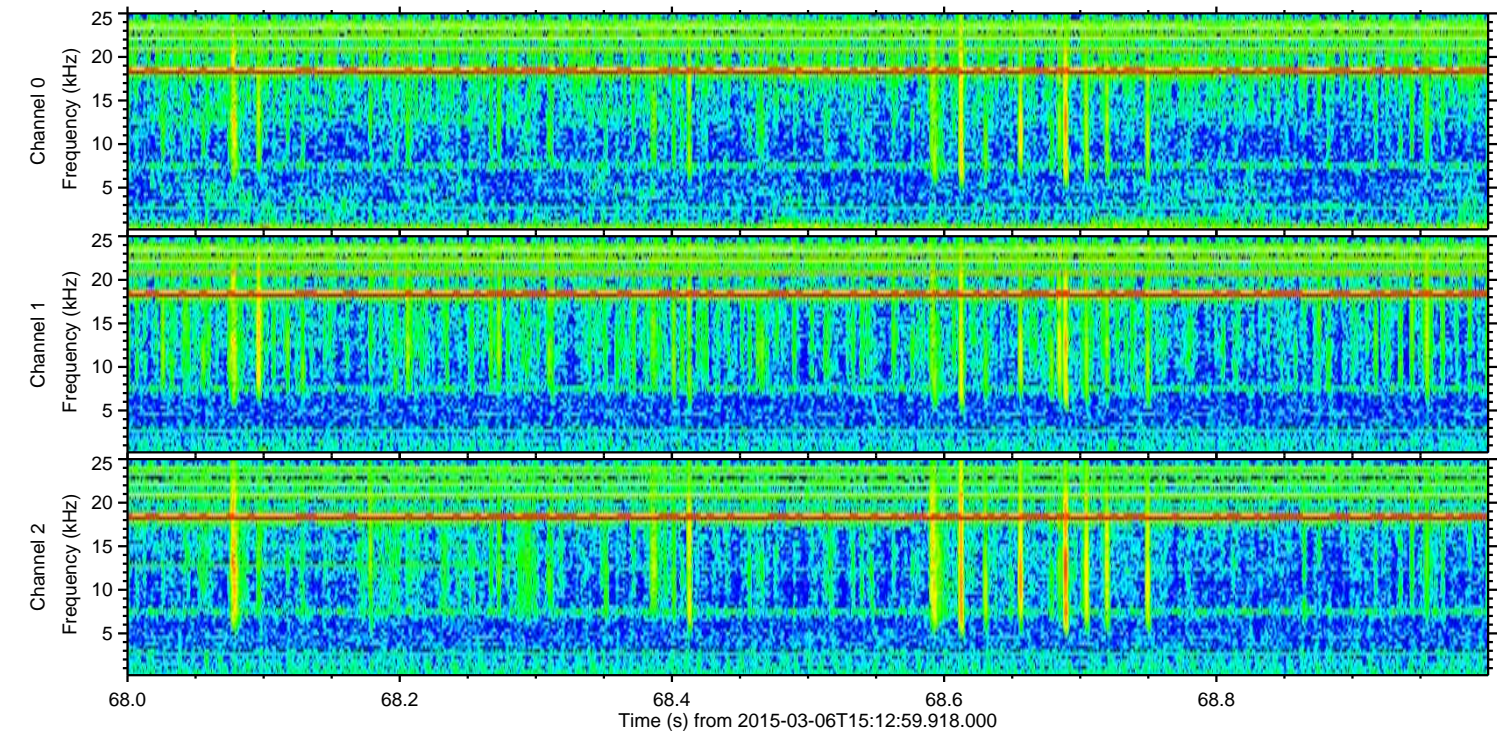
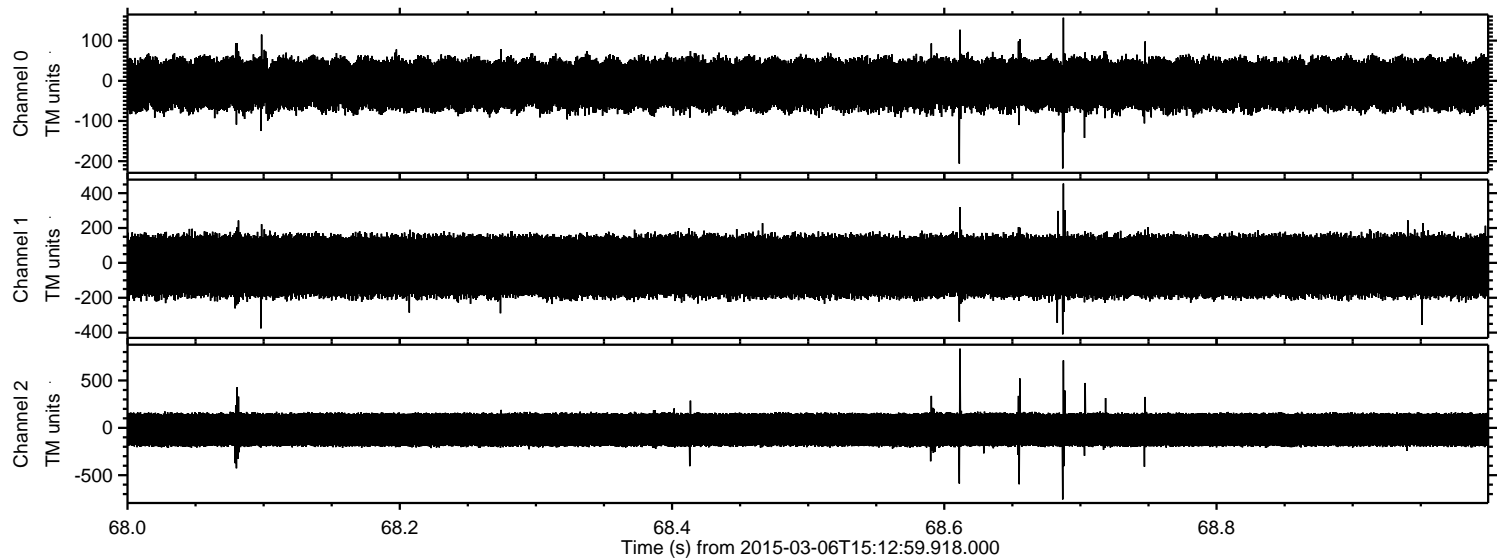
Processed Sun Mar 8 02:09:18 2015 by ELM ver.2012-10-06 from 001__elm20150306_151258__dat00.bin



Processed Sun Mar 8 02:09:19 2015 by ELM ver.2012-10-06 from 001__elm20150306_151258__dat00.bin



Processed Sun Mar 8 02:09:20 2015 by ELM ver.2012-10-06 from 001__elm20150306_151258__dat00.bin



Processed Sun Mar 8 02:09:22 2015 by ELM ver.2012-10-06 from 001__elm20150306_151258__dat00.bin

