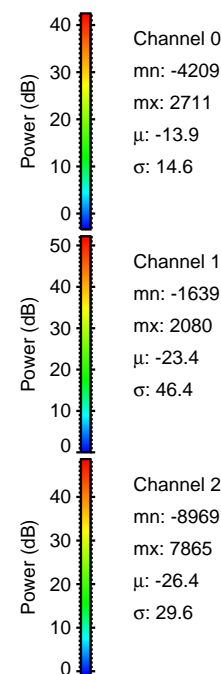
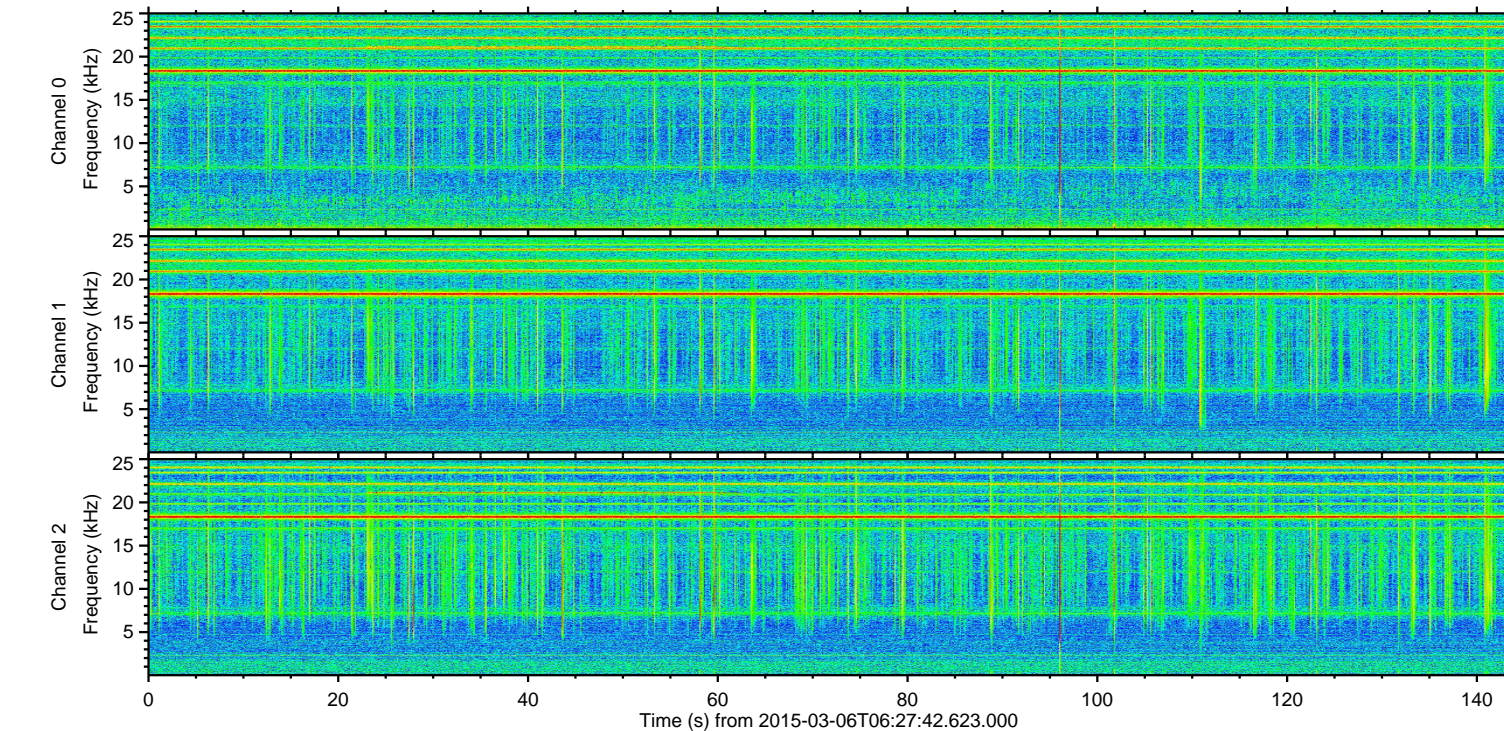
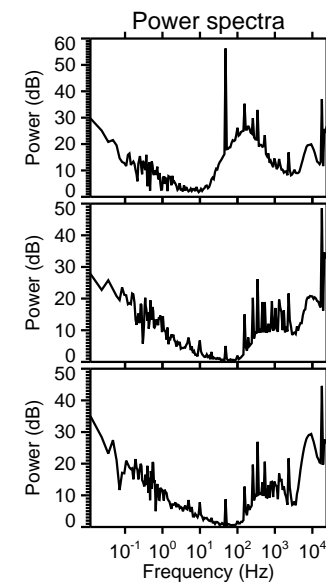
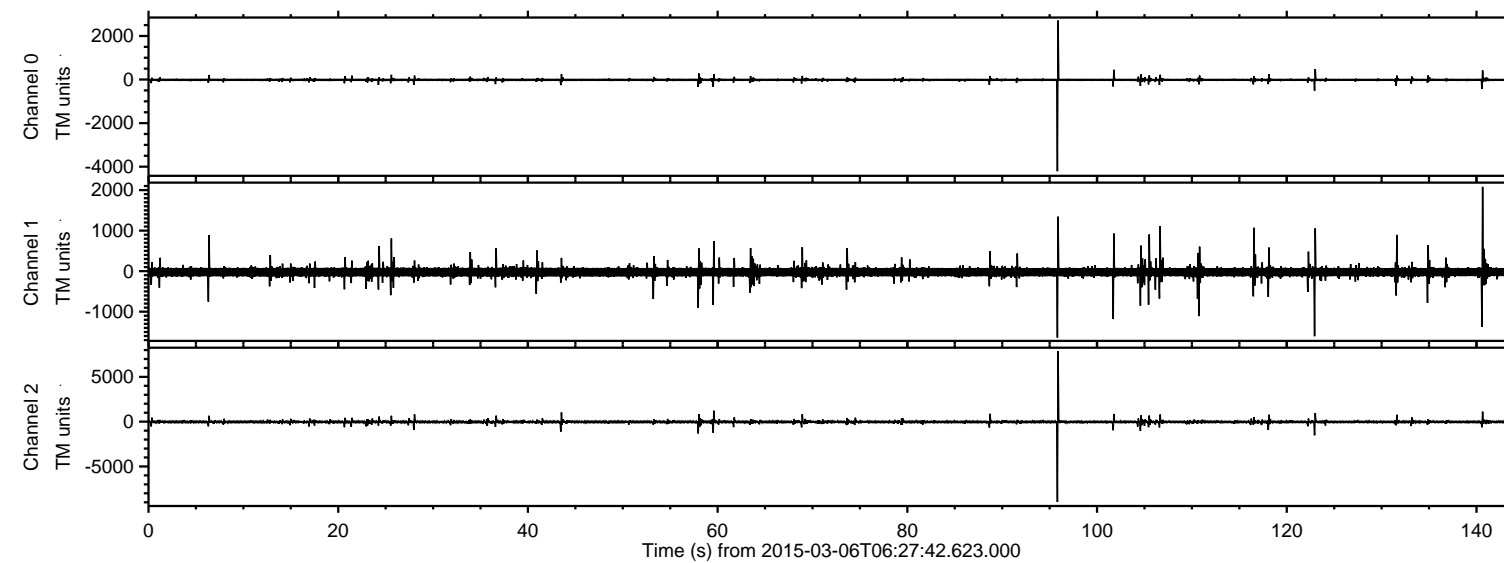


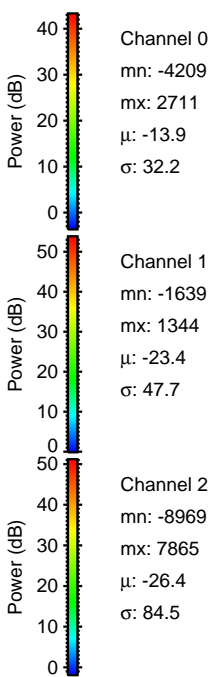
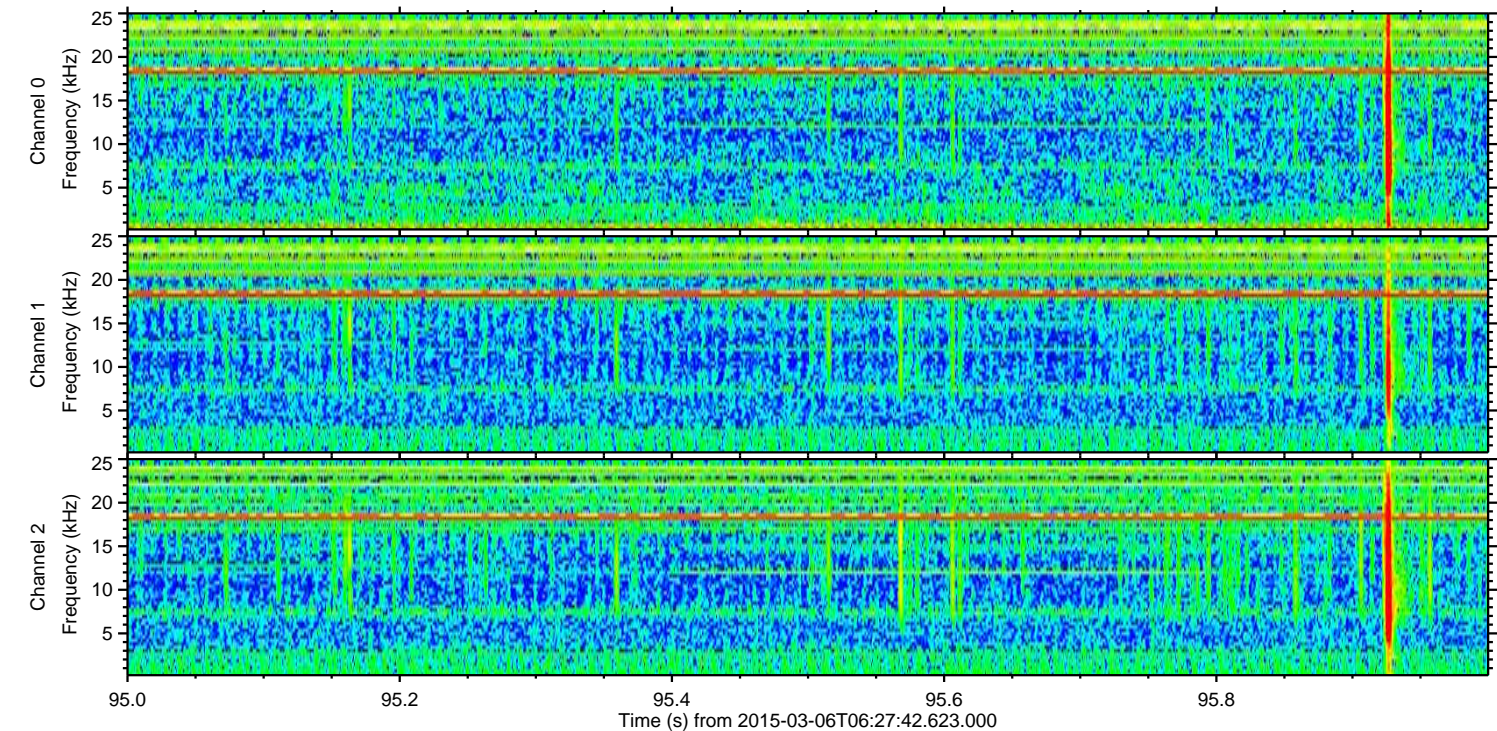
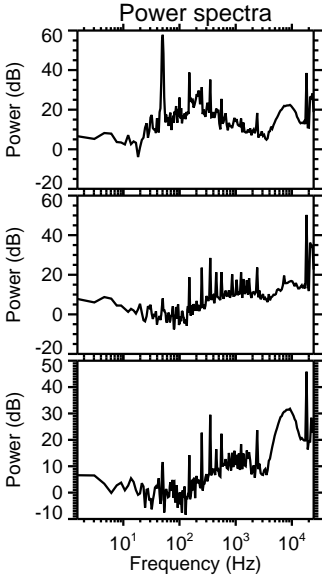
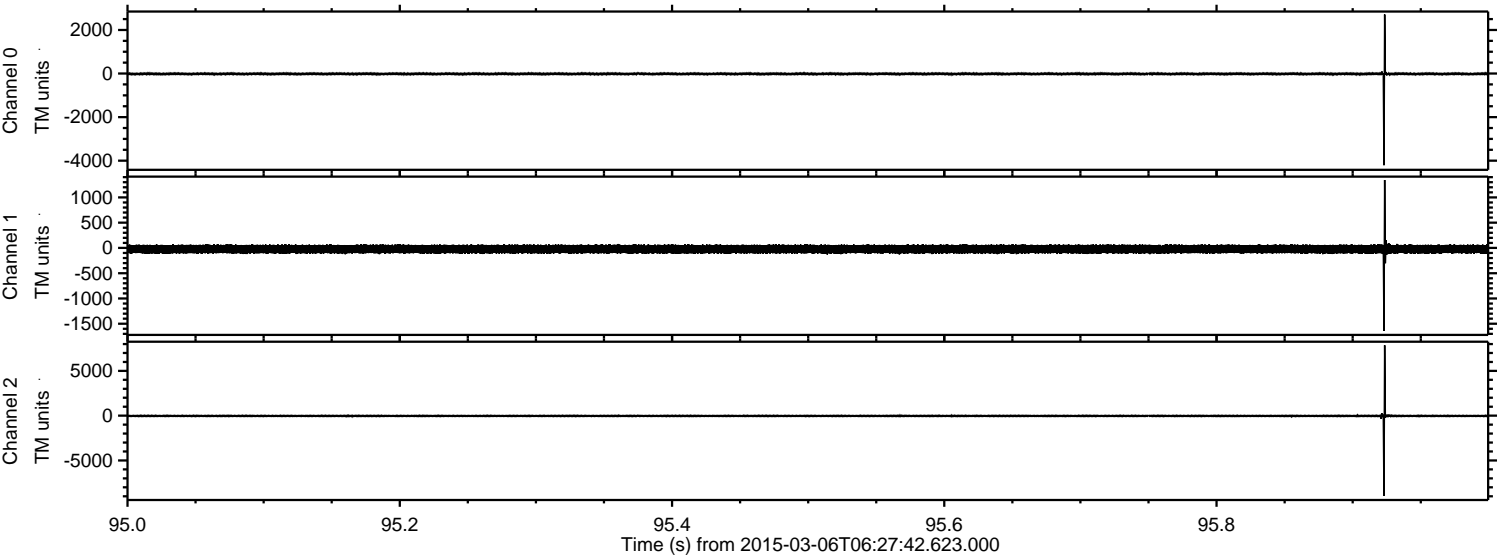
# ELMAVAN 3D WAVEFORMS (Measured data sampled at 50 kHz) 49807 packets of 144 samples from 2015-03-06T06:27:42.623.000.

Processed Sun Mar 8 00:11:33 2015 by ELM ver.2012-10-06 from 001\_\_elm20150306\_062741\_\_dat00.bin





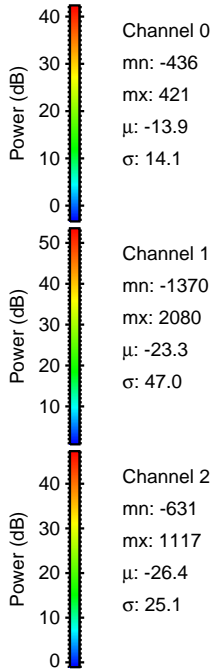
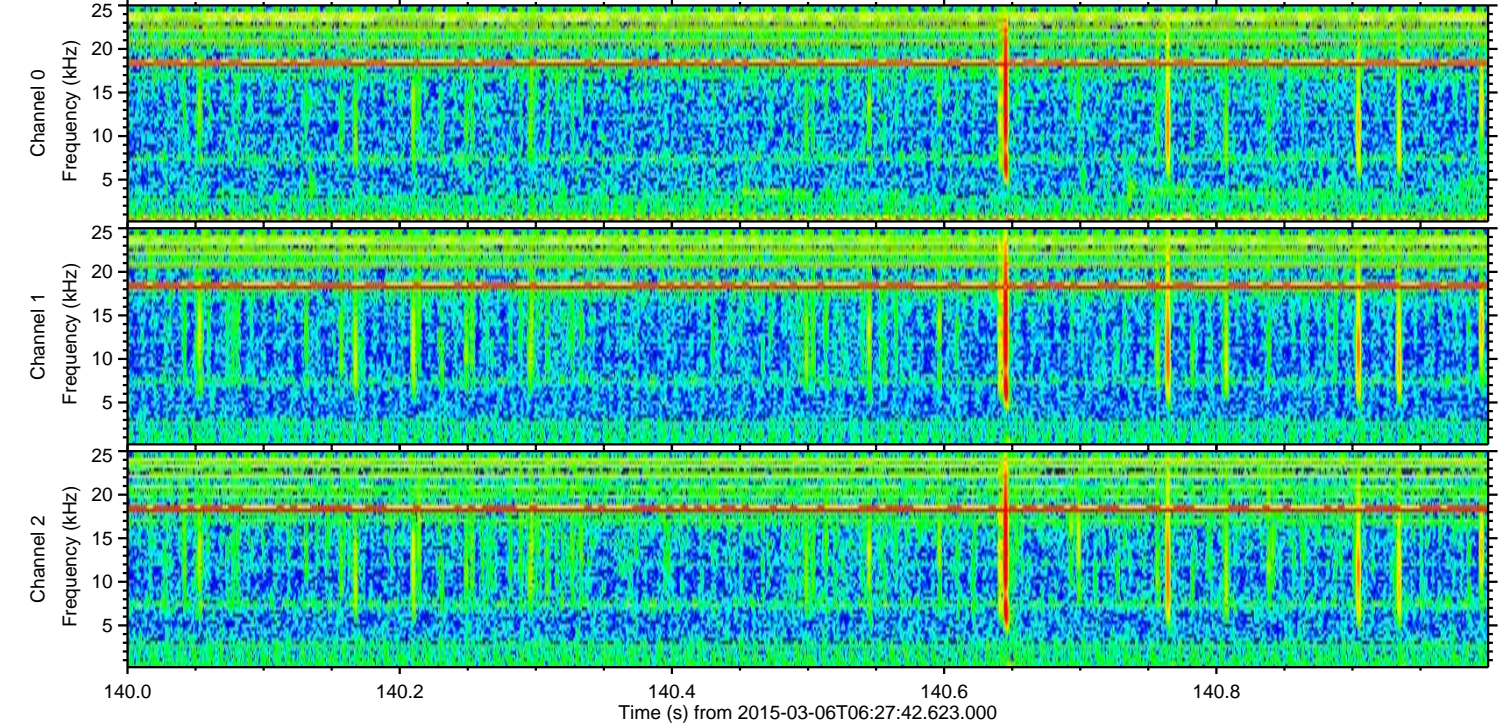
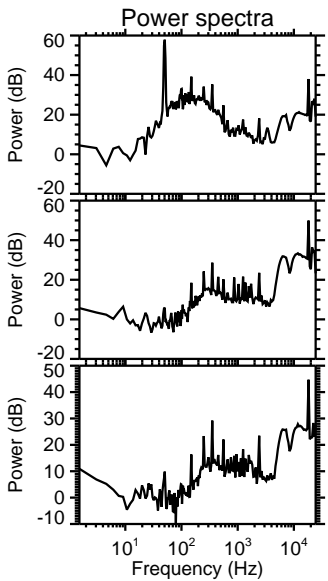
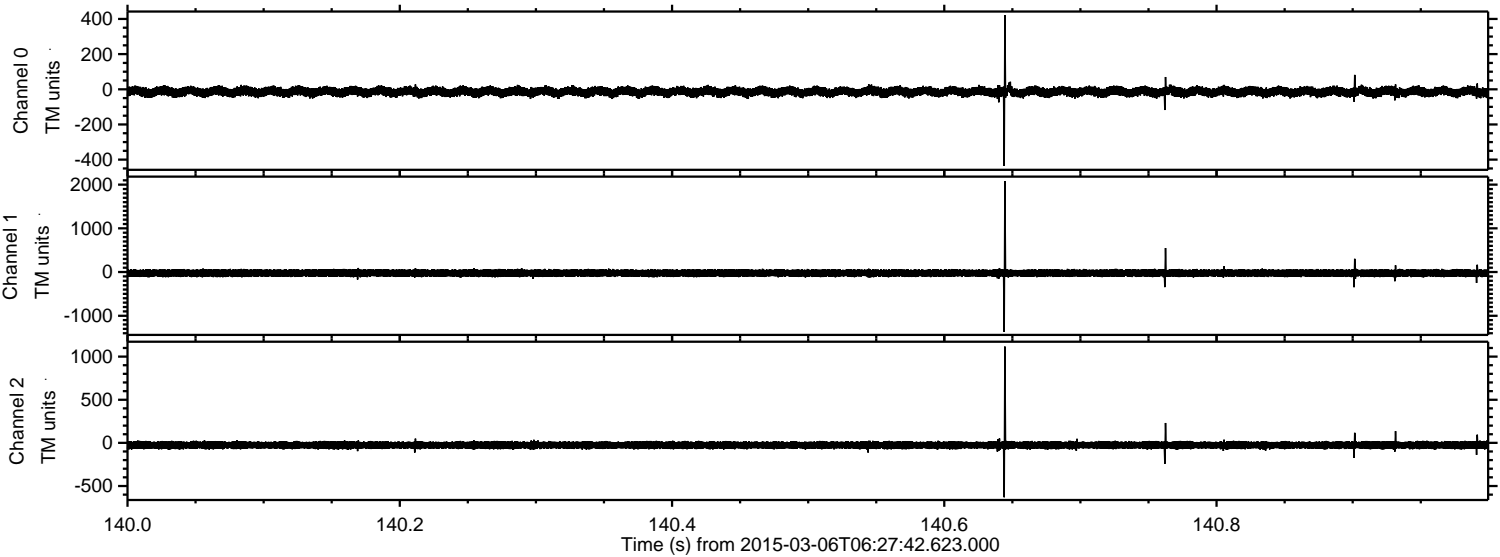
Processed Sun Mar 8 00:11:48 2015 by ELM ver.2012-10-06 from 001\_\_elm20150306\_062741\_\_dat00.bin





ELMAVAN 3D WAVEFORMS (Measured data sampled at 50 kHz) 49807 packets of 144 samples from 2015-03-06T06:27:42.623.000. Part 141/144

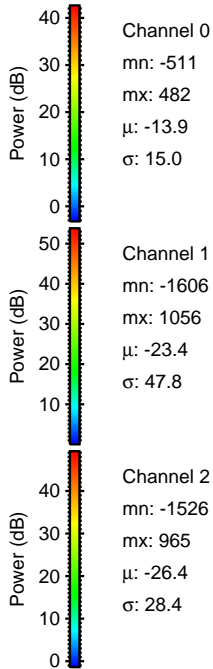
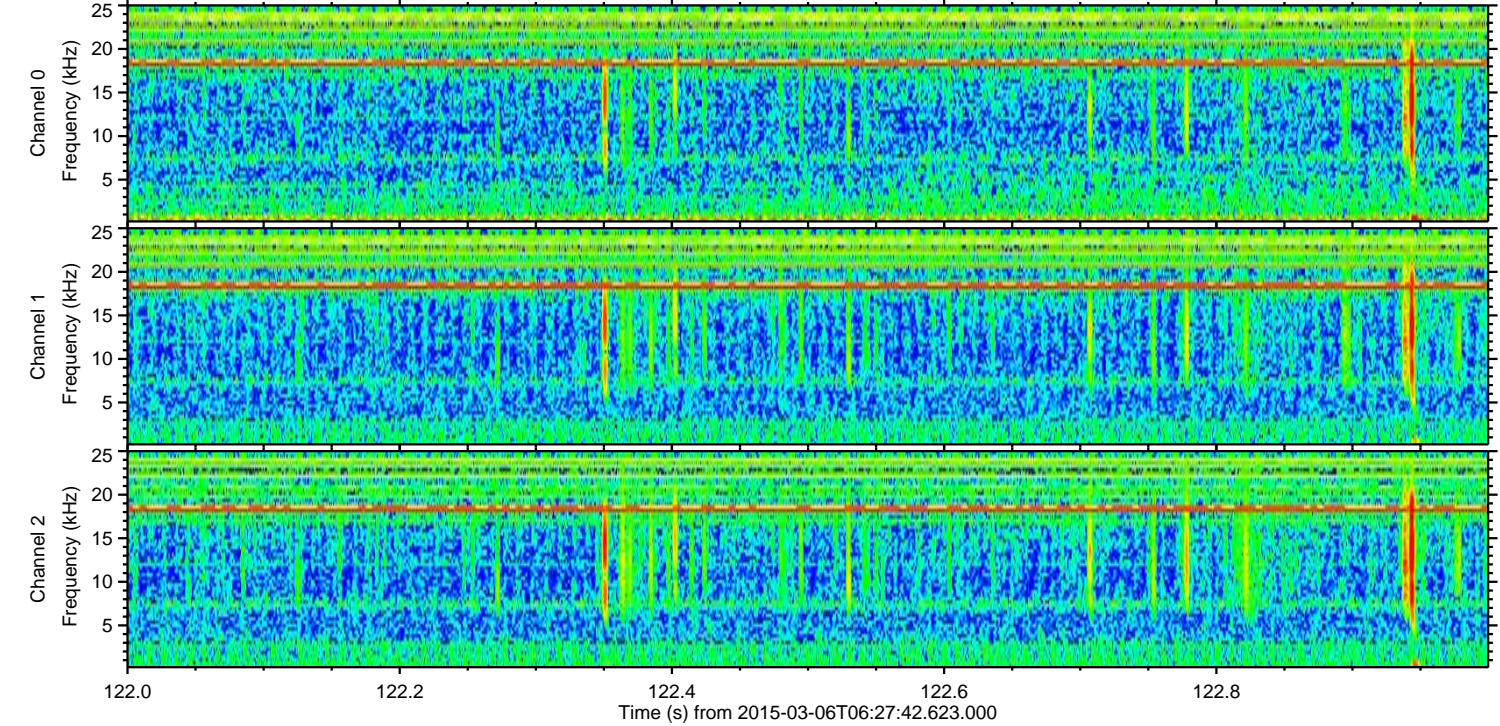
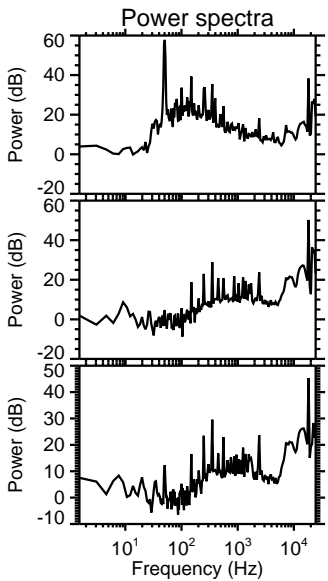
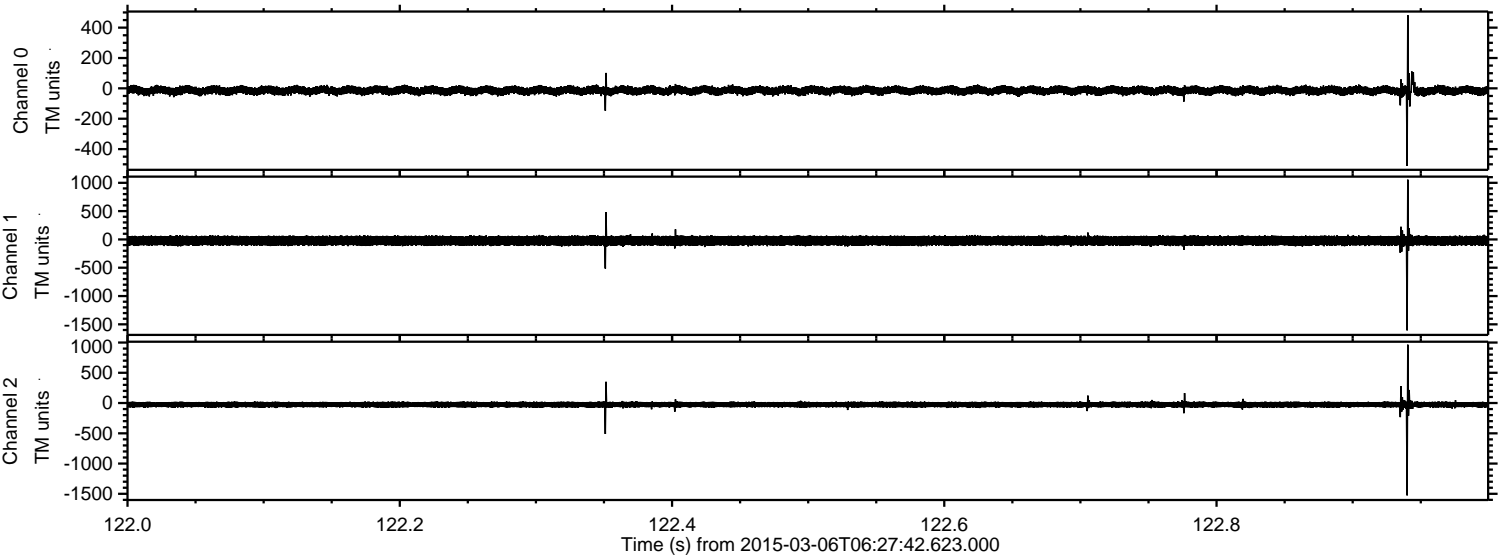
Processed Sun Mar 8 00:11:49 2015 by ELM ver.2012-10-06 from 001\_\_elm20150306\_062741\_\_dat00.bin





ELMAVAN 3D WAVEFORMS (Measured data sampled at 50 kHz) 49807 packets of 144 samples from 2015-03-06T06:27:42.623.000. Part 123/144

Processed Sun Mar 8 00:11:50 2015 by ELM ver.2012-10-06 from 001\_\_elm20150306\_062741\_\_dat00.bin



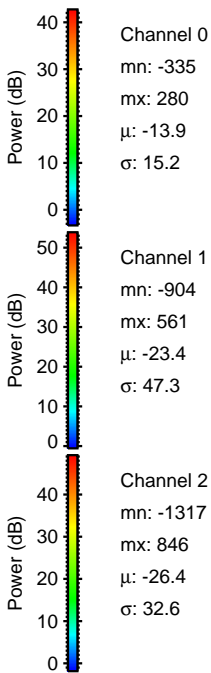
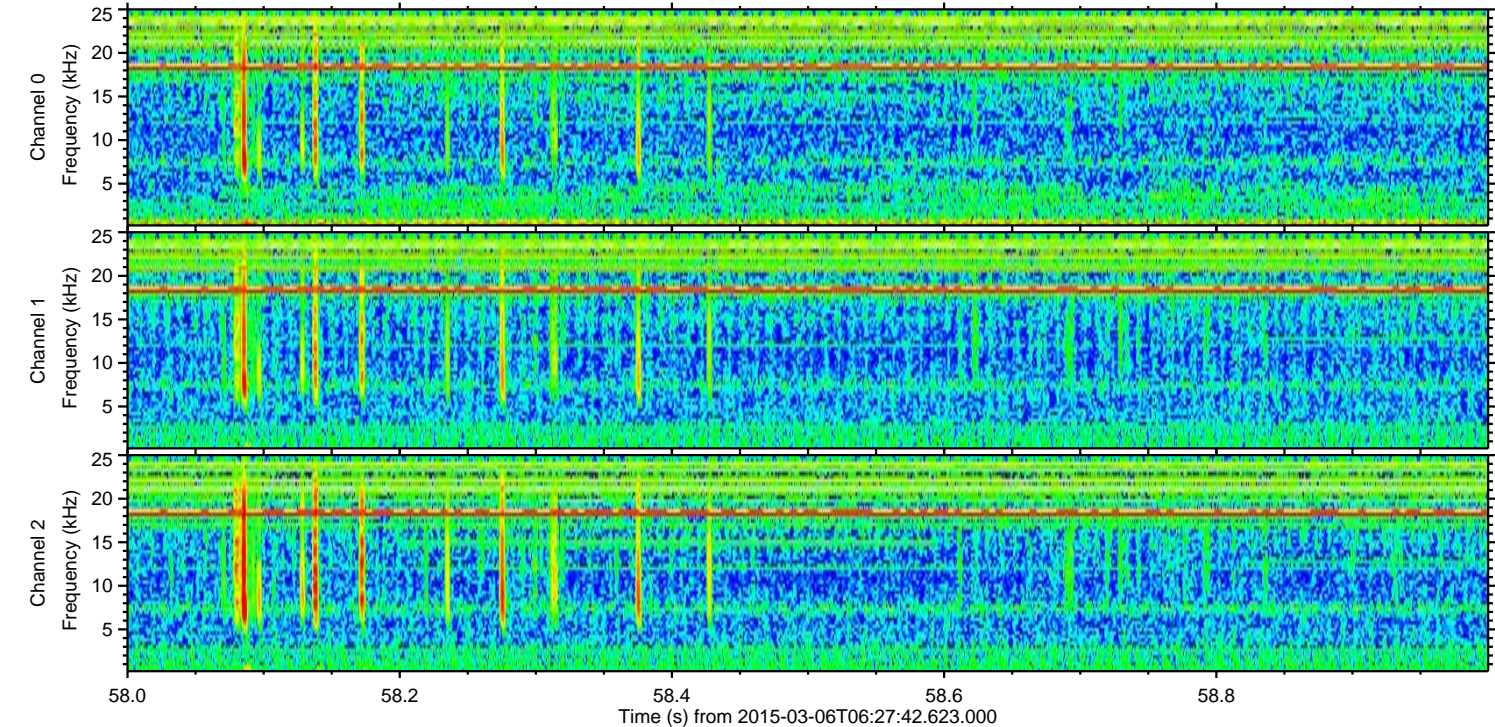
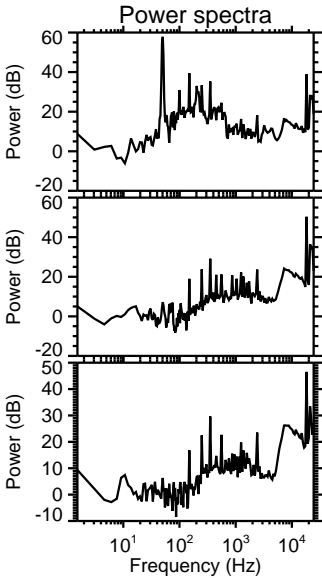
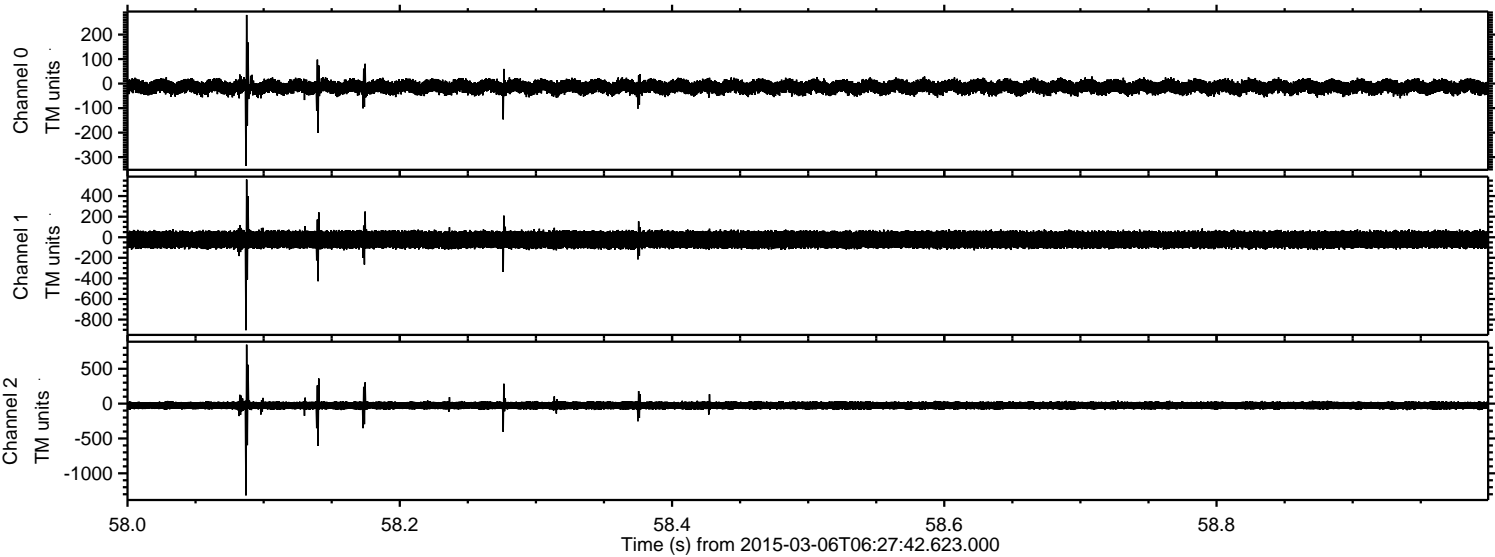
Channel 0  
mn: -511  
mx: 482  
 $\mu$ : -13.9  
 $\sigma$ : 15.0

Channel 1  
mn: -1606  
mx: 1056  
 $\mu$ : -23.4  
 $\sigma$ : 47.8

Channel 2  
mn: -1526  
mx: 965  
 $\mu$ : -26.4  
 $\sigma$ : 28.4

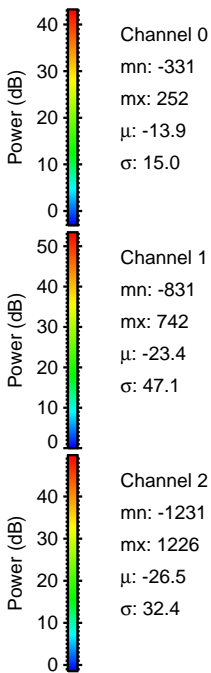
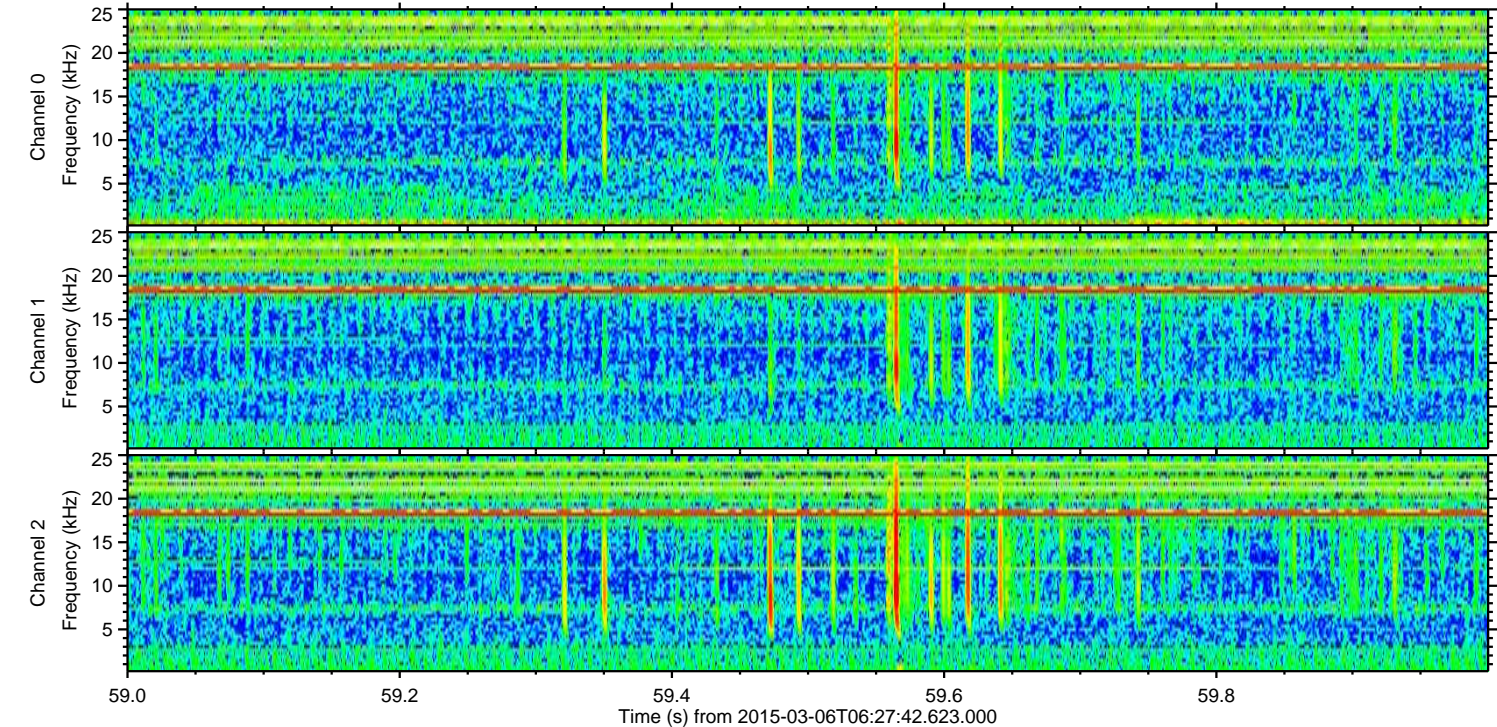
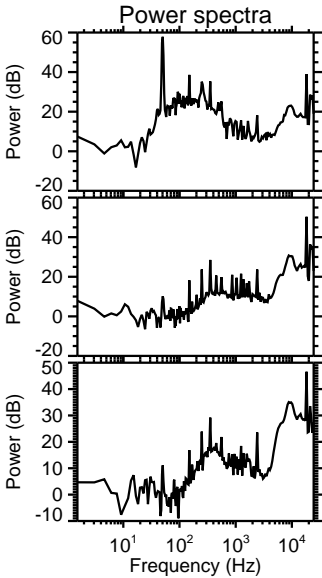
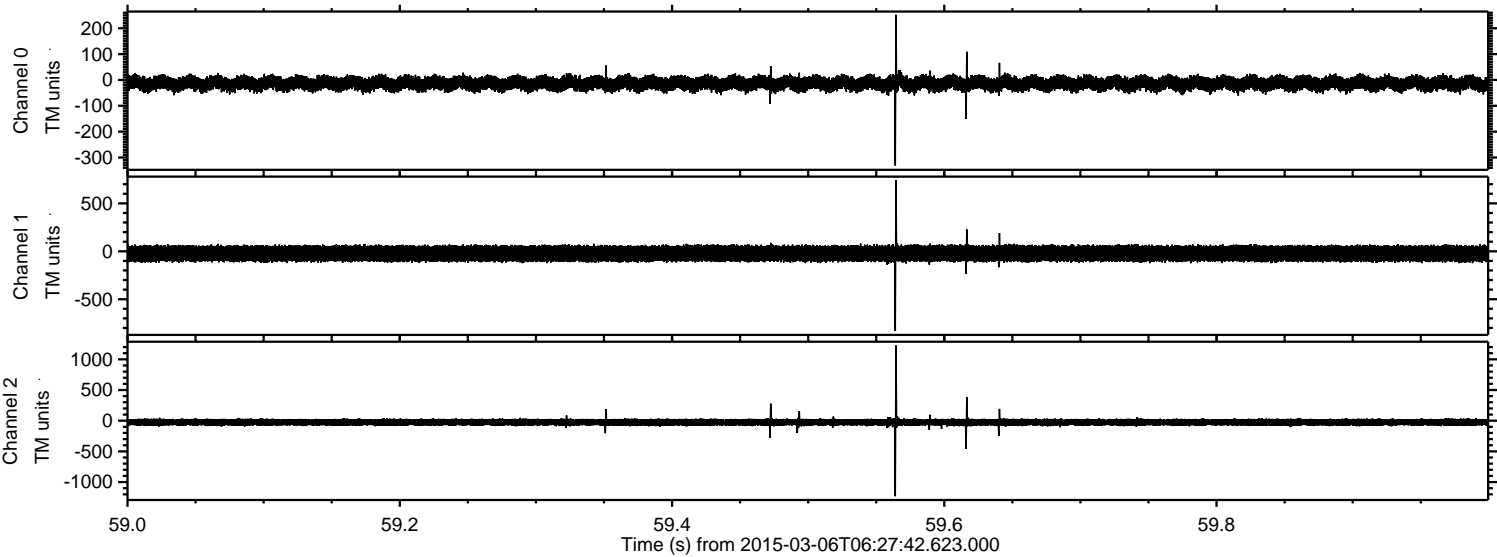


Processed Sun Mar 8 00:11:51 2015 by ELM ver.2012-10-06 from 001\_\_elm20150306\_062741\_\_dat00.bin





Processed Sun Mar 8 00:11:52 2015 by ELM ver.2012-10-06 from 001\_\_elm20150306\_062741\_\_dat00.bin



Channel 0  
mn: -331  
mx: 252  
 $\mu$ : -13.9  
 $\sigma$ : 15.0

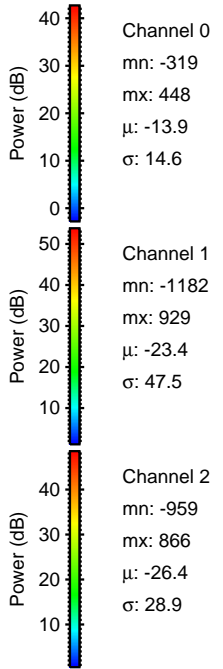
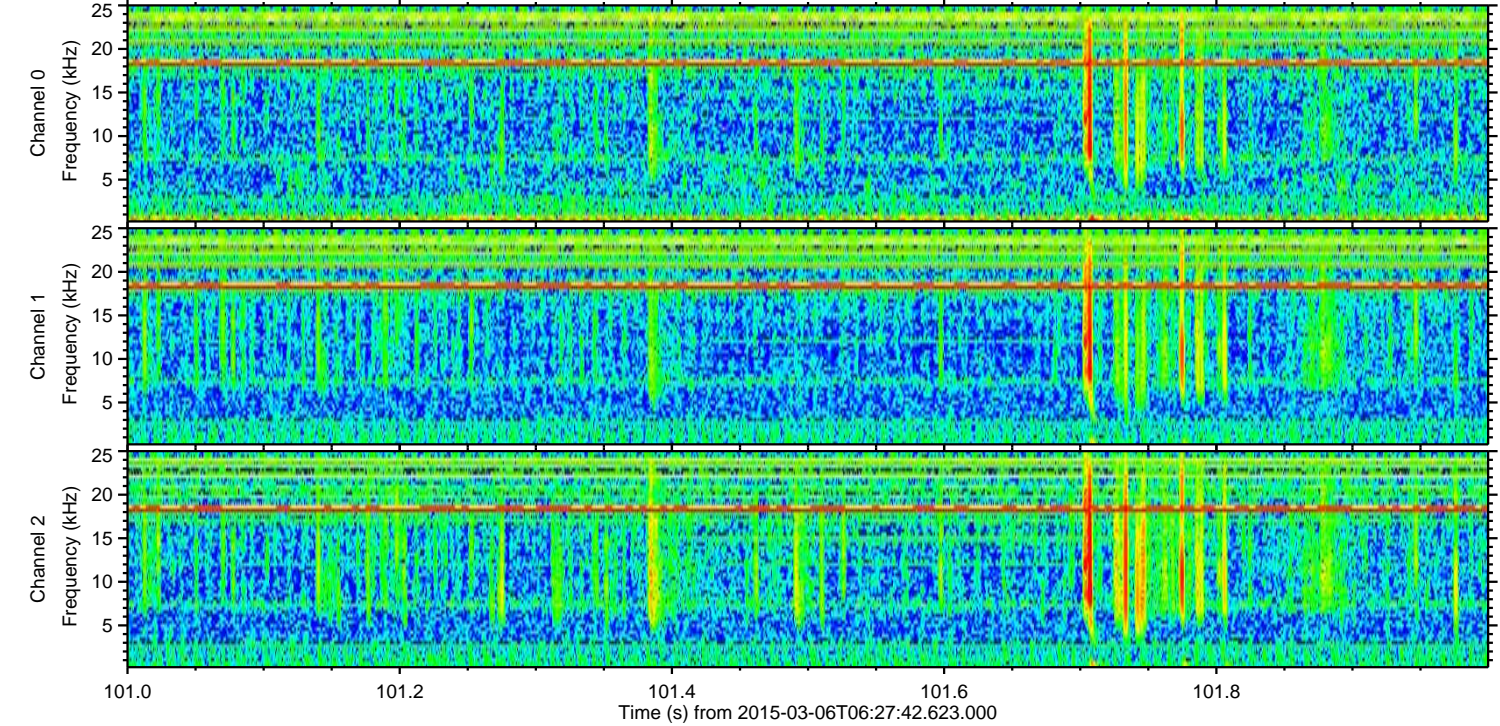
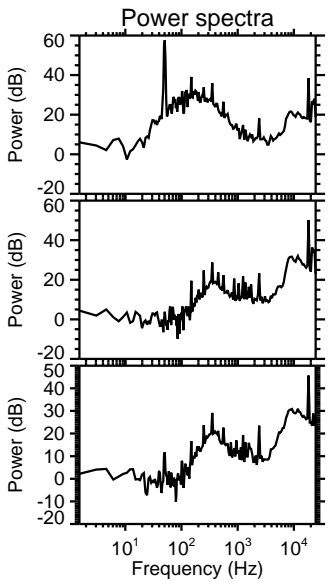
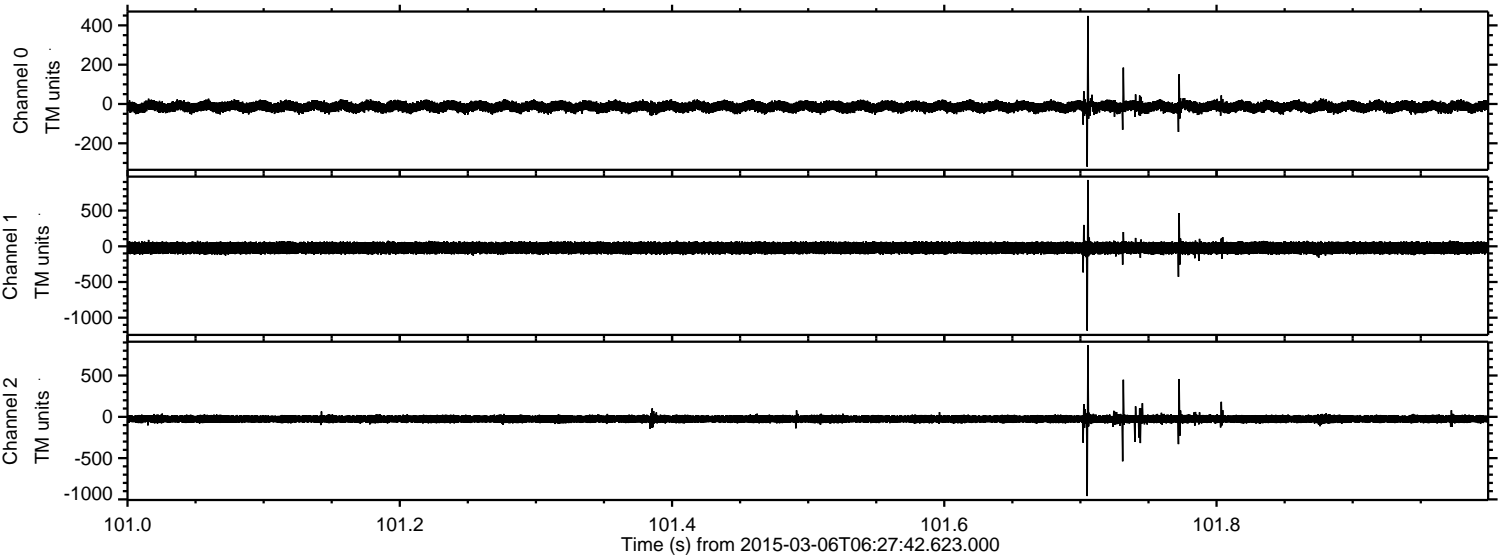
Channel 1  
mn: -831  
mx: 742  
 $\mu$ : -23.4  
 $\sigma$ : 47.1

Channel 2  
mn: -1231  
mx: 1226  
 $\mu$ : -26.5  
 $\sigma$ : 32.4



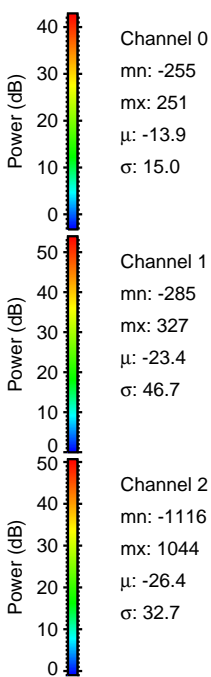
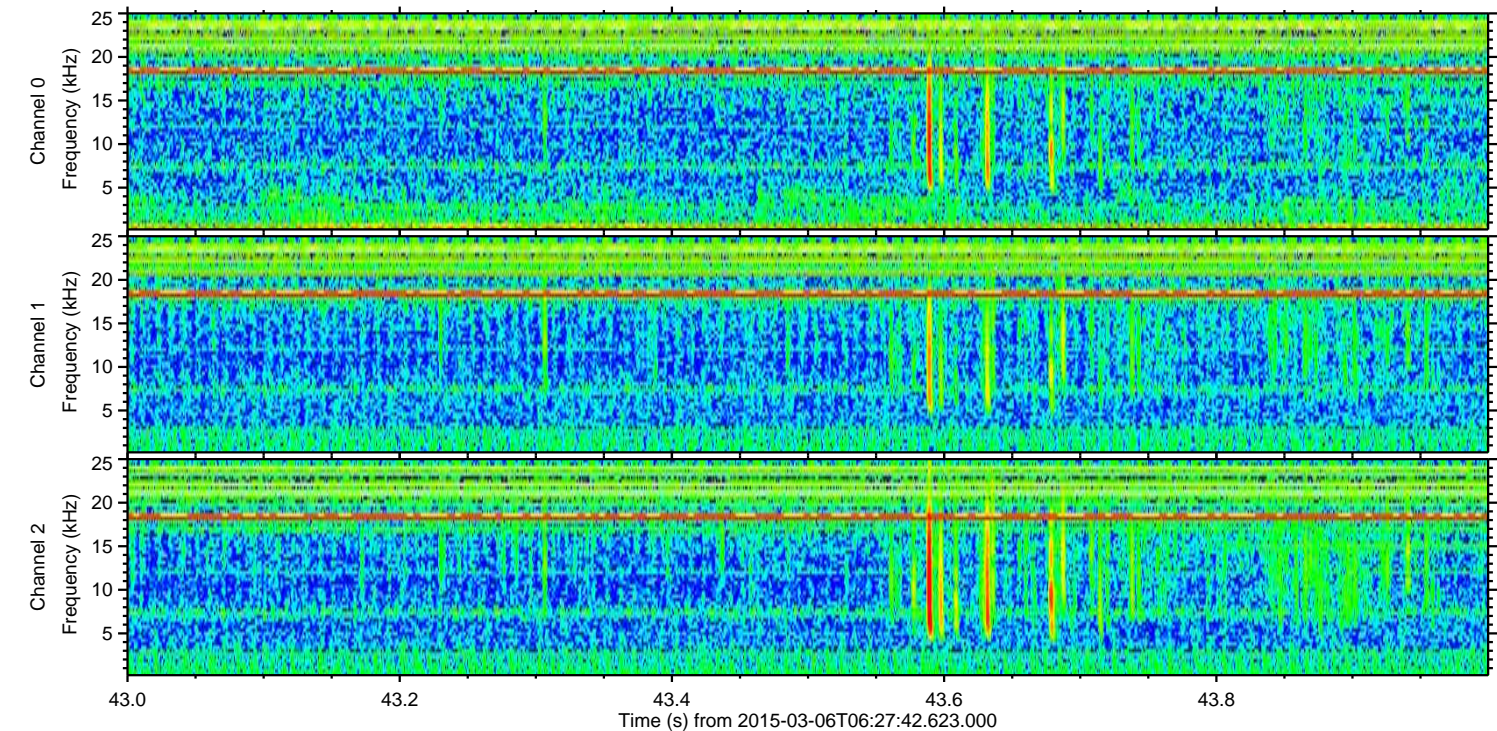
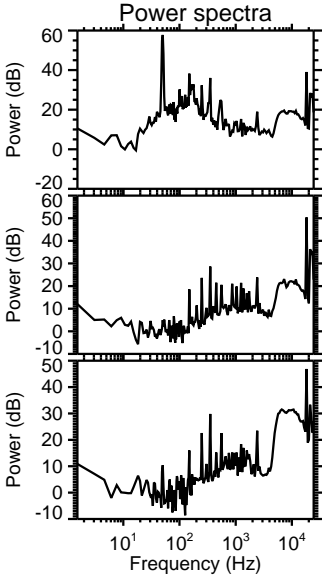
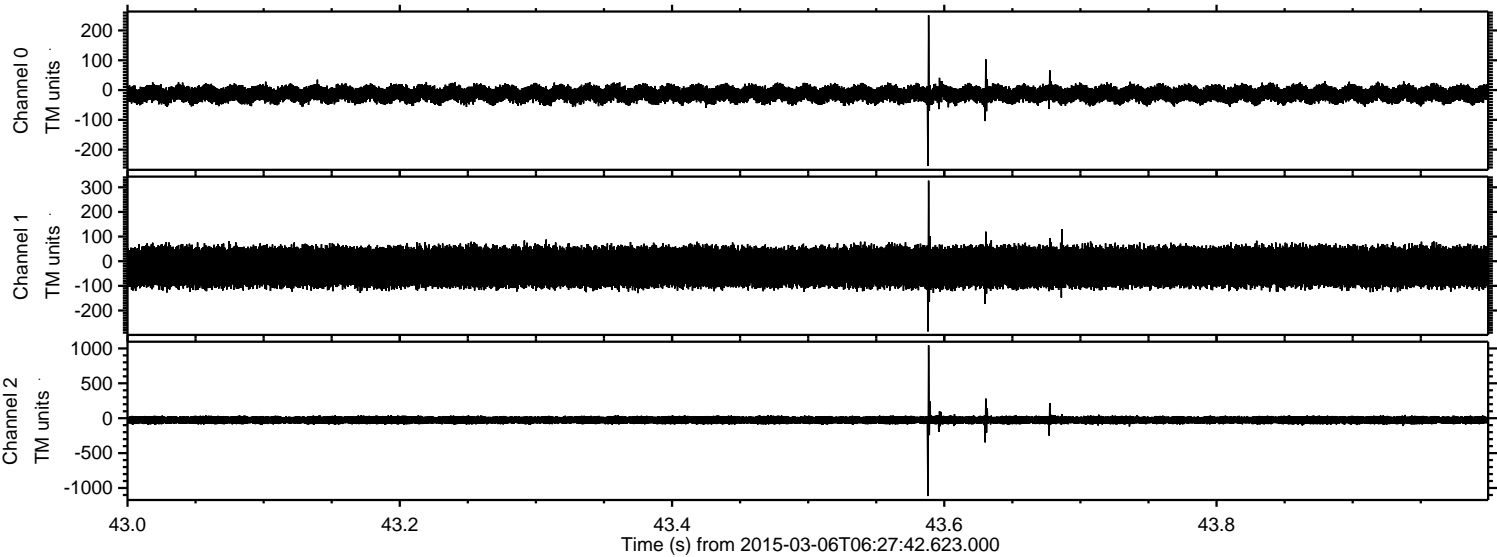
ELMAVAN 3D WAVEFORMS (Measured data sampled at 50 kHz) 49807 packets of 144 samples from 2015-03-06T06:27:42.623.000. Part 102/144

Processed Sun Mar 8 00:11:53 2015 by ELM ver.2012-10-06 from 001\_\_elm20150306\_062741\_\_dat00.bin





Processed Sun Mar 8 00:11:54 2015 by ELM ver.2012-10-06 from 001\_\_elm20150306\_062741\_\_dat00.bin

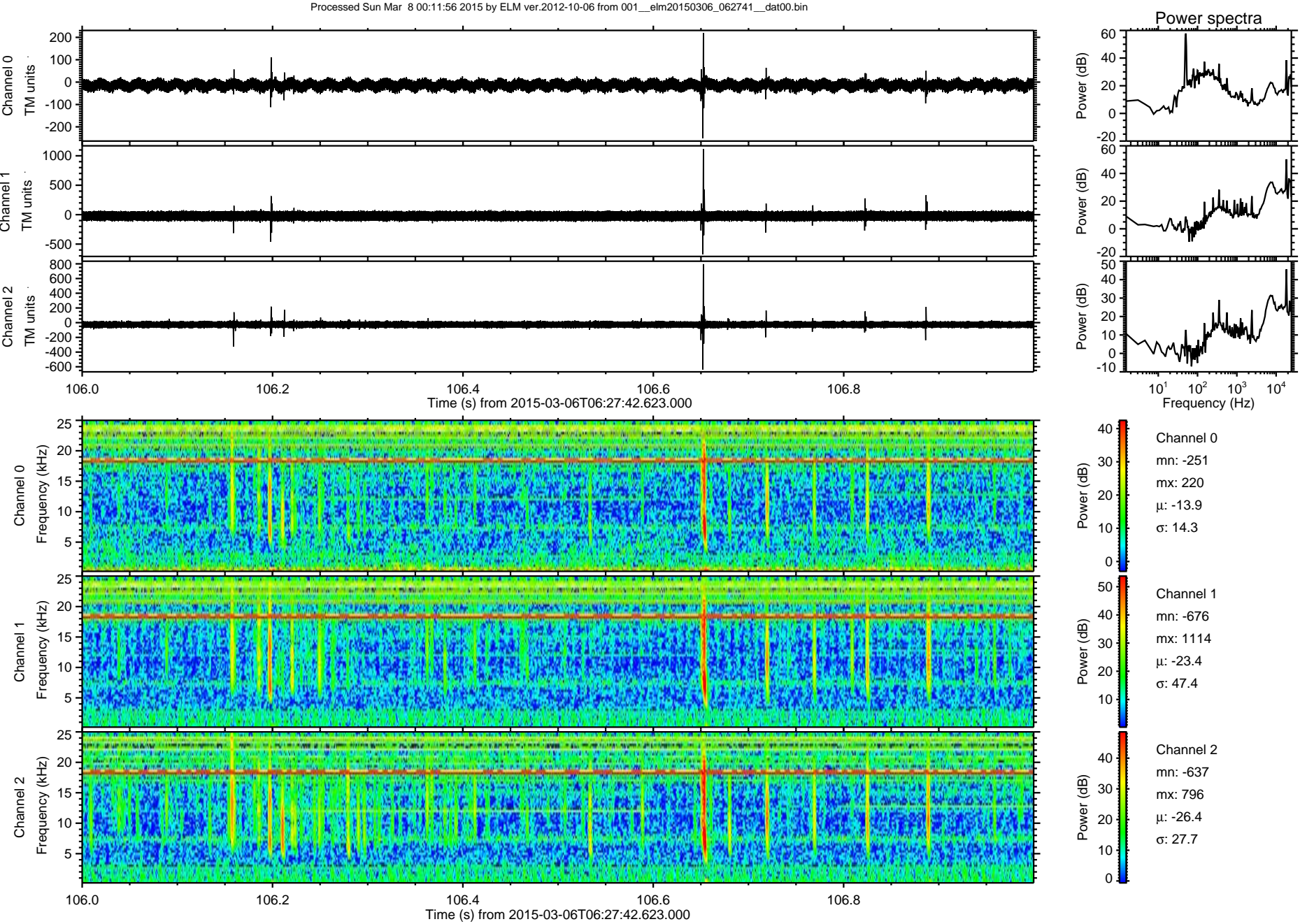


Channel 0  
mn: -255  
mx: 251  
 $\mu$ : -13.9  
 $\sigma$ : 15.0

Channel 1  
mn: -285  
mx: 327  
 $\mu$ : -23.4  
 $\sigma$ : 46.7

Channel 2  
mn: -1116  
mx: 1044  
 $\mu$ : -26.4  
 $\sigma$ : 32.7







Processed Sun Mar 8 00:11:57 2015 by ELM ver.2012-10-06 from 001\_\_elm20150306\_062741\_\_dat00.bin

