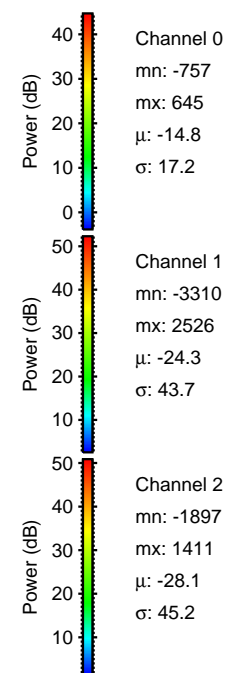
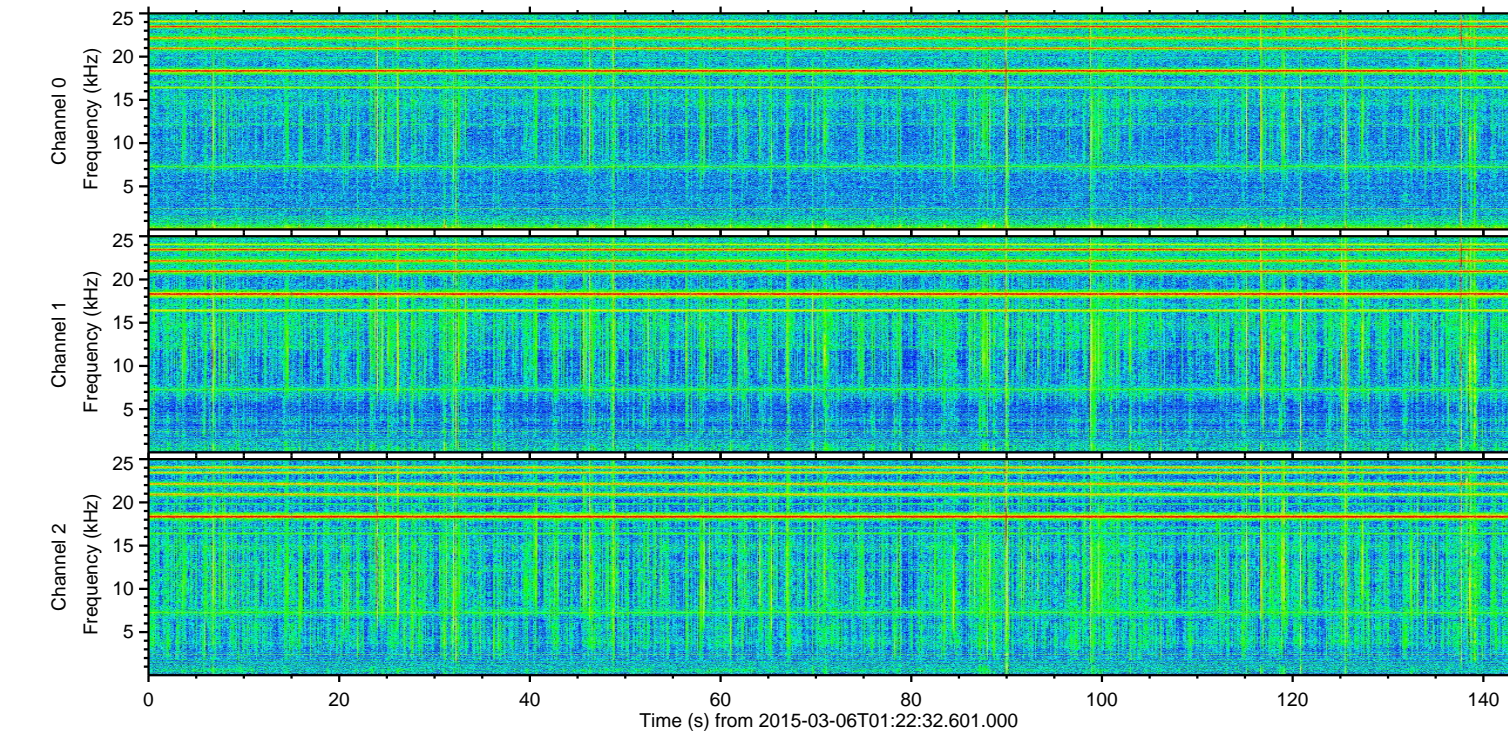
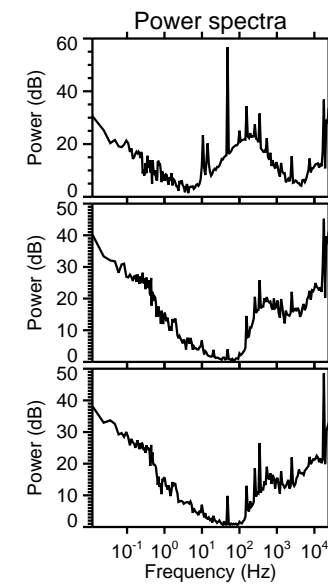
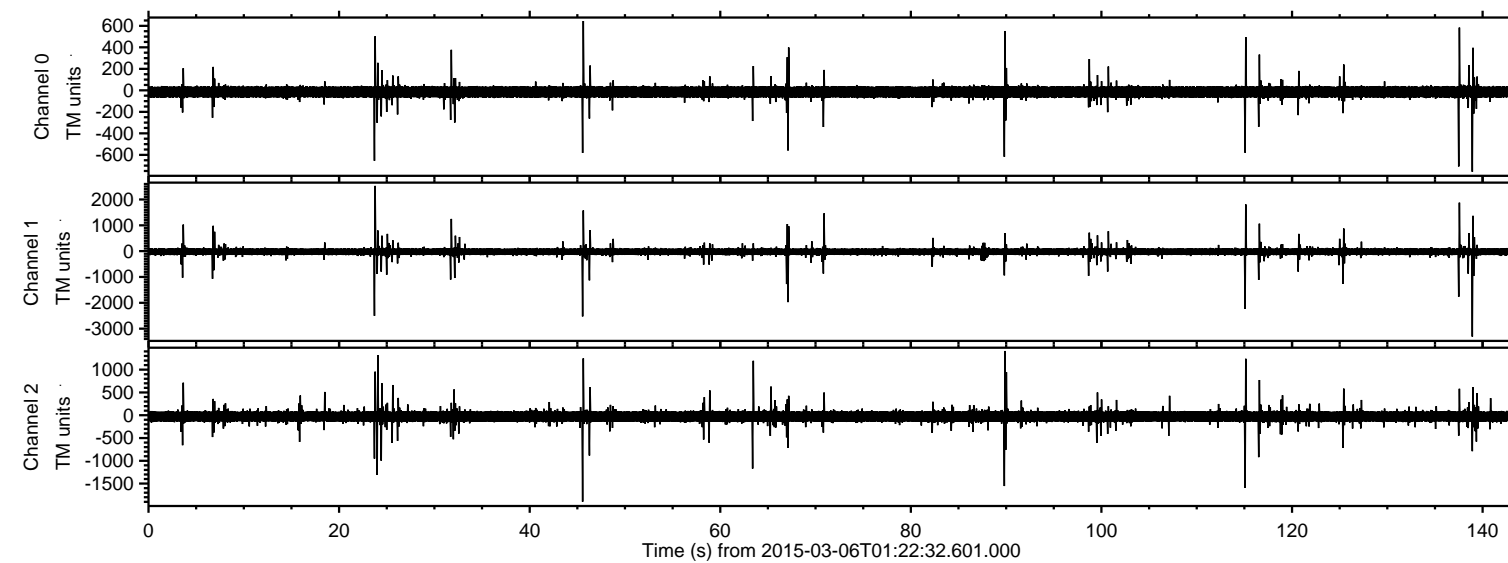


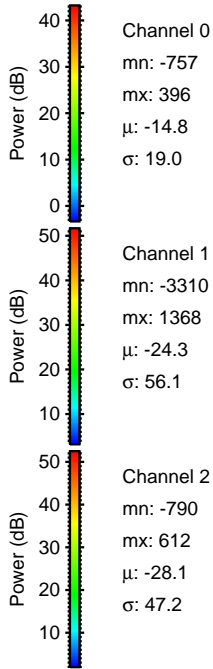
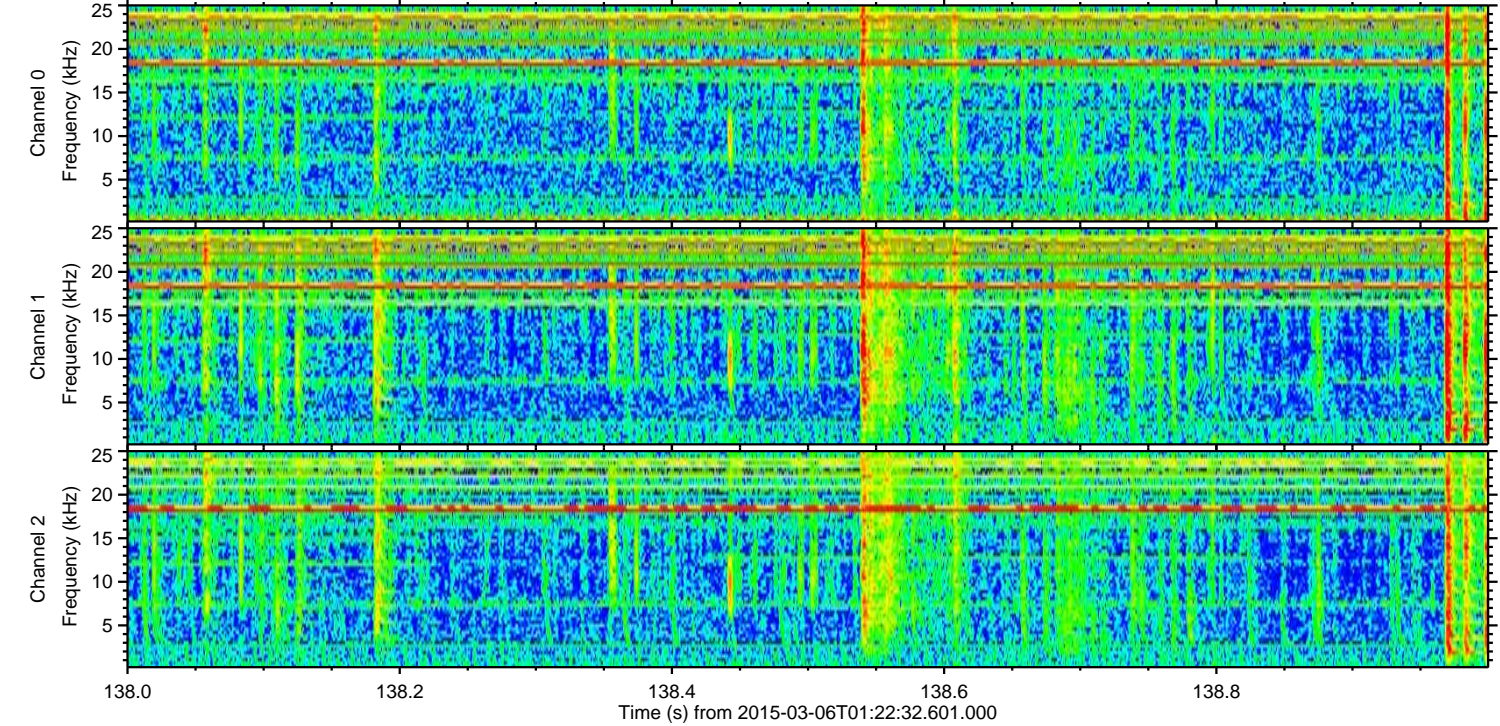
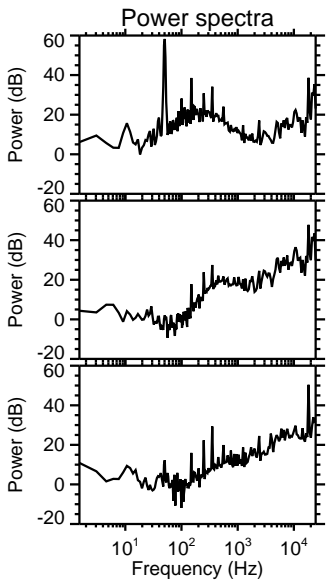
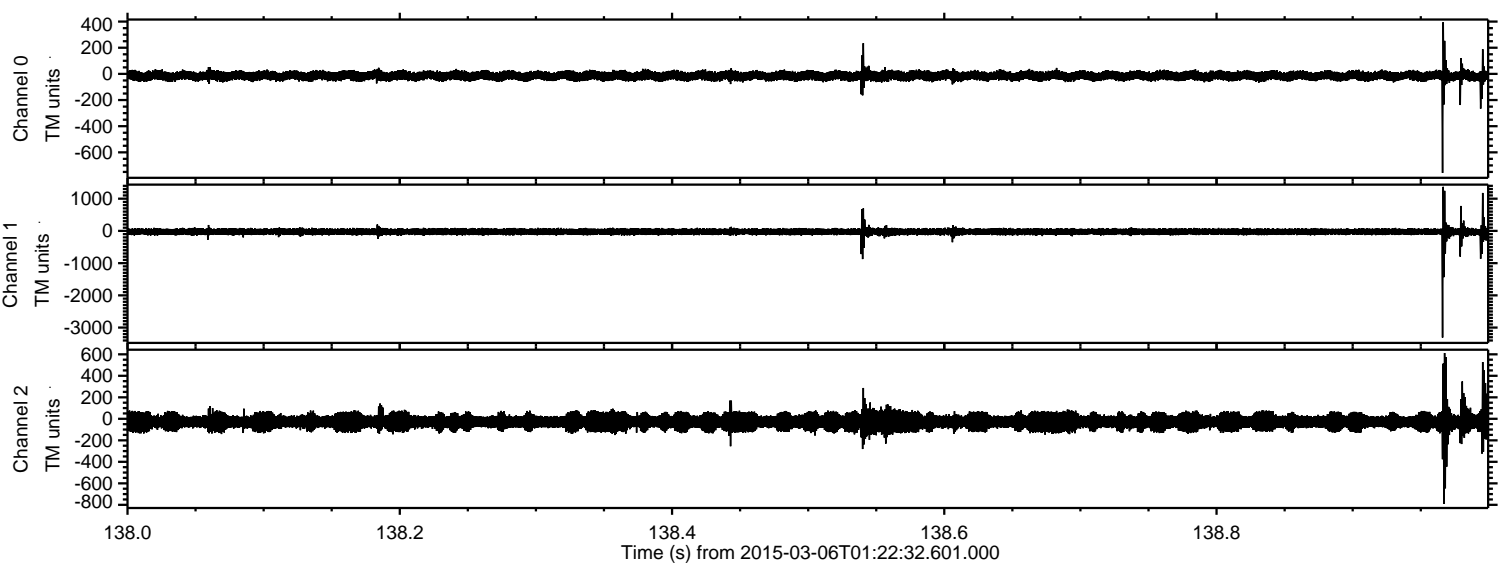
ELMAVAN 3D WAVEFORMS (Measured data sampled at 50 kHz) 49578 packets of 144 samples from 2015-03-06T01:22:32.601.000.

Processed Sat Mar 7 23:03:59 2015 by ELM ver.2012-10-06 from 001__elm20150306_012231__dat00.bin



ELMAVAN 3D WAVEFORMS (Measured data sampled at 50 kHz) 49578 packets of 144 samples from 2015-03-06T01:22:32.601.000. Part 139/143

Processed Sat Mar 7 23:04:11 2015 by ELM ver.2012-10-06 from 001__elm20150306_012231__dat00.bin

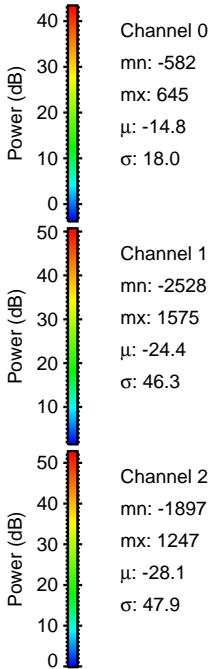
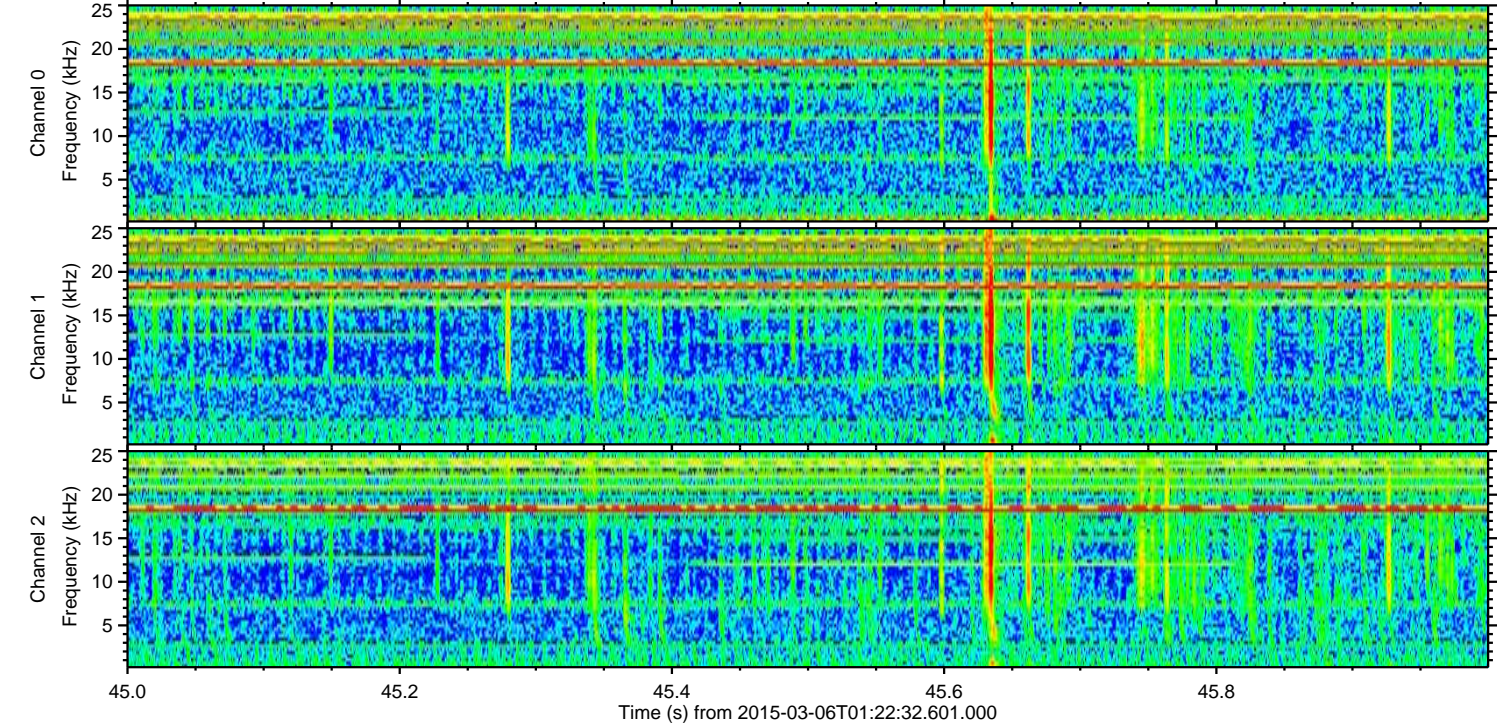
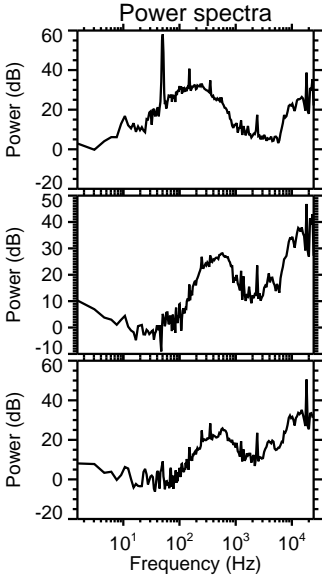
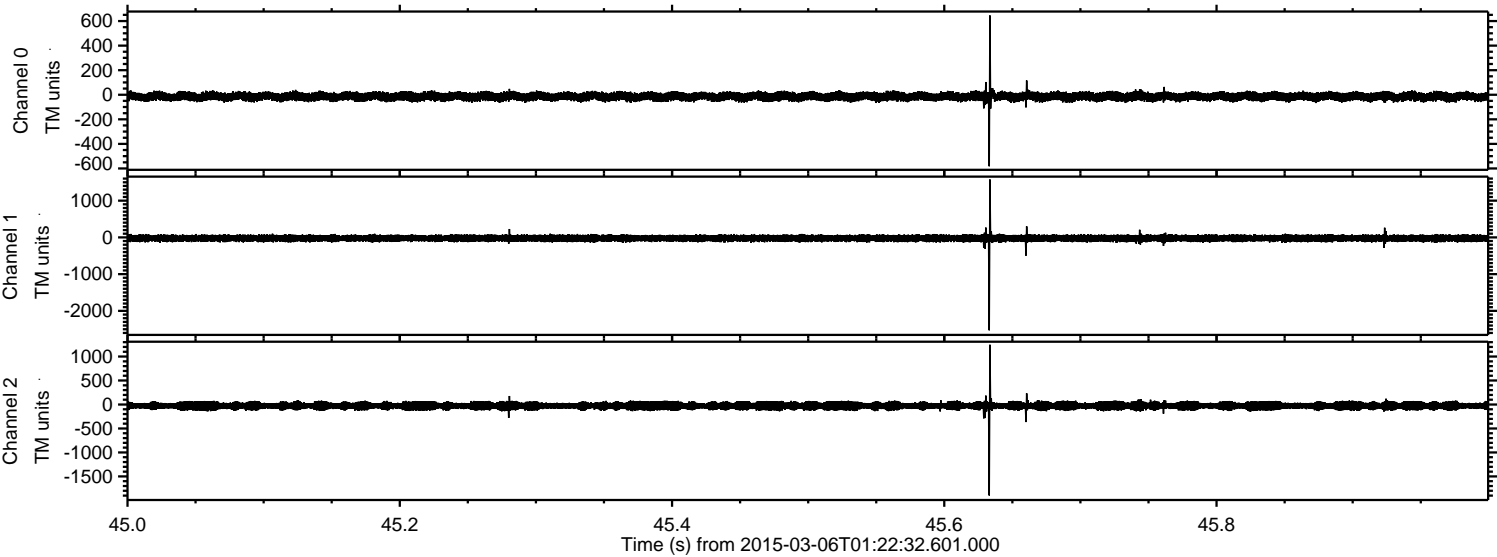


Channel 0
mn: -757
mx: 396
 μ : -14.8
 σ : 19.0

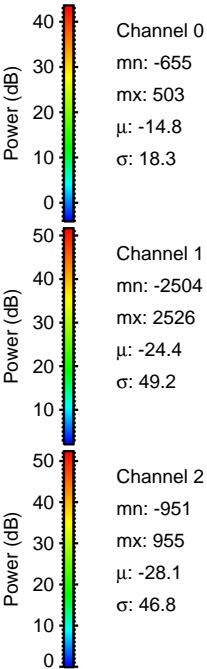
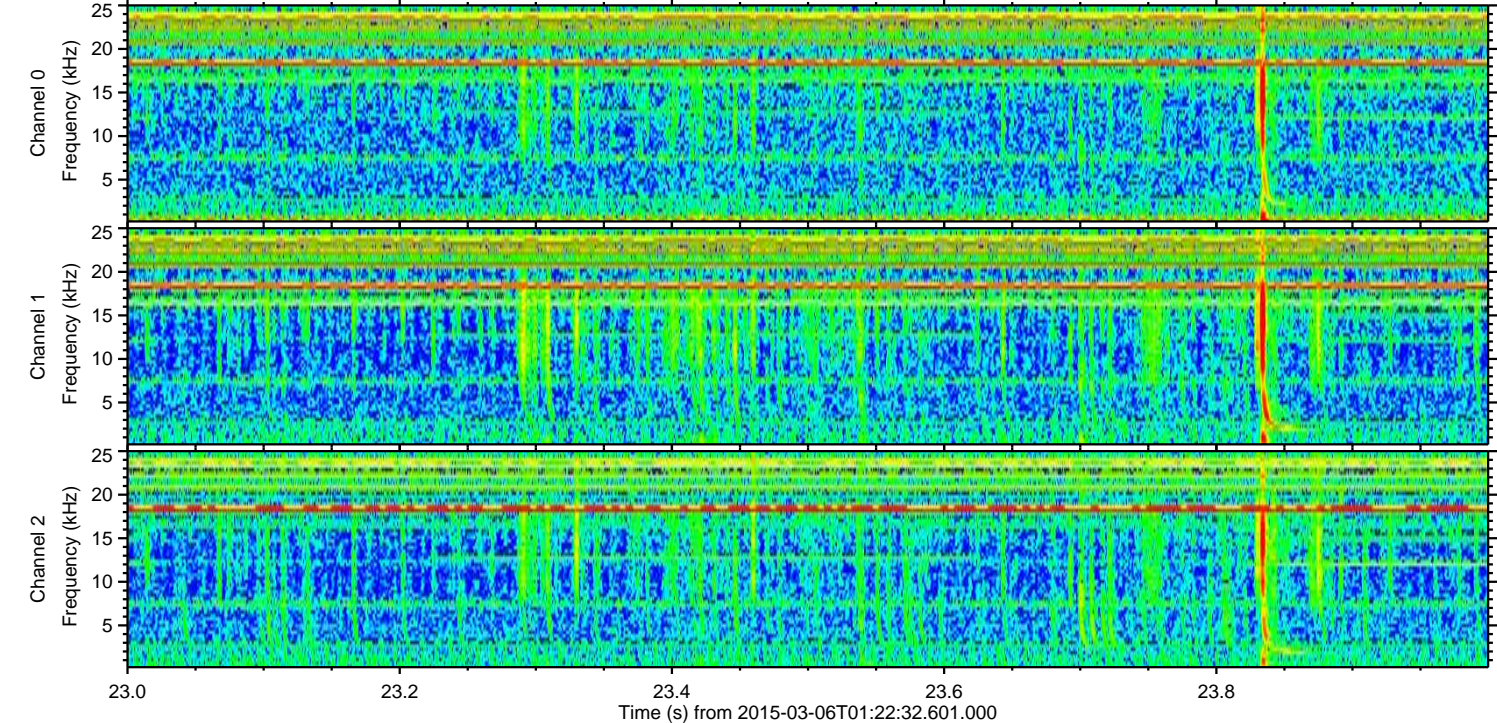
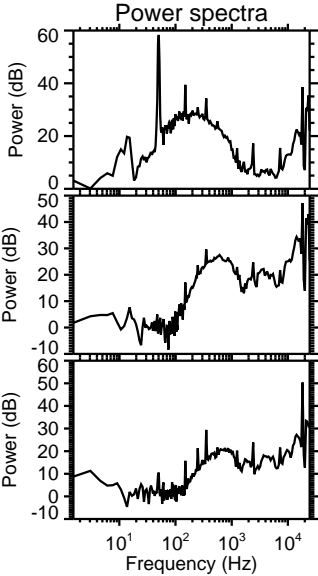
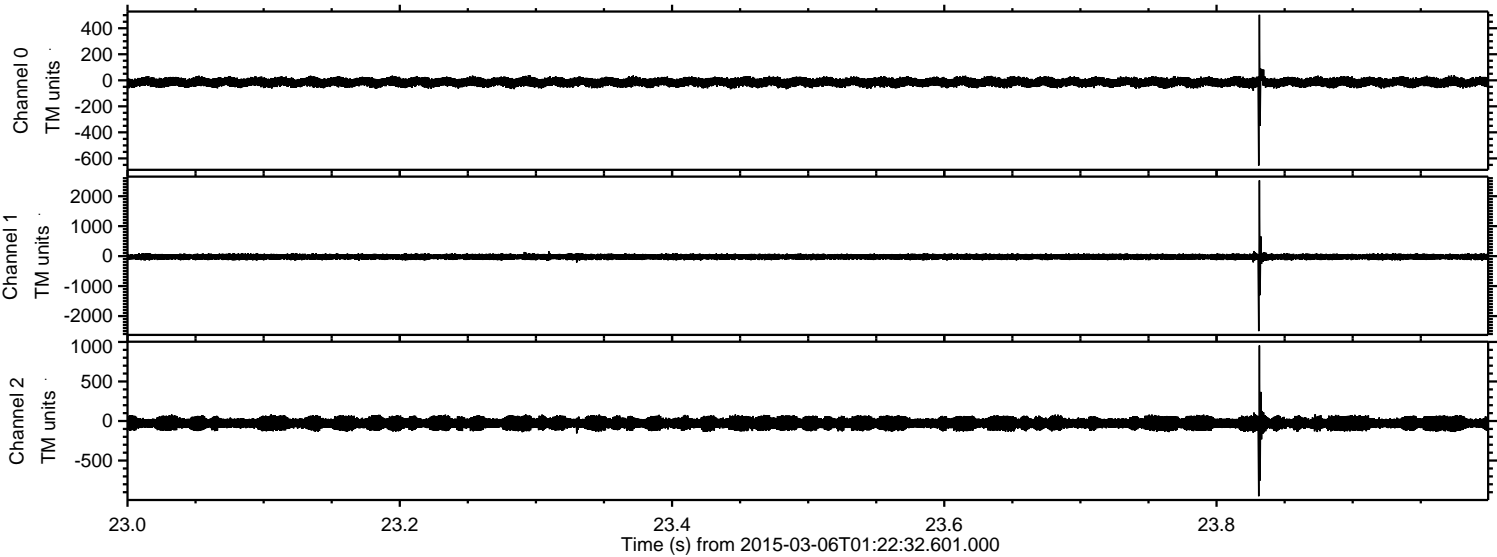
Channel 1
mn: -3310
mx: 1368
 μ : -24.3
 σ : 56.1

Channel 2
mn: -790
mx: 612
 μ : -28.1
 σ : 47.2

Processed Sat Mar 7 23:04:12 2015 by ELM ver.2012-10-06 from 001__elm20150306_012231__dat00.bin

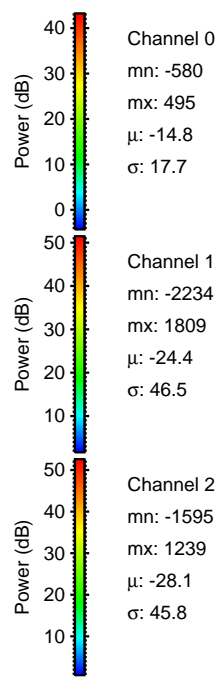
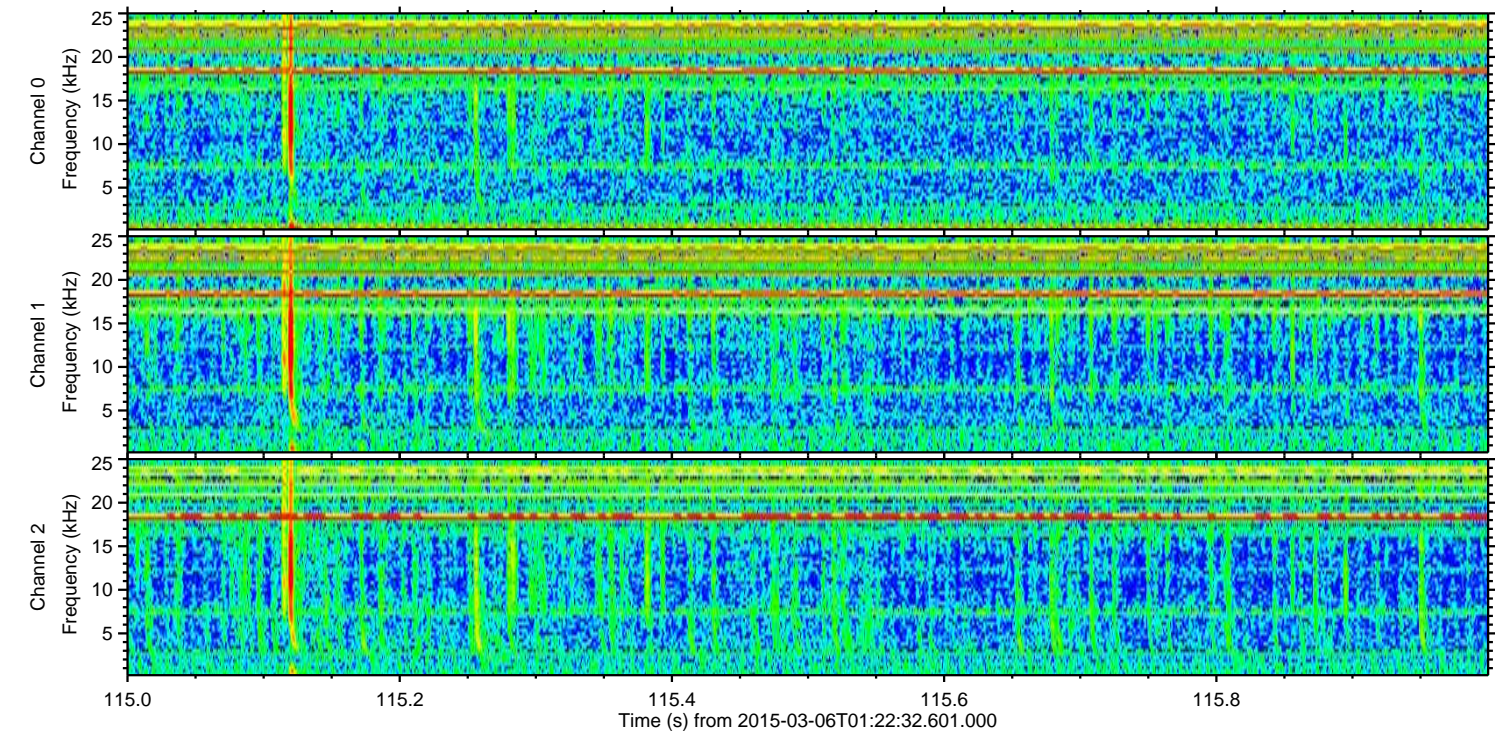
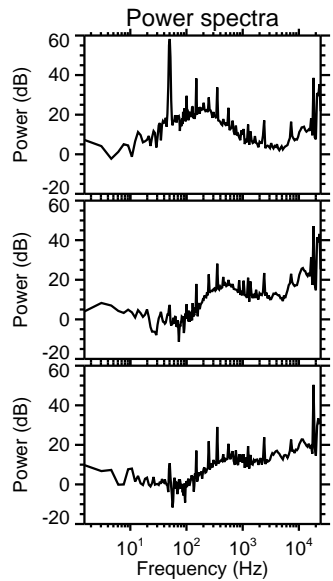
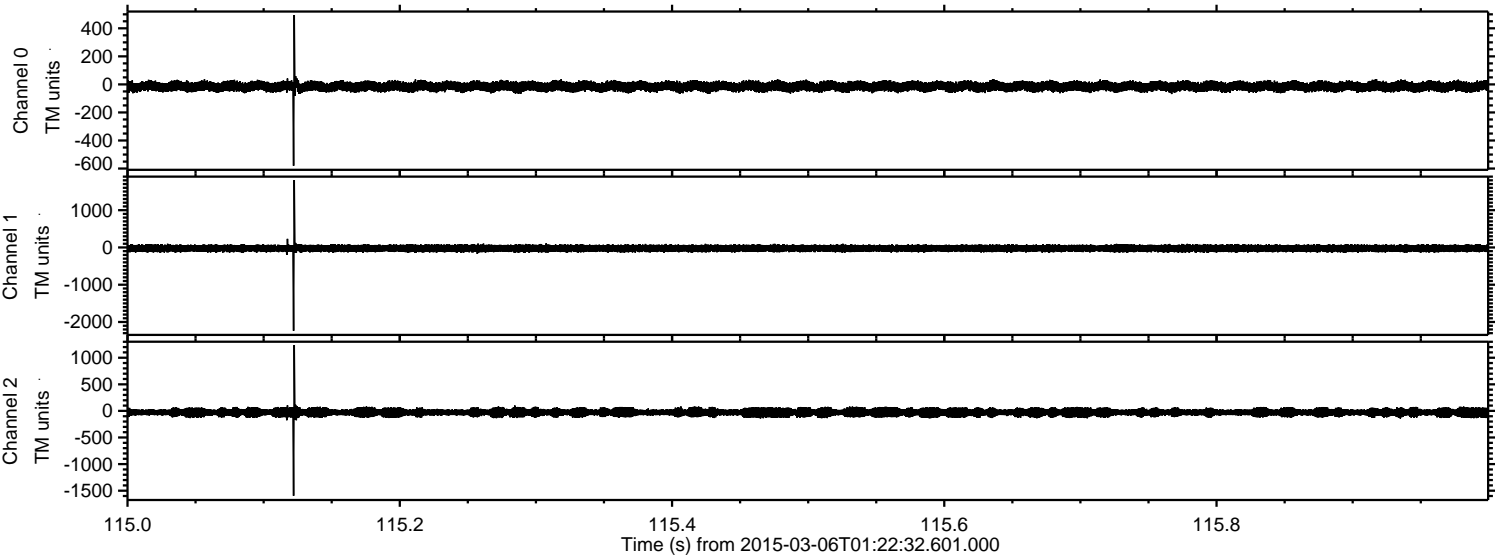


Processed Sat Mar 7 23:04:13 2015 by ELM ver.2012-10-06 from 001__elm20150306_012231__dat00.bin

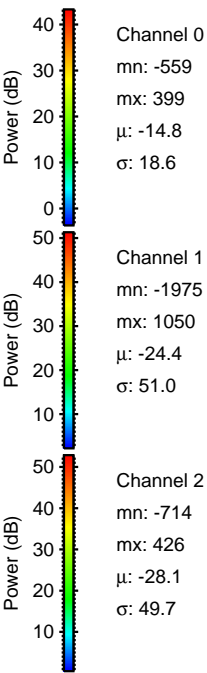
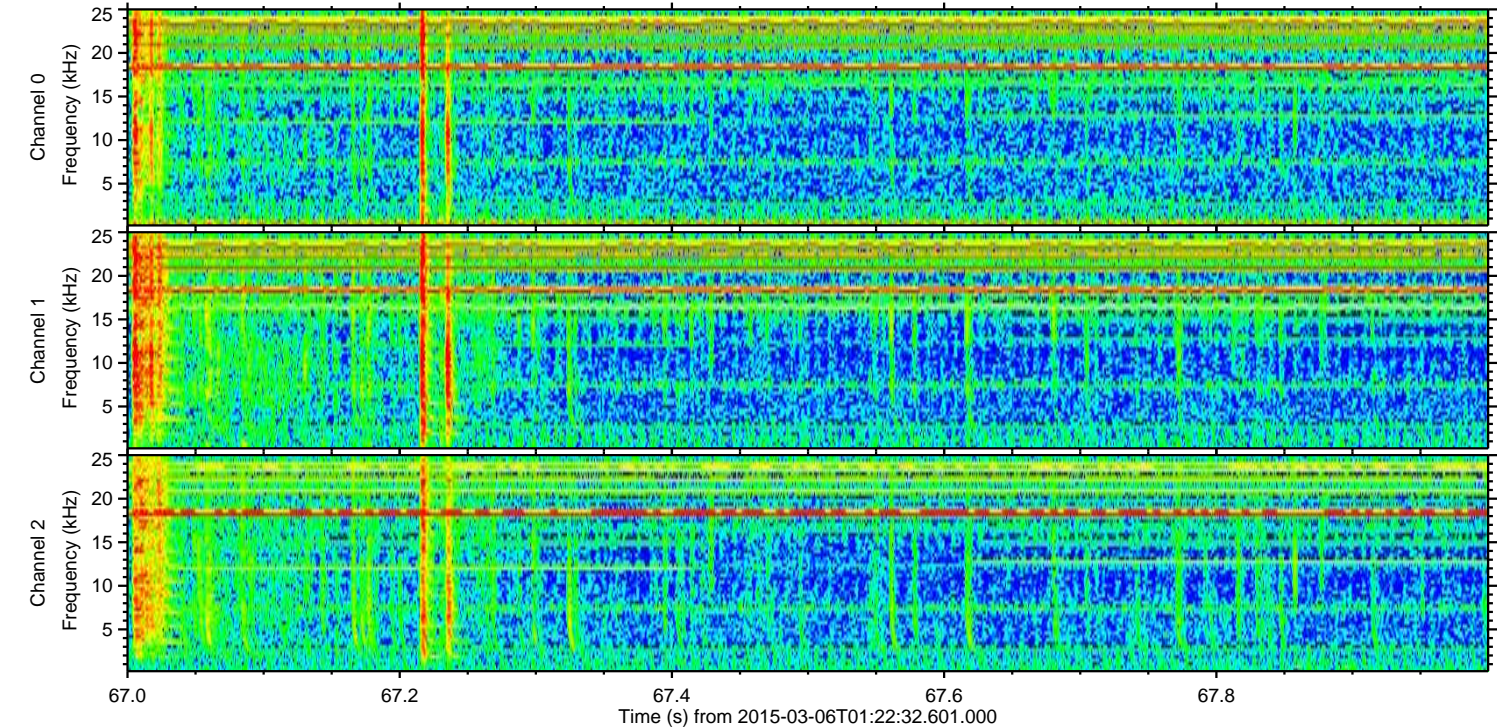
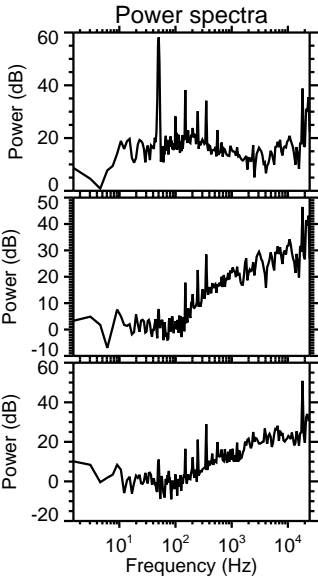
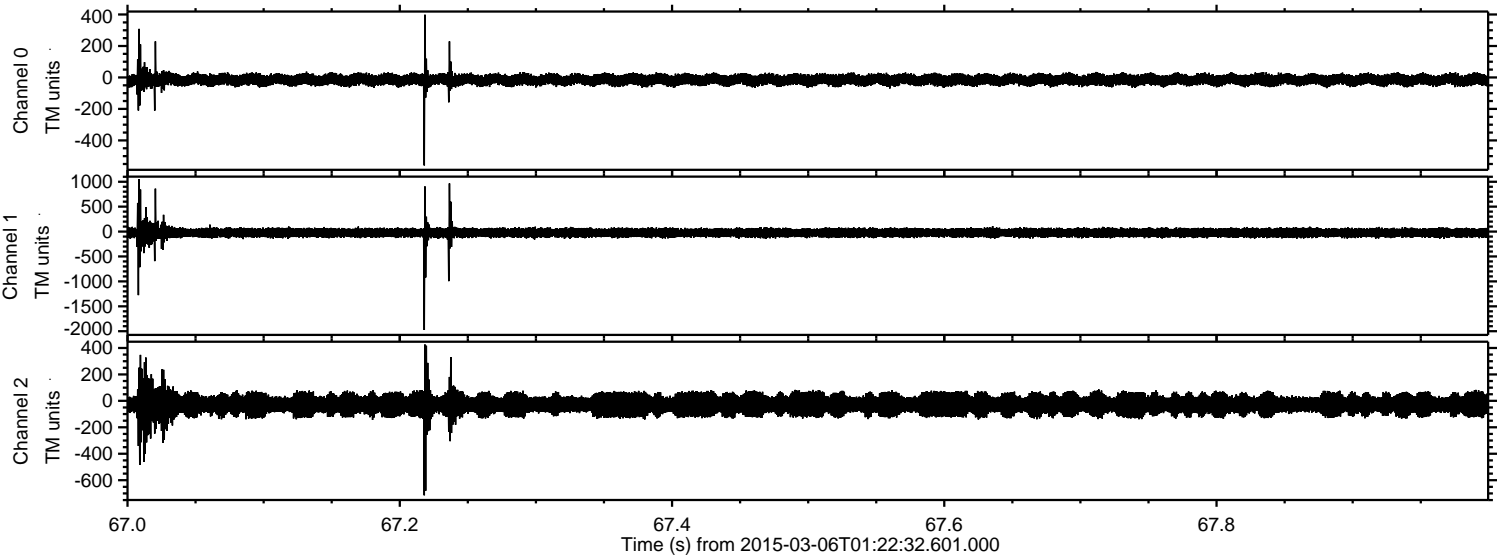


ELMAVAN 3D WAVEFORMS (Measured data sampled at 50 kHz) 49578 packets of 144 samples from 2015-03-06T01:22:32.601.000. Part 116/143

Processed Sat Mar 7 23:04:14 2015 by ELM ver.2012-10-06 from 001__elm20150306_012231__dat00.bin

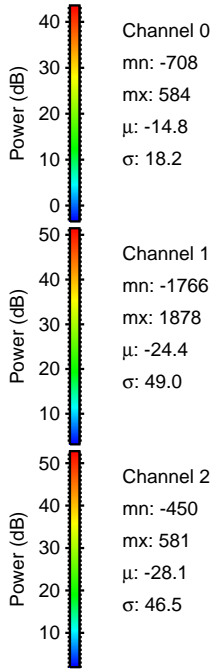
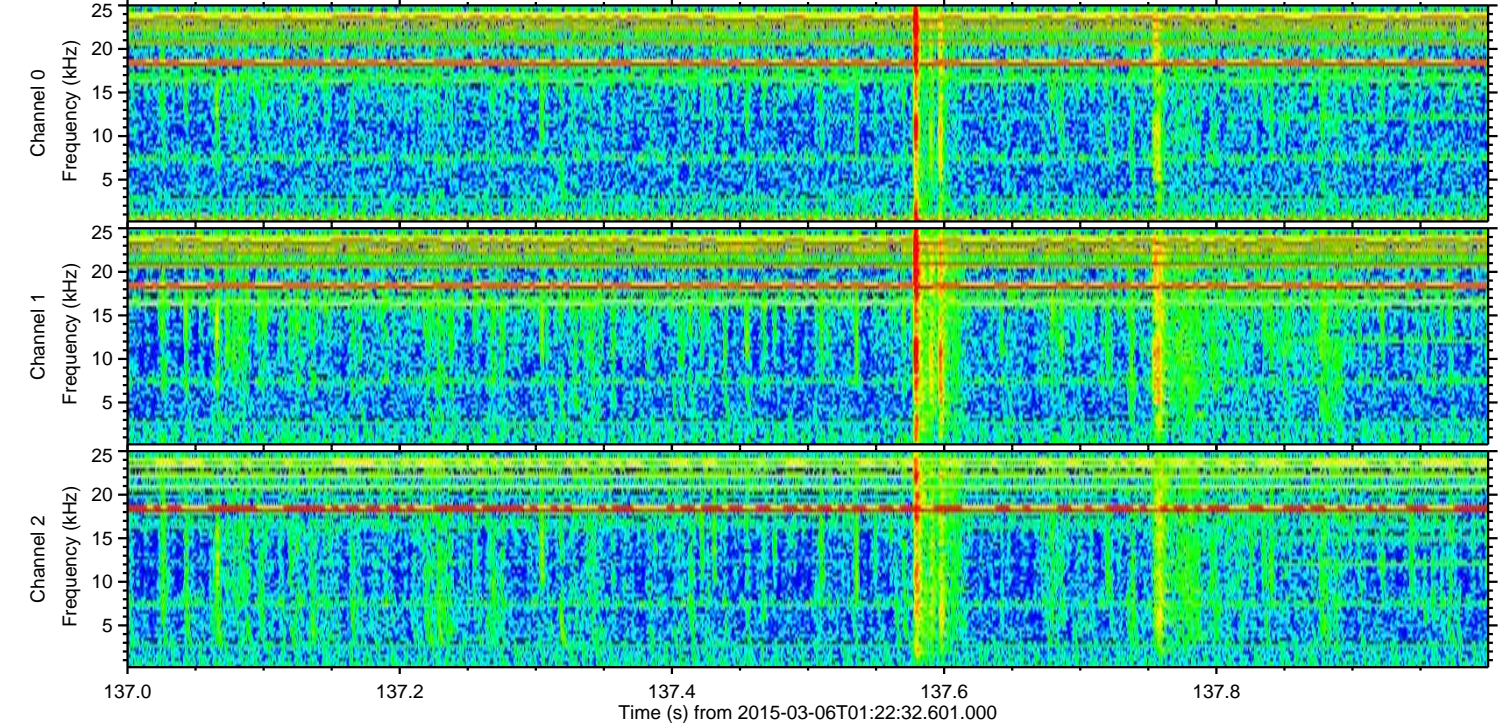
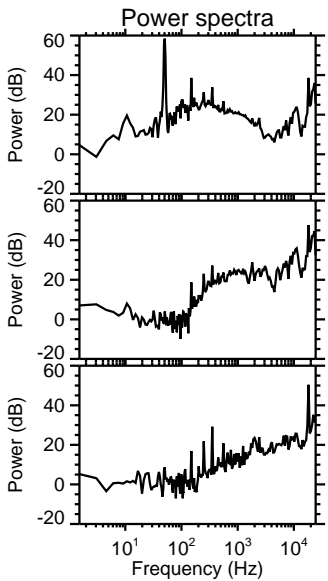
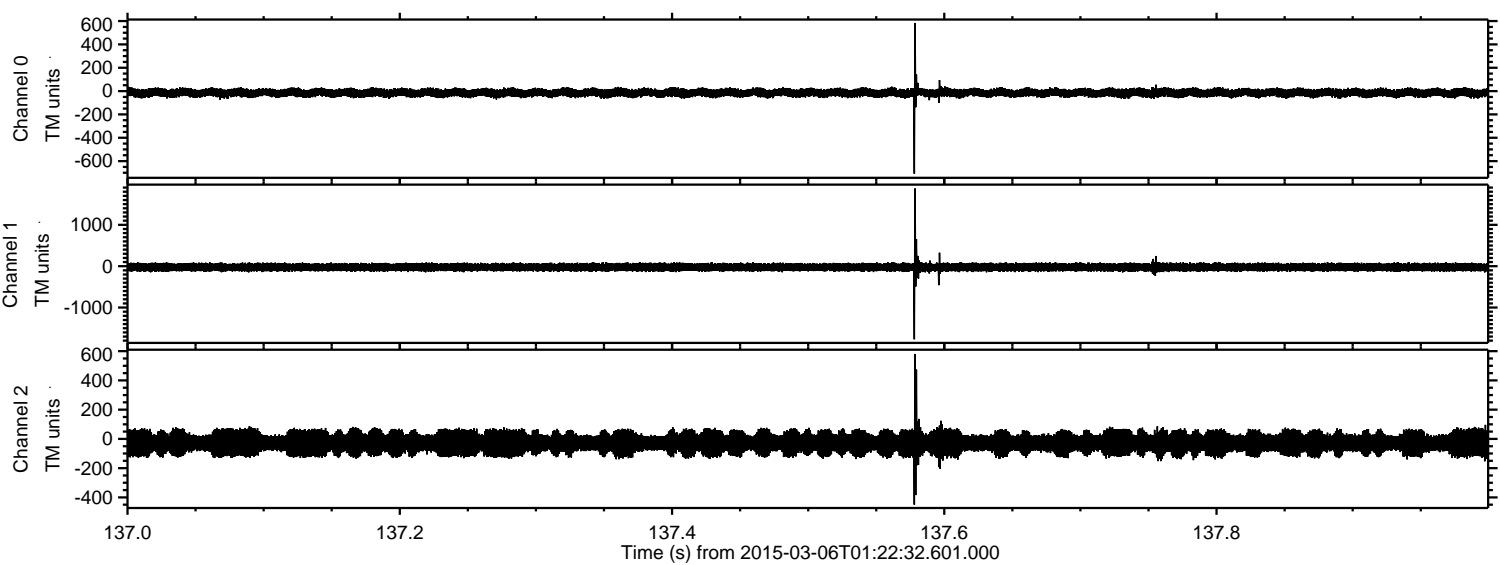


Processed Sat Mar 7 23:04:15 2015 by ELM ver.2012-10-06 from 001__elm20150306_012231__dat00.bin



ELMAVAN 3D WAVEFORMS (Measured data sampled at 50 kHz) 49578 packets of 144 samples from 2015-03-06T01:22:32.601.000. Part 138/143

Processed Sat Mar 7 23:04:16 2015 by ELM ver.2012-10-06 from 001__elm20150306_012231__dat00.bin

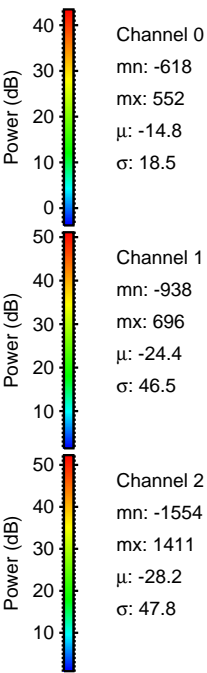
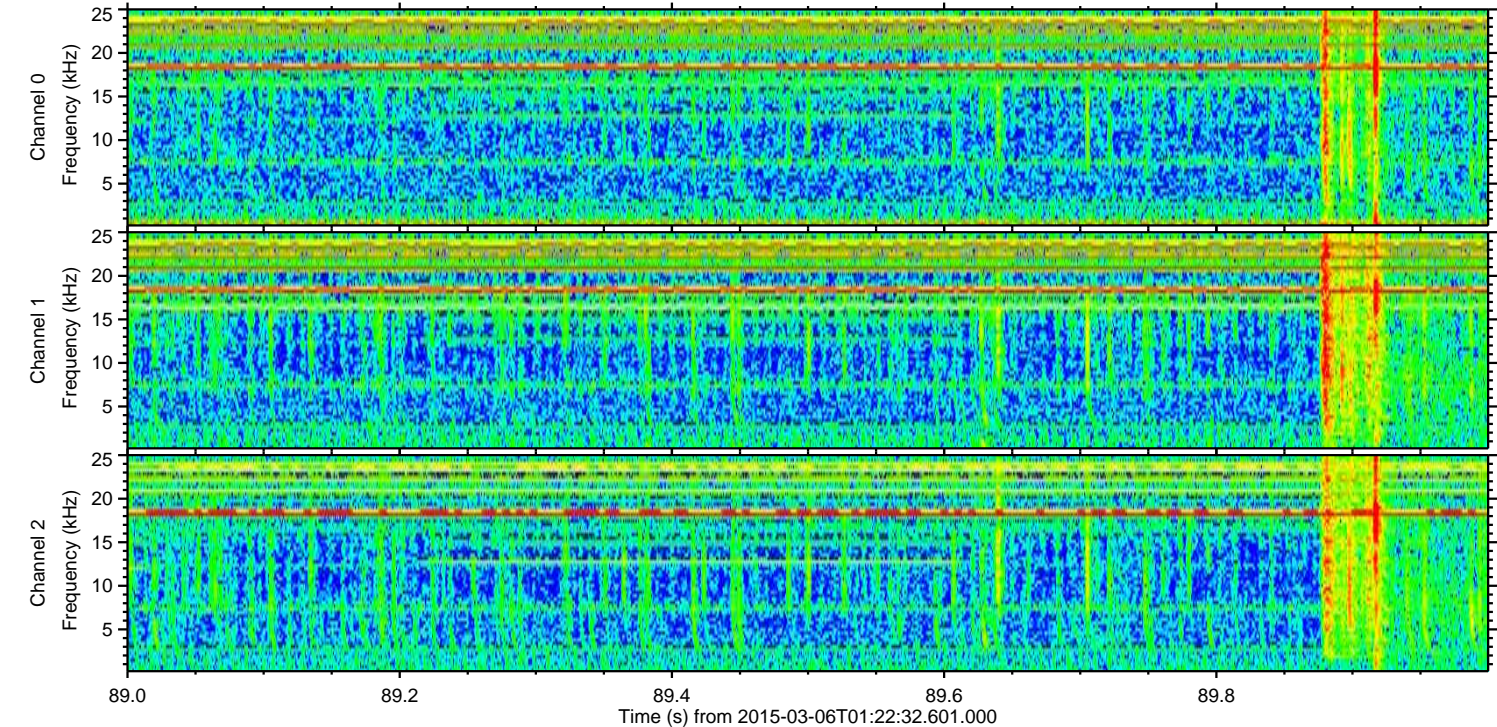
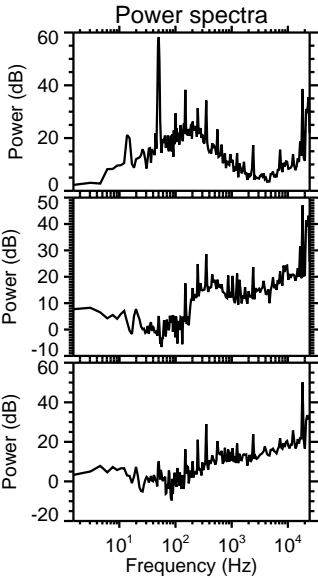
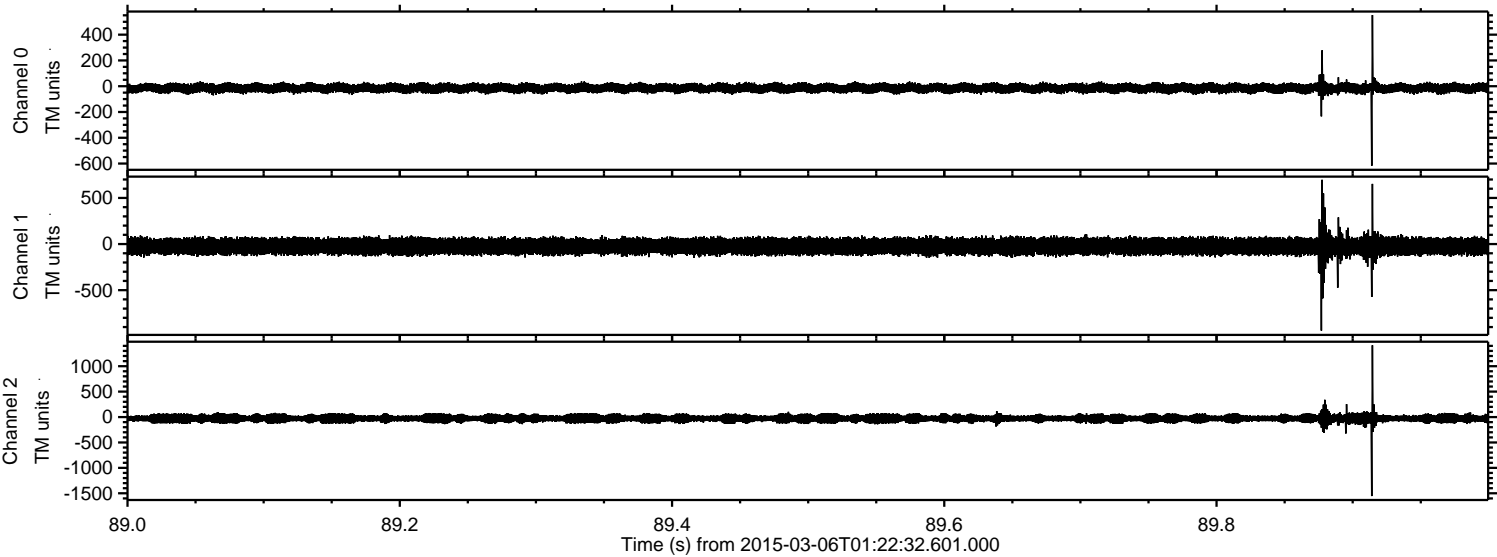


Channel 0
mn: -708
mx: 584
 μ : -14.8
 σ : 18.2

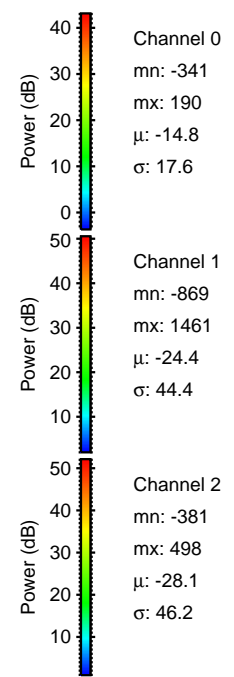
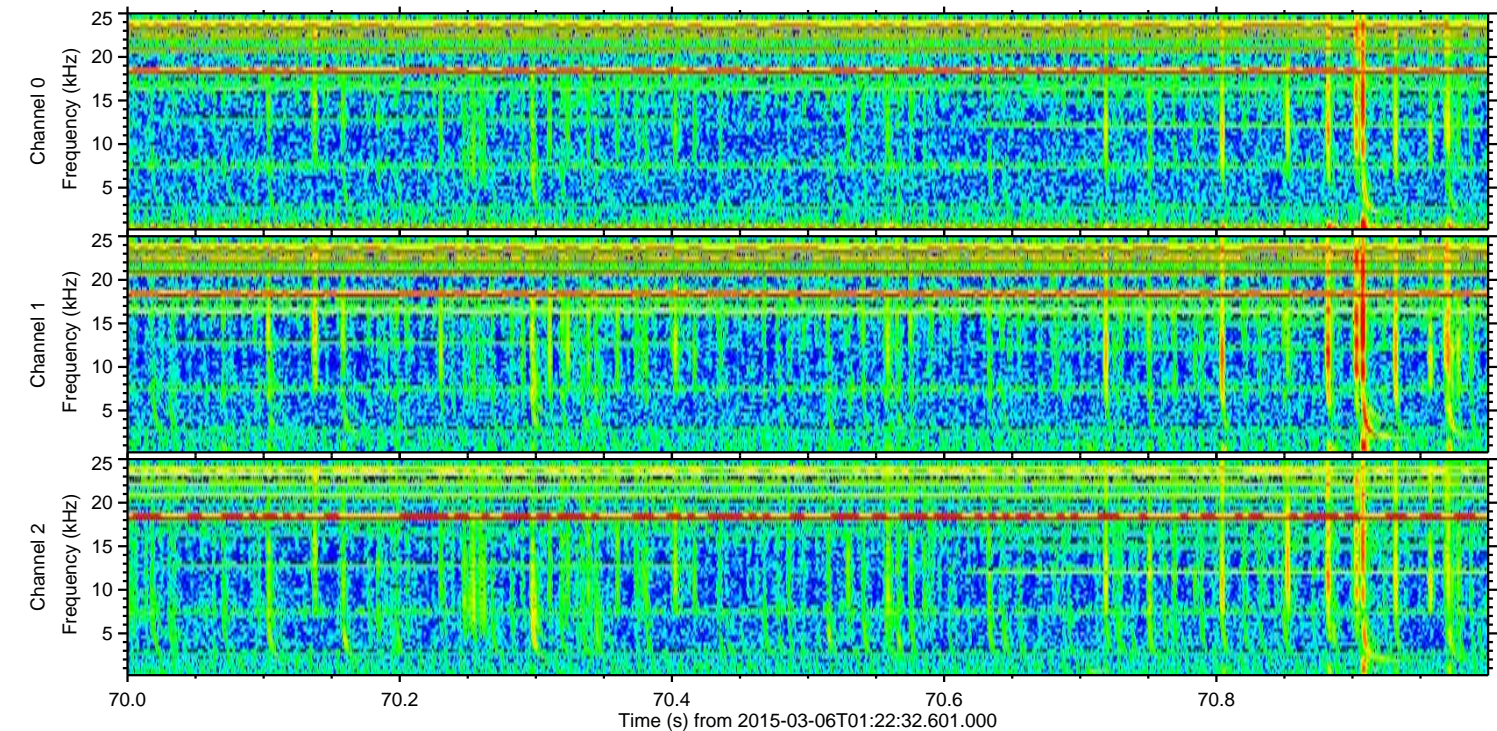
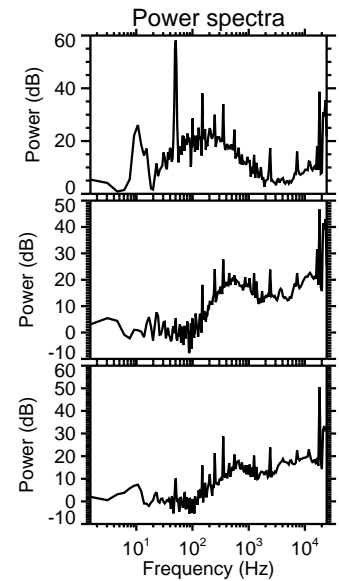
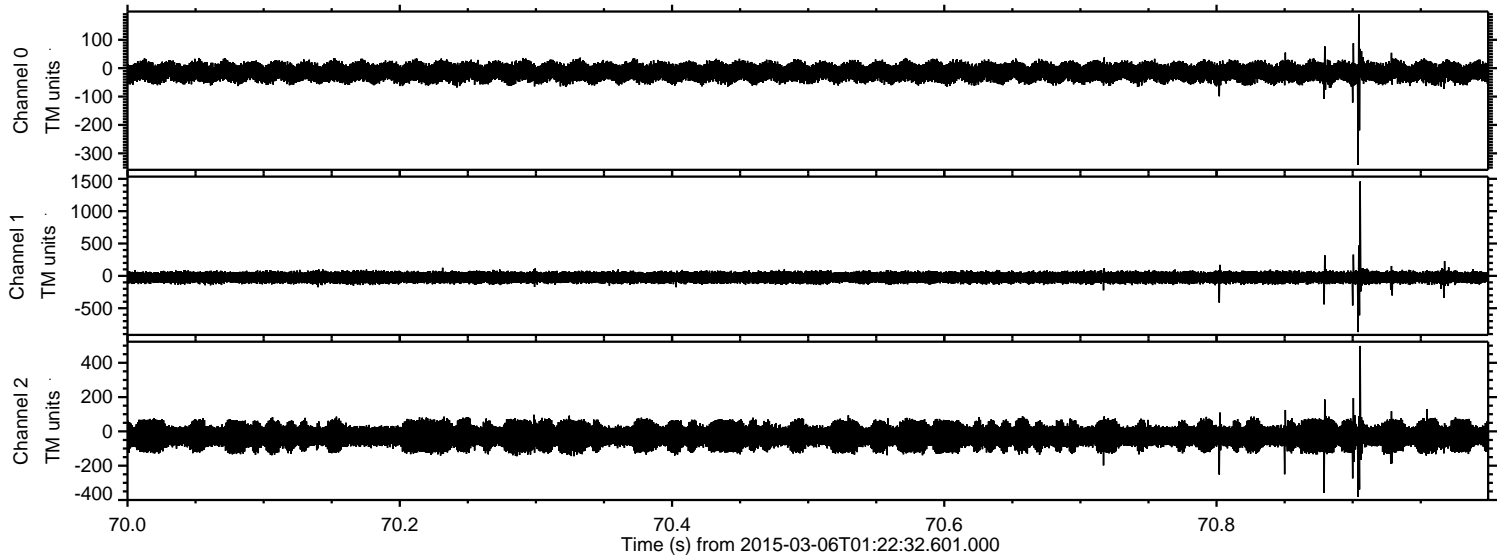
Channel 1
mn: -1766
mx: 1878
 μ : -24.4
 σ : 49.0

Channel 2
mn: -450
mx: 581
 μ : -28.1
 σ : 46.5

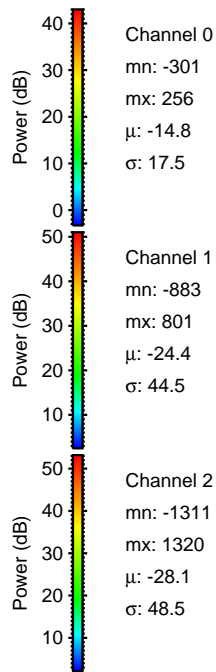
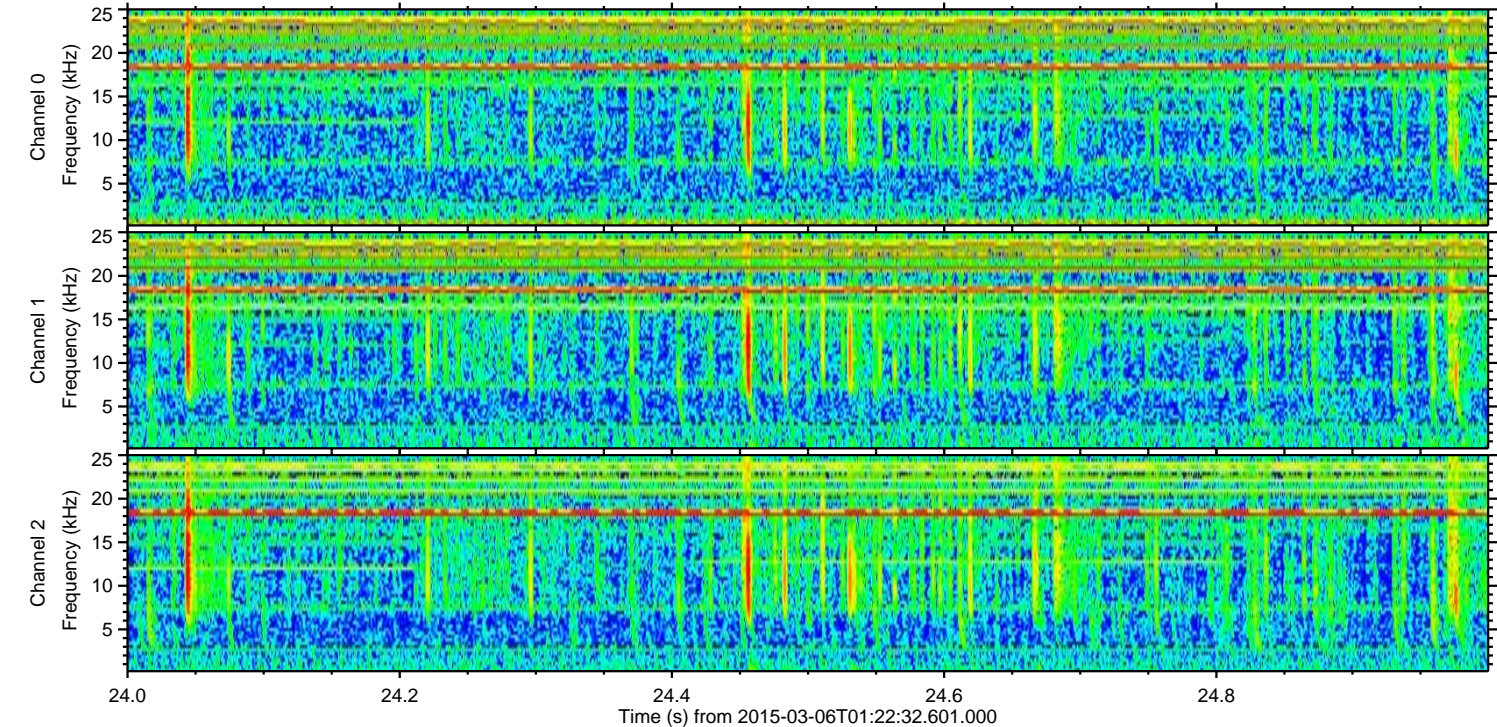
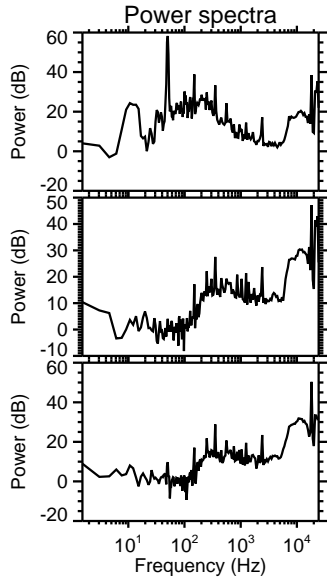
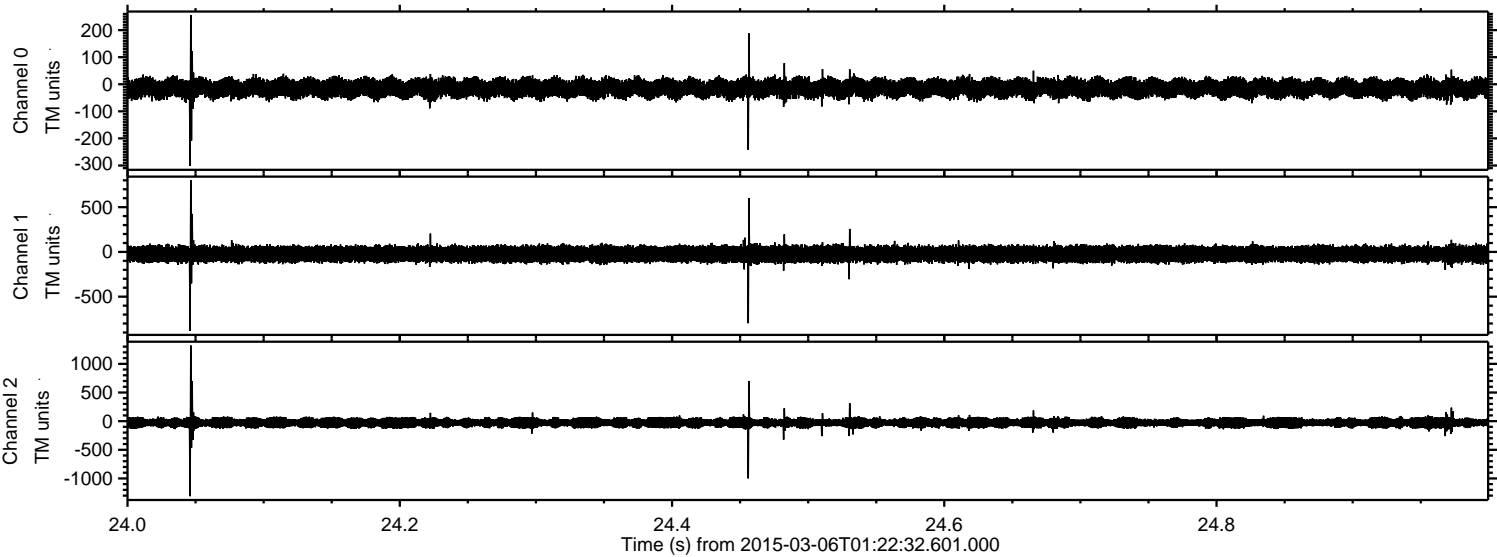
Processed Sat Mar 7 23:04:17 2015 by ELM ver.2012-10-06 from 001__elm20150306_012231__dat00.bin



Processed Sat Mar 7 23:04:18 2015 by ELM ver.2012-10-06 from 001__elm20150306_012231__dat00.bin



Processed Sat Mar 7 23:04:18 2015 by ELM ver.2012-10-06 from 001__elm20150306_012231__dat00.bin



Channel 0
mn: -301
mx: 256
μ: -14.8
σ: 17.5

Channel 1
mn: -883
mx: 801
μ: -24.4
σ: 44.5

Channel 2
mn: -1311
mx: 1320
μ: -28.1
σ: 48.5

Processed Sat Mar 7 23:04:19 2015 by ELM ver.2012-10-06 from 001__elm20150306_012231__dat00.bin

